

500140

Based upon
the Gen. Location
this would be
the 1/4 cor. to
secs. 34 & 35
and not 1/4 35 & 36
M. Hays 4/2/06

X-21

Minnesota National Forest
Township Range Meridian

Corner 1/4 Sec. 35-36 146 29 5th P.

Corner Description *Small dead Jack squared top of stump
4' high 4" in diameter.*

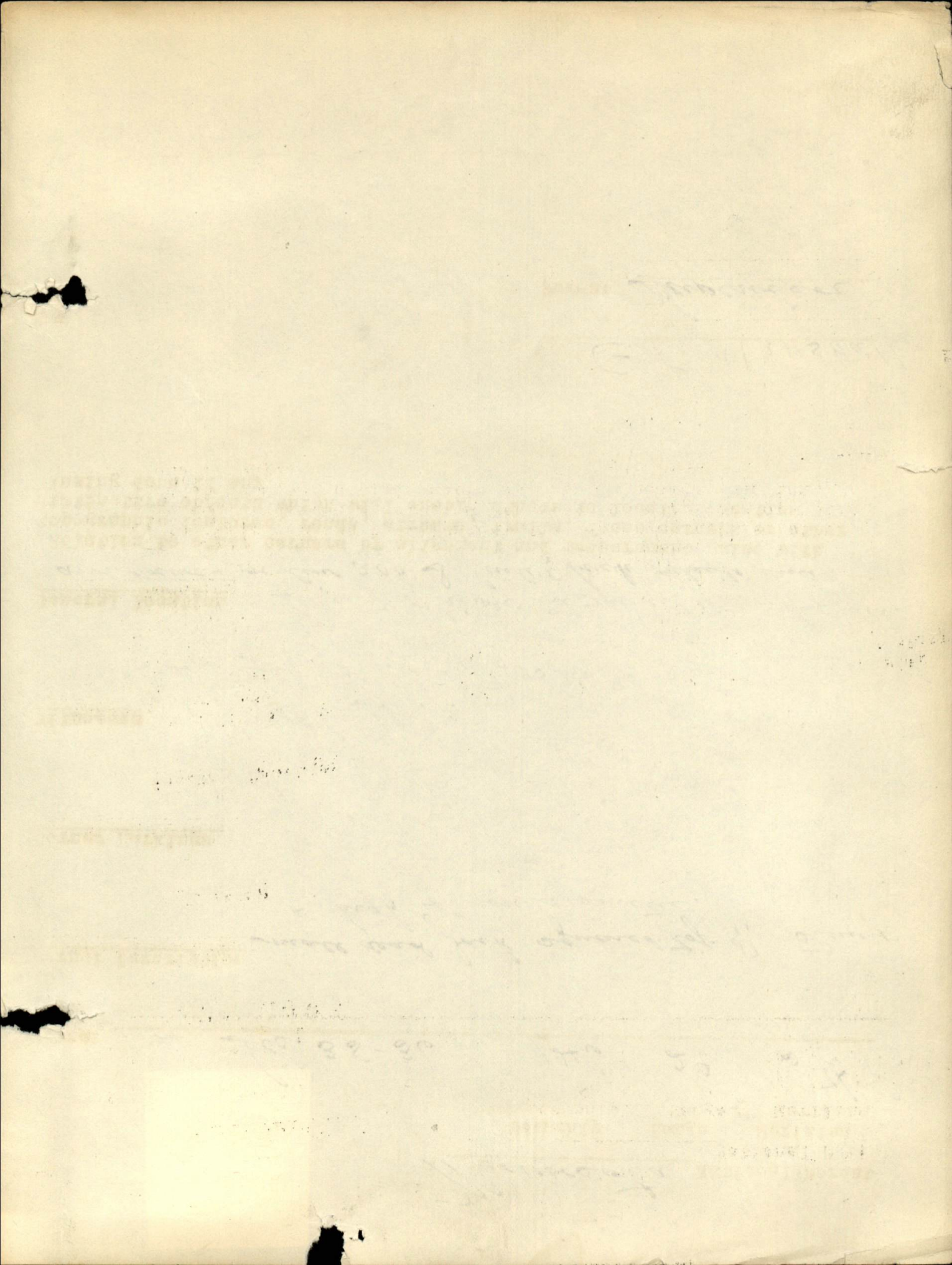
Corner Markings

Witnesses *J.P., 15", S. 12'
J.P. Stump, 12" diam., N. 75W. 30'*

General Location *2 Tallies N. of river in thicket of young Jack.
See Norway on line 200' S. Circle of birch outside pine.
(Relation to other corners by alignment and measurement, also with
topographic features, roads, streams, trails, fence corners or other
distinctive objects which will enable others to locate. Mention
blazing done if any.)*

E. E. Marshall
Forest Supervisor

*checked
1/25
H.H.*



U. S. DEPARTMENT OF AGRICULTURE
FOREST SERVICE

500140

Maybe 1/4 sec 34 35
MA

NATIONAL FOREST

CORNERS OF THE PUBLIC SURVEY

T. 146 R. 29 Mer.

Corner common to Sections
35, and 36

DESCRIPTION OF CORNER

Corner consists of a small dead jack pine

top off stump 4 ft high 4" in dia.
Dimension above ground _____ inches.

Sketch grooves, letters, figures, or notches, on proper face or edge.

CARDINAL POSITION

DIAGONAL POSITION

--	--	--	--

--	--	--	--

N W S E

NW SW SE NE

Mound of _____ is located _____

Pits are located _____

Sketch markings of Bearing Trees (or Rocks) in proper box and fill blanks below, giving bearings from Corner to Trees and Distances in Links.

Species *J. Pinus 4 feet high*

Diameter *15* *12*

Bearing *S* *N 75 W*

Distance *12* *30*

Do you believe this to be a genuine Land Office Corner? *Y*

If not, why? *B. Ts are*

[Signature]

Signature.

Date.

Title.

T. _____ R. _____ Mer.

8-3027

(Make sketch of topography near Corner.)

Sec.		Sec.	
Sec.		Sec.	

Metal Location Poster is on a _____
tree _____ inches diameter, on the _____
side of _____
from which this Corner bears _____
_____ chains distant.

Give any further facts which will aid in finding this
Corner again.

*2 tallies N of river
sets in thicket of young
oak & white. to be removed
from N. on line 200 feet
South - Arch of bridge
outside post*

500140

68

T 196 N R 29 W

X-17

Minnesota National Forest

Township 146 Range 29 Meridian

Corner ~~///~~ corner

Corner Description See 34 and 35

Corner Markings no corner

Witnesses one Jake pine 16 inches on stump

General Location two falls north of river

(Relation to other corners by alignment and measurement, also with topographic features, roads, streams, trails, fence corners or other distinctive objects which will enable others to locate. Mention blazing done if any.)

DEC 29 1914

M. J. Cummings

Forest Asst. Forest Ranger

checked
1/25
H.H.

Mention placing done if any.)
or other distinctive objects which will enable others to locate
with photographic features, logs, stumps, piles, fence corners
(Relation to other corners by alignment and measurement, also

General Location

Witnesses

Corner Markings

Corner Description

Corner

Township Range Meridian

National Forest

