

Minnesota National Forest

Township Range Meridian

Corner 7-8-17-18 144 27 S 2

Corner Description

New stake soft maple 3" Faces on four sides.
Pivoted marked S7 S8 S17 S18

Corner Markings

Witnesses

Poplar 15" S7 N 12 Feet scribed T144 NR 27W S18
Poplar stub 11" ~~S55~~ E 20 Feet scribed NS 17
No other B T in evidence

General Location

(Relation to other corners by alignment and measurement, also with topographic features, roads, streams, trails, fence corners or other distinctive objects which will enable others to locate. Mention blazing done if any.)

JAN 9 1904

J. A. Souney
Forest Ranger

Check
#4
1/20
S#
3-28

U. S. DEPARTMENT OF AGRICULTURE
FOREST SERVICE

Minn NATIONAL FOREST

CORNERS OF THE PUBLIC SURVEY

T. 144 R. 27 Mer.

Corner common to Sections
7, 8, 18, and 17

DESCRIPTION OF CORNER

Corner consists of a No corner stake

Dimension above ground _____ inches.

Sketch grooves, letters, figures, or notches, on proper face or edge.

CARDINAL POSITION

DIAGONAL POSITION

N	W	S	E

NW	SW	SE	NE

Mound of _____ is located _____

Pits are located _____

Sketch markings of Bearing Trees (or Rocks) in proper box and fill blanks below, giving bearings from Corner to Trees and Distances in Links.

<u>T144N</u> <u>R27W</u> <u>S</u>			

Species Aspen _____
 Diameter 18 _____
 Bearing _____
 Distance _____

Do you believe this to be a genuine Land Office Corner? yes

If not, why? _____

Signature.

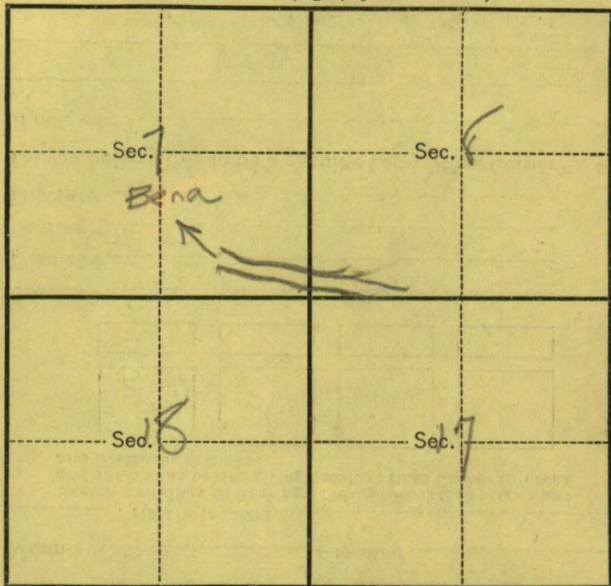
1/19/58
Date.

F. R.
Title.

T. 144 N R. 27 W 5th P Mer.

8-3027

(Make sketch of topography near Corner.)



Metal Location Poster is on a white post
tree 8 inches diameter, on the South
side of post
from which this Corner bears Due South
788 chains distant.

Give any further facts which will aid in finding this
Corner again.

White post on N edge of
road and 8 corners on
south side of road.
Near top of ridge.