

	1	2	3	4	5	6	7	8	9	10	11	12	13	14	15	16	17	18	19	20	21	22	23	24	25
A																									
B	+	+	+			+	+	+		+	+	+		+	+	+		+	+	+		+	+	+	
C	+	6	+			+	5	+		+	4	+		+	3	+		+	2	+		+	1	+	
D	+	+	+			+	+	+		+	+	+		+	+	+		+	+	+		+	+	+	
E																									
F	+	+	+			+	+	+		+	+	+		+	+	+		+	+	+		+	+	+	
G	+	7	+			+	8	+		+	9	+		+	10	+		+	11	+		+	12	+	
H	+	+	+			+	+	+		+	+	+		+	+	+		+	+	+		+	+	+	
J																									
K	+	+	+			+	+	+		+	+	+		+	+	+		+	+	+		+	+	+	
L	+	18	+			+	17	+		+	16	+		+	15	+		+	14	+		+	13	+	
M	+	+	+			+	+	+		+	+	+		+	+	+		+	+	+		+	+	+	
N																									
O	+	+	+			+	+	+		+	+	+		+	+	+		+	+	+		+	+	+	
P	+	19	+			+	20	+		+	21	+		+	22	+		+	23	+		+	24	+	
Q	+	+	+			+	+	+		+	+	+		+	+	+		+	+	+		+	+	+	
R																									
S	+	+	+			+	+	+		+	+	+		+	+	+		+	+	+		+	+	+	
T	+	30	+			+	29	+		+	28	+		+	27	+		+	26	+		+	25	+	
U	+	+	+			+	+	+		+	+	+		+	+	+		+	+	+		+	+	+	
V																									
W	+	+	+			+	+	+		+	+	+		+	+	+		+	+	+		+	+	+	
X	+	31	+			●	32	+		+	33	+		+	34	+		+	35	+		+	36	●	
Y	+	+	+			+	+	+		+	+	+		+	+	+		+	+	+		+	+	+	
Z																									

LEGEND

○ = Corner having information on form 7100-52 in this file.

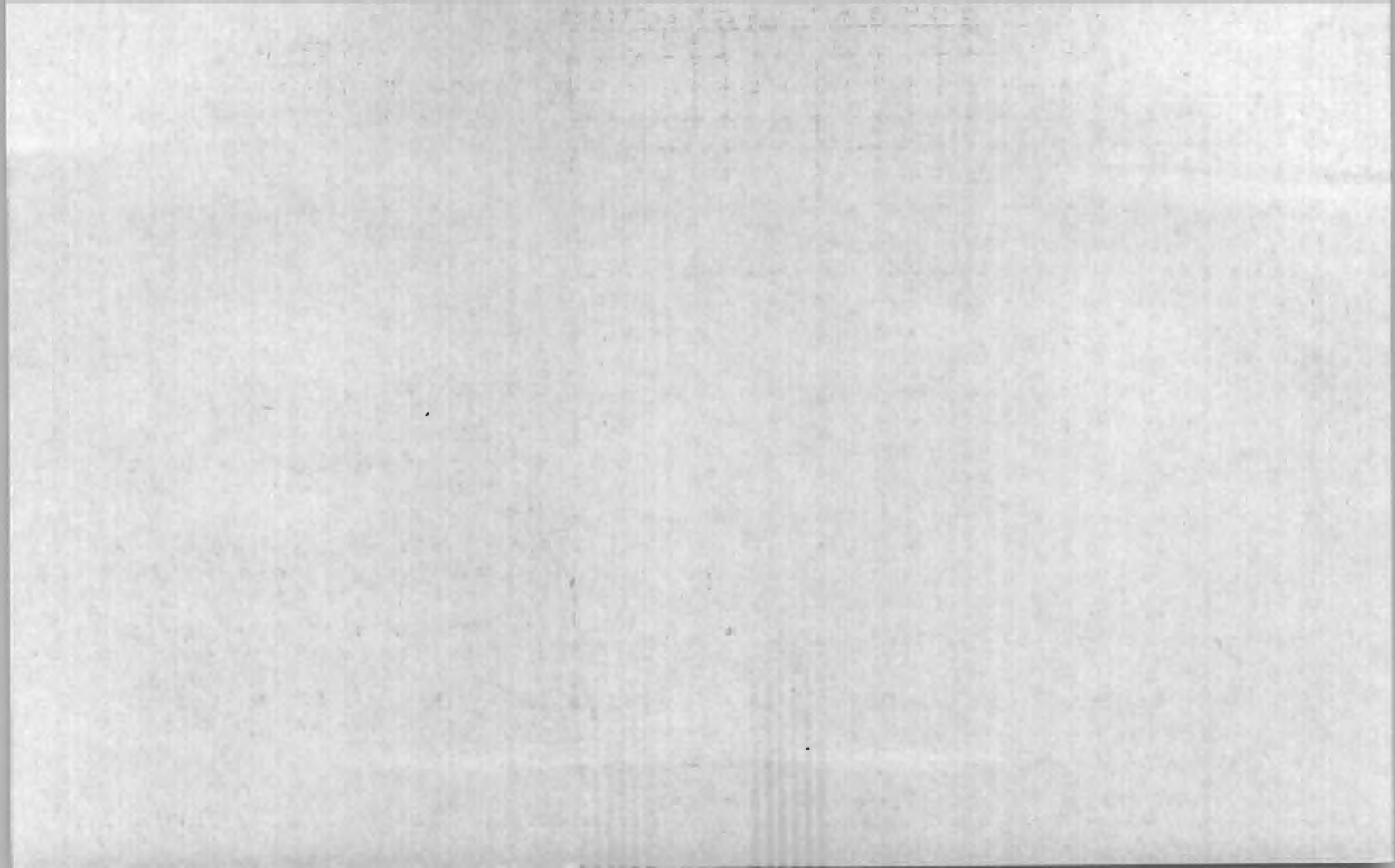
T142N R29W 5th PM

FILING INSTRUCTION

File 7100-52 card record by letter and number coordinates behind the file guide for the township in which it falls.

File the 7100-52 card record by letter and then by number i.e., all A cards first, then B cards etc.

The first card behind the file guide (if data have been obtained and recorded) will be card A-1 for N.W. Township Corner, then card A-2 for 1/16 corner then card A-3 for 1/4 corner etc.



Index No. V-22-23  
(Alphabetical - Numerical)

LAND CORNER RECORD  
(RECTANGULAR SURVEYS)

R9-7150-4 (Rev. 6/13/67)  
 GPO 802-127

T. 142 R. 29 S. 5 Mer. N.F. CHIPPEWA County CASS State MN.  
MEANDER CORNER REF. Corner common to sections 25 and 36

EXISTING SURVEYS

Original Government Survey

Year surveyed 1874  
 Original monument WOOD POST  
(Wood post, stone, pile of stones, pipe, etc.)  
INTERSECT WK. 2170 CHS.  
 Bearing Trees  
 Species W. ASH W. ASH  
 Diameter 6 8  
 Bearing S13E N40E  
 Distance 29 LKS. 67 LKS.  
19.1' 44.2'

Subsequent Corner Restoration

Year surveyed 1918 By GLO RESURVEY  
 Where filed or recorded ON FILE PAGE 6 142-29  
 Monument SET 1" X 3/8" IRON POST WITH CAP MKD  
(Original, concrete post, iron rod, etc.)  
T142N R29W  
MC/525  
536  
1918

Bearing Trees, Reference Objects

Species MAPLE BASSWOOD  
 Diameter 6 6  
 Bearing N89E S61°15'E  
 Distance 76 LKS. 99 LKS.  
50.16' 65.34'

Original Evidence Found

Year of search 1918 By GLO  
 Monument found SEARCH AT RECORD DISTANCE, - NO EVIDENCE FOUND. AT 3.19 CHS. SHORE OF LEECH LK.

Original Bearing Trees Found

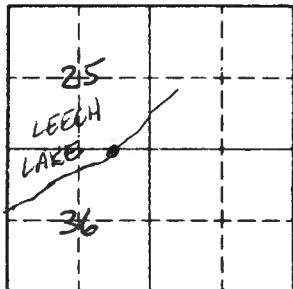
Species \_\_\_\_\_  
 Diameter \_\_\_\_\_  
 Bearing \_\_\_\_\_  
 Distance \_\_\_\_\_

Evidence of Subsequent Corner Restoration Found

Year of search 6/26/85 By CK JA (TF CASS CO.)  
FD. GLO MONU. IN PLACE. 8" ARQUE SPA. - PLACE 3  
LARGE ROCK AROUND MONU. - CORNER IS 19'E OF  
TOE OF HILL - FD. GLO BT BELOW  
OVER.

Bearing Trees, Reference Objects

Species MAPLE \_\_\_\_\_  
 Diameter 15 \_\_\_\_\_  
 Bearing N89E \_\_\_\_\_  
 Distance 49.71' \_\_\_\_\_  
SCRIBE INSIDE



Sketch

○ Corner    ▨ F.S. Land

Relation of Evidence to Record Features Along Section Lines

Section line to sections \_\_\_\_\_  
 Object \_\_\_\_\_  
 Record distance \_\_\_\_\_  
 Measured distance \_\_\_\_\_

Other Evidence

Describe evidence of use and occupation such as roads, fences, clearings, timber cutting lines, plantations, etc.. Cite source of testimony if any. \_\_\_\_\_

At time of search:

1. Did you have the record description?

Yes \_\_\_\_\_ No \_\_\_\_\_

2. How was search area located?

Pacing, chaining, photos, maps, etc. \_\_\_\_\_

3. Man hours spent in search \_\_\_\_\_

4. Do you think additional search might recover evidence? Yes \_\_\_\_\_ No \_\_\_\_\_

5. Signature \_\_\_\_\_

Perpetuation Record

Monument and accessories established. Include brief description of area. \_\_\_\_\_

MARKED NEW B.T'S.

MAPLE 16 S12W 32.72' SCRIBED BT NAIL ON W SIDE  
 N. PINE 8 N51E 53.00' " " " " NW "

Certified corner restoration certificate prepared: Yes \_\_\_\_\_ No \_\_\_\_\_

Filed in county records at \_\_\_\_\_ Date \_\_\_\_\_ County Document No. \_\_\_\_\_

Identified on aerial photo No. \_\_\_\_\_ Which is filed at \_\_\_\_\_

Index No. X-6  
(Alphabetical - Numerical)

Book 3  
P 9 42

LAND CORNER RECORD  
(RECTANGULAR SURVEYS)

RD-7150-4 (Rev. 6/13/67)  
GPO 802-127

T. 142 R. 29 Mer. N.F. \_\_\_\_\_ County Cass State \_\_\_\_\_  
Center-West 116 Corner common to sections \_\_\_\_\_ and 32

EXISTING SURVEYS

Original Government Survey

Year surveyed 1926 GLO  
Original monument \_\_\_\_\_  
(Wood post, stone, pile of stones, pipe, etc.)

Bearing Trees

Species \_\_\_\_\_  
Diameter \_\_\_\_\_  
Bearing \_\_\_\_\_  
Distance \_\_\_\_\_

Subsequent Corner Restoration

Year surveyed \_\_\_\_\_ By \_\_\_\_\_  
Where filed or recorded \_\_\_\_\_  
Monument \_\_\_\_\_  
(Original, concrete post, iron rod, etc.)

Bearing Trees, Reference Objects

Species \_\_\_\_\_  
Diameter \_\_\_\_\_  
Bearing \_\_\_\_\_  
Distance \_\_\_\_\_

Original Evidence Found

Year of search \_\_\_\_\_ By \_\_\_\_\_  
Monument found \_\_\_\_\_

Original Bearing Trees Found

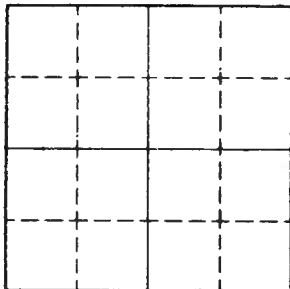
Species \_\_\_\_\_  
Diameter \_\_\_\_\_  
Bearing \_\_\_\_\_  
Distance \_\_\_\_\_

Evidence of Subsequent Corner Restoration Found

Year of search 12/30/85 By GB-JA  
Fd. corner set in place with brass cap  
set 3" above ground.  
Mkd. 3 new BT's.  
Line To Standard North & East from  
corner.

Bearing Trees, Reference Objects

Species \_\_\_\_\_  
Diameter \_\_\_\_\_  
Bearing \_\_\_\_\_  
Distance \_\_\_\_\_



Sketch

○ Corner    ▨ F.S. Land

Relation of Evidence to Record Features Along Section Lines

Section line to sections \_\_\_\_\_  
 Object \_\_\_\_\_  
 Record distance \_\_\_\_\_  
 Measured distance \_\_\_\_\_

Other Evidence

Describe evidence of use and occupation such as roads, fences, clearings, timber cutting lines, plantations, etc.. Cite source of testimony if any. \_\_\_\_\_

At time of search:

1. Did you have the record description?

Yes \_\_\_\_\_ No \_\_\_\_\_

2. How was search area located?

Pacing, chaining, photos, maps, etc. \_\_\_\_\_

3. Man hours spent in search \_\_\_\_\_

4. Do you think additional search might

recover evidence? Yes \_\_\_\_\_ No \_\_\_\_\_

5. Signature \_\_\_\_\_

Perpetuation Record

Monument and accessories established. Include brief description of area. \_\_\_\_\_

Certified corner restoration certificate prepared: Yes \_\_\_\_\_ No \_\_\_\_\_

Filed in county records at \_\_\_\_\_ Date \_\_\_\_\_ County Document No. \_\_\_\_\_

Identified on aerial photo No. \_\_\_\_\_ Which is filed at \_\_\_\_\_

Index No. X-25  
(Alphabetical - Numerical)

LAND CORNER RECORD  
(RECTANGULAR SURVEYS)

RD-7150-4 (Rev. 6/13/67)  
GPO 802-127

T. 142N R. 29W 5TH Mer. N.F. CHIPPEWA County CASS State MN  
1/4 Corner common to sections 31 and 36

EXISTING SURVEYS

**Original Government Survey**

Year surveyed \_\_\_\_\_

Original monument \_\_\_\_\_  
(Wood post, stone, pile of stones, pipe, etc.)

**Bearing Trees**

Species \_\_\_\_\_

Diameter \_\_\_\_\_

Bearing \_\_\_\_\_

Distance \_\_\_\_\_

**Original Evidence Found**

Year of search \_\_\_\_\_ By \_\_\_\_\_

Monument found \_\_\_\_\_

**Original Bearing Trees Found**

Species \_\_\_\_\_

Diameter \_\_\_\_\_

Bearing \_\_\_\_\_

Distance \_\_\_\_\_

**Subsequent Corner Restoration**

Year surveyed \_\_\_\_\_ By SCHEIDER, BOB

Where filed or recorded CASS COUNTY COURTHOUSE

Monument 4" CASS COUNTY MONUMENT  
CAST IRON  
(Original, concrete post, iron rod, etc.)

**Evidence of Subsequent Corner Restoration Found**

Year of search \_\_\_\_\_ By \_\_\_\_\_

**Bearing Trees, Reference Objects**

Species	<u>BIRCH</u>	<u>ASH</u>	<u>R. OAK</u>	<u>R. OAK</u>
Diameter	<u>N70-11W</u>	<u>7"</u>	<u>12"</u>	<u>24"</u>
Bearing	<u>8"</u>	<u>N88-08W</u>	<u>S59-22W</u>	<u>S84W</u>
Distance	<u>67.21</u>	<u>86.93</u>	<u>91.12</u>	<u>165.0'</u>

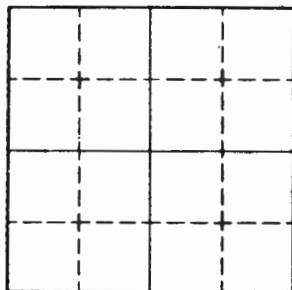
**Bearing Trees, Reference Objects**

\_\_\_\_\_

\_\_\_\_\_

\_\_\_\_\_

\_\_\_\_\_



Sketch

○ Corner    ▨ F.S. Land

Relation of Evidence to Record Features Along Section Lines

Section line to sections \_\_\_\_\_  
Object \_\_\_\_\_  
Record distance \_\_\_\_\_  
Measured distance \_\_\_\_\_

Other Evidence

Describe evidence of use and occupation such as roads, fences, clearings, timber cutting lines, plantations, etc.. Cite source of testimony if any. \_\_\_\_\_

\_\_\_\_\_  
\_\_\_\_\_  
\_\_\_\_\_  
\_\_\_\_\_  
\_\_\_\_\_

Perpetuation Record

Monument and accessories established. Include brief description of area. \_\_\_\_\_

\_\_\_\_\_  
\_\_\_\_\_  
\_\_\_\_\_  
\_\_\_\_\_  
\_\_\_\_\_

Certified corner restoration certificate prepared:    Yes \_\_\_\_\_ No \_\_\_\_\_

Filed in county records at \_\_\_\_\_ Date \_\_\_\_\_ County Document No. \_\_\_\_\_

Identified on aerial photo No. \_\_\_\_\_ Which is filed at \_\_\_\_\_

- At time of search:
1. Did you have the record description?  
Yes \_\_\_\_\_ No \_\_\_\_\_
  2. How was search area located?  
Pacing, chaining, photos, maps, etc. \_\_\_\_\_
  3. Man hours spent in search \_\_\_\_\_
  4. Do you think additional search might recover evidence? Yes \_\_\_\_\_ No \_\_\_\_\_
  5. Signature \_\_\_\_\_