

Township 143 Range 26+27+
28+29+30+31

L. Witthoef

Temp. 78°

Orville Knowels

Cloudy

1 Gray Givings

8-6 rain in after Noon

Rick Goose

Mike Frey

Started 8-4-81

Finished 8-12-81

T-143 R. 26 Sec. Cor. W. To $\frac{1}{4}$
E 222
611 $\frac{3}{4}$
6

STA

N 154'

T.L.

1. 396'

.05729-

22.69 N

2. 725'

41.54 N

3. 1100'

63.02 N

4. 1450'

83.07 N

5. 1785'

102.26 N

6. 2043'

117.04 N

7. 2293'

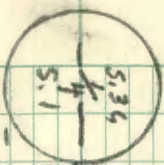
131.37 N.

8. 2688'

Post 11

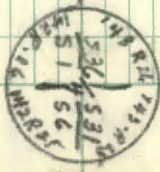
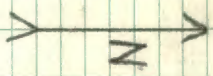
154' N.

No. 302
L. L. BAILEY CORP.
WEATHERPROOF
VANDERBILT, NASHVILLE, TENN. U.S.A.



154'

2689'



No. 302

Big 78
Weatherproof

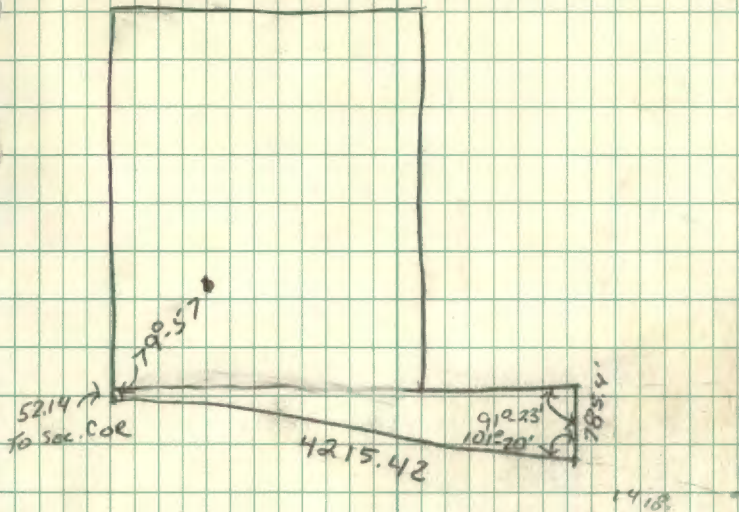
J. L. DARLING CORP.
YACONIA, MISS. U.S.A.

Component 74

T141N R29W

5-27

Red Line



5"
Bt R. OAK N10°W 33'

Aspen 5" S83°E 34.98'

Found & in GLO Platte

#2

No. 302

Fit in the Rain
WEATHERPROOF

J. L. DARLING CORP.
TACOMA, WASH., U.S.A.

2

start DATE Aug. 31, 81

L. Withoefst

W. AUsK

O. Knowels

G. Givings

R. Goose

Finish

Running $\frac{1}{8}$ mile RES. LINE

T 141 N R. 29 W

SEC. 27

#3

Pt	Dist.	Total Dist	\angle	REM.	CORRECTION
E 1/16		0+00	91°-23'		
	786.5				
CC. E 1/16		7+86.5			
CC. E 1/16		0+00	78°-40'		0.00
	197.5				
1		1+97.5			0.03
	187.5				
2		3+85			0.06
	194.6				
3	265'	5+79.6			0.10
	<u>299.4</u>				
4		8+79.			0.15
	300.0				
5		11+79			0.20
	264.5				
6		14+43.5			0.24
	273.5				
7		17+17			0.29
	202.5				
8		19+19.5			0.32
	304				
9		22+23.5			0.37
	182				

No. 302
 J. L. BAILEY CORP.
 WEATHERPROOF
 YACONIA, WASH., U.S.A.

#3

SET ON E. $\frac{1}{16}$ BACKSIGHTED ON RED LINE
WEST TURNED INTERIOR ANGLE $99^{\circ}23'$
CHAINED 786.5' TO CLOSING CORNER ON
RESERVATION LINE G.L.O. DIST. WAS 7854
THEN TURNED INTERIOR ANGLE $157^{\circ}40'$
CHAINING DIST. WEST ON RES. LINE.

Found forestry Tag APPROX.
Location for C.C. PAVED ^{J.M.} A.C.
COMPASS

P.t.	dist	Total Dist	\bar{z}	#4 Rem. Correction
10		24+05.5		0.40
74	344			
11		27+49.5		0.46
	305			
12		30+54.5		0.51
	174.5			
13		32+29		0.54
	300			
14		35+29		0.59
	241			
15		37+70		0.62
	268			
16		40+38		0.67
	230			
17		42+68	.71' N	CC 527/528

Found C.C. 527/528 in good

SHAPE ERROR .71' N

ERROR in dist 33'

No. 302

Weatherproof

J. L. BAILEY CORP.
TACOMA, WASH., U.S.A.

#4

Checked Dist.

#5

No. 302

Get the Best
WEATHERPROOF

J. L. BARLING CORP.
TACOMA, WASH. U.S.A.

2191
3022.7
174.5
31 96.2
2373

385
194
579.5

4268
4235
4.33
197 2191

184
295
3

579.5
265.2
844.7

3 4215
2405
1810

1109
274
1683
1

4005
230
4235

22
304
192
344
305.5
174.5
300
241
268
230
2348

1179
264.5
1448.5

2373
344
2717

42.15
17+17
25
2717
309

3022

1683
204
1887

3496
241
3737
60
1717
1079
638

4218
4235
33
2223.5
182.0
2405.5

3196
300
3496

2485
1029
1326

1144.7
264.5

1409.2

1111
1997.7
2349.5
4235.2

3737
268
4005

Recheck Distance

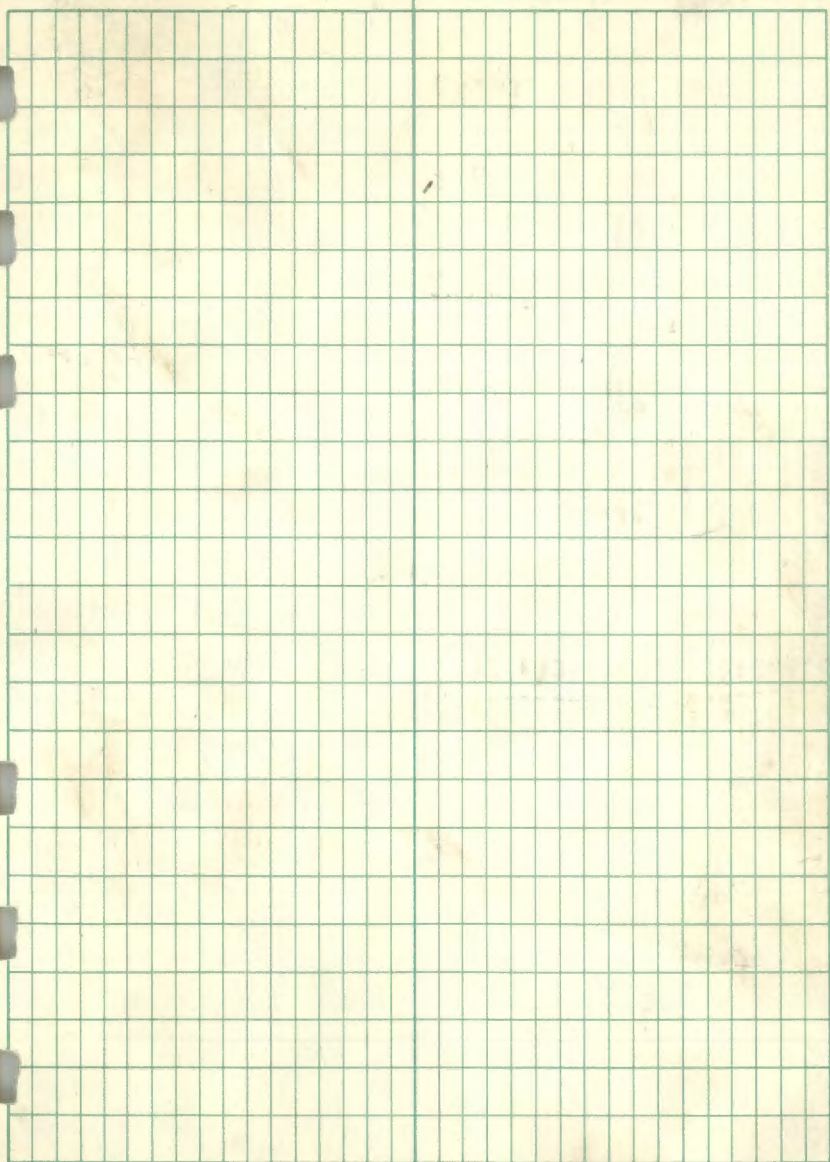
#5

Pt.	Dist	Total Dist.	Pt.	Dist	Total Dist
	197.10			³⁰⁴ 305	
1.	188	1+97.10	12.	176.0	30+22.7
2.	194.5	3+85.10	13.	³⁰⁰ 300	31+96.2
3.	265.2	5+79.5	14.	241	34+96.2
4.	300.0	8+44.7	15.	268	37+37.2
5.	264.5	11+44.7	16.	268	40+05.2
6.	274	14+09.2	17.	²²⁹ 230	42+35.2
7.	204.5	16+83.2			
8.	²⁹⁹ 304	18+87.7			
9.	183	21+91.7			
	182				
10.	344	23+73.7			
	344				
11.		27+17.7			

No. 302

Keep in the Rain
WEATHERPROOF

T. L. BARTING CORP.
TACOMA WASH. U.S.A.



No. 302

Get the Best
WEATHERPROOF

J. L. DARLING CORP.
TACOMA, WASH. U.S.A.

#6

9-9-81

L. Withoest

W. Ausk

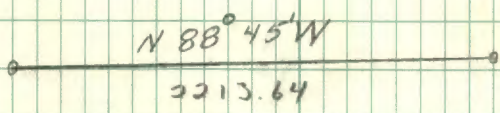
O. Knowels

G. Givings

G. Johnson

T141N R28W

SEC 31



Found α in GLO Plat

#7 Pt.	Dist	Total dist	Bearing	REM	Cor.
SEC. Cor.			N89°E		
	6+50				
1.		6+50			13.92
	4+10				
2		10+90			23.52
	2+92				
3		1382			29.76
	1+78				
4		1560			33.60
	260				
5		18+20			39.36
	212				
6		20+32			44.16
	180				
1/4 cor		22+12			48.0
	CLOSURE 48'				

71

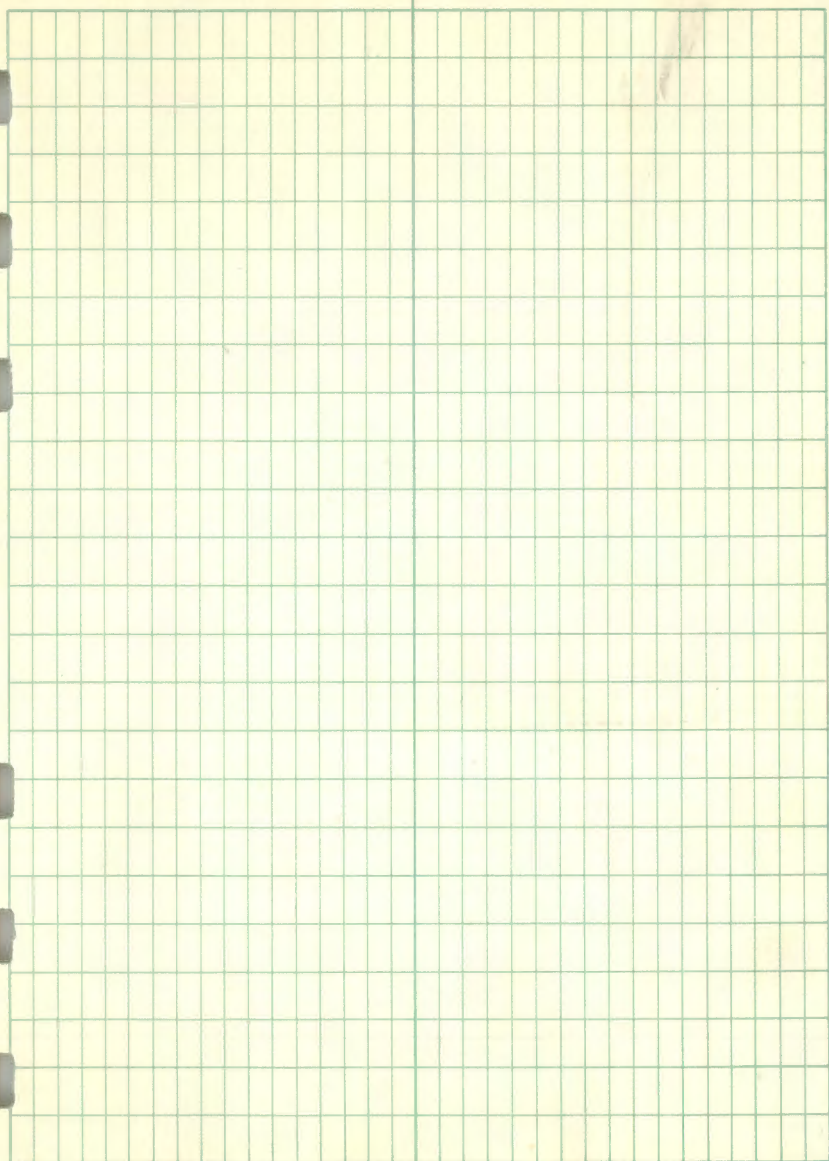
Random point BETWEEN 1 & 2 dist from ^{5^{sec}} is 890'

22

No. 302

Right in the Rain
WEATHERPROOF

J. L. DARLING CORP.
TACOMA, WASH. U.S.A.



No. 302

Pat. & Reg. U.S. Pat. & Reg. Off.
WEATHERPROOF

J. L. DARLING CORP.
TACOMA WASH. U.S.A.

N
4

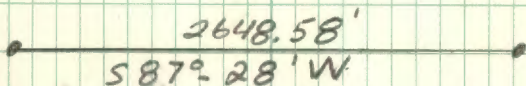
8

9-17-81

L. Withoef
W. Ausk
O. Knowels
G. Givings
G. Johnson

T141N R28W

S 12



Run Random Line with
Bearing S 87° 28' W ERROR 4' 10"
SET ONE Post w/signs 54-2 & 54-9
Line Runs on old Road Bed so
put 2 Posts w/signs 54-2 on
West side of Line

No. 302

Fit for the Rain
WEATHERPROOF

J. L. DARLING CORP.
TACOMA, WASH., U.S.A.

9-15-81

22

L. Withoefst
W. Ausk
O. Knowels
G. Givings
G. Johnson

T141 R27W
SEC. 33

C¹/₄

CE¹/₁₆



Run $\frac{1}{4}$ mile to Red Line

10

No. 302

Get in the Rain
WEATHERPROOF

J. L. DARLING CORP.
YACONA, WASH. U.S.A.

10
10-15-81 23

B. AUSK
O. KNOWELLS
G. GIVINGS
G. JOHNSON

Red Line

141-31-SEC 4

" 2PA	Dist	Cor
CE 1/6	0+00	
# 1	1+70	1.0'
# 2	7+42	4.36
# 3	11+20	6.58
# 4	17+24	10.13
# 5	22+24	13.06
# 6	26+44	15.53
# 7	28+09	16.5

16.5'

10-22-81

B. Ausk

11
25

141-30-SEC 4

O. Knowels

G. Giving

G. Johnson

20'

CN 1/16

x

x

x

20'

C 1/4

Set 20' offset, wiggled in, set
3 Sign Posts on TRUCK LINE

72
26

No. 302

Get the Best
WEATHERPROOF

J. L. BARLING CORP.
YACONA, WASH. U.S.A.

10-26-81

B. AUSK

12

20

141-30-SEC 4

O. Knowels

G. Giving

G. Johnson

CN $\frac{1}{16}$

NE $\frac{1}{16}$

* 89°07'

*

Backsighted S. post TURNED 89°07'

13 D+	Dist		COR,		
CN 1/16					
# 1	4760				
# 2	1194				
# 3 ^{NE} 1/16	1460' ±		1.15		

10-27-81

13

B. AusK 27

141-30-SEC 4

O. Knowels

G. Giving

G. Johnson

*

* 90°-51'

C'14

CE'16

BACKsighted S. Post turned 90°-51'

14 P+	Dist	COR.
C 1/4		
# 1	440	.63
# 2	860	1.23
# 3	1240	1.77'
CE 1/6	1400	2.0'

Nov. 2, 1981

14

B. Ausk

D. Knowles

G. Givings

G. Johnson

141-28

SEC 20-21

17

16

• Red lined •

2657.82

20

21

• 14

GLO Dist. AND X

15 Pt.	Dist.	Cor.
SecCor		
1	295	.34
2	555	.63
3	905	1.03
4	1155	1.31
5	1505	1.71
6	2125	2.42
1/4	2635	3.0'

ERROR 3.0'

No. 302
Get the Best
 WEATHERPROOF

A. L. DARLING CORP.
 TACOMA WASH. U.S.A.

NOTES ON
NW 1/4 SEC. 21

B. AUSK
O. KNOWELS
G. GIVING
G. JOHNSON

Found two BRASS CAPS

OKERMAN 1973
GLO 1918

Found GLO to BE good.

①

No. 302

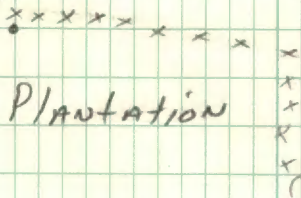
Get the Best
WEATHERPROOF

A. L. BARLING CORP.
YACOMA, WASH., U.S.A.

Q20 Dist. 1339.14

NW 1/4

NE 1/4



Plantation

Bearing N88° W tried to stay north of plantation

(2)

Pt	Dist	Total Dist	Cor.
NC 1/16	210		
1		210	10.61
2	230	440	22.26
3	300	740	37.44
4	560'	1300	65.76
	60'	1081	54.68
NW 1/16		1360	68.8'

OLD CORNER

68.8' N

Pt	Dist	TOTAL Dist	Cor.
NC 1/16	0400		
1	210		.17
2	440		.35
3	740		.58
4	1037		.82
NW 1/16	1334		

1.05 off

NEW CORNER

No. 302
Weatherproof

J. L. BARTLING CORP.
TACOMA, WASH., U.S.A.

(2)

9' N. OF FENCE LINE

Point on Line
10' off of old FENCE Post

3

No. 302

Get the Best
WEATHERPROOF

J. L. BAILING CORP.
TACOMA WASH. U.S.A.

Cloudy and Windy

11/5/81

Bill Ausk
George Johnson
ofuit Knowls
Greg Geving

(3)

W 1/16

1328.58

NW 1/16

Angle From GLO Notes 90-22' N.
Dist.

Pt	Dist	Total Dist	Cor	(4)
NW 1/16	300			
1.		300		
	305			
2.	3	605		
3.	191.4 200	796.4		
4.		996.4		
	200			
5.		1196.4		
	152.6			
6		1348		

OLD CORNER

Pt	Dist	Cor
NW 1/16		
1	260	.31
2	620	.73
3	764	.90
4	1034	1.22
W 1/16	1314	

ERROR 1.55

NEW CORNER

No. 302
 J. L. DARLING CORP.
 WEATHERPROOF
 TACOMA, WASH. U.S.A.

11- -81

(5)

Found Problems with the NW $\frac{1}{4}$
141-28 SEC 21 (B.S. CN $\frac{1}{16}$)

Angle and Dist. to W $\frac{1}{16}$ S21+16
did not fit. 60' west 20' \pm long
chained BETWEEN NW $\frac{1}{16}$ & CN $\frac{1}{16}$

37.06' Long

chained BETWEEN NW $\frac{1}{16}$ & SEC. LINE

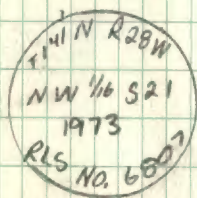
To west 30.09' short

chained BETWEEN SEC COR 16-17-20-21

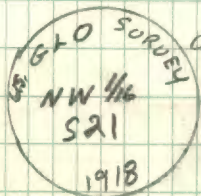
to W $\frac{1}{16}$ Dist. OK

chained BETWEEN W $\frac{1}{16}$ S21-16 to $\frac{1}{4}$ S21+16

Dist. OK



OKERMAN'S BRASS CAP
is 36' \pm W 16' \pm S



Found GLO BRASS CAP

chained to GLO BEARING
TREE GLO Dist BAD.

GLO HAS 268 LINKS SHOULD
BE 208 LINKS

②

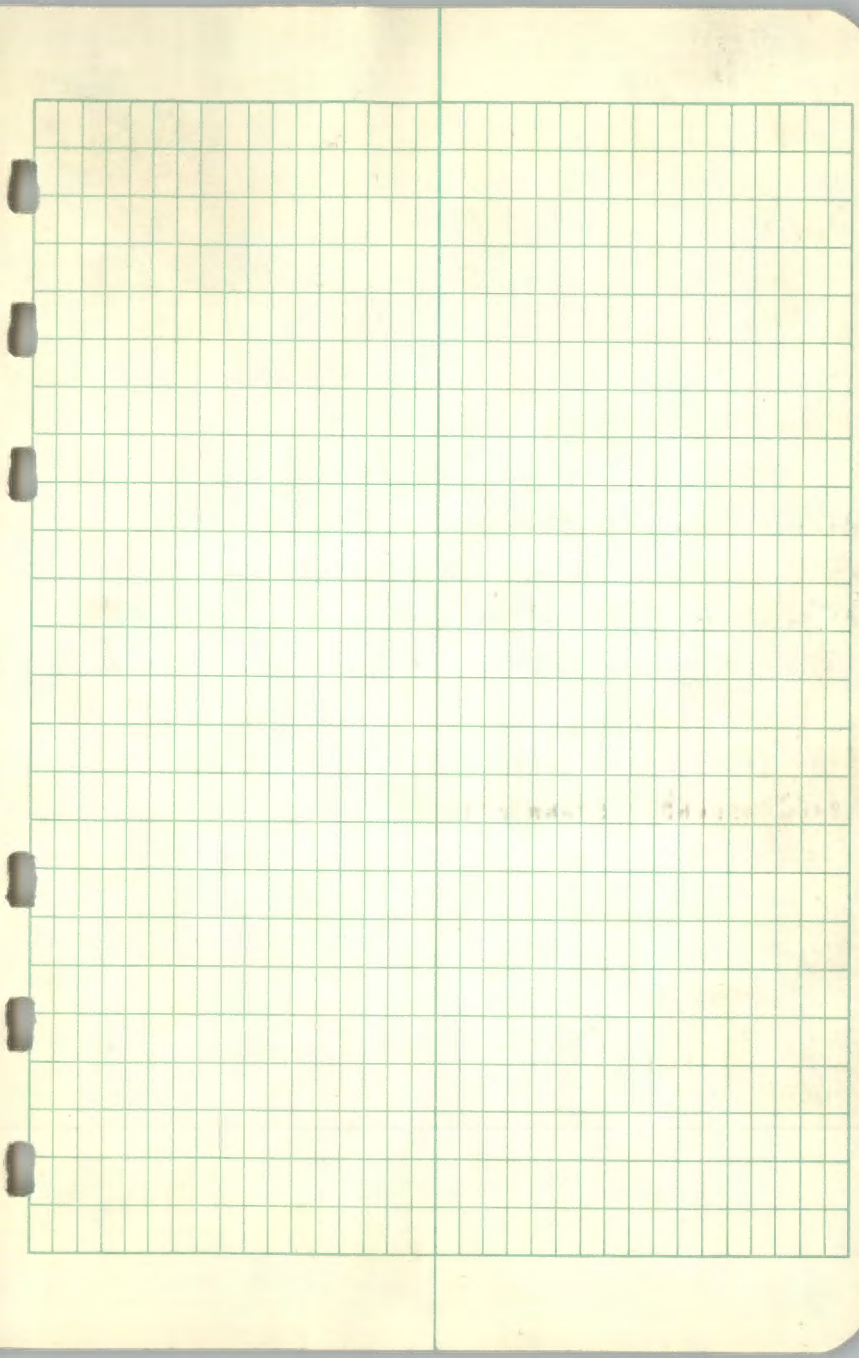
Found GLO Monument in S.
TRACK of old Road. Broke 11" off
SMALL Rock bed Around pipe
Dug up Found Both flanges
and bottom of pipe fairly
straight. pulled ties from
bottom and removed pipe
TEMPERARY 1' spike put in place

Ran Line BETWEEN CN 1/16 to NW 1/16
TEMPERARY spike. TURNED GLO \times
90°-22' CLOSED 1.5' E. of GLO 6/21-16
W 1/16 S 21-16

No. 302

King of the Kings
WEATHERPROOF

J. L. BARLING CORP.
TACOMA, WASH. U.S.A.



(7)

0+00
 2+00 200
 4+00 200
 100
 5+00 50
 5+50 200
 7+50 100
 8+50 200
 10+50 50
 11+00 50
 11+50 200
 13+50 26.2
 13+76.2

CN 1/16 to NW 1/16

GLO Dist
 1339.14

1376.20
1339.14
 37.06

0+00 200
 2+00 175
 3+75 200
 5+75 75
 6+50 50
 7+00 25
 7+25 50
 7+75 200
 9+75 50
 10+25 200
 12+25 50
 12+75 25
 13+00 28.5
 13+38.5

SEC COR to W 1/16

GLO Dist.
 1336.5

No. 302

Weatherproof

J. L. DARLING CORP. TACOMA WASH. U.S.A.

(8)

0+00⁵⁵
 0+60 120
 1+80 108
 2+88 80
 3+68 58
 4+26 200
 6+26 200
 8+26 58 ← 200'
 9+84 58
 9+42 58
 10+00₁₄
 10+14 18
 10+32 26.4
 11+08.4
 2+00.0
1308.4

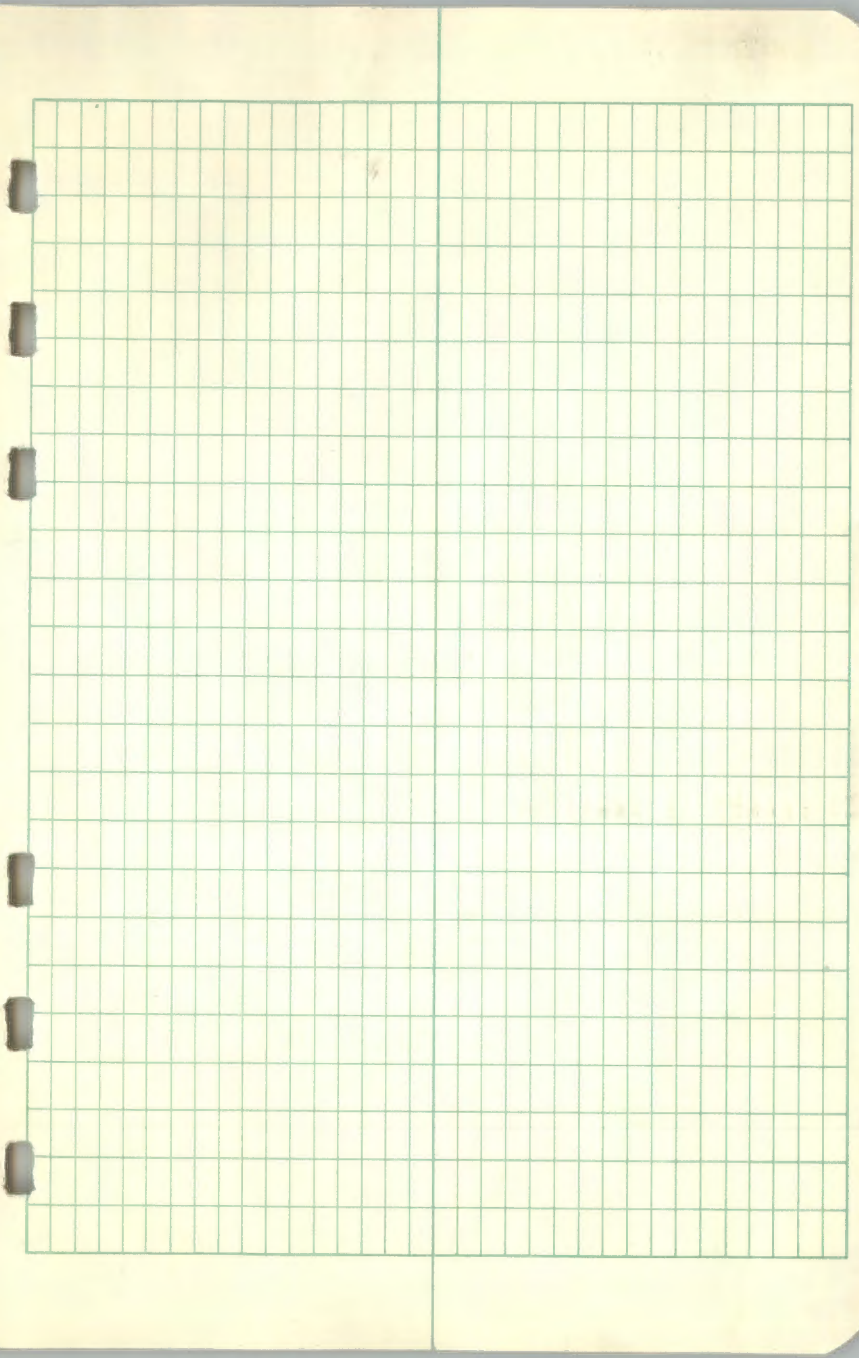
NW 1/16 To N 1/16
 SEC. 21 and 22

G20 Dist.
 1338.48

1338.48
 1308.40
30.08

1308.4
 1308.4
 21

No. 302
 J. L. DARLING CORP.
 TACOMA, WASH. U.S.A.
 WEATHERPROOF



No. 302

Pat. & M. Co.
WEATHERPROOF

J. L. SARLINE CORP.
TACOMA, WASH., U.S.A.

Cloudy-Cold

16

11/23/81 std.

11/25/81 Finished

T14111 R28W

B. AUSK

O. KNOWELS

G. GIVING

G. JOHNSON

w/16

1/4 SEC.

16/21

Both GLO BRASS CAPS IN GOOD
SHAPE all Bts still exist.

LINE RUNS BETWEEN SEC. 16/21

GLO Dist. 1336.5

GLO Angle 89°-39'

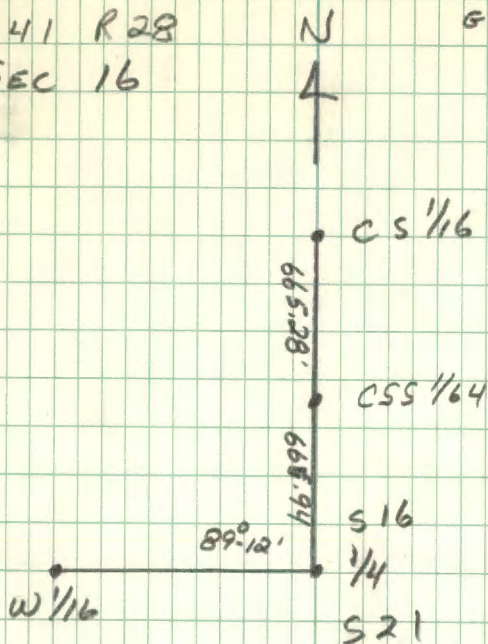
Pt	Dist	Total Dist.	Cor.
w/16	375		
1		375	1.95
	400		
2		775	4.11
	325		
3		1100	5.85
	200		
^{SEC} 1/4 COR. 16-21		1300	6.97

ERROR 6.97

11-25-B1

B. AUSK
G. GIVING
O. KNOWELS
G. JOHNSON

T141 R28
SEC 16



GLO Dist. and $\frac{1}{4}$
BS W 1/16

Pt	Dist.	Total Dist.	Cor
1/4	180		
1		180	
	350		
2		530	
	150		
CSS 1/64		680	0
CSS 1/64			
	250		
1		250	1.13
	215		
2		465	2.10
	200		
CS 1/16		665	3'

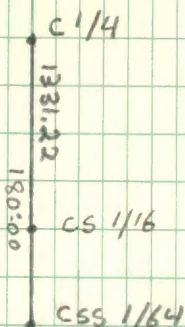
11/30/81

B. Ausk
G. Geving
O. Knowels
G. Johnson

T141 R28

Sec 16

N



GLO Dist And x
BS CSS 1/64

Pt.	Dist	Total Dist	Cor
CS 1/16			
1,	405	405	2.16
2,	400	805	4.29
3,	220	1025	5.46
C 1/4	275	1300	6.92

Error 6.92

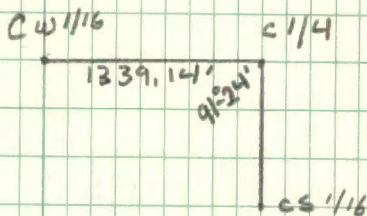
12/1181

B. Ausk
G. Geving
O. Knowels
G. Johnson

T 141 R 28

SEC. 16

N



GLO & And Dist
B.S CS 1/16

Pt	Dist	Total Dist	Cor.
C 1/4			
	340		
1		340	
	200		
2		540	
	220		
3		760	
	350		
4		1100	
	250		
W 1/16		1350	0

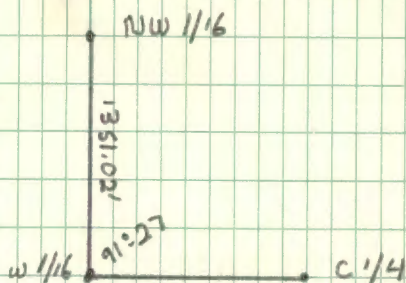
12/1/81

B. Husk
G. Geving
O. Knowals
G. Johnson

T 141 R 28

Sec 16

N



GLO & And Dist

B.S C 1/4

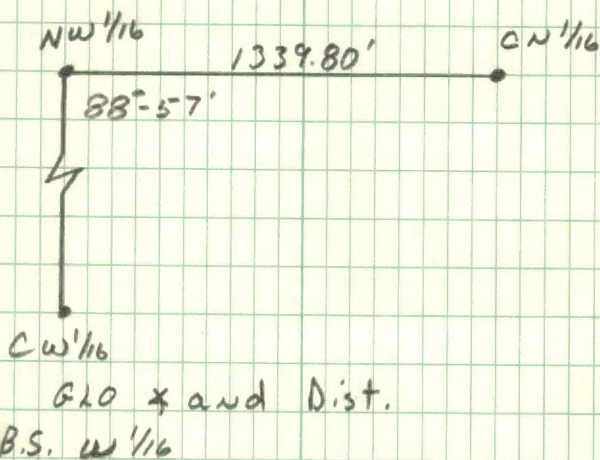
PT	Dist	TOTAL Dist	COR
W 1/16			
	302		
1		302	2.65
	220		
2		522	4.58
	290		
3		812	7.14
	205		
4		1017	8.94
	320		
NW 1/16		1337	11.75

12-4-81

B. Ausk
G. Giving
O. Knowels
G. Johnson

T141 R28
SEC. 16

N
4
|



Pt	Dist	Total Dist.	Cor
NW 1/16			
	290		
1		290	.70
	355		
2		645	1.56
	500		
3		1145	2.77
	200		
CN 1/16		1345	3.25

ERROR 3.25

12-4-81

B. Ausk
G. Giving
G. Knowels
G. Johnson

T141 R28

SEC. 16



NW 1/16

CN 1/16

AP 12-3



180°-00'

B20 Dist and \angle

ERROR .67'

B.S. NW 1/16

Pt	Dist	Total Dist.	Cor.
CN 1/16			
1	127		
1		127	.13
2	350		
2		477	.47
AP	197		
AP		674	.67

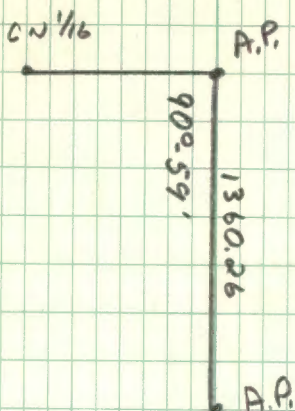
ERROR .67'

12-7-81

G. Giving
O. Knowels
G. Johnson

T141 R28

SEC. 16



G20 Dist. and *

B.S. CN 1/16

ERROR 3.42'

Pt	Dist	Total Dist.	Cor
A.P. 1-2-3			
	120		
1		120	.30
	400		
2		520	1.29
	260		
3		780	1.93
	410		
4		1190	2.95
	190		
A.P.		1380	3.42

ERROR 3.42

12-8-81

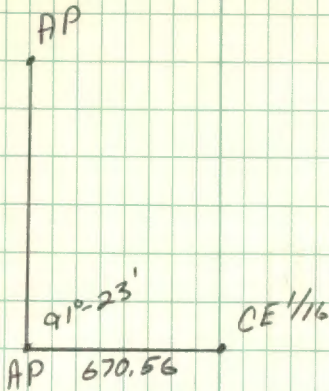
G. Giving
O. Knowels
G. Johnson

T141 R28

SEC. 16

N

4



G20 Dist. and \angle

B.S. A.P.

Pt	Dist.	Total Dist	Cor.
AP			
	310		
1		310	5.37
	240		
2		550	9.52
	120		
CE 1/16		670	11.6'

ERROR 11.6'

No. 302

Weatherproof

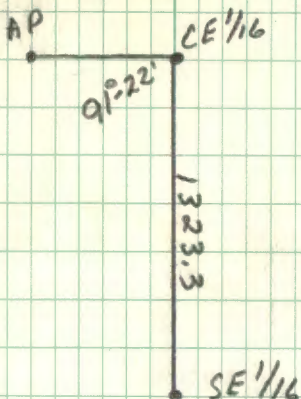
J. L. DARLING CORP.
TAHOON, WASH. U.S.A.

12-10-81

G. Giving
O. Knowels
G. Johnson

T141 R28

SEC. 16



GLO Dist. and \times
B.S. AP

Pt	Dist	TOTAL Dist	Cor
CE 1/16	280		
1		280	.32
	285		
2		565	.64
	195		
3		760	.86
	315		
4		1075	1.22
	160		
5		1235	1.40
	84		
SE 1/16		1319	1.50'

ERROR 1.50'

12-16-81

B. AUSK
G. GIVING
G. JOHNSON

T141 R28

SEC. 16

N
A

CE'1/16

1802.0'

SE'1/16

663.3'

AP

GLO Dist and \times
B.S. CE'1/16

Pt	Dist	Total Dist	Cor
SE 1/16			
	240		
1		240	.48
	190		
2		430	.86
	270		
A.P.		700	1.40

ERROR 1.40

No. 302

Get the Rain
WEATHERPROOF

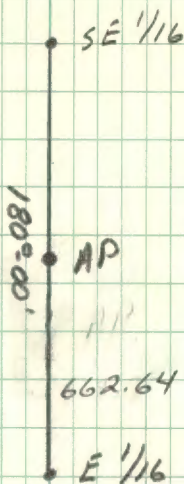
J. L. EARLING CORP.
TACOMA, WASH. U.S.A.

12-16-81

B. Ausk
G. Giving
G. Johnson

T 141 R 28
SEC. 16

N
L



GLO Dist and x
BS SE 1/16

Pt
AP

Dist

TOTAL
Dist.

Cor

350

1

E'16

split b/cap

NO ERROR

12-16-81

B. Ausk
G. Giving
G. Johnson

T141 R28
SEC 21

N
↓

AP

516
179°42' → E'1/16
521

NE'1/16

GLO Dist and x
BS AP

Pt E'1/16	Dist	TOTAL Dist.	COR
	520		
1		520	
2			
3			

split B/cap
No ERROR

Random Pt. At 260' for Post

PT	Dist	TOTAL Dist.	COR
NE 1/4	267		
1		267	.32
2	378	645	.78
3	381	1026	1.24
CN 1/4	340	1366	1.65

ERROR 1.65"

12/21/81

B. Ausk
G. Geving
G. Johnson

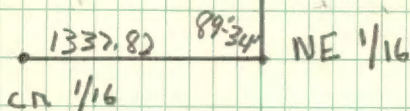
T141 R29

Sec 21

4

N

E $\frac{1}{16}$



GLD Dist And Angle
B.S E $\frac{1}{16}$

Pt	Dist	Total Dist	cor
NE 1/16	267		
1		267	.32
	378		
2		645	.79
	381		
3		1026	1.24
	340		
CN 1/16		1366	1.65

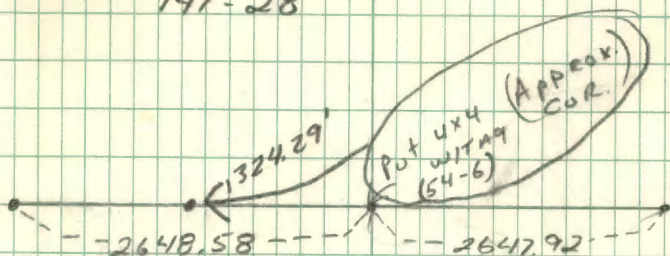
Error 1.65

B. Ausk

N

W 1/4 SEC. 12 + SEC. 13

141-28



25

No. 302

Fit for the Rain
WEATHERPROOF

J. L. DARLING CORP.
YACONA, WASH. U.S.A.

1-13-82

B. Ausk

G. GEVING

142-27 SEC. 33

G. JOHNSON

28 0 27

32 0 34

32 0 $\frac{1}{4}$
33

Pt	Dist.	Total Dist.	Cor.
SEC. COR.			
Pt 1			
Pt 2	360 790	430	.54'
TP # 1	790	790	1.00'
Pt 3	3355 624	1079	1.36'
TP # 2	---	1414	1.78
Pt 4	360 750	1804	2.28
TP # 3	--- 450	2164	2.73
1/4 COR.	4	2614	3.3'
			ERROR 3.3'

2/24/82

G. Geving
J. Cloud
S. Karl
R. Mintey
G. Johnson

T142N R30W

SEC 17

STARTED AT SEC. COR. 8-9-16-17
TO $\frac{1}{4}$ BETWEEN 8-17

BAD COMPASS READING
MAGNETIC PULL OR SOMETHING

Pts Dist T. Dist Cor

Sec Cor

	275		17.86	
1.		275	17.7	
	285		36.38	
2.		560	31.2	
	300		55.87	
3.		860	70.09	55.6
	295		75.03	
4.		1155	74.7	
	990		139.34	
5.		2145	138.8	
	400		165.32	
6.		2545	164.6	
	75			
7.		2830		
1/4		2620		

14.42'

⊙
Error
170.2

No. 302
 J. L. DARLING CORP.
 WEATHERBROOM
 TAHOA, WASH. U.S.A.