

Roger M. 11946

Gary S. 12684

from Trees

TAIN R 28 W

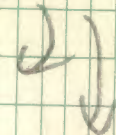
~~14 23~~ CS 1/16 S 22 VP 0.5

14" R. OAK N 30° W 21.23'

9" R. OAK N 70° W 35.05' 5/6/80

15" R. OAK S 86° E 37.34'

7" BIRCH S 4° E 39.97'



~~Sec Cor 21/22 28/27~~ 5' 1/16 S 21/5 22

5/8/80

VP 0.5

6" W. OAK N 89° W 38.55'

10" N. PINE N 67° E 19.10'

12" W. OAK S 35° W 76.25'

9

No. 302

Get the Best
WEATHERPROOF

J. L. DARLING CORP.
TACOMA, WASH. U.S.A.

T143N R28W

S70/11-2110

EGW & Hwy Sec 25

clearing to cut approx corners in new Co. Rd.

1348.75

5395 ft.

+20.75

+57.5

+16.25



3" ASPEN 1P
W 1/4 S 25

QAN 1/6
10" RICH
S 189E 78'

Q 1/4
7" ASPEN
S 90W 60'

CE 1/6
8" ASH
S 29W 51'

3" 1P
EGW S 25
P.P. N 58W 51.9'

14" ASPEN
S 28W 196'

~~7100'~~

10

No. 302

Fit to the Rain
WEATHERPROOF

J. L. DARLING CORP.
TACOMA, WASH. U.S.A.

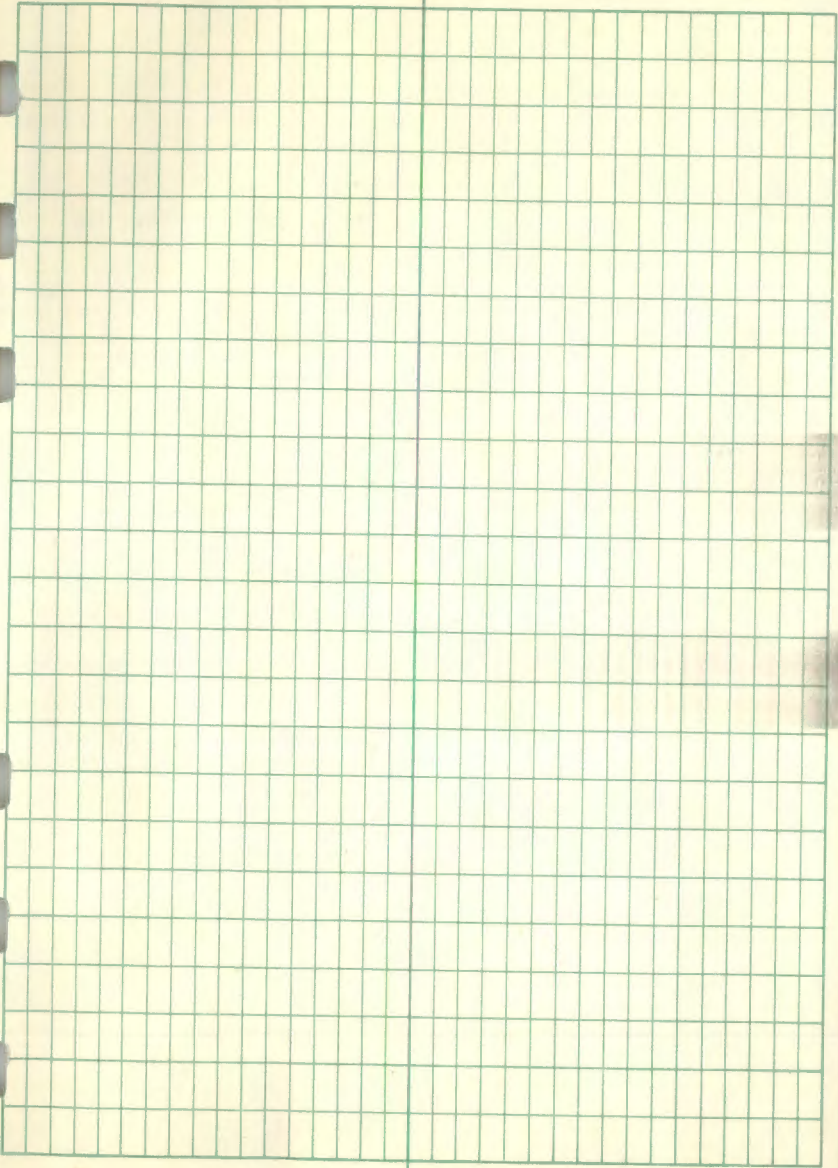
The image shows a page from a notebook with a grid of graph paper. The grid is composed of small squares, with a vertical line down the center and a horizontal line at the top. The top-right corner of the page contains the number '10'. The page is otherwise blank.

11

No. 302

Fit-to-the-Rain
WEATHERPROOF

J. L. DARLING CORP.
TACOMA, WASH. U.S.A.



12

No. 302

Fit to the Bone
WEATHERPROOF

J. L. DARLING CORP.
TACOMA WASH. U.S.A.

T141 R31 Sec 25

Affidavit #528 ~~S1/16~~ S25/S30

141 30 -index V-T ✓

1/4 S25/S30 CO. BOOK C p. 461 ✓

4/22/81

N1/16 S31 New BT N47°E 63.02'

Set R.T. Post South 13'

W1/16 S31/S6 T142 R30

Set R.T. P. 16.7' North

50' N } to IRB IP from ribbons
35' E } Gjelhaug

IRB IP FSLP S58°W 7' on 13" R. OAK ✓

Sec Cor IP FSLP S81°W 9 1/3' on 11" N. PINE ✓

Set Rock Mounds around both corners

Both 1" x 18" I.P.'s up 0.1'.

4/23/81 BO-CK

E1/16 FSLP on 13" R. OAK 46.6' S55°W } rock

1212' N IRB IP FSLP ON 5" MAPLE N36°W 6.7' } M.D.

8.70' W

W.P. 30" N30E 24 KG 16'

W.P. 12 S28E 20 KG 13'

4/2/81

SAFETY MEETING

Points Covered

Present

- | | | |
|---|--------------------------|------------|
| 1) proper use of Post Pounds | B. Olson | BO |
| 2) Safety glasses & leather gloves for blazing timber | C. Marjamaa
C. Lafond | C.M.
CL |
| 3) Use of Swede Axe | B. Griego | B.G. |
| 4) Brush Saw Safety | R. Kargel | R.K. |

No. 302

Get in the Rain
WEATHERPROOF

J. L. DARLING CORP.
TACOMA, WASH. U.S.A.

BOOK B

Record # 260 & 261

No. 302

Fit in The Rain
WEATHERPROOF

J. L. SARLING CORP.
YACOMA, WASH. U.S.A.

1952

↖ N ↗

T143 R27

~~1304.5~~

1304.5 1304.5 1305 1305



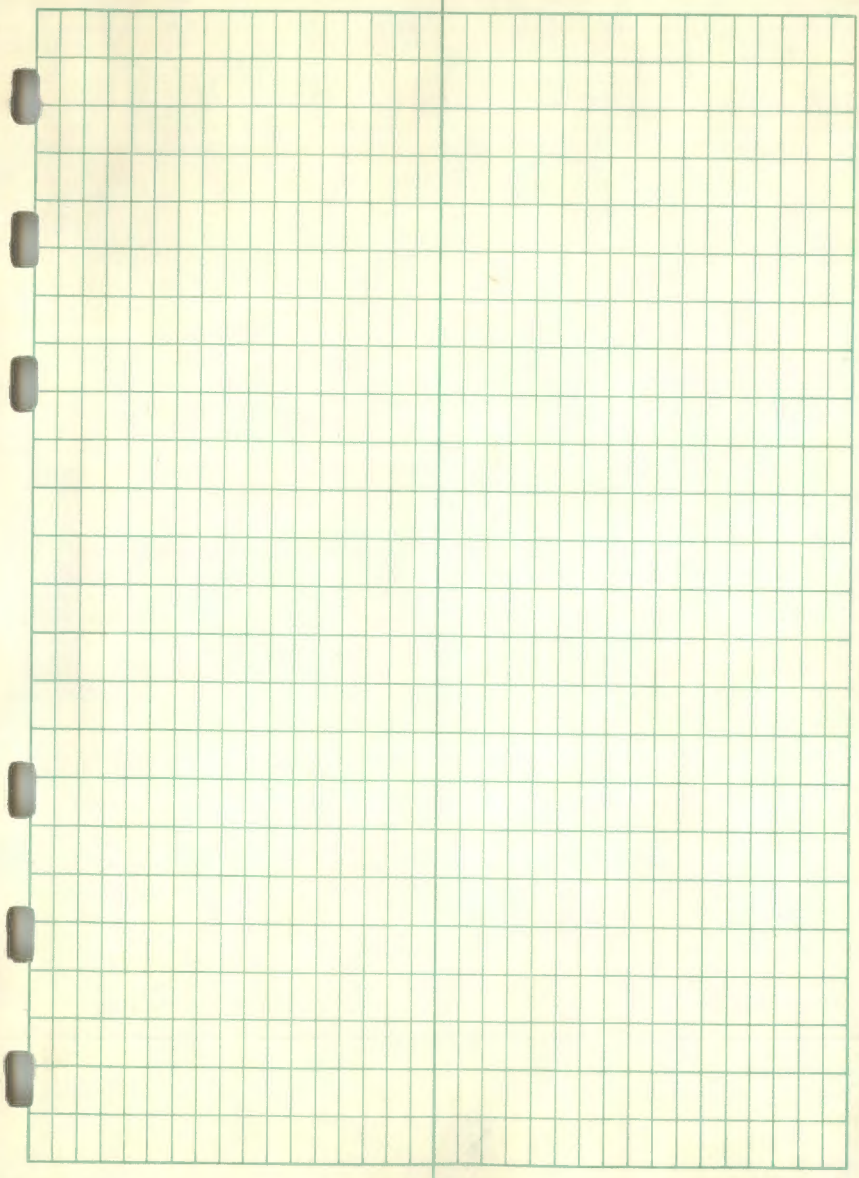
$\frac{18}{19} \frac{17}{20}$

$\frac{17}{20}$

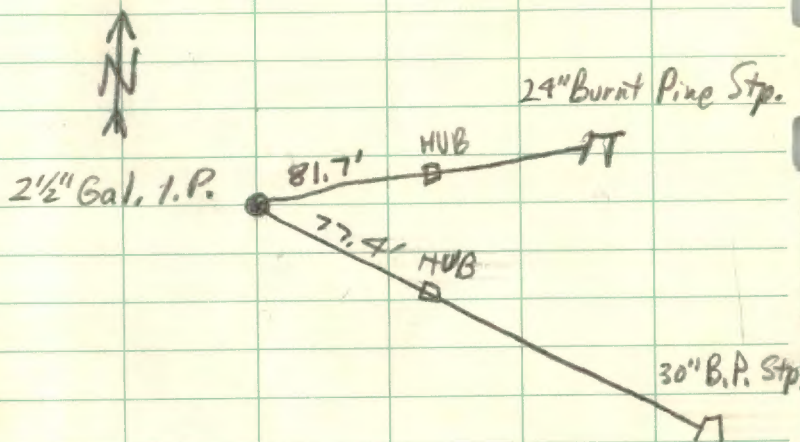
No. 302

Fit for the Rain
WEATHERPROOF

J. L. DARLING CORP.
TACOMA, WASH., U.S.A.



NE COR Sec 25 T141 R31



1332.1

No. 302

Get the Best WEATHERPROOF

J. L. DARLING CORP. WYOMING WASH. U.S.A.

E 1/4 S 25 T 141 R 31

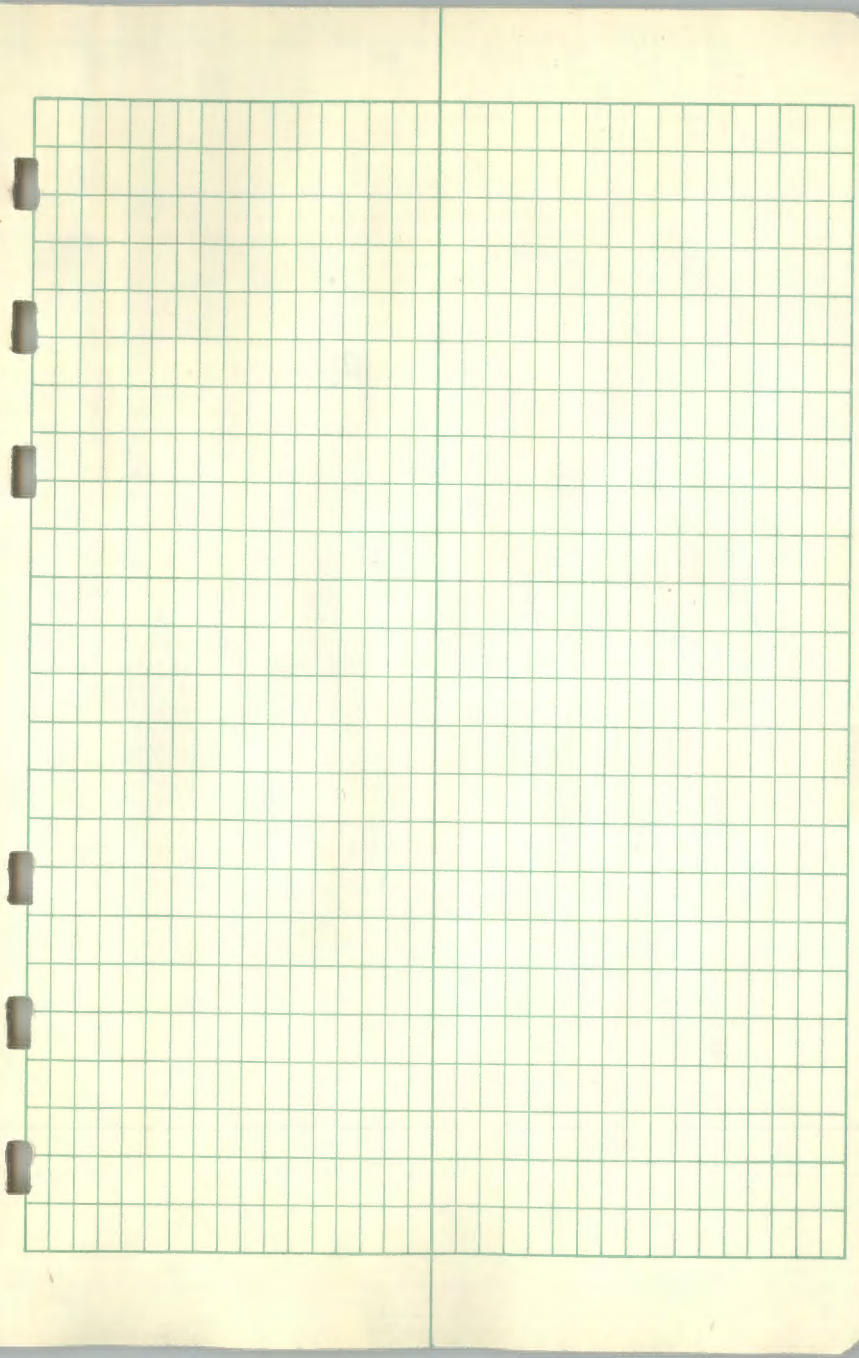
1" IP up 0.3'

✓ Placed FSLIP ON TEL POLE
from Pole N62°W 71.2' to COR,
5/12/81 WNO

No. 302

Get the Best
WEATHERPROOF

A. L. DARLING CORP.
TACOMA, WASH., U.S.A.



996.19

30

996.17

998.63

30

998.61

999.39

20

999.38

999.85

10

999.84

939.69

20

939.59



SE 1/6 S25 T141 R31

BOX 2 New BT's:

5" W. OAK 576°E 25.5' ^{MKP:} SE 1/6 S25B
5" ASH 569°W 15' 10" "

OLD BT: 18" J.P. 67.6' 580°W frontee
CONC. MON. UP 2 1/2'

CE 1/6 S25 T141 R31

2 1/2" capped IP up 2'

OLD BT'S

11" R. OAK 5.55' N71°W ^{from here}

8" R. Oak 6.7' S30°E

New BT:

10" BIRCH N21°E 16.96' CE 1/6 S25 BT

No. 302

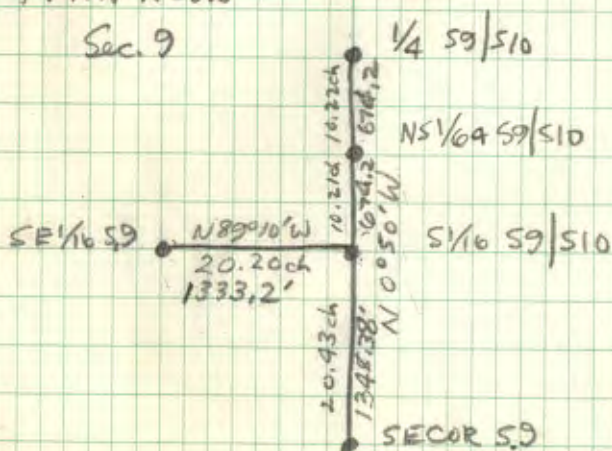
Pat. The Rain
WEATHERPROOF

J. L. DARLING CORP.
TACOMA, WASH. U.S.A.

2+40
1+30

T141N R28W

Sec. 9



T141N R28W
S1/16 S9/S10

1918 GLO
Brass Cap Mon MKD:

S1/16
S9/S10
1918

Witnessed BY:

8" J. PINE N65¹/₄°E 209.22'
8" J. PINE N30³/₄°W 123.10'
Cm 22 Iks N of old E&W Rdi

1918 GLO
NS¹/₆₄ S9/S10
set Brass Cap Mon MKD:

No BT'S

S9	TR
API	1496
TR	S10
1453	
1918	

AP S9 BT
or AP S10 BT
or AP I TR 1453 BT

3/26/81 TOOK 3 BT'S:

14" W. OAK N75°E 50.78' S1/16 S10
8^{1/2}" W. OAK S12°W 104.70' S1/16 S9
13" W. OAK S34°W 37.80' S1/16 S9

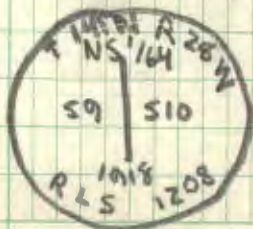
✓
12684

3/26/81

TOOK 3 NEW BT'S 26 MAR 81

✓ 11" J. Pine N34°E 20.92' APS10 BT
9" W. Oak N90°W 22.05' APS9 BT
11" W. Oak N32°W 31.85' APS9 BT

Set New Brass Cap Mon
MKD:



T141N R28W

See Cor $\frac{9}{10}$
 $\frac{16}{15}$

1918 GLO

Brass Cap Mon MKD:

T141N R28W
 $\frac{9}{10}$
 $\frac{16}{15}$
1918

Witnessed BY:

26" N. Pine Stp. (ORIG.) N8°E 171.6'

24" N Pine Stp. (ORIG.) N44°W 192.7'

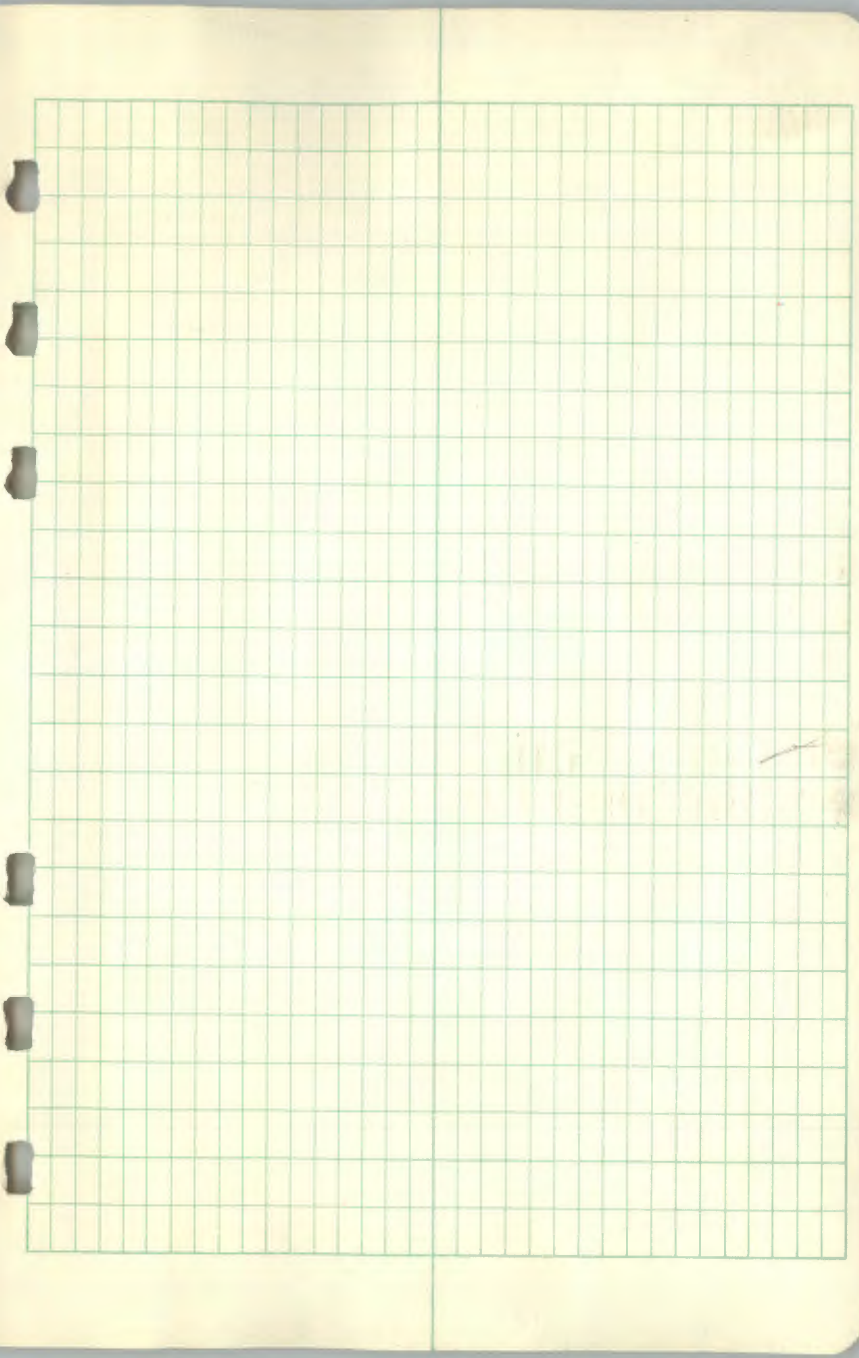
10" Poplar N70°E 297.7'

14" J. PINE S41 $\frac{1}{4}$ °E 224.4'

6" N. PINE S37°W 228.4'

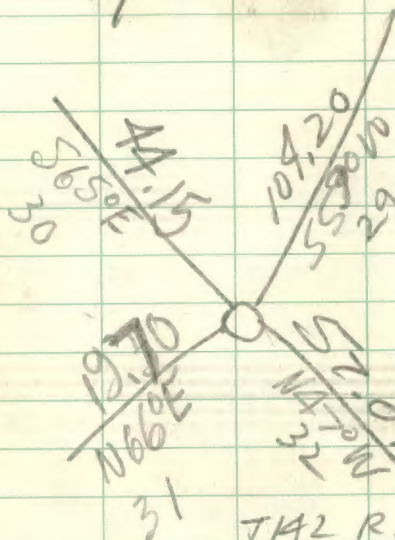
6" J. PINE N62 $\frac{3}{4}$ °W 258.7'

Cor 40 lks. East of old N & S Rd.



~~230~~

5/14/81



T42 R30
CN 1/16 S30

2/4/81

FO. BT
GLOB STP.
10 ft

GLOBT
52.14'
10" W. OAK
563°W

65.51'
N89°W
9" W. OAK

28.52'
N150°W

GLO MON IN GOOD SHAPE
UP 0.5'

No. 302

Weatherproof

J. L. DARLING CORP.
TACOMA WASH. U.S.A.

T 142 N R. 27 W

1919 GLO Set Brass Cap mon. MKD

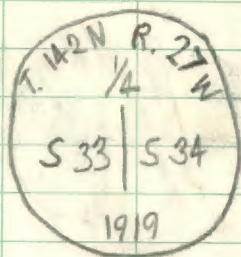
original BT

12" Tamarack S 10° W 141ks.

GLO BT $\frac{1}{2}$

6" Tamarack S 6 $\frac{1}{4}$ ° E 501ks.

6" Cedar S 52 $\frac{1}{2}$ ° W 331ks.



J. L. BARLING CORP.
TACOMA, WASH. U.S.A.

Get in the Rain's
WEATHERPROOF

No. 302

$$\begin{array}{r} 46 \\ 47 \\ \hline 462 \\ 2640 \\ 3102 \end{array}$$

$$\begin{array}{r} 56 \\ 74 \\ \hline 594 \\ 4620 \\ 5214 \end{array}$$

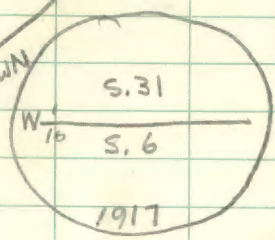
TWP 142N R. 30W

✓ 1917 GLO Set Brass Cap Mon. MKD:

1 1/2 STP.

6" W. Oak S 53 3/4° E 439 links
4" Aspen N 33 1/2° W 151 links DOWN

439 links = 287.74'
151 links = 99.66'



2/26/81 WNO - Took 3 new BT's

- 15" Norway S 28° W 45.12' W 1/16
- 12" Norway N 1° W 24.32' W 1/16
- 9" Norway N 56° W 38.82' W 1/16

FD, GLO MON. DOWN 0.3' AT SOUTH EDGE OF TRAIL.

OLD DOWN FENCE RUNS NORTH FROM CORNER.

L. EARLING CORP.
ALCOCK WASH. U.S.A.
23 74

Write in the Rain
WEATHERPROOF

No. 302

T142N R27W
section corner $\frac{5.23}{5.25} | \frac{5.24}{5.25}$

Called Mick Hansi for info.

Ron Olesen

ORIG 1871

BT's

TAM 7" S53W 9?

1964 R. Olesen

no BT FD,

FD 1 1/2" I.P. and 3" scribed wood
post at corner

which belongs in County,
FLP on 11" TAM. 14 ft. N50°E
from corner.

N 1/6 S 31

1970 W.H.O. 2 BT MKD:

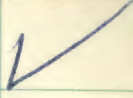
FOUND

[

~~1970~~

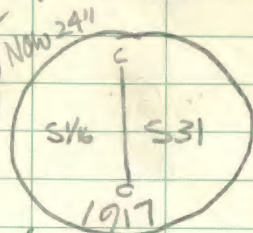
3-5-81 Took one new BT
8" Elm N47°W 63.02'

T142 N R30W
CS 1/16 S.31



1917 GLO set Brass Cap Mon MKD:

FD 7" N. Pine N74°W 3.36' ✓ FD
GONE 5" N. Pine N60°E 3.36' GN



3/12/81 TOOK 2 NEW BT'S:

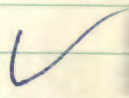
18" N. PINE N52°E 59.80' MKD CS 1/16 S31 BT
9" W. OAK S82°W 49.91' MKD CS 1/16 S31 BT

A. L. DARLING CORP.
TACOMA, WASH. U.S.A.

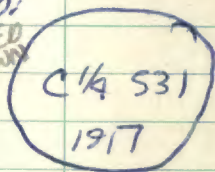
Write in the Rain
WEATHERPROOF

No. 302

T142 R30 Sec 31
C 1/4 COR



1917 GLO set Brass Cap MKD:
FD 7" R. OAK N61°E 20.98' ROTTED & DOWNY
GONE 6" Poplar N31°W 62.70'



3/12/81 WNO TOOK 3 NEW BT'S:

7" R. OAK S8°W 14.13' MKD C 1/4 S31 BT
11" R. OAK N72°W 12.66' C 1/4 S31 BT
9" R. OAK N38°E 3.80' C 1/4 S31 BT

154.8'

said 155.1'

113.6'

said 116.0'

New BT 03.02'

} N 1/16 S 30/S 29

T/42

R 30

N 1/16 S 30/S 29

" W. OAK S 56° W 154.8' N 1/16 S 30 BT

" W. OAK S 16° W 113.6' N 1/16 S 30 BT

T142N R 30W
1/4^{cor} Sections 31|32

1917 GLO

GONE (BT) 5 6" W. OAK N 38 1/2° E 83.82'
6" W. OAK S 62° W 111.54'

Wagon Rd. 71' South of corner
Brs. NE & SW

J. L. DARLING CORP.
TACOMA, WASH. U.S.A.

Act in the Rain's
WEATHERPROOF

No. 302



1917 GLO N 1/16 cor S 31|32 T142 R 30

Now 18" W. OAK 9" S 36° E 19.14' 1' STR. ✓

Now 22" N. PINE 12" N 19 1/2° W T1, 22' ✓

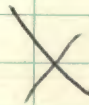
TOOK 2 NEW BT'S; MKO:

10" R. OAK N 79° E 42.56' N 1/16 S 32 BT

8" Basswood N 58° W 28.40' N 1/16 S 31 BT

1917 GLO CEE 1/64 S 31 T142 R 30

S 31
AP 5 | AP 2
TR 1607 | TR 1607
1917



1 2 3 4 5 6 7 8 9 10

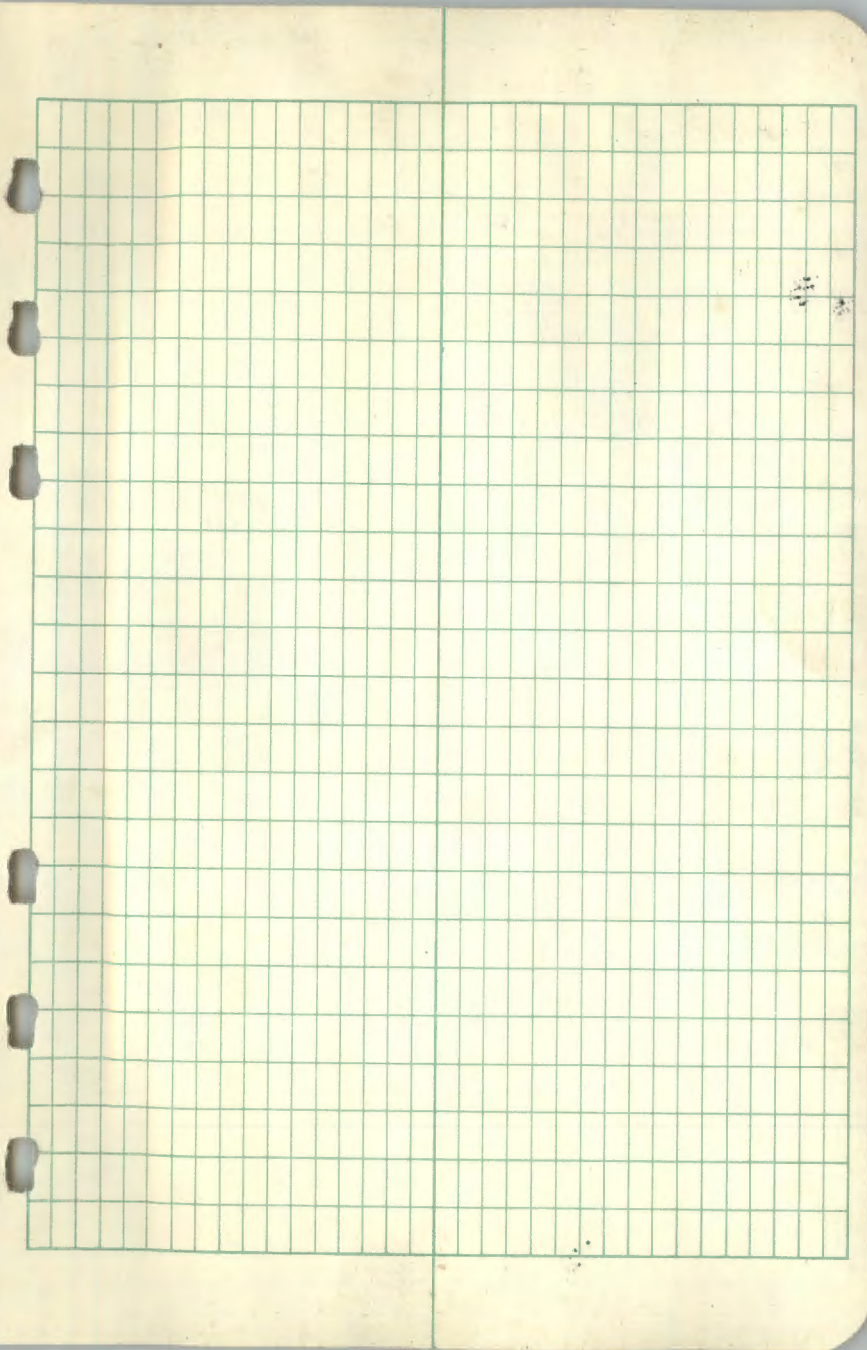
12/5/80

C. Maarjama - Head Chainman

H. Clyde - Rear Chainman

<u>STATION</u>	<u>CHAINED DISTANCE</u>	Start-Temp = 21° END-Temp = 30°
(1/4) TO PIA CN 1/16 (1A)	48.11	48.06
(1A) TO (1B)	201.04	
(1B) TO (1)	16.84	17.90
(1) TO (2)	516.92	416.92
(2) TO (3)	549.43	
(3) TO (CN 1/16)	126.90	
(CN 1/16) TO (4)	141.47	
(4) TO (A)	110.50	
(A) TO (B)	139.96	
(B) TO (C)	192.86	
(C) TO (D)	201.68	

<u>STATION</u>	<u>CHAINED DISTANCE</u>
(D) to (E)	166.17
(E) to (F)	283.61
(F) to (G)	170.49
(G) to (IB)	194.90
(IB) to (H)	84.80
(H) to (IA)	134.02
(IA) to (J)	59.77
(J) to (1/4)	36.21



FWD BACK

(W'1/6)

182.42 182.33

(A)

335.04 335.24

(B)

114.00 114.01

(3)

46.58

(A)

250.43

(B)

234.38

(C)

150.22

(D)

161.68

(E)

112.32

(F)

115.26

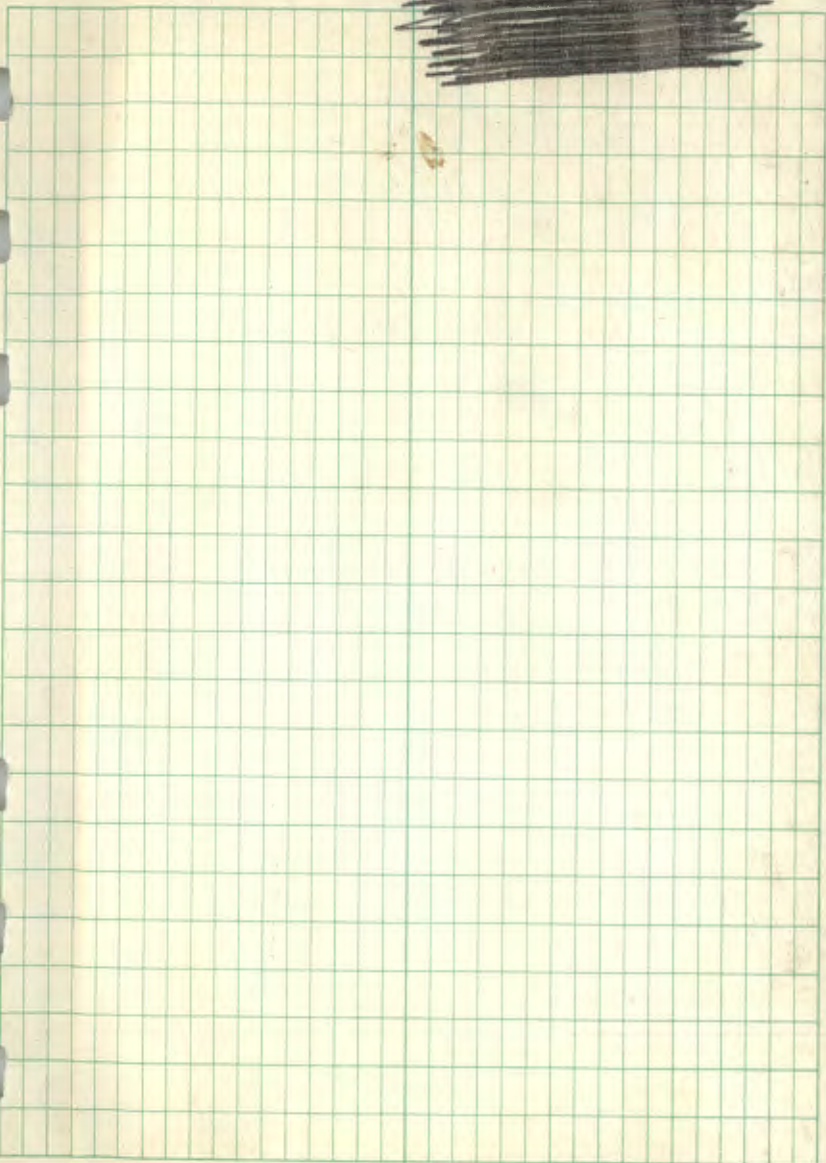
(G)

89.89

(H)

1:3000

1:700



FWD. BACK

(H)

193.40

(J)

70.96

(I)

60.22

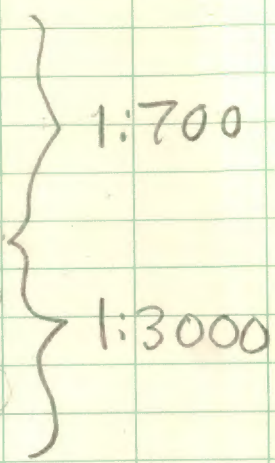
(A)

41.78

(Sec Cor)

43.53

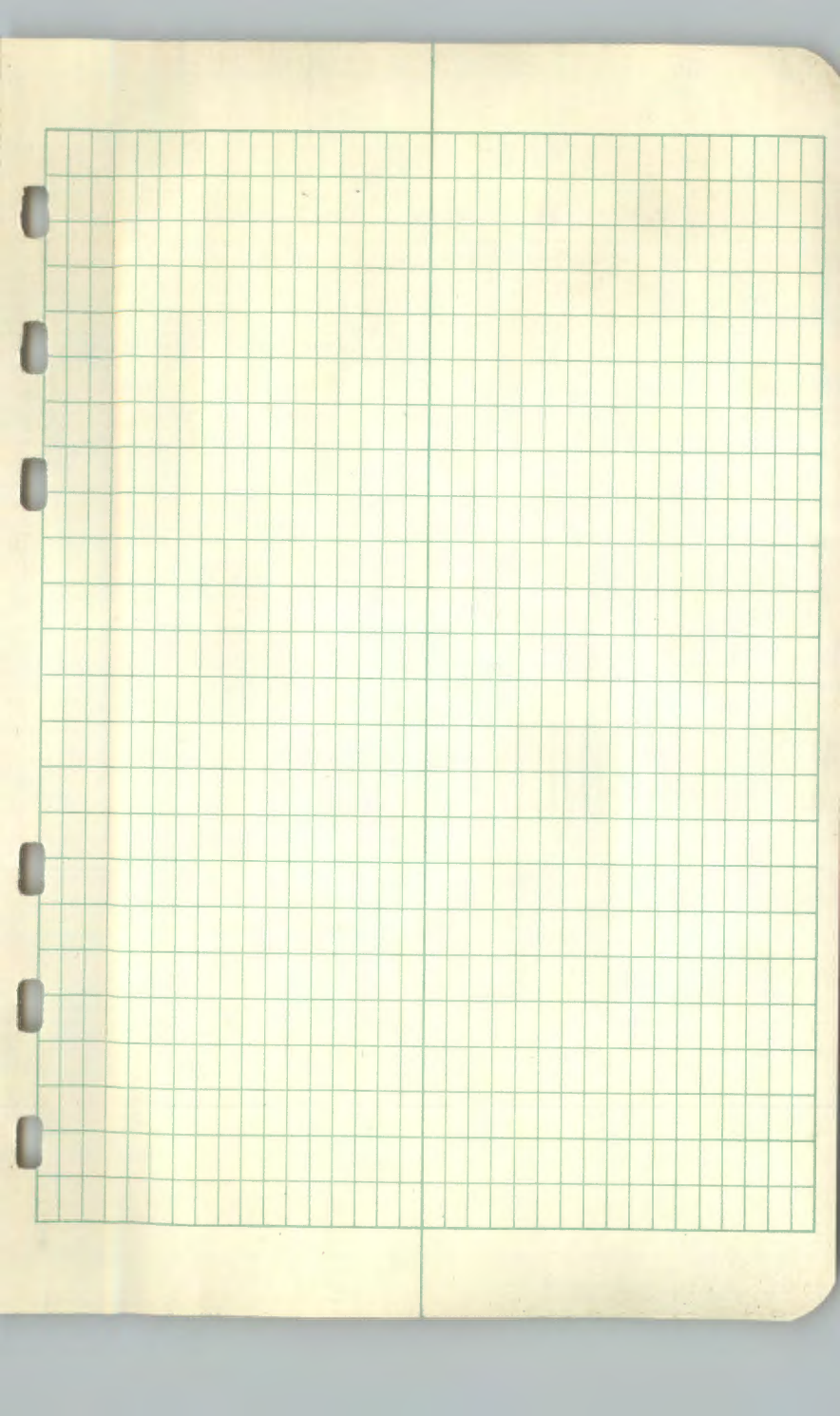
(I)



1176
- 75

1234

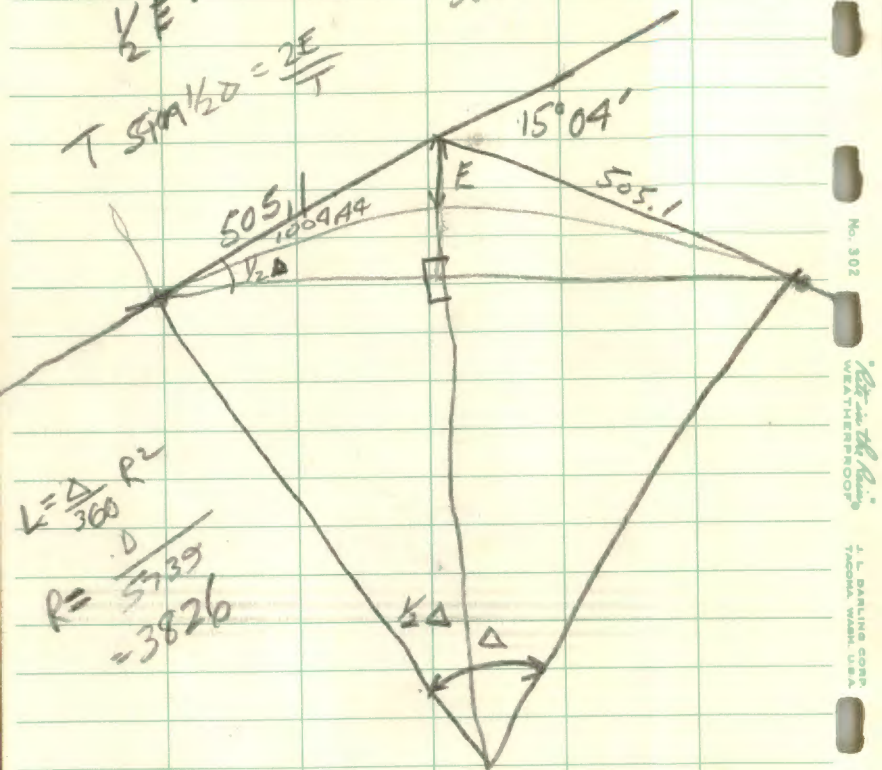
1176.40 ft. from
S.C. to post.



$$\frac{1}{2} E = T \tan \frac{1}{2} D$$

33.1

$$T \sin \frac{1}{2} D = \frac{2E}{T}$$



$$L = \frac{\Delta}{360} R^2$$

$$R = \frac{D}{5739} = 3826$$

1 2 3 4 5 6
7 8 9 10 11 12
13 14 15 16 17 18
19 20 21 22 23 24
25 26 27 28 29 30
31

31

TEMP. TIES 5/20/81-WNO

Temp

W 1/16 1/4

3/4" X 2' Bridge SPK set down
0.4' under Rd approx 3' N. of Φ ,

P.P. N 70° E 112.70'

4" TAM. S 59° E 95.50'

Temp

WE 1/64 1/4

3/4" X 2' Bridge SPK set down 0.5'
under Rd. approx 'S. of Φ North Edge

6" W.OAK S 27° E 57.81'

6" W.OAK S 14° W 43.62'

1323,86

7/41 R30

1323,86
661,93
661,93

MEAN
DIST. X

~~85~~ 252,38

467,61

2647,72

660,00

667,72

2647,74

10/11 0+00

FWD, 8+52,94

SPK. DOWN 0.1'

PT ON LINE

13+20

19+80

1/4 1/4

BACK

26+47,68

TOP HILL

17+95,37

13+27,70

667,69

467,61
467,56

Del. Scar

5/16

TRAIN R28W
 S16
 S.9 | S.10
 1981
 R/S. No. 12684

89° 57'

NS 1/64

TRAIN R28W
 NS 1/64
 S.9 | S.10
 1981
 R/S. No. 12684

89° 44'

W
0° 0'

E

89° 41'

15

- Die Set
- Digging equip.
- 100' tape
- BT TAGS
- gal. nails
- 2 d-tapes
- Sharp Axe & hotchet
- Wood Scider
- 2 brush hooks
- hand level
- Paint & brush
- plumb bobs

6	5	4	3	2	1
7	6	5	4	3	2
10	17	14	15	14	13
19	20	21	22	23	24
20	27	28	24	26	25
31	32	33	34	35	34

36	31	32	33	34	35	36	31
1	6	5	4	3	2	1	6
12	7	8	9	10	11	12	7
13	18	17	16	15	14	13	18
24	19	20	21	22	23	24	19
25	30	29	28	27	26	25	30
36	31	32	33	34	35	36	31
1	6	5	4	3	2	1	6