

clearing and blazing Boundary lines
to U.S. Forest Service standards of a
portion of Compartment 52.

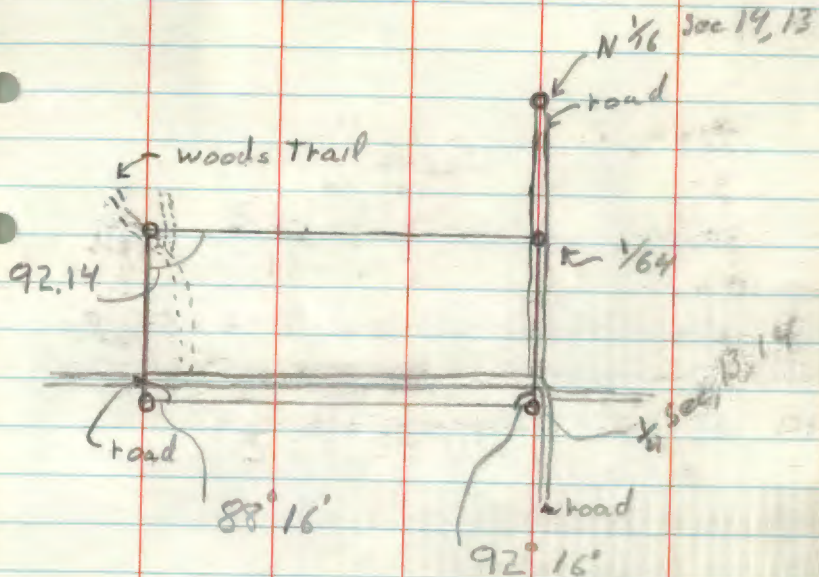
T 141 N, R 28 W, Sec 14

Starting at the $\frac{1}{4}$ corner of
Sec. 13 and 14. Sight N $\frac{1}{16}$
corner of sec 13 and 14 and
turn \angle of $92^{\circ}16'$ counterclockwise,
cleared & blazed line to
the E $\frac{1}{16}$ of sec 14. set
two steel sign posts on
line.

Starting at the E $\frac{1}{16}$ of sec 14
took sighting on $\frac{1}{4}$ corner of
Sec. 13, & 14. turned \angle of $88^{\circ}16'$
counterclockwise. cut line to
top of hill, reset instrument,
and continued to CSNE $\frac{1}{16}$
Sec 14. adjusted line
& blazed trees

Sec 14

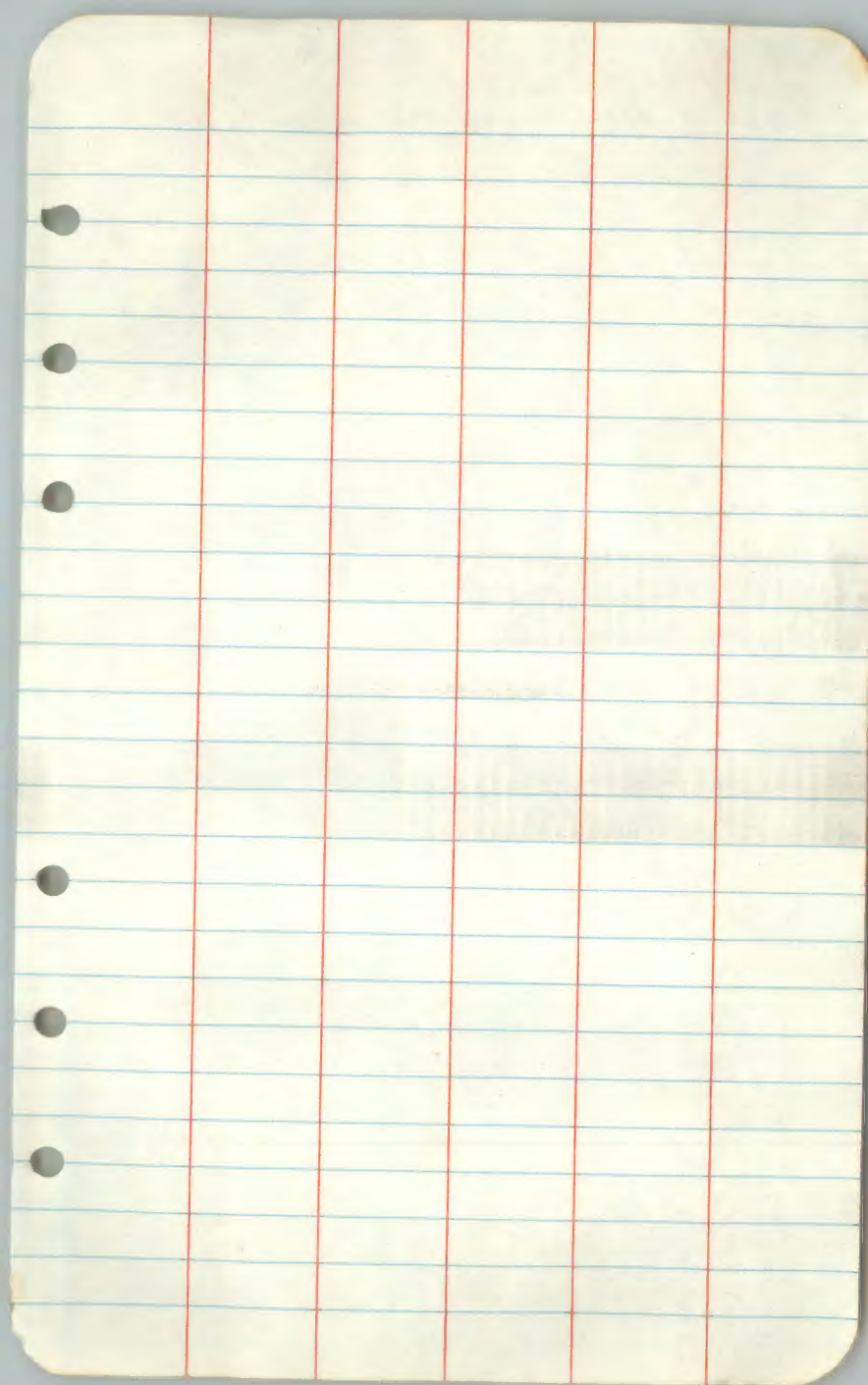
Sec 13



set two steel sign posts on line

	TR
	1458
TR	AP5
1458	AP2
	TR
	1457
Sec 14	
1918	

From above corner sight along
line just cut and turn \angle
of $92^{\circ}15'$ counter clockwise.
clear line to the CSN 164
13" off, corrected line
& blazed trees. Set two
steel sign posts on line.



T141N, R27W Sec. 6

The S $\frac{1}{16}$ com to Sec 6 and
Sec 1 to the SW $\frac{1}{16}$ Sec. 6

A \rightarrow B

100

100

100

100

100

53.4

553.4

B \rightarrow C

100

100

100

100

100

100

8.3

608.3

clear, sunny
5° F
Feb 20, 1978

N ↑

1.23'

B

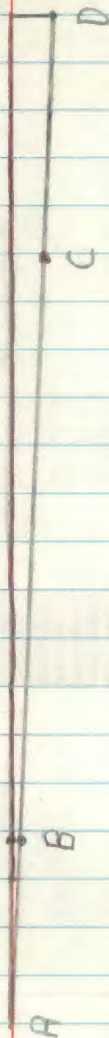
A

2.57

C

3.25

D



C → D

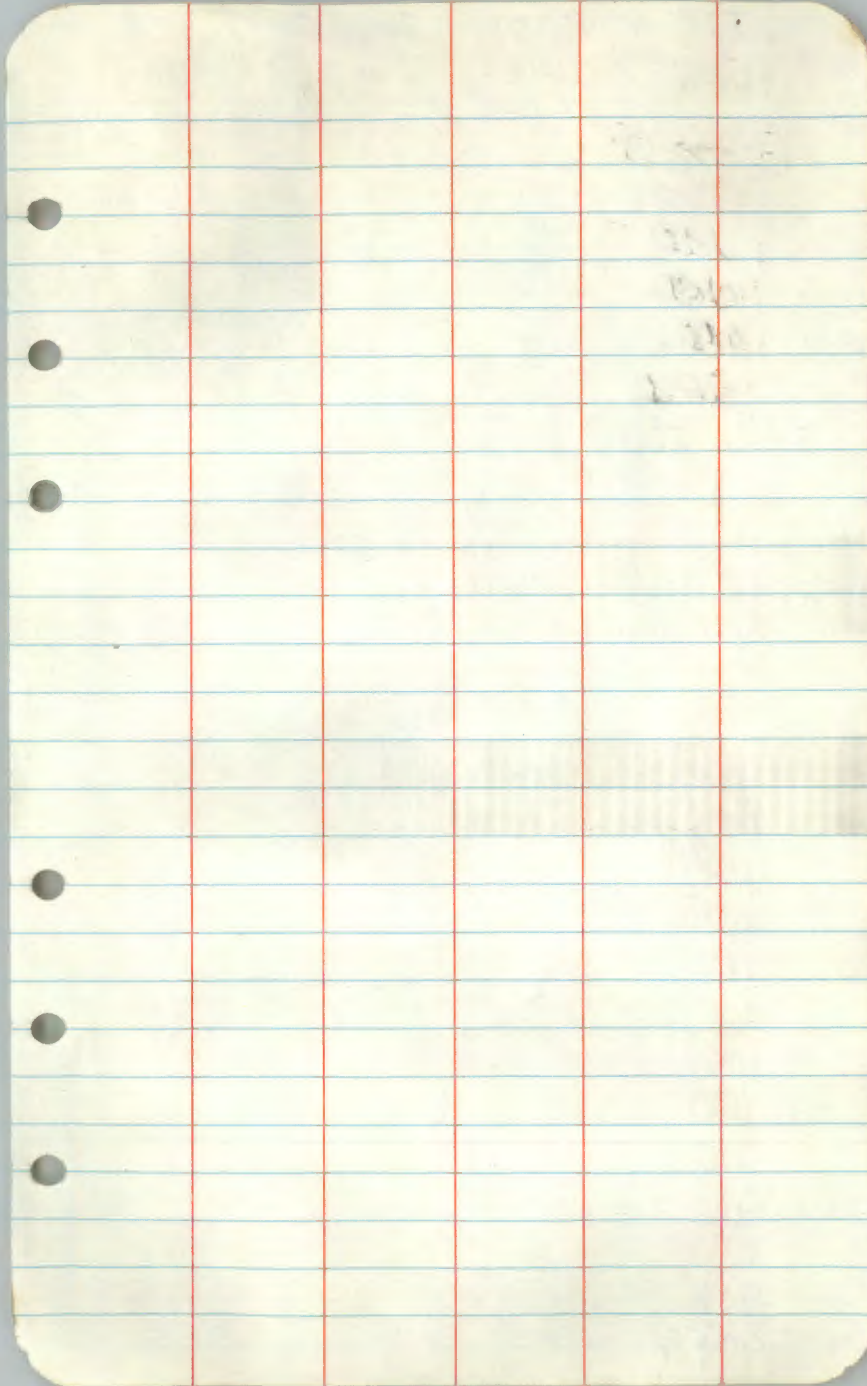
100

100

100

4.8

304.8



T141 N, R 27W Sec. 6
Taping from the SW $\frac{1}{16}$ to the
South $\frac{1}{16}$

A \rightarrow B

100

100

100

100

76.1

476.1

B \rightarrow C

100

100

100

100

100

100

100

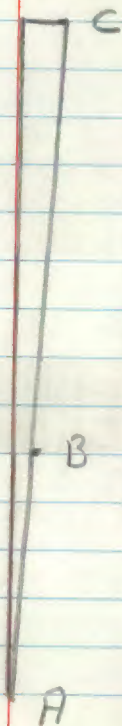
100

100

9.9

909.9

Feb 21, 1978
cloudy, 10°F



T141N R27W Sec 6

TAPING From the $S \frac{1}{16}$ to the center $\frac{1}{4}$

A → B

100

80.5

180.5

B → C

100

100

100

30.3

330.3

C → D

100

100

100

100

100

100

100

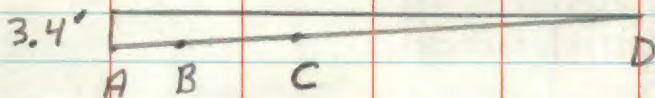
100

36.8

836.8

March 6, 1978
cloudy, 15°F

N ←



T 141N, R 27W Sec 6

W $\frac{1}{16}$ Sec 6 to approximate
N $\frac{1}{16}$ Sec; 6 + 1

100

100

100

100

100

100

100

100

100

100

100

100

100

100

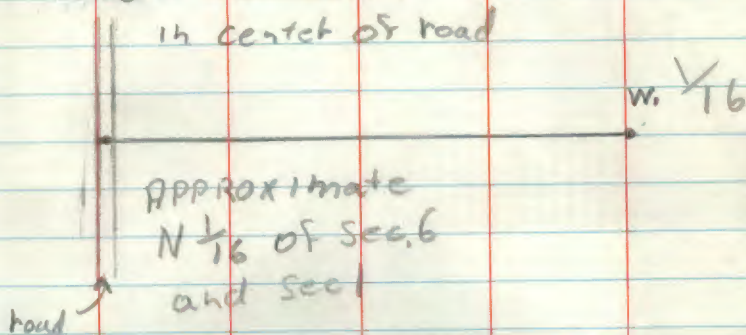
53.96

1453.96

March 7, 1978
cloudy, 20°F



approximate Corbet Falls
in center of road



Feb 9, 1979

milo Stefan remounted
N 1/16, I parted to F.S.
STANDARD, R. Sillman

T 141 N R 30 W Sec 1

Taping From The ~~SW~~ $\frac{1}{16}$ To The
E $\frac{1}{16}$ Sec 1 and 12

A → B

100

100

82.1

282.1

B → C

85.73

C → D

100

59.33

159.33

D → E

100

100

100

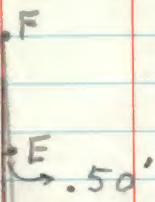
100

100

30.6

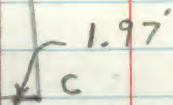
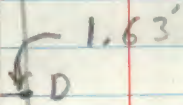
530.6

March 10, 1978
Clear, Sunny
35° F

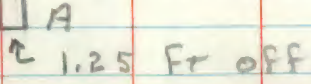
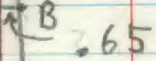


1294.61'

Hunting
Shack



OFFSET LINE 1.5'
TO AVOID TREE



E → F

100

100

36.85

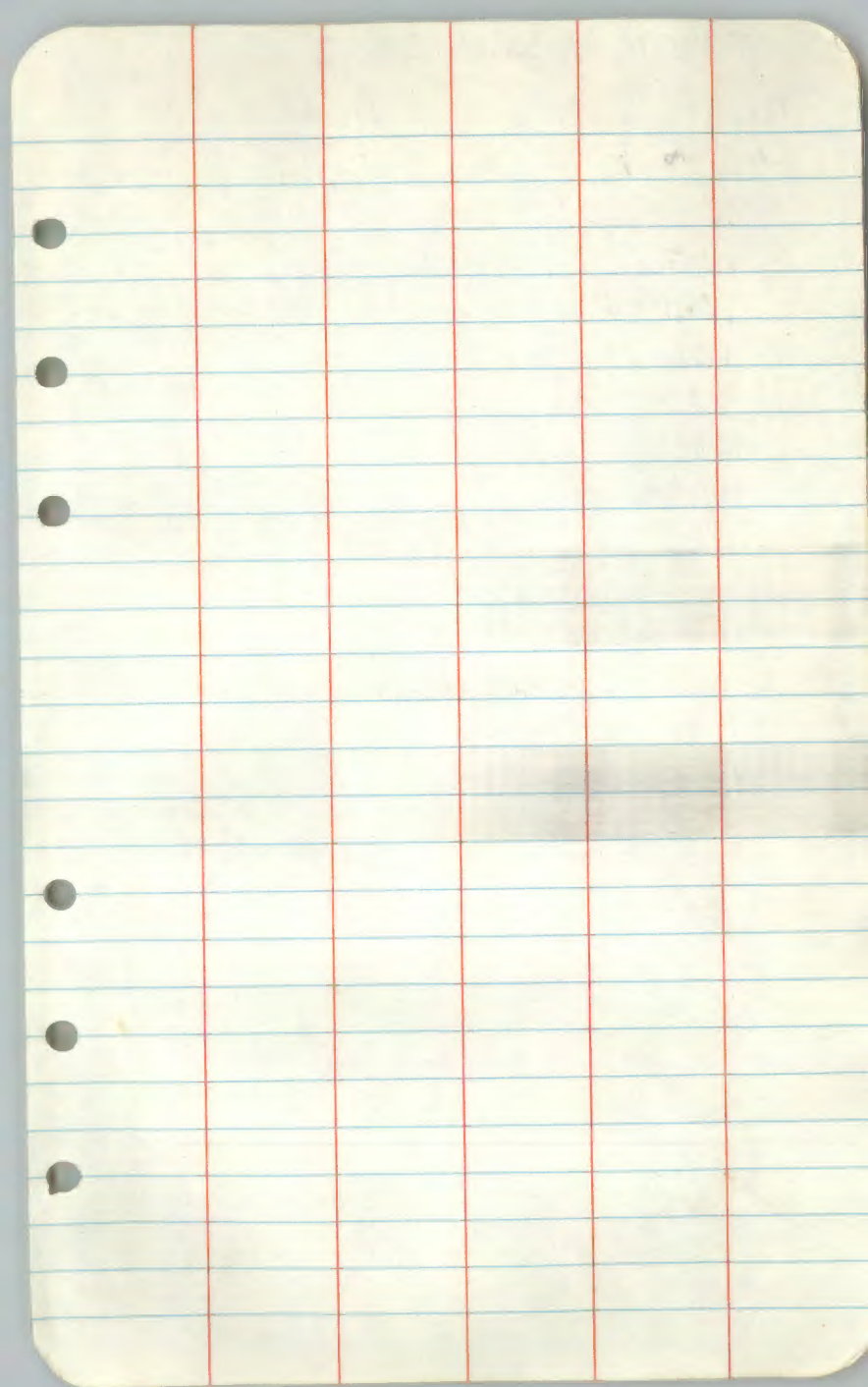
236.85

We taped off line & offset
to correct line.

The true line hit the
corner of a hunting shack.

The A.P. at the
middle of this line was
laying on the ground.

We blazed & posted
the line from the approximate
A.P. to the E 1/16 sec 1 & 2



T 141 N R 30 W Sec 2

Taping From the E 1/6 Sec 2 To
the Y 4 of sec. 2 and 1

A → B

100

100

100

100

4.22

404.22

B → C

100

100

36

100

100

100

100

26

44

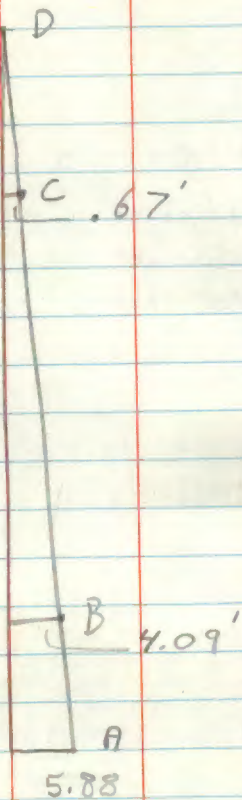
64.3

770.3

March 14, 1978
Sunny, 30°F



1326.62



C → D

56

96.1

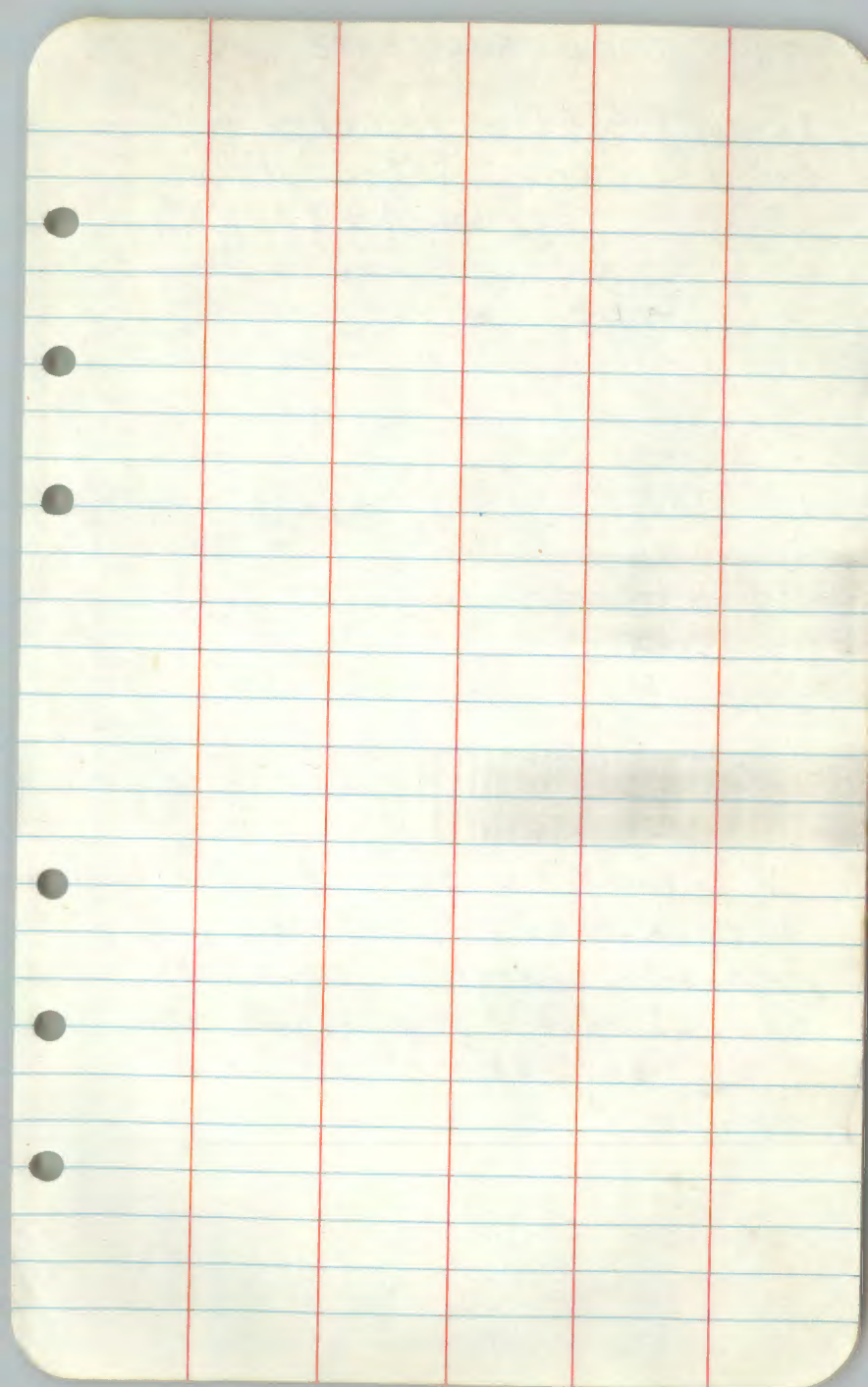
152.1

July 18, 1978, Sunny

We STARTED cutting from
the E $\frac{1}{16}$ sec 2 to the
center $\frac{1}{4}$. Ran into bees
& quit.

Aug 4, 1978

Finished line. 1.34 FT
south of center $\frac{1}{4}$
collected first pt. to
true line & ran through
with transit to corner.



T141 R30W Sec 1 and 2

Taping From the $\frac{1}{4}$ corner of
Sec. 1 & 2 towards the N $\frac{1}{16}$
of sec 1 & 2

A \rightarrow B

100

100

100

100

100

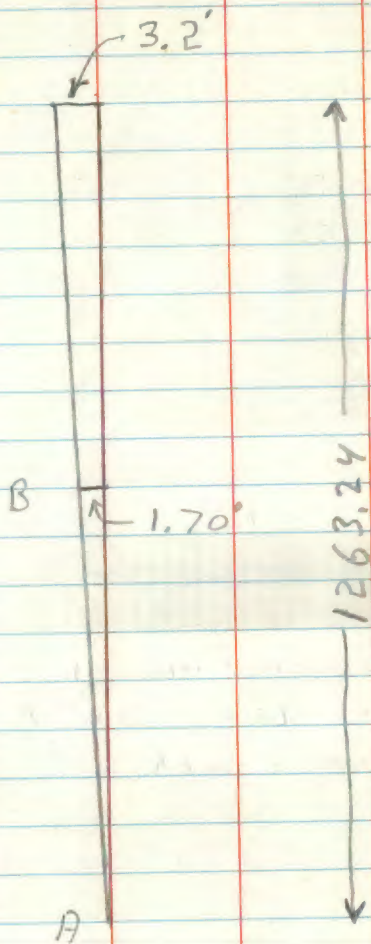
100

72.1

672.1

I taped From point A to pt. B.
I then used the distance
between corners as given by the
GLO. I moved my transit over
1.70' and checked to see if
on the line.

March 16, 1978
25° F, Sunny



T141N R 30W Sec 1 and 2

the N $\frac{1}{16}$ of Sec 1 & 2 to
the sec corner of Sec 1, 2, 35, 36

100

100

100

100

100

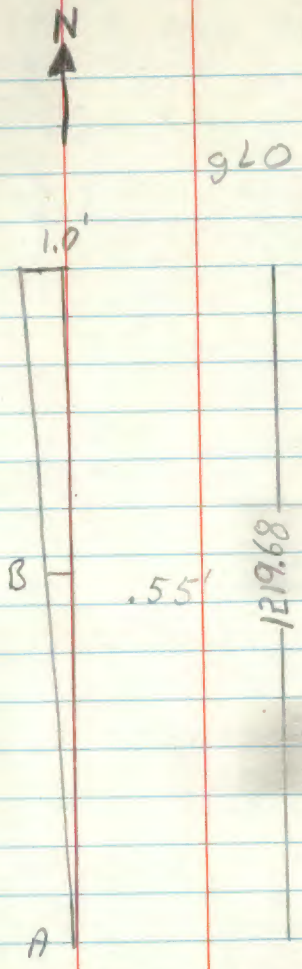
53.6

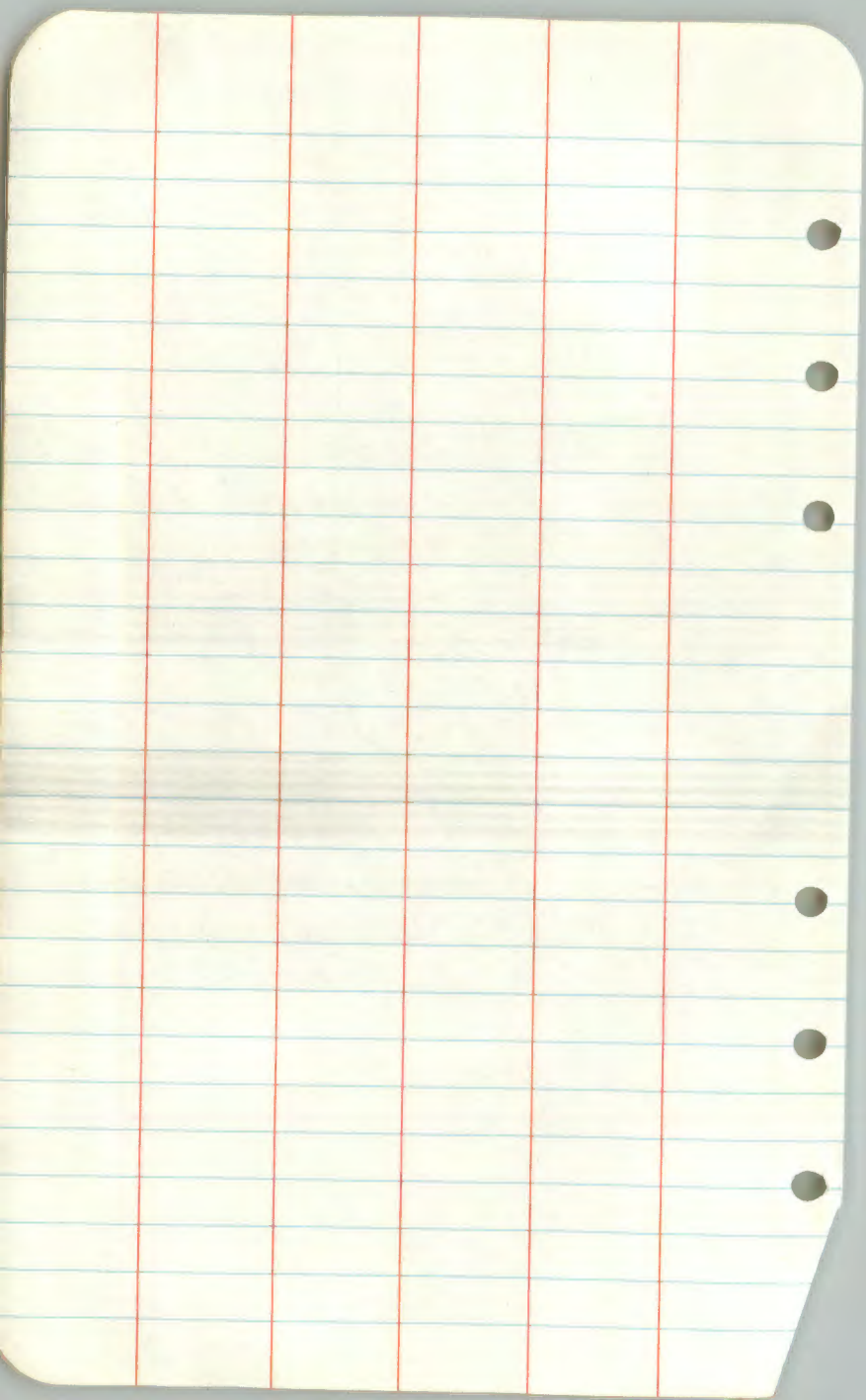
553.6

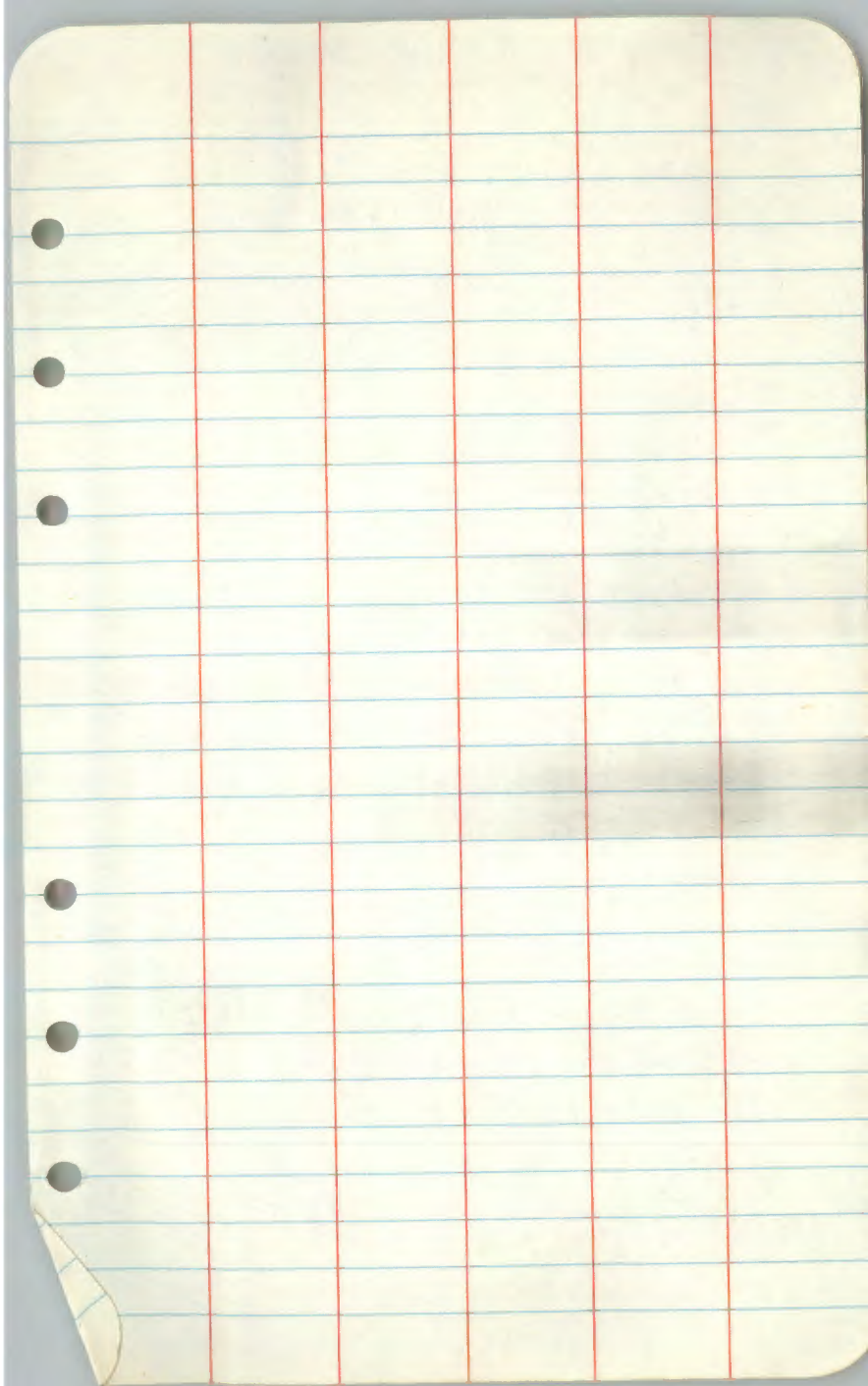
I taped from pt. A to B,
then using the distance
GLO had for the line I
calculated my offset. I then
moved the transit over to
double check.

Sahhs, 30°F
March 17, 1978

gLO - 1219.68







T 141 N R 27 W Sec 6

Taping from the N $\frac{1}{16}$ Sec 5 & 6
to the CENE Y 64 Sec 6

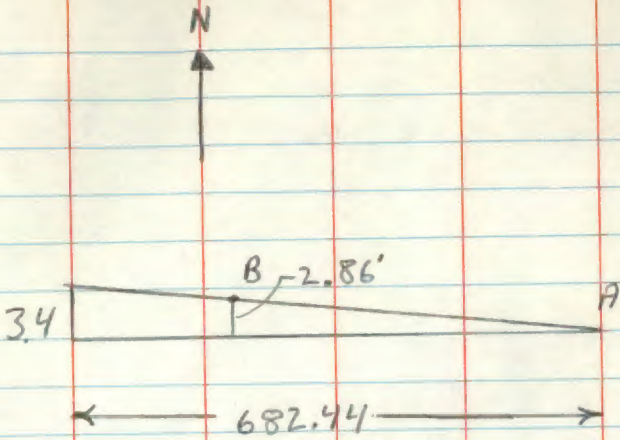
A \rightarrow B

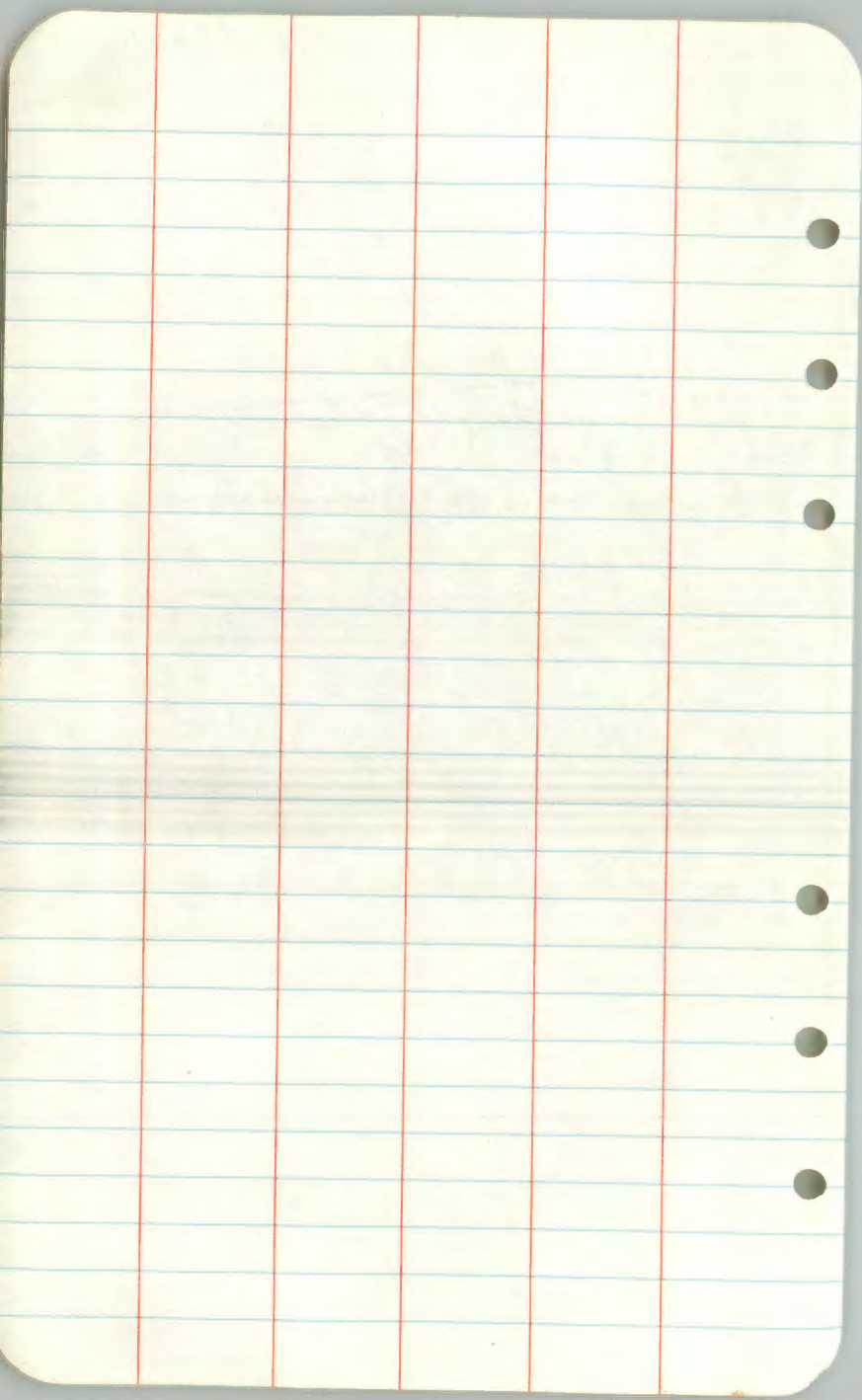
100
100
100
100
100
<u>74.44</u>
574.44

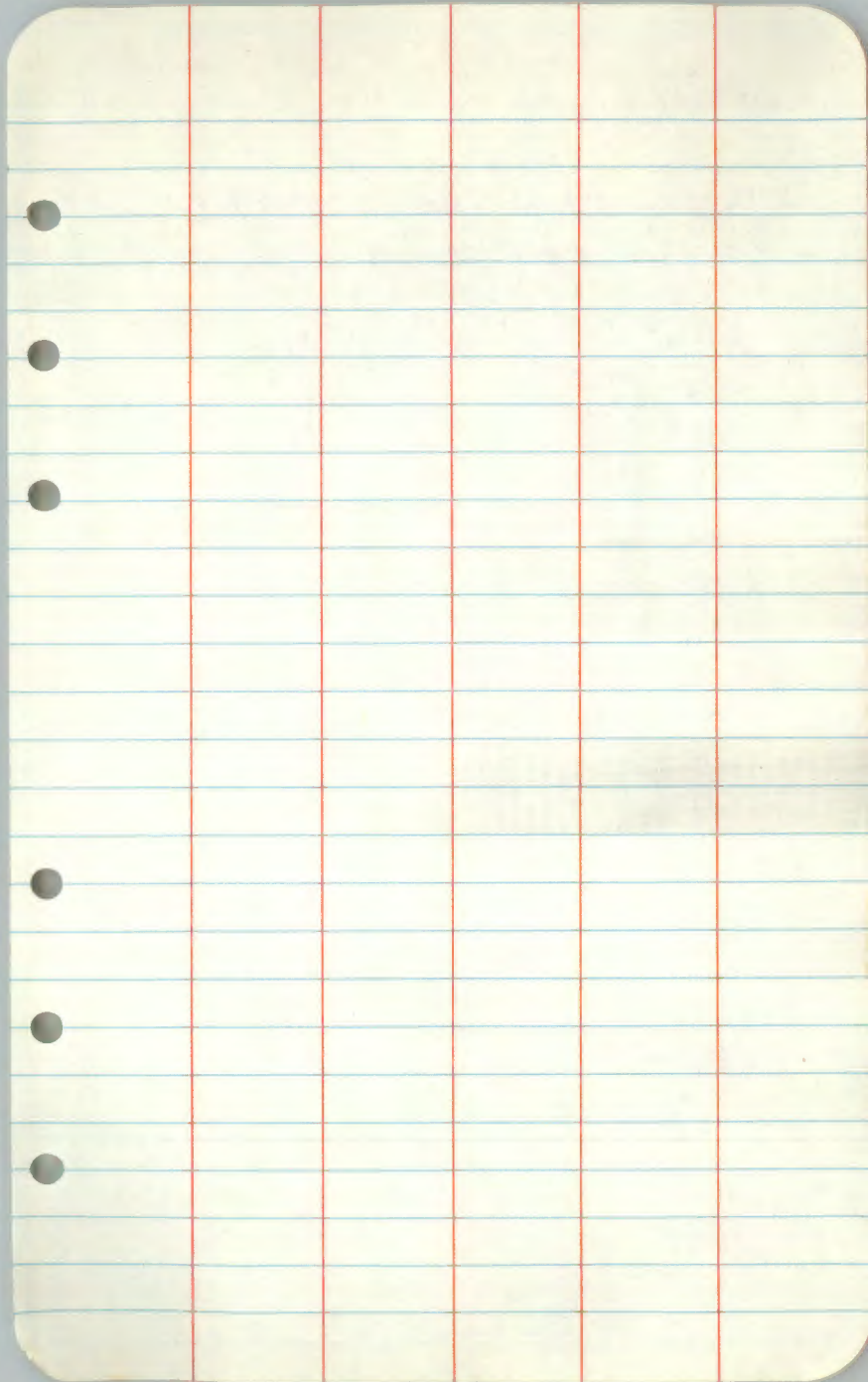
I Taped from A to B then
using GLO's distance for the
line I offset my transit
2.86 FT. I then checked
to see IF on line.

The line from the CENE Y 64
of sec 6 to the EE Y 64
of sec 6 & 31 was within
1 inch of brass cap so
no taping was done.

April 13, 1978







T141N R30W Sec17

Taping From The center N $\frac{1}{16}$
to the center $\frac{1}{4}$.

A \rightarrow B

100

100

100

100

100

56.6

556.6

C \rightarrow D

100

37.4

87.6

225

B \rightarrow C

65.3

100

100

100

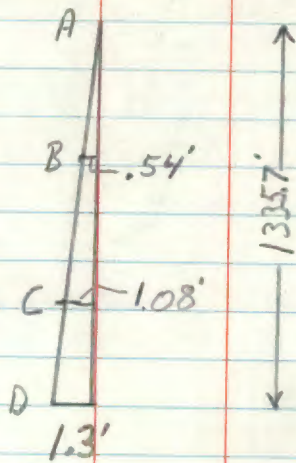
100

51.4

37.4

554.1

April 25, 1978
Clear Sunny
55° F



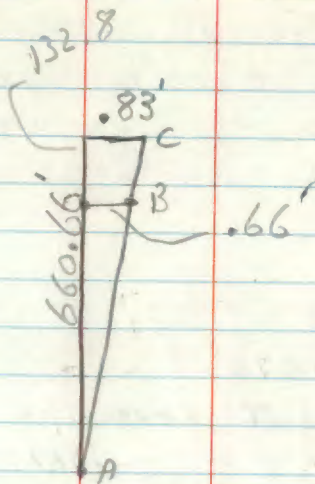
T 141 N, R 30 W, Sec 17
Line from the center $\frac{1}{4}$ to CWE $\frac{1}{64}$

B \rightarrow B

$$\begin{array}{r} 45.1 \\ 87.7 \\ \hline 132.8 \end{array}$$

I Taped From C to B, then
using the GLO Distance of
10.01 chains I moved point B
over .66 ft. I then SET
up the transit to double check.

April 26, 1978
Clear & Sunny
60° F



April 27

We cut the line North
From the CNE $\frac{1}{64}$ to the
CNE $\frac{1}{64}$. I was within
a foot so no taping was
necessary.

July 20, 1978

I cut out from the CNE $\frac{1}{64}$
to the NE $\frac{1}{6}$ sec 17. There
was a large Red Pine in
the way so I offset
entire line $1.85'$. I was
off about a ft. I collected
line & set a pt. on
the line to use as
a backsight

July 21

I sighted on my backsight on line from Day before & turned an angle of $90^{\circ} 37'$ and started blazing out line to East $\frac{1}{16}$, sec 17.

July 24

continued line to East $\frac{1}{16}$. 6 ft East of corner. I collected line by measuring to first pt. on line, moving it to the line and then turning down the line again with the transit. Hit brass cap this time.

July 25

Starting at the $N\frac{1}{4}$, sec 8 & 17 I sighted on the H.P. $\frac{1}{8}$ mile South & turned an angle of $90^{\circ} 14'$ & headed east. line follows old road.

July 26

continued line

July 27

After rechecking survey notes I find that I should have turned an angle of $89^{\circ} 48'$. I set up on corner & turn this angle and cont. line.

July 28, 1978

Finished line to sec corner of sec. 8, 9, 11, 16.

we came out south of corner.

July 31

Corrected line by measuring to first pt. on line, correcting, then going down line again with transit.

Aug 3, 1978

cont. line east from
section corner by backsighting
on line to west & turning
an angle of $180^{\circ} 26'$.
followed old road,

Aug 7

searched for W $\frac{1}{16}$ sec 9, 16
no sign of it. continued
line west

Aug 8

cut almost to C $\frac{1}{4}$.
searched for corner to
found it laying on the
ground in the road. We
can't do any more until
milo puts back this corner.

Aug 9

searched for corners in the
western part of sec 17

Aug 10, 1978

We ran a random line from the W $\frac{1}{16}$ sec 17 South 5.71 chains to the Indian Reservation boundary. Collected and established true line.

Setting up on this corner we backsighted on our line & turned an angle of $98^{\circ} 59'$ & follow the Reservation boundary east.

Aug 11

Finish line to corner that lies 20.44 chains east, collected line slightly & blazed trees

Aug 14.

Started at the W $\frac{1}{16}$ sec 17. I backsighted on the line to the South & turned an angle of $180^{\circ} 02'$ clockwise, we started creating line to the North.

Aug 15

Finished line to W.C. NW $\frac{1}{16}$
on hill overlooking lake.
made small collection +
blazed trees. There is
a bearing tree to the
W $\frac{1}{16}$ that is right on line.
(White Oak)

Aug 16.

Shot line across lake.
found W.C. on Hill overlooking
Lake.

Aug 17

Ran Line from W.C. on
north edge of lake to
the E $\frac{1}{16}$ Sec. 8, 17 by
sighting on W.C. on south
edge of lake and extending
line. made small collection
+ blazed trees.

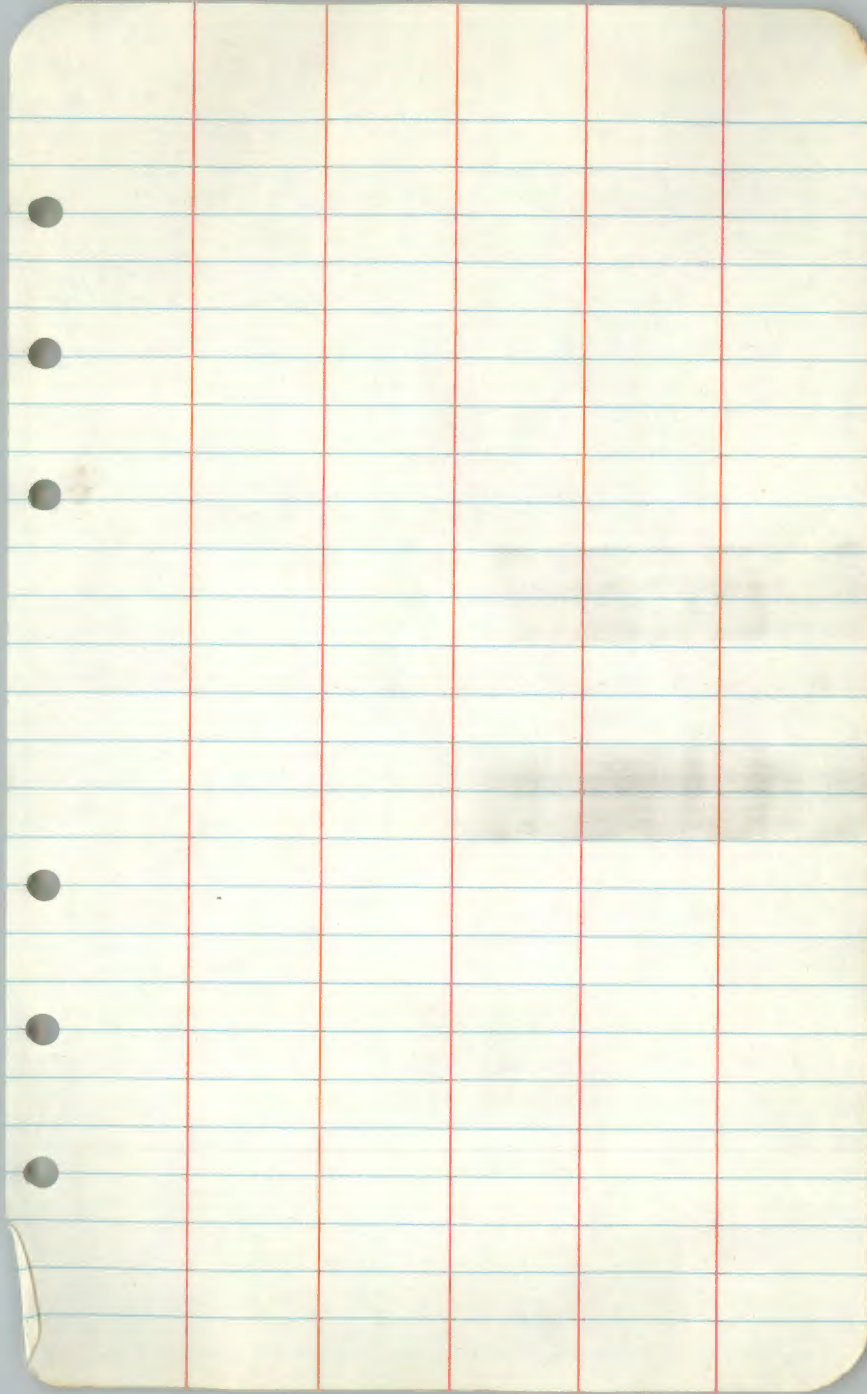
Nov 20, 21

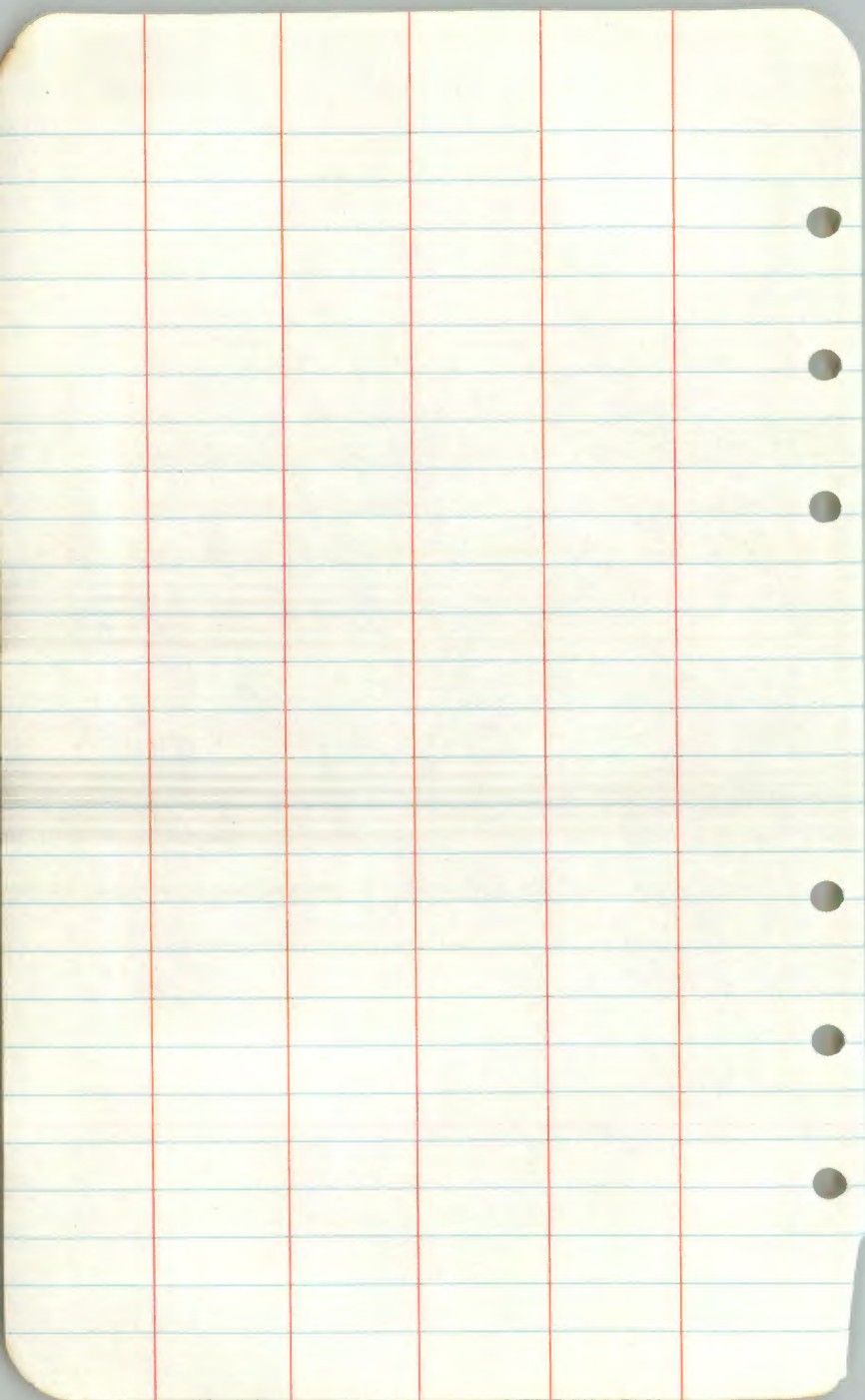
We posted the lines
in Sec 17 to standard
except for the $\frac{1}{2}$ mile
from the N $\frac{1}{4}$ Sec 17 to
the sec. corner of 8, 9, 17, 16
we ran out of sight
so we will do this later

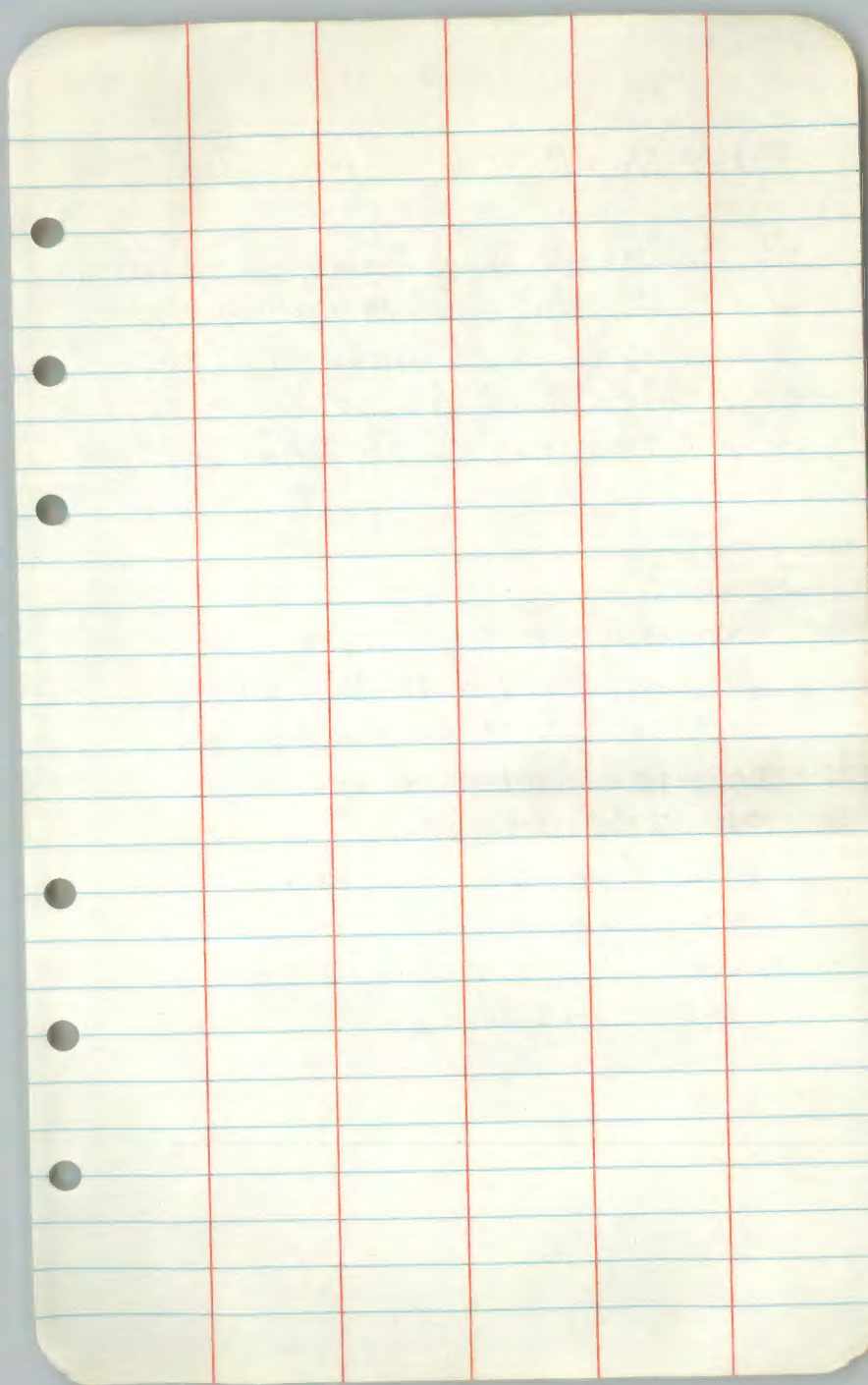
Jan 16, 1979

We post the $\frac{1}{2}$ mile
mentioned above.

R. Silbaugh







T 141 N, R 31 W, Sec. 6

We cleared and marked lines
to F.S. standards using
points set by Milo Stefan,
Registered Land Surveyor, established
on a traverse of the section.

June 13

Starting at the section corner
of sections 1, 6, 12, 7 we
sighted pt. 9 of the random
traverse & turned an angle
of $286^{\circ} 54' 17''$. We cut
the line to the $1/4$ sec 6.
We were $2\frac{1}{2}''$ off so
we marked the line to
F.S. standards.

June 15

Starting at the $W\frac{1}{4}$ sec 6 we extended our line North to the sec. corner. We were 1 ft. off. I marked line to F.S. standards after moving northern part of line back to true line.

June 16

Starting at the $W\frac{1}{4}$ on the South edge of sec. 6 we ran our line to the North by sighting on pt. 7 & turning a angle of $322^{\circ} 00' 21''$. We offset around a large Norway pine (21") about 200 ft. from $W\frac{1}{4}$. We cleared to the approximate corner so that Milo can put corner in.

June 19, 1978

Starting at the WY16
& sighting on pt. 7 I
turned an angle of
 $37^{\circ} 8' 32.7''$ & ran the
line east to the S $\frac{1}{4}$
Sec. 6. I was 1.5 FT
off. I checked my angle
& found it to be off.
I offset to put my pts.
on the line & marked
to F.S. standards.

June 20

Starting at the S $\frac{1}{4}$
Sec 6. & sighting at pt. 6
I turned an angle of
 $282^{\circ} 37' 52''$ & ran line
North UNTIL line intersected
a building owned by Wade.
I left line for m/w
to put in corner.

June 21

Starting at the sec.
corner of sec. 6, 5, 31, 32
I sighted on pt. 34 &
turned an angle of
 $6^{\circ} 23' 06''$ & ran the line
south to the N $\frac{1}{4}$ sec 6, 5
I hit edge of brass cap,
marked line to F.S.
Standards.

June 22

Starting at the section
corner of sec 6, 5, 31, 32 &
sighting at pt. 34 &
turned a \angle of $92^{\circ} 48' 04''$.
I made an offset around
a bearing tree, continued
to the N $\frac{1}{4}$ sec 6. I
was 2.9' off. I return
offset & found a small
error. ran line back to
N $\frac{1}{4}$ and was within
3". We marked to F.S.,
Standards.

June 26
starting at the N $\frac{1}{4}$
of sec 6 I sighted on
point 27 + turned a angle
of $197^{\circ} 39' 46''$ + started
line to the South.

June 27
continued on same line

June 28
Finished line to approximate
C $\frac{1}{4}$. We then started at
The E $\frac{1}{4}$. I sighted on
pt. 38 + turned on angle
of $142^{\circ} 31' 23''$ + started
brushing line to west

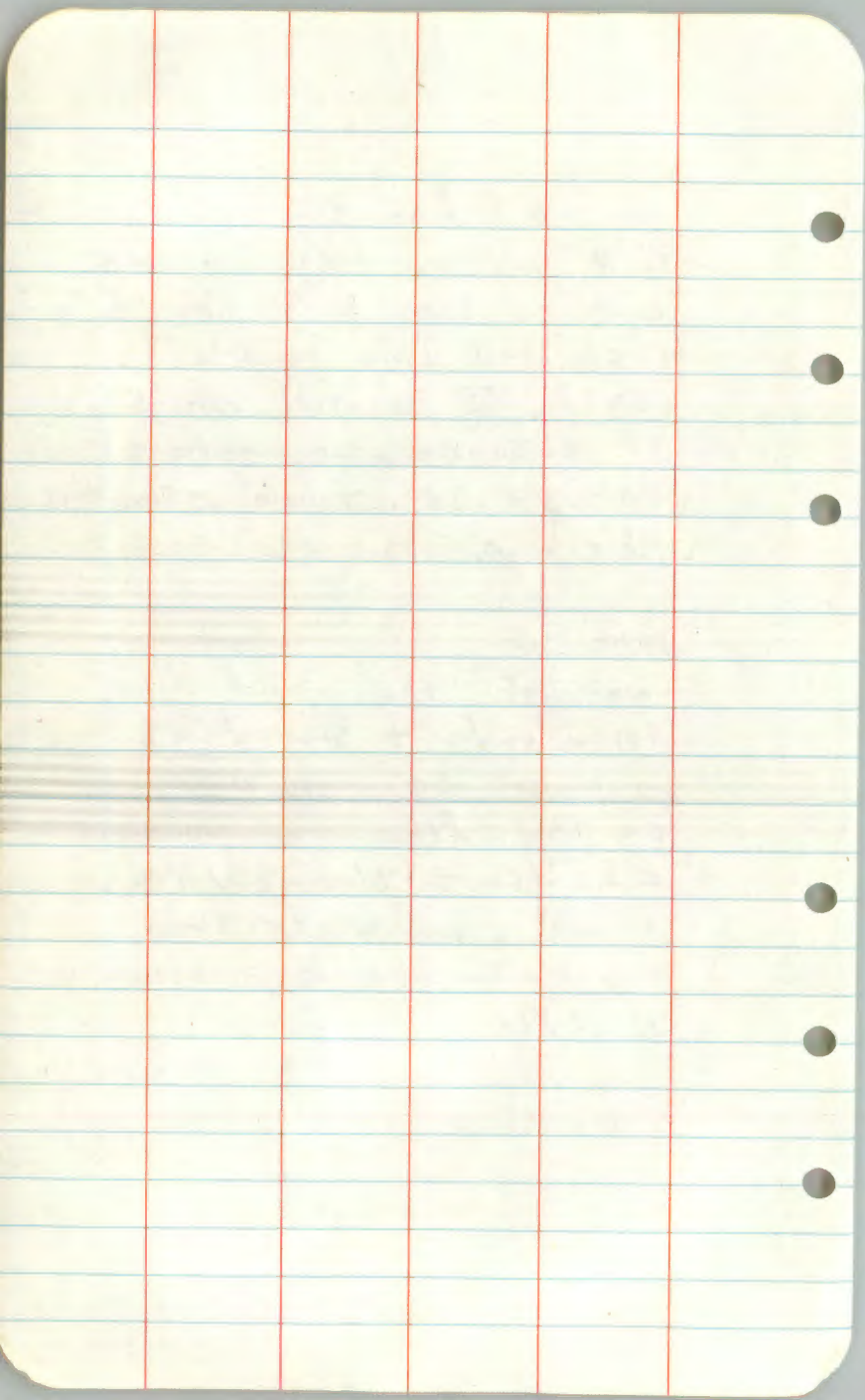
June
continued on same line.

June 29

Finished line to approximate
C $\frac{1}{4}$ sec 6. We then went
back to the E $\frac{1}{4}$ sec 6
& started line to the
south. I sighted on pt
38 & turned an angle of
 $49^{\circ} 38' 38''$ & we started
brassing.

June 30

We left the above line
for a while & started at
a point set by the
on the line between the
C S $\frac{1}{16}$ & the SW $\frac{1}{16}$.
& we cleared to the
west to the approximate
SW $\frac{1}{16}$



subdivision of Sec 5, T141N, R31W

July 3, 1978

We finished the line from the
W 1/4 sec 5 to the S 1/16 Sec 5.

In the afternoon we started
at the NW Sec. cor. Sec 5.

I sighted on pt. 11 & turned
an angle of $273^{\circ} 5' 50''$.

We then started the line to
the EAST.

July 5

We reached the W 1/16

Sec 32, 5. out line is
OFF. I decide to leave
this line till I talk to
milo. We then started

at the N 1/16 between
Sec. 5, 6. I sighted on a

point on out line from

the North & turned an

angle of $89^{\circ} 23' 51.5''$

and we started blazing line

July 6

we continued on the
same line.

July 7

we continued on
same line, almost to
approximate CN $\frac{1}{16}$

July 10, 1978

I finished the line to the approximate NW $\frac{1}{16}$ Sec 5. Line is now ready for mile to establish corner.

We then started at the sec. corner of 6, 5, 78. I sighted at pt. 20 & turned an angle of $315^{\circ} 4' 17''$ and started cutting the line to the east.

July 11, clear, sunny, 70°

We finished clearing to the approximate W $\frac{1}{16}$ of sec. 5 and 8. Leave line so mile can put in corner.

We went back & continued work on the line between the NW sec. corner of sec. 5. & the NW $\frac{1}{4}$ sec 5.

July 12. cloudy, rainy

We finished line to N $\frac{1}{4}$.
hit brass cap.

July 13

We continued east from
North $\frac{1}{4}$. Towards the E $\frac{1}{16}$
sec 5, 32. (I turned an L of

July 14

We finished pipe. I was
a foot south of pipe. We
corrected line so that it
hit the pipe. We
adjusted the transit in
the afternoon.

July 17

We painted blazes + posted
lines in sec 6.

July 19

started at the N $\frac{1}{4}$ sec
5, 4 + widened line done
by private surveyer to the
west to the CE $\frac{1}{16}$ sec 5.

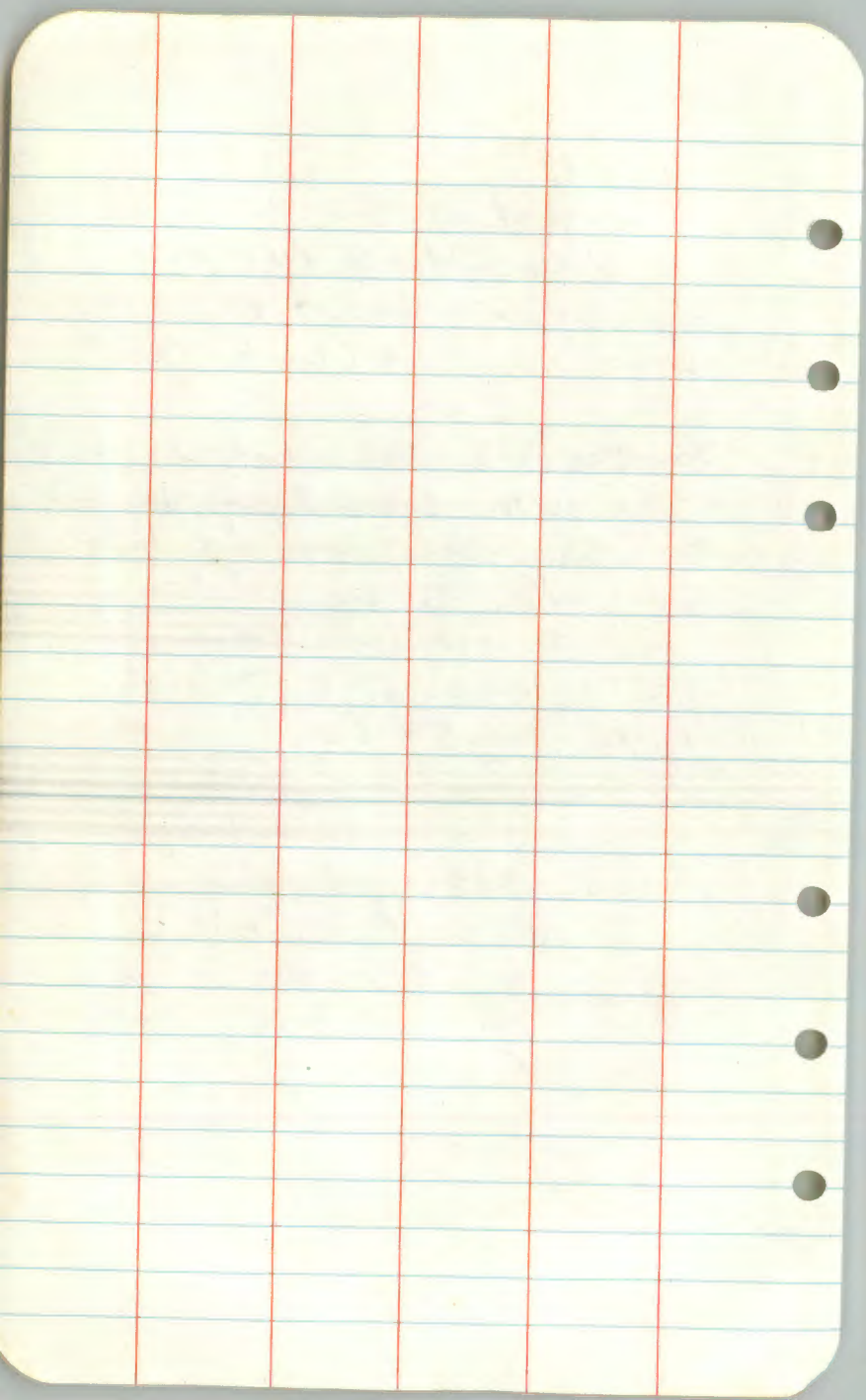
Jan 22, 1979

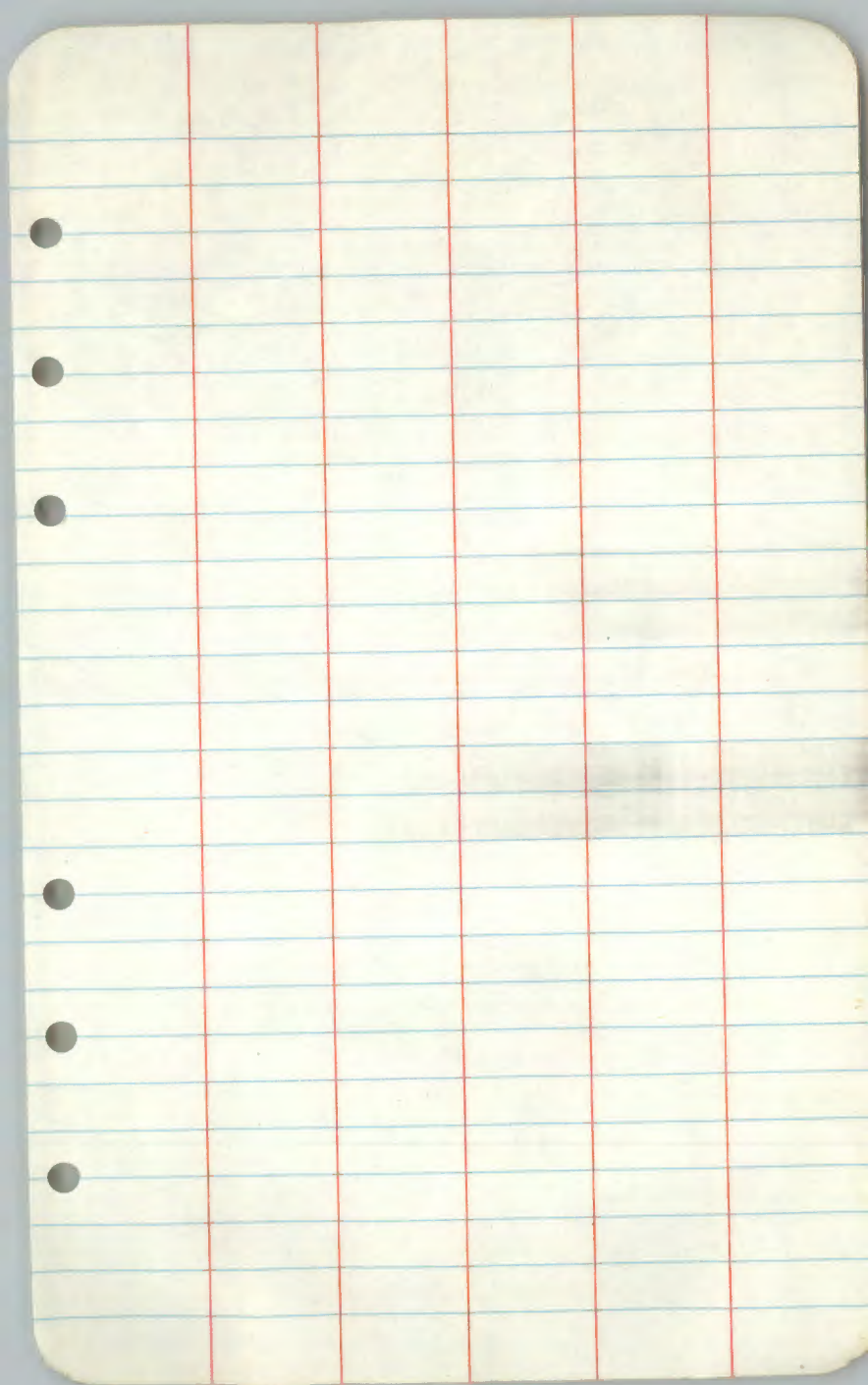
The W $\frac{1}{16}$ sec 5 + 32 is
too far south + will be moved
by mile. I posted the
line to standard from the
NW sec corner of 5 to the
E $\frac{1}{16}$ sec 5 + 32.

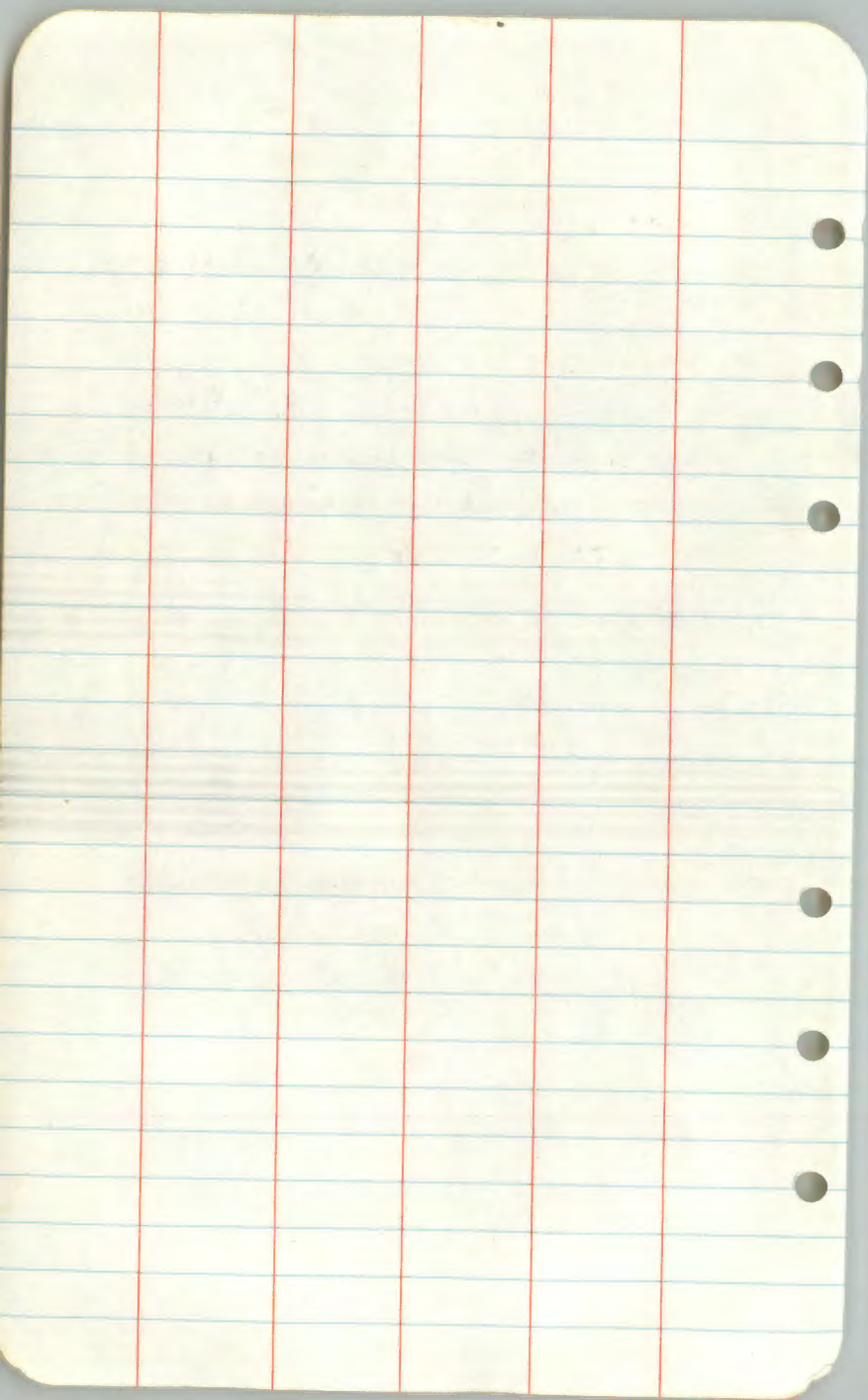
R. Schaefer

June 7, 1979

I posted line from
N $\frac{1}{16}$ sec 5 + 6 east $\frac{1}{2}$
mile then $\frac{1}{4}$ mile south
to the C $\frac{1}{4}$. AS.







T 142 N R 30 W

Sec. 27, 34

U.S. F.S. Comp. #29

Aug 18, 1978

Looked for cokers

Aug 21

I set up transit on the 116A
of Sec. 27 & ran a random
line to the South to the
W $\frac{1}{16}$ sec 27, 34. collected
to the line & blazed trees.
I left a white oak for a
line tree.

Aug 24

I set up over the W $\frac{1}{16}$
Sec 27, 34, sighted on line
to north & turned angle of
 $89^{\circ} 56'$. we cut line to approximate
corner. ^{N. 1/4 Sec 34} a wood post is now
being used to mark corner so
I will wait till Milo puts
in I.P. before we post line to
F.S. STANDARDS

28 27
33 34

N^{0°4'E}

116'

W^{1/16}

EAST

← wood
POST
APPR. CORNER

N^{0°47'E}

WEST

REN^{1/16}

Aug 25.

I set up over the CN $\frac{1}{16}$
Sec. 34 + cut Random
Line North.

Aug. 28

cut True line too
Approximate corner of
N $\frac{1}{4}$ Sec. 34. I found
two 2" pipes in the ground
about 180' apart. They
line up with N $\frac{1}{16}$ Sec 34.
using these as being on
True Line I miss approx.
corner by 1.5'. I will
wait till N $\frac{1}{4}$ Sec 34
is established before I put
to FS. standards.

T141N R28W
5th principle meridian

U.S.F.S. comp. #54

Sec. 9

Aug. 31, 1978

I set up the transit over the CE Y16 and ran a random line South to the CNSE Y64.

Sept 1, 1978

I cut out true line + blazed trees.

Sept 5

I set up transit over the CE Y16 Sec. 9. I then backsighted on the true line to the South + turned + angle of $173^{\circ}20'$ counter clockwise. We started cutting towards NE Y16 Sec 9.

Sept 6.

continued same line

Sept 7

continued same line to NE Y16

T141 N R 28W Sec 9

NE $\frac{1}{16}$

CE $\frac{1}{16}$ \curvearrowright $178^{\circ} 20'$

CNSE $\frac{1}{64}$

Sept 11

started cutting out the
line to NE $\frac{1}{16}$

Sept 12

Finished the line + blazed
trees. continued cutting
From NE $\frac{1}{16}$ north on
same line

Sept 14

continued on same line

Sept 15

Finished line to approximate
E $\frac{1}{16}$ sec 4 + 9 in north.
We will wait until mado
sets this corner before
we post to STANDARD.

No. 302

Get on the Road
WEATHERPROOF

2 L. DEXTER'S BOOKS
2400 W. MAIN ST. U.S.A.

Sept 22

Milo Stephan Set an approximate
pt for the C/4, Sec 4 + 9
in Highway #200 by the
remains of a BT. I started
here + cut out line to the
CN 1/16 Sec. 9

Sept 25

I Finished line to the
CN 1/16 + continued straight
to the C/4 Sec 9. This
I. P. Falls in about 4' of
water. I placed a 3" dia.
oak post beside it.

No. 302

Get the Best
WEATHERPROOF

J. L. DARLING CO. INC.
TACOMA WASH. U.S.A.

T 142 N R 31 W

Sec. 11

U.S.F.S. COMPARTMENT 12

Aug 28

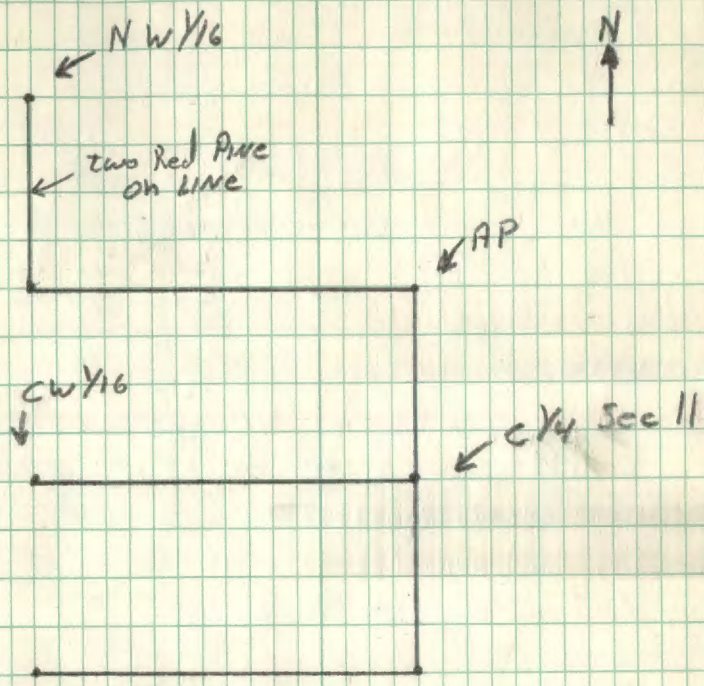
Spent afternoon looking
for cobbles

Aug 29

Set up transit on the
NW $\frac{1}{16}$ sec 11 & cut
random line $\frac{1}{8}$ mile
south to A.P.. Collected
line and blazed trees.
There were two Norway
pine near center of line
that I left for line trees.

Aug 30.

I set up transit on the
A.P. & sighted on line to
north. I turned an angle of
 $89^{\circ} 26'$ and started toward
the A.P. $\frac{1}{4}$ mile East.



Sept. 18, 1978

I Finished line to the A.P.
I was 1.43' south of I.P.
Collected. to True line.

Sept. 19

I started at the above
A.P. and sighting on the
True line to the west, turned
an angle of $89^{\circ}26'$ and cut
line to C $\frac{1}{4}$ Sec 11.

I then set up over the C $\frac{1}{4}$
+ backsighted on the line just
cut + turned an \angle of $180^{\circ}09'$
clockwise + cut to the A.P.
1/8 mile south. I was .9'
west, I collected to true line.

Sept. 20

Set up over the C $\frac{1}{4}$ + sighted
on true line to the south
+ turned an \angle of $89^{\circ}27'$
clockwise + cut line to the
C W $\frac{1}{16}$ Sec 11, I was .36' North.

Sept. 21

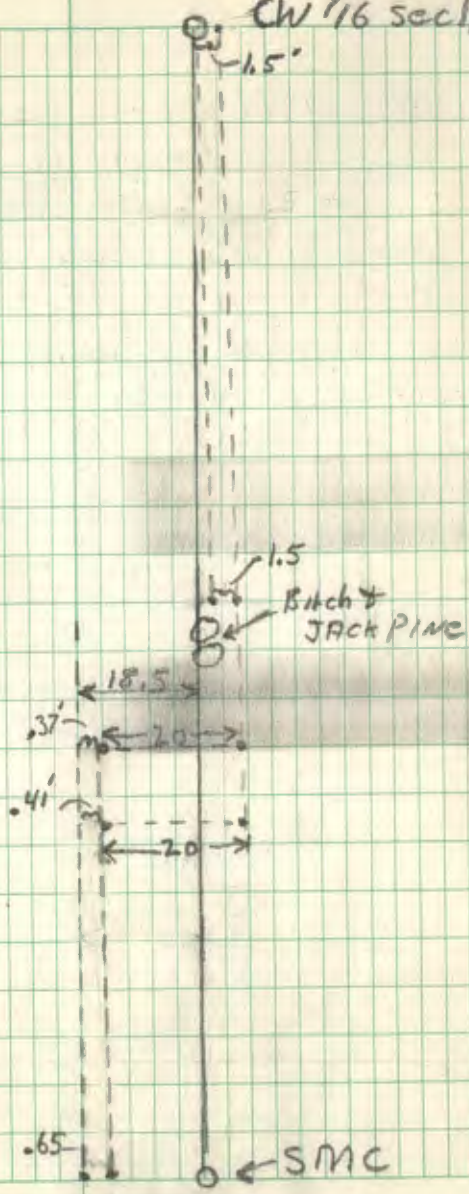
I set up over the A.P.
1/8 mile south of C 1/4 sec 11.
+ sighting on the true line to
the North, I turned a \angle of
 $90^{\circ} 38'$ counter clockwise +
cut line to the west. I came
out right at brass cap.
This I.P. is in the lawn of
Wright Summer home.

Sept 28, 1978 sunny, 60°

I Taped from the CW Y16 section ~~east~~ to the first pt. on that line. I was 437.2', since I was .36' north on that line when I reached the CW Y16 I moved the pt. .24' south to true line. Sighting on this pt I turned a \angle of 179°46' counter clockwise. My line ran into a Jack pine with a old blaze and a large birch. I follow a old fence line closely. I offset 1.5 ft south to miss these trees & set two pts. by road and in yard of Gildner. I then moved my line 20' north to miss a garage, cottage and a house. Then extended line to lake. I was 1785' North of SMC, so the line I ran was actually .65' south of SMC.

CW 1/16 sect 11

N ←



Leech Lake

Sept 29

I TAPed out Line From the
CW $\frac{1}{16}$ sec II to the SMC.
I got 763.05' compared to
760.98 in survey Notes.

I then calculated the OFFsets
at various places on the line
and posted to F. S. STANDARDS.

T 142N R 31W

Sec. 1, 11, 12

U.S.F.S. Comp #12

Crew

Randy Silbaugh - crew boss

Sharon Lundquist

Calvin White

Roger Hanson

Glenda Tuck

Instrument

Monday, Nov. 13, 78 Snowy 25°F

I set instrument up over the NW $\frac{1}{4}$ of sec. 12 which falls in a road & is badly bent over. I sighted on the CW $\frac{1}{16}$ of sec. 12 & turned an angle of $89^{\circ} 53'$ clockwise. We started cutting towards the N $\frac{1}{16}$ Sec 11 & 12. Due to several large white pine I changed my initial angle to $89^{\circ} 57'$. I came out 7.35' North of the I.P. I taped out line & corrected to the line & blazed the trees. When I taped out the line I got 1322.85' compared to 1316.7' on the plat. There are two W. pine line trees near the center of this line.

735'

N $\frac{1}{16}$ sec 11+12

89°57'

89°53'

NW $\frac{1}{16}$
SEC 12



SW $\frac{1}{16}$
SEC 12



Tues. Nov. 14/78 partly Cloudy 25°F

I set the instrument over the N $\frac{1}{16}$ between Sec 11 + 12 which is best over with the cap missing. + sighted on the true line that runs East to the NW $\frac{1}{16}$ Sec 12. + turned + angle of $89^{\circ}50'$ counter clock wise + started cutting the line towards the Sec corner of Sec. 12, 11, 12. I came out .53' west of I.P. I corrected line + blazed the trees. I then set up over the Sec. corner + back sighted on the true line that I just cut out. I turned + angle of $89^{\circ}41'$ counter clockwise. I started clearing line towards the A.P. towards the East.

Sec Corner, Sec 1, 2, 11, 12

↓ .83' west of I.P.

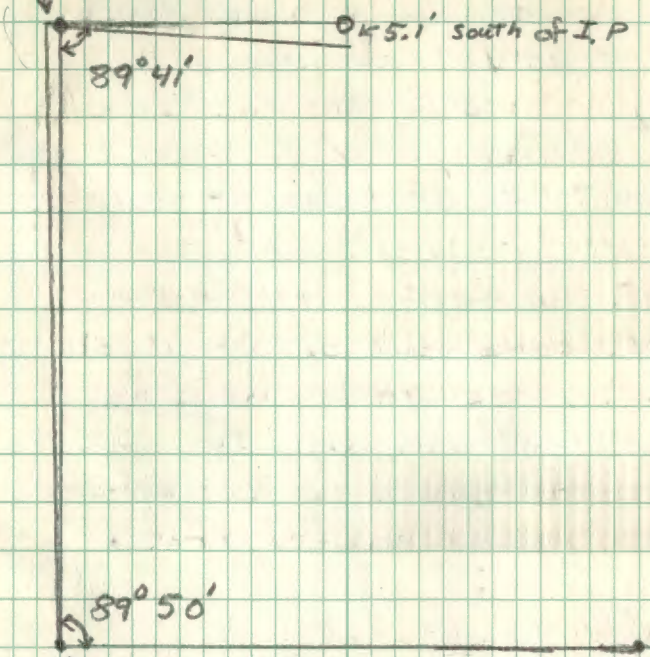
○ 5.1' south of I.P.

89° 41'

89° 50'

NW 1/16 Sec 12+11

NW 1/16
Sec 12



Wens. Nov 15, 1978 partly cloudy 25°F

I finished line from Tues.

I was 5.1 ft south of pipe.

I corrected line & blazed trees.

I set up instrument over R.P. &

sighted down the true line

just completed. I turned & angle

of $89^{\circ}40'$ clockwise & we

started cutting towards the

R.P. a $\frac{1}{4}$ of a mile north.

we came out 5.33' west of

R.P. . We taped the line &

got 1307' compared to 1304.82'

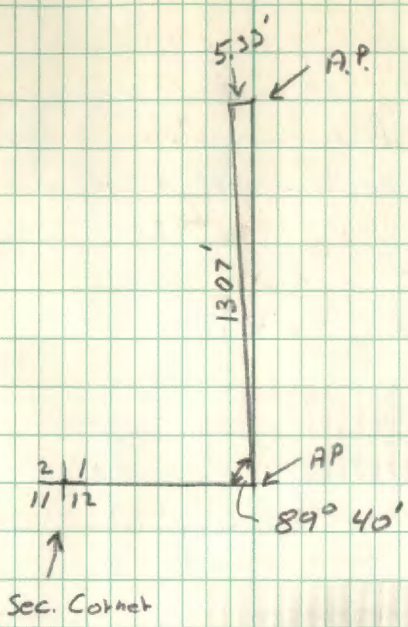
on the plat. I corrected

line & we blazed trees.

Thurs. Nov. 16, 1978

We posted the lines we

did this week to F.S. STANDARDS.



No. 101

Get in the Rain
WEATHERPROOF

J. L. DARLING CORP.
SACRAMENTO, CALIF. U.S.A.

T142N R28W

Sec 3, 10

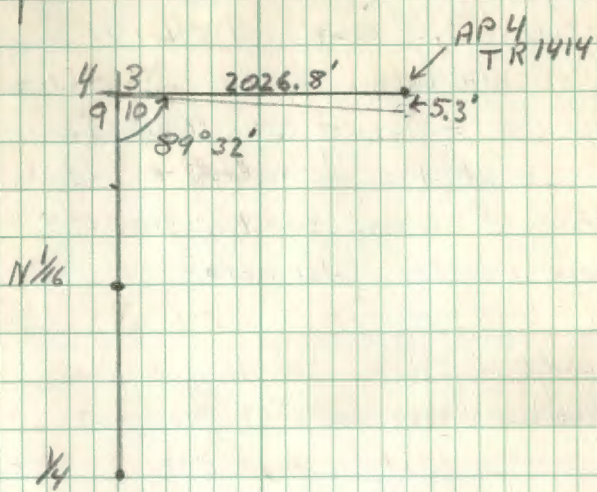
USFS Comp. 38

Nov. 22, 1978

STARTING at the N $\frac{1}{16}$ sec 9+10
I set up the instrument 3'
east of the brass cap sighted
a pt. 3' east of the sec corner
of 3,4,9,10. I did this in
order to miss a row of fence
posts. I then located positions
for three sight posts. I then
ran my line south to the $\frac{1}{4}$
sec 9,10. & had to change to
a 1' offset due to trees.

I came out right on. I
marked two spots for sight
post & blazed trees.

I then went to the sec.
corner of sec. 3,4,9,10 &
sighted on the N $\frac{1}{16}$ sec 9,10
& turned an \angle of $89^{\circ}32'$
counter clock wise & started line
to the east towards 17P4
TR 1414



Nov 24, 1978

I finished line to A.P. 4
+ was 5.3' south of I.P., I
corrected my line to true
line + blazed the trees.

I taped the distance + got
2026.8' compared to 2025.5'
given in the GLO notes.

Dec 14, 1979

I started at AP 4 +
sighted on my line to the
west + turned the angle and started
cutting out line towards API
TR 1414 my line was quite a
ways east of true line. I
corrected + started true line.

Dec 15

I finished true line + set
up over API + R1414, sighted on
my line to the south + turned an
angle + cut random line to
the CS 1/16 Sec 3. corrected
line to true line.

Dec 18 1978

I started at A.P. 1 TR 1415
& cut Random line North to the
Center 1/4 Sec 3. I collected
line to true line & continued
cutting North to AP 2 TR 1611

Dec 19

I Finished the line to AP 2
I set up over AP 1 & turned
a angle & started cutting out
the line to the west to
AP 2 TR 1415

Dec 20

Finished line, collected to
true line.

JAN 3, 1979

I started at the N 1/16 Sec 3
& cut Random line west toward
AP 3 TR 1702. Collected & cut
out true line

JAN 4

I continued line west from AP 3 to the NW $\frac{1}{16}$

I blazed trees + posted this line to F.S. STANDARDS
Road D Silbaugh

Jan 8

posted lines in Comp. 38

JAN 9

Finished posting lines in comp 38

Feb 12

I started at the N $\frac{1}{16}$ between sec 2 + 3 + cut random line south $\frac{1}{8}$ mile to A. P. + corrected line to true line + continued south to the East $\frac{1}{4}$ sec 3, hit brass caps

Feb 13, 14

I continued line south
 $\frac{3}{8}$ mile to AP 4 TR 1610
I came out east of the pipe,
corrected to true line.

I Found the S Y 15 on this
line. I didn't realize this
was here since its called
a temp. STAKE in the notes
posted to STANDARD.

No. 302

Get in the Rain
WEATHERPROOF

A. L. DARLING CO. INC.
TACOMA, WASH. U.S.A.

T 141 N R 31 W Sec 5
USFS comp. 22 + 96

March 14, 1979

I worked with Milo Stephan
and Kurt Krause. We started
at ~~the~~ the corner of sec. 5, 6, 7, 8
and measured the distance to
where the SW 1/4 Sec 5 + 8
should fall + set a pt. there.

Milo set up over this pt. (falls
in a bog) + turned an angle
+ we started cutting out the
line north to the SW 1/4 corner
Sec 5. at the correct distance
we set a pt. for the SW 1/4.

All distances were measured
with a EDM.

We set up over this pt.
back sighted on our line +
turned a \angle + started cutting
toward the SW 1/4 Sec 5 + 6.

March 15, 1979

I finished cutting out line to the S $\frac{1}{16}$ Sec 5 + 6. I hit the edge of the brass cap.

I posted this line + the line between the SW $\frac{1}{16}$ Sec 5 + The W $\frac{1}{16}$ Sec 5 + 8 to F.S. standards.

T 141 N R 31 W

Sec 5

Instrument

T 600 LIETZ Theodolite

March 16, 1979

sunny clear
40°F

I cut out the line

From the SE 1/16 sec 5 to the
CE 1/16 sec 5.

I extended a pt. set on the
lake by Milo Stefan 234.56'
west on the line from the
SW 1/16 between Sec 4 & Sec 5. This is
the pt. for the SE 1/16.

I turned a L of $268^{\circ}36'39''$
& proceeded cutting to the
CE 1/16. at 405.99' I set a
pt. for a MF.

Ties

Steel post	3.98' North
4" w. oak	41.02' N 70° E

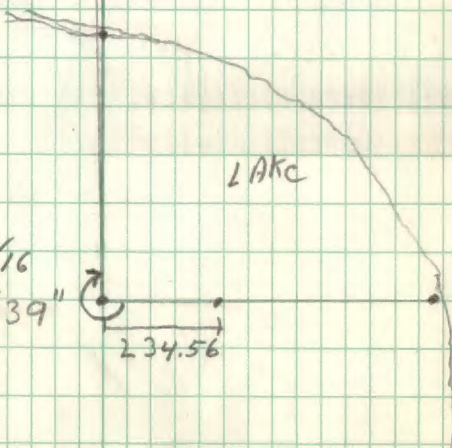
I came out .50' west of
pipe set by Curo.

$268^{\circ}36'39''$	$85^{\circ}49'40''$
	mean $268^{\circ}36'35''$

No. 302
Weatherproof
J. L. Darling Corp.
Madison, Wis. U.S.A.



50' west
CE 1/16



LAKC

SE 1/16
268° 36' 39"
234.56

March 19, 1979

We posted the line "From
the Sec Corner Sec 5, 6, 7, 8 east
to the W $\frac{1}{16}$ Sec 5+8.

We also posted the line from
the point for the W.C. to the
SE $\frac{1}{16}$ Sec 5 to the east to
the point for the W.C. to
the S $\frac{1}{16}$ sec 4+5 to F.S.
standards.

We then went south from
the m.c. sec. 4+5 to the
pt. for the Sec Corner, sec 4, 5, 8, 9,
+ posted to F.S. standards.

R. Silbaugh

T141N R30W

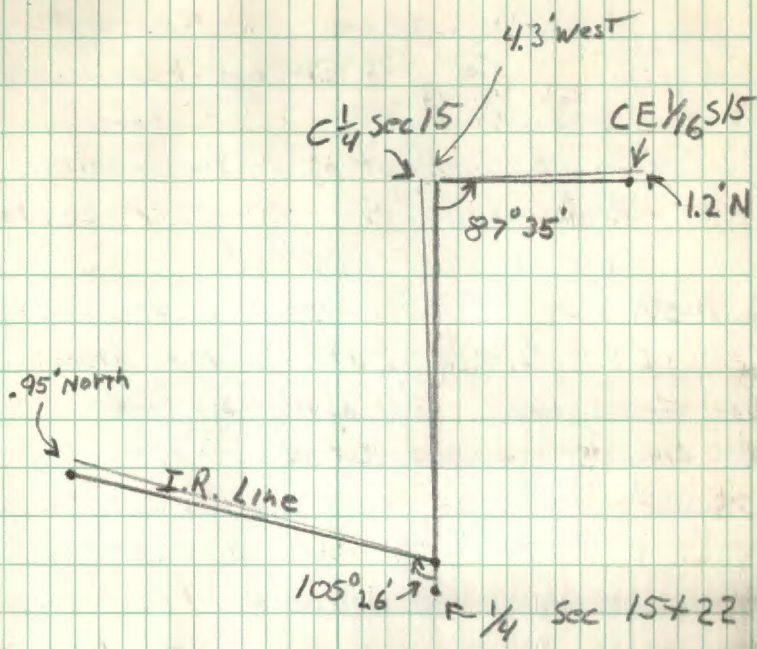
Sec 15

Nov 27, 1978

I set up my instrument over the corner where the center $1/4$ line crosses the Indian Reservation Line. This corner, the $S 1/4$ S 15, and where the Indian Reservation Line crosses the line between sec 15 & 16 were just put in by Milo Stephan. I sighted on the $S 1/4$ sec. 15 & turned an \angle of $105^{\circ}26'$ clockwise. This \angle was given to me by Milo to turn. I then started cutting out the I. R. line towards where it crosses the line between sec 15 & 16.

Nov. 28.

I finished line. I was $.95'$ North of I.P., I blazed trees & marked spots for posts.



Nov 29

I set up where the center line of 15 crosses the Indian Reservation line & sighted the $\frac{1}{4}$ corner sec 15 & 22. I turned a \angle of 180° & headed north towards the center $\frac{1}{4}$ sec 15.

Nov. 30

I finished to the C $\frac{1}{4}$ & was 4.3' west of I.P., I corrected line & blazed trees.

Dec 1, 1978

I set up over the C $\frac{1}{4}$ S 15 & back sighted on my true line to the south. I turned a \angle of $87^\circ 35'$ counterclockwise, which I got off the GLO plat, & cut a line to the C E $\frac{1}{16}$. I was 1.2' North of I.P., I corrected line & blazed trees.

JAN 15, 1979

I posted & blazed the lines to F.S. STANDARDS. R. Silbaugh

T 141 N R 30 W

Sec 7 + 18

Instrument

Lietz T60 D Theodolite

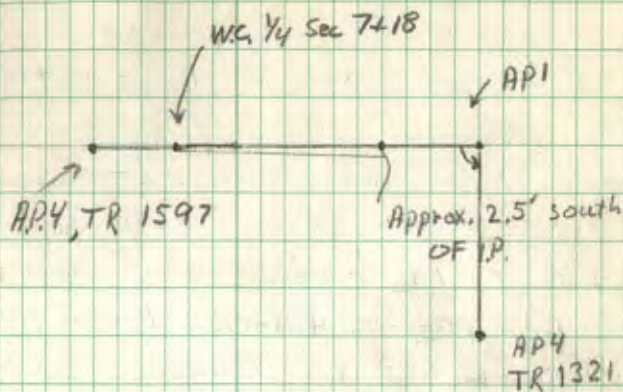
Dec 4, 1978

I set up the theodolite over the WC to the $\frac{1}{4}$ corner between Sec. 7+18 + sighted down a road to AP 4, TR 1597 which is bent + leaning on the south edge of the road. I then extended this line east to the E $\frac{1}{16}$ sec 7+18. I was approximately $2\frac{1}{2}$ ' south. I corrected line + blazed trees, most of this line ran down the center of a old road.

Dec 5

I set up over the E $\frac{1}{16}$ sec 7+18 + backsighted on the true line to the west + extended line east to AP 1, TR 1321. I was within a foot. I blazed trees. I then set up over AP 1 + backsighted to the west + turned a L. + started cut line out to the south.

N
↑



Dec. 6, 78

I Finished line to AP4, TR 1321.
I collected line + blazed trees

Dec 7, 1978

I ran a random line from
the CS $\frac{1}{16}$ of Sec 7 to the
Center $\frac{1}{4}$ Sec 7. I then started
cutting out true line.

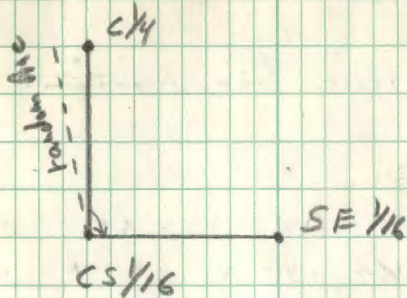
Dec 8, 1978

I Finished true line + blazed
trees. I then set up over the
CS $\frac{1}{16}$ Sec 17 + sighted true line to
the north + turned an L.
+ started cutting line to the
SE $\frac{1}{16}$ 57.

Dec 11, 78

I Finished line to the SE $\frac{1}{16}$.
I was 2 to 3' Ft. south. I collected
line to true line + blazed trees.

Sec 7



Dec 12

I ran a random line from the CN $\frac{1}{16}$ sec 18 to the NW $\frac{1}{16}$ Sec 18. I then ran the true line. The true line follows a old fence line. There is a large white oak about 18" in the middle of the line on the east side of a old trail. I blazed this as a line tree.

Dec 13

I set my instrument up over AP 4, TR. 1597 + sighted on the WC, Y 4 sec 7+18 + turned a angle of $96^{\circ}36'$ counter clockwise. + cut out line to AP 3 TR. 1597. Line came out right on pipe.

JAN. 18 1979

I began posting the these lines to F. S. STANDARDS.

JAN 19. I Finished posting.
R. Silbaugh

T141 N R30W 5th principle mer

Sec 10

U.S. F.S. Comp. 80

Instrument

Lietz T60D theodolite

Crew

R. Silbaugh - crew boss

Roger HANSON

Glenda Tuck

Kent Reeves

Tom Lindahl

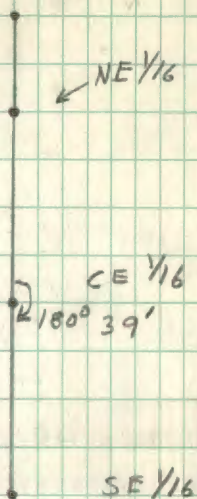
Jan. 23, 1978

I started at the corner of AP1 TR1644 + AP7 TR1284 + cut a random line to the south to the NE $\frac{1}{16}$ sec 10.

I corrected this to true line + blazed trees + marks locations for posts. I then set up over the NE $\frac{1}{16}$ Sec 10 + sighted on the line just cut out + extended my line south towards the CE $\frac{1}{16}$ sec 10.

Jan 24, 78

I finished my line to the CE $\frac{1}{16}$. I was .5' west of I.P. I set up over the I.P. + sighted on the true line to the north + turned an \angle of $180^{\circ} 39'$ clockwise + started cutting out line to the south.



JAN 25

I ran into some large pine trees
& OFFSET my line 3.5' west.

I came out 2.25' east of the I.P.

I corrected line to true line.

True line runs down a Fence
line & misses all of the pine
trees.

I set up over the SE 1/16
and sighted on my line to the

North and turned an angle
 OF $89^{\circ}44'$ counter clockwise
 and started cutting out line to
 the CS $\frac{1}{16}$

JAN. 26

I finished line to corner, I was
 2,85' North of monument, I
 corrected line to true line.
 I set up over the CS $\frac{1}{16}$
 sighted on my line to the west
 and turned an angle of $91^{\circ}3'$
 counter clockwise and cut out
 line to the C $\frac{1}{4}$ Sec 10, I was
 1,95' west, corrected to true line

Jan 29

I set up over the C $\frac{1}{4}$ +
 continued line North. to the
 CN $\frac{1}{16}$. I then continued North
 toward the A.P. $\frac{1}{8}$ mile
 North,

JAN 30

I finished $\frac{1}{8}$ mile + set
up over angle pt. + turned a
angle of $89^{\circ}18'$ + cut out
line east $\frac{1}{4}$ mile to A.P.
I was within a foot of
base cap.

Feb 1

posted lines

Feb 2

Finished posting lines 14
comp 80.

No. 302

Fit for the Rain
WEATHERPROOF

J. L. BARTON'S CO. INC.
TACOMA, WASH. U.S.A.

T141N R30W
Sec 7

March 22, 79 35°, Cloudy
SNOW

Crew

Roger Hanson

Tom Hurlburt

Edythe Tambornino

Mary Zahn

Randy Silbaugh - crew leader

We cleared the line between
the CN 1/16 Sec 7 (which is
in about $1\frac{1}{2}$ ft of water, just
The brass cap is above the ice)
To the east to the W.C. to
A.P. 3, TR. 1624. I set up over
the N 1/16 + Back sighted
on the true line to the
east + turned a \angle of $180^{\circ}41'$
counter clockwise + cut out
a line to the west. At
991' I came out 4.7' north
of a 1" pipe set by Walt
Cuto as a lot corner.

I believe this was put in last summer. there is New ribbon here and the line to the North is cut out,

March 23, 79

I correct my line over to the pipe set by Curro & continue cutting towards the N $\frac{1}{16}$ Sec 7 + 12.

March 26.

I Finish line to the approximate N $\frac{1}{16}$. I am about 8 ft South of where I should be. I could not find any sign of the corner but there was a pt. set by Curro in the road & the distance from the C $\frac{1}{4}$ Sec 7 + 12 to Curro's pt. was the same as given in the GLO Notes.

I calculated that Curro's 1" pipe that was 991' west of the CN $\frac{1}{16}$ Sec 7 is 3 ft South of its correct position.

T141N R30W
SEC 7



WC
AP3
↓

180°41' CN 1/16

424.2

4.7' 991'

1" pipe set by Curro

APPROX.
N 1/16
↓

approx. 8'

I measured the distance from
WC AP3 to the CN 1/16 + got
424.2' computed to 424.38 1/4 Notes.

No. 302

Big Ten The Record
WEATHERPROOF

J. L. BARTLING CO. INC.
TACOMA, WASH. U.S.A.

T 141 N R 31 W Sec 26

U.S. F.S. Comp. 107, 103

Crew

Randy Silbaugh - Crew boss

Roger Hanson

Tom Harbutt

April 3, 79

looked for corners, we
cut a random line from
the M.C. # 11 to the Sec corner
of 26, 27, 34, 35.

April 4

cut out true line, I found
MC # 12 badly leaning and
 $7\frac{1}{2}$ ' North of where it should be.
When Holst surveyed this in 1920
(Survey Record # 467 book C) he
measured the distance from
MC # 11 to MC # 12 as 606.7'.
It should be 706.7' as measured
by John Gleeck in 1927-28

I Taped From the Sec Corner
east to MC # 11. distance
checks out. continue east
across land to where AP # 10
should be. I could Find
no sign of it. continued
TAPing to where MC # 9
should be. No sign of it.
This is right on the edge of
the lake. About 14' east
of this pt. pete Meyet
remonumented a 2" County
pipe & called it the M.C. (1962)
I believe this is wrong.
what Meyet remonumented
I believe is the $\frac{1}{4}$ corner.
I will have mile check
this out.

R. Silbaugh

I also Found the MC North
of the pt. for the W $\frac{1}{4}$ Sec.
26 + 35 laying completely on its
side on the lake bank.

T141N R31W

Sec 33 + 34

US FS Comp 108

Dec 28, 1978

I started at the Sec. Corner
of sections 27, 28, 33, 34
and cut a random line South
to the N $\frac{1}{16}$ sec 33 + 34.

Dec 29, 1978

I cut out true line

Jan 19, 79

We blazed trees & posted
line to FS STANDARDS.

Randall Silbaugh

No. 302

W. L. R. Co.
WEATHERPROOF

J. L. BARKING CORP.
TACOMA, WASH. U.S.A.

T142N R31W

Sec 7 + 8

U.S.F.S. Comp 10

Jan 31, 1979

I started at the N $\frac{1}{16}$
between Sec 7+12 + cut
RANDOM line south towards
the west $\frac{1}{4}$ Sec 7

Feb 5

collected + cut out true line.
I started cutting out random
line from the N $\frac{1}{16}$ Sec 7+12
east to the NW $\frac{1}{16}$ Sec 7

Feb 7

cut out true line.

Feb 8

I set up over the east $\frac{1}{16}$
between sec 7+18 + sighted
down road to the corner
of sec 7, 8, 17, 18 + extended
the line west toward the S $\frac{1}{4}$
sec 7. I was 1.7' south of
2" county pipe.

Feb 16

I continued line west
to where the approximate
CW $\frac{1}{16}$ should be.

Feb 20

I started a line south
from the NW $\frac{1}{16}$ Sec 7
toward the approximate CW $\frac{1}{16}$
by lining up with the M.C.
to the north + extending
it south

Feb 21, 22

cont to approx. corner
there was no sign of the
CW $\frac{1}{16}$, I was 1.85' west
of the SW $\frac{1}{16}$.

Feb 26

I ran a random line from the
Sec corner of 18, 17, 19, 20
west to the East $\frac{1}{16}$ Sec
18 + 19.

No. 302

Keep the Rain
WEATHERPROOF

J. L. DANFORD CO. INC.
TACOMA, WASH. U.S.A.

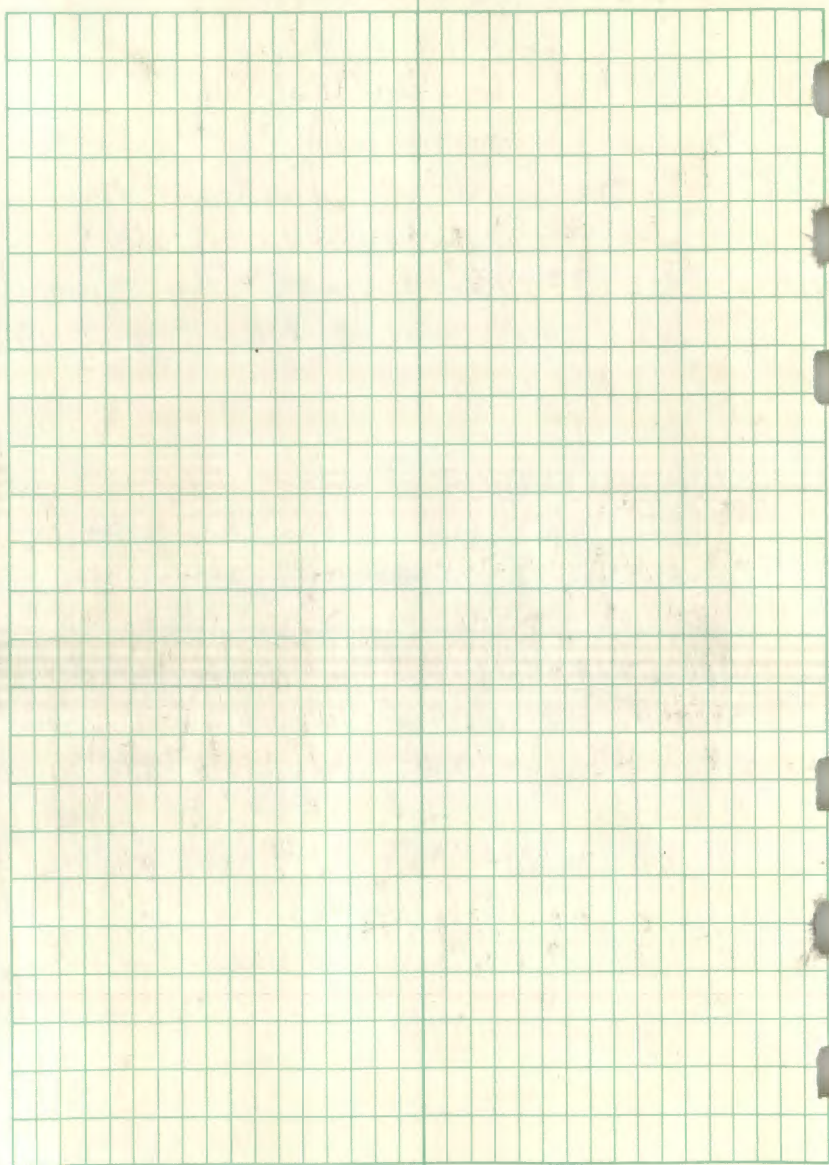
T 142 N R 31 W
Sec 18 + 19

March 20, 1979

I collected my tandem line
west from the corner of
Sec 17, 18, 19, 20 + ^{cut out} the true
line to the E $\frac{1}{16}$ Sec 18, 19.

March 21,

I set up over the pipe
for the E $\frac{1}{16}$ Sec 18, 19 (this
is a 2" county pipe, its
located beside a drainage ditch)
and extended my line west
to the C $\frac{1}{4}$ Sec. 18, 19
which is a 2" county pipe.
I came out 1.1 ft south.



T142N R27W Sec 17

U.S. F.S. Comp 144

March 27, 79

I spent the day looking
for Cornets

April 6

cont.

April 9

I could not locate the NE $\frac{1}{16}$ Sec 17 which falls in a road, since I did not have a metal detector. So I measured from the CE $\frac{1}{16}$ Sec 17 to the E $\frac{1}{16}$ Sec 8 & 17 & got 2742.27' & single proportioned the corner in. I set up over this pt & sighted on the CE $\frac{1}{16}$ & turned an \angle of $87^{\circ} 27'$ counter clockwise & began cutting out the line.

April 10

Finished 1st $\frac{1}{4}$ mile.

Set up over the N $\frac{1}{16}$
Sec 16, 17 + turned \angle
cut east to MC.

April 11

Finished line

April 16

Found NE $\frac{1}{16}$ Sec 17 th
Road with metal detector
collected line to IT.

April 18

cut Random line from C $\frac{1}{4}$
Sec 17 to CS $\frac{1}{16}$.

June 4

cut the line + posted to standard

June 5

posted other $\frac{1}{2}$ mile comp 144