

1982

T148N R31W

LAND LINE
FIELD BOOK # 16
1982 J. ALLISON

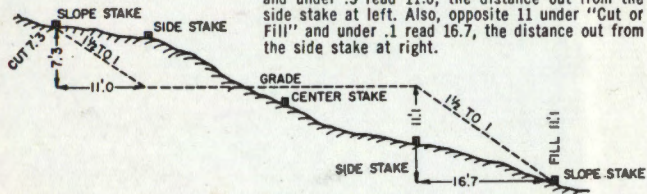
B.D. Line to Standard

RR
FIELD BOOK
82 0012

DISTANCES FROM SIDE STAKES FOR CROSS-SECTIONING

Roadway of any Width. Side Slopes $1\frac{1}{2}$ to 1.

In the figure below: opposite 7 under "Cut or Fill" and under .3 read 11.0, the distance out from the side stake at left. Also, opposite 11 under "Cut or Fill" and under .1 read 16.7, the distance out from the side stake at right.



| Cut or Fill | Distance out from Side or Shoulder Stake | | | | | | | | | | Cut or Fill |
|-------------|--|------|------|------|------|------|------|------|------|------|-------------|
| | 0 | .1 | .2 | .3 | .4 | .5 | .6 | .7 | .8 | .9 | |
| 0 | 0.0 | 0.2 | 0.3 | 0.5 | 0.6 | 0.8 | 0.9 | 1.1 | 1.2 | 1.4 | 0 |
| 1 | 1.5 | 1.7 | 1.8 | 2.0 | 2.1 | 2.3 | 2.4 | 2.6 | 2.7 | 2.9 | 1 |
| 2 | 3.0 | 3.2 | 3.3 | 3.5 | 3.6 | 3.8 | 3.9 | 4.1 | 4.2 | 4.4 | 2 |
| 3 | 4.5 | 4.7 | 4.8 | 5.0 | 5.1 | 5.3 | 5.4 | 5.6 | 5.7 | 5.9 | 3 |
| 4 | 6.0 | 6.2 | 6.3 | 6.5 | 6.6 | 6.8 | 6.9 | 7.1 | 7.2 | 7.4 | 4 |
| 5 | 7.5 | 7.7 | 7.8 | 8.0 | 8.1 | 8.3 | 8.4 | 8.6 | 8.7 | 8.9 | 5 |
| 6 | 9.0 | 9.2 | 9.3 | 9.5 | 9.6 | 9.8 | 9.9 | 10.1 | 10.2 | 10.4 | 6 |
| 7 | 10.5 | 10.7 | 10.8 | 11.0 | 11.1 | 11.3 | 11.4 | 11.6 | 11.7 | 11.9 | 7 |
| 8 | 12.0 | 12.2 | 12.3 | 12.5 | 12.6 | 12.8 | 12.9 | 13.1 | 13.2 | 13.4 | 8 |
| 9 | 13.5 | 13.7 | 13.8 | 14.0 | 14.1 | 14.3 | 14.4 | 14.6 | 14.7 | 14.9 | 9 |
| 10 | 15.0 | 15.2 | 15.3 | 15.5 | 15.6 | 15.8 | 15.9 | 16.1 | 16.2 | 16.4 | 10 |
| 11 | 16.5 | 16.7 | 16.8 | 17.0 | 17.1 | 17.3 | 17.4 | 17.6 | 17.7 | 17.9 | 11 |
| 12 | 18.0 | 18.2 | 18.3 | 18.5 | 18.6 | 18.8 | 18.9 | 19.1 | 19.2 | 19.4 | 12 |
| 13 | 19.5 | 19.7 | 19.8 | 20.0 | 20.1 | 20.3 | 20.4 | 20.6 | 20.7 | 20.9 | 13 |
| 14 | 21.0 | 21.2 | 21.3 | 21.5 | 21.6 | 21.8 | 21.9 | 22.1 | 22.2 | 22.4 | 14 |
| 15 | 22.5 | 22.7 | 22.8 | 23.0 | 23.1 | 23.3 | 23.4 | 23.6 | 23.7 | 23.9 | 15 |
| 16 | 24.0 | 24.2 | 24.3 | 24.5 | 24.6 | 24.8 | 24.9 | 25.1 | 25.2 | 25.4 | 16 |
| 17 | 25.5 | 25.7 | 25.8 | 26.0 | 26.1 | 26.3 | 26.4 | 26.6 | 26.7 | 26.9 | 17 |
| 18 | 27.0 | 27.2 | 27.3 | 27.5 | 27.6 | 27.8 | 27.9 | 28.1 | 28.2 | 28.4 | 18 |
| 19 | 28.5 | 28.7 | 28.8 | 29.0 | 29.1 | 29.3 | 29.4 | 29.6 | 29.7 | 29.9 | 19 |
| 20 | 30.0 | 30.2 | 30.3 | 30.5 | 30.6 | 30.8 | 30.9 | 31.1 | 31.2 | 31.4 | 20 |
| 21 | 31.5 | 31.7 | 31.8 | 32.0 | 32.1 | 32.3 | 32.4 | 32.6 | 32.7 | 32.9 | 21 |
| 22 | 33.0 | 33.2 | 33.3 | 33.5 | 33.6 | 33.8 | 33.9 | 34.1 | 34.2 | 34.4 | 22 |
| 23 | 34.5 | 34.7 | 34.8 | 35.0 | 35.1 | 35.3 | 35.4 | 35.6 | 35.7 | 35.9 | 23 |
| 24 | 36.0 | 36.2 | 36.3 | 36.5 | 36.6 | 36.8 | 36.9 | 37.1 | 37.2 | 37.4 | 24 |
| 25 | 37.5 | 37.7 | 37.8 | 38.0 | 38.1 | 38.3 | 38.4 | 38.6 | 38.7 | 38.9 | 25 |
| 26 | 39.0 | 39.2 | 39.3 | 39.5 | 39.6 | 39.8 | 39.9 | 40.1 | 40.2 | 40.4 | 26 |
| 27 | 40.5 | 40.7 | 40.8 | 41.0 | 41.1 | 41.3 | 41.4 | 41.6 | 41.7 | 41.9 | 27 |
| 28 | 42.0 | 42.2 | 42.3 | 42.5 | 42.6 | 42.8 | 42.9 | 43.1 | 43.2 | 43.4 | 28 |
| 29 | 43.5 | 43.7 | 43.8 | 44.0 | 44.1 | 44.3 | 44.4 | 44.6 | 44.7 | 44.9 | 29 |
| 30 | 45.0 | 45.2 | 45.3 | 45.5 | 45.6 | 45.8 | 45.9 | 46.1 | 46.2 | 46.4 | 30 |
| 31 | 46.5 | 46.7 | 46.8 | 47.0 | 47.1 | 47.3 | 47.4 | 47.6 | 47.7 | 47.9 | 31 |
| 32 | 48.0 | 48.2 | 48.3 | 48.5 | 48.6 | 48.8 | 48.9 | 49.1 | 49.2 | 49.4 | 32 |
| 33 | 49.5 | 49.7 | 49.8 | 50.0 | 50.1 | 50.3 | 50.4 | 50.6 | 50.7 | 50.9 | 33 |
| 34 | 51.0 | 51.2 | 51.3 | 51.5 | 51.6 | 51.8 | 51.9 | 52.1 | 52.2 | 52.4 | 34 |
| 35 | 52.5 | 52.7 | 52.8 | 53.0 | 53.1 | 53.3 | 53.4 | 53.6 | 53.7 | 53.9 | 35 |
| 36 | 54.0 | 54.2 | 54.3 | 54.5 | 54.6 | 54.8 | 54.9 | 55.1 | 55.2 | 55.4 | 36 |
| 37 | 55.5 | 55.7 | 55.8 | 56.0 | 56.1 | 56.3 | 56.4 | 56.6 | 56.7 | 56.9 | 37 |
| 38 | 57.0 | 57.2 | 57.3 | 57.5 | 57.6 | 57.8 | 57.9 | 58.1 | 58.2 | 58.4 | 38 |
| 39 | 58.5 | 58.7 | 58.8 | 59.0 | 59.1 | 59.3 | 59.4 | 59.6 | 59.7 | 59.9 | 39 |
| 40 | 60.0 | 60.2 | 60.3 | 60.5 | 60.6 | 60.8 | 60.9 | 61.1 | 61.2 | 61.4 | 40 |

U.S. DEPARTMENT OF AGRICULTURE FOREST SERVICE CHIPPEWA NATIONAL FOREST, MINNESOTA



The paper in this book is made of 50% high grade rag stock with a WATER RESISTING surface sizing.

KEUFFEL & ESSER CO.

Index

sec 13

sec 28, 29, 32, 33

12/28/81
JA AK PR

SEC 13

Chained east from C¹⁴ plat distance to CE¹¹⁶ - searched for gas pipe and PTS - could not locate any evidence of corner - then chained river tie to the south and chained to MC on lake east. Found downed post and gas pipe for MC used these three distance ties and searched area again for CE¹¹⁶ - found nothing.

12/29/81

JA - on S.L.

AK & PR on plantation release

12/30/82

JA AK PK

Sec 13

Walked in to area of NE $\frac{1}{4}$
searched for gas pipe and BTs
could not locate any evidence.
Then searched for MG on
Lake Benjamin - found gas
pipe and one BT - tied out
new BTs - tagged and spks. Then
chained west plot distance to
NE $\frac{1}{4}$ - searched area - no evidence

~~12/3~~

1/4/82

JA AK BT

Sec 13

Found the SW $\frac{1}{4}$ - tied new BTs
then chained plot distance west - searched
for W $\frac{1}{4}$ sec 13 & 14 - 2hr. Then chained
south from position of W $\frac{1}{4}$ plot distance
to SW sec 13 - found - off 100' to the
East about 7' south - tied out with
new BTs

1/5/82
JA BT AK

Sec 13

Searched for the C.S. 1/16 - found
gas pipe - tie to the river has
changed - 200' instead of 324'. Tied
out new BTS. Then Chained East
to SE 1/16 - Found gas pipe - distance
good. Tied out new BTS. Then
Chained South to E 1/16 Sec 13 & 24
Found gas pipe and BTS. distance
good - tied out new BTS.

Tailgate decision - softy first

1/6/82
JA BT AK

Sec 13

Chained ^{West} ~~East~~ from E 1/16 to
S 1/4 - distance good - found gas pipe
and possible stop BT - also original wood
post point. Tied out new BTS - then
Chained west to W 1/16 Sec 13 & 24
found gas pipe and BTS - tied out
new BTS.

11/7/82
JA BT

SEC 13

Searched for W^{1/4} sec 13 & 14
used metal detector - 2hr - found
nothing. Then changed north
plat distance from upper W^{1/4}
Found W^{1/4} - gas pipe and
one BT - compass line off
25" to the west. Tied out
temp BT: Cedar - county BT.
Then went back to W^{1/4} looked
to the West - located gas pipe
for evidence of W^{1/4}.

11/13/82
JA AK PR

SEC 13

Projected line south from C^{1/4}
cut 1282' to CS^{1/4} - off 2 1/2' to the west
will set true line tomorrow with
theodolite - Then ran ^(Compass) random line East
from CS^{1/4} to SE^{1/4} - off 15' to
the South. (alot of alder - willow and spruce)
slow going

1/14/82
JA AK PR

SEC 13

Ran true line from C¹⁴ south
to C⁵/₁₆ - set pts on line - ran
Sec from corner to corner -
C¹⁴ to C⁶/₁₆

| | |
|-------|-------|
| Sta 1 | 5' |
| Sta 2 | 300' |
| Sta 3 | 700' |
| Sta 4 | 920' |
| Sta 5 | 1100' |
| Sta 6 | 1297' |

(Approx)

Ran random theodolite line
from C⁵/₁₆ East to SE¹/₁₆ - cut
1297' - off 12.5' to the North - JA
1.1 South

1/14/82
JA BT

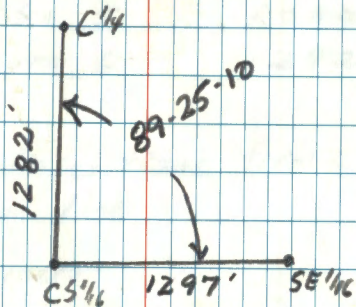
SEC 13

Ran true line from C⁵/₁₆ to SE¹/₁₆
Set pts on line
SE¹/₁₆ to C⁵/₁₆

| | |
|-------|-------|
| Sta 1 | 5' |
| Sta 2 | 165' |
| Sta 3 | 485' |
| Sta 4 | 965' |
| Sta 5 | 1045' |
| Sta 6 | 1292' |

(Approx)

Turned angle at C⁵/₁₆ - back sight
C¹⁴ to SE¹/₁₆ - $\angle 89^{\circ} 25' 10''$



1/26/82
JA PR AK

SEC 13

Turned angle - at the SE $\frac{1}{4}$
backsighted the CS $\frac{1}{16}$ - turned
interior angle of $89^{\circ}45'01''$
cut south from SE $\frac{1}{4}$ 1000'

Fence line to the west about
30' at SE $\frac{1}{16}$ - south - 600'

tailgate meeting - walking
and foot travel.

1/27/82
JA PR AK

Sec 13

Drove customan into job site - carried
sign post for the line from C $\frac{1}{4}$ to
CS $\frac{1}{16}$ - posted and painted line - then
posted and painted line East to SE $\frac{1}{16}$.
Then continued line South to E $\frac{1}{16}$
SEC 13 and sec 24 - line off .75
to the west - offset at sta. 500
.28 to the East - set true line.

| | |
|-------|----------|
| Sta 1 | 5' |
| Sta 2 | 250' |
| Sta 3 | 500' |
| Sta 4 | 750' |
| Sta 5 | 1000' |
| Sta 6 | 1292' |
| | (Approx) |

Ran broke glasses frame from a fall
walking down line

HIS to corners

| | | |
|-------------------|---------|-------|
| CS $\frac{1}{16}$ | - North | 8.60' |
| | - East | 5' |
| C $\frac{1}{4}$ | - South | 4.5' |

1/28/82
JA RR MK

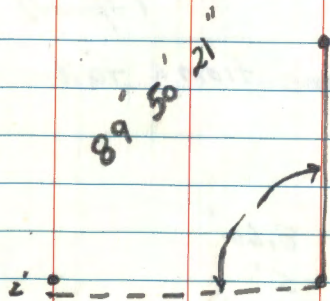
Sec 13

Turned angle at E^{1/4} - badsighted
the SE^{1/4} turned interior angle
of $89^{\circ}50'21''$ to S^{1/4} - cut
line to S^{1/4} - off 2' to the
south - corrected - offset at
sta. 810 was 1.27' to the north
set true line.

E^{1/4} to S^{1/4}

| | |
|-------|-------|
| Sta 1 | 5' |
| Sta 2 | 300' |
| Sta 3 | 600' |
| Sta 4 | 810' |
| Sta 5 | 1060' |
| Sta 6 | 1300' |

(Append)



2/11/82
JA AK PR

Sec 13

Painted and posted line from
SE^{1/4} South 1/4 to E^{1/4} - 2 post
to be pounded in - Then went from
E^{1/4} West to S^{1/4} - left 3 post
ties to corner

S^{1/4} - East 3.8'
E^{1/4} - West 4.9'
North 5.5'

Then went to ~~the~~ SW Sec 13
ran random East 1320' - off
60' to the North.

2/2/82
JA PR AK

Sec 13

Ran true line - computed
off set - ran line out
1320' - set pts on line
WNW to SW

| | |
|-------|-------|
| Sta 1 | 5' |
| Sta 2 | 150' |
| Sta 3 | 450' |
| Sta 4 | 800' |
| Sta 5 | 1050' |
| Sta 6 | 1315' |

Left sign post on line - did
not blaze or paint line.

tail gate meeting - satdy with
tools

2/3/82
JA PR AK

PR - went with Bill
AK - went with Curtis

I went to Beridji to figure
angles for sec 13 and for
computation on traverse for
sec 25 - also computed angles
for this section - all day paperwork

2/4/82

JA AK PR

(went with crew)

SEC 13

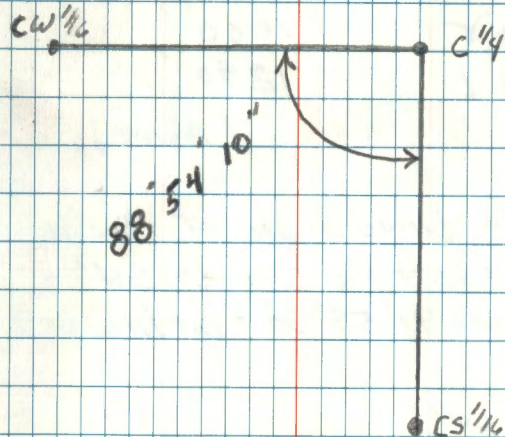
Tried to get quitmen out - would not start - changed batteries - removed spark plug. Then tied out plr on traverse in section 25 - T149 R30 - Also located NW BT at SW sec 30
T148 R31

2/8/82

JA PR AK

SEC 13

Ran random line from C^{1/4} west 1270' to CW^{1/4} - off 17.5' to the North - collected - offset at sta. 300' - 4.15' to the South - Cut true line. Turned \angle at this corner backsighted CS^{1/4} turned to CW^{1/4}



2/9/82
JA PR AK

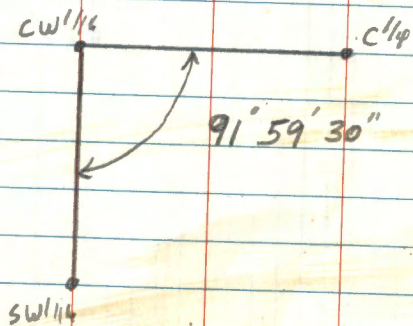
SLG 13

Set true line from CW^{1/4}
to C^{1/4} - pts on line

| | |
|-------|-------|
| Sta 1 | 5' |
| Sta 2 | 150' |
| Sta 3 | 400' |
| Sta 4 | 700' |
| Sta 5 | 1000' |
| Sta 6 | 1290' |

(Approx)

Then turned angle at CW^{1/4}
backsight the C^{1/4} to SW^{1/4}
∠ of 91° 59' 30" - cut line - angle good



Set pts on true line
from CW^{1/4} to SW^{1/4}

| | |
|-------|-------|
| Sta 1 | 5' |
| Sta 2 | 350' |
| Sta 3 | 700' |
| Sta 4 | 1000' |
| Sta 5 | 1295' |

(Approx)

2/12/82
JA PR AK

SEC 13

Painted and posted line to
standard from C'14 west
to CW'16 then south to
SW'16 - all sign post are
in ground.

Ties to corners

| | | |
|-------|-------|-------|
| C'14 | West | 5.40' |
| CW'16 | East | 0.45' |
| | South | 5.1' |

3/10/82
JA PR AK

SEC 13

Instrument at the C'14 - backsighted
take line to the CW'16 - turned the
180° projected line East - cut
approx. 800'

tail gate reworked - find and

3/11/82
JA PR AK

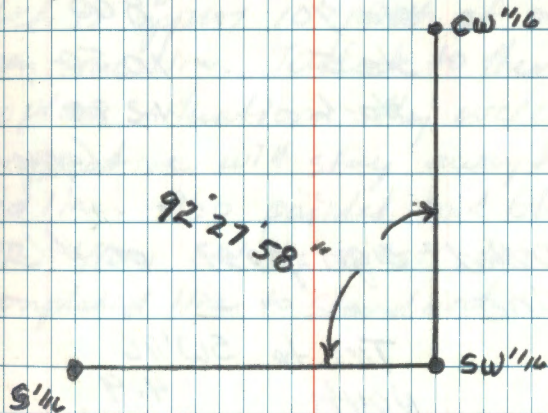
SEC 13

Continued line East from
C'14 - cut approx 500' - re-
chained plat distance -
searched area for gas pipe,
no evidence - also proved
possible MC to the East.
no good spike in deep post.

3/22/82
JA AK PR

SEC 13

Set instr. at SW'14, backsighted
the CW'14 turned \angle of $92^{\circ}27'58''$
(interior angle) cut line west 1300'
checked instr. - off level - will have
to return to correct + line to far
to the North. leftushman
on logging site with their permission.



3/23/82
JA AK

Sec 13

Cut true line from SW $1/4$
west to S $1/4$ - set pts
on line

| | | |
|---------|-------|------|
| 1290.18 | Sta 1 | 7 |
| | Sta 2 | 250 |
| | Sta 3 | 500 |
| | Sta 4 | 800 |
| | Sta 5 | 1050 |
| | Sta 6 | 1290 |

(approx)

posted sign post on this
line

| | |
|------------------|-----|
| Ties to SW $1/4$ | |
| North | 4.9 |
| West | 7.3 |

Checked distance again - fits
good - blue line north of true
and extends west to far - approx
80' and 30' North

3/24/82
JA PR AK

Sec 13

Cut random line South from
S $1/4$ Sec 13 & 14 to SW sec cor.
Cut approx 800' - also blazed
and painted line from SW to W $1/4$
between sec 13 & 24 - loggers cutting
along line that has not been posted
assumed blue line as true line
which is approx 10' north of our
open true line. Talked to them and
explain situation - they were very
cooperative will stay away from
red line. Also painted and blazed
line from SW $1/4$ west to S $1/4$
Completed line to standard

3/25/82

JA AK

Went to Bonidy Court House
spent 2 hr. researching
corner cards for Sec 25
T149 NR 31 W - prepared
for report with Mike and
Ken at SO 3/29/82 on
Sec subdivision.

Sec 13

Cut random line through
to SW - off 13' to the
East - corrected - ran
True line cut 500' south
Corrected at Sta. 2 at 375'
offset was 3.75' to the
west.

4/21/82

JA JA AK

Sec 13

pounded post for SE 1/4
ties: South 5.35'
West 4.75'

pounded post for W 1/4
ties: West 5.65'

post pounder broke!

5/5/82

JA MJ

Sec 13

Painted line from SW North
to the S $\frac{1}{4}$ - Painted BTS also.

Then pounded post from W $\frac{1}{4}$
West to the SW. Need
8 boundary and 3 ato. - 1
sign post - metal detector &
BTS tag.

5/6/82

JA JO

Sec 13

Blazed and scribed BTS at SW SEC. COR
set sign post in as accessories.

| | | | |
|-------------------|--------------|--------------------|--------|
| W. Spruce | W. Spruce | Elm | Aspen |
| Bearing and Dist. | Dist. | recorded on corner | 13" |
| Blazed & scribed | " | " | 5.47 W |
| | | BT 2 X | 11.01' |
| | T148NR31W BT | | |
| SEC 23 | → | SEC 14 | SPECLT |

sign post ties:

North 5.09'

East 5.03'

* must return to set B.C.

Tried out gas pipe (spk) new BTS at S $\frac{1}{4}$
SEC 13 & 14

| | | | |
|----------------------|--------|--------|-------|
| Tam. | Tam. | Cedar | Tam. |
| 9" | 7" | 6" | 10" |
| N89W | S11E | S63W | N24W |
| 55.88' | 29.63' | 13.28' | 7.27' |
| Tago red ring spk | " | " | " |
| | | | CLT |

sign post ties

East 6.14'

South 6.11'

SEC 13 (cont)

Blanged and scribed B.C.s at the S¹/₄

| B. Spruce | Tan | Tan | B. Spruce |
|--------------------------------------|----------|-------------|--------------------------------------|
| N W | S E | WEST | |
| S ¹ / ₄ 588 BT | 14524 BT | "BT" CAT | S ¹ / ₄ 513 BT |

sign post tie 3.8'

SW¹/₁₆

Ties:

North 4.9'

WEST 7.3'

6/1/82

JA JO.

SEC 13

Set B.C. at the SW - up 1' with gas pipe on North side. flush.

Set B.C. at the S¹/₄ - up 1' - removed gas pipe - partly (bad shape)

Then monumented the W¹/₄ - set B.C. up 1' with gas pipe on North side. Tied out new B.C.s. Blanged & scribed painted sub.

SEC 29

JA JO
12/27/82

Fd the N¹/₄ SEC 29 - ran
south 1320' - Fd CN¹/₁₆ S¹/₄
by Biller 1909 - off 36' to
the East:

CN¹/₁₆ Fd: 1/2" x 2" gas pipe up 1"
BT: Birch 10" S20E 14' (placed)
SET: 2" x 2" x 5' Cedar post on west
BT: Cedar 8" N78E c/c side of BT.
Chained S02W to Bull Lake at
1040' - no evidence of post for MC
fits lake shore good. Ran ribbon
line back to N¹/₄ for timber sale

Marked
on CC

Marked
on CC

SEC 29

JA JO
12/28/82

Ran from E¹/₄ SEC 29 west 1327'
searched for CE¹/₁₆ - Could not locate
Then went to E¹/₄ SEC 29 + SEC 20
Chained S02W 1318.6' to NE¹/₄ -
no evidence of this corner - continued
S02W 1318.6' to CE¹/₁₆ - Fd gas pipe
off 23' to the West - dist good (both directions)
CE¹/₁₆ - Fd 3/4" x 20" gas pipe up 1"
BT: Sp. N88E 1'
Sp. South 11.6'
SET: 3 x 3 x 8' Cedar post on NW side of G.P.
BT: Cedar 4" West FSLP

Marked
on CC

Sec 29

JA JD
12/29/82

Corrected ribbon line for timber
sale from CE^{1/4} to E^{1/4}, line
was 25' to the south of CE^{1/4}

Then went to SE sec 29 ran
south 1320 - set approx ^{1/4} then
1320 to approx ^{1/4} - no evidence
of original pts (power line)

Talked to mr packman about
corner info.

Then ran ~~1320~~ from N^{1/4} 33E32
~~down power line~~ - ^{1/4} W of 11
in powerline - no evidence found

marked
on C.C.

JA JD
12/30/82

Sec 29 32

Ran south from E^{1/4} sec 32
2640' - fit original ties good
Fd: squared wood post - searched
for original pts:

Tom 4" N89 E 348.5'

Tom 4" S88 E 356.4'

marked
on
C.C.

Some stps in area - must return
to check out further

distance fits good and bearing was
10' west of squared post.

Went back to approx N^{1/4} between
32 & 33 - Fence corner fits good - will
use this for timber sale.

marked
on
C.C.

SEC 32

1/3/83

JA BT

Ran from E 1/4 sec 32 west
1320' to approx. CE 1/4 - followed
blazed line - Then from approx
CE 1/4 ran North 2630' to
E 1/4 sec 32 & 29 - off 19' to
the East - ribbon line good
for timber sale, put a
tag on Birch SW corner may
need re-monumentation (blowdown)

reworked
in CC

SEC 33

1/4/83

JA BT

located the NE sec 33 - monumented
BC
chained setts South 2640
looked for MC at 2371.4' with
fell in pond - moved 25' west -
could fit MC position better (Beaver
have raised water level) also MC at
2585.5' - found old fence line at
this distance, talked to land owner
said he saw squared post - used for
property line at this position. No
evidence of post or BTS now (ice) Then
went to 2640 looked for BTS - no evidence
Went back to fence line at 2585.5'
chained soiw - fell 2640' fell short
of all ties (original) and monumented
corner SE sec 33 by 35' - Went back
to fence line moved 35' south - possible
wood post at this position - must return
after ice leaves (flagged up position)
SE sec 33 - tags on BTS were put on

SEC 28

11/5/83

JH BT

Ran from NW sec 28 - down
line to standard 1318 - set
N^{1/4} sec 28 & 29 - no evidence
of county 1919 position - near
old road - set temp fire:

N^{1/4} Cedar stb. 7" S30W 16' CLT
chained East 1320' to approx.
NW^{1/4} then chained North 1300'
to road CL - moved NW^{1/4} South
approx 30' - Blazed spruce 4 sides
Then chained south 1320 from
Approx E^{1/4} sec 28 & 21 - ~~Start~~
followed blue line (state) - set
approx NE^{1/4} Cedar - CLT as position
Then S30W 1320' to approx C E^{1/4}
set Balsam - CLT for position -
ribbon line for timber sale

SEC 28

11/6/83

JH BT

Ran from SE sec 28 west
2640' fit original - ties good
located a FSLP from 1960 - it
was 10' north of our position - dist.
good - searched for BTs - no evidence
of trees (frozen) - will use old tag
for position for timber crew
Then went back to the SE sec 28
tied out new BT.

SE sec 28 - Corner post 4x4 S56E 4.5' tag CLT
set: Cedar 7" S80W 76' Tag set
MC - Then chained East 90' to iron pipe 1 1/2"
up 4" - Corner post west 2'
temp tie: Cedar 10" S30W 8.4'

SEC 33

11/18/83

JA BT

Chained west from E¹/₄ (Approx)

1320' - ribbon line for timber sale then went west 1320

set Approx C¹/₄ then North

1320' to Approx CN¹/₄ then

North 1350' to Approx N¹/₄ -

tag put up in 60 (FSLP) off

50' to the East (low line).

Went back to CN¹/₄ moved it

CN¹/₄ 25' West - tag on tam. 8" for

corner position (Approx) Blazed 4 sides

C¹/₄ Tag on tam 4" for corner position

Blazed four sides (Approx)

Then ran compass line East

from CN¹/₄ for timber sale

END OF
BOOK #16