

1980

T148N R31W

LAND LINE  
FIELD BOOK #14  
1980 J. ALLISON

*"Rite in the Rain."*

WEATHERPROOF

FIELD BOOK

No. 350

BLACK DUCK SURVEY NOTES - L.L. T148N R31W

1980



Lines To Standard

T148N R31W

Feb. 1980 to

Jeff Allison



2/26/80

JA MT MC

established  
MC From two BS  
set spikes to mark corner  
and marked two new PTS

MC • 400' • 264.9  
Closing Standard

↓  
N

MC • instrument  
• • •  
698.5' Standard cor.

chained with 100' steel tape  
did not set closing corner but  
set two spk. on line in opposite  
area of closing corner

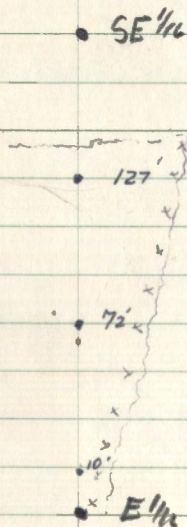
265  
433.5  
698.5



T148 R31 SEC. 5

Trusspass from E 1/4 sec 5 to  
the SE 1/4. Fence line off to the East.

N ↑



JA + MJ + JE

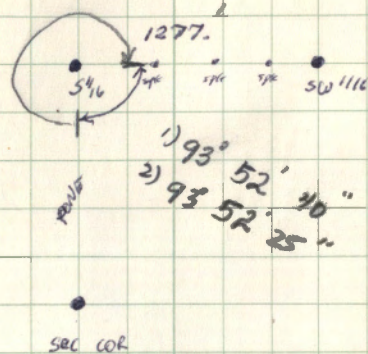
3/18/80

3/20/80

Location

T148 R31 SEC 4+5

206 07 00





N



4/14/80

JAMT JK

T148 R 31 SEC 5



5/5/80  
JA JK JO

N  
↑

T148 R31 SEC 5+8

SEC 5

S<sup>1</sup>/<sub>4</sub> SEC 5

E<sup>1</sup>/<sub>16</sub> SEC 5

P+1

88° 08' 00"

1st reading

88-08-00

2nd reading

264-24-00

SEC 8

CN<sup>1</sup>/<sub>16</sub> SEC 8



5/21/80  
JA JO JK

T148 R31 Sec 30

- ✓ W<sup>1</sup>/<sub>4</sub> sec 30 - OK  
ties sign - N - 5.5'
- ✓ NE sec cor - needs monument  
tie - sign post - S - 403.8'  
3' x 9'
- ✓ N<sup>1</sup>/<sub>16</sub> sec 30 + 29 - OK  
ties At Sign Post S - 5.8'  
At Sign Post N - 5.25'
- ✓ E<sup>1</sup>/<sub>4</sub> sec 30 - OK  
ties - sign post - N - 7.3'
- ✓ NW sec 30 - OK  
tie - sign - S - 5.09'
- ✓ N<sup>1</sup>/<sub>16</sub> sec 25 + 30 - OK  
ties sign - S - 6.31'  
gas pipe 3/4" + 7 1/2" up - S - 5.5'



83.21  
16.79  

---

100.00

5/21/80

JA 20 SK

T148 R31 SEC B+5  
W 1/4 WC - monument to be set  
replace gas pipe  
Set BTS

Tam 7" N42W 116.79

Tam 9" S49W 48.26

Spk for Sign Post - S - 26.60

post N63E 28.68

sign post W -

T148 R31 SEC B+5

SET BTS

E 1/4

Elm 6" S38E 86.01

Oak 6" S20W 83.65

Sign Post North 28.10

set monument in place of it



5/21/80

T148 R31 Sec 5 SE

monument destroyed - Found remains  
of concrete cylinder and rebar in tack

Sign Post - North - 33.38

Other B/S tied out previously - OK

T146 R31 Sec 5+8 W1/4

Found 1" x 22" gas pipe leaning over  
bent - 2" under ground surface.

9' south of road of East + West

Set spk for line from NW 1/4 -  
turned 180° at corner and shot dist.  
with EDM at 1290.78' - spk is  
N6W 3-8' from gas pipe.

Let gas pipe with spk in center  
of to mark corner



T149 R31 Sec 25 NW 1/16

Found 1" x 24" gas pipe in line  
with fence line N. and fence line  
E.

Found BTS: 1919 County's

Cedar stump S 73° W 75'

Pine stump N 05° E 37.4'

Set BTS:

Ash 13" S 31° E 36.56' (BT tags  
Cedar 12 N 10° E 25.94' (+ stake)



5/22/80

JR JR JR

Clear 98°

T148 R31 Sec 5

Ran teodolite random line from  
w/line sec 5+8 North approx. 900'  
Set three points close to fence line.  
Will finish on 5/27/80.

(a lot of alders + willows +  
hayel brush - tough cutting)  
6 hrs.

· safety talks - tailgate session  
(cutting in hayel brush,  
alders + willows)



5/27/80  
JA JK JO  
clear 93°

T148 R31 sec 5

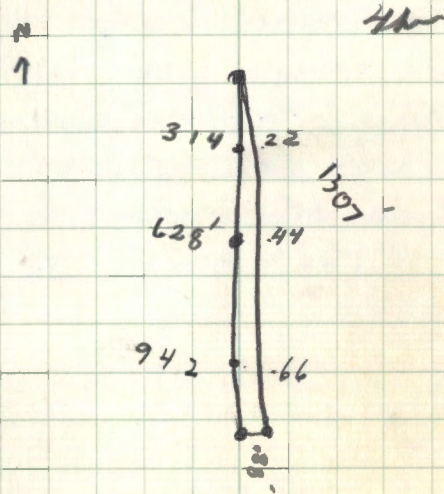
Run random line on  $1/16$  line  
from the W  $1/4$  of sec 5+8 north  
 $1/4$  mile. corrected for true line  
will check out tomorrow. also  
tied out corner - SW  $1/4$ . re-measured  
and brushed out line to BTS.

8 hrs

5/28/80  
JA JO JK  
cloudy 85

T148 R31 sec 5

Run true line out on  $1/16$  line  
from SW  $1/4$  to W  $1/4$  sec 5+8  
fell .88 East of W  $1/4$  corner  
removed spks for true line  
line to standard.



$1/2$  day spent on checking lines  
Bob Paddock T Gene Lutz  
Kurt Kramer.



5/29/80  
JA JO JK  
Cloudy 85°

T48 R31 Sec 8

Remonumentated corner - NE  
Sec 8 - set monument - remeasured  
BTS; also Remonumented the  
E 1/4 Sec 5+8 - set monument  
and tied out 3 new BTS  
and 1 corner location tag on  
fence corner; went up to the  
S 1/4 of 5+8 and measured  
steel sign post for completion  
at line of standard.

8 hrs

6/9/80  
JA JO JK  
Clear 75°

T48 R31 Sec 12

Ran compass line around  
Forest Service 40. Chained distance  
and located all four brass caps.  
Started line clearing from  
CS 1/4 to SE 1/4.

7 hrs.

Worked 1 1/2 hrs. on corner inter.  
and correspondence with Mike  
Hays on questions about procedure  
(my own time)



6/10/80

JA JO JK

Cloudy - 75°

Satty meeting - 3 1/2 hr  
Met with Mike Hays on County  
road project - 1 hr.

T148 R31 Sec 12

Checked SE 1/4 to prove out  
true position also reset CS 1/4  
from bearing trees still existing.  
Cut out line from CS 1/4 to SE 1/4.  
3 1/2 hr

6/10/80

JA JO

Clear - 80°

T148 R31 Sec 12

Trip to Court House in Bemidji  
for corner into to send to  
Mike Hays. 2 hr. also ran  
around to corners located on  
6/9/80 to monument. Tied out  
all but the SE 1/4. 6 hr.



6/12/80

JA JO JK  
cloudy 85°

planning meeting - 1hr. Office  
work - guidance from Curt Krause  
2hr. 1

T148 R 31 SEC 8

posted line from CN $\frac{1}{16}$  to C $\frac{1}{4}$   
and C $\frac{1}{4}$  to CW $\frac{1}{16}$ . also tied  
out and certified two corners -  
CN $\frac{1}{16}$  and C $\frac{1}{4}$ . 5hr.

6/16/80

JA JO JK  
Clear 75°

T148 R 31 SEC 12

Ran random line from SE $\frac{1}{16}$   
to CS $\frac{1}{16}$  - fell 8' to North.  
corrected and ran true line.  
7hr.



6/17/80  
JA JO JK  
Clear 70°

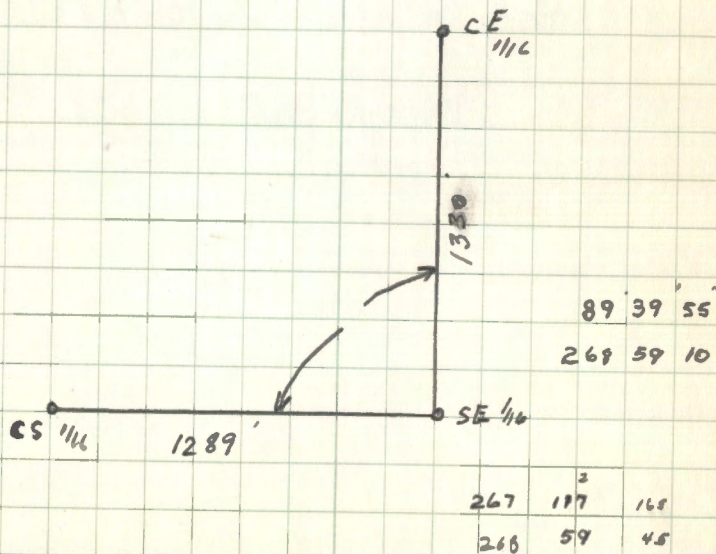
T148 R31 Sec 12

Ran true line out from  
CS'1/16 to SE'1/16 - ready  
to post. started line North  
from SE'1/16 to CE'1/16.  
7hr

6/18/80  
JA JO JK Mt  
Cloudy 70°

T148 R31 Sec 12

Ran random line from SE'1/16  
to CE'1/16 - off 6.3'. Corrected  
for true line set points - ready  
for posting. Turned angle from  
CS'1/16 to CE'1/16 setting at SE'1/16





6/19/80

JH JO JK MH JS

Clear 78°

T148 R 31 Sec 12

Ran laser Range Pole on two  
lines - Set theodolite at C5'16  
and shot North 1/4 mile to C'14  
where range pole was and then  
moved theodolite to C E 1/16 and  
shot West to C'14. Both lines  
ready to be cut for true line -

then.

- through Cushman tracks - the  
breakdown

6/20/80

JH JO JK

Cloudy 80°

T149 R31 Sec 12

Ran one line with instrument  
since we had true line from  
C E 1/16 to C'14. Came out  
right on monument.

then



6/23/80  
JA JK SK  
Clear 92°

T148 R 31 SEC 12

Ran true line shot from laser  
from CS'116 to C'14. Came out  
1' west of corner - corrected and  
line ready to post. Also reset  
CS'116 Brass capped monument and  
SE'116 Brass capped monument -  
ready for certification.

3 hrs.

tailgate session  
footing - watch for  
hazards in the woods.

6/24/80  
JA JK  
Pt. Cloudy 90°

T148 R 31 SEC 27

Located three corners in sec 27  
the - SE'116, C.S'116, C'14. Tied  
out in order to perpetuate and  
replace BTS destroyed - placed RT  
tag and spks. in order to remeasure  
BTS.

5 hrs.

Rest of day spent in office  
with paper work. Semi painting  
sign post.



6/24/80  
JH 50 mt  
Clear 80

T145 R31 sec 27

Ran laser range pole from  $2S\frac{1}{4}$   
to  $C\frac{1}{4}$  and  $SE\frac{1}{4}$  - started to wet  
out line - 700'.

8hr.

6/25/80

DK

Lines up near Ely - Tedpot  
line - gone till 6/29/80.



6/30/80  
JA JK JW  
cloudy 76°

T148 R31 SEC 27

Ran North from  $CS\frac{1}{4}$  to  $C\frac{1}{4}$ .  
Cut true line - ~~only~~ only off  
114" to East of monument. Started  
to run East to  $SE\frac{1}{16}$  - got  
about 500 feet.

8 hrs.

7/1/80  
JA JO JK  
Clear 70°

T148 R31 SEC 27

Ran East from  $CS\frac{1}{4}$  to  $SE\frac{1}{16}$  -  
off  $2\frac{1}{2}$ " - corrected for true line  
set points. Posted and blazed line  
trees for both lines - one East  
and one North from  $CS\frac{1}{4}$  - total  
 $\frac{1}{2}$  mile completed to line of  
standard. Then

PM check on vehicle -  $\frac{1}{2}$  hr.



7/2/80  
JA JO JK  
Clear 85°

T148 R31 sec 8

Posted line from CW $\frac{1}{16}$  North  
 $\frac{1}{2}$  mile. Painted trees for line  
and BTs tree. Set corner - CW $\frac{1}{16}$   
Since B.C. was destroyed by  
logging. sh.

added one more BT:

7/3/80  
JA JO JK  
Clear 88°

T148 R31 sec 30 + sec 5

Posted line in sec 5 from  
SW $\frac{1}{16}$  to W $\frac{1}{16}$  and to S $\frac{1}{16}$  -  
~~and~~ South + West. Tied out  
steel sign post - 6 hrs.

W $\frac{1}{16}$  sec 518 - N - 45.46'  
S - 26.68'

SW $\frac{1}{16}$  sec 5 - S - 4.44'  
W - 5.69'

S $\frac{1}{16}$  sec 516 - E - 27.20'

Set NE sec 30 - replaced  
B.C. - 1 hr.



7/7/80

JA JO JK

Cloudy 89°

Worked on corner cards in office  
for 2 hrs. JO+JK painted sign  
post.

T148 R31 Sec 3

Located closing corner of 3+2.  
Then went to search for N $\frac{1}{4}$  of  
Sec. 2+3. Chained but could  
not locate. Tied out closing  
corner BTS. 6 hrs

7/8/80

JA JO JK

T148 R31 Sec 3

located N $\frac{1}{16}$  sec 3+2 - tied out  
corner. Went to E $\frac{1}{4}$  sec 3 -  
located, chained distance and  
tied out corner. Started at  
N $\frac{1}{16}$  ran random line south  
about 800 feet. g.p.e.



7/9/80

JA JO JK

Clear 90°

Set 2 sign post in sec 5+8 - 1/2 hr.

T148 R31 SEC 3

Ran theodolite line from N 1/4 to  
E 1/4 of sec 3 - off 8' to East.

N 1/4  
165  
20331.5  
Corrected and ran true line.

Set post points - ready for posting

Line standard. 7 1/2 hr.

Spent 2 hrs at home on  
lower cards. - o.t.

1326

663

E 1/4

663

7/10/80

JA JO JK

100° - Hot!

Weekly

Planning meeting - 1/2 hr

T148 R31 SEC 3

Ran line North from N 1/4 to  
closing corner - got about 1100'

also posted 1/4 mile south of  
this line - painted and set sign  
post. 7 1/2 hr



7/14/80

JA JO JK

95° clear

T148 R31 Sec 3

Ran line out to Closing corner of  
Sec 213 - fell 1.54' East of corner.  
Corrected and set true line ~~between~~  
between N<sup>1/4</sup> + Closing corner Sec 3.  
Also set sign post and marked line to  
Standard. 8 hrs.

1 hr O.T. at home lining  
up work for next few days.

7/15/80

JA JO JK

T148 R31 Sec 4

Searched for three corners; ~~at~~  
CS <sup>1/4</sup>, S <sup>1/4</sup> and SE <sup>1/4</sup>. Found  
all three - remeasured BTS - put tags  
up and ran random line between  
each corner. Will start front line  
tomorrow. Corners and distance  
all check OK.

4 hrs

Spent 1 hr coordinating information  
with Mike Hays in morning.



7/16/80  
JA JO JK  
Cloudy - 85°

T148 R31 sec 4

Ran from S $\frac{1}{4}$  sec 4 to C5 $\frac{1}{16}$   
on random line - off 8' to East  
Corrected - ran true line set  
points for sign post. Tied out  
S $\frac{1}{4}$  sec 4 - set BTs - tags.  
8 hrs.

7/17/80

JA JO JK  
Planning meeting -  $\frac{1}{2}$  hr. Clear - 90°  
T148 R31 sec 4

Ran from C5 $\frac{1}{16}$  to SE $\frac{1}{16}$  on  
random line - off 6' to the South.  
Corrected - ran true line - off 1.7'  
moved points on line for true  
line and sign post.  
8 hrs.



7/18/80  
JA 50 JK  
Pr. cloudy 88

T148 R31 SEC 4

Ran 180' from SE  $\frac{1}{16}$  projected  
line to S  $\frac{1}{16}$  sec 4+3 - found  
corner came out close - will return  
to measure and correct for posting  
this

7/21/80  
JA TO JK  
cloudy 78  
(rain)

T148 R31 SEC 4

Corrected for true line from SE  $\frac{1}{16}$   
to S  $\frac{1}{16}$  sec 4+3. - was off 5'  $\frac{1}{2}$ " to the  
North. Set points for posting. Also  
searched for SE cor SEC 4 - found  
gas pipe but no ties. Tied out  
S  $\frac{1}{16}$  sec 4+3 - measuring to new stakes, putting  
up new tags. Also went to the SW cor  
of sec 4 to paint trees and post - got  
600' done. 8 hr.



Paper work - 45 "

7/22/80  
JH DJR  
Pt. Cloudy 81°

T148 R31. Sec 19 + Sec 30

Found W<sup>1</sup>/<sub>4</sub> Sec 19 - had to dig in road - found iron well point also 2<sup>1</sup>/<sub>2</sub>' S W from B.C. Chained 86<sup>3</sup>/<sub>4</sub>' East of W<sup>1</sup>/<sub>4</sub> to CW<sup>1</sup>/<sub>4</sub> - found B.C. laying down next to fence corner - has to be reset. Re-measured PTS in order to set corner back tied out and displayed PT tag on trees. also ran theodolite down along fence (old) to CW<sup>1</sup>/<sub>4</sub> from W<sup>1</sup>/<sub>4</sub> alt in Sec 19 - came out 1.32' to the South. set points for posting; will correct when returning to set post + monument.

Thru

JH JO JK  
7/24/80  
Cloudy 80°  
Rain

planning melting 1/2 hr.

T148 R31 Sec 30

Started to cut out line from SE Sec 30 to E<sup>1</sup>/<sub>4</sub> between 30 + 31. Corrected ribbon line. 4 hr

Prepared corner card paper work because of rain. Jim + Jim sharpened tool; cleaned truck up. 3 hr.

tailgate session  
Chainsaw left - correct equipment.



7/28/80  
JA JO JK  
Clady 85

T148 R31 Sec30

Ran transit line from SE Sec 30  
to the E 1/4 Sec 30 + 31 - west  
came out off 46' to the North  
Corrected points - moved for true  
line - cut out 400' - finish up tomorrow  
8hr.

7/29/80  
JA JO JK  
Clady 86

T148 R31 Sec30

Ran line from SE to E 1/4  
off - 2.6' set points at 180,  
330, 650, 1010 - corrected  
for true line - a lot of trees  
and blow down. - done with  
this line - 8hr.



7/30/80

JH JO JK

Cloudy 90°

T148 R 31 SEC 30

Posted line from E $\frac{1}{16}$  to Sec cor.  
also painted trees. Then ran line  
180° from this line West to S $\frac{1}{4}$   
Sec 30. got 785' out.

Shur.  
Sifty meeting - 2 hrs.

7/31/80

JH JO JK

Clear 85°

T148 R 31 SEC 30

Planning meeting - 1 hr.

Ran line 590' feet to S $\frac{1}{4}$  - fell  
2.6' to the North - corrected moved  
points at 785', 540', 240'. Ran line  
East from S $\frac{1}{4}$  to E $\frac{1}{16}$  - fell .65"  
off to the North. 7 hr.



8/1/80.  
JA DTK  
Clear 82°

T148 R31 sec 30

Ran line for true points for posting  
then Blazud line and posted this  
1/4 mile - also tied out - painted BTS  
at E 1/4 sec 20 and also certified  
the S 1/4 sec 30 - cut out new BTS  
measured and tagged painted red  
set Brass capped Iron pipe in  
road.

7hr

Called to Merritt Lake Fair  
at 7:00 P.M.

8/2/80

at fire from 8/1/80 to  
8/6/80



8/7/80  
57

Started at 9:30 - Office  
work - As. Norm Malton in  
his corner work  $4\frac{1}{2}$  -  
monthly planning meeting  
from 2:30 - 5:00.

8/11/80  
JA B JK  
part cloudy 72

T148 R31 Sec 12

posted  $3\frac{1}{4}$  mile - tied out one  
corner - SE  $\frac{1}{4}$  with new BTS  
since monument position changed.  
then



8/12/80

JA JO JK

Rain

~~T148 R 31 SEC 12+4~~

1 hr. field preparation - correspondence  
with Mike Hays. 1/2 hr truck  
maintenance. Rest of day ~~posted~~  
~~lines & posted corners~~ spent  
down at Court House in  
Bernidj researching corner  
cards this

8/13/80

JA JO JK

T148 R 31 SEC 12+4

Posted line - 1/2 mile in sec  
12 and 1/2 mile in sec 4.  
also tied out 3 corners for  
certification 8 hr.



8/17/80  
JA JO+  
AP

I stayed in office all day  
for management concerns meeting.

T148 R31 sec 1 - JO AP  
Searched for the SE sec cor.  
Had to go 5 1/4 mile and  
pull distance up to sec cor  
Found and searched for BITE  
6 hrs

8/15/80  
JA JO

T148 R31 SEC 19

Searched for NE sec cor. Found - went  
South 1320 found N'ite sec 19  
+ 20. 4 hrs  
Peter Returned to office to finish  
out next year's goal for bone  
tasks. 4 hrs.



8/19/80.  
JA JO SW

T148 R 31 Sec 19

Chained West from N<sup>1</sup>/<sub>4</sub> Sec 20+19  
to NE<sup>1</sup>/<sub>4</sub> 1314. Found corner  
tied out for certification. Compass  
line off 41' North. Corrected line  
and ran theodolite for about 600'

<u>41</u>	<u>N</u>	
1314	100	31
	1314	1.4166
		<u>3942</u>
		1580

8/19/80  
JA JO SW

T148 R 31 Sec 19

Finished out line from N<sup>1</sup>/<sub>4</sub> to NE<sup>1</sup>/<sub>4</sub>  
off .3' to the south - correct sta. pt.  
to true line - ready for posting. Turned  
170' at NE<sup>1</sup>/<sub>4</sub> ran west to CN<sup>1</sup>/<sub>4</sub>  
cut about 600'.

shun



8/20/80  
JA JO JK  
Rain - 70

T140 R31 sec 19

Got rained out for about 2 hrs.  
Everything very wet. Ran west  
Finished out line from NE  $\frac{1}{4}$   
to CN  $\frac{1}{4}$ . off 0.25' to the north.  
Connected sta. pts - line ready to  
post. 6 hr.

8/21/80

JA JO JK  
Rain to A cloudy

1/2 Planning meeting

T140 R31 sec 19

Tied out the CN  $\frac{1}{4}$  ready for  
certification. Located the NE  
sec corner. Ran compass line  
west 1314' found E  $\frac{1}{4}$  sec 19 + 18  
tied out ready for certification  
Line fell south 110.  
7 hr.



8/22/80

JH

Went down to Bemidji,  
Court House. Worked all  
day on corner cards and  
corner research. *sh.*

8/25/80

JH JO

T149 R31 Sec 19

Looked for 4 corners - measured  
from W<sup>1/4</sup> to the N<sup>1/4</sup> - searched  
for corner found nothing, chained  
flat distance up to NW corner.  
looked for corner found old cc post  
nothing marking corner. Chained  
east 765 to W<sup>1/4</sup> - found fence  
corner east about 15' - could not  
locate any evidence - chained  
east 1298.5 - could not locate any  
evidence of this corner. *sh.*

tail gate section  
lifting equipment.



8/26/80  
JA D JW

T148 R 31 Sec 17

Ran theodolite line from NE sec  
19 to the E 1/4. cut line - fell  
17.1' south of corner. Adjusted  
line - will return to marrow to  
run true line.

8 hrs

8/27/80

T148 R 31 Sec 19

Ran true line to E 1/4 -  
line ready for posting.  
Tied out NE sec 19.  
re-measured set spikes taps  
and red string - scribbled one  
new PT.

8 hrs.



8/26/80

Took Comp. time leave.

No corner of land survey  
work done today.

9/2/80  
JA to JW

T148 R 31 Sec. 19

Ran line from CE  $1/4$  to C  $1/4$   
cut line off - 18.4' to North.

Connected points - reran line  
cut 700' - will return tomorrow  
to finish up. sh.



9/3/80  
JA 505W

T148 R31 Sec 19

Finished up - line off 3' to  
the south from C E 1/4 to C 1/4  
corrected line from Stadia  
stations ready to post. Run  
compass line South from C 1/4  
to C S 1/4 - measured distance  
OK line off 30' to the East.  
Corrected ~~for~~ act of line  
appt. 1100.

Shu

9/4/80  
JA 505W

T148 R31 Sec 19

Finished up line from C 1/4 to  
C S 1/4 off 14.4' to the East.  
Corrected for true line - sets  
points - Ready to post.

Shu



9/8/80  
JH JO JH

T 148 R 31 SEC 19 + 20

Rerun line from C'14 to  
CS'14 - line OK. Chained  
from N'14 to E'14 searched  
for corner with metal detector  
could not locate. Also searched  
for N'14 sec 20 - found and  
tied out. Looked for road to  
this area.

Bhs.

9/9/80  
JH JO FW

T 148 R 31 SEC 20

Ran compass line from N'14  
to E'14 - off 68' to North.  
Tied out both corners. Ran  
theodolite line - cut out 1320'  
off 10'.  
Bhs.



9/10/80  
JA JO LL

T148 R31 SEC 20

Cut line from N<sup>1</sup>/<sub>4</sub> to E<sup>1</sup>/<sub>16</sub>,  
after correction from off 10'  
to the South. Hit monument  
set points on line. Ready to  
post. 8 hrs.

9/11/80  
JA JO JWDs

T148 R31 SEC 20

Cut line from N<sup>1</sup>/<sub>4</sub> to E<sup>5</sup>/<sub>16</sub>  
after running compass line and  
taping out corner. cut 1000'  
along fence lines. 8 hrs.



7/12/80  
JA JO JW D

Planning meeting  $\frac{1}{2}$

T148 R31 SEC 20

Ran line from N $\frac{1}{4}$  to CN $\frac{1}{16}$   
Theodolite line off 6' to the  
West. Correct line and ran  
out. pts at 325', 650, 850,  
1050. Rained all day. Wet!  
7hr.

9/15/80  
JA JO JW

T148 R31 SEC 20+19

Posted line from N $\frac{1}{16}$  SEC 19  
West to NE $\frac{1}{16}$  and to CN $\frac{1}{16}$   
total  $\frac{1}{2}$  mile. Posted line  
from N $\frac{1}{4}$  SEC 20 ~~to~~ East to  
E $\frac{1}{16}$  and South to CN $\frac{1}{16}$   
total  $\frac{1}{2}$  mile.

9hr.



9/16/80  
JH JO SW DP

T148 R31 Sec 20 + 19

~~Posted~~ Chained Plat distance  
from CE $\frac{1}{16}$  to E $\frac{1}{4}$  sec 19  
Searched for corner with  
distance from N $\frac{1}{16}$  south.  
Could not locate and gas pipe  
possible BT- Elm stump. Also  
Searched for CW $\frac{1}{16}$  and C $\frac{1}{4}$   
sec 20. Could not locate  
either one.

Bhu.

9/17/80  
JH JO SW DP  
mt

T148 R31 Sec 19

Posted & painted line from  
CE $\frac{1}{16}$  to C $\frac{1}{4}$  and from the  
C $\frac{1}{4}$  to CS $\frac{1}{16}$ . also reset  
B.C. at C $\frac{1}{4}$ . Posted line from  
NE sec 19 to the E $\frac{1}{16}$ , had to  
reset corner at the NE sec 19  
because it was too high in road  
surface

Bhu



9/18/80  
JH JB JW DP

T148 R31

Posted line from  $5\frac{1}{4}$  sec 4 to  
C5 $\frac{1}{16}$ . Searched for corner  
along West side of sec 8.

shw

9/22/80  
JH JB JW DP AH

T148 R31 SEC 8, 9, 10

Certified the  $5\frac{1}{16}$  sec 8 + 7  
Remeasured new spike tags + re-drilling  
also chained from  $5\frac{1}{16}$  to  
the SE sec 9 - found both  
corners tied out - certified.

shw



9/23/80  
JA TO JWD PPH

T148 R31 SEC 19.

Posted line at W<sup>1</sup>/<sub>4</sub> sec 19.  
also chained from CW<sup>1</sup>/<sub>4</sub> to  
the SW<sup>1</sup>/<sub>4</sub>. located corners  
tied out - ~~long~~ off 16' to the  
East. started to cut out line  
got 500'.

sh.

tailgate season  
pounding post - proper  
way of using the tool.

9/24/80

JA - stayed in office  
all day - setting - sh.

JA TO JWD PPH

T148 R31 SEC 19

Ran theodolite line from CW<sup>1</sup>/<sub>4</sub>  
to SW<sup>1</sup>/<sub>4</sub> - cut line 1330 off 5.3'  
to West. Corrected line cut to  
900'.

sh.



9/25/80

JA JO JW PA

T148 R31 Sec19

Cut true line from CW $\frac{1}{4}$   
to SW $\frac{1}{4}$ . Set points for posting  
at 200' intervals. Posted  
line and painted line and  
BTS. Also found E $\frac{1}{4}$  sec  
19 + 30 - gas pipe down 1 $\frac{1}{2}$   
in old township road. Located  
BTS 1920.

shu

9/26/80

JA JW DP PA

T148 R31 Sec19

Ran compass line from E $\frac{1}{4}$   
sec 19 + 30 North plat distance  
to SE $\frac{1}{4}$ . Found gas pipe on  
possible BT. Chained and compass  
line from SE $\frac{1}{4}$  to C5 $\frac{1}{4}$  after  
tying out SE $\frac{1}{4}$  with new BTS.  
off 99' to the south 5' long.  
On the line from E $\frac{1}{4}$  to SE $\frac{1}{4}$   
off 25' to the East 2' long.  
Also certified the E $\frac{1}{4}$  - no monument  
set.  
shu.



9/29/80  
JA JO JW DP

T149 R31 SEC 30

Chained South from E<sup>1</sup>/<sub>16</sub> to NE<sup>1</sup>/<sub>16</sub> plot distance. Could not locate NE<sup>1</sup>/<sub>16</sub> found old Forestry tag on cedar no gas pipe. Searched for the CN<sup>1</sup>/<sub>16</sub> - could not find. Went to the C<sup>1</sup>/<sub>4</sub>, found pump point in road surface - tied out with three BTs. Then chained North plot distance looked again for CN<sup>1</sup>/<sub>16</sub> - found nothing. Chained North plot distance to N<sup>1</sup>/<sub>4</sub> - found gas pipe; North of distance about 18'.

She

19/30/80  
JA JO JW DP PA

T148 R31 Sec 30

Chained East from W<sup>1</sup>/<sub>4</sub> sec 30 to the CE<sup>1</sup>/<sub>16</sub> - found BC - tied old corner. Chained East plot distance to East <sup>1</sup>/<sub>4</sub> sec 30 - found corner off 28' to the North. Then chained South to the S<sup>1</sup>/<sub>16</sub> sec 30 sec 29 - found corner - tied out corner. Then chained West plot distance - looked for SE<sup>1</sup>/<sub>16</sub> sec 30 - found nothing - fell in power line clearing.

She



After meeting 3hr 10/1/80  
JA JO JW DP PH  
Jim Washburn - begin below  
I went to Blundell's Court House  
research all day 1/2 hr OT.

T148 R31 Sec 30

They cut line from CE 1/4 to  
E 1/4 - off 13' to the south.  
connected moved spikes.

5hr

10/2/80  
The planning meeting JA JO JW DP PH

T148 R31 Sec 30

Finished up line from CE 1/4 to  
E 1/4. Set points at 230, 500, ~~600~~  
700, 900, 1100.

Then

Jim Ojima last day - good man!



10/6/80  
JA DB PH

T148 R31

Ran theodolite  $\frac{1}{4}$  from S $\frac{1}{4}$  sec 5  
East to E $\frac{1}{16}$  sec 5+8 Set points  
at corner off 33' and one in the  
middle 33' South. for right of  
way. also ran  $\frac{1}{4}$  for N $\frac{1}{16}$  sec  
8 South to the W $\frac{1}{4}$  and South  
to the S $\frac{1}{16}$  sec 8+7. Set points  
off 33' to the East for right of  
way. also ran  $\frac{1}{4}$  from NE sec 30  
19 South to the N $\frac{1}{16}$  - Set points  
off 33' to the West for right of way

ghu

10/7/80  
JA DB PH

T148 R31

Posted line from NE sec 30  
to N $\frac{1}{16}$  sec 30+29 - also from  
the ~~the~~ N $\frac{1}{16}$  sec 7+8 to the W $\frac{1}{4}$   
sec 8 to the S $\frac{1}{16}$  sec 7+8. also  
from the N $\frac{1}{4}$  sec 9 to the E $\frac{1}{16}$   
sec 8+5. All these lines posted  
for right of way - 33'. Then  
went to the W $\frac{1}{4}$  sec 19 South  
 $\frac{1}{2}$  mile to the SW sec 19 with  
theodolite line right of way established  
from  $\frac{1}{4}$  projection. Mike Hay  
spent about 2 hrs helping on this.

ghu



10/8/80  
JA DB PH

T148 R31 Sec 19 + 30

Post line from W $\frac{1}{4}$  sec 19 to  
the SW sec 19 for right of way  
33'. Then looked for the SE $\frac{1}{16}$   
Sec 30 - searched 1 hr found  
gas pipe and BTS - certified  
wires will set monument. Then  
prepared  $\frac{1}{2}$ " for laser range  
pole.  $\frac{1}{2}$  hr film that morning.

7hr

10/9/80  
~~JA DB PH~~  
JW

planning meeting  $\frac{1}{2}$  hr  
T148 R31

Looked for the E $\frac{1}{4}$  sec 8  
found and tied out. Also  
prepared for laser range pole.  
Met Mike Tapp that morning.  
Discussed right of way problem.  
Then we prepared the E $\frac{1}{4}$  sec  
of East  $\frac{1}{2}$  for laser range  
pole

2hr



10/10/80  
JA DB PH

7148 R31 sec 11

looked for the NW  $\frac{1}{4}$  sec. 11  
found and tied out. Then  
ran East  $\frac{1}{4}$  mile looked for  
C.N.  $\frac{1}{4}$  found and tied out.  
then prepared that  $\frac{1}{4}$  mile  
for later range pole. I did  
paper work for about  $\frac{1}{2}$  in  
afternoon while DB PH sharpened  
tools - it was raining.

shu

10/14/80

JA - sick leave  
worked 2 hrs on winter  
cards at home

D.B worked on Carter's crew  
PH - sick



10/15/80  
JA PA DB

T148 R31 SEC ~~29~~ 29

Got Cushman stuck. Stalled  
engine. Left to dry out.

Searched for NE SEC ~~29~~ 29  
found corner. Looked for BTS  
compass line and chained  
from creek down old road.

Returned to location of Cushman  
could not get going.

shu

10/16/80  
JA PA DB

T148 R31 SEC 29

Returned to get Cushman running.  
Worked on points - wet - tried everything  
we could think of to get it out.  
No luck. Almost had running but  
to wet. Tried getting saw wheel  
drive in to area but no way to  
pull it out - too heavy. What a bitch!

shu



10/17/80  
JH

Worked on Cushman - took  
four-wheel drive in from the  
other way. Rained all night and  
all day - road bad. Had to  
wrench out Cushman and load on  
trailers. Finally got it out  
worked from 9:00 AM - to 3:00 PM  
on my own!

10/20/80  
JH PA PB

T148 R31 SEC 30-110

Posted line from CE  $1/16$  to E  $1/14$   
Also met Mike Hays to shoot line  
with laser range pole from CE  $1/16$   
to SE  $1/16$ . Could not get working  
clouds too low. Then went to see  
9 prepare line for laser range pole.  
 $1/2$  mile - located SW  $1/16$  sec 10  
corner destroyed will set monument  
back in by 1960's BTS.

JH.



Safety Meeting - 2 hrs.

10/21/80  
JK DB MAS

T148 R31 Sec 33

Looked for the NW sec 33  
found corner, tied out remeasured  
set spike tag and made ready  
for laser range pole. Also  
reset SW 1/4 sec 10 remeasured ties  
and put spikes + tags on lots:

6 hrs

10/22/80  
JK PH DB

T148 R31

Looked for the N 1/4 sec 21  
found certified and prepared  
for laser range pole - chained  
East to NE sec 21 - found  
and certified. Then went  
to the SE sec 35 found - already  
certified - then located the  
E 1/4 sec 35 - tied out certified

8 hrs



Planning meeting Mr

10/23/80  
JA MAS SH

T148 R31 SEC 29 + 10

Searched for SE. of sec 29  
found and tied out ready for  
certification. Then reset the  
SW  $\frac{1}{16}$  sec 10 which had B.C.  
destroyed. also tied out corner  
ready for certification.

Shr

tail gate session  
open and hatch open

10/24/80  
JA OB

T148 R31 SEC 29 -

Chained North from SE to S  $\frac{1}{16}$   
plot distance - off 60' to the  
West - found BT - 10 Iron - taped  
HCC. Then chained North to E  $\frac{1}{4}$   
off 40' to the West, found Iron  
and one old BT. Will return  
to use laser range pole.

Shr



10/27/80  
JA JW DB

T148 R31 sec 20

Chained East from CN  $\frac{1}{4}$  plat distance fell 66' to the North - corrected line. Found the NE  $\frac{1}{4}$  - gas pipe and one pine pt. Tied out corner with three Oaks, tags, red rings. Started to cut line.

8 hr

Dave B got hurt on walk out of woods today. Have to wait and see if hurt seriously, indicated it at the time that it did not hurt too bad. - filed out CA-1

10/28/80  
JA BD AP

T148 R31 sec 20

Cut line - random from CN  $\frac{1}{2}$  NE  $\frac{1}{4}$  sec 20. Fell 6' to the North. Corrected line return line true to corner. Set points at 1150', 800', 550', 250', ready to post.

8 hr



10/29/80  
JA BD

T148 R31

Met Mike Hays, Gary B + Rob M  
to help assist in laser range pole  
in sec 8 - east  $1/4$  to the NE and  
East  $1/4$  to the C  $1/4$ . Then went  
to the sec 30 - SE  $1/16$  shot to the  
CE  $1/16$  and to the S  $1/16$  sec 30 + 29.

Shir

the - paper work

10/30/80  
JA BD DB

T148 R31 SEC 20

Took signs out to line - ready to  
post. Also had to prepare ~~sat~~  
analysis. The Guy cleared truck  
and sharpen tools. Also tied out  
two corners the S  $1/16$  sec 29 and  
E  $1/16$  sec 29. Shir



Nov 3 - Nov. 7

project in T150 N R25W  
 stayed all week at Hillside  
 Lodge.

## Comp. time

Nov 3 - 1 hr

Nov. 4 - 1 hr

Nov. 5 - 3 hr

Nov. 6 - 1 hr

Nov. 7 - 1 hr

Total

7 hrs.

11/10/80

T148 R231W

The - opnt getting me  
 back to order. Also talked  
 to Mike Hays on laser range  
 pole. Picked the SE  $\frac{1}{4}$   
 9 for laser range pole. Also  
 posted signs on the  $\frac{1}{4}$  SW  $\frac{1}{4}$   
 Sec 19. (only a few left to do)  
 Then went to CW  $\frac{1}{4}$  Sec 8  
 and tied out one new BT.  
 4 hrs.



10/12/80  
JA DB BD

T148 R31 sec 20

Posted line from the CN<sup>1/4</sup>  
to the NE<sup>1/4</sup>. Blaced and  
painted line trees. also  
certified the NE<sup>1/4</sup> - set  
instrument tags + blaze  
trees + scrubbed. also posted  
right of way sign post at  
S<sup>1/4</sup> sec 5 East <sup>1/4</sup> mile  
also tried out one more  
lot at the S<sup>1/4</sup> sec 5 + sec 6

shu

planning meeting  
1 hr  
<sup>1/2</sup>

11/13/80  
JA BD

T148 R31

Searched for the N<sup>1/4</sup> sec  
28 + 29 - channel and compare  
line. found nothing, also ran  
south to find out how distance  
SH from North at <sup>1/4</sup> lot.  
also found road for summer  
access when laser range pole  
set up occurs.

7<sup>1/2</sup> hr



11/17/80  
JA DR RD

T148 R31 SEC 30

Cut line from CE 1/4 to the  
SE 1/4 SEC 30 - tall .1' off  
to the East - laser line - set  
points at 5, 150', 400', 680', 900',  
1200', 1330. Ready to post.

ghu.

11/18/80  
JA DR RD

Spent all day on chain saw  
season with Bill Johnson,  
no time for corner work.

ghu

11/19/80  
JA DR RD MA

T148 R31 SEC 29

Laser range pole. Shot line from  
NW SEC 28 south to W 1/4. Then  
set up at the SW SEC 28 shot  
north to W 1/4. 1 mile set up  
Then went to the SE SEC 35 shot  
north to the E 1/4 SEC 35 - set  
line - about 1000' between roads.

ghu



10/20/80 Hayes

Lasar Range Pole - T148N R31W, sec. 30

Receiver @ SE 1/4 sec 30

Sight North

Horz.  $\Delta$

Vert.  $\Delta$

— 35-00-00

62° 10'

— ~~35-20-00~~

— 36-00-00

— 36-20-00

— 36-40-00

— 37-00-00

R 38-00-00

— 38-10-00

