

File: 5400 LANDOWNERSHIP (146-26)
(Preserve. Keep in Open Files.)
X Ref. made for 146-27 & 147-27.

146-147 R22

Plats of Survey
by 1958 R22
S.M.

DIETZGEN
TRADE MARK

ENGINEERS'
FIELD BOOK
No. 403

CADASTRAL SURVEY
BOOK # 11

Field notes of
Plot of Survey 9/10/58
by Sam Bering

146-26-32

NENW

NWSW

SESW

E $\frac{1}{2}$ SESE

8

147-27-35 all except Lot 1
~~all except Lot 1~~

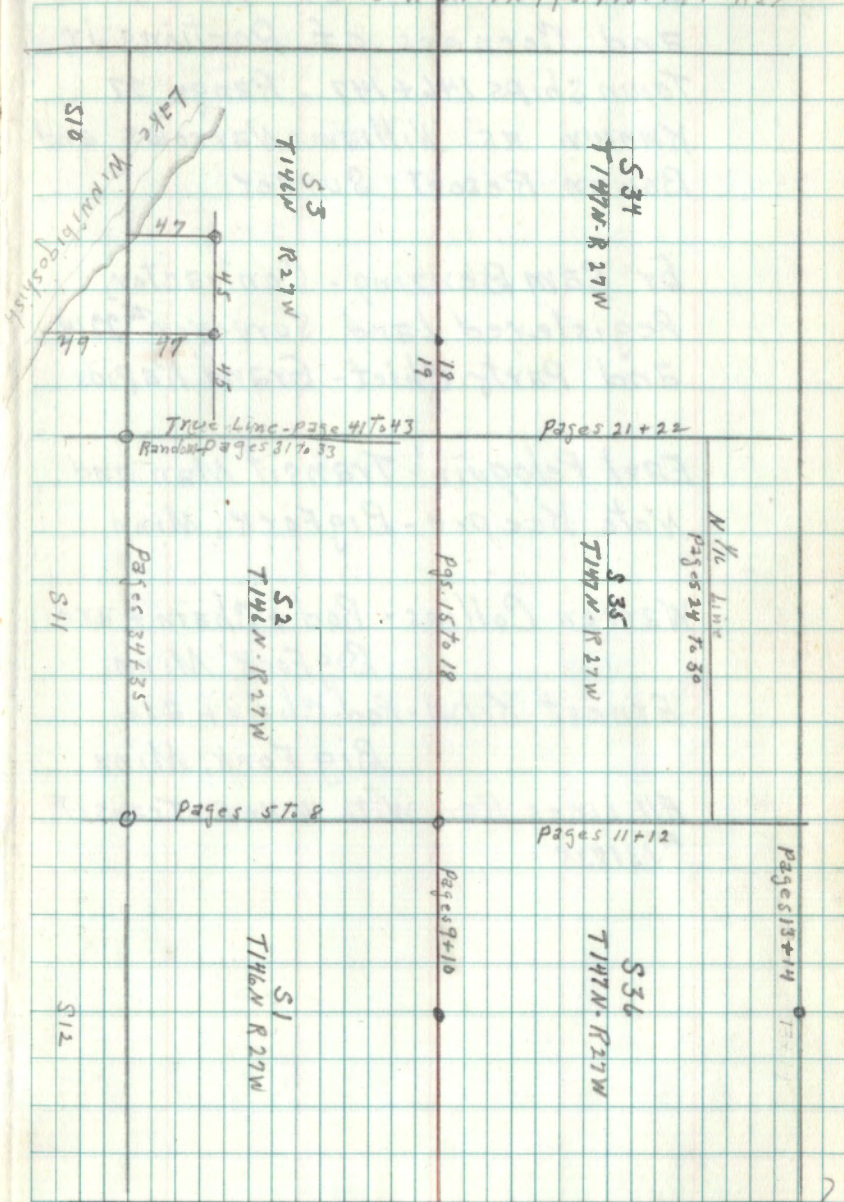
146-27 fee 2 all
" fee 3 all except SWSE
" fee 10 all except NWN

Sec 32- Twp 146N- R26W- Pages 62 to 94
 Index to Lines of S. 32- Twp 146N- R26W- Pp. 62
 For Lines Across Williams Narrows
 See Pages 25 to 30 - Williams Narrows
 Index to Lines Ran in T146+147- R 27
 Page 2

Monuments Referred to as Government
 Monuments are 2"x5' Steel Pipes- Flared
 at bottom, Filled With Cement + Capped
 With Properly Stenciled brass Cap

All bearings to Witness objects are
 Magnetic

INDEX - Lines Ran in Tps. 146+147- R 27



3

Establishment of True Lines
and Corners of Portions in
Townships 146 + 147 - Range 27
Known as Williams Narrows and
Bowen Resort Survey

By Sam Benzing - Contractor,
Registered Land Surveyor #2214
and Party Chief - Grand Rapids

Earl Peloguin - Transit Man and
Note Keeper - Big Fork, Minn

Warren Collins - Rod + Chain + axe
Big Fork, Minn.

Ernest Kelm - Rod - Chain + axe
Big Fork, Minn

All Lines Ran With A K+E Transit
#131835

4

⑤

Line of 1+2 - T.146N - R.27W

Feb. 17, 1958 - Temp 8 AM - 30°F, 4 P.M. + 14°

Find a 1" Pipe As Established By
P. Myers From Govt Stumps For
Corner of 1-2-11+12 - From which
I Run N. on magnetic declination of
7½° Through Mixed Timber.

2166.81 offset 90° E For 1.05' to avoid Large
N. Pine.

2611.81 Temporary ¼ 1+2

4679.03 P.O.T. From which I deflect W. 0°-8'

434 1/2 Road to Williams Narrows NW

565.42 The Corner of 1-2-35+36 - T.146+147 N
R.27W which is a 1½" Pipe Set in
Concrete 1 FT. above ground with
brass cap From which a dead
N. Pine 10" in diam. brs N 45¾° E - 25.4'
New J. Pine 6" " brs S. 25° E - 11.70'
" " " 6" " " S. 54° W - 17.80'
" " " 6" " " N 43¾° W - 43.95'
" N. " 7" " " N. 47° E - 19.35'

Entire line so over hung with
dense branches as to make solar
observations impossible without
destroying timber.

⑥

Random Line of 1+2 - T.146N - R.27W.

Coordinates 0'

G.L.O. Cor. 1-2-35+36

T.146+147N - R.27W

0°-7'50"

N 0°-9'-05"

True Line to ¼ 1+2 = N 89° 29' E
True Angle NW Cor Sec 1 = 90° 37' 50"
True Line of 1+2 brs S 8° 6' 58" W

0°-8' = 16'
4679.03 = 24'
6148'
8'

2611.81"
Temp ¼ 1+2

2166.81'

20.0 ch = 5244.45

N 0°-10'

0°-0'-10"

Coords }
10.44' W
5244.45' S

G.L.O. Cor.
1-2-11-12

7

True Line of 1+2 - T146N - R27W

Replace Cor. of 1-2-11+12 With
Govt Mon. From Which
old W. Pine stb 7' Tall + 38" diam. brs
N 72½° W For 16.44 FT

New oak 5" diam. brs N 24° E For 18.45'
" Maple 6" " " S. 21½° E " 46.10'
" " 5" " " S. 43° W " 15.80'

5244.45' = 80.06 Chs. = Lgth. of True Line of 1+2
brg. N. 0° 6' - 50" E.

2620.26' = 40. Chs. = Lgth. S. ½ True Line of 1+2

2624.19' = 40.06 Chs. = " N. ½ " " " 1+2

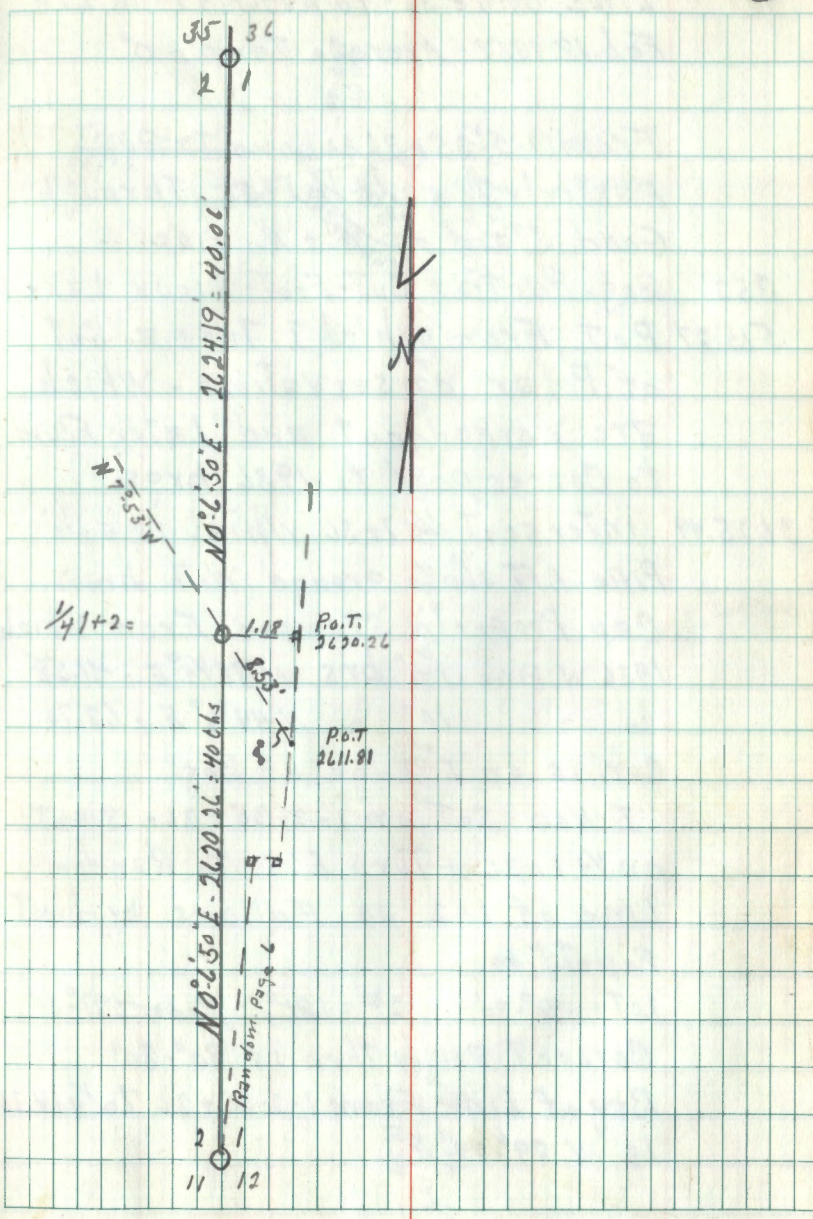
Using Coords I set instrument on Temporary
¼ 1+2 (P.O.T. 2611.81) sight N. 0° 7' E on Random
turn N. W 8° 0' For 8.53' on Line brg N 7° 53' E
to ¼ 1+2 - Also 75 Check I offset 90° W
For 1.18' From P.O.T. 2620.26 to ¼ 1+2

Place Govt Mon For ¼ 1+2 From Which
N. Pine 14" diam. brs. N. ^{30°} 20° E For ^{18.43} 20.33'
J. " 6" " " N. ^{74°} 87° E " ^{5.20} 4.55'
I " 6" " " S. ^{40°} 40° W " ^{22.81} 22.81'

True angle at ¼ 1+2 = 180°

8

True Line of 1+2 - T146N - R27W



9

Line of 1+36-Twp 146+147-R. 27W
Feb. 18, 1958 - Average Temp. = 0°

From 1-2-35+36 Above I Run
Easterly toward $\frac{1}{4}$ 1+36 Through
Good Stand of W. + N. Pine

353' Bog - Part of Cut-Foot-Sioux Lake

515.27' P.o.T. From Which I Take a Set
of Polar observations - Which
are Worked out and Later Found
to Correspond to 1936 brgs.

2625.49' intersect $\frac{1}{4}$ 1+36 Which is a $1\frac{1}{2}$ "
Pipe 1 FT above ground with brass
Cap Properly Stamped From Which
1936 N. Pine 14" brs. N $88\frac{1}{4}^{\circ}$ E - 41.58'
" " " 10" " N $44\frac{3}{4}^{\circ}$ E - 62.70'
Cor. is on E. Edge of Bog.

I New Set on 1-2-35+36 - Sight
on $\frac{1}{4}$ 1+36 + turn E:S. to Random
Line of 1+2 as Follows by direct
Repetition

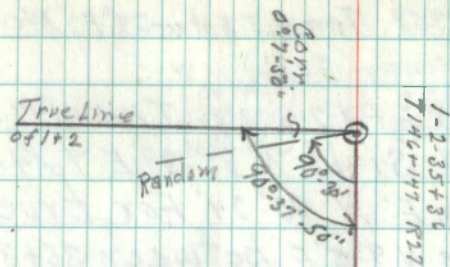
1st = $90^{\circ}30'$ 2nd = 181° 3rd = $271^{\circ}30'$

Correct angle then is $90^{\circ}30'$

Brg of Line From 1-2-35+36 to $\frac{1}{4}$ 1+36
is N. $89^{\circ}29'$ E

True Line of $W\frac{1}{2}$ Secs 1+36

10



True Line N $89^{\circ}29'$ E 2625.49'



$\frac{1}{4}$ 1+36
Twp 146+147
R 27

N. on True Line of 35+36-T147-R17

Feb. 19, 1958 Temp 8 AM = -24°F. Aver 29.0

Fair & Windy From NW

From Cor. of 1-2-35+36 T146+147 N
R. 27W I Sight N. 89°-29'E to 1/4 1+36
and turn E: N 80°-24' For true
Line bry. N 9°-5'E between 35+36
According to 1936 Survey

148.7' Single Wire Electric Fence E+W

200' AM 50' E. of N.E. Cor. of Fur Farm
Woven Wire Fence

315' End Pine Enter Bottom Land

541' Shore of Cut-Foot-Sioux Lake

807.18' Hub on Ice For S 1/2 of 35+36

1300' Snags + STPs. Now under water

1614.36' 1/4 35+36 under water

2421.54' N 1/2 of 35+36 under water

3228.72' Cor. of 25-26-35+36. We cut holes in
ice + prope for corner stake
but find nothing so to verify
our bearing + distance we decide
to open line to 1/4 25+36 on
1936 Notes.

True Line of 35+36-T147N-R27W.

Coöds. }
509.72'E
3188.34'S

25-26-35+36
3228.72'

807.18
81.68

Coöds. }
382.29'E
2891.18'N

N 1/2 35+36
2421.54'

81.68
807.18

Coöds. }
354.86'E
1594.12'S

1/4 35+36
1614.36'

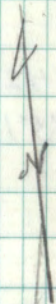
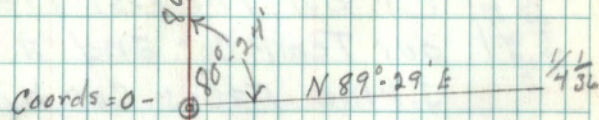
81.68
807.18

3.5' E
N 9°-5' N

81.68
807.18

S 1/2 35+36

81.68
807.18



(13)

East Between 25+36-T147N-R27W

Feb. 20, 1958 Average Temp +15°F

Cloudy - Wind From West

From Cor. of 25-26-35+36 AS
Established on Previous Page
I Sight S. 9° 5' W on True Line
of 35+36 and turn SW: S: W
124° 37' For true Line of 25+36
as Shown on 1936 Plat.

250' W. Shore Cut-Foot-Sioux Lake

340 dense Stand Small N. Pine
Rolling terrain

1427 Forrestry Trail Runs N.W.

1512 " " " " N.W.

Feb 21, 1958 - Ave. Temp +25°F

Misty + Sleet - NE Wind

Continue on same Line

1900 End Pine Enter Alders + Marsh

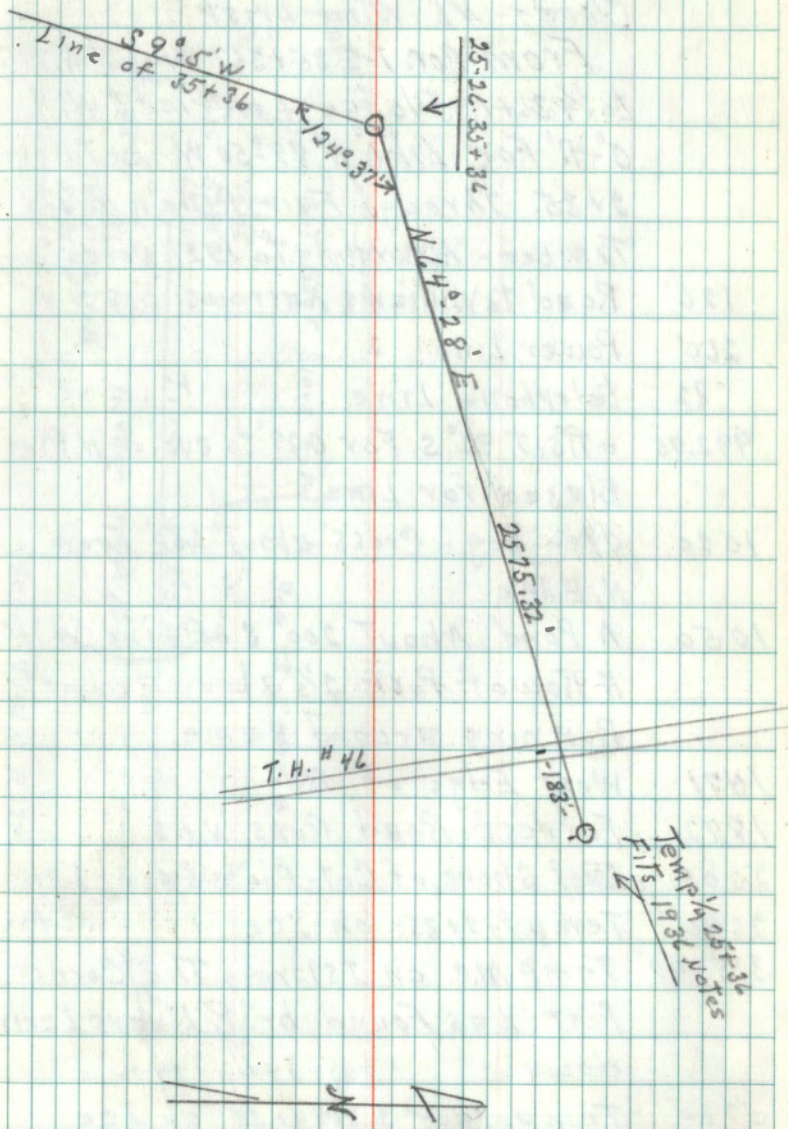
2290 Road bed

2392 1/2 T.H. #46 - New Route

2575.32 Temp. 1/4 25+36 We Find No
Cor. but The East 1936 B.T. Fits
our Temp. Cor. and a Later
J. Pine Faces Cor. but Find No
Record of Who Made This Tree

(14)

West 1/2 Line of 25+36



(15)

Line of 2+35-T146+147-R27

Feb 21, 1958 Ave. Temp. = +25°F

Cloudy - NE Wind brisk

From Cor. 1-2-35+36. Sight N. 89° 29' E
to 1/4 36+1; Plunge + deflect W. N
0° 41' For Line N 89° 50' W. between
2+35. Through Fair Pine + Mixed
Timber. According to 1927 Notes

126' Road to Williams Narrows brs N W

260' Power Line " " " "

82' telephone Line " " " "

992.75' offset 90° S For 0.29' to avoid N. Pine
blazed for Line.1020' open bog. - Cross about 250' From
N. Edge1050' A Pond About 200' S. of Line with
A Row of Posts 2 1/2' above ground
Running around same.

1471' West Edge of Bog

1872' Forrest Road Runs N + S.

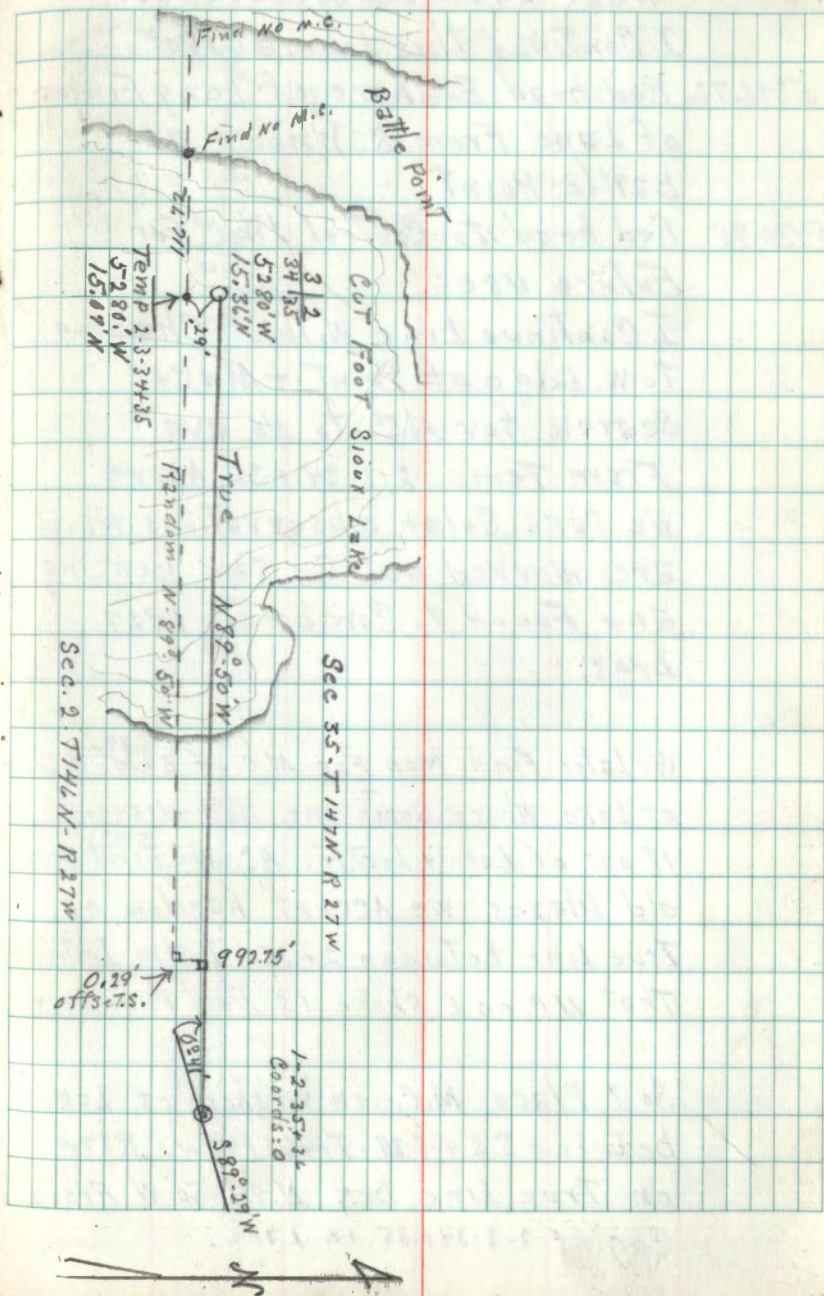
2005' East Shore of Cut-Foot-Sioux Lake

2640' Temp. 1/4 2+35 on Ice

3153.48' Temp M.C. on Island - The Corner
Post Was Found by P. Myers Laying
down.5280' Temporary 2-3-34+35 on Ice
This Point is .29' S. of True Point
For Corner due to offset.

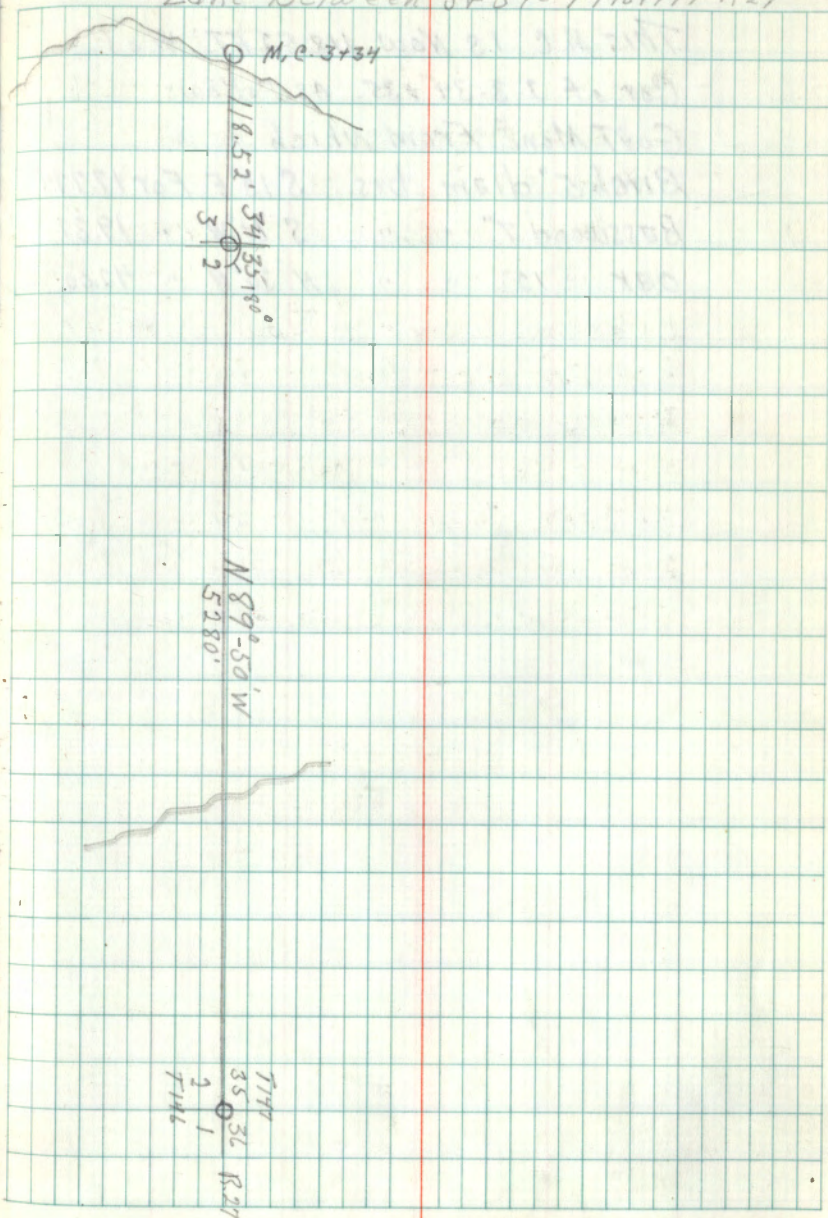
Line of 2+35-T146+147N-R27W

(16)



(17)

West From 1-2-35+36 Cont.

I Continue this Line at 180° 5396.72 Red head E. Shore of Long Finger
of Land From S. Known as
battle Point5430.95 Red head to Control Line For
Future useI Continue Line Without Chaining
to W. Edge of Point + Make
Search for M.C. to No avail.From Temp. 2-3-34+35 Above
We take Solar observations which
are Worked out By Sam Benzing
and Found to Corroborate 1927
brgs.We Later Find Mon. For M.C. of 3+³⁴/₃₅ W. Shore
of Lake Where some one had dragged
it out of Lake + Left it. AS We Find Very
old Blazes We Accept Random AS
True Line between 2+35 - I am Instructed
That M.C. on E. Shore is Now UnnecessarySo I Place M.C. on W. shore of Lake
between S. 3 + S 34 - T146+147 N. R27W
on True Line brg $N. 89^\circ - 50' W$ From
Cor. of 2-3-34+35 in LakeTrue Line 1-2-35+36 to M.C. W. Shore (18)
Lake Between 3+34 - T146+147 - R27

(19)

M.C. between 3+34-T146+147-R27

This M.C. is Now 118.52 FT. W of

Cor. of 2-3-34+35. As Follows

Govt Mon. From which

Birch 5" diam. brs. S. 13° E For 17.77 FT.

Basswood 7" " " S. 61° W " 19.37

Oak 13" " " N. 30° W " 42.00

(20)

Line of 34+35

Feb. 22, 1958 Average Temp = 25°F
Fair Wind From W.

From Temp 2-3-34+35 I Sight S 89°50'E
+ turn E:N 81°42' For line brq N 8°28'E
+ Search For M.C. on Each Side of
Point of Land 1046.76' N. of Cor. To
No. avail - I do Find a blazed Tree
on This Line Indicating it is Correct
As There are Trees blocking line
over Point. I set on Temp. Cor. of
2-3-34+35. Sight S. 99°50'E + turn E:N
81°58' For line brq. N 8°12'E.

1047.05 Temp. M.C. S. Side Point of Land
Extending into Lake From west

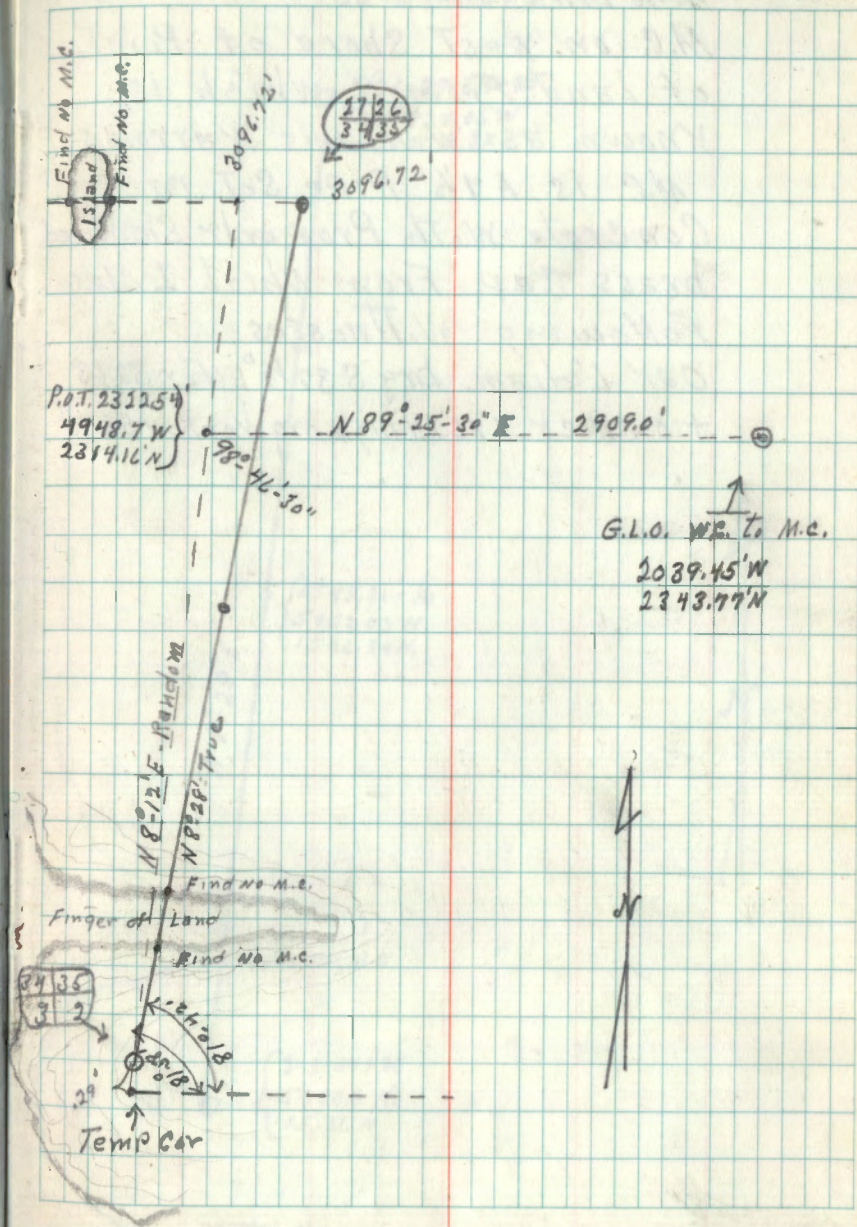
9322.54 Temp N 1/6 of 34+35 on Ice

3096.72 Temp 96-27-34+35 on Ice

From Temp 26-27-34+35 I Sight S. 8°12'W
+ turn S:W 82°3' For brq N 89°45'W
and Search For M.Cs on Each Side
of Island 617.10' + 792.10' From
True Cor. Respectively. My Line
Runs along old Line but Find
No M.Cs.

From Temp N 1/6 of 34+35 I
Sight S 8°12'W to 2-3-34+35 + turn
S:E 99°46'-30" For 2909.0' to

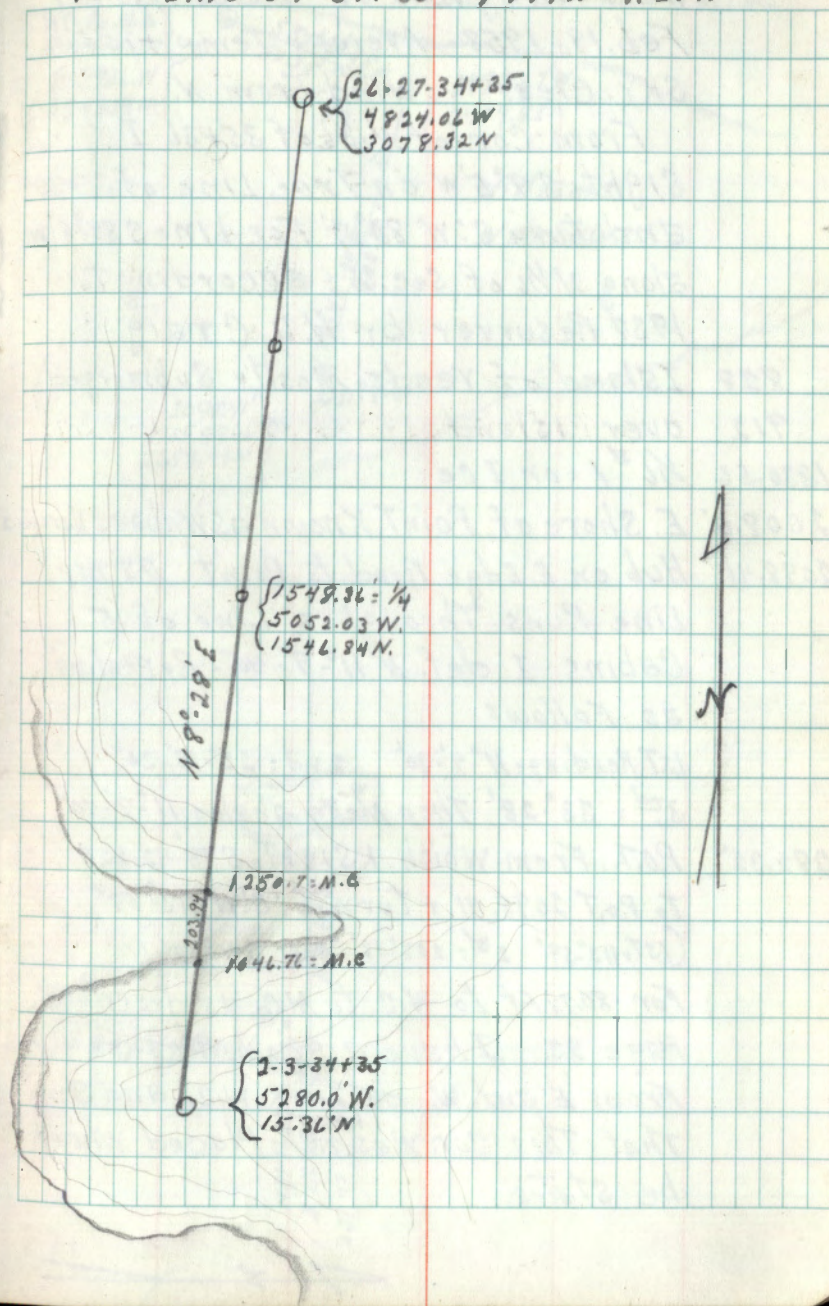
Random Line between 34+35 in Search of Corners



(23)

N. $\frac{1}{2}$ Line of S. 35
 M.C. on West Shore of Point
 of Land From S. which is
 known as Williams Narrows
 M.C. is A $1\frac{1}{2}$ " Pipe Set in
 Concrete with Properly Stenciled
 brass cap. From which I Make
 Following Witnesses
 Oak 6" diam. brg S $37\frac{1}{4}$ ° E. For 32.63'
 + on Rock 7'x6'x4' high brg North - 53.43'

True Line of 34+35 T147N-R27W (24)



(25)

West along N $\frac{1}{4}$ of Sec. 35 T147-R27

Feb. 19, 1958. Average Temp +10°F

SKY Clear Wind From N.

From Cor. of N $\frac{1}{4}$ of 35+36 I

Sight S. 9° 5' W on True Line of 35+36

and turn S:W 80°-3' For Line S 89°-8' W

along N $\frac{1}{4}$ of Sec. 35 - according to

1937 Resurvey by H.D. Craig

828 Island of Reeds - Mostly Submerged

912 over Island " "

1330.56 $\frac{1}{4}$ #1 on Ice

2009.0' E. Shore of Point Known as Williams Narrows

2098.41 Hub on E. Edge Road to Point AS My

Line Runs Through a Line of 5

Cabins I def. N 11° 9' 40". Repeating

as follows

1st Reading: 11° 9' 30" 2nd: 22° 18' 30"

3rd: 33° 28' Then Mean angle: 11° 9' 40"

282.32' P.O.T. From which I Sight S 79° 42' 20" E

to P.O.T 2098.41 & turn E: S:W 113° 59'

(1st: 113° 59' 2nd: 227° 58' 3rd: 341° 57')

For 80.78 Ft to W.C. to M.C. as described

Page 23. I have a good closure

From E. and W. on this W.C. and shows

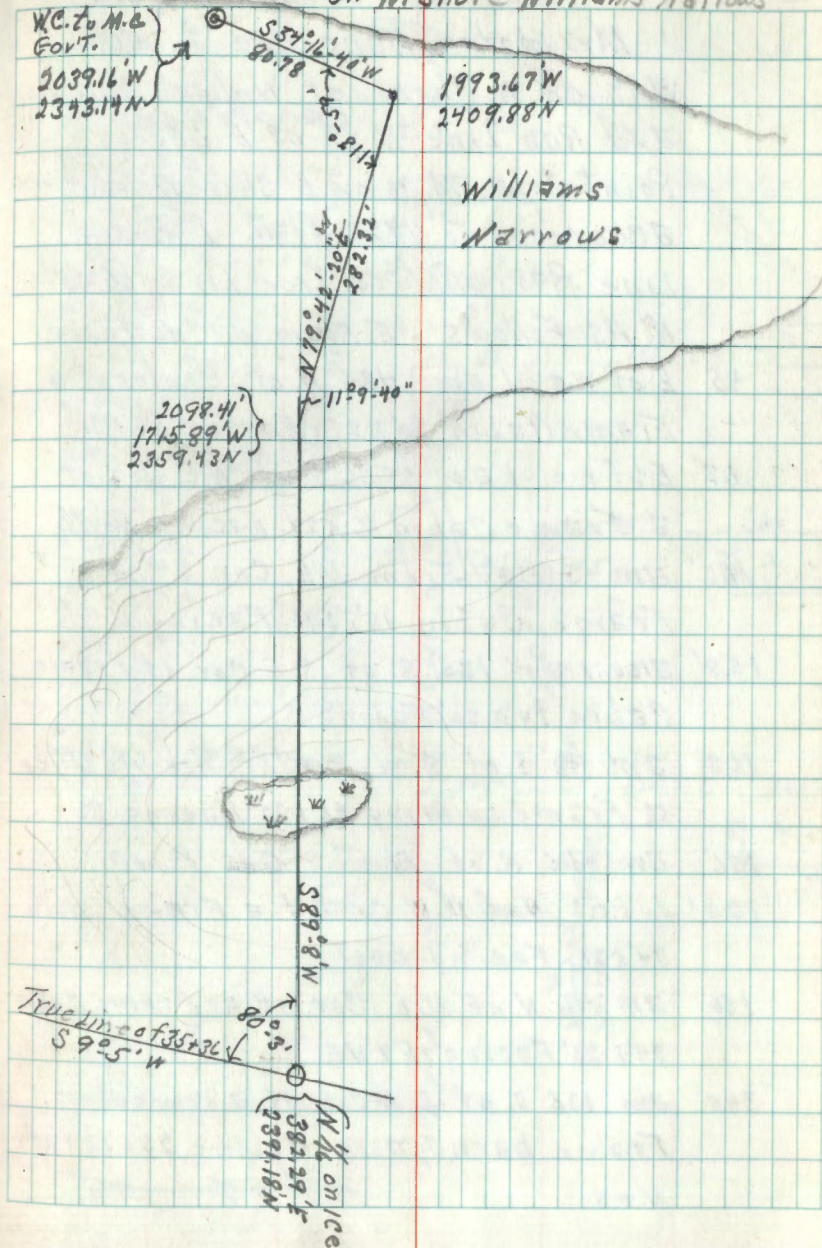
that this Cor. was not placed where

he states.

Random From N $\frac{1}{4}$ of 35+36. to G.L.D. W.C.

on W. Shore Williams Narrows

(26)



(29) Objects Within 200' of True Line
across Williams Narrows-

along N $\frac{1}{2}$ 34+35 - Continued

I Measure Balance of objects
From True Line

360' E. of W.C. E. Shore Point I am 41.98' N
of a Frame Shed 8'x18' Facing N.

427' am 92.36' S. of The S.W. Post of
a dock 4 $\frac{1}{2}$ ' Wide Running 44' East
into Lake on East Shore of Point
From Which There is a utility
Shed 8'x12'. 30' West.

5/14/58

Completion of Line Above Across
Williams Narrows

From Post. 2698.41 (Page 25) Sight
N79°42'20" W to Hub + turn NW:W: S
100°-17'-40" For Line brg. S. For 11.46 to
True Line Then Again Turn S: E 90°52'
+ Follow True line brg N 89°9' E For 76.38'
to Shore of Lake + Place A. G.V.T.
Monument For M.C. From Which

" 15" " " N 43° W " 60.20 "

S.W. Cor. Barn brs N. 03° E For 175.02 "

I also Place 5"x7' Square Ced Post. 3 $\frac{1}{2}$ ' in
ground - on Line 172.68' W. of M.C. above

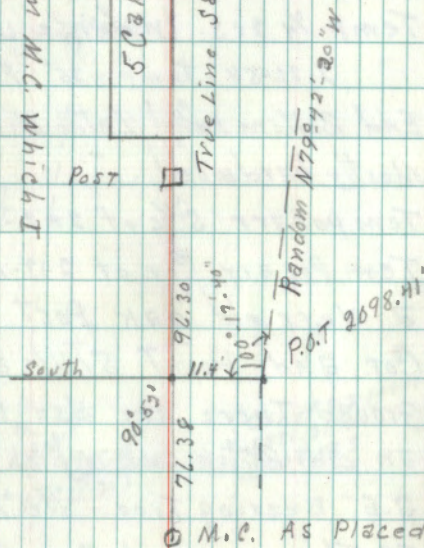
(30) True Line Across Williams Narrows.

W.C. To M.C. As Found

True Line brg S 89°-8' W From M.C. Which I
Set on E. Shore of Point
172.68' 5"x7' Square Cedar Post 3 $\frac{1}{2}$ ' in ground
173.68' West Wall of First Cabin
399.68' W.C. To M.C. As Found + described Page 28

5' Cedars partly on line - See Page 28

True Line S 89°-8' W - 399.68'



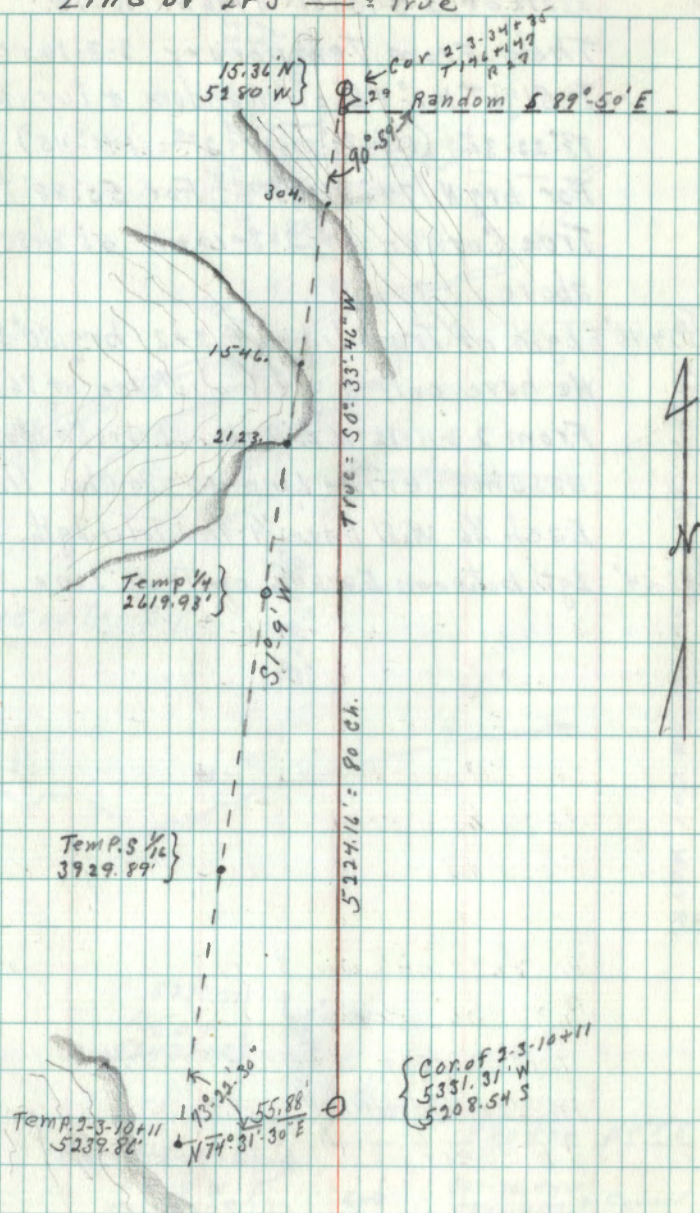
S. Between 2+3 - T. 146N - R. 27W

Feb. 25, 1958 - Fair - High Wind From S.W.
Ave. Temp + 30°F.

From Temp Cor. - 2-3-34+35 - T. 146+147
R. 27 - Sight S 89° 50' E on Rand. +
Turn E. S 90° 59' For Rand S. 1° 9' W
between 2+3

- 0.29 Temp. Cor. is South of True Corner
Measurements are From True "
- 304 Shore Line of Lake along Battle Point
- 1546 N.E. Shore of Bay of Lake on W side
of Battle Point - Entire Point has Heavy
stand of Mixed Hardwood + Scattered Pine
- 2123 across bay - Follow bottom land
- 2619.93 Temp. 1/4 2+3 - In dense willows
2-26-58 - Temp + 35° Fair - S.W. Wind
- 3290.00 End Bottom land Enter Mixed Timber
Mostly hardwood.
- 3929.89 Temporary S 1/4 of 2+3 - Set Post
- 5239.86 Temporary Cor. of 2-3-10+11. I Find
a Very old oak Post scribed for
Cor. and Point still about 10" in
Ground. There are also Remains of
an old Rotten oak which fit for the
S.E. Bearing Tree - We Accept This
as The original Cor. of 2-3-10+11
and Place Temp Post There

Line of 2+3 ----- Random
= True



Cor. of 2-3-10+11. T146N - R27W.

Then From Temporary 2-3-10+11
I sight N1°9'E on Random + turn N.E

73°23'30" (1st: 73°23'30". 2nd: 146°45')

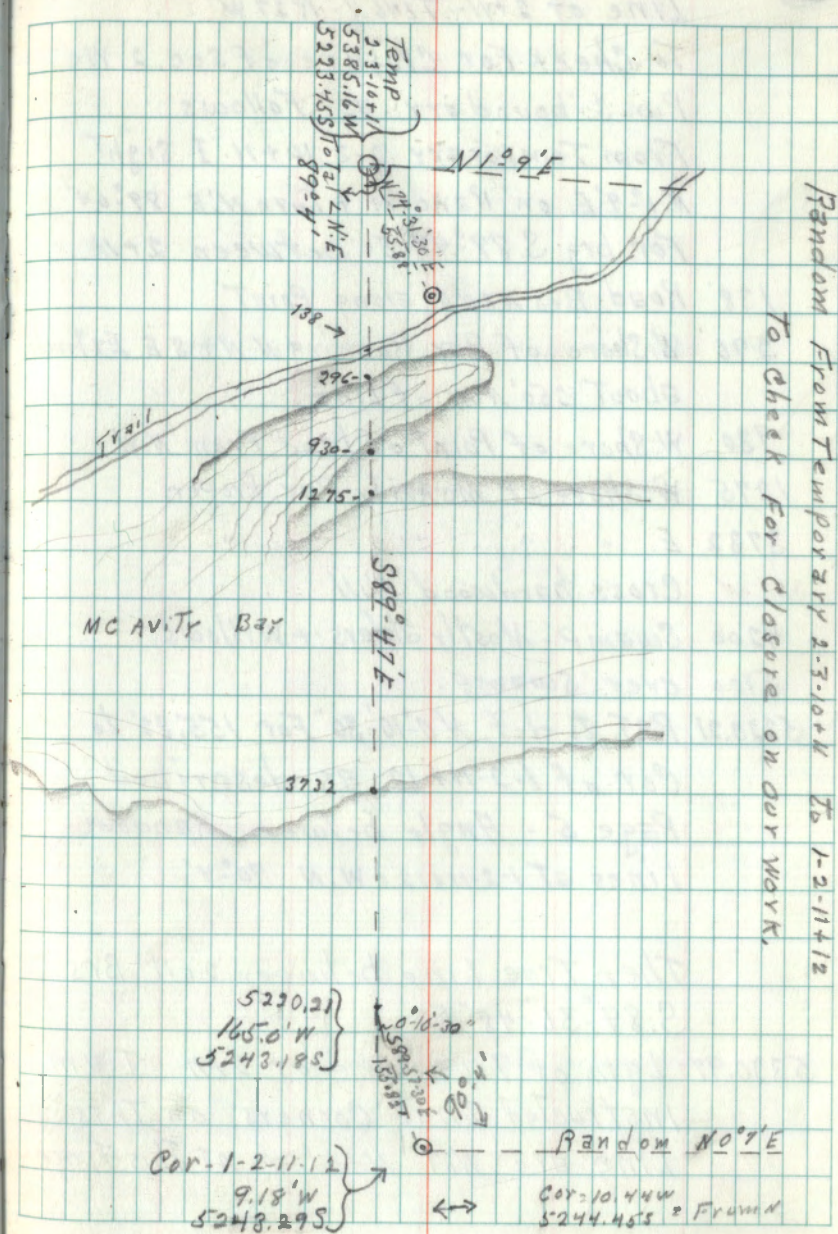
For brg N. 74°31'30" E. For 55.88 to
True Corner of 2-3-10+11 as described
above.

5224.16' = Lgth. of True Line of 2+3 brg. 50°33'46"W

We have only a given distance of 76.56 Ch.

From 2-3-11+12 N to Lake Shore, so must
assume entire line as 80 Chs. Then
Each 1/2 will have 1/4 the total Lgth.

1306.04' = Lgth. between Each 1/2 on True Line



Mar. 2, 1968 - Temp + 35° - Cloudy

Line of 2+11 - T146N - R37W

To Check For Closure of Sec. 2 We
Run S. boundary as Follows

From Temporary 2-3-10+11 I Sight
N. 1°-9' E. on Random + Turn N. E 89°-04'
For brg S. 89°-47' E between 2+11

- 138' Road Brs N. N. E along Point
- 296 W. Shore of Bay Running N. W + S. E Extends
about 250' N. W. of Line
- 930 W. Shore of Point of Land From N. W.
- 1275 W. Shore of McAvity Bay Proper
- 3732 E. " " " " "

Cross hardwood Hill

- 4200 Swamp - Mostly alders + Willows
- 5100 over swamp.

5220.21 P.O.T. to def. N. 0°-10'-30" For 155.82' to
Cor. of 1-2-11+12 as described
Page 5 - Angle between Random
Lines at 1-2-11+12 = W: N 90°-4'

Then True Line between 2+11 Brs
S. 89°-36'-48" E

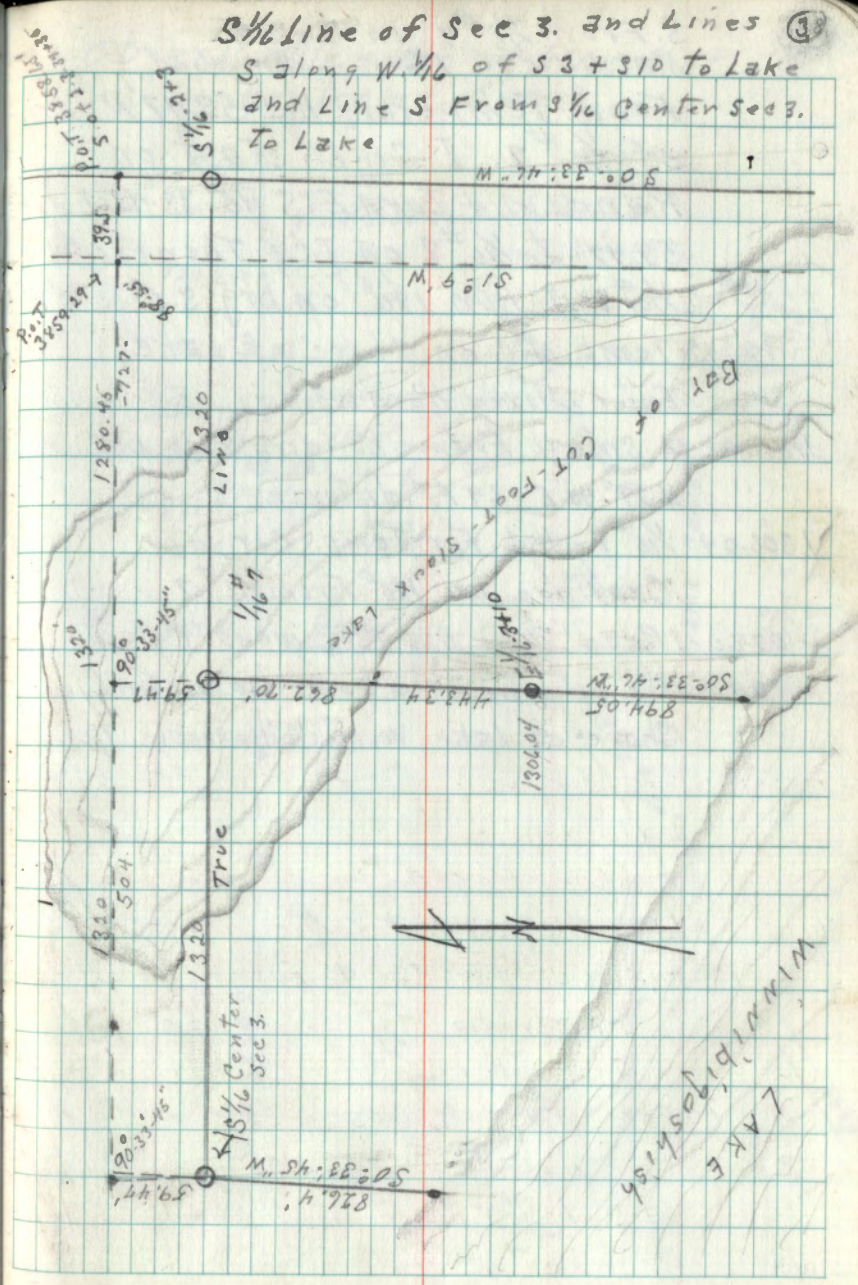
5320.97' Lgth. of True Line of 2+11 I am
instructed That Corners on This
Line are Not Needed AT This Time

S 1/2 of Sec. 3 - T146N - R27W + Center Line S.
Mar. 5, 1958 - Fair - SW. wind

From P.O.T 3859.25' S. of Cor of
2-2-34+35 on Rand. Brq S 1°-9'-W. - I
Sight S. on Random + turn S:W 88°51'
For line due West. - This Line
Is Parallel to True Line + 59.47' N. of
True Line.

- 39.55' - Point on Random West of True Line
- 727. East Shore of Bay - Follow across
bay Near North Shore
- 1320' Point on Ice. 59.47' N. of 1/6 # 8
about 60' S. of Shore Line
- 1824 West Shore of Bay. Enter Mixed
Hard wood.
- 2165 Power Line Runs Northerly
- 2205 Road Runs Northerly
- 2640 Hub. Which is 59.47' N. of True
Position For 1/6 # 6 in Sec. 3 - T146 - R27
From which I Sight E. on Random
+ turn E: S 90°-33'-45" For 59.47' + Set
Hub Temporarily For 1/6 # 6 - Sec. 3. And
Continue at 180° Through Heavy
Stand of Mixed Hard wood.
- 712.4 center of Road Brq S.E. Through Cabins
of Bowen's Resort
- 926.4 Shore of Winnibigoshish Lake
Runs S-SE + NW

S 1/2 Line of Sec 3. and Lines
S along W. 1/6 of S3 + S10 to Lake
and Line S From 3/4 Center Sec 3.
To Lake



S. From $\frac{1}{4}$ #7 in Sec. 3
 Mar. 6. 1958. Fair. SW Wind
 From Temporary hub 59.47' N
 of $\frac{1}{4}$ #7 I Sight East on
 Random & turn E: S $90^{\circ} 33' 45''$ For
 59.47' to $\frac{1}{4}$ #8 on Ice Then From
 $\frac{1}{4}$ #7 - I RUN 180° on brg S. $0^{\circ} 33' 45''$ W.

From Temp
 ↓
 922.17 Temp M.C. on Shore of Lake
 Enter Mixed Hard Wood

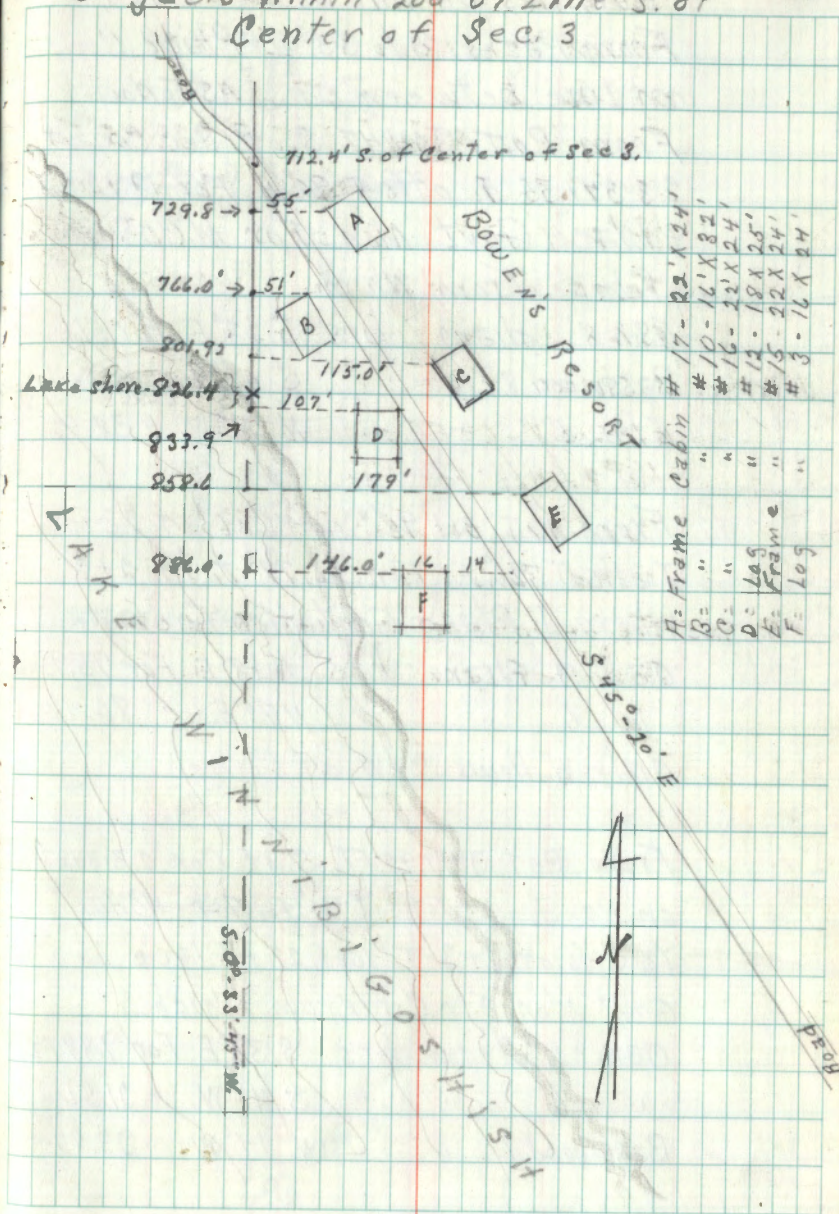
1137.33 A Small Frame building 8'x10' brs
 N $29^{\circ} 40' E$ - 64 FT distance.

1306.04 $\frac{1}{4}$ #7. Hub. For Temp. Cor.
 Continue on 180° From $\frac{1}{4}$ #7

277.0 Road Runs NW to Bowens Resort

894.05 Tie up Line at A Point 30' N. of
 Shore of Lake Winnepigoshish.

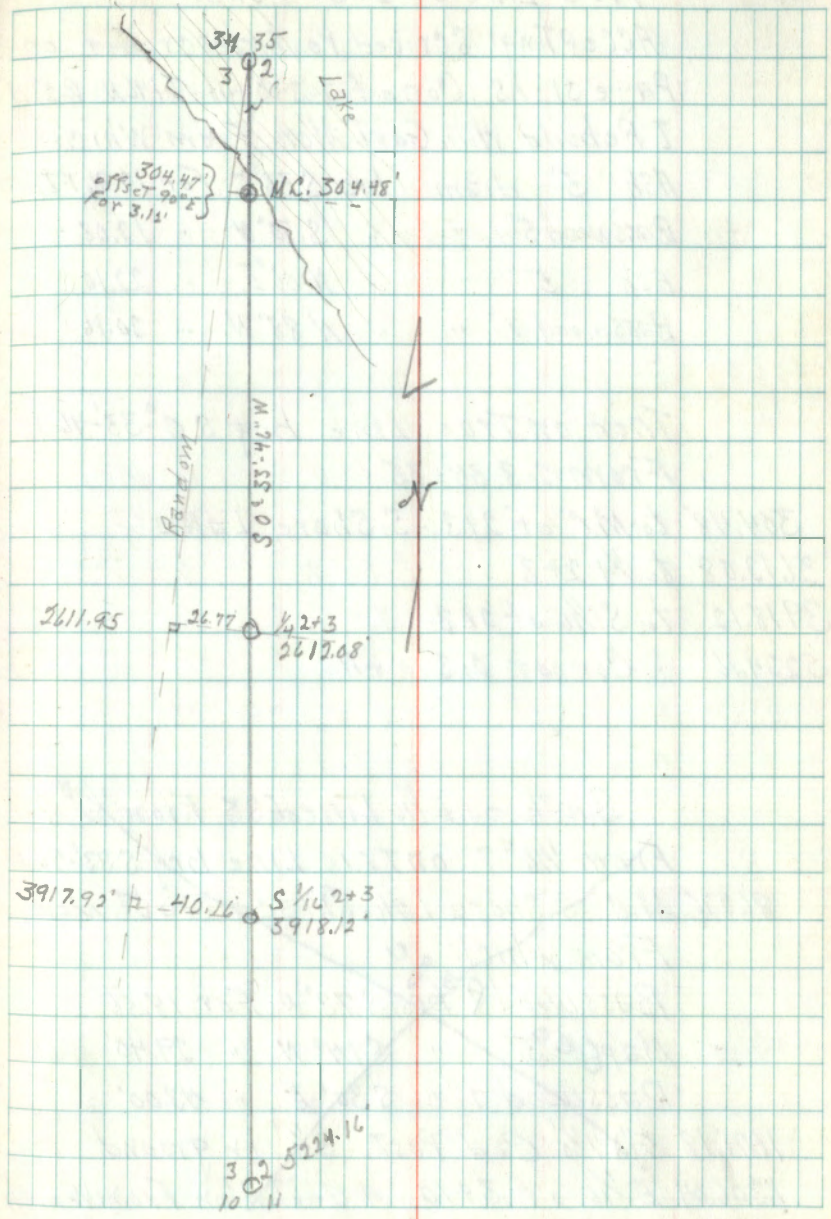
objects Within 200' of Line S. of
 Center of Sec. 3



Corners on Line of 2+3 T146-R27
 From Pages 31 to 33 I Place Corners
 on Line between 2+3 AS Follows
 From P.O.T 304.47 S. of Sec. Cor. of
 2-3-34+35 I offset 90° E. For 3.12 Ft.
 + Place Gov't. Mon. For M.C. S. Shore
 of Lake From which
 Ash 8" diam. brs. S. 13° E. For 51.52 Ft.
 Basswood 8" " " S. 03° W " 58.56"
 Elm 6" " " N. 70° W " 38.59"

From P.O.T. 2611.95 S. of Cor. of 2-3-34+35
 I offset 90° E. For 26.77' to 1/4 2+3
 where I Place Gov't Mon. From which
 Oak 9" diam. brs. N. 18° E. For 95.98 FT
 " 6" " " N. 70° E. " 80.97"
 only Willows S+W. of Corner

From P.O.T 3917.92 FT. S. of Cor 2-3-34+35
 on Random I offset 90° E For 40.16 FT.
 to S 1/2 of 2+3-T146-R27 + Place
 Gov't Mon. For Cor. From which
 Oak 11" diam. brs. S. 33° E. For 9.89 Ft.
 " 6" " " S. 42° W " 21.56"
 Basswood 6" " " N. 14° W " 23.87"



True Line of 2+3 Cont.

ACCEPTING scribed Post described on
Page 31 AS Cor. of 2-3-10+11. T. 14 N. R. 27 W
I Rebuild With Govt Mon. From Which
Ash 5" diam. brs. S. 33° E. For 12.86 Ft.
Basswood 5" " " S. 70° W " 12.08 "
Ash 5" " " N. 06° E. " 22.10 "
Basswood 7" " " N. 88° W. " 20.16 "

Then on True Line brg S. 0° 33' 46" W
From 2-3-34+35

304.48' to M.C. of 2+3 - S. Shore Lake
9612.08' to $\frac{1}{4}$ 2+3
3918.12' to S. $\frac{1}{16}$ of 2+3
5224.16' " Cor. of 2-3-10+11

South on E $\frac{1}{16}$ Line of S 5 From $\frac{1}{16}$ # 7

From $\frac{1}{16}$ # 7 on True Line brg S 33' 46" W

862.70 M.C. S. Shore Lake Place Govt Mon
From Which

Basswood 9" brs. S 73° W For 18.56'

Maple 5" " S 14° W " 29.40'

Basswood 7" " S 30° E " 43.00'

1078.18 5" x 7 $\frac{1}{2}$ " Ced. Post - 3 $\frac{1}{4}$ " in ground

1306.04 E $\frac{1}{16}$ of 3+10 - A Govt Mon From Which

S $\frac{1}{2}$ Line of S3-T146-R27-True Line

AS True Lines + Corners Are Designated
(Pages 37 to 40) in Sec 3. True Lines +
Corners are as follows

From S $\frac{1}{2}$ of 1+3 True Line brs. due
West Through hard wood + scattered
N. Pine

646.87 E. Shore of Lake Place Gov't
Monument For M.C. From which
N. Pine 7" brs. N. 10° E - For 39.98 FT.
" " 7" " S. 84° E " 19.67 "
Elm 4" " S. 36° W " 4.35 "

Continue over Lake

1320' $\frac{1}{16}$ " 7 in Lake. Continue due West

1895.75' M.C. on E. Shore of Lake. Place
Gov't. Monument From which
Maple 6" brs. N. 51° W. - For 14.30 Ft.
Oak 7" " S. 30° W. " 22.24 "
" 8" " S. 60° W. " 25.82 "

Continue 180° Through Large hardwoods

2175 Road N + S To Bowen's Landing

2190.47 Cedar Post 5" square x 7 $\frac{1}{2}$ ' long
3 $\frac{1}{2}$ ' FT in ground

2640.0' $\frac{1}{16}$ " 6 - Sec. 3 - A Gov't. Monument
From which Oak 6" diam. brs. East
For 6.78' - Basswood 9" " " S. 17° W
" 11.88' - " 12" " " N 11° E
" 31.00'

South on Center Line Sec 3 From
1/4 #6 to M.C.

From 1/4 #6 on Line described on
Page 37 brg S. 0°-38'-46" W Parallel to
East boundary of Section

495.65 5" x 7 1/2" Square Cedar Post Set
3 1/2" in Ground

720 Road N. End of Bowen's Resort

740' Very Steep Lake Shore - 50' high

812.33' M.C. - Place Govt. Mon. From which
Oak 6" diam. brs. N. 8° W For. 72.78 Ft.
+ on Gray Rock 2 1/2" x 4" brs. S. 38° E " 58.44"
+ " Red " 3" diam. " S. 45° W " 5.67"
Entire Line Through large hardwoods

South on E 1/4 Line of S. 3. From 1/4 #7

From 1/4 #7 on True Line brg S. 0°-33'-46" W
As described Page 38

862.79' M.C. on S. Shore Lake From which
Basswood 9" diam. brs. S. 73° W. - 18.56'
Maple 5" " " S. 14° W - 29.40'
Basswood 7" " " S. 30° E - 43.00'

1078.18' 5" x 7 1/2" Square Cedar Post Set
3 1/2" in ground

1306.04' E 1/4 of 3410 - A Govt Mon. From which
Basswood 8" diam. brs. N. 56° W - 11.65'
Maple 5" " " N. 70° E 16.24'
Maple 10" " " S. 02° W - 26.18'

S. on E $\frac{1}{4}$ Line Sec. 10. - T14N - R27W

From E $\frac{1}{4}$ of Sec. 3 + 10 on True

Line brg S. $0^{\circ}33'46''$ W AS described

Page 38

252.87 5" x 7 $\frac{1}{2}$ " Square Cedar Post, Set 3 $\frac{1}{2}$ " in ground

285' Road NW to Bowen's Resort

542.94 5" x 7 $\frac{1}{2}$ " Square Cedar Post - Set 3 $\frac{1}{2}$ " in ground

918.88 M.C. on N. Shore Lake Winnibigoshish

Set on high bank of Lake - A GOVT

Monument From which

Oak 20" diam. brs. N 8° W For 26.68 FT.

Maple 9" " " N 39° E " 27.36 "

Basswood 6" " " N 21° E " 20.97 "

Entire Line Through hardwoods

PAGES 51-60
ARE BLANK

51

52

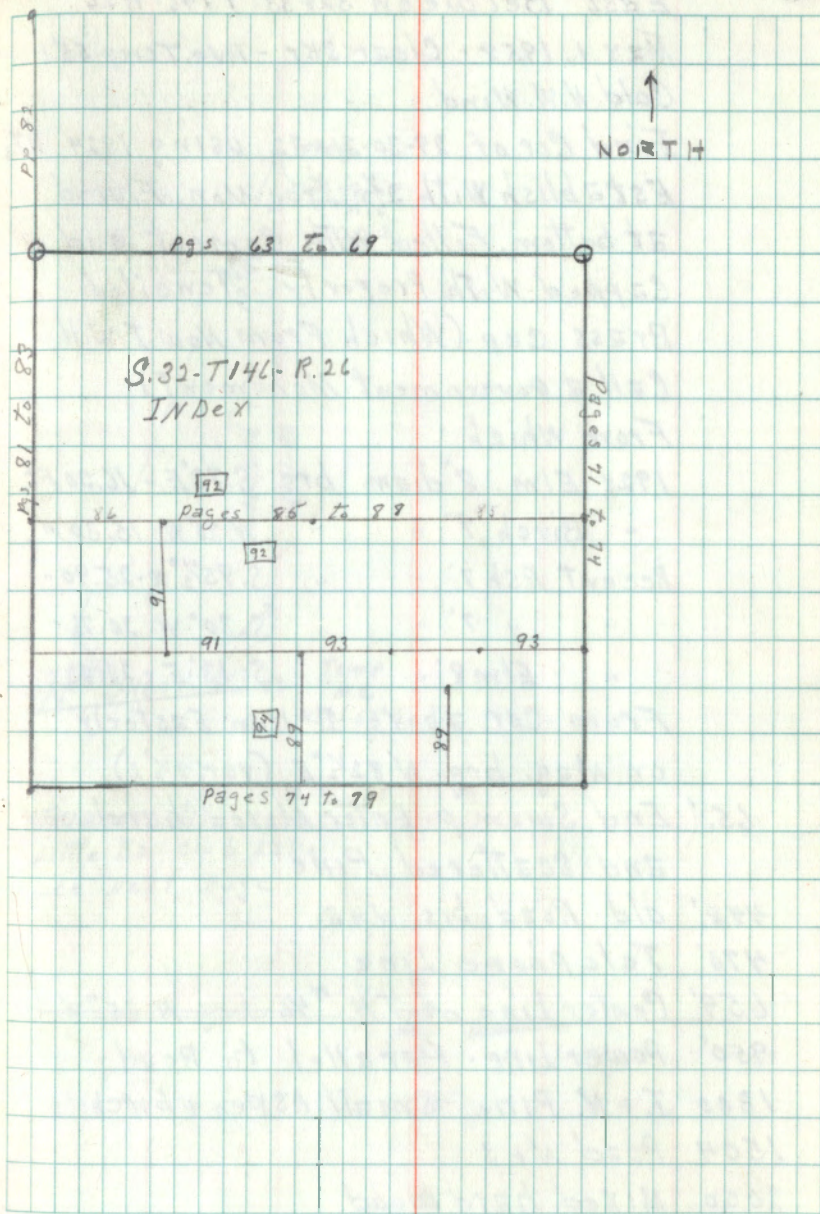
PAGES 51-60
ARE BLANK

(61)

Project # T146N-R26W
 To determine Certain Boundary
 Lines in Sec. 32 - Twp 146N-R26W of 47E

Commenced May 1, 1958 With
 Same Crew + Instruments as
 Listed on Page 3.

(62)



(63)

East Between 32+33-T146-R26

May 1, 1958 - Clear SKY - Ave. Temp. 55°F

Cold N.W. Wind

Find Cor. of 29-30-31+32 USING 1924 RTs

Establish With 2½" Iron Mon. Flared
at bottom, Filled With Cement and
Capped With Properly STenciled
Brass cap - (Which From Now I Will
Call a Government Monument)

From Which

1924 Elm. 8" diam. brs. S. 73° E - 16.20 Ft.

" Birch 9" " " N. 30° W - 15.30 "

Recent Ash 7" " " S. 85½° W - 25.90 "

" " 7" " " S. 30° W - 20.76 "

" Elm 8" " " S. 13° E - 28.83 "

From cor. above I Run Easterly
on Mag. brg. N. 82½° E (var. 7½° E)

65' End Swamp. Enter Mixed hardwood
and scattered Pine

448' old Road brs N+S.

470' Telephone Line

659' Center Line of T.H. #46 brg N. 35° W.

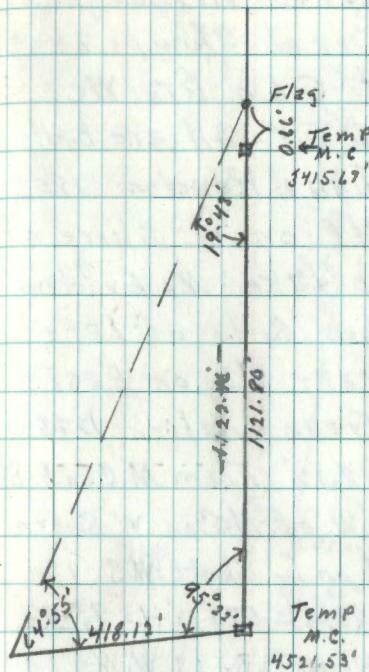
950' Power Line - Parallel to Road

1300 J.+N. Pine - Small Aspen + birch

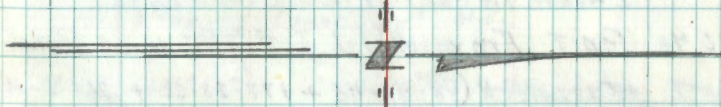
1504 Road N+S

2000 Mixed hardwood

(64)



Triangulation across
Little Ball club Lake
See next page



(65)

T/46N - R26W

Line of 32+33 Cont.

2640.' Temporary 1/4 32+33. Although There are several Stumps Large enough to fit G.L. or BTs We find No 2 Which fit. All are badly burned - Continue Random 180°

3415.67 Temporary M.C. on W. Shore of Little Ball-Club Lake. No Evidence of Corner. either Side of Lake Place Temporary M.C. on East Shore And Triangulation base S. With hub 418.12' From M.C. on E. Shore Place Flag 0.66' W. of M.C. on W. Shore Inside L. at M.C. on E. Shore: W:S is $(95^{\circ}22' + 190^{\circ}44' + 286^{\circ}6') \div 6 = 573^{\circ}12' \div 6 = 95^{\circ}22'$ Inside L. at hub. 418.12' S is W:N $(64^{\circ}55' + 129^{\circ}50' + 194^{\circ}45') \div 6 = 64^{\circ}55'$ Then $(\sin 64^{\circ}55' \times 418.12) \div 0.66 = 1121.80' = \text{distance}$
 Sin. 19°43' Between Temp. M.Cs

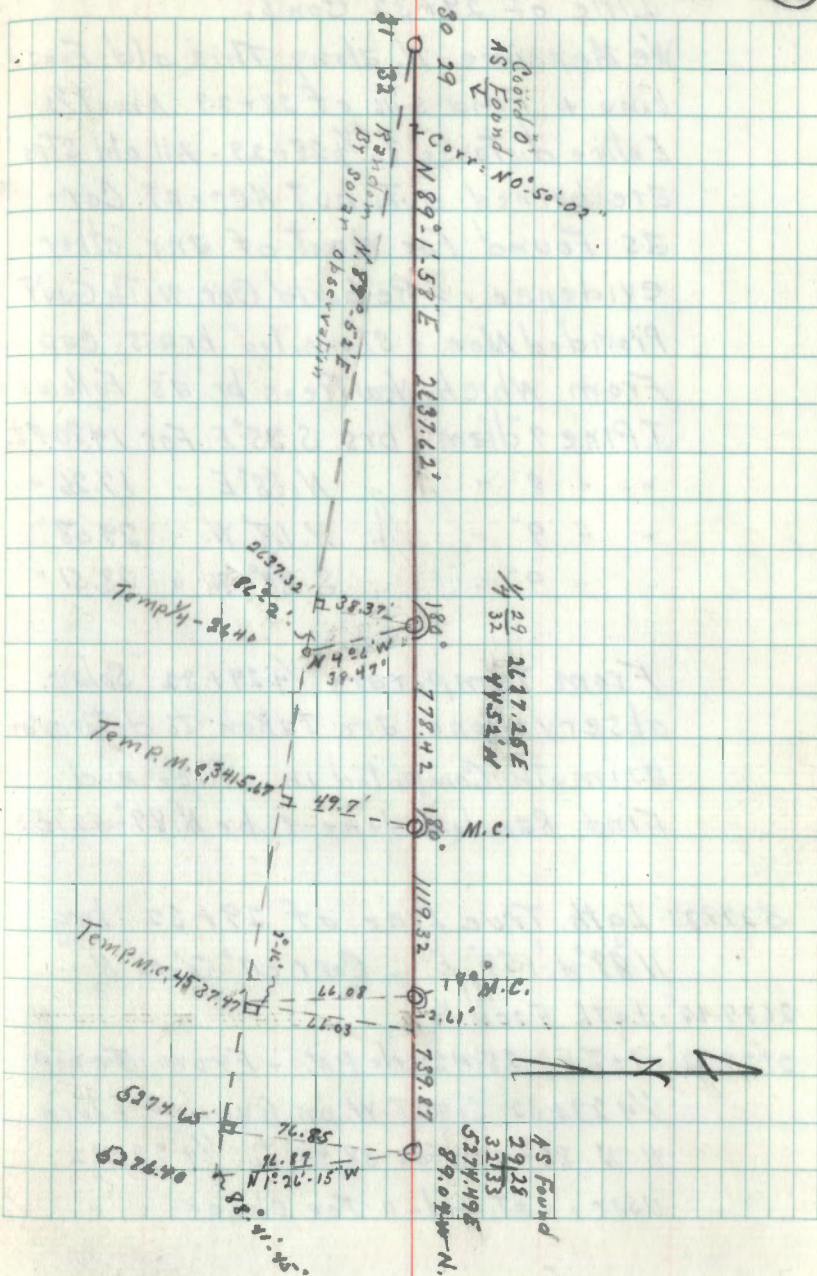
4537.47' - total dist. to Temp. M.C. on E. Shore Lake Enter Recent Pine slashings

5376.40' P.O.T. From Which I Sight W. on Random. turn W: N $(88^{\circ}41'45' + 177^{\circ}23'30' + 266^{\circ}5'15') =$ Mean L of $88^{\circ}41'45'$ For 76.87' to Cor. of 28.29.32+33 Where We find An old & Rotted off 5" Ced Post at end of a fence which seems to have been Carefully built on Line

Line of 29+32 - T/46N - R26W --- = True

- - - = Random

(66)



(67)

Line of 29+32 Cont.

We Measure N. along This old Fence
Line + Find $8\frac{1}{4}$ of 28+29 About $7\frac{1}{2}$
Entire distance to $\frac{1}{4}$ 28+29. All old STPS
are burned out. but Accept Cor-
rs Found For want of any other
evidence. Rebuild Cor. with Gov't
Provided Mon. + Stenciled brass cap
From which New Trees br. as Follows
J. Pine 7" diam. - brs. S. 35° E. For 14.80 Ft.
" " 8" " " N. 38° E " 17.26 "
" " 9" " " N. 68° W. " 29.58 "
" " 9" " " S. 38° W " 23.51 "

From Temporary $\frac{1}{4}$ 29+32 Solar
observations, are taken to determine
azimuth. Computed in office and
Find Random Line to be N. $89^{\circ}-52'$ E

5275.23 Lgth. True Line of 29+32 brg
N $89^{\circ}-1'-58''$ E. - Corr: $0^{\circ}-50'-02''$ N

2637.42 Lgth Each $\frac{1}{2}$

2637.32 LatE. 38.42: de P.M. - From Temp.
 $\frac{1}{4}$ 29+32 Sight W. on Random + turn
W. N $86^{\circ}-02'$ For 38.47' to $\frac{1}{4}$ 29+32
Using Lat. + de p. For check.

(68)

Line of 29+32 Cont.

Set Govt Mon. From which
Ash 6" diam. brs. S52°W For 25.51'

" 5" " " S60°W " 22.00'

R.O&K 3" " " N28°E " 25.89'

From Temp. M.C. on W. Shore Sight

mc-1 W. on Random + turn W: N 90° For 49.70'

to M.C. on W. Shore Little Ball Club Lake

Place Govt Mon. From which

Ash 10" diam brs S₁49°W For 35.33'

Ash 7" " " N.82°W " 33.00'

Ash 9" " " N.65°W " 32.50'

From Temp M.C. on E. Shore

L₂T = 4537.47' E + dep = 66.03'. Set on

Temp M.C. - Sight W. on Random +

turn W: N. 87°44' For 66.08' using

L₂T + dep. For Check (66.03 N. of Cor.)

+ Set M.C. on E. Shore Lake = A.

Govt Provided Mon. From which

mc-2 Elm 7" diam. brs. N.33°E For 32.47 ft.

" 9" " " S.18°W " 15.30"

Ash 9" " " S 83°E " 26.30"

True Line b₂g N 89°1'58"E From 29-30-31+32

2637.62' ¹/₄ 29+32 as described Above

3416.04' M.C. on W. Shore Lake " "

4535.36' M.C. " E. " " "

5287.25' Cor. of 28-29-32+33 " "

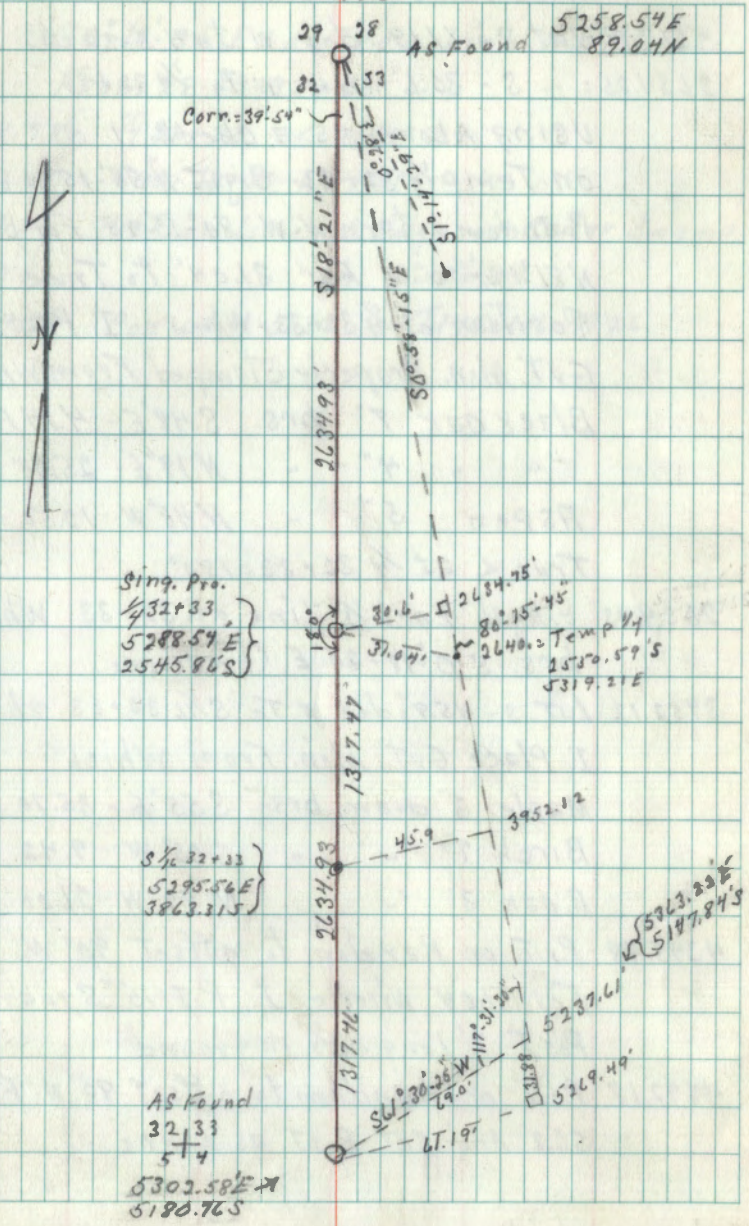
Line of 32+33 5/2/58

Mostly Cloudy. Showers. High N.W. Wind
Ave. Temp. About 60° F.

From 28-29-32+33. Sight S1°26'15" E on
Random + turn SE: S 0°28' For Random
S. 58°18' E. over slashings. old Road Just
West of Line

- 600' Swamp - Mixed Low Land Timber
- 1680 Aspen + birch dense hazel
- 2411 Logging Road brs N.E.
- 2624 old Fence Line
- 2640 Temporary 1/4 32+33
- 2784 Am about 70' E. of a ccc. Tag for 1/4 32/33
- 3708 Cross Road brg N.W.
- 4420 Swamp - dense Cedar + small balsam
- 5237.61 P.S.T. to Sight N on Random + turn N.W.'s
117°31'20" For 69.0' to Cor. of 4-5-32+33
Twp. 145+146 N. R. 26 W. Find Scribed Post
And Legible Remains of SE and NW
G.L.O. B.Ts. Rebuild Cor With 2'x5' Iron
Mon. AS Provided By Gvt. From which
New Cedar 9" brs. S. 83° E. For 7.70'
" " 8" " N. 17° E " 29.45'
" " 6" " S. 33° W " 14.20'
" " 6" " N. 75° W " 15.98'

Line of 32+33-T/46-P26 — = True
--- = Random



Line of 32+33

5269.49 - Lat. S - 61.19' - dep. W. to 4-5-32+33

2634.25 = S - 30.6' - dep. W to 1/4 32+33

Using Above as a check 1 set inst.

on Temp 1/4 32+33 - Sight N 58°-15' W on

Random + turn N:W 80°-15'-45" For brg

N 81°-14'-00" W For 31.04' to True

Position of 1/4 32+33 Where I Place

GvT. Man. Properly Stamped From Which

Black Oak 7" brs. S 48° E - 4.14 Ft.

" " 4" " N 19° E - 25.98 "

Aspen 5" " N 48° W - 12.50 "

True \angle at 1/4 32+33 = 180°2634.93 = Lgth Each 1/2 Line of 32+33 Which
brs. S 0°-18'-20" E (by coords)3952.12 - Lat. S - 45.9' - dep. W. To S 1/6 32+33 Where
I Place GvT. Man. From Which

Maple 3" diam. brs S 55° E - 35.70 FT.

Birch 7" " " S 05° W - 9.42 "

P. Oak 3" " " N. 82° W 26.00'

4395.98 P.T. on Random to offset 90° W

For 51.04' Where I Put 6" Square

Post 7' Long - 3 1/2" in ground

4892.18 P.T. on Random to offset 90° W For
56.8' And Set Post as Above

True Line of 32+33 - T/46 - R 26

S 0°-18'-20" E on True Line of 32+33

From 28-29-32+33

2634.93' - 1/4 32+33 - $\angle = 180^\circ$ 3952.40' - S 1/6 - 32+33 $\angle = 180^\circ$

4396.29 - Post on Line - N. Edge of Cedar Swamp

4892.52 " " " in Swamp

5269.86 Cor. of 4-5-32+33 - T/45+146 - R 26

75

West Between 5+32. T. 145+146 - R. 26

5/5/58 - over cast - Ave. Temp 50°
Slight Wind From NW.From Cor. of 4-5-32+33 - Tups
145+146 N - R. 26 W I Sight N.
61°30'25" W on Random - Plunge +
def. S.E. E 27°39'30" For Random
brg. S. 89°9'55" W. along old blazes.

100' End Cedar. Enter ash + Alders.

325 Aspen, birch + spruce

490 Telephone Line parallel to Road

585 Center Line T.H. #46 brs. N. 60° W

Cross grassy bottom land

972.0 Creek i' Wide Flows Southerly

1190 Alders + Cedar

1222.15 P.O.T. to def. N 20°19'40" For 90.83 FT.
to E 1/4 of 5+33.

1307.32 Lat W - 31.55 N - dep To E 1/4 Above

Corr. = N. 1°22'51" at 4-5-32+33 Then

1307.7 - Lgth. of True Line brg N 89°27'09" W
between 4-5-32+33 And E 1/4 of 5+32

From E 1/4 as Found Sight Random

From E - Plunge + turn NW: W 18°56'45"

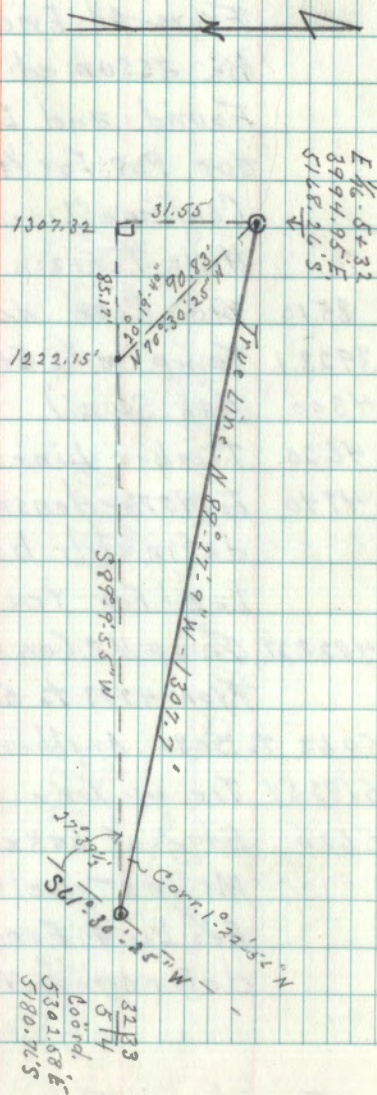
For Δ 180° - True Line N 89°27'9" W

Distances Cont. From 4-5-32+33

1858 Leave Swamp Enter J. + N Pine +
Mixed Hard Wood - Little Value

76

4-5-32+33 to E 1/4 32+5 - T. 145+146 - R. 26



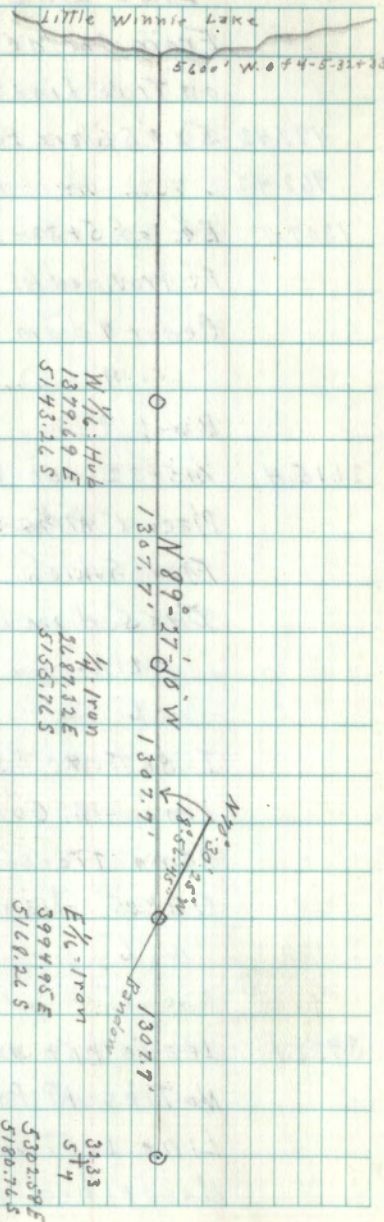
(77)

Line of 5+32 Continued

- 2515 Center of Road Brs S.E.
 2615.4 $\frac{1}{4}$ 5+32-T145 + 146 N-R26W. Comes
 on N. Shoulder of a New Road + S
 From All Evidence it can only
 be assumed that $\frac{1}{4}$ 5+32 was
 Found and E $\frac{1}{2}$ Placed on Line $\frac{1}{2}$ dist.
 our Pos. For $\frac{1}{4}$ Fits a 1938 Tag
 Continue Line 180° From $\frac{1}{4}$ 5+32
 Hilly Terrain - over Pine slashings
 3510 old Road Northerly
 3923.1 Temp. W. $\frac{1}{2}$ 5+32
 4300 Ash Swail
 4620 Timber Line Cross open Meadow
 4740 to 4773 - dense Willows - This has
 definitely been a Shore Line of
 Lake For Years (Find driftwood)
 4828.26 Temp N.C. Con Glo. distance (adjusted)
 From 4773 to 5063 - open Meadow
 5063 to 5080 - Another definite Shore Line
 5182.54 Tie up line on beach
 5600 Edge of Lake
 My Instructions are to use
 E $\frac{1}{2}$ Line for bearing + dist. to
 determine W $\frac{1}{2}$ Line

South Line of S:32-T146N-R26W

(78)



(79)

True Line of 5+32 T145+146-R26.

From Cor. of 4-5-32+33 T145+146-R26

on True Line brg $N 89^{\circ} 27' 10'' W$

497.43 5' x 7' Square Post - 3 1/2' in ground

962.42 " " " "

1307.7 E 1/4 of 5+32. Where We Set Iron Mon.

As Provided BY GVT. From Which

Cedar 7" diam. brs. $N 55^{\circ} E - 48.80'$ " 9" " " $S 32^{\circ} E - 44.48'$ Birch 9" " " $S 72^{\circ} W - 55.45'$

2615.4 1/4 5+32 on W. Shoulder of B&O Club Road

Place 1" Pipe For Cor. out of Sight in Road

From Which

Oak 5" diam brs. $S 33^{\circ} W - 55.03'$ " 6" " " $N 41^{\circ} E - 104.0'$ " 6" " " $N 83^{\circ} W - 66.90'$

I Set W.C. 33 West of 1/4 5+32 on

Line - A GVT. Mon. From Which

Same Trees as used Above As Follows

Oak 5" diam. brs. $S 4^{\circ} E - 42.30'$ " 6" " " $N 50^{\circ} E - 131.10'$ " 6" " " $N 70^{\circ} W - 35.73'$

3923.1 Leave hub on Line For Future Check

No Ties AT Present - Balance of

Line Left and Accepted as

described Page 77

(80)

(81)

T146N - R26W Very Strong W. Wind

West Line of S. 30 - N 1/2 5/8/58

5/6/58. Fair + Warm - Slight breeze

From N.W. Temp. 50° to 70° F

From 29-30-31+32 - Sight N. 89°-52' E,
on Random + turn E: S 89°-49'-30" For
Random S. 0°-18'-30" E. between 31+32
Through ash-balsam + bir.

300 Enter dense willows - This is old
Lake bottom

2649.71 Tie up Line 7.2' W. of old Post.
We Find Remains of Several old
oaks which could be G.L.O. Tree
but None can be Identified.
My Instructions are to use
S 1/2 Line of 29+30 For A Proportional
Meas. + brg of N 1/2 31+32

So From 29-30-31+32 - Sight S 18°-30' E
on Random Above - Plunge + def N: E
0°-7'-30" For Random N 0°-11' W

570' Forrest Trail N.W.

760 " " West

1157 Center Line of T.H. #46 brs N 38° W

2541 Road E+W

2586.91 P.O.T. to def E. 6'-0" For 68.04' to 1/4 29+30

Which is an Axel driven in Ground From Which
old J. Pine 7" (dead) brs S 41° E - 29.0'
" " 10" " S 53° W - 28.40'
New N. Pine 15" " S 81° E - 56.10'

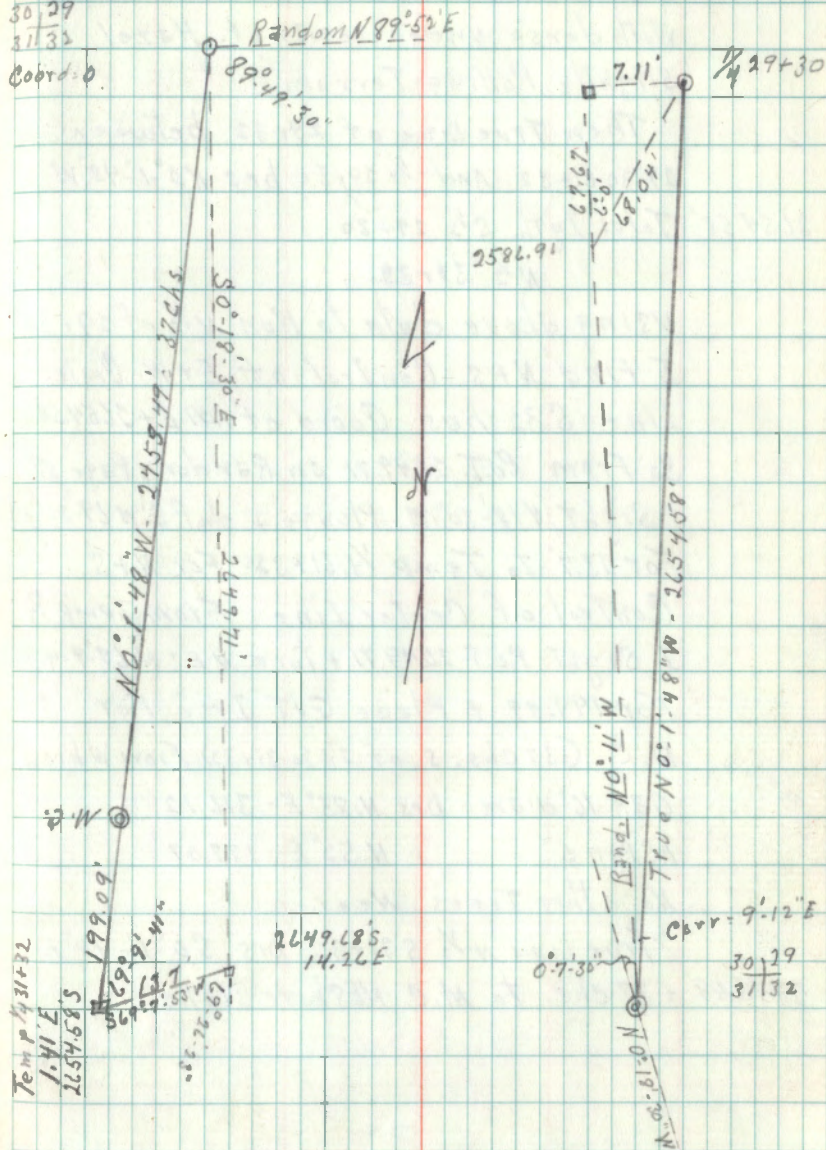
(82)

T146N - R26W

N 1/2 Line of 31+32

S 1/2 Line of 29+30

30/29
31/32
Coord. 0



S $\frac{1}{2}$ Line of 29+30 Cont.

Entire Line Mixed Pine + hardwood
With dense undergrowth of Hazel

Slightly Rolling Terrain

Then True Line of 29+32 between
29-30-31+32 And $\frac{1}{4}$ 29+30 brs $N0^{\circ}1'-48''W$

2654.58' Total Lgth. S $\frac{1}{2}$ 29+30

N $\frac{1}{2}$ 31+32

Using above data to Run N $\frac{1}{2}$ of 29+30

I Find N+S. Control of E+W. Center
Line. S 32 has Coord of $1.41'E + 2654.58'W$

So From P.O.T. 2649.71 on Random Page 81

1 Sight $N18^{\circ}30'W$ - Plunge + def $S:W 69^{\circ}21'33''$

For 13.7 to Temp $\frac{1}{4}$ 31+32. For N+S.

Control of Center Line From Temp $\frac{1}{4}$

I Sight P.O.T 2649.71 + turn $NE: N 69^{\circ}2'-41''$

For 199.09' + Place GVT Iron For

M.C. (37 chs. S. of 29-30-31+32) From Which

OAK 16" diam. brs $N.85^{\circ}E - 316.12'$

ASPEN 6" " " $N.52^{\circ}E - 177.07'$

No other Trees Near.

True Line N $\frac{1}{2}$ S 31+32 brs $S0^{\circ}1'-48''E$

2455.49' = 37 chs. to M.C. NE Shore Lake

(85)

West Across Center Sec. 32

5/9/58 - Partly Cloudy - Warm - slight
Wind From W. 50° to 60° E.

From Cor. of $\frac{1}{4}$ 32 + 33 - Sight S. 81° 14' E
to Temp $\frac{1}{4}$ on Random Plunge + def.
NW:W 9° 56' 40" For Random S 88° 49' 30" W
Calculated to intersect Temp $\frac{1}{4}$ 31 + 32

270.37 Hub "A" For Temp M.C. on E. Shore Lake
Place Hub "B" on Line West of Lake
And Flag "C" S. of B. - 612.35' dist
BAC = 16° 56' 35" ABC = 99° 6' 15"

$$16^{\circ}56'30" + 33^{\circ}58' + 50^{\circ}50" = 101^{\circ}39'30" \div 6 = 16^{\circ}56'35"$$

$$99^{\circ}6'15" + 198^{\circ}13'30" + 297^{\circ}18'45" = 594^{\circ}37'30" \div 6 = 99^{\circ}6'15"$$

$$\sin 63^{\circ}57'10" \times 112.35 = 1887.83' = AB$$

$$\text{" } 16^{\circ}56'35"$$

2158.2 Total dist. to Hub B. on West shore

2420 Fence around Field Cross 45' S. of NE Cor.

2537 Cross N Line same Fence brs. W & SW

2630 Am over 200' S. of an oak Post For $\frac{1}{4}$ cen.
A Tag on Tree 30' S. of My Line dated 1939.
Says Cor is 4 chs. N.

2775 Power Line

3032 Center Line of T.H. #46 brs N 35° W

3100 Am Just N. of House + Garage

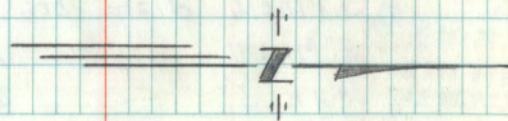
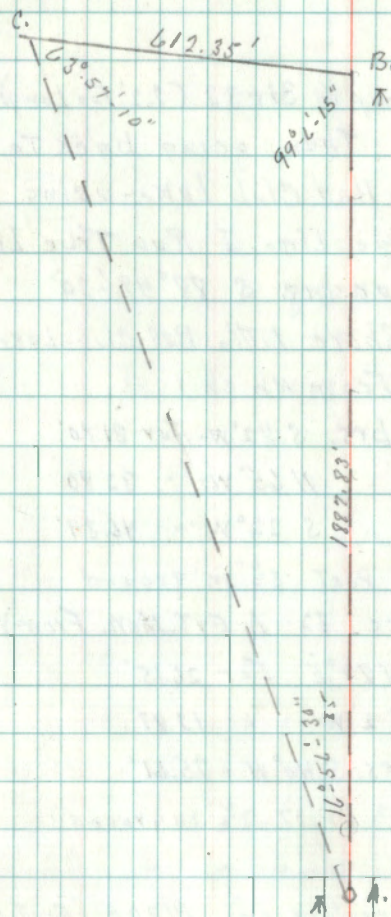
3300 " " S " " + buildings

Supposedly S. of True Line

3929 Am About 20' N. of Tag on Tree dated 1938
Stating Line to be 4 chs N.

Triangulation over Lake Along Center (86)

Line E + W



(87)

West across Cen. Sec. 32 Cont.

3957 Road N+S.

4183 " N+S

4388 " SW

5290.44 Intersect Temp $\frac{1}{4}$ 31+32 (9.2' too Long)

.08 S. of Nail Then going back To
W. Shore Little Ball Club Lake - using
Random as True Line I Run True Line
As Follows on bng S $88^{\circ}49'20''$

1131.02' M.C. West Shore Little Ball Club Lake

Nd4 A Gvt Mon. From Which
Ash-3' diam. brs. S. $82^{\circ}W$ - For 31.80'

" 4" " " N $65^{\circ}W$ - " 32.80'" 7" " " S $22^{\circ}W$ - " 46.34'2419.57' 5"x7' Square Post $3\frac{1}{2}$ ' in ground

2626.34' Center $\frac{1}{4}$ Sec 32 - A Gvt. Mon. From Which
Oak 6" brs N $89^{\circ}E$ For 26.15'

" 4" " " N $2^{\circ}W$ " 12.87'N. Pine 12" brs. S. $40^{\circ}W$ - " 25.61'3084.21' 5"x7' Square Ced. Post. $3\frac{1}{2}$ ' in ground

3625.54' " " " " " " "

3958.41 $\frac{1}{16}$ #4 (W. $\frac{1}{4}$ on center line) Place Gvt. Mon.
From Which

J. Pine 6" diam brs. West 21.18'

N. Pine 11" " " N. $82^{\circ}E$ - 34.18'Oak 5" " " S $15^{\circ}E$ - 24.54'

$\frac{1}{16}$ #4 Falls in Road - Protect This With
A 7" Ced Post - White With Red Top

E+W. Center Line
of Sec. 32.

(88)

Temp $\frac{1}{4}$ 31+32
1.41'E
2654.585

2627.25'S
1330.93'E

5290.44

POST 3625.54

POST 3084.21

2599.86'S
2662.72'E

 $\frac{1}{4}$ Cen. 2626.34

POST 2419.57

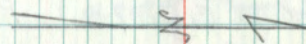
M.C. = 2131.02'

1.41'E

Temp. M.C.
270.37' $\frac{1}{4}$ 32+33

5288.54'E

2645.865

Temp $\frac{1}{4}$ 32+33

N. on E 1/4 Line of S. 32
 From E 1/4 Sec 5 + 32 T 145 + 146 R 26
 Sight N 89°-27'-10" W to 1/4 + Turn W: N
 89°-1'-30" For Line of E 1/4 S. 32
 brg N 0°-25'-40" W. over Alder Swamp Just
 E. of Barb-Wire Fence

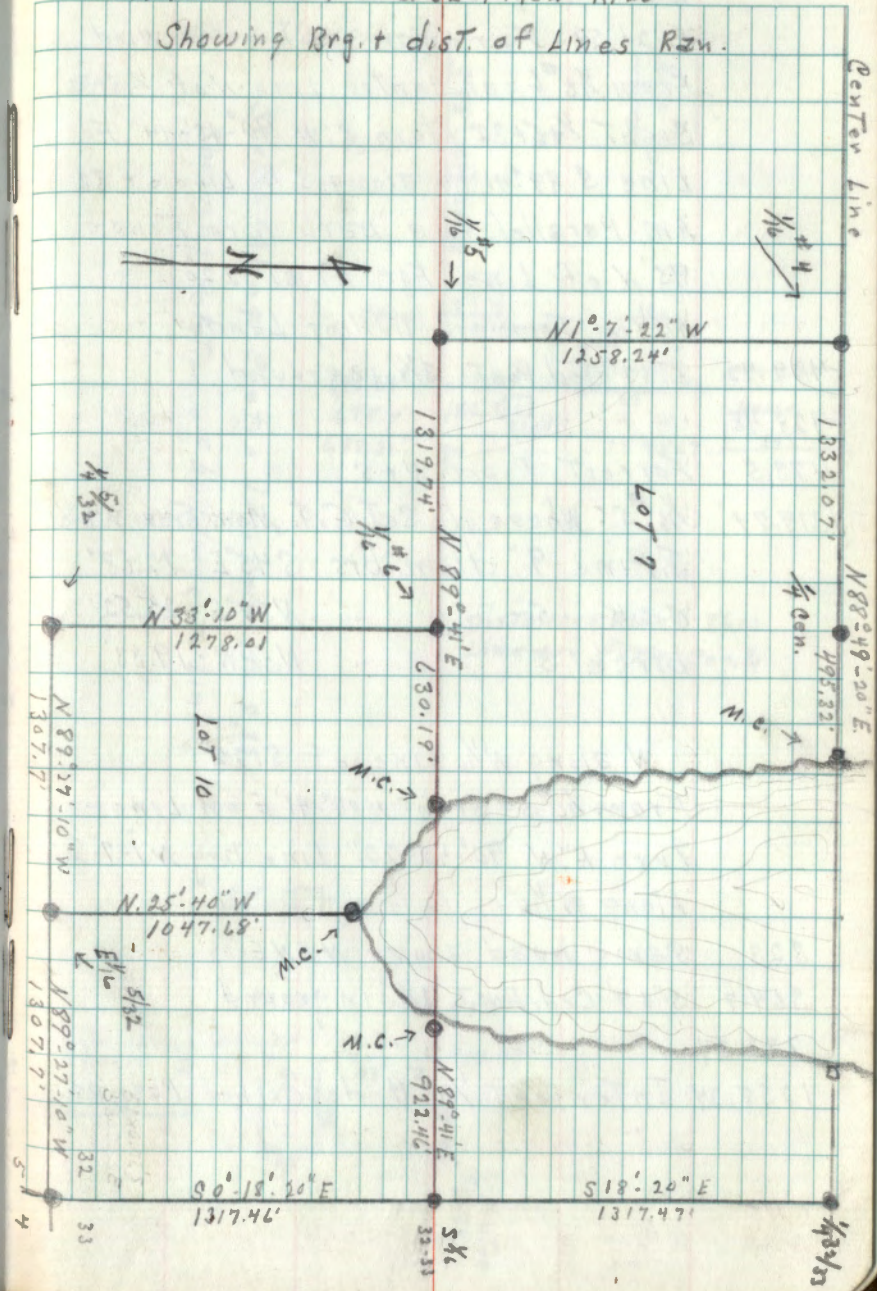
- 351.0' 5'x7' Square Ced Post - 3 1/2" in ground
- 548' Center Line of T.H. #46 brg N 58° W.
- 703.95' 5'x7' Square Ced Post - 3 1/2" in ground
- 1047.69 M.C. S. Shore Little-Ball-Club-Lake
 Place Gvt. Mon. From which
- Elm 9" diam. brs. S. 23° E - 172.2'
- birch 8" " " S 25° W - 162.60'
- Ash 5" " " S 10° W - 280.3'

N. on Center Line of S. 32
 5/10/58. Warm - Strong Wind From W.
 From 1/4 5 + 32 - T 145 + 146 N - R 26 W I
 Sight N 89°-27'-10" W + Turn W: N 88°-54'
 For Line N 0°-33'-10" W. on N + S Center
 Line of S. 32 - Along W. Side of A New
 Road.

1278.01 1/16" C.C.S. 1/4 on Center Line) Place Gvt.
 Monument From which

- oak 6" diam brs. S 13° W - 12.88'
- " 6" " " N 58° E - 96.73'
- N. Pine 8" " " N 20° W - 89.21'

A Portion in Sec. 32 - T 146 N - R. 26
 Showing Brg. + dist. of Lines Run.



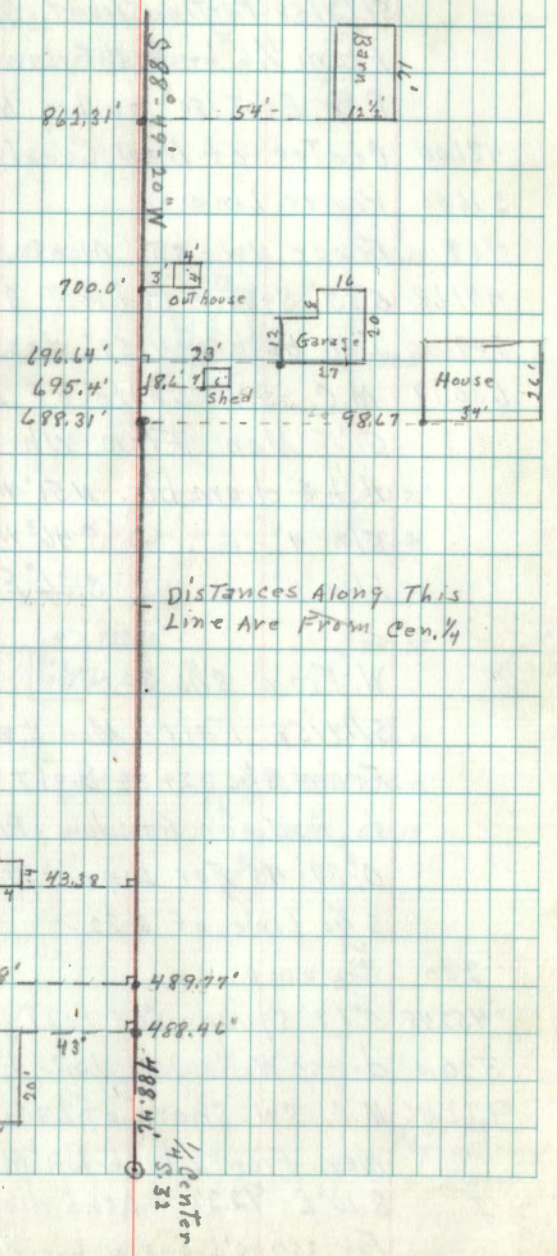
West along S. 1/4 S. 32 From 1/4 #6
 5/12/58 - Fair + Warm - Strong W. Wind
 From 1/4 #6 on Center Line N of 1/4 5+32
 Sight 1/4 5+32 + turn S:W 90°-13'-44" For
 Line S. 89°-41' W. along S. 1/4 Line of 32
 AM Parallel to a barbed Wire Fence
 95' N of Line For First 220'
 Mixed Timber - Rolling Land.

- 499.92' 5"x7' Ced Post. 3 1/2" in ground
- 928.48 " " " "
- 1173.5 Forrest Road N+S
- 1319.74' 1/4 #5 Where We Set Grt. Mon. From Which
 J. Pine 9" diam. brs. S45°E - 12.68'
 Oak 5" " " N37°E - 15.52'
 birch 5" " " N50°W - 19.33'

N. along W 1/4 Line of S. 32
 From 1/4 #5. Sight N89°-41'E on Line +
 turn E:N 90°-48'-22" Line brg N1-7'-22"W
 Along W 1/4

- 323 Same Road above N+N E
- 364.7 5"x7' Ced. Post 3 1/2" in ground
- 772.24 " " " "
- 1258.24 Intersect 1/4 #4 - described Page 88

Sketch Along Center Line E-W. of S. 32
 Showing Relation of Buildings to Line



Distances Along This Line Are From Cen. 1/4

(93)

E. along $S\frac{1}{2}$ Line of S. 32

5/13/58 Partly Cloudy - Warm SW Wind
 From $\frac{1}{16}^{\text{th}}$ - Sight Line W - Plunge +
 Run East 180° on brg $N 89^\circ 41' E$

31.00 Center of New County Road N + S

216.00 Power Line

469 Fence NW + SE Along Right of Way.

471.68 $5'' \times 7'$ Square Ced. Post $3\frac{1}{2}''$ in ground509.00 T.H. 46 brs $N 58^\circ$ West

630.19 M.C. S.W. Shore of Lake - Place
 Gov't Men. From which

Ash $3''$ diam. brs. $N 51^\circ W$ For 14.35 FT.Elm $4''$ " " $S 46^\circ W$ " 18.35 "Elm $4''$ " " $S 36^\circ E$ " 62.00 "W. From $S\frac{1}{2}$ 32 + 33

5/14/58 - Fair - Mod. S. Wind - Warm
 From $S\frac{1}{2}$ 32 + 33 Sight $N 89^\circ 1' 45'' E$
 to P.O.T. on Random - Plunge + def W. N
 $0^\circ 39' 45''$ For Line $S 89^\circ 41' W$ along
 $S\frac{1}{2}$ Line of S. 32

200 Swamp

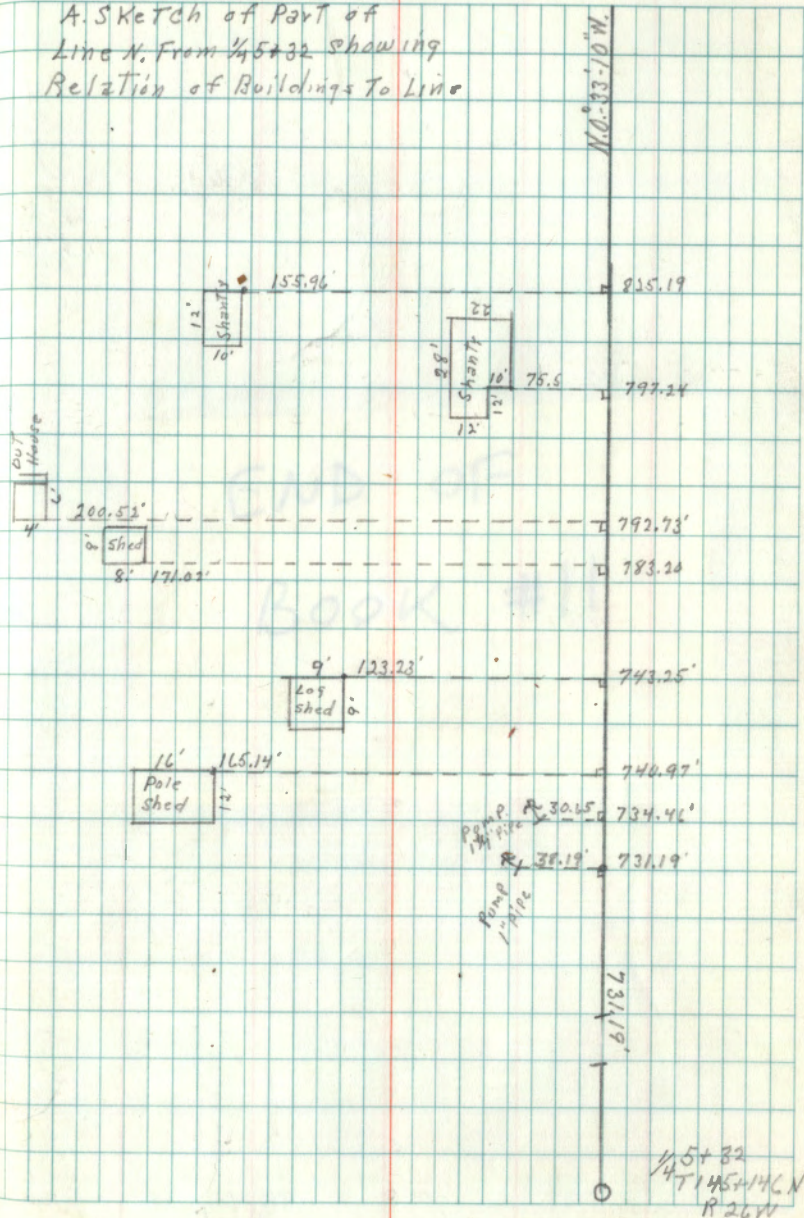
452.48 $5'' \times 7'$ Square Ced Post $3\frac{1}{2}''$ in ground

520.0 dense Willows - Lake bottom

922.46 M.C. SW Shore of Lake Place Gov't.
 Men. From which - Balm. of Gilled $4''$ brs.
 $S. 10^\circ E$ - 92.32' - Ash $5''$ diam. brs. $N 82^\circ E$
 For. 337.28' - ASP. 4. brs. $S 83^\circ E$ - 47.4'

(94)

A. SKETCH of Part of
 Line N. From $\frac{1}{4}$ S + 32 showing
 Relation of Buildings To Line



END OF
BOOK #11