

CORNER
RESTORATION
T149N R28W



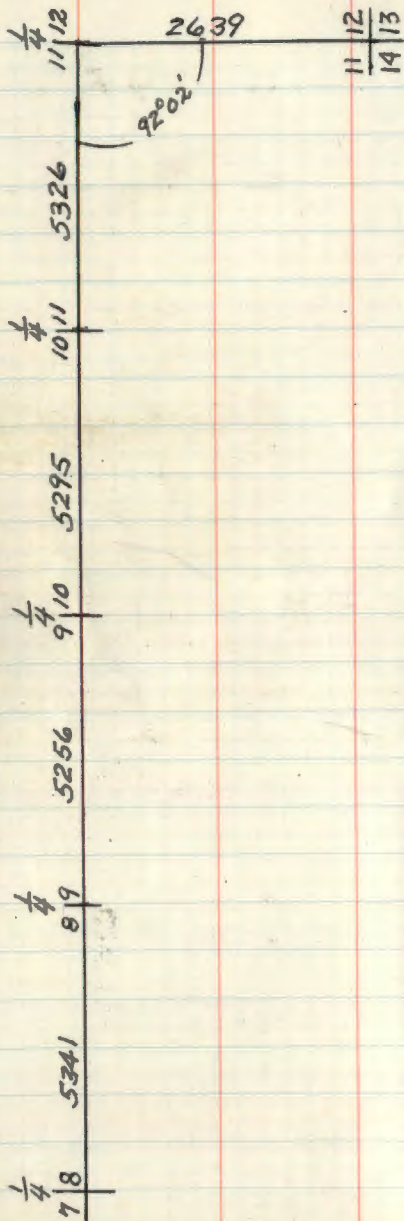
MINING
TRANSIT BOOK

No. 384P

BOOK 1

CORNER RESTORATION T149N R28W B1

ALVWOOD - BIG FORK ROAD - SURVEY PLAT



T149N R28W 5th P.M.
 BOOK 1 of 2

LAKE
~~75~~ ~~73~~ ~~74~~

				76					
6	5	4	65	3	66	2	16	1	36
62	58	57		64	67	30	17	15	18
7	3	8	4	9	5	10	6 ⁷⁹	11	7
		63		54	53	27	28	8	1
18	38	17		16		15	26	19	13
60	39		12			24	25	21	22
79	40	20		21		22	23	23	20
59	9	61		13	14	10	70	32	71
30	41	29		28		27	37	26	31
	42						47	48	49
31	43	32		33		34	46	35	50
	44							52	51
69				56	55	45	52	51	

SEE BOOK 1 T149N28W

Colored numbers refer to page on which
 Notes for that corner may be found.

1

J-23

Quarter corner sections 12-13
 From Itasca Co. surveyors record for
 survey of the Alwood - Bigfork road.

Birch 10" N13°W 65.9 Ft.

Fd. WELL ROTTED REMAINS + BARK OF BIRCH STUMP AT N6W
 65.9'

Sugar 9" S30½°W 35.0 Ft.

Found 15" Maple S37°W 35.0 with scribe 1/4" visible

CERTIFICATE FILED

Found County BTI on south side of E-W road
~~on south side of road~~ - old rusted FSLP on north
 side facing road. Put BTI tag on tree and painted red

2-26-76 CRK

10/20/86 CR JA

Fd. 1" IRON WITH SPIKE INSIDE 2" BELOW ROAD E+W
 AND NEW ROAD NE APPROX. 100' TO EAST
 SCRIBE HAS ROTTED OUT OF COUNTY MAPLE - BUT IS STILL ALIVE
 AT S37 W 35.0'

NEW TIES

ASH 8 N9W 33.8' SPIKE - PRINT + TAG
 ASPEN 10 S68E 116.0' " " "

2

Quarter corner sections 13-18

From Itasca Co. Surveyors record for
survey of the Alwood Bigfork road:-

Spruce $13^{\circ} 57' 9\frac{1}{2}'' W$ 62.2 ft.

Balsam $11^{\circ} N 53' 1\frac{1}{2}'' E$ 77.8 ft.

9-28-76 CK
CHAINED NORTH FROM APPROX. SEL. COR. 13-18-19-24

1500' N CENTER OF DRY CREEK - ORIG. TIE

2545' N CENTER LINE OF COUNTY ROAD #29
NS2W - SB2E

BLAZED 8" ASPEN ON SOUTH SIDE OF COUNTY ROAD,
MKT ASPEN WITH BLACK MARKER AND WROTE 2470' N
ON NORTH SIDE-FACING COUNTY ROAD
TIED TO OLD CCC POST WITH TAG VERY RUSTED
FROM BLAZED ASPEN TAG WAS NW 75'

1997

SEE CORNER CERTIFICATE BY ITASCA COUNTY

Quarter corner sections 7-8 (1914)
 From Itasca Co. Surveyors record for
 survey of Alwood - Bigfork road - F.E. Williams

Spruce 10" S66°W 30.8 Ft.

Spruce 8" S47½°E 46.8 Ft.

STATE ROAD # MOOSE PARK - ALWOOD

ARDENHURST 1914 - NOW HWY. 46

NEW BT's.

TAM. 6 N33E 55.2'

TAM. 9 N86W 46.7'

N½ 2642.8' - S½ 2643.5' COUNTY DISTANCES ¹⁹¹⁴

USED METAL LOCATOR AND GOT DRAW IN BLACKTOP HWY # 46
 AND S. OF DORA LAKE ROAD - IRON MAY BE DOWN UNDER
 BLACKTOP WILL DIG WHEN WE HAVE PATCHING MATERIAL
 ALONG TO FIX UP HOLE
 IRON MAY HAVE BEEN SET BY J. ROSE IN SUBDIVISION OF
 SEC. 8 1926

CK 80

4

Quarter corner sections 8-9
Notes from Itasca Co. surveyors record
for the survey of the Alwood-Bigfork road

Balsam $10^{\circ} S 11^{\circ} W$ 51.5 Ft.

Balsam $12^{\circ} N 23^{\circ} E$ 66.0 Ft.

NOTES OF ORIG. GOV'T. SURVEY 1896
SET BALSAM POST

BALSAM 4 S 81 E 11 LKS. 7.3'

W. PINE 20 N 33 W 90 LKS. 59.4'

FORM 874 1-17-34 BY L. W. JOHNSON
Fd. BALSAM 10 S 10 W -
PINE STP. 15 N 38 W -

5

Quarter corner sections 9-10

Notes From Itasca Co. surveyors record
for survey of Alwood-Bigfork road.orig.
Tamarack 16" N48°W 82.0 ft.

Jack pine 5" S36°E 47.0 ft.

NOTES OF ORIG. GOV'T. SURVEY 1896

SET SPRUCE POST

TAM. 10 N48W 123 LKS, 81.2'

TAM. 9 S87W 139 LKS, 91.7'

CERTIFICATE FILED

FORM 874 1-17-34 BY L.W. JOHNSON
Fd. J. PINE 15" N51W -

6

Quarter corner sections 10-11
From notes on Itasca Co. surveyors record
for survey of #14wood-Bigfork road

Tamarack 13" N29°E 82.4 ft.

Tamarack 7" S47°W 82.4 ft.

CERTIFICATE FILED

7

Quarter corner sections 11-12
Notes from Itasca Co. surveyors record
of survey of the Alwood-Bigfork road.

Balsam 10" N73°E 61.6 Ft.

Balsam 12" N71°W 44.5 Ft.

NOTES BY JOHN J. ROSE 1927 FOLDER 15 PAGE 93
FROM SEC. COR. 11, 12, 13, 14 NORTH TO 1/4 BET. SECS. 11 & 12
2643.7'

CERTIFICATE FILED

8

Corner sections 11-12-13-14

Notes From Itasca co. surveyors record
for survey of the Alwood Bigfork road

Spruce 12° S 3° W 37.0 Ft.

Ash 14° N 69° W 58.2 Ft.

CERTIFICATE FILED

SEARCHED AREA WITH LOCATOR NO MONUMENT
FOUND - NO BT'S FOUND
MAY BE WOOD POST UNDER ROADWAY 9' TO 6' DOWN
DISTANCE CHAINED E & W WITH COUNTY DISTANCE TO E
OLD FENCE LINE SOUTH AND CENTERLINE OF F.S.
ROAD TO NORTH

10-13-81 CK

R-5 off-sail

Corner of Sections 19, 20, 29, 30

Notes of Original Govt. Survey of 1896

Set spruce post

Spruce 10" N79E 66 lks.

Now 20" Spruce stump at brg ^{visible} dist. with all scribe

Aspen 10 S89E 90 lks.

No evidence found of stump at brg ^{dist.}

Spruce 10 S42W 28 lks.

falls in ditch

Birch 9 N87W 57 lks.

Now well rotted birch stub at brg ^{dist.}

To perpetuate this corner I set a 5 1/2" x 5 1/2" x 24" concrete monument 8" below surface of road with 3" dia. brass tablet stamped

Put FSLP on 6" Ash due East T149N R28W

of corner 36.8' blaze on front

519 | 520

530 | 529

1974

MONU. IN PLACE

Witnessed by

Elm 8" ^{NOW DEAD SNAG} N28W 81.4' ^{8117/93 R.M.T.C.K.} mkd. 519 Bt. ^{DEP}W. Oak 9" ^{RE TAG OAK} N33E 60.4' mkd. 520 Bt.

Ash 5" S70E 55.2' mkd. 529 Bt.

Ash 11" S58W 95.1' mkd. 530 Bt.

Set 8' long steel sign post due west 30.9' with F.S. signs 54-2-54-4 attached

6-21-74 Curtis R. Krause

12/11/77 With corner location measured ties and located corner with metal detector viewed evidence old ties and new

Denny E. Pepper

R.L.S. 5333

10/15/96 OK

MONUMENT IS IN PLACE - UNDER ROAD SURFACE

W/OAK 13 N33E 60.4' CLOSED w/ SCAR

ELM SNAG 10 N28W 81.4' SCRIBE VISIBLE

ASH 8 S70E 55.2' CLOSED w/ SCAR

ASH WINDFALL DECAYED 12" S58W 95.1' (BT)
SCRIBE AT BASE OF STUMP

8' STEEL POST WEST 30.9' OK

ASH, EAST 36.8' FSLP OK

R-17 affidavit

Section Corner to Sec's

22, 23, 26, 27

Notes of Original Gov't. Survey of 1896

Set post found top of post with marks

point of post was found in place in swamp

TAM. 6 N72E 251ks. 16.5'

Found tam. stump 10" with faint marks at bry $\frac{1}{2}$ dist.

TAM. 12 S1E 891ks. 58.7'

Found 14" stump no marks at bry $\frac{1}{2}$ dist.

TAM. 6 S66W 501ks. 33.0' ?

found 10" stump at bry $\frac{1}{2}$ dist.

TAM. 10 N48W 521ks. 34.3' ?

found 17" TAM. stump scribed T149N R28W S22 Bt.

To perpetuate this corner I set a 2" dia. x 5' long
galvanized steel pipe, filled with concrete and capped
with 3" dia. brass tablet stamped T149N R28W

point of original post at east edge

S22 S23

at iron monument

S27 S26

1974

RLS NO. 6807

Witnessed by.

TAM. 12" N77°E 32.0' mkd. T149N R28W S23 Bt.

B. Spruce 9" S3°E 71.2' mkd. T149N R28W S26 Bt.

Ash 8" S63W 43.9' mkd. T149N R28W S27 Bt.

Aspen 7" N36W 53.7' mkd. T149N R28W S22 Bt.

Set 8' steel sign post due West 3.6' with 54-2 $\frac{1}{2}$ 54-4

set 8' steel sign post due East 3.3' with 54-2

7-11-74 Curtis R. Krause

12/11/74 Wit. corner evidence & ties

Dennis E. Pappas

RLS 5333

N-13 offshoot

Corner of Section's 15, 16, 21, 22

Notes of Original Govt. Survey of 1896

Set TAM. post fd. orig. point of Tam post
under moss in place

Spruce 3 S11E 81ks. = 5.3'

fd. scribed stub 24" high mkd. S21Bt 7.2'

Spruce 3 S14W 681ks. = 44.9

fd. remains of rotted stp at brg $\frac{1}{2}$ dist.

TAM. 3 N43W 771ks. 50.8"

fd. 5" TAM. at brg $\frac{1}{2}$ dist. ^{Rescribed with 1st}
scribed T149N R28W S16 Bt.

Spruce 2 N5E 421ks. 27.7'

fd remains of rotted stp. at brg $\frac{1}{2}$ dist.

To perpetuate this corner I set a 2" dia. x 5' long
steel pipe filled with concrete and capped with
3" dia. brass tablet stamped T149N R28W
set orig. post point at north
edge of iron monument

S16	S15
S21	S22
1974	
RLS	NO 6807

Witnessed by.

Spruce ~~SWINDFALL~~ N37W 33.8 mkd T149N R28W S16 Bt.

Spruce 6 DEAD N48E 20.9 mkd, T149N R28W S15 Bt.

TAM. 5 OK S72E 27.8 mkd T149N R28W S22 Bt.

TAM. 5 OK S9W 37.4 mkd T149N R28W S21 Bt.

Spruce 6 DEAD S49W 10.0 mkd. T149N R28W S21 Bt.

Set 8' steel sign post due West 4.0' with 542 & 544

Set 8' steel sign post due East 3.8' with 542 attached.

7-15-74 Curtis R. Kause

12/11/74 West corner - evidence - ties

Don & Pepper

R.L.S 5333

9-20-07 RMAIN

GPSed IRON TIMBER HAS BEEN CLEARCUT
AROUND MONUMENT AND BT AREA

12

N-9

Coffey /

Corner of Sections 16, 17, 20, 21

Notes of Original Govt. Survey of 1896

Set Tam. post fd. point of original post
in place in center of old swamp road.

Tam. 15 S18E 5 1/2 lks. = 3.6'

fd tam. stp. 36" high scribed T149N R28W S21 Bt

Spruce 6 N17E 30 lks. = 19.8'

fd. rotted remains of stp. at brq. 1/3 dist.

Tam. 6 S30W 34 lks. 22.4'

fd. remains of stp at brq 1/3 dist.

Tam. 10 N35W 35 lks. 23.1'

fd. tam. stp. 36" high scribed S Bt.

To perpetuate this corner I set a 2" dia. x 5' long
galvanized steel pipe, filled with concrete and capped
with 3" dia. brass tablet stamped T149N R28W

S17 S16

S20 S21

1974

RLS No. 6807

D&P

Witnessed by.

Spruce 5" S30W 17.5' mkd. T149N R28W S20 Bt

Tam. 8" N56W 18.0' mkd. T149N R28W S17 Bt

Tam. 6" N15E 11.0' mkd T149N R28W S16 Bt

Spruce 5 S51E 35.0' mkd T149N R28W S24 Bt

Set 8' steel sign post due North 10.6' with FS. sign

54-4. attached 6-24-74

Curtis R. Kanner

12/11/74 Wit. corner - evidence of ties

Norm E. Pappas

R.L.S. 5333

1/31/89 CK-GB

Replaced F.S. monument with a 2 1/2 x 5' long
galvanized monument with brass cap attached.
Brass cap set 1.0' above swamp. Old F.S.
monument was bent over by a state logging
operation.

Fd. Spruce 6" S30W at 17.5' Scribe visible

Fd. Tam 8" N15E at 11.0' " " "

Fd. Tam 9" N56W at 18.0' as a windfall. Cut
off upper portion. Now a 6' stub.

Fd. no evidence of Spruce S51E 35'.

Fd. evidence of orig. Tam S18E at 3.6'

Didn't look for other orig. trees at this time.

Set 8' steel sign posts for new ties:

1. Steel post North 2.8 - sign attached

2. Steel post West 3.25 - " "

3. Steel post S45E 4.3 - " "

New monument marked - T149N R28W

Logging trail winds east and
west from corner.

S17 S16

S20 S21

1989

USFS

Corner of Sections 21, 22, 27, 28
Notes of Original Govt. survey of 1896
Set spruce post

Balsam 6" N51½E 26 lks.

Balsam 18" S38½E 13 lks.

Spruce 24" S30W 12 lks.

Aspen 5" N56W 24 lks.

9-20-07 R. MAIN

No EVIDENCE Fd.

3-23-36 SMITH FORM 874-9

BELIEVES HE FOUND ORIG CORNER. Fd ONE
BT IN SEC 22. PLACE TAG ON BALSAM 14"
ON SE SIDE OF TREE FROM WHICH CORNER
BEARS 45° W of N 30 lks

Quarter Corner Sections 22-27
Notes of Original Govt. survey of 1896
Set spruce post

Tam. 6" N12W —

Spruce 4" S40E —

Sec. Cor. to Sec's. 1-2-11-12

Notes of orig. Govt. Survey 1896

Set Tam. post Fd. orig tam post in place - top rotted off lying beside post point 5" x 4" x 18" long

Tam. 6 N80E 14 lks. = 9.2

Found decayed tam. stp. at brq. dist.

Tam. 7 S71E 58 lks. = 38.3

Found 10" Tam. stp at brq. dist with flat blaze - no scribe

Tam. 8 S60W 19 lks. = 12.5

Found 12" Tam. stub 30" high at brq. dist w/ scribe ^{visible} R28 S11 BT

Tam. 6 N33W 34 lks. = 22.4

No evidence of tree or stump remains at brq. dist.

To perpetuate this corner I set a 2" dia. x 5' long
galvanized steel pipe, filled with concrete and
capped with 3" dia. brass cap marked T149N R28W

S2	S1
S11	S12
1976	

Witnessed by

RHS NO 6807

Ash 11" S18E 105.6' mkd. T149N R28W S12 BT

Blk. Spruce 7" S82W 65.7' mkd. T149N R28W S11 BT

Ash 7" N40E 41.95' mkd. T149N R28W S11 BT

Birch 7" N25W 47.4' mkd. T149N R28W S2 BT

Set 8" steel sign post due West 2.8' w/ l.s. sign 5A-4

2-26-76 Curtis R. Keane

CERTIFICATE FILED

Put FSLP on 8" Birch S17W 9.7' from tam. post to
mark corner position
Fd. FSLP on 10" Balsam S12°W 12' from post
Corner in Balsam Ash-Spruce swp. runs N-S between
high ground ridges
High ground is approx. 70' east and 150' north
Corner is approx. 400' west of FR # 2229 runs N-S
Swamp has been logged years ago found many tam. stumps
11-6-75 CRK

Set 8" steel sign post at south edge of iron pipe
and wired to post to stabilize corner monumentSet 4" x 7.5" Spruce post 0.8' to south of cor. monu.
post is 5' high

ok
4/19/77

Quarter Corner Bet. Sec's 1-2
Notes of orig. Govt. Survey 1896

Set Tam. post

Tam. 12 S82W 34 lks. = 22.4'

Tam. 10 S26E 18 lks. = 11.9'

NOTES BY JOHN J. ROSE 11-7-27

FOLDER 15 Pg. 61

Fd. ORIG. TAM. 10 IN SEC. 2 (DOWN)

ALSO ORIG. POST DOWN + DECAYED

SET NEW POST + BT'S.

TAM. POST 4" X 5

BALSAM 8 S86W 18.9'

ASPEN 5 S72E 20.0'

CCC notes by H. Adams 6-28-35
Fd. post good condition 36" long mkd. W 1/4 S2 - E 1/4 S1
Fd. Aspen 8" S64E 30 lks. scribed 1/4 S1 BT
Put FshP on Aspen above.

Quarter Corner Bet. Sec's. 2-11
Notes of Orig. Gov't. Survey 1896

Set spruce post

Tam. 9 N42W 29 lks. = 19.1'

NOW ROTTED TAM STUMP AT N42W - 19.1' SCRIBE BT

Tam. 11 S82W 64 lks. = 42.2'
10/16/78 CK WITH SCRIBE 1/4 S BT
Fd. TAM. WINDFALL AT S82W - 42.2'

NOTES BY JOHN J. ROSE RLS IN 1927

FOLDER # 15 PAGE 59

FOUND BOTH GOV'T. BT'S. - POST GONE

SET NEW POST AT TRUE CORNER

10/16/78 CK

FOUND DOWN POST (TAM) IN SWAMP FAINT SCRIBE

VISIBLE ON POST - BELIEVE ABOVE POST IS ROSE'S.

CERTIFICATE FILED

CCC notes by H.C. Norman 10-11-35
Fd Spruce post 3"x3"x18" scribed 52 - 1/4 S 11
Fd. Tam 10 S83W 62 lks. mkd 1/4 S BT
Tam 10 N36W 32 lks. mkd 1/4 S BT
Put FShP on 9" Spruce N27E 14 lks. from corner

RECOVERED CORNER INFORMATION ON CORNER CARD AT S.O.
TO PERPETUATE THIS CORNER SET 2" DIA. X 5' LONG
IRON PIPE FILLED WITH CONCRETE WITH 3" DIA.
BRASS CAP MARKED

T149NR28W

1/4 52
1/4 511
1978

WITNESSED BY

RLS NO

BLK. SPRUCE 9 N2E 69.78 MKD 1/4 S 2 BT

TAM. 8 N70W 100.60 MKD. 1/4 S 2 BT

BIRCH 8 S46W 15.66' MKD. 1/4 S 11 BT

BIRCH 9 N76E 21.02' MKD 1/4 S 2 BT

8" STEEL SIGN POST SOUTH 3.7' BOTH SIGNS

8" STEEL SIGN POST NORTH 3.7' BOTH SIGNS

10-17-78 CK

Quarter Corner Bet. Sec's. 1-12
Notes of Orig. Govt. Survey 1896

Set Tam. post

Tam. 12 S35E 6 lks. = 4.0'

NOW LARGE WELL ROTTED TAM. STUMP S35 E 4.0'

Tam. 9 N88W 21 lks. = 13.9'

NOW WELL ROTTED TAM. STUMP AT N88W 13.9'

NOTES BY JOHN J. ROSE 11/18/27

FOLDER #15 PAGE 71

RAN RANDOM LINE FROM SECTION CORNER TO SECTIONS

1-2-11-12 EAST BETWEEN SECTIONS 1412

AT 2642.5' FELL 53.9' SOUTH OF 1/4 COR.

PAGE 79 11/30/27

SET OVER POST TO 1/4 CORNER BET. SEC'S. 1412

AND RAN CORRECTED LINE EAST TO RANGE LINE

AT 2405.4 FELL 0.3 NORTH OF POST TO SECTION
CORNER TO SECTIONS 1412

CERTIFICATE FILED

CCC notes by L.W. Johnson 1-10-34
Fd. post 3"x3"x30" mkd. 1/4 S
Fd. Tam 10" S40E 6 lks

CCC notes by H.C. Norman 9-15-35
Fd. post 18" high scribed 1/4 S
Put FSLP on 6" Spruce S5°E 27 lks. from corner

10-30-78 CK BJ

CHAINED FROM SEC. COR. 1-2-11-12 EAST 2645'
FOUND OLD FSLP ON SPRUCE SNAG DATED 1935
NO POST FOUND - FOUND EVIDENCE OF BOTH ORIG. BT
STUMPS - SET POST AT COR. PUT FSLP ON 10" ASPEN
450' W. OF CORNER ALONG WOODS TRAIL NE-SW AT
STA. 2150'E

AREA OF COR. NOW IS FLOODED BEAVER AREA - WILL
HAVE TO WAIT UNTIL POND IS LOWERD

2/12/87 CK 68

FROM POST AT APPROX. SEC. COR. TO SEC'S 1+12 RAN LINE AT APPROX
2405' WE FELL 62' SOUTH OF POST SET ABOVE - OUR DISTANCE
MEASURED 2405' N/E WAS AT POST - SET NEW 3" ASH NEAR
OLD BIRCH POST AND OTHER POST POINTS
PUT FSLP ON 3" ASH N55W 23.0' FROM POSTS
OLD SPRUCE SNAG WITH 1935 FSLP IS NAIL TO BRUSH AND BALCON
STUB TO WEST - BR. 57A OF COR. - 17.8'
PLACE SPIKE AND RIBS ON IN HOLE NEXT TO POSTS

Quarter Corner Bet. Sec's. 13-14
Notes of Orig. Govt. Survey 1896

Set Tam. post

Tam. 6 N79W 801ks. = 52.8'
9/6/76 CK
Fd. TAM. STUMP AT N78W 51.3' WITH SCRIBE BT

Balsam 6 S34W 701ks. = 46.2'

NO EVIDENCE OF BALSAM STUMP

NOTES BY J. ROSE R.I.S. 5-25-21

FOUND TAM. POST MKD 1/4 S ON ONE SIDE

FOUND BALSAM BT STANDING S34W 46.2'

FOUND TAM. ROOTS N79W 52.8

SET IRON PIPE AND SPRUCE POST MKD 1/4 S14 - 1/4 S13

9/6/76 CK

Fd. 1 1/2 X 20" IRON PIPE WITH COUPLING AT TOP
IN PLACE OF 1/4 COR. - 2643' SOUTH ^{OF} APPROX. SEC.

COR. TO NORTH - NO EVIDENCE OF ROSE'S SPRUCE POST

CERTIFICATE FILED

CCC notes by H. Adams 2-18-35
Fd. post scribed 1/4 S14 - 1/4 S13
Fd. iron pipe beside wood post

TO PERPETUATE THIS CORNER. SET 2" DIA X 5' LONG
IRON PIPE, WITH 3" DIA. BRASS TABLET MARKED

T199N R28W

RESET ROSE'S IRON
BESIDE F.S. MARK.
EAST SIDE

1/4

S14 | S13

1978

WITNESSED BY

RLS NO

TAM. 8 N44W 65.04 MKD 1/4 S14 BT

TAM. 9 N72W 64.72 MKD 1/4 S14 BT

BLK. SPRUCE 10 S63W 22.16 MKD 1/4 S14 BT

WL. SPRUCE 11 S24E 39.21 MKD 1/4 S13 BT

8" STEEL SIGN POST NORTH 4.6' BOTH SIGNS

8" STEEL SIGN POST SOUTH 4.6' BOTH SIGNS

10-17-78 CK

QUARTER CORNER BETWEEN SECS. 23-24

SET TAM. POST FD. TAM. POST 4" X 4" X 36" 2 FLAT
SIDES NO SCRIBE VISIBLE - TOP HAS BEEN BURNED

TAM. 10 S51E 34 LKS. 22.4'

NOW TAM SNAG 35' HIGH S51E 22.4' MKO 1/4 S BT

TAM. 6 N35W 10 LKS. 6.6'

NOW ROTTED BURNED STP. N35W 6.6' ^{VISIBLE} AXE MARKS

TO PERPETUATE THIS CORNER SET 2" DIA. X 5' LONG
GALVANIZED STEEL PIPE - WITH CONCRETE INSIDE
AND CAPPED WITH 3" DIA. BRASS TABLET MARKED

T149NR28W

1/4

523 | 524

1978

WITNESSED BY

RLS NO 12261

W. SPRUCE 5 N10W 16.93' MKO 1/4 S23 BT

TAM. 6 N47E 15.15' MKO 1/4 S24 BT

TAM. 9 N86E 54.44' MKO 1/4 S24 BT

TAM. 10 S32E 58.65' MKO 1/4 S24 BT

SET 8' STEEL POST DUE SOUTH 4.7' BOTH SIGNS

SET 8' STEEL POST DUE EAST 4.7' BOTH SIGNS

11-1-78

Curt R. Krause

FD. ORIG. TAM POST IN PLACE - ALSO ORIG BT SNAG
S51E 22.4' - OTHER BT DOWN-ROTTED
SET 3" X 7" TAM POST AT COR. PUT ESUP ON POST
RIBBON AROUND CORNER. IN TAM A SPRUCE SWAMP NW-SE
CORNER IS APPROX. 80' EAST OF ASPEN HIGHLAND
CHAINED SOUTH OF SEC. COR. 2698 - OUR LINE FELL EAST
15' OF ORIG. CORNER - LAND TIES 9-20-76
CHECKED GOOD ALONG LINE

Curt Krause

3/26/85 CK-GB-JA

ORIG. TAM STUB IS NOW WINDFALL LYING NW
BASE IS OFF GROUND

SPRUCE BT IS LEANING NE. PARTLY WINDFALL
MONU. & SIGN POST ARE GOOD SNARE

SECTION CORNER TO SECTIONS 13-14-23-24

SET ASPEN POST FD. 1" X 3/8" IRON PIPE

BY JOHN J. ROSE FLUSH WITH GROUND ON ASPEN RIDGE

ASPEN 8 S89E 84 LKS. 55.4'

NO EVIDENCE REMAINS OF THIS BT S89E 55.4'

ASPEN 8 S42E 70 LKS. 46.2'

NOW ASPEN WIND FALL ^{LARGE} S42E 46.2' SCRIBE ROTTED OUT

TAM. 8 N30E 59 LKS. 38.9'

NOW WELL ROTTED STUMP N30E 38.9'

TAM. 8 N62E 37 LKS. 24.4'

NOW WELL ROTTED STUMP N56E 24.4'

TO PERPETUATE THIS CORNER SET 2" DIA. X 5' LONG
GALVANIZED STEEL PIPE - WITH CONCRETE INSIDE
AND CAPPED WITH 3" DIA. BRASS TABLET MARKED

T149N R28W

S14 | S13

523 | 524

1978

Curtis R. Hannon

WITNESSED BY

RLS NO 12261

W. SPRUCE 13 N43W 15.49' MKD T149NR28WS14 BT

W. SPRUCE 18 N25E 88.98' T149NR28WS13 BT

H. MAPLE 9 S81E 117.92' T149NR28WS24 BT

W. SPRUCE 11 S55E 131.46' T149NR28WS24 BT

W. OAK 8 S10W 80.79' T149NR28WS23 BT

8' STEEL POST SET DUE NORTH 6.45' 54-4 '10-31-78

8' STEEL POST SET DUE WEST 6.0' 54-4

CERTIFICATE FILED

9-21-76 CK.
CHAINED SOUTH FROM 1/4 BET. SEC'S. 13+14 2641
FD. 1" X 3/8" IRON PIPE MARKING CORNER
PUT FSLP ON W. SPRUCE 12 N45E 15.5'
WE CHAINED FROM SW. SEC. COR. 2650 AND FRI. S 1/4 COR. CORNT.
EAST 2695' AND FOUND 1" X 3/8" I.P. BY ROSE. WE CHAINED SOUTH
FROM 1/4 13+14 2641 TO 1/4 BY ROSE. 9/20/76
FSLP ON 9" DIA. SPR. 730'S OF SEC. COR. N SIDE E-W TRAIL
NOTES BY JOHN J. ROSE. 1921 SUBDIVISION OF SEC. 14
FOLDER #5
STATES DISTANCE OF SOUTH LINE TO BE 5295' TO COR.
THEN AT SEC. COR. HE SIGHTED SOUTH TRUE LINE AND RAN S
NORTH TO ORIG 1/4 COR BETWEEN SEC'S. 13+14 2641.3'
CHAINED SOUTH TO 1/4 COR. 2698' AND FOUND ORIG. COR.

22

QUARTER CORNER BETWEEN SEC'S. 13-24

NOTES OF ORIG. GOV'T. SURVEY 1896

SET ASPEN POST

BIRCH 14 N5E 23 LKS. 15.2'

BALSAM 10 S60W 22 LKS. 14.5'

CC DONE OK

40.00 CHS. FROM WEST
34.82 CHS. FROM EAST

9-22-76 CK-KS

CHAINED TRUE EAST FROM SEC. COR. 13-14-23-24
630'E ENTER SWAMP N+S - 780'E LEAVE SWAMP N+S
920'E ENTER SWAMP N+S - 1320'E APPROX. W 1/4
1635'E LEAVE SWAMP ENT. ASPEN ROLLING LAND
2640'E SEARCH IN AREA - NOTHING FOUND AFTER
SEARCH - PLACED FSLP ON 8" ASPEN BLAZED
ON 4 SIDES AS APPROX. CORNER

CONTINUE LINE AT EAST

9-26-76

1200'E ENTER LOWLAND ALDER + WILLOW
1525'E LV. SWP. OVER ASPEN RIDGE N+S
1700'E ENT LOWLAND NE-SW
2040'E LV. SWP. OVER ASPEN RIDGE
2300'E RANGE LINE - APPROX. SEC. COR. IS 100'S OF
THIS CHAINED DISTANCE - NOTHING COULD BE
FOUND AT THIS TIME

23

QUARTER CORNER BETWEEN SEC'S. 22-23

NOTES OF ORIG. GOV'T. SURVEY 1896

SET SPRUCE POST

BALSAM 5 N24W 6 LKS. 4.0'

BALSAM 4 N31E 18 LKS. 11.9'

3/27/85 CK-JA/GB

EST. APPROX. 1/4 COR. MIDWAY BETWEEN SEC. COR'S.
2681' N & S

APPROX. COR IN OLD WOODS TRAIL NE-SW

PUT FSLP ON 12" BIRCH S 30 E - 21.0' FROM APPROX.

LOCATION - BLACKDUCK DISTRICT - JACK DAVIS + BOB SALMONSON

CHAINED MINE AT 5362' AND BELL 155' N OF SEC. COR.

TO NORTH LINE SHOULD RUN AT N1°30'E

AT 1/4 COR. POSITION WE MOVE 78' EAST AND EST. APPROX.

LOCATION - NO EVIDENCE OF ORIG. B.T.S. WAS FOUND

OLD BLAZED LINE RUN S SOUTH - BIRCH WITH FSLP
IS BLAZED N & S

SECTION CORNER TO SECTIONS 14-15-22-23

NOTES OF ORIG. GOVT. SURVEY 1896

SET BALSAM POST FD. 3" X 3" X 36 BALSAM

POST BESIDE 1 1/2 X 3/4 X 36" IRON BAR AT CORNER

TAM. 10 N16 1/2 E 21 LKS. 13.9'

NOW WELL ROTTED AND BURNED TAM STUMP N16 E 13.9'

TAM. 9 S10 E 20 LKS. 13.2'

NOW WELL ROTTED AND BURNED TAM STUMP SIDE 13.2'

TAM. 11 S5W 7 LKS. 4.6'

NOW WELL ROTTED AND BURNED TAM STUMP 57W 4.6'

TAM. 12 N42W 8 LKS. 5.3'

NOW WELL ROTTED AND BURNED TAM STUB N42W 5.3'

ALL ORIG. BT& HAVE BEEN CUT OFF YEARS AGO AS

STUMPS HAD FLAT TOPS - ALL HAVE SIGNS OF BURN

CORNER IS APPROX. 60' E OF HIGH LAND RIDGE BRS N4S

AND 150' TO SAME RIDGE TO SOUTH - CORNER IN

CUTOVER SWP. - VERY WET WITH BALSAM - WILLOW & ALDER BRUSH

PUT FSLP ON 10" BLK SPRUCE S50W 10.8' FROM ELM

POST 3 X 3 X 7' AT TRUE CORNER POSITION

140' E OF COR. LEAVE SWP. - OLD BRUSH LINE

IS VISIBLE NORTH AND OLD BLAZED LINE RUNS

W & E 45 FROM COR.

9-18-76 CK-OJ

CERTIFICATE FILED

NOTES BY JOHN ROSE 5-26-21 FOLDER #5
 FOUND POINT OF OLD POST AND BT STANDING
 2 DOWN - SET PIECE OF CAST IRON SLEIGH SHOE
 2 1/4" X 1" X 36" AND BALSAM POST 4" X 4" X 4.5'

10-8-81 CK-GB

SET 2" X 3" LONG IRON PIPE WITH 3" BRASS CAP MKD.

PLACE SLEIGH SHOE BESIDE
 F.S. IRON AND PLACE
 LARGE ROCKS AROUND MONUMENT
 REMAINS OF WOOD POST AT
 NORTH SIDE OF IRON

T149NR28W

S15 | S14

S22 | S23

1981

RLS NO

ASH 9 S58 E 93.80' MKD T149NR28W S23 BT

ASH 7 S17 W 88.70' " " " S22 BT

ASH 11 N49 W 88.10' " " " S15 BT

W. SPRUCE 15 N27 E 57.40' " " " S14 BT

8" STEEL SIGN POST 4.3' EAST BOTH SIGNS
 " " " " 4.3' WEST

25

QUARTER CORNER BETWEEN SEC'S. 14-23

NOTES OF ORIG. GOVT. SURVEY 1896

SET SPRUCE POST Fd. WOOD POST

3"x3"x36" MKD. 1/4 S14 1/4 S23 (J. ROSE)

SPRUCE 3 N45W 6 LKS. 4.0'

Fd. SPRUCE STP AND TOP IN MOSS N45W 4.0'

SPRUCE 3 S15W 8 LKS. 5.3'

Fd. SPRUCE STP AT S15W 5.3'

SURVEY OF SECTION 14 BY JOHN ROSE 1921

SET IRON PIPE AND WOOD POST AT TRUE CORNER

Fd. 1" OD IRON PIPE 24" LONG BESIDE TAM. POST

TO PERPETUATE THIS CORNER SET 2" DIA X 5' LONG

GALVANIZED STEEL PIPE - WITH CONCRETE INSIDE

AND CAPPED WITH 3" DIA. BRASS TABLET MARKED

RESET IRON AND WOOD POST T149NR28W

BESIDE OUR IRON

$$\frac{1}{4} \frac{S14}{S23}$$

1978

WITNESSED BY

RLS NO 12261

BLK. SPRUCE 8 N21W 32.55' MKD 1/4 S14 BT

TAM. 7 N60W 63.35' MKD 1/4 S14 BT

BLK. SPRUCE 7 S72W 29.35' MKD 1/4 S23 BT

W. PINE 21 S25W 103.70' MKD 1/4 S23 BT

8' STEEL POST DUE NORTH 4.8' BOTH SIGNS

8' STEEL POST DUE WEST 3.8' BOTH SIGNS

10-12-78 *Chas. R. Krause*

CERTIFICATE FILED

26

QUARTER CORNER BETWEEN SEC'S. 14-15

NOTES OF ORIG. GOV'T. SURVEY 1896

SET SPRUCE POST

SPRUCE 6 S45E 27 LKS. 17.8'

TAM. 4 N30W 21 LKS. 13.9'

NOTES BY JOHN ROSE LAND SURVEYOR 1921

FOUND 1 BT STANDING SPRUCE STUMP ON S SIDE OF

ROAD. N45W 17.8'-FOUND STONE BURIED IN

CENTER OF ROAD - WITNESSES STATE ORIG. POST

STOOD AT THIS POINT

CERTIFICATE FILED

10-31-81 CK-68

DUG IN INTERSECTION AND FOUND STONE 4"X4"X6"
8" BELOW ROAD SURFACE - PLACE 6" RE ROD BESIDE
ROCK - NO EVIDENCE OF ORIG. B.T.S

SECTION CORNER TO SECTIONS 10-11-14-15

NOTES OF ORIG. GOV'T. SURVEY 1896

SET SPRUCE POST

BIRCH 12 N25½E 143 LKS. 94.4'

TAM. 6 S66E 112 LKS. 73.9'

BIRCH 10 S71½W 132 LKS. 87.1'

N. PINE 18 N11W 187 LKS. 123.4

CERTIFICATE FILED

SEARCH AREA OF SEC. COR. FOR POST & BT'S. - BUT
 NO EVIDENCE REMAINS OF SEC. COR. OLD FSLP
 ON POST TO W OF CORNER ALONG OLD ROAD N & S
 AND TRAIL LEADING EAST - NOW POWER LINE
 OLD FENCE AND BRUSH WINE BRS. WEST

1976 CK

QUARTER CORNER BETWEEN SEC'S. 11-14

NOTES OF ORIG. GOVT. SURVEY 1896

SET SPRUCE POST

SPRUCE 4 S78W 5 LKS. 3.3'

UNDER ROADWAY

SPRUCE 4 N16W 18 LKS. 11.9'

UNDER ROADWAY

NOTES BY J. ROSE R.L.S. 5-26-1921

FOUND POINT OF OLD POST UNDER MOSS

FOUND STUMP $\frac{1}{4}$ " N16W 11.9'

FOUND ROOTS $\frac{3}{4}$ " STP. 5 S78W 3.3'

SET $1\frac{1}{2}$ " X 24" GALVANIZED IRON PIPE LEVEL WITH SURFACE
OF MOSS MARKED NEW BT'S.

SPRUCE 5 N67W 26.7' BOTH FALL IN DITCH

SPRUCE 4 S61 $\frac{1}{2}$ E 21.4'

CERTIFICATE FILED

10-13-81 CK-6B

START CHAINING FROM T INTERSECTION AT SEC. COR.
11-12-13-14 - ALONG CENTER LINE OF BLACKTOP
HIGHWAY WEST 2660' - USED METAL DETECTOR AND
LOCATE DRAW IN CENTER OF HIGHWAY - DUG DOWN WITH
POST HOLE DIGGER 48' DEEP TO 1" IRON PIPE STANDING
STRAIGHT UP IN PLACE. SEARCH FOR ROSE'S BT'S BUT
BOTH WOULD NOW FALL IN DITCH ALONG ROAD
OLD BRUSHED LINE - STILL PARTLY OPEN BEAR N & S
BELIEVE IRON TO BE IN PLACE AT TRUE $\frac{1}{4}$ COR. POSITION

10-14-81 6B-JA

SET 2" X 36" IRON PIPE WITH 3" BRASS CAP MKD.

F.S. MONU NOW SITS ON TOP
OF 1" IRON PIPE 48" UNDER
ROADWAY

T149NR28W

$\frac{1}{4}$ $\frac{511}{514}$
1981

RLS NO

BLK. SPRUCE 6 N22W 70.75' MKD $\frac{1}{4}$ 511 BT

BLK. SPRUCE 6 N34E 44.25' MKD $\frac{1}{4}$ 511 BT

BLK. SPRUCE 6 S37E 70.10' MKD $\frac{1}{4}$ 514 BT

BLK. SPRUCE 7 S38W 76.70' MKD $\frac{1}{4}$ 514 BT

PNT FSLP ON 6 BLK. SPRUCE N8W 43.30 ALSO
ATTENTION SIGN UNDER FSLP

6/24/88 CK

MONUMENT OK IN BLACKTOP CAP 1" BELOW SURFACE - REPATCH BLACKTOP AT COR.
BT'S. NE & NW OK BT SE TOP BROKEN OFF BT SW WINDFALL
ON SAT. NIGHT 6/18/88 A WINDSTORM CAME THROUGH THIS AREA AND TIPPED
OVER AND BROKE OFF TREES FROM ALWOOD TO DORA LAKE 60-80 MPH WIND

QUARTER CORNER BETWEEN SEC'S. 10-11

NOTES OF ORIG. GOVT. SURVEY 1896

SET SPRUCE POST

SPRUCE 4 N42E 5 LKS. 3.3'

SPRUCE 4 S80W 10 LKS. 6.6'

CERTIFICATE FILED

SECTION CORNER TO SECTIONS 2-3-10-11

NOTES OF ORIG. GOVT SURVEY 1896

SET SPRUCE POST

BIRCH 8 S76E 179 LKS. 118.1'

TAM. 6 S80W 80 LKS. 52.8'

TAM. 8 S38W 103 LKS. 68.0'

NOTES BY JOHN J. ROSE RLS IN 1927

FOLDER #15 PAGE 58

FOUND OLD POST DECAYED AND BROKEN OFF

NO EVIDENCE OF ORIG. BT'S. REMAINS

SET NEW SPRUCE POST 4X4

AND MARKED NEW BT'S.

J. PINE 7 S25W 9.6'

NOW ^{10"}J. PINE WINDFALL AT S33W 9.6' SCRIBED S10 BT

J. PINE 6 N10W 7.9'

NOW ^{8"}J. PINE SNAG AT N5W 7.9' SCRIBED T149NR28WS2 BT

J. PINE 5 N39E 13.0'

NOW J. PINE STUMP AT N42E 13.0' WITH FLAT FACE TO COR.

J. PINE 5 S64E 12.7'

NOW J. PINE WINDFALL S60E 12.7' SCRIBED S11 BT

NW J. PINE HAS OLD FSLP DATED 1934

CERTIFICATE FILED

2-25-81 CK

CHAINED TRUE NORTH FROM APPROX. 1/4 BET SEC'S.
10 & 11 - 2670 AND FELL ON RIDGE IN SWP.FOUND 4" SQD. POST SCRIBED - LYING ON GROUND ON TOP
OF RIDGE - SWAMP IS 30'E - 80'S - 80'W

FD. EVIDENCE OF ROSE'S BT'S.

SET 3X3X6" J. PINE POST AT COR.

PUT FSLP ON N. PINE 13 S41W 22.5' FROM POST

QUARTER CORNER BETWEEN SEC'S. 25-26

NOTES OF ORIG. GOVT. SURVEY 1896

SET SPRUCE POST

BALSAM 6 S29W 35 LKS. 23.1'

TAM. 12 S40E 9 LKS. 5.9'

3/12/87 CK, JA, GB

Chained north from SE Sec. 26 2640. Found no original evidence at this time. Blazed a 3" Balsam 90' east of our ending point. Found a old open line north of this Balsam. Found old cabin south of blazed Balsam approx. 150'.
PLACE FSLP ON 7" BIRCH NEXT TO 3" BLAZED BALSAM MKD 2640 AS APPROX. 1/4 CORNER

SECTION CORNER TO SECTIONS 23-24-25-26

NOTES OF ORIG. GOVT. SURVEY 1896

SET TAM. POST

TAM. 7 N55E 17 LKS. 11.2'

TAM. 9 S20E 34 LKS. 22.4'

TAM. 7 S9W 14 LKS. 9.2'

TAM. 6 N24W 10 LKS. 6.6'

874 CCC NOTES BY H. ADAMS 12-4-34

Fd. WOOD POST ON GROUND - POOR CONDITION

Fd. SPRUCE 7 N30W 8' LKS. = 5.28' - SCRIBED

— SPRUCE 8 S10°30'W 15 LKS. = 9.90' - SCRIBED

— SPRUCE 7 S12W 36 LKS. = 23.76' - SCRIBED

— TAM. 5 N61E 15 LKS. = 9.90' - SCRIBED

3/26/85 CK JA 6B

FROM BRASS CAP IRON PIPE AT ORIG. COR 1/4 BET. SECS.
23 & 24 RUN LINE AT SOUTH AND CHAINED 2640'S

TIES ALONG LINE

225'S LV. SWP. → 570'S ENT. SWP. → 1290'S LV. SWP.

2450'S ENT. SWP. → 2640'S SEARCH FOR SEC. COR.

WE END OUR LINE AT EDGE OF SWP. E SIDE - NOW MOVE WEST
60' TO TIE BY ORIG. CALL - WE SEARCHED HR. BUT COULDN'TFIND ANY EVIDENCE ABOVE SNOW & WATER TO INDICATE
PAST 40 FT'S. - MORE SEARCH IN SPRING OR SUMMER

AND 2" SPRUCE BY LIMBING AND RIBBON AS APPROX. COR.

PUT F.S.L.P. ON 7" BLK. SPRUCE N65W 17.0' FROM 2" SPR.

CONTINUE LINE WEST - TIE DE LINE WEST

275'W LV. SWP. ASPEN RIDGE - 340'W ENT. SWP. → 500'W

LV. SWP. → 625'W ENT. SWP. → 980'W LV. SWP. ENT. SWP.

1320'W IN SMALL ROUND BLK. SPRUCE SWP. AS APPROX. END

FEL. 1" X 3/4" I.P. 150'N OF END OF OUR CHAIN - DON'T KNOW WHO

SET I.P. + CONTINUE WEST THROUGH BALZAM WIND FALLS

AND BUSH & BRUSH 2640'W IS IN SMALL ROUND GRASS SLOUGH

AND AGAIN WE FOUND AN IRON PIPE 1" X 3/4" THIS WOULD BE

AT 2670'W OR 2640'E OF SEC. COR. TO WEST AS WE

CONTINUED LINE WEST TO BRASS CAPPED SEC. COR. TO WEST

OUR TOTAL DISTANCE OF MILE WAS 5310' AND WE FELL

180'S OF SEC. COR. TO SECS. 22, 23, 26 & 27 - SOUTH LINE

SHOULD RUN N88W

3/12/87 CK, 60, JA

Chained from east 1/4 sec. 26 (approx) north 2640'

to this approx. sec. corner. Fall approx. 18' west.

Blk. spruce with F.S.L.P. placed in 1985 is now a windfall.

Total distance measured from SE sec. 26 to here

is 5300'

SECTION CORNER TO SECTIONS 12-13

CLOSING ON EAST BOUNDRY AT 80.00 CHS. NORTH OF
SEC. COR. 13-18-19-24

SET TAM. POST

TAM. 16 S^{1/2}W 61 LKS, 40.3'

Fd. LARGE TAM STUMP UNDER 9" BIRCH AT SW 40.3'

TAM. 12 N75W 44 LKS, 29.0'

Fd. TAM. STUMP AT BACKSIDE OF 10" BIRCH AT N73W 29.0'

NOTES BY JOHN J. ROSE RLS 1927

FOLDER 15 PAGE 75.

FROM ^{FROM} W 1/4 SEC. 7 RAN TRUE LINE SOUTH AND AT
2455.1 LINE FELL 0.1 EAST OF POST FOR SEC. COR.
TO SEC'S. 12+13

FOLDER 15 PAGE 81

FROM POST AT SECTION CORNER 12+13 RUN RANDOM
LINE WEST 2312.8' DROVE HUB IN CENTER OF ROAD
AND SET FROM COUNTY MAPLE BT TO SW

CERTIFICATE FILED

SECTION CORNER RECORDED IN TSP. T149NR21W TO SEC'S.
7-12-13-18 BRS. S1°47'W 218 LKS. (144')

10/20/86

CHAINED ROSE'S DISTANCE OF 2312.8' AND FELL TO NORTH
OF OLD TAM POST POINT 5" DIA X 16" LONG AND ANOTHER POST
POINT 3" X 12" ALONG SIDE OF BIRCH POST
BOTH POINTS CHECK TO ORIG. B.T.S. NOW WELL PAINTED TAM. STPS.
SET 4" X 4" X 6' DRY ELM POST AT TRUE CORNER LOCATION
PLACE BT TAGS ON BOTH BIRCH GROWING OUT OF ORIG. TAM.
STUMPS
Fd. OLD RUSTED FSLP (1934) ON DOWN ASH STUB LYING IN SWAMP
30.4' TO ASH STUMP AT N81W FROM COR. POST

MIND NEW TIES

CEDAR 17 S16W 64.6' SPIKE + TAG - RED BAND

ASH 10" N75W 46.0' SPIKE + TAG " "

ASH 9" N34W 65.1' SPIKE + TAG " "

CORNER IS IN ASH SWAMP AT EDGE OF BELLY AND TREES
AND SW CORNER OF GRASS SLOUGH - 100' W & S.W.P. AND
60' SOUTH E.V. SWP.

34 Book #1

T149 NR 28W

EAST QUARTER CORNER SECTION 12

NOTES OF ORIG. GOVT. SURVEY 1896

SET POST

BIRCH 6 S45W 16 LKS. 10.6'

BIRCH 7 N20W 23 LKS. 15.2'

NOTES BY JOHN J. ROSE 11/28/27

FOLDER #15 PAGE 75

1/4 CORNER EAST SIDE ~~SECT~~ SECTION 12 149-28

SET B. ASH POST 3x4 FOR 1/4 CORNER SECTION

12 AT STATION 2623.8"

168.4' NORTH OF 1/4 CORNER TO SECTION 7 149-27

CERTIFICATE FILED

FROM SEC. COR. 12-13 RUN N1°47'E AND INTERSECT OLD 1/4 COR.
AT 37.72 CHS. AT 40.00 CHS. ESTABLISH 1/4 BET SEC'S. 12-9

1/4 Recorded in T149 NR 27W TO SEC 7 IS S01°47'W 150.5'

SECTION CORNER TO SECTIONS 1-12
CLOSING ON EAST BOUNDRY

NOTES OF ORIG. GOVT. SURVEY 1896

SET TAM. POST

TAM. 8 S40W 37 LKS. 24.4'

Fd. THIS BT DOWN IN ²BOG WITH SCRIBE VISIBLE

TAM. 7 N30W 16 LKS. 10.6'

NO TRACE OF THIS BT

NOTES BY JOHN J. ROSE 11/30/27

FOLDER 15 PAGE 71 + 78

11/18/27 NO TRACE OF CORNER TO SECTIONS 1+12

THIS CORNER WAS SET PROPORTIONATE BETWEEN

FOUND ORIGINAL CORNERS ALONG RANGE LINE

CORNER OF SECTION 1+12 IS 173' NORTH OF CORNER TO
SECTION 6+7 149-27

SET TAM. POST 4x3 1/2

SPRUCE 8 N53W 16.0'

SPRUCE 6 S18W 10.7'

CERTIFICATE FILED

40.00 CHS. N149°E OF EAST 1/4 SEC 12 SET SEC. COR.

SEC COR. RECORDED IN T149N R27W TO SEC 6+7
15.501-47W 151.8'

2/6/87 CK-68

CHAINED AT S2W FROM APPROX. W 1/4 SEC-6 149-27
ROSE'S DISTANCE OF 2451' TO THIS SEC. COR. NO EVIDENCE
COULD BE FOUND AT THIS TIME TO MUCH SNOW IN WADLOW GROSES
FOR GOOD SEARCH - WE FEEL APPROX. 130' W OF CREEK
SOME STUMP VISIBLE

CONT. S2W TO SEC. COR TO SEC 6+7 149-27

6-4-87 CK-RM

Fd. SCRIBED POST IN BOG
PLACED FSLP ON SPRUCE SNAG N64W-21.35'
DISCOVER IN MORE SEARCH THAT SCRIBE FOUND
WAS NOT ON A POST - BUT APPEARS IT WAS ON A TREE
BECAUSE OF SCRIBE T149N R28W S12 BT
THIS ABOVE TREE SHOULD HAVE BEEN DESTROYED
WHEN RESURVEY WAS DONE
ITASCA COUNTY HAS SCRIBED SURFACE ON DISPLAY IN
COURTHOUSE AT GRAND RAPIDS, MN.

36 C-25

EAST QUARTER CORNER TO SECTION 1

NOTES OF ORIG. GOVT. SURVEY 1896

SET TAM. POST

TAM. 8 S31W 15 LKS. 9.9'

TAM. 8 N16W 29 LKS. 19.1'

NOTES BY JOHN J. ROSE 11/20/27

FOLDER #15 PAGE 73

PROPORTIONATE DISTANCE

SET CEDAR POST FOR EAST 1/4 SECTION 1 149-28

170.7' NORTH OF 1/4 TO SECTION 7 149-27

ASH 6 N83W 23.3'

FOUND 12 DEAD ASH WITH SCAR FACING CORNER POST

BALSAM 5 S42W 8.9'

FOUND BALSAM STUMP ROTTED LEVEL WITH MOSS

6/3/87 CK RM

CUT INTO ASH WITH CHAINSAW AND FOUND FLAT BLAZE

AND SCRIBE BY ROSE - FD. 3"X5' CEDAR POST AT COR.

SET NEW CEDAR POST 3X3X8' AT TRUE CORNER AND

PLACE OLD POST NORTH AND ALONG SIDE

SET 8' ALUM POST DUE NORTH 3.0' WITH 54-9

WITNESSES TO NEW POST ASH 12X6" HIGH N74W 23.7'

(ASH STUB 7X36" S51W 23.50' ASH STUB 8"X4' N8W - 23.65')

2475'

37.50 CHS. NORTH TO BTSP. COR.

114 recorded in T149 NR 27W TO SEC 6 IS 541-10 W
158.4'

216/87 CK-6B

CHAINED SOUTH FROM FSBC AT TSP. COR. 2462'

OUR LINE FELL 135' EAST OF CORNER LOCATION

CHECK LAND TIES OF ROSE'S TO N OF E 1/4 SEC. 1 - OUR DISTANCE
IS 150' N OF 1/4 POSITION

FD. 12" ASH (DEAD) WITH BASE SCAR FACING COR. POSITION

DISTANCE WAS WITHIN 4' OF ROSE'S.

CORNER IS IN BEAVER-FLOODED AREA ALL DEAD TIMBER AROUND COR.

135'E LEAVE SWP. - 150' N LV. SWP.

QUARTER CORNER BETWEEN SEC'S, 26-27

NOTES OF ORIG. GOVT. SURVEY 1896

SET SPRUCE POST

SPRUCE 7 N85W 10 LKS. 6.6'

SPRUCE 5 N81E 14 LKS. 9.2'

874 CCC NOTES BY ROY NELSON 2-12-35

POST SET BY CREW

Fd. SPRUCE STUMP SOUTH 10 LKS. = 6.6'

SCRIBED 1/4 S BT

LOCATION POSTER ON SPRUCE SNAG 6"

CORNER BRS. SOUTH 10 LKS.

CHAINED NORTH FROM IRON PIPE AT SEC. COR.
2620' AND FOUND SPRUCE SNAG EAST OF OUR LINE
APPEARS TO BE BLAZED N-S AND HAS LARGE
BLAZE FACING WEST AND COULD BE ORIG. NE BT
SET PICKET AT END OF OUR CHAINING MKQ 2620' N
VERY WET NOW AND DEEP SNOW SEARCH NOT VERY GOOD
SHOULD COME BACK IN SUMMER - OUR LINE ENDED
26' WEST OF 8' SPRUCE SNAG WHICH MAYBE ORIG. BT
11-21-78

Curtis R. Kramer
OLD SWP ROAD N-WSW FROM CORNER VERY BRUSHY
FD. 20' BIRCH BLAZED N-S APPROX. 350' SOUTH OF COR.

QUARTER CORNER BETWEEN SEC'S. 17-18

NOTES OF ORIG. GOV'T. SURVEY 1896

SET OAK POST

ASPEN 7 S70E 16 LKS.

~~LYNN~~
~~ASPEN~~ 7 N70W 13 LKS.

SURVEY PLAT OF ALYWOOD ROAD 1920

B4 ITASCA COUNTY - SEE BACK OF BOOK
NEW BT'S.

OAK 12 N80E 55.5'

1989 COUNTY FOUND OAK STUMP AT N80E 55.5'

OAK 12 N50W 70.8'

BEARING + DISTANCE FALLS IN YARD

ITASCA COUNTY 7-25-89

Fd. 3/4" IRON PIPE 12" BELOW ROAD SURFACE

IN CENTERLINE - BROUGHT UP WITH A 1/2" X

10" GALVANIZED IRON PIPE 2" BELOW

SURFACE OF COUNTY ROAD #131

WITNESSED BY

W. OAK 8 1/2" N85E 84.66' SPK + DISC

TWIN
W. OAK 11" S50E 39.51' SPK + DISC

TRIPLE
ASH 6 1/2" N79E 73.66' SPK + DISC

10/15/96 CK

LOCATED IRON IN ROAD

FOUND THE FOLLOWING

W. OAK N85E 84.66' SCRIBE VISIBLE

W. OAK S50E 39.51' CLOSED

ASH DEAD SNAG N79E 73.66'

W. PINE N70E 34.61' NOTCH ON SIDE
OF TREE + NAIL HEAD

THERE IS A W. SPRUCE GROWING NEXT TO
W. PINE - TOP HAS BEEN BROKEN OFF
PINE AND HAS BEEN PUSHED INTO WOODS
OVER THE OLD COUNTY OAK STUMP AT N80E

7-02-2012 R MAIN
Fd. 3/4" IRON AND GPS SURVEY GRADE. BELIEVE
1/2" X 10" IRON HAS BEEN BLADED OUT

SECTION CORNER TO SECTIONS 17-18-19-20

NOTES OF ORIG. GOVT. SURVEY 1896

SET TAM. POST

TAM. 12 N12E 30 LKS.

TAM. 10 S34E 12 LKS.

TAM. 8 S56W 14 LKS.

TAM. 9 N1W 10 LKS.

SURVEY PLAT OF ALYWOOD ROAD 1920

BY ITASCA COUNTY SEE BACK OF BOOK

NEW B.T'S.

SPRUCE 7 N50W 65.0'

SPRUCE 10 S46W 69.2'

TAM 13 N50E 69.5'

SPRUCE 8 S32½E 46.6'

7-02-2012 R. MAIN

FD REBAR AT ROAD SURFACE AND GAS SURVEY
GRADE. ROUNDED DOWN REBAR BELOW SURFACE
OF ROAD.

QUARTER CORNER BETWEEN SEC'S. 19-20

NOTES OF ORIG. GOVT. SURVEY 1896

SET ASPEN POST

BIRCH 5 N50W 7 LKS.

SPRUCE 7 N3E 21 LKS.

SURVEY PLAT OF ALVWOOD ROAD 1920

BY ITASCA COUNTY SEE BACK OF BOOK

NEW BT'S.

SPRUCE 8 S65E 40.2'

BIRCH 12 N60E 42.2'

BALM-
GILEAD 24 S30W 71.5'

874 CCC NOTES By A.H. JAGER 1-15-35

FD. ASPEN POST 30" HIGH SCRIBED

ASPEN STP. S32W 108 LKS. = 71.28'

BIRCH STP. N62E 65 LKS. = 42.90'

SPRUCE STP. S63E 57 LKS. = 37.62'

LOCATION POSTER ON 5" ASPEN - CORNER BRS.

N55E 61 LKS. = 40.26'

7-02-2012 R. MAIN

FD REBAR \pm 3" BELOW ROAD SURFACE AND GTS
SURVEY GRADE.

QUARTER CORNER BETWEEN SEC'S. 29-30
 NOTES OF ORIG. GOVT. SURVEY 1896

SET BIRCH POST

TAM. 10 S88E 103½ LKS.

TAM. 12 N84W 85 LKS.

SURVEY PLAT OF ALYWOOD ROAD 1920
 BY ITASCA COUNTY SEE BACK OF BOOK
 NEW BT'S.

TAM. 12 S70E 67.6'

SPRUCE 9 N60W 73.0'

7-02-2012 R MAIN.

FD ITASCA CO IRON 5' EAST OF QCR Rd 131.
 GAS SURVEY GRADE.

SECTION CORNER TO SECTIONS 29-30-31-32

NOTES OF ORIG. GOVT. SURVEY 1896

SET ASPEN POST

ASPEN 10 N28E 21 LKS.

ASPEN 15 S65E 5 LKS.

BALSAM 7 S9W 5 LKS.

ASPEN 20 N89W 36 LKS.

SURVEY PLAT OF ALWOOD ROAD 1920

BY ITASCA COUNTY SEE BACK OF BOOK

NEW BT'S.

TAM. POLE 12 S42W 40.6'

GED. POLE 5 S45E 34.1'

TAM. POLE 12 N24W 107.6'

QUARTER CORNER BETWEEN SEC'S. 31-32
 NOTES OF ORIG. GOVY. SURVEY 1896
 SET ASH POST

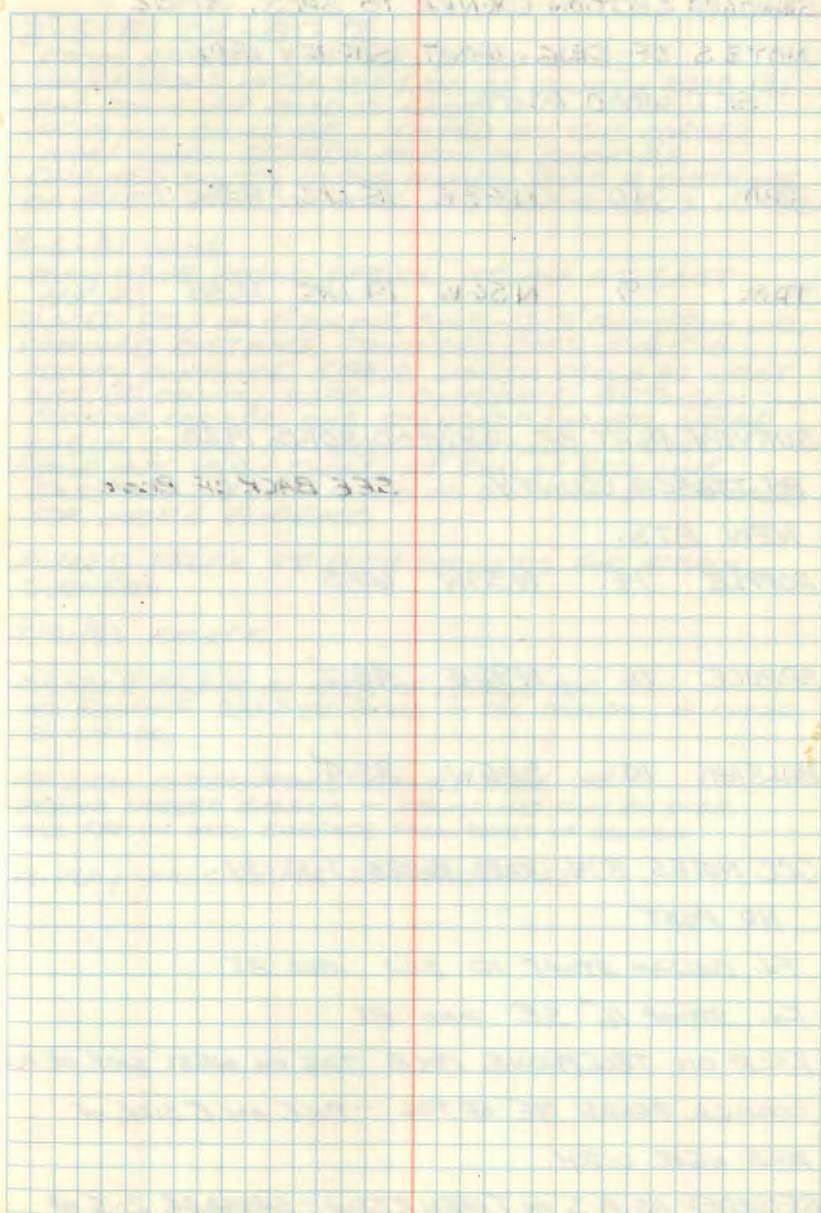
ELM 10 N49W 14 LKS.

SPRUCE 16 N80E 26 LKS.

SURVEY PLAT OF ALYWOOD ROAD 1920
 BY ITASCA COUNTY SEE BACK OF BOOK
 NEW BT'S.

ELM 10 S35W 51.3'

TAM. STUB 18 S62E 55.5'



STANDARD SECTION CORNER TO SEC'S. 31-32.

NOTES OF ORIG. GOVT. SURVEY 1896

SET WOOD POST

TAM. 10 N63E 15 LKS. = 9.90'

TAM. 9 N56W 19 LKS. 12.54'

SURVEY PLAT OF ALYWOOD ROAD 1920

BY ITASCA COUNTY SEE BACK OF BOOK

NEW BT'S.

POPPLE 14 N55W 62.5'

SPRUCE 16 N92E 48.2'

BALSAM 10 S30W 33.4'

CCC NOTES 874 KARL KOBES 1-13-34

NO POST

Fd. BALSAM STUMP 10 SW MKD BT

Fd. STUMP 16" SE MKD BT

FSLP ON TELEPHONE POLE TAG ON WEST SIDE OF ROAD

CORNER BEARS NE OF TAG - POLE ON E SIDE OF

ROAD NEAR DITCH

RECORDED AS A-5 IN T148N R28W - SHOULD BE 2-5 OF
T149N R28W

3-5-81 CK-BT-TB

FROM APPROX. SEC. COR. 29-30-31-32
WHICH IS ROAD INTERSECTION OF COUNTY ROAD 131
AND TOWNSHIP ROAD TO EAST
NOTHING COULD BE LOCATED AT THIS CORNER
NOW - WILL SEARCH AGAIN IN SUMMER.
CHAINED SOUTH ALONG COUNTY ROAD A DISTANCE
OF 5153.8' TO APPROX. STD. COR. TO SEC'S. 31+32

3-6-81 SAME

MAY HAVE FOUND SPRUCE STUMP AT EAST
48.2'PLACED FSLP ON 10" BALMIE SIGE - 13.5' FROM APPROX. COR.,
CHAINED DISTANCE FROM SEC. COR'S. 5-6-7-8
COUNTY DISTANCE 5198.2' WHICH FALLS AT WEST
SIDE OF COUNTY ROAD - DISTANCE BETWEEN
CLOSING CORNER AND STANDARD CORNER WOULD
CHECK CLOSE AT 200' - DISTANCES WOULD
COME OUT VERY CLOSE AT END OF EACH LINE
EAST AND WEST - NEED TO SEARCH IN SUMMER
FOR MORE EVIDENCEPLACED FSLP'S AT BOTH CORNERS FOR APPROX.
CORNERS

7/21/93 RM+CK

SEARCH AGAIN IN AREA OF APPROX. COR.
NO EVIDENCE COULD BE FOUND - TAG POSITION IS CLOSE
TO CORNERFd. WELL ROTTED SPRUCE STP. AT S80E 48'
BEHIND LARGER BALSAM - STUMP HAS FALLEN OVER
AND GROWN INTO SURFACE FROM ROOTS OF BALSAM

Fd. VERY LARGE ASPEN 27" N50W - 42'

45

STANDARD SECTION CORNER TO SEC'S. 34-35

NOTES OF ORIG. GOV'T. SURVEY 18

SET WOOD POST

ASH 6 N70E 48 LKS.

NO EVIDENCE FOUND

ASH 7 S25W 50 LKS.

AT EDGE OF RIVER BANK NO EVIDENC. FOUND

COUNTY PLAT BY L.W. JOHNSON 1925

SUBDIVIDED SEC. 2 T148N R28W

SET WOOD POST AT COR. (CRK) 11-75

SET IRON PIPE NO IRON FOUND - PROBABLY

WASHED OUT BY HIGH WATER YEARS

MKD NEW BT'S.

ASH 6 N4E 17.0'

NOW 14" ASH N8E 17.0' ALL SCRIBE VISIBLE (BT TAGGED)

ASH 6 N60E 19.5'

NOW ROTTED ASH STP. WITH MANY ASH SPROUTS

874 CCC NOTES BY H. ADAMS 1-2-35

NO POST FOUND

Fd. BASSWOOD 12 S30E 24 LKS. = 15.84'

SCRIBED T149 R28 S2 BT.

Fd. ELM 8 S33E 56 LKS. = 36.96'

SCRIBED T149 R28 S2 BT

CERTIFICATE FILED

46

QUARTER CORNER BET. SEC'S, 34-35

NOTES OF ORIG. GOVT. SURVEY 1896

SET SPRUCE POST

ASPEN 6 N45W 26 LKS.

ASPEN 7 S30E 32 LKS.

11-29-78 CK

CHAINED SOUTH FROM SEC. COR. 2640' - SEARCHED
 AREA, BUT NO EVIDENCE REMAINS OF ORIG. POST OR BTA.
 PUT FSLP ON IRONWOOD NORTH 23' TO APPROX. 1/4 COR.
 LOCATION - 266' N OF HWY #44

SECTION CORNER TO SEC'S. 26-27-34-35

NOTES OF ORIG. GOV'T. SURVEY 1896

SET BIRCH POST FOUND 1 1/4" X 3/4" IRON PIPE

WELL ANCHORED BENT AT TOP TO SE

BALSAM 7 N 24 E 11 LKS.

NO EVIDENCE FOUND AREA HAS BEEN DISTURBED

TAM. 10 S 85 1/2 E 52 LKS. 34.3'

Fd. TAM. STUMP AT S 85 E 34.3' FROM IRON

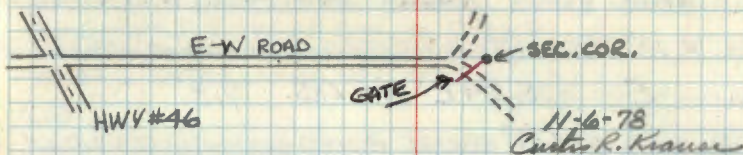
ASPEN 4 S 87 1/2 W 7 LKS.

NO EVIDENCE FOUND AREA HAS BEEN DISTURBED

BALSAM 4 N 44 1/2 W 37 LKS.

NO EVIDENCE FOUND AREA HAS BEEN DISTURBED

PUT FSLP ON 11" BALSAM S 3 W 9.5' FROM IRON
 PILED ROCKS AROUND IRON
 Rd. OLD FENCE WIRE (DOWN) TO SOUTH AND EAST OF COR.



10/16/96 CK

Fd. IRON - IN PLACE - IN MOUND OF 6 ROCKS
 TOP OF IRON IS 1.5' ABOVE GROUND
 BALSAM WITH FSLP RECORDED ABOVE IS NOW
 A ROTTED WINDFALL - NAILED TAG TO STUB

MARKED NEW TIES TO IRON

W. OAK (WIN) 9 S 1 E - 20.42' MKD. S 27 BT

W. OAK 8 N 5 W - 23.13' MKD. S 35 BT

GATE POST 9" POWER POLE - EAST POST
S 57 W 32.60'

CORNER IS ON HIGHGROUND - A GRASS MARSH
 BRS. NE - IS 35' EAST OF CORNER

WOODS TRAIL NE IS 50' NORTH OF CORNER

" " SE " " SOUTH " "
 IRON IS IN 1/4 OF ROAD WEST TO HWY #46

VERY THICK BRUSH AND WINDFALLS AROUND CORNER

QUARTER CORNER BET. SEC'S. 26-35

NOTES OF ORIG. GOVT. SURVEY 1896

SET TAM. POST FOUND POINT OF TAM POST

4" DIA. X 10" LONG - TOP ROTTED LYING IN MOSS

TAM. 5 S64E 11 LKS. 7.3'

Fd. TAM. SNAG 6" X 14' SCRIBE ROTTED OUT - BLAZED ^(OLD) FSLP

SPRUCE 3 N10E 21 LKS. 13.9'

Fd. SPRUCE SNAG 5" X 8' WITH SCRIBE 1/4 S VISIBLE

BOTH BT'S. CHECK GOOD FOR BEARING - DISTANCE

FROM TAM. POST

874 CCC NOTES B_y - SMITH 1-27-36

Fd. TAM. POST - 24" HIGH SCRIBED

Fd. SPRUCE 4 N10E 14' SCRIBED 1/4 S 26 BT.

Fd. TAM. 4 S20E 8' SCRIBED 1/4 S 35 BT.

LOCATION POSTER TAM. 4 BEARING TREE S20E

12 LKS.

CHAINED EAST FROM SEC. COR. 2662' - 17' NORTH OF TAM. POST

PUT FSLP ON 9" BLK. SPRUCE 11' SOUTH OF COR. POST
SPRUCE IS BLAZED ON E-W-N SIDES - ALSO BLAZED
LINE RUNS E-W OF COR. IN SWAMP
2300' E ENTER LOWLAND BRUSH (WET)
2360' E ENTER LIVING BLK. SPRUCE

11-7-78 CRK. RA.
Curtis R. Krause

FOUND FENCE CORNER POST AT 1328' E FROM SEC. COR.
OUR LINE WAS 8' NORTH OF POST - APPEARS CLOSE FOR
W 1/16 CORNER OF PRIVATE 40 TO SE

STATE LAND NORTH AND SOUTH OF THIS LINE HAS BEEN CUT
IN RECENT YEARS - NOW IS VERY THICK ASPEN BAPHING
FROM W 1/16 TO 1/4 - WIRE FENCE RAN SOUTH OF OUR LINE
MOSTLY DOWN - FOUND SOME POSTS STANDING NEAR W 1/16 COR.
WIRE DOWN TO SOUTH - STATE CUT WEST OF FENCE SOUTH OF
W 1/16 APPROX. 20'

SECTION CORNER TO SEC'S. 25-26-35-36

NOTES OF ORIG. GOV'T. SURVEY 1896

SET TAM. POST NO POST FOUND

BIRCH 6 N89E 58 LKS. 38.3'

NOW 10" BIRCH SNAG 30' HIGH WITH SCAR SCRIBE ROTTED OUT

BIRCH 6 S85E 17 LKS. 11.2'

NO EVIDENCE FOUND

BIRCH 6 S21W 26 LKS. 17.2'

NO EVIDENCE FOUND

SPRUCE 6 N62W 23 LKS. 15.2'

NOW LARGE ROTTED STP. N62W 15.2' FROM CORNER

874 CCC NOTES BY - SMITH 1-27-36

Fd. BIRCH STAKE - FAIR CONDITION - 30" HIGH

STAKE WAS SCRIBED WITH SECTIONS

Fd. SPRUCE 14 N35W 20' MKD WR28 S35 BT

Fd. BIRCH 7 N15E 30' MKD. WR28 S25 BT

LOCATION POSTER ON BIRCH 7 N15E 30'

CCC NOTES BY SMITH 1-27-36

FOUND BIRCH STAKE 30" HIGH

FOUND SPRUCE 14" N35W 15' MKD WR28 S35 BT

FOUND BIRCH 10" N75E 35' MKD WR28 S25 BT

PUT FSLP ON ABOVE BIRCH

FOUND ABOVE FSLP ON BIRCH SNAG 1936
 CHAINED 26.67 EAST OF (1/4 COR. BEING EVIDENCE RE)
 SET 2" X 5" DRY BALSAM POST AT BAG AND DISTANCE
 FROM BIRCH SNAG AND SPRUCE STP.
 PUT FSLP ON 5" BALSAM N74E 10' FROM BAL. POST
 FOUND OLD BLAZED LINE N-S 6' W OF COR.
 FOUND OLD BLAZED LINE E-W 8' N OF COR.
 ORIGINAL LAND TIES CHECKED GOOD N-S AND APPEARS
 TO BE 1 CHAIN EAST AND WOULD BE 1 1/2 CHS. FROM
 WEST

11-22-78

Curtis R. Krause

3/2/87 CK, JA, GB

Mkd Temporary Ties:

W. Pine snag 21" S37E 68.15 spike + tag

W. Pine 27" SIDE 85.4 spike + tag

Placed 60d spike at corner position.

Fd. Birch snag and spruce stp. which was

recorded in 1896. Fd. no trace of balsam post

which was placed in 1978 by C.R.

A lot of windfall balsams around corner area.

QUARTER CORNER BET. SEC'S, 35-36

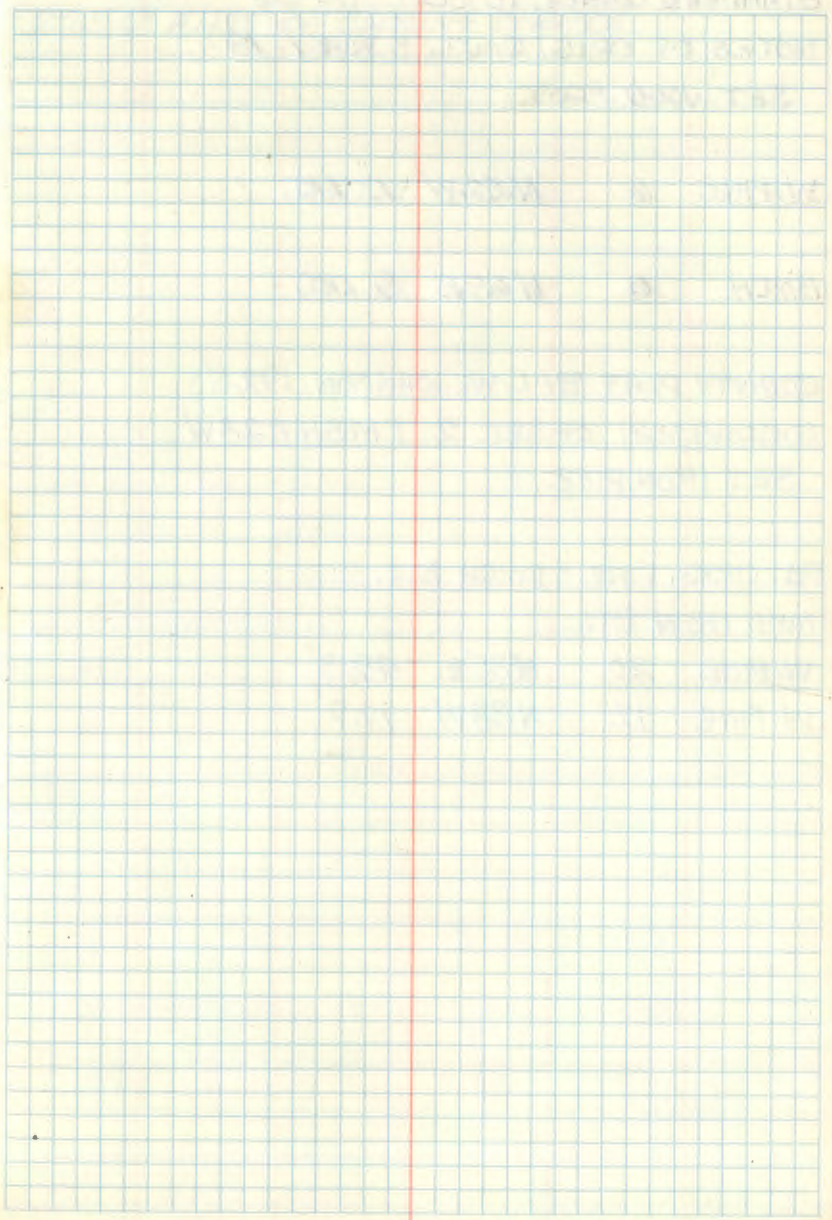
8 NOTES OF ORIG. GOVT. SURVEY 1896

SET WOOD POST

ASPEN 10 S85E 14 LKS.

BALSAM 6 N85W 10 LKS.

CERTIFICATE FILED



STANDARD CORNER TO SEC'S. 35.36
 NOTES OF ORIG. GOVT. SURVEY 18
 SET WOOD POST

W. PINE 6 N52W 13 LKS.

BIRCH 6 N65E 9 LKS.

COUNTY PLAT BY L.W. JOHNSON 1925
 SUBDIVISION OF SEC 2 T148N R28W
 SET IRON PIPE

FD. ORIG. PINE & BIRCH BT'S.

MKD NEW BT'S.

W. PINE 20 N35E 49.3'

W. PINE 12 N38W 17.9'

CERTIFICATE FILED

225.0' EAST OF CLOSING CORNER

QUARTER CORNER SOUTH SIDE SEC. 35

NOTES OF ORIG. GOVT. SURVEY 18

SET WOOD POST

SPRUCE 10 N49W 13 LBS.

BIRCH 6 N39E 35 LBS.

COUNTY PLAT BY L. W. JOHNSON 1925

SUBDIVIDED SEC. 2 T48N R28W

SET IRON PIPE FD. IRON AND ALUM. CAP - IN PLACE

FD. ORIG. GOVT. SPRUCE AND BIRCH BT'S.

MKD NEW BT'S.

POPLAR 10 N6E 46.5

FD. ASPEN STUMP NIZE 46.5' WELL ROTTED

BASSWOOD 10 N61W 41.6

NOW LIVE BASSWOOD N56W 41.6 SCRIBE OVERGROWN

CERTIFICATE FILED

11-78 CK

PUT FSLD ON 7" NI PINE 256' WEST OF IRON ON
EAST SIDE OF HWY #46 - APPROX. 150' SOUTH OF
RESERVATION BOUNDARY SIGN ON WEST SIDE OF HWY 46

QUARTER CORNER BET. SEC'S. 10-15

NOTES OF ORIG. GOV'T. SURVEY 1896

WOOD POST FOUND ORIG. TAM POST 3"X3"X30"

WITH S VISIBLE ON NORTH SIDE OF POST

TAM. 6 S28E 22 LKS. 14.5'

FD. TAM. WINDFALL IN MOSS S28E 14.5' STP. ROTTED

TAM. 4 S68E 32 LKS. 21.1'

FD. TAM. STP. S68E 21.1' TOP FROZEN IN SWP.

10-15-81 GB-JA

FOUND POST IN PLACE AND BOTH GOV'T B.T'S.

SET 2"X60" IRON POST WITH 3" BRASS CAP MKD

RESET WOOD POST

T199N R28W

BESIDE F.S. MONU.

1/4 S10
S15
1981

RLS NO

TAM 6 N48W 39.56' MKD 1/4 S10 BT

BLK. SPRUCE 6 N44E 28.53' " 1/4 S10 BT

TAM 6 S66E 31.85' " 1/4 S15 BT

TAM 6 S27W 35.97' " 1/4 S15 BT

8' STEEL SIGN POST EAST 4.3' BOTH SIGNS

" " " " SOUTH 4.3' " "

CERTIFICATE FILED

PUT FSLP ON 5" TAM. S45W-3.0' FROM TAM. POST
CHAINED SB9W 26.52' FROM APPROX. SEC. COR. TO EAST

12-20-78

Clinton R. Kramer

CORNER FALLS IN BLK. SPRUCE & TAM SWP.
WOODS TRAIL APPROX. 450' NORTH OF CORNER B.S.
NW-SE - HIGHLAND IS 300' N OF COR.

SECTION CORNER TO SECTIONS 9-10-15-16

NOTES OF ORIG. GOV'T. SURVEY 1896

WOOD POST NO POST FOUND AT THIS TIME

12/20/78

TAM. 5 N24E 21 LKS. 139'

FOUND ROTTED TAM STP. N24E 13.9' 10-9-81

TAM. 4 S88E 20 LKS. 13.2'

12-20-78

Fd. TAM STUB S88E 13.2' MKD. T149NR28WS15B VISIBLE

TAM. 4 S9W 8 LKS. 5.3'

Fd. ROTTED TAM STP. S10W 5.3' 10-9-81

SPRUCE 3 N86W 30 LKS. 19.8'

10-9-81

Fd. SPROUCE STP. ROTTED WITH FAINT SCRIBE VISIBLE

SET 2" X 5' LONG IRON PIPE WITH 3" BRASS CAP MKD.

T149NR28W

59 | S10

516 | S15

1981

RLS NO

TAM 10 OK N30E 37.65' T149NR28WS10BT

TAM 7 OK S61E 71.45' " " S15BT

SPRUCE 86 ONE S10W 42.45' " " S16BT

TAM 8 SNAG N45W 33.90' " " S9BT

8' STEEL SIGN POST WEST 3.5' BOTH SIGNS

" " " " EAST 3.2'

CERTIFICATE FILED

CHAINED S89W 26.54' FROM ORIG. CORNER EVIDENCE
 FOUND AT 1/4 CORNER
 SET 4" X 4" X 7" TAM. POST AT TRUE CORNER
 PUT FSLP ON 8" TAM N52E 12.5' FROM TAM. POST

12-20-78

Curtis R. Kramer

10-9-81 CK-6B

FOUND WOOD POST AND POINT OF POST IN PLACE
 AND REMAINS OF ALL FOUR ORIG. BT'S.
 WINTER LOGGING TRAIL N45 15 40' EAST OF COR.

11-20-2012, R. MAIN

Fd IRON IN PLACE AND GPS SURVEY GRADE

SOUTH QUARTER CORNER TO SECTION 34
 NOTES OF ORIG. GOV'T. SURVEY 1871-12th STD. PAR.
 SET WOOD POST

TAM 12 N80W 87 LKS. 57.4'

BIRCH 10 N20E 11 LKS. 7.3'

NOTES BY ITASCA COUNTY SURVEYOR 1920 IN
 SUBDIVISION OF SEC. 4 T148N

FOUND BOTH GOV'T. BT'S.

SET NEW POST - NO NEW BT'S. MKD: (NO IRON)

10-14-82 CK-GB

CHAINED FROM STD. SEC. COR. TO SEC'S. 33-34 S88E

2653' TO 1/4 COR. POSITION - DISTANCE + BRG. 5000

Fd. LARGE 20" TAM. STUMP 24" HIGH WITH NEGATIVE SCRIBE

"BT" VISIBLE AT N80W-57.4' - SET 3"X3"X6' ASH POST

THEN FOUND STUMP + LOG OF BIRCH BT LYING SW OVER

CORNER POSITION - PAPER ON LOG IS SOLID - STUMP IS WELL

ROTTED - NO POST FOUND - MKD. TEMP. TIES AS FOLLOWS

B. WOOD 13 N26E 42.0' NAIL & TAG

ASH 9 N59E 27.8' " "

ASH 9 N80E 50.5' " "

ASH 6 N13E 21.5' FSLP

10-14-82 CK

SET 2"X36" F.S. MOND. WITH CAP MKD.

PLACE 3"X3"X6' ASH POST
 ON E SIDE OF CORNER.

T149N R28W

1/4 S34

1982

NEW BT'S.

RLS NO

W. OAK 13 N65W 97.50' MKD 1/4 S34 BT

BASSWOOD 13 N26E 42.00' MKD 1/4 S34 BT

ASH 9 N59E 27.80' MKD. 1/4 S34 BT

ASH 9 N80E 50.50' MKD. 1/4 S34 BT

8" STEEL SIGN POST NORTH 3.0' WITH WARNING SIGN

RECENT ROAD SURVEY JUST SOUTH OF COR. - JUST S

SURVEY - STA. 28100 IS SITE 69.5' OF COR.

10-18-82 CK

STANDARD SECTION CORNER TO SECTIONS 33-34

NOTES OF ORIG. GOVT. SURVEY 1871

SET WOOD POST

SPRUCE 8 N36E 18 LKS. 11.9'

NO EVIDENCE FOUND NOW AT BRG. & DISTANCE

SPRUCE 9 N24W 24 LKS. 15.8'

NO EVIDENCE FOUND NOW AT BRG. & DISTANCE

NOTES BY ITASCA COUNTY - PLAT OF SECTION

SUBDIVISION SEC. 4 T148NR28W 1920

SET NEW WOOD POST ^{3"X14" LONG} FD POST POINT

REESTABLISHED FROM ORIG. EVIDENCE

AS SHOWN ON PLAT

MKD NEW BT'S.

BIRCH 8 N71/2E 6.4'

NO EVIDENCE OF THIS BT REMAINS AT BRG. & DISTANCE

SPRUCE 10 N30W 16.6'

FD. SPRUCE STP. 10"X24" HIGH N21W 16.6' ^{S33 BT} SCRIBED

10-12-82 CK-JA-GB

FOUND POINT OF OLD POST BADLY DECAYED
 3"X14" LONG IN PLACE - TOP ROTTED AWAY
 IN BURNT OVER TAM. + SPRUCE SWP. - APPROX.
 175' E OF OLD POWER LINE N+S
 CHAINED TO THIS CORNER FROM C.C. BET. SEC'S 33+
 THEN CHAINED EAST TO S 1/4 TO SEC. 34 2653' LINE
 RUN AT S88E CAME OUT AT CORNER
 SET 3"X3"X6' ASH POST AT COR. PUT ESLEP ON ASH 6"
 N13E 21.5' FROM POST

SET 2"X60" IRON PIPE STANDARD F.S. MONU.
 WITH CAP MARKED

PLACE OLD POST POINT
 AT EAST SIDE OF MONU.
 MAGNETIC PELLET UNDER
 MONU.

T149NR28W

SC

S33 | S34

1982

RLS NO

MARKED NEW BT'S.

BLK. SPRUCE 9 N83W 40.40' T149NR28W S34 SC BT

BLK. SPRUCE 7 N23W 46.10' T149NR28W S34 SC BT

BLK. SPRUCE 8 N40E 29.10' T149NR28W S33 SC BT

BLK. SPRUCE 9 N80E 32.10' T149NR28W S33 SC AT

SET B' STEEL SIGN POST 3.0' E WITH 54-9

10-13-82

Chris Kramer

QUARTER CORNER BET. SEC'S. 5-8

NOTES OF ORIG. GOV'T SURVEY 1896

SET ASPEN POST

ASPEN 6 N45E 17 LKS. 11.2'

TAM 16 S40E 200 LKS. 132'

NOTES BY JOHN ROSE LAND SURVEYOR 1928

NO TRACE OF POST - FOLDER #1 PAGE 88

FOUND STUMP OF TAM 18 S60E 132'

FOUND ASPEN 18 N45E 11.2'

SET NEW CEDAR POST AT CORNER

FOLDER 1 Pg. 89

FROM SEC. COR. 5-6-7-8 EAST TO 1/4 COR 5+8

2639.4' - LINE FELL 3.2 SOUTH OF 1/4 COR.

2330' WEST BANK OF POPPLE RIVER

2606' EAST BANK OF POPPLE RIVER

2639.4' TO 1/4 COR.

2639.4 W TO SEC. COR. —
 2629.7 S OF SEC. COR. WEST SIDE OF SEC.
 2733.7 S OF 1/4 5-8 TO 0/4 SEC. 8

SECTION CORNER TO SECTIONS 5-6-7-8

NOTES OF ORIG. GOVT. SURVEY 1896

SET TAM POST

TAM 10 N78E 21 1/2 LKS. = 14.19'

TAM 4 S35E 45 LKS. = 29.70'

TAM 12 S34W 58 LKS. = 38.28'

TAM 9 N59W 31 LKS. = 20.46'

NOTES BY JOHN ROSE LAND SURVEYOR 1926

STATE ROAD # 1914 - MOOSE PARK - ALVWOOD

ARDENHUST - NOW HWY. 46

TAM 7 N53E 40.8'

TAM. 6 N60W 44.3'

TAM. 8 S73E 47.4'

TAM. 5 S33W 44.1'

COMSTOCK + DAVIS INC. 10-18-77
BOUNDARY SURVEY FOR NOEL THOMASSSET PK NAIL FOR CORNER .80 E OF CENTERLINE
OF HWY #46SET 1/2" IRON ON WEST SIDE OF MAT, 20 FROM
EDGE OF BLACKTOP - DOWN .30 BELOW SURFACE
12.81' FROM PK NAIL

3/4" REBAR IN CENTERLINE 51.03' SOUTH

ELM 15" SE 64.10 SPK. 3 1/2" HIGH IN N FACE

QUARTER CORNER BET. SEC'S, 194-30
 NOTES OF ORIG. GOVT. SURVEY 1896
 SET ASH POST

ASH 7 S82E 186 LKS. 122.8'

ELM 10 N86E 207 LKS. 136.6'

NOTES BY JOHN J. ROSE RLS IN 1929

FOLDER #1 PAGE 100

FOUND BT TO SEC. 19 (ELM) - NO TRACE OF BT
 TO SEC. 30 (ASH) NO TRACE OF ASH POST
 IN OPEN SWAMP (MARSH GRASS) N+S

SET NEW WILLOW POST 3"X4"X6' FOR 1/4 COR.
 FROM WHICH BT TO SEC. 19 BRG. N86E -136.6'

ORIG. DISTANCE 80.40 CHS

QUARTER CORNER BET. SEC'S. 18 & 19

NOTES OF ORIG. GOVT. SURVEY 1896

SET ELM POST

ELM 7 S83E 16 1/2 LKS. 10.9'

ELM 7 N30W 13 1/2 LKS. 8.9'

NOTES BY JOHN J. ROSE RLS IN 1924

FOLDER #1 PAGES 96

FOUND OLD POST AND STUMPS OF GOVT. BT'S.

2004 ITASCA COUNTY

CORNER CERT

SET 1/2" X 2' REBAR WITH 2 1/2" ALUM CAP FLUSH ON
NORTH SIDE OF TRAIL.

ASH 4 1/2" N45W 18.50' TO SPK/WASHER

ASH 7 1/2" N30E 34.50' TO SPK/WASHER

ASH 4 1/2" S8°W 39.08' TO SPK/WASHER

ORIG. DISTANCE 79.28 CHS.

ROSE'S. DISTANCE FROM SEC. COR. 17-18-19-20 WEST
TO 1/4 18/19 IS 26.93'

QUARTER CORNER BET. SEC'S. 20 & 29
 NOTES OF ORIG. GOV'T. SURVEY 1896
 SET ASPEN POST

TAM. 12 S71E 62 LKS. 40.9'

Fd. burned remains of tam. stp. at brying + dist.

TAM. 6 N60W 227 LKS. 149.8'

Fd. burned remains of tam. stp. at brying + dist.

9/26/84-CK, JA, GB

Fd. no remains of original post or Rose's.

Mkd. New Temporary BT's:

Aspen 8" N4W 11.6 Spike + tags

Ash 5" S27W 49.6 Spike + tags

Set a Ash post 3" x 3" x 5' down 1.5'
 to mark corner position.

NOTES BY JOHN J. ROSE RLS. 1929

FOLDER 1 PAGE 19

FOUND A DOWN TAM. 12" DIA. WITH TRACE OF AX MARK

NEAR THE ROOT. I ASSUMED THAT THIS WAS THE BT.

TO SEC. 29 - I THEN SET A POPLAR STAKE N71W

40.9'. THIS STAKE IS 6.7' NORTH OF STA. 2644.6'

2 FEET LESS THAN THE GOV'T. CHAINAGE

ORIG. DISTANCE 801.20 CHS.

Chained from F.S. Brass Cap section Corner 19, 20, 29, 30
 east 2646' (Rose's distance) and chained from

☉ of township road at the approx. 1/2 corner of sects
 29, 32 north 1° East 5296'. (Rose's Distance). Cleared
 and grubbed ground thoroughly around corner area.

Distances and lines intersect very good.

Corner falls near the north edge of a grassy, alder swamp.
 Swamp bears N55W, S55E.

QUARTER CORNER BET. SEC'S. 6 & 7

NOTES OF ORIG. GOVT. SURVEY 1896

SET BIRCH POST

TAM. 9 S37W 28 LKS.

TAM. 9 N54E 29 LKS.

NOTES BY JOHN J. ROSE RLS 1923

FOLDER #1 PAGE 79

FOUND BOTH GOVT. BT'S.

SET NEW POST (TAM)

BT'S. BY ITASCA COUNTY NR DATE

TAM. 14 N10W 40.8'

BIRCH 7 S50E 26.8'

DISTANCES BY ROSE WEST FROM '14 COR. 2510.6'
AND EAST FROM '14 2625.0'

QUARTER CORNER BET. SEC'S. 8 & 17
 NOTES OF ORIG. GOVT. SURVEY 1896
 SET TAM. POST

TAM. 16 N80E 14 LKS.

TAM. 8 S59E 14 LKS.

NOTES BY JOHN J. ROSE RLS 1923

FOUND BOTH BTS. FOLDER #1 PAGE 87

FOUND POST POINT UNDER MOSS

SET NEW POST TAM $3\frac{1}{2}'' \times 3\frac{1}{2}'' \times 3\frac{1}{2}''$

MKD. $\frac{1}{4}$ S 8 N - $\frac{1}{4}$ S 17 S

GOVT. CHAIN 80.20
 ROSE'S DISTANCE FROM SEC. COR. EAST 2634.3'

6A

CERTIFICATE FILED

SECTION CORNER TO SECTIONS 3, 4, 9 & 10

NOTES OF ORIG. GOVT. SURVEY 1896

SET SPRUCE POST

TAM. 9 N9½E 40 LKS. 26.4'

W. PINE 24 S89½E 22 LKS. 14.5'

BALSAM 7 S33W 69 LKS. 45.5'

BALSAM 8 N24W 24 LKS. 15.8'

NOTES BY JOHN J. ROSE RLS IN 1928

FOLDER #15 PAGE 100

FOUND 3 GOVT. BT'S. STANDING AND STUMP
OF OTHER ACCORDING TO GOVT. NOTES

OLD POST IS GONE

SET NEW POST (SPRUCE)

ROSE'S DISTANCE FROM THIS CORNER E FOR MILE
IS 5287.8' - PROPORTIONATE ¼ BET. 3 & 10 AT
2643.9' NO TRACE OF ¼ 3/10 (ORIG.)
NORTH TO ¼ BET. 3 & 4 2648.4 FT. ORIG. COR.
2-13-81 CK

CHAINED AT TRUE NORTH FROM Q. OF COUNTY ROAD
#29 APPROX. ¼ COR. BET. 9 & 10 OUR DISTANCE
2670' AND FELL 30' WEST OF SEC. COR.
FOUND LARGE PINE STUMP EAST OF OUR LINE
FOUND CHOP MARKS ON FACE OF STUMP TO WEST
USE AS ORIG. BT. AND PLACE FSLP ON 10 ASPEN
14.5' WEST OF STUMP AS APPROX. COR.
NO POST FOUND OR ANY EVIDENCE OF OTHER BT'S.
AT THIS TIME - MORE SEARCH SHOULD BE DONE
IN SUMMER.

6A

65

QUARTER BETWEEN SECTIONS 3+4

NOTES OF ORIG. GOVT. SURVEY 1896

SET SPRUCE POST

BIRCH 12 N85E 33 LKS.

SPRUCE 20 S85W 46 LKS.

NOTES BY JOHN J. ROSE RLS IN 1928

FOLDER #15 PAGE 101

FOUND BOTH GOVT. BT'S. - NO POST

SET NEW POST BALSAM $3\frac{1}{4} \times 3\frac{1}{2}$

ROSE'S DISTANCE NORTH OF SEC. COR. 3-4-9-10
TO $\frac{1}{4}$ SECS. 3-4 2678.4'
NORTH $\frac{1}{2}$ BY ROSE 2526.3'

QUARTER CORNER BET. SEC'S. 2+3

NOTES OF ORIG. GOV'T. SURVEY 1896

SET ASPEN POST

SPRUCE 18 S22E 8 LKS.

BALSAM 6 N84W 12 LKS.

NOTES BY JOHN J. ROSE RLS IN 1922

FOLDER #1 PAGE 28

FOUND POINT OF OLD POST AND BOTH (ORIG.) BT'S.

SET NEW TAM POST MKD. $\frac{1}{4}$ S2E + $\frac{1}{4}$ S3W

2633.5' NORTH OF SW COR. SEC. 2

874 CCC NOTES BY ROY NELSON 3-9-35

Fd. POST - GOOD CONDITION - 30" HIGH - SCRIBED

LOCATION POSTER ON BIRCH 14" EAST 15 LKS. = 9.9'

ROSE'S DISTANCE FROM EVIDENCE AT MC BET. 2+3
2318.8' MC TO $\frac{1}{4}$ COR.

11-3-87 CK-MILTHANSEY
FROM APPROX C $\frac{1}{4}$ SEC. 2 (TAG ON ASPEN) RAN LINE
AT NBTW A DISTANCE OF 2720'
SEARCHED AREA FOR 2 HRS. - NO EVIDENCE COULD BE
FOUND AT THIS TIME - SEARCH WITH LOCATOR FOR
TAG - NOT FOUND, NEED TO GO TO SW COR. SEC. 2
AND CHAIN LINE NORTH
ESTABLISHED APPROX. $\frac{1}{4}$ COR. BET. SEC'S. 2+3
PLACE FSLP ON 3" ASH N7E - 19.3' FROM 3" ASH POST
AT APPROX. COR. WHICH IS AT EDGE OF SWAMP TO WEST
AREA OF CORNER IS IN BUSH WITH BALSAM + ASH
1175' W OF APPROX C $\frac{1}{4}$ SEC. 2 WOODS TRAIL NW-SE

QUARTER CORNER BET. SEC'S. 3 + 10
 NOTES OF ORIG. GOVT. SURVEY 1896
 SET BALSAM POST

SPRUCE 4 N31E 23 LKS. 15.2'

BALSAM 5 S78 $\frac{1}{2}$ W 42 LKS. 27.7'

NOTES BY JOHN J. ROSE RLS IN 1928
 FOLDER #15 PAGE 100

ALL TRACES OF ORIG. CORNER HAVE BEEN BURNT
 OUT BY FIRE - NO EVIDENCE REMAINS
 ESTABLISH $\frac{1}{4}$ CORNER BY PROPORTIONATE DISTANCE
 BETWEEN SECTION CORNERS

MILE IS 5287.8' SPLIT IS 2643.9'

SET POST

FOLDER #15 PAGE 105

SET CEDAR POST

BALSAM 6 NE 7.3'

BALSAM 4 SW 10.5'

CERTIFICATE FILED

GOVT. CHAIN 79.91 - 39.95 $\frac{1}{2}$

2-13-81 CK

CHAINED FROM SEC. COR. 3-4-9-10 AT TRUE EAST
 2644' E TO APPROX. $\frac{1}{4}$ COR. LOCATION - NO EVIDENCE
 FOUND NOW - SHOULD SEARCH IN SUMMER - FOL. OLD
 GLAZED LINE E+W IS 8' NORTH OF END OF OUR CHAIN
 APPROX. 40' N TO EDGE OF SWP. E+W
 PUT FSLP ON 14" ASPEN AS APPROX. $\frac{1}{4}$ COR. 3/10

CENTER QUARTER TO SECTION 14
 NOTES BY JOHN J. ROSE RLS IN 1921
 SET 1" X 36 GALV. IRON PIPE
 FOLDER #5 PAGE 175

10-31-78 CK-BT

CHAINED FROM S¹/₄ SEC. 14 NORTH 2645'
 OUR LINE FELL 28' W OF COR.

FD. 1" X 36" IRON PIPE 10" ABOVE GROUND
 ON SLOPE OF BALSAM - BIRCH - ASPEN RIDGE
 NW & SE AREA AROUND CORNER HAS BEEN LOGGED
 RECENTLY

SET 2 X 2 X 6' DRY BALSAM STAKE BESIDE IRON
 AND PLACE 3 LARGE ROCK AROUND IRON PIPE
 PUT F.S.L.P. ON BALSAM 7 N. 72 E 19.2' FROM COR.

SOUTHWEST TOWNSHIP CORNER BET. 31+36

NOTES OF 12th STANDARD PARALELL 1871

SET WOOD POST.

TAM. 9 N61E 17 LKS.

SPRUCE 5 N50W 7 LKS.

SEE BOOK 1 T149N R29W Pg. 7

874 CCC NOTES BY DAVE PRESTIDGE 2-23-35

NO STAKE FOUND

Fd. TAM. 8 N58E 17½ LKS. = 11.55'

LOCATION POSTER ON BLK. SPRUCE 4" ON NWSIDE
OF TREE - CORNER BEARS N32W 16½ LKS. = 10.89'

CCC NOTES FEB. 23, 1935

NO POST FOUND

FOUND TAM 8 N58E 17½ LKS. MKD T-R28W S31 BT

PUT FSLP ON BLK. SPRUCE 4 S32E 16½ LKS. FROM COR.

QUARTER CORNER BETWEEN SEC'S. 23 & 26

NOTES OF ORIG. GOVT. SURVEY 1896

SET SPRUCE POST

BALSAM 14 S57E 6 LKS. 4.0'

SPRUCE 11 N37W 13 LKS. 8.6'

3-26-85 CK-JA-6B

CHAINED FROM APPROX. SEC. COR. TO EAST TO THIS COR.
CONTINUE WEST TO SEC. COR. TOTAL DISTANCE 5310'
OUR LINE FOR MINE FELL 180'S OF SEC. COR. 22, 23, 24 & 27
LINE THEREFORE SHOULD BE RUN AT N88W

3/27/85 SAME GREN

GO BACK TO STA. 2640'W AND MOVE POSITION 25'W TO
FIT GOVT CHAIN OF 39.92 1/2 CHS. OR 2635' - WE NOW HAVE
90'N ON ASPEN + BALSAM RIDGE E+W + NO ORIG. EVIDENCE
WAS FOUND - THERE ARE WELL ROTTED STUMPS IN AREA
BUT FROZEN CONDITIONS AND SNOW MAKE SEARCH VERY HARD
AT THIS TIME + MORE SEARCH SHOULD BE DONE IN SUMMER
BUT FELP ON 6" ASPEN APPROX. 1/4 COR. IS 10' WEST OF TRS
FROM OUR APPROX. COR. POSITION WE FOUND ANOTHER 1 1/2"
IRON PIPE WITH LAND DESCRIPTION STAMPED ON FLAT SIDE OF
I.P. THIS PIPE 15.35'N AND 15'E OF OUR POSITION
WE FOUND NO EVIDENCE OF ANY STUMPS (ORIG BT) TO FIT
THIS PIPE LOCATION - THERE WAS NO NUMBER ON PIPE
AS TO INDICATE A REGISTERED LAND SURVEYOR DID THIS
SURVEY, WE THINK IT COULD HAVE BEEN RUN EAST FROM
SEC. COR. BY COMPASS & CHAIN IN THE LAST 5 YRS. - WE
FOUND THE SAME IRON'S AT ALL FOUR CORNERS OF THE 90
THE DISTRICT IS GOING TO CONTACT MR. FRANK METZGER IN
MICHIGAN AND FIND OUT WHO DID THE SURVEY
CAN COME TO CORNER ALONG TRAIL FROM SOUTH - RED WOODS
ROAD VISIBLE IN WOODS 250'W OF 1/4 POSITION

QUARTER CORNER BETWEEN SECTION 24 & 25

NOTES OF ORIGINAL GOVT. SURVEY 1896

SET WOOD POST.

ASPEN 7 N21E 18 LKS. = 11.9'

BALSAM 4 S80E 12 LKS. = 7.9'

3/12/87 CK-JA

RAN LINE DUE EAST FROM APPROX. SECTION CORNER TO SECT. 23-24-25-26 OUR DISTANCE OF 2640' E - TIE UP RIBBON AND MKD AS APPROX. CORNER - THEN CONTINUE AT ONE EAST TO BRUSH OUT LINE N+S BY ITASCA COUNTY IN WINTER OF 86-87 THIS LINE WAS STARTED BY COUNTY 1/2 MILE TO SOUTH DISTANCE OF OUR LINE WAS 2340' TO BRUSHED LINE - THEN 180' SOUTH ON OPEN LINE TO POINT WHERE WE ARE DUE EAST OF TAG PUT UP IN FALL OF 86 OR APPROX. 104' EAST OF GOVT CHAIN UP FROM 1/4 25430 TO THIS APPROX. SEC. COR. GOVT CHAIN FOR MILE FROM WEST WAS (W 1/2 40.00 CHS OR 2640) AND (EAST 1/2 34.46 CHS. OR 2274.4') GOVT TOTAL 4914 OUR TOTAL OF LINE WAS 4980' - BUT BOTH STARTING AND ENDING POSITIONS ARE APPROX. CORNERS - NO EVIDENCE AT EITHER CORNER COULD BE FOUND AT THIS TIME APPROX. 1/4 24425 SHOULD MOVE 90' SOUTH OF RIBBON NOW AT LOCATION - NO EVIDENCE AT 1/4 CORNER WAS FOUND AT THIS TIME

QUARTER CORNER BETWEEN SECTIONS 25+36

NOTES OF ORIGINAL GOVT. SURVEY 1896

SET WOOD POST

SPRUCE 6 N71W 6 LKS 4.0'

ASPEN 6 S71W 27 LKS 17.8'

GOVT CHAIN FOR LINE 4914'

GOVT CHAIN - W $\frac{1}{2}$ 40.00 CHS-2690 - E $\frac{1}{2}$ 37.60 CHS-2481.6'

3-17-87 CK-JA-RM
 CHAINED EAST FROM SW COR. SEC. 25 - 2640'E
 FOUND 7" BALSAM BLAZED 4 SIDES AS APPROX. COR.
 OUR LINE IS 100' NORTH OF BLAZED BALSAM - BUT DISTANCE
 OF 2640' FITS GOOD - PLACED FSLP ON 7" BALSAM
 AS APPROX. $\frac{5}{14}$ SEC. 25 - NO OTHER EVIDENCE
 COULD BE FOUND AT THIS TIME OF SEARCH - CONTINUE
 LINE NOW AT S88°E TO RANGE LINE - CHAINED 2340'E
 GIVING TOTAL FOR LINE BET. SEC'S. 24+25 OF 4980'E
 NO EVIDENCE OF SW COR. COULD BE FOUND AT THIS TIME
 ESTABLISHED APPROX. COR. - SEE BOOK 2 P. 35 149-27

MEANDER CORNER BETWEEN SECTION 2+3
 NOTES OF ORIGINAL GOV'T. SURVEY 1896
 SET ASH POST.

ASH 6 S47E 22 LKS. = 14.5'

ASPEN 8 S72W 40 LKS. = 26.4'

NOTES BY JOHN J. ROSE OCT. 1922

FOLDER #1 PAGE 28

FOUND POST AND BOTH GOV'T. BT'S.

THEN RAN LINE SOUTH BET. SEC'S. 2+3

2318.5' FELL 45.5' EAST OF $\frac{1}{4}$ COR.

FD. POINT OF OLD POST & BOTH BT'S.

874 CCC NOTES BY L.W. JOHNSON 2-14-34

FD. BT ASH 8 S42E — SCRIBED BT

LOCATION POSTER ON ABOVE

ORIG. DISTANCE BET. SEC'S 2+3 IS 75.20 CHS. OR
 4963.2 FT. TO SHORE OF WAGNER LAKE

MEANDER CORNER BETWEEN SECTIONS 2+35

NOTES OF ORIGINAL GOV'T. SURVEY 1896

SET SPRUCE POST

TAM. 10 S80E 28 LKS. = 18.48'

ASH 7 N62E 30 LKS. = 19.8'

ORIG. DISTANCE FROM WEST SHORE TO EAST SHORE
IS 6.30 CHS. OR 415.8'

MEANDER CORNER BETWEEN SECTIONS 3+34
 NOTES OF ORIGINAL GOV'T SURVEY 1896
 SET BIRCH POST

BIRCH 10 N88W 23 LKS. = 15.2'

ASPEN 9 S70W 22 LKS. = 14.5'

NOTES BY JOHN J. ROSE OCT. 1922

FOLDER #1 PAGE 28

FROM 1/4 CORNER BETWEEN SECTIONS 3+34 RAN
 LINE EAST AT 2583.5' FELL 55.6' SOUTH
 OF MC

874 CCC NOTES BY L.W. JOHNSON 2/14/34

NO POST FOUND

Fd. ASPEN 8 S32E 21 LKS. APPROX.

Fd. BIRCH 10 S40W 11 LKS. APPROX.

PLACED FSLP ON BALSAM 5" SIDE 16 LKS.

NOTES ON FRONT: INTERSECTION OF BLAZES

ON BT ON WEST SHORE OF LAKE

MEANDER NOTES FROM MC BET. SEC'S. 3+34 S26°30'E
 2.45 CHS. OR 141.7' TO MC BET. SEC'S. 2+3 THEN
 EAST 4.00 CHS. OR 244' THEN N31°E 2.50 CHS. OR 165'
 TO MC BET. SEC'S. 2+35

T150N R28W $\frac{33}{34}$
T149N R28W $\frac{4}{3}$

SECTION CORNER TO SECTIONS 3-4-33-34

NOTES OF ORIGINAL GOV'T. SURVEY 1896

SET ASPEN POST

SPRUCE 16 N50E 53 LKS. = 35.0'

W. PINE 16 S24E 23 LKS = 15.2'

BIRCH 18 S58W 14 LKS. = 9.2'

BIRCH 20 N55W 69 LKS. = 45.5'

NOTES BY JOHN J. ROSE MAY 5 1928

FOLDER 15 - PAGE 102

NORTH FROM $\frac{1}{4}$ COR. BET. SEC'S. 3-4 - 2502.6'

CROSS TOWN LINE 22.8' WEST OF CORNER POST
TO SEC'S. 3-4-33-34

FOUND OLD POST ROTTED DOWN - SET NEW

BALSAM POST 4"X4"X3 $\frac{1}{2}$ '

(4 BTs.?)

874 BY HARRISON ADAMS 12/7/34

FOUND WOOD POST - GOOD CONDITION ^{SCRIBED} 30' HIGH

Fd. BIRCH 16 N57W 72 LKS. 47.5' SCRIBED

Fd. BIRCH 14 S64W 15 LKS. 9.9' SCRIBED

CENTER QUARTER SECTION 19

NOTES BY JOHN ROSE - OCT. 14 - 1929

FOLDER # 10 Pg. 39

SET CEDAR POST 4" X 4" X 3 1/2"

MKD NEW BT'S.

BIRCH 8 N 68 1/2 E 4.6'

Fd. WELL ROTTED STUMP AT N 76 E - 4.6'

CEDAR 13 S 8 1/2 W 13.0'

Fd. 14" CEDAR WINDFALL AT S 16 W - 13.0' BLAZED TO COR.

9-27-84 CK-JA-68

CHAINED AT N 87 W ROSE'S DISTANCE 2609'

FROM CENTER LINE OF N+S COUNTY ROAD #131

OUR LINE FELL 25' SOUTH OF C 1/4 - DISTANCE CHECKED

GOOD - Fd. 14" CEDAR WINDFALL NORTH SPROUT

OF TWIN CEDAR - DOUBLE BLAZED WITH SPIKE IN

UPPER BLAZE - Fd. WELL ROTTED BIRCH STUMP

AT N 76 E - 4.6' FROM ROTTED-BURNED CEDAR

POST LYING ON GROUND - SET NEW 2" X 2" X 5'

CEDAR POST AT C 1/4 COR.

BLAZED ON 4 SIDES A 14" BALMIE - S 30 W - 2.0'

FROM 2" CEDAR STAKE

VERY OLD + ROTTED CEDAR CABIN 15' X 25' AT

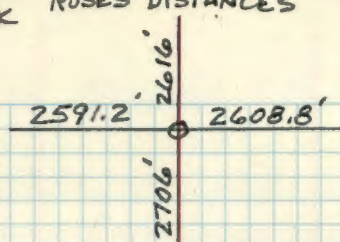
S 20 W - 35' FROM C 1/4 COR.

ALDER SWAMP 35' EAST OF CORNER

PLACED FSLP ON 8" BALMIE N 44 W - 10.8'

FROM 2" CEDAR STAKE - PLACE SPK IN GROUND

ALONGSIDE STAKE



IMPROVED TA METHOD

A grid of 20 columns and 30 rows on page 78, with a vertical red margin line on the left side.

79

ITASCA COUNTY BT'S. NO DATE

W/116 BET. SEC'S. 6+7

IRON 1 1/2" X 48" N7W 33.0'

IRON 1 1/2" X 48" S7E 33.0'

IMPROVED TABLES AND INFORMATION

HORIZONTAL STADIA CORRECTIONS

2°-00'	—	0.1	21°-00'	—	12.8	33°-00'	—	29.7
3°-00'	—	0.3	21°-30'	—	13.4	33°-15'	—	30.1
4°-00'	—	0.5	22°-00'	—	14.0	33°-30'	—	30.5
5°-00'	—	0.8	22°-30'	—	14.7	33°-45'	—	30.9
6°-00'	—	1.1	23°-00'	—	15.3	34°-00'	—	31.3
7°-00'	—	1.5	23°-30'	—	15.9	34°-15'	—	31.7
8°-00'	—	1.9	24°-00'	—	16.5	34°-30'	—	32.1
9°-00'	—	2.5	24°-30'	—	17.2	34°-45'	—	32.5
10°-00'	—	3.0	25°-00'	—	17.9	35°-00'	—	32.9
10°-30'	—	3.3	25°-30'	—	18.6	35°-15'	—	33.3
11°-00'	—	3.6	26°-00'	—	19.2	35°-30'	—	33.7
11°-30'	—	4.0	26°-30'	—	19.9	35°-45'	—	34.1
12°-00'	—	4.3	27°-00'	—	20.6	36°-00'	—	34.6
12°-30'	—	4.7	27°-30'	—	21.3	36°-15'	—	35.0
13°-00'	—	5.1	28°-00'	—	22.0	36°-30'	—	35.4
13°-30'	—	5.5	28°-30'	—	22.8	36°-45'	—	35.8
14°-00'	—	5.9	29°-00'	—	23.5	37°-00'	—	36.2
14°-30'	—	6.3	29°-30'	—	24.3	37°-15'	—	36.6
15°-00'	—	6.7	30°-00'	—	25.0	37°-30'	—	37.1
15°-30'	—	7.2	30°-15'	—	25.4	37°-45'	—	37.5
16°-00'	—	7.6	30°-30'	—	25.8	38°-00'	—	37.9
16°-30'	—	8.1	30°-45'	—	26.2	38°-15'	—	38.3
17°-00'	—	8.5	31°-00'	—	26.5	38°-30'	—	38.7
17°-30'	—	9.0	31°-15'	—	26.9	38°-45'	—	39.1
18°-00'	—	9.5	31°-30'	—	27.3	39°-00'	—	39.6
18°-30'	—	10.1	31°-45'	—	27.7	39°-15'	—	40.0
19°-00'	—	10.6	32°-00'	—	28.1	39°-30'	—	40.5
19°-30'	—	11.2	32°-15'	—	28.5			
20°-00'	—	11.7	32°-30'	—	28.9			
20°-30'	—	12.3	32°-45'	—	29.3			

Chains to Feet

1	66
2	132
3	198
4	264
5	330
6	396
7	462
8	528
9	594
10	660

Feet to Chains

100	1.515
200	3.030
300	4.545
400	6.060
500	7.575
600	9.090
700	10.606
800	12.121
900	13.636
1,000	15.151