

T149N R26W
Traverse



Level Book
02092

Book 1

DISTRICT FOREST RANGER
U.S. Forest Service
Rt. 3, Box 219
Cass Lake, MN 56638

DISTRICT FOREST RANGER

U.S. Forest Service
Rt. 3, Box 219
Cass Lake, MN 56633

Name

Address

Phone

This book is published on a fine 50% cotton-content ledger paper, specially treated for maximum archival service, and protected by a water resistant surface sizing.

T1490 R20W
Traverse Book

Projects

	PAGES
Subdivision Sec. 21	1-54
Solar Observations for Sec. 21	70-73
East Line Sec. 25 - Kunz Gate	74-77

AE ALLEN PRECISION
EQUIPMENT, INC.
3427 OAKCLIFF ROAD
ATLANTA, GEORGIA 30340
1-800-241-6223, IN GEORGIA CALL 800-282-3203
HAWAII & ALASKA CALL COLLECT 404-458-8885

Projects (continued)

Lat. - 49° 42' 05" N
 Long. 94° 58' 35" W
 Date 1/16/85
 Weather pty cl
 Temp: 0

Station JA T C B M

Elevation	1350'		
1) pt 9	4		time
	R 000-00-30		
	R 180-00-39		
pt 9	⊗ - R 066-14-16		1052 58 ⁹
	- R 246-34 38 ⁹		1054 20
27 pt 9	pt 10 R 180-00-45		
	R 000-00-30		
pt 9	⊗ - R 247-20-45		1057 34
	- R 067-11-00		1056 55
3/ pt 9	pt 10 R 000-00-30	VOID	
	R 180-00-39		
pt 9	⊗ - R 067-52-54		1059 51
	- R 248-09-14		1100 40
pt 9		pt 10	

12/10/84

Helen Lake

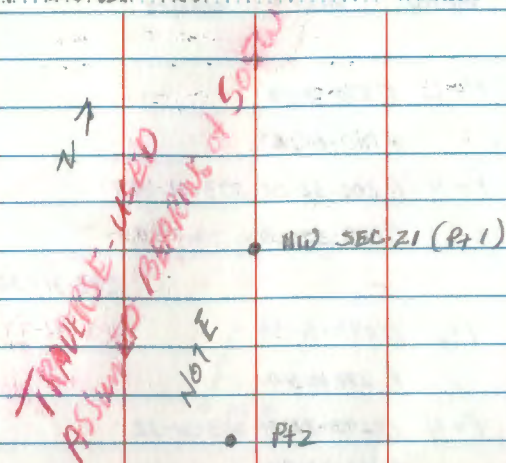
STATION OCCUPIED	STATION SIGHTED	1st ANGLE	3rd ANGLE SLOPE DISTANCE	MEAN ANGLE	HORIZONTAL DISTANCE
Pt. 2	Pt. 1	R 10-00-30			
		R 180-00-37			
Pt. 2	Pt. 3	D 167-29-23	167-28-52		
		R 347-29-28			
				167-28-52.5	
Pt. 2	Pt. 1	P 090-00-38			
		R 270-00-40			
	Pt. 3	D 257-29-29	167-28-53		
		R 077-29-35			
Vertical Angles					
	Pt. 1	D 90-08-08	428.20	428.198	
	Pt. 3	D 89-51-34	1653.23	1653.325	
		33.5	25.5		
		25.5	52.5		
		39.	8.2		
		32.	39		
			53		

Location T. 149 N. R. 26 W. Sec 21

Crew J.A. K. G.B. M. C.K.

Date 12/10/84

Weather Clear 30°



Pt 2. ties:

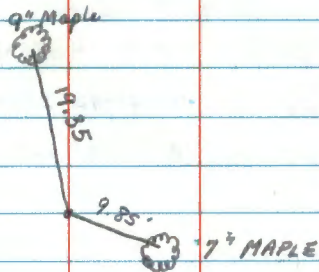
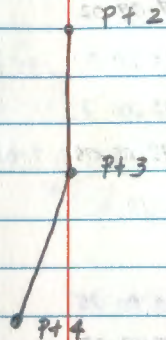
NORWAY	20"	NW	28.34'
MSPEN	15"	SW	30.61'

STATION OCCUPIED	STATION SIGHTED	1st & VERTICAL ANGLE	3rd ANGLE SLOPE DISTANCE	MEAN ANGLE	HORIZONTAL DISTANCE
Pt 3	Pt 2	D 000 08 20 R 180-00-33			
	Pt 4	D 203 32 24 R 023 52 28	203-31-54.5		
Pt 3	Pt 2	D 090-00-34 R 270 00 40	203-31-53.25 203-31-54.25		
	Pt 4	D 293-32-28 R 113-32-30	203-31-52		
		31.5	86		
		26	$\frac{31.5}{54.5}$		
		37	89		
		29	$\frac{37}{52}$		

Location
Crew

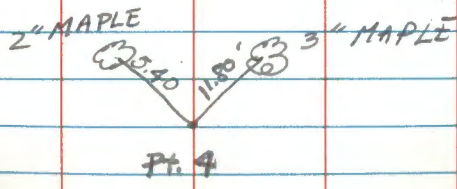
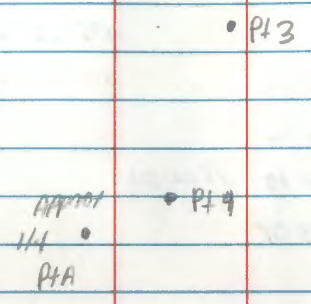
Date
Weather

12/10/89



3, STATION OCCUPIED	STATION SIGHTED	1st & 2nd ANGLE	Slope DISTANCE	MEAN ANGLE	HORIZONTAL DISTANCE
Pt 4	Pt 3	000 00 30			
	Pt 5	167-09-02			
side shot	APPROX 1/4 COR. A	195 10 00	195 09 34.5		
Pt 4	Pt 3	180 00 32			
	Pt 5	347-09-09	167-08-33.5		
	Pt A	015 10 11		195 09 34.75	side shot approx
				167-08-33.75	
Pt 4	Pt 3	090 00 35			
	Pt 5	257-09-07			
	Pt A	285 10 13	195 09 41		
Pt 4	Pt 3	270 00 40			
	Pt 5	077-09-14	167-08-33.0		
	Pt. A	105 10 24			
Vertical angles					
Pt 4	Pt 3	090.04.04	459.50	459.499	
Pt 4	Pt 5	090-47-42	2388.67	2388.440	
Pt 4	Pt. A	100 35 56	180.51		
31	65.5	18.5	78.5		
65.5	31	37.5	37.5		
	34.5		41.0		
31	66.5	37.5	40.5		
66.5	31	70.5	37.5	55.5	
	35.5		33.0	68.5	
			34.2		

Location Crew Date Weather



4.

STATION OCCUPIED	STATION SIGHTED	1st & ANGLE	2nd ANGLE SLOPE DISTANCE	MEAN ANGLE	HORIZONTAL DISTANCE
Pt 5	Pt 4	000 00 30			
		180 00 27			
	S.C. Pt 6	175 03 11	175 02 47.5		
		335 03 21			
				175 02 49.25	
Pt 5	Pt 4	090 00 32		175-02-50.25	
		270 00 40			
	S.C. Pt 6	265 03 17	175 02 51		
		085 03 37			
28.5			87		
16	4 151		36		
	76				
	28.5		51		
	47.5				

4.

Location
CrewDate
Weather

• Pt 4

• Pt 5

• Pt 6
S.C.
W SOL 21

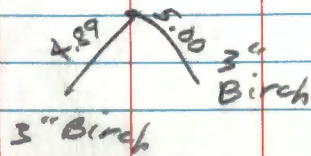
STATION OCCUPIED	STATION SIGHTED	VERTICAL ANGLE	SLOPE DISTANCE	MEAN ANGLE	HORIZONTAL DISTANCE
S.C P16	P15	000-00-30	180-00-46		
	P17	041-17-17	1641-16-46.5		
		221-17-32			
P16	P15	090-00-25	41-16-46.25		
		270-00-40			
	P17	131-17-22	41-16-46		
		311-17-25			
	Vertical Angle				
P16	P15	091-06-58	439.94	439.856	
		38	7	83.5	
		24.5	37.5		
			46.0		

Location SEC. 21 Date 1/15/85 5
 Crew JA T. G. B. M. U. L. Weather 0

N
↑
P15
P17

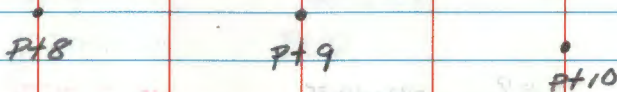
P16
S.C SW SEC 21

P15 T125

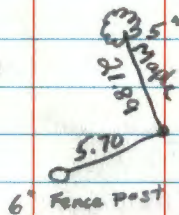


STATION OCCUPIED	STATION SIGHTED	VERTICAL ANGLE	SLOPE DISTANCE	MEAN ANGLE	HORIZONTAL DISTANCE
Pt 9	Pt 8	00-00-30			
		180-00-39		00	
	Pt 10	182-50-30	182-50-22		
		002-50-39			
				182-50-01.5	
	Pt 8	272-50-22		182-50-02.5	
		270-00-40			
	Pt 10	90-00-37	182-50-03		
		092-50-41			
				92	$\frac{39}{36}$ 3
		Vertical Angles			
Pt 9	Pt 8	92-31-12	712.35	711.661	
	Pt 10	90-21-21	321.71	321.103	

Location Date
Crew Weather



Pt. 9



STATION OCCUPIED	STATION SIGHTED	1st & 2nd ANGLE	3rd ANGLE SLOPE DISTANCE	MEAN ANGLE	HORIZONTAL DISTANCE
Pt 10	Pt 9	00-00-30	180-00-28		
	Pt 11	176-21-33	176-21-04.5		
		356-21-34		176-21-05.75	
	Pt 9	090-00-35		176-21-06.75	
		270-00-40			
	Pt 11	266-21-38	176-21-07		
		086-21-51			

32.5	44.5
29	37.5
<u>3.5</u>	<u>7.0</u>

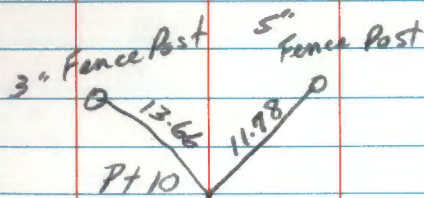
Location
Crew

Date
Weather

Pt 9

Pt 10

Pt 11



10. STATION OCCUPIED	STATION SIGHTED	1st & VERTICAL ANGLE	3rd ANGLE SLOPE DISTANCE	MEAN ANGLE	HORIZONTAL DISTANCE
Pt. 11	Pt 10	00-00-30	180-00-42 181-01-45.5		
	Pt 12 (S.C.)	181-02-21 001-02-22		181-01-43.75	
	Pt 10	090-00-30 270-00-40	181-01-42	181-01-44.75	
	Pt 12 (S.C.)	271-02-14 091-02-20			
				$\begin{array}{r} 77 \\ 35 \\ \hline 42 \end{array}$	$\begin{array}{r} 11.5 \\ 36 \\ \hline 45.5 \end{array}$
Pt 11	Pt 10	87-29-38	395.49	395.111	
	Pt. 12 (S.C.)	89-39-41	1220.62	1220.598	

1/16/85 10

Location JA-GB-CK
Crew 朱 田 干

Date 1/16/85
Weather cloudy

Pt 12 Monumented sec. Cor.
for SE corner of sec 21

Pt 11 trees

Balm	8"	SE	5.74
Balm	11"	SW	21.62

12

STATION OCCUPIED	STATION SIGHTED	VERT. ANGLE	SLOPE DISTANCE	ANGLE	HORIZONTAL DISTANCE
Pt 13	Pt 12	000 00 30			
		180 00 38			
	Pt 14	174 56 22	174 55 49.5		
		354 56 25			174 55 49.5
	Pt 12	000 00 32			
		270 00 40			
	Pt 14	264 56 22	174 55 49.5		
		084 56 29			
		25.5			
		83.5			
		34			
		49.5			
		85.5			
		36			
		49.5			
Pt 13	Pt 12	91 01 00	309.35	309.301	
	Pt 14	89 48 35	1574.58	1574.571	

Location
Crew

Date
Weather

SEC. COR.
Pt 12

Pt 13

Pt 14

13. STATION OCCUPIED STATION SIGHTED VERTICAL ANGLE SLOPE DISTANCE MEAN ANGLE HORIZONTAL DISTANCE

Pt 14	Pt 13	000 00 30			
		180 00 38			
	Pt 15	178 21 48	178 21 15		
		358 21 50			
			178-21-15.75		
Pt 13		090-00-35			
		270-00-40	178 21 16.5		
Pt 15		268-21-50			
		088-21-58			

	54'
49	37.5
34	16.5
15	

Pt 14	Pt 15	89 27 00	1900.535	1900.447
-------	-------	----------	----------	----------

Location Crew Date Weather

Pt 13

Pt 14

Pt 15

trees for Pt 14

Birch	7"	NW	4.32'
Birch	5"	SW	8.63'

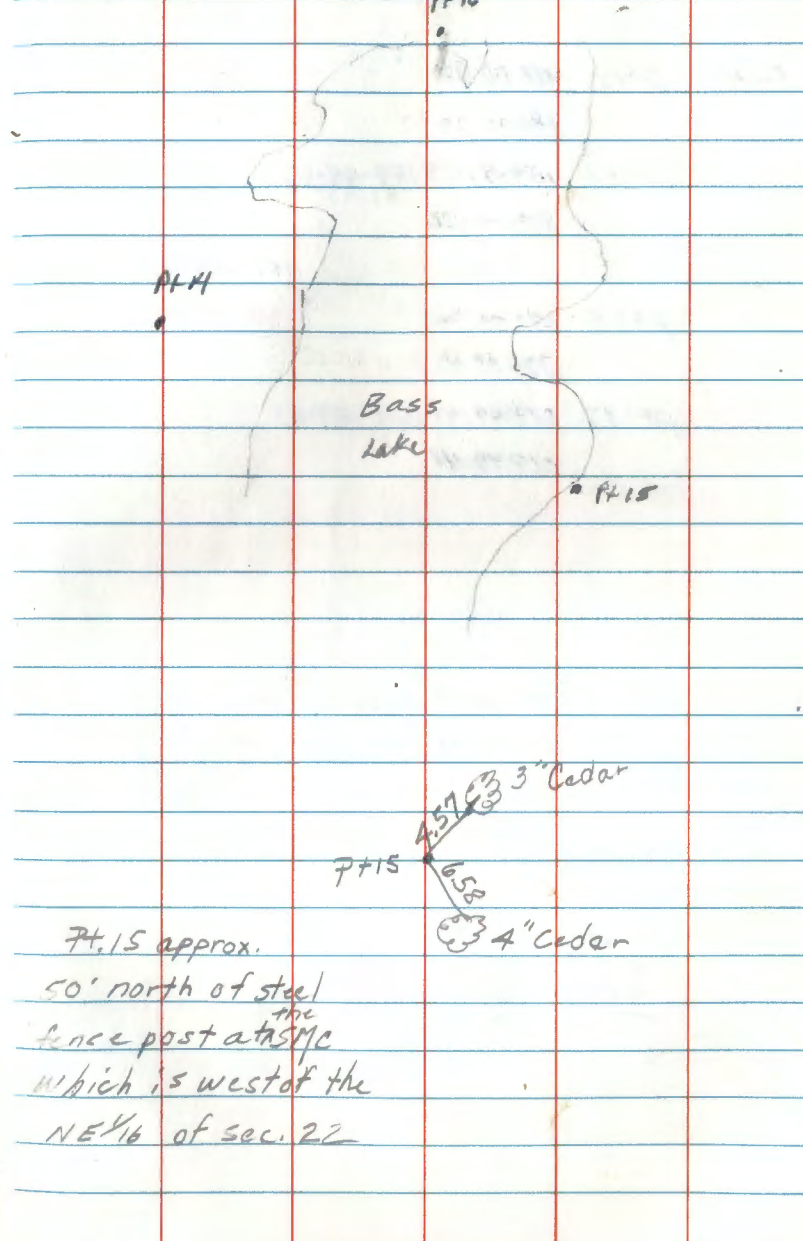
14. STATION OCCUPIED STATION SIGHTED 1st S VERTICAL ANGLE 2nd ANGLE SLOPE DISTANCE W.E.M.I ANGLE HORIZONTAL DISTANCE

STATION OCCUPIED	STATION SIGHTED	1st S VERTICAL ANGLE	2nd ANGLE SLOPE DISTANCE	W.E.M.I ANGLE	HORIZONTAL DISTANCE
Pt 15	Pt 14	000 00 30	180 00 35	050 05 46.5	
	Pt 16	050 06 23	238 06 13	050 05 43.25	
				50-05-47.25	
	Pt 14	090 00 32	270 00 40	050 05 40	
	Pt 16	140 06 19	320 06 18		

hard to see

78" / 31.5 / 46" = 76 / 36 / 40

Location J.A. T. CO. CO. G.K. 14 Date 1/17/85 Weather 5



Pt. 15 approx.
50' north of steel fence post at ^{the} SMC which is west of the NE 1/4 of sec. 22

15. STATION OCCUPIED	STATION SIGHTED	1st & VERTICAL	3rd ANGLE SLOPE	MEAN ANGLE	HORIZONTAL DISTANCE
		Angle	DISTANCE		
pt 16	pt 15	000 00 30			
		180 00 29			
pt 17	159-49-39	159-49-05.5			
		339-49-36			
pt 15	090 00 36	159-49-04.25			
		270 00 40	159-49-05.25		
pt 17	249-49-41	159-49-03			
		069-49-41			
pt 15	90 02 49	5896.55	5896.548		
pt 17	88 53 40	599.05	598.938		
	$\begin{array}{r} 4 \\ 85 \\ \hline 29.5 \\ 55 \end{array}$	$\begin{array}{r} 41 \\ 38 \\ \hline 3 \end{array}$			

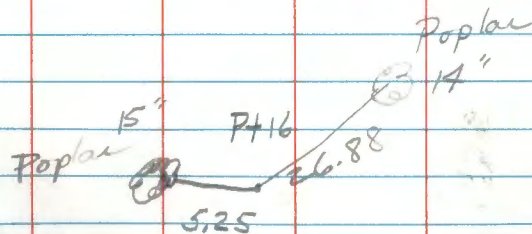
Location
Crew

15
Date
Weather

pt 17

pt 16

pt 15



16.

STATION OCCUPIED	STATION SIGHTED	1st & 2nd ANGLE	3rd ANGLE SLOPE DISTANCE	MEAN ANGLE	HORIZONTAL DISTANCE
Pt 17	Pt 16	00-00-30			
		180-00-25			
	Pt 18	184-22-35	184-22-10.5		
		004-22-41			
				184-22-12.75	
	Pt 16	090-00-30		184-22-13.75	
		270-00-40			
	Pt 18	274-22-44	184-22-15		
		099-22-56			
Pt 17	18	95-08-37	169.04	168.359	

38.10	60
27.5	35
<u>10.5</u>	<u>15</u>

16.

Location
CrewDate
Weather

• Pt 18

• Pt 17

• Pt 16

6" Balsam

5.97

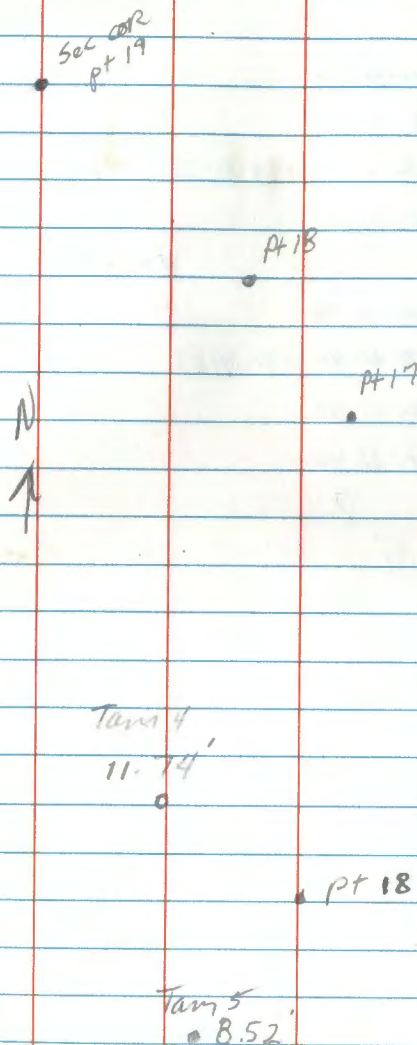
6.31

6.2" Aspen

STATION OCCUPIED	STATION SIGHTED	1st & 2nd ANGLE	MEAN ANGLE	HORIZONTAL DISTANCE
Pt 18	Pt 17	000-00-30		
		180 00 33		
	S.C.			
	Pt 19	175-24-44	175 24 15	
		335-24-49		
			175 24 14.75	
Pt 17		090 00 38		
		270 00 40	175-24-14.5	
Pt 19		265-24-50		
		085-24-57		
Pt 18	Pt 17			
"	Pt 19	9000-20	691.65	691.650
		46.5	4.0	53.5
		31.5	3.9	
		15.0	1.5	

Location
Crew

Date
Weather



18.

STATION OCCUPIED	STATION SIGHTED	1st & VERTICAL ANGLE	3rd ANGLE SLOPE DISTANCE	MEAN ANGLE	HORIZONTAL DISTANCE
pt 19	pt 18	000-00-30			
		180-00-23			
	pt 20	134-21-23	134-20-58		
		314-21-26			
				134-21-00.5	
	pt 18	090 00 38		134-21-01.5	
		270 00 40	134-21-03		
	pt 20	224-21-40			
		044 21-44			
		42			
		39			
		84.5			
		26.5			
		58.0			

Location
CrewDate: 2/4/85
WeatherN
↑

pt. 20

pt. 19
sec col

pt 18

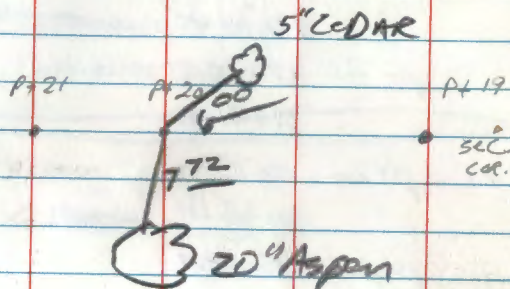
19.

STATION OCCUPIED	STATION SIGHTED	1st & 2nd ANGLE	3rd ANGLE SLOPE DISTANCE	MEAN ANGLE	HORIZONTAL DISTANCE
Pt. 20	Pt. 19	110-00-30 180 00 32			
	Pt. 21	180-00-30 006 06 32	180-00-08		
					179 59 59.75
	Pt. 19	090 08 34 270-00-40	179-59-59.5		
	Pt. 21	270 00 37 09 00 38			
84.5	41		91.10		
20.5	19	31	37.5		
58.0	63	31 00	59.5		
		x	slope		
Pt. 20	Pt. 19	090-33-44 R269-26-42	519.70	519.675	
	Pt. 21	086-35-06 R273-25-24	389.34	388.648	

19.

Location Crew _____ Date _____
Weather _____

↑
N
NOT TO SCALE



23.

STATION OCCUPIED	STATION SIGHTED	1st & VERTICAL ANGLE	3rd ANGLE SLOPE DISTANCE	MEAN ANGLE	HORIZONTAL DISTANCE
P41	P123	000-00-30 180-00-20			
	pt 2	096-51-48 276-52-05	096-51- 48 ^{31.5}		
	pt 23	90-00-59 096-51-48 270-00-40		9651-33-25 096-51-34-25	
	pt 2	186-52-20 006-52-29	096-51-35		
Pt 1	Pt230	90-30-44	1333.61	1333.556	
	Pt23 R	269-29-59			
		56.5 25 <hr/> 31.5	21.5		
		26.5 25 <hr/> 1.5	24.5 49.5 <hr/> 25.0		

Location
CreyDate
Weather

P41

P123

P23

24. STATION OCCUPIED STATION SIGHTED 1st & VERTICAL ANGLE 3rd ANGLE SLOPE DISTANCE MEAN ANGLE HORIZONTAL DISTANCE

Location SE NORTH TO S¹¹/₁₆ Date 2/24/85
Crew JA GB CK Weather

~~PT 29 SE~~

~~PT 28 S¹¹/₁₆~~

PT 28 PT SE 90-47-09 723.98

PT 28 S¹¹/₁₆ PT 287 91-10-12 723.94

724
724
1448
1332.3
115.7

724
116
608
724
1320

603.85
598
5.85

25.

STATION OCCUPIED	STATION SIGHTED	VERTICAL ANGLE	W. ANGLE SLOPE DISTANCE	Horizontal ANGLE DISTANCE
START	TRAVERSE	from	NE	South
Pt 19	Pt 20	000 00 30		
SE.		180 00 36		
Pt 24		272 17 59	272 17 28	
Approx N ¹ / ₄ W		182 18 03		
			272 17 26.5	
Pt 20		090 00 28		+03 29.5
		270 00 40	272 17 25	
Pt 24		002 17 56		
Approx N ¹ / ₄ W		182 18 02		
51		59		
61		34		
33				
28		25		

Location JA R. CK. G.B. Date 2/27/85
 Crew Weather

Pt 20

NE

N¹/₄W Pt 24

26.

STATION OCCUPIED	STATION SIGHTED	1st & VERTICAL ANGLE	3rd ANGLE SLOPE DISTANCE	MEAN ANGLE	HORIZONTAL DISTANCE
Pt 24 Approx N 1/4	Pt 19	100 00 30 180 00 34			
	Pt 25	179 58 30 359 58 28	179 57 57		
				179-57-57.5 02	
	Pt 19	090 00 40 270 00 40	179 57 58		
	Pt 25	269 58 36 089 58 40			
		89 32 57	98 40 58		
	Pt 19	90 00 40	1332.20	1332.20	
	Pt 25	87 06 01 272 54 12	648.26	647.43	

26.

Location
CrewDate
Weather

Pt 19

Pt 24 Approx N 1/4

Pt 25

29.

STATION OCCURRED	STATION SIGHTED	1st & VERTICAL ANGLE	3rd ANGLE SLOPE DISTANCE	MEAN ANGLE	HORIZONTAL DISTANCE
pt 27	pt 26	090 00 30	180 00 23		
	pt 28	180 00 46	180 00 19.5		
		090 00 46			
				180-00-19.5	
				02	
pt 27	pt 26	090 00 40	270 00 40		180 00 19
	pt 28	270 00 59	090 00 59		
		151	59		
		46	40		
		26.5	19		
		19.5			

Location SA T GO CK Date 3/19/85 29.
Crew Weather 35

pt 26

pt 27 5/16

pt 28

ties to pt 27

Tan 4" NE 8.33'

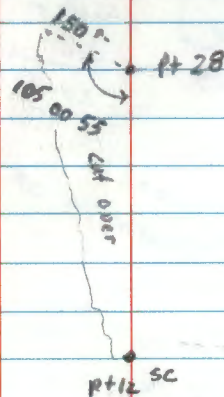
Tan 4" SE 5.82'

30

STATION OCCUPIED	STATION SIGHTED	1st & 2nd ANGLE	MEAN ANGLE	HORIZONTAL DISTANCE
pt 28	pt 27	000 00 30 180 00 28		
	pt 12	180 00 47 000 00 41	180 00 15	
			180 00 13 02	
pt 27		90 00 44 270 00 40		
pt 12		180 00 11 90 00 53 270 00 53		
pt 27		91 22 57	607.77	607.59
pt 12		70 31 00	723.92	723.89
		44 39 15	53 42 11	

Location
CrewDate
Weather

3/19/85



31

STATION OCCUPIED	STATION SIGHTED	1st & VERTICAL ANGLE	2nd ANGLE SLOPE DISTANCE	MEAN ANGLE	HORIZONTAL DISTANCE
pt 12	pt 28	000 00 30 180 00 30			
pt 13	110 19 26	110 18 56 290 19 24			
pt 28	090 00 42 270 00 40	110 18 54	110-18-55		
pt 13	200 19 35 020 19 35				
86	95	47.5	65		
30	4	26	41		
56	54	21.5	24		
END OF TRAVERSE from NE SOUTH TO SE					
pt 12	pt 28	000 00 30 180 00 22			3/25/85
pt 13	110 23 48	110 23 21.5 290 23 47			
pt 28	090 00 42 270 00 40	110 23 22.75			
pt 13	200 24 05 020 24 05	110 23 24			

Local Crew
Date 3/19/85
Weather 35

pt 28

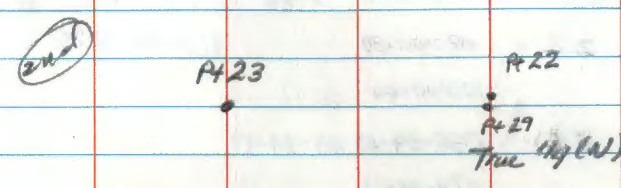
pt 12

pt 13

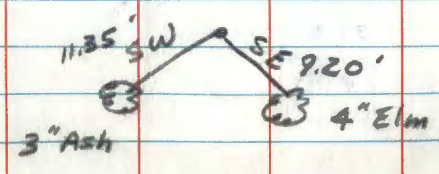
STATION OCCUPIED	STATION SIGHTED	1st & VERTICAL ANGLE	3rd ANGLE SLOPE DISTANCE	MEAN ANGLE	HORIZONTAL DISTANCE
Pt 23	Pt 22	000 00 30 180 00 37 179 59 22	check to 114		
	Pt 29	000 00 50	000.00-19.5		
		179 59 71 180 00 56	000.00-19.25		
Pt 23	Pt 22	090 00 38 179 59 22			
	Pt 29	270 00 40	000.00-19		
		090 00 57 270 01 01			
		4 12 1 26 53 33.5 19.5	58 39 19		
Pt 23	Pt 29	89-54-45	1317.89	1317.888	
Then went to					
Pt 22	Pt 23	000-00-00			
	Pt 29	263-37-14			
Pt 22	Pt 29	horizontal tape 2.15'	S 78 W		

red this first set 114

3/6/85
Location: JA CK EB
Date: _____
Weather: _____
15" of new snow

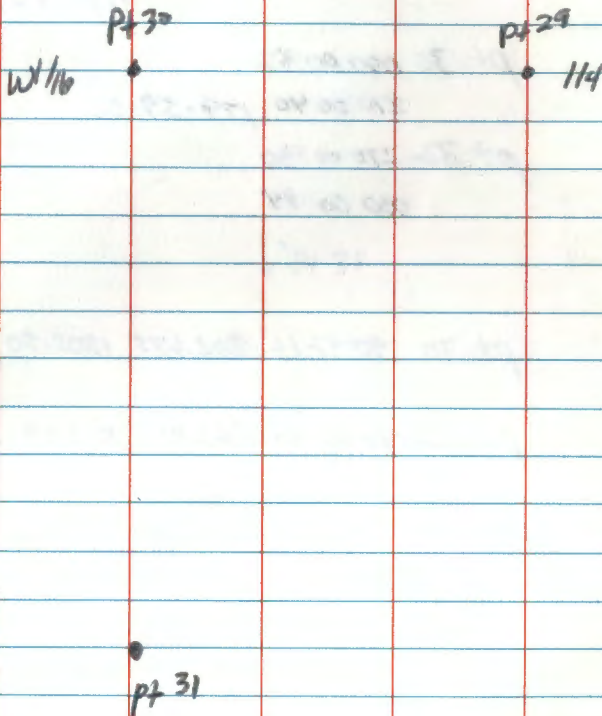


Ties for Pt 29 1/4 corner position



No.	STATION OCCUPIED	STATION SIGHTED	1st & VERTICAL ANGLE	3rd ANGLE SLOPE DISTANCE	MEAN ANGLE	HORIZONTAL DISTANCE
pt 30	pt 29	100 00 30	180 00 29	92-20-23.5		
	pt 31	092 20 53	272 20 53	92-20-23.75		
	pt 29	090 00 40	270 00 40	92-20-24		
	pt 31	180 21 04	002 21 04			

Location _____ Date _____
 Crew _____ Weather _____



39.

STATION OCCUPIED	STATION SIGHTED	1st & VERTICAL ANGLE	3rd ANGLE SLOPE DISTANCE	MEAN ANGLE	HORIZONTAL DISTANCE
33	32	00-00-30			
		180-00-25	180-00-045		
	34	180-00-30			
		00-00-28			
				180-00-045	
	32	090-00-37			
		270-00-40			
	34	270-00-47	180-00-075		
		90-00-47			
32		266-49-23 93-12-08	856.90		855.562
34		96-53-35	481.09		477.612
	29				
	27.5				
	1.5				
	3 K 1				
	47				
	39.5				
	7.5				
	22.210				
	1585.73		478.61		475.15
	855.56				
	477.57		480.75		477.28
	475.15		481.14		477.66
	2.42	move east			

Location
CrewDate
Weather

3/11/85

C44/2

P432

•

P433

•

C44

P434

•

P433

20th NAIL IN STP.
ON HIGHEST PART OF RIDGE
JUST E OF SIGN POST

40.

STATION OCCUPIED	STATION SIGHTED	1st & VERTICAL ANGLE	3rd ANGLE SLOPE DISTANCE	MEAN ANGLE	HORIZONTAL DISTANCE
Pt 34	Pt 33	00-00-30			
		180-00-32			
	Pt 35	272-12-06	272-11-36		
		092-12-08			
				272-11-36.5	
Pt 33		091-00-39			
		270-00-40	272-11-37		
Pt 35		002-12-15			
		182-12-18			
		76.5			
3					
07		39.5			
67		33.0			
31					
36		37			

Location
CrewDate
Weather

3/12/85

Pt 33

C14 Pt 34

Pt 35

Ties Pt 34 C14

Ash 9 SW 23.25'

Elm 12 NW 21.84'

41.

STATION OCCUPIED	STATION SIGHTED	1st & VERTICAL ANGLE	3rd ANGLE SLOPE DISTANCE	MEAN ANGLE	HORIZONTAL DISTANCE
pt 35	pt 34	000 00 30 180 00 28			
	pt 8	180-01-27 000 01-30	180-00 59.5		
				180-00-59.5	
	pt 34	090 00 43 270 00 40			
	pt 8	270 01-41 090 01-41	180 00 59.5		
pt 35	pt 34	89-55-25	517.88	517.879	
	pt 8	90-22-05	2249.30	2249.253	
29	18.5	41	88.5	29	101
80.5			59.5	59.5	

Location
CrewDate
Weatherpt 34 C¹⁴

pt 35

pt 8 S¹⁴

44.

STATION OCCUPIED	STATION SIGHTED	1st & VERTICAL ANGLE	3rd ANGLE SLOPE DISTANCE	MEAN ANGLE	HORIZONTAL DISTANCE
7	<i>side shot</i> B	00-00-30 180-00-30			
	6	246-26-51 066-26-98	246-26-19.5		
				246-26-18.25	
7	B	90-00-42 270-00-40			
	6	336-27-00 156-26-56	246-26-17		
7	B	90-03-35	1133.87	1133.869	
<i>check to the w/106 on the south</i>					
		58			
		49.5			
		30			
		19.5			

Location JA-CK-GB
 Date 3/13/85
 Weather clear 40°

P+7
 P+6
 P+B
 W/116

45. STATION OCCUPIED	STATION SIGHTED	1st & VERTICAL ANGLE	3rd ANGLE SLOPE DISTANCE	MEAN ANGLE	HORIZONTAL DISTANCE
pt 6	pt 7	000 00 30 160 00 33			
	pt C	321-13-40 191-13-40	321-13-085		
				321-13-0725	
	pt 7	090 00 36 270 00 40	221-13-06		
	pt C	251 13 44 231-13-44			

SETTING
W/M

pt 6 pt C 90-11-33 2606.17 2666.155

pt 6 REF MON. 91-15-42 397.56 397.46

(SET ON LINE BETWEEN SW and U 44)

4" 5"
31.5 38

REF MON

8.5

Bearing S1W
DIST. 397.46

2/11/85
OK JA

SET 5x2 1/2
BRASS LAPPED IRON
PIPE AS REF MON
UP 1' above small
Removed
12/5/91

TO CORNER
1985

Location Crew Date Weather

W 1/4 pt C

REF PT

pt 7

pt 6

47. STATION OCCUPIED STATION SIGHTED 1st & 3rd ANGLE VERTICAL ANGLE SLOPE DISTANCE MEAN ANGLE HORIZONTAL DISTANCE

at pt B - W 1/4 - spk
 moved .07' NORTH set spk for
 .08' WEST True W 1/4 position

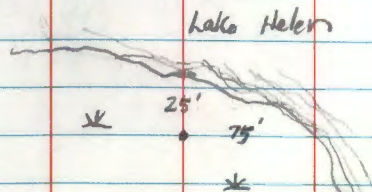
3/14/85 CK JA 6B R-10

SET 9' x 2 1/2" Brass Capped Iron Pipe up
 1' with 3" x 8' steel sign post laying
 perpendicular and attached to monument
 at bog level - also the two sign posts
 East and West are bolted to the end of the
 perpendicular sign post.
 Witnessed by:

(PTT sign)	Steel sign post 2 overlapped	WEST	2.90
(dry sign)	" "	EAST	4.00'
(dry sign)	" "	NORTH	4.55'

N
↑

CC Done
1992



Re-entered in Field Book 1 pg 61.

Location CK JA 6B Date 3/14/85
 Crew Weather

monument marked

T149N R26W
 S21
 WMC
 S28
 1985
 RES No.

3/14/85 CK JA 6B

at ptc moved .11 South
 .01 West

SET: 2 1/2" x 5' Brass Capped Iron Pipe

49. STATION OCCUPIED STATION SIGHTED 1st & VERTICAL ANGLE 3rd ANGLE SLOPE DISTANCE MEAN ANGLE HORIZONTAL DISTANCE

pt 36 pt 25 000 00 30

180 00 30

pt 26 179-47-52 179-47-21.5

359 47 51

179-47-21

pt 25 070 00 40

270 00 40 179-47-20.5

pt 26 269 47 59

89 48-02

pt 25 91-59-47 685.46 685.04

268-01-38

60.5

31.5

40

30

21.5

20.5

Location
Crew

Date
Weather

pt 25

1/4 pt 26

pt 26

Ties for pt 36 (1/4)

Maple 5" West 9.23

Maple 3" NE 6.84

(6" West of 4" maple stump)

51

STATION OCCUPIED	STATION SIGHTED	1st & VERTICAL ANGLE	3rd ANGLE SLOPE DISTANCE	MEAN ANGLE	HORIZONTAL DISTANCE
8/21/85 - CK, JA, GB					
Set 1/4 corner bet. secs. 16/21					
Set a 2" x 36" galv. pipe with brass cap mkd. T149N R26W					
Mon. set 6" above grd.					
$\frac{1}{4} \frac{S16}{S21}$ 1985 RLS No					

Mkd. New BT's:

Aspen	8	60.60	N35E	1/4 S16 BT
-------	---	-------	------	------------

Cedar	13'	84.95	N86 E	1/4 S16 BT
-------	-----	-------	-------	------------

Balm of Gil.	6"	66.05	S60 E	1/4 S21 BT
--------------	----	-------	-------	------------

8' steel sign post east 4.0' both signs

Corner falls 30' SE of a ash swale.

Line to standard East & West.

Re-entered into field book 3, page 8.

Jone
JA 9/85

Location: _____ Date: _____
Crew: _____ Weather: _____

8/21/85 - CK, GB, JA N-10

Set W 1/6 bet. Sec's 16/21

Set a 2" x 36" galv. pipe with
brass cap mkd. T149N R26W

Mon. set 12" above grd.

W 1/6 $\frac{S16}{S21}$

1985

RLS NO.

Spruce 17" N76E 44.5 W 1/6 S16 BT

8' steel sign post S45W 12.8' Land Survey attach

Balm of Gil 7" N62W 28.6' W 1/6 S16 BT

8' steel sign posts east 3.6' and south 4.6'

both signs. east and boundary south
Line to standard east and south

Balsam & Balsam trees around corner

C.C. Done 1992

Re-entered in field book 2 page 31.

STATION OCCUPIED	STATION SIGHTED	1st & VERTICAL ANGLE	3rd ANGLE SLOPE DISTANCE	MEAN ANGLE	HORIZONTAL DISTANCE	
8/22/85	CB JA PL				P-10	
SET 3' Brass Capped Iron Pipe marked up 6" at true 1/4 position T149NR26W						
Removed 12/3/91 and reset see below.						
MARKED NEW BTS!						
W. Oak	8"	N 50 E	45.35		played & scribed spikes tags red rings removed or destroyed	
Destroyed scribed						
W. Oak	10"	N 88 E	28.38			
Destroyed scribed						
W. Oak	9"	S 03 W	37.71			
Destroyed scribed						
Steel sign post	3" x 8"	North	4.50	At 9/21/91		
Removed						
"	"	East	6.01	At 9/21/91		
Removed						
SE-NW trail approx. 30' SW of corner						
12/3/91 Krause & Brama						
Set 2 1/2" x 36" galv. concrete filled iron pipe with brass cap mkd. T149NR26W						
Brass cap set 6" above ground. Corner is set						
587-47-20 & .16' from traverse pt 56 (72)						

Location Crew Date Weather

8/22/85 JA, GB, DL Reset 12/3/91
 Set a 2" x 36" galv. iron pipe with P-11 brass cap mkd. for Center 1/4.
 B.C. set 7" above ground. T149NR26W
 Monument was set 584-53-58E C 1/4 S21
 .24' from 1991 traverse pt 58 1985
 pt. (74) RLS. NO. USFS

Mkd New BT'S; 12/3/91
 W. Pine 16" N 87 E 42.15 C 1/4 S21 BT
 587 E 42.25
 Ash 9" S 22 W 27.25 C 1/4 S21 BT
 26.43
 Ash 8" N 80 W 39.85 C 1/4 S21 BT
 N 84 W 39.35
 8" steel sign posts west 5.3 and south 4.1 with both signs
 3.4' Re-entered into field book 2 C.C. Done 1992
 Corner falls in Ash swamp page 33

12/3/91 Mkd. New BT'S for with 6 mkd.
 W. Oak 9" S 36 N 66.48 C W 1/6 S21 BT
 W. Oak 17" N 84 W 57.63' 600 spikes
 Maple 8" S 30 E 45.05' Tags & bands
 8' steel sign posts north 3.1 + east 4.0 from corner with both signs attached.
 SE-NW trail is approx. 125 WSW from corner
 C.C. Done 1992
 Re-entered into field book 2 pg 32

53

STATION OCCUPIED	STATION SIGHTED	1st & VERTICAL ANGLE	3rd ANGLE SLOPE DISTANCE	MEAN ANGLE	HORIZONTAL DISTANCE
8/27/85	JA, GB				0-13
Set + NX ₆ bet secs. 21/22					
Set a 2" x 60" galv. iron pipe with brass cap mkd. T199NR26W					
Mon. set 12" above swamp					
N ¹ / ₆					
S21 S22					
1985 R.L.S. NO.					
MKd New BT's:					
Cedar	7	S47W	12.01	S ¹ / ₆	S21BT
Cedar	4	N23E	12.91	S ¹ / ₆	S22BT
Cedar	7	S81E	23.33	S ¹ / ₆	S22BT
Sign posts north 20 and east 5.6' with both signs.					
L.I.S. north					
Move dsa. 26' and east. 29' from traverse pt 29.					
Corner falls in a cedar swamp.					

cc Done - HB

Re-extend into field bk. 2 pg 53

Location
Crew 00, JADate 8/27/85
Weather

Set a 1/4 corner bet. sec's 21/22
Set a 2" x 36" galv. iron pipe with
brass cap mkd. T199NR26W
Mon. set 12" above ground. 1/4

S21 | S22

1985

R.L.S. No.

Mkd New BT's:
MAPLE 5" N88W 9.45' 1/4 S21BT

Maple 14" N34E 37.48' 1/4 S22BT

Basswood 10" N67E 33.33' 1/4 S22BT

Sign post south 3.5' with attention sign att.

Moved North .15' and East .22' from
traverse pt. 36.

Mixed hardwoods stand on high ground.

Re-extend into field book 3 pg 9

Done
JA 9/85

54.

STATION OCCUPIED	STATION SIGHTED	1st & VERTICAL ANGLE	3rd ANGLE SLOPE DISTANCE	MEAN ANGLE	HORIZONTAL DISTANCE
8/27/85	JA GB			Q-13	
Set 5 1/6 bet. sects. 21/22					
Set a 2" x 60" galv. iron pipe with brass cap mkd					
Mon. set 8" above swamp					
(spruce & Tam.)					
T149N R26W					
5 1/6					
S21 S22					
1985					
R.L.S. No.					

Mkd. New BT's:

TAM	5"	S54W	24.13'	} mloyd & Scribble spice tags readings
TAM	4"	N66W	8.00'	
TAM	5"	S34E	8.45'	

8" steel sign posts south 3.6' & east 3.7'
with both signs attached.

L.T.S. north

Moved north .78 and west .05 from
traverse pt. 27.

c.c. done 1992

re-entered into field bk. 2 pg 35

Location
CrewDate
Weather

STATION OCCUPIED	STATION SIGHTED	VERTICAL ANGLE	SLOPE DISTANCE	MEAN ANGLE	HORIZONTAL DISTANCE
		FS Sun		TIME	Azimuth
		D	123-34-07	15-45-11 ⁸⁶	
B5 3	00-00-00	D	123-41-52	15-45-43 ⁸⁷	
A 24		D	123-49-11	15-46-12 ⁸⁸	
		R	304-00-06	15-46-54 ⁸⁹	
		R	304-12-00	15-47-42 ⁹⁰	
		R	304-19-31	15-48-12 ⁹¹	
B5 3	180-00-21				
		D	125-13-49	15-51-46 ⁷⁸	
B5 3	00-00-37	D	125-21-27	15-52-16 ⁷⁹	
A 24		D	125-28-28	15-52-44 ⁸⁰	
		R	305-43-11	15-53-41 ⁸¹	
		R	305-52-41	15-54-18 ⁸²	
		R	305-59-46	15-54-46 ⁸³	
B5 3	180-00-57				

Location ^{Near} T149N R26W WEST 1/4 SEC 21 Date 10/16/91
 Crew BRAMA & WOTZKA Weather Clear - 60°

Height of lens over pt 3 is 5.50'

Height of instrument over pt 4 is 5.42

Latitude

Longitude

GHA 183-33-07.8

Declination -8-37-10.1

GHA 24 183-36-22.2

Declination -8-59-16.4

Sem. Diam. use 0

56

STATION OCCUPIED	STATION SIGHTED	1st & VERTICAL ANGLE	3rd ANGLE SLOPE DISTANCE	MEAN ANGLE	HORIZONTAL DISTANCE
* Basswood		FS Sun			
		*D	126-49-45	15-58-03 ⁶²	
BS 3	00-00-37	*D	126-56-24	15-58-29 ⁸²	
X 2 4		*D	127-02-51	15-58-55 ²²	
		*R	307-15-25	15-59-43 ⁰⁹	
		*R	307-28-21	16-00-32 ⁷¹	
		*R	307-46-49	16-01-44 ⁶²	
BS 3	180-00-55				

Location: 3370
Date: 10/11/11
Crew: [unclear]
Weather: [unclear]

57. STATION OCCUPIED	STATION SIGHTED	1st B VERTICAL ANGLE	3rd A. SLOPE DISTANCE	MEAN ANGLE	HORIZONTAL DISTANCE
FS 50 ³⁶	192-10-54	252-51-10 12-11-17	192-10-55	12-11-14	
BS 3	00-00-42	180-00-55	00-00-39	180-01-02	
FO 4	192-10-12	192-10-22	192-10-16	192-10-12	
			MN 192-10-15 ⁵		
			SDCU = ± 4.73"		
4-3	90-04-17	269-55-10	459.555	140.073M	459.555
4-50 ³⁶	101-08-28	258-51-10	183.455	55.916M	180.00
		101-08-39			
FS 51 ³⁷	120-50-30	300-50-30 300-50-46	120-50-30	300-50-46	
BS 3	00-00-00	180-00-12 180-00-12	359-59-54	180-00-14	
FO 4	120-50-30	120-50-34	120-50-36	120-50-32	
			MN 120-50-33 ⁰⁰		
			SDCU = ± 2.58"		
4-51 ³⁷	100-10-41	259-48-34	201.605	61.450 M	198.43
		100-11-04			

Location T147N R26 Near West 1/4 sec 21 Date 10/16/91
 Crew BRAMA & NOTER Weather Cloudy 60°

Pt 50 is U.S.F.S. galv. man. marking old
 1/4 corner position bet. sec's 21, 20

Pt 51 is U.S.F.S. galv. man 2" x 5" man. marking
 new 1/4 corner position bet. sec's 20, 21
 1/4 position was re-established from original
 evidence.

58. STATION OCCUPIED	STATION SIGHTED	1st & VERTICAL ANGLE	3rd ANGLE SLOPE DISTANCE	MEAN ANGLE	HORIZONTAL DISTANCE
⁶⁸ FS 52	63-51-14	243-51-32	63-51-13	243-51-23	
BS 4	00-00-00	180-00-16	00-00-00	180-00-13	
³⁷ π 0 51	63-51-14	63-51-16	63-51-13	63-51-10	(63-51-13)

⁶⁹ FS 53	241-39-41	61-40-02	241-39-43	61-40-06	
³⁷ AS 51	00-00-00	180-00-20	00-00-02	180-00-18	
⁶⁸ π 0 52	241-39-41	241-39-42	241-39-41	241-39-48	(241-39-43)

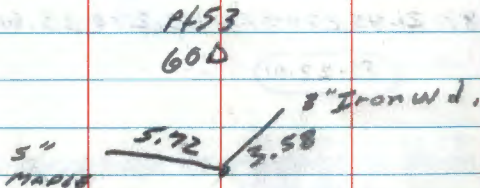
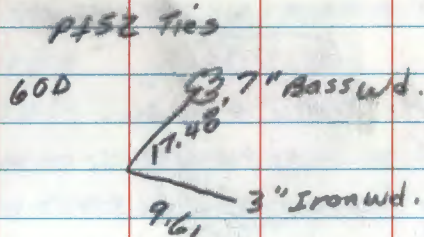
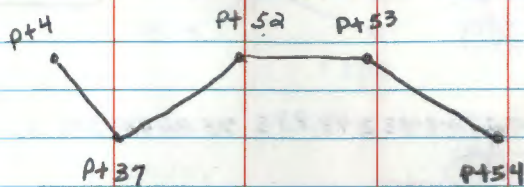
⁶⁸⁻³⁷ FS 51	98-29-07	261-30-30	223.485	68.119M	221.039
		(98-29-19)			

⁶⁸⁻⁶⁷ FS 52	89-45-48	270-13-39	378.325	115.315M	378.322
		(89-46-04)			

⁷⁰ FS 54	215-26-45	35-27-00	215-26-38	35-26-52	
⁶⁸ BS 52	00-00-00	180-00-13	359-59-53	180-00-09	
⁶⁹ π 0 53	215-26-45	215-26-47	215-26-45	215-26-43	(215-26-45)

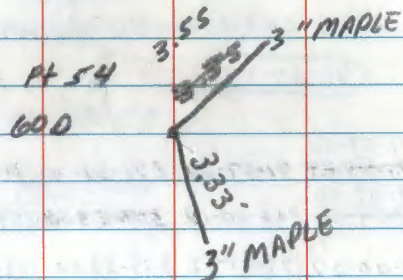
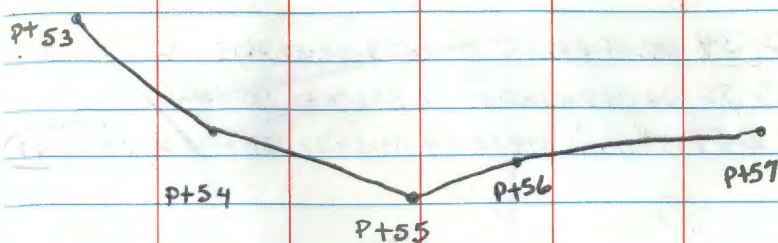
Location KRAUSE + PRAMA Date 11/25/91
 Crew _____ Weather Clear 20°F

pt 4 60D spike tied off in 1985
 pt 51 U.S.-F.S. mon marking 1/4 bet. 20/21



59. STATION OCCUPIED	STATION SIGHTED	1st & VERTICAL ANGLE	3rd ANGLE SLOPE DISTANCE	MEAN ANGLE	HORIZONTAL DISTANCE
71 FS 55	166-34-02	346-34-17	166-34-00 346-34-16		
69 BS 53	00-00-00	180-00-15	359-59-55 180-00-19	166-33-57	
70 A 54	166-34-02	166-34-02	166-34-05	166-34-07	166-34-02
70 69 54-53	89-28-10	270-31-33	248.835	75.844M	248.824
	(89-28-19)				
70 71 54-55	90-47-28	269-12-18	453.220	138.141M	453.177
	(90-47-35)				
11/27/91 Krause & Grama					
72 FS 56	161-04-56	341-05-09	161-04-49 341-05-09		
70 BS 54	00-00-00	180-00-06	359-59-48 180-00-09		
71 A 55	161-04-56	161-05-03	161-05-01	161-05-00	161-05-00
71-72 55-56	89-21-45	270-37-48	110.270	33.610	110.263
	(89-22-01)				
73 FS 57	182-58-07	02-58-26	182-58-09 02-58-29		
71 BS 55	00-00-00	180-00-22	00-00-07 180-00-29		
70 A 56	182-58-07	182-58-04	182-58-02	182-58-00	182-58-03

Location _____ Date _____
Crew _____ Weather _____



pt 55 is U.S.F.S. mon. established in 1925 as the CW 1/6.

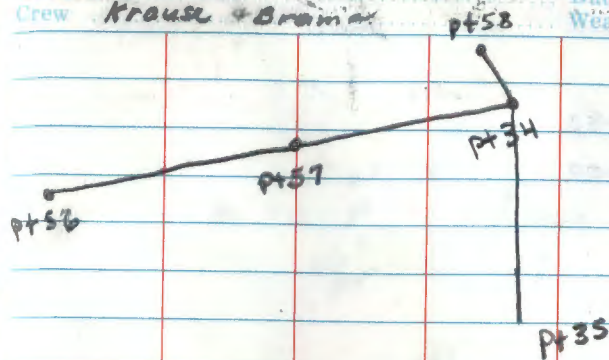
pt 56 is 600 spike marking new approx. CW 1/6. See next page for ties

WNW
pt 57 - 60D 11.1' from pt 33
Ties Birch Stg. East 1.81'
Maple 8" North 4.30'

60. STATION OCCUPIED	STATION SIGHTED	1st & VERTICAL ANGLE	3rd ANGLE SLOPE DISTANCE	MEAN ANGLE	HORIZONTAL DISTANCE
FS 34	179-58-50	359-59-11	179-58-57 359-59-15		
BS 56	00-00-00	180-00-22	359-59-57 180-00-20		
π 257	179-58-50	179-58-49	179-59-00 179-58-55		179-58-53
73-72					
57-56	93-36-48	266-22-52	735.985 224.329M		734.520
		93-36-57			
73					
57-54	96-37-38	263-22-00	492.100 149.992M		488.809
		96-37-49			
FS 35	271-57-58				
	271-57-27	91-59-50	271-59-30 91-57-48		
SS 58	79-59-28				
	79-59-22	260-00-17	79-58-58 259-59-15		
BS 57	00-00-00	179-59-52	359-59-30 179-59-44		
π 234	271-57-58	271-57-58	271-58-00 271-58-04		271-58-00
SS 58	79-59-28	80-00-25	79-59-28 79-59-31		79-59-28
73-74					
57-58	Steel tape		3.46'		
73					
57-35	90-03-50	269-55-47	517.980' 157.878		

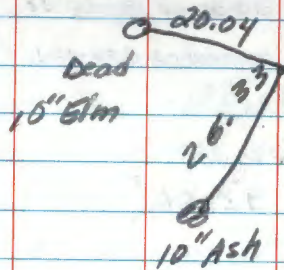
Location Krause + Brainer

Date 11/27/91
Weather cloudy - lt. snow
20°F

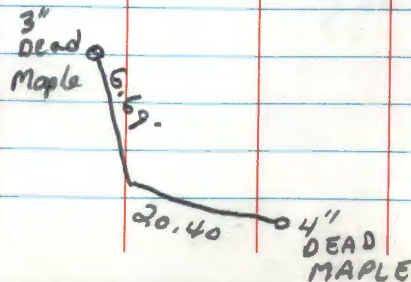


approx.
pt 58 is new position for C/4

Ties to pt 58



pt 55 Ties



61. STATION OCCUPIED	STATION SIGHTED	1st & VERTICAL ANGLE	3rd ANGLE SLOPE DISTANCE	MEAN ANGLE	HORIZON DISTANCE
----------------------	-----------------	----------------------	--------------------------	------------	------------------

~~FS 58 04-41-53~~

~~BS Ref Pt. 00-00-00~~

~~TA 6~~

~~6-58~~

~~Ref Pt.~~

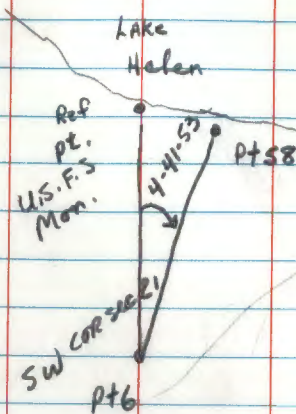
FS 58 270-00-00 90-00-38 270-00-08 90-00-50

BS 6 00-00-00 180-00-27 00-00-00 180-00-38

Ref Pt. 270-00-00 90-00-11 270-00-08 270-00-12 270-00-08

Ref Pt - 58 steel tape 32.66'

Location SW 1/4 sec 21 Establish Property 12/4/91
Crew Krause & BRAMA 6:00 Weather SAWN



set a 2 1/2" x 48" galv. pipe with brass cap mkd in place of pt 58. Brass cap set 8" above swamp. Brass cap mkd. 8' steel sign post 2.15 north of monument.

Line to standard mkd. south.
Re-entered into field book 2 pg 36

PROPERTY LINE
1991
USFS

69. STATION STATION 1st & 3rd ANGLE MEAN HORIZONTAL
OCCUPIED SIGHTED VERTICAL SLOPE ANGLE DISTANCE
ANGLE DISTANCE

Location Date
Crew Weather

PAGES 62 THRU
69 ARE
BLANK

STATION OCCUPIED	STATION SIGHTED	1st & VERTICAL ANGLE	3rd ANGLE SLOPE DISTANCE	MEAN ANGLE	HORIZONTAL DISTANCE
---------------------	--------------------	----------------------------	--------------------------------	---------------	------------------------

Lat 47° 42' 05" N
 Long 94° 58' 35" W
 Location #49
 Crew JAG GB

Date: 1/16/85
 Weather: Partly cl.
 Temp: 0

TOP #9

BSPT#10	D		00-00-30		
FS #	D		072-35-03		11 19 2430

FS #	R		252-46-40		11 20 1139
BS #10	R		180-00-41		

BSPT#10	D		180-00-59		
FS #	D		253-36-34		11 23 3469

FS #	R		073-25-33		
BS #10	R		00-00-30		11 22 5207

VOID

BSPT#10	D		00-00-30		
FS #	D				

FS #	R				
BS #10	R				

Due to cloud
 cover had to
 cancel solar

STATION OCCUPIED	STATION SIGHTED	1st & VERTICAL ANGLE	3rd ANGLE SLOPE DISTANCE	MEAN ANGLE	HORIZONTAL DISTANCE
A@ Pt #9				CST.	
				+14.5 sec's. (Time is fast)	
BS #10	D	00-00-30			
FS ✕	D	100-33-48		13-12-4984	
FS ✕	R	280-47-00		13-13-4298	
BS #10	R	180-00-41			
BS #10	D	00-00-30			
FS ✕	D	101-20-47		13-15-5771	
FS ✕	R	281-30-03		13-16-3387	
BS #10	R	180-00-37			
BS #10	D	00-00-30			
FS ✕	D	102-08-07		13-19-0753	
FS ✕	R	282-16-50		13-19-4258	
BS #10	R	180-00-36			

T149N R26W Sec. 21
 Location Pt 9 Lat 47° 42' 05" N
 Long 99° 50' 35" W
 Crew JA, GB Elevation 1350

Date 1/21/85
 Weather Clear, Windy

A@ Pt #9				CST	
				+14.5	
BS Pt #10	D	00-00-30			
FS ✕	D	100-41-45		13-25-2268	
FS ✕	R	283-51-25		13-26-0216	
BS #10	R	180-00-36			
BS Pt #10	D	00-00-30			
FS ✕	D	104-23-20		13-28-1104	
FS ✕	R	284-30-52		13-28-4118	
BS #10	R	180-00-41			
BS Pt #10	D	00-00-30			
FS ✕	D	104-56-10		13-30-2347	
FS ✕	R	285-04-34		13-30-5782	
BS #10	R	180-00-38			

72.

STATION OCCUPIED	STATION SIGHTED	1st & VERTICAL ANGLE	3rd ANGLE SLOPE DISTANCE	MEAN ANGLE CST	HORIZONTAL DISTANCE
T@ P#9					
				+14.5 sec.	
BS P#10	D	00-00-30			
FS ☆	D	106-28-44		13-36-3898	
FS ☆	R	286-36-02		13-37-0924	
BS P#10	R	180-00-39			
BS P#10	D	00-00-30			
FS ☆	D	107-05-41		13-39-0984	
FS ☆	R	287-12-42		13-39-3889	
BS P#10	R	180-00-38			
BS P#10	D	00-00-30			
FS ☆	D	107-39-30		13-41-2818	
FS ☆	R	187-46-43		13-41-5751	
BS P#10	R	180-00-37			

Location Crew: GB R JA W

Date: 1/21/85

Weather: CST

STATION OCCUPIED	STATION SIGHTED	1st & VERTICAL ANGLE	3rd ANGLE SLOPE DISTANCE	MEAN ANGLE CST	HORIZONTAL DISTANCE
T@ P#9					
				+14.5 Sec.	
BS P#10	D	00-00-30			
FS ☆	D	115-44-02		14-15-0851	
FS ☆	R	295-58-51		14-16-11.68	
BS P#10	R	180-00-36			
BS P#10	D	00-00-30		14-19-42.19	
FS ☆	D	116-48-09			
FS ☆	R	296-58-47		14-20-27.48	
BS P#10	R	180-00-36			
BS P#10	D	00-00-30			
FS ☆	D	117-38-44		14-23-19.42	
FS ☆	R	297-47-44		14-23-37.54	
BS P#10	R	180-00-38			

73.

STATION OCCUPIED	STATION SIGHTED	1st & VERTICAL ANGLE	3rd ANGLE SLOPE DISTANCE	MEAN ANGLE	HORIZONTAL DISTANCE
K @ P [#] 9				CST +14.5 sec.	
BS P [#] 10	D	00-00-30			
FS ⊗	D	119-46-04		14 32 32.47	
FS ⊗	R	299 55 47		14 33 13.83	
BS P [#] 10	R	180-00-35			
BS P [#] 10	D	00-00-30			
FS ⊗	D	120 28 29		14 35 37.47	
FS ⊗	R	300-39-24		14 36 25.16	
BS P [#] 10	R	180-00-41			
BS P [#] 10	D	00-00-30			
FS ⊗	D	121-14-11		14 38 58.94	
FS ⊗	R	301 21 34		14 39 31.26	
BS P [#] 10	R	180 00 32			

Location Crew	Date	Weather
K @ P [#] 9		CST +14.5 sec.
BS P [#] 10	D	00-00-30
FS ⊗	D	121-58-33
FS ⊗	R	302 09 44
BS P [#] 10	R	180 00 36
BS P [#] 10	D	00-00-30
FS ⊗	D	122-40-50
FS ⊗	R	302 49 35
BS P [#] 10	R	180 00 43
BS P [#] 10	D	359 50 30
FS ⊗	D	123-18-37
FS ⊗	R	303 27 53
BS P [#] 10	R	179 50 38

74. STATION OCCUPIED	STATION SIGHTED	1st & VERTICAL ANGLE	3rd ANGLE SLOPE DISTANCE	MEAN ANGLE	HORIZONTAL DISTANCE
	1 ST	2 ND	3 RD	4 TH	
FS 3	266-12-04	86-12-15	266-11-50	86-12-08	
BS 1	00-00-10	180-00-12	00-00-00	180-00-09	
TC 2	266-11-54	266-12-03	266-11-50	266-11-59	
		(266-11-56)			
		(90-43-52) FT		M	
VA 2-1	90-43-58	269-16-15	268.86	81.944	
VA 2-3	90-16-44	269-43-20	698.66	212.943	
		(90-16-42)			
FS 4	205-34-24	25-34-40	205-34-22	25-34-32	
BS 2	00-00-24	180-00-45	00-00-26	180-00-43	
TC 3	205-34-00	205-33-55	205-33-56	205-33-49	
		(205-33-55)			
FS 5	316-52-24	136-52-34	136-52-21	316-52-36	
BS 3	00-00-20	00-00-12	00-00-10	180-00-25	
TC 4		136-52-22	136-52-11	136-52-19	
		(136-52-15)			
		(88-18-30)			
VA 4-3	88-18-37	271-41-36	238.44	72.677	
VA 4-5	91-09-00	268-51-18	554.29	168.948	
		(91-08-51)			

WILD T2 PG. 60°F
 Location RED TA
 Date 10/5/93
 Crew
 Weather MAEN III T
 KRANSE

PT1 25 30
 36 31 T149 R25 R26

PT2 • SPK 125 FT WEST OF
 FR 2093

PT3 • SPK 2 FR 2093

PT4 • SPK EAST SHOULDER
 FR 2093

75. STATION OCCUPIED	STATION SIGHTED	1st &	3rd ANGLE	MEAN	HORIZONTAL DISTANCE
		VERTICAL ANGLE	SLOPE DISTANCE	ANGLE	
FS ^{GATE} POST (WEST POST)		315-58-10	135-58-18	135-58-00	815-58-23
BS 3		00-00-20		00-00-10	180-00-25
T@ 4				135-57-50	135-57-58
				<u>135-57-54</u>	
				FT	M
VA 4-GATE POST		91-31-17	268-29-00	449.355	136.964
		<u>91-31-09</u>			
FS 6		⁷⁹ 218-06-13	⁷¹ 38-06-11	218-06-00	⁶⁸ 38-06-08
BS 4		00-00-24	180-00-37	00-00-24	180-00-39
T@ 5		218-05-49	218-05-34	218-05-36	218-05-29
		<u>218-05-37</u>			
FS-7		206-10-47	26-10-55	206-10-56	26-10-58
BS-5		00-00-12	180-00-22	00-00-17	180-00-23
T@ 6		206-10-35	33	39	35
		<u>206-10-35</u>			
VA 6-5		91-19-14	268-40-52	<u>91-19-11</u>	197.915
VA 6-7		89-18-14	270-42-02	<u>89-18-06</u>	138.460
					42.203
FS-8		136-26-51	316-27-01	136-26-53	316-27-01
BS-6		00-00-08	180-00-16	00-00-08	180-00-23
T@ 7		136-26-43	136-26-45	136-26-45	136-26-48
		<u>136-26-45</u>			

Weld T-2 CLEAR 65°
 Location TAICON EDM
 Date 10/6/93
 Crew
 Weather MAIN
 VERBASE

SHOT 2 OF GATE POST (WEST POST) GATE POST TO
 GATE POST IS 14 FT 8"

PT 6 • SPK Woods LEFT ROAD
 AT GATE

PT 6 • SPK

PT 7 • SPK

76. STATION OCCUPIED	STATION SIGHTED	1st & VERTICAL ANGLE	3rd ANGLE SLOPE DISTANCE	MEAN ANGLE	HORIZONTAL DISTANCE
----------------------	-----------------	----------------------	--------------------------	------------	---------------------

FS-9	165-06-15	345-06-23	165-06-13	345-06-24	
------	-----------	-----------	-----------	-----------	--

BS-7	00-00-10	180-00-19	00-00-14	180-00-23	
------	----------	-----------	----------	-----------	--

TP 8	165-06-05	165-06-04	165-05-59	165-06-01	
------	-----------	-----------	-----------	-----------	--

165-06-02

FT M

VA 8-7	86-06-47	273-53-30	86-06-39	203.955	162.164
--------	----------	-----------	----------	---------	---------

VA 8-9	93-03-42	266-56-24	93-03-39	263.715	180.380
--------	----------	-----------	----------	---------	---------

FS-10	126-21-20	306-21-11	126-21-06	306-21-18	
-------	-----------	-----------	-----------	-----------	--

BS-8	00-00-23	180-00-17	00-00-10	180-00-27	
------	----------	-----------	----------	-----------	--

TP 9	126-20-57	126-20-54	126-20-56	126-20-51	
------	-----------	-----------	-----------	-----------	--

126-20-54

FS 11	212-42-44	32-42-44	212-42-20	32-42-30	212-42-30
-------	-----------	----------	-----------	----------	-----------

BS 9	00-00-10	180-00-20	00-00-22	180-00-37	00-00-27
------	----------	-----------	----------	-----------	----------

TP 10	42-34	42-24	41-58	41-53	03
-------	-------	-------	-------	-------	----

212-41-58

FT M

VA 10-9	89-38-22	276-21-37	89-38-22	198.240	160.423
---------	----------	-----------	----------	---------	---------

VA 10-11	90-19-42	269-37-50	90-19-41	191.665	158.420
----------	----------	-----------	----------	---------	---------

Location: Date:
Crew: Weather:

PT8 • SPK

PT9 • SPK

32-42-45

IN LOOSE CEDAR SWAMP

180-00-48

-41-57

PT10 • SPK

