

CORNER
RESTORATION
T148N, R30W. 5th PM



MINING
TRANSITION CO.
No. 3871

Book #3

T148N R30W BK3

USFS T148N R30W Book #3

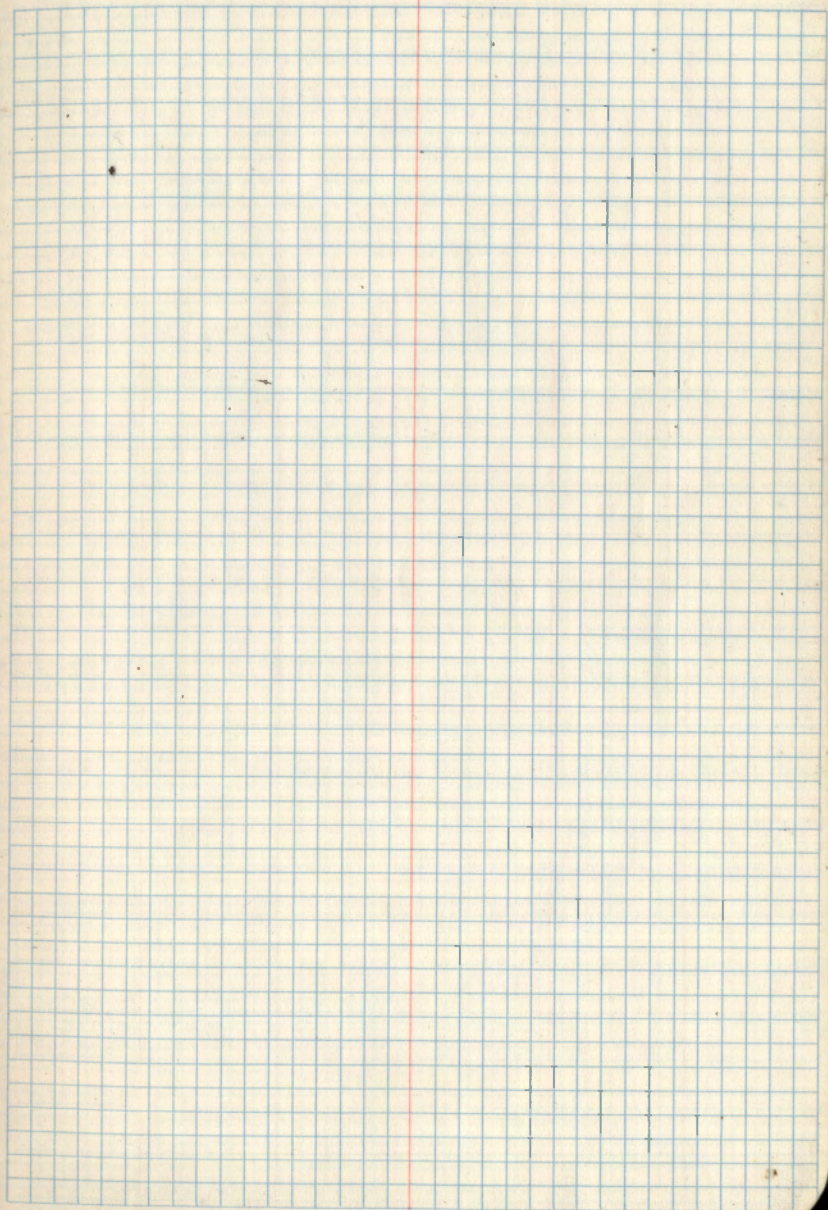
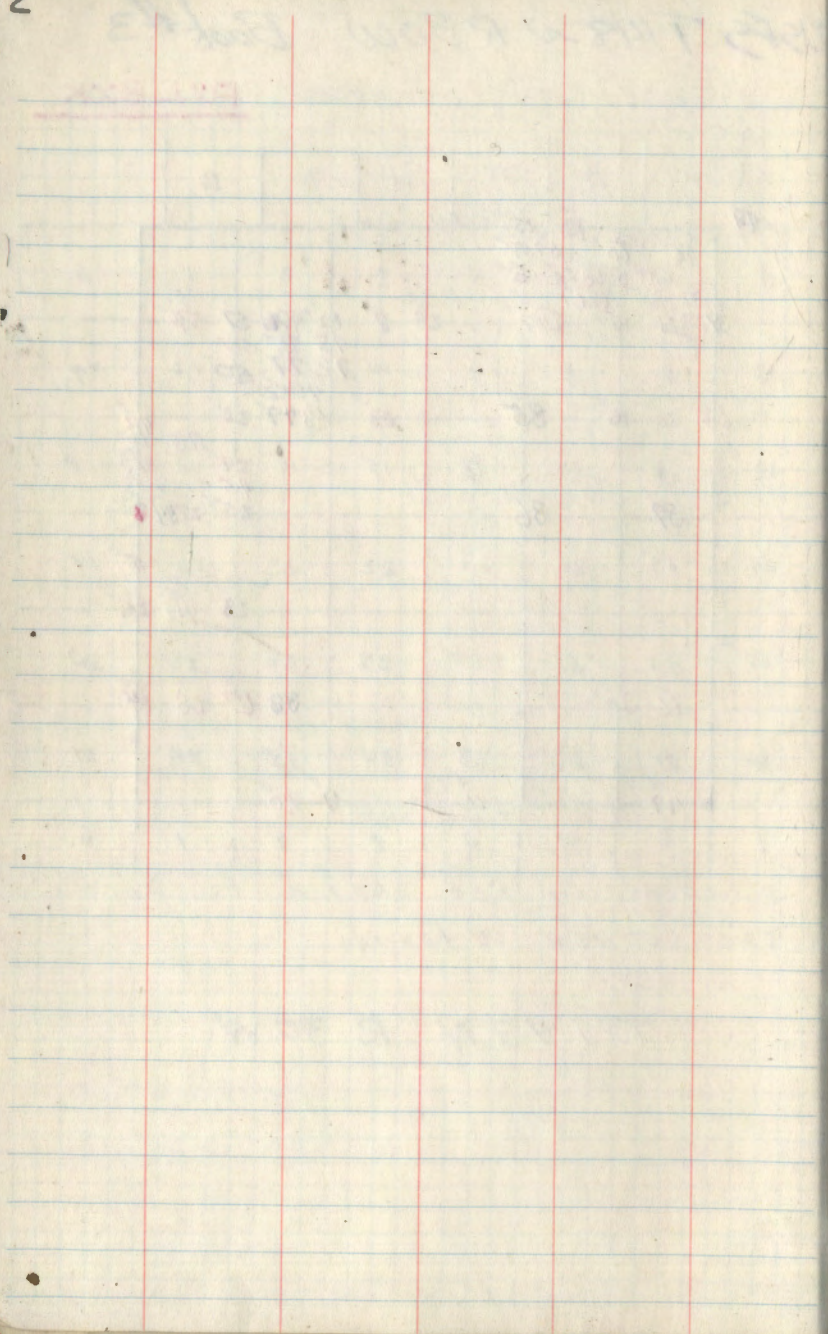
INDEX TO CORNERS

FULL BOOK

	31	32	33	34	35	36	
10							
1	58° 29'	13	12				
	5744'	60	5744'				
	643'	18	58	6	4	3	2
	323'	626'					
	322'	15	679'	23	8	10	7
						76	51
12	7	8	9	10	73	75	55'
					72	77	50
					4852'		
	65	20	16	35	63	59	49'
						22	
13	78	17	16	15	14	24	78
						13	51
	37		36			45'	
						25	27
24	19	20	21	22	23	24	5
							19
						28	41
							26
25	30	24	28	27	26	25	30
	66	30				38	67
						68	14
36	31	32	33	34	35	36	31
	19		11		4	40	
1	6	5	4	3	2	1	6

Numbers in Red Refee to page
The CORNER is found.

T148N R30W



4 2-17

Sec. 2-3-34-35

T148N	
34	35
3	2
T147N	

ORIG. BTS.

BIRCH	8"	N 64 E	28 LKS
BIRCH	10"	N 27 W	16 LKS
N. PINE	12	S 45 W	34 LKS
BIRCH	8"	S 17 E	15 LKS

County Notes From page 201 of the
County Record Book of survey
'A' Beltrami Co. Sept. 1910.

Aspen	8	N 20 W	72 LKS	47.5'
N. PINE	12	S 48 1/2 E	93 LKS	61.6'
N. PINE	12	S 24 W	166 1/2 LKS	109.9'

Co. notes by Bruce states that ets
of original survey were found.

Set 6" cylindrical concrete monument
4.5' long - 3.5' in ground. Monument
capped with a 3" Brass tablet
and mkd. in the following manner

Affidavit

2-17

REFER TO BK #2 Pg #27

T 148 N	R 30 W
1959	
524	535
53	52
T 147 N	
R. L. S. NO. 3628	

from which bears - NEW BTS.

12" W. PINE N 45 E 117.5' MKD. T148 R30 S35 BT
NOW 18" DIETS R. MAIN 10-9-03
14" W. PINE N 52 1/2 W 174.9' MKD T148 R30 S34 BT
NOW CUT OFF ROTTEN STUMP W/TAG AND SOME SCRIBE R. MAIN
7" ELM S 53 1/2 W 127.3' MKD T147 R30 S3 BT

NO EVIDENCE R. MAIN
No Evidence of orig. BTS. ~~marked~~

Co. BTS. in evidence are:

N. PINE S 24 1/2 W 109.9' MKD S 3 T 147 R 30 BT

N. Pine stump S 48 1/2 E 61.6' MKD BT

Metal location poster on Co. BT S 24 1/2 W
109.9' At South Corner

4" square cedar post with Red Top set
1.9' South of Corner

Tag on N. PINE

10-5-04 R. MAIN
GAS IRON

Date 5/25/59

Arthur W. Hancock
Civil ENGR.

1/4 bet 5 24-19

T148N

24 19

R302 R229W

ORIG. B.T.S.

FIR 6 537W 38 LKS

Cedar 5 588E 66 LKS 436'

Co. notes Oct 1923 states that one Govt
B.T. with MKS. plain was found.

Co. B.T.S. MKD.

TAM 10" 569W 42.3'

Cedar 6" 542 1/2 W 46.2'

set 2" inside diameter galvanized
wrought iron pipe filled with concrete
& capped with a 3" brass tablet
stamped in the following manner

T148N

NOTE
R 1/4 24 19
R 1959

R229W

RLS. 3628

from which bears:

cedar 9' S 27 1/2 W 159.5 MKD T148 R305 24 BT

ASH 6' S 65 E 75.3 MKD T148 R295 19 BT

cedar 10' S 80 1/2 W 111.2' MKD T148 R305 24 BT

1 dx.

no evidence of orig. Govt. B.T.S.
Remains.

Remains of Co. B.T.S.

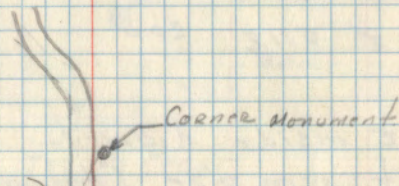
TAM wind fall. 569W 42.3' MKD 1/4 S BT.

Cedar 10" 536W 46.2 MKD 1/4 S

as corner was being reset a scribed
post and an iron was found.

a 4" squared post with a red top was
set north of corner monument

metal location post was set 536W-46.2
from corner monument on a 12" cedar



Reset mon. after road reconstruction. Set
4"x4"x6" Red topped cedar post East 10.0'
Monument is now set flush with
ditch slope. 5-2-69 PAM

see current
remonumentation
RB# P. 10 1985

Date 5/25/59
Arthur W. Flusche

6
C-9

1/4 bet 5-4-5

T148N
5 4
R30W

ORIG. BT.:

Cedar 6 S72E 20 LKS 13.2'
cedar 5 S27W 20 LKS 13.2'

Co. Notes from Dec 1914 SURVEY by
R.K. BLILER BELTRAMI Co. SURVEYOR,
Set Gas pipe 1" x 3/8" from which bears
Spruce 6" N20W 10.7'
cedar 5' S11E 20.0'

set 2" inside diameter galvanized
wrought iron pipe filled with concrete
& capped with 3" dia brass tablet
stamped.

T148N R30W

1/4 55-54

1959

RL.S-3628

from which bears:

cedar 6' S71W 47.0' MKD T148 R30 55 BT
cedar 7' S10W 43.2' MKD T148 R30 55 BT
cedar 7' S41E 20.1' MKD T148 R30 54 BT

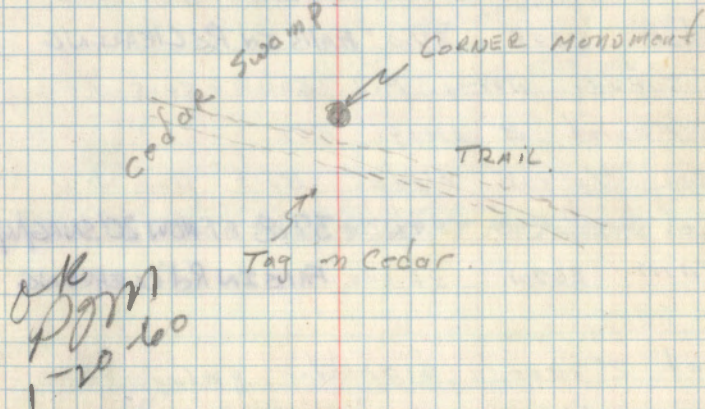
Affidavit

C-9

one ORIGINAL BT BRS S27W-13.2'
MKD-1/4 5
Co. BT of SURVEY 1914 BRS. S11E 20.0'
MKD-1/4 5

also MARKING CORNER 1" x 3/8" GAS PIPE
& SQUARED CEDAR stake MKD. 1/4 5
on 2 sides.

metal Location poster on orig. BT
S27W 13.2' from corner.



Date 5/25/59
Arthur W. Flancher

7
N-25

SEC 13-18-19-24

T148N

13 18

24 19

R30W R29W

ORIG. CORNERS

FIR 3 N32E 32 LKS 21.1'

FIR 3 S85E 28 LKS 18.5'

FIR 3 S12W 15 LKS 9.9'

TAM 3 S40W 24 LKS 15.8'

Co. Survey Notes. R.K. BILDER JAN 1920

Cedar SPOB 34.0' FALLS IN RD CLEARING

Co. Survey Notes. F.J. BOURGEOIS FEB 1908

Found 3 orig. B.T.S.

set 1/2" x 18" metal Bolt from which bore

B. of G. S52E 57 1/2 LKS 37.8 FT NOW 20' SNAG/W/ SCRIBE

TAM S62W 26 LKS FALLS IN RD CLEARING

set 2" inside diameter galvanized wrought
iron pipe capped with 3" brass tablet
stamped

T148N

3	S13	S18	N
2	S20	S19	R29W

1959

RLS 3628

From this monument bears

Affidavit

N-25

Cedar 9 S36° E 40.2' MKD T148 R29 S19 BT
NOW 10" CUT INTO FID SCRIBE 10-9-2008Cedar 6 N41 E 34.5' MKD T148 R29 S18 BT
LOGGED OFF 10-9-2008Cedar 11 N 67 W 64.5' MKD T148 R29 S13 BT
WINDFALL TIP OF IT 10-9-2008

one Co. BT. of 1908 Remains

B. of G. S 52 1/2 E 37.8' MKD T148 R29 S19
NOW 20' TALL SNAG/W/ SCRIBE 10-9-2008Iron Bolt 1/2" x 18" of supposed Cedar stake
NO EVIDENCE OF IRON BOLT
marked the corner.F.S. Post located on Balsam East
4.0' from corner

tag on Balsam.

aid rd.

other B.T.S.

B. SPRUCE N55W 47.0' MARKS VISIBLE
NOW 5 FT TALL SNAG 47.0 FT 10-9-2008off
from
1-12-60

date 5/22/59

Arthur W. Rauler

10-09-2008 R MAIN
Fd IRON OUT OF GROUND. RESET FROM 1908 BALM OF
GILEAD AND 1959 CEDAR S36° E 40.2 FT. IRON UP 2 FT
GPS'D AND WITNESS WITH 1976 ITASCA COUNTY TIES

CEDAR 15" N 62° E 13.85 FT TO SPK TAG

CEDAR 16" S 50° W 27.45 FT TO SPK TAG

8 FT STEEL SIGN POSTS 1.8 NORTH 2.85 WEST TO CORNER POST

7
N
D
E-15
1/4

bet 53-10
T148N
3
10
R30W

ORIG. BTS.

Notes. Oct 1912 by R.K. BULLER
BIRCH TWP. RD. SURVEY. SURVEYORS RECORD
Book B. Bertram County.
B.T.S.

J. PINE 10" S20E 45.5'
N. PINE 18" S20W 69.0'

Set a 6" cylindrical concrete monument
30" long
capped with 3" dia. Brass tablet
stamped.

10/17/84 CK, GG, JA

T148N R30W Top of monument
1/4 53
1/4 510 broken off. Base in place
1951
RLS. 362P

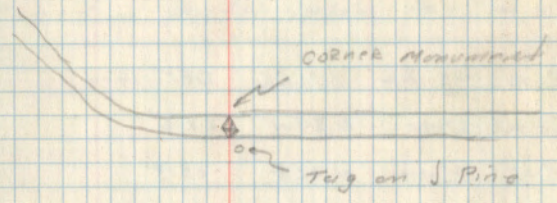
from which bears new BTS.
J. PINE 5" N49E 67.1' MED T148 R30 S3 BT
J. PINE 8" N36W 57.3' MED T148 R30 S3 BT
Living
J. PINE 10" S27E 94.5' MED T148 R30 S10 BT

Affidavit

E-15

Remaining evidence of Co. BT.
10" J. Pine S18 1/2 E 45.5' TREE IS BLAZED
but apparently was
left unmarked
Pine snag S22 1/2 W 69.0' MKS - BT.

Metal location poster on J. PINE
69.0' from CORNER. Co. BT.



Corner Monument was set approx
6" below surface of Rd.

OK
PJM
4-29-les
not written up
written up
PJM

Date - 5/29/59

Arthur W. Leland

For reenumeration
see FB 2 p. 54

99
E-9

SEC CORNER SECS. 4-5-8-9.

T148N	
55	54
58	59
R30W	

ORIG. BTS.

W. PINE 10	S17W	19 LKS	12.5'
W. PINE 14	N86E	30 LKS	19.8'
N. PINE 18	S14E	28 LKS	18.5'
N. PINE 14	N42W	8 LKS	5.3'

Co. NOTES by R.K. BUTLER DEC 1914

14" N. PINE STAMP	N84W	28.2'
12" N. PINE STAMP	N22E	23.3'

Set 6" cylindrical Concrete monument
5' long capped with 3" Brass Table
stamped.

T148N R30W

55	54
58	59
1959	
R.L.S. 3628	

Form which bears NEW BTS.

R. PINE 5"	S73W	42.8	MKD	T148	R30	58	BT
R. PINE 5"	S39W	37.7	MKD	T148	R30	58	BT
R. PINE 6"	S41E	41.4	MKD	T148	R30	59	BT
R. PINE 4"	N89E	9.1	MKD	T148	R30	54	BT

Affidavit

E-9

Remains of orig. BTS.

Pine Stamp	N36E	19.8'	Stamp Buried. Can make out face but no marks
Pine Stamp	N42W	5.3'	Can make out face but no marks
Pine Stamp	S14E	18.5'	BURST & ROTTEN

Remains of Co. Survey

Pine Stamp	N84W	28.2'	MKD - T148 R30
Pine Stamp	N22E	23.3'	MKD - T14

Metal Location Poster 510W 19.2' on a
4" R. PINE.

OK
JRM
1.28.59

4.230P
By Co. Survey
Tag on 4" R. Pine

Date 5/21/59

Broken off: stump remains

10
E-17

SEC. CORNER. 5-2-2-10-11

T148N 30W
3 2
10 11

ORIG. BTS.

TAM P S44E 100Lks 66.0'
TAM 1P N31W 20Lks 19.8'
N. PINE 1P N48E 15PLks 104.3
DEAD W. PINE 20 S24W 25Lks 49.5

Co. BTS. SURVEY 1914 1" x 24" Gas pipe
TAM B" S67E 41.5'

Set 6" cylindrical Concrete Monument
30" Long Capped with brass tablet
& stamped

10/17/84 CK, GB, JA

T148N R30W

33 52

510 511

1959

R.L.S. NO. 362Y

Top of monument
broken off. Base
in place.

from which bears new BTS.

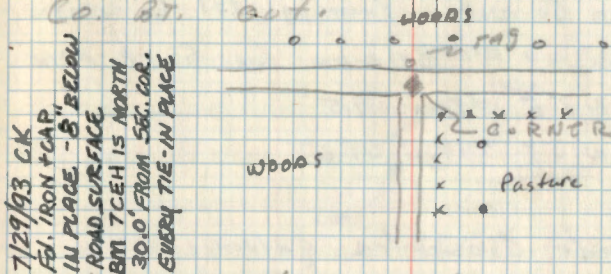
Fd. twin oak at brging & dist. South oak 11"
W. OAK 6 N62E 122.3 MKD. T148 R30 S2 BT
Fd. Elm at brging & dist.
ELM 5 N50W 144.7 MKD. T148 R30 S3 BT
Fd. Tam. snag at brging & dist.
TAM. 9 S41W 122.6 MKD. T148 R30 S10 BT
(now windfall) 8/86

Affidavit

E-17.

Remains of ORIG. GOVT SURVEY
decayed stmp S44E 66.0' N. H. LKS
decayed pine stmp. S31W 49.5' N. H. LKS
PINE stmp. N48E 104.3' N. H. LKS

1" x 24" Gas pipe of Co. SURVEY in
which Surveyor states he found
ORIG. BTS. in 1914. Rd. has TAKEN
Co. BT. out.



Metal location post in post
N20W 22.5' from CORNER (wiped out)

6/2/86 JA DG BD

Fd. Broken Concrete monument 2'
long - removed to sat B.C.

Two 1959 BTS OK Elm and W. Oak

New ties 4 2 1/2" SET: Brass Capped Iron Pipe 2' down
10" in road bed marked T148N R30W

Fiberglass sign post B' S28W 67.33

Fiberglass sign post B' S26E 42.49

date 6/2/59

3 2
10 11
1986
R.L.S. No. 15810

Road survey by county in Feb. 1908 - Book pp. 040104

Found all BT's as stumps except N.P. OK.

Set Tam. post 6" x 6" x 4 1/2'

Mkd. Aspen 10" S64 1/2 W 59 1/2 lks.

11 2-11

1/4 bet 5. 33-4

T147N R30W
 33
 4
 T147N

Orig Gov't B.T.S.

R. Pine 14" S33E 47.4

Dead Pine 8" N3W 46.4

Co. B.T.S. From Co. notes from pg. 201 Co. Record

book of Survey A" Bertram Co. Sept. 1910

N. Pine 12" N3E 75.4 49.5

J. Pine 9" N14E 74 1/2 49.2

Set. 2" inside diameter galvanized
 wrought iron pipe filled with concrete
 & capped with 3" brass tablet
 stamped

Monument 3' long & 6" below rd. surface

T147N R30W
 33
 1/4 54
 T147N
 1959
 RLS. 3628

From this monument bears

14" R. PINE S 75 1/2 E 116.5 MKD T147 R30 S4 BT

16" R. PINE S 17 E 66.4 MKD T147 R30 S4 BT

6" ELM S 38 1/2 W 122.2 MKD T147 R30 S4 BT

No other suitable TREES NEAR except
The large pines used.

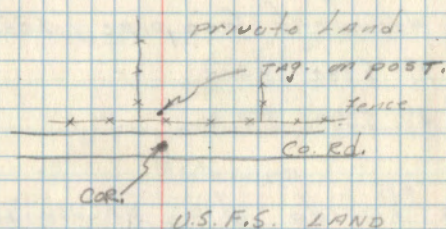
Affidavit

2-11 ✓

No Remains of Orig Gov't B.T.S. found
Remains of Co. Survey Sept 1910

Dead J. Pine N14E 49.2' MKD 1/4 S BT.

E.S. location poster on post N 7 1/2 W
19.2' from corner.



Val. 70

OK
 [Signature]
 4-29-60

Date 5/27/59

Arthur W. Fletcher

12-9
A-9

CLOSING CORNER. 5-4-5

T149N

5 4

T149N R30W

ORIG. Gov't. B.T.S.

Spruce 8" S70W 47 Lks 31.0

Spruce 8" S70E 21 Lks 13.9

Co. Notes by BLUER DEC. 1914

COR. Monument. Gas pipe 1" x 36"

Spruce 9" S28E 46.7

Spruce 4" S20W 33.2

Set. 2" inside dia. galvanized wrought
iron pipe filled with concrete 5' long
and 12" above ground. capped with
3" BRASS TABLET stamped.

T149N R30W

1959

54 55

T149N

R15, 3628

From which bears.

6" B. SPROUCE S71/2W 47.4' MKD T148 R30 S5 BT

7" TAM S46W 52.9' MKD T149 R30 S5 BT

10" J. PINE N89 1/2 E 151.6' MKD T149 R30 S83 BT

Copied 1-11-60

A-9
Affidavit
CERTIFICATE FILED

Corner monuments found Cedar post

Mks plain & 1" x 36" Gas pipe

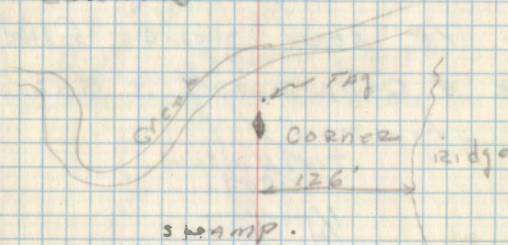
No Remaining Gov't. B.T.s.

Remaining Co. B.T.s.

Spruce stump S20W 33.2 MKD B

Spruce stump S28E 46.7' NO MKS

stump VERY MUCH ROTTEN

Location poster tam stub N 4'
from corner

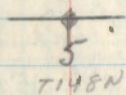
Date 5/26/59

Arthur W. Flanahan

Also See Book 1, Pg. 16

13 A-7

NORTH 1/4 5-5 T149N R30W



Co. Notes by R.K. BLIER Co. SURVEYOR

C.C. SPENCER DEPUTY

W.P. STAP 20" S48W 52.2'

W.P. STAP 20" S47E 63.7'

Set 2" inside dia. wrought iron pipe
5' long 18" above ground filled with
concrete & capped with 3" BRASS
Tablet stamped.

T149N R30W
19591/4 5
T148N
R.L.S. 362P

Scars which bears -

11" J. PINE N22E 42.2' MKD T149 R30 532 BT

6" J. PINE N22 1/2 W 91.9' MKD T149 R30 532 BT

6" N. PINE N45 1/2 W 110.7' MKD T149 R30 532 BT

9-28-82 CK-GB

Fd. IRON 1-IN PLACE - BUT BENT - 4"X4" CEDAR POST GONE

J. PINE 9" WINDFALL N22E 42.2' SCRIBE VISIBLE

J. PINE 8" STUB N22W 91.9' SCRIBE VISIBLE

N. PINE 11" N45W 110.7' SCAR

W. PINE STP. 20 S47E 63.7' SCRIBE 1/4 BT

Affidavit

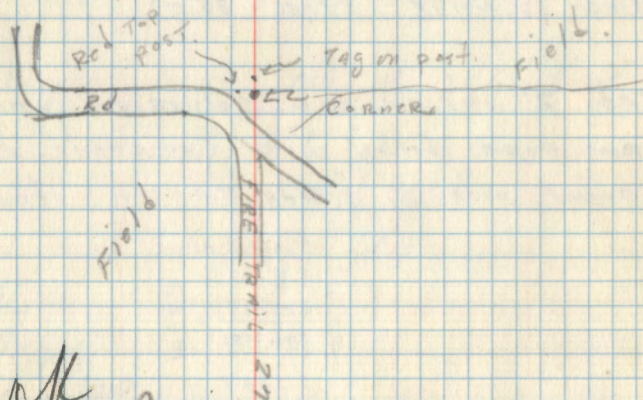
A-7

No Gov't Corner placed here,

Remains of Co. Ossego's

W. PINE STMP. S47E 63.7' AND 1/4 BT.
1" x 3/8" GAS. PIPE.

Location Post 2' North of CORNER
& Red Top 4" SQUARE CEDAR
Post West 2.5' from CORNER.

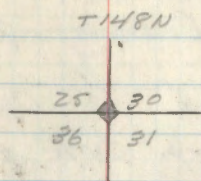


Date 5/26/59

Arthur W. Fletcher

14 V-25

8 25-30-31-36



*ORIG. BTS.

Maple 4" S16E	28 LKS	18.5'
Cedar 5" N83 $\frac{1}{2}$ W	34 LKS	22.4'
ELM 4" S89 $\frac{1}{2}$ W	42 LKS	27.7'
BIRCH 12" N43E	53 LKS	35.0'

set 2" inside dia galvanized wrought
iron pipe filled with concrete &
capped with 3" Brass Tablet stamped

T148N

R29W	525 580	
R29W	526 581	
	1959	
	R.L.S. 3628	

from which bears New BTS.

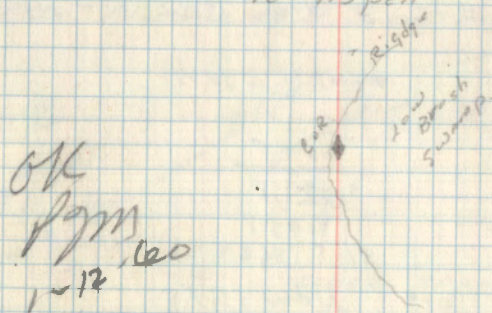
ELM 4" S73 $\frac{1}{2}$ W	49.1'	MKD T148 R30 S36 BT
ELM 9" N72 $\frac{1}{2}$ W	79.0'	MKD T148 R30 S25 BT
ELM 4" S35E	82.3'	MKD T148 R39 S31 BT

Affidavit

Remains of orig. BTS.

ELM - windfall S89 $\frac{1}{2}$ W 27.7' no mks
all to be seen on ELM is BLAZE - tree
rotted out inside along BLAZE
on the day of 11/20/39 J.A. Gjelhaug
CIVIL ENG. found ELM. ORIG. BT. &
set corner from it. Metal location
poster on ASPEN 14 LKS N74E from
corner by Gjelhaug. 11/20/39.

AS location poster N68W 10.6' from
CORNER on 10" ASPEN -



Date 5/27/53
Arthur W. Flancher

15 E-5

SEC. 5-6-7-8

T148N R30W

6 5'

7 8

ORIG. BTS. 4" x 6" TAM. POST

TAM 7 S 55E 14 LKS 9.2'

TAM 7 N 39E 15 LKS 9.9'

TAM 7 N 33W 13 LKS 8.6'

TAM 7 S 27W 9 LKS 5.9'

set 2" inside dia galvanized wrought-iron pipe 5' long filled with concrete & capped with 3" dia brass tablet marked

T148N R30W

56 55

59 58

1958

R.L.S. 3628

from which has new BTS.

TAM 6" N 54 1/2 E 52.5' MED. T148 R30 55' BT

NOW 8" X 30 FT TALL SNAG/W/ SCRIBE

TAM 7 N 65 W 15.6' MED T148 R30 56' BT

NOW ROTTEN STUMP

Cedar 7 N 11 W 28.9' MED T148 R30

NOW 9" STANDING DEAD / W/ SCRIBE

Affidavit

E-5

Remains of ORIG. GOVT. BTS -

TAM. Windfall - S 27 W 5.9' MED. T148 R30 57

TAM windfall N 46 W 8.6' MED. T148 5

TAM windfall 548 E 9.2' MED T148 R30 57 BT

TAM windfall N 31 E 9.9' MED T148 R30 55

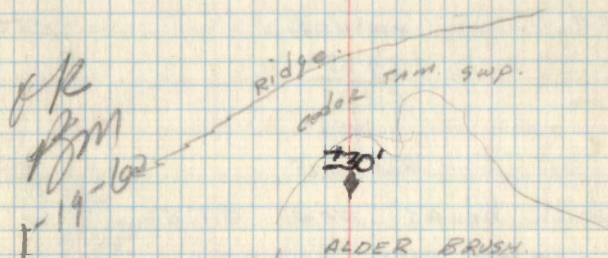
TAM CORNER post. 4" x 6" MED T148 R30 58
5-7-5-6-5-5

Co. 1" x 3/4" Gas pipe.

Remains of Co. BTS.

TAM stub 534E MED - 8' BT

Metal location post on TAM bearing
TREE N 65 W 15.6' on EAST side of



12-1-03 R MAIN

F_d IRON IN PLACE UP 2 FT. GPS IRON.

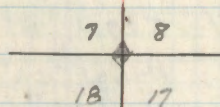
CORNER IS ± 30 FT FROM DEAD CEDAR AND TAM.

Date 5/27/58

Arthur W. Lander

16 J-5

SEC 7-8-17-18



ORIG B.T.S.

Cedar 16 N74E 23 LKS 15.2'
 Cedar 8 S55E 20 LKS 13.2'
 Cedar 10 S34W 16 LKS 10.6'
 TAM 10 N16W 36 LKS 23.8'

set 2" inside dia 5' long galvanized
 wrought iron pipe filled with concrete
 & capped with 3" BRASS TABLET
 stamped

T148R30W
 57 58
 518 519
 1959
 R.L.S. 3628

from which bears new B.T.S.

Cedar 10 N67E 32.2 MKD T148R30 58 BT
 CEDAR 7" N36E 45.2 MKD T148R30 58 BT
 CEDAR 8" N57W 26.9 MKD T148R30 57 BT

Affidavit

J-5

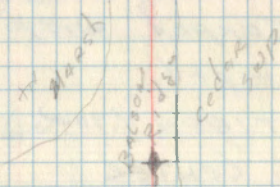
Remains of ORIG. CORNER
 58 post MKD C-8 S-18

16 Cedar N76E 15.2 MKD T148R
 Cedar stub 12" S51E 13.2' NO MKD.
 Cedar stub 15" S34E 10.6' MKD T148R30 51P
 Tin stamp N16W 23.8' NO MARKS
 Rotted badly

Metal location post on ORIG South BT
 N76E 15.2' from CORNER. also

Post on Balsam N29W 17 LKS (12/25/58)

Post on Balsam stub SE-30 LKS 12/22/57



OK
 1/22/59

Date - 5/28/59

Arthur W. Florence

SEE BK #1 PG #24

11 C-7

CENTER 1/4 SEC 5

Notes by R.K. BLUER DEC 1914 County
SURVEY

1" x 36" Gas pipe

BTs.

W.P. STMP 20" S53E 50.8

" 16 S64W 74.5

Set 2" inside diameter 5' long
galvanized iron pipe filled with
concrete & capped with 3" BRASS
Tablet stamped

T148N R30W

CENTER

1/4 5

1959

RLS. 3428

from which bears New BTs

U. PINE 7" S72W 55.8 MKD T148R30 BT

N. PINE 15" S27E 54.0 MKD T148R30 BT

Cedar 9" N67E 87.8 MKD T148R30 BT

C-7
Affidavit

Remains of County SURVEY -

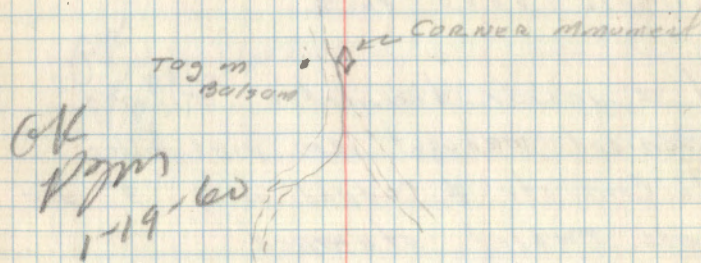
1" x 36" Gas pipe in place

W.P. STMP S53E 50.8 MKD 1/4

W.P. STMP S64W 74.5 MKD 1/4 BT

Location posted on 4" BALSAM

570 W 21.5' from CORNER



CORNER monument approx 3" below
ground surface

date 5/29/59

Arthur W. Huncher

18 C-5

 $\frac{1}{4}$ bet SEC. 5-6.

T148N R30W

 $\frac{1}{4}$ 56 55

ORIG. BT. cedar tree 6' dia post

BIRCH 8 551W 13 1/2

ELM 7 545E 22 1/2

Co. NOTES by R. BLIER DEC. 1914

1" 136" Gas Pipe

W.P. STMP 20' N69W 29.5'

W.P. STMP 12' 528E 76.5'

set 2" inside diameter 5' long
galvanized wrought iron pipe filled
with concrete & capped with 3" dia
BRASS TABLET stamped

T148N R30W

 $\frac{1}{4}$ 56 55

1959

R.L.S. 3628

from which bears new BTS -

ELM 6' N10 $\frac{1}{2}$ W 92.9' MKD T148R30 56 BTELM 12' 560 $\frac{1}{2}$ W 35.4 MKD T148R30 56 BTELM 4' 53 $\frac{1}{2}$ W 62.4 MKD T148R30 56 BTC-5
Affidavit

Remains of ORIG SURVEY.

Remains of Co. SURVEY.

1" 136" Gas Pipe

W.P. STMP 20' S23E 36.5 MKD $\frac{1}{4}$ 8W.P. STMP N69W 29.5 MKD $\frac{1}{4}$ 5 BT

Location Postion Located on
ELM BT 560 $\frac{1}{2}$ W 35.4' from
 $\frac{1}{4}$ CORNER Monument

OK
T148R30
1-19-60

Corner Monument approx 18"
above ground surface.

Date 5/29/59

Arthur W. Fletcher

19 Z-3

1/4 bet 5.31-6

T148NR30W

3'

T148NR30W.

Original BTs

MAPLE 9 S40E 27 LK

FIR 6 N23W 26 LK

Co. BTs by Stoner 1906

10" ELM S41E 51 LK 33.7'

8" Birch N72W 48 LK 31.7'

SET 2" inside diameter 5' long
galvanized wrought iron pipe
filled with concrete & capped with
3" dia brass tablet stamped.

T148NR30W

1959

531

1/4 56

T148NR

RLS. 3628

From which bears New BTs.

ELM 6" S 6° W ~~128.7~~ MKD. BT

MAPLE 8" S 39° E 45.3' MKD. BT

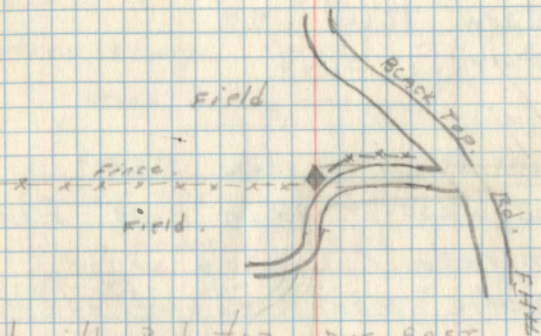
ELM 11" S 52° E 187.0' MKD. BT

Z-3
Affidavit

No remains of the original Gov't
survey exists.

Remains of the Co survey 1906

ELM STAP. S41E 39.7' MKD. B.



Post with Red top due EAST
of corner at a dist of feet

Location post is S 20° E from
the corner.

OK
12

Date 6/1/59

Arthur W. Gardner

Also see T148NR30W Book 2, pg. 4

20
J-3

1/4 CORNER bet S-7-18

TINER 230W

5.7
518

ORIG BTS.

TAM 6 S55W 11 LKS 7.8'

Spruce 9 N22W 12 LKS 7.9'

TAMEROC Post.

Set 2" inside diameter 5' long
galvanized wrought iron pipe filled
with concrete & capped with
3" diameter BRASS tablet stamped

TINER 230W

1/4 57
518

1959
RLS 3628

Same which bears New BTS

TAM. 5" S76W 9.2' MKD. TINER 230 518 BT.

ELM 4" S27E 27.4 MKD TINER 230 518 BT

ASH 4" S75 1/2 E 25.4 MKD TINER 230 518 BT

ASH 4" N32 1/2 E 27.9 MKD TINER 230 518 BT

1/4 CORNER bet S-7-18

J-3
Affidavit

Remains of 6004 BTS.

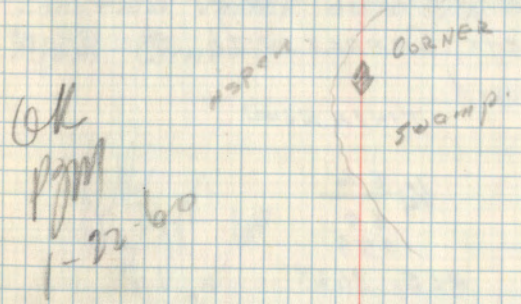
Spruce stump N22W 12 LKS. (79') found
by J.A. Gjelhaug in 1930. also

Cedar stump used as CORNER by
Gjelhaug MKD 1/4 S.

Rotten stump. S55W 7.8' No MKD.
stump badly decayed

Location posted on ELM BT S27E
from CORNER

also Tag on BIRCH S12 1/2 W 17 LKS
from CORNER



date 6/1/59

Arthur W. J. [unclear]

NOTE: SEE BOOK 2 PAGE 67

FOR CURRENT INFO ON THIS CORNER CK

21 E-3

1/4 CORNER bet 6 & 7

T148 R30W

1/4 6
7

ORIG BTS.

N. PINE 18 N72E 94.1ks 62.0' OK.

TAM. 6. 580E 80.1ks 52.8'

Co. BTS. 1" x 3/8" GAS pipe

Set 2" inside diameter 5' long
galvanized wrought IRON pipe filled
with concrete capped with 5" BRASS
TABLET stamped

T148 R30W

1/4 56
57

1959

RLS. 3628

from which bear NEW BTS.

Tam. 4" S33°30'E 52.8' MKD T148 R30 S7 BT

Tam. 8" S23° W 20.1 MKD T148 R30 S7 BT

Tam. 7" N74° W 51.9' MKD T148 R30 S6 BT

E-3
Affidavit

Remains of orig. BTS.

N. PINE STR. 24" with scribing
1/4 B.T. Visible N52E
94 links or 62.0 FT.

Location Poster on 8" Tam BT S73°W
From CORNER

[Handwritten signature]
1/22/60

Date 6-29-59

[Handwritten signature]

22 J-21

SEC. CORNER

S- 11-12-13-14

T148 R30 W

11	12
14	13

ORIG. BTS.

W. PINE 14 S35E 12 LKS 7.9'

SPRUCE 7 S32E 22 LKS 14.5

W. PINE 16 N13W 30 LKS 19.8'

ASPEN 4 N76W 13 LKS 8.6

Co. Notes - C.C. SPENCER SEPT 1917

1" x 36" Gas pipe

W.P. STMP 30 N32E 56.2'

" 30 S59E 54.8'

Co. Notes by R.K. BLILER JAN 1920

PINE STMP 20 N45E 64.2'

C.C. SPENCER stated he found ORIG. BTS.

set 2" inside dia 5' long galvanized
wrought iron pipe filled with
concrete & capped with 3"
brass tablet stamped

T148 R30 W

511 | 512

514 | 513

1959

R.L.S. 3628

J-21
Affidavit

from which bears NW. BTS.

ELM 5" N29°W 24.4 MKD T148 R30 S11 BT

OAK 4" S24½°W 79.3 MKD T148 R30 S14 BT

SPRUCE 5" S77°E 79.1 MKD T148 R30 S13 BT

ASPEN 6" N76½°E 18.5 MKD T148 R30 S12 BT

Remains of ORIG. BTS.

STMP Hole S35E 7.9' rotted badly -

STMP Hole N5°W 19.8' rotted badly -

STMP Hole S32E 14.5' rotted badly

Remains of Co. Survey

PINE STMP. S35E 54.8' MKD T148 R30 S13 BT.

BURN'T
PINE STMP N36E 56.2' BURN'T badly

PINE STMP N45E 64.2' " "

Location posted on Aspen BT N76½°E
18.5' from SEC CORN

W. Spencer
1-15-59

6/2/59

Arthur W. Spencer

23 E-13

S.C.C. COR. 5-3-4-9-10

TINER ROW

4	3
9	10

ORIG	PTS	TAM POST
TAM 4	S73E	33 LKS 21.8
TAM 5	N49E	91 LKS 60.1
TAM 5	N21W	78 LKS 48.2
TAM 4	S42W	78 LKS 51.1

Set 2" inside dia 5" long galvanized wrought iron pipe filled with concrete & capped with a 3" dia Brass Tablet stamped

TINER ROW

54	53
59	510

1959

R.L.S. 3628

From which bears new BTS

SPRUCE 5" N47W	9.8'	MKD T14PR30	54 BT
SPRUCE 5" N46E	23.6'	MKD T14PR30	53 BT
TAM 4" S20E	28.5'	MKD T14PR30	510 BT

E-13
AffidavitCORNER MARKED by TAM POST MKD
5-1" 59 510 53

Remains of ORIG. BTS.

TAM windfall S44W 58.1' MKD T14P 30 S

TAM STAMP N50°E 60.1 MKD W BT.

TAM STAMP S71°E 21.8' NO MKDS-

TAM STAMP N23°W 48.2 NO MKDS-

Co BT SPRUCE MKD 111

FS. location post 0215 SPRUCE BT. N47W
9.8' from COR.

OK
RJM
1-11-60

Date 6/3/59

Arthur W. Fletcher

24
L-21 1/4 cor. bet 5-13-14

T14N R30W

14013

ORIG. BTS. TAM. POST. 4" x 5"

TAM 6 S50E 20 LKS 13.2'

TAM 6 N49W 18 LKS 11.9'

Co. NOTES, 12cm 1/2" x 18" Cedar post.

TAM 3" N44E 39.6'

TAM 3" N26W 47.4'

set 2" inside dia 5' long galvanized
wrought iron pipe filled with concrete
& capped with 3" Brass Tablet stamped

T14N R30W

1/4 514 518
1959

RLI 5628

from which bears now BTS.

TAM 10" N 86W 94.7 MED T148 R30 S 114 BT

NOW 17" AT BRG AND DIST 2009 TAGGED

TAM 9" S 27W 68.3 MED T148 R30 S 114 BT

NOW 14" @ BRG & DIST 2009 TAGGED

TAM 5" S 56E 32.7 MED T148 R30 S 114 BT

NOW A 15" X 20" TALL SNAG 2009 RUSTED TAG

L-21
Affidavit

Remains of orig. Gov't SURVEY.

Stump (rotted) N49W 11.9 NO MED.

stump. rotted body. S50 E 13.2 NO MED.

Remains of Co SURVEY - of 1920

TAM stub N29W 47.4 med 1/4 BT

CORNER consists of 1/2" x 18" 12cm

1 1/2" x 24" iron TAM post MED 1/4 S
on 2 sides

Tag on TAM BT. S56 1/2 E 32.7'
from CORNER

CORNER IS APPROX 500' NORTH OF
The edge of swamp

4-28-2009 R MAIN

FD IRON IN PLACE AND GAS IRON IN MATURE TAM
B. SPRUCE ISLAND, SURROUNDED BY ALDER AND SMALL
TAM.

6/3/59

Arthur W. Fletcher

25 N-21

SEC COR. 5. 13-14-23-24

T148N R30W

14 18

23 24

ORIG. BTS.

FIR N75E 20 LKS

FIR S57W 14 LKS

BIRCH S22E 48 LKS

BIRCH N58W 26 LKS

Co. Notes by C. C. Spencer 1914

Found corner post by Bourgeois in center of grade.

poplar 3 S28W 56.5'

poplar 3 N43W 59.2'

Co. Notes by BLIER JAN 1920

Aspen 6 S28W 56.4

Aspen 7 N50W 79.9

set 2" inside dia 5' Long galvanized wrought iron pipe filled with concrete & capped with 3" dia. BRASS Tablet used

MONUMENT REMOVED T148N R30W BY LOGGING

514 513

523 524

19 59

RLS. NO. 3628

N-21
Affidavit

farm which bears new BTS.

EIM 4" S40E 65.3 MED T148 R30 524 BT
NOW WINFALL ± 12"

Balm of G. 7" N19W 43.5 MED T148 R30 514 BT

Balm of G. 7" N57E 30.9 MED T148 R30 513 BT
NOW 16" WITH GROWN OVER BLAZE (NEW TAG)Aspen 6" S8W 51.0 MED T148 R30 523 BT
NO EVIDENCE

All orig. BTS obliterated.

Below center of grade the remains of a cedar post were found. From which bears the remains of Co. Survey 1914

poplar stmp S28W 56.5'

poplar stmp N43W 59.2'

The remains of Co. Survey JAN 1920

poplar stmp N50W 80.9' instead of 79.9.

Location tag on post N15°W 13.8'

from corner. FOUND RUSTED TAG ON ROTTEN POST LAYING DOWN UNDER ROTTEN VEGETATION NO F.I.W./METAL DETECTOR.

No good BTS NEAR CORNER.

5-18-06 R MAIN

GPSED CORNER LOCATION FROM 1959 BTS. NEED TO RETURN TO SET NEW CORNER

6/4/59

Arthur W. Fletcher

1959 B of G 16" N 60 E 30090 FT TO SPK

B of G 6" N 23 W 20010 FT TO SPK

26 R-25

SEC. COR. S. 24-25-19.30

T148N

29 19

25 80

R30W R29W

ORIG. BTS.

BIRCH S84E 35

MAPLE N81E 29

BIRCH N48W 35

BIRCH S47½W 16

Co. Notes Oct 1923

Gas pipe 1½" x 24" & Cedar Post 6x6x5

MARK S 39.4'

MARK S28W 29.5

BIRCH S29½E 51.4

P. STMP N55W 37.5

Notes from Co. Field Book #5

Set 6" cylindrical Concrete Monument &
Long capped with 3" BRASS Tablet. MARK

T148N

3 524 519 R29W

2 525 530

19 59

219 3624

R-25

From which bears new BTS

TWIN OAK 6 N27½E 35.9 MARK T148 R29 S19 BT

OAK 7 N79 E 50.6 MARK T148 R29 S19 BT

ELM 6 S43½E 51.9 MARK T148 R29 S19 BT

ALL TRACES OF ORIG. BTS OBLITERATED

Remains of Co. SURVEY 1923

1½" x 24" Iron pipe & 6" Cedar post MARK visible

From which bears

Pine STMP N55W 37.5 NO MARKS

ALL OTHER BTS OBLITERATED

Location TAG on 8" Birch N71E 9.0'

FROM CORNER.

OK
PDM
1-12-60

5/21/59

Arthur W. Fletcher

27 N-23

Start here

1/4 COR. bet. S 13-24

T148 R30W

$$\frac{1}{4} \frac{13}{24}$$

Orig. B.T.S.

Co. B.T.S. JAN 1920 R.K. BLIER

N. PINE 10" N35°E 51.2'

W. PINE 20" N15°E 50.3'

SET 2" inside dia 5' long galvanized
wrought iron pipe filled with concrete
& capped with 3" BRASS TABLET MKD

T148 R30W

$$\frac{1}{4} \frac{13}{24}$$

1959

R.L.S. NO. 8628

From which bears New B.T.S.

Cedar 12" S 34° W 48.1' MKD T148 R30 S 24 BT

^{TWIN}
Cedar 11" S 11° W 38.9 MKD T148 R30 S 24 BT

Balsam 6" N 1° E 54.8 MKD T148 R30 S 13 BT

N-23

Orig B.T.S. are obliterated

Remains of Co. SURVEY JAN 1920

N.P. STMP. N35E 51.2' Badly Decayed

W.P. STMP. N22E 50.3' MK 1/4

assumed; one bearing TRUE & MK MAG.

J.A. Gjelhaug states he found Co. BT.

at place of N.P. STMP.

F.S. Post on Cedar (BT) 511W 38.9' from

1/4 CORNER.

Rd. runs NE APPROX. 5' FROM BT
N35E 51.2' THIS RD. SEEMS TO HAVE
BEEN MADE EARLIER THAN 1920

OK
from MK
1-15

SEE BOOK 2 Pg. 36

UPDATE BY JAGB

11/19/82

6-4-59

28 R-21

SEC. COR. S-23-24-25-26

T148N R30W

23	24
26	25

Co. Notes. Oct. 1923.

after I located S.W. cor of sec
24 by chain measurement I found
one Gov't. pt. down Mts. plain
Birch 522E 17.1'

I set 1 1/2" x 24" gas pipe & post 6x6x5
& mtd. Aspen 5 575W 55.0'
Birch 6 N45E 46.4'

SET 2" inside diameter 5' long galvanized
wrought iron pipe filled with concrete
& capped with 3" dia BRASS tablet
stamped

T148N R30W

523 824

529 525

19 59

RLS. NO. 86.28

from which has new pts.

ASH 4' N36 1/2 E 25.9' MTD T148 R30 S24 8FT HIGH
ASH 6' N47 W 21.4' MTD T148 R30 S23 18FT 11"
BURN AB. 6" S16° E 7.9' MTD T148 R30 S25 BT 15"

R-21
Affidavit

Remains of Gov't pts. obliterated
Remains of Co. Survey 1923 -

1 1/2" x 24" Gas pipe & 6x6x5 post mtd
from which bears

Birch stub N40°E 46.4' Mtd. T148 R30 S24 BT
Stump Hole 580W 55.0'

F.S. Location - postee location
in BALM of E. BT. S12°E from the
SEC. CORNER.

5-16-06 REMAIN

FD MONUMENT IN PLACE AND GPS. MONUMENT IS
± 260' SOUTH OF FR AND ON THE NORTH EDGE OF
SWAMP.

1959 ASH 11" N47W 26.4 FT NEW TAG SCRIBE OVERGROWN

1959 B of G 15" S16E 7.9 FT OLD FSLP SCRIBE OVERGROWN

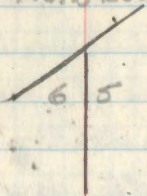
PLACE FSLP ON 12" BIRCH SOUTH SIDE OF ROAD FROM
WHICH CORNER BEARS SOUTH ± 250 FT

6-4-59

29 A, B-5

M.C. bet 8-5-6

T148N R30W



ORIG notes - Ash Post. 4"x6'

ASH 5 SIDE 57 LKS 37.6

Cedar 10 S16W 66 LKS 43.6

set 2" inside diameter 5' long
galvanized wrought iron pipe filled with
concrete & capped with 3" brass tablet
M.K.D.

T148N R30W

1959

MC

56 55

RLS. 3628

from which bears NEW B.T.S.

ASH 5° N45°E 48.6 MKD T148 R30 55 MC BT

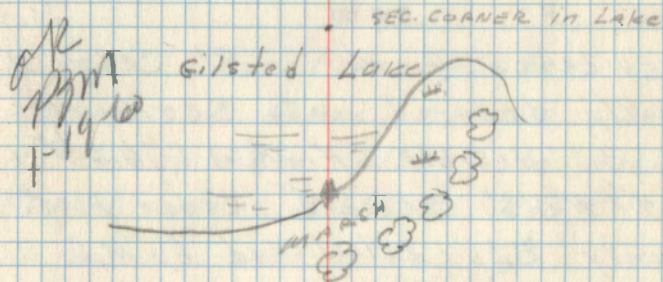
ASH 9° 568°E 15.9 MKD. T148 R30 55 MC BT

ELM 5° S25½°W 77.8 MKD T148 R30 56 MC BT

A, B-5
Affidavit

Remains of the ORIG. GOV'T. SURVEY
Cedar S13W 43.6' MKD T148 R30 56 MC BT
ASH. SIDE 37.6' NO MKD.
part of post mke CORNER

Location poster on ASH BT 568°E
from MEANDER CORNER.



Date 6/5/39

Arthur W. Fletcher

T148R30W

see Book #1
Pg. 76

Sec 29-30-31-32

T148N R 30W

30 29

31 32

Orig. B.T.s.

Cedar 4" N 32W 32 Links

Cedar 4" S 41W 12 "

County notes 1906

Cedar 9" N 28W 11 Links or 6.6 ft.

Ash 4" S 24W 30.4 ft.

Evidence found 9" Cedar wood fast
partly decayed with scribing

S. 30 visible. N. 28W 6.6 ft.

4" x 4" x 6" scribed cedar post. 1906
County B.T.s. established by M.D. StonerSet 2" inside diameter 5 ft. long galvanized
wrought iron pipe filled with concrete
and capped with a 3" bronze tablet
stamped T148N R 30W

29-30-31-32

1958

R.L.S. - 3628

New B.T.s.

Cedar 9" N 38E 35.4'

Cedar 9" S 24W 22.5'

Cedar 9" S 13E 38.8'

put metal location poster

on 9" Cedar from which

cor. bears N 24E 22.5 ft.

a metal location poster is
on a 10" Aspen APPROX. 200 ft
North of cor. along old road.
blazed line south to cor.OK
ppm
1-15-58

see Book 1 p. 76 for most recent visit

10-23-58
Joseph F. Lausche

31
L-25

1/4 13-18
T148 N
R30 13 | 18 R29

Orig. B.T.s.

N. pine 5" N 12 W 11 Links
N. pine 12" S 33 E 20 Links

County Notes by

R.K. Bliler, 1920

R. pine 16" N 20 W 20.5 FT.

W. pine 20" N 82 W 35.3 FT.

Gas pipe 1/2" x 18"

Evidence found

R. pine stp. 16" partly burnt
with scribing 1/4 B.T. visible
N 20 W 20.5 ft.

Plantations plowing and old road
took out all other B.T.s.

Set 2" inside diameter 5 foot
long galvanized wrought iron
pipe filled with concrete and
capped with a 3" bronze
tablet stamped.

L-25
Affidavit

T148 N R 30 W

13 | 18

1958

R.L.S. 3628

New B.T.s

R. pine 6" N 19 1/2 E 26.4 FT

R. pine 5" N 81 E 23.6 FT.

W. spruce 8" S 56 1/2 W 57.8 FT.

Put location poster on 5"

R. pine from which the cor.
bears S 81 W 23.6 FT.

corner just off of S.E corner
of small field. old road runs
by corner.

ok
12-60

12-9-58 Joseph F. Lauseche

D-2

S.W. $\frac{1}{4}$ Sec 6

County B.t.s.

Established by R.H. Bliler
Beltrami Co. Surveyor 1914

Birch 20" S67W 8.0 ft.

Maple 7" S52E 19.0 ft.

1" x 36" gas pipe.

Evidence found

Birch stump mostly decayed

no scribing visible S67W 8.0'

Maple stump mostly decayed

no scribing visible S52E 19.0'

Set 2" inside diameter 5 foot long
galvanized wrought iron pipe filled
with concrete and capped with
a 3" bronze tablet stampedS.W. $\frac{1}{4}$ S 6

1959

R.L.S. 3628

New B.t.s.

H. Maple	9"	S47W	21.3 ft.
10" x wood	7"	S17W	23.1 ft.
Basswood	7"	N21 $\frac{1}{2}$ E	14.2 ft.

Metal location is on a
7" 10" x wood from which the
core bears N17E 23.1 ft.Fence line runs N. & W.
from core.

W
P
R

7-1-59 Joseph G. Lausehe

33
0-3

S $\frac{1}{2}$ $\frac{1}{2}$ S 6

County B.T.s.

Established by R.H. Bliler

Beltrami Co. Surveyor 1914

Maple 8" N 76 E 172 FT.

Maple 6" N 13 W 152 FT.

1" X 36" gas pipe

Evidence found

Maple now 14" with scribing B.T.

Visible N 16 W 152 FT

Maple now 14" with scribing
decayed N 73 E 172 FT.

Corner was found to be
marked with a 1" X 36" pipe

Set 2" inside diameter 5 foot
long galvanized wrought iron
pipe filled with concrete and
capped with a 3" bronze
tablet stamped,

S 6

1959

RLS 3628

D-3
Affidavit

New B.T.s.

H. Maple 7" S 60 W 29.4'

H. Maple 6" S 21 W 34.9'

H Maple 10" S 33 $\frac{1}{2}$ E 59.1'

Metal location poster is on
a 6" Maple from which the
corner bears N 21 E 34.9'

Metal location poster on small
Maple south side of old road
approx 400 FT north of corner.

JK
RJM
1/2 60

7-1-59

Joseph F. Lausehe

W $\frac{1}{6}$ S $\frac{6}{7}$

County B.T.s.

Established by R.K. Bliley Beltrami
County Surveyor 1914

W. pine stump 24" S67E 37.7'

W. pine " " S39E 29.7'

1" x 36" pipe

Evidence found

W. pine stump scribed $\frac{1}{6}$ S.B.T.,
S67E 37.7'W. pine stump mostly decayed
with no scribing visible

S39E 29.7'

Corner was marked with a
1" x 36" pipeSet 2" inside diameter 5 Foot
Long galvanized wrought iron
pipe filled with concrete and
capped with a 3" diameter
bronze tablet stampedW $\frac{1}{6}$ S $\frac{6}{7}$
1959 $\frac{5}{7}$

R.L.S., 3628

New B.T.s.

Oak 7" S66E 47.7'

Oak 8" S38E 51.4'

Elm 8 S62W 34.6'

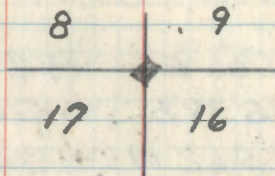
Metal location poster on
8 Elm from which the cor.
bears N62E 34.6'Logging road runs north to
farm house approx. 30 chains
north of cor.

R.L.S.

6-29-59

October 31, 1958

35
5-9 Sect. Corner between Sects 8-9-16-17



Evidenced by 2 remaining original scribed
Bearing trees of Govt. survey of 1874

① 4" Maple (Now 13" stub w/ scribe "T" visible)
N75°W 20 LINKS or 13.2'

② 18" Elm (Now 24" w/ scribing not visible
because of decay) S 67°E, 22 LINKS or 14.5'

New B.T.'s

Sect. 8 4" Maple N32½°W 13.6'

Sect. 16 6" Y Birch S 15°E 16.7'

Sect. 9 5" Maple N43°E 46.7'

All ref. bearings are true bearings

Corner is mkd by a 6" cylindrical concrete
monument, 5' long, capped w/ a 3" dia.
bronze tablet stamped

T 148 N. R 30 W

8-9-16-17

1958

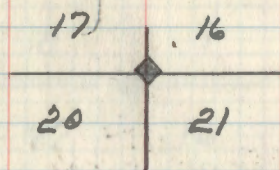
R.L.S. 362B

Joseph F. Lausche 10-31-58

CERTIFICATE FILED ^{T-9}
7/1/1958

October 24, 1958

³⁶
N-9 Sects 16, 17, 20, 21



Evidenced by one remaining original scribed B.T. of Govt. survey of 1874

① 8" J. Pine S 47° W, 11 LINKS (Now 23" W. Pine w/ scribing visible) S 47° W 11 LINKS or 7.3'

New B.T.'s

Sect. 20	7" Basswood	S 46° W	30.5'
Sect. 21	12" Elm	S 43° E	36.5'
Sect. 21	10" Cedar	S 89 1/2° E	59.5'

All reference bearings are true Bearings.

Corner is mkd by a 6" cylindrical concrete monument 5' long, capped by a 3" dia. bronze tablet stamped:-

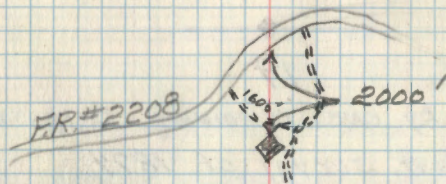
T148N. R30W

16, 17, 20, 21

1958.

R.L.S. 3628

N-9
Affidavit



Metal Location poster is on a 23" W. Pine from which the corner bears N 47° E 7.3' RELP ON W. PINE FACING COR.

5/1/90 GB-CK

Fd. CONCRETE MONU. - IN PLACE - IN GOOD CONDITION
24" ABOVE GROUND - WOODS TRAIL NW-SE IS 15' NE OF COR.
Cedar swamp ± 200' west of corner.

1957 B.T's. NOW 12 BASSWOOD - N 46° W - 30.55 SPK + TAG
NOW 16 DEAD ELM - S 43° E - 36.5 TAG
NOW 14 CEDAR - S 89 1/2° E 59.5 TAG

1874 B.T. NOW 23" WHITE PINE SNAZ S 47° W 7.3'
NEEDS SIGN POSTS - WALK IN ON TRAIL BEARING NW - APPROX 1600'
CORNER ON HIGH GROUND - IN WOODS - MIXED HARDWOODS + PINE - CEDAR
MKD NEW B.T's
CEDAR 11 S 4° W 55.15' MKD S 20 BT

Maple 10 N 24° E 59.23 " S 16 BT

Placed F.S.L.A. on 8" Basswood on south side of F.S. rd. 2207. Tag reads S 37° E, 1350' to sec. corner.

10-24-58

Joseph A. Lusche

October 24, 1958

37
N-3
1/4 Corner between Sect's 18 & 19

18

19

Evidenced by one remaining orig. bearing tree of Govt. survey of 1824

① 14" Red Pine (Now 16" stump partly decayed w/ scribing BT visible) S15°W & Links or 4.0'

Found 2 BT's believed put in by county surveyor approx. 10 years ago, of which there is no record at county courthouse

① 9" White Birch S30½°E 14.1'

② 16" Red Pine S62°E 35.1'

No other evidence of orig. cor. Found New BT's

Sect. 19 9" White Birch S30½°E 14.1'

Sect. 19 16" Red Pine S62°E 35.1'

Sect. 18 8" Balsam N12½°W 81.8'

All ref. bearings are true bearings
Cor. is mkd by 2" inside dia. 5' Long wrought iron galvanized pipe filled w/ concrete & capped w/ 1 3" dia. Bronze tablet stamped:- T148N, R30W

1/4 18
19
1958
RLB 3628

Posted
1-11-60 RMM

N-3
Affidavit

Metal location poster is on a fence post approx. 100 ft. south of cor. North side of Rd # 2208

5/1/90 Fd. 2" F.S. B.C. IRON-IN-PLACE - IN GOOD CONDITION - ON EAST SIDE OF DRIVEWAY (NORTH) TO SUMMER HOME - GATE ON DRIVEWAY - ORIG. PINE STUMP GONE TO SW-AT EDGE OF DRIVEWAY
N. PINE 562E 35.1 OK
BIRCH S30E 14.1 OK
BALSAM GONE TO NW - ALL PRIVATE LAND AROUND COR.
Fd. 1 1/2" - 10" ABOVE GROUND IRON PIPE WEST OF F.S. IRON CORNER IS 40' NORTH OF FR # 2207

06-16-2009 R. MAFN

GPS IRON

10-24-58

Joseph F. Lusche

38 V-19 *corner note up to line*
August 3, 1959

1/4 Corner between Sects 26 & 35
26.

35

Evidenced by 2 W. Pine stumps:-

W. Pine stump S15°E 11 Lks or 7.26'

W Pine stump N60°W 13 Lks or 8.58'

No scribing visible - No other evidence

found - Stumps are mostly decayed.

orig. govt. survey of 1874

New BT's

Sect 26 5" Oak N28°W 70.8'

Sect 26 4" Elm N70°E 32.9'

Sect 35 7" Elm S69½°W 71.9'

All ref. Bearings are true bearings

Cor. is mkd by a 2" inside dia. 5' long
galvanized wrought iron pipe filled w/
concrete and capped w/ a 3" dia. bronze

tablet stamped: T148N R30W

1/4 S26
S35
1959
RLS 3628

pipe projects 2' above ground.

V-19
Affidavit

Metal F.S. Location Poster on a 8"
Birch. From which corner bears
S30°W 2.2

Also, metal location poster on road
1240 East of 1/4 corner.

Fold RUSTY TAG ON THE GROUND AT BASE
OF 16" W OAK ON SW SIDE OF FR 2415.
NAILED TAG TO OAK. I FEEL THIS IS THE
TAG MENTIONED ABOVE. R. MAIN 2006

OK
1-19-60

8-3-59
G.H. McDonald

August 4, 1959

³⁹
E-1 Sect. Cor 6 & 7 T148-R30 & 1 & 12 148-31

1 6

12 7

Evidenced by: Co. Notes 1911

① Tam. stump mostly decayed with scribe
B.T. visible N67½°W 35.5'

New B.T.'s

6" Tam. S49°E 77.2' MKR T148N R30W S7 B.T.

5" Tam. S84°E 44.6' MKD T148N R30W S7 B.T.

7" Tam. N75°E 61.9' MKD T148N R30W S6 B.T.

Set 6" dia. cylindrical concrete monument
2" Long capped w/ a 3" dia. bronze
tablet stamped

T148N
R31W R30W
S1 S6
S12 S7
1959
RLS 3628

Monument is set 6" under old Roadway

See Book 1
Page 72

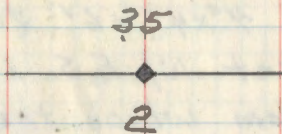
E-25
Affidavit
148-31

A Red Top 4" x 4" x 6' treated cedar
post is set w/ F.S. Location poster
attached from which the corner bears
N88°30'E 13.3'

8-4-59 G.H. McDonald

40 Z-19

1/4 Cor. Sect 35-148-30 & Sect 2, 147-30

Found.

① Co. Notes; Tam. 3" S10°W 62 Lks.
Sept. 1910 Page 201. Record book "A"
Beltrami Co. still a 3" tam w/
scribing visible

② Squared, scribed stake at corner.
No evidence of orig. corner could be
found

Set a 2" inside dia. galvanized wrought
iron pipe 5' long, filled w/ concrete
and capped w/ a 3" dia. bronze tablet.
Stamped:

T148N (30W)
1/4 S 35 R30W
1/4 S 2
T147W
1959
R.L.S. 3628

From which bears new Bt's

Tam 5" GONE N24°30'W 114.0 MKD THIN R30W 835 BT
Tam 4" S64°E 156.1 MKD X B.T.
Tam 3" N79½°E 142.8 MKD X B.T.

Z-19
Affidavit

F.S. Metal Location poster on Tam.
3" Co. B.T. from which Cor bears N10°E
40.9'

8-13-59

J. M. Arnold

10-5-04 R MAIN

FD IRON IN PLACE AND GAS. IRON UP + 2" ABOVE
LEATHER LEAF BOG. IRON ± 200 FT N55E OF
OF ASPEN POINT AND ± 250 FT S15°W OF SOUTH
END OF POND. WITNESS BY?

(DEAD) TAM 3" S10°W 40.5 FT TO E OF TREE (OLD TAG)
1959 TAM 4" S64°E 156.1 FT SCRIBE VISIBLE (TAG)
1959 TAM 3" N79°E 142.8 FT X VISIBLE (TAG)

First	<<	<	>	>>	Last	Delete
Latitude:	47°35'07.78700"N					
Longitude:	94°26'45.19823"W					
Altitude (HAE):	390.461 m					
Summary		68% Precisions		DOPs		
Date:	10/05/2004					
Time:	1:39:03.109 pm					
Position:	Average of 295					
Horiz. Precision:	1.520 ft					
Status:	3D Differential					
Filename:	4730N2.cor					

See Book 2 Page 55
T147W R30W

August 13, 1959

4123
R-1/4

Corner Between Sec. 24-25

1/4 24
25

Evidenced by County Notes of 1923

- ① 5" x 5" x 4' Scribed Cedar post - visible Scribing
- ② 2" angle iron - in place

New BT's

Aspen 7" N 78° W 57.4' MKD. T148NR30W S24 BT
 Aspen 6" N 26° 30' W 29.5' MKD. T148NR30W S24 BT
 Willow 4" N 47° E 39.6' MKD. X B.T.

Set 6" dia. cylindrical concrete monument capped w/a 3" dia. bronze Tablet stamped

T148NR30W

1/4 S24
 825
 1959
 R.L.S.# 3628

8-13-59

A. M. Donald

R-23

Affidavit

Metal location post on 14" Aspen stub from which corner bears S 50° E 8.5' Also post on old road 210' North of corner.

5-17-06 ReMAIN

Fd MONUMENT IN PLACE BUT BROKEN OFF @ GROUND LEVEL GPS ED MONUMENT. SPRUCE PLANTATION NORTH, ASPEN AND BALM OF GILEAD SOUTH. MARK NEW BTS ON 10-31-06

SPRUCE 7" N 2° E 10.22 FT TO SPK MKD 8 S24 BT

BALM OF GILEAD 6" ~~N 2° E 10.22 FT TO SPK MKD 8 S24 BT~~
 S 38° W 18.25 FT TO SPK MKD 8 S25 BT

42
C, D-3
August 12, 1959

M.C. South Center SMC sec. 6

6

Evidenced by Co. Notes R.K. Bliler 1914

- ① 1" x 36" Gas pipe - Found in place
- ② Cedar 20" N64W 6.5' - (Now Cedar 22" stub N60W 6.5' scribing visible)
- ③ Cedar 12" S27W 22.5' (Now 16" Cedar S30W 22.5' scribing visible)

Set 2" inside dia. galvanized wrought iron pipe filled w/ concrete and capped w/ a 3" dia. bronze tablet stamped

1959

SMC

C
S | 6

R.L.S. NO. 362B

From which bears New BTs

Cedar	9"	S43½°W	41.5'
"	9"	S6½°W	20.9'
"	11"	S93½°E	91.5'

8-12-59

Joseph H. Lauseche

Posted

C, D-3
Affidavit

F.S. Metal location poster set on
22" Cedar from which corner bears S60°E
6.5'

43
C-3,4

August 12, 1959

M.C. East Center SMC Sect 6

SMC / S - C
6

Evidenced by Co. Notes by R.K. Bliler 1914

① 6" Ash N14°E 28.1' (Now 7" Ash N11°E
23.5' w/ scribing M & visible) ^{with broken top}

② 5" Ash S14°E 23.5' (Now 7" with broken
Top 28.2' S15°E)

③ 1" x 36" gas pipe (Found in place)

Set a 2" inside dia x 5" long gal.
wrought iron pipe filled w/ concrete
& capped w/ a 3" dia. bronze tablet
stamped:-

SMC / S - C
6

1959

R.L.S. NO. 3628

From which bears:-

Ash 7" S71°E 12.4' MKD T148N R30W S6 BT

Ash 5" S4°E 9.1' MKD T148N R30W S6 BT

Cedar 5" S69°N 36.2' MKD T148N R30W S6 BT

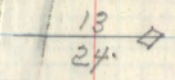
C-3,4
Affidavit

all
from
1-22-60

44
N-24

August 14, 1959

E 1/16 between Sec 13-24



Evidenced by - Co. Notes

- ① Aspen 12" N25°30'E 50.8' (Now a windfall) with scribing partly visible
 - ② Aspen 12" S35°30'E 32.0' (Now a stump mostly decayed with scribe "BT" visible) S35°E32.0'
- No other evidence found.

Set a 6" dia. cylindrical concrete monument capped w/a 3" dia. bronze tablet stamped

T148N R30W
 E 1/16 S13
 S24
 1959
 RLS.# 3628

From which bears New BTs

- Aspen 5" N51°W 12.2' MKD T148N R30S13 BT
- Aspen 8" S23°E 14.0' MKD " " S24 BT
- Tarn 10" S78°30'E 100.7' " " " "

New BTs Oct. 24, 1966 outside New road R/W

- Aspen 9" S52°W 68.3' MKD E 1/16 S24 BT
- Birch 5" N5°E 58.2' MKD E 1/16 S13 BT

A. McDonald

Posted 1-11-59
RAM

N-24
Affidavit

Placed F.S. metal location poster on 8" Aspen BT from which Cor. bears N23°W 14.0' Also poster on cedar post East side of FR# 2207 from which Cor. bears West 48.3'

8-14-59
 A. McDonald

Mc Leo
 1-12-59
 RAM

Reset mon. in ditch slope of new roadway. It is resting on a rock & projects 1' above ditch slope

5-2-69 RAM

45
M-21
August 14, 1959

S 1/16 between Sec. 13-14

14 13



Evidenced by Co. Notes

Pine stump 36" S80W 61.5' (New ^{pine} stump partly decayed N83W 61.5' scribing partly visible)

Flat head iron bolt (Found in ground 61.5' S83°E from stump)

Set a 6" dia. cylindrical concrete monument capped w/ a 3" dia. bronze tablet stamped

T148NR30W

S 1/2

S14 S13

1959

RLS #3628

From which bears new B.T.'s

Oak 4" 106.2' N30°W MKD X BT

Oak 5" 98.3' S35 1/2° W " THAN RAOUS 14 BT

Red Pine 6" 146.6' S5 1/2° E " " " S13. BT

25

Steel sign post 72" long w/ FS standard signs 54-2 & 54-4 attached set west 2.8 feet. 10-24-66 JHM

M-21
Affidavit

9-30-2008 R.M.A.I.N

Fd MONUMENT IN PLACE UP 2.5 FT WITH CONCRETE BROKEN AWAY @ GROUND LEVEL, SIGN POST LAYING DOWN. GPS MONUMENT.

1959 W. OAK 10" N30W 106.2 Scribe overgrown

1959 W. OAK 14" S35 1/2° W 98.3 " "

1959 R. PINE 15" S5 1/2° E 146.6 " "

8-14-69

J. M. Donald

OK
JHM
1-15-60

46
K-25

August 14, 1959

N 1/16 Cor. between 13 - (18-148-29)

Evidenced by Co. Notes of Roy K. Bliver 1920

- ① Iron and ~~_____~~ a scribed Tam post
(Found Iron and part of scribed Tam post)
- ② Tam 9" S30W 11.9' (Now a Tam stump
S37°W 11.9' partly decayed w/ scribing
partly visible)
- ③ Tam 7" N28°W 10.5' (Now a tam stump
N15°W 10.5' partly decayed w/ scribing
partly visible)

Set a 2" inside dia. gal. wrought iron pipe
Filled w/ concrete and capped w/ a 3" dia. bronze
tablet stamped

T148N
R30W R29W
S18 S18

1959
RLS#362B

From which bears

Tam. 5"	S68½°W	211.6'	TKO T148N R30W S18 BT
Cedar post 4"x4"x6'	N27°W	18.8'	
" " "	N74½°E	24.4'	

K-25
Affidavit
28.9.

placed F.S. metal location poster on
Tam stub 12" from which cor. bears
S31°E 28.4'

8-14-59
R.H. McDonald

OK
pgm
1-12-60

47
J, K-25
August 14, 1959

M.C. between 13-(18-148-29) South of
Coleman Lake

S13 S18

Evidenced by Co. Notes Roy K. Bliler 1920

- ① Tam 8" S75°W 17.5' (Now 10" Tam stub w/
scribing visible S67°W)
- ② W. Pine 9" S20°E 41.0' (Now 12" stub S22°E)
- ③ Found pipe 1" x 14" and flat iron and
a scribed wooden post in place

Set 2" inside dia. gal. wrought iron pipe
Filled w/ concrete and capped w/ 3" dia.

Bronze tablet stamped T148N
R30W R29W
P.C.
S13 S18
1959
RL523628

From which bears

Tam 5" S61½°W 224.7' MKO T148N R30W S13 BT
Cedar post 4x4x6' S31°W 16.5'
Cedar post " " " S43½°E 34.2

8-14-59

A. McDonald

SEE BK #3 PG 41

J, K-25
Affidavit

MC
R30W
1-12-60

US H-18

Aug 17 1959

Tlausche

SW $\frac{1}{16}$

Sec 11

T Glick

Co. notes by R.K. Bliler &
1917 C.L. Spencer

1x36" Gas Pipe

Oak 7" N35°W 20.6'

Found 1" x 36" Gas Pipe

No evidence of Bearing tree

Set 6" x 5' concrete monument
with brass cap stamped

T148N R30W

SW $\frac{1}{16}$ S 11

1959

R.S. NO. 3628

from which bears

Elm 6" S50°E 59.6'

24" Boulder N86°W 5.6'

48" Boulder N32 $\frac{1}{2}$ °E 14.9'

H-18

Affidavit

Metal F.S. location poster
is set on a 2" willow from
which the corner bears

57°W 5.2'

8/17/59
Joseph Tlausche Glick

OK
JRM
1-17-60

49 J-19

Aug 17, 1959

J. Lausche F. Glick

1/4 Cor bet sec 11 & Sec 14

Co notes by R. K. Blaker
& C. C. Spencer 1917

1x36" Gas Pipe
No Bearing trees

Found 1x36" Gas Pipe

set 2", inside diameter, 5'
long, brass capped, galvanized
wrought iron pipe

stamped

T148N R30W

$\frac{1}{4}$ S 11
4 S 14

1959

R.L.S. NO. 3628

J-19
Affidavit

From which bears
Tamarack 6" N 78° W 25.2'
" 4" S 31½° E 33.2'
B. Spruce 4" S 8° W 23.2'

4" B. Spruce & 4" Tamarack
are marked X

Metal F.S. location poster
is on 4" Black Spruce
B.T. from which the corner
bears N 8° E 23.2'

8/17/59
Joseph F. Lausche F. Glick

OK
J. Lausche
11/60

5' E-21

Aug 18, 1959

T. Lauseche T. Glick

Sec Corner 42, 11, & 12

Co notes by R.K. Bliler
& C.C. Spencer 1917

Poplar 8" N 51 1/2° W 16.2

J.P. 5" S 11° W 16.0

Gas pipe 1x36"

Found gas pipe buried
in road bed.

B.T.s have been obliterated
by road.

Set 6" x 2' brass capped
concrete monument 1' under
surface
from which bears

T. Pine 6" N 44° 43 1/2° W Sec 2

W. Pine 17" N 45 1/2° E Sec 1

Red Top Cedar Post S 27 1/2° W Sec 11

" " " " S 37° E Sec 12

E-21
Affidavit

Metal F.S. location poster
is set on fence post from
which corner bears N 1/2° W
32.5'

Corner is Stamped
T148N R30W

Sec 2 Sec 1

Sec 11 Sec 12

1959

P.L.S. NO. 3620

7/29/93
F.S. CONCRETE MONUMENT 22" BELOW
ROAD SURFACE - IN PLACE - SAND FILL
J. PINE 1" NW NOW BROKEN OFF STUB 40" HIGH
U.2 PINE IN GOOD CONDITION NE
4x4 SE IN PLACE - OK
NEW BR - N. PINE 11.541W - 36.55'
MKD. BT
8" STEEL SIGN POST 32.155 BOTH

Joseph Lauseche

8/18/59

T. Glick

97.1

170.4

25.8'

37.0

OK
4 29 60

CORNER IS 9' SOUTH OF R. OF CO.
ROAD ETLW
LINE TO STA. SOUTH

4x4 SW IS GONE - N. PINE
PLANTATION (N.W. 1/4)
PLACED MAGNETIC PELLETS NORTH
ALONG SIDE MONUMENT 4" BELOW TOP

52 H-19

Aug 18, 1959

1/4 # 12

sec 11

J. Klausche

J. Glick

Co. notes by R.K. Bliler &
C.C. Spencer 1917

Tamarack 3" N27W 3.2

" 4" N18E 5.6

1" x 24" Gas Pipe

Found 1" x 24" Gas Pipe & 1 stump
with scribing (B) visible Also
8" Tamarack with scribing visible
3.2 & 5.6' from corner respectively

Set 2" inside diameter
5' long galvanized wrought
iron pipe stamped
T148N R30W

C
5 1/6 S11

C

1959

R.L.S. No. 3628

H-19
Affidavit

from which bears

W. Oak 3"	46.7'	marked X	N. 41 1/2° W
Tamarack 5"	22.0'		S 55° W
" 7"	31.3'		S 52 1/2° E

F.S. location paster is on
8" Tamarac from which
corner bears S 31° W 5.6'

8/18/59

Joseph Klausche J. Glick

ok
J. Glick
8/17/60

53 J-18

Aug 18, 1959

1/16 # 16

Sec 11

Co. notes by R. K. Bliler
 & C. C. Spencer 1917

Gas pipe 1" x 36"
 Tamarack post

found tamarack post and
 1" x 36" Gas pipe

Set: 2" inside diameter, 5' long,
 concret filled, galvanized,
 wrought iron pipe. Stamped:

T148N R30W

$$\begin{array}{r} W \frac{1}{16} S 11 \\ 16 \quad 514 \end{array}$$

1959

R.L.S. NO. 3628

J-18
Affidavit

From which bears

Tamarack 7" S 44½° W	34.8	✓
" 5" S 5° E	44.7	✓
" 4" N 34° W	26.4	✓

Check for X on 4" Tamarack

Metal F.S. location poster
 is set on 7" Tom from
 which corner bears N 44½° E
 34.8'

8/18/59

Joseph H. Fausch Justice

OK
 from 60
 11-17-60

Aug 19, 1959 J. Lausche
J. Glick.

54
E-23
1/4 Cor between Sec 1 & Sec 12

No county notes.

Found 1" x 24" Iron gas pipe
buried on North side of road
about 6" under road surface.

Set 6" x 24" brass capped concrete
MONUMENT stamped.

T148N R30W Top of monument
1 Sec 1 broken off. Base in
4 Sec 12 place.

1959

R.L.S. NO. 3628

E-23
Affidavit

from which bears

10/17/84-CK, JA, GB

Ed. rotted Aspen stp.
ASPEN 7" N 27° W 105.5' Sec 1
Ed. rotted Aspen stp.
ASPEN 6" S 30 1/2° W 34.0' " 12
Ed. J. Pine snag, scribe visible
J. Pine 5" N 72° E 204.6' " 1
Fence Corner S 1° E 32.8' " 12

Metal F.S. location Post is
on Aspen 6" B.T. from which
corner bears N 30 1/2° E

8/19/59
Joseph Lausche J. Glick

OK
J. Lausche
J. Glick

Remorsementation Recorded on Field Book #2 p. 56

55 F-21 N $\frac{1}{16}$ bet Sec 11 & Sec 12
Aug 19, 1959
1/16 # 3 Sec 12 J. Glick J. Lausche

No county notes

Found 1" x 36" Gas Pipe
along fence line

Set 6" x 5' brass capped
concrete monument, stamped

T148N R30W

N $\frac{1}{16}$

Sec 11 | Sec 12

1959

R.L.S. No. 3628

F-21
Affidavit

from which bears:

J. Pine 6" N49 $\frac{1}{2}$ ° E 59.4'

" " 5" S 15° W 59.4'

Red Top Cedar Post N62 $\frac{1}{2}$ ° W 18.0'

Metal F.S. location poster is
set on Cedar post from which
corner bears S62 $\frac{1}{2}$ ° E 18.0'

8/19/59

Joseph H. Lausche
J. Glick

OK
PJM
1-17-60

56 B-52

Aug 19, 1959
J. Glick J. LauscheMC on $\frac{1}{16}$ line on West edge of
Gilstad lakeCo notes by R. K. Bliler
& C. C. Spencer 1914Iron bolt 1" x 20"
14" Cedar N86°W 4.5'
14" Cedar S26W 6.7'Found iron bolt 1" x 20"
Found two Cedar stumps
with visible scribing, one
N89°W 4.5'
The other S24°W 6.7'Set 2" inside diameter 5' long
galvanized wrought iron
pipe stamped

T148N R30W

	S	SMC
N	6	N

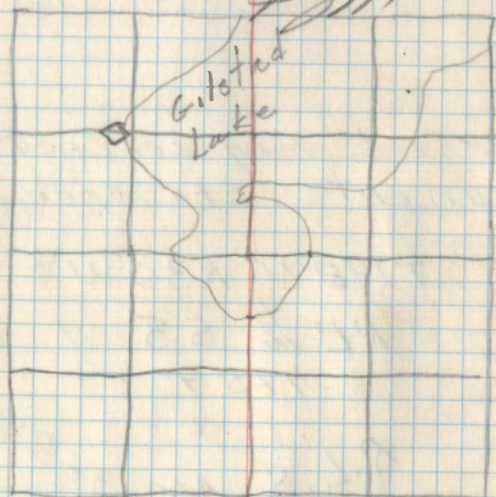
1959

R.L.S. N.O. 3628

B, 1-2
Affidavit

From which bears:

W Oak 10" 44.2	N 63 $\frac{1}{2}$ ° W
ELM 7" 48.2	N 24° W
ELM 6" 16.0	S 11 $\frac{1}{2}$ ° E

Metal F.S. location poster
is set on 6" Elm BT. from
which corner bears N 11 $\frac{1}{2}$ ° E
16.08/19/59 J. Glick
Joseph H. Lausche

T148N R30W Sec 6

B-8

Aug 20, 1959

J. Click

J. Lausche

5¹/₁₆ # 6 Sec 5

Co notes by R. K. Bliler

+ C. C. Spencer 1914

Gas pipe 1" x 36"

30" N.P. Stump S60°W 27.0'

24" N.P. Stump S69°E 18.5

Found 1" x 36" Gas pipe

Burnt N.P. stump S60°W 24.0'

Scribing visible (1/16 BT)

Set 6" x 5' long concrete
MONUMENT Stamped

T148 N R30 W

NE ¹/₁₆ S5 W

1959

P.L.S. NO. 3628

B-8

Affidavit

from which bears

Norway Pine 10"	S65 ¹ / ₂ °W	50.7'
F. Pine 7"	S74°E	64.7
Norway Pine 12"	S30 ¹ / ₂ °E	80.1

Corner stands 2.2' high because
of rock & gravelMetal F.S. location post
is set on 12" N. Pine from
which corner bears

N42°E 32.5'

Joseph F. Lausche

8/20/59

J. Click

all
from
1-20-60

52 C-6

Aug. 20 1959

F. G. Glick F. Lausche

1/16 #9

Sec 5

Co notes by R. K. Blaker
+ C. C. Spencer 1914

1" x 36" Gas pipe

7" N.P. S 6° W 25.9'

8" Balsam S 88° E 22.3'

Found 1" x 36" Gas pipe
no evidence of B.T.'s

Block

Set 2" inside diameter 5' long
galvanized wrought iron pipe
Stamped

T 148 N R 30 W

$$\begin{array}{c} \text{C} \frac{\text{W } 16}{55} \text{C} \\ 1959 \end{array}$$

P.L.S. NO. 3628

C-6
Affidavit

from which bears

Cedar 11"	S 58 1/2° E	99.0'
" 10"	S 26° E	95.3'
Elm 5"	N 55 1/2° E	37.9'

Metal F.S. location poster is
set on Aspen 6" from which
corner bears N 1° W 2.4'

Joseph Lausche

8/20/59

F. G. Glick

Monument stands 2.3' above
ground because of rock.

59 B-9

Aug 20 1959

F. Glick

F. Lausehe

1/16 #7 Sec 5

Co notes by R.K. Bliler &
C.C. Spencer 1914

1" x 36" Gas pipe

Tam. 8" N28E 12.6'

" 7" S64E 20.6

Found 1" x 36" Gas pipe
Tam snag S64°E 20.6'
with visible scribing 1/16 S BT
Tam stump N28E 12.6'
partial scribing visible

Set 2" inside diameter 5' long
galvanized wrought iron pipe
stamped

T148N R30W

L
N 1/16

Sec 5 Sec 4

1959

R.L.S. NO. 3628

B-9
Aff:cbv.T

from which bears

Cedar	11"	S 4° E	45.9'	^{L MKD} N 1/16 S 4 BT
Cedar	6"	N 60 1/2° E	33.0'	N 1/16 S 4 BT
Cedar	5"	N 18 1/2° W	53.4'	N 1/16 S 5 BT

Metal F.S. location poster
is set on 5" Black spru. from
which corner bears N33°E
2.1'

Set 8-24-59

J.H. McDonald

JK
9/2/59
1' 2" 1/2

60 B-5

N 1/16 bet 5 & 6

Co Notes by R.K. BLILER DEC. 1914

GAS PIPE 1" x 36"

Basswood 20 N34E 13.3

Basswood 16 S68W 51.5

FOUND

1" x 36" gas pipe

Basswood clump S68W mag. 51.5'

" " N34E mag. 13.3'

Set a 2" inside dia. wrought iron gal.
pipe filled w/ concrete and capped
w/ a 3" dia. bronze tablet stamped

T 1/4 BN R30W

N 1/16

S6 | S5

1959

R.L.S. # 3628

From which bears

Oak	6"	N82°W	42.8'	mxd	N 1/16 S6 BT
Ash	7"	S26 1/2 E	22.1'	"	N 1/16 S5 BT
Ash	8"	N6 1/2 E	77.6'	"	N 1/16 S5 BT

B-5
Affidavit

Placed F.S. Location poster on a
6" Elm from which corner bears S75°E
9.2'

ok
ppm
1-19-60

8-21-59
G.H.M. Donald

61 D-7 August 24, 1959

1/16 Cor. #12 of Sec. 5

Co. Notes by Roy K. Bliley 1914

1" x 36" gas pipe

Spruce 5" N32W 52.0'

W. Pine stp 16" S42W 45.6'

Found 1" x 36" gas pipe from which bears W. Pine stp. S42°W 45.6' MKD.

1/16 S B.T.

Set a 6" dia. 5' long cylindrical concrete monument capped with a 3" dia bronze Tablet stamped

T148N R30W

5 1/2 | S5

1959

From which bears R.L.S. #3628

Cedar 7" N16°E 80.8' -

Cedar 9" N30°W 65.8' -

Maple 4" S47°W 20.3' -

17.5

D-7 Affidavit

FS. Location Poster is on a 7" Balsam from which corner bears N 13° E 14.5' Also placed poster on old road from which corner bears West 230'

8-24-59
A.H. McDonald

OK
A.H. McDonald
1-2-60

62
August 24, 1959

D-6 1/16 Cor # 11 Sec 5

5

Co. Notes Roy K. Bliler 1914

Gas pipe 1" x 36" found in place

76" W Pine str. N 55 W 31.0 (Found badly
burned no. scribing visible)

12" W. Pine str. (Now rotted and burned
NO scribing visible) S 31 W 29.5'

Set a 2" inside dia. wrought iron
gal. pipe filled w/ cement and capped
w/ a 3" dia. bronze tabled stamped

T148N R30W

SW 1/16 S5

1959

R.L.S. 3628

From which bears: -

Maple 3" N 11 1/2° W 15.5' MKD X B.T.

Maple 3" S 88 1/2° W 57.5' MKD X BT

Aspen 8" S 28° W 26.4' MKD SW 1/16 S5 BT

D-6
Affidavit

F.S. Location poster on 6" Aspen from
which cor. bears: -
S 71 1/2° E 8.7'

Also poster on old trail from which cor.
bears North 120'

8-24-59

R.H. McDonald

off
from
the
file

63
5-15 August 25, 1959

1/4 Sec. 10-15

orig. Notes:-

Tam post

Tam 6" N45°E 12 LKs in 7.92' NW
a wind fall partly decayed w/
partial scribe visible.

Tam 8" S5°W 40 LKs in 26.4' NW a
badly decayed stump.

Set a 2" inside dia. gal. wrought iron
pipe filled w/ cement and capped w/a
3" dia. bronze tablet stamped

T14BN R30W

1/4 S10

S15

1959

R.L.S. 3620

From which bears:-

Tam. 6" N83°E 13.8' MKO 1/4 S10 BT

Tam 7" N3°E 10.2' " 1/4 S10 BT

Tam 6" S36°E 13.0' " 1/4 S15 BT

J-15
Affidavit

Poster is on a 6" Tam BT from
which cor. bears N36°W 13.0'

8-25-59

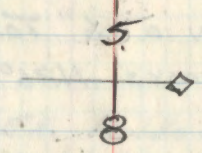
P.H. McDonald

OK
1-17-60

64
E-8

August 24, 1959

1/16 #15 Sec. 5



Co. Notes: - 1914

1" x 36" gas pipe - Found in place
W.P. Stmp. 8" N82E 15.4' (Now partly decayed
w/ scribing 1/16 BT visible)

W.P. Stmp. 14" S29E 19.8' (Now partly decayed
w/ scribing 1/16 BT visible)

Set a 2" inside dia. wrought iron ^{gal.} pipe
Filled w/ concrete and capped w/ a 3" dia.
Bronze tablet stamped

T148NR30W.

E 1/16 35
SB
1959

From which bears: - RLS 3628

- Ash 7" S88°W 82.9' MKD E 1/16 SB BT
- Ash 6" S20°E 48.0' " E 1/16 SB BT
- Oak 8" N53 1/2°E 62.1' " E 1/16 S5 BT

E-8
Affidavit

placed metal F.S. Location poster and
a 2" Basswood from which cor. bears
S50°W 16.1'

Also post an 8" Ash west side of
old trail from which cor. bears
West 80 fl.

8-24-59

G.H. McDonald

off
1959
1-2-60

65
5-1Section Cov. 12-13 - T148 R31 E
7-18 T148 R30 E12-7
13-18

Orig. Notes

Cedar 12" S9W 91 LKs on 60.0

Balsam 10" S2E 94 LKs on 62.4

Birch 6" N2½E 255 LKs.

N. Pine 6" N2½W 263 LKs on 173.6

No Evidence Found

Co. Notes R.K. Bliley 1920

Birch S63°E 43.0'

Pine Stp N4½E 76.0' (Now pine stp badly burned)

No scribing visible N64°E 76.0')

Cement monument (Found in place)

Set a 6" dia 30" long cyl. concrete monument
capped w/ a 3" dia. bronze tablet stampedT148N
R31W R30W

S 12 7

S 13 18

1959

R.L.S. No. 3628

J-1 J-25
Affidavit
(148-31)

New B.T.s

Tam.	9"	S73°W	163.8'	T148R31	S13 BT	MKD
Aspen	7"	N26½°W	143.5'	T148R31	S12 BT	
Birch	7"	N53°E	77.5'	T148R30	S7 BT	
Aspen	7"	S75°E	87.2'	T148N R30W	S18 BT	

F.S. Metal Location poster on cedar,
post west side of old Road, from which
corner bears N 84½°E 21.8'

9-25-59

R.H. McDonald

10-28-93 CK

Fd. CONCRETE MONUMENT WITH
BRASS CAP - IN PLACE - JUST UNDER
OLD ROAD NYS AND EAT SOUTH EDGE
OF 7" CEDAR FENCE CORNER POST
FENCE LINE N+E
Fd. TAM. STP. AT S73W - 163.8'
Fd. CEDAR POST WEST - 21.8'

12-1-03 R MAIN

GPS CORNER AND WITNESS

ASH 8" S64°W 46.75 FT TO SAK MKD. S13 BT

SIGN POST SOUTH 50.7 FT TO NEAREST EDGE

SIGN POST WEST 10.6 FT TO NEAREST EDGE

SIGN POST NORTH NO DIST TAKEN *Written up*

66

Book #3
T148N R30W

V-3
1/4 Corner Sec. 30, 31
$$\begin{array}{r} 30 \\ \hline 31 \end{array}$$

Go Notes: Roy K Bliver 1906

Tam. Post (Not Found)

① quart Bottle buried at corner (Found)

② Aspen 7" N37W 44 LKS (Not Found)

No evidence of original cor. found

Set a 2" inside dia. gal. wrought iron pipe filled w/ concrete and capped w/ a 3" dia bronze tablet stamped T148N R30W

$$\begin{array}{r} + 530 \\ 531 \\ 1959 \\ RL9\#3625 \end{array}$$

New BTs

- Elm 6" N57 1/2° E 78.2' MKD T148N R30W 530 BT
- Aspen 10" N64 1/2° W 33.8' MKD T148N R30W 530 BT
- Birch 7" S47° W 58.1' MKD T148N R30W 531 BT

Posted 1-11-59

V-3
Affidavit

Also see Book 2, Pg 47

F.S. Metal Location poster on a 10" Aspen from which cor bears N61°E 18.4'

Also poster on old Hwy from which cor bears North 240.0'

August 13, 1959
R. Main

4-15-04 R. MAIN

Add 8 FT STEEL SIGN POST 2.0 FT EAST TO DIST TO NEAR EDGE OF POST. GPS ED MONUMENT

67
✓-21 Section Corner 25, 26, 35 & 36

S26 S25
S35 S36

Orig. Notes

Tam post 4" x 5" (Found in place)
Tam 10" S25°W 120 LKS
Tam 12" N75°E 25 LKS } No evidence found
Cedar 6" N20°W 40 LKS }

Set a 2" inside dia. gal. wrought iron pipe
Filled w/ concrete and capped w/ a 3" dia
bronze tablet stamped T748N R30W

S26 | S25
S35 | S36
1959
P.L.S. NO. 3628

New B.T.s

Tam	9"	S12°E	24.6'	MIXD T148 R30 S36 BT
NOW	14"	SOFT TALL W/ SCRIBE		AND CLO TAG
Tam	9"	S41°W	39.0'	" T148 R30 S35 BT
NOW	13"	60 FT TALL W/ SCRIBE		
Tam	9"	N73°W	41.2'	" T148 R30 S26 BT
NOW	11"	10 FT TALL W/ SCRIBE		

Posted
1-11-60
RAM

V-21
Affidavit

F.S. Metal Location Post is on 9"
Tam. B.T. From which cor. bears N12°W
24.6'

6-26-59

W. McDonald

5-22-06 REMAIN 60° BUGGY & CLEAR

FD IN PLACE UP 3 FT. IRONS BEING PUSHED
OUT BY FROST. MONUMENT IN TAMARACK SWAMP.
ALL 1959 B.T.S ARE NOW DEAD. G.P.S ED IRON AND
PLACE F.S.P. ON 3" ASH ON NORTH SIDE OF
FR 2415 FROM WHICH CORNER BEARS N2°E
± 500 FT.

ok
ppp
1-12-60

69
V-23

1/4 Cor. Sec. 36-25

25
36

Corner Set by proportionate measurement
No evidence of original corner was
Found.

Set a 2" inside dia. gal. wrought iron pipe
filled w/ concrete and capped w/ a 3" dia.
bronze tablet stamped T148NR30W

1/4 S25
336
1959
R.L.S. No 3625

New B.Ts

MKD

Tam.	8"	N36°E	16.4'	T148NR30W S25 BT
"	6"	N46°½W	21.1'	T148NR30W S25 BT
"	7"	S14°E	15.6'	T148NR30W S36 BT

Posted 1-11-60
MKDV-23
Affidavit

Metal Location poster on 7" Tam
B.T. from which Cor. bears N 14°W
15.6'

7-31-59

J.H. McDonald

OK

JHM

1-12-60

69 D-8

SE $\frac{1}{4}$ Sec 5

Notes of Co. Surveyor Roy K. Blier in 1914 on file in Beltrami Co. Court house:-

Birch 30" N59°W 2.4' (Now a decayed birch windfall N59°W 2.4')

Birch 16" S54°E 12.2' (Not found)

Gas pipe 1" x 36" (Found in place)

Set a 2" inside dia. 5' long gal. wrought iron pipe filled w/ concrete & capped w/ a 3" dia. bronze tablet stamped:-

T148N R30W

SE $\frac{1}{4}$ S5

1960

RLS NO 3628

From which bears:-

ELM 12" N15°E 52.15' MKD SE $\frac{1}{4}$ S5 BT

Oak 5" N63 $\frac{1}{2}$ °E 34.0' MKD SE $\frac{1}{4}$ S5 BT

ELM 6" S85°E 25.3' MKD SE $\frac{1}{4}$ S5 BT

7/19/60. RKM Donald

Posted 7/20/60 RKM

N45°E 6

D-8
Affidavit

T148N

R30W

Placed F.S. Metal location poster on a 6" Basswood from which can bears N45°E 6.1'

70
C-8

East Center $\frac{1}{2}$ Cor Sec 5

Notes of Co. Surveyor Roy K. Bliler in
1914 on file Beltrami Co. Courthouse.

Gas pipe 1" x 36" (Found in place)

Cedar 7" N35°W 30.6' (Now a 9" cedar w/
scribe visible $\frac{1}{2}$ S BT" N35°W 20.6')

Tam. 583°E 13.4' (Now tam stp. & part of
log w/ scribe $\frac{1}{2}$ S" visible 583°E 13.4')

Set a 2" inside dia. 5' long gal. wrought
iron pipe filled w/ concrete & capped
w/ a 3" dia. bronze tablet stamped

T148N R30W

E $\frac{1}{2}$ C
S S

1960

R.L.S. NO. 3628

Cedar 7" N58 $\frac{1}{2}$ °W 35.1' MKD E $\frac{1}{2}$ S S

Cedar 7" N79 $\frac{1}{2}$ °E 25.5' " E $\frac{1}{2}$ S S BT

Cedar 8" N2°E 21.4' " E $\frac{1}{2}$ S S BT

7/19/60 R.H. McDonald

Posted 7/19/60 RHM

C-8
Affidavit

[Handwritten scribble]
7/19/60

Placed F.S. Metal Location poster on a
7" Cedar BT from which cor bears S79 $\frac{1}{2}$ °W
25.0'

71
B-6

North West $\frac{1}{4}$ Cor Sec 5

Notes of Co. Surveyor Ray K. Biler
in 1914 on file in Beltrami Co. Courthouse

Eye bolt 1" x 42" (Not found)

Birch 7" N89°E 5.8' (Now a 10" Birch w/
scribing visible N61°E 5.8')

Birch 3" N40°E 6.9' (Now a 5" dead Birch
w/ scribing visible N20°E 6.9')

found a 1" x 36" gal. pipe from which the
B.T.'s bear. N2°W 2.8' & S80°E 3.5' I did
not use pipe but put in new mon. on
the called dist. from B.T.'s

a 2" inside dia. 5' Long gal. wrought iron
pipe filled w/ concrete & capped w/ a
3" dia. Bronze tablet stamped:-

T148N R30W

NW $\frac{1}{4}$ S5

1960

RLS NO. 3628

From which bears:-

Cedar 7" N 25°E 9.6' MKO NW $\frac{1}{4}$ S5 BT

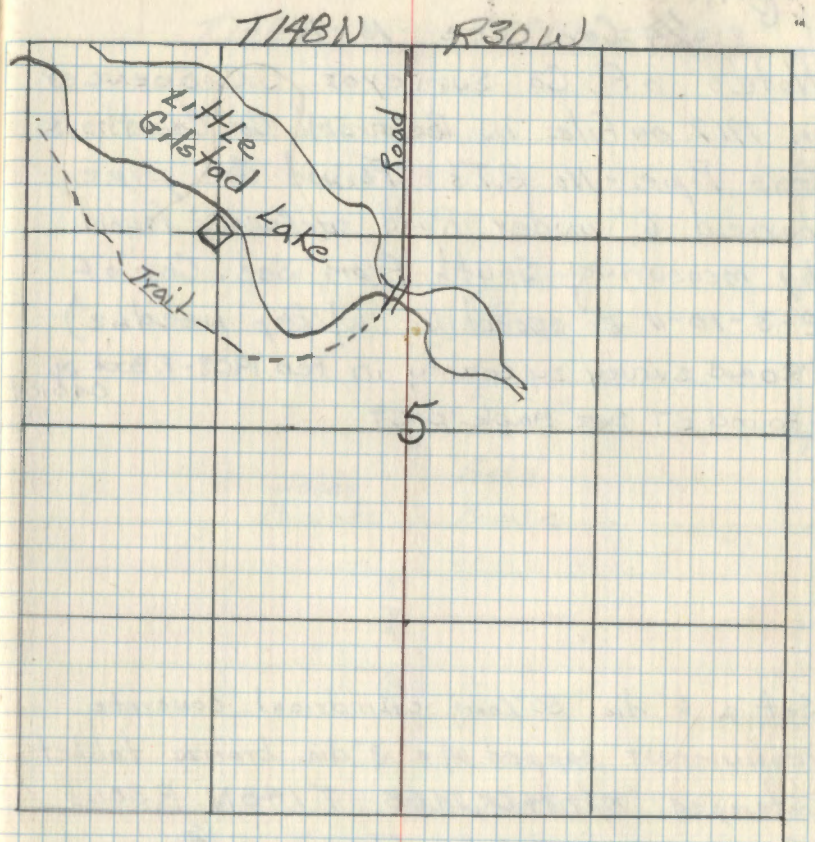
Cedar 7" N 74 $\frac{1}{2}$ °W 20.4' MKO NW $\frac{1}{4}$ S5 BT

Cedar 6" S 4°W 25.7' MKO NW $\frac{1}{4}$ S5 BT

7/19/60 RKM Donald

Posted 7/20/60 RKM

B-6
Affidavit



Placed an F.S. metal location poster on
a 6" Cedar BT from which cor. bears
S 25°W 9.3

RKM
10/22/60
12

72
G-17

1/4 Cor. Sec 10-11

Notes of Co Surveyor C.C. Spencer
in 1912 on file in Beltrami Co. Courthouse
Gas Pipe - No B.T.'s (Found Gas pipe
buried 6" under Road surface - found
by measuring South from Sec. Cor of
2-3-10-11 & searching w/ Dip needle)
Road survey by County in Feb. 1908 - F. Book pg.
Found BT Set Maple post 040104

Set a 6" dia. 30" long cylindrical concrete
monument capped w/ a 3" dia. bronze tablet
stamped: 10/7/04 CK, JA, GB T148N R30W

Fd. top of monument broken off lying 1/4
beside base. Base in place. S10/S11
1960
From which bears:- R.L.S. No. 3628

Fd. J. Pine
Jack Pine 5" N36°W 92.0' MKD 1/4 S10 BT Fd
Jack Pine 1 1/2" N67°W 47.9 " " " " stump
Fd. Red Pine
Red Pine 1 1/2" S58°W 64.3 " " " " Fd

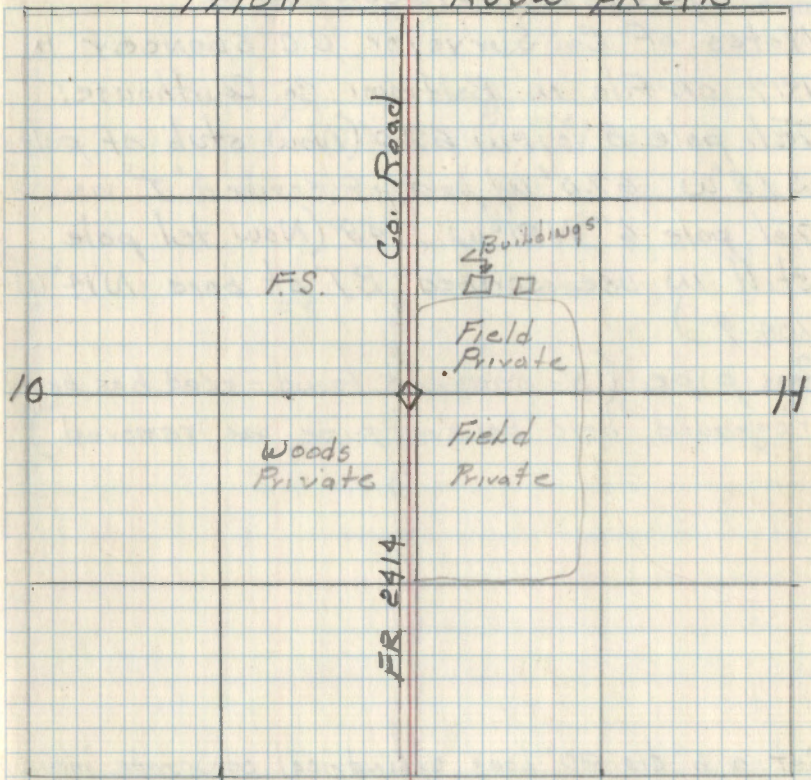
11-9-60 R.H. McDonald

Posted 11-18-60

G-17
Affidavit

T148N

R30W FR 2413



Place FS metal Location poster on a
7" Flapen from which Com bears West
39.2'

For reconstitution see FB 2 p. 55

13
F-17

North $\frac{1}{16}$ between 10-11

Notes of Co. Surveyor C.C. Spencer in 1917 on file in Beltrami Co. Courthouse:

Tel. pole 8" s 1st w 67.0' (Now stub of pole s 18° w 67.0' w/ part of scribed "T" visible)

Tel. pole 6" N 21° W 104.9' (Now tel pole still in use scribed B.T. at base N 14° W 104.9')

Gas pipe (No evidence found - road has been regraded here believe pipe was removed)

Set a 6" dia. 30" long cylindrical concrete mon.

capped w/ a 3" dia. bronze tablet stamped:-

0/15/84 CK, GB, JA

Top of monument broken off.

Base in place.

From which bears:-

ELM 13" N 63° W 92.0' MKD X BT

ELM 7" S 38 $\frac{1}{2}$ ° W 52.2' MKD N $\frac{1}{16}$ S 10' BT

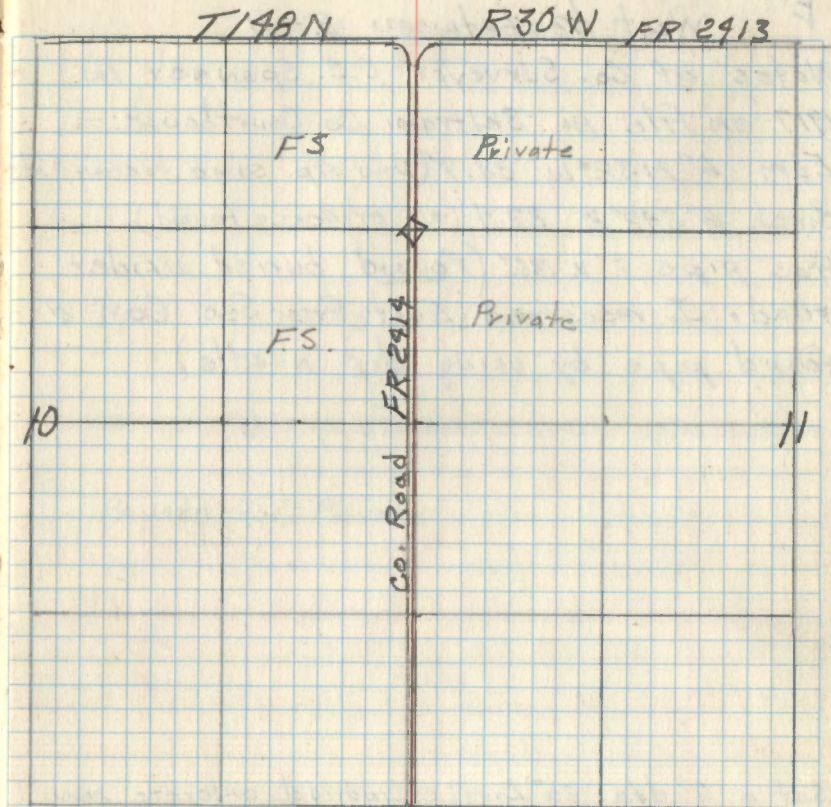
4" x 4" x 6" treated cedar post - West - 28.7'

F.S. Metal Location poster is on this post

11-9-60 A.H. McDonald

Posted 11-18-60 A.H.M.

F-17
Affidavit



74
E-18

West $\frac{1}{16}$ between 2-11

Notes of Co. Surveyor C.C. Spenser in 1917 on file in Beltrami Co. Courthouse:-

Elm 6" N32°W 28.9' (Now stp. same bearing & dist)

Birch 6" S42°E 23.4' (No evidence found)

Gas pipe 1" x 36" (Found buried under road. I measured East from Sec. Cor. & found pipe by using dip needle)

Set a 6" dia. 30" long cylindrical concrete mon.

capped w/a 3" dia. bronze tablet stamped:-
buried 6" under Rd.

T148N R30W

Top of mon. broken off. Base $W\frac{1}{16}$ $\frac{52}{511}$

From which bears: in place 1960 RLS NO. 3628

10/17/60 CK, JA, GB

Fd. Oak

Oak 12" N38°E 79.8' MKD $W\frac{1}{16}$ S2 BT

ELM 12" N2°E 51.9' MKD $W\frac{1}{16}$ S2 BT

ELM 11" S68°E 93.5' " $W\frac{1}{16}$ S11 BT

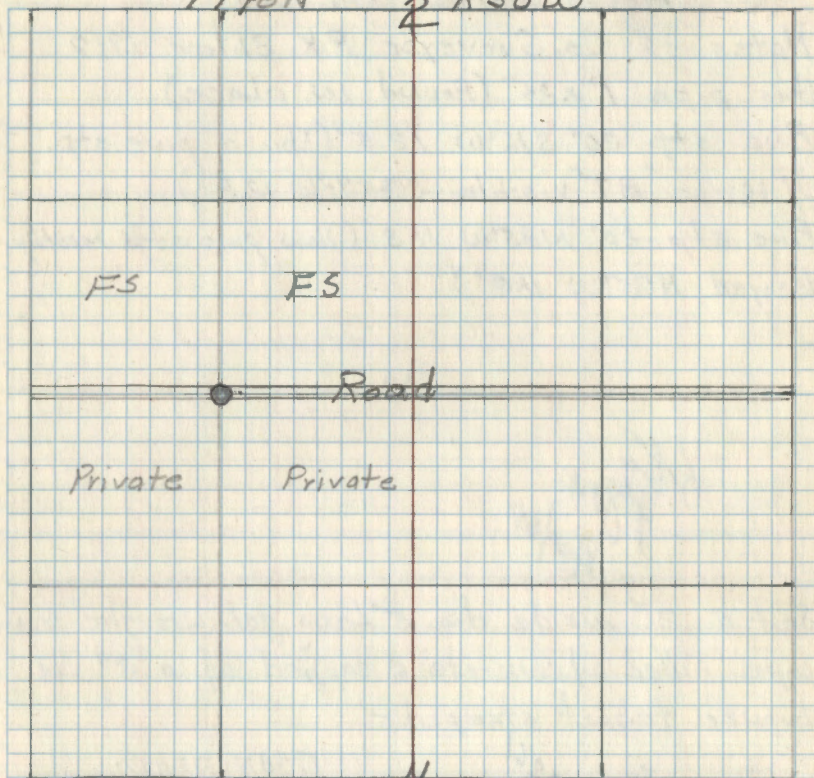
11-9-60 A.H. McDonald

Posted 11-18-60 RHM

E-18
Affidavit

T148N

R30W



Placed ES. metal location poster on the 12" Oak B.T. from which cov. bears S2°W 51.3'

15
F-19 Affidavit 7-23-79

North Center $\frac{1}{16}$ S-11

Notes of Co. Surveyor R.K. Bliley 1912

Gas pipe 1"x24" (Found in place)

Pine stp 30° S16°W 12.5' (Now a pine stp.

w/ scribe "BT" visible S25 $\frac{1}{2}$ °W 12.5')

Pine stp. 20° N85°W 11.3' (Now pine stp mostly

decayed N25°W 11.3')

Handwritten scribbles

Set a 2" inside dia. 5' Long gal. wrought iron pipe filled w/ concrete & capped w/ a 3" dia. bronze tablet stamped:-

*ok es
m
R.H. s. 12261*

T198N R30W

$N\frac{1}{16}$ S11

1960
RLS NO 3628

R. Pine 10" S17 $\frac{1}{2}$ °E 159.2 MKD NC $\frac{1}{16}$ S11 BT

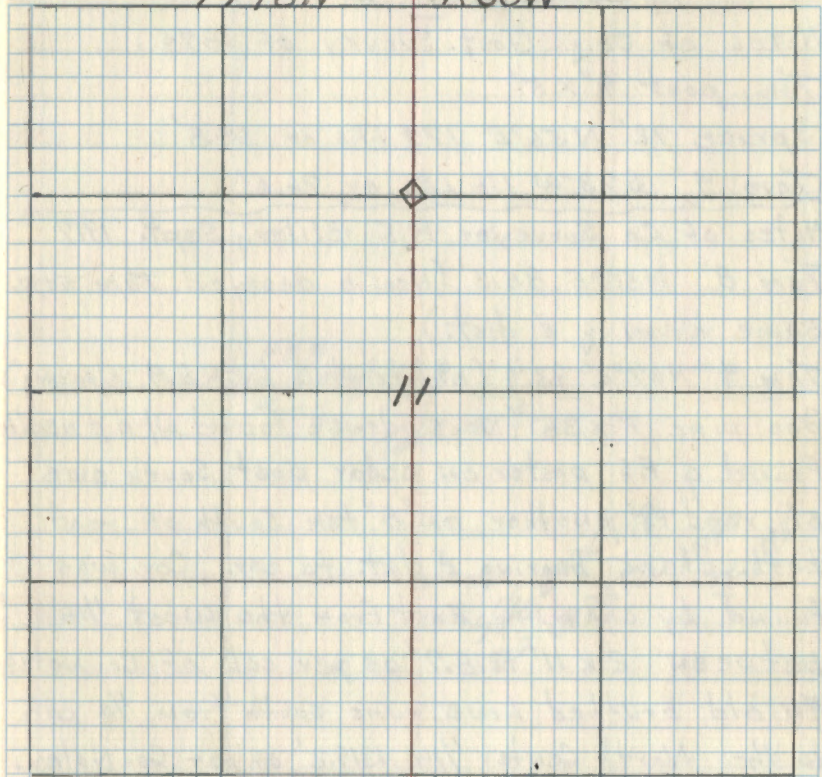
W. Spruce 9" S44°W 89.7 " X BT

Aspen 4" N64 $\frac{1}{2}$ °E 45.3 " $\frac{1}{16}$ S11 BT

11-30-60 R.H. McDonald

T198N

R30W



Placed F.S. metal location poster on a 11"
Aspen from which cor. bears N38°W 24'

76
E-19

1/4 Cor. Sec 11-2

Notes of Orig. Govt. Survey of 1874

Tam. post 4" x 5"

Spruce 12" N56°E 174 Lks or 114.8'

Tam 4" S73°W 116 Lks or 76.6'

Notes of Co. Surveyor R.K. Bliler, Sept. 1917.

Tam 8" N50°E 85.3' (Now a decayed Tam sto. Same bearing & dist.)

Tam 4" N67°E 93.4' (obliterated by R.E.A. clearing)

Gas pipe 1" x 3/8" (No evidence found w/ dip needle)

Found a F.S. poster on cedar post South side of road & another on 8" tam South of road both check bearing & dist. to cor. Cor. was found by chaining East from the West 1/16 between 2 & 11 1318.7' as per call of Co. Notes.

An old brushed line runs south from 1/4 cor. to the North Center 1/16 1319.2' as per Co. Notes.

Set a 6" dia. 30" Long cylindrical concrete mon. capped w/ a 3" dia. bronze tablet stamped

T198N R30W
1/4 52
51
1960
RLS No. 3623

From which bears

Tam. 7" S21°W 77.0' MKD 1/4 S 11 BT

Tam. 8 S6°E 62.6' " 1/4 S 11 BT

Tam. 5" S68°E 101.6' " X BT

11-8-60 R.H. McDonald

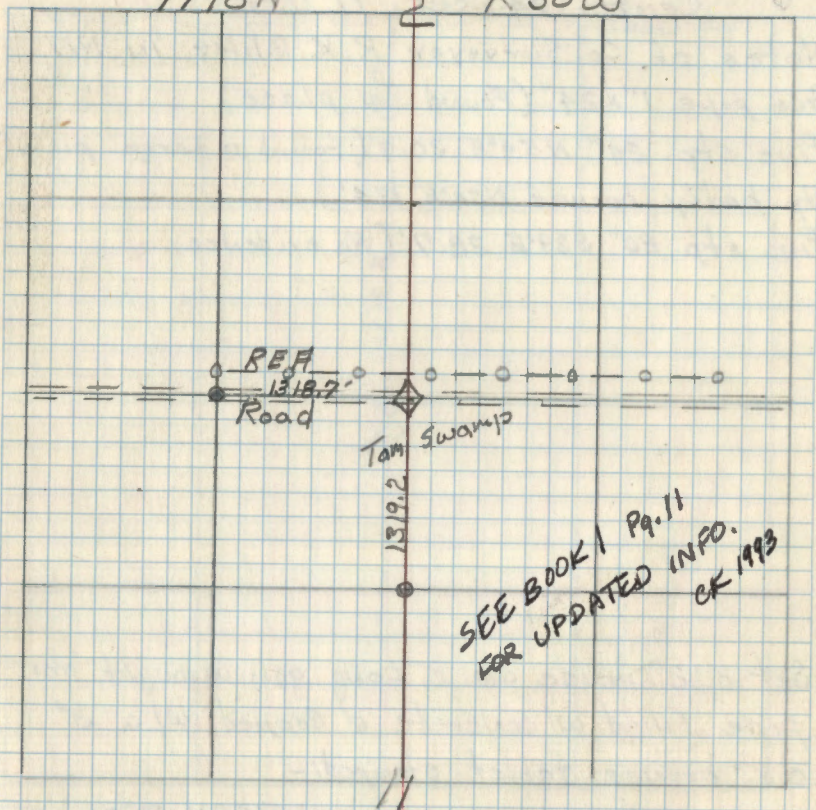
Posted 11-18-60 RHM

E-19
Affidavit

T198N

2

R30W



F.S. Metal Location poster is on 7" TAM. From which cor. bears N21°E 77.0'

U.S. B.T. shield is on the Tam B.T. S6°E

5/1/81 JA MS BT searched for this corner - FD
Bottom 12" of concrete monument - removed to reset
B.C. iron monument SET Brass capped Iron pipe, marked
2' long down 6" in road surface

FD B.T. 1960

SET:
Tam. 7" Tam. 9" Tam. 8" steel sign post
56°E 504E 523W 3" x 8'
101.6 62.52 77.0' South
15 lbs. underground 33.0'

Splice tags red rings

T198N R30W
52
51
1981
RLS NO.

Line to standard South 1 mile

17 Affidavit 7-23-79

G-19 Center 1/4 Sec. 11

Notes of Co. Surveyor R.K. Bliler in 1917.

Gas pipe 1" x 24" (Found in place)

Pine stp. 24" N54°E 30.4' (Found a large pine stp. badly burned N54°E 13.4')

Pine stp. 20" S39°E 38.7' (No evidence)

Set a 2" inside dia. 5' Long gal. wrought iron pipe filled w/ concrete & capped w/ a 3" dia. bronze tablet stamped:-

McDonald
8/20/67
M.E.S.
F.L.S. 12261

T148N R30W

C 1/4 S11

1960

RLS NO 3628

Oak 5" N60°E 87.2' MKD C 1/4 S11 BT

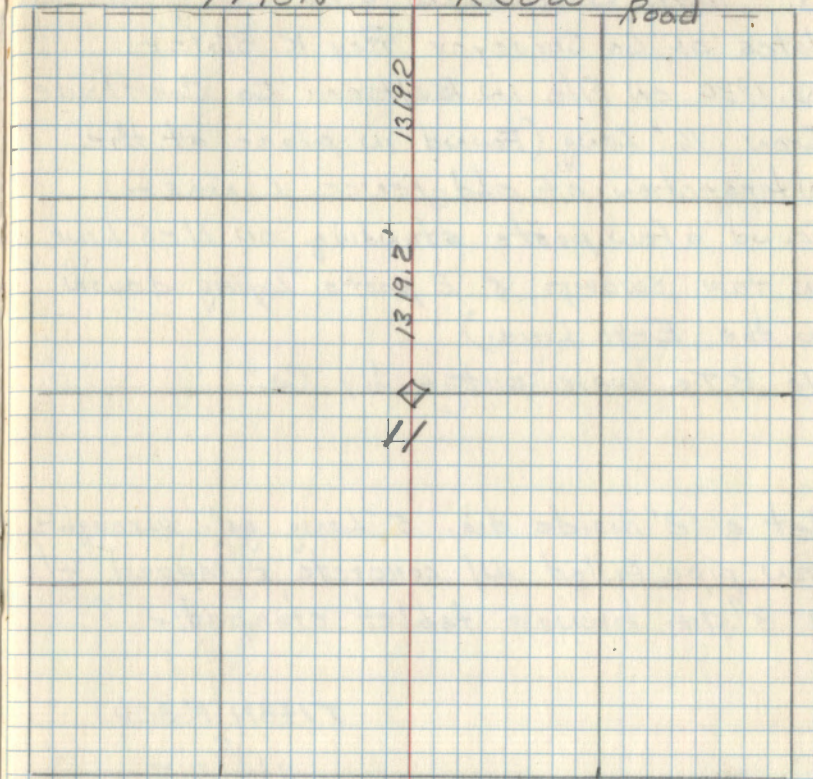
Oak 11" N77 1/2°W 47.55' MKD C 1/4 S11 BT

Oak 6" S 5 1/2°W 70.0' MKD C 1/4 S11 BT

11-30-60 R.H. McDonald

T148N

R30W Road



Placed F.S. Metal Location poster on a 4" Aspen from which cor. bears S58°W 31.7'

12
K-23

North Center 1/16 S 13

Notes of Co Surveyor Roy K. Bliler
in 1920 on file in Beltrami Co. Courthouse
Iron 16" Long (Found in place at the
intersection of old fence lines -
'found a few posts standing on N-S line
in tam. swamps & 2 posts laying down
on the E-W line.)

No BTs were put in by Co.

Set a 2" inside dia. 5" Long gal. wrought
iron pipe filled w/ concrete & capped w/
a 3" dia. bronze tablet stamped:-

T148N R30W

^C
N 1/16 S 13

^C
1960
RLS No. 3628

Aspen 17" N53°W 25.35 MKD NC 1/16 S13 BT

Aspen 4" S35°W 34.35 MKD NC 1/16 S13 BT

Balm of Gilead 8" S78 1/2°E 18.3 " NC 1/16 S13 BT

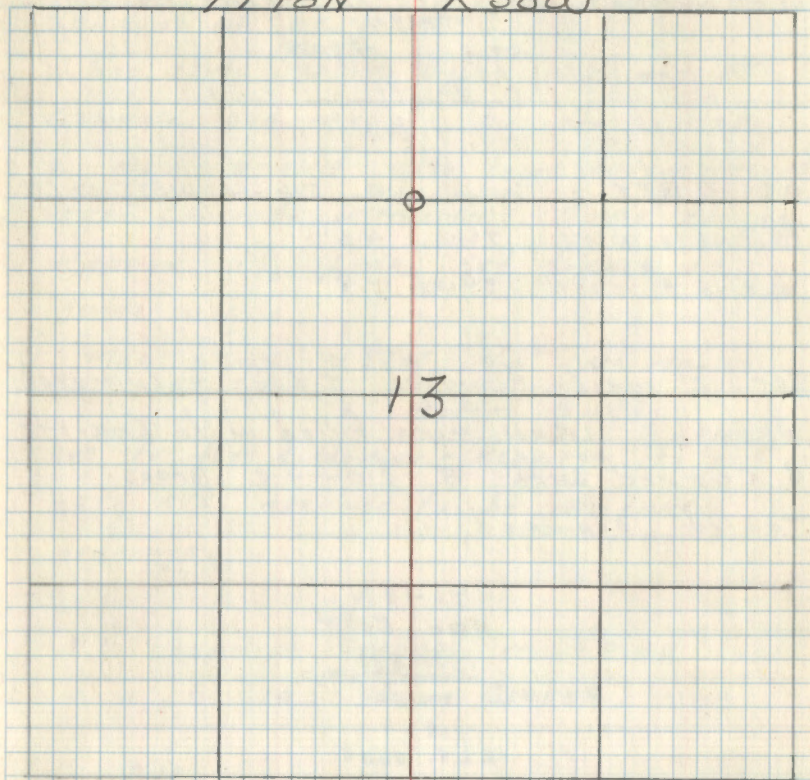
11-30-60 R. M. Daniel

Posted 1/16/61
R.M.D.

K-23
Aff. d. v. T

T148N

R30W



Placed F.S. Metal Location poster on a 17"
Balm of Gilead from which con. bears S 1 1/2° E
1.5'

79 2-1,49-30

TOWN CORNER on THE 12th STRIP PARALLEL

T149N	
R31W	R30W
36	31
T148N	

ORIG. BTS. TOWN COR. 516 LKS WEST OF C.C.

R. PINE 12 N75E 24 LKS 4.6'

W. PINE 9 N32W 24 LKS 15.8'

Set 2" inside diameter 5' Long galvanized
wrought iron pipe filled with concrete
& capped with 3" diameter brass
tablet stamped

T149N	
R31W	R30W
536	531
T148N	
1959	
R.L.S. 3628	

from which bears NWW BTS

N. PINE S 76E 37.9 MKD T149 R31 S1 BT

N. PINE N 4 1/2 E 10.5' MKD T149 R31 S36 BT

J. PINE S 45 1/2 W 28.5 MKD T148 R31 S1 BT

Also see Book 1 Page 51 T148N R30W

IMPROVED TABLES

Remains of orig. BTS.

W. Pine stamp N31W 24 LKS (15.8') and BT
CORNER was marked by fence post
& MKD. STAKE also found below ground
was concrete monument cone shape
Approx. 1 1/2' Long. Set corner in
same place.

Pine stamp N82E 4.6' NO MARKS.

Rotted Badly.

DUE to the distance - Bearings to the
ORIG. BTS assumed to be magnetic
Bearings.

FS. Location posted on R. PINE
N 4 1/2 E 10.5' from CORNER.

M
A
1-2-60

Date 6/1/69
Arthur W. Blundon