

TRAVERSE

T 148

R 26

P 5

TRAVERSE

R 26

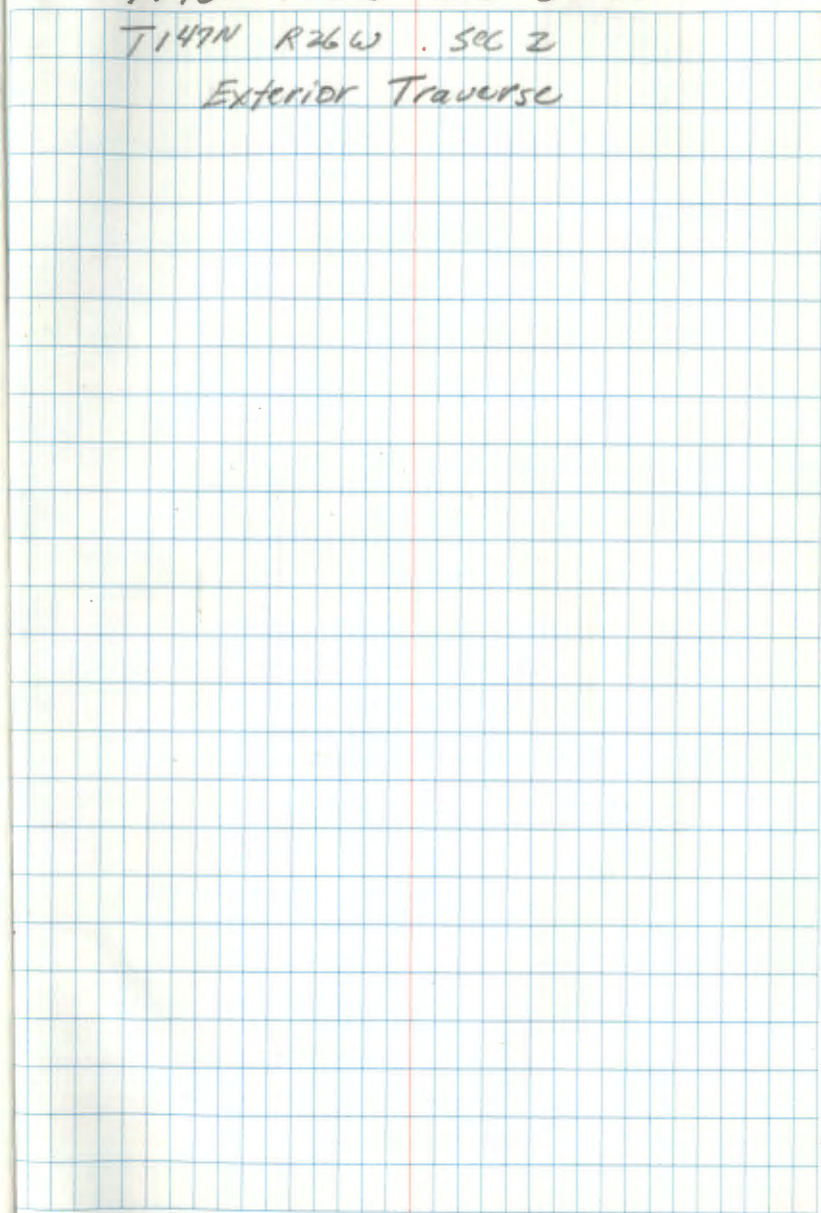
FIELD BOOK

82.0012

T148N R26W SEC 26 E 35

T147N R26W SEC 2

Exterior Traverse



Sun Observation

H.P. 41CX - Time accurate

JA K
GA A
2/9/87
Clear + 32°F

Set	Point	Direct	Time	Angle
		0 2 pt		000-00-30
N pt ↑ ☉	pt. 1	0 X	17.22-43-07	341-13-25
	NW SEC 26	0 X	17.23-34-12	161-26-35
		R 2		180-00-17
pt 7 ↓		0 2 pt		000-00-30
*	pt. 1	0 X	17.25-47-10	342-01-36
	NW SEC 26	0 X	17.26-29-26	162-12-33
		R 2		180-00-20
		Z pt		000-00-30
	pt. 1	0 X	17.28-17-86	342-41-34
	NW SEC 26	0 X	17.29-24-55	162-58-42
		Z		180-00-19
<hr/>				
		2 pt		000-00-30
		0 X	17.43-31-53	346-44-42
		0 X	17.43-58-30	346-51-46
	pt. 1	0 X	17.44-26-03	346-59-12
		Z pt		
	R X		17.45-01-51	167-08-25
	R X		17.45-26-63	167-15-14
	R X		17.45-48-77	167-21-09
		Z pt		180-00-34

T148N R26W and T147N R26W
Sectional Sub-division of Sec's
T148N26, 35 and T147N
Sec. 2.

Index

Exterior Traverse

Tied in N1/4 SEC 35

p. 2-50

p. 51-

2

	pt 1	000-00-30		
pt 2		180-00-15		
	pt 3	179-47-02	179-46-33.5	179-46-33.25 ✓
		359-46-50		

	pt 1	90-00-51		
pt 2		270-00-40		
	pt 3	269-47-24 ✓	179-46-33.0	
		89-47-13		

pt 2	pt 1	90-24-53	2809.033	2808.959
		269-35-11	856.194M ✓	

pt 2	pt 3	90-46-05	2371.325	2371.112
		269-14-03	722.782M ✓	

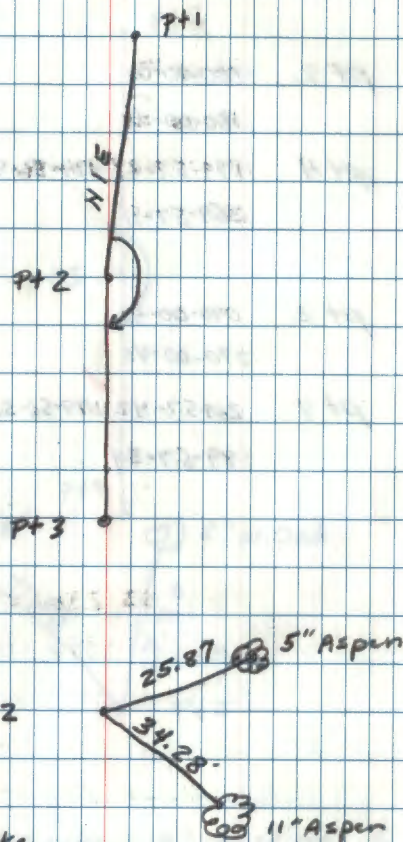
S	
58 10	78.5
<u>22.5</u>	<u>45.5</u>
33.5	35.0

Jeff Allison A Curt Krause Setups

Gary Brama B Charlie Smith Aide

12/18/86

Clear skies -30°F



pt 2 is 50d spike
5' east of E of N-S
graveled road

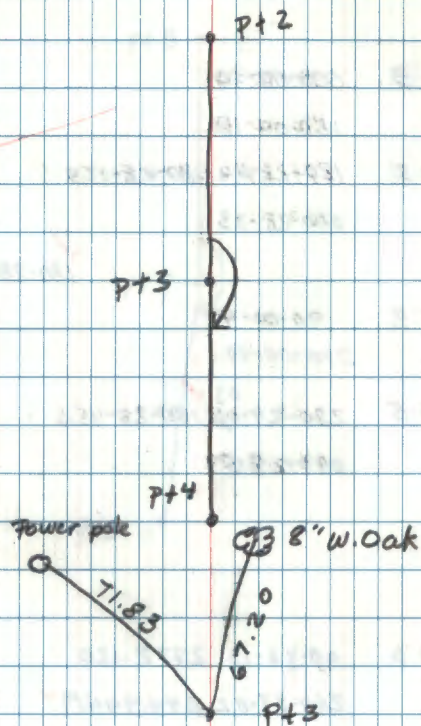
pt 1 is 50d spike set over F.S. monument
marking Sec. cor NW of sec 26

pt 3
 pt 2 000-00-30
 180-00-18
 pt 4 179-57-22 179-56-52.5
 359-57-11

✓
 179-56-53.75

pt 3
 pt 2 096-00-46
 270-00-40
 pt 4 269-57-42 179-56-55
 89-57-34

76.5	9
24	38
	43
52.5	55



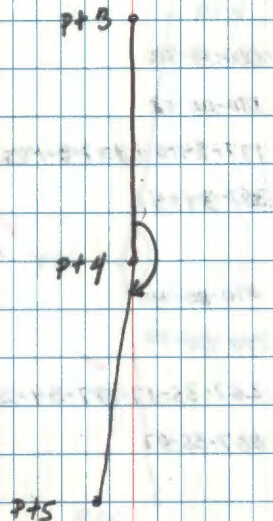
pt 3 is sod spike 9' east of \odot of
 N-S gravelled road

	pt 3	000-00-30	
pt 4		180-00-18	
	pt 5	180-28-50	180-28-17.5
		000-28-33	
			180-28-16.5 ✓
	pt 3	90-00-49	
pt 4		270-00-40	
	pt 5	270-29-03 ✓	180-28-15.5
		090-28-57	

pt 4	pt 3	90-23-15	2772-120	2772.057
		269-37-02	844.944M ✓	

pt 4	pt 5	90-19-43	2675.675	2675.631
		269-40-18	815.548M ✓	

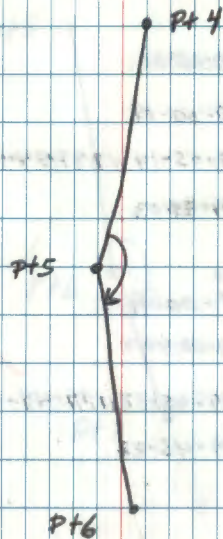
	5
241.5	69.10
24	44.5
17.5	15.5



50d spike set over monument in gravelled rd.
 pt 4, 5 west 1/4 corner of sec. 35
 See monumentation book for BT
 ties.

	pt 4	000-00-30	
pt 5		180-00-12	
	pt 6	177-34-54	177-34-26.5
		357-34-41	
			✓ 177-34-27
	pt 4	070-00-49	
pt 5		270-00-40	
	pt 6	267-35-17	177-34-27.5
		087-35-07	

47.5	0.11
21	42.10
<u>26.5</u>	44.5
	27.5



pt 5 is sod spike set over F.S. monument marking SW section corner of 35.
Mon. set 6' east of $\frac{1}{2}$ of N-S graded rd.

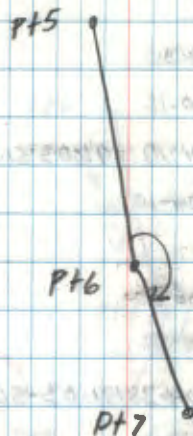
pt5 000-00-30
 pt6 180-00-19
 pt7 179-45-14 179-44-44 179-44-45
 359-45-03

pt5 90
 180-00-42
 pt6 270-00-48
 pt7 269-45-32 179-44-46
 089-45-22

pt6 pt5 90-24-20 2677.380 2677.313
 269-35-45 816.067M ✓

pt6 pt7 89-44-25 1325.570 404. ✓ 1325.556
 270-15-31 404.034M ✓

68.5	3	27
24.5	211	27
<u>44.0</u>	27	41
	14	46



pt 6 is west $\frac{1}{4}$ of sec. 2
 pt 6 is PK nail in center of iron pipe
 $\frac{1}{2}$ " below black top 5.5' south of E-W
 centerline.

	pt6	000-00-30	
pt7		180-00-16	
	pt8	191-04-19	191-03-51.5 ✓
		011-04-10	<u>191-03-50.7</u>
	pt6	090-00-50	
pt7		270-00-40	
	pt8	281-04-38	191-03-50 ✓
		101-04-32	

	9
74.5	85
<u>23</u>	<u>45</u>
51.5	50



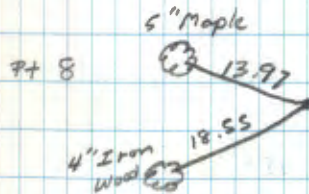
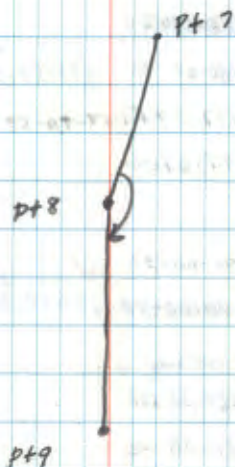
pt7 is F.S. monument on east side of
a private driveway marking $5\frac{1}{6}$ bet.
sec's. 2/3

	pt7	000-00-30	
pt8		180-00-19	
	pt9	168-21-29	168-20-58.0
		348-21-16	
			✓ 168-20-57.25
	pt7	090-00-52	
pt8		270-00-40	
	pt9	258-21-47	✓ 168-20-56.5
		078-21-38	

pt8	pt7	90-00-42	186.320	186.320
		269-59-24	56.791M ✓	

pt8	pt9	90-31-29	472.080	472.060
		269-28-37	143.891M ✓	

78	9
22.5	42.5
24.5	46
<u>58.0</u>	<u>56.5</u>



50d spike set under
power line clearing

	pt 8	000-00-30		
pt 9		180-00-20	177-57-39.5	20.5
	pt 10	177-57-51		
		357-57-40		21.25
			177-57-38.75	
	pt 8	090-00-50		22
pt 9		270-00-40	177-57-78	
	pt 10			
		087-58-02		
		257-58-12		

1 25	3 45	45.5	
<u>45.5</u>	<u>07</u>	<u>25</u>	
39.5	38	20.5	
			67
			<u>45</u>
			22

77	45.5	67
<u>45</u>		<u>45</u>
32		22

pt 8

pt 9

pt 10
SW SEC 2
(B.C.)

pt 9
ties: maple 8" west 24.04
maple 10" SW 23.29

	pt 9	000-00-30		
pt 10		180-00-17		
	pt 11	95-00-17	94-59-48	
		275-00-06		
			94-59-48	
	pt 9	090-00-51		
pt 10		270-00-40	94-59-48	
	pt 11	185-00-37		
		025-00-30		
pt 10	pt 9	89-42-45	669.785	669.777
		210-17-09	204.151	
pt 10	pt 11	90-19-19	1342.755	1342.734
		269-40-42	409.271	

$$\begin{array}{r} 23.5 \\ 11.5 \\ \hline 12.0 \end{array}$$

$$\begin{array}{r} 45.5 \\ 33.5 \\ \hline 12.0 \end{array}$$

$$\begin{array}{r} 71.5 \\ 23.5 \\ \hline 48.0 \end{array}$$

$$\begin{array}{r} 73.5 \\ 45.5 \\ \hline 48.0 \end{array}$$

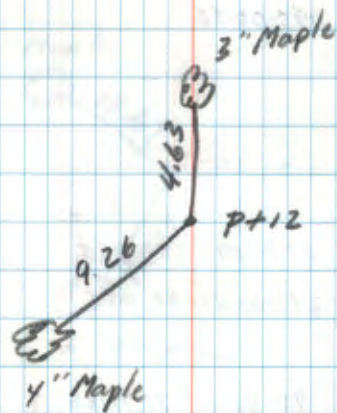
pt 9

pt 10
SW sec 2

pt 11

	10	00-00-30	
Pt 11		189-00-18	192-25-42.5
	12	192-26-13	✓
		012-26-00	192-25-41.5
Pt 11	10	09-00-45	✓
		270-00-40	192-25-40.5
		090-00	
	12	282-26-27	
		102-26-19	

	66.5	31	85°
17.5	24	42.5	42.5
6.5	42.5	25	42.5
17.5		17.5	



Pt 12	11	00-00-30		
1		180-00-12		
	13	185-06-16	185-05-48	
		005-06-02		✓
			185-05-50.75	
12	11	090-00-51		
		270-00-40		✓
			185-05-53.5	
	13	275-06-42		
		095-06-36		
12	11	87-51-09	393.885	393.608
		272-08-57	20.055 ✓	
12	13	90-58-08	723.125	723.022
		269-01-54	220.408 ✓	

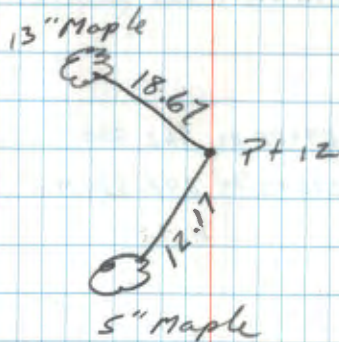
$$\begin{array}{r} 69 \\ 21 \\ \hline 48 \end{array}$$

$$\begin{array}{r} 49' \\ 45.5 \\ \hline 53.5 \end{array}$$

Pt 11

Pt 12

Pt 13



13 12 00-00-30
180-00-15

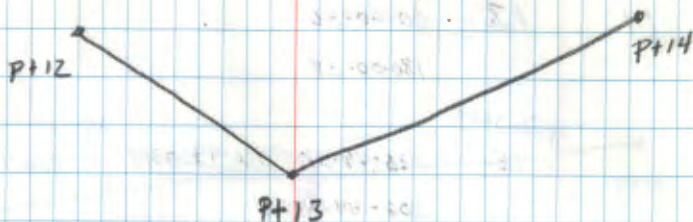
14 132-30-03 132-29-32.5
312-29-49

13 12 090-00-51 132-29-34.75 ✓
270-00-40

14 222-30-26 132-29-36 ✓
042-30-17

13 14 89-58-04 962.500 962.500
270-02-03 293.370M ✓

5
54.10
22.5 21.5
33.5 45.5
36.0



Pt 13 20d galv. on North shore of
Bowstring Lake



14 13 00-00-50
180-00-28

Side shot
15 026-49-32 026-49-03.5 ✓ 026-49-03.75
206-49-33

16 192-31-09 192-30-35 ✓ 192-30-39.5
012-30-59

14 13 090-00-53
270-00-40

15 116-49-57 026-49-04 ✓
296-49-44

16 282-31-23 192-30-32 ✓
102-31-14

14 15 90-23-26 636.430 636.415
269-26-36 193.985 ✓

14 16



Pt 14 is 60d spike set alongside wood post.
Spike marks west M.C. on Bowstring lake. ^{Sec 2}/₁₁

Pt 15 is U.S.F.S. mon. marking South
1/4 corner of Sec 2.

End of Day
12/18/86

	5
32.5	614
29	29
—	35
3.5	

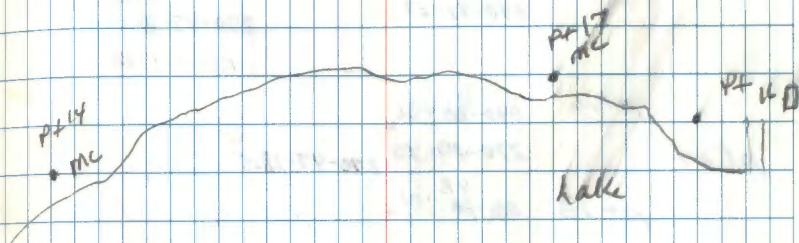
5 ¹⁴			
85	78.5		510.5
46.5	46.5		46.5
—	320		4.0
18.5			

	pt 14	000-00 30		
pt. 16		180-00-26	016-57-22	
(mc)	pt. 17	016-57-52		
		196-57-48		
			016-57-21	
pt 16	pt 14	090-00 43		
pt 16		270-00-40	016-57-20	
(mc)	pt 17	106-58-05		
		286-57-58		
pt 16	pt 14	90-24-30	2159.170	2159.115
		229-35-23	658.116	
pt 16	pt 17	91-53-31	441.280	441.039
		228-06-23	174.502	

4'	61.5
50	41.5
<u>28</u>	<u>200</u>
22	

15
12/29/86 JAT GB

Clear 25°



pt in yard

ties: Maple 10" NW 31.47' spt
 Basswood 14" NE 17.47' spt

pt 17 is North M.C. on Bowstring Lake
 bet sec. 1/2.

pt 16 000-00-30
 pt 17 180-00-00 270-47-20.5

pt 18 270-47-44
 090-47-27

✓ 19.5
 270-47-~~2~~

pt 16 090-00-30

pt 17 270-00-40 270-47-18.5 ✓

pt 18 000-00-01
 130-47-52

4
 56.5

35.5
 15

 20.5

38
 18.5

pt 18

pt 17 MC

pt 16

3/4" Iron pipe up 1"

pt 17 000-00-30

pt 18 180-00-17

(5 1/4) pt 19 178-23-19 178-22-48.5
358-23-05✓
178-22-46.75

pt 17 90-00-43

pt 18 270-00-40

(5 1/4) pt 19 268-23-31 178-22-45 ✓
88-23-22

269

pt 18 pt 17 95-46-48 230.170 229.000

264-17-07 ✓ 70.156M ✓

pt 18 pt 19 88-33-33 275.355 275.268

271-26-32 ✓ 83.928 ✓

9 1/2 10	8
23.5	26.5
48.5	41.5
	45.0

• pt 19 5 1/4 E 4 1/4

south

• pt 18

• pt 17 mc

ties: maple 8" SW 10.95'
maple 7" SE 5.10'

pt 18 000-00-30

pt 19 180-00-25

pt 20 197-10-28 197-09-54.5
017-10-16✓
197-09-54.5

pt 18 090-00-45

pt 19 270-00-40 197-09-54.5

pt 20 287-10-40

107-10-34

$$\begin{array}{r} 7' 11'' \\ 22 \\ \hline 27.5 \\ \hline 54.5 \end{array}$$

$$\begin{array}{r} 6' \\ 81 \\ \hline 42.5 \\ 48.5 \\ \hline 54.5 \end{array}$$

• pt 20

• pt 19

• pt 18

pt 19 - $5\frac{1}{16}$ Iron pipe with PK in center
flush with ground But sec's 1/2

pt 19 000-00-30

pt 20 180-00-13

pt 21 167-49-39 167-49-11.5
347-49-27✓
167-49-11.5

p pt 19 90-00-48

pt 20 270-00-40

pt 21 257-49-58 167-49-11.5
077-49-53

pt 20 pt 19 91-31-04 193.165 193.097

268-29-06 58.877M ✓

pt 20 pt 21 90-05-07 562.260 562.259

269-54-55 171.377M ✓

2	
33.10	55.5
21.5	44
11.5	11.5

• pt 21

• pt 20

• pt 19

pt 20 tiles:

Basswood 22" SW 11.0'

Maple 6" SE 10.85'

pt 20 000-00-30

pt 21 180-00-20

(E'4) pt 22 166-38-52 166-38-17.5

346-38-33

166-38-17

pt 20 090-00-42

pt 21 270-00-40 166-38-16.5

pt 22 256-38-01

076-38-54

pt 21 pt 22 91-16-46 606.745' 606.594'

266-43-09 189.929' m ✓

42.5

25

17.5

57.5

41

16.5

12/29/86

• pt 22 E 114 506.2

• pt 21

• pt 20

pt 21 ties: Maple 4" NE 10.87'

Maple 5" SE 11.0'

End of Day

12/29/86

Pt 21 00-00-30

Pt 22 180-00-35

Pt 23 274-43-57 274-43-19.5

094-43-47

Pt 22 21 90-00-49

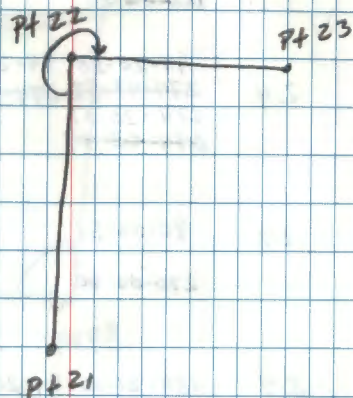
270-00-40

23 004-43-55 274-43-12.5

184-43-49

$$\begin{array}{r} 52.0 \\ 32.5 \\ \hline 19.5 \end{array}$$

$$\begin{array}{r} 11 \\ 52.10 \\ 44.5 \\ \hline 07.5 \end{array}$$

$$\begin{array}{r} 4'' \\ 52.10 \\ 44.5 \\ \hline 7.5 \end{array}$$
JA, GB, CK
1/12/87 Clear, calm, 32°F

Pt 22 is U.S.F.S marking $\frac{1}{4}$ corner
bet sec. 2/1.

	22	00-00-30		
Pt 23		180-00-16 180-00-35		
	24	94-20-58 94-20-24.5 274-43-57 274-43-19.5 274-20-37 274-43-47	✓	<u>94-20-21.5</u>
23	22	90-00-51 270-00-40		
	24	184-21-10 94-20-19 004-20-59	✓	
23	22	89-50-45 187-515 270-09-15 57.154M	✓	187.514
23	24	89-32-20 1017.9654 270-27-39 310.275M	✓	1017.932

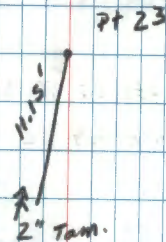
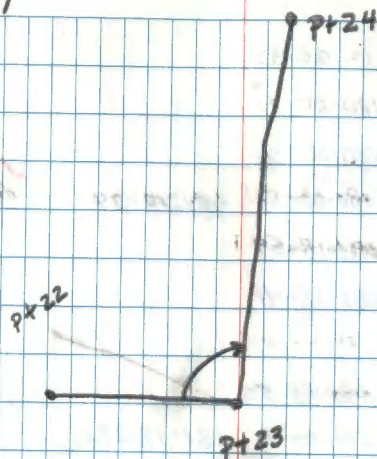
$$\begin{array}{r} 4.11 \\ 52.10 \\ \hline 3.5 \\ \hline 19.5 \end{array}$$

$$\begin{array}{r} 47.5 \\ 2.8 \\ \hline 24.5 \end{array}$$

$$\begin{array}{r} 54.5 \\ 4.5 \\ \hline 19.0 \end{array}$$

$$\begin{array}{r} 509.5 \\ 45.5 \\ \hline 19.0 \end{array}$$

1/12/87



pt 23 000-00-30
 pt 24 180-00-17 181-18-24 ✓ 181-18-25.7
 pt 25 181-18-54
 001-18-41

pt 23 090-00-53 ✓
 pt 24 270-00-40 181-18-27.5
 pt 25 271-19-21
 091-19-67

23.5 47.5 46.5

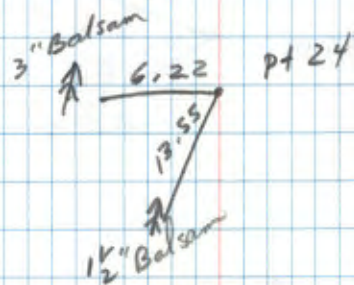
24 27.5

23.5

• pt 25

• pt 24

• pt 23

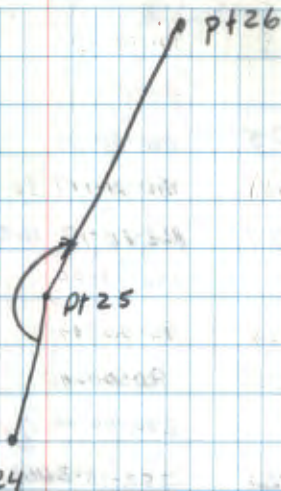


24 00-00-30

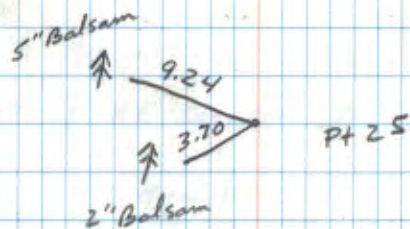
25 180-00-20

26 186-21-18 186-20-46.5 ✓ 186-20-44.5
006-21-0525 24 90-00-44
270-00-4026 276-21-30 186-20-42.5 ✓
096-21-1925 24 95-34-55 186.540 185.655
264-24-57 56.857M ✓25 26 89-58-01 1053.670 1053.670
270-01-49 321.159M ✓

6"	0
11.5	24.5
25	42
46.5	42.5



Pt 25 Ties



25 000-00-30

26 180-00-17

27 162-13-17 162-12-45

342-13-00

✓
162-12-45

25 90-00-46

26 270-00-40

27 252-13-34 162-12-45

072-13-20

$$\begin{array}{r} 68.5 \\ 23.5 \\ \hline 45.0 \end{array}$$

23.5

$$\begin{array}{r} 28 \\ 43 \\ \hline 45 \end{array}$$

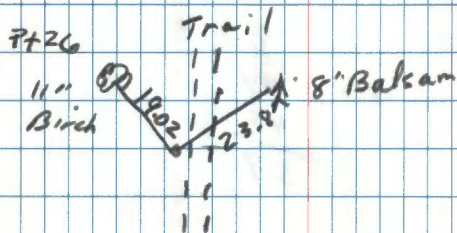
• 27 sec 60R

• pt 26

507-300

• 25

Pt 27 is NE Sec. Cor., 2.



26 00-00-30

27 180-00-17

28 191-47-27 191-46-59

191-47-18

~~191-46-59~~
~~191-47-58~~

27 26 90-00-50

270-00-40

46-59 ✓

171-47-01

28 281-47-48

101-47-40

27 26 90-18-20 477-485 477-478

269-41-38 ✓ 145.536 ✓

27 28 90-24-13

269-35-38

No dist.

could not get

23.5'

45

44

9

10

114

45

59

59

• pt 28

pt 27

SL

 $\frac{35}{21}$ $\frac{36}{21}$

• 26

27 00-00-30

28 180-00-24

29 179-54-16 179-53-45.5 ✓
359-54-09 179-53-45.528 27 90-00-49
270-00-4029 269-54-83 179-53-45 ✓
089-54-2628 27 89-37-29 ¹⁶⁵ 1112.155
270-22-48 ⁹⁸⁸ 338.985 M ✓ 1112.14128 29 89-39-44 783.865 783.851
270-20-15 238.922 M ✓27 ⁰¹² 72.5 ⁸ 29.5
27 44.5

75.5 45.0

Pt 27

• Pt 28

• Pt 27

Pt 28 2" Palsen SE 4.85'
3" Balsam NE 7.18'

29 28 10-00-30

180-00-19

30 180-11-55 180-11-24

000-11-42

✓
180-11-23

29 28 070-00-46

270-00-40

30 270-12-08 180-11-22

070-12-02

~~29 28~~~~29 30~~

48.5	65
24.5	<u>43</u>
<u>24.0</u>	22

• P+30

• P+29

• P+28

P+29 10" Birch NE 5.26'
10" Barkan SE 6.97'

30 29 100-00-30
180-00-19

31 151-19-28 ¹⁵³⁻ ~~151-18-56~~ ^{✓153-} 151-18-55.25
333-19-13

30 29 90-00-46
270-00-40

31 243-19-41 ^{153- ✓} ~~151-18-54.5~~
063-19-34

30 29 90-20-47 707.775 ⁷⁶² ~~707.1067~~
269-39-04 215.730M ✓

30 31 89-33-45 392.895 392.884
270-26-08 119.753 ✓

3	7
210.5	37.5
24.5	43
56.0	54.5

• Pt 31

Pt 30 • 114 5 35 & 36

• Pt 29

30 000-00-30
 31 180-00-20
 32 167-35-44 167-35-15.5 167-35-15.75
 347-35-37
 30 090-00-46
 31 270-00-40
 32 257-36-01 167-35-16
 677-35-57

340.5	610.5	59
<u>25</u>	25	<u>43</u>
15.5	45.5	16

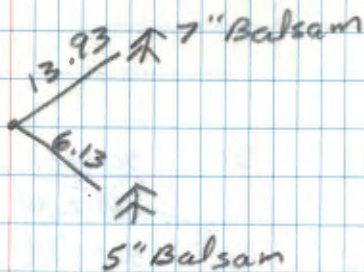
32 00 00-00

PT 31

PT 31

30

PT 31



31 000-00-30

32 180-00-19

33 259-54-54 259-54-23 ✓

079-54-41

259-54-23

31 90-00-45

32 270-00-40 ✓

33 349-55-10 259-54-23

169-55-01

32 31 90-39-02 417.915 417.888

269-21-08 127.382M ✓

32 33 90-07-30 607.175 607.174

269-52-35 185.067M ✓

47.5

24.5

23.0

65.5

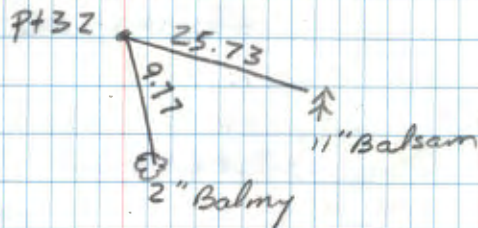
42.5

23.0

• 33

• 32

• 31



32 100-00-30

33 11 180-00-17

34 2 171-54-10 137-53-40 ✓ 137-53-41.25

3 317-53-57

33 32 8 90-00-50

5 270-00-40 ✓ 137-53-40.5

34 7 227-54-32

6 047-54-23

23.5	45
<u>03.5</u>	42.5
20.0	
40	

1/12/87 - END OF DAY
Temp. High 50°F

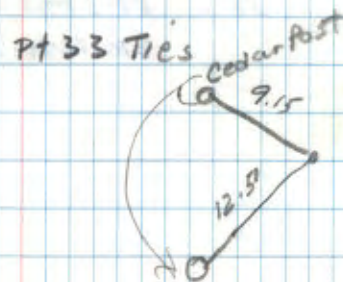
pt 34 SEC COR
NE S. 35

pt 33

pt 32

pt 34 NE Sec. cor. 35.

END OF DAY



33

000-00-30

34

180-00-25

35

180-52-03 180-51-30.5

180-51-29

000-51-53

33

090-00-48

34

270-00-40

35

270-52-15 180-51-27.5

090-52-08

34

33

90-03-40 1496.810

1496.809

269-56-28 456.227M ✓

34

35

89-37-48 1126.300

1126.276

270-22-19 343.297M ✓

58.10

27.5

20.5

6
71.5

48

27.5

1/13/87 Cloudy, calm • 35

• 34 NE SCL 35

• 33

34 000-00-30

35 180-00-18

36 153-43-09 153-42-41

333-43-01

34 090-00-49

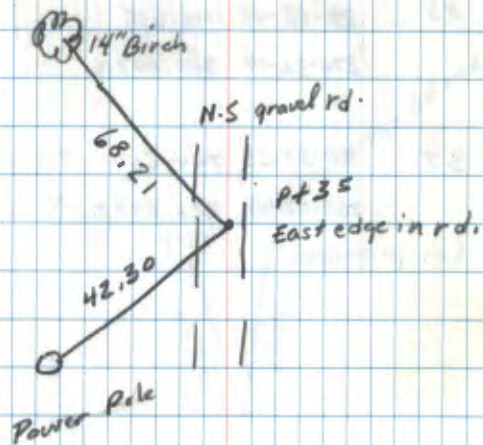
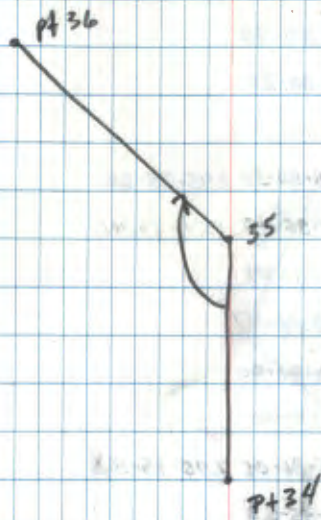
35 270-00-40

36 243-43-2915 153-42-41.5

063-43-23

153-42-41.25

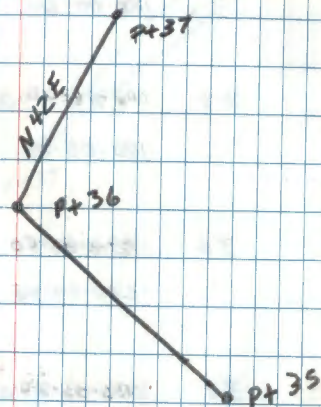
65	8.5 ₁₀
24	26
41	44.5
	41.5



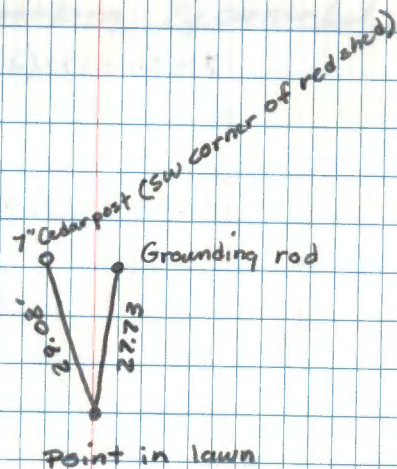
	35	00-00-30		
36		180-00-20		
	37	245-35-50	245-35-20	<u>245-35-19.25</u>
		065-35-40		
36	35	090-00-47		
		270-00-40		
	37	335-36-05	245-35-18.5	
		155-35-58		
36	35	89-23-48	1115.515	1115.453
		270-36-14	340.007M	
36	37	90-57-23	744.240	744.136
		269-02-48	226.843M	

45	51
25	62.0
20	43.5
	18.5

1/13/87



Pt 36 TICS



37 36 00-00-30
180-00-20

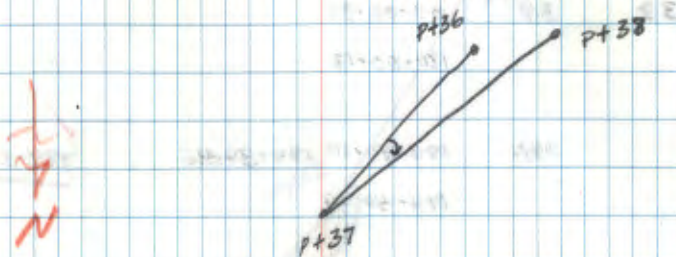
38 000-06-08 000-05-36 ✓
180-05-54 000-05-35.5

37 36 090-00-50
270-00-40

38 090-06-25 ✓ 000-05-35
270-06-15

584
25
36

28
210
45
35



P+37 U.S.F.S monument set 8" above
swamp marking $\frac{1}{4}$ corner betⁿ sec's 24/25
(E $\frac{1}{4}$ sec. 26)

38 37 00-00-30
180-00-12

39 194-40-10 194-39-45 ✓
014-40-02 794-39-42.50

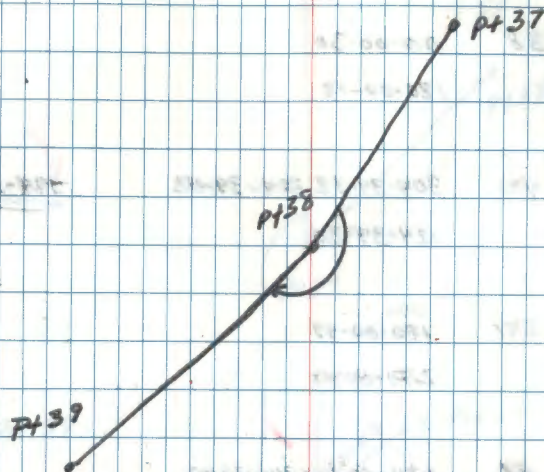
38 37 090-00-30
270-00-40

39 284-40-18 ✓
12
104-40-08 194-39-40

38 27 90-58-43 819.315 819.196
269-01-17 249.727M ✓

38 39 89-49-08 967.850 967.845
270-10-57 295.002 ✓

66	6	63	75	66	68
21	73	35	25	21	40
45	35	38	40	45	28
	38				



Pt 38 is in a lawn east of a farm house (Mrs. Sharr), ±8' North of a plum tree.

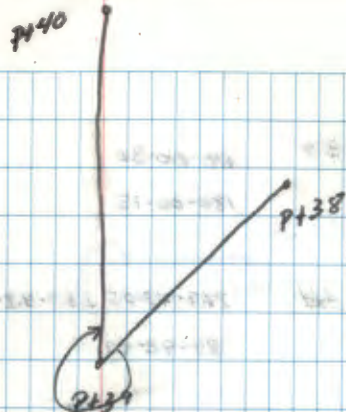
39 38 00-00-30
180-00-18

40 304-39-32 304-39-02 304-39-02
124-39-20

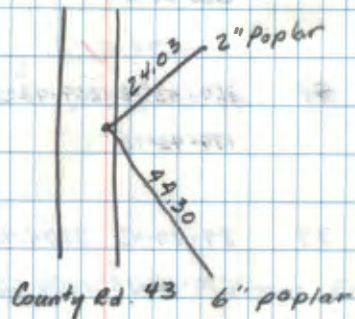
39 38 090
180-00-47
270-00-40

40 034-39-48 304-39-02
214-39-43

26 45.5
24 43.5
02 20

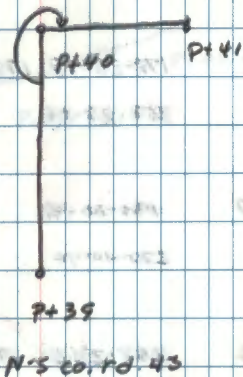


P439



40	39	00-00-30 180-00-15		
	41	269-43-05 89-42-49	269-42-34.5	<u>269-42-33.2</u>
40	39	090-00-46 270-00-40		
	41	359-43-18 179-43-12	269-43-32 ²	
40	39	89-49-45 270-10-15	3804.455	3804.438
				1159.601M ✓
40	41	86-30-38 273-29-26	553.780	552.753
				168.792M ✓

57	75
<u>22.5</u>	<u>43</u>
34.5	32



Pt 40 is $\pm 12'$ West-S.W. from E $\frac{1}{4}$ bet.
Sec's 23/26 on west side of County rd. 43

41 40 00-00-30
180-00-18

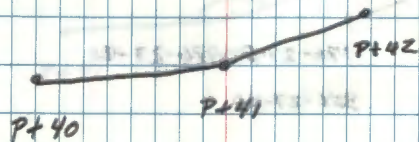
42 178-28-18 178-27-48 178-27-48.5
358-28-06

41 40 090-00-46
270-00-40

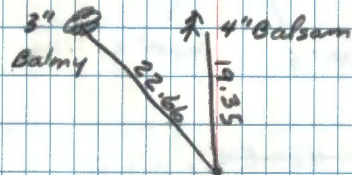
42 268-28-36 178-27-49
088-28-28

$$\begin{array}{r} 6/12 \\ 24 \\ \hline 48 \end{array} \quad \begin{array}{r} 7/2 \\ 24 \\ \hline 58 \end{array}$$

$$\begin{array}{r} 80 \\ 5/2 \\ 43 \\ \hline 49 \end{array} \quad \begin{array}{r} 2 \\ 5/2 \\ 43 \\ \hline 49 \end{array}$$



P+41 is a pt. on south side of ^{E-W} trail.



42 41 00-00-30
180-00-22

43 176-27-52 176-27-20 ✓
176-27-19
356-27-40

42 41 090-00-50
270-00-40

43 266-28-07 ✓ 176-27-18
086-27-59

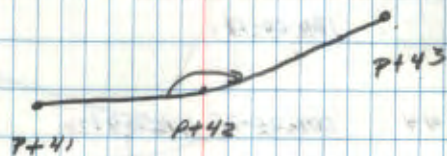
42 41 90-21-07 363.610 363.603
269-39-04 ✓ 110.830 M ✓

~~42 43~~

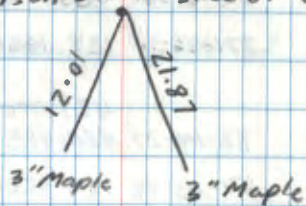
~~Rough distance 420.505~~

46 5
26 63
20 45
18

1/13/87



2442 - is on south side of E-W trail.



U.S.F.S
P+43 - is a concrete monument marking
NE Sec. cor. of sec. 26

END OF TRAVERSE

43 42 00-00-20
180-00-17

44 001-25-29 1-25-01
181-25-20

✓
1-25-01.25

43 42 090-00-48
270-00-40

44 091-25-49 1-25-01.5
271-25-42

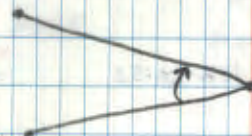
43 42 88-13-36 420.490 420.289
271-46-40 128.165M ✓

43 44 88-14-27 420.485 420.812
271-45-48 128.323M ✓

24.5
23.5
1.0

45.5
44
1.5

Pt 44



Pt 42

Pt 43

Pt 43 is on north side of E-W trail.

44 43 00-00-30
180-00-24

45 182-27-24 182-26-52 ✓
002-27-14 182-26-53

44 43 090-00-49
270-00-40

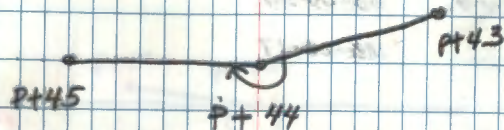
45 272-27-42 ✓ 182-26-54
092-27-35

~~44~~ ~~43~~

~~44~~ ~~45~~

	98.5
79	44.5
27	54.0
52	
	98.5
79	44.5
27	54.0
52	

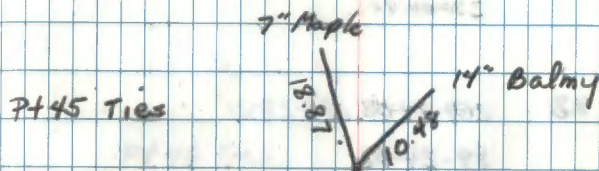
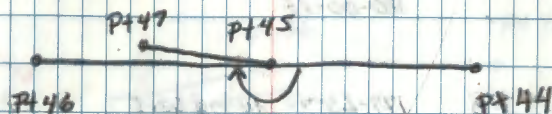
1/14/87 JA, GB Partly Cloudy, Windy, 30°F



TIPS:

9" Elm NE 20.92'
4" Maple NW 18.50'

45	44	00-00-30		
		180-00-17		
45	46	180-00-30	180-00-02.5	✓ 180-00-03.75
		000-00-22		
		SIDESHOT		
45	47	180-27-52	180-27-22.5	✓ 180-27-22.75
45	47	000-27-40		
		270-00-40		
45	44	90-00-48		
	46	270-00-40		
45	46	270-00-54	180-00-05	✓
		90-00-44		
45	47	270-28-09	180-27-23	✓
45	46	90-28-05		
45	44	89-20-18	420.945	420.917
		270-39-50	128.303M ✓	
	46	92-34-08	886.670	885.779
		267-26-13	270.256M ✓	
	47 EY6	93-35-31	482.350	481.402
		266-24-37	147.020M ✓	



P+47 is 60d set over U.S.F.S. monument
in road marking EY6 bet. sec's 23/26.

$$\begin{array}{r} 5 \\ 260 \\ 235 \\ \hline 2.5 \end{array}$$

$$\begin{array}{r} 5 \\ 46.1 \\ 23.5 \\ \hline 22.5 \end{array}$$

$$\begin{array}{r} 49 \\ 44 \\ \hline 5 \end{array}$$

$$\begin{array}{r} 67 \\ 44 \\ \hline 23 \end{array}$$

46 45 00-00-30
180-00-13

48 179-23-48 179-23-21 ✓
179-23-21
359-23-37

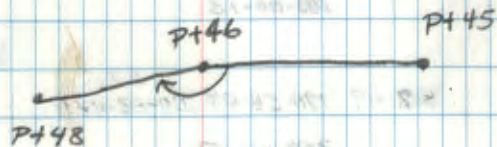
46 45 090-00-48
270-00-40

48 269-24-08 179-23-21 ✓
89-24-02
269-24-08

46 45

46 47

42.5 65
21.5 44
21.0 21



Pt 46 Ties

5" Elm

10.35

3" Birch

13.98

48 46 00-00-30
180-00-18

~~48~~ 49 179-58-08 ⁵⁷ 179-58-42.5
359-58-05

48 46 090-00-50
270-00-40

~~48~~ 49 269-58-29 ⁵⁷ 179-58-43
089-58-27

48 46 ³ 89-58-59 410.460 410.459
270-06-14 125.107 ✓

48 49 90-05-27 507.990 507.989
269-54-27 154.836 ✓

66.5 88
24 45

42.5 43

66.5 828
24 45

42.5 43

1/14/87

N 1/4 50026

P149

P148

P147

P148 Ties:

Aspen 6" South 4.78'
Aspen 6" NW 16.81'

END OF DAY

49 48 00-00-30

180-00-22

50 183-50-05 183-49-29.5

003-49-46

183-49-29.5

49 48 070-00-50 183-49-29

270-00-40

50 273-50-21

093-50-07

~~48~~ ~~47~~~~48~~ ~~49~~

1	74
55.5	45
<u>26</u>	<u>31</u>
29.5	29

Pages 47-62
 checked by MCT
 3/4/87

2/3/87 JA, GB, CK

Pt 49

Pt 50

Pt 48

Pt 49 is U.S.F.S. galv. iron pipe marking
 north $\frac{1}{4}$ corner sec. 26

50 49 00-00-30

180-00-16

51 180-05-28 180-05-00

600-05-18

50 49 ⁹⁰180-00-51

270-00-40

51 270-05-48 180-04-59.5

⁰⁵90-00-42

50 49 90-08-50 993.520 993.517

269-51-26 302.825M

50 51 ⁹⁰~~90~~-36-10 931.575 931.523

269-24-10 283.946M

23

¹⁰⁴45.10²¹⁴45.10

23

45.5

45.5

5 559 5

pt 51

pt 50

pt 49

Ties TO PT 50:

Bulson 4" NORTH - 3.35'

Bulson stub 5" SE - 2.83'

51 50 00-00-30
180-00-12

~~52~~ 179-53-56 ✓ 179-53-27.5 ✓ 179-53-27.2 ✓
359-53-41

51 50

270-00-40 179-53-27

090-00-53

~~52~~ 269-54-19

089-54-06

21
48.5
21
27.5

73.5
~~46.5~~
133.0

673.5
~~46.5~~
27.0

Pt 1
Pt 52 NW sec 26

Pt 50

Pt 51

ties:

Cedar 7" East 22.17'

Birch 13" North 8.39'

pt 1
 52 51 00-00-30
 180-08-14

pt 2 089-08-14 ~~89-08-45~~ ⁸⁹⁻⁰⁷⁻⁴⁵ ~~89-08-44.25~~ ^{89-07-44.25}
 269-08-00

pt 1
 52 51 090-00-48
 270-00-40

pt 2 179-08-32 ~~89-08-43.5~~ ^{89-07-43.5}
 359-08-23

pt 1
 52 51 90-02-25 695.055 695.055
 269-57-58 211.850

87.5
 44
 67
 22
 45

43.5

7/2/87

End of Day

1 NW SEC 26

pt 52

pt
 51

pt 2

End of Exterior Traverse

2/3/87

51

Tie in N¹/₄ sec 35
into main Traverse

pt 38 000-00-30

pt 39 180-00-15

pt 52 162-14-31 162-13-59

342-14-12

pt 38 090-00-56

270-00-40

162-13-58.25

pt 52 252-14-53 162-13-57.5

072-14-38

21.5

45.5

22.5

48

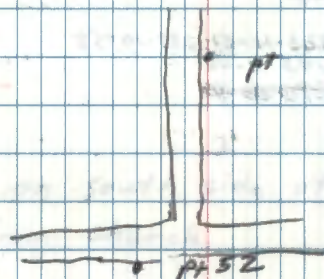
met
3/4/87

2/10/87 51

Clear 32' JATW
CO SET UPS

N
↑

• pt



52 39 00-00-30
 180-00-20
 53 233-11-31 ²³³⁻¹¹⁻⁰⁰ 233-10-59.5
 053-11-19

233-10-59

52 39 90-00-55
 270-00-40
 143
 53 323-11-51 [✓] 233-10-58
 143-11-40
 270-00-40

52 39 90-37-05 223.945
 269-23-10 [✓] 68,259M

52 53 90-05-31 2036.700
 269-54-36 [✓] 620.788M

78
 24.5
 25
 595

8
 45.5
 47.5
 58.0

me 7
 3/11/67

P453

P452

† Sand Lake
 Church

P452 is on south side of E-W county rd #36
 across from church.

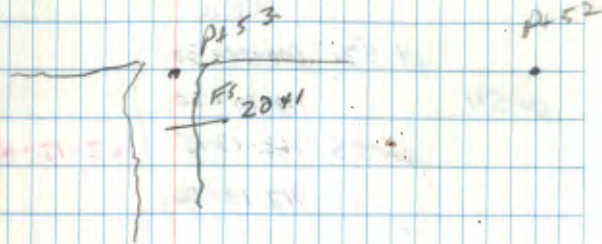
pt 52 000-00 33
 pt 53 180-00-10
 pt 54 87-16-16 87-15-45
 267-16-54

87-15-47.75

pt 52 070-00-47
 pt 53 270-00-40
 pt 54 177-16-³89 87-15-50.5
 357-16-29

65	³² 94
20	43.5
<hr/> 45	<hr/> 50.5

7m
 2/4/87



ties:

Aspen stump 6" South 19.36'
 Blabson 13" SW 38.60'

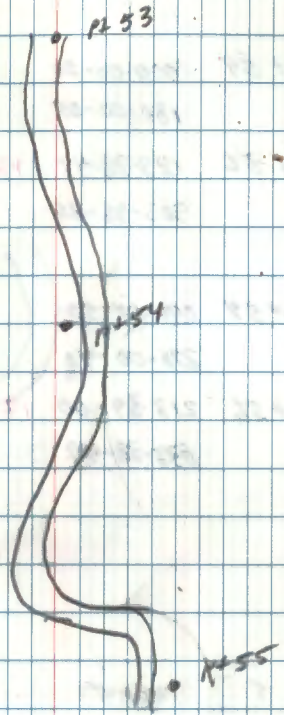
pt 53 000-00-30
 pt 54 180-00-20
 pt 55 162-13-15 162-12-45.5
 342-13-06
 090-00-54
 pt 53 162-13-15 162-12-42.75
 pt 54 270-08-40
 pt 55 252-13-32 162-12-40
 072-13-22

54 53 90-29-58 534.675'
 269-30-10 162.966 m
 54 55 70-54-24 269.746'
 269-05-52 227.606 m

705
 25
 43.5

87
 47
 40

162-12-47
 3/4/87



pt 54 000-00-30
 pt 55 180-00-05
 pt 56 123-38-47 123-38-19
 303-38-26

OK

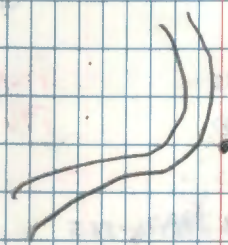
pt 54 090-00-50
 pt 55 270-00-40
 pt 56 213-39-00 123-38-09.5
 033-38-49

123-38-14.25

236.5	94.5
17.5	45
<hr/>	<hr/>
192.0	10.5

707/14/87

pt 54



pt 55

pt 56

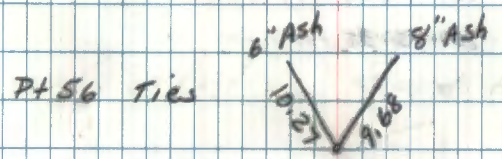
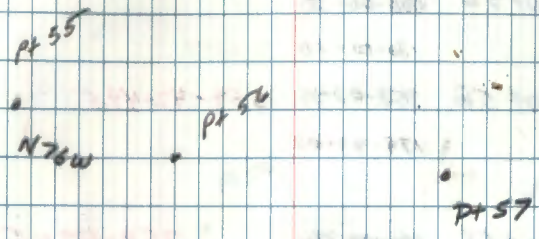
~~pt 55 000-00-30 00-00-30~~
~~pt 56 180-00-00 180-00-13~~
~~pt 57 176-12-14 176-12-23 176-11-54~~
~~N14 S2L 36356-11-54 356-12-08~~
 Not level

pt 55 90-00-55
 pt 56 270-00-40 176-11-55.25
 pt 57 086-12-36 176-11-56.5
 266-12-52

pt 56 pt 55 89-51-29 197.980
 dx 270-06-00 60.345M
 pt 56 pt 57 89-51-53 358.860
 270-08-09 109.383M

5	3
64	414 10
15	47.5
49	56.5

4	75.5
512	21.5
36	54.0
16	

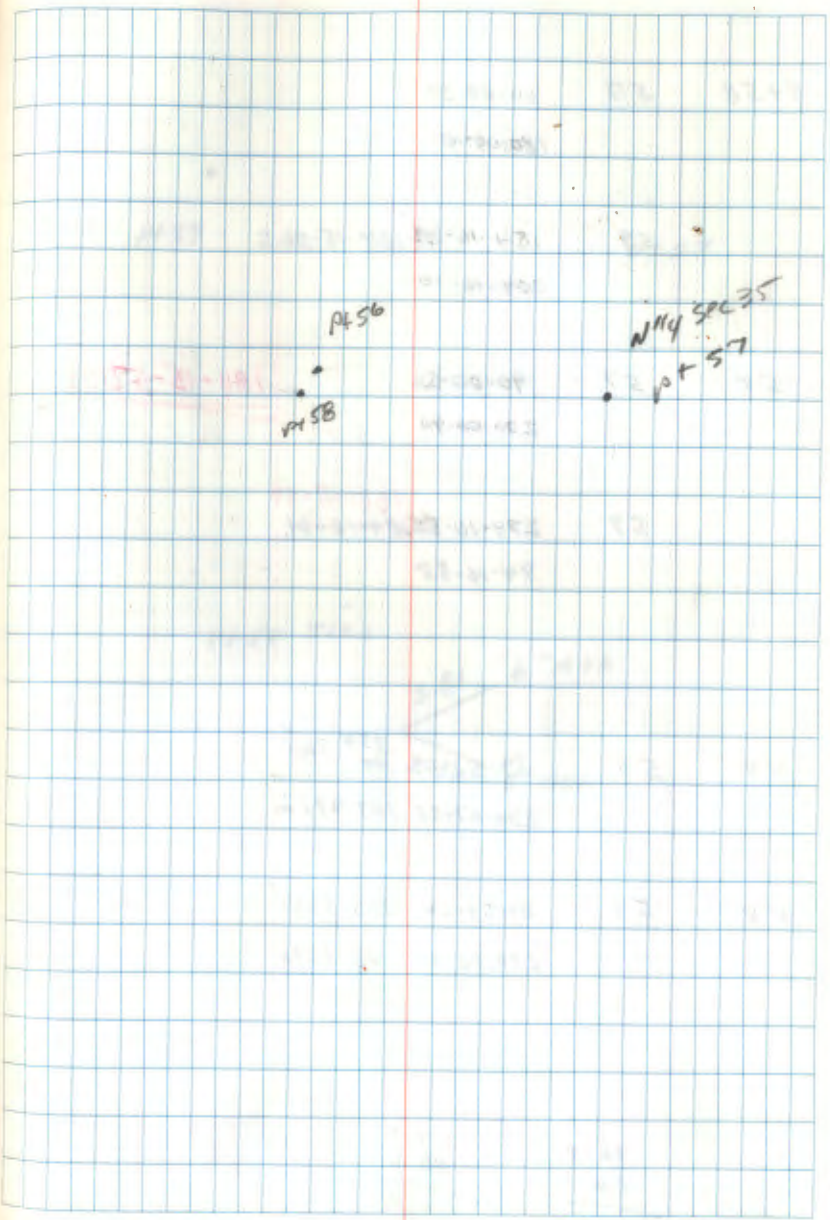


p+56 000-00-30
 p+57 180-00-10
 p+58 359-43-19 359-42-49.5
 179-43-00

p+56 090-00-56 359-42-52.25
 p+57 270-00-40
 p+58 089-43-51 359-42-55
 209-43-35

69.5	9
20	143
<hr/>	48
49.5	5.5

207
 3/4/87



9758	57	00-00-30	
		180-00-10	
	59	154-16-23	184-15-56.5
		004-16-10	
58	57	90-00-55	<u>184-15-59.75</u>
		270-00-40	
	59	274-16-55	184-15-59
		94-16-38	184-16-01
58	57	89-52-03	354.300
		270-07-58	107.991m
58	59	89-59-24	203.535'
		270-00-50	62.037m

76.5
20

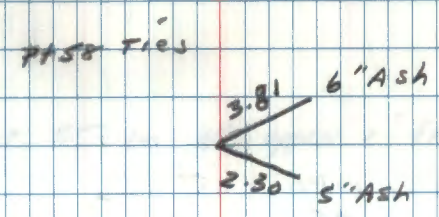
56.5

47.5
46.5

1.0

net
3/4/07

Pt 59 Pt 58 Pt 57



58 000-00-30
 pt 59 180-00-28
 60 236-12-30¹⁰ 236-11-35
 056-11-58

58 090-00 59 * 236-11-30.25
 pt 59 270-00 40
 60 326-12-24 236-11-25.5
 146-12-06

41
 64
~~39~~
 25

111
 75
 49.5 ✓
 25 5

pt 60

pt 59

pt 58

pt. 55 is NE approx 1' from pt 59

60 59 00-00-30
180-00-09
~~269-31-10~~

61 196-10-10 196-09-38.5
016-09-46

60 59 90-00-55 196-09-37.5
270-00-40

61 286-10-33 196-09-30.5
106-10-15

60 59 90-54-25 745.845
269-03-36 227.334M

60 61 90-28-52 560.335
269-31-10 170.791M

not
3/4/47

79.5
22
57.5

~~47.5~~
~~21.5~~
26.0

7
8
21.5
47.5
3.0
47.5
24.
23.5

Pt 61

Pt 60

Pt 59

Pt 60 No easy ties

pt 61
 62
 000-00-30
 179-59-55
 179-59-51
 093-50-11
 093-50-05
 273-49-31
 273-49-32

angle figured
 wrong first time
 it checks OK (use data
 with line through)

93-49-38

9349.40

pt 61
 62
 90-00-50
 090-00-54
 270-00-40
 183-50-32
 183-50-35
 003-50-19
 003-50-23

93-49-42

89
 49
 2
 42
 48.5
 10.5
 38.0

85.5
 45
 40.5

51
 17.5
 33.5

8
 29
 47
 42

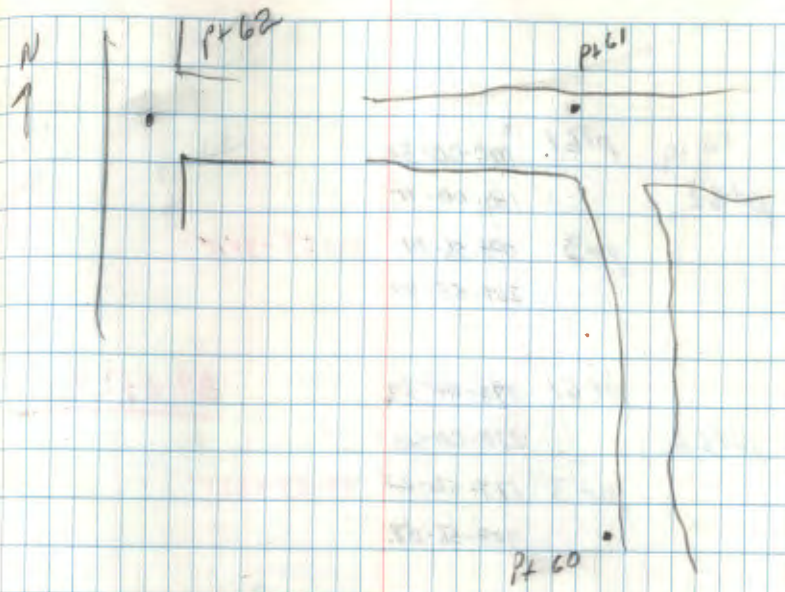
9
 36
 70.5
 48.5
 22.0
 10.5

72.5
 51
 21.5

9
 48.5
 49.5
 49.5
 59.0

3
 47
 29
 18

8
 29
 47
 42



pt62

pt61

000-00-38

180-00-11

pt3

089-56-01

89-55-34.5

269-55-49

pt61

090-00-37

89-55-36

pt62

270-00-40

pt3

179-56-25

89-55-37.5

359-56-07

pt62

pt61

88-57-15

1795.205

271-02-48

547.180

pt62

pt3

90-26-30

1222.785

269-33-28

372.707

55
20.5

34.5

pt6

38.5

37.5

mcH
3/4/87

N
↑

pt62

pt61

pt3

End of Day
2/10/87

END OF
BOOK