

CORNER
RESTORATION
T193N R26W

POST

MINING
TRANSIT BOOK

No. 384F

BOOK 2

DISTRICT RANGER
U. S. Forest Service
P. O. Box 308
Deer River, MN 56636

1

T148 N R 26-27 W
Section Cor. Sec. 25-30-31-36

Orig Notes

Post

B. Nail 6" S 53° W 18 LHs - 11.88'

B. Nail 6" N 38° W 50 LHs - 33.00'

B. Nail 4" S 57° E 28 LHs - 18.48'

B. Nail 12" N 46° E 80 LHs - 52.80'

9-6-2002 ITASCA CO CORNER CERT #545893
SET. 1/2" X 2 FT REBAR WITH 2 1/2" ALUMINUM CAP
6" UNDER ROAD

ASH 9" N 45° W 57.2 FT TO SPRINKLER

ASH 8 1/2" S 55° W 51.25 FT TO SPRINKLER

ASPEN 3 1/2" N 82° E 29.52 FT TO SPRINKLER

2

T148 N

R26-27 W

Quarter Cor. Sec. 25-30

Orig Notes

Post

Pine stub 6" N80°E 14 Lks - 9.24'

Ash stub 14" S89°W 6 Lks - 3.96'

3 R-1

T148N

R26-27W

Section Cor. Sec. 19-24-25-30

Orig Notes

Post

Cedar 10" S79°E 46 Lks - 30.36'

Ash 10" N64°E 40 Lks - 26.40'

Cedar 8" N36°W 5 Lks - 3.30'

Cedar 6" S18°W 40 Lks - 26.40'

Found 2 cedar BT's from recent co. survey
 Notes of County road surveyor Lloyd W. Johnson
 Cedar 5" N27°W 11.50 Ft. July 1931

Cedar 7" S19°W 37.0 Ft.

Cedar 6" S56°E 39.7 Ft. - Found 8" cedar ^{partly} decayed
 at record ~~bearing~~ ^{S50°E} distance scribe s30 BT visible

Cedar 5" N35°E 43.0 Ft. - Found 9" cedar
 at record ~~bearing~~ ^{N44°E} distance scribe s19 BT
 visible

Found triangular iron rod marking corner
 in roadway dec 1 1/2" iron pipe

Affidavit Form

7-23-63

CERTIFICATE FILED

Set a 6" diameter 24" long cylindrical
 concrete monument capped with a 5" diameter
 brass tablet stamped
 0.5' below road surface



New BT's

Cedar 9" N27°W 100.7 feet scribed s24 BT
 Cedar 10" S62°E 58.9 feet scribed s30 BT
 Cedar 8" S27°W 33.7 feet scribed s25 BT

Cedar post 4x4x72" with red top dug west
 23.3 feet with signs attached s4.4 & s4.2

R9-7150-4 by Olesen 1980

F.S.

PRIVATE

F.S.

PRIVATE

W. O. Olesen

4 P-1

T148N

R26-27W

Quarter Cor. Sec. 19-24

Orig Notes

Post

Poplar 6" S35°W 6 Lks - 3.96'

Poplar 5" S20°E 10 Lks - 6.60'

Found a Δ shaped iron pin marking corner
FS poster on a 6" Aspen which is S85°E 7.75'
private survey corner

From notes of a County survey filed in Surveyors
office Itasca County Court house.

Basswood 8" N03°W 12.50 Ft. (Now a basswood
stump mostly decayed N9°W 12.5 Ft.)

Basswood 7" S9°E 20.9 Ft. (Now a basswood stump
S2°E 20.9 Ft; mostly decayed.)

A iron monument (Found in place.) (also a
squared scribed post laying beside iron)

Set a 2" inside diameter, 5 foot long galvanized
wrought iron pipe filled w/ concrete and capped
w/ a 3" dia. bronze tablet stamped:-

T148N
R27W R26W
1/4
S24 S19
1962
RLS NO 3628

Affidavit RHM

CERTIFICATE FILED

Marked new BTs

ELM 8" N54°W 35.0 Feet MKD 1/4 S24 BT

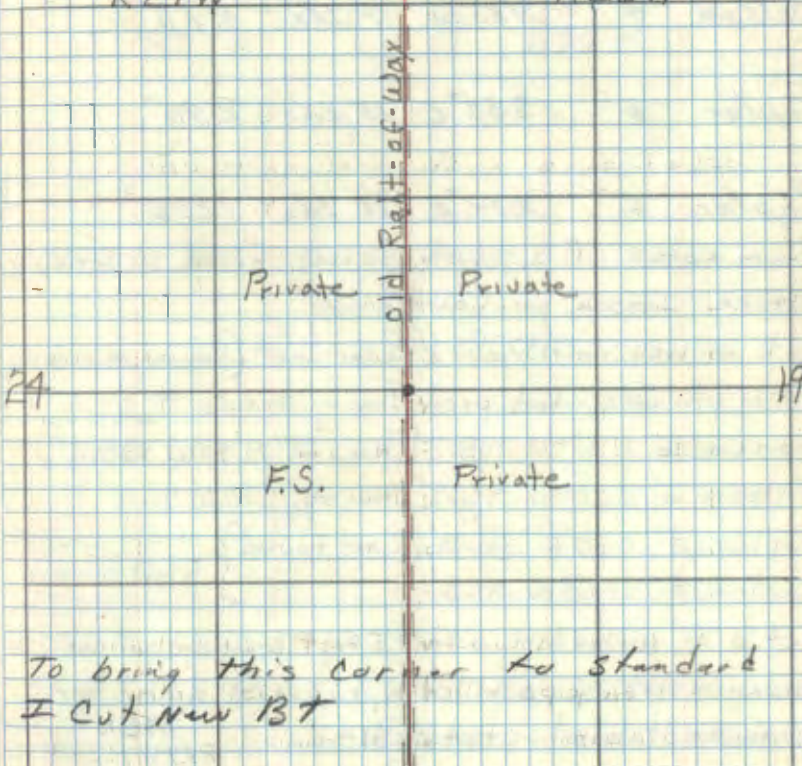
ELM 8" S51°E 36.1 Feet MKD 1/4 S24 BT

Steel sign post 72" long set 24" in ground w/
signs 54-2 & 54-4 attached due South 4.82'

12-13-62 R.H.M. Donald

R27W

R26W



To bring this corner to standard
I cut new BT

Maple 6" N34°E 36.15' 1/4 S19 BT.

Set steel post 8' long south e. 2" w/sign
5/22/80 Ronald B. Olson RA-7150-4 54.2

5 N-1

T148N

R26-27W

Section Cor. Sec. 13-18-19-24

Orig Notes

Post

Poplar 6" S68°W 10 Lks - 6.60'

Balsam 4" N83°W 7 Lks - 4.62'

Poplar 6" S53°E 15 Lks - 9.90'

Poplar 6" N14°E 26 Lks - 17.16'

From notes of a county survey filed in Surveyors office Itasca Co. Courthouse.

Set a iron monument & Cedar post (found a shaped iron pin w/ scribed post laying beside it.)

Spruce 16" N47°W 108.3' (Now 27" N40°W 108.3')

Balsam 6" S20°W 46.9' (Now stp S25°W 46.9')

Poplar 5" S30°E 36.8' not found } in old cleared
Poplar 5" N18°E 50.8' " " } Right of way

Set a 6" diameter, 5 foot long, cylindrical concrete monument capped with a 3 inch diameter bronze tablet stamped:-

T148N
R27W R26W
S13 S18
S29 S191962
RLS NO 3628Affidavit ~~PHM~~

CERTIFICATE FILED

Cedar 10" N57°W 131.8 Ft. MKD S 18 BT -
 Ash 6" S34°E 95.1 Ft. MKD S 19 BT -
 Elm 5" S41°W 44.1 Ft. MKD S 24 BT -
 White spruce 6" N51°W 95.4 Ft. MKD S 13 BT ✓
 Steel sign post 72" long set 24" in ground w/
 signs 59-2 & 59-4 attached due North 488 Ft.

12-13-62 *R.H. McDonald*

13 R27W R26W 18

FS Private

FS Private

old brushed Right of Way

24 19

R9-9150-4 by Schaner 1980

7 J-1

T148N

R26-27W

Section Cor. Sec. 7-12-13-18

Orig Notes

Post

Aspen 10" S34°E 18 Lks - 11.88' - Found

decayed stump at record brg & dist.

Aspen 14" S11°W 14 Lks - 9.24' - Found

decayed stump at record brg & dist.

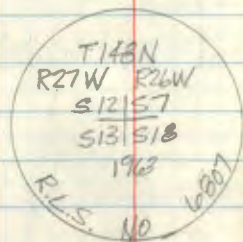
ELM 20" N34°W 33 Lks - 21.78' - Found

31" Elm at record brg & dist - scribe ^{F.S. faster of 1934 attached} ~~original~~

Aspen 12" N35°E 56 Lks - 36.96' - Found

decayed stump at record brg & dist.

Set a 2" inside diameter ^{galvanized steel} pipe, ^{68"}~~72"~~ long
filled with concrete and capped with
a 3" diameter bronze tablet stamped



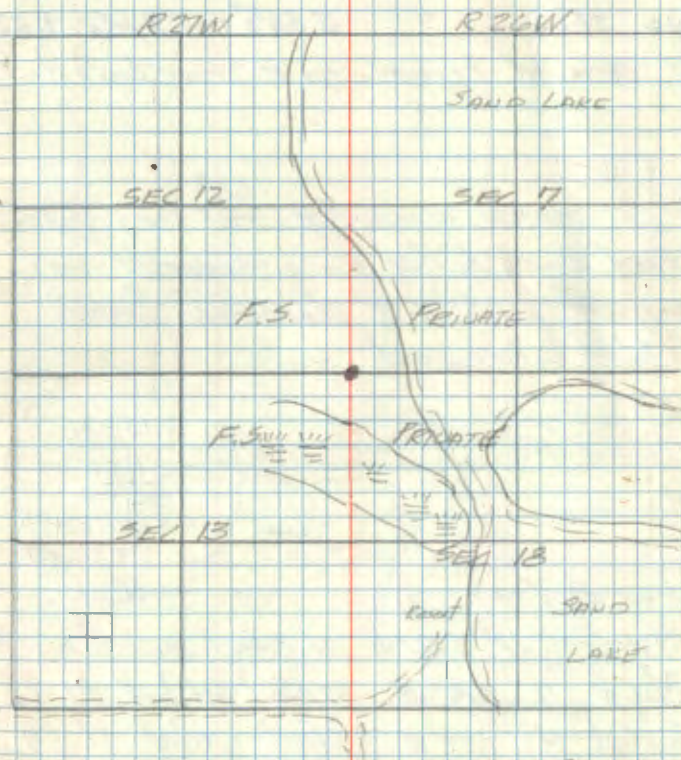
Affidavit RHM

8-7-63 W. Ok...
J. Ekstrom

CERTIFICATE FILED

New BTs:

Asp 10" N50°W	22.7 feet	scribed	S12 BT
Asp 7" S20°W	24.0 feet	scribed	S13 BT
Wack 5" S57°E	47.6 feet	scribed	S18 BT
Elm 17" N21°E	45.6 feet	scribed	S7 BT
Steel sign post 8' long South	3.1 feet	with signs	54-4 & 54-2 attached



W.D. Okerman

at Steel post 8' long South 3.1' w/signs 54-2/54-4
Set by Jim Schoonover 1/24/80
R97150-4 by Schoonover 1980

8 E-1
T148N R 26-27W
Section Cor. Sec. 6-7-1-12

(Orig Notes

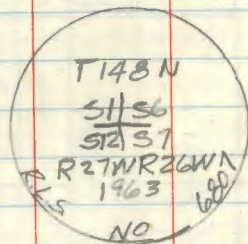
Post - Fd squared post, believe to be original

(W Pine stub S 50 1/2° W 71Ks - 4.62'

Fd damaged - burned stp at record bry & dist.

L

L Set 2" inside diameter ^{60"} 72" long galvanized
steel post filled with concrete and
capped with a 3" diameter bronze
tablet stamped



New B.T's:

Burr Oak 12" S 50° W 36.8 feet scribed S1/2 BT

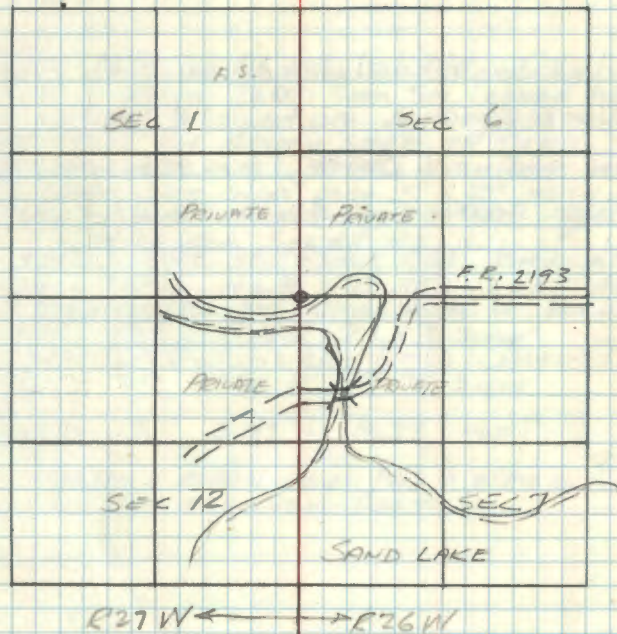
Maple 11" NE° W 34.7 feet scribed S1 BT

Tw Burr Oak 14" N 60° W 8.8 feet scribed S1 BT.
(21" stp)

Steel sign post 72" long, 24" in ground
due South 16.1 feet with sign 54-4
attached.

Accidavit RHM-5
CERTIFICATE FILED

9-15-63 W Olman
J Ekstrom



W. Olman
James Ekstrom

9 C-1

T148N

R26-27W

Quarter

Cor. Sec. 1-6

Orig Notes

Post

TAM 5" N47°E 12 Lks - 7.92'

TAM 5" S48°W 30 Lks - 19.80'

Found F.S. metal location poster on a
8" Black Spruce quite old and unreadable.
I had chained South from F.S. post at
closing corner of 40.70 chains came 200'
South and 100' west of this Poster.

Searched 3 man hours no original evidence
was found. 1-3-63 (R.H. McDonald)

11/28/90 R. MAEN L. KRAUSE G. FORDHAM
CHAINED NORTH 2600 FROM SEC CORNER 1-6-7-12
Fd old ECL TAG ON 10 FT SPRUCE
SNAG. TAG ON SOUTH SIDE OF TREE.
FOUND NO EVIDENCE OF BTS OR POST AT
THIS TIME. SET WOOD POST 5' X 2" WITH
600 SPIKE AND WASHER ON THE EAST SIDE OF
POST. WITNESSED SPIKE WITH.

SPRUCE 7" N6E 13.90 CCC TAG

CEDAR 6" N4W 21.93 SPIKE

CEDAR 4" S62E 33.75 SPIKE

TAMARACK 3" S49W 14.34 NAEI

FD A TAMARACK FALLEN DOWN W/ A BLAZE ± 3'
WEST OF OUR TAMARACK POST.

10 A-1

T 148N

R 26-27W

Closing Cor. Sec 1-6

13.50 Chains west of
Standard Cor.

Orig Notes

Post

Tan stub 12" S 48°W 138 LHs - 91.08'

Tan stub 8" S 75°E 131 LHs - 86.46'

Chained west from std corner 31-32
and came 200' north of F.S. poster of
1935 which was marked C.C. Secs 1-6.
Searched 3 man hours no orig evidence
was found 1-3-63 *RAM Donald*

11/28/90 RM-GF-MH-CK

CHAINED NORTH FROM SW COR SEC. 6 - S 1/2 2600' N 1/2 2706'
E.L. OLD TAG AT APPROX W 1/4 SEC. 6

11/29/90 RM-GF-MH-CK

CHAINED 1115' W OF TAG BY W. HABERLE, 1937
LINE FELL 9' W OF OUR STATION 2706' FROM SOUTH

SET 2" x 48" SPRUCE POST AS APPROX. C.C. TO A+6

SPRUCE 7.5" S 62°E - 21.85 BT TAG + NAIL

SPRUCE 9.6" N 27°E 17.20 BT TAG + NAIL

11 X-21

Quarter Cor. Sec. 35-36

Orig Notes

Post (Found squared scribed post Laying down w/ point at corner.)

Birch 7" N86°W 10 Lks - 6.60'

Cedar 5" S49°E 8 Lks - 5.28' (Found at record bearing & dist. cedar windfall partly decayed w/ window facing corner)

Notes of Co. road survey of 1925" Found Govt.

Cedar & MKD New

Birch 12" NB4°W 31.7 feet - Now decayed stump N77°W 31.7 feet

Cedar 6" N38°E 40.0 feet. (Now 11" cedar w/ scribe 1/4 S visible N45°E 40.0 feet)

Set a 2" galvanized wrought iron pipe 6' long filled with concrete and capped with a 3" diameter bronze tablet stamped -



B. McDonald
W. Okerman

July 2, 1963 Affidavit
CERTIFICATE FILED

New BT's

Cedar 8" S40°W 16.4 feet MKD 1/4 S35 BT

Cedar 8" N54°E 56.9 feet MKD 1/4 S36 BT

steel sign post 22' long - 2' in ground with signs 54-2 & 54-4 attached due North 3.8 feet

Nov 28, 1989 Recovery by G. Kosenko

B. Husk

G. Robertson

Recovered a 2 1/2 inch outside diameter galvanized iron pipe with a 3 inch diameter brass cap stamped as shown, up ft from which:



1963 Cedar, 11.0", N52°E, 57.18 ft to a 16d nail in SE face, double blaze overgrown with a 60d spike
1925 Cedar, 15.4", N45°E, 39.85 ft to a 16d nail in the SE face, single blaze overgrown, with a 60d spike
1963 Cedar, S43°W, 17.10 ft to a 16d nail in the SE face, double blaze overgrown w/ 60d spike
Metal fence post, north, 40 ft w/ 54-2, 54-4
Established:

Metal fence post, south, 3.04 ft w/ 54-2

Search for all other corner evidence but recovered only that listed above. All bearing trees and posts are painted red

12 V-21

Section Cor. Sec. 25-26-35-36

Orig Notes

Post

W. Pine 18" S28°W 18 Lks - 11.88'

N. Pine 18" S33°E 25 Lks - 16.50'

N. Pine 14" N68°W 35 Lks - 23.10' - Found
decayed stump at record bearing & distance

Aspen 14" N42°E 13 Lks - 8.58'

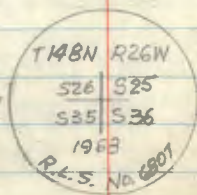
Notes of Co. road survey in 1925 Found 3 Gov't.

bits & MKD new

Pine stp. 10" S50°E 38.2 feet - Found pine stump
S45°E 38.2' with scribe "B" visible

Pine stp 18" N36°W 37.1 feet - Found decayed
stump N29°W 37.1'

Set 6" dia 24" long cylindrical
concrete monument - capped with
a 3" dia. bronze tablet stamped
0.4' below road surface



R. McDonald
W. Ckerman

Attached
CERTIFICATE FILED

Birch 7" ~~N48°E~~ 46.2 feet MKD S25 BT

Fernwood Jackpine 12" S45°E 62.0 feet MKD S36 BT

Jackpine 7" S43°W 111.3 feet MKD S35 BT

P.P. 9" N112°W 109.5 feet

Cedar Post 4"x4" pent. treated w/red top due west
16.5 feet w/signs attached

10-1-85 W. Ausk

CONTRACT CORNERS

Found 2

Birch

Used JACK PINE
top 1/2 broke off

JACK PINE

Jan 9, 1986 G. Robertson & B. Ausk

Found monument broke off. Set point back
from BT's. From which

W. Birch, , # to a 16d nail in face
double bladed, scribing visible

Refer to book 4 pg 55

13

Quarter Cor. Sec. 25-36

Orig Notes

Post

Tan 4" $N73^{\circ}E$ 12 Lks 7.92'

Sproce 6" $S66^{\circ}E$ 28 Lks 18.48'

Notes from Co. road survey of 1925

Tan. 7" $N69^{\circ}E$ 42.7 feet

Tan 7" $N85^{\circ}W$ 58.6 feet

14 T-21

Quarter Cor. Sec. 25-26

Orig Notes

Post Corner was found to be marked by a squared scribed cedar post.

Tan 12" S15°E 16 Lks 10.56' (Now a stump hole S15°E 10.56'.)

Tan 12" N68°W 8 Lks 5.28' (Now a 12" Tan windfall w/ scribe 1/4 S visible S60°W 5.28'.)

Notes of Co. road survey of 1925 "found two Govt BTs" mko. new

Cedar 7" S35°W 16.3 Feet (Now a Cedar windfall 7" S42°W 16.3 Feet)

Cedar 12" S36°E 36.5 Feet (Now a 12" cedar windfall w/ scribe "1/4 S25 BT" visible S29°E 36.5 Feet.)

Set a 2" inside dia. 5 foot long galvanized wrought iron pipe filled w/ concrete and capped with a 3" dia. bronze tablet stamped-

T198NR26W
1/4
S26 S25
1962
RLS NO 3628

Affidavit
RHM

CERTIFICATE FILED

Cedar 8" N84°W 86.6' mko 1/4 S26 BT

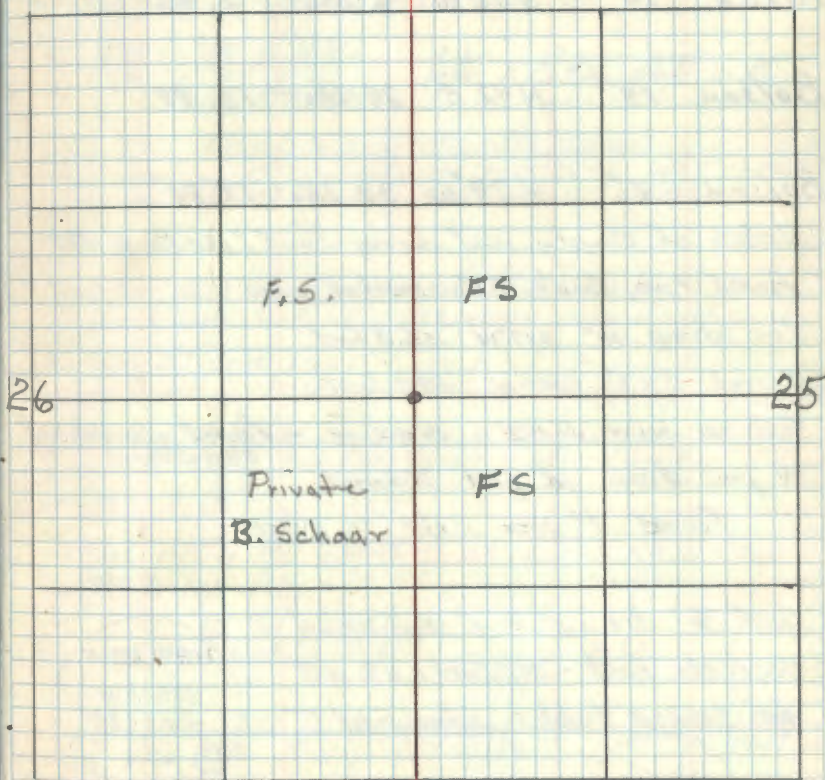
Cedar 11" S83°E 79.4 Ft mko 1/4 S25 BT

Ash 11" N15°E 30.7 Ft mko 1/4 S25 BT

Steel sign post 72" long set 24" in ground w/

signs 54-25 54-4 attached due south 5.25'

11-9-62 RHM Donald



15 R-21

Section Cor. Sec. 23-24-25-26

Orig Notes

Post

W. Pine 6" S36°E 8 LKs - 5.28'

Birch 14" S26°W 6 LKs - 3.96'

Balsam 14" N42°E 24 LKs - 15.84'

Balsam 6" N79°W 30 LKs - 19.80'

Notes of County road survey - Sand Lake Town 1929

Found two Gov't BT's marked new

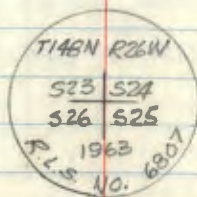
Pine stump 10" S17°W 55.8 feet

x rock 2'x3' S81°W 84.2 feet

S.W. cor house N15°E 81.0 feet - found abandoned
run down

W. pine stump 14" East 71.5 feet

Found 1" iron axe in place

Set 6" dia. 5' long cylindrical
concrete post - capped with a 3"
dia bronze tablet stamped -R. McDonald
W. OkermanAffidavit
7-1-63
CERTIFICATE FILED

Ash	5"	S80½°E	119.4 ft	Mkd S25BT
Elm	10"	S86°W	154.2 ft	Mkd S26BT
W. Oak	9"	N51½°W	150.55 ft.	Mkd S23BT

Cedar post 4x4" penta-treated with red top
due West 2.48' with sign 54-2 attachedSteel sign post, 72" - 2' in ground with signs 54-2
& 54-4 attached due North 5.3 feet

R9-7-50 - 4 by Olesen 1980 - all OK

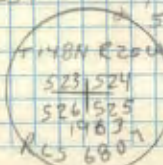
7-24-83 B. Ausk D. HARMAN BK & Bts All OK

8-21-85 B. Ausk G. Kosynko G. Robertson
Recovered a 6" cylindrical concrete post - capped
with a 3 1/4" brass cap stamped as shown
from whichAsh 6.5" S77°E 119.24' to a 16d nail on S FACE
Double BLAZE SCR. OVER GROUND w/60d SPIKEElm Dead 10' West 154.43' to a 16d nail on N FACE
Double BLAZE SCR. OVER GROUND w/60d SPIKEW. OAK 13.4" N30°W 150.45' to a 16d nail on NE FACE
Double BLAZE SCR. OVER GROUND w/60d SPIKE

Established

W. OAK 11.9" N11°E 138.40' to a 16d nail on E FACE
Double BLAZE SCR. "S24 BT" w/60d SPIKEAsh 5.6" S77°W 133.97' to a 16d nail on N FACE
Double BLAZE SCR. "S26 BT" w/60d SPIKECedar post 4x4 with red top West 2.51' w/54-2
Steel Sign Post North 5.4 w/54-2

.5° Decl.



16 R-23

Quarter Cor. Sec. 24-25

(Orig Notes

. Post

↳ Aspen 5" S76°W 5 LHs - 3.30'

↳ W. Pine 5" N50°E 9 LHs - 5.94'

↳ Notes of Itasca Co. road survey of 1922
for Bowstring road filed in Itasca Courthouse

↳ White pine 6" N65°W 49.8 feet

Balsam 19" N59½°E 95.7 feet

Searched 3 man hours but no evidence found ¹¹⁻⁹⁻⁶² RHM

17 P-21

Quarter Cor. Sec. 23-24

Orig Notes

Post found a very old squared scribed tamarack post marking corner.

Spruce 5" S81°E 36 Ls - 23.76'

Tam 4" N85°W 11 Ls - 7.26' - found decayed stump at record bearing & distance

Found a dead white pine 12" N87°E 29.6 Feet. Scribe visible 1/4 S24 visible

Spruce windfall S66°W 28.9' w/ scribe 1/4 S 23 visible,

These two BTs were recorded on ES Form

874-9 By Herbert Norman, Tech. Foreman in

Dec. 18, 1934 - Filed on Cut Coat dist. & in S.O.

12-10-63 R. McDonald

Found Plat and notes of Itasca County Surveyor from April 10 1929 in survey of Sand Lake township road.

Found two Gov't BTs and marked new White pine 7" N81°E 29.6 Feet (Now a 12" dead White pine N87°E true bearing 29.6 Feet scribe 1/4 S24 visible.)

Spruce 4" S58°W 28.9 Feet (Now spruce windfall scribed "1/4 S23" S66°W true bearing 28.9 Feet.)

R. McDonald
W. Okerman

7-2-63

Altogether
who

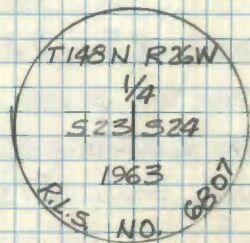
New B.T.'s

Tamarack 5" N16°E 132.0 MKd 1/4 S24 BT

Tamarack 6" N28 1/2°W 108.5 MKd 1/4 S213 BT

Steel sign post, 72" long, set 24" in ground with sign 54-23 & 54-4 attached due West 5.3 feet

Set a 2" inside diameter galvanized wrought iron pipe filled with concrete 5' long and capped with a 3" bronze tablet stamped -



R9-1150-4 by Olesen 1980 - new B.T.

Tam. 4" N81°E 38.4' MKd 1/4 S24 BT

Steel Sign Post South 20'

line to South posted to standard.

18

Quarter Cor. Sec. 13-24

Orig Notes

Post

Aspen 8" N81°W 23 LKs - 15.18'

Tam 8" S31°E 18 LKs - 11.88'

1920 B.C. Craig

Found Govt. BT's

Est.

W. Pine, 8" S81°W, 44.0'

Spruce, 6" S47°E, 129.6'

T148N R26W Sec 13 Subdivision

Inverse and Monumentation info to set

STA 4002, S. 1/4, Sec 13

STA 1st HAD 2nd HAD 3rd HAD 4th HAD H. Dist

H4

ES 4002 269-14-03 89-14-27 269-14-36 89-14-36

BS 58 00-00-19 180-00-28 00-00-46 180-00-59

T@ 57 269-13-44 269-13-59 269-13-50 269-13-51 445.94

445.94
945.94
1.60

Feb 27, 1984

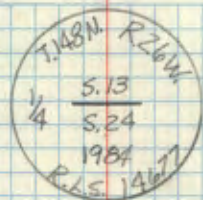
Clear, mild

PC G. Kosenko

G. Robertson

TVE SP 265189

REDA SP 4865



Searched for O.G.S. and 1920

B.C. Craig evidence at or around proportion distance. Nothing found. Area heavily cut over.

Corner position now set at proportionate measure

See Book 3, pp 70

From which:

Aspen, N32°E, 49.39 ft to 16d nail in

NW face,

Aspen, S53°E, 24.72 ft to 16d nail in

NE face,

Aspen, N31°W, 29.69 ft to 16d nail in

SW face;

19 J-23

Quarter Cor. Sec. 12-13

Orig Notes

Post

TAM 6" N4°E 23 LKs - 15.18'

TAM 4" S5°E 17 LKs - 11.22'

Chained from section corner to west 2640' (80ch) - entered tamarack swamp as shown in the original running notes at road distance

Notes of county road survey of 1913 by J.S. Swerts Co. Engineer

N. Pine stump 8" N1°35'W 60.9 feet - Found stump hole and pine roots at road distance N5°E

Tamarack 9" S37°43'E 46.0 feet - BT would fall in Ely no evidence

Abandoned road Ely to the south with fence line on Ely side & tree line on Nly side are 33.0 feet apart - the corner falls on this & extended Nly

Heidiavi RHM

8-1-63 - W. Okerman
J. Ekstrom

Set 6" diameter concrete monument 24" long 0.3' down, passed with a 2" diameter bronze tablet stamped

mon. set 6" below road surface

T145N E26W

1/512
4 513
E.S. 1963
E.S. NO.

New B.T.'s

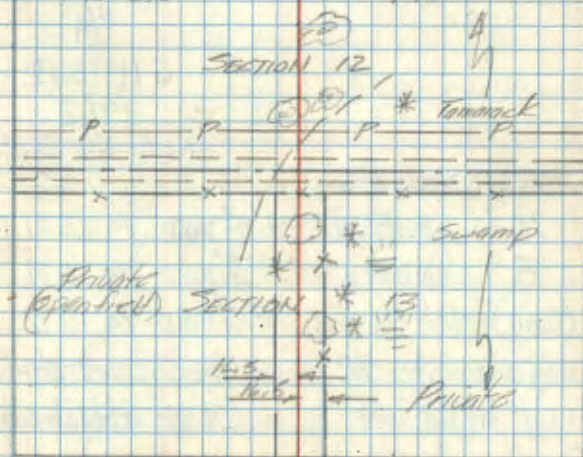
55' → Tamarack 10" N55°E 129.4 feet scribbled #512 BT
Tamarack 15" S48°E 129.4 feet scribbled #4513 BT
Recor Post 4x4x72" with top due North
720 feet with 2902 52-4-2 52-2 attached

7-21-83 B. Ausk G. Robertson D. Hurman
Both trees Bend 4x4 still in place
Picked up something in road w/ B.T.
1-5-84 B. Ausk G. Robertson found B.T.
opp about 4' below black top sue case
same monument as above

See BK 4 P. 24

Private

E.S.



& abandoned rd

W.O. Okerman

20 G-21

Quarter Cor. Sec. 11-12.

Orig Notes

Post (Found the orig. squared scribed
Post marking corner Scribed $\frac{1}{4}$ S11 & $\frac{1}{4}$ S12
Tam 8" N18°W 10 Lks - 6.60" (Now a
12" Tam stp. scribe mks visible)
Tam 6" N87°E 5 Lks - 3.30" (Now a
8" Tam. stump with part of scribe "BT" visible)

Set a 6" diameter 5 Foot Long cylindrical
concrete monument capped with a 3 inch
diameter bronze tablet stamped:-

T148N R26W
1/4
S11 | S12
1962
RLS NO 3628

From which bears

Cedar 10" S18°W 24.4' MKD $\frac{1}{4}$ S11 BTCedar 8" N85°W 27.3' MKD $\frac{1}{4}$ S11 BTCedar (Twin) 8" S28°E 72.6' MKD $\frac{1}{4}$ S12 BTSteel sign post 72 inches long set 24" in
ground w/ signs 54-2 & 54-9 attached

Duc East 6.1 Feet.

10-18-62 R.H.M. Donald

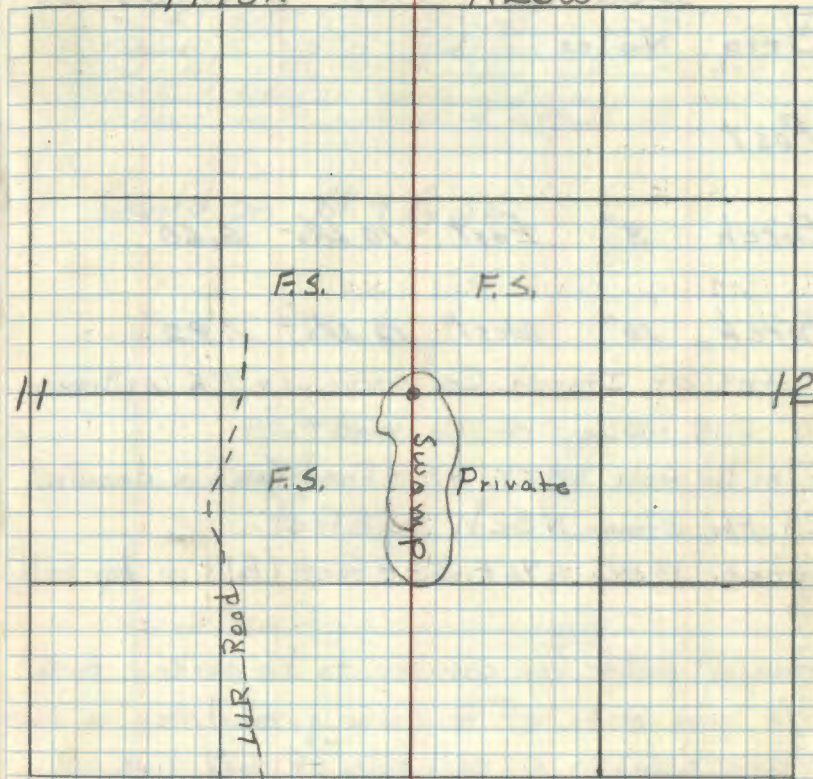
R9-7150-4 by Olsen 1960 - all O.K.

Affidavit RHM

8-19-63
ok'd by

T148N

R26W



July 18, 1983

G. Kosenko

B. Ausk

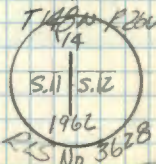
G. Roberts on

Recovered a 6" diam concrete mon w/ a
3" diam B/C stp. pt.

Both original Bts recovered

AN 1962 Bts recovered

See: T148N R26W BK3 pg 73



21 X-17

Quarter Cor. Sec. 34-35

Orig Notes

Post

Birch 8" East 10 Lks - 6.60'

Birch 10" West 12 Lks - 7.92'

Notes of Itasca Co surveyor F.E. Williams
in 1915 survey of Co. road #58

Elm 16 inch N87°W 45.8 Feet (Now a decayed

24" Elm stump N82°W 45.8 Feet

Spruce 18 inch S76°E 53.8 Feet (Falls in hay field)

Found point for corner to be marked by a
3/8" pin made of reinforcing rod driven in road.
Fence corners on each side of road line up
w/ corner

Set 6" diameter, 24" long cylindrical
concrete monument capped with a 3" diameter
bronze tablet stamped—



Ffidavit RHM

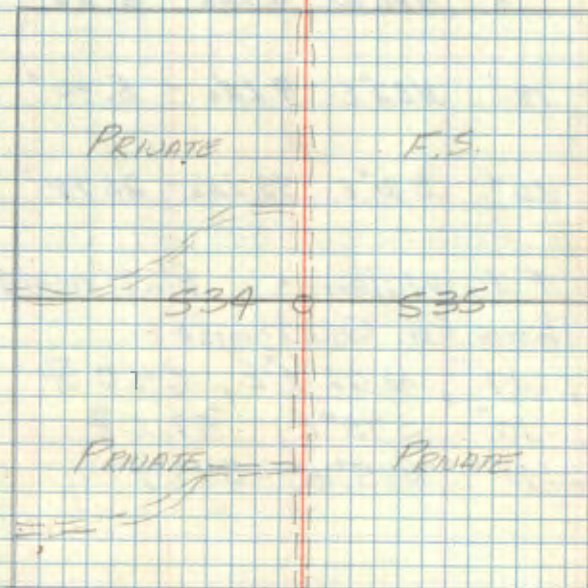
7-24-63

CERTIFICATE FILED

New B.T.'s

Elm 6" S49°E 35.9 feet capped 4535 BT
 W. Spruce 5" N82°W 44.9 feet capped X BT
 Birch 6" N25E 74.1 feet capped 4535 BT
 Cedar post 4x4x72" with red top due east
 20.1 feet with sign 34-4 attached

Cont'd on BK 4 P. 56



W.A. Okuma

23 V-19

Quarter Cor. Sec. 26-35

Orig Notes

Post

Spruce 9" N16°W 7 Lks - 4.62' (Now a
 stp hole w/some roots N16°W 4.62')

Spruce 9" S46°W 26 Lks - 17.16'

Notes of Itasca Co. Surveyor in May 1925
 during survey of Sand Lake township road.

White pine 7" South 20.6 feet (Now a 12" White
 pine S7°W 20.6' S35' visible)

Black Ash 6" N78°W 21.0 feet (Now a 10" Black
 Ash N72°W 21.0 ft. scribe overgrown.)

Found squared scribed post marking corner

Set a 2" inside diameter 5' foot long galvanized
 wrought iron pipe filled w/ concrete and capped
 w/a 3" dia. bronze tablet stamped: T148N R26W

$\frac{1}{4}$ S26
 $\frac{1}{4}$ S35

1962

RLS NO. 3628

Affidavit RHM

CERTIFICATE FILED

MKD New BTS

Black spruce 8" N18 $\frac{1}{2}$ °E 26.5' MKD $\frac{1}{4}$ S26 BTBlack spruce 5" S40°E 11.6' MKD $\frac{1}{4}$ S35 BTBlack Ash 8" S61°W 34.0' MKD $\frac{1}{4}$ S35 BT

Steel sign post 72" long set 24" in ground w/
 signs 54-2 & 54-4 attached due East 5.4 feet

11-8-62 G. A. McDonald

26

FR 2161

F.S.

F.S.

F.S.

Private

35

See: T148N R26W BK App. 53

24

Quarter Cor. Sec. 26-27

Orig Notes

Post

Spruce 12" N42°W 11 1/3 - 7.26'

N. Pine 18" S59°E 24 1/3 - 15.84'

Notes of Itasca Co. Surveyor FE Williams
in 1915 in survey of County road #58

White pine 11 inch S88 1/2°W 41.4 Feet

Birch 14 inch East 49.7 Feet

CERTIFICATE FILED

North	40.00	1/100	
	40.50	East	100 5000
	53.50		

25

R-17 Section Cor. Sec. 22-23-26-27

Orig Notes

Post

TAM 9" S21°W 12 Lks - 7.92'

TAM 11" S25°E 16 Lks - 10.56'

TAM 10" N25°W 4 Lks - 2.64'

TAM 10" N60°E 21 Lks - 13.86'

Notes of Itasca Co. Surveyor F.E. Williams in
1915, part of Sand Lake town road survey notes
on file in Itasca Co. Surveyors office.

Cedar 6" N55°E 71.5 feet (Now a 10" cedar scribed
"S23 BT" N62°E 71.5 feet)

Tamarack 7" S52½°W 50.8 feet - Found decayed
stump. S58°W 50.8 feet

Tamarack 6" N48½°W 74.5 feet

Set a 6" diameter, 24" long, cylindrical
iron pipe monument capped with a 5" diameter
bronze tablet stamped
(set 6 inches under road
surface.)

T 148 N R26W
S22 S23
S27 S26
1965
R.L.S. NO 6807

Affidavit RHW

7-25-63 - N

CERTIFICATE FILED

New B.T.'s

Tamarack 6" S45°E 39.7 feet scribed S26 BT
Tamarack 7" N70°E 21 feet scribed S23 BT
Spruce 5" N23°W 83.6 feet scribed S22 BT
Spruce 5" S75°W 75.1 feet scribed S27 BT
4x4x72" Cedar 4" post with 100 top due West
22.2 feet with sign 54-45 attached

W. D. Oleson

SEC 22

SEC 23

Private

Private

← Embury

SEC 27

SEC 26

F.S.

F.S.

4/11/78

STEPHAN & OLESEN

TOP OF MONUMENT BROKEN OFF &
OUT OF POSITION - NEED NEW MONUMENT.

See BK 4 Pg 58

26 R-19

Quarter Cor. Sec. 23-26

Orig Notes

Post

Tam 12" S86E 11 Lks - 7.26'

Spruce 7" N57E 18 Lks - 11.88'

Found a squared scribed post along side old fence corner from which an

ELM 18" N90W 36.3 FT this BT was found in 1934 by Tech Foreman Herbert Norman & recorded on FS 879-9 which is filed in S.O.

11-9-62 R.H.M.

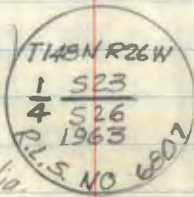
County road survey sand lake town - 1929

Elm 12" N34W 38.9' - Found

Elm 10" N13E 29.8' - Found

Found 1" ip. at record distances and new bearings

Set 2" dia 72" long galvanized wrought iron pipe filled with concrete and capped with a 3" dia bronze tablet stamped —



R. McDonald
W. Okerman

Affidavit
7-1-62
CERTIFICATE FILED

Elm (Co. BT) 17" N21E 29.9 ft rescribed
"BT" 38.9

Elm (Co. BT) 19' N27W 29.9 ft rescribed
"BT"

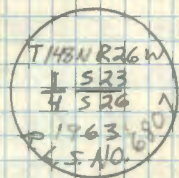
Elm 8" S60W 34.5 MKD 1/4 526 BT

72" steel sign post 24" in ground dug South 4.15 ft with signs 54-4 & 54-2 attached

Aug. 21, 1985 G. Robertson & B. Avsk (U.S.F.S.)

Recovered a 2 in outside diameter iron pipe with a 3/2 in diameter brass cap stamped as shown. Up 1.5 ft.

5° Decl.



From which:

1963 Elm (dead) 18.7" N25E 30.2' to a 1/2" nail on NW Face Single Blaze OVERGROWN w/wood spike

New Maple 6.2" S52W 51.55' to a 1/2" nail on SE Face Double Blaze 3/4" 1/4 526 BT" w/wood spike

1963 Elm (dead) 9.6" S62W 54.45' to a 1/2" nail on SE Face Double Blaze s.c. OVERGROWN w/wood spike

1963 Elm (dead) 19.6" N33W 38.79' to a 1/2" nail on SW Face Single Blaze scribe OVERGROWN w/wood spike

New Bot G. 7.4" N66W 16.89' to a 1/2" nail on SW Face Double Blaze s.c. 1/4 523 BT" w/wood spike

All Blazes & Ring Painted on Trees

Steel Sign Post 3.0' EAST w/54-2

Steel Sign Post 4.15' SOUTH w/54-2 & 4

27

P-17 Quarter Cor. Sec. 22-23

Orig Notes

Post

Balsam 10" S50°W 4 Lks - 2.64'

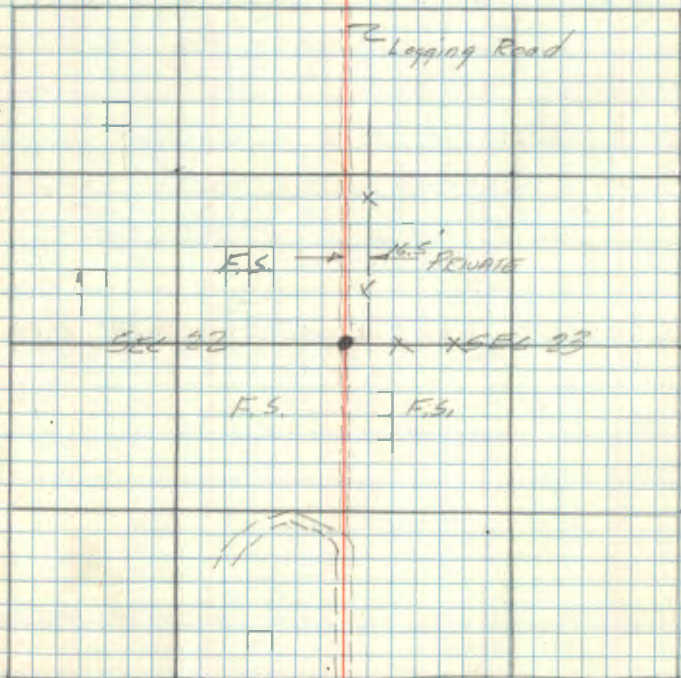
TAM 12" S75°E 17 Lks - 11.22'

Notes of Co road survey #58 by F.E. Williams
in 1915Balsam 5" S70°W 39.5 feet - Found remains
of stump S77°W at record distanceBalsam 7" N62°E 45.5 feet - Found remains
of stump N69°E at record distanceCorner falls in E of abandoned roadway
16.5 feet West of fence corner - attempt
going east and north

Affidavit RHM

8-1-63 W. Okerman
J. Ekstrom.Set 6" diameter cylindrical concrete monument 25.24
long capped with a 3" diameter bronze tablet
stamped -

New BT's:

White cap 5" S70°E 123 feet scribed N 523 BT
Balsam 8" N74°E 50.9 feet scribed N 523 BT
Corner Post 4x4x42" with 12V top die cast 15.1
feet with signs 540554-2 attached

W. Okerman

28

Quarter Cor. Sec. 2-11

Orig Notes

Post

Birch 12" S4°W 31 Lks - 20.46'

Maple 5" N23°E 23 Lks - 15.18'

29 C-17

Quarter Cor. Sec. 2-3

Orig Notes

Post

Aspen 12" N40°W 18 Lks - 11.88'

N. Pine 20" South 48 Lks - 31.68'

Searched 2 man hours in area around fence corner & white plantation post. no evidence.

Found 11-7-62 RHM

4-8-2003 ITASCA CO SEE CORNER CERT
SET 1/2" X 1 1/2' REBAR W/ 2 1/2" ALUM CAP.

SPRUCE 12" N60E 25.88' TO SPK

SPRUCE 9" S36E 36.95' TO SPK

SPRUCE 8 1/2" S65W 72.38' TO SPK

30 A-17

Closing Corner Sec 2-3
3.00 Chains East of Stand-
ard Corners 34-35

Orig Notes

Post.

Cedar 12" S63°W 6 lks - 3.96'

Spruce 2" S43°E 12 lks - 7.92'

Searched 4 man hours in cedar swamp 1/2
mile north of fence cor. 11-7-62 RHM

9-9-1991 ITASCA CO SEE CORNER CERT
SET 5' X 3/4" ROD MONUMENT W/ 3/4" ALUM CAP.

CEDAR 7" N10E 23.72' TO SPK

CEDAR 7" S52E 23.34' TO SPK

CEDAR 6" S70°W 30.61 TO SPK

Quarter Cor. Sec. 33-34

Orig Notes

Post

N. Pine 8" N43°W 3 LAs - 1.98'

Birch 5" S27°E 8 LAs - 5.28'

32

Section Cor. Sec. 27-28-33-34

Orig Notes

Post

Aspen 7" S55°W 20 LHs - 13.20'

Aspen 4" N65°W 20 LHs 13.20'

Aspen 5" N24°E 4 LHs - 2.64'

Birch 6" S45°E 19 LHs - 12.54'

Meander Cor. Sec 27-34
East shore Mushgee Lake.

Orig Notes

Post

Tam 6" N87°E 3.09 Lks - 2.03'

Tam 4" S88°E 3.05 Lks - 2.01'

From corner of Secs 27-34-26-35 14.9 chs (983.1)

Meander Cor. Sec. 27-34
West shore Mushgec Lake

Orig Notes

Post

tan 12" S88°W 2.19 LKs - 1.44'

tan 12" N24°W 2.22 LKs - 1.46'

35 T-13

Quarter Cor. Sec. 27-28

Orig Notes

Post

Tan 8" S78°E 5 LAs - 3.30'

Tan 6" N49°W 14 LAs - 9.24'

Searched 3 man hours - Found old F.S. poster
on 8" cedar & small stake marking corner.
Poster not readable. About 60' South found
F.S. poster which I had put up in 1951
by chaining North from Sec. cor. 27-28-33-34.
No orig. evidence was found. 12-19-62 RAM

36 R-13

Section Cor. Sec. 21-22-27-28

Orig Notes

Post

Aspen 5" S30°W 25 Lks - 16.50'

Aspen 12" N30°E 7 Lks - 4.62'

Oak 9" N27°W 7 Lks - 4.62'

New W. Oak 18" N27°W 4.62' 9/81 ~~4.90~~

Aspen 12" S70°E 3 Lks - 1.98'

Searched 2 man hours by chaining south from
Rush Island Lake - found blue line - No orig.
evidence. 12-19-62 RHM

4/11/78

STEFAN & OLESEN

OLESEN CHAINED SOUTH 3-4 YEARS AGO
& THOUGHT HE HAD OAK B.T. QUITE
POSITIVE THIS IS N.W. B.T., WILL
SEARCH FOR POST POINT & ASPEN
WHEN GROUND NOT SNOW COVERED.

MES

To perpetuate this corner I set
a 2" x 5' gal lion pipe with Brass Cap.
marked

T148N R26W

521 | 522

528 | 527

1981

ALS 14677

From which bears

W. Oak 18" N27°W 4.62'

original

W. Oak 5" N80°W 51.32'

W. Spruce 4" S45°W 70.05'

W. Oak 4" S23°E 41.79'

W. Oak 8" N9°E 65.19'

for detailed information see ~~book~~ book #3, page 2
T148N R26W at Deer River

Sept. 1981 Ronald Olsen

Certificate Filed 3-2-83

Doc # 356144 (D)

See BK 3, 113

Quarter Cor. Sec. 22-27

Orig Notes

Post

Aspen 14" S5°E 12 LKs - 7.92'

Spruce 6" N17°E 22 LKs - 14.52'

38 p-13

Quarter Cor. & Meander
Cor. Sec. 21-22, North
shore Rush Island Lake.

Orig Notes

Post

Aspen 12" N22°W 20 Lks- 13.20'

Tom 6" N46°E 22 Lks- 14.52'

Searched 2 man hours in area shown on
timber type map, no evidence of orig. corner
was found. an old rail fence line was
found running North from lake at this
location. 12-19-62 RHM.

CERTIFICATE FILED

39

Bass Lake

N.B Meander Cor Margin of Lake &
Section Cor. Sec. 15-16-21-22.

Orig Notes

Post

TAM 8" N43°W 28 Lks - 18.48'

TAM 5" S70°W 15 Lks - 9.90'

TAM 45" S22°E 128 Lks - 84.48'

TAM 5" N1°E 79 Lks - 52.14'

Haseo County notes

Ron Murphy found 3/4" I.P. at this
location. No more information.

CERTIFICATE FILED

40 L-13

Quarter Cor. Sec. 15-16

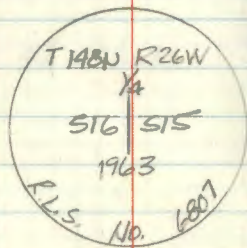
Orig Notes

Post - Found point underground top nearby - also
a recent post (keys?) one foot away

Birch 9" S 63° E 11 1/2' - 7.26' - Found
stump hole at record bry & distance

Birch 9" S 52° W 15 1/2' - 9.90' - Found
decayed stump at record bry & distance.

Set a 2" inside diameter galvanized steel
post ^{60"} 72" long, filled with concrete & capped
with a 3" diameter bronze tablet stamped



New BT's:

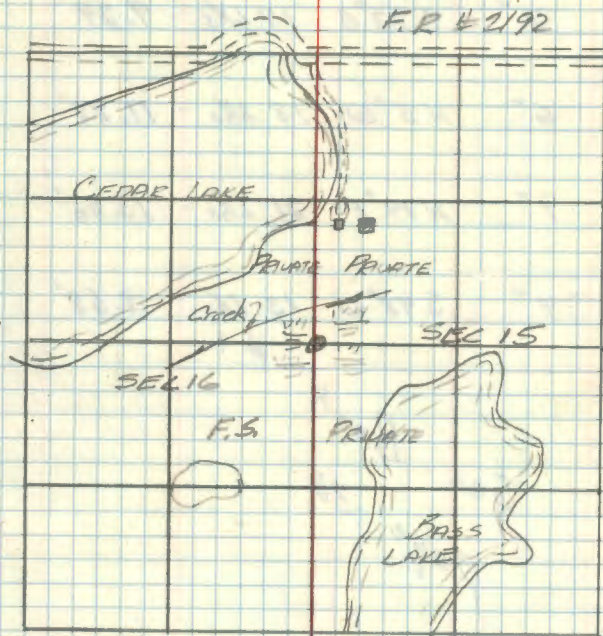
Cedar 11" S 91° W 39.0 feet scribed 1/4 S16 BT

Cedar 8" N 26° E 21.5 feet scribed 1/4 S15 BT

Steel sign post 72" long Due West 4.8 feet
with signs 54-4 & 54-2 attached

Affidavit RHM

7-12-63 W. Okerman
J. Ekstrom



W. Okerman

Section Cor. Sec. 9-10-15-16

Orig Notes

Post

Aspen 7" S73°E 14 Lks - 9.24'

Aspen 6" N5°W 18 Lks - 11.88'

Aspen 9" N14°E 21 Lks - 13.86'

Cedar 4" S48°W 13 Lks - 8.58'

#1

See Book
Page 30

Quarter Cor. Sec. 3-4

Orig Notes

Post

Aspen 8" S79°E 1.22 1/4s-

Maple 5" South 4/ 1/4s-

Closing Corner Sec 3-4
 2.50 Chains East of Sec
 33 - 34

Orig. Notes:
 Post:

B.M. 9" S55°E 6 Lks - 3.96'

Aspen 7" S49°W 29 Lks - 19.14'

44 V-11

Quarter Cor. Sec. 28-33

Orig Notes:

Post

Linn 8" S60°W 11 1/2 - 7.26'

Aspen 12" N37°W 3 1/2 - 1.98'

Found a County Iron monument with
Aluminum Cap stamped: T148 R26

$\frac{1}{4}$ $\frac{S28}{S33}$

This resurvey by Itasca Co. Surveyor
Sam Benzing IN 1957. New Co. BTs -
Basswood
Maple

45 V-9, 10

Meander Cor. Sec. 28-33
East Shore Sand Lake.

Orig Notes

Post

N. Pine 20" N13°E 70 Lhs - 46.20'

N. Pine 20" S15°E 18 Lhs - 11.88'

Found an iron pipe marking corner. this
set by Itasca Co. resurvey.

46

Quarter Cor. Sec. 16-21

orig Notes

Post

Birch 8" S7°W 13 Lhs - 8.58'

Birch 10" N5°W 31 Lhs - 20.46'

CERTIFICATE FILED

Quarter Cor. Sec. 9-16

Orig Notes

Post

Aspen 10" N58°E 60 Lhs - 39.60'

N. Pine 16" S16°E 61 Lhs - 40.26'

1913 Siverts On record in
Itasca Co Courthouse

Poplar, 18", N35°W, 42.0 ft

Birch, 14", S7½°W, 48.0 ft

48

Quarter Cor. Sec. 8-9

Orig Notes

Post

Tam 8" N65°E 27 Lks - 17.82'

Tam 2" S80°W 20 Lks - 13.20'

49 E-9

Section Cor. Sec. 4-5-8-9

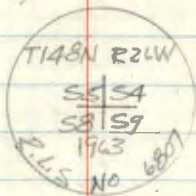
Orig Notes

Post

No "B.T.s"

Found original squared scribed post on westerly edge of roadway. Post badly decayed at water line

Set 2" inside ^{60" long} diameter galvanized steel monument filled with concrete and capped with a 3" bronze flange stamped



Tamarack 8" S51°W 23.7 feet scribed 38 BT
 Tamarack 11" N18°W 13.7 feet scribed 35 BT
 Tamarack 9" N71°E 27.7 feet scribed 34 BT
 Tamarack 5" S14°E 32.6 feet scribed 39 BT
 Steel post 72" long due West 5.8 feet
 with 5190 54-4 attached

Affidavit

W. Okerman 8-1-63
J. Ekstrom

W. Okerman

50 E-11

Quarter Cor. Sec. 4-9

Orig Notes

Post

No. Pixe 8" N89°E 3.80 Lhs 250.80'

7-30-63 W. Okerman & J. Ekstrom

Chained East from corner of 54-8-9

2670'± into cranberry bog - found small
tamarack (only tree) with location poster
of 1935 no bearing or distance given.

Searched several man hours, could not
find t.t. (stung by wasps) area well
burned over.

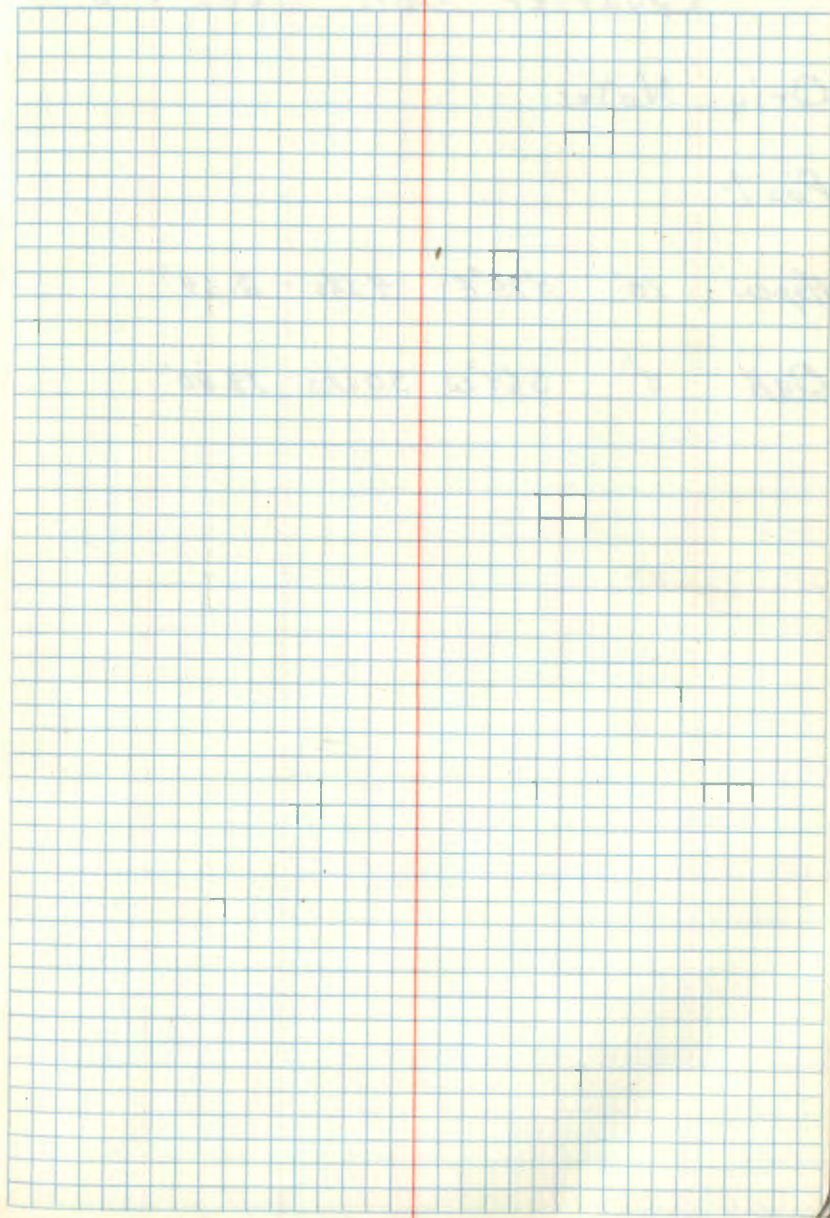
Closing Cor. Sec. 4-15
 259' East of Std. Cor. Sec.
 32 & 33

Orig Notes

Post

W. Pine 10" N69°W 54 Lks - 35.64'

W. Pine 16" S11°W 138 Lks - 91.08'



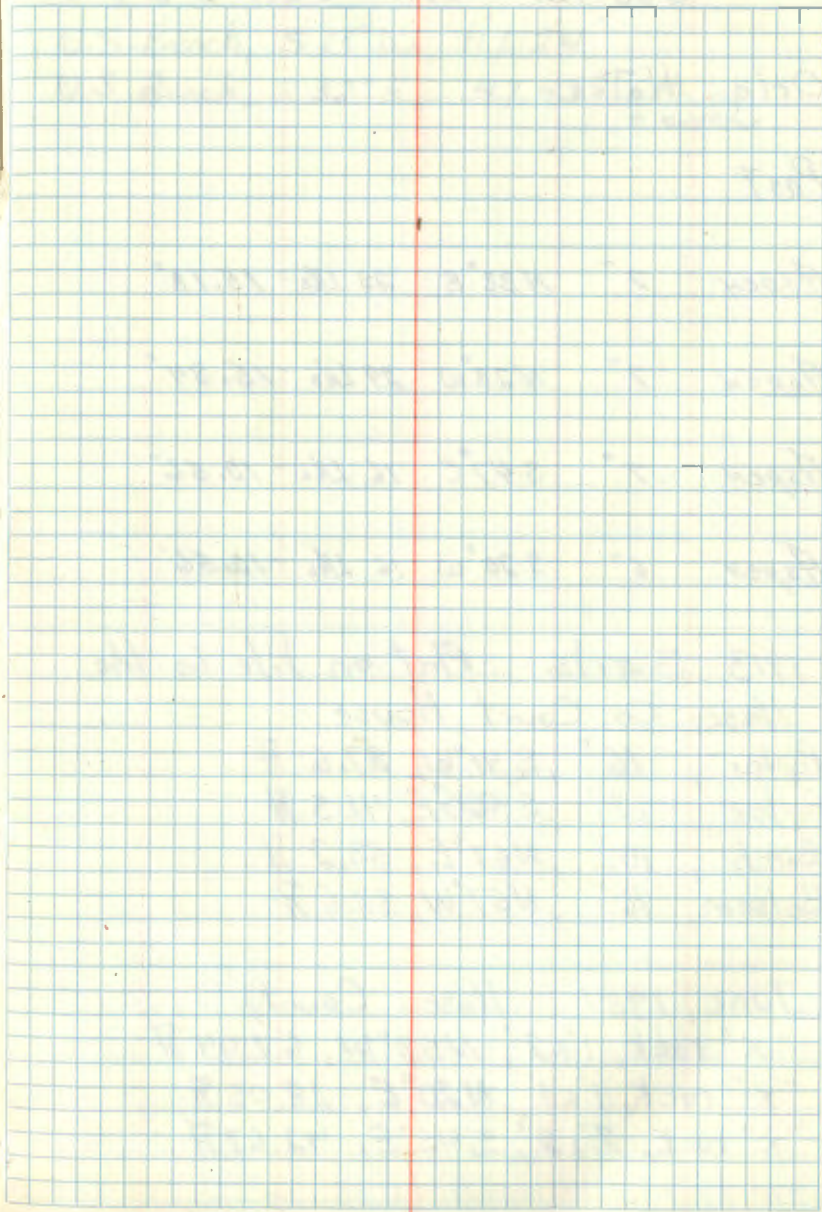
Quarter Cor. Sec. 7-8

Orig Notes

Post

Aspen 10" N75°E 14 Lks - 2.64'

Oak 8" S64°W 30 Lks - 19.80'



Section Cor. Sec. 5-6-7-8

Orig Notes

Post

Aspen 7" N32°E 23 Lks - 15.18'

Aspen 7" N23°W 24 Lks - 15.84'

Aspen 7" S47°E 16 Lks - 10.56'

Aspen 6" S20°W 16 Lks - 10.56'

1913 Siverts Plat on file in the
Itasca Co. Court House

Poplar, 16" S41°W, 87.6 ft

Poplar, 12" S56½°E, 41.3 ft

Birch, 10" N67°E, 53.2 ft

Balsam, 16" N57°W, 38.6 ft

June, 1981 Itasca County

"X" rock, 1'x2', N58°W, 67.04 ft

"X" rock, 1'x1', N20°E, 28.03 ft

"X" rock, 2'x2', S45°E, 42.67 ft

U.S. Bench, S13°W, 117.24'

U.S. Bench, S32°E, 47.43' cntr. on
+ arrow

54 E-7

Quarter Cor. Sec. 5-8

Orig Notes

Post

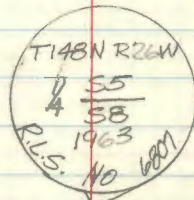
W. Pine 16" N3°W 63 Lks - 41.58' - Falls
in old roadway

Oak 12" S16°W 40 Lks - 26.40' -

Found Oak stump at record bearing &
distance

Corner falls 33' north of corner fence post
of fence line running south, very old fence
line - also lines up with E of road's
running West & North

Set 6" diameter, 60" long cylindrical concrete
monument capped with a 3" bronze tablet
stamped -



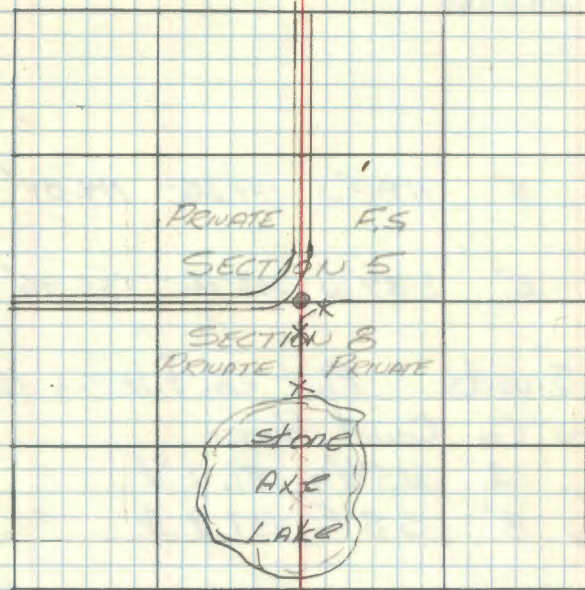
New B.T.'s

Maple 5" N82°E 22.6 feet scribed 1/4 55 BT

Maple 6" S20°W 23.2 scribed 1/4 58 BT

Center Post 4x4x72" due North 48 feet with signs 4-4 & 5-2
attached

Affidavit Ram

7-31-63 - W. Oberman
J. Ekstrom

W. Oberman

Quarter Cor. Sec 6-7

Orig Notes

Post

Birch 8" N88°W 174 Lks 114.84'

Balsam 6" S84°W 206 Lks 135.96'

1913 Siverts Plat on file in the
Itasca Co. Court House

Poplar, 12", N5½°W, 81.0 ft

Poplar, 8", S8°E, 37.8 ft

56 C-5

Quarter Cor. Sec. 5-6

Orig Notes

Post

Tam 4" S42°E 37 Lks - 24.42'

Tam 3" S87°W 38 Lks - 25.08'

From Plat of White Fish Lake road survey
in 1917 by Dep. County Surveyor B. Craig.
Plat filed in Co. Surveyors office - Itasca.
Found Govt. Post

Spruce 4" N86°E 46.5 feet - Found 9" spruce
S87°E at record distance scribe 1/4 55 visible

Spruce 3" S69°W 69.6 feet - Found 6" spruce
S77°W at record distance scribe 1/4 56 visible

Found scribed, squared post marking
corner

Set 2" inside diameter 60" long galvanized
steel monument capped with a 3" diameter
bronze cap stamped -

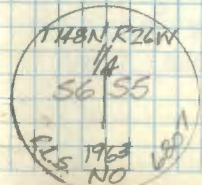
J. Ekstrom 7-3-63
W. Okuma

Affidavit RAM

New BT's:

Black spruce 2" N20°W 18.7 feet scribed 1/4 56 BT
Black spruce 6" N71°E 10.3 feet scribed 1/4 55 BT
Set steel 5/8" post due South 8.0 feet with signs
54-2 & 54-4 attached

W. Okuma



57 A-5

Closing Cor. Sec. 5-6

Orig Notes 190.08' East of Std
Cor. to Sec's 31-32

Post - (Found very old scribed post believe to
be original.)

Tan 8" S88°E 212 Lks 139.92'

Cedar 6" N69°E 148 Lks 97.68'

From a plat of White Fish Lake road survey
in 1917 by Dep. County Surveyor B. Craig
Found Gov't post. (Same I found.)

MXD NEW
Spruce 6" S44°W 49.4 Feet

Poplar 8" S68°E 51.0 Feet Now a 14" ^{SNAG} Aspen
w/ scribe partly overgrown S61°E 51.0 Feet

Set a 2" inside diameter, 5' long galvanized
wrought iron pipe filled with concrete and
capped w/ a 3" dia. bronze
tablet stamped:-

1962
T149N R26W
S32
56 | 55
C | C
T148N R26W
RLS NO 3628

Affidavit RHM

sketch
6-27-63

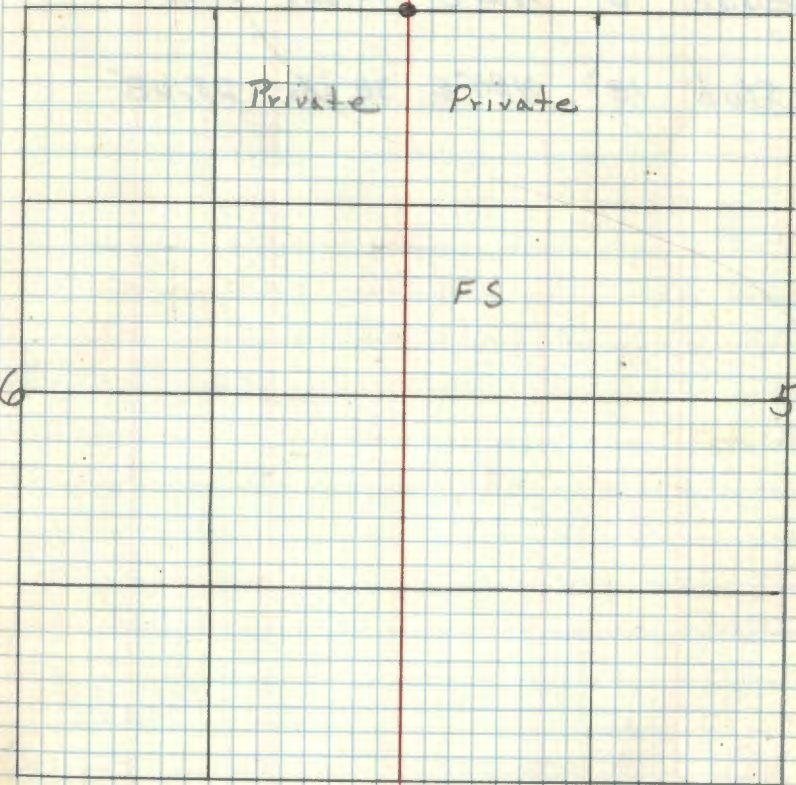
New BTs

Black spruce 10" S58½°E 81.9' MKD S 5 BT

Black spruce 10" S14°W 117.7' MKD S 6 BT

Steel sign post 72" long set 24" in ground w/
Sign 54-4 attached due East 5.6 Feet

12-27-62 RHM Donald



Quarter Cor. Sec. 30-31

Orig Notes - East true Line
55.60 chains to Cor.

Post

Cedar 6" N25°E 45 Lks - 29.70'

P. stub 18" N88°E 38 Lks - 25.08'

59

T149 N R26 W

Standard Quarter Cor. Sec 35

Orig Notes

Post

Cedar 9" N42°E 15 Lks - 9.90'

Birch 7" N70°W 18 Lks - 11.88'

60

T149 N R26 W

Standard Quarter Cor. Sec 34-35

Orig Notes

Post

Cedar 9" N67°E 9 Lks - 5.94'

Tamarack 9" N83°W 15 Lks - 9.90'

61

T149 N R26 W

Z-15 Standard Quarter Cor. Sec. 34

Orig Notes

Post

Spruce 5" N42°E 34 Lts - 22.44'

Spruce 5" N30°W 5 Lts - 3.30'

Searched 4 man hours, No evidence of
orig. corner was found 11-29-62 RHM

62

T149N R26W

Z-13 Standard Cor. Sec. 33-34

Orig Notes

Spruce 9" N60°W 32 Lts 21.12'

Bol. Mild 7" N31°E 34 Lts 22.44'

Searched 4 man hours No evidence was
found. Search area found by chaining East
from 1/4 Sec. 33. In old cut over ground (Cedar)
at foot of high ridge on East side of ridge.
11-28-62 RHW

9-21-81 CK-GB-JA

CHAINED EAST FROM S 1/4 SEC. 33 WHICH IS F.S.
BRASS CAPPED IRON PIPE - CHAINED 2640'E
SEARCHED FOR ORIG. EVIDENCE + NOTHING FOUND
CHAINED N4E + 1994' Fd. COUNTY MC, 250' EAST
BEARING SHOULD HAVE BEEN RUN N1E TO MC,
RESTORED M.C. THEN RAN S11W BACK TO SEC. COR.
1994' AT INTERSECTION OF BOTH DISTANCES
WE SEARCH AGAIN FOR ANY EVIDENCE NOTHING FOUND
WE ESTABLISH APPROX. SEC. COR + PUT FSLP ON
2" MAPLE AS APPROX. STD. SEC. COR.
SEARCH TIME 3HRS.

63

T149N R26W

Standard Quarter Cor. Sec. 33

Orig Notes

Post

Birch 10" N14°E 11 Lks - 7.26'

Aspen 9" N1°W 40 Lks - 26.40'

See T149 R26 Book 1 page 32

64 T149N R26W
Z-9,10 Meander Cor. Sec 33
East Side Little White Fish
Lake

Orig Notes

Post

Yellow pine 9" S40°E 9 Lhs - 5.94'

Yellow pine 10" N28°W 19 Lhs - 12.54'
(Now a pine stump N28°W 12.54 Feet.)

From notes of a record survey by Itasca Co
Surveyor L.W. Johnson in 1918

Yellow pine stump 7" N16°W 22.2' (Now a 15" Red
pine N9°W true, 22.2 Ft. with scribe ptly. overgrown)

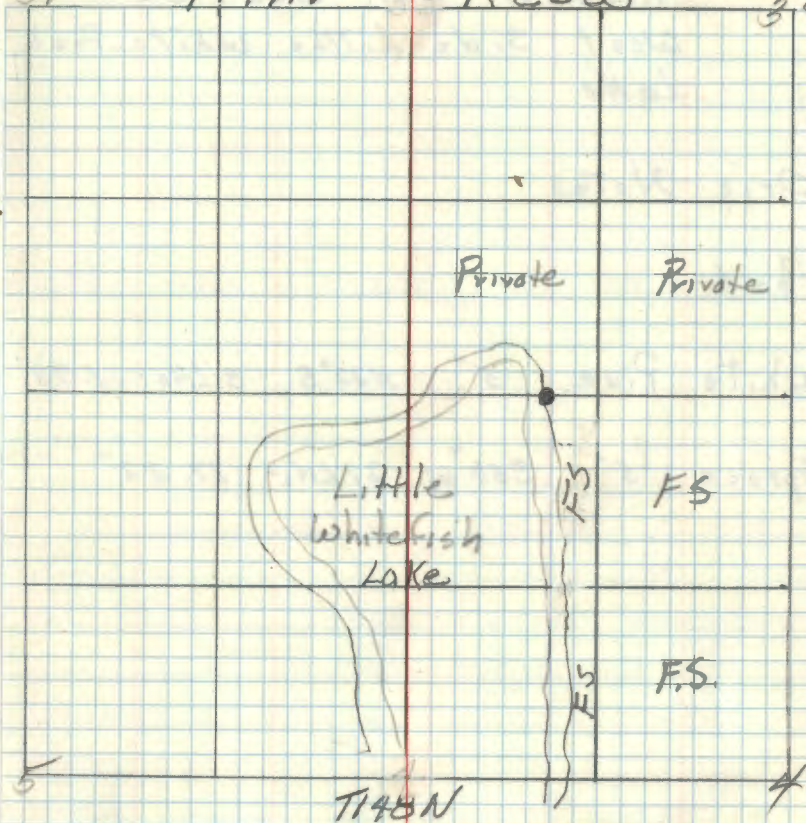
Gov't. pine stump 15" S53°E 6.0' (Now a 20" Red
pine S46°E True 6.0 Ft.)

At point for corner, set a 2 inch inside
diameter, 5 foot long galvanized steel pipe
filled with concrete and capped with a 3 inch
dia. bronze tablet stamped:

T149N R26W
MC/S33
S4
T148N
1962
RLS NO 3628

Affidavit Form

32 T149N R26W 33



Red pine 15" N9°W 22.2 Feet rescribed "BT"
Cedar 8" S1/2°W 29.0 Feet mko MC BT
Steel sign post 72" long with F.S. standard signs
54-2 & 54-4 attached set west 4.2 Feet.

[Signature]

See: T148N R26W BK 4, pg 17

65

T149N R26W

Meander Cor. Sec 33

West Side Little White Fish
Lake

Orig Notes

Post

White Pine 5" N22°E 3 Lks - 1.98'

Spruce 5" S50°W 27 Lks - 17.82'

66

T149N R26W

Standard Cor. Sec. 32-33.

Orig Notes

Post

White Pine 9" N25°E 112 Lks- 73.92'

White Pine 9" N48°W 108 Lks- 71.28'

67

T149 N R26W

Quarter Cor. Sec. 32

Orig Notes

Post

Sugar³ 8" N63°E 47 Lks 31.02'

White Pine 12" N24°W 79 Lks - 52.14'

68

T149N R26W
2-5 Standard Cor. Sec. 31-32

Orig Notes

Post

Tamarack 7" N85°E 4.30?

From White Fish Lake road survey of 1917
by Dep. County Surveyor B. Craig - Plat
filed in surveyors office Grand Rapids.
Found post which checked w/ cor. of 5-6.

Poplar 8" N14°E 51.5 Feet (Now 24" Aspen N22E
10.5 Ft. No scribe - doubtful + vice.)

Poplar 10" N22°W 51.5 Feet (Now a 14" Aspen
wind fall partly decayed N15°W True 51.5 Ft. scribe
"T149" visible

Checked distance East to closing corner
sect's 5-6 is 190.08 Ft.

H. Fidavit RHM

ok
6-27-63

Set a 2" inside diameter 5 foot long galvanized
wrought iron pipe filled w/ concrete & capped
w/ a 3" dia. bronze tablet stamped -

T149N R26W

S	C
531	532

1962
RLS NO 3628

Tamarack 8" N24°W 110.0 Ft. MKD S 31 BT
Black spruce 4" N27°E ^{47.5} 32.2 Ft. MKD S 32 BT
Steel sign post 72" long set 24" in ground
w/ signs 59-25 59-4 attached due West ²² 6.0 Ft.
12-27-62 R.H. McDonald

69

T149N R26W

Z-3 Quarter Cor. Sec. 31

Orig Notes

Post

Spruce 5" N15°W 131 Lks 86.46'

Cedar 5" N18°E 232 Lks 153.12'

Chained West From std. corner the
called dist. searched 3 man hours but no
orig. evidence was found 1-3-63 ~~AM~~

70

STANDARD

Z-1 TOWN Corner Range 26-27
Sections 31-36

Orig Notes

Post

Elm 14" N59°W 21 Lks - 13.86'

Burr Oak 15" N10°E 29 Lks - 19.14'

Chained West From Std. Cor. Secs 31-32
and came 200' North of F.S. poster of
1937 which is approx std Cor. Searched
area 4 man hours no orig. evidence was
found 1-3-63 R.H.M. Donald

71 G-1

South $\frac{1}{16}$ Corner Sections 19-24 | R26-27W
 from notes of Itasca County Road survey
 filed in County surveyors office.

△ iron monument (Found a △ shaped iron
 rod marking corner.) Squared scribed post along
 Tamarack 8" NO $\frac{1}{2}$ E 13.40 feet (Now a 10" tam. stp
 N 19° E 13.4 feet scribe "BT" visible.)
 Cedar 12" S 13° W 12.40 feet (Now a 12" cedar
 S 22° W 12.4 feet scribe "S $\frac{1}{16}$ " visible.)

Set a 6" diameter 5 foot long cylindrical
 concrete monument capped with a 3" dia.
 bronze tablet stamped:

T198N
 R27W R26W
 S $\frac{1}{16}$
 S24 | S19
 1962
 RLS NO 3628

Cedar 9" N 21 $\frac{1}{2}$ ° W 42.15 feet mxd S $\frac{1}{16}$ S24 BT
 Cedar 8" S 36° E 31.25 feet mxd S $\frac{1}{16}$ S19 BT
 Steel sign post 72" long set 24" in ground w/ signs
 54-2 & 54-4 attached due north 5.18 feet.
 12-13-62 R.H. McOmaha

Set a Steel post 8' long south 2.8' w/ sign
 RA-7150-4 by Jensen 1980

Affidavit RHM

R27W

R26W

24

FS

Private

FS

Private

Bend

119
Sand Lake

1/4 Corner Sections 16-21
Notes of original Gov't survey 1875
Post
Birch 8" S 7° W 13 Links (8.58')

Birch 10" N 5° W 31 Links (20.46')

See page 46 This Book

CERTIFICATE FILED

73 F-3

Center North $\frac{1}{16}$ Section 7

Notes of Itasca County surveyor in
1926 on file in surveyors office Itasca
Co. Courthouse

Iron monument found ^{1" dia. iron pipe} in place marking corner

Cedar 6" $S55^{\circ}E$ 16.2 Feet (Now 10" Cedar stp.
^{True bearing} $S52\frac{1}{2}^{\circ}E$ 16.2 Ft. Scribed BT.)

Tamarack 7" $S72^{\circ}W$ 17.9 Feet (Now a 8"

Tam. $S79^{\circ}W$ True bearing 17.9 Ft. scribed $\frac{1}{16}$
#2 BT)

Found a squared scribed wood post beside pipe.

Set a 2" inside diameter 5 foot long galvanized
wrought iron pipe filled w/ concrete and
capped with a 3" dia. bronze tablet
stamped:-

T148N R26W

$$\begin{array}{c} c \\ N \frac{1}{16} | S7 \\ c \end{array}$$

1962

RLS NO 3628

Cedar 6" $N28^{\circ}E$ 8.0 Feet MKD CN $\frac{1}{16}$ S7 BT

Cedar 7" $S65^{\circ}W$ 18.6 Feet MKD CN $\frac{1}{16}$ S7 BT

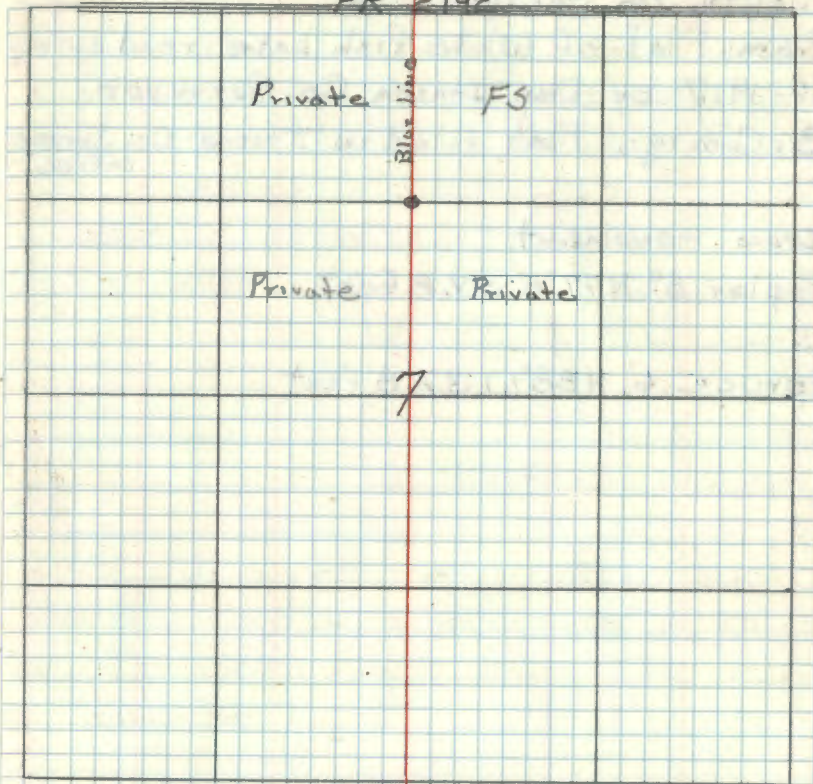
Steel sign post 72" long set 24" in ground w/
signs 54-2 & 54-4 attached due East 7.13 Ft.

12-21-62 G.H. McDonald

Affidavit RHM

Shells
12-20-62

FR 2192



South $\frac{1}{16}$ Section 5-6
From Plat of White Fish Lake road survey
of 1917 by Dep. Itasca Co. Surveyor
B. Craig, Plat filed in Itasca Co. Surveyor
office.

Iron monument

Poplar 8" N77°E 59.8 feet

Spruce 6" N88°W 37.8 feet

75 R-20

East $\frac{1}{16}$ Corner Sections 23-26

From notes of Itasca County road survey of 1926 For Sand Lake Town road. Survey Filed in Co. Surveyors Office.

Cedar Stump 10" N88°W 37.5 Feet. (New a Cedar stump tipped by bulldozer N85°W 37.5 Ft.)
Cedar stump 8" S50°W 52.3 Feet. (New a 8" Cedar stump scribed "BT S56°W 52.3 Ft.)

Set a 6 inch diameter, 24 inch long cyl. concrete monument capped w/ a 3 inch diameter bronze tablet stamped

T148N R26W

E1/16 S23
S26

1963

RLS NO 3628

Spruce 8" S74 $\frac{1}{2}$ °E 69.0 Feet $\frac{1}{16}$ E1/16 S26 BT

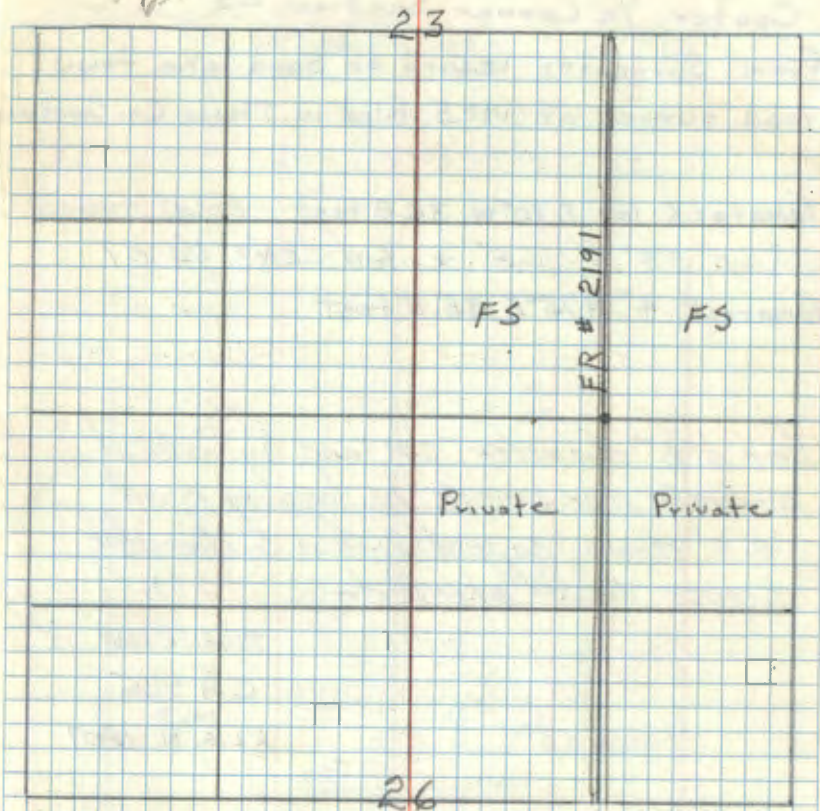
Granite boulder 3.0' x 3.0' x 2.0' N11°W 125.5 marked "X" on top center.

Cedar post 4" x 4" x 72" long, set 24" in ground w/ 6 1/8" x 54-2' x 54-4' attached due West 25.25 Ft.

5-14-63 *William Donald*

Affidavit *EM*

okunho
 6-19-63



See BK 4 Pg 47

76 T-23

Center 1/4 Corner Section 25

From Surveyors record of Sand Lake town
road survey of 1925 filed in Itasca Co. Courthouse

Tamarack 6" S70°W 36.8 feet - Found tamarack
stump S71°W-36.8' scribed CENT 1/4 BT

Tamarack 4" N75°E 35.5 feet

Set a 6" diameter 24" long cylindrical
concrete monument in logging road.
0.5' down, capped with a 3" diameter
bronze tablet stamped-

T148N R26W
C 1/4 S25
1963
R.L.S. NO 6807

New B.T.'s -

Cedar 6" N79°E 32.2 feet scribed C 1/4 S25 BT

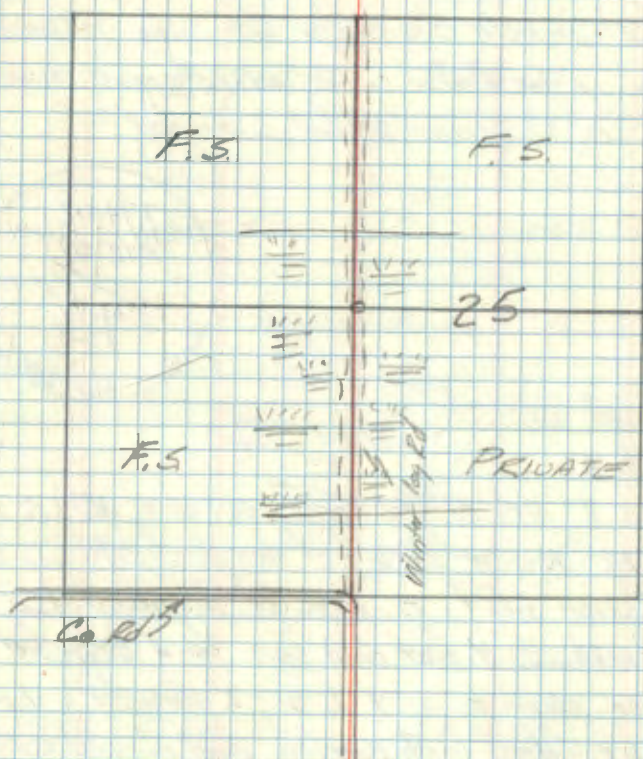
Cedar 6" due West 18.6 feet scribed C 1/4 S25 BT

Steel sign post 79" long due east 6.6 feet
with signs attached

W. D. Perma

Affidavit RHM

7-19-63 - W. Okerman
R. Mc Donald



77

E, F-1

Meander Corner between Sacs 7 & 12 on the
North side of Boustring River

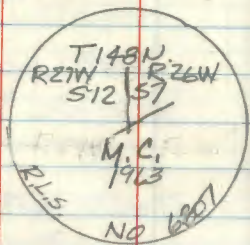
Original Notes

Br. Oak 5" S67°W 30 1/2 (19.8') - Fd

Oak snag S77°W 19.8 feet

Fd ^{squared} post believe to be original also 1" i. p. alongside

Set 2" inside diameter 60" long galvanized
steel pipe filled with concrete and capped
with a 3" bronze tablet stamped -



New B.T.'s:

Br. Oak 7" S61°W 44.0 feet scribed M.C. S12 B7

Oak 14" N48°W 24.5 feet scribed M.C. S12 B7

Steel sign post 72" long, 24" in ground Due

North 34.4 feet with sign 4'-4" attached

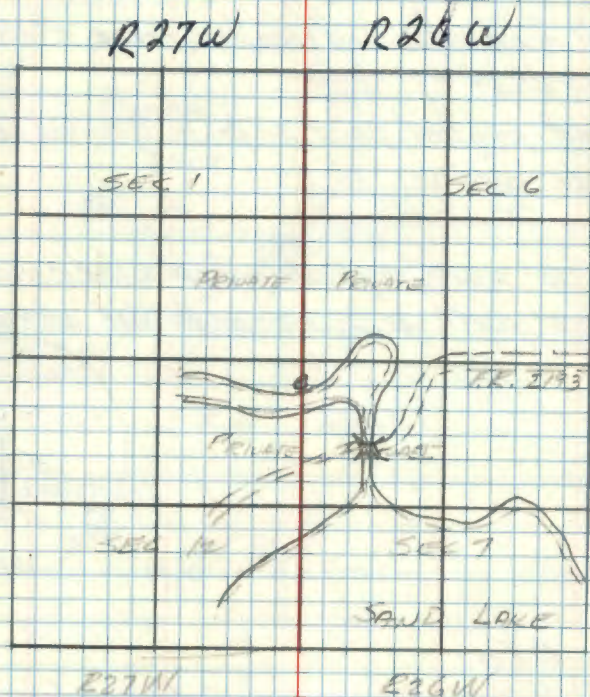
Section corner to 6, 7, 1, 12; 2" diameter galvanized
pipe filled with concrete and capped with
a 3" bronze tablet stamped -

Due North 50.1 feet

T148N
S14 S6
S12 S7
R27W R26W
1963
E.L.S. NO 6807

affidavit RHM
CERTIFICATE FILED

9-16-63 W. Okeman
J. Ekstrom



W. Okeman
J. Ekstrom

78 J, K-13

M.C. between Secs 15 & 16 on S.W. shore
of Cedar Lake

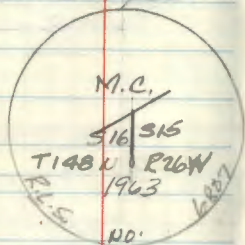
Original Notes:

Aspen 8" N80°E 51ks - Not found

B. of Cedar 4" S66°W 111ks - Found snag
with BT visible and window blaze above
with scribed wood inside, loose, of record
big & dist

Found pointed post ship in ground believe
to be original

Set 6" x 60" cylindrical concrete monument
capped with a 3" bronze tablet stamped -

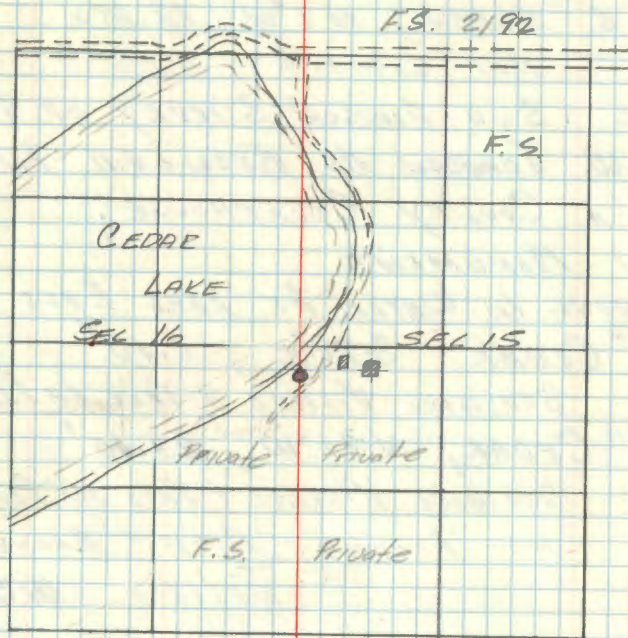


New BT's:

Cedar 13" N55E 37.1 feet scribed M.C. 515 BT

Cedar 9" N47W 20 feet scribed M.C. 516 BT

Steel sign post 72" long S19°W 5.4 feet
with sign 54" attached

Affidavit ^{RM}8-13-63 W. Okerman
J. Ekstrom

W.D. Okerman

79 N-8,9

MEANDER CORNER BET. SECTIONS 17 & 20

ORIG. NOTES:

~~8" SPRUCE~~ & " CEDAR, $S 69^{\circ} E$, 7 IRS
12-14" CEDAR UPROOTED & FALLEN.

6" ASPEN, $N 1^{\circ} W$, 12 IRS
NOT LOCATED

1926 SUB-DIVISION SURVEY OF SEC 17
BY A.W. JOHNSON AS RECORDED IN
ITASCA COUNTY COURTHOUSE.

IRON MONUMENT

LYING IN WATER AT LAKE EDGE

8" CEDAR, $S 78^{\circ} E$, 8.10'
SCRIBING VISIBLE & TREE IN PLACE.

6" CEDAR, $N 31^{\circ} W$, 23.00'
SCRIBING VISIBLE & TREE IN PLACE,
HAS RECENTLY DIED & BROKEN OFF.
8/8/1978 - MEL