

CORNER
RESTORATION
T148 N R26 W



HANDLE WITH CARE
BROKEN BINDING & LOOSE PAGES

No. 3841

BOOK 1

Do Not
Take this
Book to the
Field

T148N R26W

BOOK #1

FULL BOOK

T 148 N

R 26 W 5 7 1/2

					32 10 45 8
6	5	4	3	2	11 13
					6 14 17
					12 15 16
					1 9 7
					36 41 35 44 34
					42 39
7	8	9	10	11	12
					37 38 35
					43 40 45
	18 20 19 21 22				30 31 32 49 46 40 47
	26 25 22				51 68 62 57
18	28 27 23	16	15	50	41 55 54 13
	79			53	64 56
	24			52 59 58 60 55	
19	20	21	22	23	24
30	29	28	27	26	25
28	31	32	33	34	35
					36
66 62 68	69 70	71	72	73 74	75 76 77

Colored Numbers ^{refer} to Page,
 on which Notes for that
 Banner may be found.
 Original Survey November 18 to
 December 4 1875

E-21

Section Corn Sec. 1-2-11-12
 Survey of P. C. Warner in 1921.
 Plat is recorded in Itasca Co.
 Courthouse.

Iron Monument (Found a 1" diameter
 x 20" iron pipe marking corner.)
 Poplar 14" S38°E 22.5'

Maple 6" N20°W 23.3' (Now a 10" maple
 N13°W True, 23.3' scribe overgrown.)
 B-wood 8" S80°W 18.0' (Now a 12"
 basswood S87°W True, 18.0' scribe S11 visible.)
 Gov't Poplar 12" S59°E 23.1'

Gov't Poplar 10" N37°E 13.0'

Gov't Maple 6" S22°W 7.4' (Now a 15" maple
 wind fall S33°W 7.4' w/ windows "Scribe ET"
 facing corner.)

Orig Notes

Sugar 6" S33°W 13 LKs - 8.58'
 Aspen 12" S50°E 35 LKs - 23.10'
 Aspen 10" N43°E 21 LKs - 13.86'
 Birch 6" N63°W 19 LKs - 12.54'

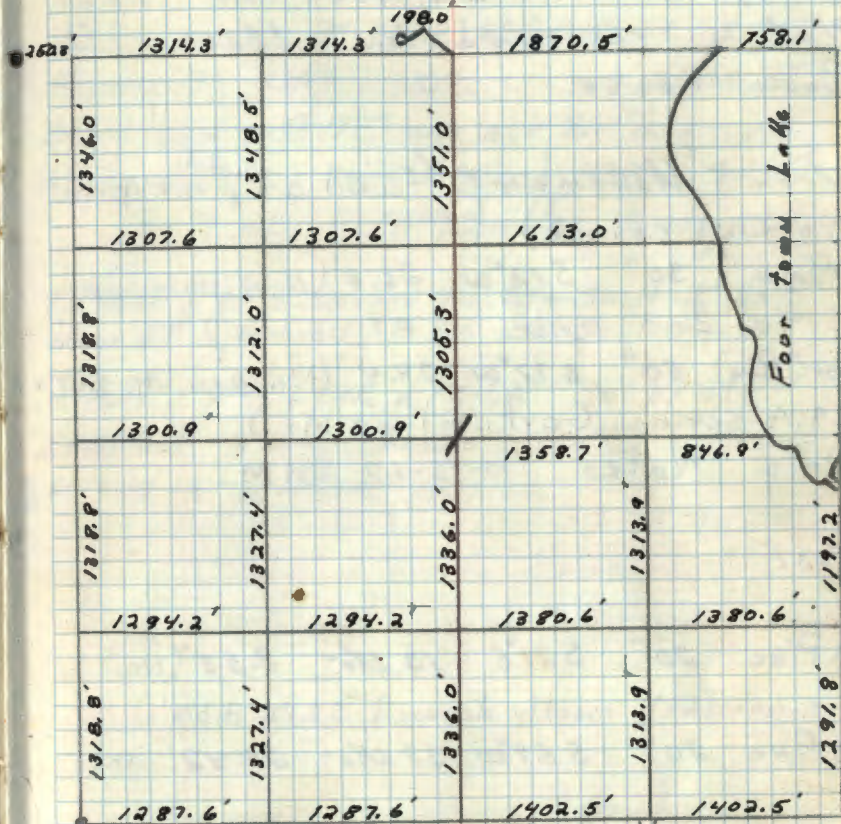
RA-7150-4 by Schoonover 1980

Affidavit R.H.M.

5280-11 B. Ausk

7-21-83 G. Robertson
 D. Harman

All Bts OK Bk LEAVING
 NE 3' out of ground



Set a 2" inside dia. 5' long galv wrought
 iron pipe filled w/ concrete & capped
 w/ a 3" dia. bronze tablet stamped:-

Maple 12" S44°E 29.1' MKD S12 BT
 Maple 10" N13°W 23.3' MKD S 2 BT
 ELV 9" N48°E 36.65 MKD S 1 BT
 Steel sign post 72" long set 24"
 in ground w/ sign 54" x 49" attached
 S 61°W 7.5 feet.

THAN R26W
 S2 S1
 S11 S12
 1962
 R25 N03628

9-27-62 R.H. McDonald
 set steel post 8' long with sign 54" x 54"
 East 6.6' Ronald Olson See BK3 Pg 68

2 A-21

Closing Corner Sec. 1-2.

Survey of P.C. Warner in 1921.
Plat is recorded in Itasca Co.
Court house.

Iron Monument: (Found a 1" ^{dia.} iron pipe
marking corner)

Pine 30" S12°W 26.8' (Now pine stp
S19°W 26.8' scribe S2 BT visible)

Govt Pine 50" S77°W 24.4' (Now pine stp S69°W
24.4 scribe "Govt BT" visible)

Orig Notes 10-16-62 RHM

Post

W. Pine 20" S21°E 13 Lks - 8.58' (Now a

Pine wind fall mostly decayed S21°E 8.58')

W. Pine 20" S69°W 37 Lks - 24.42' OK.

Set a 2" inside dia. 5' long galvanized wrought
iron pipe filled w/ concrete & capped w/ a
3" dia. bronze tablet stamped

T149N R26W
S36
S2 | S1
S C
T148N R26W
1962
RLS NO 3628

Affidavit RHM

5680-11

sketch
6/24/63

From which bears:

White spruce 9" 119.2' S20°W MKD CC S2 BT

Aspen 9" S74°E 15.2' MKD CC S1 BT

Steel sign post 72" long set 24" in ground
w/ signs 54-2 & 54-4 attached S80°W 4.25'

10-19-62 R.H. McDonald EAST 4.68

To bring this corner to Standard I cut
New BT

Birch 4" S20°E 12.62" S1 BT

steel post 8' long south 3.0' w/ 1592

R9-7150-4 by Olesen 5/27/80

3 Z-21 (T149N)

Standard Cor. Sec. 35-36.

Survey of P.C. Warner in 1921.

Plot is recorded in Itasca

Co. Court house.

Iron Monument (Found a 1" dia. iron pipe marking corner.)

Pine st. 30" N14°W 38.9' (Now a pine stp.)

N2°W scribe chopped off 38.9 feet.)

Pine st. 30" N38°6 31.6' (Now a pine stp.)

N46°E scribe BT visible 31.6 feet.)

10-16-62 R.H.M. Donald

Set a 2" inside dia. 5' long galvanized wrought IRON pipe filled w/ concrete and capped with a 3" dia. bronze tablet stamped:-

T149N R26W

S C

S 35 | S 36

S 2

T148N R26W

1962

RLS NO 3628

Aspen 11" N36°E 24.75' MKD SC S36 BT

Cedar 12" N38°W 128.4' MKD SC S35 BT

Steel sign post 72" long set 24" in ground

w/ signs 54-2 & 54-4 attached N2°W 7.0'

10-19-62 R.H.M. Donald

Affidavit RHM

sketch 6-27-63

1871 Original Govt Survey

Set post from which:

W. Pine 28", N40°E, 43.6 ft

W. Pine 28", N10°W, 59.6 ft

1920 B.L. Craig Itasca Co. Survey

Recovered the Govt trees

Pine stp, 30", N38°E, 31.6 ft

Pine stp, 30", N14°W, 38.9 ft

7-18-83 W B. Ausk

G. Kosenko

G. Robertson

RECOVERED

PINE STP. N02°W 38.06'

PINE STP. N42°W 31.35'

ASPEN 11" N36°E 24.68' BLAZE OVER GROWN 1st nail S side

CEDAR 14" N42°W 128.36' Scribing Visible 1st nail E side

60d SPIKE IN ALL TREES Bottom BLAZE

Steel post 4.16 N W/ 54.2 & 54.4

42-23 (T149N) corner card on file
Standard Corner

Quarter Cor. Sec. 36.

Survey of P.C. Warner in 1921,
Plat is recorded in Itasca.
Co. Court house.

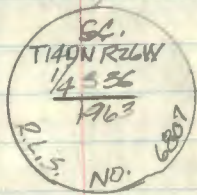
Iron Monument: (Found a 1" dia iron
pipe marking corner.)

W. Pine 10" N54°E 64.1' (Now a pine stp
badly burned N62°E 64.1')

Balsam 12" N48°W 58.2' (Now a decayed
stump N90°W True 58.2')

"Gov't ?"
B.T.s

Set 2" inside diameter 60" long galvanized
steel pipe filled with concrete capped
with a 3" diameter bronze tablet stamped—



New B.T.'s:

W. Pine 20" N39°W 44.7 feet scribed S.C. 1/4 336 BT

Maple 4" N5°E 21.2 feet scribed X BT

Steel sign ^{to iron} post due West 4.0 feet with signs:
54-4 & 54-2 attached

Affidavit RHM

7-12-63 W. Okeyman
J. Ekstrom

To bring this cor. to standard I cut
New BT.

Basswood 7" N14°W 24.37' S 1/4 536 BT.
M. 9150-4 by Olson
5/27/80
Ronald Olson

1871 Original Gov't Survey

Set post from which:

Birch, 7 in, N35°W, 7 lbs

W. Pine, 6 in, N33°E, 34 lbs

Dec.

1920 BC Craig Itasca Co survey

Recovered 2 gov't BT's and set

2 new BT's

W. Pine, 10 in, N54°E, 64.1 ft

Balsam, 12 in, N48°W, 58.2 ft

7-18-83 TF R. A. Vuk

G. Kosenko

G. Robertson

RECOVERED

W. PINE 18.4' N 49° W 44.68' 16d nail NE side B.V.
Basswood 7.9' N 13° W 24.41' 16d nail W side B.V.
Maple 7.5' N 06° E 21.24' 16d nail W side B.C.

60 d spike Bottom blaze

Steel Post w. 4.45' w/54-2 & 54-4

5 A-23

Closing Corner. $\frac{1}{4}$ Sec. 1.
Survey of P.C. Warner in 1921.
Plat is recorded in Husca
Co. Courthouse.

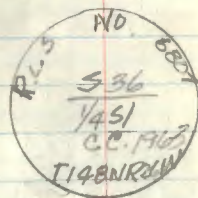
Iron Monument (Found a 1" diameter
iron pipe marking corner.)

W. Pine 8" S57°E 104.6' (Now a 22"

white pine S49°E 104.6 feet

Tim 7" S36°W 68.3' (Now a decayed
stump S49°W 68.3 feet.)

Set a 2" inside diameter 60" long galvanized
steel pipe filled with concrete and
capped with a 3" diameter bronze
tablet stamped ~



New BT's:

Cedar 6" S13°E 39.8 feet scribed $\frac{1}{4}$ S1 BT

Cedar 11" S58°W 15.8 feet scribed $\frac{1}{4}$ S1 BT

Steel sign post 72" long Due west 4.7 feet
with signs 54-4 & 54-2 attached

Affidavit

5680-11

7-12-63 W. Oleson
J. Ekstrom

To bring this corner to standard I
cut New BT's

Ash 4" S9E 23.8' cc $\frac{1}{4}$ S1 BT

Ash 7" S60E 25.1' cc $\frac{1}{4}$ S1 BT.

3/27/80
Ronald O. Oleson

RD-7150-4 by Oleson

6 C-21

Quarter Corner Sec. 1-2.

Survey of P.C. Warner in 1921.
plat is recorded in Itasca
Co. Courthouse.

Iron Monument: found a 1" dia. iron
pipe marking corner

Pine st. 36" N 61 $\frac{1}{2}$ ° E 63.9' (Now a large pine
stp. partly decayed Scribed "1/4 S1 BT" N 71° E 63.9')

Pine st. 30" N 80° W 36.0' (Now a 30" pine
stp. Scribed "1/4 S2 BT" N 70° W 36.0')

Orig Notes

Post

W. Pine 36" S 73° E 33 Lks - 21.78' (Now
a burned out pine stp S 73° E 18.25 ft.)

W. Pine 30" S 89° W 39 Lks - 25.74'

Affidavit
RHM

5680-11

Set a 2" inside dia. 5 feet long galvanized
wrought iron pipe filled with concrete and
capped with a 3" dia. bronze tablet stamped

T148NR26W

1/4
S2 | S1

1962
RLS NO 3628

from which bears

White Spruce 4" N 30° E 12.5 feet mxo 1/4 S1 BT

White Spruce 4" S 29° W 21.45 feet mxo X BT

Steel sign post 72" long set 24" in ground w/

signs 54-26 57-4 attached due West 3.9 feet

11-5-62 G.H. McDonald

To bring this corner to standard Σ
cut New BT.

W. Spruce 6" S 75° E 35.10' 1/4 S1 BT

set steel post 8' long East 10.6' w/ sign

5/27/60 Ronald A. Olson

RA-9150-4 by Olson

6 2 A1
7 E-23

Quarter Cor. Sec. 1-12.
Survey of P.C. Warner in 1921.
Plat is recorded in Itasca
Co. Court House.

Iron Monument. Found a 1" dia.

IRON PIPE MARKING CORNER
Cedar
d. Govt, ~~farm~~, st.

Tam 24" N84 $\frac{1}{2}$ W 61.8' (Now Tam. stp.)

mostly decayed N77 $\frac{1}{2}$ W True 61.8'

Tam 20" S36 $\frac{1}{2}$ E 63.0' (Now Tam. stp.)

scribed "BT" S29 $\frac{1}{2}$ E True 63.0'

Orig Notes

Post:

Cedar 12" N59 $\frac{1}{2}$ E 9 Lks - 5.94 (Now

14" Cedar stp N59 $\frac{1}{2}$ E 5.94 ft.

Cedar 18" S28 $\frac{1}{2}$ E 25 Lks - 16.50 (Now

a cedar wind fall S28 $\frac{1}{2}$ E 16.5 ft.

Set a 2" inside diameter 5' long galvanized
wrought iron pipe Filled with concrete
and capped with a 3" dia. T148NR26W

bronze tablet stamped:

1/4 S 11
S 12
1962

RLS NO 3628

Affidavit RHM

5680-11

1963
Okulu

Marked New beaving trees

Hsh 5" S41 $\frac{1}{2}$ W 31.5 feet scribed 1/4 S12 BT

Hsh 6" N30 $\frac{1}{2}$ W 26 feet scribed 1/4 S1 BT

Steel sign post 72" long set 24" in ground

W signs 54-2 & 54-4 attached Due South

S 1/4

11-5-62 (H.M. Daniels)

To bring this cor to standard I cut
New BT.

Hsh 4" N43E 18.5" X BT

set 8" long steel post North 2.6'

54-2 54-4

R9-7150-W by Olesen

11/79
Ronald O. Olesen

7-21-83 B. Ausk

G. ROBERTSON

D. HARMAN

All Bts OK + movement

NE, SW, NW

See BK 3 Pg 69 (1984)

68 A-24-25

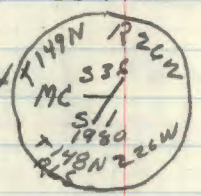
Meander Cor. Sec. 1-36
Survey of P.C. Warner in 1921.
Plat is recorded in Itasca
Co. Courthouse.

Iron Monument:
(Found Iron in place)

Balsam 10" N34°W 36.7'
found old stump hole N28W 36.7'
Peplar 8" S70°W 11.5'
found old rotted stump S76W 11.5'

To perpetuate this corner I set a
2" x 5" Gal pipe w/ brass cap marked
from which bears

Birch Ash Ash steel Post
9" 8" 9" 8"
N63W 589W 558W West
42.60 13.2 40.75 6.2'
MC 536 BT MC 51 BT MC 51 BT w/sign
54-4954-2



3/27/80 Ronald D. Olson

R9-7150-4 by Olson

1871 Original Govt Survey
Set post from which:
Aspen, 8 in, N64°W, 31 lbs
Aspen, 10 in, S50°W, 45 lbs

Dec 1920 Itasca Co. survey by B.C. Craig
Did not recover original survey
evidence. It also does not say what
kind of corner was set, but these
bearing trees were made:
Balsam, 10 in, N34°W, 37.0 ft
Peplar, 8 in, S70°W, 11.5 ft

69 E-22

West 1/6 Cor. Sec. 1-12.

Survey of P.C. Warner in 1921

Plat is recorded in Itasca

Co. Courthouse.

~~from Monument~~

X Rock for Corner (Found

rock but "X" has weathered off)

Pine stp. 20" N63°E 51.9' (Now a pine

stp. badly burned N72°E 51.9')

Pine stp. 20" S77°W 56.8' (Now a pine

stp badly burned w/ few scribe cuts visible

S88°W 56.8')

Set a 2" inside dia. 5ft. long galvanized

wrought iron pipe filled w/ concrete and

capped w/a 3" dia. bronze tablet T148NR26K1

stamped:

W 1/16 S 1/12

1962

RLS NO 3628

Birch 8 S26°W 7.3 feet mkd W 1/16 S 1/12 BT

Granite rock 2.0' x 2.0' x 1.0' N3°E 19.5' to top pt.

Granite rock 2.0' x 2.5' x 3.0' S45°E 49.15' To top pt.

Steel sign post 72" long set 29" in ground w/

signs 54-2 & 54-4 attached NB7°W 7.5 feet

11-5-62 R.H. Donald

Affidavit RHM

5680-11

alaska
4-15-63To bring this corner to Standard I
cut New BT's

Birch 6" SSE 21.2' w/1/16 S 1/12 BT

Birch 8" NZOW 43.92' w/1/16 S 1/12 BT

5/27/80

Ronald H. Olson

AP-7150-4 by Olesen

10 A-22

West 1/6 Cor. Sec. 1-56

Survey of P.C. Warner in 1921.
Plat is recorded in Itasca
Co. Courthouse.

Iron Monument: (Found a 1" dia. IRON
MONUMENT (pipe) marking corner.)

Maple 8" East 35.5' (Not found)

Cedar. stp. 16" S50°E 54.6' (Now a 16" cedar
stump S40°E 54.6' scribe W 1/16 S 1 visible)

10-16-62 R.H. McDonald

Set a 2" inside dia. 5' long galvanized wrought
iron pipe filled w/ concrete & capped with
a 3" dia. bronze tablet stamped:-

W
CC ST
W
T148N R 26W
1962
RLS No 3628

From which bears

Birch 8" S39 1/2°W 9.45' MKD W 1/16 S 1 BT

Boulder 3.0' x 2.0' x 1.0' MKD "X" ON Top center
S26°E 69.1'

Steel sign post 72" long set 29" in ground
w/ sign 59-2 attached N88°E 4.3'

10-19-62 R.H. McDonald

Need 59-9
Affidavit RHM

5680-11 CC-11

To bring this corner to standard E
cut New BT.

Birch 7" S84°E 27.10' 1/16 S 1 BT

RP 7150-4 by Olson 5/27/80 Ronald D. Olson

11 B-21

North $\frac{1}{16}$ Cor. Sec. 1-2
Survey of P.C. Warner in 1921.
Plat is recorded in Itasca
Co. Courthouse.

Iron Monument. (found a 1" dia. iron
pipe marking corner alongside was a scribed ^{scribed, 1921}
Pine, stp 12" S56°E 33.2' (Now a 12" pine
stump scribed N $\frac{1}{16}$ S1 BT S44 $\frac{1}{2}$ °E 33.2 Ft.)
Pine stp 20" N7°W 5.2' Now a pine stp
badly decayed N0°W 5.2 Ft.
10-16-62 R.H. McDonald

Set a 2 inch inside dia. 5 foot long galvanized
wrought iron pipe capped with a 3 inch dia.
bronze tablet stamped:-

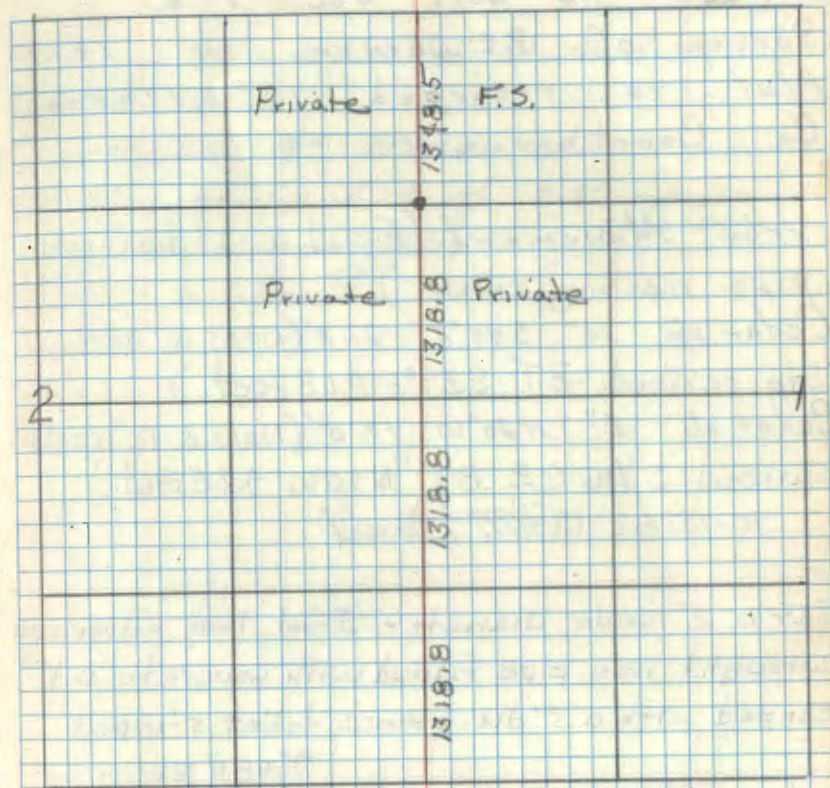
T198N R26W
N $\frac{1}{16}$
S 2 | S 1
1962
RLS NO 3628

White spruce 8" S15°W 23.9' MKD N $\frac{1}{16}$ S2 BT
White spruce 4" N70°W 42.0' MKD N $\frac{1}{16}$ S2 BT
Steel sign post 72 inches long set 24 inches
in ground w/signs 54-25, 54-4 attached
Due East 4.6 feet. 10-19-62 (R.H. McDonald)

Affidavit RHM

Oleson

5680 11



To bring this corner to standard I cut
New BT.

Birch 6" S55E 7.92' $\frac{1}{16}$ S1 BT
5/27/80 Ronald O. Oleson
R9-7150-4 by Oleson

12 D-21

South $\frac{1}{16}$ Cor. Sec. 1-2.

Survey of P.C. Warner in 1921.
Plat is recorded in Itasca
Co. Courthouse.

Iron Monument: (Found a 1" dia. iron
pipe marking corner)

Cedar stp 10" S49°E 21.8' (Now a cedar
Stp scribed BT S39°E 21.8 feet.)

Cedar stp 6" N20°W 47.5' (Now a 12" cedar
scribed "S $\frac{1}{16}$ S2 BT" N10°W 47.5 feet.)

10-15-62 R.H.M. Donald

Set a 2" inside diameter 5 foot long galvanized
wrought iron pipe filled with concrete and
capped with a 3" dia. bronze tablet stamped

T148N R26W

S $\frac{1}{16}$

S2 | S1

1962

RLS NO 3628

Cedar 5" S72 $\frac{1}{2}$ °E 19.45 feet MKD S $\frac{1}{16}$ S1 BT

Cedar 6" S10°E 38.0 feet MKD S $\frac{1}{16}$ S1 BT

Steel sign post 72" long set 24" in ground w/
signs 54-2 & 54-4 attached due West 4.6 feet.

11-5-62 R.H.M. Donald

Affidavit RHM

decker
9-15-63

5680-11

To bring this corner to standard E
cut New BT.

Black Spruce 9" N20W 29.12'

set 8" long steel post. South 2.9" w/signs
54-2 54-4

by Jim Schaefer 1979

R9-7150-4 by Schaefer

13 B-22

North West $\frac{1}{16}$ Cor. Sec. 1
Survey of P.C. Warner in 1921.
Plat is recorded in Itasca
Co. Court house

Iron Monument: (Found a 1" dia. iron
pipe marking corner.)

Pine. stp. 36° S 20° W 5.3' (Now a pine stp.
scribed $\frac{1}{16}^* 3$ S 1 BT S 33° W True 5.3 ft.)

Pine. stp. 30° N 35° W 44.5' (Now a pine stp
scribed $\frac{1}{16}^* 3$ S 1 BT N 26° W True 44.5 feet)

10-16-62 RH McDonald

~~Need steel sign post~~
~~& stamp~~

Set 2" inside diameter 60" long galvanized
steel post filled with concrete and capped
with a 3" diameter bronze tablet stamped

T143N R26W
NW $\frac{1}{16}$
R 31
1963
NO

Elm 2" 56° E 51.5' scribed NW $\frac{1}{16}$ S 1 BT

White spruce 7" N 49° W 48.6' scribed NW $\frac{1}{16}$ S 1 BT

Boulder. 2'x3' N 21° W 18.3' high spot on E. edge

Steel sign post 72" long Due West 4.8' with
signs 54-2 & 54-4 attached

Affidavit RM 5680-11

W. Okerman 8-13-63
J. Ekstrom

W. Okerman
Set a steel post 8' long South 2.4'
with signs 54-2 & 54-4

R9-4150-4 by Olesen

5/27/80
Ronald W. Olesen

1/4" C-22

Center

West 1/6 Cor. Sec. 1

Survey of P.C. Warner in 1921.

Plat is recorded in Itasca.

Co. Courthouse.

Iron Monument (Found a 1" dia. iron pipe marking corner.)

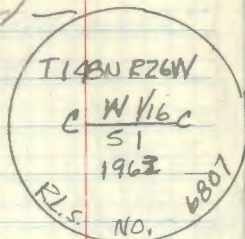
Pine stp. 20" S 39° W 28.8' (Now a pine stp mostly decayed w/ few scribe cuts visible S 52° W 28.8')

Cedar stp. 14" N 85° E 19.3' (Now a cedar stump scribed "1/16 #4" S 88° E True 19.3 ft.)

10-15-62 R.H. McDonald

~~No monument signs~~

Set 2" inside diameter ^{60" long} galvanized steel pipe filled with concrete and capped with a 3" diameter bronze tablet stamped



Ash 6" N 58° E 17.9 feet scribed ON 1/16 S1 BT

Ash 7" 309° E 24.3 feet scribed ON 1/16 S1 BT

Steel sign post 72" long set due West 5.3' with signs 544 & 542 attached

Affidavit RHM

3-9-63 W. Olesen
J. Ostrom
K. Kinse

To bring this corner to Standard T
Cut New BT

Re-surveyed 4" N 54° W 24.33' CW 1/16 S1 BT
set steel post 8' long North 3.1' w/ sign 54-2 & 54-4

5/27/80
Ronald Olesen

R9-7150-4 by Olesen

14 15 D-22

South west $\frac{1}{16}$ Cor. Sec. 1

S. Survey of P. C. Warner in 1926
P. Plat is recorded in Itasca
C. Co. Courthouse.

Iron Monument:

Found 1" x 24" Iron pipe in place

Pine. stp. 24" S17°W 18.6'

(Now pine stump 24" S23°W 18.6')

Pine. stp. 24" N38°E 11.3'

(Now pine stump. N44°E 11.3')

To perpetuate this corner I set a 2" x 5"
Gal Iron pipe w/ brass cap. marked
from which bears

Elm Elm Birch steel post steel post

6" 6" 9" 8" 8"

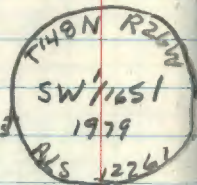
N15W-S11E N39E East South

23.78 54.73 29.95 1.8' 1.8'

SW $\frac{1}{16}$ S18T SW $\frac{1}{16}$ S18T SW $\frac{1}{16}$ S18T w/3925

10/29 Ronald D. Oleson

R9-7150-4 by Oleson



116 D-23

Center South $\frac{1}{16}$ Cor. Sec. 1

Survey of P.C. Warner in 1921.

Plat is recorded in Itasca

Co. Courthouse.

Iron Monument: (Found a 1" dia. iron pipe marking corner.)

Poplar 12" $S72^{\circ}E$ 49.7' not found, a possible stump hole found at dist. $S80^{\circ}E$

Ash 7" $N66^{\circ}E$ 43.8' (Now a 11" Ash stub w/ hollow center & reverse scribe "116 #6" visible $N73^{\circ}E$ true 43.8 ft.)

10-15-62 RHM^cDonald

Set a 2" inside dia. 5 foot long galvanized wrought iron pipe filled with concrete & capped w/ a 3" dia. bronze tablet stamped: -

T148N R26W
S $\frac{1}{16}$ S 1

1962

RLS NO 3628

Red pine 14" $N73^{\circ}W$ 48.8' MKD CS $\frac{1}{16}$ S 1 BT ✓

Ash 9" $N70\frac{1}{2}^{\circ}E$ 39.85' MKD CS $\frac{1}{16}$ S 1 BT ✓

Maple 7" $S26^{\circ}E$ 16.35' MKD CS $\frac{1}{16}$ BT ✓

10-18-62 RHM^cDonald

Affidavit RHM

7-9-63 dulle

Set steel sign post 72" long w/ signs

54-2 & 54-4 attached $N86^{\circ}W$ 5.1 feet

RHM
K9-7150-4 by Schaeffer 1989 - all O.K.

117
Center Quarter Con. Sec. 1
Survey of P.C. Warner in 1921.
Plat is recorded in Itasca
Co. Courthouse.

Iron Monument:

Spruce 8" N57°E 46.5'

Ash 6" S87°W 38.8'

Section Cor. Sec. 7-8-17-18
 Survey of L.W. Johnson in 1926.
 Plat is recorded in Itasca
 Co. Courthouse

Iron Monument:

2" PIPE AT GROUND LEVEL

Ash 7" S40°E 64.8'

12"-14" STUMP WITH BT FACE, FITS TO IRON

(Twin Elm 30" S68°W 51.4' } Established by
 Siverts in 1913

NO TRACE LOCATED - IN ROAD CLEARING

Cedar 8" N55°W 92.0' E 1913

NO TRACE LOCATED.

Cedar 5" N33°W 121.4'

NO TRACE LOCATED.

Orig Notes M.S. - 7/26/78

Post

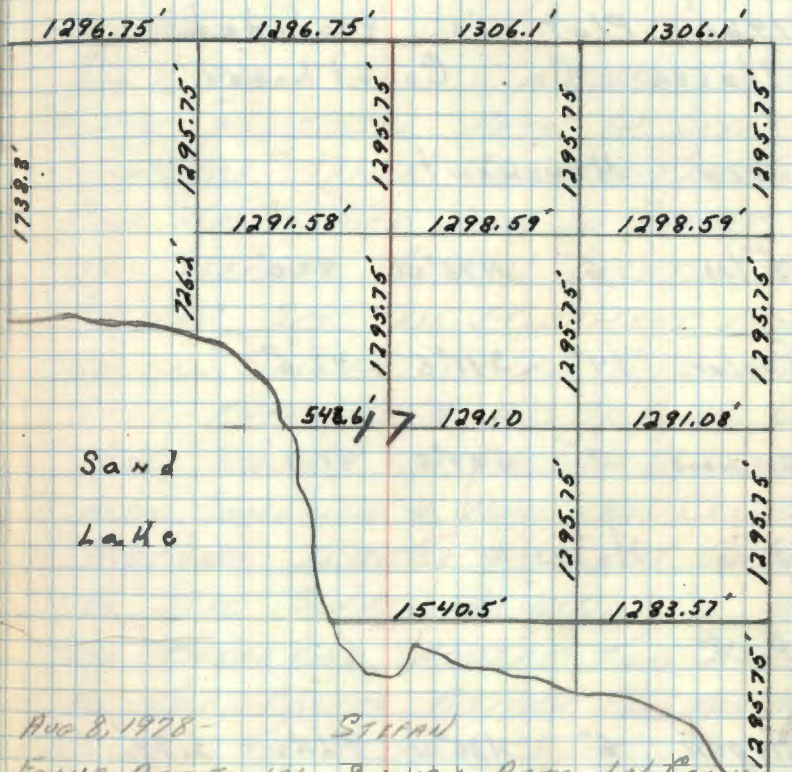
ALL ORIGINAL REMOVED IN ROAD CLEARINGS

Tam 8" N72°W 15 LKs - 9.90'

Tam 6" S59°E 13 LKs - 8.58'

Tam 7" N55°E 21 LKs - 13.86'

Aspen 6" S31°W 41 LKs - 27.06'



Aug 8, 1978 - STEFAN
 FOUND ADDITIONAL SURVEY DATA IN COUNTY
 SURVEYORS OFFICE BY PELICAN IN 1967.
 IN SURVEY OF LOCATION OF TELEPHONE
 BUILDING SET TWO NEW BT ⊥
 12" ELM, S41°W, 68.83'
 8" ELM, N40°W, 65.73'

Quarter Cor. Sec. 8-17
 Survey of L.W. Johnson in
 1926. Plat is recorded in
 Itasca Co. Courthouse.

Iron Monument:

Elm 6" N75°W 97.0'

Poplar 14" S11°E 47.6'

Bass wood 7" S37°E 51.3'

Orig Notes

Post

Aspen 6" N36°W 9 Lks - 5.94'

Aspen 4" S42°E 15 Lks - 9.90'

July 26, 1978

STEFAN YHROUSE

"AL" COUNTY CAP ON IRON PIPE, FRESH
 WITH THE GROUND ON NORTH EDGE OF
 HIGHWAY. NO EVIDENCE OF 1926 SURVEY
 WAS LOCATED. PROBABLY ALL HAS BEEN
 DESTROYED BY ROAD & POWERLINE CLEARINGS.

DISTANCE WEST TO PROVEN SECTION
 CORNER IS WITHIN A FOOT OF 1926
 SURVEY.

AUG 8, 1978

STEFAN

FOUND ADDITIONAL DATA IN COUNTY
 SURVEYORS OFFICE ON HOW THIS "AL"
 CAP WAS PLACED HERE. IN SURVEY
 OF TELEPHONE BUILDING LOCATION, EARL
 PELICAN SET THIS MONUMENT FROM
 SECTION CORNER & WEST 1/4 CORNER
 LINE EXTENDED & AT DISTANCE ON
 1926 SURVEY OF SECTION 17, SUB-DIV.
 ALSO COMSTOCK & DAVIS HAS CHECKED
 DISTANCE TO CN 1/4 & FOUND IT CONFORMS
 TO 1926 SURVEY AS WELL.

WE THEREFORE ACCEPT THIS "AL" CAP
 AS THE PROPER POSITION FOR THE 1/4
 CORNER TO SECTIONS 8/17.

Mich Stefan 8/1/78

PELICAN'S TIES - 1961

REA POLE, N10°E, 32.76'

TELEPHONE POLE, S45°E, 67.67'

20 J-6

West $\frac{1}{4}$ Cor. Sec. 8-17
Survey of L.W. Johnson in 1926.
Plat is recorded in Itasca
Co. Courthouse.

Iron Monument.

Basswood 12" S 09° W 51.1'

ELM 10" S 19° E 72.3'

FOUND IN PLACE BY PELICAN - 1961

JULY 26, 1978 STEFAN & KRAUSE

- 1) FOUND IRON PIPE FLUSH WITH GROUND JUST OFF NORTH EDGE OF BLANCH-TOP.
- 2) SCRIBED 10" IRON ELM, BUT DOES NOT FIT TO THIS IRON PIPE.
- 3) SCRIBED SQUARED POST LEANING ON BASSWOOD, S.E.

JULY 28, 1978

TIED INTO TRAVERSE THE HUB WE SET OFF ELM BT & BASSWOOD REMAINS. DISTANCE & BEARING FIT IRON PIPE, NO RECORD OF THIS ELM IN KNOWN AT THIS TIME.

MCS

AUG 8, 1978

STEFAN

FOUND ADDITIONAL FIELD NOTES IN COUNTY SURVEYORS OFFICE ON THIS $\frac{1}{4}$ COR.

BY CARL PELICAN IN 1961 FOR LOCATION OF TELEPHONE BUILDING (COUNTY FILE #5)

NEW TIES:
9" ELM, S 89° W, 91.62' - FOUND IN PLACE
7/26/78 - MCS

21. J-8

East $\frac{1}{16}$ Cor. Sec. 8-17
Survey of L.W. Johnson in 1926.
Plat is recorded in Itasca
Co. Court house.

Iron Monument

Cedar 4" $S 04^{\circ} W$ 39.0'

Cedar. stp. 7" $S 34^{\circ} E$ 34.2'

Falls in road & clearing for tel. line has destroyed
BTs. Tag on cedar post 33' north of road
& $\frac{1}{2}$ of alongside is the squared scribed Co. post.
11-26-62 RHM Donald

82
North $\frac{1}{16}$ Cor. Sec. 16-17.
Survey of L.W. Johnson in 1926.
Plat is recorded in Itasca
Co. Courthouse.

Iron Monument.

Elm. stp. 8" S 75° W 39.8'

tel. Pole 7" S 17° W 26.7'

Quarter Cor. Sec. 16-17.

Survey of L.W. Johnson in 1926.
Plat is recorded in Itasca
Co. Court house.

Iron Monument:

Cedar stp. 10" N76°W 37.4'

tan. stp. 14" N45°E 58.1'

Orig Notes

Cedar 6" S62°E 8 Lks - 5.28'

tan 8" N74°W 19 Lks - 12.54'

CERTIFICATE FILED

Section Con. Sec. 16-17-20-21.

Survey of L.W. Johnson in 1926.

S Plat is recorded in Itasca
Co. Courthouse.

Iron Monument:

3/4" x 14" OLD PIPE NEAR NEW PIPE.

Basswood 10" N69°W 60.8'

WINDTHROW & STUMP, FACE OVERGROWN.

Birch 8" S40°W 47.2'

10" FALLEN SNAG WITH SCRIBED FACE, ROTTEN

Spruce 4" S79°E 59.5'

6" STUMP WITH SCRIBED FACE.

Ash 5" N37°E 40.7'

12"-14" BELY ROTTEN STUMP.

Orig Notes

8/27/77

M/S

Aspen 6" N40°W 7 Lks - 4.62'

Aspen 10" S52°W 22 Lks - 14.52'

TAM 6" S30°E 19 Lks - 12.54'

Aspen 8" N70°E 27 Lks - 17.82'

CERTIFICATE FILED

July 27, 1978

KRAUSE, STEPHAN Y OJESON

FOUND NEW GALV. 1" PIPE WITH PLASTIC
PIPE WITH RLS # 10832. DRIVEN
DEEP IN GROUND.

North East $\frac{1}{16}$ Cor. Sec. 17.
 Survey of L.W. Johnson in 1926.
 Plat is recorded in Itasca
 Co. Court house.

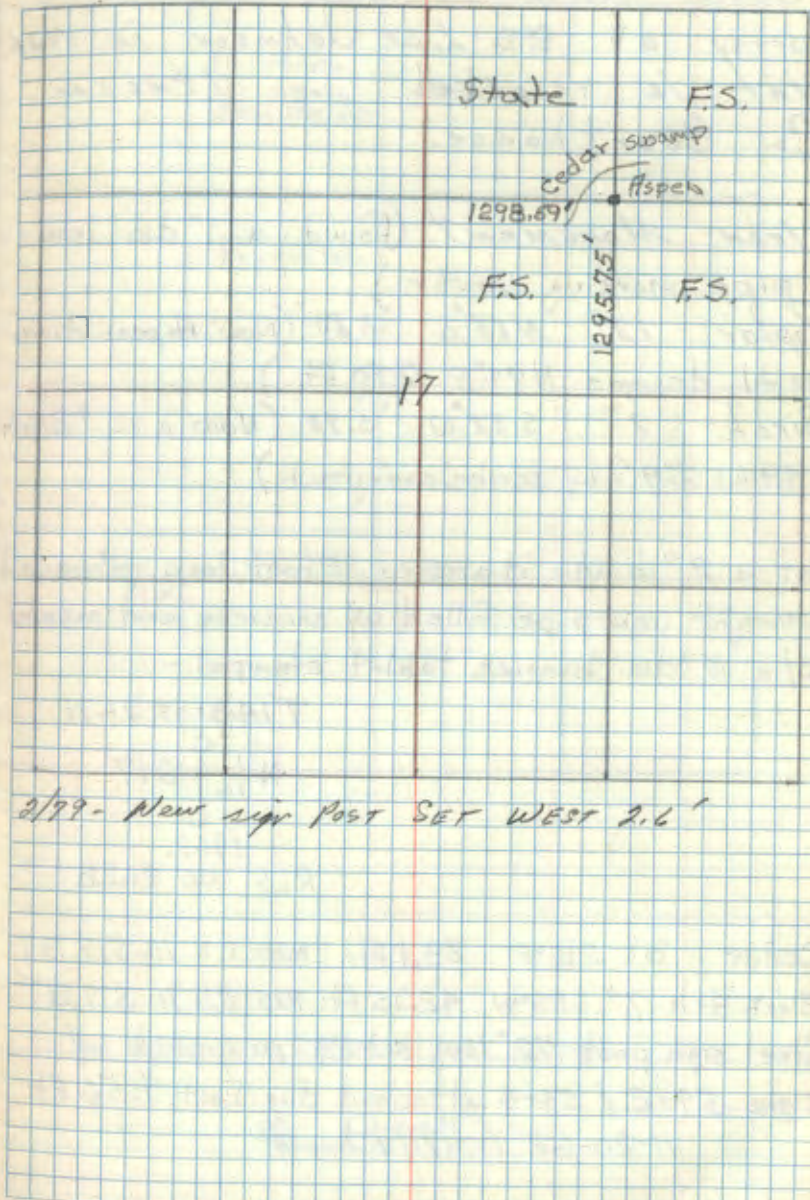
Iron Monument: (Found a 1" dia iron
 pipe marking corner. Squared scribed post was
 fallen beside pipe)
 W. Pine 36" S12°W 83.4 (Now a 36" pine
 stp. scribed "1/16#1 BT" S19°W 83.4 feet.)
 W. Pine 30" S48°W 73.9 (Now a 30" pine
 stp. scribed "BT" S61°W 73.9 feet)

Set a 2" inside dia. 5 Foot long galvanized
 wrought iron pipe filled with concrete &
 capped with a 3 inch dia. bronze tablet
 stamped:-

T198N R26W
 NE $\frac{1}{16}$ S17
 1962
 R.L.S. NO 3628

White Spruce 8" S75 $\frac{1}{2}$ °E 55.6 Ft. mxd NE $\frac{1}{16}$ BT
 Oak 5" S22 $\frac{1}{2}$ °E 36.35 Ft. mxd NE $\frac{1}{16}$ S17 BT
 Cedar 8" S75°W 105.05 Ft. mxd NE $\frac{1}{16}$ BT
 Steel sign post 72" long set 24" in ground,
 w/ signs 54.2 & 54.4 attached due North 9.45'
 11-26-62 J.A.M. Donald

Alaska
 6-20-62



Center North $\frac{1}{16}$ Cor. Sec. 17.
 Survey of ~~FR~~ L.W. Johnson in 1926.
 Plat is recorded in Itasca
 Co. Courthouse.

Iron Monument: (Found a 1" dia. iron
 pipe marking corner.)

Poplar 12" N65°E 7.80' (Now Aspen Stump
 mostly decayed N74°E 7.80 ft.)
 Birch 7" S38°W 5.90' (Now a 12" Birch
 S49°W 5.9' w/ scribe overgrown)

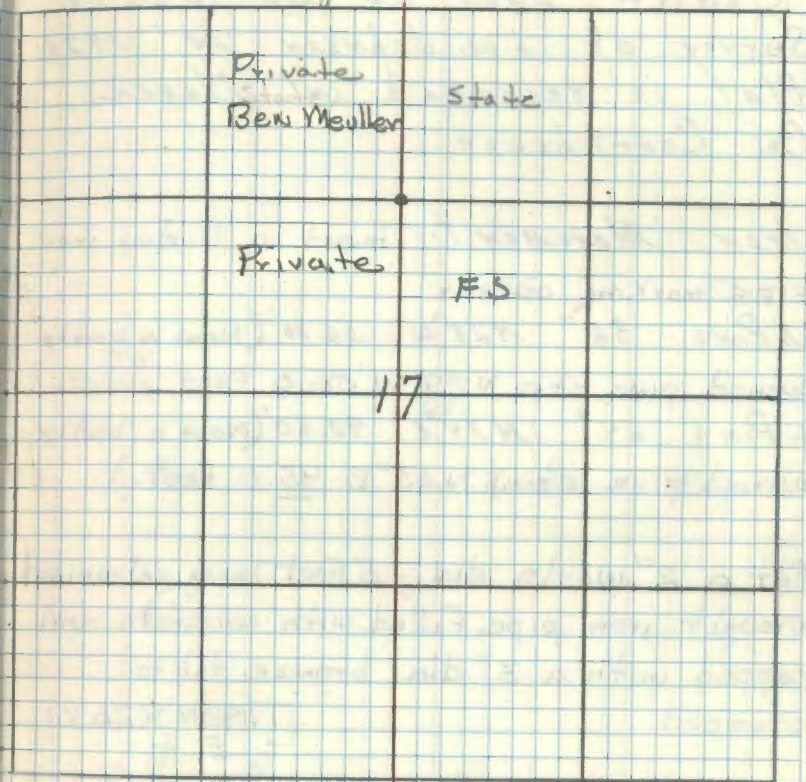
Set a 2" inside diameter, 5 foot long galvanized
 wrought iron pipe filled w/ concrete and capped
 w/ a 3" dia. bronze tablet stamped:-

T148NR26W
 N $\frac{1}{16}$ | S 17
 C
 1962
 RLS NO 3628

Cedar 8" S12°E 38.1 ft. MKD CN $\frac{1}{16}$ S17 BT
 Black Ash 7" S25°W 42.15 ft. MKD CN $\frac{1}{16}$ S17 BT
 Steel sign post 72" long set 24" in ground w/
 signs 54-2 & 54-4 attached due East 4.56 ft.

11-20-62 RHM

Okenda
 11-20-63



Center Quarter Cor. Sec. 17.

Survey of L.W. Johnson in 1926
 Plat is recorded in Itasca
 Co. Court house.

Iron Monument: (Not found, corner was
 found to be mkd by a fallen squared scribed post.)

Cedar. stp 8" S41°E 30.20' (Now cedar
 stp 5' high scribed "1/4 S BT" visible S35°E 30.2 Ft.)

Spruce 10" N61°E 17.60' (Now spruce

7 Windfall mostly decayed w/ a few scribe mks visible
 N 71 1/2° E 17.6 feet.

Set a 6" diameter, 5 foot long cylindrical concrete
 monument capped with a 3" dia. bronze tablet
 stamped:-

T148N R26W
 C 1/4 S 17
 1962
 RLS NO 3628

Cedar 10" N37°E 20.2 feet mkd C 1/4 S 17 BT

Cedar 8" N80°E 89.6 feet mkd C 1/4 S 17 BT

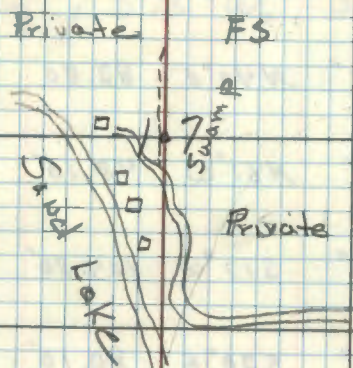
ELM 13" S58°W 32.8 feet mkd C 1/4 S 17 BT

Steel sign post 72" long set 24" in ground w/

signs 54-2 & 54-4 attached Due North 4.36 ft.

11-20-62 G.H.M. Donald

check
 corner



2/77 SET NEW SIGN POST EAST 3.8'

23 29
Section Cor. Sec. 8-9-16-17
Survey of L.W. Johnson in 1926.
Plat is recorded in Itasca
Co. Court house.

Iron Monument:

Birch 13" N40°E 82.80'

N. Pine. sp. 20" N61°W 48.10'

Poplar 16" S17°W 104.80'

Birch 10" S20°E 80.10'

Orig Notes

Aspen 7" S26°E 4 Lks - 2.64'

Birch 4" N35°E 15 Lks - 9.90'

Aspen 5" N36°W 17 Lks - 11.22'

Aspen 6" S89°W 19 Lks - 12.54'

1913 Siverts On record on the
Itasca Co. Courthouse

Birch, 9", N31°W, 45.7 ft

W. Pine, 6", N33°E, 58.5 ft

Poplar, 16", S43½°E, 64.7 ft

Spruce, 12", S15°W, 31.7 ft

Section Cor. Sec. 9-10-15-16
 Survey of P. C. Warner in 1918.
 Plat is recorded in Itasca
 Co. Court house.

Iron Monument:

Poplar 16" S35°E 37.8'

Cedar 22" S02°E 66.9'

Cedar 8" N63°W 62.2'

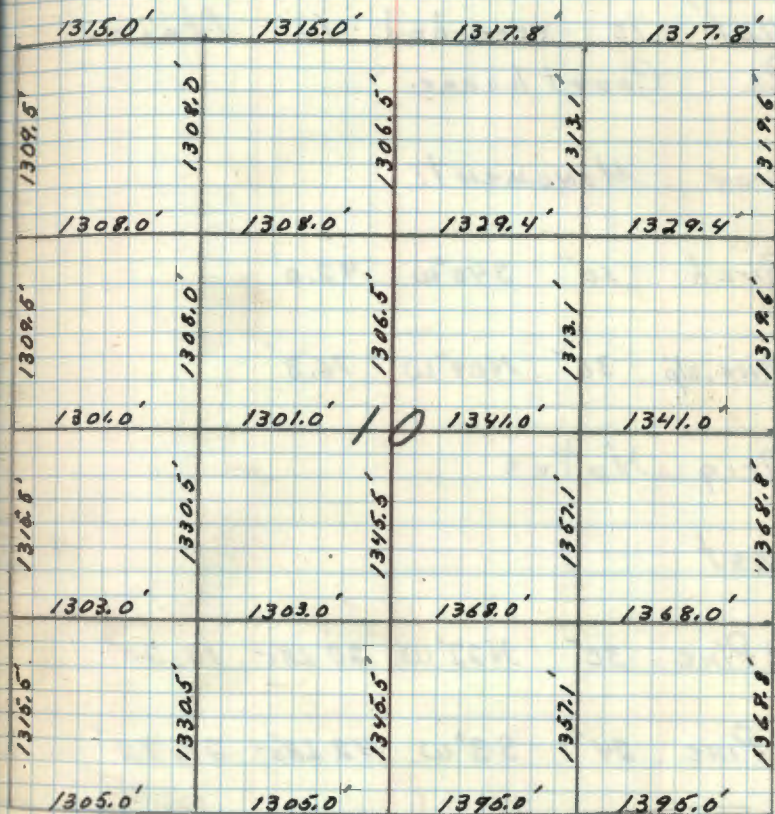
Orig Notes

Aspen 7" S73°E 14 Lks - 9.24'

Aspen 6" N5°W 18 Lks - 11.88'

Aspen 9" N14°E 21 Lks - 13.86'

Cedar 4" S48°W 13 Lks - 8.58'



31
Quarter Cor. Sec. 10-15

Survey of P.C. Warner in 1918.

Plat is recorded in Itasca

Co. Courthouse.

Iron Monument:

Birch 10" S40°W 92.0'

N. Pine. stp 36" N09°W 76.3'

Orig. Notes

Post

W. Pine 30" N22°W 20 Lks - 13.20'

N. Pine 24" S3°W 42 Lks - 27.72'

Section Cor. Sec. 10-11-14-15

Survey of P.C. Warner in 1918.

Plat is recorded in Itasca Co.
Court house.

Iron Monument:

Balsam 15" N54°W 88.4'

Ash 8" S22°W 85.8'

Balsam - S61°E 91.7'

tan. stp. - N33°E 82.0'

Orig Notes - Post

N. Pine 18" N39°W 34 Lks - 22.44'

Birch 8" N36°E 40 Lks - 26.40'

W. Pine 20" S54°E 30 Lks - 19.80'

Balsam 6" S6°W 35 Lks - 23.10'

Quarter Con Sec. 10-11

Survey of P.C. Warner in 1918.
Plat is recorded in Itasca
Co. Courthouse.

Iron Monument:

Cedar 9" N59°W 40.0'

Cedar 8" N52°E 48.8'

Orig Notes

Post

Tam 6" N84°W 16 Lks - 10.56'

Cedar 12" S76°E 12 Lks - 7.92'

34 E-17

Section Cor. Sec. 2-3-10-11

Survey of P.C. Warner in 1918.

Plat is recorded in Itasca

Co. Courthouse.

Iron Monument:

Gov't Pine 14" N31°W 7.8'

Gov't Pine 16" S 08°W 2.4'

N. Pine 8" S 68°W 30.4'

N. Pine.stp. 16" N75°W 8.4'

Orig Notes - Post

N. Pine 12" S12°W 4 Lks - 2.64'

N. Pine 7" S10°E 10 Lks - 6.60'

N. Pine 12" N24°W 11 Lks - 7.26'

Aspen 6" N75°E 12 Lks - 7.92'

7-16-63 B. McDonald
W. Ockerman

Dunks

E-17
Affidavit

Found 3/4" I.P. buried 15' below east shoulder
of roadway in line with fence running north and
33' south of fence corner - all B.T.'s destroyed

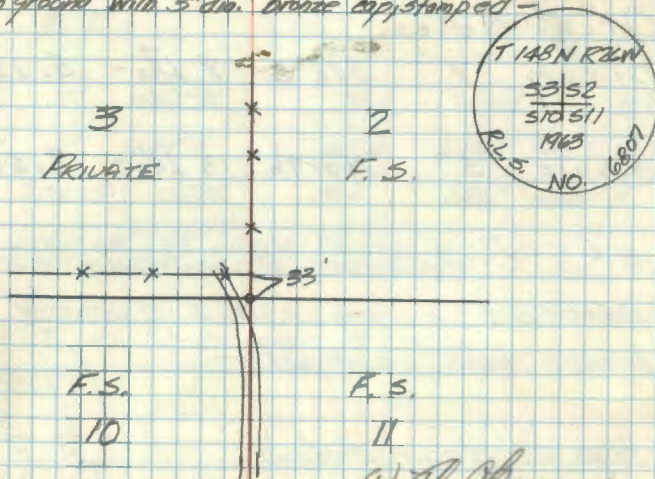
Location of I.P. was described to us by Kenneth Ames - This
man helped his father erect fence before roads were built.
This fence was built 33' north of existing irons placed by
P.C. Warner to accommodate section line road which was
then proposed. Mr. Ames stated that he drove 20's iron
down so that it would not be destroyed during construction.
I.P. falls in line with E of road to south and fence line
to north.

W. Ockerman
B. McDonald

New B.T.'s:

Maple 6" N75°W 33.0 feet scribed S3 BT.
Maple 5" S 9°W 142.2 feet scribed S10 BT.
Maple 5" N 64°E 48.0 feet scribed S2 BT
Birch 7" S52°E rd top 34.5 feet scribed S11 BT
4x4x72' cedar post 12" in ground due east 6.9' with sign
544 attached

Set a 6" diameter 24" long cylindrical concrete monument
flush with ground with 5" dia. bronze cap stamped -



RR-7150-R by Scherer 1929

W. Ockerman

35 E-15

Quarter Con. Sec. 3-10.

Survey of P.C. Warner in 1918.
Plat is recorded in Itasca
Co. Courthouse.

Iron Monument: (Found a 1" Pipe
Buried in Road) 9-5-62 JNE

Birch 14" N14½°W 30.3'

Birch 10" S23½°W 31.4'

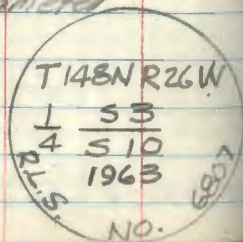
Orig Notes

Birch 7" S16°E 8 Lks - 5.28'

Maple 5" North 13 Lks - 8.58'

set a 6" diameter cylindrical concrete
monument 2' long with 3" diameter
brass tablet stamped -

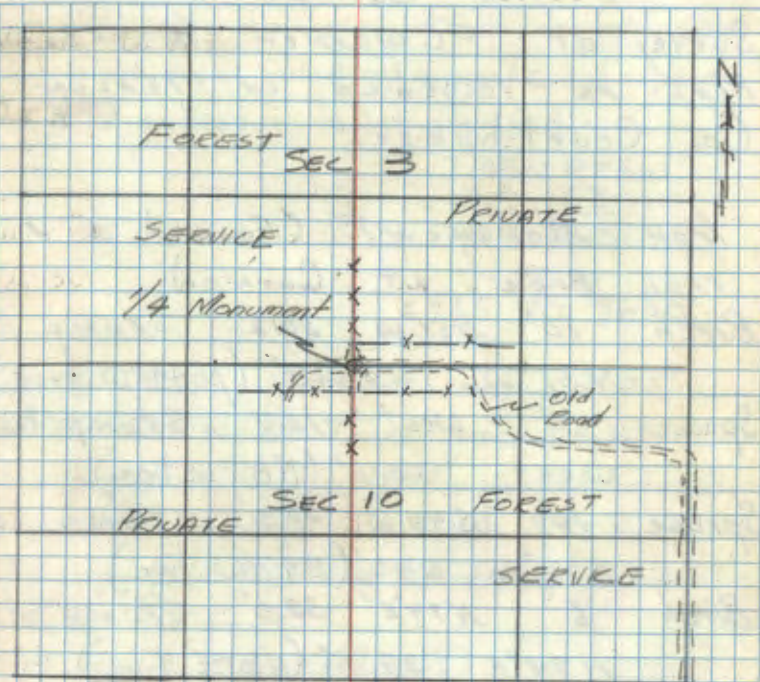
top of road below
road surface



B. McDonald
W. Okerman

7-3-63

Affidavit
who



New B.T.'s

9-16-63

Will be removed by C.M.

Oak 11" N61°W 51.2 MKD 53 BT

Maple 6" N49°E 45.4 MKD 1453 BT

Rock 20x15 350°E 46.4 MKD WITH "X"

Fast cedar 4" x 4" ^{12"} penta-treated with red top
dog's south 6.75' tied with signs for 54-2 & 54-4
attached

R9-7150-4 by Schoonover 1979

36 E-13

Section Cor. Sec. 3-4-9-10.

Survey of P.C. Warner in 1918.
 Plat is recorded in Itasca
 Co. Courthouse.

Iron Monument: (Found a 1"
 iron pipe at corner)

Birch 10" N51°W 20.2' stump hole

N51°W 20.2' (N44°W true)

Spruce 9" West 10.7' stump hole

West 10.2' (N83°W true)

Spruce 10" S40°W 27.3' stump hole

S40°W 27.3' (S47°W true)

Birch 6" N74°E 32.0' stump hole

N74°E 32.0' (N81°E true)

Found an old F.S. Location

Poster on a 7" aspen

S11°W 5.2' 9-5-62

Orig Notes

N. Pine 10" S33°W 10 Lks - 6.60'

N. Pine 16" N67°W 23 Lks - 15.18'

Spruce 7" S42°E 18 Lks - 11.88'

Aspen 8" N18°E 13 Lks - 8.58'

Found two
 Pine stumps
 at record
 bearings' dist
 both badly
 burned.

Affidavit RHM

Shaded
 with 63

Set a 2" inside diameter 5 foot long galvanized
 wrought iron pipe filled w/ concrete and capped
 with a 3" dia. bronze tablet stamped:-

T148N R26W

S4 | S3

S9 | S10

1962

RLS NO 3628

Birch 4" N34°W 18.9 Feet mxo S9 BT

Cedar 8" S55°W 82.7 Feet mxo S9 BT

Steel sign post 72" long set 24" in ground w/ signs

54-2 & 54-4 attached due South 3.55 Feet

Steel sign post 72" long set 24" in ground

due East 4.5 Feet

12-18-62 RHM McDonald

R9-750-4 by Schommer 1979

To bring this corner to standard I set
 New BT#

Birch 4" N32E 11.9'

Spruce 4" S21E 20.82'

12/4/79
 by J. Schommer
 checked by
 R. Olson

Quarter Cor. Sec. 9-10

Survey of P.C. Warner in 1918.
 Plat is recorded in Itasca
 Co. Courthouse.

Iron Monument: found a $\frac{3}{4}$ " dia.

iron pipe marking corner

Tam 8" N03°E 15.0' (Now tam stop

N10°E 15.0 feet.)

Tam 8" S12°W 12.4' (Now a 7" tam

stub w/ scribe "1/4 S9 BT" S20°W 12.4 feet.)

Orig Notes

Post

Tam 4" N89°E 9 lks - 5.94' (Now a

5" tam stop w/ scribe "S" & part of "BT" N68°E 5.94'

Spruce 4" N72°W 14 lks - 9.24'

Twin

Cedar 10" N53°E 34.9 Ft. mko 1/4 S10 BT

Cedar 4" S43 1/2°W 25.45 Ft. mko x BT

Steel sign post 72" long set 24" in ground w/

signs 54-2 & 54-4 attached due North 5.05 Ft.

Set a 2" inside diameter, 5 foot long
 galvanized wrought iron pipe filled with
 concrete and capped with a 3" dia. bronze
 tablet stamped,

T198N R26W

1/4

S9 | S10

1962

RLS NO 3628

12-3-62 (RHM) Donald

R4-7150-4 by Olesen

To bring this corner to standard Z cut
 New BT.

Cedar 12" S35E 10.12 1/4 S10 BT

set steel sign post 8" long south 4.2'
 w/ signs 54-2 & 54-4.

6/3/80

Ronald Olesen

G-15

Center Quarter Cor. Sec. 10
 Survey of P. C. Warner in 1918.
 Plat is recorded in Itasca
 Co. Courthouse.

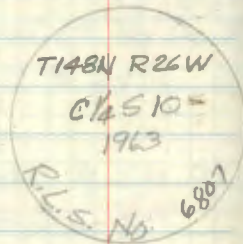
Iron Monument: (Found a $\frac{3}{4}$ " iron pipe
 marking corner under old fence line.)

Spruce st. 7" S29°W 7.2'

D. Spruce st. 10" N36°E 26.0'

Found a squared scribed post laying beside corner
 area has been badly burned & stumps were not
 found. 12-18-62 *R.O.M.*

Set a 2" diameter 60" long galvanized
 steel pipe ^{filled with concrete and} capped with a 3" bronze
 tablet stamped —



Apapa

8263 W. Okamen
 J. Ekstrom

Affidavit FHM

New B.T.'s
 Aspen 8" N61°W 100 feet scribed C1/4 S10 BT
 Birch 6" N31°E 65.2 feet scribed C1/4 S10 BT
 7" Steel sign post due North 42 feet with sign 54-9.5
 54-7 attached
 7" Steel sign post due South 35 feet with sign 54-4
 attached

ok W.A. Okamen

To bring this corner to standard 2 cut
 New B.T.'s

Birch 5" N8W 45.39 scribed C1/4 S10 BT

Birch 6" S10W 41.49 " C1/4 S10 BT

3/11/81 Ronald Okamen

F-15

Center North 1/6 Con. Sec. 10.
Survey of P.C. Warner in 1918.
Plat is recorded in Itasca
Co. Court house.

Iron Monument: (Found 1" iron pipe
under old fence line marking corner.)

Birch 8" N65W 33.6'

Birch 9" N19E 18.7'

Found decayed, scribed, squared post alongside i.p.

NEW B.T.'s:

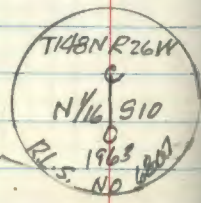
Rock 3'x2.5 feet S48W 8.8 feet "x" chiseled
on top

Rock 3'x2.5 feet N14W 7.5 feet "x" chiseled
on top

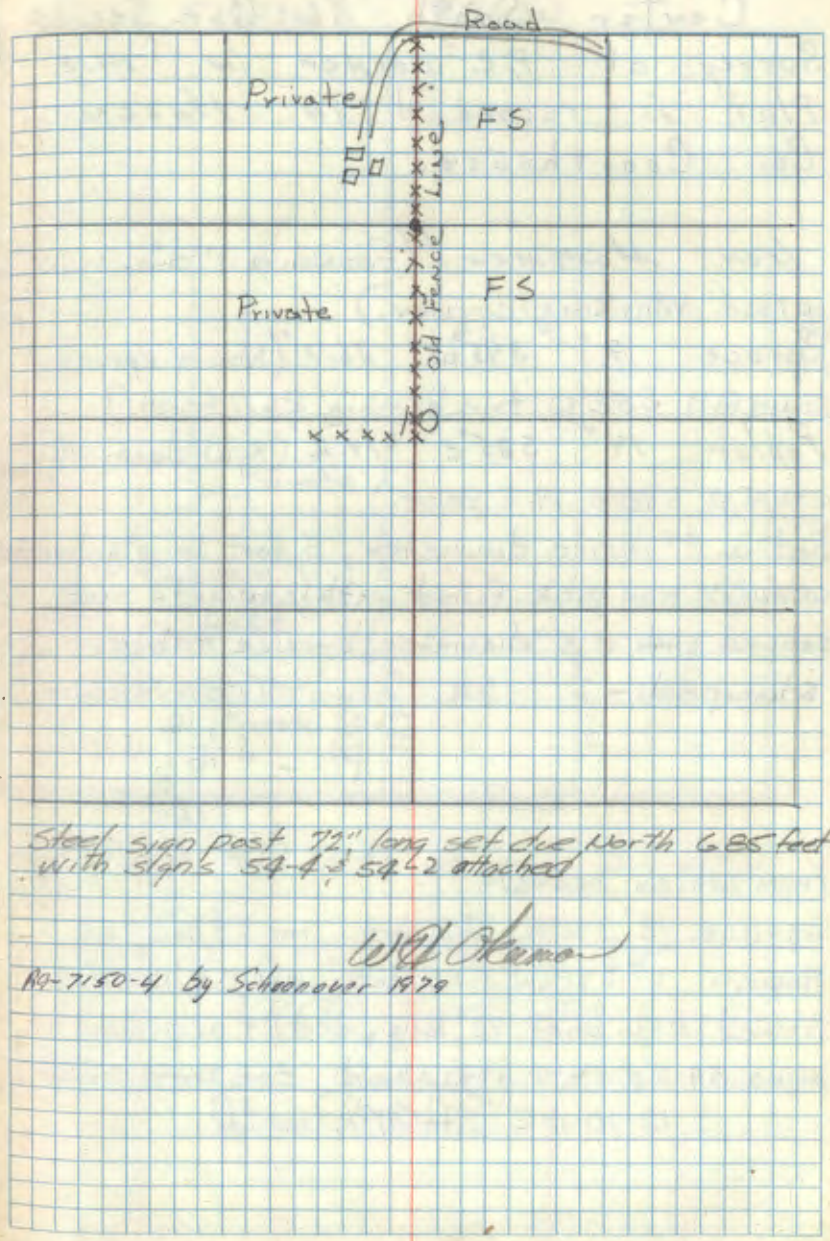
Ash 7" S8E 79.1 feet scribed
CN 1/6 S10 BT

Set 6" cylindrical concrete monument 60"
long capped with a 3" dia bronze tablet
clamped

Monument and BTS in good
condition 3/11/81 Ronald Olson



7-16-63 B. McDonald
W. Ostrom



Steel sign post 7 1/2" long set due North 6.85 feet
with signs 54-4 & 54-2 attached

W.D. Ostrom
RQ-7150-4 by Schaeffer 1979

H-15

Center South $\frac{1}{16}$ Cor. Sec. 10
 Survey of P.C. Warner in 1918.
 Plat is recorded in Itasca
 Co. Courthouse.

Iron Monument (Found a 1" dia. iron
 pipe marking corner.)

Spruce 9" S45°W 26.7' (Now a spruce
 wind fall S52°W true bearing 26.7 feet.)

Poplar 14" S25°E 19.2' (Now decayed
 stump S18°E 19.2 feet.)

Set a 2" inside diameter, 5 foot long galvanized
 wrought iron pipe. Filled with concrete and
 capped with a 3" diameter bronze tablet
 stamped:-

T148N R26W

S $\frac{1}{16}$ S10

1962

R/LS NO 3628

From which bears:-

Spruce 12" S82°E 83.2 feet MKD CS $\frac{1}{16}$ S10 BT

Aspen 6" S41°E 5.85 feet MKD CS $\frac{1}{16}$ S10 BT

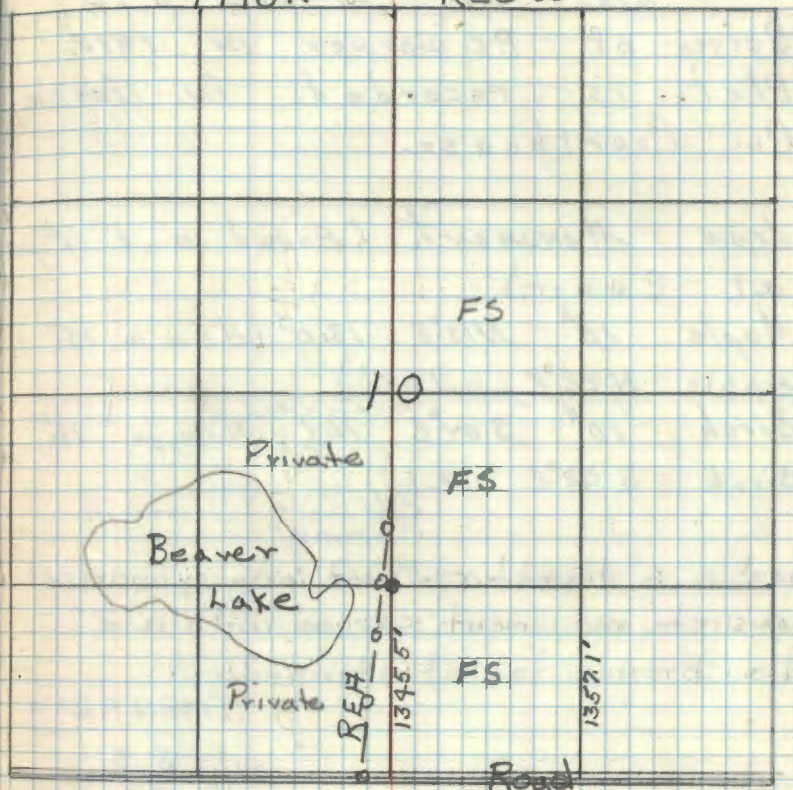
Steel sign post 72" long, set 29" in ground w/
 signs 54-2 & 54-4 attached due North 4.24 ft

12-10-62 R.H. McDonald

H.F. Davis RHM

T148N

R26W



Monument and BTs in good condition
 Test new BT.

* Rock $\frac{1}{2}$ x $\frac{1}{2}$ S 8°W 35.20'

3/11/81 Ronald Olson

E-14

West $\frac{1}{16}$ Cor. Sec. 3-10.

Survey of P.C. Warner in 1918.
Plat is recorded in Itasca
Co. Courthouse.

Iron Monument (Found a 1" Pipe
at Corner.)

Maple 10" N13°E 13.0' (Now a 15"

Maple N22°E 13.0')

Birch 10" S04°E 11.1' (Now a 16"

Birch S02°E 11.1')

Set a 6" diameter 5 foot long cylindrical
concrete monument capped with a 3"
dia. bronze tablet stamped:

T148NR26W

$$\begin{array}{r} W \frac{1}{16} \quad S \quad 3 \\ S \quad 10 \end{array}$$

1962

RLS NO 3628

Maple (county BT rescribed "BT" N22°E
13.0 feet

Maple 10" N30 $\frac{1}{2}$ °W 57.8 feet MKD S3 BT

Steel sign post 72" long set 29" in ground w/
signs 54-2 & 54-4 attached due West 4.5 Ft.

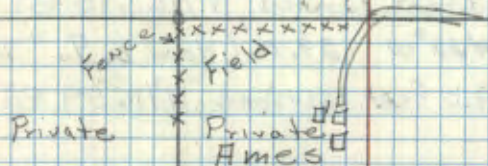
12-18-62 R.H. McDonald

Affidavit RHM

Shubs
6-26-63

F.S.

F.S.



R9-7150-4 by Schconover 1979

North $\frac{1}{16}$ Cor. Sec. 9-10.
 Survey of P.C. Warner in 1918.
 Plat is recorded in Itasca
 Co. Courthouse

Iron Monument: Found a 1" dia. iron
 pipe marking corner.

Tam 12" N72°E 23.3' (Now a 9" Tam

stub N81 $\frac{1}{2}$ °E 23.3 feet scribed "N $\frac{1}{16}$ S10 BT")

Tam 12" N22°W 29.0' (Now a 9" Tam

stub N14°W 29.0 feet scribed "N $\frac{1}{16}$ S9 BT")

Set a 2" inside diameter, 5 foot long galvanized
 wrought iron pipe filled w/ concrete and capped
 with a 3" dia. bronze tablet stamped:-

T148N R26W

N $\frac{1}{16}$

S9 | S10

1962

R.L.S. NO 3628

Tamarack 6" S76 $\frac{1}{2}$ °E 48.0 Ft MKD N $\frac{1}{16}$ S10 BT ✓

Tamarack 7" N25°E 15.8 Ft MKD N $\frac{1}{16}$ S10 BT ✓

Tamarack 6" N61°W 7.25 Ft MKD N $\frac{1}{16}$ S9 BT ✓

Steel sign post 72" long set 24" in ground w/

signs 54-2 & 54-4 attached due South 4.85 Ft

12-3-62 G.H. McDonald

R9-7150-4 by Schooner 1979 - all O.K.

Handwritten
 6-26-63

H-13

South $\frac{1}{16}$ Cor. Sec. 9-10

Survey of P.C. Warner in 1918.

Plat is recorded in Hasca
Co. Courthouse.Iron Monument (Found a 1" dia. iron
pipe marking corner.)Spruce 15" S88°E 31.8' (Now a large
spruce stump mostly decayed S80°E 31.8 Feet)Spruce 9" N71°W 37.1' (Now a decaying
spruce windfall N63°W 37.1 Feet.)Set a 2 inch inside diameter 5 foot long
galvanized wrought iron pipe filled with
concrete and capped with a 3 inch dia.
bronze tablet stamped:

T198N R26W

S $\frac{1}{16}$

S9 | S10

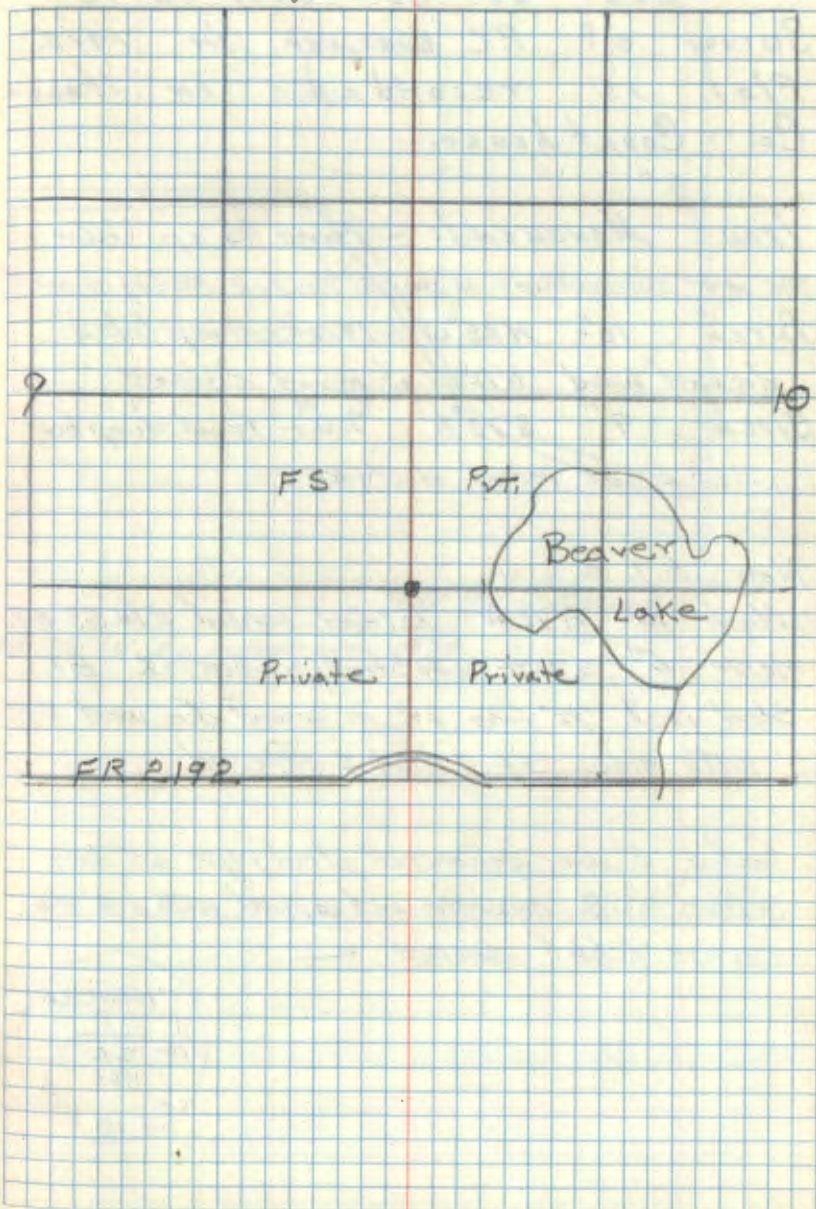
1962

RLS NO 3628

From which bears:

Ash 6" N28 $\frac{1}{2}$ °W 60.1 Feet MKD S $\frac{1}{16}$ S9 BTAspen 8" S9°W 17.65 Feet MKD S $\frac{1}{16}$ S9 BTAspen 7" N85°E 16.2 Feet MKD S $\frac{1}{16}$ S10 BTSteel sign post 72" long set 24" in ground w/
signs 54-2 & 54-4 attached due West 9.3 Feet

12-4-62 G. M. Donald

Affidavit ^{RWM}sketch
2/26/62

E-16

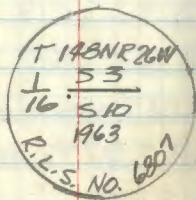
East $\frac{1}{6}$ Cor. Sec. 3-10
 Survey of P.C. Warner in 1918.
 Plat is recorded in Itasca
 Co. Court house.

Iron Monument: - Found $\frac{3}{4}$ " up under
 the same circumstances as page 38 this book marking corner
 Birch 10" N85°W 19.7' stump hole &
 decayed wood N78°W at record distance
 Birch 9" S70°E 7.0' - Found stump hole
 S63°E at record distance

New B.T.'s

Maple 10" N72°W 73.2 feet scribed E $\frac{1}{6}$ S3 BT
 Maple 5" S75°E 31.3 feet scribed X BT
 Steel post 72" long 24" in ground due west 4.85'
 with signs 54-4 & 54-2 attached

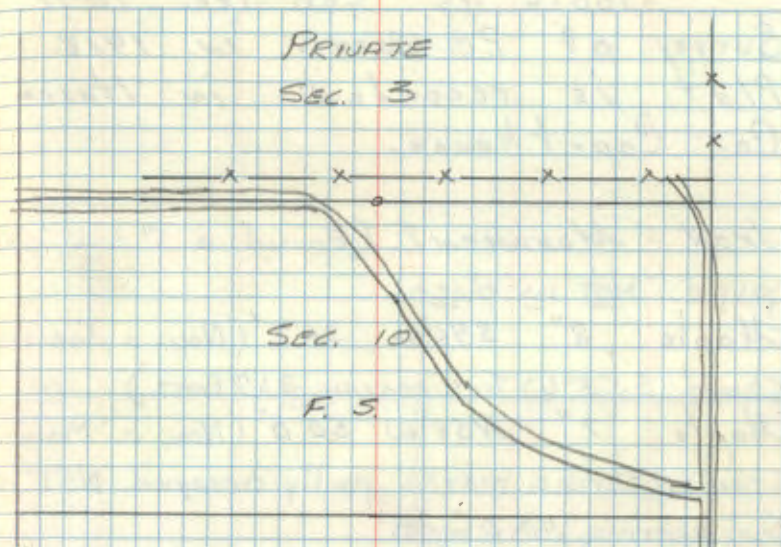
Set a 3" dia. galvanized steel pipe 60" long
 filled with concrete and capped with a 3" dia
 bronze tablet stamped —



7-16-63 B McDonald
 W. Olerud

Affidavit RHM

W. Olerud



W. Olerud

A9-7150-4 by Schwanover 1979

H-17

South 1/6 Cor. Sec. 10-11
Survey of P.C. Warner in 1918.
Plat is recorded in Itasca
Co. Courthouse.

Iron Monument: (Found a 1" dia. iron
pipe, not in place)

Maple 8" S46°W 31.7' (Now a decayed
stump S53°W True bearing 31.7 feet.)

Maple 7" N58°W 50.0' (Now a Maple
stub w/ scribe marks partly decayed N51°W
True bearing 50.0 feet.)

Set a 6" diameter 3 foot long cylindrical concrete
monument w/ a 3" dia. bronze tablet stamped:-

T198N R26W
S 1/4 T6
S10 | S11
1962
RLS NO 3628

From which bears:

Oak 7" S81°W 34.75 Feet MKD S 1/16 S10 BT

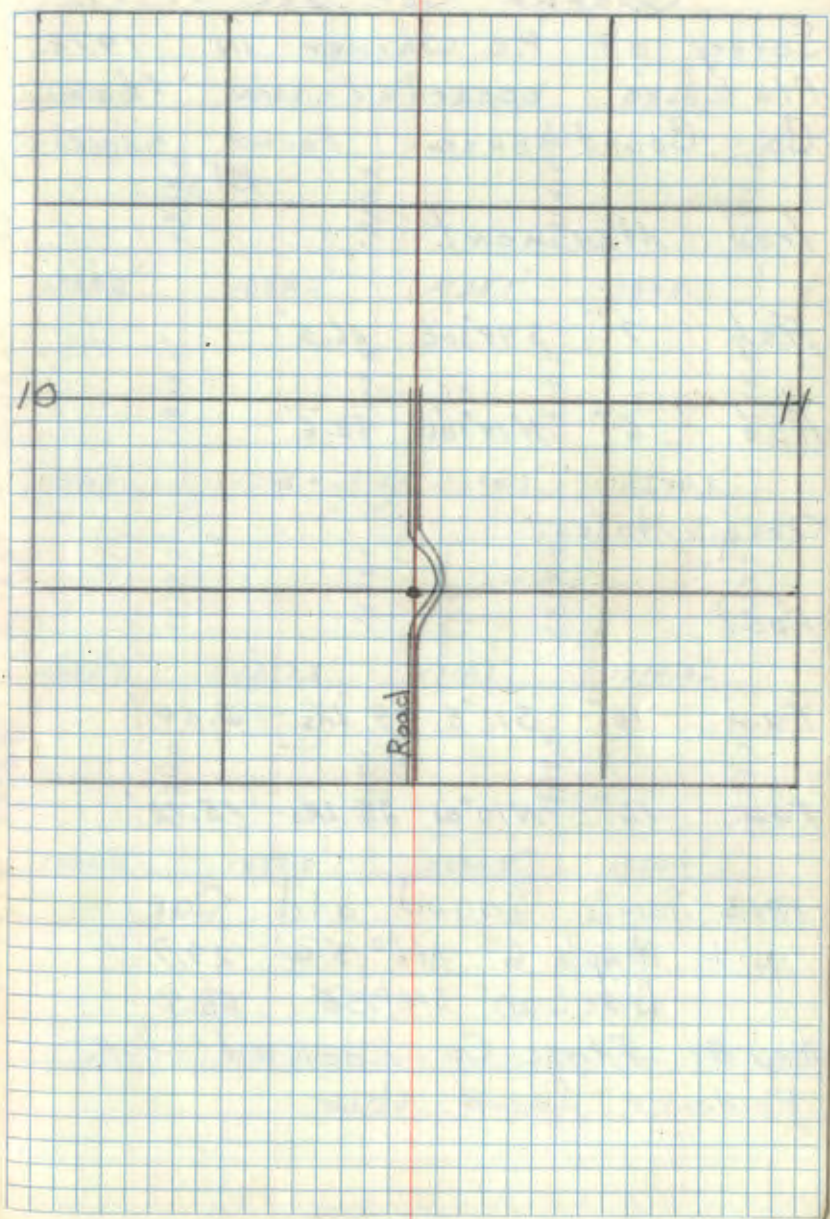
Oak 11" N54°W 22.45 Feet MKD S 1/16 S10 BT

Steel sign post 72" long set 24" in ground
w/ signs 54-2 & 54-4 attached due South
4.15 Feet

11-5-62 F.M. Donald

Affidavit RHM

okwko
6-26-63



Quarter Cor. Sec. 11-14.

Survey of P.C. Warner in 1918.
Plat is recorded in Itasca
Co. Court house Found. SEVERTS
BT's

Iron Monument

Ash 7" S48°30'E 66.5'

Ash 6" N14°30'W 63.6'

Orig Notes

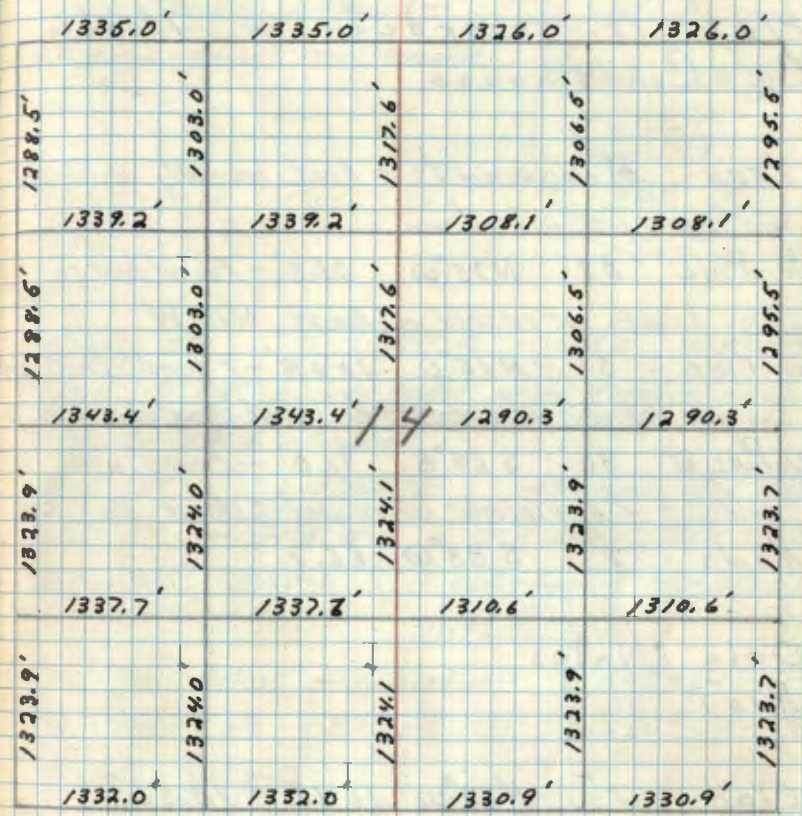
Post

tan 16" S11°E 4 lks - 2.64'

tan 16" N10°W 23 lks - 15.18'

1913 Severts found old COR.
wit. Maple 6" N16°15'W 27.7
Birch 20" S12°15'E 56.4

May 8/ Itasca Co. Looked for
EVIDENCE found NONE



J-21

Section Cor. Sec. 11-12-13-14.
Survey of P.C. Warner in 1918.
Plat is recorded in Itasca
Co. Court house.

Iron Monument: - Road recently repaved
and corner fell in cut area

N. Pine 88" N25°W 61.3' - Found broken
stump & roots at record distance N18°W

W. Pine 5" N15°E 104.9' - Found decayed
burned stump w/ scribe BT visible at record dist N22°E

W. Pine st 30" S69°E 91.0' - Found with
scribe BT visible at record distance S62°E

Maple 2" S33°W 66.7'

Orig Notes
Post

Oak 2" N22°W 16 Lks - 10.56'

Oak 2" N15°E 21 Lks - 13.86'

Maple 5" S51°E 39 Lks - 25.74'

Maple 6" S54°W 25 Lks - 16.50'

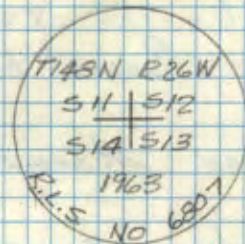
B. McDonald
W. Okerman

7-3-63

Affidavit

Set a 6" diameter 2' long cylindrical concrete
monument and encased with a 3" diameter
bronze tablet stamped -

0.3 below gravel road surface



Oak 5" N25°W 93.0' MKD S11BT

Post 4" x 4" squared cedar penta-treated with
red top due North 77.1 feet with signs
54-2 & 54-4 attached

Oak 9" N36½°E 131.0 feet MKD S12BT

Oak 10" S48°W 71.8 feet MKD S14BT

Oak 9" S67°E 208.9 feet MKD S13BT

W. Okerman

7-21-83 B. Husk G. Robertson D. HARMAN

All Bts OK Picked up something in
Road w/ mtd

4-80 ITASCA County
Established

R. OAK 12" N05°E 71.92'

P. Pole N56°E 85.0'

X Rock 1" x 1½" S55°E 56.86'
OLD COUNTY Mon. S56°W 64.41' Flush

Cont. on page 11 Book #3

East $\frac{1}{6}$ Cor. Sec. 11-14

Survey of P.C. Warner in 1918.

Plat is recorded in Itasca
Co. Court house.

Iron Monument:

Ash 6" S29°W 49.4'

W. Pine 6" N36°W 72.5'

West $\frac{1}{6}$ Cor. Sec. 11-14.

Survey of P.C. Warner in 1918.

Plat is recorded in Itasca
Co. Courthouse.

Iron Monument:

Ash 8" N35°E 54.3'

Birch 7" S46°W 60.6'

Quarter Cor. Sec 14-16

Survey of P.E. Warner in 1912
Plat ~~1st~~ recorded in Itasca
Co. Courthouse.

Iron Monument:

Birch 9" N81°E 62.4'

Cedar 12" N27°W 72.6'

Orig Notes

Post

Birch 12" N53°E 19 Lks - 12.54'

Birch 8" S33°W 10 Lks - 6.60'

1915 F.E. Williams Plat recorded
in Itasca Co. Courthouse

Birch, 10", S60°W, 28.4 ♂

Birch,
Maple, 9", N80°E, 62.4 ♂

North $\frac{1}{6}$ Cor. Sec. 14-15.

Survey of P.C. Warner in 1918.

Plat is recorded in Itasca
Co. Court house.

Iron Monument:

Birch 6" S51°E 45.3'

Y. Birch 8" N48°W 47.8'

Section Cor. Sec. 14-15-22-23

Survey of P.C. Warner in 1918.
Plat is recorded in Itasca
Co. Courthouse.

Iron Monument.

Pine st. 18" S 68°W 55.5' (Now a badly burned

pine stump at ^{S 75°W} record bearing & distance

Tam 7" S 45°E 68.8' - Now decayed wood
in pile S 33°E & record distance

Gov't N. Pine 6" N 43°E 56.0' (Now a badly burned

pine stump scribe mark ^{BT} visible

Orig Notes

"Post"

N. Pine 6" N 43°E 84 Lhs - 55.44'

(Now burned pine stp. scribed BT)

Aspen 6" N 53°W 99 Lhs - 65.34'

Tam 5" S 18°E 75 Lhs - 49.50'

Tam 6" S 29°W 66 Lhs - 43.56'

Set 6" diameter 24" long cylindrical concrete
monument; ~~is set~~ in old road grade, with
capped a 5" diameter bronze tablet stamped -

T14BN R26W

S15S14

S21S23

1963

R.L.S No 4807

NEW B.T.'s:

BIRCH 5" N 72 1/2° W 49.7 feet scribed S15 BT
BIRCH 7" S 31° W 63.5 feet scribed S22 BT
BIRCH 5" N 43° E 66.8 feet scribed S 14 BT
Steel sign post 72" long S 42° E 16.9 feet with
sign ~~set~~ attached

W. Oleron

M-17

South $\frac{1}{16}$ Cor. Sec. 14-15.

Survey of P.C. Warner in 1918.
Plat is recorded in Itasca
Co. Court house.

Iron Monument: Found in place
buried under old road grade, 1" dia iron pipe
Birch 16" N29°E 55.6' (Now a stump
hole N39°E 55.6 feet.)

Cedar 9" S40°W 67.4' (Now a 10" cedar
stump scribed "S $\frac{1}{16}$ S15 BT" S49°W 67.4 feet.)

Set a 6 inch diameter, 24 inch long cylindrical
concrete monument capped with a 3 inch dia.
bronze tablet stamped: - T148NR26W
(Note monument is set
4 inches below road surface.)

S $\frac{1}{16}$
S15 | S14
1963
RLS NO 3628

Flsh 11" S79 $\frac{1}{2}$ °E 53.5 feet MKD S $\frac{1}{16}$ S14 BT

Flsh 5" S44°W 73.5 feet MKD S $\frac{1}{16}$ S15 BT

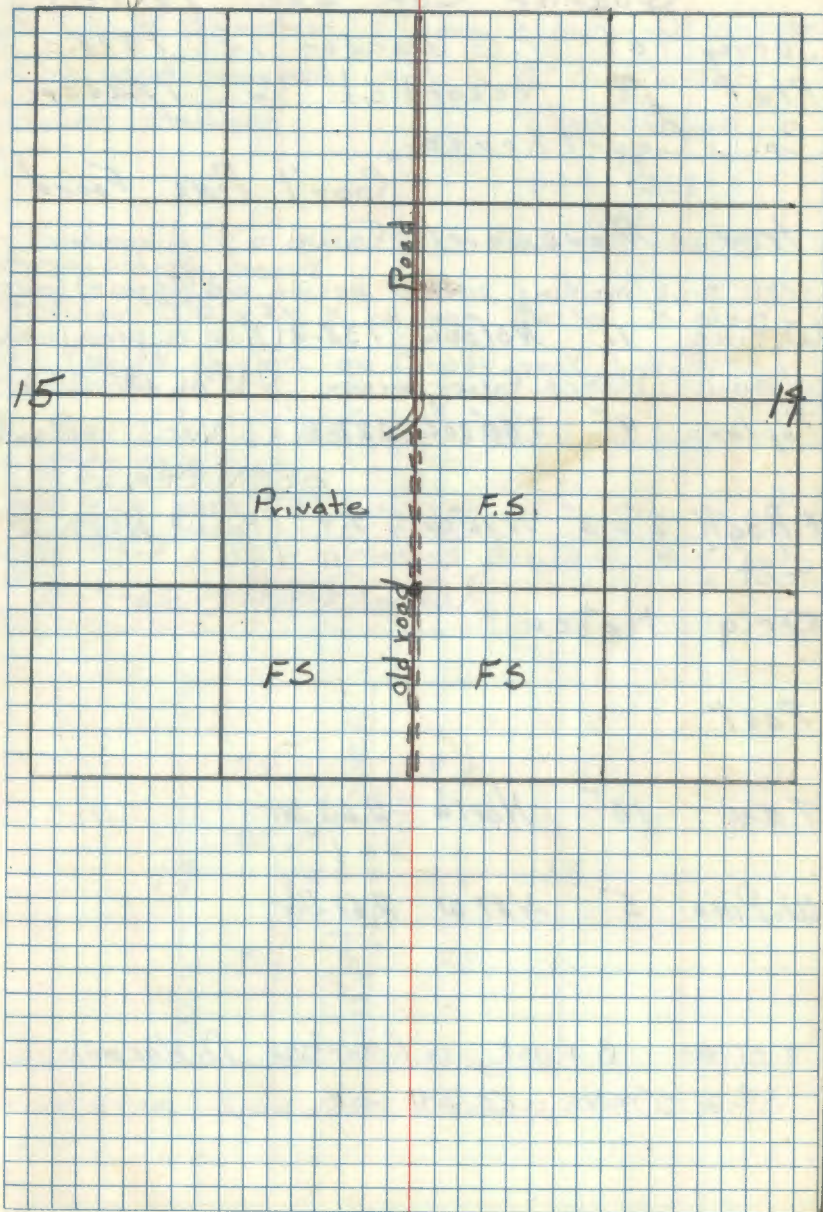
Steel sign post 72" long set 24" in ground w/ signs

54-2 & 54-4 attached due West 18.1 feet

May 13, 1963 *A. M. R. R. R.*

okendo
6-20-63

Affidavit RWM



2-21

Quarter Cor. Sec. 13-14.

Survey of P.C. Warner in 1918.
 Plat is recorded in Itasca
 Co. Courthouse.

"Gov't Pine Found"

Iron Monument Found a 1" diameter

iron pipe marking corner beside old (30 year) ^{FENCE} corner

W. Pine 11" N51°50'W 138.2 (Now a pine windfall)

w/ window blazes facing corner N45°W 138.2 feet)

Poplar 9" S50°30'E 227.4'

X Rock 3" x 3" N76°W 9.9' (Found N69°W 29'
 feet)

Orig Notes

Post

TAM 10" North 2.63 Ws-

W. Pine 5" N87°W 2.67 Ws-

7-21-83 B. AUSK G. ROBERTSON D. HARMAN

B.C. + TIES ARE ALL OK

Affidavit RHM

shelley
6-19-63

13-1

Set a 6" diameter, 5' long cylindrical concrete
 monument capped with a 3" dia. bronze
 tablet stamped:

T148NR26W

S14 ^{1/4} S131962
RLS NO 3628

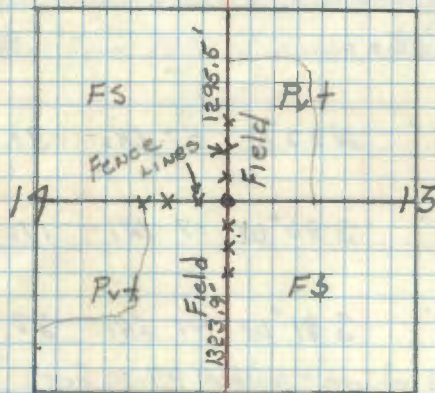
From which bears

Boulder 3.0' x 3.0' x 1.0' high marked X on
 top (New X chisled on County rock) N69°W
 16.05 feet.

Boulder 2.0' x 2.0' x 0.5' high marked X on top
 S17 1/2° E 26.8 feet. 26.8

Steel sign post 72" long set 24" in ground w/
 signs 59-2 & 59-4 attached due North 4.5 feet

12-7-62 RHM Donald



New Steel Sign Post 8' long, West 6.2'

N-21

Section. Cor. Sec. 13-14-23-24

Survey of P.C. Warner in 1918
 Plat is recorded in Itasca
 Co. Courthouse.

3 Gov't B.t.s Found.

Iron Monument: (not found point for
 corner falls alongside a fence cor. est. to be 30
 years old)

Poplar 14" N51°W 145.5' Now a Aspen

stp. mostly decayed N46°W 145.5 feet

W. Pine 10" N07°W 156.1' (Now a white pine
 windfall and stp N0°W 156.1 feet - blaze facing corner.)

W. Pine st. 14" N67°E 45.9' Not Found

W. Pine st. 22" S50°E 83.7' (Now a large pine
 stp. mostly decayed S43°E 83.7 feet.)

Orig. Notes.

Tan 6" N32°E 47 Lks - 31.02'

Tan 5" S30°W 17 Lks - 11.22'

W. Pine 8" S81°W 41 Lks - 27.06'

(Now a decayed stump S80½°W 27.06 Feet.)

W. Pine 8" N79°W 54 Lks - 35.64'

(New pine stp. mostly decayed w/ part of scribe "B"
 visible N79°W 35.8 feet.)

Affidavit
RHMShirley
Woods

Set a 2" inside diameter, 5 foot long galvanized
 wrought iron pipe filled with concrete and
 capped with a 3" dia. bronze tablet stamped

T198N R26W

S14 | S13

S23 | S24

1962

RLS NO 3628

From which bears

Oak 16" N89½°W 130.2 Feet MKD S14 BT

Elm 11" S61°W 101.5 feet MKD S23 BT

Birch 10" N76½°E 46.4 feet MKD S13 BT

white pine 15" N6°W 179.6 Feet MKD S14 BT

Steel sign post 72" long set 24" in ground with
 signs 54-2 & 54-4 attached due East 4.52 Feet

12-6-62 (A.H. McDonald)

2/79 - New SIGN POST 8' LONG, NORTH, 25'

56
South $\frac{1}{6}$ Cor. Sec. 13-14.
Survey of P.C. Warner in 1918.
Plat is recorded in Hasca
Co. Courthouse.

Iron Monument:

W. Pine ~~sp.~~ 10" S76°E 318.7'

W. Pine 7" N23°W 224.8'

57 K-21

North $\frac{1}{6}$ Cor. Sec. 13-14.

Survey of P.C. Warner in 1918.
plat is recorded in Itasca
Co. Court house.

Iron Monument

W. Pine stb 10" S31°6 45.3'

W. Pine stb 6" N44°W 56.1'

Searched 3 man hours with help of adjacent Land
owner Ted Dowling who had seen pipe near
old fence corner. We chained North 1295.5 ft
from $\frac{1}{4}$ Sec. 13-14 & dug up approx 10 sq ft
around fence cor. but no trace of pipe was
found. put up FS metal location poster on a
6" Birch at corner. 12-7-62 RHM

58
N-19

Quarter Cor. Sec. 14-23.
Plat is recorded in Itasca
Co. Courthouse Survey of
1918 by P. C. Warner.

Iron Monument. (Found a $\frac{3}{4}$ " dia.
iron pipe marking corner.) Stake lays beside)
N. Pine 8" $N32\frac{1}{2}^{\circ}E$ 146.1' (Now a 10" pipe
SNAG w/ window blades facing corner $N39\frac{1}{2}^{\circ}E$ Type
Cedar 8" $S31^{\circ}E$ 54.3' (Now a cedar window
stop $S24^{\circ}E$ 54.3 feet)

Orig. Notes
"Post"

Aspen 6" $N40^{\circ}W$ 32 Lbs - 21.12'

Birch 8" $S25^{\circ}E$ 27 Lbs - 17.82'

Set a 2" inside diameter, 5 foot long galvanized
wrought iron pipe filled w/ concrete and
capped with a 3" dia bronze tablet stamped:-

T148N R26W

1 S 14

4 S 23

1962

RLS NO 3628

Affidavit RHM

sketch
6-20-63

New bearing trees

Red pine 7" $N57^{\circ}W$ 29.58' MKD $\frac{1}{4}$ S 14 BT

Red pine 7" $S49\frac{1}{2}^{\circ}E$ 26.25' MKD $\frac{1}{4}$ S 23 BT

Red pine 7" $N10\frac{1}{2}^{\circ}W$ 28.95' MKD $\frac{1}{4}$ S 14 BT

Set steel sign post 72" long set 24" in

ground w/ signs 54-24-24 attached due West

3.15 feet

12-5-62 RHM & Donald

N-18

West $\frac{1}{16}$ Cor. Sec. 14-23.

Survey of P.C. Warner in 1918.
Plat is recorded in Itasca
Co. Courthouse.

Found squared post laying beside pipe

Iron Monument: (Found a 1" dia.
iron pipe marking corner.)

Birch 9" S36°E 30.8' (Now decayed
wood in ground S29°E 30.8 feet)

Birch 8" N78°W 28.5'

Set a 2" inside diameter, 5 foot long galvanized
wrought iron pipe filled w/ concrete & capped
w/ a 3" dia. bronze tablet stamped:-

T14BN R26W

W $\frac{1}{16}$ S 14

N $\frac{1}{16}$ S 23

1962

PLS NO 3628

Birch 6" N72°E 30.35 feet mkb W $\frac{1}{16}$ S 14 BT
White spruce 5" N78°W 91.9' mkb X BT
Steel sign post 72" long set 24" in ground
w/ signs 54.2 & 54.4 attached due South 3.6 Ft.

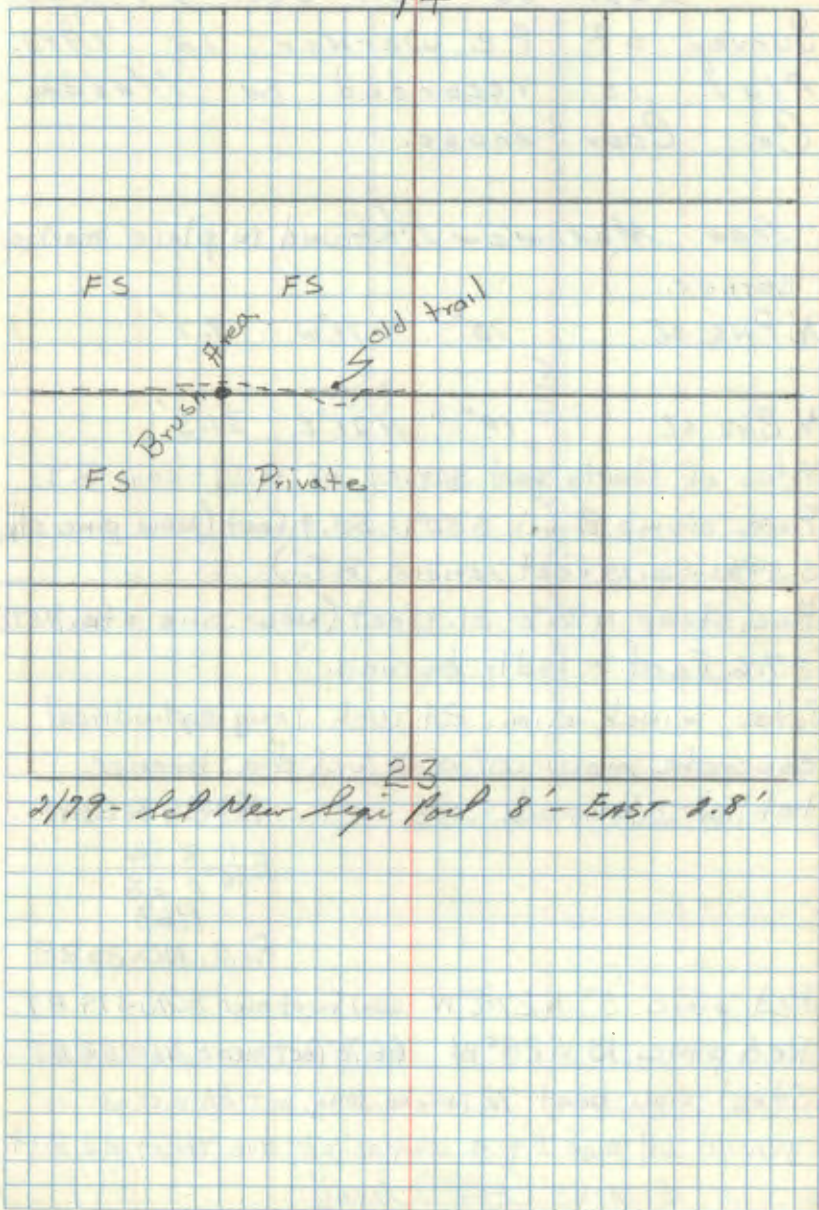
12-6-62 RHM/Donald

Affidavit RHM

done
12-20-62

05-W

14



384 50%

2/79 - let New Sign Post ²³ 8' - EAST 1.8'

N-20

33.8

East $\frac{1}{16}$ Cor. Sec. 14-23.
Survey of P.C. Warner in 1918.
Plat is recorded in Itasca
Co. Court house.

Iron Monument. (Found in place marking
corner.)

N. Pine st. 10" S71°W 9.7'

N. Pine st. 10" N21°E 31.3'

Notes of County road survey of 1929 - New B.T.s
Pine stump 8 inch S50°W 55.9 feet (now pine stp,
S59°W 56.15 feet scribed B.T.)

Pine stump N75°E 31.3 feet (now pine stp. N51 $\frac{1}{2}$ °E
27.6 feet - badly burned.)

Set a 6 inch dia. 24 inch long cylindrical
concrete man. w/ a 3 inch dia. bronze
tablet stamped:-

T148N R26W.

E $\frac{1}{16}$ S 14
S 23
1963

R.L.S., NO. 3628

Red pine 5" N27 $\frac{1}{2}$ °W 60.1 feet mxd E $\frac{1}{16}$ S 14 BT

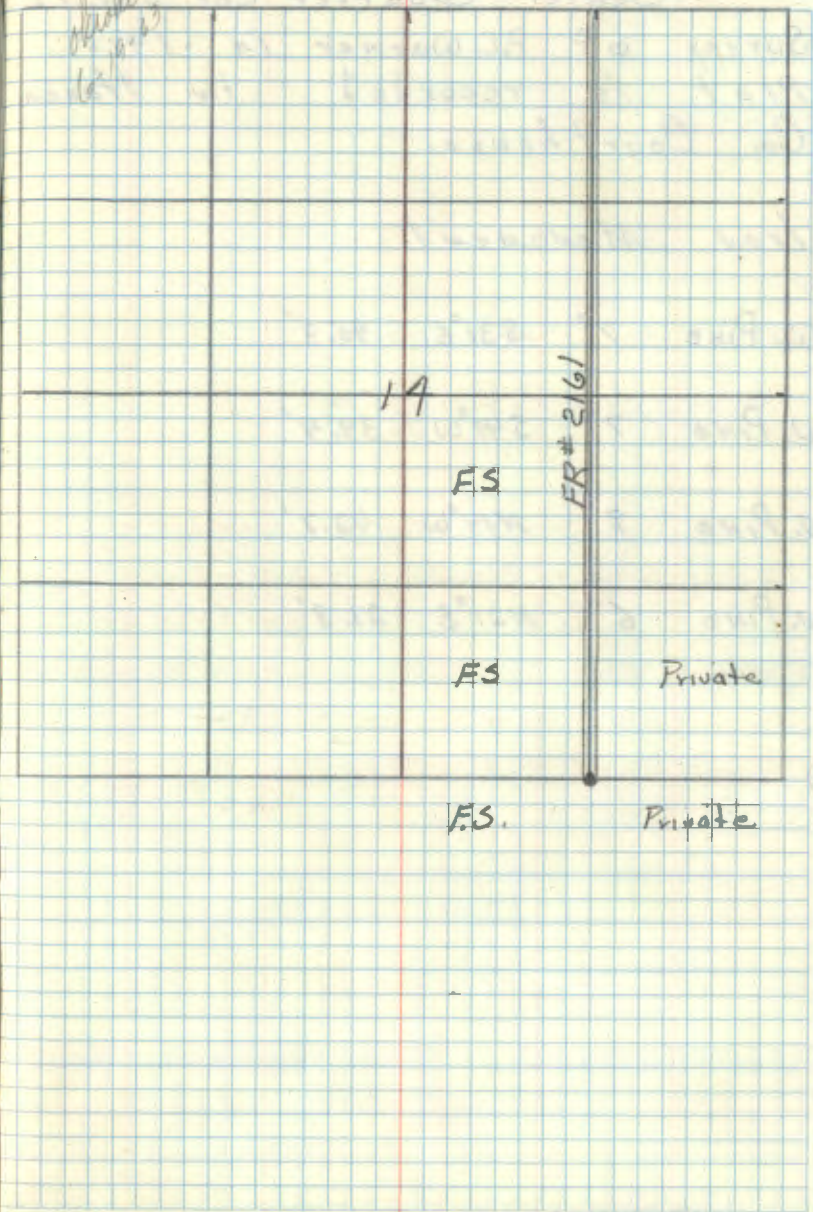
Red pine 13" S28°W 66.75 feet mxd E $\frac{1}{16}$ S 23 BT

Steel sign post 72 inches long set 24 inches in
ground w/ sign 54-4 attached due West 33.8 ft.

5-13-63

(Handwritten signature)

Affidavit. RM



Center Quarter, Cor. Sec. 14
Survey of P.C. Warner in 1918.
Plat is recorded in Itasca
Co. Court house.

Iron Monuments:

W. Pine 7" S31°E 45.3'

W. Pine 7" S41°W 39.4'

W. Pine 9" N14°W 42.7'

W. Pine 6" N21°E 21.8'

North East $\frac{1}{4}$ Cor. Sec. 14
 Survey of P.C. Warner in 1918.
 Plat is recorded in Itasca
 Co. Court house.

Iron Monument:

Maple 6" S50°E 8.4'

Basswood 6" N66°E 23.1'

Searched 2 man hours using dip needle but
 apparently road building has obliterated all
 corner evidence. A survey line is still visible
 crossing road East to West. I put up FS metal
 location post on a 6" Birch 33 ft. West
 of Road ϕ . 12-10-62 RHM.

K-19

Center North $\frac{1}{16}$ Cor. Sec. 14.
Survey of P.E. Warner in 1918.
Plat is recorded in Itasca
Co. Courthouse.

Iron Monument (Found a $\frac{3}{4}$ " dia.
iron pipe marking corner.)

Maple 7" N85°W 22.6' (Now a decayed
stump N78°W 22.6 Feet.)

Poplar 18" S42 $\frac{1}{2}$ °E 22.8' (Now a decaying
Aspen windfall S35 $\frac{1}{2}$ °E 22.8 Feet.)

Set a 2" inside diameter, 5 foot long galvanized
wrought iron pipe filled w/ concrete and capped
w/ a 3" dia. bronze tablet stamped:

T/16NR26W

$$\begin{array}{c} \text{C} \\ \text{N} \frac{1}{16} \text{S} 14 \\ \text{C} \end{array}$$

1962

RLS NO 3628

Maple 12" N44 $\frac{1}{2}$ °E 30.3 Feet MKD CNY $\frac{1}{16}$ S14 BT

Maple 10" S72 $\frac{1}{2}$ °W 36.7 Feet " CN $\frac{1}{16}$ S14 BT

Maple 7" N64 $\frac{1}{2}$ °W 52.4 Feet " CNY $\frac{1}{16}$ S14 BT

Set Steel sign post 72" long, 2 $\frac{1}{2}$ " in ground w/ signs

57.2 & 57.4 attached - due North 3.43

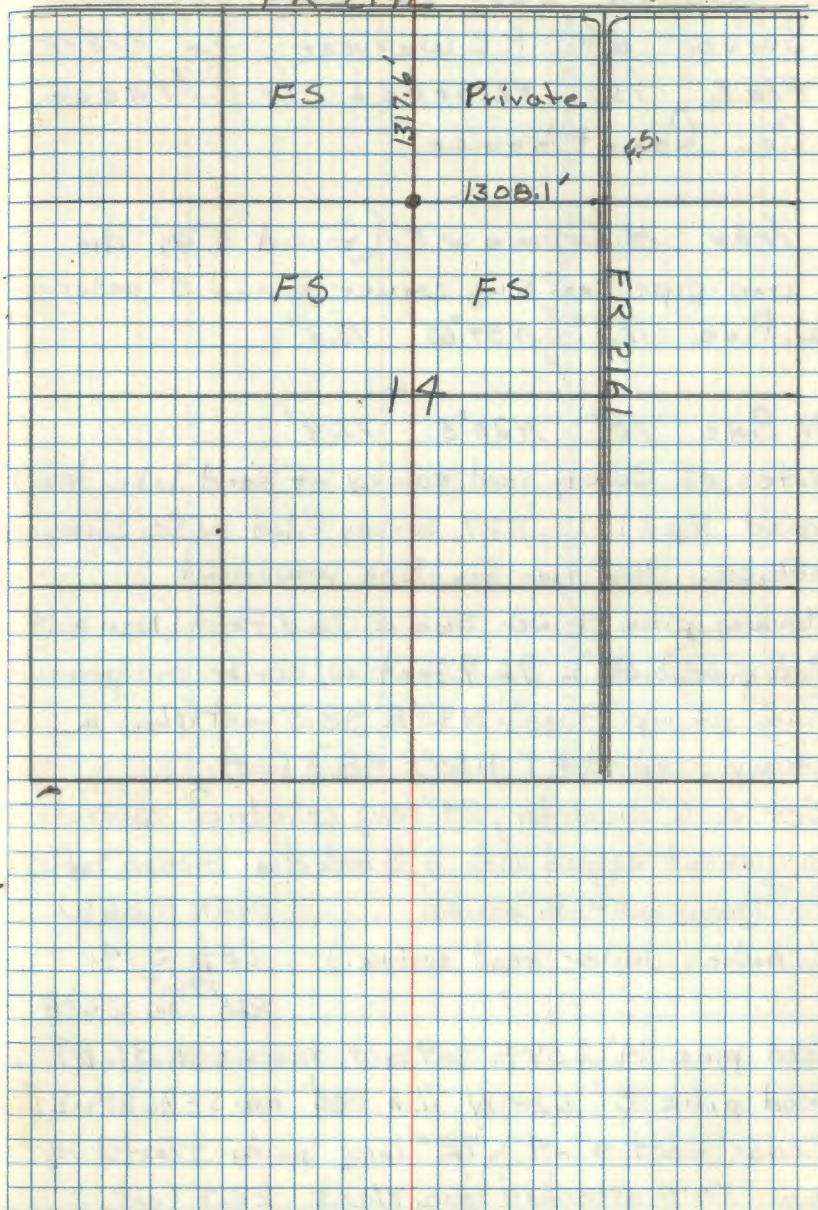
12-10-62 *(Signature)*

Affidavit RHM

*check
6-20-63*

DS-M

FR 2192



M-20

South East 1/4 Cor. Sec. 14

Survey of P.C. Warner in 1918.
Plat is recorded in Itasca
Co. Court house.

Iron Monument: (Found a 3/4" dia
iron pipe marking corner buried 8" under road.)
W. Pine. 572" N39°W 43.5'

N. Pine 10" N20°E 77.4'

Notes of County road survey of sand lake town
road April 10, 1929, Survey Filed in Co. Surveyors
office. New ties for Pipe monument.

Norway pine 4 inch S66°E 96.9 Feet (Now a 14"

Red pine S59°E 96.9 Feet w/ scribe overgrown.)

1 Pine stump 8 inch N40°E 48.5 Feet (Now a pine
stump scribed BT N50°E 48.5 Feet.)

Set a 6" diameter, 24" long cylindrical concrete
monument capped with a 3 inch dia. bronze tablet

Note (monument is buried T148N R26W

6 inches under road surface.) SE 1/4 S14

1963
RLS NO 3628

Red pine 14" S59°E 96.9 Feet rescribed BT. BT.

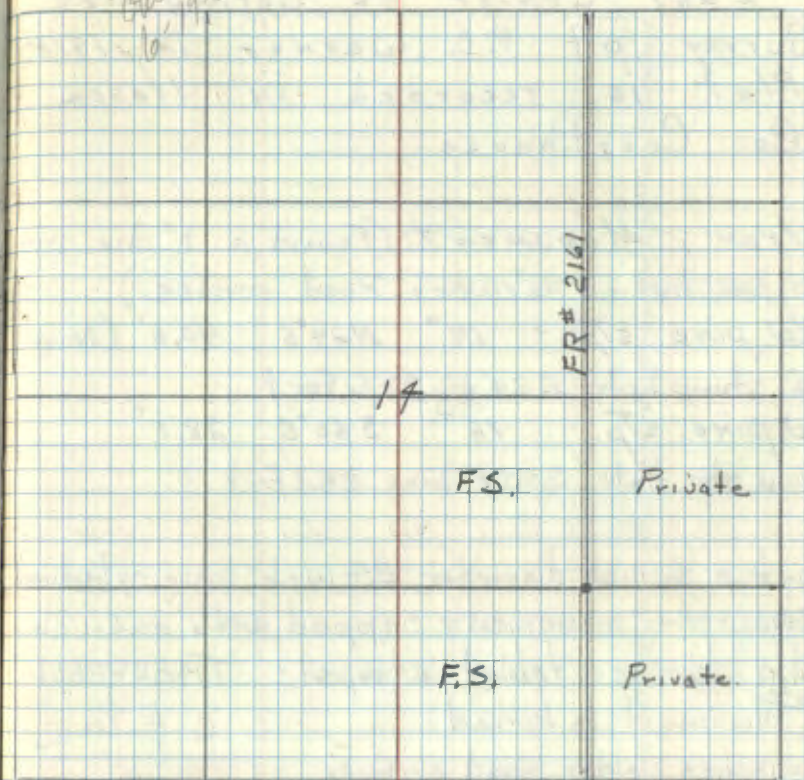
Red pine 8" N29°W 71.6 Feet mkd SE 1/4 S14 BT

Cedar post 4"x4"x72" long painted & treated w/
sign 54.4 attached due West 22.9 Feet.

May 19, 1963 RHM Donald

Affidavit RHM

checked
6-19-63



L-20

East Center $\frac{1}{16}$ Cor. Sec. 14
 Survey of P. C. Warner in 1918.
 Plat is recorded in Itasca
 Co. Courthouse.

Iron Monument: (Found a 1" dia. iron
 pipe buried 6" under Road surface.)

W. pine stp. 14" N24°E 40.6' (Now
 a stump hole N34°E 40.6 feet)

W. pine stp. 16" S60°E 28.1'

Now stp hole S50°E True 28.1 feet

Set a 6 inch diameter 24 inch long cylindrical
 concrete monument capped with a 3 inch
 dia. bronze tablet stamped: T14BNR26W

NOTE
 Monument is buried

6 inches under road surface

c E $\frac{1}{16}$ c
 S 14
 1963
 RLS NO 3628

Oak 11" S72 $\frac{1}{2}$ °W 48.4 feet MKD CE $\frac{1}{16}$ S14 BT

Elm 9" N64°W 36.25 feet MKD CE $\frac{1}{16}$ S14 BT

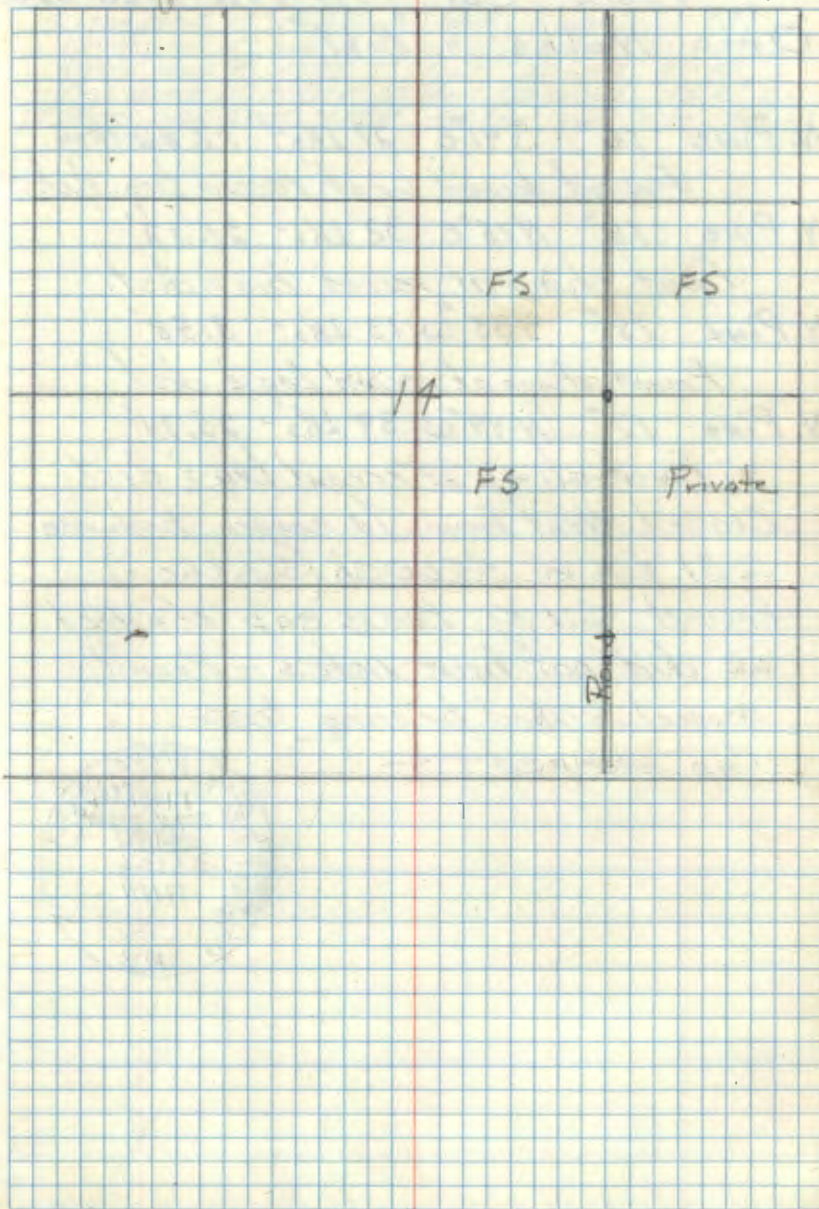
Steel sign post 72 inches long, set 24 inches
 in ground w/ signs 54.2 & 54.4 attached

due East 26.15 feet

AM Donald May 14, 1963

Affidavit RHM

stump
 to 1963



Town Cor T147-148 R25-28W

Orig Notes - "Post"

N. Pine 16" S41°E 27 Lks - 17.82'

Found downed log at record brg. & dist

N. Pine 18" N15°E 32 Lks - 21.12'

Found stump at record brg. & dist.

N. Pine 18" S35°W 13 Lks - 8.58'

Found stump at record brg. & dist

N. Pine 17" N49°W 39 Lks - 25.74'

Found stump at record brg. & dist

Chained West from 1/4 corner between

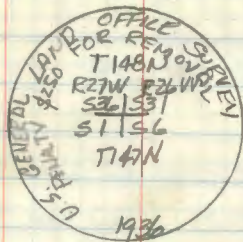
S31 & S6 55.60 ch (3669.60')

Found G.L.O brass cap of which

we did not have notes - Found

several scribed bearing trees

Cap stamped -

8-6-63 W. Okerman
J. Ekstrom

New BT's 5

Jackpine 8" N63°W	5.2 feet	scribed	51 BT
White pine 12" N50°E	12.9 feet	scribed	531 BT
White pine 9" S13°E	23.9 feet	scribed	56 BT
Red pine 11" N42°W	35.7 feet	scribed	536 BT
72" steel sign post	N10°W	5.8 feet with sign	544 attached

T148-R26 South Boundary

Quarter Cor. Sec 31-6

Orig Notes -

55.60 Chains East of town Corner
"Post"

TAM 4" S70°W 14 Lks - 9.24'

TAM 5" N44°W 40 Lks - 26.40'

SEE BOOK #1 - PAGE 16 - 147-26

Sec 31-6

Meander Cor. West Shore

Sand Lake. T148-147 R26-2

Orig Notes -

Post

W. Pine 16" S8°E 98 Lts 64.68'

Aspen 6" N4°E 33 Lts 21.78'

See book 1 T147N R26W page 36

Sec 32-5
Meander Cor. East Shore
Sand Lake T148-147 R26

Orig Notes

Post

Oak 3" N66°E 88 Lhs 58.08'

Oak 4" S53°E 45 Lhs 29.70'

T148-147. R 26 N
Quarter Con. Sec. 32-5

Orig Notes.

Post

Tam 4" N67°W 78 Lks - 51.48'

Tam 6" S73°W 80 Lks - 52.80'

Chained west from Sec corner of 32,
33, 4 & 5 2640'; point fell in abandoned
roadway - All apparent original evidence
has been obliterated, BT's were
evidentially out for corduroy on road

8-19-63 W. Olerman
L. Ekstrom

T148-147 A26W
 Section Cor. Sec. 45-32-33

Orig Notes.

Post.

J. Pine 8" N80°W 27 Lks - 17.82'

J. Pine 6" S53°W 29 Lks - 19.14'

N. Pine 8" S58°E 145 Lks - 95.70'

Aspen 3" N17°E 28 Lks - 18.48'

SEE BOOK #1 147-26 PAGE 21

7148-147 R26W
 Section Cor. Sec. 3-4-33-34

Orig Notes

Post

Aspen 8" S28°E 22 Lks- 14.52'

Aspen 10" S53°W 27 Lks- 17.82'

Birch 6" N30°E 13 Lks- 8.58'

Birch 5" N29°W 22 Lks- 14.52'

SEE BOOK #1 - PAGE 41 - 147-26

73 Z-15, 16

T148-147 R26W

Meander Cor. Sec 34-3

East Shore of Bay on Sand M.

Orig Notes

Post

Aspen 4" S77°E 33 Lks 21.78'

N. Pine 20" N7°W 110 Lks 72.00'

Notes of Itasca County road survey in May 1935

Filed in County surveyors office.

Found Gov't. Pine stump 8" N7°W 72.6ft.

Marked new

N. Pine 13" S45°E 164.2 feet (New a " Red
pine S44°E 164.2 feet.) (scribe MC 53 BT visible)

Poplar 7" N30°E 39.5 feet (New a " Aspen N33°E
39.5 feet scribe, BT visible.) 12-12-62 RHM

N. Pine * 183.2' 12° N 22° W * Poplar
BT BT
" True bearings "

A witness corner should be set at this location
but only by running true line between
existing corners *Willo*

T148-147 R26W
Section Cor. Sec. 2-3-34-35

Orig Notes

Post

Balsam 6" N76°W 17 Lks - 11.22'

N. Pine 18" N87°E 27 Lks - 17.82'

W. Pine 30" S56°W 42 Lks - 27.72'

Aspen 14" S32°E 27 Lks - 17.82'

Co. Rd. #58 survey of 1915 by
F.E. Williams

Spruce 14" S50°W 41.6 feet - Found stump
hole of record bearing & distance

Cedar 8" N62½°W 67.2 feet - Found damaged
stump scribe B.T. visible ^{N59°W} record bearing dist.

Balsam 11" S50°E 56.8 feet

Sand Lake Survey of 1935

Gov't W pine stp 30" S-W 27.7' - stump hole

Gov't N pine stp 4" N.E. 17.8' - Gone

Iron Men 1½" x 4" N83°E 33.0' - Gone

X Rock 2½" S31°W 42.7' - Found rock
with X apparently broke & moved

CERTIFICATE FILED

7-25-63 - W.O. Williams
J. E. Williams

X Rock 5' N28½° W 149.85 - Found
rock with X N28½° W at record distance

Set 6" diameter 24" long, cylindrical concrete
monument capped with a 3" bronze tablet stamped
0.5 below road surface

T148N R26W
S31°53'S
53°52'
T147N
R25
1963

New B.T.'s
Rock 3x2½' N14°E 45.9' with X chiseled on top
Rock 2x2' S83°W 43.1' with X chiseled on top
Rock 4x5' S66°E 91.2' with X chiseled on top
Rock 1½x3' N21°W 132.0' with natural raised
X on top
Cedar 13½' 4x4x12" with red top decrest 14.2 feet
with sign 34-A attached

W.O. Williams

5-1-85 B.Ausk G. Robertson

Found Concrete Monument with top
BROKE OFF. Road work took ALL
ALL B.T.s BUT ONE.

1963 Rock 1½x3' N21°W 132.0' with NATURAL
RAISED X ON TOP

REFER TO PAGE 41 BOOK 4

T148-147 R26W
Quarter Cor. Sec. 35-2

Orig Notes
Running East 35.00 Enter Swamp
38.50 L^o
40.00 1/4
42.00 Enter Swamp

Post

Cedar 9" N8°E 4 Lks - 2.64'

Cedar 6" S8°W 10 Lks - 6.60'

Notes of deputy Itasca Co. Surveyor F.E. Williams
in 1915 while surveying Co. road # 58

Cedar 15" N9 1/2°W 38.0 Feet

Cedar 10" S4°W 58.5 Feet

4/4/56 M. Hayes, C. Krone, B. Ausk & G. Robertson

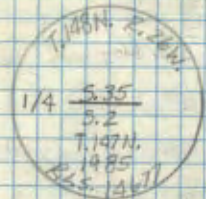
sought again for this corner at a position determined
using the 1915 co. angle at the ²⁷²⁶ ~~5435~~ and the
1915 distance. No evidence was found. Area at one
time had many cedar but is badly burned. The
position of the monument set in 1915 fits
the natural feature well for the swamp to
the east is wet by 1.5 also. No found no evidence
of any other lines in the area either. M.H.

CERTIFICATE FILED

Inverse to set corner post

STA 1st H&D 2nd H&R H. Dist

FS 1001 ~~329-48-47~~ ⁵¹ 149-48-10
LS 9 00-01-04 180-02-20
TR 10 329-47-47 329-47-50 66.49
329-47-49



March 27, 1985
T-25N/R26S18W G. Robertson
B. Ausk
G. Robertson

Decl. 5°E 5-1-85
OP 1.5° B. Ausk
G. Robertson

Set a 2 1/2" OD ^{+5' long} Iron pipe filled with concrete
with a 3" Brass cap stamped as shown:

From which:

Birch, 7.2", N76°E, 45.04 ft. to 16d nail on N.
side tree; double blazed scribed "S35 BT" w/60d spike
Aspen, 7.6", S09°E, 36.18 ft. to 16d nail on E.
side tree; double blazed scribed "S2 BT" w/60d
Aspen, 11.5", N42°W, 24.79 ft. to 16d nail on W.
side tree, double blazed scribed "S35 BT" w/60d
Metal fence post, East, 3.0' w/54-2 +54-9
Metal fence post, West, 3.0' w/54-2
All trees painted Red Card Filed

76 Z-21

T148-147

R26W

Section Cor. Sec. 1-2-36-36

Orig Notes

Post

Spruce 8" S36°E 12 LNs - 7.92'

Spruce 5" S35°W 14 LNs - 9.24'

Balsam 5" N62°E 51 LNs - 33.66'

W. Pine 30" N75°W 12 LNs - (New a large stump badly burned due west 7.9 feet)

Notes of deputy Itasca Co. surveyor FE Williams in 1915 while surveying Co road #59

Balsam 7" S27½°E 63.3 ft.

Birch 10" N23°W 47.8 ft.

Spruce 7" S43°W 59.5 ft.

Found a squared scribed post marking corner

Resel recovered Metal fence post, west,
Metal fence post, northW. Okerman
J Ekstrom

Heldavit RHTN

Set 2 inside diameter pipe filled with concrete capped with a 3" diameter brass tablet stamped

T148N	R26W
S29536	
S2151	
T147N	
1915	
5 No.	680

New BT's
 Birch 8" S88°W 12.3 feet scribed S2 BT
 Maple 5" N45°W 74.8 feet scribed S35 BT
 Maple 4" S76°E 2.1 feet scribed 2 BT
 Maple 5" N20°E 6.5 feet scribed S36 BT
 Steel sign post 72" long due west 4.5 feet with signs 54-4 & 54-2 attached

Williams

Nov 28 1989 Recovery by G. Kosenko

Recovered a 2½" O.D. B. Husk
galvanized iron pipe G. Robertson
with a 3 inch diameter brass

cap & stamped as shown, up 18

inches from which:

(Established steel sign post North 20' w/542)

Red Maple, 7.9" N45°E, 6.47 ft to a 16d nail in the SE face, double blaze mostly overgrown "BT" w/6d spike
 Red Maple, 9.0" S77°E, 35.98 ft to a 16d nail in south face, ~~BT~~ blaze overgrown, w/6d spike
 White birch, 10.8" S88°W, 12.53 ft to 16d nail in NW face, double blaze overgrown, w/6d spike
 Red Maple, 12" N45°W 74.70 ft to 16d nail in S face, double blaze overgrown w/6d spike
 Steel Sign Post West 3.0' w/54-2 + 54-4
 All trees & posts are painted Red

T148N	R26W
S35536	
S2151	
T147N	
1915	
5 No.	680

77

7148-147 A26W
 Quarter Cor. Sec. 36-1

Orig Notes

Post

Cedar 6" N63°W 6 Lks - 3.96'

Cedar 4" S66°E 4 Lks - 2.64'

From a plat of Itasca County road survey
 of 1922. Plat filed in Itasca County
 Surveyors office.

Iron monument

Cedar 24" N35°E 41.2 Feet

Spruce 10" S69°E 36.2 Feet

BOWSTRING ROAD SURVEY - 1927 - PLAT ON FILE

NEW BT's.

BIRCH 14 S15W 89.4'

SPRUCE STP. 10 S60E 37.7'

78

T148N R 26-27W
Quarter Cor. Sec. 31-36

Orig Notes

Post

J. Pine 4" N33°E 18 Lks - 11.88'

J. Pine 4" N42°W 24 Lks - 15.84'

79 M-9

SOUTH 1/16 COR. BET. SECTIONS 16417
FROM SURVEY OF L.W. JOHNSON IN
1926, PART OF RECORD IN ITASCA
COUNTY COURT HOUSE.

IRON MONUMENT:

* LIENS FLAT UNDER 12" OF ROAD SURFACE
W. PINE 24", N. 72° W., 56.2'

* FALLEN & VERY ROTTEN, SCRIBING VISIBLE
ELM 5", S 65° E, 48.4'

* FOUND 7/27/78 - MGS

IMPROVED TABLES AND INFORMATION

1320
462
33
7815
3300
198
5298

HORIZONTAL STADIA CORRECTIONS

2°-00'	0.1	21°-00'	12.3	33°-00'	29.7
3°-00'	0.3	21°-30'	13.4	33°-15'	30.1
4°-00'	0.5	22°-00'	14.0	33°-30'	30.5
5°-00'	0.8	22°-30'	14.7	33°-45'	30.9
6°-00'	1.1	23°-00'	15.3	34°-00'	31.3
7°-00'	1.5	23°-30'	15.9	34°-15'	31.7
8°-00'	1.9	24°-00'	16.5	34°-30'	32.1
9°-00'	2.5	24°-30'	17.2	34°-45'	32.5
10°-00'	3.0	25°-00'	17.9	35°-00'	32.9
10°-30'	3.3	25°-30'	18.6	35°-15'	33.3
11°-00'	3.6	26°-00'	19.2	35°-30'	33.7
11°-30'	4.0	26°-30'	19.9	35°-45'	34.1
12°-00'	4.3	27°-00'	20.6	36°-00'	34.6
12°-30'	4.7	27°-30'	21.3	36°-15'	35.0
13°-00'	5.1	28°-00'	22.0	36°-30'	35.4
13°-30'	5.5	28°-30'	22.8	36°-45'	35.8
14°-00'	5.9	29°-00'	23.5	37°-00'	36.2
14°-30'	6.3	29°-30'	24.3	37°-15'	36.6
15°-00'	6.7	30°-00'	25.0	37°-30'	37.1
15°-30'	7.2	30°-15'	25.4	37°-45'	37.5
16°-00'	7.6	30°-30'	25.8	38°-00'	37.9
16°-30'	8.1	30°-45'	26.2	38°-15'	38.3
17°-00'	8.5	31°-00'	26.5	38°-30'	38.7
17°-30'	9.0	31°-15'	26.9	38°-45'	39.1
18°-00'	9.5	31°-30'	27.3	39°-00'	39.6
18°-30'	10.1	31°-45'	27.7	39°-15'	40.0
19°-00'	10.6	32°-00'	28.1	39°-30'	40.5
19°-30'	11.2	32°-15'	28.5		
20°-00'	11.7	32°-30'	28.9		
20°-30'	12.3	32°-45'	29.3		

Chains to Feet

1	66
2	132
3	198
4	264
5	330
6	396
7	462
8	528
9	594
10	660

Feet to Chains

100	1.515
200	3.030
300	4.545
400	6.060
500	7.575
600	9.090
700	10.606
800	12.121
900	13.636
1,000	15.151