

CORNER RESTORATION T147N R29W B1

T147N R29W  
CORNER  
RESTORATION



---

MINING  
TRANSIT BOOK

No. 334F

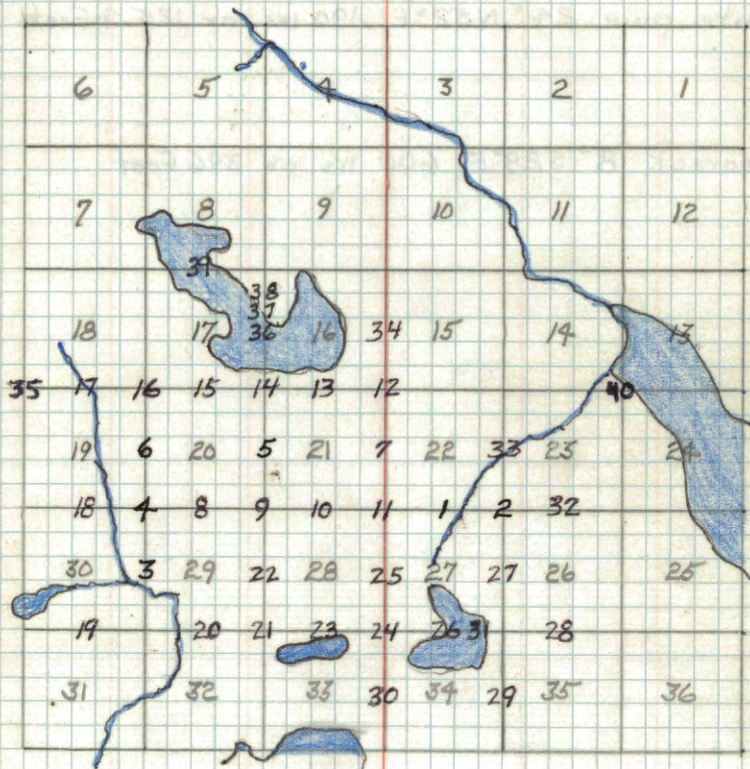
---

Book #1

USFS Book 1

T147N R29W

5th P.M.



1  
Quarter Corner Sections 22, 27

Notes of orig. Gov't. survey of 1876

Post -

White pine  $24^{\circ}$  N  $52^{\circ}$  E 190 lks. or 125.4 feet.

Tamarack  $8^{\circ}$  S  $29^{\circ}$  E 600 lks. or 396 feet

GOV'T. CHAIN

39.60  $\frac{1}{4}$  COR. 2613.6'

79.20 MILE 5227.2

22

FS

FS

FS

FS

27

Section corner - 22-23-26-27

Notes of orig. Govt. survey of 1876

Post -

Birch 8" S88°E 25 1ks. (16.5')

Birch 6" S10°W 8 1ks. (5.28')

Aspen 8" N17°W 60 1ks. (39.6')

Balm-of-Gilead 6" N25°E 11 1ks. (7.26')

Notes of F.S. surveyor J.A. Gjelhaug in 1939  
on standard form 874-9

Found post in good condition and  
Balsam 14" S36°E 9 1ks. (5.94')

Birch 14" S89°E 26 1ks. (17.16')

Took one new BT, a Balsam 7" N38°W 26 1ks. (17.16')

1/28/81 CK-BT

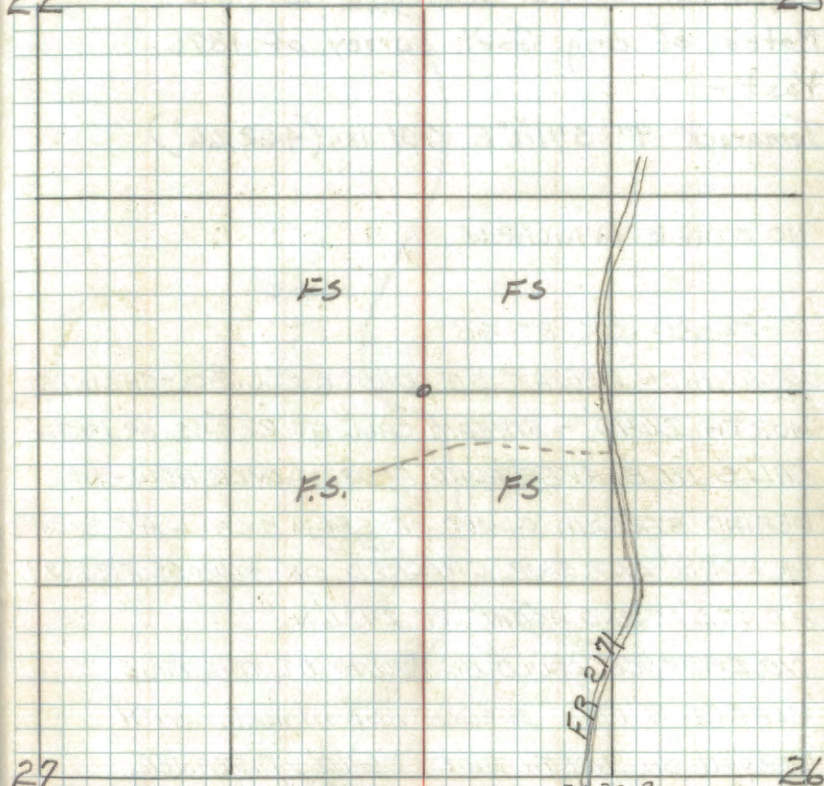
RAN LINE TRUE NORTH FROM '14 2637' TO SOUTH

SEARCH AREA HAS BEEN LOGGED + BURNT OVER YEARS.  
AGO - NO EVIDENCE COULD BE FOUND AT THIS TIME

2/3/81 CK-BT

RAN LINE WEST FROM N'14 SEC. 26 - 2614' AND

INTERSECT LINE RUN FROM SOUTH - SEARCH AGAIN



IN AREA - NO EVIDENCE COULD BE FOUND  
PLACE FSLP ON BALSAM 9" NORTH 22' FROM APPROX.  
SEC. COR. LOCATION - 2 1/2 HRS. SEARCHING

Quarter corner sections 29-30  
Notes of orig. Gov't. survey of 1876  
Post -  
Tamarack 9" S 71 $\frac{1}{2}$ ° E 701 1ks (462.66')

NO OTHER AVAILABLE

12-22-80 CK-BT-GB

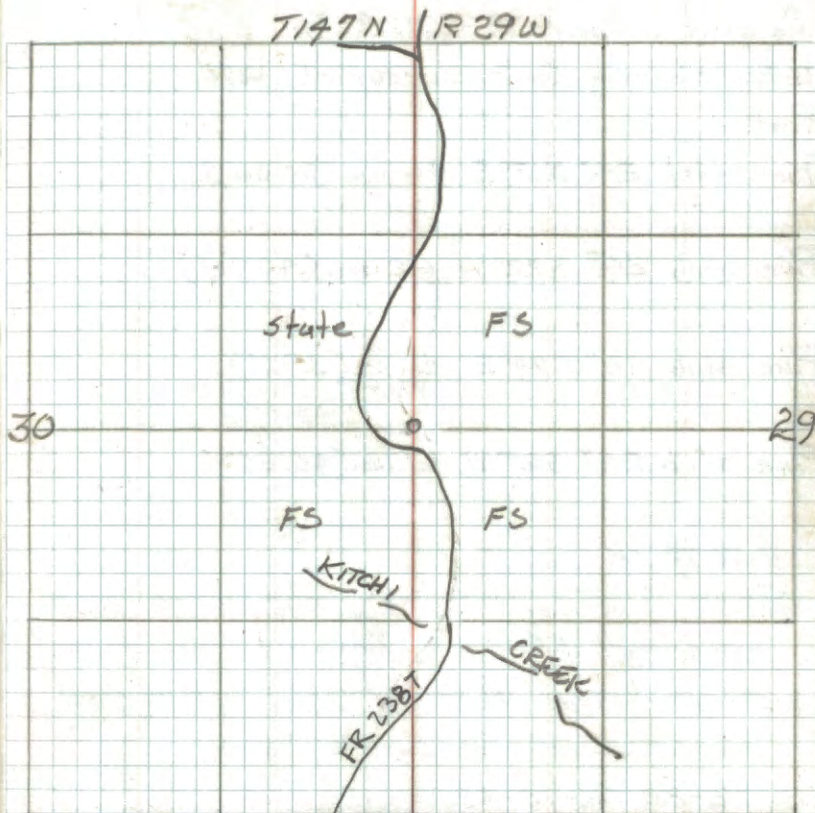
FROM IRON PIPE AT SE CORNER SEC. 30 - CHAINED  
NORTH 2640' - STREAM CALL AT 22 CHS. OR 1452'  
FALLS IN BEAVER POND FROZEN OVER NOW - NO  
DEFIND STREAM COULD BE SEEN - CALL AT 38 CHS  
OR 2508' ENT. SWP. CHECKED OK - CROSS FR 2387  
AT 775' N AND AGAIN AT 2436' N

NO EVIDENCE COULD BE FOUND AT THIS TIME  
BLAZED 8" DEAD SPRUCE AND MARKED WITH  
CRAYON ON NORTH SIDE 2640' - DISTANCE  
CHAINED IS 9' NORTH OF BLAZED SPRUCE

NO FSLP OR STAKE WAS SET  
MORE SEARCH NEEDED IN SPRING

5-2-95 RM + CK

FROM G.P.S. POSITION IN ROAD) WE RAN N 3 E - 195'  
TO APPROX. 1/4 COR. - THEN RAN S 71 E - 462.6' TO  
SEARCH FOR ORIG. TAM. BT - NOTHING COULD BE  
FOUND OF TAM. BT ENDS UP IN VERY WET GRASS  
SLOUGH + WILLOW BRUSH



WENT BACK TO APPROX. LOCATION OF 1/4 COR.  
FOUND BLAZED WIND FALL SPRUCE MARKED IN 1980  
WITH IS. S 60 W 11.0' FROM NEW POSITION ESTABLISH-  
ED BY G.P.S. - NO EVIDENCE COULD BE FOUND OF  
POST - SWAMP STILL FROZEN IN PLACES

FROM APPROX. COR. PLACE FSLP ON 6" ASH N 6 E  
16.0' FROM RIBBON TIED ON BRUSH AS APPROX.  
1/4 COR.

PLACED FSLP ON 13" ASPEN ON NORTH SIDE OF  
FR 2387 - APPROX. 1/4 COR. IS N 3 E - 175'  
FROM TAG - ASPEN IS 20' NORTH OF ROAD  
OLD BLUE PAINT ON THIS ASPEN N + S - PAINT  
PROBABLE FROM 1980

Section corner 19-20-29-30

Notes of orig. Gov't. survey of 1876

Post -

Pine stub  $24^{\circ}$  N  $13^{\circ}$  E 76 lks. (30.36')

Pine stub  $24^{\circ}$  N  $22^{\circ}$  W 62 lks. (40.92')

Pine stub  $18^{\circ}$  S  $74^{\circ}$  E 6 lks. (3.96')

Pine stub  $24^{\circ}$  S  $60^{\circ}$  W 61 lks. (40.26')

4-21-76 CK

~~Searched 1/2 hour looking along edge of sup. approx. 200' west of FR #2387. There are many burned stumps & snags all around area. Should chain into cor. from Sec. Cor. to south.~~

12-22-80 CK-TB-GB

CHAINED NORTH FROM APPROX. 1/4 COR. BET. 29-30

2640' N - CROSS WOODS ROAD AT 1550' N OF 1/4

SEARCH AREA AROUND END OF CHAINING

Fd. MANY BURN'T PINE STUMPS IN AREA

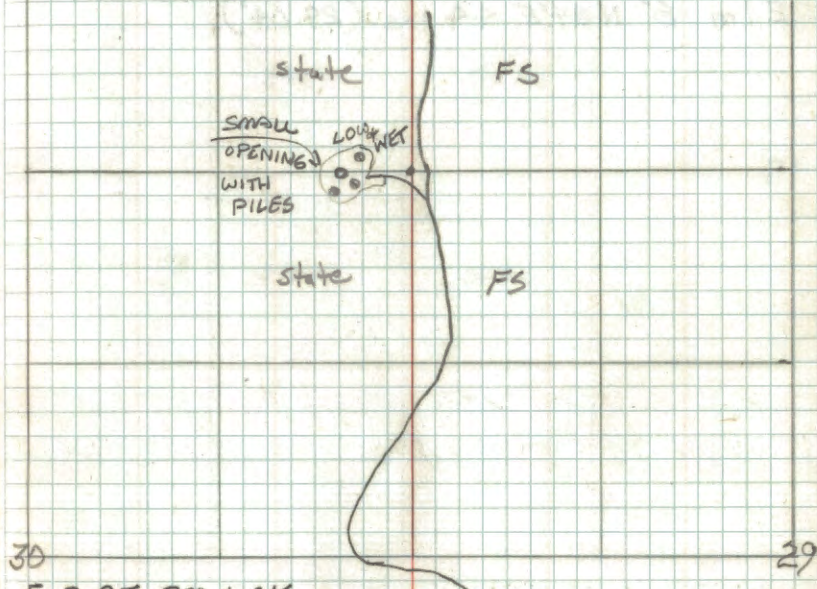
Fd. 12" BALMIE BLAZED ON 4 SIDES - APPROX. 110'

EAST OF OUR POSITION - OLD BLUE LINE RUNS

WEST FROM BLAZED BALMIE - OUR POSITION IS

APPROX. 200' WEST OF FR #2387 - BRS. N + S

SEARCH SHOULD BE DONE IN SUMMER



5-2-95 RM + CK

SEARCH FROM OUR G.P.S. POSITION S75E - Fd. MANY BURN'T PINE-STUMPS - WINDFALLS - SNAGS IN AREA - NO MARKS LEFT ON ANYTHING WE LOOKED AT - NOTHING TO PLACE A TAG ON EVERYTHING HAS BEEN LOGGED AND NOW IS A SPEN REGENERATION AROUND SEARCH AREA OUR SEARCH AREA IS APPROX. 100' WEST OF FR 2387 N + S - CHECK TIE EAST TO ENTER CEDAR + TAM, SWAMP - ORIG. TIE WAS 7 CHS. OR 462' - THIS TIE CHECKS VERY CLOSE WITH DISTANCE OF 100' WEST OF ROAD MOST OF THE PINE EVIDENCE WAS BURNED AGAIN AFTER ORIG. SURVEY - PROBABLY IN THE DRY 1930'S. - SPENT 3 HRS. IN SEARCH AREA MANY PINE STUMPS + WINDFALLS HAVE BEEN MOVED AROUND - STUMPS BROKEN IN PIECES AS THEY LOGGED OVER CORNER LOCATION

5

Quarter corner sections 20-21

Notes of orig. gov't. survey of 1876

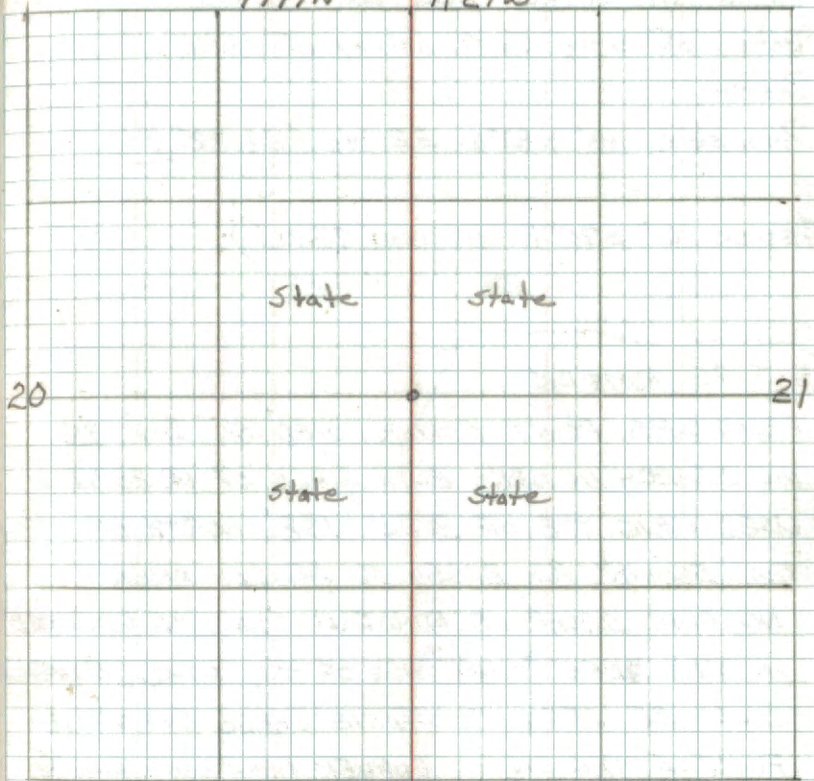
Post

Elm 7" S23°W 20 lks. (13.2')

Elm 8° N84°E 44 lks. (29.04')

T197N

R29W



Quarter corner sections 19-20

Notes of orig. Govt. survey of 1876

Post-

Pine stub 18" N82°W 52 lks. (34.32')

Aspen 6" S70°E 111 lks. (73.26')

5-3-95 RM4CK

FROM G.P.S. POINT ESTABLISHED ON 5-2-95

WE SEARCH IN AREA BOTH SIDES OF FR 2387

USED ORIG. TIE OF 3 PHS. = 198' NORTH OF

TAM. SWAMP AS BASES TO SEARCH AREA

NO PINE STUMP OR WINDFALL COULD BE LOCATED

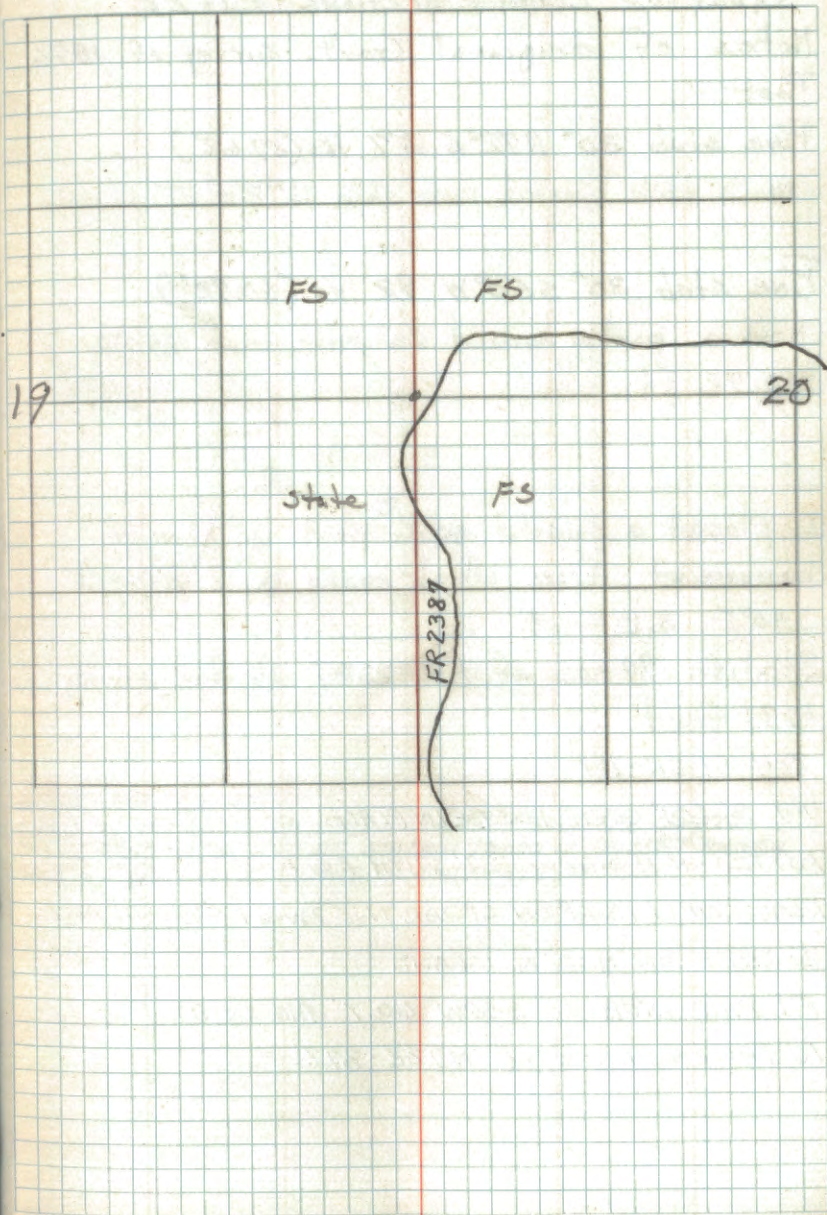
IN THIS AREA - NO SIGN OF ANY OTHER EVIDENCE

COULD BE SEEN - NOTHING LARGE ENOUGH TO

PLACE A TAG ON - CORNER AREA WAS LOGGED

OVER YEARS AGO - NOW IS ASPEN REGENERATION

1" TO 3" THICK AS HAIR





Quarter corner sections 21-22  
Notes of original Govt. survey of 1876

Post

Pine stub  $30''$   $N72^{\circ}E$   $57$  lks ( $37.62'$ )

Now a badly burned pine stub  $N72^{\circ}E$   $37.62$  ft.

Pine stub  $30''$   $S50^{\circ}W$   $92$  lks. ( $60.72'$ )

Now a partly buried  $36''$  pine stub  $S50^{\circ}W$   
 $60.72$  ft.

I placed a squared cedar post as corner  
monument from which bears a  $7''$  Aspen  
 $S40^{\circ}E$   $3.2$  feet.

Station  $79+00$  of FR 2387 is due south  
 $1094$  feet

2-4-81 CK-BT

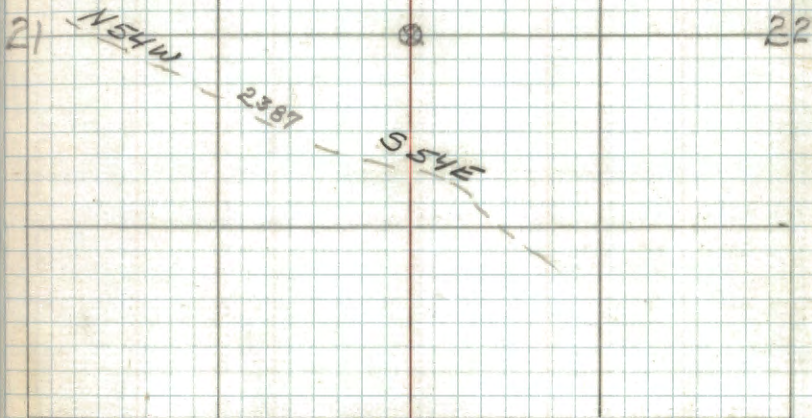
Fd.  $3''$  SQD CEDAR POST - IN PLACE

Fd. ASPEN  $11$   $S40^{\circ}W$   $3.2'$  WITH FSLP

PLACE NEW FSLP ON CEDAR  $11$   $S7^{\circ}W$  -  $61.5'$  FROM POST  
CORNER ON ASPEN ISLAND

Fd. PINE STUB  $30$   $S50^{\circ}W$   $60.7'$  TAG ON BT

Fd. FALLEN PINE STUB  $N72^{\circ}E$  -  $37.6'$



2-25-82 CK-CO  
START AT  $1/4$  COR. BET. SEC'S. 21422 - CHAINED SOUTH  
TO FR 2387 -  $1100'$  AND AT STATION  $78+00$  OF FR 2387 SURVEY  
FOUND FSLP ON  $20''$  W. PINE ON SOUTH SIDE OF ROAD

QUARTER CORNER BET. SEC'S. 20+29

NOTES OF ORIG. GOV'T. SURVEY 1875

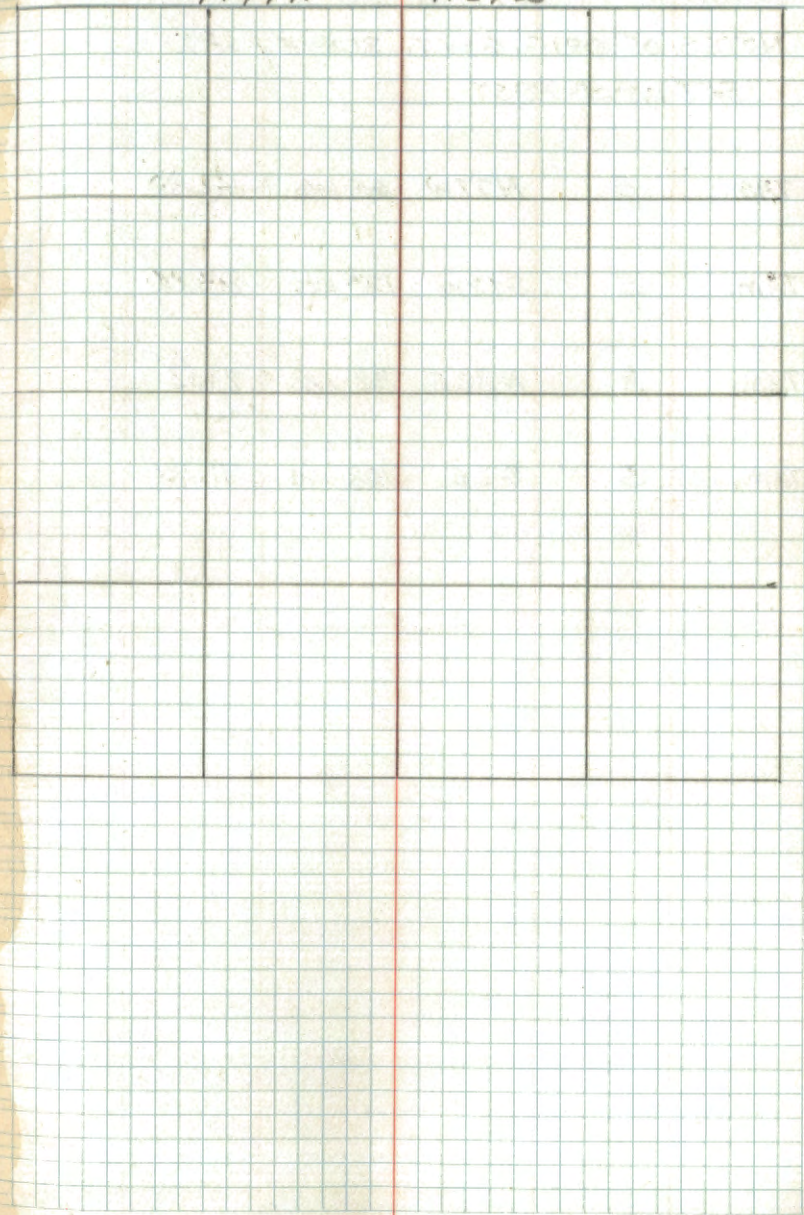
SET WOOD POST

PINE STUB 24 S22W 33 LKS. = 21.78'

PINE STUB 20 N5E 40 LKS. = 26.40'

T147N

R29W



CORNER TO SECTION 20-21-28-29  
NOTES OF ORIG. GOVT. SURVEY 1875  
SET WOOD POST

TAM. 5 N77W 65 LKS. = 42.90'

TAM. 5 S17W 130 LKS. = 85.80'

TAM. 3 N88E 32 LKS. = 21.12'

TAM. 5 S2E 108 LKS. = 71.28'

QUARTER CORNER BET. SEC'S. 21+28  
 NOTES OF ORIG. GOV'T. SURVEY 1875  
 SET WOOD POST

SPRUCE 6 S57E 110 LKS. = 72.60'

TAM. 6 N66E 95 LKS. = 62.70'

CORNER TO SECTIONS 21-22-27-28  
NOTES OF ORIG. GOV'T. SURVEY 1875  
SET WOOD POST

MAPLE 10 S48W 344 LKS. = 227.04'

MAPLE 8 S27W 322 LKS. = 212.52'

PINE STUB 20 N68E 167 LKS. = 110.22'

PINE STUB 30 N10W 203 LKS. = 133.98'

CORNER TO SECTIONS 15-16-21-22

NOTES OF ORIG. GOV'T. SURVEY 1876

SET WOOD POST

CEDAR 8 NZOE 57 LKS. = 37.6'

CEDAR 8 N11W 59 LKS. = 38.9'

CEDAR 8 S57E 21 LKS. = 13.8'

BALSAM 3 S59W 97 LKS. = 64.0'

2/4/81 CK-TB-GB

CHAINED NORTH FROM ORIG. EVIDENCE FOUND

AT 1/4 BET. SEC'S. 21 + 22 - 2640' N - CHECK

CREEK CALL TO NORTH 5 CHS OF 330' WE CHAIN

370' N TO CREEK - WE NOW CHAIN EAST TO CHECK

TIE OF 9 CHS OR 594' - NO STREAM COULD BE FOUND

WE END UP IN LOW-WET FLOWAGE

NO ORIG. EVIDENCE COULD BE FOUND

BLAZED 5" IRONWOOD AND MARKED WITH CRAYON

2640' N

80.00 CHS. INTERSECT NORTH BOUNDARY OF RESERVATION  
60 LK. OR 39.6' WEST OF CORNER ON RESERVATION LINE

TIES TO SEC. COR.

NORTH OF S.C. 5 CHS. = 330' STREAM 8 LKS WIDE - FLOW E  
EAST OF S.C. 9 CHS. 594' STREAM 5 LKS. WIDE - FLOW SE  
WEST OF S.C. 2 CHS - 132' LK. CEDAR SWAMP  
SOUTH OF S.C. 1 CH - 66' LK. CEDAR & TAM. SWAMP  
East of S.C. 18 chs - 1188' leave swamp

1-7-92 GB-CK

SEARCH AGAIN IN AREA OF POSITION ESTABLISH IN 1981  
RUN LINES NORTH + EAST AND CHECK TIES  
WE FIND THAT IF WE WOULD MOVE EAST FROM  
IRONWOOD WITH BLAZE APPROX. 200' WE WOULD BE  
IN ASH SWALE AND LOW LAND WITH BURNT AND DOWN  
CEDAR - TIE TO CREEK NORTH WOULD CHECK CLOSER  
NO POSITIVE CREEK TO EAST  
WE NOW STRING NORTH TO LOOK FOR 1/4 BET. SEC'S. 15 + 16  
2 HRS. SEARCH TIME

1-8-92 GB-CK

RAN LINE EAST OF IRONWOOD (1981) 140' E AND  
ESTABLISH APPROX. SEC. COR. 15-16-21-22  
PLACE FSLP ON 7" BALMIE ON SOUTH SIDE  
APPROX. CORNER 15 SOUTH 9'  
MANY CEDAR STUMPS WELL ROTTED - SOME WINDFALLS  
IN AREA - NEED TO SEARCH IN SUMMER  
TIE NORTH TO CREEK NOW IS 350' N  
TIE EAST TO LV. SWAMP NOW IS 1160' E  
WEST AND SOUTH ARE CLOSE - BY TIMBER TYPE  
CHANGE TO HARDWOODS  
BELIEVE TAG SHOULD BE WITHIN 50' OF TRUE COR.  
TAG IS 125' E + N OF WOOD TRAIL W-SE

QUARTER CORNER BET. SEC'S, 16 & 21  
NOTES OF ORIG. GOV'T. SURVEY 1875  
SET WOOD POST

WILLOW 4 S23E 21 LKS. = 13.9'

ASPEN 4 N61E 94 LKS. = 62.0'

CORNER TO SECTIONS 16-17-20-21  
 NOTES OF ORIG. GOVT. SURVEY 1875  
 SET WOOD POST

ASPEN 5 N24W 77 LKS. = 50.82'

ASPEN 4 S45W 126 LKS. = 83.16'

BIRCH STUB 6 N14E 70 LKS. = 46.20'

ASPEN 3 S32W 135 LKS. = 89.10'



QUARTER CORNER BET. SEC'S. 17+20  
NOTES OF ORIG. GOVT. SURVEY 1875  
SET WOOD POST

MAPLE 7 N78W 80 LKS. = 52.8'

LIND 12 S81W 236 LKS. = 155.76'

CORNER TO SECTION 17-18-19-20  
NOTES OF ORIG. GOV'T. SURVEY 1875  
SET WOOD POST

PINE STUB 30 S9W 53 LKS. = 34.98'

PINE STUB 20 S27E 52 LKS. = 34.32'

B. GILEAD 4 N23E 80 LKS. = 52.80'

TAM. STUB 9 N4W 181 LKS. = 119.46'

QUARTER CORNER BET. SEC'S. 18+19  
NOTES OF ORIG. GOVT. SURVEY 1875  
SET WOOD POST

TAM. 9 NORTH 2.22 LKS = 146.52'

BIRCH 9 S25E 111 LKS = 73.26'

QUARTER CORNER BET. SEC'S. 19+30  
 NOTES OF ORIG. GOV'T. SURVEY 1875  
 SET WOOD POST

PINE STUB 24 S2W 100 LKS. 66.0'

BIRCH 7 N2E 9 LKS. 5.94'

4-27-95 RM & CK

WENT TO SEARCH AREA FROM QUAD. MAP AND  
 ARIEAL PHOTO - SEARCH AREA WAS APROX.  
 150' TO 250' WEST OF FR # 3843B

FD. 24" N. PINE WITH BLAZES N & S WHICH LINES  
 UP WITH EAST EDGE TO TAM & SPRUCE CUTTING  
 EDGE TO SOUTH APPROX. 600'

WE FOUND MANY BADLY BURNED PINE STUBS  
 AND STUMPS IN SEARCH AREA - BUT NOTHING  
 THAT HAD ANY BLAZES OR SCRIBE

G. P. S. POINT IN ROAD IN LINE WITH TIMBER  
 CUTTING LINE E & W - STATE LAND TO NORTH  
 HAS BEEN RECENTLY CUT - NO TAG OR  
 PAINT WAS SEEN AT THIS TIME

WE MAY COME BACK IF WE CAN FIND EITHER  
 SECTION CORNER E OR W OF THIS LOCATION  
 NO TAG WAS PLACED AT THIS TIME

QUARTER CORNER BET. SEC'S. 30+31

NOTES OF ORIG. GOVT. SURVEY 1875

SET WOOD POST

ASPEN 4 N38W 70 LKS. = 46.20'

ASPEN 4 S70W 64 LKS. = 42.24'

46.00 CHS. 1/4 COR

86.00 MILE BET. 30+31

QUARTER CORNER BET. SEC'S. 29+32

NOTES OF ORIG. GOV'T. SURVEY 1875

SET WOOD POST

ASPEN 5 N89W 47 LKS. = 31.02'

ASPEN 5 S23W 88 LKS. = 58.08'

874 BY H. HOARD 1-26-40 (IN OLD FIELD BOOK)

1/4 COR. SET PROPORTIONATE BET. SEC. COR'S.

AT BRG. ~~N~~ S88E 40.10 CHS. OR 2646.6'

PLACE FSLP ON ASPEN 7 N3W 24 LKS. = 15.8'

1-29-81 CK-BT-TN

FROM IRON PIPE AT SW COR. TO SEC. 29 WE  
RAN LINE AT S88E AND CHAINED A DISTANCE  
OF 2666' TO APPROX. 1/4 COR. LOCATION  
SEARCH AROUND AREA 2 HRS. - NO EVIDENCE  
COULD BE FOUND - NO TAG (40) COULD BE LOCATED  
ASPEN MAY BE WINDFALL NOW

PLACE FSLP ON ASPEN 10 NORTH 3' FROM  
PICKET SET AT END OF CHAINING OR 2666'E  
BLUE LINE PAINTED FROM W'116 TO 1/4 COR. - BOTH  
ARE APPROX. COR'S.

40.40 1/4 COR. = 2666.4' ORIG. CHAIN  
80.80 MILE BET. 29+32

CORNER TO SECTIONS 28-29-32-33  
 NOTES OF ORIG. GOVT. SURVEY 1875  
 SET WOOD POST

ASPEN 3 N62W 90 LKS. = 59.40'

ASPEN 3 S35W 105 LKS. = 69.30'

TAM. 5 N54E 20 LKS. = 13.20'

TAM. 9 S71E 10 LKS. = 6.60'

QUARTER CORNER BET. SEC'S. 28+29

NOTES OF ORIG. GOV'T. SURVEY 1875.

SET WOOD POST

TAM. 8 S79W 106 LKS. = 69.96'

TAM. 12 S65E 95 LKS. = 62.70'



QUARTER CORNER BET, SEC'S. 28+33  
 NOTES OF ORIG. GOV'T SURVEY 1875  
 SET WOOD POST

SPRUCE 3 S22E 26 LKS. = 17.16'

SPRUCE 3 N35W 95 LKS. = 62.70'

40.25 1/4 COR.  
 80.50 MILE BET. 28-33

CORNER TO SECTIONS 27-28-33-34  
 NOTES OF ORIG. GOVT. SURVEY 1875  
 SET WOOD POST

MAPLE 8 NZW 55 LKS. = 36.30'

MAPLE 12 S56W 63 LKS. = 41.58'

MAPLE 8 S50E 55 LKS. = 36.30'

IRONWOOD 3 N59E 51 LKS. = 33.66'

874 CCC NOTES By J. AGJELHAUG 8-15-39

Fd, MAPLE POST - GOOD CONDITION - 40" HIGH

Fd, ORIG. BT.

BIRCH STUB 8 S73E 10 LKS. = 6.60'

MARKED NEW BT

BIRCH 10 S65E 13 LKS. = 8.58'

PLACED FSLP ON BIRCH 10 ON NORTH SIDE.

CORNER BRS. NORTH 16 LKS. = 10.56'

QUARTER CORNER BET. SEC'S, 27+28  
NOTES OF ORIG. GOV'T. SURVEY 1875  
SET WOOD POST

TAM: 3 S10W 12 HRS. = 7.92'

TAM: 4 N35E 33 HRS. = 21.78

26

MEANDER  
~~QUARTER~~ CORNER BET. SEC'S. 27+34

NOTES OF ORIG. GOV'T. SURVEY 1875

SET WOOD POST

TAM. 4 S81W 89 LKS. = 58.74'

SPRUCE 3 N82W 132 LKS. = 87.12'

26

*Set Wood Post*

QUARTER CORNER BETWEEN SEC'S 26 & 27

NOTES OF ORIG. GOV'T. SURVEY 1875

SET WOOD POST

ASPEN 8 N83E 46 LKS. = 30.4'

ELM 6 S80W 23 LKS. = 15.2'

874 By J. A. GJELHAUG 12-8-39 (OLD FIELD BOOK)

FOUND ROTTEN ASPEN STUMP 12" S83E - 50 LKS. = 33.0'

SET 4" X 48" MAPLE POST

MKD NEW BT'S.

W. OAK 7 N85W 35 LKS. = 23.1'

ASPEN 8 N75E 27 LKS. = 17.8'

MAPLE 10 N17W 23 LKS. = 15.2'

ESTABLISH 1/4 CORNER ON ORIGINAL LINE

EQUAL DISTANCE BETWEEN SECTION CORNERS

1/28/81 CK-BT

CHAINED TRUE NORTH FROM APPROX. S.E. COR. TO

SECTION 27 - A DISTANCE OF 2637' WHICH IS

RECOVERED POSITION FOR 1/4 CORNER ESTABLISHED

By J. A. GJELHAUG - SET 3" X 5' IRONWOOD POST

AT 1/4 COR. LOCATION - Fd. W. OAK 12" N88W - 23.1'

SCAR ABOVE AND AT BASE - Fd. ROTTEN ASPEN STR.

12" N81E - 17.8' - PLACE FSLP ON 4" IRONWOOD

S66W - 3.3' FROM POST AT COR.

BLAZED TREE 13" SPRUCE <sup>SOUTH</sup> NORTH SIDE OF WOODS ROAD  
E&W - 170' SOUTH OF 1/4 COR.  
NORTH OF 1/4 CORNER 1470' CROSS FR # 2387  
BEARS E&W - NO TAG AT THIS TIME

QUARTER CORNER BET. SEC'S. 26+35  
 NOTES OF ORIG. GOVT. SURVEY 1875  
 SET WOOD POST

TAM. 5 S81E 141 LKS. = 93.06'

TAM. 3 N82W 32 LKS. = 21.12'

39.65 CHS. 1/4 COR.  
 79.30 MILE BET. 26-35

## QUARTER CORNER BETWEEN SECTIONS 34+35

NOTES OF ORIG. GOV'T. SURVEY 1875

SET WOOD POST

ASPEN 8 N4W 119 LKS. = 78.5'

ASPEN 8 N5E 138 LKS. = 91.1'

C.C.C. NOTES BY J. A. GJELHAUG 8/24/39 FIELD BOOK

ESTABLISHED 1/4 CORNER PROPORTIONATELY BET.  
SECTION CORNERS N+S

CORNER WAS EAST OF THIRD RIVER ROAD

SET ASPEN POST 4" X 36"

MARKED NEW BT'S.

W. OAK	6	S79W	41 1/4 LKS. = 27.22'
FSLP ON 4" OAK			
W. OAK	4	N83E	14 1/2 LKS. = 9.57'

BEARING OF LINE BY GJELHAUG WAS N1°18'E  
AND DISTANCE OF 40.16 CHS. = 2650.56'

1/28/81 CK-BT

CHAINED LINE AT N1E FROM GLO MONUMENT AT SE  
CORNER OF SEC. 34 - MEASURE 2650' N - SEARCH  
ON BOTH SIDES OF THIRD RIVER ROAD, BUT COULDN'T  
FIND ANY EVIDENCE OF INFORMATION RECORDED ABOVE  
PLACE FSLP ON 6" ASPEN ON WEST SIDE OF ROAD  
AS APPROX. LOCATION FOR 1/4 CORNER - CONTINUE NORTH

9-18-95 CK

REMOVED FSLP FROM ASPEN AS IT IS READY TO  
FALL ACROSS ROAD - (WIND STORM) BAD LEANPLACED FSLP (NEW) ON 7" W. OAK AS APPROX.  
WITNESS TO 1/4 COR. IN CENTER OF FR 2171  
2650' N+STAG IS 44' WEST OF APPROX. 1/4 COR.  
PAINTED OAK RED IF TAG GETS SHOT (OLD TAG HAS  
9 HOLES)

CCC FIELD BOOK #123 - Pg 34

SHOWS FR 2171 IS WEST OF CORNER

QUARTER CORNER BET. SEC'S. 33+34  
 NOTES OF ORIG. GOV'T. SURVEY 1875  
 SET WOOD POST

ELM 3 S59W 24 LKS. = 15.84'

BASSWOOD 6 N7E 185 LKS. = 122.10'

NOTES BY J.A. GJELHAUG 8-24-39 (IN OLD FIELD BK)

ESTABLISHED CORNER PROPORTIONATLY BET. SEC'S.

CORNERS N & S 40.04 CHS. = 2642.64'

SET MAPLE POST 4" X 48"

MKD NEW BT'S.

ASPEN 10 S59E 8 1/2 LKS. = 5.6' FSLP

ELM 6 S29 1/2 W 25 LKS. = 16.5'

PLACED FSLP ON ASPEN BT  
 OLD CORNER BURNT



MEANDER CORNER BET. SEG'S. 27+34

EAST SHORE OF ISLAND LAKE

NOTES OF ORIG. GOVT. SURVEY 1875

SET WOOD POST

TAM. 4 S61W 26 LKS. =

Fd. as a tip out on edge of shore (1992)

TAM. 4 N79W 31 LKS. =

Fd. no evidence. Falls in lake. (1992)

874 By H. HOARD 8/21/39

FOUND WOOD POST (ORIG) GOOD CONDITION 40" HIGH

Fd. TAM. 3 S66W 23 LKS. MKD BT

PLACE FSLP ON 3" TAM N56W 41 LKS. =

SET NEW SPRUCE POST 4" X 48"

1/26/81 CK-BT

Fd. 2" SQD. POST-16" HIGH

Fd. ORIG. TAM. STAMP AT S61W 17.2' - PUSHED

EASTERLY APPROX. 24" BY ICE + WIND

Fd. TAM. N56W 27.1 WITH FSLP (39) rusted tag nailed on top.

SET 3" X 3" X 8' TAM. POST BESIDE OTHER POST (S)

MKD TIES TO POST

TAM. 4 N50W 8.1' BLAZED

TAM. 6 N28E 17.25' BLAZED

PLACE FSLP ON TAM. 4 S8E 3.0' FROM TAM. POST

13,95 CHS. E. MC. ISLAND LAKE

1/6/92 Krause & Brama

Set a 2 1/2" x 60" galv. concrete filled pipe with brass cap mkd. over old post found on 1/26/81.

Brass cap mkd. B.C. set 10" above floating swamp.

Mkd. New BT'S:

1. Tam 5" N50W 27.88' MC 534BT
2. Tam 6" N28E 17.12' MC 527BT
3. Tam 6" S66E at 7.95' MC 527BT

placed 8' steel sign post with T147N R29W sign attached. 3.0' WEST

Corner falls approx. 20' east of lake. Pine plantation is approx 145' east.

M.C.	527
	534
	1992
	U.S.F.S

QUARTER CORNER BET. SEC'S. 23 & 26

NOTES OF ORIG. GOV'T. SURVEY 1875

SET WOOD POST

TAM. 8 N5E 253 LKS. = 167.0'

TAM. 6 S24E 56 LKS. = 37.0'

NOTES BY J.A. GJELHAUG 12-8-39 (IN OLD FIELD BOOK)

FOUND SQUARD TREE AS ORIG. CORNER POST

SET 2" X 4" X 48" CEDAR STAKE ALONGSIDE

MARKED NEW BT'S.

OAK 7 N45E 10 LKS. = 6.6' FSLP

ASPEN 10 N62E 13 LKS. = 8.6' FSLP

ASPEN 8 S55E 11 LKS. = 7.3' FSLP

~~39.65 CHS. OR 2614.26'~~  
~~79.30 CHS. OR 5228.52' BET. SEC'S. 23-26~~

39.61 CHS. OR 2614.26'  
 79.22 CHS. OR 5228.52' BET. SEC'S. 23-26

1-29-81 CK-BT

FOUND 11" W. OAK WITH SCAR AT BASE N45E 6.6'  
 FROM OLD POST LYING NEAR OAK - FROZEN TO  
 GROUND

FD. ASPEN 15 N62E 8.6'

FD. ASPEN 13 S55E 7.3' FSLP 1939

PLACE NEW FSLP ON W. OAK BT

SET 2" X 24" HUB AT CORNER LOCATION

FD. OLD BLAZED LINE WEST FROM CORNER

1939 DISTANCE WEST OF '14 COR. RECORDED AT 39.80 CHS

OR 2627' ORIG. GOV'T. CHAIN RECORDED AT 39.61 CHS.

OR 2614. - DIFFERS BY 13'

MORE SEARCH NEEDED IN SUMMER

BELIEVE CORNER CAN BE MONUMENTED AFTER  
 MORE SEARCH.

QUARTER CORNER BET. SEC'S. 22-23  
 NOTES OF ORIG. GOV'T. SURVEY 1875  
 SET WOOD POST

W. PINE 12 S62W 107 LKS. = 70.6'

W. PINE 10 S46W 162 LKS. = 106.9'

NORTH BET. SEC'S, 22-23

8.00 CHS. ENT. TAM. SWP. SW  
 16.00 " LY. SAME  
 30.00 " ENT. TAM. SWP. E+W  
 36.50 " STREAM 10 LKS. WIDE FLOW E  
 38.00 " LV. TAM. SWP.  
 40.00 " 1/4 COR.  
 64.00 " ENT. TAM. SWP. NW  
 78.00 " N. BDRY RESERVATION LINE COR IS 108 LKS. E  
 80.00 " SEC. COR.

QUARTER CORNER BET. SEC'S. 15+16  
 NOTES OF ORIG. GOV'T. SURVEY 1875  
 SET WOOD POST

PINE STUB 30 N62W 124 LKS. = 81.8'

PINE STUB 28 S30E 190 LKS. = 125.4'

2-4-81 CK BT

CHAINED NORTH FROM APPROX. SEC. COR.  
 370' N SMALL CREEK RUNS EAST  
 1200' N MORPH MEADOWS ROAD E+W  
 2640' N SEARCH FOR 1/4 COR.

1-7-92 GB-CK

STRING NORTH 2640' AND SEARCH FOR PINE STUBS  
 Fd. PINE ON GROUND TO SE OF END CHAINING  
 NO OTHER EVIDENCE FOUND AT THIS TIME

NEED TO SEARCH IN SUMMER  
 PLACE FSLP ON 11 BIRCH ON SOUTH SIDE AS  
 APPROX. COR. - TAG IS ON WEST SIDE OF  
 WOODS TRAIL N+S - STATE ROAD

CREEK TIE TO NORTH IS 100'± OF OUR LINE TODAY  
 1-8-92 WE NEED TO MOVE TO SOUTH WHEN  
 SEARCHING AGAIN - AS APPROX. SEC. COR.  
 TO SOUTH MOVED TO SOUTH TODAY

CORNER TO SECTIONS 13-18-19-24  
 ORIG. GOV'T. SURVEY 1875  
 SET WOOD POST

BIRCH 12 N66E 62 LKS. = 40.92'

BIRCH 12 N58W 48 LKS. = 31.68'

POPLAR 20 S31½W 133 LKS. = 87.78'

BIRCH 8 S56½E 72 LKS. = 47.52'

NOTES OF BELTRAMI COUNTY ROAD SURVEY  
 By C. C. SPENCER AUG. 10 1917

FOUND POPLAR STUMP WITH AXE MARKS PLAIN  
 FROM WHICH I MEASURE BEARING + DISTANCES  
 AND FOUND EVIDENCE OF 3 BIRCH STUMPS  
 WHICH (CHECK OK) WITH GOV'T. NOTES  
 ACCEPT AS TRUE CORNER

SET ELM POST 4" X 4" X 3" IN STONE MOUND  
 WITH PIECE OF STRAP IRON 1" X 24"

MKD NEW BT'S.

ASPEN 10 S70E 10.4'

NO TRACE AT S70E 10.4'

ASPEN 12 S68W 28.6'

NOW WELL ROTTED ASPEN STUMP AT S68W - 28.6'

C.C.C. FIELD BOOK #94 PAGE 13  
 NOTES BY J. A. GHELHAUG 2-1-40

Fd. SCRIBED POST AND PIECE OF IRON STRAP  
 8" ABOVE GROUND

Fd. COUNTY BT'S.

ASPEN 14 S69E 15½ LKS. = 10.23'  
 NO TRACE AT S69E - 10.23'

ASPEN 18 N75W 23½ LKS. = 15.51'  
 NO TRACE AT N75W - 15.51'

PLACED FSLP ON ASPEN 4" S3E 11 LKS. = 7.26'  
 NOW 18" ASPEN - NO TAG BY J.A.G.  
 TAG BY D. JOHNSON 7-20-65

11-3-66 JAMES EKSTROM  
 SET 2" DIA. X 5' LONG IRON PIPE WITH BRASS CAP  
 MARKED

2.2' ABOVE GROUND  
 IN MOUND OF STONE

T147N  
 R30W R29W  
 S13 S18  
 S24 S19  
 1966  
 RLS NO 6807

ASPEN 12" S23W 16.6'

NOW 18" ASPEN AT S20W 16.6' SCAR NEW TAG

ASPEN 6 N60E 32.4' NOW 15' SNAG

NOW 14" ASPEN AT N60E 32.4' SCAR NEW TAG

ASPEN 7" N47E 46.9' NOW 10' SNAG

NOW 14" ASPEN AT N47E 46.9' SCAR NEW TAG

6" STEEL SIGN POST WEST - 5.6'

REMOVED 6' POST + REPLACE WITH 8' POST + NEW SIGNS

AT WEST 5.6'

8" STEEL POST EAST 4.3'

NEW BT.

W. OAK 8 S67E - 58.53' MKD S19 BT  
 NOW 10"

4-13-2016 R. MAIN

GPS MONUMENT SURVEY GRADE.

QUARTER CORNER BET. SEC'S. 16 & 17  
 ORIG. GOV'T. SURVEY 1875  
 SET WOOD POST

SPRUCE 3 S28E 29 LKS = 19.14'

SPRUCE 3 N70W 38 LKS = 25.08'

874 CCC NOTES By J. A. GJELHAUG 2-1-40  
 Fd. TAM. POST - GOOD CONDITION - 36" HIGH  
 MARKED NEW BT'S.

TAM. 4 N34W 49 LKS = 32.34'

TAM. 4 N59E 40 LKS = 26.40'

PLACED FSLP ON TAM. 3 ON SE SIDE  
 CORNER BRS. S46E 25 LKS = 16.50'

SOUTH EDGE  
MEANDER CORNER BET. SEC'S. 16+17  
ORIG. GOV'T SURVEY 1875  
SET WOOD POST

TAM. 5 S79E 8 LKS. = 5.28'

TAM. 5 S70W 36 LKS. = 23.76'

874-CCC NOTES By J. A. GJELHAUG 2-1-40

Fd. TAM. POST - GOOD CONDITION - 40" HIGH

Fd. ORIG. BT'S.

TAM. 9 S79E 8 LKS. = 5.28'

TAM. 9 S74W 38 LKS. = 25.08'

PLACED FSLP ON TAM. 6 ON WEST SIDE  
CORNER BRS. S80W 14 LKS. = 9.24'

J-K-9

NORTH EDGE  
 MEANDER CORNER BET. SEC'S, 16 & 17  
 ORIG. GOV'T. SURVEY 1875  
 SET WOOD POST

TAM. 7 N80E 7 LKS. = 4.62'

TAM. 6 N18E 9 LKS. = 5.94'



QUARTER CORNER BET. SEC'S. 8 & 17  
ORIG. GOV'T. SURVEY 1875  
SET WOOD POST

TAM. 6 S 81½ W 790 LKS = 521.40'

NO OTHER

SECTION CORNER  $\frac{14113}{2324}$ 

OCT 1875 ORIG SURVEY B.C. BALDWIN

SET POST

CEDAR	8	S7W	70
P. STUB	12	N33W	62
P. STUB	16	N65E	38
TAM	8	S57E	433

SEPT 1932 DEPENDENT RESURVEY

NOTES WERE NEVER OFFICIALLY APPROVED  
NO BTS FOUND POSITION DETERMINED BY  
TOPOGRAPHIC TIES.

SET  $4\frac{1}{2}$ " DABM, 4 IN STEM IN A CONCRETE  
CYLINDER MONUMENT 26" X 6" 20" IN THE  
GROUND. MKD: T147N R29W

S14	S13
S23	S24
1932	

DIFFERENTIAL  $47^{\circ}32'38".6824$  40  
CORRECTED GPS  $94^{\circ}18'27.07909$

1-15-02 R/MAIN JALLISON J. WHITE  
FD MONUMENT 2 FT UNDER CATTAILS AND  
ICE. MONUMENT IS LAYING DOWN UNDER ICE.  
WE DID NOT HAVE THE PROPER EQUIPMENT TO  
RESET. NEEDS TO BE WIRED TO A COWLE SIGN  
POSTS AND SHOULD BE DONE IN WINTER. SET  
TAMARACK POST NEAR MONUMENT AND GPS'ED.

END OF

BOOK 1