

T146N R30W

TRAVERS^{#4}~~5~~

RE

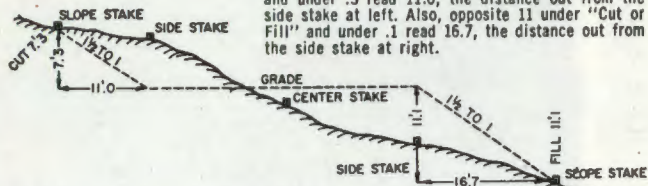
FIELD BOOK

82-0012

DISTANCES FROM SIDE STAKES FOR CROSS-SECTIONING

Roadway of any Width. Side Slopes 1½ to 1.

In the figure below: opposite 7 under "Cut or Fill" and under .3 read 11.0, the distance out from the side stake at left. Also, opposite 11 under "Cut or Fill" and under .1 read 16.7, the distance out from the side stake at right.



Cut or Fill	Distance out from Side or Shoulder Stake									Cut or Fill	
	0	.1	.2	.3	.4	.5	.6	.7	.8		.9
0	0.0	0.2	0.3	0.5	0.6	0.8	0.9	1.1	1.2	1.4	0
1	1.5	1.7	1.8	2.0	2.1	2.3	2.4	2.6	2.7	2.9	1
2	3.0	3.2	3.3	3.5	3.6	3.8	3.9	4.1	4.2	4.4	2
3	4.5	4.7	4.8	5.0	5.1	5.3	5.4	5.6	5.7	5.9	3
4	6.0	6.2	6.3	6.5	6.6	6.8	6.9	7.1	7.2	7.4	4
5	7.5	7.7	7.8	8.0	8.1	8.3	8.4	8.6	8.7	8.9	5
6	9.0	9.2	9.3	9.5	9.6	9.8	9.9	10.1	10.2	10.4	6
7	10.5	10.7	10.8	11.0	11.1	11.3	11.4	11.6	11.7	11.9	7
8	12.0	12.2	12.3	12.5	12.6	12.8	12.9	13.1	13.2	13.4	8
9	13.5	13.7	13.8	14.0	14.1	14.3	14.4	14.6	14.7	14.9	9
10	15.0	15.2	15.3	15.5	15.6	15.8	15.9	16.1	16.2	16.4	10
11	16.5	16.7	16.8	17.0	17.1	17.3	17.4	17.6	17.7	17.9	11
12	18.0	18.2	18.3	18.5	18.6	18.8	18.9	19.1	19.2	19.4	12
13	19.5	19.7	19.8	20.0	20.1	20.3	20.4	20.6	20.7	20.9	13
14	21.0	21.2	21.3	21.5	21.6	21.8	21.9	22.1	22.2	22.4	14
15	22.5	22.7	22.8	23.0	23.1	23.3	23.4	23.6	23.7	23.9	15
16	24.0	24.2	24.3	24.5	24.6	24.8	24.9	25.1	25.2	25.4	16
17	25.5	25.7	25.8	26.0	26.1	26.3	26.4	26.6	26.7	26.9	17
18	27.0	27.2	27.3	27.5	27.6	27.8	27.9	28.1	28.2	28.4	18
19	28.5	28.7	28.8	29.0	29.1	29.3	29.4	29.6	29.7	29.9	19
20	30.0	30.2	30.3	30.5	30.6	30.8	30.9	31.1	31.2	31.4	20
21	31.5	31.7	31.8	32.0	32.1	32.3	32.4	32.6	32.7	32.9	21
22	33.0	33.2	33.3	33.5	33.6	33.8	33.9	34.1	34.2	34.4	22
23	34.5	34.7	34.8	35.0	35.1	35.3	35.4	35.6	35.7	35.9	23
24	36.0	36.2	36.3	36.5	36.6	36.8	36.9	37.1	37.2	37.4	24
25	37.5	37.7	37.8	38.0	38.1	38.3	38.4	38.6	38.7	38.9	25
26	39.0	39.2	39.3	39.5	39.6	39.8	39.9	40.1	40.2	40.4	26
27	40.5	40.7	40.8	41.0	41.1	41.3	41.4	41.6	41.7	41.9	27
28	42.0	42.2	42.3	42.5	42.6	42.8	42.9	43.1	43.2	43.4	28
29	43.5	43.7	43.8	44.0	44.1	44.3	44.4	44.6	44.7	44.9	29
30	45.0	45.2	45.3	45.5	45.6	45.8	45.9	46.1	46.2	46.4	30
31	46.5	46.7	46.8	47.0	47.1	47.3	47.4	47.6	47.7	47.9	31
32	48.0	48.2	48.3	48.5	48.6	48.8	48.9	49.1	49.2	49.4	32
33	49.5	49.7	49.8	50.0	50.1	50.3	50.4	50.6	50.7	50.9	33
34	51.0	51.2	51.3	51.5	51.6	51.8	51.9	52.1	52.2	52.4	34
35	52.5	52.7	52.8	53.0	53.1	53.3	53.4	53.6	53.7	53.9	35
36	54.0	54.2	54.3	54.5	54.6	54.8	54.9	55.1	55.2	55.4	36
37	55.5	55.7	55.8	56.0	56.1	56.3	56.4	56.6	56.7	56.9	37
38	57.0	57.2	57.3	57.5	57.6	57.8	57.9	58.1	58.2	58.4	38
39	58.5	58.7	58.8	59.0	59.1	59.3	59.4	59.6	59.7	59.9	39
40	60.0	60.2	60.3	60.5	60.6	60.8	60.9	61.1	61.2	61.4	40

U.S. DEPARTMENT OF AGRICULTURE
FOREST SERVICE
 CHIPPEWA NATIONAL FOREST, MINNESOTA



The paper in this book is made of 50% high grade rag stock with a WATER RESISTING surface sizing.

KEUFFEL & ESSER CO.

T146NR30W

USFS

BOOK 4 of 4

TRAVERSE T146NR30W

INDEX

I

	<u>page</u>
Traverse W $\frac{1}{4}$ sec 10 to C $\frac{1}{4}$ sec. 10	1-2
Set CW $\frac{1}{16}$ sec. 10	3
Set C-W-W $\frac{1}{64}$ sec 10	4
POL BET W $\frac{1}{16}$ ^B ₁₁ AND MISSING MC $\frac{B}{17}$	5

II

III

1	Stat. occup	Stat. sight	1st \times Vert. \times	4th \times Dist	Mean \times	Horiz. Dist.
1		0	90-07-30	616.80		616.80
		0	00-00-00			
1		2	179-42-00	358.48-20	179-42-05	
1		2	90-06-75	1146.04		1146.04
		1	00-00-00			
2		3	180-04-50	00-19-45	180-04-55	
2		3	89-54-00	964.75		964.75
		0	00-00-00			
1		4	177-53-05			
1		4	99-55-40	65.83		64.84
			Moved pt. 4 east .3' and at 177-53-05			
1		4	99-55-40	66.13		65.14

Setting of CW-W $\frac{1}{4}$

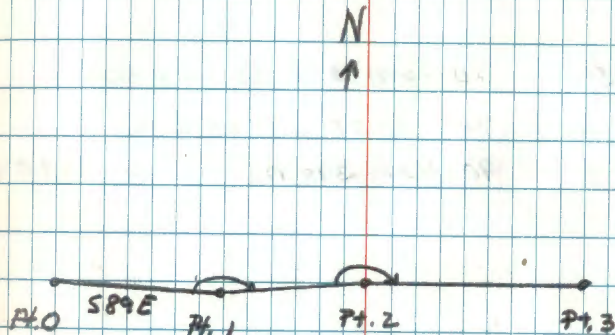
5/13/82 - KRAUSE, BRAMA, Klaus

Cloudy - 60° F

Survey traverse run between $\frac{1}{4}$ c. bet sec. 9/10 to C $\frac{1}{4}$ sec. 10 to establish the CW $\frac{1}{4}$ and $\frac{1}{4}$ corner in sec. 10.

Pt. 0 - $\frac{1}{4}$ corner bet. sec 9/10

Pt. 3 - C $\frac{1}{4}$ sec. 10



To set the curve, occupied
pt 2, backsight pt. 1 and turned
right 00-07-53. Set pt. 5 near
the curve position.

1 00-00-00

2

5 00-07-53

2 5 90-30-10 398.32 398.30 →

Moved nail .74' west and on line

2 5 90-30-10 399.06 399.04

5/17/92 - KRAUSE, BRAMA, KLAUS

See computation sheet

Center-West $\frac{1}{16}$ Sec 10

Set a 2" x 60' galv. concrete filled
pipe set 1.0' above ground with B.C. mkd.

T146NR30W

C W $\frac{1}{16}$ C

5.10

1982

P.L.S. NO. 46

To perpetuate this corner I mkd. BT's:

1. W. Oak, 6" S 66° W at 47.15' CW $\frac{1}{16}$ S10BT
2. W. Oak 6" S 36° W at 33.50' CW $\frac{1}{16}$ S10BT
3. W. Oak 6" S 72° E at 61.24' CW $\frac{1}{16}$ S10BT

Sign post east 5' & west 5' with both
signs attached.

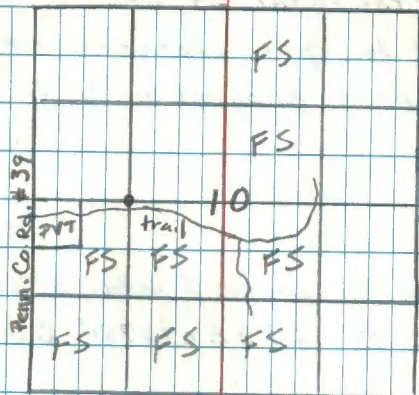
Corner falls on the south edge of a old swamp

Line east & west are mkd. to F.S. Standard.

Placed a F.S.L.P. on south side of a trail

that runs east & west on R. Oak 8" South at 86.0'

5/17/82 Gary Brama



Center-West - West $\frac{1}{4}$, Sec 10

Set a 2" x 36" galv. pipe, concrete f. lkd,
set 10' above ground with B.C. mkd.

T146 N R 30 W

C $\frac{W-W\frac{1}{4}}{510}$ C1982
R.S. NO. 1467

To perpetuate this corner I mkd. BT's:

1. W. Spruce 13" S53E at 27.41' CWW $\frac{1}{4}$ BT
2. W. Oak 9" S12°W at 13.17' CWW $\frac{1}{4}$ BT
3. W. Oak 6" N76°W at 40.90' CWW $\frac{1}{4}$ BT

8" Sign posts east $50'$ & south $50'$ from corner
with both signs attached.

line east is mkd. to F.S. Standard.

Corner falls in the middle on the east slope
of a hill. Alder swamp approx. 65' east of corner.

Corner falls approx. 72' east of a recent
fence corner. 5/17/82 Gary Brama

← removed #

TRANS SET POL BETWEEN $W \frac{1}{16} \frac{8}{17}$ AND MISSING MC $\frac{8}{17}$

FS 3 220-0312 40-03-36

BS 1 00-00-00/80 00 23

$\pi @ 2$ 220-0312 220-04-13

Z-1 814.77

Z-3 164.77

TO SET POL

FS 4 9-12-09

BS ~~4~~ 1 00 00 00

$\pi @ 2$ 9-12-09

Z-4 39.99'

FS = ELM BT

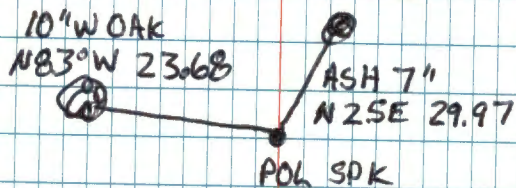
BS = $W \frac{1}{16} \frac{8}{17}$

π ON SPIKE

FS = POL

BS = $W \frac{1}{16} \frac{8}{17}$

π ON SPIKE



REMAINDER OF
BOOK IS
EMPTY