

CORNER  
RESTORATION  
TIPON ROW



MINING  
TRANSIT BOOK

No. 3841

BOOK #7







Note:

Original survey of the township boundaries made by R.H. Conger in 1873. The township was subdivided by Benjamin C. Baldwin in 1875.

The west boundary was resurveyed in 1932 under the direction of the General Land Office, in connection with the resurvey of T156N, R31W.

The resurvey of the remainder of the township was made by H.H. Craig in 1933.



2 V-21 Affidavit 11/3/78

Corner Sections 25-26-35-36

Restored from original evidence by G.L.O.

J. Pine stp. 14" S88W 265 lks. 174.9'

Distance & Bearing new fall in road clearing

J. Pine stp. 14" N12W 143 lks. 94.4'

Found rotted & burned J. Pine stp. at brg & dist.

with base scar and scribe visible "BT"

Found: 6" dia. concrete monument w/ Brass tab.

Stamped: T146N R30W G.L.O. Survey

526 | 525

535 | 536

From which Bears: 1933

Jack Pine 13" N41°W 78.1' (Scribe partly grown over) 5/5/61 R.M.M.

(Checks with resurvey notes) P.G.U.

1933 G.L.O. Bt's.

Tam. 3 N53E 137 lks 90.4'

Now 8" Tam. at brg & dist. scribe overgrown

H. Pine 12 S14E 50 lks 330.7

Now 13" Norway Pine at brg & dist. scribe overgrown

Tam 3 S59½W 7 lks. 4.6

Now 11" Tam at brg & dist. scribe overgrown

J. Pine 8 N40½W 118 lks. 77.9'

Now 15" J. Pine at brg & dist. scribe overgrown

Monument is 10" above ground - in good cond.

in tam. Spruce & Jack pine swamp - corner is

approx. 75' out in swamp

To perpetuate this corner I scribed 3 new bearing trees as follows

J. Pine 9" S71W - 17.1' mkd T146N R30W S35BT

J. Pine 11" N53W - 86.8' mkd T146N R30W S26BT

J. Pine 7" S72E - 76.8' mkd T146N R30W S36BT

Set 8" steel post due east 2.7' with FS sign 54-4

9-9-76

Carl R. Kraus

M.E.S.  
11/28/78

3-6-96 R. Mainz

J. Pine BT @ N40W 77.9' Now Dead (Top Broken Out)

Tamarack Bt @ S60W 46.6' Now a Stump

All Remaining Bearing Trees are in good condition

Placed F.S. Metal location poster on a 10"

Tam. From which Cor. bears N55E 4.5' (This

is possibly a BT has scar facing Cor.)

(Checks with resurvey notes) P.G.U.



3 21-18

SW 1/16 Sec. 26

Notes of G.L.O. Resurvey 1933 Set Iron  
post 3' long 1"  $\phi$  w/brass Cap MKD

J. pine 6" N 7 1/4° E 101Ks or 6.60' SW 1/16 S 26

J. pine 8" S 10 1/2° E 48 Ks or 31.68' 1933

Found: G.L.O. Brass Cap on a 1" dia. iron pipe.  
Cap MKD SW 1/16 S 26 1933. Pipe is  
Leaning West & has been in a hot fire.

From base of Pipe are two Jack Pine stumps

J. Pine stp. 11" S 8 1/2° E 32.0' MKD "BT"

J. Pine stp. 11" N 9° E 7.0' w/ Blaze Facing Cor.  
but Scribing burned off. 5/5/61 RHTM

Set a 4" x 4" x 6 1/2' Treated Red top cedar post  
from which cor. bears North 0.7'



7 T-19

Center 1/4 Cor. Sec. 26

Notes of G.I.O. Resurvey of 1933

Set on Iron post 3' long 2"  $\phi$  w/bars

Cap MKD C 1/4 S 26

- ① J. pine 7" S 78° E 58.1Ks or 38.28'
- ② J. pine 7" S 83 1/2° W 46.1Ks or 30.36'
- ③ J. pine Stp 18" by 15' High S 6 1/2° W 43.56'

Found a G.I.O. Capped 1 3/4" iron pipe  
MKD C 1/4 S 26 1933

From which bears

- ① Jack Pine 13" S 72° E 38.3' w/ scribe mostly  
grown over) Re-Scribed "BT")
- ② Now Jack pine stump S 88° W 30.36 Ft. scribed C 1/4 S 26 BT
- ③ Now pine stump S 10° W 43.56 Feet.

I set a 4" x 4" x 6 1/2" Treated Red topped  
Cedar post South 1.0') 5/5/61 RHM

Put signs 54-24 54-4 on Cedar Post

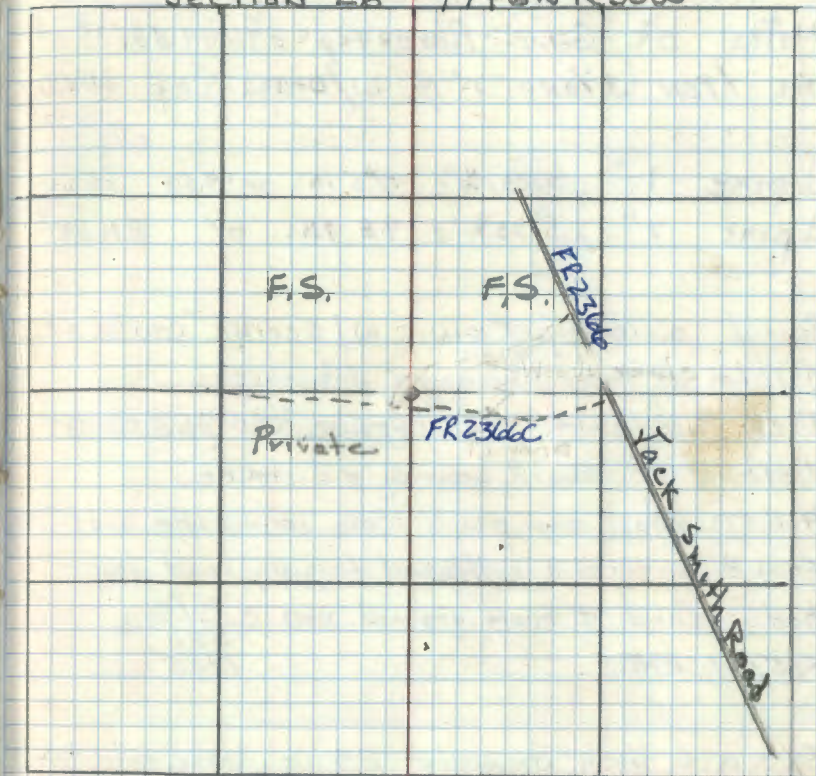
MKD

Jack Pine 9" N 29 1/2° W 9.65 Feet MKD C 1/4 S 26 BT

4-26-63 RHM Donald

Affidavit RHM T-19

Section 26 T146NR30W



R MAIN 3-696 0° # 26" S 10 W  
MKD 3 NEW BTS. CLEAR CUT NOW ON PUT  
1/4 1/4 DO SOUTH WEST 1/4 ONE TO STANDARD SOUTH AND  
WEST

(PINE) PINE 13" N 30° W 9.65 FT Scribe Overgrown

RPINE 11" N 32° W 9.467 FT TO Scribe MKD S 26 BT  
NOW A SWAG RM 2009

RPINE 17" S 39° E 20.42 FT TO Scribe MKD S 26 BT  
NOW 19" RM 2009

RPINE 11" N 60° E 72.05 FT TO Scribe MKD S 26 BT  
NOW 13" RM 2009

HEAVE SIGN POST WEST 4.2 FT

GPS IRON 4-21-2009  
IRON IS 230 FT NORTH OF FR 2366C



5 T-18

West Center  $\frac{1}{16}$  Cor S26Notes of G.L.O. Resurvey of 1933. Set  
an Iron 3' long 1"  $\phi$  w/brass Cap MKD

- ① Jack pine 14" N82 $\frac{1}{2}$ °E 75 1/2' or 49.50'  $\frac{CW \frac{1}{16} C}{S26 1933}$
- ② Jack pine 7" S73 $\frac{1}{4}$ °E 48 1/2' or 31.68'

③ Found a 15" Jack pine w/ scribe "CW  $\frac{1}{16}$  S26"  
visible at record bearing & distance.

④ Jack Pine stump 15" w/ scribe "CW  $\frac{1}{16}$  S26 BT"  
visible at record bearing & distance.

# G.L.O. Brass cap on a 1" dia. iron pipe was  
found beside a bulldozed logging road dozer  
had pushed it from ground. MKD  $\frac{CW \frac{1}{16} C}{S26 1933}$   
5/5/61 RHM

Set a 6 inch diameter, 24 inch long cylindrical  
concrete monument capped with a 3 inch  
diameter bronze tablet stamped:-

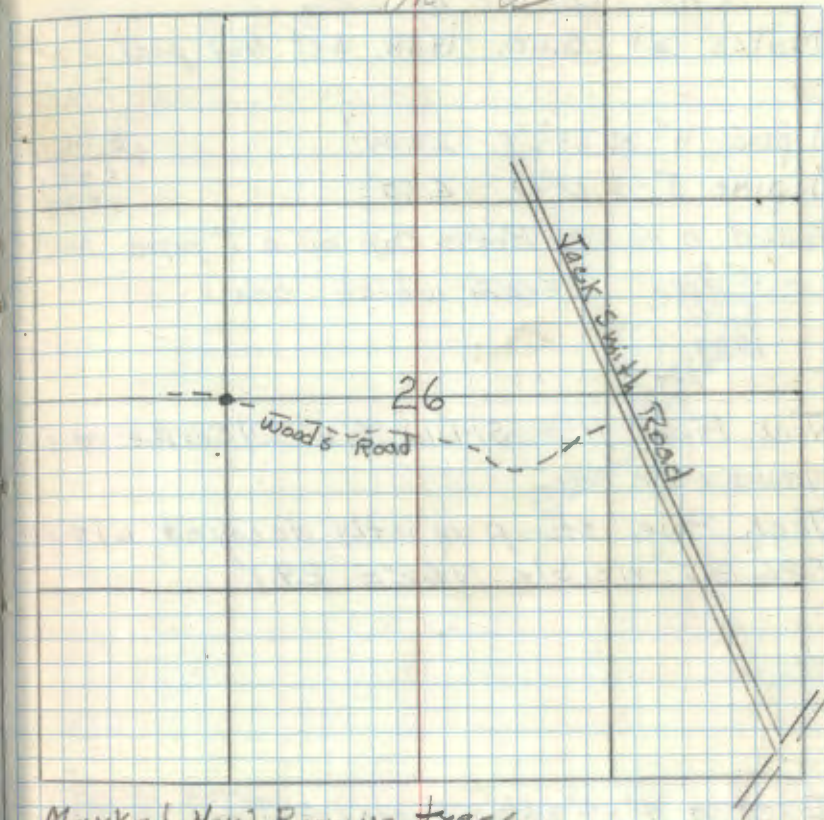
Note T196N R30W  
Monument is buried  $\frac{CW \frac{1}{16} C}{S26 1963}$   
6 inches under South  
Wheel track of logging  
Road. RLS NO 3628

See BOOK 3, Page 36  
(additional information)

Affidavit RHM

6-11-63

F-78



Marked New Bearing trees

Jack pine 6" S25 $\frac{1}{2}$ °E 12.45 Feet MKD CW  $\frac{1}{16}$  BT  
Red pine 11" N67 $\frac{1}{2}$ °W 64.7 Feet MKD CW  $\frac{1}{16}$  BT  
Steel sign post 72 inches long set 24 inches in  
ground w/ signs 54-2 & 54-9 attached due south  
5.6 Feet  
4-26-63 RHM Donald







7 R-17

Sec. Cor. 22-23-26-27

Notes of the G.L.O. resurvey of 1933

Set concrete mon. w/ brass cap from which -

<sup>Local</sup> Jack pine stp 19" N 45° E 16 lbs (10.56')

Jack pine 12" S 12 1/2° W 55 lbs (36.3')

Jack pine 14" S 68 1/2° W 62 lbs (40.92')

<sup>New</sup> Jack pine stp 11" N 71° W 39 lbs (25.74')

Jack pine 14" N 52° E 67 lbs (44.22')

Found a 6" dia. Concrete monument w/ a  
3" dia. bronze tablet stamped: T196NR30W

U.S.G.L.O. S22 | S23.  
S27 | S26

Found.

1933

Jack pine stump S 13° W 36.4' scribed "BT"

Jack pine stump S 69° W 41.0' " " "BT"

(B.T.'s check with G.L.O. Resurvey notes) R.A.U.

I set a 4" x 4" x 6.5' pentq-treated Red topped  
cedar post South 17'

Jack pine 13" N 12° E 31.9 Feet MKD S23 BT<sup>20'</sup> SNA6

Jack pine 7" S 44 1/2° E 40.4 Feet MKD S26 BT GONE

Jack pine 9" S 18° W 56.2 Feet MKD S27 BT GONE

Jack pine 7" N 65° W 44.4 Feet MKD S22 BT<sup>NOW</sup> 11"

5-5-61 R.A.M. Donald

Affidavit RHM

R-17

G.L.O.  
Jack pine 16" S 71 1/2° E 28 lbs (18.48') GONE

10-22-2008 RMAIN

FD IRON IN PLACE AND GPS. MATURE R. PINE PLANTATION  
SOUTH MIXED PINE AND HARDWOODS NORTH. ADD  
TWO NEW WITNESSES.

R PINE 13" S 26° W 14.11 FT TO SPK NOT MKD TAG

R PINE 13" S 29° E 14.87 FT TO SPK NOT MKD TAG



7 8 R-18

West 1/16 Sec. 23-26

See page 70 RHM

Found a GLO Brass cap on a 1" iron  
pipe - cap is stamped W 1/16 <sup>523</sup>/<sub>526</sub>  
1933

I set a 4"x4"x6.5', pentu-treated red topped  
cedar post North 485'



9 B-20

North East 1/16 Section 2

Notes of Survey by Beltrami Co. Surveyor  
Roy K. Bliler in 1919 on record Beltrami  
Co. Courthouse

Iron Bar 2" x 16" (Not Found should be on road edge)

Jack pine 4" N80W 11.5' (Now a T. Pine stump  
w/scribe "1/16 BT" visible N75W 11.5')

Jack pine 4" S45W 10.4' (Now a down T. Pine  
w/scribe "1/16 BT" visible S22W 10.4')

8/14/61 R.H. McDonald

Set a 6" dia. 5' Long cylindrical concrete  
monument capped w/a 3" dia. bronze tablet  
stamped:-

T196N R30W

NE 1/16 S2

RLS <sup>1961</sup> NO. 3628

From which bears:-

Red pine 1 1/2" S46W 28.95' MKD NE 1/16 S2

Jack pine 10" S47 1/2 E 49.25' MKD NE 1/16 S2

Cedar post <sup>15 x 50'</sup> 4 x 4" x 6.5' Penta-treated w/ red  
top South 1.4'

8/21/61 R.H. McDonald

Set a steel post 72" long 24"

in ground w/signs 54-2 attached

North 3.8' 5-10-63 James Christian

Affidavit RAM

B-20

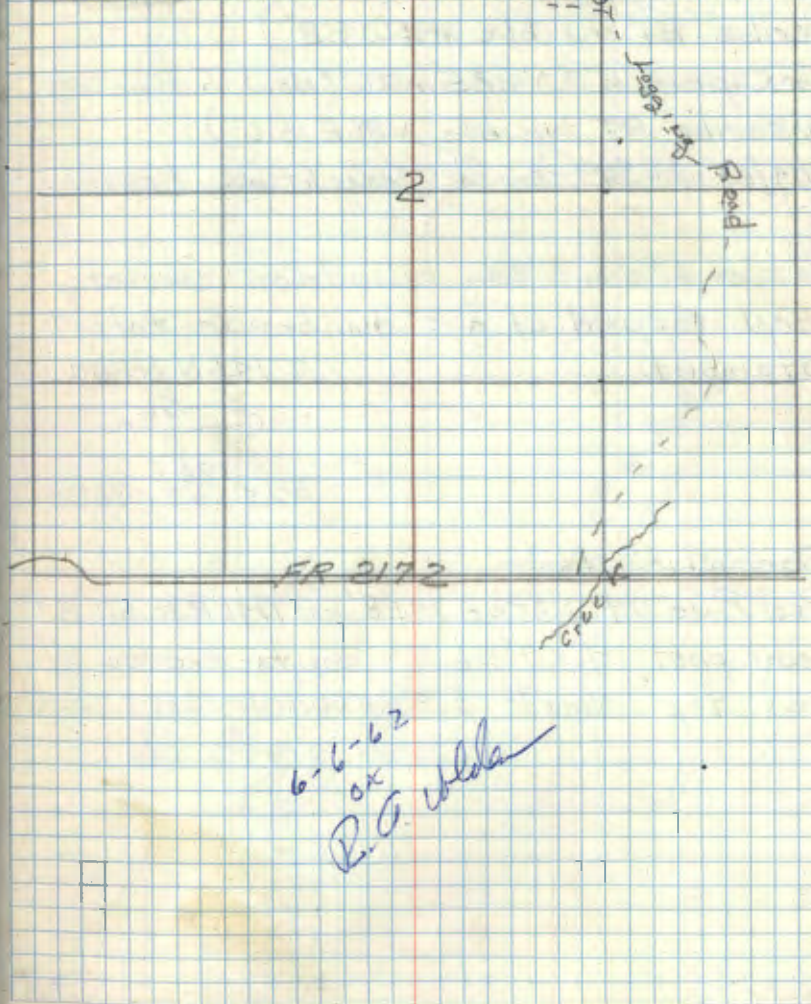
T196N

R30W

11-24-2008 R. MAIN  
RD MONUMENT IN PLACE AND GPS. 1961 J. PINE  
NOW 15" X 50' TALL SNAG. CEDAR 4X4 IS LAYING  
ON THE GROUND WITNESS WITH.

1961 R PINE 26" S46W 28.95'

R. PINE 16" N80°E 20.10 FT TO SPK NOT SCRIBED





10 C-20

East center 1/4 Section 2

Notes of Beltrami Co. Surveyor Roy K. Bliler  
in 1919 on record Beltrami Co. Courthouse

Gas pipe (Found in place under old fence)

Jack pine 4" N88W 9.8' (Now 17" Jack pine w/  
scribe "BT" visible N84W 9.8')

Jack pine 5" N28E 15.6' (Now J. Pine str.  
w/ scribe "BT" visible N36E 15.6')

8/14/61 R.H. McDonald Search time 1 man hr.

Set a 6" dia. 5' long cylindrical concrete  
mon. capped w/ a 3" dia. bronze tablet  
stamped:

T146N R30W  
E 1/4  
S 2  
1961  
RLS NO 3628

From which bears

Red Pine 14 N35 1/2 E 141.8' mko T146 R30 S2 BT

Cedar post 4" x 4" x 6.5' penta-treated w/  
red top West 3.5' w/ signs 54-2354-4 attached

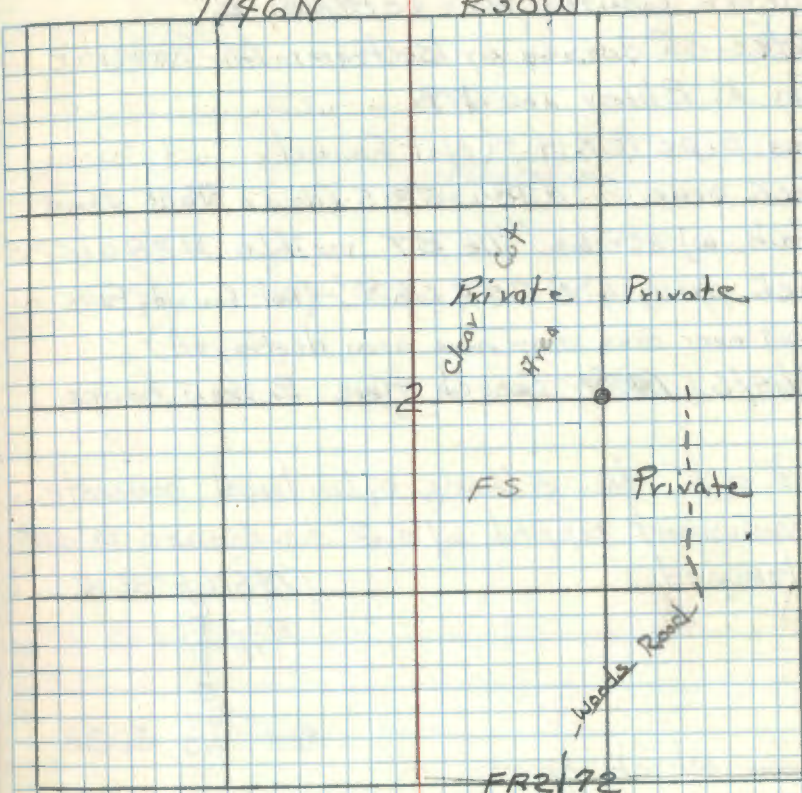
8/21/61 R.H. McDonald

Affidavit RAN

C-20

T146N

R30W



6-6-66  
0.14  
R.H. McDonald



11 B-19

North Center 1/16 Section 2

Notes of Survey by Beltrami Co. Surveyor

Roy K. Bliler in 1919.

Gas pipe 1/2" x 14" - (Not Found)

Jack pine 8" N28W 52.5' (Now a Jack Pine stub w/ scribe "1/16 BT" visible N28W 52.5')

Jack pine 4" N35E 66.8' - (Not Found, Falls in a cut over area may have been destroyed)

8/19/61 RHM Search time 2 man hours

Set a 6" dia. 5' Long cylindrical concrete monument capped w/ a 3" dia. bronze tablet stamped

T196N R35W

N 1/16 S 2

RLS <sup>C</sup> 1961 NO 3628

From which bears:

Jack pine 10" N39W 12.2' MKD CN 1/16 S2 BT

Jack pine 8" N82E 16.25' " " " "

8/21/61 R.H. McDonald

Set steel sign post South 2.75' with signs

54-2 & 54-4 attached RHM

RFF. davit RHM

B-19

T196N

R30W

FS

FS

Plantation

FS

Private

2

6-6-62  
D.K.  
P.A. [Signature]



12 C-19

Center Quarter Section 2

Notes of Survey by Beltrami Co. Surveyor  
Roy K. Bliler in 1919:-

Jack Pine 4" S 68W 63.5' (Now a J. Pine stp  
mostly decayed w/ scribe "T" visible S74W 63.5'

N.P. Stp N55W 29.8' (Now a large pine stp badly  
burned w/ scribe "BT" visible N44W 29.8')

Gas Pipe 2" x 1/4" (Found in place 1" under  
surface of ground) 8/21/61 R.M. S.T. Thour

Set a 2" inside dia. 5' Long gal. wrought  
iron pipe filled w/ concrete & capped w/  
a 3" dia. bronze tablet stamped:-

T146N R30W

C 1/4 S 2

1961  
RLS NO 3628

Elm 8" S49W 38.5' MKD C 1/4 S2 BT

Oak 10" N11E 30.1' MKD C 1/4 S2 BT

8/21/61 R.M. McDonald

Set a steel sign post 72" long 2 1/2" dia  
ground w/ signs 542 & 549 attached

North 2.9' 5-10-63 James Johnson

Affidavit R.M.

C-19

5-11-02 R MAIN

Ed MONUMENT IN PLACE ± 50 FT NORTHEAST  
OF FR 2157 IN RPINE PLANTATION. GPS IRON  
AND ADD ONE NEW BT EKSTROM ELM NOWA  
WINDFALL 1961 OAK NOW 17'.

R PINE 7" S36 E 100.3 FT TO SPR MKD S2 BT



Corner of Townships 145 and 146 N,  
Notes of G.L.O. Resurvey of 1933.

6"  $\phi$  concrete monument with a 3 1/2"   
brass cap marked:

T146N	
R30W	R29W
S36	S31
S1	S6
T145N	
1933	

Fallen tamarack, 14", S70°E, 250 lbs or 165', rotted

Rotted tam. stump, S 79°W, 177 lbs or 116.82

Tam. stump, 6", N71°W, 240 lbs or 158.40'

(New)  
N. Pine, 24", N 41°08'W, 825 lbs or 544.5', T146N R30W  
S36 BT

6"  $\phi$  Tam. stake set as necessary to corner

Ranges 29 and 30 W.



14.

Quarter Corner, Section 36 T146N 2nd  
 Notes of G.L.O. resurvey of 1933:  
 From remains of original bearing  
 trees, set an iron post, 3' long, 1"  $\phi$ ,  
 with brass cap med:

$$\frac{1}{4} \frac{536}{31}$$

1933

Burned J. Pine stump, 12", S74°W, 66 lbs or 48.56'

Fallen, burned J. pine, 12", N67°W, 79 lbs or 52.14'

(New)  
 J. pine, 9", S02°E, 97 lbs or 64.02', 1/4 51 BT

(New)  
 Red oak, 12", N43°W, 88 lbs or 58.08', 1/4 536 BT

Section 1, T145N.



15. Z-21

Section corner 35-36, T146N, and

Notes of G.L.O. resurvey of 1933:

By proportional distance, set a  
6"  $\phi$  conc. monument, with  $3\frac{1}{2}$ " brass cap mkt.(Found in  
Place.)

T146N	R30W
535	536
52	51
T145N	
1933	

J. pine, 7", N80°07'E, 227 lks (149.82'), T146N R30W S36 BT

J. pine, 8", 506°38'E, 11 lks (46.86'), T145N R30W S1 BT

(Now a 15" J. Pine stp. scribed BT S 62°E 46.86')

Paper, 4", 531°30'W, 42 lks (27.72'), T145N R30W S2 BT

J. pine, 7", N33°45'W, 333 lks (219.78'), T146N R30W S35 BT

(Now a 12" J. Pine wind tipped w/ scribe on under  
side N33 $\frac{3}{4}$ °W 219.78')

Marked new BTs

Red pine 7" S17°W 70.5' MKD S2 BT

Red pine 7" S62°E 373' MKD S1 BT

Red pine 8" N67°E 50.6' MKD S36 BT

Steel sign post 72" long set 24" in ground w/

sign 54-4 attached N83°W 2.48'

8-28-62 *RAM Donald*

Affidavit RAM

Z-21

1-2, T145N

3-28-96 R MAIN

FD GLO AND 1962 BTS IN GOOD CONDITIONS CORNER  
FALLS IN MATURE PINE WITH MIXED J PINE  
AND ASPEN MKD ONE NEW BT1962  
J PINE 17" N67°E 50.6 FT SCRIBE OVERGROWN

J PINE 15" S17°W 70.5 FT SCRIBE OVERGROWN

J PINE 16" S62°E 37.3 FT SCRIBE OVERGROWN  
NOW STANDING DEAD

NEW PINE 14" N 10°W 58.58 FT T6 SK MKD S35 BT

FSLP ON 10" J. PINE EAST SIDE FR 2351 A FROM  
WHICH CORNER BEARS EAST  $\pm$  250 FT. DIST  
RACED W/ SMOUSHOES J PINE W/ FSLP 1450 FT SOUTH  
FROM FR 235111-28-07 R MAIN  
GPS ED IRON10" J. PINE W/ FSLP NOW A WINDFALL, MOVED  
TAG TO 6" W PINE



Quarter Corner, Section 35, T146N, and  
Notes of G.L.O. resurvey of 1933.

From remains of orig bearing trees,  
set on iron post, 3' long, 1"  $\phi$ , brass cap  
mkd:  $\frac{1}{4}$   $\frac{535}{52}$   
1933

N. pine stump, 20", S36°W, 65/ks (42.90'), old blaze visible

N. pine stump, 24", N67°W, 43/ks (28.38')

(New)  
J. pine, 9", S87°15'W, 112/ks (73.92'),  $\frac{1}{4}$  52 BT  
Now 8 FT TALL SNAG/W/ SCRIBE VISIBLE

(New)  
J. pine, 5", N47°30'W, 104/ks (66.66'),  $\frac{1}{4}$  535 BT  
UNDER SNOW ROTTED STUMP 2008 RM

4-18-96 R. MAIN J. SCHOONOVER

FD GLO IN PLACE IN MIXED HARDWOODS 60 FT WEST  
OF 30 YR OLD RED PINE PLANTATION

MKD NEW BYS AS FOLLOWS

JR PINE 8" S64°E 70.60 FT TSPK MKD: 452 BT  
OK

JR PINE 8 1/2" N62°E 41.98 FT TSPK MKD: 4535 BT  
OK

R PINE 7 1/2" N32°W 98.82 FT TSPK MKD: 4535 BT  
NOW STANDING DEAD 2008 RM.

8 FT STEEL SIGN POST 3005' SOUTH

Section 2 T145N

8-18-2008 R. MAIN

GPS IRON



17. 2-17

Section corner 34-35, T146N and

Notes of G.L.O. resurvey of 1933:

From remains of orig. bearing trees,  
set a 6"  $\phi$  conc. monument with 3 1/2" brass  
cap marked

T146N	R30W
534	535
53	52

- Fd tipped, straightened from trees.  
T145N  
1933

Rooted oak stump, 8", N 74° E, 31 lbs (20.46')

Rooted elm stump, 12", S 89° E, 80 lbs (52.80')

Burned white pine stump, 28", S 82° W, 72 lbs (47.52')

(Now O.T.G.)  
Poplar, 4", N 23° 30' E, 110 lbs (72.6'), T146N R30W 535 BT

Poplar, 7", S 24° 30' E, 19 lbs (12.54'), T145N R30W 52 BT

Fd 10" nub scribing visible at record brg & dist

R. oak, 6", S 46° 30' W, 65 lbs (42.90'), T145N R30W 53 BT

Fd 10" at record brg & dist scribe overgrown

R. oak, 5", N 52° 30' W, 114 lbs (75.24'), T146N R30W 534 BT

the 3rd river road is .70 chs. west of corner.

11/23/01  
2-17-04

2-17

W. Okerman  
J. Ekstrom  
8-7-64

2-3, T145N.

New B.T.'s,

R. Oak 10" S 19° W 52.1 feet scribed 53 BT

R. Oak 10" N 16° W 64.9 feet scribed 534 BT

REMOVED BY ROAD CONSTRUCTION

R. Oak 5" S 44° E 12.7 feet scribed X BT

REMOVED BY ROAD CONSTRUCTION

Redwood Post 4" 1/2" 1.3 feet with  
sign attached

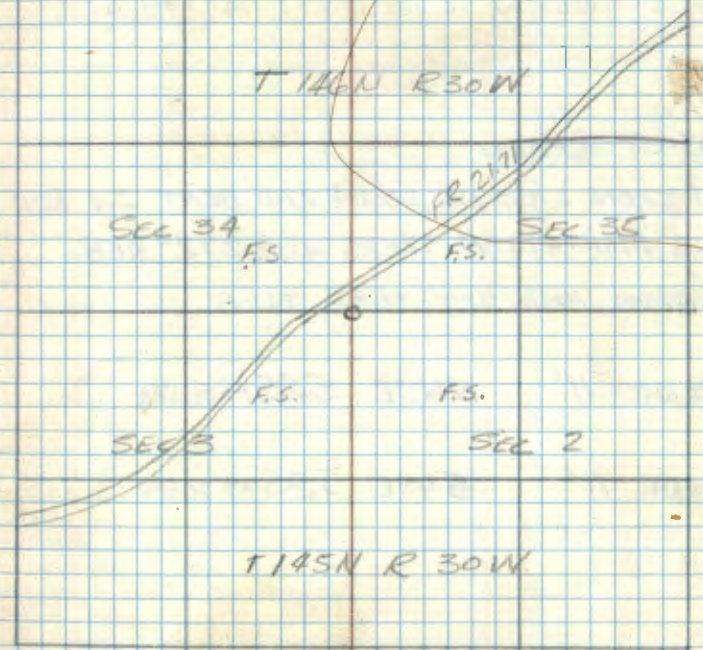
REMOVED BY ROAD CONSTRUCTION

Scribed two New Bearing Trees 2-22-72

Aspen 9" S 67° E 56.4' Scribed 52 BT

Flopan 7" S 39° E 23.3' Scribed 52 BT

James Ekstrom



CONT BK 3 Pg # 51

*Handwritten signature*



18.

Quarter corner Sect. 34, T146N, and  
Notes of G.L.O. resurvey of 1933:

By prop. distance, set on iron post,  
3' long, 1"  $\phi$ , brass cap mkd:

$$\frac{1}{4} \frac{534}{33}$$

1933

Burr oak, 5",  $S32^{\circ}30'W$ , 33 lbs (21.78'),  $\frac{1}{4}$  534 BT

Poplar, 5",  $N65^{\circ}W$ , 6 lbs (3.96'),  $\frac{1}{4}$  534 BT

12-03-07 R MAIN

FD IRON LAYING DOWN AND BENT IN RED  
PINE PLANTATION TREES ARE  $\pm 12"$  DBH.  
GPS IRON AND SET TEMP. TIES

R PINE 11"  $N60^{\circ}E$  5.85 FT TO SPK

R PINE 11"  $S4^{\circ}E$  5.85 FT TO SPK

Sect. 3, T145N,

			$589^{\circ}56'W$		
33	34	39.82	34	39.82	34 35
.43		2628.12	3	2628.12	3 2



Section corner 33-34, T146N, and 3-4,

Notes of G.L.O. resurvey of 1933:

By prop. distance, set a 6"  $\phi$  conc.  
monument, with 3 1/2" brass cap mkd.:

T146N	R30W
533	534
54	53
T145N	
1933	

Corner falls in center of Blackduck Road  
(FH-3) and was set 4" below surface.

Red oak, 3", N59°30'E, 52 lks (34.32'), mkd BT

J. pine, 4", 548°E, 84 lks (55.44'), mkd 53 BT

H. pine, 14", 584°30'W, 299 lks (197.33'), T145N R30W 54 BT

J. pine, 12", N11°40'W, 331 lks (218.46'), T146N R30W 533 BT

12-05-06 R, MAIN

GPS IRON

T145N.



Meander Corner Fra. Sect. 33, T146N,  
Notes of G.H.O. Resurvey of 1933.

From remains of orig. bearing trees, set  
on iron post, 3' long, 2"  $\phi$ , brass cap mxd.

	T146N
	R30W
M.C.	533
	54
	T145N

1933

(orig.)

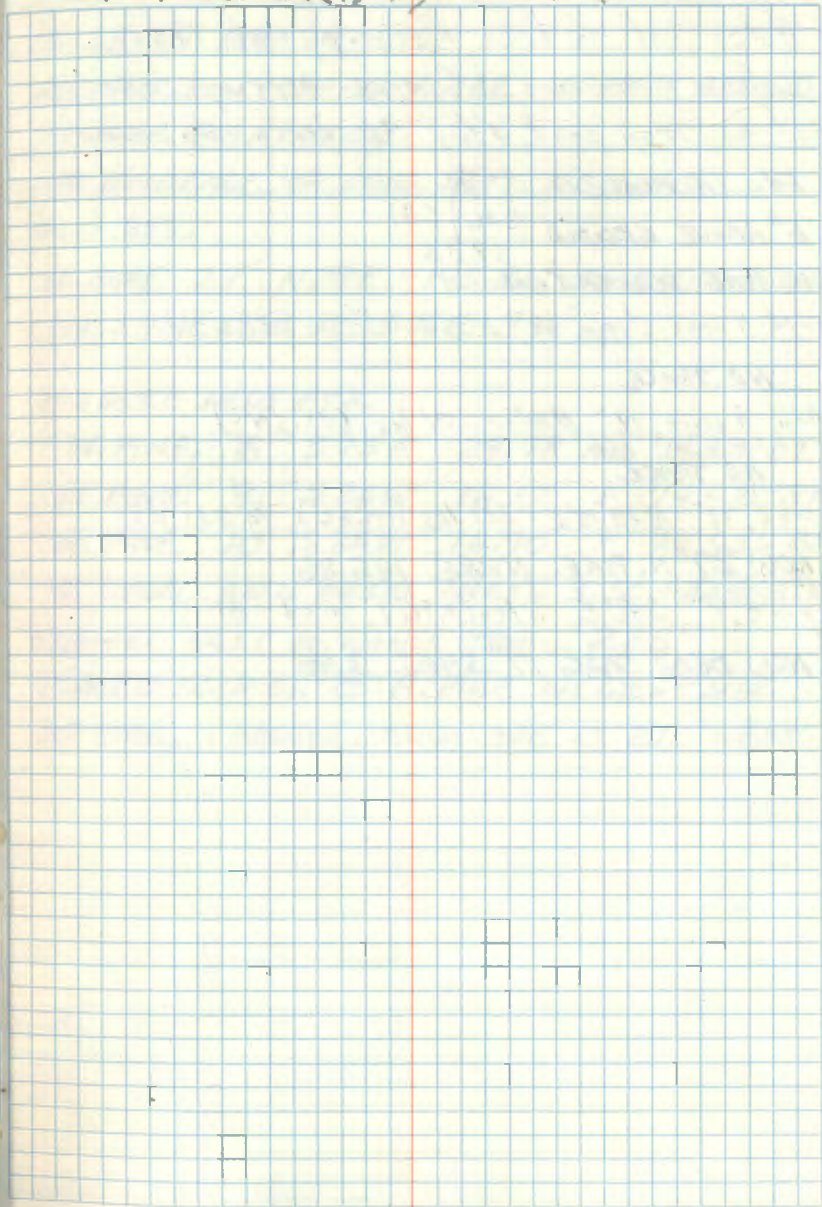
N. pine, 21", N89°30'E, 75 lks (478.5'), T146N R30W 533 M.C. BT

Burned j. pine stump, 588°45'E, 720 lks (475.2')

(New)

Burr oak, 14", 585°15'E, 592 lks (390.72') T145N R30W  
54 M.C. BT

and Fra. Sect. 4, T145N. (on Cass Lake)





Quarter Corner, Sec. 36 T146N R30W  
Notes of G.L.O. Resurvey of 1933.

From remains of orig. bearing trees  
Set an iron post,  $3\frac{1}{2}$ " $\times$ " $\frac{1}{2}$ ", 1"  $\phi$ , brass cap mxd.

Ed. IN PLANK  $\frac{1}{4}$

6" ABOVE GROUND 536 | 531  
1933

IN PINE PLANTATION

Burned N. pine stump, 12" N80°E, 60 lbs (39.60')

NO TRACE

Fallen N. pine, 14" N20°W, 54 lbs (35.64')

NO TRACE

(New)  
N. pine, 12" N28°15'E, 221 lbs (145.86'),  $\frac{1}{4}$  531 BT

NOW 27" N. PINE N28E 145.86'

(New)  
J. pine, 4" S46°E, 6 lbs (3.96'), mxd BT

NOW DEAD SNAG 17" S46E 3.96'

, and Sec. 31 T146N R29W

10-25-95 RM4CK

Ed. GLO IRON YCAP - IN PLACE - 6" ABOVE GROUND  
IN PINE PLANTATION

NO EVIDENCE OF ORIG. BT'S. REMAINS  
GLO BT'S.

N. PINE 27" N28E - 145.86' SCAR FACING COR.

DEAD J. PINE SNAG 17" S46E - 3.96' " " "

MARKED NEW BT'S.

N. PINE 8 S75E 29.78' mxd  $\frac{1}{4}$  531 BT

N. PINE 9 S26W 16.17' "  $\frac{1}{4}$  536 BT

N. PINE 10 S75W 16.90' "  $\frac{1}{4}$  536 BT

8' STEEL SIGN POSTS NORTH 3.50' + EAST 3.35'

CHAINED EAST TO WOODS TRAIL 225'

PLACED FSLP ON 12" N. PINE ON WEST SIDE

OF TRAIL - CORNER FROM TAG IS 210' WEST



Section Corner 25-36 T146N R30W, 30-31

Notes of G.L.O. Resurvey of 1933.

From remains of orig. bearing trees,  
set a 6"  $\phi$  conc. monument, brass cap mtd.:

T146N	
R30W	R29W
325	530
536	531
1933	

N. pine stump, 24", N. 48° E, 29 lks (19.14')

N. pine stump, 28", S 37° E, 160 lks (105.6')

Burned N. pine stub, 28", S 52° 30' W, 148 lks (97.68')

Burned N. pine stump, 25", N 78° W, 131 lks (86.46')

(New)  
J. pine, 5", N 36° 45' E, 164 lks (108.24'), 530 BT

(New)  
Burr oak, 6", S 57° 45' W, 333 lks (219.78'), T146N R30W  
536 BT

T145N R29W



23. T-25 Affidavit 11/3/78

Quarter Corner 25-30, T146N, R30 S29W

From remains of original bearing trees  
set on iron post, 3' long, 1"  $\phi$ , brass cap mkd.

$\frac{1}{4}$  found iron in place - in good  
525 | 530 condition 4" above ground  
1935  
10-11-74

Burned N. pine stump, 24" N58°E, 42 lks (27.72')

evidence of pine stump at brg.  $\frac{1}{2}$  dist.

Burned N. pine stump, 30" S40°W, 57 lks (24.42')

evidence of pine stump at brg.  $\frac{1}{2}$  dist.

Red oak, 3" S13°30'E, 74 lks (48.84'),  $\frac{1}{4}$  S30 BT

Now 10" <sup>hollow</sup> Red Oak S14°E 48.9' scribe overgrown

Red oak, 3" S41°W, 38 lks (25.08'), mkd BT

Now 11" Red Oak S40°W 25.1' scribe overgrown

To perpetuate this corner I scribed 4 new bearing  
trees as follows

N. Pine 14" N37°W 20.1' mkd.  $\frac{1}{4}$  S25 BT.

N. Pine 16" N43°E 32.2' mkd  $\frac{1}{4}$  S30 BT.

N. Pine 8" S53°W 6.4' mkd.  $\frac{1}{4}$  S25 BT.

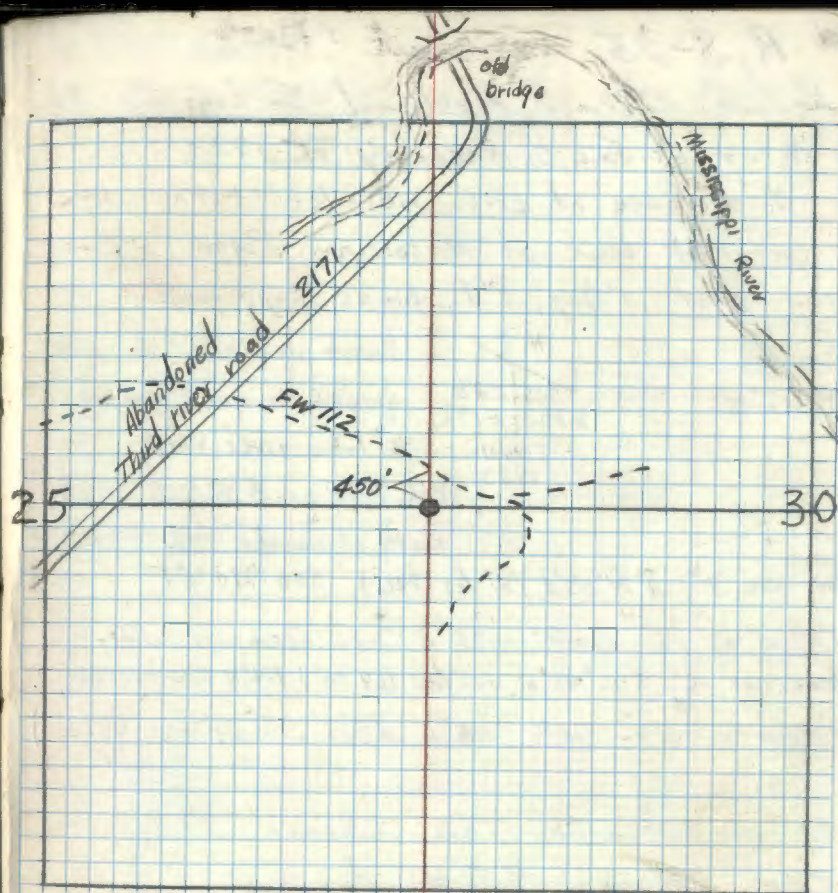
N. Pine 8" S41°E 6.4' mkd.  $\frac{1}{4}$  S30 BT.

Set 8' steel sign post due south 1.2' with FS sign  
54-4 attached.

MEJ  
11/25/78

10-11-74

Clinton R. Klausner



Put FSLP on 10" N. Pine blazed on south side  
corner is 450' south - pine on north side of trail/  
also blazed line to corner

corner in norway - Jack pine plantation with thick  
brush - Pine is N-W-SW - birch and R. Oak to S-SE-E



24. R, S-25

Affidavit 11/3/78

Meander Corner, Fractional Sections 25-30,

Notes of G.L.O. Resurvey of 1933

No evidence of orig. meander corner.

On right bank of Mississippi River, set on  
iron post, 3' long, 1"  $\phi$ , brass cap mcd

Found in ~~MC~~ found in place 14" above

Place ~~325 530~~ ground in good condition

R30W R29W

T146N

1933

4' from river bank

Put FSLP on 8" W. Oak 100'

south of corner 10-11-74 CRK

Burr oak, 3", N74°45'E, 11 lbs (726'), 530 MC BT

(New a 10" Oak N75°E 7.26' scribe overgrown)

Burr oak, 16", S05°45'N, 105 lbs (69.30'), T146N R30W 325 MC BT

(New a 20" Oak S6°W 69.3' scribe overgrown)

to perpetuate this Corner I rescribed  
two New B.T.'s.

Oak 6" N84°E 5.6' scribed MC 530 BT

Oak 10" S41°E 15.7' scribed MC 530 BT

mcd  
11/28/78

11-3-65

James Estlin

R, S-25

T146N, R30W & R29W (on Miss. River)



25. O, P-25

Meander Corner, Sections 19-24,  
Notes of G.L.O. Resurvey of 1933.

No evidence of orig. meander corner

Set iron post 3' long, 1"  $\phi$ , brass cap mkd

Found in good condition.	T146 N	} found in place bt's. OK 10-10-74 Curtis R. Krause
	R30 W	
	524	519
	MC	
	1933	

Burr oak, 6", N12°55'E, 336 lks (221.76'), T146N R29W 519 MC BT

(Now a 12" Oak N12°E 221.76' scribe overgrown)

Burr oak, 6", S57°30'W, 122 lks (80.52'), T146N R30W 524 MC BT

(Now a 10" Oak S58°W 80.52' scribe overgrown)

To perpetuate this corner I rescribed  
the N-E G.L.O. B.T., MC 519 BT.

New B.T.

Oak 7" S81°W 13.1' scribed MC 524 BT

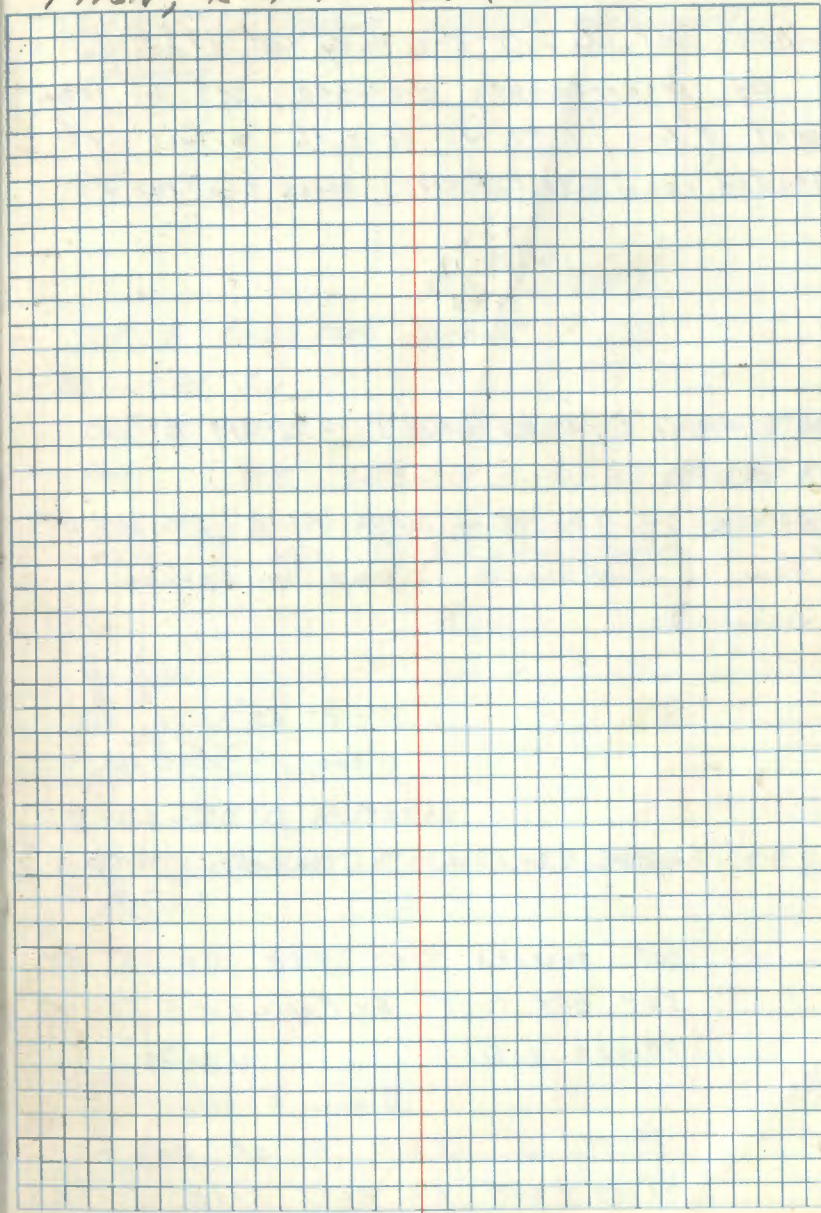
11-3-65

James Estlin

Affidavit

O, P-25

T146N, R29 S 30 W. (on Miss. River)





26. Q-25

5 1/16 Sections 19-24

Notes of G.L.O. Resurvey of 1933.

By proportionate distance, set an iron post, 3' long, 1"  $\phi$ , 4" beneath surface of graded road (F.R. # 2172), brass cap mxd

5 1/16  
S24 S19  
1933

Oak, 6", S21°E, 98 lks (64.68'), 5 1/16 S19 BT

Tamarack, 5", N05°45'W, 203 lks (133.98'), 5 1/16 S24 BT

(Now a tamarack stump w/ scribe visible.)

11-3-65

James Ekstrom

Re-monument as soon as possible - who  
5/13/70

PUT bearing tree tag on 2" BY

5" BT OAK POST BY TAMARACK STUMP.

scribe visible 6/2/70

Dennis Bengerson

STUMP IS 150 FT N. OF ROAD

going EAST on WEST side of road

Appichuit

Set a 3'x5" square concrete monument  
24" long capped with a 3" diameter brass scribed  
stamped  $\pm$

T146N  
R30W S16 R29W

S24 S19

1970  
RLS. NO. 6807

Set 6" below road surface

Witnessed by:

Oak 6" N37E 60.9 feet scribed BT NOW 10" RM

Oak 330E 65.5 feet scribed BT NOW 15" RM

Steel sign post 72" long set due west side  
with R.S. signs S24-2 & S24-4 attached

Obit  
7/15/70

7-01-2010 R. MAIN.

GPS MONUMENT. CORNER IS WEST OF Q  
 $\pm$  5 FT.



27. P-25

Quarter Corner Sections 19-24

Notes of G.L.O. Resurvey of 1933.

By proportionate distance, set on iron  
post, 3' long, 1"  $\phi$ , brass cap mkd

$\frac{1}{4}$

524 | 519

1933

Burr oak, 5", N 65° 45' E, 29 lbs (19.14'),  $\frac{1}{4}$  519 BT

(Now a 12" Oak N 65° E 19.14' No scribe visible)

Burr oak, 26", S 42° 45' W, 62 lbs (40.92'),  $\frac{1}{4}$  530 BT

(Would fall in cleared area)

And local bearing trees:

Burr oak 16", N 31° E, 72 lbs (47.52'), mkd  $\frac{1}{4}$  5

(Now a cut off tree rotted N 31° E 47.52')

Dead burr oak, 16", N 75° W, 57 lbs (38.94'), mkd  $\frac{1}{4}$  5

(Now a rotted stump N 75° W 38.94')

(Corner falls at E. side of ditch on E. side  
of road and is set in a collar of stumps)

(dug at this point 2' below road surface <sup>not found</sup>)

Chained up from M.C. 19-24 1789.93

as Call for in G.L.O. running Notes.

Same dist. as is recorded on Affidavit

No 14 Lot 3 Leech Lake Reservation.

Also chained south to this

location from Sec. Cor. 13-24-18-19

Affidavit

P-25

as Call for in G.L.O. running Notes  
2552.22' dist from both directions  
were approx 5 feet off. rough  
Chaining, tied in one tree and  
two rotted stumps at this point  
Checked good for bearing & dist.

11-1-65

James Ekstrom

To perpetuate this corner I set a 2'  
long cylindrical concrete monument  
6" dia. 6" below road surface - East  
Edge road w/ 3" bronze tablet stamped

T146 N

R30W R29W

$\frac{1}{4}$

524 519

1965

PLS NO 6807

From which bears:

Oak - 10" S 88° E 25.3' Scribed  $\frac{1}{4}$  519 BT

Oak - 12" N 67° E 46.9' Scribed  $\frac{1}{4}$  519 BT

Cedar Post 4" x 4" x 5' due East w/ signs  
54-2 & 54-4 attached. 8.5'

11-2-65

James Ekstrom

SEE BOOK #3 PAGE 52 FOR

RESTORATION INFORMATION 11/25/96

CK



28. N-25

Corner Sections 13-24-18-19

Notes of G.L.O. Resurvey of 1933.

From remains of orig. bearing trees,  
set a 6"  $\phi$  conc. monument, 3" below surface  
of road, brass cap mkd:

T146N	
R30W	R29W
S13	S18
S24	S19
1933	

Fd. mon. in place  
with cap gone - did  
not replace

Burned burr oak stump, N25°E, 72 lks (47.52')

Fallen & burned N. pine, 26", 582°30'E, 69 lks (45.54')

Burned W. pine stump, 30", 550°W, 102 lks (67.32')

New bearing trees:

Burr oak, 4", N15°E, 145 lks (95.7'), T146N R29W S18 BT

N. pine, 20", due South, 444 lks <sup>293.4</sup> (~~377.44~~ <sup>6.27</sup>), T146N R29W S19 BT

Fd 24" R. Pine at record brg & dist scribed  
Burr oak, 3", 537°W, 72 lks (47.52'), S24 BT <sup>T146N R29W</sup>

Fd. at record brg & dist scribe overgrown  
Poplar, 8", N57°45'W, 124 lks (81.84'), T146N R30W S13 BT

Fd 15" aspen at record brg & dist scribe overgrown

Hillman  
11/3/78

N-25

W Okamond  
830-64

New B.T.'s  
Burr Oak 13" N 49°E 40.8' scribed S18 BT  
NOW 20"  
Elm 11" N67°W 64.7 feet scribed S13 BT  
GONE  
Burr Oak (G.L.O.) 9" 531°W 41.5 feet scribed K BT  
NOW A STUMP  
Red Pine (G.L.O.) 24" South 193.4 feet  
NOW A 28"  
Cedar Post 4 1/4 x 12 with red top due west 18.3  
GONE feet with signs S4 2 & S4 4 attached

11/28/78  
Hillman

6-30-2010 R.M.A.I.N

GPS MONUMENT IN Q OF FR217Z



29. L-25

Quarter Corner Sections 13-18

Notes of G.L.O. Resurvey of 1933.

From remains of orig. bearing trees, set on iron post, 3' long 1"  $\phi$ , 3" below surface of road, brass cap mkd: Z

1/4 Mon not found  
S13 | S18  
1933

N. pine stump, 30", S59°E, 89 lks (58.74')

Fallen & burned N. pine, 20", S83°W, 13 lks (8.58')

(New)  
N. pine, 12", S68°30'E, 113 lks (74.58') - Fd 19" R Pine at record by dist write overgrown - rescribed 1/4 S13 BT

N. pine, 15", S39°30'W, 82 lks (54.12'), 1/4 S13 BT -

Fd 23" R Pine at record by dist, scribing partially visible, did not remark

Set a 6 inch diameter 24 inch long cylindrical concrete monument, 4 inches below road surface, capped with a 3 inch diameter bronze tablet stamped Z

T146N  
R30W R29W

1/4  
S13 | S18  
1904

R.L.S. No. 6807

L-25

W. Ockerman  
3-30-64

Cedar Post 4 1/4"  $\phi$  due West 17.4 feet with signs 542 & 544 attached.

4/18/84 JH CK GB & Belt. Co. Survey (New)

Fd: R.C. Concrete Monument Broken off down 6" : 4" x 16" tied out to center of concrete monument, removed to set new monument

Fd BTs: N. Pine 27 S39W 53.55 overgrown to sap set

N. Pine 23" S69°E 75.22' scribe visible to sap set

SET: 2" x 30" Squared Capped Iron Monument down 13" (Belt. Co.) marked Belt. Co. T146N

SET BT W. Oak 12" S25°E 79.13' Aged 114  
S13 • S18  
SPT Tag Reading R30W R29W  
1984  
CO.

CORNER FULL 3' WEST of 1/2 of Forest Service Road  
NES





30. J-25

Corner Sections 12-13 & 7-18

Notes of G.L.O. Resurvey of 1933.

From remains of orig. brng. trees, set  
a 6" dia. conc. mon., 3" below surface of road,  
brass cap marked: - Fd brass cap and part of

T146N		mon. lying alongside road
R30W	R29W	bottom 3/4 of mon in
512	57	place
513	518	
1933		

Burned w. pine stump, 30", S25°E, 51 lks (33.66')

Rotted oak stump, 15", S 40° 30' W, 62 lks (40.92')

Locat B.T.

Burr oak, 24", N 44° E, 92 lks (60.72'), T146N R29W 57 BT -

Fd rotten stp at record brng & dist

W. oak, 4", S 14° 30' E, 107 lks (70.62'), 518 BT - Fd 11"

at record brng. dist scribe overgrown

W. oak, 18", S 32° 30' W, 319 lks (210.54'), T146N R30W 513 BT

Fd 20" at record brng & dist scribe rotted out

N. pine, 12", N 61° W, 221 lks (146.86'), T146N R30W 512 BT

Fd 18" at record brng & dist scribe visible

Set a 6" diameter 24" long  
steel monument, filled with concrete and covered  
with a 3" diameter brass tablet stamped T146N R

REVISION

J-25

N. Ockerman  
Estham  
9-8-64

Set a 6" diameter 24" long cylindrical  
concrete monument capped with a 3" bronze  
tablet stamped

T146N
R30W R29W
512 57
513 518
1934
R.L.S. NO. 6801

New B.T.'s:

R. Pine (G.L.O.) 18" N 61° W 145.9'

W Oak (G.L.O.) 11" S 14° 30' E 70.6' rescribed 513 BT

Elm 5" S 68° W 67.5 feet scribed 513 BT

Oak 5" N 53° E 38.6 feet scribed X 13T

Cedar Post 4x4x60 with red top due West 20.2'

4/18/84 CK JA GB

Belt. Co. Survey

Fd: Broken B.C. concrete monument - tied out  
from bottom remains of concrete monument  
Resurveyed to set 2" x 30" squared monument marked  
in place of concrete monument down 1' T146N

Fd: N. Pine 20" N 58° W 145.95' scribe visible R30W R29W

Elm 5" S 68° W 67.47' 86y overgrown 12 7

W Oak 8 1/2" N 53° E 38.73'

W Oak 13 1/2" S 12° E 70.82'

set: W Oak 7

BTS W Oak 7" S 73° W 138.95' alongside scribe  
set a tag rec. Bottom 1/2

Corner is 4' East of 4 of Forest Service Road N 45,  
4x4x8 WOOD POST WEST 20.2

4/18/84 JJ Ockerman



31. G-25

Quarter Corner Sections 12-7

Notes of G.L.O. Resurvey of 1933.

By prop. distance, set on iron  
post, 3' long, 2"  $\phi$ , brass cap mxd  
(Found in place)  $\frac{1}{4}$   
512 | 57  
1934

Tamarack, 6", S26°45'E, 89 lks (58.74'), mxd  $\frac{1}{4}$  S7 BT

(Now dead 12" Tam S26°45'E 58.74 Feet scribe decayed.)

Poplar, 8", S45°45'W, 145 lks (95.70'),  $\frac{1}{4}$  S12 BT

Not Found

NOW 10 FT TALL SNAG

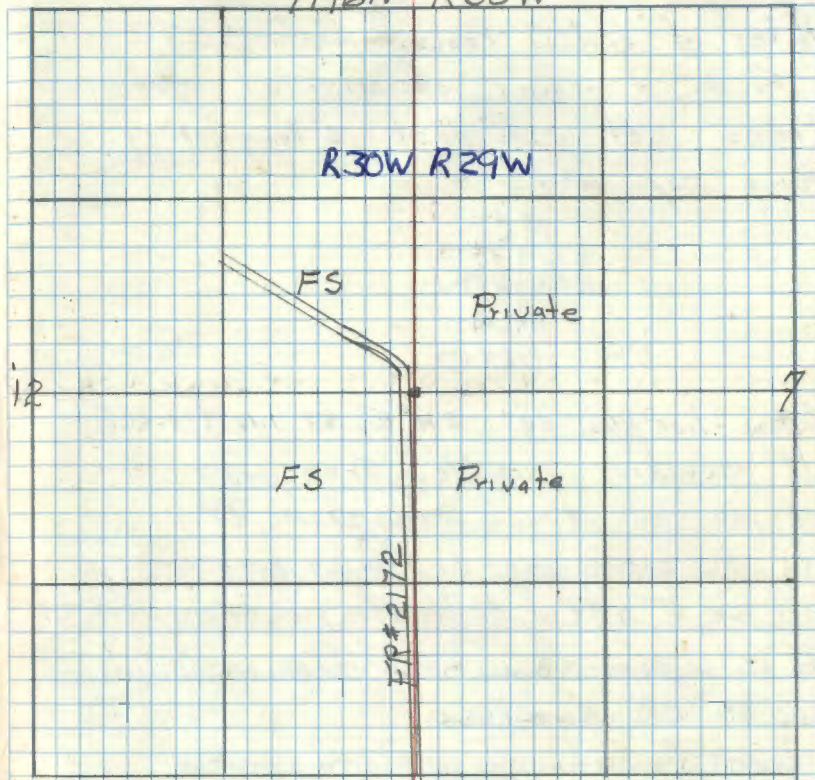
Tamarack 10" N72°W 111.15 Feet mxd  $\frac{1}{4}$  S12 BTElm 6" due East 38.7 Feet mxd  $\frac{1}{4}$  S7 BTNOW 18" @ BRG AND DIST  
3-1-63 RHM

Set a cedar post 72" long - penta-treated  
5' w/ red top due North 3.65 Feet - w/ std.  
signs 54-2 & 54-4 attached RHM

Affidavit RHM

G-25

T146N R30W



4-23-2009 R MAIN  
FD IRON IN PLACE AND GPS CORNER IN GRASSY  
LOW AREA 3.3 FT EAST OF C FR 2172. TAM SIGN  
WEST SIDE OF FR 2172. DRIVE 8' STEEL SIGN POST  
ALONG WEST EDGE OF IRON AND WIRE TO SAME MONUMENT  
AND PB SIGN ATTACHED TO POST. MARK ON NEW BT.

W. OAK 6" N70°E 21.00 FT TO SPK MKD'S X BT



Meander Corner Fractional Sections  
Notes of G.L.O. Resurvey of 1933.

From remains of original bearing trees, set iron post, 3' long, 1"  $\phi$ , brass cap mkd:

MC	
S12	S7
R30W	R29W
T14N	
1934 (2)	

Hollow live elm, 32", S12°E, 51 lbs (33.66'),  
old scribing visible. Tree was  
re-marked T14N R29W S7 MC 8T

Fd WELL ROTTED LARGE ELM STUMP SIZE - 33.7'  
Burr oak, 6" N84°W, 82 lbs (54.12'), T14N R30W S12 MC 8T

Fd. 15" W. OAK N86W - 54.1' SCAR FACING IRON  
3-2-83 CK JIM OJANEN

LOCATED IRON UNDER ICE WITH LOCATOR

BLAZED 4" ASH 4 SIDES - IRON IS 1.0' NORTH OF ASH

WILL WAIT UNTIL IRON CAN BE SEEN TO WITNESS

GOOD W. OAKS SE + EAST OF IRON

BRING IN SIGN POSTS - ALSO TO RAISE MONUMENT

AREA IS SUBJECT TO BEAVER FLOODING

12-7 (on south shore Burns Lake)



Meander Corner - Fractional Sections 16  
Notes of G.L.O. Resurvey of 1933.

Dead tamarack, 6", N05°E, 436 lks (287.76') <sup>T146N R29W</sup> 51 MC BT

Point for M.C. falls in soft mud, im-  
possible to set corner at original point

N 00°51'E - 3.46 chains (228.36') -

Set iron post, 3' long, 1" φ, for witness  
to orig. meander corner, brass cap marked:

WC
T146N
R30W   R29W
51   56
MC
1934 (R)

Tamarack, 6", N20°45'E, 110 lks (72.6') <sup>WC T146N R29E</sup> 56 MC BT

Tamarack, 5", N02°15'N, 130 lks (85.8'), <sup>WC T146N R30W</sup> 51 MC BT

(on north shore of Burns Lake)



34.

Quarter Corner Sections 1-6

Notes of G.L.O. Resurvey of 1933.

In place of orig. squared and scribed  
tomorack stake, set on iron post, 3' long,  
2"  $\phi$ , brass cap mkt.

$\frac{1}{4}$   
51 | 56  
1934 (?)

Orig. B.T.'s

Tomorack stump,  $S 80^{\circ} E$ , 53 lks (34.98')

Tomorack stump,  $N 80^{\circ} W$ , 24 lks (15.84')

New B.T.'s

Tomorack, 6",  $N 23^{\circ} 45' E$ , 192 lks (126.72'),  $\frac{1}{4}$  56 BT

Tomorack, 7",  $N 34^{\circ} 45' W$ , 362 lks (238.92'),  $\frac{1}{4}$  51 BT



35.

Corner Twp. 146 E 147 N, Ranges 29 E 30 W  
Notes of G.L.O. Resurvey of 1933.

In place of original squared tamarack  
stake, set an iron post, 3' long, 2"  $\phi$ ,  
encased in a 6"  $\phi$  concrete monument,  
brass cap marked:

T147N	
R30W	R29W
S36	S31
S1	S6
T146N	
1933(?)	

Old bearing trees rotted stumps or stump holes.  
New B.T.'s:

Tom., 6", N48°30'E, 53 lks (34.98'), T147N R29W S31 BT

Tom., 5", S12°30'E, 37 lks (24.42'), T146N R29W S6 BT

Tom., 6", S33°W, 40 lks (26.40'), T146N R30W S1 BT

Tom., 5", N62°15'W, 11 lks (7.26'), T147N R30W S36 BT



Witness Meander Corner - Sections

Notes of G.L.O. Resurvey of 1933:

Iron post, 3' long, 1"  $\phi$ , brass cap mxd:

	WC	
	T147A	
R304L	S31	MC
	S6	
	T146N	
	1933	

Burr oak, 16", S30°45'W, 42 lcs (2772'), WC T146N R304W S6 MC BT

Poplar, 10", N83°15'W, 45 lcs (2970'), WC T147A R304W S31 MC BT

6 E 31 - West Shore Walker Bay

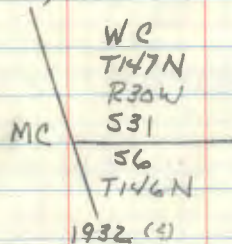


37. A-~~1~~ 3,4

Witness Meander Corner - Sections 6 & 31

Notes of G.L.O. Resurvey of 1933:

From remains of orig. bearing trees, located true meander corner. (Point falls in shallow water). Thence  $N89^{\circ}15'E, 0.40$  chains (26.40') dist., set an iron post, 3' long, 1"  $\phi$ , brass cap marked:



Ash, 7",  $N37^{\circ}5'E, 9\frac{1}{2}$  (5.74'), WC T147N R30W S31 MC BT

Poplar, 10",  $S38^{\circ}15'E, 11\frac{1}{2}$  (7.26'), WC T146N R30W S6 MC BT

Found brass Cap along shore, but no evidence of bearing trees. Cap is not firm in ground.

6-14-17

Jesse Johnson

Notes from a corner card by G.R. Jehake (no date) - "Capped pipe leaning at the edge of Walker Bay, just a few ft. west of the SW corner of the first building of Chet and Sipi's Resort,"  
mjt 2/25/06

- East Shore of Walker Bay

2/10/80 Hayes Krause, Rama  
From the established position of the MC on the East side of pt. we pulled rough chain 108 ft,  $S89^{\circ}4'$  (had to set around cap). From this location we set a 15" dia. Ash with scar NE approx. 1/6 ft. It appears that this tree is probably the 1933 G.L.O. Ash. No evidence of the G.L.O. Poplar was to but we did not scrape the ground to search. The G.L.O. monument was 7' south of this position approx 30 ft.

M. Hayes



38. A-4,5 Affidavit A-4,5

Meander Corner - Sections 6 & 31 - on

Notes of G.L.O. Resurvey of 1933.

From remains of an original bearing tree, set on iron post, 3' long, 1"  $\phi$ , brass cap and

	T147N		
	531	MC	Found bent
R30W	56		over by ice
	T146N		action
	1933		

Ash stump, N40°W, 26 lbs (16.50')

(New B.T.'s)

Elm, 7" 56°15'W, 30 lbs (19.5'), T146N R30W 56 MC BT

Elm, 7" N30°15'W, 45 lbs (29.7'), T147N R30W 531 MC BT

(Now a 10" N30°15'W 29.7' scribe overgrown)

To perpetuate this Corner I scribed one new bearing tree and straightened out the G.L.O. brass cap that had been bent over by ice action.

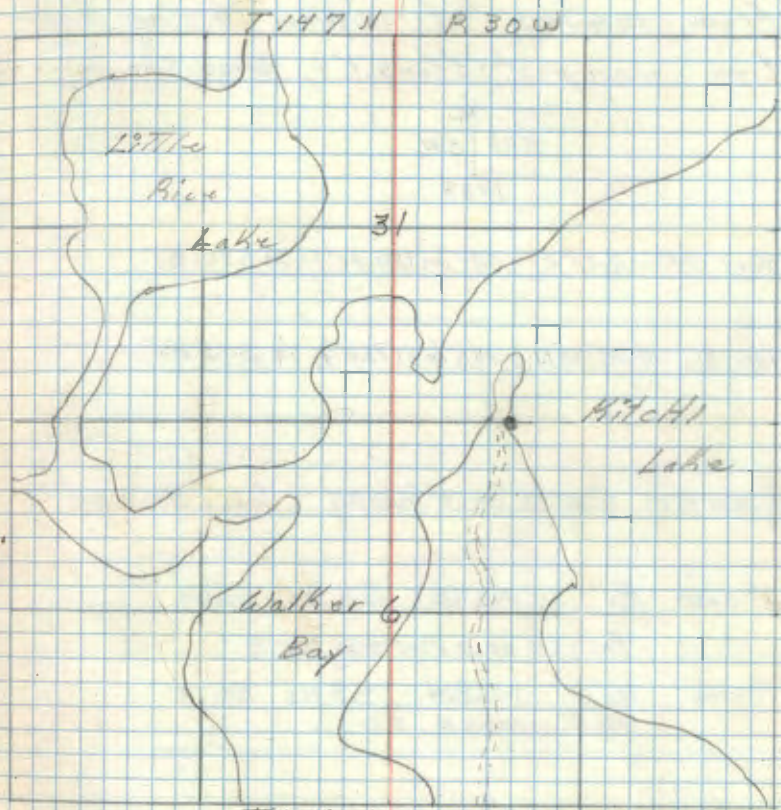
New B.T.

Elm " 10" 66.0°W 18.0' scribed B.T.

6-14-57

James Ekstrom

West Shore of Main Body of Kitchi Lake



1/14/86 G.B. JA

Ed. iron pipe with B.C. set in a berm caused by ice push-up.

Ed 10" Elm 56°W 170' to iron G.L.O. upper scar vis.  
Ed 11" Elm N30°W 29' " " Dead - No scar vis.

Established <sup>remod</sup> corner position based from <sup>original</sup> G.L.O. Elm B.T.'s. set a 50D spike at corner position.  
Tie from spike to B.C. is 57TW 3.11

See T146N R30W. Book #3, pg 45 & #46



Quarter Corner - Sections 35 & 36

Notes of G.L.O. Resurvey of 1933:

From remains of original bearing trees,  
set on iron post, 3' long, 1"  $\phi$ , brass cap marked

$\frac{1}{4}$   
535 | 536  
1933

N. pine, 14", N 61° E, 287 lks (109.42'),  $\frac{1}{4}$  536 BT

Poplar, 5", N 38° 30' W, 150 lks (79.0'),  $\frac{1}{4}$  535 BT

AUG-SEPT 1875 ORIG GOUT SURVEY B.L. BALDWIN

J. PINE 8" N37E 54 lks 35.64

Fallen NEW PLANTING SITE

J. PINE 10" N28W 53 lks 34.98'

NO EVIDENCE FO.

5-1-97 RMAFN

MONUMENT SEEMS TO HAVE BEEN REMOVED BY TREE

PLANTER. LOCATION FALLS ON EDGE OF 120 YEAR OLD

PLANTATION AND NEWLY PLANTED AREA.

FD GLO (1933) R. PINE NOW 25" WITH SCAR. PLACED

TAGS ON TREE.



Quarter Corner - Sections 25 & 36

Notes of G.L.O. Resurvey of 1933:

From remains of original bearing trees,  
set iron post, 3' long, 1"  $\phi$ , brass cap mkd.:

$\frac{1}{4}$   $\frac{525}{536}$

1933

Orig. bearing trees fallen and rotting.

New B.T.'s:

Tamarack, 5",  $530^{\circ}15'W$ , 33 lbs (21.78'),  $\frac{1}{4}$  536 BT

Tamarack, 5",  $N67^{\circ}30'W$ , 32 lbs (21.12'),  $\frac{1}{4}$  525 BT



41. T-21

Quarter Corner - Sections 25-26

Notes of G.L.O. Resurvey of 1933:

From remains of original bearing trees  
set an iron post, 3' long, 1"  $\phi$ , brass cap mkd.:

$\frac{1}{4}$   
526 | 525  
1933

Orig. bearing trees burned stumps. New B.T.'s

Jack pine, 7", S70°15'E, 26 lvs (17.16'),  $\frac{1}{4}$  525 BT.

Fd 1990 as a 17" J. Pine at S76E, 17.2' Scar closed

N. pine, 14", S84°30'W, 292 lvs (192.72'),  $\frac{1}{4}$  526 BT

Fd 1990 as a cut off N. Pine stp. at S84W at 192.7'

"BT" has been burned but scribe is visible.

5/30/90 GB

Fd. GLO iron pipe with brass cap laying  
above ground. Iron was bent. I straighten  
monument and reset it in the ground  
at the intersection of distances from both  
GLO trees that were record in 1933.

Brass cap is set 5" above ground.

Mkd. New BT's:

N. Pine 8" N35E 27.2  $\frac{1}{4}$  525 BT -60d

N. Pine 16" S44E 61.29  $\frac{1}{4}$  525 BT -60d

N. Pine 18" N72W 59.0'  $\frac{1}{4}$  526 BT -60d

Placed a 8' steel sign post north 1.85' from  
corner with survey sign attached

C.C. Dore 7/3/90

This corner falls in cutting block 3 of the Cass  
River Sale. A Clearcut planned for sale in 1990.  
A E-W trail is approx. 150' south of corner.  
Fireday road is approx 1000' west.



42.

North  $\frac{1}{16}$  - Sections 25 & 26  
Notes of G.L.O. Resurvey of 1933.

By prop. distance, set on iron post,  
3' long, 1"  $\phi$ , brass cap marked:

N  $\frac{1}{16}$   
S26 | S25  
1933

N. pine, 12", S87°15'E, 50  $\frac{1}{2}$ s (33'), N  $\frac{1}{16}$  S25 BT

N. pine, 9" S64°30'W, 31  $\frac{1}{2}$ s (20.46'), [mkd  $\frac{1}{4}$  S26 BT] (?)  
Now "22"

3-14-96 R. MAZIN

FD GLO IRON IN PLACE IN MIXED JACK & R. PINE.  
STRING CHAINED FROM NE  $\frac{1}{16}$  OF 26 TO OTHER GLO BT UNDER  
SNOW, DID NOT SEARCH

GLO. PINE 22" S64°W 20.88 FT TO SPK. ~~SEE~~ QUAGRAIN

R. PINE 5" S 50° E 20.45 FT TO SPK MKD X BT

R. PINE 8" N 21 W 55.56 FT TO SPK MKD S26 BT



## Corner Sections 23-24-25-26

Notes of G.L.O. Resurvey of 1933.

From remains of original B.T.'s, set  
a 6"  $\phi$  conc. monument, 24" long, brass cap mkd

T146N R30W	523	524
526	525	
1933		

Orig. B.T.'s. burned stumps. Local B.T.'s:

J. pine stub, 18", N42°E, 154 lbs (69.64'), T146N R30W 524 BT

J. pine stump, 16", 576°E, 80 lbs (36.3'), 524 BT

J. pine, 10", 531°W, 7 lbs (3.18'), mkd "X"

New B.T.'s:

Rplbr, 3", N47°45'E, 174 lbs (78.87'), mkd 524 BT

J. pine, 7", 531°30'W, 18 lbs (8.18'), T146N R30W 526 BT  
Now 17" X 10 FT SNAO/W/ SCRIBE VISIBLE

J. pine, 10", N83°45'W, 130 lbs (59.00'), T146N R30W 523 BT

3-13-96 R. MAEN

FO GLO MONUMENT IN PLACE IN MATURE JACK  
AND RED PINE. SMALL LAW AREA  $\pm$  50 WEST OF  
CORNER. MKD NEW WITNESSES AS FOLLOWS.

R PINE 19" N26°E 40.90 FT TO SPK MKD 524 BT

R PINE 18" 530°E 32.36 FT TO SPK MKD 525 BT

W OAK 8" S06°W 16.92 FT TO SPK MKD 526 BT

ALL OTHER B.T.'S OF GLO UNDER SNOW, NO SEARCH  
UNDERTAKEN.

7-07-2010 R. MAEN

GPS CORNER. B.T.'S ARE IN GREAT CONDITION.



44. R-22

West  $\frac{1}{16}$  - Sections 24 & 25

Notes of G.L.O. Resurvey of 1933:

By prop. distance, set on iron post, 3' long, 1"  $\phi$ , brass cap mkd:

W  $\frac{1}{16}$   $\frac{524}{525}$   
1933

Poplar, 5", N15°45'E, 131 lbs (84.46'), W  $\frac{1}{16}$  524 BT  
4/25/90 Found no evidence.

Poplar, 4", S15°W, 15 lbs (9.9'), W  $\frac{1}{16}$  525 BT  
6/25/90 Found no evidence

6/18/90 GB

Found no evidence of corner position at this time.  
Need metal detector. Very heavy brush.

6/25/90 CK, GB

Found GLO iron pipe with brass cap set 8" above ground. Monument orientated and firmly set.

Mkd New BT's:

White Oak 8" N21E 57.7' W  $\frac{1}{16}$  524 BT-60d

White Oak 6" N57E 54.26' W  $\frac{1}{16}$  524 BT-60d

White Oak 3 S34W 8.75 NAIL + TAG  
BARK SCRIBE BT

Placed 8' steel sign post north 2.1 from corner with survey sign.

C.C. Done

6/18/90 - Measured 1322.6 from NW  $\frac{1}{4}$  Sec 25 and ran line at 581W to this corner.  
Left 8' steel sign post at end of line.

6/25/90 - Chained 1322.6 from NW  $\frac{1}{4}$  Sec. 25. Found corner at 1327.6.

7-07-2010 R. MAJN  
GPS IRON.



457 R-23

Quarter Corner - Sections 24 & 25

Notes of G.L.O. Resurvey of 1933.

By prop. distance, set an iron post,  
3' long, 1"  $\phi$ , brass cap mkd.:

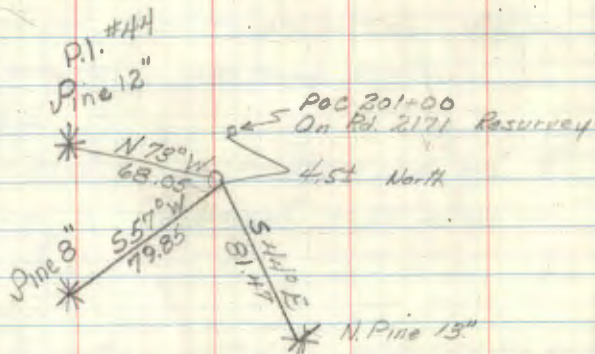
$\frac{1}{4}$  524  
525  
1933

Brass cap is in center of southerly driving lane

Jack pine, 8"; S30°05'W, 229' (151.14'),  $\frac{1}{4}$  525 BT

Found tree at bearing and dist.

No other trees marked



9-27-68

Lyle Elliott

5/30/90 GB

Found GLO iron pipe with brass cap set  
at the surface of the black top. (3rd River Rd.)

Found GLO recorded J. Pine S30W at 151.1' as  
a snag 13" dia.

C.L. Dore

5/30/90 Set 8' steel sign post 33.25' west of corner.

Survey sign attached.

Mkd. New BT

N. Pine 12" N75W at 42.63'  $\frac{1}{4}$  524 BT-60d.

N. Pine 18" S44E at 82.0'  $\frac{1}{4}$  525 BT-60d



Meander Corner - Sections 24.5 25 -  
Notes of G.L.O. Resurvey of 1933.

No evidence of original corner or B.T.'s.

Set on iron post, 3' long, 1" diam, brass cap mark

T146N

S24

S25

R30W

1933

Burr oak, 16", S25°15'W, 246 lks (162.36'), T146N R30W S24 MC BT

Burr oak, 4", S85°30'W, 416 lks (274.56'), T146N R30W S25 MC BT

West (Right) Bank of Mississippi River



Meander Corner - Sections 24 & 25 -

Notes of G.L.O. Resurvey of 1933.

No evidence of original corner or B.T.s.

Set iron post, 3' long, 1"  $\phi$ , brass cap marked

	T146N	
	524	
M.C.	525	Found iron pipe with cap
	R30W	in river 7" below water
	1933	

N. pine, 6", N 34° E, 109 lks (11.94'), T146N R30W 524 M.C. BT

No evidence found

Burr oak, 4", N 35° 15' E, 52 lks (34.32'), T146N R30W 524 M.C. BT

tree at bearing & dist. but not scribed

No trees available in sec. 25.

Set steel sign post with standard  
F.S. sign 54-4 at location of corner.

11/13/68

Lyle Elliott

East (Left) Bank of Mississippi River



Meander Corner - Sections 24 & 25 -

Notes of G.L.O. Resurvey of 1933

No evidence of original corner or B.T.'s.

Set iron post, 3' long, 1"  $\phi$ , brass cap mkd

T146N	MC
S24	
S25	
R30W	
1933	

No trees available for marking. A  
4"  $\phi$  oak stake set alongside post as  
an accessory to the corner.

West (Left) Bank of Mississippi River



49. ~~48~~-21 Affidavit

Meander Corner - Sections 23 & 24

Notes of G.L.O. Resurvey of 1933.

From original bearing tree, set on iron post, 3' long, 1"  $\phi$ , brass cap marked

	MC	Found iron cap 8"
523	524	
T146N	R30W	above ground in good
1933		condition.

(orig.)

N. pine, 32", 553°E 25/100 (23.10'), MC 524 BT

found good condition New

N. pine, 6", 589°15'W 34/100 (22.44'), T146N R30W 523 MC BT

found good condition New and 11" N. Pine  
(Corner falls at foot of a 15' high bank)

Set steel sign post 72" long due South 20'  
with standard F.S. 54-4 attached.

11/12/68

Lyle Elliott

South (Right) Bank of Mississippi River



Meander Corner - Sections 23 & 24 -  
Notes of G.L.O. Resurvey of 1933.

No evidence of orig. corner or B.T.'s.

Set iron post, 3/4" dia, 1" h, brass cap marked

T146N	R30W
S23	S24
MC	
1933	

Burr oak, 24" N51°45'E, 316 lbs (208.56'), T146N R30W S24 MC BT

Burr oak, 5" N09°35'W, 363 lbs (252.58'), T146N R30W S23 MC BT

425

North (Left) Bank of Mississippi River



51. P-21

Affidavit

P-21

Quarter Corner - Sections 23 & 24

Notes of G.L.O. Resurvey of 1933.

By prop. distance, set on iron post,  
3' long, 1"  $\phi$ , brass cap marked

	$\frac{1}{4}$	Found 10" above ground
523	524	
1933		in good condition

Burr oak 4" N47°15'E, 38/ks (25.08'),  $\frac{1}{4}$  524 BT

NOW LAYING DOWN

Now a twin oak at bearing & dist

Burr oak, 8" N18°45'W, 45/ks (29.70'),  $\frac{1}{4}$  523 BT

found good condition scrub grown over

New BT's

Burr Oak 11" N18°45'W 29.80 Resurveyed  $\frac{1}{4}$  523 BT

NOW 13"

Burr Oak 8" N55°W 9.05' resurveyed  $\frac{1}{4}$  523 BT

NOW 10"

Burr Oak 8" S6°W 12.85 resurveyed  $\frac{1}{4}$  523 BT

LAYING DOWN

As per 2.5' S46°E with F.S. sign 544  
attached

11/12/68

Carl Krause

Lyle Elliott

07- -2010 R MAIN

FD IRON IN PLACE AND GPS



52.

Angle Point No. 2, Indian Allotment No. 113,  
Notes of G.L.O. Resurvey of 1933.

By prop. distance, set on iron  
pst, 3' long, 1"  $\phi$ , brass cap marked:

523	524
	AP 2
	TR 113
	1933

No bearing trees.

Section 24



53.

North  $\frac{1}{16}$  - Sections 23 & 24  
Notes of G.L.A. Resurvey of 1933.  
By prop. distance, set on iron post,  
3' long, 1"  $\phi$ , brass cap marked

N  $\frac{1}{16}$   
523 | 524  
1933

Poplar, 10",  $S09^{\circ}15'E$ , 82 lks (54.12'), N  $\frac{1}{16}$  524 BT

Birch, 11",  $N33^{\circ}45'W$ , 54 lks (35.64'), N  $\frac{1}{16}$  523 BT



54. N-21

Aff. dau. t. id 3/1/78 N-21

Corner Sections 13-14-23-24

Notes of G.L.O. Resurvey of 1933.

From remains of orig. B.T.'s, set  
a 6"  $\phi$  conc. monument, 24" long, brass cap mkd

Found mark for  
in place 4' above  
ground, in good condition, 1933

T146N	R30W
514	513
523	524

(Orig. B.T.)

J. pine, 14", 55 $^{\circ}$  E, 40 ks (26.40'), R30W 524 BT

(lost B.T.) Found orig. stp. with scribe visible

J. pine, 14", N58 $^{\circ}$  15' E, 63 ks (41.58'), T146N R30W 513 BT

(New B.T.) Found burned stp. no marks at brg. &amp; dist.

J. pine, 16", N41 $^{\circ}$  E, 36 ks (23.76'), T146N R30W 513 BT

Found burned stp. no marks at brg. &amp; dist.

J. pine, 18", S39 $^{\circ}$  30' E, 46 ks (30.36'), T146N R30W 524 BTFound stp. with all scribe visible at dist. <sup>brg.</sup>Tomatoe, 10", S62 $^{\circ}$  45' W, 167 ks (110.22'), T146N R30W 523 BT

Now fallen down at brg. &amp; dist.

11-24-70

Curtis K. Krause

To perpetuate this corner I scribed  
(4) four new bearing trees as follows.

12" Aspen N45 $^{\circ}$  W 43.6 ft. scribed 514 BT.5" W. Oak N22 $^{\circ}$  E 61.3 ft. scribed 513 BT.10" T. Pine N54 $^{\circ}$  E 67.2 ft. scribed 513 BT.7" Aspen S15 $^{\circ}$  W 96.1 ft. scribed 523 BT.

72" steel sign post due West 1.0 ft. with  
F.S. sign 54-4 attached.

No trees within reasonable distance in Sec. 24  
Corner falls on north edge of small  
Tam & brush swamp. logging trail  
south of corner approx 100'.

11-24-70

Curtis K. Krause

7-26-2010 R. MAIN

GAS IRON LOCATION. AREA IS NOW FLOODED BEAVER POND.  
CORNER IS 10 FT SOUTH OF DRY GROUND VERY THICK  
HAZEL BRUSH. 1970 W OAK NOW A WINDFALL W/ TAG.  
1970 J. PINE NOW 20' TALL SWAG - 6 FT SIGN POST  
IS LEANING BUT FIRMLY SET YET.



35. N-22

Aff. dau. 10/31/78 N-22

West 1/16, Sections 13-24

Notes of G.L.O. Resurvey of 1933.

By prop. distance, set on iron post,  
3' long, 1"  $\phi$ , brass cap marked

W 1/16  $\frac{513}{524}$  Found Iron & cap, in place  
1933 6" above ground, in good  
condition.

Burr oak, 8", 581°W, 17 lbs (11.22'), W 1/16 524 BT

Now a 16" White Oak at bry & dist. (scribe overgrown)

NOW 26"  
Burr oak, 7", N 22°W, 48 lbs (31.68'), W 1/16 513 BT

Now a 16" White Oak at bry & dist. (scribe overgrown)  
NOW 26"

To perpetuate this corner I scribed (1)  
one new bearing tree as follows.

7" Elm S 14°E 22.2 ft. scribed W 1/16 524 Bt.

72" steel sign post due South 1.4 ft. with F.S.  
sign 54-4 attached.

11-24-70

Curtis R. Krause

Found Cedar fence post N 55°W 7.5 feet  
from GLO brass cap, and beside fence post  
was a 1" dia. pipe 18" long.

Corner falls at SW edge of a norway pine  
plantation and north of a small swamp.

OK-11ES  
11/25/78

4-14-2009 R. MAIN J. SCHOONOVER

FD IRON IN PLACE AND GPS CORNER IS  $\pm$   
150 FT SOUTH OF PLANTATION CORNER AND  
E 60' EAST OF LARGE SWAMP. OLD TRAIL  
ALONG SOUTH SIDE OF PLANTATION.  
1970 BTS NOW ARE 26" AND TAGGED.



56. N-23

11/13/78 N-23

Quarter Corner - Sections 13 & 24

Notes of G.L.O. Resurvey of 1933.

Found 3"  $\square$  oak stake with scribe  
 $\frac{1}{4}$  S on N. & S. faces, and 1"  $\phi$  iron rod  
alongside stake. No evidence of B.T.s.

Set iron post, 3' long, 1"  $\phi$ , brass cap med

$\frac{1}{4}$   $\frac{513}{524}$  Found iron cap, in place  
1933 11" above ground in grassy area.

Poplar, 8", S24°15'E, 262 lbs (172.92'),  $\frac{1}{4}$  524 BT

No evidence of aspen remains at big dist.

J. pine 4" N21°30'W, 109 lbs (71.94'),  $\frac{1}{4}$  513 BT

NOWA SNAG

Now a 15' Jack Pine at big dist. (scribe over ground)

Reset old stake and iron rod alongside corner.

Found 12" of iron rod beside 840 iron.

To perpetuate this corner I scribed (2)

Two new bearing trees as follows.

<sup>12'</sup> SNAG Aspen S87°W 121.0 ft. scribed  $\frac{1}{4}$  513 Bt.

DEAD LOGS Elm S58°E 211.5 ft. scribed  $\frac{1}{4}$  524 Bt.

72" steel sign post due S82°W 1.0 ft. with F.S.

signs 54-2 & 54-4 attached.

11-24-78

Curtis R. Krause

OK  
AM E  
11/25/78

4-14-2009 R. MAIN J. SCHOONOVER

FD IRON IN PLACE OUT  $\pm$  50 FT IN A GRASS AIDER  
WILLOW SWAMP. MATURE R. PINE NORTH OF  
CORNER (OLD PLANTATION). TOP 6" OF PIPE IS  
BROKEN OFF AT GROUND LEVEL. DRIVE SIGN  
POST ALONG SIDE OF PIPE AND WIRE IRON  
TO SAME. SIX FOOT SIGN POST IS LAYING  
DOWN AND FROZEN IN SWAMP. ALL PREVIOUS  
BTS ARE EITHER DEAD OR GONE. PLACE  
ESLP ON 15" RED PINE ON SOUTH SIDE  
OF HUNTER WALKING TRAIL FROM  
WHICH CORNER BEARS SOUTH  $\pm$  370 FT  
MARK TWO NEW WITNESSES.

W. OAK 14 N 1°E 82.80 FT TO SPK MK 05 13 BT

R. PINE 14 N 42°E 96.35 FT TO SPK MK 05 13 BT



57.

Angle Point 2, I.A. #136 - Angle Point 1, I.A. #163

Notes of G.L.O. Resurvey of 1933.

By prop. distance, set on iron post,  
3' long, 1"  $\phi$ , brass cap mkd

514	513
AP1	AP2
TR163	TR136

1933

4-15-09 R. MAEN J. SCHOONOVER TAX DAY  
Fd IRON IN PLACE AND GPS. CORNER IN  
4" TO 6" ASPEN

W OAK 11' N47°E 60.85 FT TO SPK MKD: S13 BT

W OAK 14 S80°E 44.40 FT TO SPK MKD: S13 BT

Sections 13-14



58.

South  $\frac{1}{16}$ , Sections 13-14  
Notes of G.L.O. Resurvey of 1933.

By prop. distance, set on iron post,  
3' long, 1"  $\phi$ , brass cap marked

$\frac{5}{16}$   
S14 | S13  
1933

N. pine, 14", N69 $^{\circ}$ , 55 lbs (36.30'),  $\frac{5}{16}$  S13 BT

ROTTED WINDFALL

W. pine, 16", N41 $^{\circ}$ 30'W, 64 lbs (42.24'),  $\frac{5}{16}$  S14 BT

NOW A WIND FALL

4-15-2009 R. MAIN J. SCHOONOVER

FD IRON IN PLACE AND GPS<sub>0</sub> CORNER IN  
MIXED HARD WOODS ON THE NORTH EDGE OF  
A VERNAL POOL

W OAK 8" S47 $^{\circ}$ W 22.24 FT TO SPL MKD: S14 BT

W OAK 7" N71 E 23.51 FT TO SPL MKD: S13 BT

FD FSLP ON 22 $^{\circ}$  ASPEN By C.S. 8-15-73  
FROM WHICH CORNER BEARS N64 $^{\circ}$ W 1207



59.

Quarter Corner, Sections 13-14  
Notes of G.L.O. Resurvey of 1933.

By prop. distance, set an iron  
post, 3' long, 1"  $\phi$ , brass cap marked

$\frac{1}{4}$   
514 | 513  
1933

Poplar, 6", N 75° E, 5 lks (3.3'),  $\frac{1}{4}$  S13 BT

Poplar, 6", N 78° W, 4 lks (2.64'),  $\frac{1}{4}$  S14 BT

4-15-2009 R. MAINE J. SCHOONOVER  
FD IRON IN PLACE AND SLIGHTLY BENT.  
IRON FALLS IN ASPEN 5" TO 7"

ASPEN 7" N 12° E 20.50 FT TO SPK MKD  $\circ$  S13 BT

BASSWOOD 7" N 45° W 19.30 FT TO SPK MKD  $\circ$  S14 BT



60.

Corner Sections 11-12-13-14

Notes of G.L.O. Resurvey of 1933

From remains of original B.T.'s,  
set a 6"  $\phi$  conc. monument, brass cap mkd

T146N	R30W
S11	S12
S14	S13
1933	

Orig. B.T.'s burned and rotted stumps.

Local B.T.'s:

N. pine, 12", N30°15'E, 101 lks (66.66'), T146 R30 S12 BT

J. pine, 12", N59°W, 126 lks (83.16'), T146 R30 S11 BT

New B.T.'s:

Birch, 6", S77°45'E, 157 lks (103.12'), T146N R30W S13 BT

Poplar, 8", S74°45'W, 118 lks (77.88'), T146N R30W S14 BT

4-20-09 R MAIN 12 DEER TICKS

FD MONUMENT IN PLACE AND GPS. CORNER IN ALOER  
WILLOW 1/25 FT SOUTH OF A LARGE SWAMP. BEAVER HAVE  
DAMAGED MOST OF THE TREES NEAR BY. 8 FT STEEL  
SIGN POST W/ ATTENTION SIGN DRIVEN ALONG NORTH  
SIDE OF CORNER. FOUND A FSLP ON THE GROUND  
BY SCHLUTER 9-17-67. MAKE NEW TIES

BIRCH 8" N8°E 16.10 FT TO SPK. NOT SCRIBED

BIRCH 4" N64°E 7.40 FT TO SPK. NOT SCRIBED



61.

Quarter Corner, Sections 12-13  
Notes of G.L.O. Resurvey of 1933.

From remains of orig. B.T.'s, set on  
iron post, 3' long, 1"  $\phi$ , brass cap and

$\frac{1}{4}$   $\frac{512}{513}$   
1933

Orig. B.T.'s fallen and rotting.

Elm 8" S02°45'E, 20 lks (13.2'),  $\frac{1}{4}$  513 BT  
NOW 19" TAGS FRONT & BACK

Elm 6" N27°45'W, 28 lks (18.48'),  $\frac{1}{4}$  512 BT  
NOW 15" TAGS FRONT & BACK

4-20-2009 RMAIN

FD IRON IN PLACE AND BENT OVER & STRAIGHTEN  
AND GPS. IRON IN ASPEN 4" TO 8"  $\pm$  120 FT  
SOUTH OF HUNTER WALKING TRAIL. 8 FT  
STEEL SIGN POST W/ ATTENTION SIGN 1/20  
SOUTH. DIST TO FACE OF POST



62.

Quarter Corner, Sections 34-35

Notes of G.L.O. Resurvey of 1933

From remains of original B.T.'s, set on  
iron post, 3' long, 1" dia, brass cap mkd

1/4  
S34 | S35  
1933

Orig. B.T.'s fallen and rotting.

N. pine, 6", S69°15'E, 64 lks (42.24'), 1/4 S35 BT  
Now loggers STUMP 14" BT SCAR @ Beg. DIST

N. pine, 15", S67°25'W, 325 lks (214.5'), 1/4 S34 BT  
NO EVIDENCE FD

447.96 R MAIN

FD GLO IRON IN CLEARCUT BENT UNDER FROZEN  
IN LOG. WILL RETURN TO STRAIGHTEN

WITNESS WITH FOLLOWING

R. PINE 7" S 35 E 68.29 FT TO SAK MKD: S35 BT

R. PINE 8" S 27° W 57.30 FT TO SAK MKD: S34 BT  
NOW A 20 FT SWAG ALREADY 5-1-97 R MAIN

R. PINE 7" N 22° E 62.20 FT TO SAK MKD: S35 BT

8 FT STEEL SIGN POST NORTH 2.55 FT



63. V-17

Corner Sections 26, 27, 34, & 35

Notes of G.L.O. Resurvey of 1933.

From remains of orig. B.T.'s, set a

6"  $\phi$  conc. monument, brass cap marked

Found in place marking corner.	T146N	R30W
	S27	S27(?)
	S34	S35
	1933	

Orig. B.T.'s stumps or stump holes.

N. pine, 10", N75°45'E, 131/ks (86.46'), T146N R30W S26 BT

(Now 15" Red pine, MKD "T146N R30W S26 BT" at record bearing & dist.)

J. pine, 10", S05°15'E, 23/ks (15.18'), T146N R30W S35 BT

(Now a 16" J. Pine stp scribed "S35 BT" at record bearing & dist.)

J. pine, 11", S67°15'W, 28/ks (18.48'), T146N R30W S34 BT

(Now 18" Jack pine stp. scribed "S34 BT" at record bearing & dist.)

J. pine, 12", N74°30'W, 48/ks (31.68'), T146N R30W S27 BT

(This tree marked by local engineers about 30 years before resurvey. BT added at base of tree.)

(Now a 17" Jack pine stp 16 ft high scribed BT. at record bearing & distance.)

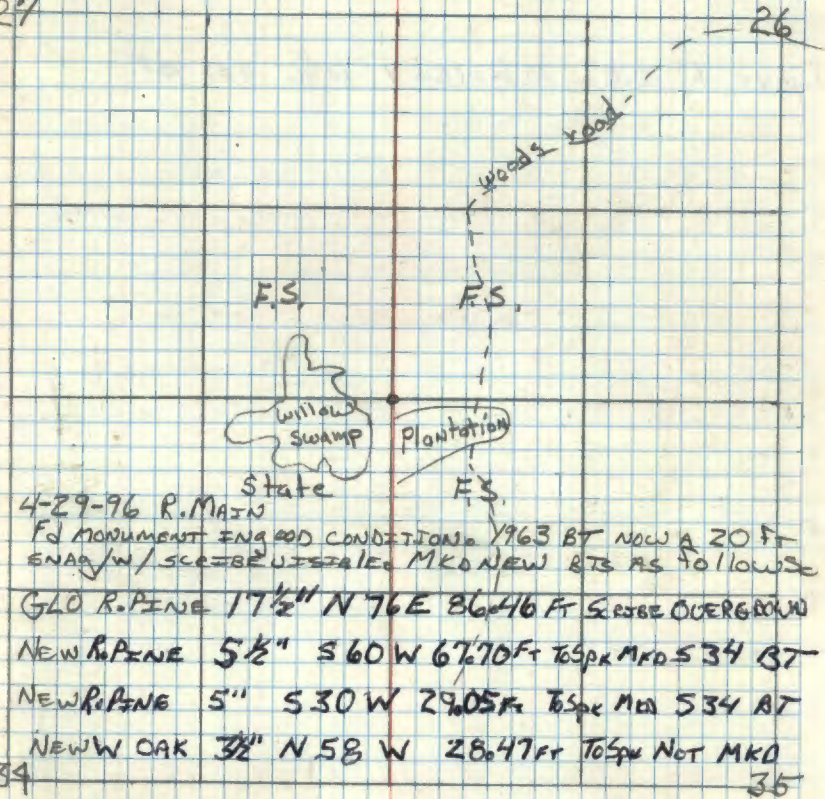
Affidavit PHM

V-17

To perpetuate this corner I marked  
 Jack pine 8" S63 $\frac{1}{2}$ °W 13.7 feet MKD S34 BT  
 Steel sign post 72 inches long set 24 inches  
 in ground w/ signs 54-2 & 54-4 attached due West 3.9'  
 Cedar post 4" x 4" x 72" penta-treated & w/ red  
 top due south. 1.2 feet. 5-3-63 ~~PHM~~

27

26



34

35

CORNER ON SW CORNER OF CLEAR CUT  $\pm$  50 FT EAST OF  
 SMALL WATER HOLE IN MIXED PINE & ASPEN



64.

West  $\frac{1}{16}$ , Sections 26 & 35

By prop. distance, set on iron post, 3'  
long, 1"  $\phi$ , brass cap marked:

W $\frac{1}{16}$   $\frac{526}{535}$

1933

J. pine, 7", N $68^{\circ}45'E$ , 49 lks (32.34'), W $\frac{1}{16}$  526 BT

J. pine, 6", S $18^{\circ}W$ , 10 lks (6.6'), W $\frac{1}{16}$  535 BT



65. V-19

Quarter Corner, Sections 26-35

Notes of G.L.O. Resurvey of 1933

From remains of orig. B.T.'s, set an iron post 3' long, 1"  $\phi$ , brass cup marked

$\frac{1}{4}$   $\frac{526}{535}$  (Found in place  
1933 marking corner.)

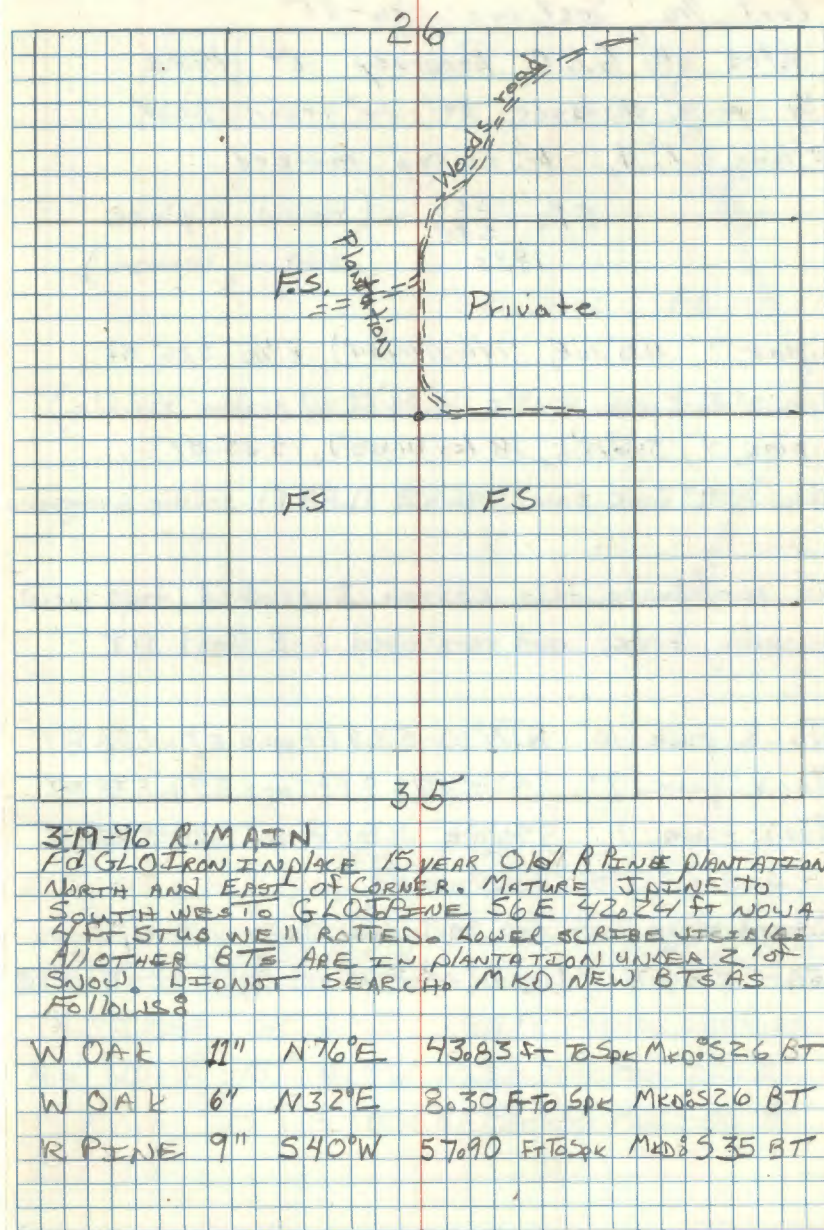
Remaining orig. B.T. burned and rotting stump.

J. pine, 7", N08°45'E, 56'ks (36.96'),  $\frac{1}{4}$  526 BT (Now a  
14" Jack pine scribed " $\frac{1}{4}$  526 BT" at record bearing & dist.)

J. pine, 4", S06°15'E, 64'ks (42.24'),  $\frac{1}{4}$  535 BT (Now a  
12" Jack pine scribe partly overgrown at record bearing  
and distance.)

To perpetuate this corner I marked  
Jack pine 9 inch N35° W 19.7 feet mkd  $\frac{1}{4}$  526 BT  
Steel sign post 72 inches long, set 24 inches in  
ground w/ signs 54-2 & 54-4 attached due  
North 3.75 feet. 4-30-63 RHM Donald  
DID NOT FIND SIGN POST &

Affidavit RHM





66. V-20

East  $\frac{1}{16}$  Sections 26-35

Notes of G.L.O. Resurvey of 1933

By prop. distance, set on iron post,  
3' long, 1"  $\phi$ , brass cap marked:

E  $\frac{1}{16}$   $\frac{526}{535}$  (Found in place  
1933 marking corner.)

- J. pine, 9" N30°30'E, 174 1/2 (114.84'), E  $\frac{1}{16}$  526 BT  
(Now 12" Jack pine N30 1/2° E 114.84 Ft. w/ scribe visible)  
- J. pine, 4" S46°15'E, 18 1/2 (11.88'), S 35 BT  
(Now a 11" Jack pine S46 1/4° E 11.88 Ft. scribe overgrown)

To perpetuate this corner I scribed two new  
bearing trees and re-scribed S-E Govt. BT.

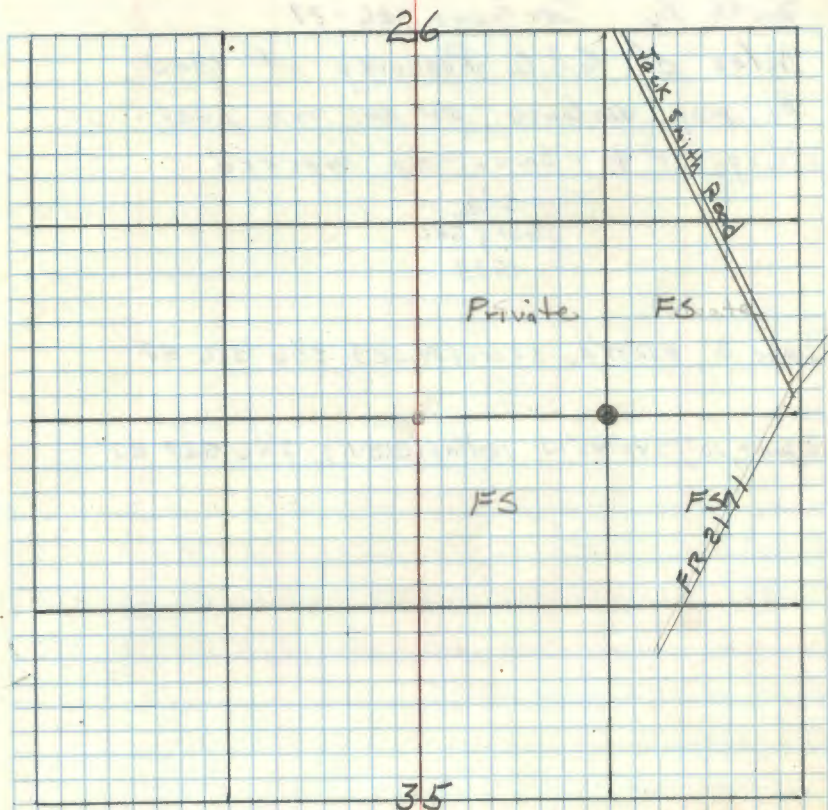
- Jack pine 10" N1 1/2° W 53.9 Ft. MKD E  $\frac{1}{16}$  S 26 BT  
Jack pine 9" S43 1/2° W 14.9 Ft. MKD E  $\frac{1}{16}$  S 35 BT  
Jack pine 11" S46 1/4° E 11.88 Ft. MKD E  $\frac{1}{16}$  S 35 BT

3-5-63 R.H.M. Donald

Steel sign post set 24 inches in ground w/ signs  
54-2 & 54-4 attached due West 4.25 Feet. R.H.M.

Affidavit R.H.M.

V-20



3-19-96 P.M.A.N.O.  
FOR G.L.O. IRON IN PLACE. ALONG A SOUTH EDGE OF  
E/S NEAR OLD PINE PLANTATION. MATURE PINE S  
R. PINE SOUTH OF CORNER. G.L.O. J. PINE S46°E 16.88 FT  
NOW A 3 FT STUMP. G.L.O. J. PINE N30E 114.84 FT FALLS IN  
PLANTATION. 1963 PINE N1W 53.9 FT IN PINE PLANTA-  
TION. WITNESSED IRON AS FOLLOWS

- 1963 J. PINE 14" S43°W 14.9 FT Scribe Overgrown  
NEW W. OAK 13" N17°W 12.80 FT To Spk MKD S 26 BT  
R. PINE 15" S70°W 47.75 FT To Spk MKD S 35 BT



67.

South  $\frac{1}{16}$ , Sections 26-27

Notes of G.L.O. Resurvey of 1933

By prop. distance, set an iron post,  
3' long, 1"  $\phi$ , brass cap marked

$\frac{5}{16}$   
527 | 526  
1933

J. pine, 8",  $N27^{\circ}15'E$ , 52 lks (34.32'),  $\frac{5}{16}$  526 BT

J. pine, 10",  $S40^{\circ}45'W$ , 120 lks (81.84'),  $\frac{5}{16}$  527 BT



68.

Quarter Corner - Sections 26-27

Notes of G.L.O. Resurvey of 1933.

From remains of orig. B.T.'s, set on  
iron post, 3' long, 1"  $\phi$ , brass cap mkd.:

$\frac{1}{4}$   
527 | 526  
1933

Orig. B.T.'s burned and rotted stumps.

J. pine, 12", N80°05'E, 351/ks (231.66'),  $\frac{1}{4}$  526 BT

J. pine, 10", N49°30'W, 234/ks (154.44'),  $\frac{1}{4}$  527 BT

NOW 4 FT TALL STP SCRIBER VISABLE (2008)

11-17-2008 R. MAIN

Fd IRON IN PLACE ON NORTH EDGE OF  
LARGE GRASS SLOUGH. I DROVE AN 8 FT  
STEEL SIGN POST ALONG SOUTH EDGE OF  
IRON AND WIRE TOGETHER. ATTENTION  
SIGN ON POST. GPS IRON



69.

North  $\frac{1}{16}$ , Sections 26-27

Notes of G.L.D. Resurvey of 1933

By prop. distance, set on iron post,  
3' long, 1"  $\phi$ , brass cap m.k.d. i

N  $\frac{1}{16}$   
527 | 526  
1933

(Local B.T.)

J. pine, 12", N73°30'N, 22 lbs (15.18'),  $\frac{1}{16}$  S BT

(New B.T.)

J. pine, 12", N74°45'E, 28 lbs (18.48'), N  $\frac{1}{16}$  526 BT

J. pine, 12", N23°5'W, 5 lbs (3.3'), N  $\frac{1}{16}$  527 BT



70. R-18

West 1/4, Sections 23-26

Notes of G.L.O. Resurvey of 1933.

By prop. distance, set on iron post 3' long, 1"  $\phi$ , brass cap marked: (Found in

W 1/4  $\frac{523}{526}$  place marking corner)  
3/13/81-GB-DJ-RG 1933

Fd. iron pipe with brass cap set 6" above grd.

J. pine, 4", N 32° 15' E, 36 1/2 s (23.76'), W 1/4 523 BT

Not Found

J. pine, 5", S 23° 30' E, 59 1/2 s (38.94'), W 1/4 526 BT

Now a 12 inch Fire Killed snag S 23 1/2° E 38.94 Feet.)

Corner is in 1961 burn area most nearby trees are fire damaged.

Marked

Jack pine 14 inch S 42° E 53.2 Ft. mark W 1/4 526 BT

4" x 4" x 72" long pent-a-treated red topped

Cedar post is set due North 1.8 Feet w/

signs 54-2 & 54-4 attached

*G. McDonald*

3/13/81-GB, DJ, RG

Mkd. New BT's:

1. R. Pine 5"  $\frac{11}{16}$ " S 42° W 27.87' W 1/4 526 BT

2. R. Pine 5"  $\frac{11}{16}$ " N 42° W 6.85' W 1/4 523 BT

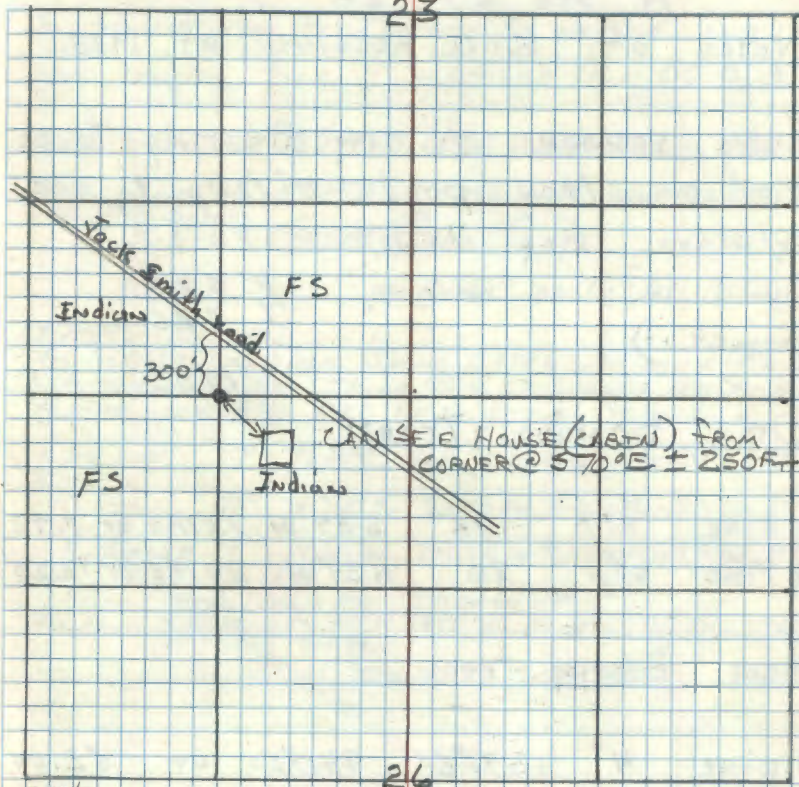
3. R. Pine 5"  $\frac{11}{16}$ " N 50° E 9.04' W 1/4 523 BT

Sign posts south east with both signs attached.

Affidavit *RHM*

R-18

23



3-13/81

Found 1 BT recorded by GLO in 1933:

1. J. Pine windfall S 24° E 38.94' Scribe visible.

Found BT recorded by McDonald in 1963:

1. Jack Pine windfall S 42° E 53.2' Scribe visible

Fd. 4" x 4" x 72" wood post 2.04' north of corner with attention sign attached. Placed a F.S.L.P. on post. Lines south east are mkd. to F.S. Standard. Corner falls on the SW edge of a R. Pine plantation.

3-20-96 R Main

Fd Iron & 1981 BTs in good conditions. Placed new spikes next to overgrown BT marks

HEAVY 8FT STEEL SIGN POSTS 1/2 SOUTH 3/2 WEST  
300 EAST



71. R-19

1/4 Sec 23 - 26

Notes of G.I.O. Resurvey of 1933.

From remains of orig Bearing trees.  
Set an Iron post 3' long 1" Dia.  
w/brass Cap MKD.

(Found in place marking  
corner.)

 $\frac{1}{4}$  S23  
S26

1933

Orig Bearing Trees:

J. pine stp 16" S34°W 121Ks or 7.92'  
N. Pine stp 20" N34°W 201Ks or 13.20'

New Bearing trees

- ① J. pine 4" S31°E 941Ks or 62.04'
- ② J. pine 6" N73 $\frac{1}{4}$ °W 1101Ks or 72.60'

- ① Now a 12" Jack pine S31°E 62.04 Feet with  
scribe overgrown.)
  - ② Now a Jack pine blowdown N73 $\frac{1}{4}$ °W 72.6 feet  
has been burned.)
- corner falls in the 1961 burn area.

Affidavit RHM

R-19

To perpetuate this corner I marked one  
new bearing tree & rescribed the S-E Govt. BT

Jack pine 6" S71°E 63.5 Feet MKD 1/4 S26 BT

Jack pine 12" S31°E 62.04 Feet MKD 1/4 S26 BT

Now 40' SWAG

3-5-63 RHM Donald

23

3-20-96 R. MAIN  
Fd GLO IRON END OF ACE J. PINE S31°E 62.04 NOW A 40 FT SWAG  
W/BRASS UCCABLE J. PINE S71°E 63.5 NOW A 4 FT STUMP W/  
SCR OF UCCABLE MKD NEW BT'S AS FOLLOWS

R. PINE 12" N/40°E 48.90 FT TO SPK MKD S23 BT

R. PINE 11" S52°E 9.218 FT TO SPK MKD S26 BT

R. PINE 9" N60°W 29.98 FT TO SPK MKD S23 BT  
FS FS

HEAVY STEEL SIGN POST 29 FT WEST  
Fd DEAD J. PINE BY 7" N38°E No DIST ON TAG FORM 12-22-81  
769 FT.

Private

Private

26

Steel sign post set 24" in ground w/ signs 59-2  
& 59-7 attached due East 3.5 feet RHM



72. R-20

East  $\frac{1}{16}$  23-26

Notes of G.I.O. Resurvey of 1933  
By "prop. distance" set an Iron  
post 3' long 1"  $\phi$  w/brass Cap  
MKD. (Found laying horizontal)

covered w/ dirt - by bulldozer  
operations.)

$E \frac{1}{16} S 23$
$S 26$
1933

New Bearing trees:

- ① burr Oak 6" S  $36\frac{1}{2}^\circ E$  29.1Ks or 19.14'  
② burr Oak 4" N  $18\frac{1}{4}^\circ W$  40.1Ks or 26.40'

- ① Now a 7" Oak S  $36\frac{1}{2}^\circ E$  19.14 feet w/ scribe visible.)  
② Now a 10" Oak N  $18\frac{1}{4}^\circ W$  26.40 feet scribe overgrown

Set a 6 inch diameter, 5 foot long cylindrical  
concrete monument capped with a 3" dia.  
bronze tablet stamped:

T146N R30W  
 $E \frac{1}{16} S 23$   
 $S 26$   
1963  
RLS No 362B

Affidavit RHM

R-20

6-11-63

ok w/fo

Marked two new bearing trees  
Oak 10" S  $63^\circ W$  25.2 Feet MKD E  $\frac{1}{16}$  S 26 BT  
Oak 11" S  $76^\circ E$  29.65 Feet MKD E  $\frac{1}{16}$  S 26 BT  
Burr Oak 10" N  $18\frac{1}{4}^\circ W$  26.40 Feet MKD BT  
Steel sign post 72" long set 24" in ground  
w/ signs 54-2 & 54-4 attached due south 3.4 feet  
4-25-63 *Graham Donald*  
23

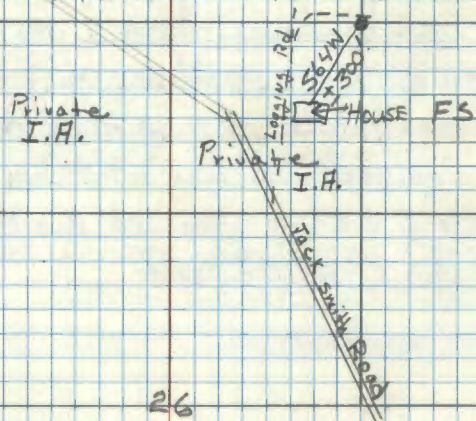
3-13-96 ReMAIN

FOUND WITNESSES AS FOLLOWS

GLO W OAK 14" N  $18^\circ W$  26.40 FT SCRIBE OVERGROWN  
1963 W OAK 12" S  $63^\circ W$  25.2 FT SCRIBE OVERGROWN  
1963 W OAK 14 1/2" S  $76^\circ E$  29.65 FT SCRIBE OVERGROWN  
GLO W OAK 9" S  $36^\circ E$  19.14 FT SCRIBE OVERGROWN

HEAVY SIGN POST 309 WEST FS FS

Light 8' STEEL SIGN POST 304 SOUTH (1963 REPLACEMENT)  
CAN SEE HOUSE FROM CORNER @ S  $64^\circ W$  I 300 FT





73. 21-19

South Center  $\frac{1}{16}$  Sec 26

Notes of G.I.O. Resurvey of 1933  
By "prop distance set an Iron  
post 3' long 1"  $\phi$  w/brass Cap  
(Found in place marking  
Corner.) MKD

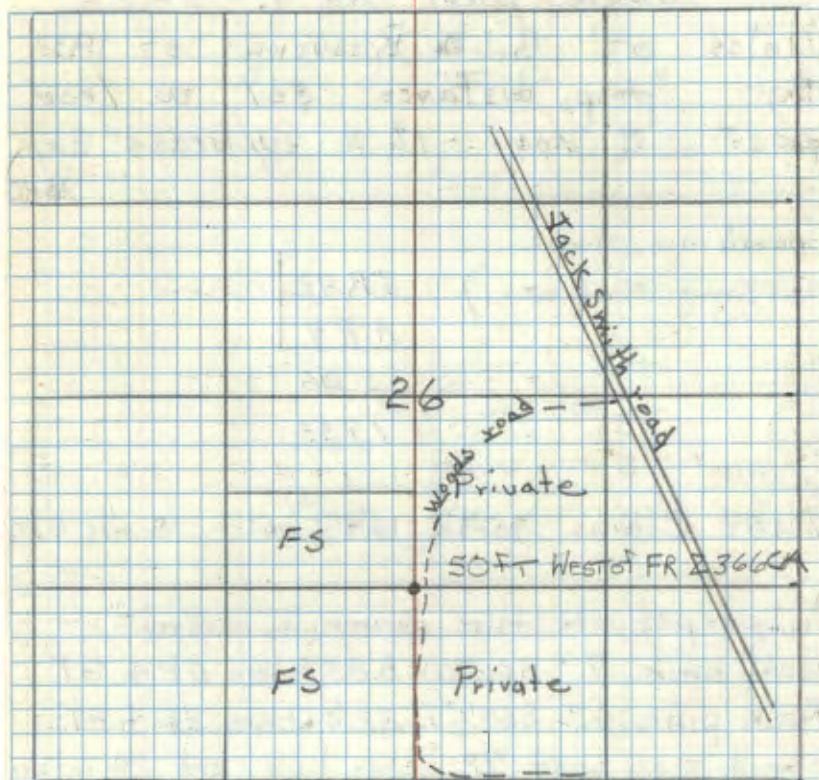
C  
S  $\frac{1}{16}$  | S 26  
C  
19 33

- ① J. pine 9" S  $46\frac{1}{2}^\circ$  W 55 1/4s or 36.30'  
② J. pine 8" N  $10\frac{1}{2}^\circ$  W 48 1/4s or 31.68'

- ① Now a Jack pine stump scribed "26 8T" at  
record bearing & distance  
② Now a decayed pine stump at record bearing & dist.  
To perpetuate this corner I marked  
Jack pine 7 inch S  $81\frac{1}{2}^\circ$  W 33.4 ft MKD CS  $\frac{1}{16}$  BT  
Jack pine 11 inch S  $8^\circ$  W 13.75 ft. MKD CS  $\frac{1}{16}$  BT  
Steel sign post 72" long set 24" in ground w/  
signs 54-2 & 54-4 attached due North 7.2 feet.  
4-30-63 RHM McDonald

Affidavit RHM

21-19



3-19-96 RMAEN.  
FD 640 IN PLACE IN 15 YEAR OLD R PINE PLANTATION.  
1963 J PINE S  $81\frac{1}{2}^\circ$  W 33.4 NOW A 40 FT ENCL W/SCRE ODD DOWN  
1963 J PINE S  $81\frac{1}{2}^\circ$  W 33.4 NOW A 4 FT STP (S) SCRE ODD DOWN  
1963 SIGN POST IS GONE OR UNDER SNOW MKD NEW  
OTS AS FOLLOWS

R PINE 13" S  $75^\circ$  W 41.90 FT TO SPE MKD 526 BT  
R PINE 4" NORTH 28.85 FT TO GPK. NOT MKD  
W OAK 4" S  $15^\circ$  W 7.95 FT TO NBL NOT MKD



74. T, 21-19

Angle point No. 4. S-26

Notes of G.L.O. Resurvey of 1933  
By "prop distance set a iron  
post 3' long 1"  $\phi$  w/brass cap

MKD

(Found in place  
marking corner.)

TR 42

AP 4

S 26

1933

10.04 Chains North of Center so,  $\frac{1}{16}$  S 26

To perpetuate this corner I marked:-

Jack pine 7" S 65° W 8.85 Ft. MKD AP 4 BT

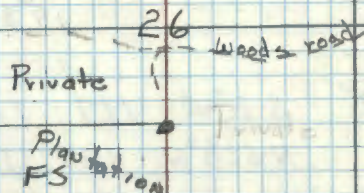
Jack pine 6" S 63½° E 32.0 Ft. MKD AP 4 BT

Steel sign post 72 inches long, set 24 inches  
in ground w/ signs 54-2 & 54-4 attached  
due South 3.85 feet.

4-26-63 RHM Donald

Affidavit RHM

T, 4-19



3-11-96 R MAIN

FD GLO IN PLACE 1963 J.PINE S 65° W 8.85 FT MKD  
A STD WITH SCREW U.S. 1963 J.PINE S 63° E 32.0 FT  
NEW A 30 FT SNAO. FD A R.OAK BT/W/TAG BY JN  
FROM 12/17/81 WITH SCREW QUERQUOIN.  
MKD NEW BT'S AS FOLLOWS

1981 ROAK 7½" N 79° E 7.38 FT NEW SPR

R. PINE 13" N 14° E 83.31 FT 65° S MKD AP 526 BT

R. PINE 8" S 42° W 35.43 FT 70° S MKD AP 526 BT

HEAVY STEEL SIGN POST 5.0 FT WEST

CLEAR CUT TO NORTH WEST LINE TO STANDARD NORTH  
AND WEST OF CORNER



75. S-19

Center North  $\frac{1}{16}$  sec 26.

Notes of G.L.O. Resurvey of 1933  
by prop distance set an Iron post  
3' long 1"  $\phi$  w/brass Cap MKD.  
(Found in place  
marking corner.)

C  
N  $\frac{1}{16}$  S 26  
C  
1933

- ① J. pine 12" S  $2^{\circ}$  W 127 1/4s or 83.82'  
② J. pine 4" N  $62\frac{1}{2}^{\circ}$  W 185 1/4s or 122.10'

① (Now a Jack pine stump w/ scribe "S 2" visible  
S  $2^{\circ}$  W 83.82 Feet)

② (Now a 10" Jack pine N  $62\frac{1}{2}^{\circ}$  W 122.1 Feet with  
scribing visible tree now dead.)

Corner is in the east edge of a point of meadow.  
To perpetuate this corner I MKD three new  
bearing trees.

Jack pine 5" N  $39\frac{1}{2}^{\circ}$  E 56.5 FT MKD X 13T

Jack pine 7" S  $68\frac{1}{2}^{\circ}$  E 18.25 FT MKD CN  $\frac{1}{16}$  BT

Jack pine 8" S  $20\frac{1}{2}^{\circ}$  E 22.8 FT MKD CN  $\frac{1}{16}$  BT

3-5-63 R.H. McDonald

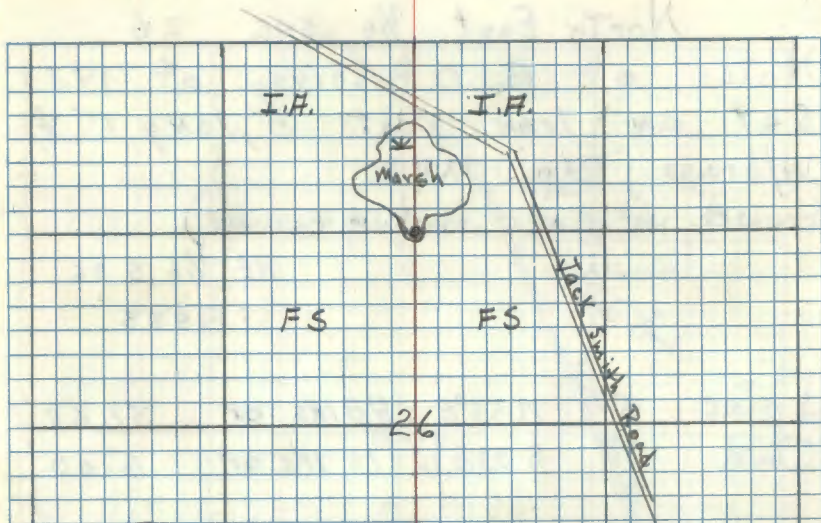
Steel sign post 72" long set 24" IN ground w/  
std signs 54-2 & 54-4 attached due West 3.95'

RHM

Affidavit  
RHM

595

S-19



3-12-96 R. MAINE

FOR G.L.O. IRON ON SOUTH EAST CORNER OF MARSH  
IRON BENT & FROZEN END BT DISTANCES ARE TO CORNER  
OF IRON WITNESSED AS FOLLOWS.

1963 J PINE 10" N  $39^{\circ}$  E 56.5 FT SCRIBE OVERGROWN

1963 J PINE 7" S  $68^{\circ}$  E 18.25 FT SCRIBE OVERGROWN

1963 J PINE 8" S  $20^{\circ}$  E 22.8 FT SCRIBE OVERGROWN

NEW R PINE 5" N  $39^{\circ}$  E 40.85 FT TO SDR MKD'S 26 BT

NEW R PINE 11" S  $30^{\circ}$  W 85.03 FT TO SDR MKD'S 26 BT

HEAVY STEEL SIGN POST EAST 5 FT



76. S-20

North East  $\frac{1}{16}$  sec 26

Notes of G.I.O. Resurvey of 1933  
Set an Iron post 3' long 1"  $\phi$   
w/brass cap MKD.

(Found in place marking corner)

NE  $\frac{1}{16}$  S 26

1933

- ① J. pine 5" N55°E 481ks or 31.6R'  
② Oak 3" S33 $\frac{1}{2}$ °W 101ks or 6.60'

① Now a Jack pine wind fall scribed "NE  $\frac{1}{16}$  S 26  
BT" at record bearing & distance.

② Now a 8" Oak w/ blaze facing corner at  
record bearing and distance.

to perpetuate this corner I marked

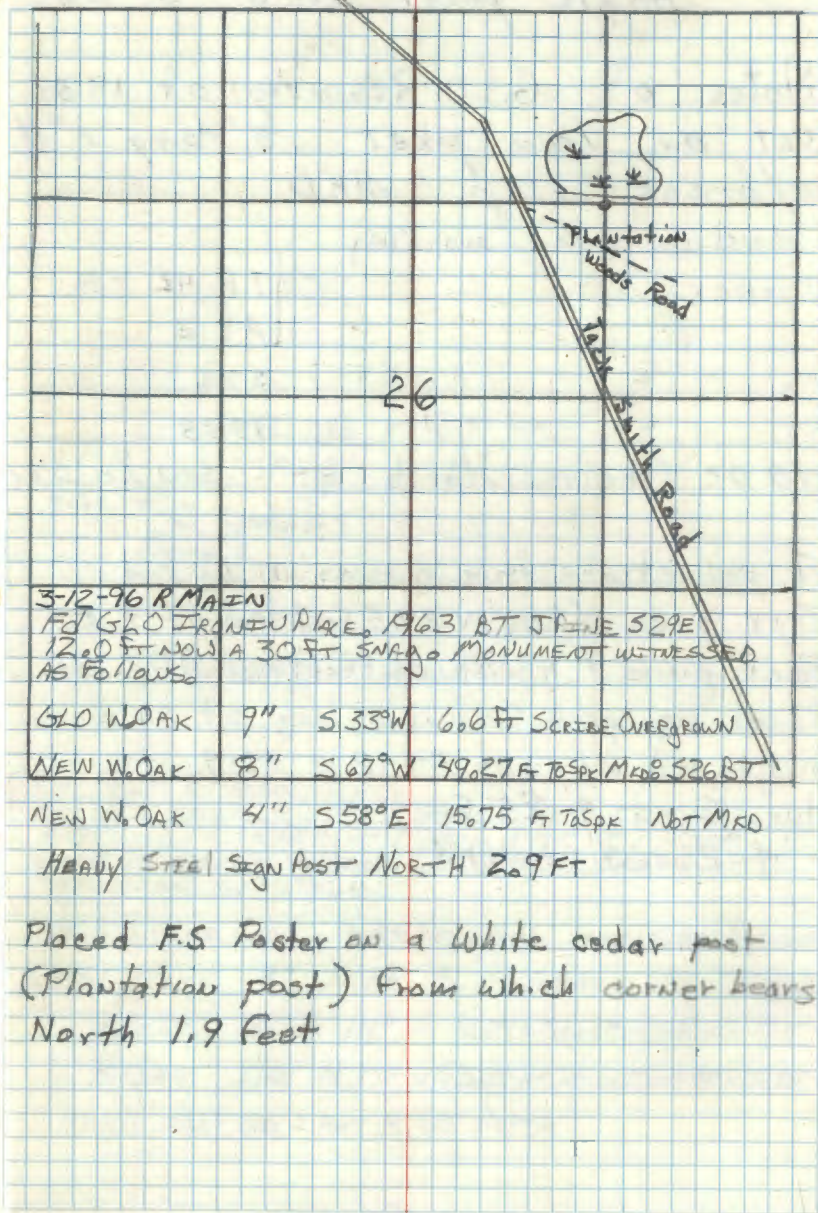
Jack Pine 8" S29°E 12.0 Feet MKD NE  $\frac{1}{16}$  S 26 BT

Oak 8" S33 $\frac{1}{2}$ °W 6.6 Feet re-scribed BT-BT  
Steel sign post 72 inches long set 24 inches  
in ground w/ signs 54-2 & 54-4 attached  
due West 3.35 Feet.

4-25-63 RHM Donald

Affidavit RHM

S-20





77. T, 21-18

Angle point No 3 S-26

Notes of G.L.O. Resurvey of 1933  
set an Iron post 3' long 1"  $\phi$   
w/brass Cap MKD

Found in place marking

CORNER

TR 42

AP 3

S 26

1933

10.02 Chains North of SW  $\frac{1}{16}$  S 26

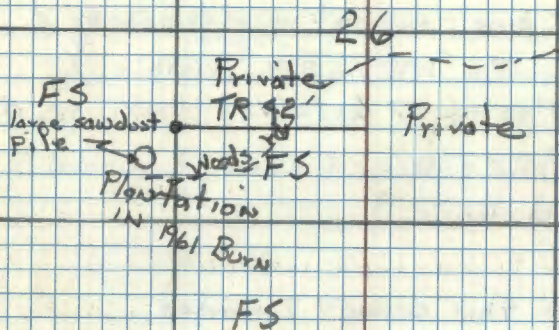
To perpetuate this corner I marked  
Jack pine 8" S 86° W 27.5 feet MKD AP 3 BT  
Jack pine 7" N 22 $\frac{1}{2}$ ° W 36.1 feet MKD AP 3 BT  
Steel sign post 72 inches long set 29 inches  
in ground w/ signs 54-2 & 54-4 attached  
due East 4.25 feet

4-26-63 R.H. Donald

Affidavit RHM

FS

FS



3-11-96 R. MAEN  
FOR G.L.O. IN PLACE. 1963 SPINE S 86° W 27.5 FT MARK  
A STUMP CLEAR CUT NORTH EAST OF CORNER.  
LINE TO STANDARD NORTH & EAST OF CORNER.  
WITNESS AS FOLLOWS.

1963 J. PINE 13" N 24° W 36.1 SCREE OVERGROWN  
12-17-81 R. PINE 9" N 24° E 14.76 NEW SPK SCREE OVERGROWN  
R. PINE 8" S 14° W 12.04 FT TO SPK MKD AP S 26 13 FT  
R. PINE 17 $\frac{1}{2}$ " N 73° W 53.60 FT TO SPK MKD AP S 26 BT  
HEAVY STEEL SIGN POST 4.65' NORTH



78. S-18

Northwest  $\frac{1}{16}$ -Section 26

Notes of G.L.O. Resurvey of 1933:

Iron post, 3' long, 1"  $\phi$ , brass cap mkd:

(Found in place NW  $\frac{1}{16}$  S26 3/13/81 - found iron pipe marking corner.) 1933 with brass cap set 8" above ground in place.

J. pine, 4", N  $03^{\circ}45'E$ , 60 lbs (39.6'), NW  $\frac{1}{16}$  S26 BT

(Now a 10" Jack pine snag at record bearing & distance w/ scribe "NW  $\frac{1}{16}$  S26" visible.)

Poplar, 4", N  $89^{\circ}45'W$ , 37 lbs (24.42'), NW  $\frac{1}{16}$  S26 BT

(Now a stump hole & decayed wood at record bearing and distance.)

To perpetuate this corner I marked

Jack pine 5 inch N  $89\frac{1}{2}^{\circ}W$  9.4 feet mko x BT

Steel sign post 72" long set 24" in ground w/ signs 54-2 &amp; 54-9 attached due North 4.35 Ft

Steel sign post 72" long, set 24" in ground w/ sign 54-2 attached due East 3.25 Ft.

5-1-63 P.H. McDonald

3/13/81 - Bram a, Jacobs, Gehrke

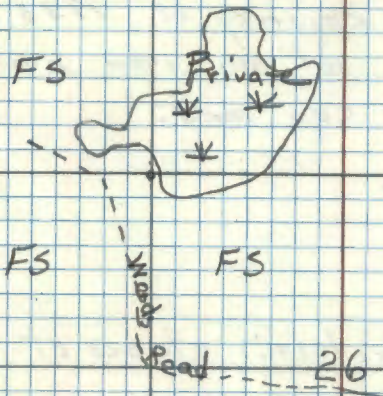
Mkd. New BT'S:

1. W. Oak 7" 57 $^{\circ}$ E 104.17' NW  $\frac{1}{16}$  S26 BT2. W. Oak 7" S46 $^{\circ}$ W 92.10' NW  $\frac{1}{16}$  S26 BT3. J. Pine 11" N50 $^{\circ}$ W 13.20' NW  $\frac{1}{16}$  S26 BT

Lines north and east are mkd. line to standard.

Affidavit RHM

S-18



3/13/81 - Ed. 1 BT recorded by GLO in 1933:

J. Pine snag N  $4^{\circ}$ E 39.6'

Ed. 1 BT recorded by McDonald in 1963:

J. Pine 5" West 9.4'

Ed. sign posts in place.

Corner falls west of marsh about 5.0'.



South  $\frac{1}{16}$  - Sections 22 & 23

Notes of G.L.O. Resurvey of 1933:

By prop. distance set an iron post,  
3' long, 1"  $\phi$ , brass cap mkd:

$\frac{5}{16}$   
522 | 523  
1933

J. pine, 12", N49°E, 81 lks (53.46'),  $\frac{5}{16}$  523 BT  
FALLS IN ROAD CLEARING

J. pine, 7", S86°15'E, 65 lks (42.90'),  $\frac{5}{16}$  522 BT  
NO EVIDENCE.

5-16-96 R MAIN

Fd GLO IRON BENT OVER BUT IN PLACE 15 FT  
SOUTH OF E FR. STRAIGHTEN IRON AND  
NOW IS 5 INCHES ABOVE GROUND. 30 yr old  
R. PINE PLANTATION NORTH AND WEST. 1 ACRE Slough  
30 FT SOUTH. MATURE J PINE TO SOUTH EAST.  
MKD NEW B.T.S AS FOLLOWS.

R PINE  $7\frac{1}{2}$ " S40°W 35.71 FT TO SPK MKD: 527 BT

R PINE 9" N62°W 39.76 FT TO SPK MKD: 527 BT

R PINE  $10\frac{1}{2}$ " N16°W 43.90 FT TO SPK MKD: 527 BT  
8 FT STEEL SIGN POST 2.1 NORTH