

OWNER
ESTORATION
146N R29W

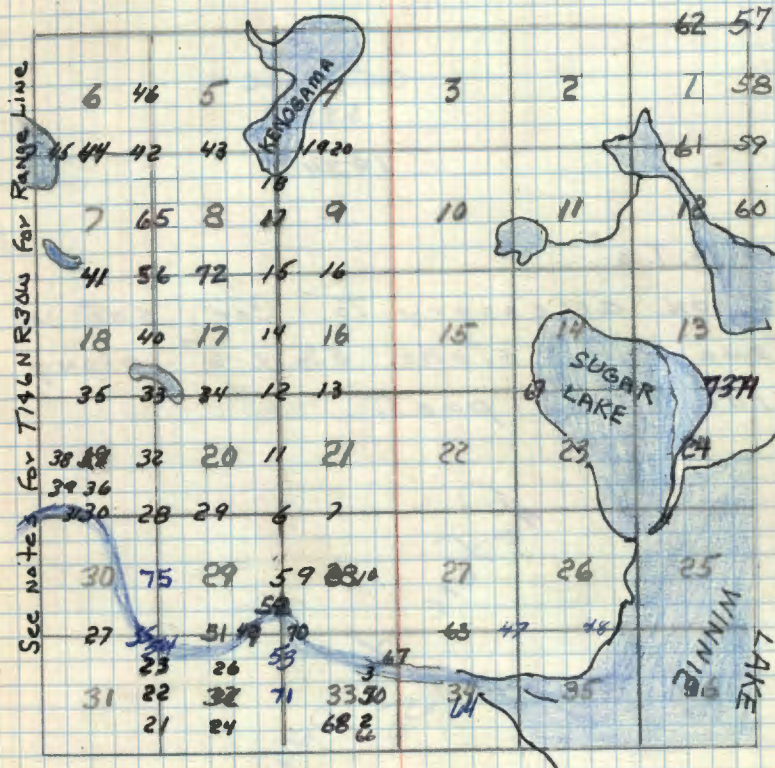
146N R29W

BOOK 2

Book # 214

USFS

T146N R29W 50 P.M.
 CASS and ITASCA COUNTIES



Notes of GLO Dependent Resurvey
 of - Surveyor Hal. D. Craig.
 June 21, 1934 To Sept 19, 1935.

1.
Center East $\frac{1}{6}$ Cor. Sec. 33.
Iron post 3'x1" w/brass Cap MRD

C $\frac{E\frac{1}{6}}$ C
S33
1934

"No B.T.s"

As an accessory to Cor. set a
Tamarack stake 5 $\frac{1}{2}$ 'x 6" along
side iron post.

Refer to page
50

2.

South East $\frac{1}{16}$ Cor. Sec. 33.
Iron post 3'x1" w/brass Cap MKD.

SE $\frac{1}{16}$ S 33

1934

"No B.T.s"

5/10/88 CK-GB

CHAINED FROM CE $\frac{1}{16}$ - SOUTH 1337' TO SE $\frac{1}{16}$

FOUND IRON + CAP - IN PLACE - IN GOOD CONDITION

5" HIGH - IN JACK PINE STAND & HEAVY HAZEL BRUSH

NORWAY PLANTATION SE + SW 2' TO 4' TREES

APPROX. 125' E OF MARSH NW + SE

PUT FSLP ON J. PINE 7" WEST OF COR. 4.9'

OLD BLAZED LINE RUNS EAST TO S $\frac{1}{16}$ SOME TREES

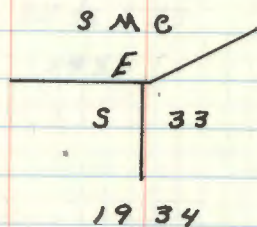
ARE STILL STANDING ALONG THIS LINE - BUT MOST

TIMBER HAS BEEN CUT N + S OF EAST LINE

See page 66

Meander Cor. Sec. 33

Iron post 3'x1" w/brass Cap MHD.



J. Pine 10" N0°45'E 7481K₅ 493.68'

J. Pine 10" N4°07'W 7701K₅ 508.20'

4
Meander Cor. Sec's 29 - 28
Iron post 3'x1" w/brass Cap MKD.

T146N R29W

S29 S28

MC

1934

"Orig B.T.s"

J. Pine 16" N23°W 25 LKs - 16.50'

"New B.T.s"

J. Pine 12" N84°E 14 LKs - 9.24'

found

J. Pine 8" N51¾°W 39 LKs - 25.74'

found

Refer to page
52

5
Quarter Cor. Sec's 28 - 29
Iron post 3'x2" w/brass Cap MKD.

3-8-94 RM+CK

Fd. 2" IRON IN PLACE

+

IN ASH SWALE - IN NW COR. S29 S28

1934

"Orig B.T.s"

Fallen J. Pine. 14" N2°E 110 LKs - 72.60'

Fallen B.o.P.B.i.l. 19" S42°W 88 LKs - 58.08'

"New B.T.s"

J. Pine 12" S35°E 201 LKs - 132.66'

NOW 14" J. PINE STUB 30' HIGH AT S35E - 132.6'

N. Pine 22" N2¼°W 90 LKs - 59.40'

NOW 25" N. PINE STUB 30' HIGH AT N2W - 59.40'

MKD NEW BT's.

W. OAK 9" N28°E 105.44' FT TO SPK MKD #1528BT

W. OAK 10.5" S85°W 119.10' FT TO SPK MKD #1529BT

W. OAK 13.5" N37°W 69.14' FT TO SPK MKD #1529BT

6
Section Cor. Sec's 20-21-28-29
6" dia 24" Long Cyl Concrete Mon
w/3/2" dia. Brass Cap MKD.

T146N R29W

S20 S21

S29 S28

1934

"Orig B.T.s"

Fallen N. Pine 26" N1°E 70 Lhs - 46.20'

rotted P. Stump 24" S68°E 132 Lhs - 87.12'

N. Pine stump 24" S20°W 64 Lhs - 42.24'

Pine stub 20" N3°W 58 Lhs - 38.28'

"New B.T.s"

N. Pine 8" N68°E 58 Lhs - 38.28'
NOW 12"

N. Pine 14" S82°E 28 Lhs - 18.48'
NOW 19" X 40' TALL SNAG

N. Pine 7" S46 1/4°W 66 Lhs - 43.56'
NOW 16"

W. Pine 6" N44 3/4°W 15 Lhs - 9.90'
NOW 14 1/4" W / OLD LOCATION POSTER 10-19-47

9-06-2010 R.M.AIN

EJ MONUMENT IN PLACE UP 3" IN MATURE
REQ. E WHITE PINE

6 7 R-11

Quarter Cor. Sec. 21-28

6 Iron post 3'x1" w/brass Cap MHD.

4 (Found in place) $\frac{1}{4}$ $\frac{S21}{S28}$
1934

"Orig B.T.s" (Bearing & dist same)

W. Pine 28" N17°6 42 Lks - 27.72' WINDFALL

(Now a 23" pine stub 40' high scribe 1/4 5" visible)

Tam stp 7" S80 1/4° W 98 Lks - 64.68'

"New B.T.s"

N. Pine 12" N80 1/4° W 138 Lks - 91.08'

(Now a pine stp N80 1/4° W 91.08')

Tam 5" S20 3/4° W 55 Lks - 36.30'

(Now a 9" Tam. S20 3/4° W 36.3' scribe overgrown)

To perpetuate this corner I marked two new

Bearing trees:-

Tamarack ^{SMAG (2009)} S2°W 36.3' MKD 1/4 S28 BT

Oak ⁹ N43 1/2° E 22.6' MKD 1/4 S21 BT

NOW 13 1/2" (2009) 3/26/62 G.H. McDonald

40K steel sign post 72" long, set 24" in ground w/

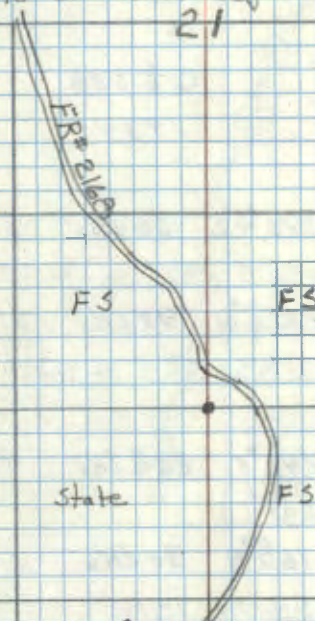
F.S. signs 54-2 & 54-4 attached due West 4.4 feet

Accident RHM
5680-11 RHM

R-11

CORNER IS ON NORTH EDGE OF A TAM. SWAMP

21



3-26-2009 R. MAIN J. SCHOONOVER
FD IRON IN PLACE LEANING CORNER ON
THE NORTH EDGE OF TAM SWAMP, YOUNG ASPEN
AND MATURE OAK NORTH OF IRON. STEEP
SLOPE NORTH OF SWAMP. FS 5" W OAK
BT BY ITASKA COUNTY BUT HAD NO INFO.

28

T-11

Center Quarter Cor. Sec. 28
Iron post 3'x1" w/brass cap MHD

(Found in place) C 1/4 S28
1934

Tam 10" S76 3/4° E 60 Lhs 39.60'
(Now a Tam stp. S76 3/4° E 39.6' scribed "S28")
N. Pine 24" N85 1/2° W 48 Lhs 31.68'
Now a 23" N. Pine N85 1/2° W 33.0' scribed "C 1/4 S28 BT"
Local B.T.
Tam 8" N49° E 26 1/2 Lhs 17.49'
(Now Tam stp N49° E 17.49')
J. Pine 12" S16 1/2° E 30 Lhs 19.80'
(Now a J. Pine stp S16 1/2° E 19.80')

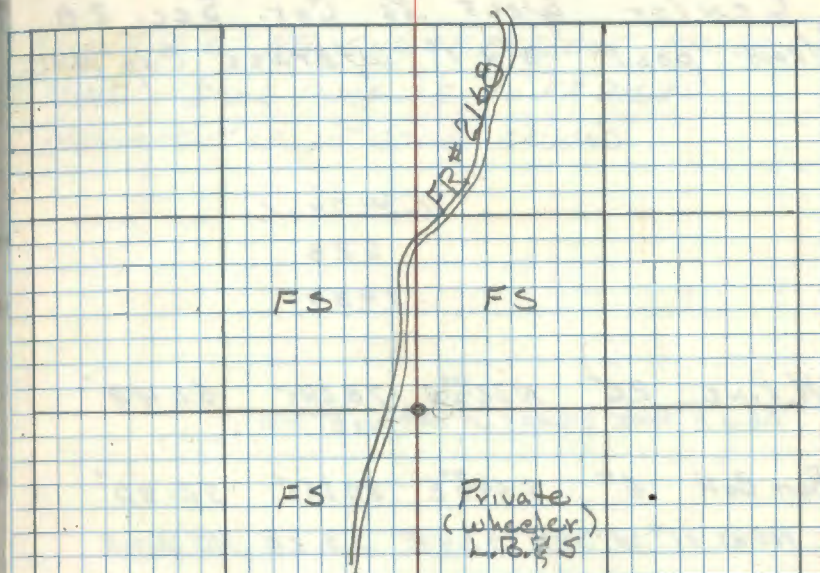
CEDAR 4X4 IS GONE

Cedar post 4"x4"x6.0' penta-treated w/ red top
South 1.9' 3/26/62 R.H. McDonald

GLO Norway pine BT is in good condition

Affidavit RHM
5680-11 RHM

T-11



9/30/93 R MAIN

FD IP IN PLACE UP ± 10". MONUMENT NOW
UP 4" AND WITNESSED BY:

GLO RPINE 26" N85° W 32.91 FT TO SPK - SCAR
Vestale
W OAK 4" N48° W 33.4 FT TO SPK MKD. BT
8 FT STEEL SIGN POST SOUTH 3.5 FT EAST 3.35 FT
FD FSLP ON 13" JPINE CORNER BEARS 2 CH EAST FROM
TREE. NO DATE BUT BELIEVE TOOR McDONALD.
Also FSLP ON CEDAR 4X4 FROM WHICH A CORNER BEARS
2.15 CH EAST. 4X4 placed by SCHLUTER 7/19/65

9
Center West $\frac{1}{6}$ Cor. Sec. 28
Iron post 3' x 1" w/brass Cap MHD.

C W $\frac{1}{6}$ C
S 28
1934

N. Pine 26" N $32\frac{1}{2}^{\circ}$ E 78 LKS 51.48'
NOW A PINE STUMP CUT OFF W/BT TAG

Burr Oak 6" S $64\frac{1}{2}^{\circ}$ E 80 LKS 52.80'
NOW 11" W. OAK S 64 E 53.28' NO SCAR

3-8-94 R. MAIN C. KRAUSE

Fd GLO IRON PIPE IN PLACE UP 8" AND BENT.

STRAIGHTENED AND WITNESSED WITH

GLOW. OAK 11" S 64 E 53.28 TO SPK SCRIBE OVERGROWN

NEW W. OAK 15" N 35° W 78.93 FT TO SPK MKD. CW $\frac{1}{6}$ S 28 BT

NEW W. OAK 8" N 13° E 55.78 FT TO SPK MKD. CW $\frac{1}{6}$ S 28 BT

CORNER IS AT THE END OF PRESENT BEAVER
POND - POND RUNS SE TO FR 2168 D
MONUMENT IS 10" ABOVE GROUND

10 T-12

Center East $\frac{1}{16}$ Cor. Sec. 28
 Iron post 3' x 1" w/brass Cap MKD.
 (Found in place marking corner.)

C E $\frac{1}{16}$ C
 S28
 1934.

Burr Oak 6" N78 $\frac{1}{4}$ °E 59 Lhs 38.94'
 (Now a 9" oak N78 $\frac{1}{4}$ °E 38.94' scribed "CE $\frac{1}{16}$ S28")
 Burr Oak 6" N59 $\frac{1}{2}$ °W 22 Lhs 14.52'
 (not Found.)

To perpetuate this corner I MKD 3 New BTs.

Oak 8" N18 $\frac{1}{2}$ °E 41.6 feet MKD CE $\frac{1}{16}$ BT

Oak 7" S51°W 39.95 feet MKD CE $\frac{1}{16}$ BT

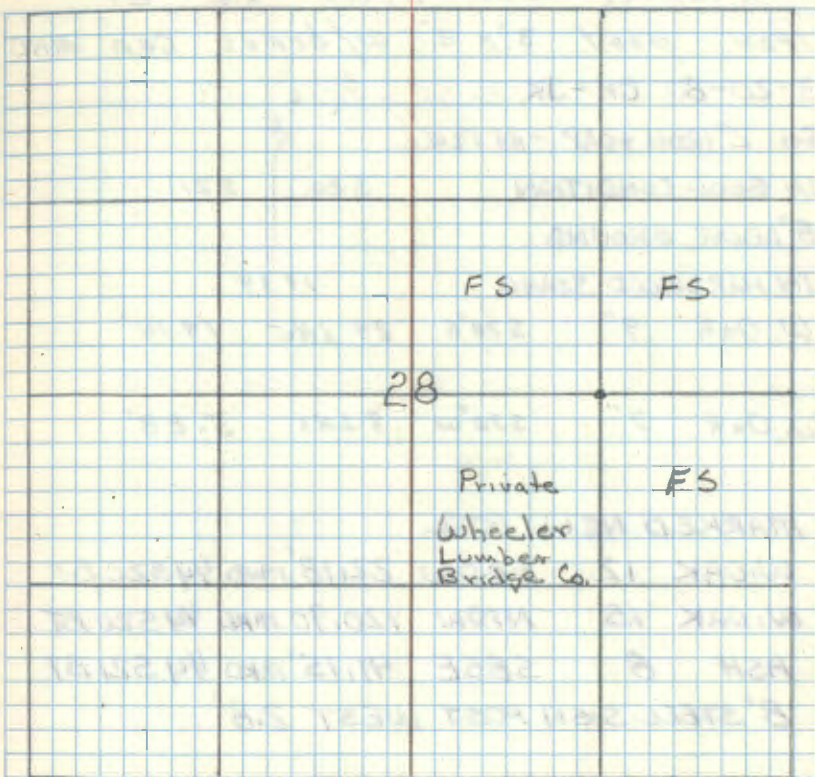
Oak 5" S86°W 20.7 feet MKD CE $\frac{1}{16}$ BT

3-1-63 *A.H.M. Donald*

Steel sign post 72" long set 24" IN ground w/
 signs 54-2 & 54-4 attached due South 4.4 feet.
A.H.M.

Affidavit RHM

T-12



Quarter Cor. Sec's 20-21

Iron post 3'x2" w/brass cap MKD

3-20-80 CK-JK

Fd. 2" IRON + CAP - IN PLACE $\frac{1}{4}$

IN GOOD CONDITION S20 S21

8" ABOVE GROUND

IN HARDWOOD STAND 1934

W. Oak 9" S70°E 29 LKs 19.14'

W. Oak 7" S70°W 8 LKs 5.28'

MARKED NEW BT'S.

W. OAK 12 S60W 22.18' MKD 1/4 S20 BT

W. OAK 15 N10W 120.90 MKD 1/4 S20 BT

ASH 8 S85E 41.15' MKD 1/4 S21 BT

8' STEEL SIGN POST WEST 2.8'

CORNER IS ON SIDE SLOPE - IN HARDWOODS

APPROX. 100' NORTH OF LOW DRAW BETWEEN

RIDGES - 1400' WEST OF FR 2168

FSLP ON ASPEN 10 ON WEST SIDE OF ROAD

12 N-9

Section Cor. Sec. 17-16-20-21

6" dia 24" Long Cyl. Concrete Mark.

W/3 1/2" dia. Brass Cap MKD.

Found in place

marking corner.

Approx 250' south

of FR # 2171

T146N R29W

S17 S16

S20 S21

19 34

"Orig B.T.s"

Stump Hole N74°E 44 Lks - 29.04'

double Birch 26" S20°E 42 Lks - 27.72'

Poplar 19" S50°W 37 Lks - 24.42'

stump Hole N20°W 19 Lks - 12.54'

"New B.T.s"

Burr Oak 7" N42 3/4°E 59 Lks - 38.94'

(Now 12" Oak N42 3/4°E 38.94' scribe visible) "T146N"

Maple 6" S32 1/2°E 89 Lks - 58.74'

(Now a decayed stp. S32 1/2°E 58.74')

Maple 9" S79°W 59 Lks - 38.94'

(Not Found)

Maple 11" N49°W 36 Lks - 23.76'

(Now 11" Aspen stub N49°W 23.76' scribed T146N R29W S17BT)

Affidavits RHM
5680-11 RHM

N-9

To perpetuate this corner I rescribe the

G.L.O. oak BT & new BTs

Oak 12" N42 3/4°E 38.94' MKD BT NOW 17"

Maple 6" S32 1/2°E 35.3' MKD S 21 BT NOW 9"

Maple 13" S89°W 29.4' MKD S 20 BT NOW 17"

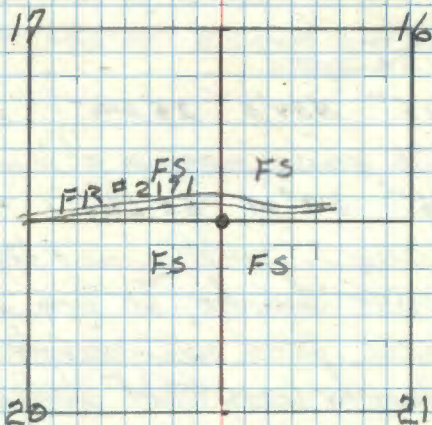
Ash 9" N16 1/2°W 40.9' MKD S 17 BT NOW 13"

3-23-62 G.H. McDonald

Cedar post 4x4x72 inches penta-treated &
CEDAR POST GONE R.M.

with red top set due North 0.95 feet w/ F.S.

sign 57-4 attached. G.H.M.



3-26-2009 R. MAIN J. SCHOONOVER

FOUND IN PLACE AND GPS

13 N-11

Quarter Cor. Sec's 16-21

Iron post 3'x1" w/brass Cap MHD.

Now pipe with

cap gone

$$\frac{1}{4} \frac{516}{521}$$

"Orig B.T.s"

W. Pine 24" N27°E 33 LKs - 21.78' -

Poplar 16" S9°W 30 LKs - 19.80'

"New B.T.s"

W. Pine 16" N34°E 26 LKs - 16.50'

Now a 22" with scribe overgrown at rear by dist

W. Pine 16" S7°W 63 LKs 41.58'

Now stp with scribe B.T. visible at rear by dist.

Set a 2" inside diameter, 60" long galvanized steel monument, filled with concrete and capped with a 3" diameter brass tablet stamped -

T146 N R29W

$$\frac{1}{4} \frac{516}{521}$$

1964

R.L.S. No. 6807

Affidavit

1-17-67 214E

N-11

W. Oberman
J. Ekstrom
9-8-64

Now stp with lag-scribe overgrown laying alongside

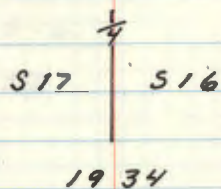
New B.T.s

W. Pine (G.L.O) 22" N34°E 16.5 feet rescribed "K"

W. Pine 16" S18°W 41.5 feet scribed 1/4 521 BT

B. Oak 7" N66°W 11.5 feet, with sign 54-d attached

Quarter Cor. Sec's 17-16
 Iron post 3'x2" w/brass Cap MRD.



"Orig B.T.s"

w. pine 17" S23°E 209 LKs - 132.94'

"New B.T.s"

t am 4" S75½°E 200 LKs - 132.0'

Maple 9" N46°W 213 LKs - 140.58'

Section Cor. Sec's. 8-9-17-16
 6" dia 24" Long cyl Concrete Mon.
 @ 3/4" dia Brass Cap M410.

T146N R29W

S8 S9

S17 S16

1234

Spruce 4" N64³/₄E 73 Lks - 48.18'
 GONE

Poplar 5" S10°E 23 Lks - 15.18'
 GONE

Poplar 5" S25°W 24 Lks - 15.84'
 GONE

W. Pine 12" N34¹/₂W 72 Lks - 47.52'
 NOW STUMP SOME BT SCRIBE VISIBLE

4-23-03 R. MAIN

FD MONUMENT IN PLACE UP 1" CORNER IS
 ON EDGE OF ALDER SPRUCE TAM SWAMP AND
 MIXED HARDWOODS. SWP EAST HARDWOODS WESTE
 FD FSLP ON 7" MADE BY LS 3/77 FROM
 WHICH CORNER BEARS N5°E 12 FT.
 GPS MONUMENT

Quarter Cor. Sec's 9-16
 Iron post 3"x2" w/brass Cap MHD.

$$\frac{1}{4} \begin{array}{r} 59 \\ 516 \\ 1934 \end{array}$$

"Orig B.T.s"

pine stp - S 65° W 88 LKs - 58.08'

W. pine stp - West 108 LKs - 71.28'

"New B.T.s"

W. Pine 14" S 36½° W 138 LKs 96.08'
 NO EVIDENCE FALLS IN CUT YOUNG ASPEN

N. Pine 24" N 73½° W 114 LKs 76.24'
 GLO PINE STUMP NO SCRIBE @ BRG & DIST

4-22-03 R. MAIN

Fd IRON IN PLACE UP 1 FT. MIXED PINE &
 HARDWOODS NORTH, YOUNG ASPEN SOUTH. FIND
 FSLP ON 18" ASPEN SNAG BY RB & LS 3/77 FROM
 WHICH CORNER BEARS EAST 5 FT.

Quarter Cor. Sec's 8-9
 Iron post 3'x2" w/brass Cap MKD.

Ed. 2" IRON + CAP. - IN PLACE

1/4

10" ABOVE GROUND

SB

S9

150' EAST OF SWAMP

IN ASPEN + BIRCH

1934

Poplar 8" S18°E 9 LKS - 5.94'

Ed. ROTTED STUMP AT S18E S9'

Poplar 7" N61°W 6 LKS - 3.96'

Ed. 13" ASPEN N61W 3.96' PART OF TOP BROKEN OFF

MKD NEW TIES

ASPEN 5 SBSE 33.95' SPK + TAG

BIRCH 10 S49E 35.89' " "

SPRUCE 12 S38W 30.12' " " FSLP

Meander Cor. Sec's 8-9.

South shore Kenogama Lake.

Iron post 3'x1" w/brass Cap MKD.

MC	
38	39
T146N	R29W
1984	

"Orig B.T.s"

Tan 8" N72°W 215 Lks - 141.90'

"New B.T.s"

W. Pine 12" S40°E 64 Lks - 42.24'

Spruce 10" S15°W 70 Lks 46.20'

Meander Cor. Sec's 4-9
S. East shore Kenogama Lake.

Temporary stake

"Orig B.T.s"

Tan. stp. N72°E 65 Lks - 42.90'

Tan stp. S43°E 40 Lks - 26.40'

Point Falls in shallow water

unsafe For. Corner. RUN S89°34'E

.22 Chains or 14.52' and set a

Iron post 3'x1" w/brass cap MHD.

	WC
	T146N
MC.	S4
	S9
	R29W
	1934

Tan 4" N32 $\frac{1}{2}$ °E 58 Lks - 38.28'

Tan 6" S73 $\frac{1}{4}$ °E 21 Lks - 13.86'

Quarter Cor. Sec's 4-9

Iron post 3'x2" w/brass Cap MKD

12/14/82. GB.

Fd. I.P. with B.C.

Set in place and $\frac{1}{4}$ S4
2.0' above grd. S9

1934

Birch 6" N21°E 18 Lks - 11.88'

Fd. no evidence of birch BT

Maple 5" S41°W 11 Lks - 7.26'

Fd. Maple, 11", S41°W at 7.26' from I.P.

4-24-03 R MAIN

Fd IRON IN PLACE LEANING. STRAIGHTEN
AND MARK BTS. YOUNG ASPEN SOUTH AND
EAST, MIXED HARDWOODS NORTH WEST.
GPSed IRON. IRON NOW UP 6".

GLO MAPLE 13" S41°W 6.80 FT TO SPK SCRIBE OVER
TAG BY CK-80-30-GB 12/14/82 GROWN

MAPLE 5½" N79°W 16.70 FT TO SPK MKD: X BT

BASSWOOD 5" N13°W 11.55 FT TO SPK MKD: S 4 BT

PIALE FSLP ON 12" MAPLE SOUTH SIDE OF WOODS
TRAIL 2364EA FROM WHICH CORNER BEARS SOUTH ± 270 FT.
CORNER IS ALSO ± 300 FT WEST OF FR2364E.

21
South $\frac{1}{2}$ Cor. Sec's 31-32
Iron post 3'x1" w/brass Cap MHD.

3/1/89 MONUMENT INTACT - GOOD SHAPE

S $\frac{1}{6}$
S31 | S32
1934

J. Pine 6" S3°E 46 LHS 30.36'
1/31/89 FOUND 35' HIGH SNAG - BURNED

J. Pine 8" S50°W 42 LHS 27.72'
1/31/89 - GONE - NO EVIDENCE

See BOOK #
Page 5

FOUND STEEL SIGN POST 8' W/SIGNS - DUE NORTH S.31'
NEW B.T.S.

R. PINE 7" S46°W 16.73' SCRIBED S $\frac{1}{6}$
S.31 BT + 20d SPIKE

R. PINE 8" S5°W 21.96' SCRIBED S $\frac{1}{6}$
S.31 BT + 20d SPIKE

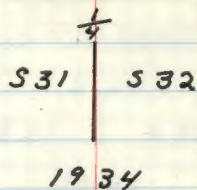
J. PINE 7" N20°W 15.81' SCRIBED S $\frac{1}{6}$
S.31 BT + 20d SPIKE

1/31/89 MAA, TJS, J.S. + C.C.

Placed 8' steel sign post east 4.2'. Signs
attached. line to standard north + east

82 X-5

Quarter Cor. Sec's 31 - 32
 Iron post 3'x2" w/brass Cap MKD.



J. Pine 9" N41°E 59 Lks - 38.94'
 (Now a Jack pine stump scribed "1/4 S32 BT" at record bearing ^{1/2} dist.)
 J. Pine 12" S39 1/4°W 38 Lks - 25.08'
 Now a 18" Jack pine w/ scribe partly overgrown at record bearing and distance - I scribed "BT" above blaze

To perpetuate this corner I set a 6 inch diameter 5 foot long cylindrical concrete monument capped w/ a 3 inch dia. bronze tablet stamped:-

T146N R29W
 1/4
 S31 | S32
 1963
 RLS NO 3628

From which
 Jack pine 5 inch N22°E 6.9 feet MKD 1/4 S32 BT
 Steel sign post 72" long set 24" in ground w/
 Signs 54-2 & 54-4 attached due South 3.9 ft.
 5-6-63 R. M. Donald

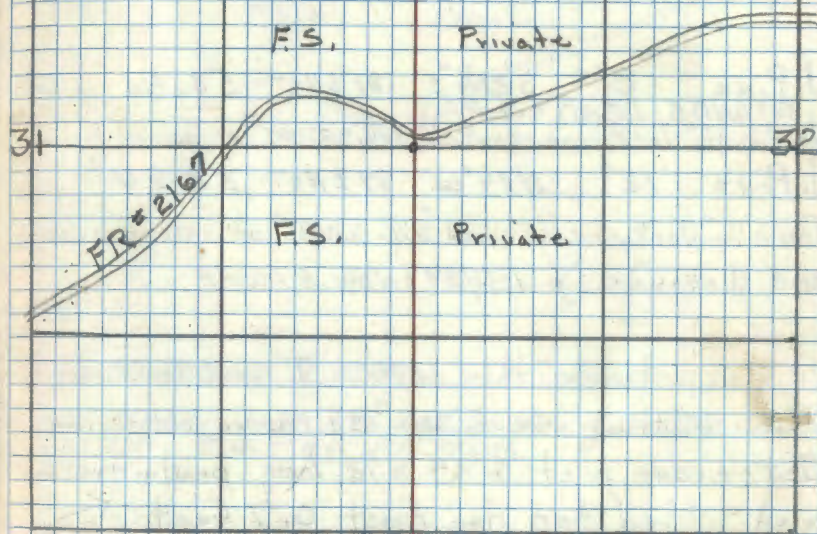
#fidavit RHM

6-14-63

X-5

T146N R29W

9-07-2010 R MAIN
 FD MONUMENT IN PLACE AND GPS. BTS
 DESCRIBED IN 1989 ARE GOOD. CLEAR CUT WEST
 PINE EAST. CORNER IS 1/4 365 FT SOUTH OF
 S MERLER ROAD (FR 2167)



2-2-89 C.R. J.S. G.B. C.B.

Found
 J. Pine 18" S39 1/4°W 25.08'

J. Pine 11" N22°E 6.9'

To perpetuate this corner I markers now BTS
 W. oak 12' N56°W 28.46' MKD 1/4 S31 BT
 W. oak 12" N20°W 36.79' MKD 1/4 S31 BT

23 W-5

North $\frac{1}{16}$ Cor. Sec's 31-32
 Iron post 3'x1" w/brass Cap MKD.

(Found in place marking corner.) N $\frac{1}{16}$
 531 | 532
 1934

J. Pine 8" S21 $\frac{1}{2}$ °E 81 LKs - 53.46 (1/31/89 STILL STANDING)
 (Now a 12" Jack pine scribed N $\frac{1}{16}$ S32BT" at record bearing & dist.)

J. Pine 12" N14°W 89 LKs - 58.74
 (Now a 16" Jack pine scribed N $\frac{1}{16}$ S31BT" at record bearing and distance.) 1/31/89 - NOW A STUMP

To perpetuate this corner I rescribed both G.L.O. bearing trees w/ "BT" above old scribe
 Set cedar post 4"x4"x72" long painted and w/ red top due East 0.7 Feet.

Steel sign post 72" long set 24" in ground w/ signs 54-25 54-4 attached due South 3.7'.

5-6-63 ~~Frank~~ Donald STILL THERE & PAINTED RED 1/31/89

NEW B.T'S

R. PINE 8" S44°W 17.64' SCRIBED N $\frac{1}{16}$ 5.31 BT + 20d SPIKE
 R. PINE 7" N78°W 12.95' SCRIBED N $\frac{1}{16}$ 5.37 BT + 20d SPIKE

1/31/89 MAJ + TEST.

SET sign Post 5.95' EAST OF CORNER

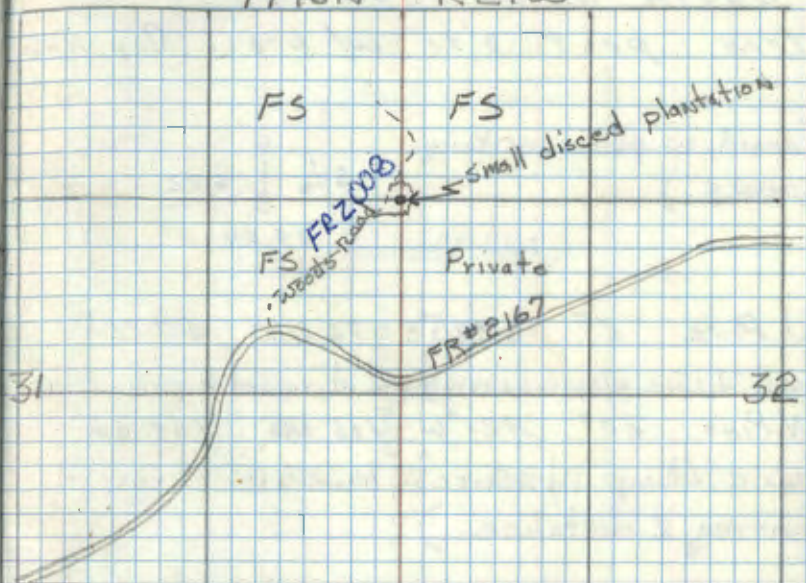
Heidavit
 RHM

CC DONE

T146N

W-5

R29W



9-07-2010 R. MAJEN

GRS IRON, 1989 B.TS ARE GOOD. CORNER IS 60 FT EAST OF FR 2008

24 Y-7
Center

South $\frac{1}{16}$ Cor. Sec 32.

Iron post 3'x1" w/ brass Cap MHD

(Found in place marking
corner.)

$S \frac{1}{16}$ } S 32
1934

J. Pine. 6" $S 28 \frac{1}{2}^{\circ} E$ 76 Lks - 50.16'

(Now 13" J. Pine w/ scribe overgrown at record bearing & dist.)

N. Pine. 20" $N 21^{\circ} W$ 166 Lks - 109.66'

Now a stump w/ scribe "CS $\frac{1}{16}$ S 32 BT" at record
bearing & distance.)

To perpetuate this corner I marked new BTs

Jack pine 10 inch $S 39^{\circ} E$ 7.25' MKD CS $\frac{1}{16}$ BT

Jack pine 7 inch $N 60^{\circ} E$ 23.25' MKD CS $\frac{1}{16}$ BT

Steel sign post 72 inches long set 24 inches in
ground w/ signs 54.2 & 54.9 attached due

North 3.0 feet 5-6-63 ~~THH~~ Donald

2/1/89 TREES STILL STANDING, CORNER
STILL IN GOOD SHAPE

JACK PINE 11 INCH $S 39^{\circ} E$ 7.25'

JACK PINE 11 INCH $N 60^{\circ} E$ 23.25'

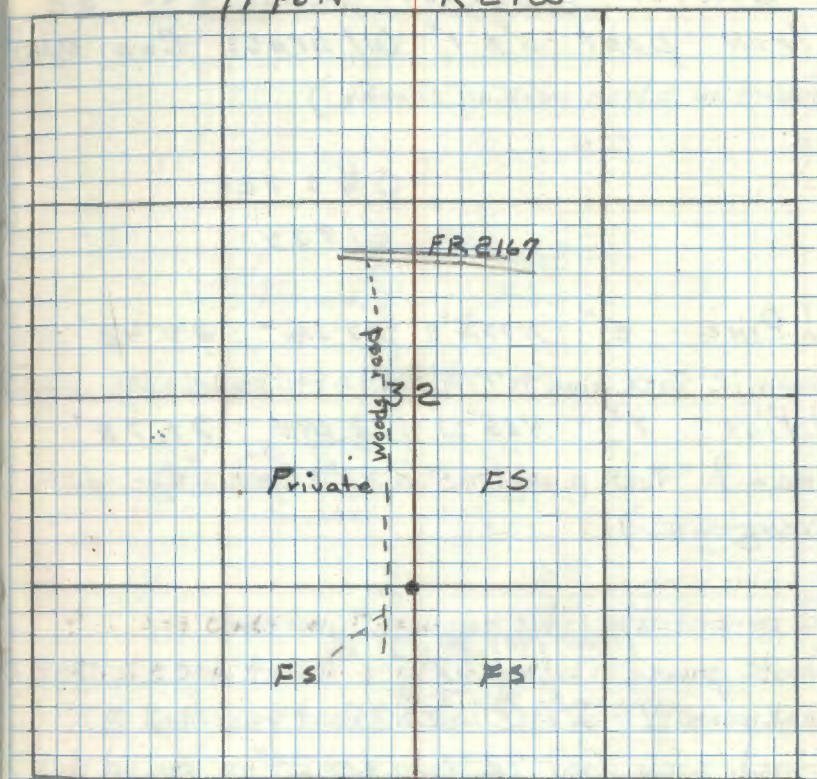
JACK PINE 15 INCH $S 28 \frac{1}{2}^{\circ} E$ 50.16'

Affidavit RHM

CC DONE

T146N

R 29W



25 X-7

Center Quarter Cor. Sec 32
 Iron post 3'x1" W/brass Cap MKD
 (Found in place marking corner)

C 1/4 S 32

1934

J. Pine 5" N77 3/4° E 37 LNs - 24.412'

(Now a 12" Jack pine N77 3/4° E 24.0 Ft. scribe partly overgrown)

J. Pine 4" N65° W 33 LNs 21.78'

(Now a 9" Jack pine N65° W 22.3 Feet. scribe partly overgrown)

To perpetuate this corner I marked

Jack pine (Now 13" ²⁻⁷⁻⁸⁹) 8 inch N67° E 6.6 Feet MKD C 1/4 S 32 BTJack pine (Gone ²⁻⁷⁻⁸⁹) 9 inch N65° W 22.3 Feet rescribed BT

Steel sign post 72" long set 24" in ground due North 3.9 Feet.

5-3-63 RHM McDonald

J. Pine N65° W - Gone, J. Pine N77° E now 14" J.S. G. B 2-7-89

To Perpetuate corner

Red Pine 16" S19° E 51.65 Ft MKD C 1/4 S 32 BT

Red Pine 4" S46° W 33.37 Ft MKD BT

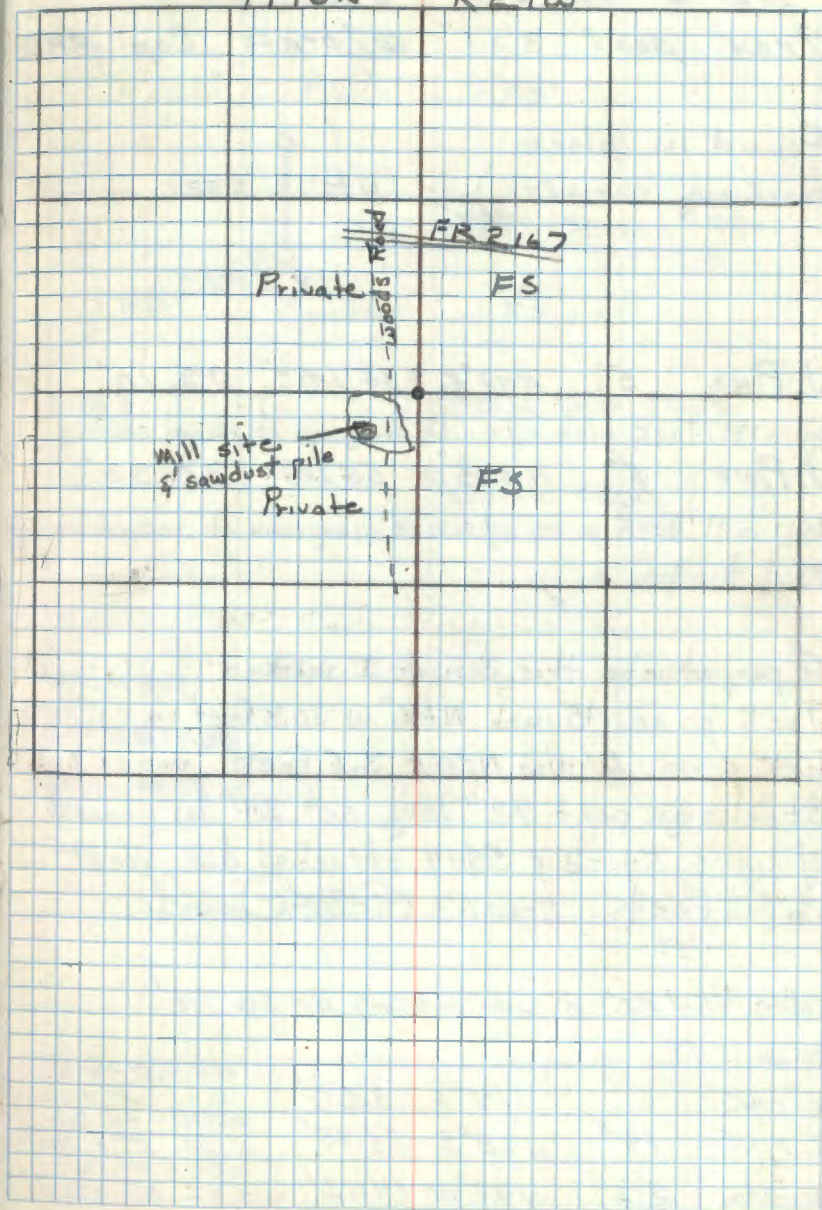
Set sign post 3.6' S of corner

Affidavit RHM
CC DONE

X-7

T146N

R29W

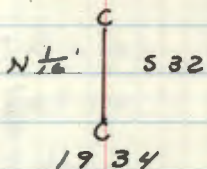


26 W-7
Center

North $\frac{1}{6}$ Cor. Sec. 32

Iron post 3'x1" w/brass Cap MKD.

(Found in place
marking corner.)
1/31/89 CORNER INTACT



J. Pine 5" N47°E 35 Lbs - 23.10' dist.
1/31/89 - DEAD - 30" HIGH
(Now a 13" Jack pine w/scribe overgrown at record bearing)

J. Pine 5" N89½°W 55 Lbs 36.30'
1/31/89 - STUMP
(Now a 11" Jack pine w/scribe overgrown at record bearing and distance)

To perpetuate this corner I marked
Jack pine 15 inch N66°W 30.8 feet MK CN 1/16 BT
1/31/89 NO REMAINS
Jack pine 6 inch N80°E 3.5 feet MKD CN 1/16 BT
1/31/89 IN PLACE
Steel sign post 72" long set 24" IN ground
w/ signs 54-2 & 54-4 attached due West
3.63 feet 5-6-63 G. M. Donald

STEEL SIGN POST 8' LONG W/SIGNS DUE SO. 8.1'

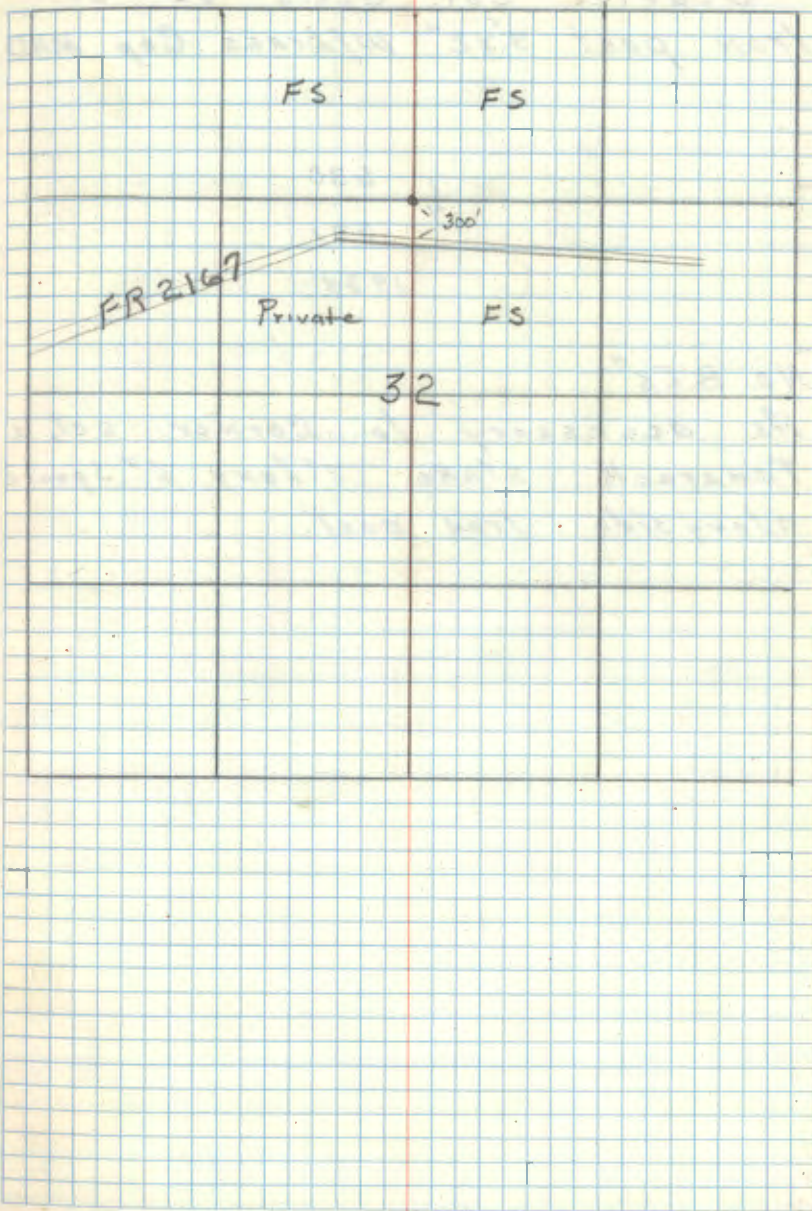
NEW B.T.S.

W. OAK	6"	S14°E	3.50'	SCRIBED CN 1/16
R. PINE	14"	N68°E	23.45'	S. 32 BT # 20d
W. OAK	5 1/2"	N40°W	14.12'	SCRIBED CN 1/16
				S. 32 BT # 20d

1/31/89 MAY = J.S.

Affidavit ^{rum}
CC DONE

W-7



Quarter Cor. Sec's 30-31.
 Iron post 3'x2" w/brass Cap MKD

1	S30
4	S31
1934	

"No. B.T.s"

As accessory to corner set, a
 Tamarack stake. 7' long 6" square
 along side iron post.

Section Cor. Sec's. 19-20-30-29
 6" dia 24" Long Cyl Concrete Mon
 w/3½" dia Brass Cap MKD.

T146N	R29W
-------	------

S19	S20
-----	-----

S30	S29
-----	-----

1934

"Orig B.T.s"

Fallen Cedar 5" N76°E 9 Lhs - 5.94'

Tam stump - S78°E 13 Lhs - 8.58'

Cedar Log 5" S89°W 15 Lhs - 9.90'

Tam stump 10" N20°W 24 Lhs - 15.84'

"New B.T.s"

Dead Tam stub 10" S36½°E 46 Lhs 30.36'

As an accessory to Corner set a
 6½' x 3½' tamarack stake along side
 The Corner.

Quarter Cor. Sec's 20-29

Iron post 3'x2" w/brass Cap MHD

3-17-80 CK-JK = JOHN KETCHUM

Ed. 2" IRON+CAP - IN PLACE

IN GOOD CONDITION $\frac{1}{4}$ 520

8" ABOVE GROUND 529

IN PINE-ASPEN+OAK 1934

ON SLIGHT KNOLL

N. PINE 12" N25°E 410 1/5 26.40'

NOW 18" N. PINE N25E 26.40' SCAR FACING CORNER

W. PINE 30" S54 3/4°E 62 1/5 - 410.92'

NOW 33" W. PINE S55E 409' SCAR FACING CORNER

8' STEEL SIGN POSTS N 3.5' + S 3.8' BOTH SIGNS

WOODROAD NE-SW 15 SOUTH OF CORNER 975'

PLACED FSLP ON 13" J. PINE ON NORTH SIDE

OF ROAD - PAINTED BLUE LINE BETWEEN

APPROX. CN 1/16 SEC. 29 AND 1/4 CORNER

9-8-2010 R. MAIN

Ed IRON IN PLACE AND GDS. BTS AND:

S. POSTS ARE GOOD.

30
Quarter Cor. Sec's 19-30.
Iron post 3'x2" w/brass cap MHD

$\frac{1}{4}$ $\frac{519}{530}$
1934

"Orig B.T.s"
Dead tan stub 8" N88°E. 11.98 ch-790.68

As accessory to corner set a
pine stake 6'x 3½" along side
iron post.

Meander Cor. Sec's 19-30.
Left Bank Mississippi River.

Iron Post 3'x1" w/brass Cap MKD.

	T146N	
M.C.	519	
	530	
		R29W
		1935

"No. B.T.s"

As an accessory to Corner
set a 5'x3" Cedar stake
along side of iron post.

Quarter Cor. Sec's 19-20

Iron post 3'x2" w/brass Cap MKD

Found post as described at corner position
but tipped North. I $\frac{1}{4}$ reset corner from the S19 S20
2 cedar BTs.

1934

"Orig B.T.s"

rotted Tam stp 18" S55°W 45 LKs 29.70'

"New B.T.s"

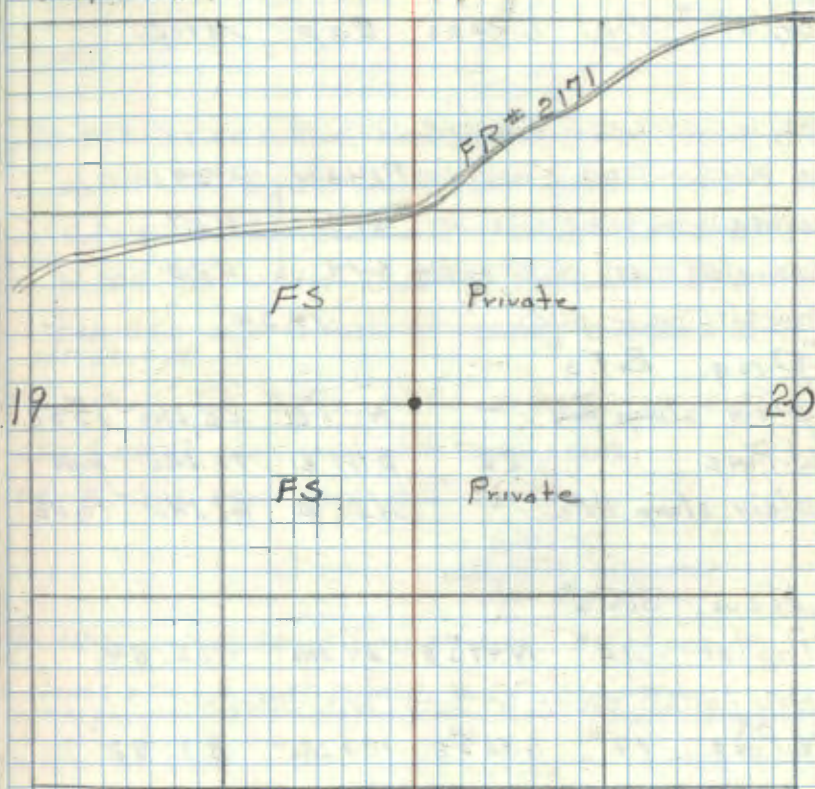
Cedar 6" N39 $\frac{3}{4}$ °E 37 LKs 24.42'(Now a 8" Cedar N39 $\frac{3}{4}$ °E 24.42' scribe partly grown over.)

Cedar 6" N44°W 4 LKs 2.64'

(Now a 6" cedar N44°W 2.64' scribe partly overgrown)

To perpetuate this corner I rescribed the
two GLO cedars and one new cedarCedar 8" N39 $\frac{3}{4}$ °E 24.42' MKD "BT" rescribe

Cedar 6" N44°W 2.64' MKD "BT" rescribe

Cedar 6" S2 $\frac{1}{2}$ °W 7.3' MKD S19 BTSteel sign post 72" long, set 24" in ground w/
FS signs 54-2 & 54-4 attached due North 3.5"8-7-63 *(Signature)*Brass cap is tipped needs resetting in summer
~~3-29-62 R1174~~

33 N-5

Section Cor. Sec's. 17-18-19-20
6" dia 24" Long Cyl. Concrete Mon.
w/3/2" dia. Brass Cap MID.

FD 6" CONCRETE CYLINDER

IN PLACE 3" ABOVE GROUND T146N R29W

CORNER IS ON RIDGE 10' ABOVE S18 S17

SWP. 1150' NORTH OF 3rd RIVER S19 S20

ROAD 2171 (TAG AT ROAD) 1934

"Orig B.T.s"

plain stump Hole - N77°E 22 LKs 19.52'

W. Pine 22" S47°E 10 LKs 6.60'

plain stump Hole - N65°W 21 LKs 13.86'

"New B.T.s"

Poplar 10" N49½°E 24 LKs 15.84'

NOW ROTTED STUMP AT BRG. AND DISTANCE

N. Pine 17" S56½°E 127 LKs 83.82'

Now 20" N. Pine S56½°E 83.82' scribing partly overgrown

Spruce 7" S48°W 77 LKs 50.82'

Now blunderain scribe "T146NR29WS19BT" S48°W 50.82'

Spruce 16" N62½°W 100 LKs 66.00'

Now stp. scribe "8 BT" visible N62½°W 66.0'

Mon. is tipped by blowdown needs resetting in
summer 3-29-62 RHMMonument reset deep creating files as noted
6-14-63 LWH

TO PERPETUATE THIS CORNER I SCRIBED 3 NEW B.T.S.

N. PINE 27" S45W 66.10' MKD T146NR29WS19 BT

N. PINE 21" S40E 76.63' T146NR29WS20 BT

W. OAK 10" N47W 73.51' T146NR29WS18 BT

RESCRIBED GLO N. PINE BT SCRIBE BURNED AND
ROTTED OUT

N. PINE 23" S57E 83.80' T146NR29WS20 BT

SET 8" STEEL POST NORTH 3.8' BOTH SIGNS

SET 8" STEEL POST EAST 3.2' BOTH SIGNS

2-9-79

Curt R. Kramer
John Ketchum

ORIGINAL W. PINE BT IS NOW WINDFALL SE OF CORNER

Lines north + east is mkd. to F.S. Standard.
Ed. corner + BT's in good condition. 3/16/82 Gary Cusma

34 N-7

Quarter Cor. Sec's 17-20
Iron post 3'x2" w/brass Cap MKD.

Found in place $\frac{1}{4}$ S17
2" under surface S20

29.0' south of E 1934

FR 2171

Burr oak 11" N37 $\frac{1}{2}$ E 90 LKs - 59.40'

Birch 10" S58 $\frac{1}{4}$ E 24 LKs 15.84'

Now a birch stub mostly decayed S58 $\frac{1}{4}$ E 15.84'
scribe partly visible.

Now falls in ditch area - AB

FS. post was found on a 3" Elm 2' south
of corner

Elm 13" S65°E 50.0' MKD $\frac{1}{4}$ S20 BT

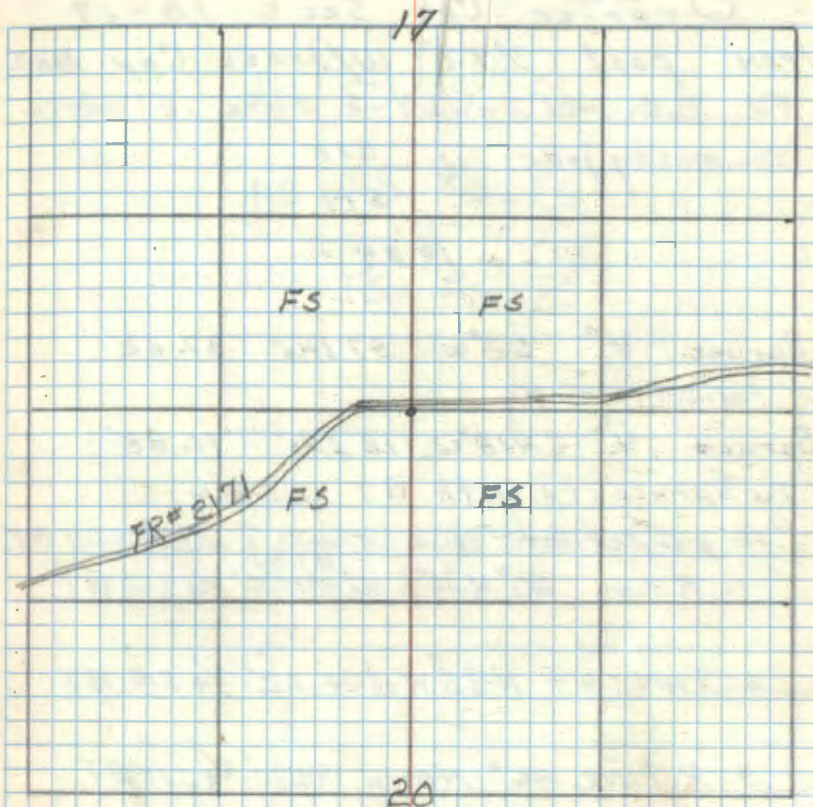
Maple 5" S34 $\frac{1}{2}$ W 32.2' MKD $\frac{1}{4}$ S20 BT

3-23-62 RH McDonald

Cedar post 4x4x72 inches, pent-treated
f/w/red top set due south 0.5 Feet w/ FS.
sign 54-9 attached. *RM*

Affidavit RHM
5680-11 RHM

N-9



1981 Hayes, Kraus, Brana, Sejanover
Found G.L.O. iron laying beside 1962 Maple B.T. Corner
position now falls in ditch. Iron was probably removed when
road was rebuilt. Reset iron in ditch from 1962 B.T.s. Measure
projects 2" above ground. *MCH* (Last line void)

6/23/82 Hayes & Brana

Got two new B.T.s single blazed & scribed
S. Maple 9" S44°E 82.53 to rail
Ash 7" N2°W 68.93 to rail

1962 BT Elm, now 15" with blazes overgrown w/scar
" " Maple now 8" with " " w/scar

MCH

Quarter Cor. Sec's 18-19

Iron post 3'x2" w/brass Cap MKD.

Fd. B.C. and I.P. set in place .2' above

the messy grd. $\frac{1}{4}$ $\frac{518}{519}$

1934

Spruce 4" S2°W 57 LKs 37.62'

Fd. no remains

Spruce 4" N18°W 18 LKs 11.88'

Fd spruce stp with "BT" visible

To perpetuate this corner I mkd new BTs

1. R. PINE, 20° N36°E at ^{187.30'} 188.30' $\frac{1}{4}$ 518 BT

2. TAM, 4" N85°W at 65.22' $\frac{1}{4}$ 518 BT

3. R. PINE 26" North, 199.80' $\frac{1}{4}$ 518 BT

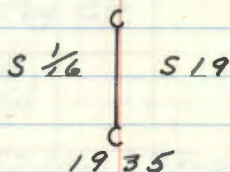
Placed 8' steel sign posts south 4.9'
and east 5.2' with both signs attached.
(54-244)

Line cast is mkd. to F.S. standard.

3/16/82 Gary Brama

FS	FS	S	FS
FS	FS	FS	FS
	FS	FS	FS

Center South $\frac{1}{6}$ Cor. Sec. 19
 Iron post 3'x1" w/brass Cap MHD



Birch 3" $S 58\frac{3}{4}^{\circ} E$ 34 LHs 22.44'

Birch 4" $N 8\frac{1}{2}^{\circ} W$ 38 LHs 25.08'

Center Quarter Cor. Sec. 19
 Iron post 3'x1" W/brass cap
 MHD.

C $\frac{1}{4}$ S 19
 1935

W. Oak 14" N76°E 34 LKs 22.44'

Birch 6" S20°W 19 LKs 12.54'

38 p-2

Center West $\frac{1}{6}$ Cor. Sec. 19.
Iron post 3'x1" w/brass Cap MKD.

(Found in place
marking corner.)

$\frac{W \frac{1}{6} C}{519}$
1935

Birch 6" N $9\frac{1}{2}^{\circ}$ E 15 Lks - 9.90'

(Now a decayed birch stump at record bearing & distance.)
w. Oak 6" S $44\frac{1}{2}^{\circ}$ E 32 Lks - 21.12'

(Now a 10" oak with scar facing corner, at
record bearing and distance.) I MKD BT

To perpetuate this corner I marked

Oak 9 inch S $74\frac{1}{2}^{\circ}$ E 4.8 Ft MKD C W $\frac{1}{16}$ BT

Elm 6 inch S 44° W 15.1 Feet MKD X BT

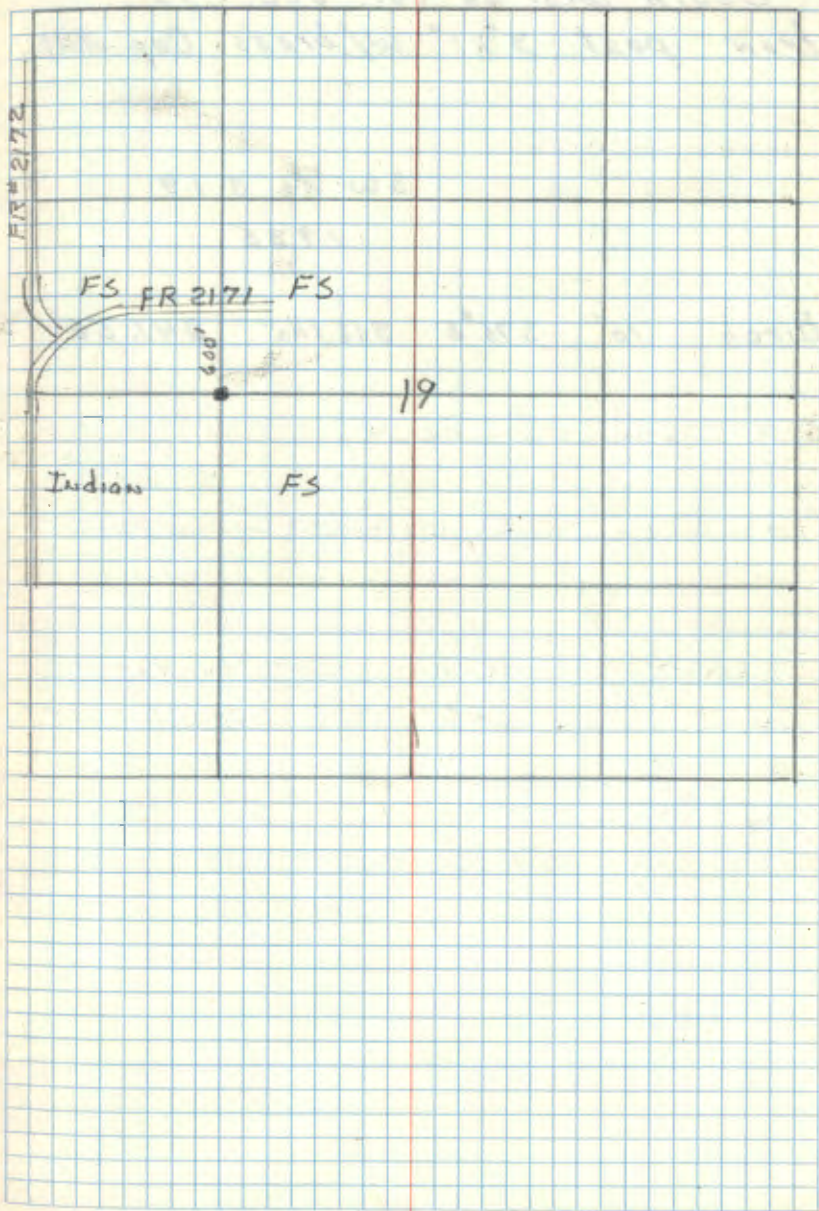
Steel sign post 72" long set 24" in ground

w/ F.S. standard signs 54-2 & 54-4 attached

due West 4.5 Feet 8-7-63 *A.H. McDonald*

Affidavit
RHM

p 2



South West $\frac{1}{6}$ Cor. Sec. 19
Iron post 3'x1" w/brass Cap MHD.

SW $\frac{1}{6}$ S 19

1935

Birch 10" S76°E 366 Lhs- 241.56'

40 1-5

Quarter Cor. Sec's 18-17
Iron post 3'x2" w/brass Cap MKD.

Fd. 2" DIA IRON POST-IN PLACE $\frac{1}{4}$
IN GOOD CONDITION-FROZEN IN ICE S18 517
IN DEAD TAM. $\frac{3}{4}$ SPRUCE SWP.

AREA WILL BE FLOODED BY FUTURE 19 34

IMPONDMENT-NOW BEING SURVEYED

TAM 3" N88 $\frac{3}{4}$ °E 7 LKs - 4.62'

NO EVIDENCE ABOVE ICE AT BRG. $\frac{1}{2}$ DISTANCE

Spruce 4" S58 $\frac{1}{2}$ °W 38 LKs - 25.08'
OLD FSLP AND BT TAG FACING COR.
NOW DEAD 7" SPRUCE S59W 25.1 SCRIBE VISIBLE

TO PERPETUATE THIS CORNER I SCRIBED 2 NEW BT

N. PINE 17 N59W 235.78' MKD $\frac{1}{4}$ S18 BT

N. PINE 22 S66E 226.13' MKD $\frac{1}{4}$ S17 BT

SET 8' STEEL POST NORTH 4.7' BOTH SIGNS

SET 8' STEEL POST SOUTH 4.0' BOTH SIGNS

2-13-79

Curtis R. Krauss

Fd. corner and BT's in good condition

Lines north & south are mkd. to F.S. Standard.

3/26/82 Gary Bunn

41 J-3

Quarter Cor. Sec's 7-18

Iron post 3'x2" w/brass Cap MKD.
(Found in place marking corner)

$$\frac{1}{4} \frac{57}{518}$$

1934

Burr oak 4" S56½°E 45 Lks- 29.70'

(Now a 12" oak S56½°E 29.7 feet scribe overgrown.)

Burr Oak 6" N34½°W 52 Lks- 34.32'

(Now a 14" oak N34½°W 34.32 Feet w/ scribe overgrown.)

Oak 8" N15½°W 38.4 Feet MKD ¼ S 7 BT

Oak 5" S34½°W 49.8 Feet MKD ¼ S 18 BT

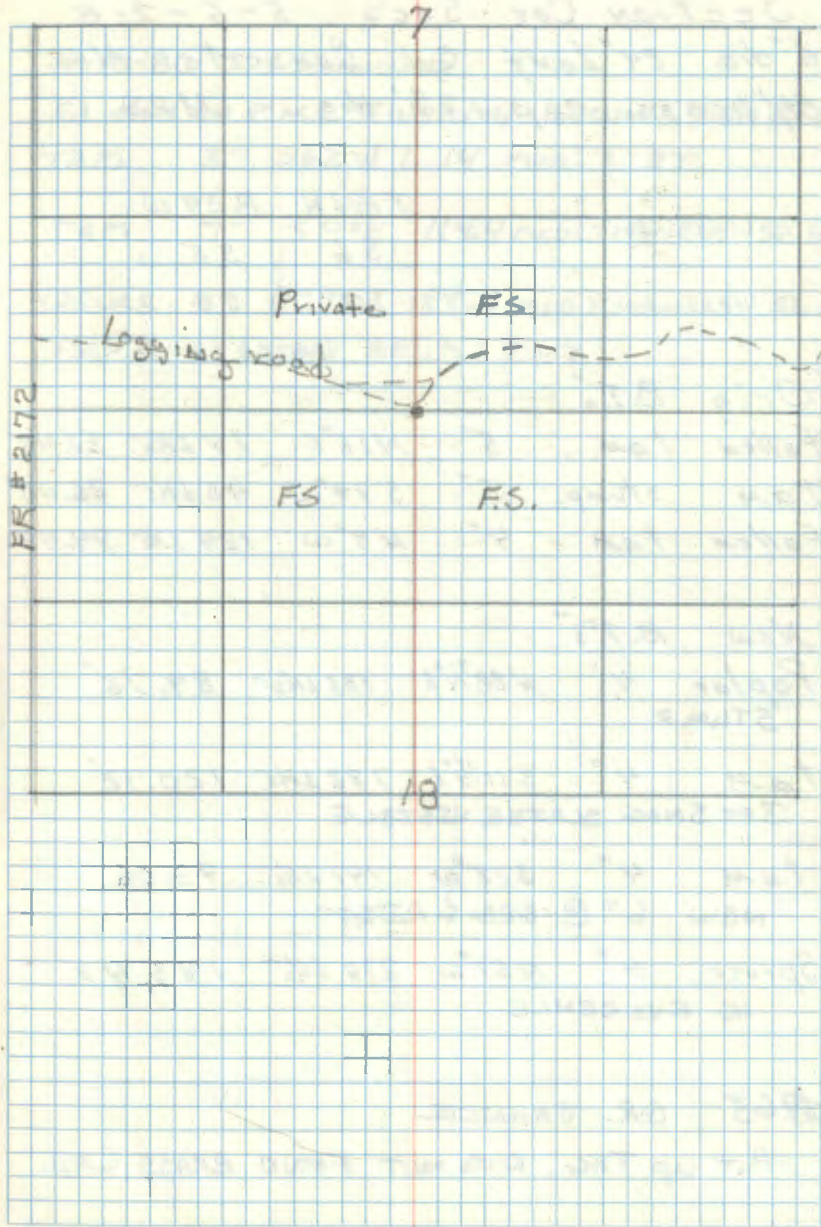
Oak 12" S56½°E 29.7 Feet Re-MKD ¼ S 18 BT

3-1-63 R.H.M. Donald

Gedar post 4x4x72 inches penta-treated
& w/ red top set due West 1.5 Feet with
signs 54-2 & 54-4 attached. RHM

Affidavit
RHM

J-3



42
Section Cor. Sec's 5-6-7-8
6" dia 24" Long Cyl Concrete Mon.
W/brass cap 3 1/2" dia MHD.

T146N	R29W
S6	S5
S7	S8

1934

"Orig B.T.s"

Fallen tam, 5" N16°E 78 Lks 51.48'
Tam stump, 6" S79°W 40 Lks 26.40'
Fallen tam, 4" N8°W 128 Lks 84.48'

"New B.T.s"

Poplar 4" N88 3/4°E 136 Lks 89.76'
STUMP

Tam 4" S11 1/2°E 182 Lks 120.12'
3FT SNAG SCRIBE VISIBLE

Tam 4" S15°W 141 Lks 93.06'
NOW 6" @ BRG & DIST

Spruce 4" N57°W 278 Lks 183.48'
NO EVIDENCE

GR63 GR. JAHNKE

PUT UP TAG. DID NOT FIND BRASS CAP.

12-10-80 J-SCHOONOVER

FD MON IN PLACE FLUSH/W/ GROUND. NEW B.T.S
TAM 3" S62W 6.14 MKD: X BT

TAM 7" S9°E 114.4 MKD: T146NR29WS8 BT

SPRUCE 5" N77°W 133.5 MKD T146NR29W S6 BT
FSLP ON 6" SPRUCE S86°W 29.7

Quarter Cor. Sec's 5-8
 Iron post 3'x2" w/brass Cap MHD.

$$\frac{1}{4} \frac{55}{58}$$

1934

Birch 6" S89½°W 23 LHs- 15.18'

Birch 4" N5¾°W 14 LHs- 9.24'

44 E-3

Quarter Cor. Sec's 6-7
 Iron post 3'x2" w/brass Cap
 MHD. (Found in place marking corner)

$$\frac{1}{4} \begin{array}{l} 56 \\ 57 \end{array}$$

1934

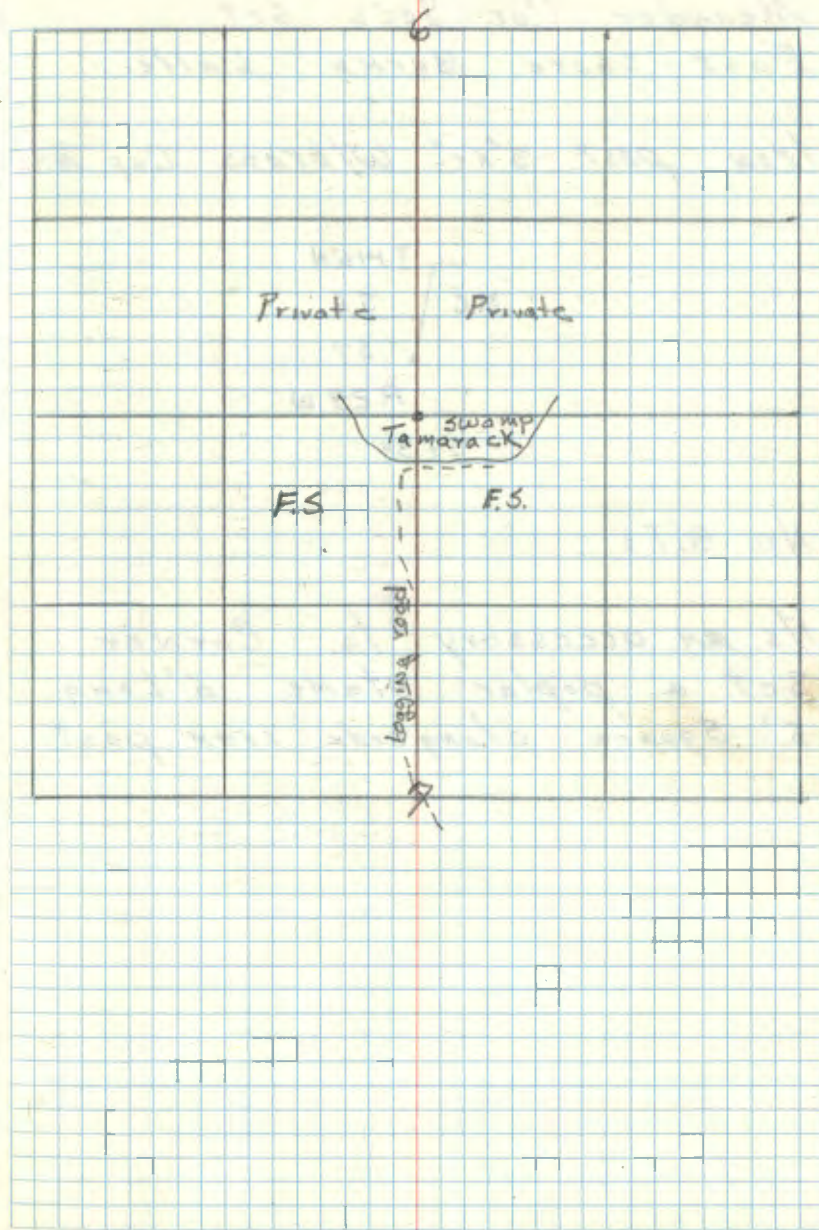
Tam 4" N61 $\frac{1}{4}$ °E 27 Lks - 17.82'
 (Now a 6" tam N61 $\frac{1}{4}$ °E 17.7 Feet scribe overgrown.)
 Tam 4" S22°E 35 Lks 23.10'
 (Now a 5" tam S22°E 23.55 Feet scribe overgrown.)

Tamarack 7" N70°W 11.2 Feet MKD $\frac{1}{4}$ S6 BT
 Tamarack 6" N61 $\frac{1}{4}$ °E 17.7 Feet Re-MKD $\frac{1}{4}$ S6 BT
 Tamarack 5" S22°E 23.55 Feet Re-MKD $\frac{1}{4}$ S7 BT
 3-1-63 *A. H. McDonald*

Steel sign post 72" long, set 24" in ground
 with F.S. standard signs 54-2 & 54-7 attached
 due West 4.0 Feet *A. H. M.*

Affidavit RHM

E-3



45
Meander Cor. Sec's 6-7
East shore Borne Lake.

Iron post 3'x1" w/brass Cap MHD

	T146N
MC	56
	57
	R29W
	1934

No. B.T.s

As an accessory to Corner
Set a poplar stake 6' Long
5" Square alongside iron post.

Quarter Cor. Sec's 5-6
 Iron post 3'x2" w/brass Cap
 MHD.

1/4
 56 | 55

1934

"Orig B.T.s"

Tam 6" N56 $\frac{3}{4}$ °E 11 LHs 7.26'

Tam sp N63 $\frac{1}{4}$ °W 21 LHs 13.86'

"New B.T.s"

Tam 5" N70 $\frac{3}{4}$ °E 25 LHs 16.50'

Tam 5" S29 $\frac{1}{4}$ °W 19 LHs 12.54'

Sec Corner Sec's 26-27-34-35

Con. Mon 24" x 6" 20" in ground with brass
cap

Original Bearing trees

A plain stump hole N 37° E, 47 lbs

Norway pine stub 28° N 88° W, 155 lbs

New C.L.O. B.T.'s:

Norway pine 6" N 41° E, 6 lbs mtd T146N R29W 526 BT

Norway pine 9" S 9° E, 4 lbs mtd T146N R29W 535 BT

Norway pine 11" S 34½° W, 14 lbs mtd T146N R29W 534 BT

Norway pine 11" N 7½° W, 16 lbs mtd T146N R29W 527 BT

Notes for this corner are in

Book # 1 page 37

48 V-21

Sec. Corner Secs. 25-26-35-36

Con. Mon. 24" x 6" 20" inground with brass
cap mtd.

T146N R29W
S26 S25
S35 S36
1934

No trees available - South 20hs level marsh
with wash sand surface (also point for
true M.C.)

Corner is now in lake 1400 to 1500'
set a Witness corner to section corner
by projecting line thru 1/4 corner
& sec corner to west to point
900' East of 1/4 cor between S26 & S35

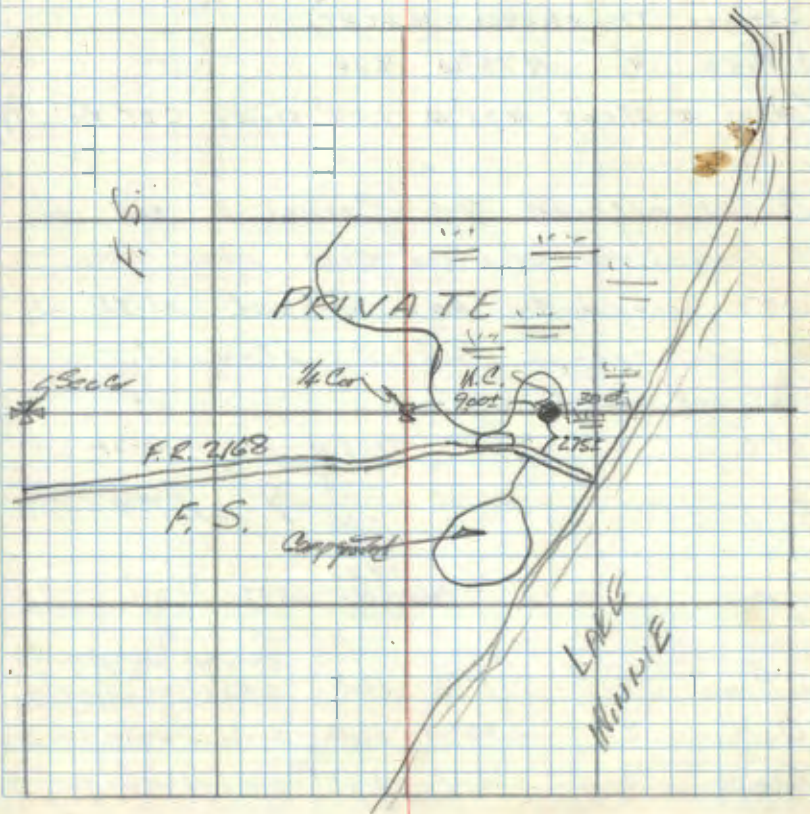
Set galvanized steel monument, 2" diameter
filled with concrete and capped with a 3"
diameter brass tablet marked

T146N R29W
S 26 S25
S 35 S36
W.C. →
1966
R.L.S. NO. 6807

V-21

 #FF:lavit
 1-17-67
 DITE

New B.T. S.
 Oak 14" S 62° W 347 feet scribed WCS35 BT
 Elm 13" S 21° W 529 feet " WC S35 BT
 Oak 15" N 83° E 196 feet WCS25 BT
 Cedar post 4x4x60' with red top due East
 47 feet with signs 54-2 & 54-4 attached

 High Leg
 O'Brien
 O'Brien
 O'Brien


49 V-8,9

Meander Cor. Sec's 29 & 32

Iron post 3' long 1" dia with
brass Cap stamped

Found in place	7146N	
ON River shore.	529	MC
	532	
	R29W	
	1934	

J. Pine 6" 544°W 11.22'

(Now a J. Pine stub 6' High 544°W 10.17

scribed T146N R29W 532 MC BT)

J. Pine 4" N73°W 9.24'

(Now a stump N73°W 9.24' scribe CBT visible)

To perpetuate this Corner I set a
5' long 2" dia galvanized steel pipe filled
with concrete and capped with a
3" dia bronze tablet stamped
and set west.

35.0.	T146N	} 10-21-67 James Johnston
	R29W	
WCMC	529	
	532	
	R29W	
	1967	
	RLS NO 6807	

J. Pine 12" N11°E 13.3' (F.S. sign copy attached)
scribed WCMC 529 BT

Oak 9" 552°W 21.8' scribed WCMC 532 BT

Oak 8" 511°E 32.45' scribed WCMC 532 BT

~~47,8~~

RIF: davis

Johnston
10/30/67

50 X-12

Center East $\frac{1}{4}$ Sec. 33

iron post 3' long 1" diameter

Found remain of GLO Brass Cap
Stamped;

No Bases Available

C E $\frac{1}{4}$ C
S 33
1934

New BT's

Red Pine 13" 29.27' N 2° W scribed CE $\frac{1}{4}$ S 33 BT

Red Pine 9" 29.76' N 70° W scribed CE $\frac{1}{4}$ S 33 BT

V. Pine 6" 15.84' S 74° W scribed CE $\frac{1}{4}$ S 33 BT

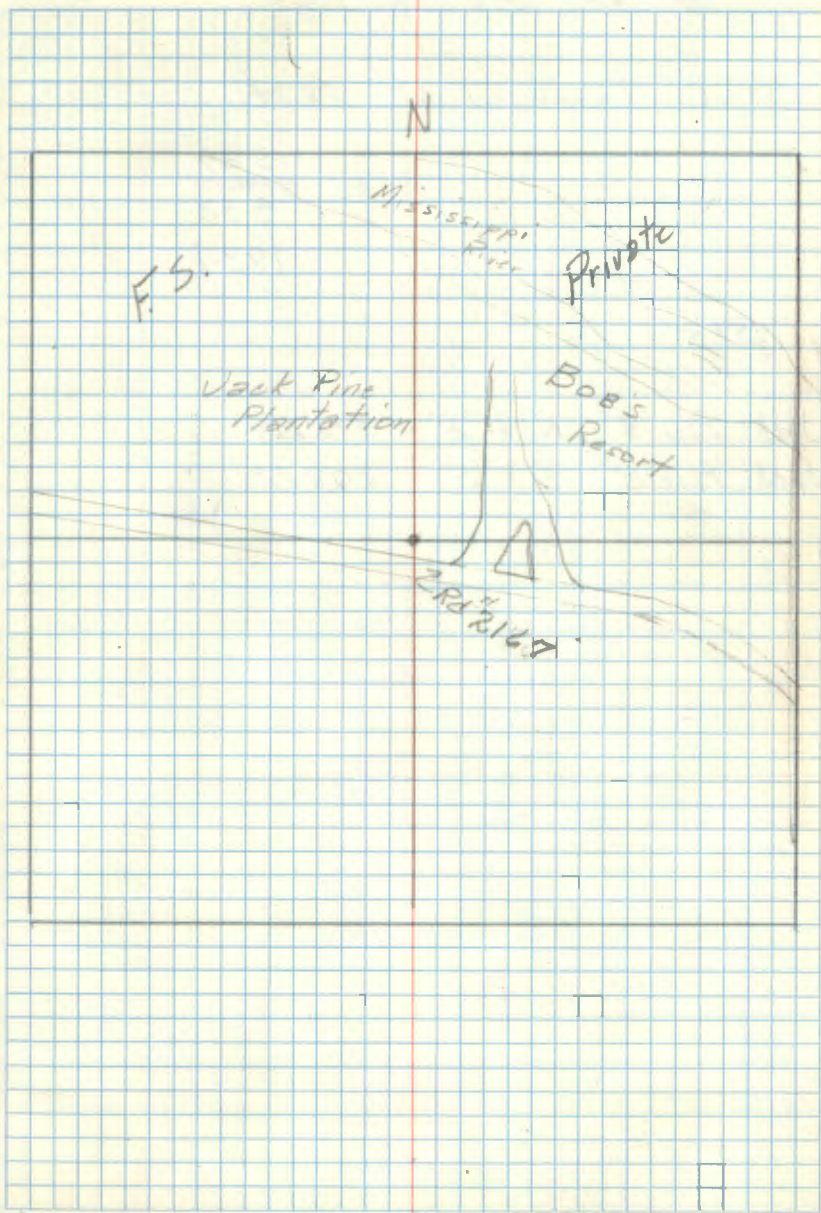
4" x 4" x 72" long cedar post with standard
FS signs 54-4 & 54-2 attached, Set
Due South - 4.9'

11/6/68

[Signature]

X-12

Affidavit



1/4 Cor. bet. sec's 29 f 22

GLO Resurvey of 1934

1/4 $\frac{529}{532}$
1934

BT's

Jack Pine 5" N 41° E 516 Lts

Jack Pine 8" S 2° E 209 Lts

52 U, V-9

M.C. bet. Sec's 28 & 29

Iron post 3' long 1 inch dia.

529/528

found good
Condition
M.C.
1934

Jack Pine 12" N84°E 14 Lks -9.24'

found at bearing & dist. scribe visible

Jack Pine 8" N51°W 39 Lks 25.74'

found at bearing & dist. scribe grown over

Jack Pine 14" N84°E 9.18'

PINE WAS DEAD w/SCRIBE

NOW J. PINE STUB 17" X 36" HIGH N84E -9.18'

Red Pine 10" N15°W 42.66 M.C. 529 BT

NOW 13.5" N. PINE N15W -42.66' SCRIBE VISBLE

Jack Pine 12" N51°W 25.74'

SCRIBE VISIBLE

NOW 12" J. PINE STUB 36" HIGH N51W -25.74'

4x4x72" long set due North 64 ft

with standard F.S. sign 54-4 5'

54-8. attached

11/7/68

Lyle Elliott

Affidavit

5-9-94 RM & CK
NEW BTS.

CAP IS 12" ABOVE GROUND

R PINE 17" N38°W 54.85 FT TO SPK M.C. 529 BT

WOAK 10" N65°W 7.27 FT TO SPK M.C. 529 BT

SW CORNER OF CABIN N18E - 27.30'

4x4 IN PLACE 6.4' NORTH OF COR.

IRON ON SIDE HILL - 5' ABOVE SWP. GRASS

15'± NORTH OF WATER

53 V, W-9

M.C. Bet. Sec's 32 & 33

Iron post 3' long 2" dia.

GLO Resurvey Notes of 1934

M.C.

S 32 S 33

Found 9' 1934

BT's

Birch 5" N74°W 36 LKS - 23.76'

found 9" at bearing & distance

Jack Pine 3" N80°E 44 LKS, 29.04'

Found Now 7" at bearing & dist

New BT's

Jack Pine 10" 38.62' S89°E scribbled M.C. 532

Red Oak 9" 33.30' S79°W scribbled M.C. 532

4x4 70" long cedar post with

standard FS sign 5' dia

at end Due South 13.2 ft

11/7/68

V, W-9

Affidavit

H-7-96 R. MAINE STILL 2 FT OF SNOW. 35°

FD GLO IRON IN PLACE ON SOUTH BANK OF MISSISSIPPI RIVER 20 FT FROM WATERS EDGE ON 70% SLOPE o GLO JUNE AND 1968 BEARING TREES ARE DOWN o TO MUCH SNOW TO SEARCH o MONUMENT WITNESSED AS FOLLOWS o

GLO BIRCH 11" N74W 23.76 FT SCRIBE OVERGROWN (TWIN)

BIRCH (CLUMP) 9" S60E 8.60 FT TAPK NOT MKD

WOOD POST 4X4 SOUTH 13.33 FT TO #16 NAIL

54 VSW-5

M.C. Bot. Seed 31 & 32.

3' long 1" dia. iron post

G.L.O. Resurvey Note of 1934.

Good
Sound
condition

M.C.	
S31	S32
T146N	R29W
1934	

Jack Pine 7" S43°E 131 Lks - 86.46'

Now a 13" Pine at bearing & dist scribe visible

Jack Pine 12" S15½°W 150 Lks - 99.00

Now a 3' high stump at bearing & dist scribe visible

New Bl's

Jack Pine 9" S56°E 39.13 scribed, M.C. S32 BT

W. Oak 7" S47°W 17.75 scribed M.C. S31 BT

Jack Pine 6" S50°W 3.5' with signs scribed
attached

11/8/68

Lyle Ellent
Curt Krause
Henry Bengtson

VSW-5

17 ft dia. pit

55 V-4,5

M.L. Bet Sec's 30 & 31

iron post 3' long Indian.

G.O. Resurvey Notes of 1934

T146 N

found

S30

S31

M.L.

R29 W

1934

Jack Pine 5" S80°W 1242ks - 81.84'

Now a stump

Jack Pine 8" N 17 1/2°W 1022ks - 67.32'

Now a 17" in good

~~Set a 5' long 2" dia galvanized pipe
filled with concrete, with a 3" dia
bronze tablet stamped;~~

~~T146 N R29 W~~

~~S30~~

~~S31~~

~~1968~~

~~R.L.S. No. 6807~~

11/8/68

V-4,5

Affidavit

New B's

Jack Pine 9" 14 1/2° N4°W scribed M.L. S30 BT

W. Oak 7" 69.51 N38°W scribed M.L. S30 BT

Jack Pine 17" 67.32 N17 1/2°W

Section Cor. Secs. 7-8-17-10

6" x 24" long Concrete Cyl. Mon.
with 3 1/2" dia. Brass. Cap MKD.
Fd conc. cyl. with B.C.

set in place and set
5" above grd.

T. 146N	R. 29W
S7	S8
S18	S17

1934

Original Bearing Trees

1. Live N. Pine ^{18"} ^{58"} N88 1/2° E 291ks. 13.20'
Now Pine Stp. N52° E at 13.20' Scribe mks. burped
Blaze vis. no scribe

2. Live White Pine 20° S42° E 61ks. 3.96'
Now Pine Stp. S42° E at 3.96' Scribe visible
Axe mks. vis.

GLO placed "BT'S" on each tree.

New B.T.S.: GLO

1. N. Pine 22" N88 1/2° E 291ks. 19.14'

Now Pine Stp. at N89° E at 19.14'. Blaze vis. no scribe

2. Poplar 4" S39° E 571ks. 37.62'

Fd. no remains

3. Poplar 4" N22° W 221ks. 14.52'

Fd. no remains.

To Perpetuate this corner I mkd. New BT'S:

1. R. Pine 24" S3° W 316.0' ^{→ New tree falls in Sec. 17.} T. 146N R. 29W S17 BT

LOGGED OFF 2/13/03

2. W. OAK 10" S87° W 98.95 T. 146N R. 29W S18 BT

OK

3. W. OAK 3" N70° W at 32.12 X BT

BEAVER KNOCKED DOWN 2/13/03

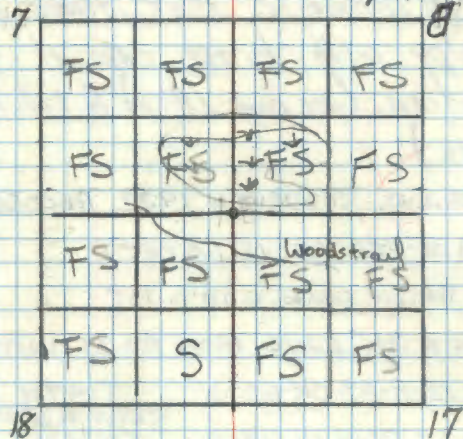
4. W. OAK 5" S75° E at 33.50' S17 BT

OK

Placed 8' Steel Sign Post with 54-4 attached 2.75' from corner (North)

Placed a F.S. LP, ON N.P. 17° S6° W at 397.0' on south side of woods trail (beats NW-SE) 20'.
Corner falls approx. 30' south of a open marsh.

3/17/82 Mary Brama



A-25 T146 N R 31 W
North East Township Corner

The 1934 G.L.O. notes for T146 N R 29 W state that they recovered the 1932 G.L.O. 2" iron post w/brass cap. The 1932 notes have never been made official so all that is known is that there is a 2" pipe with brass cap at this location. (see page 18 of G.L.O. Resurvey Notes)

NOTES BY G.L.O. RESURVEY 1932 RECORDED IN

T147 N R 29 W (SEE ABOVE NOTE-)

RESTORED FROM ORIG. GOVT. BT

SET 2" DIA X 36" LONG IRON POST WITH BRASS

CAP MKD. 12-8-83 CK-66-SA T147 N

FD. 2" IRON POST W/CAP IN PLACE R29W R28W

6" ABOVE GRD. IN MOUND OF STONES 536 | 531

FROM WHICH T146 N

1932

POPLAR 8 N64E 32 LKS. 21.1'

NOW ASPEN STP. N64E 21.1' ROTTED NEARLY LEVEL

POPLAR 12 S9E 20 LKS. 13.2'

NOW 36" HIGH ASPEN STUB S9E 13.2' OVERGROWN SCRIBE

ELM 6 S45W 52 LKS. 34.3'

NOW DEAD ELM SNAG 10' HIGH S45W 34.3' OVERGROWN SCRIBE

POPLAR 12 N24W 31 LKS. 20.5'

NOW ASPEN STP. N24W 20.5' ROTTED NEARLY LEVEL

PUT FSLP ON BASSWOOD 8 N60W - 9.0' FROM COR.

TRAIL TO SOUTH OF CORNER IS 865' BR. NW-SE
FSLP ON 14" BIRCH 885' S2E OF CORNER ON S
SIDE OF TRAIL

FSLP ON 5" IRONWOOD APPROX. 950' N81W OF COR.
ON W SIDE OF WOODS TRAIL NW-SE
ALSO HAS STATE TAG

SET 2" X 7' BASSWOOD POST BESIDE 2" I.P.
NEEDS NEW BT'S AND SIGN POST 12-8-83 CK

C-25 EAST QUARTER CORNER TO SEC 1

NOTES OF ORIG. GOV'T. SURVEY 1875

TAM. S34E 11 LKS. 7.3'

GLO FOUND TAM STP. S34E 7.3' WELL ROTTED

TAM. N35W 21 LKS. 13.9'

GLO FOUND TAM STP. N35W 13.9' WELL ROTTED

NOTES OF G.L.O. RESURVEY OF 1934

FOUND REMAINS OF ORIG. B.T. STUMPS

SET 2" X 36" IRON POST WITH CAP MKD.

12-16-83 CK GB-JA

Fd. 2" IRON POST AND CAP IN PLACE 51 | 56

8" ABOVE SWP. MOSS 1934

NEW BEARING TREES 1934

TAM 4 N73E 8 LKS. 5.3'

NOW DEAD 7" TAM SNAG 20' HIGH N73E 5.3' ^{SCRIBE} ^{OVER GROWN}

SPRUCE 6 S45 1/2 W 42 LKS. 27.7'

NOW 10" SPRUCE STP. S45W 27.7' SCRIBE VISABLE

PUT FSLP ON 8 TAM. S18E - 140' FROM IRON IN SWAMP

450'S LV. SWP. ASCEND ASPEN & BIRCH RIDGE E-W

548'S ♀ OF WOODS TRAIL E-W

565'S FSLP ON 14 BIRCH ON SOUTH SIDE OF TRAIL

STATE HAS LOGGED SWP. N-S TO WEST OF CORNER

F.S. HAS MKD. TIMBER TO EAST OF CORNER THIS YEAR

NEW ROAD SURVEY AT TRAIL TO SOUTH OF CORNER HAS

TIED INTO THIS CORNER AND SEC. COR. TO SOUTH

12-16-83 CK

BLAZED LINE FROM TSA COR. TO 1/4 COR. VERY GOOD

SECTION CORNER TO SECTIONS 1-6-7-12

NOTES OF G.L.O. RESURVEY 1934

SET 6" X 24" CONCRETE CYLINDER WITH
BRASS CAP MKD.T146N
R29W R28W

12-16-83 CK-JA-68

FD. 6" CONG. CYL. IN PLACE

51 | 56

6" ABOVE GRD. AT E EDGE OF SWP.

512 | 57

1934

FROM WHICH

SPRUCE 5 N64½E 47 LKS. 31.0'

FD. SPRUCE STP. N64E 31.0'

SPRUCE 9 S72½E 73 LKS. 48.2'

NO EVIDENCE NOW 16" SNOW DEPTH

BIRCH 6 S35W 52 LKS. 34.3'

NO EVIDENCE NOW 16" SNOW DEPTH

TAM 5 N63W 46 LKS. 30.4'

NO EVIDENCE NOW 16" SNOW DEPTH

CHAINED SW. 2642' FELL 8' E OF CORNER AT EDGE
OF RIDGE TO E AND SWAMP TO WEST

DISTANCE FROM ¼ BET 1-6 WAS RIGHT ON 2642'

PUT FSLP ON 9" BALMIE N76E 19.2' FROM CORNER

NEW ROAD SURVEY HAS TIED TO THIS CORNER FROM

SOUTH - OPEN BRUSHED LINE, VISABLE. 12-16-83 CK

OLD BLAZED LINE FROM ¼ COR. TO SEC. COR. - LINE IS

VERY GOOD

QUARTER BET SEC'S. 7 & 12

NOTES OF ORIG. GOVT. SURVEY 1875

SET WOOD POST

BIRCH 4 N79E 18 LKS.

BIRCH 4 S27W 18 LKS.

NOTES OF GLO RESURVEY 1934

PROPORTIONAL DISTANCE

SET 2 X 3/4 IRON POST WITH CAP MARKED

 $\frac{1}{4}$

S12|S7

1934

BIRCH 8 N17 $\frac{1}{2}$ E 19 LKS.

BIRCH 5 N26W 11 LKS.

QUARTER CORNER BET. SEC'S. 1 & 12
 NOTES OF ORIG. GOVT. SURVEY 1875
 SET WOOD POST

BIRCH 12 N20E 20 LKS.

BIRCH 11 S64W 11 LKS.

NOTES OF GLO RESURVEY 1934
 PROPORTIONAL DISTANCE

SET 2 X 36 IRON POST WITH CAP MKD.

$\frac{1}{4} \frac{S1}{S12}$
 1934

ASH 5 S40 $\frac{1}{2}$ E 34 LKS.

ASH 3 N45W 11 LKS.

QUARTER CORNER BET. SEC'S. 1 & 36

NOTES OF ORIG. GOVT SURVEY 1875

SET WOOD POST

SPRUCE 8 S40E 109 LKS. 71.9'

NOTES OF GLO RESURVEY 1934

FOUND ORIG. DEAD SPRUCE 24 S40E 109 LKS.

MKD WITH ORIG. BLAZE AND SCRIBE

SET 2 X 36 IRON POST WITH CAP MKD.

$$\frac{1}{4} \frac{536}{51}$$
 1934

POPLAR 10 N4E 10 LKS. 6.6'

POPLAR 12 S19¹/₄E 78 LKS. 51.5'

Quarter Bet. Sec's 27 & 34

Notes of Original Gov't Survey

Set wood post and mkd BT's

Pine 53½ E 62 lks. 40.91

Pine N13 E 73 lks. 48.18

Notes of Resurvey Notes by GLO-1934

Set a 1" x 36" iron pipe with brass cap
mkd.

$$\begin{array}{r} \sqrt{527} \\ + 534 \\ \hline 1934 \end{array}$$

Found original evidence of both BT's.

Pine stump 24" 53½ E 62 lks. 40.91'

Pine stump 24" N13 E 73 lks. 48.18'

Mkd. New BT's:

Doglar 6" N10W 31 lks. 20.5'

N. Pine 4" S61 E 5 lks. 3.3'

Notes recorded by Jim Schoonover in 2/26/81

Found GLO iron pipe with brass cap set 7"
above ground in good condition.

Found 1 BT N. Pine 14" S61 E 3.3'

Mkd. New BT's:

N. Pine 14" N7W 56.98 scribed

N. Pine 14" S24W 12.69 scribed

X, Y-15

Witness Point on N-S $\frac{1}{4}$ line Sec. 34

Under a contract #43-6392-6-92 with the U.S.F.S., Roger Mustonen, RLS #11946, surveyed and established a Witness Point on the N-S $\frac{1}{4}$ line of Section 34, a distance of 206.0 ft northerly of the recovered G.L.O. Resurvey C.S. $\frac{1}{16}$ corner. A certificate of Survey was filed with the Cass County Recorder on Jan. 13, 1986 as document # 286815.

For the Witness Point a 2 $\frac{1}{2}$ " ~~100~~⁵⁴" galv. iron pipe with brass tablet, was set up 18". The monument was fitted with a break-away base with a magnetic pallet.

From the monument the following bearings:

Red Oak	12"	S 89° W	6.95'	blazed & sealed
Balsam	6"	S 11° W	18.30'	blazed & sealed
NW cor. of concrete block foundation		S 19° E	35.79'	
Steel Sign Post		North	4.0 feet	

MCH 1-22-86

5/19/86 CK

REMOVED MONUMENT AND PLACED NEW PLASTIC BASE ON 2" IRON - RESET AND PACKED DIRT AROUND MONUMENT BRASS CAP NOW IS 8" ABOVE GROUND - BT'S. CHECK SAME AS ABOVE FOR DISTANCE AND BEARING

Quarter Bet. Sec's 7/8

Notes of GLO Resurvey of 1984 -

Set an iron pipe 2" x 36" in the ground
at proportionate distance to mark $\frac{1}{4}$ c. position

1/5/88 - JA, GB, MH, J. S.

Found GLO iron leaning slightly and in place.

B.C. set 10" above ground.

Mkd. BT's

Burr OAK 4" N83E 14 1/2 IKS 9.6"

Fd. 10" OAK at bringg + dist.

Poplar 8" S21W 37 IKS 24.4

Found frozen decayed mound at bringg + dist.

Tagged oak BT.

1/5/88 - Placed F.S.L.P. on 6" white Oak on north side
of trail saying corner is 1315' South. This tag
also represents approx position for N1/4 bet. sec. 7/8.

02/03 R. MAIN

MARK TWO BT'S & GAS. IN MIXED HARDWOODS

W.OAK 9" N76°W 34.20 FT TO SPR MKD: S7 BT

W.OAK 9" S29°E 29.50 FT TO SPR MKD: S8 BT

SOUTH EAST 1/16 CORNER IN SECTION 33

NOTES OF GLO RESURVEY 1934

SET 1" X 3/16" IRON POST WITH BRASS CAP MARKED

5/10/88 CK-GB Fd. IRON & CAP IN PLACE - IN GOOD CONDITION

6" ABOVE GROUND - IN JACK PINE STAND WITH HEAVY BRUSH

OLD CUTTING LINES N+M

SE 1/16 S33

NO TREES AVAILABLE 1934

PUT FSLP ON J. PINE 7" WEST 4.9' FROM IRON

125' EAST OF MARSH NW & SE - PINE PLANTATION SE-S-SW

1988 R MAIN G. BRAMA

Fd G10 IRON IN GOOD CONDITION .6" ABOVE
GROUND.

WITNESSED BY;

W.OAK 6" N51W 15.67 SE 1/16 S33 BT

W.OAK 10" N4°E 63.40 SE 1/16 S33 BT

W.OAK 7" N39°E 37.0 SE 1/16 S33 BT

STEEL SIGN POST 3.8 NORTH

" " " 3.95 EAST

MEANDER CORNER BET. SECS. 33+34 NORTH SIDE OF RIVER

NOTES OF GLO RESURVEY 1934

REESTABLISHED FROM EVIDENCE OF ORIGINAL BEARING TREE

FOUND LIVE NORWAY PINE 26 N48W 43 LKS. = 28.32'

MKD. T146 NR 29W LOWER MARKS BURNED

I ADD 533 MC BT

SET 1" X 36" IRON POST WITH BRASS CAP MARKED

T146 NR 29W

533 | 534
MC

1934

FROM WHICH

N. PINE 6 N 26 1/2 E 39 LKS. = 25.74'

1988 R. MAZIN G. BRAMA

FOUND ORIGINAL Red PINE BY RUNNING SOUTH TO MISSISSIPPI RIVER FROM NE SECTION CORNER OF SECTION 33. ALSO FOUND GLO Red PINE. MONUMENT NOT AT RECORDED DISTANCES. CAME BACK WITH METAL DETECTOR AND FOUND GLO MONUMENT HAD ERODED DOWN THE BANK. MONUMENT WAS UPSIDE DOWN AND COVERED WITH EARTH. PLACED MONUMENT @ RECORD DISTANCES. SCRIBE VISIBLE ON ORIGINAL R. PINE

WITNESSED BY:
GREG R. PINE N48W NOW A 50' SWAG
NEW J PINE 17 N 50 W 28.97 TO NAIL MC 533 BT

"
GLO R. PINE 17 N 26 1/2 E 25.74 TO NAIL

NEW R PINE 12 N 64 E 58.38 TO NAIL MC 534 BT

STEEL SIGN POST 17.27' NORTH

MONUMENT IS ON A STEEP BANK APPROX 20' FROM RIVER.

CENTER-SOUTH Sec. 33

Set an iron post 1" x 36" with
brass cap marked:

2/17/89 CK GB Fd. IRON & CAP S¹/₆ | 533
IN PLACE - 8" ABOVE GROUND C
IN JACKPINE & NORWAY PINE STAND 1934

No trees available in 1934

MARKED NEW BT's.

N. PINE	14	NSOE	26.67' ⁵⁴⁻⁹ mod CS ¹ / ₁₆ S33 BT
N. PINE	18	N10E	29.00' " " " "
N. PINE	18	NSOW	41.50' " " " "

7-1-96 R MAIN

MONUMENT NOW IN CLEAR CUT PLANTED THIS
YEAR TO PINE - PINE NSOW 41.5 NOW A
WINDFALL.

SET 8 FT STEEL SIGN POST NORTH 30.25 FT TO
"FACE" OF POST

MEANDER CORNER BETWEEN SECTION 14 + 23

ON WEST SHORE OF SUGAR LAKE

NOTES OF GLO RESURVEY 1934

SET 1" X 36" IRON POST WITH BRASS CAP MKD.

10/12/89 GB-MEH

MEASURE EAST FROM SEC. COR. T146N

SHORE LINE AT 220' - REST OF LINE $\frac{514}{523}$ MC

IN OPEN LAKE - CATTAIL BOTTOM R29W

FROM WHICH 1934

ELM 14 S83 $\frac{1}{2}$ W 265 LKS. = 174.9'

NOW ELM SNAG S83W 174.9' - SCAR TO COR.

MAPLE 9 N19 $\frac{1}{2}$ W 254 LKS. = 167.6'

NOW 15" MAPLE N19W 167.6' - SCAR TO COR.

4.86 CHS. OR 320.76' EAST OF SECTION CORNER

70

MEANDER CORNER BET. SECS. 28 & 33

NOTES OF GLO RESURVEY 1934

SET 1" X 3/8" IRON POST WITH BRASS CAP MKD.
3-9-94 RM DCK

Ed. IRON & CAP - UNDER

DOCK 16" HIGH - AT BASE

OF RIDGE NTS

MC	T146N
	S28
	S33
	R29W

FROM WHICH

1934

J. PINE 12 N86³/₄E 26 LKS. = 17.16'

NO TRACE

W. PINE 5 S53³/₄W 40 LKS. = 26.40'

NO TRACE

REMAINS OF ORIG. BT's.

J. PINE STUMP N47E 8 LKS. = 5.28'

FALLEN J. PINE 16" S53E 13 LKS. = 8.58'

CORNER FALLS AT FOOT OF SANDY BANK - BRS. NTS

FROM SW COR. SEC. 28 - S88°30'E - 3.40 CHS. 224.4'

71
 QUARTER CORNER SECTION 32-33

SEPT OCT 1875 ORIG GOVT SURVEY B.C. BALDWIN

SET WOOD POST AND WITNESSED

R PINE 24" N87°W 481KS 31.68 FT

R PINE 14" S85°E 201KS 13.20 FT

1934 GLO DEPENDENT RESURVEY HAL. D. GRAIG

FD ORIG BT EVIDENCE. SET IRON POST

3 FT X 2" 28 INCHES IN THE GROUND WITH

BRASS CAP MARKED: $\frac{1}{4}$

S32+533

1934.

WITNESSED BY

ORIG R PINE 23" S85°E 201KS 13.2 FT REMARKED 4533BT

ORIG R PINE STP N87°W 481KS MARKS BURNED AWAY

NEW R. PINE 16" N10 $\frac{1}{2}$ °W 241KS 16.7664 FT MKD 4533BT

71
 4-8-96 R MAINC

FD GLO IRON IN PLACE IN MATURE RED AND
 JACK PINE MONUMENT \pm 100 FT NORTHWEST
 OF 15 YEAR OLD R PINE PLANTATION. PLACED
 FSLP ON A 16" R PINE ON THE NORTH EDGE OF
 A WOODS TRAIL FROM WHICH CORNER BEARS
 S10°E 160 FT
 MONUMENT WITNESSED WITH.

ORIG R PINE STP 5' TALL S85°E 13.2 FT (SCREE)
 (VISIBLE)

NEW R. PINE 13" N87°E 69.90 FT ESPE MKD 4533BT

R. PINE 19 $\frac{1}{2}$ " S14°W 73.75 FT ESPE MKD 4532BT

R. PINE 11" S72°W 88.24 FT ESPE MKD 4532BT

QUARTER CORNER BET. SEC'S, 8417
 ORIG. GOVT. SURVEY 1875
 SET WOOD POST

N. PINE 20 N88W 265 LKS = 174.90'

GLO 1934 Fd. BURNED PINE STUMP

W. PINE 16 S28W 93 LKS = 61.38'

GLO 1934 Fd. ROTTED W. PINE WINDFALL

GLO RESURVEY 1934

FROM REMAINS OF ORIGINAL BTS

SET 2" X 36" IRON POST WITH BRASS CAP AND

$$\frac{1}{4} \frac{58}{517}$$

1934

FROM WHICH

N. PINE 14 S1 1/2 E 218 LKS = 143.88'
 NOW 18" X 30 FT SNAG/W/SCAR

N. PINE 13 N86 1/2 W 246 LKS = 162.36'
 LOGGED OFF STUMP/W/ SCRIBE @ BRG AND DIST

4-23-03 R MAIN

Fd IRON IN PLACE @ SURFACE OF FLOATING BOG
 5 FT SOUTH AND EAST OF BEAVER CHANNEL. GPS
 MONUMENT. DRIVE 8 FT STEEL SIGN POST ON
 NORTH SIDE OF IRON DOWN 5 FT. WIRE IRON TO SAME
 AND PLACE WARNING SIGN ON POST. NO BTS NEARBY.

MEANDER CORNER BET. SEC'S. 13+24

GLA RESURVEY 1934

SET 1" X 3/8 IRON POST WITH BRASS CAP MKD

MC	T146N
	S13
	S24
	R29W
	1934

FROM WHICH

CEDAR 5 S77 $\frac{1}{2}$ E 155 LKS. = 102.30'

BURROAK 11 N18W 46 LKS. = 30.36'

2-7-30 L.W. JOHNSON ITASCA CO SURVEYOR
PLAT OF GOUT LOT 1. SET IRON @ MC

2-14-06 R MAIN

FD TRIANGLE SHAPED IRON SET BY JOHNSON
ON STEEP BANK OF SUGAR LAKE c LINE TO
STANDARD EAST OF IRON c GASED IRON

8 FT STEEL SIGN POST 31 c 3 FT EAST ON
BANK OF CROSSION c

ON NE. SHORE OF SUGAR LAKE

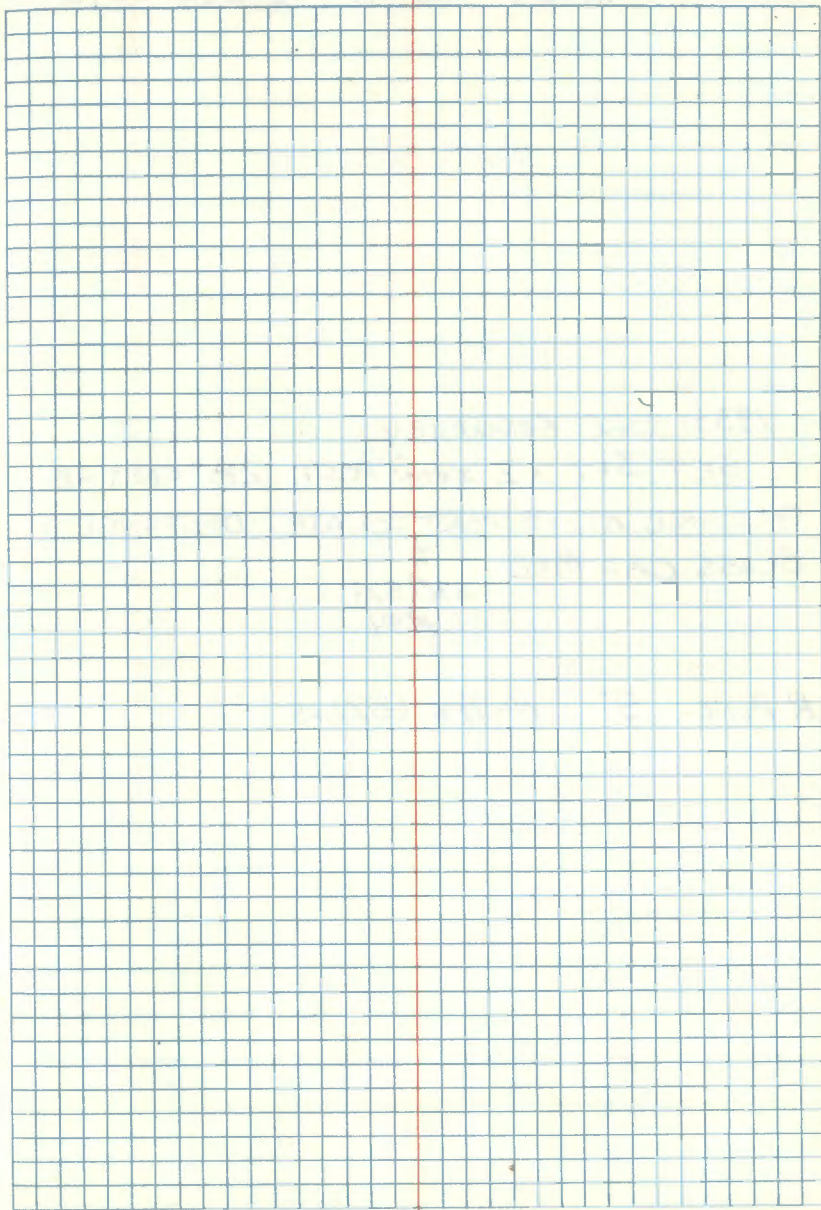
EAST $\frac{1}{16}$ BETWEEN SECTION $\frac{13}{24}$

2-7-30 LW. JOHNSON ITASCA CO SURVEYOR
PLAT OF GOUT LOT 1 SEC 24. SET IRON

2-14-06 R. MAIN

FD TRIANGLE SHAPED IRON SET BY JOHNSON.
LINE TO STANDARD WEST OF CORNER. GPS SECTION

8 FT STEEL SIGN POST 208 FT WEST.



QUARTER CORNER SECTION 30|29

1933 GLO RESURVEY

SET 3 FT X 2" IRON POST 28" IN THE
GROUND AT PROPORTIONATE DISTANCE

BRASS CAP MKD $\frac{7}{4}$
530|529
1934

R PINE 5" N47 $\frac{1}{2}$ E 652 LKS