

CORNER
RESTORATION
145N R29W



MINING
TRANSIT BOOK

No 3841

BOOK # 1

145N - R29W

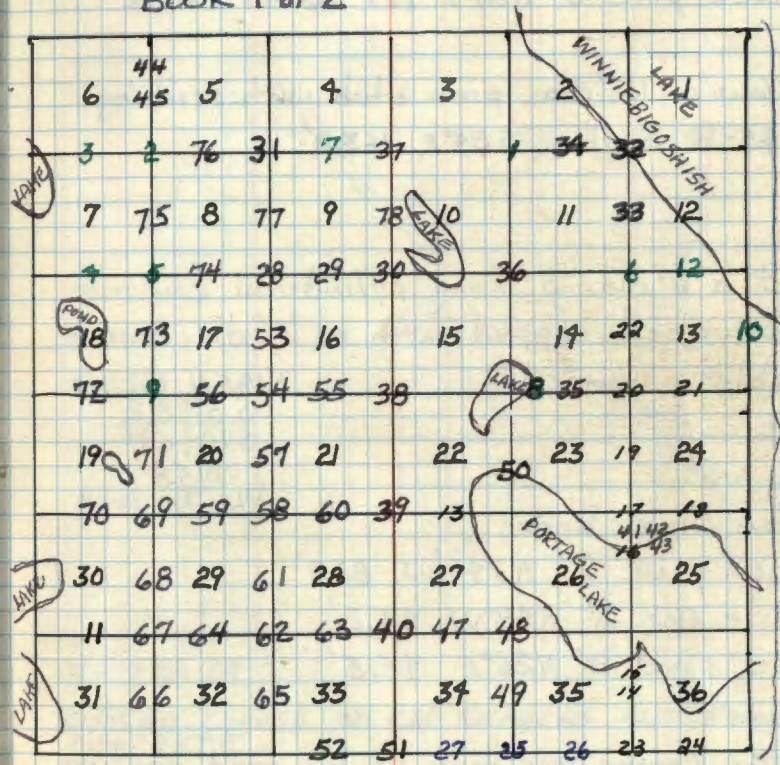
145N - R29W

USFS

T145N R29W 5th P.M.

Cass County, MN

BOOK 1 of 2



SEE BOOK 1 T145N R28W

Colored numbers refer to page on which notes for that corner may be found.

Original Gov't survey 1874

1 E-17

Section corner 3-2-10-11

Original Gov't. survey of 1874

- ① Black pine 4° S84°E 247 Lks. or 163.0'
- ② Black pine 5° N87°E 177 Lks or 116.82'

- ③ Now a 15" dia. pine stub with scribing
145-R visible S84°E 163.0'

Set a 6" dia. 5' long cylindrical concrete monument capped with a 3" dia. bronze tablet stamped:-

T145N R29W
S3 | S2
S10 | S11
1958
RLS NO. 3628

From which bears

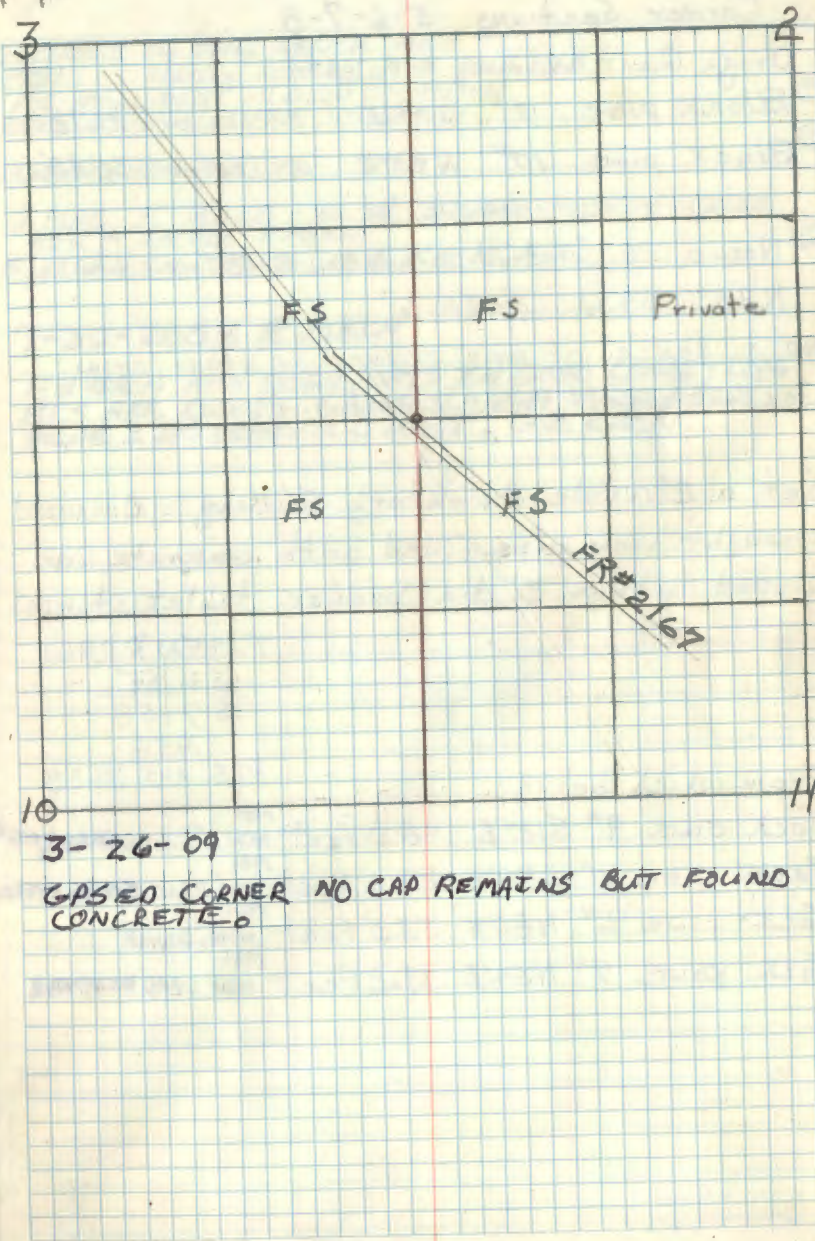
- Jack pine 7" N74½°W 83.9'
- White Oak 6" S48°W 44.2'
- Jack pine 8" N26°E 45.5'

Note Corner was torn up by road grading in 1962 I replaced it with a 29" long 6" diameter concrete monument buried 4" under ground on the East side of ditch on Rd # 2167. I stamped the brass cap same as above. # 3 bearing trees are in good condition.

9-11-62 G.H.M. Dmsd

Adjacent
1960

E-17



10
3-26-09

GPS ED CORNER NO CAP REMAINS BUT FOUND
CONCRETE

2 E-5

Corner Sections 5-6-7-8

Orig. Gov't survey of 1874

- ① Black pine 12" S37°E 33 LKS or 21.78'
- ② Black pine 10" N45°E 54 LKS or 35.64'

- ② Now a 20" windfall with scribe BT visible
N45°E 54 LKS. or 35.6'

No evidence of orig. corner or other orig. Gov't. bearing trees was found.

Set a 2" inside diameter, 5' long galvanized wrought iron pipe filled with concrete and capped with a 3" dia. bronze tablet stamped

T195N R29W

56 | 55

57 | 58

1958

RLS NO 3628

From which bears

- Jack pine 9" S12°E 48.0 feet ¹⁹⁸¹ NOW 11" J. PINE SNAG REMAIN
- Jack pine 10" S58°E 29.0 feet ¹⁹⁸¹ NOW DEAD SNAG REMAIN
- Jack pine 6" N80°E 53.5 feet ¹⁹⁸¹ NOW STUMP
- Jack pine 7" N34°E 18.2 feet ¹⁹⁸¹ NOW DEAD WINDFALL

E-5

Affidavit
160

CONTRACT BY TONY KERICK RLS #
1981 COUNTY DOCUMENT # 265248
Fd. MONUMENT IN GOOD CONDITION
ORIG. BT NOW J. PINE STUMP

MARKED NEW BT

J. PINE 8" N50°E - 46.20' SCRIBED - TABLET PAINTED
NOW A SNAG REMAIN
8" STEEL SIGN POSTS N 5.7' & W 5.2'

7-30-2008 R. MAIN

FD IRON AND SIGN POSTS IN GOOD CONDITION
BTS ARE DEAD. GRASS SLOUGH WEST / RED
PINE ± 30 YEARS OLD EAST. GPS IRON

384 50%

3 FL 3

Quarter Corner Sections 6-7

Original Govt. survey notes of 1874

- ① Black pine 4" S35°E 5 Lks or 3.30'
- ② Black pine 5" N6°E 34 Lks or 22.4'

② Now a 10" windfall with scribing 1/4 S BT visible N6°E 34 Lks or 22.4'

No other evidence of original corner was found.

Set a 2" inside diameter, 5 foot long galvanized wrought iron pipe filled with concrete and capped with a 3 inch dia. bronze tablet stamped:-

T195N R 29W

1/4 S 6
5 7
1958

From which bears:-

RLS No 3628

Jack pine 8" N58 1/2°W 10.3 feet ¹⁹⁸¹ NOW WINDFALL

Jack pine 7" S25 1/2°W 8.5 feet ¹⁹⁸¹ NOW STUMP

Red pine 6" N76°E 8.4 feet ¹⁹⁸¹ NOW 8" N. PINE

E-3

Attached to

CONTRACT BY TONY KERICK RLS # 1981

FD. MONUMENT IN GOOD CONDITION MARKED 2 NEW B.T.S.

N. PINE 10 N28E 12.45'

J. PINE 10 S25W 15.77'

8" STEEL SIGN POST SOUTH 2.85'

8" STEEL SIGN POST EAST 3.80'

4 J-3

Quarter Corner Sections 7-18

Notes of Original Govt. survey of 1874

- ① Tamarack 8" N5°E 7 Lks or 4.62'
- ② Tamarack 5" S37°E 17 Lks or 11.22'

① Now a 10" windfall with scribe visible
N5°E 7 Lks. or 4.6 feet.

② Now a 9" windfall with scribe "S" visible
S37°E 17 Lks or 11.2 feet

Corner was found to be marked by a 3"x3"
scribed cedar post partly decayed

Set a 2" inside diameter, 5 foot long
galvanized wrought iron pipe filled
with concrete and capped with a 3 inch
dia. bronze tablet stamped:

T195N R29W

$$\begin{array}{r} \frac{1}{4} \text{ S } 7 \\ \hline 7 \text{ S } 18 \\ 1958 \end{array}$$

From which bears:

- Tamarack 5 inch N46°W 21.2 feet now WINDFALL
- tamarack 4 inch S24°E 8.9 feet GONE
- Tamarack 4 inch N26°E 9.6 feet now 5" TAM.

J-3 7

26 Allister

CONTRACT WITH TONY KERICK RLS #
1981

Fd. MONUMENT IN GOOD CONDITION
MARKED 2 NEW BT'S.

TAM. 5 S32W 1.29' SCRIBED-TAGGED-PAINTED

CEDAR 6 S31E 19.77' " " "

8' STEEL SIGN POST NORTH 5.0'

8' STEEL SIGN POST EAST 5.0'

R-22-2008 R MAIN

FD IRON IN PLACE AND GPS. 1981 TAM BT IS 1 FT
HIGH STUMP. 1981 CEDAR NOW 7". 1958 TAM N26E
9.6 FT NOW 7". SIGN POSTS ARE GOOD.

5 J-5

Corner to Sections 7-8-17-18

Notes of orig. Govt. survey of 1874

- ① White pine 10" N5°E 16 Lks. or 10.56'
- ② White pine 12" S21°E 38 Lks. or 25.08'

① Now a 15" stump with scribe visible N5°E 16 Lks. or 10.6 feet. Note this BT tipped & moved about 5 feet by bulldozer clearing road.

② Now a 16" stump scribe S17 visible S21°E 38 Lks or 25.1 feet.

Set a 2" inside dia., 5 foot long galvanized wrought iron pipe filled with concrete and capped with a 3 inch diameter bronze tablet stamped:

T. 145N R 29W
 S 7 | S 8
 S 18 | S 17
 1958
 RLS NO 3628

From which bears:-

- ① Red pine 16 inch N89½°W 40.7 feet
 - ② Jack pine 12 inch N18°W 67.4 feet
 - ③ Jack pine 6 inch N13°E 49.3 feet
 - ④ White pine 7 inch S89½°E 65.9 feet
- 1 NOW 22" N. PINE N89W 40.7' SCRIBE VISABLE
 - 2 NOW LARGE J. PINE STUMP AT N18W 67.3' CUTOFF LOW
 - 3 NOW 10" J. PINE AT N13E 49.3' SCRIBE VISABLE
 - 4 NOW 12" DEAD W. PINE SNAG S89E 65.9' SCRIBE CLOSED

Affidavit
100

J-5

7/8/91 CK
 FD. 2" IRON - IN PLACE - IN GOOD CONDITION
 20' SOUTH OF FR # 2959

MARKED NEW BT'S.

N. PINE 14 N9E - 59.17' - MKD S8 BT

W. OAK 9 S75E - 33.45' - MKD S17 BT

N. PINE 10 S35W - 10.58' - MKD S18 BT

B' STEEL SIGN POST SOUTH 4.0' BOTH SIGNS

B' STEEL SIGN POST EAST 4.1' BOTH SIGNS

ORIG. PINE STUMP AT S21E-25.1 WITH SCRIBE
 STILL IN PLACE - BUT ROTTED AND IN PIECES

OTHER ORIG. STUB IS LYING ON SCRIBE - HAS BEEN
 PUSHED OUT OF PLACE - LIES 6' NORTH OF IRON
 HEAVY BRUSH AROUND CORNER
 PLACED NEW TAGS ON 1958 BT'S. #1 + 3

NO TRACE OF LOG OF J. PINE AT N18W 67.4'
 TREE WAS CUT OFF AT GROUND LINE - NO SCRIBE

6 J-21

Corner Sections 11-12-13-14

Notes of orig. Govt. survey of 1874

- ① Black pine 3" N67°E 260 Lks. or 171.60 Feet
- ② Black pine 6" S85°E 337 Lks. or 222.42 Feet
- ③ Black pine 7" S41°W 86 Lks. or 56.76 Feet
- ④ ~~Black pine~~

⑤ Now a 18" dia. stub scribed "195N R S41°W
86 Lks. or 56.8 Feet

No other evidence of the orig. corner was found.

Set a 2 inch inside diameter, 5 foot long galvanized wrought iron pipe filled with concrete and capped with a 3 inch dia.

bronze tablet stamped: T195N R29W

*~~to~~ 0-15-84 up 24" and leaning to the east. Base in place. Straightened.

S11	S12
S14	S13
1958	
RLS	NO 3628

From which bears:-

- ① Red Pine 20" S51°W 183.5 Feet
- ② Tamarack 14" S22°E 62.0 Feet
- ③ Tamarack 6" S56°E 103.0 Feet

6-15-84 Hayes, Brama, Allison (heavy rain)

- ③ ~~to~~ stub at S41°W 56.8' scribe still visible
- ④ no evidence - pine plantation (rain, hamper search for this tree)
- ⑤ ~~to~~ now a 17" dead Tam. scribe overgrown.
- ⑥ ~~to~~ now a 7" dead Tam. scribe visible.

J-21

Atchafalaya

6-15-84 To perpetuate took the following tie

N. Pine 19" S82°E at 217.8' ~~due to heavy rain~~
Now 21" REMAIN 1-12-04 scribe spike

Hayes

1-12-04 R-MAIN

FD IRON IN PIPE LEANING AND FROZEN IN.
17" DEAD TAM NOW A 8FT SNAG & GASED
MONUMENT.

Quarter Corner Sec. 4-9

Notes of orig. Govt. Survey of 1874

- ① Yellow pine 10" S60°E 65 Lks. (42.9')
- ② Black pine 2½" N72°E 20 Lks (13.2')

- ① Now a 26" Red pine S60°E 42.9 Feet w/
scribing "¼ S" visible.
No other orig. evidence was found.

Set a 2 inch inside diameter, 5 foot
long galvanized wrought iron pipe
filled with concrete and capped with
a 3 inch diameter bronze tablet stamped

T145NR29W

$$\frac{1}{4} \frac{S}{S} \frac{4}{9}$$

1958

RLS No 3628

Aspen 6" S85°W 40.3 feet

R. Oak 5" N10°W 72.2 feet

R. Oak 7" N50°E 31.6 feet

7820

5280

8 N-18, 18

Meander Corner Sec. 14-23

Notes of original Gov't. Survey of 1874

- ① Yellow pine 10" N62°E 34 Lks. (22.44')
- ② Black pine 6" S39°E 34 Lks. (22.44')

- ① Now a 27 inch Red pine with scribe "B" visible N62°E 22.44 feet
No other evidence of orig. corner was found. 10-9-80 ORIG. BT OK NOW 30" DIA. FAINT SCRIBE VISIBLE WITH FSLP AND 54-4 FACING COR.

Set a 2 inch inside diameter, 5 foot long galvanized wrought iron pipe filled with concrete and capped with a 3 inch dia. bronze tablet stamped: T145NR29W

M.C. | S 14
 | S 23
 1958

From which bears:

RLS NO 3628

- ① Red Oak 7" S28°E 49.2 feet
- ② Jack pine 3" S62°E 31.6 feet
- ③ Red Oak 8" N53°E 62.3 feet
- ④ Jack pine 13" N9°E 12.9 feet

10-9-80 CK-JS

1. NOW 10" R. OAK STUMP S28E 49.2' WITH BT SCRIBE
2. NOW 3" J. PINE WINDFALL S62E 31.6' ALL SCRIBE VISIBLE
3. NOW R. OAK WINDFALL N53E 62.3' SCRIBE BT VISIBLE
4. NOW 15" J. PINE N9E 12.9 ALL SCRIBE VISIBLE

4-18-86 D. Marshall - Corner measured in good shape - BTs observed

Affidavit
to

N-18, 19

9 N-5

Section Corner 17-18-19-20

Notes of original Govt. Survey of 1874.

- (1) Yellow pine 16" N14°E 20 Lks (13.2')
- (2) Yellow pine 14" N30°W 20 Lks (13.2')
- (3) Yellow pine 10" S28°E 18 Lks (11.88')
- (4) Yellow pine 6" S60°W 16 Lks (10.56')

- (1) Now a 24 inch pine stump N14°E 13.2 Feet
- (3) Now a 16 inch pine stump with scribe
'BT' visible S28°E 11.9 Feet.
- No other orig. evidence was found.

Set a 6 inch diameter, 5 foot long cylinder
concrete monument with a 3 inch dia.
bronze cap marked T145N R29W

S18	S17
S19	S20

1958

RLS NO 3628

From which bears:-

- Jack pine 13" N49°W 45.6 Feet
- Jack pine 12" S43½°W 28.4 Feet
- Jack pine 10" S15°E 37.7 feet
- Jack pine 12" S80°E 42.0 Feet

N-5

FOUND CONCRETE MON. IN PLACE - IN GOOD
CONDITION 20" ABOVE GROUND. AT SW
CORNER OF PINE PLANTATION AND OLD
HOMESTEAD REMAINS APPROX. 200' NORTH
BTS. (CORNER IS IN CUT OVER AREA

- J. PINE SNAG 14" N49°W 45.6 SCRIBE OPEN
- J. PINE LIVING 17" S43°W 28.4 " "
- J. PINE LIVING 15" S15°W 37.7 " "
- J. PINE LIVING 18" S80°E 42.0 " "

NO SIGN POST OR SIGNS

PUT TAGS ON BTS. THIS DATE 8-7-73

Cut Krause

ESLP ON A 37" WHITE PINE 320' SOUTH OF CORNER
AT NORTH EDGE OF WOODS ROAD RUNNING E-W
5/8/91 BRAMA e.c. Doney

Found conc. monument as described in 1973 by Krause
Found the same two original BT's as recorded
by McDonald when corner was re-monumented.
Found J. Pine snag @ N49W @ 45.6.
Found J. Pine stub at S15W @ 37.7.
Found J. Pine stub at S43W @ 28.4.
Found J. Pine snag at S80E @ 42.0.

Mkd. New BT's:

- R. Pine 16" South at 91.5 19kd. T145N R29W S20E
- W. OAK 8" S62°W at 22.42' " S19 - BT
- W. OAK 12" N65°W at 72.80' " S18 - BT
- N. Pine 16" N 8° E at 93.05' " S17 - BT

Placed a 8' steel sign post south 3' from corner.
Survey sign etc

10 X-25

Quarter Corner Sec's 13-18 R28-29 W

Notes of original Gov't. Survey of 1874.

① Jack pine 8" West 60 Lks. (396)

② Norway pine 20" N84 $\frac{1}{2}$ °E 4 Lks.

Notes of Cass County Surveyor Harold

Curo dated 1955 Found in record book

#270 Surveyors office, Cass Co. Court

House, Walker Minn.

③ Jack pine 14" S10°W magnetic. 11.6 Feet

④ Jack pine 8" N90°E magnetic 4.9 feet

⑤ Corner was marked by 1 $\frac{1}{2}$ " x 36" pipe

③ Now 14" Jack pine S10°W True 11.6 feet

④ Now 8" Jack pine N79°E True 4.9 feet

⑤ Found marking corner.

Set a 2 inch inside diameter, 5 Foot Long
galvanized wrought iron pipe filled w/concrete

and capped w/a 3 inch dia. bronze tablet

stamped:

T145N
R29W R28W

1/4
S 13 S 18

1958

R.L.S. NO. 3628

From which bears.

White Oak 8" S22°E 44.5 Feet

Red Oak 7" N47 $\frac{1}{2}$ °E 49.5 Feet

Jack Pine 9" N6°E 39.8 feet

CERTIFICATE FILED

R9-1150-4 by Hayes 7/9/50

SEE T145 R28W Book #1
Page #3

L-25

11 V-3

Quarter Corner Sec's 30-31

Notes of the orig. Govt. survey of 1874

- ① Yellow Pine 16" S30°E 24 Lks. (15.84')
- ② Yellow Pine 18" N34°W 29 Lks (19.14')

- ① Now a 24 inch Red pine with scribe
"1/4" visible S30°E 24 Lks - 15.84'
No other original evidence was found.

Set a 2 inch inside diameter, 5 foot long
galvanized wrought iron pipe. Filled w/
concrete and capped with a 3 inch dia.
bronze tablet stamped: T145NR29W

$$\frac{1}{4} \begin{array}{l} S30 \\ S31 \\ 1958 \end{array}$$
 RLS NO 3628

From which bears:-

- Jack pine 6" S58°W 36.3 feet
- Jack pine 7" S76°E 37.1 feet
- Jack pine 7" N38°E 18.2 feet

- ② Found 20" N. Pine stump 12" high rotted and
burned no scribe visible N44°W 19.8'

V-3

Michael
16

12-30-75 *Quito K. Kauser*
Found 2" Dia. iron pipe, in place, in good condition
14" above ground, in J. Pine Spruce balsam & N. Pine
knoll - blaze line runs east to FR# 2135
Put FSLP on 7" J. Pine 252' east of corner on west
side of FR# 2135 - state tag on same tree
Put FSLP on 10" J. Pine, blazed on 4 sides and painted
1' west of iron-tag on east side of tree, facing corner men.

Found orig. N. Pine 26" S30°E 14.9' with faint scribe
visible - old burn scars and some inside rot visible

BT's found to witness iron pipe
 J. Pine 10" N42°E 18.2' mkd. T145NR29W S30 BT
 J. Pine 11" S77°E 37.2' mkd. T145NR29W S31 BT
 J. Pine 10" S61°W 34.2' mkd. T145NR29W S31 BT
 NOW 5 FT SNAG SCRIBE VISIBLE
 old logging trail runs E-SW 40' south of corner
 Painted around corner and place BT tags on bearing trees
 also painted old blaze line east to road + PUT FSLP ON
 7" J. PINE 252' E ON WEST SIDE OF KETCHUM ROAD

5-5-05 REMAIN
 GPS IRON ADD NEW BT
 R PINE 8" S40°W 21.10 FT TO SPR MKD S31 BT
 8 FT STEEL SIGN POST 68 FT NORTH

12 J-23

Quarter Corner Section 12-13

Notes of orig. Govt. Survey of 1874

- ① Black pine 6" N54°E 100 Lks. (66.0')
- ② Black pine 4" S85°E 142 Lks. (93.72')

- ① Now a 10 inch pine stump partly decayed with scribe "BT" visible N54°E 66 feet. No other orig. evidence was found.

Set a 2 inch inside dia. 5 foot long galvanized wrought iron pipe filled with concrete and capped with a 3 inch dia. bronze tablet stamped: T145N R29W

1/4 S12
4 S13
1958

RLS NO 3628

From which bears:-

- Red pine 13" S48°W 80.1 feet
- Red pine 16" S26°E 82.5 feet
- Tack pine 4" N61½°E 66.9 feet

J-23

Found this corner torn out. Point falls in area where dozers pushed out brush and trees off from new road construction. Stamped a new 5" long galvanized steel pipe filled with concrete and capped with a 3" dia bronze tablet stamped

T145N R29W

1/4 S12
4 S13
1967
R.L.S. NO. 6807

Set from orig. B.T. stump and three other trees described on opposite page.

7-5-67

James Estation

12-29-80 JIM SCHOONOVER

FD. IRON IN PLACE CAMP 24" HIGH

FD. FOLLOWING BT'S

N. PINE 20 S48W 80.1' NOW 25"

N. PINE SNAG 20" x 8" HIGH S26E 82.5'

J. PINE 9" N61E 66.9' 10 FT SNAG RM

MKD. NEW BT.

W. OAK 8 S47E 49.2' NOW 13" RM

10-7-03. R MAIN

FD IRON IN PLACE 12.5 FT SOUTH OF FR2167 (BIG FISH) ROAD. 1958 J PINE NOW A 10 FT TALL SNAG. GPS ED CORNER AND ADD ONE BT.

W OAK 8 1/2" N83°W 36.53 FT TO SPK MKD: S12 BT

13 R-15

Quarter Corner Section 22-27
Notes of orig gov't survey
of 1874.

① Spruce 6" S29°E 5 Lhs - 3.3'

② Spruce 6" N42°W 16 Lhs - 10.56'

Left at approx loc. 9/63

~~Set~~ 2" inside diameter 60" long galvanized
steel monument filled with concrete and
capped with a 3" diameter bronze tablet stamped

T145N R29W

1 522
4 527
1963

R.L.S. NO. 6807

R-15

1/4 Cor. Sec's 35 & 36

Notes of orig. gov't Survey of
1874.

Birch 4" 570°E 9.24'

Oak 4" 568°W 13.20'

"old stake"

Notes of H.E. Marshall in 1914.

He found old Oak B.T. Facing
N.E. 5 paces out in open. Cor
is on edge of swamp. 550 paces
is young Norway & J. Pine. 270
paces south to P.R. tracks.Chained to this location from
C.H.D. brass Cap found at the
Standard Section Corner, 35 & 36.
Searched 2 Mar hrs. Found
a F.S.L.P. on 14" Maple. No
other evidence found.

7-7-67

James E. Johnson

11/2/90 GB - Measured from STD. SEC. CORNER
of sec's 35/36 north 2640' (string machine).
Fell at the south edge of a swamp. Fd.
a 2 1/2" W. OAK 100' east of line. Cut into
OAK. OAK is rotted out in center. Found
no evidence of original corner position.Placed a F.S.L.P. on 5" Ash, north 16'
from approx. corner. Ran compass
line west to old train tracks. Tied up
ribbons on my line.

1 15 W, X-21

Meander Cor. Sec's 35 & 36
South bank Portage Lake

Notes of the orig gov't Survey
of 1874.

Cedar 4° N79°W 11.24'

Cedar 10° 58'E 21.78'

Chaining dirt shows that
corner to be approx 150'
out in lake.

7-7-67

James E. Eubank

W, X-21

16 S-21

Meander Cor. Sec's 25 & 26
North bank of Portage Lake.

Notes of orig gov't Survey of
1874

Spruce 6" N33°W 20.46'

W. Oak 8" N18°E 23.10'

NOTES OF BLM SURVEY 1974

WITNESS CORNER MEANDER CORNER NORTH SHORE
OF PORTAGE LAKE

SET IRON POST 2 1/2 x 30" LONG - CAP MKD.

T145N R29W

S26 S25

MC

1974

FROM WHICH

ELM 12 N66E 65 LKS. = 42.9'

BIRCH 7 S87W 55 LKS. = 36.3'

CORNER IS 161.5' EAST OF DOWN BARBED WIRE
FENCE N+S

Section Corn Sec's 23-24-25-26

Notes of orig gov't Survey
of 1874.

B. Pine 8" S45°W 6.60'

B. Pine 8" N66°E 9.90'

B. Pine 10" N61°E 19.14'

B. Pine 10" S35°W 25.08'

Notes by J. H. Doney, Forest Ranger.
In 1914 He found a J. Pine
stake and a fallen J. Pine
B.T. in Sec 26. Corner Falls
36 Rods South of Great Northern
Rail road tracks.

5/6/81 SURVEY BY DAVID CLAYPOOL RLS 13298
SUBDIVISION SECTION 24
NO ORIGINAL EVIDENCE WAS FOUND - CORNER WAS SET
BY LOST METHOD, DOUBLE PROPORTIONATE N+S-E+W
BETWEEN KNOWN CORNERS.
SET 20" CAST IRON MONUMENT - 6" ABOVE GROUND

WITNESSED BY

W. OAK 8" N34°W 37.61' DOUBLE BLAZED
J. PINE 17" N70°W 5.13' " "
N. PINE 8" S74°W 57.46' " "

CORNER IS 138' WEST OF POWERLINE N+S

DOCUMENT # 260.588

9-25-97 RM+CK

FD. CAST IRON MONUMENT - IN PLACE - TOP
OF MONUMENT HAS BEEN BROKEN OFF - BASE
WAS IN PLACE - SET TOP BACK INTO PLACE
BT'S FOUND

NOW DEAD JACK PINE SNAG 35' HIGH N70°W
5.13' COULD GO DOWN SOON

NOW N. PINE 15" S74°W 57.46' IN GOOD SHAPE

NOW W. OAK 12" N34°W - 37.61' " " "

CORNER IN VERY THICK BRUSH WITH SCATTERED
NORWAY PINE - NO TREES NE-E+SE
POWERLINE VISIBLE TO EAST OF CORNER, N+S
FSLP ON 19" N. PINE ON EAST SIDE OF FR 2175
375' EAST TO CORNER - TAG SHOT UP

MARKED NEW BT.

N. PINE 9" S72°W 70.05' MKO. S26 BT

1/4 Cor. Sec's 24 & 25

Notes of orig gov't Survey of
1874.

Cedar 5" S28°W 18.48'

Tamarack 6" N38°E 18.48'

Notes by J. H. Doney Forest Ranger
In 1914 he found two B.T.'s.

Tamarack 14" IN Sec 24

Cedar 8" IN Sec 25

5/6/81 SURVEY BY DAVID CLAYPOOL RLS # 13298

SUBDIVISION OF SECTION 24

NO EVIDENCE OF ORIG. CORNER COULD BE RECOVERED

SET BY LOST METHOD ACCORDING TO COMPUTATIONS

OF THE BLM SURVEY OF 1974

SET 20" CAST IRON BELT. CO. MONUMENT

TIES

OLD BEAVER LODGE EAST 34.0±

TAM 10 S70W 50.0±

DOCUMENT # 260590

1-13-98 R MAIN

FD CLAYPOOL CAST IRON MONUMENT IN PLACE 6" UNDER THE ICE.
DROVE DOWN 8 FT STEEL SIGN POST AND WIRED MONUMENT
TO POST. MONUMENT ON SOUTH EDGE OF PIPE LINE
ON WOODS EDGE. MKD ONE NEW BEARING TREE
AND TIED IN CLAYPOOL TAMARACK TO OUR STANDARD.

TAMARACK 13" S77W 52.8 FT TO SPK NOT MKD

CEDAR 5 1/2" S28E 32.6 FT TO SPK NOT MKD

8 FT STEEL SIGN POST 3.4' NORTH

19 P-21

1/4 Cor. Sec's 23 & 24
Notes of orig gov't Survey
of 1874.

B. Pine 8" 52°E 7.26'

B. Pine 10" 547°W 4.62'

Chained to this area from orig evidence
found at Section Corner 11-12-13-14.
Found two old blazes near each
other, one states approx Corner by
Joe Lorsche in 19? Had another
very old one on a 10" S Pine
sway that states Corner is N 2° E
24 lbs. No evidence found. a few
very old burned stumps in area.
Searched 2 Mar h's.

8-28-67

James Johnston

5/6/81 SURVEY BY DAVID CLAYPOOL RLS 13298
SUBDIVISION SECTION 24
NO EVIDENCE OF ORIGINAL CORNER WAS FOUND
CORNER SET BY LAST METHOD BETWEEN KNOWN COR'S.
SET 20" CAST IRON MONUMENT - 6" ABOVE GROUND

WITNESSED BY

N. PINE 7	N 45° E	87.50'	DOUBLE BLAZED
N. PINE 8	N 60° W	36.69'	" "
N. PINE 10	S 78° E	50.53'	" "

DOCUMENT # 260589

10-2-97 Re MAEN C. KRAUSE

Fd MONUMENT IN good condition. 1981 BT5 TO
NORTH EAST AND SOUTHEAST FALL IN ROAD CLEARING
WEST OF Bug School complex. MONUMENT IS
140 FT WEST OF ROAD SHOULDER ON EDGE OF WOODS.
MONUMENT WITNESSED BY.

1981 R. PINE 14" N 60° W 36.56 FT TO SPK MKD: 4523 BT
NEW R. PINE 12" N 31° W 67.83 FT TO SPK MKD: 4523 BT
8 FT STEEL SIGN POST 3065 NORTH, 4015 SOUTH

20 N-21

Section Cor. Sec's 13-14-23-24

Notes of orig gov't Survey of 1874.

Y. Pine 24" N80W 132.0'

Y. Pine 24" S32W 52.80'

1981 Fd. PINE STA. PUSHED NORTH

B. Pine 8" N26E 12.54'

B. Pine 6" N57E 29.70'

Forest Service Notes of 1914.

No name given.

N. Pine sets alongside of old road.

Corner is 20 paces North of road.

Found post along old woods road.

New bulldozing in area has possibly obliterated the evidence described above. Searched 3 Max h's. No evidence found.

7-19-67

Jamie Johnston

5/6/81 SURVEY BY DAVID CLAY POOL RLS 13298
SUBDIVISION SECTION 24
CORNER POSITION WAS ESTABLISHED FROM ORIGINAL EVIDENCE - LARGE PINE STUMP - PUSHED NORTH OF ITS TRUE POSITION - THIS TREE WAS DETERMINED TO BE THE 24" N. PINE S32W - 52.80' - NO OTHERS COULD BE LOCATED

SET 20" CAST IRON MONUMENT - 2" ABOVE GROUND

WITNESSED BY

R. OAK 8	N44E	12.25'	DOUBLE BLAZED
N. PINE 10	S78E	26.80'	" "
N. PINE 12	S16E	18.06'	" "

DOCUMENT # 260584

8/7/89 CK-RM

Fd. CAST IRON MONUMENT - IN PLACE - 6" ABOVE GROUND
4' EAST OF WOODS TRAIL NE-SW

R. OAK BT IS NOW DEAD AT BKG. + DISTANCE

N. PINE 12 S78E 26.80' SCRIBED S24 BT

N. PINE 14 S16E 18.06' " " "

NEW BT

N. PINE 16 S27W 32.85' MKD. S23 BT

8" STEEL SIGN POST NORTH 3.95' S4-9

ORIG. PINE STUMP HAS BEEN PUSHED DUE WEST OF ITS LOCATION
NO STUMP MORE VISIBLE AS TRAIL NE WOULD GO OVER STP. HOLE

21 N-23

1/4 Cor. Sec's 13 & 24

Notes of orig gov't Survey
of 1874.

B. Pine 8" S15°W 27.06'

B. Pine 12" N13°W 143.22'

Notes by Forest Ranger J. H.
Dowery in 1914. Found J. Pine
stake flat on ground. Found
one B.T.

J. Pine 8" in Section 13. ^{No other} - tree's
(Found scribed 1/4 s BT 6' high snag)

One small J. Pine 20 paces east of
Corner."

"Corner sets on side Hill."

8-28-67
James E. Hutton

5/6/81 SURVEY BY DAVID CLAYPOOL RAS 13298
SUBDIVISION OF SECTION 24

FOUND 12" DIA. JACK PINE STUB + 6' HIGH - BLAZED
AND SCRIBED 1/4 S BT - BLAZE FACES S S E
AND DOES NOT AGREE WITH ORIG. NOTES
CORNER WAS ESTABLISHED BY HOLDING THE ORIGINAL
DISTANCE TO THE BEARING OF N S W TO THE BT

SET 20" CAST IRON MONUMENT - TOP IS 5" ABOVE
GROUND - AT BASE OF 12" POPLAR STUB

TIES TO MONUMENT

N. PINE 8 N11E 41.10' DOUBLE BLAZED

N. PINE 4 N60E 17.65' " "

N. PINE 5 SIZE 19.07' " "

DOCUMENT 240587

9-25-97 RMYCK

FOUND CAST IRON MONUMENT - IN PLACE - 4" HIGH
IN THICK BRUSH - ON SIDE SLOPE - N + J PINE
BTS FOUND WE TAGGED + PAINTED RED RING
NOW N. PINE 5" N58E - 17.65

NOW N. PINE 7" S22E - 19.07'

NOW N. PINE 15" N12E 41.10'

WE WILL SEARCH AGAIN ON MONDAY USING
RECORDED BEARING + DISTANCE - SEARCH FOR
OTHER STUMP + POST POINT

BLAZED N. PINE 13" ON 4 SIDES - 3.10' N18W

PLACED FSLP ON ASPEN 6" 400' E OF 1/4 CORNER
ON WEST SIDE OF WOODS TRAIL N NW - S - SE

21 N-23

1/4 Cor. Sec's 13.5' 24
Notes of orig gov't Survey
of 1874.

B. Pine 8" 515°W 27.06'

B. Pine 12" N13°W 143.22'

Notes by Forest Ranger J. A.
Downery in 1914. Found J. Pine
stake flat on ground. Found
one B.T.

J. Pine 8" in Section 13. - ^{No other} Tree's
(Found scribed 1/4 s BT 6' high snag)
One small J. Pine 20 paces east of
Corner.

"Corner sets on side Hill."

f

8-28-67
James E. Sutton

EXISTING SURVEYS	
Original Government Survey	Original Evident's Found
Year surveyed _____ By _____	Year of search _____ By _____
Original monument _____	Monument found _____
Bearing Trees	
Species _____	Original Bearing Trees Found _____
Diameter _____	Diameter _____
Bearing _____	Bearing _____
Distance _____	Distance _____
Systems of Subsequent Corner Restoration	
Year surveyed _____ By _____	Year of survey 2-3-69 by Program 23, 24, 25 Top of side 7 is "J. Pine Stake which is on top of B.T. 8. This is an old top and has been accepted as the corner for many years. It is found on the side of the hill.
Where first or restored _____	
Monument _____	
Bearing Trees, Reference Objects	
Species _____	
Diameter _____	
Bearing _____	
Distance _____	

TIES TO MONUMENT

N. PINE 8 N11E 41.10' DOUBLE BLAZED

N. PINE 4 N60E 17.65' " "

N. PINE 5 SIZE 19.07' " "

DOCUMENT 260587

9-25-97 RMYCK

FOUND CAST IRON MONUMENT - IN PLACE - 4" HIGH
IN THICK BRUSH - ON SIDE SLOPE - N + J PINE
BT'S FOUND WE TAGGED + PAINTED RED RING
NOW N. PINE 5" N58E - 17.65

NOW N. PINE 7" S22E - 19.07'

NOW N. PINE 15" N12E 41.10'

WE WILL SEARCH AGAIN ON MONDAY USING
RECORDED BEARING + DISTANCE - SEARCH FOR
OTHER STUMP + POST POINT

BLAZED N. PINE 13" ON 4 SIDES - 3.0' N18W

PLACED E.S.L.P. ON ASPEN 6" 400'E OF 1/4 CORNER
ON WEST SIDE OF WOODS TRAIL N NW - S-SE

3298

LAZED
SZEORIGINAL
BT

"ABOVE"

22 L-21

1/4 Cor. Sec's 13 & 14

Notes of orig gov't Survey of
1824.

B. Pine 6" N29°W 9.90'

B. Pine 6" N34°E 32.34'

Chained to this location from
orig evidence 2640.0' North. old
burned stumps in area. No evidence
of orig B.T's found. F.S.L.P. found
approx 200' west of my search
location. Searched 2 Man hi's.

7-19-67

James E. Epton

23 Z-21

Standard Sec Cor. Sec's 35 & 36

Notes of the G.L.O. resurvey
of 1926. set a 3" long 2"
dia iron post with Brass Cap stamped

Found in place

SC	
T145N	R29W
535	536
1926	

N. Pine 14" N42°W 56.76'

(Now a 18" N42°E 56.76' scribe visible)

N. Pine 12" N75°W 21.78'

(Now a 21" N75°W 21.78' scribe visible)

to perpetuate this Corner I
scribed ONE New bearing tree's

N. Pine 19" N85°W 60.2' scribed SC535BT

Steel sign post 72" long set 2'
in ground w/ signs 54-2.5' 54-4'
attached due west 7.7'

James Johnston 7-6-67

AFF. J. Johnston

Z-21

8/12/87

21" dia 2" IRON & CAP IN PLACE - IN GOOD CONDITION
IN HEAVY BRUSH WITH PINE - OAK - ASPEN
125' SOUTH OF OIL PIPELINE AND APPROX 600' WEST OF
FOREST ROAD # 2341

BT's ARE ALL ALIVE AND IN GOOD CONDITION

N. PINE 24" N75°W 21.78' SCAR - SCRIBE OVERGROWN

N. PINE 21" N25°W 60.20' SCRIBE VISIBLE

N. PINE 19" N42°E 56.76' SCAR - SCRIBE OVERGROWN

8' STEEL SIGN POST WEST 7.7' BOTH SIGNS

PUT ESCAPON 15' N. PINE ON SOUTH EDGE OF PIPELINE
CLEARING S12°W 89.0' TO SEE FOR.

8' STEEL SIGN POST EAST 5.5' BOTH SIGNS

24 7-23

1/4 Cor. Sec's 36

Notes of the G.L.D. resurvey
of 1926. From remains of
Orig B.T. set a squared Cedar
Post 8' long 6" square 6' in ground
for Corner. 7.92' East of
Portage Creek.

Note - This Corner Found by C-C's
No date. 3 stakes found at
Corner location out in Bog
area as described above.

Orig BT
Tamarack 6" N33°E 83.17'
(Not Found)

Found a squared post. Laying under
bog. Scribed SC 1/4 S 36 Visible.
Two more old painted stakes along side.

7-6-67
skunks

Aff. doc. T 2-23

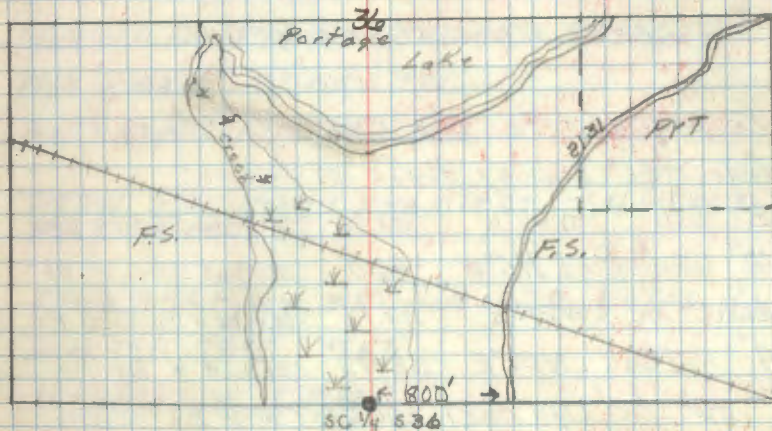
To perpetuate this Corner I
set a 6' long 2" dia steel pipe
filled w/ concrete and capped with
a 2" dia bronze tablet stamped

71854 18894

SC
145361957
R16 42 6807

North Bearing Tree's Near
set two steel sign post

South — ' with sign 54-2 attached.
West — ' with sign 54-2 & 54-4 attached.



26 Z-17

Standard Corner For sec's S34 & S35

Notes of G.L.O. Resurvey of 1926

Set Iron post 3' Long 2" dia. 26" in ground
with brass cap marked:

S.C.	
T195N R29W	
534	535
1926	

Found in place in ash swale
10" above ground

From which:

Balsam 6" N9°30'W 78 lks. - 51.48'

Found balsam stub 5' high 1 1/2" dia. at bearing & dist.

Birch 8" N27°45'E 37 lks. - 24.42'

Found rotted stump at bearing & dist.

to perpetuate this corner I scribed

four new bearing trees as follows:

8" Ash N67°W 23.48' scribed SCS34 Bt.

12" White Pine N5°W 46.0' scribed SCS34 Bt.

NEW WINDFALL	1 1/2" Elm N21°E 27.17' scribed SCS35 Bt.
-----------------	---

4" Red Oak N57°E 32.43' scribed X Bt.

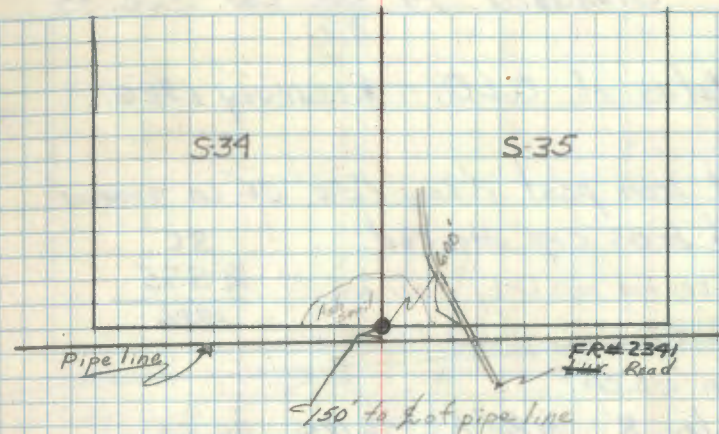
~~6" steel sign post 396' East with F.S. sign~~~~544 attached~~

6-27-69

Curtis R. Krause

Aff. Davit

Z-17



5-3-05 R. MAIN

FD IRON IN PLACE AND GPS. WITNESS WITH H2

1969 W PINE 17" TOP DRYING BACK NEW TAGS

1969 R OAK 10" NEW TAG

1969 ASH 12" NEW TAG

HEAVY 8 FT STEEL SIGN POST 304' EAST TO
FACE OF POST

KIND FSLP BY WRI AND EJB 1/4/55 CN

ASH 12" S8°E 7 FT

11-13-2014 R. MAIN

GPS IRON SURVEY GRADE.

26 Z-19

Standard 1/4 Sec. Cor. Sec. 35

Notes of G.L.D. Resurvey 1926

Set Iron post 3' long 1" dia 26" in ground
with brass cap marked:Brass cap has been hit by dozer and
bent, but base of post was still in place.SC
1/4 S 35
1926

From which:

Poplar 8" N82°E 56 lks. 36.96'

Found stump at dist. bearing also part of scribe visible

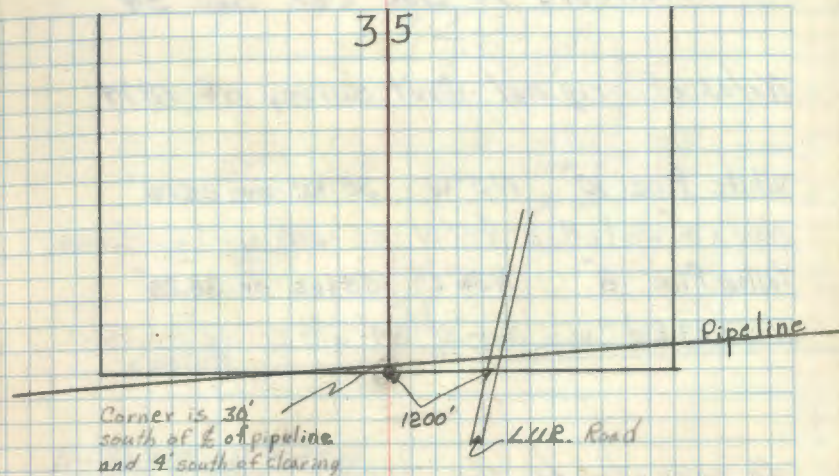
Poplar 8" N17°E 103 lks. 67.98'

Taken out with pipeline clearing

Note. G.L.D. corner has been bent and split so I
replaced it with a concrete monument.

APP: dov. T.

Z-19

to perpetuate this corner I set a 6" dia.
5' long concrete monument with a 3" dia. brass
tablet stamped as follows.SC
T. 145 N. R. 29 W.
1/4 S 35
1969
R.L.S. NO. 6807

Witnessed by

22" White Oak N81°W 90.72' scribed S.C. 1/4 S 35 Bl.
 10" Red Oak N6°W 163.57' scribed S.C. 1/4 S 35 Bl.
 11" Red Oak N16°E 149.42' scribed S.C. 1/4 S 35 Bl.
 10" White Oak N42°E 166.24' scribed S.C. 1/4 S 35 Bl.
 6' steel sign Post 8.4' North with F.S. sign 54-4
 attached

7-1-69

Curtis R. Kramer

27 2-15

Standard 1/4 Sec Cor. Sec. 34

Notes of original Gov't survey of 1874

White Pine 10" N5°W 381ks. or 25.08'

Now a 32" White Pine N5°W 25' with scribe visible

Yellow Pine 8" N36°E 581ks. or 38.28'

Now a 24" Red Pine N36°E 39' with scribe visible

to perpetuate this corner I set a 2" dia
5' long galvanized steel pipe filled with
concrete and capped with a 3" brass tablet
stamped as follows.

SC
T. 145 N. R. 29 W.

1/4 S34

1969

P.L.S. NO. 6807

Witnessed by:

22" Norway Pine N46°W 65.20' scribed SC 1/4 S34

19" Norway Pine N1°E 45.90' scribed SC 1/4 S34

8" Elm Down 537°E 8.60' scribed X Bt.

GONE → 6' steel sign post 2.70' East with F.S. sign 54-4
attached.

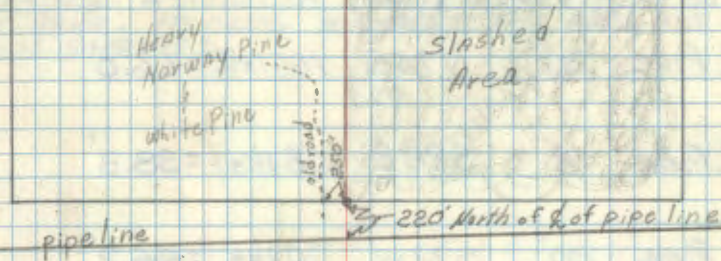
7-7-69

Ante R. Krause

AFF. Jour. t

2-15

34



11-20-02 R MAIN

FD IRON IN PLACE UP 2 FT. ALG ELM BT
IS NOW A WIND FALL. ALL REMAINING B.T'S ARE
OK & G.P.S.E.D. CORNER.

NEW 8 FT STEEL SIGN POST 2.6 FT NORTH

FD FSLP ON NORTH SIDE OF PIPE LINE ON 15"
ASPEN FROM WHICH CLEARER BEARS NORTH 169 FT
TAG BY KRAUSE 7-7-69

Corner to Sec's. 8-9-16-17

Notes of Orig. Gov't survey of 1874

Set wood post

N. Pine 20" N70E 100 lks. = 66.0'

N. Pine 18" S28E 58 lks. = 38.3'

N. Pine 20" S72W 70 lks. = 46.2'

N. Pine 24" N81W 75 lks. = 49.5'

5/9/91 BRAMA

Scouted off of quad map to find search area. Search a large area and found very few old pine stumps. Search area has been heavily burned over and has deep ^{planting} furrows. This area is now a N. Pine plantation or aspen regeneration.

1-13-75 C. KRAUSE

CHAINED FROM I.P. 7-8-17-18 EAST GOVT DISTANCE. ESTABLISH APPROX CORNER. FSLP ON 12" R. PINE. NO ORIG EVIDENCE FD. AREA HAS BEEN SHEARED.

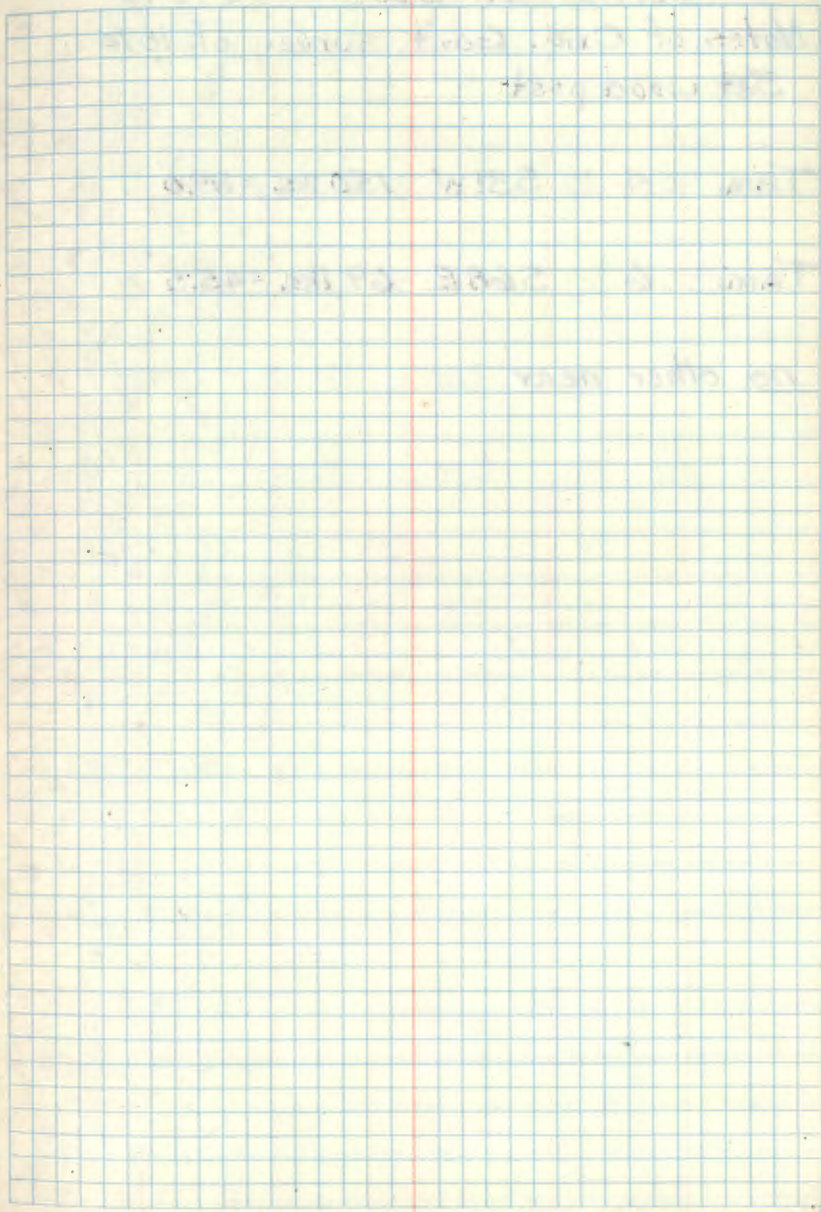
Quarter Bet. Sec's. 9-16

Notes of Orig. Govt. survey of 1874

Set wood post

J. Pine 10 S87W 371ks. = 24.4'

J. Pine 10 N42W 401ks. = 26.4'



30

Corner to Sec's. 9-10-15-16

Notes of Orig. Gov't. survey of 1874

Set wood post

Tam. 4 S31W 150 lks. = 99.0'

Tam. 6 S68E 69 lks. = 45.5'

no other near

31

Corner of Sec's 4-5-8-9
Notes of Orig. Gov't. survey of 1874
Set wood post

N. Pine 30 S65W 121ks. = 7.9'

N. Pine 30 S80E 131ks. = 8.6'

N. Pine 20 N64E 441ks. = 29.0'

J. Pine 6 N55W 781ks. = 51.5'

~~SECTION~~ CORNER ~~TO~~ SEC'S. 11 & 12 1 & 2

NOTES OF ORIG. GOV'T. SURVEY 1874

JAN 2, 1874

SET WOOD POST

Y. PINE 16 S18W 8 LKS.

Y. PINE 14 N44E 44 LKS.

Y. PINE 16 S60E 34 LKS.

NO OTHER - NOTE STATES ALL TIMBER (DEAD)

EAST TRUE LINE BET. SEC'S. 1 & 12
 30.00 CHS. ENTER CEDAR SWAMP NW 4 SE
 30.00 CHS. TO LAKE SET MC

Check	Pondam Line bet Sec 1 & 2
510	Enter Cedar Swamp bet NW 4 SE
4000	Set temp. in Sec. 10
8110	Enter at Pond bet NW 4 SE
	0. 47 ft. set
	All Cedar Swamp

QUARTER CORNER BET. SEC'S. 11 & 12
 NOTES OF ORIG. GOVT. SURVEY 1874
 JAN. 2, 1874
 SET WOOD POST

BL. PINE 12 N9E 232 LKS. 153.1'

BL. PINE 14 N8W 334 LKS. 220.4'

6-15-84 Hayes, Brama & Allison

Checked north to search area from sec. cor. $\frac{11}{12}$
 Many pine stumps in the large search area but
 no evidence found. Corner position falls in swamp.

M. Hayes

North Post Sec 11 & 12

NO	2000	Leave Post Blank to East	12-84
35	5000	Center " " "	12-84
40	4000	Set post for 1/2 Sec cor from which	
42		Bl Pine 12 N9E 232	
		1st 1/2 84 884	
	4200	Leave Blank to West	
	8000	Set post Post Sec 12, 11 & 12	
		from which	
		Bl Pine 16 N8W 334	
		1st 1/2 84 884	
		16 860 884	
		All dead	
		Surface level Soil 3' Rate	
		Scrub Pine	

Hayes

FR 2167

QUARTER CORNER BET. SEC'S. 11 & 12
 NOTES OF ORIG. GOV'T. SURVEY 1874
 JAN. 2, 1874

SET WOOD POST

BL. PINE 12 N9E 232 LKS. 153.1'

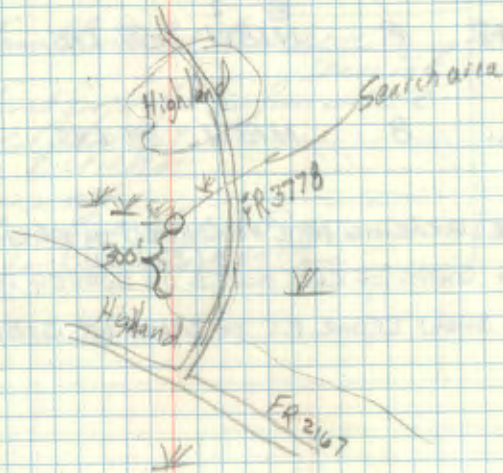
BL. PINE 14 N8W 334 LKS. 220.4'

6-15-84 Hayes, Brama & Allison

Joined north to search area from sec. cor. $\frac{11}{12}$
 Many pine stumps in the large search area but
 no evidence found. Corner position falls in swamp.

M. Hayes

NORTH BET. 11 & 12
 30.00 CHS. LV. WET MARSH E & W
 35.00 CHS. ENT. " " NE-SW
 40.00 CHS. '14 COR.
 42.00 CHS. LV. MARSH NW & SE



QUARTER CORNER BET. SEC'S. 2 & 11

NOTES OF ORIG. GOV'T. SURVEY 1874

JAN. 4, 1874

SET WOOD POST

CEDAR 8 ^{S?}
N18W 59 LKS.

TAM. 8 [?]
N18W 33 LKS.

NOTE: BEARING ARE RECORDED IN ORIG. NOTES AS ABOVE

1903 (Book 311)

FROM CORPS OF ENG. NOTES OF SURVEY FOR LAKE WINNIE

THEY SHOW CEDAR BT TO STAND AT S18W

East Random bet Sec 2 & 11 Va 10 75 6

EAST

25.0

40.0

51.00

80.38

TRUE

40.1

Enter Swamp bet Sec 2 & 11

bet Sec 2 & 11

Leave Swamp bet Sec 2 & 11

Unit for Cultivation

Release Sec Line 71' at Sec cor

119.50 at Sec Line bet Sec 2 & 11

40.19 Set post for 1/4 Sec. corner which

cedar 8' at 11.10.7

Sam S. at 11.10.7

81.81 1/2 Sec cor

Surface level Soil S. Pate

Enter Swamp bet Sec 2 & 11

QUARTER CORNER BETWEEN SECTIONS 14+23

NOTES OF ORIG. GOV'T. SURVEY 1874

SET WOOD POST

CEDAR 5 SZW 28 LKS. = 18.48'

CEDAR 4 N60W 16 LKS. = 10.56'

EAST RANDOM BET. SEC'S. 14-23

12.00 CHS. LV. LAKE TEMP. MC

36.00 CHS. ENT. CEDAR SWP. NE+SW

40.00 CHS. TEMP 1/4

80.30 CHS. INTER. LINE 17 LKS. NORTH OF COR.

WEST TRUC. BET. 14+23

40.15 CHS 1/4 COR.

CORNER TO SECTIONS 10-11-14-15

NOTES OF ORIG. GOV'T. SURVEY 1874

SET WOOD POST

BLK. PINE 10 S13E 8 LKS. = 5.28'

BLK. PINE 10 S36W 9 LKS. = 5.94'

Y. PINE 20 N67W 145 LKS. 95.7'

BLK. PINE 12 N58E 138 LKS. = 91.1'

CORNER TO SECTIONS 3-4-9-10

NOTES OF ORIG. GOV'T. SURVEY 1874

SET WOOD POST

BLK. PINE 6 S40W 19 LKS. = 12.54'

BLK. PINE 7 N53W 9 LKS. = 5.94'

BLK. PINE 4 N70E 67 LKS. = 44.22'

BLK. PINE 8 S19E 123 LKS. = 81.18'

CORNERS TO SECTIONS 15-16-21-22

NOTES OF ORIG. GOVT. SURVEY 1874

SET WOOD POST

Y. PINE 10 N59W 34 LKS. = 22.44'

BLK. PINE 10 S89E 47 LKS. = 31.02'

TAM. 10 S1E 56 LKS. = 36.96'

Y. PINE 12 N34E 34 LKS. = 22.44'

8-24-73 CK MN

CHAINED NORTH FROM HWY #2 - 2640' N

SEARCH AREA NOTHING COULD BE FOUND

PUT FSLP ON 10" J. PINE AS APPROX SEC. COR.

3 LARGE N. PINE ARE APPROX. 150' NORTH

MORE SEARCH COULD BE DONE

PUT FSLP ON 16" N. PINE 880' WEST OF APPROX. COR.

ON EAST SIDE OF FINN ROAD

CORNER TO SECTIONS 21-22-27-28

NOTES OF ORIG. GOV'T. SURVEY

SET WOOD POST

W. PINE 12 S45E 45 LKS. = 29.7'

Y. PINE 20 S55W 123 LKS. = 81.18'

W. PINE 20 N64W 134 LKS. = 88.4'

NO OTHER TREES

CORNER TO SECTIONS 27-28-33-34
 NOTES OF ORIG. GOV'T SURVEY 1874
 SET WOOD POST

W. OAK 5 N2E 18 LKS. = 11.88'

Y. PINE 24 S33E 16 LKS. = 10.56'

W. PINE 10 S15W 35 LKS. = 23.10'

NO OTHER TREES NEAR

GPS. THIS APPROX LOCATION 3-30-95^{RM}

4-6-95 RM-CK

WENT BACK TO G.P.S. POSITION AND
 SEARCHED ALONG WOODS TRAIL NYS
 ON EAST SIDE - FD. SOME BADLY BURNED
 PINE STUMPS - BUT NO OTHER EVIDENCE
 COULD BE LOCATED AT THIS TIME

N. PINE PLANTATION TO WEST HAS
 JUST BEEN THINNED

NORTH 1/16 BETWEEN SECTIONS 25+26

NOTES OF BLM RESURVEY 1974

SET 2 1/2 X 30" IRON POST WITH BRASS CAP MKD.

T145MR29W

N 1/16

S26 | S25

FROM WHICH

1974

R. PINE 8

N39E

32 LKS. = 21.12'

BIRCH 7

N49W

59 LKS. = 38.94'

NORTHWEST $\frac{1}{16}$ SECTION 25

NOTES OF BLM RESURVEY 1974

SET 2 $\frac{1}{2}$ X 30" IRON POST WITH BRASS CAP MKD.

T14SNR29W

NW $\frac{1}{16}$
S25

FROM WHICH

1974

TAM. 7 N68E 48 LKS. = 31.68'

CEDAR 13 S20W 24 LKS. = 15.84'

CORNER FALLS IN WILLOW SWAMP

S0°15'W - 20.29 CHS. = OR 1339.14'

SPECIAL MEANDER CORNER ON N+S CENTERLINE
OF THE NW¹/₄ SEC, 25

NOTES OF BLM RESURVEY 1974

SET 2¹/₂ X 30" IRON POST WITH BRASS CAP MKD.

T145NR29W

W

S 25

W

SMC

1974

FROM WHICH

BIRCH 13 N82E 9 LKS. = 5.94'

ELM 6 S81W 17 LKS = 11.22'

87 LKS. OR 57.42' S 0°15' W OF NW¹/₄ SEC, 25

NORTH $\frac{1}{16}$ CORNER BET. SECS. 546
 CONTRACT WITH TONY KERICK RLS #
 1981

SET 2" X 5' LONG IRON PIPE WITH BRASS CAP INCD
 1590.45' NORTH AND 1514.71' SOUTH

MARKED NEW BTS:

J. PINE	10	N22W	9.15'	^{SCRIBED} NAIL + TAG - PAINTED		
J. PINE	11	S76W	19.05'	"	"	"
J. PINE	11	S34E	26.97'	"	"	"

8' STEEL SIGN POSTS N + S 5' WITH SIGNS

QUARTER CORNER BETWEEN SECTIONS 5+6

NOTES OF ORIG. GOV'T. SURVEY 1874

SET WOOD POST

Y. PINE 18 S56W TO HKS. = 46.2'

BLK. PINE 6 N40E 50 HKS. 33.0'

CONTRACT WITH TONY KERICK #

1981

SET 2" X 5' LONG IRON PIPE WITH BRASS CAP MKD.

3105.16' NORTH AND 3029.42' SOUTH

SET BY PROPORTIONAL DISTANCE

MARKED NEW BT'S.

J. PINE 8 N45W 9.05' SCRIBED-TAGGED

J. PINE 10 S85W 17.22' PAINTED " "

J. PINE 8 S74E 10.38' " "

8" STEEL SIGN POSTS N+S 5' BOTH SIGNS

E^{1/16} BETWEEN SECTIONS 6+7

CONTRACT BY TONY KERICK RLS #
1981

SET 2" X 5' LONG IRON PIPE WITH BRASS CAP MKD.
1299.41 EAST + WEST

MARKED NEW BT'S.

J. PINE	15	N 52W	75.08'	SCRIBED-TAGGED
J. PINE	12	N 70W	66.98'	" PAINTED "
J. PINE	8	S 88W	87.97'	" "

8' STEEL SIGN POST WEST 2.7' →

8' STEEL SIGN POST EAST 4.15'

47
QUARTER CORNER BET, SEC'S. 27+34

ORIG. GOV'T. SURVEY 1874

SET WOOD POST

W. OAK 10 S42E 50 LKS. = 33.0'

W. OAK 10 N17W 67 LKS. = 44.22'

3-23-95 CK

FROM FR 2341 - SCALED OFF QUAD
RAN SOUTH 750' TO SEARCH AREA
FELL IN THICK BRUSH 200' SOUTH
OF N. PINE PLANTATION TO NE
SOME OAK IN AREA OF CHAINED
POSITION - BUT THERE ARE VERY
LARGE W. OAK TO SE 150' - 250'
SOME MAY BE 24" TO 30"
FOUND SOME OLD STUMPS AND
WELL ROTTED WIND FALLS IN AREA
NOTHING COULD BE FOUND OF ORIG.
BT'S AT THIS TIME

WAS GPS ON 3-30-95 RM
WILL SEARCH AGAIN AFTER GROUND
THAWS OUT AND WE GPS

547
5-4-95 RMYCK

SEARCH AGAIN FROM G.P.S. CORRECTED
POSITION - Ed. WELL ROTTED LOG - STILL
FROZEN IN GROUND - PEELED AWAY SOME
OF OUTSIDE - BUT REST IS STILL SOLID
FROZEN - WILL COME BACK LATER
NO OTHER EVIDENCE COULD BE LOCATED

CORNERS TO SECTIONS 26-27-34+35
ORIG. GOV'T. SURVEY 1874
SET WOOD POST

W. PINE 24 N10E 15 LKS. = 9.90'

N. PINE 24 S23E 10 LKS. = 6.60'

W. OAK 14 S89W 17 LKS. = 11.22'

W. PINE 30 S2W 6 LKS. = 3.96'

3-23-95 CK

USED TIES FROM SOO LINE RAILROAD PLAT
Fd. CONCRETE CULVERT NEARLY BURIED
ON ENDS AT STATION 453+90 THEN RAN
S48E ALONG GRADE TO STATION 435+56
DISTANCE WAS 1834' THEN FROM $\frac{1}{4}$ OF
GRADE RAN S2W 770' TO APPROX. SEC. COR.
LOCATION - WHICH NOW FALLS IN N. PINE
PLANTATION AND WINDROWS - NO
EVIDENCE COULD BE LOCATED AS AREA
IS LEVELED AND NOTHING REMAINS OF
ANY OLD STUMPS - ESTABLISH APPROX.
SEC. COR. AT END OF MY LINE AT 770'
PLACED FSLP ON N SIDE OF 7" (H) BLAZED

N. PINE APPROX. COR IS N2E 24' FROM
TAG. THIS TAGGED N. PINE IS AT EDGE
OF WINDROW

GPS THIS POSITION ON 3-30-95 RM

DISTANCE FELL IN WINDROW

CONCRETE CULVERT IS AT SE END OF
NOW ACTIVE-BEAVER POND

QUARTER CORNER BET. SEC'S. 34 & 35
 ORIG. GOV'T. SURVEY 1874
 SET WOOD POST

W. PINE 16 S 67 E 65 LKS. = 42.90'

1-3-90 CK+GB

CHAINED TRUE NORTH FROM IRON PIPE
 AT STANDARD SECTION CORNER BET. SEC'S
 34 & 35 - 2640' DOWN FR # 2341
 THEN AT 2640' N WE MEASURE 60'
 EAST TO 17" ASPEN WITH (2) OLD FSLPS
 ON SOUTH SIDE - HIGHEST TAG IS SOLID
 RUST NOTHING CAN BE READ
 OTHER TAG IS SIGN IN WITH DATES
 AS FOLLOWS 3/17/35 - 3/19/41
 4/28/54 + 1-3-90
 FOUND 15" W. PINE BLAZED ON 4 SIDES
 5' WEST OF 17" ASPEN WITH OLD TAGS
 NOTHING COULD BE FOUND OF ORIG.
 W. PINE BT - NO OTHER EVIDENCE
 SEEN AT THIS TIME

3-23-95 CK

FD. SAME TAGS - IN PLACE

THIS WAS GPS ON 3-30-95 RM

WE SEARCH AGAIN FROM GPS CORRECTION
 BUT COULD FIND NOTHING OF OLD BT
 GPS DISTANCE FROM STA COR. TO APPROX.
 1/4 COR. WAS 2641.8' AT BEARING
 OF N 0° 00' 34" W

5/4/95 RM+CK

SEARCH AGAIN FROM GPS POSITION
 NOTHING COULD BE LOCATED

MEANDER CORNER BET. SEC'S. 22+23
 ORIG. GOV'T. SURVEY 1874
 SET WOOD POST

W. PINE 36 ³² NZZE 16 LKS. = 10.56'

Fd. PINE STUMP LARGE N32E - 10.56'

W. PINE 30 N45W 64 LKS. = 42.24'

Fd. PINE STUMP LARGE N45W - 42.24'

~~4/6/95~~ RM + CK

Fd. EVIDENCE OF BOTH PINE STUMPS
 AT BEARING AND DISTANCE
 CORNER WOULD FALL IN LAKE AT EDGE
 OF BANK - WILL HAVE TO SET WITNESS
 CORNER ON SAFE GROUND
 BANK SHOWS HEAVY EROSION
 PLACED FSLP ON 19" W. PINE - N40E - 18.5

STANDARD CORNER TO SECTIONS 33+34
 ORIG. GOV'T. SURVEY 1871
 SET WOOD POST

N. PINE 20 N50E 190 LKS. = 125.40'

W. PINE 25 N80W 47 LKS. = 31.02'

Rm

G.P.S. THIS APPROX. POSITION 3-30-95

~~3~~⁵-4-95

FROM G.P.S. POSITION WE SEARCH
 IN AREA - Fd. LARGE PINE WINDFALL
 NORTH OF GPS LOCATION 25'-35'
 LOG IS LYING PARTIALLY IN SMALL
 WATER HOLE - STILL FROZEN
 WE DIDN'T FIND ANY SCAR ON LOG
 AS MUCH AS WE COULD DIG THROUGH
 AT THIS TIME - Fd. LOW CUT PINE
 STUMP - WELL ROTTED IN SPRUCE
 PLANTATION NE 135' FROM GPS.
 LOCATION - FACE OF STUMP IS BURNED
 AND ROTTED - NOTHING ELSE
 COULD BE LOCATED AT THIS TIME

STANDARD QUARTER CORNER TO SECTION 33
 ORIG. GOV'T. SURVEY 1871
 SET WOOD POST

W. PINE 40 N63E 46 LKS = 30.36'

W. PINE 40 N23W 50 LKS = 33.00'

G.P.S. THIS LOCATION

4-6-95 CRK-RM

SEARCH IN AREA FROM G.P.S. LOCATION
 NO TWO STUMPS WOULD FIT CORRECTLY
 WITH ORIG. TIES

MANY LARGE W. PINE STUMPS IN AREA
 THEY SHOW SIGNS OF BURN & ARE WELL
 ROTTED - SOME ARE NEARLY LEVEL
 WITH GROUND - NOTHING COULD BE
 FOUND AT THIS TIME

5/4/95 RM-CK

SEARCHED AGAIN NOTHING COULD BE
 TIED TOGETHER

QUARTER CORNER BET. SEC'S. 16 & 17
 ORIG. GOVT SURVEY 1874
 SET WOOD POST

5" S15E 20 LKS. 13.20'
 ASPEN ~~2 1/2"~~ S16E ~~14 LKS. 9.24'~~

4" S26W 33 LKS 21.78'
 ASPEN ~~2 1/2"~~ S37W ~~16 LKS. 10.56'~~

CORNER TO SECTIONS 16-17-20-21

ORIG. GOVT. SURVEY 1874

SET WOOD POST.

J. PINE 8 S83W 83 LKS. = 54.78'

J. PINE 8 N74W 80 LKS. = 52.80'

J. PINE 8 N38E 115 LKS. = 75.90'

NO OTHER NEAR

QUARTER CORNER BET. SEC'S. 16 + 21
 ORIG. GOV'T. SURVEY 1874
 SET WOOD POST

J. PINE 15 S65E 217 LKS. = 143.22'

TAM. 5 N40W 23 LKS. = 15.18'

2653.20'
 GOV'T CHAIN 40.20 BET. SEC'S. 16 + 21

QUARTER CORNER BET. SEC'S. 17+20
 ORIG. GOV'T. SURVEY 1874
 SET WOOD POST

J. PINE 6 N22E 11 LKS. = 7.26'

ASPEN 5 S18W 27 LKS. = 17.82'

2653.20'
 GOV'T. CHAIN 40.20' BET. SEC'S. 17+20

8-13-73 CK-MN
 CHAINED DUE EAST FROM SEC. COR. 17-18-19-20
 1300' E ALONG OLD FENCE LINE - PUT FSLP ON
 18" J. PINE ON WEST SIDE OF LYBE ROAD

8-14-73 MARK NORNBERG
 CONTINUES FROM TAGGED J. PINE EAST TO
 2640' E - FD. N. PINE WITH FSLP ON EAST SIDE
 PUT NEW FSLP ON WEST SIDE FACING FIRE TRAIL
 #20 N. PINE HAS SCRIBE MARK ON EAST SIDE
 SCRIBE READABLE

INFORMATION ON COR. CARD

4/30/97 CK
 WALK NORTH FROM HWY 2 - APPROX 1200'
 FD. 27" N. PINE WITH SCRIBE INSIDE ON EAST
 SIDE OF TREE - OLD TAG ON EAST SIDE DATED
 6/8/39 C. SMITH - NO DISTANCE TO A CORNER
 ALSO FARRALL CREEK SIGNE IN DN 10/24/51
 TAG FROM 1973 ON WEST SIDE. STILL IN PLACE
 PINE IS ON EAST SIDE OF WOODS TRAIL N+S
 30' SOUTH OF DRAINAGE SW+SE
 BEAVER NOW ARE BUILDING A DAM ON OLD TRAIL
 BACKING WATER TO SE - WHICH RUN BACK TO
 HWY 2
 REMOVED OLD TAG ON EAST SIDE OF N. PINE
 BUT (5) SMALL NAILS ARE BACK IN PLACE
 JUST EAST OF N. PINE THEY HAVE TAKEN OUT
 SOIL FOR TRAIL CONSTRUCTION ACROSS LOW
 AREA - PROBABLY REMOVED ANY TRACE OF
 POST OR OTHER EVIDENCE
 N. PINE COULD VERY WELL BE OLD ENOUGH
 FOR ORIG. BT + JUST DOESN'T FIT ORIG. TIES
 THERE SOME ASPEN IN AREA - MOSTLY PINE
 AROUND CORNER
 N. PINE HAS BLUE + RED PAINT AROUND TREE

NOTHING IN CCC BOOKS TO HELP RESTORE
 POSITION - NO 874'S COULD BE FOUND

CCC BOOK #111 SHOWS A DISTANCE OF 40.38 CHS,
 OR 2665.08' FROM SEC. COR. TO WEST

QUARTER CORNER BET. SEC'S 20+21
ORIG. GOV'T. SURVEY 1874
SET WOOD POST

ASPEN 2 1/2" S76E 14 LKS. = 9.24'

ASPEN 2 1/2" S37W 16 LKS. = 10.56'

CORNER TO SECTIONS 20-21-28-29

ORIG. GOV'T. SURVEY 1874

SET WOOD POST

W. PINE 30 S49W $17 \text{ LKS.} = 11.22'$
 ~~$27 \text{ LKS.} = 17.82'$~~

W. PINE 30 N48W $27 \text{ LKS.} = 17.82'$

W. PINE 20 N62E $68 \text{ LKS.} = 44.88'$

W. PINE 18 S67E $64 \text{ LKS.} = 42.24'$

QUARTER CORNER BET. SEC'S. 20 + 29
 ORIG. GOV'T. SURVEY 1874
 SET WOOD POST

W. PINE 40 S49E 8 Lks. 5.28'

W. PINE 30 N114E 30 Lks. 19.80'

2659.8'
 GOV'T. CHAIN 40.30 BET. SEC'S. 20 + 29

QUARTER CORNER BET. SEC'S. 21 & 28
 ORIG. GOV'T. SURVEY 1874
 SET WOOD POST

MAPLE 8 N10W 14 LKS = 9.24'

ELM 6 S75E 21 LKS = 13.86'

2634.06'
 GOV'T CHAIN 39.91' BET. SEC'S. 21 & 28.

QUARTER CORNER BET. SEC'S. 28+29

ORIG. GOV'T. SURVEY 1874

SET WOOD POST

W. OAK 12 N57W 39 LKS. = 25.74'

LIND 10 N21E 17 LKS. = 11.22'

CORNER TO SECTIONS 28-29-32+33
ORIG. GOVT. SURVEY 1874
SET WOOD POST

ASPEN 4 S76E 27 LKS. = 17.82'

ASPEN 3 S57W 70 LKS. = 46.70'

BIRCH 4 S79W 30 LKS. 19.80'

ASPEN 2 1/2 N62E 17 LKS. = 11.22'

QUARTER CORNER BET. SEC'S. 28 & 33
ORIG. GOV'T. SURVEY 1874
SET WOOD POST

ASPEN 14 N26W 19 Lks. = 12.54'

R. OAK 6 S31E 31 Lks. = 20.46'

64

QUARTER CORNER BET. SEC'S, 29+32
ORIG. GOV'T. SURVEY 1874
SET. WOOD POST

W. PINE 24" SB1E 33 LKS. = 21.78

N. PINE 24" N45E 4 LKS. = 2.64'

64

2646.6'
GOV'T CHAIN 40.10' BET. SEC'S, 29+32

QUARTER CORNER BET. SECS. 32 + 33

ORIG. GOV'T. SURVEY 1874

SET WOOD POST

W. PINE 24 S10W 46 LKS. = 30.36'

MAPLE 7 N89E 57 LKS. = 37.62'

66

QUARTER CORNER BET. SEC'S. 31 & 32

ORIG. GOV'T. SURVEY 1874

SET WOOD POST

N. PINE 20 N60E 90 LKS. = 59.40'

N. PINE 16 N22W 40 LKS. = 26.40'

66

67

CORNER TO SECTIONS 29-30-31+32

ORIG. GOV'T. SURVEY 1874

SET WOOD POST

N. PINE 20 N56E 20 LKS. = 13.20'

N. PINE 24 S80E 76 LKS. = 50.16'

ASPEN 5 S30W 50 LKS. = 33.00'

ASPEN 4 N87W 48 LKS. = 31.68'

67

68

QUARTER CORNER BET. SEC'S. 29+30
ORIG. GOV'T. SURVEY 1874
SET WOOD POST

ASPEN 8 S58E 73 LKS. = 48.18'

ASPEN 3 S50W 37 LKS. = 24.42'

68

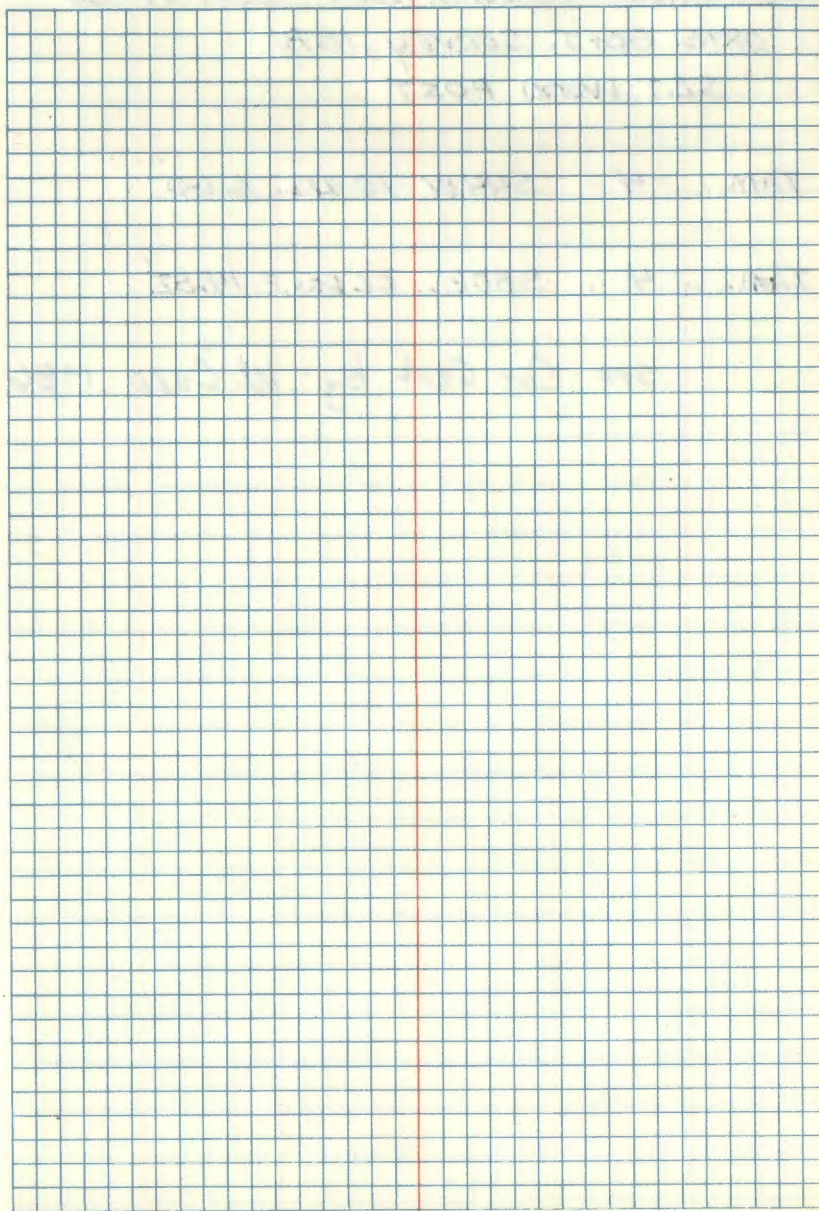
CORNER TO SECTIONS 19-20-29+30
ORIG. GOV'T. SURVEY 1874
SET WOOD POST

ASPEN 4 S22W 84 LKS. = 55.44'

BIRCH 6 S1W 160 LKS. = 105.60'

ASPEN 14 N60E 110 LKS. = 72.60'

NO OTHER NEAR



QUARTER CORNER BET. SEC'S. 19430
ORIG. GOV'T. SURVEY 1874
SET WOOD POST

TAM. 4 S44W 10 LKS. 6.60'

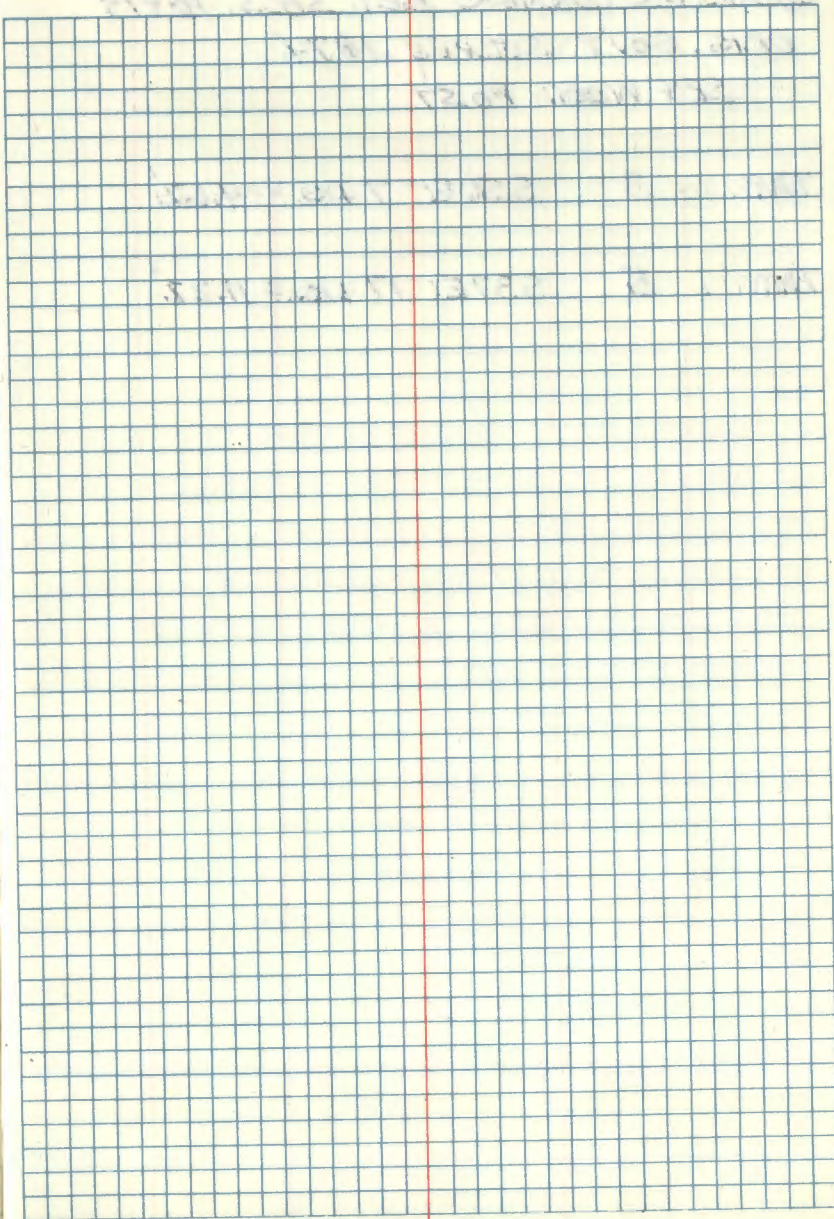
TAM. 4 S80E 22 LKS. = 14.52'

see Con Cert by W. Curo 1986

QUARTER CORNER BET. SEC'S. 19+20
ORIG. GOV'T. SURVEY 1874
SET WOOD POST

J. PINE 8 S62E 14 LKs. = 9.24'

J. PINE 10 S72E 33 LKs. 21.78'



QUARTER CORNER BET. SEC'S. 18+19
ORIG. GOV'T. SURVEY 1874
SET WOOD POST

TAM. 3 S50E 7 LKS. = 4.62'

TAM. 5 S37E 17 LKS. = 11.22'

QUARTER CORNER BET. SECS. 17 & 18
 ORIG. GOV'T. SURVEY 1874
 SET WOOD POST

N. PINE 12 N17W 150 LKS = 99.00'

ASPEN 3 S42E 110 LKS = 72.60'

11-17-04 R MAIN P MOBERG (DNR)

LOOK FOR COR AND BTS MIDPOINT ON
 LINE BETWEEN Fd SECTION CORNERS. NO
 EVIDENCE FOUND. WE DO FIND A 1" IRON
 PIPE (PVT) AT THIS LOCATION WITH STEEL
 "T" POST DRIVEN ALONG SIDE. I GPS THIS
 IRON.

QUARTER CORNER BET. SEC'S. 8 & 17
 ORIG. GOV'T. SURVEY 1874
 SET WOOD POST

J. PINE 15 S52W 5 LKS. = 3.30'

J. PINE 14 N8W 30 LKS. = 19.80'

11-04-08 Romain

SEARCH @ GOVT DISTANCE FROM $\frac{718}{1877}$.
 CORNER FALLS IN ± 50 YR OLD PINE PLANTATION
 NO EVIDENCE. THIS AREA WAS PROBABLY
 SHEARED WHEN PLANTED AND WAS THINNED WITHIN
 THE LAST YEAR.

GOVT CHAIN $\frac{2640'}{40.00 \text{ CHS}}$ BET SEC'S. 8 & 17

QUARTER CORNER BET. SEC'S. 7+8
 ORIG. GOV'T. SURVEY 1874
 SET WOOD POST

N. PINE 20 N70W 142 LKS. = 93.72'

N. PINE 10 N42E 210 LKS. = 138.60'
 FALLS IN R. PINE PLANTATION

11-5-08 R. MAIN

Fd ROUND POST WITH PART OF A COUNTY
 TAG AT APPROX CORNER LOCATION. APPEARS
 TO BE MIDPOINT ON LINE. † 30 YR OLD
 R. PINE PLANTATION EAST. MATURE PINE
 WEST. NO EVIDENCE FD @ THIS TIME.

QUARTER CORNER BET. SECS. 5+8
 ORIG. GOVT. SURVEY 1874
 SET WOOD POST

J. PINE 8 S17W 40 LKS. = 26.40'

N. PINE 2 N2W 24 LKS. = 15.84'

2666.40'
 GOVT. CHAIN 40.40 CHS. BET SECS. 5+8

QUARTER CORNER BET. SEC'S. 8 & 9

ORIG. GOV'T. SURVEY 1874

SET WOOD POST

J. PINE 6 N32E 40 LKS. = 26.40'

J. PINE 4 S23W 18 LKS. = 11.88'

11-04-08 R. MAIN

SEARCH AREA FALL IN \pm 25YR OLD R. PINE
PLANTATION.

QUARTER CORNER BET. SEC'S. 9+10

ORIG. GOVT. SURVEY 1874

SET WOOD POST

J. PINE 3 SIDE 275 Lks. = 181.50'

ASPEN 2 1/2 EAST 200 Lks. = 132.00'

IMPROVED TABLES