

CORNER
RESTORATION
T145 N R28W



MINING
TRANSIT BOOK

No 3841

BOOK # I

MINING TRANSIT BOOK T145 N2

U.S.F.S.

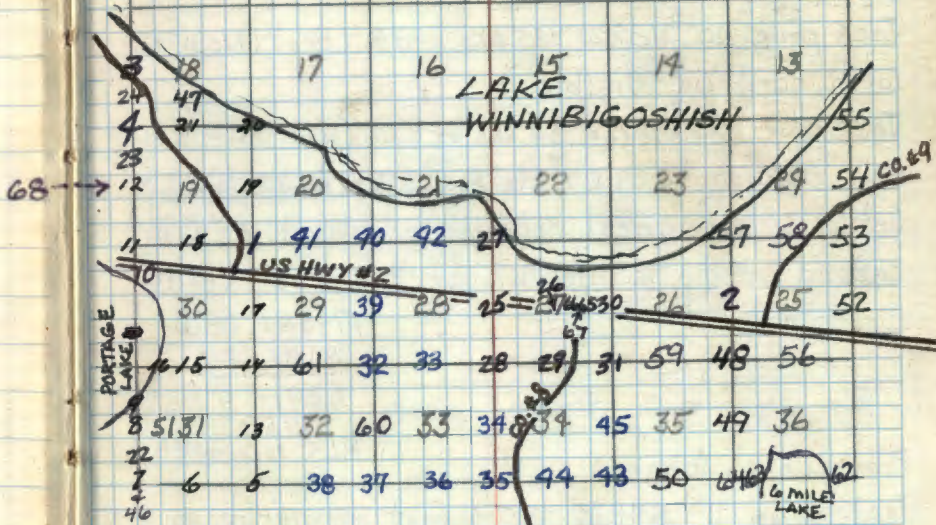
Book #1

T145N R28W 5th P.M.

CHASS COUNTY MINN.

BOOK #1 of 2

6	5	4	3	2	1
7	8	9	10	11	12



ORIGINAL GOV'T SURVEY By P.H. CONGER
 NOV. 25 - DEC. 12 1873

1 R-5

Section Corner 19-20-29-30

Corner was found to be evidenced by two blazed and scribed bearing trees established by V.A. Gjelhaug Jr., Civil Engineer & Reg. Land Surveyor of U.S. Forest Service in May 3, 1937. Recovery in 1937 was made from an original Gov't. bearing tree S33°E 82 LINKS (Now destroyed by clearing of power lines. Corner was marked by Oak post 4 feet high in 1937.

Gjelhaugs BTs -

Jack pine 10" N87°W 135 Lks or 89.1 Feet (Now 12" with scribing visible.)

Jack pine 5" S18½°E 50 Lks or 33.0' (Now an 8" stump with scribing "S29 BT" visible S18½°E 33.0')

Set a 6" cylindrical concrete monument 5' long capped with a 3" dia. bronze tablet stamped:

T145NR28W

S19 S20

S30 S29

1958

RLS NO 3628

From which bears:

Jack pine 11" S48°E 35.6 Feet MKD T145NR28WS29 BT

GCNE
Jack pine 11" N31°E 31.1 Feet MKD T145NR28WS29 BT
NOW 10 FT TAIL SNAG

11-25-08 R MAIN

GPS MONUMENT, ±50 FT EAST COR D#91

AFF. dav. t

On Sept 11, 1962 I stopped to check this corner and found concrete post pulled up & broken 25 feet north of point for corner. Also the South East bearing tree had been bulldozed down & brush chopped.

From the one remaining B.T. a Jack pine 12" N31°E 31.1' I reset corner a new 6" dia, 5' long concrete mon. w/ brass cap stamped

T145NR28W

S19 S20

S30 S29

1962

RLS NO 3628

Marked one new BT.

Jack pine 10" S50°E 67.0' MKD S29 BT

GCNE (2008)

Steel sign post 72" long set 24" in ground

w/ signs 54-2 & 54-4 attached West 4.6'

9-11-62 R.M. Donelle

Notes of orig gov't survey of 1873 -

J Pine - 6" N 70°W 32 Lks - 21.12'

J Pine - 7" N 13½°E 19 Lks - 10.54'

J Pine - 8" S 33°E 82 Lks - 54.12'

1986 - See Cor. Cert by Curro

2 T-21

Quarter Corner Sections 25-26

Corner was evidenced by two remaining original scribed bearing trees from the Government survey of 1874

① 14" Red pine (Now 20" stump partly decayed with scribing "B" visible) S84°W 20 Links or 13.2 Feet.

② 14" Jack Pine (Now stump hole) S80°E, 30 Links or 19.8 Feet.

Corner was found to be marked by a 3 inch squared post.

Set a 2" inside diameter, 5' Long galvanized wrought iron pipe filled with concrete and capped with a 3" dia. bronze tablet stamped

Found Iron, in good condition

In place (Bts. ALL DEAD)

T195N R28W

1/4
S 26 | S 25

1958

RLS NO 3628

From which bears

Jack pine 12" S27°W 45.3 Feet NOW A STUMP
NO MARKS

Jack pine 11" N24°E 5.7 Feet NOW A 13" SNAG
scribe showing

Jack pine 11" S59°E 18.0 Feet NOW A 12" SNAG
scribe showing

AFF; davn^t

To perpetuate this corner I scribed (3) THREE New Bts as follows.

5" W. PINE N72°W - 45.6 Ft. scribed Bt.

DOWN 10 - -2011

18" NORWAY PINE N26°W 50.2 Ft. scribed 1/4 S26 Bt

NOW 20" 10 - -2011

9" MAPLE EAST 44.9 Ft. scribed 1/4 S25 Bt.

NOW 14" W/ DEAD TOP.

72" STEEL SIGN POST SET DUE NORTH 2.0 FT W/F.S.

SIGN 59-9 ATTACHED.

72" STEEL SIGN POST SET DUE EAST 2.7 FT W/F.S.

SIGNS 59-2 & 59-9 ATTACHED.

6-18-72
Curtis R. Keame

10- -2011 R.MAIN

FD IRON IN PLACE AND GPS.

FD NEW TIES AS FOLLOW

R. PINE 7" N94°W 53.7 FT TO SPK 5/10 BY PJH

MAPLE 5" N35°W 9.9 FT TO NATL 5/10 BY PJH

TAGS ON TREES UNKNOWN ORIGIN. CORNER IS

± FT

3 L-1

Quarter Corner Section 13-18 R28-29W
Corner was found to be evidenced by
Two bearing trees established by Cass
Co. Surveyor Harold Curo in 1955. Bearing
trees are entered in Field book 270, Surveyors
Office Cass Co. Courthouse, Walker Minn.

- ① 14" J. Pine S1°W mag. bearing (Now 14" blazed
but not scribed) S10°W True 116 Feet.
- ② 8" J. Pine N90°E mag. (Now 8" blazed but not scribed)
N79°E true 8.9 Feet.

Corner was found to be marked by a 1 1/2" x
36" pipe.

Set a 2" inside diameter, 5' long galvanized
wrought iron pipe filled with concrete,
and capped with a 3" dia. bronze tablet
stamped:-

	T145N	
R29W	1/4	R28W
	S13	S18
	1958	
RLS	NO	3628

- Section 18 8" W. Oak S22°E 44.5 Feet
- Section 18 7" R. Oak N47 1/2°E 49.5 Feet
- Section 18 9" J. Pine N6°E 39.8 Feet

CERTIFICATE FILED

Notes of orig gov't Survey of
1873

J Pine 8" West 60 Lks - 39.60'
 X Pine 80" N64 1/2°E 4 Lks - 2.64'

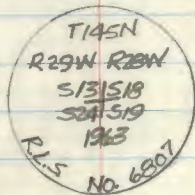
R9-7150-4 by Hayes 7/2/60

SEE T145-N-R29-W Book #1
Pg #10

4 - N-1

Section Corner 18, 19, 13, 24

Original Gov't survey notes of 1874

J. Pine 12" N 31° E 15.18' - 231KS - Found stump
hole with remains of charred pine stump at ^{record} bearing & distanceJ. Pine 8" N 19° W 9.9' - 151KS - Found charred
stump at record bearing & dist.J. Pine 10" S 65° W 30.36' - 461KS - Found charred
pieces of pine in stump hole at record bearing & dist.J. Pine 7" S 60° W E 7.92' - 121KS - Found pieces of
charred pine in stump hole at record bearing & dist.Set a 2" inside diameter, 5' long galvanized
steel pipe filled with concrete and capped
with a 3" diameter bronze tablet stamped

NEW BEARING TREES:

J. Pine 15" N 65½° W 61.3 feet scribed S13 BT
15" STANDING DEAD SCRIBE VISIBLE.

Oak 6" N 44° E 126.5 feet scribed S18 BT
NO EVIDENCE FAIR IN PLANTATION

Oak 6" S 1K½° E 137.5 feet scribed S19 BT
6' WINDFALL AS SHIELD ATTACHED.

J. Pine 11" S 53½° W 56.7 feet scribed S24 BT
12½" x 40" SNAQ SCRIBE VISIBLE

72" sign post set 24" in ground due South 425 feet
with signs 54-2 & 54-4 attached

Attached

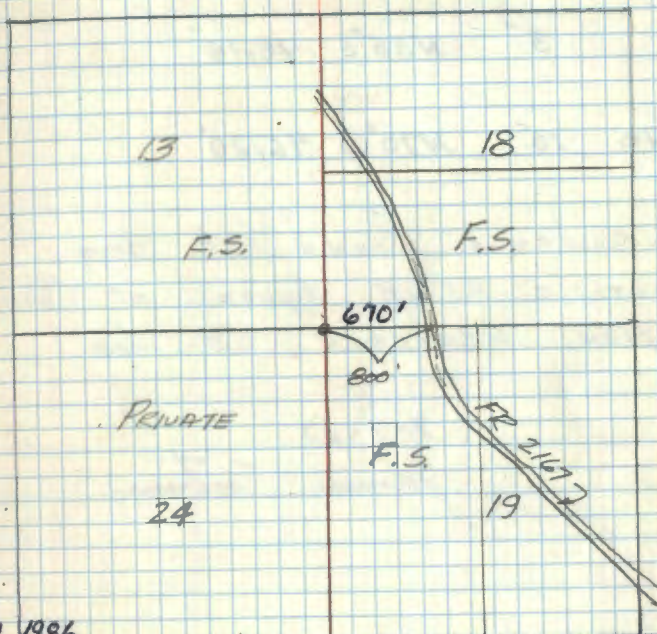
ok

CERTIFICATE FILED

Searched & Found 7-11-63 V. Hadman - B. McDonald - W. Ockerman,

Set 7-15-63 B. McDonald - W. Ockerman

W. O. Ockerman



Fall 1986

CONTRACT BY WAIT CURE FOR USFS OF SEC 19 T145 R 28

89-7150-4 by Hayes 7/9/80

7-30-97 R. MAEN

FOUND MONUMENT IN GOOD CONDITION ON THE EDGE OF
A ± 30 YEAR OLD PINE PLANTATION EAST AND ASPEN WEST.
AD CURBS BTs AS FOLLOWS:

R PINE 8½" N 40° W 19.75 TO NEW SPK MKS VISIBLE

R PINE 11" N 5° E 17.40 TO NEW SPK " "

R PINE 12" N 80° E 10.00 TO NEW SPK " "

R PINE 9½" S 23° E 41.94 TO NEW SPK " "

6' SIGN POST 466 NCT 4.25 TO E OF POST

- FSL P ON 10" ASPEN ON FR 2167 FROM WHICH CORNER BEARS WEST 67°

5 2-5

Section Cor. Sec's 31. E 32
Notes of orig gov't survey
of ~~1878~~. 1871

Fir 5" N35°E 48.18'

W. Pine 10" N70°W 46.20'

No evidence found of orig
Corner. a B.S. L.P. Approx at Corner
location Searched 3 Men
hrs.

7-7-67

James E. Eason

6 Z-3

1/4 Cor. Sec 31

Notes of orig. govt. Survey
of ~~1873~~ 1871

Tamarack 8" N35°E 33.00'

Tamarack 5" N60°W 25.74'

Chained to this location from a
P.S. Brass cap, at the C-C for
Section's 1E6 T144N R28W.
Searched 3 Man hrs. NO
evidence found.

7-6-67

James E. Johnson

6 7 Z-1

Section Cor. Secs 31-36

Notes of orig gov't survey
of ~~1873~~ 1871

1. y. Pine 19° N40°E 27.06'

2. Bl. Pine 9° N66°W 60.06'

Notes by G.E. Marshall Forest
Supervision in 1924, states that
Corner is on South side of
Soo Line R.R. track right of way
Just west of platform which
is on North side. A Norway
10" has been squared up for Cor.
tree is located on bank at
Edge of Cut. orig. Corner was
North in the Cut.

Chained to this location from
closing corner for Section's 186
for Township's South. My dist. &
bearing falls approx the same as
described in 1924. No evidence
found.

7-5-67

James Ekstrom

SEE PAGE 46 THIS BOOK

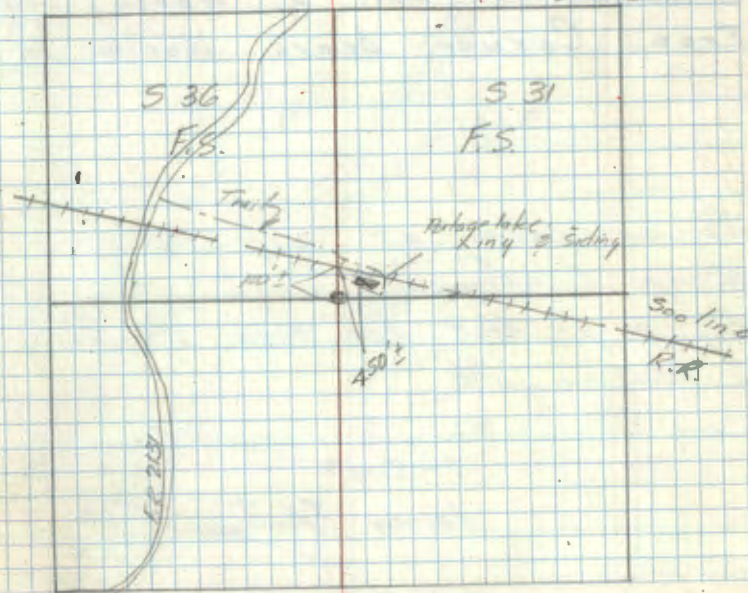
This corner set by proportional measurement
from cadastral survey delimiting the Top & Pge lines
Sets 6 inch diameter conical base cylindrical
concrete monument capped with a 3 inch diameter
brass cap marked -2

T.145N.
R29W. R28W.
S.C.
S36 | S31
ST
1968
R.L.S. No. 6207

Witnessed by
P. Pine 8" N39°E 51.0 feet scribed S31 BT
P. Pine 5" N6°E 42.37 feet scribed S31 BT
P. Pine 7" N18°W 41.34 feet scribed S36 BT
P. Pine 8" N58°W 23.36 feet scribed S36 BT
Cedar Post 6"x6"x10" N4°E 9.1 feet with
sign 54-4 attached

7/5/68

W.B. Chas



8 X-1

1/4 Cor Sec's 31 & 36

Notes of orig gov't Survey
of 1873.

N. Pine 12" N76°W 20.46'

N. Pine 14" N81°E 32.84'

Notes by Stanley Morrison Forestry ad
in 1960. Found Sguard stake
2" above ground in fair condition
No other evidence found. F.S.L.P.
on a Red Oak 5" North side of
tree. Corner bears North 11.88'

No evidence of orig B.T.'s. One
stump I found. Could possibly
be orig But has been Burned
& weather off.

7-5-67

James Johnston

This corner set by proportional measurement from
Cadastral survey delineating Township line

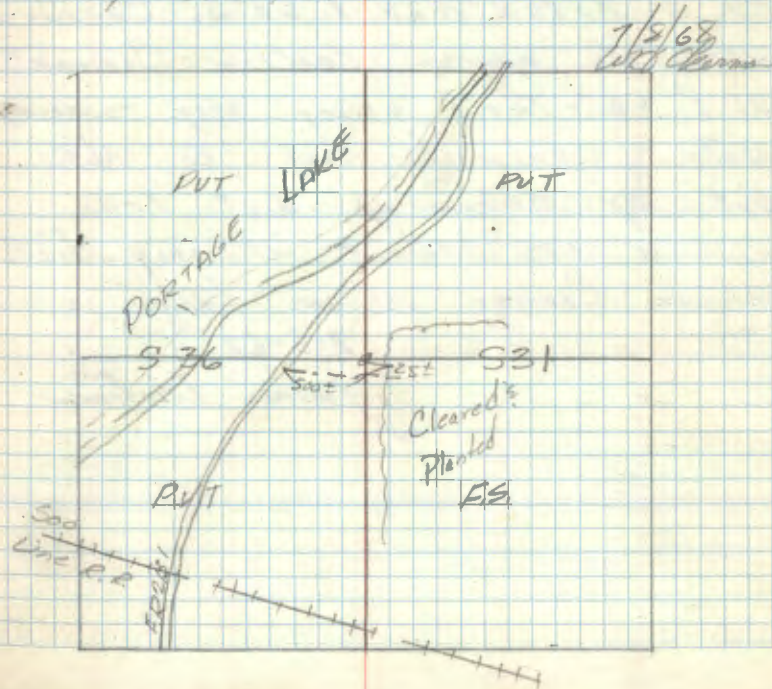
Set a 6" diameter 60 inch long cylindrical concrete
monument capped with a 3 inch diameter brass cap
marked π

T. 146 N.
R. 29 W. R. 28 W.
4
5.36 | 5.31

Witnessed by:

1968
R.L.S. No. 6807

R Oak 10" S31°W 51.05 Scribed 74.536 BT
R Pine 10" N19°W 113.62 Scribed 74.536 BT
R Pine 15" N40°E 98.41 Scribed 74.531 BT
Cedar Post 6" x 6" x 60' dug south 35.65 with
FS signs 54-2 & 54-4 attached



9 W, X-1

Meander Cor. Sec's 36 & 31
South bank Portage Lake.

Notes of orig govt survey
of 1873.

Cedar 12" N65°E 5.28'

Spruce 12" S32°W 31.68'

Chained to this location from
the Closing Corner for Section
11' 6 T144N R28 E 29W. Chained
west to approx section corner
31 E 36 Then using orig running
notes chained North to M.C.
But my chaining dist falls
approx 175' short of orig dist.
believe corner is in lake.

7-5-67

James Ekstrom

10

Meander Cor. Sec's 25 & 30
North bank Portage Lake

Notes of orig gov't survey of
1873.

Elm 18" N13°E 13.20'

Ash 10" N19°W 31.68'

Aug 1925 B.L. WARNER PLAT OF PORTAGE LAKE
PLAT SHOWS SYMBOL FOR MC 2535.1 FT SOUTH
OF 19-24-25-30. ORIGINAL DIST 2554.2

'10-4-99 R. MAIN

I FIND SOME LOT PIPES FROM WARNER PLAT
ALONG LAKE VIEW AVE, AND THE SW PIPE OF
LOT 12 ALONG LAKE. STRING BOX SOUTH FROM
APPROX PIPE 454.1 FT NORTH OF MC. BELIEVE
MC TO BE \pm 40 FT IN THE LAKE.

11 R-1

Section Cor Sec's 19-24-26-30

Notes of orig govt survey of
1873.

N. Pine 20" N74°W 6.60'

N. Pine 24" N52°E 105.60'

N. Pine 18" S88°W 16.50'

N. Pine 16" S76°E 38.28'

C-C Notes of 1928. Found a
'5x5x24" squared scribed wood
Post. No B.T's found. Post on
Hi way approx 33.00' south west of
Corner.

Corner set by cadastral survey delimiting
township line

Set a 6" diameter 24" long cylindrical
concrete monument capped with a 3" diameter
brass tablet stamped 2

T145N
R29W R28W
SP415P
S21S20
1968
R.L.S. NO 6807

Witnessed by

Jackpine 10"	N55°E	155.95'	scribed	S 19 BT
Red Oak 8"	S40°E	134.84'	scribed	S 30 BT
Red Oak 9"	S36°W	101.90'	scribed	S 25 BT
Red Pine 21"	N46°W	197.95'	scribed	S 24 BT

ok
8/48

12 P-1

1/4 Cor. Sec's 19.5' 24
Notes of orig. gov't Survey
of 1873.

J. Pine 7" N13 1/2° E 16.84'

N. Pine 24" S74° W 48.18'

This corner set by proportional measurement
from cadastral survey delimiting township line

Set a 2" inside diameter, 5' long galvanized steel
pipe filled with concrete and capped with a 3" diameter
bronze tablet stamped

10-1-97 CK

CUT OFF TOP OF 2" IRON PIPE

REMAINING IRON IS 1" ABOVE GROUND

COVERED WITH DUFF + LIMBS

REMOVED 4x4 CEDAR POST

IN VERY THICK BRUSH AND ASPEN

REGENERATION

T 145 W

R29 W. R28 W

S24 S19

1968

RLS. No. 6807

Witnessed by:

Jack Pine 12" N8° E 45.53 Feet scribed 1/4 S19 BT
NOW DEAD SNAG CHOPPED OUT SCRIBE - REMOVED TAG + PAINT

Jack Pine 11" N88° W 66.08 Feet scribed 1/4 S24 BT
NOW DEAD SNAG REMOVED SCRIBE AND TAG + PAINT

Norway Pine 9" S17° E 92.87 Feet scribed 1/4 S19 BT

NOW 17" N. PINE REMOVE PAINT + TAG SCRIBE CLOSED

7-15-88

Justin P. Keane

49-7150-4 by Hayes 3/9/80

12-30-80 JIM SCHOONOVER WAS AT CORNER

Ed. IRON PIPE IN PLACE IN GOOD CONDITION

Ed. BOTH J. PINE BT'S DEAD

N. PINE NOW 14" S17° E 92.87'

MARKED NEW BT'S.

W. OAK 7' STE 48.38', MKD 1/4 S19 BT

J. PINE 13' SBW 87.76' " 1/4 S24 BT

NOW

W. OAK 11" STE REMOVE PAINT + TAG

J. PINE MOSTLY DEAD SBW REMOVE PAINT + TAG

CHOPPED OFF SCRIBE

REMOVED NAILS THAT SHOWED OR DROVE INTO TREES

THE BEARING OF NISE AND DISTANCE OF 346' 4"

OR 105 M FELL RIGHT AT CORNER MONUMENT

FROM MONUMENT SET BY CURD IN 1986

SEE PAGE 68 THIS BOOK FOR ADDITIONAL
CORNER INFORMATION

13 X-5

1/4 Cor. Sec's 31.5' 32

Notes of orig govt Survey
of 1873.

J. Pine 10" 576W 97.68'

Notes by Stanley Morrison Forestry
aid in 1959. No evidence of
orig stake or B.T.'s.

Found a F.S.H.P. at Corner
location. No evidence of
orig Corner or B.T.'s.
Searched 3 Max hr's.

7-2-67

James Johnson

14 V-5

Section Cor. Sec's 29-30-31-32

Notes of orig gov't Survey
of 1873.

Tamarack 4" $54^{\circ}E$ 26.40'

Tamarack 3" $N64^{\circ}E$ 25.08'

Tamarack 4" $N86^{\circ}W$ 17.16'

Tamarack 3" $55^{\circ}W$ 59.40'

Checked to this location from
Section Cor. F.S. Brass Cap 19-20-21-22.
and also from approx section
Cor. 31-32 from the South. the
Chaining dist from both directions
fit each other good. Searched
to see if's No evidence found.
this location is very wet & Muddy.

7-11-57

James Chatham

15 V-3

1/4 Cor. Sec's 30 & 31

Notes of orig. gov't Survey
of 1873.

J. Pine 6" 571°E 11.88'

1 J. Pine 6" 530°W 18.48'

Chained to this location from
Approx Sec Cor Sec's 29-30-31-32.

A lot of old stumps in area.
Most of them badly decayed.
Searched 3 Man h's. No
evidence found.

7-21-67

James E. Johnson

16 V-1,2

Meander Cor. Sec's 30. 31.
East bank Portage Lake.

Notes of orig gov't Survey
of 1873.

Balsom 8" N27°E 14.52'

Balsom 8" S33°E 9.90'

Searched 1 Man. he No
evidence found.

7-21-67

James E. Johnson

17 T-5

1/4 Cor. Sec's 29 & 30.

Notes of orig gov't survey
of 1873.

J. Pine 6" N74°W 11.88'

J. Pine 6" S3°E 12.54'

Came to this location from F.S.
Bruce Camp at Section Cor. 19-20-29-30.
Searched 3 Man hrs. Found a
dipen post, believe that the
dist put it there. No evidence found
of orig bits.

7-11-67

James Ekstrom

18

R-3

1/4 Cor. Sec's 19.1' 30

Notes of orig gov't survey
of 1873.

J. Pine 10" S15°W 54.78'

J. Pine^{stub} 8" N13°E 59.40'

19 P-5

1/4 Cor. Sec's 19 & 20

Notes of Orig gov't Survey
of 1873.

J. Pine 10" S71 1/2°W 12.54'

(Not Found)

J. Pine 10" N13°E 134.64'

(Not Found)

Notes by J.A. Gjølhaug in 1987.

Found an Oak Post 45" High.
in good Condition. New B.T.'s.

Aspen 2 1/2" S36°W 16.5'

(Now a 9" S36°W 14.5' Scribbling Visible)

Aspen 2 1/2" N72°E 14.5'

Falls in old logging road.

Metal F.S.L.P. on a 2" Aspen on
the North west side of tree. Corner
bears N35°W 9.90'

To perpetuate this Corner I set a
5' long 2" dia steel pipe filled with
concrete and capped with a 3" dia
brass tablet stamped.

TWEN 82860

1/4

519 520

1987

R.L.S. No 8807

7-10-87

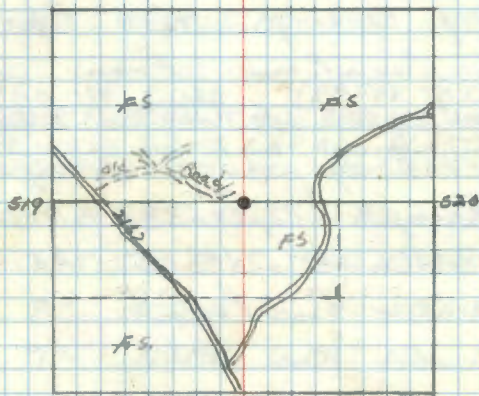
Corner Station

Oak 5" East 130.1' scribed 1/4 520 BT

Oak 5" N45°W 102.86' scribed 1/4 519 BT

Aspen 8" S22°W 44.2' scribed 1/4 519 BT

steel sign post 72" high set 2" in ground
w/ 54.2' & 54.4' attached box built 55'



20 N-5

Section Cor's Sec's 17-18-19-20

Notes of orig gov't Survey of
1873.

Tamarack 8" S85 $\frac{1}{2}$ °W 3.30'

Cedar 6" N3 $\frac{1}{2}$ °E 3.30'

Tamarack 10" N87 $\frac{1}{2}$ °E 5.94'

Tamarack 5" S4 $\frac{1}{2}$ °E 9.24'

Using orig running notes chained
to this location from evidence
found at this by 519 S. 520 established
in the 1237 by J.P. Gjelhaug. Falls
in clearing & planted area, old
tag found on 14" J. Pine. No
other evidence found.

7-17-67

James Ekstrom

CERTIFICATE FILED

RECORDED IN FIELD BOOK #1-271 Pg. 1
NOTES BY CORPS OF ENG. MAY 22-1900
Fd. POST + 2 ORIG. BT's
CEDAR 6" N3 $\frac{1}{2}$ °E 5 LKS.
TAM 8" S85 $\frac{1}{2}$ °W 5 LKS.

CCC NOTES BY WELLER 8/1/38
RECORDED IN OLD CCC FIELD BOOK #18 145-28
FOR SECTION 20 AT SEC. COR. 17-18-19-20
PLACED F.S. POSTER ON (W.T.) WITNESS TREE
JACKPINE 7" N2E 9 LKS. = 5.94'

1979 MN ONR

SET CAST IRON MONUMENT

R PINE 6" NE 19.22

R PINE 5" ESE 17.40

R PINE 6" SOUTH 12.99

R PINE 4" WEST 6.09

8-22-1986 W. CURD (REFER TO CORNER CERT)
REMOVE ONR MONUMENT AND REPLACE WITH 2" X 60"
GALV PIPE WITH BRASS CAP AND PLASTIC BASE
WITH MAGNET. WITNESS WITH:

R PINE 8" N28E 19.35 NOW 12"

R PINE 7" S60E 15.76 NOW 8"

R PINE 8" S22W 16.14 NOW 12"

R PINE 7" N80W 6.09 NOW 10"

8 FT CARBONITE POST 2 FT SOUTH

21 N-3

1/4 Cor. Sec's 18. & 19

Notes of orig gov't Survey
of 1873.

J. Pine 12" N67°E 22.44'

Search area falls in Red pine
New planted and cleared area.
No evidence found.

7-17-67

James E. Ebbens

9-4-1986 W. CURD (REFER TO CORNER CERT)

SET 2" X 60" GALV PIPE WITH BRASS CAP
AND PLASTIC BASE WITH MAGNET 18" ABOVE
GROUND. WITNESS WITH:

R. PINE 8" N50W 18.38 WINDFALL

R. PINE 6" S70E 5.11 NOW 8"

R. PINE 5" S30W 14.80 NOW 8"

8 FT CARSONITE SIGN POST NORTH 20.75

SET IRON MIDPOINT ON LINE

CERTIFICATE FILED

05-25-2011 R. MAIN

FD IRON IN R. PINE PLANTATION AND GAS
PIECE SAKS ALONG 1986 NAILS. CARSONITE
POST WAS LAYING DOWN. PIPE FSLA ON 14"
R. PINE FROM WHICH CORNER BEARS SOUTH
+ 170 FT. THIS TREE IS ON FR 3025 WHICH
IS OVER GROWN WITH BRUSH.

22 Y-1

S $\frac{1}{16}$ Cor. bet Secs 31 & 36

This corner set by Cadastral survey on
proportional location between Sec. Cos.

Set a 6 inch diameter 60 inch long
cylindrical concrete monument capped
with a 3 inch diameter brass tablet
stamped π

T145N
R29W R28W
S $\frac{1}{16}$
S36 | S31
1968
R.L.S. NO. 6807

Witnessed by:

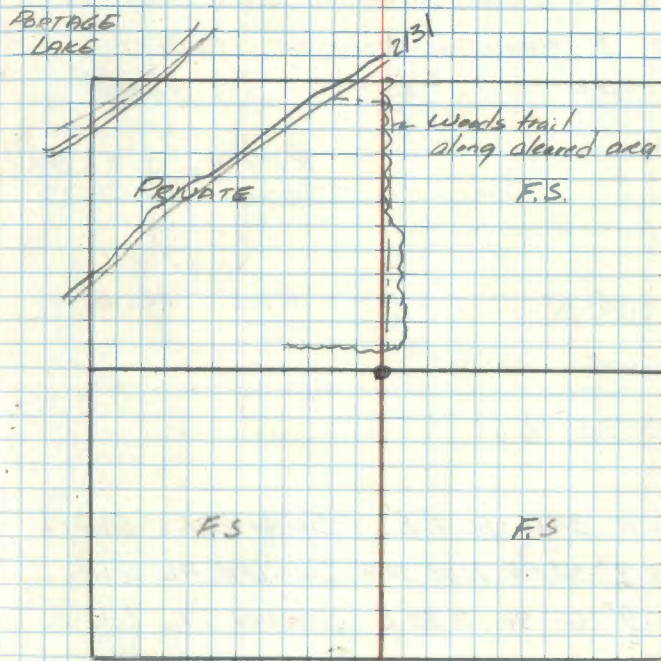
Red pine 19" N41°E 74.85' scribed 1/16 S31 BT

White oak 5" N15°E 49.2' scribed 8/16 S31 BT

Aspen 6" N28°W 70.7' scribed 8/16 S36 BT

Cedar post 6" x 6" x 16' with red top due
north 13.5' with signs 54.2 & 54.4
attached

7/5/68
W. J. Okerman



23 0-1

N 1/4 Cor lot. Sec. 19:24

Set a 2" diameter 5ft. long galvanized pipe filled with concrete and capped with a 3" diameter bronze tablet stamped:

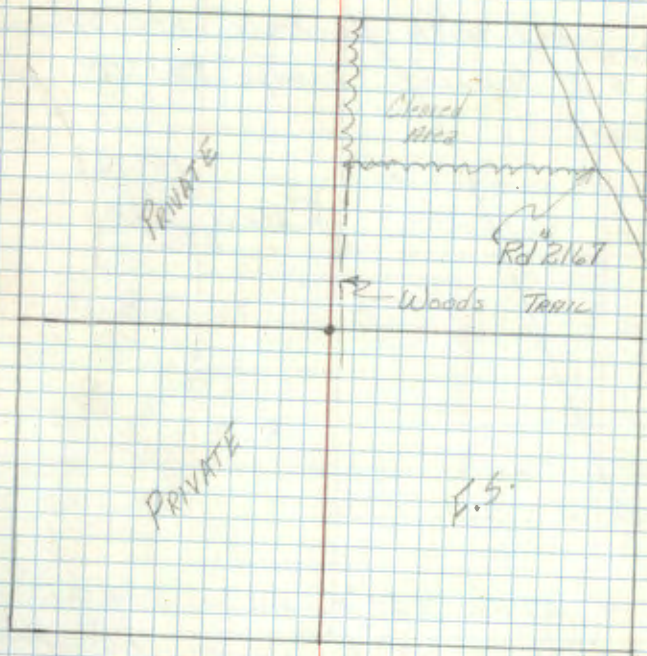
T 145 N
 R29W ^{1/4} | R28W
 524 | 519
 |
 1968
 RLS No. 6807

Witnessed by:

Jack Pine 11" 34.01 N17°E Scribed 1/4 519 BT
 Jack Pine 9" 43.45 N84°30'W Scribed 1/4 524 BT
 Jack Pine 9" 60.90 S38°E Scribed 1/4 519 BT

Cedar post 4x4x60" with Red top due North 10.0' with signs 54-2 & 54-4 attached

7/18/1968
 Lyle Elliott



24 M-1

S 1/16 Cor bet Sec 18 & 13

This corner set by Cadastral survey
on proportionate location between Sec Cor.

Set a 2" diameter 5' long galvanized
pipe filled with concrete and capped
with a 3" diameter bronze tablet
stamped;

T. 145 N.
R. 29 W. R. 28 W
S 1/16
S 13 S 18
1968
R.L.S. No. 6807

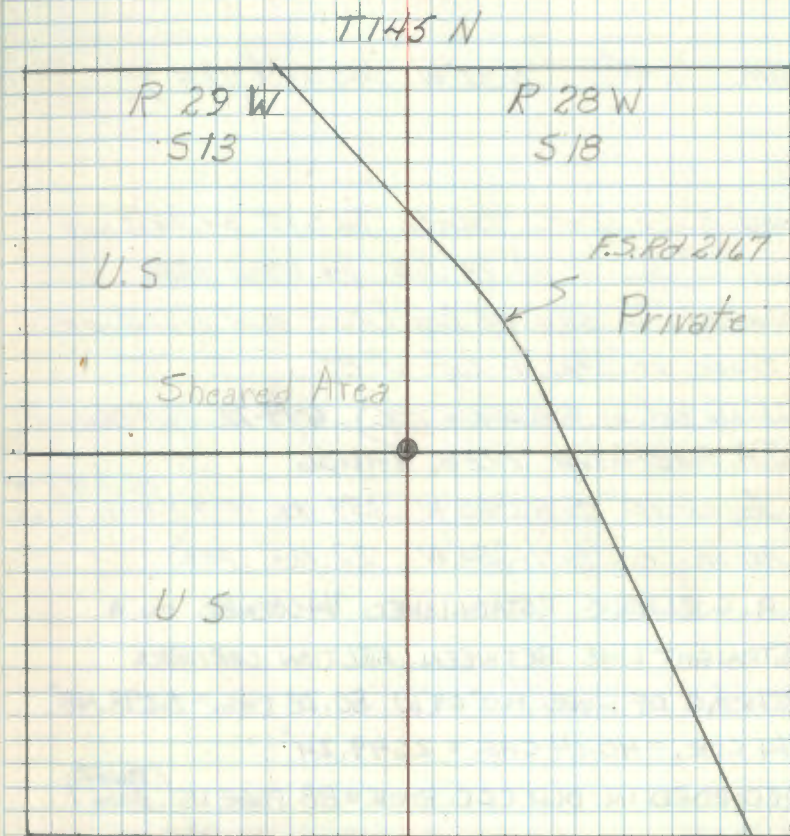
Witnessed by:

R. Oak 9' 109.02' N34°E scribed S 1/16 S 18 BT

R. Oak 10' 225.20' S48°E scribed S 1/16 S 18 BT

R. Oak 8' 189.76' S76°E scribed S 1/16 S 18 BT

4" x 4" x 72" cedar post due North ± 6'
with F.S. signs 54-4 & 54-2 attached.



3/30/92 BRAMA

Fd. U.S. F.S. man. set 16" above ground. 4x4 post set north.
Fd. R. Oak 12' N34E @ 109.2" Tree not healthy.
Didn't look for other BT'S recorded in 1968.

Mkd. New BT'S:

10" N. Pine	566E	3.95'	} Scribed according, tag, 620, paint.
11" N. Pine	541W	9.55'	
8" N. Pine	N42W	14.80'	

Set 8' steel sign post east 4.85' w/both signs

25 T-13

Quarter Corner Bet. Sec's 27 & 28
Notes of Original Govt Survey of 1873
Set post on small island in marsh

TAM. 4" N32°W 140 lks. (92.9')

Found 3" Sq. Post w/ scribe 1/4 S27 ON East side
1/4 S2 ON West side

probed for stp. at bry. dist. and found no
Trace of stp. or log of Bt.

(Probably set by GJELHAUG IN 1936) 6-19-72 Cmt. Vance

J.A. Gjelhaug 1936 9-11-36

Aspen 10" S 83°45'W 139 lks. (91.7') FALLS IN HWY 2
clearing ditch

Aspen 6" S 41°30'W 77 lks. (50.8') " " "

J.A. GJELHAUG ESTABLISHED 1/4 CORNER ON A

STRAIGHT LINE BETWEEN SECTION CORNERS

BEARING OF LINE N0°09'W 80.28 CHS. = 5298.48'

1/4 COR. = 40.14 CHS. = 2649.24'

RECORDED IN OLD CCC BOOK #88 PAGE 15 (TOWER
BOOK)

6/29/92 GB-CK

Fd. 3" X 48" SCRIBED CEDAR POST 24" HIGH NOW

69' NORTH OF CENTERLINE OF HWY 2

PLACE MAGNETIC PELLET 24" DOWN AT POINT OF POST

RACE 8' STEEL SIGN POST 3.0' NORTH OF CEDAR POST

Center Quarter Sec. 27

SUBDIVISION OF SECTION 27 FOR
LOCATION OF BENA RANGER STATION
SURVEYED IN 1936 BY J.A. GJELHAUG R.L.S.

1" IRON PIPE SET IN CONCRETE 9/18/36

Set Concrete monument

FSLP ON J. PINE 4" WEST 16 LKS. = 10.6'

RECORDED IN OLD CCC BOOK #88 PAGE 15

7/10/63 Morrison (from form RR-508-11)

Corner consists of a metal pipe set in concrete with a squared Cedar Post painted red beside it. A metal tag is on a 10" Jack Pine which has been cut down and lies approx. 10 ft. W. of corner. Corner is on South edge of R.E.A. clearing.

3/11/87 M. Hayes & R. Alimi

Ed. metal pipe set in concrete tipped slightly to the west. Cedar post is still there but the Jack Pine w/ tag appears to be gone. Corner is approx. 10' south of Power-Line Q. MCH

FROM W 1/4 - BRG. N89°31'E - 39.44 CHS. = 2603.04'
FROM S 1/4 - BRG. S0°06'E - 40.27 1/2 CHS. = 2658.15'

6/29/92 GB-CK

Ed. IRON-IN CONCRETE TIPPED WESTWARD - STRAIGHTEN
SO PIPE + CONCRETE IS STANDING IN PLACE - UPRIGHT
CONCRETE IS FLUSH WITH GROUND AND IRON IS 2" HIGH
TIES TO IRON PIPE

N. PINE 17 N84E 39.05' TAG + SPK
POWER POLE 7.5 N84E 57.12' TAG + NAIL

8' STEEL SIGN POST DUE NORTH 3.0' BOTH SIGNS

8' SOUTH OF POWER POLES - CENTERLINE - 1/4 WHEELER TRAIL
AT SOUTH SIDE OF IRON E+W

SE CORNER OF METAL STORAGE BUILDING IS N58W 63.65'
BELONGS TO RESORT

27

Sec. Cor. Common to Sec's. 21, 22, 27^{1/2}

Set post Orig. Gov't. Notes - 1873

Cedar 6" S 81° W 90 lks. (59.4')

Cedar 5" S 40° E 31 lks. (20.5')

Cedar 6" N 17^{1/2}° W 19 lks. (12.5')

Cedar 5" N 13^{1/2}° E 102 lks. (67.3')

RECORDED IN OLD CCC BOOK #88 PAGE 15

J.A. GJELHAUG - 1936

Found orig. Bts. down

Cedar stp. 10" N 20° W 19 lks. (12.5')

Cedar stp. 10" S 42° E 31 lks. (20.5')

No trees to mark (near)

Set iron pipe ^{3/4" x 24"} 4" x 8" union on top.

SET CEDAR POST 4" x 5'

FROM W 1/4 SEC. 27 - N 0° 09' W - 40.14 CHS. = 2649.24'

28 V-13

Sec Cor. Common to Sec's. 27, 28, 33, 34

Set post Orig. Gov't. Notes - 1873

J. PINE 12" N12°W 62 lks. (40.9')

J. PINE 10" S30°W 70 lks. (46.2')

Ash 6" S45°E 90 lks. (59.4')

Tam. 4" N72°E 81 lks. (53.5')

INFORMATION RECORDED IN OLD FIELD BOOK #88 Pg. 15
^{TOWER BOOK}

J.A. GJELHAUG - 1936 9/11/36

Found Dead J. PINE 10" S50°W 52 lks. (34.3')
^{ORIG. BT.} (60.1')

JAG MARKED Elm 10" N38°15'W 91 lks. (49.9')

JAG MARKED Cedar 10" S12°E 68 lks. (44.9')

FOUND POINT OF OLD POST FROM ORIG. BT

BLAZE ON OLD J. PINE FACES OLD POST

FSLP ON ELM BT

Fd 4" X 4" X 48" LONG WITH SCRIBE VISIBLE
Fd 16" ELM SNAG AT N38W 60.1' SCRIBE VISIBLE INSIDE
Fd 15" CEDAR WINDFALL TOWARDS POST SIZE 44.9'
PUT FSLP ON 16" CEDAR 67.8' SOUTH OF POST
SET 5" X 5" X 8" RSH POST BESIDE SCRIBED POST
141' SOUTH OF STA. 26.55'E
CORNER IN OPEN MARSH HIGHER GROUND IS APPROX. 130' N

4-25-78 CK-15-DP

Lloyd SOBIECK
DENNIS PARKER

11-2-04 R. MAIN

Fd 1/2" PIPE WITH PLASTIC CAP RLS#16089
AND GAS SAME

29

Quarter Corner Bet. Sec's. 27 & 34
 Orig. Govt. Survey Notes of 1873
 Set post.
 PINE STUB 6" S13°E 48 lks. (31.7')

BIRCH 3" N60°E 18 lks. (11.9')

NOTES BY JOHN CURO 1907 BOOK B Pgs. 323-327

Fd. STAKE MARKING CORNER + BT'S. MARKED

J. PINE 8 S74°15'W - 30.40'

J. PINE 6 N61°03'W 8.20'

J.A. GJELHAUG - 1936

(Iron King Bolt) set for corner

J. PINE 10" N61°30'W 31 lks. (20.5')

J. PINE 10" S48°W 51 lks. (33.7')

IRON SET AT FENCE COR.

1982 CK-TF

Fd. SCRIBED WOOD POST LYING ON GROUND

Fd. POINT OF OLD POST IN PLACE

Fd. 1 1/2 IRON PIPE ON EAST SIDE OF OLD POST POINT

Fd. 1 1/2 IRON KING BOLT EAST OF IRON PIPE.

Fd. STUMP + LOG OF GJELHAUG'S BT TO NW
 MARKED WITH "BT" N60W - 19.9'

4-27-82 CK-TF-6B

SET CASS COUNTY IRON MONUMENT

PLACE KING BOLT UNDER COUNTY MONUMENT

WITNESSED BY

J. PINE 5 N49E 15.69' MKD. 1/4 S 27 BT

N. PINE 18 S82W 39.12' " 1/4 S 34 BT

N. PINE 16 S21W 71.22' " 1/4 S 34 BT

CORNER IS IN OLD (OWN) FENCE LINE ETW

30

Quarter Corner Bet. Sec.'s 26 & 27

Orig. Gov't. Survey Notes of 1873

Set post

Norway Pine 14" N36°W 70 lks. (46.2')

Norway Pine 12" N57°E 64 lks. (42.2')

RECORDED IN OLD CCC BOOK #88 PAGE 15

J.A. GJELHAUG 9-11-36 - ESTABLISH COR. TO CONFORM
WITH BENA TOWNSITE PLAT (ON RECORD)

JA GJELHAUG - 1936

Iron bolt 7" x 12"

W. PINE 10" S31°W 94 lks. (62.4')

W. PINE 10" S7°E 109 lks. (71.9')

CASS COUNTY RESURVEY 1907 BY J.W. CURRO
SURVEY #304 BOOK BFOUND ORIG. STAKE MARKING CORNER
MARKED NEW BT'S.

J. PINE 8 S74W 30.40'

J. PINE 6 N61E 8.20'

← for 5 1/4

FROM SE COR. SEC. 27 N1°24'W - 40.41 CHS = 2667.06'

31

Sec. Corner Common to Sec's. 26, 27 54²⁵
Orig. Govt. Survey Notes of 1873

Set post

TAM. 8" N20°E 13 lks. (8.6')

TAM. 6" S4°E 18 lks. (11.9')

TAM 6" N60°W 16 lks. (10.6')

Cedar 5" S85°W 19 lks. (12.5')

J.A. GJELHAUG 1936

1"X18"

FSLP

Found Iron pipe-MKD TAM. 4 S31°30'E 28 lks = 18.5'

CASS COUNTY RESURVEY 1907 BY J.W. CURD
SURVEY #304 BOOK B

MKD NEW BT'S. By J.A. GJELHAUG

TAM. 10 N144°E 18.90'

TAM. 10 N53°40'W 15.50'

1982 CK-TF-KW

NO EVIDENCE OF IRON PIPE OR BT'S. COULD BE

FOUND AT SECTION CORNER LOCATION

WILL TRAVERSE TO LOCATION - GARY STEVENSON

RLS AT WALKER, MN. HAS SURVEY CONTRACT

WITH BIA.

5-26-82 TF
CORNER WAS RESTORED BY OBLITERATED
METHOD. - PLAT OF BENA

SET CASS COUNTY IRON MONUMENT

8" BELOW FR #2130
ROAD RUNS E+W

WITNESSED BY

CEDAR 7 S10W 25.61' NAIL + DISC.

CEDAR 8 S40^E 41.00' " "

7-11-05 R.M.AIN

AD IRON 1 INCH BELOW RD SURFACE AND GAS.
PLACE TAG ON 7" CEDAR & 8" CEDAR SHOE 41.00 AT
NOW A WINDFALL.

32 V-9

SECTION CORNER TO SECTIONS 28-29-32-33

NOTES OF ORIG. GOV'T. SURVEY 1873

SET WOOD POST

J. PINE 14 S57½W 140 LKS. 92.4'

Fd. FALLEN J. PINE SNAG S57W-92.4' WITH BT BLAZE

ASH STUB 6 N30W 65 LKS. 42.9'

BIRCH 4 N45E 30 LKS. 19.8'

CCC NOTES BY J.A. GJELHAUS 12-18-36

FOUND OAK POST AT CORNER

SET 1" X 20" IRON PIPE BESIDE OAK POST

FOUND 1" IRON PIPE SET IN CONCRETE AT CORNER

Fd. ORIG. J. PINE BT 20" S57½W 140 LKS.

WITH SCRIBE BT VISIBLE

MARKED NEW BT

N. PINE 12 S20W 13¾ LKS. 9.0' FSLP

Fd. 20" N. PINE S20W -9.0' SCRIBE OVER BROWN

PLACED BT TAG ON THIS TREE

Corner Card by Morrison (1968)

TO PERPETUATE THIS CORNER I SET A 2" DIA. X 5' LONG GALVANIZED STEEL PIPE - WITH CONCRETE INSIDE AND CAPPED WITH 3" DIA. BRASS TABLET MARKED

T145N R28W

S29 S28

S32 S33

1978

WITNESSED BY

RLS NO 12261

18" N. PINE N39°E 63.32 T145N R28W S28 BT

21" N. PINE S12°E 25.93 T145N R28W S33 BT

30" N. PINE S18°W 36.92 T145N R28W S32 BT

20" N. PINE N21°W 84.60 T145N R28W S29 BT

SET 8" STEEL SIGN POST ONE SOUTH 3.7' WITH F.S. SIGN 54-4

33 V-11

QUARTER CORNER BETWEEN SEC'S. 28-33

NOTES OF ORIG. GOVT. SURVEY 1873

SET WOOD POST

J. PINE 8 NORTH 5 LKS. 3.3'

Fd. J. PINE STUMP AT BRG. $\frac{1}{2}$ DIST.

J. PINE 6 S10E 40 LKS. 26.4'

Fd. PINE WINDFALL WELL ROTTED AT BRG. $\frac{1}{2}$ DIST.

CCC NOTES BY J. A. GJELHAUG 12-18-36

FOUND OAK POST MARKING CORNER

(Fd. 4" SQ. X 24" HIGH PINE POST)

FOUND ORIG. J. PINE BT 12" STUB SIDE 40 LKS.

MARKED NEW BT

N. PINE 14 S32E 30 LKS. MKD $\frac{1}{4}$ S33 BT

(Fd. 23 N. PINE S32E 19.8 CUT INTO BT
FOUND SCRIBE $\frac{1}{4}$ S VISIBLE) 4" DEPTH

PUT FSLP ON 12" J. PINE N79E 71' FROM 4" SQ.
PINE POST AT CORNER

4-24-78

TO PERPETUATE THIS CORNER SET 2" DIA. X 5'
LONG GALVANIZED STEEL PIPE, WITH CONCRETE
INSIDE AND CAPPED WITH 3" DIA. BRASS TABLET
MARKED

RESET SQUARD PINE POST
BESIDE IRON PIPE

T145N R28W

$\frac{1}{4}$ S28
S33

1978

RLS NO 12261

WITNESSED BY

J. PINE 12 N79E - 11.47' MKD $\frac{1}{4}$ S28 BT

NOW A WINDFALL, RA

N. PINE 12 S41E - 44.44' MKD $\frac{1}{4}$ S33 BT

N. PINE 9 S2W - 60.60' MKD $\frac{1}{4}$ S33 BT

SET 8" STEEL POST DUE WEST 2.3' WITH FS
SIGN S4-4

RESURVISED 1936 N. PINE - "BT"

7-10-78

Curto R. Krause

11-2-04 R. MAZIN
Fd IRON AND GPS

34

X-13

CC DONE CK

QUARTER CORNER BETWEEN SEC'S. 33-34

NOTES OF ORIG. GOV'T. SURVEY 1873

SET WOOD POST

POPLAR 8 N32E 40 LKS. 26.4'

N. PINE 16 S18W 70 LKS. 46.2'

CASS COUNTY RESURVEY 1907 BY J.W. CURO
SURVEY # 304 BOOK B

SET NEW WOOD POST

FIND ORIG. BT'S. PLAINLY MARKED BUT DON'T
AGREE WITH ORIG. NOTES

ORIG. BT'S. STAND AS FOLLOWS

W. PINE 16 N18W 70 LKS.

Fd. ORIG. W. PINE STUMP 34" DIA X 36" HIGH SCRIBED BT
STUMP IS FAIRLY "SOLID"

POPLAR 8 S32E 44.9'

NO TRACE OF ASPEN AT BRG. + DISTANCE

OLD BLAZED LINE RUNS SOUTH OF COR.

OLD DIM LOGGING TRAIL E+W 15 125' N OF COR.

5/6/82 CK-6B

CASS COUNTY IRON MONUMENT 2" ABOVE GROUND

WITNESSED BY

N. PINE 23 N62W 119.70' MKD. 1/4 533 BT

N. PINE 24 S87W 87.63' " 1/4 533 BT

N. PINE 17 N51E 87.14' " 1/4 534 BT

8' STEEL SIGN POST WEST 5.0' BOTH SIGNS

8' STEEL SIGN POST SOUTH 4.6' " "

FSLP ON MAPLE 10 S17W 7.9' FROM CORNER

11-3-04 R. MAIN

GPS IRON. GEO BUSH ELECTED PRES

35 Z-13

STANDARD CORNER TO SECTIONS 33-34

NOTES OF ORIG. GOVT. SURVEY 1871

SET WOOD POST FD. CHARCOAL WOOD POINT
OF ORIG. WOOD POST. IN PLACE

N. PINE 9 N23E 36 LKS. 23.8'
FD. PINE STUB ^{BURNED} WINDFALL AT BRG. ^{SCRIBE} 1/2 DIST. VISIBLE

N. PINE 10 N40W 12 LKS. 7.9'
FD. PINE STUB ^{BURNED} WINDFALL AT BRG. ^{BOTH BLAZED} 1/2 DIST. AREAS

PUT FSLP ON 12" N. PINE N5°E 30.4 FROM
4" X 4" X 5" SQUARD PINE POST SET AT COR.

APPROX. 175' NORTH OF E-W WOODS ROAD
4-28-78 CRK-DP
CHAINED TO THIS CORNER LOCATION FROM 1 MILE
TO NORTH DISTANCE 15 5288'
ALSO CHAINED TO EAST AT CLOSING CORNER
POSITION - DISTANCE 1006' - POST FOUND AT
CLOSING CORNER TO SEC'S 3-4

4/7/78

STEVEN & KRUISE

TO PERPETUATE THIS CORNER, SET A 2" GALV.
X 5' LONG IRON PIPE, FILLED WITH CONCRETE,
CAPPED WITH 3" BRASS CAP STAMPED:



FROM WHICH THE FOLLOWING BEAR:

12" R. PINE, N78°W, 28.16' T145N R28W S33 SC BT

10" R. PINE, N22°W, 32.04' T145N R28W S33 SC BT

10" R. PINE, N30°E, 30.01' T145N R28W S34 SC BT

18" R. PINE, N67°E, 33.07' T145N R28W S34 SC BT

SET STEEL FENCE POST ONE MILE WITH
F.S. #54-4.

STANDARD QUARTER CORNER TO SEC. 33
NOTES OF ORIG. GOVT. SURVEY 1871
SET WOOD POST

BLK. ASH 7 N4E 264 LBS.

ASPEN 8 NSW 253 LBS.

STANDARD QUARTER CORNER TO SEC. 33
NOTES OF ORIG. GOVT. SURVEY 1871
SET WOOD POST

BLK. ASH 7 N4E 264 LBS.

ASPEN 8 NSW 253 LBS.

STANDARD CORNER TO SECTIONS 32-33
NOTES OF ORIG. GOVT. SURVEY 1871
SET WOOD POST

TAM. 7 N58E 65 LKS.

TAM. 6 N75W 178 LKS.

STANDARD CORNER TO SECTIONS 32-33
NOTES OF ORIG. GOVT. SURVEY 1871
SET WOOD POST

38

STANDARD QUARTER CORNER TO SEC'S. 32

NOTES OF ORIG. GOVT. SURVEY 1871

SET WOOD POST

TAM. 5 N50E 61 LKS.

QUARTER CORNER BETWEEN SECTIONS 28-29

NOTES OF ORIG. GOVT. SURVEY 1873

SET WOOD POST

J. PINE 5 N70E 10 LKS. 6.6'

J. PINE 4 NORTH 12 LKS. 7.9'

~~Corner and by Marked
Approx. 100' N of SW
15' N of SW~~

5-23-78 CK-LS

CHAINED DUE NORTH FROM SW COR. SEC. 28

2640' N - FD, OLD BLAZED LINE RUNS WEST ABOUT 10'

NORTH OF END OF CHAINING - NO EVIDENCE OF CORNER

COULD BE FOUND AT THIS TIME - THINGS STILL FROZEN

PLACE FSLP ON SOUTH SIDE OF 6" MAPLE - APPROX.

CORNER IS 2' SOUTH OF TAG

CORNER ON SLIGHT RIDGE 100' N ENT. SWP. AND 60' E

ENT. SWP.

1900' N FD, OLD FSLP ON POST ALONG SIDE ROAD

1964' N 28" N. PINE BLAZED N+S

SECTION CORNER TO SECTIONS 20-21-28-29

NOTES OF ORIG. GOVT. SURVEY 1873

SET WOOD POST

J. PINE 4 S19E 10 LKS.

J. PINE 5 S22W 13 LKS.

J. PINE 5 N11W 16 LKS.

J. PINE 8 N3E 11 LKS.

1965 Corner Card by Morrison

J. Pine 7" Approx Tag on E side
of tree. blue line N & E

QUARTER CORNER BETWEEN SECTIONS 20-29

NOTES OF ORIG. GOV'T. SURVEY 1873

SET WOOD POST

J. PINE 7 S33W 28 LKS. 18.48'

J. PINE 8 N10E 31 LKS. 20.46'

CCC NOTES BY J.A. GJELHAUG 5-12-37

Fd. SCRIBED POST - FAIR CONDITION

SET NEW POST 48" HIGH

Fd. ORIG. BT J. PINE 8" NIDE 31 LKS.

MKD 1/4 S BT

PUT FSLP ON 8 TAM. ON EAST SIDE OF TREE

CORNER BRS. N79E 9 LKS.

2-8-95 GB-CK GARY BRAMA - CURT KRAUSE

MEASURED FROM SW CORNER SECTION 20 - RAN

LINE AT S89E AND BY STRING MACHINE - HAVE

A DISTANCE 2673'

Fd. OLD TAG BY J.A. GJELHAUG ON 13" TAM. ON E SIDE

OF TREE - NO POST IS STANDING AT CORNER

ORIG. J. PINE MAY BE WINDFALL NOW - BUT EVERY

THING IS FROZEN DOWN AT EDGE OF SUP. - HIGHER

GROUND JUST TO WEST OF CORNER

OUR LINE FELL 70' SOUTH OF CORNER - LINE RUN FROM APPROX. W 1/4 WAS RUN AT S87E - TODAY - AT W 1/4 WE FOUND OLD TAM. BT - REFERRED TO BY J.A. GJELHAUG AS (COUNTY BT?) NOTHING RECORDED BY COUNTY IN COURTHOUSE OR CURE NOTES WE FD. A TAM. SNAG 15" DIA. X 40' HIGH WITH CHOPPED OUT AREA AND REVERSE SCRIBE INSIDE TAM. STUB BARBED WIRE HAS GROWN INTO THIS TREE - GARY WENT SOUTH AND FOUND OLD FENCE LINE SOUTH - WHICH WOULD PROJECT NORTH TO THIS POSITION WE DON'T BELIEVE W 1/4 IS ON STRAIGHT LINE BET. CONTROLLING CORNERS - OUR LINE AT S89E FELL 90' NORTH OF OLD TAM. SNAG - SO I RAN FROM TAM SNAG S87°E TO 1/4 COR. AND W 1/4 FELL 70'S OF 1/4 COR. WE BELIEVE TRUE LINE SHOULD BE RUN S89E BET. SEC. COR. & 1/4 COR. TAM SNAG MEASURED 13.50' FROM WEST AND THEN 1323'E TO 1/4 COR. - GIVING TOTAL OF LINE AT 2673' PLACE BT TAG ON GJELHAUG'S TAM. WITH TAG - RIBBONED AREA - WILL COME BACK IN SPRING TO MONUMENT

11-25-2008 R. MAJIN

DEG UNDER FROZEN SURFACE AND FIND GJELHAUG WOOD POST BROKEN @ GROUND LEVEL AND LAYING DOWN - FIND POST POINT STRAIGHT UP AND DOWN AT ORIGINAL POSITION. POST IS 2" X 2" SQUARE BY FOUR FEET LONG. GPS WOOD POST AND WITNESS WITH

TAMARACK 8" S20W 21.65 FT TO SPK

TAM (GJELHAUG) 12" S74°W 7.90 FT TO SPK (DEAD)

TAMARACK 7" N32°E 34.40 FT TO SPK

12-07-1933 PAUL MOELLER 874-9

Fd SCRIBED SQUARE STAKE IN FAIR CONDITION. METAL LOCATION POSTER ON J. PINE FROM WHICH THE CORNER BEARS SE 40 FT.

CONT Pg #70

42

QUARTER CORNER BETWEEN SECTIONS 21-28

NOTES OF ORIG. GOVT. SURVEY 1873

SET WOOD POST

J. PINE 6 N27½W 22 LKS.

J. PINE 5 S31E 82 LKS.

43

Z-17

STANDARD SECTION CORNER TO SEC'S. 34-35

NOTES OF ORIG. GOV'T. SURVEY 1871

SET WOOD POST

ASH 9 N22E 28 LKS. = 18.5'

Fd. ROTTED ASH STUMP AT BRG. & DIST

ASH 6 N59W 15 LKS. = 9.9'

Fd. ROTTED ASH STUMP AT BRG. & DIST.

CASS COUNTY RESURVEY 1907 BY J.W. GORO
SURVEY #304 BOOK B

FOUND BOTH ORIG. BT'S PLAINLY MARKED

BLK ASH 9 N28°29'E 18.5'

BLK ASH 6 N58°44'W 9.90'

SET NEW WOOD POST

Fd. ROTTED WOOD POST WITH FLAT SIDE - NO SCRIBE
POST WAS 1 1/2 X 1 1/2 X 24" - BELIEVE ASH POST

874 NO DATE BY C. GORDON

FOUND BADLY ROTTED WOOD STAKE 24" HIGH

PLACE FSLP ON ASH 8 S34W 8 LKS. = 5.3' - FROM POST

4-26-82 CK-KW-TF-GB

Fd. ROTTED WOOD POST LYING ON GROUND - POINT
OF POST IN GROUND. Fd. EVIDENCE OF BADLY
ROTTED ASH STUMPS

5-7-82 GB-CK

SET 2" X 5' LONG IRON PIPE WITH BRASS CAP
MARKED

T145N R28W

S C

S34 | S35

T144 N
1982

RLS NO 12684

WITNESSED BY

N. PINE 17 N63E 98.35 MKD T145N R28W
S35 SC BT

ASPEN 8 N7E 65.35" MKD. S35 SC BT

ASPEN 7 N48W 42.15 " S34 SC BT

N. PINE 23 N89W 150.30' " T145N R28W S34

SC BT

8' STEEL SIGN POST NORTH 5.0'

8' STEEL SIGN POST EAST 5.0'

STANDARD QUARTER CORNER SECTION 34
 NOTES OF ORIG GOVT. SURVEY 1871
 SET WOOD POST

NO BT'S. CORNER IN OPEN MARSH

CASS COUNTY RESURVEY 1907 J.W. CORO
 SURVEY # 304 BOOK B

SET GOOD 4" TAM POST 5' LONG FOR TRUE
 CORNER

WITNESSED BY

TAM. 4 N28°15'E 53.0'
 DEAD TAM. 3 N58W 53.50'

Fd. CORO'S WOOD POST - IN PLACE

CHAINED FROM SW COR. SEC. 34 - 2644'

5/7/82 CK-6B

SET 2" DIA. X 5' LONG IRON PIPE WITH BRASS CAP
 MARKED
 PLACE 8' STEEL SIGN POST
 ALONGSIDE IRON PIPE
 ALSO CORO'S WOOD POST
 WIRED ALL TOGETHER

T145 N R 28W

S.C.

1/4 | 534

1982

WITNESSED BY

RLS NO 12684

TAM. 5 N70W 23.80' MKD 1/4 534 SC BT
 TAM. 5 N22W 21.54' " 1/4 534 SC BT
 TAM. 4 N20E 14.17' " 1/4 534 SC BT
 TAM. 4 N60E 13.60' " 1/4 534 SC BT

8' STEEL SIGN POST 5.0' WEST

PLACED FSLP ON TAM 4 N73E 2.0' FROM COR.

QUARTER CORNER BET. SEC'S. 34-35
 NOTES OF ORIG GOV'T. SURVEY 1873
 SET WOOD POST

J. PINE 7 N12W 200 LKS.

J. PINE 6 N15E 115 LKS.

CASS COUNTY RESURVEY 1907 J.W. CURO
 SURVEY #304 BOOK B

FIND BOTH ORIG. BT'S. PLAINLY MARKED
 BUT THEY DON'T TIE TO POST BY ORIG.

NOTES - SO I SET BY INTERSECTING
 TIES FROM BT'S. AS GIVEN IN ORIG. NOTES
 BT'S. STAND AS FOLLOWS.

J. PINE 7 N12W 70.80'

J. PINE 6 N15E 62.60'

SET LARGE POST FOR 1/4 COR.

Statement of Evidence:

- 1873 U.S. General Land Office survey set wood post for this corner and marked the following bearing trees: 7th J. Pine N 12 W 200 links and 6th J. Pine N 15 E 115 links.
- 1907 County Surveyor's Record Book B pages 323 to 327 show survey by John Curo. The survey shows both original bearing trees found plainly marked, but that the bearings and distances do not intersect. Curo set a post by intersecting the bearings from the trees after which they are as follows: 7th J. Pine N 12 W 70.80' and 6th J. Pine N 15 E 62.60'. Curo states that this is a temporary corner and that James Middleton will check further south for the original post later. Curo distance from his post to the NE corner of Sec. 34 is 2538.72'. Curo received a letter from Middleton dated July 16, 1908 in which he states that he found the remains of the old U.S. stake 64 feet south of Curo's stake.
- 1976 USFS technician R. Glessen searched for corner by following an old down fence from the approximate NE corner of Sec. 34. No evidence was found.
- 1982 After traversing in Section 34, I computed the location of Curo's corner based on his 1907 survey. From this information we found evidence of an old down north-south fence line in the bog. Also found remains of a J. Pine root that fit the position called for by Curo for the NW bearing tree. Found no evidence of Curo's wood post. On April 26, I searched for evidence with USFS Surveyor K. Whitson, USFS technician C. Krause, and Cass County technician T. Freeman. We searched area 64' south of Curo's position and found a 3" round wood post point with sharpened end down under bog. Accepted this post point as marking the original corner as found by Middleton. We set a 5/8" x .10' long aluminum rod with 3" aluminum cap in hole of found post. We also found laying down a cut 8' length of post which evidently had been standing alongside. From the corner set the remains of the J. Pine stump was found to be N 2° - 30' W 134'. The distance north to the NE corner of Sec. 34 was found to be 2600.2 feet. This all agrees very well with the Curo survey and Middleton's findings. No evidence of the NE bearing tree was found. Three new bearing trees were taken and are shown on this certificate. The new trees were all scribed "1535 BT".

NOTE: It appears that Middleton found the corner at approximately the correct distance from the original J. Pine bearing tree. The edge of swamp call to the north given in the original notes also checks well. It appears the original call to the NE bearing tree is the one that was in error, it should have been something like N 12 E 195 links.

4-26-82 KW-TF-CK
 SET 5/8" X 10' LONG ROD MONUMENT WITH 3" ALUM. CAP MKD.
 T145NR281W
 1/4
 S34 | S35

RESET OLD POST POINT
 ALONG SIDE OF IRON

1982

RLS NO 12684

WITNESSED BY

W. PINE 9 N18E 93.83' MKD. 1/4 S35 BT
 WINDFALL

BLK. SPRUCE 7 S70E 63.03' " 1/4 S35 BT
 WINDFALL

TAM. 7 S30E 72.03' MKD 1/4 S35 BT
 10 FT TALL SNAG

7-11-05 R. MAIN

Fd MONUMENT AND GPS. ALL 1982 BT'S ARE DEAD.

46 CONTINUED FROM PAGE 7 THIS BOOK

SECTION CORNER TO SECTIONS 36+31

FOUND 6" CONCRETE CYLINDER 24" HIGH - IN PLACE
IN GOOD CONDITION - SET IN 1968 RLS 6807

R. PINE 8 N39E 37.0'

NOW 15" N. PINE N39E 37.0' SCRIBE OVERGROWN

R. PINE 5 N6E 42.37'

NOW 9" N. PINE N6E 42.37' SCRIBE OVERGROWN

R. PINE 7 N18W 41.34'

NOW 12" N. PINE N18W 41.34' SCRIBE OVERGROWN

J. PINE 8 N58W 23.36'

NOW 10" X 12" HIGH J. PINE STUB ^{SCRIBE VISIBLE} N58W 23.36'

MHD NEW BT. 8/14/87 CK/MH

N. PINE 17 N54W 54.50 MHD S36 BT

8' STEEL POST DUE WEST 9.0' WITH SIGN 54-9

PUT FSLP ON 17 J. PINE ON SOUTH CLEARING OF

ABANDOND R.R. LINE SE + NW - FROM TAG S17W

80' TO SEC. COR. MONU.

CENTER SOUTH $\frac{1}{16}$ IN SECTION 18

ESTABLISHED BY SUBDIVISION OF SECTION 18

By Wm. OKERMAN RLS 1-19-73

SET 2" X 5' IRON PIPE WITH BRASS CAP MARKED

T145N R28W

C
S116 | S18

C
1973

RLS NO 6807

WITNESSED BY

OAK	10	S16E	42.46'	MKD BT N+D
OAK	10	S45E	68.85	BT N+D
BIRCH	3	S77°30'W	13.77	BT N+D

$\frac{3}{4}$ " IRON PIPE DUE NORTH 108.28' - PIPE IS ON N+S

QUARTER LINE

3/30/92 - Brama

Measured from $S\frac{1}{16}$ east and found $CS\frac{1}{16}$

95' south of my line found U.S.F.S. monument
and B.C. set
A 26" above ground.

Fd. 12" R. OAK S45E @ 68.85' - Tree is not healthy

Fd. R. OAK windfall S16E 42.46'

Fd. no evidence of birch

Fd. 2" O.D. iron pipe @ S50E @ 66' from
D.N.R. nail & 55¢ tie trees to 2" I.P.

U.S.F.S. monument. A Fd. $\frac{3}{4}$ " pipe north 108.28'

Ribbon line from $CS\frac{1}{16}$ to $S\frac{1}{16}$ at N88W.

~~WITNESSED BY~~
~~W. OKERMAN~~
~~1-19-73~~
2/13/96 R. M. W. J. Schaeffer
FD MONUMENT IN PLACE MKD NEW
BT'S AS FOLLOWS

W. OAK 12" S14°W 64.60' to Spk MKD $CS\frac{1}{16}$ S18 BT

BIRCH 7" N 60°W 12.88' to Spk MKD S18 BT

R. OAK 5" N 21°W 40.95' to Spk MKD X BT

8 FT STEEL SIGN POST 303 FT WEST 31 FT EAST

CORNER TO SECTIONS 25-26-35-36
 NOTES OF ORIG. GOV'T. SURVEY 1873
 SET WOOD POST

CEDAR 14 S40W 22 LKS. = 14.52'

CEDAR 6 S32E 17 LKS. = 11.22'

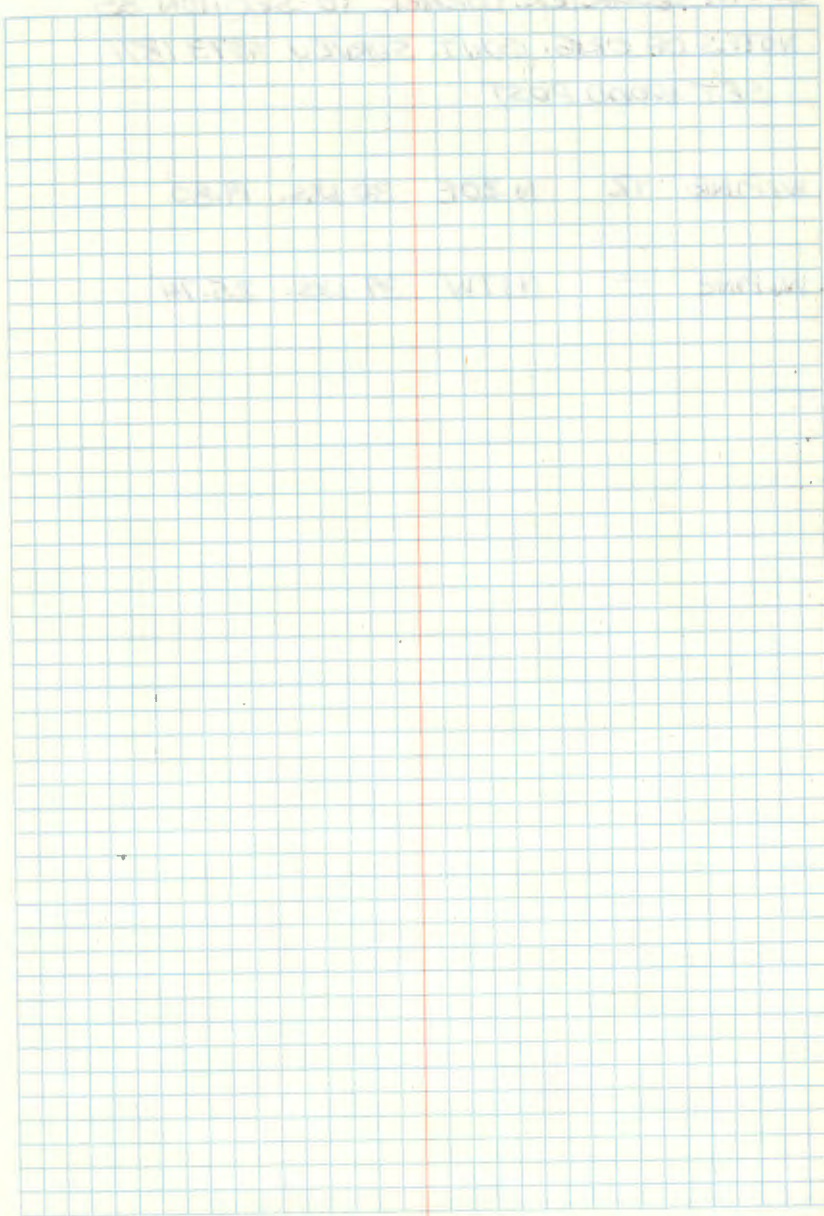
CEDAR 12 N3W 7 LKS. = 4.62'

CEDAR 10 N4E 9 LKS. = 5.94'

QUARTER CORNER BET. SEC'S. 35 & 36
 NOTES OF ORIG. GOVT. SURVEY 1873
 SET WOOD POST

N. PINE 14 S28E 21 LKS. = 13.86'

N. PINE 16 S79W 14 LKS. = 9.24'



50

SOUTH QUARTER CORNER TO SECTION 35

NOTES OF ORIG. GOVT. SURVEY 1873 1871

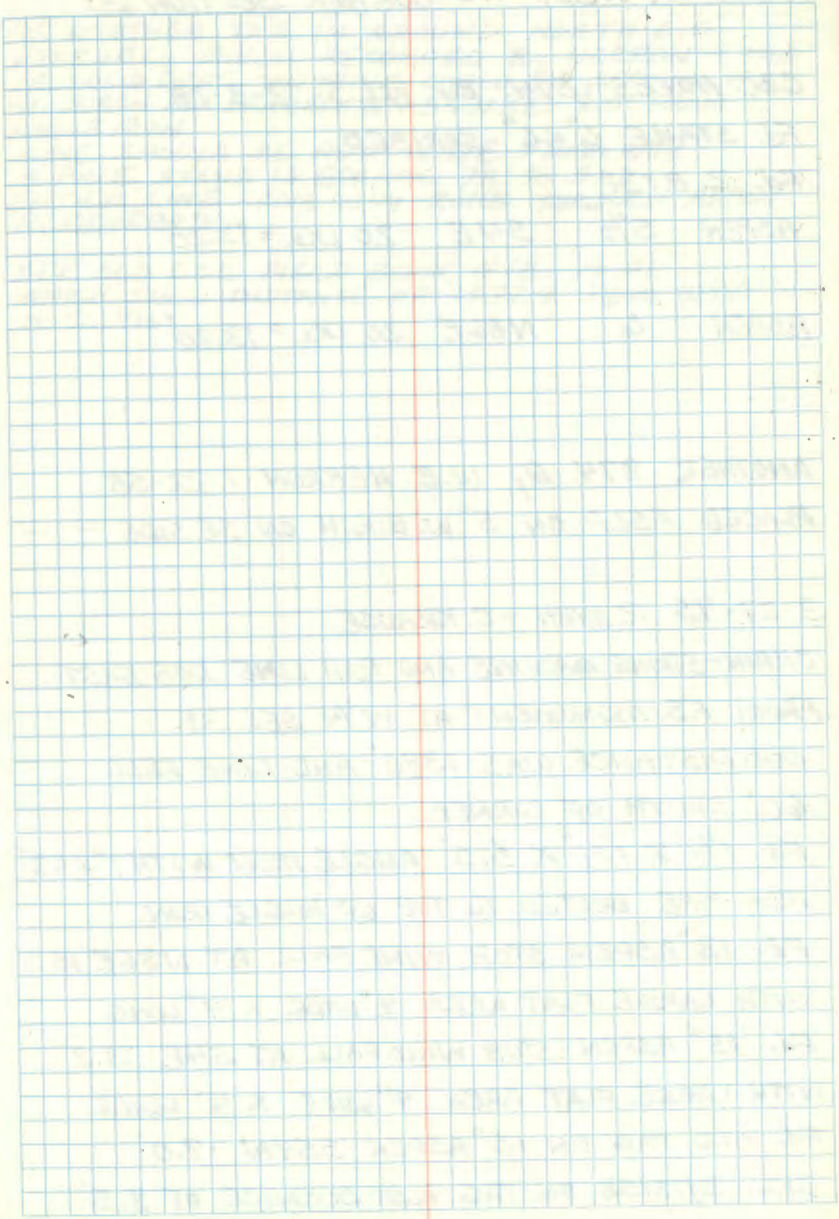
SET WOOD POST

W. PINE 12 N 20E 30 LKS. 19.80'

W. PINE — N 17W 39 LKS. 25.74'

384 50%

50



CENTER WEST $\frac{1}{16}$ CORNER SECTION 31

CCC NOTES 874 By W.L.S. 2-3-28

Fd. STAKE 6"x6" SCRIBED

Fd. 2 BT's.

ASPEN 5 $\frac{1}{2}$ " S4E 20 LKS. = 13.20'

ASPEN 6" N86E 20 LKS. = 13.20'

ANOTHER 874 By W.B. HERRON 1-22-58

PLACED FSLP ON 5" W. BIRCH ON SE SIDE —

3-27-95 R. MAIN + C. KRAUSE

CHAIN-STRING MACHINE AND RAN LINE DUE EAST

FROM FS. MONUMENT AT W $\frac{1}{4}$ SEC. 31

OUR DISTANCE WAS 1390' AND LINE FELL

60' SOUTH OF CORNER.

Fd. 1 $\frac{1}{4}$ " x 1 $\frac{1}{4}$ " x 3.5' ANGLE IRON WITH 1" x 1.2'

IRON PIPE BOLTED TO TOP OF ANGLE IRON

Fd. 13" ASPEN STUB WINDFALL AT N86E 13.2'

WITH LARGE FLAT AREA 4" WIDE x 4' LONG

Fd. 15" ASPEN STUB WINDFALL AT S4E 13.8'

WITH LARGE FLAT AREA 4" WIDE x 4' LONG

Fd. OLD TAG ON 15" ASPEN S59W - 9.0'

J.F.L. 3/13/58 ON TAG ALSO DISTANCE OF 8.5'

Fd. ANOTHER TAG IN GROUND NORTH 6.0'
 PROBABLY BIRCH RECORDED BY HERRON - TAG
 IS SOLID RUST - NOTHING COULD BE SEEN ON TAG
 Fd. BIRCH 12" BLAZED N45 N3E 9.0' FROM
 ANGLE IRON
 LINE SHOULD BE RUN N87E FROM W $\frac{1}{4}$
 N. PINE STAND IS APPROX. 75' TO SW
 ENTIRE LINE FROM W $\frac{1}{4}$ RUNS THROUGH ASPEN
 REGENERATION

SEE OLD CCC FIELD BOOK #18 Pg. 31
 WHICH SHOW DISTANCE OF 1377.4' FROM W $\frac{1}{4}$
 TO CW $\frac{1}{16}$

QUARTER CORNER BET. SEC'S. 25 + 30
 ORIG. GOV'T. SURVEY 1873
 SET WOOD POST

N. PINE 18 S83½W 13 Lks. = 8.58'

N. PINE 14 N12E 26 Lks. = 17.16'

874 By D. F. KIRK MIRE 2-15-28 (T-1 145-27)

Fd. N. PINE STAKE 3" X 3' HIGH - SCRIBED

Fd. N. PINE STUMP 15" DIA. S12W 13 Lks.

SCRIBE ¼ S

LOCATION POSTER ON N. PINE 16" ON N.E. SIDE
 OF PINE - CORNER BEARS N47E 92 Lks. = 60.72'

NOTE: A DRAINAGE DITCH BEARS ABOUT 2 CHS E
 OF CORNER AND SOUTH FOR ABOUT 4 TO 5 CHS.

THEN TURNS SHARPLY TO THE EAST

CORNER IS ON EASTERLY EDGE OF N. PINE RIDGE
 AND ABOUT 7 CHS. W FROM A LARGE OPEN SWAMP
 EDGE

CORNER TO SECTION S 19-24-25+30
 ORIG. GOVT. SURVEY 1873
 WOOD POST

TAM. 6 N52W 10 LKS. = 6.60'

1912 Fd. STUMP - PLAINLY MARKED SMALLER MARKS

TAM. 6 N24E 16 LKS. = 10.56'

1912 Fd. STUMP - PLAINLY MARKED - SMALLER SCRIBE

TAM. 6 S60W 12 LKS. = 7.92'

1912 Fd. STUMP - PLAINLY MARKED

TAM. 4 S39E 29 LKS. = 19.14'

1912 Fd. STUMP - PLAINLY MARKED BT - 17.48'

BOOK A SURVEY RECORD #222 Pgs. 544-550

By JOHN CURO 1912 PAGE 546 + PAGE 548

WE FIND OLD STAKE SET WELL INTO SWAMP

Fd. ALL FOUR ORIG. BT STUMPS WHICH CHECK

FOR BEARING - BUT DIFFER IN DISTANCE

By ABOUT 1.0'

SET 2 1/2" X 48" IRON PIPE OVER 5' LONG

TAM. STAKE WHICH IS DRIVEN SOLID INTO

SWAMP - 18" ABOVE SWAMP

MARKED NEW BT'S.

TAM. 3 S53°31'E 12.54'

TAM. 3 S61°35'W 16.44'

TAM. 3 N28°18'W - 9.56'

TAM. 4 N32°50'E - 26.49'

874. By D. F. KIRK MIRE 2/15/28

Fd. 2 1/2" IRON PIPE

AT NORTH EDGE OF TAM. SWP.

874 SHEET By JOE LAUSCHE 3/10/58

Fd. 2" IRON PIPE - 24" HIGH

MARKED NEW BT'S.

TAM. 7 ^{MAG. BRS.} N31W 13.4'

TAM. 6 S20W 8.9'

TAM. 6 S82E 21.5'

TAM. 7 N54E 18.7' FSLP

CORNER IN TAM. SWAMP APPROX. 834' SOUTH
 OF COUNTY ROAD #9 TO '14 COR.
 TAG ON NORTH SIDE OF ROAD #9

QUARTER CORNER BET. SEC'S. 19 & 24

ORIG. GOV'T. SURVEY 1873

SET WOOD POST

TAM. 6 NB3W 18 LKS. = 11.88'

TAM. 6 N63E 22 LKS. = 14.52'

BOOK A SURVEY RECORD #222 Pgs. 544-550

By JOHN CURD DEC. 1912 PAGE 548

Fd. ORIG. STAKE IN PLACE - WELL PRESERVED

Fd. BOTH ORIG. BT'S. DOWN - BUT PLAINLY
MARKED

WE DO NOT TAKE TIME TO SET THIS CORNER

BUT FROM STAKE WE RUN SOUTH

874 By DANA F. KIRKMIRE 2/16/28

Fd. WOOD POST 2 1/2' HIGH + 4" - SCRIBED

Fd. TAM 4 S60E 14 LKS. = 9.24' SCRIBED

FSLP ON TAM. S ON EAST SIDE OF TREE - CORNER BRG.

S76E 20 LKS. = 13.20'

COR. IN EDGE TAM. SWP. - WITH GRASS MARSH ABOUT 2 CHS.
WIDE TO WEST OF COR. THEN N. PINE RIDGE

CORNER TO SECTIONS 13-18-19-24
 ORIG. GOV'T. SURVEY 1873
 SET WOOD POST

CEDAR 8 N42E 26 LKS. = 17.16'
 1912 Fd. CEDAR WINDFALL WITH SCRIBE VISIBLE,
 60 LKS. 39.60'
 N. PINE 18 S23W ~~18.18~~ = ~~18.18~~
 1912 Fd. LIVING N. PINE 18 S23W 39.60 SCRIBE VISIBLE
 BALSAM 6 N40W 11 LKS. = 7.26'
 1912 Fd. BALSAM WINDFALL WITH SCRIBE VISIBLE
 POPLAR 14 S28½E 32 LKS. = 21.12'
 1912 Fd. POPLAR STUMP S28½E -21.12'

BOOK A SURVEY RECORD #222 PAGES 544-550

By JOHN CURO DEC. 1912 PAGE 547

SET 2½" X 48" IRON PIPE WITH PIPE CAP
 WITH ANCHOR ROD THROUGH BOTTOM
 MARK NEW BT'S.

POPLAR 10 N56W 29.20'

ORIG.
 N. PINE 18 S23W 39.60'

N. PINE 24 S51E 36.90'

BIRCH 4 N47E 10.26'

874 By D. F. KIRKMIRE, 2/16/28
 Fd. IRON POST 1½" HIGH - 2½" DIA.
 Fd. ASPEN (DEAD) 10 N60W 42 LKS. 27.72' SCRIBED
 Fd. N. PINE WINDFALL 19 S50E 63 LKS. = 41.58' SCRIBED
 FSLP ON ASPEN 5" ON SE SIDE OF TREE - CORNER BRS.
 S60E 3 LKS. = 1.98'

QUARTER CORNER BET. SEC'S, 25+36

ORIG. GOV'T. SURVEY 1873

SET WOOD POST

BIRCH 6 N70E 15 Lks. = 9.90'

POPLAR 8 S30W 73 Lks. = 48.18'

57

CORNER TO SECTIONS 23-24-25-26

ORIG. GOV'T SURVEY 1873

SET WOOD POST

TAM. 5 S64W 15 LKS. = 9.90'

TAM. 4 S62½E 27 LKS. = 17.82'

TAM. 6 N40E 60 LKS. = 39.60'

TAM. 4 N19½W 40 LKS. = 26.40'

57

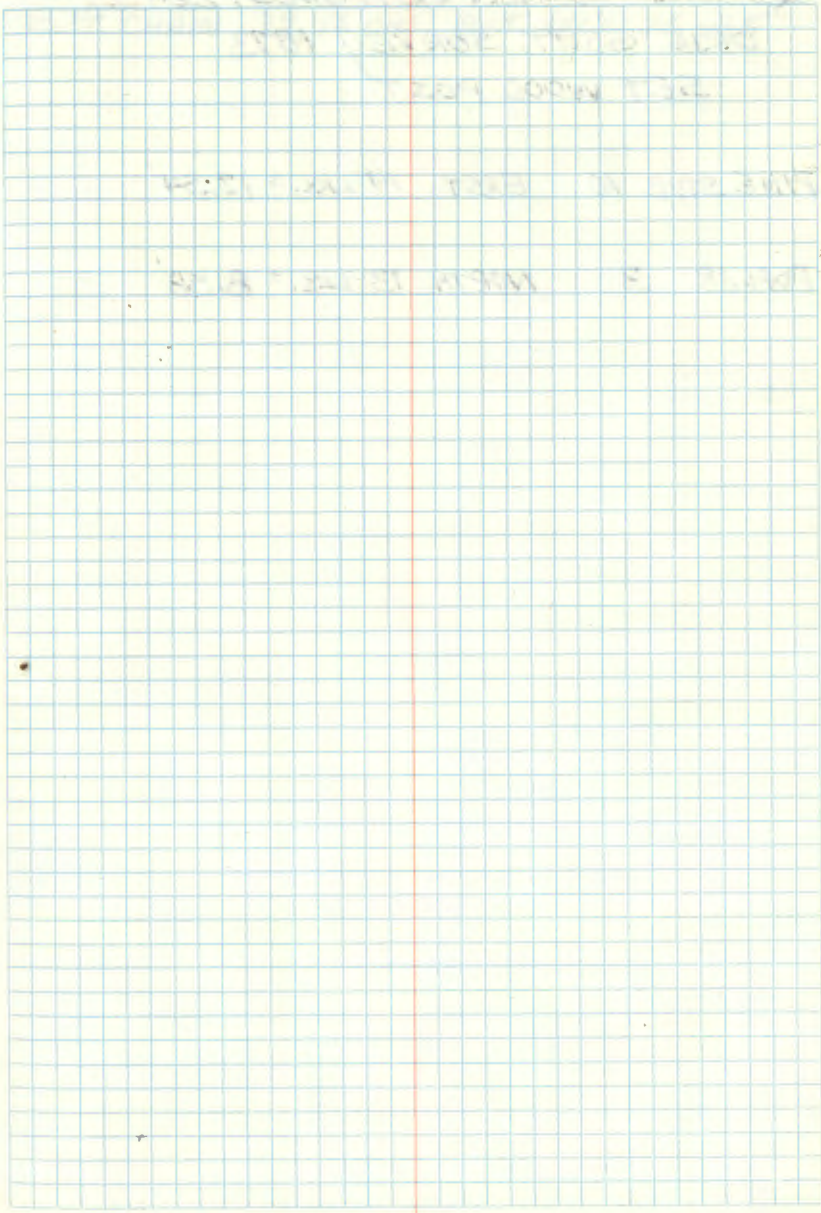
QUARTER CORNER BET. SEC'S, 24425

ORIG. GOV'T. SURVEY 1873

SET WOOD POST

TAM. 3 S31½E 19 LKS. = 12.54'

TAM. 3 N18W 28 LKS. = 18.48'



59

QUARTER CORNER BET. SEC'S. 26+35
ORIG. GOVT. SURVEY 1873
SET WOOD POST

PINE STUB 10. EAST 19 LKS. = 12.54'

POPLAR 3 NORTH 13 LKS. = 8.58'

59

2637.36'
GOVT. CHAIN 39.96 CHS. BET. SEC'S. 26+35

QUARTER CORNER BET. SEC'S. 32+33
ORIG. GOV'T. SURVEY 1873
SET WOOD POST

TAM. 3 S84E 204 LKS. = 134.64'

TAM. 3 N57W 108 LKS. = 71.28'

QUARTER CORNER BET. SEC'S, 29 & 32
ORIG. GOV'T. SURVEY 1873
SET WOOD POST

J. PINE 14 S10W 12 LKS. = 7.92'

N. PINE 10 N39E 18 LKS. = 11.88'

MEANDER CORNER EAST SHORE OF 6 MILE
LAKE SOUTH SIDE OF SEC. 36

ORIG. GOVT. SURVEY ~~1873~~ 1871

BIRCH 6 N34E 53 LKS. = 34.98'

BIRCH 6 N13E 63 LKS. = 41.58'

906.18
GOVT. CHAIN 13.73 CHS.

63

MEANDER CORNER ON WEST SHORE OF
6 MILE LAKE SOUTH SIDE SEC. 36
ORIG. GOVT. SURVEY #~~73~~1871
SET WOOD POST

CEDAR 12 N60W 75 LKS. = 49.50'

NO OTHER NEAR

63

2825.46'
GOVT. CHAIN 42.81 CHS.

64

STANDARD CORNER TO SEC'S. 35+36

ORIG. GOV'T. SURVEY 1871

SET WOOD POST

BIRCH 10 N70E 23 LKS. = 15.18'

N. PINE 15 NSW 26 LKS. = 17.16'

64

65

CENTER EAST $\frac{1}{16}$ SECTION 27

SEPT 1936 J.A. GJELHAUG

SET 1" X 18" IRON PIPE FOR SURVEY OF BENN
RANGER STATION SETS.

6-20-96 R. MAIRN C. KRAUSE

FOUND GJELHAUG IRON IN PLACE NORTHEAST OF
WOODS TRAIL'S INTERSECTION AND IN POWER LINE
CLEARING. IRON IS 6 FT EAST OF NORTH SOUTH
TRAIL AND 20 FT NORTH OF EAST WEST TRAIL.
POUNDED IRON 6 INCHES BELOW GROUND AND
WITNESSED WITH THE FOLLOWING:

R PINE 8 N26°E 51.5 FT TO SPK NOT MKD

R PINE 9 N46°E 35.5 FT TO SPK NOT MKD

8 FT STEEL SIGN POST 19.8 FT WEST.

66

CENTER WEST EAST $\frac{1}{64}$ SECTION 27
MIDPOINT BETWEEN C $\frac{1}{4}$ AND C E $\frac{1}{16}$

SEPT 1936 JA. GJELHAUG

SET IRON PIPE SURROUNDED BY
CONCRETE FOR SURVEY OF BENA RANGER
DISTRICT SITE.

6-20-96 R MAIN C KRAUSE

FOUND GJELHAUG MONUMENT IN $\frac{1}{2}$ OF WOODS
TRAIL UNDER POWER LINE CLEARING. MONUMENT
ZINCAS BELOW ROAD SURFACE. MKD.

WITNESSES AS FOLLOWS

R. PINE 14" S56°W ~~480.38~~ FT TO SPK NOT MKD

R. PINE 13" N26°E 430.32 FT TO SPK NOT MKD

67

CENTER EAST WEST EAST $\frac{1}{2}$ 256 SECTION 27

1936 SEPT J.A. GJELHAUG

SET A CONCRETE MONUMENT FOR SURVEY OF
BENA RANGER STATION SITE.

6-20-96 R MAIN CKRAUSE

SEARCHED FOR GJELHAUG MONUMENT, FALLS
IN WOODS TRAIL UNDER POWER LINE. NO
MONUMENT FOUND.

68 CONTINUED FROM PAGE 12 THIS BOOK
EAST QUARTER CORNER TO SECTION 24
WALT CURD UNDER CONTRACT FOR SUBDIVISION
OF SECTION 19 145-28 IN 1986
SEE CERTIFICATE FOR STATEMENT OF EVIDENCE
SET 2" x 60" IRON PIPE WITH BRASS CAP MKD.

WITNESSED BY

ASPEN 8 N85E 89.62'

NOW 11" ASPEN

J. PINE 8 S58E 165.54'

NOW 10.5" J. PINE

W. OAK 7 S5E 123.09'

NOW 11" W. OAK

10-1-97 CK

Fd. 2" IRON + CAP - IN PLACE - IN GOOD CONDITION
IRON IS IN THICK BRUSH AND ASPEN REGEN-
ERATION IN NW CORNER OF OLD SMALL CLEARING
WITH 2" TO 4" J. PINE GROWING IN OPENING
APPROX. 175' NORTH OF WOODS TRAIL E+W
AND APPROX. 500' TO NEW HOME BEING
BUILT TO SE OF CORNER

8' HEAVY DUTY STEEL SIGN POSTS
SOUTH 2.95' + EAST 3.05'

1/4 CORNER S31-36

9/28/99 R. MAIN TO SHACKMAN

Fd CORNER IN PLACE UP 103 FT. 1968 ROAK BT
 NOW A 30 FT SNAG. Fd CEDAR POST LAYING
 DOWN. WITNESS CORNER WITH:

1968 R. PINE 17" N19W 113.62 SCRIBE OVERGROWN

1968 R. PINE 21 1/2" N40E 98.41 SCRIBE OVERGROWN. LOWER
BT SCRIBE BURNED BLACK

NEW R. PINE 12 1/2" S61°E 68.70 FT TO SPK MKD. S31 BT

8 FT STEEL SIGN POSTS NORTH 502 FT. EAST 606 FT.

FSLP ON 14" R. PINE ON FR 2131 NORTH SHOULDER
 FROM WHICH CORNER BEARS SOUTH ± 500 FT

QUARTER CORNER $\frac{20}{29}$

12-9-1965 S. MORRISON D. MORGAN (CORNER CARD)

FD OLD SQUARED STAKE. TAG ON W.
SIDE OF TAMARACK 9". CORNER LIES
S61°W OF TAG 8 FT. ANOTHER TAG ON EAST
SIDE OF 11" TAMARACK CORNER LIES N79°E
OF TAG 7 FT. FD BLOWDOWN TREE AT BT
J PENE 8" N10°E LOCATION, BUT COULD NOT
TELL IF IT WAS A BEARING TREE.

CONT FROM PG # 41

CLIPPER (1847-1850)

12-1847
 Ed. by ...
 Size ...
 1/2 ...
 1/2 ...
 1/2 ...
 1/2 ...
 1/2 ...
 1/2 ...

END OF
 BOOK