

CORNER
RESTORATION

T144N R27W



BOOK #1

CORNER RESTORATION T144N R27W

USFS

CASS COUNTY, MN

INDEX

T144N R27W

17	18	19	16	77			18				
6	5	4	4	3	41	2	1				
45	40	7	38	39	40	42	43				
7	8	6	5	9	37	10	11	12			
	11	10	3	35	36	51					
18	34	17	67	16	50	15	56	14	63	13	58
25	65	64	66	33	46	55	60	61	53	57	
19	14	20	32	21	22	15	23	62	24	52	
	76	31		22	21	20	19	59	51	44	
30	29	30	28	25	27	24	26	49	25		
	29	28	27		25	26	47	48			
31	32	33	34	35	70	36	69				
					73						
					72						

SIX MILE LAKE

PRIMEVAL LAKE

1 E-9

SECTION CORNER 4, 5, 89

Original Gov't survey notes

Tamarack 8° 588°E 181ks

Tamarack 6" N36°E 431ks - Fallen N54³/₄°E 311ks on
marks and a part of the B.T. blaze

Spruce 6" N4°W 261ks

Cedar 5" 550°W 251ks

G.L.O. Resurvey Notes of 1937 - Corner is squared cedar
tree 6" - *Fd tipped & split*

At a point N 1°23'E 41ks from original tree
set a conc man. 2' x 7" p 20" in ground for W.C.

with brass tablet 3¹/₂" dia mkd - *Fd tipped (reset)*

W.C.	
T 144N	R 27W
55	54
58	59
1937	

Tamarack 5" N25¹/₂°E 801ks mkd W.C. T144N R27W 54BT (52)

Fd slp tipped on side at record big & dist. scribe visible

N. Pine 17" 530¹/₄°E 791ks mkd W.C. T144N R27W 59BT (52)

Fd 20" at record big & dist scribed T144N R27W visible

Cedar 10" 559¹/₄°W 191ks mkd W.C. T144N R27W 56BT (25)

Fd Cedar slp record big & dist scribed W.C. T144N R27W 58BT

Cedar 8" N59°W 581ks mkd W.C. T144N R27W 55BT (38.5)

Fd 14" 39.2 feet scribed 55 T144N R27W 55BT

N 59°W

Affidavit
wks

W. O. Korman
J. Ekstrom
M. Hamsey
6-2-64

Now B.T.

Black Spruce 6" 57°W 2.7 feet scribed 58 BT

Red Pine (G.L.O.) 20" 530°E 52.1 feet

Cedar 14" N59°W (G.L.O.) 39.2 feet

Black Spruce 6" N2°W 44.3 feet scribed 55 BT

Shed sign post 72" long due west 6.3 feet
with signs 54-4 & 54-2 attached

2 G-9

QUARTER CORNER BETWEEN SECS 8-9

Original 600't survey Notes

Pine 16" S10°W

Tamarack 6" S25° -

Tamarack 8" N45°W 27 lks

No remaining evidence

C.L.O. resurvey notes of 1937

Set an i. p. 3' x 1' x 1' mkd 1/4

58 | 59

1937

Tamarack 4" S19°E 38 lks mkd 1/4 59 BT (25.1)

Ed 8" at record big & dist scribe overgrown

Tamarack 6" N82°W 97 lks mkd 1/4 58 BT

Ed blown down at record big & dist

New B.T.'s

Tamarack 8" (G.L.O.) S19°E 25.1 feet rescribed

1/4 59 BT

Tamarack 8" N68°W 61.0 feet scribed

1/4 58 BT

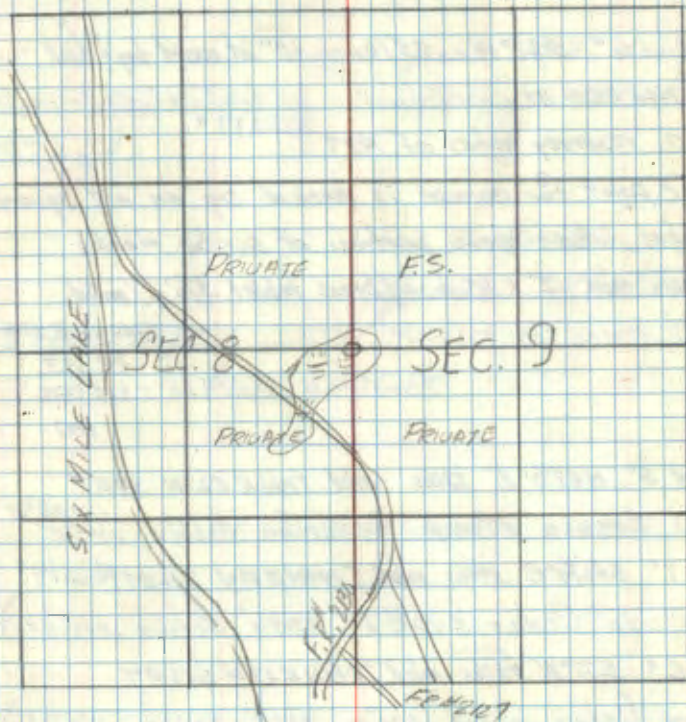
Steel sign post 72" long due North

9 1/2 feet with signs 54 2 1/2' 54 1/4' attached

Attach with
who

9-6

W. Okerman
M. Hansley
J. Ekstrom
6-2-64



W. Okerman

3 J-9

SECTION CORNER TO 8, 9, 16, 17

Original Govt. survey notes

N. Pine 20" N 25° W 28 lks - burned pine stp N 25° W 18 lks

Cedar 10" S 70° E 13 lks - burned & fallen cedar at record by dist

N. Pine 25" N 26° E 60 lks - burned pine stp record by dist

Cedar 6" S 27° W 25 lks - 10" at record by dist

mkd T144N R21W BT - 14" at record by dist - scribe visible

G.L.O. resurvey notes of 1937
NOW 17"

The point for corner is marked by an old squared
stakes, which shows portions of scribe marks

Set conc. mon. 2' x 6" w/ brass tablet 3 1/2" mkd

Fd mon in place

T144N	R27W
58	59
517	516
1937	

Spruce 5" N 67 1/2° E 22 lks mkd T144N R27W 59 BT

(Now Spruce stump w/ scribe visible N 67 1/2° E 14 5/8')

Cedar 7" S 42 1/2° E 34 lks mkd T144N R27W 516 BT NOW 14"

(Now a 10" Cedar 54 2 1/2° E 22 1/4' scribe visible)

Cedar 6" S 71° W 48 lks mkd T144N R27W 517 BT

(Now Cedar stump S 21° W 31 1/8' scribe visible)

double N. Pine N 42 1/4° W 168 lks mkd T144N R27W 50 BT

(Now a double N. Pine stump N 42 1/4° W 110.00' scribe overgrown)

Affidavit

W. O'Farmer,
M. Haysen,
J. Etsberg
9-16-24

to perpetuate this Corner I
Marked New BT's

Cedar 5" N 64° E 14.8' Scribed
59 BT NOW 14"

Cedar 11" S 45° W 20.5' Scribed 517 BT
NOW 16"

Set a steel sign post 22" long
due East 8.2' w/ signs 542 & 544
attached.

9-16-24

James Etsberg

12-07-2010

FD IRON IN PLACE AND GPS

QUARTER CORNER BETWEEN SECS 4-5

Original Gov't Survey Notes

Pine 16" S10°W 100 lks - A large sp. hole brs S10°W 100 lks

Pine 20" S19°E 106 lks - A large sp. hole brs S19°E 108 lks

~~C.L.O. Resurvey Notes~~~~Set 1. post 3' x 1" ϕ 28" in ground w/ brass cap~~
~~Tamarack 4" S79°E 38 lks mkd 1/4 S5BT~~~~Tamarack 6" N182°W 97 lks mkd 1/4 S5BT~~

Norm C.L.O. Resurvey Notes of 1937

Set an iron post 3' long x 1" dia. mkd 1/4

A. Norway Pine - 8" S74 $\frac{3}{4}$ °E 30 lks mkd 1/4 S4BTNorway Pine - 9" N59 $\frac{1}{2}$ °W 15 lks mkd 1/4 S5BT

5 F-9

N 1/4 CORNER BETWEEN SECS 8 & 9

No Gov't notes - found 1" p pipe 18" above ground set by F.E. Meyer 1956

Subsequent survey by me establishes that this iron is properly located midway between the NE cor sec 8 and the E 1/4 corner of Sec 8

Set a 5' long, 2" inside diameter galvanized steel monument filled with concrete and capped with a 3" diameter brass cap marked -



New B.T.'s

Red Pine 22° 52' 4" E 291.0 feet scribed
N 1/4 59 BT

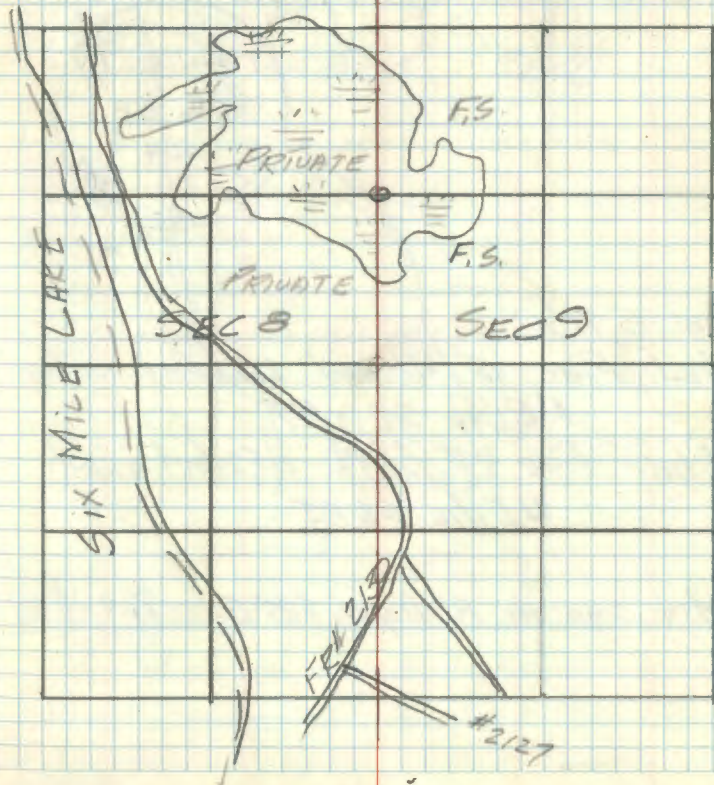
Steel sign post 72" long due South
9.0 feet with sign 54-2 attached

Steel sign post 72" long due North
10.4 feet with signs 54-2 & 54-4 attached

Attached
wire

W. Okerman
J. Ekstrom
H. Hansoy
6-2-67

William A. Okerman



6 F-8

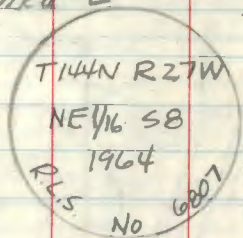
NE 1/4 Sec 8

Not established by Bout survey - found 1" i.p.

18" above ground. set by F.E. Meyer in 1956

Subsequent survey by me verifies this location
on a prorated bry and distance = to split of
1/2 mile between N 1/4 Cor & NE Cor.

Set a 5' long, 2" inside diameter galvanized steel
monument filled with concrete and capped with
0 3" dia. bronze tablet mtd ~



New B.T.'s

Red Pine 16° N 12° W 215.6 feet scribed

NE 1/4 S8 BT

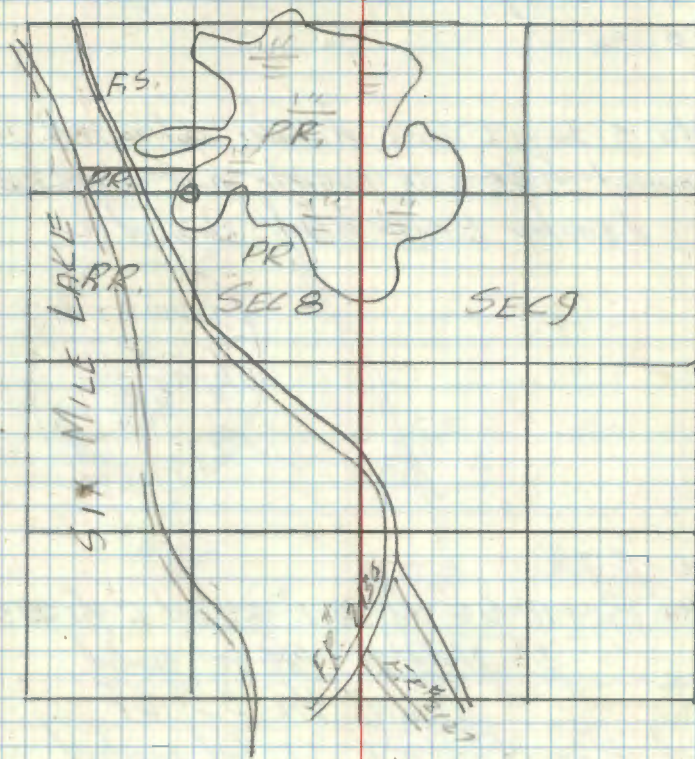
White Pine 19° S 14° E 115.2 feet scribed

NE 1/4 S8 BT

54.4 sign on 8° Aspen 385° E 82.0 feet

W. Odawart
wks

W. Ogerman
J. Ekstrom
M. Hansley



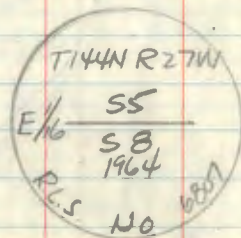
7 E-8

E 1/16 CORNER BETWEEN SECS 5 & 8

Not established by Gov't survey - found 1 1/2 i.p.
18" above ground set by F.E. Meyer in 1956.

Subsequent survey by me establishes this location
to be mid way between the N 1/4 Cor. & The NE 1/4 Cor.
S.B. -

Set a 5' long, 2" inside diameter galvanized steel
monument filled with concrete and capped with
a 3" diameter bronze tablet stamped -



New B.T.'s

Red Pine 12" S 66° W 18.1' scribed E 1/16 S 55 BT

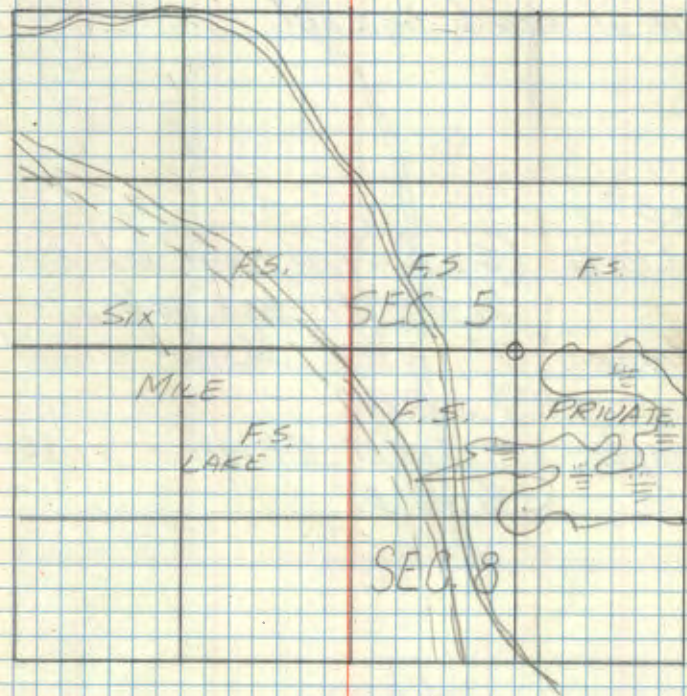
" 8' N 44° W 19.4 feet scribed
E 1/16 S 55 BT

Red Pine 14" N 73° E 21.2 feet scribed
S 55 BT

Steel sign post 72" long with signs 542
& 54-4 attached due East 4.4 feet

W. O. O'Brien
8/25/78

W. O'Brien
J. E. Johnson
M. Hanson
6-2-64



W. O'Brien

E-7

8 1/4 SEC. COR BETWEEN SECS 5 & 8

G.L.O. resurvey notes of 1937

No remaining evidence of original corner

Set an i.p. 3' x 1" ϕ with brass cap mtd:Fd as described in good condition $\frac{1}{4}$ $\frac{55}{58}$
1937Ash 6" N57 $1/2$ °E 41ks mtd 1/4 SSBT - Fd 9" at
record bearing & dist. scribe overgrown

Elm 8" S80°W? 371ks mtd 1/4 SSBT - Fd 12"

Elm at record bearing & dist.

New B.T.'s

Elm 12" (G.L.O.) S90°W 246 feet scribed
1/4 S B BT sign 54-4 attachedIronwood 7" N65°E 352 feet scribed
1/4 S S BTMaple 11" S22°E 443 feet scribed
1/4 S B BT

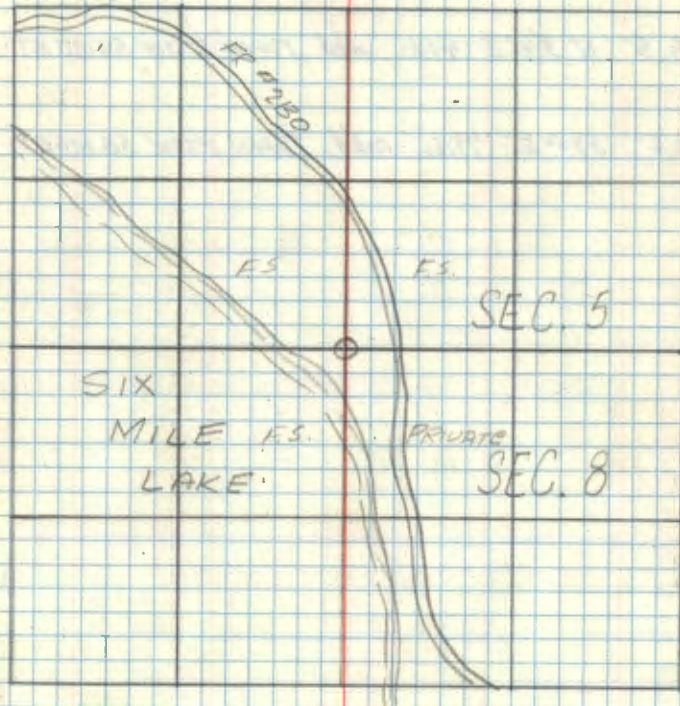
Affidavit

W. Okerman

J. Ekstrom

M. Hanscy

62-64



W. Okerman

9 MEANDER COR BETWEEN SECS 5 & 8

G.L.O. resurvey notes of 1937

No remaining evidence of original corner

Set on ip. 3' x 1" ϕ w/brass cap mkd

T144N
SS
M.C. / SB
R27W
1937

Ash 5" N 3 $\frac{1}{4}$ ° E 4716s mkd T144N R27W SSMCBT

Ash 6" S 74° E 7716s mkd T144N R27W SB MCBT

10 J-8,9

MEANDER COR BETWEEN SECS 8 & 17
G.L.O. resurvey of 1937

No remaining evidence of original M.C.

Set an i.p. 3' long 1" ϕ w/brass cap mkd

T144N
SB
M.C. / S17
R27W

Birch 6" N67°E 142 lbs mkd T144N R27W SB MC BT

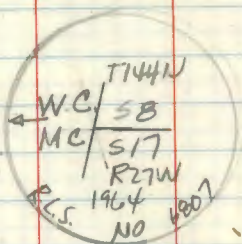
Ed decayed birch slip with scribe marks visible along top

Poplar 10" S39°E 248 lbs mkd T144N R27W S17 MC BT

Ed decayed log with scribe marks visible at round top & dist

As G.L.O. M.C. falls in water I set a W.C.

M.C. 5' long, 2" inside diameter filled with
concrete galvanized steel post, capped with
a 3" diameter bronze tablet stamped—



4x4x60" red top cedar post dir E. 72'

4x4x60" " " " S7°E 82' with
sign SB-4 attached

Affidavit

W. Olman
M. Hoxsey
J. Chapman
7-16-64

11 J-5

Section Corner Sec's 7-0-17-18

Notes of G.L.O. resurvey of
1937.

N. Pine 8" N15 $\frac{1}{4}$ °E 221 Lks 145.86' Fd
pine snag at record box & dist scribe T144N R27W S5BT w

Y. Oak 9" S59°E 102 Lks 67.32'

Balsam 6" S24 $\frac{1}{2}$ °W 57 Lks 37.62'

Cedar 8" N61°W 199 Lks 131.34'

Set a Concrete Monument 2 feet
long 6" dia 20" in ground w/brass
Cap stamped. -

T144N R27W

Fd monument broke in half
with bottom part in place

57	58
518	517
1937	

Set a 6" diameter 60" long cylindrical
concrete monument capped with a 3" diameter
brass tablet stamped

T144W R27W

57	58
518	517
1964	

R.L.S. NO. 6807

Affidavit

W. Oberway
M. Johnson
J. Johnson

BT's

Elm 6" N50°E 634 feet scribed 59 BT

Elm 17" N7°E 110.1 feet scribed 58 BT

Elm 10" S53°E 1515 feet scribed 517 BT

Cedar Post 4x4x60 with red top due north
17.0 feet with sign 54.4 marked

7-18-64

12 G-8

CE 1/16 SB

CORNER SET FROM SECTION

SUB DIVISION FOR ENGSTROM SEPARATION
SURVEY

Set a 6" diameter 60" long cylindrical
concrete monument capped with a 3"
diameter bronze tablet stamped

T144N R27W

CE 1/16

SB

1964

P.L.S. NO. 6807

B.T.'s.

White Pine 15' NNW 51.8 feet scribed

CE 1/16 SB BT

White Pine 14' NNE 46.7 feet scribed

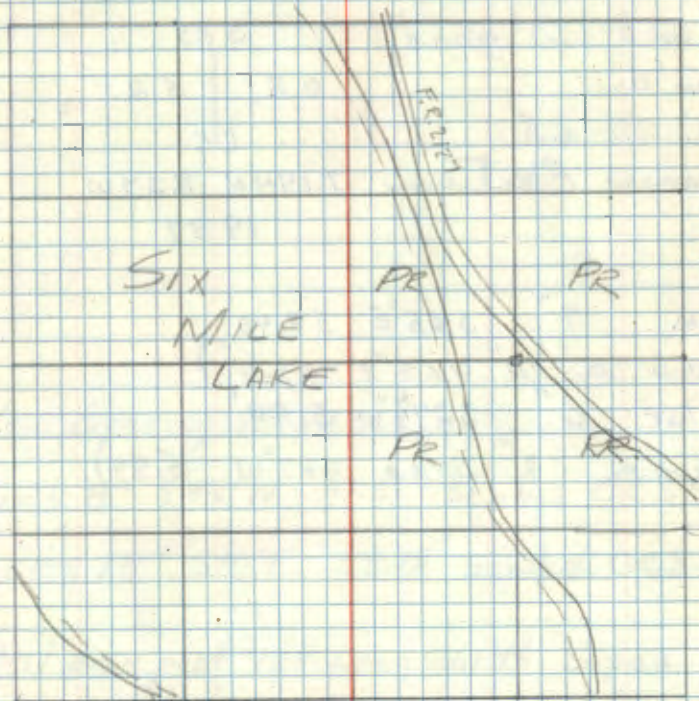
CE 1/16 SB BT

Ash 10' SNE 17.9 feet with sign

54-4 attached

Affidavit

W. Okerman
J. Ekstrom
M. Hansey
9-21-64



13 A-17

Closing Cor. Sec's 2-3

Notes of G.L.O resurvey of
1937. set a 3' long 2" dia
Iron post w/ brass Cap
Marked.

T145N R27W

Found in good

535

Con'd.

53

52

12-20-65

CC

James Ekstrom

T144N R27W

1937

Tan 7" S65°E 59.40'

(Now a 10" S65°E 59.4')

Poplar 6" S27½°W 5.94'

(Now a 12" S27°W 5.94')

1

Ad. Id. Unit
3-9-66

New Bearing Trees

Birch 8" S42°W 41.5' Scribed C.C.S3BT

P. Pine 18" S41°E 58.15' Scribed C.C.S2BT

Steel sign post 72" Long with signs
54-2 - 54-4 Due west 4.15'

3/9/77

Ronald D. Olson

14 R-19

Quarter corner between 23 & 26

Notes of G.L.O. resurvey of 1937.

Set an iron post 3' long 1" ϕ

27" in the ground w/brass cap mkd.

Found in place $\frac{1}{4}$ S. 23

in good condition S. 26

1937

G.L.O. bearing Trees:

burr oak 14" N. 39 $\frac{3}{4}$ W. 63 LKS. (91.58')

mkd. $\frac{1}{4}$ S. 23 B.T.

(also a 18" AT correct bearing &
d.s.t. w/ blaze visible.) (rescribed $\frac{1}{4}$
S. 23 B.T.)

New B.T.

Oak 6" S. 80 E. 92.9'

(scribed $\frac{1}{4}$ S. 26 B.T.)

Steel sign post 72" long w/signs

54-2 & 54-4 Attached due west 5.5'

6/10/66

W. J. Allen & company

Affidavit
8-8-66

To bring this corner to Standard &
cut new B.T.

Oak 10" N. 79 W. 53.52'

5/14/80 Road Clear

RD 7150-4 by Olson

August 20, 1985 Recovery by G. Kosenko

B. Husk

G. Robertson

Found a 1 inch diameter

(outside) iron pipe with a

2 $\frac{1}{2}$ inch diameter brass

cap stamped as shown

up 6" above swamp and

1.0 ft under water from which:

Recovered:

Decl: 5° East

W. Oak 13.0 in, N80°W, 53.45 ft to a 1/2" nail in

SW face, double blaze overgrown, w/60d spike

W. Oak 20.8 in, N42°W, 42.05 ft to a 1/2" nail in

W face, double blaze overgrown w/ BT visible & 60d spike

Metal fence post, west, 5.8 ft w/54-2, 54-4

Established -

W. Oak 8.6 in, N80°E, 49.12 ft to a 1/2" nail in

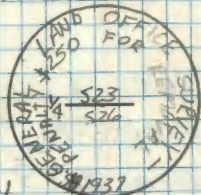
north face, double blaze, sec 11/45 23 BT w/60d spike

Metal fence post, north, 3.0 ft w/54-2, 54-4

19 1/2" W. Oak, 9.8 in, S77°E, 92.98 ft to 1/2" nail in

S face, double blaze overgrown, w/60d spike

11-OST-2010 R.M.A.F.N.
GAS IRON



15 P-17

Quarter Corner between 22 & 23

Notes of G.L.O. Resurvey of 1937

Set an iron post 3' long 1" ϕ
27" in the ground w/brass cap mkd:

$\frac{1}{4}$

Found in place S. 22 S. 23

in good condition.

1937

G.L.O. bearing trees:

Cedar 6" N. 49° E. 26 LKS (17.16')

mkd: $\frac{1}{4}$ S. 23 B.T.

(Now a 9" at correct bearing and
dist. w/scribe B.T. visible) (rescribed
 $\frac{1}{4}$ S. 23)

Ash 5" N. 57° W. 51 LKS (33.66')

mkd: $\frac{1}{4}$ S. 22 B.T.

(Now a 7" at correct bearing and
dist.) (rescribed S 22 $\frac{1}{4}$ B.T.)

6/10/66

Jeffrey Hanson

Affidavit
8-8-66

16 A-3

N $\frac{1}{4}$ TO SECTION 6, T144N, R27W
Closing Quarter Corner between SEC 6 of
T.144N R.27W & SEC. 31 T.145N R.27W

Notes of G.L.O. resurvey of
1937. Set an iron post 3" long
1" diam 27" in the ground w/brass
cap mkd:

Found in place $\frac{1}{4}$ S. 6
in good condition, 1937

G.L.O. bearing Trees

J. pine 6" S. 29 $\frac{1}{2}$ E. 53 LKS. (34.98)
mkd $\frac{1}{4}$ S. 6 B.T.

(Now a pine stump w/scr. be visible)

N. pine 4" S. 94 $\frac{1}{2}$ W. 28 $\frac{1}{2}$ LKS. (18.81)
mkd $\frac{1}{4}$ S. 6 B.T.

(Now a 10" N. pine at correct bearing
and dist. w/scr. be visible) (rescribe
B.T.)

New B.T.

N. pine 12" S. 28 E. (scribed $\frac{1}{4}$ S 6
B.T.)

6/13/66

Milton Harris

Affidavit

~~Original Government Survey~~

17 Z-1 + Z-25 (T145 - R28 + 27W)

affidavit 9/8/78

Standard Town corner, sec's 36 & 31

of T. 145 N R. 27 & 28 W.

Notes of G.L.O. Resurvey of 1937.

Set a concrete monument 2' long

6" ϕ 20" in ground w/brass cap mkd:

T. 145 N.

Found in place R. 28 W. R. 27 W.

in good condition, S 36 S. 31

(2 1/2" Coped pipe along side) 1937

Original bearing Trees.

N. pine 19" N. 23° E. 93 LKS. (28.38')

mkd: (T. 145 N. R. 27 W. S. 31)

(Now a 22" R. pine w/scribe visible at correct

N. pine 24" N. 35° N 60 LKS. (39.60) ^{bearing} dist.)

(Now a pine stump at correct bearing & dist.)

G.L.O. bearing Trees.

W. pine 5" N. 69 1/4° E 23 LKS. (15.18')

mkd: (S.C. T. 145 N. R. 27 W. S. 31 B.T.)

(Now a 7" W. pine w/scribe visible
at correct bearing and dist.)

R. Oak 6" N. 87 1/2° W 18 LKS (11.88')

mkd: (S.C. T. 145 N. R. 28 W. S. 36 B.T.)

(Now a 12" Oak w/scribe visible at
correct bearing and dist.)

(rescribed S. 36 B.T.)

New B.T.'s

bur oak 10" N. 19° W. 33.18'

(scribed S. 36 B.T.)

W. spruce 7" S. 77° E. 27.99'

^{DOWN}
(scribed S.C. S. 31 B.T.)

6/13/66

Wilton Hanson

5/23/83 G. Robertson & D. Harmon

Corner in good shape.

10-26-2009 R. MAIN

FD MONUMENT IN PLACE AND GDS. CORNER
± 250 FT NORTH OF FR2102

REFER TO BK1 PG 74 T145 R27

18 A-1

Closing corner sec's 1 & 6 of
T. 194 E. 195 N. R. 27 W.

Notes of G.L.O. Resurvey of 1937
set a concrete monument 2' long
7" ϕ 20" in ground w/ brass cap mkd.

T. 195 N. R. 27 W.

Found in place
in good condition.

S. 31
S. 1 S. 6
R. 28 W. R. 27 W.
C.C.

T. 194 N.
1937

G.L.O. bearing trees:

N. pine 14" S. 16 $\frac{1}{2}$ ° E. 377 LKS. (248.82)
mkd. (T. 194 N. R. 27 W. S. 6 C.C. B.T.)

(Now a pine stump w/ scribe visible correct bearing dist.)

N. pine 9" S. 76 $\frac{1}{2}$ ° W. 198 LKS. (130.68)
mkd. (T. 194 N. R. 28 W. S. 1 C.C. B.T.)

(Now a decayed blowdown w/ scribe visible
at correct bearing & dist.)

10-26-2009 R. MAIN

Fd MONUMENT IN PLACE \pm 250 FT NORTH OF

FR 2102. GPS MONUMENT

Now B.T.'s

R. Oak 11" S. 10° W. 22.6'
(scribed S. 1 B.T.)

Maple 5" S. 65° E 35.83'
(scribed S. 6 B.T.)

6/13/66

John Harman

Sept 9, 1981 K. Whitehorn & R. Oleson

Found GLO concrete monument
in good condition.

5/23/83 G. Robertson & D. Harman

Est

~~Now DOWN ROTTED R. OAK~~
R. Oak 9.5" N 38° E 10.63' scribed S31 CC BT

~~S. Maple 4.4" N 83° E~~
S. Maple 4.4" N 83° E 31.55' scribed S6 CC BT

~~Now 6" MAPLE~~
Found

R. Oak 12" S 11° W 22.06' (dist. from 60d spike in base)

Now 12" R. OAK
Maple stump 6.2" S. 66° E 35.93'

All BT's double blazed with 60d spike in base
of BT. Painted red with FS 54+3 sign.

19 Z-3

SOUTH 1/4 TO SECTION 31, 145-27
STANDARD QUARTER CORNER BETWEEN SEC
31 OF T. 145 N. R. 27 W. & SEC 6
OF T. 144 N. R. 27 W.

Notes of G.L.O. Resurvey of 1937

Set an iron post 3' long 1" ϕ 27"
in the ground w/ brass cap mkd:

S.C.

Corner missing 1/4 S. 31

1937

G.L.O. bearing Trees

J. pine 7" N. 71 $\frac{1}{4}$ ° W 251 LKS. (165.66')
mkd. S.C. 1/4 S. 31 B.T.

N. pine 12" N. 43 $\frac{1}{4}$ ° W 294 LKS. (161.09')
mkd. S.C. 1/4 S. 31 B.T.

(Now a pine snag w/ scribo visible)

See Book 1, PP 73 T145N R27W
See Book 3, PP 4 T145N R27W

6/13/66

Wilton H. H. H.
Hanson

20 R-17

SECTION Corner sec's 22-23-27-26
NOTES of G.L.O. resurvey of 1932
set a concrete monument 2' long
6" ϕ 20" in the ground w/brass cap
marked:

T.144N. R.27W.

Found Tipped, 5.22 5.23
reset in correct 5.27 5.26
position. 1937

G.L.O. bearing trees,

burr oak 8" N. 23 $\frac{3}{4}$ ° E. 40 LKS. (26.40')
(Now a decayed stump at record brg.
& dist. w/scribe visible)

burr oak 11" S. 66 $\frac{1}{2}$ ° E. 89 LKS. (58.74')
(Now a 16" oak at record brg & dist. OK
w/blade marks visible)

burr oak 14" S. 55 $\frac{1}{2}$ ° W. 94 LKS. (62.04')
(Now a 18" oak at correct brg & dist. w/blade
marks visible. (scribed 5.27 B.T.) OK

Ash 12" N. 32 $\frac{1}{2}$ ° W. 177 LKS. (116.82')
(Now a 18" Ash at correct brg. & dist. OK
w/blade visible. (scribed 5.22 B.T.)

AAA:darit
8-8-66

New B.T.'s

Oak 3" N. 84° E. 30.2 Feet
NEW 10" 11-03-2010
(scribed X B.T.)

Elm 15" S. 21° E. 70.95 FEET WINOFALL
(scribed 5.26 B.T.) 11-03-2010

Set steel sign post 72" long
w/signs 54-2 & 54-4 attached.
due WEST 4.2 feet

6/14/66

John Murray

steel post 8' long East 3.0'
by Schaner 12-19-79
RP-7150-4 by Schaner

11-03-2010 RMAIN

GAZEON. IRON IN MIXED HARDWOOD AND HEAVY
BRUSH. FSLP ON 17" RAISE NORTH SIDE OF
FR2266 FROM WHICH CORNER IS NORTH 1545 FT

See Book 2, pg 12

21 R-15

Quarter Corner between 22 & 27

Notes of G.L.O. resurvey of
1937. Set an Iron post 3' long
1" ϕ 28" in the ground.

Found in place $\frac{1}{4}$ S. 22
in good condition. S. 27
1937

G.L.O. bearing Trees.

Maple 7" S. 57° E 29 LKS (19.14')
(Now a maple snag w/ scribe visible at
correct brg & dist.)

Spruce 12" N. 14½ W. 62 LKS (40.92')
(Now a decayed stump at record
brg & dist.)

New B.T.s.

Maple 12" S. 39° W. 25.35'
(scribed $\frac{1}{4}$ S. 27 B.T.)

Maple 4" N. 72° E 19.82'
(scribed $\frac{1}{4}$ S. 22 B.T.)

APP. Lovitt
8-8-66

2613 ~~22/28~~
27/26

Set steel sign post 72" long
w/signs 54.4 & 54.2 attached
due south 4.0 feet.

6/17/66

Hilton Haney

11-30-2010 R.M.A.I.N

FD IRON IN PLACE IN MIXED HARDWOODS. 1966
BTS ARE BOTH 20 FT TALL SNAGS/W/TAGS.
WITNESS WITH

W. OAK 6" N 88 E 10.05 FT TO SPK. NOT SCRIBED.
GPS ED IRON SIGN POST IS GOOD.

22

Section corner To 21-22-28-22

Notes of G.L.O. Resurvey of
1937. Set a concrete monument
2' long 6" ϕ 18" in the ground
w/ brass cap marked:

T. 144N. R. 22W.

S 21 S 22

S 28 S 27

1937

G.L.O. bearing Trees.

Tamarack 6" N. 88° E. 360 LKS. (237.60')
GCNE

Tamarack 7" S. 76¼° E. 399 LKS. (260.04')
GCNE

Tamarack 6" S. 50½° W. 278 LKS. (183.98')
GCNE

N. pine 10" N. 27° W. 299 LKS. (199.09')
6' FT TALL SNAG W/ BT SHIELD

N 21 087 E 2617
28

12-01-2010 R. MAEN 15°F

FD MONUMENT IN PLACE IN LARGE
CATTAIL SWAMP ONE FOOT UNDER WATER.
GPS MONUMENTS

23

Quarter corner between 28 & 27

Notes of G.L.O. resurvey of
1937. Set an iron post 3' long
1" ϕ 28" in the ground w/ brass
cap marked:

$\frac{1}{4}$

528 527

1937

G.L.O. bearing trees,

J. pine 6" S. $31\frac{1}{2}^{\circ}$ E. 34 LXS (22.44')

J. pine 8" N. $54\frac{1}{4}^{\circ}$ W 19 LXS (12.54')

24 T-17

Quarter corner between 26 & 27
Notes of G.L.O. recovery of
1937. set an Iron post 3' Long
1" ϕ 28" in the ground w/ brass
Cap marked!

$\frac{1}{4}$

Found in place in 527 526
Good condition. 1937

G.L.O. bearing Trees.

burr oak 8" S. 66 $\frac{1}{2}$ $^{\circ}$ E. 26 LKS. (13.16')
(Now a 10" oak at correct bry & dist)
(w/ scribe marks visible.)

elm 7" N. 61 $\frac{3}{4}$ $^{\circ}$ W. 12 $\frac{1}{2}$ LKS (8.15')
(Now a 10" elm at correct bry &
dist. w/ scribe visible.)

New B.T.'s

ELM 9" N. 85 $^{\circ}$ W 20.85'
(scribed $\frac{1}{4}$ S. 27 B.T.)

ELM 13" S. 41 $^{\circ}$ E. 20.1'
(scribed $\frac{1}{4}$ S. 26 B.T.)

attached sign 54-4 To this tree.

Affidavit
8-8-66

~~Set Steel Sign post 72" Long
w/ sign 54-4 & 52.2 attached
due East 4.2 Feet.~~

6/19/66

Melton Haney

25 V-17

section corner between 27-26-34-35
Notes of G.L.O. resurvey of 1937.
set a concrete monument 2' long
6" ϕ 20" in the ground w/brass cap
marked:

	T. 144 N.	R. 27 W.
Found in place	527	526
in good condition.	534	535
	1937	

G.L.O. bearing trees.

N. pine 5" N. 83 $\frac{1}{2}$ ° E. 28 LKS. (18.48') 15"
(Now a 9" N. pine at correct brg & dist
w/scribe marks visible)

N. pine 5" S. 68 $\frac{3}{4}$ ° E. 9 LKS. (5.94') 15"
(Now a 10" N. pine at correct brg &
dist. w/scribe marks visible.)

N. pine 6" S. 10 $\frac{1}{2}$ ° W. 45 LKS. (29.70') 17"
(Now a 12" R. pine at correct brg &
dist. w/ser. be marks visible.)

N. pine 10" N. 76 $\frac{1}{2}$ ° W. 410 LKS. (270.60') 20"
(Now a 19" N. pine at correct brg
& dist. w/only blaze mark visible)

Aff. do vit
8-8-66

New B.T.

B. Spruce 5" S. 60° W. 6.95'
NW 12"
(scribed S. 34 B.T.)

set steel sign post 72" long
w/signs 59.4 & 59.2 attached
due East 7.8 feet.

6/19/66

Wilton Hansley

R9-7150-4 by R. Olson 10/17/79

4-19-2011 R. MAIN.

ED IRON IN PLACE AND GPS. MONUMENT ON SOUTH
SIDE OF GRASS SLUGH IN MATURE RAINE

26

V-19

Quarter corner between 26 - 35

Notes of G.L.O. resurvey of 1937.

Set an Iron post 3' long 1" ϕ

27" in the ground.

Found in place in $\frac{1}{4}$ S 26

good condition. Original S 35

post is along side. 1937

G.L.O. bearing trees.

Tamarack 5" S. 88° E. 290 Lks. (191.40')

(Now a 10" Tamarack at correct brg
& dist. (rescribed $\frac{1}{4}$ S. 35 B.T.)Tamarack 5" N. 37 $\frac{1}{4}$ ° W. 148 Lks. (99.68')(Now a dead Tamarack at correct
brg & dist.)

New B.T.

Tamarack 7" N. 38° W. 110.6'

(rescribed $\frac{1}{4}$ S. 26 B.T.)

Set steel sign post 72" long w/ signs

59-4 & 59-2 attached.

due North 5.9 feet.

6/19/66

7/1/66

Hansen

Affidavit
8-8-66To bring this corner to standard I
cut New B.T.'s

Tam 10" N 55° W 109.5' 1/4 S 26 B.T.

Set 8' long steel post w/sign West 1.9'

PA-7150-4 by Ronald Olson 12/17/79

SECTION CORNER BETWEEN 28-27-33-34
 Notes of G.L.O. Resurvey of 1937.
 SET a concrete monument. 2' Long
 6" ϕ 20" in the ground w/ brass
 cap marked:

T. 144 N. R. 27 W.

S. 28 S. 27

S. 33 S. 34

1937

G.L.O. bearing Trees.

Balm of Gilead 6" N. 85 $\frac{3}{4}$ $^{\circ}$ E. 223 LKS. (147.18')
 GONE NOW ALDER

Poplar 17" S. 63 $\frac{1}{4}$ $^{\circ}$ E. 133 LKS. (87.78')
 GONE (ALDER AREA)

Spruce 4" S. 49 $\frac{1}{2}$ $^{\circ}$ E. 39 $\frac{1}{2}$ LKS. (26.07')
 NO EVIDENCE

Tamarack 6" N. 55 $^{\circ}$ W. 247 LKS. (163.02')
 NO EVIDENCE

04-19-2011 R. MAIN.

FD IRON IN PLACE AND GPS. CORNER FLUSH
 WITH GROUND AND SLIGHT LEAN. FALLS IN TAM
 BLACK SPRUCE ALDER GRASS SWAMP.

TAM 5" N 45 $^{\circ}$ W 26.5 FT TO SPK / NOT MKD TAGGED

Quarter Corner between 28-33

Notes of G.L.O. Resurvey of 1937.

Set an iron post 3' long 1" ϕ

27" in the ground w/ brass cap marked:

$\frac{1}{4}$ S. 28

S. 33

1937

G.L.O. bearing trees.

Tamarack 5" N. 52° E. 13 LKS. (8.58°)

Tamarack 5" S. 16° W. 29 LKS. (19.19°)

Section corner between 29-28-32-33
 Notes of G.L.O. resurvey of 1932.
 Set a concrete monument 2' long
 6" ϕ 18" in the ground w/ brass
 cap marked:

T. 144 N. R. 27 W.

S. 29 S. 28

S. 32 S. 33

1937

Original bearing Trees.

fallen Tamarack 12° N. 47° W. 25 LKS. (16.50')

G.L.O. bearing Trees.

Tamarack 7° N. 61 $\frac{3}{4}$ ° E. 38 LKS. (25.08')

Tamarack 5" S. 73° E. 42 LKS. (27.72')

Tamarack 6" S. 23 $\frac{1}{2}$ ° W. 15 LKS. (9.90')

Tamarack 5" N. 85 $\frac{3}{4}$ ° W. 14 LKS. (9.24')

30 T-9

Quarter corner between 29-28
Notes of G.L.O. resurvey of 1937.
Set an iron post 3' long 1" \varnothing
28° in the ground w/ brass cap marked:

Found in place in
good condition. S. 29 S. 28

1937.

Original bearing trees.

W. pine stump 18" S. 32° E. 21 LKS. (13.86')

(Record position S. 95° E. 21 LKS.

(Now a decayed stump at correct bry & dist.)

W. pine stump 15" S. 41 $\frac{3}{4}$ ° W. 17 LKS (11.22')

(Now a decayed stump at correct
bry & dist.)

G.L.O. bearing trees.

N. pine 10" S. 7° E. 215 LKS (141.90')

(Now a 18" R. pine at correct bry. & dist.)

Scribe not visible. (rescribed S. 28 B.T.)

W. pine 9" S. 76° 25' W. 256 LKS (168.96')

(Now a 19" W. pine correct bry & dist.)

(scribe overgrown.) (rescribed S. 28 B.T.)

Affidavit
8-8-66

2633 NE 29 39.90

attached sign 59-4 to a 5"
birch S. 36° W. 18.5 feet.

6/30/66

J. H. Hanson

12-6-2010

FD IRON AND GPS IN 4" ASPEN. 1937
W. PINE NOW A 3' TALL STUMP. 1937 R. PINE
NOW A 18" TALL CUT OFF STUMP.

4" Aspen 4' N. NAIL + BT TAG.

J.S.

31 R-9

Section corner between 20-21-29-28
Notes of G.L.O. resurvey of 1937.
Set a concrete monument 2' long
6" ϕ 20" in the ground w/ brass
cap marked.

T. 144 N. R. 27 W.

Found in place in S. 20 S. 21
Good condition S. 29 S. 28
1937

Original bearing trees.

Fallen cedar 11" S. 30° W. 16 LKS. (17.82')

(No evidence of cedar)

Cedar stump S. 29° E. 28 LKS. (18.98')

(No evidence of cedar stump)

Fallen cedar 12" N. 72° W. 95 LKS. (62.70')

(No evidence of cedar)

G.L.O. bearing trees.

poplar 8" N. 60½° E. 66 LKS. (43.56')

(Now a fallen poplar snag at correct bearing & distance, ^{scribe} visible)

birch 7" S. 20¾° E. 91 LKS. (60.06')

(a birch snag at correct bearing & distance, w/ scribe visible)

birch 6" S. 78¼° W. 162 LKS. (106.92')

(Now a 9" birch at correct bearing & distance, w/ scribe visible)

Tamarack 8" N. 28½° W. 11 LKS. (7.26')

(Now a 14" tamarack at correct bearing. 7.6')

AM. Dall
9-9-66

New bearing trees.

Ash 4" S. 30° W.

(scribed S. 29 B.T.)

9" ASH

15.51'

Ash 6" S. 52° E. 23.22'

(scribed S. 28 B.T.)

Now 10" R.M. J.S. 12-2-10

Balsam 12" N. 61° E. 44.55'

(scribed S. 21 B.T.)

10' TALL SNAG 12-2-10

Set a steel sign post 72" long
w/ sign 59-4 & 59-2 attached,
due west 4.2 feet.

6/30/66

Walter Hansley

RR-7150-4 by Schoenauer 12/25/79

32 P-9

ADAidavit
8-9-66

Quarter corner between secs 20-21
Notes of G.L.O. resurvey of 1937.
Set an iron post 3' long 1" ϕ
22" in the ground w/ brass cap mxd.

Found in place in $\frac{1}{4}$
good condition, S. 20 S. 21

6/30/66 1937

Walter Hancock

G.L.O. bearing trees.

poplar 7" N. 87 $\frac{1}{2}$ ° E. 36 LKS. (23.76')
(Now a 17" poplar at correct brg.
& d.st. scribe grown over.)

poplar 9" S. 20° W. 20 LKS. (13.20')
(Now a poplar stump at correct
brg. & d.st. old blaze mark visible.)

New bearing trees.

poplar 4" S. 82° E. 16.6'
(scribed $\frac{1}{4}$ S. 21 B.T. Attached sign
59-4 to this tree.)

Poplar 5" N. 88° W. 19.85'
(scribed $\frac{1}{4}$ S. 20 B.T.)

33 N-13

Section Corner between 15-16-21-22

Notes of G.L.O. resurvey of 1937

set a concrete monument 2' long
6" ϕ 20" in the ground w/ brass
cap marked:

T. 144 N. R. 22 W

Found in place in S 16 S 15

good condition. S 21 S 22

original post laying along side. 1937

Original bearing Trees,

rotted Tamarack stump N $45\frac{1}{2}^{\circ}$ E.

33 LKS. (21.78')

G.L.O. bearing Trees.

Tamarack 9" N. $73\frac{1}{4}^{\circ}$ E. 127 LKS. (83.82')

(Now a 12" Tamarack at correct bearing
w/ scribe visible (rescribe S. 15 B.T.) ^{old T.A.R. attached} to this tree.

Tamarack 5" N. $17\frac{1}{4}^{\circ}$ W. 110 LKS. (72.60')

(Now a 9" Tamarack at correct bearing
dist. w/ blaze visible) (rescribe S. 16
B.T.)

No trees available in sections 21 & 22.

Affidavit
8-9-66

set a steel sign post 22" long
w/ signs 54-4-54-2 attached.

due west 4.5 feet

6/21/66

Milton Hansen

34 L-5

Quarter corner between secs 18-12
Notes of G.L.O. survey of 1937

set an iron post 3' long 1" ϕ
28" in the ground w/ brass cap marked.
Found in place $\frac{1}{4}$
in good condition. S. 18 S. 17

1937

G.L.O. bearing trees.

N. pine 23" N. 75 $\frac{1}{2}$ ° E. 202 Lks. (133.32°)
(now a pine blow down at correct
brg & dist)

N. pine 18" N. 27 $\frac{1}{2}$ ° W. 117 Lks. (77.22°)
(now a pine snag N. 30° W 89.9"
w/ scribe marks visible.)

New B.T.'s

OAK 4" N. 78° E. 53.15'
(scribed $\frac{1}{4}$ S. 17 B.T.)

ELM 5" N. 40° W. 52.9'
(scribed $\frac{1}{4}$ S. 18 B.T.)

Aff. Javit
7-8-66

Set a steel sign post 72" long
w/ signs 54-2 & 54-4 attached.
due North 4.2 feet.

6/16/66

Walter Hansen

35 J-11

Quarter corner between secs 9-16.

Notes of G.L.O. resurvey of 1932
set an iron post 3' long 1" ϕ 28"
in the ground w/ brass cap marked:

Found in place in $\frac{1}{4}$ S. 9

good condition S. 16

1937

G. L. O. bearing - Trees.

ELM 6" S. $3\frac{1}{2}^{\circ}$ E. 79 LKS. (48.84')
(Now a 15" ELM w/ blaze visible at correct
bearing & dist.) (scribed $\frac{1}{4}$ S. 16 B.T.)

Birch 5" N. 7° W. 33 LKS. (27.78')
(Now a 9" Birch at correct, brg & dist
w/ scribe marks visible.)

New B.T.

ELM 11" N. 10° E. 71.25'
(scribed $\frac{1}{4}$ S. 9 B.T.)

Set a steel sign post 98" long
w/ signs 54-4 & 54-2 attached
due west 5.1 feet

6/16/66 Walter Haney

R9-7150-4 by R. Olesen 5/14/80

Allidavit
8-8-66

36 J-13

Section corner between 9-10-15-16

Notes of G.L.O. resurvey of 1937.

set a concrete monument 2' Long
6" ϕ 20" in the ground w/brass

Cap marked:

Found in place T.149N. R.27W.

in good condition. S. 9 S.10

S.16 S.15

1937

G.L.O. bearing Trees:

Tamarack 8" N. 69 $\frac{3}{4}$ ° E. 64 LKS. (42.24')(Now a dead Tamarack w/scribe visible
at correct bearing & dist.)

Poplar 12" S. 87° E. 211 LKS. (139.26')

(Now a dead rotted log w/scribe visible
at correct bearing & dist.)W. pine 8" S. 79 $\frac{1}{4}$ ° W. 223 LKS. (147.18')(Now a dead W. pine at correct brg &
dist. w/scribe visible.)R. pine 19" N. 86 $\frac{1}{2}$ ° W. 222 LKS. (146.52')(Now a 20" pine at correct brg & dist
scribe over grown.) (rescribed S. 9 B.T.)Affidavit
8-8-66

New B.T.'s

Spruce 8" 176.3' S. 62° W.

(scribed S. 16 B.T.)

Tamarack 10" 79.3' N. 18° W.

(scribed S. 9 B.T.)

Balsam 16" N. 89° E 139.0'

(scribed S. 10 B.T.)

Poplar 12" S. 72° E 147.5'

(scribed S. 15 B.T.)

Set steel sign post 22" long

w/signs 54-4 & 54-2 attached

due North 7.4 feet

6/16/66

William H. Homan

Steel post 5' long West 3.5'

by Schornover 11/26/79 X9-7133-4

37 G-13

Quarter corner between secs 9-10.

Notes of G.L.O. resurvey of 1937
set an iron post 3' long 1" ϕ
28" in the ground w/ brass cap
marked:

Found in place $\frac{1}{4}$
in good condition. 5.9 5.10

1937

Original bearing tree.

W. pine 30" N. 80 $\frac{1}{2}$ $^{\circ}$ E. 39 LKS (25.74')
(Now a decayed stump at record
bearing & dist. w/ blaze visible.)
G.L.O.

W. pine 30" S. 80 $^{\circ}$ E. 10 LKS (6.60')
(Now a rotted stump at correct bearing
& dist. w/ scribe visible)

W. pine 18" N. 20 $^{\circ}$ W. 29 LKS (19.14')
(Now a stump at correct bearing
& dist. w/ scribe visible)

Att. David
8-8-66

DIFF LAT 47 $^{\circ}$ 18'22.54473
CORRECTED LONG 94 $^{\circ}$ 05'37.34109
GPS

New B.T.

ELM 8" 77.7 feet S. 92 $^{\circ}$ E.
(Scribed $\frac{1}{4}$ S. 10 B.T.)
FD LAYING DOWN ROTTED

ELM 10" 37.4 feet N. 10 $^{\circ}$ W.
(Scribed $\frac{1}{4}$ S. 9 B.T.)
NOW A ROTTED STD $\frac{1}{4}$ BRG AND DIST

6/14/66

William Hansen

10-15-02 R MAIN

FD IRON ON NORTH SIDE FR 3013 \pm 12 NORTH OF G.O.
CORNER IS \pm 1.9 MILES FROM SIX MILE LAKE
ROAD (FR ZIZT). MARK NEW BTS

R. PINE 11" 28.75' SPRK N 30 $^{\circ}$ W MED: 5.9 BT

R. PINE 9" N 12 $^{\circ}$ E 25.35' FT SPRK MED: 5.10 BT

8 FT STEEL SIGN POST 0.85 FT NORTH

38 E-11

15.34

Quarter corner between secs. 4-9

Notes of G.L.O. resurvey of 1937.

Set an iron post 3' long 1" ϕ .

28" in the ground w/ brass cap

Marked:

found in place $\frac{1}{4}$ S.4

in good condition. S.9

6/14/66

1937

Wilton Stanley

G.L.O. bearing trees.

Spruce 6" N. $32\frac{1}{2}^{\circ}$ E. 8 LKS. (5.28")

(Now a decayed log w/ scribe visible
at correct bearing & dist.)

N. pine 12" S. 50° E. 32 LKS. (21.12")

(Now a 18" R. pine at correct bearing
and dist.) (rescribed $\frac{1}{4}$ S. 9 B.T.)

New B.T.

Spruce 10" N. 70° E. 19.23'

(scribed $\frac{1}{4}$ S. 4 B.T.)

Steel sign post 72" Long w/ signs

54-2 & 54-4 attached; due west.

6.5 feet.

RAF davit
8-8-66

39 E-13

Section corner between 4-3-9-10

Notes of G.L.O. resurvey of 1937.

set a concrete monument 2' long
6" ϕ 20" in the ground w/ brass

cap marked:

Found in place T149N. R27W.

in good condition. S.4 S.3

S.9 S.10.

1937

Original bearing trees.

poplar 14" N.51°W. 8 LKS (5.28')

(Now a stump hole at correct
brg. & dist.)

G.L.O. bearing trees.

poplar 6" N.48 $\frac{1}{2}$ °E 23 LKS (15.18')

(Now a decayed log w/ scribe
visible at correct brg & dist.)

poplar 6" S.69 $\frac{1}{2}$ °E. 53 LKS (34.98')

(Now a 13" poplar w/ blaze visible at
correct brg & dist.)

Tamarack 5" S.54 $\frac{1}{2}$ °W. 129 LKS (85.14')

(Now a dead Tamarack at correct brg. & dist. ^{scribe} visible)

Cedar 6" N.21 $\frac{1}{2}$ °W. 170 LKS (112.20')

(Now a cedar 11" at correct bearing
and dist. w/ scribe visible.)

Affidavit
8-8-66

New B.T.

birch 6" N.48°W. 10.6 feet
(scribed S.4 B.T.)

birch 6" N.23°E. 19.9 feet
(scribed S.3 B.T.)

birch 6" S.77°E. 18.5 feet
(scribed S.10 B.T.)

birch 5" S.44°W. 54.2 feet
(scribed S.9 B.T.)

set steel sign post 72" long
w/ signs 54-4 & 54-2 attached
due west 5.5 feet.

6/14/66

William Harvey

40 E-15

Quarter corner between secs 3-10

Notes of G.L.O. resurvey of 1937

- set an iron post 3' long 1" ϕ 28" in
The ground w/brass cap marked

$\frac{1}{4}$ S. 3

S. 10

1937

G.L.O. bearing Trees.

birch 7" N. $33\frac{1}{4}^{\circ}$ E. 120 LKS (79.20')

poplar 8" S. $51\frac{1}{2}^{\circ}$ W. 37 LKS (24.42')

41 C-17 Offedant 8/25/78

Quarter Corner between secs 2 & 3

Notes of G.L.O. resurvey of 1937

Set an Iron post 3' Long 1" ϕ 27" in

The ground w/ brass cap marked:

Found in place $\frac{1}{4}$
S. 3 | S. 2
1937

Remains of original B.T.'s

rotted Tamarack stump 6" N. 80° E. 31 LKS (20.96')

rotted Tamarack stump 6" S. 38° W. 61 LKS (40.26')

G.L.O. bearing Trees.

Tamarack 7" N. 48 $\frac{3}{4}$ ° E. 56 LKS (36.96')

Not found possibly dozed out by road

Tamarack 8" S. 79 $\frac{3}{4}$ ° W. 85 LKS (56.10')

Found Rotted Tam. Stump Laying down S 77° W 56.1'

OK
2/9/80
MMOS

New Bearing Trees

Cedar 9" N 63° E 81.4' scribed 1/4 S 2 BT

Cedar 9" S 43° E 37.8' scribed 1/4 S 2 BT

Tamarack 9" N 87° W 82.2' scribed 1/4 S 3 BT

Steel sign post 72" Long with signs
54-2 & 54-4 Due West 3.7'

steel sign post 72" Long with signs
54-2 & 54-4 Due South 6.6'

3/9/77

Ronald A. Olson

42 E-17

Section Corner between Sec's 2, 3, 10 & 11

Notes of G.L.O. resurvey of 1932

Set a concrete monument 2' Long
6" ϕ 20" in the ground w/brass cap mkd:

T. 144 N. R. 22 W

S. 3 S. 2

S. 10 S. 11

G.L.O. bearing Trees. 1937

W. pine 22" N. 34 $\frac{1}{2}$ $^{\circ}$ E. 373 LKS. (246.18')
Now 32" N 34 E 246.2'

Tamarack 5" S 36 $^{\circ}$ 20'E. 268 LKS (176.88')
Now 12" S 36 $^{\circ}$ E 176.9'

Birch 5" N. 86 $^{\circ}$ W. 412. LKS. (271.92')

Tamarack 5" S. 35 $\frac{1}{2}$ $^{\circ}$ W. 108 LKS (71.28')
Now 14" S 86 $^{\circ}$ W 71.3'

New Bearing trees

Birch 9" N 14 $^{\circ}$ W 141.35' scribed 53 BT

43 E-21 Off-Davit 8/25/78

Section corner between secs 2-1-11-12

Notes of G.L.O. resurvey of 1937

set a concrete monument 2' long
6" \varnothing 20" in the ground w/ brass cap midk:

T. 144 N. R. 27 W.

S. 2 S. 1

S. 11 S. 12

Remains of Original B.T.'s 1937

Poplar 16" N. 22° E. 38 LKS (25.08') (Record position
N. 35° E. (25.08'))

rotted J. pine stump 8" S. 9° W 18 LKS (11.88') (Record
position S. 4° E. 11.88')

rotted poplar stump S. 70° W. 27 LKS (17.82') (Record position
S. 60° W 17.82')

J. pine 14" N. 71° W. 49 LKS (29.04')

G.L.O. bearing Trees.

W. pine 2" N. 49° E. 73 LKS (48.18')

(Now a Pine stub at record bearing & dist
Scribe visible.)

W. pine 6" S. 51 1/4° E. 46 LKS (30.36')

(Now a Pine snag at record bearing & dist
Scribe visible.)

N. pine 5" S. 63 1/2° W. 52 LKS (39.32')
(Now a 14" N. Pine at record bearing & dist)
NOW 17"

Spruce 6" N. 46° W. 37 LKS (29.42')
(Now a wind fall Scribe visible)

To perpetuate this corner I scribed
four new bearing trees

W. Pine 13" " 54° E 26.8' scribed S 12 BT
NOW 17"

Spruce 8" " 55° W 10.4' scribed S 11 BT

N. Pine 14" " N 71° W 49.9' scribed S 2 BT
NOW 21"

N. Pine 12" " N 22° E 42.9' scribed S 1 BT
NOW 18"

Steel sign Post 72" long set due
East 9.0" with signs 54-2 and 54-4
attached.

OK
2/24/10
JMS

2-25-78

James Estum

3-13-08 R MAIN J. SCHOONOVER C. GETZER

FEEL IRON IN PLACE AND GPS. PLACE 8 FT STEEL
SIGN POST NORTH 30.65 FT

44 R-25

Section corner between secs 29-25 of
T. 144 N. R. 27 W. & 19-30 T. 144 N. R. 26 W.

Notes of G.L.O. resurvey of 1937
set a concrete monument 2' long 6" ϕ
20" in the ground w/brass cap marked:

T. 144 N.

Found in place in	R. 27 W.	R. 26 W.
good condition,	S. 24	S. 19
	S. 25	S. 30

Original bearing trees 1937

poplar 22" N 89° E. 11 LKS (7.26') (Now a
poplar snag at correct brg & dist. old blaze visible)

W. pine 20" S. 28° E. 16 LKS (10.56') (Now a
26" w. pine at correct brg & dist. w/scribe visible ^{old} tag attached)

poplar 18" S. 72 1/4° W. 20 LKS (13.20')
(Now a decayed stump at correct dist. & brg.)

G.L.O. bearing trees

W. pine 26" N. 66 1/4° E. 46 LKS (30.36') (marked
T. 144 N. R. 26 E. S. 19 B.T.) (Now a 27" w. pine at

Correct brg & dist. w/scribe marks visible)

Original w. pine 20" S. 28° E (10.56') added B.T.

at base of tree. (Now a 26" w. pine at correct

brg & dist. w/scribe marks visible. old

Tag attached to this tree.

Affidavit
8-9-66

Spruce 14" S. 61 1/2° W. 52 LKS (34.32')
(marked T. 144 N. R. 27 W. S. 25 B.T.)
(Now a spruce stump at correct brg & dist. w/scribe visible)
Birch 10" N. 27° W. 64 LKS (42.29') marked
T. 144 N. R. 27 W. S. 24 B.T.)
(Now a 16" birch at correct brg & dist
w/scribe visible)

New B.T.

Birch 10" S. 30° W. 15.22'
(scribed S. 25 B.T.)

Set steel sign post 72" long w/sign
54-1 & 54-2 attached.
due west 3.7 feet.

Affidavit by W.H.O.
#399 Cass County

6/23/66

Milton
Hanson

See T144NR26W Book #2 Page #13 for notes
by Oleson Whitehorn 8/10/61

45 E-1

section corner between secs 6-7-1st 12

T. 144 N. R. 27 E 28 W

Notes of G.L.O. resurvey of 1937

set a concrete monument 2' Long 6" ϕ
18" in the ground w/brass cap marked:

T. 144 N.

Found in place in R. 28 W. R. 27 W.

good condition S. 1 S. 6

S. 12 S. 7

G.L.O. bearing trees 1937

w. oak 14" N. 57° E. 73 LKS (48.18')

(rotted oak stump at correct brg & dist)

w. oak 16" S. 73 $\frac{1}{2}$ ° E. 86 LKS (56.76')

(now a 20" oak at correct brg & dist)

(rescribed S. 7 B.T.)

Ash 8" S. 65 $\frac{3}{4}$ ° W. 27 LKS (17.82')

(now a 12" Ash at correct brg & dist
w/blaze visible.) (rescribed S. 12 B.T.)

Ash 9" N. 79 $\frac{3}{4}$ ° W. 19 LKS (12.54')

(now a rotted Ash stump at correct
brg & dist.)

Affidavit
8-12-66

New B.T.'s

Oak 5" N. 42° E 11.5'

(rescribed S. 6 B.T.)

Ash 5" N. 68° W 46.1'

(rescribed S. 1 B.T.)

set a steel sign post 72" Long
w/sign. 54-1 & 54-2 attached.
dvc south 4.5 feet.

6/28/66

Walter Hansen

46 N-15

Quarter corner between 15th & 22nd.

Notes of G.L.O. Resurvey of 1937
set an iron post 3' Long 1" ϕ
28" in the ground w/brass cap marked 3

Found in place in $\frac{1}{4}$ S. 15
good condition. S. 22
1937

G.L.O bearing Trees.

W. pine 15" N. 37 $\frac{1}{4}$ ° E. 396 LKS. (228.36')
(Now a 26" W. pine at correct b'rg & dist.
w/scribe marks visible (rescribe S. 15)
E.L.M. 6" S. 76 $\frac{3}{4}$ ° W. 77 LKS. (50.82')
(Now a decayed stump S. 76 $\frac{3}{4}$ ° W. 48.0')

New B.T.s

Birch 5" S. 50° E 41.95' GONE
(scribed S. 22 B.T.) $\frac{0}{21} \frac{29}{100}$

P. pine 9" N. 58° E 39.65'
(scribed S. 15 B.T.) w/sign 59-4
ATTACHED NOW A ROTTED STUMP

T. J. Hillman

H. J. Hillman
8/25/78

11-04-2010 R. MAIN

GPS IRON. IRON FALLS IN SPRUCE
PLANTATION. I FOUND IRON BENT, STRAIGHTEN
AND WITNESS. IRON IS \pm 120 FT SOUTH
OF SIX MILE LAKE ROAD.

8 FT STEEL SIGN POST 1 FT NORTH TO NEAREST
EDGE OF POST

GLO W PINE 28" ON NORTH SIDE SIX MILE RD.

47 V-21

Section corner between sec's 26-25-35-36

Notes of G.L.O. resurvey of 1937

set a concrete monument 2' long

6" ϕ 18" in the ground w/brass

Tablet marked:

	T. 144 N.	R. 27 W.
FOUND IN GOOD COND.)	S. 26	S. 25
	S. 35	S. 36
	1937	

G.L.O. bearing Trees.

J. pine 4" N 84 $\frac{1}{2}$ ° E. 50 LKS (33.00')
(NOW A STUMP, SCRIBE VISIBLE CORRECT BRG & DIST.)

Tamarack 6" S. 3 $\frac{1}{2}$ ° E. 146 LKS (96.36')
(NOW A SNAG, SCRIBE VISIBLE CORRECT BRG & DIST.)

J. pine 4" S. 71° W. 49 $\frac{1}{2}$ LKS. (32.66')
(NOW A 7" J. PINE, SCRIBE VISIBLE CORRECT BRG & DIST.)

Spruce 6" N. 14 $\frac{1}{2}$ ° W. 109 LKS. (71.94')
(NOW A STUMP, SCRIBE VISIBLE CORRECT BRG & DIST.)
NEW BSTS.

J. Pine 7" N. 85° E. 79.95' (NKD. 525 BST)

APP. 8/25/78

SPRUCE N 55 $\frac{1}{2}$ ° W. 55.2' (NKD. 576 BST)

SPRUCE 11" S 66° E 139.8' (NKD. 536 BST)

SPRUCE S 65° W 71.65' (NKD. 535 BST)

STRA SIGN POST 72" LONG w/SIGNS 54-2
& 54-4 ATTACHED; DUE EAST 6.2'

OK
2/29/70
MMB

6/20/66

Edward R. Berner

R9-7150-4 by R. Olson 12/20/77

See BK 2 pg 8

48 V-23 Affidavit of 2/21/78

Quarter cor. between sec's 25-36

Notes of G.L.O. resurvey of 1937

Set an iron post 3' long 1" ϕ 28"
in the ground w/brass cap marked:

Fd brass cap monument
in good condition $\frac{1}{4}$ S. 25

S. 36

1937

G.L.O. bearing Trees:

Cedar 5" N. 33° E. 109 Lks. (71.94')
Now 12" at record by $\frac{1}{2}$ " dit scribe visible

Birch 5" S. 29 $\frac{3}{4}$ ° W. 27 $\frac{1}{2}$ Lks. (18.15')
Now 7" at record by $\frac{1}{2}$ " dit

New B.T.'s

Spruce N74°W 8.2 feet scribed
 $\frac{1}{4}$ S 25 BT

Steel sign post 72" long set 24" in ground
with F.S. signs 54-2 & 54-4 attached
due South 2.4 feet

8/28/79
WHO

on
2/29/78
MWB

Set a steel post 8' long west 2.0'
w/sign 54-2
19-7150-4 by 12/20/79 Ronald Olson

July 28, 1983

PC. G. Kosenko

B. Ausk

G. Robertson

Recovered a 2 $\frac{1}{2}$ " diam brass cap on
a 1" diam iron pipe, up 20" from
which:

Cedar in the NE

Birch in the SW

Spruce in the NW

Red line to this corner

August 8, 1985

Recovery by G. Kosenko, B. Ausk, G. Robertson

Recovered a 1 inch outside diameter
iron pipe with a 2 $\frac{1}{2}$ diameter brass
cap stamped as shown

up 18 inches from which:

Decl = 5° East



See BK 2 pg 9

49

T-21

QUARTER CORNER BETWEEN SEC 25-26
 NOTES OF G.L.O. RESURVEY IN 1937
 SET AN IRON POST 3' LONG 1" ϕ 28" IN
 THE GROUND WITH BRASS CAP MKD.

(FOUND IN GOOD COND.)

526 525

1937

G.L.O. BT'S,

ASPEN 6" S. 58 $\frac{3}{4}$ E. 31 LKS. 20.46' (MKD. #525 BT)

(NOW A 14" ASP, SCRIBE VISIBLE, CORRECT BRG + DIST)

CEDAR 4" N. 39 $\frac{3}{4}$ W. 81 LKS. 53.46' (MKD. #526 BT)

(NOW A 16" CEDAR, SCRIBE VISIBLE, CORRECT BRG +
 DIST. I RESCRIBED THIS TREE (#526 BT)

NEW BT'S

ASPEN 6" S 20° E 14.35' MKD (#525 BT)

STEEL SIGN POST 72" LONG w/SIGNS
 54-2 & 54-4 ATTACHED; DUE EAST 5.45'

6/20/66 Edward R. Bernier

Affidavit
 8-8-66

50 L-13,

Quarter corner between sects 16 & 15

Notes of G.L.O. Resurvey of 1937

Set an Iron post 3' Long 1" ~~Ø~~ 28" in

The ground w/ brass cap marked:

Found in place in S. 16 S. 15

Good cond. T.O.W. 1937

Original bearing Trees.

N. pine 18" N 5° W. 12 LKS (7.92')

(Now a badly burned stump w/ decayed log lying along side w/ old tag attached at correct brg & dist)

G.L.O. bearing Trees.

J. pine 6" S. 14° E. 51 LKS (33.66')

(Now a 16" J. pine at correct brg & dist. w/ blaze visible.) NOW A WIND FALL

N. pine 7" S. 44½° W. 33 LKS (21.78')

(Now a 15" N. pine at correct brg & dist w/ blaze mark visible.) (rescribed S. 16. B.T.)
NOW A WIND FALL

New B.T.

R. pine 10" N. 20° E 11.15' (scribed ¼ S.

15 B.T.) w/ sign 59-4 attached
NOW 18"

4/21/66 T. J. H. H. H. H.

Abundant
8-1-66

5562

05-02-2011 R. MAIN
FEDERATION IN PLACE 30 FT SOUTH OF FR

R PINE 12" S 50° W 11.05 FT TO SPK MKD: S 16 BT
(1966) R PINE 18" N 20° E 11.10 TO NEW SPK

51 R-23

Quarter Cor. between sec's 24 & 25
Notes of G.L.D. Resurvey of 1937
Set an Iron post 3' Long 1" ϕ 27" in
The ground w/ brass cap marked:

Found in place in	$\frac{1}{4}$	S. 24
Good condition.		S. 25
G.L.D. bearing trees,		1937

Ash 6" S. 18 $\frac{1}{2}$ ° E. 28 LKS (18.48')
(Now a 10" Ash at correct brg & dist. no
scribe or blaze marks visible (rescribe by S. 25 B.T.)

Cedar 10" N. 68 $\frac{1}{4}$ ° N. 23 LKS (15.18')
(Now a 17" cedar at correct brg & dist
old B.T. blaze visible (rescribe $\frac{1}{4}$ S. 24
B.T.) attached sign 59-9 to this tree.

6/23/66

William Hanson

Attest
8-15-66

52 P 25

Quarter Cor. between sec 29 of T.149N.

R. 27W. 5th sec 19 of T.149N. R. 26W.

Notes of G.L.O. resurvey of 1937

Set an Iron post 3' Long 1" ~~d~~ 28" in

The ground w/ brass cap marked:

Found in place in ^{1/4} S. 24 S. 19
good condition. 1937

G.L.O. bearing Trees.

W. pine 6" N 57° E. 10 Lks. (6.60') Now 30' (2010)

(Now a 12" W. pine at correct brg. & dist.
w/ blaze marks visible) (rescribed 1/4 S. 19 B.T.)

Cedar 6" S. 19 1/2° W. 39 Lks. (25.74) Now 16' (2010)

(Now a 11" cedar at correct brg & dist.
w/ scribe marks visible.)

Set a steel sign post 72" Long
w/ signs 54-9 & 54-2 attached.
due west 4.7 feet

6/23/66

W. H. Hansey

Alford
8-15-66

To bring this corner to standard I cut
New BTS

W. Pin - 19" S 58° W 46.25' Now 28" (2010)

steel post 8' Long North 3.4'
w/ signs 54-2 & 54-4

5/14/80 Ronald D. Olson R. 9-7150-4
by Schneider

11-22-2010 R. MATO

FD IRON IN PLACE 20 FT WEST OF FR 3064 AND
GPS. BTS AND SIGN POST ARE GOOD.

53

Quarter Cor. between sec's 13 & 24
 notes of G.L.O. resurvey of 1937
 Set an Iron post 3' long 1" ϕ 28" in
 The ground w/ brass cup marked.

 $\frac{1}{4}$ 5.13

5.24

Original B.T.'s

1937

Stump hole N. 39° E. 80 LKS. (52.80')

Ash 16" S. 60° E. 8 LKS. (5.28')

G.L.O. bearing Trees.

Ash 4" S. 32° W. 32 LKS. (21.12') NW 13"
 FS SHIELD ON THIS ASH. (2010)ELM 6" N. 25 1/4 W. 36 LKS. (23.76')
 NEW FS WINDFALL (2010)

11-23-2010 R. MAIN

FD IRON IN PLACE AND GPS. IRON IN ASH
 W/ FEW BALSAM & OTHER HARDWOODS. CORNER
 IS \pm 150 FT WEST OF W.DS TRAIL. FR 2264 ON
 SALE MAP.

W OAK 4" N 80 W 14.10 FT TO SPK / NOT MKD.
 FSLP ON THIS BT.

N65-58E

43. 2880.24

54 J-15

Quarter Cor. sec's 10 & 15

Notes of G.L.O. resurvey of 1937

set an iron post 3' long 1" ϕ 28"
in the ground w/ brass cap marked: \uparrow

Found in good condition $\frac{1}{4}$ S. 10

pipe laying under bog. S. 15

1937

G.L.O. bearing trees.

Tamarack 9" S. 22° W. 297 LKS (196.02')

(Now a dead Tamarack at correct b'g
& dist w/ scribe visible.)

Tamarack 8" N. 43 $\frac{3}{4}$ ° W. 179 LKS (114.84')

(Now a Tamarack stump at correct
b'g & dist w/ scribe visible.)

New B.T.'s

poplar 8" S. 78° E 81.3 feet
(scribed $\frac{1}{4}$ S. 15 B.T.)

poplar 9" N. 82° E 114.7 feet
(scribed $\frac{1}{4}$ S. 10 B.T.)

Aff.avit
8-15-66

Set a steel sign post 28" long
w/ signs 59-1 & 59-2 attached.
due North 4.9 feet.

6/24/66

Walter Hanning

55 N-17

Section. Cor. between 15, 14, 22 & 23

Notes of G.L.O. resurvey of 1937
set a concrete monument 2' long
6" ϕ 20° in the ground w/ brass
cap marked:

Found in good	T. MAN.	R. 22 W.
Condition laying	S. 15	S. 14
on its side,	S. 22	S. 23
Original B.T.'s	1937	

rotted Tamarack stump N. 2° E. 10 LKS (6.60')
(NOT FOUND)

dead Tamarack 12" S. 80° E. 35 LKS. (23.10')
(old decayed stump at correct brg & dist.)

rotted Tamarack stump N. 50° W. 18 LKS. (11.88')
(NOT FOUND)

G. L. O. bearing trees,

Cedar 9" N. 85° E. 57 LKS. (37.62')
(now 12" cedar at correct brg &
dist. w/ scribe visible) NOW 15' W/ TAGS

spruce 6" S. 64° E. 8 LKS (5.28')
(now a old decayed stump at correct
brg & dist.)

Cedar 16" S. 45° W. 65 LKS. (42.90')
(now a dead cedar laying under the
water at correct brg & dist.)

H. Lidovit
9-15-66

spruce 7" N. 21 3/4° W. 19 LKS. (12.59')
(No evidence)

New B.T.'s

Birch 4" N. 11° W. 35.0 feet ROTTED STUMP
(scribed S. 15 B.T.)

Birch 5" S. 56° W. 28.8 feet ROTTED STUMP
(scribed S. 22 B.T.) w/ sign 54-4 attached

Cedar 10" S. 36° E. 42.0 feet NOW A WINDFALL
(scribed S. 23 B.T.)

6/29/66

[Signature]

11-08-2010 R. MAIN

FD IRON IN PLACE AND GPS. CORNER IN GRASS
WITH SPARCE ALDER TAM. CEDAR & B. SPRUCE.
CORNER I 100 FT EAST OF TIMBERED GROUND

B. SPRUCE 4" S 15 E 7.80 FT TO SPK
NOT MKD. PLACE 54-4 SIGN ON TREE WHICH
I FOUND ON THE GROUND @ 1966 BIRCH BTO

56

Quarter cor. between sec's 14.5' 15'
Notes of G. L. O. resurvey of 1937
Set an Iron post 3' Long 1" ϕ 27"
in the ground w/ brass cap marked

1/4

S. 15 S. 14

1937

G. L. O. bearing Trees.

Tamarack 5" N. 32° E. 24 LKS. (15.84')
NOW 5' TALL X 8" SNAG/W/NEWTAG

Tamarack 5" S. 34 1/4° W 26 LKS. (50.16')

11-08-2010 R. MAIN

Fd IRON IN PLAKE AND GPS. CORNER IN
LARGE TAM SWAMP. Fd LAND SURVEY
MON SIGN ON 5" TAM S 38° E 5 FT

57 N-25

Sec. Cor. between sec's 18 & 29 of T.149N.

R.27W. & sec's 18, 19 of T.149N. R.26W.

Notes of G.L.O. Resurvey of 1937

Set a concrete monument 2' Long 6" ϕ

20" in the ground w/brass cap marked

T.149N.

Found in place R.27W, R.26W.
in good condition. S.13 S.18

S.24 S.19

Original B.T.'s 1937

N. pine 18" N.68°E. 60 LKS (39.60') NOW 23'
(2010)

(Now a 20" N. pine at correct brg & dist w/ scribe visible)

pine stump 4' high N.60°W. 53 LKS (34.98')

(No remains of stump.)

J. pine 16" N.36°W 22 LKS (14.52')

(Now a fallen pine tree rotted at correct brg & dist.)

G.L.O. bearing Trees

N. pine 6" N.39½°E. 61 LKS (40.26')

(Now a 13" pine at correct brg & dist w/ blaze
visible.) (scribed S.18 B.T.)

N. pine 16" S.59°E. 50 LKS (33.00')

(Now a stump at correct brg & dist w/ scribe visible)

N. pine 10" S.73¼°W. 75 LKS (49.50')

(Now a pine stump at correct brg & dist
w/ scribe visible.)H.A. David
part 1

New B.T.'s

N. pine 10" N.37°W 20.25' NOW 18"

(scribed S.13 B.T.)

N. pine 12" S.52°W. 33.75' NOW 21"

(scribed S.29 B.T.)

N. pine 10" S.37°E 36.9' NOW 16"

(scribed S.19 B.T.)

Set a steel sign post 78" long

w/signs 59-4 & 54-2 attached.

due East 5.6 Feet.

6/27/66

Milton Hansen

Steel post 8" long South 3.2'

by Schoonover 11-20-77 R9-7150-4

11-22-2010 RMAIN

Fd MONUMENT IN PLACE 100' WEST FR 3064.
GPS CORNER & B.T.S AND S. POSTS IN GOOD SHAPE

58 L-25

$\frac{1}{4}$ corner between sets 13 & 18

Notes of G.L.O. resurvey of 1937

Set an Iron post 3' Long 1" ϕ 28" in

The ground w/ brass cap marked:

Found in place in $\frac{1}{4}$

good condition. S. 13 S. 18

1937

G.L.O. bearing Trees.

N. pine 12" N. 15° E. 57 LKS. (37.62") ^{NOW A} WINDFALL

(N. pine 18" N. 15° E. 29.6' w/scr. bc
visible) (rescribed $\frac{1}{4}$ S. 18 B.T.)

N. pine 12" S. 85° W. 30 LKS. (19.80") ^{NOW TT} TAIL SNAG

(now a 17" N. pine at correct brg & d. st
w/ blaze visible) (rescribed $\frac{1}{4}$ S. 13 B.T.)

Set a steel sign post 22" Long
w/ signs 59-9 & 54-2 attached
due East 4.5 feet.

6/27/66

Millon Haney

Additional
survey

NO 0200

40034262

11-22-2010 R. MAIN

FD IRON IN PLACE AND GPS. GRASS SLOUGH
S85 W 25' JUST BEHIND BT'S CORNER IN
YOUNG PINE PLANTATION.

Sec. cor. between sec's 23, 24, 25 & 26

Notes of G.L.O. survey of 1937.

set a concrete monument 2' long 6" ϕ 20"
in the ground w/ brass cap marked:

T. 149 N. R. 27 W.

S. 23 S. 24

S. 26 S. 25

G.L.O. bearing trees. 1937

Cedar 8" N. 57 $\frac{1}{2}$ ° E 53 LKS. (34.98')
NOW 14" SCRIBE OVERGROWN

Cedar 7" S. 45° E. 46 LKS (30.36')
NOW 14" SCRIBE VISIBLE

Cedar 8" S. 9° W 39 LKS (25.71')
NOW 14" SCRIBE VISIBLE

Cedar 10" N. 21° W 29 LKS (15.89')
NOW 16" SCRIBE OVERGROWN

05-02-2011 R. MAIN

FD MONUMENT IN PLACE AND GPS.
FD OLD RUSTY TAG ON 12" CEDAR N 76 E
14 LKS TO COR, WRITTEN ON TAG. ITAG ALL
1937 BT'S

60

1/4 cor. between sec's 19 & 23

Notes of G.L.O. resurvey of 1937

Set an Iron post 3' Long 1" ϕ 23" in

The ground w/brass cap marked.

4 S. 14

S. 23

1937

G.L.O. bearing Trees.

N. pine 7" S. 2° E. 106 LKS. (69.96')
NOW 21" W/TAGS

N. pine 8" N. 89 3/4° W. 186 LKS. (122.76')
NOW 23" W/TAGS

11-23-2010 REMAIN

Fd IRON \pm 50 FT EAST OF FR2259.

CORNER IN MATURE RPINE W/ MIXED

HARDWOODS. GPS IRON

2603410.04 FROM NE 22

N 52 38 E

61

Sec. cor. between sec's 14, 13, 23 & 24

Notes of G.L.O. Resurvey of 1937

set a concrete monument 2' Long 6" ϕ
20" in the ground w/ brass cap - marked

T. 144N. R. 22W.

S. 14 S. 13

S. 23 S. 24

G.L.O. bearing trees. 1937

W. fork of Twin poplar 14" S. 84 $\frac{1}{2}$ ° E. 67 LKS. (44.22')

beam of Gilead 6" S. 45° E. 49 LKS (32.34')

poplar 6" S. 71 $\frac{1}{4}$ ° W. 78 LKS (51.48')

Ash 6" N. 85 $\frac{1}{2}$ ° W. 97 LKS (64.02')

62

1/4 corner between sects 23 & 24

Notes of G.L.O. resurvey of 1937

SET an Iron post 3' Long 1" ϕ 28" in

The ground w/ brass cap marked.

1/4

S. 23 S. 24

1937

G. L. O. bearing Trees.

W. pine 10" N. $74\frac{1}{2}^{\circ}$ E. 73 LKS (48.18')

NOW A FINE STUMP @ BAG AND DIST.

Ash 5" N. 30° W. 19 LKS (12.54')

NOW ASH 12" N 30° W 12.65 TO NEW SPR. TAG

4-13-2011 R. MAIN

FJ IRON IN PLACE IN MIXED HARD WOODS

(MOSTLY ASH) AND GPS.

63

Quarter corner between sec's 13 & 14

Notes of G.L.O. resurvey of 1937

set an iron post 3' long 1" ϕ 28" in the ground w/ brass cap mdk:
$$\begin{array}{r} 4 \\ 5.14 \ 5.13 \\ 1937 \end{array}$$

Remains of original bearing trees.

N. pine 30" N. 33° E. 32 LKS (25.74')

rotted N. pine stump 28" N. 33° W. 31 LKS (26.46')

G.L.O. bearing trees.

N. pine 6" N. 65° E. 69 LKS (45.54')

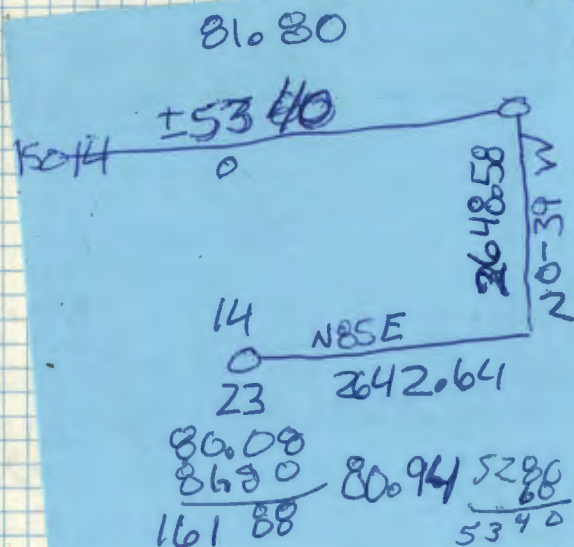
NOW 19" W/TAGS

W. pine 7" N. 6° W. 100 LKS (66.0')

NOW 25" W/TAGS

11-23-2010 R. MAIN

FD IRON IN PLACE AND GAS. IN HEAVY BALSAM
CORNER IS \pm 260 FT WEST OF FR 2259A



64 N-9

section cor. between 16-17-20 E 21

Notes of G.L.D. Resurvey of 1937

set a concrete monument 2' long 6" ϕ
20" in the ground w/ brass cap mdk.

T. 144 N. R. 27 W.

Found in place in S. 17 S. 16

good condition. S. 20 S. 21

G.L.D. bearing trees. 1937

w. pine 20" N. 17 $\frac{1}{2}$ ° E. 175 Lks (115.50')(Now a w. pine stump N. 23° E. 115.6'
w/ scribe visible)birch 12" S. 46 $\frac{1}{2}$ ° E. 30 Lks (19.18')(Now a birch snag w/ scribe visible
S. 40° E. 19.9')Elm 6" S. 65 $\frac{3}{4}$ ° W. 91 Lks (60.06')LAYING DOWN IN SNOW (2010)
(Now a 13" Elm S. 70° W. 60.3' scribe
overgrown) (rescribed S. 20 B.T.)w. pine 16" N. 18 $\frac{1}{4}$ ° W. 323 Lks (213.18')(Now a 81° w. pine N. 12° W. 214.3'
w/ scribe visible) NOW 30" SCRIBE OVERGROWN
(2010)

New bearing tree.

Ash 5" S. 49° E. 97.55' NOW 14" W/TAGS
(scribed S. 21 B.T.) (2010)Affidavit
5-1-1968

7911 N 22

East 4" ELM of a bunch of four.

N. 9° E 59.85' GONE.

(scribed S. 16- B.T.)

POST w/ LOCATION poster is 1' N.
of corner attached sign 59-4
to this post.

6/28/66

11-30-2010 R. MAIN

FD IRON IN PLACE AND GPS CORNER IS
 \pm 325 FT SOUTH OF FR 2339
20° 5" SNOW.

65 N-7

1/4 corner between sec's 17 & 20

Notes of G.L.O. survey of 1937

Set an Iron post 3' long 1" ϕ 28" in
The ground w/ brass cap marked

Found in place in 1/4 S. 17
good condition. S. 20

G.L.O. bearing trees. 1937

Birch 5" S. $9\frac{1}{4}^{\circ}$ E. 25 LKS (16.50')
(Now a birch stump at correct brg
and dist. w/ scribe visible.)

Cedar 16" N. 11° W. 80 LKS (52.80')
(Now a cedar stump at correct brg
and dist. scribe NOT visible.)

New bearing trees.

Birch 8" S. 21° E. 16.6' DOWN
(scribed 1/4 S. 20 B.T.)

ELM 7" N. 28° W. 39.0' DOWN
(scribed 1/4 S. 17 B.T.)

Affidavit
8-8-66

2534 NE 20

Set a steel sign post 78" long
w/ sign 54-4-54-2 attached.
due west 2.8 feet.

7/1/66
Feltton Fleming

To bring this corner to standard I set
New B.T.'s

Birch 5" S 83W 27.00' 1/4 S 20 B.T.
^{NEW 9" BIRCH}
Birch 6" S 29W 20.97 DOWN 1/4 S 20 B.T.
M-7150-4 by 5/19/80 Ronald Olson

12-02-2010

Fd IRON AND GPS

66

$\frac{1}{4}$ corner between sec's 16 & 21

Notes of G.L.O. survey of 1937

Set an iron post 3' long 1" ϕ 27" in
the ground w/ brass cap marked:

$\frac{1}{4}$ S. 16

S. 21

G.L.O. bearing Trees.

1937

Cedar 6" N. $19\frac{1}{2}^{\circ}$ E. 16 Lks. (10.56')

Cedar 5" S. $38\frac{1}{2}^{\circ}$ W. 32 Lks. (21.12')

67

$\frac{1}{4}$ corner between sec's 17 & 16
Notes of G.L.O. resurvey of 1937,
set an iron post 3' long 1" ϕ 28" in
the ground w/ brass cap marked:

$\frac{1}{4}$
S. 17 S. 16

1937

Remains of Original B.T.'s.

dead Cedar 12" N. $78\frac{1}{2}^{\circ}$ W. 20 LKS (13.20')

Record position N. 27° E. 12 LKS (11.22')

N. pine 24" S. 97° W. 26 LKS (17.16')

Record position S. 25° W. 29 LKS (15.89')

G.L.O. bearing trees

Cedar 6" S. $48\frac{1}{4}^{\circ}$ E. 25 LKS (16.50')

68 V-25 Affidavit 8/22/78

Sec. Cor between Secs 25, 36, 30 & 31

Notes of G.L.O. Resurvey of 1937

Set a concrete monument 2' long, 6" diameter, 20" in ground with brass cap marked.

T144N

Found G.L.O. monument in good condition

R27W R26W

S25 S30

S36 S31

1937

Remains of original survey

Rotted spruce stp S12°E 61ks 4.0' - rotted wood

Rotted birch stp S41°W 201ks 13.2' - rotted stp

Rotted spruce stp N10°W 151ks 9.9' - rotted stump
marks visible

New B.T.'s

Balsam 6" N77³/₄°E 611ks 40.3' - Now

rotted birch stp at record brg & dist

Balsam 7" S65³/₄°E 371ks 24.4' - Now

rotted birch stp at record brg & dist

Birch 7" S21¹/₂°W 511ks 33.7' - Now

a 17" birch at record brg & dist scribe visible

Cedar 20" N60¹/₂°W 891ks 58.7' - Now

a downed cedar at record brg & dist. with scar facing corner

New B.T.'s.

Cedar 17" N88°W 33.7' scribed S25BT

Green Ash 5" N22°E 25.7' scribed S30BT

Black Ash 8" S18°E 61.4 feet scribed S31BT

Steel sign post 70" long set 24" in ground with F.S. signs 54-2 & 54-4 attached due east 2.9 feet.

on 8/29/70
WLB

8/29/70
WLB

69 X-25 Affidavit 8/24/78

1/4 Sec Cor between Secs. 36 & 31

G.L.O. Resurvey Notes of 1937

Found the remains of the original B.T.

Dead Norway Pine 28' S12°E 271ks - Now

Red pine snag

Set an iron post 3' long, 1" dia 28" in ground

with brass cap marked

Found monument as

1/4
S36 | S31

described

1937

New B.T.'s

Jack pine 7" N81 1/4°E 791ks - Now dead pine

10" at record brg & dist

Norway Pine 16" S82 1/2°W 661ks - Now 22"

Red pine at record brg & dist.

Witnessed by:

R. pine 8" N1°E 62.5 feet scribed
1/4 S31 BT

Steel sign post 72" long set 24" in
ground due west 2.5 feet with F.S.
signs 54-2 & 54-4 attached

07
8/29/78
MJD

July 28, 1983

PC. G. Kasenko

B. Ausk

G. Robertson

Recovered a 2 1/2" diameter brass cap on a 1" diam
iron pipe 12 1/2 inches set by G.L.O. Resurvey

Recovered:

Original Red Pine BT F.S.

Jack pine, dead NE quad

Red pine SW quad

Red Pine NE quad

F.S.

F.S.

S36

S31

T144 R27

T144 R26

8-28-78
WHD

70 W, X-21 Offset prepared
W.C. Meander Corner between Secs 55 & 56
G.L.O. resurvey notes of 1937

Set an iron post 3' long, 1" dia., 28" in
ground with brass cap marked =

WC

Found G.L.O. monument in T14N R27W
good condition as described

535 | 536

M.C.

1937

G.L.O. New B.T.'s:

Norway pine 24" N35 $\frac{1}{4}$ 'E 215 lks - Now
32" Red pine at record brg & dist.

Jack pine 12" N14'W 247 lks - Now
jack pine stump scribe "CBT" visible
at record brg & dist.

OK
2/29/30
M.C.

New B. T.'s:

W. Oak 8" N55°W 100.5 scribed

WC MC 535 BT

Balm-of-Gilead 5" N14°E 5.0 feet scribed

WC MC 536 BT

8/28/70
Ruhoff

71 Z-21 Affidavit 8/21/78
Section Corner to Secs. 1, 2, 35, 36

Original Govt Survey of 1873

Set wood post

N. Pine 12" S20W 17 lks. 11.2'

N. Pine 16" N60W 20 lks. 13.2'

Bl. Pine 7" S40E 14 lks. 9.2'

Bl. Pine 6" N40E 13 lks. 8.6'

GLO found 12" burned J. Pine stump
evidence of this stump 2' high at brg. dist.

Notes of GLO Resurvey of 1937

Set 6" Concrete cylinder 24" long

w/brass cap stamped as follows

Found 6" con. mon. in place T144N R27W

5" above grd. in good condition

New bearing trees

J. Pine 10" N31E 74 lks. 48.8'

Now fallen J. Pine snag at brg. dist. w/ T144N R27W S36 E.

J. Pine 7" S53E 76 lks. 50.2'

Now J. Pine stub 8" dia 15' high at brg. dist. w/ T143N R27W S1 E.

Tam. 6" S1W 113 lks. 74.6'

Now 13" Tam. living at brg. dist. scribe overgrown

J. Pine 12" N74W 188 lks. 124.1'

Now 20" J. Pine living at brg. dist. w/ scribe at base visible inside

area badly burned years ago, many stumps in brush around corner.

To perpetuate this corner I scribed 4 new bearing trees as follows:

15" N. PINE S44°E - 97.9' - scribed T143N R27W S1 E.

7" J. PINE N18°E - 94.0' - " T144N R27W S36 E.

6" J. PINE N43°W 79.9' - " T144N R27W S35 E.

7" J. PINE S71°W 57.1' - " T143N R27W S2 E.

8" steel sign post set due East 2.2' with F.S. signs

54-2 & 54-4 attached.

9-18-74

Curtis R. Hume

John B. Wells

Corner is at south edge of a pine island and at westerly end of ridge on island brush swamp to south with tam. Spruce
Corner in heavy brush 3' above water
This corner can be reached easiest by boat as it is on island in large grass swamp south of river

72 Z-20, 21 Affidavit 8/29/78
Meander Corner to Sec's. 2³ 35
16.00 Chains West of Section Cor.

Set post

N. Pine 15" S20E 176 lks 116.2'

N. Pine 15" S30E 160 lks. 105.6'

Notes of GLO Resurvey of 1937

Proportional Distance no remaining
evidence of original post or bearing trees

Set Iron post 1" dia. 36" long w/ brass cap
stamped as follows

1068'
MC is 16.18 Chs. N88°W
of section corner

MC / T149N
R27W
S35
S2
T143N
1937

No BT's. By GLO

found Iron in place
in good condition
10" above ground, in brush

Set 8' sign post due East 1.0 ft. with
F.S. signs 54-2 & 54-4 attached.

Curtis R. Krause 4-18-74

Set 8' sign post S88°W 139.0' of corner
with F.S. sign 54-2 attached
this sign can be seen from river
corner is on brush ridge in meadow
approximately 600' south of river

There are two large trees one is
W. Spruce the other is a large W. Pine
on Island Approx. 300' to 400' NE of
Corner

Believe on bow may run near this cor.
as it was wet and flooding when we
were here in April at spring thaw
open grass meadow to south of corner
and another J. Pine Island is to SW of
corner approx. 300'

73

Y, Z-21 Affidavit 8/25/78

Meander Corner Bet. Sec's. 35 & 36

Notes of Original Govt Survey of 1873

Set post

No Bt's.

Notes of GLO Resurvey of 1937

Proportional distance, no orig. evidence found, Iron is 11.04 Chs. N 1° E of sec. cor.

729'

Set Iron post 1" dia. 36" long w/ brass cap stamped as follows

MC	
535	536
T144N	R27W

Fd Iron in place, in good condition

14" above meadow grass, in brush

1937

231'

South Fork of triple ELM 10" N 74° E 350 lks.

Now 21" ELM scribe overgrown at bry ³ dist.

No other tree

Set 8' steel sign post beside iron and place sign SA-4 on top, post is 6' high

4-18-74

Curtis R. Keener

Corner is 300' in brush swamp north of Island

on
2/29/80
MC

74 P-5

1/4 corner sections 19th 20

Notes of G.L.O. Survey of 1937

Set Iron 3" x 1" with brass cap.
(found Iron in place)

Poplar 8" N64E 328Lks or 216.48'
(Now Aspen stump. N64E 216.48')

Poplar 10" S59W 254Lks or 167.64'
(Now Aspen Stob. 14" S59W 167.64')

To perpetuate this cor I cut new 187³

Aspen 8" S88W 150.75' 14519 BT

Spruce 10" N29E 205.20' 14520 BT

steel post 8" S45E 5.90'

steel post 8" N45W 8.95'

steel post 8" North 1.8' w/sign 54-2954-4

R9-7150-4 by 6/4/80 Ronald Olson

75 N-5

Section corner 17, 18, 19, 20

Notes of G.L.O. Survey 1937

set Concrete Cylinder 2' x 6" x 20" w/ Brass Cap
(found Monument in place)

from which

Paplar 7" S84E 281 Lks. or 185.46'
(found remains of rotted stump.)

To perpetuate this corner I put in New
Bearings

Balm of Gilead 4" S88E 152.14'

steel post 8' N43E 7.8'

steel post 8' S82W 6.0'

steel post 8' East 3.1' 54-4

steel post 8' South 2.0' 54-2854-4

RR-7150-4 by 6/5/20 Donald Olson

R-7
76

1/4 corner sections 20 & 29

Notes of G.20 Resurvey 1937

(found monument in place)

set Iron 3"x1" with Brass Cup.

Tam. 6" N44 $\frac{1}{2}$ E 27.4ks or 17.82"
(Now Tam 8" N45E 17.8" w/sear)

Tam 4" S84 E 85.1ks or 56.10
(Now Tam. 6" S84E 56.10 w/sear)

To bring this corner to standard I
cut new BTS

Tam 9" N56E 16.60"

Tam 8" N82W 50.0"

Steel post 8' long East 2.6' w/signs ⁵⁴⁻²₅₄₋₇

by Schoonover 12/28/79

Checked by Ronald Olean

R9-9150-4 by Schoonover

77

T144N R27W Closing Corner
to Sections 5 & 6

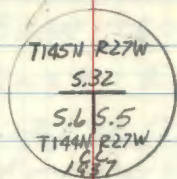
Original Govt. Survey

N. Pine, 12", S 15° E, 35 lks

W. Pine, 6", S 22° E, 11 lks

1937 GLO Dependent Resurvey

Set an iron post, 3' long, 2" diam,
28" in the ground for closing corner
stump:



From which:

N. Pine 18" S 25° E 66 lks

J. Pine 7" S 52½° W 179 lks

4/8/66 Morrison & Morgan

66
52.14
118.14

Tag on W. side of 7" Jack pine

Corner is a brass cap - Corner lies N 80° W
30 ft from tag. Tag is on the East side of
old woods road - trees painted blue adjacent
to corner - Corner is on West side of road
R. Pine (stp), 24", S 30° E, Approx. 40 ft

10-19-83

□

By Ausk

G. Koserko

G. Robertson

RECOVERED:

JACK PINE S 52½° W 118.14 Scribing Visible
(T144N R27W CCS)

Established

R. Pine 10.7" S W
(MKD CC 55 BT)

~~JACK PINE 24" S 30° E~~
~~(MKD CC 55 BT)~~

GLO

532

56

55

T144N

R 27W

C C

1937

MONUMENT WAS TAKEN OUT BY LOGGERS
MONUMENT SHOULD GO IN CENTER OF LOG
PILE SO WE WILL HAVE TO COME BACK AT
A LATER DATE TO RESET.

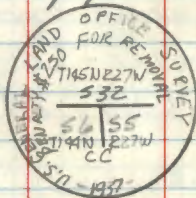
Go to Next Page

T144N R27W

Cont'd from pg 77

Reset the recovered 2 inch outside diameter
by 3 foot long galvanized iron pipe with
a 2 1/2 inch diameter brass
cap stamped as shown,
up 1.0 ft from which:

Decl = 5° East



From which

DEAD AND STANDING

1937 J. Pine, 13.3 in, 557°W, 118.14 ft to 16d nail in
NW face, single blaze cut into w/6d spike
Cedar post, N87°E, 30.00 ft w/old Lac poster
attached

Established:

J. Pine, 8.7 in, S 16° E, 61.98 ft to 16d nail in SNAG
SW face, double blaze, scr: "455BT" w/6d spike
Red Pine, 10.9 in, S 63° W, 50.18 ft to 16d nail ^{NOW} in 1800
NW face, double blaze, scr: "456BT" w/6d spike
Metal fence post, west, 3.0 ft w/54-9

Also recovered the 1937 R. Pine. It has
been grubbed out and is now in a pile
of slash

10-27-2009 R MAIN
Fd IRON AND GPS. 1983 J. PINE BT IS NOW
A 30 FT TALL SNAG. 1937 J. PINE 557W 118.14
FT NOW STANDING DEAD. MARK ONE NEW BT.

J. PINE 6" S 16° W 21.35 FT TO SPK MKD8 X BT