

T 142 R26W
TRAVERSE

DIETZGEN
Dietzgen

ENGINEERS'
FIELD BOOK
No. S400V

T142N R26W

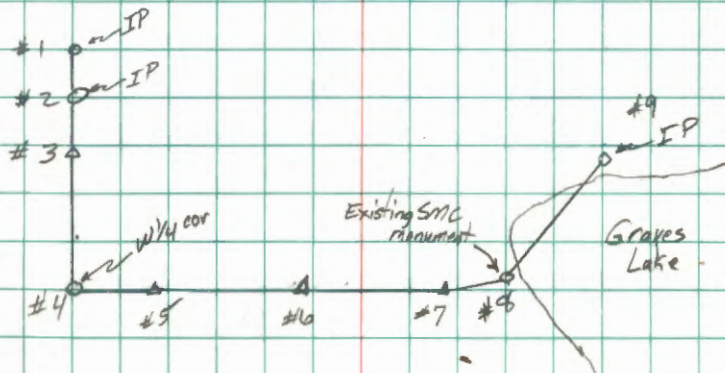
TRAVERSE

USFS, CASS COUNTY

T142 N R26 W

Sec. 10

Traverse to check the position
of SMC on E-W $\frac{1}{4}$ line set
by Walt Caro



T58N R27W

Curo

Traverse in Sec 10 - check on ~~Stevenson~~
STA~~1st H20~~ 2nd H20 3rd H20 4th H2R

H4

300
113
37Dist 2-1 32 2 22
~~91-02-35~~ 268-01-22 380.47 115.969BS 91-3 2-37 ✓
179-59-49 359-59-12 179-59-56

FS 3 180-00-09 00-00-01 179-59-45 359-59-54

BS 1 30-00-29 180-00-25 00-00-20
00-00-07 179-59-54 359-59-43 180-00-22X@ 2 179-59-20 179-59-17 36
180-00-01 180-00-05 179-59-02 179-59-32

179-59-26 ✓

Dist 2-3 34 14 2
87-04-10 272-05-48 288.49 87.933

87-34-18 ✓

FS 2 180-00-56 360
180-01-03 00-00-59 180-01-01 00-00-53BS 4 359-59-37
00-00-04 179-59-42 359-59-43 179-59-32

X@ 3 180-01-17 180-01-18 180-01-21

180-01-19 ✓

Dist 4-3 87-45-07 272-14-59 480.90 146.578

87-45-01 ✓

Temp = 25°F

Feb 17, 1987

BPR :

R. Main T A

ECF :

G. Robertson M

D. Ojanen Aid

STA 1 = 1st Curo

380.33

iron Sof N 1/16 corner

W side Sec 10

instrument kept

going out of level

STA 2 = 2nd Curo

iron Sof N 1/16 W side

Sec 10

288.23

STA 3 = 60 d spike

480.53

T58 N R 27 W

Traverse Contd from pg 2

STA	1 st H&D	2 nd H&R	3 rd H&D	4 th H&R
			<u>H&</u>	

FS 5 87-54-33 267-54-21 87-54-33 267-54-22

BS 3 00-00-18 180-00-06 00-00-15 180-00-08

TP 4 87-54-15 87-54-15 87-54-18 87-54-14

87-54-16 ✓

Dist 4-5 85-10-31 274-49-24 164.88 50.254

85-10-34 ✓

FS 6 180-00-00 00-00-04 180-00-16 00-00-08

BS 4 00-00-25 180-00-34 00-00-40 180-00-39

TP 5 179-59-35 179-59-30 179-59-36 179-59-29

179-59-33 ✓

Dist 6-5 89-09-21 270-50-39 ^{600.52} ~~599.~~ 183.08

89-09-23 ✓

STA 4 = W¹/₄ S 10

164.30

STA 5 = 16d nail
in hub

600.45

T58N R27W

Traverse Contd from Pg 3

STA 1stHAD 2ndHAR 3rdHAD 4thHAR

		75 00-01-18		00-01-18
FS 7	180-01-15	180-00-20	180-01-12	180-00-16
BS 5	00-00-24	180-00-20	0-00-20	180-00-16
		0-01-18	0-00-20	0-01-18
TP 6	180-00-51	00-58	180-00-52	01-02
		180-00-52		180-01-58
		180-00-56 ✓		

Dist 6-7 93-04-19 266-55-30 982.16 299.363
 93-04-24

FS 8	176-43-55	356-43-49	176-43-57	356-43-53
BS #6	00-00-20	180-00-11	00-00-15	180-00-15
TP 7	176-43-35	176-43-38	176-43-42	176-43-38
		176-43-38 ✓		

Dist 8-7 89-04-09 270-55-64 134.98 41.143
 89-04-08 ✓

STA 6 = God spike

920.75 ✓

STA 7 = God spike

134.96 ✓

T58 N R27 W
Traverse Cont'd from pg 4

STA 1stHAD 2ndHAR 3rdHAD 4thHAR
NA

FS 9 147-51-39 327-51-35 147-51-39 327-51-38

BS 7 00-00-14 130-00-19 00-00-24 ~~00-00-29~~ 180-00-23

TP 8 147-51-25 147-51-16 147-51-15 147-51-15

147-51-18 ✓

Dist 8-9 89-14-00 270-45-55 924.36 231.745

89-14-03 ✓

FS

BS

TP

STA 8 = SMC W shore
Graves Lake

924.28

STA 9 = Curra's SMC
N. shore Graves
Lake (3/4" x 20"
iron pipe)

END OF
BOOK