

CORNER RESTORATION
T14N R 31W

MINING TRANSACTIONS
1904

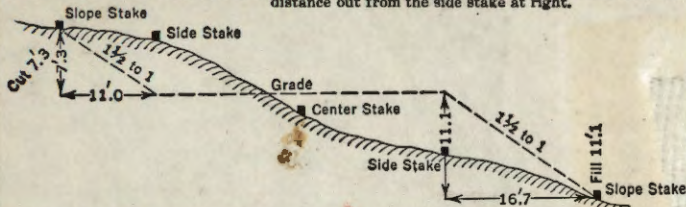
BOOK 3

CORNER RESTORATION
T14N R 31W
BOOK 3

DISTANCES FROM SIDE STAKES FOR CROSS-SECTIONING

Roadway of any Width. Side Slopes 1 1/2 to 1.

In the figure below: opposite 7 under "Cut or Fill" and under .3 read 11.0, the distance out from the side stake at left. Also, opposite 11 under "Cut or Fill" and under .1 read 16.7, the distance out from the side stake at right.



Cut or Fill	Distance out from Side or Shoulder Stake										Cut or Fill
	0	.1	.2	.3	.4	.5	.6	.7	.8	.9	
0	0.0	0.2	0.3	0.5	0.6	0.8	0.9	1.1	1.2	1.4	0
1	1.5	1.7	1.8	2.0	2.1	2.3	2.4	2.6	2.7	2.9	1
2	3.0	3.2	3.3	3.5	3.6	3.8	3.9	4.1	4.2	4.4	2
3	4.5	4.7	4.8	5.0	5.1	5.3	5.4	5.6	5.7	5.9	3
4	6.0	6.2	6.3	6.5	6.6	6.8	6.9	7.1	7.2	7.4	4
5	7.5	7.7	7.8	8.0	8.1	8.3	8.4	8.6	8.7	8.9	5
6	9.0	9.2	9.3	9.5	9.6	9.8	9.9	10.1	10.2	10.4	6
7	10.5	10.7	10.8	11.0	11.1	11.3	11.4	11.6	11.7	11.9	7
8	12.0	12.2	12.3	12.5	12.6	12.8	12.9	13.1	13.2	13.4	8
9	13.5	13.7	13.8	14.0	14.1	14.3	14.4	14.6	14.7	14.9	9
10	15.0	15.2	15.3	15.5	15.6	15.8	15.9	16.1	16.2	16.4	10
11	16.5	16.7	16.8	17.0	17.1	17.3	17.4	17.6	17.7	17.9	11
12	18.0	18.2	18.3	18.5	18.6	18.8	18.9	19.1	19.2	19.4	12
13	19.5	19.7	19.8	20.0	20.1	20.3	20.4	20.6	20.7	20.9	13
14	21.0	21.2	21.3	21.5	21.6	21.8	21.9	22.1	22.2	22.4	14
15	22.5	22.7	22.8	23.0	23.1	23.3	23.4	23.6	23.7	23.9	15
16	24.0	24.2	24.3	24.5	24.6	24.8	24.9	25.1	25.2	25.4	16
17	25.5	25.7	25.8	26.0	26.1	26.3	26.4	26.6	26.7	26.9	17
18	27.0	27.2	27.3	27.5	27.6	27.8	27.9	28.1	28.2	28.4	18
19	28.5	28.7	28.8	29.0	29.1	29.3	29.4	29.6	29.7	29.9	19
20	30.0	30.2	30.3	30.5	30.6	30.8	30.9	31.1	31.2	31.4	20
21	31.5	31.7	31.8	32.0	32.1	32.3	32.4	32.6	32.7	32.9	21
22	33.0	33.2	33.3	33.5	33.6	33.8	33.9	34.1	34.2	34.4	22
23	34.5	34.7	34.8	35.0	35.1	35.3	35.4	35.6	35.7	35.9	23
24	36.0	36.2	36.3	36.5	36.6	36.8	36.9	37.1	37.2	37.4	24
25	37.5	37.7	37.8	38.0	38.1	38.3	38.4	38.6	38.7	38.9	25
26	39.0	39.2	39.3	39.5	39.6	39.8	39.9	40.1	40.2	40.4	26
27	40.5	40.7	40.8	41.0	41.1	41.3	41.4	41.6	41.7	41.9	27
28	42.0	42.2	42.3	42.5	42.6	42.8	42.9	43.1	43.2	43.4	28
29	43.5	43.7	43.8	44.0	44.1	44.3	44.4	44.6	44.7	44.9	29
30	45.0	45.2	45.3	45.5	45.6	45.8	45.9	46.1	46.2	46.4	30
31	46.5	46.7	46.8	47.0	47.1	47.3	47.4	47.6	47.7	47.9	31
32	48.0	48.2	48.3	48.5	48.6	48.8	48.9	49.1	49.2	49.4	32
33	49.5	49.7	49.8	50.0	50.1	50.3	50.4	50.6	50.7	50.9	33
34	51.0	51.2	51.3	51.5	51.6	51.8	51.9	52.1	52.2	52.4	34
35	52.5	52.7	52.8	53.0	53.1	53.3	53.4	53.6	53.7	53.9	35
36	54.0	54.2	54.3	54.5	54.6	54.8	54.9	55.1	55.2	55.4	36
37	55.5	55.7	55.8	56.0	56.1	56.3	56.4	56.6	56.7	56.9	37
38	57.0	57.2	57.3	57.5	57.6	57.8	57.9	58.1	58.2	58.4	38
39	58.5	58.7	58.8	59.0	59.1	59.3	59.4	59.6	59.7	59.9	39
40	60.0	60.2	60.3	60.5	60.6	60.8	60.9	61.1	61.2	61.4	40

KEUFFEL & ESSER CO., N. Y.
For Curve Tables see end of book.

Note

I set points for the M.C.s on Howard Lake as follows: M.C. West bank between sec's 30-31, M.C. East shore of Bay on Howard Lake sec's 30-31 just west of 1/4 corner, S.M.C. South bank of Howard Lake on the center line of sec. 30 just north of Quarter between sec's 30-31. These are spikes driven in ground and referenced. To be monumented in summer of 1963

2-27-63 JAM

NO WRITING
ON PAGES

15, 16, 63, 64, 65

BOOK 3

T 141N R 31W 5th P.M.

CHASS

COUNTY

14	15	16	17	18	19	20	21	22	23	24	66
15	6	5	4	3	2	1					67
16											68
9/16/17											72
18 21 20 22 24											73 71 69
17	19 7 23	8	9	10	11						70
7											79
											78
											76
6	18	17	16	15	14	13					77
5											
14	19	20	21	22	23	24					
3	46										50
	44 43										53
2	26 30	29	28	27	49 23 46						51
	42 41 40				14 12 41						55
1	27 41 30 35										56
	27 28 31 34										57 55 52
	30 29 31 32	32	33	34	35	36					
	33 36										
	25										

Colored numbers refers to page
on which notes for that
corner may be found.

1 V-1

Section Corner 31-36-25-30 on
4th Guide Meridian T141R31-32W

Notes of orig. Govt. Survey 1871

B. Oak 8" S65°E 3 Lks.

B. Oak 8" S16°W 23 Lks

W. Pine 8" S60°E 40 Lks

B. Oak 8" N20°W 36 Lks.

Remanumented by Cass County surveyor

Harold Curo in 1958

set a 2³/₄" x 60" capped monument filled
with concrete from which bears

Red Oak 6" N76°14'W 41.95' mxd S25 T141R32

Maple 6" S26°58'^N 26.9' mxd S36 T141R32

Maple 5" S47°45'E 17.95' mxd S31 T141R31

Affidavit + 5680-11
RHM

2

2 T-1

Quarter Corner Sec. 25-30 on 4th
Guide meridian. Notes of orig.
Gov't. survey of 1871

Y. Pine 8" N85°E 14 Lks (9.24')

W. Pine 9" S55°W 35 Lks. (23.10')

Remonumented by Cass County Surveyor
Harold Guro in 1958

Set a 2^{3/4}" x 60 capped monument filled with
concrete from which bears:

ELm 5' S26°39'E 38.40' MKD S30 T141 R31

Cedar Post 4" x 4" x 48" N82°30'E 14.65'

Cedar Post 4" x 4" x 48" N62°09'W 8.40'

Found the 2" inside dia iron pipe w/ brass
cap stamped

1/4	
T141	T141
S25	S30
R32	R31
1958	
R45 NO 3917	

Cedar post N80°E 14.65' MKD S30 T141 R31 BX

Cedar post N65°W 8.4' MKD S25 T141 R32 BX

Oak S30°E 38.4' scribe overgrown

ARM Donald

Affidavit + 5680-11

+++

J

3

Section Cor. 19-24-25-30 on 4th Guide
meridian. Notes of orig. gov't. survey.

Aspen 9" N80°E 13 Lks.

Aspen 9" S65°E 16 Lks.

White Pine 6" S43°W 19 Lks.

White Pine 6" N70°W 10 Lks.

9-28-2016 R. MAIN

GPS IRON SURVEY GRADE CASS Co NORTH

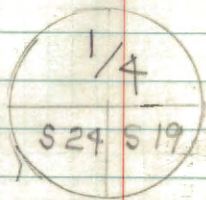
COORDINATES: N=174107.266 E=388446.937

CERTIFICATE FILED

4 P-1
Quarter Corner Sec's 19-24 on
4th Guide meridian. Notes of orig.
govt. survey of 1871
Aspen 8" N65°E 5 Lks (3.30')

Y. Pine 10" S40°W 19 Lks (12.54') (Now a
pine stump with 1 scribe mark visible
S38°W 19 Lks or 12.54 feet.)

Corner was found to be marked by
a 2" inside dia galvanized iron pipe capped
w/ a galvanized iron pipe cap stamped



No good BTs available.

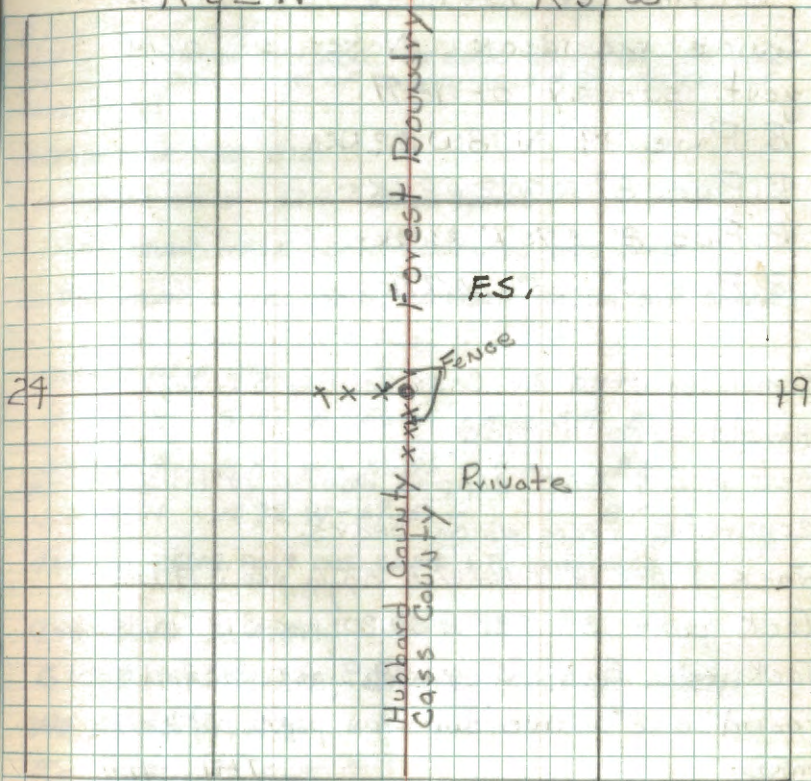
Set two steel sign posts 72" long with
signs 54-2 & 54-4 attached

Due East 3.4 feet

Due North 2.5 feet

5-24-62 R.H. McDonald

Affidavit
T141N R32W R31W
R9-5680-11 NE



22

5 N-1

Section Cor. 13-18-19-24 on 4th
Guide meridian. Notes of orig.
govt. survey of 1871

B. Pine 14" N38W 32 LKS

B. Pine 8" N70°E 62 LKS

B. Pine 8" S70°E 36 LKS

B Pine 10" S65°W 67 LKS

Remonumented by Cass County Surveyor

Harold Curo in 1958

set a 2 $\frac{3}{4}$ " X 60" capped monument filled with
concrete from which bears

Jack pine 16" S56°17'E 55.6' MKD S19 T141 R31

Jack pine 13" S89°E 50.20' MKD S19 T141 R31

Jack pine 8" N1°57'W 58.9' MKD S13 T141 R32

(Found a 2" inside dia. iron pipe w/ brass cap
MKD

T141	T141
S13	S18
S24	S19
R32	R31
1958	

Jack pine N4°W 58.9' MKD S13 T141 R32 BT

Jack pine N89°E 50.2' MKD S19 T141 R31 BT

Jack pine S57 $\frac{1}{2}$ °E 55.6' MKD S19 T141 R31 BT

7-31-62 RHM Donald

R9-5680-11 JHE

8/10/87 CK MH

FD 2" IRON CAP IN PLACE - IN GOOD CONDITION - 24" HIGH
AT TOP OF BACK SLOPE OF COUNTY ROAD #83 - 35' EAST OF
CENTERLINE

REMAINS OF 1958 BT'S

J. PINE 15 N4W 58.9' SCRIBE VISIBLE

J. PINE STUMP N89E 50.2' SCRIBE ON BASE BLAZE

J. PINE STUMP S57E 55.6' SCRIBED BT ON BASE BLAZE

MARKED NEW BT'S.

W. OAK 9 S 47 E - 56.55' - MKD S19 BT

J. PINE 7 S 32 W - 78.95' - " BT

J. PINE 11 N 72 W - 69.15 - " BT

4X4X6' CEDAR POST DUE EAST 1.7' WARNING SIGN

9-6-2016 R. MAEN

GPS IRON SURVEY GRADE CASS CO NORTH

N \approx 179361.578E \approx 388447.945

6 L-1

Quarter Corner Sect's 13-18 on 9th
Guide Meridian. Notes of orig. gov't.
survey. Yellow pine 11" S58°E 182 LKs

Aspen 4" S50W 29 LKs

Re-monumented by Cass County Surveyor Harold
Curo in 1959 - set a 2 $\frac{3}{4}$ " x 60" capped monument
filled with concrete. From which bears:

Cedar post 4" x 4" x 100" S44°42'E 35.85' MKO 518
T141 R31

Cedar post 4" x 4" x 100" S45°12'W 39.05' MKO 513 T141 R32
" " " " N49°57'W 54.72' " " " "

R9-5680-11 JHE

J

7 J-1

R9-5680-11 ME

Corner of sections 7-12-13-18
on 4th Guide meridian. Orig. Govt Survey

Notes: Aspen 8° S 50° E 101 LKs

W. Birch 5° N 15° E 54 LKs

B. Oak 12° N 2° W 72 LKs

Y. Pine 10° S 25° W 123 LKs

Re-monumented by Cass County Surveyor
Harold Guro in 1959 - used existing 2 1/4" x 3/8"
Iron capped monument for corner

From which bears:-

Cedar post 4" x 4" x 100" N 45° 35' W 29.15' MKD S 13 T 14 R 31

Cedar post 4" x 4" x 100" N 46° 19' E 19.16' MKD S 7 T 14 R 31

Cedar post 4" x 4" x 100" S 45° 26' W 23.65' MKD S 12 T 14 R 32

Found iron capped pipe stamped:

	T 14	
	R 32	R 31
	S 12	S 7
	S 13	S 18
	1959	
RLS	NO	3917

Cedar post N 53° E 29.6' MKD S 7 T 14 R 31

Cedar post N 38° W 23.85' MKD S 12 T 14 R 32

Cedar post S 52° W 23.8' MKD S 18 T 14 R 31

Cedar post S 39 1/2° E 19.0' MKD S 13 T 14 R 32

7-31-62 R. W. Donald

2

8 G-1

Quarter Corner sections 7-12
on 4th guide meridian. Notes of
orig. govt. survey of 1871
Y. pine 14" S15°W 92 LKS.

Aspen 4" N20°E 46 LKS.

Deputy

Notes of Cass County Surveyor Baldwin
in 1915 - They found original BT
a Y Pine 14" S15°W 60.72' from which
they set a 3"x3"x36" Aspen post
marking corner.

Remonumented by Cass County Surveyor
Harold Curo in 1959 - Used existing
2 1/4"x48" capped iron pipe for corner
from which bears:-

White Oak 7" S39°46'E 8.65' MKD S7 T14 R31

Norway Pine 24" S10°20'W 21.5' MKD S12 T14 R32

White Oak 6" N57°22'W 38.85' MKD S12 T14 R32

(Found iron capped pipe
marked:-
T141 T141
S12 S7
R32 R31
1959
RLS NO 3417

Found

Oak 9" S31°E 8.65' MKD S7 T14 R31 BT

2/3/94 Fd. as a 12" W. Oak

Red Pine 26" S18°W 21.5' MKD S12 T14 R32 BT

Fd. as a dead snag
Oak 8" N50 1/2°W 38.85' MKD S12 T14 R32 BT

Didn't look for this BT

7-31-62 AH/TT/Amela

2/3/94 Braman Schoonover, Geiger
Placed 8" steel sign posts 3' north and
3' east with both signs attached. Line to
standard goes east.

Found OAK BT SW and Oak NE tag and double
blazed with nail. Presume they were
marked by private surveyor under F.S. contract

9 E-1

Corner Sections 1-6-7-12 ON 4th
Guide meridian. Notes of orig. govt.
survey of 1871.

Yellow Pine 14° S 16° E 151 LKS (99.66')

Yellow Pine 12° N 52° E 189 LKS (124.74')

White Pine 16° N 25° W 35 LKS (23.10')

White Pine 16° S 42° W 263 LKS (173.58')

Notes of Cass County Surveyor John
Curo in 1915 - They found the four
original bearing trees and from these
set a stake and a Iron monument.
(Found a FS metal location poster on a
15" Jack pine put up in 1935 saying corner
N 25° W 43 LKS - Cooke & Prastidge)

R-9-5680-11
RHM

MONUMENTED 1" OD IRON PIPE SET BY R.L.S.
ROBERT SCHNIDER - LOCAL SURVEYOR - WALKER MN.

TO PERPETUATE THIS CORNER I SET 5 1/2 X 5 1/2 X 24"
LONG CONCRETE MONUMENT - CAPPED WITH 3" DIA.

BRASS TABLET MARKED

PLACED 1" IRON PIPE AT
NORTH EDGE OF MONUMENT
PLACE OTHER IRON OBJECTS
AROUND CORNER - PLACED
14" BELOW SURFACE OF ROAD

T14IN
R32W R31W
S1 S6
S12 S7

WITNESSED BY

1978
RLS NO 12261

JACK PINE 9 N 26° W 97.60' T14IN R32W S1 BT

JACK PINE 12 N 19° E 112.10' T14IN R31W S6 BT

N. PINE 23 S 68° E 92.56' T14IN R31W S7 BT

JACK PINE 9 S 47° W 52.73' T14IN R32W S12 BT

SET 4" X 4" X 86" RED TOP CEDAR POST DUE SOUTH 24.42'
WITH F.S. SIGNS 54-2 & 54-4

5-25-78

Curtis R. Krause
Randall Silbaugh

2-15-94 RHM & CK

FD. 2" X 2" COUNTY ALUM. SQD. CAP AT SURFACE OF CO. RD.
CAP STAMPED COUNTY SURVEYOR
CORNER IS 11.0' SOUTH OF CENTERLINE CASS CO. 12
MARKED NEW B.T.S.

W. PINE 13 N 18° W - 91.23 MKD S1 BT

N. PINE 20 N 45° E - 171.60 MKD S6 BT

SE N. PINE NOW 25" IN GOOD CONDITION

SW J. PINE NOW 10" " " "

J. PINE NE IS NOW SNAG 25' HIGH

J. PINE NW IS NOW STANDING DEAD

10 C-1

Quarter Corner sect's. 1-6 on
4th guide meridian. Notes of orig.

Govt. survey of 1871

Yellow Pine 20° S 25° E 77 Lks. (50.82')

White Pine 25° N 58° W 67 Lks (44.22')

Searched 2 man hours after chasing North 1/2
mile from poster on Co. Road no evidence

Found 6-8-62 RHM

May 18, 1978 STEFAN & KRAUSE
FROM SINGLE PROPORTIONED POSITIONS
SURVEYED IN DURING THE SUB-DIVISION
OF SECTION 6, T14N, R31W - WE
PLACED HUB FOR 1/4 CORNER. SEE PAGE
, SECTION 6 SURVEY. mcs

TO PERPETUATE THIS CORNER I SET A 2" DIA. X 5' LONG
GALVANIZED STEEL PIPE, WITH CONCRETE INSIDE
AND CAPPED WITH 3" DIA. BRASS TABLET MARKED

T14N
PILE ROCK AROUND IRON PIPE R32W R31W

1/4
S1 | S6

1978
RLS NO 12261

WITNESSED BY

N. PINE 19 N 41 W 40.62' MKD 1/4 S1 BT

W. OAK 6 N 49 E 49.70' MKD 1/4 S6 BT

W. OAK 9 S 45 E 62.24' MKD 1/4 S6 BT

SET 8' STEEL POST DUE NORTH 4.1' WITH FS.
SIGNS 54-2 & 54-4

5-24-78

Curtis R. Krause
Randall S. Gillough

11 A-1

Corner sections 1-6-31-36 on 4th

Guide meridian T141-142N R31-32W

Notes of orig. Govt. survey of 1871

Yellow pine 9" N38°W 191 Lks (126.06') (Now a

Pine stp badly burned N40°W 126.0')

Yellow pine 28° S82°W 156 Lks (102.96') (Now a

Pine stp badly burned S82°W 108.0')

Yellow pine 30° S18°E 171 Lks (112.86') (Now a

Large Pine stp badly burned S18°E 115.0')

Yellow pine 29° N71°E 225 Lks (148.50') (Now a

Large pine stp badly burned N71°E 148.5')

Notes of Cass County Surveyor John

Curo in 1916 taken from County record

book "C" page 113

Iron monument 2 1/2" x 48"

Searched 4 man hours after chaining north

from F.S. poster on Road (1 mile) 6-8-62 RHM

No evidence found. Searched again by chaining

West from 1/4 Cor of 6-31 Found the

corner set by John Curo in 1916 a 2 1/2 x 48"

capped iron pipe. 6-29-62 RHM

W.PINE

N.PINE

8

18

S87°52'W

N29°18'W

58.9'

82.2'

1916 CO.

1916 CO.

BT'S,

BT'S,

CRK

CRK

Affidavit RHM check letter N

R9-5680-11

Set a 2" inside diameter 5' long galvanized wrought iron pipe filled with concrete & capped with a 3" diameter bronze tablet stamped

T142N
R32W R31W

S36 S31

S1 S6

T141N

1962

R15 NO 3628

* Red Pine 29" N31°W 82.6' MKD S36 BT

* White Pine 25" N89°W 58.8' MKD S36 BT

Oak 12" S1°E 24.3' MKD S6 BT

Granite boulder 2' x 3' x 0.8' high S26°W
17.6' to "X" on top center

Granite boulder 6.0' x 2.0' x 1.5' high N75°E
28.8' to "X" on top center.

Steel sign post 72" long set 24" in ground
South 2.9' w/ signs 54-2554-4 attached

* 1916 COUNTY BEARING TREES

12 U-19
C. South $\frac{1}{16}$ Sec 26
Notes of County Surveyor
E.B. Horst 1921.

Stake: Found stake set in a 2" dia
iron pipe (outside diameter). Found by
chaining North from the $\frac{1}{4}$ cor. sec's
26-35 as per survey plat on file
in Cass Co. Courthouse.

Set a 2" inside dia., 5' long galvanized
wrought iron pipe filled w/ concrete and
capped w/ a 3" dia. bronze tablet stamped:

T14N R31W

^c
S $\frac{1}{16}$ 526

^c
1962
RLS NO 3628

Oak 6" S86°W 11.9' MKO CS $\frac{1}{16}$ BT

Oak 7" N45°E 22.7' MKO CS $\frac{1}{16}$ BT

White Pine 32" S74°E 52.5' MKO BT

72" steel sign post South 2.0' - Signs attached
6/26/62 R.M. Donale

Affidavit RHM

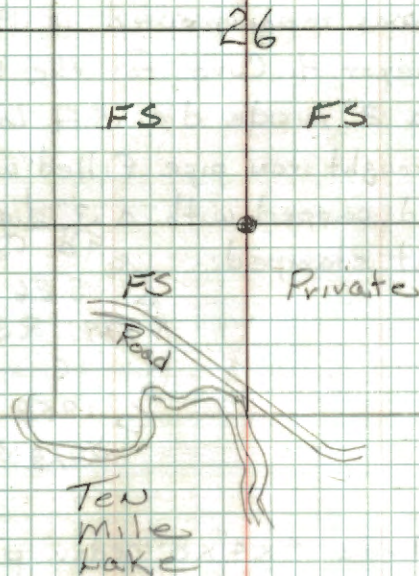
R9-5680-118 He
plates
4-27-62

take stamp 2 Feb 1962

4-16-80 BRAMA SCHOONOVER

ADD HEAVY 8" SIGN POSTS 2.7 EAST 2.6 SOUTH.
LINE TO STANDARD EAST AND SOUTH.

5-5-08 R. MAEN
GPS IRON



T-19 V
13 CENTER 1/4 Sec 26

Notes of County Surveyor

E. B. Horst 1921.

taken from Cass County Record

Book # C Page 462

Iron Monument

This corner was remonumented in 1958 by

Cass Co. surveyor H. Curo for the USFS

Corner is a 2" inside dia. 5 ft long

galvanized wrought iron pipe filled with

concrete and capped with a 3" diameter

bronze tablet stamped:-



There are three 4"x4"x8' cedar posts for
reference monuments. 4-2-62 EAHM

Cedar Post 4x4x100" N 45° E 29.20'

Cedar Post 4x4x100" S 45° W 30.15'

Cedar Post 4x4x100" N 45° W 32.04'

(From R9-7150-4 from Walker-McZ)

14 U-17

South Y16 sec 26-27

Notes of Cass County Surveyor

E. B. Horst 1921.

taken from County Record Book

C Page 462. Photo.

Iron Monument (Found in place on
west edge of marsh - Location checks with
photo & type map)

concrete mon.

R9-5680-11 & 12

22

1/4 Cor. Sect. 2 side

Notes of Cass County Surveyor
Baldwin 1915.

They found a line 21.

On line 44° 35' 00" from which
they set a 3" x 3" x 3" Fern post
than in corner.

16. 1/4 Cor. Sec 6 & 7 West side

Notes of Cass County Surveyor
Curo 1915

They Found only B. To 1

Y.PINE 14" S1BE 99.66'

Y.PINE 12" N5EE 124.74'

W.PINE 16" N2SW 23.10'

W.PINE 16" S4EW 173.58'

From above survey set a table
& iron monument.

17 E-2.

West $\frac{1}{16}$ Cor 6-7Notes of County Surveyor
Coro 1915

Iron Monument: (Found a 2" dia. iron pipe on East side of road intersection and alongside a fence corner. R.H. McDonald)

IRON PIPE CHECKED OK IN TRAVERSE RUN
AROUND SECTION 6 BY FOREST SERVICE 1978TO PERPETUATE THIS CORNER I SET $5\frac{1}{2} \times 5\frac{1}{2} \times 24$ "
LONG CONCRETE MONUMENT - CAPPED WITH
3" DIA. BRASS TABLET MARKED

T14IN R31W

SET COUNTY IRON FLUSH WITH
GROUND F.S. MONUMENT - SAMEW $\frac{1}{16}$ $\frac{56}{57}$
1978

WITNESSED BY

RLS NO 12261

N. PINE	6	N 13W	93.60'	MKD W $\frac{1}{16}$ S6 BT
N. PINE	8	N 61W	95.55'	MKD W $\frac{1}{16}$ S6 BT
W. OAK	11	S 12W	37.98'	MKD W $\frac{1}{16}$ S7 BT

5-26-78

Curtis R. Krause
Randall D. DebaughR-9568-11
1978

5-17-94 RM-OK

REMOVED F.S. CONCRETE MONUMENT + CO. 2" CAPPED
48" LONG IRON PIPE - REMOVED SIGN POSTSPLACED MAGNETIC PELLET IN CENTER OF HOLE
FROM CONCRETE MONUMENT

MONUMENTS + SIGN POSTS AT SE OAK BT

NEW TIES 5-17-94 RM OK

W. OAK 14 S43E - 114.20' W $\frac{1}{16}$ S7 BTN. PINE 9 N64W - 189.17' W $\frac{1}{16}$ S6 BTW. OAK 13 N33W - 203.95' W $\frac{1}{16}$ S6 BTBOTH N. PINES FROM 1978 HAVE BEEN REMOVED
BY ROAD CONSTRUCTION
TAG REMOVED FROM W. OAK AS THIS 1978 BT
IS IN CLEARING LIMITS

CLOSE TIES

ASPEN	6	S40E	35.22'	OUTSIDE CLEARING LIMITS
ASPEN	7	S16E	34.08'	

18 F-1
North 1/16 Sections 7-12

Notes of County Surveyor Curo
1915:

Iron Monument: (Found a 2" dia.
capped iron pipe marking corner.)
Found by chaining south from FS post on
on Co. road 1316' as per call of Co. plat.
Corner is on a hill on North side of a
bay of Lake Bess. 8-29-62 *RA*

Set a 2" inside diameter, 5 foot long galvanized
wrought iron pipe filled with concrete and
capped with a 3" dia. bronze tablet stamped

T141N
R32W R31W
N 1/16
S 12 57
1962
RLS NO 3628

OK *RA* 3/28/63

From which bears:

Oak 6" N46°E 61.4' mxd N 1/16 S 7 BT

Oak 4" S 77 1/2°E 34.5' mxd X BT

Steel sign post 72" long set 24" in ground w/
signs 54-2 & 54-4 attached Due South 3.45

9-14-62 *RA* McDonald

Hoffman RHM

9-22-99 R MAIN

FO MONUMENT IN GOOD CONDITION & LINE TO STANDARD
NORTH TO SECTION CORNER 1/16. I REPLACED MCDONALD
SIGN POST W/ NEW 8 FT POST

8 FT STEEL SIGN POSTS 4.2 NORTH 4.3 SOUTH

19. G-2

West Center 1/6 Cor Sec 7

Notes of County Surveyor Curo
1915.

Iron Monument. (Found a 2" dia.
IRON pipe buried in a road - this lines
up with a N-S fence line. A F.S. metal
location poster on a cedar post north
side of road gave bearing and distance
to corner, poster put up in 1948
4-10-62 R.H.M.

Set a 6" dia. 24" Long cylindrical
concrete monument capped with a 3"
dia. bronze tablet stamped: T141N R31W
Note

Monument is buried
7" under road surface

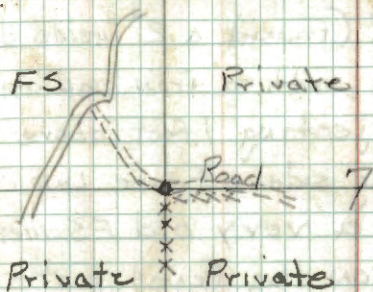
C W 1/16
S 7
1962
RLS No 3628

Set a steel sign post 72" long with signs
54-2 & 54-4 attached N 3° W 18.2'

Oak 12" S 1/2° E 43.9' MKD CW 1/16 BT
Now 15" x 12" ft S.M.D.
3-22-62 R.H.M. Donald

Affidavit RHM

R9-5680-11 date



5-17-94
FOR CONCRETE MONUMENT - IN PLACE 12' BELOW
TSP RD 12 - REMOVED COUNTY 2" IRON AS IT WAS
BADLY BENT TO EAST - PLACE MAGNETIC PELLET
AT EAST SIDE OF CONCRETE MONUMENT

W. OAK 8" S 22° W 37.03 MKD SW 1/16 S 7 BT

W. OAK 13" S 54° W 88.21 MKD CW 1/16 S 7 BT

W. OAK 9" N 9° W 66.25 FT TOSP MKD SW 1/16 S 7 BT

REMOVED 6' STEEL SIGN POST

8' STEEL SIGN POST NORTH 24.55'

CORNER ON SOUTH SHOULDER OF TOWNSHIP
ROAD E & NW

20 F-3
North Center 1/6 Cor Sec 7

Notes of County Surveyor Curo
1915

IRON Monument. (Found a 2" inside dia.
galvanized iron pipe with a iron cap marking
corner. pipe is projecting 1 foot above
ground and is along side a fence line
near fence corner. a very old FS metal
Location poster is on the fence post at
corner) 4-10-62 RHM

2/10/94 KRAUSE, DEBRA, MAEN

MONUMENT IN GOOD CONDITION, Fd 14" DEAD OAK
W/ FS SHIELD AND OVERGROWN BLAZE NR 4W 55.4 FT
TO CENTER OF TREE.

W OAK 7" S63W 25.08 FT TO SPK MKD: CN 1/6 57 BT

W OAK 7" S26E 10.92 FT TO SPK MKD: CN 1/6 57 BT

W OAK 6" S73E 20.39 FT TO SPK MKD: CN 1/6 57 BT

Oak

Oak

8 FT STEEL SIGN POST 3 FT WEST 3.3 FT EAST.

R9-5680-11 dte

21 F-2
North West 1/6 Cor Sec 7

Notes of Cass County Surveyor
Curo 1915.

Iron Monument: (Found a 2" inside
dia, galvanized iron capped pipe marking
corner alongside old fence corner. A F.S.
metal location poster dated 1955 is on
the fence corner post.) 4-10-62 RHM

Set a 6" diameter 5' long cylindrical
concrete monument capped with a 3"
diameter bronze tablet stamped:

T141N R 31W

NW 1/6 S 7

1962

RLS NO 3628

ok
RHM
8/2/62

Set a steel post 72" long with signs 54-2
& 54-4 attached south 2.35'

Oak 6" S 43° W 16.55' MCD NW 1/16 BT

5005K 8" N 75° W 22.95' MCD NW 1/16 BT

5-17-62 R.H. McDonald

Affidavit RHM

R9-5680-11 JNE

FS

FS

Fence

XXXXXX

X

X

X

X

X

FS

Private

7

2/3/94 R. MAEN

(162) W. OAK 8" S 43 W 16.58 Ft TO SPK SEABE OVERGROWN

W. OAK 7" N 32 E 27.50 Ft TO SPK UP 28 ON NE SIDE OF
TREE. MCD: NW 1/6 S 7 BT

AND R. PINE 16" N 36 W 56.26 TO SPK MCD: NW 1/6 S 7 BT

8 FT STEEL SIGN POST SOUTH 3.2 FT EAST 2.9 FT

22 F-4

North East 1/4 Cor Sec 7

Notes of Cass County Surveyor
Curo 1915

Iron Monument: (Found a 2" inside dia. galvanized iron pipe with an iron cap pipe is projecting 2 feet above ground and is alongside a fence corner. Found 2 FS, metal location posters on a Elm Tree N-W of corner one tag dated 1946 other is older and not readable.) 4-10-62 RHM

Set a 2" inside diameter 5' long galvanized wrought iron pipe filled w/ concrete and capped with a 3" dia. bronze tablet stamped

T14N R31W

NE 1/4 S7

1962

RLS NO 3628

Tamarack 18° S 38° E 84.3' MKD NE 1/4 BT

ELM 13" N 65 1/2° W 8.6' MKD NE 1/4 BT

72" steel post set 2' in ground w/ signs 54-2

54-9 attached S 71° W 2.25'

June 26, 1962 R.H. McDonald

Affidavit RHM

R9-5680-11 site

FS

FS

XXXXXXXXX

Private

GN RR

FS

2/10/94 Krause, Brama, Main

Fd I.P. EN PIKE IN GOOD CONDITION. 1962 TAMARACK NOW A WINDFALL, 1962 ELM STANDING DEAD. MKD THREE NEW WITNESSES

ASH 13" S 61° W 39.01 FT TO SPK MKD: NE 1/4 S7 BT

ASH 7" N 20° E 33.02 FT TO SPK MKD: NE 1/4 S7 BT

W OAK 6" N 77° W 28.98 FT TO SPK MKD: NE 1/4 S7 BT

NEW 8 FT STEEL SIGN POST 4.5 FT SOUTH

OLD 6 FT STEEL SIGN POST 2.6 FT WEST

23. G-4

East Center 1/6 Cor Sec 7.

Notes of Cass County Surveyor
Curo 1915.

IRON MONUMENT. (Found a 2" inside
dia galvanized iron pipe projecting 18" above
ground and capped with a iron cap marking
corner.) 4-10-62 RHM

Set a 6" dia. 5' long cylindrical concrete
monument capped with a 5" dia. bronze
tablet stamped:

T141N R31W

E 1/6

S. 7

1962

RLS NO 3628

Note

Monument projects

25" above ground as

a large boulder is

under the point

Steel post 72" long with sign S 54-2'

54-4 attached North 2.3'

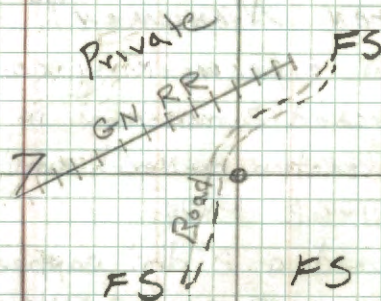
DEAD ^{+30 FT LONG} ~~W~~ack pine 74' S84°W 37.8' CE 1/16 BTWEND ~~W~~ack pine 11" S47°E 19.85' CE 1/16 BT

M2M 5-21-62 RHM McDonald

8/21/62

Affidavit RHM

R9-5680-11 dHE



2/3/94 RMAEN

W. OAK 6" S50°E 69.20 Ft To Spk MKO: 57 BT

W. OAK 5" S36°W 56.45 Ft To Spk MKO: 57 BT

HEAVY 8 FT STEEL SIGN POST 2.2 FT WEST

LIGHT 8 FT STEEL SIGN POST 2.35 FT NORTH

24. F-5

North $\frac{1}{16}$ Cor. Sec 7 & 8

Notes of Cass County Surveyor
Curo 1915

IRON MONUMENT: Found a 2" dia. capped
iron pipe marking corner.

Searched 2 man hours in area around old road
intersection on North side of Ten Lake.

7-31-62 RHM

Found a 2" dia. capped iron pipe marking
corner. 8-24-62 RHM

Set a 2" inside diameter 5' Long galvanized
wrought iron pipe filled with concrete &
capped with a 3" diameter bronze tablet
stamped

T141N R31W

N $\frac{1}{16}$

S7 S8

1962

RLS NO 362B

off
from 3/28/63

From which bears:-

Jack pine 13" S88 $\frac{1}{2}$ °W 26.3' MKD N $\frac{1}{16}$ S7 BT

Jack pine 16" S56°E 6.15" MKD N $\frac{1}{16}$ S8 BT

Steel post 72" Long set 24" in ground with
signs 54-2 & 54-4 attached S5 $\frac{1}{2}$ °E 3.33'

8-24-62 G.H.M. & Donald

Affidavit RHM

R9-5680-11 JMC

25. Z-5

Standard Cor sec 31 3 32

Notes of Cass County Survey
E. B. Horst 1921.

Set a large wood post for
Cor. Corner was established
from remains of orig B.T.s as
follows:

W. Pine 7" N 63°W 23.1'

Aspen 10" N 35°E 74.6'

See Book 6A
#2 page

CERTIFICATE FILED

26 T-2

West Center 1/6 sec 30

Notes of Cass County Surveyor

E. B. Horst 1921

taken from County Record Book C

Page 447.

IRON MONUMENT: Found a 1 1/2" inside dia.
iron pipe wired to a fence corner. pipe
is not set in ground measured to SMC on
west shore of Howard Lake & dist. is 31 feet
short of the called 180 feet. 9-17-62 GJM

CERTIFICATE FILED

27. W-1

North $\frac{1}{4}$ Cor Sec 31

ON west side

Notes of Cass County Surveyor

EB Horst 1921,

Taken From County Record Book # e

Page 446.

~~Iron Monument~~
Iron Monument: (Found in place

Cass Co. surveyor Harold Curo has
marked new BTs. Corner is on East
side of a large field and south of an
old road leading to Howard Lake.) RHM

CERTIFICATE FILED

28.

North West $\frac{1}{4}$ sec 31

Notes of Cass County Surveyor

E.B. Horst 1921

taken from County Record Book C

Page 446.

Iron Monument.

15
CERTIFICATE FILED

29 V-2

West $\frac{1}{4}$ Sec 30 3 31

Notes of Cass County Surveyor

E B Horst 1921

taken from County Record Book C

Page 446.

Iron Monument: Found in place
marking corner. 2-27-63 *THM*

CERTIFICATE FILED

30 V-4

East 1/16 Sec 30 & 31

Notes of Cass County Surveyor
E.B. Horst 1921.
Taken From County Record Book c
Page 446.

Iron Monument: (Found a $1\frac{3}{4}$ " inside
dia. iron pipe marking corner - this
is alongside a very old fence corner
est. to be 30 years old. Fence post are
now fallen down.)

Set a 6" dia. 5' long cylindrical
concrete monument capped with a
3" dia. bronze tablet stamped:

T141N R31W

$$E \frac{1}{16} \begin{array}{l} S 30 \\ S 31 \\ 1962 \end{array}$$

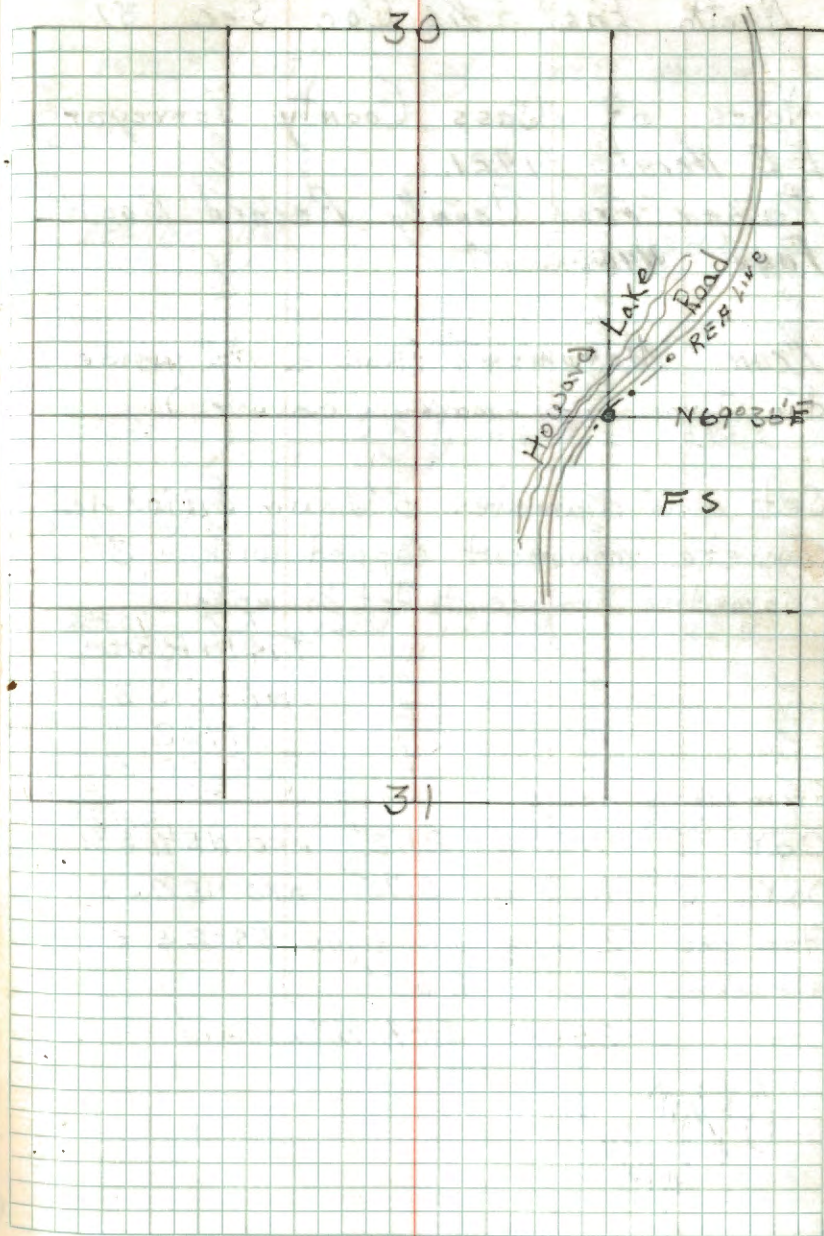
RLS No 3628

Oak 6" S4'2"E 93.3' mko BT-1BT
Cedar post 4"x4"x72" with sign 54-2 attached
N79°30'E 2.35'

Steel sign post 72" long with signs 54-2
& 54-4 attached South 2.3'
5-25-62 G.H.M. Donald

Affidavit RHM

R9-5680-11 dte



31 W-4

North East $\frac{1}{16}$ Cor Sec 31Notes of Cass County Surveyor
EB Horst 1921Taken From County Record Book^c
Page 446. mentIron Monument (Now a $1\frac{3}{4}$ " inside
dia. Iron pipe marking corner.)Set a 6" diameter 5' Long cylindrical
concrete monument capped with a 3"
diameter bronze tablet stamped:

T141NR31W

NE $\frac{1}{16}$ S31

1962

RLS NO 3628

From which bears

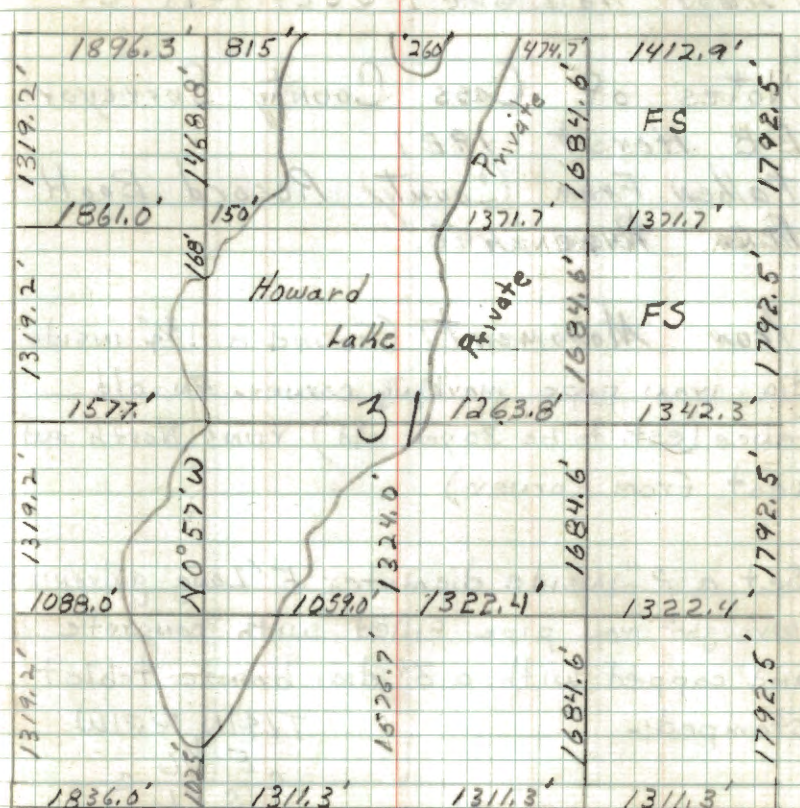
Oak 7" N20°E 21.2' MKD NE $\frac{1}{16}$ S31 BTOak 8" N62°W 2.75' MKD NE $\frac{1}{16}$ BTSteel post 72" Long with signs 54-2 & 54-4
attached South 2.65'

5-25-62 R.H. McDonald

OK
9/6/62

Affidavit RHM

R9-5680-11 JHE



32 Center
X-4 East $\frac{1}{16}$ Cor Sec 31

Notes of Cass County Surveyor
EB Horst 1921
taken from County Record Book
C Page 446.

Iron Monument: (Found a $1\frac{3}{4}$ " inside
dia. iron pipe marking corner. An old
fence (est. to be 30 year old) runs North and
west from corner)

Set a 2" inside diameter 5' Long galvanized
wrought iron pipe filled with concrete
and capped with a 3" dia. bronze tablet
stamped:-

T141N R31W

E $\frac{1}{16}$ c

S 31

1962

RLS NO 3628

EB Horst

Jack pine 12" N10 $\frac{1}{2}$ °E 19.3' MKD CE $\frac{1}{16}$ S31BT
Steel sign post 72" Long North 2.15'
Steel sign post 72" Long S79°W 2.85'
Signs 54-2 & 54-4 are attached to the
steel posts. 5-25-62 R.H. McDonald

Affidavit RHM

R9-5680-11 dnc

T141N

R31W

31

South East $\frac{1}{4}$ Cor Sec 31

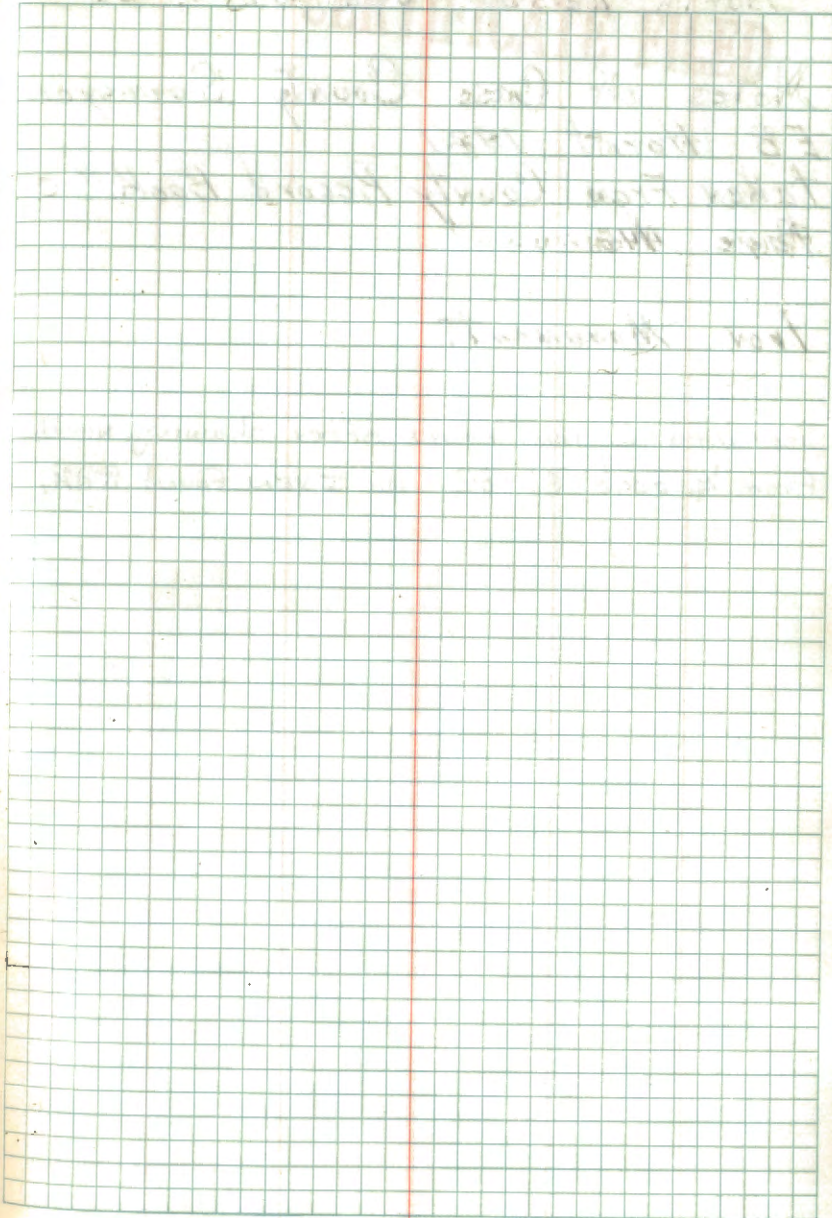
Notes of Cass County Surveyor

EB Horst 1921

taken from County Record Book #C

Page 446.

Iron Monument.



34 W-5

North $\frac{1}{4}$ Cor Sec 31 3 32

Notes of Cass County Surveyor
EB Horst 1921
taken from County Record Book # C
Page 446.

Iron Monument.

Searched 2 man hours after chaining north
from $\frac{1}{4}$ Sec's 31-32 No Iron Found RHM

R-9-5680-11
RHM

CERTIFICATE FILED

35 V-5
Section Cor 29-30-31-32

Notes of Cass County Surveyor
EB Horst 1921.
taken from County Record Book
C. Page 446.

Iron Monument:

see page 10
Book # 2

53-18
CERTIFICATE FILED

36 South $\frac{1}{6}$ Cor sec 31 - 32

Notes of Cass County Surveyor
EB Horst 1921
taken from County Record Book
C, Page 446.

Iron Monument

CERTIFICATE FILED

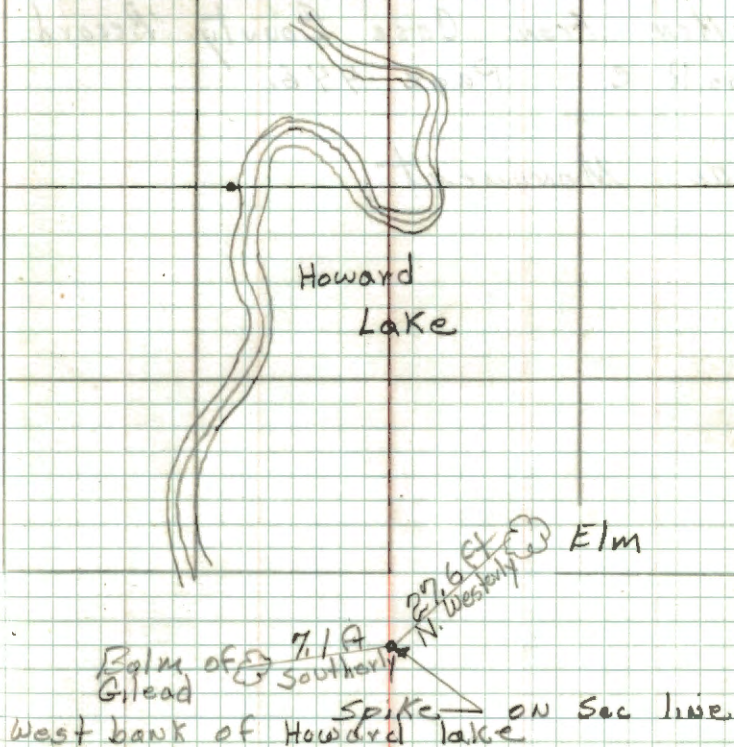
37
V-2,3 M. C. West Bank Howard Lake $\frac{30}{31}$

Sec 30-31

Notes of Cass County Surveyor
EB Horst 1921
Taken From County Record Book C
Page 446.

Iron Monument (Not found in lake)
I set transit over $\frac{1}{4}$ Corner of Sec's
30-31 then sighted the West $\frac{1}{16}$ corner
of sec's 30-31 I then establish a new
S.M.C. on West bank of Howard Lake
where the E-W line intersects shore.
2-27-63 *AM Donald*

CERTIFICATE FILED



M. C. West Bank Howard Lake sec 31
168' South of North West $\frac{1}{6}$ " "

Notes of Cass County Surveyor

E. B. Horst 1931.

Taken from Cass County Record
Book c Page 446.

Iron Monument

CERTIFICATE FILED

M.C. West Bank Howard Lake Sec 31
150' East of North west $\frac{1}{4}$ Cor.
Notes of Cass County Surveyor
E.B. Horst. 1921.
taken from County Record Book
C Page 446.

Iron Monument:

CERTIFICATE FILED

40. 2, V-3

M.C. South Bank Howard Lake
ON the North-South & sec 30

Notes of Cass County Surveyor

E.B. Horst 1921

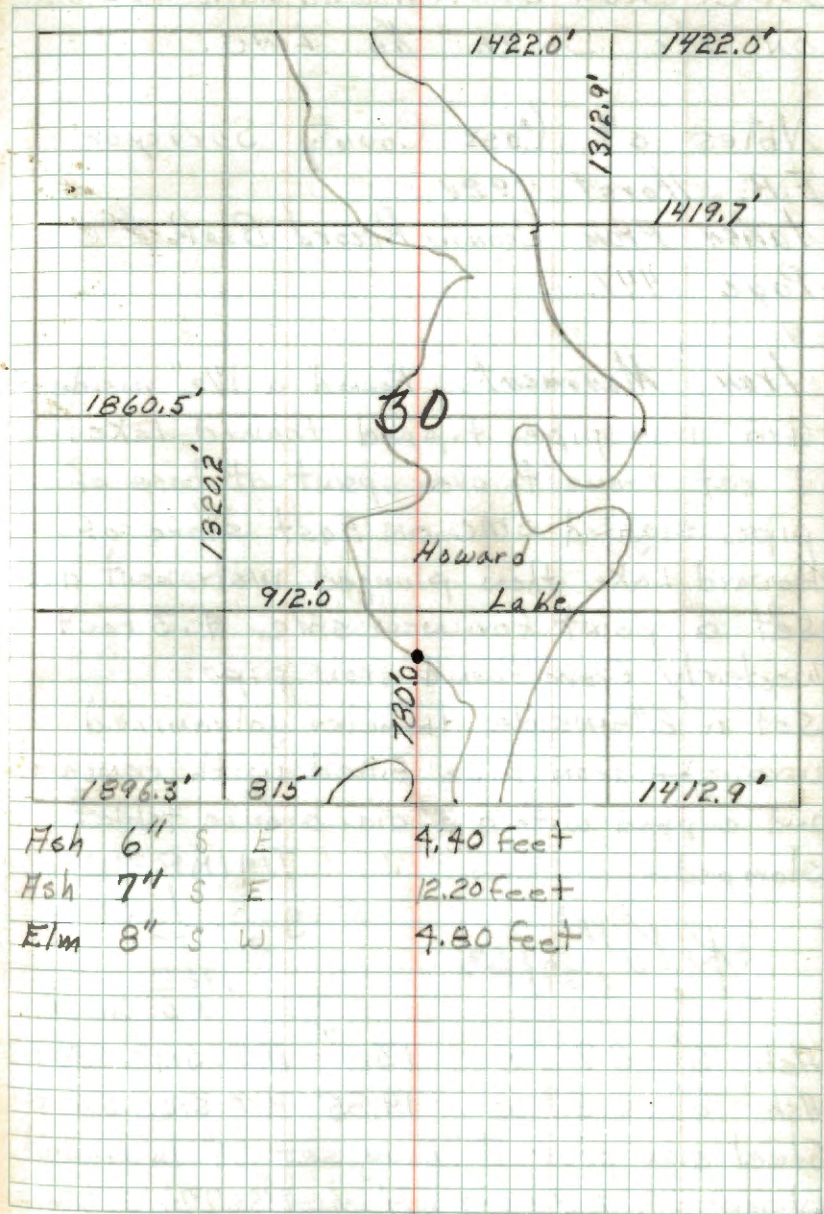
Taken From County Record Book # C

Page 447

IRON Monument: (Found a 2" dia. iron
pipe near shore. Pipe is tipped to East)

I extended a Transit line from the $\frac{1}{4}$ cor.
Sec's 30-31 North to the SMC on North
bank of lake, this SMC having been
perpetuated by Co. surveyor Harold Curo.
I then set SMC on South bank of lake
back from waters edge and marked
three new bearing trees. - 2-27-63

Robert H. McDonald



41. 21-2,3

M.C. West Bank Howard Lake Sec 30
on the South 1/2 Line.

Notes of Cass County Surveyor

E.B. Horst 1921

taken From County Record Book # c

Page 447.

Iron Monument: Found a 1 1/2" inside
dia. iron pipe tipped toward lake.
I set transit over point at base of
pipe sighted SMC on East shore of
Howard Lake then plunged instrument and
set a point for new SMC 4.3 feet
westerly from found iron pipe.

Set a 2" inside diameter galvanized
wrought iron pipe filled with concrete
and capped with a 3" dia. bronze tablet
stamped:-

T/41NR31W

S S / S SMC
30

1962

RLS NO 3628

Ash 6" S 7 1/2° W 13.4' MKD SMC S30 BT

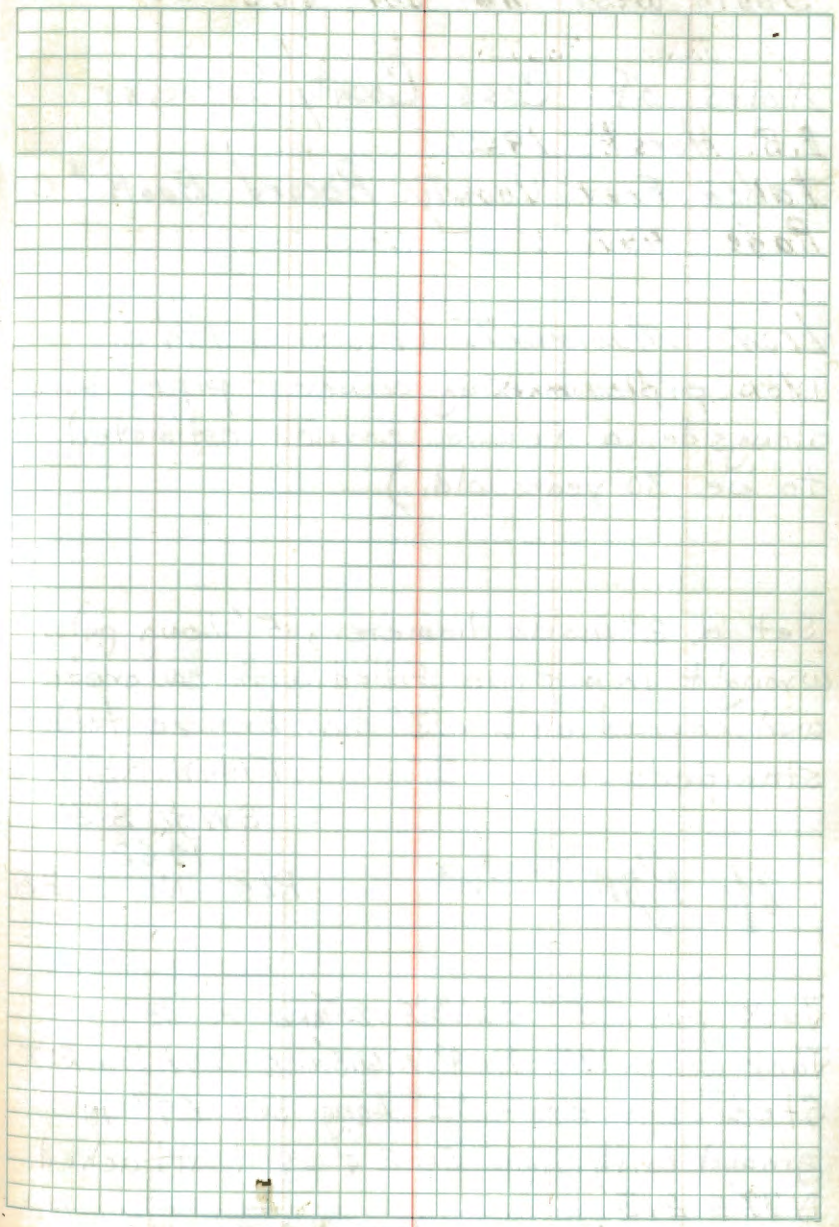
Ash 6" S 57° W 19.85' MKD SMC S30 BT

Steel sign post 72" long set 24" in ground

w/signs 54-2 & 54-4 attached S 67° W 2.06

9-17-62 RHM Donald

affidavit
RHM



42. 21-2

South West $\frac{1}{6}$ Cor Sec 30

Notes of Cass County Surveyor

E.B. Horst. 1921.

Taken From County Record Book # C
Page 447.

IRON Monument, (Found a $1\frac{3}{4}$ " dia
iron pipe marking corner - pipe is
alongside a fence corner estimated
to be 30 years old.)

Set a 2" inside diameter, 5' Long galv.
wrought iron pipe filled with concrete
and capped with a 3" dia. bronze tablet
stamped:

T14.1N R31W

SW $\frac{1}{6}$ S 30

1962

RLS NO 3628

ofc Jim 3/27/63

Jack pine 5" S66 $\frac{1}{2}$ °E 19.5' MKD x BT

Jack pine 9" N64°W 61.3' MKD SW $\frac{1}{16}$ BT

Steel sign post 72" long set 29" in
ground with signs 54-2 & 54-4 attached
N79°E 2.3'

7/20/62 R.H. M. Donald

Affidavit RHM

R9-5680-11 d/NE

43. 9-5

North 1/6 Sec 29-30

Notes of Cass County Surveyor

E.B. Horst 1921

Taken From County Record Book # C

Page 447.

Iron Monument: (Found the corner marked by a 1 1/2" dia iron pipe.)

Found a F.S. Metal location poster on a 7" Oak put up in 1945 4 feet west of corner.

Set a 2" inside dia 5' long galvanized wrought iron pipe filled with concrete and capped with a 3" dia. bronze tablet stamped:-

T 1/4 N R 31 W

N

1/6

S 30 | S 29

1962

RLS No 3628

Red Pine 22" S 63° W 31.0' mko N 1/6 S 30 BT

Oak 8" N 53 1/2° E 3.5' mko N 1/6 S 29 BT

Steel sign post 72" long set 2' in ground with signs 54-2 & 54-4 attached S 70° W 2.05'

6-8-62

E.H. McDonald

Affidavit R.H.M.

A9-5630-11 2/16

30

N 29

Old E-W survey line partly visible Bears N 70° E. Corner is near top of a hill on East slope.

14. S-4

North East $\frac{1}{4}$ Cor Sec 30

Notes of Cass County Surveyor

E.B. Horst 1921.

Taken From County Record Book # C

Page 447.

IRON Monument. (Found a $1\frac{1}{2}$ " dia. iron pipe marking corner on a brushed out survey line from a M.C. on Howard Lake. Found a F.S. metal location poster on a 9" Aspen 5' NE of corner put up in 1945 by Hanson & Countryman.)

Set a 6" diameter 5' long cylindrical concrete monument capped with a 3" dia. bronze tablet stamped:-

T141NR31W

NE $\frac{1}{4}$ S30

1962.

R.L.S. NO. 3628

Oak 5" N26°W 8.95' MKD x BT

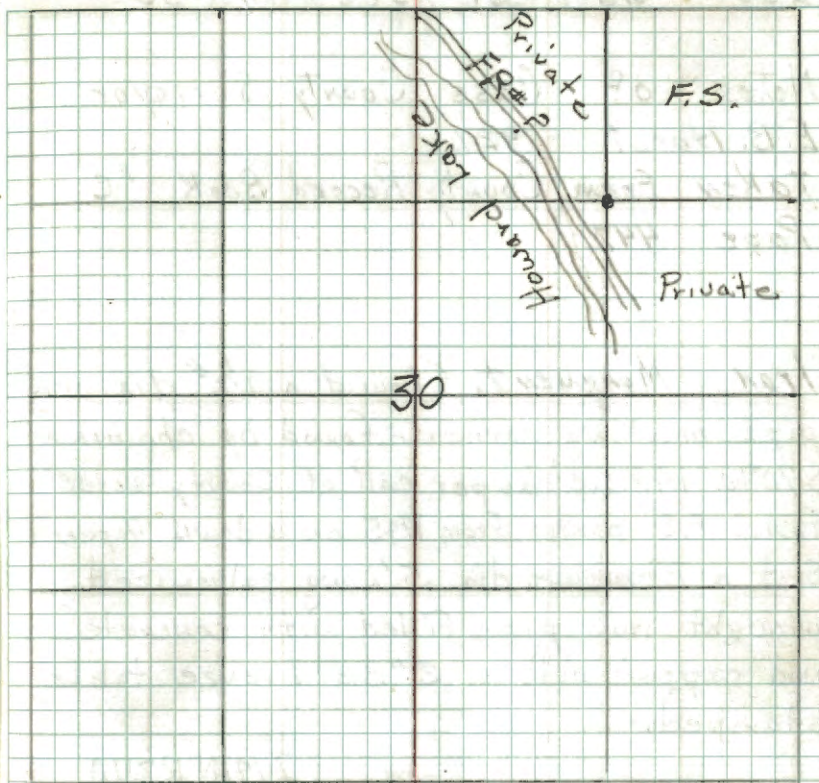
Oak 14" S56°W 27.5' MKD NE $\frac{1}{4}$ BT

Steel sign post 72" long set 2' in ground with signs 54-2 & 54-4 attached N66°E 21'

6-8-62 G.H. McDonald

Affidavit RHW

R9-5680-11 & NE



Corner is approx 320' East of Road - Line bears N70°E

45. R-4
East $\frac{1}{6}$ Cor Sec 19-30

Notes of Cass County Surveyor
E. B. Horst 1921
Taken from County Record Book #C
Page 447.

Iron Monument. (Found a $1\frac{1}{2}$ " dia iron pipe marking corner - found by chaining S70°W 1422.0' as per call of County Notes) (Found F.S. poster from 1945 on a down Aspen) Set a 2" inside dia. 5' long galvanized wrought iron pipe filled with concrete and capped with a 3" dia. bronze tablet stamped:-

OK $\frac{1}{2}$ 3/27/63

T141N R31W

E $\frac{1}{6}$ S19
T16 S30

1962

RLS NO 5628

Red pine 4" S63°E 19.1' MKD BT

Steel post 72" long N70°E 1.5' SAME CRK 54-71

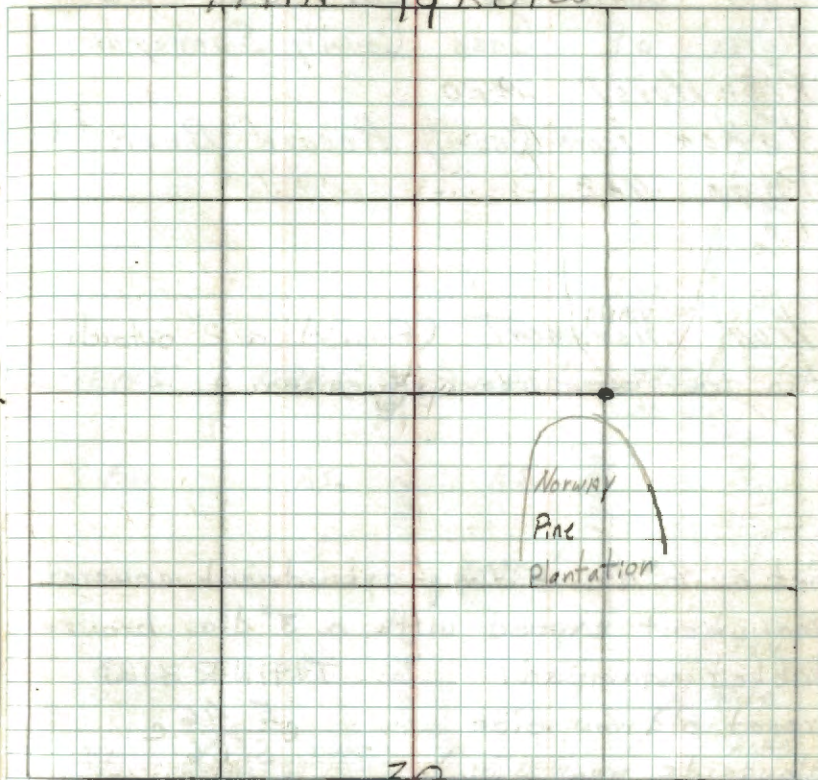
Steel post 72" long South 2.75' SAME CRK 54-71

Signs 54-2 & 54-9 attached to the steel posts. 5-25-62 (R. McDonald)

Accidavit RHM

R9-5680-11 dte

T141N R31W



This monument was found to be
70' ± S of true line by survey
of section 19 who 1968

Reset monument 5-4-71

Witnessed by

5" White Oak N31°E 26.6 ft. scribed E $\frac{1}{6}$ S19 BT

6" Red Oak N84°E 29.4 ft. scribed E $\frac{1}{6}$ S19 BT

7" Norway Pine S3°W 66.9 ft. scribed E $\frac{1}{6}$ S30 BT

Same tree as 1962
4" Norway Pine

5-4-71 Curtis R. Kramer

46. T-20

East Center 1/6 Cor sec 26

Notes of Cass County Surveyor

E. B. Horst 1920.

taken from County Record Book # C

Page 462.

Iron Monument (found a 2" outside dia. iron pipe marking corner.)

Set a 6" dia. 5' long cylindrical concrete monument capped with a 3" dia. bronze tablet stamped:-
T141N R31W
E 1/6
S 26
1962
alongside new mon.)

RLS NO 3628

M. J. Finn 3/28/63

New Bearing trees:-

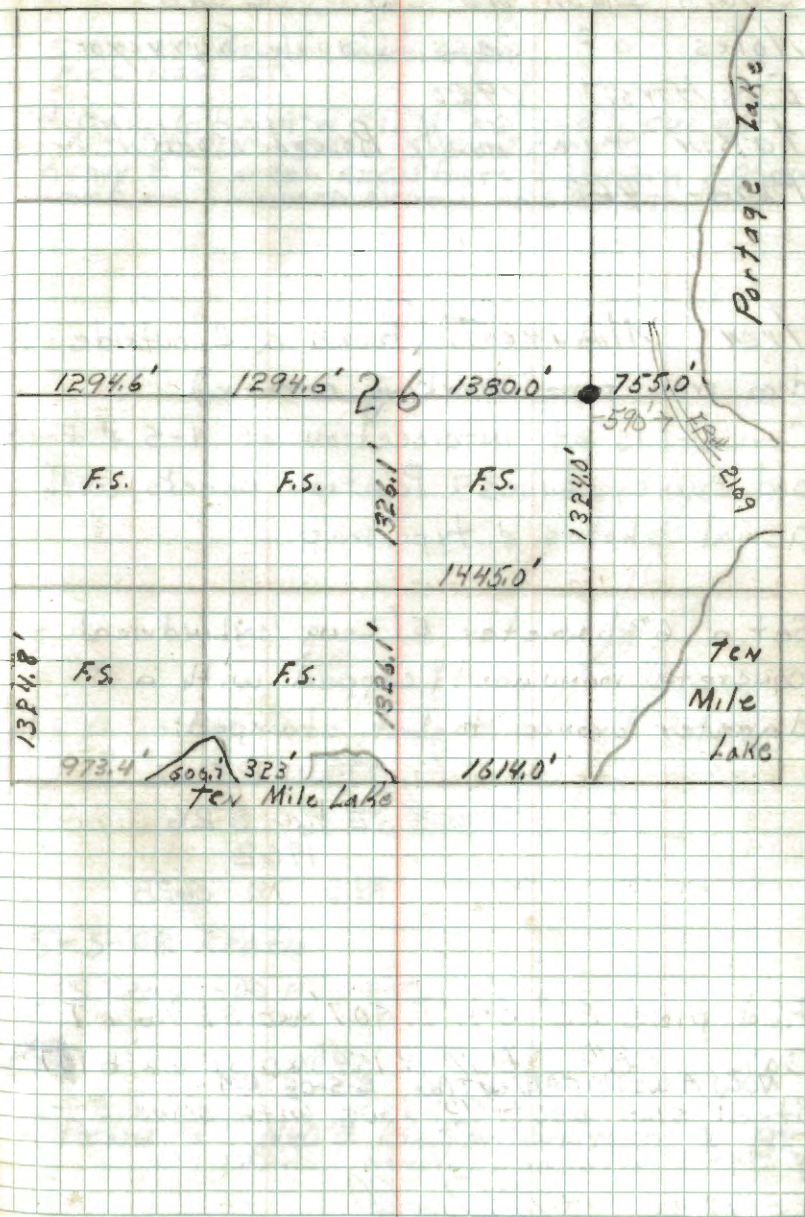
Red Pine 17" N16°E 53.6' MKD C E 1/6 BT

Red pine 17" S71°W 25.9' MKD C E 1/6 BT

4-24-62 R. H. McDonald

Affidavit RHM

R9-5680-11 d/12



47. 21-20

South East 1/4 Cor Sec 26

Notes of Cass County Surveyor

E. B. Horst 1920

Taken from County Record Book # C

Page 462

Iron Monument. (Found a 2" outside dia. iron pipe marking corner)

Corner is at intersection of N-S & E-W old survey lines. Position checks with aerial photos & type map

Set a 6" diameter 5' long cylindrical concrete monument capped with a 3" diameter bronze tablet stamped:-

T141N R31W
SE 1/4 S26
1962
RLS. NQ 3628

Red pine 22" S41°E 40.7' MKD SE 1/4 BT OK

Oak 8" S67°W 15.9' MKD SE 1/4 BT ~~OK~~

NOW A WINDFALL/W/TAG 5-5-08 RM
Steel sign post 72" long with signs 54-2

& 54-4 attached ^{dup} North 2.35'

5-17-62 *(Signature)*

6-17-62

R9-5680-11 2 NE

5-20-80 BRAMA SCHOONOVER
MKD NEW BT

W. OAK 6" N19°W 31.79' MKD SE 1/4 S26 BT
NOW ± 30 FT SNAG 5-5-08 RM 16
HEAVY 8 FT STEEL SIGN POSTS 3.21 NORTH 2.9 WEST.
LINE TO STANDARD NORTH AND WEST

26

F.S. Private

Private Road Private Lake

5-5-08 R MAIN

GPS IRON ADD NEW BT.

R PINE 7" N60°E 15.65 FT SAK MKD: X BT

48. S-17

North $\frac{1}{16}$ Cor Sec 27-26

Notes of Cass County Surveyor

ER Horst 1920

taken from County Record Book C

Page 462.

IRON MONUMENT: (Found a 2" outside
dia. iron pipe marking corner under a ^{downed} fence
Line estimated to be 30 years old)

4-3-62 RHM

Set a 2" inside diameter, 5' long galvanized
wrought iron pipe filled with concrete
and capped with a 3" dia. bronze tablet
stamped:-

T141N R31W

N $\frac{1}{16}$

S 27 520

1962

RLS NO 3628

Oak 4" N $59\frac{1}{2}^{\circ}$ E 10.0 MKD X BT

Jack pine 15" N 87° W 69.0 MKD N $\frac{1}{16}$ S 27 BT

Steel sign post 72" long set 2' in ground

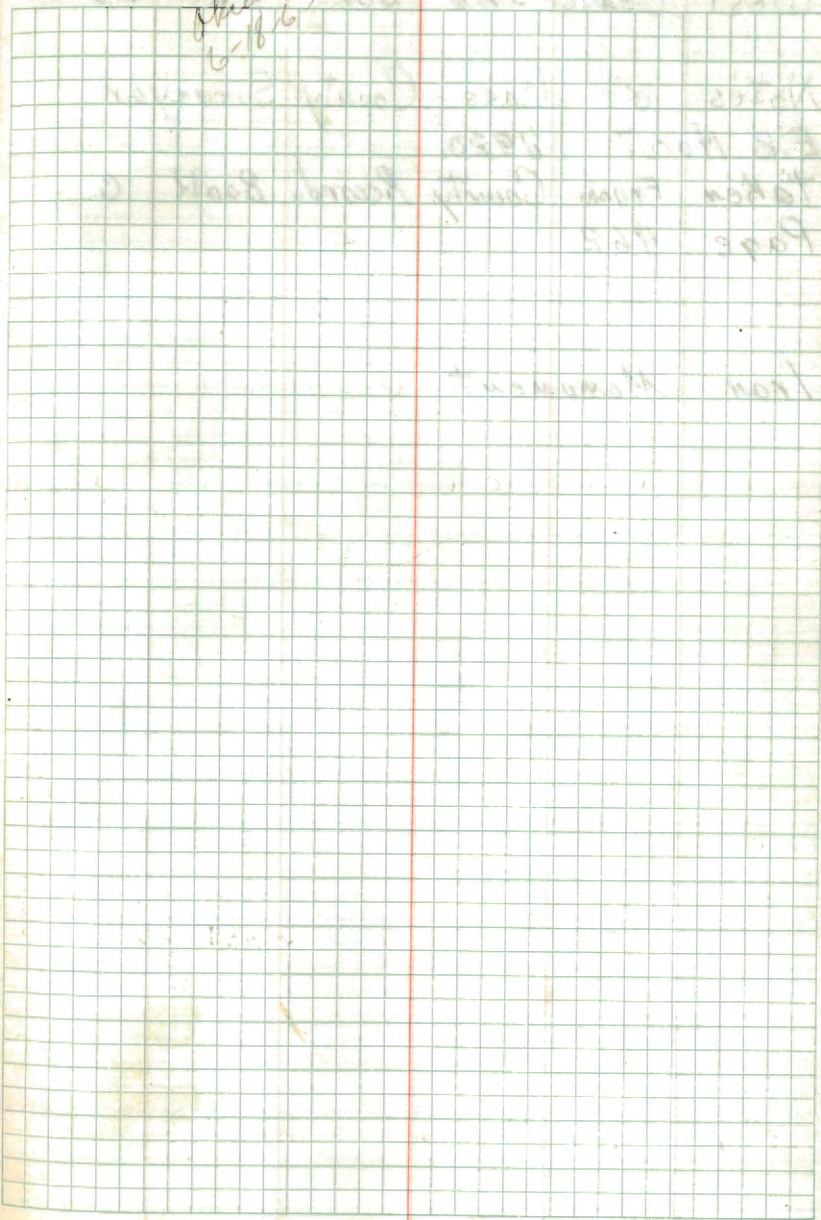
North 2.0'

6/25/62 RHM Double

Affidavit RHM

A9-5680-11 JNE

Shelby 3
6-16-63



West Center $\frac{1}{16}$ Cor Sec 26

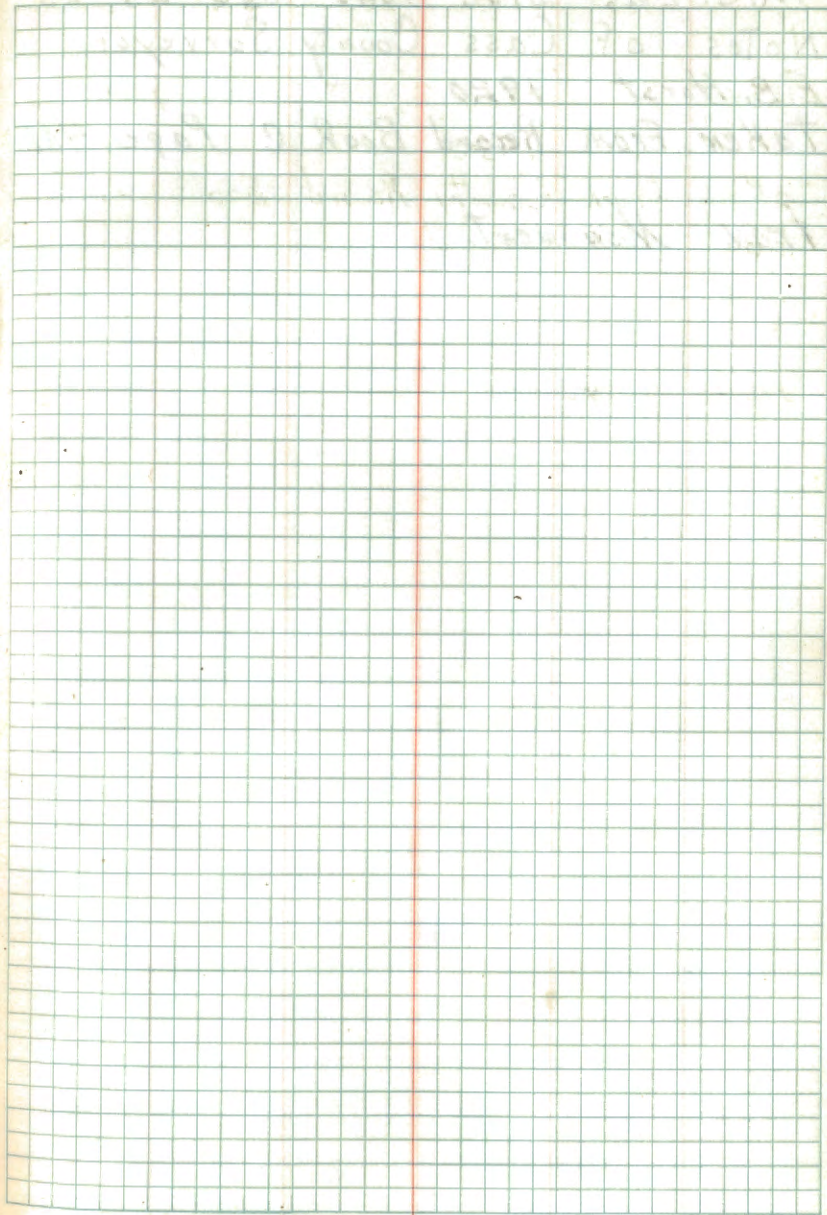
Notes of Cass County Surveyor

E.B. Horst 1920.

Taken From County Record Book C

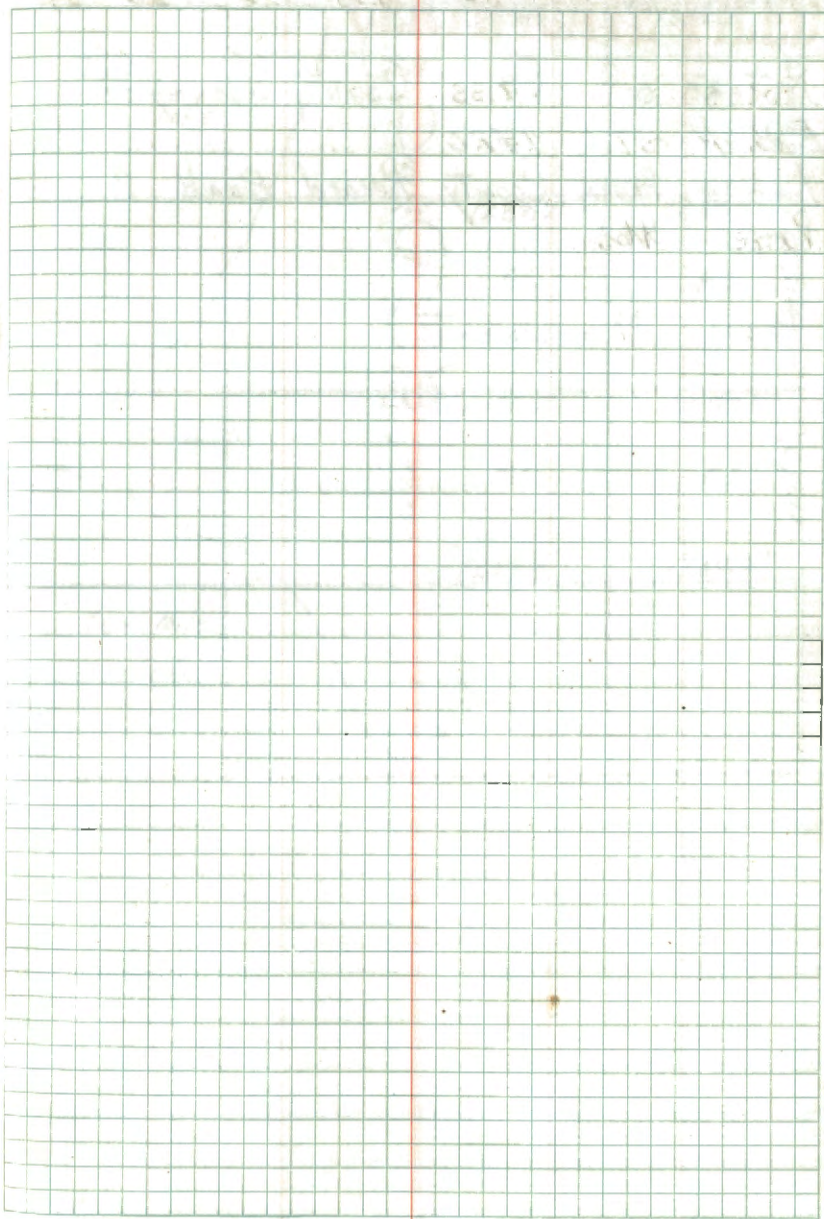
Page 462.

Iron Monument.



M.C. East Side Pond sec 24-25
Notes of Cass County Surveyor
F.B. Horst 1920
Taken from Record Book C Page 461

Iron Monument.



North $\frac{1}{6}$ Cor Sec 25-30-R30-31

Notes of Cass County Surveyor

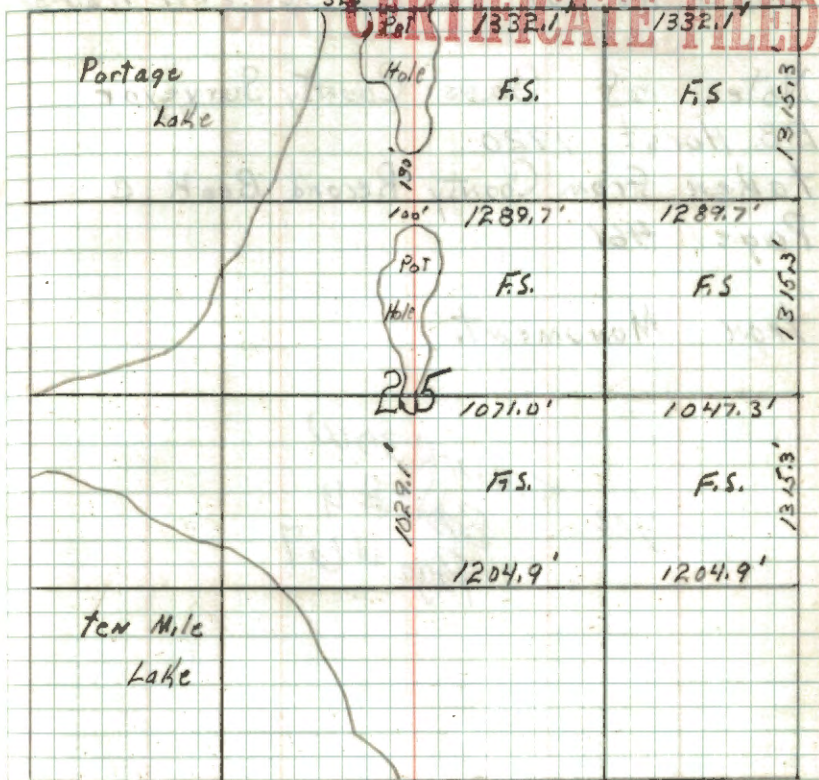
E. B. Horst 1920

Taken from County Record Book C

Page 461

Iron Monument:

CERTIFICATE FILED



52

South $\frac{1}{6}$ Cor Sec 25-30 T141 R30-31

Notes of Cass County Surveyor

E.B. Horst 1920

taken from County Record Book c

Page 461

IRON Monument.

See T141R30W
Book #4
Page #67

CERTIFICATE FILED

M.C. on South Bank of Small Pond
North-South $\frac{1}{2}$ Sec 25, 130'
North of N $\frac{1}{4}$ Cor. Sec 25.

Notes of Cass County Surveyor
E.B. Horst 1920
Taken from County Record Book C
Page 461.

Iron Monument.

54.

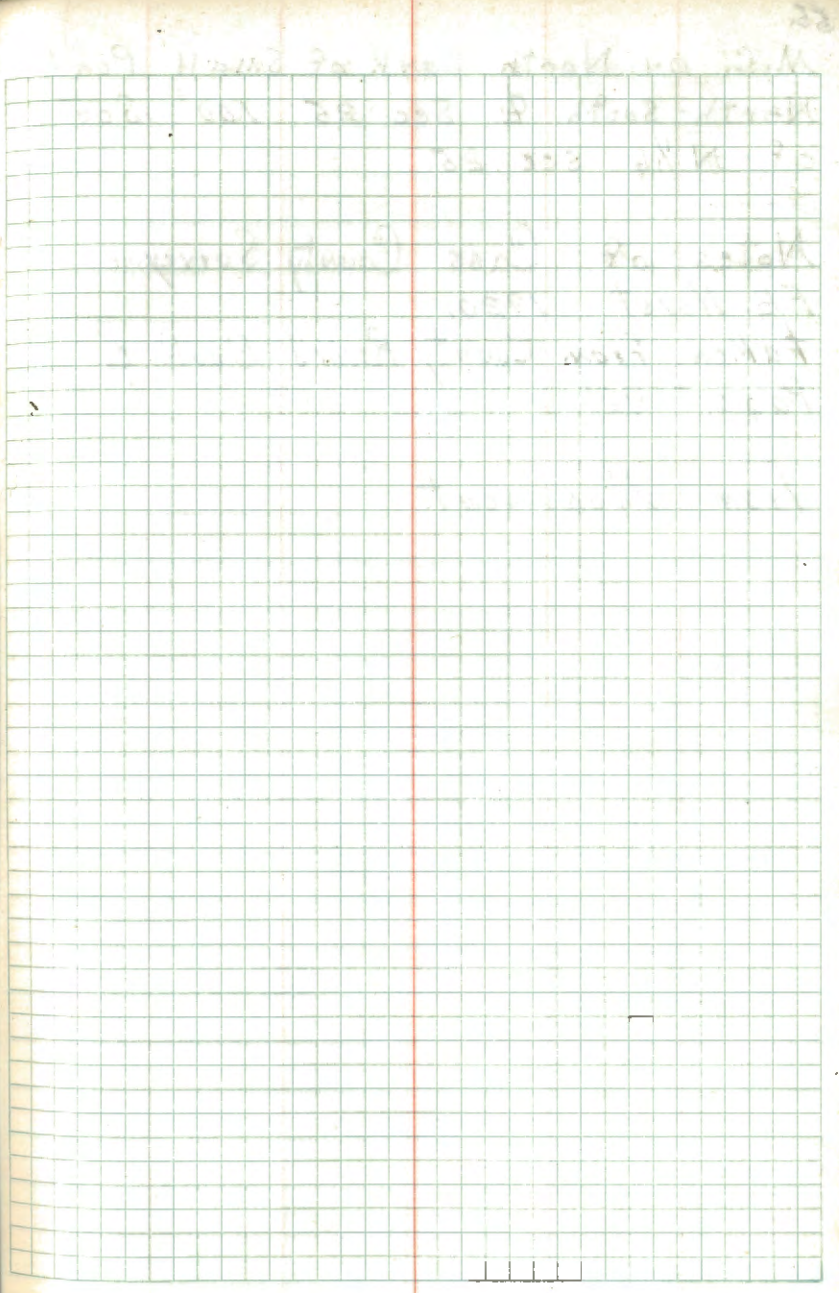
North $\frac{1}{6}$ Cor. Sec 25
Notes of Cass County Surveyor

E. B. Horst 1920.

Taken From County Record Book C

Page 461.

Iron Monument



M.C. on North Bank of Small Pond
 North-South $\frac{1}{2}$ Sec 25 100' South
 of N $\frac{1}{4}$ sec 25.

Notes of Cass County Surveyor

E.B. Horst 1920.

taken from County Record Book C

Page 461.

Iron Monument.

[Faint, illegible handwriting on a grid background]

56.

M.C. South Bank Small Pond on the
North South $\frac{1}{2}$ Sec 25 1029.1'
North of the South $\frac{1}{6}$ Cor Sec 25.

Notes of Cass County Surveyor

E.B. Horst 1920.

taken from County Record Book C

Page 461.

Iron Monument.

57.

South $\frac{1}{6}$ Cor Sec 25

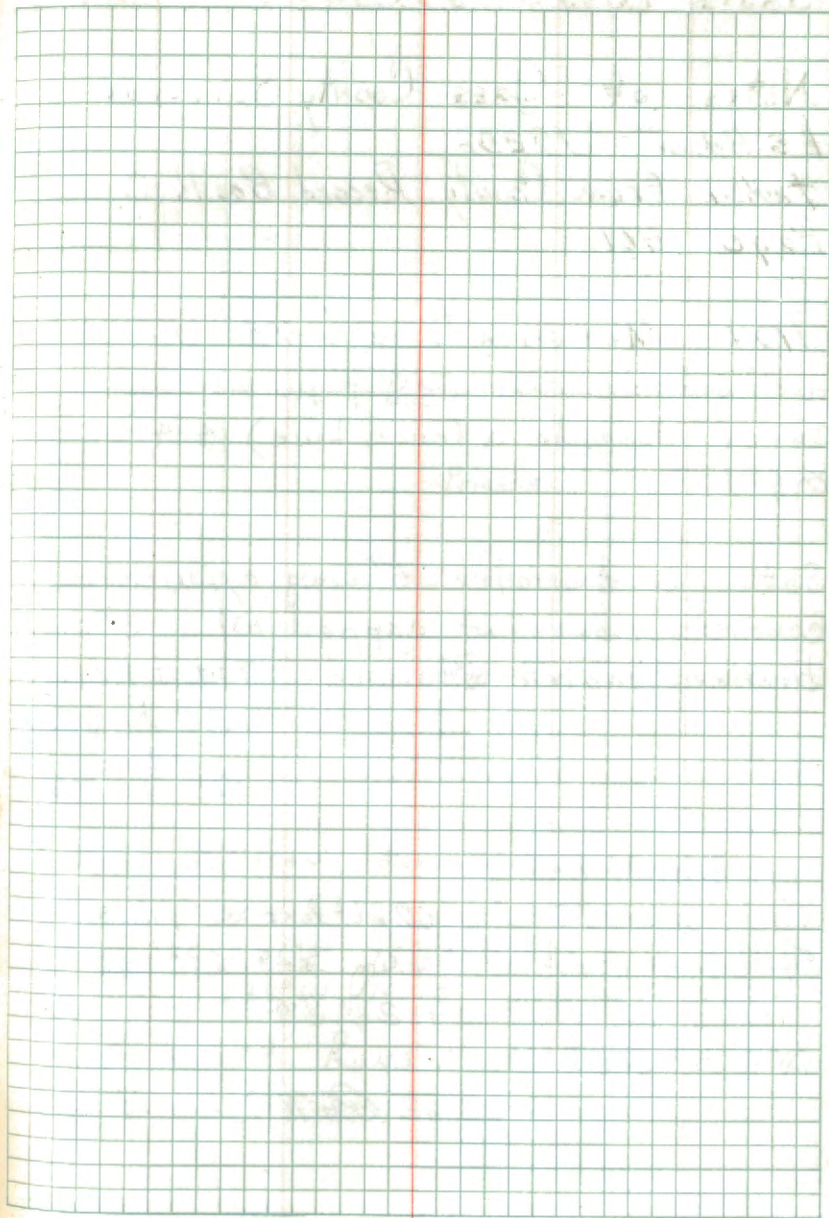
Notes of Cass County Surveyor

E.B. Horst 1920.

Taken From County Record Book C

Page 461.

Iron Monument.



58 71-24

South East $\frac{1}{16}$ Cor. Sec 25

Notes of Cass County Surveyor

E.B. Horst 1920.

taken from County Record Book C

Page 461.

IRON Monument, 2" x 48" (Found
a 2" outside dia. iron pipe marking
corner alongside a fence line) 4-4-62

E#M

Set a 6" diameter 5' Long cylindrical
concrete monument capped w/ a 3" dia.
bronze tablet stamped T191N R31W
SE $\frac{1}{16}$ S25
1962
RLS. NO 3628

From which bears

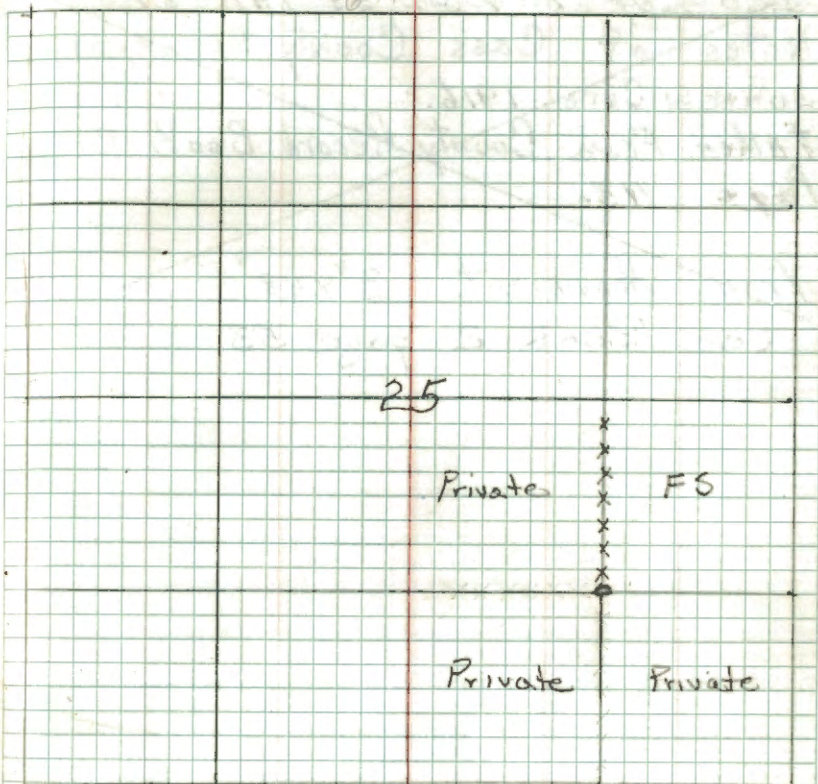
Jack pine 12" S 80° W 67.6' MKD SE $\frac{1}{16}$ BT
Steel sign post 72" long set 2.0' in
ground w/ signs 54-2 & 54-4 attached
N 2° E 3.3'

6-25-62 R.H. McDonald

Affidavit RHM

ok'd
6-17-63

R9-5680-11 & HE



5-18-81 B. Olson Monument & Bts O.K.

Took 2 new Bts

5" W. OAK S 76° E 25.50' MKD. SE $\frac{1}{16}$ S 25 BT5" Ash S 69° W 15.10' MKD SE $\frac{1}{16}$ S 25 BT

LINE to Std. Runs North from CORNER

~~See Cor 5-4-32-33 141-31
Notes of Cass County Surveyor
John W. Curo 1916.
Taken From County Record Book C
Page 113.~~

~~Iron Monument. 2" x 48"
See Book 2 page 53~~

60. ~~Quarter Sec 5-32 141-142-31
Notes of Cass County Surveyor
John W. Cox 1916
taken from County Record Book C
Page 113.~~

~~Iron Monument. 2" x 48"
Sec Book 2 page 52~~

11. Sec Cor Sec 5-6-31-32
 Notes of Cass County Surveyor
 John W. Curo 1916
 taken from County Record Book C
 page 113

IRON MONUMENT 2" x 48"

B.T.S

W. Pine 12" N47°5'E 69.7'

N. Pine 12" N79°W 34.6'

N. Pine 12" S87°E 40.4'

See Book 2 Page 51

62.

142-31

~~Quarter Sec 6 - 31 141-31
Notes of Cass County Surveyor
John Curo 1916.
Taken from County Record Book C
Page 113~~

~~Iron Monument: 2' x 48"~~

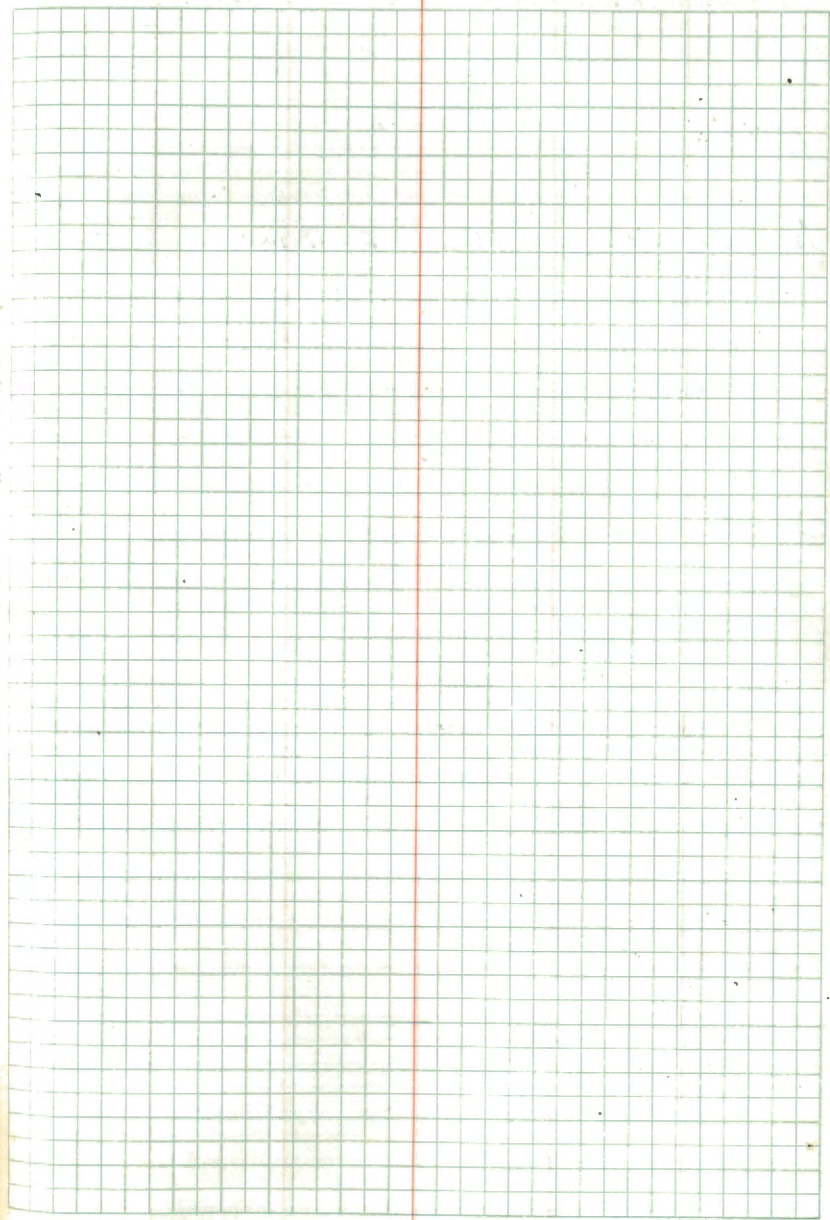
~~See Book 2 page 50~~

Original Note 1575

1257

Hepon 8" 11575

6 Pine 12" 11575

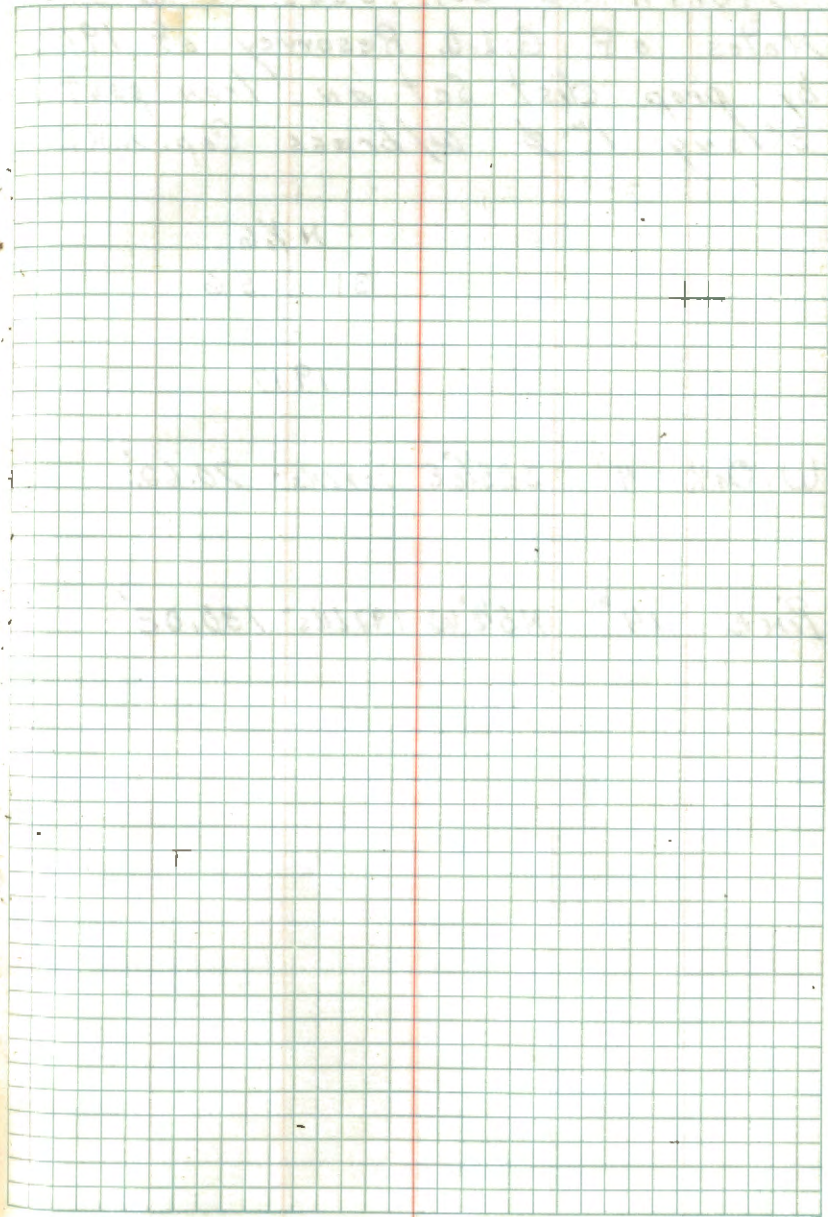


Quarter Cor 6-1

Orig Notes

N. Pine 25" 250 21 186

W. Pine 25" N 58° W 67 186



North $\frac{1}{6}$ Cor. Sec's. 1-6

Notes of F. G. L. O. Resurvey of 1917.
by prop. dist. Set an Iron post
3' long 1" ϕ w/brass Cap. MKD.

N $\frac{1}{6}$

S1 S6

1917

W. Oak 4" S25 $\frac{1}{2}$ °E 107.14s - 70.62'

Pine 14" N5 $\frac{1}{2}$ °W 197.14s - 130.02'

Angle Point #4 Sec's 1-6
 Notes of G.L.D. Resurvey of 1912
 by Prop. distance set an
 Iron post 3' x 9" 1" ϕ
 w/brass Cap MKD.
 652.74' South of $\frac{1}{4}$ Sec's 1-6

HP4

TR

S1 1307 56

API

TR

1306

1917

No accessories to Corven

68

South $\frac{1}{6}$ Con. Sec's 1-6
 Notes of G.L.O. Resurvey of 1917.
 by prop. distance set an Iron
 post 3' long 1" ϕ w/brass
 Cap MKD,

S $\frac{1}{6}$
 S1 S6

1917

W. Oak 4" N28 $\frac{1}{4}$ °E 197 Lks - 130.02'

W. Oak 4" S60 $\frac{3}{4}$ °W 57 Lks - 37.62'

Angle Point #4 Sec's 12-7
 Notes of G.L.D. Resurvey of 1917.
 by proportional dist. set an
 Iron post 3' long 1" ϕ w/brass
 Cap MKD.

AP4

TR

1304 57

S 12

1917

No. accessories to Corner.

70 H-25

South 1/16 Sections 2-12

Notes of GHO dependent resurvey of 1917

Set iron post 3' long 1" ϕ with brass cap *
 marked. (Found bent over $S\frac{1}{16}$
 under surface of old road) $S\frac{1}{16} S 12^{\circ} 57'$
 1917

From which bears:-

Red oak 12" N $68\frac{1}{2}^{\circ}$ E 120 LKS. (79.20') Now
 19" oak stump & Log with blaze facing cor. N 68° E 79.2'
 Red oak 8" S $24\frac{1}{2}^{\circ}$ W 182 LKS. (120.12') Now
 pieces of oak stump in REH clearing S $24\frac{1}{2}^{\circ}$ W 120.12'

* base of iron post is in original location
 of pt. for corner. I replaced old post along
 side new concrete monument.

Set a 6" dia. 24" long cylindrical concrete
 monument capped w/ a 3" dia. bronze tablet

Stamped:-

Note
 Corner is buried 6"
 under old road.

T141N
 R31W R30W
 S $\frac{1}{16}$

S 12 | S 7

1962
 RLS NO 3628

From which bears:-

Oak 8" N $14\frac{1}{2}^{\circ}$ E 76.4' MKD S $\frac{1}{16}$ S 7 BT

^{Twin} Oak 13" S $54\frac{1}{2}^{\circ}$ W 71.15' MKD S $\frac{1}{16}$ S 12 BT

Cedar post 4" x 4" x 72" penta-treated with red
 top S 89° E 10.5 feet w/ signs 54-2 & 54-4

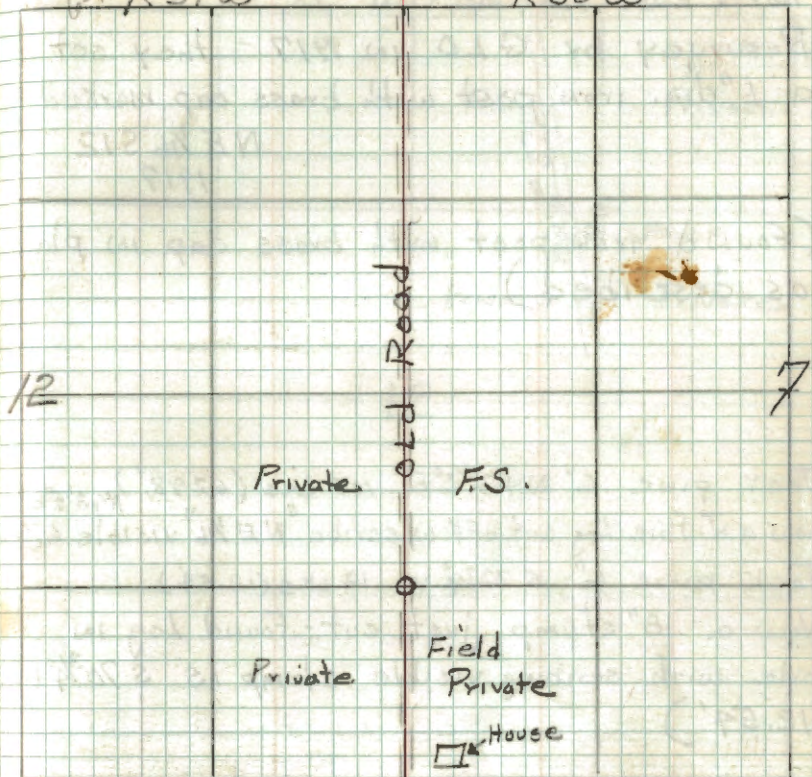
9-25-62 G.H.M. Omal

October
 6-18-63 R31W

T141N

Affidavit
W.H.O.

R30W



9/25/85 CK4JA

FD. MONU. IN PLACE 6" BELOW GROUND AT EAST EDGE
 OF OLD TSP ROAD N+S AND 4' SOUTH OF FENCE LINE
 EAST - 4X4 CEDAR POST IS GONE

W. OAK 10 N 14° E 76.4' SCRIBE CLOSEDTWIN R. OAK 9 S 54° W 71.15' " "

WARNING SIGN (UNDER GROUND BURIED CABLE.)
 8" CEDAR POST N 48° E 5.45' NAIL 4 FSLP
 SET 48" L IRON STEEL POST E SIDE OF MONU.

71 F-24

North East 1/16 Section 12

Resurvey by GLO in 1917 - they set
a 1" dia. iron post with brass cap marked

NE 1/16 S12
1917

(Found iron post with brass cap in place
as described)

Jack pine 6" N43¹/₂°E 103 LKS (67.98') N43¹/₂°E
(Now a J. Pine Log cut off w/ scribe "NE 1/16" visible 67.28)

Jack pine 6" S70³/₄°W 19 LKS (12.54')

(Now a 18" stump just cut - Found Log in
pile with scribing visible stump is S70³/₄°W
12.54')

Set a steel post with signs 54-2 & 54-4
West 2.6' - Found - removed

A cedar post 4" x 4" x 72" penta-treated with
red top North 2.9' Found OK

5-14-62 R.H. McDonald

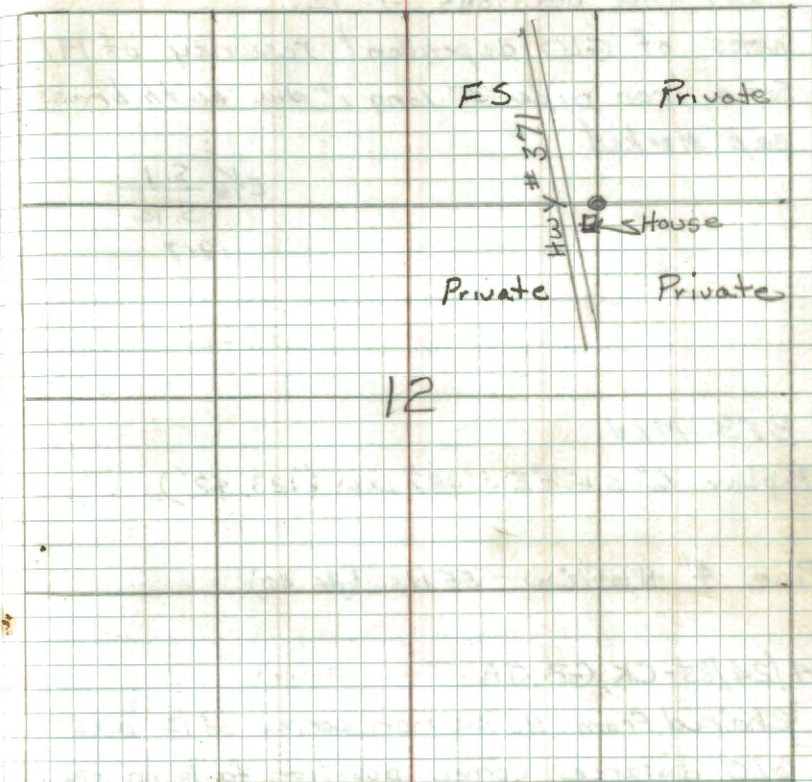
6/20/85 - CK, GB

Found iron pipe with B.C. set 6"
above the ground in good condition.

Corner approx. 35' north of the NE
corner of a garage.

Affidavit RHM

A9-5680-11 dte



SET BTS:

W. Oak 8" N16W 11.48' MKD NE 1/16 S12 BT

W. Oak 5" N42E 41.47' MKD BT

W. Oak 8" N81W 66.82' MKD NE 1/16 S12 BT

72 E-24

East 1/16 Sections 1-12

Notes of GLO dependent resurvey of 1917

Set a iron pipe 3' long, 1" dia. with brass cap marked.

E 1/16 S. 1
S. 12
1917

BT's Mkd.

Poplar 6" S 15 1/2° E 187 LKS. (123.42')

Pine 4" N 6 1/2° W 55 LKS. (36.30)

4/24/85-CK, GB, JA

Chained from NE section corner of 12 west GLO distance. Corner position falls in the right-of-way clearing for Hwy. 2000. Found no evidence of corner or BT's.

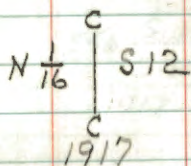
C.G. Done 5/15/85

N 88° W 1181.4'

73 F-23

Center North 1/16 Section 12

GLO survey of 1917 set iron post 1" dia. with a brass cap marked



(Found the iron post with brass cap marking corner.)

From which bears:-

Jack pine 8" S 27.34° E 41 Lks. (27.06')

(Now a 12" Jack pine scribed "N 1/16 S 12 BT S 28 E 27.06')

Jack pine 12" N 73° W 68 Lks. (44.88')

(Now a Jack pine stump with one scribe mark visible N 73° W 44.88')

Set a steel post 72" long with signs 54-2 & 54-4 East 2.8'

Cedar post 4"x4"x72" penta-treated with red top North 2.4'

5-14-62 R.H. McDonald

7/26/85 G.B., R.F.

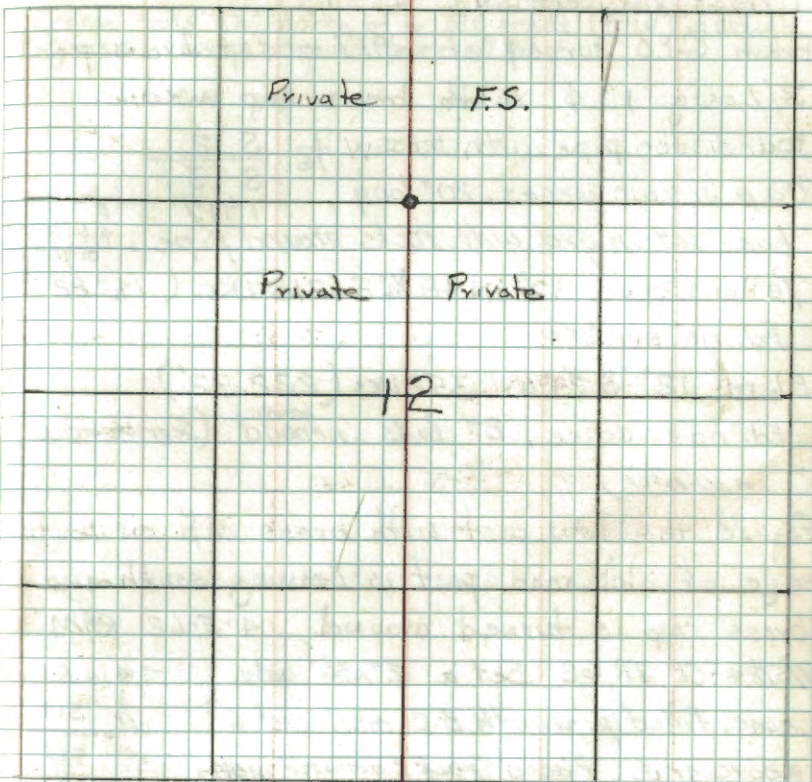
Fd. iron pipe with B.C. set 8" above grd. and set in place. Fd. 4x4 and sign in place. Fd. 15" J. Pine S 28 E 27.06'

Scribe seems to be rotted out. Rescribed BT

Fd. J.P. stp with blaze at N 73° W 44.88'

Affidavit RHM

R9-5680-11 ditto



~~Corner is in an open clear cut area.~~

7/26/85

Mkd. New BT'S:

1. N.P. 14" N 23° W 63.45 CN 1/16 S 12 BT

2. W. Oak 5" N 65° E at 52.11' CN 1/16 S 12 BT

74 J-22

West 1/16 Sections 12-13

From GLO survey of 1917 - set Iron post

3' Long 1" ϕ with brass cap mkd:-

Found iron pipe with brass w $\frac{1}{16}$ S 12

Cap in two pieces. 20" long S 13

base set in grd with rocks around pipe. 1917

B.C. with 18"
pipe set also
in grd

Yellow pine 12" N 48 $\frac{3}{4}$ E 218 Lks. (193.88')

Fd. no evidence

ELm 12" S 29 W 352 Lks (232.32')

Fd. no evidence. BT falls in ^{beaver} pond. (Search done
in winter)

Found the iron post with brass cap on North

edge of old road post is leaning south and

brass cap is turned around. 4-5-62 RHM

9/5/84-CK, JA, GB Set a 2"x36" galv. TAIN R31W

conc. filled pipe with B.C. mkd set 6" W $\frac{1}{16}$ S 12

above grd. Placed rocks around mon. S 13

Mkd New BT'S: 1984

1. W. Oak 2" S 71 E 31.75' Nail & Tag

2. Ash 10" S 06 W 87.25' W $\frac{1}{16}$ S 13 BT

3. Double W. Oak 7" N 45 W 25.25' W $\frac{1}{16}$ S 12 BT

Set both pieces of pipe and B.C. on north side
of new monument and under ground.

R9-5680-11 218

Corner falls 10' north of a old grade (E-W) in slough
grass, large beaver pond S.W.

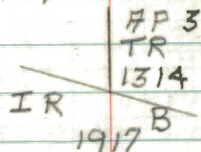
75 J, K-2R

Indian reservation boundary between Sects.

13-14 FP 3 Tr 1314

Set iron post 3' long 1" ϕ with brass cap marked:-

(Found in place)



480.98' North to Sec. Cor 11-12-13-14

Cedar 8" N51°E 85 Lks (56.10') (Now a down stub N51°E 56.10' mostly decayed)

Pine 14" S87½°W 186 Lks (122.76') (Now a

Pine windfall w/ few scribe cuts visible S87½°W 122.76') 4-23-62 RHM Donald

Corner is in a alder-willow swamp

To perpetuate this corner I marked

Two new bearing trees:-

Cedar 9" N72½°E 97.2' MKD X BT

Tamarack 11" S41°W 73.5' MKD X BT

Cedar post 4" x 4" x 72" pentat-treated with red top N5°E 2.0 Feet

4-24-62 RHM Donald

Affidavit RHM

R9-5680-11 htc

76 H-25
North $\frac{1}{16}$ Cor. Sec's 13-18

Notes of P.G.L.O. Resurvey of 1917
by prop. distance set on
Iron post 3' long 1" ϕ w/brass
Cap MKD. Found laying beside road
Mr. Norton states that N $\frac{1}{16}$
grader pulled this up S13 S18
Many years ago.

1917

Oak 5" N50°E 103 lks - 67.98'

Now a 13" Oak N50°E 67.98' chopped in scribe $\frac{1}{16}$ visible

Oak 6" S3 $\frac{1}{2}$ °W 81 lks - 53.46'

Not found.

Set a 6" diameter 24" long cylindrical cone
monument capped with a 3" diameter bronze
tablet stamped:

T141N
R31W R30W
N $\frac{1}{16}$
S13 S18
1962
RLS NO 3628

MKD New bearing tree

Red pine 16" S70 $\frac{1}{2}$ °W 81.3' MKD N $\frac{1}{16}$ S13 BT

Cedar post 4" x 4" x 72" long set 24" in ground
penta-treated with red top Due West 50.1'

Oak 5" N69 $\frac{1}{2}$ °W 50.6' MKD "X" BT

9-13-62 A. McDonald

Affidavit 8/17/78

R31W

T14N

R30W

FS.

Private

REF. POST

House

FS.

Private

13

18

4/25/85

FL BRASS CAP 4" BELOW ROAD IN CENTER OF ROAD S
AND IN W WHEEL TRACK OF ROAD NORTH
BOTH 1962 BT'S ARE ALIVE IN GOOD CONDITION
8" W. OAK N69W 50.6' SCRIBE CLOSED
20" N. PINE S70W 81.3' " " "
6LO OAK N50E IS GONE (IN YARD)
4X4 CEDAR POST IN PLACE

6-24-88 LANDECKER + STEVENSON ASSOC.

FL CONCRETE MONUMENT .25' BELOW ROAD
PINE + OAK BT'S. OK
MKD NEW BT
TWIN MAPLE 5" + 8" N30W - 89.45' MKD N $\frac{1}{16}$ S13 BT

77 H, L-25 Affidavit 8/17/78
South Boundary of Indian Reservation

Sec's 13-18

202.62' South of N $\frac{1}{4}$ Cor

Sec's 13-18

Notes of G.L.O. Resurvey of 1917

Set an Iron post 3' long

2" ϕ w/brass Cap MKD.

(Found the "Brass Cap" buried 8" below
surface of Road)

T 141 N

R 31 W | R 30 W

S 13 | S 18

LL 1 RB

1917

Pine 16" N80°E 206 Lks - 135.96'

4/25/85

DISTANCE AND BEARING FALL IN YARD OR LAWN - NO STUMP REMAINS

Oak 8" N1 $\frac{1}{4}$ °W 225 Lks - 148.50'

FALLS IN N+S TOWNSHIP ROAD

MKD New BTs

Oak 7 S89 $\frac{1}{2}$ °W 48.0' MKD x BT

Oak 8" N54°W 57.1' MKD x BT

Cedar post 4" x 4" x 72" penta-treated w/
red top N69 $\frac{1}{2}$ °W 15.8'

9-12-62 R.H. McDonald

4/25/85

NOW 9" W. OAK

SCRIBE CLOSED

NOW 10" W. OAK TWIN (SOUTH)

" "

CEDAR POST IN PLACE

78 J-24

East $\frac{1}{4}$ Cor. Sec's 12-13

Notes of G.L.O. Resurvey of 1917.
by prop. distance set an Iron
Post 3' long 1" ϕ w/brass
Cap MKD.

E $\frac{1}{4}$ S12

S13

1917

R. Oak 12" N9°W 250 Lks - 165.00'

W. Oak 10" S17 $\frac{1}{2}$ °E 240 Lks - 158.40

July 13, 1977

STEFAN, KRANSE, ORESEN

FOUND:

- 1) 18" W. OAK WITH "SCRIBING"
LOCATED AT 10" DBH DEPTH.
- 2) CORNER AREA ON SOUTH EDGE OF
ROAD ABOUT 100' EAST OF ϕ OF 371

4/19/85 CK-GB TF - CC. Done

DUG HOLE 30" X 40" 92" DEEP WITHIN 1' OF WATER

LEVEL TO SOUTH OF ROAD - NO IRON WAS FOUND

SET 50^c SPIKE AT MIDPOINT AND STRAIGHT LINE
BETWEEN SEC. COR. & $\frac{1}{4}$ COR.

OAK STUB 20" DIA X 48" HIGH SISE 160.4' FROM SPIKE

NEGATIVE SCRIBE ON LOOSE PIECE
THIS OAK HAS BEEN CHOPPED INTO AND THEN CUT OFF
WITH CHAIN SAW APPROX. 10 YRS. AGO

4/24/85 CK JA TF

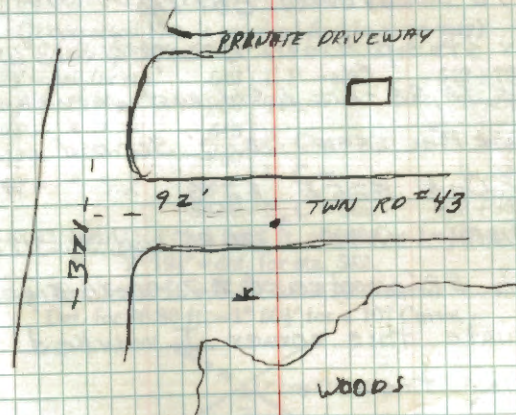
SET: 2" X 2" BRASS CAPPED IRON PIPE MARKED
DOWN 8" IN ROAD SURFACE. CORNER T141NR31W
falls 7' south of ϕ of ROAD EAST S12
and 92' East of ϕ of HWAY 371, E'1/4 S13
CORNER WAS SET MIDPOINT BUT 2' SOUTH
of a straight line in order to hold DIST. 1985
of G.L.O. BT: OAK STUB 20" S16°E 158.40' RLS NO 1595
BTS

N. PINE 6" S42°W 55.77 MKR E'1/4 S13 BT

W. Oak 5" S03°E 70.66 MKR E'1/4 S13 BT

TRIPPLE
R. Oak 11" N06°W 140.10' MKR BT
(SOUTH ONE)

1" Iron pipe N81°W 17.15' (CWD's right of way position)
(down 4")



Line to standard west

South $\frac{1}{6}$ Cor. Sec's 11-12Notes of G.L.O. Resurvey of
1917. by Prop. distance set
on Iron post 3' long 1" ϕ
w/brass cap MKD.(Found the iron post with brass cap
marking corner) S $\frac{1}{6}$

MONU. IS 12" ABOVE GROUND S11 S12

IN ROCK MOUND - ON ASPEN RIDGE

1917

Cedar 10" S69°E 207 lks - 136.62'

Now a cedar stp badly burned S69°E 136.62'

Cedar 10" S12 $\frac{1}{2}$ W 281 lks - 185.46'

Now cedar stump badly decayed S13°W 185.96'

10/22/85 CK, JA, GB - line to std. east & south

Fd. 9" Jack Pine S50W 121.0' Scribed overgrown

Fd. 11" W. Oak S25E 82.6 " "

NEW 85 8" W. OAK N14E 120.85 MKD S $\frac{1}{16}$ S12 BT8" S.P. South 3.8' and east 2.7' - both signs *Cedar 10/22/85*To perpetuate this corner I marked two
new bearing treesOak 8" S25°E 82.6' MKD S $\frac{1}{16}$ S12 BTJack Pine 5" S50 $\frac{1}{2}$ W 121.0' MKD S $\frac{1}{16}$ S11 BT4-23-62 *A. McDonald*Cedar post 4" x 4" x 72" penta-treated with red
top North 0°00' 2.0 feet *RHM*

CURVE TABLES.

Published by KEUFFEL & ESSER CO.

HOW TO USE CURVE TABLES.

Table I. contains Tangents and External to a 1° curve. Tan. and Ext. to any other radius may be found nearly enough, by dividing the Tan. or Ext. opposite the given Central Angle by the given degree of curve.

To find Deg. of Curve, having the Central Angle and Tangent: Divide Tan. opposite the given Central Angle by the given Tangent.

To find Deg. of Curve, having the Central Angle and External: Divide Ext. opposite the given Central Angle by the given External.

To find Nat. Tan. and Nat. Ex. Sec. for any angle by Table I.: Tan. or Ext. of twice the given angle divided by the radius of a 1° curve will be the Nat. Tan. or Nat. Ex. Sec.

EXAMPLE.

Wanted a Curve with an Ext. of about 12 ft. Angle
of Intersection or I. P. = 23° 20' to the R. at Station
542+72.Ext. in Tab. I opposite 23° 20' = 120.87
120.87 \div 12 = 10.07. Say a 10° Curve.Tan. in Tab. I opp. 23° 20' = 1183.1
1183.1 \div 10 = 118.31.Correction for A. 23° 20' for a 10° Cur. = 0.16
118.31 + 0.16 = 118.47 = corrected Tangent.

(If corrected Ext. is required find in same way)

Ang. 23° 20' = 23.33° \div 10 = 2.3333 = L. C.

2° 19 $\frac{1}{2}$ ' = def. for sta.	542	I. P. = sta.	542+72
4° 49 $\frac{1}{2}$ ' = " " "	+50	Tan. =	1 .18.47
7° 19 $\frac{1}{2}$ ' = " " "	543	B. C. = sta.	541+53.53
9° 49 $\frac{1}{2}$ ' = " " "	+50	L. C. =	2 .33.33
11° 40' = " " "	543+	E. C. = Sta.	543+86.86
	86.86		

100 - 53.53 = 46.47 \times 3' (def. for 1 ft. of 10° Cur.) = 139.41' =2° 19 $\frac{1}{2}$ ' = def. for sta. 542.

Def. for 50 ft. = 2° 30' for a 10° Curve.

Def. for 36.86 ft. = 1° 50 $\frac{1}{2}$ ' for a 10° Curve.