

BAT 141 R26 TRAVERSE

T141 R26  
BK 3 TRAVERSE

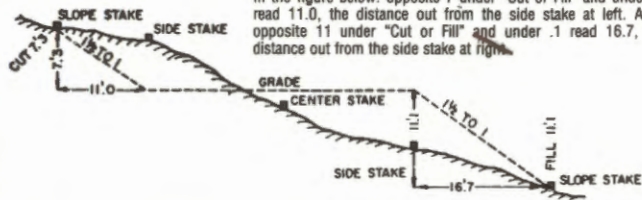


Field Book  
115300

### DISTANCES FROM SIDE STAKES FOR CROSS-SECTIONING

Roadway of any Width. Side Slopes 1½ to 1.

In the figure below: opposite 7 under "Cut or Fill" and under .3 read 11.0, the distance out from the side stake at left. Also, opposite 11 under "Cut or Fill" and under .1 read 16.7, the distance out from the side stake at right.



Cut or Fill	Distance out from Side or Shoulder Stake										Cut or Fill
	0	.1	.2	.3	.4	.5	.6	.7	.8	.9	
0	0.0	0.2	0.3	0.5	0.6	0.8	0.9	1.1	1.2	1.4	0
1	1.5	1.7	1.8	2.0	2.1	2.3	2.4	2.6	2.7	2.9	1
2	3.0	3.2	3.3	3.5	3.6	3.8	3.9	4.1	4.2	4.4	2
3	4.5	4.7	4.8	5.0	5.1	5.3	5.4	5.6	5.7	5.9	3
4	6.0	6.2	6.3	6.5	6.6	6.8	6.9	7.1	7.2	7.4	4
5	7.5	7.7	7.8	8.0	8.1	8.3	8.4	8.6	8.7	8.9	5
6	9.0	9.2	9.3	9.5	9.6	9.8	9.9	10.1	10.2	10.4	6
7	10.5	10.7	10.8	11.0	11.1	11.3	11.4	11.6	11.7	11.9	7
8	12.0	12.2	12.3	12.5	12.6	12.8	12.9	13.1	13.2	13.4	8
9	13.5	13.7	13.8	14.0	14.1	14.3	14.4	14.6	14.7	14.9	9
10	15.0	15.2	15.3	15.5	15.6	15.8	15.9	16.1	16.2	16.4	10
11	16.5	16.7	16.8	17.0	17.1	17.3	17.4	17.6	17.7	17.9	11
12	18.0	18.2	18.3	18.5	18.6	18.8	18.9	19.1	19.2	19.4	12
13	19.5	19.7	19.8	20.0	20.1	20.3	20.4	20.6	20.7	20.9	13
14	21.0	21.2	21.3	21.5	21.6	21.8	21.9	22.1	22.2	22.4	14
15	22.5	22.7	22.8	23.0	23.1	23.3	23.4	23.6	23.7	23.9	15
16	24.0	24.2	24.3	24.5	24.6	24.8	24.9	25.1	25.2	25.4	16
17	25.5	25.7	25.8	26.0	26.1	26.3	26.4	26.6	26.7	26.9	17
18	27.0	27.2	27.3	27.5	27.6	27.8	27.9	28.1	28.2	28.4	18
19	28.5	28.7	28.8	29.0	29.1	29.3	29.4	29.6	29.7	29.9	19
20	30.0	30.2	30.3	30.5	30.6	30.8	30.9	31.1	31.2	31.4	20
21	31.5	31.7	31.8	32.0	32.1	32.3	32.4	32.6	32.7	32.9	21
22	33.0	33.2	33.3	33.5	33.6	33.8	33.9	34.1	34.2	34.4	22
23	34.5	34.7	34.8	35.0	35.1	35.3	35.4	35.6	35.7	35.9	23
24	36.0	36.2	36.3	36.5	36.6	36.8	36.9	37.1	37.2	37.4	24
25	37.5	37.7	37.8	38.0	38.1	38.3	38.4	38.6	38.7	38.9	25
26	39.0	39.2	39.3	39.5	39.6	39.8	39.9	40.1	40.2	40.4	26
27	40.5	40.7	40.8	41.0	41.1	41.3	41.4	41.6	41.7	41.9	27
28	42.0	42.2	42.3	42.5	42.6	42.8	42.9	43.1	43.2	43.4	28
29	43.5	43.7	43.8	44.0	44.1	44.3	44.4	44.6	44.7	44.9	29
30	45.0	45.2	45.3	45.5	45.6	45.8	45.9	46.1	46.2	46.4	30
31	46.5	46.7	46.8	47.0	47.1	47.3	47.4	47.6	47.7	47.9	31
32	48.0	48.2	48.3	48.5	48.6	48.8	48.9	49.1	49.2	49.4	32
33	49.5	49.7	49.8	50.0	50.1	50.3	50.4	50.6	50.7	50.9	33
34	51.0	51.2	51.3	51.5	51.6	51.8	51.9	52.1	52.2	52.4	34
35	52.5	52.7	52.8	53.0	53.1	53.3	53.4	53.6	53.7	53.9	35
36	54.0	54.2	54.3	54.5	54.6	54.8	54.9	55.1	55.2	55.4	36
37	55.5	55.7	55.8	56.0	56.1	56.3	56.4	56.6	56.7	56.9	37
38	57.0	57.2	57.3	57.5	57.6	57.8	57.9	58.1	58.2	58.4	38
39	58.5	58.7	58.8	59.0	59.1	59.3	59.4	59.6	59.7	59.9	39
40	60.0	60.2	60.3	60.5	60.6	60.8	60.9	61.1	61.2	61.4	40

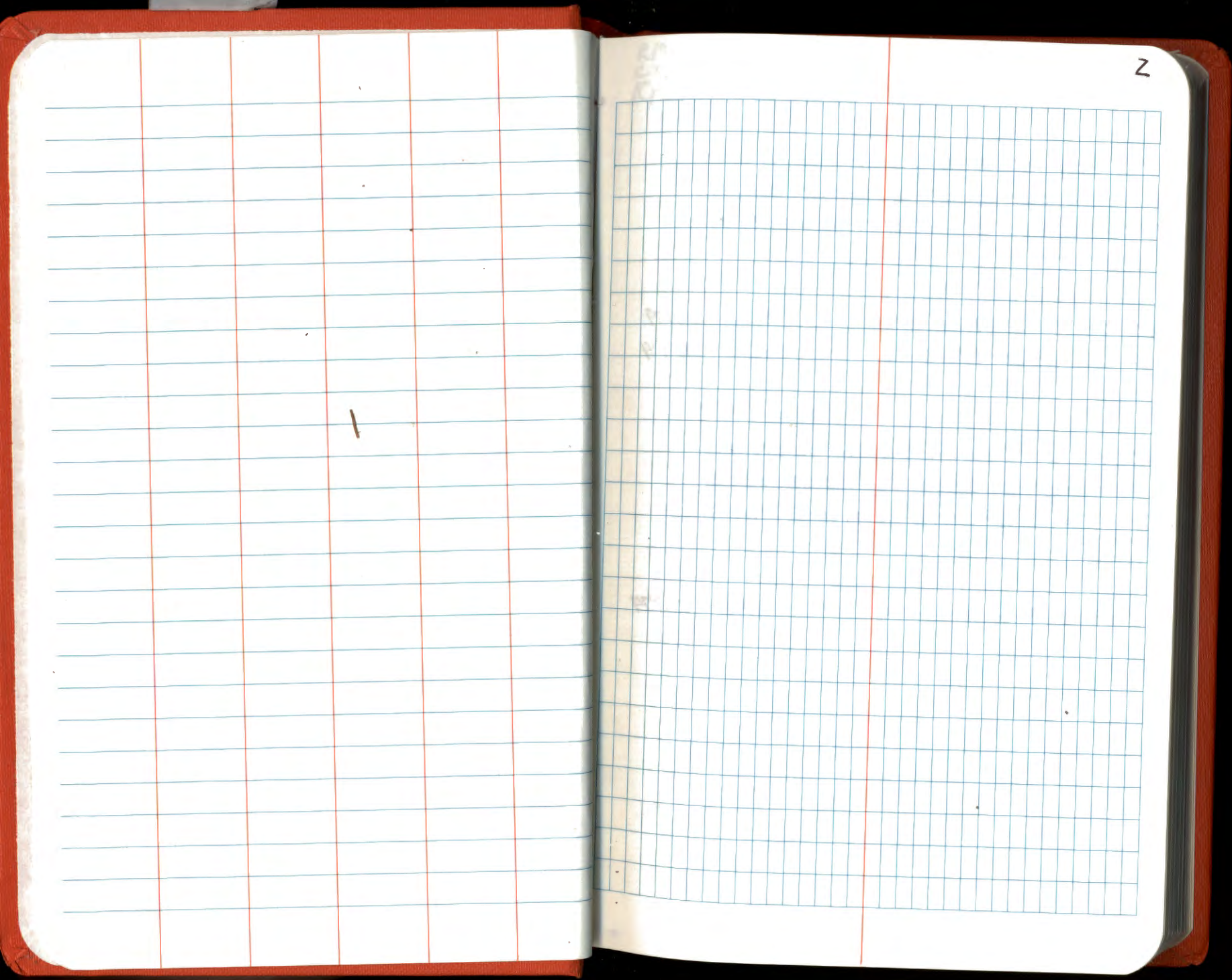
T141R26

BOOK #3 TRAVERSE  
USFS

CASS COUNTY

The paper in this book is  
made of 50% high grade rag stock with  
a WATER RESISTING surface sizing.





2

FT M

FS 3 SPK 37-32-20 217-32-35 37-32-20 217-32-32  
 BS 1 RM 2 ~~00-00-00 180-00-12 00-00-00 180-00-15~~  
 TR 2 REMER 37-32-20 37-32-23 37-32-20 37-32-17

VA 2-1 91-21-27 268-3850 72.76 22.179  
 VA 2-3 89-38-41 270-2143 268.78 81.924

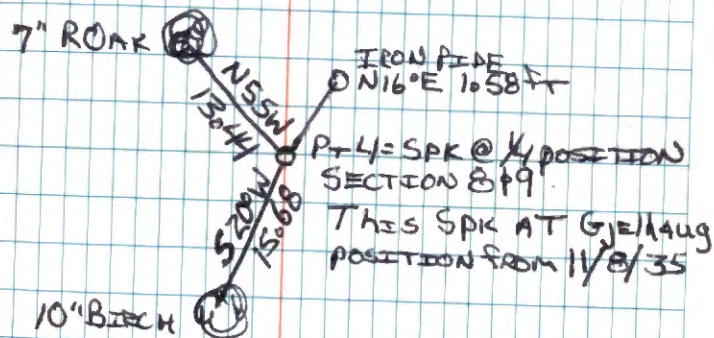
FS 4 179-18-50 359-19-10 179-18-00 359-19-12  
 BS 2 REMER ~~00-00-00 180-00-23 00-00-07 180-00-21~~  
 TR 3 SPK 179-18-50 179-18-47 179-18-53 179-18-51

VA 3-4 97-00-35 262-5948 89.49 27.274

RM MAIN T II TORCON EDM  
 C KRAUSE WELTZ  
 10/20/94 CLEAR 50°

3

- o PT 3 TRAV POINT SPIKE
- o PT 1 = REFERENCE MONUMENT #2 OF STATION REMER
- o PT 2 = STATION REMER



T 1/4 N R 26 W  
Sec. 34 Ft M

FS 3 180-40-53 00-41-17 180-40-50 00-41-15

BS 1C W 1/16 00-00-15 180-00-37 00-00-12 180-00-36

TR 2 180-40-38 180-40-40 180-40-38 180-40-39

180-40-39

90-01-11

VA 2-1 90-01-09 269-58-46 218.145 60.492

VA 2-3 86-09-47 273-50-09 256.285 78.116

86-09-49

FS 4 179-35-59 179-36-22 179-35-53 359-36-21

BS 2 00-00-15 180-00-30 00-00-05 180-00-36

TR 3 179-35-44 179-35-52 179-35-42 179-35-45

179-35-47

~~FS 1/4 178-08-51 358-09-13 178-08-48 358-09-18 178-08-54~~

~~BS 3 00-00-10 180-00-19 359-59-57 180-09-18 359-59-54~~

~~TR 4 178-08-41 178-08-54 178-08-51 178-09-00 59~~

178-08-56

89-43-25

VA 4-3 89-43-15 270-16-25 579.21 176.544

VA 4-5 ~~89-39-05 270-20-29~~ 265.69 80.982

~~89-39-10 270-20-44~~

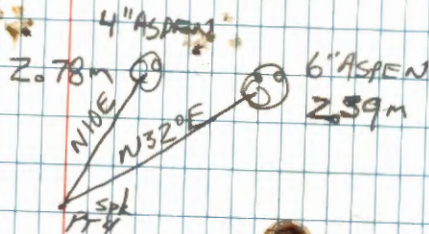
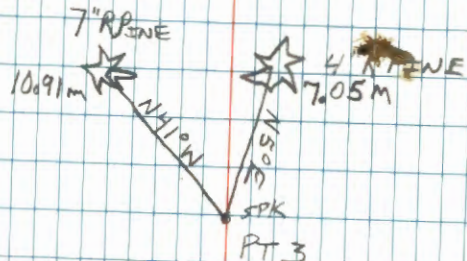
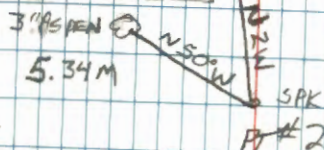
89-39-13

6-25-97 Topcon EDM  
CLEAR 60° Wild T Z

T Main  
D Hayes  
I Krause

4

PT #1 is curv'd on sec. 34



PT #5 is W 1/4 sec 34

END OF  
NOTES