

CORNER
RESTORATION
TEON R27W



MINING
TRANSIT BOOK

No. 3841

BOOK # 1

CORNER RESTORATION TEON R27W

T60N R27W 4th P.M.
 ITHSCA COUNTY

		28	29	30	31	32	33	34	35	36
6	5	4	3	2	1					
		7	8	9	10	11	12			
		13	14	15	16	17	18	19	20	21
		22	23	24	25	26	27	28	29	30
		31	32	33	34	35	36	37	38	39
		40	41	42	43	44	45	46	47	48
		49	50	51	52	53	54	55	56	57
		58	59	60	61	62	63	64	65	66
		67	68	69	70	71	72	73	74	75
		76	77	78	79	80	81	82	83	84
		85	86	87	88	89	90	91	92	93
		94	95	96	97	98	99	100	101	102

Colored numbers refer to page on which notes for that corner may be found.

Orig. Survey by J.P. Hinchilwood
 Dec 4th to 18th 1875

2 V-13

Section Corner 27-28-33-34

Original corner notes:-

Tam. Post

Tam 6" S40W 15 LKS 9.9'

Tam 6" N35W 5 LKS 3.3

Tam 6" N60E 25 LKS 16.5

Tam 6" S17E 35 LKS 23.1

Searched 4 man hours no evidence found 8/7/61 KATM

Itasca Co. Mon. No DATE

Set

Spruce 4" N58°E 14.97'

Spruce 7" N73°W 14.45'

Spruce 6" S53°W 11.00'

Cedar 6" S32°E 10.30'

CERTIFICATE FILED

12/2/84 CK, GB, JA

Ed. Co. iron pipe set 2' above ground in
a flooded spruce swamp. BT's recorded by
Co. in 1961 are dead.

3 V, W-13

Meander Sec's 33-34 North bank Lake

Orig. corner notes:

Post

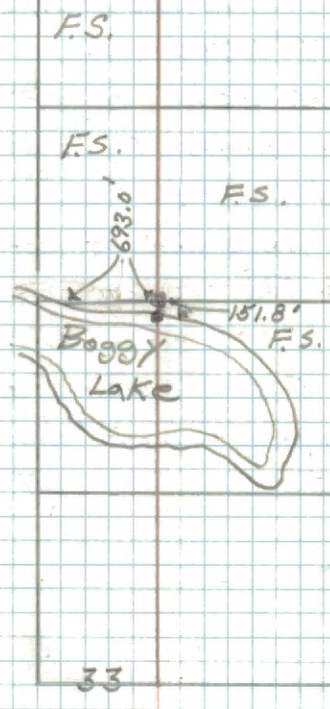
Tam. 3" N13E 26 LKS

Tam 4" N44W 41 LKS

Searched 2 man hours no evidence found 8/7/61 RHM

28

27



4 L-13

Quarter Corner Sec's 15-16

Orig. Govt Survey Notes

Cedar 10" N76W 15 Lks or 9.9' (Now a 16" Cedar
Scribed "1/4 S BT" N76W 9.9')

Maple 8" S37E 30 Lks or 19.8' (Now a stump hole
& decayed maple windfall S37E 19.8')

Found a Squared Cedar post scribed "1/4 S 15" &
"1/4 S 16" Laying on ground at corner.

8/15/61 Search 1 hr. P.H.M.

Set a 6" dia. 5' Long cylindrical concrete
monument capped w/a 3" dia. bronze tablet
stamped:-

T 60 N R 27 W
1/4

S 16 S 15

1961
RLS NO 3628

From which bears:-

Cedar 12" S62E 36.7' MKD 1/4 S 15 BT

Cedar 12" N57W 42.8' MKD 1/4 S 16 BT

8/16/61 P.H.M. Donald

43.0 R.O.U.

CERTIFICATE FILED

L-13

affidavit

T 60 N R 27 W

-741.84'-

S 16 S 15

Private

F.S.

16

Private

F.S.

-732.88'-

Found F.S. Metal Location poster on a 12"
White Pine from which cor. bears S77NW
93 Lks poster put up in 1935

1-5-62
O.K.

R.O. Ullde

4/25/61

OK Donald

REFER TO Pg 54

R9-7150-4 by Oleson 4/28/61

5 J-13

Corner Sect's 9-10-15-16

Original Gov't Survey Notes:-

Aspen post

Fir 8" S90W 30 LKS

Maple 6" N24E 30 LKS or 19.8' (Now a stp. hole N24E 19.8')

Aspen 8" S48E 30 LKS

W. Pine 12" N56W 41 LKS or 27.06' (Now a pine stump w/ part of Scribe "BT" visible N56W 27.06') 1 hr. search time 8/15/61 RNM

Set a 6" dia. 5' Long cylindrical concrete mon. capped w/a 3" dia. bronze tablet stamped:-

T60N R27W

S9 S10

S16 S15

1961
R.L.S. NO 3628

From which bears

Maple 5" N87E 37.42' MKD X BT

Maple 7" S31 1/2 E 7.15' " X BT

Cedar Post S53W 2.6'

Cedar Post N29W 3.6'

Note - Cedar posts are penta-treated w/ red

Taps 4" x 4" x 6.5'

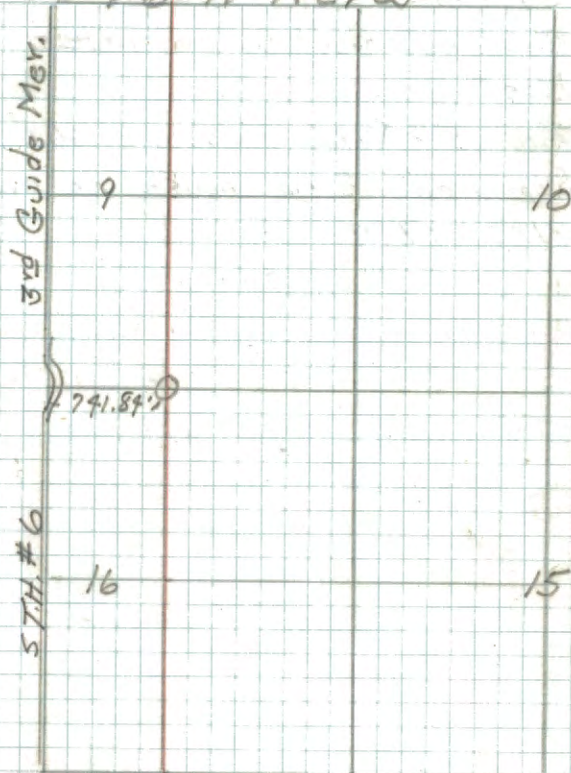
5/16/61 R.H. McDonald

CERTIFICATE FILED

J-13

Affidavit

T60N R27W



Placed F.S. Metal Location poster on the Cedar post S53W 2.6'

County B.T.:

Birch, 5", N62°W, 10.76', T60 R27 S9 BT

8 FT HEAVY STEEL Sign post 40.7 FT SOUTH

5-62
O.K.
P.O. Weller

4/28/81

OK
Ronald Olson

R9-7150-4 by Olesen 4/28/81

6 V-12, 13

Meander cor. Fractional Sec's 28-33

Original Gov't. Survey notes:

Post

Tam. 5" N19E 100 Lks or 66.0'

Searched 2 man hours no evidence found.

8/7/61 RHM

T60N R27W

28

FS

Boggy
Lake

FS

33

7 T-13

Quarter Corner Sec. 27-28

Original Govt. Survey notes

Cedar 8" N45E 60.4Ks or 39.6'

Cedar 14" N83W 40.4Ks or 26.9'

Searched 3 man hours NO evidence found - RRR

Set by Itasca County.
Set Iron pipe with Alu. Cap.
from which bears

Spruce 10" N10°W 9.29'

(Now 12" N4W 9.29')

Birch 6" N68E 19.4'

(Now taken out by Road)

To perpetuate this corner I
cut new B.T.'s

Cedar 10" N76W 59.02'

scribed 1/4 S 28 BT

Cedar 12" S 75W 65.42'

scribed 1/4 S 28 BT

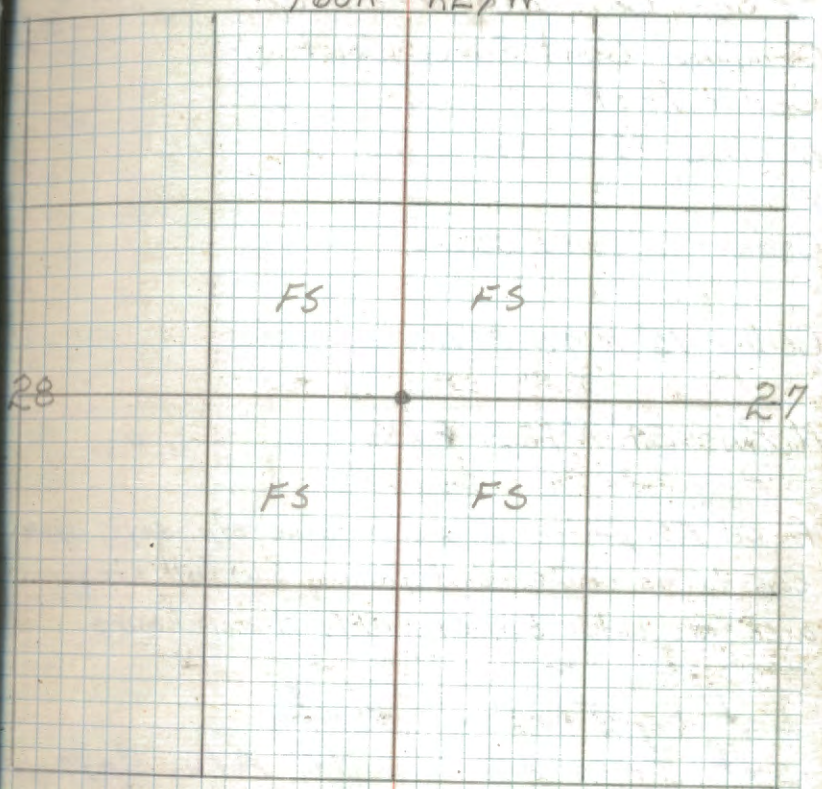
Set 8" steel sign post North 1.7'
with sign 54-4

6/14/29
Ronald Olson

made 2/19/30
MOK

CERTIFICATE FILED

T60N R27W



1933 J.S. Moon 874-9

Set Cedar Post

TAM. 11" NW 1ch.

he says this is original corner but does
not give ANY ties to original or what
he found.

8 R-13

Sec. Cor. 21-22-27-28

Original Govt Survey notes:-

Cedar Post

N. Pine 18" S55W 5 Lks

Cedar 12" S18E 50 Lks

Cedar 16" N19W 25 Lks

N. Pine 24" N72E 8 Lks

Found F.S. post on large pine stp. says approx. tag is on "window" facing SW all stps. in area are badly burned KHM 9 man hours

Set by Itasca County
set Iron pipe with Alu. Cap
from which bears

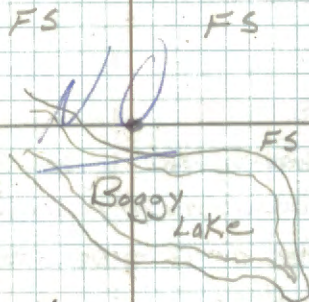
Aspen 8" N75E 3.45"
(Now 12" NB2E 3.45')

Birch 5" S64E 15.05"
(Now stump S59E 15.05')

Balsam 5" S46W 10.47"
(Now 8" S56W 10.47')

Balsam 6" N20W 11.6"
(Now 9" N14W 11.6')

CERTIFICATE FILED



To perpetuate this Cor I cut
New B.T.

Birch 5" S75E 26.85'

set 8" steel sign post North 2.4'
with signs 54-29 54-9

RP-7150-4

6/14/79

Ronald Oles

9

Closing Cor. Sec. 21-28

Original Gov't Survey notes:-

Cedar post

Cedar 18" S 42 E 10 LKS.

Cedar 20" N 41 E 80 LKS.

12/1/86 CK-GB-JA

Fd. ITASCA COUNTY MOND. IN PLACE IN WEST DITCH ALONG HWY #6

FLUSH WITH GRASS - COUNTY TAG ON POWER POLE ON E SIDE OF

HWY #6 TAG STATES CORNER TO BE S 70 W 100'

CORNER AGREES WITH TAG

T60N

R27W

21

S.T.H. #6

28

P-13

Quarter Corner Sect's 21-22

Original Gov't. Survey notes

Cedar 8" N80E 30 Lks.

Cedar 6' S65W 35 Lks.

set by Itasca County.
 set Iron pipe with Alv. Cap.
 from which bears

Cedar 9" S86W 2.8'

Cedar 10" S26E 14.7'

To perpetuate this cor I cut
 new BT.

Cedar 13" N10W 12.55'
 (scribed 1/5 21 BT)

set 8' steel sign post south 3.7
 with signs 54-2 & 54-4

RQ-7150-4

6/14/79
 Ronald Olson

Cor. made 2/19/50 M.R.H.

2-8-06 R MAIN

GPS IRON. LINE TO STANDARD NORTH

8 FT STEEL SIGN POST 3.45 FT NORTH

11

N-13

Section Cor. 15-16-21-22

Original Gov't. Survey notes:

W. Birch post

W. Birch 12° N65W 25 Lks. 16.50ft

" " 10° S31E 8 Lks. 5.28 ft

" " 10° N27E 75 Lks. 49.50ft

Fiv 6° S47W 30 Lks. 19.80ft

Sept 4, 1931 OCC notes state they chained south from original 1/4 cor. Sec 15-16, 40.64 chs (2682.24 ft) and found "original cor. BT 17 links N61°W" (11.22 ft)

circa 1960-1970 Itasca County Surveyor's records indicate they found a 2 in iron pipe which fits the remains of 3 stumps for bearing, distance and species. Replaced iron with county monument from which:

New Basswood 10 in N48°W 25.79 ft

New Cedar 8 in S10°W 17.41 ft

New Spruce 5 in N61°E 12.52 ft

New Cedar 13 in S14°E 42.87 ft

of County Brass cap on brushed out line east of state camp ground on long lake on Hwy 6 and west of N-S power line.

Cedar 9 in South 12 ft

W Spruce 5 in NE 10 ft

Cedar 9 in SE 35 ft

Date Unk USFS Corner Card by Charles Schantz state. that corner consists

See page 46 This Book

12

Closing Corner Sect. 16-21

Original Gov't. Survey notes:

W. Birch post

W. Birch 12" S23E 25 Lks.

Fir 6" N53E 30 Lks.

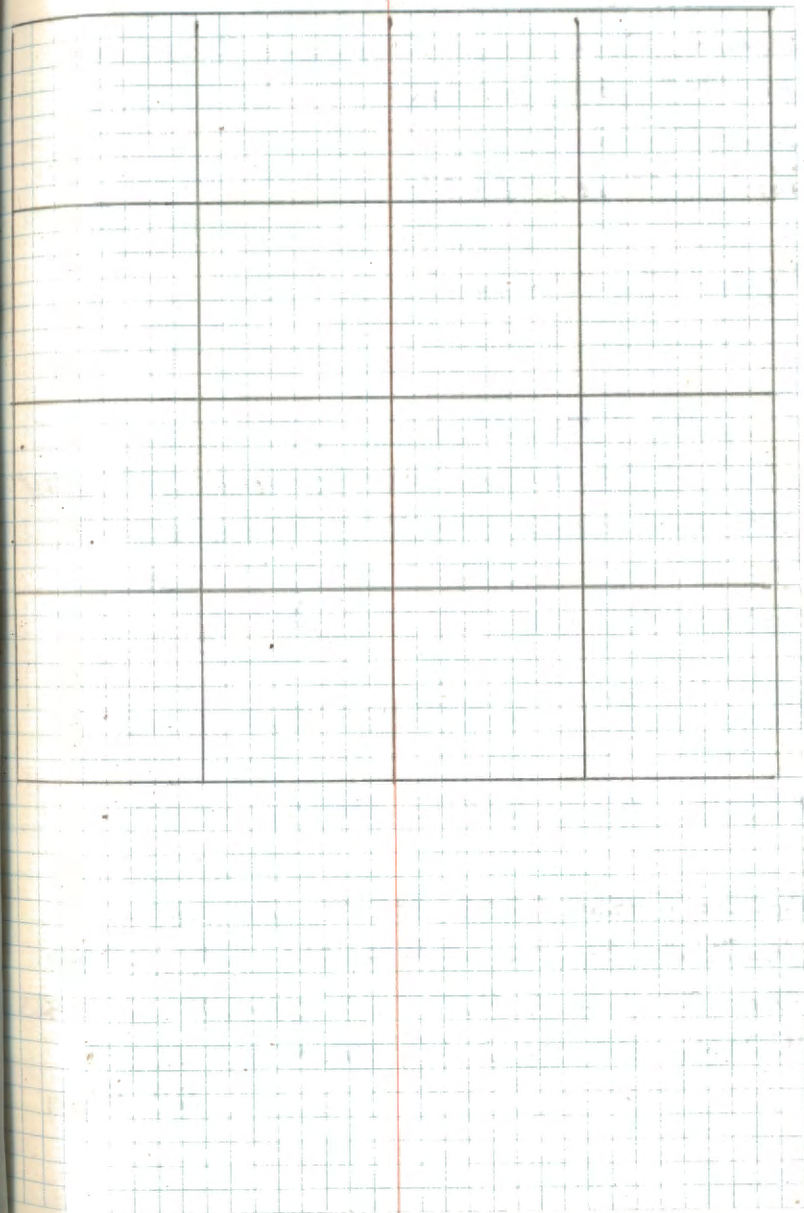
13

M.C. Fractional Sects 33-34 South Bank
Lake

Notes of Orig. Govt. Survey

Cedar 7" S15E 23 Lks.

Cedar 5" S16W 93 Lks.



14

Center Quarter Corner Sec 26

Survey By Itasca Co. Surveyor P.C. Warner
in 1942 plat recorded.

Iron Monument

Poplar 4" N50°E 28.9'

Poplar 9" N52°W 36.4'

4-14-05 R MAINTSCH

FD 1½" IRON FLUSH WITH GROUND 3 FT NORTH
OF LAKE EDGE AND 4 FT ~~SOUTH~~ S34°E
OF SOUTHEAST CORNER OF BOAT HOUSE.
GPS'D IRON AND TIE OFF WITH.

BIRCH 8" N25°E 29.95 FT TO SPK

BIRCH 9" N47°E 34.90 FT TO SPK

NOTE: THESE TIES ARE TO AN IRON
10.75 FT SOUTH OF WARNERS C₄, LAND
OWNER HAS A PVT PLAT SHOWING THIS
IRON. BELIEVE C₄ IRON IS LOST.

R.C. Main

15

R-19

Quarter Corner Sec's. 23-26

Survey By Itasca Co. Surveyor P.C. Warner 1992
plat recorded.

IvON MONUMENT

Maple 10" S 12° W 46.2'

B. Wood 13" N 57° E 63.7'

CERTIFICATE FILED

16

R-21

Corner Sections 23-24-25-26

Survey by Itasca Co. Surveyor P.C. Warner in
1942 - plat recorded. Cor. restored from Govt BT
Iron mon.

Gov't Cedar N79°W 11.9'

Gov't Cedar N28°E 17.8'

poplar 6" S73°W 26.8'

poplar 11" N35°W 33.8'

poplar 10" N13°E 12.5'

poplar 6" S58°E 24.6'

unknown date Itasca County Survey

Set county monument from which:

Aspen, 11", S58°E, 24.6 ft

Aspen, 10", N68°W, 17.15

Basswood, 4", S46°N, 37.40

Aspen, 6", N43°E, 22.05 ft

Jan 6, 1983 Established

Sugar Maple, 6.2 in, S58°E, 10.30 ft to 16 d nail
in North face, w/60d spike, ser: "525 BT"

Metal sign post North, 3.0 ft, w/54-2

Metal sign post south, 3.0 ft, w/54-2, 54-9

CERTIFICATE FILED ^{land}

Jan 6, 1983

heavy wet snow

G. Kosenko

T. Suddendorf

J. Hoover

Recovered a 2" O.D. Itasca County monument
with a 3 inch diam brass cap stamped:

1.8 ft above ground



Recovered BT's, N30°E

poplar stump, N30°E, 12.50 ft to 60d spike
in stump. No scribe visible

poplar stump, S44°E, 24.60 ft to 60d spike
in stump, No scribe visible

poplar stump, S75°W, 26.80 ft to 60d spike
in stump, No scribe visible

Aspen, 11.8 in, N48°E, 22.40 ft to 16d nail
in west face, w/60d spike, blaze overgrown

Basswood, 7.5 in, S62°W, 37.50 ft to 16d nail
in south face, w/60d spike, blaze overgrown

Aspen, 16 in, N64°W, 17.15 ft to 16d nail
in south face, w/60d spike, blaze overgrown

Certificate filed 4-27-83
Doc. # 357067

Corner Sections 26-27-34-35

Survey by Itasca Co. Surveyor P.C. Warner
in 1942. Plat recorded. Gov't corner preserved
with IRON MONUMENTS by other surveyors.

Iron mon for Gov.

Iron mon East on Line 33.0'

Iron mon East on Line 789.8'

1981 ITASCA County

Found

USBM 572°W 64.86'

Birch 8" N74°W 109.64'

1969 X. Rock 3x4 N53°E 35.40'

1969 T. Pole 528°E 54.30'

Set

G. Pole N30°E 71.19'

X. Rock 2x2 543°E 105.69'

1933 CCC Orville Hatie

W.P. Maddz

Original Stake + Bts do not match

Original Gov't Survey - W. Birch post

Spruce, 12", S66°E, 2.64'

W. Birch, 12", N58°E, 13.86'

CERTIFICATE FILED

W. Birch, 14", N28°W, 11.88'

W. Pine, 8", S39°W, 3.96'

18

Meander Corner on E-W center line

Sec. 26 East shore ^{Turtle} ~~Water~~ Lake

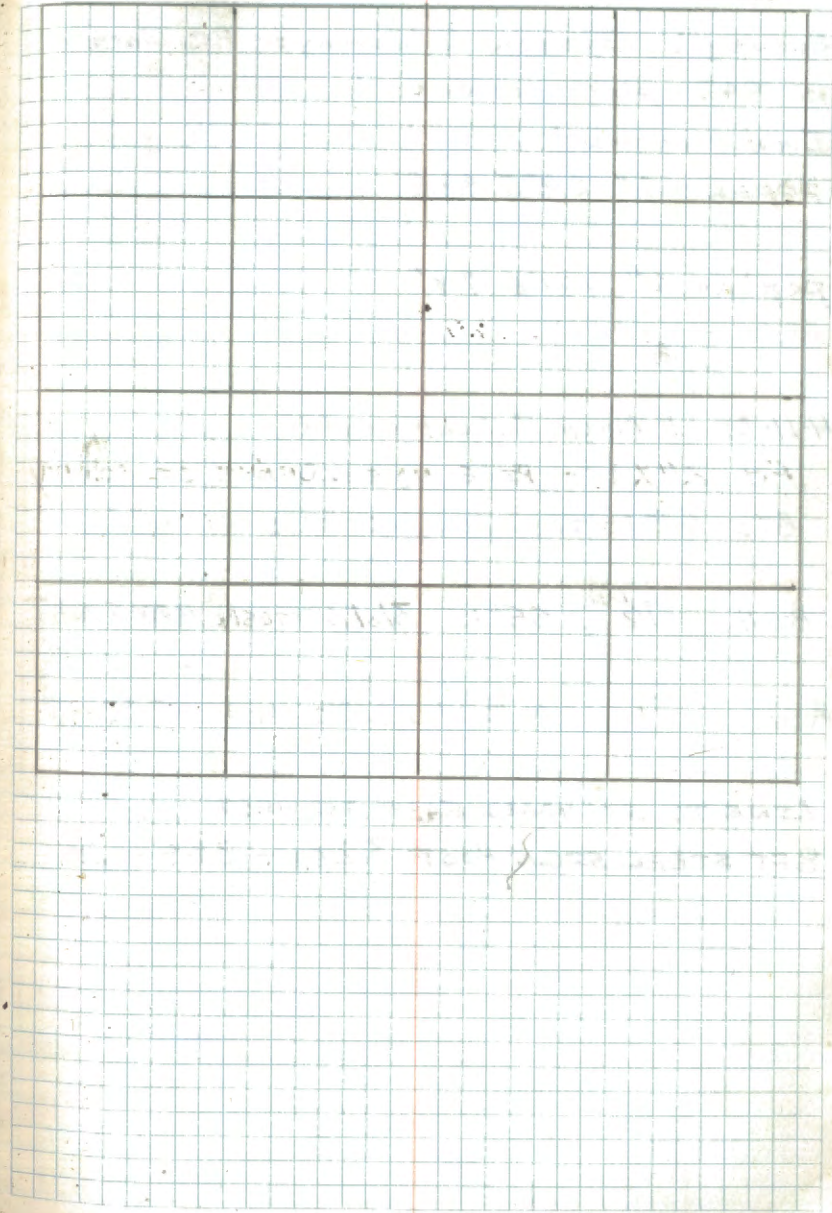
Survey by Itasca Co. surveyor F.C. Warner
in 1942. plat recorded.

Iron mon.

ELM 7" N57°E 23.9'

Birch 5" S48°E 17.7'

[Faint, illegible handwritten notes and sketches, possibly including a diagram of a meander corner.]



Center North 1/16 Section 26

Survey by Itasca Co. Surveyor P.C. Warner
in 1942 - plat recorded.

Iron monument

poplar 6" S 2° E 44.8'

poplar 6" N 39° E 7.9'

4-11-05 R. MAIN J. SCHOONOVER

Fd 2" X 1 FT PIPE NO EVIDENCE OF COUNTY
BT'S GPSED IRON AND WITNESS WITH:

ASH 7 1/2" S 55° E 31.12 FT TO SPK MKD 526 BT

ASH 7" N 75° W 23.60' TO SPK MKD 526 BT

LINE TO STANDARD EAST AND WEST

8 FT STEEL SIGN POST 3.2 EAST 2.85 WEST

20 S-19, 20

Special meander Cor. on E-W $\frac{1}{16}$ Line
through center of N-W $\frac{1}{4}$ Sec. 26 on
East shore of Hatch Lake. Survey by
P.C. Warner in 1942 plat recorded.

Iron monument

Poplar 11" N60°E 9.8'

Birch 5" S18°E 11.1'

11/77 LOCATED BOTH BT's & COUNTY
PIPE WITH OWNER OF HILLCREST
RESORT. MEB

4-14-05 Rob Main, Jim Schenck

Found Iron Monument 2'
From waters edge.

Found 1942 Birch BT now 12"
Aspen cone

To perpetuate this corner
MADE one new BT

MAPLE 4" N71°E 21.25' NO SCRIBE
SPIKE + TAG.

LINE TO STANDARD EAST. 8 FT STEEL SIGN
POST 3.35 EAST

North East $\frac{1}{16}$ Corner Section 26

Survey by P.C. Warner in 1942 - plat recorded

Iron monument -

4-6-05 J.S. R.M.

poplar 4" S 30° W 30.0' Now 13" SNA 6

poplar 4" N 67° W 43.6' Now 13" SNA 6

4-6-05 ROB MAIN JIM SCHOONOVER
TO PERPETUATE THIS CORNER
2 NEW BT'S

ASH 5" S 60° E 45.75' scribed S-26-BT

ASH 12" N 65° E 48.20' scribed S-26-BT

FOUND CORNER ON EDGE OF
CEDAR SWAMP WEST EDGE.
GASED IRON. IRON IS A 1" X 12". DROVE
8 FT STEEL SIGN POST ON NORTH SIDE OF
IRON 1 FT 3 FT SHOWING AND WIRE IRON
TO SAME.

LINE TO STANDARD SOUTH AND WEST
8 FT STEEL SIGN POST $\frac{3}{1}$ WEST $\frac{3}{5}$ SOUTH

Center East $\frac{1}{16}$ corner sec. 26

Survey by Itasca Co. Surveyor P.C. Warner
in 1942 - plat recorded.

Iron monument

Cedar 12" N 1° E 45.6' Fd CEDAR WITH SCRIBE
AS PART OF A THREE TREE TRIPOUT. NO LONGER
USABLE TO DETERMINE DISTANCE TO IRON

ELM 8" S 2° W 6.2'
NO EVIDENCE

11-1-05 R MAIN

Fd IRON IN PIKE LAYING IN MARSH GRASS

\pm 25 FT SOUTHWEST OF CREEK BETWEEN

TURTLE AND MAPLE LAKES. CORNER ALSO

\pm 200 FT EAST OF HIGH TIMBER RIDGE WHICH

RUNS NORTH AND SOUTH. GPS IRON

ASH 7" W/FSLP SOUTH 140.9 FT TO NAIL

LINE TO STANDARD WEST AND NORTH

WITNESS WITH:

SIGN POST 8 FT 204 WEST DIST TO E OF POST

SIGN POST 8 FT 307.5 NORTH DIST TO E OF POST

23 21-18, 19

Special meander Corner on South $\frac{1}{16}$ Line
East shore of turtle Lake. Section 26
Survey by P.C. Warner in 1942.

Iron monument found in place

Cedar 10" S 50° W 9.6'

found in good condition Now 12" Cedar

Birch 4" N 14° E 18.2'

found leaning into lake Now 6" birch

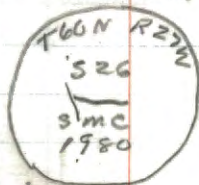
2/77 Ronald Olsen

To perpetuate this corner I set a
2" x 5" Gal. Iron pipe with Brass Cap
from which bears

Marked

Birch 5" N 48° E 35.44'

Spruce 9" S 68° E 38.44'



7/31/80
Ronald Olsen

24 21-20

South East $\frac{1}{16}$ Cor. Section 26
Survey by Itasca Co. Surveyor P. C. Warner
IN 1942 plat recorded.

Iron mon. found in place:

poplar 12" S53°W 5.4'

found rotted stump.

poplar 10" N84°E 21.6'

found in good condition Now 14" Aspen

2/77 Ronald Olson

To perpetuate this corner I set a 2" x 5"
Gal. Iron pipe with Brass Cap Marked
from which bears

Cedar 7" N80W 31.16"

Cedar 7" N36W 41.68"



7/31/80

Ronald Olson

25 21-20, 21

Special meander corner on South $\frac{1}{16}$ Line
Section 26 on West shore Maple Lake
Survey by Itasca Co. Surveyor P.C. Warner
in 1942 - plat recorded.

Iron monument found laying down on lake shore

Birch 7" N 17° W 56.0'

found rotted birch stump at record bearing to dist.

Birch 8" S 75° W 47.7'

found 12" Birch S 75° W 47.7' W. scribe

2/77 Ronald Olson

To perpetuate this corner I set a 2" x 5"
Gal. Iron pipe w. th Brass Cap Marked
from which bears

Ash 8" S 70° W 33.58'

Ash 5" N 55° W 24.57'



7/31/80
Ronald Olson

26

P-21

Quarter Corner Sections 23-24
 Survey by Itasca Co. Surveyor P.C. Warner
 in 1943 - plat recorded. Cor. restored from
 Gov't BT.

Iron monument

Gov't Cedar 14" N76°E 7.3'

Cedar 12" N54°W 8.0'

Circa 1960-1970 Itasca County surveyors office records
 state they found an iron pipe and
 replaced it with a county monument.

find Cedar	18 in	N54°W	8.0 ft
------------	-------	-------	--------

find GLO stump		N73°E	7.3 ft
----------------	--	-------	--------

New Cedar	7	S25°E	8.52 ft
-----------	---	-------	---------

date unk USFS corner card by F.L. Coyle indicates
 corner to be capped iron pipe by
 Itasca County, Squared Cedar stake
 and Forest Service Metal Tag. Mentions
 12 in scribed Cedar 12 lbs (7.925) and a
 14 in scribed Cedar 11 lbs (7.26 ft).

Certificate filed 4-27-83
 Doc # 357066

Lower Camp
filed

Jan 4, 1983

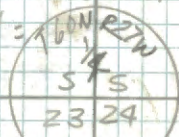
Snow, mild, calm

PC w/ G. Kosanko

Aides: T. Subtendorf

- J. Hoover

Recovered a 3 ft. long by 2 in O.D
 County (Itasca) iron pipe with a 3 in
 diam. brass cap stamp:



laying in water. Reset same monument
 from two recovered BT's 1.0 ft above
 ground

Recovered BT's:

Cedar, 14 in stub, N⁶76°E, 7.30 ft to base blaze
 w/scr: faintly visible on face blaze, 60d spike
 Cedar, 9.3 in, S18°E, 8.52 ft to base blaze
 scr: 14 524 BT visible w/60d spike

Established BT's:

Cedar, 10.5 in, N47°E, 26.15 ft to 16d nail
 NW face, scr: 14 524 BT, w/60d spike

Cedar, 6.9 in, S84°W, 44.73 ft to 16d nail
 SE face scr: 14 523 BT, w/60d spike

Metal sign post S, 3.0 ft
 metal sign post W, 2.0 ft

27 R-17, 18

M.C. between Secs 23 & 26
Survey by Itasca Co Surveyor P.C. Warner
1942 recorded plat in County Court House
Iron monument -

Poplar 7" N40°W 21.0' - Now 11"
poplar N35°W 21.2' scribe overgrown
Poplar 7" S78°E 12.0' - Now 9" poplar
S66°E 12.3' scribe marks visible

1 1/2" iron monument capped with a 2"
aluminum cap marked 2
Set by Itasca Co.
Surveyor 1961 -
Found in place



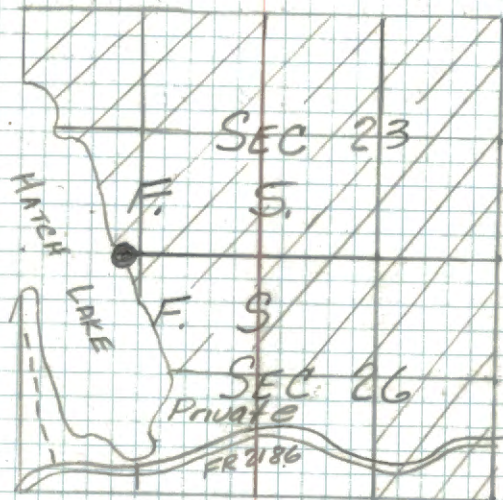
New B.T.
Red pine 14" N61°E 7.3' scribed BT

10/18/66
WHO

B-84 Itasca County
X Rock 4x5 N15°E 19.19
X Rock 1x2 1/2 S77°E 15.89
B.O.B.G. 8" N25°W 11.26

OK
M.E.S.
R.L.S. 4/12/26

Original Gov't Survey Cedar Post
W. Birch, 6", S 43°E, 9.90'
W. Birch, 8", N 56°E, 21.12'



28 A-9

Closing Corner Sec. 4^E 34

T60-61N R27W

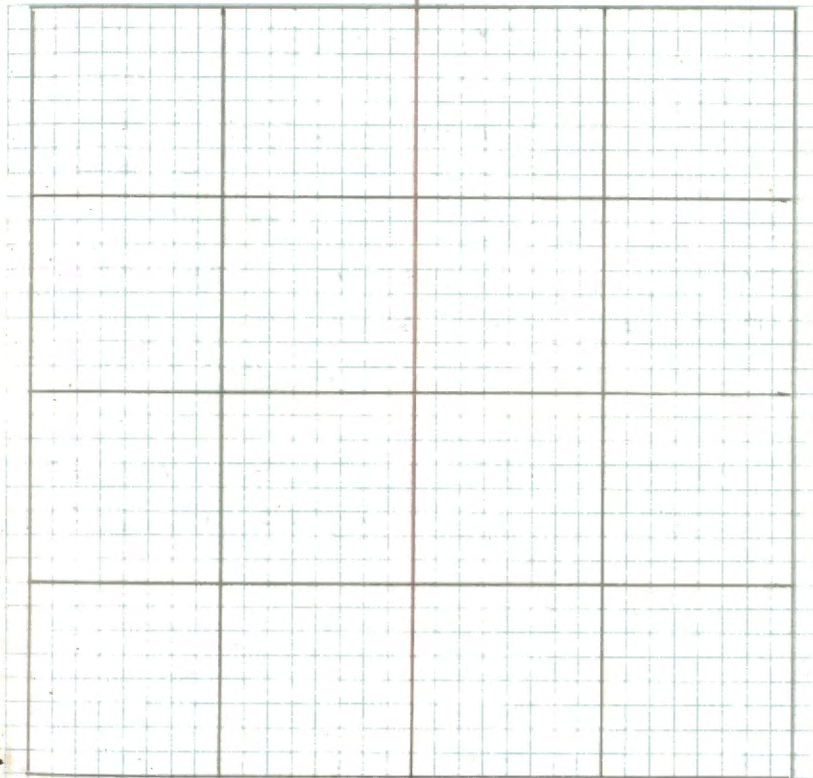
Resurvey by Itasca County in 1980
recorded in Itasca County Surveyors
Office

3/4" Iron rod from which bears,

Tel. Pole S30E 93.39'

X South End Culvert N57E 21.47'

X North End Culvert N17E 45.04'



29 A-13

Closing Section Corner 3/4
Resurvey by Itasca County in 1980

County Monument from which bears

Old Balsam	13"	S58W	12.31'	from Nail
Old Poplar	13"	S60E	35.34'	" "
Balsam	6"	N45W	18.72'	
Poplar	7"	N50E	15.54'	

Corner and BT^s are to FS Standard
10/80 R. M. Olsen

R9-7150-4 by Olsen

10/4/94 R. M. Olsen

Fd ITASCA Co MONUMENT 2" WITH 3" ALUMINUM
CAP UP ± 2 FT. MONUMENT WITNESSED WITH

Co BALSAM	12"	S58W	12.31	To GALUNAI	SCRIBE OVERGROWN
Co ASPEN	17"	S60°E	35.34	To GALUNAI	SCRIBE OVERGROWN
(FS) BALSAM	8"	N45W	18.72	To GALUNAI	SCRIBE VISIBL

HEAVY FOREST SERVICE SIGN POST EAST 5.7 FT

ORIG GOUT SURVEY
SET WOOD POST

R PINE	14"	S53E	60	1/ks	39.6 FT
R PINE	10"	S14W	48	1/ks	31.68 FT

30 A-15

Closing 1/4 section 3

Resurvey by Itasca County 1980

County Monument from which bears.

old Poplar 13" S41W 25.21' from Nail

old poplar 12" S70°E 24.18 " "

Spruce 5" S20W 52.09' from BT.
52.38 from Nail

Spruce 6" S78W 64.41'

Spruce 4" N15W 39.12'

Corner and BT^s are to F.S. Standard

10/80 R. Olsen

R9-7150-4 by Olsen

31 A-17

Closing Section Corners 2 & 3
Resurvey by Itasca County 1980

County Monument from which bears
old poplar 12" S14W 19.90' from Nail

Old Basswood 12" S44E 22.63 " "

Birch 11" S14W 32.84' from Nail

Birch 6" S76E 8.70' from Bt 9.21' from Nail

X Rock 1½" x 2" N33E 21.36'

X Rock 2½" x 3" S16W 29.49'

X Rock 1" x 1" west 8.77'

Corner of 13T^s are to F.S. Standard
10/80. Ronald Olson

A9-7150-4 by Olsen

32 A-19

Closing 1/4 corner Section 2
Resurvey by Itasca County 1980

County Monument from which bears

X Rock 1' x 1/2' S75W. 9.84'

X Rock 2 1/2' x 3' S22E 27.38'

X Rock 3' x 4' N7E 92.40'

X Rock 2' x 2' N88E 53.50'

Balsam 8" South 25.36'

Set sign post 8' West 1.2' w/sign 54-2

Set sign post 8' South 1.8' w/sign 54-2
54-9

Corner and B⁺ are to F.S. Standard
10/80 Ronald Olsen

~~A-19~~ R9-7150-4 by Olsen

33 A-20

Closing Corner Lot 1/2 Section 2
Resurvey by Itasca County 1980

Set County monument from which bears

Ash 4" S66W 20.37'

Ash 8" N33E 4.23'

Ash 8" N35W 3.50'

Steel post 8' East 1.0' w/sign

Corner Δ Bt^s arc to f.s. standard
10/80 Ronald Olson

RA-7150-4 by Olson

34 A-21

Closing Section Corner 1 & 2
Resurvey by Itasca County 1980

County Monument from which bears

Old Birch 6" SIZE 10.84'

Ash 5" S73W 7.92

Elm 8" N44W 13.44'

Cedar 14" N21E 57.04

Sign post 8" West 1.3' w/sign

Corner of B12 are to F.S. Standard
10/80 Ronald Olson

RA-9150-4 by Olson

35 A-23

Closing 1/4 section 1
Resurvey by Itasca County 1980

County Monument from which bears

Spruce 4" N55E 58.98'

Spruce 11" N23W 37.35'

Spruce 5" N57W 36.50'

Corner of BTS are to F.S. Standard.

10/80 Ronald Olien

R9-7150-4 by Olien

36 A-25

Closing Section Corner 1/6
Resurvey by Itasca County 1980

County Monument from which bears
Basswood 9" S18W 153.73 from Nail
153.34 from BT

Elm 7" S75E 51.94 from Nail
51.84 from BT

X Rock 1' x 1/2' N30E 30.61

X Rock 1' x 1/2' S28E 6.80'

8" sign post East 1.78' w/sign

8" sign post west 1.89' w/sign

Corner of BT \pm are to F.S. Standard
10/80 Ronald Olsen

RR-7150-4 by Olsen

37 R-15

1/4 Corner Section 22 & 27
Survey by Itasca County 1959
Set

Iron pipe with Alu. Cap.
from which bears

Cedar 3" NS1E 11.61'

(now 4" NS7E 11.61) scribe visible

Cedar 4" S66E 14.25

(now stump S60E 14.25)

To perpetuate this corner I cut New BT =

Cedar 6" N28W 38.07 ^{scribed} 1/4 S22 BT

Cedar 7" N10E 28.30' 1/4 S22 BT

Set steel sign post 8' long West 2.5'
w/signs 54-2 & 54-9

1984 County ITASCA

1959 Cedar 3" NS10E 11.61'

^{USFS} 1981 Cedar 6" S28°W 37.90 Nail

^{USFS} 1981 Cedar 7" N10°E 28.30 Nail

1981 ? Balsam 8" N72°W 10.49 Nail

1984 X Rock 1 1/2 x 1 1/2 S05°W 14.62

1984 X Rock 1 1/2 x 1 1/2 S81°W 15.67

CERTIFICATE FILED

Original Gov't Survey

Cedar post

Cedar, 10", N 10°W, 16.50'

N. Pine, 20", South, 16.50'

(38)

OP-21

MC# South shore Bello Lake
Between Sections 23 and 24

Dec 1875 John P. Hinckelwood set a 4x5 Aspen
post and:

Willow 7 inch S 17° E 170 lks 112.20 ft

Ash 8 in S 20° W 186 lks 122.76 ft

Dec 1943 P. C. Warner survey of Section 24, Twp 60N,
R 27W states he found:

Gov't Ash 10 in S 20° W 122.8 ft

Cedar Post 6 in x 5 in 671.8 ft north of 1/4 cor.

Circa 1960-1970 Itasca County survey records show they
found a scribed post but no bearing
trees. Replaced post with county Monument.

New Ash 6 in S 38° W 60.92 ft

New Ash 6 in S 24° E 65.30 ft

(38)

1/4 corner to sections 24 & 25

Dec 1875 John P. Hinchelwood, Deputy Surveyor,

set a 3 1/2 in x 4 in Tamarack post and:

Tam 10 in N50°W 4 lks 2.64 ft

Tam 8 in SOUTH 6 lks 3.96 ft

Dec 1943 P. C. Warner survey of section 24,
on file and of record in the office of
the Itasca County Recorder, states this
corner to be an iron monument and
6 in x 5 in Tamarack post. There is also
a note which states: "Location of Cor.
has been marked and preserved by Frank
Edman for 40 years. Gov't Witness tree
is buried in road fill."

Tam 10 in N86°E 84.0 ft,

Circa 1960-1970 Itasca County survey records state
they found the 1943 iron and replaced it
with a County Monument and

and 1943 Tam 10 in N86°E 84.0 ft

New Tam 9 in S42°E 132.0 ft

(40)

N-15

Quarter Corner Sections 15 & 22

Dec 1875 John P. Hinchelwood, Deputy Surveyor,
set an Elm Post, 7" x 5" in, from which:

Spruce	10 in	S 10° E	10 lks	6.60 ft
w. Birch	12 in	N 64° W	40 lks	26.40 ft

Sept 6, 1934 CCC notes state they chained
east from corner of Sections 15, 16,
21 and 22 and at 40 chs (2640.00 ft)
set 1/4 cor. No Bearing trees mentioned.

Dec 15, 1939 874 By H. Hamelain, CCC, states
this corner consists of a stake in
good condition 2 chains (132.00 ft)
out in Ruck Lake East of Hwy #6.
No BT's mentioned.

Circa 1960-1970 Itasca county surveyors notes
indicate they ran by here but
never found anything nor set
anything.

Nov 1, 1982 Ken Whitehorn, RLS, and Glenn Kosenko
chained east from the Section Corner of
Section 15, 16, 21 & 22 (see page 11, this Book)

EAST 500 ft strike lake

NORTH 500 ft

EAST 919 ft

SOUTH 300 ft Strike lake

EAST 400 ft Strike lake

S 45° E 383 ft

EAST 300 ft

N 45° E 100 ft

EAST 580 ft (PT A)

NORTH 130 ft Strike lake (PT B)

Flag across lake & PT A to PT B 30°

EAST 225 ft leave lake

Found Itasca County Monument Laying
down on top of Hill. Need better search
area. On stump with blaze & axe mark
species sent to Wood Products Lab for ID.

(40)

N-17

Section Corner Sec 14, 15, 22 & 23

Dec 1895 John P. Hinchelwood, Deputy Surveyor,
set a White Birch Post, 4 in x 5 in, and:

Maple	14 inch	S 67° E	13 lks	8.58 ft
Maple	10 in	N 56° E	45 lks	29.70 ft
Maple	14 in	S 59° W	32 lks	21.12 ft
Linden	6 in	N 56° W	53 lks	34.98 ft

Sept 6, 1934 CCC's set this corner while traversing
section line between 15 & 22 at 80.56
chains (5316.96 ft) east of Sec Cor 15, 16, 21 &
22. No ties or BT's mentioned

Sept 7, 1934 CCC notes indicate that they chained
79.50 chs (5260.20 ft) south from Section
cor 10, 11, 14 & 15 and moved corner
set 9/6/34, direction and distance
unspecified.

Circa 1960-1970 while traversing East from Sec Cor
15, 16, 21 & 22 to Sec Cor 13, 18, 19 & 24
at 5350.56 ft they set Temporary
sec cor, 14, 15, 22 & 23. No references.

(41)

Nov 24, 1982 Ken Whitcomb, RLS
Ernie Therrault, Volunteer

Sunny/Cold
Windy

See page 40

0 leave lake

2100 hit aspen clearcut

2140 Temporary Sec Cor 14, 15, 22 & 23

No chance here.

(42)

N-19

1/4 corner Section 14 & 23

Dec. 1875 John P. Hinchelwood, Deputy Surveyor,
set a white Birch post, 4 in x 5 in, for
corner:

white Birch 10 in N16°W 15 lks

white Birch 8 in S10°E 8 lks

Sept 1934/ CCC notes indicate this corner
to be 80.8 chs (5332.80 ft) East
of the corner to sec 14, 15, 22 & 23
no BT or monuments are mentioned.

Circa 1960-1970 Itasca County survey notes show
this line (sec line between 14 & 23) was
run with a transit & chain. No
mention of the 1/4 cor is made.

(42)

(13)

N-19/20

MC # 11 Sec 14 E 23

Dec 1875 John P. Hinchelwood, Deputy Surveyor,
set a 3.5 in x 4.5 in white Birch post
from which:

W. Birch	10 in	S34°W	14 lks	9.24 ft
W. Birch	6 in	N27°W	38 lks	25.08 ft

Sept 1934 Page 45 of CCC field notes shows
M.C. on Sec drawing but no other information.

Circa 1860-1970 Itasca County field note indicate
no corner was found.

(43)

(44)

P-17

Quarter Corner Common to
Sections 22 and 23.

Dec 1875 John P. Hinchelwood, Deputy Surveyor, set
a 4in x 5in White Birch Post from which:

W. Birch	10in	S47°E	10lks	6.60ft
W. Birch	8in	N83°W	5lks	3.30ft.

Circa 1960-1970 Itasca County Surveyor's field
notes state that there was no
evidence found for this corner

(44)

Meander Corner #22, Common
to Sections 22 and 23

Dec 1875 John P. Hinchilwood, Deputy Surveyor,
set a 4 in x 4 in Cedar Post from which

Spruce	10 in	N39°E	12 lks	7.92 ft
Cedar	6 in	N38°W	38 lks	25.08 ft

Circa 1960-1970 Itasca County surveyors notes
(page 53) indicate nothing was found
for this corner location.

(96)

N-13

Sec Cor 15, 16, 21 & 22

See page 11, This Book

11-1-82 Ken Whitehorn, RLS, and Glenn Kosenko
visited this corner. All four BTs.
Needs Maintenance.

11-24-82 Ken Whitehorn, RLS, and Ernie Therriault,
volunteers, found all 4 County BT
from the 1960's

DEAD SNAG Spruce 8.5 in N67 $\frac{1}{2}$ °E 12.48 ft to
4-5-05 2nd nail in SE face by upper blaze with
scribe visible lower blaze grown over
"T60 R27 ..."

OK Cedar 13.8 in S05°E 43.31 ft to 2nd
nail in east face both blazes visible & scribing
visible "T60 R27 S22" and BT

OK Cedar 10.0 in S47°W 17.72 ft to 2nd
nail in NW face, both blazes and scribing
visible "T60 R 27 S 21" and "BT"

OK ~~Basswood~~ ^{Mable} 10.5 in N42°W 26.22 ft to 2nd
bent nail in SW face Scribe marks visible

71-2

(96)

on upper blaze lower blaze grown over
4" sucker & 6" sucker growing out of tree

Monument Stamped

2 in IP w/ 3 in Alum Cap

up 2.1 ft

T60 N R27W

16/15

21/22

No trace of original evidence can be
found. Rusty location poster found
on 4 in white Birch snag N56°W 16 ft
poster partially grown into tree and too
rusty to make out any marks

All BT's Marked with Red Enamel, USFS Tag
No 54-3 and 60d spike used in base blaze

4-5-05 JSCHOENOVER R MAIN

FD IRON AND GPS.

HEAVY STEEL SIGN NORTH 1.35 NORTH TO E
OF POST.LINE TO STANDARD SOUTH OUT & POSTED
2-8-06 R Main

Quarter Corner Common to Sections
14 and 15

Dec 1875 John P. Hinchlwood, Deputy Surveyor,
set 4 in x 5 in Tamarack Post from which;
Tamarack 6 in S 50° W 21 lks 13.86 ft
Tamarack 8 in N 66° E 25 lks 16.50 ft

Sept 1934 CCC field notes (pg 47) indicate they
found an old corner but no mention
of any BT's

Circa 1960-1970 Itasca County Surveyor's Notes
(page 52) indicate that nothing was
found

Nov 24, 1982 Ken Witchorn, RLS, & Ernie Theriault,
volunteer. Chained north from Temp
^{157.14}
2123 See page 41, Sunny/Cold/Windy
579 Hit open water
1900 Strike point of land
2000 leave point of land enter marsh
2160 leave marsh
2330 enter marsh
2640 Temp 1/4 cor Sec 14 & 15

Searched 2 man hours, no stamps or trace of
correct size.

(48)

J-17

Section Corner for 10, 11, 14
and 15

Dec. 1875 John A. Hinchilwood, Deputy Surveyor,
set a 3.5 in x 5 in Linden Post from which:

Maple	8 in	N5°E	6 lks	3.96 ft
Ironwood	5 in	N24°W	18 lks	11.88 ft
Linden	14 in	S64°W	20 lks	13.20 ft
Maple	10 in	S12°E	43 lks	28.38 ft

Aug 1934 CCC notes (page 31) indicate this
corner was set 80 chs (5280) east of
cor to Sec 11, 12, 13 & 14.

Circa 1960-1970 Itasca County found nothing

(48)

FG-17

Witness Corner 10.56 chs (696.96 feet)
 North of Quarter Corner common
 to Sections 10 and 11.

Dec 1874 John P. Hinchilwood, Deputy Surveyor,
 sets a 4in x 4in Tamarack Post for W.C. to
 1/4 cor in pond, from which

Tamarack	6 in	N13°W	14 lks	9.24 ft.
Tamarack	6 in	N42E	22 lks	14.52 ft.

Aug 1934 CCC's ran this line but make no
 mention of Corner (pp 27) call north
 side of lake 42.09 chs (2777.94 ft) north
 of cor they set for sec 10, 11, 14 & 15.

Circa 1960-1970 Pasca County found nothing

(50)

E-17

Section Corner Common to 2, 3, 10
and 11

Dec 1874 John P. Hinchilwood, Deputy Surveyor, set a
4 in x 5 in Cedar Post from which:

W. Birch	8 in	S2°W	16 lks	10.56 ft
Cedar	12 in	N70°E	26 lks	17.16 ft
Fir	6 in	N74°W	14 lks	9.24 ft
Fir	8 in	S50°E	30 lks	19.80 ft

Aug-Spt 1934 CCC notes (pp 7) indicate this corner
to be a location poster tacked to tall
cedar snag in brushy area. No BT's

Circa 1960-1970 Itasca County found nothing

(50)

TU-21
Witness Corner 21.68 ft North of
Meander Corner No. 6 between
Sections 25 and 26

Dec 4, 1875 John P. Hinchelwood, Deputy Surveyor, set
a 4" x 4" Cedar post from which:
B of G. lead 10 in N17°W 50 lks 33.00 ft
Cedar 8 in N18°E 60 lks 39.60 ft

Dec 1942 P.C. Warner, Itasca County Surveyor
Set IP from found Gov't BT:
Gov't Cedar 10 in N18°E 39.6 ft
Elm 15 in N80°W 23.0 ft
Cedar 7 in N20°E 27.7 ft

Circa 1960-1970 Itasca County Surveyors notes state
Gov't MC falls in lake so set G.
Mon 21.68' North for MC:
Ash 4 in N74°W 19.12 ft
Ash 4 in N25°W 22.1 ft

See page 52

CERTIFICATE FILED

Jan 6, 1983

Snow, mild

G. Kosenko

J. Hoover

T. Soddendorf

Corner not located. Will try again
at a later date.

January 29, 1983 Recovery by: G. Kosenko

Decl: 5°E

(1960) G. Robertson

Recovered the Itasca Co. Monument laying
down, 1.5 ft under the ice and water. Could
not see it, just feel it. Set a 60d spike in
ice where the two recovered ash trees tie to.
Did not recover the P.C. Warner iron pipe (1942)
Will re-monument when conditions are right.

References Recovered:

Ash, 8.6 in, N75°W, 19.12 ft to 16d nail in NE face,
blaze grown over and cut into, w/60d verticle spike
Ash, 8.7 in, N22°W, 22.10 ft to 16d nail in East
face, blaze overgrown w/60d verticle spike

References established:

Ash, 4.1 in, N64°E, 16.00 ft to 16d nail in south
face, has blaze only scr. "BT" w/60d verticle spike
Metal sign post, North, 4.0 ft, w/54-9

T60N R27W TU-21
Cont'd from page 51

Decl. 5° East

Recovered a 2 in Outside Diameter by 3 ft long
Itasca Co. Iron pipe with a 3 in diameter
aluminum cap stamped as shown: for WCMC



Reset monument 4 in. below water surface.

Set a 3/4 in diameter rod monument (aluminum)
with an aluminum cap 3 1/4 in diam., stamped
as shown:



We set the 5 ft. long rod, 1 ft under
water surface. The water is 3 ft deep at
this point. The monument is set 21.68 ft
south from the WCMC.

Corner
lead
filled

April 28, 1983

PCA - G. Kasanko
Aides - G. Robertson
- B. Ausk

These trees are the same as the ones
referencing the WCMC. These trees are
measured to the actual MC

Ash, 4.1 in,	\$27 ⁰⁰	31.10
Ash, 8.7 in,	\$110 ⁰⁰	43.10
Ash, 8.6 in,	\$37 ⁰⁰	33.50

Setting the MC was very difficult. This
position may not agree exactly with the
exact position. We established it as close
as possible. *Harold P. Kasanko*
04-28-83

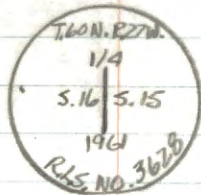
Certificates filed 5-5-83
Doc # 357247 (10)

3

3

(34) L-13 REFER to Pg. 4
QUARTER CORNER SEC'S 15-16
Nov 27, 1984 Recovery by: G. Kosenko
B. Husk
G. Robertson

Recovered a 6 inch diameter concrete monument with a 3 inch diameter brass cap stamped as shown, up 1.8 ft from which:



OGS Cedar, 17.5", N65°W, 9.34 ft to 1/2" nail in North face, ser: "1/4 S BT" visible

1961 Cedar, 15.8", S62°E, 36.35 ft to 1/2" nail in South face, double blaze ser: "1/4 S15 BT" partly overgrown

1961 Cedar, 13.5", N57°W, 42.31 ft to 1/2" nail in North face, double blaze ser: "1/4 S15 BT" partly overgrown

Metal fence post, north, 5.3 ft w/542, 54-9

Established

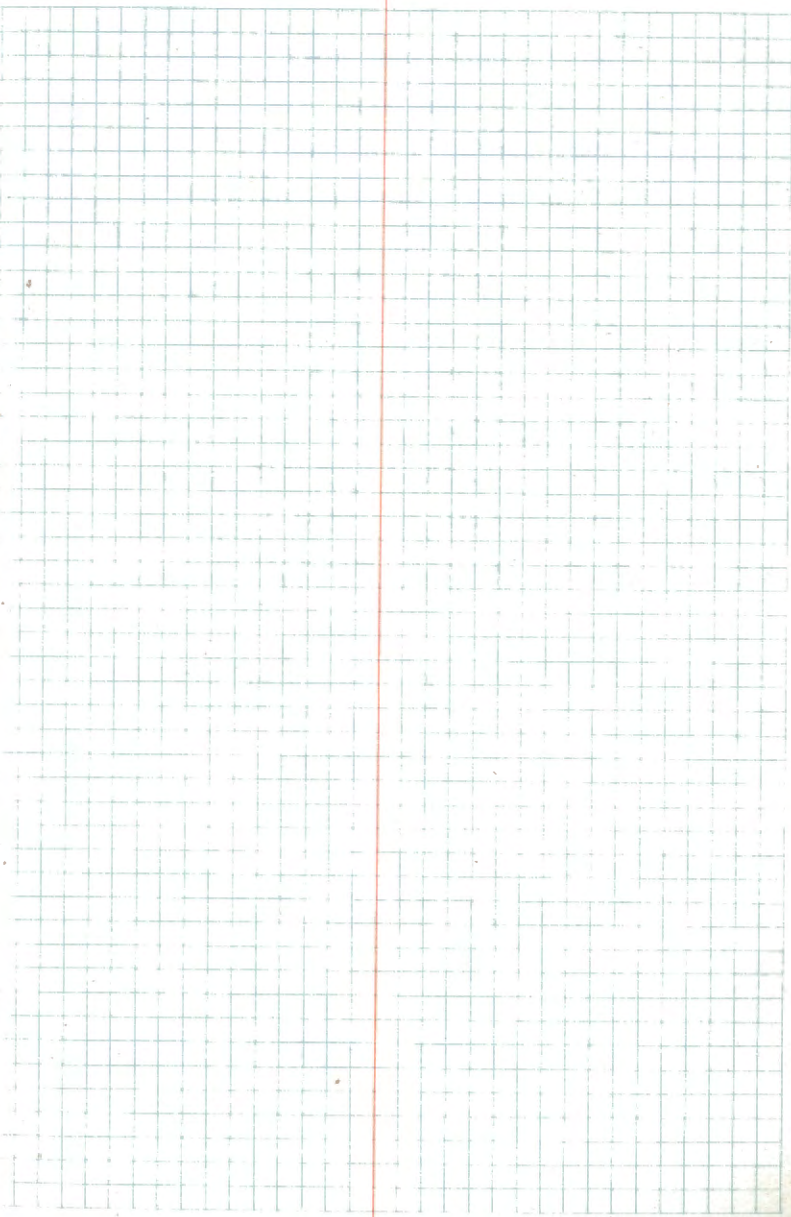
White Pine, 15.8', N72°E, 24.00 ft to a 1/2" nail SE face, double blaze, ser "1/4 S15 BT" d^{w/60} d^{sp/10}

Metal fence post, south, 3.0 ft w/54-2

(35)
All BT's have a 1/2" vertical spike in the base blaze and are painted red. We searched for the other OGS BT but did not recover it.

33

34



(56)

S-17

T 60 N R 27 W

M.C. 26 & 27 S. Side Hatch Lake
Co. Mon.

TAKEN FROM Co. Notes

1960 Cedar	5"	SE	4.54'	Fd. 567°E 4.5'
" Cedar	5"	South	2.19'	Fd 1986 ^{scribe vis.} Twin
" Cedar	5"	560°E	9.65'	Fd 6" N78E 9.65'
" Cedar	4"	South	2.70'	Twin
" Cedar	5"	567°E	5.00'	

1984 ITASCA COUNTY SET

Cedar	4"	S18°W	17.95'	Fd 1986
Cedar	7"	S86°E	7.97'	Fd 1986
X Rock	2x2	N40°E	38.74'	Fd 1986

Original Gov't Survey Aspen post
 Aspen, 6", S07°W, 17.82'
 Cedar, 6", S72°E, 10.56'

P.C. Warner 1942

Gov't Cedar, 8", S72°E, 10.6'

Set

Cedar	5"	S55°E	16.0'
Cedar	4"	N12°E	18.0'

CERTIFICATE FILED

(56)

11/24/86 CK, JA, GB

Fd. original Cedar, burnt stub S72°E 10.6 with
all scribe visible.Fd. 1 Cedar BT recorded in 1942. Now 8" Cedar
543E 16.0.

Corner position falls in the lake approx 8'.

Fd. witness corner mon. set by Co. in 1960.

(57)

T-17

T60 N R. 27 W $\frac{1}{4}$ Sec. 26+27

Original Gov't Survey Aspen post

W. Birch, 6", S39°W, 5.28'

Spruce, 10", S76°E, 8.56'

P.C. Warner 1942

Iron Mon. East on line, 50.0'

Poplar, 6", N52°E, 41.5'

Poplar, 6", N27°E, 112.2'

Nov. 11, 1986 J. Allison + G. Robertson USFS

Shot EDM distance down road &
from Sec. cor. 26, 27, 34, + 35.Distance falls at road intersection.
Searched but found no evidence of
corner.

CERTIFICATE FILED

(57)

53

T60N R27W

1/4 Sec. 27 + 34

Original Gov't Survey Fir post

Maple, 10" , S 25° W, 23.10'

Fir , 10" , N 45° E, 19.80'

CERTIFICATE FILED

53

(39)

South $\frac{1}{16}$ Bet sec's 26, 27

Notes of Itasca Co. Survey 1942

Set an iron monument to mkd. corner.

Witness by:

Birch 7" N42W 69.5'

Power line clearing - no evidence

Birch 9" S63E 67.5'

Fd. 16" Birch S54E 67.5'

Iron monument East 33'

Fd. I.P. 1" dia. set 3" above ground.

11/24/86 Ck, GB, JA

Measured from SE of sec. 27 north 1320' up road.

Corner position falls on the south side of a culvert. Pulled from Birch tie and iron mon. 33' east. Set a PK nail to mark $\frac{1}{16}$ position.

Made additional tie:

Poplar 9" N82E 37.57 Tag + spike

(39)

(16)

T-25

EAST QUARTER CORNER TO SEC. 25

ORIG. GOV'T. SURVEY 1875

SET CEDAR POST

CEDAR 10 WEST 6 LKS. = 3.96'

CEDAR 9 N76E 5 LKS. = 3.30'

CERTIFICATE FILED

(60)

(61) U-V-25

MEANDER CORNER BET. SECS. 25+30

NORTH SHORE OF SHOAL LAKE

ORIG. GOV'T. SURVEY 1875

SET TAM. POST

TAM. 7 N28E 20 LKS. = 13.20'

TAM. 8 N46W 10 LKS. = 6.60'

CERTIFICATE FILED

(61)

(63)

QUARTER CORNER BET. SEC'S. 25+36

ORIG. GOV'T. SURVEY 1875

SET CEDAR POST

W. PINE 30 SBTE 20 LKS = 13.20'

CERTIFICATE FILED

(62)

63

MEANDER CORNER BET. SEC'S. 25+36
ON WEST SHORE OF SHOAL LAKE
ORIG. GOV'T. SURVEY 1875
SET TAM. POST

TAM. 6 S76W 10 LKS. = 6.60'

TAM. 5 N16W 6 LKS. = 3.96'

CERTIFICATE FILED

63

(64)

POL EAST WEST $\frac{1}{4}$ LINE. 439
EAST OF CENTER $\frac{1}{4}$ SECTION 26

4-11-05 R. MAIN J. SCHOONOVER
FD IRON IN PLACE ON EAST SIDE OF
CREEK ENTERING TURTLE LAKE. GPS
IRON AND WITNESS WITH.

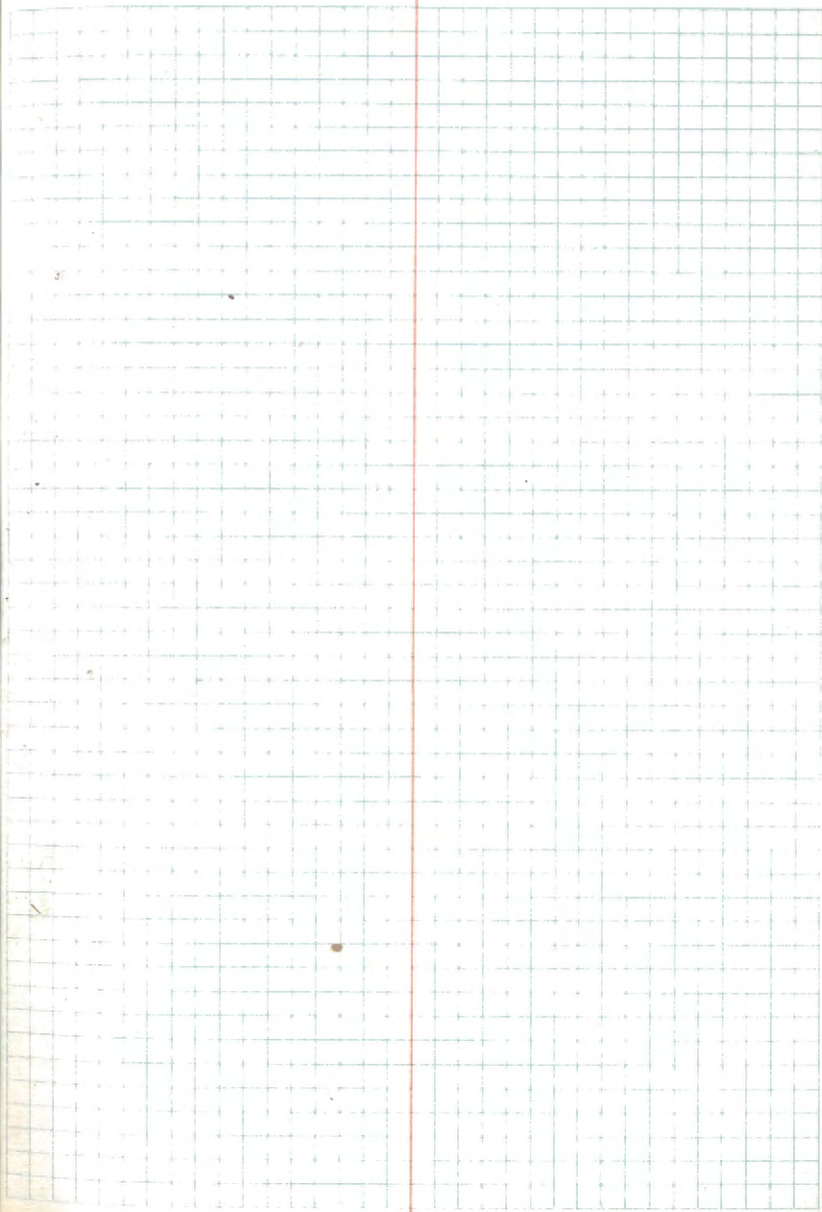
CEDAR 20" N42E 32.8 NOT MKD

LINE TO STD EAST 8 FT STEEL SIGN
POSTS 2.6 WEST & 2.6 EAST

(64)

64

65



66

66

REMAINDER OF THIS
BOOK IS EMPTY