

T 59 N  
R 27 W  
K 8  
4\* P.M.  
82-0012  
Book 2

T. 59 N  
R. 27 W

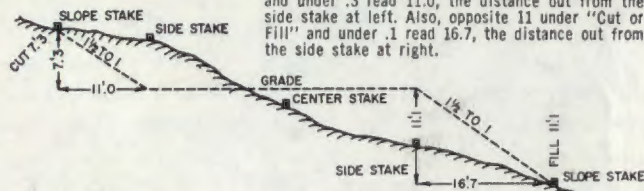
K 8  
FIELD BOOK  
4\* P.M.  
82-0012

Book 2

### DISTANCES FROM SIDE STAKES FOR CROSS-SECTIONING

Roadway of any Width. Side Slopes 1½ to 1.

In the figure below: opposite 7 under "Cut or Fill" and under .3 read 11.0, the distance out from the side stake at left. Also, opposite 11 under "Cut or Fill" and under .1 read 16.7, the distance out from the side stake at right.



Cut or Fill	Distance out from Side or Shoulder Stake										Cut or Fill
	0	.1	.2	.3	.4	.5	.6	.7	.8	.9	
0	0.0	0.2	0.3	0.5	0.6	0.8	0.9	1.1	1.2	1.4	0
1	1.5	1.7	1.8	2.0	2.1	2.3	2.4	2.6	2.7	2.9	1
2	3.0	3.2	3.3	3.5	3.6	3.8	3.9	4.1	4.2	4.4	2
3	4.5	4.7	4.8	5.0	5.1	5.3	5.4	5.6	5.7	5.9	3
4	6.0	6.2	6.3	6.5	6.6	6.8	6.9	7.1	7.2	7.4	4
5	7.5	7.7	7.8	8.0	8.1	8.3	8.4	8.6	8.7	8.9	5
6	9.0	9.2	9.3	9.5	9.6	9.8	9.9	10.1	10.2	10.4	6
7	10.5	10.7	10.8	11.0	11.1	11.3	11.4	11.6	11.7	11.9	7
8	12.0	12.2	12.3	12.5	12.6	12.8	12.9	13.1	13.2	13.4	8
9	13.5	13.7	13.8	14.0	14.1	14.3	14.4	14.6	14.7	14.9	9
10	15.0	15.2	15.3	15.5	15.6	15.8	15.9	16.1	16.2	16.4	10
11	16.5	16.7	16.8	17.0	17.1	17.3	17.4	17.6	17.7	17.9	11
12	18.0	18.2	18.3	18.5	18.6	18.8	18.9	19.1	19.2	19.4	12
13	19.5	19.7	19.8	20.0	20.1	20.3	20.4	20.6	20.7	20.9	13
14	21.0	21.2	21.3	21.5	21.6	21.8	21.9	22.1	22.2	22.4	14
15	22.5	22.7	22.8	23.0	23.1	23.3	23.4	23.6	23.7	23.9	15
16	24.0	24.2	24.3	24.5	24.6	24.8	24.9	25.1	25.2	25.4	16
17	25.5	25.7	25.8	26.0	26.1	26.3	26.4	26.6	26.7	26.9	17
18	27.0	27.2	27.3	27.5	27.6	27.8	27.9	28.1	28.2	28.4	18
19	28.5	28.7	28.8	29.0	29.1	29.3	29.4	29.6	29.7	29.9	19
20	30.0	30.2	30.3	30.5	30.6	30.8	30.9	31.1	31.2	31.4	20
21	31.5	31.7	31.8	32.0	32.1	32.3	32.4	32.6	32.7	32.9	21
22	33.0	33.2	33.3	33.5	33.6	33.8	33.9	34.1	34.2	34.4	22
23	34.5	34.7	34.8	35.0	35.1	35.3	35.4	35.6	35.7	35.9	23
24	36.0	36.2	36.3	36.5	36.6	36.8	36.9	37.1	37.2	37.4	24
25	37.5	37.7	37.8	38.0	38.1	38.3	38.4	38.6	38.7	38.9	25
26	39.0	39.2	39.3	39.5	39.6	39.8	39.9	40.1	40.2	40.4	26
27	40.5	40.7	40.8	41.0	41.1	41.3	41.4	41.6	41.7	41.9	27
28	42.0	42.2	42.3	42.5	42.6	42.8	42.9	43.1	43.2	43.4	28
29	43.5	43.7	43.8	44.0	44.1	44.3	44.4	44.6	44.7	44.9	29
30	45.0	45.2	45.3	45.5	45.6	45.8	45.9	46.1	46.2	46.4	30
31	46.5	46.7	46.8	47.0	47.1	47.3	47.4	47.6	47.7	47.9	31
32	48.0	48.2	48.3	48.5	48.6	48.8	48.9	49.1	49.2	49.4	32
33	49.5	49.7	49.8	50.0	50.1	50.3	50.4	50.6	50.7	50.9	33
34	51.0	51.2	51.3	51.5	51.6	51.8	51.9	52.1	52.2	52.4	34
35	52.5	52.7	52.8	53.0	53.1	53.3	53.4	53.6	53.7	53.9	35
36	54.0	54.2	54.3	54.5	54.6	54.8	54.9	55.1	55.2	55.4	36
37	55.5	55.7	55.8	56.0	56.1	56.3	56.4	56.6	56.7	56.9	37
38	57.0	57.2	57.3	57.5	57.6	57.8	57.9	58.1	58.2	58.4	38
39	58.5	58.7	58.8	59.0	59.1	59.3	59.4	59.6	59.7	59.9	39
40	60.0	60.2	60.3	60.5	60.6	60.8	60.9	61.1	61.2	61.4	40

1/k = 201/68 m

U.S. DEPARTMENT OF AGRICULTURE  
 FOREST SERVICE  
 CHIPPEWA NATIONAL FOREST, MINNESOTA

Cass Lake, Mn

218-335-2226



The paper in this book is made of 50% high grade rag stock with a WATER RESISTING surface sizing.

KEUFFEL & ESSER CO.

1 Link = 0.201168 m

INDEX

59 N 27 W 4<sup>th</sup> Principal No.

0	5	1	0	0	1
7	8	0	10	11	12
13	17	18	15	14	13
19	20	21	22	23	24
30	29	28	27	26	25
31	32	33	34	35	36

49352

K. Whitehorn, R. Olson, T. Sittlerdorf  
 October 22, 1981 Cloudy, cold  
 Reestablish Corner to Sections  
 25, 36 Twp 59N Rge 27W  
 and 30, 31 Twp 59N Rge 26W  
 from 1965 Ties:

Found Spruce 5" N 2° W 153.54'

Found REA Pole N 32° E 216.35'

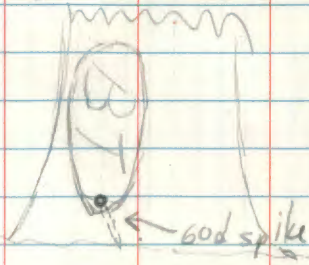
1938 Ties

Spruce 6" S 36° W 44.6'

Spruce 6" S 31° E 60.0'

Found 1965 County ties. REA Pole  
 was a Telephone guy pole scribed  
 "BO" at the base.

See Sketch for new ties  
 4½° E declination



See

BK 2, T59N R26W PP 5

BK 4, T59N R26W, PP 8

BK 1, T59N R27W, PP 20

V-25

CERTIFICATE FILED ②

16d nail in E face up 30cm in 20.5cm Spruce (Black)  
 N 01° E 46.900M Scribing visible  
 County BT

N 10° E 35.174m  
 16d nail up 50 cm  
 in NW face of  
 11.4 cm Tamarack  
 Top Blaze 35cm  
 B 26 530 up 1m  
 Base 25cm  
 BT

16d nail in NE face up 50cm  
 of 16.6 cm Black Spruce  
 upper blaze 42cm long up  
 1 meter scribed ~~S 25~~  
 R 27 S 26

Base blaze 25cm long

Scribed BT

58.918m N 30° W

12'

ditto

S 32° W 19.815M

16d nail up 84cm in 152cm

B.O.G.

Top Blaze 21cm "S 36" up 9cm

Base Blaze 15cm "BT"

T 59N

R 27W R 26W

525 | 530

536 | 531

1981

RLS 14677

Declination 4½° E



K. Whitehorn, R. Oleson

22 Oct 81 Cloudy cold

$4\frac{1}{2}^{\circ}$  E declination

found county I.P. w/ Alum Cap  
up 40 cm Stamped

159N

$\frac{1}{4}$	5	25
	5	36

R2TW

declination  $4.5^{\circ}$  E

see page 13 of Corner Restoration  
Book 1

3

V-23

16d nail up 120 cm in W Face

4" Balsam Fir Scribed

"1/4 S25" "BT"

N  $18^{\circ}$  W

36.02'  
10.997m

16d nail up 120 cm

in NW Face 5" Black

Spruce

N  $37^{\circ}$  E

47.26'  
14.405m

Trail

Top of slope

16d nail up 40 cm in

NW Face of 120 cm

Ash Scribed "X" upper

at "BT" lower

S  $47^{\circ}$  W 0.98m

17.6cm dia

16d nail in N

Face up 60cm

in County Ash

15.17' 580°E  
4.624m

Edge of Break in Slope

ditch

Oct 22, 1981 K. Whitehorn R. Oleson  
Cloudy cold T. Sudden draft  
4 1/2° E declination

Original ties

Tamarack 5" S 64 3/4° E 55 lks

Tamarack 4" N 17 3/4° E 48 lks

Tamarack 8" N 29° W 91 lks

Tamarack 4" S 86° W 62 lks

Certificate filed 5-5-83  
Doc # 357248

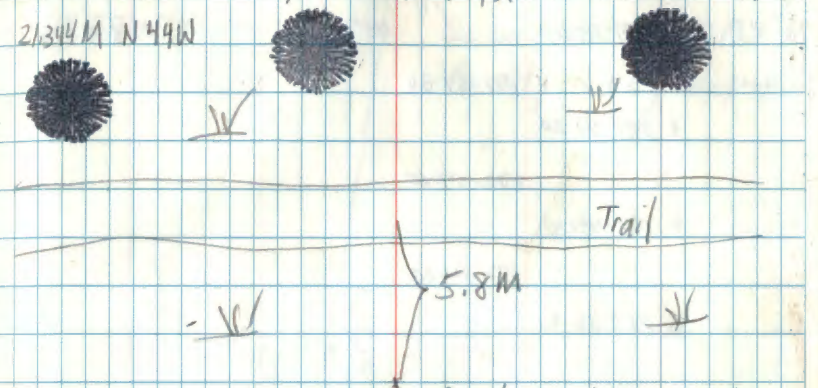
See Book 1, pg 22

# CERTIFICATE FILED

526 BT V-21

Double Blaze 16d nail up 30cm  
6d nail up 20cm in E 9/218 cm Tam  
in NE Face Found County BT  
369 cm Tam N 10° W 16.474m  
21344M N 49W

14.725  
2.34  
14.985  
COUNTY BT  
16d nail up 7cm  
in SE face of  
21.8 cm Tam  
N 17° E 14.865m



found County iron pipe  
with aluminum cap  
scribed

T 59 N

26/25  
35/36

R 27 W

16d nail up 20 cm,  
in SE face of  
258 cm Tamarack

S 44° W 17.847m  
Double blaze scribe  
"S 35" "BT"

1915 County  
BT  
16d nail, up 50 cm  
in west face of 32.7cm  
Tamarack 60d spike  
set in Base Blaze  
by 'BT'

21.245  
09  
21 3.174

17.748  
99  
17.847

15.86  
09  
14.097

S 42° E 13.899m  
70 Rings to old blaze

with scribe

Snow Showers Temp 28°F Pres: 29.90 Hg Mostly Cloudy  
 Horiz  $\neq$  Vert  $\neq$  Slope Dist

TR@ PT 1 3m south of pole with ribbon and backmark  
 BS Sec Cr 0-00-00 90° 15' 40" 362.432m 362.426m  
 FS PT 2 178-54-50 90° 00' 40" 306.047m 306.047

178-54-30

357-49-20

178-54-50

176-44-10

178-54-20

355-38-30

Mean  $\neq$  178° 54' 37"

TR@ PT 2 1.762m SE of B.O.G with Hackmark

BS PT 1 0-00-00

FS PT 3 180° 24' 20"

180-24-30

48-50  
 00-45-40

180-24-20

13-10  
 181-24-30

180-24-30

37-40  
 1-34-40

Mean  $\neq$  180° 24' 25"

K. Whitehorn R. Oleson T. Suddendorf 10/23/81 (5)

Rge 26 W

Sec 30

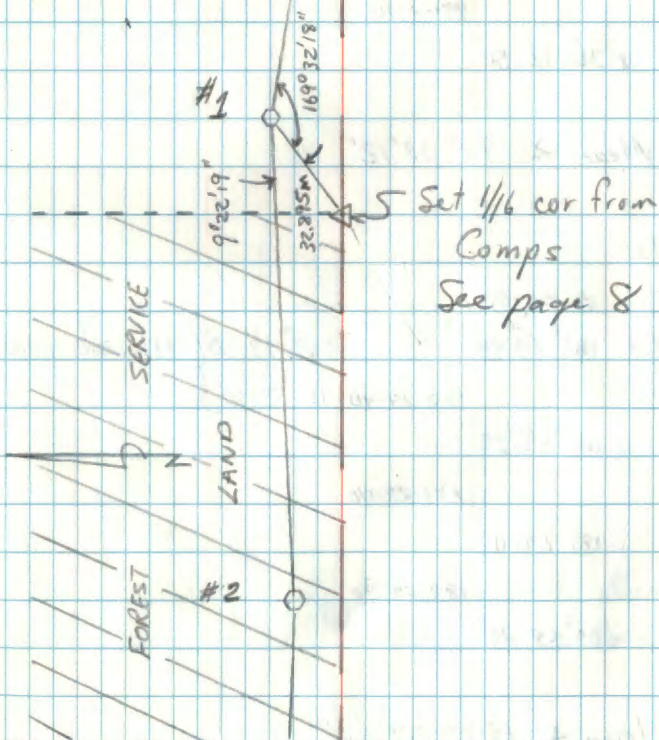
Sec 31

Sec 25

Sec 36

R 27 W

Sec cor. (reset using 1965  
 County Ties) See page 2



Set 1/6 cor from  
 Comps  
 See page 8

SERVICE

LAND

FOREST

#2

26° 29.85

PT3 60d spike 5.212m SE B.O.G. N/Hack

BS PT2 0-00-00 89° 48' 00" 120.450 120.449m

FS 1/4 cor 99° 03' 00" 114° 58' 50" 5.230m 4.741m

99-04-00

∠ 198° 07' 00"

99-02-40

∠ 297° 09' 40"

99-03-10

∠ 36° 12' 50"

Mean ∠ 99° 03' 12"

PT3

BS PT2 0-00-00

FS PT4 182° 29' 40" 269° 47' 30" } 410.079 410.076

182-29-40 90° 13' 10" }

∠ 04° 59' 20"

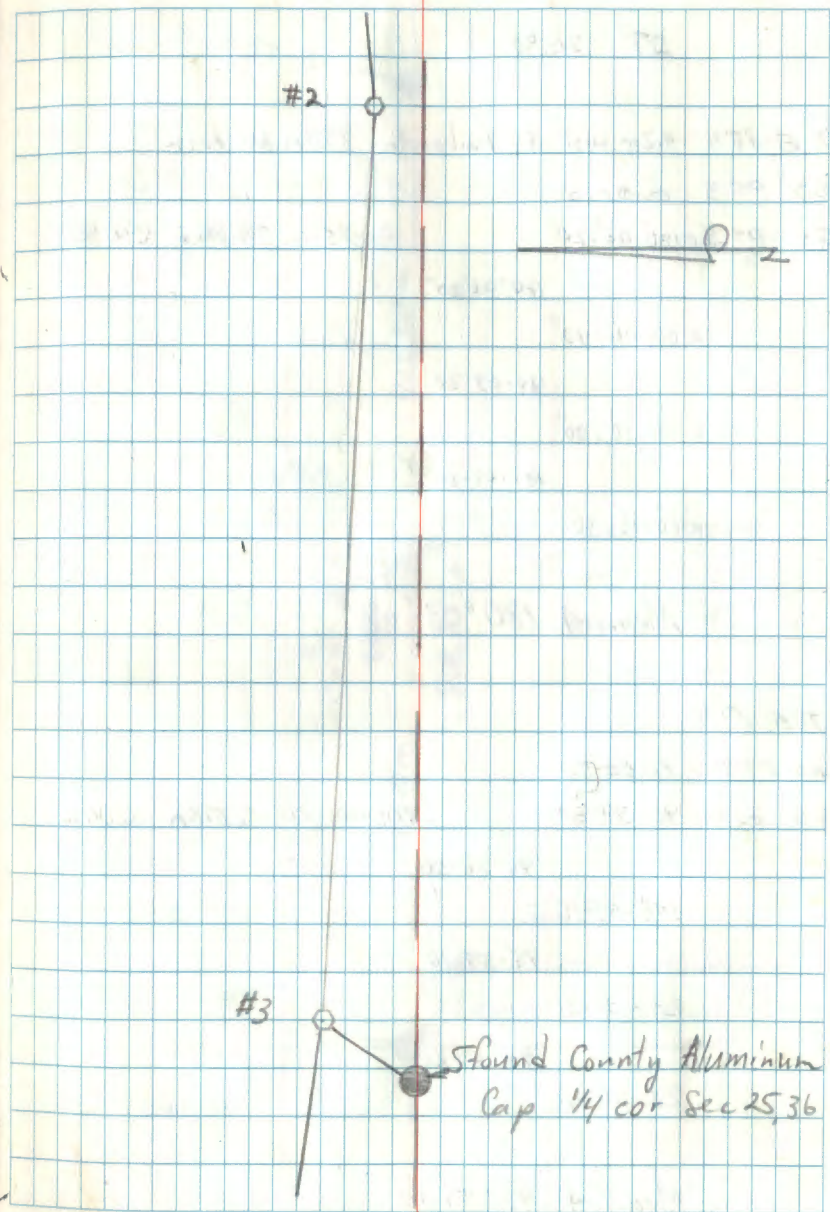
182-29-40

∠ 187° 29' 00"

182-29-40

∠ 09° 58' 40"

Mean ∠ 182° 29' 40"





27° 28,90

T & B PT 4 4.2m west of E trail north 8,539m NW bench

BS PT 3 0-00-00

FS PT 5 180° 03' 20" 90-25-00 398.696m 398.685m

180° 03' 20"

R 00° 06' 40"

180-03-20

P 180° 10' 00"

180-03-30

R 00° 13' 30"

8.44  
29  
197

Mean  $\pm$  180° 03' 22"

T & B PT 5

BS PT 4 0-00-00

FS Sec Cor 95-59-20 105-46-20 6,278m 6,042

95-58-50

194-58-10

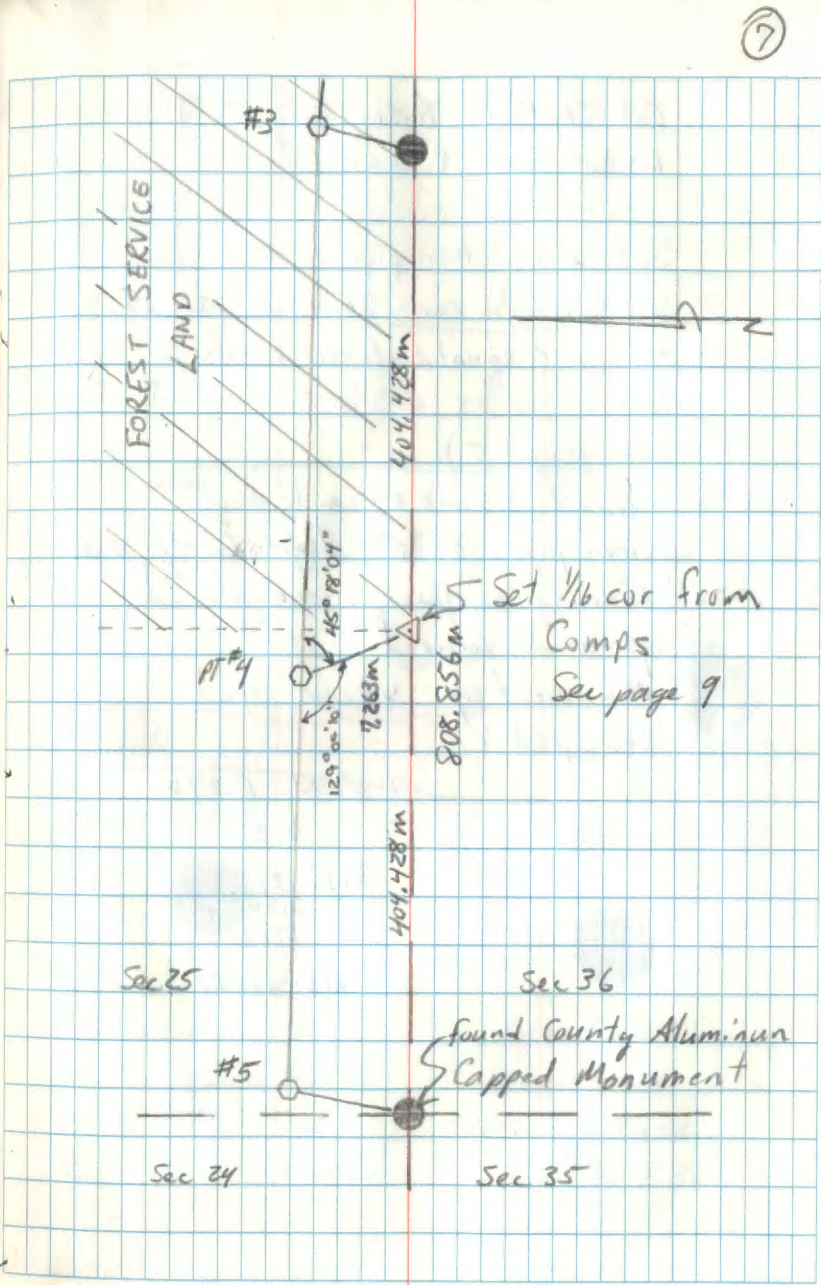
95-59-10

287-57-20

95-59-20

23-56-40

Mean  $\pm$  95° 59' 10"



Oct 29, 1981 Partly Cloudy 50°F  
K. Whitehorn R. Oleson

Set 2" x 5' iron pipe with 2 1/2" Brass  
Cap for S 1/4 cor. - SE 1/4 of Sec 25  
On line of equal distance between  
SE cor Sec 25 & S 1/4 cor Sec 25  
(see page 5).

found 2.5 cm x 57 cm (2 piece  
iron pipe. 1938 Itasca County pipe  
Leaning southerly, straightened  
up and towered  
Monument up 43 cm and  
Stamped:

T 59 N R 27 W

S. 25

E. 1/6  
S. 36  
1981

RLS 14677

V-24

Trail

Top of Slope

S 85° E 11.63'

60 d vert spike in base  
double Blazed  
Top "1/16 S 36"  
Base "BT"

ditch

102.05° S 11° W

16 d nail up 38 cm  
in a 31 cm  
Balm of Gilead

16 d nail in SE face

Up 70 cm in 17"

Cedar double Blazed

Top: "1/16 S 36"

Base "BT" 60 d spike

Vertical in Base

Blaze

16 d nail in NE face, up

80 cm in 20" Cedar

double Blaze:

Top "1/16 S 36"

Base "BT" 60 d spike

Vertical in Base Blaze

107.30° S 34° E

V-22 WEST ONE SIXTEENTH 525-36

Oct 29, 1981 Cloudy 45°F Snowy

Set 5cm x 15cm bar Pipe with 6cm Brass  
cap up 40 cm at Break in  
ditch Bank - Stamped

759N R27W

w. 4/6  $\frac{525}{5.26}$   
1981  
265 14677

1.87 x  
1.87

9

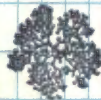
V-22

16d nail up 105cm in  
24cm ELM in clump  
of 5 (in NE Face)  
N37°W 46.23'



road

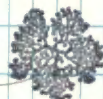
16d nail up 70 cm in  
7" Balm-of-Gilead



81.42 N 28°E

Trail

Top of Slope



Top of Slope

16d nail up 55 cm in  
13" white Birch South  
Face, N 86°W 23.85'  
(2 Blazes) "1/6 52" "BT"

ditch

ditch

Pages

10 - 11

Blank

T59N R27W

## Mack Rd. Easement Survey

STA 1<sup>st</sup> H&D 2<sup>nd</sup> H&R 3<sup>rd</sup> H&D 4<sup>th</sup> H&R 2<sup>nd</sup> Pk  
 H& 2<sup>nd</sup>

1.

89.52-09

270-08-16

89.52-24

00-00-14 359-57-33 179-57-39 359-57-31 90-23-04

179-57-42 180-00-05 00-00-13 179-59-60 269-37-31

74+00 179-57-28 179-57-28 179-57-26 179-57-31 90-22-46

179-57-28

51

22 00-21-57 00-21-55 00-22-13 89-58-05

180-15-10 180-05-12 180-05-14 180-05-12 270-02-47

91+44.9 180-16-46 180-16-45 180-16-39 180-17-45 89-57-39

180-16-40

180-16-45

180-16-46

16-55

90-21-46

269-38-46

190-23-54 10-23-46 190-23-54 10-23-48 89-38-35

90-00-00 179-60-00 00-00-01 179-54-59 270-22-31

4 190-23-54 190-23-46 190-23-55 190-23-49 89-38-17

190-23-48

190-23-51

90-21-30

V.O.K. Pk. 01-17-83

12

Jan 12, 1983

Cloudy, cold, calm

S. Dist<sup>(P)</sup> H. Dist P.C. to G. Kosenka  
 (traming) TTR G. Robertson

1156.70

1156.70

STA 1 =

1156.70

90 1156.70

1156.70

Iron pipe w/BC .9 ft  
 under road surface

BPR=29.5 Temp=6°F

ECF=-3

1744.05

1744.04

1744.05

1744.05

1744.01

Nail in E of Mack Rd  
 (same ties as road survey)

2419.03

2419.03

2419.03

2419.03

2419.03

Nail in W. side of  
 bridge

2337.16 1352.96

BPR=29.4 Temp=18°F

2337.15 1352.97

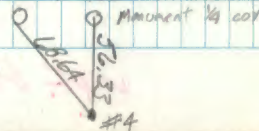
ECF=-2

1352.96

1352.96

1352.93

Concrete nail in road  
 3" PP



T59N R27W

Mack Rd Extension Rd survey cont'd from pg 12

STA 1<sup>st</sup> H&R 2<sup>nd</sup> H&R 3<sup>rd</sup> H&R 4<sup>th</sup> H&R 2<sup>nd</sup> D/R

H4

Z8

SIDESHOT TO 1/4 Corner

91+44.9

93-43-56 273-43-59 93-44-01 273-43-53

180-03-46  
00-03-48 93-40-08 00-03-49 180-03-51

4 93-40-08 93-40-12 93-40-12 93-40-02

93-40-09

91+44.9 SIDESHOT TO POT 130+89.2

190-41-55 10-41-47 190-41-60 10-41-46 89-35-41

00-03-55 180-03-47 00-03-54 180-03-46 20-24-57

4 190-38-00 190-38-00 190-38-16 190-38-00 89-35-22

190-38-02

SIDESHOT TO 1/16 CORNER

259-16-10 02-02-53 79-15-55 259-16-05 79-15-57 90-08-46

00-03-22 00-01-46 180-02-42 00-02-47 180-02-42 269-51-52

5 259-13-17 259-13-13 259-13-18 259-13-15 90-08-27

259-13-16

40 BS SPUR TRAV TO N 1/4 Sec 35

259-14-40 179-14-22 259-14-36 179-14-24 90-04-36

00-05-37 180-05-21 00-05-29 180-05-23 269-56-04

~~5001~~ 5 259-13-17 259-14-01 259-14-07 259-14-01 90-04-16

259-14-03

259-14-03

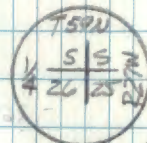
VOK BR 01-17-83

Jan 12, 1983

S. Dist

H. Dist

STA = 4001 =



(chained) 56.33

Itasca Co. Monument  
w/ALUMINUM CAP

1523.10

1523.09

1523.09

1523.09

1523.05

FS POT 130+89.2

2337.16

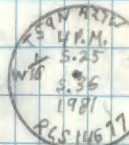
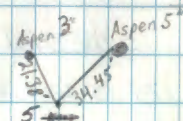
2337.15

2337.15

2337.15

2337.14

STA = 5001 =



2317.54

2317.54

2317.54

2317.54

2317.54

5002 = P1 = 23 + 13.8

T59N R27W  
Mack Rd Easment Rd Survey

cont'd from pg. 13

STA 1<sup>st</sup> H&D 2<sup>nd</sup> H&D 3<sup>rd</sup> H&D 4<sup>th</sup> H&R Z4 "OR"

H&

269-55-34 89-55-24 269-55-26 189-55-17 89-39-09

00-04-27<sup>57</sup> 180-04-45 00-04-59 180-04-49 270-21-22

5002  
5003

269-51-07 ~~89-00-09~~ 269-50-27 269-50-28 89-38-53

~~269-50-37~~ 269-50-39 269-50-33

180-13-11 00-13-01 180-13-10 00-13-02 90-00-10

00-06-05 180-06-02 00-06-05 180-06-02 270-00-24

5003  
5004

180-07-06 180-06-59 180-07-05 180-07-00 89-59-53

180-07-03

5003 SIDESHOT TO NE Sec Cor Sec 35

174-35-32 354-35-~~22~~ 174-35-26 354-35-16 90-31-22

00-11-33 180-11-26 00-11-30 180-11-25 269-29-02

5003  
5004

174-23-59 174-23-~~56~~ 174-23-56 174-23-51 90-31-10

174-23-56

180-30-40 00-30-33 180-30-38 00-30-33 89-57-15

00-00-57 180-00-52 00-00-58 180-00-52 270-03-22

5004  
5005

180-29-43 180-29-41 180-29-40 180-29-41 89-56-57

180-29-41

✓ OK br. 01-17-83

Jan 13, 1983

Cldy, 20°F, calm

P.C. G. Kosenko

S. Dist H. Dist (training) X X <sup>AP</sup> G. Robertson

1129.69

1129.69

1129.70

1129.69 ✓ 1129.67 ✓ Sta = 5002 60d spike

1305.64

1305.64

1305.65

1305.64 ✓

1305.64 ✓ 5003 = 60d spike

197.80

197.80

197.79

197.80 ✓

197.79 ✓

1562.64

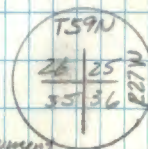
1562.64

1562.64

1562.64 ✓

1562.64 ✓

STA 501A<sup>3</sup> =  
Itasca Co Monument



T59N R27W

Traverse cont'd from pg 14

STA	1 <sup>st</sup> H&R	2 <sup>nd</sup> H&R	3 <sup>rd</sup> H&R	4 <sup>th</sup> H&R	2 <sup>nd</sup> P/R
		H &			H &

90-36-03 270-35-58 90-35-57<sup>36-08</sup> 270-35-57

00-07-50 180-07-44 10-07-52<sup>1</sup> 180-07-40

5005 90-28-13 90-28-14 90-28-15<sup>-17</sup> 90-28-17

90-28-15 ✓

5006

VOK RR 01-17-83

Jan 13, 1983

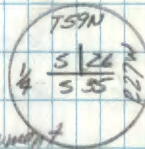
F1  
S. Dist

F1  
H. Dist

(chained) 52.45 ✓ 60d spike

STA 5006 =

Itasca Co. Monument





T59N R27W

Traverse cont'd from pg 12.

STA	1 <sup>st</sup> H&D	2 <sup>nd</sup> H&D	3 <sup>rd</sup> H&D	4 <sup>th</sup> H&D	24 P/R
		Hx			24

4 BS

180-25-22 00-25-16 180-25-22 00-25-16 89-59-44

00-04-59 180-04-49 00-04-59 180-04-50 270-01-02

5	180-20-23	180-20-27	180-20-23	180-20-26	89-59-21
		180-20-25			

282-36-51 102-36-42 282-36-47 102-36-43 90-04-44

00-09-31 180-09-22 00-09-33 180-09-24 269-55-54

6	282-27-20	282-27-20	282-27-14	282-27-19	90-04-25
		282-27-18			

155-42-11 335-42-06 155-42-13 355-42-10 90-00-04

00-03-25 180-03-11 00-03-26 180-03-13 270-00-21

7	155-38-46	155-38-55	155-38-53	155- <del>38</del> <sup>38</sup> -57	89-59-52
		155-38-53			

180-22-49 00-23-34 180-23-<sup>22</sup>~~20~~ 00-23-13 90-08-5400-04-38 180-05-24 00-05-<sup>20</sup>~~18~~ 180-05-01 269-51-50

8	180-18-11	180-18-10	180-18-02	180-18-12	90-08-32
		180-18-09			

9 STA 9 = TNSP CORNER  
Rusted Iron cap in ground

Jan 14, 1983

(FT)  
S. DIST(FT)  
H. DIST

Partly Cldy, mild, breeze

PC. by G. Kosenko

RT, RT by G. Robertson

T-2 S/N 265184

Red-1

4802.98

4802.97

4802.98

4802.98 ✓

4802.98 ✓

60 d spike (see ties on pg 13)

BPR = 29.9 Temp = 19°F

ELF = -1

2008.48

2008.48

2008.48

2008.48 ✓

2008.48 ✓

Road PI

BPR = 29.9 Temp = 19°F

ELF = -1

2173.56

2173.57

2173.56

2173.56 ✓

2173.56 ✓

Concrete nail in intersection of road 46

2730-26

2730-26

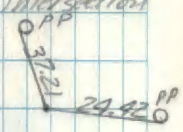
2730-26

2730.26 ✓

2730.25 ✓

Concrete nail in road. Recovered and Iron pipe for 1/4 car under road, laying down.

Placed nail at corner position from WC to the west



T59N R27W

SPUR TRAU TO <sup>S</sup> ME SEC Cor Sec 25

STA 1<sup>st</sup> H&D 2<sup>nd</sup> H&R 3<sup>rd</sup> H&D 4<sup>th</sup> H&R Z&D/R  
H&R Z&D

6

359-24-16 179-23-57 359-24-10 179-23-58 89-59-33

00-08-10 180-07-56 00-08-07 180-07-57 270-01-10

7 359-16-06 ✓ 359-16-01 ✓ 359-16-03 ✓ 359-16-01 ✓ 89-59-12 ✓

359-16-03 ✓

66-24-49 246-24-93 66-24-50 246-24-43 90-13-02

00-04-52 180-04-42 00-04-50 180-04-40 269-47-35

7001 66-19-57 66-20-01 ✓ 66-20-00 ✓ 66-20-01 ✓ 90-12-40 ✓

66-20-00 ✓

7002

✓ OK R.R. 01-17-83

17

Jan 14, 1983

Ptly. cloudy, mild, breezy

S. Dist

H. Dist

PC CO Br. Kosenko

TR Br. Robertson

T-2 S/N 265189

Red-1

BPR = 29.9 Temp = 19°F

ELF = -10

608.73

608.73

608.73

608.73 ✓

608.73 ✓ concrete nail @ intersection  
of road & S

231.21

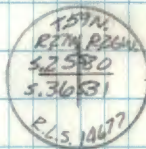
231.21

231.20

231.21 ✓

231.21 ✓ 60'd spike in top of ditch  
grade

7002 =





T59N R27W

Spur trav to SE sec Cor sec 24

STA 1<sup>st</sup> H&D 2<sup>nd</sup> H&D 3<sup>rd</sup> H&D 4<sup>th</sup> H&D 24<sup>th</sup> Div

H &

Z &

7

121-38-30 301-38-28 121-38-38 301-38-33 89-52-06

00-20-27 180-20-36 10-20-32 180-20-36 270-08-37

6 121-18-03 121-17-52 121-18-06 121-17-57

121-18-00

90-14-42

213-33-29 33-33-15 213-33-24 33-33-09 90-15-05

00-00-30 180-00-19 00-00-26 180-00-16 269-43-25

6001 213-32-59 213-32-56 213-32-58 213-32-53

213-32-57

164-47-44 344-47-49 164-47-47 344-47-49

00-00-35 180-00-23 00-00-35 180-00-23

6002 164-47-09 164-47-21 164-47-17 164-47-26

164-47-17

164-47-43 344-47-42 164-47-40 344-47-38

00-00-30 180-00-21 00-00-33 180-00-20

164-47-13 164-47-21 164-47-17 164-47-18

164-47-15

3/13  
HAN

Jan 26, 1983

Clear, cold, calm -10°F

(LH)  
S Dist

(RH)  
H. Dist

PC G. Kosenko

OR B. Ausk

TR G. Robertson

Aide J. Jackson

T-2 S/N 265184

Red-1A

1298.58

1298.58

1298.58

1298.58

Road PI

BPR=29.9 2°F @ 1200PM

231.32

231.32

231.32

231.32

60d spike

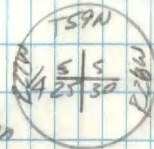
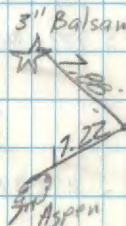
1845.16

1845.15

1845.17

1845.16

6002 =  
Itasca Co Mon



T59N R27W

Spur tray cont'd from pg 19  
 STA 1<sup>st</sup> H&D 2<sup>nd</sup> H&R 3<sup>rd</sup> H&D 4<sup>th</sup> H&R 2<sup>nd</sup> P/R

H &

R &

90-04-11

~~164-47-43 344-47-42 164-47-40 344-47-38 90-04-32~~

~~00-00-30 180-00-21 00-00-33 180-00-20 269-56-11~~

6002 164-47-13 164-47-21 164-47-07 164-47-18

164-47-15

222-55-14 42-55-07 222-55-18 42-55-09 90-05-08

00-00-33 180-00-32 00-00-41 180-00-29 269-55-36

6003 222-54-41 222-54-35 222-54-37 222-54-40 90-04-46

222-54-38

242-37-09 62-37-04 242-37-16 62-37-07 89-53-10

00-00-30 180-00-24 00-00-35 180-00-24 270-67-39

6004 242-36-39 242-36-40 242-36-41 242-36-43 89-52-46

242-36-41

6005

312/153  
 BR

20

Jan. 26, 1983

(ft)  
 S. Dist

(ft)  
 H. Dist

1845.18

1845.18

1845.19

1845.18

903.06

903.06

903.06

903.06

177.65

177.66

177.64

177.65

3" ASPEN

16.73  
 5" ASPEN

12.91  
 5.81 4" Balsam

4" ASPEN

T59N  
 2419  
 25730  
 R27W R27W

Remainder of  
Book —

Blank  
Pages