

OWNER
RESTORATION
JEN A 26 W



MINING
TRANSIT BOOK
No. 3845

BOOK 1

Handwritten text on the spine:
J. S. M. K. 111 41

Book #1

T 58 N

R 26 W

¹⁶
4 P.M.

7 28 5								
3 17 16 15 12								
9 18 23 22 13	5	4	6A	3	2	75	1	
6 19 20 21 11								
1 10 4 14			4B 57				74	
	7	72	8	9	⁶⁵ 80	10	11	73 12
28 26 26 24 27			58 59			60		
30 32								
29 28		17	16	15	14	13		
31 33								
35 37 34				78	61			
		71						
39 19		20	21	22	23	24		
38								
40 66 70				62		63		
79								
41 30		29	28	27	26	25		
42		69	77					
44								
45 31 68 32 76 33				34	35	36		
46								
43 55 57 52 52 50					8 67			

Colored Numbers refers To
Page ON Which, Notes For
That Corner May Be Found.

1
 Section Cor. Sec. 1-6-7-12
 Survey of P.C. Warner in 1920.
 Plat is recorded in Itasca
 Co. Courthouse.

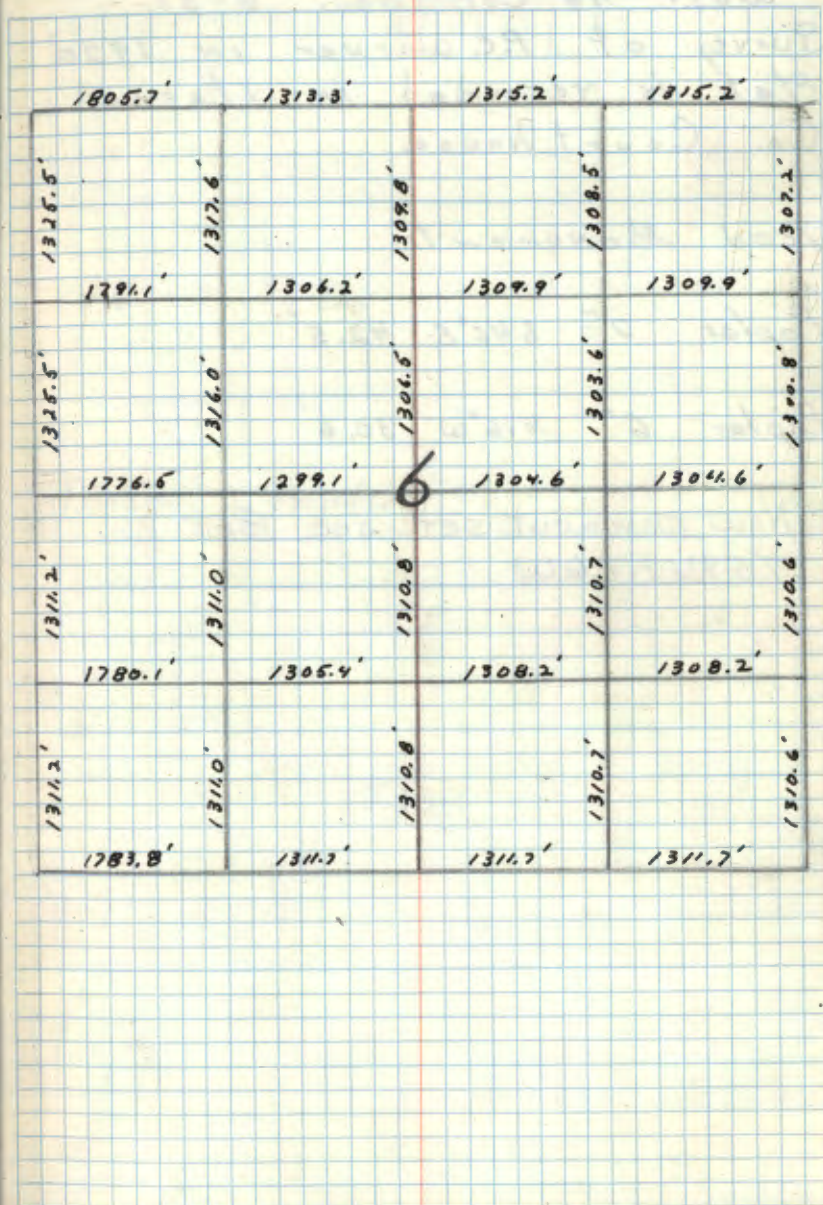
Iron Monument:

Poplar 10" S 52° E 56.8'

Poplar 13" N 46° E 63.3'

Poplar 14" N 65° W 78.5'

Poplar 14" S 33° W 66.7'



2 A-2

West $\frac{1}{4}$ Cor. Sec. 6-31.

Survey of P.C. Warner in 1920.
Plat is recorded in Itasca
Co. Court house.

Iron Monument:

Poplar 7" S46°E 42.5'

Poplar 6" N16°W 30.6'

New monument set see Book 2
T59N R26W

R26W

T59N

31

FS

FS

Private

Private

⁶
T58N

3 B-1

North $\frac{1}{16}$ Cor. Sec. 1-6

Survey of P.C. Warner in 1920.
Plat is recorded in Itasca
Co. Court house.

Iron Monument. (Found a 1" ϕ iron pipe
marking corner on a brushed out N-S line.)
Spruce 6" N40°E 84.7' (Now an 8" spruce
N41°E 84.7 Feet Scribing visible.)
Spruce 4" S83°E 41.4'

Set a 2 inch ϕ galvanized steel pipe filled w/
concrete and capped w/a 3 inch dia. bronze
tablet stamped

T58N
R27W R26W
N $\frac{1}{16}$
S1 | S6
RLS 1966 NO 6807

Tamarack 6" N70°W 29.1 Feet MKD N $\frac{1}{16}$ S 1 BT
Spruce 6" S67°E 10.15 Feet MKD N $\frac{1}{16}$ S 6 BT
Steel sign post 72 inches long with F.S.
standard signs 54-2 & 54-4 attached set South
3.45 Feet

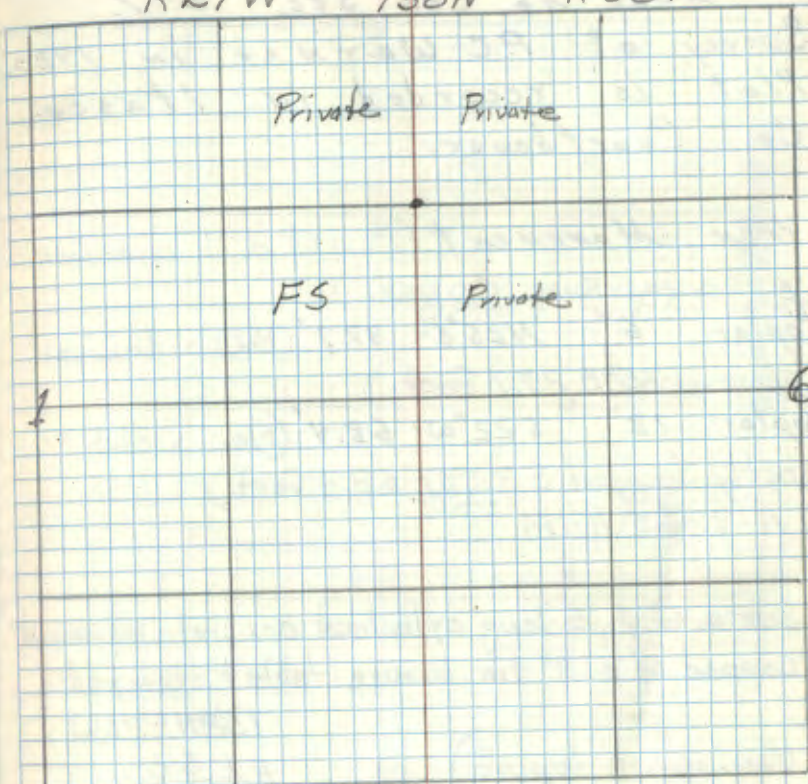
11-2-66 R.H.M. Donald

Affidavit RHM

R27W

T58N

R26W



A brushed out line extends North
and south from corner through heavy
spruce type.

Donald
7/7/70

4 E-4
East 1/6 Cor. Sec. 6-7.

Survey of P.C. Warner in 1920.
Plat is recorded in Itasca
Co. Courthouse.

Iron Monument. (Found a 1" dia. iron
pipe marking corner.)

Poplar 6" N25°E 37.7' (Now a decayed
stump N35°E 37.7 Feet.)

Poplar 12" S22°W 68.4' (Now a stub
mostly decayed S32°W 68.4 Feet.)

11-9-65 RHM

Set a 6" ϕ , 5' long cylindrical concrete monument
capped w/ a 3" dia. bronze tablet stamped:-

T58NR26W

E 1/16 S 6
S 7

RLS 1966 NO 6807

(Mon. is on top of
a large rock.)

Elm 7" N3 1/2°W 15.0 Ft. MKD E 1/16 S 6 BT

Ash 5" S34 1/2°W 37.8 Ft. MKD E 1/16 S 7 BT

Cedar ^{Post} 4" x 4" x 6' w/ F.S. standard signs ~~4-25~~ 54-4
attached set South 5.55 Ft.

5-19-66 (H.M. D. Mald)

Affidavit.

T58N R26W

6

Other F.S.

1311.7'

Other F.S.

FR 2159

7

sketch
7/2/70

East 1/6 Cor. Sec. 6-31

Survey of P.C. Warner in 1920.
Plat is recorded in Itasca
Co. Court house.

Iron Monument:

Poplar 7" S10°W 27.0'

Poplar 7" N9°E 30.5'

New monument by Itasca County Surveyors

T59N R26W

31

FS

FS

FR2149

FS

6
T58N

South $\frac{1}{6}$ Cor. Sec. 6-1
 Survey of P.C. Warner in 1920.
 Plat is recorded in Itasca
 Co. Courthouse.

Iron Monument:

Tan 6" S 83°W 28.6'

Spruce 5" N 69°E 21.5'

R27W T58N R26W

1

6

F.S.

Other

F.S.

Other

Section Cor. Sec. 1-6-31-36
Survey of P.C. Warner in 1920.
Plat is recorded in Hasca
Co. Court house.

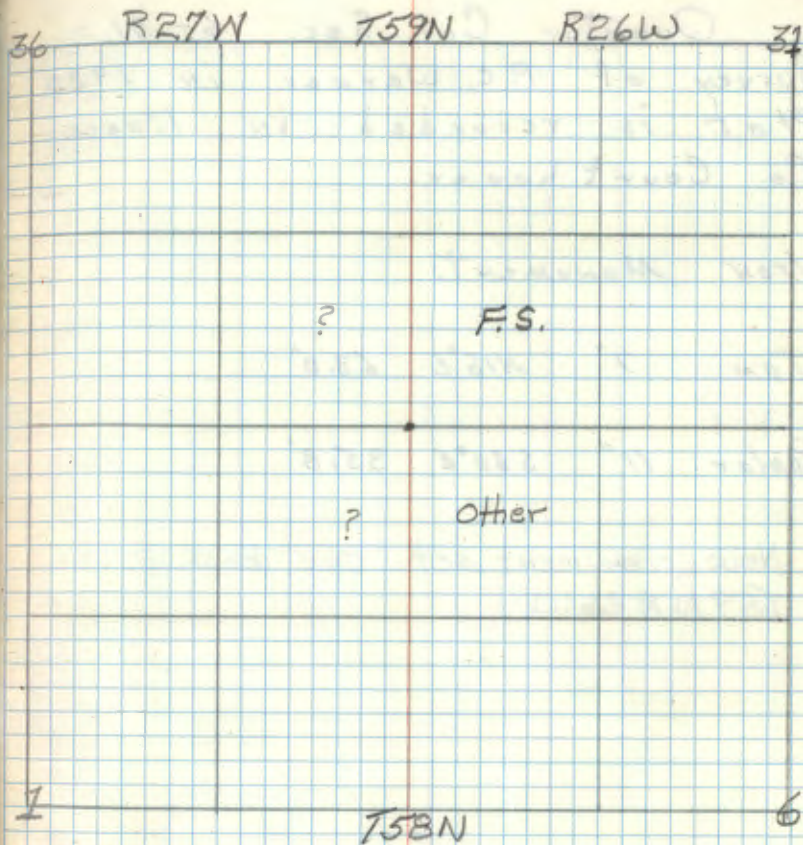
Iron Monument:

Spruce 4" S48°E 51.5'

Spruce 4" N35°W 90.0'

Spruce 6" N45°E 143.0'

Spruce 4" S55°W 65.3'



8
Quarter Cor. Sec. 6-31.
Survey of P.C. Warner in 1920.
Plat is recorded in Itasca
Co. Court house.

Iron Monument:

Tan 7" N15°E 63.0'

Poplar 11" S60°E 35.8'

New monument set - see Book 2
T59N R26W

R9-7150-4 by Olesen 7/2/01

9 C-1

Quarter Cor. Sec. 1-6

Survey of P.C. Warner in 1920.
Plat is recorded in Itasca
Co. Courthouse.

Iron Monument: (Found a 1" ϕ iron pipe
marking corner.)

Tam 6" N75°E 48.6' (Now a stump
N82°E 48.6')

Spruce 5" S37°W 34.1' (Now a stump
S44°W 34.1')

Set a 2" ϕ 5' long galvanized steel pipe
filled w/ concrete and capped w/ a 3" ϕ
bronze tablet stamped:

T58N
R27W, R26W
S1 | S6
1966
RLS NO 6807

Spruce 8" S64½°E 10.3' mxd ¼ S6 BT

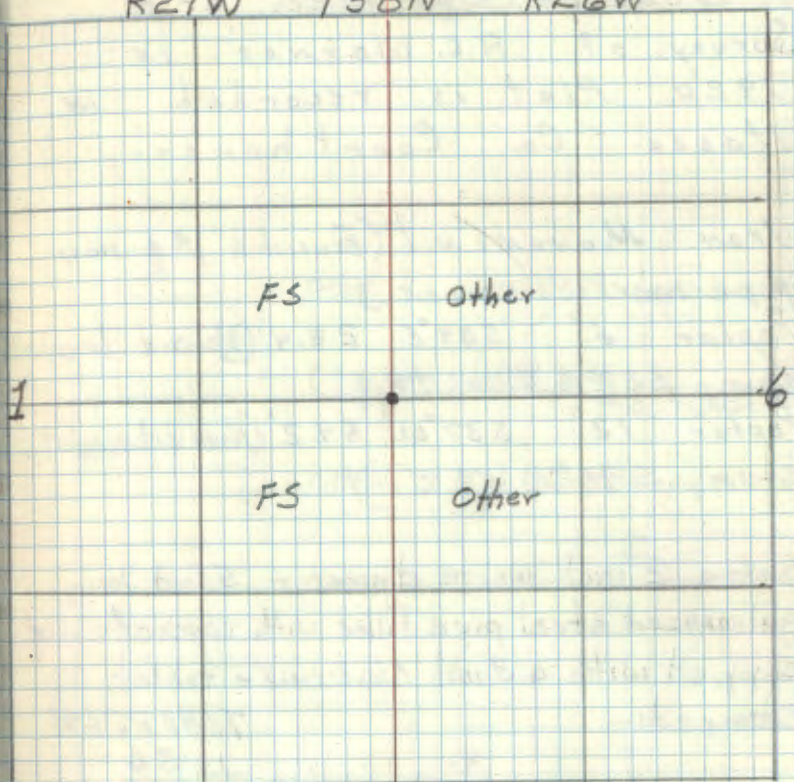
Spruce 8" S18°W 11.9' mxd ¼ S1 BT

Steel sign post 72" long w/ FS standard signs
54-2 & 54-4 attached set South 4.1 Feet

11-2-66 B.A. McDonald

Affidavit RNM

R27W T58N R26W



Corner is in a spruce-Tam. swamp
a cut out line extends north from corner

Quarter Cor. Sec. 6-7.
Survey of P.C. Warner in
1920. Plat is recorded in
Itasca Co. Court house.

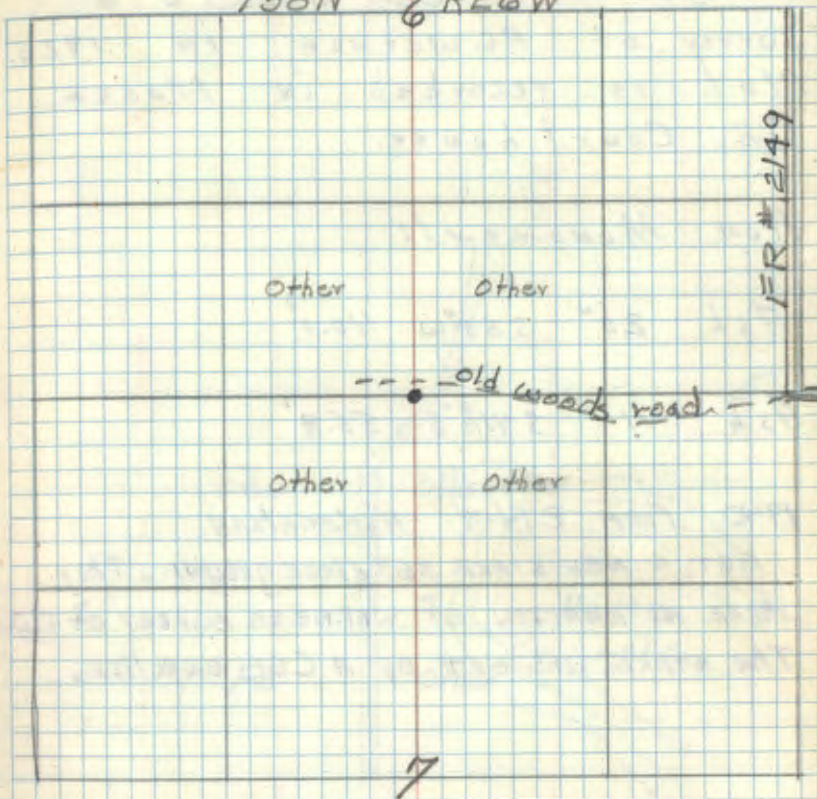
Iron Monument (Found a 1" ϕ iron
pipe marking corner)
Poplar 6" S39°E 28.4' (Now a decayed
stump S32°E True 28.4')
Poplar 12" S37°W 54.2' (Now a decayed
stump S49°W 54.2')

Set a 2 inch inside diameter, 5 foot long
galvanized steel pipe filled with concrete and
capped with a 3 inch dia bronze tablet
Stamped:-

T58N R26W
1 S6
4 S7
1966
RLS NO 6807

Monument and BTS in good condition
7/6/81 Ronald Olson

Ash 7" S68°W 32.9 Feet MKD 1/4 S7 BT
Ash 8" S11°W 34.85 Feet MKD 1/4 S7 BT
Birch 10" N75 1/2°E 4.2 Feet MKD 1/4 S6 BT
Steel sign post 72" long w/FS. standard
sign 54.9 attached set North 3.5 Feet
11-3-66 R.A.M. Donald



Set a steel post 8" long North 6.1" w/signs
7/6/81 Ronald Olson 54-2854-9

R9-7150-4 by Olson 7/6/81

South $\frac{1}{6}$ Cor. Sec. 5-6

Survey of P.C. Warner in 1920.
Plat is recorded in Itasca
Co. Court house.

Iron Monument:

Ash 20" S53°W 40.1'

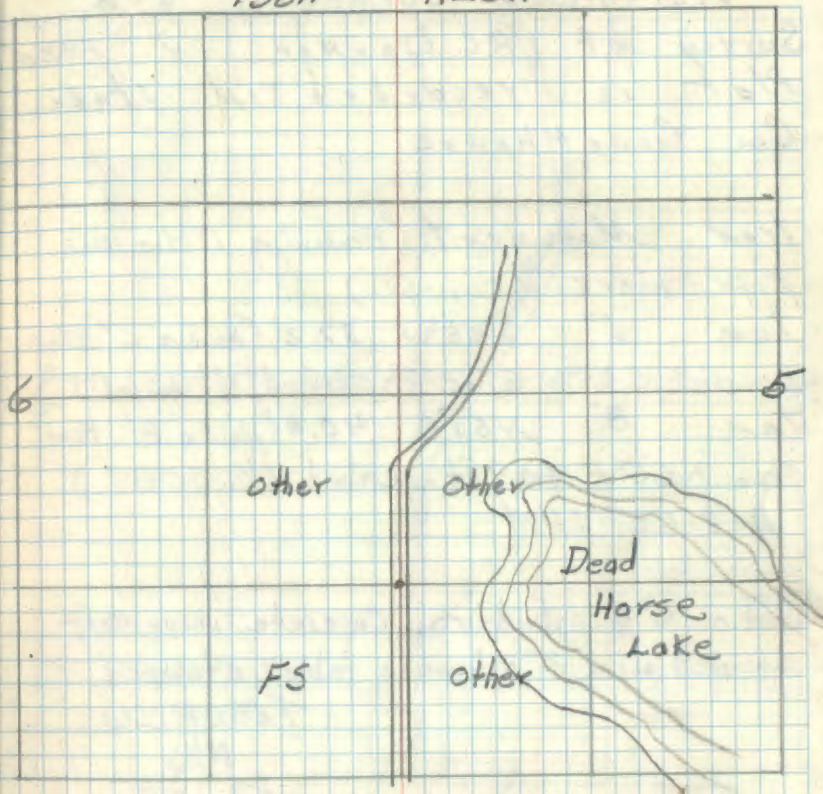
Ash 11" S41 $\frac{1}{2}$ °E 55.9'

1940 Form 874-9 H. HAMATIAN

SET A NEW STAKE 36" ABOVE GROUND. THEY
MAKE NO MENTION OF WARNER'S SURVEY OF 1920.
THE STAKE WAS SET BY A CCL ENROLLEE.

384 5096

CERTIFICATE FILED
T384 REGW



12

B-5

North $\frac{1}{16}$ Cor. Sec. 5-6.

Survey of P.C. Warner in 1920.
Plat is recorded in Itasca
Co. Courthouse.

Iron Monument (Found a 1" dia iron
pipe marking corner.)

Tam 6" S28°W 37.2' (Now a 6" Tam
windfall S35°W 37.2 Ft. scribed (N $\frac{1}{16}$ S6BT))

Tam 8" N53°E 40.9' (Now a 8" tam
stub N65°E 40.9 Ft. scribed "N $\frac{1}{16}$ S5BT")

11-8-65 PHM

Set a 6" ϕ cylindrical concrete monument
capped w/a 3" ϕ bronze tablet stamped

T58NR26W

N $\frac{1}{16}$

S6|55

1966

RLS NO 6807

Cedar 8" S71 $\frac{1}{2}$ °W 25.5 Ft. MKD N $\frac{1}{16}$ S6BTCedar 11" S75 $\frac{1}{2}$ °E 40.5 Ft. MKD N $\frac{1}{16}$ S5BT

Steel sign post 72" long w/FS standard signs

54.2 & 54.4 attached set North 4, 2

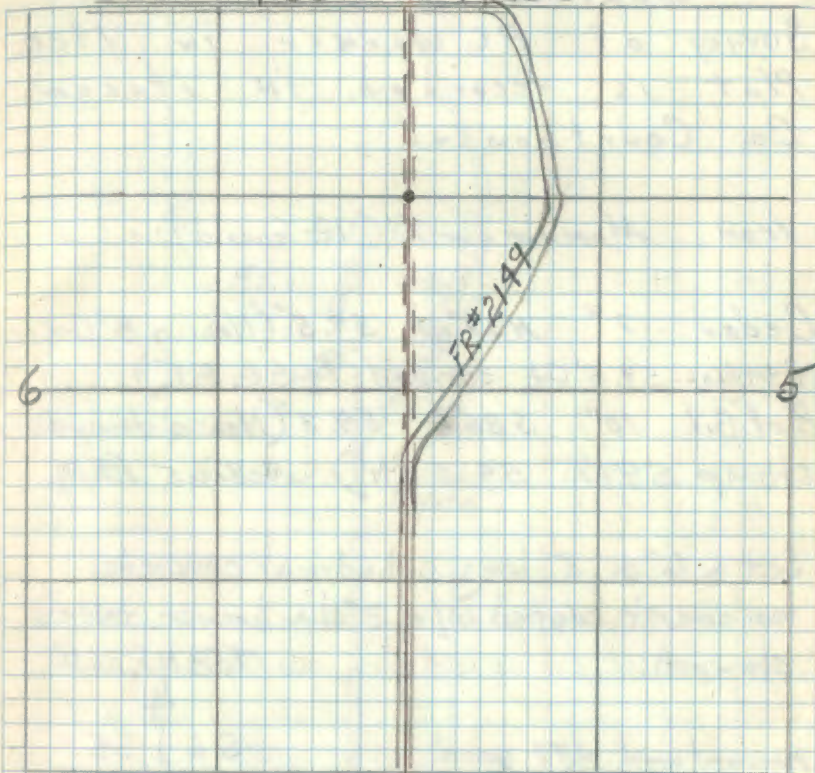
5-19-66 PHM

Affidavit

CERTIFICATE FILED

T58N

R26W



Corner is in old Road grade

PHM
7/9/70

Quarter Cor. Sec. 5-6.

Survey of P.C. Warner in 1920.

Plot is recorded in Itasca
Co. Courthouse.

Iron Monument: (Not Found)

Cedar 7" N57°W 59.5' (Now a 8" Cedar
N50°W 59.5 Ft. scribed 1/4 S6 BT.)

Bof Gil. 10" S86°E 54.3' (Now a decayed
stump S79°E 54.0 Ft.) 11-8-65 RHM

Set a 6" ϕ , 5' long cylindrical concrete
monument capped w/a 3" dia. bronze tablet
stamped:

T58N R26W

1/4

S6 | S5

1966

RLS NO 6807

Monument and BT's good
7/2/81 Ronald Olsen

Birch 6" N89°W 20.7' MKD 1/4 S6 BT

Hsper 8" N59°E 49.8' MKD 1/4 S5 BT

Rock 2'x3' N21°E 47.15 To high point

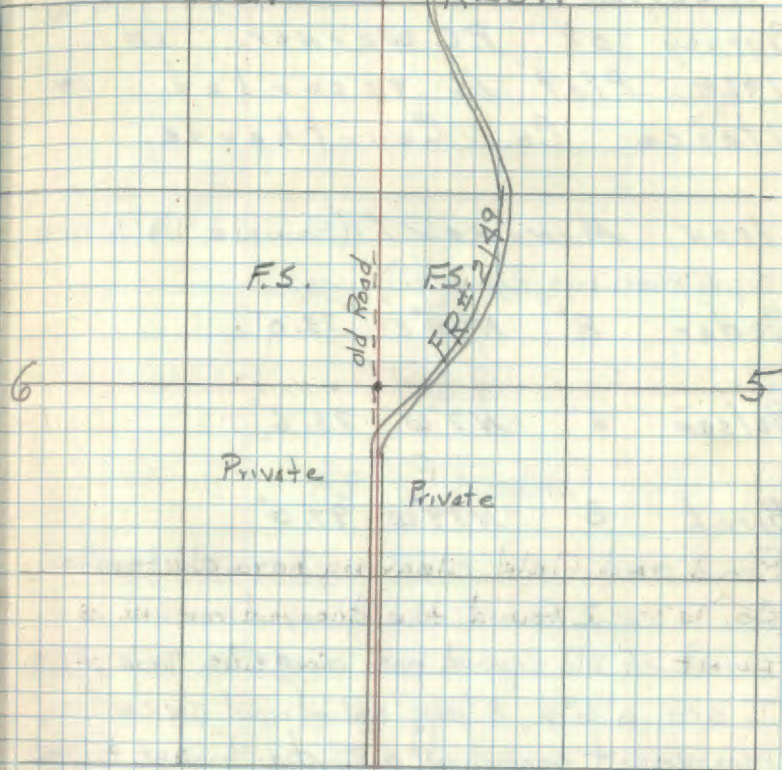
Cedar Post 72" long with FS standard signs

54-2 & 54-4 attached set East. 3.3

5-18-66 RHM-Donald

T58N

R26W



Corner is 540' North of F.R. 2149

check
1/9/70

I set steel post 8' long

west 6.1' w/signs 54-2 & 54-9

7/2/81 Ronald Olsen

R9-7150-4 by Olesen 7/2/81

14 E-5 Affidavit RHM

Section Cor. Sec. 5-6-7-8.
Survey of P.C. Warner. in
1920. Plat is recorded in
Itasca Co. Courthouse.

Iron Monument: (Found a 1/4" ϕ iron
pipe marking corner.)

Cedar 8" N48°E 73.0'

Balsam 6" N7°W 73.6'

Birch 8" N79°W 97.0'

Road and field clearing have obliterated
Co. B.T.s. I found the decayed remains of
point of old squared post alongside Iron pipe.
I set a 6" ϕ , 5' long cylindrical concrete
monument capped w/ a 3" dia. bronze tablet
stamped:

T58NR26W

S6 | S5

S7 | S8

1966
RLS No 6807

Spruce 8" S5°E 54.1 Ft. MKD S8 BT

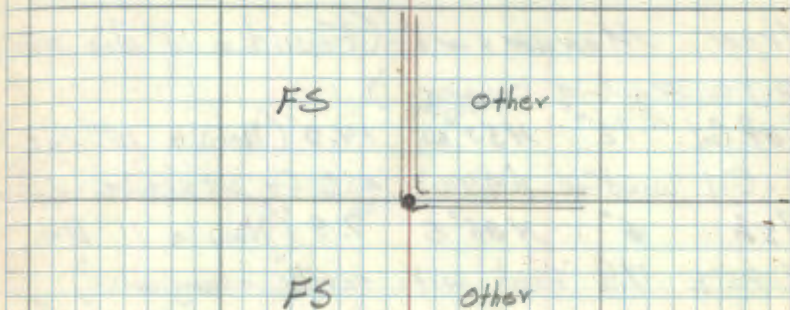
Tamarack 9" S76°W 75.4 Ft MKD S7 BT

Spruce 9" N46 1/2°W 120.3 Ft MKD S6 BT ✓

Cedar post 4'x4'x72" w/FS Standard signs 54-2
& 54-4 attached set South 5.5 Ft.

CERTIFICATE FILED

T58NR26W



5-19-66 G.H.M. Donald
Monument is located on approx. PI of curve
in Co. road.

Donald
4/7/70

~~See T58NR26W BK 2 pg 22~~

CONT BOOK 7 pg # 7

B-4 Affidavit - RHM

North East 1/6 Cor. Sec. 6.

Survey of P.C. Warner in 1920.
Plat is recorded in Itasca
Co. Court house.

Iron Monument: (Found a 1" dia iron
pipe marking corner.)

B.o.P. Gil 12" N57°W 14.0' (Now a 15" Balu-
of-Gil windfall N49°W 14.0 ft. w/ scribe visible)

Ash 6" N85°E 7.9' (Now a 11" Ash
S85°E 7.9 Feet with scribe overgrown.)

Set a 2" inside ϕ , 5' long galvanized steel
pipe Filled w/ concrete & capped w/ a 3"
 ϕ bronze tablet stamped:

T58N R26W
NE 1/6 S6
1966
RLS NO 6807

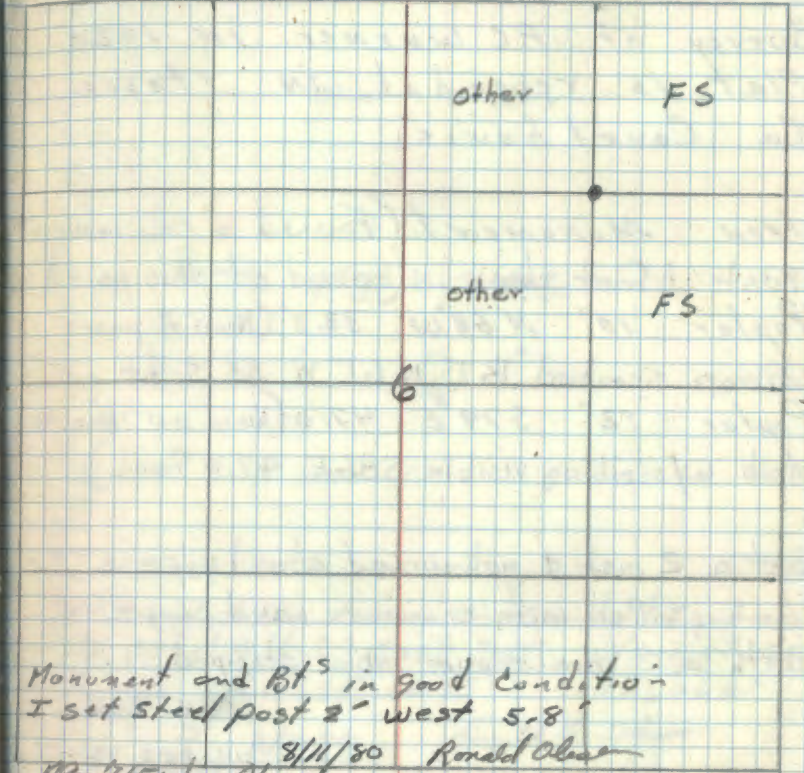
Ash 9" N19°E 11.9 Ft. MKD NE 1/6 S6 BT

Cedar 10" S9°W 34.6 Ft. MKD NE 1/6 S6 BT

Steel sign post 72" long w/ F.S. standard
signs 54-28 54-4 attached set South 6.2 Ft.

5-19-66 R.H. McDonald

T58N R26W



Monument and Bt's in good condition
I set steel post 2' west 5.8'
8/11/80 Ronald Olson
R9-7150 by Olesen

[Handwritten signature]
8/11/80

116 B-3

Center North $\frac{1}{4}$ Cor. Sec. 6.

Survey of P.C. Warner in 1920.

Plat is recorded in Itasca Co. Court house.

Iron Monument. (Found a column of rust 1 foot deep in ground at this point.)

Poplar 10" N68°W 33.3' (Now Aspen

stump scribed "BT" N61°W 33.3 Ft

Poplar 12" S79°E 47.0 (Now an Aspen stub w/ scribing visible S86E 47.0 Feet.)

Set a 2 inch ϕ galvanized steel pipe 5' long, filled with concrete and capped with a 3" dia. bronze tablet stamped

T58N R26W

N $\frac{1}{4}$ S6

1966

RLS NO 6807

Cedar 6" N87°E 78.2 Feet MKDCN $\frac{1}{16}$ S6BT

Cedar 10" N32°E 70.9 Feet MKDCN $\frac{1}{16}$ S6BT

Steel sign post 72" long with F.S. standard

signs 54-2554-4 attached set West 3.5 Feet

11-2-66 T.H. McDonald

Affidavit RHM

T58N

R26W

other

other

F.S.

F.S.

6

To bring this corner to standard I cut new
Bt. steel post 8" East 7.1' w/ sign 54-2554-9
Birch 7" N68E 13.95' CN $\frac{1}{16}$ S6BT

8/11/80
R9-1150-4 by class

Ronald W. Olson

[Handwritten signature]
7/1/71

B-2

North West $\frac{1}{16}$ Cor. Sec. 6

Survey of P.C. Warner in 1920.
Plat is recorded in Itasca
Co. Courthouse.

Iron Monument: (Found a 1" ϕ iron
pipe marking corner.)

Spruce 6" S45°W 12.9' (Now a stump
S38°W 12.9')

Spruce 6" N13°E 12.6' (Now decayed
roots N6°E 12.6 Feet)

Set a 2 inch inside dia., 5 Foot long galvanized
steel pipe filled w/concrete and capped with a
3 inch dia. bronze tablet stamped:

TSBN R26W
NW $\frac{1}{16}$ S6.
1966
R.L.S. ND 6807

Tamarack 8 inch N43°W 75.0' MKD NW $\frac{1}{16}$ S6 BT

Tamarack 11 inch S79 $\frac{1}{2}$ °W 64.2' MKD NW $\frac{1}{16}$ S6 BT

Steel sign post 72 inches long with F.S. standard
signs 54-2 & 54-4 attached set East

10-31-66 G.A. McDonald
check dist.

Affidavit RHM

T58N, R26W

Other

Other

x

Other

F.S.

6

Corner is approx 200' west of an old
clearing.

[Signature]

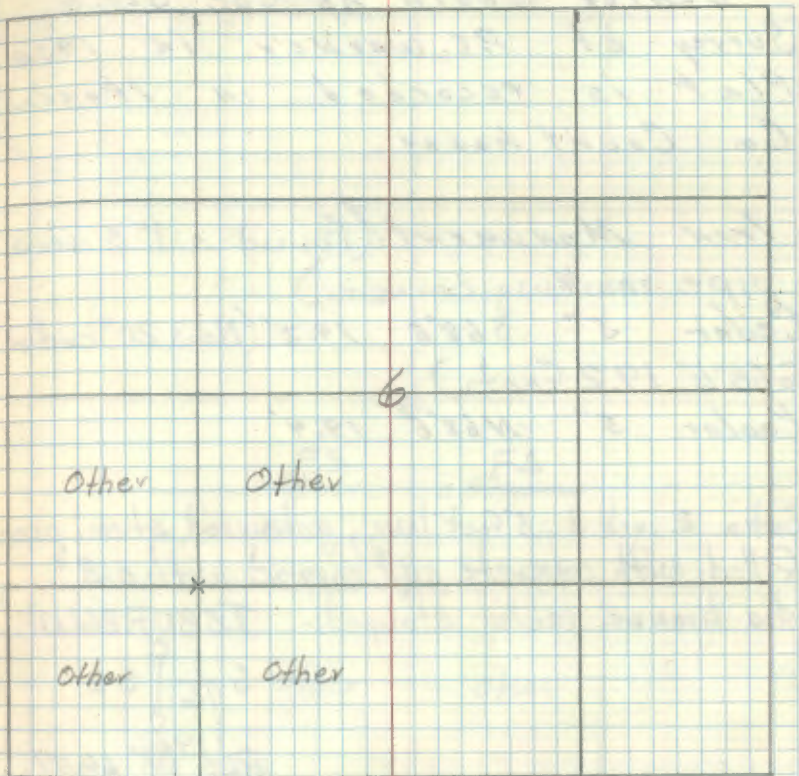
South West $\frac{1}{6}$ Cor. Sec. 6.
 Survey of P.C. Warner in 1920.
 Plat is recorded in Itasca
 Co. Court house.

Iron Monument:

Balsam 6" S28°E 15.9'

Ash 12" N83°W 12.3'

504 50%



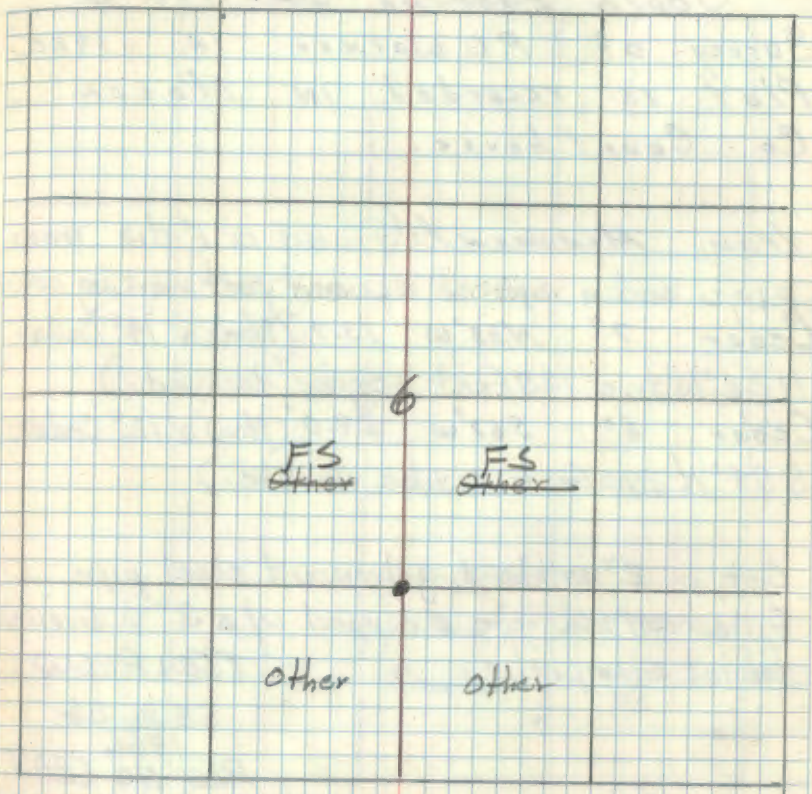
Center South $\frac{1}{16}$ Cor. Sec. 6.
 Survey of P.C. Warner in 1920.
 Plat is recorded in Itasca
 Co. Court house.

Iron Monument: (Found a 1" ϕ iron
 pipe marking corner.)
 Cedar 5" S68°E 19.2' (Now 20" cedar
 S58°E 19.2 Feet.)
 Poplar 5" N68°E 19.4'

Set a 2 inch ϕ , 5 foot long, galvanized steel pipe
 filled with concrete and capped with a 3"
 dia bronze tablet stamped:- T5BNR26W
 $S \frac{1}{16} | S6$
 1966
 RLS NO 6807

Cedar 16" N55 $\frac{1}{2}$ °E 79.25 Ft. MKO CS $\frac{1}{16}$ S6BT
 Co. Cedar 20" S58°E 19.2 Feet Rescribed "BT"
 Steel sign post 72" long w/ FS. standard signs
 54-2 and 54-4 attached set West 3.2 Ft.
 November 1, 1966 *Small Olsen*

monument ant BT^s in good condition
 7/6/81 Small Olsen



Small Olsen

Set steel post 9' Long South 8.1' w/ sign 54-2
 Steel post 8' Long East 7.9' w/ signs 54-2 & 54-9
 7/6/81 Small Olsen
 R9-7150-4 by Olsen 7/6/81

at D-4 Affidavit RHM

South East $\frac{1}{6}$ Cor. Sec. 6

Survey of P.C. Warner in 1920.
Plat is recorded in Itasca
Co. Court house.

Iron Monument: (Found a 1" dia iron
pipe and a squared scribed post marking corner
Cedar 7" N33°W 13.7' (Now a 14" Cedar
N26°W true 13.7 feet scribe decayed.)
Cedar 6" S67°W 29.0' (Now a 12" Cedar
S74°W 29.0 feet scribe visible.)

Set a 2" inside ϕ galvanized steel pipe
filled w/ concrete & capped w/ a 3" ϕ bronze
tablet stamped:-

T58N R26W
SE $\frac{1}{6}$ S6
1966
PLS NO 6807

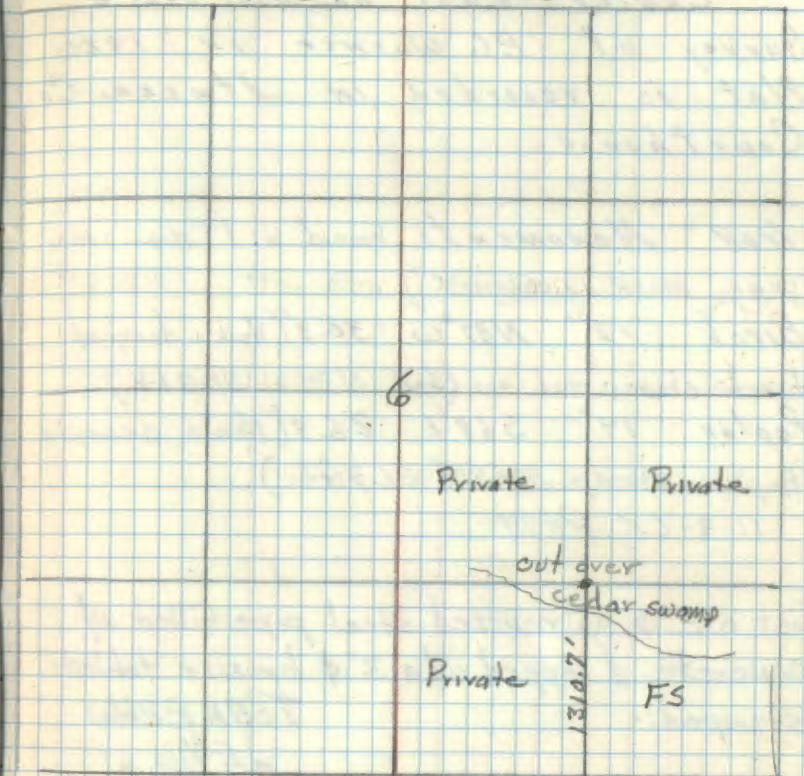
Monument and BTS OK
7/6/91 Robert Oleson

Cedar 6" S66 $\frac{1}{2}$ °W 42.8' MKD SE $\frac{1}{6}$ S6 BT
Cedar 8" N42°W 33.65' MKD SE $\frac{1}{6}$ S6 BT
Cedar Post 4"x4"x72" w/ FS. standard sign 54-4
attached set south 4.0 ft.

5-19-66 *[Signature]*

R9-7150-4 by Oleson 7/6/91

T58N R26W



Center East $\frac{1}{4}$ Cor. Sec. 6.

Survey of P.C. Warner in 1920.
Plat is recorded in Itasca Co.
Court House.

Iron Monument: Found a 1" dia. iron
pipe marking corner.

Birch 12" N37°W 30.3' (Now a decayed
birch stump and windfall N30°W 30.3 Ft.)

Poplar 14" S68°E 26.9' (Now a decayed
Aspens stump S59°E 26.9 Ft.)

11-9-65 RHM.

Set a 2" ϕ galvanized steel pipe filled w/
concrete & capped w/a 3" ϕ bronze tablet
stamped:-

T58N R26W

CE $\frac{1}{16}$ C
S 6
1966
RLS NO 6807

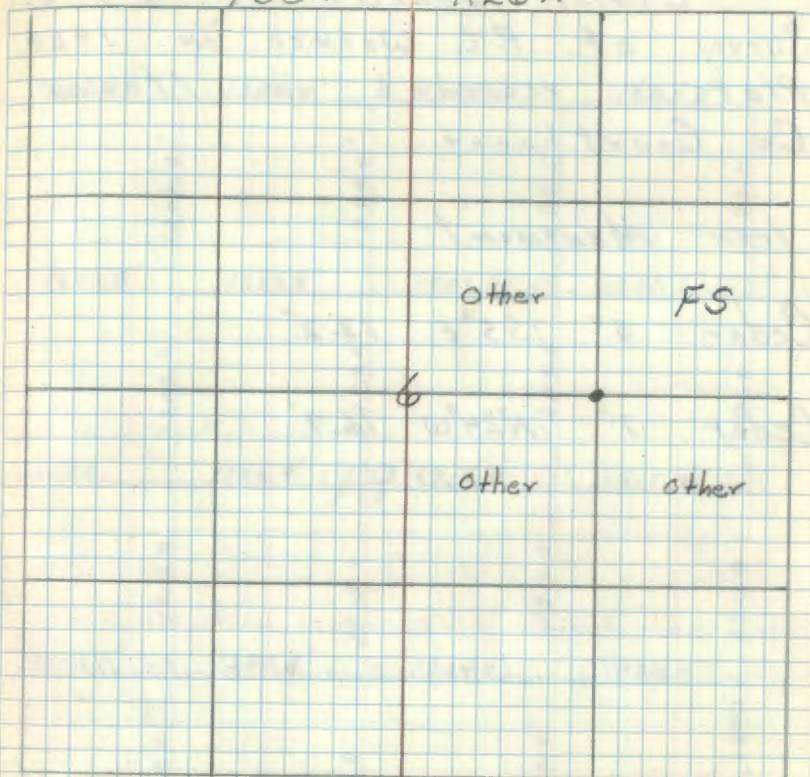
Cedar 12" S78°E 59.3 Ft MKD CE $\frac{1}{16}$ S 6 BTCedar 6" S37 $\frac{1}{2}$ °W 46.1 Ft. MKD CE $\frac{1}{16}$ S 6 BT

Steel sign post 72" long w/ FS standard signs
54-2 & 54-4 attached set North 5.9'

5-19-66 T.H.M. D. D. D.

T58N.

R26W



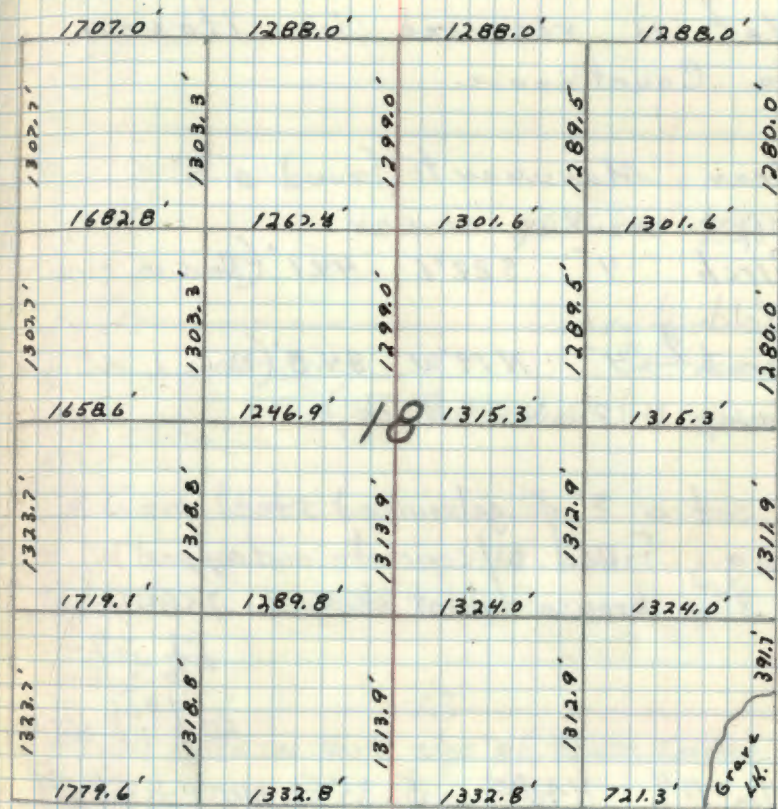
To bring this corner to standard I cut New BT
Cedar 12" S80°W 63.52' CE $\frac{1}{16}$ S 6 BT
Steel post 8' long East 9.0' w/signs 54-2 & 54-4
Steel post 8' long South 5.2' w/sign 54-2
R9-7150-4 by Olson 7/2/61

Center Quarter Cor. Sec. 6.
 Survey of P. C. Warner in 1920.
 Plat is recorded in Itasca
 Co. Court house.

Iron Monument:

Cedar 5" S5°E 13.2'

Cedar 7" N24°W 16.7'



24 J-4 Affidavit RHW

East 1/4 Cor. Sec. 7-18

Survey of L.W. Johnson in 1925.
Plat. is recorded in Itasca
Co. Courthouse.

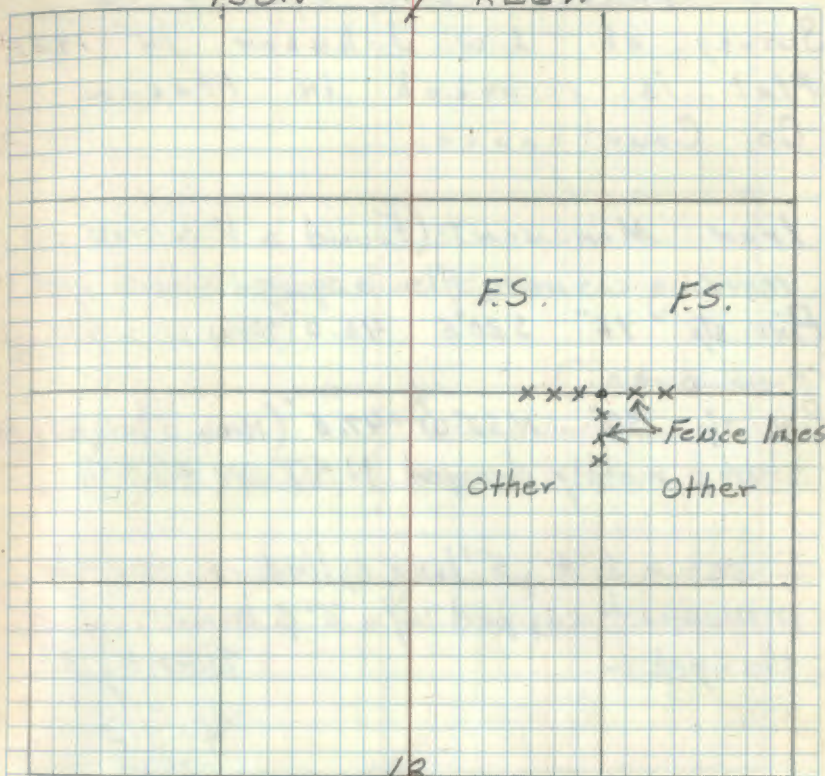
Iron Monument: (found a 4" ϕ iron
pipe marking corner
Birch 4" S22°E 44.1' (Now in cleared
field)
Birch 4" N19°W 34.8' (Now a decayed
stump N12°W 34.8 ft.)

I set a 2" ϕ galvanized steel pipe 5'
long, filled w/ concrete and capped w/
a 3" ϕ bronze tablet stamped: T58NR26W

E 1/16 S 7/16
1966
RLS No 6807

Elm 7" N40°E 51.35 ft. MKD E 1/16 S 7/16 BT
Elm 4" S87°W 21.6 ft MKD X
Elm 5" N8°W 35.55 ft MKD E 1/16 S 7/16 BT
Steel sign post w/ F.S. standard signs 54-2
& 54-4 attached set East 3.95 ft.
6-7-66 R.H. McDonald

T58N 7 R26W



18
Corner falls on North edge of fence corner post

Zcot New lot

Elm 6" N38E 23.96' E 1/16 S 7/16 BT

Steel post 8' Long East 13.5' w/sign 54-2

Steel post 8' Long West 8.4' w/sign 54-2 & 54-9

7/6/81 Ronald B. Olson

RA-7150-4 by Olson 7/6/81

25 J-3 Affidavit RHM

Quarter Cor. Sec. 7-18

Survey of L. W. Johnson in 1925.
Plat is recorded in Itasca
Co. Courthouse.

Iron Monument: (Found a 1" ϕ iron pipe
marking corner. Also a squared scribed post)

Pine. stp. 16" S20°E 46.0 (Now in a cleared
over area.)

Pine. stp. 30" N52°W 47.5 (Now a large pine
stump mostly decayed N47° W 47.5 ft.)

I set a 6" ϕ , 5' long cylindrical concrete
monument capped w/ a 3" ϕ bronze tablet
stamped i-

T58N R26W

$\frac{1}{4}$ $\frac{57}{518}$
1966

RLS NO 6807

Aspen 5" N52°E 41.3' MKD $\frac{1}{4}$ S7 BT

Birch 10" S43 $\frac{1}{2}$ °W 13.4' MKD $\frac{1}{4}$ S18 BT

Aspen 5" N57°W 47.15' MKD $\frac{1}{4}$ S7 BT

Steel sign post w/ FS standard sign 54-2

& 54-4 attached set East 4.6 ft.

6-7-66 *RHM*

T58N 7 R26W

FS.

FS.

xxxxx

Fence lines

other

Other

18

Corner is 18" NW of fence corner post

I cut new BT

Aspen 4" S62E 17.86' 1/4 S18 BT

Steel post 8' long west 6.9' w/sign 54-2/54-9

7/6/91 Ronald Olson

RA-7150-4 by Olson 7/6/91

26 J.2 Affidavit RHM

West 1/6 Cor. Sec. 7-18

Survey of L.W. Johnson in 1925.
Plat is recorded in Itasca
Co. Court house.

Iron Monument: Found a 1" ϕ iron
pipe marking corner also scribed post.

Poplar 6" N20°W 57.7' (Now a 14"

Aspen N3°W 57.7 Ft. scribe overgrown.)

Poplar 6" S12°W 54.2' (Now a Aspen

Stub 13" S19°W 54.2 Ft. scar Facing Cor.)

I set a 6" ϕ , 5' long, cylindrical concrete
monument capped w/a 3" ϕ bronze tablet
stamped:—

T58N R26W

W 1/16 S 7

1966
R.L.S. NO 6807

Ash 6" N7°E 40.3 Ft MKD W 1/16 S 7 BT

Elm 5" S78°E 41.2 Ft MKD X BT

Birch 4" S 1/2 W 16.7 Ft MKD X BT

Steel sign post w/ F.S. standard signs 54-2

& 54-4 attached set East 5.9 Ft

6-7-66. RHM Donald

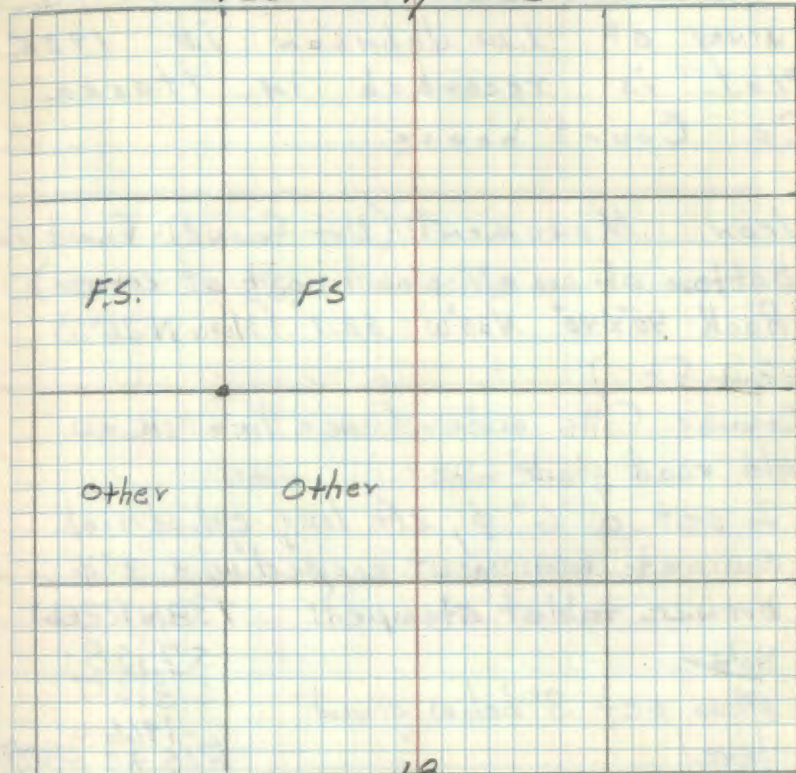
(BT OK steel post gone)

7/6/81

Ronald D. Olson

T58N

7 R26W



Corner is alongside old fence corner

Shirley
7/9/70

Set
Steel post 8' long East 5.9' w/ signs 54-2 & 54-9

Steel post 8' long South 6.3' w/ signs 54-2 & 54-9

7/6/81

Ronald D. Olson

R9-7150-4 by Olexon 7/6/81

27 J-5 Affidavit RAM

Section Cor. Sec. 7-8-17-18.

Survey of L.W. Johnson in 1925.
Plat is recorded in Itasca
Co. Court house.

Iron Monument: (Not found - Found the
bottom of an old wood post at corner)
x Rock 40"x48" N33°W 62.1' (Now N26°W
62.1 Ft.)

Corner falls under fence line in an
old road grade

I set a 6" ϕ , 2ft. long cylindrical
concrete monument capped w/a 3" ϕ
bronze tablet stamped: T5BNR26W

Note
Mon set 3" below ground
level

57 | 58

518 | 517

1966
RLS NO 6807

Hspens 5" 16.6' S71°E MKD S17 BT

Birch 6" 86.9' N85°W MKD S18 BT

Cedar post 4"x4"x6" w/ F.S. standard
signs 54-2 & 54-4 attached set North
26.9 Ft

6-9-66 R.A. McDonald

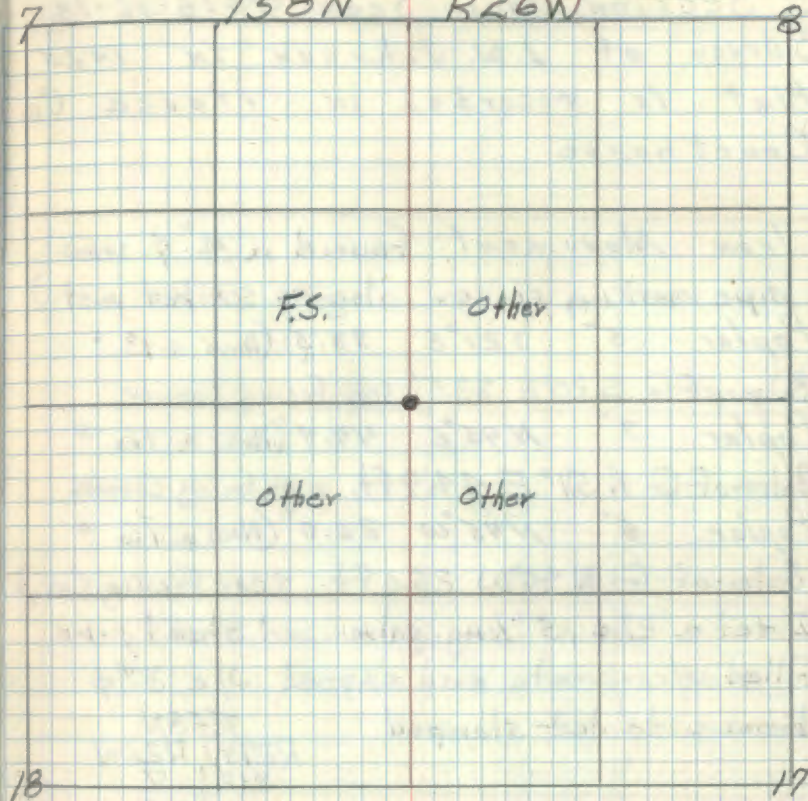
BTs and monument in good condition

Set steel post 8' long west 13.3' w/ signs 54-2 & 54-9

7/6/81 Ronald Olsen R9-7150-4 by Olsen

CERTIFICATE FILED

T5BN R26W



checked
6/20/70

28 J-1

Section. Cor. Sec. 7-18-12-13.
 Survey of L.W. Johnson in 1925.
 Plat is recorded in Itasca Co.
 Court house.

Iron Monument: Found a 4" ϕ iron
 pipe marking corner also sq. scribed post.)
 Poplar 5" S 21° E 33.5' (Now a 13"

Balm-of-G. S 20° E 33.5' scar facing corner
 Poplar 7" N 45° E 44.9' (Now a 16"

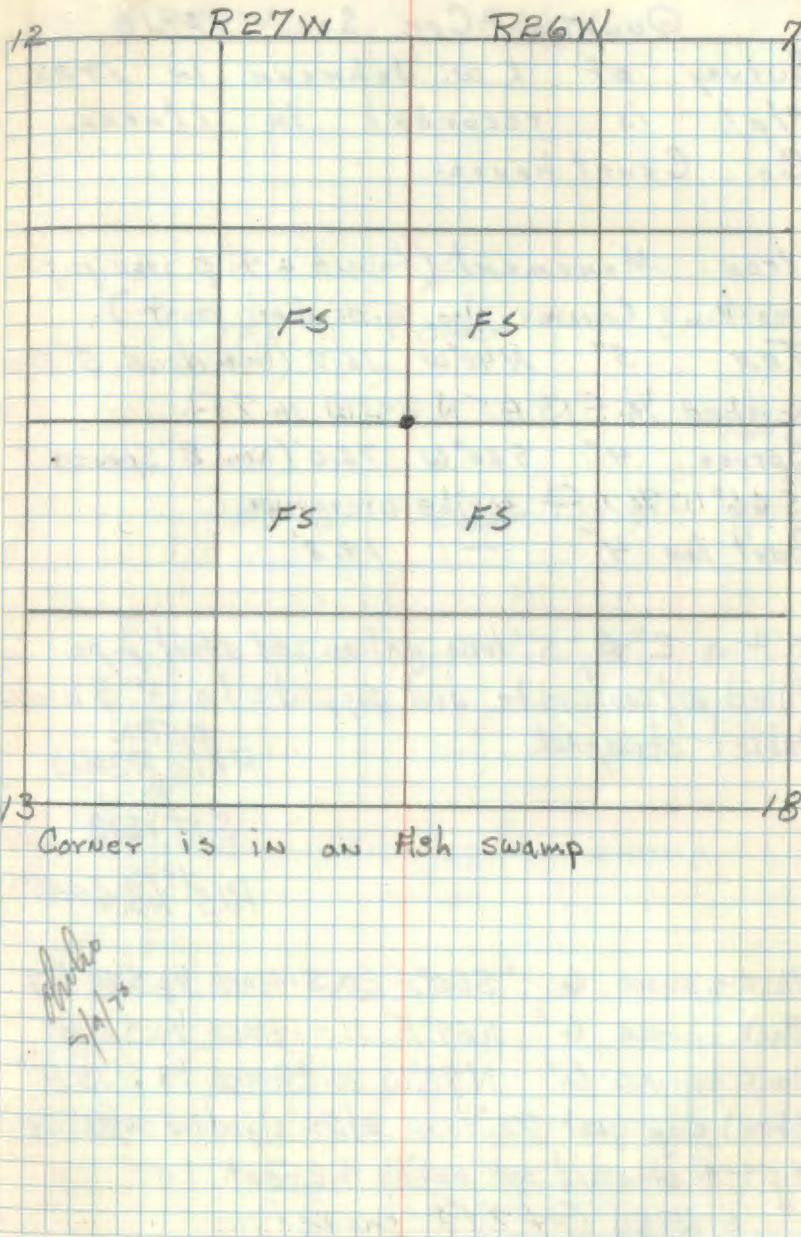
Balm-of-G. N 51° E 44.9 ft. scar facing corner
 Poplar 6" N 45° W 26.0' (Now a 16"

Balm-of-G. N 90° W 26.0 ft. scar facing cor.)
 I set a 2" ϕ , 5' long galvanized steel pipe
 filled w/concrete and capped w/a 3" ϕ
 bronze tablet stamped

T58N
 R27W R26W
 S12 | S7
 S13 | S18
 1966
 RLS NO 6807

Ash 4" N 27° E 21.15 ft. MKD x BT
 Ash 4" S 86° E 32.65 ft MKD x BT
 Ash 6" S 48 1/2° W 57.5 ft MKD S 13 BT
 Ash 7" N 27 1/2° W 15.85 ft. MKD S 12 BT
 Steel sign post 72" long w/ F.S. standard sign
 54-4 attached set North 4.55 ft.
 6-15-66 *A.H.M. Donald*

Affidavit 1971 T58N



L-1

Quarter. Cor. Sec. 13-18

Survey of L.W. Johnson in 1925.
Plat is recorded in Itasca
Co. Court house.

Iron Monument: (Found a 4" ϕ iron pipe
marking corner also sq. scribed post.)

Tam 5" N40°W 16.7' (Now dead 5" Tam
scribed $\frac{1}{4}$ S13 BT N 34°W 16.7 ft

Spruce 4" S60°W 76.0' (Now 8" Spruce
S66°W 76.0 ft. scribe overgrown

Gov't tam "4" — 19.8'

Set a 2" ϕ , 5' long galvanized steel pipe
filled w/ concrete and capped w/ a 3" ϕ bronze
tablet stamped:

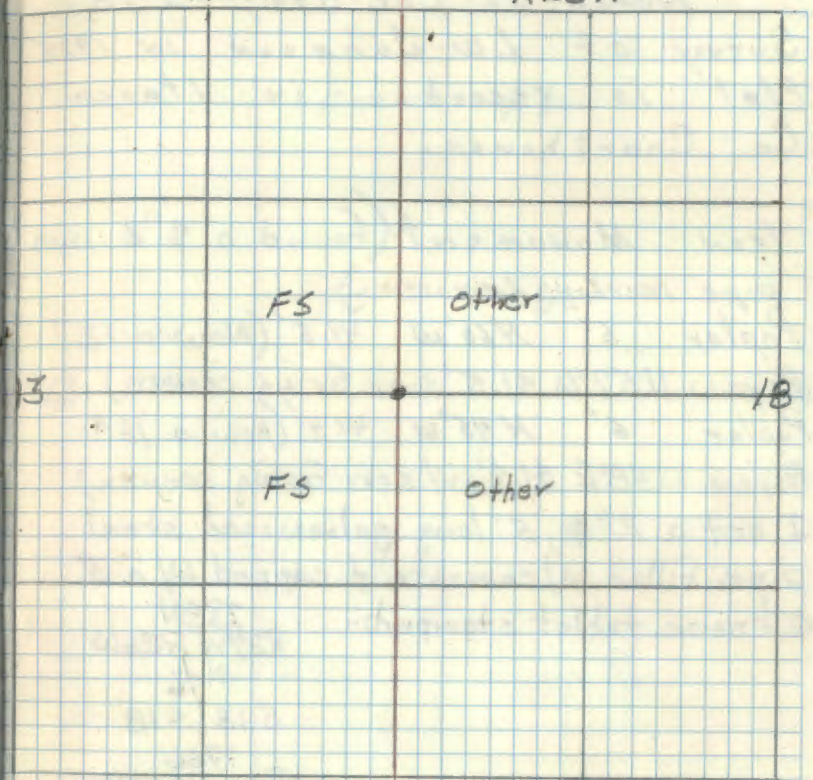
T5BN
R27W R26W
 $\frac{1}{4}$
S13 | S18
RLS ¹⁹⁶⁶ NO. 6807

- Black spruce 6" S60°E 20.3 ft MKD $\frac{1}{4}$ S18 BT
- Black spruce 6" N69°E 11.4 ft MKD $\frac{1}{4}$ S18 BT
- Black spruce 6" N72°W 30.2 ft MKD $\frac{1}{4}$ S13 BT
- Steel sign post 72" long w/ FS standard signs 54-2
& 54-4 attached set south 4.2 feet.

6-15-66 AHM Donald

R27W

R26W



Corner is in a Black spruce swamp

4.2'
sketch
11/9/70

K-1

North $\frac{1}{6}$ Cor. Sec. 13-18

Survey of L.W. Johnson in 1925
Plat is recorded in Itasca
Co. Courthouse.

Iron Monument: (Found a 4" ϕ iron
pipe marking corner.)

Poplar 5" N60°W 41.5' (Now a 12"

Aspen N57°W 41.5' scar facing corner)

Poplar 6" N45°W 41.4' (Now a 13"

Aspen N58°E 41.4' w/ scar facing corner.)

I set a 2" ϕ , 5' long galvanized steel
pipe filled w/ concrete & capped w/ a 3"
 ϕ bronze tablet stamped:-

T58N
R27W R26W
N $\frac{1}{6}$
S 13 | S 18
1966
RLS NO 6807

Ash 5" N4°W 66.2 Ft MKD N'1/6 S13 BT

Ash 5" S82°E 19.65 Ft MKD N'1/6 S18 BT

Ash 8" S68 $\frac{1}{2}$ °W 21.35 Ft MKD N'1/6 S13 BT

Steel sign post 72" long w/ F.S. Standard signs

54-2 & 54-4 attached set South 4.55 Ft

6-27-66 R.H. McDonald

Affidavit RHM T58N

R27W

R26W

		FS	FS
		FS	Other
13			18

Corner is on North edge of a black Ash Swamp

Handwritten signature
7/1/70

See T58N R27W R26W pg 18

M-1
South $\frac{1}{4}$ Cor. Sec. 13-18

Survey of L.W. Johnson in 1926.
Plat is recorded in Itasca Co
Court house.

Iron Monument: Not Found

Poplar 6" S70°W 39.0' (Now a stump
S69°W 39.0 Ft w/axe blaze facing corner)
Poplar 8" N80°E 47.4' (Now a 21" Aspen
N86°E 47.4 Ft scribe overgrown.)

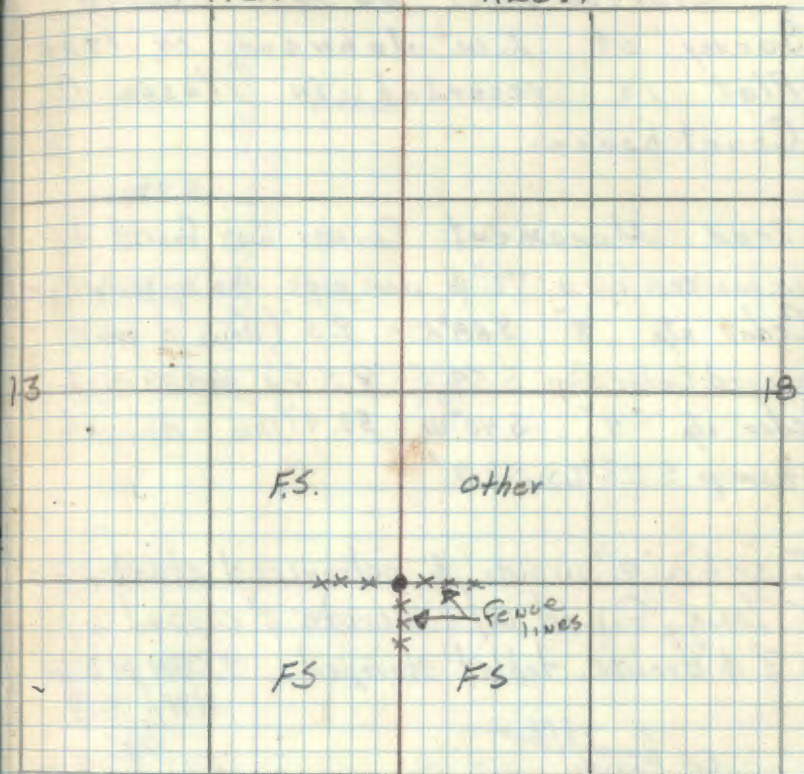
Set a 2 inch ϕ galvanized steel pipe
5' long, filled with concrete and capped
with a 3" ϕ bronze Tablet stamped:
T58N
R27W, R26W
S $\frac{1}{16}$
S13 | S18
1966
RLS NO 6807

Ash 6" N44°E 19.5 Ft MKD S $\frac{1}{16}$ S18 BT
Maple 3" S62°E 23.6 Ft MKD X
Ash 6" N73°W 38.7 Ft MKD S $\frac{1}{16}$ S13 BT
Steel sign post 72" long w/ F.S. standard
signs 54-2 & 54-4 attached set North 4.3 Ft
6-15-66 R.H. McDonald

Heidavit T58N

R27W

R26W



Corner is alongside old fence corner

MKD
7/15/70

See: T58N R27W BK2 pg 19

K-2

North West $\frac{1}{4}$ Cor. Sec. 18

Survey of L.W. Johnson in 1925.
Plat is recorded in Itasca Co.
Court house.

Iron Monument: Corner was found to
be marked by a $\frac{1}{2}$ " ϕ iron pipe also sq. scribed post
Cedar stp. 8" S68°E 9.5' (Now a partly
decayed Cedar stp. S54°E 9.5' Ft part of scribe
Cedar stp. 4" S40°W 53.9' (Now a decayed ^{visible}
stump S28°W 53.9')

I set a 2" inside ϕ galvanized steel pipe
5' long, filled w/ concrete & capped w/
a 3" ϕ bronze tablet stamped: T5BN R26W

OK Ronald Olsen
7/6/81

NW $\frac{1}{4}$ S18
1966
RLS NO 6807

Tamarack 9" N30°E 23.8' MKD NW $\frac{1}{4}$ S18BT

Tamarack 9" N40°W 37.1' MKD NW $\frac{1}{4}$ S18BT

Steel sign post w/ F.S. standard signs 54-2
& 54-4 attached set West 7.3 Ft.

6-7-66 R.H. McDonald

Set steel post 8' long. North 6.8' w/ signs

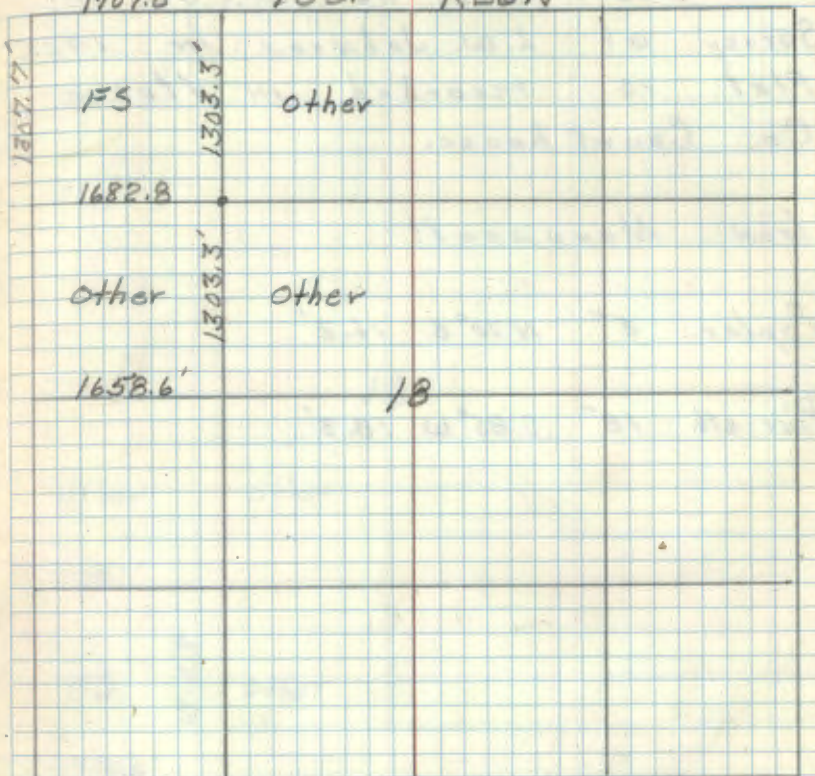
54-2 & 54-9

R9-7150-4 by Olsen

7/6/81
Ronald Olsen

Affidavit RHM

1702.0' T5BN R26W



old fence line runs N & E from corner

OK
7/9/80

South West $\frac{1}{6}$ Cor. Sec. 18.

Survey of L.W. Johnson in 1925.

Plat is recorded in Itasca
Co. Court house.

Iron Monument:

Poplar 5" N70°E 16.2'

Pine stb. 18" S85°W 18.3'

T58N

R26W

other other

1719.1'

FS

1318.8

other

1779.6'

18

N-1

Section Cor. Sec. 18-19-13-24

Survey of L.W. Johnson in 1925.

Plat is recorded in Itasca

Co. Courthouse.

Iron Monument: Found a 1" ϕ iron pipe marking corner at intersection of fence lines

Poplar 6" S 72° E 43.9' (Now decayed stump S 66° E 43.9')

Poplar 5" N 41° E 47.3' (Now decayed stump N 45° E 47.3 Ft.)

Poplar 4" N 67° W 60.4'

Birch 5" S 38° W 40.2' (Now a 8" Birch S 47° W 40.2 Feet scribing visible.)

Set a 6" ϕ , 5' long cylindrical concrete monument capped w/ a 3" ϕ bronze tablet stamped:

TSBN
R27W R26W
S13 | S18
S24 | S19
1966
RLS No 6807

Birch 6" S 47° E 22.4 Feet MKD S 19 BT

Birch 9" N 32° E 16.8 Feet MKD S 18 BT

Birch 8" N 20° W 15.55 Feet MKD S 13 BT

Steel sign post 72" long w/ F.S. standard

signs 54-24' 54-4 attached set East 7.3 Ft.

6-15-66 J.H. McDonald

R27W

R26W

13

18

F.S.

F.S.

Other

Other

24

19

From 58-27 B1 pg 64 August 27, 1982

Fence lines running east, west, and south from monument

N-3

Quarter Cor. Sec. 18-19

Survey of P.E. & L.W. Johnson
in 1925. Plat is recorded
in Itasca Co. Court house.

Iron Monument. (Found a 2" ϕ iron
pipe marking corner by a fence corner.)

Poplar 5" S21°W 41.7' (Now a decayed
stump S35°W 41.7' has been bulldozed.)

Poplar 4" N34°W 49.0' (Now a 10" Aspen
N28°W 49.0 Ft.)

I set a 6" ϕ cylindrical concrete mon.
5 feet long, capped w/ a 3" ϕ bronze
tablet stamped

T58N R26W

$$\frac{1}{4} \frac{S18}{S19}$$

1966
RLS NO 6807

Oak 11" S58½°E 73.2' MKD ¼ S19 BT

Maple 5" N38°W 71.45' MKD ¼ S18 BT

Basswood 5" N34°E 9.0' MKD ¼ S18 BT

Cedar post 4"x4"x6' w/ F.S. standard signs

54-25' 54.4 attached set south 2.6 Ft

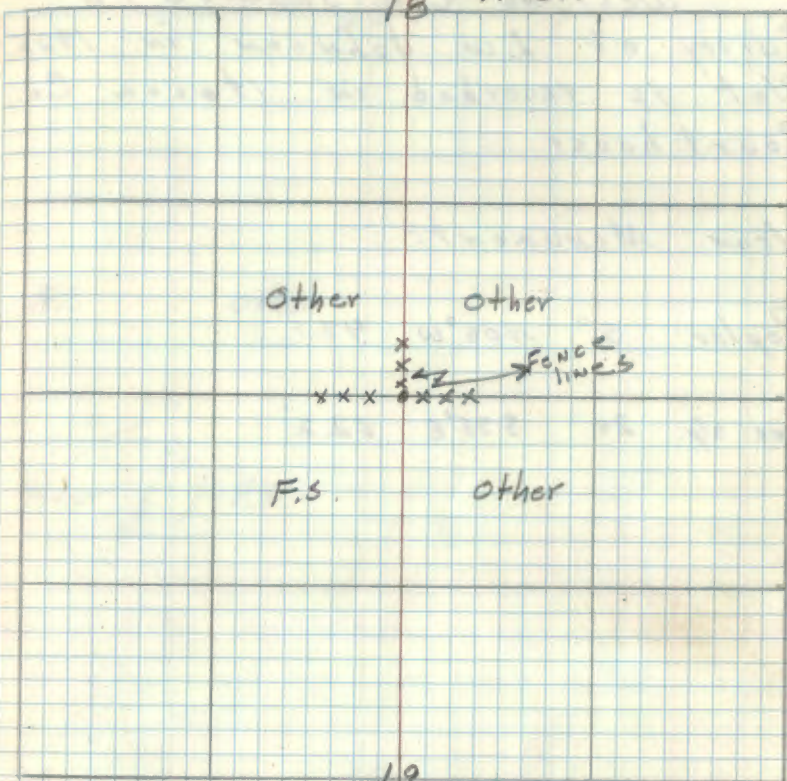
6-2-66 R.H. McDonald

Affidavit RHM

T58N

18

R26W



ok
11/4/70
note: ~~check for possible trespass - opening of the~~
Exchanged.

1-17-95 RM & CK

GPS OFF THIS CORNER POSITION
MONUMENT IN PLACE - BT'S OK

West 1/4 Cor. Sec. 18-19.

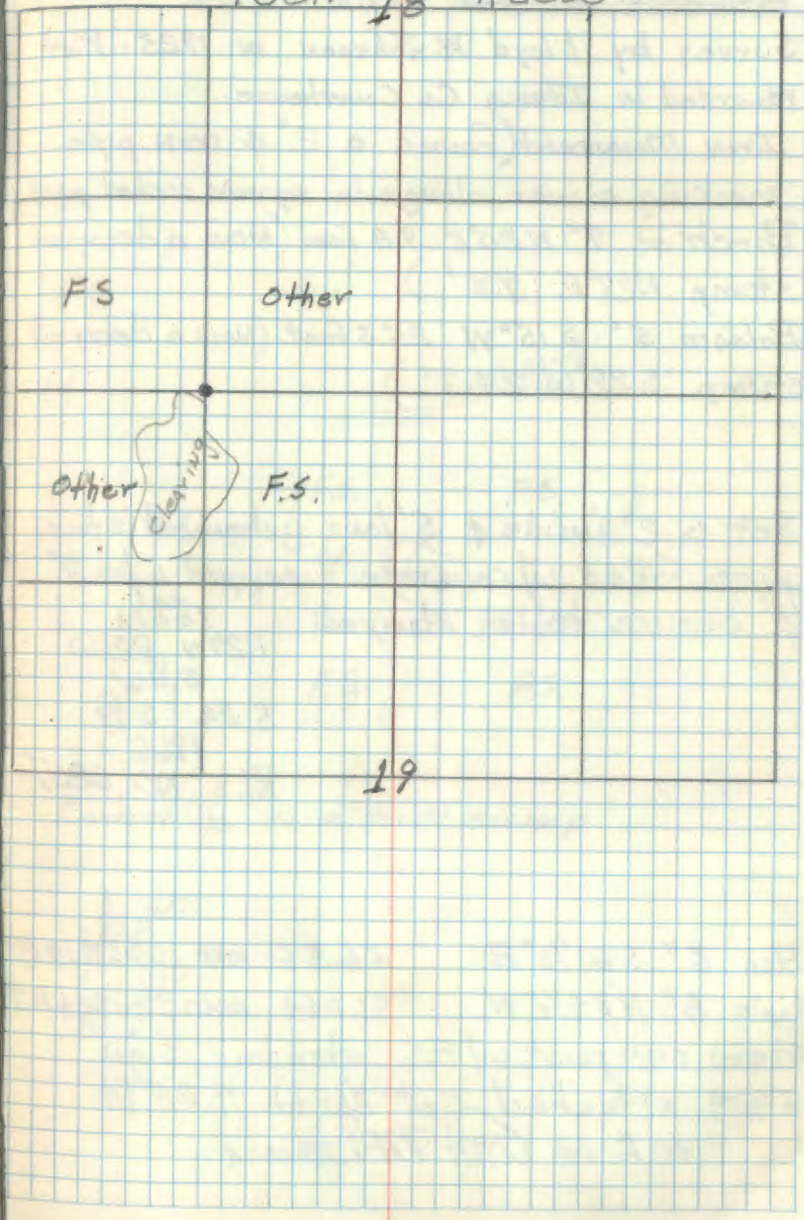
Survey of L.W. Johnson in 1925.
Plat is recorded in Itasca Co.
Court house.

Iron Monument:

Poplar 5" N05°W 43.1'

Pine stp. 24" S95°E 62.2'

T58N 18 R26W



Q-1

T58N R26-27W

South $\frac{1}{16}$ Corner
~~Quarter~~ Corner Sec's 19-24

Survey by Lloyd W. Johnson in 1923. Plat
 recorded in Itasca Co. Courthouse.

Iron Monument (Found a 2" ϕ iron pipe
 marking corner alongside squared scribed post.)
 Birch st. 7" N20°E 9.8 feet (Now a decayed
 stump N27°E 9.8')
 Balsam 5" S15°W 25.3 feet. (Now a decayed
 stump S22°W 25.3')

Set a 2" inside ϕ 5' long galvanized steel
 pipe filled w/ concrete $\frac{1}{2}$ capped w/ a 3"
 ϕ bronze tablet stamped:

T58N
 R27W R26W
 S 24 | S 19
 1966
 RLS ND 6807

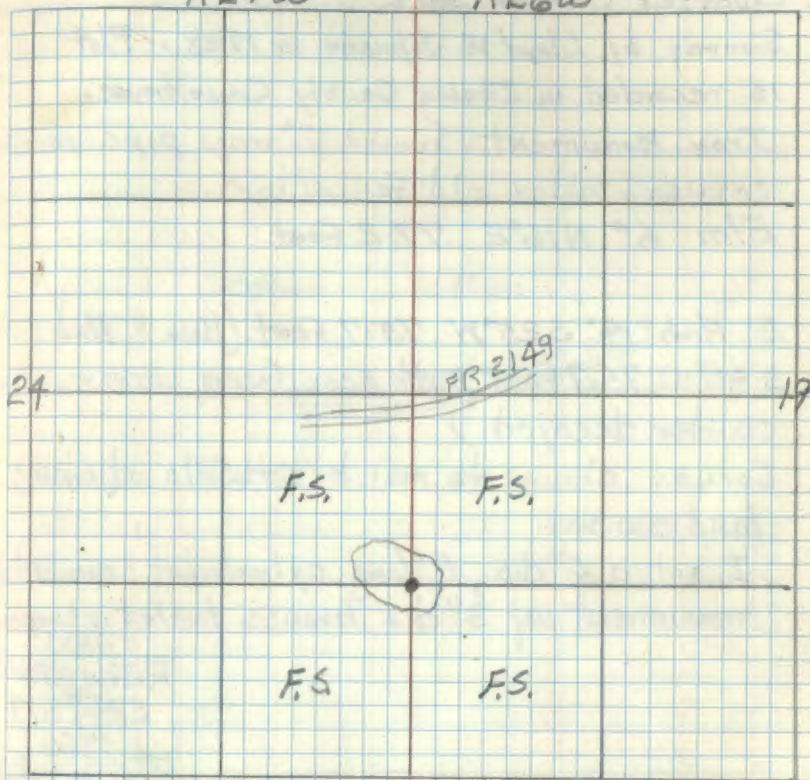
Ash 8" S61 $\frac{1}{2}$ °E 56.5 ft MKD S $\frac{1}{16}$ S19BT
 Maple 8" N84 $\frac{1}{2}$ °W 31.0 ft MKD S $\frac{1}{16}$ S24BT
 Steel sign post w/ F.S. standard sign
 54-4 attached set North 4.25 ft
 6-2-66 G.H. McDonald

Affidavit RHM

T58N

R27W

R26W



Corner is in a small swamp

G.H. McDonald
 11/6/70

Quarter Corner Sec's. 19-24

Survey by Lloyd W. Johnson in 1923. Plot
is recorded in Itasca County Courthouse.

Iron Monument. Found 2" iron pipe marking
corner - under old fence line.

Elm 6" N16°E 77.2 Feet.

B. Ash 4" S25°W 75.7 Feet. (Now 8" Ash
S 40°W 75.7 Feet with scar facing corner
center decayed.)

Corner shown to me by Otto Salo adjoining
land owner.

I set a 6" dia. 5' long cylindrical concrete
monument w/ 3" dia. bronze tablet stamped

T58N
R27W R26W
S24°S19
1966
RLS NO6807

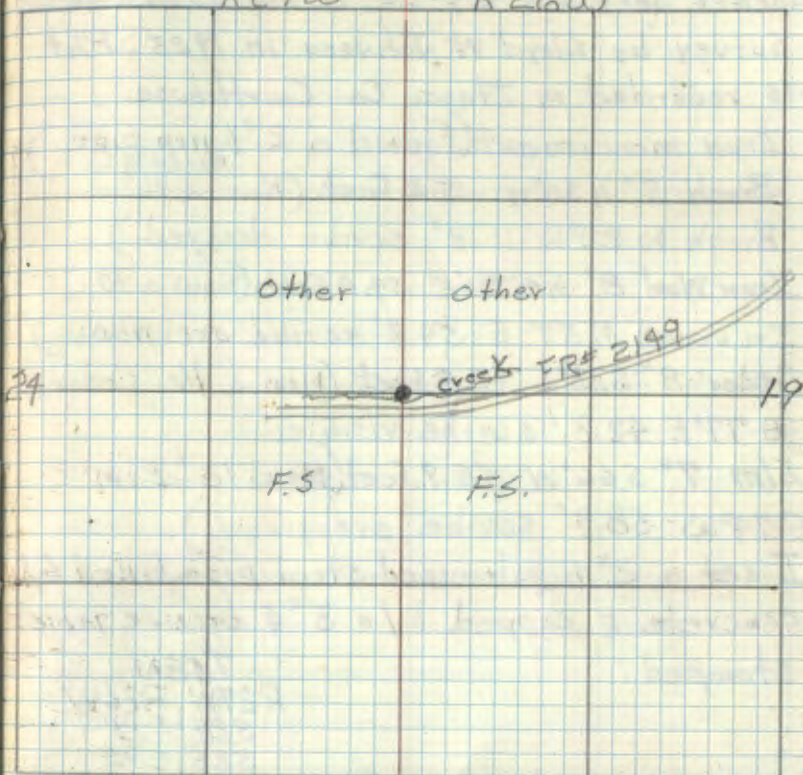
Elm 4" S77°E 66.6 Ft. MKD X BT

Elm 8" South 22.3 Ft MKD 1/4 S24 BT

Cedar post 4"x4"x5' w/ F.S. standard signs 54-2

& 54-4 attached set East 4.6 Ft.

5-20-66 G.H. McDonald



Corner is in open meadow 25' North of
Creek.

Checked
7/12/70

1-17-95 RM & CK
GPS OFF THIS CORNER LOCATION
MONUMENT LEANING IN WET MARSH
APPROX 200' SE OF HOME
NEEDS SIGN POSTS - NO BT'S AVAILABLE
SWAMP IS VERY WET

R-1

Corner Sections 24-25-19-30 T58N R26-27

Survey by Lloyd W. Johnson in 1923. Plat is recorded in Itasca Co. Courthouse.

Iron monument (found a 2" ϕ iron pipe ^{marking Coy.})
Birch 7" N30°W 15.2 feet. (Now a 1 1/2"

Birch N 22°W 15.2' scribe decayed.)

Iron Wood 8" N47°30'E 54.8 feet. (Now a 10"

Ironwood N57° E 54.8' scribe overgrown.)

Cedar 8" S88°E 42.8 feet. (Now a 16" Cedar

S 77°E 42.8' scribe visible)

Elm 7" S66°W 58.9 feet (Now) 12" Elm

S 74°W 58.9' scribe overgrown)

I set a 2" ϕ galvanized steel pipe filled w/
concrete & capped w/ a 3" ϕ bronze tablet
stamped:

T58N
R27W R26W
S24 | S19
S25 | S30
1966
RLS No 6807

Elm 8" S 22°E 53.4' MKD S 30 BT

Elm 8" S 21 1/2°W 44.0' MKD S 25 BT

Cedar 12" N42°W 52.75 MKD S 24 BT

Steel sign post w/ FS standard signs

54-2 & 54-4 attached set North West 5.3'

6-2-66 G.A. McDonald

Acidovit RHM

T58N

R27W

R26W

19

F.S.

F.S.

other

F.S.

30

5/17/95 R. MAIN C. KRAUSE

Fd MONUMENT IN PLACE UP 1.8 FT AND WITNESSED WITH.

1923 BIRCH 17 1/2" N22W 15.2 FT

1923 CEDAR 7" S77E 42.8 FT TO SPK

1966 CEDAR 12" N42W 52.75 FT

6 FT STEEL SIGN POST 50.3 FT WEST
HEAVY 8 FT STEEL SIGN POST 50 FT SOUTH

1923 IRONWOOD BT NOW GONE. 1923 E/ln NOW A SNAG.

1966 Elm S22E 53.4 NOW A 3 FT STUB W/ WINDFALL.

1966 Elm S21 1/2 W 44.0 NOW A SNAG.

25

T-1

Quarter Corner Sec's ²⁵ 29-30 T5BN R26-27W
Survey by Lloyd W. Johnson in 1983. Plot
is recorded in Itasca Co. Courthouse.

Iron monument (Found a 2" ϕ iron
pipe marking corner.)

Maple 10" S36°W 43.2 Feet

w. Pine 7" N29°W 46.4 Feet. (Now a windfall)
N 22°W 46.4 Ft.)

I set a 2" ϕ galvanized steel pipe filled
w/ concrete & capped w/a 3" ϕ bronze
tablet stamped

T5BN
R27W R26W
1/4
S 25 | S 30
1966
RLS No. 6807

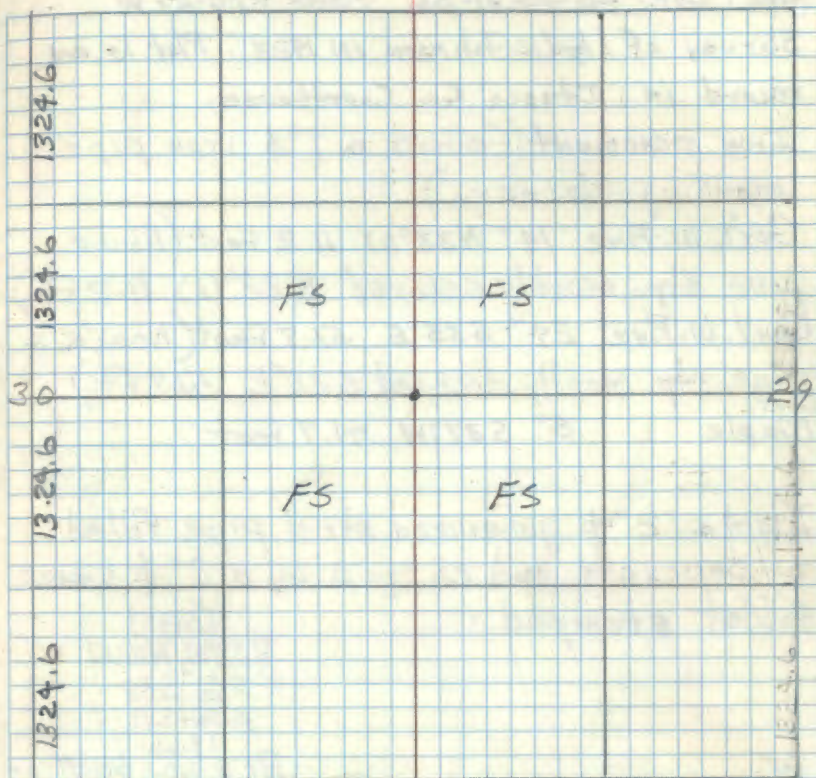
Birch 5" N74°E 18.2' MKD 1/4 S30BT

Birch 4" S46°E 32.1' MKD 1/4 S30BT

Maple 4" S71°W 33.2' MKD 1/4 S25BT

Steel sign post w/ FS standard signs 54-2
& 54-4 attached set N34 $\frac{1}{2}$ °W 7.1 ft

6-1-66 G.A. McDonald

Affidavit
RHM

McDonald
1/2/70

42

V-1

Sec. Cor. 25-30-31-36 T58N R26-27W

Survey of Lloyd W. Johnson in 1923. Plat is on record in Itasca Co. Courthouse.

Iron monument (found a 1" ϕ iron pipe marking corner.)

Gov't. W. Pine 14" N33°W 11.2 feet. (Now a pine stp. mostly decayed N22°W 11.2 ft.)

Gov't. W. Pine 24" S35°E 51.7 feet (Now a pine stp. mostly decayed S25°E 51.7 ft.)

Gov't. Maple 8" S37°W 41.7 feet

I set a 2" ϕ galvanized steel pipe filled w/ concrete and capped w/ a 3" ϕ bronze tablet stamped:

T58N
R27W R26W
S25 S30
S36 S31
1966
RLS NO. 6807

Aspen 6" N44°E 26.9' MKD S30BT

Maple 4" S34°E 22.8' MKD S31BT

Maple 6" S19°W 32.0' MKD S36BT

Rock 4'x4' mkd x N52°W 12.7 ft.

Steel sign post w/ F.S. standard signs 54-2

§ 54-4 attached set West 48'

6-1-66 R.H. McDonald

Affidavit RHM

T58N

25

R27W

R26W

30

36

31

calculated
5/27/70

43

Z1

Sec. Corner 1-6-31-36 T57-58N R26-27 W
 Survey by P.C. Warner in 1922 Plat is
 recorded in Itasca Co. Courthouse.

Iron Monument (found in place marking Cor.)
 W. Pine St. $30^{\circ} N 12^{\circ} W$ 72.2 Feet. (Now 30" scribed
 pine stump $N 4^{\circ} W$ 72.2 Feet.)

Tamarack 80" $S 62^{\circ} W$ 136.0 Feet. (Now a scribed
 Tam. stump $S 69^{\circ} W$ 136.0 Feet.)

Balsam 6" $N 50^{\circ} W$ 19.2 Feet.

Govt. Cedar 8" $S 41^{\circ} E$ 33.0 Feet

I set a 6" ϕ cylindrical concrete monument
 capped w/ a 3" ϕ bronze tablet stamped

T58N
 R27W R26W
 S36 | S31
 51.56
 T57N
 1966
 RLS NO 6807

Birch 7 $N 46\frac{1}{2}^{\circ} E$ 41.8 FT MKD S31 BT

Birch 6" $S 69^{\circ} E$ 10.65 FT MKD S6 BT

Birch 6" $S 80^{\circ} W$ 51.5 FT MKD S1 BT

Birch 6" $N 13^{\circ} W$ 56.0 FT MKD S36 BT

Steel sign post 72" long w/ FS standard signs

54-2 & 54-4 attached set West 4.8'

5-31-66 A.M. McDonald

Affidavit RHM

T58N

R27W

R26W

36

31

other FS FR# 2153

FS

FS

1

T57N

6

5/31/66
 McDonald

Sec T58N R26W BK 2 pg 74

44

W-1

North $\frac{1}{16}$ Corner Sections 31-36 T58N
 Survey by Itasca Co. Surveyor R26-27W
 P.C. Warner in 1922 plat on record Itasca Co.

also a scribed wood post

Iron Monument (Found a 1" ϕ iron pipe marking Cor.)
 Spruce 6" N10°E 13.9 Feet (Now a stump
 N13°E 13.9 ft.)

Spruce 8" N34°W 18.2 Feet (Now a spruce stump
 scribed BT N27°W 18.2)

I set a 2" ϕ galvanized steel pipe filled
 w/ concrete & capped w/ a 3" ϕ bronze
 tablet stamped:

T58N
 R27W R26W
 N $\frac{1}{16}$
 S36 | S31
 1966
 P.L.S. NO. 6807

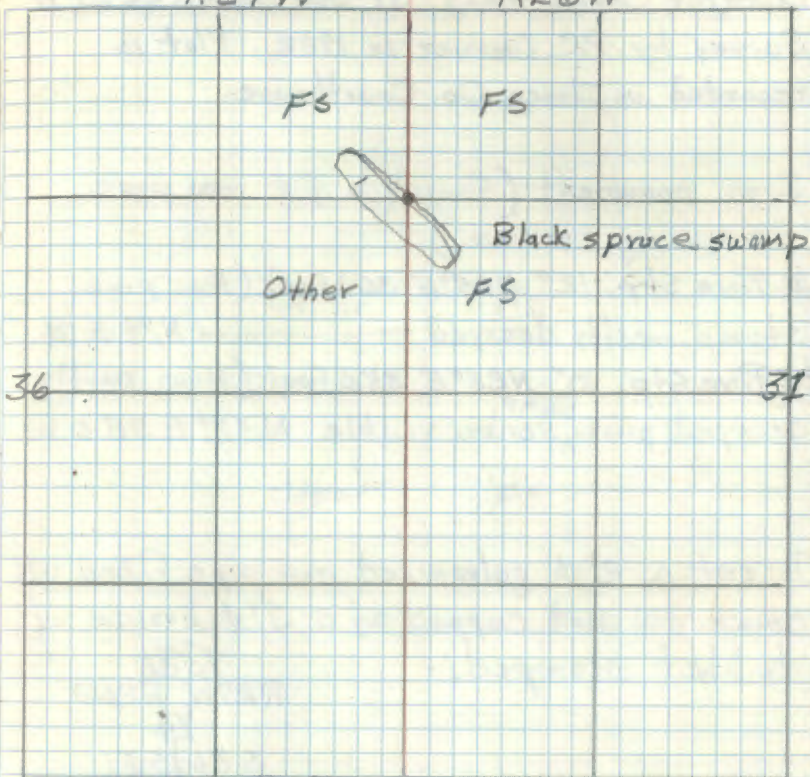
Black spruce 8" N24°W 22.2' MKD N $\frac{1}{16}$ S36 BT
 Tamarack 7" S20°E 16.6' MKD N $\frac{1}{16}$ S31 BT
 Steel sign post w/ F.S. standard signs 54-25'
 54-4 attached set West 4.85'
 6-1-66 R.H.P. Donald

Affidavit RHM

T58N

R27W

R26W



Corner is in ^{North} Edge of a Black spruce
 Swamp bearing NW-SE

check
 1/27/70

Quarter Corner Sec's. 31-36 T58N R26-27 W
 Survey by P.C. Warner in 1922. Plot is
 recorded in Itasca Co. Courthouse.

Iron monument (Found a 1" ϕ iron pipe
 marking corner.)

W. Pine Stp. 12" N65°E 36.1 feet (Now pine
 stump mostly decayed ————— N74°E 36.1')

W. Pine Stp. 10" N23°E 35.0 feet (Now partly
 decayed pine ^{stump} scribe visible N32°E 35.0 ft

I set a 2" ϕ galvanized iron pipe filled w/
 concrete and capped w/ a 3" ϕ bronze
 tablet stamped: -

T58N
 R27W R26W
 1/4
 S 36 | 531
 1966
 RLS NO 6807

Birch 6" N53°E 28.9 ft. MKD 1/4 S 31 BT

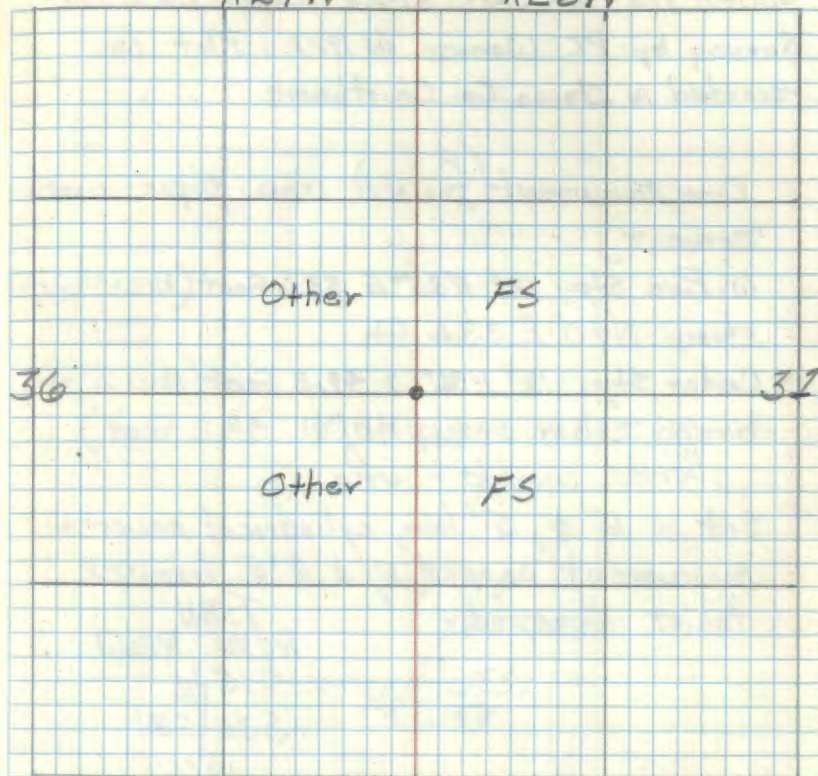
Maple 6" S25°W 20.9 ft. MKD 1/4 S 36 BT

Birch 6" N62°W 12.8 ft. MKD 1/4 S 36 BT

Steel sign post w/ F.S. standard signs 54-2

§ 54-4 attached set North 4.15 ft.

5-31-66 A.H. McDonald



Checked
 5/27/70

Y-1

South $\frac{1}{16}$ Cor. Sec's. 31-36 T58N R26-27W

Survey by P.C. Warner in 1922. Plat is recorded in Itasca Co. Courthouse.

Iron Monument (found iron pipe marking corner.)

W. Pine Stp. $12^{\circ} N 35^{\circ} E$ 33.6 Feet (Now decayed stump $N 40^{\circ} E$ 33.6 Ft.Cedar Stp. $12^{\circ} N 86^{\circ} W$ 49.2 Feet (Now a partly burned cedar stump $N 81^{\circ} W$ 49.2 Feet.)

Scribe visible - who

Set a 6" ϕ , 5' long cylindrical concrete monument capped w/a 3" ϕ bronze tablet stamped:-T58N
R27W R26WS $\frac{1}{16}$
S36 | S31

1966

RLS NO 6807

Birch 6" $S 65^{\circ} W$ 22.7' MKD S $\frac{1}{16}$ S36 BTOak 3" $N 18^{\circ} E$ 84.9' MKD X 13TBirch 6" $N 6^{\circ} W$ 25.8' MKD S $\frac{1}{16}$ S36 BT

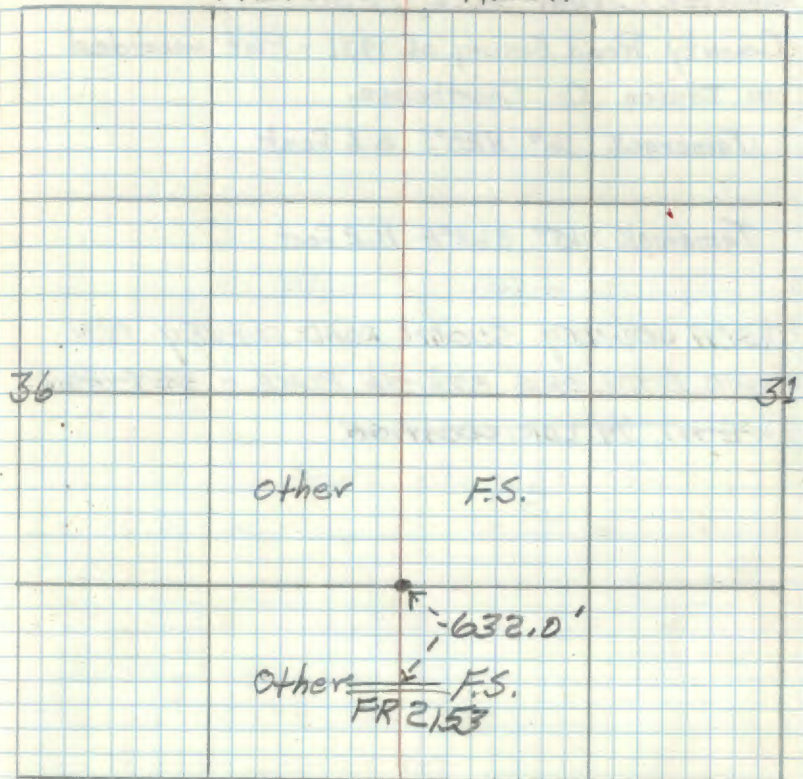
Steel sign post w/ F.S. standard signs

54-2 & 54-4 attached set South 4.1 Feet

5-31-66 R.H. McDonald

R27W

R26W

Set a 4" x 4" x 6' cedar post on North side of FR 2153. 632.0 Ft South of the S $\frac{1}{16}$ Sec's 31-36oleander
5/28/90

Quarter Corner Sec's. 19-30

County Road Survey of 1931 - Plat recorded
in Itasca Co. Courthouse.

Tamarack 16" N20°E 6.6 Feet

Tamarack 15° S63°E 11.2 Feet

ITASCA COUNTY SWOMI ROAD SURVEY 1931
FOUND BOTH ORIG. B.T'S. - IN PLACE - SET IRON
PIPE AT 1/4 COR. LOCATION

1-17-95 RMYCK

Fd. TAG By RON OLESOM OFF OLD FENCE LINE
RUNNING SOUTH INTO ASH SWAMP - SEARCH WITH
LOCATOR - NO IRON COULD BE LOCATED - DID
FIND WIRE IN AREA OF TAG - GPS POSITION
DISTANCE OK NTS WITH COUNTY PLAT
See BK 1, PP 66

T58N

R26W

19

Other

Other

F.S.

FS

30

48

E-9

Corner Sect's. 4-5-8-9 T58N R26W

From a County road survey - Plat recorded
in Itasca Co. Courthouse. 1925Poplar 5" N78°W 24.5 Feet (Now a 16" Aspen
N70°W 24.5 ft scribe decayed.)Birch 5" N5°E 21.1 Feet (Now a decayed
birch Stump & log N7°E 21.1 Ft.)Cedar 6" S7°W 26.0 Feet (Now a cedar snag
& will fall S11°W 26.0 ft. scribe visible.)Balsam 5" S45°E 29.2 Feet (Now a 9" Balsam
S39°E 29.2 ft scribe visible.)

Corner was marked by a square cedar post.

Set a 2" inside ϕ , 5' long galvanized steel
pipe Filled w/ concrete and capped w/ a 3"
 ϕ bronze tablet stamped

T58N R26W

55 | S4

SB | S9

1966
RLS NO 6807

Basswood 9" N21½°E 20.45 Ft MKD S4 BT ✓

Birch 5" S32°W 19.8 Ft MKD SB BT ✓

Maple 7" S84°W 57.5 Ft MKD S4 BT ✓

Steel sign post 72" long w/ FS standard sign

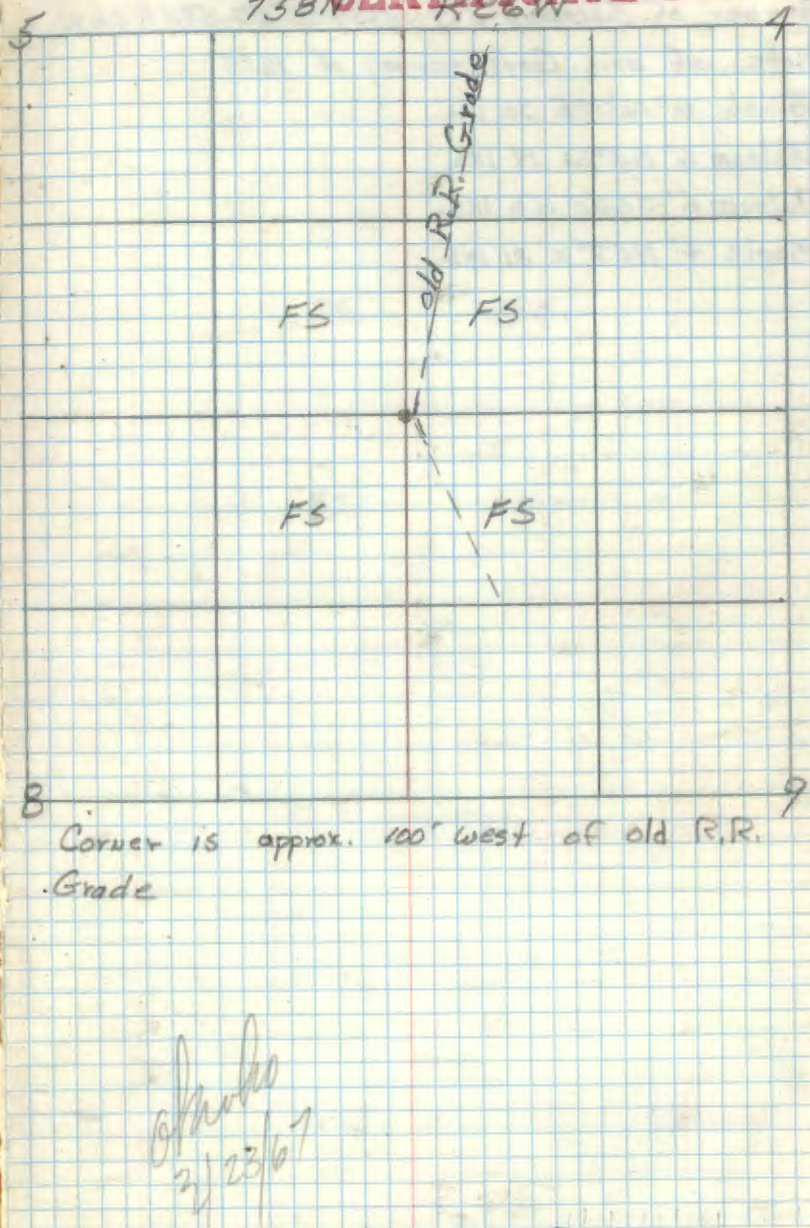
54-4 attached set N4°W 4.7 Ft.

5-20-66 J. H. McDonald

Affidavit RHM

CERTIFICATE FILED

T58N R26W

Corner is approx. 100' west of old R.R.
GradeJ. H. McDonald
2/23/67

CONT BOOK 7 Pg# 8

49

Corner of Sections 3-4-33-34 T57-58NR26W

Notes of orig. Govt. survey of 1875

Birch 6" N54°E 30 IKS.

Balsam 6" S3°W 19 IKS.

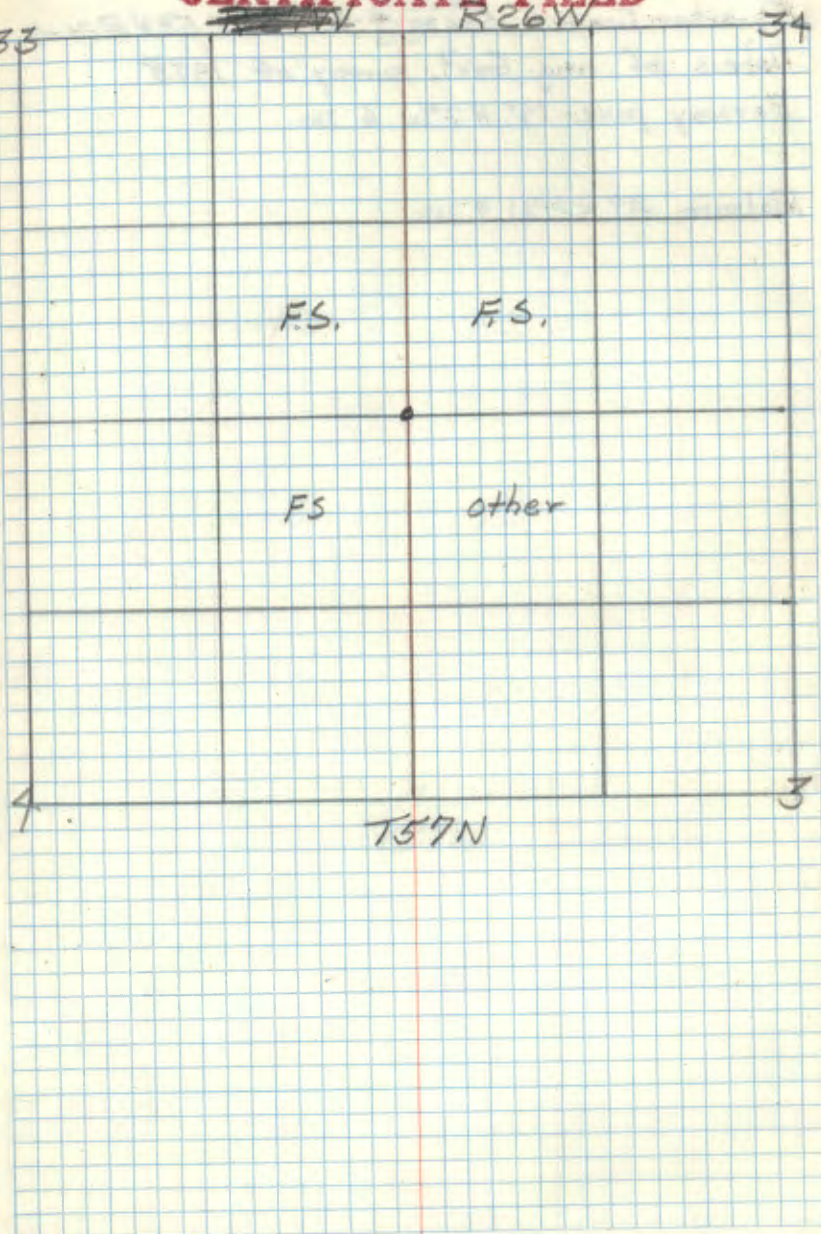
Balsam 6" S60°E 56 IKS.

Maple 4" N57°W 21 IKS.

CERTIFICATE FILED

33

34



50

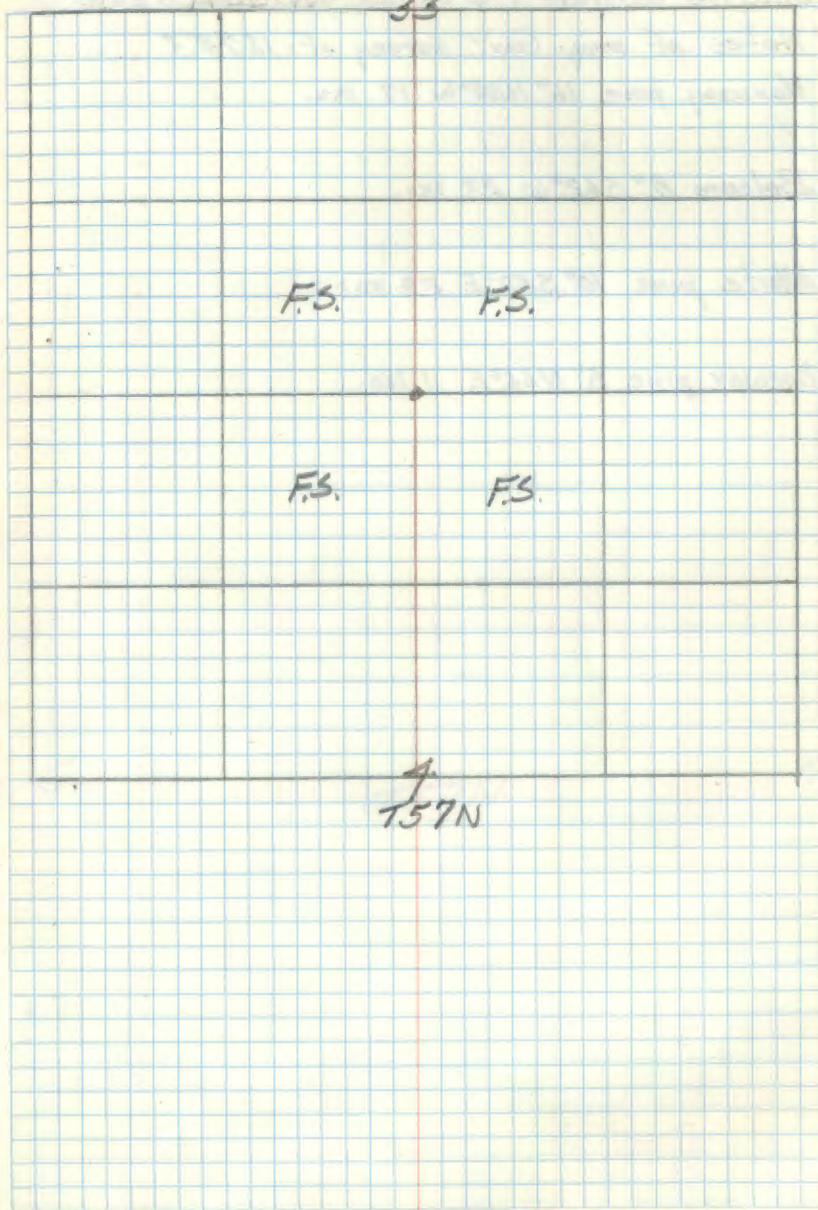
Quarter Corner Secs. 4-33 T57-58N R26W

Notes of orig. Govt. survey of 1873

Norway pine 14° N 7° W 6 1ks.

Balsam 8° S 2° W 9 1ks.

T58N
R26W
33



51

Section Corner 4-5-32-33 T57-58N R26W

Notes of orig. Govt. survey of 1873

Norway pine 16" N29°W 17 lks.

Balsam 8" S62°W 23 lks.

White pine 10" S52°E 24 lks.

Norway pine 8" N66°E 11 lks.

32

T58N R26W

33

F.S.

F.S.

Other

Other

5

T57N

4

52

Quarter corner sections 5-32 T57.58NR26W

Notes of Orig. govt. survey of 1873.

Aspen 12" S25°E 14 lks.

Birch 6" N6°W 22 lks.

T58N R26W

32

F.S.

F.S.

F.S.

F.S.

5
T57N

Corner sections 5-6-31-32 T57N58N R26W

Notes of orig. gov't. survey of 1873

White Birch 10° 51' W 591 ks.

White Pine 12° N 80° E 11 ks. (7.26')

White Pine 10° N 31° W 11 ks. (7.26')

White Pine 12° 57' E 48 ks. (31.68')

31

T58N R26W

32

F.S.

F.S.

F.S.

F.S.

6

T57N

5

Corner sections 5-6-31-32 T57N58W R26W

Notes of orig. govt. survey of 1873

White Birch 10" S19°W 591ks.

White Pine 12" N80°E 111ks. (7.26')

White Pine 10" N31°W 111ks. (7.26')

White Pine 12" S70°E 481ks. (31.68')

F.S.

F.S.

F.S.

F.S.

THIS BOOK
HAS NO PAGE 54

55

Quarter Corner Sect's. 6-31 T57-58N R26W

Notes of orig. Govt. Survey of 1873

Ash 6" N35°E 6 Iks.

Ash 4" S45°E 5 Iks.

T58N R26W

31

F.S.

F.S.

F.S.

F.S.

6
T57N

56

Corner 4-5-B-9

Notes of a road survey of 1925 - Plot on
record in Itasca Co. Courthouse.

Poplar 5" N78°W 29.5'

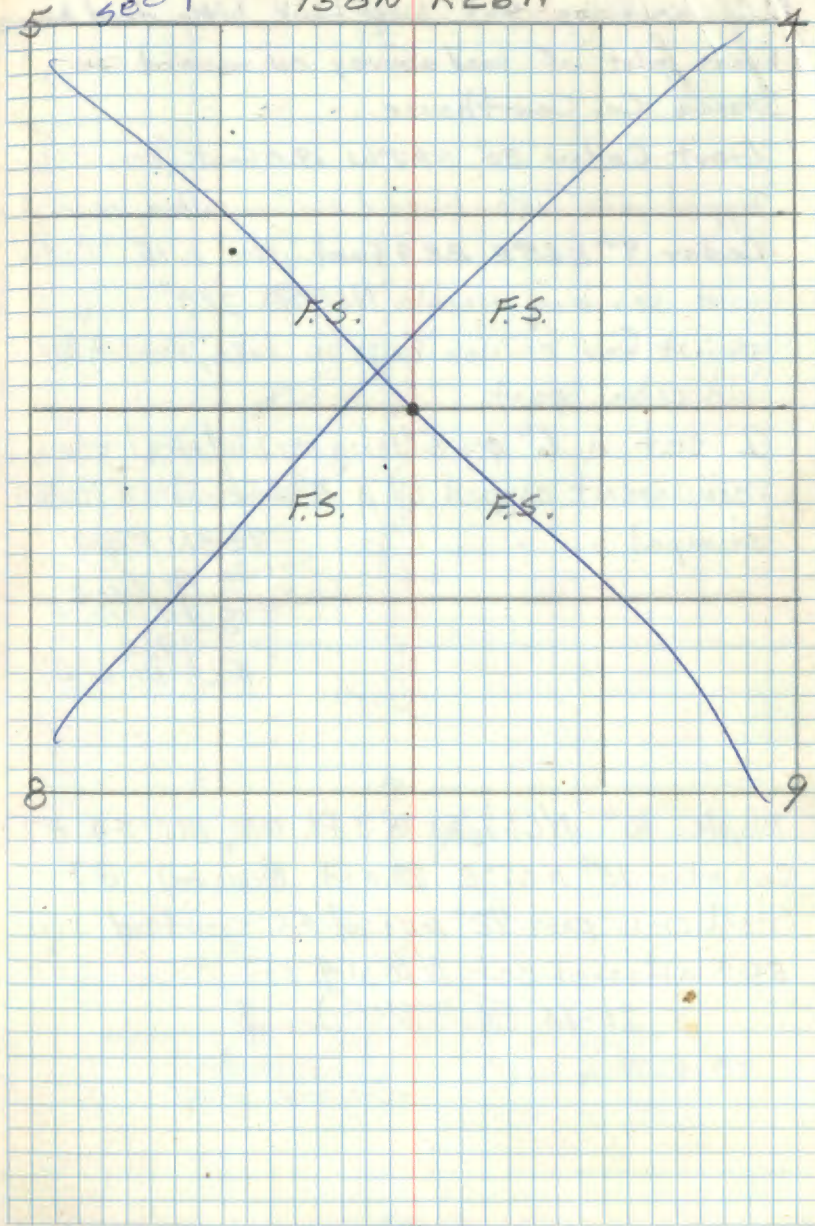
Birch 5" N5°E 21.1'

Cedar 6" S7°W 26.0'

Balsam 5" S45°E 29.2'

5 see page 48

T58N R26W



M.C. sections 4-9 West bank little dead horse
From plot of road survey on record in
Itasca Co. Courthouse.

Gov't. Cedar 20" S 87°W 19.0 Feet. (Now cedar
Tipped into lake blaze & scribe under water)

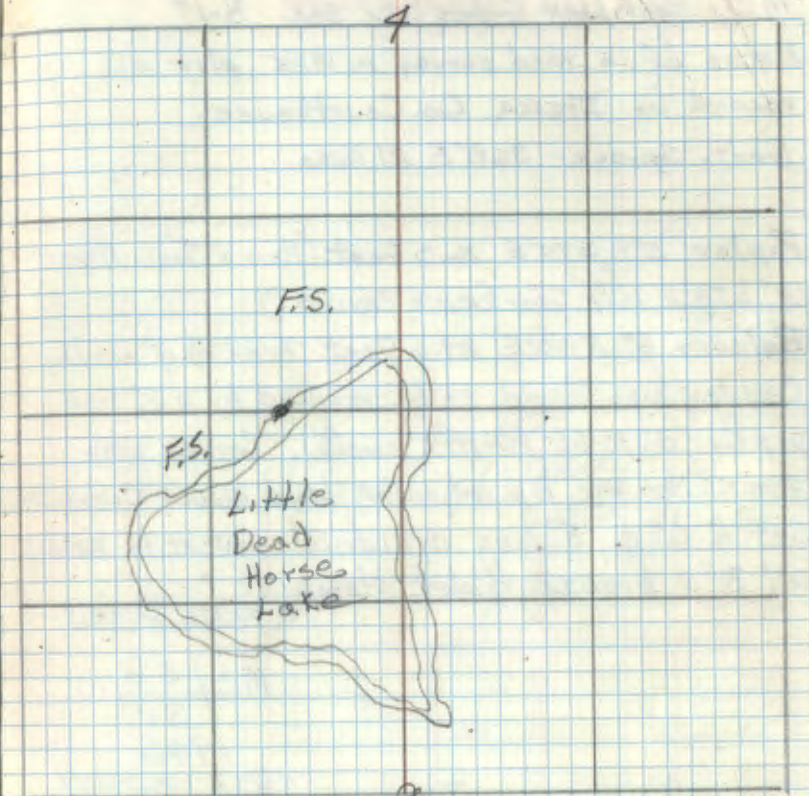
Cedar 9" N 60°E 28.9 Feet. (Now a 15" Cedar
with scribing visible N 67°E 28.0'
point for corner Falls in Lake, marked by
old cedar post.

I set a 6" ϕ , 5' long cylindrical concrete
monument capped w/ a 3" ϕ bronze tablet
stamped

T58N R26W
S 4 / MC
S 9 / MC
1966
RLS NO. 6807

Maple 10" N 66 1/2°W 18.3 Ft. MKD MC S 4. BT
Co Cedar 15" N 67°E 28.0 Ft. Rescribed BT
Steel sign post 72" long w/ F.S. standard sign,
54-t attached set N 10°W 4.1 Ft.

5-20-66 RHM:Ornd



Heidavit
4/18/67

Note: Poor location for monument -
probably will not stay in place, very
loose and shaky

See BRS, PP 52

J-89

M.C. East Bank Graves Lake Sec. 8-17

Notes of a road survey in 1925 plot on record in Itasca Co. Courthouse.

Govt. Spruce - $S68^{\circ}E$ 21 links.Poplar 5" $S70^{\circ}E$ 16.0 feet. (Now a Twin Aspen 18" $S58^{\circ}E$ 14.7' scar facing corner.)Balsam 6" $N60^{\circ}E$ 29.6 feet. - balsam strip at record by ~~Donald~~

Corner was found to be marked by a 2" iron pipe. 5-10-66 RHM Donald. Corner was shown to me by adjoining land owner C. Synnus. Set a 6" ϕ , 5' long cylindrical concrete mon. w/ 3" ϕ bronze tablet stamped:

75BN R26W

M.C./S8
S17

1966

RLS NO 6807

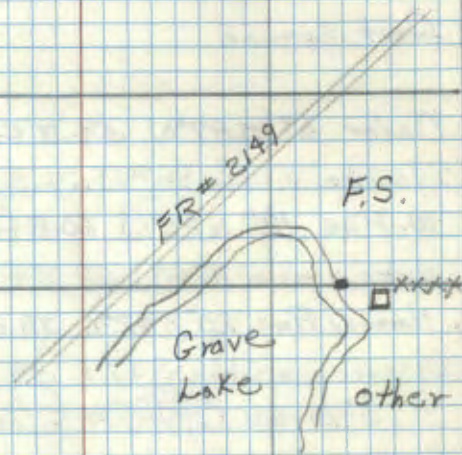
Ash 6" $N27^{\circ}E$ 17.7 ft. w/ BT shield - Enbal M58 BT

Ash 7" East 44.5 ft w/ BT shield - Enbal BT

Cedar post 4"x4"x5' w/ F.S. Standard signs

54-24 54-4 attached set East 5.0 ft.

5-18-66 RHM Donald

75BN R26W
8
CERTIFICATE FILED

17
East-West line passes just North of Synnus' house and then follows old fence line to sec. Cor. of 8-9-16-17.

John
6/7/70

see Book 4, pp 39

Corner Sections 8-9-16-17

From plot of road survey of 1925 on record in Itasca Co. Courthouse.

Gov't Spruce

Cedar 6" S87°W 54.3 Ft. (Now a 12" Cedar w/scribe visible S87°W 54.3 Ft.)

W. Pine 12" N26°W 60.8 Ft. (Now a 14" White pine scribe visible N28°W 62.8 Ft.)

Norway Pine 20" S42°E 38.2 Ft. (Now a 21" Red pine w/scribe visible S37°E 38.2 Ft.)

5-10-66 J.H. McDonald

Corner was found to be marked by squared scribed post.

Set a 2" inside ϕ galvanized steel pipe filled w/ concrete & capped w/ a 3" ϕ bronze tablet stamped

T5BN R26W

58/59

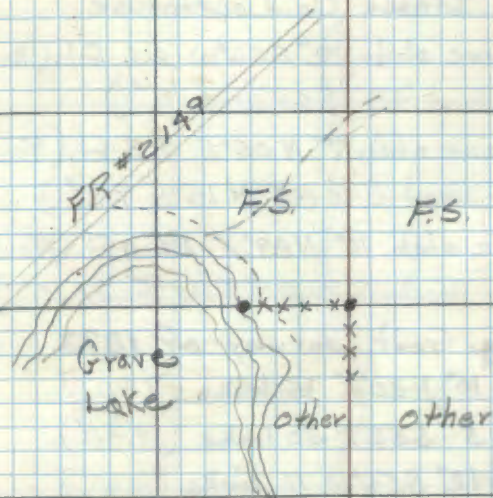
517/516

1966

RLS NO 6807

Steel sign post 72" long w/ F.S. standard signs 54-2 & 54-4 attached set East 3.85' Co. B.Ts are in good condition I placed B.T. shields on these trees.

5-18-66 J.H. McDonald



old fence line runs west and south from corner.

JHM
5/18/66

80 J-13

Corner Sections 9-10-15-16

From a plat of a road survey in 1925 -
on record in Itasca Co. Courthouse.

Govt. Norway pine stub $12^{\circ} S 56^{\circ} W$ 6.6 Ft. (Now
Pine stump scribed "BT" $S 68^{\circ} W$ 6.6')

Govt. Norway pine stub $7^{\circ} N 05^{\circ} E$ 9.8 Ft. (Now a
Pine stump scribed $S 10^{\circ} BT N 15^{\circ} E$ 9.8')

Govt. Norway pine stub $10^{\circ} N 89^{\circ} E$ 26.0 Ft. (Now a
pine stump scribed $S 10^{\circ} BT N 89^{\circ} E$ 26.0')

Notes of orig. Govt. survey of 1873

Norway pine $10^{\circ} N 20^{\circ} E$ 15 links (9.90')

White birch $5^{\circ} S 52^{\circ} E$ 30 links (19.80')

Norway pine $12^{\circ} S 56^{\circ} W$ 10 links (6.60')

Norway pine $12^{\circ} N 46^{\circ} W$ 80 links (52.80')

Corner was found to be marked by a 1" dia.
iron pipe extending 2' above ground.

Set a 6" dia. 5' long cylindrical concrete
monument w/ a 3" ϕ bronze tablet stamped

T5BN R26W

S9 | S10

S16 | S15

1966

RLS No 6807

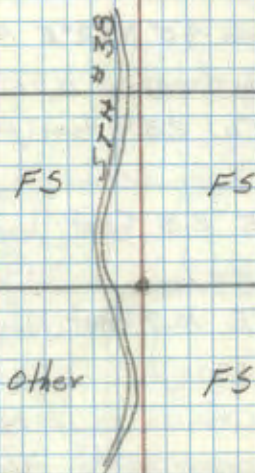
See BK 4, pg 18

Affidavit RHM

CERTIFICATE FILED
T5BN R26W

9

10



16

15

Placed FS metal location poster on a 6"
Birch from which corner bears $N 39^{\circ} W$ 7.0'

Set Red top square cedar post on East
edge of Hwy 38 R/W from which corner
bears East 134 Feet.

Maple 6" $S 2^{\circ} W$ 26.35' MKD S16 BT

Oak 9" $N 26^{\circ} E$ 23.1' MKD S10 BT

Oak 5" $N 41^{\circ} W$ 22.3' MKD S9 BT

Steel sign post w/ FS standard signs 54-2 &
54-4 attached set West 4.6 Feet

5-18-66

W. M. Donald

61 N-13

Corner Sections 15-16-21-22

From a plat of a road survey in 1925-
ON record in Itasca Co. Courthouse.

Gov't. pine stub. $40^\circ N52^\circ E$ 9.9 feet (Now a
Pine stp mostly decayed $N52^\circ E$ 9.9 feet
Birch 5" $N71^\circ W$ 23.9 feet (Now a 9" Birch
 $N61^\circ W$ 23.9 with scribe visible

Birch 5" $S30^\circ E$ 3.5 feet (Now a birch stump
 $S33^\circ E$ 3.5 feet)

Poplar 6" $S69^\circ E$ 10.7 feet (Now a Aspen stump
 $S64^\circ E$ 10.7 feet)

Corner was found to be marked by a 2"
dia. iron pipe with Alum. Cap stamped
set by Itasca Co.

T58N

R216 W 16 15

R216 W 21 22

Co. Bearing trees:-

Birch 10" $N39^\circ E$ 8.4 feet MKD S15 BTBirch 6" $S41^\circ E$ 26.6 feet MKD S22 BTAspen stub 9" $S21^\circ W$ 19.1 feet MKD S21 BT

4-26-66 P.H. McDonald

I set a steel sign post w/ FS standard
signs 54-2 & 54-4 attached North 3.3 feet

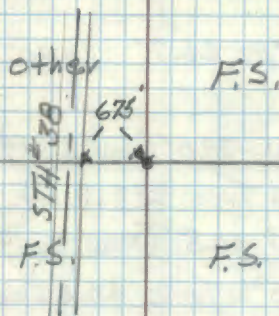
Accidavit RHM

CERTIFICATE FILED

T58N R26W

16

15



Note

Out out line
runs East
From Corner

21

22

Original Government Survey

Set by post from which:

W. Pine, 32 in, $N41^\circ W$, 30 lbsW. Pine, 40 in, $N52^\circ E$, 15 lbsSugar tree, 11 in, $S81^\circ E$, 15 lbsSugar tree, 10 in, $S73^\circ W$, 12 lbs

BK4, 1 p 10

See: T58N R26W BK2 pg 73

BK3 pp 14

62

R-13

Corner Sections 21-22-27-28

From a plat of a road survey in 1925
ON record in Itasca Co. Courthouse.

2 Govt. BTs

Balsam 5" N35°W 20.8'

Balsam 9" N55°E 66.7'

Poplar 5" S77°W 39.0' (Now a 14" Aspen scribe
Visible S88°W True 33.2 Ft.)

Poplar 4" S23°W 40.8' (Now a 13" Aspen stump
& windfall S35°W True 40.6 Feet.)

From a subsequent Co. Road survey in 1934

Same BTs as above

~~Balsam~~

Corner is marked by a 3" dia. Alum. Cap on
a 2" dia. Iron pipe set by Itasca Co.
Cap is stamped

T58N
R26W
21/22
28/27

Basswood 7" S22°W 39.8 Feet MKD S28 BT

Basswood 8" S70½°E 32.2 Feet MKD S27 BT

Oak 7" N41°E 23.7 Feet MKD S22 BT

Oak 6" N40°W 44.9 Feet MKD S21 BT

4-25-66 R.H. McDonald

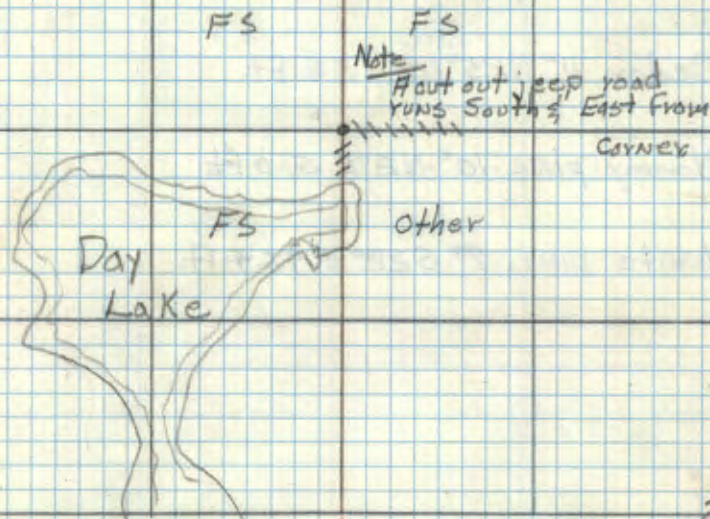
Affidavit RHM

CERTIFICATE FILED

T58N R26W

22

21



28

27

Original Government survey 1873
4/7/70

Certificate filed 7-11-83

Doc # 358703

See: T58N R26W BK 2 pg 75

SEE: " " BK 3 pg 34

Corner Sections 23-24-25-26

From a plat of a road survey in 1934
recorded in Itasca County Courthouse

Govt. Norway pine stp. 16" S73°E 7.3 ft.

Govt. Norway pine stp. 16" N49°E 29.4 ft.

Cedar 11" N25°W 53.8 ft.

Norway pine 10" N2°E 51.0 ft.

White pine 7" S22°E 43.4 ft.

23

24

FS

Other

Other

Other

26

25

Quarter Corner Sec's. 3-4

From Notes of a County Survey of
1928 plat on file in Itasca Co. Courthouse

Gov't. BTs

W. Pine 6" N59°E 23.8 Feet (Now a 14"
White pine scribe visible N68°E 23.8')
N. Pine 4" S65°E 26.1 Feet (Now a 12"
Red pine S58°E 26.1 Ft. scribe overgrown.)
Pieces of charred post were found near
point for corner 5-11-66 RHM

Set a 6" ϕ , 5' long cylindrical concrete
monument w/ bronze tablet stamped:-

T58N R26W

1/4

S4 | S3

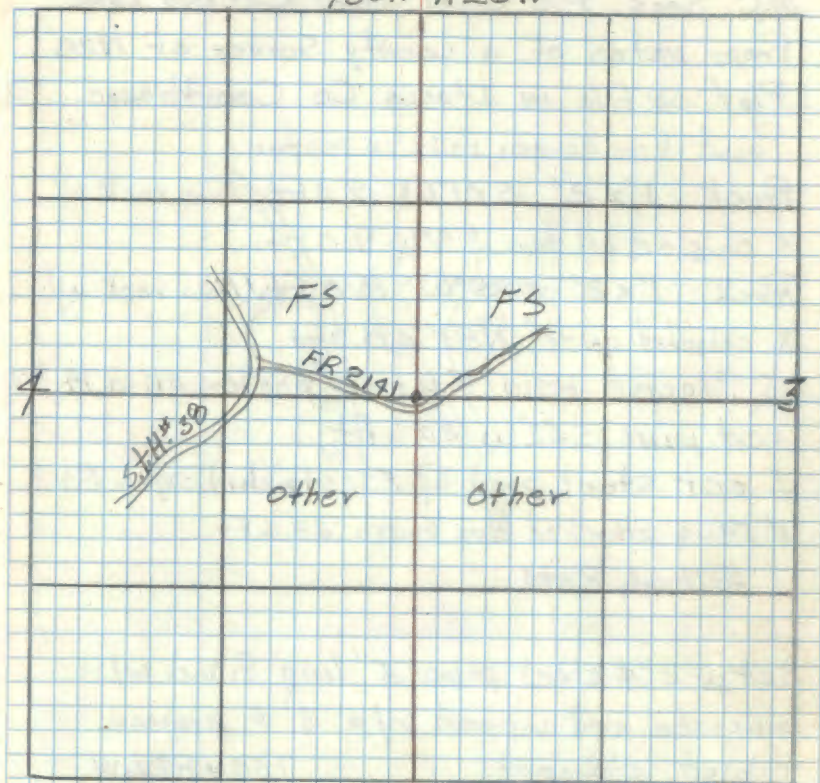
RLS. 1966
No. 6807

White Spruce 7" N2°W 283' mxd 1/4 S4 BT

Cedar post set on North edge of Forest road
#2141 bears South 138.3 Ft.

Steel sign post w/ FS. standard signs 57-2
& 54-4 attached, set West 2.6 Feet.

5-18-66 (A.H. McDonald)



[Signature]
3/24/67

65 16-13

M.C. Sec's. 9-10 South shore Caribou Lake
From notes of a county Survey of 1928
Plot on file in Itasca Co. Courthouse.

Point for corner falls in water.

Rock 1'x2' S01°W 9.0 Ft. (Now rock w/
X chiseled on top S4°W 9.0 Ft.)

Rock 1'x2' S85°W 8.0 Ft. (Now rock w/
X chiseled on top N89°W 8.0 Ft.)

I Placed new location poster on a 14"
red pine S62°W 30.6 Ft.

I set steel post w/ FS. standard signs 54-2
& 54-4 attached due South 23.6 Ft.

5-11-66 RHM

Set a 2" ϕ steel pipe 5' long Filled w/
concrete and capped w/ a 3" ϕ bronze
tablet stamped:

T58NR26W

MC

S9 | S10

1966

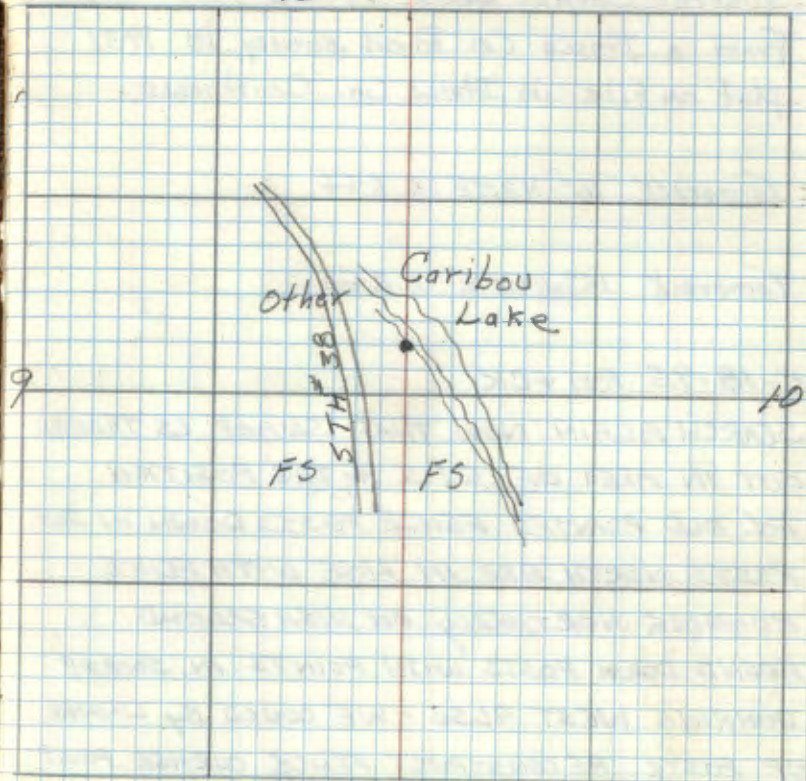
RLS No 6807

I scribe BT on base of the 13" Red pine
which bears S62°W 30.6 Ft.

The two Co. rocks are in good condition
5-18-66
(J.H.M. Donald)

Freidavit RHM

T58NR26W **CERTIFICATE FILED**



Calculus
5/21/70

SEE PAGE 80 - THIS BOOK

Quarter Corner Sec's. 19-30

From a Itasca Co. Road survey in 1931
plat on file in Itasca Co. Courthouse.

Tamarack $16^{\circ} N 20^{\circ} E$ 6.6 ft.

Tamarack $15^{\circ} S 63^{\circ} E$ 11.2 ft.

5-18-95 RM & CK

SEARCH AGAIN NOW THAT SWAMP IS THAWED
OUT IN AREA OF G.P.S. & TAG POSITION
FD. OLD POINTED FENCE POSTS DOWN IN SWP.
POSTS NORTH ARE IN LINE WITH FENCE
RUNNING NORTHERLY ON HIGH GROUND
FOUND DOWN POSTS WITH POINTS IN SWAMP
RUNNING WEST ALSO - WE COULD BY LINING
UP POSTS RECONSTRUCT FENCE CORNER POST
WHICH WAS DOWN UNDER SWAMP - WE FOUND
TWO STUMPS THAT FIT THIS POSITION (FENCE COR.
POST) ONE AT $N 20^{\circ} E$ 6' AND ANOTHER
WHICH IS $S 70^{\circ} E$ 9.5' - PLACED FSLP
ON 10" ASH S W - 14.1' FROM FENCE
CORNER POST AS APPROX. $S \frac{1}{4}$ SEC. 19

DON'T BELIEVE ITASCA COUNTY SET IRON
MONUMENT AT THIS CORNER

See BK I, PP 47

other

other

FS

FS

30

67

E-17

Corner Sections 2-3-34-35 T57-58NR26W
 From a plot of Itasca Co. Road ties
 IN 1925 - plot on file IN Itasca Co. Courthouse

Spruce 5" S17°E 29.1 Feet.

Spruce 6" S67°E 23.3 Feet.

+ Rock 3'x4' N30°W 25.9 Feet. (Now N27°W
 25.9')

Gort. Tamarack 12" N05°E 146.2 Feet. (Now a
 decayed Tam. stump N8°E 146.2 Ft.)

Set a 6" ϕ , 5" long cylindrical concrete
 monument capped w/ a 3" ϕ bronze
 tablet stamped:-

T58NR26W

539 | 535

53 | 52

T57N

1966

RLS No 6807

White pine 15" S85°W 8.6 ft MKD S3 BT

X Rock 3'x4' N27°W 25.8 ft MKD X

Tamarack 6" N84°E 11.0 ft MKD S35 BT

Birch 5" S20°E 29.3 ft MKD S2 BT

Steel sign post 72" long w/ FS standard signs

54-2 & 54-4 attached set South 4.5 ft

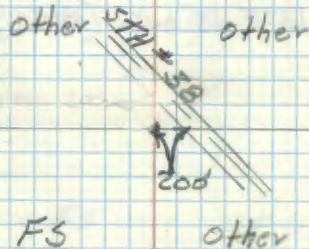
6-16-66 R.H. McDonald

Affidavit RHM

34

T58N R26W

35



3

A Red topped cedar post is on SW side
 of Hwy 38 approx. 200' East of Corner.

2

Photo
 1/11/70

rd 3/4" ip & squared cedar post
 at corner location

68

Quarter Corner Sec's. 31-32

Notes of the original Govt. Survey of
1873

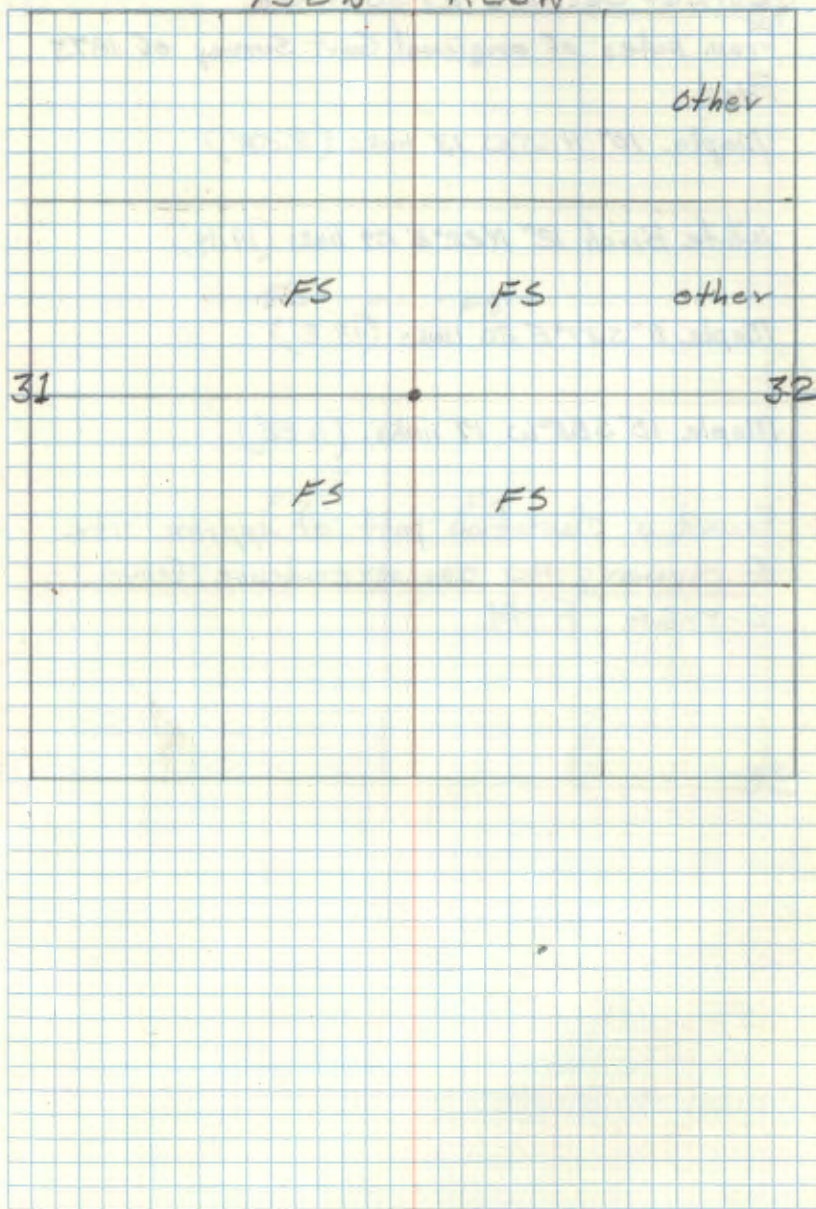
Post:

Norway pine 18" N49°W 8 links (5.28')

Aspen 11" S13°E 13 links (6.58')

T58N

R26W



69

V-5

Corner Sections 29-30-31-32

From Notes of original Govt. Survey of 1873
Post.

Maple 10° N 60° W 13 links (8.58')

White Birch 12° N 22° E 29 links (19.14')

Maple 8° S 37° E 20 links (13.2')

Maple 10° S 85° W 17 links (11.22')

Found a plantation post at approx. site
of corner, NO corner evidence found

6-8-66 RHM

30

T58N R26W

29

31

32

FS

FS

FS

FS

Corner Sections 19-20-29-30

Notes of original Govt. survey of 1873

Post

Tamarack 14° N 88° W 17 links. (11.22')

White cedar 10° N 62° E 18 links. (11.88')

Tamarack 12° S 55° E 21 links. (13.86')

White birch 10° S 25° W 24 links. (15.84')

5-18-95 RM + CK

SEARCH AREA OF (ROUGH VALUE) GPS POSITION

FOUND MANY DOWN WINDFALLS AND BURNED

STUMPS IN AREA - FOL ASH WITH BLAZE

ON E SIDE IN AREA OF G.P.S. POSITION

NOTHING COULD BE FOUND AT THIS TIME

5-22-95 RM + CK

SEARCH AGAIN AFTER PHONE CALL FROM BOB

ANTILLA LOCAL RESIDENT WHO LOCATED OLD

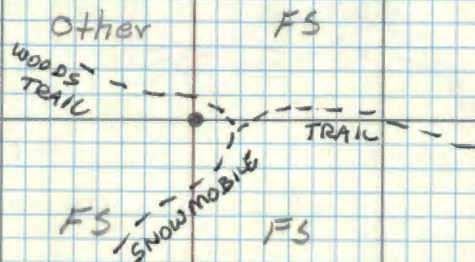
DOWN POST CEDAR WITH POINT IN PLACE

STILL NO EVIDENCE OF ORIG. BT'S. COULD BE

FOUND THAT WOULD FIT POST - PLACED FSLP

ON 11" ASH BLAZED ON E SIDE, - N 76° W - 3.0'

FROM POINT OF CEDAR POST - TOP VERY POOR



CONDITION OLD BLUE PAINT WAS FOUND ON TOP OF CEDAR POST - ALSO SAW OLD BLUE PAINT (FAINT) SOUTH + WEST OF OLD POST BELIEVE POST WAS SET BY CCC'S IN 1930's. SEE CCC LINEAL SURVEY BOOK # 46 5B-26 THEY CAME TO THIS LOCATION FROM EAST + SOUTH TAG WAS MARKED APPROX. SEC. COR. TODAY 5/22 CORNER IS APPROX. 175' SOUTH OF WOODS TRAIL NW-SE AND APPROX. 375' WEST OF WOODS TRAIL AND SNOWMOBILE TRAIL E + S INTERSECTION

ROUGH G.P.S. POSITION IS ABOUT 35' TO 40' EAST TOOK NEW G.P.S. READING TODAY 5/22 AT CEDAR POST POSITION

71

Meander
~~Quarter~~ Corner Sections 19-20

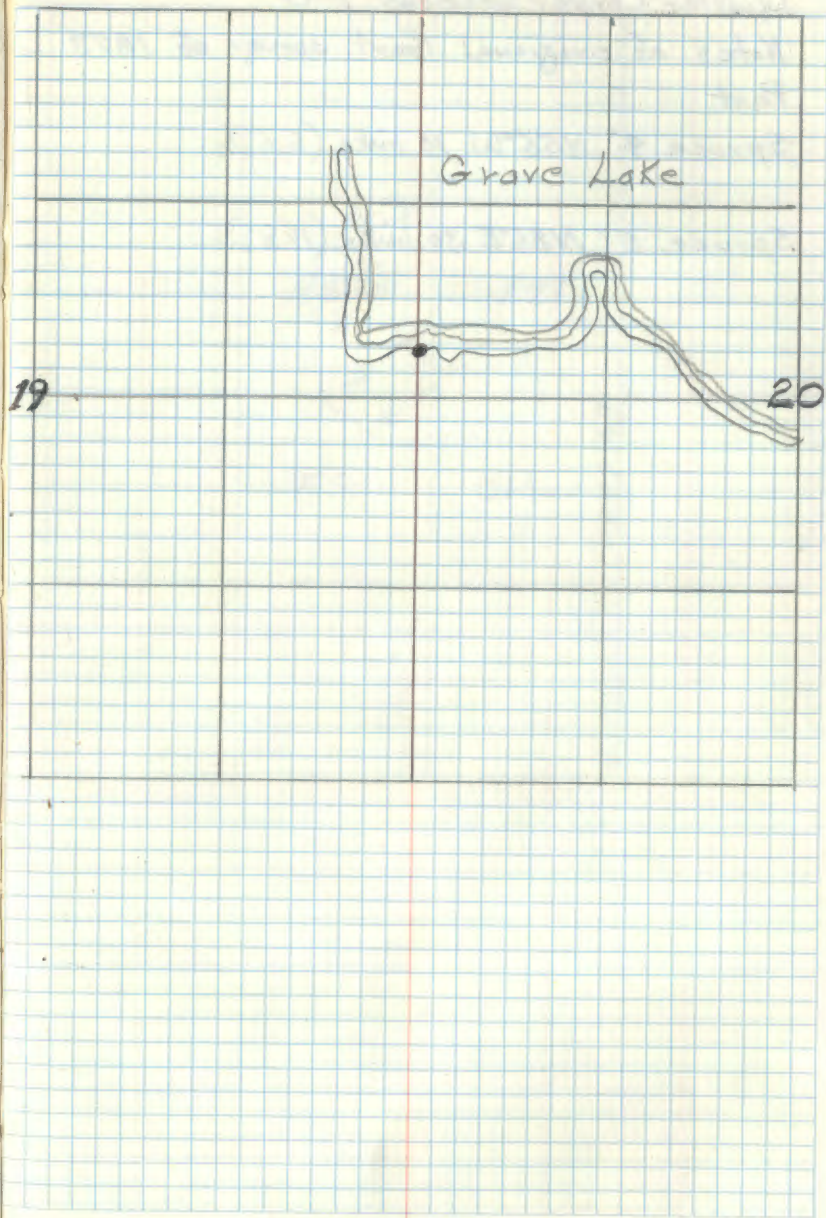
Notes of the orig. govt. survey of 1873

Post.-

Tamarack $10^{\circ}S 19^{\circ}W$ 97 links (64.02')

Tamarack $10^{\circ}S 80^{\circ}E$ 127 links (83.82')

T58N R26W



Quarter Corner Sections 7-8

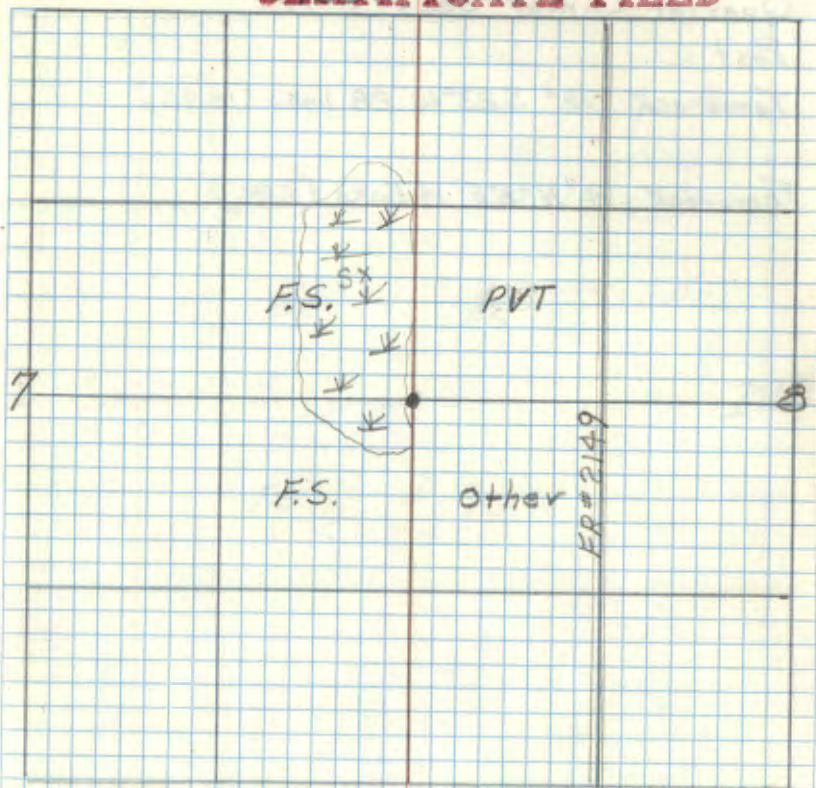
Notes of original Govt. survey of 1873

Post

Spruce 4" N55°W 10 links (6.6')

Spruce 5" N86°E 30 links (19.8')

CERTIFICATE FILED



73

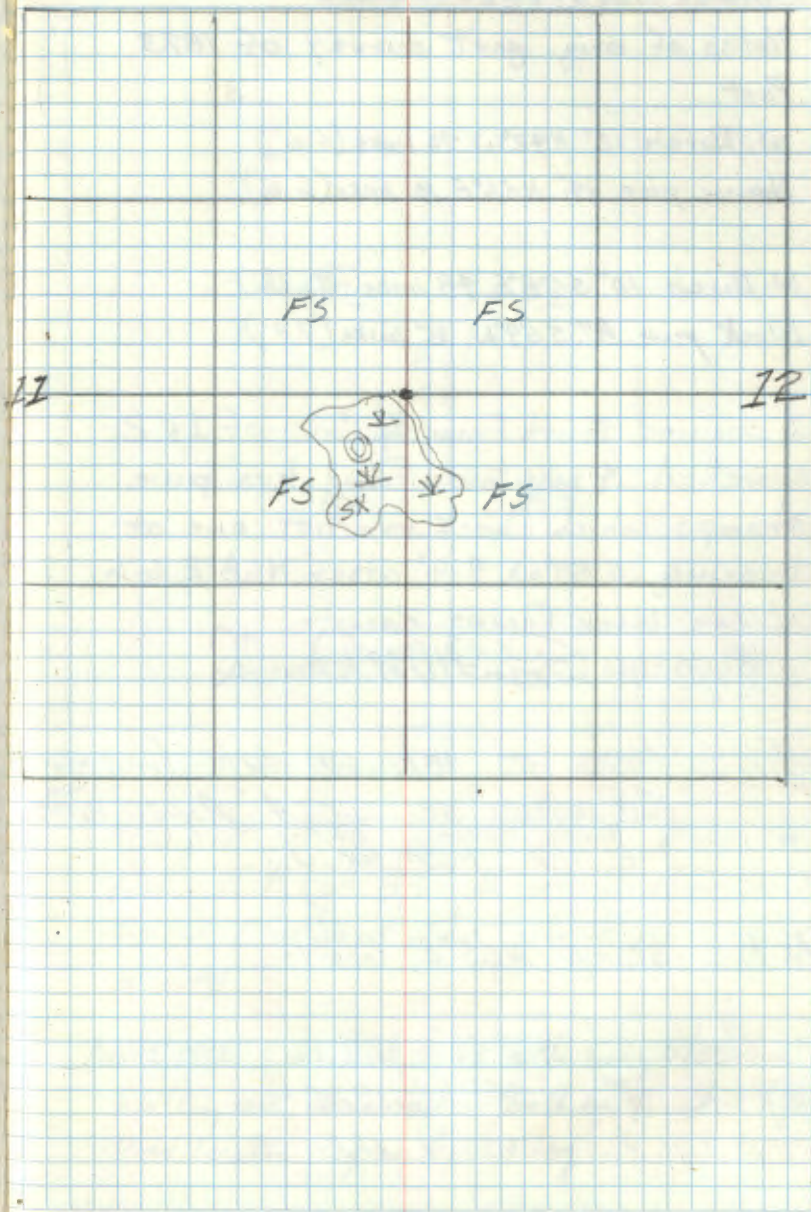
Quarter Corner Sec's. 11-12

Post

Tamarack 12" S23°W 28 links (18.48')

Tamarack 14" N38°E 14 links (9.24')

T58N R26W



74

6-21

Corner Sec's 1-2-11-12

Notes of orig. govt. survey of 1873

Post

W. Birch 12" N42°W 10 links (6.6')

Norway pine 14" N56°E 10 links (6.6')

W. Birch 10" S78°E 48 links (31.68')

Black pine 8" S59°W 15 links (9.9')

I chained south from $\frac{1}{4}$ Cor. of 15' 2
searched 4 man hrs. Found two pine
stumps which check for dist one at
bearing S59°W 9.9' other N68°E 6.6

W/ axe blaze facing corner.

5-16-66 *Phyllis M. Donald*

C.C.C. Notes of unknown date (mid 1930's)

Set approx sec cor, 4" Aspen post
3 ft high From which:N. Pine, stump, N55°E, 6.6⁵ ft

N. Pine, 5", S48°E, 24 ft

Aspen, 2", S41°W, 13.25 ft

Aspen, 2", N35°W, 12.5 ft

CERTIFICATE FILED

2

1

F.S.  F.S.

F.S. F.S.

11

12

Also put USFS poster on 4" Aspen on
P.L. Est. cor 84' E of Random Line
Found 2 stumps that check with best
survey

Nov 5, 1982 Searched 4 hrs with Gary Stevenson, RLS,
Walker, MN. No evidence could be found. (4 people)
Used locator trying to find tag

See TSBW E26W B4 pg 20

75

C-21

Quarter Corner Sec's 1-2

Notes of orig. gov't. survey of 1873

Post

White Birch 6" N32°E 20 links (13.2')

Black pine 12" N82°W 13 links (5.58')

Note - corner falls 3.50 ch. south of Baldy Lake

Corner was found to be marked by 2

F.S. location posters one rusted badly, one

readable stating this to be approx 1/4 cov.

postax is on a 7" Aspen N40°E 12 Ft.

cor. check w/ distance to Baldy lake 231 Ft.

A blue line runs East from Cor.

5-16-66 *R. J. M. Dora*

RECOVERED a 1" (Outside diam) IRON PIPE with a PLASTIC CAP N5 12684

6-30-83 B. Husk
 10.3" N66°W 61.08 with nail $\frac{1}{2}$ " ←

Birch 11.1" N87°W 7.27" O's k double ←

R. OAK 3.3" 827°W 31.26 blazed - no scribe ←

Established

R. OAK 55" N87°E 37.88 to 1/6 d nail in the

ASPEN 10.4" S22°E 28.36 to 1/6 d nail in the

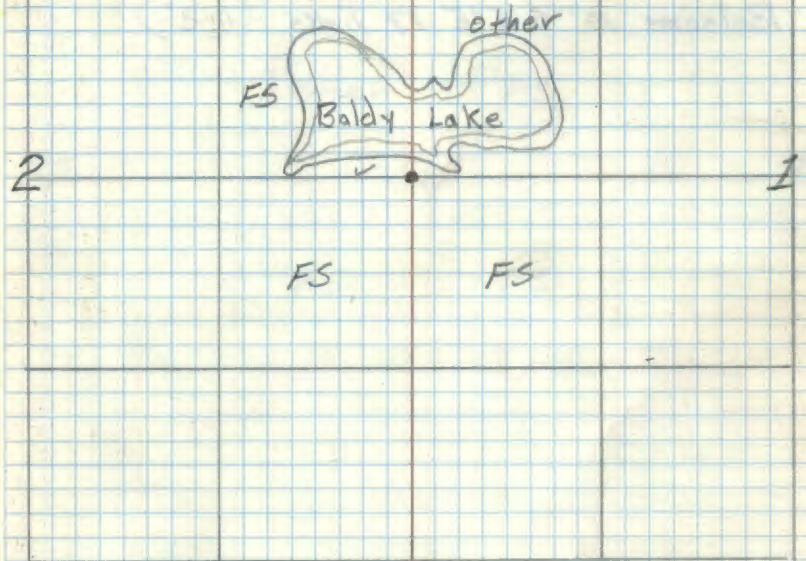
ASPEN 9.4" S71°W 33.21 To 1/6 d nail in the

BT marked with red enamel, BT tags & 60d spikes in

Base blaze 5° E. sect

CERTIFICATE FILED

T58N R26W



8' post 3.0' Northely with 54-2 sign
 Painted red 8' post 3.0' Eastely with 54-2 & 54-9
 Birch has old rusted location poster grown into tree
 not painted Birch dead 5-17-84 whitehorn/Ausk/
 Robertson
 Set 2 "x60" Galv IP with Brass tablet
 up 1.5 ft
 stamped as shown
 Southernly face
 S. 58 N. R26 W.
 1/4
 S. 20 S. 1
 1984
 R.L.S. 14677
 lowered
 "IP to bottom
 of our man (inside)

76

Quarter Corner Sec's. 32-33

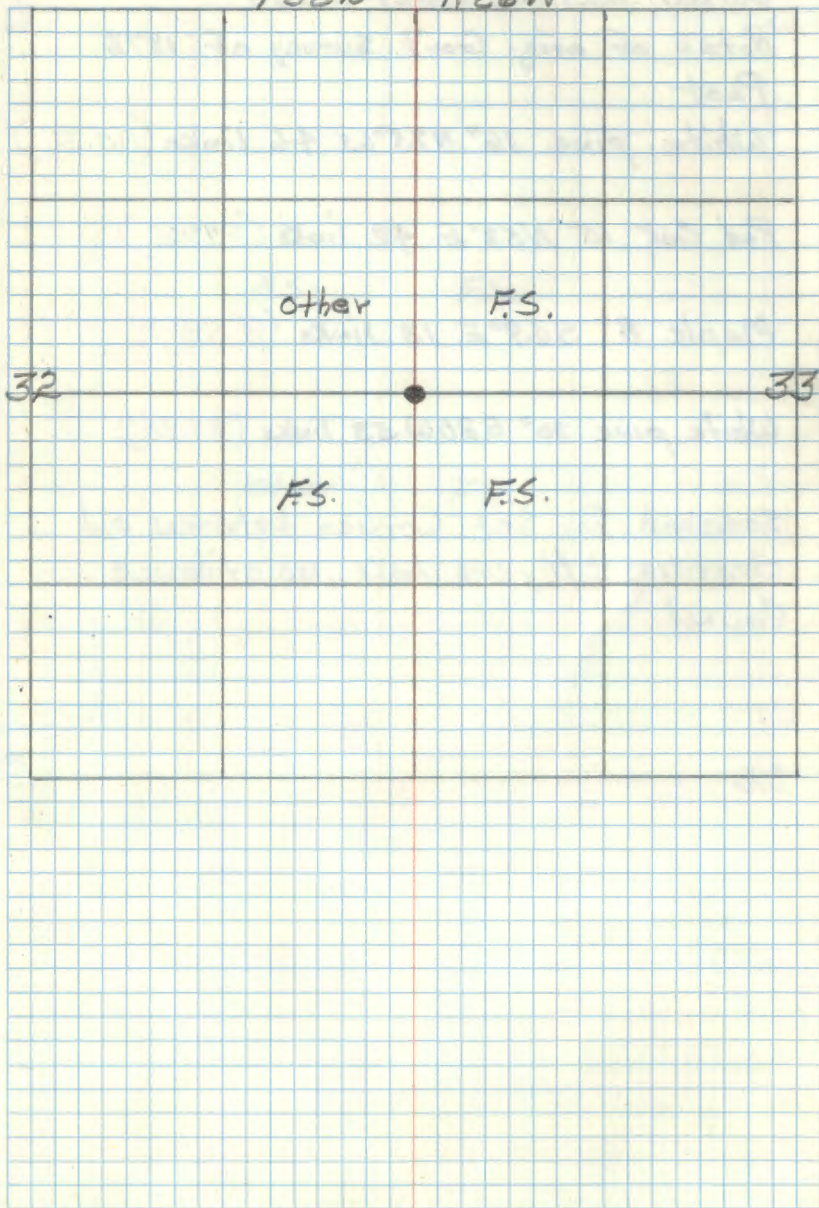
Notes of orig. Gov't. survey of 1873

Post

Norway pine 16" N75°W 7 links (4.62')

Balsam 10" S5°E 17 links (11.2')

T58N R26W



77

V-9

Corner Sections 28-29-32-33

Notes of orig. Gov't. Survey of 1873

Post

White pine 16" N75°W 46 links (30.36')

Red Oak 10" N52°E 42 links (27.72')

Maple 8" S69°E 13 links (8.58')

White pine 30" S20W 53 links (34.98')

Searched for Sec. Corner between old
clearing & Myers Lake no evidence
found

29

T58N R26W

28

FS

FS

other

FS

32

33

Quarter Corner Sec's. 16-21

Notes of orig. Govt. Survey of 1823

Post

Norway pine 12" S69° E 14 links (9.24')

Norway pine 20" N64° W 15 links (9.90')

located search area from photos, found old F.S. location poster* (~~est. to be 30 years old~~) states this to be approx. cov. Found new intersecting ribbon lines approx. 70 ft N-E of poster. Searched 4 man hours checking out the many pine stumps in area. No orig. evidence of cov. was found. 5-10-66 FHM

*Date 3-11-1934

CERTIFICATE FILED

T58N R26W

16

Other

Other

(9)

F.S.

F.S.

21

79

5-1

T58N

North $\frac{1}{16}$ Cor Secs 25-30 R 26-27W

Survey by Lloyd W. Johnson in 1923

Plat recorded in Itasca Co. Courthouse.

Iron monument (Found a $1\frac{3}{4}$ " ϕ iron pipe marking corner.) Also scribed post)Birch 16" S 75° W 16.7' (Now a decayed stump S 85° W 16.7')Cedar 8" N 54° W 43.2' (Now a dead11" Cedar N 44° W 43.2'.)

x 5' long

I set a 2" ϕ , galvanized steel pipe

filled w/ concrete and capped w/ a

3" ϕ bronze table stamped

T58N

R27W R26W

N $\frac{1}{16}$

S 25 S 30

1966
RLS NO 6307Ash 7" N 23° W 7.5' MKD N $\frac{1}{16}$ S 25 BTAsh 3" S 6° E 22.25' MKD X BT

Steel sign post w/ FS. standard signs

54-2 & 54-4 attached set West 3.65'

6-2-66 RHM-Donald

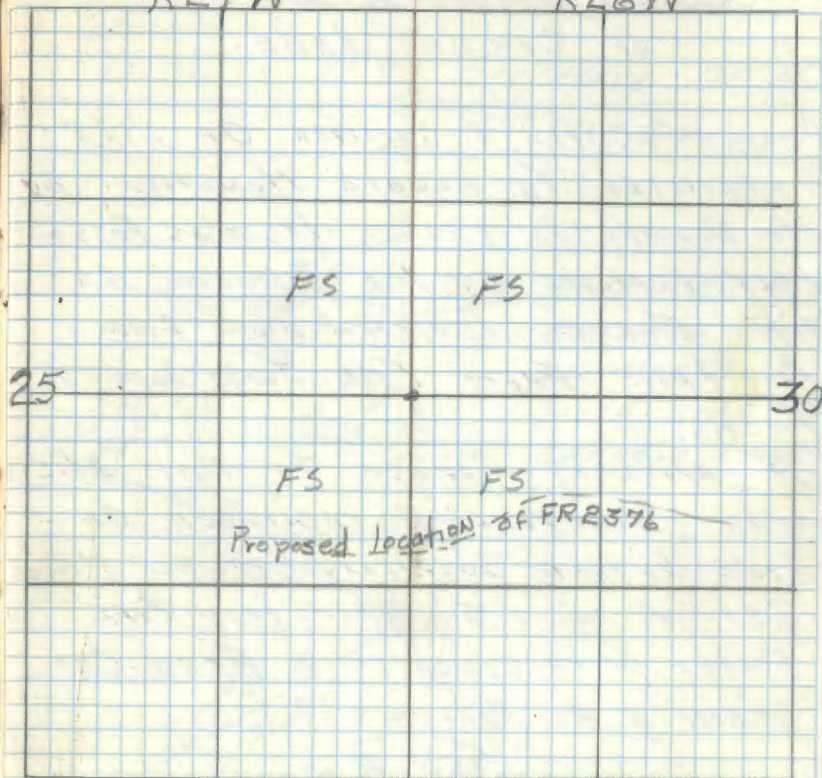
Cedar 11" S 64° E 78.9 scribed N $\frac{1}{16}$ S 30 BT

Affidavit RHM

T58N

R27W

R26W



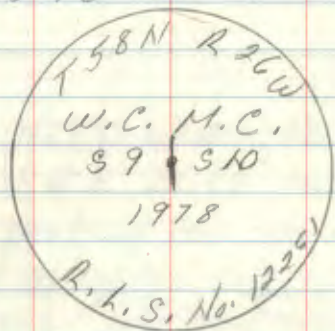
— Cut off by beaver

RHM
11/4/70

M.C. SECTION 9410 SOUTH SHORE
OF CARIBOU LAKE.

DURING WINTER & SUMMER OF 1978
ATTEMPTED TO LOCATE MONUMENT BY
MC DONALD IN 1966 - IT WAS POSS-
IBLY REMOVED BY ICE ACTION AS
THE CORNER POSITION NOW FALLS
IN LAKE FROM THE TWO COUNTY
ROCKS.

A WITNESS CORNER TO THIS M.C.
WAS THEREFORE ESTABLISHED ON
LINE EXTEND SOUTHERLY BETWEEN M.C.'s
SET A 2" X 5' GALV. IRON PIPE
FILLED WITH CONCRETE & BRASS CAP
STAMPED AS FOLLOWS:



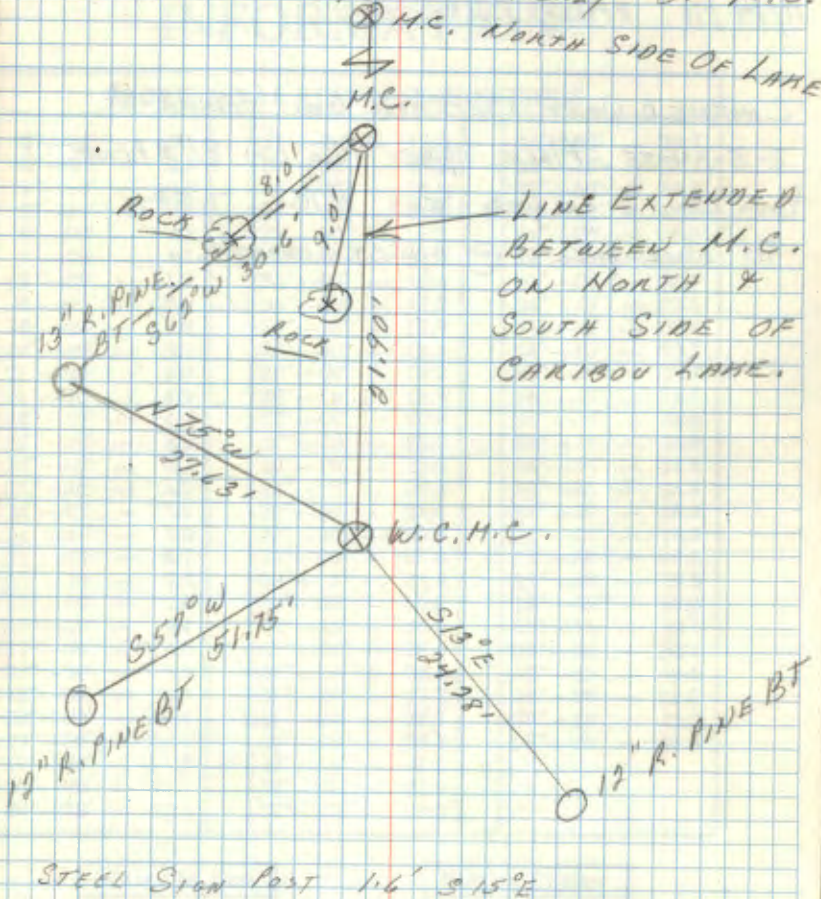
FROM WHICH THE FOLLOWING BEAR:

- 12" R. PINE, S13°E, 24.28' MKD M.C. S10WC BT
- 12" R. PINE, S57°W, 51.75' MKD MC 39 WC BT
- 13' R. PINE, N75°W, 27.63' (1966 BT TO M.C.)

CERTIFICATE FILED

NOTE:

W.C. Is 21.90' SOUTHERLY OF M.C.



EAST ONE SIXTEENTH SEC 3-34

11/14/91 R MAIN CKRAUSE

CHAINED WEST 1320 FROM SEC CORNER OF
2-3-34-35. PLACED APPROX TAG ON 8" R RENE
FROM WHICH CORNER LIES N 10 E 7.5 FT.
Pd BLUE PAINT @ APPROX CORNER.

IMPROVED TABLES AND INFORMATION

HORIZONTAL STADIA CORRECTIONS

2°-00'	0.1	21°-00'	12.3	33°-00'	29.7
3°-00'	0.3	21°-30'	13.4	33°-15'	30.1
4°-00'	0.5	22°-00'	14.0	33°-30'	30.5
5°-00'	0.8	22°-30'	14.7	33°-45'	30.9
6°-00'	1.1	23°-00'	15.3	34°-00'	31.3
7°-00'	1.5	23°-30'	15.9	34°-15'	31.7
8°-00'	1.9	24°-00'	16.5	34°-30'	32.1
9°-00'	2.5	24°-30'	17.2	34°-45'	32.5
10°-00'	3.0	25°-00'	17.9	35°-00'	32.9
10°-30'	3.3	25°-30'	18.6	35°-15'	33.3
11°-00'	3.6	26°-00'	19.2	35°-30'	33.7
11°-30'	4.0	26°-30'	19.9	35°-45'	34.1
12°-00'	4.3	27°-00'	20.6	36°-00'	34.6
12°-30'	4.7	27°-30'	21.3	36°-15'	35.0
13°-00'	5.1	28°-00'	22.0	36°-30'	35.4
13°-30'	5.5	28°-30'	22.8	36°-45'	35.8
14°-00'	5.9	29°-00'	23.5	37°-00'	36.2
14°-30'	6.3	29°-30'	24.3	37°-15'	36.6
15°-00'	6.7	30°-00'	25.0	37°-30'	37.1
15°-30'	7.2	30°-15'	25.4	37°-45'	37.5
16°-00'	7.6	30°-30'	25.8	38°-00'	37.9
16°-30'	8.1	30°-45'	26.2	38°-15'	38.3
17°-00'	8.5	31°-00'	26.5	38°-30'	38.7
17°-30'	9.0	31°-15'	26.9	38°-45'	39.1
18°-00'	9.5	31°-30'	27.3	39°-00'	39.6
18°-30'	10.1	31°-45'	27.7	39°-15'	40.0
19°-00'	10.6	32°-00'	28.1	39°-30'	40.5
19°-30'	11.2	32°-15'	28.5		
20°-00'	11.7	32°-30'	28.9		
20°-30'	12.3	32°-45'	29.3		

Chains to Feet

1	66
2	132
3	198
4	264
5	330
6	396
7	462
8	528
9	594
10	660

Feet to Chains

100	1.515
200	3.030
300	4.545
400	6.060
500	7.575
600	9.090
700	10.606
800	12.121
900	13.636
1,000	15.151