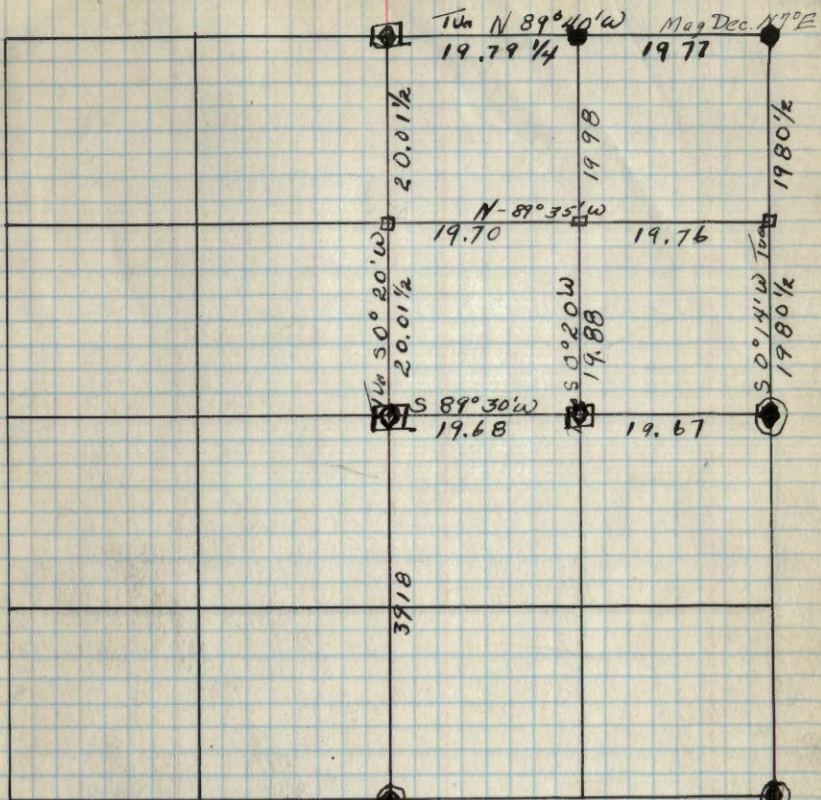
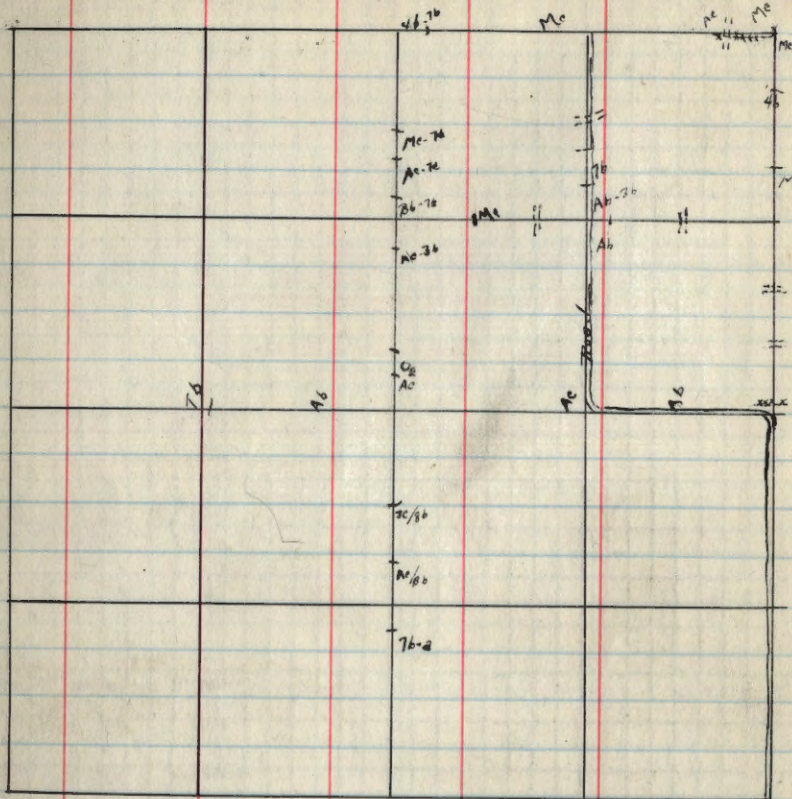


Loose Lead
CC

Sac 17 T148N R28W
By

Date

Page 53



Tun N 89°40'W 19.79 1/4
Mag Dec. 17°E 19.77

N-89°35'W 19.70 19.76

S 89°30'W 19.68 19.67

Type	DBH	Bearing	Dist		Type	DBH	Bearing	Dist
17/16 Oak	10"	S-46°E	.77	17	TAM	5"	N 35°W	.25
20/21 Basswood	12"	S 40°W	.84	20	TAM	4"	S 34°W	.225
D Aspen	12"	N-52°E	1.21	1/6#8 C44	Aspen Dead	12"	S 52°W	.59
8/9 Basswood	16"	S-45°E	.60	Aspen	10"	S 25°E	0.5 0.5	
17/16 Elm	7"	N-41°W	.40	Aspen Dead	12"	S 28°W	.19	
stump Elm	8"	S-26°W	.91	Dead Aspen	6"	N-32°W	.76	
				" "	14"	N-23°W	.57	
				" "	14"	N-78°E	.39	

Sec. 20 T48N R28W

56

