

120

T. 148N. R. 31W.

DEWEY

MINING

FIELD BOOK

No. 4221

# 128

FIELD T. 148N. R. 31W.



# EUGENE DIETZGEN CO.

DRAWING MATERIALS, MATHEMATICAL and  
SURVEYING INSTRUMENTS

Chicago New York San Francisco New Orleans Pittsburg Toronto

Distances from Center of Roadway for Cross-Sectioning  
Roadway 16 feet wide. Side Slopes 1 on 1.  
For Single Track Embankment.

H	0	.1	.2	.3	.4	.5	.6	.7	.8	.9	H
0	8.0	8.1	8.2	8.3	8.4	8.5	8.6	8.7	8.8	8.9	0
1	9.0	9.1	9.2	9.3	9.4	9.5	9.6	9.7	9.8	9.9	1
2	10.0	10.1	10.2	10.3	10.4	10.5	10.6	10.7	10.8	10.9	2
3	11.0	11.1	11.2	11.3	11.4	11.5	11.6	11.7	11.8	11.9	3
4	12.0	12.1	12.2	12.3	12.4	12.5	12.6	12.7	12.8	12.9	4
5	13.0	13.1	13.2	13.3	13.4	13.5	13.6	13.7	13.8	13.9	5
6	14.0	14.1	14.2	14.3	14.4	14.5	14.6	14.7	14.8	14.9	6
7	15.0	15.1	15.2	15.3	15.4	15.5	15.6	15.7	15.8	15.9	7
8	16.0	16.1	16.2	16.3	16.4	16.5	16.6	16.7	16.8	16.9	8
9	17.0	17.1	17.2	17.3	17.4	17.5	17.6	17.7	17.8	17.9	9
10	18.0	18.1	18.2	18.3	18.4	18.5	18.6	18.7	18.8	18.9	10
11	19.0	19.1	19.2	19.3	19.4	19.5	19.6	19.7	19.8	19.9	11
12	20.0	20.1	20.2	20.3	20.4	20.5	20.6	20.7	20.8	20.9	12
13	21.0	21.1	21.2	21.3	21.4	21.5	21.6	21.7	21.8	21.9	13
14	22.0	22.1	22.2	22.3	22.4	22.5	22.6	22.7	22.8	22.9	14
15	23.0	23.1	23.2	23.3	23.4	23.5	23.6	23.7	23.8	23.9	15
16	24.0	24.1	24.2	24.3	24.4	24.5	24.6	24.7	24.8	24.9	16
17	25.0	25.1	25.2	25.3	25.4	25.5	25.6	25.7	25.8	25.9	17
18	26.0	26.1	26.2	26.3	26.4	26.5	26.6	26.7	26.8	26.9	18
19	27.0	27.1	27.2	27.3	27.4	27.5	27.6	27.7	27.8	27.9	19
20	28.0	28.1	28.2	28.3	28.4	28.5	28.6	28.7	28.8	28.9	20
21	29.0	29.1	29.2	29.3	29.4	29.5	29.6	29.7	29.8	29.9	21
22	30.0	30.1	30.2	30.3	30.4	30.5	30.6	30.7	30.8	30.9	22
23	31.0	31.1	31.2	31.3	31.4	31.5	31.6	31.7	31.8	31.9	23
24	32.0	32.1	32.2	32.3	32.4	32.5	32.6	32.7	32.8	32.9	24
25	33.0	33.1	33.2	33.3	33.4	33.5	33.6	33.7	33.8	33.9	25
26	34.0	34.1	34.2	34.3	34.4	34.5	34.6	34.7	34.8	34.9	26
27	35.0	35.1	35.2	35.3	35.4	35.5	35.6	35.7	35.8	35.9	27
28	36.0	36.1	36.2	36.3	36.4	36.5	36.6	36.7	36.8	36.9	28
29	37.0	37.1	37.2	37.3	37.4	37.5	37.6	37.7	37.8	37.9	29
30	38.0	38.1	38.2	38.3	38.4	38.5	38.6	38.7	38.8	38.9	30
31	39.0	39.1	39.2	39.3	39.4	39.5	39.6	39.7	39.8	39.9	31
32	40.0	40.1	40.2	40.3	40.4	40.5	40.6	40.7	40.8	40.9	32
33	41.0	41.1	41.2	41.3	41.4	41.5	41.6	41.7	41.8	41.9	33
34	42.0	42.1	42.2	42.3	42.4	42.5	42.6	42.7	42.8	42.9	34
35	43.0	43.1	43.2	43.3	43.4	43.5	43.6	43.7	43.8	43.9	35
36	44.0	44.1	44.2	44.3	44.4	44.5	44.6	44.7	44.8	44.9	36
37	45.0	45.1	45.2	45.3	45.4	45.5	45.6	45.7	45.8	45.9	37
38	46.0	46.1	46.2	46.3	46.4	46.5	46.6	46.7	46.8	46.9	38
39	47.0	47.1	47.2	47.3	47.4	47.5	47.6	47.7	47.8	47.9	39
40	48.0	48.1	48.2	48.3	48.4	48.5	48.6	48.7	48.8	48.9	40

**Example**—If point is 22.6 ft. above grade, how far should it be from center line to be a slope stake point? Ans. from Table 30.6. For same slopes but other widths of roadbed, correct above figures by one-half difference in width of roadbed; thus in example above, for 20 ft. roadbed distance will be  $30.6 + (20 - 16) \div 2$  or 2 ft. added to 30.6 = 32.6. For slopes of 1 on 1½ see inside of back cover.

Copyright, 1914, by Eugene Dietzgen Co.

# FIELD

# # 120

## T. 148N. R. 31W.

The paper stock of this book is made of a high grade 50% rag paper having a water resisting surface and is sewed with Bing Special Enamel Waterproof Thread.

Made in U. S. A.



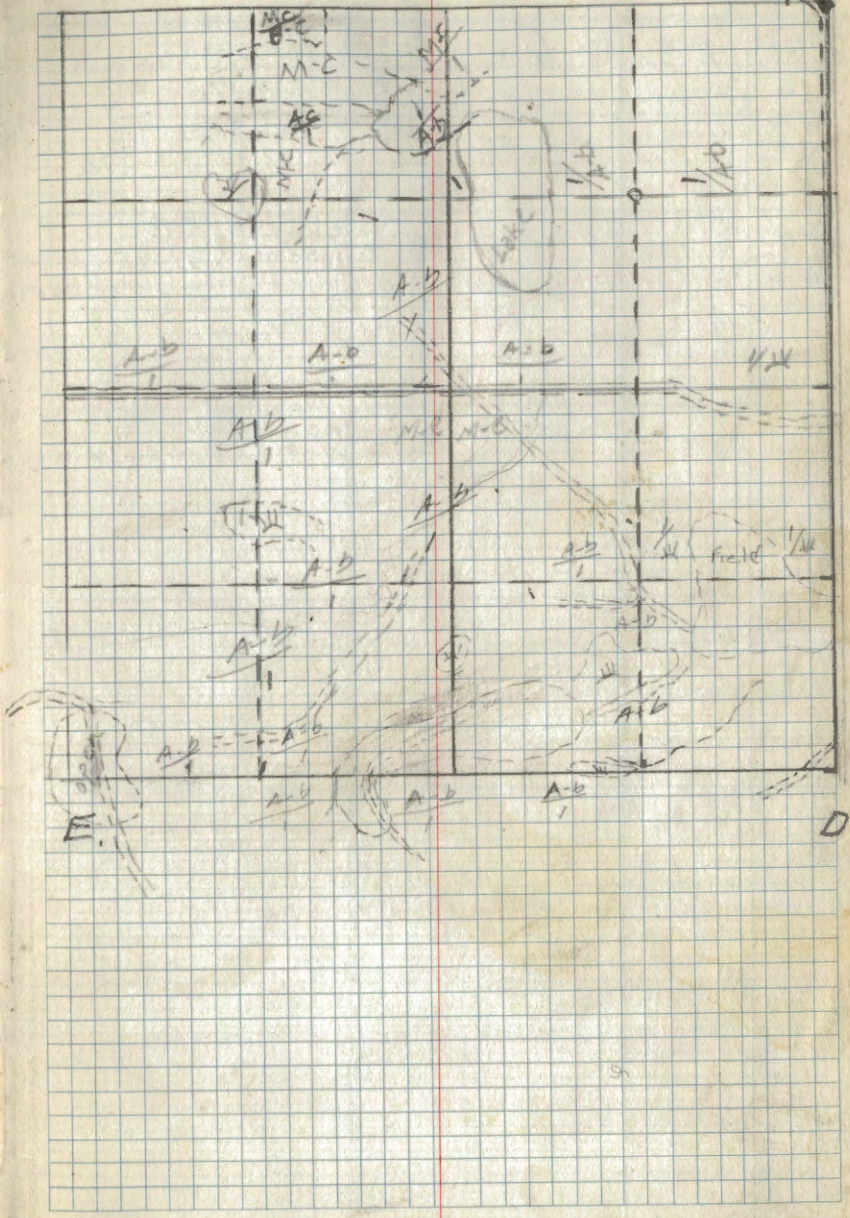




- C Aspen 3" N71°E 37 F.S. Poster 3/14/40 H. Hoard
- 14 Elm 4" S87°W 64 F.S. Poster 3/12/40 H. Hoard
- 9 Aspen 3" S29°E 19 F.S. Poster set 2x4x48 Aspen post 3/16/40 H. Hoard
- 5 Aspen 7" (N13°E 42 1/2) N. 8°E 72 F.S. Poster 3/16/40 H. Hoard set 2x4x48 aspen post
- 8 Aspen 3" S17°E 25 set 2x4x48 aspen post 3/16/40 H. Hoard
- 2 Aspen 5" N62°W 72 F.S. Poster 3/16/40 H. Hoard cor in road
- 7 W. Pine 14" S21°W 182 F.S. Poster 3/16/41 H. Hoard

B

1A



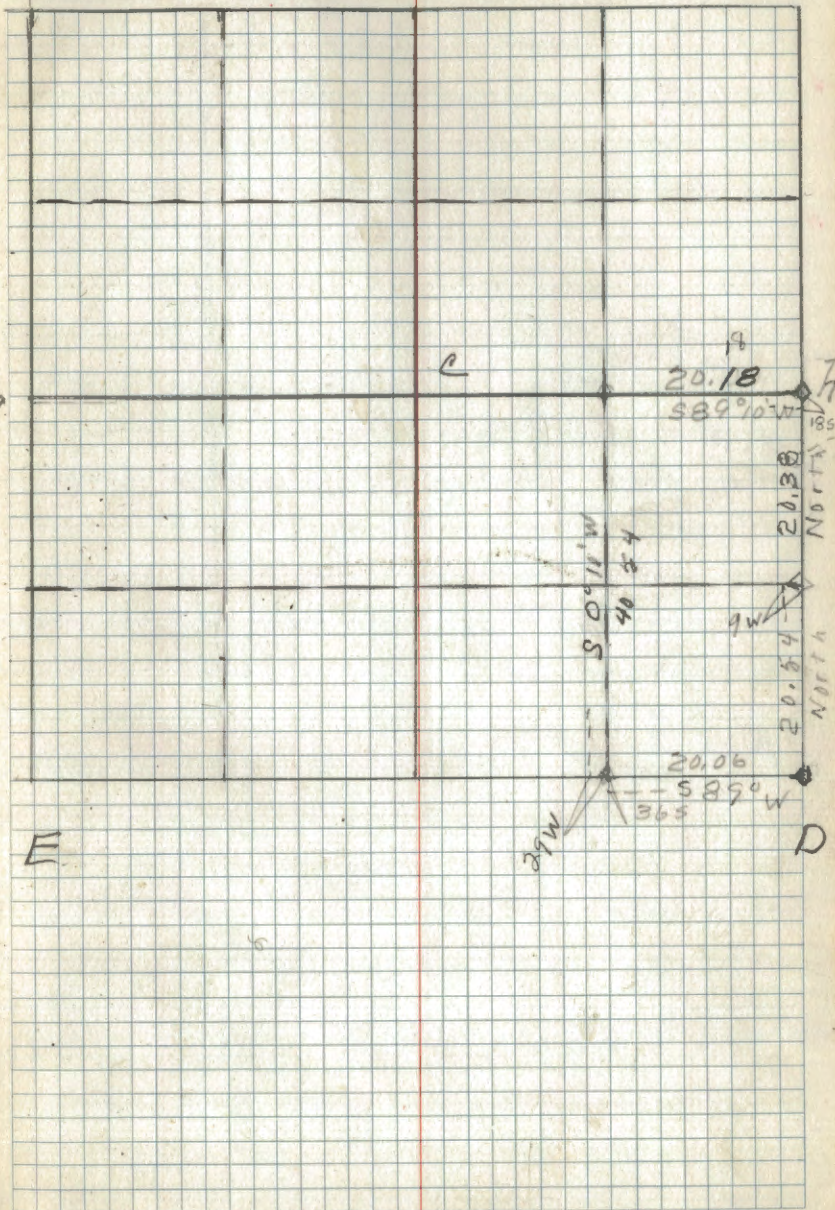


B

A

2A

Corat	Spec	Dia	Bearing	Dist	Remarks
✓ 15 E 1/16 bet.	Aspen	4"	S 86° W	25	F.S. Poster <sup>3/8/41</sup> H. Hoard Found 3x3x50 corrod cedar stake, good
✓ 14 S 1/16 bet.	w Pine stump	24"	N 24° E	40 1/2	County Bto. Set 3x4x48 aspen post iron pipe for corner
	w Pine stump	18"	S 47° E	50	
	w Pine stump	8"	S 8° E	35 1/2	F.S. Poster <sup>3/8/40</sup> H. Hoard
7	Aspen	8"	N 37° E	44	F.S. Poster <sup>3/15/40</sup> Set 3x4x48 aspen post







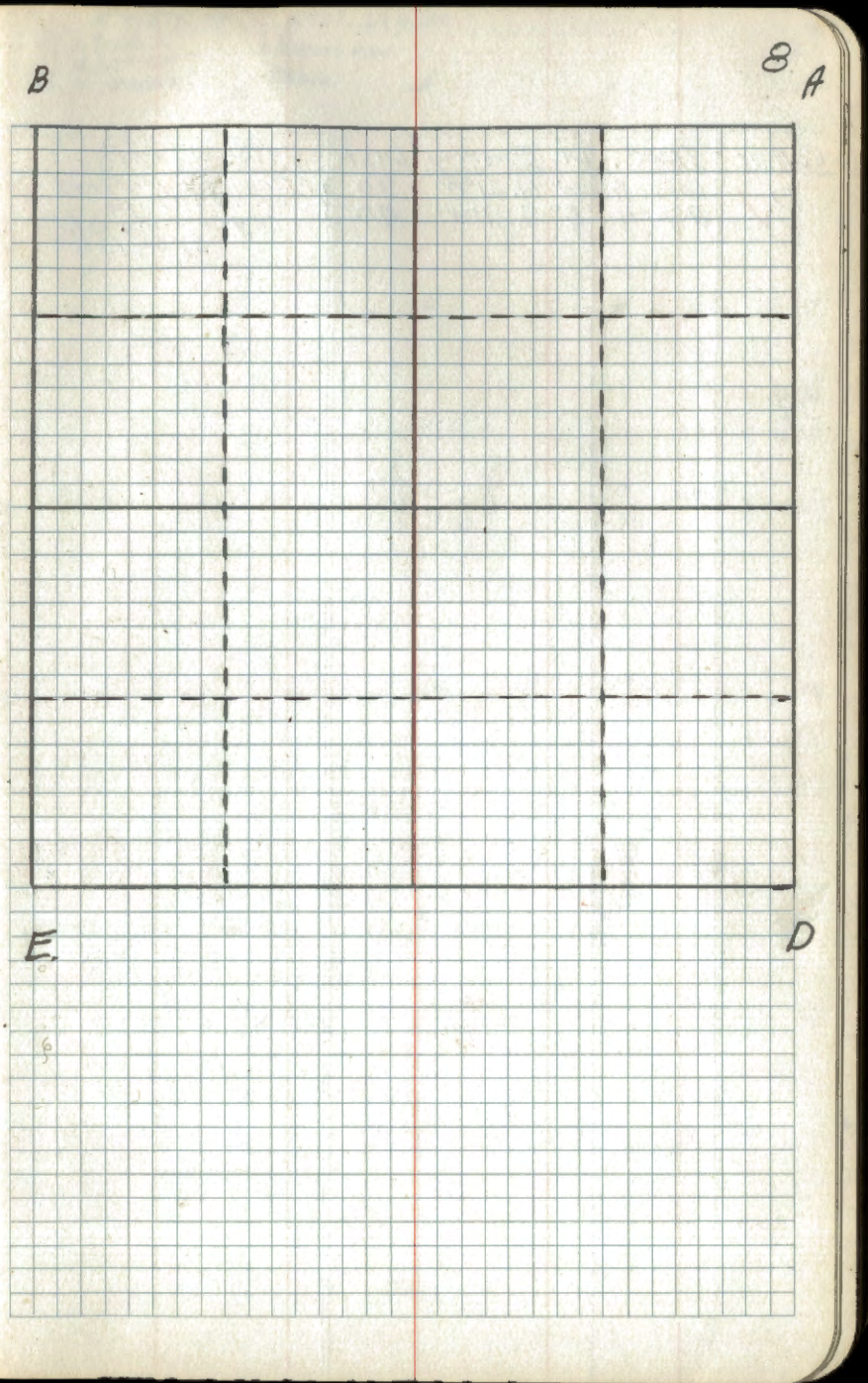
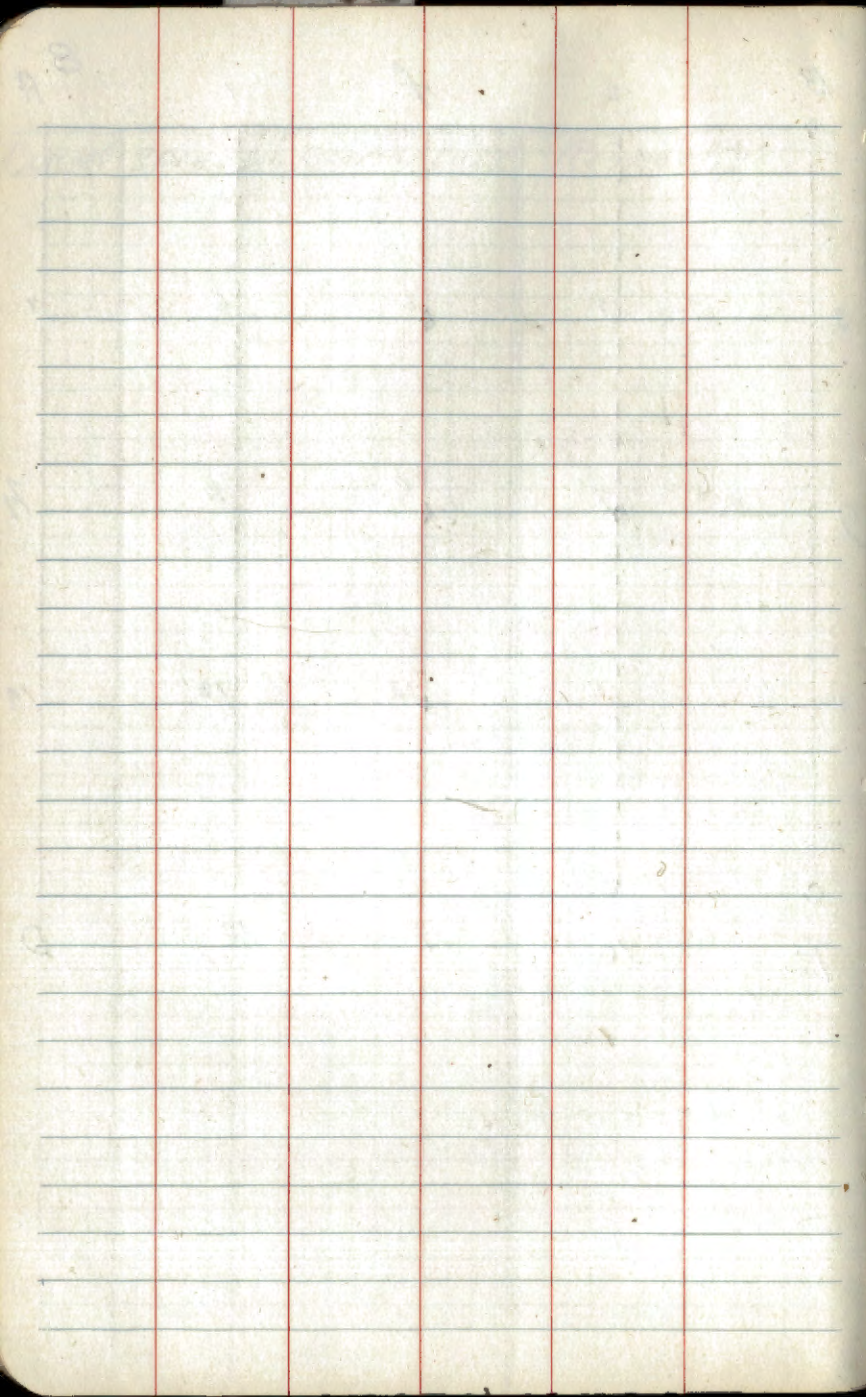


NUMEROUS BLANK  
PAGES NOT  
SCANNED







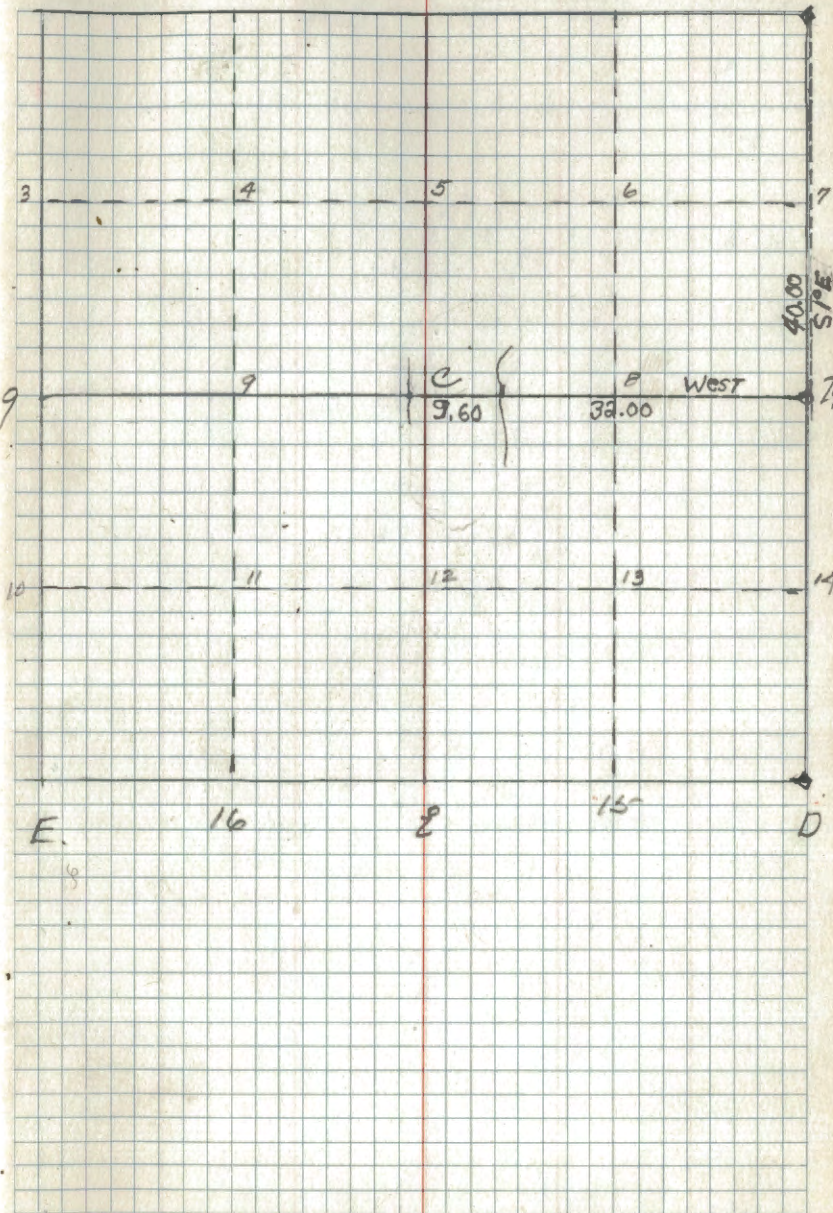




K.V. STYLER ASST. LEADER  
 J. SESOCK }  
 M. SESOCK } COMPASS MAN  
 B. H. WAGNER } 2 CHAIN. f

9  
A

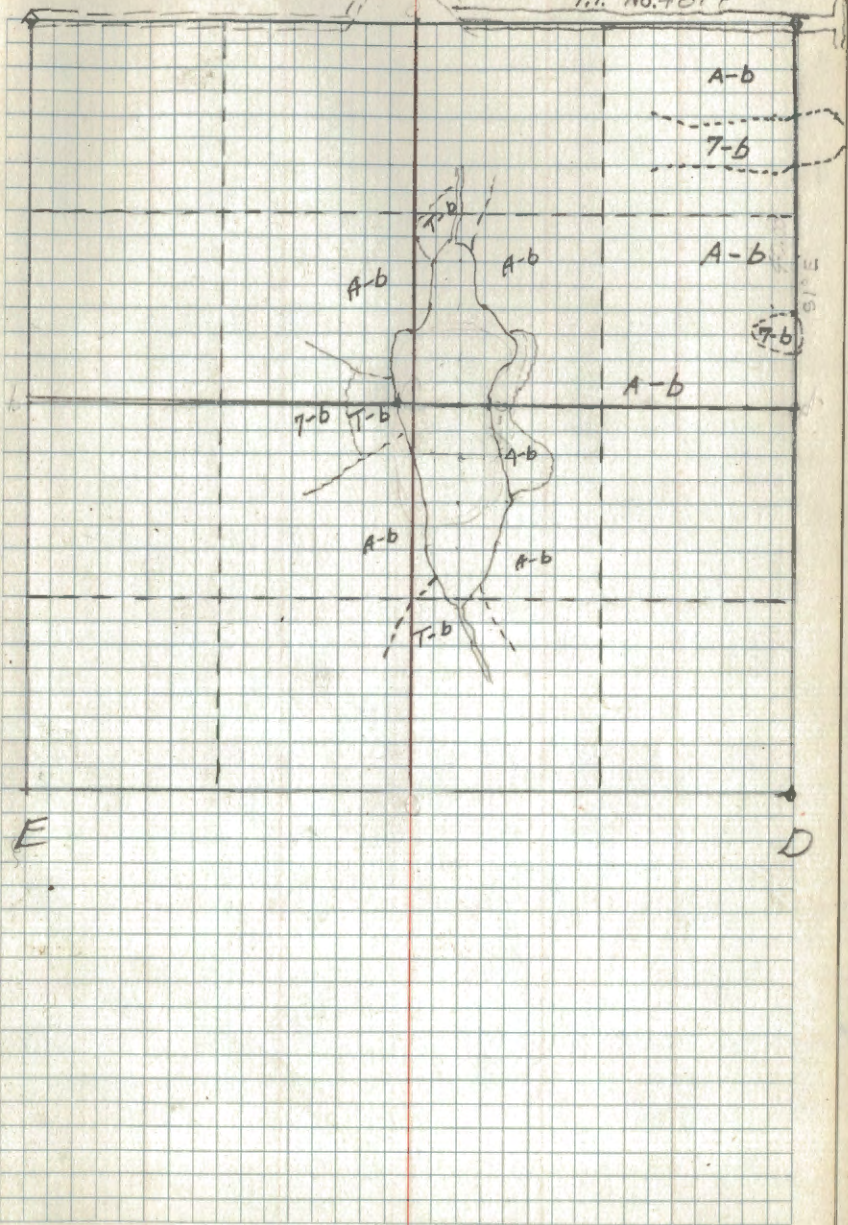
COR. PT.	SPEC.	DIAM.	BEARING	DIST.	REMARKS
D ✓	Birch	6"	N. 31° W	30	Placed E.S. Paster. ✓ Cot. 3 5 Ir. Pipe 137 County O.K. 2/24/38
	Aspen	5"	S. 21° W	40	





T.T. NO. 4814

B



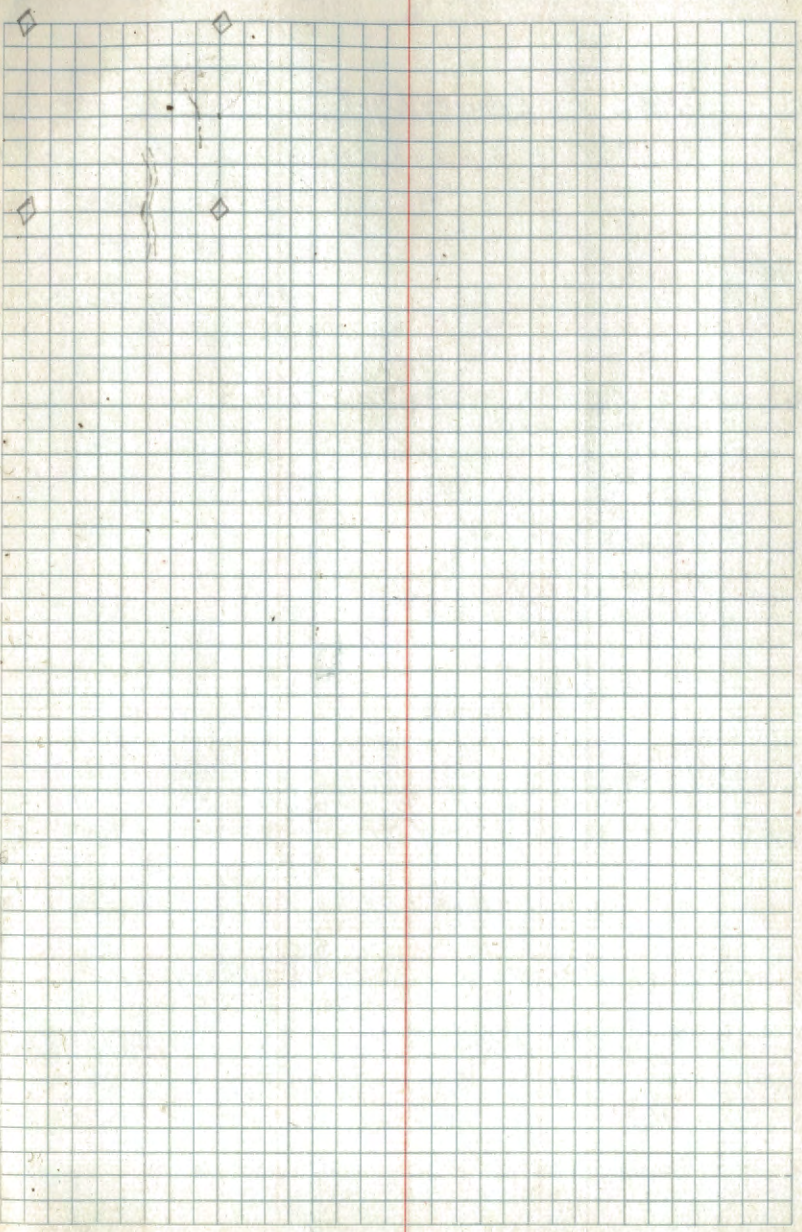
E

D

















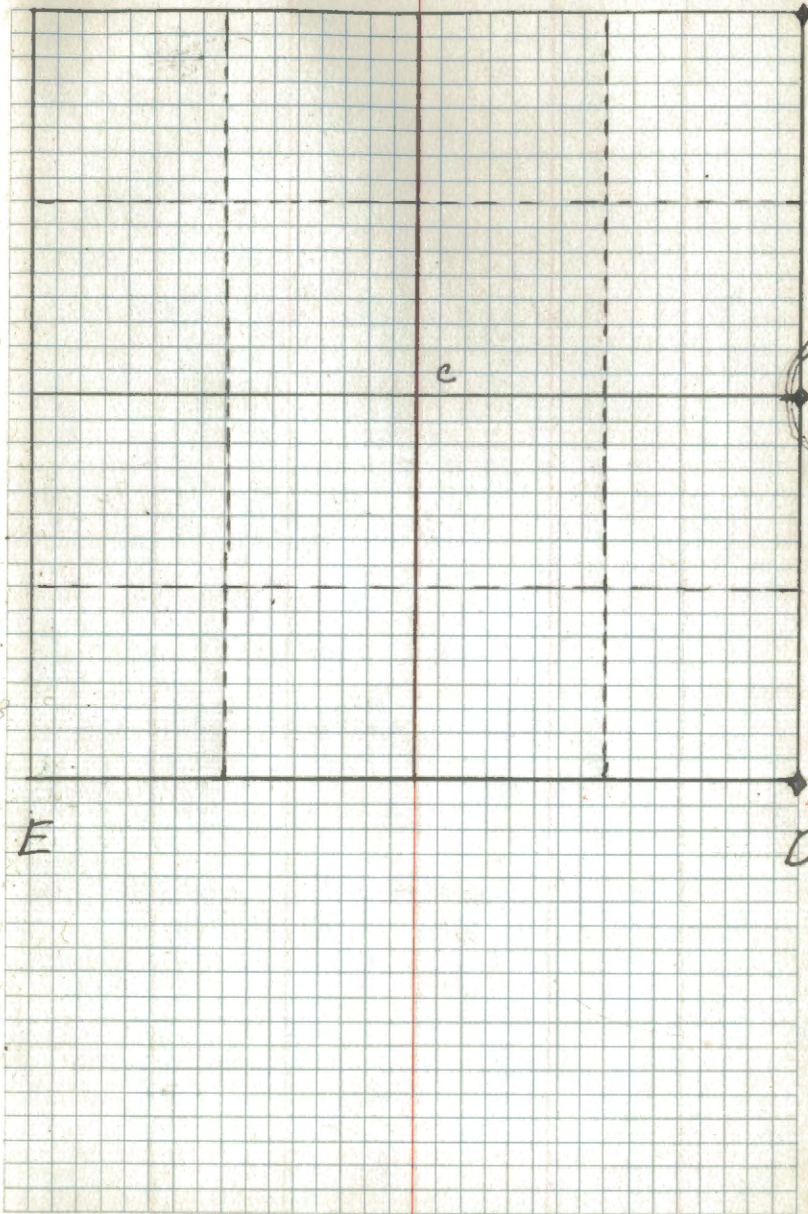






B

13A

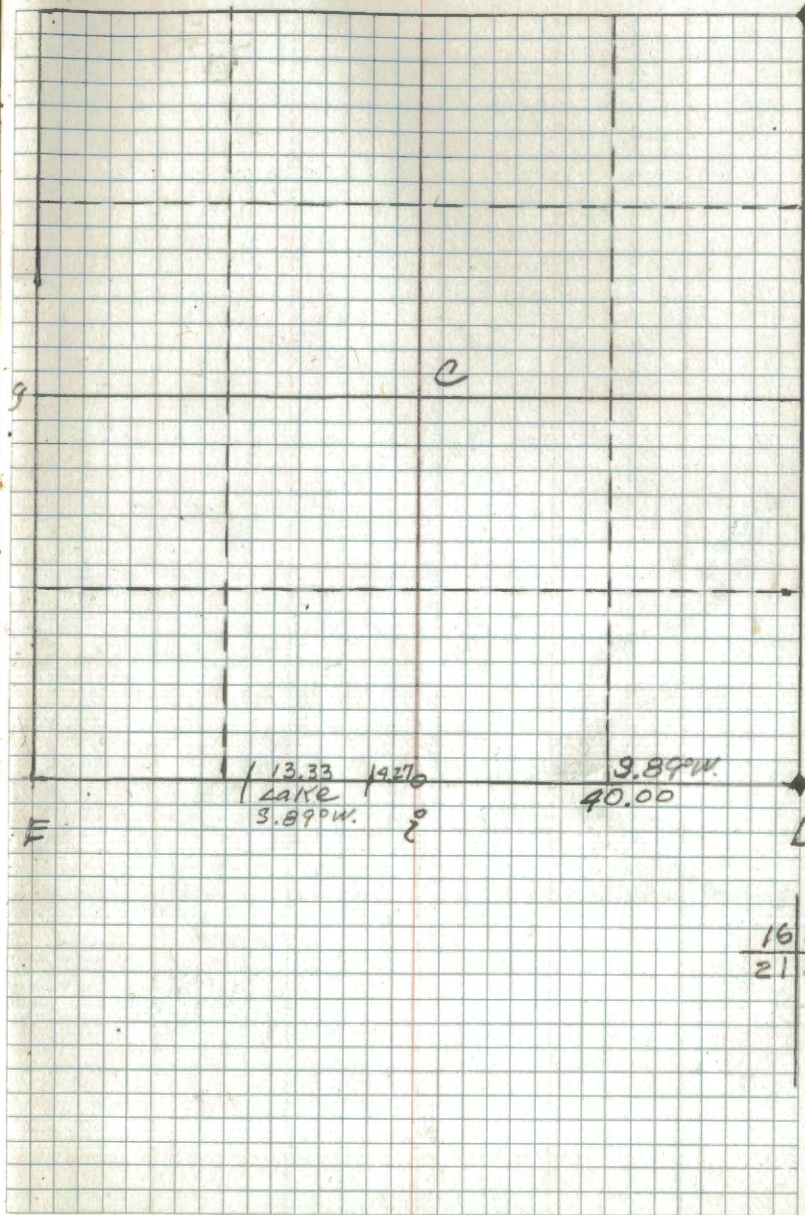




COR. AT	Spec.	Dia	Bearing	Dist	Remarks
✓ A.			Refer to D		Sec. 9 ✓
✓ D.	As 1/4	9"	S. 15° W.	56	Orig. B.T. FS. Post. ✓
	"	10"	S. 44° E	62	Placed FS. " ✓ Tannic. Post. 4" x 3" 2/25/38

K.V. Stryker Leader 2/25/38  
 J. Sebeck compass  
 B.W. Wagner Chain " f

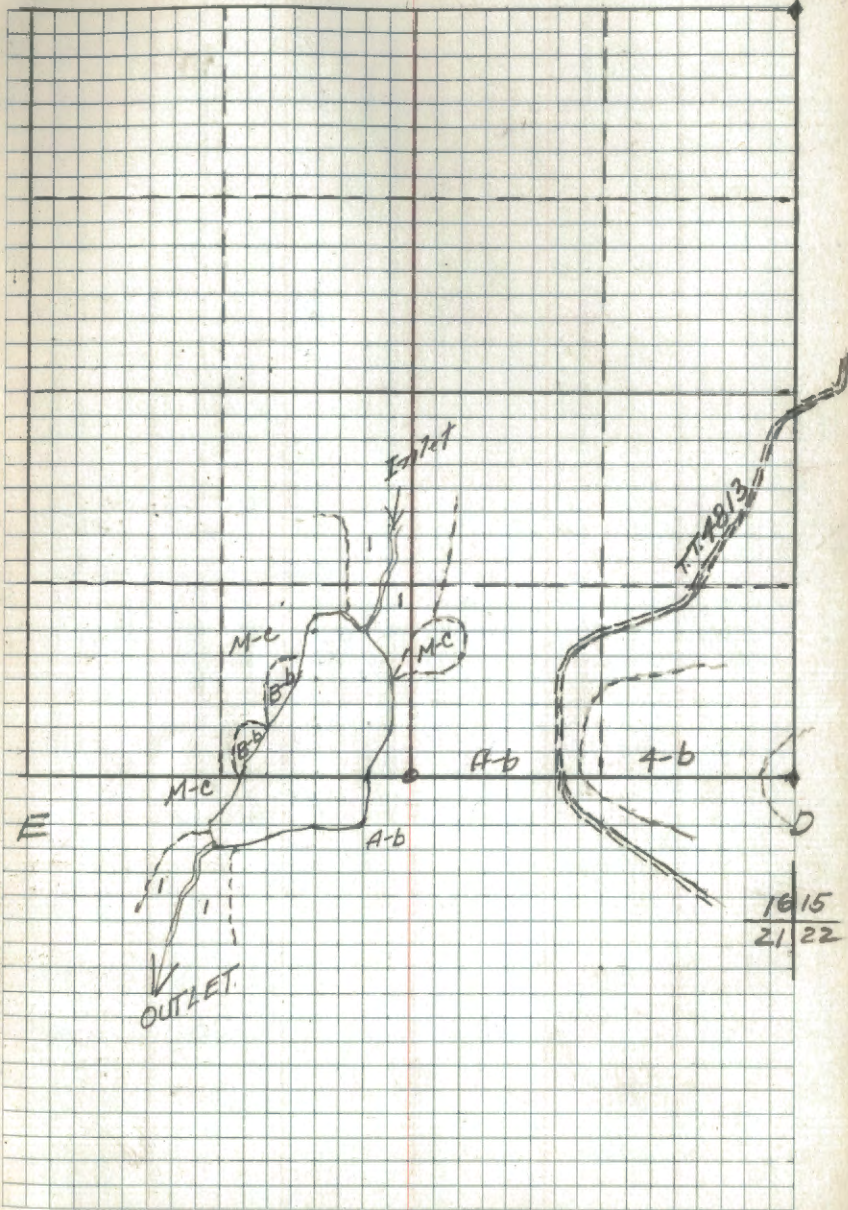
16  
A



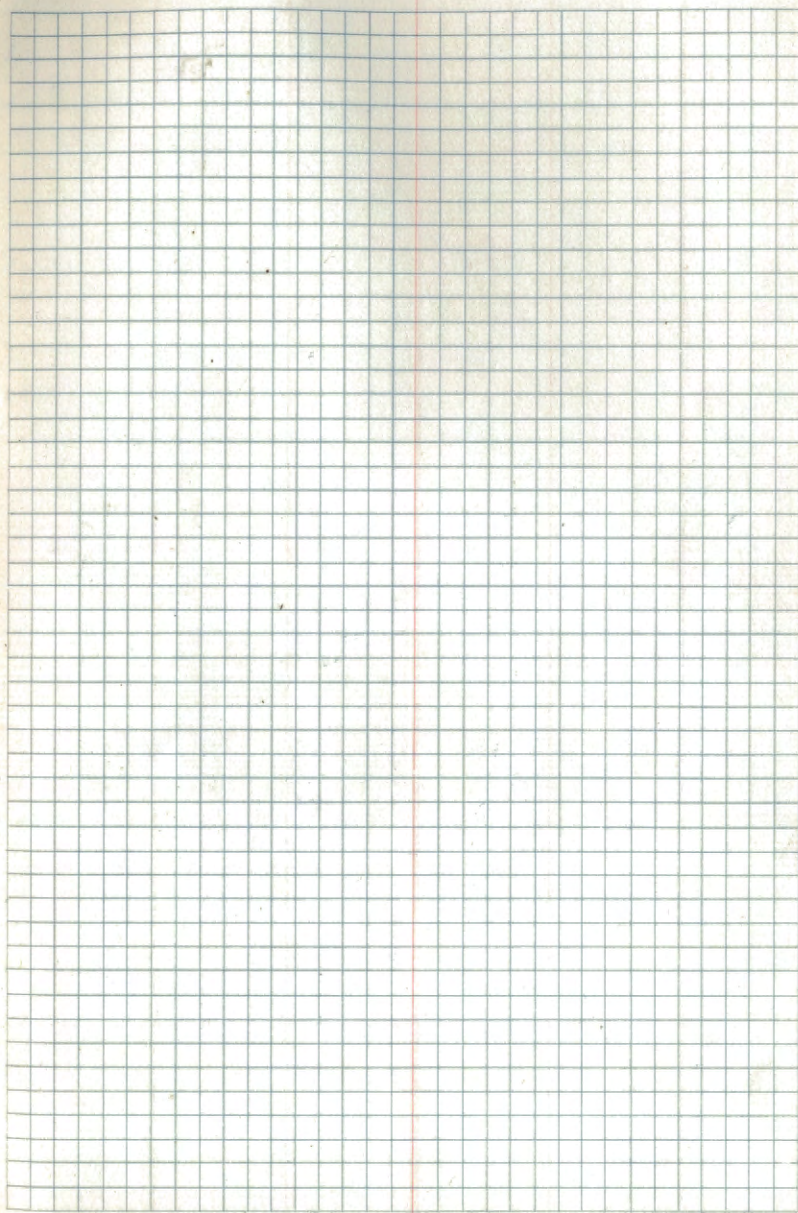
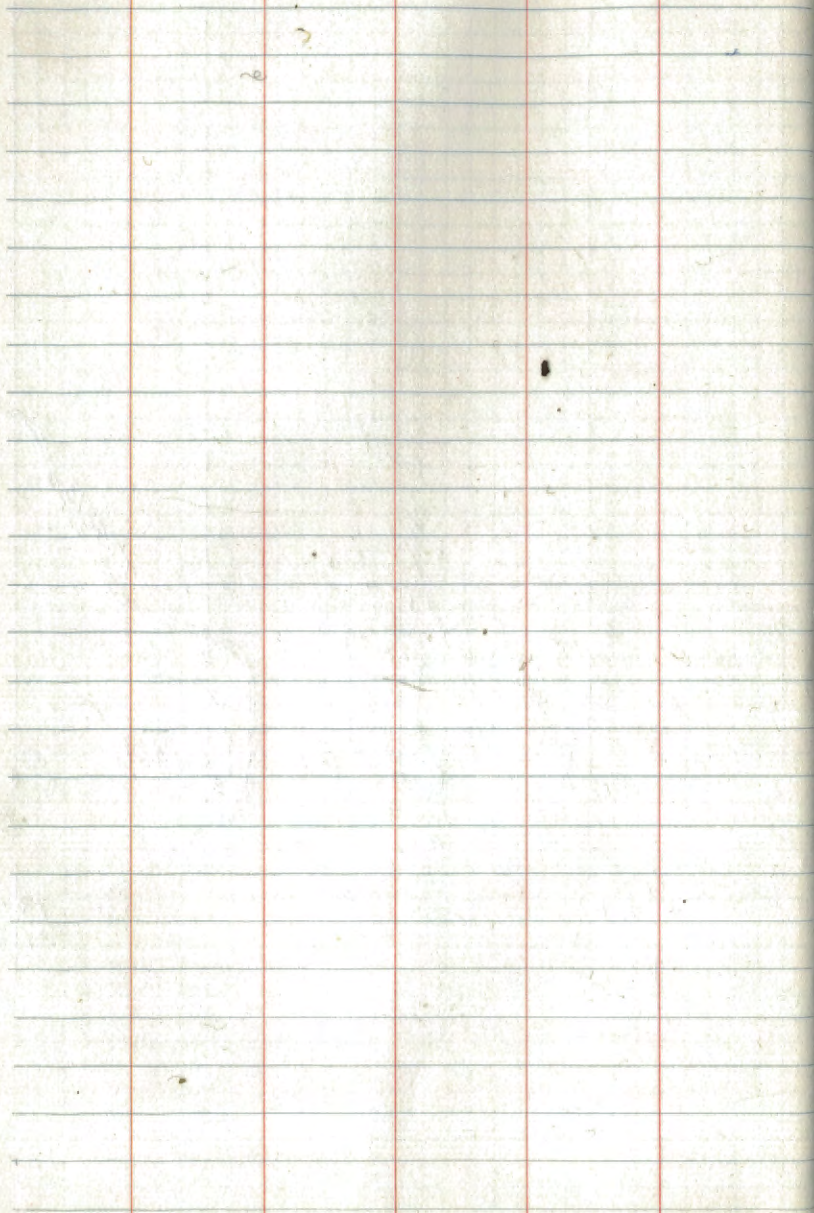
1615  
2122



B



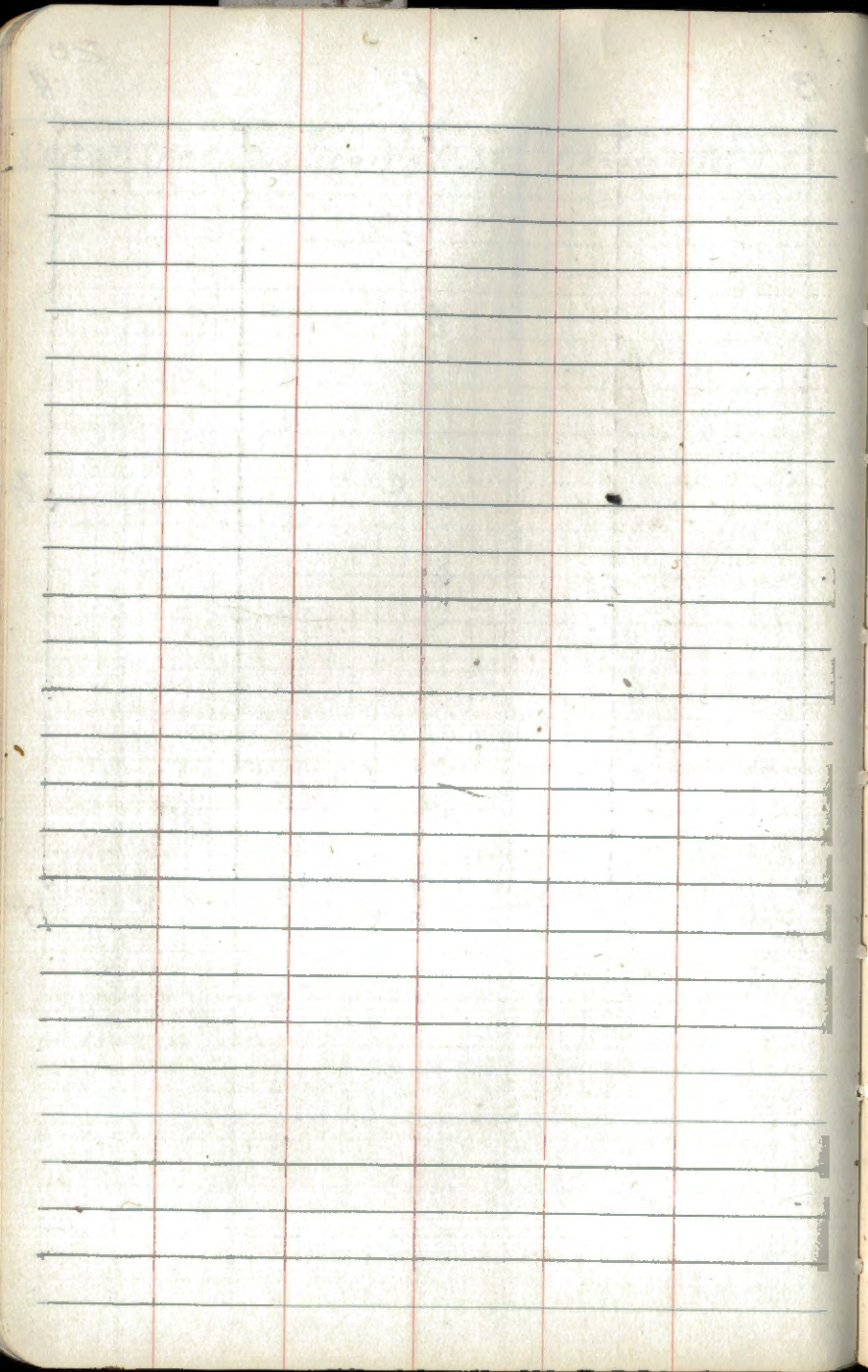






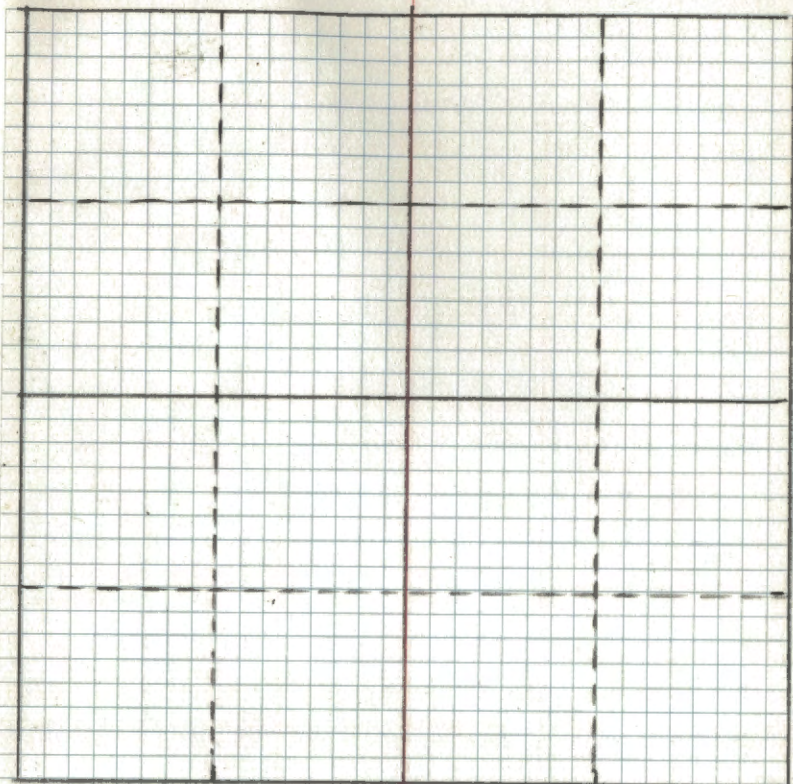






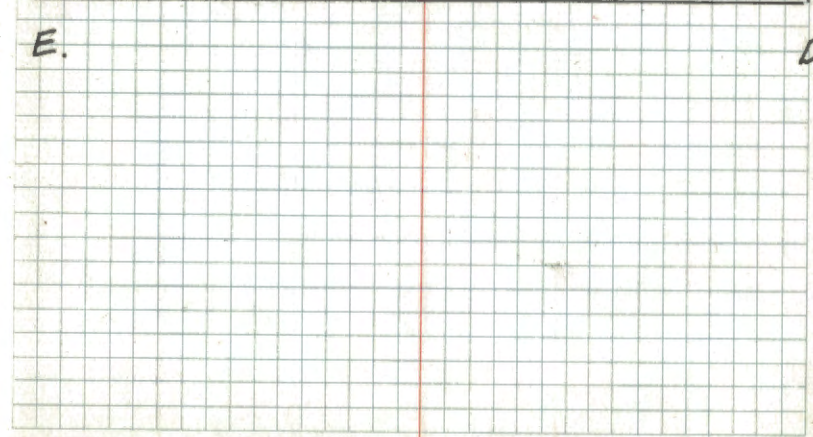
B

20<sup>A</sup>



E.

D





Corner Notes.

Cot. at	Spec.	Dia	Bearing	Dist	Remarks
✓ N.	Elm	8"	S 47° W.	23	} Orig. B.T. ✓
	Basswood	10"	N. 72° E	24	
	"	12"	N. 77° E	23	F.S. Post set 2/2/38
7					Fence line Elm. 4 Lks North of 20.000 Lks.

B J.A. Gethung Engineer  
f

32 A

