

147-29

MINING
FIELD BOOK

No.

ccc # 127

Table of Departure Corrections

Distance	15'	30'	45'	1°00'	1°15'	1°30'	1°45'	2°0'
	Error	error	error	error	error	error	error	error
1 chain	—	—	.13	.17	.21	.26	.30	.34
20 "	.088	.18	.26	.35	.44	.52	.61	.70
40 "	.18	.35	.52	.70	.87	1.05	1.22	1.40
60 "	.26	.52	.79	1.05	1.31	1.57	1.83	2.10
80 "	.35	.70	1.05	1.40	1.74	2.10	2.44	2.80

Chi

H

0

1

2

3

4

5

6

7

8

9

10

11

12

13

14

15

16

17

18

19

20

21

22

23

24

25

26

27

28

29

30

31

32

33

34

35

36

37

38

39

40

41

42

43

44

45

46

47

48

49

50

to
of
es
31

T 147 N - R 29 W 5th mer.

Original G.L.O. Survey by-
E.C. Baldwin
Var. 10°30'
Oct. 7 - Oct. 19 - 1875

Legend

- ◆ G.L.O. Corner positively identified
- ◊ Probable G.L.O. Corner
- F.S. Corner
- ⊙ County Corner
- ✕ Corner in Lake
- ◇ Corner set in Original Survey

Legend for Type Map

- | | |
|-----------------------------|-----------------------------------|
| 0 Grassland | A Aspen |
| 0 ₁ Wild pasture | B Balsam |
| 0 ₂ Hay Meadow | C Cultivated |
| 1 Brush | C ₁ Impoverished Field |
| 1 ₅ Swamp brush | M Mixed Hard wood |
| 2 Mus Keg | L Maple |
| 3 Birch | K Oak |
| 4 Cedar | R Ash |
| 5 Jack Pine | Swamp |
| 6 White Spruce | 7b Non-productive stagnated |
| 7 Black Spruce | W Water |
| T Tamarack | X seed Trees |
| 8 Norway Pine | |
| 9 White Pine | |

- a Reproduction - up to 6'
b Saplings - 6' in height to 4.5" D.b.h.
c. Poles - 4.5" D.b.h. - 9.5" - D.b.h.
Capitals - Saw timber over 9.5" D.b.h.

==== Improved Road
----- Woods Road

~ stream (showing direction)

~ Body of water

UR Pronounced Ridge

All data in red taken from original survey

1.
chains

Notes

chains

Type + Cultural Map

Remarks:

Notes

Chains

LINE No F sec. cor.

1/2/11/12

02 Road

10 chs 56¹ corner Road

18 chs Fireway

24 chs Fireway

38 chs 50/80

39.53 chs 1/14 cor

LINE S. of N. 1/4 cor.

30/30

20 chs 50/90

50 chs Fireway

230 chs 50/60

40 chs 50/60

32 chs 15

60 chs 10/30

730 chs 1/4 cor

LINE E of No #12

4 chs 76/76

12 chs 70/6

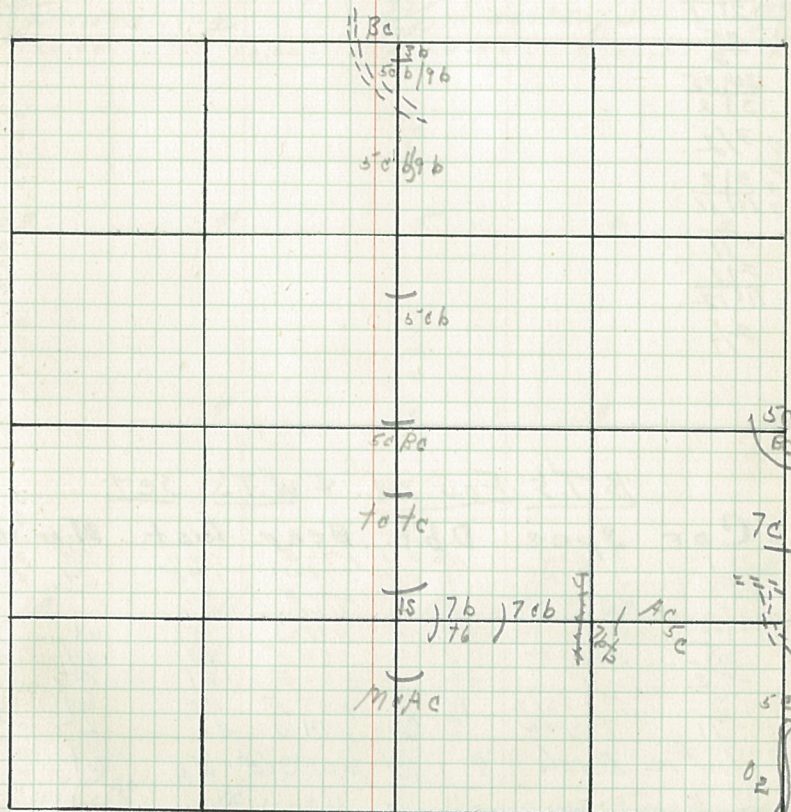
18 chs 76/76

Fireway N-5

22 chs 70/50

40.22 chs 1/10 1/4

Chains

Type & Cultural Map

Remarks:

2.

Original G.L.O. Corners

Cor. Spec. D.b.h. Bear Dist.

$$\begin{array}{r} 35/36 \\ 2/1 \\ \hline 35 \\ 2 \end{array}$$

$$\begin{array}{r} 34/35 \\ 3/2 \end{array}$$

3/2

$$\begin{array}{r} 3/2 \\ 10/11 \end{array}$$

$$\begin{array}{r} 2/1 \\ 11/12 \end{array}$$

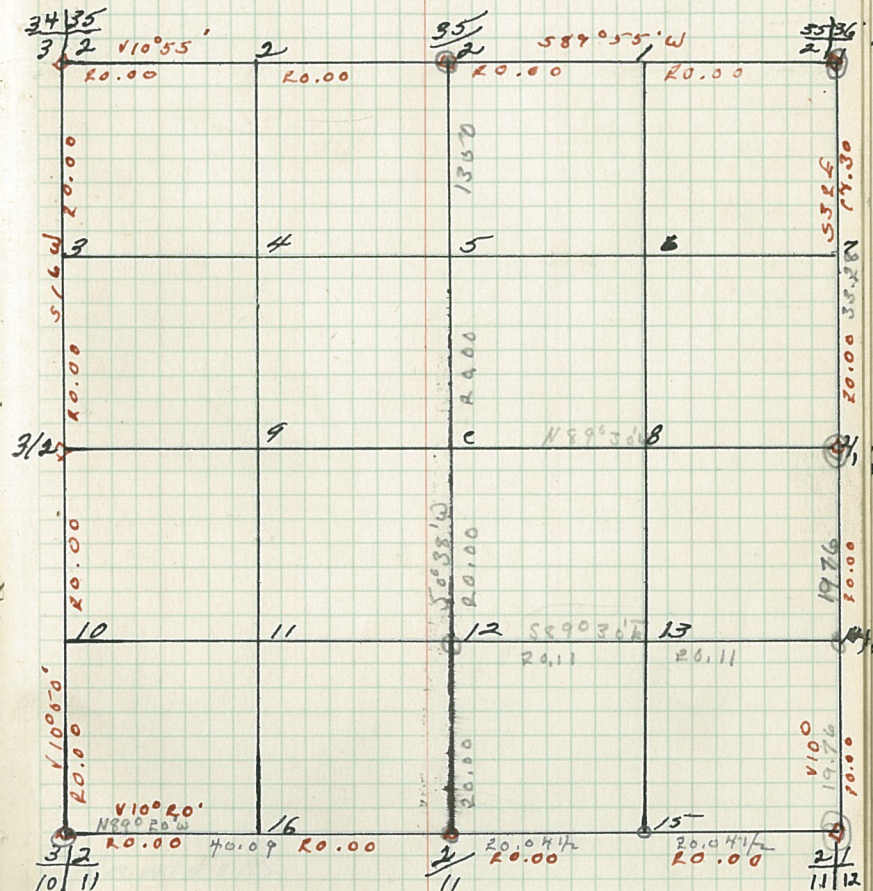
$$\begin{array}{r} 2/1 \\ 11/12 \end{array}$$

2/1

B.T.'s Found & W.T.'s set.

Cor.	Spec.	D.b.h.	Bear.	Dist.	B.T. or W.T.
2/1	Aspen	10	N76E	11.60	B.T.
11/12	J. PINE	12	S42W	11.75	B.T.
1/2	J. PINE stub	6	N77E	8.5	B.T.
1/2	Aspen stub	14	N37W	9.5	B.T.
3/2	Balsam	12	N72W	15	wt.
2/2	"	10	S44E	27	B.T.
2/1	Balsam	10	N20E	21	B.T.
2/1	Balsam	12	N89E	17	wt.
2/1	Aspen	8	N14W	11	wt.
1/10 #12	Birch	4	N69°36'E	5.0	wt.
1/10 #14	J. PINE	7"	N38W	6	wt.

2.

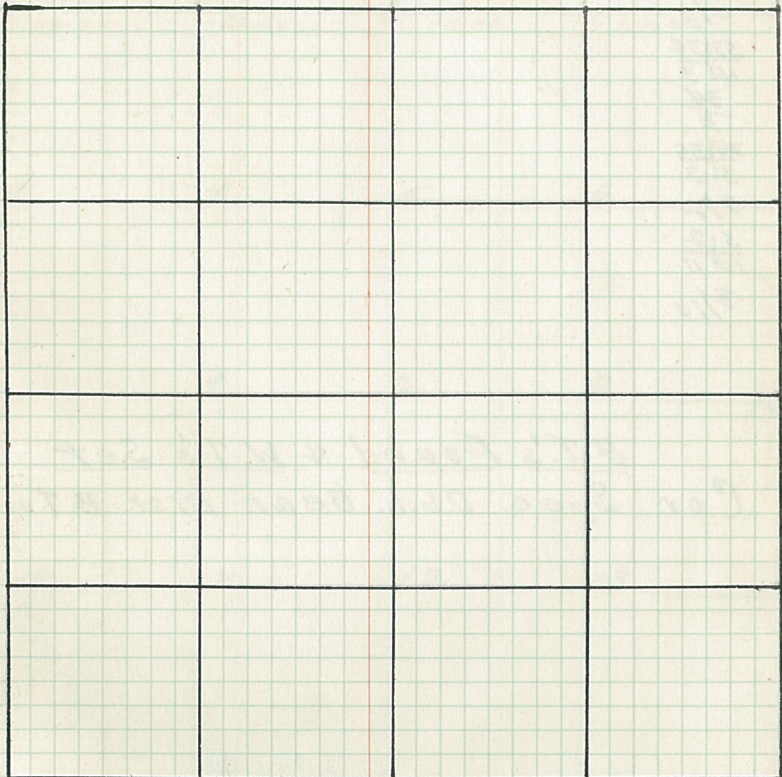
Sec. 2 T147N R29W
65-B.T.'s + W.T.'s (cont.)

Cor. Spec. D.b.h. Bear. Dist. B.T. or W.T.

Notes

Chains

chains

Type + Cultural Map

Remarks:

Original G.L.O. Corners

Cor. Spec. D.b.h. Bear. Dist.

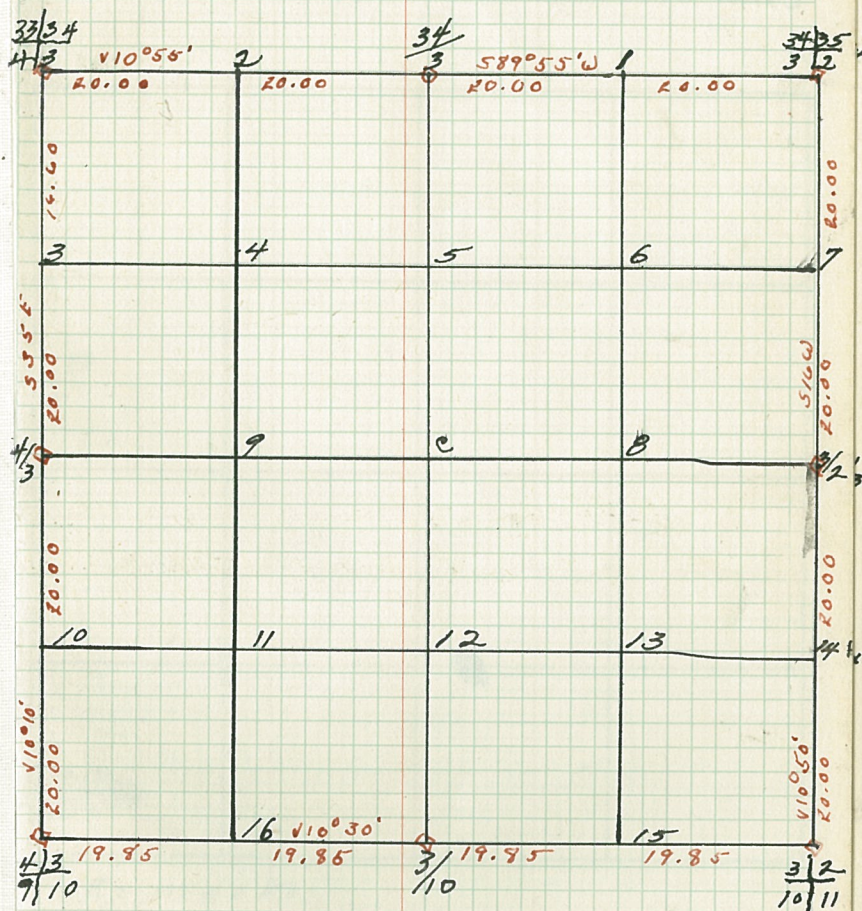
 $\frac{4}{3}$
 $\frac{9}{10}$ $\frac{4}{3}$ $\frac{33}{34}$ $\frac{4}{3}$ $\frac{34}{3}$ $\frac{24}{35}$ $\frac{3}{2}$ $\frac{3}{2}$ $\frac{3}{2}$
 $\frac{10}{11}$ $\frac{3}{10}$

B.T.'s Found & W.T.'s Set

Cor. Spec. D.b.h. Bear. Dist. B.T. or W.T.

Sec. 3 T147N-R29W

by



B.T.'s & W.T.'s (cont.)

Cor. Spec. D.b.h. Bear. Dist. B.T. or W.T.

 $\frac{4}{3}$
 $\frac{9}{10}$ $\frac{3}{10}$ $\frac{3}{2}$
 $\frac{10}{11}$

3.

4.

Chains

Notes

Chains

4.

Type + Cultural Map

Remarks:

4.

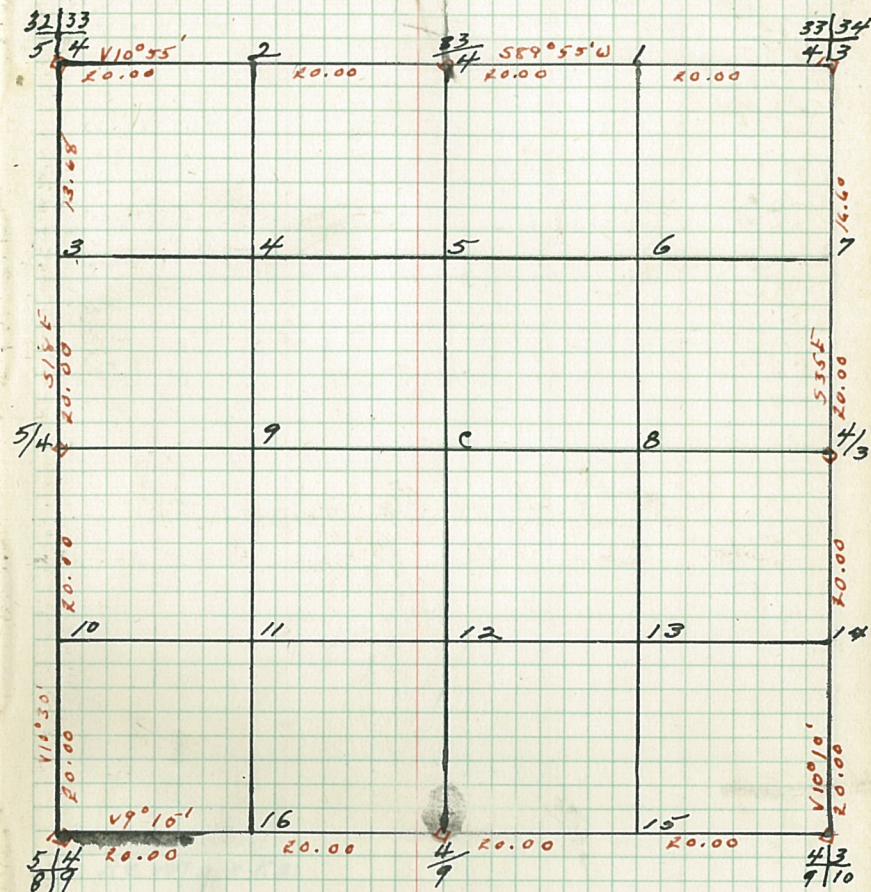
Original G.L.O. Corners

Cor. Spec. D.b.h. Bear. Dist.

$\frac{32}{5} \frac{33}{4}$
 $\frac{41}{3}$
 $\frac{33}{4}$
 $\frac{82}{5} \frac{33}{4}$
 $\frac{51}{4}$
 $\frac{51}{8} \frac{4}{9}$
 $\frac{43}{9} \frac{10}{10}$
 $\frac{41}{3}$

B.T.'s Found & W.T.'s Set

Cor. Spec. D.b.h. Bear. Dist. B.T. or W.T.

Sec 4 T 147 N - R 29 W
by-B.T.'s & W.T.'s (cont.)

Cor. Spec. D.b.h. Bear. Dist. B.T. or W.T.

5.

Notes

Chains

Chains

Type + Cultural Map.

5.

Remarks:

5.

Original G.L.O. Corners

Cor. Spec. D.b.h. Bear. Dist.

 $\frac{32}{5} \frac{32}{4}$ $\frac{32}{5}$ $\frac{31}{6} \frac{32}{5}$

6/5

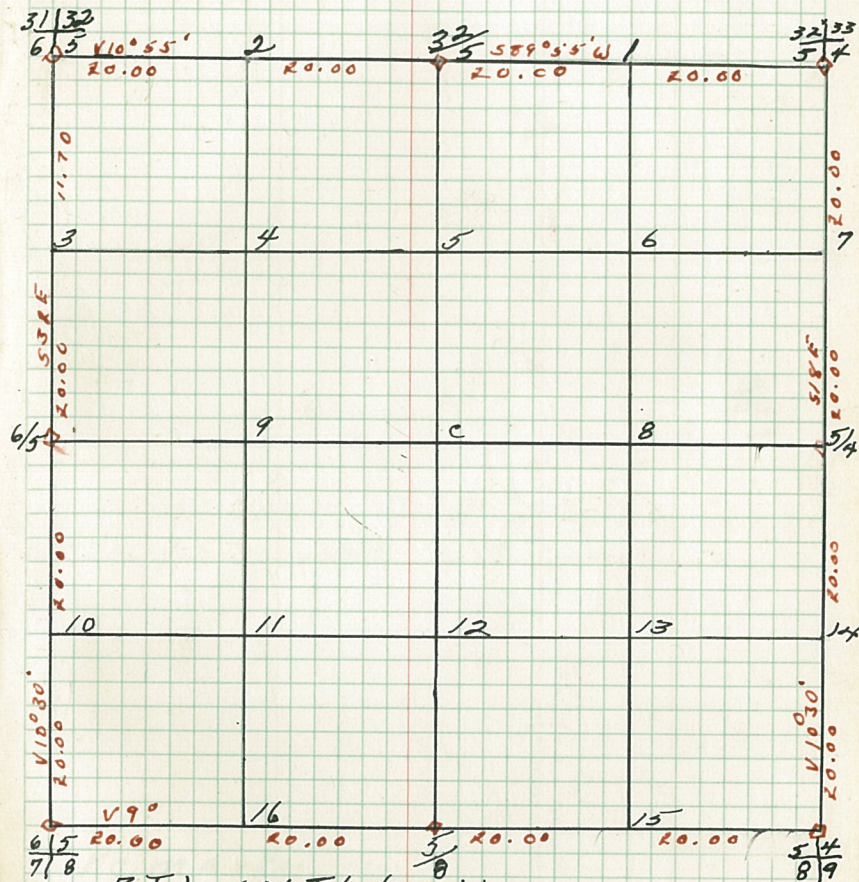
 $\frac{6}{7} \frac{5}{8}$ $\frac{5}{8}$ $\frac{5}{8} \frac{4}{9}$

5/4

B.T.'s Found + W.T.'s Set

Cor. Spec. D.b.h. Bear. Dist. B.T. or W.T.

5.

Sec. 5 T147-R29W.
by-B.T.'s + W.T.'s (cont)

Cor. Spec. D.b.h. Bear. Dist. B.T. or W.T.

6.

Notes

Chains

Chains

6.

Type + Cultural Map

Remarks:

6.

Original G.L.O. Corners

Cor. Spec. D.b.h. Bear. Dist.

31|32
6|5

3|6

36|31
7|6

1|6

1|6

12|7

6|7

6|5

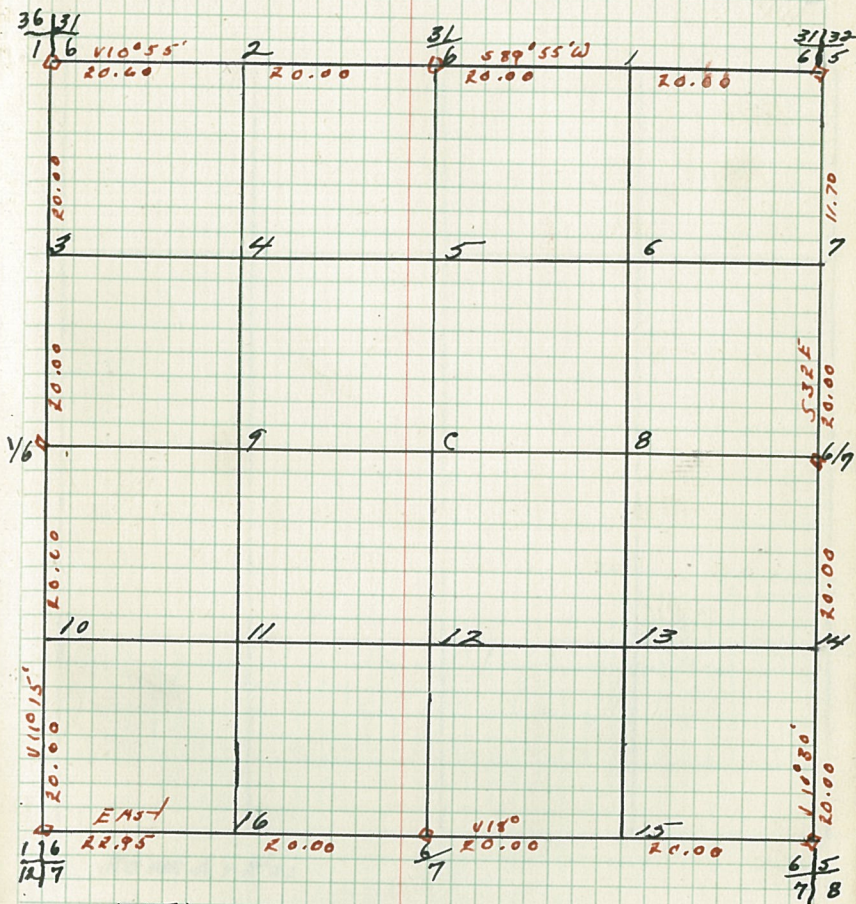
7|8

6|5

B.T.'s Found & W.T.'s set

Cor. Spec. D.b.h. Bear. Dist. B.T. W.T.

6

Sec. 6. T147N - R29W
64-

B.T.'s + W.T.'s (cont)
Cor. Spec. D.b.h. Bear. Dist. B.T. W.T.

Notes

Chains

Chains

Type + Cultural Map

Remarks:

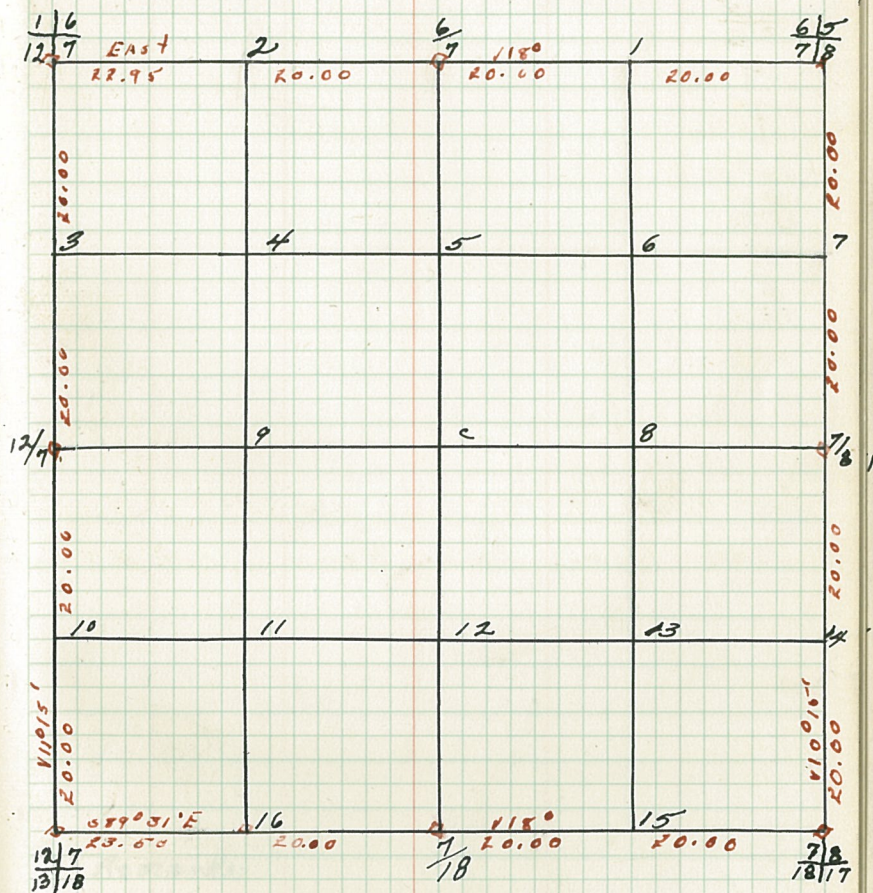
Original G.L.O. Corners

Cor. Spec. D.b.h. Bear. Dist.

6/5
7/8
6/7
1/6
12/7
12/7
12/7
13/18
7/8
7/8
18/17
7/8

B.T.'s Found + W.T.'s Set.

Cor. Spec. D.b.h. Bear. Dist. B.T. or W.T.

Sec. 7 T 147N - R 29W
by-

B.T.'s & W.T.'s (cont.)
Cor. Spec. D.b.h. Bear. Dist. B.T. or W.T.

Notes

Chains

chains

Type + Cultural Map

Remarks:

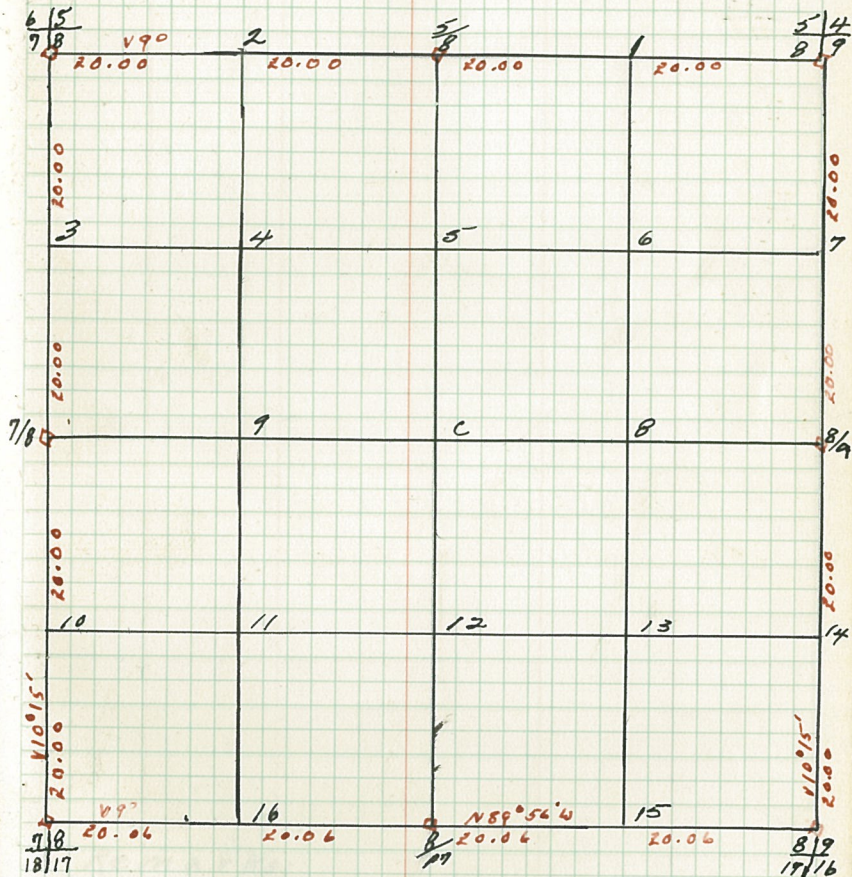
Original G.L.O. Corners

Cor. Spec. D.b.h. Bear. Dist.

5/4
8/9
5/8
6/5
7/8
7/8
7/8
18/17
8/
17/
8/9
17/16
8/9

B.T.'s Found & W.T.'s Set.

Cor. Spec. D.b.h. Bear. Dist. B.T. W.T.

Sec. 8 T147N-R29W
by-B.T.'s & W.T.'s (cont.)

Cor. Spec. D.b.h. Bear. Dist. B.T. W.T.

Notes

Chains

Chains

Type + Cultural Map

Remarks:

Original G.L.O. Corners

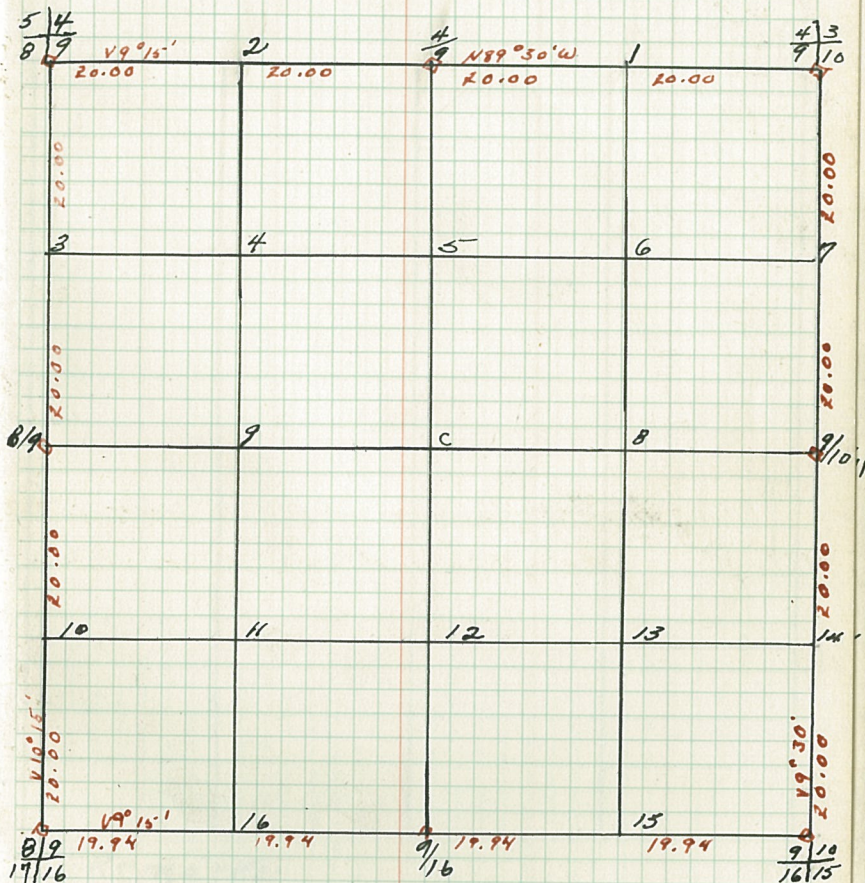
Cor.	Spec.	D.b.h.	Bear.	Dist.
4/3	8/9			
4/9				
5/4	8/9			
8/9				
8/9				
17/16				
9/16				
9/16				
9/16				
9/16				
9/16				
9/16				

B.T.'s Found & W.T.'s Set

Cor.	Spec.	D.b.h.	Bear.	Dist.	B.T.	W.T.

Sec. 9. T147N-R29W

by

B.T.'s & W.T.'s (cont.)

Cor.	Spec.	D.b.h.	Bear.	Dist.	B.T.	W.T.

Notes

Chains

Chains

Type & Cultural Map

Remarks:

Original G.L.O. Corners

Cor. Spec. D.b.h. Bear. Dist.

 $\frac{3}{2}$
 $\frac{10}{11}$ $\frac{3}{10}$ $\frac{4}{3}$
 $\frac{9}{10}$

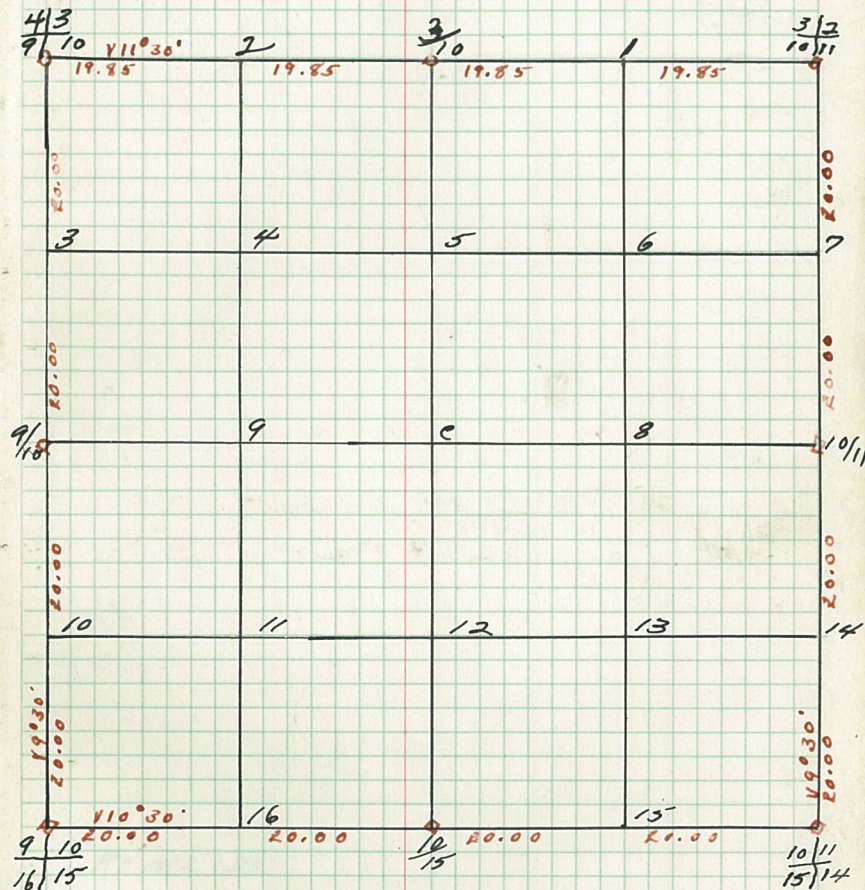
9/10

 $\frac{9}{10}$
 $\frac{16}{15}$ $\frac{10}{15}$ $\frac{10}{11}$
 $\frac{15}{14}$

10/11

B.T.'s Found + W.T.'s Set

Cor. Spec. D.b.h. Bear. Dist. B.T. W.T.

Sec. 10 T147N - R29W
by-B.T.'s + W.T.'s (cont.)

Cor. Spec. D.b.h. Bear. Dist. B.T. or W.T.

Notes

Chains

Chains

Type + Cultural Map

REMARKS:

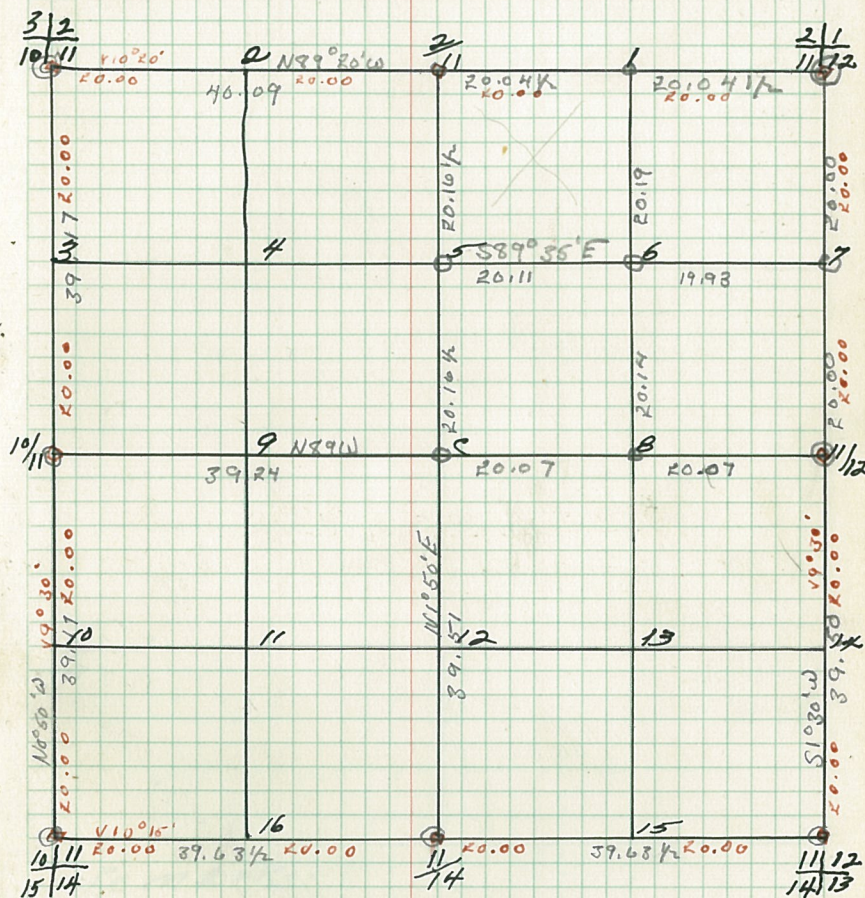
Original G.L.O. Corners

Cor. Spec. D.b.h. Bear. Dist.

$\frac{21}{11/12}$
 $\frac{2}{11}$
 $\frac{3/2}{10/11}$
 $\frac{10/11}{15/14}$
 $\frac{11}{14}$
 $\frac{11/12}{14/13}$
 $\frac{11}{12}$

B.T.'s Found & W.T.'s Set

Cor.	Spec.	D.b.h.	Bear	Dist.	B.T. or W.T.
$\frac{2}{11}$	Balsam	12	N88E	47	W.T.
$\frac{11}{12}$	ASPEN	8	N14W	41	W.T.
$\frac{21}{11/12}$	ASPEN	10	N76E	1.60	B.T.
$\frac{11/12}{11/12}$	J. PINE	12	S42W	1.45	B.T.

Sec. 11 T 147N - R 29W
by-B.T.'s & W.T.'s (cont.)

Cor. Spec. D.b.h. Bear. Dist. B.T. or W.T.

Notes

Chains

Chains

Type & Cultural map.

Remarks:

Original C.L.O. Corners

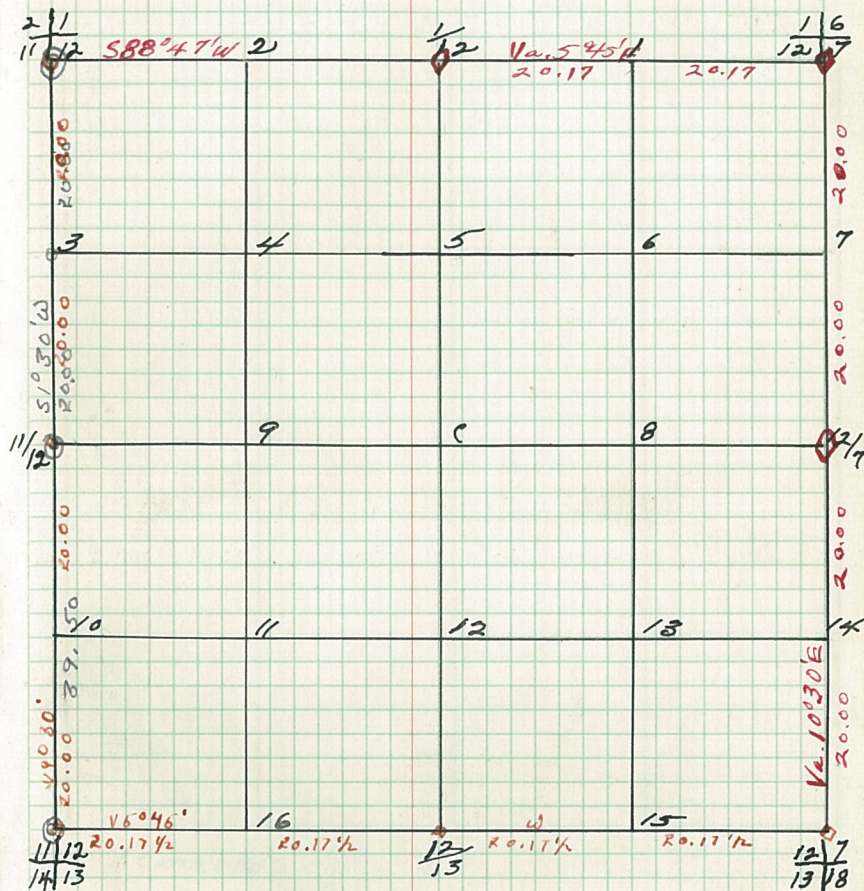
Cor.	Spec.	D.b.h.	Bear.	Dist.
$\frac{1}{16}$	Poplar	3	N57E	.16
$\frac{12}{17}$	"	3	N28W	.14
	"	3	S27E	.10
	"	3	S47W	.25
$\frac{1}{12}$	Elm	8	N47W	.9
$\frac{2}{11}$	Balsam	6	S22W	.86
$\frac{2}{11}$				
$\frac{11}{12}$				
$\frac{11}{12}$				
$\frac{14}{13}$				
$\frac{12}{13}$				
$\frac{12}{12}$				
$\frac{13}{18}$				
$\frac{12}{17}$	Poplar	3	N75E	.13
	"	3	N36W	.19

B.T.'s Found & W.T.'s Set.

Cor. Spec. D.b.h. Bear. Dist. B.T. W.T.

Sec. 12 T147N-R29W

by-



B.T.'s & W.T.'s (cont.)
 Cor. Spec. D.b.h. Bear. Dist. B.T. W.T.

Notes

Chains

Chains

Type & Cultural Map.

Remarks:

Original G.L.O. Corners

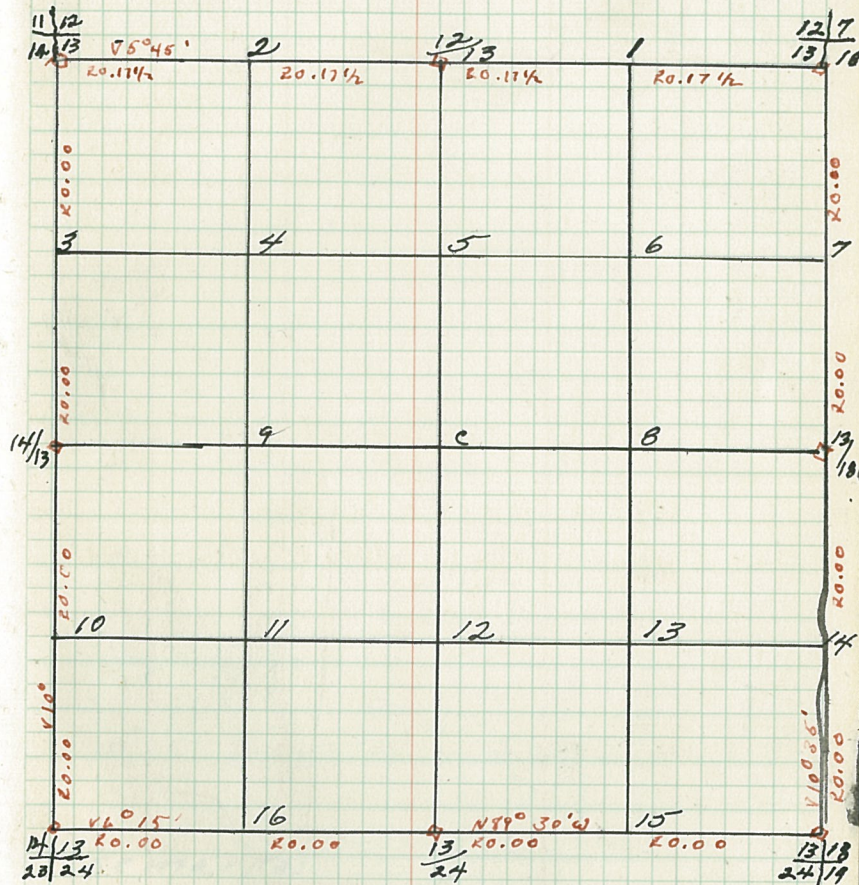
Cor. Spec. D.b.h. Bear. Dist.

 $\frac{12}{7}$ $\frac{13}{18}$ $\frac{12}{13}$ $\frac{11}{12}$ $\frac{14}{13}$ $\frac{14}{13}$ $\frac{14}{13}$ $\frac{14}{13}$ $\frac{23}{24}$ $\frac{13}{24}$ $\frac{13}{18}$ $\frac{24}{19}$ $\frac{13}{18}$ $\frac{13}{18}$ B.T.'s Found + W.T.'s Set

Cor. Spec. D.b.h. Bear. Dist. B.T.'s W.T.

Sec. 13. T147N - R29W

by-

B.T.'s + W.T.'s (cont.)

Cor. Spec. D.b.h. Bear. Dist. B.T.'s W.T.

14.

Notes

Chains

Chains

14.

Type + Cultural Map

Remarks:

Original G.L.O. Corners

Cor. Spec. D.b.h. Bear. Dist.

11/12

14/13

11/14

10/11

15/14

15/14

15/14

22/23

14/23

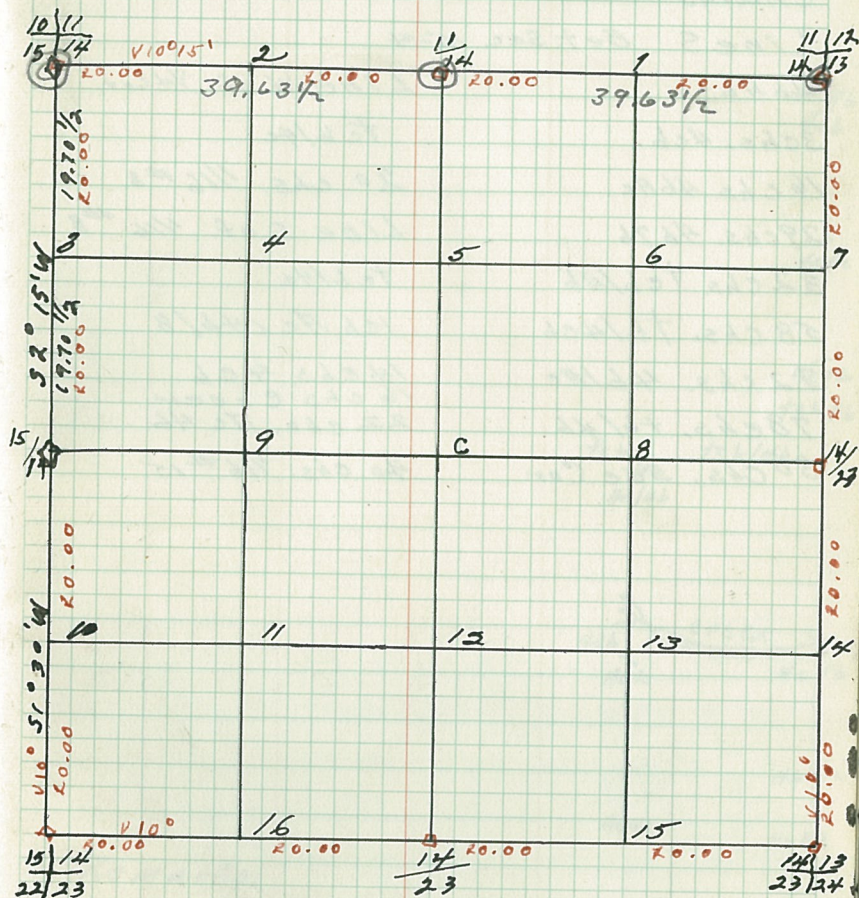
23/24

23/24

14/23

B.T.'s Found & W.T.'s Set.

Cor.	Spec.	D.b.h.	Bear.	Dist.	B.T.	W.T.
14/15	1/2 in. stub	6	SSE	14	B.T.	wt.
	cedar	3	N81W	17	B.T.	wt.
1/16 #3	Aspen	6	S27°30'E	22		wt.
15/14	cedar	3	EAST.	01		wt.
22/23	"	4	N59W	17		wt.
1/16 #10	Balsam	6	SSE	43		wt.

Sec. 14 T 147N - R 29W
by-B.T.'s & W.T.'s (cont.)

Cor. Spec. D.b.h. Bear. Dist. B.T. W.T.

15/14
22/2314/23
2314/13
23/24

Notes

Chains

Lines S Bet. Sec. 15-14

46 AB

3 chs. 4cb

16 chs. 46Ac

29 chs. 467b

32 chs. 7cb/46

58 chs. 7b/4cb

72 chs. 46/7Ac

78 chs. 7b/46

80 chs. sec. Cor.

Chains

Line W. of 74 cor.

7cb/4c

20 chs. 1/16 #8

Line S of. 1/16 #8

7cb/4c

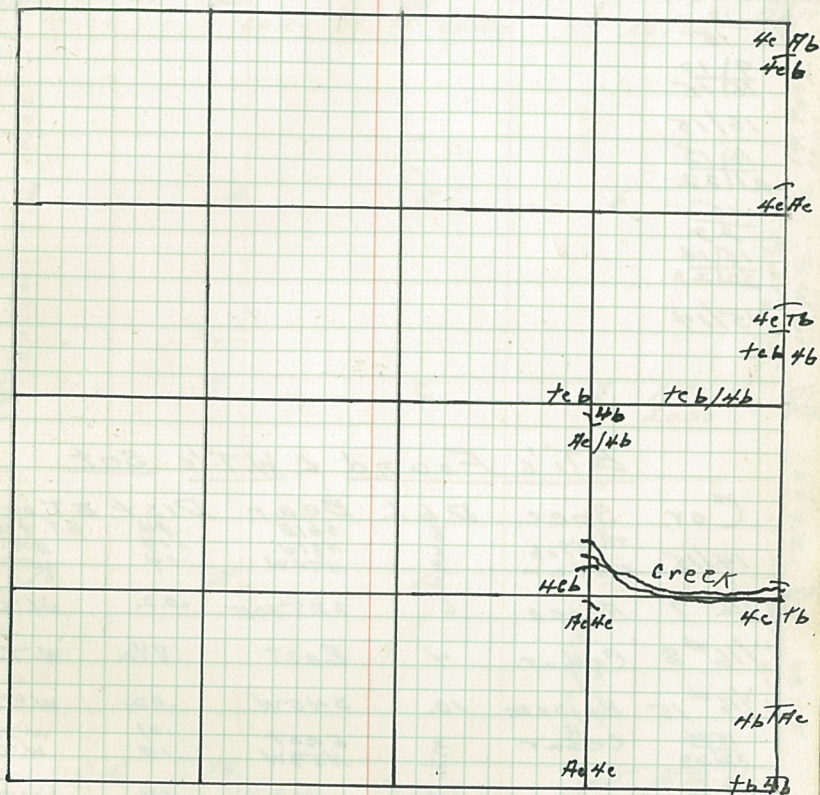
1ch. 7c/4b/8

14 chs. 4cb

16 chs. Creek

22 chs. 7c 46

40 chs. 1/16 #15

Type & Cultural Map

Remarks:

Original G.L.O. Corners

Cor. Spec. D.b.h. Bear. Dist.

10/11

15/14

10/15

9/10

16/15

16/15

16/15

21/22

15/22

15/14

22/23

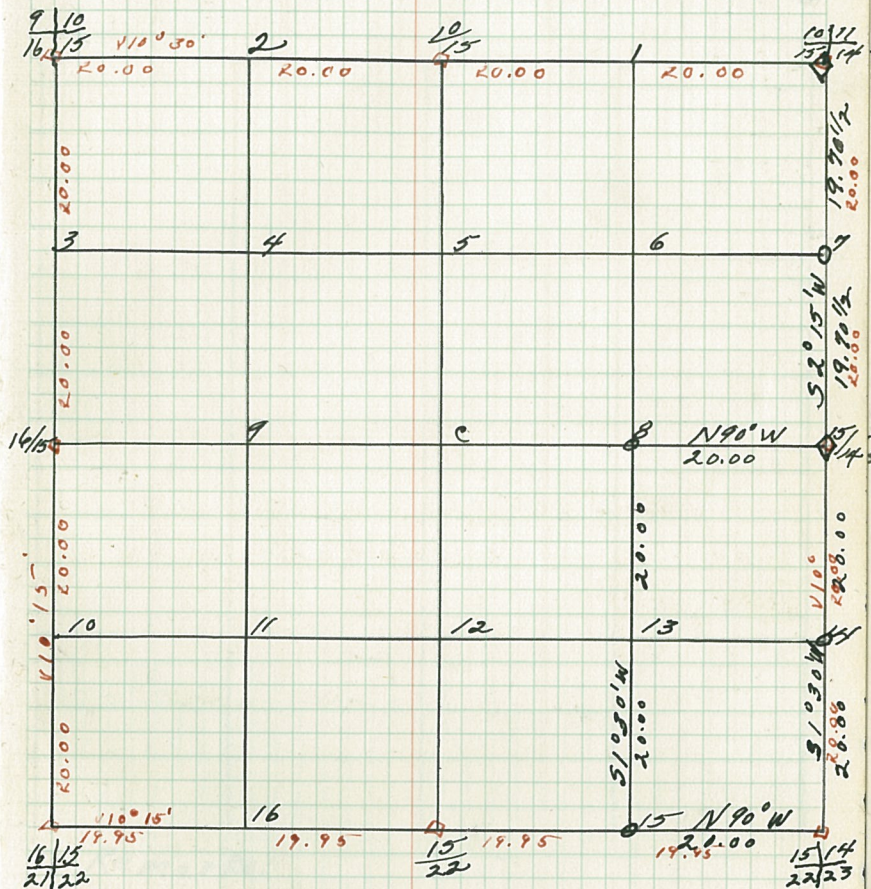
15/14

B.T.'s Found & W.T.'s Set

Cor.	Spec.	D.b.h.	Bear.	Dist.	B.T. or W.T.
14/15	Tam. stub Cedar	8 3	S61E N81W	.14 .17	B.T. & W.T.
1/16 #7	Aspen	6	S27°30'E	.22	W.T.
1/16 #8	Cedar	4	East	.8 1/2	W.T.
1/16 #15	Balsam	12	S45W	.02	W.T.
15/14	Cedar	3	E95°	.01	W.T.
22/23	"	4	N59W	.17	W.T.
1/16 #14	Balsam	6	S3E	.43	W.T.

Sec. 15 T147N-R29W

by-

B.T.'s & W.T.'s (cont.)

Cor. Spec. D.b.h. Bear. Dist. B.T. or W.T.

Notes

Chains

Chains

Type & Cultural Map.

Remarks:

Original G.L.D. Corners
 Spec. D.b.h. Bear. Dist.

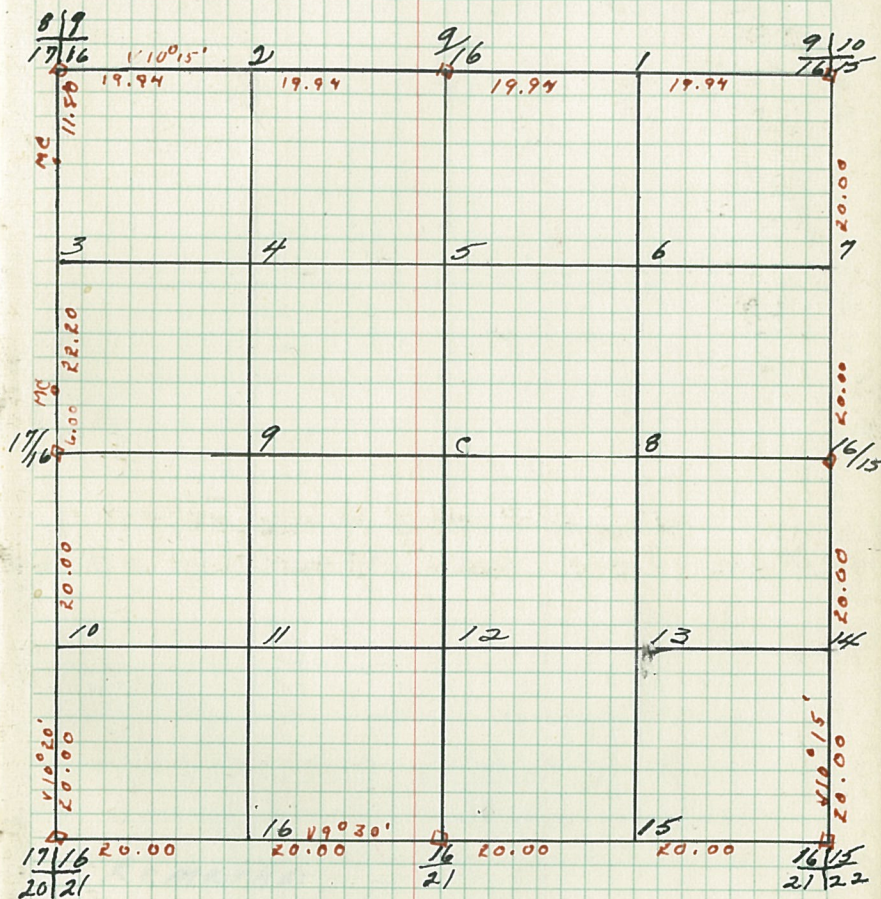
Cor.
 9/10
 16/15
 9
 16
 8/9
 17/16

17/16
 17/16
 20/21
 16
 21
 16/15
 21/22
 16/15

B.T.'s Found & W.T.'s Set

Cor. Spec. D.b.h. Bear. Dist. B.T. or W.T.

Sec. 16 T147N - R29W
 by-



B.T.'s & W.T.'s (cont.)
 Cor. Spec. D.b.h. Bear. Dist. B.T. or W.T.

ChainsNotesChainsType & Cultural Map

Remarks:

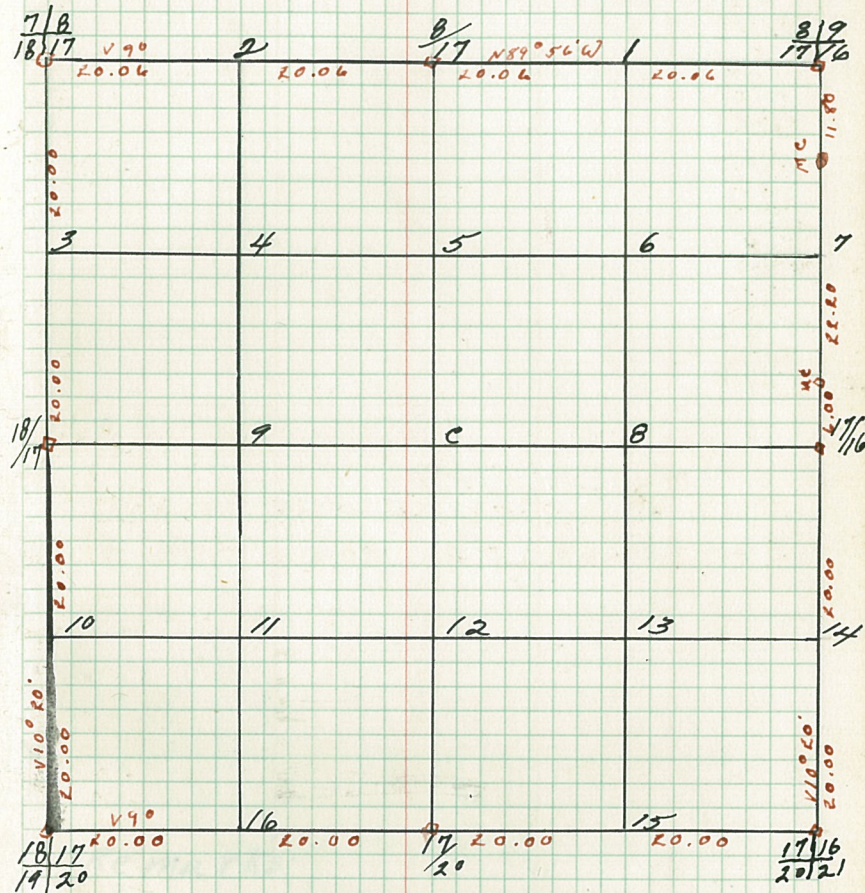
Original C.L.O. Corners
 Spec. D.b.h. Bear. Dist.

Cor.
 8/9
 17/16
 8/7
 7/8
 18/17
 18/17
 19/20
 17/20
 17/16
 20/21
 17/16

B.T.'s Found & W.T.'s Set

Cor. Spec. D.b.h. Bear. Dist. B.T.'s or W.T.'s

Sec. 17 T 147N - R 29W
 by -



B.T.'s & W.T.'s (cont.)
 Cor. Spec. D.b.h. Bear. Dist. B.T.'s or W.T.'s

Notes:

Chains

Chains

Type & Cultural Map.

Remarks:

Original G. L. O. Corners

Cor. Spec. D.b.h. Bear. Dist.

7/8
18/177/8
13/1812/7
13/18

13/18

13/18
24/19

18/19

18/17
19/20

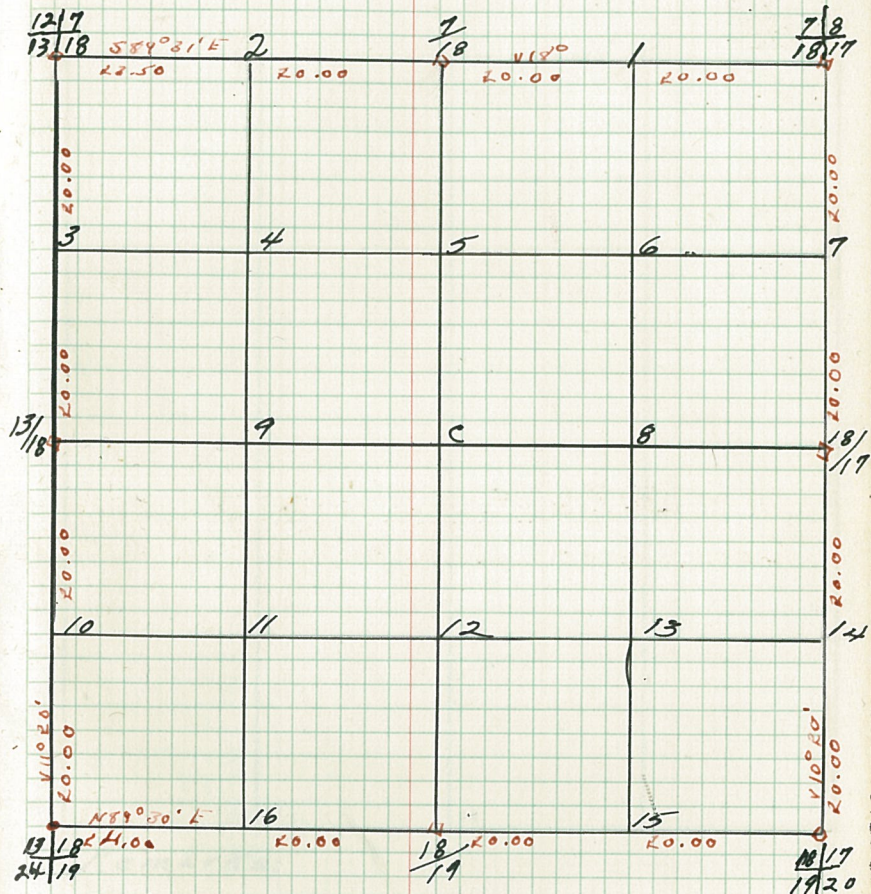
18/17

B.T.'s Found & W.T.'s Set

Cor. Spec. D.b.h. Bear. Dist. B.T. W.T.

Sec. 18 T147N - R29W

by-

B.T.'s & W.T.'s (cont.)

Cor. Spec. D.b.h. Bear. Dist. B.T. W.T.

Notes

Chains

Chains

Type & Cultural Map

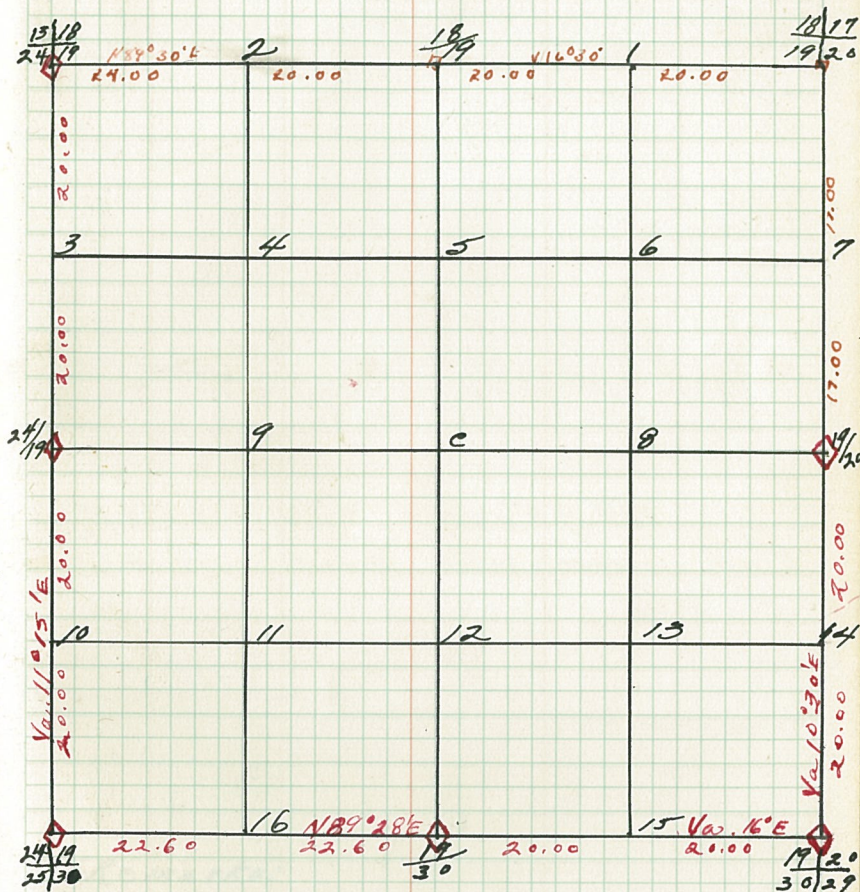
Remarks:

Original G.L.O. Corners

Cor.	Spec.	D.b.h.	Bear.	Dist.
18/17 19/20				
18/19				
3/18	Birch	12	N66E	.62
24/19	Poplar	20	N58W	.48
	Birch	8	S31 1/2 W	1.32
			S56 1/2 E	.72
24/19	W. Pine	30	N68E	.78
	Cedar	4	N58W	.77
24/19	Tam.	3	N2E	.17
25/30	"	5	N24W	.23
	"	5	S43W	.19
19	Pine stub	24	S17E	1.00
30	Birch	7	S2W	.9
19/20	Pine stub	24	N2E	.46
30/29	"	24	N13E	.61
	"	18	S60W	.62
	"	18	N22W	.6
19/20	Aspen	6	S74E	1.11
	Pine stub	18	S70E	.52
			N82W	

B.T.'s Found & W.T.'s Set

Cor. Spec. D.b.h. Bear. Dist. B.T. W.T.

Sec. 19 T147N-R29W
by-

B.T.'s & W.T.'s (cont.)

Cor. spec. D.b.h. Bear. Dist. B.T. W.T.

20.

Chains

Notes

Chains

20.

Type & Cultural Map

Remarks:

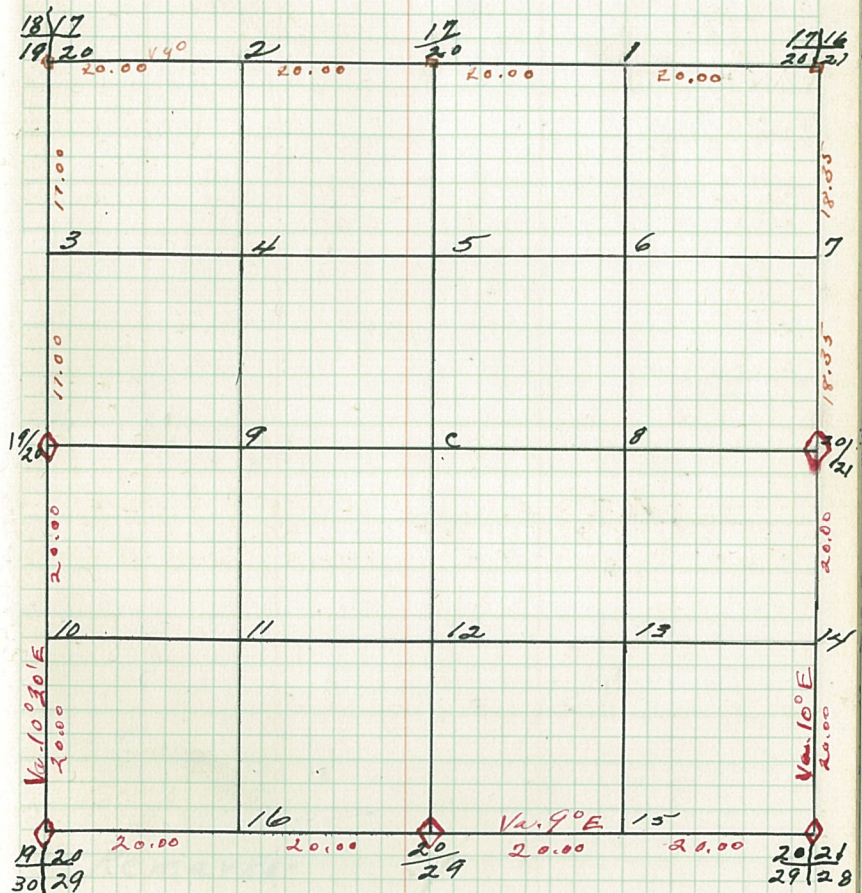
Original G. L. O. Corners

Cor.	Spec.	D.b.h.	Bear.	Dist.
17/16				
20/21				
17				
20				
18/17				
19/20				
19/20	Aspen	6	S70E	1.11
	Pine stub	18	N82W	.52
19/20	Pine stub	24	N3E	.46
	"	24	S60W	.61
30/29	"	24	N22W	.62
	"	18	S74E	.6
20	Pine stub	24	S22W	.33
29	"	20	N5E	.40
20/21	Tam.	35	N77W	1.65
	"	35	S17W	1.20
29/28	"	35	N88E	.32
	"	35	S2E	1.08
20/21	Elm	7	S23W	.20
	"	8	N84E	.44

B.T.'s Found & W.T.'s Set

Cor. Spec. D.b.h. Bear. Dist. B.T. W.T.

Sec. 20 T147N - R29W
by -



B.T.'s & W.T.'s (cont.)
Cor. Spec. D.b.h. Bear. Dist. B.T. W.T.

21.

Notes

Chains

Chains

21.

Type & Cultural Map

Remarks:

21.

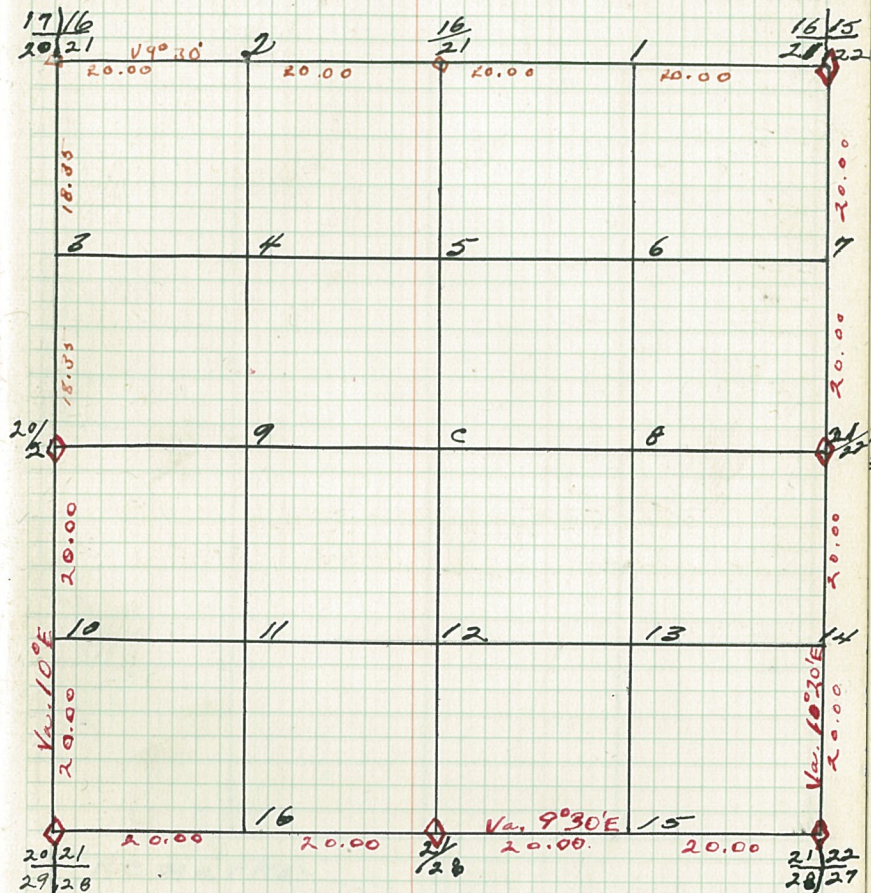
Original G.L.O. Corners

Cor.	Spec.	D.b.h.	Bear.	Dist.
18/15	Cedar	30000	N20E	.57
21/22	"	"	N11W	.57
16	Balsam	"	S57E	.21
21	"	"	S59W	.77
17/16				
20/21				
20/21	Elm	7	S23W	.20
"	"	8	N84E	.44
20/21	Tam.	5	N77W	.65
20/21	"	5	S17W	1.30
29/28	"	3	N88E	.32
"	"	3	S2E	1.08
21	Spruce	6	S57E	1.10
28	Tam.	6	N66E	.25
21/22	Sugar Maple	10	S48W	3.44
28/27	Pine stub	200	S27W	3.22
"	"	30	N68E	1.67
"	"	30	N10W	2.03
21/22	Pine stub	50	N72E	.57
"	"	30	S50W	.92

B.T.'s Found & W.T.'s Set

Cor. Spec. D.b.h. Bear Dist. B.T.°W.T.

21.

Sec. 21 T147N - R29W
by-B.T.'s & W.T.'s (cont.)

Cor. Spec. D.b.h. - Bear. Dist. B.T.°W.T.

22.

Chains

Notes

Chains

22.

Type & Cultural Map

Remarks:

Original G.L.O. Corners

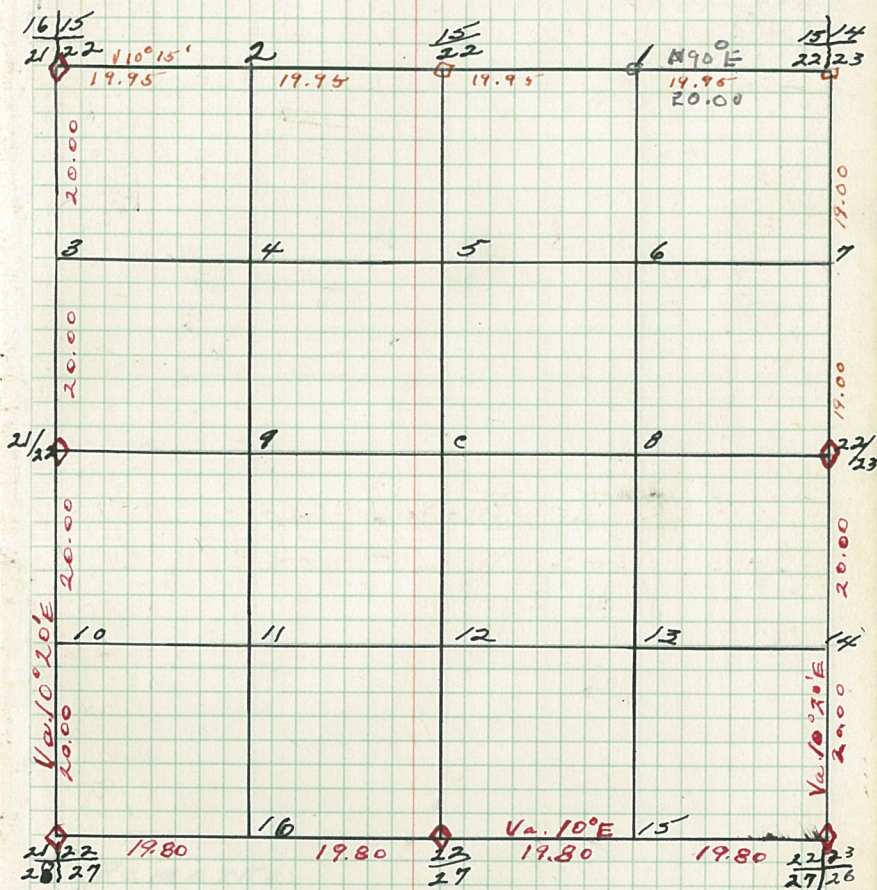
Cor.	Spec.	D.b.h.	Bear.	Dist.
15/14				
22/23				
15				
22				
16/15	Cedar	8	N 20 E	.57
27/22	"	8.3	N 41 W	.59
	Balsam	8.3	S 57 E	.29
	"		S 59 W	.97
21/22	Pine Stub	30	N 72 E	.57
	"	30	S 50 W	.92
21/22	Sugar Maple	1.8	S 48 W	3.44
28/27	Pine Stub	20	S 27 W	3.22
	"	30	N 68 E	1.67
	"	24	N 10 W	2.03
22	W. Pine	8	N 52 E	1.90
27	Tam.	8	S 29 E	6.00
20/23	Birch	8.8	S 88 E	.25
27/26	Rosen	8.6	S 10 W	.80
	B. of Gil.	8.6	N 7 W	.60
	"		N 25 E	.71
22/23	W. Pine	12	S 62 W	1.07
	"	10	S 46 W	1.62

B.T.'s Found & W.T.'s Set

Cor.	Spec.	D.b.h.	Bear.	Dist.	B.T.°W.T.
1/16 #1	Balsom	12	S 46 W	02	w.t.
15/14	Cedar	3	East	101	w.t.
22/23	"	4	N 59 W	117	w.t.

Sec. 22 T147N-R29W

by -

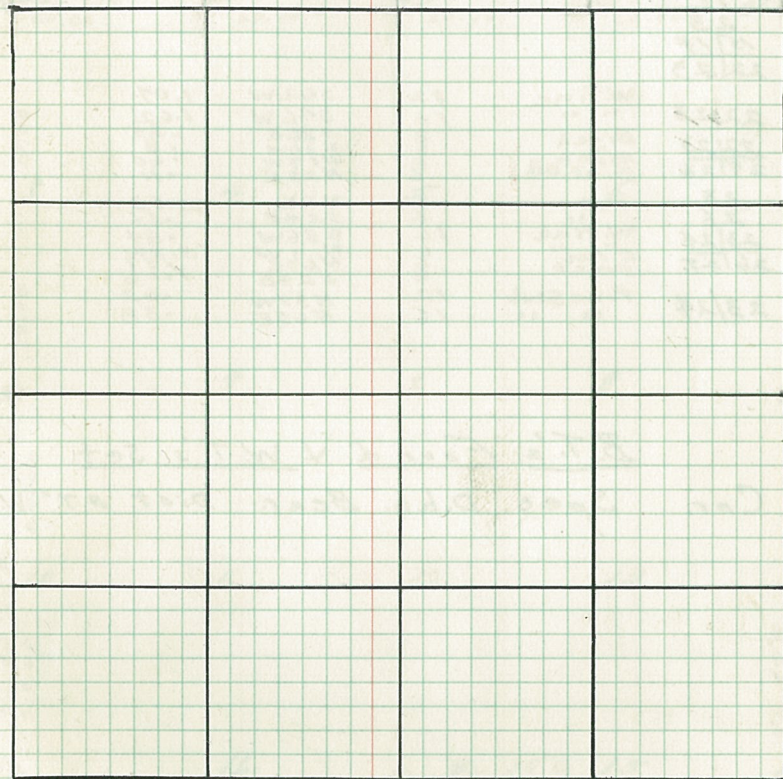
B.T.'s & W.T.'s (cont)

Cor. Spec. D.b.h. Bear. Dist. B.T.°W.T.

Notes

Chains

Chains

Type + Cultural Map

Remarks:

Original G. L. O. Corners

Cor. Spec. D.b.h. Bear Dist.

$\frac{14}{13}$
 $\frac{23}{24}$
 $\frac{14}{23}$
 $\frac{23}{24}$
 $\frac{14}{23}$

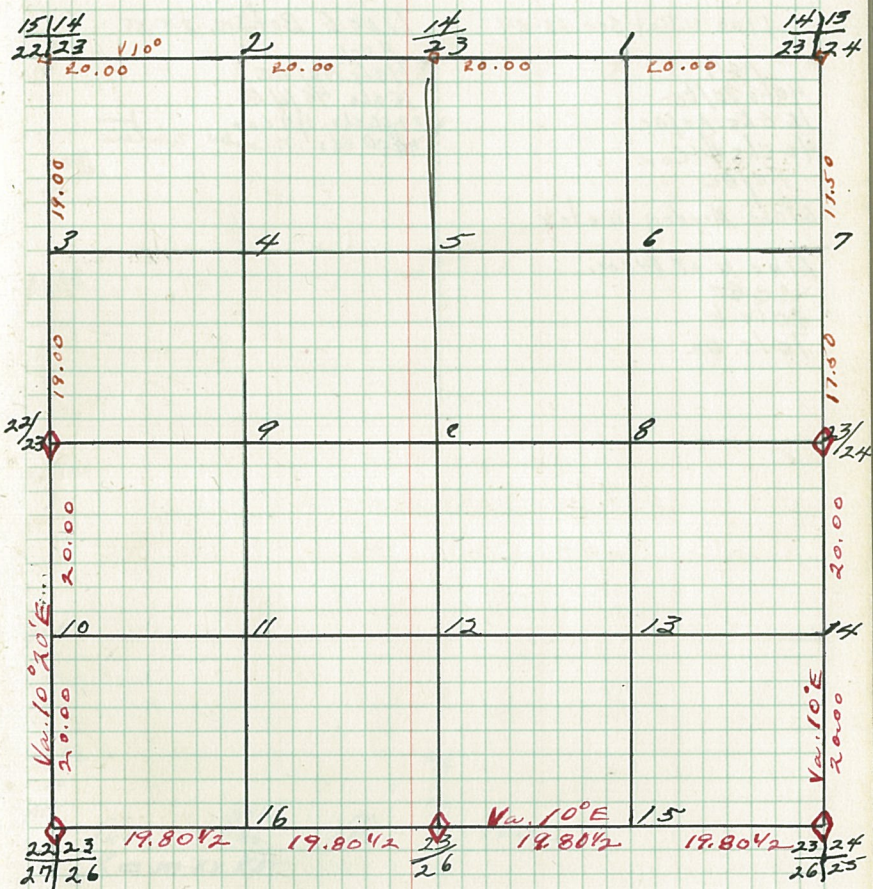
22/23	W. Pine	12	S 62 W	1.07
	" "	10	S 46 W	1.62
22/23	Birch	8	S 88 E	.25
27/26	Aspen	8	S 10 W	.8
	B. of. G. H.	8	N 17 W	.60
			N 25 E	.11
$\frac{23}{26}$	Tam.	8	N 5 E	2.53
$\frac{23}{26}$	" "	6	S 24 E	.56
$\frac{23}{24}$	W. Pine	16	S 36 W	.84
26/25	E. M.	8	N 1 W	3.83
	Birch	8	N 67 E	.57
			S 24 E	1.06
23/24	Pine Stub	12	N 33 W	.62
	" "	16	N 65 E	.38

B.T.'s Found & W.T.'s Set.

Cor. Spec. D.b.h. Bear Dist. B.T. or W.T.

Sec. 23 T147N-R29W

57-

B.T.'s & W.T.'s (cont.)

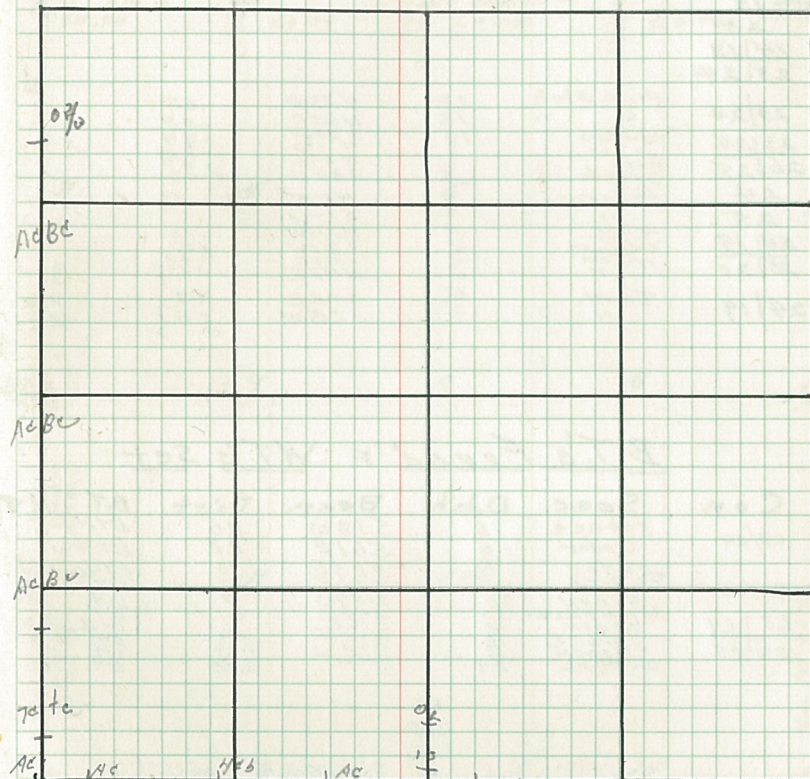
Cor. Spec. D.b.h. Bear Dist. B.T. or W.T.

NotesChains

Line N. Bot. Sec. 23-24
 Ac/I
 4 chs. Ia/Ic
 16 chs. Ac/BC
 40 chs. 1/4 cov
 Ac/BC
 67 chs. Meadow Water
 Line N. of 1/4 cov.
 Ac, BC
 20 chs. Is
 7 chs. Oz

Chains

Line E Bot. Sec. 24-25
 Ad-I
 7 chs. Ac/BC
 18 chs. 1/4 cov
 39, 06 chs. 1/4 cov
 400 chs. meadow water

Type + Cultural Map

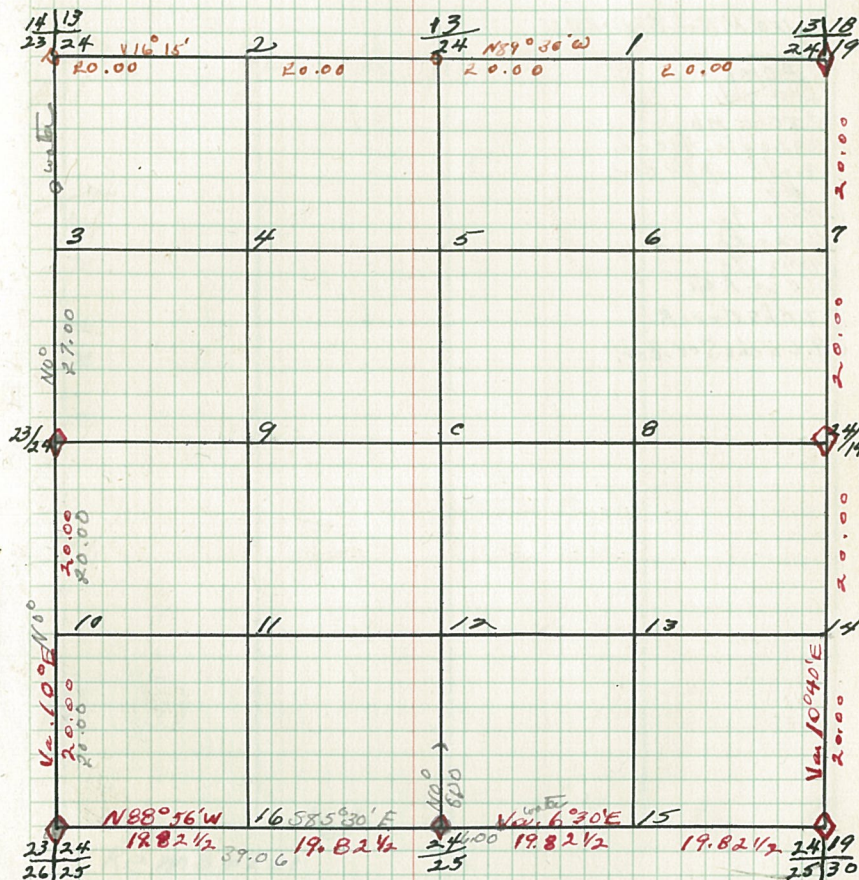
Remarks:

Original G.L.O. Corners

Cor.	Spec.	D.b.h.	Bear.	Dist.
13/18	W. Pine Stub	10	N73E	1.03
24/19	" "	12	S53E	1.14
13	Poplar	8	S70W	1.57
24	" "	"	N41/2W	2.0
14/13				
23/24	Pine Stub	12	N33W	.62
23/24	" "	16	N65E	.38
23/24	W. Pine	16	S34W	1.34
26/25	" "	6	N1W	3.57
34	Elm	8	N67E	1.06
25	Birch	4	S24E	.4
24/19	Balsam	4	N10E	.5
25/30	" "	5	S13W	.18
24/19	TAM.	5	N20W	.19
25/30	Cedar	5	S80W	.25
24/19	TAM.	5	S81E	.15
24/19	" "	5	N43E	.7
24/19	TAM.	5	S52E	.21
24/19	" "	5	S72W	

B.T.'s Found & W.T.'s set

Cor.	Spec.	D.b.h.	Bear.	Dist.	B.T. or W.T.
23/24	Spruce	6	S18W	20	B.T. & W.T.
23/24	Cedar	6	S61E	22	B.T. & W.T.
24/25	W. Pine	4	S35W	10	B.T. & W.T.
24/25	W. Pine	18	N82E	35	B.T.
23/24	Aspen	18	N59W	7	W.T.
23/24	Aspen	18	S10E	31	B.T. & W.T.
26/25	Spruce	18	S65E	36	B.T.
26/25	Aspen	14	S72W	11.5	W.T.
26/25	W. Pine	24	N16W	3.8	B.T.

Sec. 24-T147N-R29W
by-B.T.'s & W.T.'s (cont.)

Cor. Spec. D.b.h. Bear. Dist. B.T. or W.T.

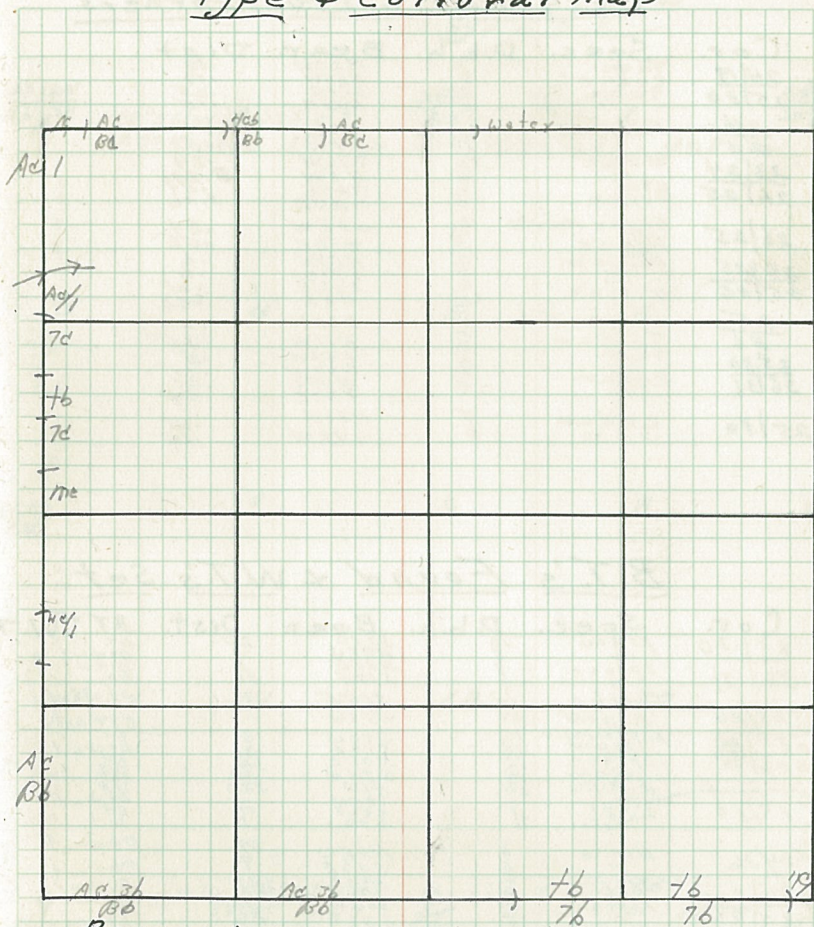
Notes

Chains

Line N. Bet Sec. 25 & 26

Ad/Bb
 24 ch. 7b/1
 28 chs Mb
 39.60 chs. 1/4 cor.
 North of 1/4 cor.
 Mb
 4 chs. 7c
 10 chs. 7b
 14 chs. 7d
 21 chs. A 41
 27 chs. Creek
 39.60 chs. Sec. Cor.

Chains

Type + Cultural Map

Remarks:

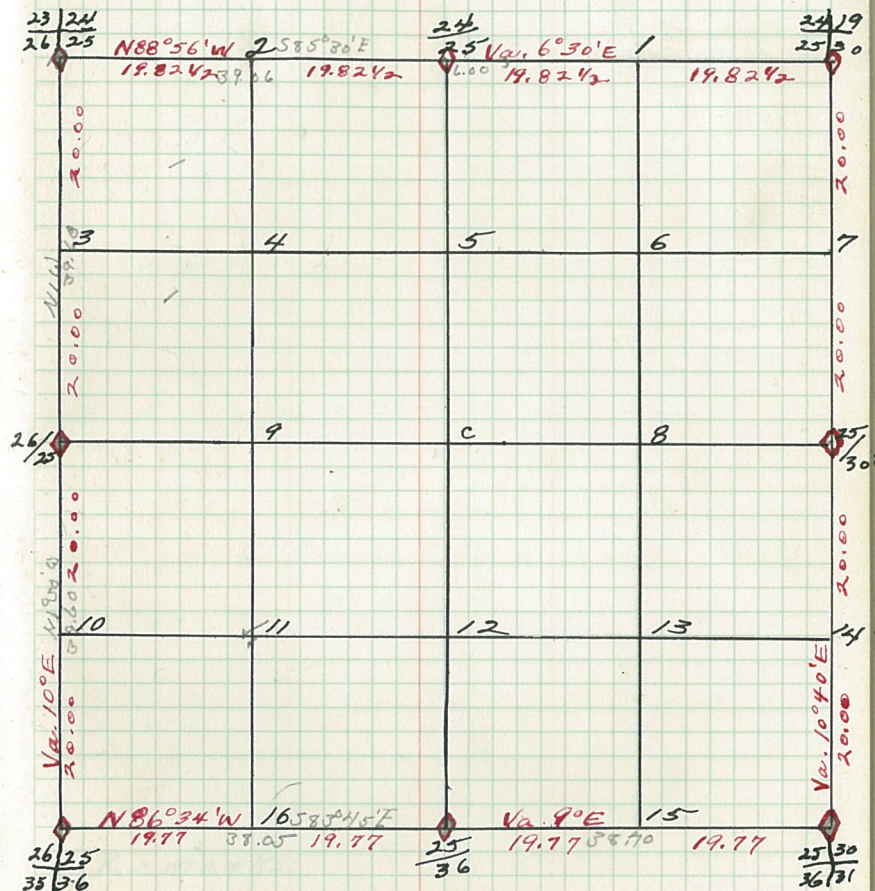
Original G.L.O. Corners

Cor.	Spec.	D.b.h.	Bear.	Dist.
24/19	Tam.	4	N20W	.18
25/30	Cedar	4	S80W	.19
	Tam.	4	S61E	.25
	"	4	N43E	.15
24/25	Balsam	4	N10E	.4
	"	4	S15W	.5
23/24	W. Pine	16	S36W	.84
26/25	"	16	N1W	.82
	Elm	8	N67E	.37
	Birch	8	S24E	1.06
26/25	Sugar Maple	6	S38W	.84
	Aspen	3	N58E	.06
26/25	Balsam	4	N31W	.6
35/36	"	4	S61W	.6
	W. Pine	10	S52E	.21
	"	6	N5E	.36
25/36	Spruce stub	6	S35E	.25
	Cedar	8	N11W	.25
25/30	Tam.	4	S47W	.5
36/31	"	4	N63W	.5
	Cedar	4	N77E	.09
	"	4	S83E	.21
25/30	Cedar	5	N61E	.15
	"	5	S73W	.14

B.T.'s Found & W.T.'s Set

Cor.	Spec.	D.b.h.	Bear.	Dist.	B.T. or W.T.
25/30	Aspen	10	S50W	26	BT
	"	8	N47W	19	BT + wt
36/31	Spruce	8	N55E	30	BT
	"	8	S13E	30	BT
25/26	Maple	12	S25E	31	BT + wt
	Aspen	12	S47W	37	BT + wt
23/24	Aspen	10	S40W	31	BT
26/25	Spruce	12	S16E	36	BT + wt
	"	12	N65E	116	BT
	Aspen	12	S72W	32	BT
	W. Pine	24	S70W	360	BT + wt
24/25	Cedar	12	S20W	25	BT
	Maple	12	N42E	125	BT
	Aspen	12	N59W	7	BT
25/36	Birch	6	N65W	37	BT + wt
	"	6	S56E	9	BT + wt
26/25	Balsam	2	N50W	23	BT + wt
35/36	Aspen	5	S20W	26	BT + wt
	"	5	S32E	26	BT

Sec. 25 T147N R29W

by - HakalaB.T.'s & W.T.'s (cont.)

Cor. Spec. D.b.h. Bear. Dist. B.T. or W.T.

Notes

Chains

Chains

Type & Cultural Map

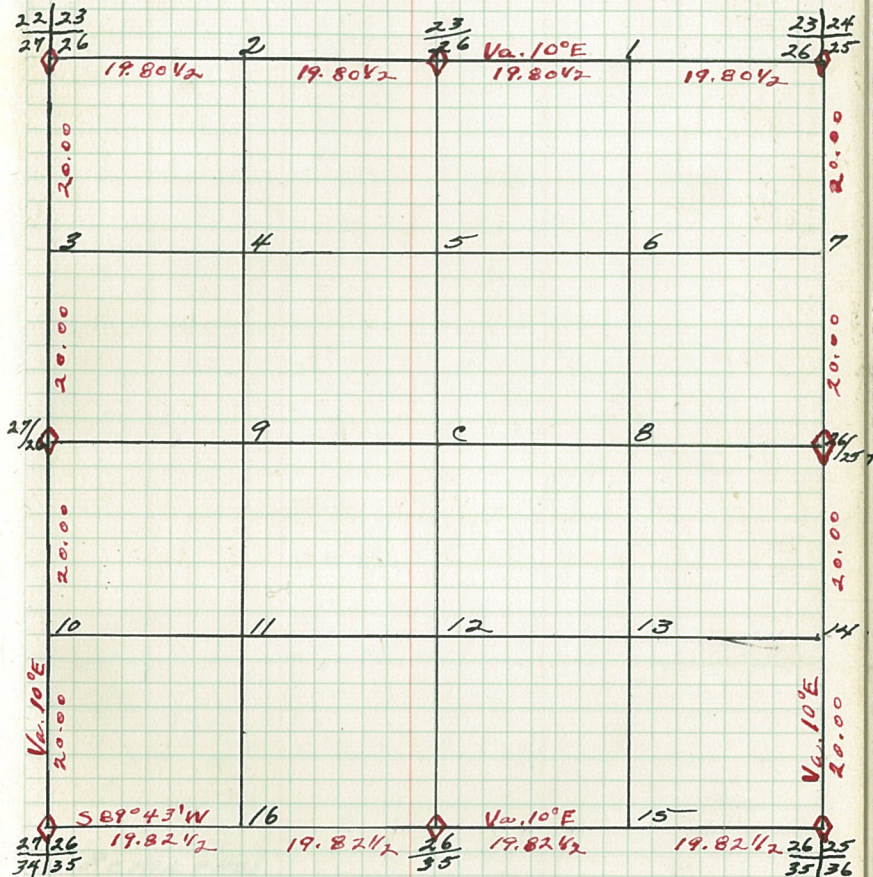
Remarks:

Original G.L.O. Corners

Cor.	Spec.	D.b.h.	Bear.	Dist.
23/24	W. Pine	16	S36W	.84
26/25	Elm	6	N 1W	3.82
	Birch	8	N67E	.57
			S24E	1.06
23	Tam.	8	N5E	2.53
26	"	8	S24E	-5.6
22/23	Birch	8	S88E	.25
27/26	"	8	S 10 W	.8
	B.P. of Gil	6	N 17 W	.60
			N25E	.11
27/26	Aspen	8	N83E	.46
	Elm	6	S80W	.23
27/26	W. Pine	6	N35W	.23
34/35	"	6	S12W	.21
	Birch	6	N56E	.27
	"	6	S42E	.26
26	Tam.	5	S81E	1.41
35	"	3	N82W	.32
26/25	Balsam	4	N81W	.6
35/36	"	2	S61W	.6
	W. Pine	12	S52E	.21
			N5E	-36
26/25	Sugar Maple	6	S38W	.84
	Aspen	3	N58E	.56

B.T.'s Found & W.T.'s Set

Cor.	Spec.	D.b.h.	Bear.	Dist.	B.T. or W.T.
------	-------	--------	-------	-------	--------------

Sec. 26-T147N-R29W
byB.T.'s & W.T.'s (cont.)

Cor.	Spec.	D.b.h.	Bear.	Dist.	B.T. or W.T.
------	-------	--------	-------	-------	--------------

Notes

Chains

Chains

Type + Cultural Map

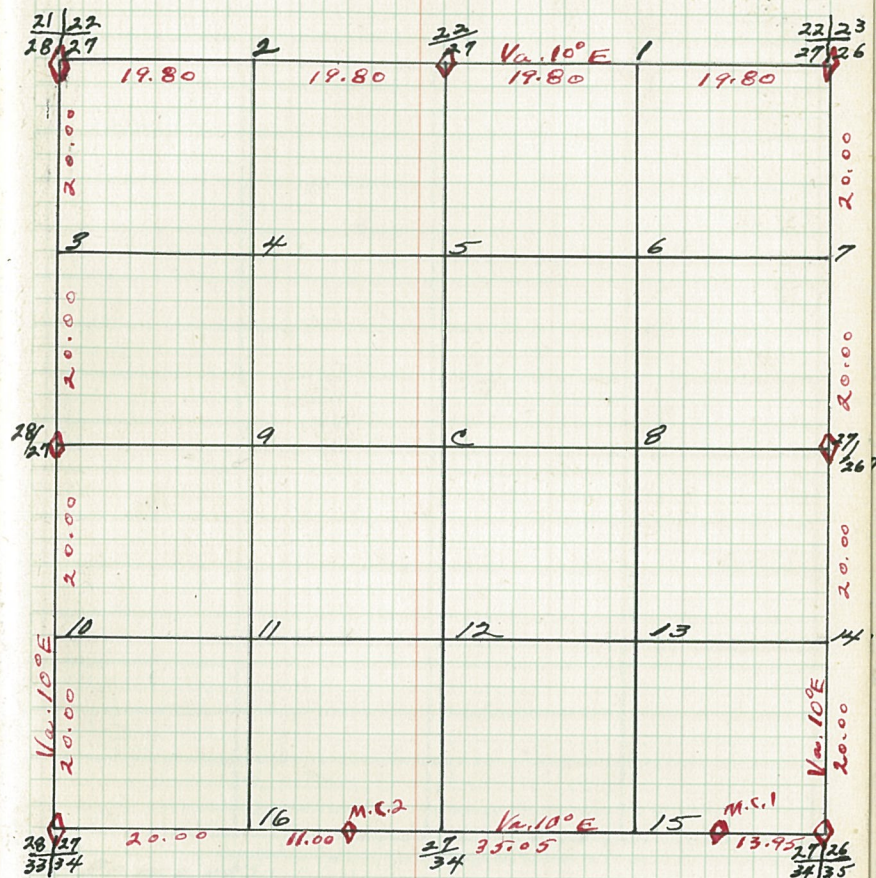
Remarks:

Original G.L.O. Corners

Cor.	Spec.	D.b.h.	Bear.	Dist.
22/23	Birch	8	S 88 E	.25
27/26	Aspen	6	S 10 W	.60
	Box Gil.	6	N 25 E	.11
22	W. Pine	24	N 52 E	1.90
27	Tam.	8	S 29 E	6.00
21/22	Sugar Maple	10	S 48 W	3.44
28/27	Pine Stub	3	S 27 W	3.22
	"	3	N 68 E	1.67
	"	3	N 10 W	2.03
28/27	Tam.	3	S 10 W	.12
	"	4	N 35 E	.33
28/27	Sugar Maple	10	N 2 W	.35
33/34	"	10	S 26 W	.63
	Ironwood	3	S 30 E	.85
	"	3	N 79 E	.57
27	X			
34	X			
27/26	W. Pine	6	N 35 W	.23
34/35	Birch	6	S 22 W	.21
	"	6	N 56 E	.27
	"	6	S 42 E	.26
27/26	Aspen	8	N 85 E	.46
	Elm	6	S 80 W	.23
M.C. 1	Tam.	4	S 61 W	.26
	"	4	N 79 W	.31
M.C. 2	Tam.	4	S 81 W	.89
	Spruce	3	N 82 W	1.32

B.T.'s Found & W.T.'s Set

Cor. Spec. D.b.h. Bear. Dist. B.T. W.T.

Sec. 27. T147N - R29W
by-

B.T.'s & W.T.'s (cont.)
Cor. Spec. D.b.h. Bear. Dist. B.T. W.T.

28.

Chains

Notes

Chains

28.

Type + Cultural Map.

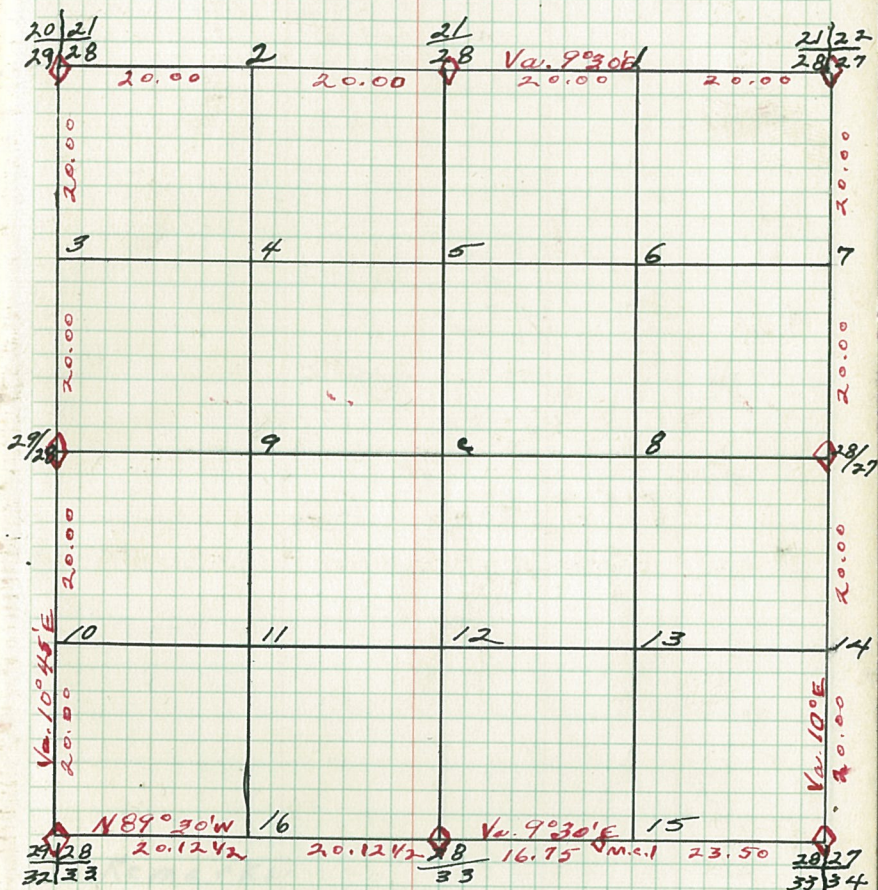
Remarks:

Original G.L.O. Corners

Cor.	Spec.	D.b.h.	Bear.	Dist.
21 22	Sugar Maple	10	S 48 W	3.44
28 27	"	10	S 27 W	3.22
	Fine stub	2	N 68 E	1.67
	"	2	N 10 W	2.03
21	Spruce	6	S 57 E	1.10
28	Tam.	6	N 66 E	.95
20 21	Tam.	5	N 77 W	.65
29 28	"	5	S 17 W	1.30
	"	5	N 88 E	.32
	"	5	S 2 E	1.08
29 28	Tam.	8	S 79 W	1.06
	"	12	S 65 E	.95
29 28	Open	12	N 62 W	.40
32 33	Tam.	8	S 35 W	1.05
	"	8	N 54 E	.20
	"	8	S 71 E	.70
28	Spruce	5	S 22 E	.36
33	"	3	N 35 W	.95
28 27	Sugar Maple	8	N 2 W	.65
	"	12	S 56 W	1.63
33 34	Ironwood	30	S 50 E	.53
	"	30	N 59 E	.37
28 27	Tam.	3	S 10 W	.12
	"	4	N 35 E	.33
M.C.1	Spruce	5	S 43 1/2 E	1.10

B.T.'s Found & W.T.'s Set

Cor.	Spec.	D.b.h.	Bear.	Dist.	B.T.	W.T.
------	-------	--------	-------	-------	------	------

Sec. 28 T147N - R29W
by -B.T.'s & W.T.'s (cont.)

Cor.	Spec.	D.b.h.	Bear.	Dist.	B.T.	W.T.
------	-------	--------	-------	-------	------	------

Notes

Chains

Chains

Type & Cultural Maps

Remarks:

Original G.L.O. Corners

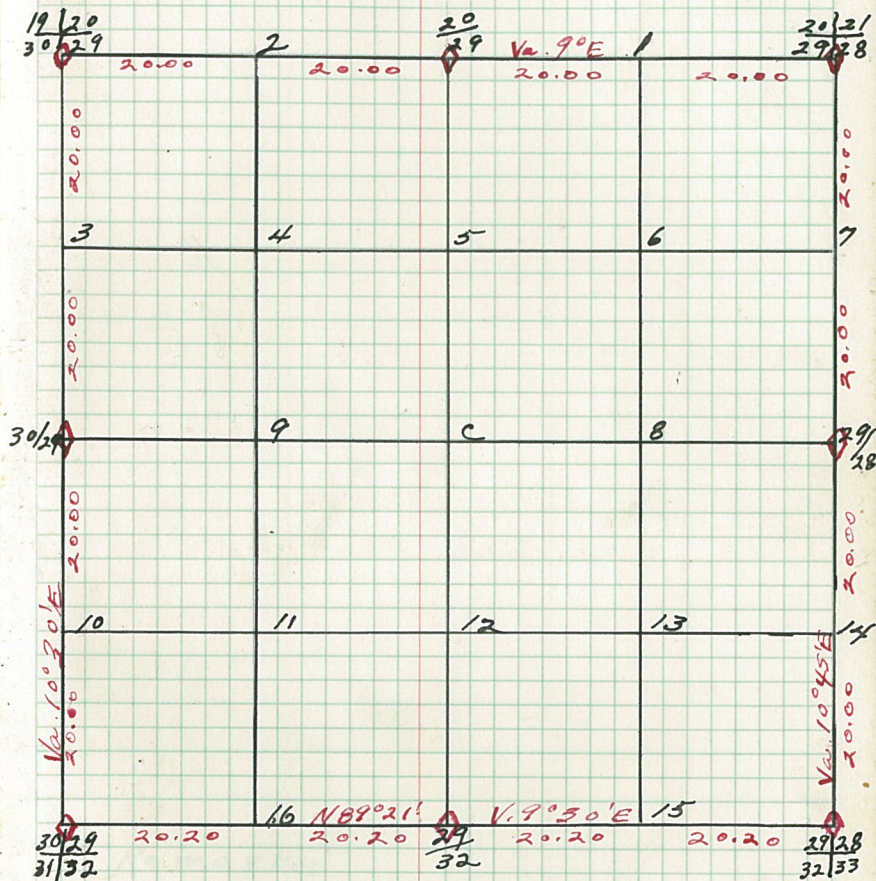
Cor.	Spec.	D.b.h.	Bear.	Dist.
20/21	Tam.	3	N77W	.65
29/28	"	3	S77W	1.30
	"	3	N88E	1.32
	"	3	S2E	1.08
20/29	Pine stub	24	S22W	.33
29	"	20	N5E	.40
19/20	Pine stub	24	N3E	.46
30/29	"	24	S60W	.61
	"	18	N22W	.62
	"	18	S74E	.6
30/29	Tam.	9	S7142E	1.01
30/29	Tam.	12	S48E	.47
31/32	Cedar.	6	N79E	.20
	"	3 stub	N88W	1.55
	"		S11W	1.76
29	Aspen	5	N89W	.47
32	"	5	S23W	.88
29/28	Aspen	3	N62W	.90
32/33	Tam.	3	S35W	1.05
	"	7	N54E	.20
	"	7	S71E	.70
29/28	Tam.	8	S79W	1.06
	"	12	S65E	.95

B.T.'s Found & W.T.'s Set

Cor.	Spec.	D.b.h.	Bear.	Dist.	BT ^r W.T.
------	-------	--------	-------	-------	----------------------

Sec. 29 T147N - R29W

ky-

B.T.'s & W.T.'s (cont.)

Cor.	Spec.	D.b.h.	Bear.	Dist.	B.T. ^r W.T.
------	-------	--------	-------	-------	------------------------

Notes

Chains

Chains

Type & Cultural Map

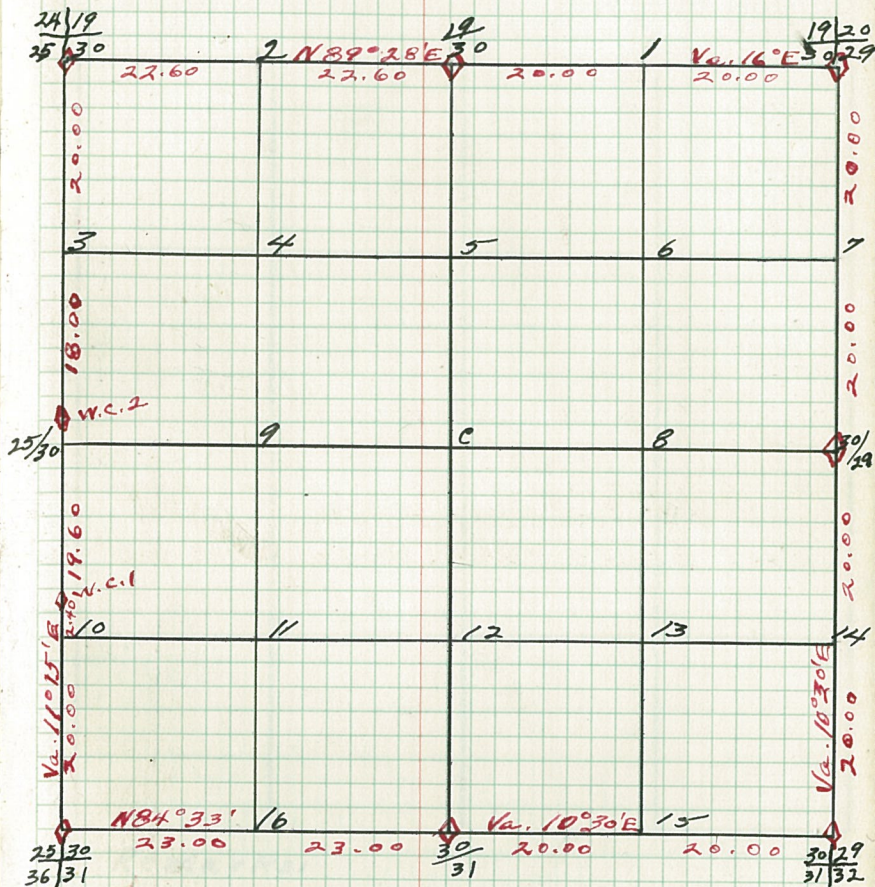
Remarks:

Original G.L.O. Corners

Cor.	Spec.	D.b.h.	Bear.	Dist.
19/20	pine stub	2.4	N13E	.46
30/29	"	2.4	S60W	.61
	"	2.4	N22W	.62
	"	1.8	S74E	.6
19/30	pine stub	2.4	S2W	1.00
30/29	Birch	7	N2E	.9
24/19	Tam.	3	N2E	.17
25/30	"	3	N24W	.23
	"	3	S30W	.4
	"	3	S77E	.17
25/30	X			
25/30	cedar	0	N32E	.4
	"	2	N61W	.14
	"	2	S30W	.15
36/31	"	5	S74E	.21
30/31	Aspen	4	N38W	.70
	"	4	S70W	.64
	"	4	S40E	.47
30/29	Tam.	12	N70E	.20
31/32	cedar	6	N88W	1.53
	"	stub	S11W	.16
30/29	Tam.	7	S71/2E	1.07
w.c.1.	Tam.	6	S17W	.40
	"	3	S30E	.52
w.c.2.	Tam.	4	N59E	.20
	"	3	N88W	.60

B.T.'s Found + W.T.'s Set

Cor. Spec. D.b.h. Bear. Dist. B.T. or W.T.

Sec. 30. T147N-R29W
64-B.T.'s & W.T.'s (cont.)

Cor. Spec. D.b.h. Bear. Dist. B.T. or W.T.

Notes

Chains

Chains

Type + Cultural Map

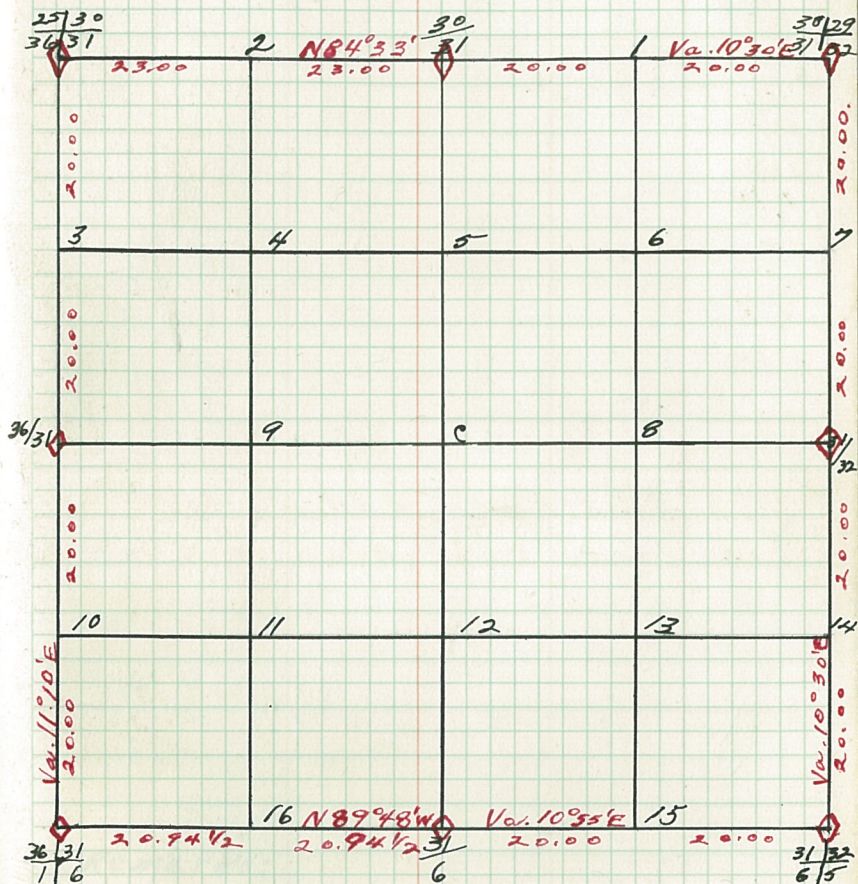
Remarks:

Original G.L.O. Corners

Cor.	Spec.	D.b.h.	Bear.	Dist.
30/29	Tam.	15	S48E	.49
31/32	Cedar	stob	N78E	.20
	"		N88W	1.53
	"		S11W	.16
30	Aspen	4	N38W	.90
31	"	4	S70W	.64
25/30	cedar	8	N32E	.9
36/31	"	7	N61W	.14
	"	7	S30W	.15
	"	5	S74E	.21
36/31	W. Pine	10	S74W	.22
	Poplar	3	N9E	.12
26/31	Tam.	6	N19E	.34
7/6	"	6	N17W	.22
	"	6	S20W	.30
	"	6	S75E	.23
9/6	N. Pine	20	S72W	.10
6	W. Pine	10	N65E	.27
31/32	Birch	8	N62E	.35
6/5	Poplar	3	N42W	.43
	Birch	3	S44W	.53
31/32	Spruce	14	N50W	.17

B.T.'s Found & W.T.'s Set.

Cor. Spec. D.b.h. Bear. Dist. B.T. W.T.

Sec. 31 T147N-R29W
by-

B.T.'s & W.T.'s (cont.)
Cor. Spec. D.b.h. Bear. Dist. B.T. W.T.

Notes

Chains

Chains

Type + Cultural Map.

Remarks:

Original G.L.O. Corners

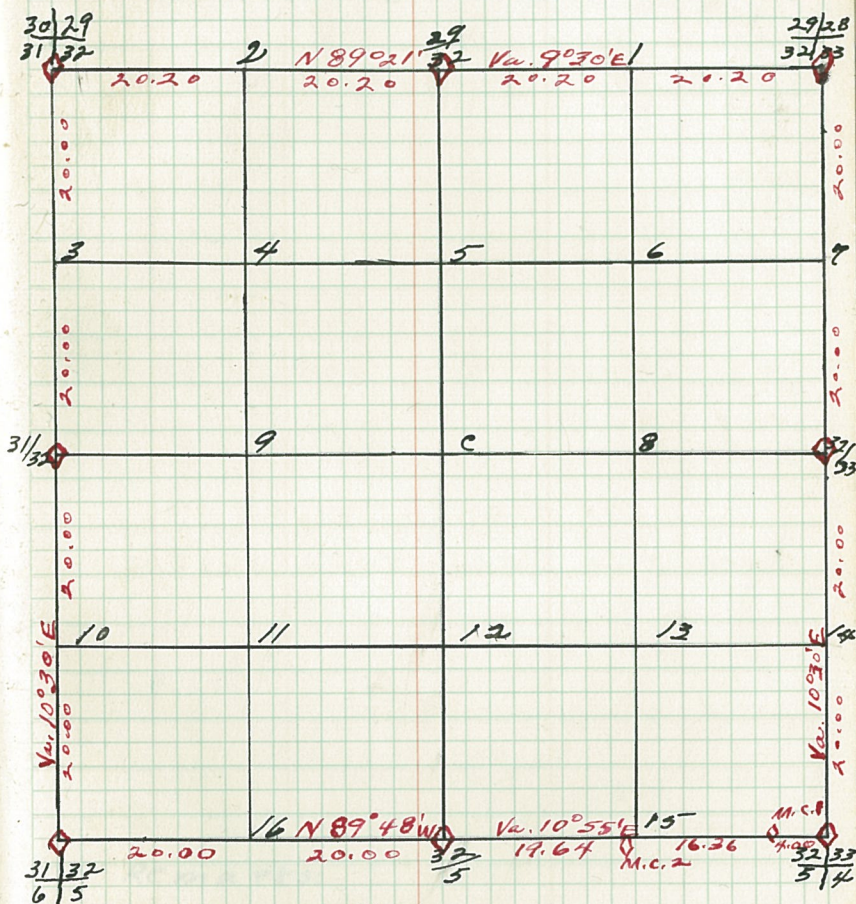
Cor.	Spec.	D.b.h.	Bear.	Dist.
29/28	Aspen	3	N62W	1.05
32/33	Tam.	7	S25W	.20
	Tam.	7	S71E	.10
29	Aspen	5	N89W	.47
32	"	5	S23W	.88
30/29	Tam.	12	S48E	.44
31/32	Cedar	6	N77E	.20
	"	stub	N88W	1.53
	"		S11W	.16
31/32	spruce	14	N50W	.17
31/32	Birch	8	N62E	.35
6/5	Poplar	3	N42W	.43
	Birch	3	S44W	.53
32	Tam.	3	N34W	.7
5	"	3	S3E	.12
32/33	spruce	3	N47E	.11
5/4	Tam.	3	N37W	.8
	spruce	3	S62E	.31
	"	3	N83E	.12
32/33	"	3	S73W	.6
M.C.1	Tam.	3	S76E	.30
	"	3	N45E	.16
M.C.2	Tam.	3	N82W	.44
	"	3	S70W	.53

B.T.'s Found + W.T.'s Set

Cor.	Spec.	D.b.h.	Bear.	Dist.	B.T.°W.T.
------	-------	--------	-------	-------	-----------

Sec. 32 T147N - R29W

by-



B.T.'s + W.T.'s (cont.)
 Cor. Spec. D.b.h. Bear. Dist. B.T.°W.T.

Notes

Chains

Chains

Type + Cultural Map

Remarks:

34.

Notes

Chains

Chains

Type + Cultural Map

34.

REMARKS:

Original G.L.O. Corners

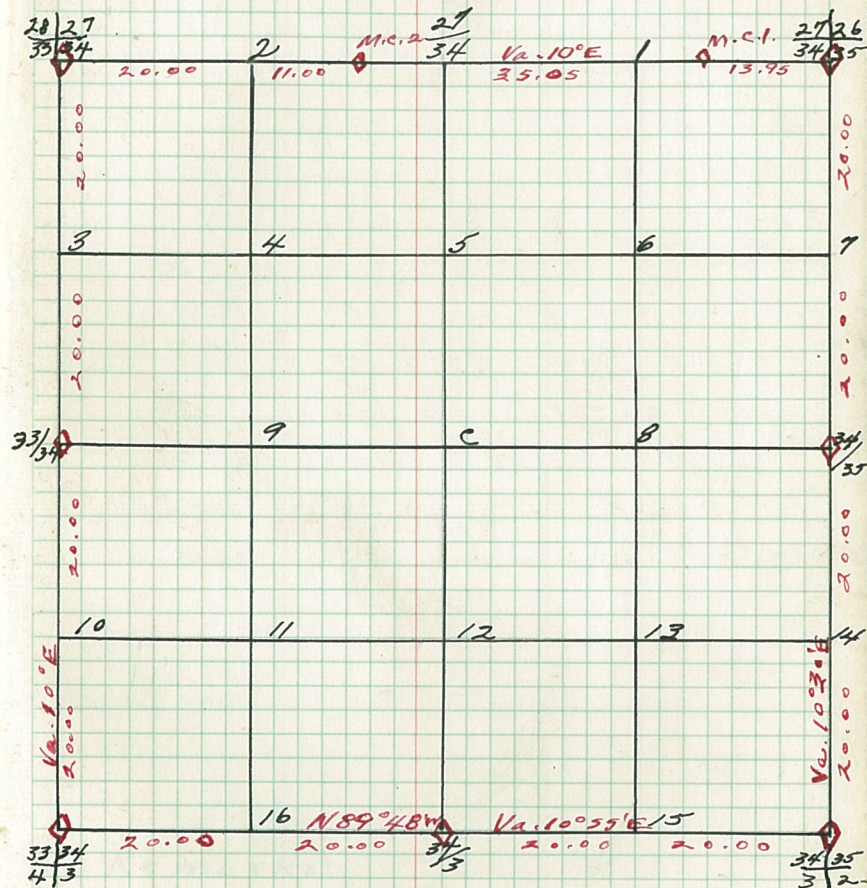
Cor.	Spec.	D.b.h.	Bear.	Dist.
27/26	W. Pine	6.6	N35W	.23
34/35	Birch	6.6	S12W	.27
	"	6	N56E	.26
	"		S42E	
27/34	X			
28/27	Sugar Maple	1.8	N2W	.55
33/34	"	1.8	S56W	.63
	"		S38E	.35
	Ironwood		N57E	.51
33/34	Elm	1.3	S57W	.24
33/34	Linden	1.3	N7E	1.85
4/3	Linden	1.4	N50E	.3
34	Maple	1.4	N35W	.23
3	"		S42W	.26
	"		S56	.10
34/35	Tam.	1.3	N30E	.24
	"		S54E	.34
34/35	Poplar	1.3	S65E	1.35
3/2	No other trees		N86E	1.36
34/35	Aspen	1.0	N4W	1.19
	"		N5E	1.38
M.C. 1.	Tam.	4	S61W	.26
	"		N79W	.31
M.C. 2.	Tam.	4	S81W	.89
	Spruce	3	N82W	1.32

B.T.'s Found & W.T.'s Set.

Cor.	Spec.	D.b.h.	Bear.	Dist.	B.T.	W.T.
------	-------	--------	-------	-------	------	------

Sec. 34 T147N R29W

57-



B.T.'s & W.T.'s (cont.)
 Cor. Spec. D.b.h. Bear. Dist. B.T. or W.T.

Notes

Chains

Chains

Type + Cultural MAP

Remarks:

36.

NotesChains

LINE E of F / 4 cor.

5 c/8 c
 10 chs. Ad
 13 chs. Ta
 32 chs. Ad/7c/Bc
 38 chs. 7c/te
 44 chs. Tab
 54 chs. Ac
 56 chs. Tab
 62 chs. Ac/3c

LINE S. of W. 1/4 cor.

8 c. 5 c
 8 chs. 7b
 19 chs. 7b
 27 chs. Ad/7c
 31 chs.
 40.48 chs. S. cor

LINE E. of S. Sec. 36/36

A c/3b/3c
 38.05 chs. 7c
 58 c

Chains

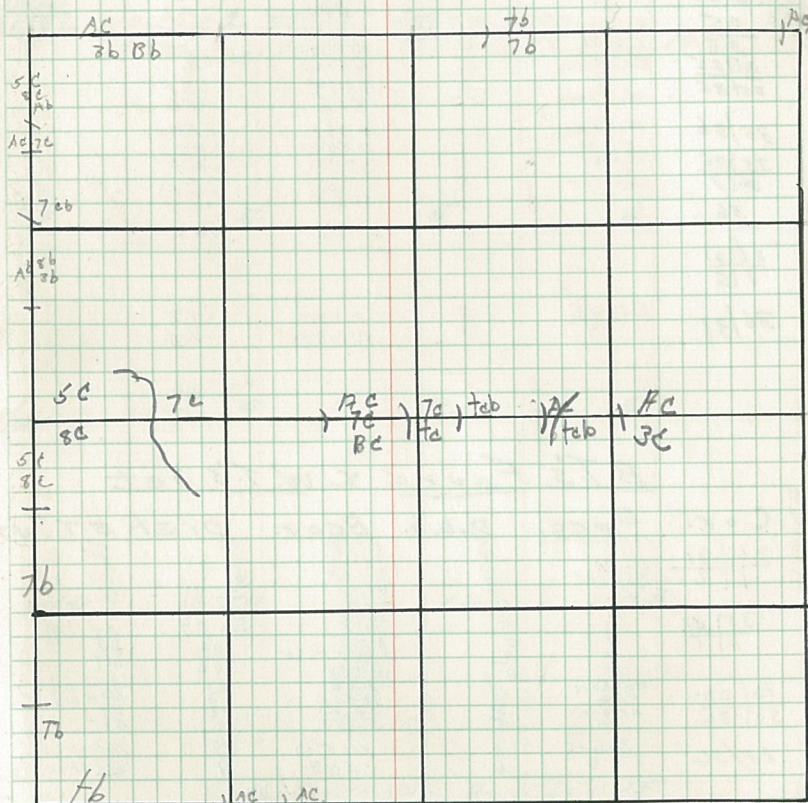
LINE N. of E. W. 1/4 cor.

50/8c
 70 chs. Freeway
 12 chs. Ab 8b 3b
 29 chs. 7ab
 39.76 S. cor

LINE E. of S. Sec. 36-1

7b
 19 chs. 50 A c 3 c
 26 chs. Ad/7c

36.

Type & Cultural Map

Remarks:

Original G.L.O. Corners

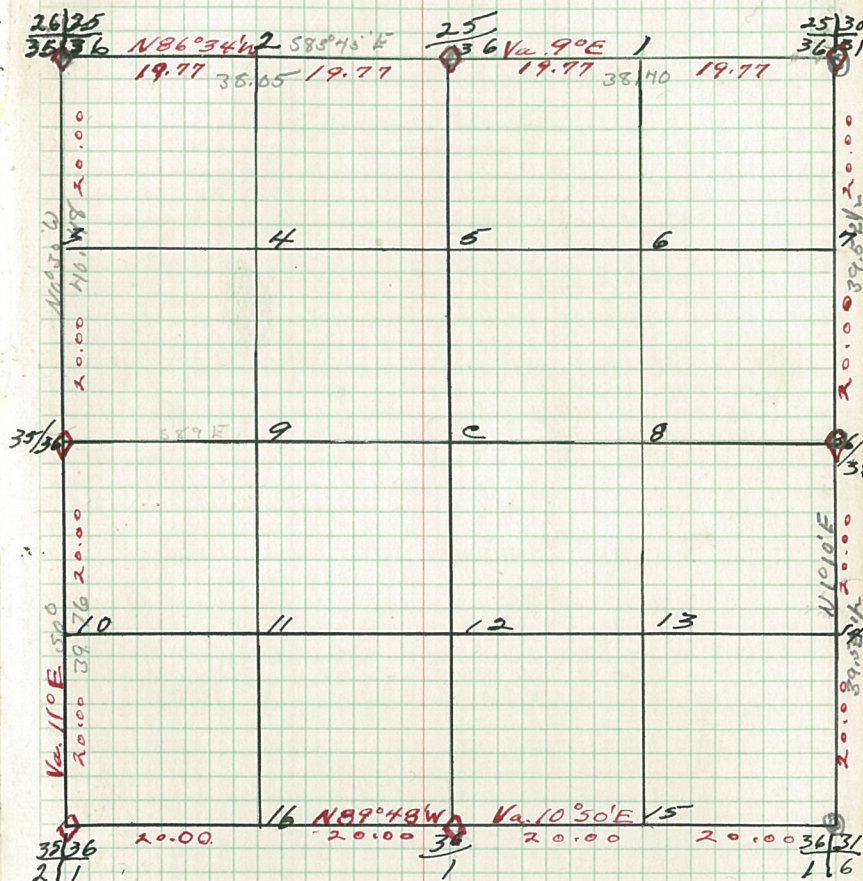
Cor.	Spec.	D.b.h.	Bear	Dist.
26/30	Tam.	5	S47W	.15
36/31	cedar	4	N63W	.88
	"	4	N77E	.21
25	spruce stub	6	S35E	.25
36	Cedar	8	N11W	.25
24/25	Balsam	5	N81W	.6
35/36	"	6	S61W	.21
	W. Pine	12	S52E	.36
	"	12	N5E	.88
	"	12	N54W	.98
35/36	Tam.	8	N40E	.28
2/7	cedar	5	N52W	.8
	"	3	S23W	.54
	"	3	S22E	.64
36	Spruce	8	S40E	1.09
36/31	Birch	3	N77E	.17
	"	3	N67W	.26

B.T.'s Found & W.T.'s set

Cor.	Spec.	D.b.h.	Bear.	Dist.	B.T.	W.T.
26/31	ASP	4	N73W	30	87	87
	ELM	4	S12W	31	87	87
	ASP	4	N66E	31	87	87
35/36	"	4	N83W	24	12	87 + wt.
	"	4	N77W	24	52	87
	"	4	S67W	24	87	87
	"	3	S71E	20	87	87
	"	3	N79E	25	87	87
	"	3	N75E	30	87	87
	"	5	N75E	30	87	87
26/25	Balsam	4	N58E	23	87 + wt.	87 + wt.
35/36	ASP	4	N56W	10	87	87
	"	4	S53W	26	87	87
25/36	Birch	6	N66W	39	87 + wt.	87 + wt.
	"	6	S66E	9	87 + wt.	87 + wt.

Sec. 36 T147N-R29W.

by - Holm



B.T.'s & W.T.'s (cont.)

Cor. Spec. D.b.h. Bear. Dist. B.T. W.T.