

FIELD

T.147N. R.29W.

FIELD T.147N. R.29W.

#123

EUGENE DIETZGEN CO.

DRAWING MATERIALS, MATHEMATICAL and
SURVEYING INSTRUMENTS

Chicago New York San Francisco New Orleans Pittsburg Toronto

Distances from Center of Roadway for Cross-Sectioning
Roadway 16 feet wide. Side Slopes 1 on 1.
For Single Track Embankment.

H	0	.1	.2	.3	.4	.5	.6	.7	.8	.9	H
0	8.0	8.1	8.2	8.3	8.4	8.5	8.6	8.7	8.8	8.9	0
1	9.0	9.1	9.2	9.3	9.4	9.5	9.6	9.7	9.8	9.9	1
2	10.0	10.1	10.2	10.3	10.4	10.5	10.6	10.7	10.8	10.9	2
3	11.0	11.1	11.2	11.3	11.4	11.5	11.6	11.7	11.8	11.9	3
4	12.0	12.1	12.2	12.3	12.4	12.5	12.6	12.7	12.8	12.9	4
5	13.0	13.1	13.2	13.3	13.4	13.5	13.6	13.7	13.8	13.9	5
6	14.0	14.1	14.2	14.3	14.4	14.5	14.6	14.7	14.8	14.9	6
7	15.0	15.1	15.2	15.3	15.4	15.5	15.6	15.7	15.8	15.9	7
8	16.0	16.1	16.2	16.3	16.4	16.5	16.6	16.7	16.8	16.9	8
9	17.0	17.1	17.2	17.3	17.4	17.5	17.6	17.7	17.8	17.9	9
10	18.0	18.1	18.2	18.3	18.4	18.5	18.6	18.7	18.8	18.9	10
11	19.0	19.1	19.2	19.3	19.4	19.5	19.6	19.7	19.8	19.9	11
12	20.0	20.1	20.2	20.3	20.4	20.5	20.6	20.7	20.8	20.9	12
13	21.0	21.1	21.2	21.3	21.4	21.5	21.6	21.7	21.8	21.9	13
14	22.0	22.1	22.2	22.3	22.4	22.5	22.6	22.7	22.8	22.9	14
15	23.0	23.1	23.2	23.3	23.4	23.5	23.6	23.7	23.8	23.9	15
16	24.0	24.1	24.2	24.3	24.4	24.5	24.6	24.7	24.8	24.9	16
17	25.0	25.1	25.2	25.3	25.4	25.5	25.6	25.7	25.8	25.9	17
18	26.0	26.1	26.2	26.3	26.4	26.5	26.6	26.7	26.8	26.9	18
19	27.0	27.1	27.2	27.3	27.4	27.5	27.6	27.7	27.8	27.9	19
20	28.0	28.1	28.2	28.3	28.4	28.5	28.6	28.7	28.8	28.9	20
21	29.0	29.1	29.2	29.3	29.4	29.5	29.6	29.7	29.8	29.9	21
22	30.0	30.1	30.2	30.3	30.4	30.5	30.6	30.7	30.8	30.9	22
23	31.0	31.1	31.2	31.3	31.4	31.5	31.6	31.7	31.8	31.9	23
24	32.0	32.1	32.2	32.3	32.4	32.5	32.6	32.7	32.8	32.9	24
25	33.0	33.1	33.2	33.3	33.4	33.5	33.6	33.7	33.8	33.9	25
26	34.0	34.1	34.2	34.3	34.4	34.5	34.6	34.7	34.8	34.9	26
27	35.0	35.1	35.2	35.3	35.4	35.5	35.6	35.7	35.8	35.9	27
28	36.0	36.1	36.2	36.3	36.4	36.5	36.6	36.7	36.8	36.9	28
29	37.0	37.1	37.2	37.3	37.4	37.5	37.6	37.7	37.8	37.9	29
30	38.0	38.1	38.2	38.3	38.4	38.5	38.6	38.7	38.8	38.9	30
31	39.0	39.1	39.2	39.3	39.4	39.5	39.6	39.7	39.8	39.9	31
32	40.0	40.1	40.2	40.3	40.4	40.5	40.6	40.7	40.8	40.9	32
33	41.0	41.1	41.2	41.3	41.4	41.5	41.6	41.7	41.8	41.9	33
34	42.0	42.1	42.2	42.3	42.4	42.5	42.6	42.7	42.8	42.9	34
35	43.0	43.1	43.2	43.3	43.4	43.5	43.6	43.7	43.8	43.9	35
36	44.0	44.1	44.2	44.3	44.4	44.5	44.6	44.7	44.8	44.9	36
37	45.0	45.1	45.2	45.3	45.4	45.5	45.6	45.7	45.8	45.9	37
38	46.0	46.1	46.2	46.3	46.4	46.5	46.6	46.7	46.8	46.9	38
39	47.0	47.1	47.2	47.3	47.4	47.5	47.6	47.7	47.8	47.9	39
40	48.0	48.1	48.2	48.3	48.4	48.5	48.6	48.7	48.8	48.9	40

Example—If point is 22.6 ft. above grade, how far should it be from center line to be a slope stake point? Ans. from Table 30.6. For same slopes but other widths of roadbed, correct above figures by one-half difference in width of roadbed; thus in example above, for 20 ft. roadbed distance will be $30.6 + (20 - 16) \div 2$ or 2 ft. added to 30.6 = 32.6. For slopes of 1 on $1\frac{1}{2}$ see inside of back cover.

Copyright, 1914, by Eugene Dietzgen Co.

T 147 N. R. 29 W.

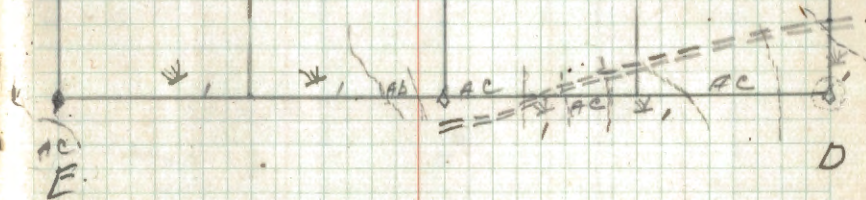
S.O.

The paper stock of this book is made of a high grade 50% rag paper having a water resisting surface. This book is sewed with Bing Special Enamel Waterproof Thread.

Made in U. S. A.

B

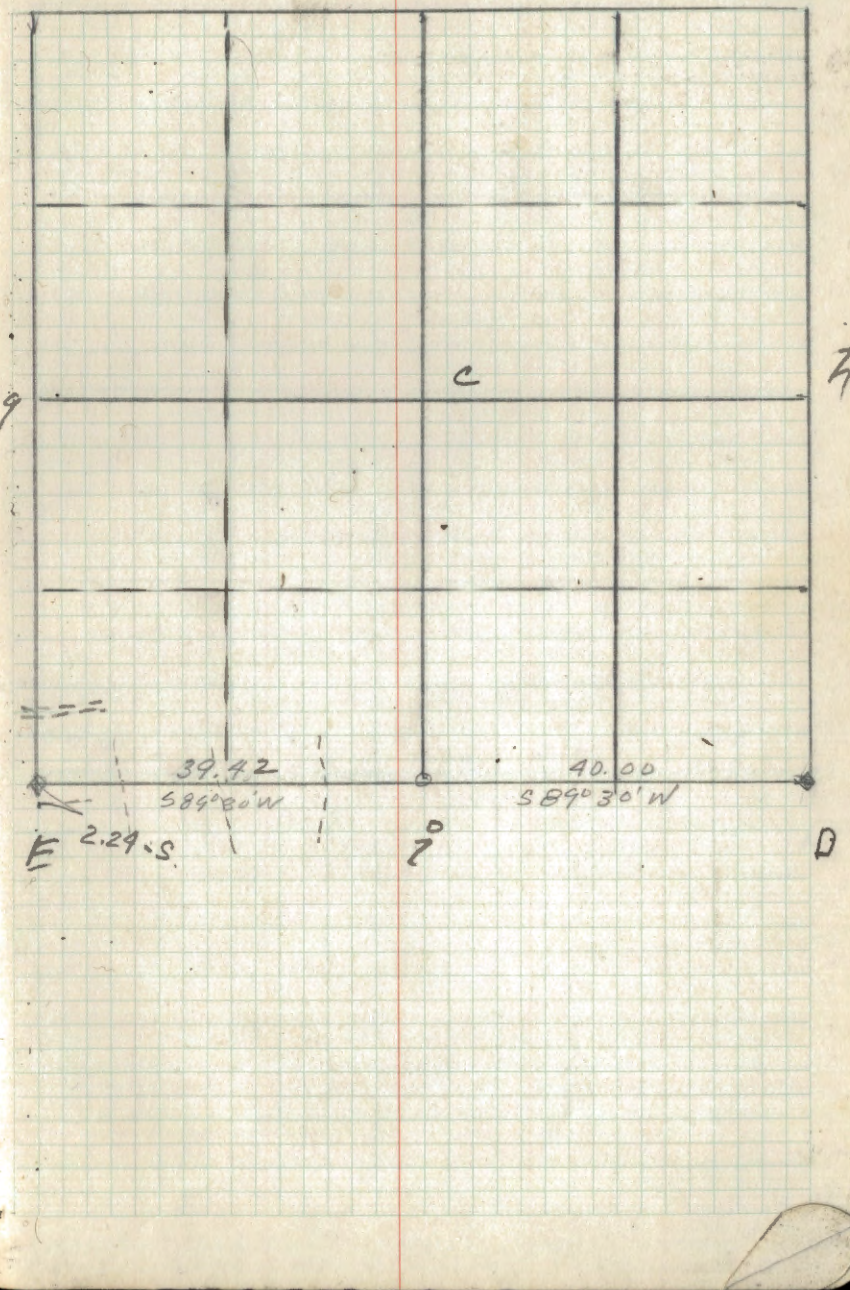
9A



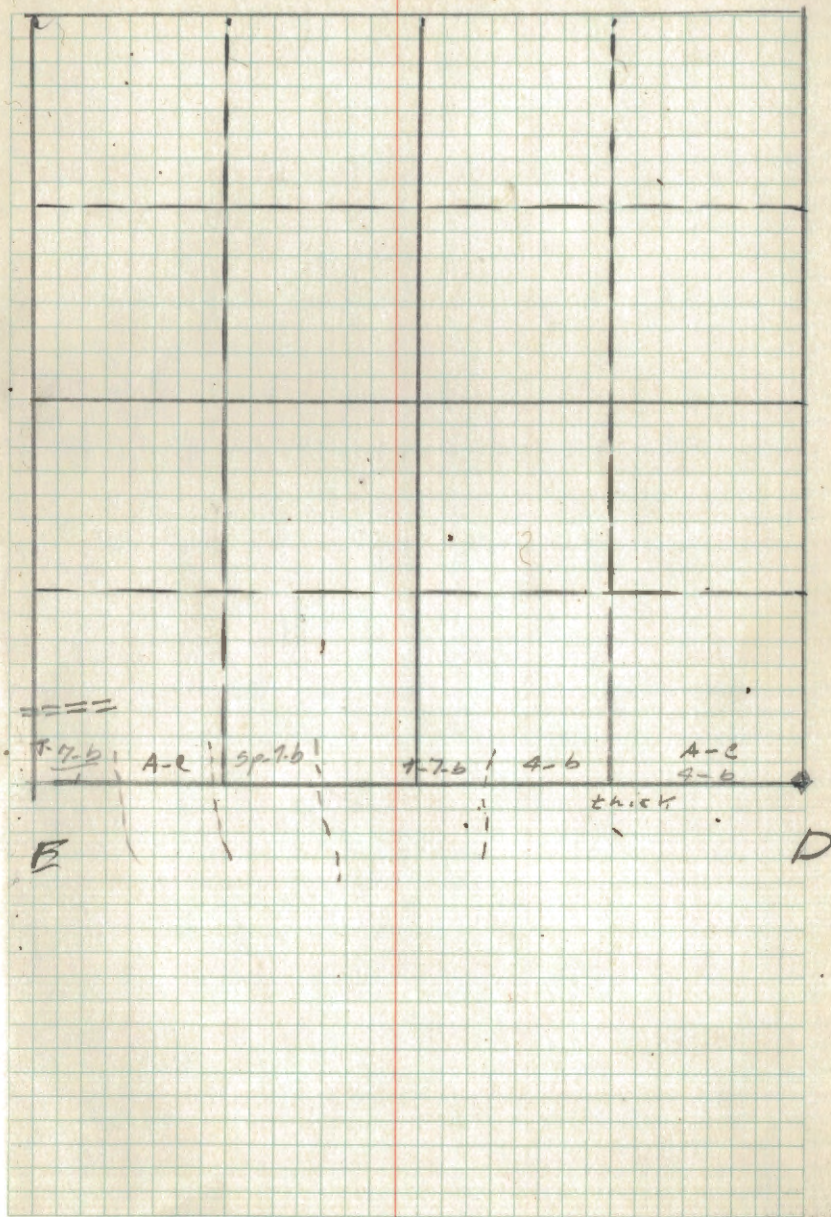
Cor at	Spec	Dig	Bearing	Dist	Remarks
	Cedar	5"	S39°W	72	0 1/2 BT. OK
D	Cedar	5"	S36°E	66	0 1/2 BT. OK
✓	Aspen	10"	S59°E	35	FS. PIS. 7/11
					Iron Pin 1" x 24" and 4" x 40" post. 7/15/39 J.S.
E	Refer to A-See. 16				

B

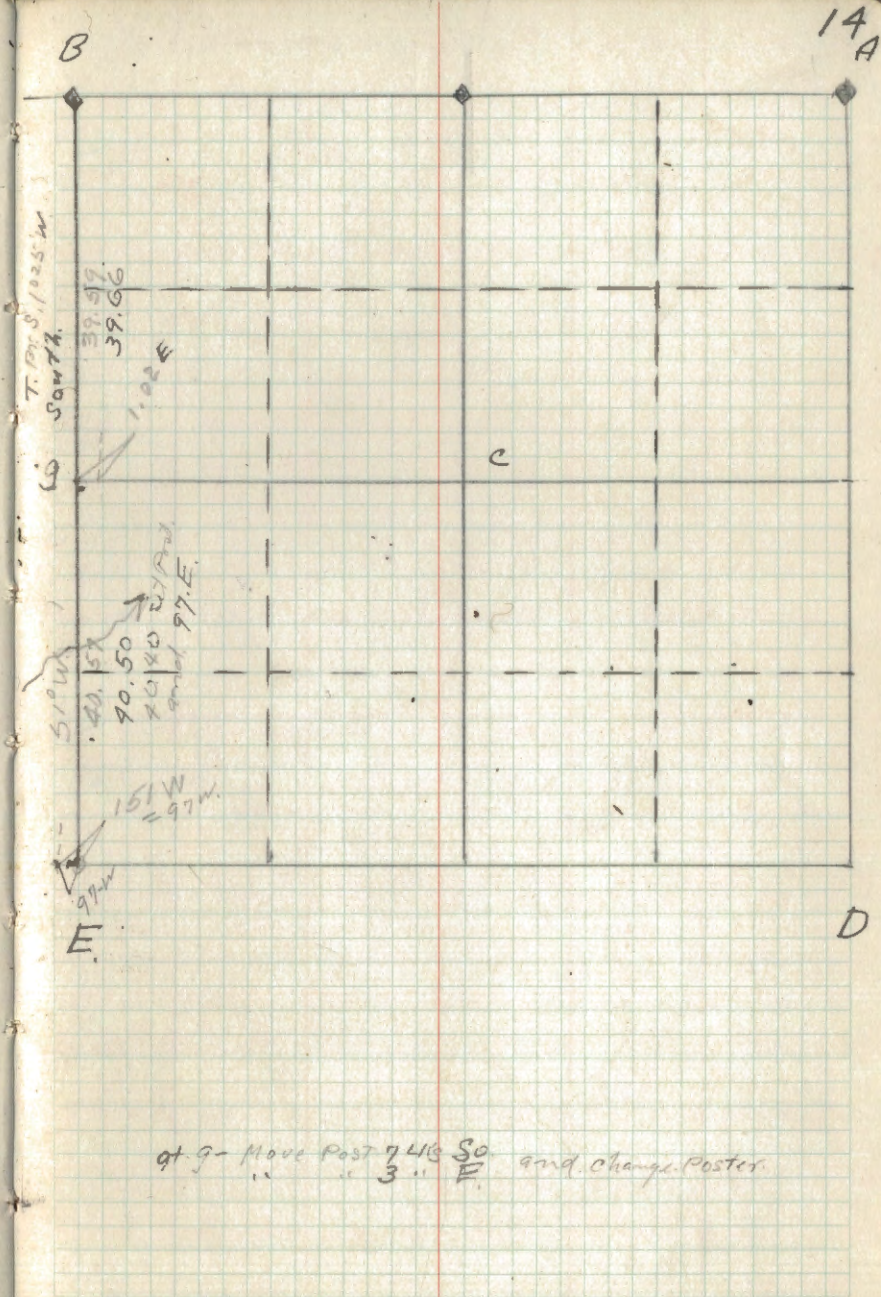
f

10
A

B



COR. at	Spec.	Dia	Bearing	Dist	Remarks
9	Tann K	8	S 83° E	7	Orig BTs + FS Poster
✓	Tann K	6	N. 64° W	22	Orig BT H. Hugrel
	Cedar	3	N 59° W	19 1/2	FS. Poster 12/10/39.



$$\frac{a-c}{7-59-b}$$

$$\frac{a-c}{7-59-b}$$

$$\frac{a-c}{7-59-b}$$

$$\frac{a-c}{7-59-b}$$

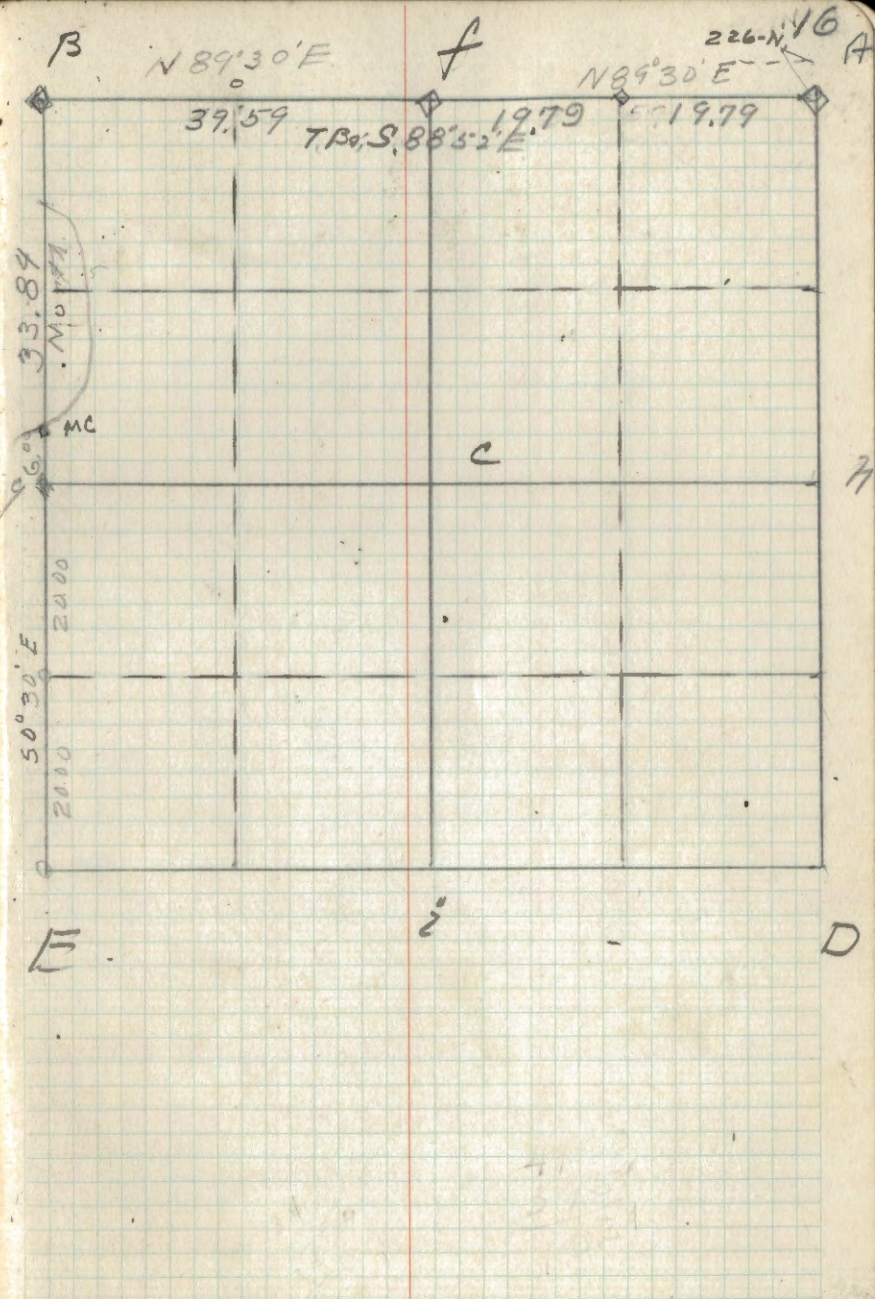
$$\frac{a-c}{7-59-b}$$

$$\frac{a-b}{7-59-b}$$

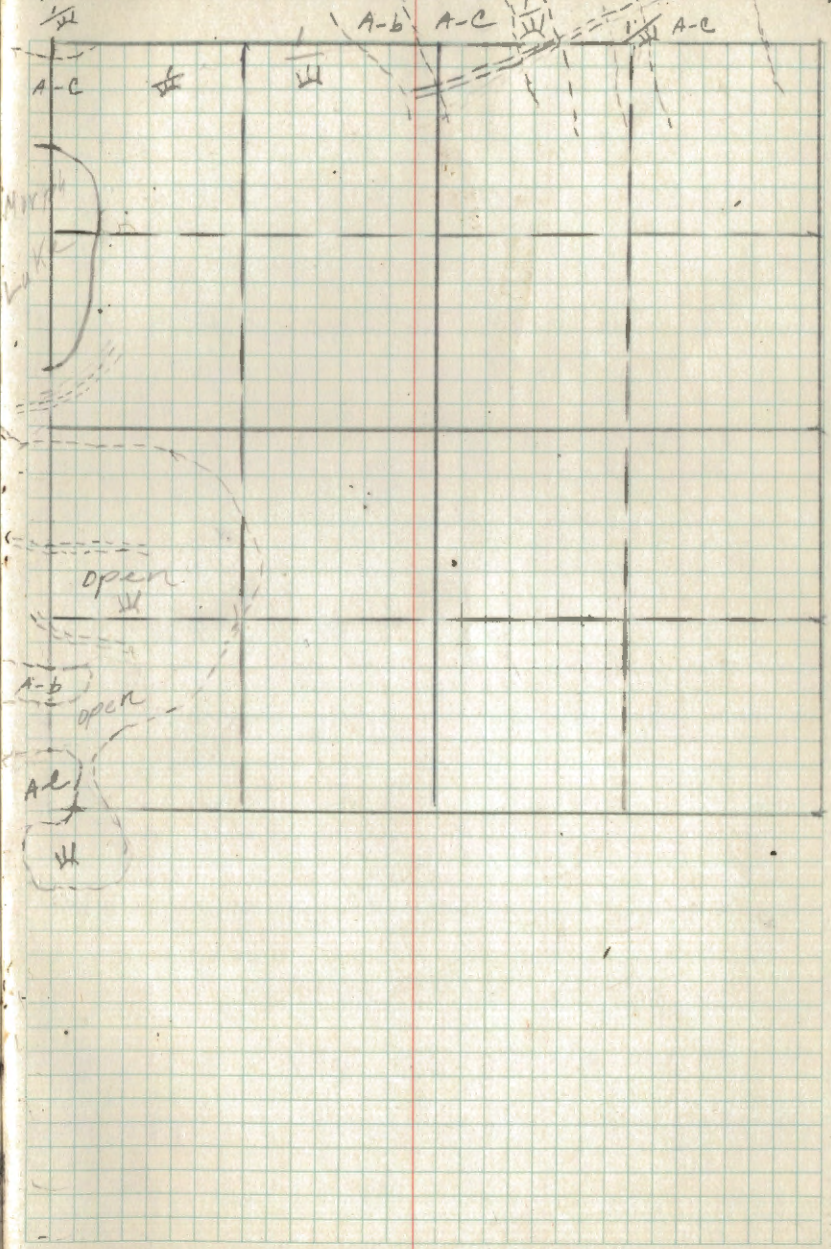
$$\frac{a-b}{7-59-b}$$

$$\frac{a-b}{7-59-b}$$

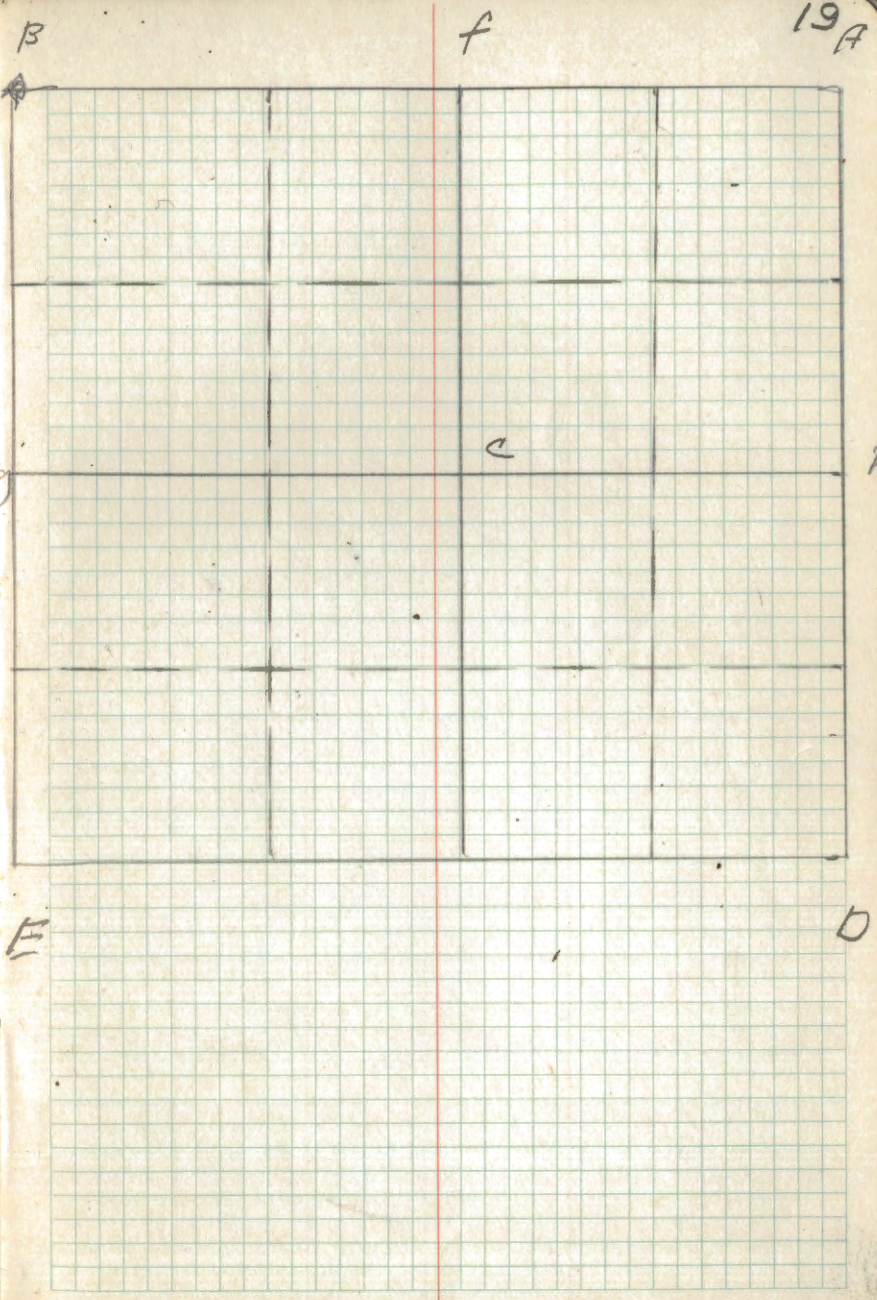
COR at	Spec	Dir Baring	Dist	Remarks
✓ M. Ngg.	Tam.K	9" S. 79° E	8	} Orig. BTs. 4x4x48 Tam.K 56k 2/1/40 F.S. Poster JAG
	"	9" S 74° W	38	
	"	6" N 80° E	14	
✓ B	Willow	4" S. 2° E	243	} 3x3 x 48 Cedar Post F.S. Poster CR 2/1/40 JAG
	Dum. Tam.	7" S 4° E	226	
✓ 9	Tam.K	4 N 34° W	49	} MKd New BTs. 4x4x48 Tam.K Post 2/1/40 F.S. Poster JAG Est. from M.C. 600kts. North
	"	4 N 59° E	40	
	"	3 N 46° W	25	
A	Aspen	9" S 45° E	6	} MKd New BTs. 4x4x48 Tam.K Post 2/2/40 F.S. Poster JAG
	Aspen	9" N 74° W	29	
	Aspen	9" N 45° W	1	
F	Burr Oak	6" S 64° W	11	} F.S. Poster 3x3 x 50 Elm. Post MKd New BTs. 2/2/40 JAG
	Ironwood	5" S 10° E	23	



B



Corr'd	Spec	Dia	Bearing	Dist	Remarks
✓ B.	Aspen.	14"	S 69° E	15 1/2	Counters
"	"	18"	N. 75 W.	23 1/2	" " old scribble and
"	"	4"	S 3 E,	11	Iron strip 1 1/2" x 1/4"
			2/1/40	JAG	Set new post Aspen 4' x 4"



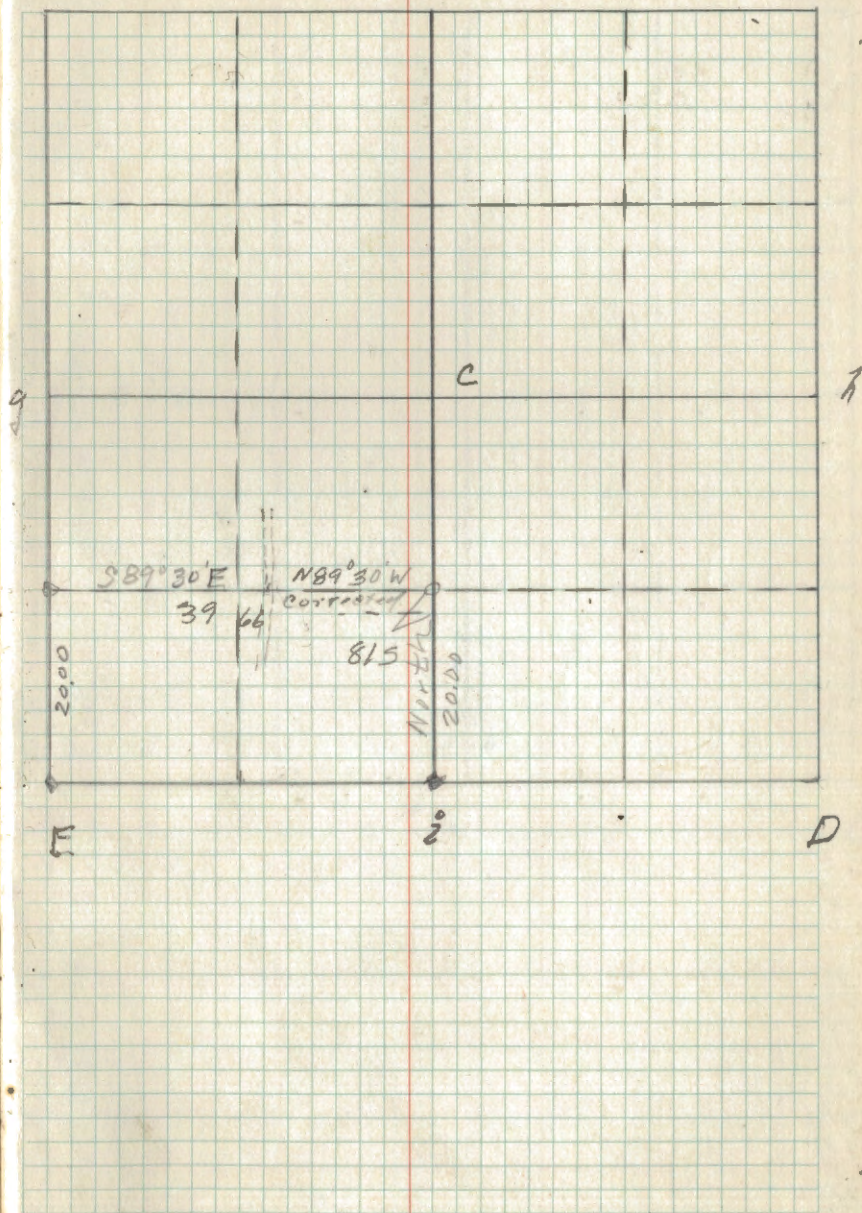
T147N
R29W
Sec. 19

COR. at	spec.	Dia Bearing	Dist	Remarks
z				Refer to F 26

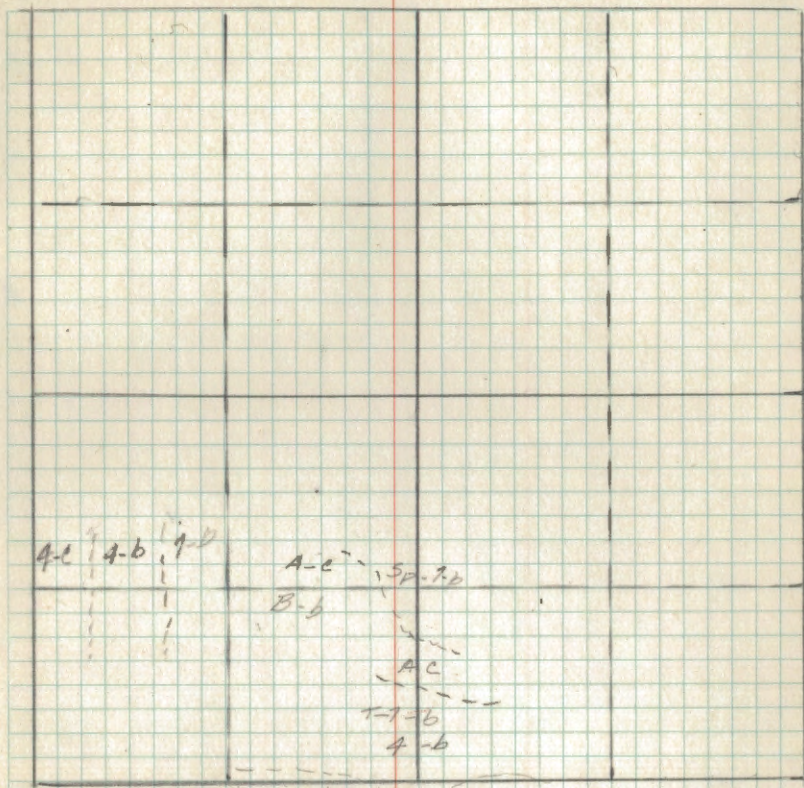
B

f

23A



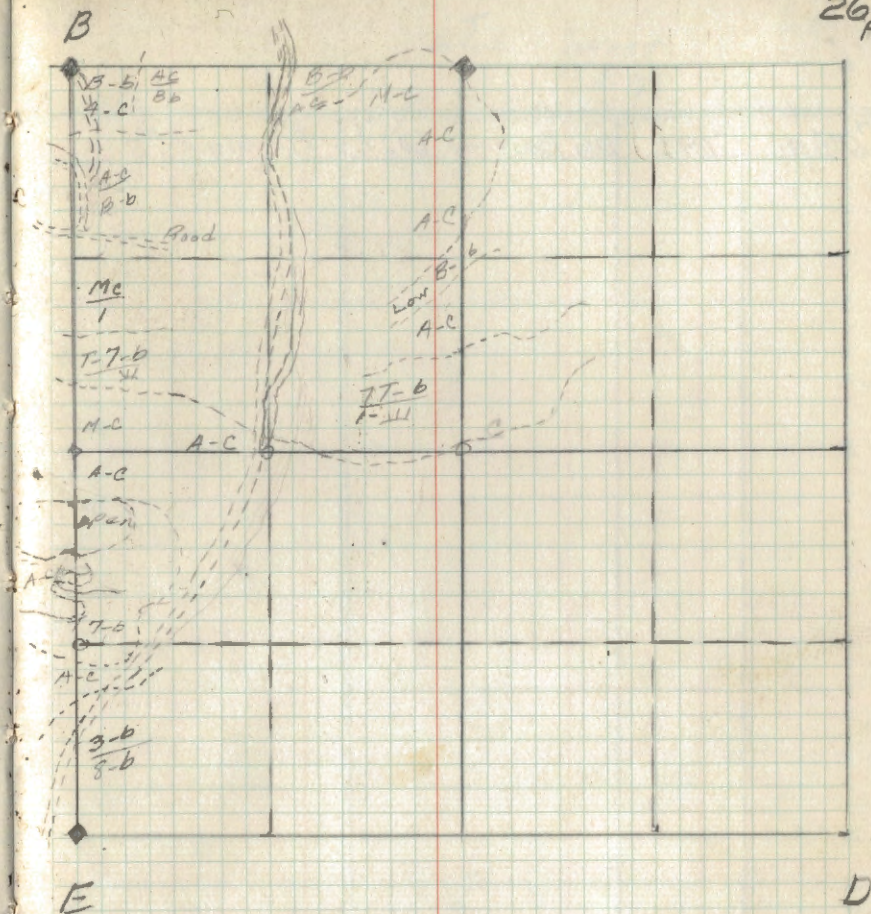
B



E

D

3- Corrected 1/16 cor.
Basswood 8" N.35°E. 94rs. FS Pastor.



B

$$\frac{A-C}{B-C}$$

T-7a

AC

T-7b

B-C

T-7-b

AC-B-b

M-C

E.

D

COR. at Spc dia Bearing Dist Remarks

9. Tame's 9' S 71 1/2° E 101 Govt work

B

f

29
A A

90

100
40

E

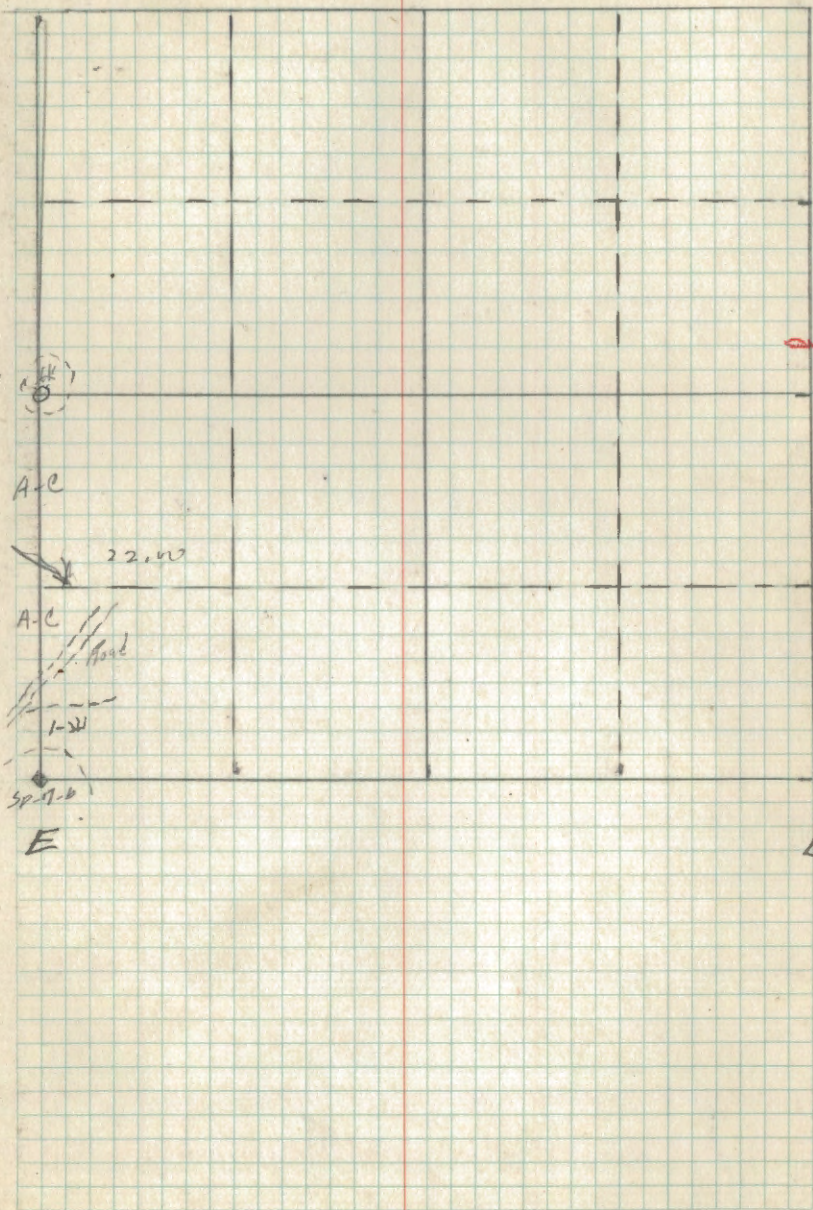
i

D

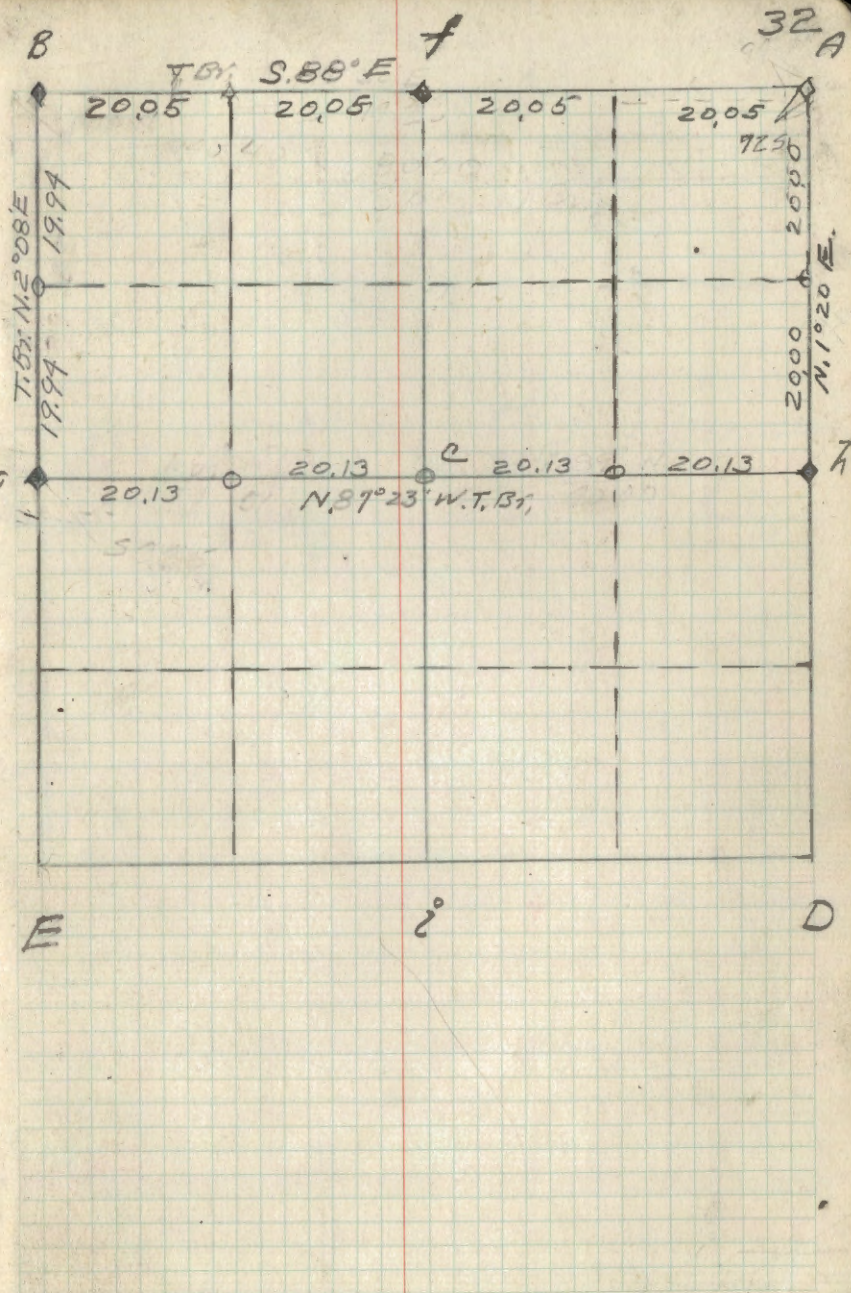
e

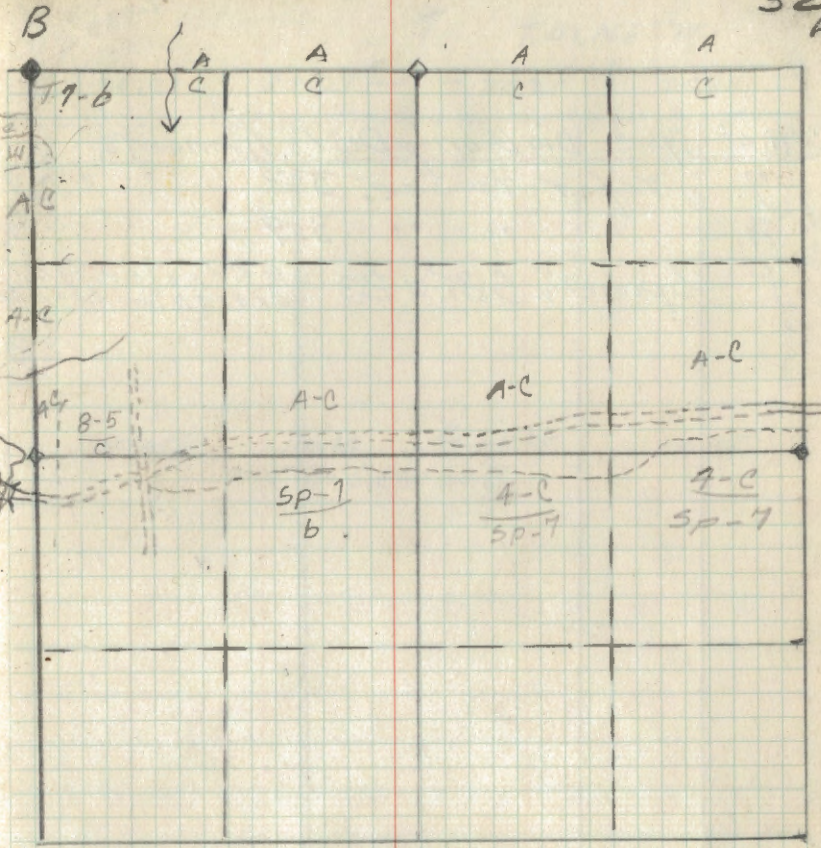
h

B



Cor. at	Spec.	Dir Bearing	Dist	Remarks
9 ✓	Spruce	16" N. 50° W	17	Orig. BT. down and rotten BT. OK.
	Aspen	8" S. 42° E.	54	Mkd. New BT. FS. Poster.
	Dead	9" S. 28° W.	45	Mkd. New BT. Set Ash Post. 2" x 50" 12/11/39 JAB.
7.	Spruce	8" S. 73° W.	6	Orig. BT. stp. & rotten BT. OK.
✓	Cedar	8" N. 86° E.	19	Mkd. New BT. FS. Poster.
	"	6" N. 6° E.	12½	" Found Top of Orig Post. Set Cedar Post. 3" x 48" 12/11/39 JAB.
B	^{bt. up} Cedar	12 511° W	16	Orig BT
✓	Spruce	by cor. 45	Poster	Found orig Cor. 12/27/39
	Spruce	8" N 32° E	18	FS Poster 1/4/40
A	Aspen	12 565° W	57	FS. Poster
	Tamuk	2½ N 56° E	53	" " 1/25/40
F	Aspen	7" N 3° W	24	FS. Poster 1/26/40

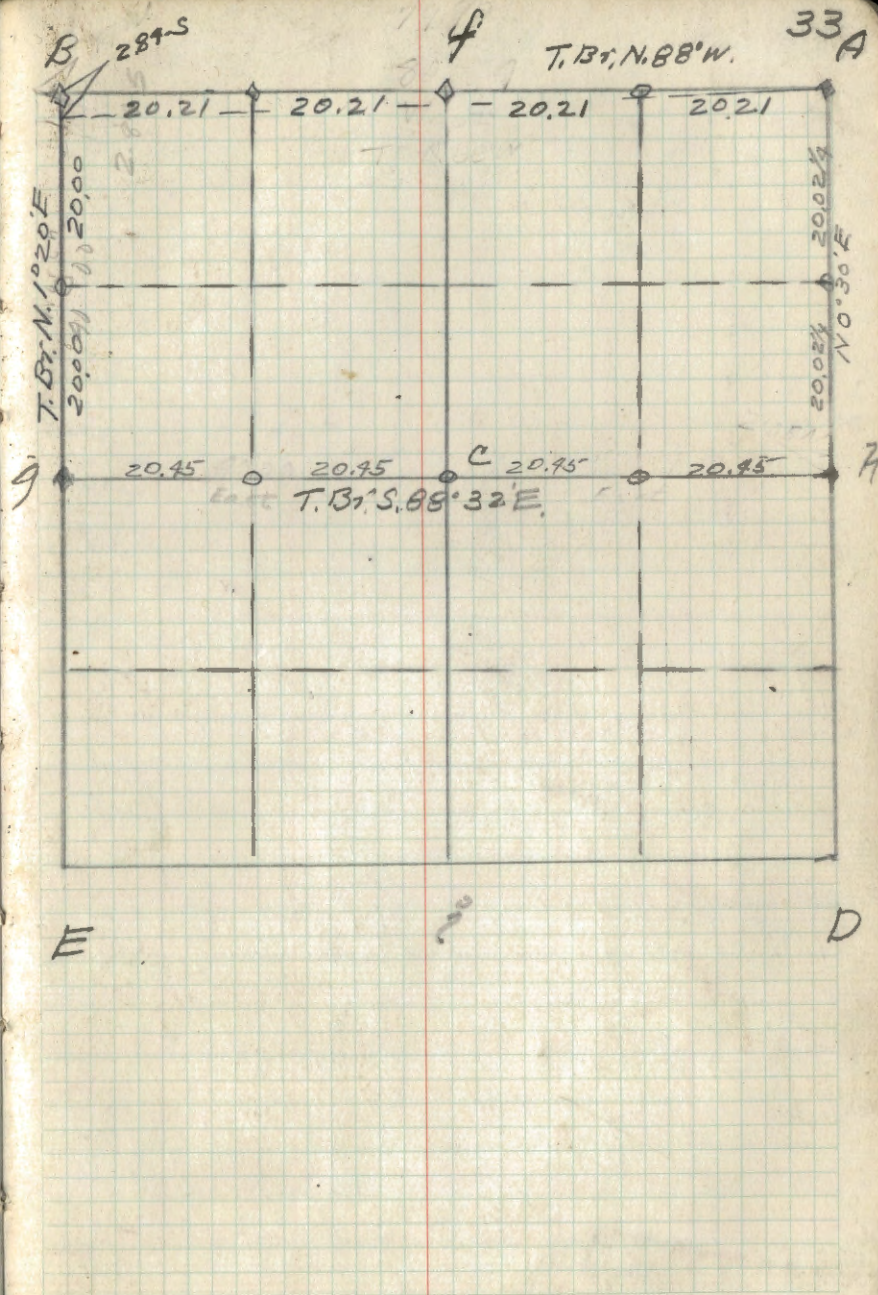




E

D

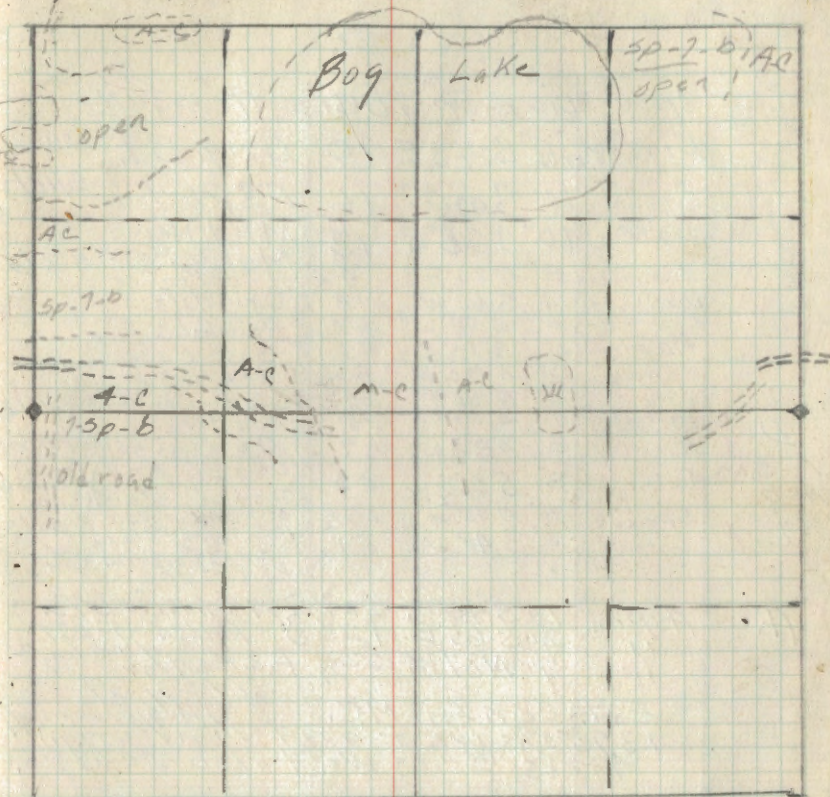
Corr. at	Spec.	Dia	Bearing	Dist	Remarks
g.	refer	to	Sec.	3	2
h.	"	"	"	3	9
F	Spence	2 1/2"	S 81° W	23	F.S. Poster 1/24/40 4x148 Tamik Stake



B

sp-7-b

sp-7-b



E

D

Hoard Compass Notes
Chain

Cor. at	Spec.	Dir.	Bearing	Dist.	Remarks
B ✓	Birch	8"	S. 73° E	10	Orig. BT. J.A. Gjelhaug
	Birch	10"	South	16	FS. Post 8/15/39
	Birch	10"	S 65° E	13	Mild. New BT. Mapk. Post 4" x 6"
E ✓	Basswood	8"	N 74° E	4	FS. Post
	Down	14"	S 62° W	15	50 Orig BTs.
	Ironwood	6"	S 58° W	42 1/2	New 60 BTs.
	Maple	11"	S 13° E	42	Set Balsam post
	Aspen	12"	N 30° W	55 1/2	4 1/4 x 4 8 by cement monument 8/14/39
	Spruce	7"	N 55° E	24	New BTs.
	Norway	8"	S 25° W	25	Cement Monument
D ↓	Norway	8"	S 53° E	69	(Orig BT and) Set
M-C. on A-B	Tam.	8"	S 66 1/2° W	23	(Orig BT and) Set
I ✓	Spruce	8"	N 70° W	63 1/2	orig. corner stake 8/21/39
	"	8"	S 48° W	54	iron pipe brass cap New BTs. 3 1/2 x 4 8 Balsam Post FS. Post
A ✓	Aspen	6"	S 40° W	22 1/2	Mild. New BTs.
	"	4"	S 65° E	12 1/4	Balsam Post
	"	4"	N 87° W	22 1/4	FS. Post 4 1/4 x 6 6 1/4 8/23/39
	Est. Cor. from MC. J.A. Gjelhaug 1395 chs. west and Lind (orig) trees 2 chs west also 2 chs S.				
H.	W. Oak	6"	S. 79° 30' W	4 1/4	Mild. New BTs
	"	4"	N. 83° 30' E	14 1/2	FS. Post
	Est. 1/4 cor. Aspen Post 4 1/4 x 3 6 1/4 8/24/39 Old cor. burnt J.A. Gjelhaug.				
J.	Aspen	10"	S. 59° E	8 1/2	FS. Post
	ETM	6"	S. 29° W	25	Mild. New BTs. Mapk. Post 4" x 4 8 8/24/39
	Est. 1/4 cor. J.A. Gjelhaug Old cor. burnt				
MC. A to f ✓	Tam.	3"	S 66° 30' W	23	Orig. BT. Orig. Post
	Tam.	3"	N 56° W	41	Set Spruce Post FS. Post 4" x 4 8" 8/26/39

