

Different
Sections in
Tupper

#108

MINING
TRANSIT BOOK

W

#108

#121

INDEX.

Section	TWP.	Page	Sec.	TWP.	Page
16	142-30	19 + 35	14	141-31	34
21	"	30	15	"	40
20	"	49	23	"	42
3+10	"	52	7	"	25
			1	"	48

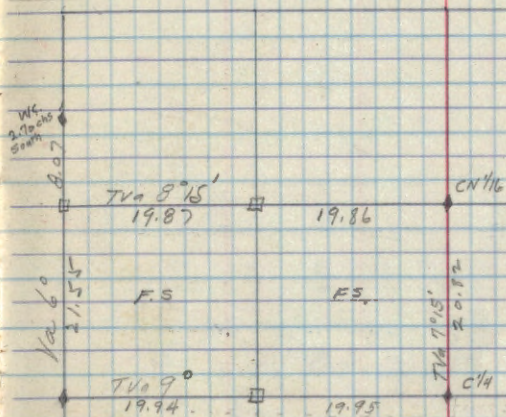
10	141-30	29	18	142-31	26
15	"	38			
3	"	44			
16	"	46			

1	141-28	1	22	141-29	5
2	"	3	23	"	7
			13	"	9
			15	"	11
			16	"	13
			9	"	15
			14	"	17
			20	"	53
			29	"	54

BEARING TREES AND POSTERS

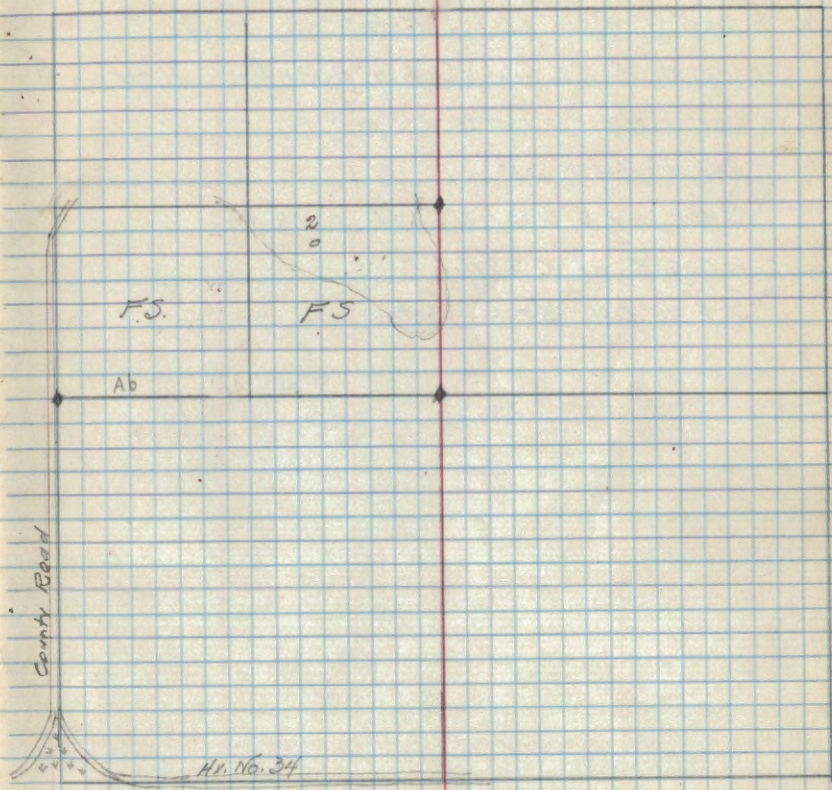
Corner	Spec	DBH	Bearing	Dist	Remarks
$\frac{1}{4}$ S ² S ¹	No Trees.		Poster 458 on White Cedar Post	1-1k. E. of Corner	
			6/23/36 - A. Everhart.	G.L.O. 1"x6"	✓
Chs 1	No Trees -		Poster 458A - on fence corner at corner		✓
			C.E.S. 6/23/36 - G.L.O. 1"x6"		✓
$\frac{1}{4}$ N ¹ S ¹	No Trees.		Poster 458A - on fence post at corner		✓
			C.E.S. 6/23/36 - G.L.O. 1"x6"		✓
NW ¹ / ₄	No G.L.O. found.		Set 4" Aspen post with		✓
			Poster 458A on post.		
N ¹ / ₄ S ¹	No G.L.O. found.		Set 4" Aspen post		✓
			Poster on 6" Aspen - N-84W 0.57 chs.		
CW ¹ / ₄	No G.L.O. found.		Set 5" Oak post.		✓
			Poster on 6" Aspen - N60W 0.14 chs.		

SURVEY —
Sec. 14 T. 141 N., R. 28 W



TYPE MAP

Sec. 1- 141-28



CORNERS - S. 2, T. 141, R. 28

1/64 - 10chs. W. of N 1/16 S. 1 + S. 2 - Set 5" Aspen Post. ✓

Poster on 6' Aspen - Δ 84 E 0.04 chs.

1/64 - 10chs. W. of 1/4 S. 1 + S. 2 - Set 5" Aspen Post. ✓

Poster on 3" Aspen - N 42 E 0.57 ch.

CE 1/16 - Set 5" Aspen post. - Poster on stake ✓

1/64 - 10chs. W. of CE 1/16. Set 4" Aspen Post. - Poster on Post ✓

C 1/4 - Set 5" Aspen - Poster on post. ✓

CS 1/16 - Set 4" Aspen post. - ✓

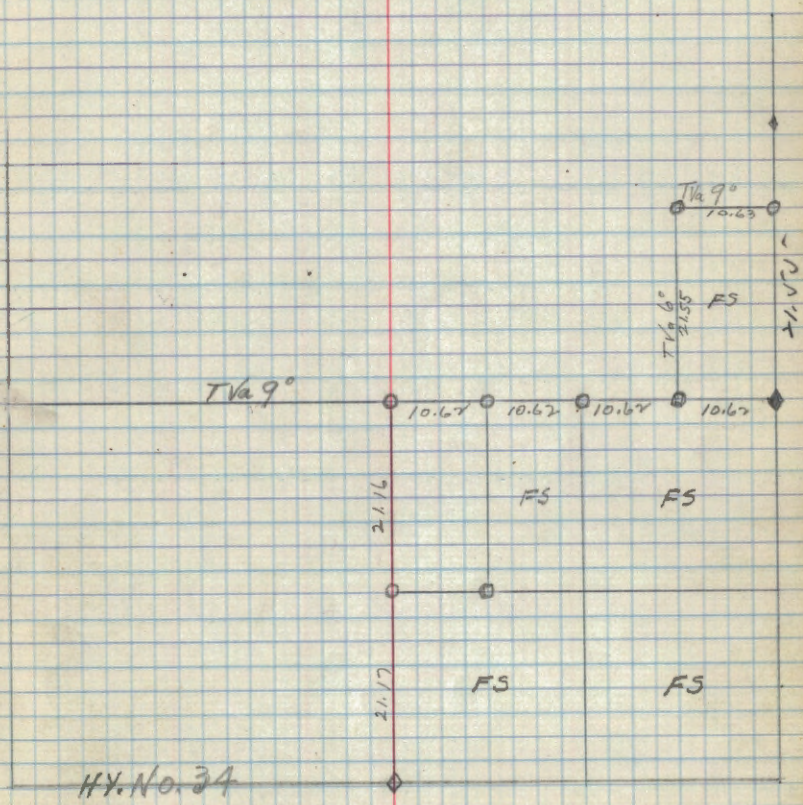
Poster on 5" Oak - N 58 W 0.58 chs.

1/64 - 10chs. E. of CS 1/16. ✓

Set 5" Oak Post. - Poster on post.

SURVEY

Sec. 2, T. 141 N., R. 28 W

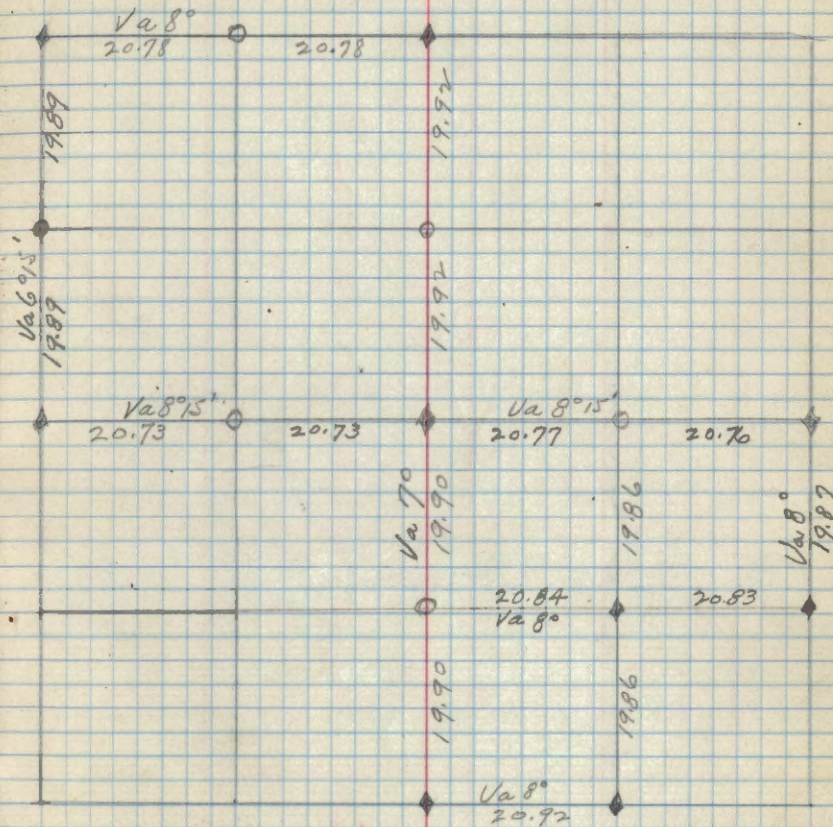


◊ Probable G.L.O.
 ◆ G.L.O.

TYPE MAP
Sec. 2. T.14N. R.28W

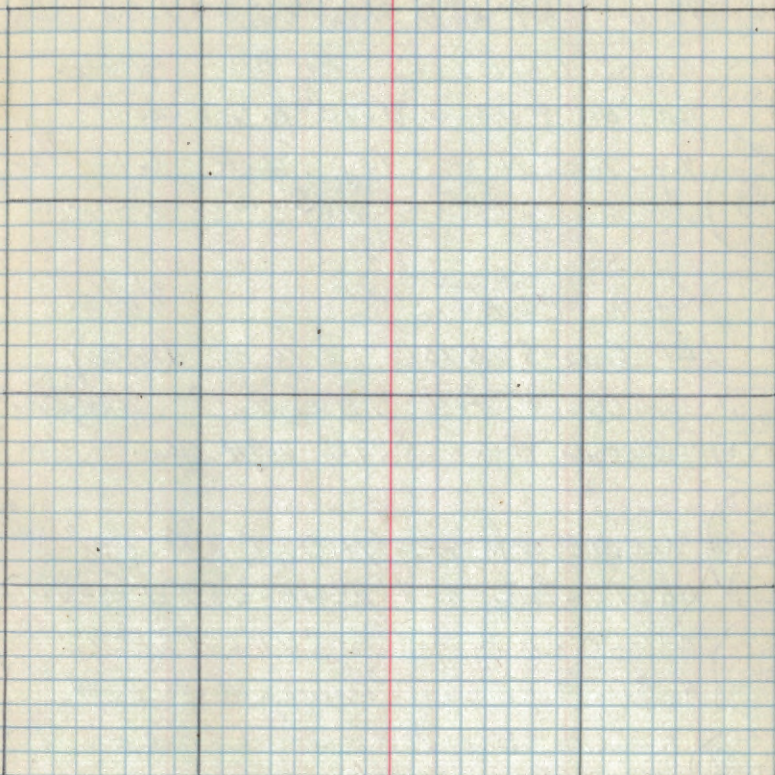
S. 22, T. 14 N., R. 29 W.

- $\frac{1}{4}$ ✓ Poster $S 2\frac{1}{2} E$ 165-lbs. on 14" R. Oak. ✓
 (S27 523)
- $\frac{1}{4}$ ✓ Poster N $5\frac{1}{2} W$ 6-lbs. - on 4" Aspen Post. ✓
 (S27 527)
- $\frac{1}{4}$ ✓ Poster - N $41 E$ 65-lbs. to 4" Aspen. ✓
 (S27 522)
- $\frac{5}{16}$ ✓ Poster N $20 E$ 31-lbs. - 6" J.P. ✓
 (S25 525)
- CS $\frac{1}{16}$ ✓ Poster S $53 E$ 30-lbs. - 5" W.P. - "Aspen post." ✓
 (FS)
- CE $\frac{1}{16}$ ✓ Poster - $S 89 E$ 86-lbs. - 5" R.O. ✓
 (FS)
- $\frac{SE}{16}$ ✓ G.L.O. - Poster on 4" Aspen N $10 E$ 25-lbs. ✓
 (S27 527)
- $\frac{16}{15}$ ✓ Poster on 10" N.P. - N $32 W$ 1.94 chs. ✓
 (S27 527)
- W $\frac{1}{16}$ ✓ Set 4" Aspen Post. -
 F.S.
- $\frac{16}{15}$ ✓ Poster on 10" N.P. - N $47 W$ - 1.59 chs. ✓
 F.S.
- $\frac{1}{4}$ ✓ Poster on 10" Aspen - N $72 W$ - 0.62 chs. ✓
 (S27 527)
- N $\frac{1}{16}$ ✓ Poster on 8" J.P. $S 70 E$ 0.62 chs. ✓
 F.S.
- Set 4" Aspen post.



TYPE MAP
S. 22, T. 14N, R. 29W.

6



S. 23, T. 14 N., R. 29 W

W^{1/2} S²³ Poster on 4" W.O. N22°W - 0.40 chs. ✓

SW^{1/4} FS. Poster on 4" W.O. - N21°W 1.21 chs. ✓

G.L.O. 1" I.P. - 12" - No B.T.s. 7/24/36 ✓

C^{1/4} S²³ Poster on 8" Spruce N51E 0.23 chs. ✓

TR^{1/4} S²³ 1/4 - 10 chs. N. of C^{1/4} 1" I.P. - 6" 7/24/36 ✓

AP³ S²³ TR^{1/4} 1371 Poster on 8" Aspen N54W - 0.52 ✓

W^{1/2} S²³ G.L.O. - 1" I.P. - 12" 7/24/36. ✓

B.T. Cedar 8" S15E 0.10 chs. (Poster.) ✓

S^{1/4} S²³ G.L.O. - 1" I.P. 6" - No B.T.s. 7/24/36 ✓

Poster on 6" Aspen - S37E 0.94 chs. ✓

T^{1/4} N^{1/2} S²³ M.C. 16.81 E. of 1/4^{1/4} 12". G.L.O. 1" I.P. 12" 7/24/36 ✓

No B.T.s. - Poster on 8" W. Oak - S87W 0.54 chs. ✓

TR^{1/4} S²³ 1/4 G.L.O. - 10.36 chs. W. of CN^{1/4} - 1" I.P. - 12" 7/27/36 ✓

No B.T.s. - Poster on 10" Tamarack - N66W 0.24 ✓

1/4 G.L.O. 9.88 chs. W. of 1/4^{1/4} - 1" I.P. - 5" - 7/27/36 ✓

No B.T.s. - Poster on 8" Aspen S18W 0.28 chs. ✓

NE^{1/4} S²³ G.L.O. - 1" I.P. 15" - 7/27/36 ✓

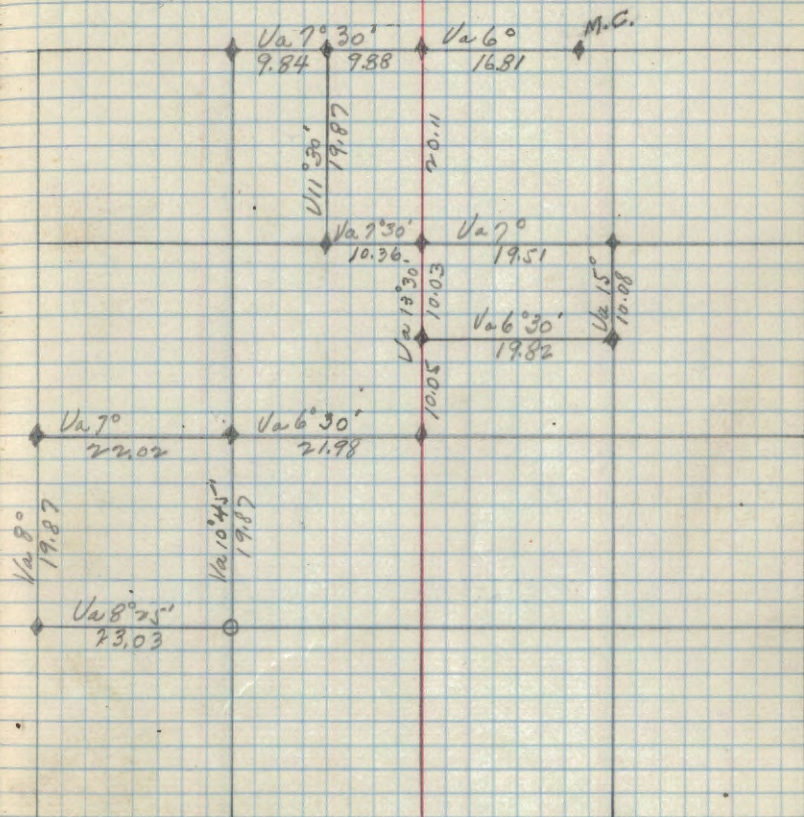
No B.T.s. - Poster on 5" Aspen post at corner

TR^{1/4} S²³ 1/4 G.L.O. 10.05 chs. S. of NE^{1/4} - 1" I.P. - 2" 7/27/36 ✓

No B.T.s. - Poster on 7" Aspen N50W - 40 chs. ✓

G.L.O. 1" I.P. 12" ✓ 7/24/36

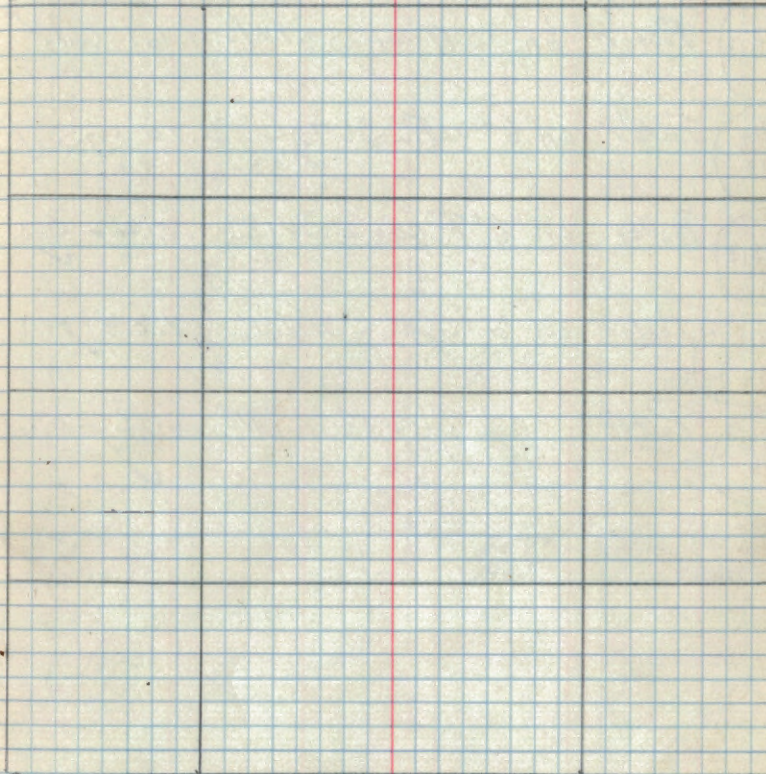
W^{1/2} S²³ No B.T.s. - Poster on 6" Aspen S83W 0.11 chs. ✓



TYPE MAP

JULY 1936 8

S. 23, T. 14 N., R. 29 W.



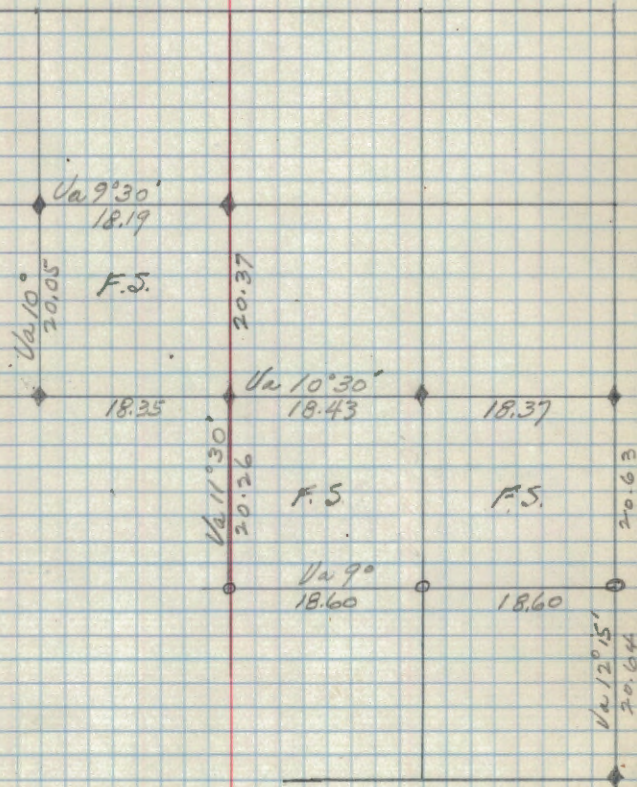
July 1936 -

- SE 1/4 Poster on 12" N.P. - S38W - 0.16 chs.
 F.S.) 3" Birch post for corner ✓
- CS 1/4 Poster on 10" Aspen - S20W - 1.24 chs. ✓
 F.S. 6" Aspen post for corner ✓
- (N 1/4 S13) Poster on 10" Aspen - S37W - 1.61 chs. ✓
 1" ✓
- (E 1/4 S13) Poster on 6" W.P. - S67W - 0.10 chs ✓
- (C 1/4 S13) Poster on 6" R. Oak - S41E 0.42 chs. ✓
- (W 1/4 S12) Poster on 6" R. Oak - N40E 1.03 chs. ✓
- (NW 1/4 S13) Poster on 5" Spruce - N89E 0.66 chs. ✓

SURVEY.

9

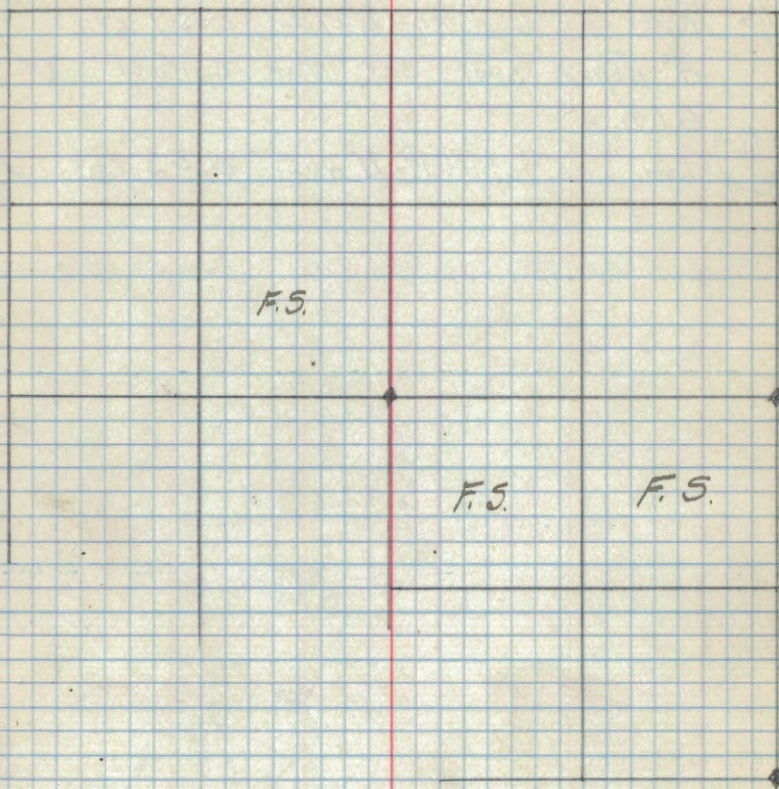
S. 13, T. 141, R. 29



TYPE MAP

10

S. 13 T. 14 N., R. 29 W.



(C/S. 15)

July 1936

No poster ✓

CS/16 Poster on 6" Aspen - N27E 0.57 chs.

4" Aspen post set for corner ✓

G.H.O. -

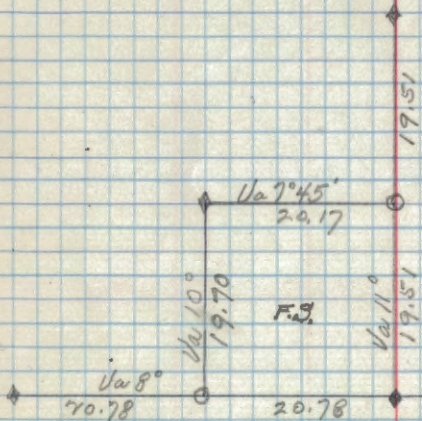
(SW/16)

Poster on 10" N.P. - N40E 0.53 chs. ✓

SURVEY -

S. 15, T. 141, R. 29

11



Poster on 5" Aspen - N 13 1/2 W - 0.34 chs. ✓

1/4 16
21

S 1/16 S 1/16
C

Poster on 4" Aspen post at corner ✓

C 1/4 S 1/16

G.L.O. 1" I.P. 7" - No B.T.s. 7/24/36

Poster on 4" Aspen post at corner ✓

TR
1654
ADH

G.L.O. 1" I.P. flush with ground - No B.T.s. ✓

9.36 N. of C 7 1/2 S. 1/16

Poster on 5" Aspen post at corner ✓

C

G.L.O. 1" I.P. 12" - No B.T.s. 7/24/36

N 1/16 S 1/16
C

Poster on 4" Aspen post at corner ✓

1/4 59
16

G.L.O. 1" I.P. 10" 7/24/36

B.T.s. N.P. 12" - N 10 1/2 W 2.60 chs. (Poster) ✓

E 1/16 59
516

G.L.O. 1" I.P. 8" - No B.T.s. - 7/24/36

Poster on 4" Aspen post at corner ✓

1/4 16/15

4" R. Oak post. - Poster on post ✓ 7/28/36

(FS)

C 1/16
FS

4" Aspen post - Poster on 6" N.P. - N 60 E 0.80 chs. 7/28/36 ✓

NE 1/16
FS

4" R. Oak post - Poster on 10" N.P. - N 78 E 1.86 (G.L.O. B.T.?) ✓

S 1/16 N 1/16
S 1/16

S.M.C. (G.L.O.) 6.7 N E. of 7 1/2 1/16 cor. - 1" I.P. 10" 7/29/36

Poster on 8" W.O. - S 40 W - 1.30 chs. ✓

W 1/16 59
516

G.L.O. - 1" I.P. 14" 7/29/36

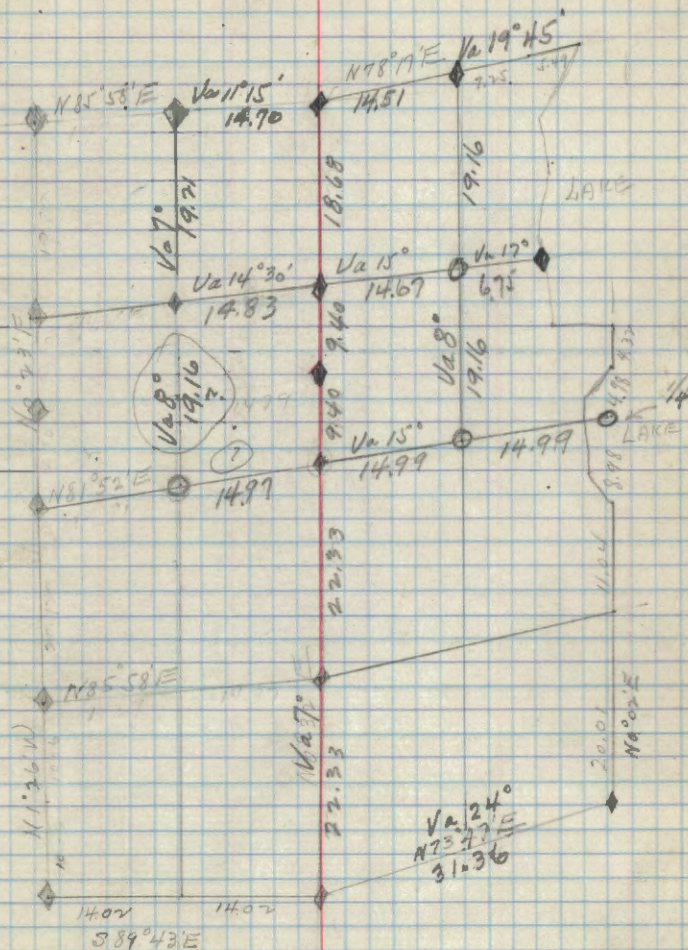
Poster on 5" Aspen N 78 E 0.60 chs. ✓

NW 1/16 516

G.L.O. 1" I.P. 10" 7/29/36

Poster on 5" 1/16 - N 80 W - 1.98 chs. ✓

S. 16, T. 141, R. 29



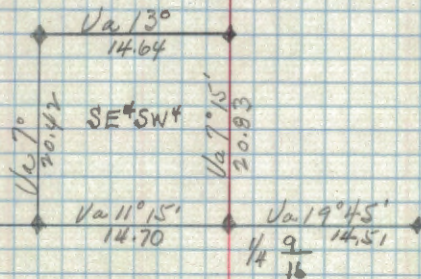
Note:

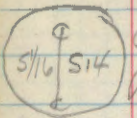
? of CW 1/16 is set and if line is run South from NW 1/16 corner

S. 9, T. 141, R. 29

5/16/59
 G.L.O. 1" I.P. 7" - 7/20/36
 Poster on 6" W. Oak - N39E 0.17 chs. ✓

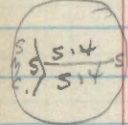
SW 1/6 59
 G.L.O. 1" I.P. - 10" 7/20/36
 Poster on 5" Elm - 7175W - 0.16 chs. ✓





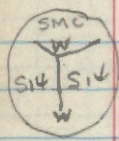
G.L.O. 1" I.P. 6" - 7/29/26.

Poster on 6" Aspen - 731W 0.05 chs. ✓



G.L.O. 1261 chs W. of CS 1/16 - 1" I.P. 6"

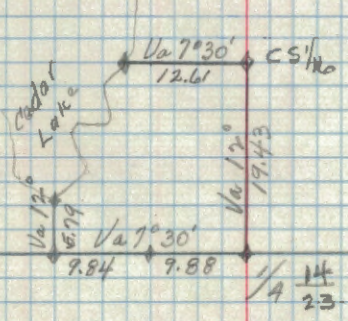
Poster on 4" Aspen just at corner ✓



SMC 5.78 chs N. of W 1/16 $\frac{S14}{S23}$ 7/28/26

640 1" I.P. 6"

No BTS Poster on 6" Tamarack S3W 0.40 chs ✓



G.L.O. 1" I.P. 8" -

8/25/36

B.T.S. - 8" Oak - N71W 0.58 - (Poster) ✓

Oak 12" - S66E 0.55

G.L.O. 1" I.P. 14" ✓

Poster on 5" Oak - S53W 0.74 ✓

G.L.O. - 2" I.P. 12" ✓

Poster on 4" Elm stake at corner ✓

G.L.O. 1" I.P. 10" ✓

B.T. N. Pine 14" N61E 0.84 (Poster) ✓

G.L.O. - 1" I.P. 12" ✓

B.T. W. Pine 24" N24E 0.38 (Poster) ✓

G.L.O. 1" I.P. 8" - 10.05 chs. N. of E 1/16 16/21 ✓

Poster on W.P. 5" - N72E 0.43 8/20/36 ✓

G.L.O. 1" I.P. 10" - 9.95 chs N. of 1/4 16/21 ✓

Poster on Aspen 8" S61E 0.20 chs. ✓

G.L.O. - 1" I.P. 7" -

Poster on Aspen 8" - S32E 0.17 chs. ✓

G.L.O. 2" I.P. 10" -

Poster on 4" Aspen post at corner ✓

G.L.O. 1" I.P. 12" - 9.80 chs N. of 17/21 16/21 ✓

Poster on 3" Aspen post at corner. ✓

G.L.O. 1" I.P. 10" 8/27/36

Poster on Elm 8" N48W 0.54 chs. ✓

G.L.O. 1" I.P. 7" -

B.T. Aspen 10" N36W 0.24 (Poster) ✓

Aspen 6" Sugar 10' - N47E 0.75 8/27/36

G.L.O. 1" I.P. 7" -

B.T. Aspen 10" N41W 0.95 chs (Poster) ✓

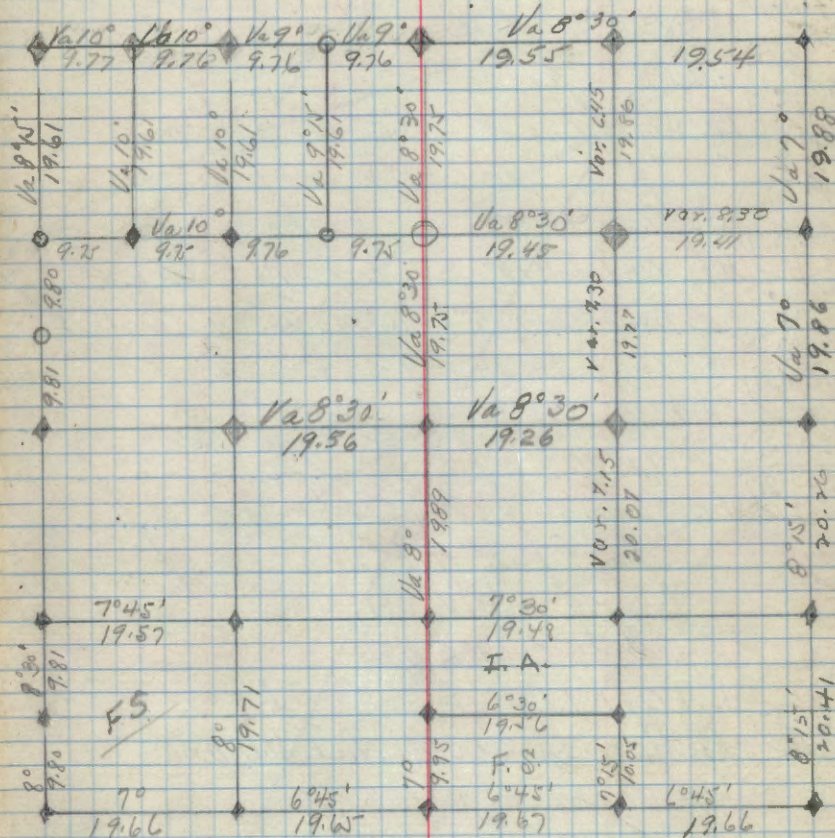
(Continued on Page 35)

S. 16, T. 142, R. 30

Aug.

1936

19



S. 21, T. 142, R. 30

See page 50

~~G.L.O. 1" I.P. 10" -
 B.T. Nov. Pine 6" - N37W 0.27 (Poster) ✓
 8/25/20~~

~~13.15
 75.16
 G.L.O. 1" I.P. 7"
 S57Ls to 14.5, 15.16~~

~~1/4
 517 5.10
 G.L.O. 1" I.P. 10"
 Bt. White Pine 14" S41°E 0.04 (Poster)
 " " 12" S57°W 0.08~~

~~NV16
 5.20 5.21
 G.L.O. 1" I.P. 7"
 Bts. Whiteoak 10" S76°E 0.29 (Poster)
 " Birch Stump 5" N40°W 0.22 (Poster)~~

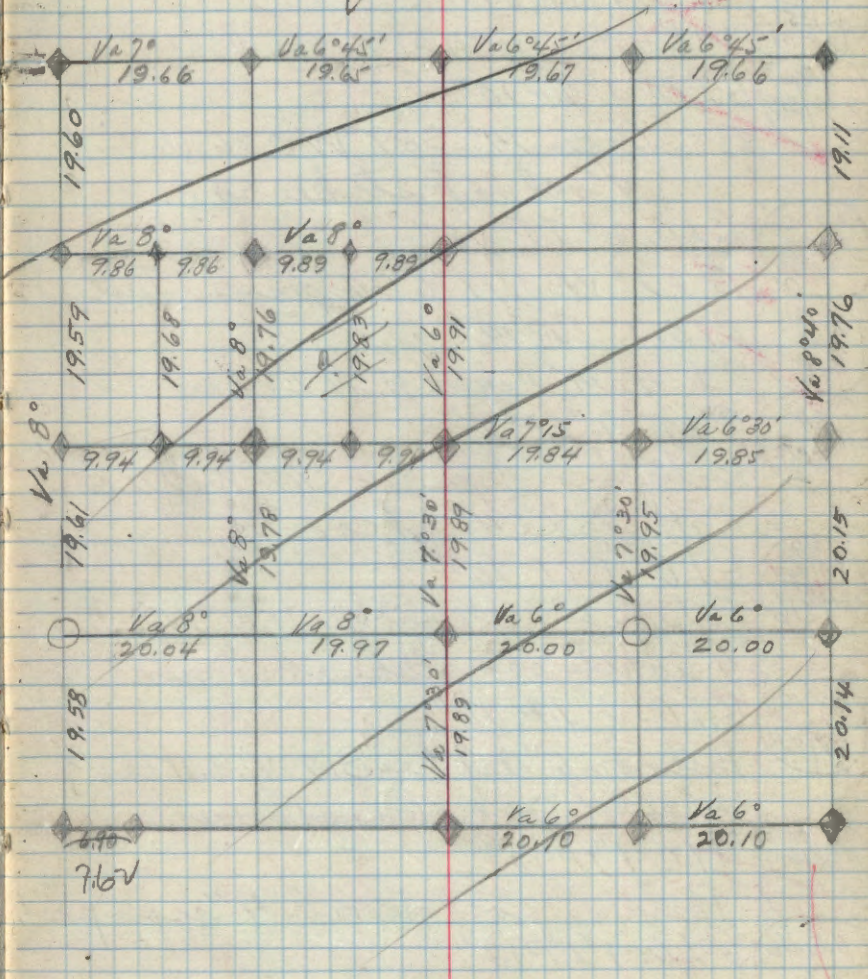
~~1/4
 520 5.21
 G.L.O. 1" I.P. 14"
 Ash 4" Poster~~

~~20 21
 29 28
 2" I.P. 10"
 Bt. Spruce 5" N.62°W 0.17 (Poster)
 " Cedar 4" S.11°W 0.32
 " Cedar 4" N.60°W 0.31
 " Cedar 3" S.69°E 0.26~~

~~M
 1813 5.22
 G.L.O. 1" I.P. 7"
 Poster on Spruce 4" N.61°W 0.06
 17.07 lbs S. to C. S. 1/16
 5.16+17~~

~~N1/2
 521 5.22
 G.L.O. 1" I.P. 12"
 No trees Poster on 3" Willow~~

~~1/4
 521 5.22
 G.L.O. 1" I.P. 8"
 Bts. 10" Aspen snag 15' N66°W 0.15
 10" Aspen N.45°E 0.45 (Poster)~~



~~S 1/6
S21 S22~~ G.L.O. 1" I.P. 7"
Aspen 10" S84°W 0.05 (Poster)

~~AP 3
T.P.
1357
T.P. 1358~~ G.L.O. 1" I.P. 6"
White Pine 12" N. 21° E. 0.12 (Poster)

~~N 1/6
S 16/S15~~ G.L.O. 1" I.P. 10"
B.to. Aspen 14" S89°W 0.26 (Poster)
4" red oak stake at C.

~~S 9 S10
S16 S15~~ G.L.O. 2" I.P. 18"
S 87°W 0.91 to 14" Aspen (Poster)

~~1/2 5
S16~~ G.L.O. 1" I.P. 14"
Poster on 14" Aspen N. 29° E. 1.66

~~S 9
N 1/6 S76~~ G.L.O. 1" I.P. 7"
Poster on 8" Aspen tree S47°W 0.17 chs.
Oak stake 4" at corner.

~~S 9
S16 S16~~ G.L.O. 1" I.P. 10"
Poster on 6" white oak tree N. 19° W 0.075
4" white oak stake at corner

~~S 9 S9
S16 S16~~ G.L.O. 2" I.P. 16"
Poster on 6" Ash tree S. 7° W. 0.11 chs.
4" white oak stake at corner.

~~NE 1/6 S16~~ G.L.O. 1" I.P. 12"
Poster on post at corner 4" aspen post.

~~C.E. 1/6
S16~~ G.L.O. 1" I.P. 12"
B.to. 10" Aspen N7°E 0.42 chs.
4" Aspen stake at corner.

S 21 T 142 R 30

Per page 50

AP 3
TR 1356

G.L.O. 1" I.P. 3"

Poster on 6" Ash tree S. 79° E 0.33

3" White oak stake at corner

NW 1/4 S 21

~~G.L.O. 1" I.P. 6"~~

Bts Aspen stub

Poster on 16" red oak S. 2° W. 0.365

TR 1359
AP 2
TR 1358

G.L.O. 1" I.P. 6"

Poster on 7" red oak S. 59° W. 0.35

4" red oak stake at corner.

ON 1/4 S 21

~~G.L.O. 1" I.P. 8"~~

Bts. Old Aspen stub S. 3° W. 0.18

Poster on 6" red oak N. 73° W. 0.46

4" red oak at corner

CE 1/4
TR 1

~~G.L.O. 1" I.P. 14"~~

Poster on 5" Tamarack N. 1° E. 0.52

4" elm stake at corner.

AP 3
TR 1357
TR 1358

G.L.O. 2" I.P. 4"

No Bt

CS 1/4 S 21

~~G.L.O. 2" I.P. 6"~~9/2/76
Bt. Aspen 14" ^{Southern} 10 chs. to 14" Aspen on line. ✓

CS 1/4 S 21

G.L.O. 2" I.P. 5"

9/8/76
Poster on Norway Pine 14" S 23° W 0.38 chs.

1 S 21
4 S 21

~~G.L.O. 2" I.P. 5"~~9/8/76
BT Dead Stump 14" N 50° E 0.08 chs.

FS N. 58° W 14 chs. to 6" Norway Pine

T 142 R 30

✓
 E $\frac{1}{4}$ S21 S28 G.L.O. 2" I.P. 14" 9/10/76
 F.S. Tag N34°W Aspen 8" 0.07 Cedar Stake 5"

142-30
 S21 S28 G.L.O. 2" I.P. 10" 9/10/76
 S28 S27 F.S. tag on 3" Cedar Stake this corner

is in water and grass swamps (no trees)

S $\frac{1}{16}$
 S21 S28 G.L.O. 2" I.P. 8" 9/11/76

TR
 133
 132
 AP1 AP2
 TR TR
 134 135
 G.L.O. 2" I.P. 6" - 10 chs W. of NW $\frac{1}{16}$ S16 9/1/76

Post on Birch 4" N75°E 0.31 to CW $\frac{1}{64}$ Sec 16
 F.S. tag on 12" Elm

C4 S16 G.L.O. 2" I.P. 14" 8/20/76

BT Dead Spruce 6" C $\frac{1}{4}$ S16 N9°E - 0.11 chs.

F.S. Post 5.95 chs S. to C.S. $\frac{1}{16}$ S16

1/4 S9
 S16 ~~G.L.O. 2" I.P. 12" 8/29/76~~ know

F.S. Tag 1.65 chs. N30°E 1.96 chs.

NW $\frac{1}{16}$ S6 G.L.O. 2" I.P. 14" 9/1/76

No BT 5" Aspen Stake

W $\frac{1}{16}$ S16 G.L.O. 2" I.P. 18" 9/2/76

No BT

AP3
 TR
 135
 G.L.O. 2" I.P. 4" - 10 chs S. of CW $\frac{1}{16}$ S16 9/2/76

F.S. Tag on 10" Birch N26°E 0.25 Aspen Stake

W $\frac{1}{16}$ S21 G.L.O. 2" I.P. 4" 9/2/76

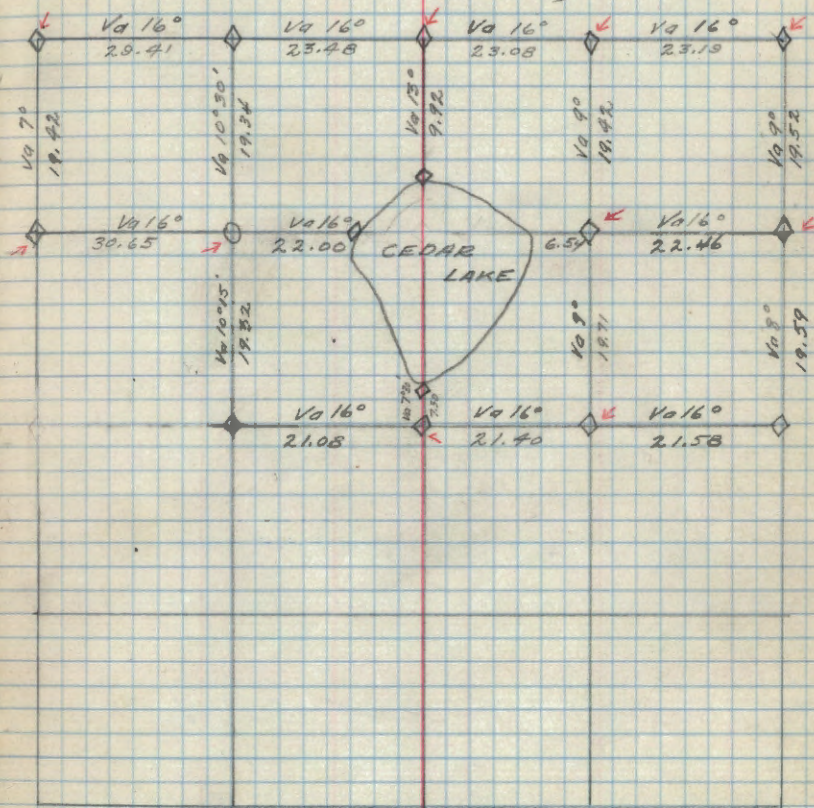
F.S. Tag on 6" Aspen N.48°E. 0.22 to 4" Aspen Stake

BEARING TREES AND POSTERS

CORNER	Height	BT	Poster
CE 1/16 5/18	24"	None	557°E 30IKs To 6" Aspen 11/5/36
1/4 5/18	24"	None	55°E 44IKs To 6" Aspen 11/6/36
NW 1/16 5/18		None	574°W 59IKs 2 1/2" Ash
N 1/16 5/18-18		None	N72°W 81Ks 4" Aspen
1/4 57-18	8"	None	N43°W 34 IKs To 5" Aspen
12-13 7-18	12"		52.5°W 45IKs To 18" Norway Pipe
E 1/16 7-18	12"	None	N51°W 17IKs To 12" Aspen 4" Aspen at corner
NE 1/16 5/18	18"	None	N35°W 17IKs To 7" Aspen 4" Aspen stake at corner
7/8 18/17	5"		563°E 17IKs To 4" Red Oak 4" Aspen stake at corner
N 1/16 5/18/5/17	2"	(Poster)	N68E 0.52 Chs to 4" W. Oake 2" pipe.

SURVEY OF S 18-142-31

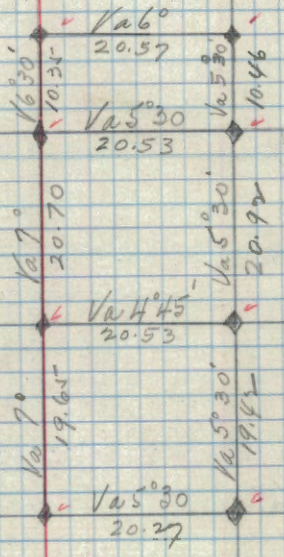
Nov. 1924



County corners ◊
F.S. corners ○

S. 10, T. 141, R. 30

Corner	Height	B.T.	Poster	Date
$\begin{matrix} \text{N} \\ \frac{1}{16} \\ \text{S} \end{matrix} \text{S. 10}$	6"	8" Jack Pine	574°W 36 Lks. to 6" Norway Pine	11/10/36
	1" I.P.	4" Red Oak	at Corner	✓
$\begin{matrix} \text{S} \\ \frac{1}{4} \\ \text{S} \end{matrix} \text{S. 10}$	2"	None	533°W 10 Lks. to 4" Norway Pine	
	1" I.P.	4" Aspen	at Stake	11/10/36
$\begin{matrix} \text{S} \\ \frac{1}{16} \\ \text{S} \end{matrix} \text{S. 10}$	4"	None	554°W 9 Lks. to 10" Norway Pine - 4" Red oak	11/10/36
	1" I.P.		Post at Corner	✓
$\begin{matrix} \text{SE} \\ \frac{1}{16} \\ \text{S} \end{matrix} \text{S. 10}$	7"	None	N79°W 28 Lks. to 10" Jack Pine	11/11/36
	1" I.P.		4" Aspen post at Corner	
$\begin{matrix} \text{E} \\ \frac{1}{16} \\ \text{S} \end{matrix} \text{S. 10}$	1" 3" I.P.	W. Pine Stub	S4E 0.17 chs	11/11/36
			Poster on 5" Aspen N75E 0.11 chs.	✓
$\begin{matrix} \text{NE} \\ \frac{1}{16} \\ \text{S} \end{matrix} \text{S. 10}$	5"	12" Jack Pine	N38°E 1.41 chs. to 12" Jack Pine	11/11/36
	1" I.P.	4" Red oak	Post at Corner	✓
$\begin{matrix} \text{TR} \\ \frac{1}{16} \\ \text{S} \end{matrix} \text{S. 10}$			located 10 chs N. of NE corner - 4" Birch post	11/11/36
			1" I.P. 5" above ground. Poster on 8" I. Pine N5W 0.77 chs	✓
$\begin{matrix} \text{TR} \\ \frac{1}{16} \\ \text{S} \end{matrix} \text{S. 10}$			1" I.P. 10" above ground. (10 chs. North of CN 1/16)	11/9/1936
			Poster on 6" W. Oak - S48E 0.09 chs.	✓

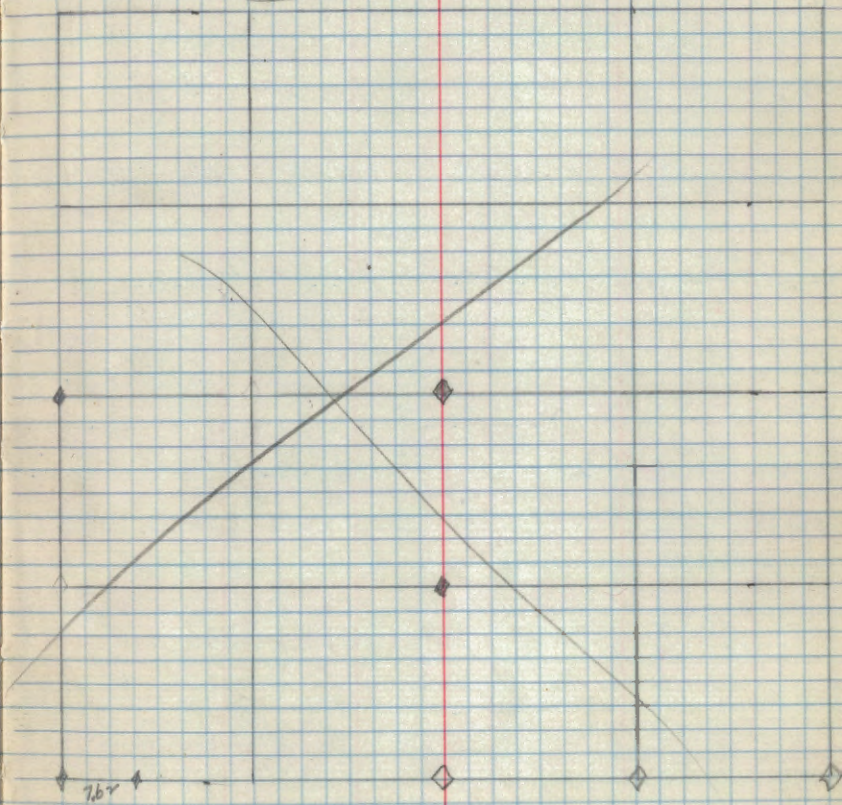


SURVEY OF 50421-142-30

See page 50

See page 50

Corner	Height	B.T.	Poster	9/2/76
(APR 1357 TR 1358)	4"	None	where located?	
	1" I.P.			
(C452)	6"	14" Aspen	5-10 Lks to 14" Aspen	9/2/76 ✓
	1" I.P. ✓		on line	
(5/2521)	5"	None	S. 23° W 38 Lks. to	9/8/76 ✓
	1" I.P. ✓		14" Norway pine	
(1521/452B)	5"	14" Dead?	N 50° E 8 Lks.	9/8/76 ✓
	1" I.P. ✓	Stump	F.S. tag N 58° W 14 Lks to	
			6" Norway pine	
(W/60 521)	4"	None	N 48° E ^{2 1/2} - 1 Lks. Aspen (F.S. Tag)	9/2/76 ✓
	1" I.P. ✓		4" Aspen Stake	
(E/6521 528)	14" ✓	None	N 34° W 7 Lks. to 8" Aspen	9/10/76 ✓
	1" I.P.		5" Cedar Stake	
(546 521/522)	8"	None		9/10/76 ✓
	1" I.P. ✓			
(521/522 528 527)	10" ✓	None	F.S. Tag on 3" Cedar Stake	✓
	2" I.P.		Corner in swamp (No trees)	9/10/76 ✓



S. 14, T. 14 N., R. 31 W.

- ⊙ County corner
- F.S. corner
- ◆ G.L.O. corner

- 15/14 ✓ ⊙ 2" Gal. I.P. 15" above ground. 12/8/36 ✓
 22/23 Poster on 10" Aspen - S24E 0.52 chs
- SE 1/16
 Sec. 14 ○ 4" Aspen post (Approx. corner) 12/23/36 ✓
 Poster on 12" Jack Pine - S16E 0.57 chs.
- CE 1/16 ○ 4" Aspen post (Approx. corner) 12/23/36 ✓
 S. 14 Poster on 6" Aspen - S54E 0.07 chs.
- NE 1/16 ○ 5" Aspen post (Approx. corner) 12/23/36 ✓
 S. 14 Poster on 4" J. Pine S36W 0.41 chs.
- EN 1/16 ○ 4" Cedar post (Approx. corner) 12/23/36 ✓
 S. 14 Poster on 10" J. Pine N63W 0.31 chs.
- C/4 ○ 3" Cedar Post (Approx. corner) 12/23/36 ✓
 S. 14 Poster on 10" Jack Pine - S73E 0.40 chs.
- C 5/16 ○ 4" Aspen Post (Approx. corner) 12/23/36 ✓
 S. 14 Poster on 10" Jack Pine S30E 0.11 chs.
- 1/4 S. 14 / S. 23 ○ 4" Aspen post (Approx. corner) 12/23/36 ✓
 Poster on 12" J. Pine S74W 0.07 chs.
- W 1/16 S. 14 / S. 23 ○ 3" Aspen post (Approx. corner) 12/23/36 ✓
 Poster on 7" Jack Pine - N15W 0.26 chs.
- 14/13
 23/24 ○ 3" Aspen post - Fence corner 12/23/36 ✓
 Poster on 14" W Pine - N1E 0.53 chs
- E 1/16 S. 14 / S. 23 ○ 3" Aspen post (Approx. corner) 12/23/36 ✓
 Poster on 5" Aspen - N3W 0.09 chs.
- 10/11
 15/14 ○ 5" Aspen post (Approx. corner) 12/24/36 ✓
 Poster on 7" Aspen - S8E 0.11 chs
- S. 14
 S. 15 / S. 14 ○ 3" Aspen post (Approx. corner) 12/24/36 ✓
 Poster on 4" Tamarack - S65W 0.15 chs.

(Continued on Page 37)

Fence corner.
 Probably this corner
 is O.K.

Later, County corner
 is about 10' South
 of fence corner.

CORNERS 7 S. 16-142-30

Corner Height B.T. Poster

N.W. 1/4 516
14" None 5" Aspen Stake
1" I.P.

W. 1/2 516
18" None
1" I.P. - Poster on 4" Aspen

SE 1/4 516
1" I.P. - B.T. N. Pine 6" N. 37° W 0.27 chs. (Poster)
10" 8/28/36

1/4 516
1" I.P. - 10"
B.T.
W. Pine 14" S 41° E 0.04 chs. (Poster)
W. Pine 12" S 57° W 0.08 " (Poster)

1/4 516
14" 6" Dead N 9° E 11 Lks.
1" I.P. Spruce. 8/30/36

NE 1/4 516
1" I.P. 12'
Poster at 4" Aspen post at corner

N 1/2 516
8 1/2 516
1" I.P. - 10"
B.T.
Aspen 14" - S 89° W 0.26 chs. (Poster)

1/4 516
1" I.P. 14"
Poster on 14" Aspen - N 29° E 1.66 chs.

1/4 516
1" I.P. - 18"
8/-/1936
Poster on 14" Aspen - S 87° W 0.91 chs.

1/4 516
1" I.P. - 7"
Aug. 1936.
Poster on 8" Aspen - S 47° W 0.17 chs.

1/4 516
2" I.P. 16"
Aug. 1936
Poster on 6" Ash - S 7° W 0.11 chs.

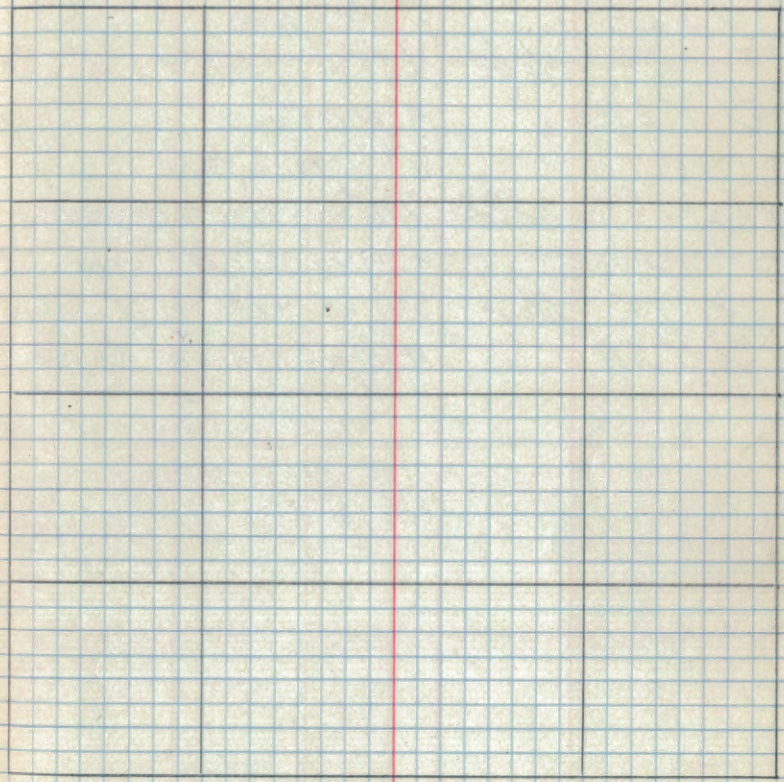
CORNERS - S. 16-T. 142, R. 30.

1" I.P. - 12"
C E 1/16 C
S 1/16 C
B.T. - Aspen 10" - N 7° E 0.42 chs.

⊙ County Corner
○ F.S. Corner
♦ G.L.O. Corner

1/4 5" Aspen post (Approx corner) 12/24/36
S15/S14 Poster on 10" Aspen N5W 0.40 chs. ✓

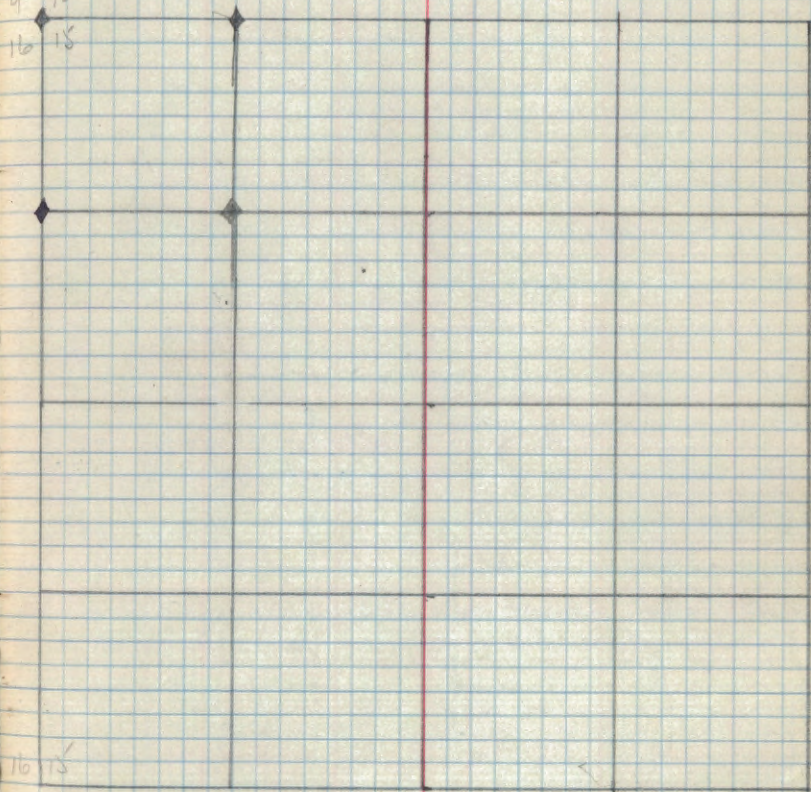
S. 14-141-31 (Cont. from Page 34)



SURVEY OF 515-141-30

Corner	Height	B.T.	Poster	
(59 510 / 516 515)	1"	None	511°E 66Lks to	Nov 13 th 1926 ✓
	2" I.P.		6" Jack pine	
(NW 1/4 515 / 516 515)	2"	None	N. 79°W 28Lks. to 5"	11/21/26 ✓
	1" I.P.		Aspen tree	
			4" Aspen Stake at Cor.	
(NW 1/4 515)	16"	12" Cedar	N 32°W 48Lks. to 12" Cedar	11/21/26 ✓
	1" I.P.		4" Aspen stake at Corner	
(1/4 510 / 1/4 515)	10"	None	541°W 4Lks. to 8" Jack p.	11/21/26 ✓
	1" I.P.		4" Aspen Stake at Corner	

9 10
16 15



16 15

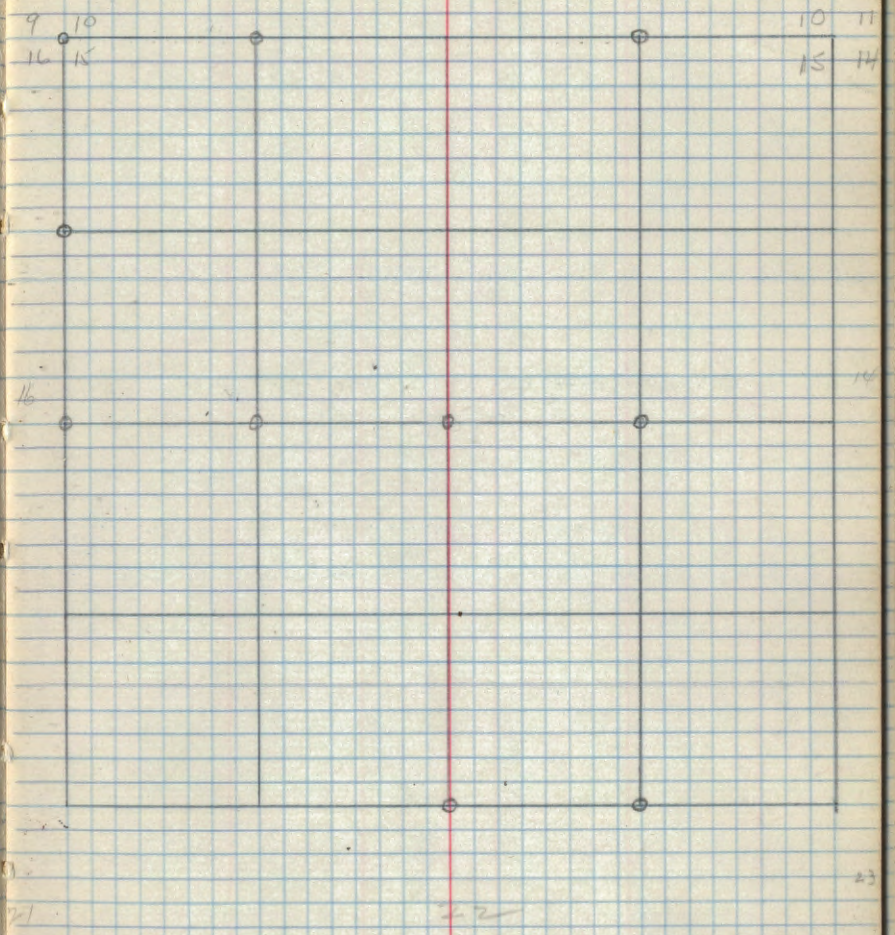
21 22

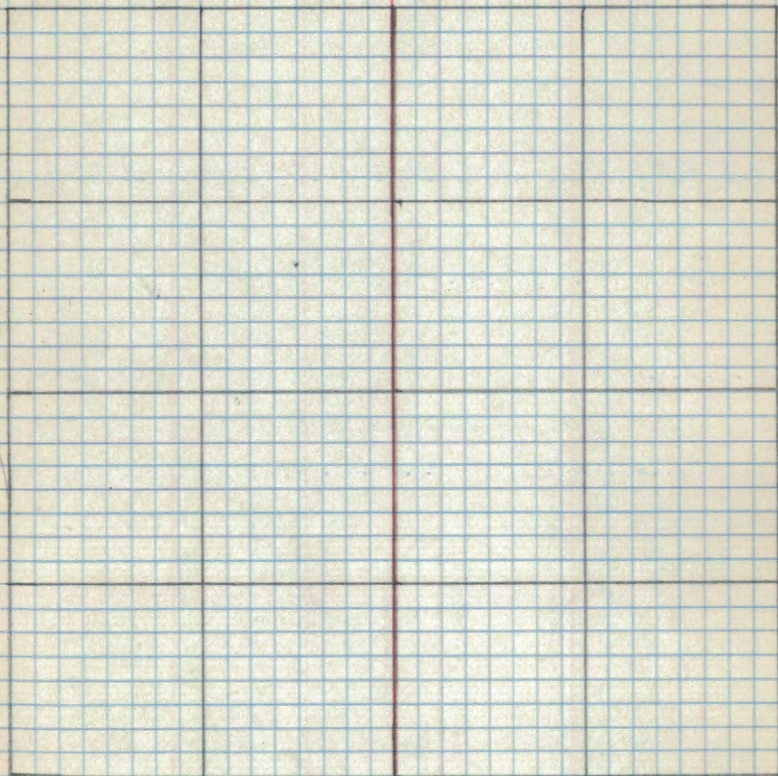
15-141-30

○ County Corner
 ○ P.S. Corner
 † G.D.O. corner

S.15, T.141, R.31

- E/16 S22 ^{8/15} ○ 2" Aspen post - (Approx. corner) 12/23/36 ✓
 Poster on 20" N. Pine - S14E 1.21 chs.
- 1/4 S22 ^{8/15} ○ 4" Aspen post (Approx. corner) 17/23/36 ✓
 Poster on 8" J. Pine N39E 0.12 chs.
- 1/4 S16/S15 ^{8/15} ○ 4" Aspen post. (Approx. corner) 17/23/36 ✓
 Poster on 7" J. Pine - S82W 0.24 chs.
- E/16 S15 ^{8/10} ○ 2" Aspen post. (Approx. corner) 17/24/36 ✓
 Poster on 5" Aspen N89E 0.09 chs.
- W/16 S15 ^{8/10} ○ 2" Aspen post - (Approx. corner) 17/24/36 ✓
 Poster on 4" Maple - S73W 0.04 chs.
- CW/16 S15 ○ 3" Cedar post (Approx. corner) 17/24/36 ✓
 Poster on 16" Jack Pine - N22W 0.66 chs.
- Ch/S.15 ○ 4" Aspen post (Approx. corner) 12/24/36 ✓
 Poster on 18" N. Pine - S51W 0.44 chs.
- CE/16 S.15 ○ 3" Aspen post - (Approx. corner) 17/24/36 ✓
 Poster on 7" Jack Pine S53E 0.30 chs.
- 9/10 16/15 ○ 3" Aspen post (Approx. corner) 12/24/36 ✓
 Poster on 10" Elm - N to E 0.10 chs.
- 11/16 S16/S15 ○ 2" Aspen post. (Approx. corner) 12/24/36 ✓
 Poster on 5" Aspen S14E 0.15 chs.





⊙ county corner
○ F.S. corner
* G.L.O. corner

S. 23, T. 141, R. 31

$\frac{1}{4}$
S23/S24 ○ 4" Aspen post - (Approx. cor.) 11/23/36 ✓
Poster on 9" Aspen S73W 0.10 chs.

$\frac{1}{16}$
S23/S24 ○ 4" Aspen post (Approx. cor.) 11/23/36 ✓
Poster on 6" Aspen - N60W 0.24 chs.

15 14
22 23

14 13
23 24

⊙ County Corner
 ○ F.S. corner
 ◆ G.L.O. corner

S. 3, T. 141, R. 30

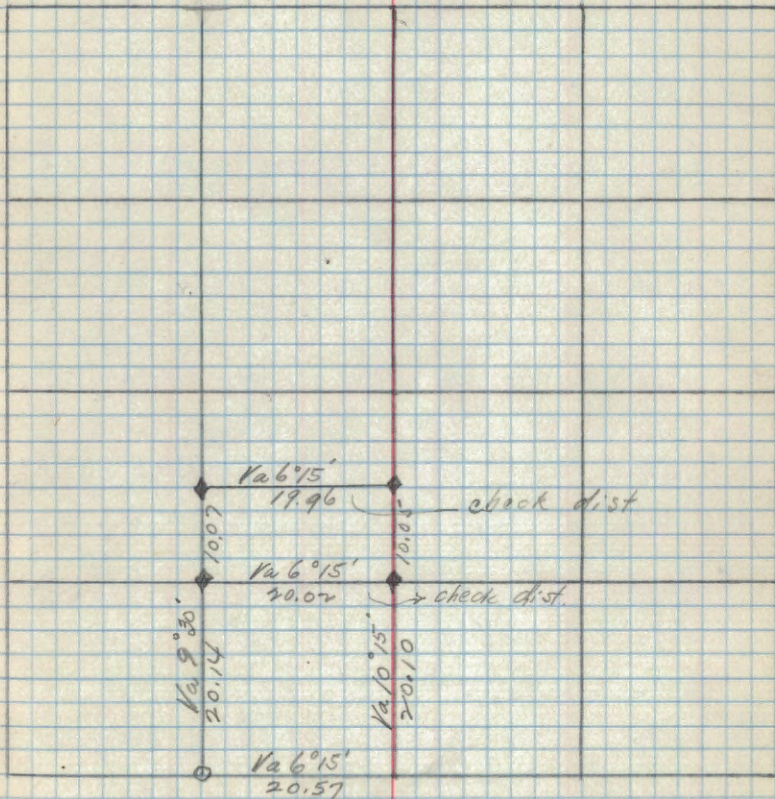
(C) S³/₁₆ S³ Poster on 12" Jack Pine - S53E 0.17 chs. 11/1/36 ✓

W³/₈ S³/₁₀ Poster on 10" Jack Pine - N46W 1.05 chs. 11/1/36 ✓

(SW³/₈) S³ Poster on 8" Cedar S2°E 0.54 chs. 11/1/36 ✓

(S³) A¹/₄ T²/₈ 1285 1470 Poster on 10" Jack Pine N43W 0.31 chs. 11/1/36
 1" I.P. 4" above ground

(S³) A¹/₄ T²/₈ 1282 1285 Poster on 14" Cedar S85°E 0.12 chs. 11/1/36
 Located 10 chs. N. of SW¹/₄ corner
 1" I.P. 6" above ground



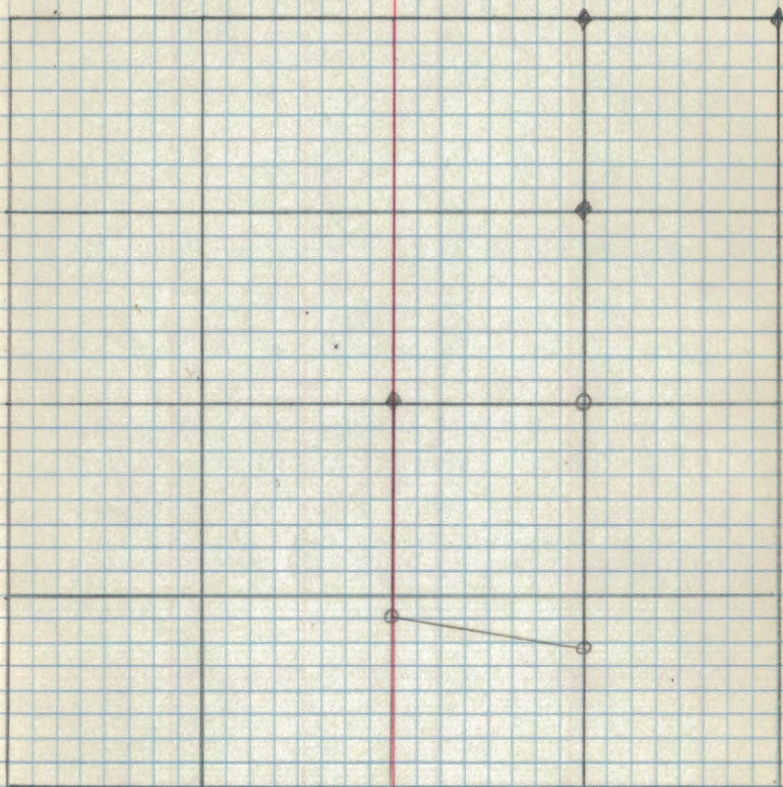
S. 16, T. 141, R. 30

Ex 89
S 16

1" I.P. 1" above ground.

11/2/26

Poster on telephone pole - S 61 E 0.48 chs.



Dec. 30 - 31 - 1936

48

S. 1, T. 14 N., R. 31 W.

$\frac{C\ E\ 1/6\ e}{81}$ 1" I.P. w/brass cap - 6" above ground - 11/30/36
Poster on 4" R. Oak - S83W 0.20 chs.

$\frac{C\ 4\ S\ 1}{1}$ 1" I.P. w/brass cap - 6" above ground - 11/31/36
Poster on 4" Jack Pine N80E 0.62 chs.

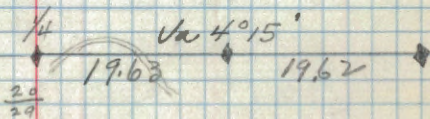
$\frac{1}{64}$ 1" I.P. w/brass cap - 6" above ground - 12/31/36
Poster on telephone pole - N27E 0.04 chs.
Corner located 9.42 chs. W. of CW $\frac{1}{16}$ corner

$\frac{1}{64}$ 1" I.P. w/brass cap - 6" above ground - 12/31/36
Poster on 6" W. Oak - S89W 0.67 chs.
Corner located 9.42 chs. W. of C $\frac{1}{4}$ corner

$\frac{C\ W\ 1/16\ e}{81}$ 1" I.P. w/brass cap - 6" above ground - 12/31/36
Poster on 12" R. Oak - N31E 0.80 chs.

◆ 9.42 ◆ 9.42 ◆ 9.42 ◆ $\frac{126^{\circ}30'}{19.05}$ ◆ 19.04 ◆

S. 20, T. 142, R. 30



Note: put up posters
 at $\frac{1}{4}$ $\frac{20}{29}$ + E $\frac{1}{6}$ $\frac{20}{29}$
 + Post at road $\frac{1}{4}$ $\frac{20}{29}$

CORNERS - S. 21¹¹, T. 142, R. 30NW
S21/S21

1" I.P. w/brass cap - 12"

Poster on 3" Willow post at corner

N
S21/S21

1" I.P. - 14"

Poster on 4" Ash post at corner

NW 1/16 S21

1" I.P. - 6"

Poster on 16" R. Oak S2°W 0.36 chs.

C
N 1/16 S21

1" I.P. - 8" - B.T. Aspen snag - S3°W 0.18 chs

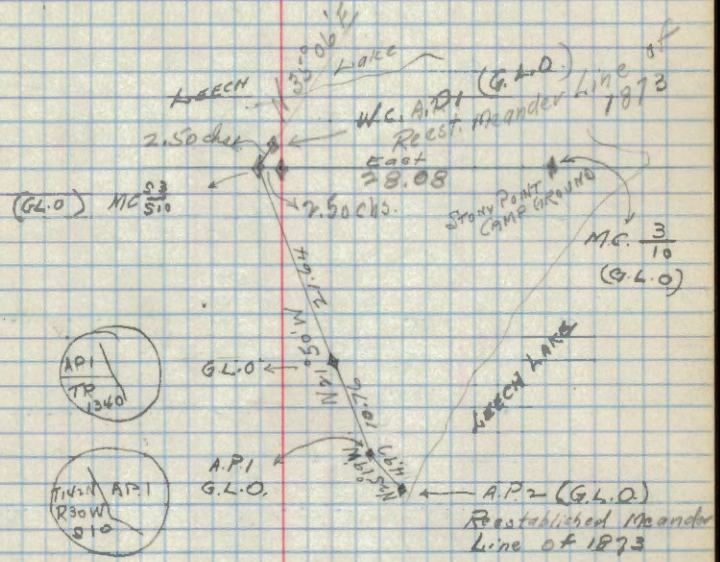
Poster on 6" R. Oak N73°W - 0.46 chs

E 1/16 C
S21

1" I.P. - 14"

Poster on 5" Tamarack N1°E 0.52 chs.

S. 3 and 10, T. 142, R. 30



SURVEY MADE BY J. A. Gjalhaug
Dec. 15, 1936

S. 29, T. 141, R. 29

29/29
32/33

Oak post - (local corner)

B.T.S.

Oak - 5" N 81° 45' W 0.30 chs

Oak - 7" S 77° E 1.11 chs.

Poster on Aspen 6" S 11° W 1 1/2 chs.

20 | 21
29 | 28No 0371'E
80.08Oak Post
(local corner)Survey Made by J. A. Gjelhaug,
Sept. 1936

N - between 24/19 -

1/4 Pine 6 N 31 W 4X
" 10 N 64 E 39

60.00 enter Cedar-Town Swamp

North between 19/24

44.16 Jitriout South Bdy of
Res - 35.80 ch's N 79°-33 W
of 13 mile post

between 19-20

29.49 North of Sec. Cor

Creek 0.15 N of $\frac{13}{24}$ / $\frac{18}{19}$

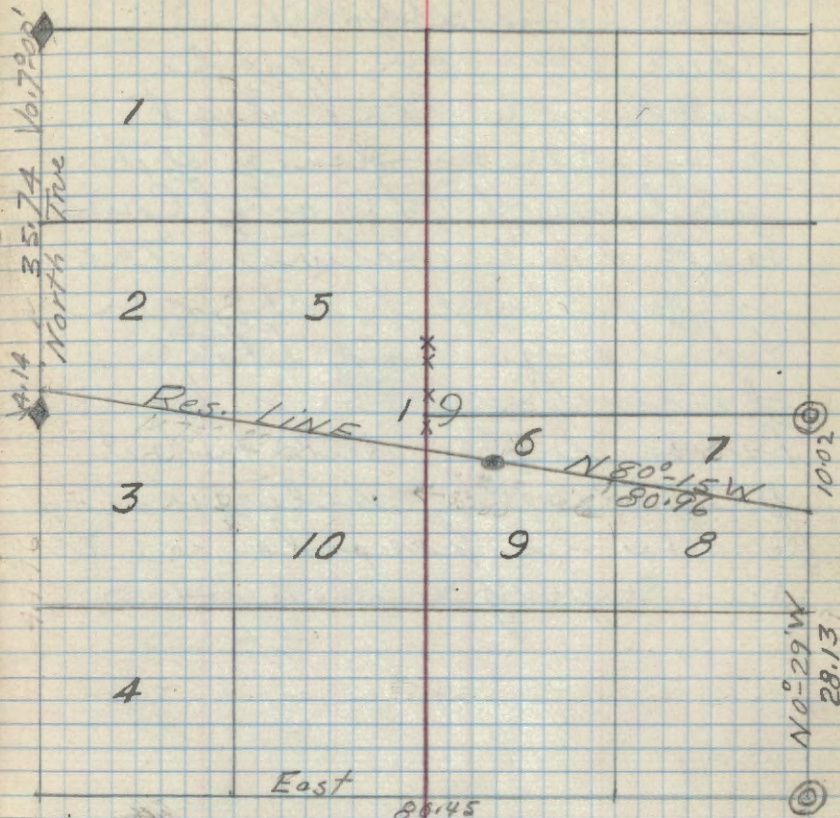
Sec 27 - 141-29

N 80-15 W 85.36 - 0.79 South

of $\frac{21}{28}$ / $\frac{22}{27}$ 8 15.64 S of $\frac{22}{27}$ / $\frac{23}{26}$

Sec. 19-141-29

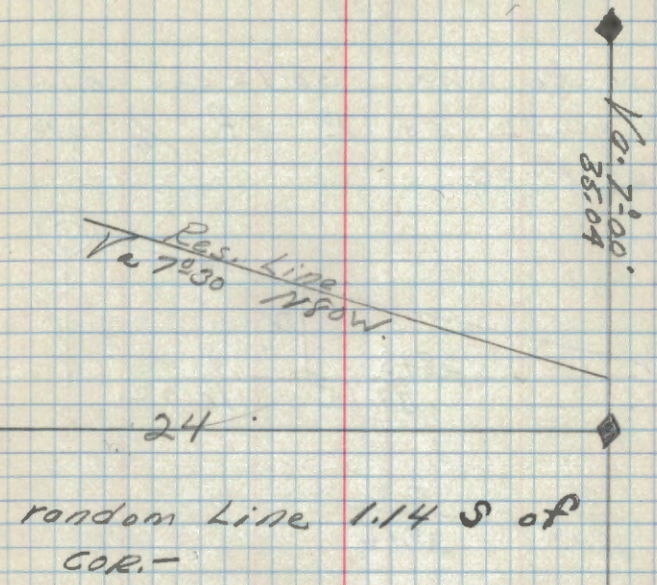
56



Survey made by R. T. DeFont. 2-41
2 county cor's on East side -
2 G.L.O. cor's on West side -
Bearing Res. Line N 80-15' W
Va. 7°-00

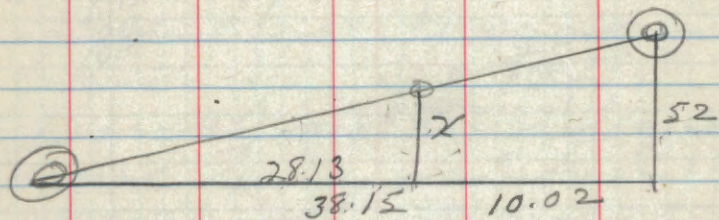
Line re-established in their true orig position according to the best available evidence of the position of the orig Corner - all diff between the measurements shown on the orig and those derived in the re-locament have been distributed proportionally between accepted corners in accordance with surveying rules -

Sec. 24-141-30



beginning at $\frac{19}{50}$ then N Va $6^{\circ}30'$ -
 $\frac{30}{29}$

along Sec. Line - 38.15 ch's missing
 c $\frac{1}{4}$ - 0.52 ch's E of $\frac{1}{4}$ COR
 T Va. $7^{\circ}00'$



$$\frac{x}{28.13} = \frac{52}{38.15}$$

$$x = \frac{14.6276}{38.15}$$

$$x = 38 \text{ Links.}$$

Rem line N $79^{\circ}30'W$

beginning at $\frac{13}{18}$ thence
 South $\frac{24}{19}$
 South along TWP Road No. 7°
 a distance of 39.88

33.69 Res. Line W } Present
 31.83 " " E }
 35.74 Res. line

\angle of correction $2^{\circ}-42' L$

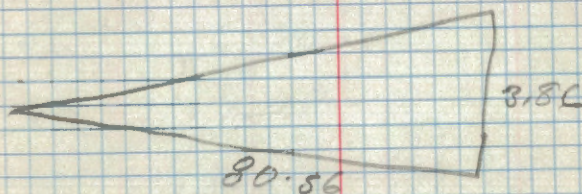
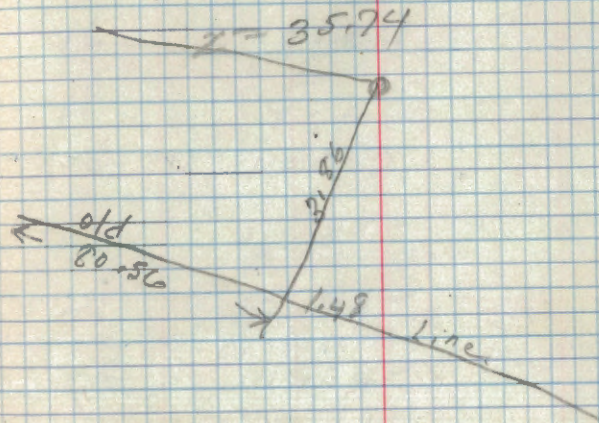
begin at E-Res. Cor.
 run New Res. Line - $2^{\circ}-42'$
 South of old Line - $N 80^{\circ}-30' W$
 missing W. R. Line by 471Ks
 South of past -

Random Line Notes - W to E

20.16 $\frac{1}{16}$ Line
 40.00 $\frac{1}{4}$ " "
 48.00 enter field
 60.00 - leave " "
 80.96 E. I.P.L. past

20.56
 $\frac{82.81}{1.48}$
 80.50
 34.00
 7.31
 33.69
 32.02
 17
 21.83

$\frac{40}{35.84} = \frac{39.88}{x}$



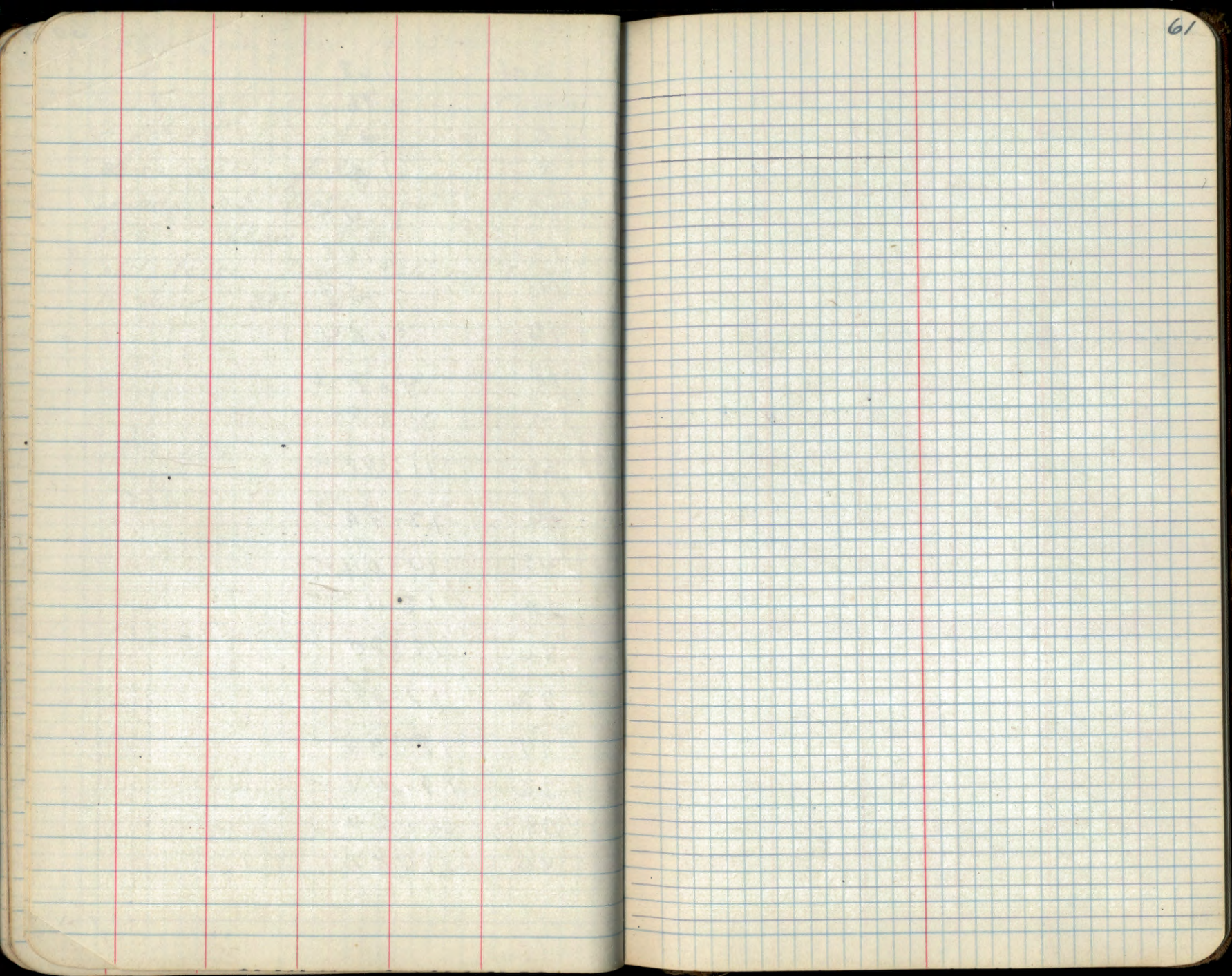
$\tan \theta = \frac{3.86}{80.56} = .0479$

$\theta = 2^{\circ}-42' L$

Res. Line Sec. 19-141-29

Begin at E-I.R.L. thence
N 80°-15'W along Res. Line-
30.00 enter field
26.00 43 Vints South To fence
34.0 - Leave field.
old fence line follows close
to line 38-40+

2 ch's	1.08
4 "	2.16
6 "	3.24
8 "	4.32
10 "	5.40
12 "	6.48
14 "	7.56
16 "	8.64
18 "	9.72
20 "	10.80
22 "	11.88 ✓
24 "	12.96 ✓
26 "	14.04 ✓ 1.00
28 "	15.12 ✓
30 "	16.20 ✓
32 "	17.28 ✓
34 "	18.36 ✓
36 "	19.44 ✓
38 "	20.52
40 "	21.60



61

TRAVERSE OF TELEPHONE LINE
STA

ON Old Highway #34

72

Startingth Inter. of Hi-way #34 & Underpass
on R.R.

N14°W

410.5

N24°W

206.0

N35°30'W

816.5

S84°E

0+00

100.0 7+00

S55°E

120.5 8+20.5

S35°30'E

21+52 29+72.5

S36°E

2+68 32.40.5

TRAVERSE
OLD 34

Junction Old #34 & R.R. Tracks (old Underpass)

523' To & Old #34

Along N side Hi-way

Inter. Old #34 & New #34 516' To R
New #34

Traverse of Spindler Hay Meadow
34 & 5 142-31

Starting #	Bear.	Dist.	Sta	Remarks
N 1/6 ⁵⁵ 142-31				
	N 82° W			
		2.21	1	Sta. 1
	N 73° E			
		.75	2	
	S 64° 30' E			
		6.67	3	
	N 4° E			
		8.13	4	
	N 26° W			
		5.27	5	
	N 0° 30' W			
		5.80	6	
	N 18° E			
		2.17	7	
	E			
		29.14	8	
	S 31° E			
		2.82	9	
	S 35° W			
		12.21	10	
	S 42° W			
		9.32	11	
	S 24° W			
		11.38	12	

Surveyed 11/3/36 Upham - Brank - Compose

Sta. 0

Start 7 on sec. line 4 & 33 - W 2.19 cbs
 - to sec cor ^{32/33} 142-31 & 143-31 (co. cor)
 5/4

@ 17.85 N 1/4 4-33

from Sta 11
 Tie to NW 1/4 54 GLO N 85° W 1.22 cbs

	cls.	Dist	Sta
Bear			
S65°W		3.88	13
S16°W			
		11.06	14
N54°W			
		1.60	15
N26°E			
		2.89	16
N66°W			
		7.11	17
S21°W			
		5.20	18
S36°W			
		4.69	19
S53°E			
		7.92	20
S15°E			
		4.32	21
S37°W			
		7.54	22
N36°30'W			
		0.48	23
N14°30'E			
		9.19	24
N			
		8.87	25

RR Tracks 1 ch 5

Bear. Dist Sta.

N44°E

2.56 26

N30°30'E

3.06 27

N16°E

5.16 28

N8°30'E

12.34 29

N32°W

3.74 30

N51°30'W

2.83 0

2 10.97 chs

77

35.84

~~39.88~~

28672

~~28672~~

32256

~~10752~~

~~14292992~~

35.73

40 | 14292992

120

229

200

292

280

120

N16° COR 5542-31 STA. 0 which
was starting point of meadow trail crs

$$\frac{4.16}{40} = x$$

$$\frac{39.88}{4.16}$$

$$239.28$$

$$39.88$$

$$159.52$$

$$40 \overline{) 165.9008} \quad 4.14$$

$$160$$

$$59$$

$$40$$

$$190$$

$$160$$

$$\frac{40}{35.84} = \frac{39.88}{x}$$

$$39.88$$

$$4.14$$

$$35.74$$

$$35.84$$

$$40.00$$

$$31.88$$

$$\frac{40}{35.84}$$

$$x$$