

T149 N R 26-27-28

T150 N R 25-26-27

RORDS

FIELD BOOK

360

RORDS

#117

ROADS

T 149 N R 26 W

T 150 N R 25 W

T 150 N R 26 W

T 150 N R 27 W

T 149 N R 27 $\frac{1}{2}$ 28 W

Running South along Road on $\frac{1}{4}$
 Line from $\frac{1}{4}$ cor of Secs $\frac{14}{14}$ T149-R26
 To $\frac{1}{4}$ cor Secs $\frac{14}{23}$ T149-R26

N



$\frac{1}{4}$ cor $\frac{14}{14}$

Ab

10ch

Ab

20ch

Mc

30ch

Mc

40ch

Clearing
 Partly
 Cultivated

Ab

Timber is sparse

50ch

Ab

60ch

Ab

70ch

Small Mustog

Ab

82.37ch

$\frac{1}{4}$ cor $\frac{14}{23}$

Figures Denote Distance in Chains at
 which Strip Stakes were set
 Letters Denote Timber Types

Dec 16, 1933

D. H. Wilson

G. Sherman

Started at $\frac{1}{4}$ cor $\frac{14}{14}$

Chained South on $\frac{1}{4}$ Line in Sec 14 -
 T149-R26 82.37ch. To $\frac{1}{4}$ cor Secs $\frac{14}{23}$

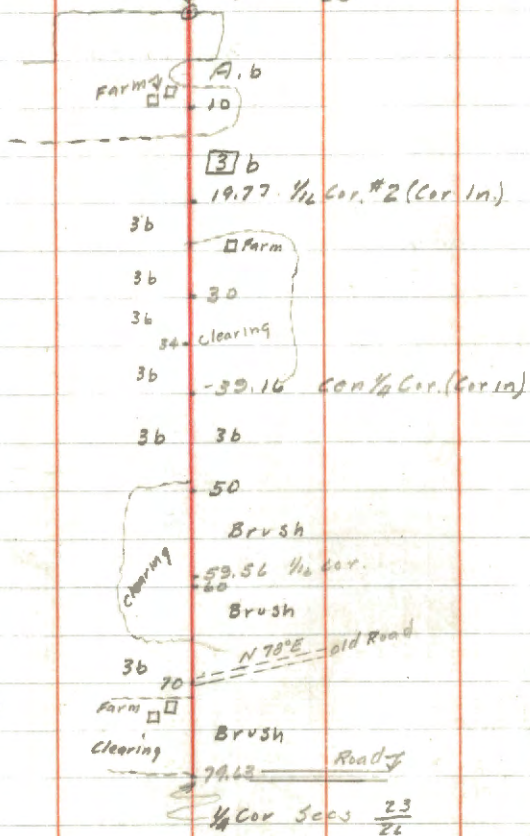
Fence on West side of Road & Telephone
 Line on East side. Country is Rolling
 (Some steep pitches)

Running S. on N45 1/4 Line Thru

Sec 23-149-26 Along Road

1/4 Cor $\frac{14}{23}$

N



12/16/33 cont,

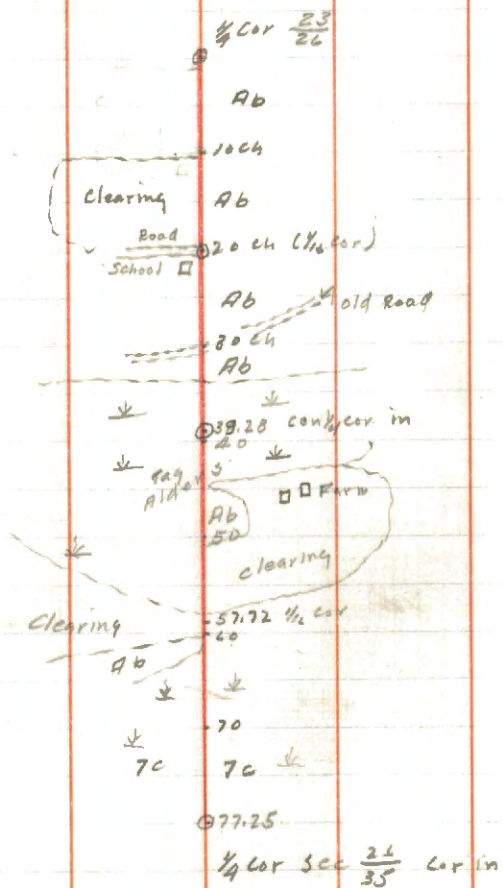
D.H.M.

G.S.

Chained South along Road on N45 1/4
Line of Sec 23-149-26, Country
Rolling.

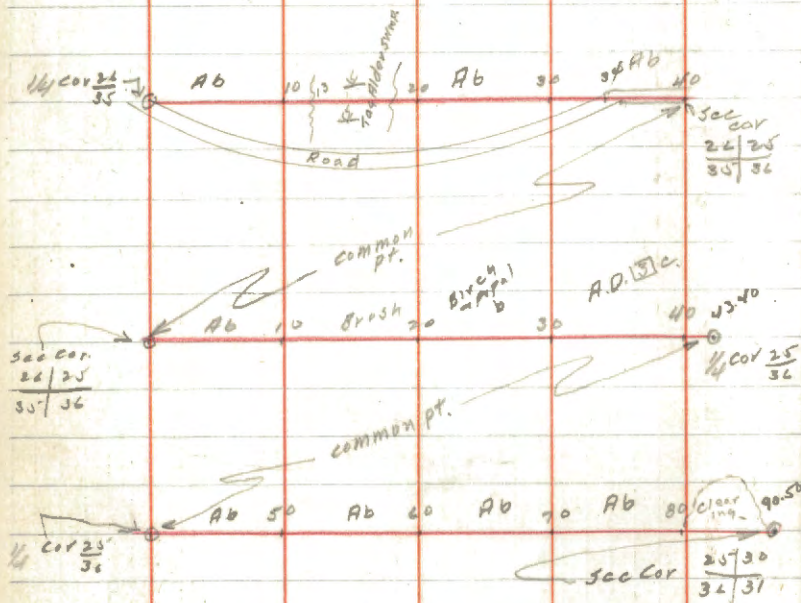
Running South on $\frac{1}{4}$ Line of Sec 26-149-26

N



Dec 18, 1933
D. H. Wilson
& Sherman

Running East from $\frac{1}{4}$ cor $\frac{26}{30}$ 149-26 along
 Sec line To sec cor $\frac{25}{30}$
 $\frac{30}{31}$



4
 1418 cont
 W.H.W.
 S.S.

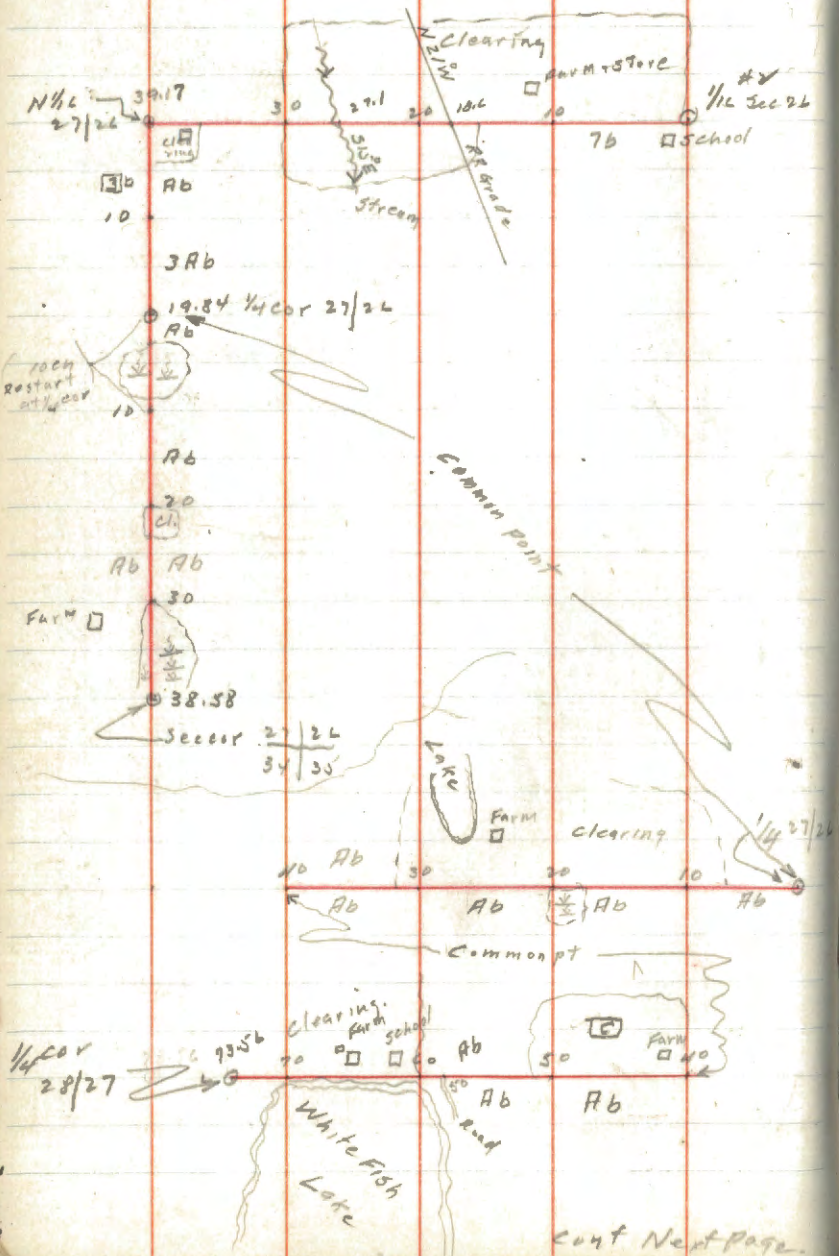
start $\frac{1}{4}$ $\frac{26}{30}$ followed fence line on section
 for 34 ch, from 34 to 40 followed Road
 on line. To sec cor $\frac{26}{30}$ 149-26
 $\frac{30}{31}$

from above cor followed Road to cor
 $\frac{25}{30}$ 90.50 chains (Cason Range
 $\frac{32}{31}$ Line)

Bearing Trees

sec cor $\frac{25}{30}$ $\frac{36}{31}$	N 10° 57' E	84.0'
"	N 45° E	109.2'
$\frac{1}{4}$ cor $\frac{25}{30}$ $\frac{32}{31}$	BIRCH'S TOP	110.0'
	TAM 0° N 28° E	145.2'

Start on 1/4 Sec 26 T149-R26 Run West



Dec 19, 1933
D H Wilson
G Sherman.

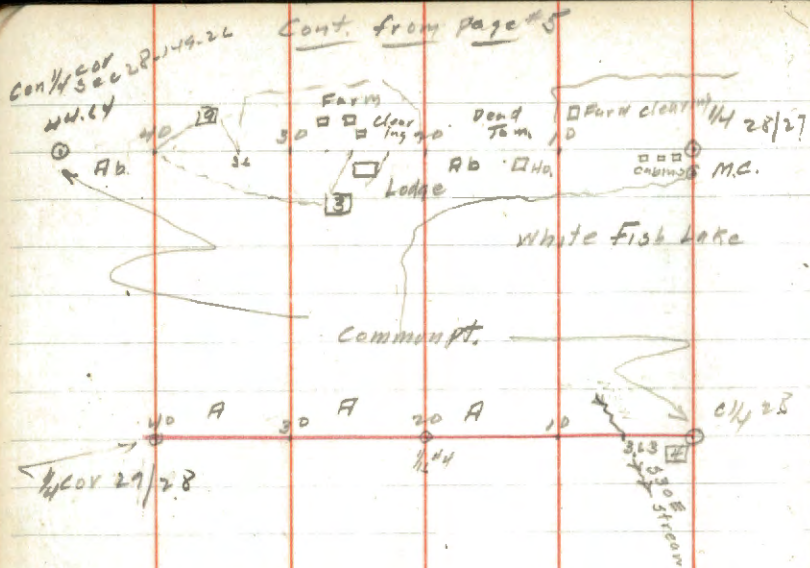
Clearing Road
Chained West from 1/4 # 2 Sec 26 T149-R26
along line to N 1/4 27/26 Thence South along
Sec Line to Sec cor $\frac{27}{26}$ T149-R26
 $\frac{34}{35}$

Started at 1/4 Cor 27/26-149.26 +
Chained West on 1/4 line to 1/4 Cor 28/27
Thence West on 1/4 line to 1/4 Cor 29/28
All on Roads.

B.T.S.

$\frac{27}{26}$	Iron Pipe for Cor.
$\frac{34}{35}$	Pine stp 12" S 10W 473 ch.
	Pine stp 8" S 49E 115 ch.

cont Next page.

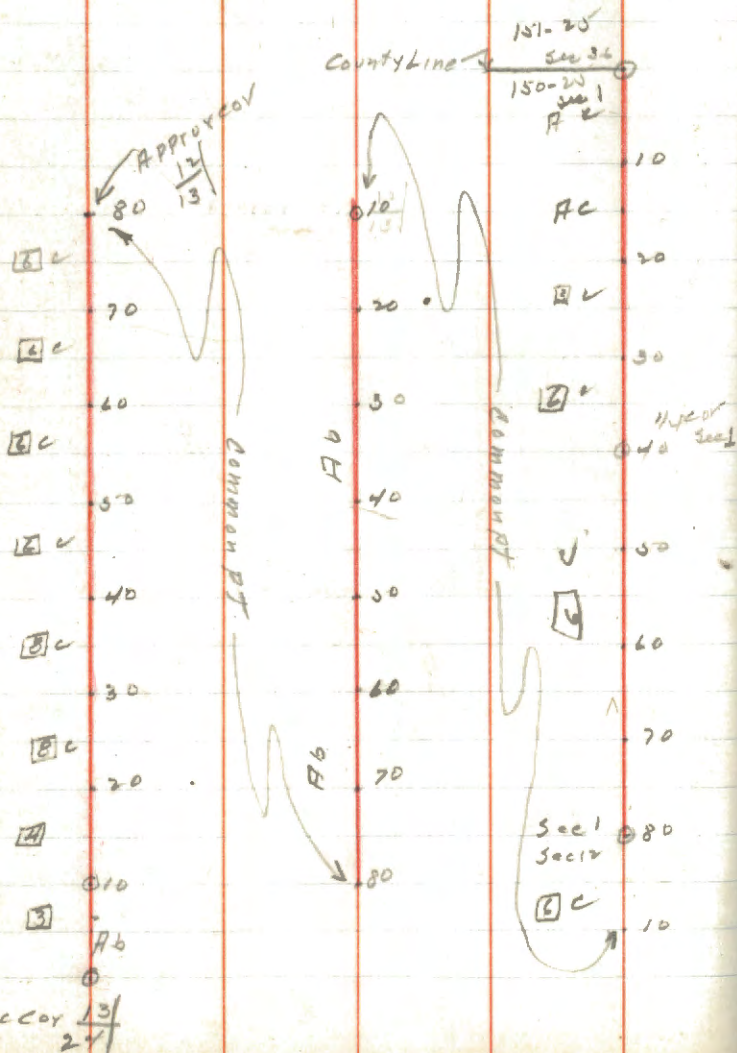


B.T.S.

Con 1/4 28	Cedar 7"	N 30° W	43 L
W Pine 15"	3 11° W		1.03 ch.
1/4 44			
Dead Poplar 12"	N 7° E		
Birch 7"	S 17° W		

North from sec cor $\frac{13}{27}$ T150-R25

Along Hi Way #61 (Range Line between
150-25 & 61-27)



7

12/20/33

DH Wilson

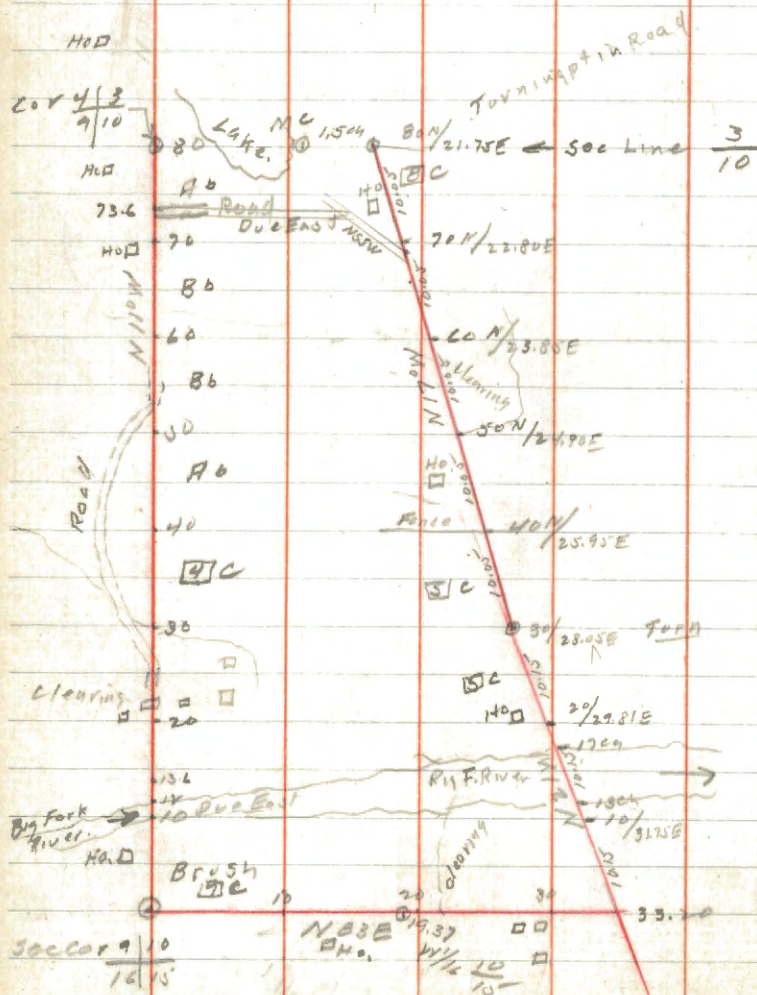
G Sherman

Chained Along Hi Way #61 on Range
Line East Side of TRIP 150-R25
from sec cor $\frac{13}{27}$ To North Boundary
of TRIP (County Line)

← Govt Birch B.T. N.W.

← Spruce stp 12" N.W. (B.T.)

Section line between Secs 9+10 T149-R24.
 + Traverse of Diagonal Road known
 as Pomroy Road.



12/28/33

DH Wilson
 J. Simkins
 - 40° Tem.

Ran N from $\frac{9}{10}$ To $\frac{4}{13}$
 $\frac{16}{15}$

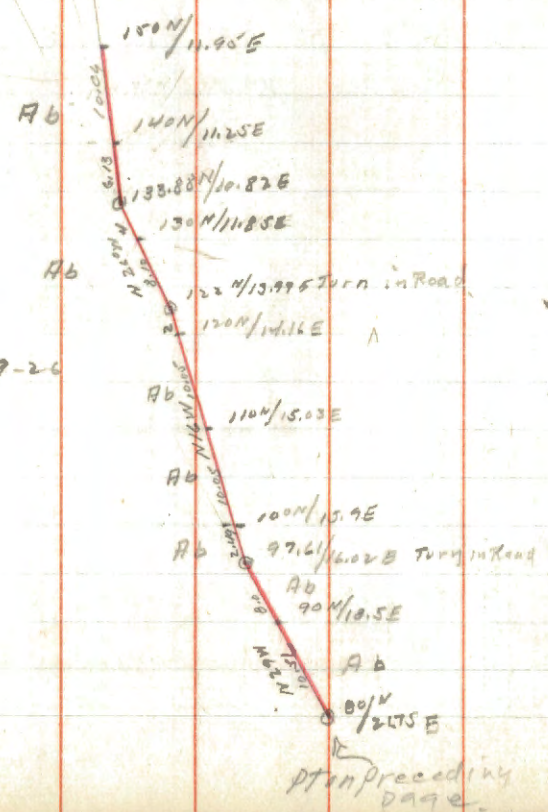
ⓐ $\frac{4}{13}$ found stake 3' hi 4" sq.
 for Cor, N O B. T.
 at $\frac{9}{10}$ Tam 7" N 53 E 51.8
 $\frac{16}{15}$ Tam 7" N 29 W 70.0

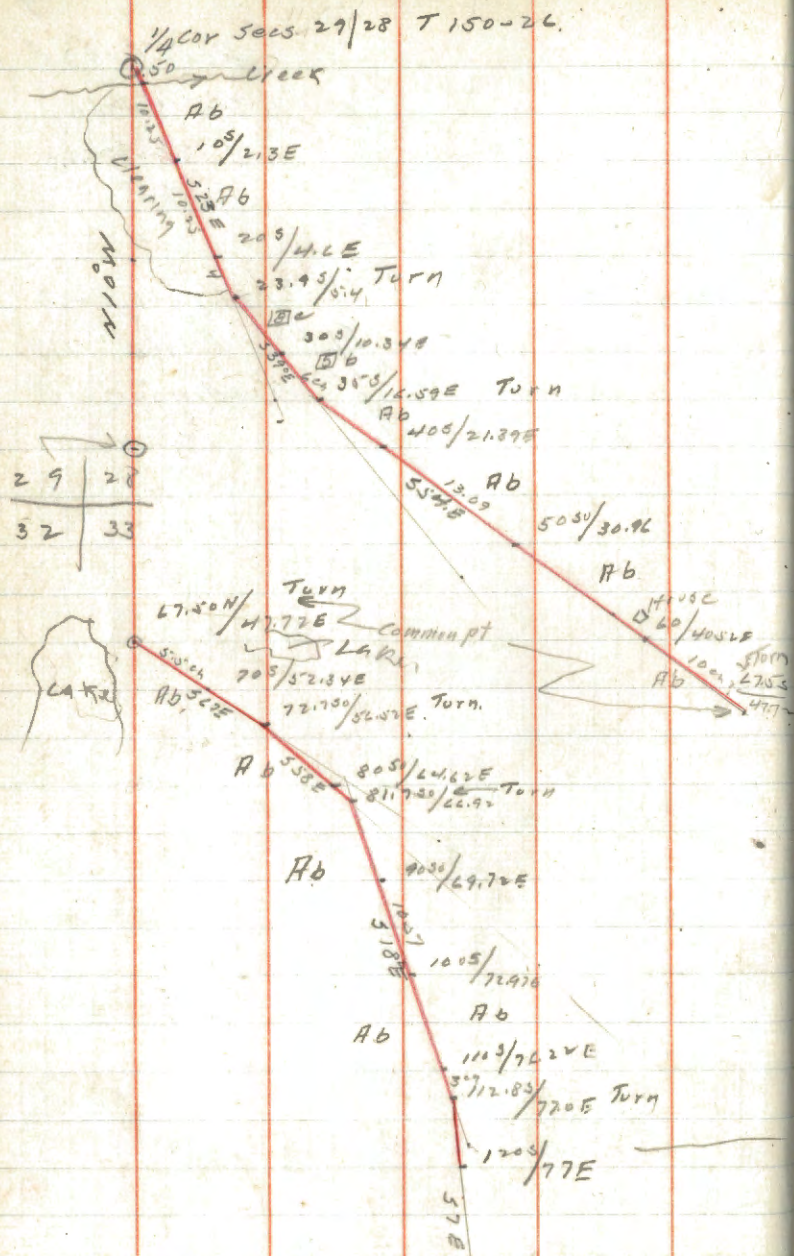
Mc $\frac{3}{10}$ East shore of Lake
 Two N Pine B.Ts 12" NE+SE

Dec 29, 1935
D.H. Wilson
J. Simkins
-20°

Start at pt 80 ch No / 21.75 ch East
of Sec cor $\frac{9}{10}$ in a NW
direction along $\frac{16}{15}$ Winding Road
To a pt 100 ch / 11.95 ch E of same cor.

Sec 3-149-20





Jan 22nd 1934
 D.H. Wilson
 J. Simkins

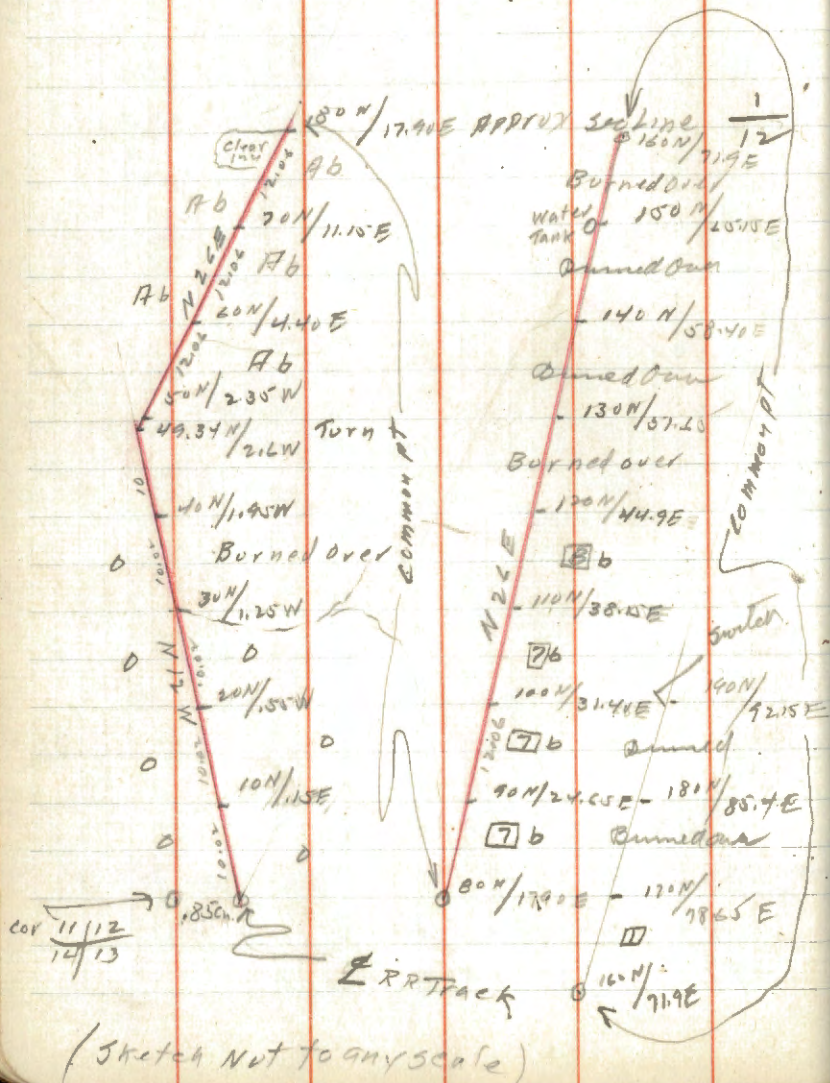
1/4 Cor Sec 29/28 post Near Road (E side)
 & N side of Bridge
 Sec cor 29/28 post + J Pine
 32/33 57p 10' SE

This pt is 6.53 ea NO of
 pt on page 7 (150N/11.95E)
 (Diff should be 10 ea)

Traverse Backus RR Track

from cor $\frac{11}{12}$ / $\frac{14}{13}$ 150-27 North
To Town Line. + Post.

Jan 3 1934
D.H. Wilson
J. S. Minkins



Start at 1/4 Cor 10/11 Twp 149-28

South, on Section Road.

1/4 Cor 10/11

7b

10

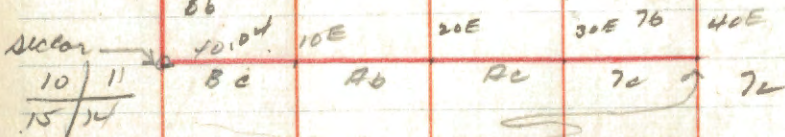
7c 7c

AC 20

7c

30

8b



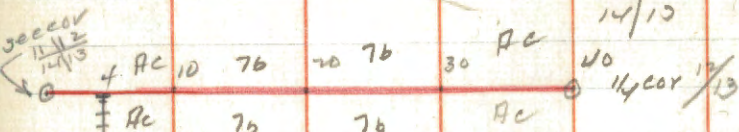
Comm. PT

40E 50E 7b 60E 70E 80.69

7c Ho. Clearing 7b Section

11/12

14/13



Section Road

Timber Landing

RR

Duaso

Cont Next page

T149N R28W

12

1/4/34

DH Wilson

John Simkins

BTS 11/12
14/13

Ash 12" NW

Popal 11" NE

1/4 Cor 12/13 Maple 10" SW

Cont from preceding page.

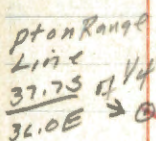


Continued on next page.

1/4/34¹³

cont from previous page

pt on Range
Line
37.75
36.0E →

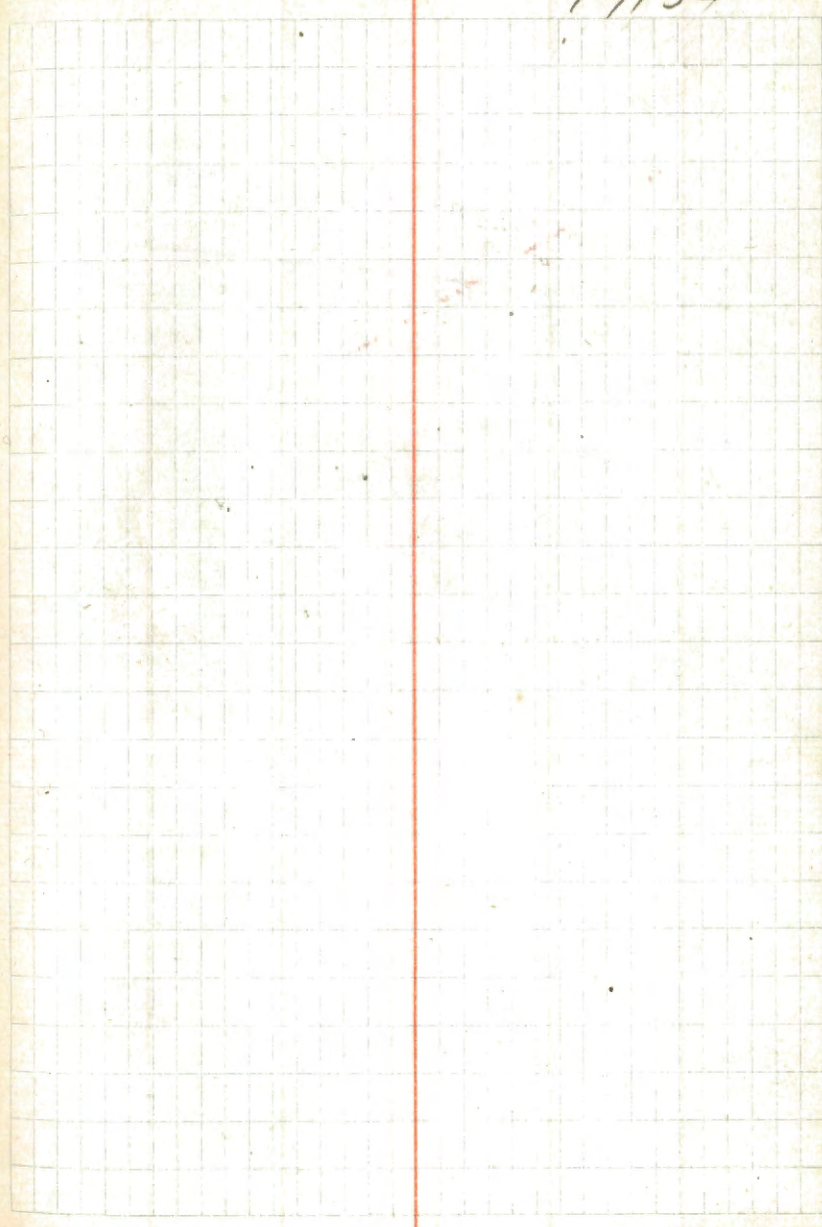


course is $\frac{12}{19} - 147-28$
12572
A 5600E A

1000E Range Line
wind ch. $\frac{14}{19} - 147-28$

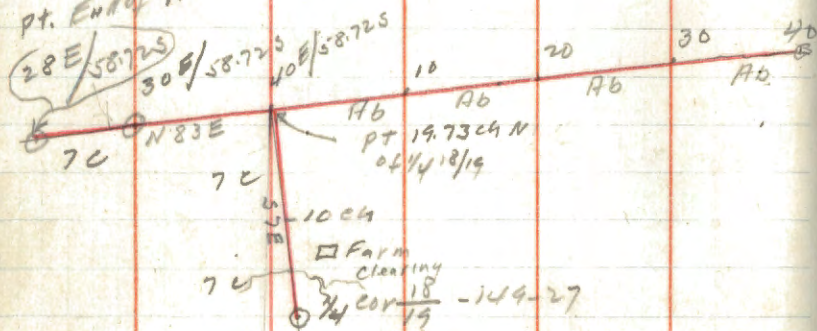
12572
A 5600E A 2000E/52.775
12572
A 2800/58.725

1/4/34 14



(pt. End of Traverse on previous page)

Pt. End of Traverse on previous page (#10)



Jan 8, 1934
D. H. Wilson
J. Simkins

B.T.S. 14 $\frac{18}{19}$ - 149-27

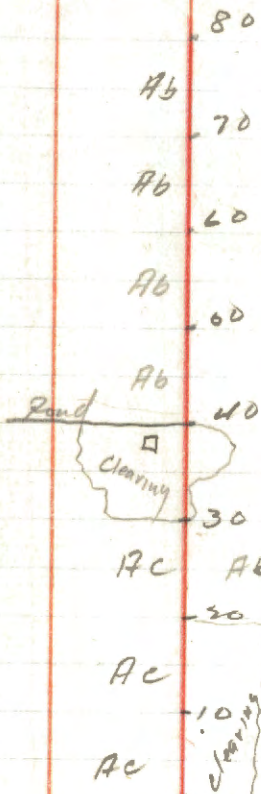
Birch 15" SE (Gout Tree)
pop 91 14" NW (Gout Tree)

ORIG. Notes

Set spruce post.

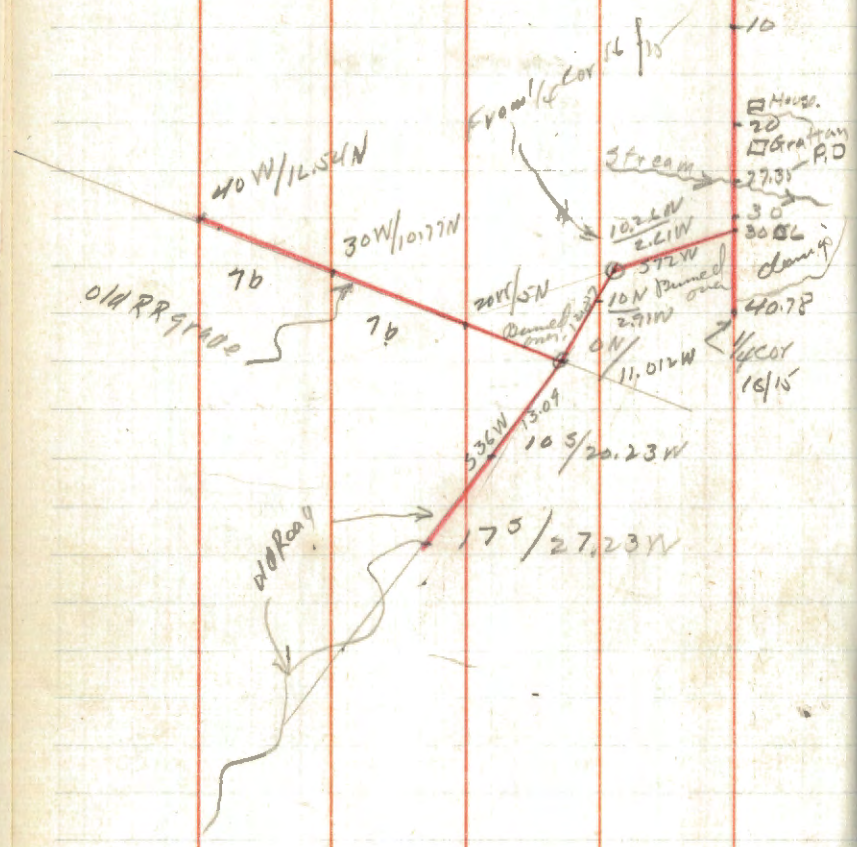
Aspen 7 N 66E 12 7.9'

Birch 10 South 17 11.2'



© Center for
See 9-149-28

Sec cor
 9/10
 16/15
 7c
 10



Jan 9th 1937
 D.H. Wilson
 J. SIMONS
 Deep Snow

B.T.s + 150 N 22 W
 9/10 Tam Sta 12" SW
 16/15 Ced. Sta 14" SE
 Tam Sta 8" NE

1/4 cor 16/15
 Popal stub 57 SE 44 L
 4" Spruce post 2 1/2 High.
 } part markings
 E W

At a Point 1.75 Chasms East

Thence $8\frac{1}{4}$ $4/9$ 149-27 3.4

S. 49 E	3.4
	<u>8.96</u>
S. 34 E	12.36
	<u>10.00</u>
S. 50 E	22.36
	<u>2.00</u>
	20.00
	<u>15.00</u>
	40.50
	<u>15.00</u>
	56.00
	<u>1.00</u>
	60.00
	<u>4</u>
S. 31 E	64.00
	<u>4.16</u>
S. 16 E	68.16
	<u>2.00</u>
S. 15 E	70.16

Lat D. D

0.05, 1.75 E

	<u>273</u>
2575	3.96 E
7.63	<u>6.02 E</u>
10.00	10.00
829	<u>5.00</u>
1849	15.00
171	<u>2.00</u>
2000	17.00 E
1000	<u>12.00</u>
3000	30.00
70.00	<u>12.00</u>
4000	43.00
257	<u>3.00</u>
4257	46.00
393	<u>2.00</u>
4600	48.00
400	<u>1.00</u>
5000	49.00
173	<u>0.06</u>
51.93	50.06

Tel. Phonsht

Crack E.D

END OF
BOOK 117