

T144-145-146 N R29W

T144 N R29 W
T145 N R29 W
T146 N R29 W

MINNE
SOTA

#116

KEUFFEL & ESSER CO.
DRAWING MATERIALS
 AND
SURVEYING INSTRUMENTS.

NEW YORK.
 CHICAGO. ST. LOUIS. SAN FRANCISCO. MONTREAL.

Tables for Excavations and Embankments.

DISTANCES FROM CENTER OF ROADWAY FOR CROSS-SECTIONING.
 ROADWAY 18 FEET WIDE. SIDE SLOPES 1 TO 1.
 FOR SINGLE TRACK EXCAVATION.

" Copyright, 1895, by Keuffel & Esser Co."

	0	.1	.2	.3	.4	.5	.6	.7	.8	.9	
0	9.0	9.1	9.2	9.3	9.4	9.5	9.6	9.7	9.8	9.9	0
1	10.0	10.1	10.2	10.3	10.4	10.5	10.6	10.7	10.8	10.9	1
2	11.0	11.1	11.2	11.3	11.4	11.5	11.6	11.7	11.8	11.9	2
3	12.0	12.1	12.2	12.3	12.4	12.5	12.6	12.7	12.8	12.9	3
4	13.0	13.1	13.2	13.3	13.4	13.5	13.6	13.7	13.8	13.9	4
5	14.0	14.1	14.2	14.3	14.4	14.5	14.6	14.7	14.8	14.9	5
6	15.0	15.1	15.2	15.3	15.4	15.5	15.6	15.7	15.8	15.9	6
7	16.0	16.1	16.2	16.3	16.4	16.5	16.6	16.7	16.8	16.9	7
8	17.0	17.1	17.2	17.3	17.4	17.5	17.6	17.7	17.8	17.9	8
9	18.0	18.1	18.2	18.3	18.4	18.5	18.6	18.7	18.8	18.9	9
10	19.0	19.1	19.2	19.3	19.4	19.5	19.6	19.7	19.8	19.9	10
11	20.0	20.1	20.2	20.3	20.4	20.5	20.6	20.7	20.8	20.9	11
12	21.0	21.1	21.2	21.3	21.4	21.5	21.6	21.7	21.8	21.9	12
13	22.0	22.1	22.2	22.3	22.4	22.5	22.6	22.7	22.8	22.9	13
14	23.0	23.1	23.2	23.3	23.4	23.5	23.6	23.7	23.8	23.9	14
15	24.0	24.1	24.2	24.3	24.4	24.5	24.6	24.7	24.8	24.9	15
16	25.0	25.1	25.2	25.3	25.4	25.5	25.6	25.7	25.8	25.9	16
17	26.0	26.1	26.2	26.3	26.4	26.5	26.6	26.7	26.8	26.9	17
18	27.0	27.1	27.2	27.3	27.4	27.5	27.6	27.7	27.8	27.9	18
19	28.0	28.1	28.2	28.3	28.4	28.5	28.6	28.7	28.8	28.9	19
20	29.0	29.1	29.2	29.3	29.4	29.5	29.6	29.7	29.8	29.9	20
21	30.0	30.1	30.2	30.3	30.4	30.5	30.6	30.7	30.8	30.9	21
22	31.0	31.1	31.2	31.3	31.4	31.5	31.6	31.7	31.8	31.9	22
23	32.0	32.1	32.2	32.3	32.4	32.5	32.6	32.7	32.8	32.9	23
24	33.0	33.1	33.2	33.3	33.4	33.5	33.6	33.7	33.8	33.9	24
25	34.0	34.1	34.2	34.3	34.4	34.5	34.6	34.7	34.8	34.9	25
26	35.0	35.1	35.2	35.3	35.4	35.5	35.6	35.7	35.8	35.9	26
27	36.0	36.1	36.2	36.3	36.4	36.5	36.6	36.7	36.8	36.9	27
28	37.0	37.1	37.2	37.3	37.4	37.5	37.6	37.7	37.8	37.9	28
29	38.0	38.1	38.2	38.3	38.4	38.5	38.6	38.7	38.8	38.9	29
30	39.0	39.1	39.2	39.3	39.4	39.5	39.6	39.7	39.8	39.9	30
31	40.0	40.1	40.2	40.3	40.4	40.5	40.6	40.7	40.8	40.9	31
32	41.0	41.1	41.2	41.3	41.4	41.5	41.6	41.7	41.8	41.9	32
33	42.0	42.1	42.2	42.3	42.4	42.5	42.6	42.7	42.8	42.9	33
34	43.0	43.1	43.2	43.3	43.4	43.5	43.6	43.7	43.8	43.9	34
35	44.0	44.1	44.2	44.3	44.4	44.5	44.6	44.7	44.8	44.9	35
36	45.0	45.1	45.2	45.3	45.4	45.5	45.6	45.7	45.8	45.9	36

Calculated by Julien A. Hall, M. Am. Soc. C. E.

LINE SURVEY

C.G.C. Co. 765

May 9, 1935

R. McMillan - Assistant Leader

W. Mc Ginty - Rear Chain

C. Groves - }
 K. Fredricks } Brushmen

D. De Mars - Stake Man

JAMES ROE

Township	Range	Section	pages
146	29	8	1-7
146	29	11	9-23
146	29	15	25-33
146	29	2	35-47
144	29	17	49-63
145	29	28	65-71
145	29	33	74-75
144	29	8	77-87
144	29	7	89-101
144	29	18	103
145	30	12	105-107
144	29	30	111-119
144	29	31	120-137
144	29	21	139-149
145	29	7	153-159

3 Starting 10 chs East of section corner $\frac{6\frac{1}{2}}{7\frac{1}{8}}$
run East on G.L.O. line declination 7° .

Type 10 to 11 chs. open swamp

11 to 14 chs. Aspen pole - Birch pole

14 to 18 chs. Alder brush

18 to 20 chs. muskeg - spruce sapling

Established $\frac{1}{16}$ corner #2 - 20 chs. East
of section corner $\frac{6\frac{1}{2}}{7\frac{1}{8}}$ continued East.

Type - 20 to 37.5 chs. muskeg & spruce sapling

37.5 to 40 chs. aspen pole

Intersected $\frac{1}{4}$ line 40.128 chs. East of
section corner $\frac{6\frac{1}{2}}{7\frac{1}{8}}$. Checked in 2.3 links
South of G.L.O. Continued East.

Type - 0 to 3.5 chs. aspen pole & birch pole

3.5 to 5 chs. aspen pole & balsam sapling

5 to 7 chs. birch pole

7 to 9.5 chs. muskeg & spruce sapling

Found G.L.O. meander corner 20.19 chs East
of $\frac{1}{4}$ corner $\frac{5}{8}$.

B.T. $4\frac{1}{2}$ " tamarack 46.5 links, $S56^\circ E$

B.T. 4" tamarack 35.8 links, $N72^\circ W$

May 10, 1934

Cloudy & cool

Starting at $\frac{1}{4}$ corner 819

B.T. $\frac{1}{4}$ S8 - $N61^\circ W$ - 6.9 links 7" Aspen

B.T. $\frac{1}{4}$ S9 - $S21^\circ 30' E$ - 19.2 links 8" Aspen

5

Offset to West 40.8 links from GLO stake to
GLO line run North declination.

Type 0 to 2 aspen pole

2 to 5 chs. brush swamp

5 to 6 chs. birch pole & aspen merch.

6 to 11 chs. muskeg & spruce sapling

11 to 15 chs. aspen pole & birch pole

15 to 20 chs muskeg

Established $\frac{1}{16}$ corner #7 - 20 chs. North of $\frac{1}{4}$
corner #9 continued North.

Type 20 to 24 chs. muskeg & spruce sapling

24 to 27.9 chs aspen sapling

Intersected lake 27.9 chains North of $\frac{1}{4}$ corner #9

Checked in 18.2-links West of GLO meander
corner #5

B.T. T146 N R 29^w S 9 MC

S 40° 30' E 64-links 9 inch white pine

B.T. T146 N R 29 W S 8 MC

S 13° W - 69.9-links 8 inch black spruce

Starting at $\frac{1}{16}$ corner #14 running West
declination 7°

Type 0 to 7 chs. aspen sapling & birch sapling

7 to 9 chs. meadow

9 to 12 chs. aspen pole

12 to 14 chs. birch sapling

14 to 16 chs aspen pole

6

16 to 20 chs. brush
 Established $\frac{1}{16}$ corner #13 - 20 chains West of
 $\frac{1}{16}$ corner #14.

Starting at $\frac{1}{16}$ corner #13 run North.
 declination $6^{\circ}30'$

Type 0 to 4 chs. brush

4 to 20 chs. muskeg & spruce sapling
 Intersected $\frac{1}{4}$ line 20.245 chains North of
 $\frac{1}{16}$ corner #13. Checked in 6.2 links West of
 $\frac{1}{16}$ corner #8.

Started at $\frac{1}{16}$ corner #5 run West
 declination 7°

Type 0 to 10 chs. muskeg & spruce sapling

10 to 14 chs. aspen pole

14 to 20 chs muskeg & spruce sapling

Established $\frac{1}{16}$ corner #4 - 20 chains West
 of $\frac{1}{16}$ corner #5

6-10 chs. balsam sapling

10-20 chs. birch pole.

Established $\frac{1}{16}$ corner #15 - 20 chains West
of section corner $\frac{11}{14} \frac{12}{13}$ continued West.

Type 20-24 chs. aspen merchantable

May 14, 1935

Clear & warm

Starting 24 chains West of section corner
 $\frac{11}{14} \frac{12}{13}$ continue West

Type 24 to 32 chs. birch pole

32 to 39.645 chs. Mixed hardwood merchantable

Intersected $\frac{1}{4}$ corner $\frac{31}{14}$ 39.645 chains West
of section corner

B.T. $\frac{1}{4}$ S 14 - 36 links S. 41° W - 6" maple

B.T. $\frac{1}{4}$ S 11 - 53.5 links N. 43° E. 7" elm.

Continue West.

Type 0 to 4 chs. aspen merchantable

4 to 6 chs. brush

6 to 10 chs. cedar sapling

10 to 18 chs. aspen merch. & balsam sapling

18 to 20 chs. cedar sapling

Established $\frac{1}{16}$ corner #16 - 20 chains West of

$\frac{1}{4}$ corner $\frac{31}{14}$ continue West.

Type 20 to 22 chs. cedar sapling

22 to 27 chs. aspen merch.

cross trail 23 chains East of $\frac{1}{4}$ corner

27 to 32 chs. brush

32 to 34.78 chs. hay meadow.

Intersected water 34.78 chains East of $\frac{1}{4}$ corner $\frac{511}{514}$.

Starting at $\frac{1}{4}$ corner $\frac{511}{514}$ run North
declination $6^{\circ}30'$

Type. 0 to 4 chs. aspen merch.

4 to 10 chs. brush

10 to 14 chs. aspen merch & balsam sapling

14 to 17 chs. mixed hardwood pole

17 to 20 chs. meadow & brush

Established $\frac{1}{6}$ corner #12 - 20 chains North of
 $\frac{1}{4}$ corner $\frac{511}{514}$

May 15, 1935

Clear & cool.

Starting at $\frac{1}{6}$ corner #12 continueing North.

Type 0 to 18 chs. brush meadow

cross creek at 6 chains North of $\frac{1}{6}$ corner

#12

18 to 20 chs. birch pole & balsam sapling

Established $\frac{1}{6}$ corner #20 chains North of $\frac{1}{6}$ corner #12, continued North.

Type 0 to 2 chs. birch pole & balsam sapling

2 to 3 chs. meadow

3 to 5 chs. birch pole & balsam sapling

5 to 10 chs. alder brush

15

10 to 20 chs. swamp & snags
Established $\frac{1}{16}$ corner #5 - 20 chains North of
center/corner continued North.

Type 0 to 2 chs. willow

2 to 10 chs. aspen merch & balsam pole

10 to 18 chs. aspen sapling

18 to 19.3 chs. cedar sapling

Cross G.L.O. line 19.3 chains South of $\frac{1}{16}$ corner
#5. checked in 41.5 links West of G.L.O. $\frac{1}{4}$
corner $\frac{2}{11}$

B.T. $\frac{1}{4}$ S11 - 3.2 links, S29°E. - 4 $\frac{1}{2}$ " cedar

B.T. $\frac{1}{4}$ S2 - 14.9 links, N40°W. - 5" cedar

May 16, 1935

clear, warm

Starting at section corner $\frac{312}{1011}$

B.T.T. 146 NR29 WS2 - 38.5 links N52°30'E

5 $\frac{1}{2}$ " black spruce

B.T.T. 146 NR29 WS11 - 36.9 links S46°E

6" black spruce

B.T.T. 146 NR29 WS10 - 54.8 links S24°30'W

5 $\frac{1}{2}$ " cedar

B.T.T. 146 NR29 WS3 - 21 links N68°W

7" black spruce

Run N88°E on G.L.O. line declination 6°30'

Type 0 to 4 chs. cedar & spruce pole

4 to 20 chs. birch pole

EBC 144 678

9607 HIE GONOVOR

16

Established $\frac{1}{16}$ corner #2 - 20 chains East of
section corner $\frac{31^2}{10111}$, continued East

Type 20 to 27 chs. mixed Hardwood pole

27 to 32 chs. spruce pole

32 to 34 chs. aspen merch

34 to 38 chs. aspen sapling, balsam sapling

38 to 39.343 chs. cedar sapling

Intersected $\frac{1}{4}$ section corner $\frac{52^2}{10111}$ 39.343 chains
East of section corner $\frac{31^2}{10111}$

Starting at section corner $\frac{21^2}{10111}$ offsetting
11.8 links West to GLO line run South, declination
7°

Type 0 to 6 chs. spruce sapling

6 to 13 chs. cedar sapling

13 to 20 chs. brush

Cross creek 16 chains South of section corner

Established $\frac{1}{16}$ corner #3 - 20 chains South
of section corner $\frac{31^2}{10111}$ continued South

Type 20 to 22 chs. brush

22 to 30 chs. cedar sapling, spruce pole

30 to 32 chs. balsam sapling

32 to 36 chs. brush

36 chains South of section corner intersected
water.

Starting at $\frac{1}{16}$ corner #3 run East
declination 7°

Type 0 to 9 chs. brush
cross creek 3 chains East of $\frac{1}{16}$
corner #3

9 to 24 chs. cedar sapling
May 21, 1935 clear, warm
Starting 14 chains East of $\frac{1}{16}$ corner #3 continued
East

Type 14 to 20 chs. cedar sapling
Established $\frac{1}{16}$ corner #4 - 20 chains East of $\frac{1}{16}$
corner #3 turned and run North

Type 0 to 3 chs. cedar sapling
3 to 10 chs. aspen pole, balsam sapling
10 to 19.285 chs. mixed hardwood pole
Intersected section line at 19.285 chains North
of $\frac{1}{16}$ corner #4 checked in 20 links East of $\frac{1}{16}$
corner #2.

May 17, 1935 clear, warm
Starting at $\frac{1}{16}$ corner #12 run East 7° declination

Type 0 to 5 chs. swam & brush
3 to 20 chs. meadow

Crossed creek 5 chains East of $\frac{1}{16}$ corner #12
recrossed creek 18 chains East of same corner
Established temporary $\frac{1}{16}$ corner #13 20 chains East
of $\frac{1}{16}$ #12 continued East

Type 0 to 11 chs. brush
11 to 15 chs. aspen sapling

15 to 19.72 chains aspen pole, balsam sapling
 Intersected section line 19.72 chains East of $\frac{1}{16}$
 corner #13. Checked in 20.84 chains North of
 section corner $\frac{11}{14} \frac{12}{13}$

Starting at $\frac{1}{4}$ corner $\frac{11}{12}$ run West declination
 6°30"

Type 0 to 20 chs. brush, swamp

Established $\frac{1}{16}$ corner #8 continued West.

Type 0 to 4 chs. brush, swamp

4 to 20 chs. birch sapling, balsam sapling

Intersected $\frac{1}{4}$ line 19.84 chains West of $\frac{1}{16}$ corner
 #8 checked in 60 links south of approximate
 $\frac{1}{4}$ center corner. Continued West.

Type 0 to 4 chs. birch pole, balsam sapling

4 to 20 chs. brush, swamp

Established $\frac{1}{16}$ corner #9 20 chains West of
 $\frac{1}{4}$ center corner intersected water 21 chains
 West of $\frac{1}{4}$ center corner

May 20, 1935

clear, warm

Starting at $\frac{1}{16}$ corner #15 run North
 declination 6°30'

Type 0 to 2 chs. birch pole

2 to 8 chs aspen merch

8 to 20 chs lowland brush

Intersected $\frac{1}{16}$ line 20.578 chains North of
 $\frac{1}{16}$ corner #15 continued North

Type 0 to 8 chs. brush

8 to 16 chs. Mixed hard wood pole balsam sapling

16 to 19.205 chs. lowland brush

Intersected $\frac{1}{4}$ line 39.205 chains North of
section line $\frac{511}{514}$

Starting at $\frac{1}{16}$ corner 12 run West

Type 0 to 16.8 chs swamp brush

Intersected water 16.8 chains West of $\frac{1}{16}$
corner #12

Starting $\frac{1}{16}$ corner #16 run North

Type 0 to 6 chs. spruce sapling

6 to 10 chs. brush.

Intersected water 11 chains North at $\frac{1}{16}$
corner #16.

Section 15, Township 146 N, Range 29 W.

May 21, 1935

clear, warm

Starting at $\frac{1}{4}$ corner $\frac{510}{515}$ run South
declination of $6^{\circ}30'$ B.T. $\frac{1}{4}$ S 10 - 23.6 links N $22^{\circ}30' E$,
6" mapleB.T. $\frac{1}{4}$ S 15 - 28.3 links S $13^{\circ}30' E$,
6" mapleType 0 to 15 chs. mixed hard wood pole, balsam
sapling

15 to 17 chs. swamp

17 to 20 chs. aspen pole, balsam sapling

Established temp. $\frac{1}{16}$ corner #5 - 20 chains
South of $\frac{1}{4}$ corner $\frac{510}{515}$, continued South

Type 0 - 15 chains. aspen pole, balsam sapling

15 to 17 chs. brush swamp

17 to 18 chs. aspen pole, balsam sapling

18 to 20 chs. brush swamp

Crossed Third River Road 13.83 chains South
of $\frac{1}{16}$ corner #5Established $\frac{1}{4}$ center corner temp. 20 chains
South of $\frac{1}{16}$ corner #5

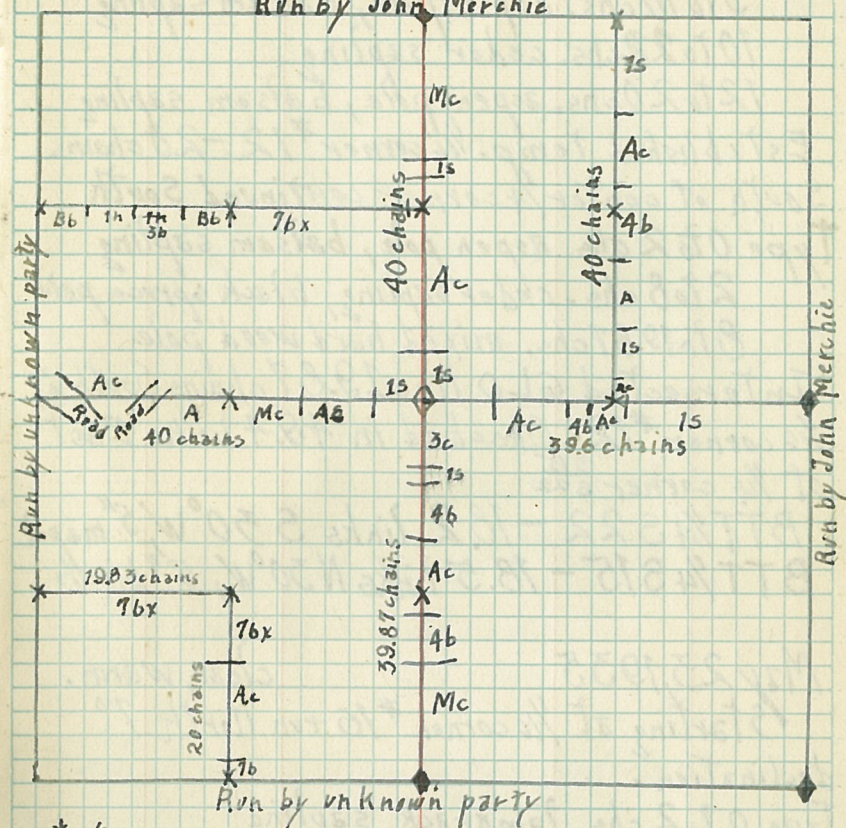
May 22, 1935

clear, cool

Starting at $\frac{1}{4}$ center corner run South
Type 0 to 7 chs. birch pole, balsam seedling

Section 15, Township 146 N, Range 29 W.

Run by John Merchie

* $\frac{1}{16}$ cornero $\frac{6}{10}$ corner

7 to 9 chs. swamp

9 to 10 chs. aspen pole, balsam sapling

10 to 20 chs. cedar sapling

12 to 20 chs. aspen pole, balsam sapling

Established temp. $\frac{1}{16}$ corner #12 - 20 chains

South of center $\frac{1}{4}$ corner continued South

Type 0 to 2 chs. aspen pole, balsam sapling

2 to 8 chs. cedar sapling, black spruce pole

8 to 19.87 chs. mixed hard wood pole

Intersected GLO line 19.87 chains South of
 $\frac{1}{16}$ corner #12. Checked in 49.4 links East
of $\frac{1}{4}$ corner $\frac{216}{322}$

BTT $\frac{1}{4}$ S 22 - 18.2 links S 30° W, 5" maple

BTT $\frac{1}{4}$ S 15 - 18.5 links N 30° W, 5" birch

May 23, 1935

clear, warm.

Starting at $\frac{1}{16}$ corner #16 run North 7°
declination.

Type 0 to 2 chs. tamarack sapling

2 to 13 chs. aspen pole birch pole

13 to 20 chs. black spruce sapling, muskeg

Established $\frac{1}{16}$ corner #11 - 20 chains North of
 $\frac{1}{16}$ corner #16

Starting $\frac{1}{16}$ corner #11 run West, declination 7°

Type - 0 to 20 chs. black spruce sapling, muskeg

Cross GLO line 19.83 chains West of $\frac{1}{16}$ corner

#11, checked in 10 links South of $\frac{1}{16}$ corner
#10.

Starting at $\frac{1}{4}$ corner $\frac{16}{15}$ run East 7°
declination.

BT $\frac{1}{4}$ S15 - 113.3 links, N 70° E,
14" white pine

BT $\frac{1}{4}$ S16 - 164 links, S $30^\circ 50'$ W,
24" white pine.

Type 0 to 6 running along and cross road

6 to 12 chs. aspen pole

12 to 14 chs. recrossing road

14 to 20 chs. aspen merch.

Established Temp. $\frac{1}{16}$ corner #9 - 20 chains
East of $\frac{1}{4}$ corner $\frac{16}{16}$ - continued East.

Type 0 to 8 chs. mixed hardwood pole

8 to 16 chs. aspen pole, balsam sapling

16 to 20 chs. brush swamp

Crossed $\frac{1}{4}$ line 20 chains East of $\frac{1}{16}$ corner
#9 checked in 39.87 chains South of $\frac{1}{4}$ corner
 $\frac{510}{510}$ - continued East.

Type 0 to 6 brush swamp

May 24, 1935 clear warm.

Starting 6 chains East of $\frac{1}{4}$ corner, center,
run East

Type 6 to 13 chs. aspen pole, balsam sapling

13 to 17 chs. cedar sapling

17 to 20 chs. aspen pole, birch pole
 Established $\frac{1}{16}$ corner #8 - 19.8 chains East
 of $\frac{1}{4}$ center corner, continued East
 Type 0 to 19.8 chs. Brush swamp
 Intersected section line 19.8 chains
 East of $\frac{1}{16}$ corner #8. Checked in 208
 links South of $\frac{1}{4}$ corner #14

Starting at approximate $\frac{1}{16}$ corner #8 run
 North, declination $6^{\circ}30'$

Type 0 to 2 chs. aspen pole

2 to 7 chs. brush swamp

7 to 16 chs. aspen merch. balsam sapling

16 to 20 chs. cedar sapling

Established $\frac{1}{16}$ corner #6 - 20 chains North of
 $\frac{1}{16}$ corner #8 continued North

Type 0 to 3 chs. cedar sapling

3 to 10 chs. aspen pole balsam sapling

Crossed trail 5.7 chains North of
 $\frac{1}{16}$ corner #6.

10 to 20 chs. brush swamp

Intersected section line 20 chains North of
 $\frac{1}{16}$ corner #6. Checked in 22 links West of
 $\frac{1}{16}$ corner #1.

May 27,

Starting at $\frac{1}{16}$ corner #5 run West
 declination of 7° clear cool

Type 0 to 2 chs, aspen pole, balsam sapling
 2 to 20 chs. spruce sapling, muskeg
 Established $\frac{1}{16}$ corner #4 - 20 chains West of
 $\frac{1}{16}$ corner #5 continued West
 Type 0 to 6 chs. balsam sapling
 11 to 16 chs. brush swamp
 18 to 19.87 chs. balsam sapling
 Intersected section line 16/15 - 19.87 chains
 West of $\frac{1}{16}$ corner #4 checked in 19.89 chains
 North of $\frac{1}{4}$ corner 5/15/15

Type 20 to 25 chains norway pole
 crossed road 25.5 chains North of $\frac{1}{4}$
 26 to 28 chains white pine sapling
 28 to 41.57 chains aspen pole, norway sapling
 Cross C.L.O. line 41.57 chains North of $\frac{1}{4}$ corner
 checked in Ok.

BTT 146 NR 29 W S 3 - 24.5 links
 S 22° 30' W - black spruce 5" diameter

B.T. 146 NR 29 W S 2 - 64.6 links
 S 53° E - black spruce 6" diameter

B.T. 147 NR 29 W S 35 - 2.328 chains
 N 24° E - norway pine 10" diameter

BTT 147 NR 29 W S 34 - 167 links
 N 40° 30' W - black spruce 4" diameter

May 30, 1935 warm, clear.

Starting at section corner $\frac{31}{36}$ run
 S 88° 10' W declination 6° 30' run West

Type 0 to 14 chs. tamarack sapling,

14 to 21 chs. aspen pole

Established $\frac{1}{16}$ corner #1 - 20 chains

West of section corner

21 to 25 chs. black spruce sapling

25 to 31 chs, " " pole

31 to 40 chs. Norway pole.

Intersected $\frac{1}{4}$ corner $\frac{33}{32}$ 40 chains West

of section corner. Checked in 5.1 links
South of section corner.

BT $\frac{1}{4}$ S2 - 38.2 links, $S53^{\circ}W$, 9" norway pine

BT $\frac{1}{4}$ S35 - 20 links, $N25^{\circ}E$, $5\frac{1}{2}$ " norway

Starting at $\frac{1}{4}$ corner $\frac{33}{32}$ run West on
G.L.O. line, declination 7°

Type 0 to 20 chains Norway pine sapling

Established $\frac{1}{16}$ cor #2 - 20 chains

West of $\frac{1}{4}$ continued West

20 to 27 chs. norway sapling

27 to 30 chs. aspen pole

30 to 36 chs. brush swamp

36 to 40 chs. Norway sapling

crossed road 38.74 chains West of

$\frac{1}{4}$ corner. Intersected section corner

$\frac{34\frac{1}{2}}{312}$ 40.05 chains West of $\frac{1}{4}$ corner

June 3, 1935

rain, cool

Starting $\frac{1}{4}$ corner 2 $\frac{1}{2}$.

BT $\frac{1}{4}$ S1 - $S1^{\circ}E$ - 22.8 links to 2 $\frac{1}{2}$ " snag

BT $\frac{1}{4}$ S2 - $N77^{\circ}W$ - 48.4 links to 3" snag

Run North $3^{\circ}15'E$ declination $6^{\circ}30'$.

Offset 64 links West to G.L.O. line.

Type 0 to 3 chs. swamp

3 to 7 chs. birch pole.

7 to 20 chs. swamp brush.

Established temporary $\frac{1}{16}$ cor #7 - 20
Chains North of $\frac{1}{4}$ corner continued North

Type 20 to 36 chs. swamp brush

36 to 45.56 chs. aspen sapling

Intersected section line $\frac{35}{2}$ 45.56 chains
North of $\frac{1}{4}$ corner. Checked in 63 links
West of section corner.

June 4, 1935

rainy, cool

Starting $\frac{1}{4}$ corner $\frac{3}{2}$ run East declination
 $6^{\circ}30'$

Type 0 to 2 chs. muskeg

2 to 8 chs. aspen sapling

8 to 17 chs. aspen pole

cross small creek 15.5 chains East
of $\frac{1}{4}$ corner $\frac{3}{2}$

17 to 20 chs. Brush.

Established $\frac{1}{4}$ corner #9 - 20 chains East
of $\frac{1}{4}$ corner continued East.

Type 0 to 4 chs brush

4 to 12 chs. Tamarack pole

12 to 18 chs. aspen pole

18 to 20 chs. black spruce pole

Established temporary $\frac{1}{4}$ center corner
20 chains East of $\frac{1}{4}$ corner #9. continued North

Type 0 to 12 chs. black spruce pole

12 to 20 chs. Norway pine pole.

Established temporary $\frac{1}{4}$ corner #8 - 20
chains East of $\frac{1}{4}$ center corner continued
East

Type 0 to 4 chs. Norway pine pole
 4 to 10 chs. cedar sapling
 10 to 19 chs. swamp brush.

Intersected section line 19.38 chains East
 of $\frac{1}{16}$ corner # 8. Checked in 144 links
 North of $\frac{1}{4}$ corner # 21.

June 6, 1935 cloudy, cool

Starting at $\frac{1}{4}$ corner # 11 run N 2° E
 declination $6^{\circ} 30'$

Type 0 to 2 chs. cedar sapling
 2 to 6 chs. brush, swamp
 6 to 8 chs. aspen pole
 8 to 16 chs. brush, swamp
 16 to 20 chs. aspen merch.

Established temp. $\frac{1}{16}$ corner # 12 - 20 chains
 North of $\frac{1}{4}$ corner # 11 continued North.

Type. 0 to 12 chs. tamarack sapling
 12 to 21.63 chs. black spruce pole.

Intersected $\frac{1}{4}$ line 21.63 chains North of $\frac{1}{4}$
 corner # 11. crossed $\frac{1}{4}$ line 10 links East of
 $\frac{1}{4}$ center corner. Continued North.

Type 0 to 4 chs. brush.
 4 to 7. chs. black spruce pole.
 7 to 16. chs. aspen pole.
 16 to 20. chs. brush/swamp

Established $\frac{1}{16}$ corner # 5 - 20 chains North
 of $\frac{1}{4}$ center corner continued North.

Type. 0 to 6 chs. birch sapling

6 to 12 chs. aspen pole

12 to 22.37 chs. Norway pine pole.

Intersected section line 22.37 chains

North of $\frac{1}{16}$ corner #5. Checked in 13.8

links East of $\frac{1}{4}$ corner $\frac{32}{2}$.

June 7, 1935

clear, warm.

Starting $\frac{1}{16}$ corner #5 run West declination
6°30'

Type 0 to 14 chs. muskeg

14 to 20 chs. Norway pine pole

Established $\frac{1}{16}$ corner #4 - 20 chains

West of $\frac{1}{16}$ corner #5. Starting corner
#4 run S 1°30' West 6°30' declination.

Type 0 to 2 chs. Norway pine pole.

2 to 5 chs. swamp brush.

5 to 18 chs. aspen pole

18 to 19.51 chs. brush swamp

Intersected $\frac{1}{4}$ line 19.51 chains South
of $\frac{1}{16}$ corner #4 checked in 19.827 chains

East of $\frac{1}{4}$ corner $\frac{32}{2}$.

Starting at $\frac{1}{16}$ corner #4 run South
2° West declination 6°30'

Type 0 to 4 chs. aspen sapling

4 to 10 chs. Tamarack sapling

10 to 12 chs. aspen pole

12 to 23.07 Balsam sapling

Established $\frac{1}{16}$ corner #6 - 23.07 chains
 South of $\frac{1}{16}$ corner #7. Starting $\frac{1}{16}$ corner
 #6 run S 89° E declination 6°30'

Type 0 to 6 chs. balsam sapling

6 to 14 chs. aspen pole

14 to 18 chs. birch pole

18 to 20.35 chs. brush swamp

Intersected section line #1 - 20.81 chains
 North of $\frac{1}{4}$ corner #1 and 20.35 chains
 East of $\frac{1}{16}$ corner #6.

Type. 0 to 4 chs. mixed hard wood pole

4 to 14 chs. aspen pole

14 to 18 chs. birch sapling

18 to 20 chs. aspen pole.

Established $\frac{1}{6}$ corner #14-20 chains
North of section corner continued North.

20 to 40 chs. aspen pole.

Established $\frac{1}{4}$ corner $\frac{1}{16}$ 40 chains North
of section corner, temporary, continued North.

June 11, 1935 clear warm.

Starting 40 chains North of section
corner $\frac{17}{16}$ continued North.

Type 40 to 50 chs. aspen pole

50 to 60 chs. aspen merch.

Established temporary $\frac{1}{6}$ corner #7

80 chains North of section corner continued North

60 to 74 chs. aspen pole.

74 to 80 chs. mixed hard wood pole.

Intersected section line 80 chains North of
section corner $\frac{17}{16}$. Checked in 81 links East
of section corner $\frac{8}{19}$.

Starting section corner $\frac{8}{19}$ run N89°W
declination 6°30'

Type. 0 to 12 chs. mixed hard wood pole

12 to 15 chs. Aspen merch.

15 to 20 chs. mixed hardwood pole.

Established $\frac{1}{16}$ corner #1 20 chains West
of section corner continued West

20 to 22 chs. birch sapling

22 to 26 chs. white pine pole.

26 to 30 chs. swamp brush.

30 to 40 chs. mixed hardwood pole.

Established Temporary $\frac{1}{4}$ corner $\frac{8}{17}$ 40
chains West of section corner, Crossed
road 33. 27 chains West of section corner.

June 12, 1935

clear warm

Starting 40 chains West of section
corner $\frac{8}{16}$ continued West.

Type. 40 to 80. 182 chains mixed hardwood pole

Intersected section line 80. 182 chains West
of section corner $\frac{8}{16}$. Checked in 21.2 links
North of section corner $\frac{7}{17}$.

BTT144NR29WS17 - 26.3 links S53°E
to 12" Maple

BTT144NR29WS8 - 27.8 links N65°E
to 9" balsam.

BTT144NR29WS7 - 44 links N57°W
to 9" Maple.

June 13, 1935

Starting at section corner ¹⁸¹⁷ r/n cloudy warm.South $1^{\circ}38'$ West declination $6^{\circ}30'$

Type 0 to 30 chs. mixed hardwood pole.

Established $\frac{1}{16}$ corner # 3-20
chains South of section corner ¹⁸¹⁷
continued South.

30 to 36 chs. hardwood merch.

36 to 40 chs. white pine merch.

Established temporary $\frac{1}{4}$ corner
1817 - 40 chains South of section corner
continued South.

40 to 52 chs. mixed hardwood pole

52 to 60 chs. hardwood merch

Established temporary $\frac{1}{16}$ corner # 10
60 chains South of section corner continued
South.

60 to 68 chs. balsam sapling

68 to 79.4 chs. mixed hardwood pole.

Intersected section line 79.405 chains
South of section corner ¹⁸¹⁷. Checked in
5 links West of corner ¹⁸¹⁷₁₉₂₀.

BTT 144 NR 29 W S 18 - 41.5 links

N 28° W to 8" yellow birch

BTT 144 NR 29 W S 17 - 20.5 links

N 4° E to 12" elm.

57

BTT 144NR29WS19 - 36.8 links

S52°W to 10" Bass wood

BTT 144NR29WS20 - 36 links S16°E

to 7" maple

June 14, 1935

clear warm.

Starting at section corner ^{R112}/_{19/20} run

East declination 6°30'

Type 0 to 19 chs. mixed hardwood pole.

19 to 32 chs. cedar pole.

Intersected ^{R17}/_{16/20} @ L-O corner stake

20.66 chains East of section corner

continued East. Crossed road 28.74 chains

East of section corner

32 to 36 chs. aspen pole

36 to 41.33 chs. mixed hardwood pole.

Intersected ^{R17}/_{14 corner/20} 41.33 chains

East of section corner. Checked in 5.2

links South of ^{R17}/_{14 corner}

June 18, 1935.

cloudy cool

Starting ^{R17}/_{14 corner/20} run N20°E

declination 6°30'

Type. 0 to 4 chs. birch pole

4 to 6 chs. mixed hardwood sapling

6 to 18 chs. " " pole

18 to 20 chs. birch sapling

58

Established $\frac{1}{16}$ corner #12 - 20 chains
North of $\frac{1}{4}$ corner, continued North
Type 0 to 6 chs. birch sapling
6 to 20 chs. aspen pole.

Established temporary $\frac{1}{4}$ center
corner 40 chains North of $\frac{1}{4}$ corner $\frac{17}{20}$
continued North.

Type. 0 to 20 chs mixed hard wood pole.

Established temporary $\frac{1}{16}$ corner #5
20 chains North of $\frac{1}{4}$ center corner continued
North.

Type. 0 to 20 chs. mixed hard wood pole.

Crossed road 3.24 chains North of
 $\frac{1}{16}$ corner #5. Crossed truck trail 12.92
chains and 13.38 chains North of $\frac{1}{16}$ corner
#5. Intersected section line 19.405
chains North of $\frac{1}{4}$ corner $\frac{17}{20}$ checked in
40.05 chains West of section corner $\frac{17}{16}$

June 19, 1935

clear, fair.
Starting $\frac{1}{4}$ corner $\frac{17}{16}$ run $N 89^{\circ} 45' W$
declination $6^{\circ} 30'$

Type 0 to 3 chs. birch sapling

3 to 20 chs. muskeg, tamarack sapling

Established temporary $\frac{1}{16}$ corner
#8 - 20 chains West of $\frac{1}{4}$ corner, continued
West.

Type 0 to 6 chs. aspen pole
 6 to 21.48 chs. mixed hardwood pole.
 crossed old trail 3.07 chains West
 of $\frac{1}{16}$ corner #8.

Crossed $\frac{1}{4}$ line 21.48 chains West of
 $\frac{1}{16}$ corner #8 and checked in 18 links
 North of $\frac{1}{4}$ center corner

Starting $\frac{1}{4}$ center corner offset 10
 links South run West.

Type 0 to 20 chs. Mixed hardwood pole
 crossed road 9.70 chains West of $\frac{1}{4}$
 center corner. Put up location tag on
 14" birch 9.52 chains West of $\frac{1}{4}$ center
 corner. Established $\frac{1}{16}$ corner, temporary,
 #9 - 20 chains West of $\frac{1}{4}$ center corner
 continued West.

Type 0 to 21.02 chains mixed hardwood pole
 intersected section done 21.02 chains
 West of $\frac{1}{16}$ corner #9. Checked in
 29 links ^{South} West of $\frac{1}{4}$ corner #17

June 20, 1935

clear, warm.
 Starting at $\frac{1}{16}$ corner #3 run $S 89^{\circ} 30' E$
 declination. $6^{\circ} 30'$

Type 0 to 10 chs. mixed hardwood pole.
 10 to 18 chs. mixed hardwood merch

18 to 20 chs. mixed hardwood pole.

Established temporary $\frac{1}{16}$ corner #4

20 chains East of $\frac{1}{16}$ corner #3 continued East
Type 0 to 20.78 chs. mixed hardwood pole.

crossed truck trail 8.75 chains East
of $\frac{1}{16}$ corner #4

Crossed road 18.32 chains East of
 $\frac{1}{16}$ corner #4.

Intersected $\frac{1}{4}$ center line 40.783
chains East of $\frac{1}{16}$ corner #3.

Starting $\frac{1}{16}$ corner #5 run $S89^{\circ}30'E$
declination $6^{\circ}30'$.

Type 0 to 8 chs. mixed hardwood pole

8 to 14 chs. balsam pole

14 to 16 chs. brush, swamp

16 to 20 chs. muskeg, tamarack sapling

Established $\frac{1}{16}$ corner #6 - 20 chains

East of $\frac{1}{16}$ corner #5 continued East.

Type 0 to 16 chs. muskeg, tamarack sapling

16 to 21.48 chs. aspen pole.

Intersected section line 21.48
chains East of $\frac{1}{16}$ corner #6. Checked in
7 links South of $\frac{1}{16}$ corner #7.

LINEAL SURVEY CREW

McGINTY - COMPASS
DeMARS - R. CHAIN
CLUFF - Brusher
SEADO - Brusher

July ^{0 F} 1935

65

July 8, 1935 cloudy, cool

SURVEY STARTED FROM A CORNER
WITH A COMPASS USING PENCIL TOP
THREE SIDED STAKES lined by SIGHT.

SEC. 28 Township 145N Range 29W.

STARTING $\frac{1}{4}$ COR $\frac{21}{28}$ AS SET BY SWIFT
RUN SOUTH, DECLINATION $6^{\circ}30'$

TYPE 0 chs. to 4 chs. MEADOW

INTERSECTED SIOUX LINE RAILROAD 1.46 chs
SOUTH OF $\frac{1}{4}$ COR $\frac{21}{28}$

4 - 6 chs. ASPEN POLES

6 - 20 chs. ASPEN SAPIINGS

INTERSECTED FIRE TRAIL No. 1 8.10 chs.
SOUTH OF $\frac{1}{4}$ $\frac{21}{28}$

ESTABLISHED TEMP. $\frac{1}{6}$ # 5 20 chs. SOUTH
OF $\frac{1}{4}$ $\frac{21}{28}$. CONTINUED SOUTH

0 - 20 chs. ASPEN SAPIINGS.

ESTABLISHED CENTER CORNER 40 chs. SOUTH
OF $\frac{1}{4}$ $\frac{21}{28}$. CONTINUED SOUTH

0 - 2 chs. ASPEN SAPIINGS

2 - 5 chs MEADOW

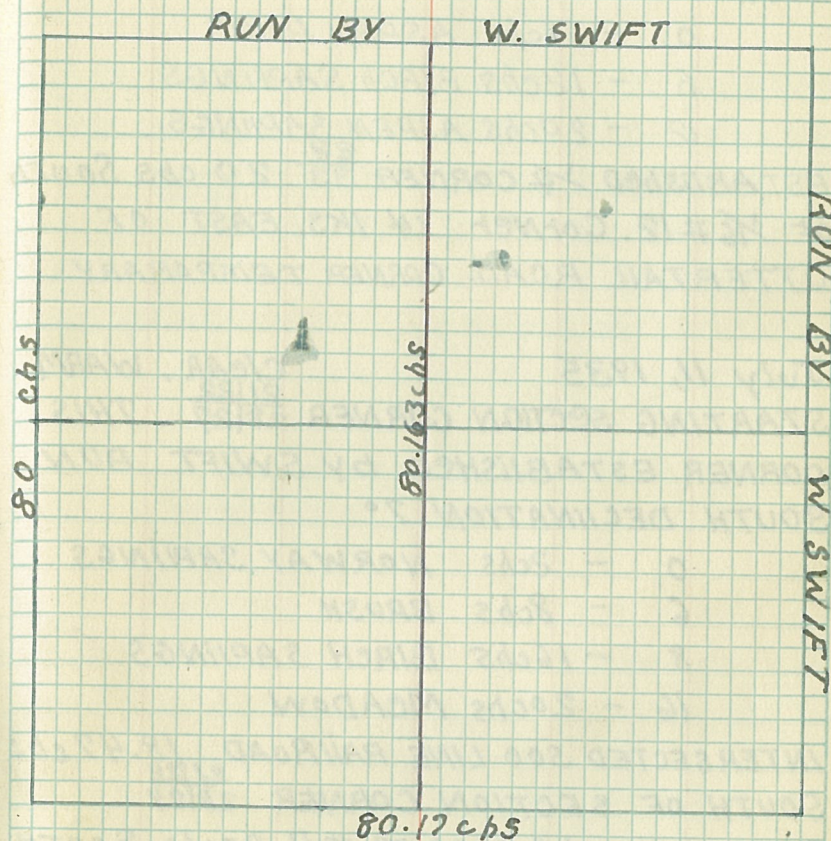
5 - 6 chs. ASPEN SAPIINGS

July 9, 1935 clear, WARM

STARTING 6 chs. SOUTH OF CENTER
CORNER RUN SOUTH DECLINATION $6^{\circ}30'$

66

SECTION 28 TOWNSHIP 145N RANGE 29W



SECTION 28 TOWNSHIP 145N. RANGE 29 W.

67

6 - 20chs. ASPEN SAPIINGS

ESTABLISHED $\frac{1}{6}$ CORNER #12. 20chs

SOUTH OF CENTER CORNER CONTINUED SOUTH

0 - 6chs. ASPEN POLES

6 - 12chs. BIRCH SAPIINGS

12 - 20chs. ASPEN SAPIINGS

ESTABLISHED $\frac{1}{4}$ CORNER $\frac{28}{33}$ 20chs. SOUTH
OF $\frac{1}{6}$ #12. CORNER 14 IKS. EAST OF
OTTERTAIL ROAD. CORNER TEMPORARY

July 11, 1935

CLEAR, WARM

STARTING SECTION CORNER $\frac{21}{28}$ $\frac{22}{27}$. THIS

CORNER ESTABLISHED BY SWIFT. RUN

SOUTH DECLINATION 7°

0 - 2chs NORWAY SAPIINGS

6 - 8chs BRUSH

8 - 16chs BIRCH SAPIINGS

16 - 20chs MEADOW

INTERSECTED 500 LINE RAILROAD $\frac{18.47}{28}$ chs

SOUTH OF SECTION CORNER $\frac{21}{28}$ $\frac{22}{27}$

ESTABLISHED $\frac{1}{6}$ CORNER #7 20chs SOUTH
OF SECTION CORNER. CONTINUED SOUTH

20 - 22chs MEADOW

22 - 30 MIXED HARDWOOD SAPIINGS

30 - 32 ASPEN SAPIINGS

32 - 34 MEADOW

68

SECTION 28 TOWNSHIP 145 N. RANGE 29 W.

⁶⁹ July 12, 1935 CLEAR, HOT
STARTING ^{21 122} 34 chs. SOUTH OF SECTION
CORNER ^{21 122} 28|27 RUN SOUTH DECLINATION 7°
34 - 80 ASPEN SAPIINGS

ESTABLISHED TEMPORARY ^{21 122} 1/4 CORNER 28|27
40 chs. SOUTH OF SECTION CORNER ^{21 122} 28|27

ESTABLISHED TEMPORARY ^{28 122} 1/6 #14 60 chs.
SOUTH OF SECTION CORNER ^{28 122} 28|27

ESTABLISHED TEMPORARY SECTION CORNER ^{21 122}
^{28 127} 33|34 80 chs. SOUTH OF SECTION CORNER ^{21 122} 28|27

July 13, 1935 CLEAR, HOT
STARTING SECTION CORNER ^{29 128} 32|33 AS
ESTABLISHED BY SWIFT RUN EAST
DECLINATION 7°

0 - 22 chs ASPEN SAPIINGS
ESTABLISHED TEMPORARY ^{29 128} 1/6 CORNER #15
20 chs. WEST OF SECTION CORNER ^{29 128} 32|33

22 - 26 BRUSH

26 - 34 ASPEN POLES

34 - 40 ASPEN SAPIINGS

INTERSECTED OTTERTAIL ROAD ^{29 128} 39.845 chs.
WEST OF SECTION CORNER ^{29 128} 32|33

INTERSECTED MINE 39.74 chs. WEST OF
SECTION CORNER. CHECKED IN 16.31 ks.
SOUTH OF TEMPORARY ²⁸ 1/4 33

SECTION 28 TOWNSHIP 145 N. RANGE 29 W.

71

40 - 44chs ASPEN SAPIINGS

44 - 46chs MEADOW

July 15, 1935 CLEAR, HOT

STARTING 46chs WEST OF SECTION CORNER

^{29/28}
32/33 RUN EAST DECLINATION 7°

46 - 80chs ASPEN SAPIINGS

ESTABLISHED TEMPORARY $\frac{1}{6}$ #16 60chs.WEST OF SECTION CORNER ^{29/28} 34/33INTERSECTED FIRE TRAIL #2 70.68chs WEST
OF SECTION CORNER. CONTINUED EASTINTERSECTED SECTION LINE ^{28/27} 80.17chs. WEST OF SECTION CORNER ^{29/28} 32/33

CHECKED IN 1LK. SOUTH OF CORNER.

STARTING AT $\frac{1}{4}$ CORNER ^{28/27} RUN

WEST DECLINATION 7°

0 - 8chs MIXED HARDWOOD SAPIINGS

8 - 14chs BIRCH SAPIINGS

14 - 16 BLACK SPRUCE - MUSKEG

16 - 20 MIXED HARDWOOD SAPIINGS

ESTABLISHED $\frac{1}{6}$ CORNER #8 20chs WESTOF $\frac{1}{4}$ 28/27 CONTINUED WEST

0 - 6 MIXED HARDWOOD SAPIINGS

INTERSECTED OTTERTAIL ROAD 6chs.

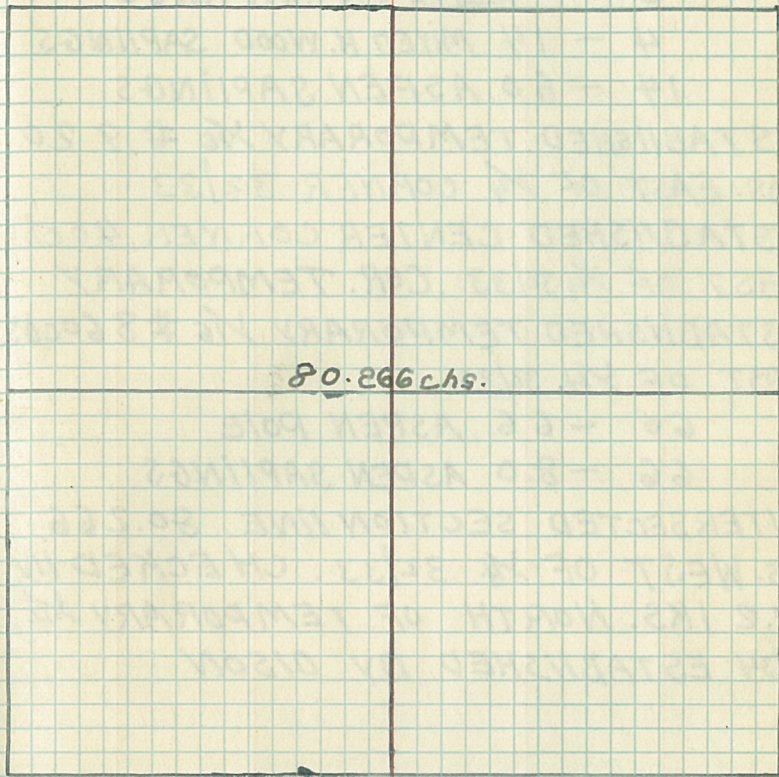
WEST OF $\frac{1}{6}$ #8

72

73

74

SECTION 33 TOWNSHIP 145 N. RANGE 29W.



July 16, 1935 CLEAR, HOT
 STARTING $\frac{1}{4}$ CORNER 33/32 RUN EAST
 DECLINATION 7°

0 - 41 $\frac{1}{2}$ ASPEN SAPIINGS

4 - 14 MIXED H. WOOD SAPIINGS

14 - 60 ASPEN SAPIINGS

ESTABLISHED TEMPORARY $\frac{1}{16}$ # 920
 chs. EAST OF $\frac{1}{4}$ CORNER 32/33

ESTABLISHED CENTER CORNER, 40 chs
 EAST OF $\frac{1}{4}$ 32/33 COR. TEMPORARY

ESTABLISHED TEMPORARY $\frac{1}{16}$ # 860 chs
 EAST OF $\frac{1}{4}$ 32/33.

60 - 66 ASPEN POLE

66 - 80 ASPEN SAPIINGS

INTERSECTED SECTION LINE 80.266
 chs. WEST OF $\frac{1}{4}$ 32/33. CHECKED IN
 39.2 IKS. NORTH OF TEMPORARY $\frac{1}{4}$
 33/34 ESTABLISHED BY OISON

SECTION 8 TOWN SHIP 144N RANGE 29W

77 July 17, 1935 600% cloudy

STARTING SECTION CORNER $\frac{514}{819}$ RUN

SOUTH DECLINATION 7°

0 - 14 chs MEADOW

14 - 20 chs MIXED HARDWOOD SAPLINGS

ESTABLISHED TEMPORARY $\frac{1}{6}$ CORNER # 7

SECTION 8 20 chs. SOUTH OF SECTION CORNER

INTERSECTED OTTERTAIL ROAD 19.70 chs.

SOUTH OF SECTION CORNER

20 - 36 MIXED H. WOOD POLES

36 - 39 BIRCH SA

39 - 46 MIXED H. WOOD POLE

46 - 48 MIXED H. WOOD MERCHABLE

ESTABLISHED TEMPORARY $\frac{1}{4}$ 819 40 chs

SOUTH OF SECTION CORNER.

48 - 52 MIXED H. WOOD SAPLINGS

52 - 56 MIXED H. WOOD POLE

56 - 58 MIXED H. WOOD SAPLINGS

58 - 68 MIXED H. WOOD POLE

ESTABLISHED TEMPORARY $\frac{1}{6}$ # 14 60 chs

SOUTH OF SECTION CORNER.

68 - 76 MIXED H. WOOD SAPLINGS

76 - 80 MIXED H. WOOD POLE

80 - 82.965 MIXED H. WOOD MER.

INTERSECTED SECTION LINE 82.965 chs

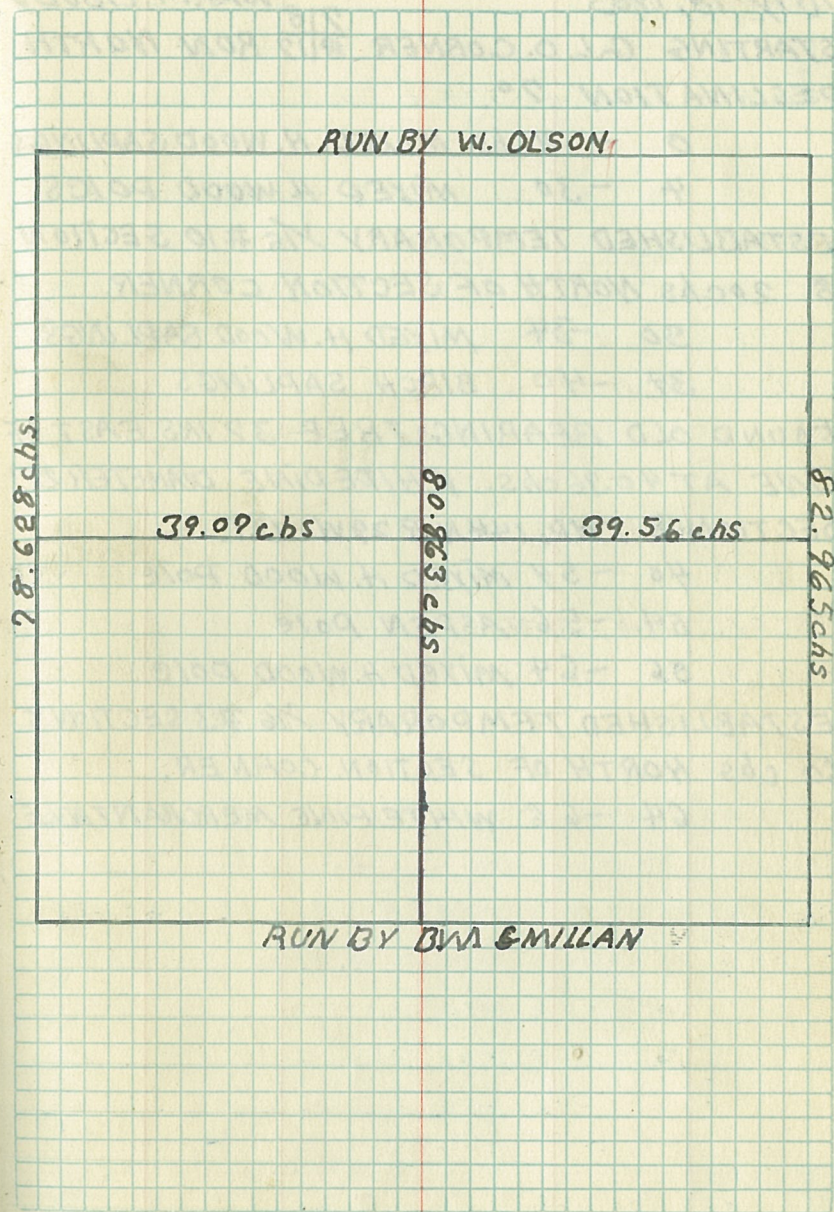
SOUTH OF SECTION CORNER. CHECKED IN

51.1 KRS WEST OF G. L. CORNER.

146

674
MISS

78



July 18, 1985

STARTING G.L.O. CORNER $\frac{218}{1817}$ WARM, CLOUDY
 RUN NORTH
 DECLINATION 7°

0 - 4 chs MIXED H. WOOD SAPLINGS

4 - 30 MIXED H. WOOD POLES

ESTABLISHED TEMPORARY $\frac{1}{16}$ #10 SECTION
 8 20 chs NORTH OF SECTION CORNER.

30 - 34 MIXED H. WOOD SAPLINGS

34 - 40 BIRCH SAPLINGS

FOUND OLD BEARING TREE 37 IKS EAST OF
 LINE AT 40.96 chs. WHITE PINE DIAMETER 28"
 SECTION 8 TWP. 144 N. R. 29 W. B.T.

40 - 54 MIXED H. WOOD POLE

54 - 56 ASPEN POLE

56 - 64 MIXED H. WOOD POLE

ESTABLISHED TEMPORARY $\frac{1}{16}$ #3 SECTION 8
 60 chs NORTH OF SECTION CORNER.

64 - 66 WHITE PINE MERCHANTABLE

July 19, 1935

COOL, CLOUDY

STARTING 66 chs. NORTH OF G.L.O. CORNER

 $\frac{218}{1817}$ RUN NORTH DECLINATION 7° .

66 - 78 MIXED H. WOOD POLES.

76 - 78628 CEDAR MER CHANTABLE

INTERSECTED SECTION LINE 78.628 chs.

NORTH OF SECTION CORNER $\frac{218}{1817}$ CHECKED
IN 75 YKS. EAST OF SECTION CORNER.STARTING $\frac{1}{4}$ $\frac{5}{8}$ RUN SOUTH DECLINATION
 7° .

0 - 20 ASPEN SAPLINGS.

ESTABLISHED TEMPORARY $\frac{1}{6}$ #5 20 chs SOUTH
OF SECTION CORNER.

0 - 6 ASPEN POLES

6 - 14 MIXED H. WOOD POLES

14 - 20 BIRCH SAPLINGS

ESTABLISHED TEMPORARY CENTER CORNER.

40 chs. SOUTH OF $\frac{1}{4}$ CORN & $\frac{5}{8}$

0 - 4 BIRCH SAPLINGS

4 - 6 MIXED H. WOOD SAPLINGS

SECTION 8 TOWNSHIP 144N RANGE 29W

83 July 22

CLEAR, HOT

STARTING 6 chs. SOUTH OF TEMPORARY CENTER
CORNER RUN SOUTH DECLINATION 7°

6 - 2 chs. MIXED H. WOOD SAPLINGS
ESTABLISHED TEMPORARY $\frac{1}{16}$ #12 60 chs. SOUTH
OF $\frac{1}{4}$ $\frac{5}{8}$. CONTINUED SOUTH

0 - 80.86 chs. MIXED H. WOOD POLE
INTERSECTED SECTION LINE 80.863 chs SOUTH
OF $\frac{1}{4}$ $\frac{5}{8}$. CHECKED IN 42.3 IKS. WEST OF
APPROXIMATE $\frac{1}{4}$ $\frac{8}{17}$.

STARTING $\frac{1}{4}$ 819 RUN WEST DECLINATION 7°

0 - 8 chs. MIXED H. WOOD POLE

8 - 18 chs MIXED H. WOOD SAPLINGS

INTERSECTED OTTERTAIL ROAD 3.04 chs EAST
OF $\frac{1}{4}$ 819.

18 - 29 chs MIXED H. WOOD POLE

ESTABLISHED TEMPORARY $\frac{1}{16}$ # 8 20 chs
WEST OF $\frac{1}{4}$ 819

0 - 6 chs MIXED H. WOOD SAPLINGS

84

JULY 23,

CLEAR, WARM

STARTING 6 chs. EAST OF $\frac{1}{16}$ #8 RUNWEST DECLINATION 70°

6 - 19.07 chs MIXED H. WOODSAPLINGS
 INTERSECTED $\frac{1}{4}$ LINE 19.07 chs chs. WEST
 OF SECTION LINE. CHECKED IN 107 (K). SOUTH
 OF TEMPORARY $\frac{1}{4}$. RERUN.

STARTING AT TEMPORARY $\frac{1}{4}$ LOCATED 40 chs.
 SOUTH OF SECTION CORNER RUN WEST
 DECLINATION 70° .

0 - 8 chs MIXED H. W. POLE

8 - 18 MIXED H. WOODSAPLINGS

18 - 20 ASPEN POLE

ESTABLISHED TEMPORARY $\frac{1}{16}$ #8 20 chs WEST
 OF $\frac{1}{4}$.

INTERSECTED OTTERTAIL ROAD 2.99 chs
 WEST OF $\frac{1}{4}$

0 - 8 chs. MIXED H. WOODSAPLINGS

8 - 20 MIXED H. WOOD POLE

INTERSECTED $\frac{1}{4}$ LINE 39.56 chs. WEST OF $\frac{1}{4}$
 AT POINT 40.61 chs. N OF SECTION LINE $\frac{8}{17}$

20 - 4 chs. MIXED H. WOODSAPLINGS

4 - 6 chs. BIRCH SAPLINGS

July 24, 1935

CLEAR, HOT

STARTING 46 chs. EAST OF $\frac{1}{4}$ 819 RUNWEST DECLINATION 7°

46 - 48 chs. BIRCH SAPLINGS

48 - 54 MIXED H. WOOD POLE

54 - 58 ASPEN POLE

58 - 62 MIXED H. WOOD SAPLINGS

ESTABLISHED TEMPORARY $\frac{1}{16}$ # 9 SECTION8 60 chs. EAST OF $\frac{1}{4}$ 819.

62 - 64 MIXED H. WOOD POLE

64 - 68 ASH SAPLINGS

68 - 70 MIXED H. WOOD SAPLINGS

70 - 74 MIXED H. WOOD POLE

74 - 79.32 MIXED H. WOOD SAPLINGS

INTERSECTED SECTION LINE 718 79.32 chs.

WEST OF $\frac{1}{4}$ 819 AT. POINT 40.77 chs.NORTH OF SECTION CORNER $\frac{812}{1718}$ OLDBEARING TREE $N 62^{\circ} E$. AND 41.31 KS FROM
POINT OF INTERSECTIONSTARTING SECTION CORNER $\frac{212}{1812}$ RUN WEST
DECLINATION 7°

0 - 14 chs MIXED H. WOOD POLE

INTERSECTED OLD LOG ROAD 9.96 chs. WEST OF
CORNER

14 - 28 chs. MIXED H. WOOD SAPLINGS

ESTABLISHED TEMPORARY $\frac{1}{16}$ # 15 SECTION ?

20 chs. WEST OF SECTION CORNER

SECTION 7 TOWNSHIP 144N. RANGE 29W.

89

July 25, 1935

CLEAR, HOT

STARTING 28chs. WEST OF SECTION CORNER

$\frac{218}{1217}$ RUN WEST DECLINATION 7°

28 - 62.285 MIXED H. WOOD POLE

ESTABLISHED TEMPORARY $\frac{1}{4}$ S. 7 40 chs. WEST OF SECTION CORNER.

ESTABLISHED TEMPORARY $\frac{1}{6}$ #16 S. 7 60chs WEST OF SECTION CORNER.

INTERSECTED SECTION LINE 62.285chs WEST OF SECTION CORNER $\frac{218}{1217}$. CHECKED IN 43 lks.

SOUTH OF G.L.O. CORNER $\frac{1212}{1318}$

STARTING CORNER $\frac{1217}{1318}$ RUN NORTH ON BLAZED LINE.

0 - 8chs. MIXED H. WOOD POLE

8 - 18chs CEDAR POLE

July 26, 1935

CLEAR, HOT

18 - 62chs CEDAR POLE

ESTABLISHED TEMPORARY $\frac{1}{6}$ #14 S. 7 20chs NORTH OF SECTION CORNER.

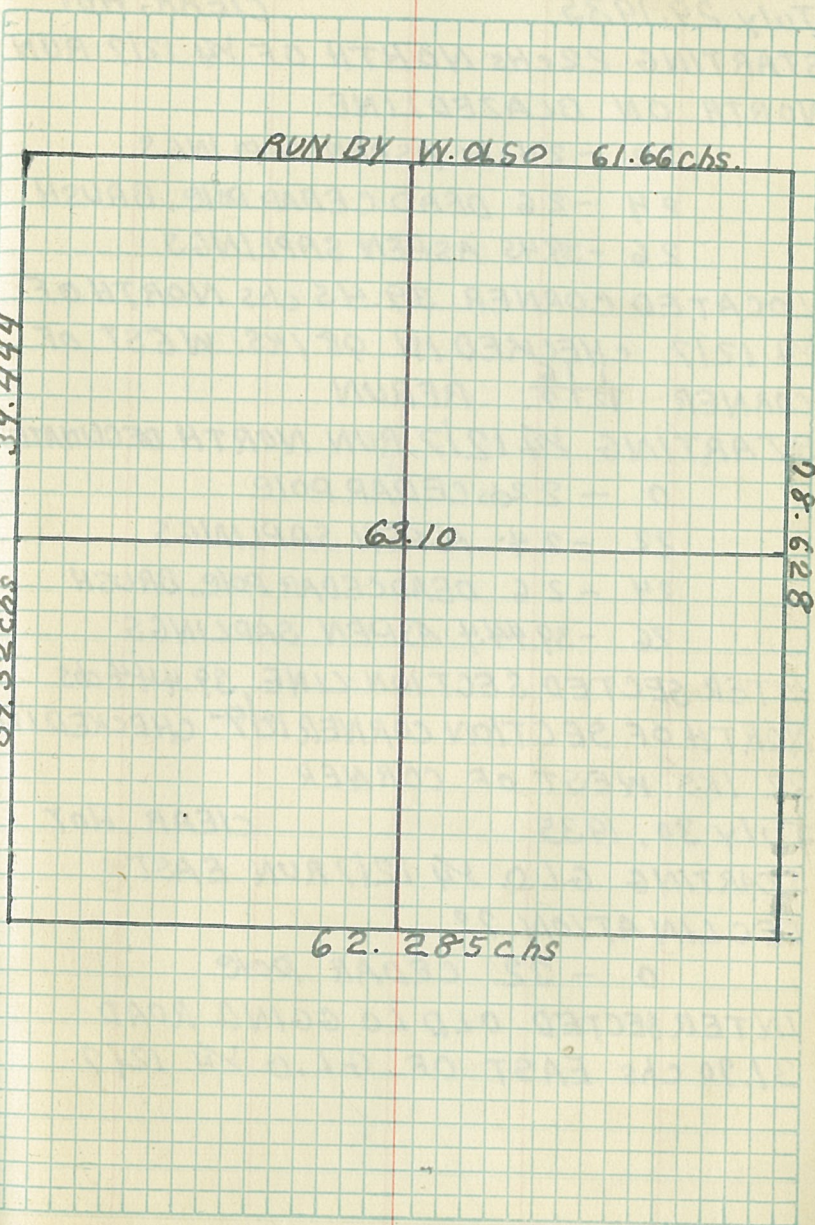
HIT G.L.O. $\frac{1}{4}$ 1217 39.32 chs. NORTH OF SECTION CORNER $\frac{1212}{1318}$.

STARTING $\frac{1}{4}$ CORNER 1217 RUN NORTH ON BLAZED LINE.

ESTABLISHED TEMPORARY $\frac{1}{6}$ # 7 S SECTION 7 60 chs. NORTH OF CORNER

SECTION 7 TOWNSHIP 144N. RANGE 29W

90



91

July 29, 1935

CLEAR, HOT

STARTING 22 chs NORTH OF $\frac{1}{4}$ 1217 RUN
NORTH ON BLAZED LINE.

22 - 24 chs ASPEN SAPLINGS

24 - 26 DEAD CEDAR POLE, BRUSH

26 - 39.45 ASPEN SAPLINGS

LOCATED CORNER 39.45 chs NORTH OF
 $\frac{1}{4}$ 1217. CHECKED IN 98 IKS. WEST OF
CORNER $\frac{1}{2}$ 1217. RERUN

STARTING $\frac{1}{4}$ 1217 RUN NORTH DECLINATION 7°

0 - 22 chs CEDAR POLE

22 - 24 ASPEN SAPLINGS

24 - 26 DEAD CEDAR POLE, BRUSH

26 - 39.444 ASPEN SAPLINGS

INTERSECTED SECTION LINE 39.444 chs
NORTH OF SECTION CORNER $\frac{1}{2}$ 1217. CHECKED IN
32 IKS WEST OF CORNER

July 30, 1935

CLEAR, HOT

STARTING G.L.O. $\frac{1}{4}$ 1217 RUN EAST
DECLINATION 7°

0 - 32 CEDAR POLE

INTERSECTED OLD LOGGING ROAD
31.70 chs EAST OF G.L.O. $\frac{1}{4}$ 1217

92

93

July 31, 1935 CLEAR, HOT

STARTING 32 chs EAST OF $\frac{1}{4}$ 1217RUN EAST DECLINATION 7°

32 - 42 chs CEDAR POLES

42 - 6310 MIXED H. WOOD POLES

INTERSECTED SECTION LINE 63.10 chs

EAST OF $\frac{1}{4}$ 1217. CHECKED IN 851 chs.SOUTH OF APPROXIMATE $\frac{1}{4}$ 817.STARTING APPROXIMATE $\frac{1}{4}$ SECTION 7SOUTH LINE, RUN NORTH DECLINATION 7°

0 - 10 MIXED H. WOOD POLES

94

95

AUGUST 1, 1935

CLEAR, COOL

STARTING 10 chs. NORTH OF APPROXIMATE

 $\frac{1}{4}$ SECTION 7 RUN NORTH DECLINATION 7°

10 - 18 chs. MIXED H. WOOD POLE

18 - 20 chs. BALSAM SAPLINGS

20 - 24 chs. BIRCH POLE

24 - 56 chs. CEDAR POLE

INTERSECTED LOGGING ROAD 37.06 chs

NORTH OF $\frac{1}{4}$ SECTION 7.INTERSECTED $\frac{1}{4}$ LINE 39.888 chs. NORTHOF SECTION ~~7~~ CORNER. ESTABLISHED

APPROXIMATE CENTER CORNER SECTION 7

INTERSECTED SAME LOGGING ROAD 47.50

chs. NORTH OF $\frac{1}{4}$ CORNER SECTION 7.

AUGUST 13, 1935

CLEAR, COOL

STARTING 56 chs NORTH OF $\frac{1}{4}$ SECTION 7RUN NORTH, DECLINATION 7°

56 - 68 chs CEDAR POLE

ESTABLISHED TEMPORARY $\frac{1}{16}$ # 2SECTION 7 60 chs NORTH OF $\frac{1}{4}$.

68 - 74 chs. CEDAR SNAGS, BRUSH

74 - 79.05 ASPEN SAPLINGS

INTERSECTED SECTION LINE 79.05 chs.

NORTH OF APPROXIMATE $\frac{1}{4}$ SECTION 7.CHECKED IN 71.8 KRS. E OF $\frac{1}{4}$ S. 7.

96

STARTING APPROXIMATE $\frac{1}{6}$ #2 SECTION
7 RUN SOUTH DECLINATION 7°

0 - 8chs. CEDAR POLES

8 - 20chs. CEDAR POLES

AUGUST 14, 1935 CLEAR, COOL

STARTING 8chs. SOUTH OF $\frac{1}{6}$ #2
SECTION 7 RUN SOUTH, DECLINATION 7°

8 - 20chs CEDAR POLE

ESTABLISHED TEMPORARY $\frac{1}{6}$ #4

SECTION 7 20chs SOUTH OF $\frac{1}{6}$ #2

STARTING $\frac{1}{6}$ #4 SECTION 7 RUN
WEST DECLINATION 7° .

0 - 16.8 CEDAR POLES

INTERSECTED SECTION LINE 16.8chs.
WEST OF $\frac{1}{6}$ #4 AT POINT 19.397chs.
NORTH OF $\frac{1}{4}$ 1217.

STARTING APPROXIMATE $\frac{1}{6}$ #18

SECTION 7 RUN NORTH DECLINATION 7°

0 - 6chs. MIXED H. WOOD MER.

AUGUST 15, 1935 CLEAR, COOL

STARTING 6chs NORTH OF $\frac{1}{6}$ #18

SECTION 7 RUN NORTH DECLINATION 7°

6 - 10chs. M. H. WOOD MER.

10 - 20chs CEDAR POLES

ESTABLISHED TEMPORARY $\frac{1}{16}$ #11 20 chs
NORTH OF $\frac{1}{16}$ #16 SECTION 7.
STARTING $\frac{1}{16}$ #11 RUN EAST DECLINATION
7°.

- 0 - 2 chs CEDAR POLE
- 2 - 15.8 chs MIXED H. WOOD POLE

INTERSECTED $\frac{1}{4}$ LINE AT POINT 20.13 chs
NORTH OF $\frac{1}{4}$ SECTION 7. CHECKED IN 131 chs.
NORTH OF $\frac{1}{16}$ #12 SECTION 7.
STARTING $\frac{1}{16}$ #12 SECTION 7 RUN
EAST DECLINATION 7°.

- 0 - 6 chs. MIXED H. WOOD POLE
- 6 - 12 chs. CEDAR POLE

AUGUST 16, 1935 CLEAR, HOT
STARTING 12 chs. EAST OF $\frac{1}{16}$ #12 SECTION 7
RUN EAST DECLINATION 7°.

- 12 - 15.57 chs ASH POLE

ESTABLISHED TEMPORARY $\frac{1}{16}$ #13 15.57 chs
EAST OF TEMPORARY $\frac{1}{16}$ #12 SECTION 7.

STARTING $\frac{1}{16}$ #13 RUN NORTH DEC. 7°.

- 0 - 10 MIXED H. WOOD POLE
- 10 - 12 MIXED H. WOOD SAPLINGS
- 12 - 19.82 M. H. W. MERCHANT ABLE

INTERSECTED $\frac{1}{4}$ LINE 19.82 chs. NORTH
OF $\frac{1}{16}$ #13 SECTION 7.

101

ESTABLISHED TEMPORARY $\frac{1}{16}$ # 8 19.82

chs. NORTH OF $\frac{1}{16}$ #13 SECTION 7.

STARTING $\frac{1}{16}$ # 8 RUN NORTH DECLINATION 7°

0 - 14 MIXED H. WOOD POLE

14 - 20 CEDAR POLE

ESTABLISHED TEMPORARY $\frac{1}{16}$ # 6 20chs

NORTH OF $\frac{1}{16}$ # 8 SECTION 7

AUGUST 19, 1935

COOL, CLOUDY

STARTING TEMPORARY $\frac{1}{16}$ # 6 RUN NORTH.

0 - 4 chs CEDAR POLE

4 - 12 MIXED H. WOOD SAPLINGS.

12 - 16 MIXED H. WOOD POLE

16 - 18.70 CEDAR POLE

INTERSECTED SECTION LINE 18.70 chs
NORTH OF $\frac{1}{16}$ # 6 SECTION 7.

ESTABLISHED TEMPORARY $\frac{1}{16}$ # 1 SECTION 7

STARTING APPROXIMATE $\frac{1}{4}$ SECTION 18

RUN SOUTH DECLINATION 7°.

0 - 6 chs MIXED H. WOOD POLE

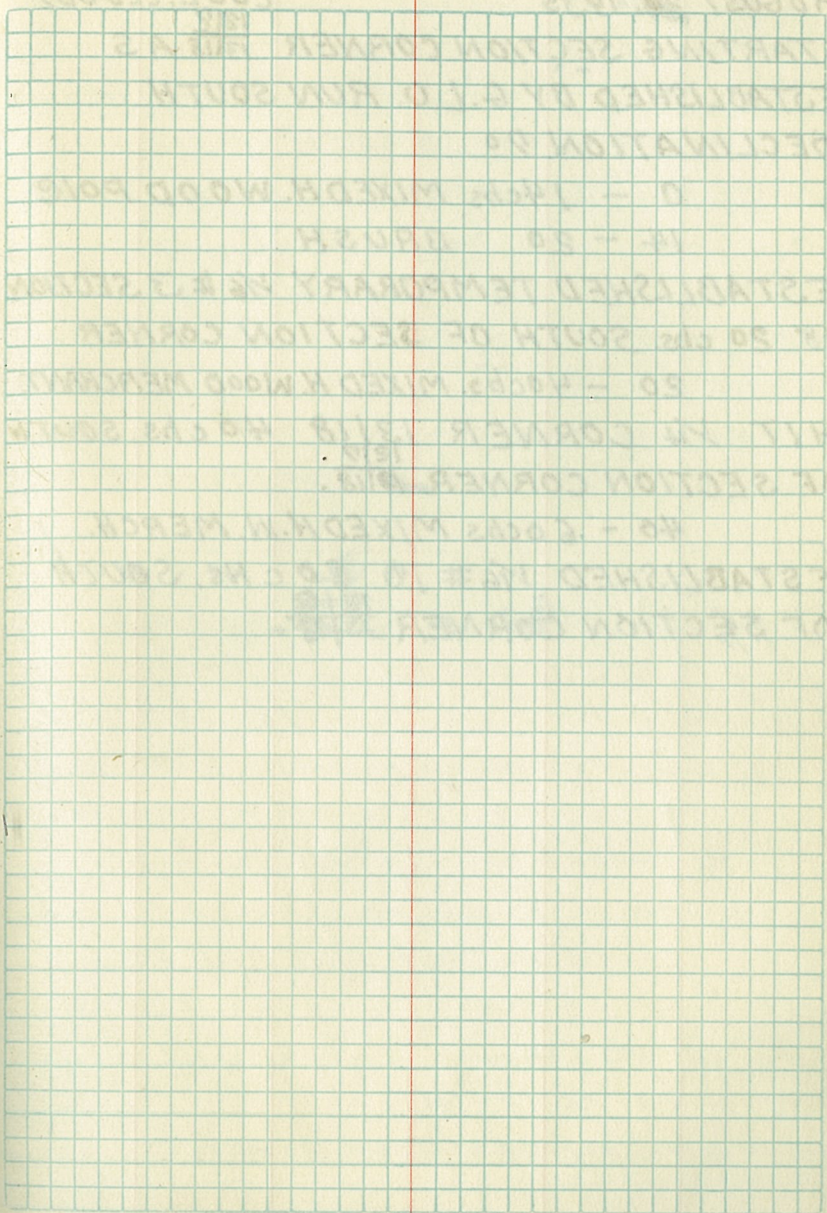
6 - 20 MIXED H. WOOD SAP.

ESTABLISHED TEMPORARY $\frac{1}{16}$ # 5

20 chs. SOUTH OF APPROX. $\frac{1}{4}$ SECTION 18.

20 - 24 M. H. WOOD SAPLINGS.

102



SECTION 18 TOWNSHIP 144N RANGE 29W

103

AUGUST 20, 1935

COOL, CLOUDY

STARTING SECTION CORNER $\frac{1217}{1318}$ AS

ESTABLISHED BY G.L.O. RUN SOUTH

DECLINATION 70

0 - 14chs. MIXED H. WOOD POIC

14 - 20 BRUSH

ESTABLISHED TEMPORARY $\frac{1}{16}$ # 3 SECTION

18 20 chs. SOUTH OF SECTION CORNER

20 - 40chs. MIXED H. WOOD MERCHANT.

HIT $\frac{1}{4}$ CORNER $\frac{1318}{1217}$ 40 chs. SOUTH
OF SECTION CORNER $\frac{1217}{1318}$.

40 - 60chs MIXED H.W. MERCH.

ESTABLISHED $\frac{1}{16}$ # 10 60 chs. SOUTH
OF SECTION CORNER $\frac{1217}{1318}$.

105 SECTION 12 TOWNSHIP 145 N RANGE 30W.

AUGUST 22, 1935.

STARTING $\frac{1}{4}$ CORNER SECTIONS $\frac{1}{12}$

RUN SOUTH DECLINATION $7^{\circ}5'$

0 - 12chs JACK PINE SAPLINGS

12 - 79.41 BRUSH

INTERSECTED NORDIC ROAD AT 21.70
CHS. SOUTH OF $\frac{1}{4}$ CORNER.

INTERSECTED SECTION LINE 79.41 chs.

SOUTH OF $\frac{1}{4}$. CHECKED IN 99 IKS.

WEST OF $\frac{1}{4}$ $\frac{12}{13}$. RERAN 50-80 chs.

B.T. JACKPINE 12" N. 58° E. - 89 IKS

YELLOW POSTER S. 45° E JACKPINE 12" 81 IKS

AUGUST 23, 1935

STARTING $\frac{1}{4}$ COR 1112 RUN EAST

DECLINATION $7^{\circ}5''$

B.T. JACK PINE 12" N. 43° E. 180 IKS.

YELLOW POSTER ON JACKPINE 12" N 16° W 112 IKS

0 - 40chs JACK PINE SAPLINGS

HIT $\frac{1}{4}$ CORNER CORNER AT 40.29 CHS.

40 - 52 ASPEN SAPLINGS

52 - 80 JACK PINE SAPLINGS

INTERSECTED SECTION LINE 80 chs.

EAST OF $\frac{1}{4}$ CORNER. CHECKED IN 81 IKS.

SOUTH OF $\frac{1}{4}$ CORNER 1212

RERAN AND SET OVER STAKES.

AUGUST 30, 1935

COOL, CLOUDY

STARTING SECTION CORNER ³¹²/₁₀₁₁ RUN
EAST DN OLD G.L.O. LINE

B.T. JACK PINE 5" S. 56° 20' W 3.5 IKS.

READING T. 145 N. RANGE 30 W. S. 10 B.T.

B.T. NORWAY PINE 18" N. 32° E. 223 IKS

READING T. 145 N. RANGE 30 W. S. 2 B.T.

B.T. NORWAY PINE 20" S. 80° 30' E 264 IKS

READING T. 145 N. RANGE 30 W. S. 11 B.T.

B.T. NORWAY PINE 18" N. 39° W ~~S~~ B.T.

READING T. 145 N. RANGE 30 W. S. 3 B.T.

0 - 8 cbs. JACK PINE SAPLINGS

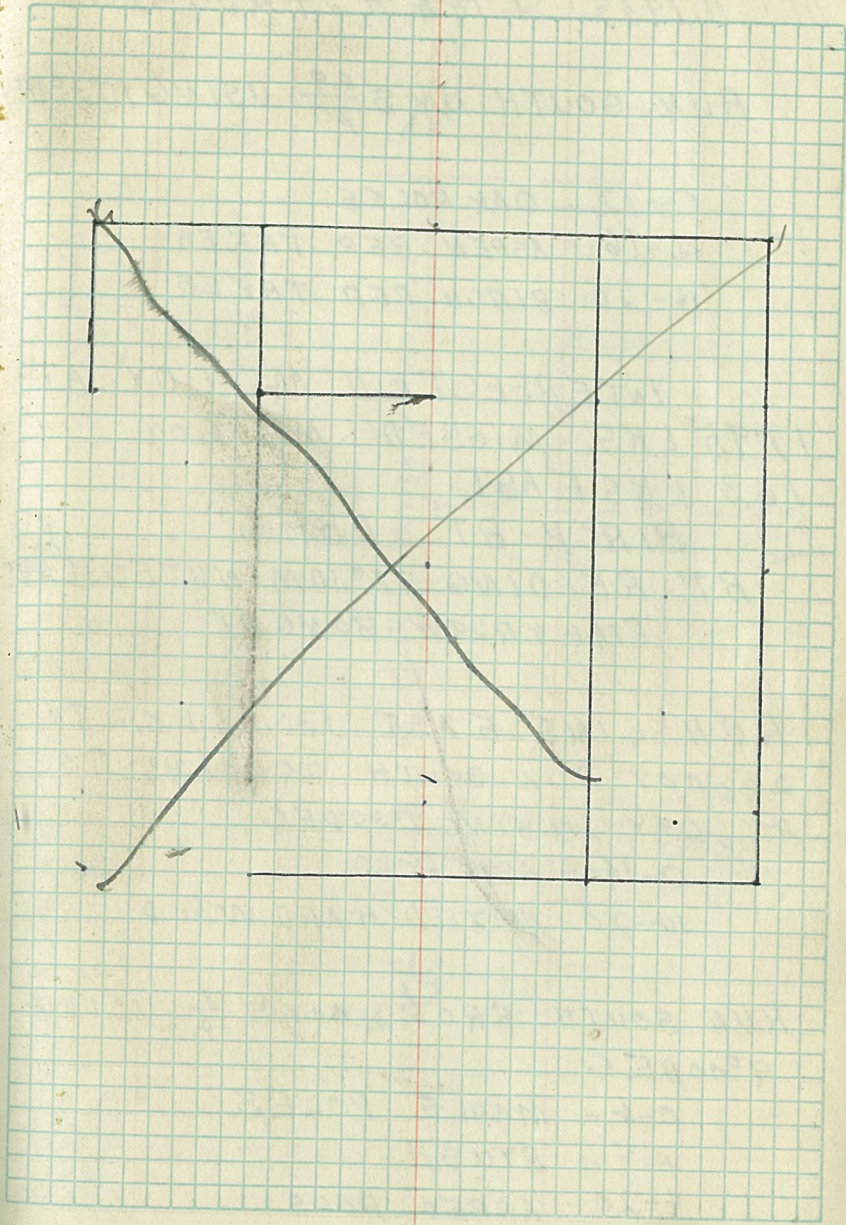
8 - 16 PINE MERCHANTABLE

16 - 39.75 ASPEN SAPLINGS.

ESTABLISHED TEMPORARY $\frac{1}{16}$ S. 11 20 cbs
EAST OF SECTION CORNER.HIT $\frac{1}{4}$ SECTIONS 2/11 39.75 cbs. EAST
OF SECTION CORNER. CHECKED 5 IKS. SOUTH
39.75 cbs - 60 cbs ASPEN SAPLINGS.STARTING $\frac{1}{4}$ CORNER 2/11 RUN EAST.

0 - 20 ASPEN SAPLINGS

ESTABLISHED TEMPORARY $\frac{1}{16}$ SECTION 11
20 cbs. EAST OF $\frac{1}{4}$ 2/11.



DEC 11, 1935 T144 R29 S30

RUN SOUTH ON S $\frac{29}{30}$ USING 103° DEC

0-12 - OAK POLES
 12-16 ASPEN REP TREES
 16-20 BIRCH REP TREES

INTERSECTED M-C COY AT
 17.95 LKS. MISSED M-C COY
 16.3 LKS EAST.

BIRCH BT DBH 6"
 B.T. READING $37^{\circ}30'$ MINUTES EAST
 T144 R29 W530 M-C BT

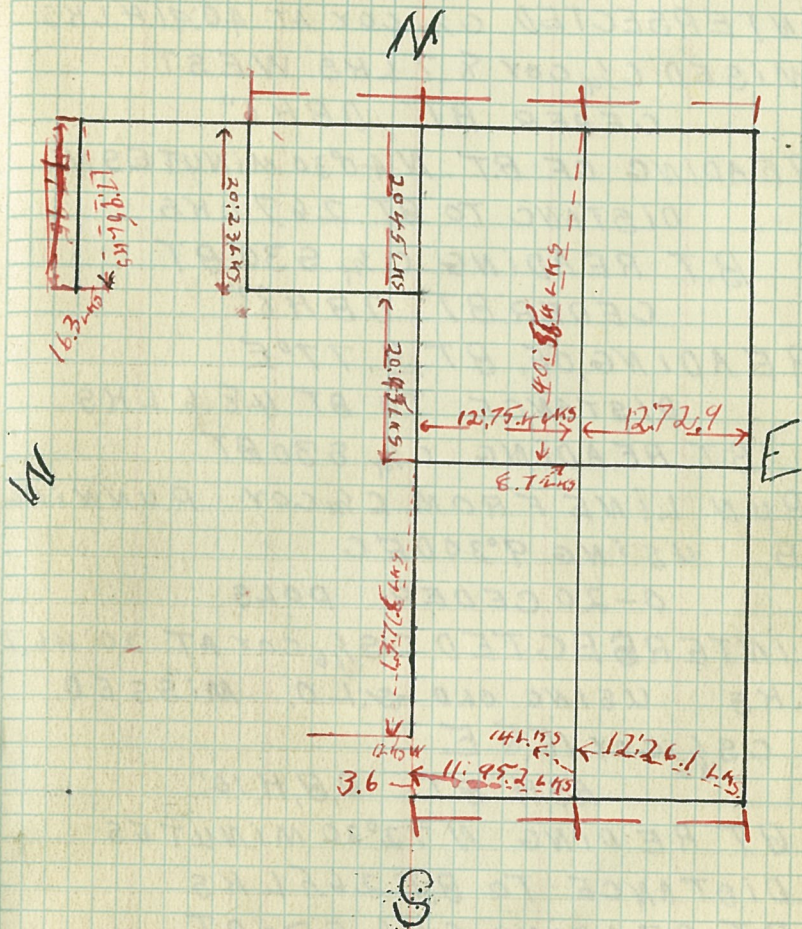
RUN LINE EAST 13.145 LKS TO
 $2\frac{1}{16}$ COY RUN SOUTH 20 CHANS TO
 $4\frac{1}{16}$ COY USING $7^{\circ}30'$ DEC

0-14 - ASH POLES
 14-20 - MIXED HARD WOOD

RUN SOUTH FROM $\frac{1}{16}$ COY S $\frac{19}{30}$ USING
 $9^{\circ}00'$ DEC

0-4 - MAPLE POLES
 4-8 - BUSH
 8-20 - ASPEN POLES

DEC 20 T144 R29 S30



20-26 ASPEN REF TREES

26-40 MIXED HARD WOOD

INTERSECTED C $\frac{1}{4}$ COY AT 40:91.4 LKS

MISED C $\frac{1}{4}$ COY 8.7 LKS WEST

CEDER BT DBH 6"

READING OF B.T. N 40°30 MINUTES W.

DISTANC TO B.T. 26.7 LKS

B.T. READING C $\frac{1}{4}$ S 30 BT

CEDER BT DBH 8"

READING OF B.T. S. 77° E

DISTANCE TO BT 48.6 LKS

BT READING C $\frac{1}{4}$ S 30 BT

RUN LINE FROM C $\frac{1}{4}$ COY RUNNING

S. USING 9°30 DEC

0-20 CEDER POLS

INTERSECTED C S $\frac{1}{16}$ COY AT 20:46.7

LKS USING OLD S.L.O. MISSED

C S $\frac{1}{16}$ COY 16.8 E

ASH BT DBH 10"

BT READING N 72°30 MINUTES

DISTANCE TO B.T. 26.5 LKS

BT READING C S $\frac{1}{16}$ S 30 BT

RUN LINE S ON C S $\frac{1}{16}$ COY USING

10°30 DEC.

0-8-MIXED HARD WOOD

8-13-ASPEN POLS

INTERSECTED L.M.C. AT 13:71.8 LKS

MISSED L.M.C. I.LINK W

OAK BT. DBH 14"

BT READING S 18°30 MINUTES
EAST

DISTANCE TO BT. 53.6 LKS

BT. READING S 303 M.C. BT

RUN LINE W ON S $\frac{30}{31}$ USING 9°30
MINUTES

0-12 ASPEN POLES

HIT ROAD AT 9:62 LKS

INTERSECTED 15 $\frac{1}{16}$ COY AT 12:26.1 LKS

MISSED 15 $\frac{1}{16}$ COY 14 LKS N

MAPLE BT D.B.H. 8"

FOY S 31 COMPUS READING

S 47°E BT. READING E $\frac{1}{16}$ S 31 BT.

RUN LINE W OF 15 $\frac{1}{16}$ COY

USING 9°30 Dec.

0-12 ASPEN POLES

INTERSECTED $\frac{WC}{S30}$ AT 11:95.2

$\frac{MC}{S31}$

LKS MISSED COY 3.6 LKS N.

S 30 CEDER BT D.B.H. 14"

COMPUS READING N 42°30 MINUTES

E

BT READING: W.C.T. 144 NR 29 W MC. S 30

117
S31 BIRCH BT DBH 10"
COMPUS READING S10°30 MINUTES
E.

DISTANCE TO BT. 11.6 LMS
BT. READING WCT144 NR29 WMC. S. 31. BT
RUN LINE E FROM C $\frac{1}{4}$ USING
11°30 DEC.

0-12 - MIXED HARD WOOD
HIT C $\frac{1}{16}$ COY AT 12:72.4 LMS.
MAPLE BT. DBH 7. COMPUS
READING S54°E DISTANCE TO BT.
33.7 LMS BT. READING CE $\frac{1}{16}$ S30 BT.
RUN LINE E FROM CE $\frac{1}{16}$ COY
USING 11°30 MINUTES DEC.

HIT $\frac{1}{4}$ $\frac{829}{530}$ COY AT 12:72.9
LMS USED OLD $\frac{1}{4}$ L.O.
0-12 MAPLE POLS

RUN LINE S. ONE $\frac{1}{16}$ COY
USING 10° DEC.

HIT ROAD AT 40:26 LMS.

0-20 - MAPLE POLS

20-30 - BRUSH

30-40 MAPLE POLS

INTERSECTED CE $\frac{1}{16}$ COY AT 40:55
4 LMS MISSED COY 48.2 LMS E.

DEC 31. 1935 T 144 R 29 R 30 S 31

RUNNING SOUTH ON S $\frac{30}{31}$

96 LKS STO $\frac{E}{S 31}$

USING 16°30 DEC FOLLOWING
OLD G.L.O.

0-20- MAPLE REP TREES
INTERSECTED $3\frac{1}{16}$ COY AT 20:
70.2 LKS.

MISSED $3\frac{1}{16}$ COY 11.4 LKS W.

MAPLE B.T. D.B.H. 8"

COMPUS READING N 7°30 W.

DISTANCE TO BT 18.7 LKS

B.T. C N $\frac{1}{16}$ S 31 B.T.

MAPLE BT D.B.H. 6"

COMPUS READINGS 11°30 E

DISTANCE TO BT 32.8 LKS

~~BT~~ C N $\frac{1}{16}$ S 31 B.T.

RUN SOUTH ON $3\frac{1}{16}$ LINE

USING 16°30 DEC.

0-20- MIXED HARD WOOD

INTERSECTED $C\frac{1}{4}$ COY AT 21: 66.6 LKS

MISSED $C\frac{1}{4}$ COY 17.7 LKS W

ASH B.T. D.B.H. 8"

COMPUS READING $S. 9^{\circ} 30' E$

DISTANCE TO B.T. 16.7 LKS.

B.T. $C \frac{1}{4}$ 531 B.T.

ASH B.T. D.B.H. 14"

COMPUS READING $N 12^{\circ} E$

DISTANCE TO B.T. 58.6 LKS

B.T. $C \frac{1}{4}$ 531 B.T.RUN LINE SOUTH ON $C \frac{1}{4}$ USING $16^{\circ} 30' DEC.$

0-10 - MIXED HARD WOOD R.E.P.

10-16 - SPRUCE & TAMRACK SWAMP

16-20 - MIXED HARD R.E.P.

INTERCEPTED $10 \frac{1}{16}$ GOY AT 21.19 LKSMISSED $10 \frac{1}{16}$ GOY 24.5 LKS. W.

ASPEN B.T. D.B.H. 6"

COMPUS READING $N 59^{\circ} 30' E$

DISTANCE TO B.T. 57 LKS.

B.T. $S \frac{1}{16}$ 531 B.T.RUN LINE SOUTH FROM $10 \frac{1}{16}$ GOYUSING $17^{\circ} DEC.$

0-8 - BALSAM REP

8-20 BRUSH SWAMP

INTERECTED $S\frac{31}{6}$ AT 21.23 LMSMISSED $S\frac{31}{6}$ COY 54.3 LMS W.

SPRUGE BT DBH 8"

COMPUS READING $N32^{\circ}W$

DISTANCE TO BT 35 LMS

BT $\frac{1}{4}$ S31 BT

SEC 6

TAMARACK BT. DBH. 8"

COMPUS READING $S26^{\circ}30'E$

DISTANCE TO BT 47.5 LMS

BT $\frac{1}{4}$ S6 BTRUN LINE W FROM $\frac{1}{4}$ $\frac{SEC 31}{SEC 6}$ USING $7^{\circ}DEC$

0-4 BRUSH SWAMP

4-14 CEDER SWAMP

14-20 BIRCH R.E.P.

INTERECTED $16\frac{1}{6}$ COY 20.236 LMSMISSED $16\frac{1}{6}$ COY 3 LMS SOUTH

SEC. 31

MAPLE BT. D.B.H. 12"

COMPUS READING $N40^{\circ}E$ EAST

DISTANCE TO BT. 40.5 LMS

BT $W\frac{1}{6}$ S31 BT.

SEC 6

MAPLE BT DBH 10"

COMPUS READING S 51° 30' WEST

DISTANCE TO B.T. 16.8 LKS

BT W $\frac{1}{16}$ S 6 BT.RUN LINE W, FROM 16 $\frac{1}{16}$ COY

USING 7° DEC.

0-14 MIXED HARD WOOD

14-20 MAPLE POLES

INTERSECTED SEC. COY. $\frac{36}{31}$ AT

1/6

19.69 LKS.

MISSED COY 10.3 LKS SOUTH

SEC 31

CEDER BT DBH 14"

COMPUS READING N 15° 30' EAST

DISTANCE TO B.T. 27.3 LKS

BT T 14 N R 29 W S 31 BT

SEC 36

CEDER BT DBH 24"

COMPUS READING N 34° 30' WEST

DISTANCE TO B.T. 12.7 LKS.

BT R 30 W S 36 BT

SEC 1

MAPLE BT DBH 10"

COMPUS READING S 78° WEST

DISTANCE TO BT 25 L.K.S.
BT COULD NOT READ

RUN LINE W ON SEC $\frac{31}{6} | \frac{32}{5}$

Q144 SEC 31 USING 7° DEC.
Q143 SEC 6

0-12 - MIXED HARD WOOD

12-14 - ASPEN POLS

14-18 BRUSH

18-20 ASPEN POLS

20-30 " " "

30-34 MIXED HARD WOOD REF.

34-38 WILLOW SWAMP.

INTERCEPTED C.S. $\frac{1}{4} \frac{21}{6}$ COY AT
38:59.5 L.K.S.

MISSED C.S. $\frac{1}{4} \frac{21}{6}$ COY 49 L.K.S

NORTH

RUN LINE N FROM $\frac{36}{1} | \frac{31}{6}$

~~7144~~
~~R30 P29~~ USING 10° 30' DEC.

7143
R30 HIT ROAD AT 15:92 L.K.S.

0-19 - MAPLE POLS

INTERCEPTED $\frac{10}{16}$ COY AT 19:13 L.K.S.

MISSED $\frac{10}{16}$ COY 10.5 L.K.S WEST
6 L.K.S FROM $\frac{10}{16}$ COY TO SAME

JAN. 11 1936

SEC 36

MAPLE BT D.B.H. 12"

COMPUS READING S 48° 30' W

DISTANCE TO B.T. 23 LMS

BT S $\frac{1}{16}$ S 36 B.T.

SEC 31

MAPLE BT D.B.H. 14"

COMPUS READING N 69° 30' E

DISTANCE TO B.T. 88 LMS

B.T. S $\frac{1}{16}$ S 31 B.T.RUN LINE N FROM 16 $\frac{1}{16}$ COY

USING 16° DEC

0-4 - MAPLE POLS

4-12 - MIXED HARD WOOD REP

12-16 - ASPEN POLS

16-20 - ASH POLS

INTERECTED 11 $\frac{1}{16}$ COY AT 20.422 LMSMISSED 11 $\frac{1}{16}$ COY 10.8 LMS W

ASH BT D.B.H. 8"

COMPUS READING S 3° W

DISTANG TO B.T. 14.2 LMS

BT S W $\frac{1}{16}$ S 31 B.T.RUN LINE E. FROM 11 $\frac{1}{16}$ COY

USING 7° DEC.

0-4-ASH POLS

4-8-ASPEN POLS

8-16 BRUSH

16-20 ASPEN POLS

INTERSECTED $12\frac{1}{16}$ COY AT 18' 15.3 LMSMISSED $12\frac{1}{16}$ COY 468 LMS SOUTHRUN LINE E FROM $12\frac{1}{16}$ COY
USING $7^{\circ}30$ DEC.

0-10-ASPEN REF.

10-20 MAPLE POLS

20-24 ASPEN POLS

24-30-BLACKSPRUE TAMARACK

30-~~36~~ MIXED HARDWOOD REF.INTERSECTED $14\frac{1}{16}$ COY AT 35' 70.8 LMSMISSED $14\frac{1}{16}$ COY 10 LMS SOUTH

SEC. 31

ASPEN BT D.B.H. 8"

COMPUS READING $S 35^{\circ}30$ WEST

DISTANCE TO B.T. 34.2 LMS

BT 531 BT

SEC. 32.

ASPEN BT D.B.H. 8"

COMPUS READING $S 83^{\circ}30$ EAST.

DISTANCE TO B.T. 41.2 LMS

BT SW $\frac{1}{16}$ 532 B.T.

RUN LINE W FROM E $\frac{1}{4}$ COY
SEC. 31

USING 9° DEC.

0-8 WILLOW SWAMP

8-15- ASPEN R.E.P.

INTERECTED $8\frac{1}{16}$ COY AT 15:91.3 LMS

MISSED $8\frac{1}{16}$ COY 3.5 LMS SOUTH

RUN LINE W FROM $8\frac{1}{16}$ COY

USING $8^{\circ}30$ DEC.

0-6- BLACK SPRUCE TAMARACK

6-12 MIXED HARD WOOD

12-15 MAPLE POLS

INTERECTED $C\frac{1}{4}$ COY AT 15:98.8 LMS

MISSED $C\frac{1}{4}$ COY 2.6 LMS SOUTH

RUN LINE W FROM $C\frac{1}{4}$

USING $8^{\circ}30$ DEC

0-16 MAPLE POLS

INTERECTED $9\frac{1}{16}$ COY AT 16:48 LMS

MISSED $9\frac{1}{16}$ COY 6 LMS SOUTH

MAPLE BT DBH 6"

COMPUS READING S 11° EAST

DISTANCE TO BT 26 LMS.

BT $CW\frac{1}{16}$ 531 BT

MAPLE BT DBH 20"

COMPUS READING N $21^{\circ}30$ W

DISTANCE TO BT 14 LMS

BT CW $\frac{1}{16}$ S31 BT
 HIT LAKE AT 7:85 LMS W
 FROM 9 $\frac{1}{16}$ COY
 RUN LIN W FROM 5 $\frac{1}{16}$ COY
 USING 8°30 DEC.

0-11 MAPLE POLS

INTERECTED $\frac{S}{N} \frac{5}{31}$ COY AT
 11:948 LKS

MISSED COY 2 LKS NORTH
 MAPLE BT D.B.H. 8"
 COMPUS READING N76° EAST
 DISTANCE TO BT 61.6 LMS
 BT S31 SMC BT

JAN. 18, 1936 T 144 R 29 SEC 21

RUN LINE E FROM W $\frac{1}{4}$ COY
SEC 20/21 T 144 R 29
USING 6° DEC.

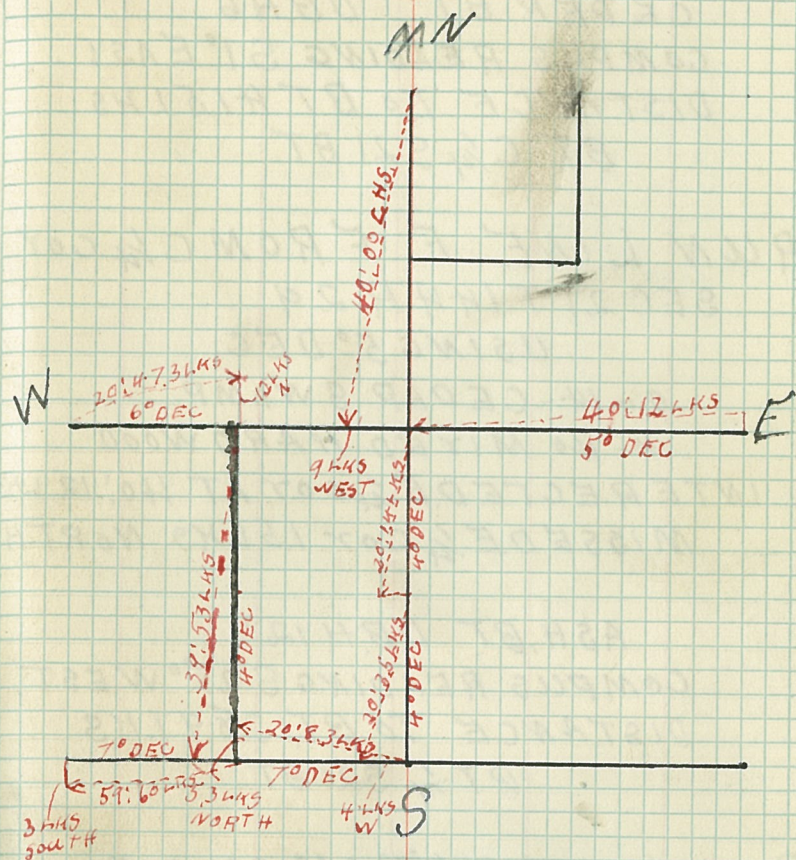
0-20-MIXED HARDWOODS
INTERECTED 9 $\frac{1}{16}$ COY AT 20:47.3 LMS
MISSED 9 $\frac{1}{16}$ COY 12.4 LMS NORTH

ASPEN STUB BT DBH 12"
COMPUS READING N 47° WEST
DISTANCE TO BT 24.8 LMS

RUN LINE E FROM 9 $\frac{1}{16}$ COY
SEC 21 T 144 R 29
USING 5° DEC

FOLLOWING OLD G.L.O.
0-6-ASPEN POLS
6-20-MIXED HARDWOOD
CEDER BT DBH 4"
COMPUS READING N 19° EAST
DISTANCE TO B.T. 19.9 LMS
BT C $\frac{1}{4}$ S 21 BT

JAN 18 1936 T 144 R 29 SEC 21



CEDER BT DBH 6"
 COMPUS READING S1° EAST
 DISTANCE TO BT 41.5 LKS
 BT C $\frac{1}{4}$ S 21 BT

RUN LINE E FROM C $\frac{1}{4}$ COR
 SEC 21 T144 R29
 USING 5° DEC.

0-14- CEDAR SWAMP
 14-40 MIXED HARDWOOD
 INTERECTED E $\frac{1}{4}$ COR AT 40' 12 LKS
 MISSE E $\frac{1}{4}$ COR 1.5 LKS NORTH

ASH BT DBH 12"
 COMPUS READING S 25° WEST
 DISTANCE TO BT 28.9 LKS
 BT $\frac{1}{4}$ S 21 BT

RUN LINE S FROM 9 $\frac{1}{6}$ COR
 SEC 21 T144 R29
 USING 4° DEC.

FOLLOWING OLD G.L.O.

0-20-

20-34 MAPLE POLES

34-40 - MIXED HARD WOOD

INTERECTED OLD G.L.O. AT
39:53 LMS.

INTERECTED $16\frac{1}{16}$ COY 48.2 LMS
SOUTH OF OLD G.L.O.

MISSED $16\frac{1}{16}$ COY 8.3 LMS WEST

SEC 28 READING T144 R29

MAPLE BT DBH 6"

COMPUS READINGS 193° EAST

DISTANCE TO BT 57.2 LMS

BT $W\frac{1}{16}$ 528 B.T.

SEC 21 READING T144 R29

MAPLE BT DBH 8"

COMPUS READING $N44^{\circ}$ NORTH

DISTANCE TO BT 22.5 LMS

BT $W\frac{1}{16}$ 521 B.T.

RUN LINE WEROM 39:53 LMS

COY. SEC 21 T144 R29.

USING 7° DEC.

39-55 - MIXED HARD WOOD

55-59 - MAPLE POLS.

INTERECTED SEC COY $\frac{20}{29} | \frac{21}{28}$

AT 59:60 LHS
MISSED COX 3 LHS SOUTH

RUN LINE S FROM $C \frac{1}{4}$ SEC 21, T144, R29
USING 4° DEC

0-16 - CEDAR SWAMP
16-20 MIXED HARDWOOD

INTERECTED $12 \frac{1}{16}$ COY AT 20:14 LHS
MISSED $12 \frac{1}{16}$ COY 2.9 LHS WEST

SEC 21 READINGS

BIRCH BT. DBH 20"
COMPUS READING N 47° WEST
DISTANCE TO BT 48.9 LHS
BT C.S. $\frac{1}{16}$ S 21 BT

BALSOM BT. WIND FALLEN
COMPUS READINGS S $36^\circ 30'$ WEST
DISTANCE TO BT 24.7 LHS
BT C.S. $\frac{1}{16}$ S 21 BT

RUN LINE S FROM $12\frac{1}{16}$ COY
 SEC 21, T144 R29
 USING 4° DEC.

0-10 - MIXED HARDWOOD
 10-16 CEDAR SWAMP
 16-20 MIXED HARDWOOD
 INTERECTED $5\frac{1}{4}$ COY AT 20:3.5 LMS
 MISSED $5\frac{1}{4}$ COY 4 LMS WEST

SEC 28 READING
 CEDAR BT D.B.H. 12
 COMPUS READING $S 5^{\circ} 30'$ EAST
 DISTANCE TO BT 37 LMS
 BT $\frac{1}{4}$ 528 BT

RUN LINE W FROM $5\frac{1}{4}$ COY
 $\frac{21}{28}$ T144 R29
 USING 7° DEC.

0-20 - MIXED HARDWOOD
 INTERECTED $16\frac{1}{16}$ COY AT 208.3
 LMS
 MISSED $16\frac{1}{16}$ COY 5.3 LMS
 NORTH

RUN LINE S FROM N $\frac{1}{4}$ COY
 SEC 21 T144 R29
 USING H^o DEC

0-12 ASPEN POLS
 12-24 BLACK SPRUCE TAMARAC
 24-40 ASPEN POLS

INTERCEPTED C $\frac{1}{4}$ COY AT 40'; 00 HRS
 MISSED C $\frac{1}{4}$ COY 9 HRS WEST

JAN 26 1936 T 145 R 29 SEC 7

RUN LINE W FROM TEMP 14 $\frac{1}{16}$ COY

T 145 R 29 SEC 7

USING 7° DEC

0-40 JACK PINE RED

HIT ROAD AT 22:24.7 LKS

INTERECTED TEMP. 12 $\frac{1}{16}$ COY

AT 40:69 LKS

MISSED TEMP COY 40.6 LKS NORTH

RUN LINE E FROM TEMPT 5 $\frac{1}{16}$ COY

T 145 R 29 SEC 7

USING 7° DEC

HIT ROAD AT 7:59 LKS

" " " 12:43 LKS

0-18 JACK PINE POLES

18-44 JACK PINE RED

INTERECTED TEMPT 7 $\frac{1}{16}$ COY

AT 44:67 LKS.

MISSED TEMP COY 44.4 LKS

RUN LINE N FROM TEMP 5 $\frac{1}{16}$ COY

T 145 R 29 SEC 7

USING 7° DEC.

0-10-BLACKSPRUETAMARACK
 10-20 JACK PINE REP.
 HIT ROAD AT 9:66 LHS

RUN LINES FROM TEMPT 13 $\frac{1}{16}$ COY
 T14~~5~~ R29 SEC 7.

USING 7° DEG.

HIT ROAD AT 6:10 LHS

0-20 JACK PINE REP.

INTERECTED TEMPT. 15 $\frac{1}{16}$ COY
 AT 20:17.3 LHS

MISSED COY 19.5 LHS WEST

RUN LINE E FROM TEMPT E $\frac{1}{4}$ COY
 T145 R29 SEC 7.

USING 7° DEG.

RE BRUSHED OLD LINE

0-40-JACK PINE POLS

INTERECTED TEMPT SEC COY

$\frac{218}{817}$ AT 39:37.4 LHS.

RUN LINE N FROM TEMPE $\frac{1}{4}$ COY
 T14~~5~~ R29 SEC 7
 USING 7° DEG

RE BRUSHED OLD LINE

0-20 JACK PINE POLS

20-40 JACK PINE REP.

INTERECTED TEMP SEC COY

$\frac{615}{718}$ AT HI: 90.6 LKS

JAN 27, 1936

T144 R29 SEC, 17

RUN LINE N FROM TEMPT 9 $\frac{1}{16}$

COY T144 R29 SEC 17

USING 7° DEC

0-28 MIXED HARD WOOD

28-34 MAPLE POLS

34-40 MIXED HARD WOOD

INTERECTED TEMPT. 2 $\frac{1}{16}$ COY AT

40: HI. 4 LKS

MISSED TEMPT. 2 $\frac{1}{16}$ COY ~~4~~ 5.7 W