

FIELD
141-29

106

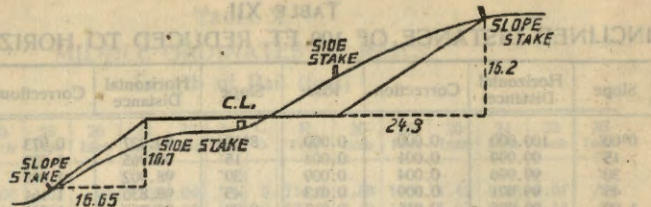
MINERAL
TRANSIT BOOK

w

#115

Page
1-3
4-6

~~Survey~~
Survey
Dec. 26
1903



DISTANCES FROM SIDE STAKES FOR CROSS-SECTIONING.
SLOPE 1 1/2 TO 1. ROADWAY OF ANY WIDTH.

	0	.1	.2	.3	.4	.5	.6	.7	.8	.9	
0	0.00	0.15	0.30	0.45	0.60	0.75	0.90	1.05	1.20	1.35	0
1	1.50	1.65	1.80	1.95	2.10	2.25	2.40	2.55	2.70	2.85	1
2	3.00	3.15	3.30	3.45	3.60	3.75	3.90	4.05	4.20	4.35	2
3	4.50	4.65	4.80	4.95	5.10	5.25	5.40	5.55	5.70	5.85	3
4	6.00	6.15	6.30	6.45	6.60	6.75	6.90	7.05	7.20	7.35	4
5	7.50	7.65	7.80	7.95	8.10	8.25	8.40	8.55	8.70	8.85	5
6	9.00	9.15	9.30	9.45	9.60	9.75	9.90	10.05	10.20	10.35	6
7	10.50	10.65	10.80	10.95	11.10	11.25	11.40	11.55	11.70	11.85	7
8	12.00	12.15	12.30	12.45	12.60	12.75	12.90	13.05	13.20	13.35	8
9	13.50	13.65	13.80	13.95	14.10	14.25	14.40	14.55	14.70	14.85	9
10	15.00	15.15	15.30	15.45	15.60	15.75	15.90	16.05	16.20	16.35	10
11	16.50	16.65	16.80	16.95	17.10	17.25	17.40	17.55	17.70	17.85	11
12	18.00	18.15	18.30	18.45	18.60	18.75	18.90	19.05	19.20	19.35	12
13	19.50	19.65	19.80	19.95	20.10	20.25	20.40	20.55	20.70	20.85	13
14	21.00	21.15	21.30	21.45	21.60	21.75	21.90	22.05	22.20	22.35	14
15	22.50	22.65	22.80	22.95	23.10	23.25	23.40	23.55	23.70	23.85	15
16	24.00	24.15	24.30	24.45	24.60	24.75	24.90	25.05	25.20	25.35	16
17	25.50	25.65	25.80	25.95	26.10	26.25	26.40	26.55	26.70	26.85	17
18	27.00	27.15	27.30	27.45	27.60	27.75	27.90	28.05	28.20	28.35	18
19	28.50	28.65	28.80	28.95	29.10	29.25	29.40	29.55	29.70	29.85	19
20	30.00	30.15	30.30	30.45	30.60	30.75	30.90	31.05	31.20	31.35	20
21	31.50	31.65	31.80	31.95	32.10	32.25	32.40	32.55	32.70	32.85	21
22	33.00	33.15	33.30	33.45	33.60	33.75	33.90	34.05	34.20	34.35	22
23	34.50	34.65	34.80	34.95	35.10	35.25	35.40	35.55	35.70	35.85	23
24	36.00	36.15	36.30	36.45	36.60	36.75	36.90	37.05	37.20	37.35	24
25	37.50	37.65	37.80	37.95	38.10	38.25	38.40	38.55	38.70	38.85	25
26	39.00	39.15	39.30	39.45	39.60	39.75	39.90	40.05	40.20	40.35	26
27	40.50	40.65	40.80	40.95	41.10	41.25	41.40	41.55	41.70	41.85	27
28	42.00	42.15	42.30	42.45	42.60	42.75	42.90	43.05	43.20	43.35	28
29	43.50	43.65	43.80	43.95	44.10	44.25	44.40	44.55	44.70	44.85	29
30	45.00	45.15	45.30	45.45	45.60	45.75	45.90	46.05	46.20	46.35	30
31	46.50	46.65	46.80	46.95	47.10	47.25	47.40	47.55	47.70	47.85	31
32	48.00	48.15	48.30	48.45	48.60	48.75	48.90	49.05	49.20	49.35	32
33	49.50	49.65	49.80	49.95	50.10	50.25	50.40	50.55	50.70	50.85	33
34	51.00	51.15	51.30	51.45	51.60	51.75	51.90	52.05	52.20	52.35	34
35	52.50	52.65	52.80	52.95	53.10	53.25	53.40	53.55	53.70	53.85	35
36	54.00	54.15	54.30	54.45	54.60	54.75	54.90	55.05	55.20	55.35	36
37	55.50	55.65	55.80	55.95	56.10	56.25	56.40	56.55	56.70	56.85	37
38	57.00	57.15	57.30	57.45	57.60	57.75	57.90	58.05	58.20	58.35	38
39	58.50	58.65	58.80	58.95	59.10	59.25	59.40	59.55	59.70	59.85	39
40	60.00	60.15	60.30	60.45	60.60	60.75	60.90	61.05	61.20	61.35	40
41	61.50	61.65	61.80	61.95	62.10	62.25	62.40	62.55	62.70	62.85	41
42	63.00	63.15	63.30	63.45	63.60	63.75	63.90	64.05	64.20	64.35	42
43	64.50	64.65	64.80	64.95	65.10	65.25	65.40	65.55	65.70	65.85	43
44	66.00	66.15	66.30	66.45	66.60	66.75	66.90	67.05	67.20	67.35	44
45	67.50	67.65	67.80	67.95	68.10	68.25	68.40	68.55	68.70	68.85	45
46	69.00	69.15	69.30	69.45	69.60	69.75	69.90	70.05	70.20	70.35	46
47	70.50	70.65	70.80	70.95	71.10	71.20	71.40	71.55	71.70	71.85	47
48	72.00	72.15	72.30	72.45	72.60	72.75	72.90	73.05	73.20	73.35	48
49	73.50	73.65	73.80	73.95	74.10	74.25	74.40	74.55	74.70	74.85	49
50	75.00	75.15	75.30	75.45	75.60	75.75	75.90	76.05	76.20	76.35	50

372 G.L.O. Corner 1/2" cap + 1/2" pipe

B.T. 13" White oak 3 1/2" hole 1/2" Y.M. BIT

27/28
28/29
F.S.

472 G.L.O. Corner 1/2" cap + 1/2" pipe

1/2" Pine 1/2" pipe

23/24
24/25
G.L.O. Corner

B.T. 1" Jack pine S 53° W 47 1/2" Y.M. BIT

B.T. 8" Jack pine N 77° E 71 1/2" Y.M. BIT

28/29
29/30
G.L.O. Corner 1/2" cap + 1/2" pipe

B.T. 10" J.P. N 56° W 47 1/2" Y.M. BIT

B.T. 10" J.P. S 82° W 71 1/2" Y.M. BIT

B.T. 11" R.P. N 16° E 96 1/2" Y.M. BIT

N 1/2" F.S.

477/26 F.S.

57/27 F.S.

67/28
30/31
F.S.

X. M.C.
9/10

1/16 #3
5.9

1/4
9/10

1/16 #14
5.9

9/10
M.C.

9/10
10/M.C.

1/16 #9
10

1/16 #15
5.9

1/4 #9
16

1/16 #16
5.9

X. M.C.
8/13
17/16

1/16 #10
5.9

1/4
8/9

1/16 #3
5.9

X. M.C.
8/9

P.h. 0. 1" L. M. & brass Cap. 4" Above Ground

S.M.C.
S. 9

S.M.C.
S. 9

S.M.C.
S. 9

No #5
S. 9

No #6
S. 9

No #8
S. 9

C. 1/4
S. 9

No #9
S. 9

1/64
S. 9

1/64
S. 9

No #11
S. 9

G.L.O. 1" I.M. + brass Cap 10" Above ground
Form 758a on 5" Elm N75°W 161k s

No #12
S. 9

G.L.O. 1" I.M. + brass Cap 7" Above ground
Form. 758a on 6" W. Oak N39°E 171k s

No #13
S. 9

1/64
S. 9

41NR29
11/13
17/13

1/6 #2
5.13

1/4
12/13

1/6 #1
5.13

41NR29
12/13
15/13

1/6 #7
5.13

1/6
5.13

1/4
13+18

1/6 #14
5.13

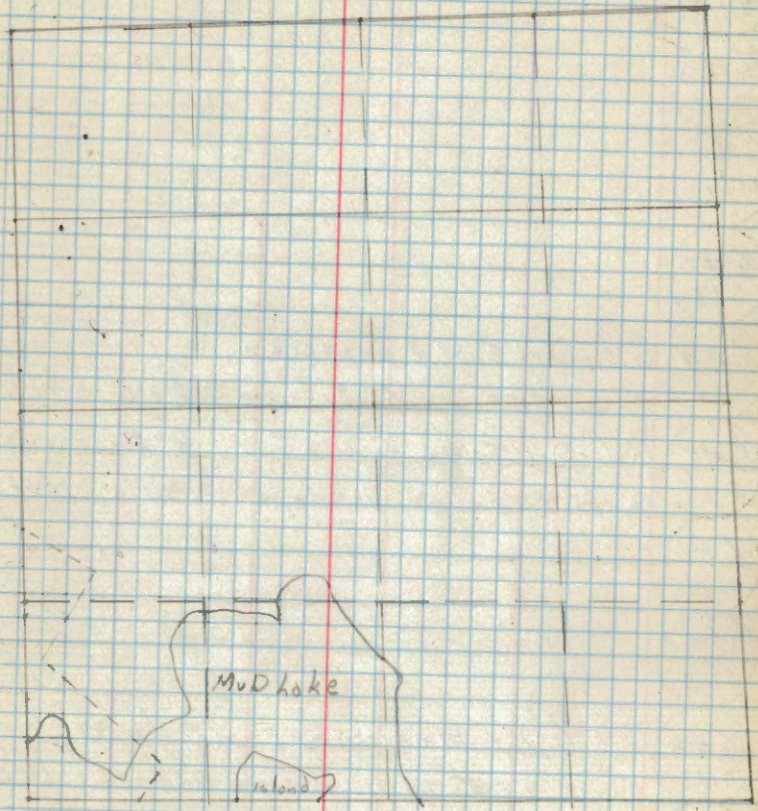
41NR29
13/13
29/13

1/6 #15
5.13

M.C. 13
29

19/13
M.C.

G. h. O 2" I. M 4 brasses of 12" Above ground.
Form 758 on Fence post East. 30 lbs.



- $\frac{1}{16}$ #7
 S.13
- $\frac{1}{16}$ #10
 S.13
- $\frac{1}{4}$
 #4
 S.13
- $\frac{1}{16}$ #3
 S.13
- $\frac{1}{16}$ #9 G.L.O. 1" I.M. + brass Cap
 Form 458a on 5" Spruce N89°E 661ks
 S.13
- $\frac{1}{16}$ #5 G.L.O. 1" I.M. + brass Cap 8" Above ground
 Form 458a on 10" Aspen S37°W 1611ks.
 S.13
- $\frac{1}{16}$ #6
 S.13
- $\frac{1}{16}$ #9
 S.13
- $\frac{1}{16}$ #8 G.L.O. 1" I.M. + brass Cap 6" Above ground
 Form 458a on 6" White Pine S76°W 101ks.
 S.13
- $\frac{1}{4}$ G.L.O. 1" I.M. + brass Cap 8" Above ground
 Form 458a on 6" R. Oak S41°E 421ks
 S.13
- $\frac{1}{16}$ #9 G.L.O. 1" I.M. + brass Cap Flush with ground
 Form 458a on 6" R. Oak N40°E 1031ks.
 S.13
- $\frac{1}{16}$ #11
 S.13
- $\frac{1}{16}$ #12
 S.13
- $\frac{1}{16}$ #13
 S.13

NIN 229
10/11
15/17

11/7
19/M.C.

MC. 11/17

1/6 #1
S.14

NIN 229
11/13
19/13

1/6
14/13

1/6 #7
S.14

1/4
19/13

14/13
S.M.C.

1/6 #19
S.14

14/13
M.C.

14/1
23/M.C.

1/6 #15
S.14

S.M.C.
S.14

1/4 17
23

1/6 #16
S.14

NIN 229
15/14
22/23

1/6 #10
S.14

1/4
15/14

1/6 #3
S.14

S.M.C.
S.14

S.M.C
S.14

S.M.C.
S.14

S.M.C
S.14

1/6 #5
S.14

1/6 #4
S.14

1/6 #6
S.14

1/6 #3
S.14

1/6 #8
S.14

1/6 #4
S.14

C 1/4
S.14

S.M.C
S.14

G.L.O 1" I.M. brass Cap 6" Above ground
Form 45 Ed on 4" Aspen post at Corner.

S.M.C
S.14

S.M.C
S.14

S.M.C
S.14

1/6 #11
S.14

S.M.C
S.14

S.M.C
S.14

1/6 #12
S.14

G.L.O 1" I.M. brass Cap
6" Above ground
Form 45 Ed on
6" Aspen N 31° W 51 ks.

1/6 #4
S.14

1/6 #10
S.14

1/6 #13
S.14

S.M.C
S.14

S.M.C
S.14

S.M.C
S.14

AINR 200
K 10/15

No #2
5.15

No 10
15

No #1
5.15

AINR 200
K 10/15
15/17

No 6A
15/14

No #7
5.15

No
15/14

No #17
5.15

AINR 200
K 15/22
22/23

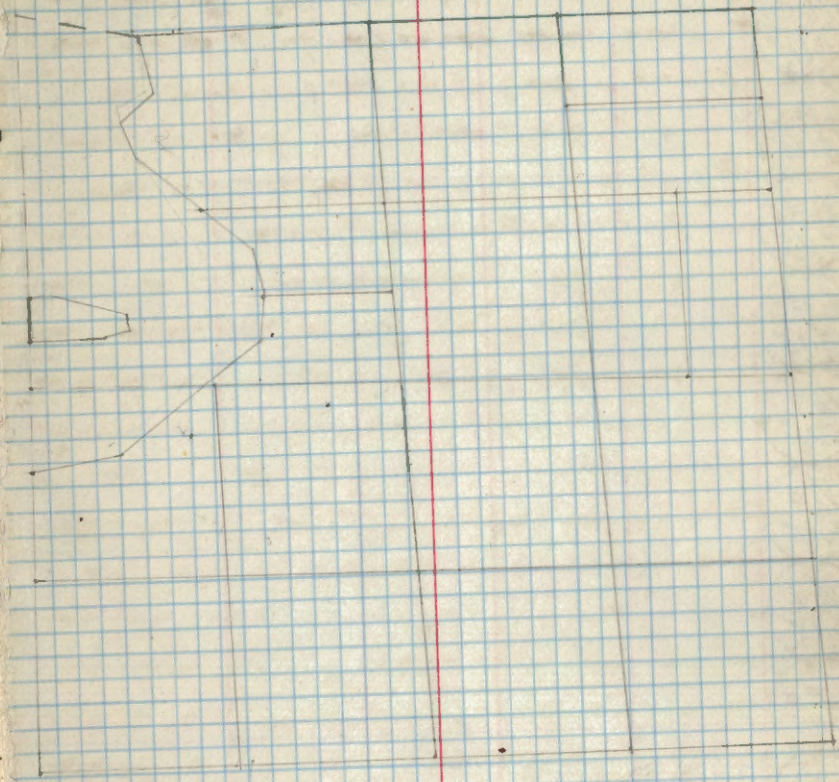
No #15
5.15

No 15
22

No #16
5.15

No 4

Sec: 15-191-29



1/6 #10
S.15

M.C.
1/6/15

S.M.C
S.15

1/6 #5
S.15

1/6 #6
S.15

1/6 #7
S.15

1/6 #9
S.15

1/6 #9
S.15

1/6 #8
S.15

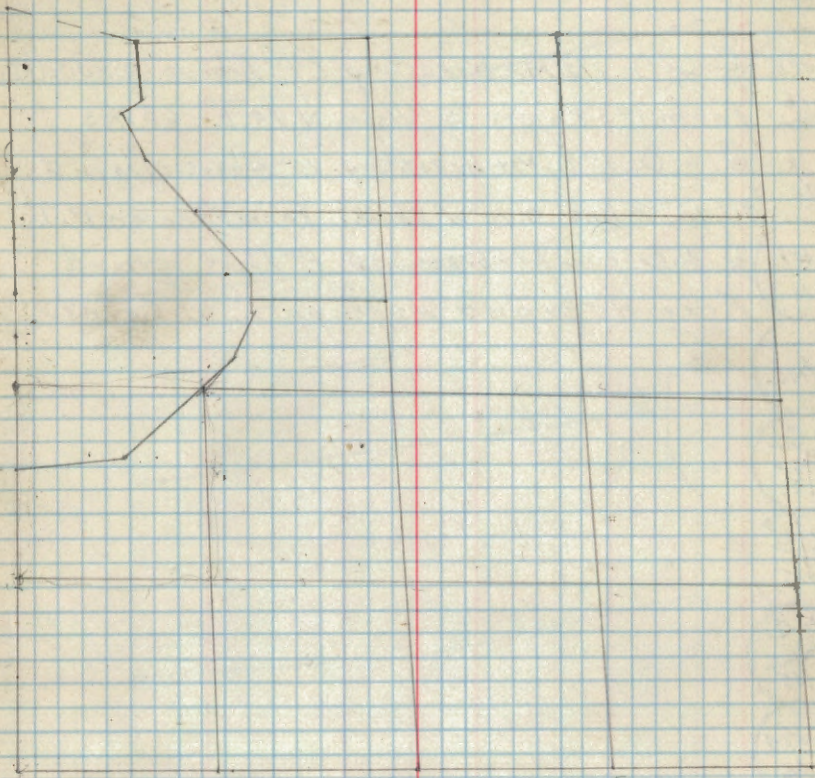
1/4 G.L. 0 1" I.M. + brass Cap 8" Above ground
S.15

1/6 #9
S.15

1/6 #11 G.L. 0 1" I.M. + brass Cap 6" Above ground
S.15 Form 958a on 10" R. Pine N 40° E 53 lks.

1/6 #12 F. S. 4" Aspen post 3' Above ground
S.15 Form 958a on 6" Aspen N 72° E 57 lks

1/6 #13
S.15



1/6 #9
S.15

Sec. 16-141-29

AIN 7, 29
819
1778

1/16 #2
5.16 G.L.O. 1" I.M. & brass Cap 14" Above ground
Form 458a on 5" Aspen N78°E 60 lks

1/16 #9
5.16 G.L.O. 1" I.M. & brass Cap 10" Above ground
B.T. 12" R. Pine N10°W 260 lks. Form 458a on B.T.

1/16 #1
5.16 G.L.O. 1" I.M. & brass Cap 8" Above ground
Form 458a on 4" Aspen post at Corner

9
16/MC

M.C.
16/15

16/15
M.C.

M.C.
16/15

1/16 #14
5.16

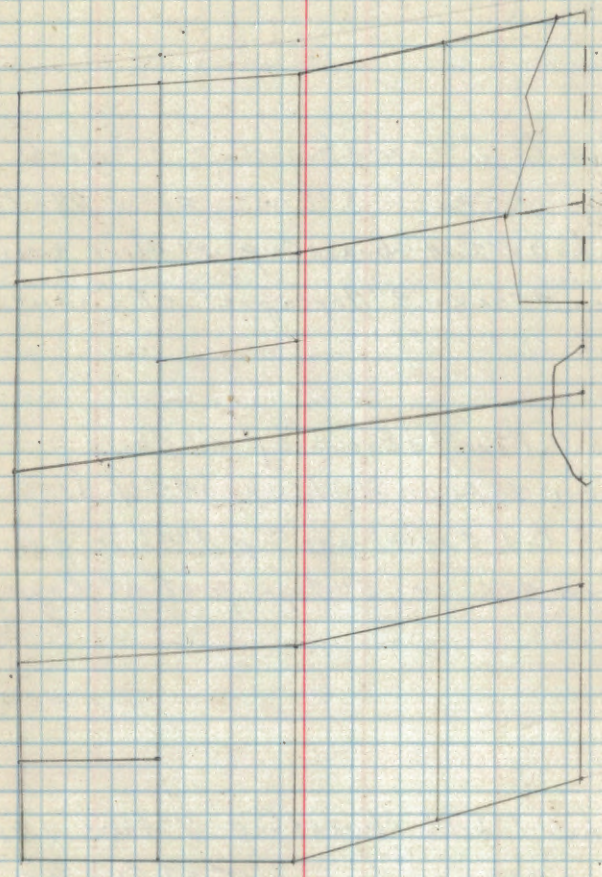
AIN 7, 29
819
2122 G.L.O. 2" I.M. & brass Cap 8" Above ground
Form 458 on 10" R. Pine N32°W. 194 lks.

1/16 #15
5.16

1/16 #1
4 21 G.L.O. 1" I.M. & brass Cap Flush with ground
Form 458a on 5" Aspen N18°W. 59 lks.

1/16 #16
5.16

AIN 7, 29
17126
2021



1/16 #17
17 16

1/16 #10
5.16

1/4
17/16

1/6#3
5.16

1/6#4 G.h.O. 1" I.M. & brass Cap 10" Above ground
Form 958a on 5" Elm N 80° W 1981ks.

1/6#5 G.h.O. 1" I.M. & brass Cap 12" Above ground
Form 958a on 4" Aspen post at Corner

1/6#6 G.h.O. 1" I.M. & brass Cap 10" Above ground
Form 958a on 5" Elm N 80° W 1981ks.

S.M.C. 5.16 G.h.O. 1" I.M. & brass Cap 10" Above ground
Form 958a on 8" W. Oak S 40° W 1301ks

1/6#9 G.h.O. 1" I.M. & brass Cap 1" Above ground
Form 958a on 5" Aspen post at Corner

1/6#4
5.16

1/6#8
5.16

1/6#10 G.h.O. 1" I.M. & brass Cap 7" Above ground
Form 958a on Aspen post at Corner.

1/6#9 G.h.O. 1" I.M. & brass Cap 6" Above ground
Form 958a on 14" Oak N 31° W 761ks.

1/6#11 G.h.O. 1" I.M. & brass Cap 6" Above ground
Form 958a on 6" Oak S 85° W 1311ks.

1/6#12 G.h.O. 1" I.M. & brass Cap Flush with ground
Form 958a on 7" Aspen post at Corner

1/6#13
5.16

1/6#4
5.16

3960 N0°16'E 3990
 2042 N 80°55' W
 1975
 2820 N 0°18' W
 1980
 1980

1519 2700

NC | 15.89
 3.70 | Pine
 | Lake

P
 103
 104
 105
 106
 107
 108
 109
 110
 111
 112
 113
 114
 115
 116
 117
 118
 119
 120
 121
 122
 123
 124
 125
 126
 127
 128
 129
 130
 131
 132
 133
 134
 135
 136
 137
 138
 139
 140
 141
 142
 143
 144
 145
 146
 147
 148
 149
 150
 151
 152
 153
 154
 155
 156
 157
 158
 159
 160
 161
 162
 163
 164
 165
 166
 167
 168
 169
 170
 171
 172
 173
 174
 175
 176
 177
 178
 179
 180
 181
 182
 183
 184
 185
 186
 187
 188
 189
 190
 191
 192
 193
 194
 195
 196
 197
 198
 199
 200

1/20/20
20/20

1/20/20
5/20

4
20/21

C.C. Set by J. A. Gjelhaug 2" x 4' Oak Post
20/21 I.R.B. 1/2" Iron Pin 4" Above ground

21/18/20 Set by J. A. Gjelhaug 2" x 4' Scribed Oak Post
21/18 1/2" Iron Pin 4" Above ground

21/15 Set by J. A. Gjelhaug 2" x 4' Oak Post
2/20 1/2" Iron pin 4" Above ground.

4/20/20
2/20

2/16
5/20

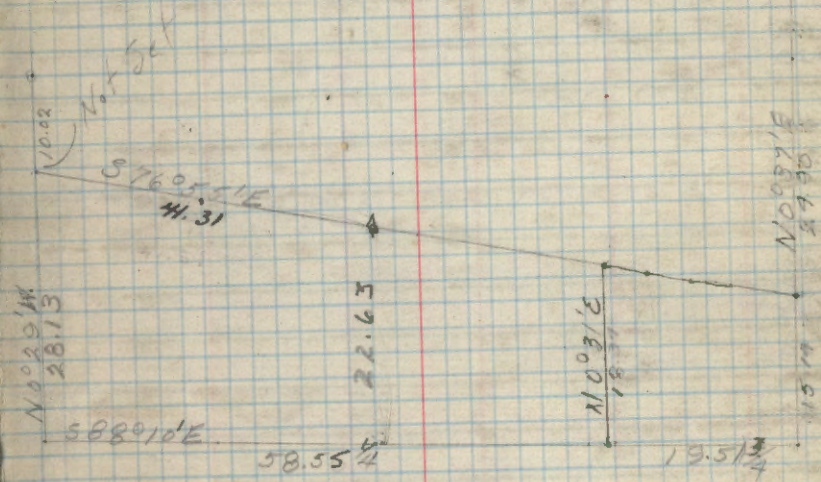
21/15/20 County Cor 2" Iron pipe & Cap
21/20

C.C.
19/20
I.R.B.

4 County Cor 2" Iron pipe & Cap
19/20

2/10/20 Co. Cor 2" x 24" I.P. 458 on Tonic East 0.07 ch. CES
5/20

M.C. G.L.O. 1" x 2" - No Poster 2/15/1940 CES
3/20



40.04

54.96

15.11

17/20 M.C.

G.L.O. 1" I.P. 10" - Poster on Apr. 6 - 54 45 0.88 CES

1/4 #1 5.20

1/4 #1 5.20

1/4 #1 5.20

S.M.C. 5.20

1/4 #5 5.20

1/4 #6 5.20

1/4 #8 5.20

C. 1/4 5.20

1/4 #9 5.20

W.C.C. 5.20

E.C.C. 5.20

E.C.C. 5.20

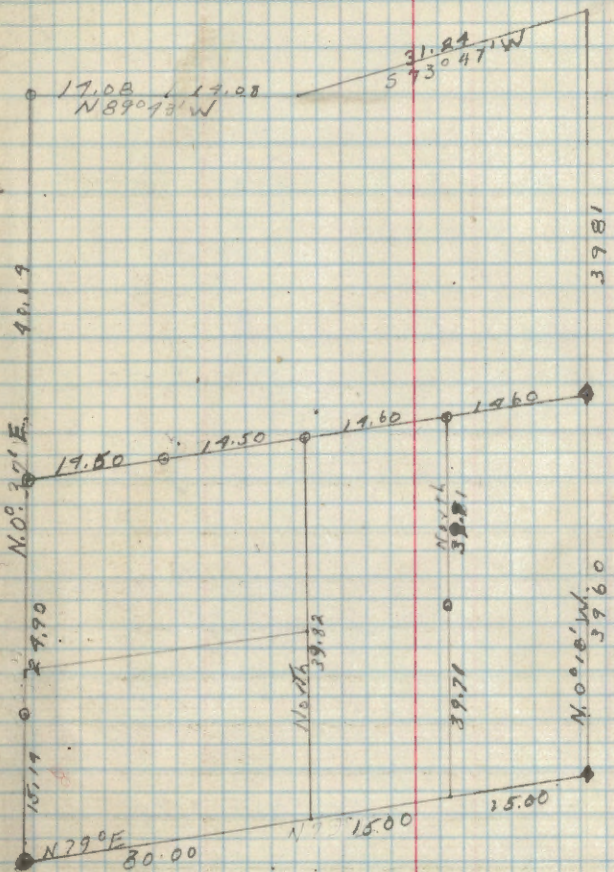
1/2" Iron Pin 4" above Ground.

Pin

6.57

Ad Ac Ac Ab Ac swamp Ac Ab

Sec. 21-141-29



G.L.O. 2" I.M. + brass Cap 8" Above ground
Form 958 on 10" R. Pine N32°W. 194 lbs

G.L.O. 1" I.M. + brass Cap 10" Above ground
Form 958 on 6" J. Pine N60°E 52 lbs.

G.L.O. 2" I.M. + brass Cap 8" Above ground
B.T.'s. 14" R. Oak N62°W 29 lbs. 12" R. Oak S14°W 31 lbs

Set by J. A. Gjelhaug 2" x 9" Scribed Oak Post
1/2" Iron Pin 4" Above ground

W 20/21

W 1/2 21

NW 1/4
5.21

C.N 1/4
5.21

NE 1/4
5.21

C.E 1/4
5.21

E 1/4
5.21

C.W 1/4
5.21

S.W 1/4
5.21

C.S 1/4
5.21

S.E 1/4
5.21

E.C.C.
5.21

C.C.C.
5.21

W.C.C.
5.21

AIN R20
15/15
21/22

G.L.O 2" I.M. & brass Cap 8" Above ground
Form 458 on 10 R. Pine N92°W 194 lks

1/16 #2
5.22

1/4 #15
22

G.L.O. 1" I.M. & brass Cap 6" Above ground
Form 458 on 10" Aspen N72°W 62 lks.

1/16 #1
5.22

AIN R20
15/14
22/23

1/16 #7
5.22

1/4
22/23

1/16 #14
5.22

1/4
22/23

AIN R20
12/23
27/26

G.L.O. 1" I.M. & brass Cap 6" high = B. T's 10" J. Pine 522°W 77 lks
6" J. Pine 519°E 117 lks. 12" W. oak N66°W 123 lks. 16" J. Pine 59°E 176 lks.

1/16 #15
3.22

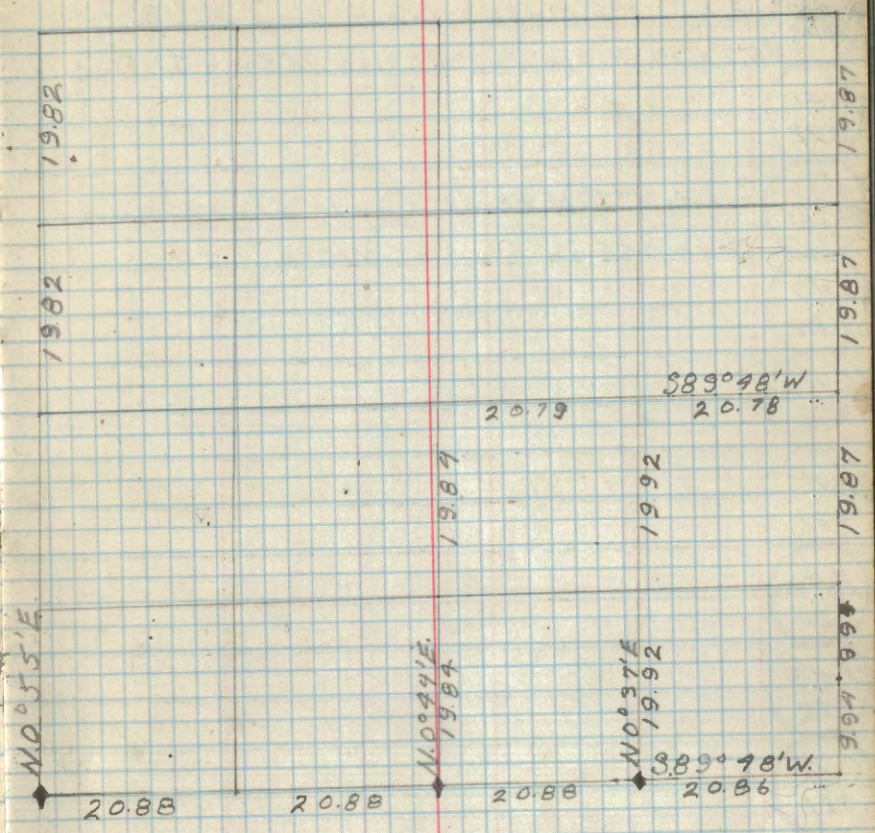
G.L.O 1" I.M. & brass Cap 6" Above ground
Form 458 on 7" Aspen N41°E 65 lks.

1/4 #22
27

G.L.O. 1" I.M. & brass Cap 6" Above ground
Form 458 on 7" Aspen Post N51°W 61 lks.

1/16 #16
3.22

G.L.O 1" I.M. & brass Cap 6" Above ground
Form



~~21/22~~
~~25/27~~
 G.L.O. 1" I.M. + brass Cap 8" Above ground
 B.T's. 14" R. Oak N62°W 291ks 12" R. Oak S. 14°W 311ks

1/6 #10
 3.22

~~21/22~~
 G.L.O. 1" I.M. + brass Cap 10" Above ground
 Form 45B on 6" J. Pine N60°E 521ks.

1/6 #3
 3.22

1/6 #4
 3.22

1/6 #5
 3.22

1/6 #6
 3.22

1/6 #8
 3.22

C. 1/4
 3.22

1/6 #9
 3.22

1/6 #11
 3.22

1/6 #12
 3.22

1/6 #13
 3.22
 G.L.O. 1" I.M. + brass Cap 6" Above ground
 Form 45B on 7" Aspen N100°E 251ks.

AIN R 20
K 15 1/2
22/23

1/2 #2 G.L.O. 1" I.M. + brass Cap 12" Above ground
5.23 Form 958 on 6" Aspen 583°W 11ks

1/4 #1 G.L.O. 1" I.M. + brass Cap 6" Above ground
23 Form 958 on 6" Aspen 337°E 97ks.

1/6 #1
5.23

MC 1/9
23

M.C.
23/24

1/4 G.L.O. 1" I.M. + brass Cap 8" Above ground
23 2/29 B.T's. 10" R. Pine N55°E 261ks. 12" J. Pine 318°W 359ks

1/6 #14
5.23

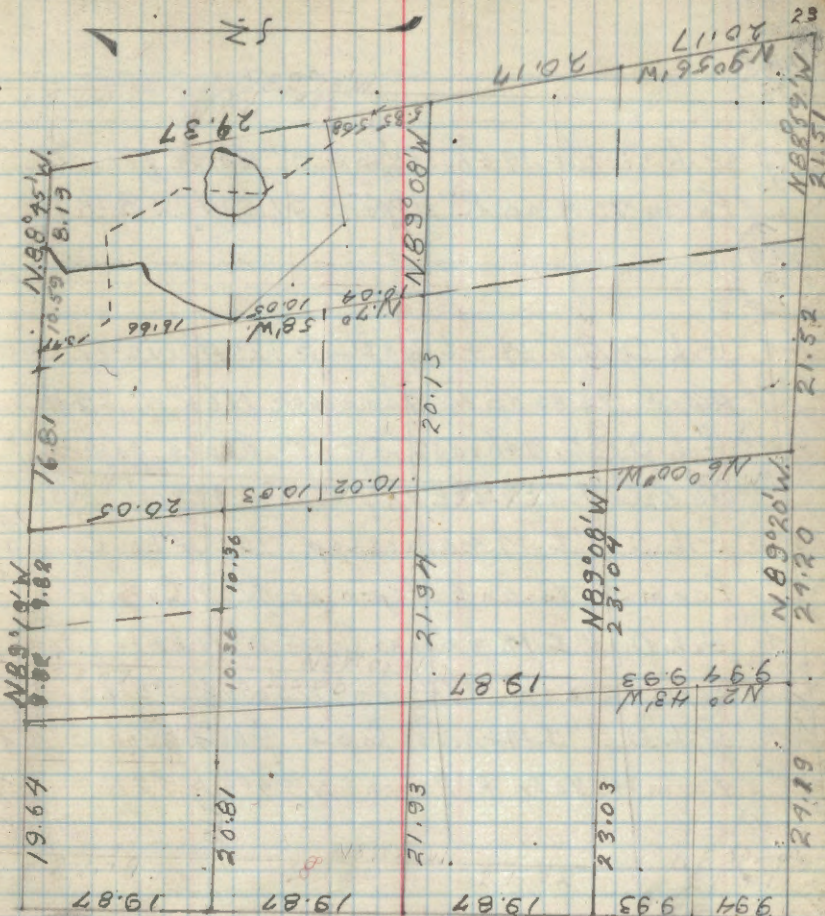
AIN R 20
K 23 1/2
26/25
1/6 #15 G.L.O. 2" I.M. + brass Cap 8" Above ground
5.23 B.T. 12" W. Oak 316°E 1091ks. Form 458 on B.T.

1/6 #15
5.23

1/4 #23 G.L.O. 1" I.M. + brass Cap. 8" Above ground
26

1/6 #16 G.L.O. 1" I.M. + brass Cap Now buried in Tt. 418
5.23 B.T's. 8" J. Pine 570°W 731ks 8" J. Pine N77°E 721ks.

AIN R 20
K 27 1/2
27/26
1/6 #17 G.L.O. 2" I.M. + brass Cap 6" Above ground.
5.23 B.T.'S. 10" J. Pine 522°W 70ks 6" J. Pine 544°E 117ks
12" W. Oak N66°W 103ks 16" J. Pine N57°E 176ks



1/6 #18 G.L.O. 1" I.M. + brass Cap 12" Above ground
22 2/23

1/6 #19 G.L.O. 1" I.M. + brass Cap 6" Above ground
5.23 Form 958 on 6" J. Pine N20°E. 311ks

1/6 #20 G.L.O. 1" I.M. + brass Cap 6" Above ground
22 2/23 Form 958 on 14" R. Oak 53°E 1651ks.

1/4 #21 G.L.O. 1" I.M. + brass Cap 12" Above ground
5.23 Form 958 on 8" spruce N51°E 231ks

1/6 #3
5.23

G.L.O. 1" I.M. & brass Cap 5" Above ground
Form 758 on 8" Aspen S18°W 281ks.

1/6 #4
5.23

G.L.O. 1" I.M. & brass Cap 12" Above ground
Form 758 on 10" Tamarack N66°W 291ks

1/6 #5
5.23

G.L.O. 1" I.M. & brass Cap 12" Above ground
B.T. 8" Cedar S15°E 101ks. Form 758 on B.T.

1/6 #6
5.23

G.L.O. 1" I.M. & brass Cap 15" Above ground
Form 758 on 5" Aspen post at Corner

1/6 #7
5.23

G.L.O. 1" I.M. & brass Cap 2" Above ground
Form 758 on 7" Aspen N50°W 401ks

1/6 #8
5.23

G.L.O. 1" I.M. & brass Cap 6" Above ground
Form 758 on 8" Aspen N59°W 521ks

1/6 #8
5.23

G.L.O. 1" I.M. & brass Cap 6" Above ground
B.T.s. 6" S. Spruce 57°E 601ks. 10" B.T. in stub N9°W 601ks

1/6 #11
5.23

G.L.O. 1" I.M. & brass Cap 6" Above ground

1/6 #12
5.23

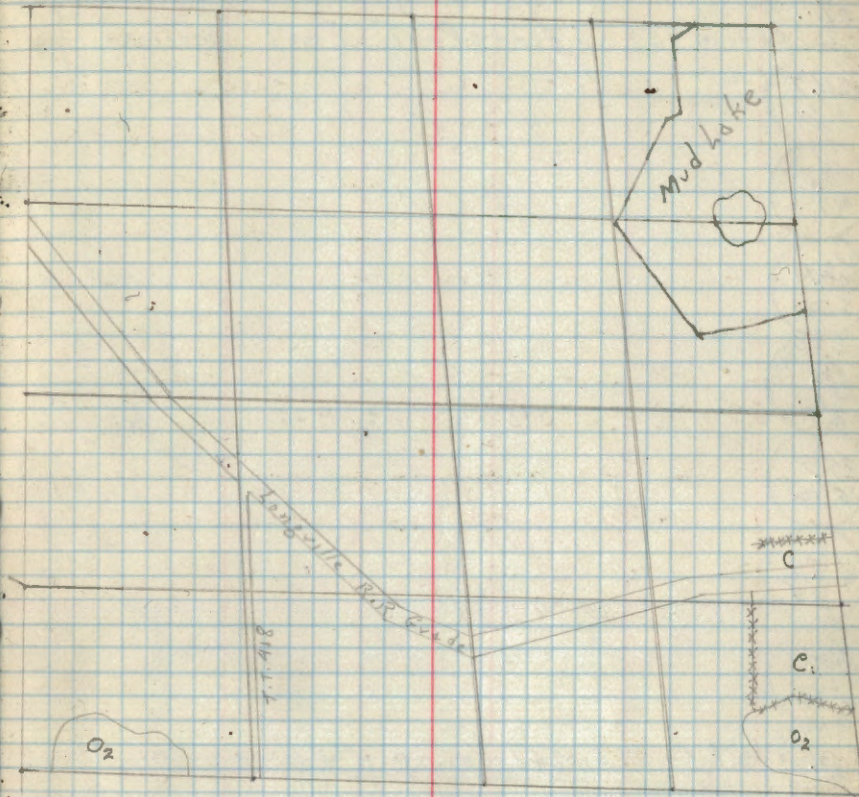
G.L.O. 1" I.M. & brass Cap 6" Above ground

1/6 #13
5.23

G.L.O. 1" I.M. & brass Cap 6" Above ground

1/6 #9
5.23

G.L.O. 1" I.M. & brass Cap 12" Above ground
Form 758 on 8" White Oak S87°W 591ks.



19/23/M.C.

G.L.O. 1" I.M. & brass Cap 12" Above ground
Form 758 on 8" White Oak S87°W 591ks.

AINR 29
13/29
G.L.O. 2" I.M. + brass Cap 12" Above ground
Form 958 on Fence Post East 30 lks.

1/16 #7
5.24

1/4
29

1/16 #14
5.24

AINR 29
K 29
25
W.C.

29
25/MC

1/4 29
25

1/16 #16
5.24

AINR 29
23/29
26/25
G.L.O. 2" I.M. + brass Cap 8" Above ground
B.T. 12" W. Oak S160E. 189 ch.

1/16 #10
5.24

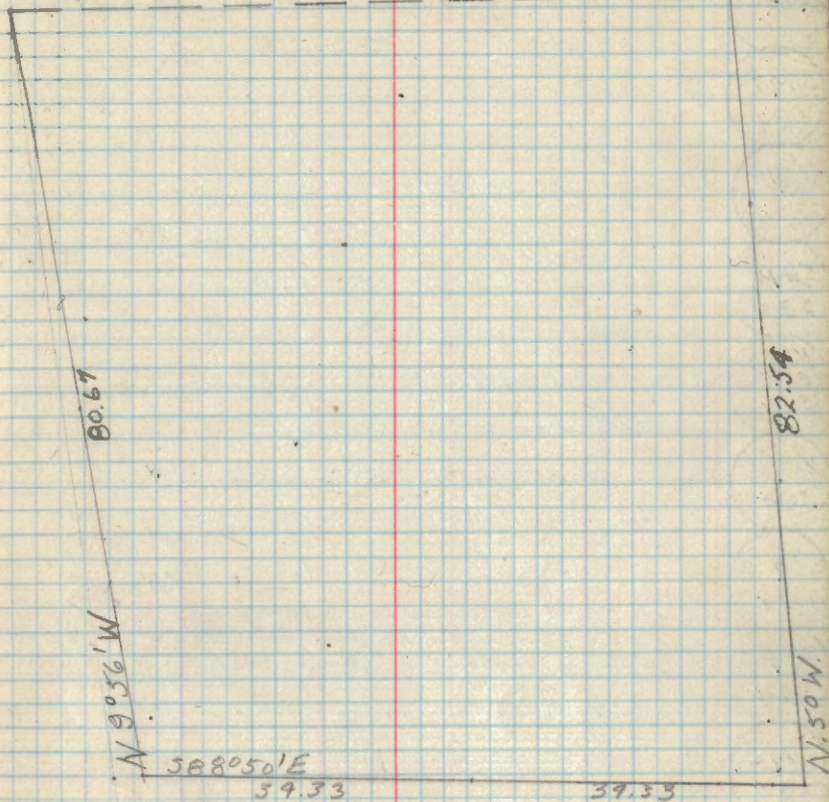
1/4
23/29
G.L.O. 1" I.M. + brass Cap 8" Above ground.
B.T. 16" R. Pine N55E 2.61 ch. 12" B. Pine S180W. 3.59 ch.

M.C.
23/29

MC/13
29

13
29/M.C.

MC/13
29



1/6 #1

S.M.C.
529

1/6 #5
529

S.M.C.
529

1/6 #6
529

1/6 #8
529

1/6 #9
529

1/6 #9
829

S.M.C.
529

S.M.C.
529

S.M.C.
529

1/6 #11
529

1/6 #12
529

1/6 #13
529

AIN 220
23/25
26/25

G.L.O. 2" I.M. & brass Cap Form 458 on B.T.
B.T. 12" W Oak S. 16° E. 1.03 chains

1/6 #2
5.25

1/4 29
25

G.L.O. 1" I.M. & brass Cap. 6" Above ground
Form 458 on 8" W Oak. S 56° W 341 ks.

MC 29
25

AIN 220
29/25
25/30
W.C.

G.L.O.

1/6 #7
5.25

AIN 220
25/30
I.R.B.

1/6 #14
5.25

AIN 220
25/30
36/34

County Cor. 2" Iron pipe buried in rd. road.

1/6 #15
5.25

1/4 25
36

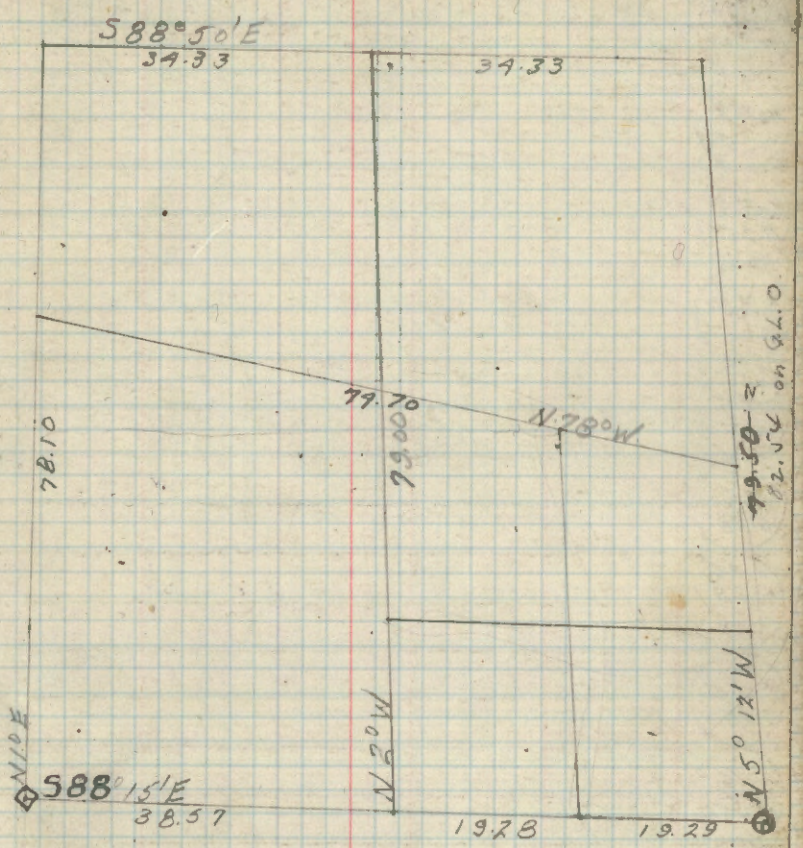
K. S. Approx 2" x 4' Birch post
Form 458 on 8" S. Pine N 64° E 691 ks. 3" S. Pine S 29° E. 731 ks.

1/6 #16
5.25

AIN 220
26/25
35/36

Probable G.L.O.

1/6 #10
5.25



1/4
26/25

26/25
I.R.B.

1/6 #3
5.25

1/6 #4
5.25

1/6 #5
5.25

S.M.C.
5.25

S.M.C.
5.25

S.M.C.
5.25

1/6 #8
I.R.B.
5.25

I.R.B.
5.25

C 1/2
5.25

1/6 #9
5.25

1/6 #9a
5.25

1/6 #11
5.25

1/6 #12
5.25

1/6 #13
5.25

1/4 G.L.D. 1" I.M. + brass Cap 8" above ground
25+30 B.T. 8" W. Birch N69°W 31k5 Form 458 on B.T.
Also County Cor. 2" I.P. + Cap 18" high

MIN 2201
A 2625
35156

1/6 #15
3.26

1/6 #15
3.26

1/6 #16
3.26

1/6 #3
3.26

1/6 #7a
3.26

1/6 #50
3.26

1/6 #6a
3.26

1/6 #8
3.26

C 1/4
3.26

1/6 #9
3.26

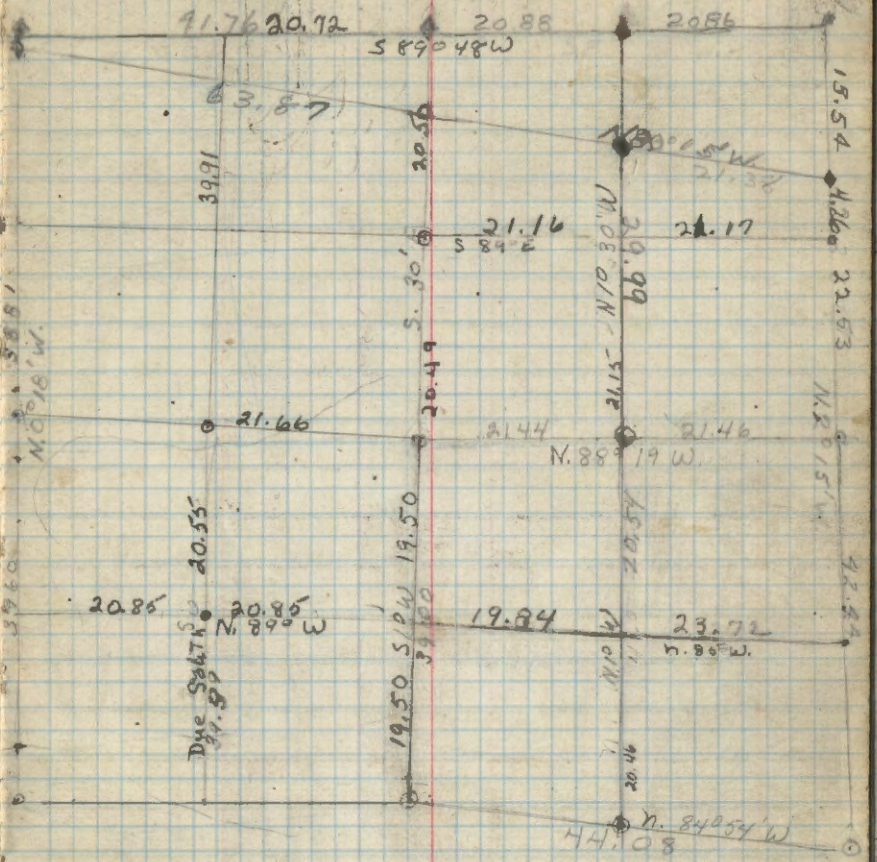
1/6 #11
3.26

1/6 #12
3.26

1/6 #13
3.26

Sec 27-141-29

- 21/22
20/27 G.L.O. 1" I.M. + Brass Cap. 6" Above ground
- B.T's. 14" R.Oak N62°W 29 lks 12" R.Oak S19°W 31 lks
- C.C 20/27 G.L.O. 1" I.M. + Brass Cap 4" Above ground
- B.T's. 12" R.Oak N10°W 50 lks 8" R.Oak S38°E 45 lks.
- N. 1/6 F.S.
- 1/2 20/27 F.S.
- 5/6 20/27 F.S.
- 28/27
23/27
N. 1/6
26/27 F.S. Aspen Post
- C. 1/4
S-27 F.S. Aspen Post
- W. 1/6 22/27 F.S.
- 1/4 22/27 G.L.O. 1" Iron pipe and Brass Cap 6" high
- Form 458 is on a 7" Aspen post S51°E 64 lks.
- E. 1/6 22/27 G.L.O. 1" Iron pipe and Brass Cap 6" high
- Form 458 is on a 7" Aspen S41°W 65 lks.
- 22/23
27/26 G.L.O. See Sec 26
- C.C
27/26 G.L.O. See Sec 26
- N. 1/6 27/26 F.S. See Sec 26
- 1/4 27/26 F.S. See Sec 26
- S. 1/6 27/26 F.S. See Sec 26
- C.C E. 1/6
S-27 G.L.O. 1" I.M. + Brass Cap 8" above ground
- BT 12" Red Pine N29°W 25 links
- S. 1/6 F.S. Aspen Post
- 27/26
34/35 F.S. APPROXIMATE CORNER.



AIN R 29
20/21
23/28

Sethy J. F. Gjelhaug scribed Oak post
1/2" Iron pin 4" Above ground

No #2
528

1/4 28
28

No #1
528

AIN R 29
21/22
28

G.L.O. 2" IM. brass Cap 6" Above ground.

B.T's 14" R. Oak N 62° E. 29 kts. 12" R. Oak S 14° W. 31 kts.

28/27
I.R.B

G.L.O. 1" I.M. brass Cap 4" Above ground.

B.T's. 12" R. Oak N 10° W 50 kts. 8" R. Oak S 38° E 45 kts.

No #7
528

F.S. Approx.

No #8
528

F.S. Approx.

No #19
528

F.S. Approx.

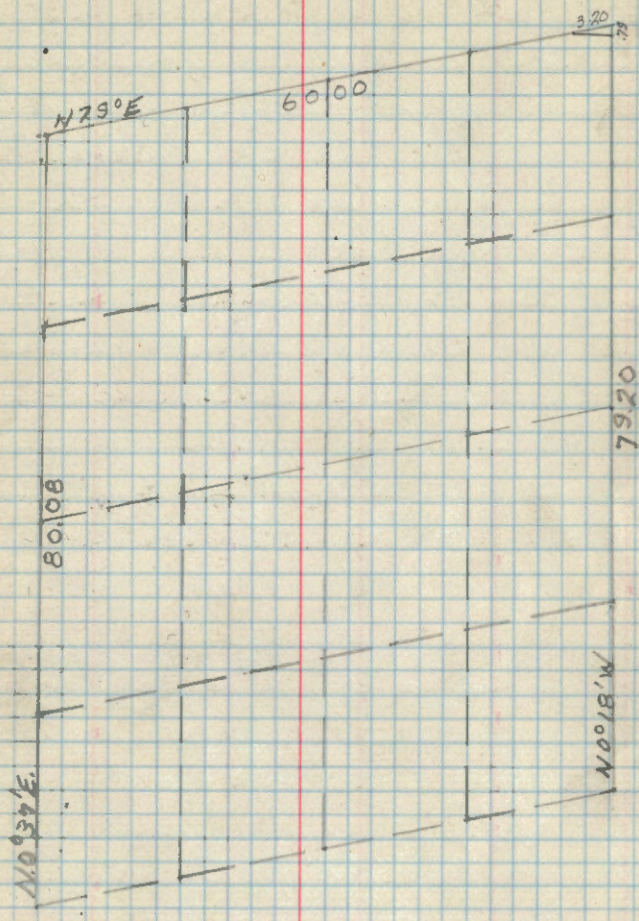
AIN R 29
22/23
28

F.S. Approx.

No #15
528

1/4 28
33

MC 28
33



EB/MC
33

AIN R 29
29/28
32/28

County Cor. 2" x 3' Scribed Oak Post

No #10
528

1/4
528

1/6#3
528

1/6#4
528

S.M.C.
528

1/6#5
528

1/6#6
528

1/6#8
528

S.M.C.
528

S.M.C.
528

S.M.C.
528

S.M.C.
528

S.M.C.
528

S.M.C.
528

S.M.C.
528

1/6#13
528

S.M.C.
528

MNR 22 1/2
1912
30/29

County Cor. 2" Iron pipe & Cap

1/6 #8
529

F.S. Approx 5' Aspen 4" Above E

1/4 29
32

1/6 #1
529

F.S. 4' Aspen 4" Above ground
1/2" Iron pin 4" Above ground

MNR 22 1/2
2012
31/28

Set by J.A. Gelhaug 2" x 4' scribed Oak post

1/6 #7
529

F.S. 6" Aspen 4" Above ground

1/4 29
32

F.S. 3" Aspen 4" Above ground

1/6 #14
29

F.S. Approx 2 1/2" Aspen 3" Above ground

MNR 22 1/2
1912
32/33

County Cor. 2" x 3' Scribed Oak post

1/6 #15
529

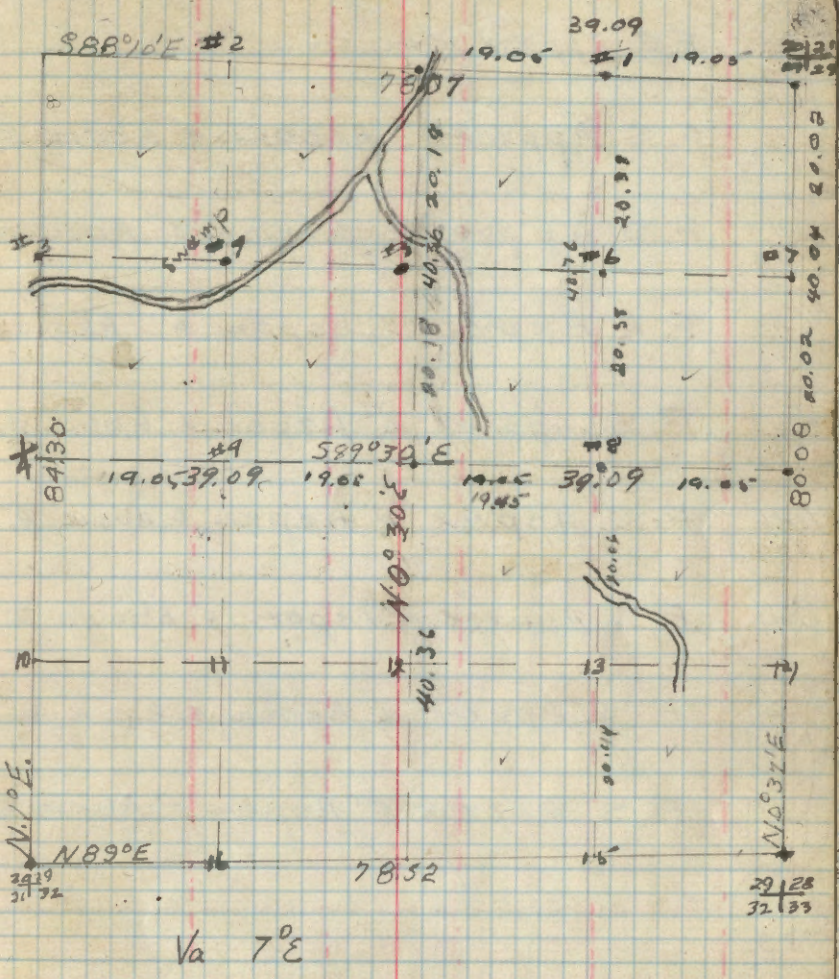
F.S. Approx 2" Aspen 3" Above ground

1/4 32
32

1/6 #16
529

MNR 22 1/2
1912
31/32

Probable G.L.O. 2" x 3' Scribed Tamarack Post
B.T's. 6" Tamarack Stump 360° W 81ks.



Va 7°E

1/6 #10
529 F. S. Approx 4" Aspen 3 1/2" Above B.

1/4
30/29 F. S. Approx 5' Aspen 4" Above B.

1/6 #3
529 F. S. Approx 5' Aspen 3" Above B.

1/6 #4
529 F. S. Approx 5' Aspen 5" Above B.

1/6 #5
529 F. S. Approx 3" Aspen 2" Above B.

1/6 #6
529 F. S. Approx 4" Aspen 3" Above B.

1/6 #8
529 F. S. Approx 4" Aspen 3" Above B.

C/4
529 F. S. Approx 4" Aspen 4" Above B.

1/6 #9
529 F. S. Approx 5' Aspen 4" Above B.

1/6 #11
529 F. S. Approx 5" Aspen 4" Above B.

1/6 #12
529 F. S. Approx 3" Aspen 3" Above ground

1/20
1/29 F. S. Approx 5' Aspen 3" Above B.

No 10
530

1/4
530

F. S. Approx 1" Aspen 3 1/2" Above ground

M.C.
530

530
M.C.

S.M.C.
530

F. S. Approx 1" Aspen 2" Above ground

No 14
530

F. S. Approx 4" Aspen 3" Above ground

No 15
530

F. S. Approx 6" Aspen 3 1/2" Above B.

No 16
530

F. S. Approx 3" Aspen 3" Above ground

No 18
530

F. S. Approx 1" Aspen 3" Above ground

C 1/2
530

F. S. Approx 2" Aspen 3" Above ground

No 19
530

S.M.C.
530

S.M.C.
530

No 23
530

RAINR 30
3130
431

County Cor. 2" Iron pipe & cap 10" High

1/6 #2
334

30/31 MC

MC/30
31

1/6 #1
331

RAINR 30
3132
3132

Probable G. h. 0 2" x 3' Scribed Tamarack Post
B.T. 6" Tamarack stump 360° W B.L.K.S

1/6 #7
331

F.S. Approx 2" Aspen 3 1/2" Above B.

1/4
31+32

Set 4" Aspen - 30"

3/4/40 CES.

1/6 #19
331

RAINR 30
3132
3132

3" Sq. Tomic Post - 30" Set by unknown party about
20 yrs ago - 3/4/40 CES.

1/6 #15
331

1/4
31

1/6 #16
331

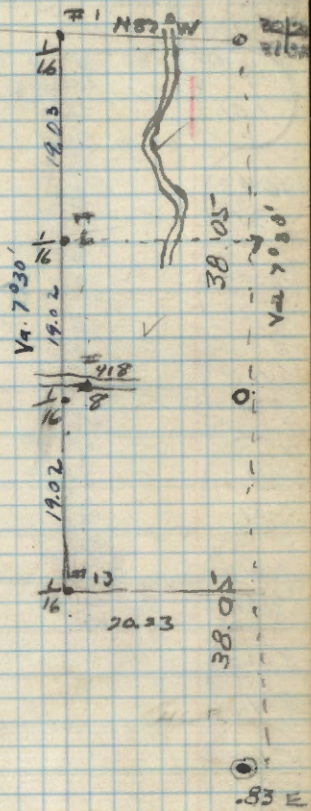
RAINR 30
3131
181

County Cor. 2" Iron pipe & Cap 4" high
Form 758 on 6" R. P. No. N 130° W 251 K.S.

587° E.

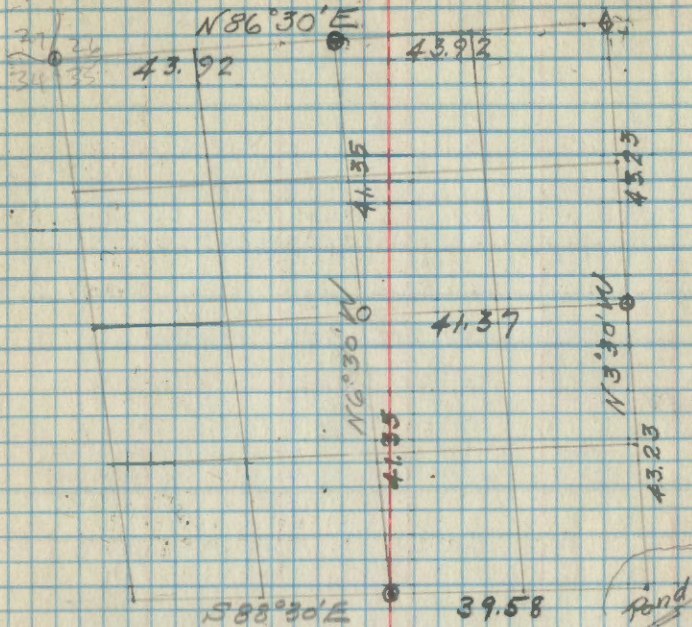
7880

90.00
90.00
N 10° W
N 45° W



Feb - 1940

35



VAT:

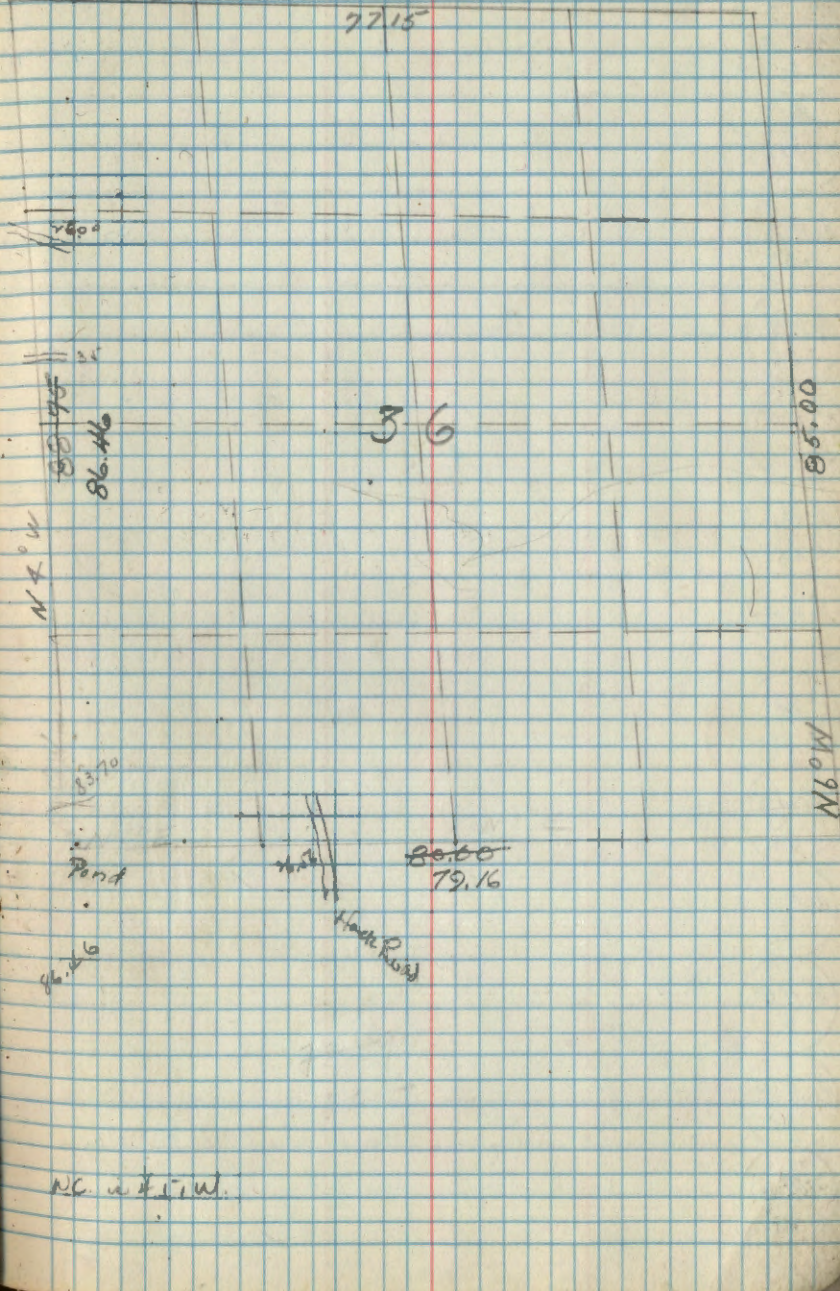
Note:

The above survey is an approximate survey. The NE & NW corners are in proper position. The balance of the corners are not true locations. Survey made for T.S.I., and time did not permit extensive search & retracement for purpose of locating evidence of original corners.

C. E. Stebbins

S 88° 05' E

77.15



AIN R 29
26/25
36/36

Propable G.L.O.

1/2 #2

5.36

AIN R 29
25/36

F.S. Approx. 2" X 4' Birch post
Form 458' 8" J. Pine N 64° E 64 1/2'. 3" J. Pine S 20° E 72 1/2'

1/2 #1

5.36

AIN R 29
25/36

County Cor. 2" Pipe buried in road.

1/2 #7

5.36

W.C.
36/31

Set by J. H. Gjel having 3" X 3' scribed Aspen Post

AIN R 29
36/31
W.C.

County Cor. 2" I. Pipe & Cap. 8" Above ground

AIN R 29
36/31
W.C.

1/2 #15

5.36

1/2 #16

5.36

1/2 #16

5.36

AIN R 29
25/36
W.C.

W.C.

N.C. in 1911.

$\frac{1}{6}\#10$

5.36

 $\frac{1}{4}$

5.36

 $\frac{1}{6}\#3$

5.36

 $\frac{1}{6}\#4$

5.36

 $\frac{1}{6}\#5$

5.36

 $\frac{1}{6}\#6$

5.36

 $\frac{1}{6}\#8$

3.36

C/4

5.36

 $\frac{1}{6}\#9$

5.36

 $\frac{1}{6}\#11$

5.36

 $\frac{1}{6}\#12$

5.36

 $\frac{1}{6}\#13$

5.36

S.M.C.

5.36

29 | 28
32 | 33

44. 20 ch. n. to sec. car.

30 | 29
31 | 32

44. 49 ch. n. to sec. car

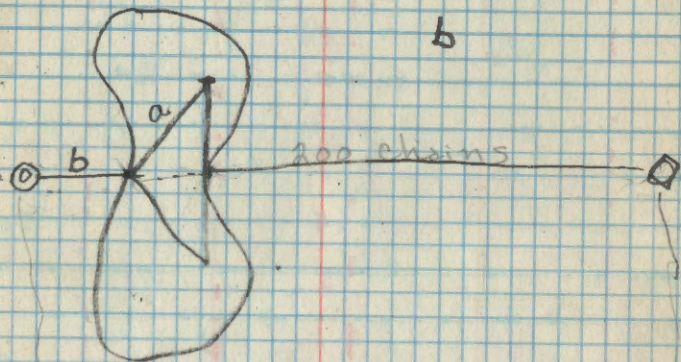
30
31

2352 ch. n. to sec. car.

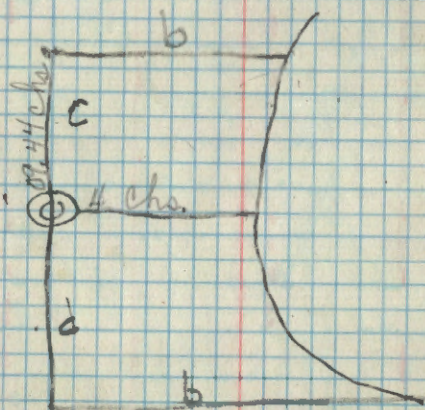
Dist	offset
40 ch's	21.60 ✓
42	22.68
44	23.76
46	24.84
48	25.92
50	27.00
52	28.08
54	29.16
56	30.24
58	31.32
60	32.40
62	33.48
64	34.56
66	35.64
68	36.72
70	37.80
72	38.88
74	39.96
76	41.04
78	42.12
80	43.20
80.96	44.0

Peko-29.25ch

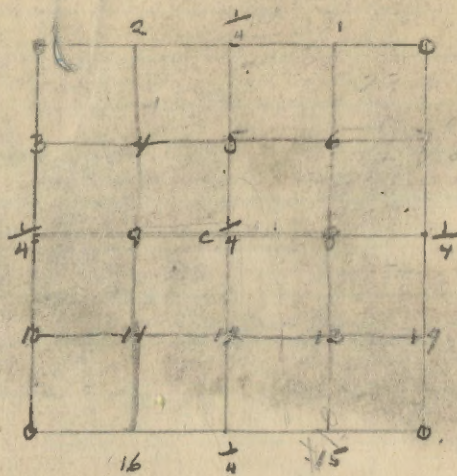
a-
b



233,25



at 20 chgs. $\frac{3}{4}$ in. from post 4 above ground



2 Chs E to E. Cor.

Res. Line

DISTANCES FROM CENTER OF ROADWAY FOR CROSS-SECTIONING.

ROADWAY 14 FEET WIDE. SIDE SLOPES $\frac{1}{2}$ TO 1.

FOR SINGLE TRACK EMBANKMENT.

	0	.1	.2	.3	.4	.5	.6	.7	.8	.9	
0	7.0	7.2	7.3	7.5	7.6	7.8	7.9	8.1	8.2	8.4	C
1	8.5	8.7	8.8	9.0	9.1	9.3	9.4	9.6	9.7	9.9	1
2	10.0	10.2	10.3	10.5	10.6	10.8	10.9	11.1	11.2	11.4	2
3	11.5	11.7	11.8	12.0	12.1	12.3	12.4	12.6	12.7	12.9	3
4	13.0	13.2	13.3	13.5	13.6	13.8	13.9	14.1	14.2	14.4	4
5	14.5	14.7	14.8	15.0	15.1	15.3	15.4	15.6	15.7	15.9	5
6	16.0	16.2	16.3	16.5	16.6	16.8	16.9	17.1	17.2	17.3	6
7	17.5	17.7	17.8	18.0	18.1	18.3	18.4	18.6	18.7	18.9	7
8	19.0	19.2	19.3	19.5	19.6	19.8	19.9	20.1	20.2	20.4	8
9	20.5	20.7	20.8	21.0	21.1	21.3	21.4	21.6	21.7	21.9	9
10	22.0	22.2	22.3	22.5	22.6	22.8	22.9	23.1	23.2	23.4	10
11	23.5	23.7	23.8	24.0	24.1	24.3	24.4	24.6	24.7	24.9	11
12	25.0	25.2	25.3	25.5	25.6	25.8	25.9	26.1	26.2	26.4	12
13	26.5	26.7	26.8	27.0	27.1	27.3	27.4	27.6	27.7	27.9	13
14	28.0	28.2	28.3	28.5	28.6	28.8	28.9	29.1	29.2	29.4	14
15	29.5	29.7	29.8	30.0	30.1	30.3	30.4	30.6	30.7	30.9	15
16	31.0	31.2	31.3	31.5	31.6	31.8	31.9	32.1	32.2	32.4	16
17	32.5	32.7	32.8	33.0	33.1	33.3	33.4	33.6	33.7	33.9	17
18	34.0	34.2	34.3	34.5	34.6	34.8	34.9	35.1	35.2	35.4	18
19	35.5	35.7	35.8	36.0	36.1	36.3	36.4	36.6	36.7	36.9	19
20	37.0	37.2	37.3	37.5	37.6	37.8	37.9	38.1	38.2	38.4	20
21	38.5	38.7	38.8	39.0	39.1	39.3	39.4	39.6	39.7	39.9	21
22	40.0	40.2	40.3	40.5	40.6	40.8	40.9	41.1	41.2	41.4	22
23	41.5	41.7	41.8	42.0	42.1	42.3	42.4	42.6	42.7	42.9	23
24	43.0	43.2	43.3	43.5	43.6	43.8	43.9	44.1	44.2	44.4	24
25	44.5	44.7	44.8	45.0	45.1	45.3	45.4	45.6	45.7	45.9	25
26	46.0	46.2	46.3	46.5	46.6	46.8	46.9	47.1	47.2	47.4	26
27	47.5	47.7	47.8	48.0	48.1	48.3	48.4	48.6	48.7	48.9	27
28	49.0	49.2	49.3	49.5	49.6	49.8	49.9	50.1	50.2	50.4	28
29	50.5	50.7	50.8	51.0	51.1	51.3	51.4	51.6	51.7	51.9	29
30	52.0	52.2	52.3	52.5	52.6	52.8	52.9	53.1	53.2	53.4	30
31	53.5	53.7	53.8	54.0	54.1	54.3	54.4	54.6	54.7	54.9	31
32	55.0	55.2	55.3	55.5	55.6	55.8	55.9	56.1	56.2	56.4	32
33	56.5	56.7	56.8	57.0	57.1	57.3	57.4	57.6	57.7	57.9	33
34	58.0	58.2	58.3	58.5	58.6	58.8	58.9	59.1	59.2	59.4	34
35	59.5	59.7	59.8	60.0	60.1	60.3	60.4	60.6	60.7	60.9	35
36	61.0	61.2	61.3	61.5	61.6	61.8	61.9	62.1	62.2	62.4	36

16381
11.10.19