

0  
|  
4  
-  
1  
2  
9

OFFICE  
141-29

DICTIONARY  
OF THE  
ENGLISH LANGUAGE  
REVISED EDITION  
1935

#114



BLANK PAGES OR  
PAGES w/ NO  
SPECIFIC INFO  
WERE NOT  
SCANNED



RAIN R29  
89  
17/16

1/6 #2 G.L.O. 1" I.M. + brass Cap 14" Above ground  
S.18 Form 45B on 5" Aspen N78°E. 60 kts.

1/4 9/16 G.L.O. 1" I.M. + brass Cap 10" Above ground  
S.18. 12" R. Pine N10°W 260ch. Form 958a on B.T.

1/6 #5 G.L.O. 1" I.M. + brass Cap 8" Above ground  
S.16 Form 958a on 4" Aspen Post to T Cor.

9/16 M.C.

M.C.  
15/16

15/16 M.C.

M.C.  
15/16

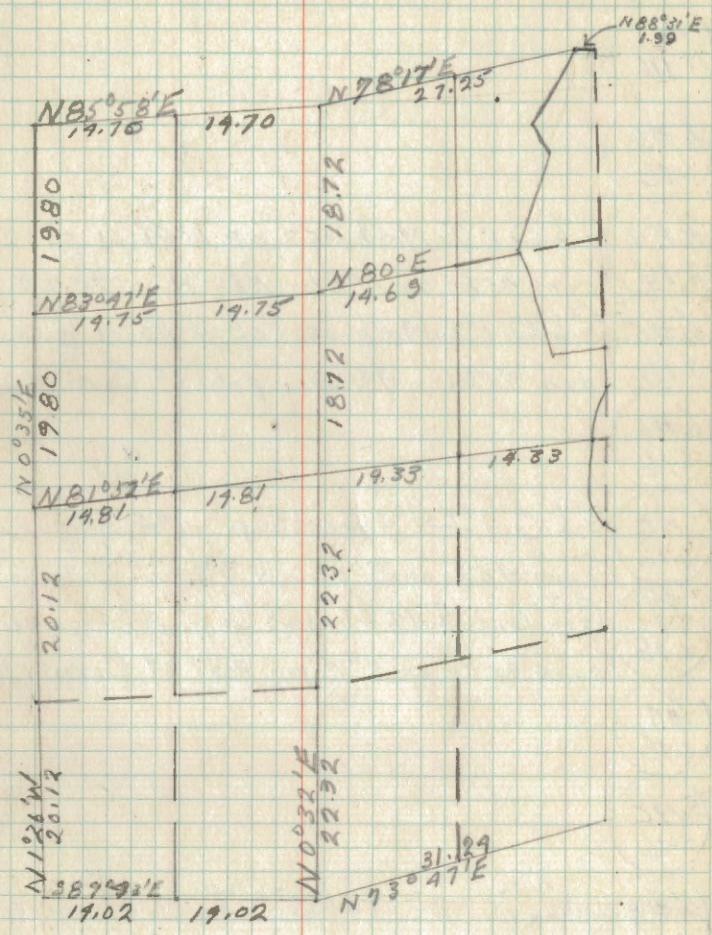
1/6 #19  
S.16

RAIN R29  
1645  
21/22 G.L.O. 2" I.M. + brass Cap. 8" Above ground  
Form 95B on 10" R. Pine N32°W. 199 kts.

1/6 #15  
S.16

1/4 16/21 G.L.O. 1" I.M. + brass Cap. Flush with ground  
Form 458a on 5" Aspen N18°W 391 kts.

1/6 #16  
S.16



RAIN R29  
17/16  
20/21

1/4  
17/16



1/16 #10

5.16

1/4

17-16

1/16 #3

5.16

✓ 1/16 #4 G.L.O. 1" I.M. + brass Cap 10" Above ground.

5.16 Form 458a on 5" Elm N80°W. 198 lks.

✓ 1/16 #5 G.L.O. 1" I.M. + brass Cap 12" Above ground.

5.16 Form 458a on 4" Aspen post at Corner

1/16 #6

5.16

NO 51M.C. G.L.O. 1" I.M. + brass Cap 10" Above ground

5.16 Form 458a on 8" W. Oak S90°W 130 ch

✓ 1/16 #7 G.L.O. 1" I.M. + brass Cap. 1" Above ground.

5.16 Form 458a on 5" Aspen Post at Corner

1/89

5.16

51M.C.

5.16

1/16 #8

5.16

✓ 1/4 G.L.O. 1" I.M. + brass Cap 7" Above ground.

5.16 Form 458a on Aspen Post at Corner

✓ 1/16 #9 G.L.O. 1" I.M. + brass Cap 6" Above ground.

5.16 Form 458a on 14" Oak N30°W 76 lks.

✓ 1/16 #11 G.L.O. 1" I.M. + brass Cap 6" Above ground

5.16 Form 458a on 6" Oak S.85°W 131 lks

✓ 1/16 #12 G.L.O. 1" I.M. + brass Cap Flush with ground

5.16 Form 458a on 4" Aspen post at Cor.

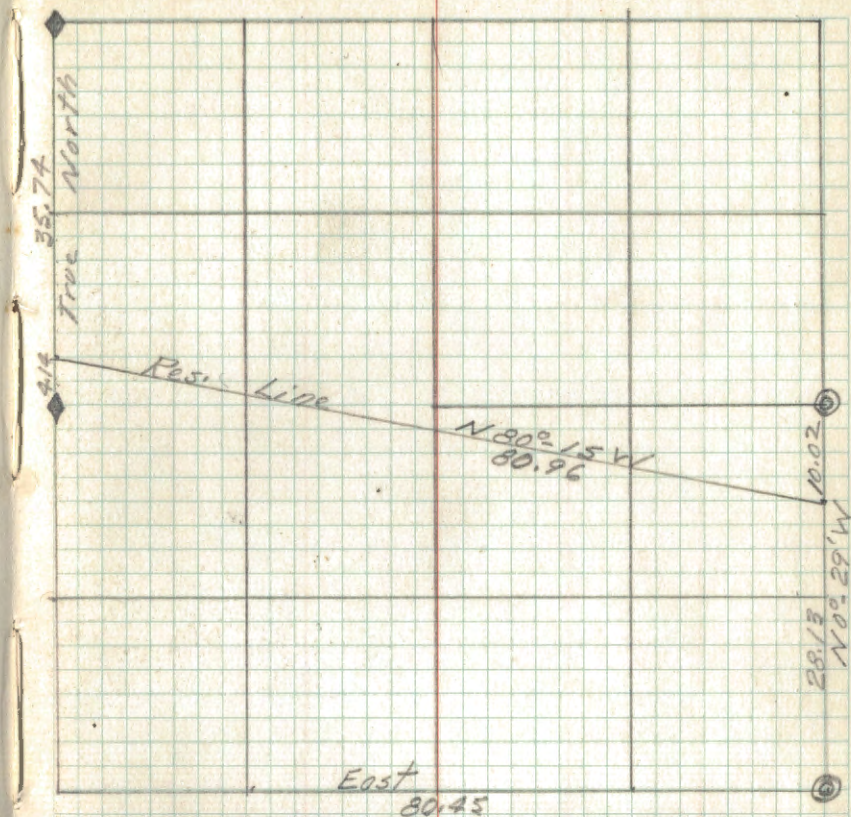
1/16 #13

5.16

1/89

5.16





Survey of Res. Line made by  
R. T. Defont. 2-41

All measurements distributed  
proportionately between accepted  
cop's - present measurements  
compared with original - no  
re-survey (1920) made of Sec. 19.

2-7-41 R.T.D.



WIN R 20  
17/16  
20/21

1/6 #7

5.20

4

20/21

C.C.

20x21

I.R.B

Set by J.A. Gjelhaug 2" x 4' Oak Post

1/2" Iron pin 4" Above ground

WIN R 20  
22/21  
29/28

Set by J.A. Gjelhaug 2" x 4' Scribed oak Post

1/2" Iron Pin 1" Above ground

1/6 #15

Set by J.A. Gjelhaug 2" x 4' Oak post

5.20

1/2" Iron pin 4" Above ground

4 20

29

1/6 #16

5.20

WIN R 20  
19/20  
3d29

County Cor. 2" Iron pipe & Cap

C.C.

19/20

I.R.B

County Cor. 2" Iron pipe & Cap

4

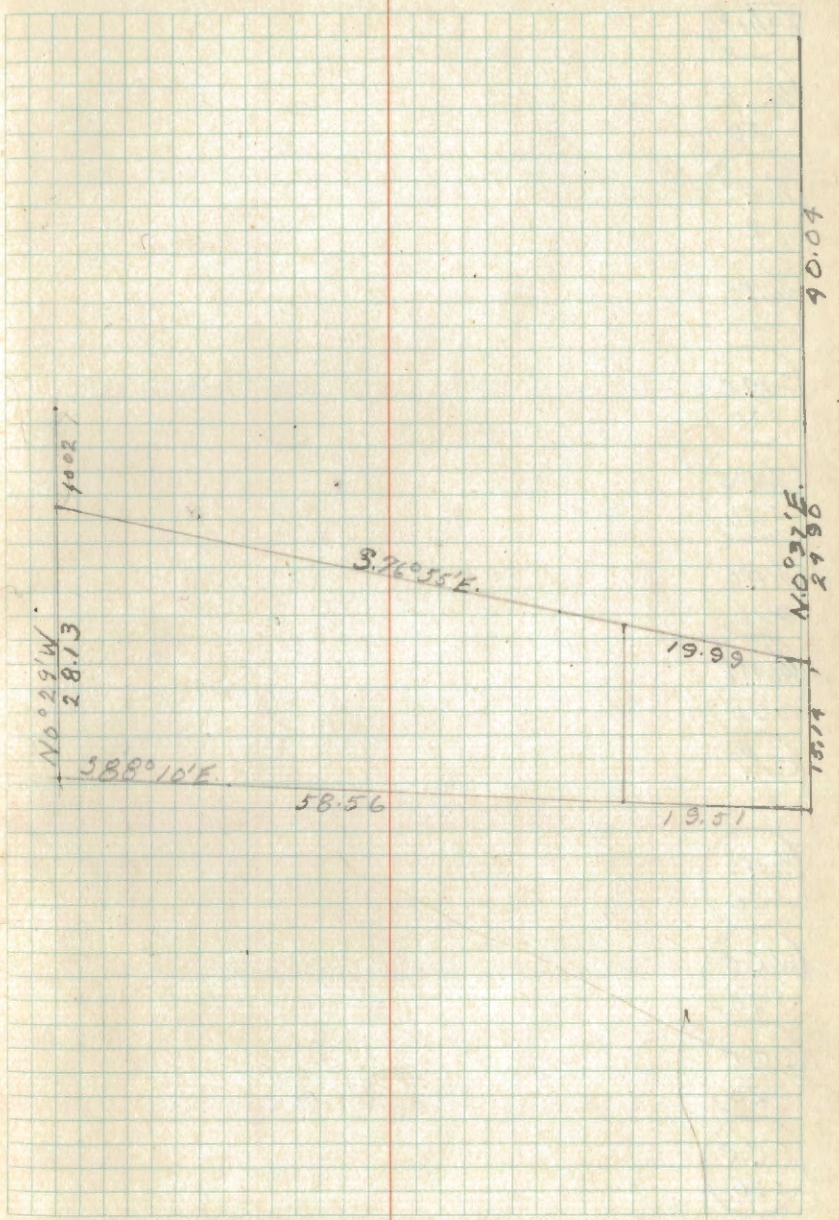
19/20

1/6 #3

5.20

M.C.

19/20





17/  
20/MC

1/4 17  
20

1/6 #1  
5.20

1/6 #4  
5.20

S.M.C  
5.20

1/6 #5  
5.20

1/6 #6  
5.20

1/6 #8  
5.20

C/A  
5.20

1/6 #9  
5.20

W.C.C  
5.20

C.C.C  
5.20

E.C.C  
5.20



1/16 #18  
17/26  
20/21

1/16 #2  
5/21

1/4  
16  
21

1/16 #1  
5/21

1/16 #29  
16/15/2  
21/22

G.L.O. 2" I.M. & brass Cap 8" Above ground  
Form 458 on 10" P. Pine N320W 199 lbs.

1/16 #7  
5/21

1/2  
21/22

G.L.O. 1" I.M. & brass Cap 10" Above ground  
Form 458 on 6" J. Pine N60°E. 52 lbs

1/16 #14  
5/21

1/16 #29  
21/22  
25/27

C.C. 21  
28

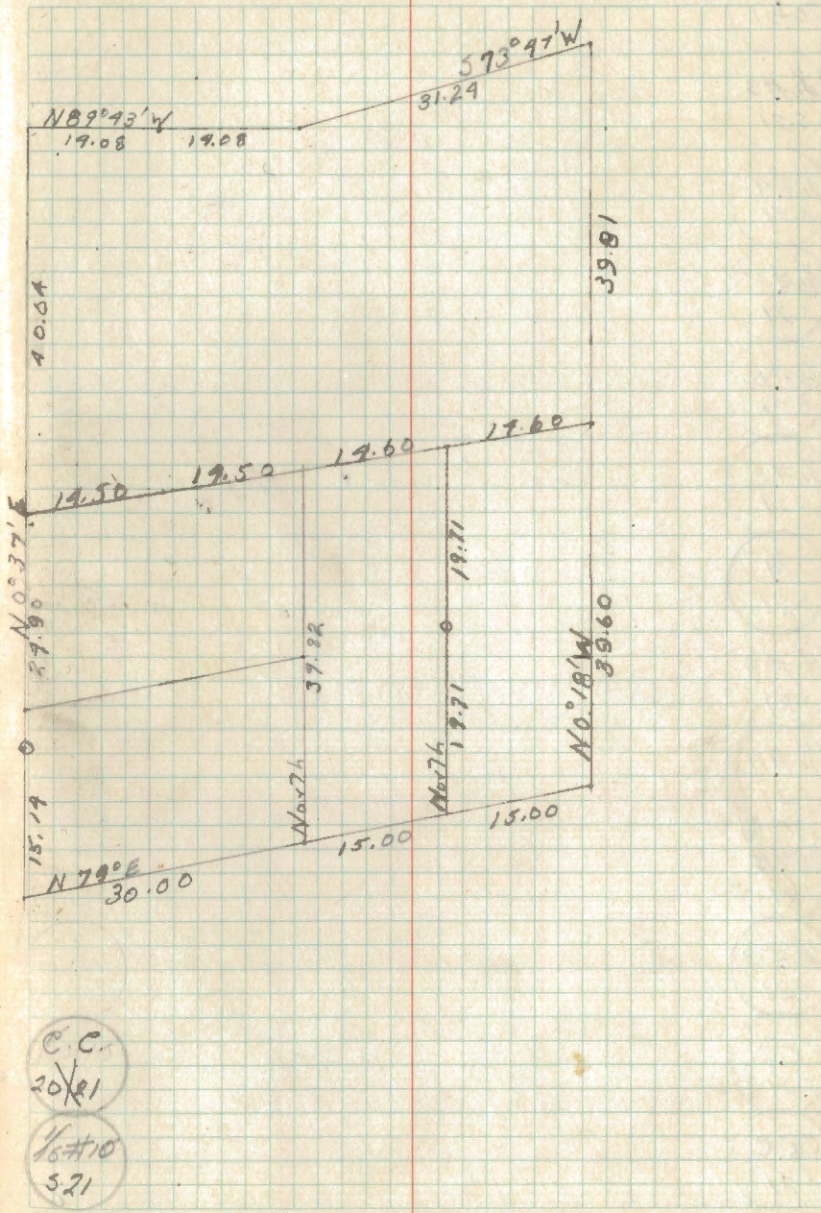
1/16 #15  
5/21

1/4 21  
28

1/16 #16  
5/21

1/16 #29  
20/21  
27/28

Set by J. H. Gjelhaug 2" x 4" scribed Oak Post  
1/2" Iron pin 4" Above ground





1/4  
20/21

1/6 #3  
5-21

1/6 #4  
5-21

1/6 #5  
5-21

1/6 #6  
5-21

1/6 #8  
5-21

C 1/4  
5-21

1/6 #9  
5-21

1/6 #11  
5-21

1/6 #12  
5-21

1/6 #13  
5-21

E.C.C.  
5-21

C.C.C.  
5-21

W.C.C.  
5-21



WIN R 23  
15/22  
22/23

1/16 #2 G.L.O. 1" I.M. + brass Cap 12" Above ground  
5.23 Form 458a on 6" Aspen 5.85° W. 111 ks.

1/16 #19 G.L.O. 1" I.M. + brass Cap 6" Above ground  
23 Form 458a on 6" Aspen 5.37° E 94 ks.

19/23 M.C.

1/16 #1  
5.23

19/23 M.C.

M.C.  
23/24

1/4 G.L.O. 1" I.M. + brass Cap 8" Above ground  
23/24 B.T.s 10 R. Pine N 55° E 2.61 ks. 12° J. Pine S 18° W 3.59 ks.

1/16 #14  
5.23

WIN R 23  
23/24  
26/25

1/16 #15  
5.23

1/4 2.3  
26

1/16 #16  
5.23

WIN R 23  
22/23  
27/26

1/16  
22/23

1/16 #10  
5.23



1/4  
22+23

1/6 #3  
5.23

1/6 #4  
5.23

1/6 #4  
5.23

1/6  
5.23

1/6 #5  
5.23

1/6 #6  
5.23

1/6  
5.23

1/6  
5.23

1/6 #8  
5.23

C 1/4  
5.23

1/6 #9  
5.23

1/6 #11  
5.23

1/6  
5.23

1/6 #12  
5.23

1/6 #13  
5.23



✓  $\frac{23}{25}$   $\frac{24}{25}$  G.L.O 2" I.M. & brass Cap Form 458 on B.T.  
B.T. 12" W. Oak S. 16° E. 109 chains

$\frac{1}{6}$  #2  
S. 25

✓  $\frac{29}{25}$  G.L.O 1" I.M. & brass Cap 6" Above ground  
Form 458 on 8" W. Oak S. 56° W. 391 ks.

M.C.  $\frac{29}{25}$

$\frac{29}{25}$  W.C. G.L.O.

$\frac{1}{6}$  #7  
S. 25

$\frac{29}{25}$  I.R.B.

$\frac{1}{6}$  #14  
S. 25

✓  $\frac{25}{30}$  County Cor 2" I. Pipe buried in road

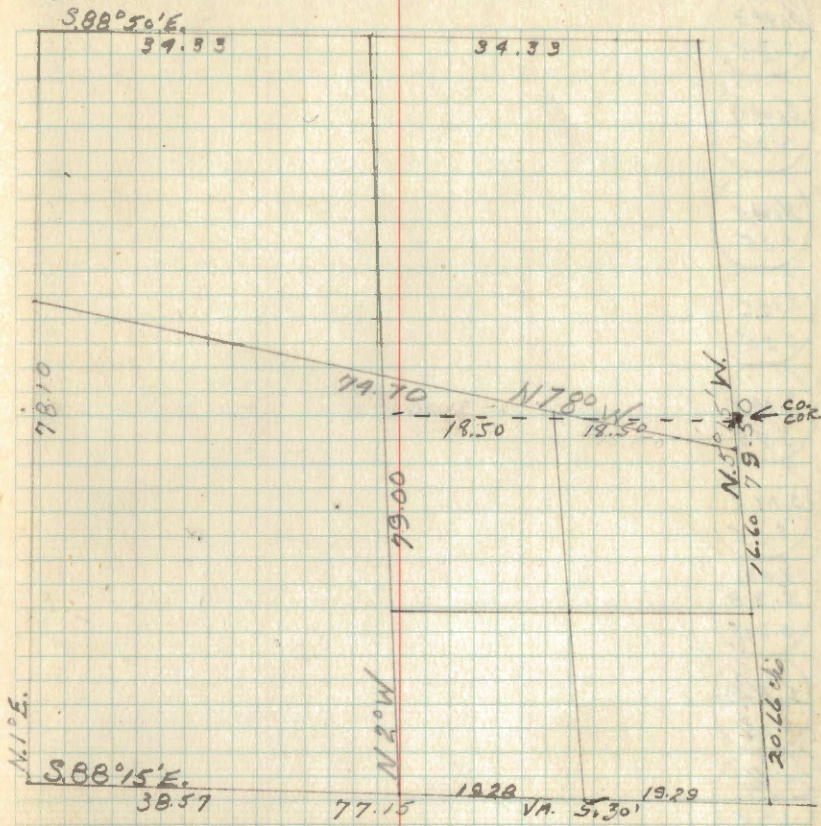
$\frac{1}{6}$  #15  
S. 25

✓  $\frac{25}{36}$  F.S. Approx. 2" x 4' Birch Post  
Form 458 on 8" J. Pine N 69° E 69 ks. 3" J. Pine S 29° E 73 ks.

$\frac{1}{6}$  #16  
S. 25

✓  $\frac{26}{36}$  Probable G.L.O.

$\frac{1}{6}$  #10  
S. 25



$\frac{1}{4}$   
 $\frac{26}{25}$

$\frac{26}{25}$   
I.R.B.

2066  
16.50  
3/26



1/6 #3  
5.25

1/6 #4  
5.25

1/6 #5  
5.25

S.M.C.  
5.25

S.M.C.  
5.25

S.M.C.  
5.25

1/6 #8  
I.R.B.  
5.25

I.R.B.  
5.25

C/A  
5.25

1/6 #9  
5.25

1/6 #10  
5.25

1/6 #11  
5.25

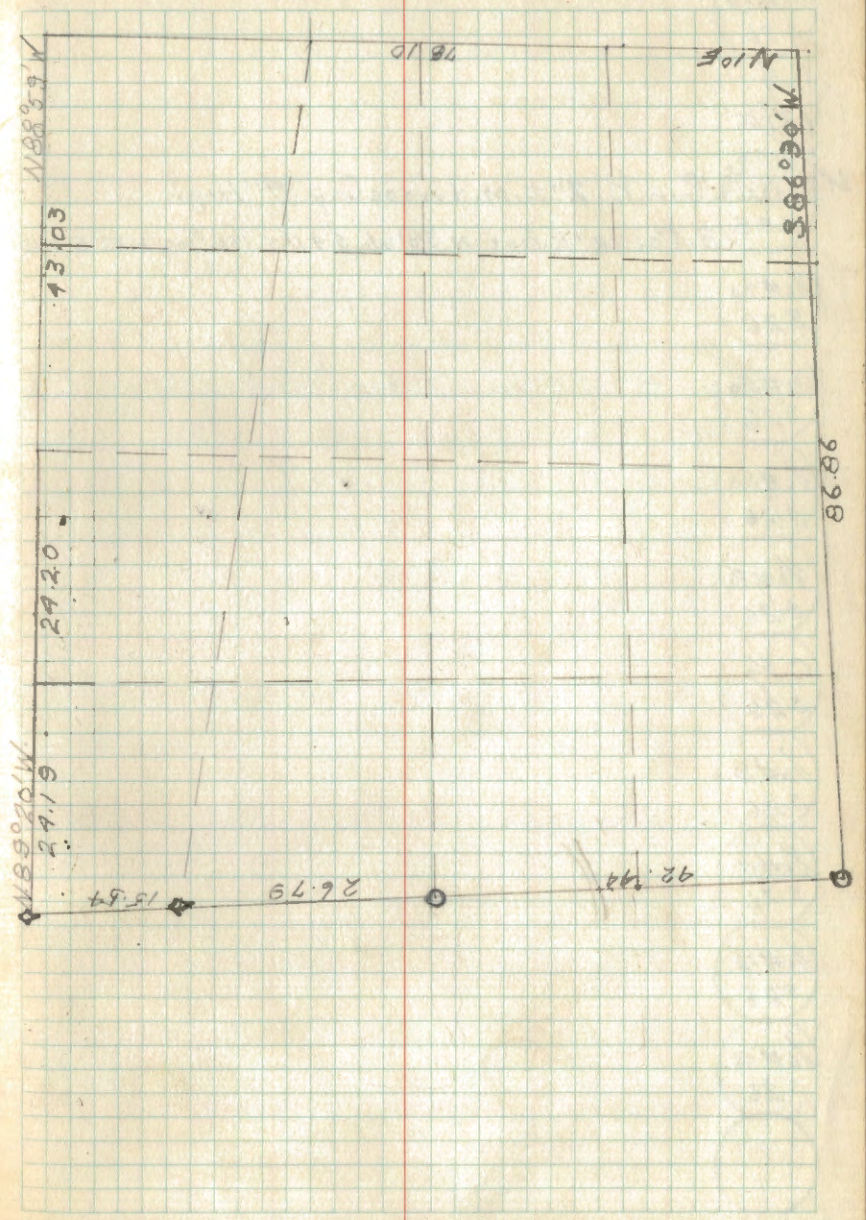
1/6 #12  
5.25

1/6 #13  
5.25

✓  
 G.L.O. 1" I.M. + brass Cap 8" above ground  
 B.T. 8" W Birch N 69° W 31 kS  
 Form 958 on B.T.  
 Asta County Cor. 2" I.P. + Cap 18" high.



- AIN 920  
22/23  
20/26  
G.L.O. 2" I.M. brass Cap 6" High. B.T. 10" J. Pine S22°W 77 1/2
- 6" J. Pine S19°E 117 1/2 k. 12" W. Oak N66°W 133 1/2 k. 16" J. Pine N59°E 140
- 1/6 #8  
5/26  
G.L.O. 1" I.M. brass Cap. Buried in TT. 918  
B.T.s. 8" J. Pine S90°W 73 1/2 k. 8" J. Pine N47°E 42 1/2 k.
- 1/4 23  
26  
G.L.O. 1" I.M. brass Cap 8" High. No B.T's.
- 1/6 #1  
5/26
- AIN 920  
23/24  
20/25  
G.L.O. 2" I.M. brass Cap 8" High. Form 458 on B.T.  
B.T. 12" W. Oak S. 16° E. 109 chains
- AIN 920  
24/25  
20/26  
I.R.B.
- 1/4  
26/25
- 1/6 #14  
5/26
- AIN 920  
26/25  
35/38  
Orig B.T.'s - COR Est. by County.  
Wood Post.
- 1/6 #15  
5/26
- 1/4 26  
35
- 1/6 #16  
5/26
- AIN 920  
27/26  
34/35





1/6 #10

5.26

1/4

~~27/26~~✓<sup>AINR3</sup>  
27 X 26 G. h. O. 2" I. M. 4 brass Cap. 4" High

I.R.B.

B. T's. 12" R. Pine N. 39° W. 59 lbs 19" R. Pine N. 22° E. 21 lbs.

1/6 #9a

5.26

1/6 #5a

5.26

1/6 #6a

5.26

1/6 #8

5.26

C. 1/4

5.26

1/6 #9

5.26

1/6 #11

5.26

1/6 #12

5.26

1/6 #13

5.26

1/6 #14

5.26







$\frac{1}{16}$ #3 F.S. Approx.

5.27

~~$\frac{1}{16}$ #4~~  
~~25~~ ~~1272~~ G.L.D. 1" I.M. 4 brass Cap 4" Above ground:  
 I.R.B. B.Ts. 12" R. Oak N10°W 50lbs. 8" R. Oak S30°E. 45lbs

W.C.C.

5.27

C.C.C.

5.27

E.C.C.

5.27

$\frac{1}{16}$ #4

5.27

$\frac{1}{16}$ #5

5.27

$\frac{1}{16}$ #6

5.27

$\frac{1}{16}$ #8

5.27

C/A

5.27

$\frac{1}{16}$ #9

5.27

$\frac{1}{16}$ #11

5.27

$\frac{1}{16}$ #12

5.27

$\frac{1}{16}$ #13

5.27



AIN R20  
R 20 21  
528  
Set by J. H. Gjelhaug scribed Oak Post  
1/2" Iron pin 4" Above ground

1/16#2  
5.28

1/4 31  
28

1/16#1  
5.28

AIN R20  
I.R.B. 21  
28

AIN R20  
R 21 12  
28 127  
G.L.O. 2" I.M. & brass Cap 6" Above ground  
B.Ts. 19" R. Oak N62°W. 29 lbs 12" R. Oak S19°W. 21 lbs.

AIN R20  
R 20 127  
I.R.B.  
G.L.O. 1" I.M. & brass Cap 4" Above ground  
B.Ts. 13" R. Oak N10°W 50 lbs 8" R. Oak S30°E 45 lbs.

1/16#7 F.S. Approx  
5.28

1/4 F.S. Approx.  
27 28

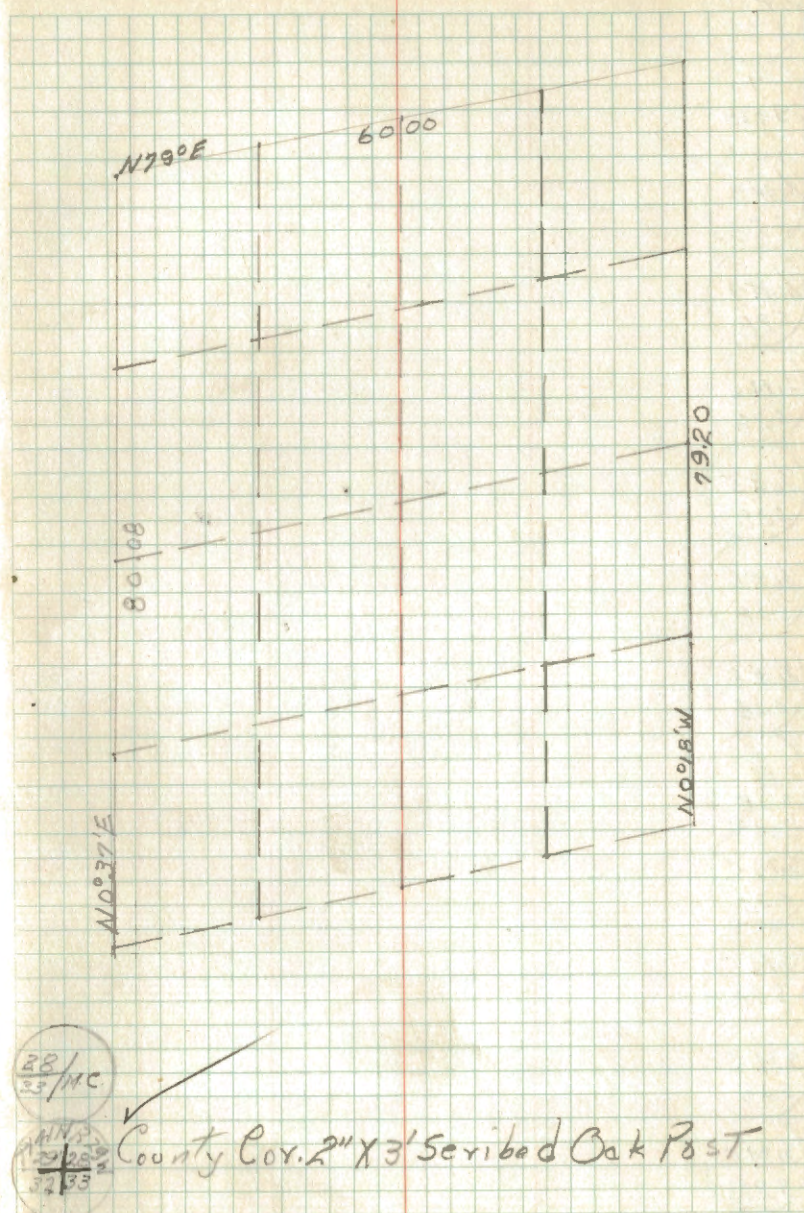
1/16#14 F.S. Approx.  
5.28

AIN R20  
R 20 27  
53109  
F.S. Approx.

1/16#15  
5.28

1/4 28  
33

MC/HB  
31





1/6 #10

5.28

1/4  
29+28

1/6 #3

5.28

1/6 #9

5.28

S.M.C.

5.28

1/6 #5

5.28

1/6 #6

5.28

1/6 #8

5.28

S.M.C.

5.28

S.M.C.

5.28

S.M.C.

5.28

S.M.C.

5.28

S.M.C.

5.28

S.M.C.

5.28

S.M.C.

5.28

1/6 #13

5.28

S.M.C.

5.28



✓  
N 1920  
5/29  
County Cor. 2" Iron pipe & Cap

1/6 #2  
5.29

1/4 29  
30

1/6 #1  
5.29

✓  
N 1920  
29/28  
Set by J.A. Gjelhaug 2"x9' scribed oak Post  
1/2" Iron Pin 4" Above ground.

1/6 #7  
5.29

1/4  
29/28

1/6 #14  
5.29

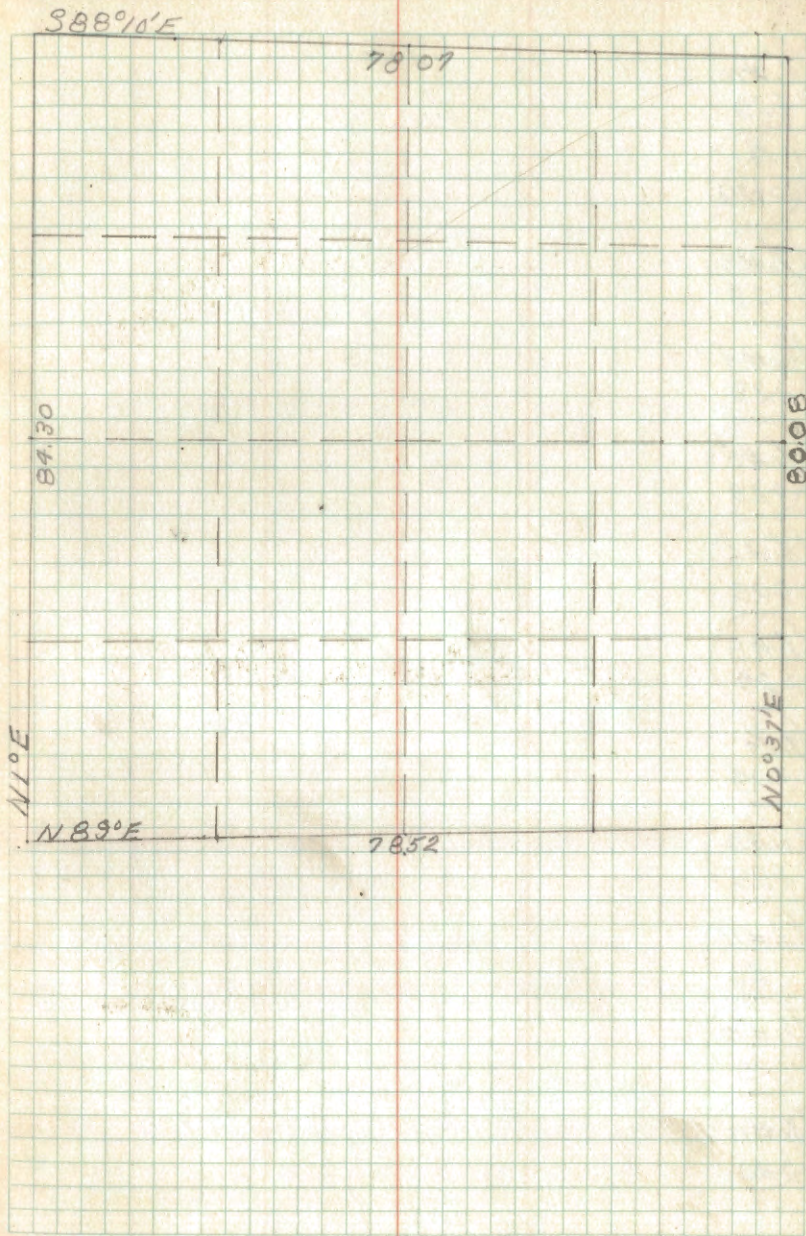
✓  
N 1920  
32/33  
County Cor. 2"x3' scribed Oak Post

1/6 #15  
5.29

1/4 29  
32

1/6 #16  
5.29

✓  
N 1920  
31/32  
Probable G.L.O. 2"x3' scribed Oak Post  
B. Ts. 6" Tamdræk Stamp 360° N. B1K5.





$\frac{1}{16}\#10$   
5.29

$\frac{1}{16}$   
30+29

$\frac{1}{16}\#13$   
5.29

$\frac{1}{16}\#1$   
5.29

$\frac{1}{16}\#5$   
5.29

$\frac{1}{16}\#6$   
5.29

$\frac{1}{16}\#8$   
5.29

c/4  
5.29

$\frac{1}{16}\#9$   
5.29

$\frac{1}{16}\#11$   
5.29

$\frac{1}{16}\#12$   
5.29

$\frac{1}{16}\#13$   
5.29



WIN R29  
1/8  
30

1/6#2  
5.30

1/4  
19  
30

1/6#1  
5.30

WIN R29  
1/30  
29

County Cor. 2" Iron pipe & Cap

1/6#7  
5.30

1/4  
30+29

1/6#14  
30

WIN R29  
1/30  
29

Probable G.H.O. 2" x 3' scribed Tamarack Post  
B.P.'s. 6" Tamarack Stump 560° W. 8 lbs.

1/6#15  
5.30

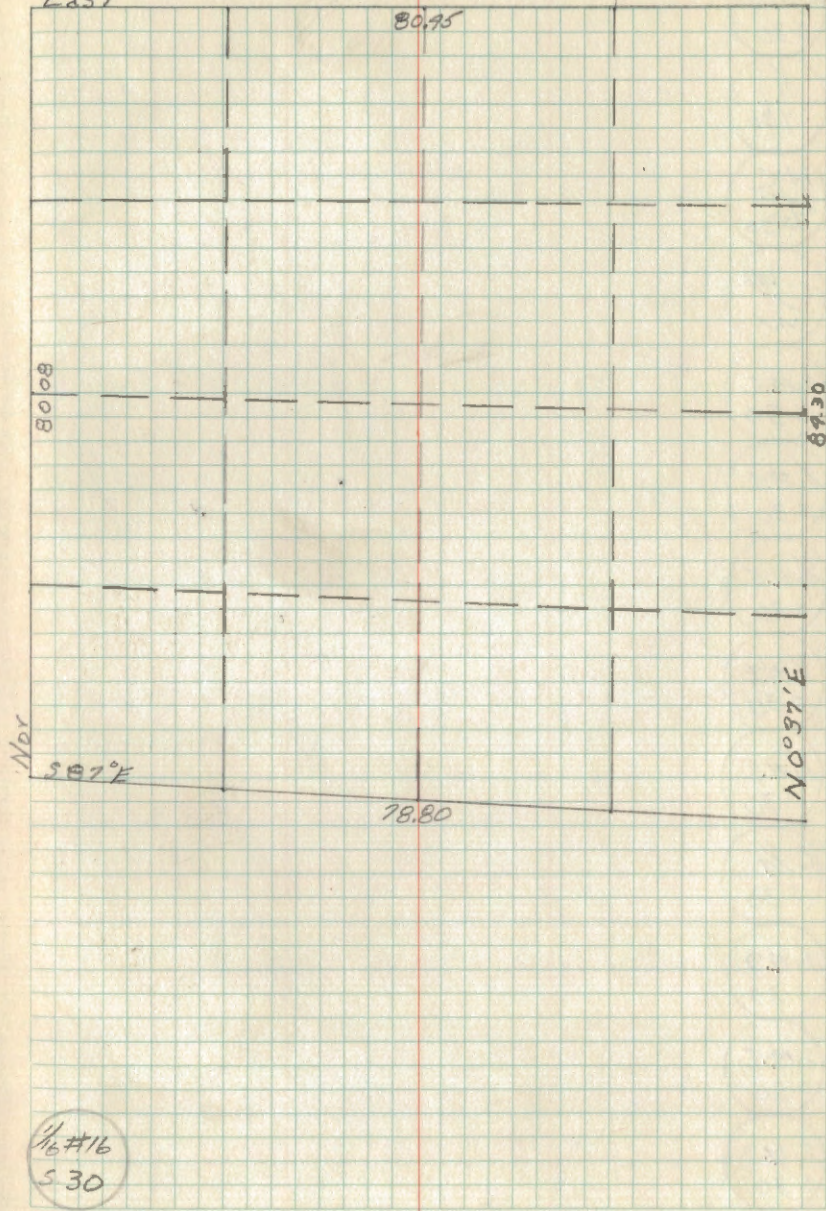
M.C.  
30  
31

30/MC  
31

WIN R29  
1/30  
31

County Cor. 2" Iron pipe & Cap 10" high

East





1/6 #10  
5.30

1/4  
7.30

M.C.  
7.30

~~1.30~~  
M.C.

S.M.C.  
5.30

1/6 #9  
5.30

1/6 #5  
5.30

1/6 #6  
5.30

1/6 #8  
5.30

C/4  
5.30

1/6 #9  
5.30

S.M.C.  
5.30

S.M.C.  
5.30

1/6 #13  
5.30



RAIN R29  
30  
31  
County Cor. 2" Iron pipe & Cap 10" High

1/6 #2  
5.31

30  
31/MC

MC/30  
31

1/6 #  
5.31

RAIN R29  
30  
31  
Probable G.L.O. 2' x 3' Scribed Tomarack Post  
B.T's. 6" Tomarack stamp S60°W. 8 lks.

1/6 #7  
5.31

1/4  
31/32

1/6 #14  
5.31

RAIN R29  
31/32

1/6 #15  
5.31

1/4  
31

1/6 #16  
5.31

RAIN R29  
131  
County Cor. 2" Iron pipe & Cap 9" High  
Form 958 on 6" R. Pine N43°W. 25 lks.

387°E

7880

4000

4000

Nor

Nor



No #10

S. 31

✓ 4 County Cor. 2" Iron pipe & Cap 18" Above ground  
 F31 Form 458 on 6" Aspen S 80° W. 531hs.

No #3

S. 31

No #9

S. 31

S.M.C.

S. 31

S.M.C.

S. 31

No #6

S. 31

No #8

S. 31

C/4

S. 31

S.M.C.

No #5

S. 31

No #11

S. 31

No #12

S. 31

No #13

S. 31



AIN R 25  
26/36  
36/36 Probable G.H.O.

1/6 #2  
5.36

1/4 #2  
36 F.S. Approx 2"x4' Birch Post.  
Form 95B's 8" J. Pine N69°E 69'1/2" 3" J. Pine S29°E 73'1/2"

1/6 #1  
5.36

AIN R 25  
36 County Cor. 2" Pipe. Flush with ground in road.

1/6 #7  
5.36

1/4  
36 731  
W.C.

M.C. Set by J.A. Gjelhaug 3"x3' Scribed Aspen Post  
36/31

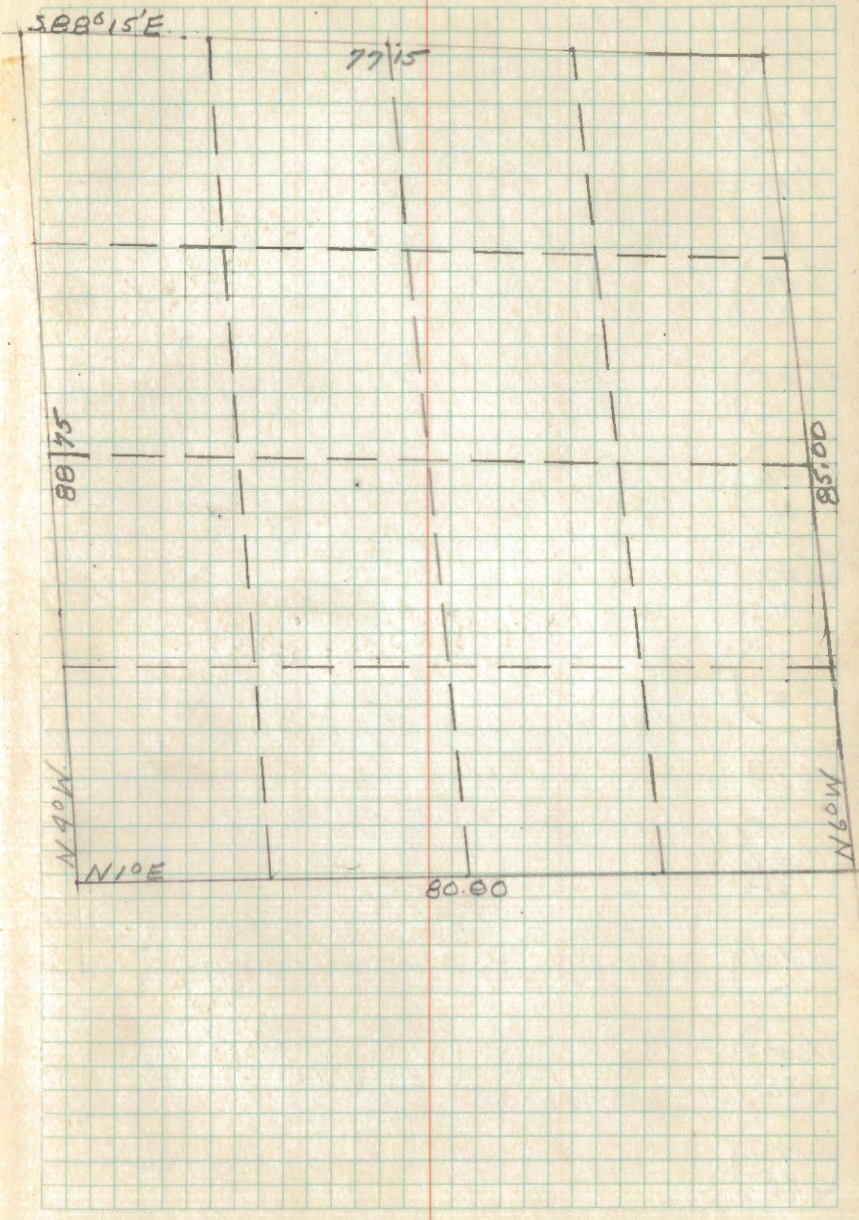
AIN R 25  
36 County Cor. 2" I Piped Cap 8" Above ground

1/6 #15  
5.36

1/4  
36

1/6 #16  
5.36

AIN R 25  
35/36  
W.C.





1/6 #10  
5.36

1/4  
35+36

1/6 #3  
5.36

1/6 #4  
5.36

1/6 #5  
5.36

1/6 #6  
5.36

1/6 #8  
5.36

e 1/4  
5.36

1/6 #9  
5.36

1/6 #11  
5.36

1/6 #12  
5.36

1/6 #13  
5.36

S.M.C  
5.36