

T 144 N R 29 W
T 145 N R 29-30 W
T 146 N R 29 W

K & E
FIELD BOOK
F 360 A

#112

KEUFFEL & ESSER CO.

DRAWING MATERIALS AND SURVEYING INSTRUMENTS.

NEW YORK.

CHICAGO. ST. LOUIS. SAN FRANCISCO. MONTREAL.

Tables for Excavations and Embankments.*

DISTANCES FROM CENTER OF ROADWAY FOR CROSS-SECTIONING.
ROADWAY 18 FEET WIDE. SIDE SLOPES 1 TO 1.

FOR SINGLE TRACK EXCAVATION.

* " Copyright, 1895, by Keuffel & Esser Co."

	0	.1	.2	.3	.4	.5	.6	.7	.8	.9	
0	9.0	9.1	9.2	9.3	9.4	9.5	9.6	9.7	9.8	9.9	0
1	10.0	10.1	10.2	10.3	10.4	10.5	10.6	10.7	10.8	10.9	1
2	11.0	11.1	11.2	11.3	11.4	11.5	11.6	11.7	11.8	11.9	2
3	12.0	12.1	12.2	12.3	12.4	12.5	12.6	12.7	12.8	12.9	3
4	13.0	13.1	13.2	13.3	13.4	13.5	13.6	13.7	13.8	13.9	4
5	14.0	14.1	14.2	14.3	14.4	14.5	14.6	14.7	14.8	14.9	5
6	15.0	15.1	15.2	15.3	15.4	15.5	15.6	15.7	15.8	15.9	6
7	16.0	16.1	16.2	16.3	16.4	16.5	16.6	16.7	16.8	16.9	7
8	17.0	17.1	17.2	17.3	17.4	17.5	17.6	17.7	17.8	17.9	8
9	18.0	18.1	18.2	18.3	18.4	18.5	18.6	18.7	18.8	18.9	9
10	19.0	19.1	19.2	19.3	19.4	19.5	19.6	19.7	19.8	19.9	10
11	20.0	20.1	20.2	20.3	20.4	20.5	20.6	20.7	20.8	20.9	11
12	21.0	21.1	21.2	21.3	21.4	21.5	21.6	21.7	21.8	21.9	12
13	22.0	22.1	22.2	22.3	22.4	22.5	22.6	22.7	22.8	22.9	13
14	23.0	23.1	23.2	23.3	23.4	23.5	23.6	23.7	23.8	23.9	14
15	24.0	24.1	24.2	24.3	24.4	24.5	24.6	24.7	24.8	24.9	15
16	25.0	25.1	25.2	25.3	25.4	25.5	25.6	25.7	25.8	25.9	16
17	26.0	26.1	26.2	26.3	26.4	26.5	26.6	26.7	26.8	26.9	17
18	27.0	27.1	27.2	27.3	27.4	27.5	27.6	27.7	27.8	27.9	18
19	28.0	28.1	28.2	28.3	28.4	28.5	28.6	28.7	28.8	28.9	19
20	29.0	29.1	29.2	29.3	29.4	29.5	29.6	29.7	29.8	29.9	20
21	30.0	30.1	30.2	30.3	30.4	30.5	30.6	30.7	30.8	30.9	21
22	31.0	31.1	31.2	31.3	31.4	31.5	31.6	31.7	31.8	31.9	22
23	32.0	32.1	32.2	32.3	32.4	32.5	32.6	32.7	32.8	32.9	23
24	33.0	33.1	33.2	33.3	33.4	33.5	33.6	33.7	33.8	33.9	24
25	34.0	34.1	34.2	34.3	34.4	34.5	34.6	34.7	34.8	34.9	25
26	35.0	35.1	35.2	35.3	35.4	35.5	35.6	35.7	35.8	35.9	26
27	36.0	36.1	36.2	36.3	36.4	36.5	36.6	36.7	36.8	36.9	27
28	37.0	37.1	37.2	37.3	37.4	37.5	37.6	37.7	37.8	37.9	28
29	38.0	38.1	38.2	38.3	38.4	38.5	38.6	38.7	38.8	38.9	29
30	39.0	39.1	39.2	39.3	39.4	39.5	39.6	39.7	39.8	39.9	30
31	40.0	40.1	40.2	40.3	40.4	40.5	40.6	40.7	40.8	40.9	31
32	41.0	41.1	41.2	41.3	41.4	41.5	41.6	41.7	41.8	41.9	32
33	42.0	42.1	42.2	42.3	42.4	42.5	42.6	42.7	42.8	42.9	33
34	43.0	43.1	43.2	43.3	43.4	43.5	43.6	43.7	43.8	43.9	34
35	44.0	44.1	44.2	44.3	44.4	44.5	44.6	44.7	44.8	44.9	35
36	45.0	45.1	45.2	45.3	45.4	45.5	45.6	45.7	45.8	45.9	36

Calculated by Julien A. Hall, M. Am. Soc. C. E.

For Keith's Railroad Curve Tables see end of book.

T144N - R29W - SEC. 16 - PAGE 1
 T145N - R30W - SEC. 12 - PAGE 10
 T145N - R30W - SEC. 13 - PAGE 16
 T145N - R29W - SEC. 21 - PAGE 18
 T145N - R29W - SEC. 5 - PAGE 24
 T145N - R29W - SEC. 6 - PAGE 28
 T146N - R29W - SEC. 32 - PAGE 30
 T145N - R30W - SEC. 2 - PAGE 38
 T146N - R29W - SEC. 18 - PAGE 56
 T146N - R29W - SEC. 20 - PAGE 62
 T146N - R29W - SEC. 23 - PAGE 66
 T146N - R29W - SEC. 29 - PAGE 70
 T146N - R29W - SEC. 26 - PAGE 72
 T146N - R29W - SEC. 19 - PAGE 76
 T146N - R29W - SEC. 32 - PAGE 88
 T145N - R29W - SEC. 7 - PAGE 96
 T145N - R29W - SEC. 19 - PAGE 104

The paper in this book No. F360A

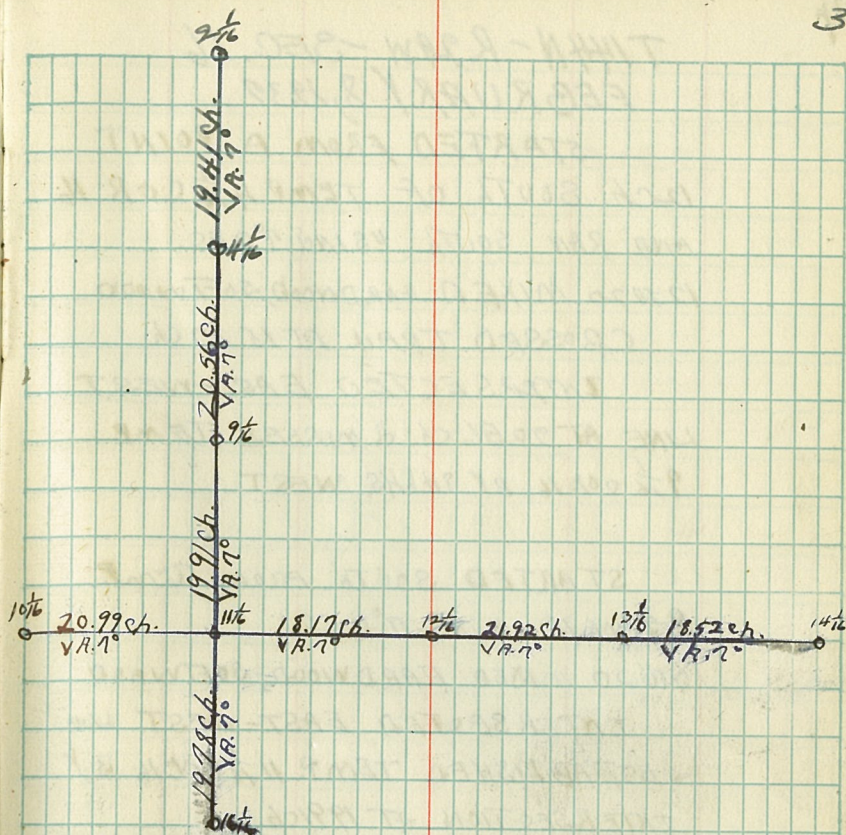
is made of 50% high grade rag stock
with a WATER RESISTING surface sizing.

PARTY CHIEF - HAROLD HENNES
STAKE CUTTER - TEDDY GRANDAHL
REAR CHAIN MAN - CHICK EVENS
BRUSHER - FRED MEISSNER
BRUSHER - DON BEICHER

T144N - R29W - SEC. 16
 FEBRUARY 5, 1937

STARTED SOUTH FROM TEMP.
 2 $\frac{1}{16}$ COR. $\frac{9}{16}$ USING 7 $^{\circ}$ DEC.
 0 TO 10 MIXED HARDWOODS, SOFTWOODS
 10 TO 20 SPRUCE, TAMARACK SWAMP.
 INTERSECTED EAST-WEST LINE
 AT 19.41 ch. MISSED TEMP. 4 $\frac{1}{16}$ COR. 6
 BY TAKS. WEST

STARTED SOUTH FROM TEMP.
 4 $\frac{1}{16}$ COR. 16 USING 7 $^{\circ}$ DEC.
 0-4 SPRUCE, BIRCH, TAMARACK
 4 TO 12 ASPEN



4

TIHAN-R.29W-SEC.16
FEBRUARY 8, 1937

STARTED FROM A POINT
12 CH. SOUTH OF TEMP. 4 $\frac{1}{16}$ COR. 16
AND RAN SOUTH USING T^oDEC.

12 TO 20 MIXED HARDWOOD, SOFTWOOD
CROSSED TRAIL AT 15.37 CH.

INTERSECTED EAST-WEST
LINE AT 20.56 CH. & MISSED TEMP.
9 $\frac{1}{16}$ COR. 16 BY 8 HRS. WEST

STARTED SOUTH FROM TEMP.
9 $\frac{1}{16}$ COR. 16 USING T^oDEC.

0 TO 20 MIXED HARDWOOD, SOFTWOOD

INTERSECTED EAST-WEST LINE
& ESTABLISHED TEMP. 11 $\frac{1}{16}$ COR. 16 BY
INTERSECTION AT 19.91 CH.

#

FEBRUARY 9, 1937

STARTED EAST FROM TEMP.
10 $\frac{1}{16}$ COR. 16 USING T^oDEC.

0 TO 21 MIXED HARDWOOD, SOFTWOOD

INTERSECTED NORTH-SOUTH
LINE AT 20.99 CH. & ESTABLISHED
TEMP. 11 $\frac{1}{16}$ COR. 16 BY INTERSECTION

5

6

FEBRUARY 10, 1937

T44N-R29W-SEC. 16

STARTED SOUTH FROM
 TEMP. 11 $\frac{1}{2}$ COR. 16 USING 7° DEC.
 0-20 MIXED HARDWOOD, SOFTWOOD
 INTERSECTED EAST-WEST
 LINE AT 19.78 CH. & MISSED
 TEMP. 16 $\frac{1}{2}$ COR. 16 BY 1.55 CH. EAST.

~~H~~

FEBRUARY 11, 1937

STARTED EAST FROM
 TEMP. 11 $\frac{1}{2}$ COR. 16 USING 7° DEC.
 0-18 MIXED HARDWOOD, SOFTWOOD
 INTERSECTED NORTH-SOUTH
 LINE AT 18.19 CH. & MISSED TEMP.
 12 $\frac{1}{2}$ COR. 16 BY 18 LKS. NORTH.

STARTED EAST FROM
 TEMP. 12 $\frac{1}{2}$ COR. 16 USING 7° DEC.
 0 TO 22 MIXED HARDWOOD, SOFTWOOD
 INTERSECTED NORTH-SOUTH
 LINE AT 21.92 CH. & HIT TEMP.
 13 $\frac{1}{2}$ COR. 16 ON HEAD

7

T144N - R29W - SEC. 16

FEBRUARY 12, 1937

STARTED EAST FROM

TEMP. 13 $\frac{1}{2}$ C. @ 16 USING 7° DEC.

0-18.5 MIXED HARDWOOD, SOFTWOOD.

INTERSECTED NORTH-SOUTH

LINE AT 18.52 CH. & MISSED

TEMP. 14 $\frac{1}{2}$ C. @ 16/15 BY 90 KGS. NORTH.

MAP ON PAGE 3.

T145N - R30W - SEC. 12

MARCH 1, 1937

STARTED SOUTH FROM
C.L.O. $\frac{1}{4}$ COR. $\frac{1}{12}$ FOLLOWING $\frac{1}{4}$ LINE
USING 1° DEC.

0 TO 4 JACK PINE, NORWAY PINE, ASPEN

4 TO 11 JACK PINE, ASPEN

11 TO 20 OPEN

INTERSECTED EAST WEST LINE
AT 20 ch. $\frac{1}{2}$ HT TEMP. $5\frac{1}{2}$ COR. 12
ON HEAD

CONTINUED SOUTH FROM $5\frac{1}{2}$ COR. 12
20 TO 26 BRUSH

CROSSED NORICK ROAD AT 21.74.

26 TO 40 JACK PINE, ASPEN

INTERSECTED EAST-WEST
LINE AT 40.035 ch. $\frac{1}{2}$ MISSED
TEMP. C. 3 E. COR. 12 BY 5 ch. W.

CONTINUED SOUTH FROM
TEMP. C. 3 E. COR. 12 FOLLOWING
 $\frac{1}{4}$ LINE USING 1° DEC.

0 TO 20 JACK PINE, ASPEN

INTERSECTED EAST-WEST
LINE AT 19.71 ch. MISSED
TEMP. $12\frac{1}{8}$ COR. 12 BY 12 MIS. W.
CONTINUED SOUTH FROM

T145N-R30W - SEC. 12

MARCH 6, 1937

12 $\frac{1}{16}$ CO. 12

20 TO 40 AREA PINE, ASPEN

INTERSECTED EAST-WEST

LINE AT 39.62 CH. 4 MISSED

C.H.O. $\frac{1}{4}$ CO. $\frac{12}{13}$ BY 95 HRS. W

BEARING TREES

NORWAY PINE - D.B.H. 13"

BEARING - N 50° W

DISTANCE - 81.5 HRS.

READS - $\frac{1}{4}$ S. 13

NORWAY PINE - D.B.H. - 14"

BEARING - S 45° E

DISTANCE - 72 HRS.

READS - $\frac{1}{4}$ S. 12

14

T145N-R30W-SEC. 12

MARCH 2, 1939

STARTED EAST FROM Q. 60.
 $\frac{1}{4}$ COR. 11/12 FOLLOWING $\frac{1}{4}$ LINE
 USING 9° GEC.

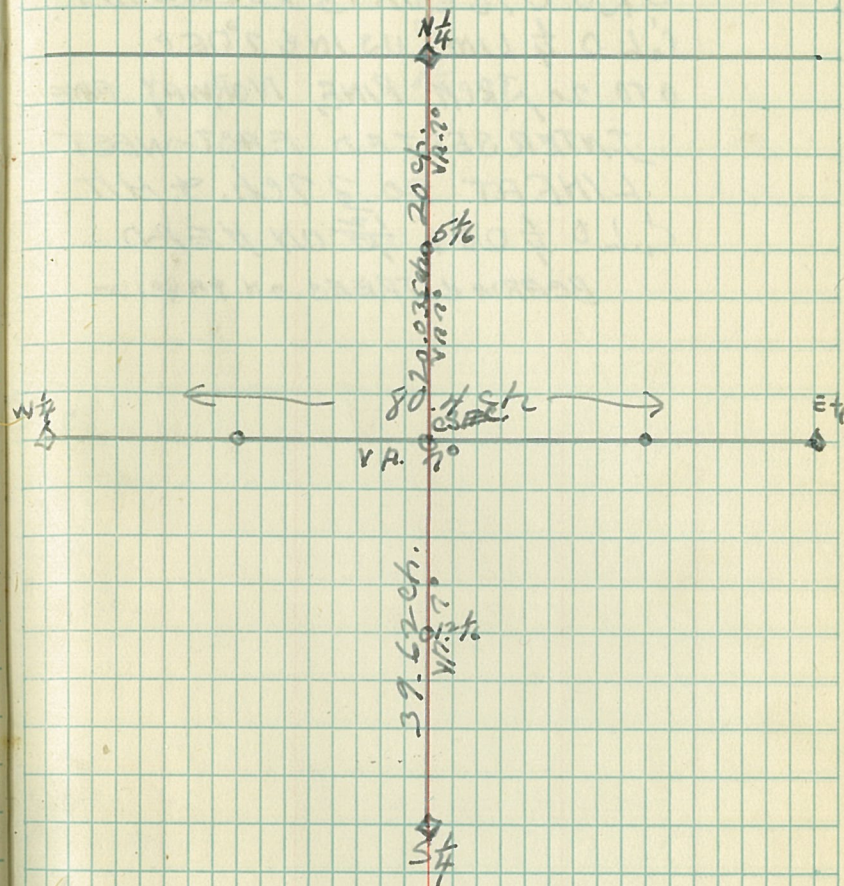
0 TO 80 JACK PINE, ASPEN
 INTERSECTED NORTH-SOUTH
 LINE AT 80.4 CH. & HIT TEMP.
 $\frac{1}{4}$ COR. 12/7 ON HEAD

BEARING & TREES FOR $\frac{1}{4}$ COR. 11/12
 NORWAY PINE - D.B.H. - 14"
 BEARING - N 41.5° E
 DISTANCE - 1.81 ch.
 READS - $\frac{1}{4}$ S. 12

JACK PINE - D.B.H. - 12"
 BEARING - N 19° W
 DISTANCE - 1.13 ch.
 READS - $\frac{1}{4}$ S. 11

15

T145N-R29W-SEC. 12



T145N-R30W-SEC. 13

MARCH 3, 1937

STARTED NORTH FROM
 C.L.O. $5\frac{1}{6}$ COR. 13 FOLLOWING
 C.L.O. $\frac{1}{4}$ LINE USING 7° DEC.
 TO 20 ARCH PINE, NORWAY PINE
 INTERSECTED EAST-WEST
 LINE AT 20.37 CH. & HIT
 C.L.O. $\frac{1}{4}$ COR. $\frac{13}{17}$ ON HEAD
 BEHIND TREES ON PAGE 12

T145N-R29N-SEC. 13

N $\frac{1}{4}$ $\frac{13}{17}$ 20.37 CH.
W. 7
 $5\frac{1}{6}$

T 145N-R29W - SEC. 21
 MARCH 4, 1937

STARTED NORTH FROM
 TEMP. $15\frac{1}{6}$ COR. $\frac{21}{22}$ USING 7° DEC.
 0 TO 10 W. BIRCH, OAK, ASPEN
 CROSSED OTTERTAIL ROAD
 AT 95 LKS. & 5.89 CH.
 10 TO 20 ASPEN, ASH
 ESTABLISHED TEMP. $13\frac{1}{6}$ COR.
 21 AT 20 CH.

STARTED WEST FROM
 TEMP. $14\frac{1}{6}$ COR. 21/22 USING 7° DEC.
 0 TO 20 W. BIRCH, ASPEN SAPLINGS
 INTERSECTED NORTH-SOUTH
 LINE AT 20 CH. & ESTABLISHED
 TEMP. $13\frac{1}{6}$ COR. 21 BY INTERSECTION
 19.84 CH. NORTH OF $15\frac{1}{6}$ COR.

MARCH 5, 1937

STARTED EAST FROM
 TEMP. $15\frac{1}{6}$ COR. $\frac{21}{22}$ FOLLOWING
 SECTION LINE USING 7° DEC.
 BEARING E 1/2 S
 0 TO 6 W. BIRCH, MAPLE, ASPEN
 6 TO 11 ASPEN, W. BIRCH
 11 TO 14 OPEN

T145N - R29W - SEC. 21

MARCH 5, 1937

14 TO 20 NORWAY PINE, W. BIRCH, ASPEN

INTERSECTED NORTH-SOUTH

LINE AT 20 ch. & HIT TEMP.

SEC. COR. $\frac{21}{28} | \frac{22}{27}$ ON HEAD

STARTED NORTH FROM TEMP.

SEC. COR. $\frac{21}{28} | \frac{22}{27}$ FOLLOWING

SECTION LINE USING 7° DEC.

0 TO 4 OPEN

4 TO 8 ASPEN, W. BIRCH, NORWAY PINE.

8 TO 14 ASPEN, W. BIRCH, BALSAM

14 TO 20 ASPEN, BIRCH.

INTERSECTED EAST-WEST
LINE AT 20.02 ch. & HIT TEMP.14 TO COR. $\frac{21}{28} | \frac{22}{27}$ ON HEAD

STARTED NORTH FROM

TEMP. 14 TO COR. $\frac{21}{28} | \frac{22}{27}$ FOLLOWING

SECTION LINE USING 7° DEC.

20 TO 25 ASPEN

25 TO 34 ASPEN, BIRCH.

34 TO 40 TAMARACK, SPRUCE

CROSSED GREAT NORTHERN

T145N-R29W-SEC. 21
 RAILROAD TRACKS AT 39.48ch.
 INTERSECTED EAST-WEST
 LINE AT 40ch. HIT TEMP. $\frac{1}{4}$ COR.
 21/22 ON HERD

STARTED WEST FROM TEMP.
 $\frac{1}{4}$ COR. 21/22 USING 7° DEC.
 0 TO 13 OPEN

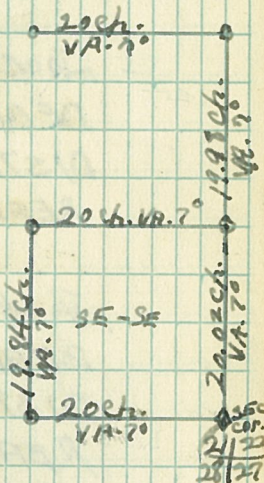
CROSSED GREAT NORTHERN RAILROAD
 TRACKS AT 13.50ch.

CROSSED OTTERTAIL ROAD AT
 17.56ch.

13 TO 20 BRUSH.

CROSSED FIREBREAK AT 19.20ch.
 ESTABLISHED TEMP. $\frac{8}{16}$
 COR. 21 AT 20ch.

T145N-R29W-SEC. 21



MARCH 8, 1937

T145N-R29W-SEC. 5

STARTED SOUTH FROM C.H.D.

SEC. COR. $\frac{31132}{615}$ FOLLOWING SECTION
LINE USING 7° DEC.

BEARING: TREES

JACK PINE - D.B.H. 5"

BEARING: $N21.5^{\circ}E$

DISTANCE - 13 LKS.

READS - T146N-R29W-832

JACK PINE - D.B.H. 6"

BEARING: $N16^{\circ}W$

DISTANCE - 35 LKS.

READS - T146N-R29W-S.31

JACK PINE - D.B.H. 6"

BEARING: $S58^{\circ}W$

DISTANCE - 48 LKS.

READS - T145N-R29W-S.6

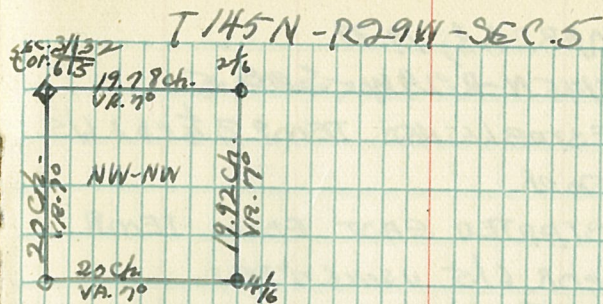
JACK PINE - D.B.H. 6"

BEARING: $S14^{\circ}E$

DISTANCE - 11 LKS.

READS - T145N-R29W-S.5

OTOZO JACK PINE POLES



MARCH 8, 1937

T145N-R29W-SEC. 5

ESTABLISHED TEMP. $3\frac{1}{6}$ COR. 6/5
AT 20 ch.

STARTED EAST FROM TEMP.
 $3\frac{1}{6}$ COR. 6/5 USING 7° DEC.

0 TO 20 ARCH PINE

CROSSED ROAD AT 11.5 ch.
ESTABLISHED TEMP. $4\frac{1}{6}$ COR. 5 AT 20 ch.

STARTED NORTH FROM TEMP.
 $4\frac{1}{6}$ COR. 5 USING 9° DEC.

0 TO 10 ARCH PINE

CROSSED TRAIL AT 1 ch.

10 TO 20 ARCH PINE, ASPEN

INTERSECTED EAST-WEST LINE
AT 19.92 ch. & MISSED TEMP.
 $2\frac{1}{6}$ COR. $\frac{32}{5}$ BY 25 LITS. WEST

STARTED WEST FROM TEMP. $2\frac{1}{6}$
COR. $\frac{32}{5}$ USING 9° DEC.

0 TO 9 ARCH PINE, ASPEN

9 TO 20 ARCH PINE

INTERSECTED NORTH-SOUTH LINE
AT 19.78 ch. & AT C.P.D. SEC. COR. $3\frac{1}{6}$
6/5

ON HEAD

CROSSED ROAD AT 17.24 ch.

MAP ON PAGE 25

T145N R29W - SEC. 6

MARCH 7, 1937

STARTED WEST FROM TEMP.

7 $\frac{1}{6}$ CO. 615 USING 7° DEC.

0 TO 8 MIXED HARDWOOD & PINE

8 TO 10 SPRUCE, CEDAR, TAMARACK

10 TO 14 TAMARACK POLES

14 TO 19.61 MIXED SPRUCE & CEDAR

HIT TEMP. 6 $\frac{1}{6}$ CO. 6 AT 19.61 ch.

STARTED WEST ON SECTION LINE

FROM SEC. CO. 31 $\frac{3}{6}$ FOLLOWING:

C.W. LINE USING 7° DEC.

BEARING, W 14.5° S

0 TO 10 JACK PINE

10 TO 20 SPRUCE, TAMARACK

ESTABLISHED TEMP. 1 $\frac{1}{6}$ CO. 31 $\frac{3}{6}$

AT 20 ch.

RAN SOUTH FROM TEMP 1 $\frac{1}{6}$ CO. 31 $\frac{3}{6}$ USING 7° DEC.

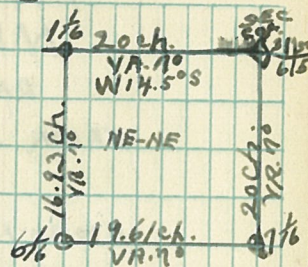
0 TO 16.93 ch. JACK PINE

INTERSECTED E-W-LINE AT

16.93 ch. & ESTABLISHED

TEMP. 6 $\frac{1}{6}$ CO. 6.

T145N R29W - SEC. 6



T146N-R29W-SEC. 32

MARCH 10, 1937

RAN NORTH ON SEC. LINE
 FROM SEC. COR. 31/32 AT 1° DEC.
 $\frac{6}{5}$

0 to 20 JACK PINE

HIT ROAD AT 20 ch.

HIT C.L.O. 10 $\frac{1}{2}$ COR. 31/32 AT 20 ch.

BEARING TREES

JACK PINE - D.B.H. - 10"

DISTANCE - 42 HKS.

BEARING - W 50° S

REFDS - 5 $\frac{1}{2}$ - S. 32 - B.T.

JACK PINE - D.B.H. - 9"

BEARING - S 3° E

DISTANCE - 41 HKS.

REFDS - 5 $\frac{1}{2}$ - S. 31 - B.T.RAN EAST FROM 10 $\frac{1}{2}$ COR. 31/32

ON C.L.O. LINE

0 TO 20 JACK PINE, ASPEN

INTERSECTED NORTH-SOUTH LINE

AT 20 ch. & ESTAB. TEMP. 11 $\frac{1}{2}$ COR. 32CONTINUED E ON $\frac{1}{2}$ LINE

20 TO 40.16 JACK PINE

HIT C.L.O. 12 $\frac{1}{2}$ COR. 32 AT 40.16 ch.

T146N-R29W-SEC. 32
 BEARING TREES
 NORWAY PINE - D.B.H. 18"
 DISTANCE - 167 LKS.
 BEARING - N 21.5° W
 READS - C 5 1/6 S. 32 - D.T.

ARCH PINE - D.B.H. 6"
 BEARING - S 29° E
 DISTANCE - 75 LKS.
 READS - C 5 1/6 S. 32 - D.T.

MARCH 11, 1937

RAN EAST ON SECTION LINE
 FROM 16 1/6 CO. ³²/₅ USING 1° DEC.
 0 TO 20 ASPEN ARCH PINE
 INTERSECTED 1/4 LINE AT 70 ch.
 CONTINUED EAST ON SEC. LINE
 0 TO 20 ARCH PINE
 ESTAB. TEMP. 15 1/6 CO. ³²/₅
 AT 20 ch.
 RAN NORTH FROM 15 1/6 CO. ³²/₅
 USING 1° DEC.
 0 TO 20.4 ARCH PINE
 HIT EAST-WEST LINE AT
 20.4 ch. + ESTABLISHED TEMP 13 1/6
 CTR. 32

34

T146N - R29W - SEC. 32

RAN WEST ON OLD LINE AT
 7° DEC. FROM 13 $\frac{1}{16}$ CO. 32
 0 TO 20 JACK PINE, OAK BRUSH
 HIT 12 $\frac{1}{16}$ CO. 32 AT 20 ch.

MARCH 12, 1937

RAN NORTH FROM 16 $\frac{1}{16}$ CO. $\frac{32}{5}$
 USING 7° DEC.

0 TO 20 MIXED JACK PINE, ASPEN
 HIT 11 $\frac{1}{16}$ CO. 32 AT 20 ch.

RAN S. FROM 12 $\frac{1}{16}$ CO. 32 ON
 $\frac{1}{4}$ LINE AT 7° DEC.

0 TO 20.08 SCRUB OAK & SCATTERED
 JACK PINE SEED LINGS

HIT SOUTH $\frac{1}{4}$ CO. $\frac{32}{5}$ AT 20.08 ch.

RAN NORTH FROM 12 $\frac{1}{16}$ CO. 32
 USING 7° DEC. ON OLD LINE

0 TO 20.09 JACK PINE

HIT CENTER SECTION CO. AT
 20.06 ch.

BEARING TREES

JACK PINE - D.D.H. 4"

BEARING - N 64° W

DISTANCE - 37 HRS.

READS - C $\frac{1}{4}$ S 32 - BT.

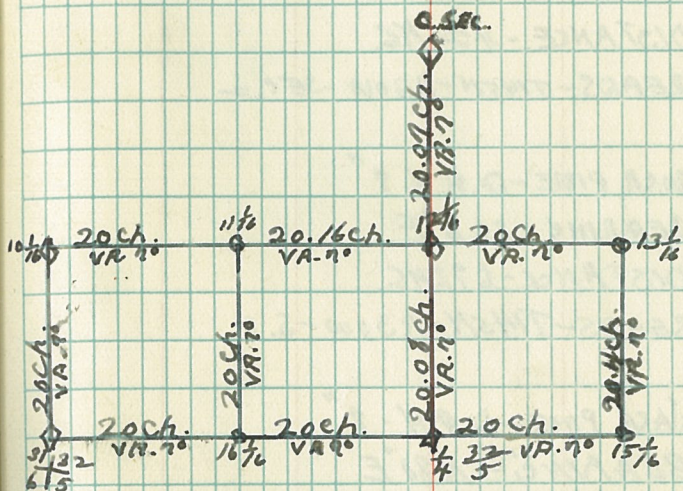
35

36

T146N-R29W-SEC.32
 JACK PIN - D.B.H. 7"
 BEARING - N 71° E
 DISTANCE - 37 LKS.
 READS - c $\frac{1}{4}$. S. 32 - B.T.

37

T146N-R29W-SEC.32



T145N-R30W-SEC. 2

MARCH 16, 1937

STARTED SOUTH FROM 0.20-350. 001.

35/36 FOLLOWING C.L. LINE USING
219° DEC.

BEARING TREES

ASPEN - D.B.H. - 4"

BEARING - S30.5°W

DISTANCE - 424KS.

READS - T145N-R30W-SEC. 2

JACK PINE - D.B.H. 8"

BEARING - S6.5°E

DISTANCE - 692KS.

READS - T145N-R30W-S. 1

JACK PINE - D.B.H. - 8"

BEARING - N80°E

DISTANCE - 228ch.

READS - T146N-R30W-SEC. 26

A. PINE - D.B.H. - 10"

BEARING - N23°W

DISTANCE - 3.35ch.

READS - T146N-R30W-S. 25

01016 JACK PINE, ASPEN SAPLINGS.

T 45 N - R 30 W - SEC. 2

1640 20 NORWAY PINE, ASPEN, BIRCH

ESTABLISHED TEMP. $3\frac{1}{6}$ COT.

211 AT 20 CH. ↓ CONTINUED SOUTH

2040 28 N. PINE, ASPEN, BIRCH.

2840 44 N. PINE, A. PINE, BIRCH, ORK

INTERSECTED EAST-WEST LINE AT 40.9 CH.

HIT C.L. $\frac{1}{4}$ COT. 211 ON HEAD

BEARING: TREES

NORWAY PINE - DBH - 12"

DISTANCE - 94 LMS.

BEARING - $S 80^{\circ} E$

READS - $\frac{1}{4}$ S. 1. BT.

WHITE PINE - 12"

DISTANCE - 38 LMS.

BEARING - $N 70^{\circ} W$

READS - $\frac{1}{4}$ S. 2. BT.

CONTINUED SOUTH FROM $42\frac{1}{4}$

COT. 211 USING $7^{\circ} DEC.$

40.9-51 BIRCH, ASPEN, W. PINE

51-58 - BALSAM, SPROCE

58-61 WACK, NORWAY PINE, BIRCH.

INTERSECTED EAST-WEST LINE

AT 61.18 CH. & ESTABLISHED TEMP.

$14\frac{1}{6}$ COT. 211

T145N-R30W-SEC. 2

MARCH 17, 1937

STARTED SOUTH FROM TEMP.

10 1/2 CO. 211 FOLLOWING C.H. LINE
USING 9° DEC.61 TO 70 WHITE PINE, N. PINE, DALSIAM,
W. BIRCH.

70 TO 82.33 TAMARACK, CEDAR, SPRUCE

INTERSECTED EAST-WEST LINE

AT 82.33 CH. 4 MISSED 9.20. SEC. COR.

2 1/11 BY 19 LKS. WEST
11/12

BEARING TREES

CEDAR D.B.H. 5"

BEARING - S10.5°E

DISTANCE - 16 LKS.

READS - T145N-R30W-8.12-BT.

CEDAR - D.B.H. 6.5"

BEARING N62.5°E

DISTANCE - 17.5 LKS.

READS - T145N-R30W-S.1

TAMARACK - D.B.H. 9.5"

DISTANCE - 33 LKS.

BEARING N30°W

READS - T145N-R30W-S.2

T145N-R30W-SEC. 2
 CED RR - O.D.H. 5^m
 DISTANCE - 5 LMS.
 BEARING - S48°W
 REIDS - T145N-R30W - S.11

STARTED WEST FROM SEC. COR. $\frac{2}{1}$
 USING 7° DEC. FOLLOWING C.L. SEC. $\frac{11}{12}$
 LINE.

0104 ASPEN, BALSAM

4108 SPRUCE, TAMARACK

8106 BALSAM, BIRCH

161070 WHITE, NORWAY PINE, BIRCH

INTERSECTED NORTH-SOUTH LINE
 AT 19.91 CH. & MISSED TEMP. 15 $\frac{1}{2}$ COR. $\frac{2}{11}$
 BY 1 H. M. SOUTH

STARTED EAST FROM $\frac{2}{1}$ COR. $\frac{2}{11}$
 FOLLOWING C.L. SECTION LINE
 USING 7° DEC.

0106 JACK PINE, ASPEN

61070 ASPEN

ESTABLISHED TEMP. 17 $\frac{1}{2}$ COR. $\frac{2}{11}$
 AT 70 CH.

T145N-R30W-SEC 2

MARCH 18, 1937

STARTED WEST FROM C.L.O.

SEC. COR. $\frac{25}{36}$ FOLLOWING C.L.O.SECTION LINE $\frac{21}{1}$ USING 7° DEC.BEARING 9° W 2° S.

0 TO 20 ASPEN, JACK PINE SAPLINGS

INTERSECTED NORTH-SOUTH LINE
AT 20.04 CH. & MISSED TEMP. $\frac{1}{2}$ COR. $\frac{25}{2}$
BY 33 LKS. NORTH.CONTINUED WEST FROM TEMP.
 $\frac{1}{2}$ COR. $\frac{25}{2}$ FOLLOWING SECTION LINE
USING 7° DEC. BEARING 7° S

20 TO 40 JACK PINE, ASPEN

INTERSECTED NORTH-SOUTH LINE
AT 40.09 CH. & MISSED C.L.O. $\frac{1}{4}$ COR.
 $\frac{25}{2}$ BY 37 LKS. NORTH.

BEARING: TREES

JACK PINE - D.B.H. - 12"

DISTANCE - 113 LKS.

BEARING: S 88° W

READS - T145N - R30W - S. 2

JACK PINE - D.B.H. 6"

DISTANCE - 107 LKS.

BEARING - N 47.5° W

READS - T146N - R30W - S. 35

T145N-R30W-SEC. 2

STARTED WEST FROM CLO.
 $\frac{1}{4}$ COR $\frac{35}{2}$ FOLLOWING SECTION
 LINE USING 1" DBE.

40 TO 49 BIRCH SAPLINGS

41-60 W. BIRCH, OAK

INTERSECTED NORTH-SOUTH LINE
 AT 60 CH. & MISSED TEMP. 2" DBE
 $\frac{35}{2}$ BY 14 LKS. SOUTH.

STARTED EAST FROM SEC. COR $\frac{34}{35}$
 $\frac{3}{2}$
 FOLLOWING SECTION LINE USING 2" DBE.

BEARING TREES

ASPEN - D.O.H. 6"

BEARING - N23°E

DISTANCE - 105 LKS.

READS - T146N-R30W-S. 35

RED OAK - D.O.H. - 6"

BEARING - N52°W

DISTANCE - 114 LKS.

READS - T146N-R30W-S. 34

ASPEN - D.O.H. - 11"

BEARING - S22.5°E

DISTANCE - 19 LKS.

READS - T145N-R30W-S. 2

T145N-R30W-SEC. 2
 RED OAK - D.B.H. - 5"
 BEARING - S46.5°W
 DISTANCE - 65.52 HS.
 READS - T145N-R30W-S. 3
 0 TO 70 W. BIRCH, OAK SAPPINGS
 ESTABLISHED TEMP. $2\frac{35}{16}$ CH.
 AT 20 CH.

MARCH 19, 1937

STARTED NORTH FROM G.L.D.
 SECTION CORNER $\frac{3}{10} \frac{2}{11}$ FOLLOWING
 G.L.D. SECTION LINE USING 7' DEC.

BEARING TREES

JACK PINE - D.B.H. - 6"
 BEARING - S61.5°W
 DISTANCE - 44 HS.
 READS - T145N-R30W-S. 10 BT.

NORWAY PINE - D.B.H. - 2'
 BEARING - N30°E
 DISTANCE - 2.24 ch.
 READS - T145N-R30W-S. 8 BT.

NORWAY PINE - D.B.H. 2'
 BEARING - N40°W
 DISTANCE - 3.88 ch.
 READS - T145N-R30W-S. 2 P.T.

T145N-R30W-SEC. 2

NORWAY PINE-D.D.H. 20"

BEARING - S 9° E

DISTANCE - 2.64 ch.

READS - T145N-R30W - S. 11 - BT.

01 to 3 JACK PINE, ASPEN SAPLINGS

37 to 40 WHITE PINE, ASPEN SAPLINGS

INTERSECTED EAST-WEST LINE

AT 21.465 ch. HIT TEMP. $\frac{1}{8}$ COR. 3/2

ON HEAD.

CONTINUED NORTH FOLLOWING

SECTION LINE USING 9° DEC.

20 to 33 JACK PINE, WHITE PINE, ASPEN SAP.

33 to 39 DIAMOND WILLOW BRUSH

39 to 43 W. BIRCH, ASPEN SAPLINGS.

INTERSECTED EAST-WEST LINE

AT 42.9 ch. HIT GLS. $\frac{1}{4}$ COR. 3/2

ON HEAD.

BEARING, TAPES

ASH-D.D.H. 4"

BEARING - S 8° W

DISTANCE - 38 LKS.

READS - S. 3 - P.T.

WHITE PINE STUB 5' HIGH &
TURNED TO 6"

T146N - R29W - SEC. 18

MARCH 22, 1937

STARTED SOUTH FROM G.L.O.

SEC. COR. 7/8 USING 7° DEC.

FOLLOWING 8/17 SECTION LINE

BEARING TREES

WHITE PINE - D.B.H. - 2.5'

BEARING - S42°E

DISTANCE - 44 MS.

READS - D.T.

NORWAY PINE - D.B.H. - 2.1'

BEARING - N89°E

DISTANCE - 29 MS.

READS - T146N - R29W - S. 8

ASPEN - D.B.H. - 3"

BEARING - N20°W

DISTANCE - 22 MS.

READS - S. 9 BT.

ASPEN - D.B.H. - 4"

BEARING - S38.5°W

DISTANCE - 57 MS.

READS - T146N - R29W - S. 18

T146N-R29W - SEC. 18

07012 ASPEN, SAPLING'S

127016 - ASPEN, BIRCH

167020 ASPEN, WHITE, NORWAY PINE.

INTERSECTED EAST-WEST LINE
AT 19.89 CH. \angle HIT TEMP. $3\frac{1}{16}$ COF. 18/17
ON HEAD $\frac{1}{2}$ CONTINUED SOUTH

207026 BALSAM, ASPEN

267034 - W. PINE, ASPEN, BIRCH

347036 B. SPRUCE, TAMARACK - SWAMP

367038 BALSAM, ASPEN

397040 TAG ALDER

INTERSECTED EAST-WEST LINE AT
H0 CH. \angle HIT $\frac{1}{4}$ L.O. $\frac{1}{4}$ COF. 18/17 ON HEAD

BEARING, TREE

B. SPRUCE - O.B.H. - 2"

DISTANCE - 28 M.S.

BEARING - 352.5° W

READS - $\frac{1}{4}$ S. 18 - B.T.

STARTED SOUTH FROM G.L.B.

$\frac{1}{4}$ COF. 18/17 FOLLOWING, G.L.O. BLAZES
USING 1° DEC.

07016 B. SPRUCE, TAMARACK SWAMP

167020 B. SPRUCE SWAMP

INTERSECTED EAST-WEST
LINE AT 20 CH. \angle ESTABLISHED
TEMP. $14\frac{1}{2}$ COF. 18/17

T146N-R 29W - SEC. 18

STARTED SOUTH FROM
 TEMP. 147² cot. 18/17 FOLLOWING
 OLD CUT OUT LINE USING 2nd SEC.
 0708 B-SPRUCE, TAMARACK, SWAMP
 81014 W. BIRCH, BALSAM, W. PINE
 141020 ASPEN, BALSAM, SPRUCE
 INTERSECTED EAST-WEST SECTION
 LINE AT 20ch. - HIT S.W. SEC. COR.
 18/17 ON HEAD
 19/20

9/8
 18/17 T146N-R 29W - SEC. 18



T146N-R29W-SEC. 20

MARCH 23, 1937

STARTED SOUTH FROM
 S.H. CO. $\frac{12}{20}$ FOLLOWING OLD
 LINE USING 9° DEC.

BEARING TREES

ASH - D.B.H. - 12"

DISTANCE - 91 MS.

BEARING - $N61^{\circ}E$ READS - $\frac{1}{4}$ S. 17 B.T.

W. BIRCH, D.B.H. - 12"

DISTANCE - 21 MS.

BEARING $362^{\circ}E$ READS - $\frac{1}{4}$ S. 20 B.T.

01020 W. BIRCH, BALSAM, ASH, ASPEN

ESTABLISHED TEMP. $5\frac{1}{2}$ CO. 20 AT

20 ch. CONTINUED SOUTH

20 TO 25 B. SPRUCE SWAMP

25 TO 40 BALSAM, BIRCH, ASPEN

INTERSECTED EAST-WEST

QUARTER LINE AT 39.57 ch. AND

ESTABLISHED C. SEC. CO. 20

CONTINUED SOUTH

40 TO 45 SPRUCE, ASPEN, BIRCH

45 TO 52 B. SPRUCE, SWAMP

T146N-R29W-SEC. 20

 $\frac{17}{20}$
 $\frac{1}{4}$
 $\frac{20}{20}$
 V.P. 70

 $\frac{20}{20}$
 $\frac{1}{4}$
 $\frac{19.57}{19.57}$
 V.P. 70

C. SEC.

 $\frac{20}{20}$
 V.P. 70

 $\frac{12}{12}$
 $\frac{19.80}{19.80}$
 V.P. 70

 $\frac{20}{29}$
 $\frac{1}{4}$

64

T146N-R29W-SEC. 20

52 TO 60 B. SPRUCE, TAMARACK, BIRCH

INTERSECTED EAST-WEST $\frac{1}{4}$ LINEAT 57.92 CH. & HIT TEMP. 12 $\frac{1}{16}$ COR. 20

ON HEADLAND CONTINUED SOUTH

60 TO 62 B. SPRUCE, TAMARACK, BIRCH SWAMP.

62 TO 70 BALSAM, ASPEN, BIRCH

70 TO 76 SPRUCE, TAMARACK, BIRCH SWAMP.

76 TO 86 BALSAM, BIRCH, ASPEN

INTERSECTED EAST-WEST SECTION

LINE AT 49.52 CH. & MISSED $\frac{1}{4}$ COR. $\frac{20}{29}$ BY 92 LKS. EAST

BEARING & TREES

WHITE PINE - D.M.H. - 26"

BEARING - 355° E

DISTANCE - 62 LKS.

READS - $\frac{1}{4}$ S. 29 BT.

NORWAY PINE - 12"

BEARING - N 25.5° E

DISTANCE - 40 LKS.

READS - $\frac{1}{4}$ S. 20 BT.

65

T146N-R29W-SEC. 20

MAP ON PAGE 63

T146N-R29W-SEC. 23

MARCH 24, 1937

STARTED NORTH FROM TEMP.

 $\frac{1}{4}$ COR. $\frac{23}{26}$ USING 7° DEC.

0+06 ASPEN, BALSAM

6+10 OPEN

HIT APPROXIMATE SHORE OF
SUGAR LAKE AT 10 CH.

STARTED WEST FROM TEMP.

 $\frac{1}{2}$ COR. 2423 USING 7° DEC.

0+06 BIRCH, ASPEN, BALSAM

6+18 BRUSH

18+22 OPEN

INTERSECTED NORTH-SOUTH $\frac{1}{6}$
LINE AT 18.63 CH. ESTAB. TEMP.9 $\frac{1}{2}$ COR. 23 BY INTERSECTIONHIT APPROX. SHORE OF SUGAR
LAKE AT 22 CH.

MARCH 25, 1937

STARTED NORTH FROM TEMP.

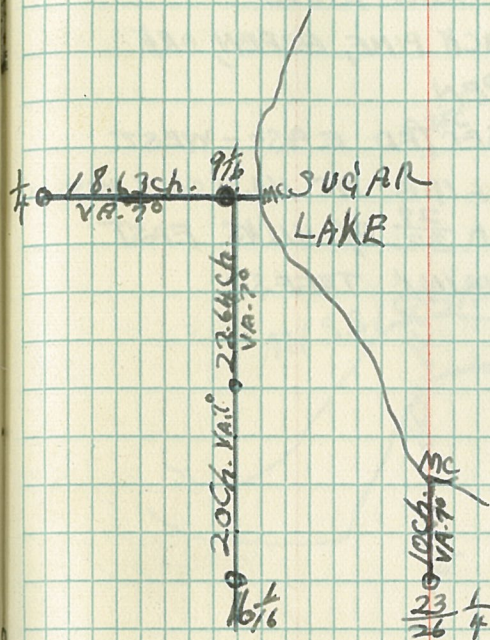
 $\frac{1}{6}$ COR. $\frac{23}{26}$ USING 7° DEC.

0+02 BRUSH

2+04 OPEN

4+20 BALSAM, ASPEN, BIRCH.

T146N - R29W - SEC. 23
 ESTABLISHED TEMP. $11\frac{1}{2}$ COF.
 23 AT 20 ch. & CONTINUED NORTH
 01014 BRUSH, ASPEN, BIRCH
 CROSSED TRAIL AT 13.65 ch.
 147018 BRUSH
 187022 OPEN
 INTERSECTED EAST-WEST LINE
 AT 22.64 ch. & ESTAB. TEMP. $9\frac{1}{2}$
 COF. 23 BY INTERSECTION.



T146N-R29W-SEC. 29

MARCH 26, 1937

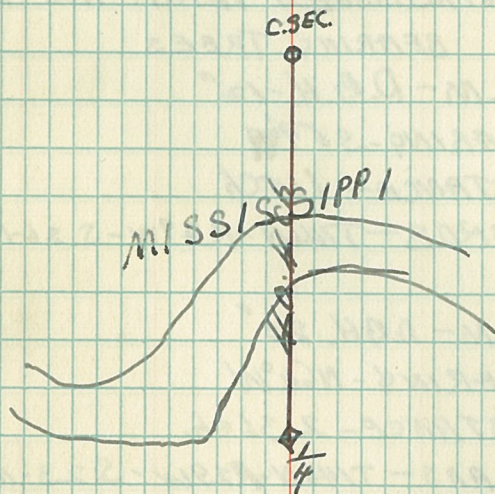
STRATED SOUTH FROM
 TBM P. C. SEC. COR. 29 USING 1° REC.
 01032 MISSISSIPPI RIVER AND
 MEADOW LOW LAND.

32-40.35 ARCH PINE, ASPEN, ORK

35-40.4 OPEN

INTERSECTED EAST-WEST
 SECTION LINE AT 40.4 CH. & MISSED
 Q.L.D. $\frac{29}{32}$ COR. $\frac{29}{32}$ BY 4 INKS. EAST
 NO BEARING TREES

T146N-R29W-SEC. 29



T146N-R29W-SEC. 26

MARCH 29, 1937

STARTED EAST FROM TEMP.

 $\frac{1}{4}$ CO. $\frac{23}{26}$ USING 7° DEC.

0+03.78 ASPEN, BIRCH, DALSAM

HIT SUGAR LAKE AT 3.78 CH. +

MISSED C.L. M.C. BY 56 LKS. SOUTH

ESTABLISHED TEMP. M.C. AT 3.78 CH.

BEARING TREES

ELM - D.B.H. - 12"

BEARING - 35° W

DISTANCE - 1.65 CH.

READS - T146N-R29W-S. 26-M.C.

ELM - D.B.H. 20"

BEARING - $N64^{\circ}$ W

DISTANCE - 2.36 CH.

READS - T146N-R29W-S. 23-M.C.

STARTED SOUTH FROM TEMP.

 $\frac{1}{4}$ CO. $\frac{23}{26}$ FOLLOWING OLD $\frac{1}{4}$ LINE
USING 7° DEC.C.L. $\frac{1}{4}$ CO. $\frac{23}{26}$ IS 54 LKS. NORTH

METAL LOCATION POSTER ON

ASPEN - D.B.H. 7"

BEARING - $S11^{\circ}$ W

DISTANCE - 60 LKS.

T146N - R29W - SEC. 26

070 10 ASPEN, W. BIRCH, BALSAM

1070 14 BALSAM, ASH, BIRCH.

1470 18 - BRUSH

1870 20 ASPEN, BALSAM, BIRCH

ESTABLISHED TEMP. S¹/₂ C. 26

AT 19.77 Ch. & CONTINUED SOUTH.

070 14 ASPEN, BALSAM, BIRCH

1470 17 BRUSH

1970 19 BALSAM, ASPEN, BIRCH

1970 20 BRUSH

INTERSECTED EAST-WEST LINE

AT 19.88 Ch. HIT TEMP. C. S¹/₂ C. 26

ON HEAD.

T146N - R29W - SEC. 26

3.78 Ch. 9°

MS. (SUGAR LAKE)

12.88 Ch. 19.77 Ch.
 19.70

T146N-R29W-SEC. 19

MARCH 31, 1939

STARTED SOUTH FROM A
POINT 236KS. WEST OF SEC. COR.
12/18 FOLLOWING OLD LINE

24/19 USING 7° DEC.

SEC. COR. 13/18 IS LOCATED IN
MIDDLE OF 24/19 ROAD.

BEARING, TREES

ASH - D.B.H. 12"

BEARING - N14°E

DISTANCE - 1.59 ch.

READS - T146N-R29W-S.18

ASPEN - D.B.H. 8"

BEARING - N57°W

DISTANCE - 1.26 ch.

READS - T146N-R30W-S.13

NORWAY PINE - D.B.H. 2'

DISTANCE - 4.42 ch.

BEARING - S30°E

READS - T146N-R29W-S.19

ON 19 ASPEN SPLITTING S.

INTERSECTED OLD 3¹/₂° E OF 24/19

AT 18.67 ch. WENT IT ON HEAD.

CONTINUED SOUTH.

T 146N - R 29W - SEC. 19

MARCH 31, 1939

197039 LARGE ASPEN, ASH.

INTERSECTED EAST-WEST LINE
 AT 38.67 CH. & MISSED APP. Q. 1/4
 COR. 19/24 BY 24 HRS. WEST
 Q. 1/4 COR. 19/24 LOCATED IN
 MIDDLE OF ROAD.

BEARING TREES

ASH - D.B.H. - 26"
 BEARING - S 36° W
 DISTANCE - 58 LKS.
 READS - $\frac{1}{4}$ S. 24 - B.T.

ASH - D.B.H. - 6"
 BEARING - N 68° E
 DISTANCE - 36 LKS.
 READS - $\frac{1}{4}$ S. 19 - B.T.

CONTINUED SOUTH USING 1° DEC.

FOLLOWING PARALLEL TO ROAD.

397049 ASH, BIRCH, ASPEN

487054 ASPEN SAPLINGS

547058 TAMARACK, B. SPRUCE

587060 ASPEN SAPLINGS

INTERSECTED EAST-WEST
 LINE AT 60 CH. & MISSED APP. 10 $\frac{1}{4}$
 COR. 19/24 BY 4 HRS WEST.

T146N-R29W-SEC. 19

APP. CO. LOCATED IN ROAD

BEARING TREES

ASH-D.B.H.-4"

BEARING S25°E

DISTANCE-1ch.

READS-S $\frac{1}{2}$ -S.19.B.T.

CONTINUED SOUTH

60 to 63 ASPEN SAPLINGS

CROSSED ROAD AT 63.47ch.

63 to 68 OPEN

CROSSED BURNS LAKE ROAD AT 67.09ch

MISSISSIPPI RIVER BRIDGE FEW

LINKS SOUTH EAST OF LINE

HIT MISSISSIPPI RIVER AT

68ch.

HIT G.L.D. M.C. AT 67.81ch. &

ON HEARD

BEARING TREES

ASH-D.B.H.-7"

BEARING N58°W

DISTANCE-1.24ch.

READS-T146N-R29W-S.24-M.C.

ASH-D.B.H.-8"

DISTANCE-2.4ch.

BEARING-N10°E

READS-T146N-R29W-S.19-M.C.

T146N-R29W-SEC. 19

APRIL 1, 1939

STARTED WEST FROM TEMP.
MEANDER COR. $\frac{12}{30}$ ON MISSISSIPPI
USING 7° DEC.

OTO 8.14 MERQUOY

HIT G.L.O. 16 $\frac{1}{2}$ COR. $\frac{19}{30}$ ON MERQUOY R. H.C.

BEARING TREES

ASPEN - D.B.H. - 7"

BEARING - S53 $^{\circ}$ W

DISTANCE - 2.23 ch.

READS - W $\frac{1}{2}$ S 30

CONTINUED WEST FROM G.L.O.

16 $\frac{1}{2}$ COR. $\frac{19}{30}$ USING 7° DEC. FOLLOWING

SECTION LINE

OTO 5 BRUSH

5 TO 2.2 DIRCH, ASPEN

CROSSED BURNS LAKE ROAD AT 18.32 ch.

YELLOW POST ON ROAD.

HIT G.L.O. M.C. $\frac{19}{30}$ ON MISSISSIPPI

RIVER AT 22.94 ch. ON I.C.R.D.

ASH - D.B.H. - 7"

BEARING - N85 $^{\circ}$ W

DISTANCE - 666 ft.

READS - T146N-R29W-S.19 M.C.

T146N - R 29W - SEC. 19

ARCH PINE - D.O.H. 13"

BEARING - S 37° E

DISTANCE - 1.84 ch.

READS - T146N - R 29W - S. 30 - M. C.

STARTED EAST FROM TEMP.

12 1/6 CO. 19 USING 7° 05' C. FOLLOWING

1/6 LINE

0 to 6 BRUSH, CEDAR SNAGS.

CROSSED TRAIL AT 5.06 ch.

6 to 8 BALSAM, CEDAR

8 to 16 B. SPRUCE, CEDAR

16 to 20 CEDAR SAPLING'S.

ESTAB. TEMP. 13 1/6 CO. 19 AT 20 ch.

CONTINUED EAST

20 to 23 B. SPRUCE, CEDAR SWAMP.

23 to 27 TAMARACK, CEDAR SAPLING'S.

27 to 30 SPRUCE, CEDAR SWAMP.

30 to 32 TAMARACK SWAMP

32 to 40 BRUSH, CEDAR SAP. SNAGS.

INTERSECTED NORTH-SOUTH LINE

AT 40.12 ch. HIT TEMP. 14 1/6 CO.

20/19 ON HEAD.

T146N-R29W-SEC. 32

APRIL 5, 1937

STARTED NORTH FROM S.L.O.

C. SEC. COR. 32 USING 7° DEC.

0106 JACK PINE SAPILING'S

67014 TRAIL JACK PINE SAPILING'S

CROSSED MISSISSIPPI LOOP ROAD

AT 14.98 CH.

141020 JACK PINE SAPILING'S

INTERSECTED EAST-WEST
LINE AT 19.935 CH. & HIT S.L.O. 57 $\frac{1}{2}$

COR. 32 ON HEAD

BEARING TREE'S

JACK PINE - D.O.H. - 4.5"

BEARING - N 89.5° W

DISTANCE - 52 LKS.

READS - CN $\frac{1}{16}$ - S. 32

JACK PINE - D.O.H. - 4.5"

BEARING - N 47° E

DISTANCE - 35 LKS.

READS - CN $\frac{1}{16}$ S. 32CONTINUED SOUTH FROM S.L.O. 57 $\frac{1}{2}$ COR. 32USING 7° DEC. FOLLOWING $\frac{1}{4}$ LINE

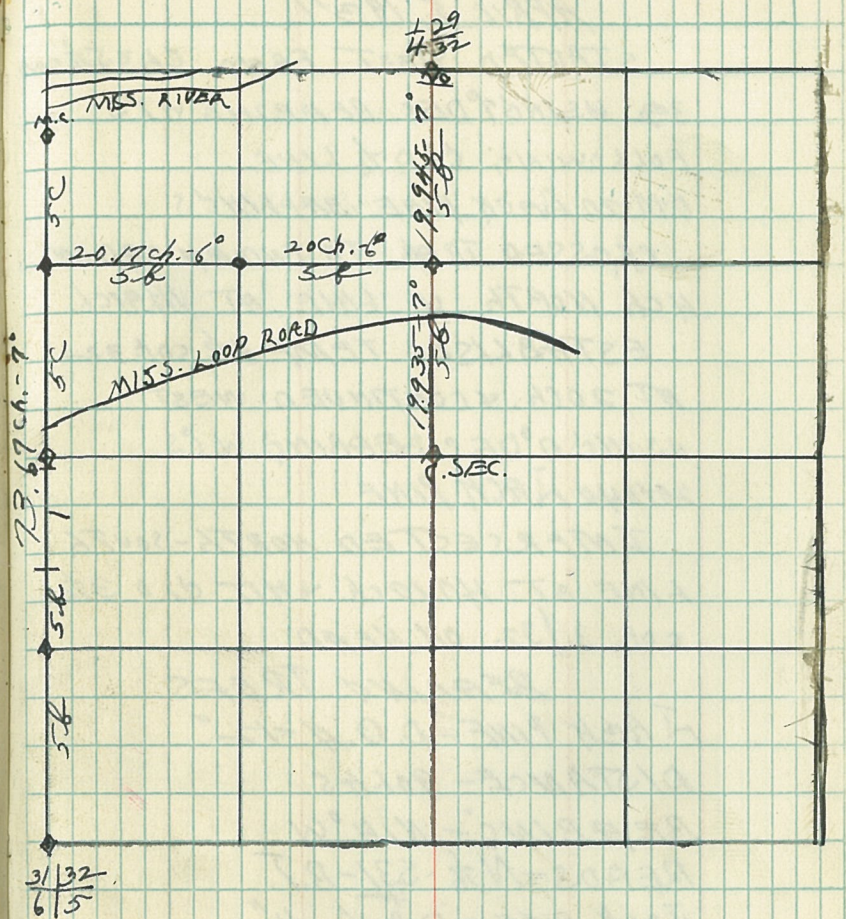
201028 JACK PINE SAPILING'S

32-40-OPEN

INTERSECTED EAST-WEST
LINE AT 39.88 CH. & MISSED S.L.O. $\frac{1}{4}$

COR. 32 BY 2 LKS. WEST.

T146N-R29W-SEC. 32



T146N-R29W-SEC.32

APRIL 5, 1937

STARTED WEST FROM CH. 5 1/2 COR.

32 USING 7° DEC. BEARING W 1° S

FOLLOWING; CH. 7 1/2 LINE

0 TO 20 ARCH PINE SAPLINGS

CROSSED TRAIL TO INDIAN CABIN
4 CH. NORTH OF LINE AT 14.91 CH.

ESTABLISHED TEMP. 4 1/2 COR. 32

AT 20 CH. & CONTINUED WEST

USING 7° DEC. BEARING W 1° S

20 TO 40 ARCH PINE

INTERSECTED NORTH-SOUTH
LINE AT 40.17 CH. & HIT CH. 3 1/2

COR. 3/32 ON HEAD

BEARING TREES

ARCH PINE - D.O.H. - 12"

DISTANCE - 90 H.S.

BEARING - N 14° W

READS - N 7 1/2 - S 31 - B.T.

ARCH PINE - D.O.H. - 11"

DISTANCE - 81 H.S.

BEARING - S 22° E

READS - N 7 1/2 - S 32 - B.T.

T146N-R29W-SEC. 32

APRIL 6, 1937

STARTED NORTH FROM $1\frac{1}{2}$ COR.
 31/32 FOLLOWING $\frac{1}{2}$ COR. SEC. LINE
 USING 7° DEC.

0 TO 8 JACK PINE POLES

8 TO 19 BRUSH

18 TO 20 JACK PINE POLES

INTERSECTED EAST-WEST LINE
 AT 40 CH. N. OF SEC. COR.

ESTAB. $\frac{1}{2}$ COR. 31/32 AT 40 CH. $\frac{1}{2}$ COR. $\frac{1}{2}$ COR. COULD NOT BE FOUNDCONTINUED NORTH USING 7°

20 TO 40 JACK PINE POLES

CROSSED MISSISSIPPI LOOP ROAD
 AT 43.19 CH. N. OF SEC. COR.

INTERSECTED EAST-WEST
 LINE AT 59.95 CH. N. OF SEC. COR.

MISSED $\frac{1}{2}$ COR. $3\frac{1}{2}$ COR. 31/32 BY
 8.5 LKS. WEST

CONTINUED NORTH FOLLOWING
 $\frac{1}{2}$ COR. SEC. LINE USING 7° DEC.

40 TO 49 JACK PINE

CROSSED TRAIL AT 62 CH. N. OF SEC. COR.

HIT $\frac{1}{2}$ COR. M.C. AT 73.67 CH.

WHICH IS 9 LKS. EAST OF TEMP. M.C.
 M.C. ON MISSISSIPPI RIVER.

T146N-R29W-SEC.32

BEARING & TREES

JACK PINE - 6"

BEARING - S47°E

DISTANCE - 1.31 ch.

READS - T146N-R29W-S.32-M.C.B.T

JACK PINE - 12"

BEARING - S16.5°W

DISTANCE - 1.49 ch.

READS - T146N-R29W-S.31-M.C.B.T

T145N-R29W-SEC. 7

CONTINUED NORTH

HOTO 55 JACK PINE, ASPEN SPRINKLES

INTERSECTED LYDICK LAKE AT

15.06 CH. NORTH OF 1/4 COR.

HIT 6.20 M.S. 12/7 ON HEAD

BEARING OF TREES

JACK PINE - 3"

BEARING - S28°E

DISTANCE - 97 LKS.

READS - T145N-R29W-57-M.S.

JACK PINE - 45"

DISTANCE - 43 LKS.

BEARING - S41°W

READS - T145N-R30W-512-M.S.

T145N-R29W-SEC. 7

APRIL 8, 1937

STARTED EAST FROM C.H.O. $\frac{1}{4}$
COR. 12 $\frac{1}{2}$ USING 1° DEC.

0102 KRAK PINE, ASPEN SAPPLINGS
2104 BRUSH

4106 B. SPRUCE, TAMARACK

61012 KRAK, NORWAY PINE, ASPEN

121014 BALSAM, B. SPRUCE

141016 KRAK PINE, BALSAM, ASPEN

161020 B. SPRUCE, TAMARACK

ESTAB. TEMP. $9\frac{1}{2}$ COR. 7 AT 20ch.

STARTED SOUTH FROM TEMP.
 $9\frac{1}{2}$ COR. 7 USING 1°

01014 TAMARACK, B. SPRUCE SWAMP.

141018 CEDAR SWAMP.

CHECKED IN FOR DRY AT 18ch.

APRIL 9, 1937

STARTED EAST FROM TEMP. $10\frac{1}{2}$ COR.
12 $\frac{1}{2}$ USING 1° DEC.

0102 KRAK PINE PONES

2105 B. SPRUCE SWAMP

5107 CEDAR SWAMP

71010 B. SPRUCE SWAMP

101017 W. BIRCH KRAK, NORWAY PINE

141020 CEDAR SWAMP.

T145N - R29W - SEC. 9

APRIL 9, 1937

ESTAB. TEMP. $11\frac{1}{2}$ COR. 9 AT 20.29 CH.

BY INTERSECTION

TEMP. $11\frac{1}{2}$ COR. 9 ESTAB. 19.74 CH.

SOUTH OF TEMP. $9\frac{1}{2}$ COR. 9

104

T145N-R29W-SEC. 18

APRIL 9, 1937

STARTED SOUTH FROM G.L.O.

SEC. COR. $\frac{12.7}{13.18}$ USING 1° DEC.

07020 BRUSH.

INTERSECTED G.L.O. $3\frac{1}{8}$ COR. 13/18
 AT 20.16 CH. & MISSED G.L.O. COR. BY
 9.5 LKS. EAST

CONTINUED SOUTH FROM G.L.O.

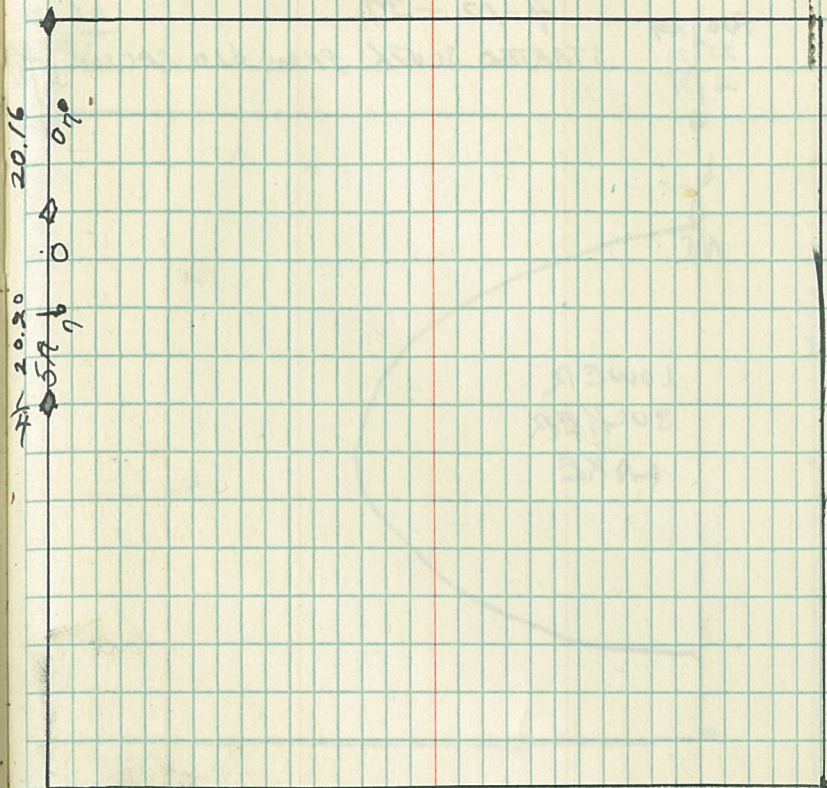
207031 BRUSH

317040 HICK PINE, ASPEN

INTERSECTED EAST-WEST LINE
 AT 40.36 CH. & HIT G.L.O. $\frac{1}{4}$ COR. 13/18
 ON HEARD.

105

T145N-R29W-SEC. 18

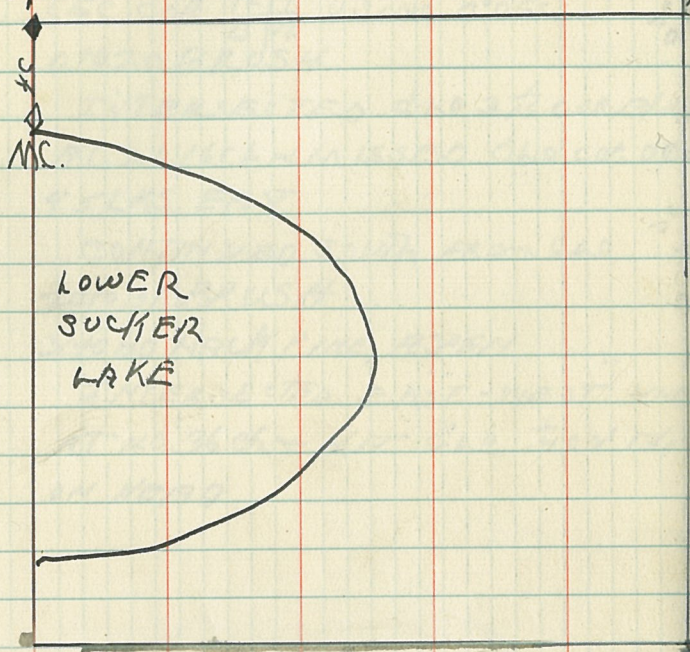
 $\frac{12.7}{13.18}$ 

T145N-R29-30 SEC. 31

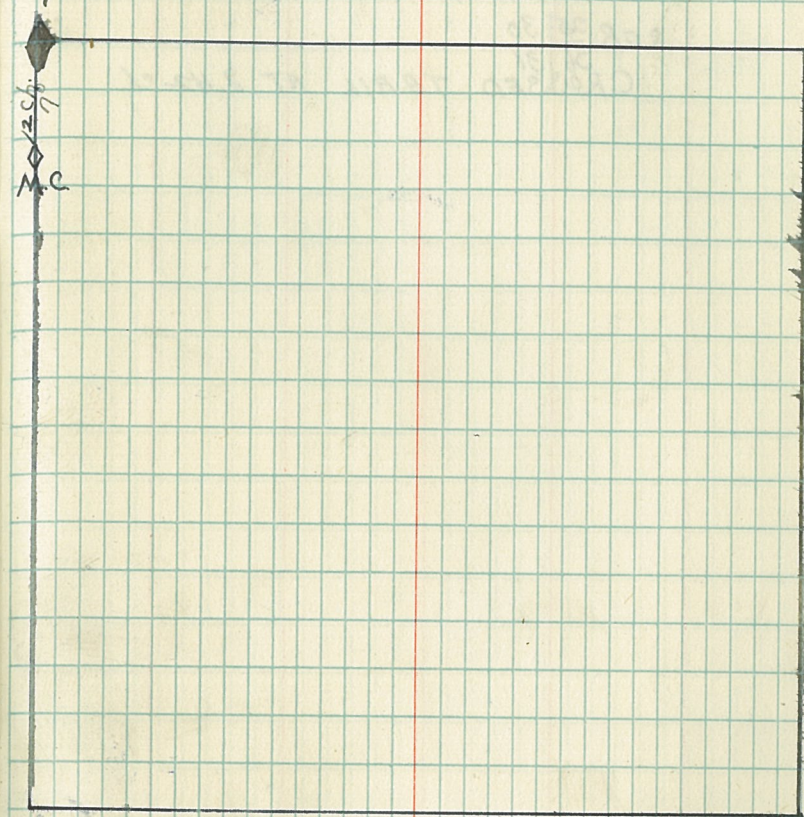
4-12-37

R30 R29
25 30
36 31

STARTED SOUTH FROM E.A.O. SEC. 30.

25 30
36 31LOWER
SUCKER
LAKE

T145N-R29-30W-SEC. 30

25 30
36 31

108

T145N-R29-30W-SEC. 30

APRIL 12, 1937

STARTED NORTH FROM C.R. SEC.

COR. $\frac{25}{36}$ 30

CROSSED TRAIL AT 8.42 CH.

109