

T 143
T 143
T 143

K. M.
MINING
TRANSFERS
1937A

#110

KEUFFEL & ESSER CO.

DRAWING MATERIALS

AND

SURVEYING INSTRUMENTS.

NEW YORK.

CHICAGO. ST. LOUIS. SAN FRANCISCO. MONTREAL.

Tables for Excavations and Embankments.

DISTANCES FROM CENTER OF ROADWAY FOR CROSS-SECTIONING.
ROADWAY 18 FEET WIDE. SIDE SLOPES 1 TO 1.
FOR SINGLE TRACK EXCAVATION.

" Copyright, 1895, by Keuffel & Esser Co."

	0	.1	.2	.3	.4	.5	.6	.7	.8	.9	
0	9.0	9.1	9.2	9.3	9.4	9.5	*9.6	9.7	9.8	9.9	0
1	10.0	10.1	10.2	10.3	10.4	10.5	10.6	10.7	10.8	10.9	1
2	11.0	11.1	11.2	11.3	11.4	11.5	11.6	11.7	11.8	11.9	2
3	12.0	12.1	12.2	12.3	12.4	12.5	12.6	12.7	12.8	12.9	3
4	13.0	13.1	13.2	13.3	13.4	13.5	13.6	13.7	13.8	13.9	4
5	14.0	14.1	14.2	14.3	14.4	14.5	14.6	14.7	14.8	14.9	5
6	15.0	15.1	15.2	15.3	15.4	15.5	15.6	15.7	15.8	15.9	6
7	16.0	16.1	16.2	16.3	16.4	16.5	16.6	16.7	16.8	16.9	7
8	17.0	17.1	17.2	17.3	17.4	17.5	17.6	17.7	17.8	17.9	8
9	18.0	18.1	18.2	18.3	18.4	18.5	18.6	18.7	18.8	18.9	9
10	19.0	19.1	19.2	19.3	19.4	19.5	19.6	19.7	19.8	19.9	10
11	20.0	20.1	20.2	20.3	20.4	20.5	20.6	20.7	20.8	20.9	11
12	21.0	21.1	21.2	21.3	21.4	21.5	21.6	21.7	21.8	21.9	12
13	22.0	22.1	22.2	22.3	22.4	22.5	22.6	22.7	22.8	22.9	13
14	23.0	23.1	23.2	23.3	23.4	23.5	23.6	23.7	23.8	23.9	14
15	24.0	24.1	24.2	24.3	24.4	24.5	24.6	24.7	24.8	24.9	15
16	25.0	25.1	25.2	25.3	25.4	25.5	25.6	25.7	25.8	25.9	16
17	26.0	26.1	26.2	26.3	26.4	26.5	26.6	26.7	26.8	26.9	17
18	27.0	27.1	27.2	27.3	27.4	27.5	27.6	27.7	27.8	27.9	18
19	28.0	28.1	28.2	28.3	28.4	28.5	28.6	28.7	28.8	28.9	19
20	29.0	29.1	29.2	29.3	29.4	29.5	29.6	29.7	29.8	29.9	20
21	30.0	30.1	30.2	30.3	30.4	30.5	30.6	30.7	30.8	30.9	21
22	31.0	31.1	31.2	31.3	31.4	31.5	31.6	31.7	31.8	31.9	22
23	32.0	32.1	32.2	32.3	32.4	32.5	32.6	32.7	32.8	32.9	23
24	33.0	33.1	33.2	33.3	33.4	33.5	33.6	33.7	33.8	33.9	24
25	34.0	34.1	34.2	34.3	34.4	34.5	34.6	34.7	34.8	34.9	25
26	35.0	35.1	35.2	35.3	35.4	35.5	35.6	35.7	35.8	35.9	26
27	36.0	36.1	36.2	36.3	36.4	36.5	36.6	36.7	36.8	36.9	27
28	37.0	37.1	37.2	37.3	37.4	37.5	37.6	37.7	37.8	37.9	28
29	38.0	38.1	38.2	38.3	38.4	38.5	38.6	38.7	38.8	38.9	29
30	39.0	39.1	39.2	39.3	39.4	39.5	39.6	39.7	39.8	39.9	30
31	40.0	40.1	40.2	40.3	40.4	40.5	40.6	40.7	40.8	40.9	31
32	41.0	41.1	41.2	41.3	41.4	41.5	41.6	41.7	41.8	41.9	32
33	42.0	42.1	42.2	42.3	42.4	42.5	42.6	42.7	42.8	42.9	33
34	43.0	43.1	43.2	43.3	43.4	43.5	43.6	43.7	43.8	43.9	34
35	44.0	44.1	44.2	44.3	44.4	44.5	44.6	44.7	44.8	44.9	35
36	45.0	45.1	45.2	45.3	45.4	45.5	45.6	45.7	45.8	45.9	36

Calculated by Julien A. Hall, M. Am. Soc. C. E.

Book No 1. A.

John Murchie

Assistant Leader

Co. 765 C.C.C.

CHARLES GROVES

Assistant Leader

Co. 3714 C.C.C.

JOSEPH F. LAUSCHE

CO. 4708 C.C.C.

K

CHIC

T

DIST.

0
1
2
3
4
5
6
7
8
9
10
11
12
13
14
15
16
17
18
19
20
21
22
23
24
25
26
27
28
29
30
31
32
33
34
35
36

Index

1-3, 5-9	T146N R29W S10
3-5	T146N R29W S7
4-5	T145N R29W S15
9-13	T146N R29W S14
13	T146N R29W S13
14-18	T146N R29W S3
19	T146N R29W S5
20-21	T146N R29W S4
21-28	T145N R29W S30

T146N R29W S10

May 10 1935

(cloudy - cool)

started at the North West section

corner ran East

$\frac{43}{9 \ 10}$

B.T. N47°W 10.5 Links dead snag

T146N R29W SA 6°30' Declination

0-8 Larch sapling

8-14 Birch pole - Balsam sapling

14-18 Brush

18-28 Larch-spruce sapling

Established temporary $\frac{1}{16}$ corner #2

20 chains East of section corner.

28-38 Birch pole Balsam sapling

38-46 Brush

46-54 Larch pole

54-62 Block spruce pole

Established temporary $\frac{1}{16}$ cor #1 60

chains East of section corner

Crossed road 44 chains East of section corner.

60.695 chains East to old $\frac{1}{16}$ corner

checked in 43 Links North of corner.

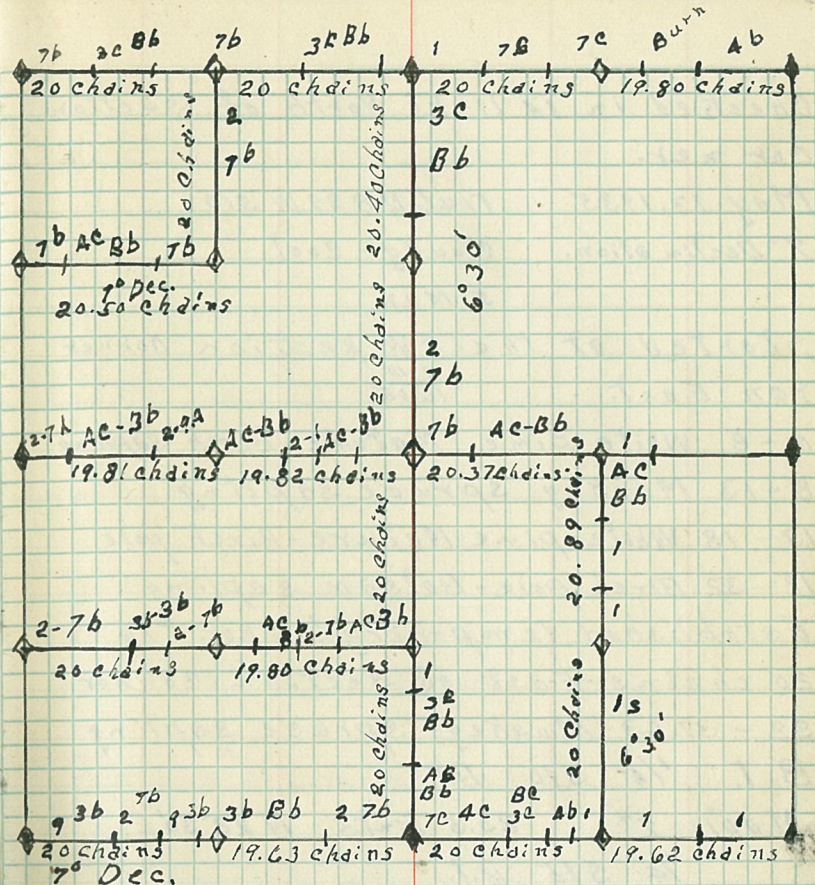
Continued East.

62-66 Burn

66-79.80 cedar sapling

Ran 79.80 chains E to SE section cor.

T146N R29W S10



Checked in 14 links North of section
corner.

May 13, 1935 T146 NB 29 W S10

7° Declination. Cloudy - Cool

5 Men

Started at the SW section corner
ran East. $\frac{210}{1065}$

0-8 White pine Mature - Birch sapling

8-13 Muskeg spruce sapling

13-18 White pine Mature - Birch pole

18-32 Birch pole - Balsam sapling

Established temporary $\frac{1}{4}$ cor. #16

20 chains East of section corner

32-39.63 Muskeg - spruce sapling

B.T. $\frac{1}{4}$ S10 B.T.

Maple 7" 23.5 Links N 22° 30' E

$\frac{1}{4}$ S15 B.T.

Maple 6" 20.2 Links S 12° E.

Checked in 3 Links North of $\frac{1}{4}$

corner. Continued East.

4-8 spruce - cedar pole

8-14 Birch pole - Balsam sapling

Crossed road 10.46 chains East

of $\frac{1}{4}$ corner. put up tag.

14-16 Cedar sapling

16 - 20 Brush

Established temporary $\frac{1}{16}$ corner

15 20 chains East of $\frac{1}{4}$ corner

Continued East.

0 - 10 Brush.

May 14, 1935

T146 N R29 W S 7

Clear - Warm

5 Men

Started at a point 18 chains East
of $\frac{1}{4}$ corner ran East correcting

line. reset $\frac{1}{16}$ # 9 24.25 chains

East of $\frac{1}{4}$ corner

re-set temporary $\frac{1}{4}$ center 20 chains
East of $\frac{1}{16}$ # 9

re-set temporary $\frac{1}{16}$ cor. # 8 20 chains
East of $\frac{1}{4}$ cor. # 7 center

20.288 chains from $\frac{1}{16}$ # 8 to $\frac{1}{4}$ cor

T146 N R29 W S 19

Started at $\frac{1}{4}$ cor ran East reset

line North set $\frac{1}{16}$ # 9 39.5 links

North. reset center 79 links North

reset $\frac{1}{16}$ cor. # 8 1.185 chains North

May 5, 1935

T145N R29W S15

cloudy - cool

5 Men

Started at a point 14 chains
East of center of S 16 continued
East.

14-20 Brush

Established temporary $\frac{1}{16}$ cor. # 8.20
chains East of center.

Ran North from $\frac{1}{16}$ # 8. 7° Dec.

0-4 Brush

4-20 Brush & pine seedlings

Established temporary $\frac{1}{16}$ cor # 6
20 chains North of $\frac{1}{16}$ # 8

Crossed trail 5.59 chains North
of $\frac{1}{16}$ cor. # 8

Started at $\frac{1}{16}$ cor. # 6 ran East.

0-7 Brush

7-12 Brush & pine seedling

12-23.51 Brush

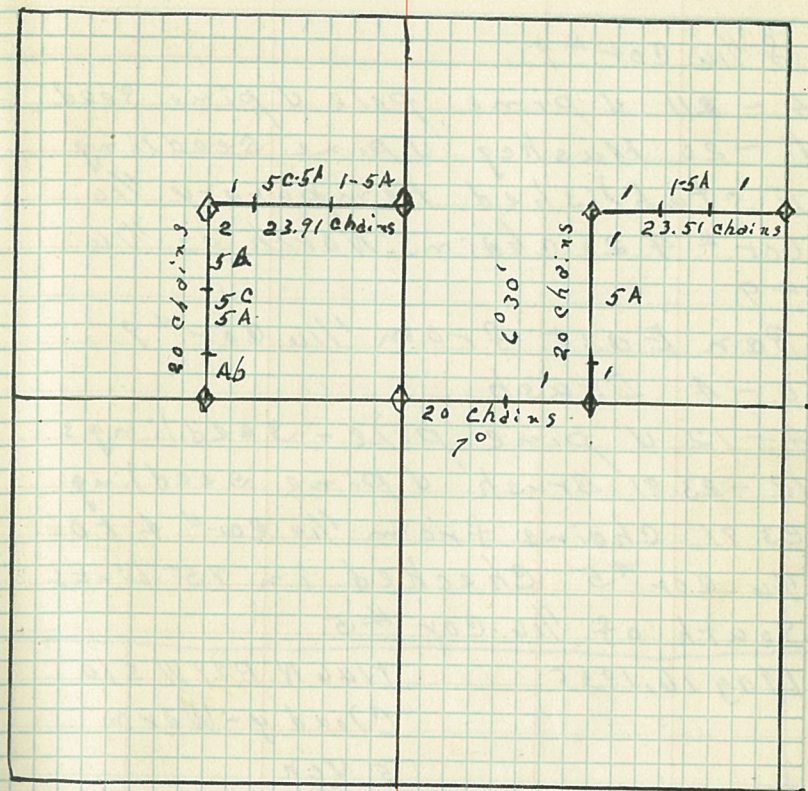
23.51 chains from $\frac{1}{16}$ cor # 6 to $\frac{1}{16}$
cor # 7 Checked in 3.88 chains
south of $\frac{1}{16}$ cor # 7.

Started at $\frac{1}{16}$ cor # 9 ran North

0-4 Aspen sapling

Crossed trail 4.43 chains North

T145N R29W S15



of $\frac{1}{16}$ cor #9

4 - 211 up pine pole & pine seed.

11 - 20 Muskeg up pine seedling

Established temporary $\frac{1}{16}$
cor # 4 20 chains North of $\frac{1}{16}$
#9.

Ran East from $\frac{1}{16}$ cor #9

0 - 4 Brush

4 - 12 up pine pole - seedlings

12 - 23.91 Brush & pine seedling

23.91 chains from $\frac{1}{16}$ cor # 4 to
 $\frac{1}{16}$ cor #5 checked in 15 Links
South of $\frac{1}{16}$ cor #5.

May 16, 1935

T146 N R39 W S10

Cloudy - Warm

5 Men

Started at a point 30 chains
East of $\frac{1}{4}$ corner, continued
East.

30 - 39.62 Brush

39.62 chains from $\frac{1}{4}$ cor. to S.E.
section corner. checked in 24
Links North of corner

Started at $\frac{1}{4}$ corner ran North

0 - 6 Aspen pole - Balsam sapling

6-15 Brush Birch pole-Balsam sap.

15-20 Alder

Established temporary $\frac{1}{16}$ cor # 12 20
chains North of $\frac{1}{4}$ cor.

20-64 Muskeg-spruce-Larch sap.

Established temporary center of
S 10 40 chains North of $\frac{1}{4}$ cor.

Established temporary $\frac{1}{16}$ cor.

#5 60 chains North of $\frac{1}{4}$ cor.

64-80. 405 Birch pole-Balsam sap.

80:405 Chains North to $\frac{1}{4}$ cor.

Checked in 8.2 links West of
corner.

B.t. $\frac{1}{4}$ S3 B.t.

Larch 7" 88 Links N 57° E

$\frac{1}{4}$ S10 B.t.

Birch 5" 35 Links S 51° W

May 17, 1935 T 146 N R 29 W S 10

7° Declination Clear - Warm

5 Men

Started at $\frac{1}{4}$ corner # ran East.

0-4 Muskeg-spruce seed ^{2/10}

4-14 Aspen pole-Balsam sap.

14-20 Muskeg-W pine sapling

Established temporary $\frac{1}{16}$ cor. # 29

19.81 chains East of $\frac{1}{4}$ corner.

20-27 Aspen pole, Balsam sapling

27-30 Muskeg - Brush

30-34 Aspen pole - Balsam sapling

34-46 Spruce sapling - Larch sapling

Established temporary center of S 10

39.63 chains East of $\frac{1}{4}$ corner.

Checked in 43 links North of corner.

46-60 Aspen pole Balsam sapling

Birch pole.

51.78 chains East to the road.

Established temporary $\frac{1}{16}$ cor # 8 60

chains East of $\frac{1}{4}$ corner.

60-66 Brush.

May, 20, 1935

T146N R29W S10

Clear - Warm

5 Men

Started at $\frac{1}{16}$ #16 ran East.

0-11 Muskeg - Larch - spruce sapling

11-15 Birch pole - Balsam sapling

15-20 Muskeg - Larch - spruce sapling

Established temporary $\frac{1}{16}$ #10 20 chains

East of $\frac{1}{16}$ cor #10

0-3 Muskeg - Larch - spruce sapling

3-6 Aspen pole - Balsam sapling

6-13 Muskeg-Larch - Spruce sapling
 13-19.80 Aspen pole - Balsam sapling
 19.80 chains East to $\frac{1}{16}$ cor #12
 Checked in 2 links North of corner.
 Started at $\frac{1}{16}$ cor #15 ran North
 6°30' Declination

0-20 Swamp Brush
 Established temporary $\frac{1}{16}$ cor #13 20
 chains North of $\frac{1}{16}$ cor #15

10-6 Brush.

May 21, 1935 T 146 N, 1399 W S 10
 Best Warm
 5 Men

Started at a point 6 chains North
 of $\frac{1}{16}$ cor #13 continued North

6-16 Brush

16-20.89 Aspen pole - Balsam sapling
 20.89 chains North from $\frac{1}{16}$ #13 to
 $\frac{1}{16}$ cor #8 checked in 35 links
 West of corner.

Started at $\frac{1}{16}$ cor #2 ran south

0-20 Muskeg-Larch - Spruce sapling
 Established temporary $\frac{1}{16}$ cor #4 20
 chains south of $\frac{1}{16}$ cor #2
 Ran West from $\frac{1}{16}$ #4 7° Declination

0-6 Larch spruce sapling
 6-17 Aspen pole-Balsam sapling
 17-20.50 Muskeg-larch-spruce sapling
 20.50 chains from $\frac{1}{4}$ cor. # 4 West
 to $\frac{1}{4}$ # 3. checked in 70 links
 North of $\frac{1}{4}$ # 3.

May 22, 1935 T146NR29WS14
 7° Declination Clear-Cool
 5 Men

Started at the North West Section
 corner ran south $\frac{1011}{1514}$

off-set line 74.5 links West.

5-17 Brush

17-20 Aspen Mature ced at sapling

Established temporary $\frac{1}{4}$ # 3, 20
 chains south of section corner

20-26 Aspen Mature - cedar sapling

20.56 chains south to trail

26-49 Brush

39.85 chains south to $\frac{1}{4}$ Corner

checked in 74.5 Links East of cor.

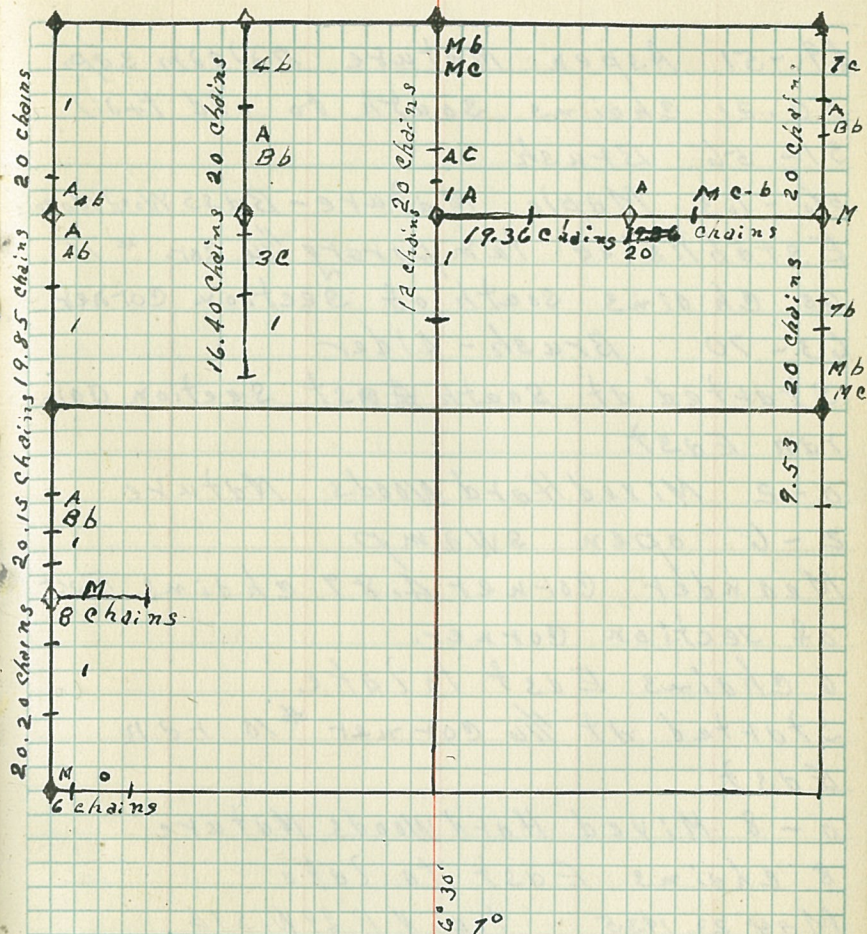
B.t. snag 4" $\frac{1}{4}$ S14 B.t.

91 links S41°E

B.t. $\frac{1}{4}$ S15 B.t.

68 Links N15°W snag 7"

T146NR29WS14



49-51 Aspen Mature Balsam sap.

50.21 chains south to old trail

51-56 Brush

56-63 Maple Mature - Bass Wood Mature

Established temporary $\frac{1}{4}$ cor. # 10

66 chains south of section corner

63-70 Brush - Alder

Started at south ~~west~~ section corner East.

0-2 Mixed Hard Woods Mature

2-6 open swamp

Meander corner 4.89 chains East of section corner.

6 chains East to lake.

Started at $\frac{1}{4}$ corner # 10 ran East.

0-8 Mixed Hard Woods Mature

8 chains East to lake

May 23, 1935 T14N R29W S14

Clear - Hot

5 Men

Started at a point 70 chains south of the section corner.

70-76 Brush

76-80 Mixed Hard Woods Mature

80.20 chains south to section
corner. Checked in 1.385 chains
East of section corner

Started at ~~a point~~ $\frac{1}{16}$ corner #2
ran south

0-8 Cedar sapling

8-22 Aspen Mature Balsam sapling

8.15 chains south to trail

Established temporary $\frac{1}{16}$ #4

20 chains south of $\frac{1}{16}$ #2

2-9 Birch pole

9-16.40 Brush

16.40 chains south from $\frac{1}{16}$ #4
to lake.

May 24, 1935

T146N R29W S14

Cedar-Hot

5 Men

Started at the North East section
Section corner $\frac{1}{16}$ ran south.

0-6 Larch pole

6-10 Aspen Mature Balsam sapling

10-28 Mixed Hardwoods Mature

Established temporary $\frac{1}{16}$ #7

20 chains south of section corner

28-30 Larch sapling

30 - ~~40~~⁴⁹ Mixed Hard Woods - pole - sapling

46 chains south to $\frac{1}{4}$ cor net.

Checked in 16 links West of cor.

$\frac{1}{4}$ 313 B.t. 14" Maple

N 88° E 19 links

$\frac{1}{4}$ 314 B.t. 15" Maple

S 57° W 55 links

48.16 chains south to Meindat

corner 15 links East of line

T 146 N R 29 W S 14 M.C. B.t. Maple 8"

N 12° W 1.27 chains

T 146 N R 29 W S 13 M.C. B.t. Maple 8"

N 52° E 1.16 chains

49.53 chains south to lake

Started at temporary $\frac{1}{4}$ #7 ran West.

0-20 Mixed Hard Woods Mature

Established temporary $\frac{1}{4}$ #6 20 chs West of $\frac{1}{4}$ #7

0-10 Mixed Hard Woods Mature

8.33 chains West to trail.

May 27, 1935 T 146 N R 29 W S 14

Clear - Cool

5 men

Started at $\frac{1}{4}$ corner ran south $\frac{1}{4}$

0-14 Mixed Hardwoods - pole sapling
 13 chains south to trail
 14-16 Aspen - Birch pole
 16-18 Aspen Mature - Maple sapling
 18-20 Willow

Established temporary $\frac{1}{16}$ cor #5
 20 chains south of $\frac{1}{4}$ corner
 0-12 Willow

crossed trail 10.24 chains south
 of $\frac{1}{16}$ #5

Started at a point 10 chains
 West of $\frac{1}{16}$ cor. #6

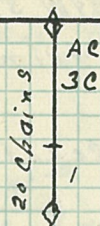
10-14 Mixed - Hardwoods - pole sap.
 14-19.36 Aspen Mature - Balsam sap.
 19.36 chains West to $\frac{1}{16}$ cor. #5
 checked in 1.14 chains south of
 $\frac{1}{16}$ #5

T 146 N R 29 W S 13

Started at $\frac{1}{16}$ #2 ran south

0-14 Aspen - Birch pole
 14-20 Willow

Established temporary $\frac{1}{16}$ #4 20
 chains south of $\frac{1}{16}$ cor #2



June 3, 1935

T146 NR29W S3

Cloudy - rain

5 Men

Started at south west section

Corner $\frac{43}{910}$ ran North

0-6 Larch sapling

6-28 Aspen - Birch pole - Balsam sap

Established temporary $\frac{1}{4}$ cor #10

20 chains North of section cor.

28-41 Aspen pole

38.74 chains North to $\frac{1}{4}$ cor.Checked in 12.5 links West of
 $\frac{1}{4}$ corner. $\frac{1}{4}$ SA B.t. Birch 4"N 71° W 38 Links $\frac{1}{4}$ S3 B.t. Aspen 8"N 91° E 41 Links

41-46 Alder

46-48 Birch pole

48-60 Larch sapling

Established temporary $\frac{1}{4}$ cor

#3 58.11 chains North of section

Corner.

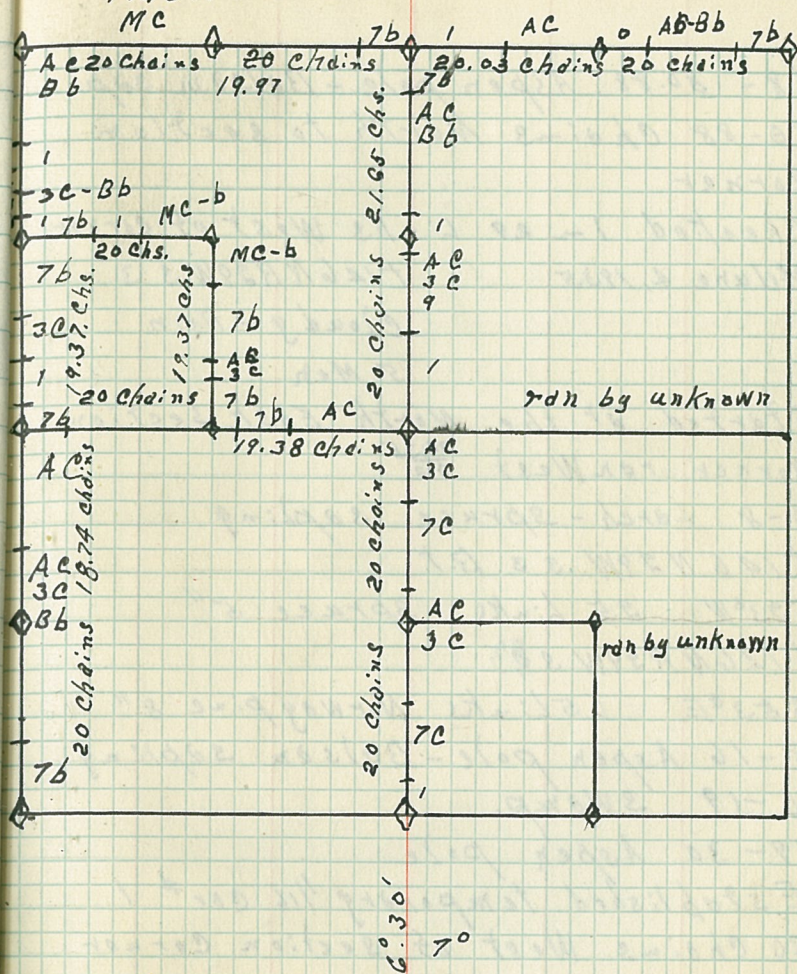
60-62 Alder

62-64 Birch pole - Balsam sapling

64-68 Alder

T146 NR29W S3

MC



68-80.88 Aspen pole - Balsam sap.

80-88 Chains North to section
corner

Checked in 29 links West of corner

June 4, 1935 T146NR29W S3

cloudy - Rain

5 Men

Started at the North East section
corner ran West $\frac{34.35}{3\frac{1}{2}}$

0-8 Larch - spruce sapling

T146NR29W S3 B.T.

S23°W 25 links spruce 5"

T146NR29W S2

S53°E 65 links Norway pine 8"

8-16 Aspen pole - Balsam sapling

16-19 Swamp.

19-30 Aspen pole

Established temporary 1/16 cor # 1

20 Chains West of section corner

30-40 Brush

40.03 chains West to 1/4 cor.

checked in 2.5 links south of 1/4 cor.

1/4 S3 BT 54 links

S39°W spruce 4"

1/4 S34 B.T. 63.5 links

N73°W spruce 4"

Off-set line 73 links south ran
West on G10 line

40 - 44 Black spruce

44 - 80 Mixed Hardwoods Hole

Established temporary $\frac{1}{16}$ cor.

#2 60 chains West of section cor.

80 chains West to section corner

Checked in 67 links North of

section corner,

T 147 N R 29 W S 33 B.T. Aspen 10"

55 links N 22° W

T 146 N R 29 W S 4 B.T. Elm 5"

42 links S 41° W

T 146 N R 29 W S 3 B.T. Maple 10"

42.7 links

T 147 N R 29 W S 34 B.T. Aspen 6"

24.2 links N 55° E

June 5, 1935 T 146 N R 29 W S 3

6° 30' Dec. cloudy - cool

5 Men

Started at $\frac{1}{16}$ corner ran North $\frac{3}{10}$

0 - 4 Alder

4 - 12 Larch pole

12 - 24 Aspen - Birch pole

Established temporary $\frac{1}{16}$ cor. #12

20 chains North of $\frac{1}{4}$ corner
 24 - 36 Latch pole
 36 - 40 Aspen - Birch pole
 Established temporary center
 corner of section 3 40 chains North
 of $\frac{1}{4}$ corner
 40 - 46 Latch pole
 46 - 50 Alder
 50 - 52 Aspen - Birch pole
 52 - 57 Aspen - Birch pole - W pine Mat.
 57 - 61 Alder
 Established temporary $\frac{1}{4}$ # 5
 60 chains North of $\frac{1}{4}$ cor.
 61 - 63 Aspen - Birch pole - W pine Mat.
 63 - 75 Aspen pole - Balsam sapling
 75 - 81.65 Latch - spruce sapling
 81.65 chains North to $\frac{1}{4}$ cor.
 Checked in 95 links West of
 $\frac{1}{4}$ corner
 June 6, 1935 T146N R29W S3
 7° Dec. Cloudy - Cool
 5 Men
 Started at $\frac{1}{4}$ corner ran East,
 0 - 6 Alder - Latch sapling
 6 - 8 Aspen pole

8-22 Latch sapling
 Established temporary $\frac{1}{16}$ #9
 20 chains ~~west~~ East of $\frac{1}{4}$ corner
 Reset temporary $\frac{1}{16}$ #3 to a
 point 57.38 chains North of section
 corner. ran East.

0-8 Latch sapling

8-14 Alder

14-20 Mixed Hard Woods pole as sap.
 Established temporary $\frac{1}{16}$ cor.
 #4 20 chains East of $\frac{1}{16}$ cor.
 #3, from $\frac{1}{16}$ cor #4 ran south

0-6 Mixed Hard Woods pole as sap.

6-14 Latch sapling.

14-16 Aspen-Birch pole

16-18.57 Latch sapling

18.57 chains south to $\frac{1}{16}$ cor.
 #9 checked in 27.5 links
 East of $\frac{1}{16}$ cor #9.

Started at a point 22 chains
 East of $\frac{1}{4}$ corner. ran East.

22-38 Latch sap

38-40 Aspen pole.

39.40 chains E to $\frac{1}{4}$ line

June 7, 1935

6° 30' Dec.

T14GN R29WS5

East - 000)

5th Meh

Started at 1/4 corner ran North

0-9 Aspen-Birch pole

9-27 Larch spruce sapling

Established temporary 1/16 cor.

#12 - 20 chains North of 1/4 corner.

27-32 Aspen pole-Birch sapling

32-42 Brush

Established temporary center of Section 5 40 chains North of 1/4 corner

42-58 Brush-Larch sapling

Established temporary 1/16 cor.

#5 60 chains North of 1/4 cor.

58-74 Aspen pole-Balsam sap.

74-82.87 Larch sapling

82.89 chains North to 1/4 corner.

Checked in 1.43 Links East of corner

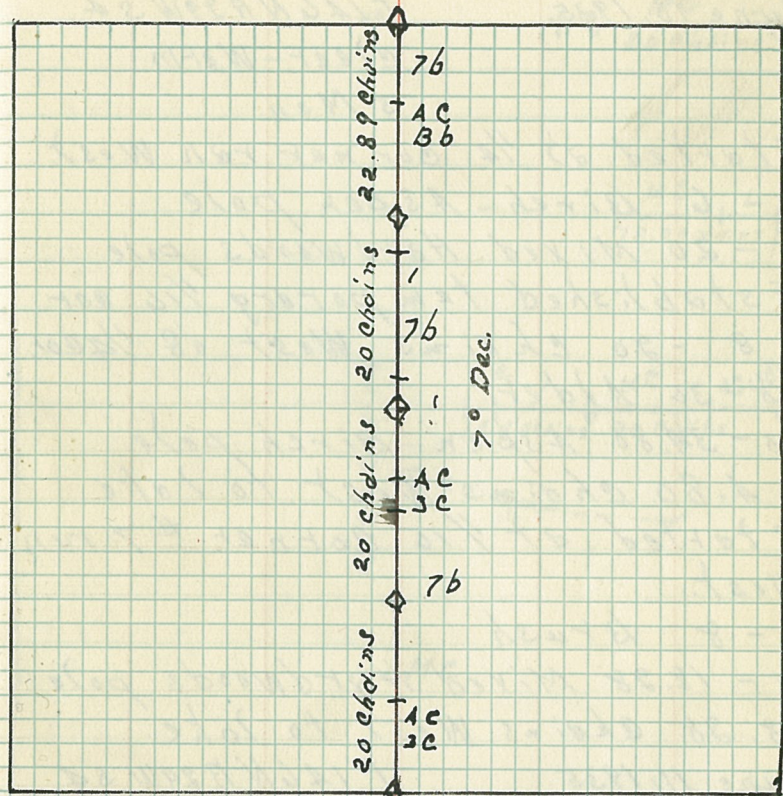
1/4 S 5 B.t. Larch 3"

35 links S 11° W

1/4 S 32 B.t. Larch 3"

28 links N 65° E

T14GN R29WS5



20

June 10, 1935.

T146NR29WS4

cleat - Warm

5 Men

Started at $\frac{1}{4}$ corner ran West.

0 - 6 Birch - Aspen pole

6 - 20 Mixed Hardwoods pole

Established temporary $\frac{1}{16}$ cor# 8 - 90 chains West of $\frac{1}{4}$ cor.

20 - 30 Alder

30 - 34.80 Aspen - Birch pole

34.80 chains West to lake

Started at $\frac{1}{16}$ corner # 7 run West.

0 - 8 Brush

8 - 18.28 Mixed Hardwoods pole

18.28 chains West to lake

June 11, 1935

T146NB29WS4

cleat - Warm

5 Men

Started at $\frac{1}{4}$ corner ran North $\frac{4}{9}$ $\frac{1}{4}$ S4 B.T. Birch 5"

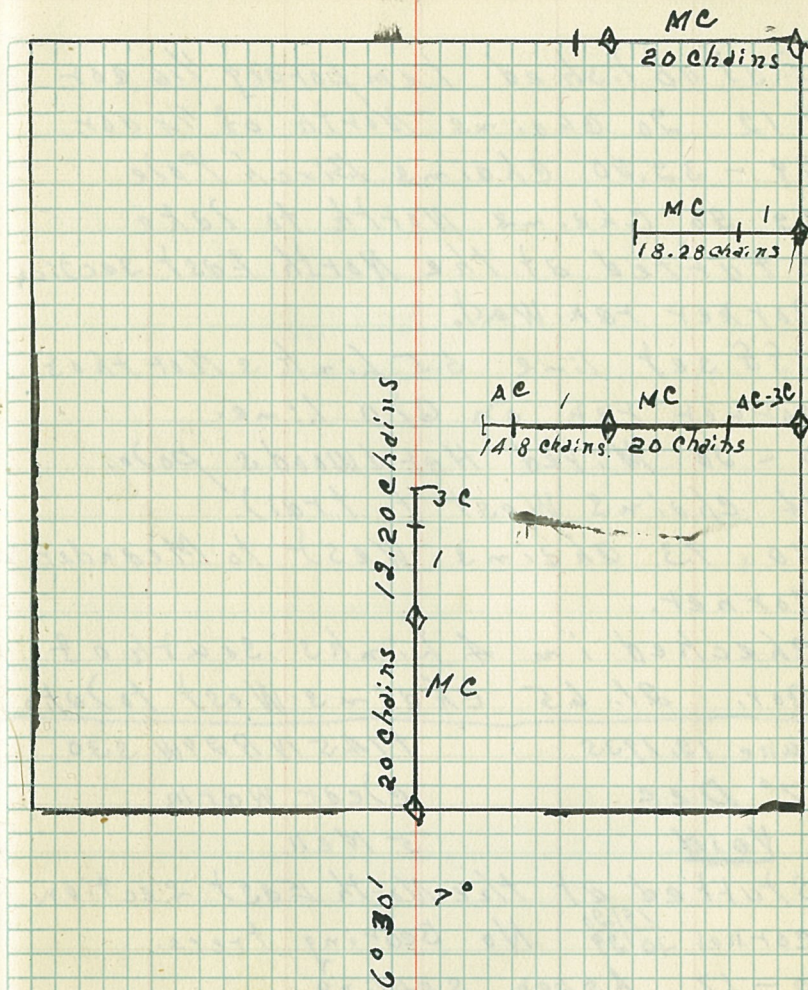
N 25° E 17.5 Links

 $\frac{1}{4}$ S9 B.T. Maple 4"

S 40° W 10.5 Links

0 - 20 Mixed Hardwoods pole

20 - 29 Alder



Established temporary $\frac{1}{16}$ cor.
 #12 20 chains North of $\frac{1}{4}$ cor.
 29 - 32.80 chains Birch pole
 32.20 chains North to lake
 Started at the North East section
 corner ran West.
 Off set line 55 links North of
 corner, ran on Q20 Line.
 0 - 20 Mixed Hard Woods pole.
 14 chains West to trail.
 20.93 chains West to Meander
 corner.

Checked in 4 links south of
 cot. 21.65 chains West to lake

June 12, 1935

T145 NB 29 W S30

7^o Dec

Clear Warm

Void

5 Well

Started at the North East section
 corner ^{19/20} 30/39 No Bearing trees.

0 - 17 Aspen sapling

14.39 chains West to road

17 - 20 W pine Matate

Established temporary $\frac{1}{16}$ #1 20
 chains West of section corner.

20 - 24 Brush

24-28 Brush - Aspen sapling
 28-32 Brush Aspen sapling - Cedar sap.
 32-41 Cedar sapling
 Established temporary 1/4 cor.
 40 chains West of section cor.
 41-52 Spruce sapling - Brush.
 52-56 Aspen Mature - Balsam sapling
 56-65 Aspen pole.
 Established temporary 1/16 cor.
 #2 60 chains West of section
 corner.
 65-72 Aspen sapling - Birch. / Pine pole
 72-77.90 ch. / Pine sapling.
 77.90 chains W section cor.
 Checked in 3.46 chains North
 of corner.

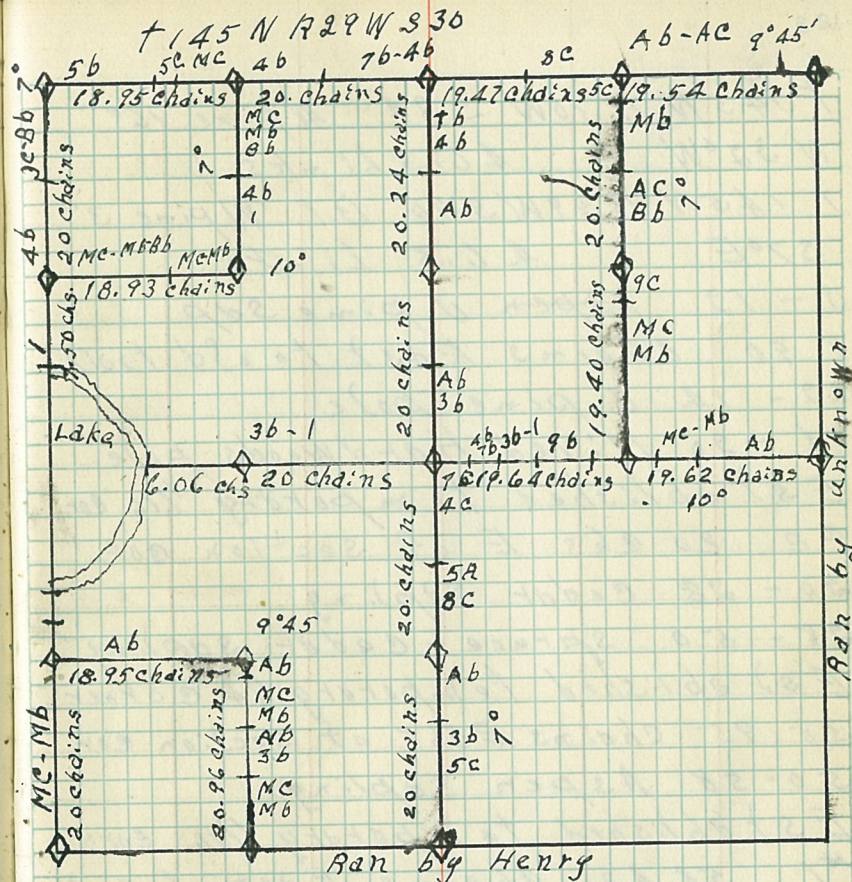
Resurvey

June 13, 1935 T 145 N 1399 W S 30.
 9° 45' Dec. Cloudy & in
 5 Men

Started at the North West
 section corner. ran East.

B.T. T 145 N 1399 W S 19 N Pine 18"
 N 31° E 7.6 Lts.

T 145 N 130 W S 15 N Pine 16"
 S 89° N 91 Lts



T 145N 1330W S 24 Alpine 16"

N 32°W 46.5 links

T 145N 1329W S 30 B.T. W pine 3"

S 70°E 46.5 Links

0 - 12 Aspen & pine sap

9.90 chains East to old trail

12 - 14 & pine pole

14 - 20 Mixed Hardwoods pole.

Established temporary 1/16 cor.

#2 20 chs E of section cor.

20 - 28 Cedar sapling

28 - 50 spruce - cedar sapling

Established temporary 1/4 corner

38.95 chains East of section cor.

50 - 58 Aspen sapling

Established temporary 1/16 corner

#1 58.42 chains East of section

corner.

58 - 60 N pine pole

60 - 77.96 Aspen pole - sapling

62 chains East to road

77.96 chains East to corner.

checked in 68.5 links south
of corner

24

June 14, 1935

T 145 N 132 W S 30

7° 15'

5 Men

Started at the North West section
corner ran south. ^{24/19}
~~25/30~~

0-10 Birch pole Balsam sapling

10-20 ceddt sapling

Established temporary $\frac{1}{4}$ cor # 3

20 chains south of section cor.

20-27.50 Alder.

20.45 south to old $\frac{1}{4}$ cor. # 3

5 links East of corner.

27.50 chains south to Meander

corner. Checked in 20 links East.

~~to corner~~ to corner

~~27~~ chains south to lake.

²⁸
Started at the S. West section corner
ran North ^{25/30}
~~26/31~~

0-24 Mixed Hardwoods-pole-sapling

crossed trail 5.78 chains North of
section corner.

Established temporary $\frac{1}{4}$ # 10 20 chains
North of section.

June 17, 1935

T145N R29W S30

Cloudy - Warm.

5 Men

Started at a point 24 chains North of
section corner.

26 chains North to Meander corner
checked in 55 links West of corner
9° 45' Declination.

Started at $\frac{1}{16}$ corner #10 ran East.

0 - 18.95 Aspen sapling

18.95 chains East to $\frac{1}{16}$ cor. #11

7° Declination

started at $\frac{1}{16}$ cor #11 ran south.

0 - 2 Aspen sapling

2 - 6 Mixed Hard Woods - pole - sapling

6 - 14 Aspen - Birch sapling

14 - 20.96 Mixed Hard Woods - pole - sapling

20.96 chains south to $\frac{1}{16}$ corner #16

checked in 1.07 chains West of corner

started at $\frac{1}{4}$ corner ran North.

0 - 14 Birch sapling - d pine pole

14 - 20 Aspen sapling

Established temporary $\frac{1}{16}$ cor #12

20 chains North of $\frac{1}{4}$ corner.

20 - 28 d pine seedling - N pine pole

28 - 40 spruce - cedar pole

Established temporary center corner
40 chains North of $\frac{1}{4}$ corner.

40-48 Aspen-Birch sapling

June 18, 1935 T145N R29W S30

7° Dec. Cloudy - Cool

5 Men.

Started at a point 48 chains North
of $\frac{1}{4}$ corner ran North

48-70 Aspen sapling

Established temporary $\frac{1}{16}$ corner
#5 60 chains North of $\frac{1}{4}$ corner.

70-80.24 Larch-Cedar sapling

80.24 chains North to $\frac{1}{4}$ corner.

Checked in 55 links West of corner

Reset $\frac{1}{16}$ cor #2 to a point 18.95
chains East of section corner.

thence south.

0-10 Mixed Hardwood pole - Balsam spr.

10-20 Cedar sapling - Brush

Established temporary $\frac{1}{16}$ corner.

#4 20 chains South of $\frac{1}{16}$ cor #2
ran West.

Void 0-3 Aspen pole - Balsam sapling

3-10 Aspen-Birch sap.

10-18.98 Mixed Hardwood pole
Balsam sapling

18.98 chains West to $\frac{1}{16}$ #3
 Checked in 1.85 chains North
 of $\frac{1}{16}$ #3.

June 19, 1935 T145 N R29 W S30
 7° Dec. " Cloudy - Cool
 5 Men

Started at $\frac{1}{16}$ cor. #1 ran south.

0-2 W pine pole
 2-8 Mixed Hard Woods sapling
 Crossed road 6.61 chains south
 of $\frac{1}{16}$ cor. #1.

8-20 Aspen pole Balsam sapling
 Established temporary $\frac{1}{16}$ cor. #6
 20 chains south of $\frac{1}{16}$ #1

0-4 W pine pole
 4-19.40 Mixed Hard Woods - pole - sapling
 Checked in 7 links West of cor.
 10° Declination.

Started at $\frac{1}{4}$ corner ran West.
 0-13 Aspen sapling
 13-16 Mixed Hard Woods - pole - sapling
 16-18 Mixed Hard Woods pole - sap W pine pole
 Established temporary $\frac{1}{16}$ cor. #8
 19.62 chains West of $\frac{1}{4}$ cor.

25.14 chains West to road
 18-25 Mixed Hard Woods pole - sap
 25-28 W pine pole.

June 20, 1935

T145 N R29W S30

Cledt-Warm

5 Meli

Started at a point 28 chains West
of $\frac{1}{4}$ corner.

28 - 32 Birch sapling Brush

32 - 34 cedar-spruce sapling

34 - 65.28 Birch sapling Brush.

Established temporary center cor

39.26 chains West of $\frac{1}{4}$ corner.Crossed line 39.31 chains West of
 $\frac{1}{4}$ corner.Established temporary $\frac{1}{16}$ #959.26 chains West of $\frac{1}{4}$ cor.65.28 chains West of $\frac{1}{4}$ to lake.

9° 45' Resurvey

Started at $\frac{1}{16}$ cor. #4 ran West.

0 - 8 Mixed Hardwoods pole-sap.

8 - 18.93 Mixed Hardwoods pole-sap Bb

18.93 chains West to $\frac{1}{16}$ cor. #3

Checked in 25 links south of cor.

29

JULY 9 1935 T. 144 N. R. 29 W.

YELLOW POSTER. CLOUDY WARM
SOUTH 34° E. 15 LINKS b LAM. 7"

STARTED AT SECTION CORNER

5/4 RND TAN EAST

819

0-8 ASPEN POLE

8 CHS. EAST CROSSED OTTER-TAIL ROAD

8-20 ASPEN POLE

AT 20 CHS. EAST OF SECTION CORNER SET
1/6 CORNER #2. #16.

20-40 ASPEN POLE

ESTABLISHED TEMPORARY 1/4 CORNER 40 CHS.
EAST OF SECTION CORNER

40-50 ASPEN POLE

JULY 11 1935 T144 N.R. 29 W.

WARM CREEK

STARTED AT A POINT 50 CHS. EAST OF SECTION
CORNER.

50-56 ASPEN POLE

56-59 MIXED HARDWOOD

CROSSED TRAIL AT 57.18 LINKS EAST OF SECTION
CORNER

59-60 ASPEN SAPLING

ESTABLISHED TEMPORARY $\frac{1}{16}$ CORNER #15th

60-63 MIXED HARDWOOD.

63-66 ASPEN POLE

66-69 BIRCH SAPLING

~~69-76 ASPEN~~

69-76 ASPEN SAPLING

76-77 BIRCH POLE

77-80 BRUSH SWAMP

JULY 12 1935 T 144 N. R. 29 W.

WARM CLEAR.

STARTING AT SECTION CORNER $\frac{514}{819}$
AND RUNNING NORTH TO THE NORTH.

WEST SECTION CORNER OF 4 AT 6³⁰
DECLINATION

0-17. ASPEN. SAPLING.

17-19. brush

19-20. ASPEN. SAPLING.

AT 20 CHAINS NORTH OF SECTION CORNER.

SET $\frac{1}{16}$ CORNER # 10. # 14.

20-32. ASPEN. SAPLING

32-34. Mixed. poles.

34-40. ASPEN. SAPLING

AT 40 CHAINS NORTH OF SECTION CORNER

SET $\frac{1}{4}$ CORNER TEMPORARY.

JULY 13. 1935. T 144. N. R. 29 W.

WARM CLEAR

STARTING AT $\frac{1}{4}$ SECTION CORNER
AND CONT NORTH.

40-46. ASPEN. SAPLING

46-50. ASPEN AND PINE POLE.

50-59 ASPEN. POLE.

59-60 ASPEN. SAPLING

AT 60. CHAINS SET $\frac{1}{4}$ CORNER #3 #7.

60-66 ASPEN. SAPLING

66-70 ASPEN. POLE.

70-78.50 ASPEN. SAPLING

Checked in ~~AT 78.5 LINKS~~ SECTION. LINE
78.50 LINKS SOUTH OF SECTION CORNER.

$\frac{514}{819}$

JULY 15 1935 T 144 N. R. 29 W.

WARM CLEAR.

STARTING AT SECTION CORNER.

413 YEL. POSTER. NORTH 76 EAST
ON ASPEN STAKE 3" AND 22.3 LINKS FROM
SECTION CORNER

B. T. S. 13 W. T. 144 N. R. 29 W. SEC. 4. 38 LINK
FROM CORNER. NORWAY 18"

B. T. S. 10 E. T. 144 N. R. 29 W. SEC. 3. 11.5 LINK
FROM CORNER. ON NORWAY 17"

0-8 ASPEN-BIRCH SAPLING

8-22 ASPEN-PINE POLE

AT 20 CHAINS ^{SOUTH} NORTH OF SEC. COR. SET $\frac{1}{2}$ COR
#7#3

22-26 MIXED SAPLING

26-28 MIXED POLE

28-40 MIXED HARD WOOD MURCHABLE

AT 40 CHAINS SOUTH OF SEC. COR. SET $\frac{1}{4}$ COR.

40-60 MIXED HARD WOOD MURCHABLE

JULY 16 1935 T 144 N. R 29 W.

HOT CLEAR.

STARTING AT SECTION CORNER. RUNNING
EAST ON SECTION LINE

~~0-20 ASPEN~~

0-20 ASPEN SAPLING

AT 20 CHAINS EAST OF SECTION CORNER.
SET $\frac{1}{16}$ COR. #2 TEMPORARY.

20-22 ASPEN SAPLING

CROSSED OTTER-TAIL ROAD AT 22.56 LINKS
EAST OF SECTION CORNER.

22-40 ASPEN SAPLING

AT 40 CHAINS E. OF SEC. COR. SET $\frac{1}{4}$ COR
TEMPORARY

40-60 ASPEN SAPLING

AT 60 CHAINS E. OF SEC. COR. SET $\frac{1}{16}$ COR. #1

60-81.59 MIXED HARDWOOD

SAPLING MISSED SEC. COR. 91.5 LINKS

SOUTH

CHECKED IN 91.5 LINKS SOUTH OF SEC.

COR. #

#10 #14

STARTING AT $\frac{1}{16}$ TEMPORARY TUNING
SOUTH TO SECTION CORNER.

60-76 MIXED HARDWOOD

CROSSED ROAD #456 AT 76 CHAINS

76-80 Mixed HARDWOOD pole.
 ENTER SECTION LINE AT 49 LINKS EAST
 OF SECTION CORNER.
 STARTING AT APP $\frac{1}{4}$ COR. RUNNING NORTH
 0-6 Mixed HARDWOOD pole

July 17, 1935

T. 144 N. R. 99 W.

Cloudy cool

STARTING AT A POINT 6 CHAINS
 NORTH OF $\frac{1}{4}$ SECTION CORNER.
 AND RUNNING NORTH CROSSED ROAD
 # 456. 6 CHAINS NORTH OF $\frac{1}{4}$ CORNER
 6-20 Mixed HARDWOOD pole
 AT 20 CHAINS NORTH OF $\frac{1}{4}$ CORNER.
 SET $\frac{1}{2}$ CORNER # 12.
 20-24 Mixed HARDWOOD pole
 24-26 ASPEN pole
 26-30 Mixed HARDWOOD pole
 30-40 Mixed HARDWOOD sap.
 AT 40 CHAINS NORTH OF $\frac{1}{4}$ CORNER
 SET $\frac{1}{2}$ CENTER CORNER AND CONT.
 NORTH. 40-50 Mixed HARDWOOD pole
 50-60 Mixed HARDWOOD MURCHABLE
 AT 60 CHAINS NORTH OF $\frac{1}{4}$ C.C. SET $\frac{1}{8}$ # 5
 60-66 Mixed HARDWOOD MURCHABLE
 66-70 brush. (over)

70-76 ASPEN SAPLING
 ENTER. SECTION LINE 76.26.8 LINKS
 MISSED APP. $\frac{1}{4}$ CORNER 1.76 LINK E.

JULY 18 1935
 CLOUDY COOL.

STARTING A $\frac{1}{4}$ COY. WEST AND
 RUNNING EAST.

0-4 ASPEN SAPLING
 4-14 MIXED HARDWOOD MURCH
 14-20 PINE MURCHABLE.

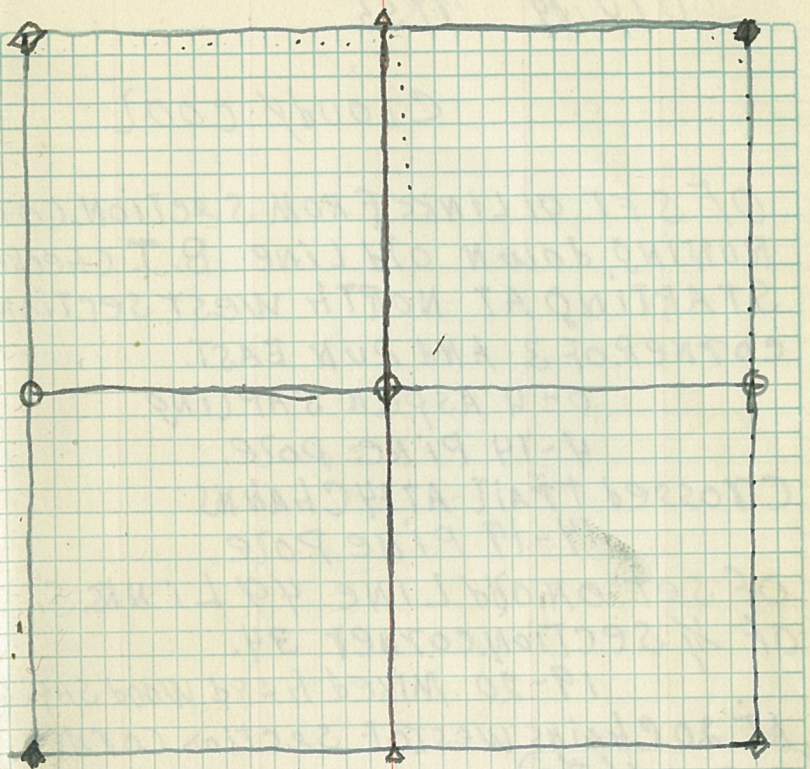
CROSSED OTTER-TAIL ROAD AT 16 CHS.
 EAST OF $\frac{1}{4}$ CORNER.

AT 20 CHS. EAST OF $\frac{1}{4}$ COR. SET $\frac{1}{16}$ COY. #9.
 20-28 PINE MURCHABLE
 28-40 ASPEN SAPLING

ENTER. $\frac{1}{4}$ SEC. LINE RUNNING NORTH AND
 SOUTH 41.76 LINKS EAST OF $\frac{1}{4}$ COR. ON THE
 WEST SIDE OF SECTION 4.

40-60 MIXED HARDWOOD POLE
 AT 20 CHS. EAST OF $\frac{1}{4}$ CO. SET $\frac{1}{16}$ #8
 60-80 MIXED WOOD MURCHABLE

ENTER. SECTION LINE 56 LINKS SOUTH
 OF $\frac{1}{4}$ CORNER.



JULY 19 1935

Cloudy cool

OF SET 91 LINKS FROM SECTION CORNER
RUNNING DOWN OLD LINE B. T. CHECKED
STARTING AT NORTH WEST SECTION
CORNER OF 3 AND RUN EAST.

0-4 ASPEN SAPLING

4-14 PINE POLE

CROSSED TRAIL AT 14 CHAINS

14-19 PINE POLE

OF SET ON OLD LINE 49 LINKS, S.

OF $\frac{1}{4}$ SECTION CORNER 34.

19-20 MIXED HARD WOOD SAPLING

AT 20 CHAINS WEST OF SECTION CORNER

(3 SET $\frac{1}{6}$ #20)

20-40 MIXED SAPLING AND POLE

AT 40 CHAINS WEST OF SECTION CORNER

3 SET SET $\frac{1}{4}$ CORNER TEMPORARILY

40-46 SPRUCE SWAMP

46-60 MIXED POLE

AT 60 CHAINS WEST OF SECTION CORNER

3 SET $\frac{1}{6}$ #1 TEMPORARILY

60-74 MIXED POLE

CHECKED IN 4 LINKS NORTH OF SECTION

CORNER 3/2 AND 27.8 LINKS FROM

3541

91

SECTION CORNER.

$\frac{135}{3 \frac{1}{2}}$ Yellow post on ASPEN.
 2) LINKS FROM COR.
 (D.T. NOTWAY 22" C.C.T. 144 N.R. 29 W.
 S. 3.) 34 LINKS WEST OF CORNER.

JULY 23, 1935 T. 144 N. R. 29 W.
 HOT CLEAR

STARTING AT NORTH EAST CORNER
 OF SECTION 3 AND RAN. SOUTH AT 70
 (sect.) 0-16 ASPEN. A.

16-19 BALSAM B.
 AT 19 CHS. HIT 2d LINE RUNNING NORTH
 AND SOUTH 19-20 ASPEN A.

AT 20 CHS. SOUTH OF SECTION CORNER
 SET ~~16~~ COR TEMPORARY

20-26 ASH SWAIL

26-34 CED AT MECHABLE

JULY 25 1935 T. 144 N. R. 29 W.
HOT CLEAR.

STARTED AT A POINT 34 CHS. SOUTH OF
SECTION CORNER 3/2.

34-40 CEDAR MATCHABLE
AT 40 CHS. SOUTH OF SECTION CORNER
Set $\frac{1}{4}$ COR. TEMPORARY

40-44 ASP. SAP. AND WHITE PINE

44-48 Mixed HARD WOOD.

48-54 BIRCH SAPLING

54-60 ASPEN POLE

AT 60 CHS SOUTH OF SECTION CORNER.
Set $\frac{1}{16}$ #14. TEMPORARY

60-70 CHS ASPEN POLE

70-80 CHS MIXED HARD WOOD

Crossed Road #456 AT 80.50 LINKS

80-82 CHS. ASPEN SAPLING

82.28 LINKS HIT OLD PENCIL POST

312
10/11

11/30

JULY 26 1935 T144 N.R. 29W.
HOT CLEAR.

STARTING AT DENCIEL POSTON
SOUTH EAST CORNER OF SECTION
312 RUNNING WEST.

$\frac{312}{1011}$

ASPEN POLE

0-10 ~~MIXED HARDWOOD~~ WOOD.

10-12 ASPEN MERCHANTABLE

12-15 SWAMP. MUSKEG

15-24 ~~MIXED HARDWOOD~~ BEACH SAPLINS

24-26 ASPEN MERCHANTABLE

26-42 WHITE PINE MERCHANTABLE

42-46 MIXED HARDWOOD POLES.

JULY 29 1935 T144 N.R. 29W

HOT CLEAR.

STARTING AT POINT 46 CHS. E. OF SEC. COR.

RUNNING WEST.

46-50 MIXED HARDWOOD SAPLINS

50-56 MIXED HARDWOOD POLES

56-60 WHITE PINE MERCHANTABLE

60- ESTABLISHED ^{W. OF COR.} TEMPORARY CORNER

60-68 MIXED HARDWOOD POLE

68-72 MIXED HARDWOOD MERCHANTABLE

72-74 ASPEN POLE

74-76 MIXED HARDWOOD MERCHANTABLE

76-80 MIXED HARDWOOD SAPLIN

MIXED CORNER APPROXIMATELY 240 TO 43 LINKS.

OVER

STARTED $\frac{1}{4}$ QUARTER CORNER BETWEEN
SEC 3 AND 4 GOING ACROSS SEC. 3 EAST.

0-12 ASPEN MERCHABLE.

4 MEN JULY 30 1935 HOT CLEAR

12-28 MIXED HARDWOOD POLE

28-32 ASPEN MERCHABLE

32-40 OAK MERCHABLE

40- ESTABLISHED ^{TEMP.} COR. CENTER.

40-6 MIXED HARDWOOD POLE

6-8 MIXED HARDWOOD SAPLIN

8-14 BIRCH SAPLIN

14-20 MIXED HARDWOOD SAPLIN

20 ESTABLISHED TEMPORARY $\frac{1}{4}$ COR #8

20-26 NORWAY PINE MERCHABLE

26-30 MIXED HARDWOOD SAPLIN.

4 MEN JULY 31, 1935

STARTING AT 30 CHAINS EAST OF
CENTER CORNER HOT CLEAR.

30-32 MIXED HARDWOOD SAPLIN.

32-34 CEDAR MERCHABLE

MISSED TEMPORARY $\frac{1}{4}$ CORNER III

LINKS SOUTH. INTERSECTION

LINE 74 CHAINS 37 LINKS.

STARTING AT POINT $\frac{1}{4}$ CORNER
BETWEEN 3 AND 10 SECTIONS,

OVER 1

RUNNING NORTH.

- 0-2 ASPEN MERCHABLE.
 2-7 WHITEPINE MERCHABLE
 7- HIT ROAD 456
 7-20 MIXED HARDWOOD SAPLIN
 20- TEMPORARY $\frac{1}{2}$ CORNER #12
 20-28 MIXED HARDWOOD POLE
 28-32 MIXED HARDWOOD MERCHABLE
 32-36 ASPEN MAPLE MERCHABLE

STARTING AT POINT 36 CHAINS N $\frac{1}{4}$ COR.

RUNNING NORTH. AUG. 1, 1935

4 MEN

- 36-40 MIXED HARDWOOD MERCHABLE -
 MISSED CENTER COR. 34 LINKS WEST.
 36 CHAINS 10 LINKS TO CENTER CORNER
 0-6 MIXED HARDWOOD MERCHABLE
 6-10 MIXED HARDWOOD SAPLIN
 10-32 ~~MIXED HARDWOOD MERCHABLE~~
 WHITE PINE MERCHABLE
 32-42 MIXED HARDWOOD MERCHABLE
 42 CHAINS 76 LINKS FROM CENTER CORNER
 TO N $\frac{1}{4}$ CORNER.
 MISSED $\frac{1}{4}$ CORNER 1 CHAIN 23 LINKS
 WEST.

AUG. 5, 1935 WARM CLOUDY
 4 MEN STARTING AT A POINT 20 CHAINS NORTH
 OF CENTER CORNER RUNNING EAST #5
 0-6 PINE MERCHABLE
 6-12 ASPEN POLE
 12-20 MIXED HARDWOOD POLE
 20 TEMP. $\frac{1}{16}$ CORNER #6
 RUNNING NORTH
 0-4 ASH SWAIL POLE
 4-8 BIRCH POLE
 8-12 MIXED HARDWOOD POLE
 12-20 ASPEN MERCHABLE
 20-22 GRASS ALDERS.
 23 CHAINS 67 LINKS FROM TEMP $\frac{1}{16}$
 CORNER #6 TO TEMP $\frac{1}{16}$ CORNER #1
 MISSED $\frac{1}{16}$ CORNER #1 BY 5 LINKS
 WEST.

AUG. 6 1935 WARM CLOUDY
 4 MEN STARTING AT A POINT $\frac{1019}{814}$ GOING SOUTH.
 0-26 MIXED HARDWOOD SAWN,
 27 CHS. 25 LINKS OLD TRAIL,
 26-34 MIXED HARDWOOD POLE
 35 CHS. 80 LINKS OLD TRAIL.
 34-40 MIXED HARDWOOD POLE
 40 CHS TO 44 OLD CLEARING.
 44-50 MIXED HARDWOOD SAWN

AUG. 7 1935 HOT CLEAR.

4 MEN STARTING AT 50 CHAINS SOUTH OF

SECTION CORNER BETWEEN 9 & 10

50 - 62 MIXED HARDWOOD POLE

62 - 74 ASPEN MERCHABLE.

74 - 80 MIXED HARDWOOD POLE

80 - 44 LINKS LOOKS LIKE OLD

SURVAY LINE. NO CORNER STAKE.

RUNNING EAST AND WEST.

0 - 12 ASPEN SAPLING.

12 - 16 ASPEN POLE.

NOV. 12 1935 T. 144 N. R. 29 W.

5 MEN Cloudy. Cool.

STAYING AT $\frac{1}{4}$ COY. SEC. 17/16

RAN EAST. DEC. 7°

0-245. ASPEN POLE

6-20" MIXED H. WOOD POLE

ESTABLISHED TEMP. $\frac{1}{6}$ COY. #9

2045 EAST OF $\frac{1}{4}$ COY.

INTERSECTED FIRE TRAIL

2745 EAST OF $\frac{1}{4}$ COY.

20-3045. MIXED H. WOOD

30-40" MIXED H. WOOD AND ASPEN

ESTABLISHED TEMP. CENTER SECTION.

4045 EAST OF $\frac{1}{4}$ COY. SEC. 17/16

NOV. 7th 1935 Cloudy WATM.

STAYING CENTER SEC. 16

40-4445 ASPEN AND BIRCH POLES.

44-52" ASPEN

52-55" ALDET SWAMP

55-60" ASPEN

ESTABLISHED TEMP. $\frac{1}{6}$ COY #8

6045 EAST OF $\frac{1}{4}$ COY. 17/16

INTERSECTED OLD G.L.O. SEC. LINE

79, 72 LKS. EAST OF $\frac{1}{4}$ COY. 17/16

MISSED $\frac{1}{4}$ COY SEC. 16/15 61 LKS NORTH

Nov. 22 1935 Cloudy Cool

STARTING SECTION COY. $\frac{9}{16} \frac{10}{15}$

RAN SOUTH DEC. 7° ON old G.L.O.

0-9 chs ASPEN

9-13" ALDER SWAMP

13-20" ASPEN AND BIRCH

MISSED $\frac{1}{6}$ COY #7 LINCH PIPE

2 IKS TO THE WEST.

B.T. NORTH $78\frac{1}{2}^\circ$ WEST T. 144 N

R. 29 W S. 16 3.9 IKS FROM COY.

ON 5" ASPEN

B.T. SOUTH 40° EAST T. 144 N

R. 29 W. S. 15 23.6 IKS FROM

COY. ON 10" ASPEN

20-23 chs ASPEN POLE

23-26" WILLOW MATCH

26-40" ASPEN AND BIRCH.

INTERSECTED FIRE TRAIL 39.54 chs

SOUTH OF S. COY.

MISSED $\frac{1}{4}$ COY. 16/15 5.4 IKS

WEST. 40.14 chs. SOUTH OF S. COY.

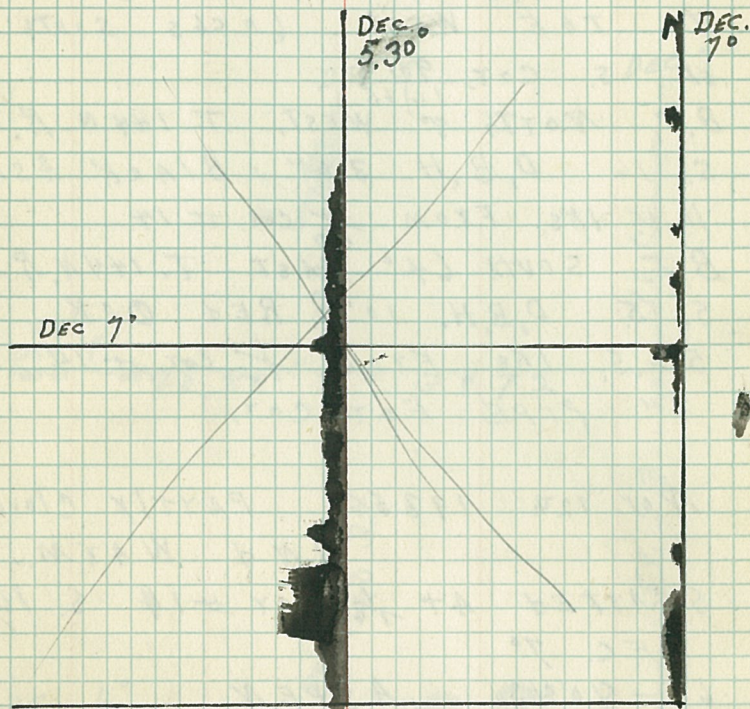
B.T. NORTH 23° EAST T. 144 N

R. 29 W. S. 15 BLACK ASH

D.B.H. 7.9 5.1 IKS. FROM COY

B.T. SOUTH 57° WEST T. 144 N

R. 29 W. S. 16 W. OAK.



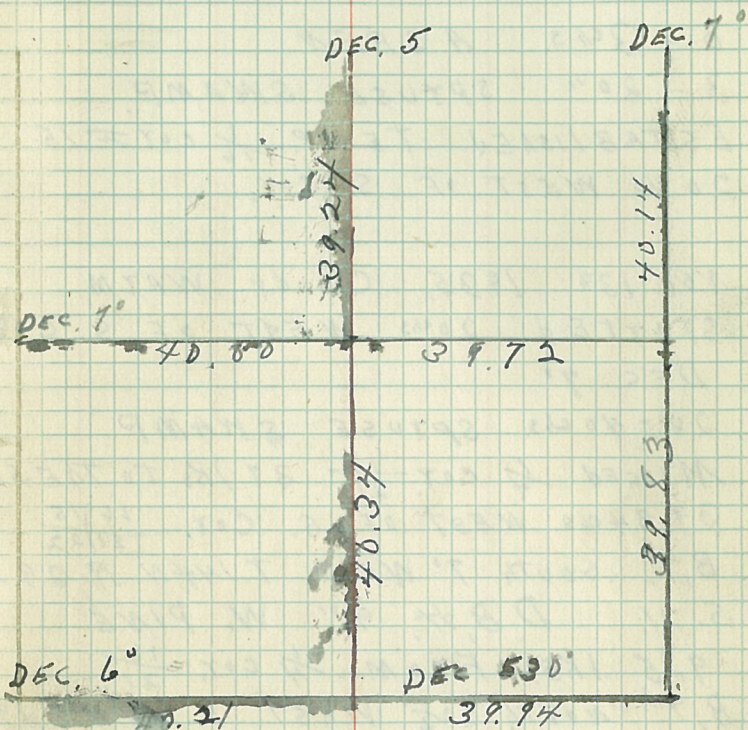
D.B.H. 6" 25.5 IKS FROM COT.
 40-60 chs. MIXED H. WOOD
 MISSED $\frac{1}{16}$ COT #14 S. 16/15 55 chs
 TO THE WEST. 60 chs SOUTH
 OF S. COT. $\frac{9/10}{16/15}$
 B.T. NORTH 8° WEST, T. 144 N R. 29 W
 S. 16 D.B.H. 3.8" BLACK ASH
 11.1 IKS FROM $\frac{1}{16}$ COT #14
 B.T. SOUTH 64° EAST T. 144 N. R. 29 W.
 S. 15 D.B.H. 10" RED OAK
 53.5 IKS FROM $\frac{1}{16}$ COT #14
 1" PIPE FOR COT.

NOV. 12th 1935 PARTLY CLOUDY
 AND WARM.

STARTED AT $\frac{1}{16}$ COT #14 S. 16/15

DEC. 7^o
 60-80 chs. ASPEN
 MISSED S. COT. $\frac{16/15}{21/22}$ 14.8 IKS
 TO THE EAST. 79.97 chs. SOUTH
 OF S. COT. $\frac{9/10}{16/15}$ 2" PIPE FOR COT.
 B.T. NORTH $34\frac{1}{2}^\circ$ EAST T. 144 N. R. 29 W.
 S. 10 D.B.H. 10" ASPEN
 18.9 IKS FROM S. COT.
 B.T. SOUTH 64° WEST T. 144 N. R. 29 W.
 S. 21 D.B.H. 14" ASPEN

T 144 N S. 16
 R 29 W.



27.1, 1ks FROM S. COY. $\frac{16}{21} \frac{15}{22}$
CONTINUED WEST FROM S. COY

$\frac{16}{21} \frac{15}{22}$ DEC. 7°

0 - 3chs. ASPEN

3 - 20" SPRUCE SWAMP

ESTABLISHED TEMP. $\frac{1}{16}$ COY # 15

20. chs WEST OF S. COY.

NOV. 13th 1935. Cloudy WATM.
STARTED 20chs WEST OF S. COY.
DEC. 7°

20 - 40 chs. SPRUCE SWAMP

MISSED $\frac{1}{4}$ COY. $\frac{16}{21}$ 37.1ks TO THE SOUTH
39.94chs. WEST OF S. COY. $\frac{16}{21} \frac{15}{22}$

B.T. SOUTH 7° WEST T. 144N R. 29W.

S. 21. D.B.H. 9" W. PINE

9.5, 1ks. FROM $\frac{1}{4}$ COY. $\frac{16}{21}$

B.T. NORTH 32½° WEST. T. 144N. R. 29W.

D.B.H. 5" ASPEN

23.3, 1ks. FROM $\frac{1}{4}$ COY.

CONTINUED ON WEST FROM $\frac{1}{4}$ COY $\frac{16}{21}$

1" PIPE FOX COY

DEC. 7°.

40 - 56. chs. ASPEN

56 - 60" ASPEN AND MIXED

H. Wood
 ESTABLISHED TEMP $\frac{1}{6}$ COY. #16
 60 chs. WEST OF S. COY. $\frac{16}{21} \frac{15}{22}$
 60-66 chs. ASPEN AND
 MIXED H. Wood,

NOV. 14th, 1935 Cloudy - FAIR.
 TIMM. R 29. W.

CONTINUED ON S. LINE WEST 66 chs
 FROM S. COY. $\frac{16}{21} \frac{15}{22}$

66-80 chs ASPEN AND M. H. Wood
 INTERSECTED S. LINE 80.15 chs

WEST OF S. COY. $\frac{16}{22} \frac{15}{22}$

MISSED S. COY. $\frac{17}{20} \frac{16}{21}$ 3" PIPE

22-IRS TO THE SOUTH
 WENT BACK $\frac{1}{4}$ COY. $\frac{16}{21}$

RAN NORTH ON THE $\frac{1}{4}$ LINE
 DEC. 5.30°

0-20 chs ASPEN

ESTABLISHED TEMP $\frac{1}{6}$ #12

20 chs NORTH OF $\frac{1}{4}$ COY

20-26 ASPEN

26-36 ASPEN AND M. H. Wood

CHECKED IN 36 chs NORTH OF
 $\frac{1}{4}$ COY. $\frac{16}{21}$

NOV. 18th 1935 cloudy - WAYM

T 144 N R 29 W

CONTINUED NORTH ON $\frac{1}{4}$ LINE

36-40 chs ASPEN AND

M. H. WOOD.

INTERSECTED FIRE TRAIL

36 chs 50-1ks NORTH OF $\frac{1}{4}$ COR

INTERSECTED EAST AND WEST

$\frac{1}{4}$ LINE 40 chs 34-1ks NORTH OF $\frac{1}{4}$

COR $\frac{16}{21}$ MISSED CENTER

SECTION 130-1ks TO THE WEST

40-44 chs ASPEN AND

M. H. WOOD.

44-49 chs ASPEN

49-52" ALDET SWAMP

WITH ASPEN OVER HEAD

52-80 chs ASPEN

INTERSECTED NORTH S. LINE

OF S. 16 79 chs 58-1ks NORTH

OF $\frac{1}{4}$ COR $\frac{16}{21}$

ESTABLISHED TEMP $\frac{1}{4}$ COR

S. $\frac{9}{16}$ 80 chs NORTH OF $\frac{1}{4}$

COR. $\frac{14}{21}$

MISSED TEMP $\frac{1}{4}$ COR

• 67-1ks TO THE EAST.

NOV. 20th 1935 CLOUDY FAIR

T. 144 N R 29 W

PAN SOUTH FROM S. COR

17 1/2
20 21 DEC. 8.30°

0-10chs ASPEN AND BIRCH

10-20" ASPEN POLES AND

M. H. WOOD,

INTERSECTED OLD LOGGING-ROAD

AT 17chs

ESTABLISHED TEMP $\frac{1}{2}$ # 7

20chs SOUTH OF S. COR

20-27chs ASPEN

27-29" CEDAR SWAMP

29-40" BIRCH ASPEN AND

BALSAM

ESTABLISHED TEMP $\frac{1}{2}$ COR 20 1/2

40chs SOUTH OF S. COR

MISSED $\frac{1}{2}$ COR 66-1ks

TO THE WEST 1" PIPE FOR COR

B.T. SOUTH 71.30° WEST

D.B.H. 5" 71-1ks FROM POST

B.T. NORTH 63.30° EAST

D.B.H. 7.5 BIRCH 21-1ks

FROM POST

NOV. 21st 1935 Cloudy, Cool.

T 144 N R 29 W.

STARTING AT $\frac{1}{4}$ COT S. 20/21

DEC. 6.30°

40-44 chs ASPEN AND BIRCH. P.

44-54" BIRCH ASPEN AND BALSAM

54-60" M. H. WOOD.

ESTABLISHED TEMP $\frac{1}{2}$ # 14

60 chs SOUTH OF S. COT. $\frac{17}{16}$

$\frac{29}{21}$

60-68 chs M. H. WOOD.

68-72" BIRCH SAPLINGS

72-80" M. H. WOOD AND BALSAM

INTERSECTED S. LINE

79-92 chs SOUTH OF S. COT

ESTABLISHED TEMP S. COT $\frac{29}{21}$

$\frac{29}{29}$

80 chs SOUTH OF S. COT. $\frac{17}{16}$

$\frac{29}{21}$

MISSED S. COT 2" PIPE

5. 8-1ks TO THE WEST.

B.T. SOUTH 18.30° EAST. MAPLE

D.B.H. 9" 64ks FROM POST.

B.T. NORTH 82.30° WEST

N. PINE D.B.H. 11"

89.6-1ks FROM POST.

NOV. 22nd 1985 CLEAT-COLD,
T144N R29W.

STARTING AT S. COY. 20/21
RAN WEST ON O/D 29/28

G.L.O. LINE DEC 5.30°

0-12chs M.H. Wood AND BALSON,

12-20" ASPEN SAPLINGS,

ESTABLISHED TEMP $\frac{1}{4}$ IS

2045 WEST OF S. COY.

MISSED $\frac{1}{6}$ COY 5-1KS TO THE

NORTH 21.37chs WEST OF S. COY.

B.T. NORTH 82.30° EAST

ASPEN DBH. 5"

98.5-1KS FROM COY

B.T. SOUTH 87° WEST

TAMARCK DBH. 12"

102 1KS FROM COY.

20-34chs TAMARCK CEDAR
AND SPRUCE SWAMP,

34-40chs ASPEN SAPLINGS

ESTABLISHED TEMP $\frac{1}{4}$ COY

40chs WEST OF S. COY.

FOUND $\frac{1}{4}$ COY ²⁰ 1" PIPE

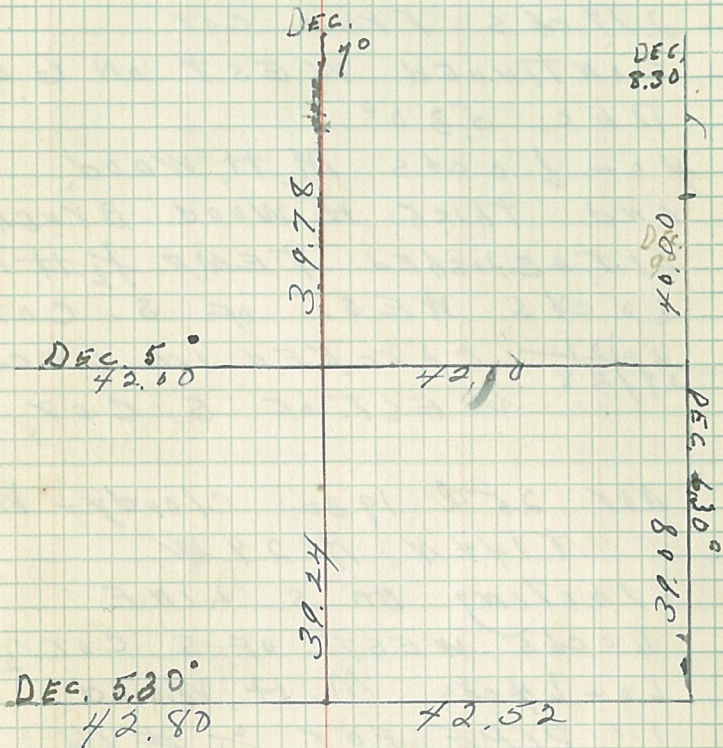
42.52chs WEST OF S. COY

MISSED $\frac{1}{4}$ COY. 9-1KS TO NORTH

B.T. NORTH 6.30° WEST.

S. 20

T144N R29W.



54

BLACK SPYUSE D.B.H. 10.8"
 2. 19chs FROM COT.
 B.T. SOUTH 330° EAST.
 MAPLE D.B.H. 11"
 2. 19chs FROM COT.
 CONTINUED WEST ON G.L.O.
 DEC. 030°
 40 - 60chs M.H. WOOD
 AND THICK H. WOOD BRUSH
 ESTABLISHED TEMP $\frac{1}{16}$ #16
 60chs WEST OF S. COT.
~~20/21~~ CHECKED IN 60chs
~~29/28~~ WEST OF S. COT.

NOV 26th 1935. Cloudy - WARM
 T 14°N, R 29W.
 STARTING ON S. LINE
 60chs WEST OF S. COT. ~~20/21~~
 60-64chs M.H. WOOD. ~~29/28~~
 2" PIPE FOR $\frac{1}{16}$ #16
 64chs WEST OF S. COT.
 MISSED COT. 5.5-1ks TO S.W.
 B.T. SOUTH 48.30° WEST.
 W. S. PYUSE D.B.H. 14"
 32.5-1ks FROM POST.
 B.T. NORTH 30° EAST.

BASSWOOD DBH. 13"

43.5-1KS FROM COY POST.

60-79 chs M.H. WOOD.

79-85.32.5 chs MEADOW
AND SWAMP

HIT S. COY.	$\frac{19}{20}$	85.32.5 chs
	$\frac{30}{29}$	
WEST OF S. COY.	$\frac{20}{21}$	
	$\frac{29}{28}$	

WENT NORTH TO

$\frac{1}{4}$ COY 19/20

RAN WEST ON G.L.O. LINE.

DEC. 5.30°

INTERSECTED ROAD

1-chs EAST OF $\frac{1}{4}$ COY.

0-9-chs BIRCH AND BALSAM
INTERSECTED WOOD ROAD 9 chs

EAST OF $\frac{1}{4}$ COY.

9-14 chs BIRCH AND BALSAM

14-21" TAMARCK SWAMP.

ESTABLISHED TEMP #6 #10

20 chs EAST OF $\frac{1}{4}$ COY.

HIT 1" PIPE $\frac{1}{2}$ COY

21 chs EAST OF $\frac{1}{4}$ COY

B.T. SOUTH 18.30° WEST

TAMARCK D.B.H. 5"

22.5-1KS FROM POST

B.T. NORTH 7.30° EAST

TAMATCH D.B.H. 4"
 11.6 - 1Ks FROM POST
 CONTINUED EAST ON G.L.O.
 21-24chs TAMATCH SWAMP
 24-28" ASPEN WITH BALSOM
 UNDER STORY
 28-32chs BALSOM
 INTERSECTED old logging
 ROAD 33chs EAST OF $\frac{1}{4}$ COR.
 32-40chs TAMATCH CEDAR SWAMP
 ESTABLISHED TEMP CENTER
 SECTION 40chs EAST OF $\frac{1}{4}$ COR.
 CHECKED IN 40chs EAST OF $\frac{1}{4}$
 COR. 19/20

NOV 26th 1935 CLOUDY WARM
 T 47 N R 29 W.
 STARTING 40chs EAST OF $\frac{1}{4}$
 COR. 19/20
 40-42chs ASPEN BIRCH
 AND BALSOM POLES
 HIT CENTER SECTION
 1" PIPE 42chs EAST OF
 $\frac{1}{4}$ COR.
 B.T. NORTH 55° EAST.
 BALSOM D.B.H. 12"

40.7-1Ks FROM POST.
 READING ON TREE C. $\frac{1}{4}$ S. 20
 B.T. NORTH 41° WEST. CEDAR.
 D.B.H. 9" $\frac{1}{4}$ 7-1Ks FROM POST.
 READING ON TREE C. $\frac{1}{4}$ S. 20.
 CONTINUED EAST
 42-50chs BITCH AND BALSOM.
 50-59" BALSOM AND CEDAR
 SWAMP.

ESTABLISHED TEMP $\frac{1}{4}$ # 8
 60chs EAST OF $\frac{1}{4}$ COR.
 60-84chs BITCH ASPEN
 AND BALSOM. POLES.
 ESTABLISHED TEMP $\frac{1}{4}$ COR
 80chs EAST OF $\frac{1}{4}$ COR. 19/20
 HIT $\frac{1}{4}$ COR $\frac{1}{2}$ " PIPE S. 20/21
 EAST OF $\frac{1}{4}$ COR 19/20
 WENT TO THE SOUTH LINE
 OF S. 20. RAN NORTH AND
 SOUTH $\frac{1}{4}$ LINE
 DEC. 40

0-2chs ASPEN SAPLINGS.
 2-18" M. H. WOOD.
 18-20" CEDAR AND BALSOM
 SWAMP
 ESTABLISHED TEMP $\frac{1}{4}$ # 12

20 chs NORTH OF $\frac{1}{4}$ COR. S. $\frac{20}{29}$
 20-23 chs. CEDAR SWAMP
 23-26" ASPEN AND BIRCH
 CHECKED IN 26 chs NORTH
 OF $\frac{1}{4}$ COR. S. $\frac{20}{29}$

NOV. 27th 1935. Cloudy-SNOW
 T 14th N R 29 W.

STARTING 26 chs NORTH OF $\frac{1}{4}$
 COR. S. $\frac{20}{29}$ DEC. 7^o

26-40 chs CEDAR BIRCH AND
 BAISOM SWAMP

HIT CENTER SECTION AT
 39.84 chs NORTH OF $\frac{1}{4}$ COR
 40-56" BAISOM BIRCH
 AND BLACK ASH. POLES.
 56-60 chs BIRCH ASPEN
 AND BAISOM.

ESTABLISHED TEMP $\frac{1}{6}$ #5
 60 chs NORTH OF $\frac{1}{4}$ COR.

60-70" TAMARACK AND BLACK
 SPRUCE SWAMP.

70-80 chs ASPEN AND BIRCH
 POLES INTERSECTED S.

LINE AT 79.62 chs NORTH
 OF $\frac{1}{4}$ COR. $\frac{20}{29}$ MISSED

$\frac{1}{4}$ COR. $\frac{517}{20}$ 4-1KS TO THE EAST

DEC. 1, 1935 CLEAR-COOL.

T 144 N B. 29 W.

RAN SOUTH ON G.L.O. S. LINE
STARTING AT S. COR $\frac{1920}{3029}$

DEC. 1920

0-34s TAMARCK SWAMP.

3-9" M.H. WOOD.

9-14" CYANBERRY bog

14-17" ASPEN SAPLINGS.

17-20" CEDAR SWAMP

ESTABLISHED APPROX $\frac{1}{6}$ #3

20chs SOUTH OF $\frac{1920}{3029}$

FOUND TWO B.T.'S BUT

COULD NOT FIND $\frac{1}{6}$ COR.

SO I TOOK THE DEC OF THE

B.T.'S FROM THE APPROX COR.

B.T. NORTH 29' EAST.

MAPLE DBH. 10"

23.4-1KS FROM APPROX COR.

B.T. SOUTH 30' EAST

MAPLE DBH. 9"

57.5-1KS FROM APPROX COR.

20-34chs. M.H. WOOD.

INTERSECTED OLD LOGGING

ROAD 34.31 chs South of S. Cor.
 34-40 chs M.H. Wood
 H.T. $\frac{1}{4}$ cor. $\frac{30}{29}$ 40.06 chs
 South of S. Cor.
 B.T. South 86.30° EAST.
 MAPLE D.B.H. 15"
 66-1ks FROM POST.
 B.T. South 74° WEST.
 MAPLE D.B.H. 10"
 32.8-1ks FROM POST.
 40-60 chs MIXED H. Wood.
 ESTABLISHED TEMP $\frac{1}{6}$ #10
 60 chs South of S. Cor.
 CHECKED IN 60 chs South
 OF S. Cor. $\frac{1920}{20/29}$

DEC. 3d 1935 cloudy - FAIR.
 CONTINUED South ON G.L.O. S. Line
 60-80 chs M.H. Wood.
 MISSED S. Cor. $\frac{30}{29}$
 $\frac{31}{32}$
 3.8-1ks EAST
 80-04 chs FROM S. Cor. $\frac{1930}{30/29}$
 TO S. $\frac{30}{29}$
 $\frac{31}{32}$
 B.T. North 73° EAST.
 MAPLE D.B.H. 10"
 62.5-1ks FROM COR POST

READING ON TREE T 144 N

R 29 W S. 29

B.T. SOUTH 430° WEST.

MAPLE DBH. 9"

71-1Ks FROM POST.

READING ON TREE

T. 144 N. R 29 W. S. 31

CONTINUED EAST ON G.L.D.

S. LINE $\frac{29}{32}$

DEC. 20

0-4cs M. H. Wood.

4-10" ASPEN SAPLINGS.

10-16" ALDER SWAMP

16-20" M. H. WOOD.

ESTABLISHED TEMP $\frac{1}{16}$ # 16

20cs EAST OF S. COR.

MISSED $\frac{1}{16}$ COR. 16-1Ks NORTH

21.71cs EAST OF S. COR.

B.T. NORTH 16° WEST.

ASPEN DBH. 9"

17.9-1Ks FROM POST.

READING ON TREE

W $\frac{1}{16}$ S 29.

B.T. SOUTH 30° WEST.

SPTUSE DBH. 8"

56.3-1Ks FROM POST

READING ON TREE

W $\frac{1}{6}$ S. 32.
 20-40 chs ALDET SWAMP
 INTERSECTED OLD ROAD
 21 chs EAST OF S. COY.
 ESTABLISHED TEMP $\frac{1}{6}$ COY
 40 chs EAST OF S. COY.
 CHECKED IN 40 chs EAST OF S. COY.

DEC. 5th 1935. CLOUDY - FAIR.
 T 144 N R 29 W.
 CONTINUED EAST

DEC 2°
 MISSED $\frac{1}{6}$ COY 2 $\frac{1}{2}$
 27.5-1/5 TO THE ³ NORTH
 41.44 chs EAST OF S. COY.
 40-50 chs ASPEN SAPLINGS
 50-56 " BIRCH POLES.
 56-60 " ASPEN POLES.
 ESTABLISHED TEMP $\frac{1}{6}$ #15
 60 chs EAST OF S. COY.
 MISSED $\frac{1}{6}$ COY 47.7-1/5
 NORTH 25.19 chs EAST OF S. COY
 B.T. NORTH 190 WEST.
 ASPEN D.B.H. 8"
 52.5-1/5 FROM POST.

B.T. SOUTH 50.30° WEST.
 ASPEN D.B.H. 10"
 40-1KS FROM POST.
 60-84 CHS ASPEN POLES
 84-88-97 CHS ALDER SWAMP
 MISSED S. COY $\frac{29}{32} \frac{28}{33}$
 69.5-1KS NORTH
 88.97 CHS EAST OF S. COY.
 $\frac{30}{31} \frac{29}{32}$ H" OAK POST
 FOR S. COY $\frac{29}{32} \frac{28}{33}$
 B.T. NORTH 5° EAST.
 W. SPYUSE D.B.H. 12"
 3.69 CHS FROM COY
 ONLY ONE B.T. WAS FOUND

DEC 6th 1935 Cloudy FAIR
 T 14 N B 29 M

RAN SOUTH FROM SCOT $\frac{20}{29} \frac{20}{29}$
 DEC. 8.30

0-20 CHS M.H. WOOD
 ESTABLISHED TEMP $\frac{1}{16}$ # 7
 20 CHS SOUTH OF S. COY
 MISSED $\frac{1}{16}$ COY 2 P-KS
 TO THE WEST.
 SET UP AT $\frac{1}{16}$ # 7
 RAN SOUTH

64

DEC. 9^o0-21 chs ASPEN POLES
ESTABLISHED TEMP $\frac{1}{4}$ COT20 chs SOUTH OF $\frac{1}{6}$ COTMISSED $\frac{1}{4}$ COT 29/28

6.8-1ks TO THE WEST.

19.87 chs FROM $\frac{1}{6}$ COTTO $\frac{1}{4}$ COT.

BT. SOUTH 18.30° WEST

BALSON DBH 7"

49.2-1ks FROM POST

READING ON TREE

 $\frac{1}{4}$ COT S. 29.

BT. NORTH 74.30° EAST

BALSON DBH. 8"

27.1-1ks FROM POST

READING ON TREE

 $\frac{1}{4}$ COT S. 28.

D

DEC 9th 1935 Cloudy Cool

T 144 N R 29 W

CONTINUED ON S. LINE

SOUTH DEC. 9^o

0-4 chs ASPEN POLES

4-12" M.H. WOOD.

12-20" ASPEN POLES

65

ESTABLISHED TEMP ~~TO~~
20 chs SOUTH OF $\frac{1}{4}$ COT 29/28

FOUND TWO B.T.S BUT
COULD NOT FIND THE COT.
CONTINUED SOUTH

0-16 chs ASPEN POLES
16-20" ALDER SWAMP
INTERSECTED EAST AND WEST

S. LINE $\frac{29}{32}$ 18.91 chs

SOUTH OF $\frac{1}{4}$ # 14.

MISSED S. COT $\frac{29}{28}$

1-15 WEST. $\frac{32}{33}$

19.48 chs TO S. COT.

FROM $\frac{1}{4}$ # 14

ESTABLISHED TEMP

S. COT? $\frac{28}{28}$ 9 chs

SOUTH $\frac{32}{33}$ OF S. COT. $\frac{20}{21}$
 $\frac{29}{28}$

DEC. 10th 1935 CLEAR-COLD
T 14 N R 29 W.

RAN SOUTH ON OLD G.L.D.

$\frac{1}{4}$ LINE S. $\frac{21}{29}$

DEC. 9^o

0-20 chs ASPEN POLES

ESTABLISHED TEMP

$\frac{1}{4}$ # 5 20 chs SOUTH

OF $\frac{1}{4}$ COY.

MISSED $\frac{1}{6}$ COY #5
1. - 1K EAST. 19.97 chs
south of $\frac{1}{4}$ COY.

B.T. south 28° WEST
ASPEN D.B.H. 10"

39.9 - 1Ks FROM POST

B.T. south 80.30° EAST
ASPEN D.B.H. 10"

53.1 - 1Ks FROM POST.

CONTINUED south

0 - 20 chs HAZEL BRUSH
AND ASPEN SAPLINGS.

MISSED CENTER $\frac{1}{4}$ COY.

3 - 1Ks TO THE EAST.

19.94 FROM $\frac{1}{6}$ #5 TO C.S.

B.T. NORTH 86.30° WEST.

ASPEN D.B.H. 10"

102.2Ks FROM POST

JUST FOUND ONE B.T.

CONTINUED south

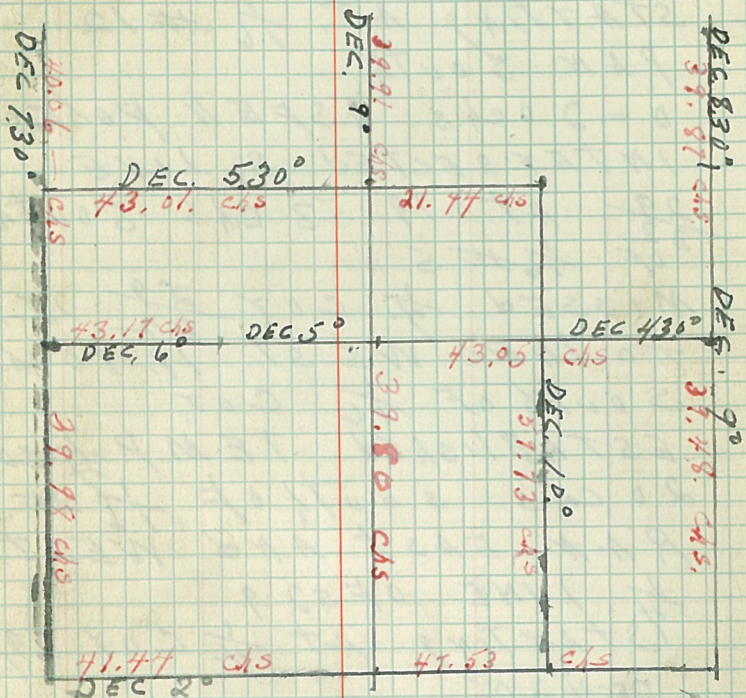
0 - 20 chs ASPEN SAPLINGS
AND HAZEL BRUSH

ESTABLISHED TEMP

$\frac{1}{6}$ #12 20 chs south

OF C. S. $\frac{1}{4}$ COY.

TWENTY NINE S. 29. R 29 W.



DEC 11th 1935 Cloudy-FAIR.

T. 144 N. R. 29 W.

CONTINUED SOUTH ON $\frac{1}{4}$

LINE S. 29.

STARTING AT $\frac{1}{16}$ #12

RAN SOUTH

0-20 chs ASPEN POLES

INTERSECTED S. LINE

$\frac{29}{32}$ AT 19.53 chs SOUTH

OF $\frac{1}{16}$ #5

MISSED $\frac{1}{4}$ COY $\frac{29}{32}$ 15-1/2

TO THE WEST 19.80 chs

SOUTH OF $\frac{1}{16}$ COY

ESTABLISHED TEMP $\frac{1}{4}$ COY

20 chs SOUTH OF $\frac{1}{16}$ #5

RAN EAST AND WEST

$\frac{1}{4}$ LINE OF S 29

STARTING AT $\frac{1}{4}$ COY 29/28

DEC. 30

0-10 chs ASPEN POLES

10-20" TAMARCK SWAMP

ESTABLISHED TEMP $\frac{1}{16}$ #5

20 chs WEST OF $\frac{1}{4}$ COY

0-14 chs TAMARCK SWAMP

14-20" ASPEN POLES

INTERSECTED $\frac{1}{4}$ LINE

23.5 chs WEST OF $\frac{1}{16}$ # 8
 MISSED C.S. $\frac{1}{4}$ COR
 14.7-1ks SOUTH
 CHECKED IN AT C.S. $\frac{1}{4}$ COR.

DEC 12th 1935 CLOUDY - FAIR.
 T 144 N, R 29 W 529
 STATING AT CENTER $\frac{1}{4}$ COR.
 RAN WEST DEC 5°
 0-4 chs ASPEN POLES
 7-20" TAMARCK SWAMP
 AND HAZEL BRUSH
 ESTABLISHED TEMP $\frac{1}{16}$ # 9.
 20 chs WEST OF C. $\frac{1}{4}$ COR.
 MISSED $\frac{1}{16}$ COR 77.7 Iks
 NORTH AT 21.59.5 chs
 WEST OF C. $\frac{1}{4}$ COR.
 B.T. NORTH 85.30 WEST
 ASPEN D.B.H. 11"
 47.4-1ks FROM POST.
 B.T. SOUTH 74.30° EAST.
 ASPEN D.B.H. 10"
 26.9-1ks FROM POST
 CONTINUED WEST FROM
 $\frac{1}{16}$ # 9
 DEC, 2°

0-8 cfs TAMARACK SWAMP
AND HAZEL BRUSH

8-12" ASPEN SAPLINGS
AND CEDAR.

12-21.58 cfs M. H. WOOD

ESTABLISHED TEMP $\frac{1}{4}$ COT

30/29 20 cfs WEST OF $\frac{1}{6}$ COT

MISSED $\frac{1}{4}$ COT. S. 30/29

24-1KS TO THE NORTH.

21.58-1KS WEST OF $\frac{1}{6}$ #9

DEC. 13TH 1935 CLOUDY-FAIR.

T 144 N R 29 W, S. 29.

RAN EAST FROM $\frac{1}{6}$ #3

DEC. 5.30° APPROX $\frac{1}{6}$ COT.

0-16 cfs M. H. WOOD

16-20" ASPEN POLES

ESTABLISHED TEMP $\frac{1}{6}$ #2

20 cfs EAST OF APPROX $\frac{1}{6}$ #3.

CONTINUED EAST.

0-12 cfs M. H. WOOD.

12-23.1-cfs ASPEN AND

BITCH POLES SAPLINGS

INTERSECTED NORTH AND

SOUTH $\frac{1}{4}$ LINE

23.1-cfs W EAST OF $\frac{1}{6}$ #4

MISSED $\frac{1}{6}$ # 5 38.8 - IKS
 TO THE SOUTH
 CONTINUED EAST
 FROM $\frac{1}{6}$ # 5
 DEC. 6
 0 - 4 chs HAZEL BRUSH
 4 - 18 " ASPEN POLES

DEC. 16th 1935 CLOUDY - FAIR

CONTINUED EAST ON $\frac{1}{6}$ LINE
 18 - 21.44.2 - chs ASPEN - P.
 ESTABLISHED TEMP $\frac{1}{6}$ # 6
 20 chs EAST OF $\frac{1}{6}$ # 5
 MISSED $\frac{1}{6}$ # 6 10.2 - IKS
 TO THE SOUTH.
 21.44.2. chs EAST OF
 $\frac{1}{6}$ # 5
 B.T. SOUTH 47.30° EAST
 WHITE PINE STUMP
 D.B.H. 24" 35.3 - IKS
 FROM POST.
 B.T. SOUTH 63° WEST.
 WHITE PINE STUMP
 D.B.H. 30"
 26.8 - IKS FROM POST.

RAN SOUTH FROM $\frac{1}{6}$ # 6
DEC. 10°

0-8 chs ASPEN POLES
8-20" TAMARCK SWAMP.
INTERSECTED EAST AND
WEST $\frac{1}{4}$ LINE

19.96 - chs SOUTH OF $\frac{1}{6}$ # 6
MISSED TEMP $\frac{1}{6}$ # 9

1.51 - chs TO THE WEST.
ESTABLISHED APPROX $\frac{1}{6}$ # 9

20 chs SOUTH OF $\frac{1}{6}$ # 6
CONTINUED SOUTH

0-14 chs TAMARCK SWAMP

14-20" ASPEN POLES
ESTABLISHED TEMP

$\frac{1}{6}$ # 13 20 chs SOUTH OF $\frac{1}{4}$
9

0-6 chs ASPEN POLES

6-10" M. H. WOOD.

10-20" ASPEN - POLES
INTERSECTED S. LINE

OF $\frac{29}{32}$ AT 19.27.9. chs

SOUTH OF $\frac{1}{6}$ # 13

MISSED $\frac{1}{6}$ # 15 S. $\frac{29}{32}$

3.8 - 1/8S TO THE EAST

19.73.5 chs SOUTH OF $\frac{1}{6}$ # 13

ESTABLISHED TEMP $\frac{1}{16}$ #15
20 chs south of $\frac{1}{16}$ #13

DEC. 18th 1935 Cloudy-cool
T 144 N R 29 W.

STARTING AT S. COY.

$\frac{30}{29}$ RAN south

$\frac{31}{32}$ DEC. 26

0-20 chs M. H. Wood,
INTERSECTED old ROAD
AT 16.24 chs south of S. COY.
ESTABLISHED TEMP
 $\frac{1}{16}$ #3 20 chs south of S. COY.
CONTINUED south

20-26 chs M. H. Wood,
ESTABLISHED TEMP

$\frac{1}{4}$ COY 31/32

40. chs south of S. COY.

0-5. 80 chs HOZEL BRUSH

MISSED $\frac{1}{4}$ COY 31/32

161-1Ks TO THE WEST.

45. 80 chs south of S. COY.

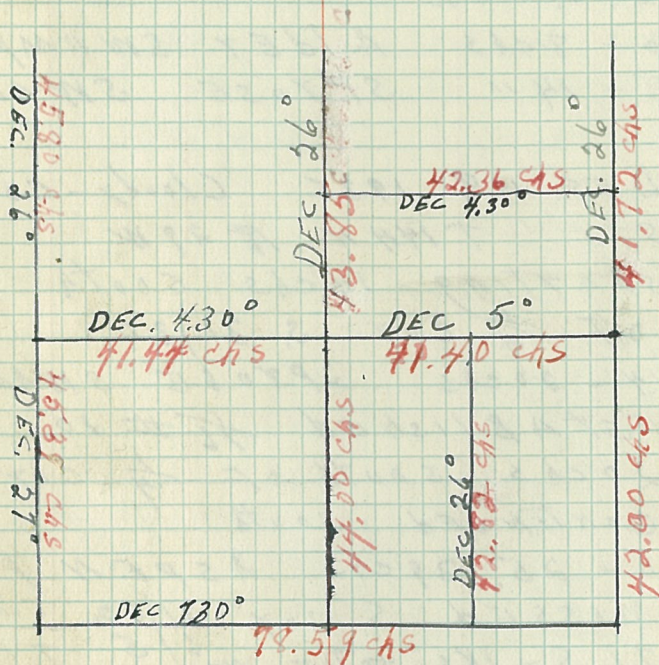
B.T. NORTH 14.30° WEST.

ASPEN D.B.H. 8"

8-1Ks FROM POST

B.T. NORTH 71.30° WEST

S. 32.
T. 144 N. R. 29 W.



TAMARCK D.B.H. 6"
 90.7-1KS FROM POST,
 CONTINUED SOUTH FROM
~~1/4~~ COT.

DEC. 27^o

0-8chs ALDER SWAMP
 8-14" SPYUSE SWAMP.

DEC. 19th 1935 Cloudy-Cool
 STA T144N R29W.

STARTING 14chs SOUTH
 OF ~~1/4~~ COT S. 31^o 32

14-20chs SPYUSE SWAMP

ESTABLISHED ~~1/6~~ #10

20chs SOUTH OF ~~1/4~~ COT.

CONTINUED SOUTH

0-25.39chs ASPEN PILES
 MISSED S. COT ~~31/32~~ T144

76.8-1KS TO THE WEST ~~6/5~~ T143

25.39chs SOUTH OF ~~1/6~~ #10

B.T. FOX S. COT ~~31/32~~ ~~6/5~~

SOUTH 80.30° WEST.

BITCH D.B.H. 6"

53.5-1KS FROM POST.
 READING ON TREE

T. 143. N. R29. W. S. 6.

B.T. North 48.30° WEST.

ASPEN D.B.H. 7"

38.4 - 1RS FROM POST.

READING ON TREE

T 144 N. S. 31.

B.T. South 41.30° EAST.

BIRCH D.B.H. 5"

22.5 - 1RS FROM POST.

READING ON TREE

T. 143. N. S. 5

CONTINUED EAST, FROM

S. COT. $\frac{31}{32}$

DEC. 73. $\frac{.6}{5}$

0 - 16 CAs ASPEN POLES

16 - 20 " M. H. WOOD.

ESTABLISHED TEMP $\frac{1}{16}$ # 16

20 CAs EAST OF S. COT.

CONTINUED EAST.

20 - 8 CAs M. H. WOOD.

CHECKED IN 8 CAs EAST

OF TEMP $\frac{1}{16}$ # 16.

DECEMBER. 30th 1935

T. 144 N R 29. W. S. 32.

CONTINUED EAST ON S. LINE
BETWEEN S. 32. T. 144.

S. 5. T. 143. - 8 chs EAST OF TEMP $\frac{1}{4}$ #16
8-12 chs M. H. Wood.

12-20" ASPEN POLES

ESTABLISHED TEMP $\frac{1}{4}$ CUT.

S. ~~32~~ 20 chs EAST OF TEMP $\frac{1}{4}$ #16.

CONTINUED EAST.

0-12 chs BALSAM AND CEDAR S.
12-20" CEDAR SWAMP.

MISSED #15 2-1Ks TO
THE SOUTH 19.02 chs EAST
OF TEMP $\frac{1}{4}$ CUT. S. ~~32~~ T. 144

B.T. SOUTH 18.30° EAST. S. #143

CEDAR D.B.H. 8"

27-1Ks FROM POST.

COULD ONLY FIND ONE B.T.
AT #15

CONTINUED EAST

0-8 chs CEDAR SWAMP.

8-19.57 chs ALDER SWAMP.

MISSED M. CUT.

10.8-1Ks TO THE NORTH.

S. ~~32~~ T. 144 R 29 W.
5 T. 143

JAN. 6th 1936

T. 144 N R 29 W. S. 32

STARTING AT S. COR. $\frac{29}{28}$

RAN South ON G.L.O. $\frac{22}{33}$

DEC. 26°

0 - 6 chs ALDER SWAMP.

6 - 20.81 chs ASPEN POLES

INTERSECTED OLD ROAD

AT 17.50 chs SOUTH OF S. COR.

MISSED ~~1/6~~ #7 - 9.8-1ks

TO THE WEST. 20.81 chs

SOUTH OF S. COR.

B.T. NORTH $43\frac{1}{2}$ ° WEST.

ASPEN D.B.H. 7"

44-1ks FROM POST.

READING ON TREE

N. $\frac{1}{6}$ S. 32.

B.T. SOUTH 47° EAST.

ASPEN D.B.H. 9"

10-1ks FROM POST. S. 32

CONTINUED SOUTH

0 - 20.91 chs ASPEN POLES.

MISSED $\frac{1}{4}$ COR S. 32) 33

17.4-1ks TO THE WEST.

20.91 chs SOUTH OF ~~1/6~~ #7.

B.T. SOUTH 36° WEST.

ASPEN D.B.H. 10"
 47.6 - IKS FROM POST.
 BT. NORTH 24.30° EAST.

ASPEN D.B.H. 9"
 92.4 - IKS FROM POST.

CONTINUED SOUTH
 0 - 14chs ASPEN POLES

14 - 20" BIRCH POLES
 ESTABLISHED TEMP $\frac{1}{16}$ #14

20chs SOUTH OF $\frac{1}{4}$ COR.
 CHECKED IN 20chs SOUTH OF
 $\frac{1}{4}$ COR. S. 32/33

JAN 8th 1936

T. 144 N R 29 W S. 32.
 STARTING 20chs SOUTH OF
 $\frac{1}{4}$ COR. S. 32/33

RAN SOUTH

DEC. 26°

0 - 10chs CEDAR SWAMP

10 - 22" ALDER SWAMP

ESTABLISHED TEMP S. ~~COR. $\frac{1}{4}$~~

20chs SOUTH OF $\frac{1}{4}$ COR.

MISSED N. COR.

35 - IKS TO THE WEST

22chs SOUTH OF TEMP $\frac{1}{16}$ #14

WENT NORTH AND WEST
 AND RAN THE NORTH AND
 SOUTH $\frac{1}{4}$ LINE
 STARTING AT $\frac{1}{4}$ COR S. $\frac{29}{32}$
 RAN SOUTH DEC. 26°
 0 - 6 chs ASPEN POLES
 6 - 16 " M. H. WOOD.
 16 - 21.90 chs ASPEN POLES
 INTERSECTED OLD ROAD
 AT 15. #4 chs SOUTH OF $\frac{1}{4}$ COR.
 ESTABLISHED TEMP $\frac{1}{16}$ #5
 20 chs SOUTH OF $\frac{1}{4}$ COR.
 MISSED $\frac{1}{16}$ #5 2.6 - 1ks
 TO THE WEST. 21.90 - chs
 SOUTH OF $\frac{1}{4}$ COR. S. $\frac{29}{32}$
 B.T. SOUTH 77° WEST
 BIRCH D.B.H. 4"
 32.5 - 1ks FROM POST.
 READING ON TREE C. N. $\frac{1}{16}$ S. 32.
 B.T. NORTH 72° WEST.
 BIRCH D.B.H. 4"
 22 - 1ks FROM POST.
 CONTINUED SOUTH
 0 - 10 chs ASPEN POLES
 10 - 21.95 - chs MEADOW.
 ESTABLISHED TEMP C. $\frac{1}{4}$ COR.

20 chs south of $\frac{1}{6}$ # 5
 MISSED C. $\frac{1}{4}$ cot S. 3 $\frac{1}{2}$
 4-1Ks TO THE WEST

21.95-chs south of $\frac{1}{6}$ cot.
 B.T. NORTH 86° WEST.
 ASPEN D.B.H. 9"

22-1Ks FROM POST.
 READING ON TREE C. $\frac{1}{4}$ C.S. 32.
 B.T. NORTH 68° EAST.
 ASPEN D.B.H. 10"

10-1Ks FROM POST.
 READING ON TREE C. $\frac{1}{4}$ C.S. 32
 CHECKED IN AT C. $\frac{1}{4}$ C.S. 32.

JAN 9th 1936

T. 144 N. R. 29 W. S. 32.
 STARTING AT C. $\frac{1}{4}$ cot. S. 32.

RAN SOUTH DEC. 26°

0-20 chs ASPEN AND Birch poles
 ESTABLISHED TEMP $\frac{1}{6}$ # 12

20 chs south of C. $\frac{1}{4}$ cot.
 CONTINUED SOUTH

20-32 chs ASPEN AND Birch P.
 INTERSECTED old ROAD

30.57-chs south of C. $\frac{1}{4}$ cot.
 32-44 chs ASPEN SAPLINGS

INTERSECTED EAST AND
WEST S. LINE BETWEEN
S. 32. T 144 AND
S. 5. T 143 — 43.93 CHS

SOUTH OF C. $\frac{1}{4}$ COR S. 32.
MISSED TEMP $\frac{1}{4}$ COR.
OF S. 32 70 LKS TO
THE WEST.

ESTABLISHED APPROX.
 $\frac{1}{4}$ COR. S. 32 T 144
5 T 143

44 CHS SOUTH OF C. $\frac{1}{4}$ COR. S. 32.
I WENT TO $\frac{1}{4}$ COR
S. 31/32 RAN EAST
DEC. 4.30°

0 - 4 CHS ALDER SWAMP.
4 - 20 - 79 CHS ASPEN. POLES
HIT. $\frac{1}{6}$ # 9. 20. 79. CHS.
EAST OF $\frac{1}{4}$ COR S. 31/32
B.T. SOUTH 51° EAST.
ASPEN D.B.H. 6"

12. 5. - LKS FROM POST.
READING ON TREE N. $\frac{1}{6}$ S 32.
B.T. NORTH 70° WEST.
ASPEN D.B.H. 7"
9.2 LKS FROM POST.

Natural Trigonometrical Functions

Angle.	Sin.	Tan.	Sec.	Cosec.	Cotg.	Cosin.	Angle.	Sin.	Tan.	Sec.	Cosec.	Cotg.	Cosin.
0	0	0	1.	∞	∞	1.	90	1.	0	0	∞	∞	0
10	.0029	.0029		.3438	.3438	.7174	80	.1392	.1405	1.0098	7.185	7.115	.99027
20	.0058	.0058		.6876	.6876	.7174	70	.1421	.1435	1.0102	7.040	6.988	.98986
30	.0087	.0087		1.0314	1.0314	.7174	60	.1449	.1465	1.0107	6.900	6.827	.98944
40	.0116	.0116	1.0001	1.3753	1.3753	.7174	50	.1478	.1495	1.0111	6.766	6.691	.98902
50	.0145	.0145	1.0001	1.7192	1.7192	.7174	40	.1507	.1524	1.0115	6.636	6.561	.98858
60	.0175	.0175	1.0002	2.0631	2.0631	.7174	30	.1536	.1554	1.0120	6.512	6.435	.98814
70	.0204	.0204	1.0003	2.4070	2.4070	.7174	20	.1564	.1584	1.0125	6.394	6.314	.98769
80	.0233	.0233	1.0003	2.7509	2.7509	.7174	10	.1593	.1614	1.0129	6.277	6.197	.98723
90	.0262	.0262	1.0003	3.0948	3.0948	.7174	0	.1622	.1644	1.0134	6.166	6.084	.98676
100	.0291	.0291	1.0004	3.4387	3.4387	.7174	350	.1650	.1673	1.0139	6.050	5.976	.98629
110	.0320	.0320	1.0005	3.7826	3.7826	.7174	340	.1679	.1703	1.0144	5.955	5.871	.98582
120	.0349	.0349	1.0006	4.1265	4.1265	.7174	330	.1708	.1733	1.0149	5.855	5.766	.98531
130	.0378	.0378	1.0007	4.4704	4.4704	.7174	320	.1736	.1763	1.0154	5.759	5.671	.98481
140	.0407	.0407	1.0008	4.8143	4.8143	.7174	310	.1765	.1793	1.0160	5.665	5.576	.98430
150	.0436	.0437	1.0010	5.1582	5.1582	.7174	300	.1794	.1823	1.0165	5.575	5.485	.98378
160	.0465	.0466	1.0011	5.5021	5.5021	.7174	290	.1822	.1853	1.0170	5.485	5.396	.98325
170	.0494	.0495	1.0012	5.8460	5.8460	.7174	280	.1851	.1883	1.0176	5.403	5.309	.98272
180	.0523	.0524	1.0014	6.1899	6.1899	.7174	270	.1880	.1914	1.0181	5.320	5.226	.98218
190	.0552	.0553	1.0015	6.5338	6.5338	.7174	260	.1903	.1941	1.0187	5.241	5.145	.98163
200	.0581	.0582	1.0017	6.8777	6.8777	.7174	250	.1937	.1974	1.0193	5.164	5.066	.98107
210	.0610	.0612	1.0019	7.2216	7.2216	.7174	240	.1965	.2004	1.0199	5.089	4.989	.98050
220	.0640	.0641	1.0020	7.5655	7.5655	.7174	230	.1994	.2035	1.0205	5.016	4.915	.97992
230	.0669	.0670	1.0022	7.9094	7.9094	.7174	220	.2022	.2065	1.0211	4.945	4.843	.97934
240	.0698	.0699	1.0024	8.2533	8.2533	.7174	210	.2051	.2095	1.0217	4.877	4.773	.97875
250	.0727	.0729	1.0027	8.5972	8.5972	.7174	200	.2079	.2126	1.0223	4.810	4.705	.97815
260	.0756	.0758	1.0029	8.9411	8.9411	.7174	190	.2108	.2156	1.0230	4.745	4.638	.97754
270	.0785	.0787	1.0031	9.2850	9.2850	.7174	180	.2136	.2186	1.0236	4.682	4.574	.97692
280	.0814	.0816	1.0033	9.6289	9.6289	.7174	170	.2164	.2217	1.0243	4.620	4.511	.97630
290	.0843	.0846	1.0036	9.9728	9.9728	.7174	160	.2193	.2247	1.0249	4.560	4.449	.97566
300	.0872	.0875	1.0038	10.3167	10.3167	.7174	150	.2221	.2278	1.0256	4.502	4.390	.97502
310	.0901	.0904	1.0041	10.6606	10.6606	.7174	140	.2250	.2309	1.0263	4.445	4.331	.97437
320	.0929	.0934	1.0043	11.0045	11.0045	.7174	130	.2278	.2339	1.0270	4.390	4.275	.97371
330	.0958	.0963	1.0046	11.3484	11.3484	.7174	120	.2306	.2370	1.0277	4.336	4.219	.97304
340	.0987	.0992	1.0049	11.6923	11.6923	.7174	110	.2334	.2401	1.0284	4.284	4.165	.97237
350	.1016	.1022	1.0052	12.0362	12.0362	.7174	100	.2363	.2432	1.0291	4.232	4.113	.97169
360	.1045	.1051	1.0055	12.3801	12.3801	.7174	90	.2391	.2462	1.0299	4.182	4.061	.97100
370	.1074	.1080	1.0058	12.7240	12.7240	.7174	80	.2419	.2493	1.0306	4.133	4.011	.97030
380	.1103	.1110	1.0061	13.0679	13.0679	.7174	70	.2447	.2524	1.0314	4.086	3.962	.96959
390	.1132	.1139	1.0065	13.4118	13.4118	.7174	60	.2476	.2555	1.0321	4.039	3.914	.96887
400	.1161	.1169	1.0068	13.7557	13.7557	.7174	50	.2504	.2586	1.0329	3.994	3.867	.96815
410	.1190	.1198	1.0072	14.0996	14.0996	.7174	40	.2532	.2617	1.0337	3.949	3.821	.96742
420	.1219	.1228	1.0075	14.4435	14.4435	.7174	30	.2560	.2648	1.0345	3.906	3.776	.96667
430	.1248	.1257	1.0079	14.7874	14.7874	.7174	20	.2588	.2679	1.0353	3.864	3.732	.96593
440	.1276	.1287	1.0082	15.1313	15.1313	.7174	10	.2616	.2711	1.0361	3.822	3.689	.96517
450	.1305	.1317	1.0086	15.4752	15.4752	.7174	0	.2644	.2742	1.0369	3.782	3.647	.96440
460	.1334	.1346	1.0090	15.8191	15.8191	.7174	350	.2672	.2773	1.0377	3.742	3.606	.96363
470	.1363	.1376	1.0094	16.1630	16.1630	.7174	340	.2700	.2805	1.0386	3.703	3.566	.96285
480				16.5069	16.5069	.7174	330	.2728	.2836	1.0394	3.665	3.526	.96206
490				16.8508	16.8508	.7174	320						
500				17.1947	17.1947	.7174	310						
				17.5386	17.5386	.7174	300						
				17.8825	17.8825	.7174	290						
				18.2264	18.2264	.7174	280						
				18.5703	18.5703	.7174	270						
				18.9142	18.9142	.7174	260						
				19.2581	19.2581	.7174	250						
				19.6020	19.6020	.7174	240						
				19.9459	19.9459	.7174	230						
				20.2898	20.2898	.7174	220						
				20.6337	20.6337	.7174	210						
				20.9776	20.9776	.7174	200						
				21.3215	21.3215	.7174	190						
				21.6654	21.6654	.7174	180						
				22.0093	22.0093	.7174	170						
				22.3532	22.3532	.7174	160						
				22.6971	22.6971	.7174	150						
				23.0410	23.0410	.7174	140						
				23.3849	23.3849	.7174	130						
				23.7288	23.7288	.7174	120						
				24.0727	24.0727	.7174	110						
				24.4166	24.4166	.7174	100						
				24.7605	24.7605	.7174	90						
				25.1044	25.1044	.7174	80						
				25.4483	25.4483	.7174	70						
				25.7922	25.7922	.7174	60						
				26.1361	26.1361	.7174	50						
				26.4800	26.4800	.7174	40						
				26.8239	26.8239	.7174	30						
				27.1678	27.1678	.7174	20						
				27.5117	27.5117	.7174	10						
				27.8556	27.8556	.7174	0						
				28.1995	28.1995	.7174	350						
				28.5434	28.5434	.7174	340						
				28.8873	28.8873	.7174	330						
				29.2312	29.2312	.7174	320						
				29.5751	29.5751	.7174	310						
				29.9190	29.9190	.7174	300						