

T. H. B. T. H. B. T. H. B.

MINING
TRANSIT BOOK

#108

TABLES FOR EXCAVATIONS AND EMBANKMENTS.

DISTANCES FROM CENTER OF ROADWAY FOR CROSS-SECTIONING.
ROADWAY 18 FEET WIDE. SIDE SLOPES 1 TO 1.
FOR SINGLE TRACK EXCAVATION.

	0	.1	.2	.3	.4	.5	.6	.7	.8	.9	
0	9.0	9.1	9.2	9.3	9.4	9.5	9.6	9.7	9.8	9.9	0
1	10.0	10.1	10.2	10.3	10.4	10.5	10.6	10.7	10.8	10.9	1
2	11.0	11.1	11.2	11.3	11.4	11.5	11.6	11.7	11.8	11.9	2
3	12.0	12.1	12.2	12.3	12.4	12.5	12.6	12.7	12.8	12.9	3
4	13.0	13.1	13.2	13.3	13.4	13.5	13.6	13.7	13.8	13.9	4
5	14.0	14.1	14.2	14.3	14.4	14.5	14.6	14.7	14.8	14.9	5
6	15.0	15.1	15.2	15.3	15.4	15.5	15.6	15.7	15.8	15.9	6
7	16.0	16.1	16.2	16.3	16.4	16.5	16.6	16.7	16.8	16.9	7
8	17.0	17.1	17.2	17.3	17.4	17.5	17.6	17.7	17.8	17.9	8
9	18.0	18.1	18.2	18.3	18.4	18.5	18.6	18.7	18.8	18.9	9
10	19.0	19.1	19.2	19.3	19.4	19.5	19.6	19.7	19.8	19.9	10
11	20.0	20.1	20.2	20.3	20.4	20.5	20.6	20.7	20.8	20.9	11
12	21.0	21.1	21.2	21.3	21.4	21.5	21.6	21.7	21.8	21.9	12
13	22.0	22.1	22.2	22.3	22.4	22.5	22.6	22.7	22.8	22.9	13
14	23.0	23.1	23.2	23.3	23.4	23.5	23.6	23.7	23.8	23.9	14
15	24.0	24.1	24.2	24.3	24.4	24.5	24.6	24.7	24.8	24.9	15
16	25.0	25.1	25.2	25.3	25.4	25.5	25.6	25.7	25.8	25.9	16
17	26.0	26.1	26.2	26.3	26.4	26.5	26.6	26.7	26.8	26.9	17
18	27.0	27.1	27.2	27.3	27.4	27.5	27.6	27.7	27.8	27.9	18
19	28.0	28.1	28.2	28.3	28.4	28.5	28.6	28.7	28.8	28.9	19
20	29.0	29.1	29.2	29.3	29.4	29.5	29.6	29.7	29.8	29.9	20
21	30.0	30.1	30.2	30.3	30.4	30.5	30.6	30.7	30.8	30.9	21
22	31.0	31.1	31.2	31.3	31.4	31.5	31.6	31.7	31.8	31.9	22
23	32.0	32.1	32.2	32.3	32.4	32.5	32.6	32.7	32.8	32.9	23
24	33.0	33.1	33.2	33.3	33.4	33.5	33.6	33.7	33.8	33.9	24
25	34.0	34.1	34.2	34.3	34.4	34.5	34.6	34.7	34.8	34.9	25
26	35.0	35.1	35.2	35.3	35.4	35.5	35.6	35.7	35.8	35.9	26
27	36.0	36.1	36.2	36.3	36.4	36.5	36.6	36.7	36.8	36.9	27
28	37.0	37.1	37.2	37.3	37.4	37.5	37.6	37.7	37.8	37.9	28
29	38.0	38.1	38.2	38.3	38.4	38.5	38.6	38.7	38.8	38.9	29
30	39.0	39.1	39.2	39.3	39.4	39.5	39.6	39.7	39.8	39.9	30
31	40.0	40.1	40.2	40.3	40.4	40.5	40.6	40.7	40.8	40.9	31
32	41.0	41.1	41.2	41.3	41.4	41.5	41.6	41.7	41.8	41.9	32
33	42.0	42.1	42.2	42.3	42.4	42.5	42.6	42.7	42.8	42.9	33
34	43.0	43.1	43.2	43.3	43.4	43.5	43.6	43.7	43.8	43.9	34
35	44.0	44.1	44.2	44.3	44.4	44.5	44.6	44.7	44.8	44.9	35
36	45.0	45.1	45.2	45.3	45.4	45.5	45.6	45.7	45.8	45.9	36

INDEX

- T 144 N R 29. W. SEC. 32 - PAGE - 2.
- T 144 N R 29 W. SEC. 33 - PAGE -- 6
- * T 145 N R 29 W. SEC 7 - PAGE -- 10.
- T 145 N R 30 W SEC 1 - PAGE --- 22.
- T 145 N R 29. W SECT - PAGE - - 24.
- T 145 N R 30 W SEC 1 PAGE -- 28
- T 145 N R 30 W SEC. 11 - PAGE -- 46
- T 145 N R 30 W SEC 14 - PAGE -- 64
- T 145 N R 29 W SEC 18 - PAGE -- 81.
- T 145 N R 29 W SEC 20. PAGE - - 96.
- T 145 N R 30 W. SEC 26 PAGE - - 103
- T 145 N R 29 W SEC 9 PAGE - 110
- T 146. N. - R 30. W - SEC. 36 - PAGE - 111.
- T 146. N. - R 30. W - SEC. 26 - PAGE - 112.
- T 146. N. - R 30. W. - SEC 26 - PAGE - 113
- T 146. N - R 30 W. - SEC 26 - PAGE - 114.
- T 145 N - R 29 W - SEC. 9 - PAGE - 115
- T 145 N - R 29 W - SEC. 8 - PAGE - 119
- T 145 N - R 29 W - SEC. 9 - PAGE - 125

CONTINUED FROM BOOK
NO. 1. A T144 N R29 W S. 32.

JAN 10th 1936

T. 144 N R29 W S. 32.

CONTINUED EAST ON $\frac{1}{4}$ LINE
FROM $\frac{1}{16}$ #9.

DEC. 4.30°

0 - 3 chs ASPEN POLES
3 - 20.65 chs ALDER SWAMP
MISSED C $\frac{1}{4}$ COR. 30.5-1Ks
TO THE SOUTH

SET UP AT C $\frac{1}{4}$ COR.

CONTINUED EAST

DEC. 5°

0 - 20.71 chs ASPEN AND
BIRCH POLES
MISSED $\frac{1}{16}$ #8 10.5-1Ks
TO THE SOUTH

B.T. SOUTH 21° WEST.

CEDAR D.B.H. 9"

106.5-1Ks FROM POST.

READING ON TREE C. E. $\frac{1}{16}$
S. 32.

B.T. NORTH 53° WEST.

ASPEN D.B.H. 8"

4
27.8-1ks FROM POST,
CONTINUED EAST.

DEC. 5.

0 - 20.69 chs ASPEN POLES
MISSED $\frac{1}{4}$ COY S. 32/33
14-1ks TO THE SOUTH
CHECKED IN AT $\frac{1}{4}$ COY S. 32/33

JAN 13th 1936

T 144 N R 29 W S. 32.

STARTING AT $\frac{1}{6}$ # 8

RAN SOUTH.

DEC. 26.

0 - 20 chs ASPEN POLES
ESTABLISHED TEMP $\frac{1}{6}$ # 13.
20 chs SOUTH OF $\frac{1}{6}$ # 8.
CONTINUED SOUTH

20 - 26 chs ASPEN POLES

26 - 32 " BIRCH AND BALSAM

32 - 42.82 chs CEDAR SWAMP.

MISSED $\frac{1}{6}$ # 15.

14 - 1ks TO THE WEST.

WENT TO $\frac{1}{6}$ # 5.

RAN EAST.

DEC. 4.30.

0 - 10 chs ASPEN POLES

CHECKED IN 10 chs EAST OF $\frac{1}{6}$ # 5. 532

JAN 14th 1936.
 T. 144 N R 29 W. S. 32,
 CONTINUED EAST ON $\frac{1}{2}$ LINE
 10 CHS EAST OF $\frac{1}{2}$ # 5
 10-42.36 CHS ASPEN POLES
 INTERSECTED S. LINE.
 BETWEEN S. 32/33 42.19 CHS.
 EAST OF $\frac{1}{2}$ # 5
 ESTABLISHED TEMP $\frac{1}{2}$ # 6
 20 CHS EAST OF $\frac{1}{2}$ # 5
 ESTABLISHED TEMP $\frac{1}{2}$ # 7
 20 CHS EAST OF TEMP $\frac{1}{2}$ # 6.
 MISSED $\frac{1}{2}$ # 7 1.1K TO THE
 NORTH 42.36 CHS EAST OF $\frac{1}{2}$ # 5
 WENT NORTH TO S. COY. $\frac{29}{28}$
 $\frac{32}{33}$
 RAN EAST. BETWEEN S. $\frac{28}{33}$
 DEC. 6.30
 0-10 CHS ALDER SWAMP
 10-20" ASPEN AND BIRCH POLES
 ESTABLISHED TEMP $\frac{1}{2}$ # 2.
 20 CHS EAST OF S. COY.
 CONTINUED EAST.
 28-30 CHS ASPEN AND
 BIRCH POLES
 CHECKED IN 30 CHS EAST
 OF S. COY $\frac{29}{28}$
 $\frac{32}{33}$

T 144 N R 29 W. S. 33.

DEC. 6.30
 40.07 CHS 40.26 CHS

FOR DEC 6.30
 5. 22/23 30 CHS

JAN 15th 1936

T144 X R 29 W S. 33

CONTINUED EAST ON S. LINE

BETWEEN S. $\frac{28}{33}$

30-36 chs BIRCH POLES

36-40.01 chs M.H. WOOD.

MISSED $\frac{1}{4}$ COT S. $\frac{28}{33}$

1-1K TO THE SOUTH

40.01 chs EAST OF S. COT $\frac{29.95}{34.33}$

CONTINUED EAST.

0-6 chs M.H. WOOD.

INTERSECTED OLD ROAD.

20 chs 40-1Ks EAST OF $\frac{1}{4}$ COT.

ESTABLISHED TEMP $\frac{1}{16}$ #1.

20 chs EAST OF $\frac{1}{4}$ COT.

20-28 chs M.H. WOOD.

28-40.26 CEDAR AND

BALSAM SWAMP.

ESTABLISHED TEMP S.

COT. $\frac{28.97}{33.34}$ 40 chs EAST OF

$\frac{1}{4}$ COT. $\frac{28}{33}$

INTERSECTED NORTH AND

SOUTH S. LINE OF 28/27

40.26 chs EAST OF $\frac{1}{4}$ COT.

NO S. COT. WAS FOUND.

THE READING ON THE S. LINE

WERE WE INTERSECTED

12.

OF C. $\frac{1}{4}$ COY S. 7.
 CONTINUED EAST
 20-28chs JACK PINE SEEDLINGS
 28-42.4/ chs JACK PINE.
 INTERSECTED NORTH AND
 SOUTH S. LINE
 BETWEEN S. 7/8
 42.4/ chs EAST OF C. $\frac{1}{4}$ COY.
 MISSED TEMP $\frac{1}{4}$ COY S. 7/8
 12. 2-1/2s TO THE NORTH

WENT NORTH TO S. COY.
 NO S. COY COULD BE
 FOUND SO WE STARTED
 FROM B.T. TREE READING
 ON B.T. T145 R29 WS. 5
 RAN WEST

DEC. 70

0-20chs JACK PINE SEEDLINGS
 ESTABLISHED TEMP $\frac{1}{6}$ #1
 20 chs WEST OF THE
 POINT WHERE WE STARTED
 CONTINUED WEST
 20-40 chs JACK PINE SEEDLINGS
 ESTABLISHED TEMP $\frac{1}{4}$ COYS $\frac{1}{6}$
 20chs EAST OF TEMP $\frac{1}{6}$ #1.
 MISSED $\frac{1}{4}$ COY S. $\frac{1}{6}$
 48-1/2s TO THE NORTH

13.

JAN 21, 1936
T 145 N R 29 W. S. 7.
STARTING AT $\frac{1}{6}$ #1

RAK SOUTH

DEC 70

0 - 10 chs JACK PINE SEEDLING

10 - 14 " JACK PINE

14 - 20 " JACK PINE SEEDLING

INTERSECTED OLD ROAD

AT 11.90 chs SOUTH OF $\frac{1}{6}$ COR.

INTERSECTED $\frac{1}{6}$ LINE

RUNNING EAST AND WEST

AT 19.56 chs SOUTH OF $\frac{1}{6}$ COR.

MISSED TEMP $\frac{1}{6}$ #6

2.51 chs TO THE EAST

ESTABLISHED TEMP $\frac{1}{6}$ #6

20 chs SOUTH OF $\frac{1}{6}$ #1.

CONTINUED SOUTH

20 - 40 chs JACK PINE SEEDLING

INTERSECTED EAST AND WEST

$\frac{1}{4}$ LINE S. 7. AT 39.77 chs

SOUTH OF $\frac{1}{6}$ #1.

MISSED TEMP $\frac{1}{6}$ #8

2.12 chs TO THE EAST.

ESTABLISHED TEMP $\frac{1}{6}$ #8

40 chs SOUTH OF $\frac{1}{6}$ #1.

CONTINUED SOUTH.

16

40-50chs JACK PINE SEEDLINGS
CHECKED IN 50chs SOUTH
OF TEMP #1. S. 7 T145.

JAN 24th 1936.

T145N R 29W S. 7.

STARTING AT C $\frac{1}{4}$ COR. S. 7.

RE-BUSHED AND RE-STAKED
OLD $\frac{1}{4}$ LINE.

RAN SOUTH.

0-28chs JACK PINE SAPLINGS
28-40" TAMARCK AND
SPURSE SWAMP.

ESTABLISHED TEMP $\frac{1}{4}$ COR S. $\frac{7}{8}$
40chs SOUTH OF C $\frac{1}{4}$ COR.
MISSED $\frac{1}{4}$ COR S. $\frac{7}{8}$
46.5-1ks TO THE EAST.

JAN 25th 1936

T145N R 29W S. 7

RE-BUSHED AND RE-STAKED
SOUTH S. LINE BEGINNING
AT $\frac{1}{4}$ COR. S. $\frac{7}{8}$

RAN EAST.

0-41.97chs JACK PINE SAPLINGS
RE-MARKED S. COR. $\frac{7}{8}$
EAST OF $\frac{1}{4}$ COR S. $\frac{7}{8}$

17

WENT TO C $\frac{1}{4}$ COY S.
 RE-RUN THE $\frac{1}{4}$ LINE NORTH
 0 - 20chs JACK PINE SAPLINGS
 RE-MARKED ALL STAKES AND
 $\frac{1}{6}$ # 5.

WENT 50 chs south of
 $\frac{1}{6}$ # 1. CONTINUED SOUTH
 ON $\frac{1}{6}$ LINE

DEC 7^o

50-60 chs JACK PINE SAPLINGS
 INTERSECTED EAST AND
 WEST $\frac{1}{6}$ LINE AT.

59.23 chs south of $\frac{1}{6}$ # 1.

MISSED $\frac{1}{6}$ # 13

164 - 1ks TO THE EAST.

THE REST OF THE NORTH
 AND SOUTH LINE WAS RUN

WENT TO $\frac{1}{4}$ COY S. $\frac{6}{7}$

RAN WEST — DEC. 7^o

0 - 20chs JACK PINE SAPLINGS
 ESTABLISHED TEMP $\frac{1}{6}$ # 2

20chs WEST OF $\frac{1}{4}$ COY S. $\frac{6}{7}$

CHECKED IN 20chs WEST
 OF $\frac{1}{4}$ COY S. $\frac{6}{7}$

JAN 27th 1936

T144 N R29 W S.17.

STARTING AT ~~16~~#6

CONTINUED NORTH ON ~~16~~ LINE

DEC 6.30°

0 - 14 CHS MEADOW.

14 - 20" ASPEN

INTERSECTED NORTH S. LINE

OF S. 17.

AT 19.51 CHS NORTH OF ~~16~~#6

MISSED ~~16~~#15. S ~~8~~⁹/₁₇

140 - 165 TO THE EAST.

RE-BLASED ^{STAKES} RE-MARKED

AND RE-BRUSHED THE

FOLLOWING LINE

T144 N R29 W S.17.

FROM ~~16~~#8 NORTH

TO ~~16~~#6

FROM ~~16~~ 1/4 COR S. ~~8~~⁹/₁₇

SOUTH TO C ~~16~~ 1/4 CH.

FROM ~~16~~#5. EAST TO.

~~16~~#6.

JAN 28th 1936

T 145 N. R 30 W S. 1.
 STARTING AT S. COY $\frac{35}{36}$
 B.T.'s FOX S. COY. $\frac{2}{1}$
 SOUTH 7° EAST

JACK PINE D.B.H. 8"

70.5-1ks FROM POST.

READING ON TREE

T. 145 N R 30 W S. 1.

B.T. SOUTH 31° WEST.

ASPEN D.B.H. 3.8"

42-1ks FROM POST.

READING ON TREE.

T 145 N R 30 W S. 2.

RAN SOUTH FROM S. COY.

ON G.L.D. LINE

DEC. 6°

0-20chs ASPEN SAPLINGS

ESTABLISHED TEMP $\frac{1}{16}$ #3

20chs SOUTH OF S. COY.

20-34chs NORWAY AND
WHITE PINE

34-40.07chs ASPEN AND BIRCH

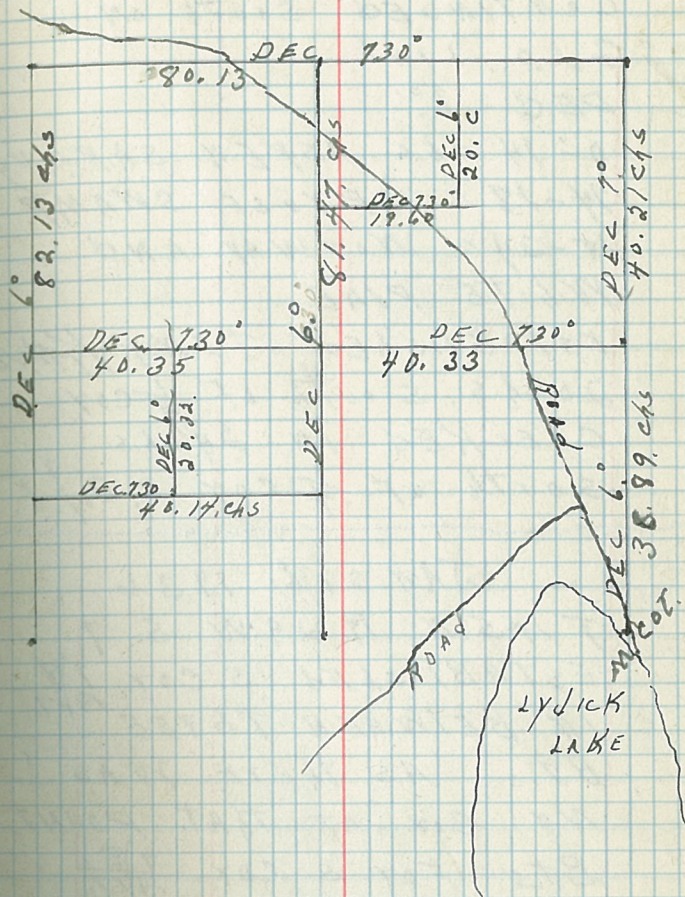
MISSED BY COY S $\frac{2}{1}$.

15-1ks TO THE WEST.

THE G.L.D. SURVEYERS

USED A NORWAY PINE

T. 145 N R 30. S. 1.



24.

TREE FOT $\frac{1}{4}$ COY S. 2/1.
DBH. 20"

CONTINUED SOUTH ON
G.L.D. LINE

DEC 6°

0-14 chs ASPEN SAPLINGS
14-18" SPRUCE SWAMP
18-24" NORWAY AND
WHITE PINE

ESTABLISHED TEMP $\frac{1}{4}$ #10
20 chs south of $\frac{1}{4}$ COY.
CHECKED IN 24 chs
south of $\frac{1}{4}$ COY S. 2/1.

JAN 29th 1936

T145 N R 29 W S. 7
ESTABLISHED S. COY. $\frac{1}{8}$
IN BETWEEN THREE ¹⁹¹⁷

B.T.s AS THERE WAS
NO COY AT THAT POINT.

B.T.s FOT S. COY. $\frac{1}{8}$
WERE AS FOLLOWS

B.T. NORTH $24\frac{1}{2}$ ° WEST.

JACK PINE DBH. 12"

27-145 FROM POST.

READING ON TREE

T145 N R 29 W S. 7.

25.

26.

B.T. SOUTH 23° EAST.
 JACK PINE D.B.H. 10"

24.5-1KS FROM POST.

READING ON TREE

T 145 N R 29 W S. 17.

B.T. SOUTH 35° WEST.

JACK PINE D.B.H. 11"

32-1KS FROM POST

READING ON TREE

T 145 N R 29 W S. 18.

RAN NORTH FROM

ESTABLISHED S. COY. $\frac{7}{8}$
 1917

DEC. 7°.

0-20chs JACK PINE

MISSED $\frac{1}{6}$ #14

13-1KS TO THE EAST.

CONTINUED NORTH

20-40chs JACK PINE

SAPLINGS

INTERSECTED EAST AND WEST

$\frac{1}{4}$ LINE AT 39.33chs

NORTH OF S. COY.

MISSED TEMP $\frac{1}{4}$ COY.

45-1KS TO THE EAST.

CONTINUED NORTH

40-62chs JACK PINE SAPLINGS

ESTABLISHED TEMP $\frac{1}{6}$ #7. 60chs

27.

NORTH OF S. COY. $\frac{78}{1817}$

JAN 30th 1936

T 145 N. R 29. W S. 7

CONTINUED NORTH ON S. LINE
BETWEEN S. $\frac{7}{8}$

STARTING 62 chs NORTH

OF S. COY. S. $\frac{78}{1817}$

62-78 chs - JACK

PINE SAPLINGS

78-80 chs MEADOW

INTERSECTED S. LINE

BETWEEN S. $\frac{6}{7}$ AT

79.21 chs NORTH OF S. COY.

1.83 chs WEST OF $\frac{78}{1817}$

BT. WHICH WAS

USED FOR S. COY. $\frac{65}{78}$

ON THE NORTH LINE $\frac{7}{8}$

OF S. 7.

ESTABLISHED APPROX

S. COY. $\frac{65}{78}$ 80 chs

NORTH OF S. COY. $\frac{78}{1817}$

WENT TO

T. 145 N. R. 31. W. S. 1.

CONTINUED SOUTH ON

S. LINE BETWEEN S. $\frac{2}{1}$.

30.

STARTING 64 chs south
 OF S. COY. $\frac{30}{36}$
 RAN south ON $\frac{2}{1}$ G.L.O. LINE
 DEC. 6.

64-68 chs NOTWAY PINE
 68-82 " TAMARCK SWAMP

MISSED S. COY. $\frac{21}{11/12}$

64-115 TO THE
 WEST 82.13 chs south
 OF S. COY. $\frac{30}{36}$
 $\frac{2}{1}$

WENT TO $\frac{1}{4}$ COY. S. $\frac{1}{12}$.

RAN NORTH

DEC 6.

0-10 chs TAMARCK SWAMP

JAN 31st 1936

T 145 N R 30 W S. 1.

CONTINUED NORTH ON

$\frac{1}{4}$ LINE S. 1.

10-14 chs TAMARCK SWAMP

14-20 " BALSAM.

ESTABLISHED $\frac{1}{6}$ # 12

20 chs NORTH OF $\frac{1}{4}$ COY. $\frac{1}{12}$

CONTINUED NORTH

20-28 chs TAMARCK

AND BALSAM.

31.

28-40 chs ASPEN AND BRUSH.
 ESTABLISHED C $\frac{1}{4}$ COR HOLES
 NORTH OF $\frac{1}{4}$ COR S. $\frac{1}{12}$
 CONTINUED NORTH
 40-52 chs ASPEN SAPLINGS
 AND BRUSH.
 52-56 chs BALSAM.
 56-60 " TAMARCK SWAMP
 ESTABLISHED TEMP $\frac{1}{16}$ #5
 60 chs NORTH OF $\frac{1}{4}$ COR.
 60-66 chs TAMARCK SWAMP.
 INTERSECTED ROAD AT
 66 chs NORTH OF $\frac{1}{4}$ COR. $\frac{1}{12}$
 66-70 " MEADOW.

FEB 3rd 1936
 T 145 N R 30 W. S. 1.
 CONTINUED NORTH ON
 $\frac{1}{4}$ LINE
 70. - 81.47 chs JACK PINE
 SAPLINGS
 INTERSECTED THE NORTH
 SURV. LINE OF S. 1.
 81.47 chs NORTH OF $\frac{1}{4}$ COR.
 $\frac{1}{12}$ MISSED TEMP $\frac{1}{4}$ COR.
36
 42-165 TO THE EAST.

34.

WENT TO S. COT.

~~36/31~~ RAN LINE WEST.

DEC. 7.30.

0 - 10 chs MEADOW AND
BRUSH

10 - 20 chs JACK PINE SAPLINGS

ESTABLISHED TEMP $\frac{36}{16}$ #1

20 chs WEST OF S. COT.

20 - 40 chs JACK PINES.

ESTABLISHED TEMP $\frac{36}{16}$ COT S. ~~36~~ 40 chs WEST
OF S. COT.

CONTINUED WEST.

DEC 7.30

40 - 60 chs JACK PINE SAPLINGS

ESTABLISHED TEMP

 $\frac{36}{16}$ #2 60 chsWEST OF S. COT $\frac{36}{16}$ FEB 6th 1936

T 145 N R 30 W. S. 1.

CONTINUED WEST ON

S. LINE. FROM $\frac{36}{16}$ #2

S. 1. DEC 7.30

60 - 80.13 chs JACK PINE
SAPLINGS

INTERSECTED ROAD AT

35.

71.50 chs WEST OF S. COY.
 36/31 T 145 N R 29
 17/6 145 N R 30

MISSED S. COY. 35/36
 27.5 - 1/4s TO THE 2/1
 SOUTH 80.13 chs
 WEST OF S COY 34/36
 7/6

FEB 7th 1936

T 145 N R 30 W S 1.
 STARTING AT M. COY. S. 1-6
 B.T. FOR M. COY.

NORTH 30° WEST
 NORWAY D.B.H. 9"
 43.5 - 1/4s FROM POST
 READING ON TREE

T 145 N R 31 W S. 1 M.C.
 B.T. SOUTH 30° EAST
 NORWAY D.B.H. 8"

6.-7-1/4s FROM POST
 READING ON TREE
 T 145 N R 31 W S. 6. M.C.
 RAN NORTH FROM M. COY.
 DEC. 1°

0-28 chs NORWAY PINE
 28-3889 chs SPRUCE
 SWAMP.

MISSED $\frac{1}{4}$ COY S. 1-6
 14.5 - 1K5 TO THE EAST
 38.89 chs NORTH OF
 M. COY. S. 1-6.

FEB 8th 1936

T 145 N. R 30 W. S-1.
 B.T. FOR $\frac{1}{4}$ COY S 1-6
 NORTH 35° WEST
 BLACK SPRUCE

D.B.H. 6"

11.5 - 1K5 FROM POST.

READING ON TREE $\frac{1}{4}$ COY S-1

B.T. SOUTH 67° WEST

JACK PINE STUMP

D.B.H. 12"

RAN NORTH FROM $\frac{1}{4}$ COY.

DE 7° S. 1-6

0-8 chs SPRUCE SWAMP

8-28" TAMARCK SWAMP

ESTABLISHED TEMP $\frac{1}{2}$ #9

20 chs NORTH OF $\frac{1}{4}$ COY.

29-40.21 chs MEADOW

MISSED S. COY. 32 | 31

5-6 - 1K5 TO THE EAST $\frac{1}{4}$ 6

40.21 chs NORTH OF $\frac{1}{4}$ COY

S. 1-6

40

WENT BACK TO $\frac{1}{4}$
 COY. S-1-6
 RAN WEST DEC 7.30°
 0-2 chs SPRUCE SWAMP
 2-12" JACK PINE
 INTERSECTED ROAD
 AT 12.80 chs WEST OF
 $\frac{1}{4}$ COY. S-1-6
 12-24 chs JACK PINE
 SAPLINGS
 ESTABLISHED TEMP
 $\frac{1}{2}$ #8 2 chs WEST
 OF $\frac{1}{4}$ COY S-1-6
 24-26 chs TAMARCK SWAMP

FEB 10th 1936

7145 N. R 30 W. S 1.
 CONTINUED WEST ON $\frac{1}{4}$ LINE
 DEC 7.30°
 26-30 chs TAMARCK SWAMP
 30-40" ASPEN SAPLINGS
 INTERSECTED NORTH
 AND SOUTH $\frac{1}{4}$ LINE
 AT 40.33 chs WEST
 OF $\frac{1}{4}$ COY S-1-6
 THE READINGS ON NORTH
 AND SOUTH $\frac{1}{4}$ LINE

41 B

42

WHERE INTERSECTED

#1. 12 chs NORTH OF $\frac{1}{4}$ COY

S. 1-12

CONTINUED WEST

40. 54 chs ASPEN SAPLINGS

54-60 " WHITE PINE

AND BALSAM

ESTABLISHED TEMP

 $\frac{1}{16}$ # 9 60 chs WESTOF $\frac{1}{4}$ COY 1-6

#1-70 chs SPRUCE

AND TAMARACK SWAMP

70-80. chs 60-100 BIRCH PINES

MISSED $\frac{1}{4}$ COY S. 2-1

7. 2-100 TO THE NORTH

90. 60 chs WEST OF $\frac{1}{4}$ COY 1-6FEB 11th 1936

T 145N R 30W S-1

RAN $\frac{1}{16}$ LINE SOUTHFROM $\frac{1}{16}$ # 1. - SEC. 1.

DEC. 6'

0-20 chs JACK PINE

ESTABLISHED TEMP

 $\frac{1}{16}$ # 6 20 chs SOUTHOF $\frac{1}{16}$ # 1.

RAN WEST FROM

43

44
~~1/6 # 6~~ — DEC 7.30.
0 - 16 chs JACK PINE
INTERSECTED ROAD
AT 7 chs WEST OF ~~1/6 # 6~~
16 - 19.60 chs TAMARCK
SWAMP
INTERSECTED NORTH AND
SOUTH $\frac{1}{4}$ LINE
20.08 SOUTH OF $\frac{1}{4}$ COR.
SEC 36-1
AT 19.60 chs WEST
OF ~~1/6 # 6~~

FEB 12th 1932
T 145 N R 30 W S 1.
STARTING AT APPROX

~~1/6 # 10~~
RAN EAST

DEC 7.30.
0 - 8 chs NOTWAY PINE
8 - 22 " SPRUCE SWAMP
ESTABLISHED TEMP
~~1/6 # 11~~ 20 chs EAST
OF ~~1/6 # 10~~.

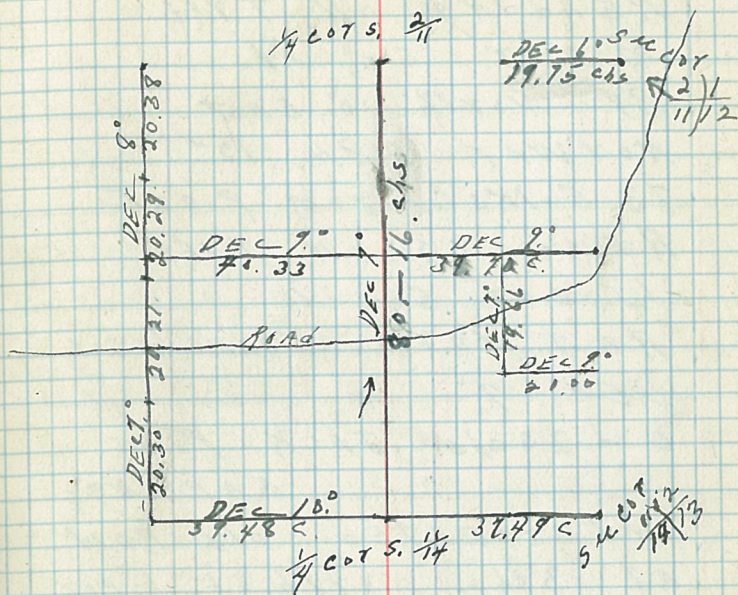
46

FEB 13, 1936
 T. 145 N. R 30 W. S. 1.
 CONTINUED EAST ON $\frac{1}{2}$ LINE
 DEC 73.0°
 22. - 32 chs TAMARCK AND
 BAISON SWAMP.
 32 - 40.14 chs BAISON
 MISSED APPROX $\frac{1}{2}$ # 12
 78 - 1K5 TO THE NORTH
 40.14 chs EAST OF APPROX
 $\frac{1}{2}$ # 10.

WENT TO APPROX
 $\frac{1}{2}$ # 11. RAN NORTH
 DEC. 6°
 0 - 10 chs SPTUSE SWAMP
 10 - 20.32 chs BAISON
 MISSED APPROX $\frac{1}{2}$ # 9
 18 - 1K5 TO THE WEST
 20.32 chs NORTH OF
 APPROX $\frac{1}{2}$ # 11.

FEB 18th 1936
 T 145 N R 30 W. S. 11.
 STARTING AT $\frac{1}{4}$ COR Sec $\frac{11}{14}$
 B.T.S FOR $\frac{1}{4}$ COR AYE
 B.T. SOUTH 80° EAST
 NOT WAY D.B.H. 14"

T. 145 N R 30. S. 11. 47



48

92-1ks FROM POST
READING ON TREE

$\frac{1}{4}$ COY. SEC. 14

BT. NORTH 10° EAST

NOYWAY D.B.H. 12"

73.5-1ks FROM POST

READING ON TREE

$\frac{1}{4}$ COY SEC. 11

RAN NORTH FROM $\frac{1}{4}$ COY

DEC. 7°

0-20chs JACK PINE
SAPLINGS

INTERSECTED OLD ROAD
AT 3chs NORTH OF $\frac{1}{4}$ COY

ESTABLISHED TEMP $\frac{1}{6}$ #12
20chs NORTH OF $\frac{1}{4}$ COY

FEB 20th 1936

T. 145 N R 30 W, SEC 11

CONTINUED NORTH ON $\frac{1}{4}$
LINE

20-40chs JACK PINE
SAPLINGS

INTERSECTED ROAD
AT 29.90chs NORTH

OF $\frac{1}{4}$ COY. SEC $\frac{1}{4}$
ESTABLISHED TEMP

49

56

C. $\frac{1}{4}$ COT SEC 11
40 chs NORTH OF $\frac{1}{4}$ COT

SEC. $\frac{11}{4}$
CONTINUED NORTH
40-60 chs JACK PINE
AND JACK PINE SAPLINGS
ESTABLISHED TEMP

$\frac{1}{16}$ # 5 60 chs NORTH
OF $\frac{1}{4}$ COT SEC $\frac{11}{4}$

FEB 21st 1936

T 145 N R 30 W S. 11
CONTINUED NORTH ON
NORTH AND SOUTH $\frac{1}{4}$ LINE
STARTING AT $\frac{1}{16}$ # 5

DEC 7.
60-74 chs JACK PINE
SAPLINGS

74-80.16 chs ASPEN SAPLINGS
MISSED $\frac{1}{4}$ COT SEC $\frac{21}{4}$

20-1ks TO THE WEST
80.16 chs NORTH OF
 $\frac{1}{4}$ COT SEC. $\frac{17}{4}$

WENT TO $\frac{1}{16}$ # 15
BETWEEN SEC. $\frac{21}{4}$
RAN SEC LINE $\frac{21}{4}$ EAST.

57.

52

STARTING 20 CHS EAST
OF $\frac{1}{4}$ COT. SEC $\frac{2}{11}$
DEC 2^o

20. - 24 CHS ASPEN POLES
24 - 39.75 CHS BALSAM
AND TAMARCK SWAMP

MISSSED SEC COT $\frac{2}{11} \frac{1}{12}$

12 - 1KS TO THE
SOUTH, 39.75 CHS EAST
OF $\frac{1}{4}$ COT. SEC $\frac{2}{11}$

FEB 24th 1936

T 145 N 19 30 W SEC 11.

STARTING AT SEC COT. $\frac{10}{18} \frac{11}{14}$
BEATING TREES FOR SEC COT.

B.T. SOUTH 67^o EAST

JACK PINE D.B.H. 4"

26 - 1KS FROM POST SEC 14

B.T. SOUTH 21^o WEST

JACK PINE D.B.H. 10"

36.7 - 1KS FROM POST SEC 13

B.T. NORTH 81^o WEST

JACK PINE D.B.H. 5"

120 - 1KS FROM POST SEC 10.

B.T. NORTH 25^o EAST.

ASPEN D.B.H. 6"

110 - 1KS FROM POST SEC 11.

53

54

RAN EAST FROM SEC. COR. $\frac{10}{11}$
 DEC 10°

0-39.48chs JACK PINE
 SAPLINGS

MISSED $\frac{1}{4}$ COR. SEC. $\frac{11}{14}$

4.5-1ks TO THE NORTH

39.48chs EAST OF SEC. COR.

CONTINUED EAST

DEC 10°

0-20chs JACK PINE
 SAPLINGS

ESTABLISHED TEMP $\frac{1}{6}$ #15

20chs EAST OF $\frac{1}{4}$ COR. SEC. $\frac{11}{14}$

FEB 25th 1936

T 145 N R 30 W. SEC. 11.

CONTINUED EAST IN SEC. LINE

BETWEEN SEC. $\frac{11}{14}$

STARTING AT $\frac{1}{6}$ #15

20. CHS EAST OF $\frac{1}{4}$ COR. $\frac{11}{14}$

20-23chs JACK PINE SAPLINGS

23-28 " MEADOW

28-37.49 JACK PINE SAPLINGS

MISSED SEC. COR. $\frac{11}{12}$

8.2-1ks TO THE $\frac{11}{13}$

NORTH, 37.49chs EAST OF

$\frac{1}{4}$ COR. SEC. $\frac{11}{14}$

55

FEB 24 1936

T 145 N R 30 W. SEC 11
 STARTING AT SEC COY. $\frac{1011}{1514}$
 XAN SEC LINE NORTH
 BETWEEN SEC 10-11

DEC 7^o

0-20.30 chs JACK PINE

SAPLINGS

MISSED $\frac{1}{6}$ # 10 1-5-1ks
 TO THE EAST,

20.30 chs NORTH OF SEC COY.

B.T. SOUTH 35^o EAST,

JACK PINE D.B.H. 3.5

8.5-1ks FROM POST.

CONTINUED NORTH

0-20.21 chs JACK PINE

SAPLINGS

INTERSECTED ROAD

11 chs NORTH OF $\frac{1}{6}$ # 10MISSED $\frac{1}{4}$ COY SEC 10-11

3-1ks TO THE EAST

20.21 chs NORTH OF $\frac{1}{6}$ # 10B.T. SOUTH 27^o EAST

JACK PINE D.B.H. 7"

31.6-1ks FROM COY.

CONTINUED NORTH

DEC. 8^o

58

0-20.29chs JACK PINE
SAPLINGS

HIT $\frac{1}{16}$ #3 20.29chs NORTH
OF $\frac{1}{4}$ COY Sec 10-11
B.T. SOUTH 12° WEST.

JACK PINE DBH. 3.5
17-18s FROM POST.

CONTINUED NORTH

0-20.38chs JACK PINE
SAPLINGS

MISSED SEC COY $\frac{3}{10} | \frac{2}{11}$
1.5 lbs TO THE WEST.

20.38chs NORTH OF $\frac{1}{16}$ #3

FEB 27th 1936

T 145 N. R 30. W Sec. 11.

STARTING AT $\frac{1}{4}$ COY Sec 11-12.

RAN WEST.

DEC. 9°

0-20chs ALDER SWAMP.

ESTABLISHED TEMP $\frac{1}{16}$ #8

20chs WEST OF $\frac{1}{4}$ COY.

INTERSECTED ROAD AT

20.85chs WEST OF $\frac{1}{4}$ COY

20-40chs JACK PINE.

INTERSECTED NORTH AND

SOUTH $\frac{1}{4}$ LINE AT 39.70chs

59

60.

WEST OF $\frac{1}{4}$ COT
 MISSED TEMP C $\frac{1}{4}$ COT
 OF SEC. 11. 45-115 TO THE NORTH
 CONTINUED WEST
 40-56 chs JACK PINE SAPLINGS

FEB 28th 1936

T 145 N R 30 W S 11.
 STARTING AT APPROX
 ~~$\frac{1}{6}$ # 14~~ RAN $\frac{1}{6}$ LINE WEST

DEC 9°

0-4 chs MEADOW
 4-8 " TAMARCK
 8-16 " ALDER SWAMP
 16-20 " JACK PINE SAPLINGS
 ESTABLISHED TEMP

 ~~$\frac{1}{6}$ # 13~~ 20 chsWEST OF $\frac{1}{6}$ # 14.RAN NORTH FROM $\frac{1}{6}$ # 13

DEC 7°

0-16 chs JACK PINE SAPLINGS
 16-19.66 chs ALDER SWAMP
 MISSED TEMP $\frac{1}{6}$ # 8

8-115 TO THE EAST.

19.66 chs NORTH OF $\frac{1}{6}$ # 13

WENT 56 chs WEST
 OF $\frac{1}{4}$ COT SEC. 11-12.

61.

62

CONTINUED WEST
ON $\frac{1}{4}$ LINE
DEC. 9^o
56-66chs JACK PINE
SAPLINGS
ESTABLISHED TEMP
 $\frac{1}{6}$ # 9 60chs
WEST OF $\frac{1}{4}$ COT SEC 11-12

MAY. 2, 1936,

T 145 N R 30. W SEC 11.
CONTINUED WEST ON $\frac{1}{4}$ LINE
STARTING 66chs WEST OF
 $\frac{1}{4}$ COT. SEC 11-12

DEC. 9^o
66-79.03chs JACK PINE SAPLINGS
MISSED $\frac{1}{4}$ COT SEC 10-11
70-1ks TO THE NORTH
AT 79.03chs WEST OF $\frac{1}{4}$
COT. SEC 11-12.

WENT TO SEC COT.
 $\frac{10}{15}$ " RAN SOUTH ON G.L.O.
LINE BETWEEN SEC. 15-14

DEC 7^o
0-10chs JACK PINE
10-14" TAMARCK SWAMP.
14-20.27chs JACK PINE

63

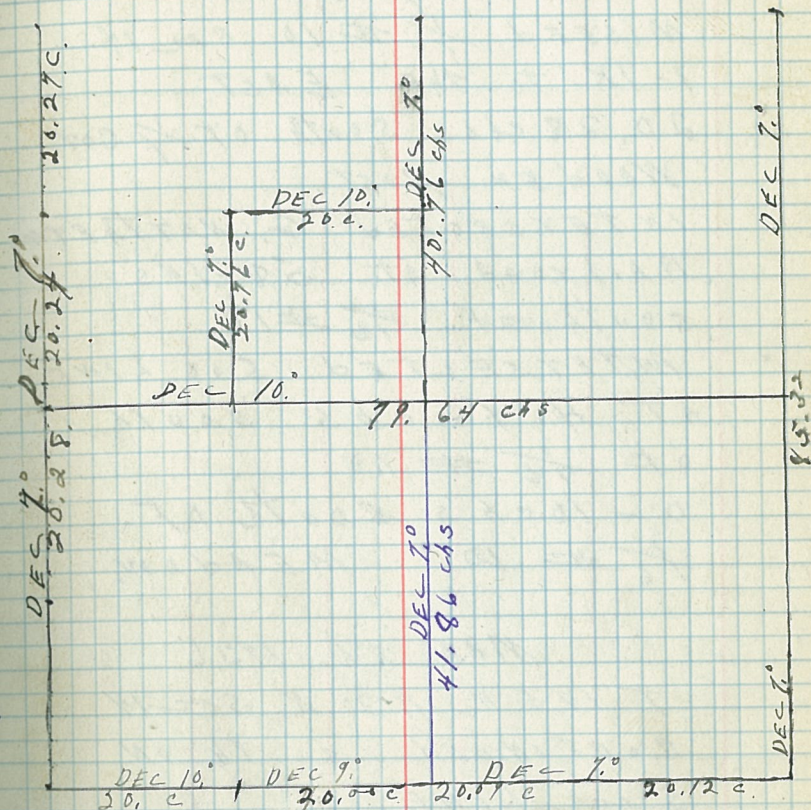
64

AND ASPEN SAPLINGS
 MISSED $\frac{1}{2}$ # 3 Sec 14
 1-1K. TO THE WEST.
 20, 27 chs south of Sec cor.
 B.T. south $\frac{1}{2}$ EAST.
 NORWAY PINE DBH. 14"
 72.5-1Ks FROM WOODEN POST
 CONTINUED SOUTH
 0-16 chs JACK PINE
 16-20, 24 chs ASPEN.
 H.I.T $\frac{1}{4}$ COR. SEC. 15-14
 20, 24 chs south of $\frac{1}{2}$ # 3
 B.T. NORTH $86\frac{1}{2}^{\circ}$ EAST.
 W. OAK DBH. 6"
 41-1Ks FROM POST.
 B.T. NORTH 47° WEST.
 W. OAK DBH. 7.5"
 20-1Ks FROM POST.

MAY. 3rd 1936

T 145 N R 30. W Sec 14.
 CONTINUED SOUTH ON
 G.L.D. LINE BETWEEN
 SEC 15-14
 STARTING AT $\frac{1}{4}$ COR.
 RAN SOUTH
 DEC. 6.

65
 T 145 N R 30. W
 SEC 14.



SCALE $2\frac{1}{2}$ CHAINS = 1 SQUARE

66

0 - 20 chs ASPEN POLES
 INTERSECTED NO. 2.
 HIGHWAY AT 19.66 chs
 SOUTH OF $\frac{1}{4}$ COR SEC
 MISSED $\frac{1}{6}$ # 10. SEE IT
 1-1/2 TO THE EAST.

20.28 chs SOUTH OF $\frac{1}{4}$ COR.
 WOODEN POST
 INTERSECTED G. NORTHERN
 RAILROAD AT 58-1/2s
 SOUTH OF $\frac{1}{6}$ # 10
 INTERSECTED SEC LINE
 AT 41.45 chs SOUTH
 OF $\frac{1}{6}$ # 10
 0 - 10 chs SOUTH OF
 $\frac{1}{6}$ # 10 MEADOW.

MAR 4th 1936

T 145 N R 30 W SEC 14
 CONTINUED SOUTH ON
 SEC LINE
 STARTING 18 chs SOUTH OF
 $\frac{1}{6}$ # 10.

10 - 20.29 chs ASPEN SAPLINGS
 MISSED SEC COR $\frac{15}{22}$ | $\frac{14}{23}$
 1-1/2 TO THE WEST
 AT 20.29 chs SOUTH OF $\frac{1}{6}$ # 10

67

68

B.T. NORTH 22° EAST

W. PINE DBH. 8"

107-1KS FROM POST

B.T. NORTH 18° WEST

ASPEN DBH. 3"

39-1KS FROM POST.

B.T. SOUTH 75° EAST.

W. PINE DBH. 18"

143-1KS FROM POST.

RAN EAST FROM SEC COR $\frac{15}{23}$ / $\frac{24}{23}$

DEC 10°

0-16cls ASPEN SAPLINGS

16-20" BRUSH

MISSED ~~TL~~ #16 44-1KS

TO THE NORTH (WOODEN POST)

B.T. SOUTH 59° EAST

TAMARACK DBH. 2.5"

12-1KS FROM POST

B.T. SOUTH 64° WEST

TAMARACK DBH. 2.7"

8-1KS FROM POST

SET UP AT TL #16

CONTINUED EAST

DEC. 9°

0-14cls TAMARACK SWAMP

14-20" MEADOW

MISSED ~~TL~~ COR $\frac{24}{23}$ 40-1KS NORTH

69

570.

MAR. 5th 1936

T 145 N R 30 W, Sec 14
CONTINUED EAST ON
Sec LINE BETWEEN Sec $\frac{14}{23}$
STARTING AT $\frac{1}{4}$ COR. $\frac{14}{23}$
RAN EAST ON G.L.O.

DEC 7^o

0 - 2 ch MEADOW.
2 - 16 " ASPEN SAPLINGS
16 - 20.09 chs JACK PINE
H.T. $\frac{1}{6}$ # 15 - 20.09 chs
EAST OF $\frac{1}{4}$ COR.

B.T. south 44° EAST.

NORWAY PINE D.B.H. 7"

24 - 1ks FROM POST (Sec 23,

B.T. north 16° WEST.

JACK PINE D.B.H. 10"

9 - 1ks FROM POST (Sec 14)

CONTINUED EAST.

DEC 7^o

0 - 10 chs JACK PINE SAPLINGS
10 - 20.12 chs TAMARACK SWAMP

H.T. Sec COR $\frac{14}{23} | \frac{13}{24}$

20.12 chs EAST

$\frac{1}{6}$ # 15

B.T. south 25° WEST.

TAMARACK D.B.H. 4"

71.

9.5 - IKS FROM POST (SEC 23)

B.T. SOUTH 33° EAST

TAMATAK DBH, 4"

12.7 - IKS FROM POST (SEC 24)

B.T. NORTH 22½ WEST

TAMATAK DBH, 5"

32.5 - IKS FROM POST (SEC 14)

B.T. NORTH 73° EAST

TAMATAK DBH, 3.7"

11.9 - IKS FROM POST (SEC 13)

RAN NORTH FROM SEC COY. $\frac{14}{23} | \frac{13}{24}$

DEC 7°

0 - 12chs TAMATAK AND CEDAR SWAMP

12 - 18chs OPEN

18 - 20 " BRUSH

INTERSECTED SOD LINE AT

12.48chs NORTH OF SEC COY.

INTERSECTED G. NORTHERN

LINE AT 14.53chs

INTERSECTED NO. 2,

HIGHWAY AT 16.60chs

NORTH OF SEC COY.

274

MAY 6th 1936

T 145 N R 30 W Sec 14
 CONTINUED NORTH ON EAST
 Sec. LINE OF Sec 14
 STARTING AT $\frac{1}{4}$ #14

20 chs NORTH OF sec cor. $\frac{14}{13}$
 $\frac{23}{24}$
 20-26 chs SPTUSE SWAMP

26-40" JACK PINE AND
 JACK PINE SAPLINGS

40-60 chs JACK PINE SAPLINGS
 ESTABLISHED TEMP $\frac{1}{6}$ #7

60 chs NORTH OF sec cor.

60-85.35 chs JACK PINE SAPLINGS
 MISSED sec cor. $\frac{11}{12}$
 $\frac{14}{13}$

33-145 TO THE EAST

85.32 chs NORTH OF sec cor. $\frac{14}{13}$
 $\frac{23}{24}$

MAY 9th 1936

T 145 N R 30 W Sec 14

STARTING AT $\frac{1}{4}$ cor. Sec 15-14

RAN EAST

DEC. 10:

0-20 chs ASPEN POLES
 ESTABLISHED TEMP $\frac{1}{6}$ #9

20 chs EAST OF $\frac{2}{4}$ cor.

20-38" JACK PINE
 ESTABLISHED TEMP $\frac{1}{4}$ cor.

275

76.
40 chs EAST OF $\frac{1}{4}$ COR SEC 15-14
38 - 46 chs SWAMP
46 - 56 " JACK PINE.

MARCH 10TH 1936

T 145 N R 30 W Sec 14.
CONTINUED EAST ON EAST
AND WEST $\frac{1}{4}$ LINE Sec 14
STARTING 56 chs EAST
OF $\frac{1}{4}$ COR SEC 15-14
56 - 79.64 chs JACK PINE SAPLINGS
ESTABLISHED TEMP $\frac{1}{16}$ # 8
60 chs EAST OF $\frac{1}{4}$ COR.
INTERSECTED EAST SEC LINE
OF Sec 14 - - 79.64 chs
EAST OF $\frac{1}{4}$ COR 15-14
MISSED $\frac{1}{4}$ COR APPROX COR.
105-115 TO THE SOUTH

WENT TO $\frac{1}{4}$ COR. SEC $\frac{11}{14}$
RAN $\frac{1}{4}$ LINE SOUTH

DEC 7.⁰
0 - 24 chs JACK PINE SAPLINGS
ESTABLISHED TEMP $\frac{1}{16}$ # 5
30 chs SOUTH OF $\frac{1}{4}$ COR.
24 - 32 chs ASPEN SAPLINGS

MARCH 11th 1936

T 140 N R 30 W. Sec 14
CONTINUED SOUTH ON $\frac{1}{4}$ LINE
32-40.92 CHS SWAMP
INTERSECTED EAST AND WEST
 $\frac{1}{4}$ LINE SEC 14. AT 40.92 CHS
SOUTH OF $\frac{1}{4}$ CO. SEC $\frac{1}{4}$
MISSED APPROX $\frac{1}{4}$ CO.
17-185 TO THE WEST AT 40.40 CHS
SOUTH OF $\frac{1}{4}$ CO.

CONTINUED SOUTH

40.-44 CHS TAMARACK SWAMP.

44-52" JACK PINE AND W. PINE

WENT TO APPROX $\frac{1}{6}$ #5

RAN WEST.

DEC 10°

0-10 CHS JACK PINE SAPLINGS

10-20" TAMARACK SWAMP.

ESTABLISHED TEMP $\frac{1}{6}$ #4

20 CHS WEST $\frac{1}{6}$ #5

RAN SOUTH FROM $\frac{1}{6}$ #4

DEC 7°

0-8 CHS TAMARACK SWAMP

8-20.76 CHS JACK PINE

MISSED APPROX $\frac{1}{6}$ #9

25-185 TO WEST 20.50 CHS SOUTH OF $\frac{1}{6}$ #4

INTERSECTED $\frac{1}{4}$ LINE AT 20.76 CHS

SOUTH OF $\frac{1}{6}$ #4

MARCH 12th 1936
 T 145 N R 30 W Sec 14
 CONTINUED south ON $\frac{1}{4}$ LINE
 STARTING 52 chs south of
 $\frac{1}{4}$ COR Sec $\frac{1}{4}$
 52-60 chs JACK PINE
 ESTABLISHED TEMP # 12
 60 chs south of $\frac{1}{4}$ COR
 INTERSECTED NO 2. HIGHWAY
 AT 62.78 chs south of $\frac{1}{4}$ COR
 INTERSECTED G. NORTHEN. LINE
 AT 64.06 chs south of $\frac{1}{4}$ COR.
 INTERSECTED SOO. LINE
 64.56 chs south of $\frac{1}{4}$ COR.
 65-82.78 chs JACK PINE
 MISSED $\frac{1}{4}$ COR. Sec. $\frac{1}{2}$
 11-145 TO THE EAST
 82.78 chs south of $\frac{1}{4}$ COR $\frac{1}{4}$
 WENT TO APPROX SEC COR.
 $\frac{7}{16}$ T 145 N R 29 W.
 RAN SOUTH
 DEC 6.30.
 0-28 chs JACK PINE
 ESTABLISHED TEMP # 7.
 28 chs south of Sec COR.

T 145 N R 29 W Sec. 18.

DEC 7.0
 38.17 chs
 DEC 7.30
 23.99 chs

DEC 7.47 chs

DEC 7.0
 22. chs

DEC 7.0
 32 chs

DEC 7.30
 18 chs

DEC 7.0 chs

DEC 9.30
 38.69 chs

DEC 9.0

DEC 9.0
 39.47 chs

MARCH 13th 1936

T 146 N 19 29 W SEC 18.
CONTINUED SOUTH IN EAST
SEE LINE OF SEC 18.

STARTING 28 chs SOUTH OF
SEC COT ~~7/16~~
7/17

28-30 chs SPYLOSE SWAMP

30-34 " ASPEN SAPLINGS

34-44 " WILLOW AND MEADOW

MISSED $\frac{1}{2}$ COT SEC 19/17

92-1ks TO EAST AT 44 chs
SOUTH OF SEC CM.

CONTINUED SOUTH FROM ~~Sec.~~DEC 7^o

0-34 chs MEADOW.

INTERSECTED FENCE LINES

AT 19 chs SOUTH OF $\frac{1}{2}$ CMAND 30 chs SOUTH OF $\frac{1}{2}$ CM.

30-40 chs - FIELD

MISSED APPROX SEC CM

~~18/17~~ 8-1ks TO EAST.

19/20 RAN WEST FROM

SEC COT.

DEC 8^o

0-14 chs J. PINE AND NORWAY

INTERSECTED OLD ROAD

AT 8.47 chs WEST OF SEC CM.

MARCH 16th 1936

T 145 N R 29 W. Sec 18
CONTINUED WEST ON SOUTH

SEE LINE OF SEC 18

STARTING 14 CHS WEST OF

SEE COT. $\frac{18}{19/20}$

DEC 8°

14-20 chs JACK PINE

MISSED $\frac{1}{2}$ # 15 1-1K

TO THE NORTH. (WOODEN COT.)

19.44 chs WEST OF SEC COT.

B.T. NORTH 45° EAST

CEDA AT DBH. 16"

16-1Ks FROM POST

CONTINUED WEST

20-40 chs CEDAR AND BALSOM

SWAMP

MISSED $\frac{1}{2}$ COT SEE $\frac{18}{19}$

26-1Ks TO THE SOUTH

20 chs WEST OF $\frac{1}{2}$ # 15

(WOODEN $\frac{1}{2}$ COT.)

SIT OVER AT $\frac{1}{2}$ COT

CONTINUED WEST

DEC 8°

8-~~26~~ chs BALSOM SWAMP

6-12.5 chs SAND PIT.

HIT NO 2. HIGHWAY AT 12 chs

86.

WEST OF $\frac{1}{4}$ COR.
 12 - 26 CHS TAMATACK SWAMP
 INTERSECTED DITCH AT
 20.98 CHS
 INTERSECTED 500 LINE
 AT 25 CHS
 SET UP AT $\frac{1}{16}$ #16 20 CHS
 WEST OF $\frac{1}{4}$ COR.
 DEC 9.30

TINEN R29.

MATCH 17th 1936

CONTINUED WEST ON SOUTH
 SEE LINE SEE 18

DEC 9.30

26 - 38.69 CHS BRUSH
 INTERSECTED G. NORTHERN
 LINE AT 38.69 CHS WEST
 OF $\frac{1}{4}$ COR.

MISSED SEE COR.

38 - 1KS TO NORTH AT
 39.69 CHS WEST OF $\frac{1}{4}$ COR.

WENT TO $\frac{1}{4}$ COR. SEE $\frac{18}{19}$

RAN NORTH

DEC 7.30

0 - 7 CHS SPYUSE SWAMP
 7 - 18" JACK PINE
 HIT LAKE AT 19 CHS
 NORTH OF $\frac{1}{4}$ COR.

87.

MATCH 18th 1936

T 145 N R 29 W. SEC 18

CONTINUED NORTH ON $\frac{1}{4}$ LINE
41 chs ACROSS LAKE MACDONOLD

CONTINUED NORTH RETURN

FROM $\frac{1}{6}$ #5

DEC 7.30

0-10 chs MEADOW

10-16" ASPEN AND BIRCH

16-23.39 chs TAMARACK

MISSED $\frac{1}{4}$ COR $\frac{7}{8}$

12-1 chs TO THE EAST

23.39 chs NORTH OF $\frac{1}{6}$ #5

MATCH 19th - 1936

T 145 N R 29 W. SEC. 18.

STARTING AT $\frac{1}{4}$ COR SEC 18-17

RAN WEST

DEC 7.

0-12 chs ASPEN POLES

12-26" MEADOW.

ESTABLISHED TEMP $\frac{1}{6}$ #9

20 chs WEST OF $\frac{1}{4}$ COR

26-32 chs BRUSH

INTERSECTED LAKE

MACDONOLD AT 32 chs

WEST OF $\frac{1}{4}$ COR, SEC 18-17

MARCH 20th 1936

T145N. R29W. SEC. 18

STARTING AT ~~SEC. COR. 12/7~~
13/8

R. 30 - 29. RAN EAST

DEC = 7°

- 0 - 20 ch MEADOW
- 2 - 10 " JACK PINE PILES
- 10 - 16" TAMARACK SAPLINGS
- 16 - 30" ASPEN

ESTABLISHED TEMP #2
20 chs EAST OF SEC. COR.

30 - 38.17 ch TAMARACK SAPLINGS

MISSED 1/4 COR. SEC. 18

54 - 15s TO THE SOUTH

38.17 chs EAST OF SEC. COR.

WENT TO 1/4 COR. SEC. 13-18

RAN EAST

DEC = 7°

0 - 4 ch JACK PINE SAPLINGS

4 - 22 1/2 MEADOW.

INTERSECTED LAKE

MACDONALD 20 chs EAST

OF 1/4 COR. SEC. 13-18.

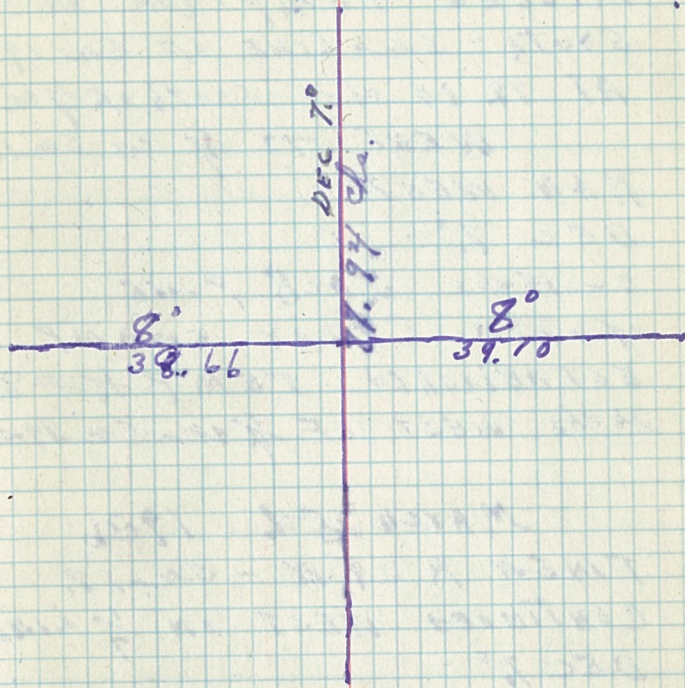
92.

MARCH 23rd 1936
 T 145 N R 29 W. Sec 19
 STARTING AT $\frac{1}{4}$ CR. SEC $\frac{18}{19}$
 RAN SOUTH
 DEC. 7°
 0-6chs SPTUSE SWAMP
 INTERSECTED NO 2. HIGHWAY
 AT 6chs south of $\frac{1}{4}$ CR.
 INTERSECTED G. N. LINE
 AT 7.30chs south of $\frac{1}{4}$
 SOD. LINE AT 11.04chs
 SOUTH OF $\frac{1}{4}$ CR. SEC $\frac{18}{19}$
 6-14chs BRUSH
 14-18" W. PINE AND BIRCH
 18-24" SPTUSE SWAMP
 24-56" CUT OVERT SPTUSE
 SWAMP
 ESTABLISHED TEMP $\frac{1}{4}$ CR.
 40chs south of $\frac{1}{4}$ CR. SEC $\frac{18}{19}$

MARCH 24th - 1936
 T 145 N R 29 W sec 19.
 CONTINUED SOUTH ON $\frac{1}{4}$
 LINE SEC 19.
 56-77.94chs CUT OVERT
 CED AT SWAMP
 MISSED APPROX $\frac{1}{4}$ CR. $\frac{19}{30}$

93.

T 145 N R 29 W SEC. 19.



31-1Ks TO THE EAST
 76.39 chs south of $\frac{1}{4}$ cor $\frac{18}{19}$
 MISSED TEMP COL ON
 SOUTH SW LINE OF SW 19
 AT 77.94 chs south of $\frac{1}{4}$ cor $\frac{18}{19}$
 WENT TO $\frac{1}{4}$ cor SW 19-20
 RAN WEST.

DEC 7.

0-14 chs JACK PINE
 14-22" CEDAR SWAMP
 ESTABLISHED TEMP $\frac{1}{6}$ #8
 28 chs WEST OF $\frac{1}{4}$ cor SW 19-20

MARCH 25th 1936

T15N R 29 W - SW 19.
 CONTINUED WEST IN $\frac{1}{4}$ LINE

DEC 7.

22-68 chs CUT OVER CEDAR
 AND TAMAYACK SWAMP
 INTERSECTED NORTH AND
 SOUTH $\frac{1}{4}$ LINE AT 39.10 chs
 WEST OF $\frac{1}{4}$ cor SW 19-20
 MISSED C $\frac{1}{4}$ cor SW 19
 65-1Ks TO THE NORTH.
 68-77.76 chs JACK PINE POLES
 INTERSECTED WEST SW LINE
 SW 19 AT 77.76 ch WEST.

96.

OF $\frac{1}{4}$ COR. SEC 19-20
 ESTABLISHED TEMP $\frac{1}{4}$ COR.
 SEC 19 - 29 W - SEC 24 - R 30 W
 AT 77.71 WEST OF EAST COR.

MARCH 26th - 1926

T 145 N R 29 W SEC 20.
 STATING AT $\frac{1}{4}$ COR. 19-20
 RAN EAST.

DEC 7°

0-18 CHS ASPEN SAPLINGS
 INTERSECTED ROAD AT
 19 CHS EAST OF $\frac{1}{4}$ COR.

ESTABLISHED TEMP $\frac{1}{6}$ #9
 20 CHS EAST OF $\frac{1}{4}$ COR.

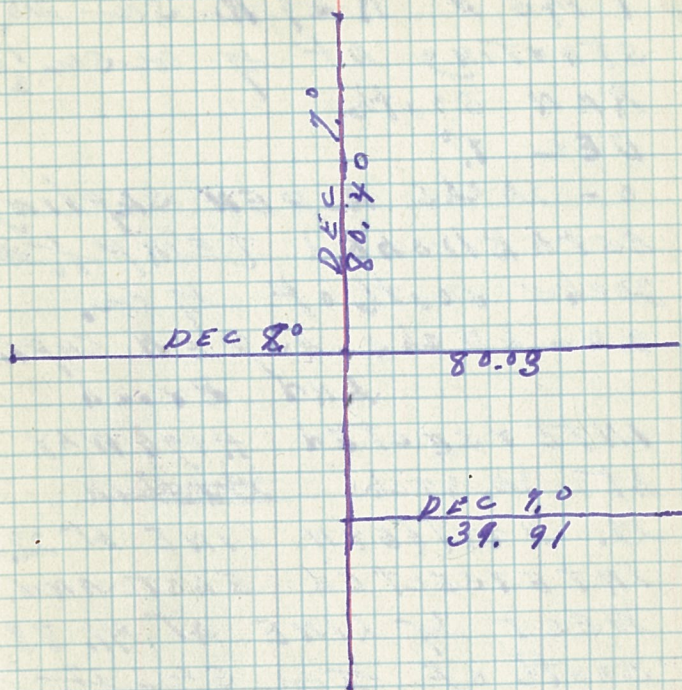
18-34 CHS OPEN
 INTERSECTED SOD LINE
 AT 26.63 CHS

34-60 CHS ASPEN AND
 ASPEN SAPLINGS
 ESTABLISHED TEMP C. $\frac{1}{4}$ COR.
 SEC 20. 40 CHS EAST OF
 $\frac{1}{4}$ COR. SEC 19-20.

ESTABLISHED TEMP $\frac{1}{6}$ #8
 60 CHS EAST OF $\frac{1}{4}$ COR.
 SEC 19-20.

60-78 CHS BTUSH
 78-80 " PILES

T. 145 N R 29 W. SEC 20.



MARCH 27th 1936

T 145 N R 29 W. Sec 20.
STARTING AT $\frac{1}{4}$ COR. SEC. $\frac{17}{20}$

RAN SOUTH

DEC 7°

0 - 20 chs ASPEN SAPLINGS
ESTABLISHED TEMP $\frac{1}{6}$ #5
20 chs south of $\frac{1}{4}$ cor.

20 - 60 chs ASPEN SAPLINGS
AND BROOK

INTERSECTED HIGHWAY
AT 20.97 chs ~~20.97~~

N. NORTHERN LINE AT 22.27

INTERSECTED EAST AND
WEST $\frac{1}{4}$ LINE AT 41.88

SOUTH OF $\frac{1}{4}$ COR. SEC. $\frac{17}{20}$

MISSED C $\frac{1}{4}$ COR. 15 TH'S
TO THE WEST.

INTERSECTED SDI LINE
AT 47.49 chs

ESTABLISHED TEMP
#6 #12. 60 chs south

OF $\frac{1}{4}$ COR. SEC. $\frac{17}{20}$.

MARCH 30th 1936
 T 145 N R 29 W Sec 20.
 CONTINUED SOUTH ON
 $\frac{1}{4}$ LINE Sec 20

DEC 7.⁰

STARTING AT $\frac{1}{16}$ # 12
 60 chs SOUTH OF $\frac{1}{4}$ CORNER $\frac{17}{20}$
 60-80.40 chs ASPEN POLES
 MISSED $\frac{1}{4}$ OR $\frac{27}{29}$
 73-118 TO THE WEST.

WENT TO $\frac{1}{16}$ # 12
 RAN EAST APPROX TO
 DEC 7.¹

0-24 chs ASPEN POLES
 ESTABLISHED TEMP P $\frac{1}{16}$ # 13
 20 chs EAST OF APPROX $\frac{1}{16}$ # 12
 24-39 chs MEADOW.

INTERSECTED SD LINE AT
 29.21 chs EAST OF $\frac{1}{16}$ # 12
 38-39.91 chs ASPEN POLES
 MISSED $\frac{1}{16}$ # 14 29-118
 TO THE NORTH AT 39.91 chs
 EAST OF $\frac{1}{16}$ # 12.

MARCH 31st - 1936

T. 145 N R 29 W. Sec 20.
 RETURN EAST AND WEST $\frac{1}{4}$ LINE Sec 20
 DEC 8.⁰ RETURN 60 chs

APRIL 1 - 1936

T 145 N R 29 W Sec 20.

CONTINUED TO RETURN

 $\frac{1}{4}$ LINE Sec 20.

60 - 81.83 chs

MISSED $\frac{1}{4}$ CR. 25-1/2 TO SWTHWENT TO SEC CR $\frac{33}{25}$

T 145 N R 30 W

RAN LINE SOUTH BETWEEN

Sec 26 - 25

DEC 2.30°

6 - 19.85 chs FENCE RIGHT
A WAYMISSED #7 - 1-1/2 TO
EAST 19.85 chs SOUTH
OF SEC CR.

CONTINUED SOUTH

0 - 20.32 chs OPEN

CROSSED FENCE AT 9 chs
SOUTH OF $\frac{1}{2}$ #7.MISSED $\frac{1}{4}$ CR 26-25
13-1/2 TO WESTAT 20.32 chs SOUTH OF $\frac{1}{2}$ #7

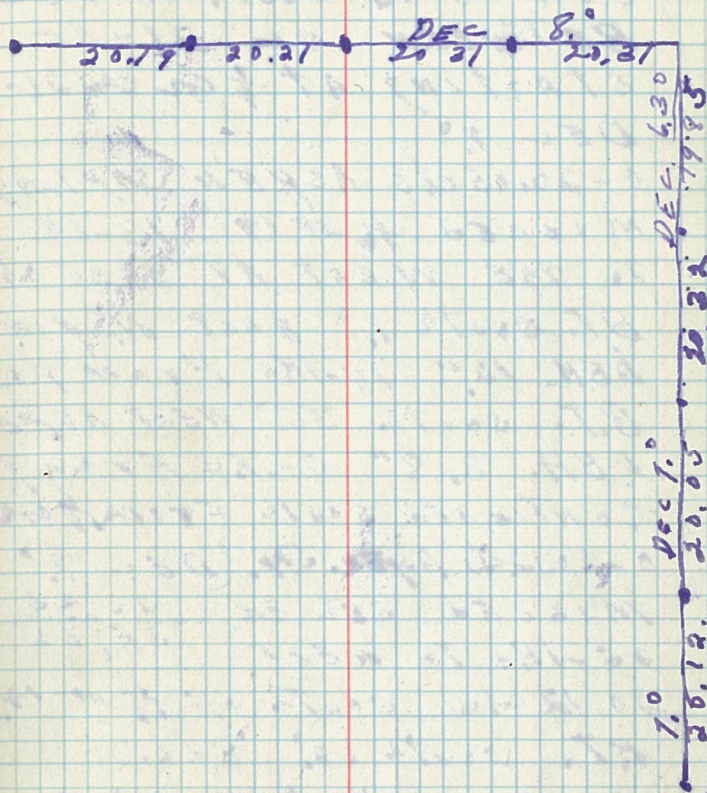
BT. SOUTH 36° WEST ASPEN 4"

26-1/2 FROM POST. Sec 26

BT. NORTH 58° EAST

ASPEN DBH. 3" 30-1/2 FROM POST.
Sec 25

T 145 N. R 30 W. Sec 26.



April 2, 1934

T 145N R 30 W. Sec 26.
CONTINUED SOUTH ON SURLINE
BETWEEN sec 26-25
STARTING AT $\frac{1}{4}$ COR sec 26-25
DEC 7°

0-20.05 chs ASPEN SAPLINGS
MISSED $\frac{1}{2}$ # 14 13-1ks
TO THE WEST AT 20.05 chs

B.T. south 7° EAST W. PINE
D.B.H. 12" 14-1ks FROM POST

B.T. south 56° WEST ASPEN
D.B.H. 3.8" 8-1ks FROM POST

CONTINUED SOUTH FROM $\frac{1}{4}$ COR

0-20.12 chs ASPEN. SAP. (DEC 7°

MISSED SEC. COR. $\frac{26}{35} \frac{25}{36}$
25-1ks TO WEST.

20.12 chs south of $\frac{1}{2}$ # 14.

B.T. south 62° EAST.

ASPEN D.B.H. 4" - 30.5-ks FROM POST

B.T. north 40° EAST W. PINE

D.B.H. 22" - 143-1ks FROM POST

B.T. north 54° WEST, W. PINE

D.B.H. 24" - 98-ks FROM POST

B.T. south 17° WEST.

W. PINE D.B.H. 13"

2, chs 77-ks FROM POST.

APRIL 3rd 1981

T 146 N R 30 W sec 26

RAN WEST FROM SEC COR.

23	24	DEC 8 ^o
24	25	

20-31 chs ASPEN POLES

MISSED $\frac{1}{2}$ #1 - 9-1ks NORTHB.T. NORTH $3\frac{1}{2}$ ^o EAST.

BLACK ASH D.B.H. 5.6"

48-1ks FROM POST.

B.T. SOUTH 42^o EAST.

BLACK ASH D.B.H. 5"

63-1ks FROM POST.

CONTINUED WEST FROM $\frac{1}{4}$ COR

0-20.21 chs ASPEN POLES

MISSED $\frac{1}{4}$ COR SEC $\frac{23}{26}$

19-1ks TO NORTH

20.21 chs WEST OF $\frac{1}{2}$ #1.B.T. NORTH 17^o WEST.

JACK PINE D.B.H. 12"

30-1ks FROM POST.

B.T. SOUTH 34^o EAST

BLACK ASH D.B.H. 4"

49-1ks FROM POST.

CONTINUED WEST FROM

$\frac{1}{4}$ COR. SEC	$\frac{23}{26}$
	$\frac{26}{26}$

0-20.21 chs ASPEN POLES

MISSED $\frac{1}{2}$ #2 - 29-1ks

TO THE NORTH
 20.21 chs WEST OF $\frac{1}{4}$ sec.
 B.T. SOUTH 22° WEST.
 W. BIRCH D.B.H. 11"
 28-1ks FROM POST.
 B.T. NORTH 66° EAST.
 BALSAM D.B.H. 7"
 12.5-1ks FROM POST.
 CONTINUED WEST.
 0-20.19 chs ASPEN POLES
 MISSED SEE COL. $\frac{22}{27} \frac{23}{26}$
 45-1ks TO THE NORTH
 20.19 chs WEST OF $\frac{1}{4}$ # 2.

T145N - R. 28W - SEC. 9

JANUARY 8, 1939

STARTED WEST FROM TEMP. C. SEC.

COR. 9 FOLLOWING LINE USING 7° DEC.

0 to 20 4 PCK PINE

HIT 9 1/2 COR. 9 AT 20 ch.

STARTED SOUTH FROM TEMP. 9 1/2 COR. 9
USING 7° DEC.

0 to 24 4 PCK PINE

24 to 26 4 PCK PINE, ASPEN

CROSSED TRAIL AT 18.25 ch.

ESTABLISHED 11 1/2 TEMP. COR. 9 AT 26 ch.

STARTED SOUTH FROM TEMP. C. SEC. COR. 9

FOLLOWING LINE USING 7° DEC.

0 to 8 4 PCK PINE

111.

T. 146, N. R. 30, W. - SEC. 36.

January 11, 1937.

Started South From 1 $\frac{1}{2}$ cor.

Using 7 $\frac{1}{2}$ var.

From 0. - To 26. CH. PLOWED GROUND.

From 26 - To 30. MEADOW.

January 12, 1937.

Run. South. From 30. CE S. FROM 1 $\frac{1}{2}$ COR.

HIT LYDICK BROOK AT 40 CH 7 LKS.

HIT 8 $\frac{1}{2}$ COR AT 49 CH 5, 87 LKS.

HIT 2 LKS W OF TEMP 8 $\frac{1}{2}$ COR.

From 30 CH TO COR IS LYDICK BROOK

MEADOW.

T. 146, N. R. 30, W. SEC. 36.

1 $\frac{1}{2}$ cor

7 $\frac{1}{2}$ DEC. L.
30 CH 18 LKS. 29 CH 87 LKS.

112.

T. 146. N. R. 30. W. SEC. 26

January 13, 1937

RUN N, FROM SENTER $\frac{1}{4}$ COY USING 7° DECL

FROM 0-TO 22 CH BACK PINE STAND AV.

D.B.H. 6"

HIT $\frac{5}{16}$ COY AT 18 CH 94 LKS

FOUND TEMP. STAKE WITH ONE WITNESS TREE

FROM 22 CH TO 32 CH IS MEADOW.

HIT ROAD NO 4612 AT 33 CH 38 LKS.

FROM 32 CH TO N $\frac{1}{4}$ COY IS SCATTERED LACK PINEHIT N $\frac{1}{4}$ COY AT 41 CH 62 LKS. TEMP. COY.

January 14, 1937

RUN E, FROM N $\frac{1}{4}$ COY USING 7° DECL.

FROM 0-TO 20 IS SCATTERED LACK PINE

HIT $\frac{1}{16}$ COY AT 20 CH 12 LKS. TEMP COY.RUN S, FROM $\frac{1}{16}$ COY USING 7° DECL.

FROM 0-TO 12 CH IS SCATTERED LACK PINE

FROM 12 CH TO $\frac{6}{16}$ COY IS MEADOW.HIT $\frac{2}{16}$ COY AT 20 CH 7 LKS. FOUND

IRON STAKE 48 LKS. SW. OF LACK PINE

WITNESS TREE. S. 53° W. FROM TREE

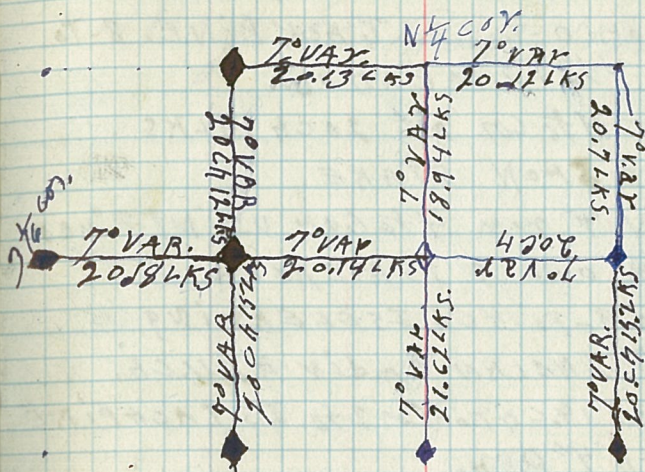
IS IRON PIPE.

RUN W, FROM $\frac{6}{16}$ COY.

HIT ROAD AT 7 CH 6 LKS.

FROM 0-TO $\frac{5}{16}$ COY IS LACK PINE.HIT $\frac{5}{16}$ COY AT 2 CH.

T. 146. N. R. 30. W. SEC. 26.



T. 146. N. R. 30. W. SEC. 26.

JANUARY, 15, 1937.

RUN. W. FROM 5 $\frac{1}{2}$ COR USING 7 $\frac{1}{2}$ VAR
 FROM 0-TO 8 IS TACK PINE. 8-TO
 COR. 4 $\frac{1}{2}$ IS MEADOW.

HIT 4 $\frac{1}{2}$ COR AT 20 CH 14 LKS
 FOUND IRON STAKE.

RUN. N. FROM 4 $\frac{1}{2}$ COR USING 7 $\frac{1}{2}$ VAR
 FROM 0-TO-9 IS MEADOW.

FROM 9-TO 14 CH IS CLEARING

HIT INDIAN CABIN AT 11. CH.

FROM 14 CH TO COR 2 $\frac{1}{2}$ IS TACK PINE
 STAND 4" D.B.H.

HIT 2 $\frac{1}{2}$ COR 20 CH 12 LKS. FOUND
 IRON STAKE & B.T. TREES.

JANUARY, 19, 1937.

RUN. N. FROM 8 $\frac{1}{2}$ COR

FROM 0-TO COR 6 $\frac{1}{2}$ IS TACK PINE

HIT ROAD AT 13.6 LKS

HIT COR AT 20 CH 18 LKS. FOUND

IRON STAKE & WITNESS TREES.

RUN. W. FROM N. 4 COR.

FROM 0-TO NEAR SCATTERED TACK PINE

FROM 11-TO 2 $\frac{1}{2}$ COR IS TACK PINE.

STAND HIT ROAD AT 11.65 LKS.

HIT COR 2 $\frac{1}{2}$ AT 20 CH 13 LKS.

T. 146. N. R. 30. W. SEC. 26.

Map on Page 112.

114.

T. 146. N. R. 30. W. SEC 26
January 27 1937.

RUN. N. FROM 9 $\frac{1}{2}$ COR USING 7 $^{\circ}$ VAD
FROM 0-TO-4 $\frac{1}{2}$ COR IS LACK PINE
STAND.

HIT. 4 $\frac{1}{2}$ COR AT. 20 1/2 LKS.

FOUND IRON STAKE & BT. TREES.

RUN. W. FROM 4 $\frac{1}{2}$ COR USING 7 $^{\circ}$ VAD
FROM 0-TO 20 CH IS LACK PINE.

HIT. 3 $\frac{1}{2}$ COR AT. 20 CH 18 LKS

FOUND IRON STAKE & WITNE
SS. TREES.

T. 146. N. R. 30. W. SEC 26.

Map on page. 117.

115

T. 145. NR 29. W SEC 9.

RUN. S. FROM N. W. SEC COR.

USING 70 V. P. 0-TO 40. LACK PINE

HIT 3 $\frac{1}{2}$ COR AT 20.21 LKS.

HIT W. 4 COR AT 40 CH 35 LKS

RUN. E. FROM 3 $\frac{1}{2}$ COR. USING 70

FROM 0 TO 20 IS LACK PINE -

HIT 4 $\frac{1}{2}$ COR AT 19.55 LKS.

116

JANUARY 29, 1937
T145N-R29W-SEC. 9

STARTED WEST FROM TEMP 2 $\frac{1}{16}$
COT. $\frac{4}{9}$ FOLLOWING CLO LINE
USING 9° DEC.

07012 JACK, NORWAY PINE

1210222 JACK, NORWAY PINE, ASPEN

INTERSECTED NORTH-SOUTH
LINE AT 22.2 CA. & HIT CLO. SEC.

COT. $\frac{5}{8}$ ON HEAD.

T146N - R29W - SEC. 8

JANUARY 29, 1937

STARTED WEST FROM TEMP.

 $7\frac{1}{2}$ COF. 8/9 USING 7° DEC.

01020 JACK PINE, NORWAY PINE, ASPEN

INTERSECTED NORTH-SOUTH
LINE AT 20.12 CH. & HIT TEMP. $6\frac{1}{2}$ COF.
ON HEAD.STARTED WEST FROM TEMP. $6\frac{1}{2}$
COF. 8 USING 7° DEC.

01020 JACK PINE, NORWAY PINE, ASPEN

ESTABLISHED TEMP. $5\frac{1}{2}$ COF. AT 20 CH.

FEBRUARY 1, 1937

T145N - R29W - SEC. 8

STARTED WEST FROM TEMP.

 $\frac{1}{2}$ COF. $\frac{5}{8}$ FOLLOWING OLD LINEUSING 7° DEC. BEARING 41° S

01012 JACK PINE, ASPEN

121019 JACK, NORWAY PINE

INTERSECTED NORTH-SOUTH
LINE AT 20 CH. & ESTABLISHED
TEMP. $\frac{1}{4}$ COF. $\frac{5}{8}$.

T145N-R29W-~~SEC. 8~~

FEBRUARY 2, 1937

STARTED SOUTH FROM TEMP.

 $\frac{1}{4}$ COR. $\frac{5}{8}$ USING 1st DEC.

0-19.4 JACK PINE, NORWAY PINE, ASPEN

INTERSECTED EAST-WEST LINE
AT 19.4 CH. + ESTABLISHED TEMP. P. 5 $\frac{1}{2}$ COR. 8CONTINUED SOUTH USING 1st DEC.

0-22 JACK PINE, NORWAY PINE, ASPEN

INTERSECTED EAST-WEST LINE
AT 22.06 CH. + ESTABLISHED TEMP. C.

SEC. COR. 8.

STARTED EAST FROM TEMP.

C. 8 SEC. COR. 8 USING 1st DEC.

0-20 JACK, NORWAY PINE, ASPEN

HIT TEMP. P. 8 $\frac{1}{2}$ COR. 8 AT 19.82 CH.

+ ON HERR.

123

T145N R29W - SEC. 8

FEBRUARY 3, 1937

STARTED WEST FROM TEMP.

 $\frac{1}{4}$ COR. $\frac{5}{8}$ USING 1° DBE. BEARING W 1° S

0-26 JACK PINE, NORWAY PINE

CROSSED ROAD AT 17.97 ch.

ESTABLISHED TEMP. $2\frac{1}{16}$ COR. $\frac{5}{8}$

AT 20 ch. & CONTINUED WEST

20-28 JACK, NORWAY PINE

28-39 JACK, NORWAY PINE, ASPEN

INTERSECTED NORTH-SOUTH LINE

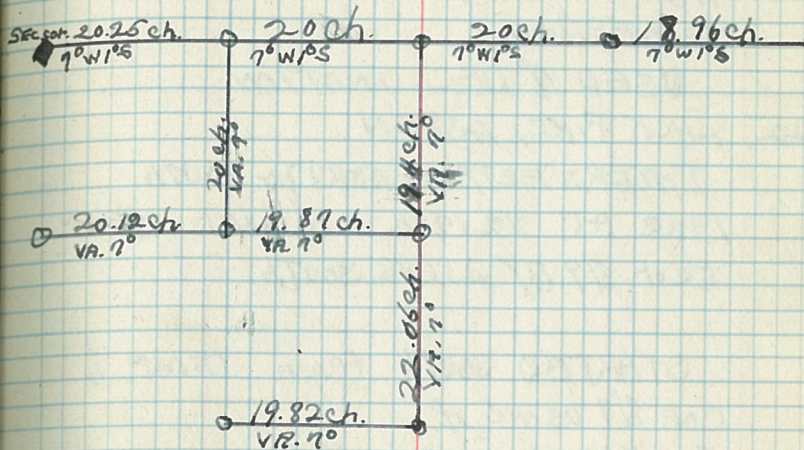
AT 38.96 ch.

TEMP. SEC. COR. $\frac{6}{7} | \frac{5}{8}$ IS 3.49 ch.
SOUTH.APPROXIMATE Q.L.O. SEC. COR. $\frac{6}{7} | \frac{5}{8}$

1.39 ch. SW of TEMP. SEC. COR.

OLD BEARING TREE IS
JACK PINE - DBH - 14" - BEARING
T145 R29 - S5

124



125

T145N-R29W-SEC. 9
FEBRUARY 4 1937

STARTED WEST FROM TEMP.
9 $\frac{1}{6}$ COR. 9 WHICH IS 8.67 ch. SOUTH OF
TEMP. 9 $\frac{1}{6}$ COR. 9

USED 7° DECLINATION

0-22 JACK PINE, ASPEN

INTERSECTED NORTH-SOUTH
LINE AT 22.17 ch. & MISSED TEMP
 $\frac{1}{4}$ COR. 8/9 BY 23 LKS. SOUTH.

STARTED SOUTH FROM TEMP. $\frac{1}{4}$
COR. 8/9 USING 7°

01020 JACK PINE, NORWAY PINE, ASPEN

CROSSED TRAIL AT 9.16 ch.

INTERSECTED EAST-WEST
LINE AT 20 ch. & HIT TEMP. 10 $\frac{1}{6}$ COR. 9
ON HEAD

STARTED EAST FROM TEMP.

10 $\frac{1}{6}$ COR. 9 USING 7° D.B.C.

0106 ASPEN

11022 NORWAY PINE, JACK PINE, BIRCH.

INTERSECTED NORTH-SOUTH LINE
AT 22.18 ch. & ESTABLISHED TEMP.
11 $\frac{1}{6}$ COR. 9

126

127

T145N R29W-8EC.9
FEBRUARY 4, 1937

STARTED FROM A POINT PAVED
26ch. SOUTH OF TEMP. 9 $\frac{1}{16}$ CO. 9 & RAN
SOUTH HITTING EAST-WEST LINE
AT 31.4ch. & HIT TEMP. 11 $\frac{1}{16}$ CO. 9
ON HEAD

26 TO 31.4 JACK PINE, ASPEN

128