

T145N R29W - T144N R29W

T145N R29W

T144N R29W

DIXON

1880

1880

1880

1880

1880

#106



EMPTY PAGES  
WERE NOT  
SCANNED

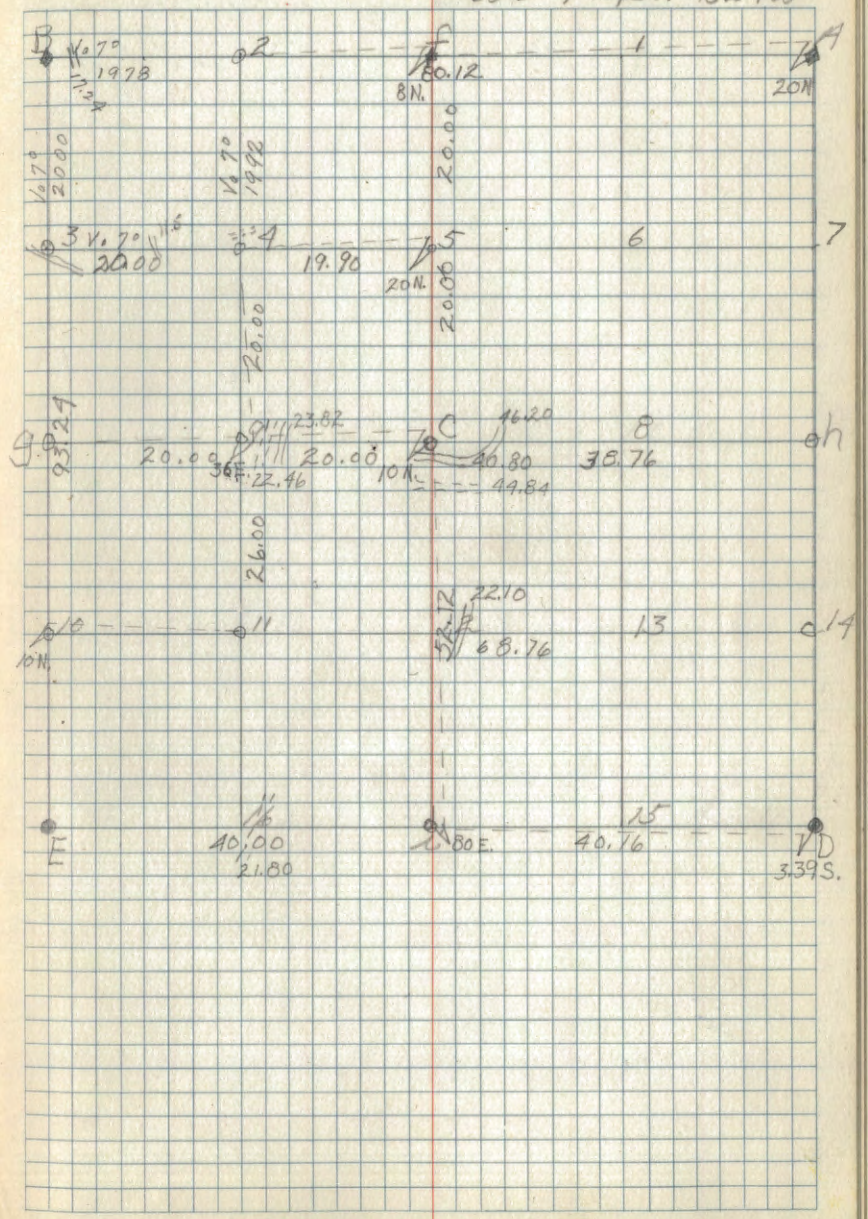
sec 5 T145N R29W

B. 1/2 Pipe 5" N 215° E 13 G.L.O. cement  
 1/2 Pipe 6" N 16° W 35  
 1/2 Pipe 6" S 58 W 48  
 1/2 Pipe 6" S 14° E 11

E. 1/2 Pipe 94 LKS. E. F.S. poster

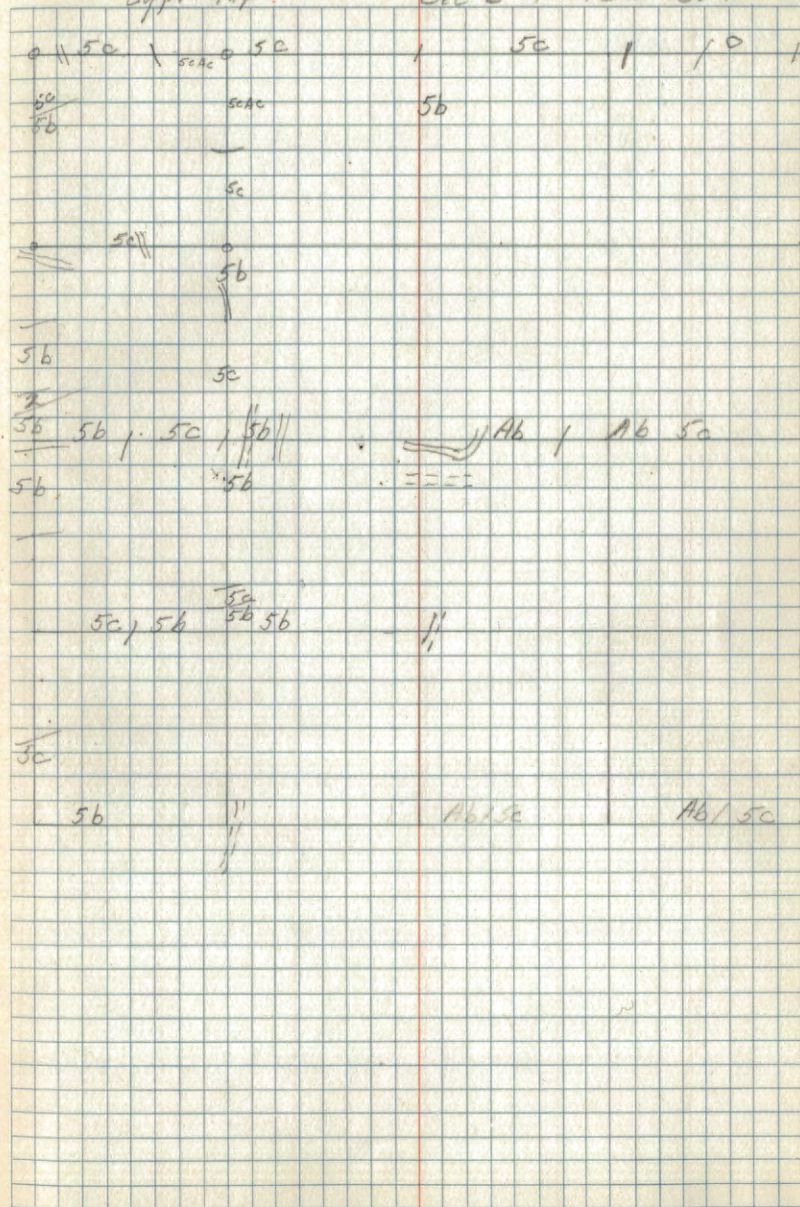
f G.L.O. capped pipe

A. cement



Type Map

Sec 5 T145N R29W



N 81 E  
Sec. 31

5

Sec. 6-T.145N.R.29W.

W. 455. N. 7°  
20.00

A

N. 7°  
16.05

N. 7°  
20.00

B

N. 7°  
19.61

C

6

Sec. 6. T. 145. N. R. 29 W.

177 T 15

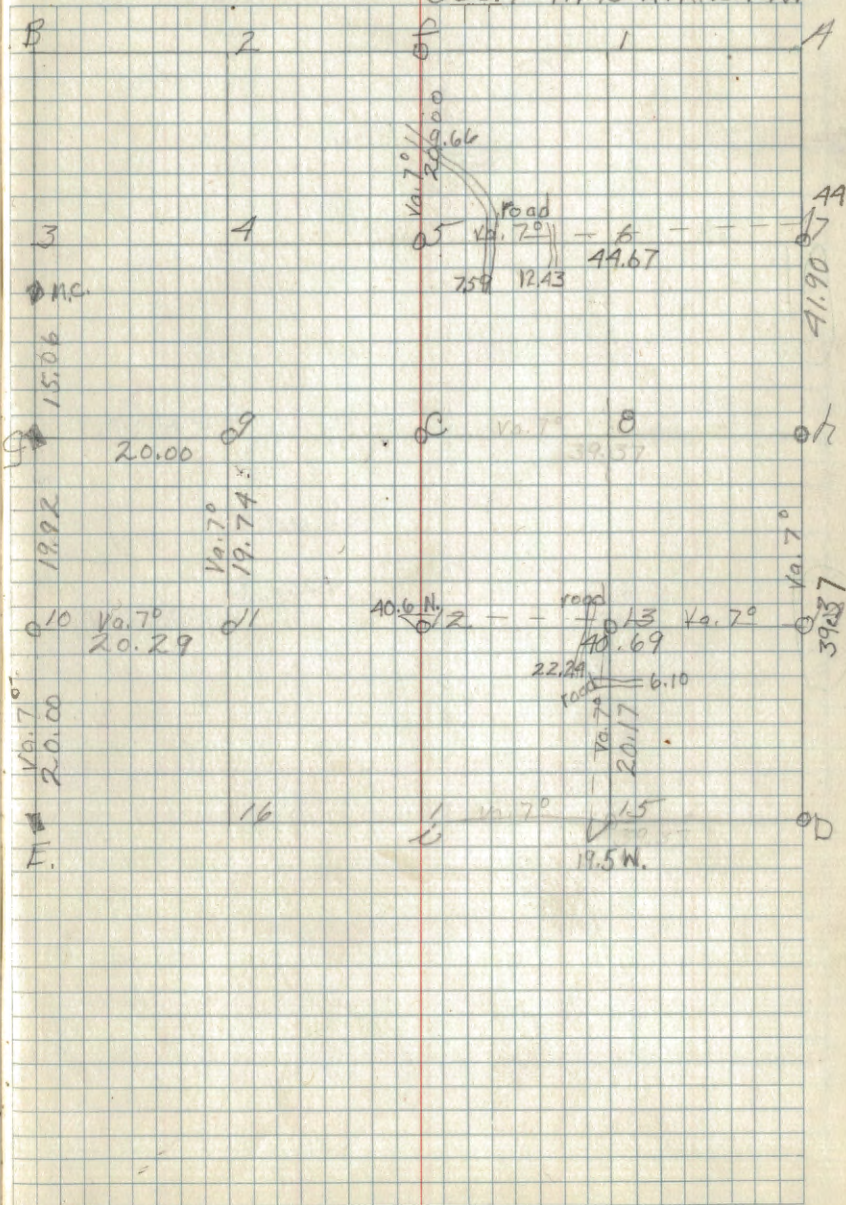
5

79 T<sup>14-T</sup> Mc. B

Corner Notes

Cor	spec dia.	Bearing	Dist	Remarks
E	J. Pine 13"	N. 15° W.	4.67	Q.L.O.
M.C.N.	J. Pine 3"	S. 28° E.	97	
at 9	J. Pine 45"	S. 41° W.	43	

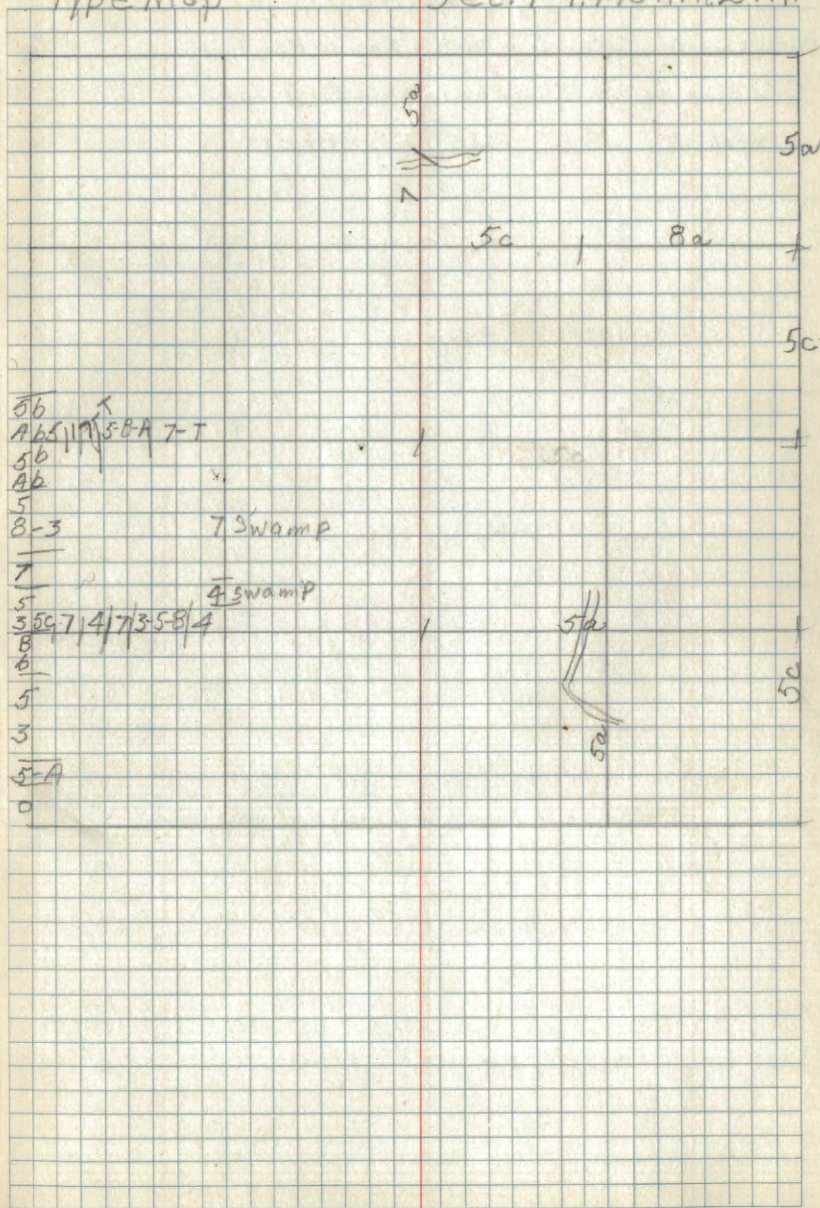
Sec. 7-T. 145 N. R. 29 W.





Type Map

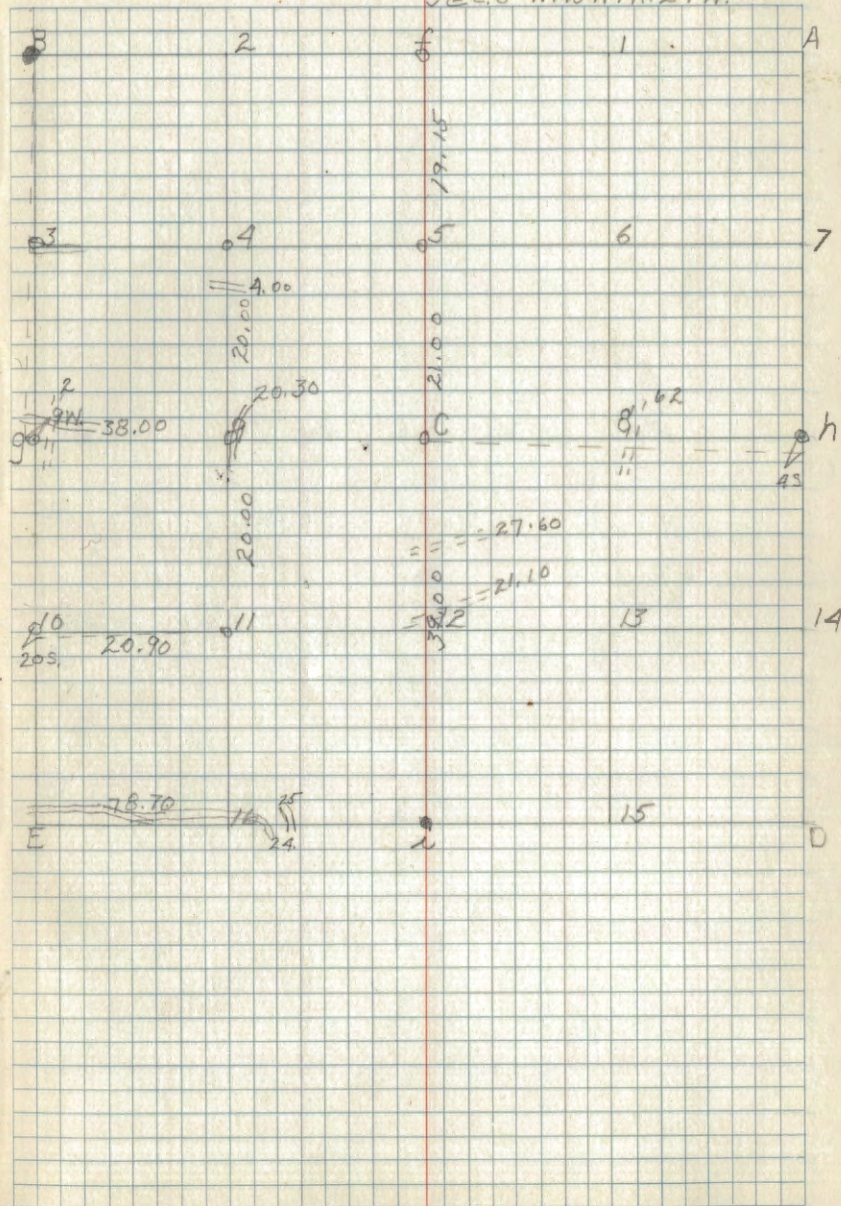
Sec. 7-T. 145N. R. 29W.



Corner Notes

Cor. Spec. Dia.	Bearing	Dist.	Remarks
E. J. Pine	with F.S. Marker	151 Ks. E. of Line	
W. Oak	S. E.	25	F.S. Marker

Sec. 8-T. 145 N. R. 29 W.



S<sub>e</sub>8-T.145N. R.29W.

5b

5b

5b  
5a/5b5c" 5b/5c  
"

5c

5b

5c  
"

5c

5c  
5c  
5c5b | 5c  
5b5c

5c

5c

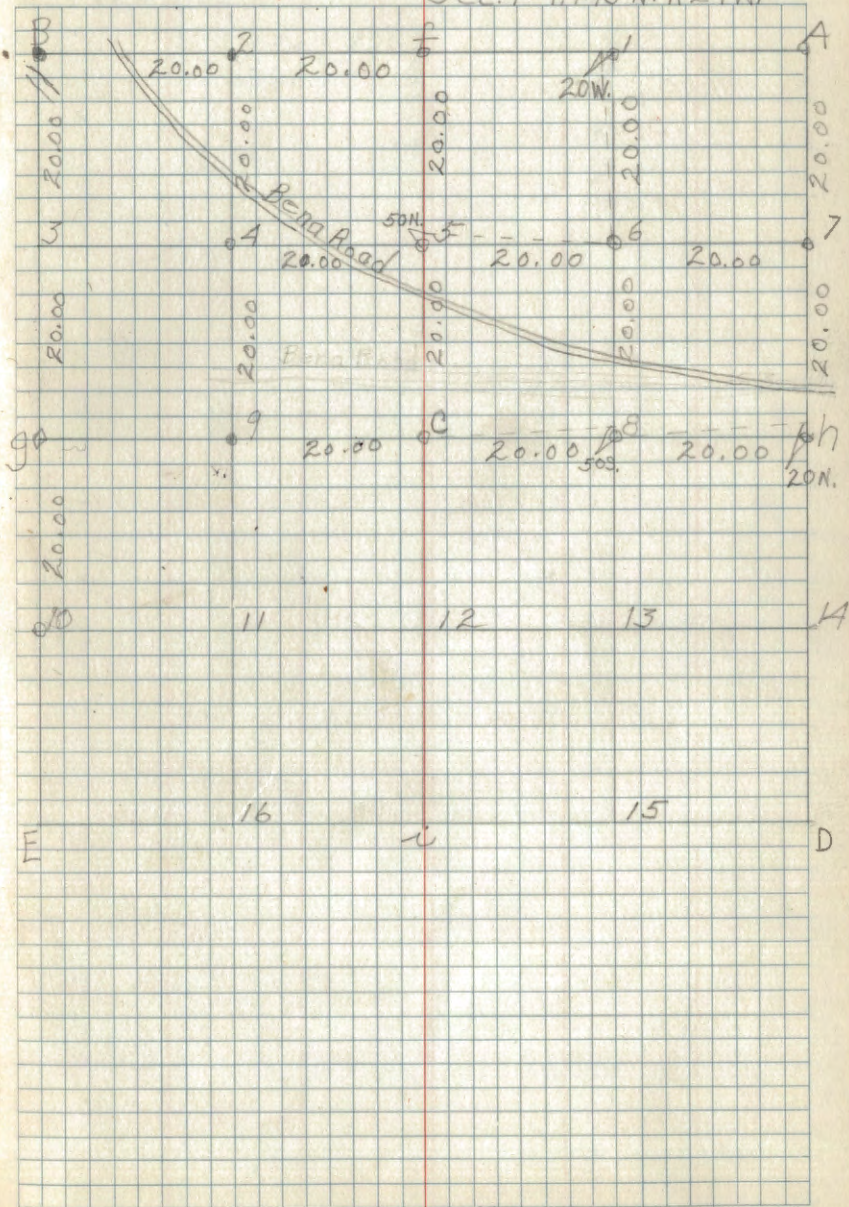
Ac

| Ac

corner Notes

Cor. Spec.	Dig.	Bearing	Dist.	Remarks
Pine Stub	30"			
B. P. Pine	30"			Blazes on both trees.
Q. v. Pine	8"			Blazes on four sides

Sec. 9-T. 145N. R. 29W.



Type Map

Sec. 9 - T. 145 N. R. 29 W.

5-80.1 /

A  
5  

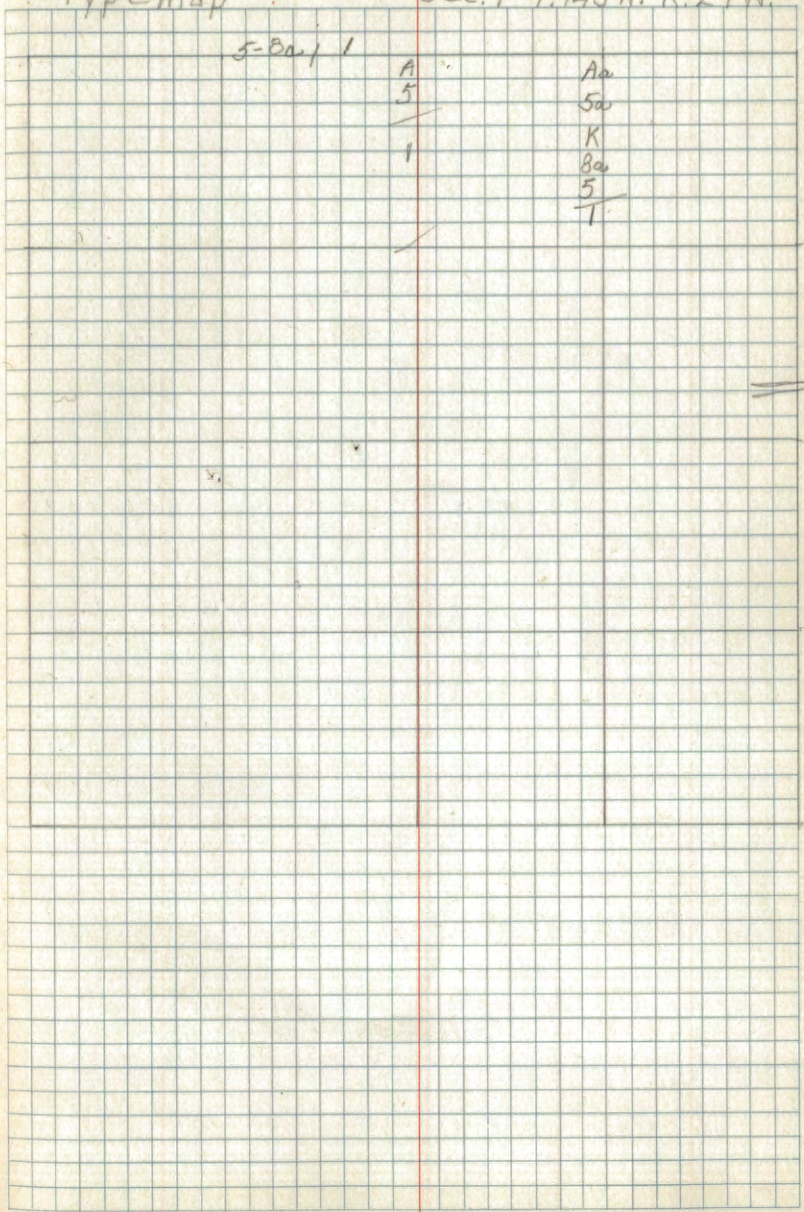
---

1

Aa  
5a  
K  
Ba  
5  

---

T



10

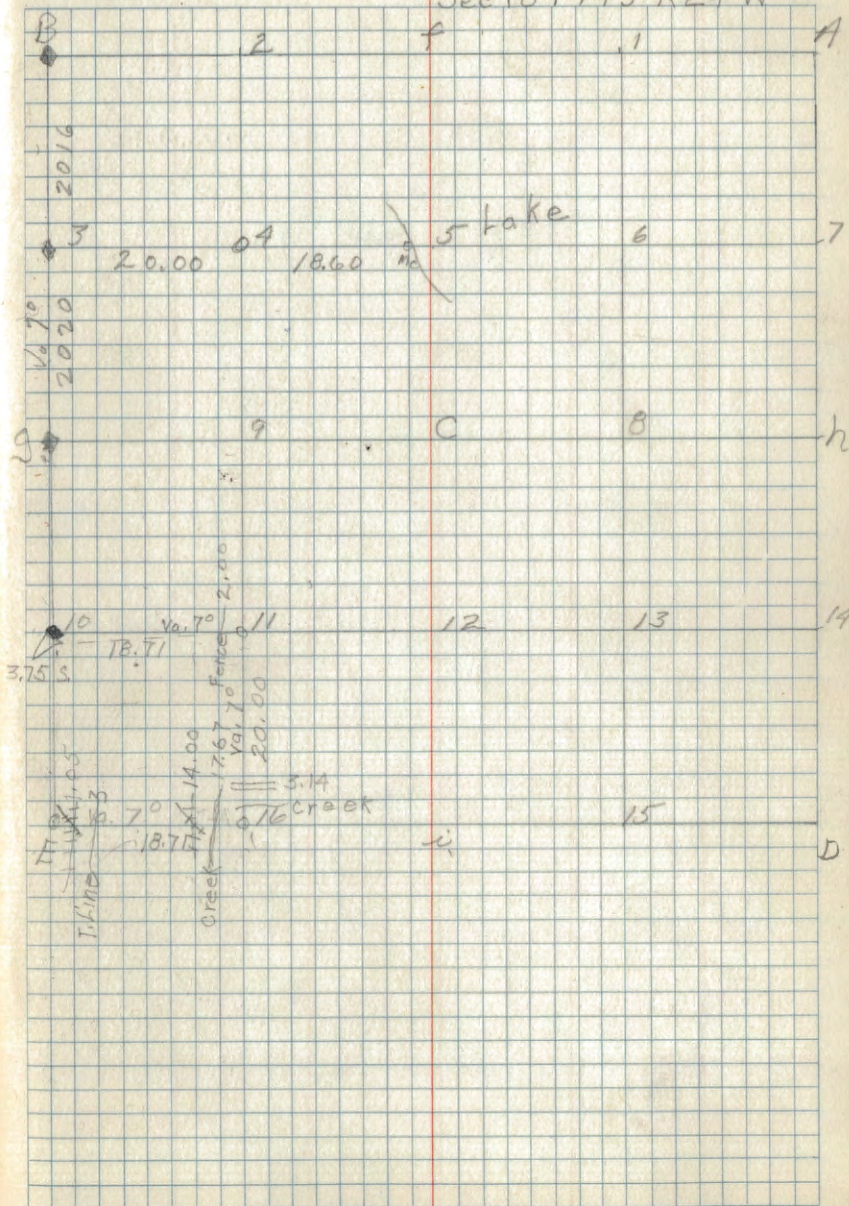
Bross Cap.

3

GLA.

17

Sec 18 T145 R29 W



B

2

f

1

A

2016

3

20.00

04

18.60

5 Lake

6

7

2020

g

9

C

B

h

10  
3.75 S

Var. 70

11

12

13

14

T. 14.00  
18.71  
Creek

70

14.00

7.67

Var. 70

20.00

5.14

16 Creek

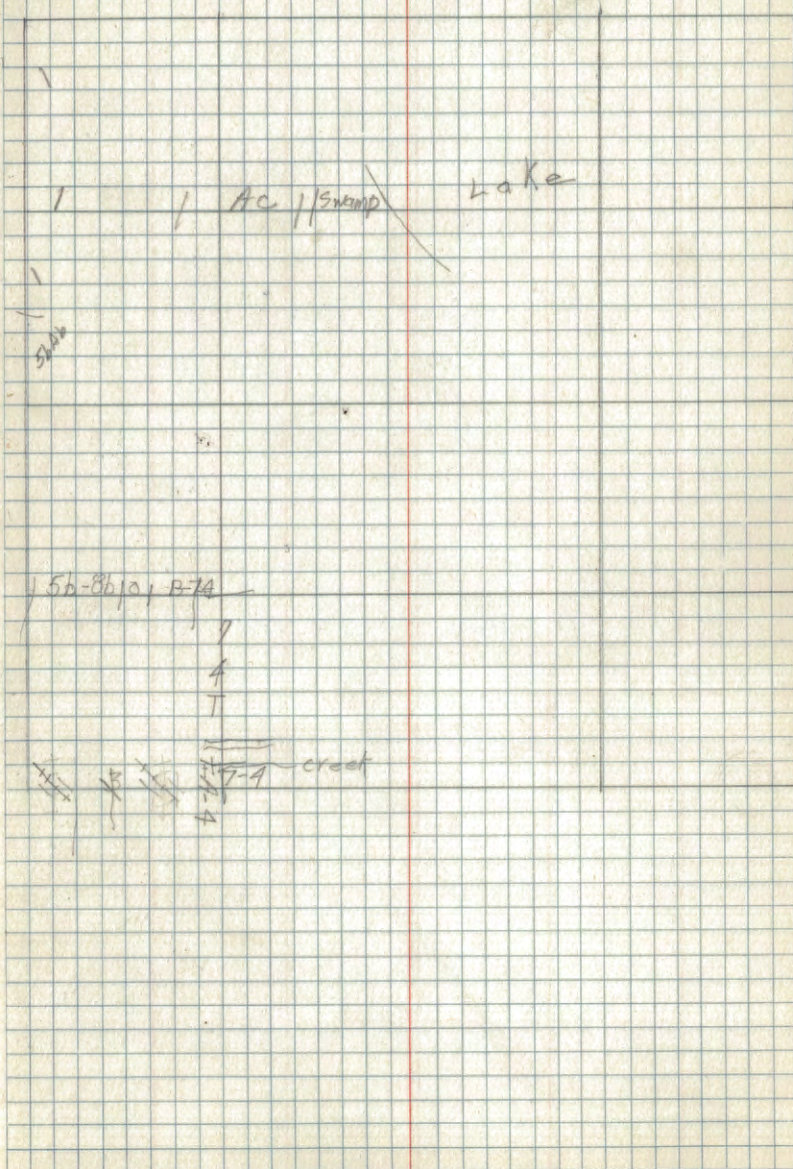
15

D

j

Type Map

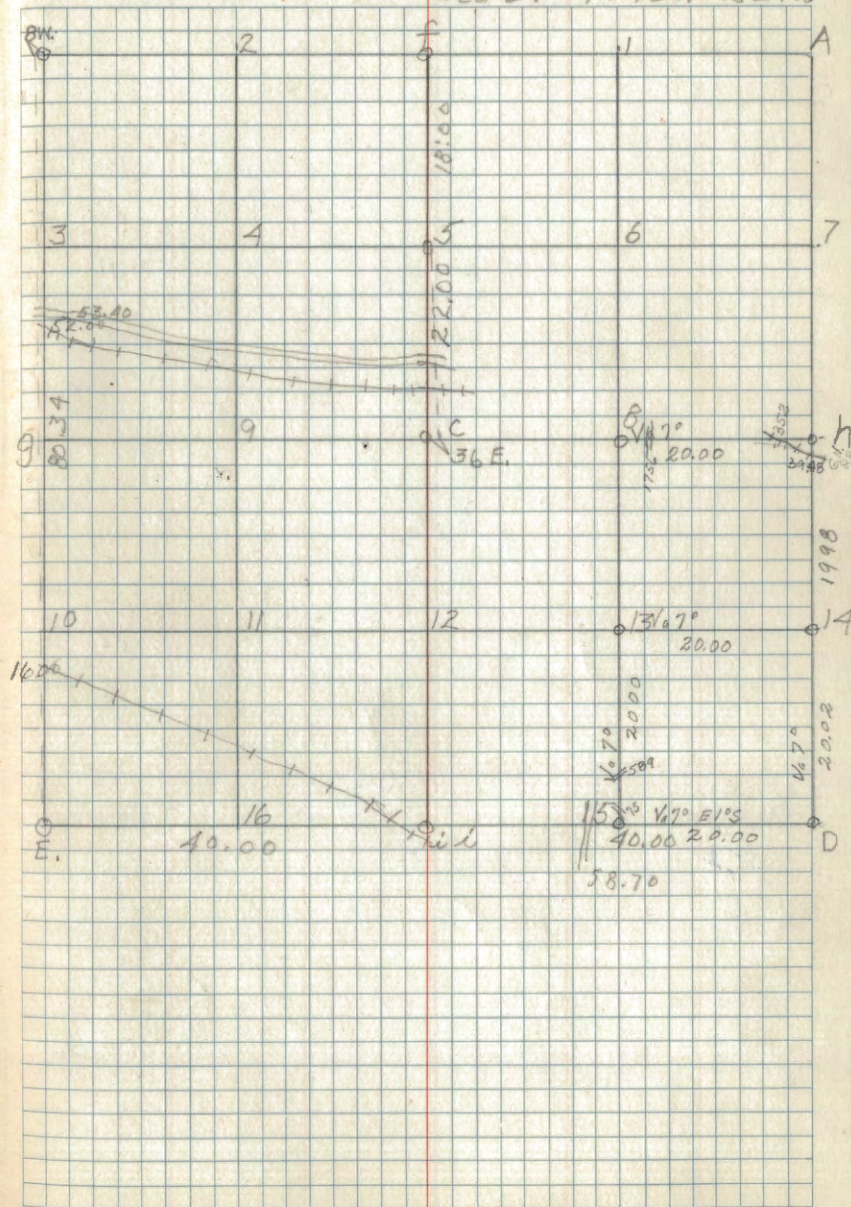
Sec. 18-T. 145N. R. 29W.



5b-86/0, B-74

creek

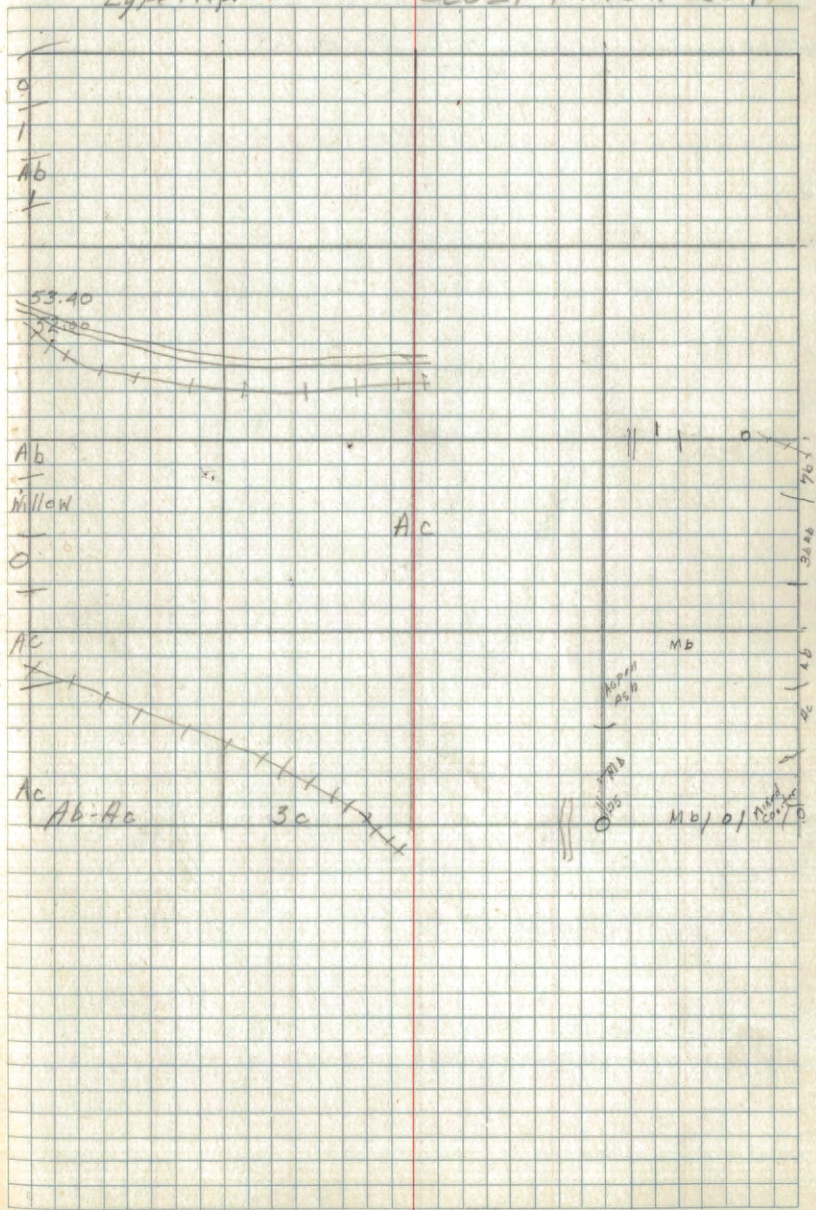
Sec 21 T145N R29W





Type Map

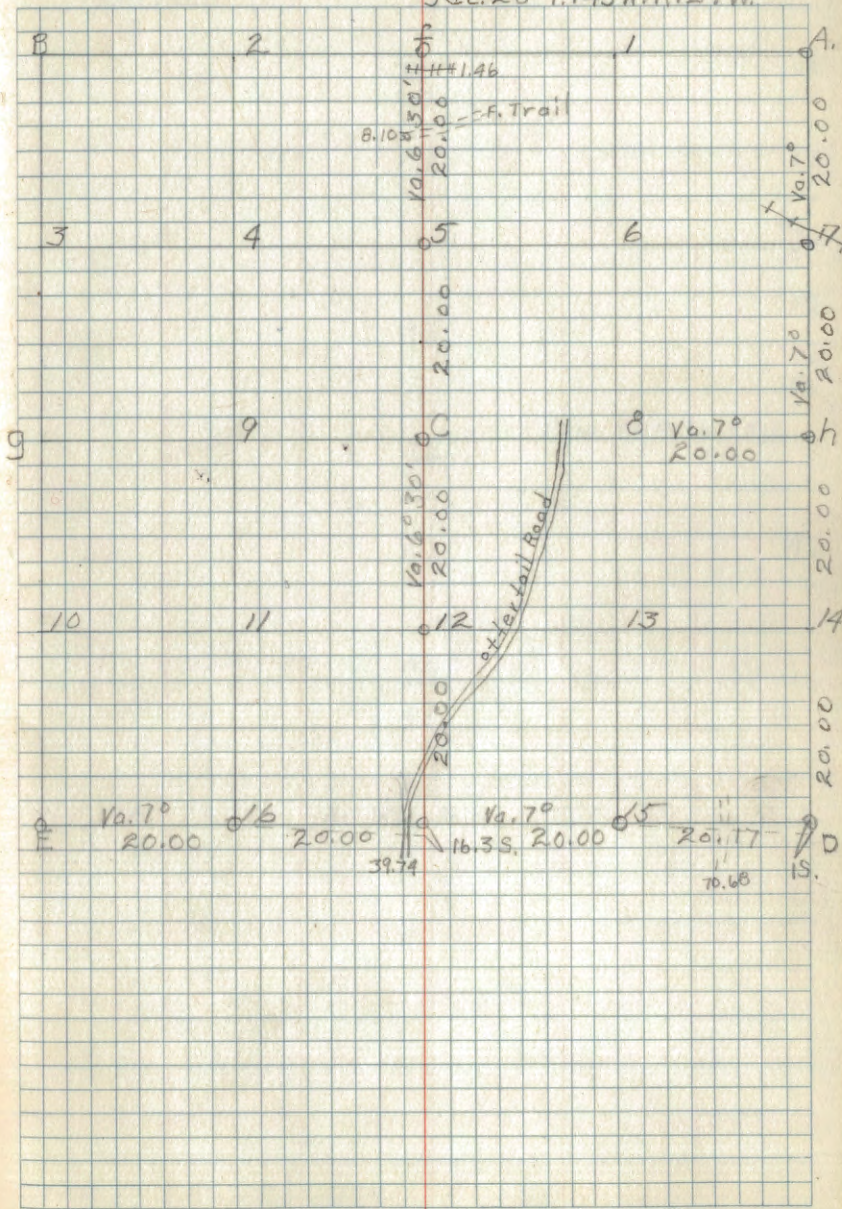
Sec 21 T145N R29



Corner Notes

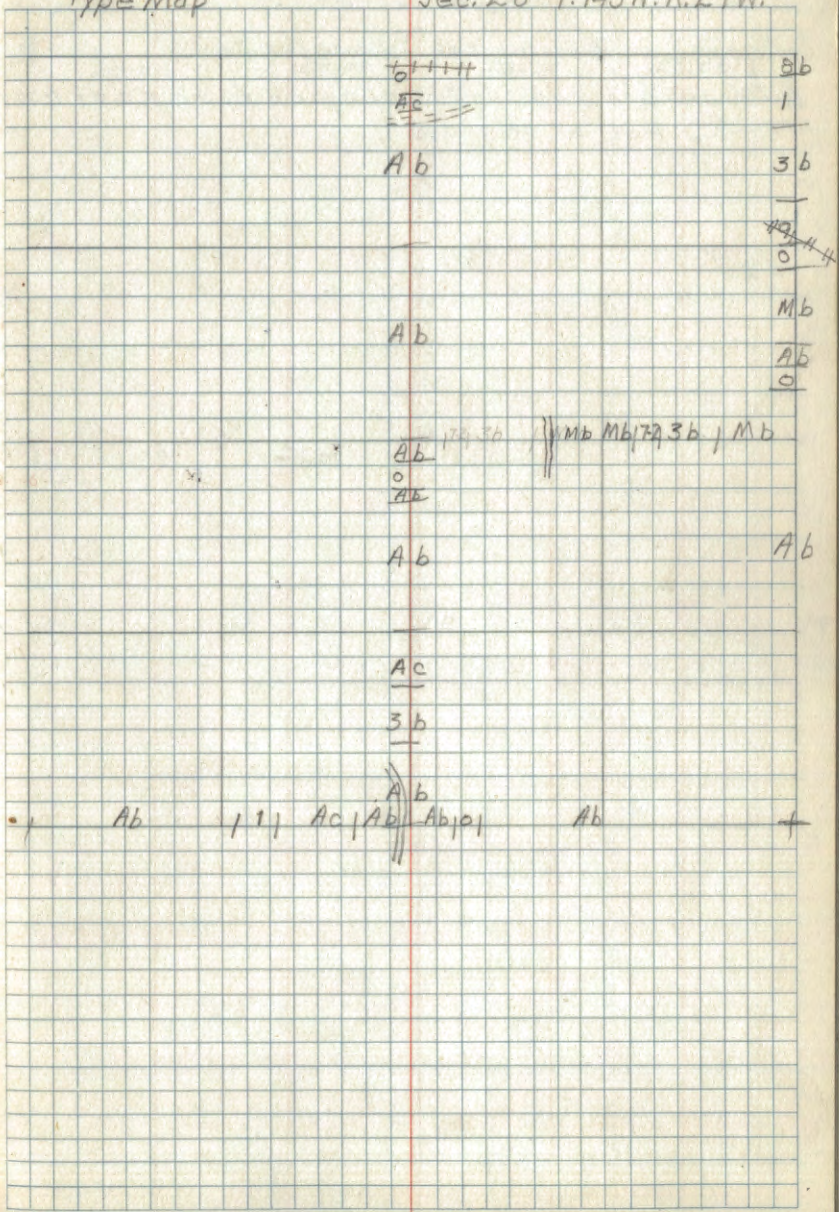
Cor. Spec. Dia. Bearing Dist. Remarks

Sec. 28-T. 145N. R. 29W.



Type Map

Sec. 28-T. 145 N. R. 29 W.



Corner Notes

Cor. Spec. Dia. Bearing dist. Remarks

A. Found old bearing tree laying down near Aspen  
F.S. Marker on old B.T.

Sec. 29, T. 145N, R. 29W

B	20.00	2	20.00	F	20.00	4	20.00	A
				4036			6829	
				20.00			8.52	0
				20.00				20.00
3		4		20.00		6		7
							23	
				20.00				20.00
9A	20.00	8	20.00	0		8		0
25S.								0
10		11		12		13		14
		16		15				0
E								D

Type Map

Sec. 29. T. 145N. R. 29W.

Ac

Ac-Ab/K

Ab

"

Ab

Ac

~~Ac~~~~Lc~~~~Kc~~~~Ac~~

1

~~Ab~~~~Ac~~

---

---

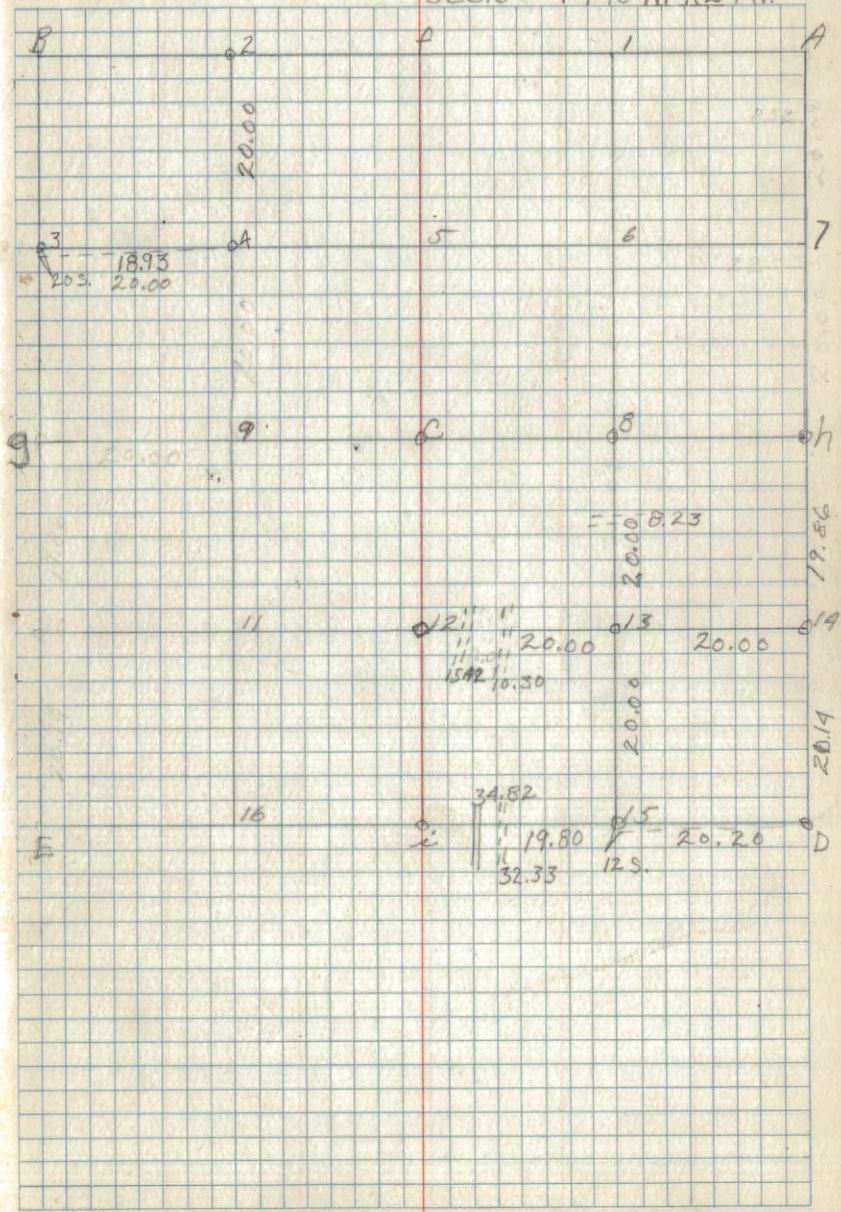
Ab

Ab

~~Ab~~

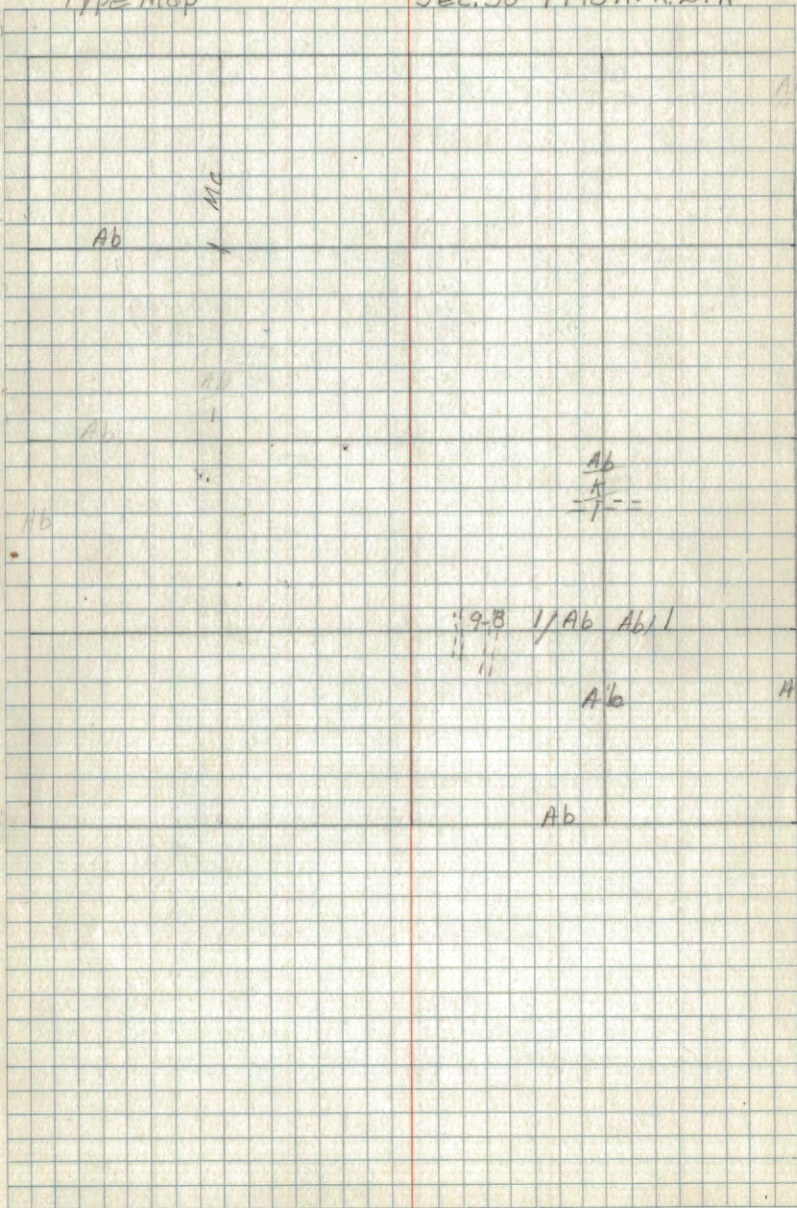
Sec. 30-T145N. R29W.

Cor. Spec.	Dia.	Bearing	Dist
12 R. Pine	10"	West	4 D.B.H



Type Map

Sec. 30-T145N. R. 29W



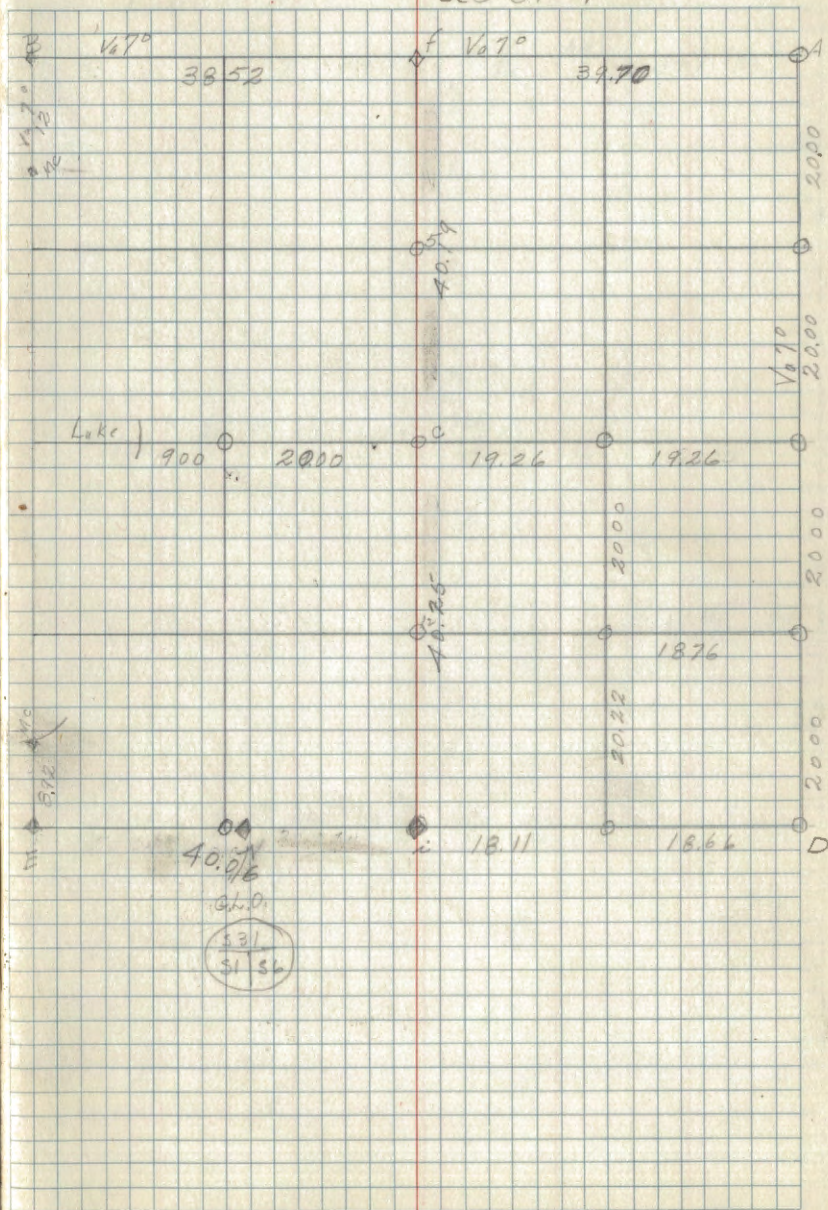
Corner Notes

Cor	SP	Dia	Bearing	Dist	Remarks
B	Ash	8"	N27°W	15.9	G.L.O.
	Birch	4"	S79°E	23	
	Ash	8"	S30°W	36	
	Birch	5"	N61°E	33	
Mc on S 25 28					Br. Iron (S36/S31) - MC
f	RPine				Poster
	Aspen	6"	N15°W	70.7	Cement Br. CAP (S14/S31)
i	Ash	12"	N82°E	245	
	RPine	18"	N82°W	29.7	G.L.O. (R30/R21) (S36/S31)
E	Aspen	14"	N54°E	30	
Mc	Cedar	10"	N52°W	22	
Not E	Birch	6"	S46°E	30	(MC) (S36/S31)

7<sup>th</sup> Dec.

31

Sec 31 T145N R29W



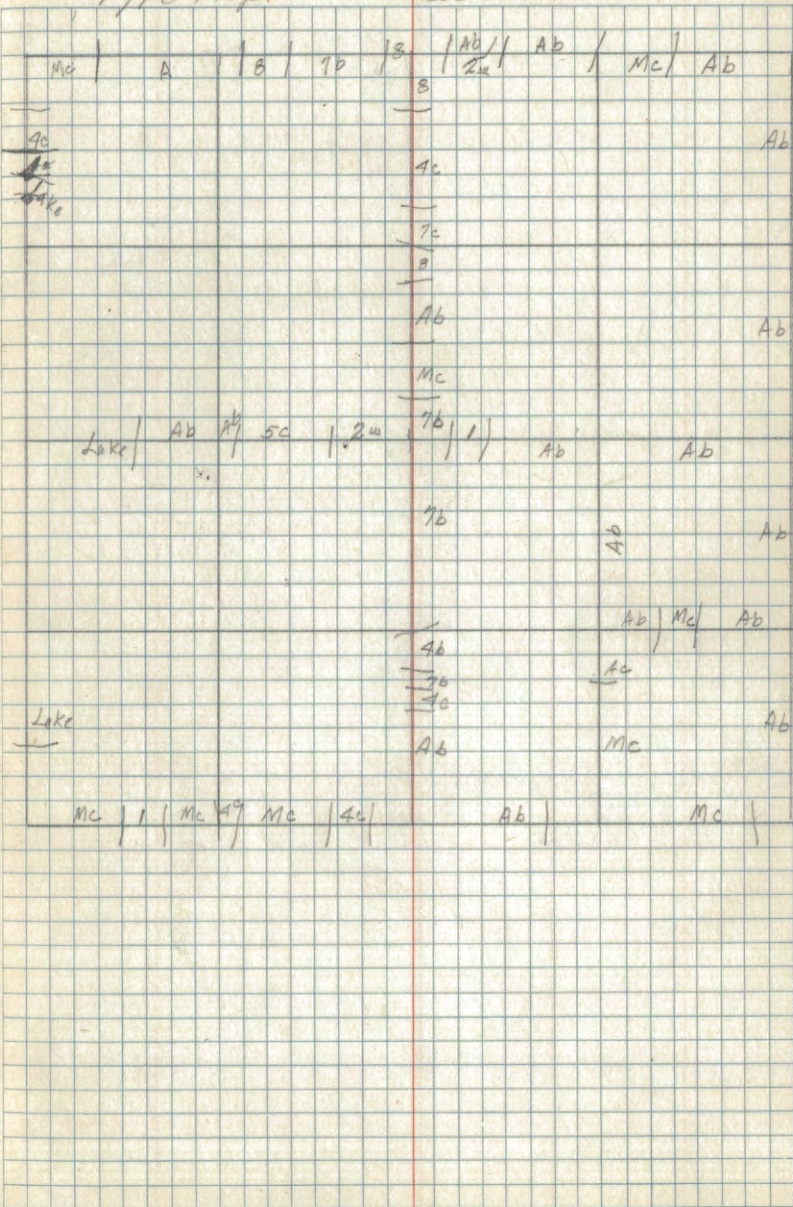


June 1935

32

Type Map.

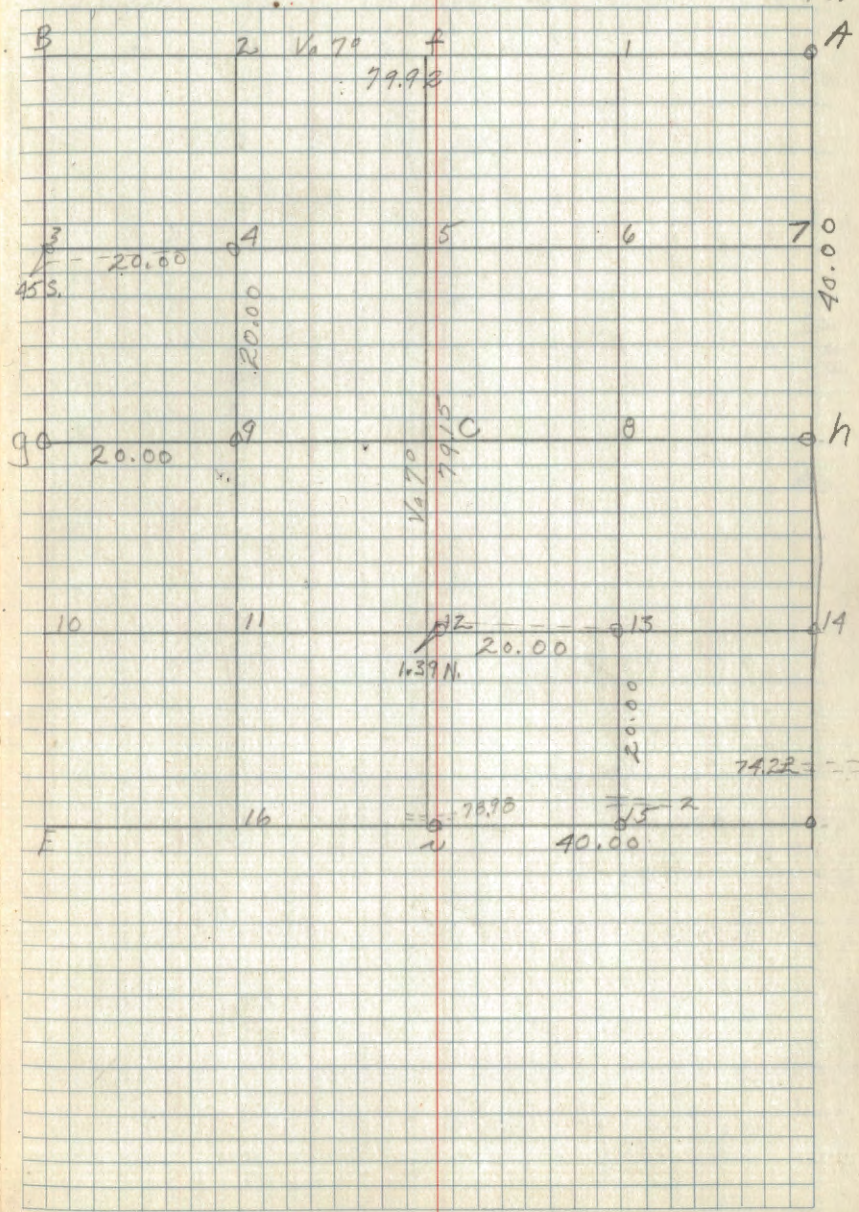
Sec 31 T145N R29W



July 1935

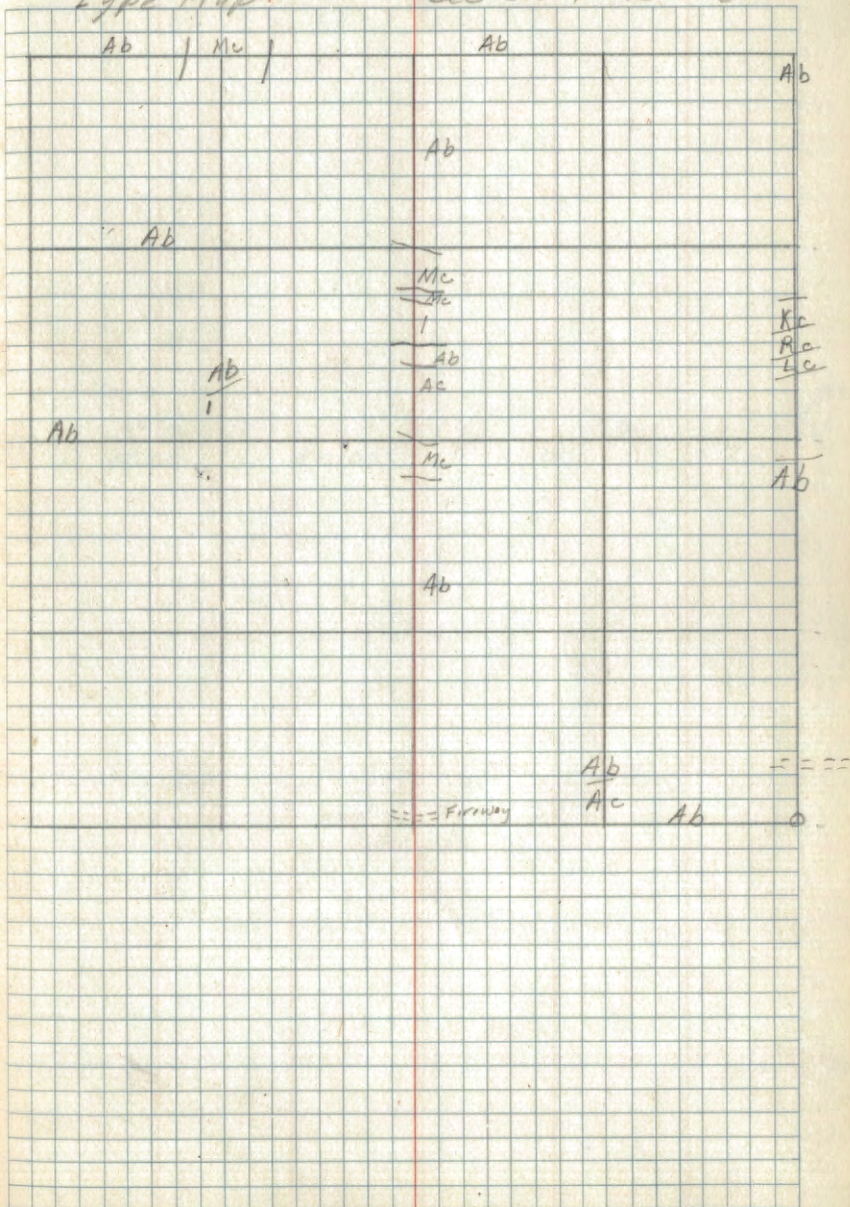
33

Sec 32 T145N R99W

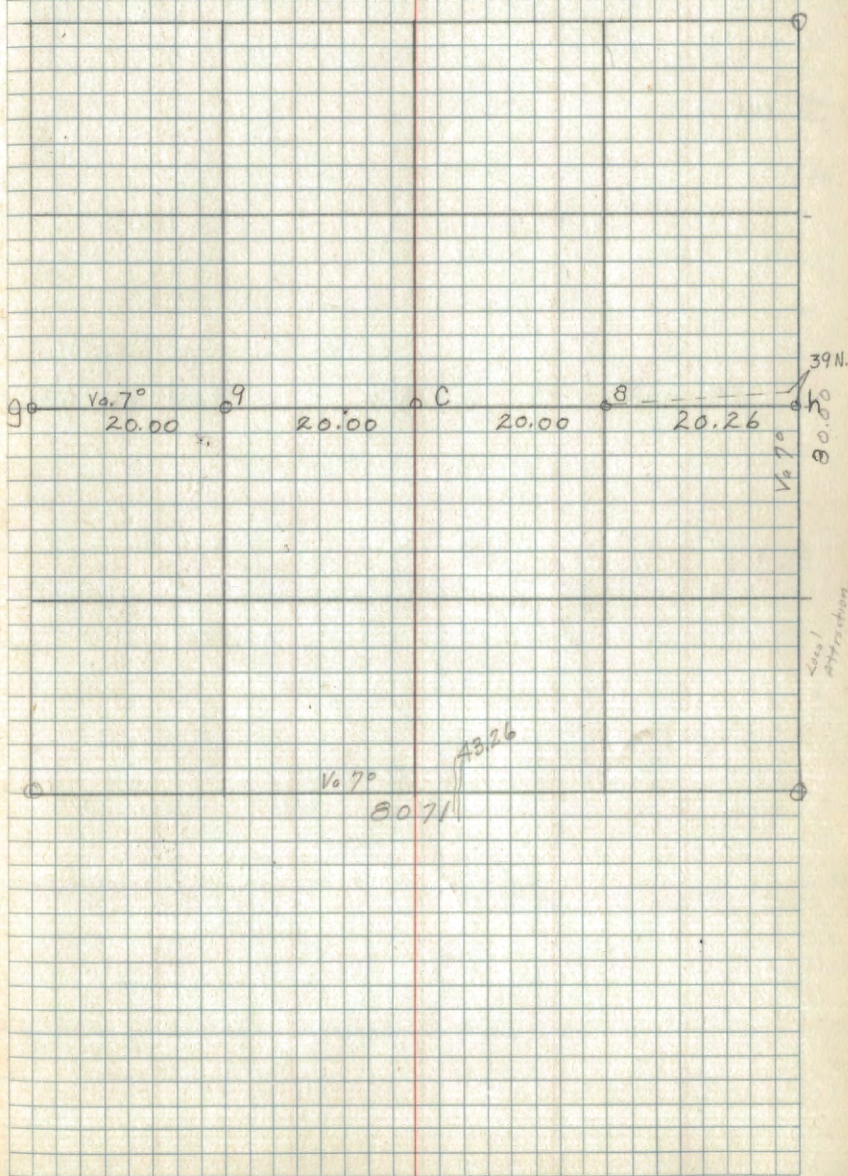


Type Map.

Sec 32 T145N R29W



Sec 33 T145N R29W

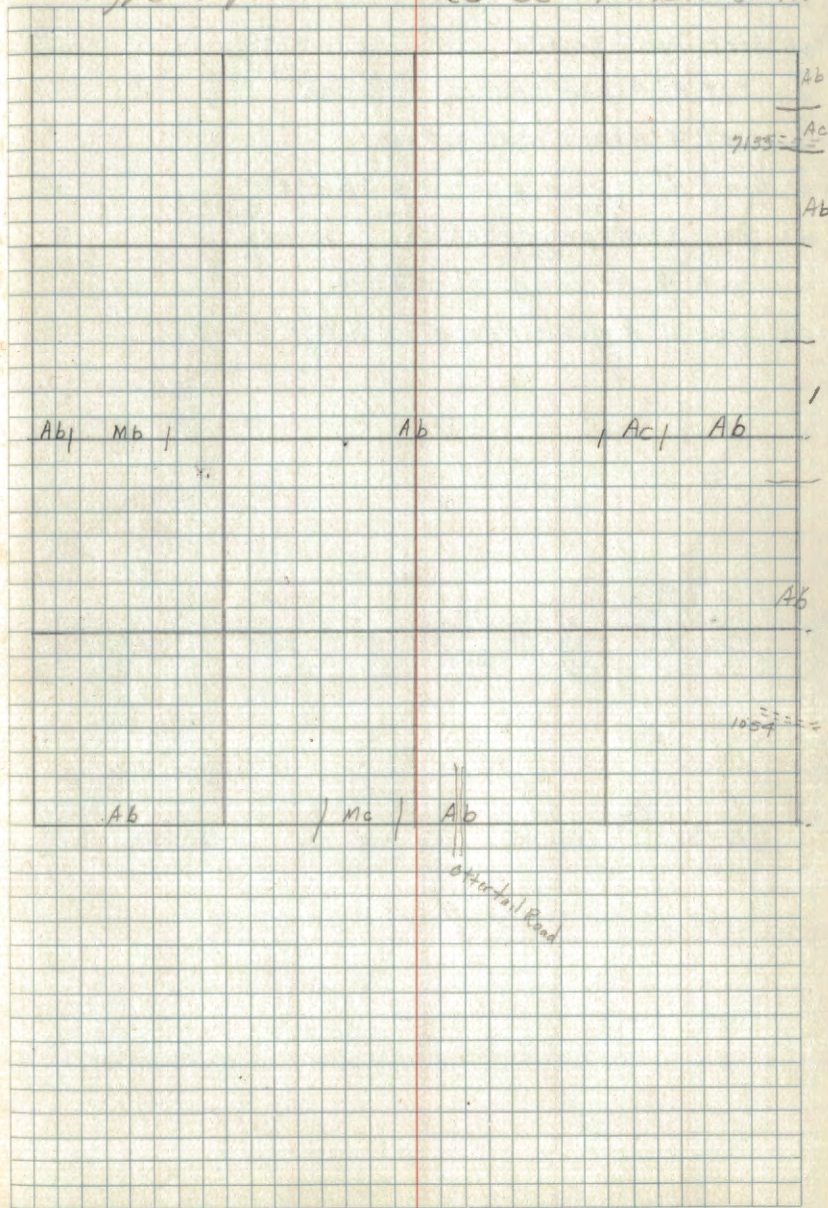


July 1955

36

Type Map..

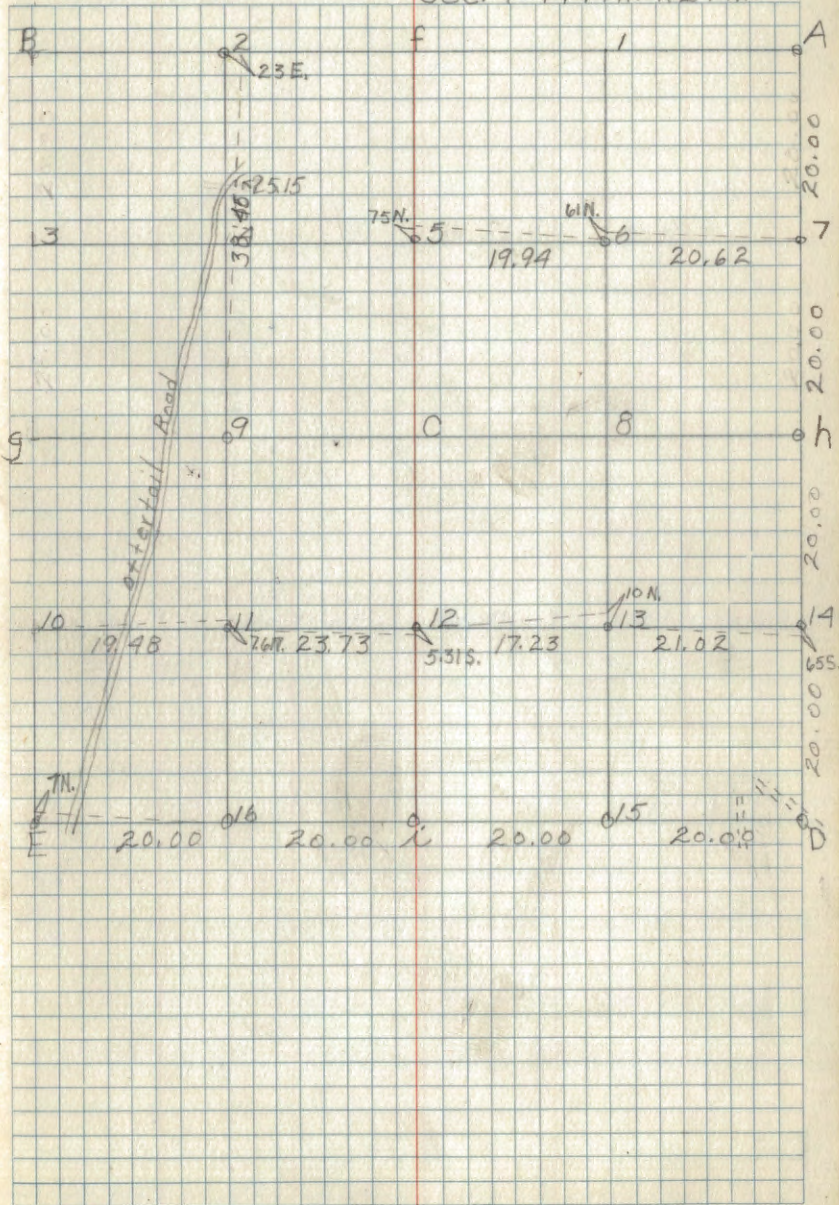
Sec 33 T45N R29W



Corner Notes

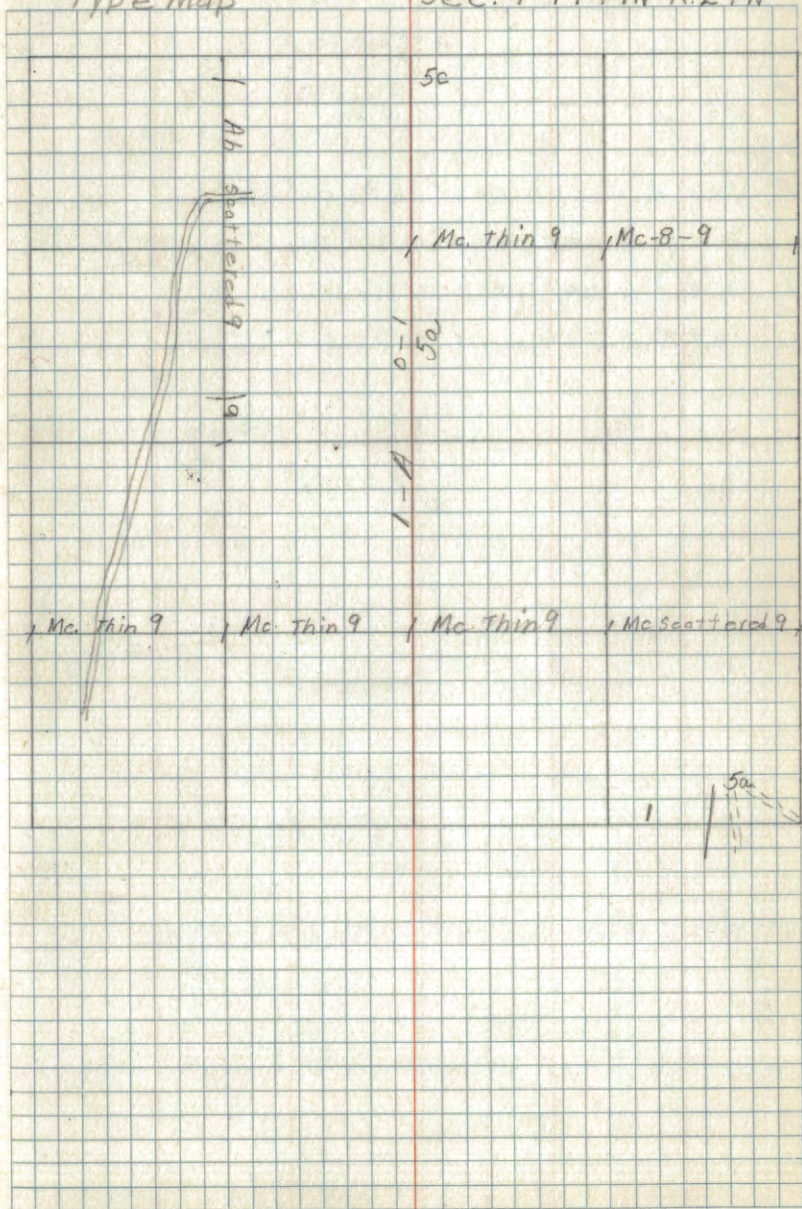
- | Cor. | Spec. | Dia.              | Bearing | Dist. | Remarks                               |
|------|-------|-------------------|---------|-------|---------------------------------------|
| 7    | Set   | 4"                |         |       | Aspen post as N $\frac{1}{16}$ cor.   |
| h    | set   | 4"                |         |       | Aspen post as $\frac{1}{4}$ cor.      |
| D.   | Set   | 4"                |         |       | Aspen post as SE cor.                 |
| 15.  | set   | 2 $\frac{1}{2}$ " |         |       | Aspen stake as E. $\frac{1}{16}$ cor. |
| i    | set   | 4"                |         |       | Aspen post as $\frac{1}{4}$ cor.      |
| 16   | set   | 4"                |         |       | Aspen post as W $\frac{1}{16}$ cor.   |

Sec. 4-T144N. R29W.



Type Map

Sec. 4-T144N-R.29W

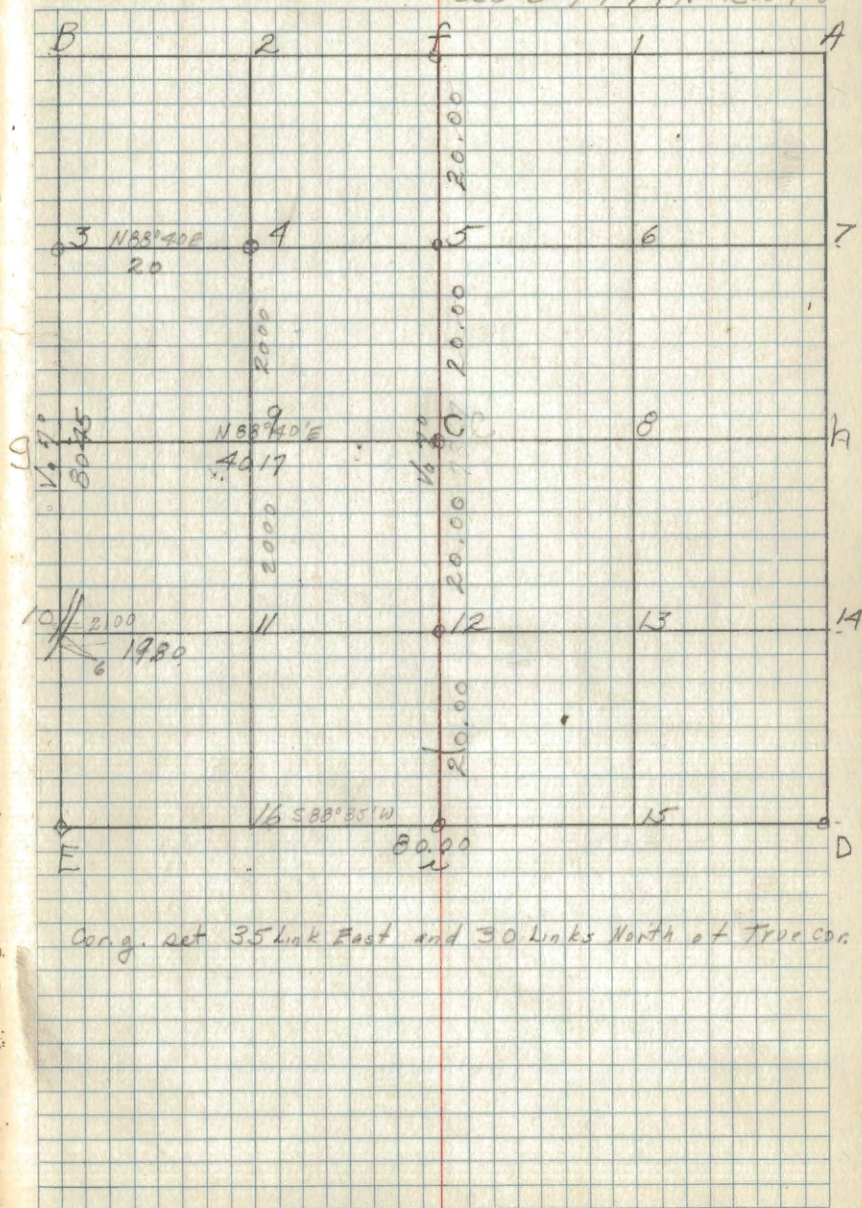


Corner Notes

Cor	Sp.	Dis	Bearing	Dist	Remarks
E					Found 1 BT. Placed Poster
g.		78.1	55"		Poster.
12					set 4" Aspen post as tem. st $\frac{1}{6}$
C.					set 4" Aspen post as C $\frac{1}{4}$ cor.
5					set 4" Aspen post
f					Set 4" Aspen post as $\frac{1}{4}$ cor.

Dec 7<sup>o</sup>

Sec 5 T144N R29W

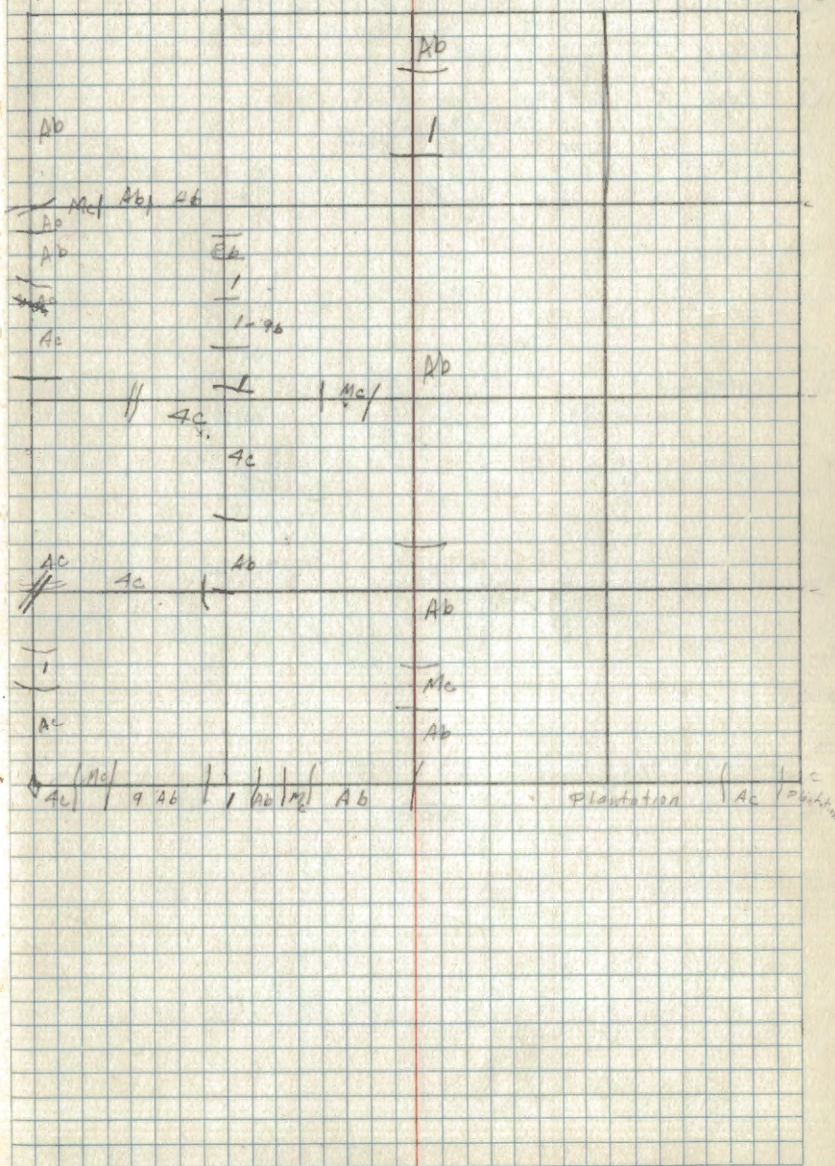


Cor. g. set 35 link East and 30 Links North at True cor.



## Type Map

Sec 5 T144N R29

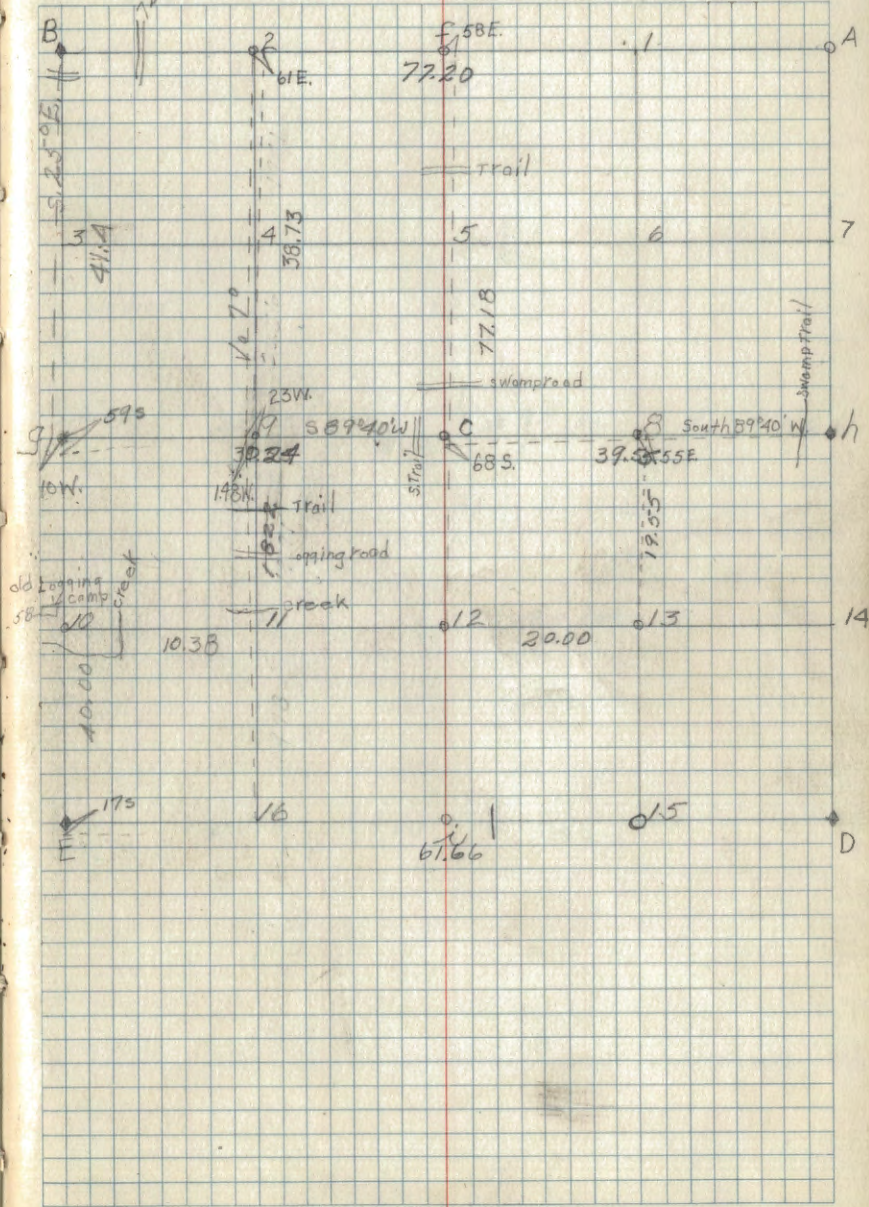


Corner Notes

Cor	Spec.	Dia.	Bearing	Dist.	Remarks
B	Elm	16"	S.44°E.	36	GLO.
B	W. Oak	16"	S.35°W.	79.2	
9	Cedar	8"	N.26°E.	10	
9	Cedar	8"	N.40°W.	11.6	GLO.
	Aspen	4"	N.30°30'W.	49.5	
E	Elm	18"	N.68°E.	2.34	GLO.
	Dead Aspen	4"	S.30°E.	89	
	Elm (stub)	13"	S.69°W.	136.9	

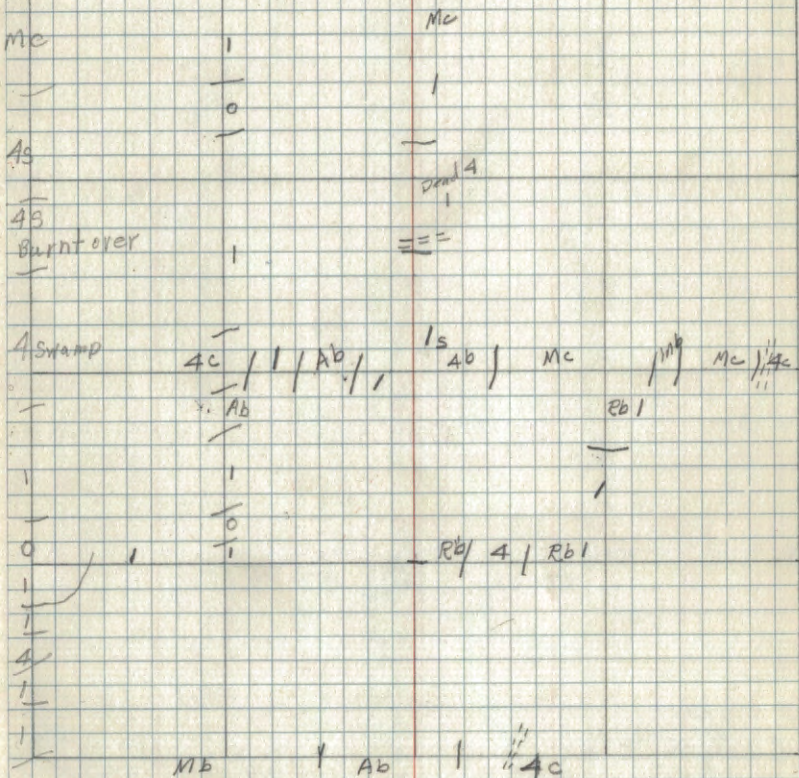
Ran 70 Dec

Sec 6 T144N R29W

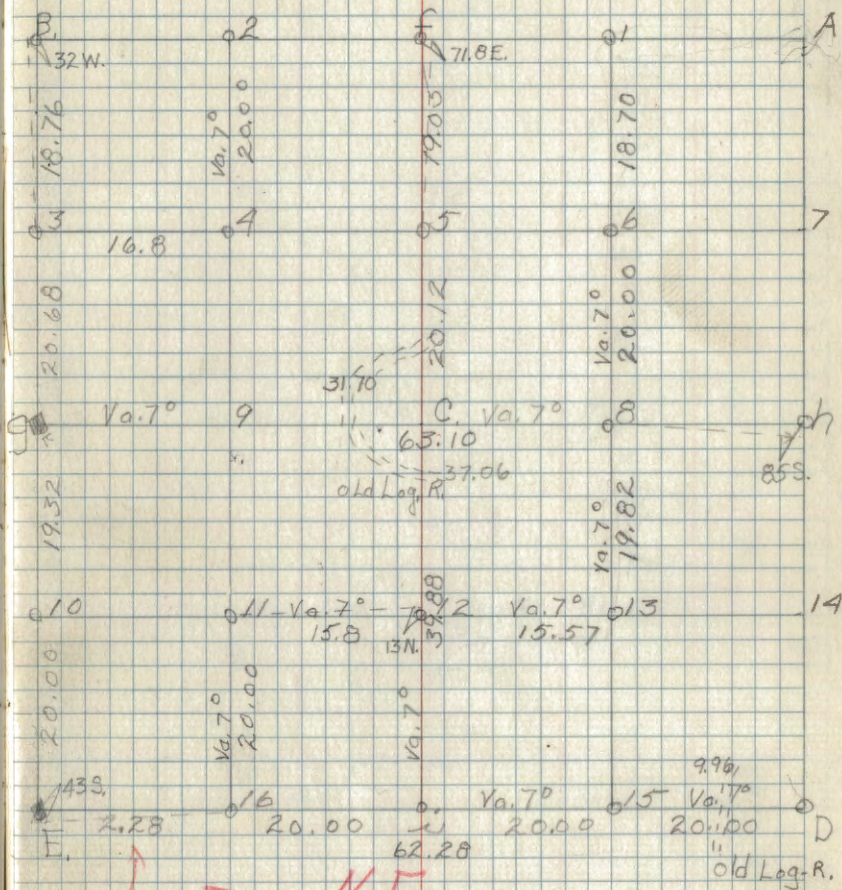


Type Map

Sec 6 T144N R29W



Sec. 7-T-144 N.R. 29 W.



N.E.

(53)

This is a narrow section and the  
40's are not 20 ch. wide.

31.14  
15.57

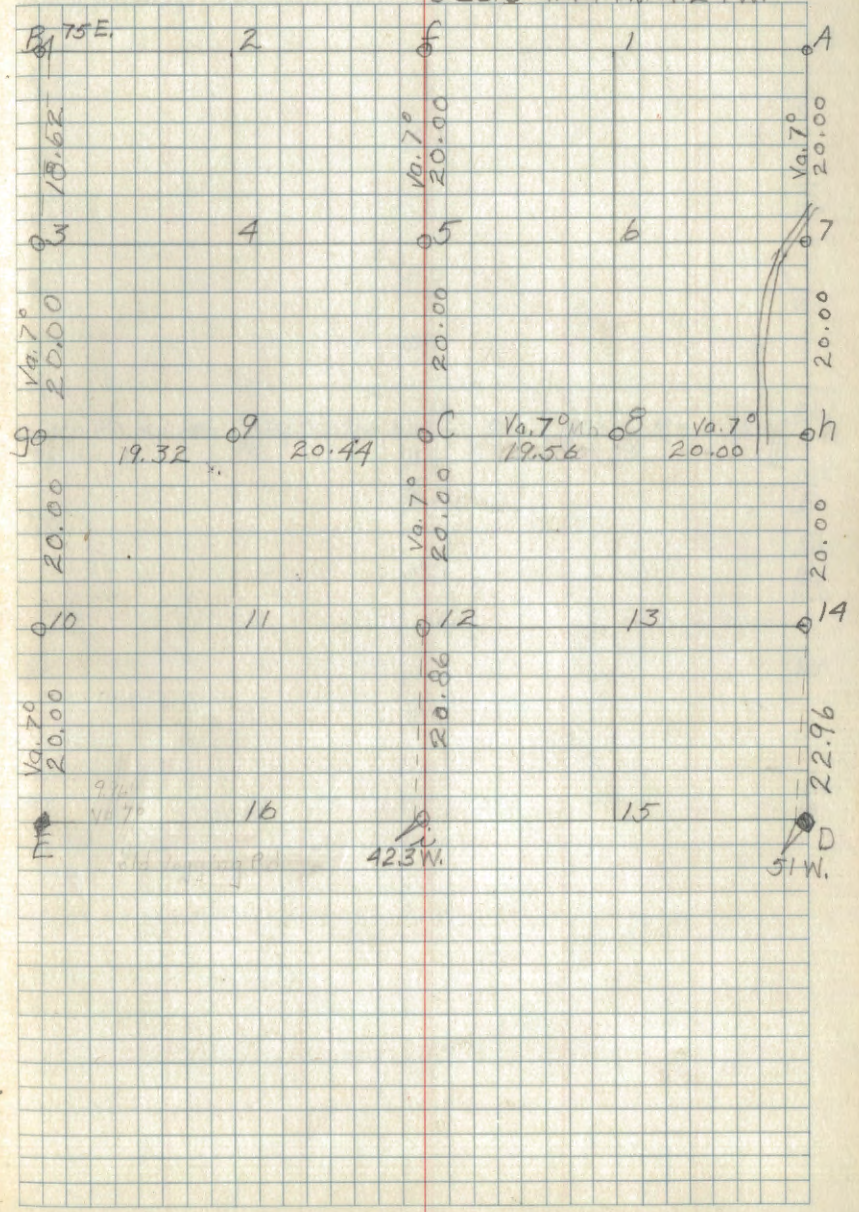
Sec 7 T144N R29W

			Ab	4c	
Ab	4c		<u>4c</u>	<u>Mc</u>	
			4c	Mc	
Dead 4c-1	4c		4c	4c	
Ab				4c	
				4c	
4c			4c	Mc	
	4c		4c	Mc	
				M	
			4c	Mc	
				Mc	
	4c	Mc	3c	Mc	4c
	4c		Bb	4c	Rc
4c			Mc		
	M				
	M		Mc		
Mc		Mc			
				1 Mb	1 Mc
					1 Mc
					1 Mc

Corner Notes

Cor.	Spec.	Dia.	Bearing	Dist	Remarks
	W. Pine	28"	37 Lks East of Line	40.96 chs.	N. of E.
g	Old Bearing Tree		N. 62° E.	41.31	

Sec. 8-T. 144N. R. 29W.

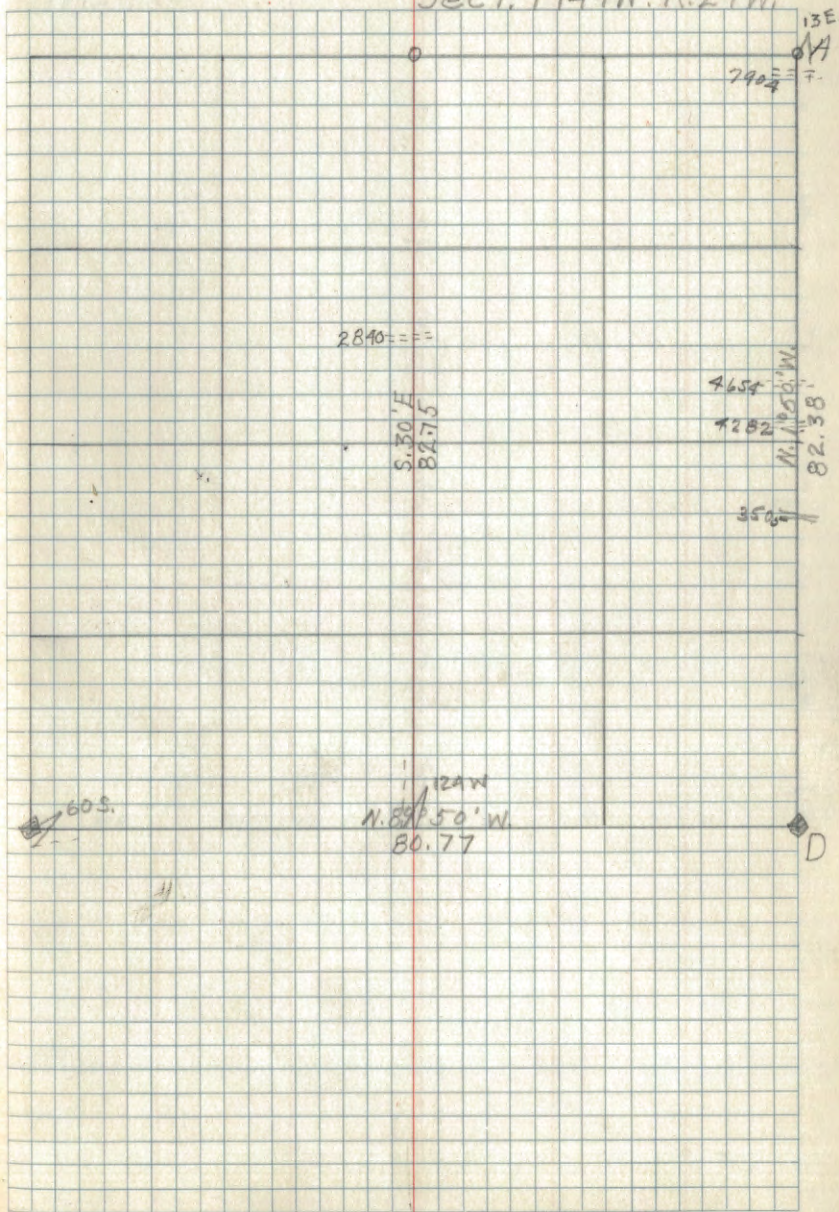




Corner Notes

Cor.	Spec	Dia.	Bearing	Dist	Remarks
	Aspen	11	S. 61° 30' W	20.45	
D	W. oak	10	N. 10° W	81.15	
	W. oak	12	S. 75° E	41.5	
	Aspen	13	S. 89° W	17	poster

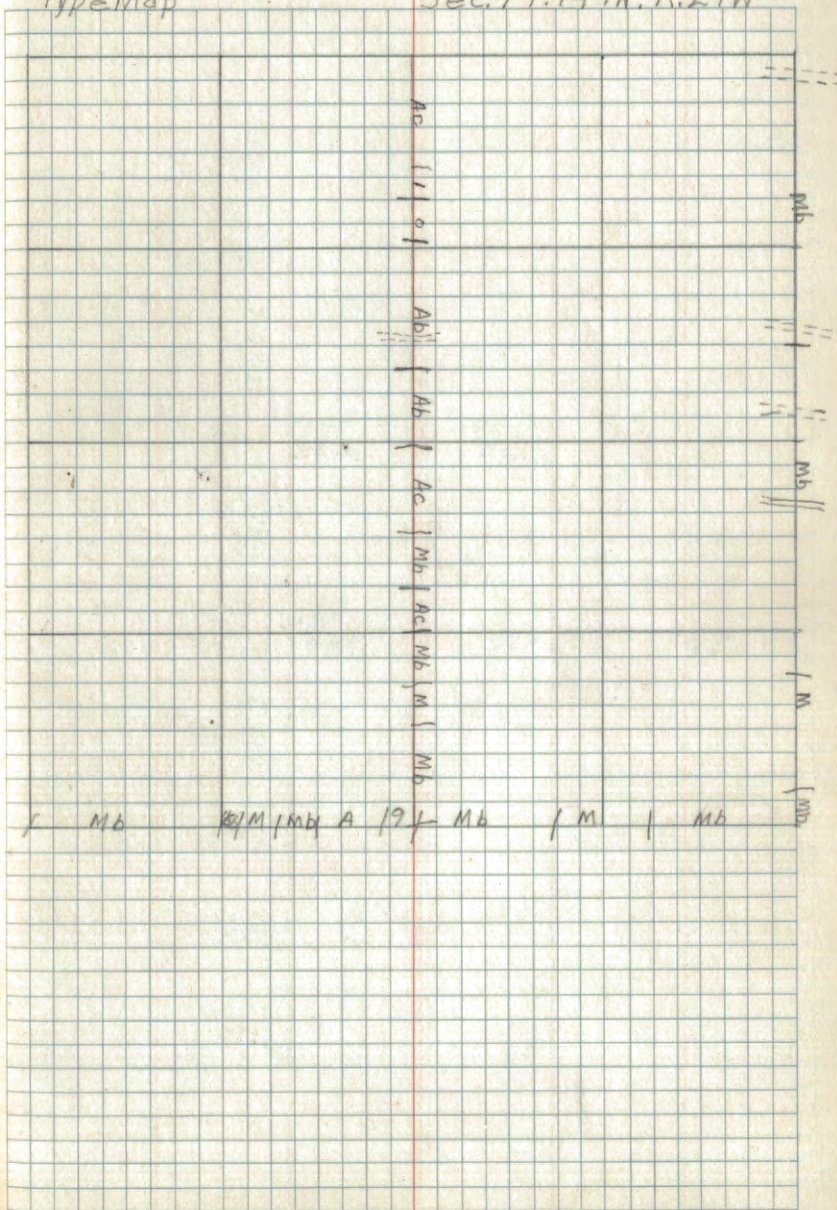
Sec 9. T144N. R. 29W



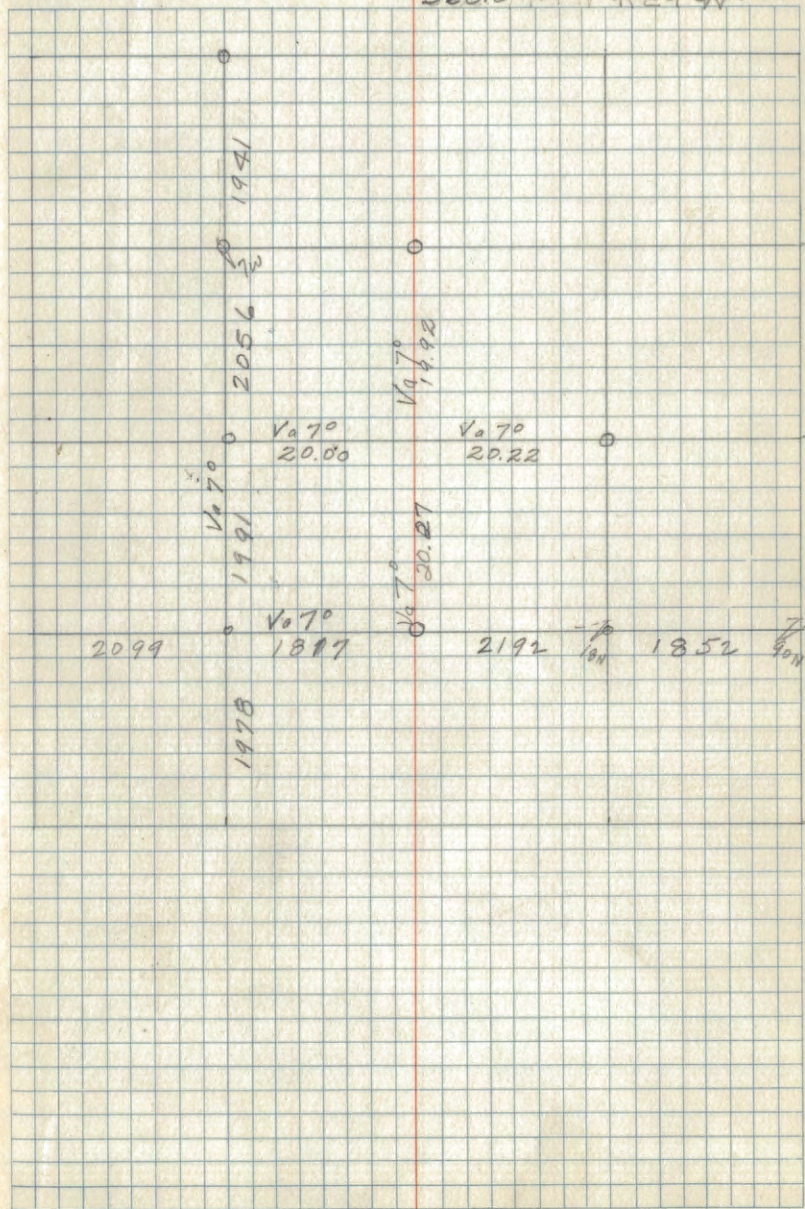


Type Map

Sec. 9 T. 144 N. R. 29 W

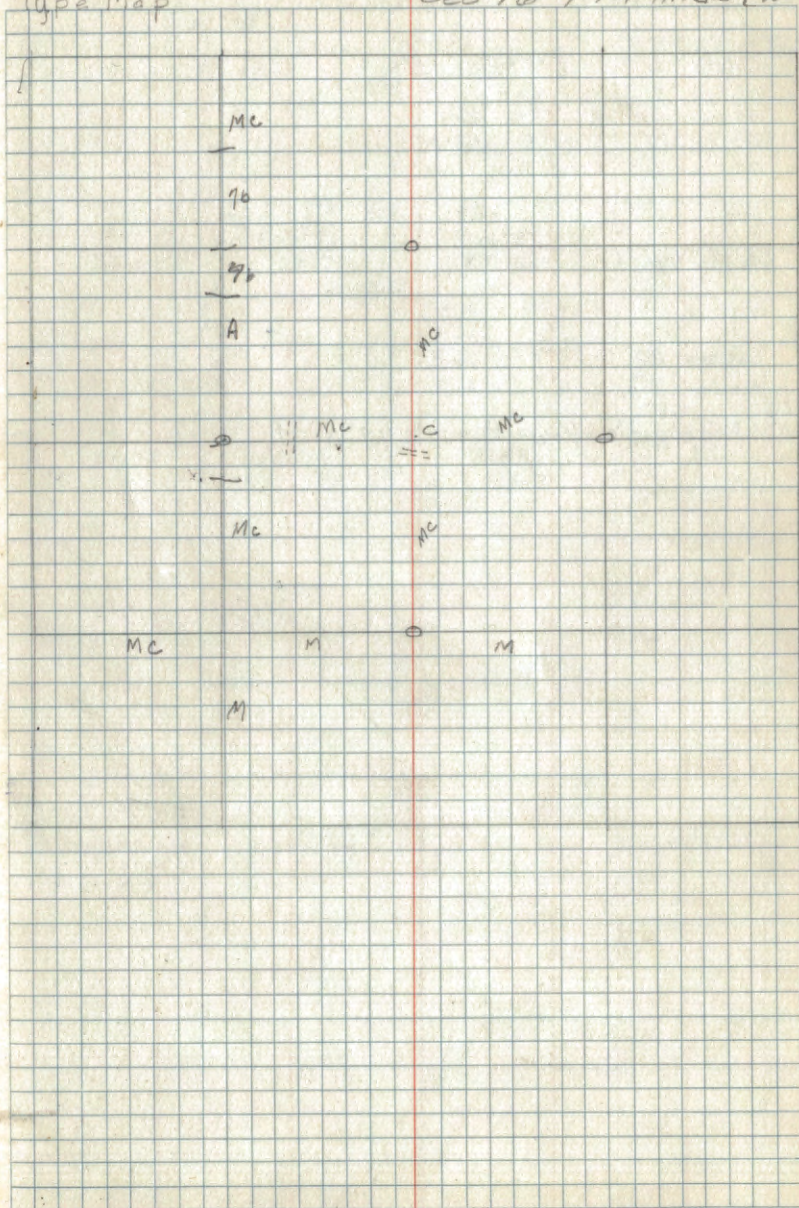


Section T144N, R29W



Type Map

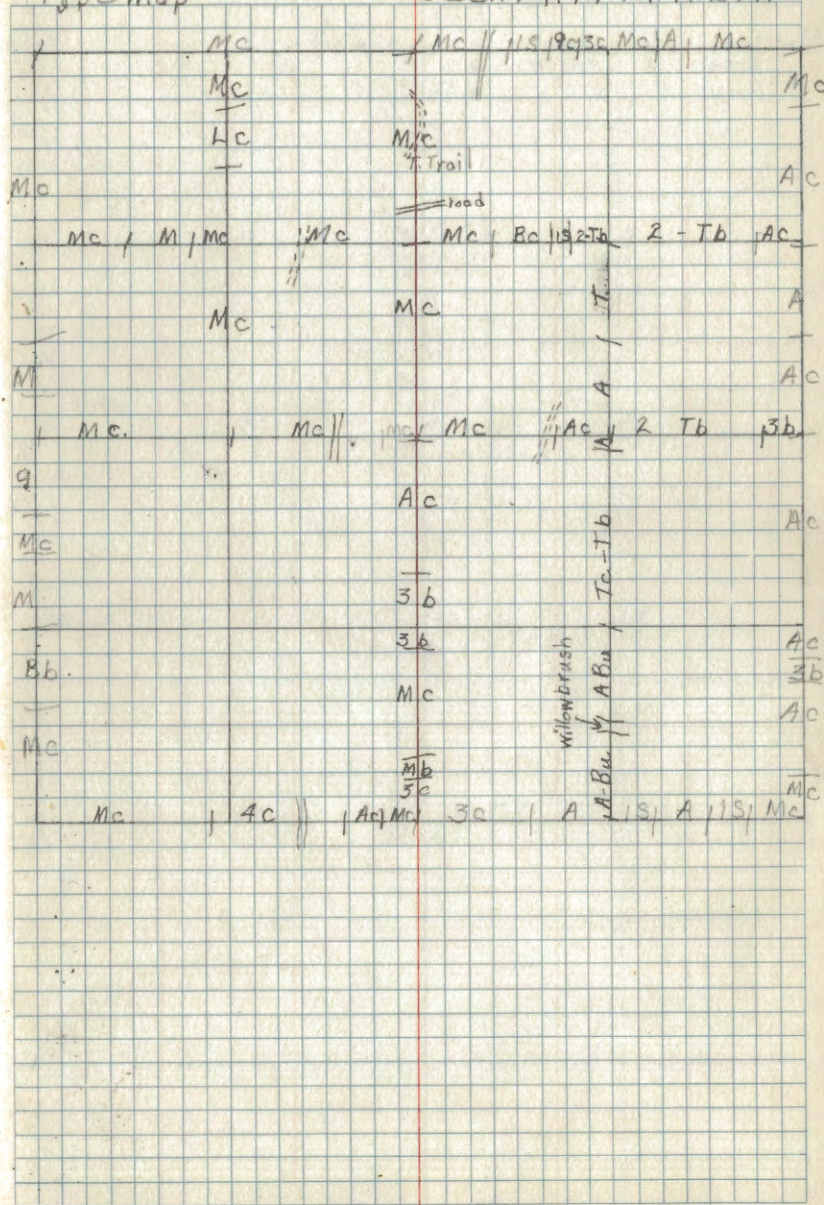
Sec 16 T144NR29W





Type Map

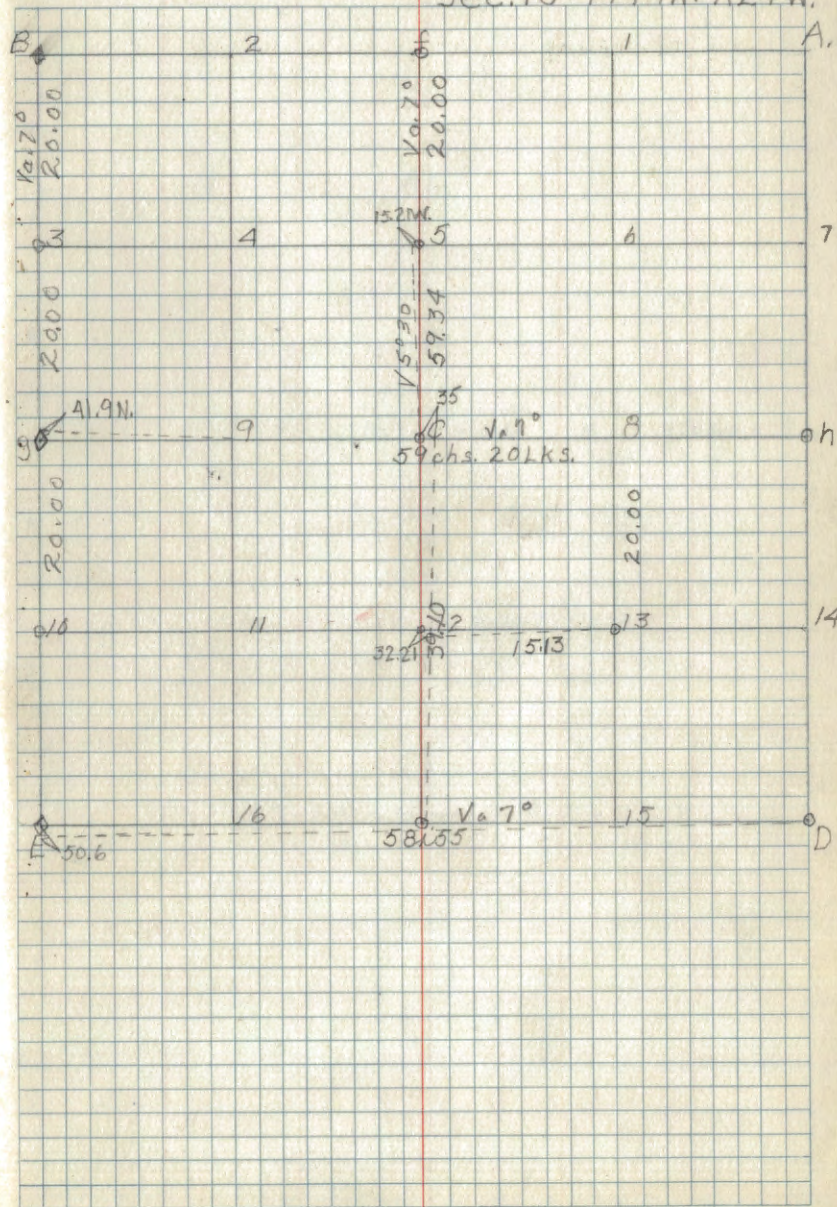
Sec. 17 T. 144 N. R. 29 W.



Sec. 18-T144N. R29W.

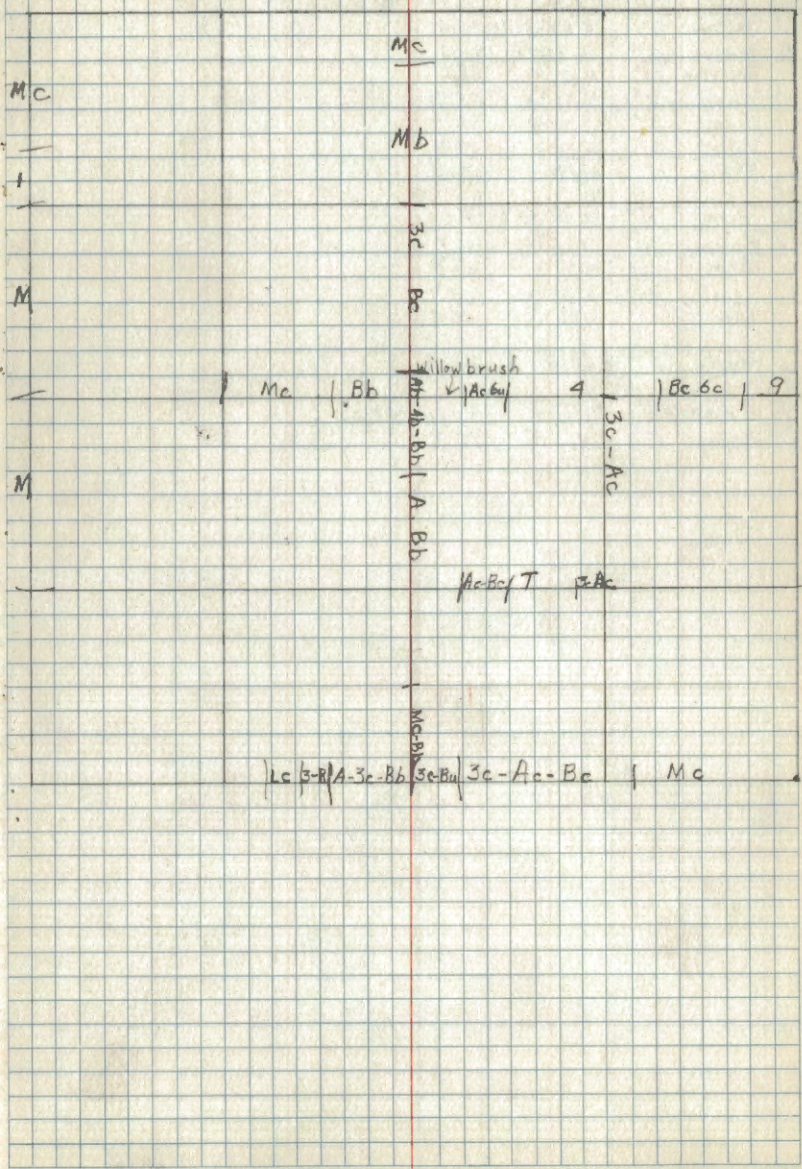
## Corner Notes

Cor.	Spec.	Dia.	Bearing	Dist	Remarks
9	Aspen	8"	S. 17° W.	9.3	
9	Birch	9"	N. 16° W.	11.3	



Type Map

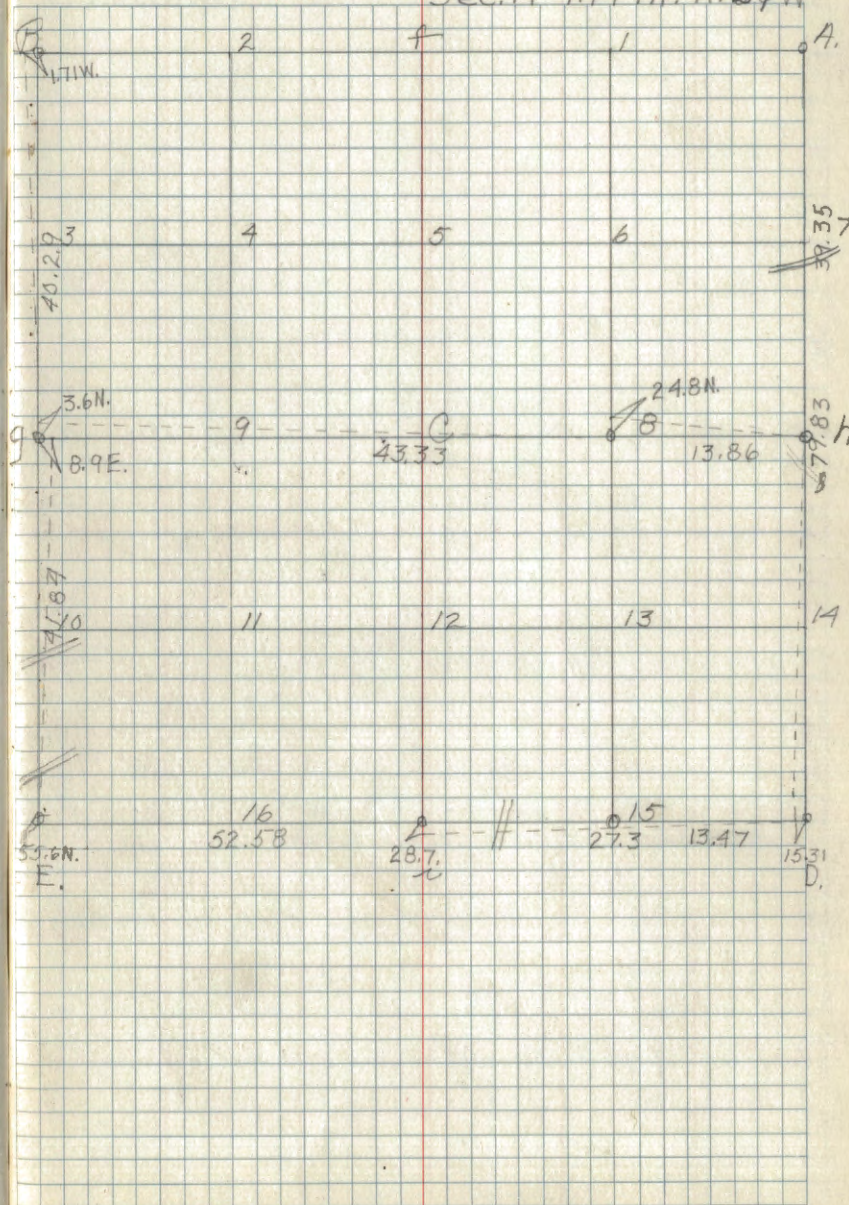
Sec. 18-T. 144N. R. 29W.



corner Notes

Cor.	Spec.	Dia.	Bearing	Dist	Remarks
h	Aspen	8"	N.67°30'E	38.41	
	Maple	13"	S.20°E	66.7	
	Tern. Snag	14"	N.47°W	38.21	
D.	T.am	7"	S.31°W	25.51	
	T.am	11"	S.53°E	21.11	
	Fam	10"	N.19°E	29.91	
15	Maple	12"	N.49°E	20.51	
	Elm	11"	N.46°30'E	31.1	
i	Basswood	14"	S.86°E	10.7	
	Elm	10"	N.5°E	63.3	
E.	Elm	10"	N.32°W	23.7	
	Elm	13"	S.36°E	60.4	
g.	Maple	11"	N.25°30'W	22.4	
8	Balsam	10"	N.57°15'E	14.71	
	Aspen	10"	N.16°W	13.3	

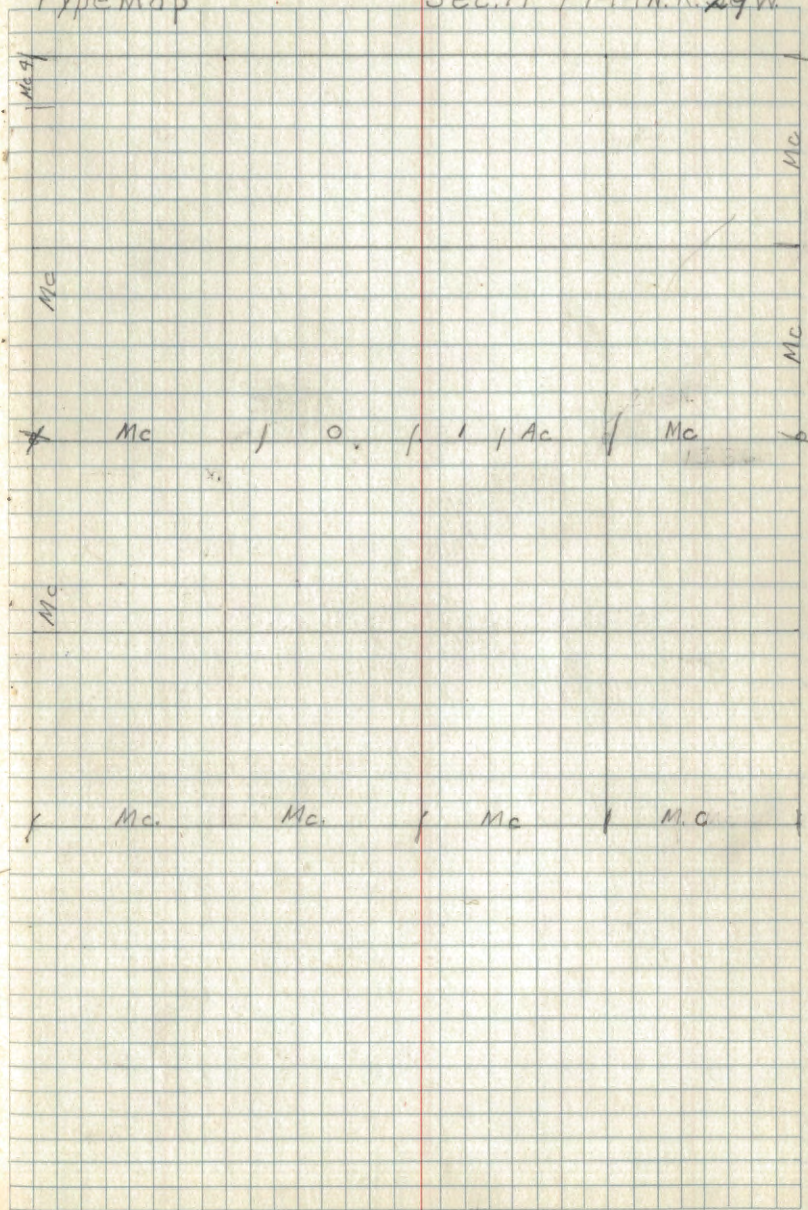
Sec. 19-T. 144N. R. 29W

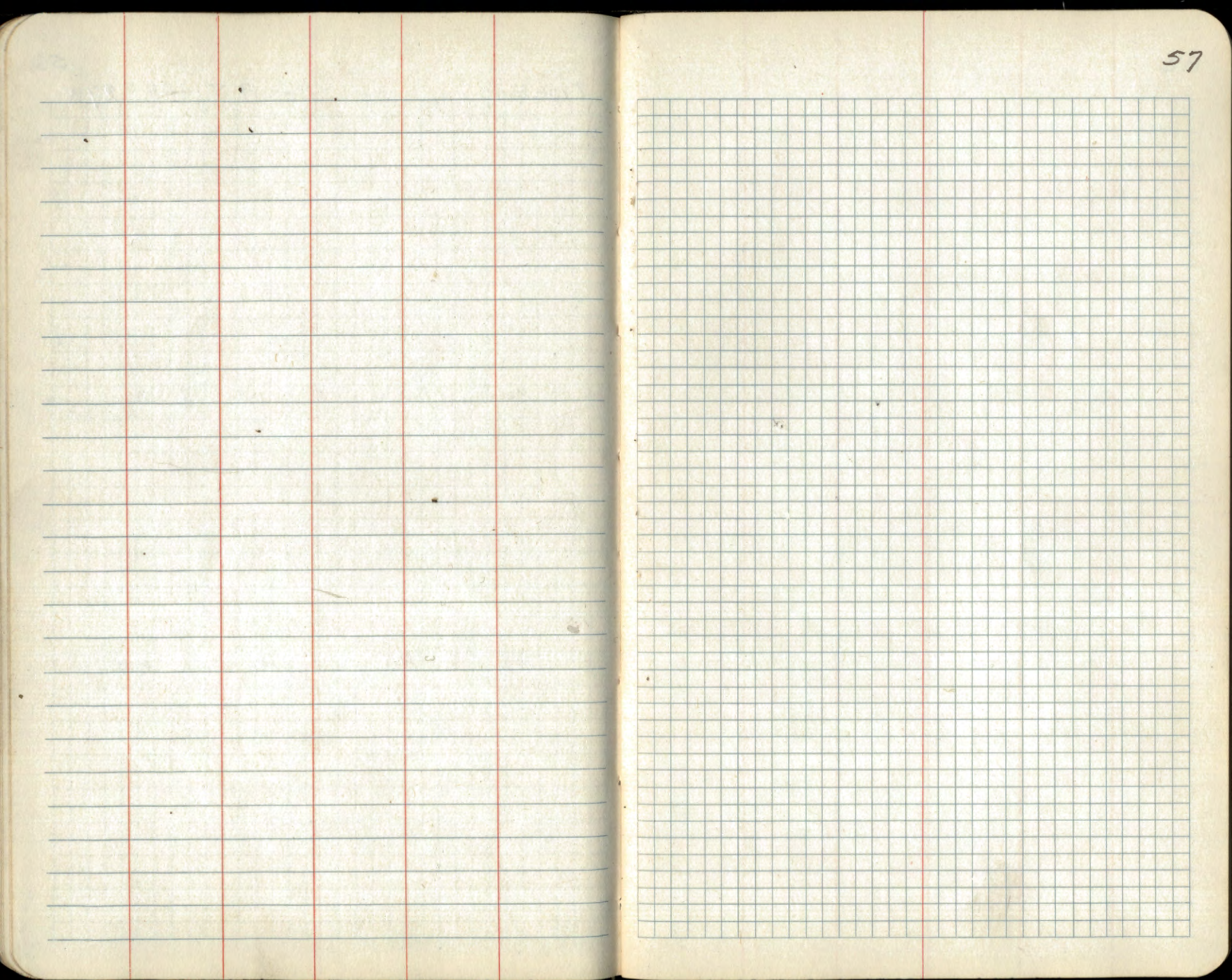


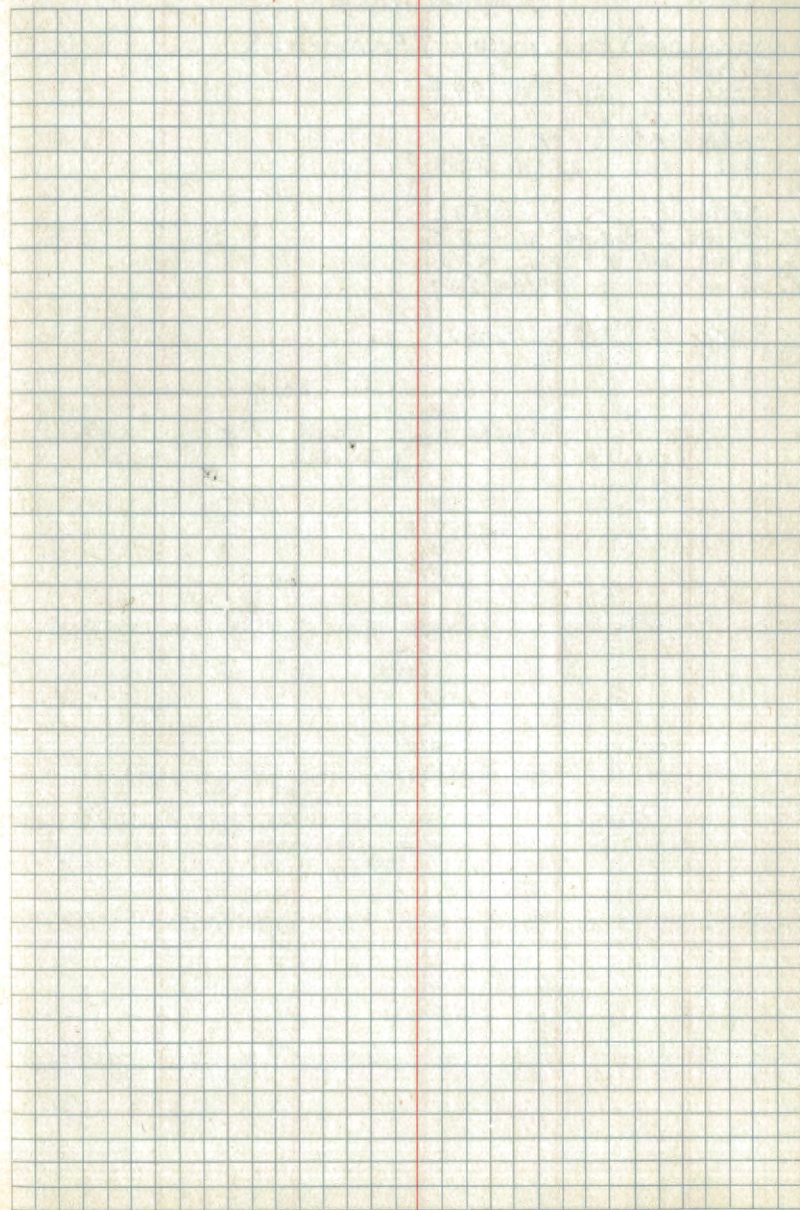
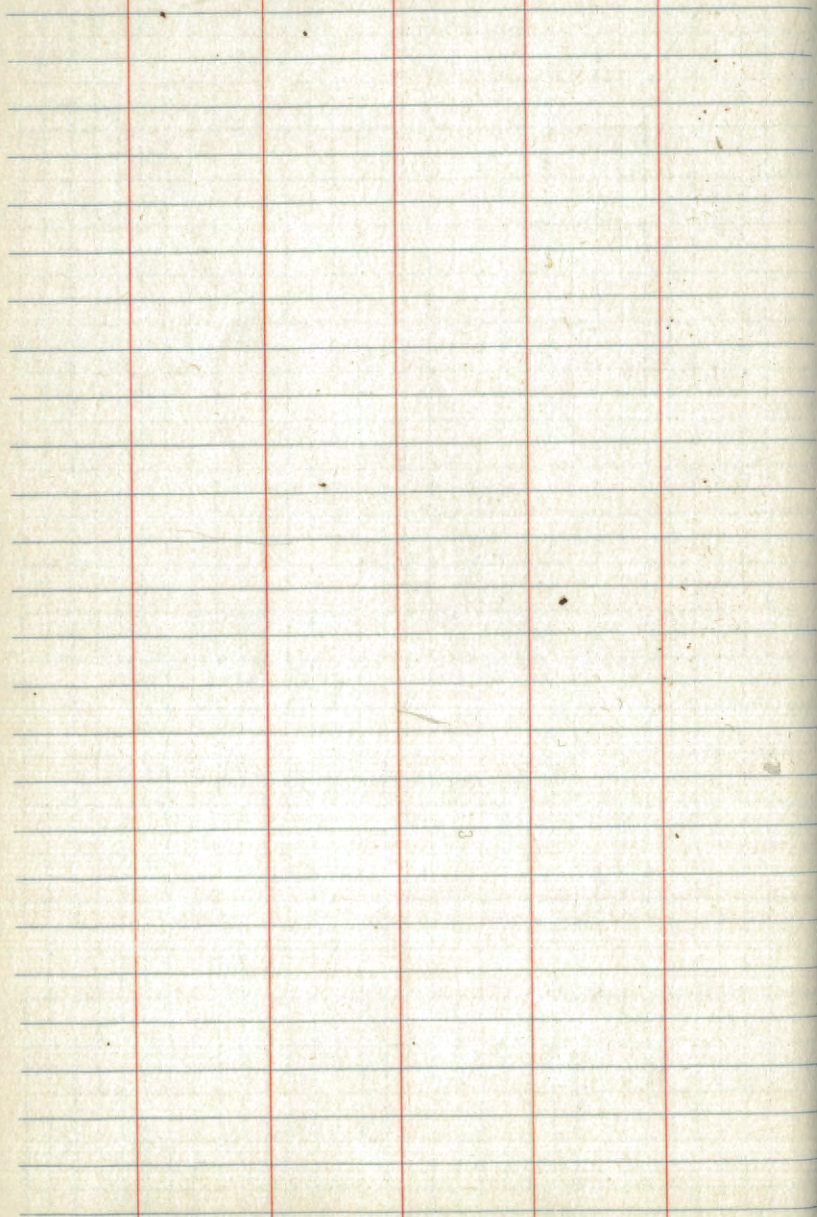


Type Map

Sec. 19-T144N.R. 29W



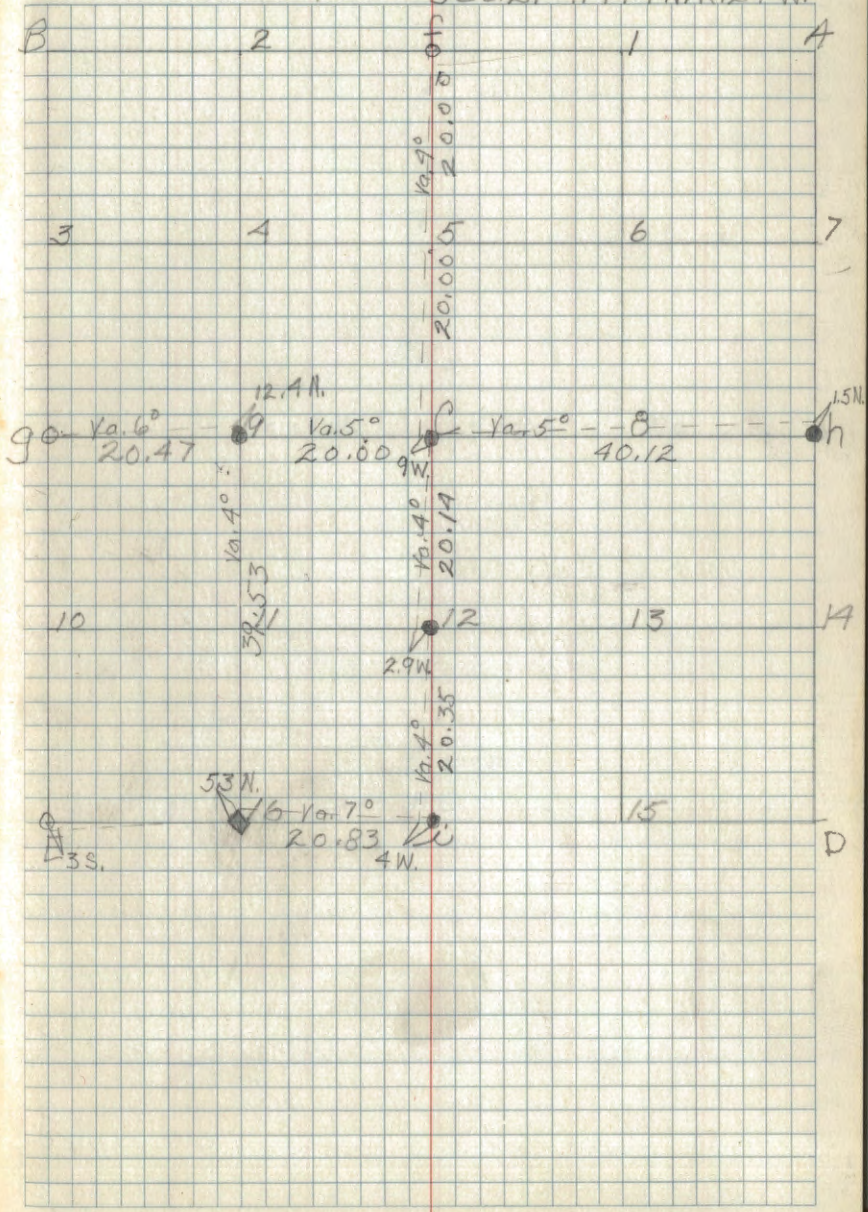




Corner Notes

Cor.	Spec.	Dia.	Bearing	Dist.	Remarks
9	Aspen Stub	12"	N. 47° W.	24.8	
C	Cedar	4"	N. 19° E.	19.9	
	Cedar	6"	S. 1° E.	41.5	
h	Ash	12"	S. 25° W.	28.9	
	Maple	6"	S. 19° 30' E.	57.2	
16	Maple	8"	N. 44° N.	22.5	
12	Birch	20"	N. 47° W.	48.9	
12	Balsam	—	S. 36° 30' W.	24.7	
U	cedar	12"	S. 5° 30' E.	37	

Sec. 21-T. 144 N. R. 29 W.



Type Map

Sec. 21-T.144N.R.29W.

Ac

—

7

—

Ac

Mc | Ac | Mc | 4swamp | Mc

4swamp

—

Mc

Mc

—

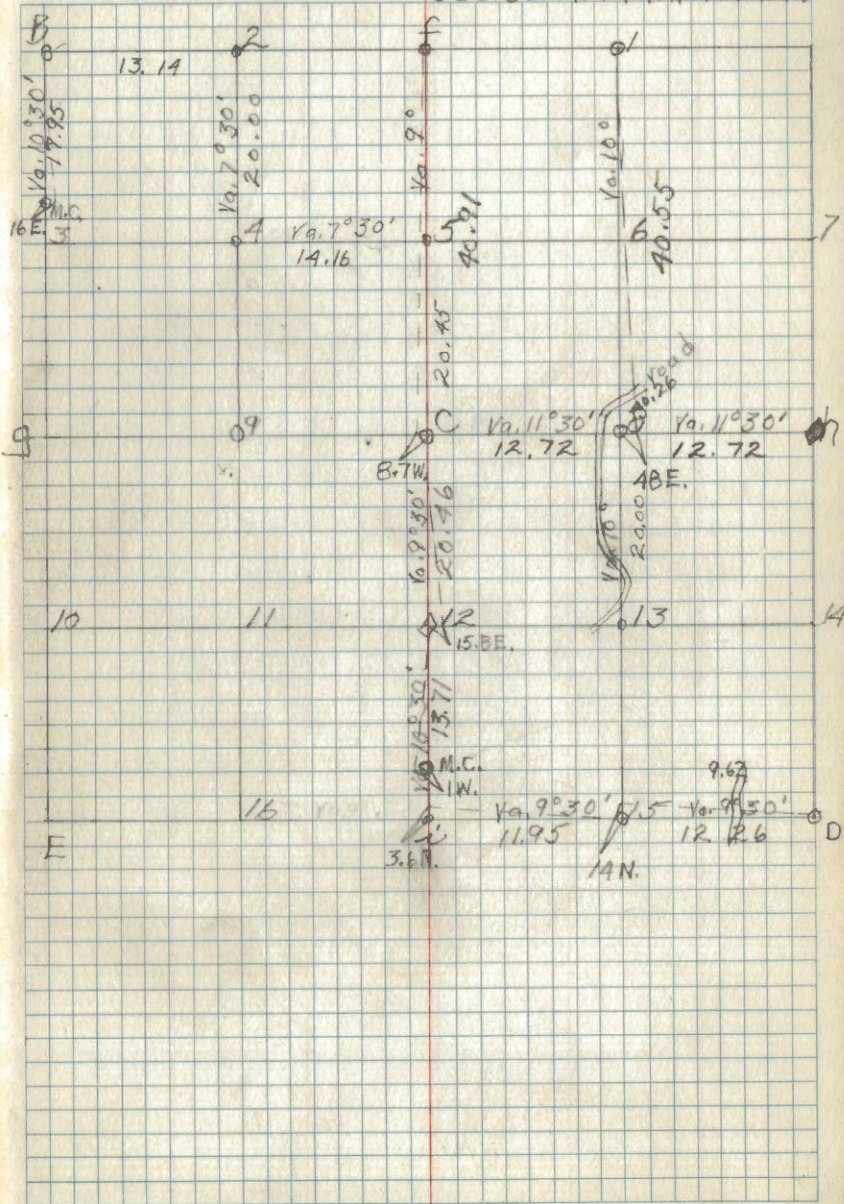
4swamp

Lc | Mc | Mc | Mc | Mc

Corner Notes

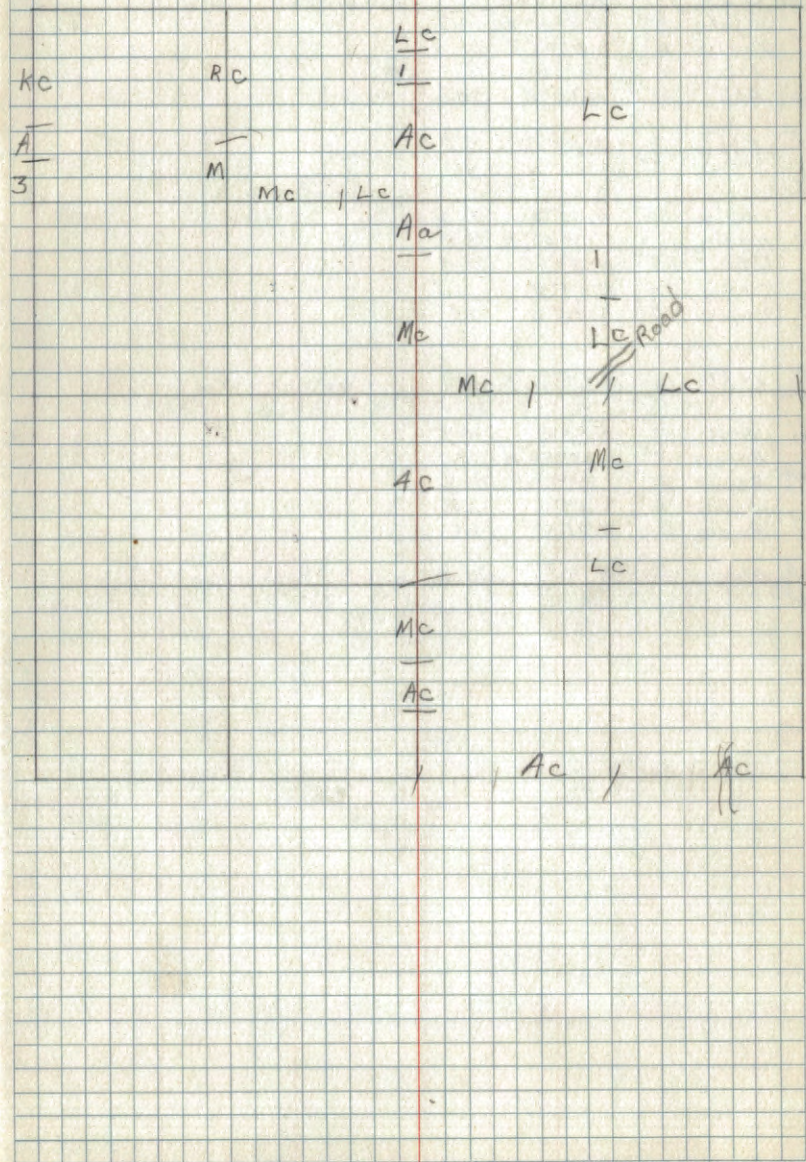
cat.	spec.	Dia.	Bearing	dist.	Remarks
M.C.	Birch	6"	E.37°30'	-	
S. of B					
C.	Cedar	6"	N.40°30'W.	26.7	
	Cedar	8"	S.77°E.	48.6	
12	Ash	10"	N.72°30'	26.5	
M.C.	Oak	14"	S.18°30'E.	53.6	
Note					
15	Maple	8"	S.47°E.	-	
11.95 lbs.	Cedar	14"	N.42°30'E.	-	
not	Birch	10"	S.10°30'E.	11.6	
8	Maple	7"	S.54°E.	33.7	

Sec. 30-T. 44.N. R. 29.W.



## Type Map

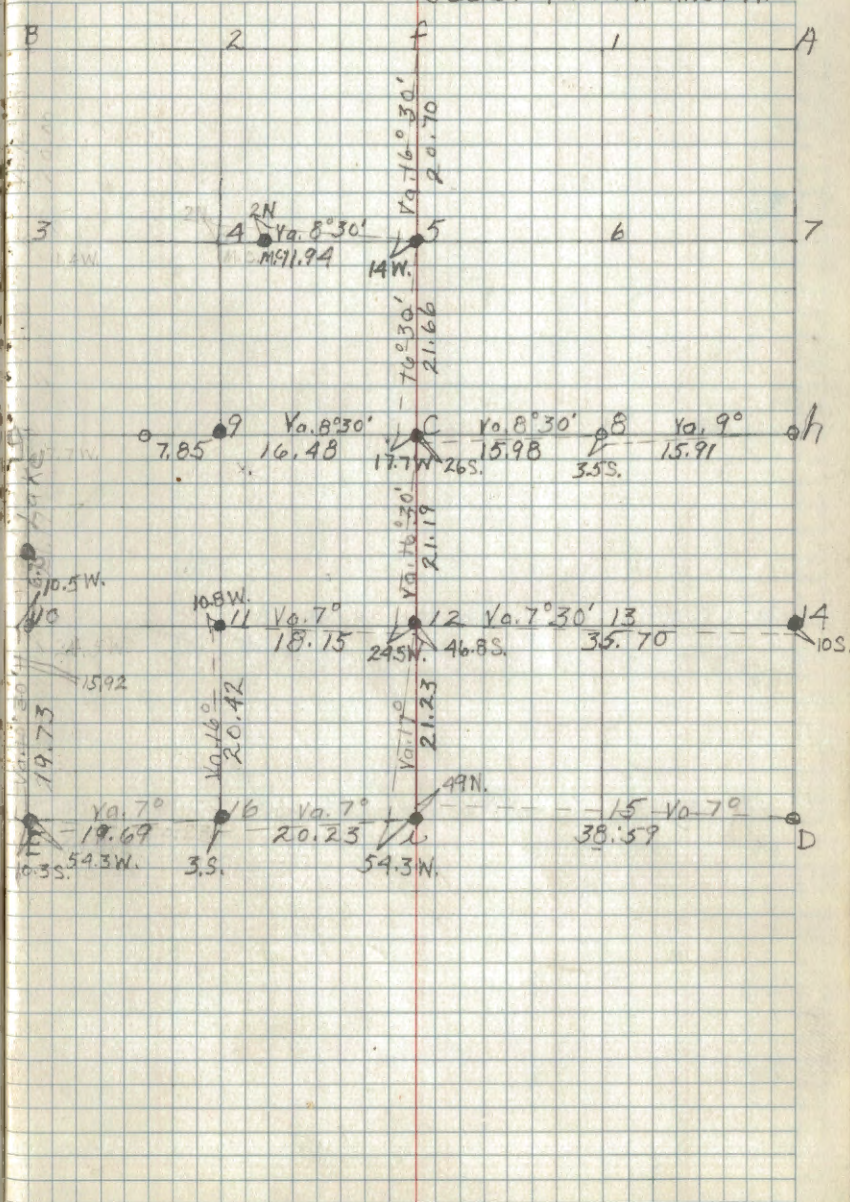
Sec. 30-T. 144N. R. 29W.



Corner Notes

Cor.	Spec.	Dia.	Bearing	Dist.	Remarks
5	Maple	8"	N. 79°30' W.	18.7	
5	Maple	6"	S. 11°50' E.	32.8	
C	Ash	8"	S. 9°30' E.	16.7	
C	Ash	14"	N. 12° E.	58.6	
12	Aspen	6"	N. 59°30' E.	57	
	Spruce	8"	N. 32° W.	35	
2	Tam.	8"	S. 26°30' E.	47.5	
	Maple	12"	N. 40° E.	40.5	
16	Maple	10"	S. 51°30' W.	16.8	
	Cedar	14"	N. 15°30' E.	27.3	
E.	Cedar	24"	N. 34°30' W.	12.7	
	Maple	10"	S. 78° W.	25	
16	Maple	14"	N. 69°30' E.	88	
11	Ash	8"	S. 3° W.	14.2	
	Aspen	8"	S. 35°30' W.	34.2	
14	Aspen	8"	S. 83°30' E.	41.2	
9	Maple	6"	S. 11° E.	2.6	
9	Maple	20"	N. 21°30'	14	
M.C. E. of 4	Maple	8"	N. 76° E.	61.6	

Sec. 31-T. 144N. R. 29W.





Sec. 31-T. 144 N. R. 29 W.

Ha

Lc

Ma

Ma

Swamp

Ha

Lc

Swamp

Lc

Lc

Lc | Lc | Mc | T | Aa | <sup>willow</sup> Swamp

Ac | Ag | 1 | Ac | Aa | Lc | Ac | T | Ma |

Ac

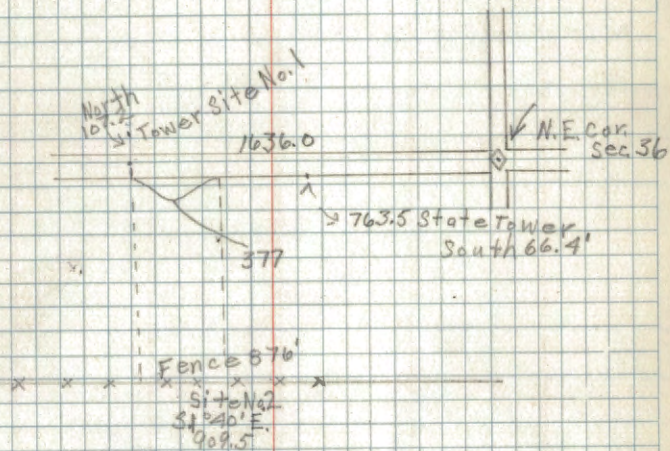
Ac

Ma

Lc

Lc | - MC | 3a | 4 SWAMP SW | <sup>Willow</sup> Swamp | Ma | Ac | Ac | Ag | MC

## Blackduck Tower



corner Notes

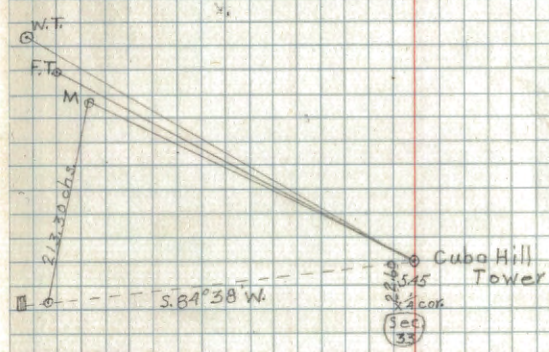
Cor. spec	Dia.	Bearing	Dist.	Remarks
1/4 cor. 6th W. Pine	12"	N. 3° E.	77 1/2 LKS.	
Sec. 28-33 W. Pine	14"	S. 10° E.	59 LKS.	G.L.O. Cement

M = Mill Smoke Stack Cass Lake

F.T. = Fire Tower Cass Lake

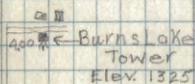
W.T. = Water Tank Cass Lake

Cuba Hill Fire Tower



Sec's 7-18-19 T. 146 N. R. 29 W.

Sec  
7


 400 ← Burns Lake  
 Tower  
 Elev. 1325

14100

Sec.  
 18

18.70

Elev. 1360

Sec.  
 19