

Office Book
No. 1

Lineal Survey
Comp F-12

By: J.A. Gjelhaug

112

MAKING
TRAVEL BOOK
363

50

Copied from Field Book
No. 1

#105

KEUFFEL & ESSER CO.

DRAWING MATERIALS
AND
SURVEYING INSTRUMENTS.
NEW YORK.

CHICAGO. ST. LOUIS. SAN FRANCISCO. MONTREAL.

TABLES FOR EXCAVATIONS AND EMBANKMENTS.

DISTANCES FROM CENTER OF ROADWAY FOR CROSS-SECTIONING.
ROADWAY 18 FEET WIDE. SIDE SLOPES 1 TO 1.
FOR SINGLE TRACK EXCAVATION.

"Copyright, 1895, by Keuffel & Esser Co."

	0	.1	.2	.3	.4	.5	.6	.7	.8	.9	
0	9.0	9.1	9.2	9.3	9.4	9.5	9.6	9.7	9.8	9.9	0
1	10.0	10.1	10.2	10.3	10.4	10.5	10.6	10.7	10.8	10.9	1
2	11.0	11.1	11.2	11.3	11.4	11.5	11.6	11.7	11.8	11.9	2
3	12.0	12.1	12.2	12.3	12.4	12.5	12.6	12.7	12.8	12.9	3
4	13.0	13.1	13.2	13.3	13.4	13.5	13.6	13.7	13.8	13.9	4
5	14.0	14.1	14.2	14.3	14.4	14.5	14.6	14.7	14.8	14.9	5
6	15.0	15.1	15.2	15.3	15.4	15.5	15.6	15.7	15.8	15.9	6
7	16.0	16.1	16.2	16.3	16.4	16.5	16.6	16.7	16.8	16.9	7
8	17.0	17.1	17.2	17.3	17.4	17.5	17.6	17.7	17.8	17.9	8
9	18.0	18.1	18.2	18.3	18.4	18.5	18.6	18.7	18.8	18.9	9
10	19.0	19.1	19.2	19.3	19.4	19.5	19.6	19.7	19.8	19.9	10
11	20.0	20.1	20.2	20.3	20.4	20.5	20.6	20.7	20.8	20.9	11
12	21.0	21.1	21.2	21.3	21.4	21.5	21.6	21.7	21.8	21.9	12
13	22.0	22.1	22.2	22.3	22.4	22.5	22.6	22.7	22.8	22.9	13
14	23.0	23.1	23.2	23.3	23.4	23.5	23.6	23.7	23.8	23.9	14
15	24.0	24.1	24.2	24.3	24.4	24.5	24.6	24.7	24.8	24.9	15
16	25.0	25.1	25.2	25.3	25.4	25.5	25.6	25.7	25.8	25.9	16
17	26.0	26.1	26.2	26.3	26.4	26.5	26.6	26.7	26.8	26.9	17
18	27.0	27.1	27.2	27.3	27.4	27.5	27.6	27.7	27.8	27.9	18
19	28.0	28.1	28.2	28.3	28.4	28.5	28.6	28.7	28.8	28.9	19
20	29.0	29.1	29.2	29.3	29.4	29.5	29.6	29.7	29.8	29.9	20
21	30.0	30.1	30.2	30.3	30.4	30.5	30.6	30.7	30.8	30.9	21
22	31.0	31.1	31.2	31.3	31.4	31.5	31.6	31.7	31.8	31.9	22
23	32.0	32.1	32.2	32.3	32.4	32.5	32.6	32.7	32.8	32.9	23
24	33.0	33.1	33.2	33.3	33.4	33.5	33.6	33.7	33.8	33.9	24
25	34.0	34.1	34.2	34.3	34.4	34.5	34.6	34.7	34.8	34.9	25
26	35.0	35.1	35.2	35.3	35.4	35.5	35.6	35.7	35.8	35.9	26
27	36.0	36.1	36.2	36.3	36.4	36.5	36.6	36.7	36.8	36.9	27
28	37.0	37.1	37.2	37.3	37.4	37.5	37.6	37.7	37.8	37.9	28
29	38.0	38.1	38.2	38.3	38.4	38.5	38.6	38.7	38.8	38.9	29
30	39.0	39.1	39.2	39.3	39.4	39.5	39.6	39.7	39.8	39.9	30
31	40.0	40.1	40.2	40.3	40.4	40.5	40.6	40.7	40.8	40.9	31
32	41.0	41.1	41.2	41.3	41.4	41.5	41.6	41.7	41.8	41.9	32
33	42.0	42.1	42.2	42.3	42.4	42.5	42.6	42.7	42.8	42.9	33
34	43.0	43.1	43.2	43.3	43.4	43.5	43.6	43.7	43.8	43.9	34
35	44.0	44.1	44.2	44.3	44.4	44.5	44.6	44.7	44.8	44.9	35
36	45.0	45.1	45.2	45.3	45.4	45.5	45.6	45.7	45.8	45.9	36

Calculated by Julien A. Hall, M. Am. Soc. C. E.

For Keith's Railroad Curve Labels see end of book.

Index

T. 145 N. R. 31 W.

T. 145 N. R. 30 W.

Sec. Page
34 3
35 4
27 5
22 6
13 15
36 17
25 18
14 22

Sec. Page
4 1
9 2
8 7
17 8
16 9
18 12
19 13
30 14
10 16
28 19^{1/2}
3 23
15 24
20 26
12 27

T. 144 N. R. 31 W.

T. 144 N. R. 30 W.

Sec. Page
3 10
2 11
25 20
1 21

Sec. Page

MC East of f. G.L.O. Br. Caped Iron pipe 2" 8" high
 38.66 West of S. Cor.
 Old Gout BT. 720
 N. Pine 20" N. 89 1/2° E 717 LK.

MC 533
 534

May 31-1934

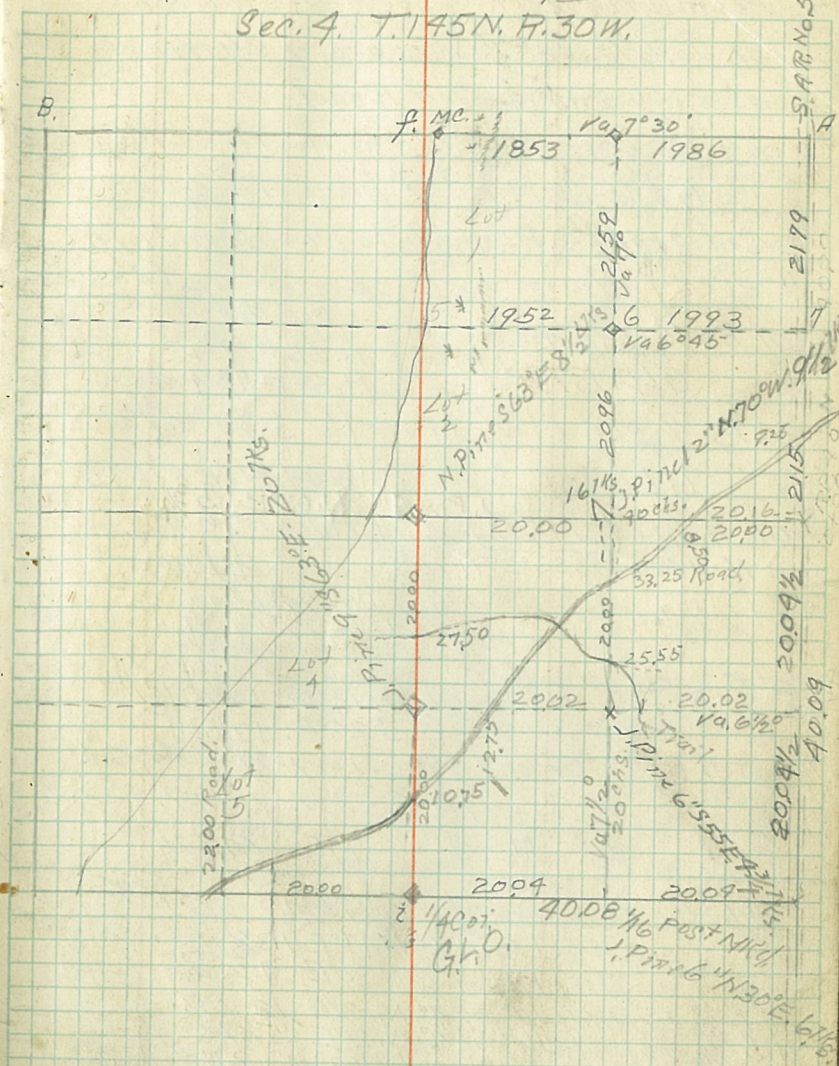
at 1-1/16 cor. MKd }
 R. Oak 6" N. 85° E. 13 1/4 }
 at 6-1/16 cor. MKd }
 J. Pine 12" N. 01° E. 16 }
 6
 11
 34

Dec. 5th 1933

" 6th

" 7th

Sec. 4. T. 145 N. R. 30 W.



J.A. Gjellman
 C. Man (Brown) 5th only
 " Nelson
 C. " Litter
 ax Man Danz
 " " Mahn
 " " Olson

Dec. 8th 1933

From North $\frac{1}{4}$ cor. of Sec. 9 - Run West
on Va. 6 $\frac{1}{2}$ Set stakes every chain
at 21.00 Intersected Road.

34.40 came 2.22 $\frac{1}{2}$ chs. North of M.C.

G.L.D. corrected back to $\frac{1}{4}$ cor
set stakes Rt. angle to Random line
every chain and opened up to check.

at 8 $\frac{1}{4}$ sec. betw. 8-9 Dec. 18th
J. Pine 6" N. 35 $^{\circ}$ W. 9 $\frac{3}{4}$
G.L.D. B.T.S. " " 6" N. 89 $^{\circ}$ E. 7 $\frac{3}{4}$

at 15 $\frac{1}{6}$ cor. Mk'd. J. Pine 12" S. 37 $^{\circ}$ W. 13 $\frac{1}{4}$ Ks

G.L.D. B.T. for M.C. 8.44 North of 15
at 7 $\frac{1}{6}$ cor. Mk'd. Birch 7" N. 15 $^{\circ}$ W. 6 Ms.

at 16 J. Pine 6" S. 33 $^{\circ}$ E 11 $\frac{1}{4}$ Ks. Dec. 19th

at 6 $\frac{1}{4}$ cor. G.L.D. B.T.S. J. Pine 9" N 79 $^{\circ}$ W 11 $\frac{1}{4}$ Ks Jan. 2nd 1934
N. " 12" S. 37 $^{\circ}$ E 10 $\frac{1}{4}$ "
No Cor. Inters. Tang. & Line west

at 5 $\frac{1}{4}$ cor betw. 9-9
N. Pine 6" N 14 $^{\circ}$ W 12 $\frac{1}{2}$ $\frac{1}{4}$ Ks

" " 6" S. 26 $^{\circ}$ W. 12 $\frac{1}{2}$ "

$\frac{1}{4}$ cor at 7 G.L.D. Brass Cap on Trip. P. P. Dec. 21st

" N. Pine 18" S. 52 $^{\circ}$ W. 10 $\frac{1}{4}$ Ks

" " 9" N. 7 $^{\circ}$ E 6 $\frac{3}{4}$ $\frac{1}{4}$ Ks

at 13 $\frac{1}{6}$ cor. Birch post Mk'd. Tam. 5" S. 75 $^{\circ}$ E 12

at c $\frac{1}{6}$ cor. Mk'd. J. Pine 6" N 49 $^{\circ}$ E 13 $\frac{1}{2}$ $\frac{1}{4}$ Ks

at g $\frac{1}{6}$ cor. Mk'd. J. Pine 6" N 30 $^{\circ}$ E 7 $\frac{1}{2}$ $\frac{1}{4}$ Ks } Jan. 4th 34

at d $\frac{1}{6}$ cor. Mk'd. J. Pine 4" N. 3 $^{\circ}$ E 12 $\frac{1}{4}$ Ks

at b $\frac{1}{6}$ cor. Mk'd. J. Pine 4" N. 20 $^{\circ}$ E 5 $\frac{1}{2}$ $\frac{1}{4}$ Ks

at c $\frac{1}{4}$ cor. Mk'd. Poplar 10" S 64 $^{\circ}$ W 8 $\frac{1}{4}$ Ks } Jan. 5th 34

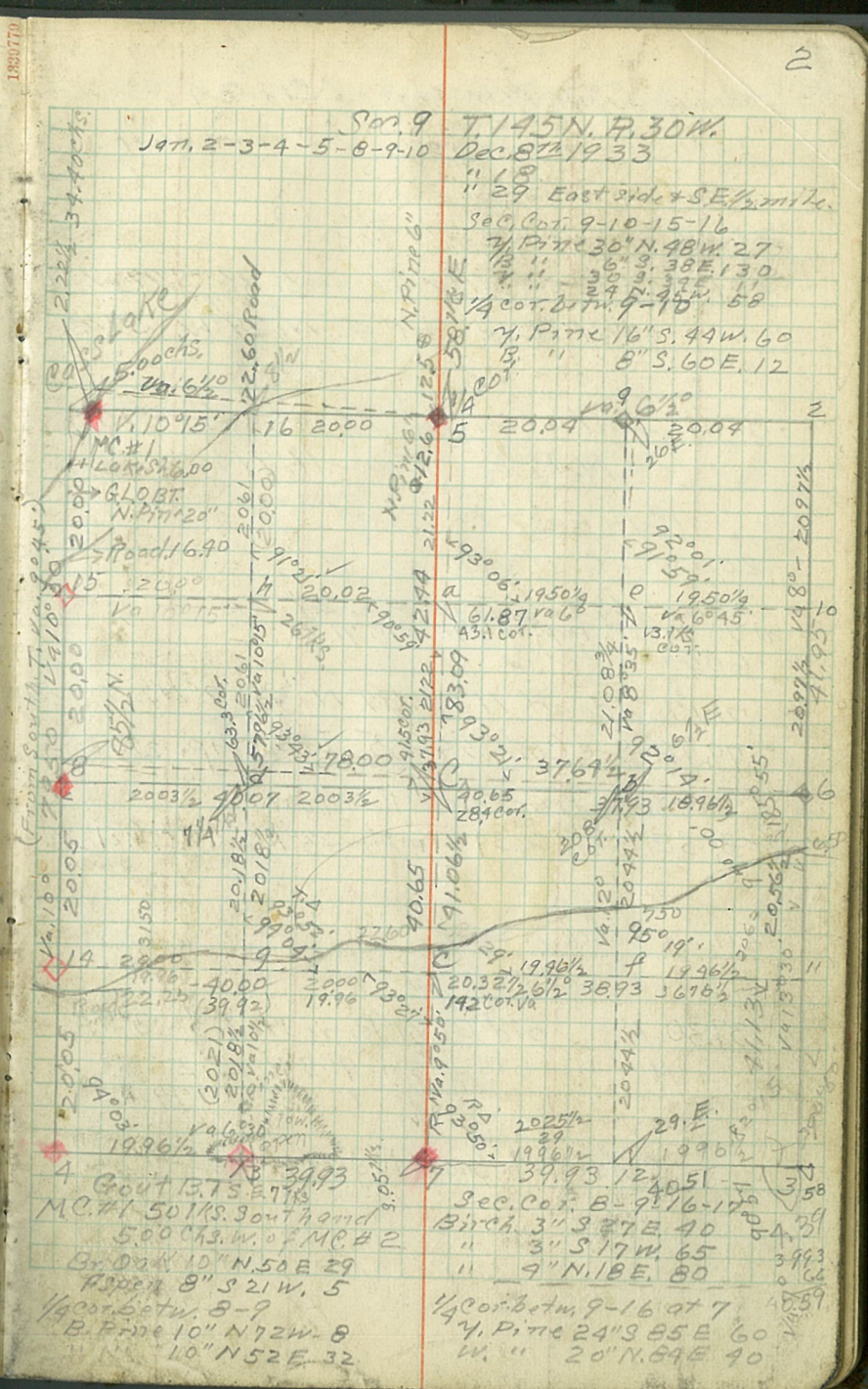
J. Pine 8" S. 70 $^{\circ}$ E 3 $\frac{1}{4}$ "

at e $\frac{1}{6}$ cor. Mk'd. J. Pine 6" S 46 $^{\circ}$ W. 5 $\frac{1}{4}$ $\frac{1}{4}$ Ks.

at a $\frac{1}{6}$ cor. Mk'd. J. Pine 6" S 68 $^{\circ}$ W 11 $\frac{1}{4}$ Ks

at f $\frac{1}{6}$ cor. Mk'd. J. Pine 6" N 45 $^{\circ}$ E 1 $\frac{1}{4}$ Ks

at 12 $\frac{1}{6}$ cor. Mk'd. J. Pine 7" N. 43 $^{\circ}$ E. 11 $\frac{1}{2}$ $\frac{1}{4}$ Ks.



Began from N.W. cor. of Sec. 34
 Intersection of Road N. 7 S. and West
 as Corner.
 20.00 set temp. stake
 40.16 Found old BT. Oak 16" S. 77° W. 28
 MKd. Rock 4" N. 29° W. 57.75.

80.11 Intersection of Roads for cor.
 N. Pine BT. N.W. 16" N 69° W 82.75
 Run East on Road
 20.00 Set stake.

40.00 1/4 Cor. Iron Pipe 2 1/2" Cap
 at 7' 1/4 Cor. Poplar 6" N. 30° W. 71.75
 600' Stake.

71.17 Road N. 7 S. BT. N. Pine 9" N 72° E 32.75
 79.96 Sec. Cor. 34-35 Iron Pipe 2 1/2" Cap
 Run North on Random
 at 3' S.E. Cor. of Sec. 34 Iron pipe 2 1/2" N. Pine 7" N. 59° W. 81 1/2 75.

11.20 Road N.W.

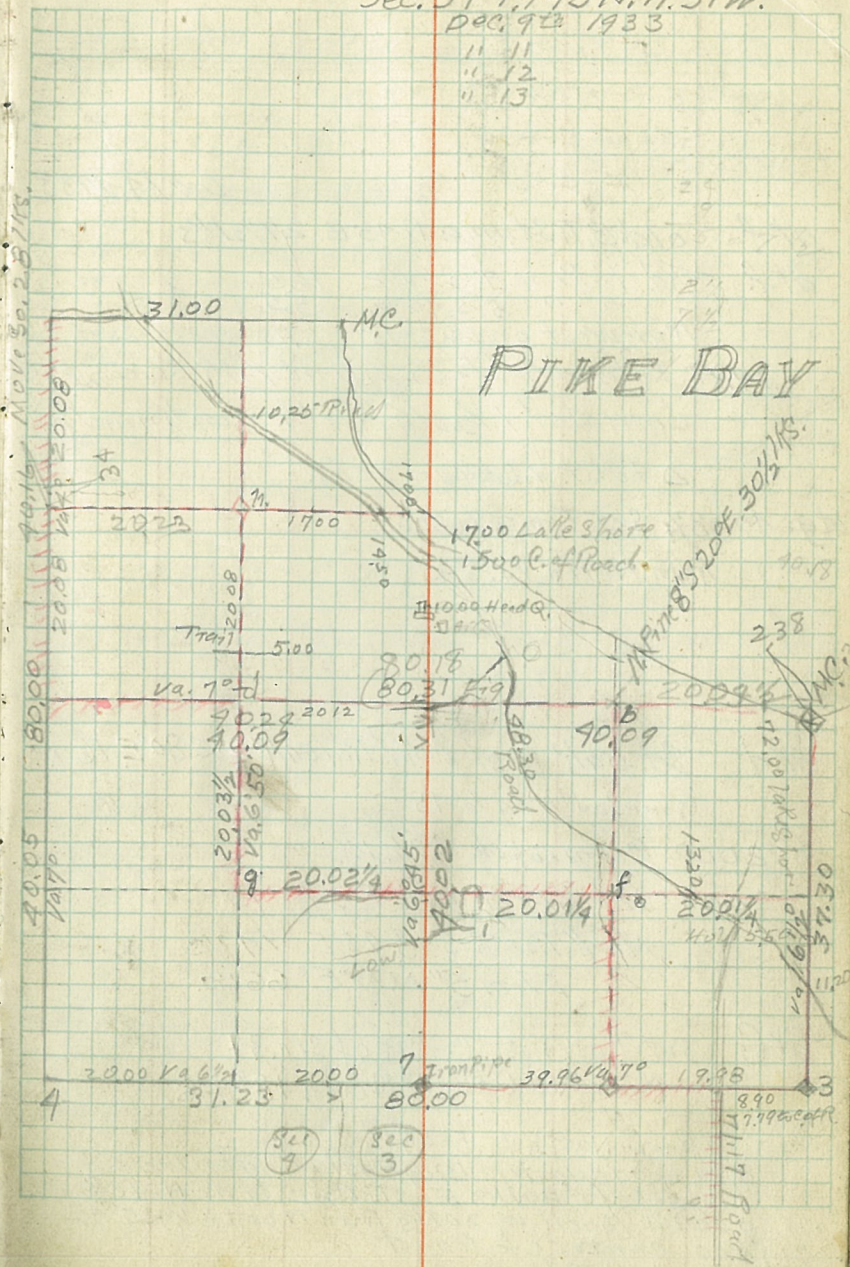
37.30 MC. old BT. N. Pine stub S. 43° W. 4
 MKd New BTs. J. Pine 9" S 46° W. 56.75
 " " 8" S 36° E 79 "

Corrected. back to Sec. Cor.

Sec. 34 T. 145 N. R. 31 W.

Dec. 9th 1933

11.11
 11.12
 11.13



1386770

Dec. 14-1933

at f old B.T. Stump. N 45 E. 27 1/2 Ls.

at f Mk'd. N. Pine 4" S. 79° E. 165.

" " 5" S 40° W. 55

Run West on Va. 6° 45'

19.99 Intersected. NTS 1/4 line 1/2 Ls. So. of 1/16 Post

Corrected 1 1/2 Ls. North. Continued W.

Δ to Pt. 1.6 Ls. in 20 Ls.

at g. 40.08 1/4 Set Temp. 1/16 Cor.

Run North Va. 6° 45'

at d Set oak Post. Mk'd. Red Oak 8" S 80° E. 16 Ls.

Run South Va. 6° 45'

2000 corner 1/2 Ls. W.

2003 Set 1/16 Cor. oak Post

Mk'd. Birch 3" S 45° E. 14 Ls.

From 5" N. 39° E. 66 Ls.

at C Set oak Post Center of Sec. 34

Mk'd Red Oak. 6" North 18 1/2 Ls.

Run North Va. 5° 45'

8.30 Headquarters Bldg. East wing on line

offset 20 Ls East Run line N. 1 ch.

9.00 oil back W. 20 Ls Run North Va. 5° 45'

15.00 Center of Road

17.00 Lake Shore

Dec. 15th 1933

Sec. 34

at h. Mk'd Red Oak 6" S 35° W. 13 1/2 Ls.

Sec. 35 T. 145 N. R. 31 W.

at 14-1/16 Cor. Mk'd

J. Pine S 1° W. 13 Ls.

at 8-1/16 Cor. Mk'd

W. Oak 4" S 88° W. 22 1/2 Ls.

at 13-1/16 Cor. Mk'd

W. Pine 6" N 18 1/2° E. 47 Ls.

at 15-1/16 Cor. Mk'd

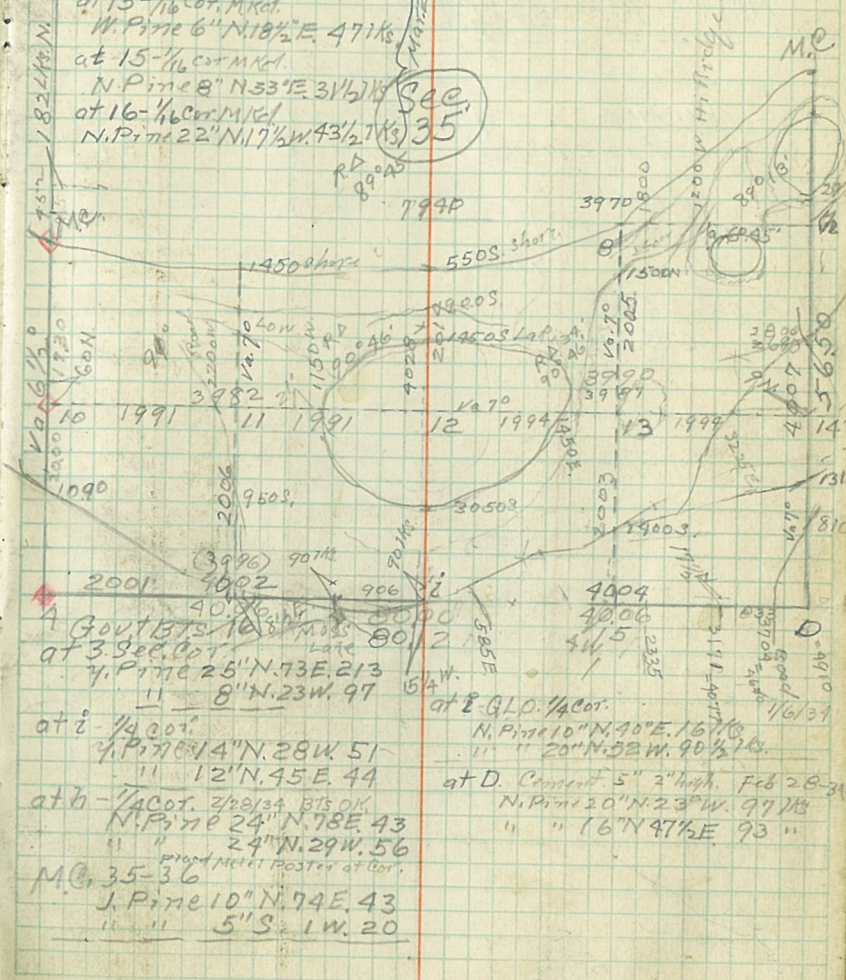
N. Pine 8" N 33° E. 31 1/2 Ls.

at 16-1/16 Cor. Mk'd

N. Pine 22" N 17 1/2° W. 43 1/2 Ls.

at 11-1/16 Cor. Mk'd

R. Oak 2" N 87° W. 24 Ls.



3096
906
4001

Govt B.Ts. Sec. 27 T145 R31. Feb 8th
 Sec. Cor. 21-22-27-28 at B MKd.
 J. Pine 6" S 3 1/2° E 196
 " " 8" S 4° W 190
 " " 2" N. 52° W. 98
 " " 8" N. 99 1/2° E. 370

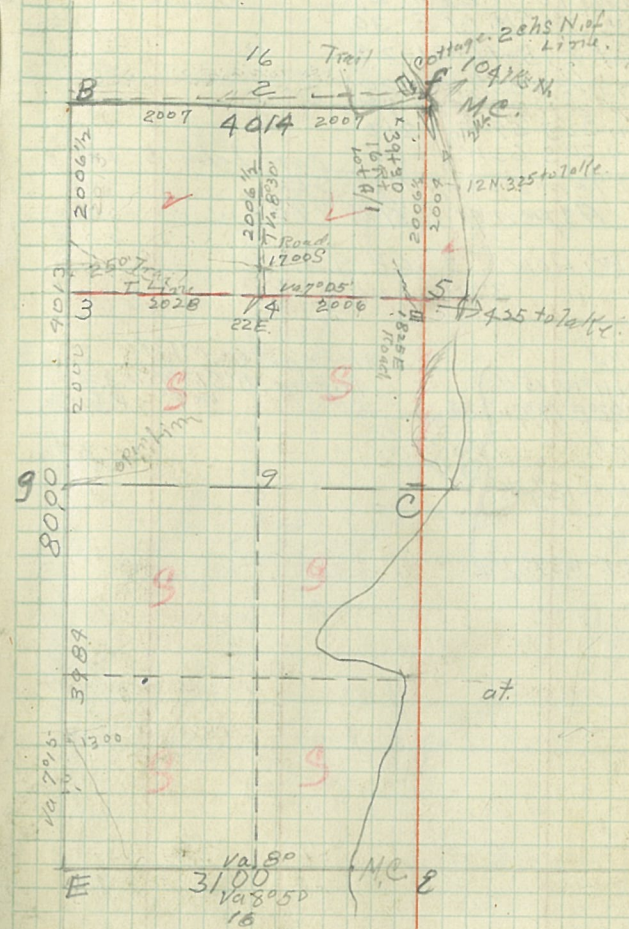
(f) 1/4 cor. betw. 22-27
 N. Pine 6" N. 19° W. 20 OK Set new post
 " 16" S. 31° W. 7 → fallen down over Post.
 M.C. at 5. Aspen 6" N. 6° W. 10
 " 8" S 31° W 22

1/4 Cor. at f MKd Feb 8th
 at 2 - 1/16 cor. MKd
 N. Pine 20" S 21° E. 19 1/2 Mk
 N. Pine 10" N 72° W. 40 1/2 Mk
 J. " 6" S 80° W 54 "

at 4 - 1/16 cor MKd
 Tam. 3" N. 10 1/2° E 46 Mk } Feb 8
 at 5 - 1/16 cor MKd
 J Pine 6" N. 3° W. 19 Mk

entered
 SR

Sec. 27 T, 145 N. R 31 W.



Dec. 18-1933
 at ^{G.L.O. #1} M.C. #2 9376" N 20° E 65 1/4
 " 6" S 75° W 78 1/2"

20.00
 at 9. 1/4 cor. betw. 8-9 G.L.O.

G.L.O. B.T.S. J. Pine 6" N 35° W 9 3/4 1/4
 at 7 1/6 cor " " 6" N 89° E 78 1/4 "

M.K.d. J. Pine 12" S 37° W 137 1/4

Dec. 19 1933

at D. Sec. Cor. 8-9-16-17

G.L.O. B.T.S. N. Pine 14" S 79 1/2° W 39 1/4
 " " 14" S 81° E 39 1/2
 " " 14" N 46 1/2° W 74 1/2
 " " 10" N 47° E 75 1/2

at 15 1/6 cor. M.K.d. N. Pine 20" N 74° E 42 3/4 1/4

at 14 1/6 cor. M.K.d. Birch 5" N 85° W 36 1/4 1/4

at 13 1/6 cor. M.K.d. N. Pine 16" S 50° W 107 1/4

Dec. 20-1933

New Party: Danz
 Mohn
 Lassen
 Warrin & } New.
 Matmgren

at 8 1/6 cor. M.K.d. J. Pine 5" S 83° E 64 1/4 1/4

at 7. 1/4 cor. G.L.O. W. Pine 6" N 32 1/2° W 36 1/4
 N " 20" South 75 1/4

at M.C. #2 G.L.O. Cement 5"

N. Pine 16" N 52 1/2° E 52 3/4 1/4
 N. Pine 18" S 23 1/4° E 53 1/4

Jan 11/2
 1904

Sec. 8 T145 N. R. 30 W.

Govt B.T.S.

at D - Sec. Cor. 8-9-16-17

Birch 15" S 27° E. 40

" 3" S 17° W. 65

" 4" N 18° E. 80

at 7 1/4 cor. betw. 8-17

J. Pine 20" S 7° W. 4

" " 20" N 4° W. 30

M.C. #2 betw. 8-17

W. Pine 24" S 7° W. 32

B. " 4" N 37° E. 20

at 8 1/4 cor. betw. 8-9

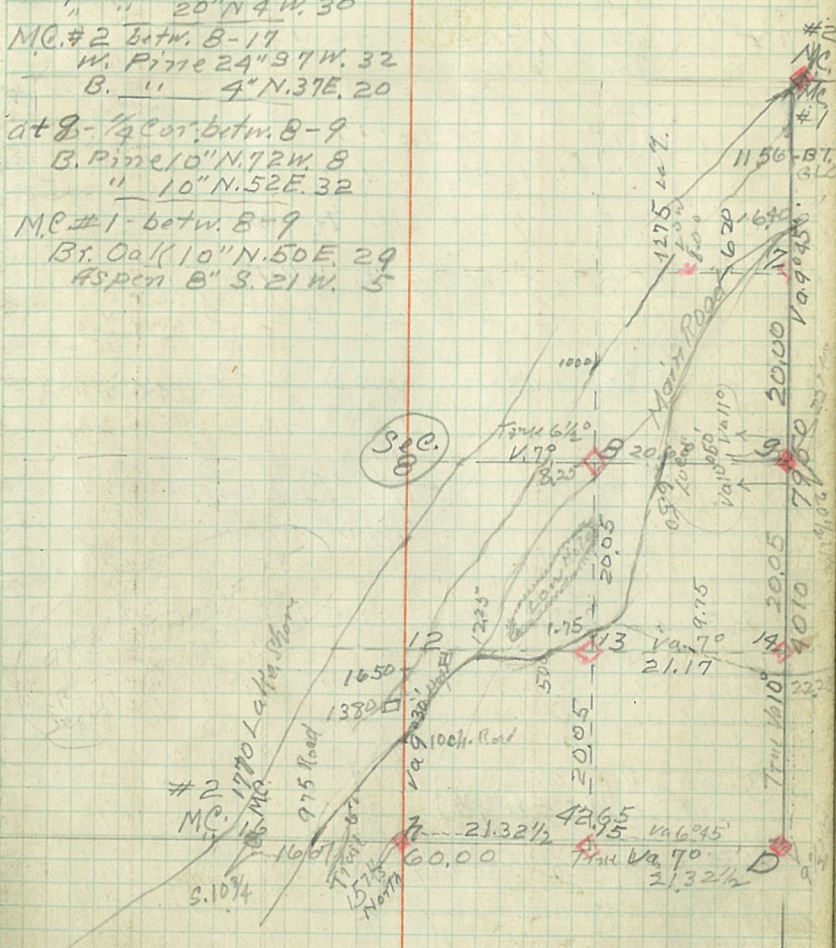
B. Pine 10" N 72° W. 8

" 10" N 52° E. 32

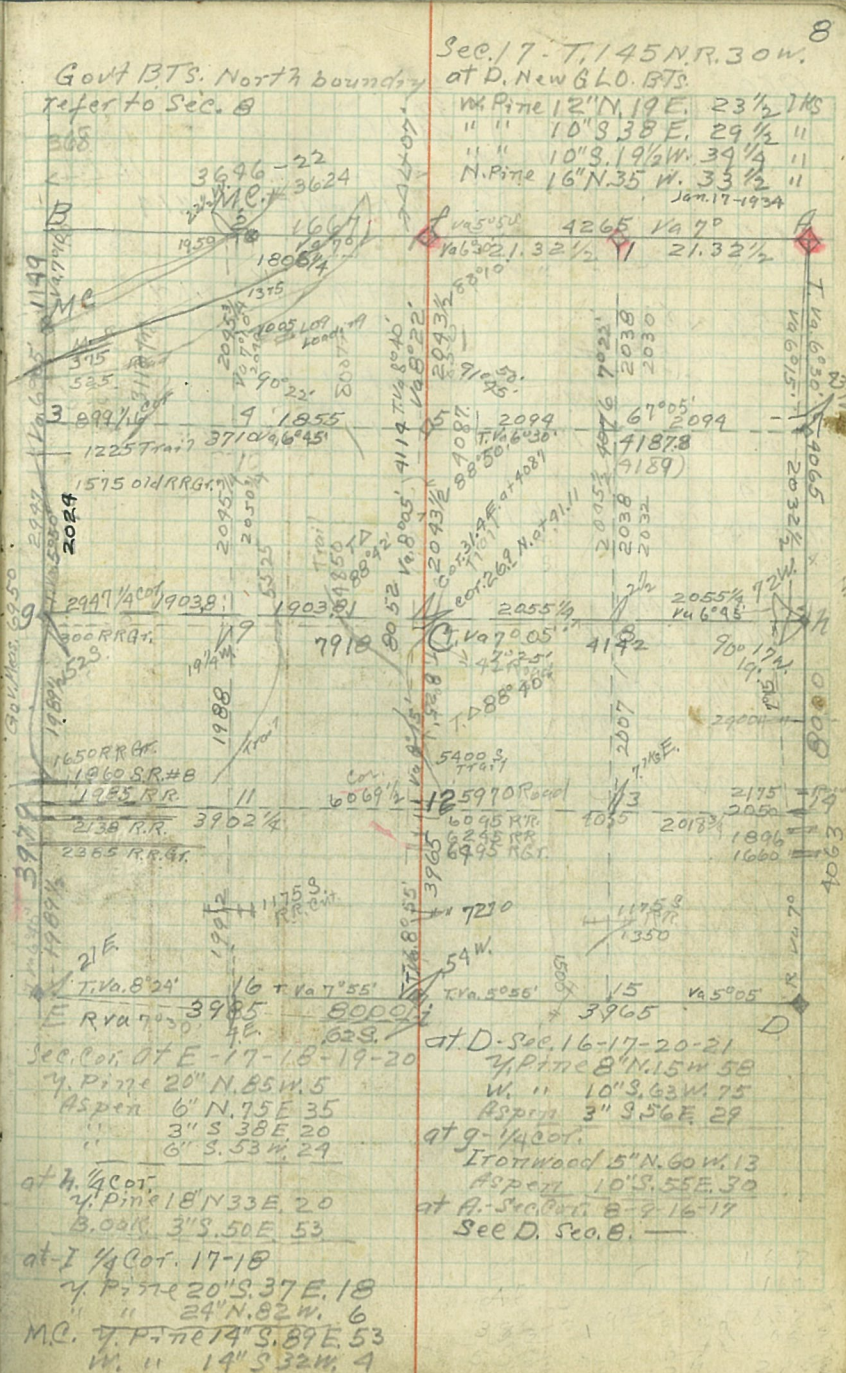
M.C. #1 betw. 8-9

Bt. Oak 10" N 50° E. 29

Aspen 8" S 21° W. 5



MC at $N. Pine 11^{\circ} 37' 90'' E 56 \frac{1}{4} Ks$
 $N. Pine 10^{\circ} 55' 54'' W 105 Ks$ } Jan. 12, 1934
 at $9 \frac{1}{4}$ Cor bitw 17-18 GLO. Cement 5" 2' above 6ft.
 $N. Pine 20^{\circ} N 21^{\circ} E 1187 Ks$
 $W. Pine 20^{\circ} N 85^{\circ} W 4 \frac{3}{4} "$
 at E. S. W. cor sec 17 GLO. Cement 5" 3"
 Maple 7" N. $49^{\circ} E 59 Ks$
 Oak 7" S $83^{\circ} E 72 "$
 Maple 6" S $75^{\circ} W 45 "$ (Va. T used on all corners)
 $W. Pine 6^{\circ} N 54^{\circ} W 79 "$
 at $2 \frac{1}{4}$ Cor bitw 17-20 GLO. Iron pipe Brass Cap 6" dia
 $N. Pine 8^{\circ} N 3^{\circ} W 11 \frac{1}{4} Ks$ } Jan. 15, 1934
 $W. Pine 6^{\circ} S 38^{\circ} E 15 \frac{1}{2} "$
 at $7 \frac{1}{4}$ Cor bitw 16-17 GLO
 Aspen 10" N $78^{\circ} W 19 \frac{1}{8} Ks$ } Jan. 16, 1934
 $W. Pine 6^{\circ} N 79^{\circ} E 36 \frac{1}{4} "$
 at $5 \frac{1}{6}$ Cor. MKd.
 $N. Pine 18^{\circ} N 55^{\circ} E 20 Ks$ } at $15 \frac{1}{6}$ Cor. MKd.
 $J. Pine 10^{\circ} N 30^{\circ} W 17 \frac{1}{2} Ks$
 at $7 \frac{1}{6}$ Cor. MKd.
 Oak 4" S $83^{\circ} E 3 \frac{1}{4} Ks$ } at $3 \frac{1}{6}$ Cor. MKd.
 Birch 5" S $2^{\circ} E 81 \frac{1}{2} Ks$
 at $6 \frac{1}{6}$ Cor. MKd.
 $N. Pine 24^{\circ} S 20^{\circ} E 6 Ks$ } at $4 \frac{1}{6}$ Cor. MKd.
 $N. Pine 20^{\circ} S 15^{\circ} E 6 \frac{1}{2} Ks$
 at $19 \frac{1}{6}$ Cor. MKd.
 Tel. Pole 3, 20' W. $79 Ks$ } at $9 \frac{1}{6}$ Cor. MKd.
 $J. Pine 8^{\circ} N 80^{\circ} W 16 \frac{1}{2} Ks$
 $W. Pine N. 38^{\circ} W 100 "$ } at $10 \frac{1}{6}$ Cor. MKd.
 $N. Pine 14^{\circ} N 7^{\circ} 29 \frac{1}{2} "$
 South Rail North $15 \frac{1}{4} "$ } S. Rail is $1 \frac{1}{4} Ks N.$
 at C $\frac{1}{4}$ sec 17 MKd.
 $N. Pine S $70^{\circ} E 6 \frac{1}{4} Ks$$
 at $8 \frac{1}{6}$ Cor. MKd.
 $W. Pine 24^{\circ} S 40^{\circ} W 30 Ks$ } at $12 \frac{1}{6}$ Cor. MKd.
 T. Pole N. $110^{\circ} W 90 \frac{3}{4} Ks$
 South Rail South $26 \frac{1}{2} "$
 at $13 \frac{1}{6}$ Cor. No B.Ts.
 Cor. is $2 \frac{1}{2} Ks N.$
 of North Post 7 set
 Oak Post 10 Ks N.
 on $\frac{1}{6}$ line } at $11 \frac{1}{6}$ Cor. $14 \frac{1}{2} Ks N.$ of S. Rail.
 at $16 \frac{1}{6}$ Cor. MKd.
 $N. Pine 7^{\circ} S 67^{\circ} E 43 Ks$



Cement 5"

Cement 5"

M.C. North of 10 G.L.O.
W. Oak 5" N. 34 W. 22 1/2 kts.
" " 9" S. 47 E. 37 1/2 "

M.C. West of f. G.L.O.
W. Oak 8" N. 31 E. 81 kts.
" " 4" S. 3 W. 19 1/2 "

1/4 Cor. at f. Cement 5"
Red Oak 6" N. 20 E. 22 1/2 kts.
Jan. 30th 1934

M.C. East of f. Cement 5"
14.07 Chs. East of f. Va. 10°
No B.T.S.

at C - Center of Sec. M.M.P.
Oak 4" N. 31 W. 3 1/4 kts.
Aspen 9" N. 61 E. 28 "

at 6 - 1/16 Cor. M.M.P.
R. Oak 5" N. 86 W. 21 1/2 kts.

at 16 - 1/16 Cor.
29 1/2 kts East of M.C.
M.C.B.T.
Aspen 9" S. 85 E. 11 kts.

at 15 - 1/16 Cor. M.M.P.
J. Pine 12" N. 50 W. 5 1/4 "

at 11 - 1/16 Cor.
62 3/4 kts North
of 2 1/2 N. R. 17
of So. Trak.

at 13 - 1/16 Cor.
25 1/2 kts So. of So. Part
of North Trak.

at 12 - 1/16 Cor.
46 1/2 kts So. of So. Part
of No. Trak.

at 5 - 1/16 Cor. M.M.P.
W. Pine 3" S. 32 W. 30 1/4 kts.

at 4 - 1/16 Cor. M.M.P.
N. Pine 4" North 12 1/2 kts.
Va. 7°

at 8 - 1/16 Cor. M.M.P.
J. Pine 5" S. 31 1/2 E. 18 1/2 kts.

For Corners East side
Refer to Sec. 17.

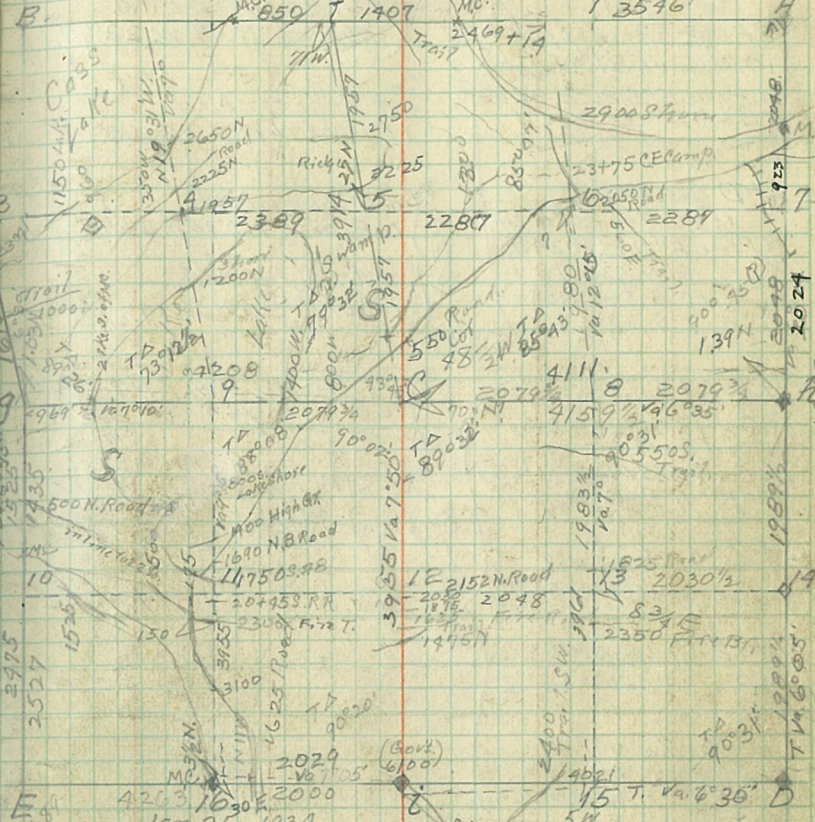
Sec. 18 - T. 145 N. R. 30 W.

12

M.C. So. of 3 Govt.

M.C. N. of 10 Govt B.T.S.
Poplar 8" N. 1° W. 36
W. Oak 10" N. 85 E. 40.
1/4 Cor. at 9 W. Pine 16" S. 65 E. 27
N. " 16" N. 78 W. 44

W. Oak 8 1/2 E. 13 kts.
Poplar 3" S. 37 W. 76 "
M.C. W. of 1 Govt. Aspen 8" S. 17 E. 273.
1/4 Cor. at f. 7. Pine 24" N. 9 E. 8 1/2 kts.
M.C. W. of f. W. Oak 12" N. 71 E. 48
W. Pine 24 1/2 S. 10 E. 54



at 2 - 1/4 Cor. betw. 18-19
Brass and Iron G.L.O.
N. Pine 24" N. 21° E. 24 1/2 kts.

at 9 - 1/4 Cor. betw. 18-13
5" Cement Br.P. 8 1/2 kts.

" " 20" S. 11 1/2 E. 7 3/4 "

N. Pine 20" S. 40 W. 8 1/2 "

Govt. " " 12" S. 77° E. 127 "

M.C. So. of 3 Cement 5" "

M.C. at 16, Cement 5" Brass G.L.O.
Aspen 4" N. 5 E. 10 kts.
" " 5" East 40 1/2 "

N. Pine 20" S. 42 E. 17 1/2 kts.
" " 10" S. 20 1/2 W. 146 "

Metal Poster 4 1/2 kts. South.

Govt. M.C. at 16 - B. Aspen 6" N. 9 E. 17 "

at 2 Govt B.T.S.
B. Pine 5" N. 20 E. 67 "

" " 19" S. 20 E. 6 "

1/4 Cor. at 2° betw. 19-30
Brass Capped Iron 5" high

19
4330

W. Pine 6" S. 54° W. 22 1/2' Ks.
" " 4" N. 53° E. 33 "

at MC 3.31 W. of 16
old Govt. BT. stub oak
N. Pine 5" S. 85° E. 32 1/2' Ks.
(G.L.O. blaze page)
(Too much growth)

at D sec. Cor.
G.L.O. Cement 4" high
N. Pine 8" N. 75° W. 34 1/2' Ks.
W. " 6" N. 53° E. 13 "
" " 10" S. 56° E. 40 "
" " 7" S. 36° W. 41 "

at H G.L.O. Br. Cap Iron
R. Oak 12" N. 80° W. 24 1/2'
old Govt. BT. oak
W. Oak 5" S. 14 1/2° E. 43 1/2' Ks.
Maple 7" S. 66 1/2° W. 69 "

at C. Center of Seal
W. Pine 8" N. 55° E. 12 1/2' Ks.

at 12-1/16 cor. old BT.
W. Pine 34" S. 70° W. 63 1/2' Ks.

at 16-1/16 cor. MKd.
J. Pine 5" S. 77° W. 23 1/2' Ks.
N. " 5" N. 42° W. 24 1/2 "

at 8-1/16 cor. MKd.
Maple 6" N. 45° E. 10 1/2' Ks.

at 13-1/16 cor. MKd.
Twin N. Pine 36" N. 19° E. 18 1/2' Ks.

at 14-1/16 cor. MKd.
Aspen 6" N. 49° W. 22 1/2' Ks.

at 7-1/16 cor. MKd.
Birch 6" N. 49° W. 33 1/2' Ks.

at 5-1/16 cor. MKd.
N. Pine 10" N. 0° 30' W. 26 1/2' Ks.

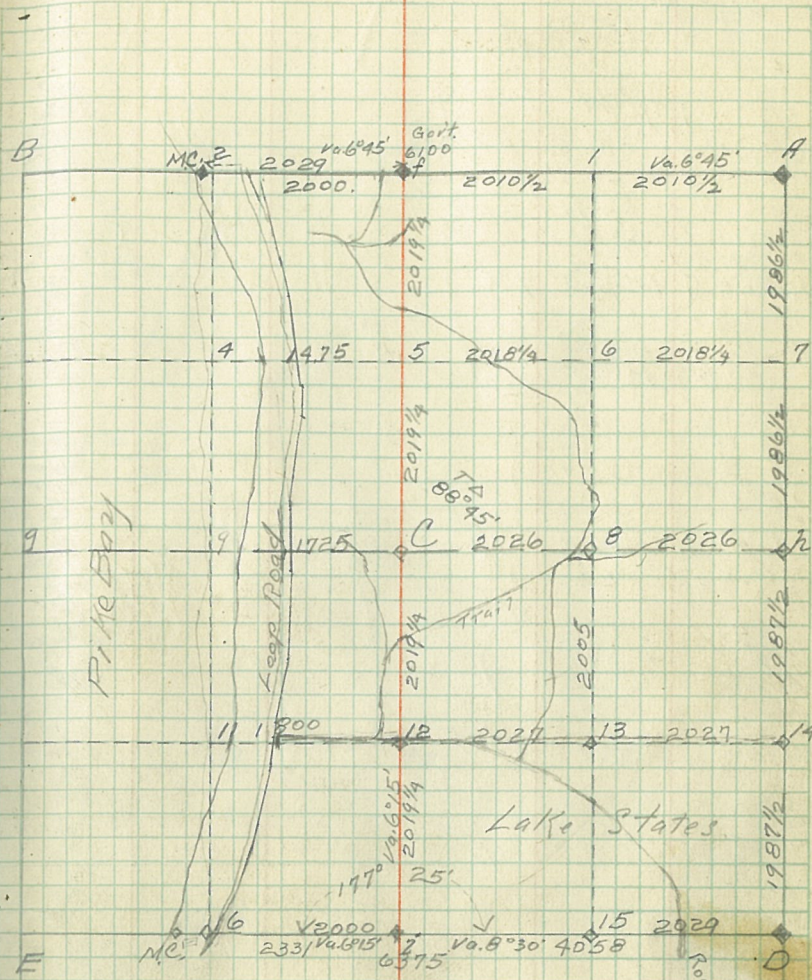
at 6-1/16 cor. MKd.
R. Oak 7" S. 49 1/2° W. 14 1/2' Ks.

Va. used on 977 B.T.s
7°

at MCs at 16. New G.L.O.
N. Pine 5" N. 25° E. 27 1/2' Ks. alt.
8/16/30

For North Corners
refer to Sec. 18

Sec. 19-T145N, R. 30W. 13



Govt. BT. at:-
N. Birch 3" S. 89° E. 15 1/2' Ks.
B. Oak 4" N. 80° W. 25 "

1/4 cor at 2
Aspen 12" N. 58° E. 27 1/2' Ks.
" 3" S. 53° E. 27 "

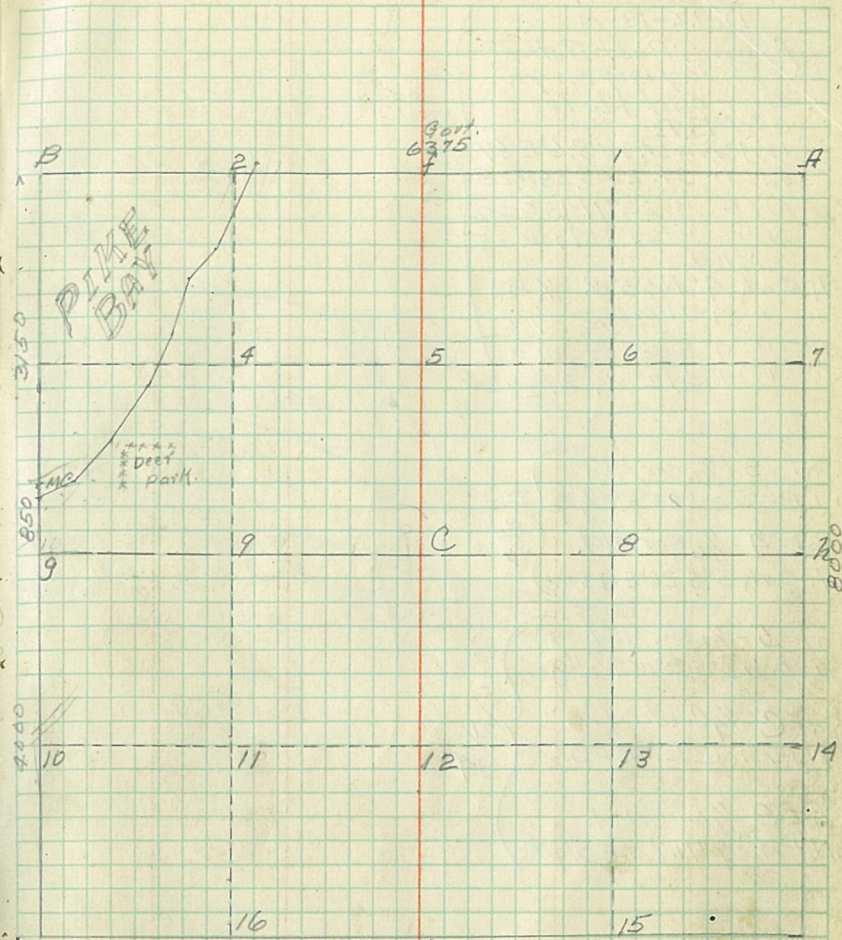
MC. at 16
N. Pine 12" N. 89° E. 130
" " 14" S. 48° E. 110

at D- Aspen 6" N. 70° E. 71 1/2' Ks.
" 6" N. 75° W. 92 "
" 4" S. 72° W. 74 "
No other tree nears.

North line Refer to Sec. 19

Sec. 30. T. 45 N. R. 30 W.

14



E 1992
Gort
at E. Sec. Cor.
N. Pine 8" N. 12 W. 70
Birch 3" S. 73 E. 55
N. Pine 16" S. 50 W. 80

1/4 cor. at 9.
Poplar 9" S. 90 W. 440
W. Pine 6" S. 11° E. 510.

MC. No. 77 of 9. No Iron Stake.
N. Pine 20" S. 88° E. 105 W. 160
" " 20" S. 8 W. 119 out)
" " 5" S. 10° W. 59 New.

at-B, Sec. Cor.
11-12-13-14.

found, Post Potted
off 7' x 10' on gr.
But old Hole

Old B.Ts.

W. Pine 30° S 22° E 67

W. " 31° 28' S 28° W 28

N. " " 22° N 45° E 62

N. " " 24° N 43° W 35

Mkd.
R. Oak 4° N 55° W 7.1 Ks.

" " 4° N 60° E 37 "

W. " 4° S 88° E 39 "

R. " 4° S 12° W 29 1/2 "

at-3-1/16 cor. MKd

J. Pine 3° S 85° E 2 1/4 Ks

at-4-1/16 cor. MKd

R. Oak 3° S 26° E 43 Ks

at-5-1/16 cor. MKd

Aspen 3° S 2° W 4 1/2 Ks

at C-1/4 Center of Sec.

N. Pine 12° S 48° E 3 1/2 Ks

at 8-1/16 Sec. MKd

N. Pine 7° N 72° E 3 1/4 Ks

S 111/3 A

5/8/34

5/21/34

MC. 1095 E of B.

Elm 7° S 26° E 90

Oak 7° N 42° W 150

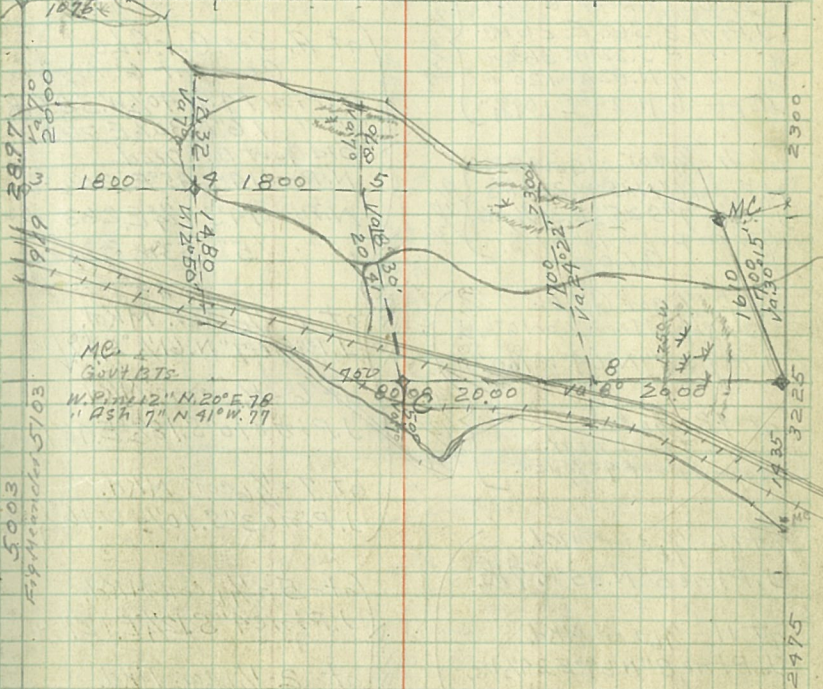
at B, Cor. 11-12-13-14

W. Pine 30° S 22° W 30

" " 29° N 39° W 28

" " 20° S 7° E 68

" " 12° N 48° E 68



5003
Fish Creek 5103

Br. Iron Pipe 6" high
 at 2-1/16 cor. buth
 Secs. 10-15 } 3/29/34
 Old Gout. BT
 B. Pine 10" S 20° W
 N. Pine 20" S 50° W 17 1/2 Ks
 J. " 3" N 39° E 31"

at D. Sec. 10-11-14-15
 G.L.O. Cement 6" high
 J. Pine 3" S 66° E 26 1/2 Ks } 4/10/34
 " " 8" S 22° W 36 3/4 "
 " " 4" N 82 1/2° W 120 "
 Aspen 6" N 24° E 109 3/4 "

at 11-1/16 cor. old Gout. BT
 N. Pine 16" N 15° W 26 1/2 Ks } 4/11/34
 J. " 7" S 25 1/2° E 31 3/4 Ks
 Br. Iron pipe 10" high
 G.L.O.

at f. 1/16 cor. G.L.O.
 Br. Caped Iron pipe 10" high
 J. Pine 5" N 09° W 160 1/2 Ks } 4/12/34

at 12-1/16 cor.
 No Trees near
 Aspen post 4" square } 1/39

at 16-1/16 cor. MKd.
 J. Pine 5" N 85° W 7 Ks } 4/13/34

at 11-1/16 cor. MKd.
 J. Pine 8" N 67° E 34 1/2 Ks } 4/13/34

at 9-1/16 cor. MKd.
 J. Pine 3" S 42° W 25 1/2 Ks } 4/13/34

at C. 1/4 Center Sec. 10
 J. Pine 3" S 89° W 89 3/4 Ks } 4/13/34

at 8-1/16 cor. MKd.
 J. Pine 3" S 80° E 3 1/2 Ks } 4/13/34

at 15-1/16 cor. No Trees Near
 Set Aspen Post 9" sq.

at 13-1/16 cor. MKd.
 J. Pine 3" S 24 1/2° E 17 1/2 Ks } 4/16/34

at 14-1/16 cor. MKd.
 J. Pine 4" S 20° E 9 Ks } 4/16/34

at A. Sec. Cor. G.L.O.
 Cement 6" high
 N. Pine 14" N 40 1/2° W 38.5 Ks
 " " 16" N 30 1/2° E 222 "
 Old Gout. BT Dead
 N. Pine 14" S 95° E 20 1/2 Ks
 N. Pine 14" S 9 1/4° E 263 "
 " " 5" S 53° W 3 3/4 "

at 1-1/16 cor. MKd.
 J. Pine 7" N 61 1/2° E 19 1/2 Ks } 4/19/34

at 6-1/16 cor. MKd.
 J. Pine 10" S 18 1/2° E 48 1/4 Ks } 4/19/34

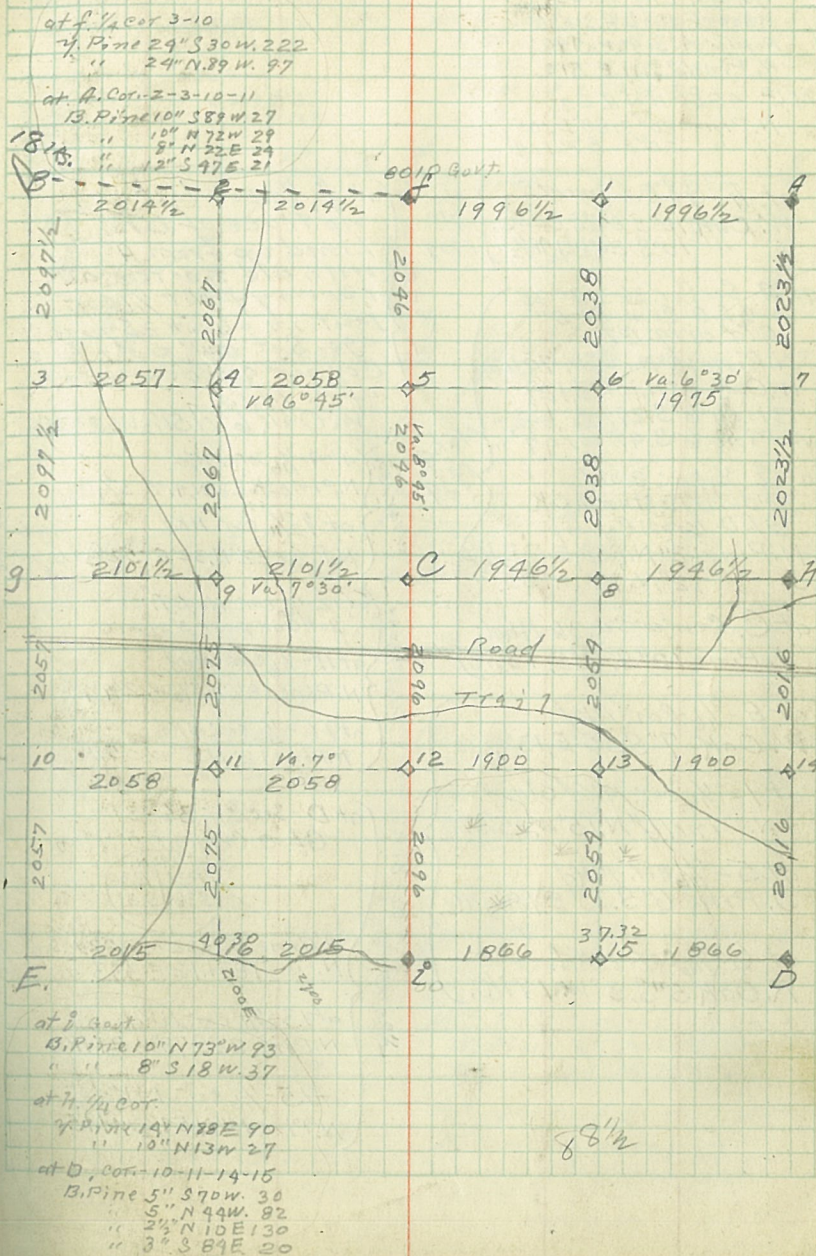
at 7-1/16 cor. MKd.
 J. Pine 3" S 10 1/2° W 16 3/4 Ks } 4/19/34

at 5-1/16 cor. MKd.
 J. Pine 4" S 12 1/4° E 127 7/8 Ks } 4/19/34

at 2-1/16 cor. MKd.
 Aspen 3" S 34° W 127 Ks } 4/19/34

at 4-1/16 cor. MKd.
 J. Pine 3" N 47° E 67 7/8 Ks } 4/19/34

at B. Sec. Cor.
 N. Pine 4" S 43° 30' E 88 1/2 Ks
 J. " 5" N 52° W 154 "



East Cor. of Sec. 25

Govt Notes.

1/4 Cor. E. of Sec. 25

4000 chs. N. of A. Sec. 36.

Poplar 4" S. 40° W. 490

W. Pine 6" S. 11° E. 510

M.C. 4850 N. of A. Sec. 36.

N. Pine 20" S. 88° E. 105

" " 20" S. 8° W. 114

at 1/4 - G.L.O. Cement 5" } Mar. 9th
W. Oak 10" S. 67° E. 82 1/2 Ks. }
" " 10" S. 20° W. 148 1/2 " } 1934

at A - Sec. Cor. 36-31-30-25 }
G.L.O. Cement 5" }
Old oil 1/4 B.T. }
N. Pine 18" N. 10 1/2° W. 70 1/2 Ks. }
W. Oak 8" N. 10 1/2° E. 127 " }
Birch 6" S. 29 1/2° E. 34 1/4 " }
W. Pine 6" S. 47° W. 47 " } Mar. 9th 1934

at 2 1/4 cor. 2 old }
Gov. B.T. Stumps O.K. }
G.L.O. Brass Cap. Pipe }
N. Pine 12" N. 86 3/4° E. 72 1/2 Ks. }
J. " 12" N. 73° W. 153 " } Mar. 9th 1934

at C, Center Sec. 36 MKd. }
J. Pine 12" S. 2° E. 137 Ks. } Mar. 9th 1934

at 8 - 1/6 cor. MKd }
W. Oak 7" S. 55° E. 13 1/4 Ks. } Mar. 9th 1934

at 1 - 1/6 cor. MKd of old B.T. }
N. Pine 16" N. 15° W. 15 1/4 Ks. } Mar. 9th 1934

at 5 - 1/6 cor. MKd }
J. Pine 6" S. 33° E. 18 1/4 Ks. } Mar. 9th 1934

at 6 - 1/6 cor. MKd. }
R. Oak 5" S. 3° W. 17 1/2 Ks. } Mar. 9th 1934

at 1/4 cor. lost }
no trace of B.Ts. }
Lined up from A }
with old pine trees at }
the way past 1/6 cor. }
Put in about 25 years }
ago. Set oak post for }
corner 40,000 chs west }
of A. MKd. }
W. Oak 6" N. 51 1/2° W. 24 1/2 Ks. } Mar. 9th 1934

at 4 - 1/6 cor. MKd. }
N. Pine stub 6.8" N. 49° E. 5 1/4 Ks. }
at 9 - 1/6 cor. MKd. }
N. Pine 22" N. 32° E. 58 1/2 Ks. } Mar. 9th 1934

at 12 - 1/6 cor. No B.T. }
Set Oak post 3" square }
at 11 - 1/6 cor. MKd. }
N. Pine 18" S. 55 1/2° W. 249 1/4 Ks. }
at 16 - 1/6 cor. MKd. }
N. Pine 12" N. 5° W. 55 1/2 Ks. } Mar. 9th 1934

at D - Sec. Cor. 36-31 }
G.L.O. Cement 5" 1" 1/4 Ks. }
1934 }
R. 31 | R. 30 }
336 | 331 }
1934 }
1934 }
1934 }

J. Pine 8" N. 32° W. 302 1/2 Ks. }
N. " 18" N. 12° E. 333 " } Mar. 9th 1934

at 13 - 1/6 cor. MKd }
N. Pine 22" S. 78° W. 21 1/2 Ks. } Mar. 9th 1934

at 15 - 1/6 cor. MKd }
N. Pine 16" N. 54 1/2° W. 115 1/2 Ks. } Mar. 9th 1934

(For west Side Refer to Sec. 35) Sec. 36 - T. 145 N. R. 31 W.

Govt Notes

at 1/4 Cor. 9" Birch for Cor.

Birch 4" N. 54° W. 31

4" S. 14° W. 81

M.C. w. of 1238

W. Pine 16" S. 24° E. 36

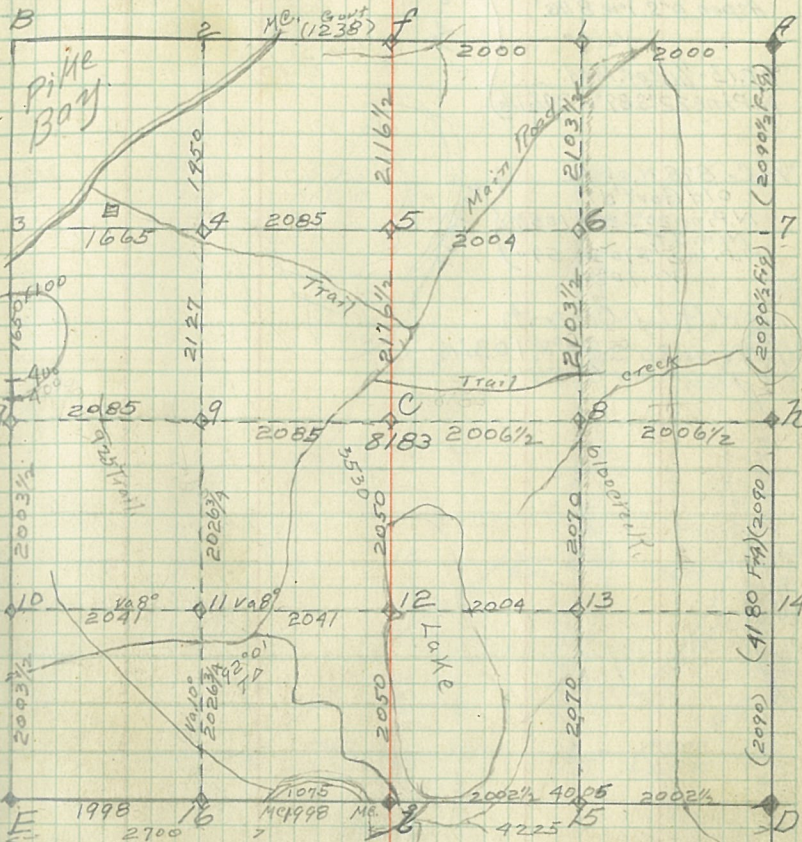
N. " 12" S. 12° W. 37

at A, Sec. Cor. 36-25-30-31

N. Pine 8" N. 12° W. 70

Birch 3" S. 73° E. 55

N. Pine 16" S. 50° W. 80



Govt Notes -

at D, S.E. Cor. of 36.

Y. Pine 25" N. 20° E. 53

" " 20" N. 46° W. 87

at 2 - So. 1/4 cor. of 36

Y. Pine 30" N. 50° W. 29

" " 30" N. 8° E. 151

M.C. 225 1/2 Ks. W. of 2

W. Pine 35" N. 20° E. 83

B. " 14" N. 70° W. 65

M.C. 1300 W. of 2

B. Pine 10" N. 50° E. 51

W. " 40" N. 43° W. 238

at 1/4 Cor. G.L.O.
Br. Caped Iron pipe 1 1/2 in.
N. Pine 10° N. 0° 30' W. 409 1/2
" " 20° S. 59° W. 934
Va. 7°

at 1/4 Cor. MKd.
Aspen 8° S. 1° W. 8 1/2
Va. 7°

at 1/4 Cor. MKd.
N. Pine 22° S. 89° W. 24 1/2

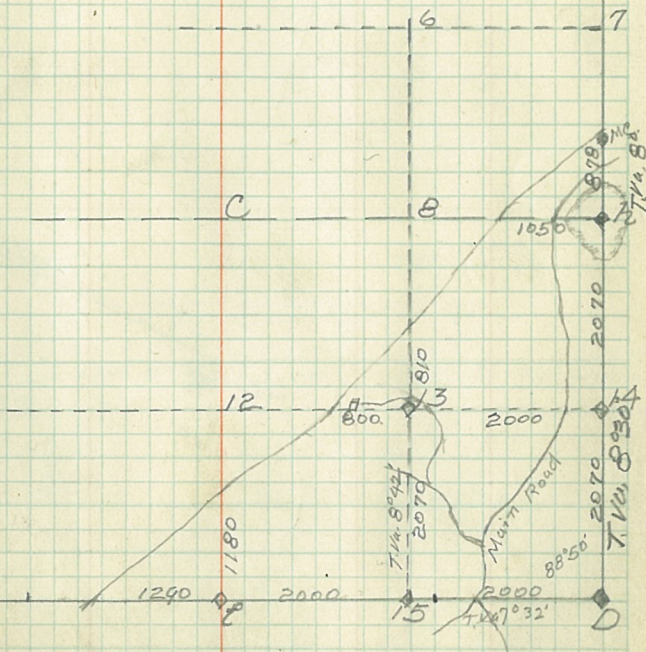
M.C. 878 N. of N.
old Govt B.T.
N. Pine 20° S. 88° E. 105 1/2
New B.T.
N. Pine 5° S. 92° W. 54
Va. 10°

New G.L.D. Cement
N. Pine 20° S. 89° E. 103 1/2
Va. 6° 55'

Mar. 16-34

Mar. 19-34

(For South line Refer to Sec. 36) Sec. 25 T. 145 N. R. 31 W 18

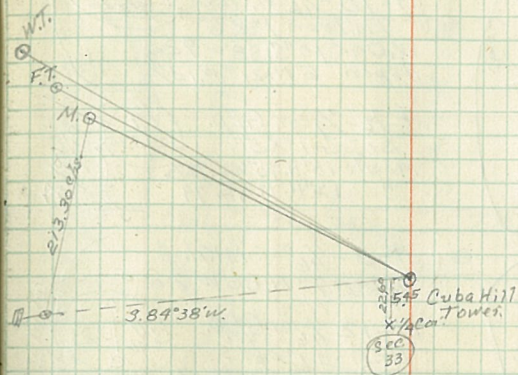


M. = Mill 3m¹/₂ S of trail, Cass Lake.

F.T. = Fire Tower Cass Lake.

W.T. = Water Tank " "

19
Cuba Hill Fire Tower,
Sec. 28 T. 145N. R. 30W.



1/4 Cor. betw. Secs. 28-33
T. 145N. R. 30W.

Q.L.O. Cement

328
4333

W. Pine 12" N, 3° E, 77 1/2' 1/3

" " 14" S. 10° E, 54 "

Var. 8°

Sec. 25-T144 N.R. 31W

at B Sec Cor.
NW of Sec. 25
G.L.O. Br. Iron 1" high
Cedar 5" S 72° E. 60 1/2
" 12" N. 23° E. 225 "
" 8" N. 37° W. 174 "
" 6" S. 34° W. 99 1/2 "

M.C. N. of 3
G.L.O. Iron Br. 6"
Cedar 8" N. 59° E. 121 1/2 Ks.

Should be
MC
MR.

at f 1/4 Cor. G.L.O.
Br. Iron 8" high,
old Govt Br.
N. Pine 22" N. 69 1/2° E. 99 1/2 Ks.
" " 22" S. 82° E. 66 "

S. 29
4 S. 25

at 2-1/16 Cor. MKd
J. Pine 3" S. 58° E. 17 1/2 Ks.

at C 1/4 Center of Sec. 25
G.L.O. Br. Iron C 4 S 25
J. Pine 10" S. 57° E. 83 1/2 Ks.

at M.C. E. of 9 G.L.O.
Brass Iron. C 1/3

W. Pine 29" S. 53° E. 27 1/2 Ks.
" " 24" N. 82° E. 61 "

at 9-1/16 Cor. MKd
J. Pine 6" S. 31° E. 14 1/2 Ks.

at 4-1/16 Cor. MKd
J. Pine 2" N. 37° E. 35 1/2 Ks.

at 7-1/16 Cor. G.L.O.
Br. Coped Iron 1" x 8
Aspen 8" N. 24° E. 65 1/2
Erm 6" N. 37° W. 47 1/4

at 14-1/16 Cor. G.L.O.
Br. Coped Iron 1" x 8
Aspen 8" N. 70 1/2° W. 33
Erm 6" N. 77 1/4° E. 11 1/2

at D Sec Cor.
G.L.O. Br. Iron 2" x 8
Birch 6" S. 61° W. 12
Aspen 6" N. 51 1/2° W. 32 3/4
" 6" N. 91 1/2° E. 18 1/4
" 6" S. 68 3/4° E. 13

at 15-1/16 Cor. G.L.O.
Br. Iron 1" x 6"
W. Oak 10" S. 38° W. 92 1/4
Aspen 6" N. 21 1/2° W. 13 1/2

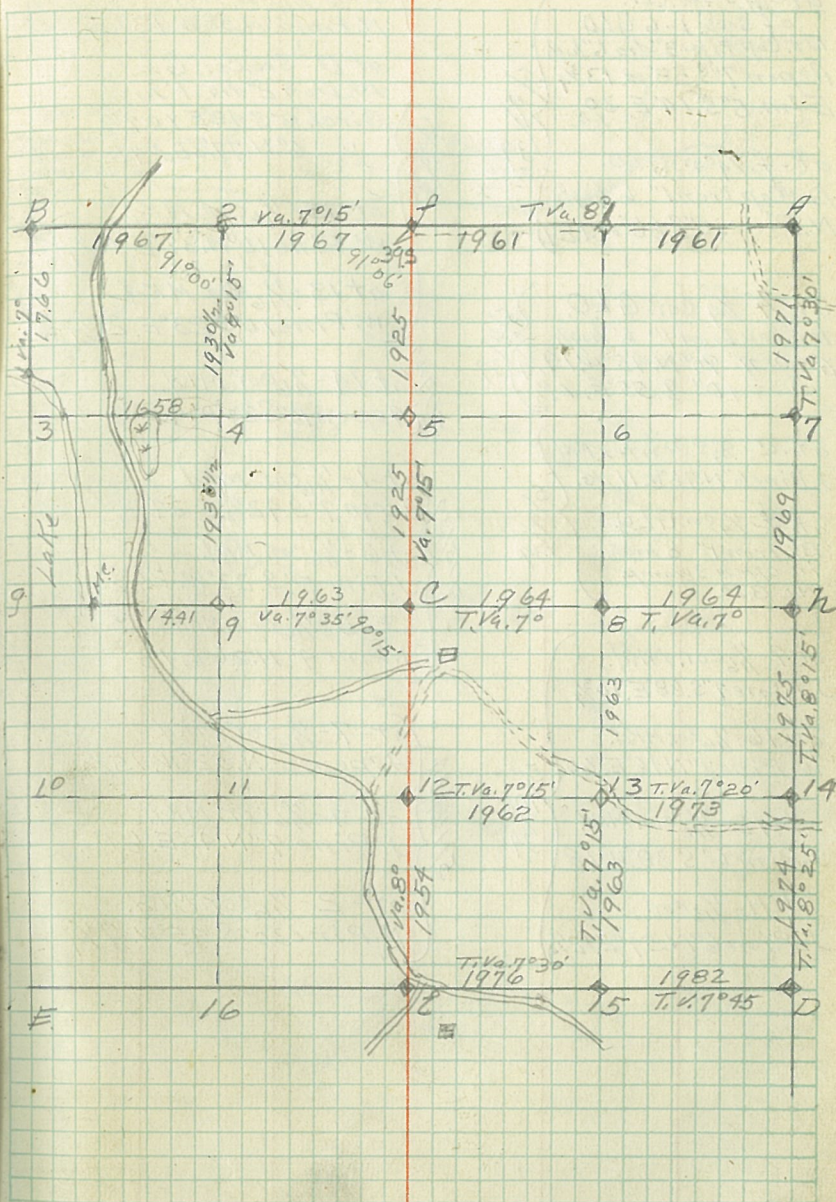
at 7-1/4 Cor. G.L.O.
Br. Iron 1" x 5"
Maple 10" N. 15 1/4° W. 72 1/2
" 12" N. 77 1/4° E. 79

at 8-1/16 Cor. MKd.
Aspen 9" N. 86° W. 28

at 12-1/16 Cor. G.L.O.
Br. Iron 1" x 8"
Aspen 6" S. 25° E. 13

at 13-1/16 Cor. MKd
W. Oak 6" S. 85° W. 15

at 2-1/4 Cor. G.L.O.
Br. Iron 1" x 8"
Aspen 9" N. 14° W. 10



Va. used on all corners, 7°

at-A- Sec. Cor.
of Secs. 1-6 G.L.O.
Br. Cap. Pipe 3" dia 6" high
Aspen 7" S. 58° W. 13 3/4
E 7m. 5" S. 14° E. 30
5/34

at-7 1/4 Cor. G.L.O.
Br. Cap. Iron 1" 6" high
Aspen 9" N. 45° W. 14 3/4
" 10" S. 55° E. 1 1/2
5/28
5/34

at-C- 1/4 S. Center MKd
J. Pine 6" N. 76° W. 11 1/2
5/19
5/34

at-2 1/4 Cor. G.L.O.
Br. Iron 1" 8" high
in open Swamp
No B.T.S.
5/34

at-9- 1/6 Cor. MKd.
J. Pine 7" S. 68° E. 10 3/4

at-16- 1/6 Cor. MKd.
W. Pine 7" N. 16° E. 60
5/10
5/34

at-12- 1/6 Cor. MKd.
J. Pine 6" S. 38° W. 18
5/10
5/34

at-11- 1/6 Cor.
J. Pine 6" N. 59° E. 12 1/4

at-8- 1/6 Cor. MKd
N. Pine 6" N. 58° W. 13 7/8

at-D- Sec. Cor. G.L.O.
Br. Iron 2" dia. 1" high
Birch 8" S. 48° E. 10 7/2
" 6" N. 77 1/2° E. 45.

at-15- 1/6 Cor. MKd
W. Pine 10" N. 37° E. 16 1/4

at-13- 1/6 Cor. MKd.
W. Pine 10" S. 23° E. 21 1/4

at-14- 1/6 Cor. MKd.
Aspen 10" S. 20° W. 42 1/8
5/23
5/34

at-1- 1/6 Cor. MKd
Aspen 7" S. 92 1/2° E. 27 1/8

at-6- 1/6 Cor. MKd.
J. Pine 5" S. 23° W. 20 1/2
5/15/34

at-5- 1/6 Cor. MKd
J. Pine 4" N. 26° E. 13

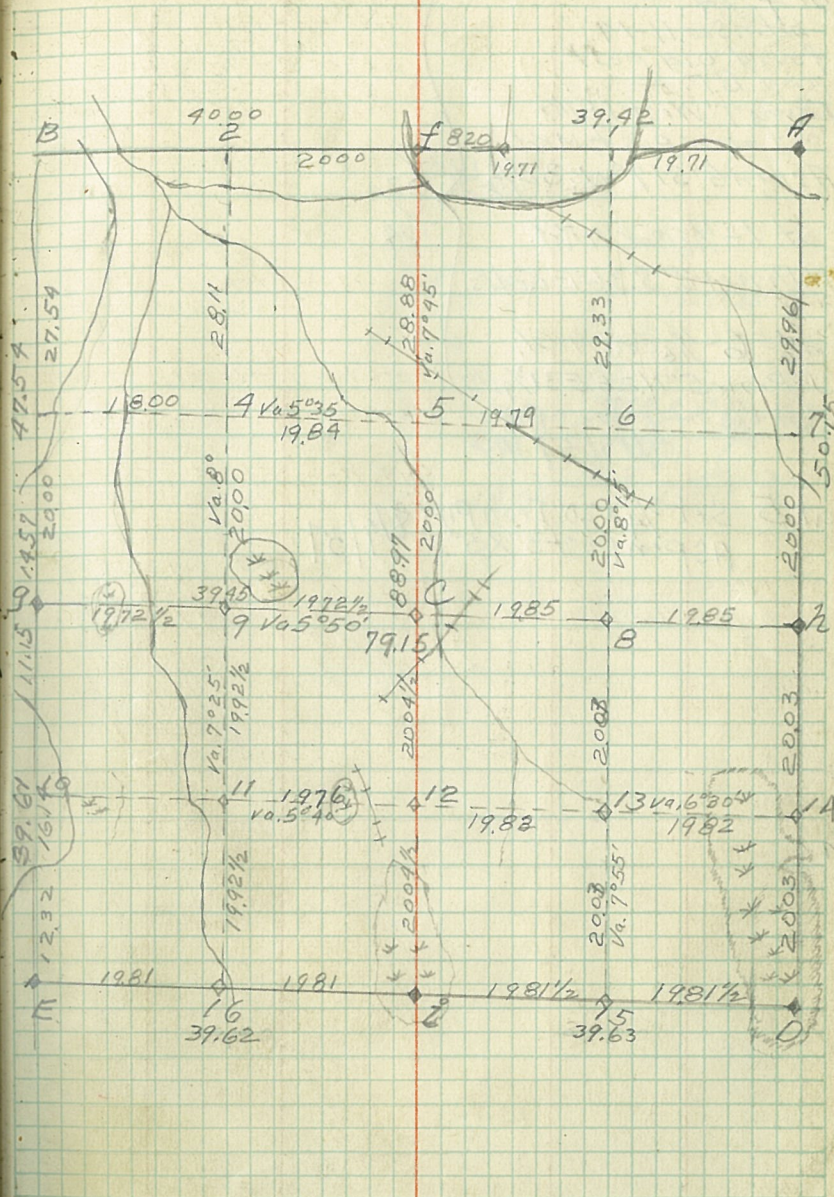
at-7- 1/6 Cor. MKd
Aspen 10" N. 52° W. 15 3/4
5/16/34

at-4- 1/6 Cor. MKd.
J. Pine 9" N. 40° E. 6 1/8

at-2- 1/6 Cor. MKd.
N. Pine 30" S. 45° W. 7 1/4

Sec. 1-T144N.R.31W.

21



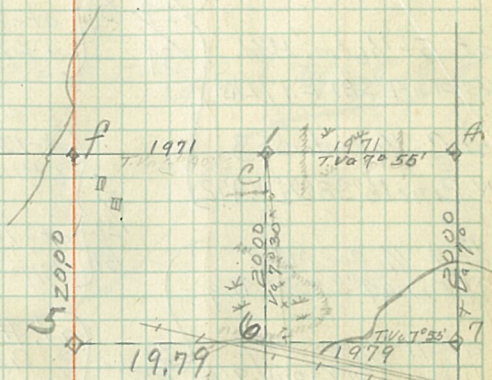
at f , $\frac{1}{4}$ cor,
betw. Sec. 11-14
found old post
and B.T. \pm
J. Pine 9" West 1876
set new post, MKL
Aspen 6" S 17° W, $32\frac{1}{2}$ LKs 5/22

at $1-\frac{1}{16}$ cor. MKd. 34
N. Pine 12" S 36° E 22 LKs

at $6-\frac{1}{16}$ cor. MKd.
J. Pine 5" N 28° E $31\frac{3}{4}$ LKs
Set $1\frac{1}{4} \times 24$ " Iron pipe
4/19/37 JAC

at 5. Set $3\frac{1}{4} \times 20$ " Iron pipe
Aspen Post 3" X 5" 8/9/37

Sec. 14 - T. 145 N. R. 31 W



at f. 1/4 Cor. betw
secs. 3-33-GLO.
Br. Coped Iron pipe 1" 6"
W. Oak 6" S. 33° W. 33 1/2"
Aspen 4" N. 63° W. 6 "

at 5-1/16 Cor. MKd.
Aspen 4" S 81° E. 17 Lks.

at C- 1/4 Center Sec. 3.
N. Pine 16" S 86 1/2° W. 47 1/2

at 9- 1/16 Cor. MKd
J. Pine 4" S 50° W. 49 3/4

at 11- 1/16 Cor. MKd.
N. Pine 3" S. 38° W. 9 Lks.

at 12- 1/16 Cor. MKd.
J. Pine 10" N. 89 1/2° W. 277
(on 1/16 line west)

at 1/4 Cor. GLO. (14)
53 1/2
Br. Iron Pipe 1" 10" high
old Govt. B.T. Burnt Stump
N. Pine S. 67° E. 14 1/2 Lks.
W. Oak 5" S. 90° W. 36 1/2"
Aspen 6" S. 52° E. 16 1/2" → Posters.

at 8- 1/16 Cor. MKd.
J. Pine 7" S 85 1/2° W. 58 1/4 Lks.

at 13- 1/16 Cor. MKd.
J. Pine 6" S. 85 1/2° W. 113 1/4 Lks.

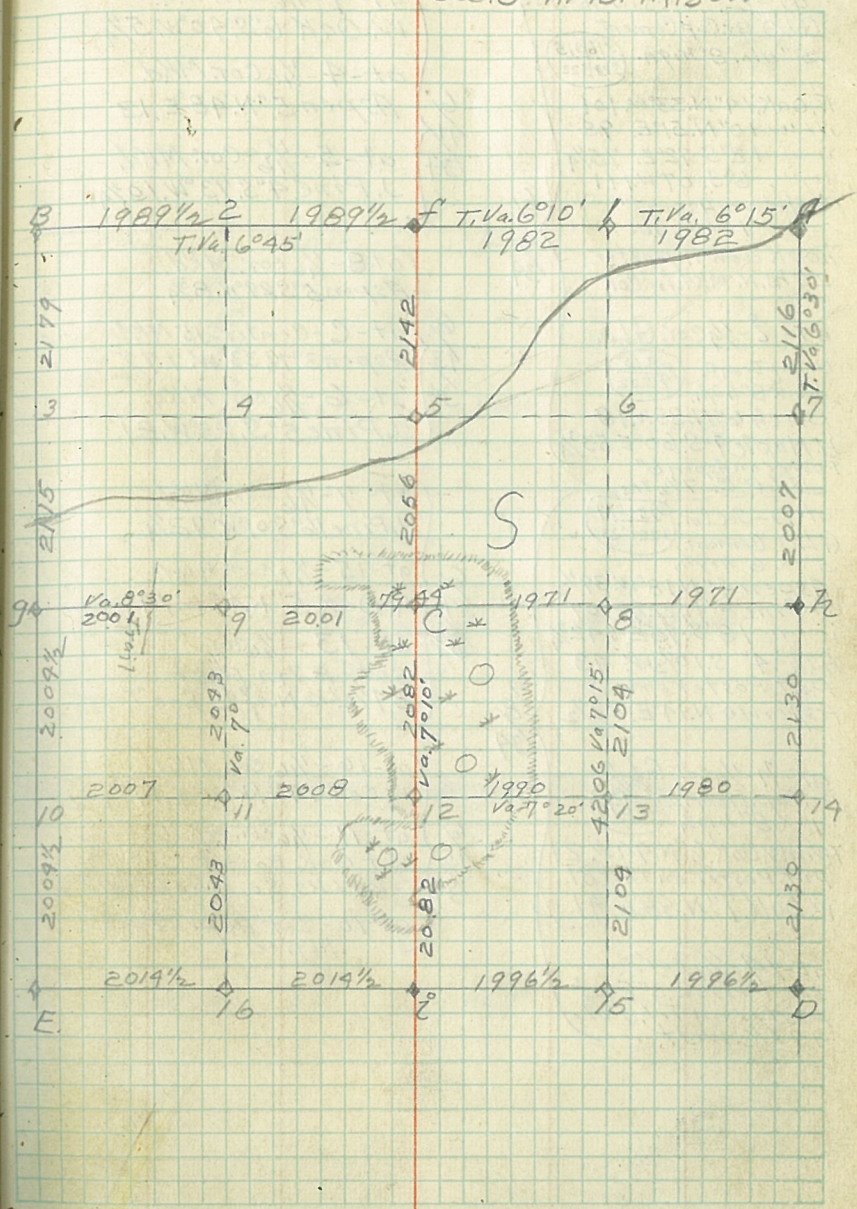
at 14- 1/16 Cor. MKd.
Aspen 3" N. 75° W. 73 1/2 Lks.

at A- Sec Cor. 2-3-33-34
GLO Cement 6" x 4" high
R. Oak 6" N. 52° W. 113 1/2
Aspen 6" N. 24° E. 110
" 9" S. 23 1/2° E. 18
R. Oak 6" S. 47° W. 65

at 1- 1/16 Cor. Oak Post
R. Oak 5" N. 38° W. 9

at 7- 1/16 Cor. MKd.
Aspen 6" S. 69 1/2° W. 12 3/4

Sec. 3 - T. 145 N. R. 30 W



Sec. 15-T.145N.R.30.W

at-E, Secs. 15-16-21-22
G.L.O. Br. Cap Cement
5" dia. 8" high. (516315)
(528522)

R. Oak 14" N. 33° W. 101
" " 10" N. 51° E. 98
" " 12" S. 72° E. 75 1/4
" " 6" S. 07° W. 111
Poster on Aspen 3"
10 Lks. So.

Took down poster
20 Lks. N. MKd. for Cor.

at-2-1/4 Cor. G.L.O.

Br. Cap Iron P. (43.15)
(45.22)
1" x 8" high.
Birch 6" N. 88° W. 18
H. Maple 9" S. 60° E. 53 1/4
Poster on Aspen 6"
N. 65° E. 7 1/2 Lks.

at-D-3rd Cor. (215134)
G.L.O. Cement (322523)

5" x 6" high.
Aspen 4" N. 18° W. 39 1/2
W. Pine 8" N. 22° E. 107
" " 18" S. 75° E. 142 1/4
Ash 4" S. 10 1/2° W. 43
put poster on
Aspen 10" N. 14° E. 22 1/2

at-N-1/4 Cor. G.L.O.

Br. Cap. Iron P. (5151514)
1" x 8" high.
Twin W. Oak 6" N. 44° W. 21
put poster on this Br.
W. Oak 7" N. 88° E. 91

at-14-1/6 Cor.
Set W. 71° W. 3" Post
poster on T. 1. Post
44 Lks. west.

at-9-1/6 Cor. MKd.
W. Oak 6' S. 40° W. 5 1/4

at-4-1/6 Cor. MKd.
Aspen 5" N. 48° E. 13

at-5-1/6 Cor. MKd.
J. Pine 4" S. 73° W. 10 1/4

at-8-1/6 Cor. MKd.
Aspen 5" S. 29° W. 8 3/4

at-C-Center S. 13° MKd.
Aspen 3" N. 33° W. 17 1/2

at-6-1/6 Cor. MKd.
J. Pine 5" S. 25° W. 21.

at-7-1/6 Cor. MKd.
N. Pine 16' S. 01° W. 72 1/4

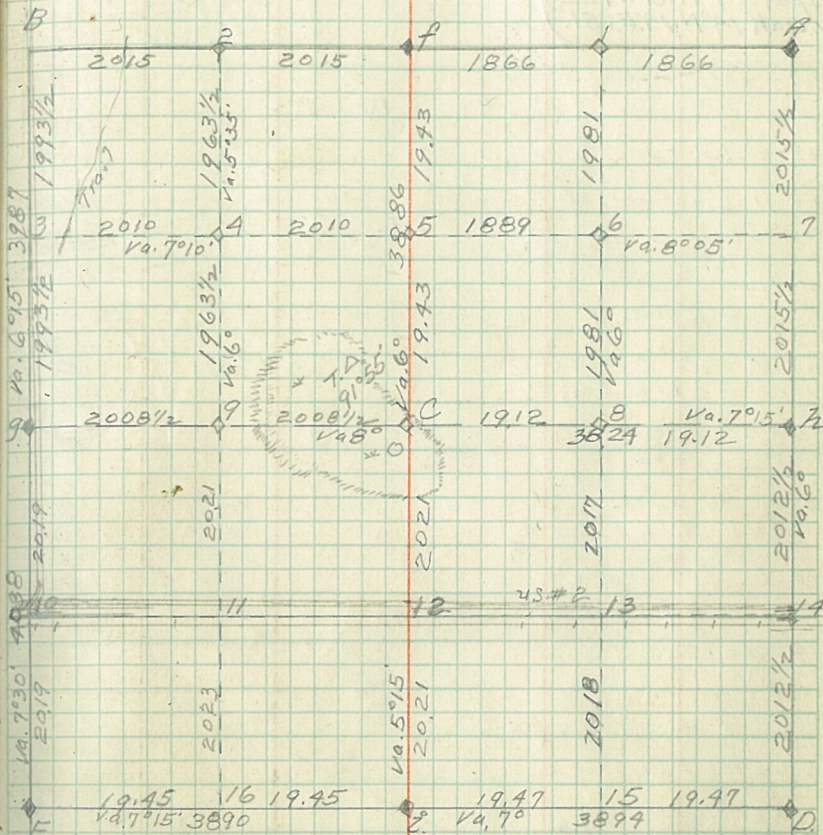
at-15-1/6 Cor. MKd.
R. Oak 5" N. 40° W. 14

at-13-1/6 Cor.
Set- E 7 1/2 Post
34 1/2 Lks. N. of E. Soo Track.

at-16-1/6 Cor. MKd.
W. Oak 14" N. 30° E. 19 1/4

at-11-1/6 Cor.
Set Oak Post 4"
29 Lks. So. of Soo Track

at-10-Set Aspen Post 3"
Notices.



Var. used 7°

S.W. Cor. of Sec. 18

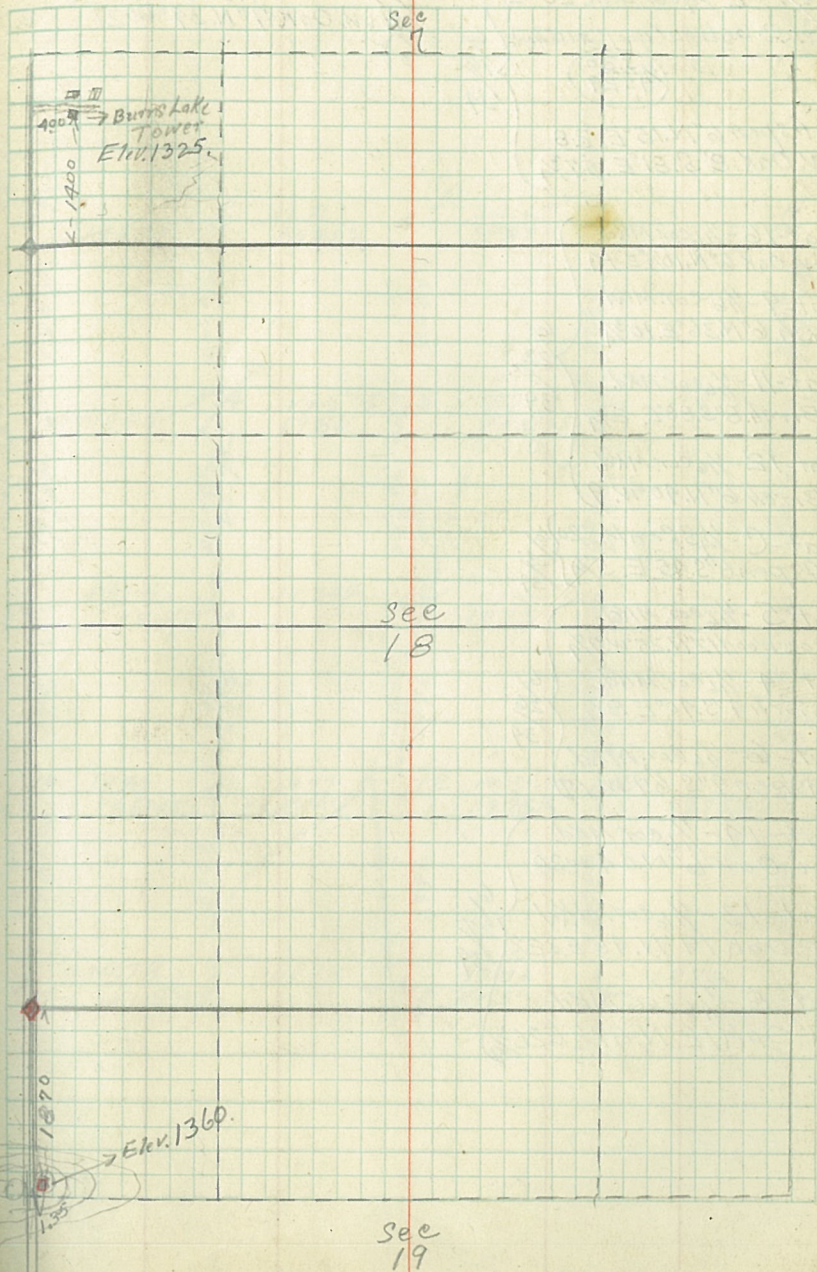
G.L.O. Hub in Center
of Road.

N. Pine 16° S. 01° E. 445

Twin Ash 6° S. 37° W. 73½

Aspen 9° N. 61° W. 122

W. Oak 14° N. 14° E. 151.

Elevations taken with
Barometer. Checked.Secs. 7-18-19
T146 N.R. 29W.

at-2 $\frac{1}{16}$ cor. betw. 20-29
 G.L.O. Br. Iron Pipe 1" x 10" h. h. }
 4320 }
 4329 }
 6/19/34

Aspen 6" N. 15° E. 28
 W. Oak 8" S. 81° E. 57 $\frac{3}{4}$

at-16 $\frac{1}{16}$ cor. MKd.
 W. Oak 6" N. 10 $\frac{1}{2}$ ° E. 14
 at-9 $\frac{1}{16}$ cor. MKd.
 Ash 6" N. 36° E. 10 $\frac{3}{4}$

at-11 $\frac{1}{16}$ cor. MKd.
 Birch 8" S. 88° E. 2 $\frac{3}{4}$

at-12 $\frac{1}{16}$ cor. MKd.
 Birch 6" N. 40° W. 9

at-C $\frac{1}{16}$ Center, S. 2016
 Aspen 6" S. 45° E. 5 $\frac{1}{4}$ }
 134

at-5 $\frac{1}{16}$ cor. MKd.
 Basswood 12" N. 25° W. 7 $\frac{1}{4}$

at-4 $\frac{1}{16}$ cor. MKd.
 Birch 4" S. 40° E. 8 $\frac{1}{2}$

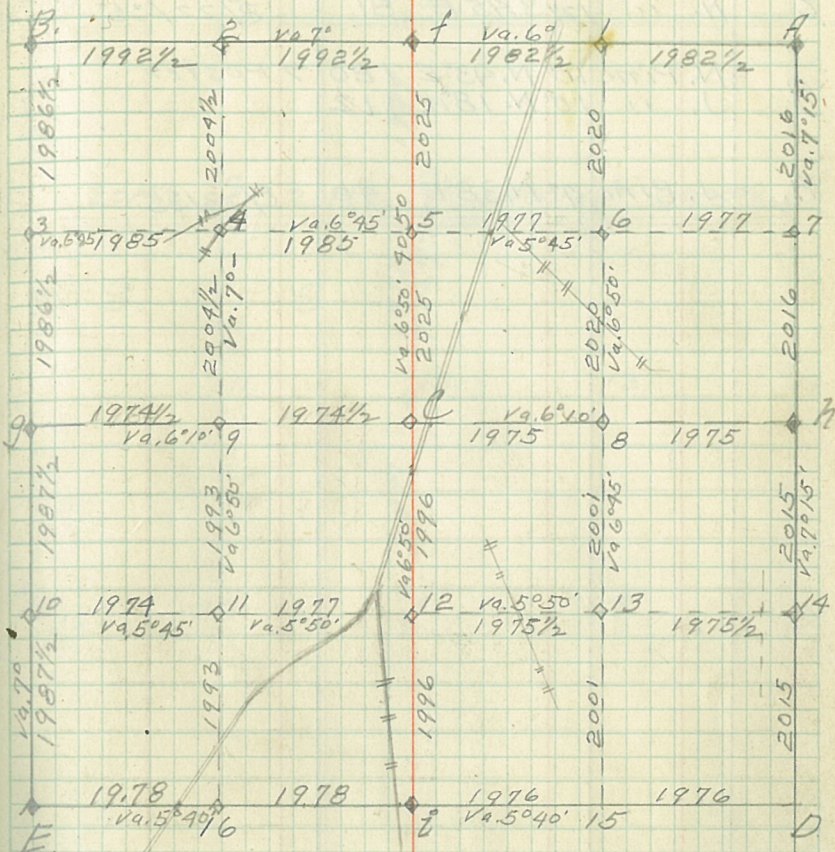
at-6 $\frac{1}{16}$ cor. MKd.
 Aspen 9" S. 67° W. 17

at-14 $\frac{1}{16}$ cor. MKd.
 W. Oak 6" N. 04° W. 20

at-13 $\frac{1}{16}$ cor. MKd.
 R. Oak 14" N. 46° E. 22 $\frac{1}{2}$

at-B $\frac{1}{16}$ cor. MKd.
 R. Oak 12" N. 89 $\frac{1}{2}$ ° E. 26 $\frac{3}{4}$

6 } at-15 $\frac{1}{16}$ cor. MKd.
 29 } W. Oak 7" N. 39° W. 21
 34



Corner Notes

Cor. No.	Spec.	Dia	Bearing	Dist.	Remarks
f	N. Pine	6"	N. 79° E	17 3/4	→ Posters
	" "	6"	S 14° E	23 1/2	
e	J. Pine	12"	N. 68° E	59	→ Posters
	N. "	12"	S. 45° E	81	8/22/35
g	N. Pine	10"	N. 43° E	180	→ Posters
	J. "	10"	N. 18° E	112	
h.	J. Pine	4"	N. 38° E	40	8/23/35

