

Cass Lake Dist. only

Office Book
No. 2

Lineal Survey
Camp F-12

FIELD BOOK

764W

Copied from Field Books
Nos. 2-3-

#104

at f - 1/4 Cor. G.L.O. (S21 522)
 Br. Caped Iron pipe 1" X 10" h.
 W. Oak 5" N. 59° E. 11
 R. " 10" S. 8° E. 3 1/2
 old Gov't. BT.
 N. Pine st. 16" S. 11" W. 15 3/4

at e - 1/4 Cor. G.L.O. (S21 522)
 Br. Caped Cement 5" X 4" h.
 Birch 4" S. 38 1/2° W. 5 8
 R. Oak 8" N. 62 1/2° E. 2 1/4

at g - 1/4 Cor. G.L.O. (S21 522)
 Br. Cap. Pipe 2" X 10" h.
 R. Oak 6" S. 49 1/2° W. 8 1/2
 W. " N. 17 1/2° E. 2 8 3/4

at 5 - 1/6 Cor.
 W. Oak 4" Blazed 2 S. sides
 W. Pine 36" S. 69° E. 41
 Burnt Pine st. 30" N. 78° E. 43 1/2

at c - 1/4 Center S21
 W. Oak Post 3" S9.

at e - Sec. Cor. G.L.O. (S21 521, S29 528)
 Br. Cement 5" X 2" high.
 Ash 6" S. 76° E. 42
 " 14" S. 19 1/4° W. 89 3/4
 W. Pine 6" N. 55 3/4° W. 7 2
 " " 6" N. 9 1/2° E. 105 3/4

at 12 - 1/6 Cor.
 Ash Post 5" high.
 R. Oak 14" S. 31° W. 5
 " " 10" N. 75° E. 8 1/2

at 3 - 1/6 Cor. 4" R. Oak Post.
 W. Pine Blazed Line
 Tree S. 8 1/2 Lks.

at 11 - 1/6 Cor. 3 1/2" W. Oak Post
 Ash 3" North 6 1/2 Blazed
 Aspen 8" East 61 "

at 10 - 1/6 S. 3 1/2" W. Oak Post

at 16 - 3 1/2" W. Oak Post
 5' high.

at f - 1/4 Cor. G.L.O. (S21 522)
 Br. Caped Iron pipe 1" X 6" high.
 W. Oak 4" N. 65 1/2° E. 9 1 3/4
 " " 3" N. 02 3/4° W. 59 1/4

at 1 - 1/6 Cor. 3" R. Oak Post
 Twin R. Oak 3" South. 5

at 8 - 1/6 Cor. 3" W. Oak Post
 Bass Wood 12" S. 50° E. 19 3/4
 at 6 - 1/6 Cor. 3 1/2" W. Oak Post.
 Aspen 10" N. 6° E. 18 1/2

at 14 - 1/6 Cor. 4" W. Oak Post
 Blazed N. Pine 6" N 63 Links
 " Aspen 10" S. 41° E. 16

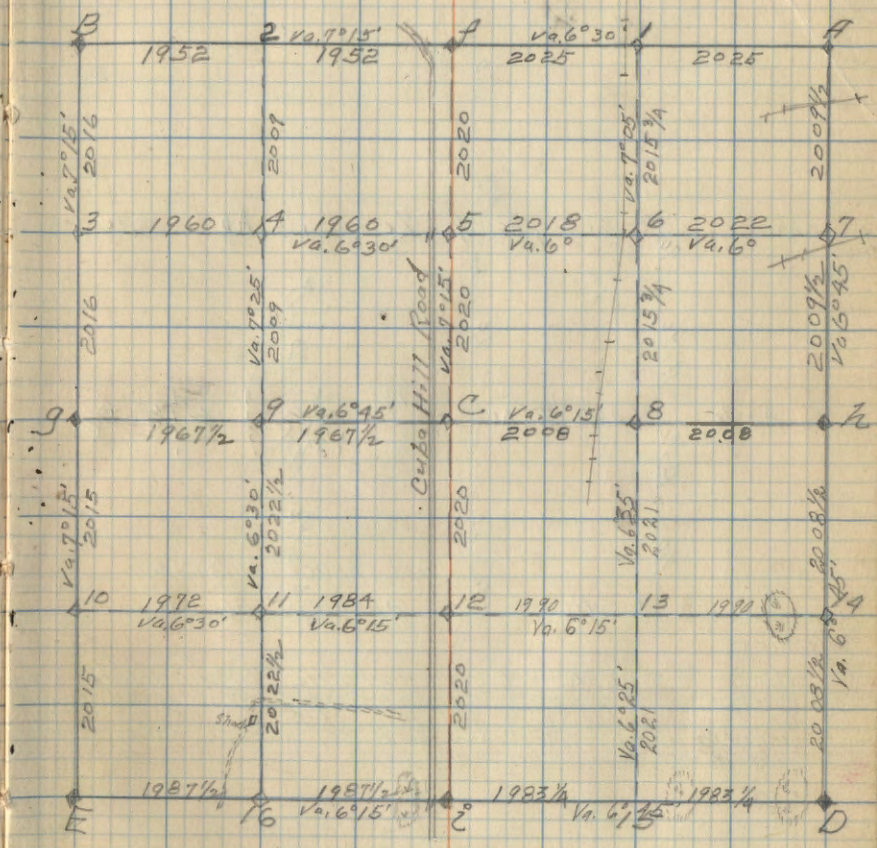
at 7 - 1/6 Cor. 3" W. Oak Post
 Aspen 2 1/2" S. 88° E. 9

at d - Sec. Cor. G.L.O. (S21 522, S28 527)
 Br. Cement 4" high
 Ash 5" N. 18° 30' W. 52 1/4
 Elm 8" N. 50° 30' E. 39 3/4
 Birch 14" S. 40° 30' E. 11 1/4
 Ash 4" S. 82° W. 23
 Ash 4" N. 72° 30' W. 14 1/4 (Bater)

at 13 - 1/6 Cor.
 4" R. Oak Post
 W. Pine 8" S. 31° 30' W. 20 1/2

at 15 - 1/6 Cor.
 5" W. Oak Post
 R. Oak 12" S. 31° E. 47
 Elm 6" N. 1° E. 26

Compass Man - Danz Rose Sec. 21-T/45 N. R. 30 W.



at i - G.L.O.
 W. Pine 14" S 8° 30' E 52.8
 W. " 14" N 3° 31' E 74.8

528
533

7/5
34

at D - G.L.O.
 R. Oak 14" N 69° E 47.3
 W. Pine 6" S 32° E 59.5
 W. Oak 3" S 57° W 28
 W. Oak 4" N 12° 30' W 21.5
 Pastor P. Oak 10" S 86° 30' W 32.8

528 527
533 534

7/6
34

at E G.L.O.
 Iron Wood 3" N 25° E 14.5
 Pastor R. Oak 8" S 52° 30' E 8.5
 N. Pine 8" S 35° 30' W 49
 W. Pine 14" N 44° 30' 65.5

529 528
532 533

7/5
34

at H.
 W. Oak 5" N 31° 30' E 16.8
 Pastor W. Pine 10" S 37° W 18.9

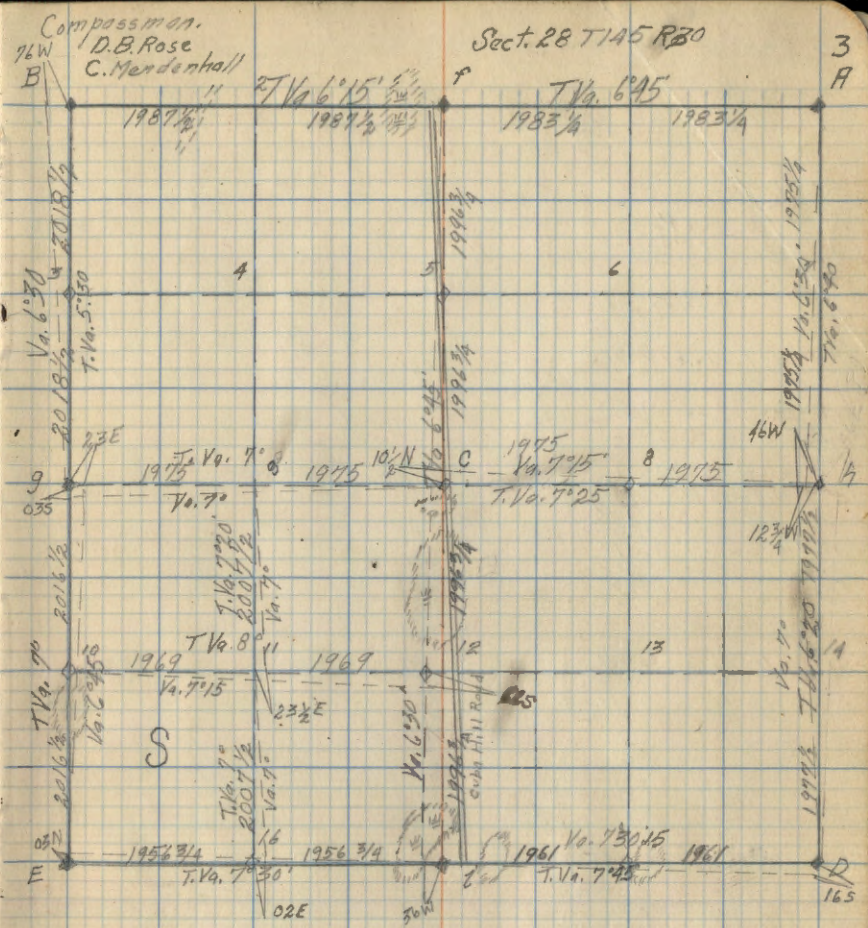
527 527
527 527

7/6
34

at G. G.L.O. Br. Iron 1" x 1" high
 6" Maple N 69° W 88.5 Pastor
 H. Maple 4" N 7° 15' E 47.5

529 528

7/11
34

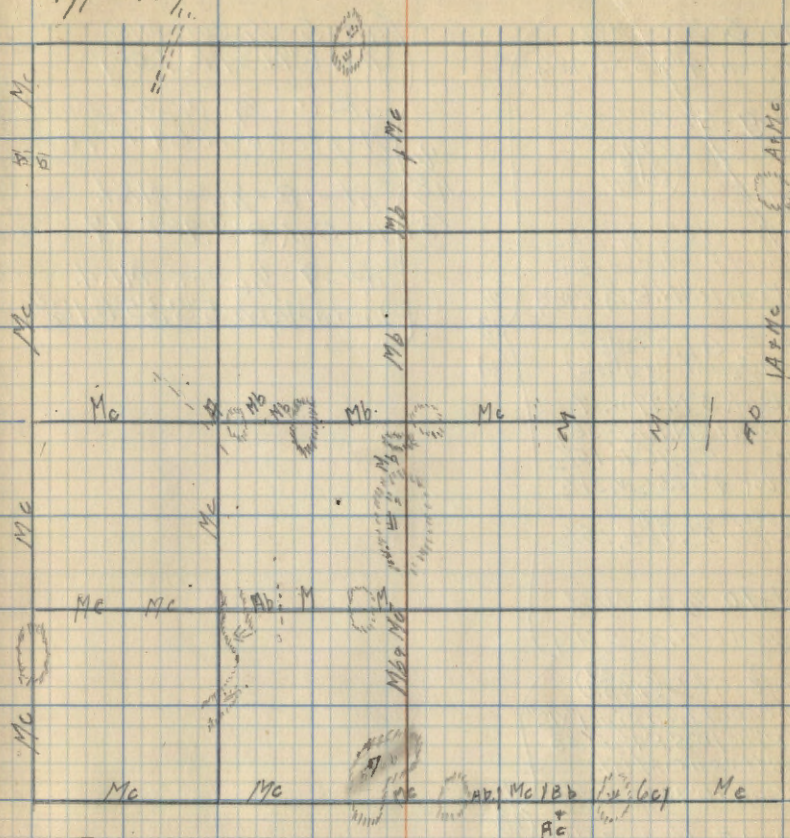


Note:
 East and North Line of SWSW Sec. 28
 corrected.

Type Map

Sec. 28-T/45R30

4



Remarks:

Most of the Mc type runs heavy with merchantable aspen. Scattered Norway and white pine and considerable balsam about sapling size SW 1/4 has a good many small swamps in it some of which have quite a little black spruce and tamarack in them also ash. land is quite rolling

Va. used on all corners - 7°

at-3-1/16 cor. MKd.
Aspen 14°N. 53°E. 48 1/4

at-9-GLO 1/2 cor.

Br. Caped Iron pipe
2" x 6"
W. Pine 16°S. 49°E. 22
Nailed Poster on above
W. Pine 10°N. 69 3/4°W. 98 3/4

at-E GLO
Br. Caped Cement
W. Oak 3°N. 77°W. 7
Aspen 12°N. 11 1/2°E. 36 1/4
" 5°S. 76°E. 15 1/2
W. Oak 4°S. 25 1/2°W. 31 1/2
Poster on BT
Aspen 5°S. 76°E. 15 1/2

at-10-1/16 cor. MKd.
Aspen 6°N. 35°E. 11 1/4

at-E-GLO
Br. Caped Iron pipe 1" x 12"
W. Pine 10°S. 84 1/2°E. 33
Poster on BK BT
W. Oak 10°N. 42°E. 16

at-15-1/16 cor. MKd.
Birch 4°N. 30 1/2°W. 27

at-16-1/16 cor. MKd.
Basswood N. 15°E. 15 1/2

at-8-1/16 cor. MKd.
Maple 6°S. 56°E. 14

at-5-1/16 cor. MKd.
Ash 6°N. 34°E. 15 1/4
at-C-1/4s Center of Se MKd
Maple 20°N. 69°E. 10.

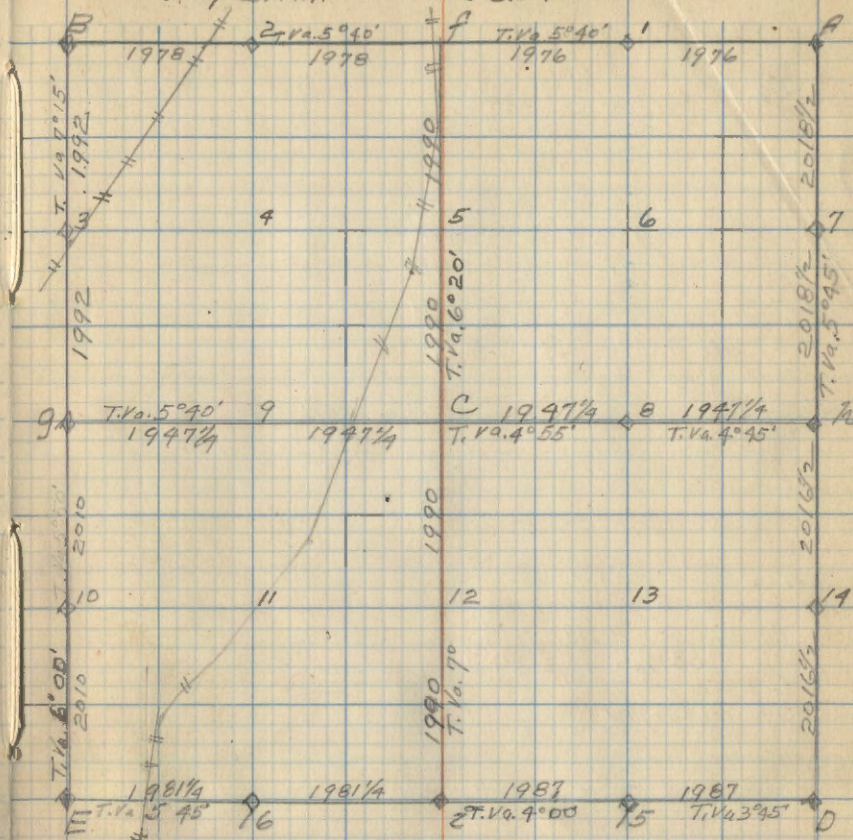
at-12-1/16 cor. MKd.
W. Oak 8°S. 42°E. 17

at-9-1/16 cor. MKd.
Twin Maple 5°S. 55°E. 12 1/4

J.A. Gjelthaug
Compassman.

Sec. 29-T145 N. R. 30 W.

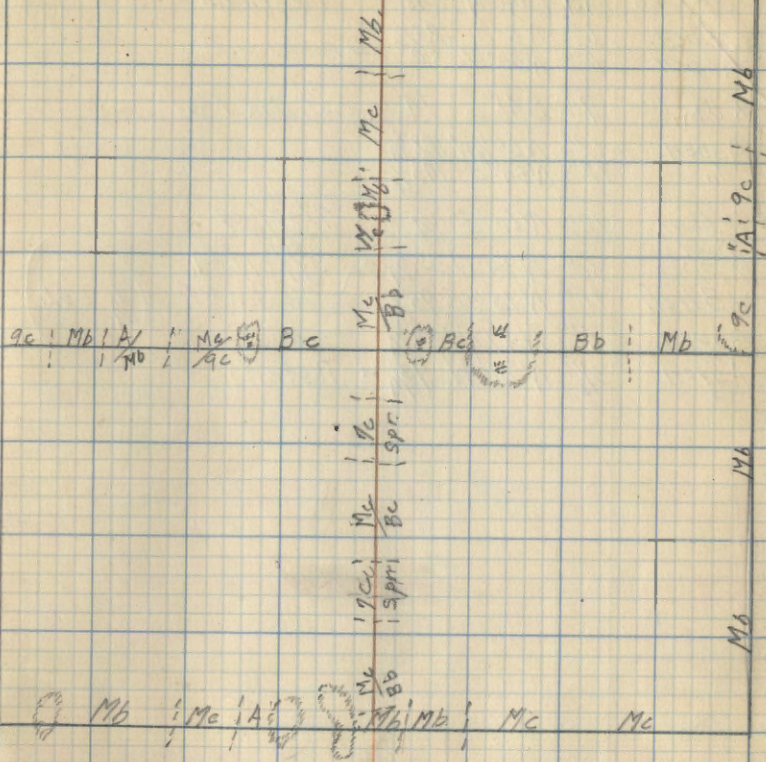
5



C. Mendenhall
Typ Map.

Sec 27 T145NR30W

10



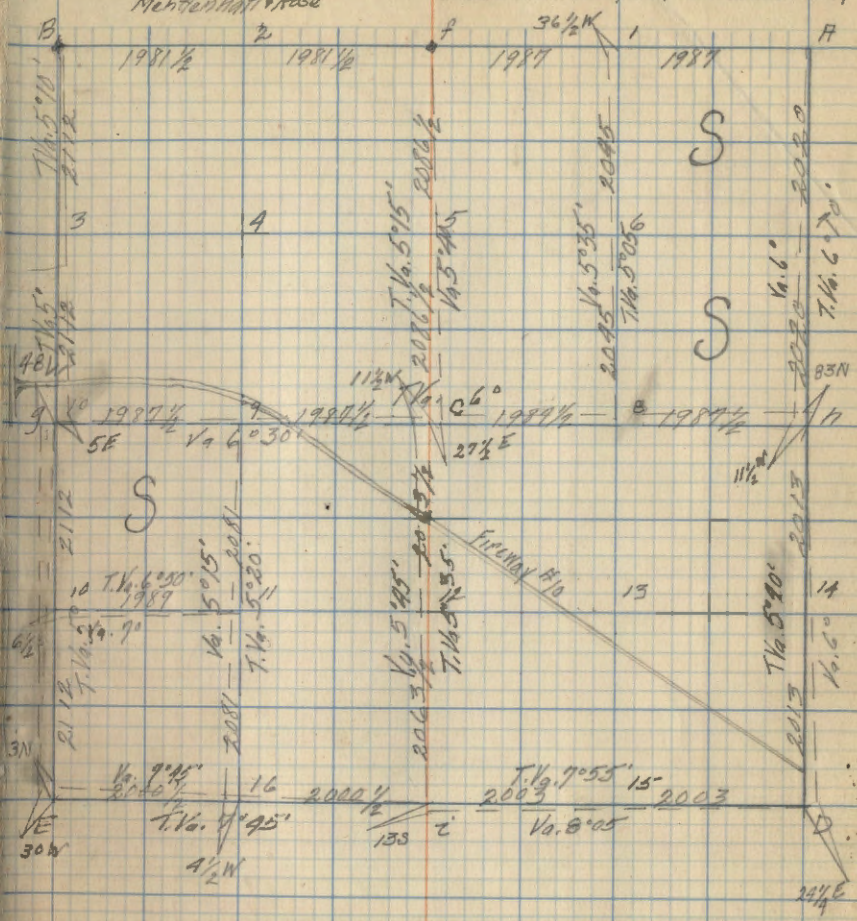
1st Var. On a 11 Bk. Corners corrected.
Corner Notes.

Cor.	Species	Dist.	Bearing	Dist.	Remarks
9	Aspen.	6"	N 8° E	123 1/2	→ Poster on Bk.
	Aspen.	6"	N 50° W	30	
3	R Oak.	9"	S 38° E	14	Set Oak Post
E	Aspen	12"	N 65 1/2° W	122 3/4	
	"	12"	N 54° E	173 1/2	
10	W/O oak	12"	N 60° E	1/4	7/20/34
2	Dead W. Pine	30"	N 54° W	35 3/4	7/31/34 Old Gov. Bk.
	W. Birch	10"	N 15 1/2° E	95 1/2	
	Aspen	6"	N 77 1/4° W	36 1/4	→ Poster
	Aspen	3 1/2"	N 31° W	7 3/4	

1/4 532

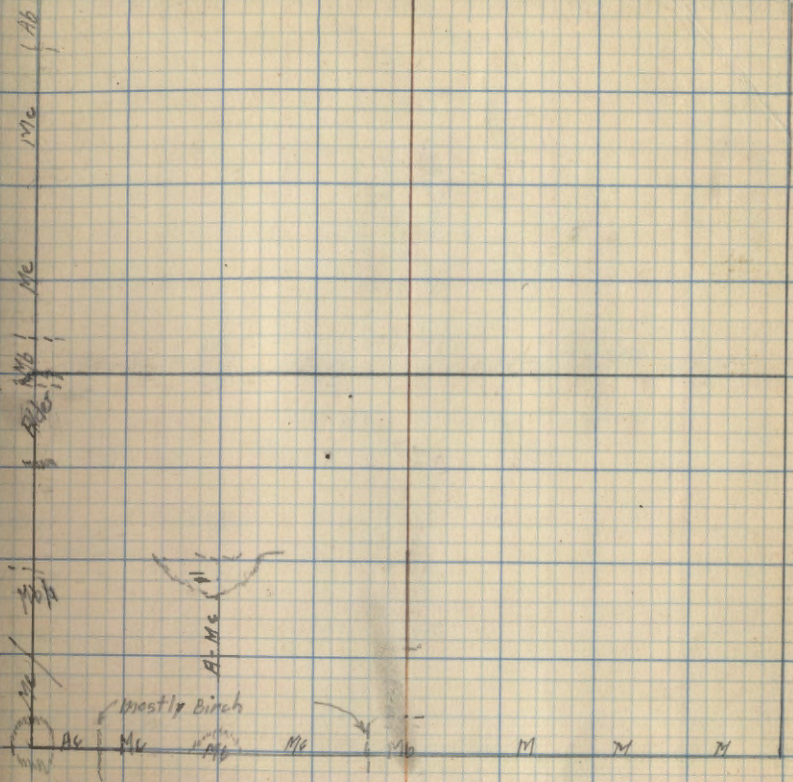
Compassman.
J. A. Gjelhaug
Nordenfjeld, Rose

Sec. 32 T. 145 N R. 30 W 11



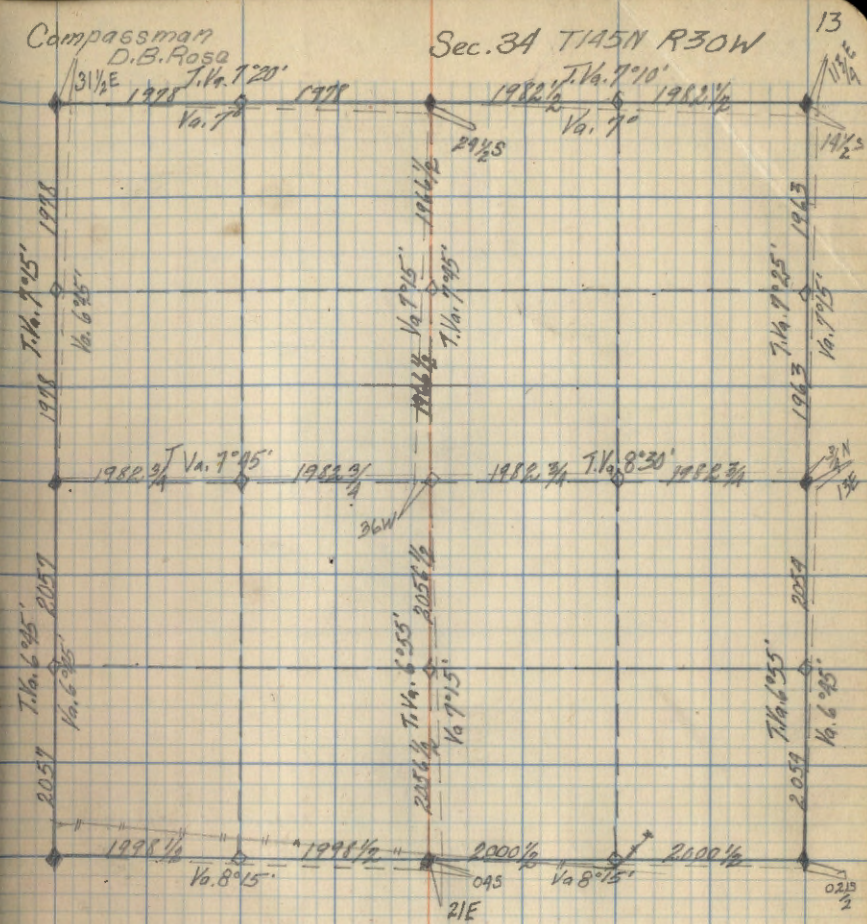
Rose
Typ Map

Sec. 32 T145N R30W 12



Compassman
D.B. Rosa

Sec. 34 T145N R30W



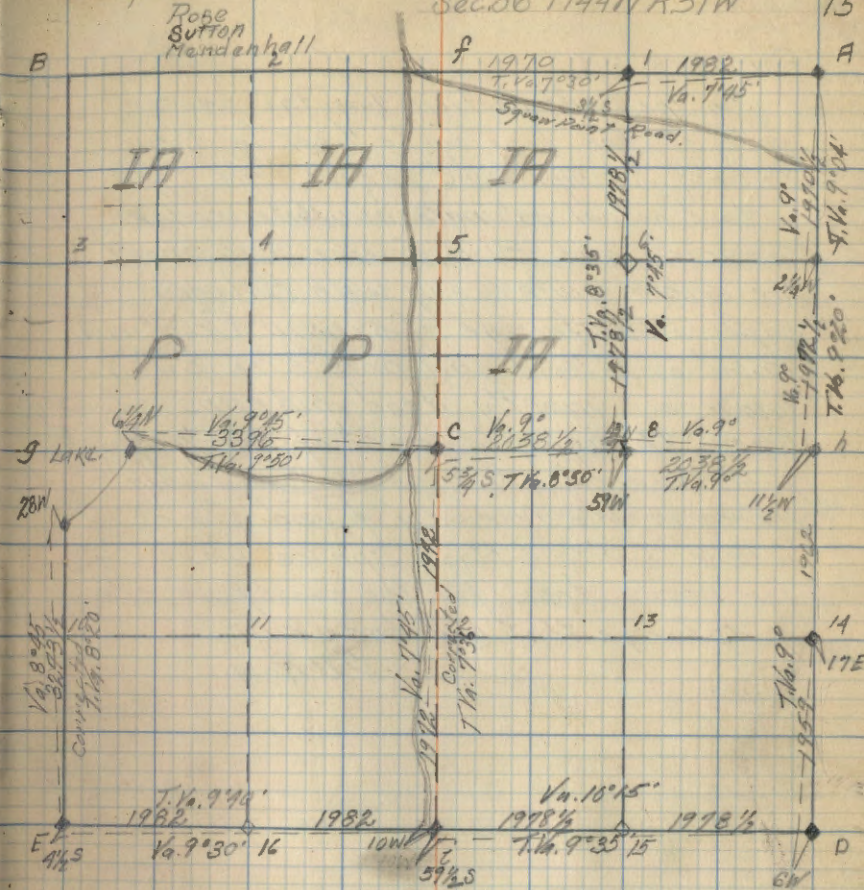
Corner Notes

Cor	Species	Dia	Bearing	Dist	Remarks	
7	Fsp. Elm W. Pine	8" 6"	N17°W N31 3/4°W	24 1/2 78 3/4	GLO. Br. Iron 1"x3" 8/12/34	(N 16 336/531)
h	Birch Elm W. Oak	6" 6" 5"	N75 1/2°E N65 1/2°W N56 1/4°W	44 3/4 18 3/4 27	GLO. Br. Iron 8/12/34	(N 16 536/531)
14	W Birch Hopen	3" 8"	N41 1/4°W N87 3/4°E	22 3/4 25 1/2	GLO. Br. Iron 1"x1" 8/13/34	(N 16 536/531)
D	W. Cedar W. Cedar	4" 9"	S46 1/4°W S33°E	26 1/2 25 1/2	GLO. Br. Iron 3"x1" B.T. at 370 14+90 on Road on line 6 1/2 k. E 12° W Cedar St Striked T149N R30W-3187, R31W	(N 16 536/531) T149N R30W
8	Dead Hopen ROak	15" 6"	S52 1/2°E N47 1/2°W	33 30 1/2	GLO. Br. Iron 1"x5" 8/12/34	(E 1/16 C 536)
C	Norway Norway	12" 9"	N57 1/4°E S41 1/4°W	42 1/2 33 3/4	GLO. Br. Iron 8/12/34	(C 1/4 536)
i	B. Gilced Birch	10" 6"	N133°E S15 1/4°E	13 1/2 11 1/2	GLO. Br. Iron 1"x8" 8/14/34	(N 16 536/531)
E	Tom Stp. Spr. Dead Spr Stp. Tom Stp. Cedar	8" 4" 6" 8" 6"	N40 1/4°E N39 1/4°W N89°W S51 1/4°W S69 1/2°E	25 11 5 3/4 34 3/4 56	GLO. Br. Iron 2"x1" Original B.T.s 8/15/34 Poster.	(T149N R31W 536/536) (52 51 7143 N)
i	East and West Line Mc Birch	9"	S77 1/5°E	98 1/2	GLO. Br. Iron 1"x5" 8/17/34	(S 1/2 C 536)
9	North & South Line Mc Aspen	16"	S26 15°W	383 1/2	GLO. Br. Iron 1"x4" 8/17/34	(WC 534/536 1144N R31W)

Compassman

Sec. 36 T144N R31W

15

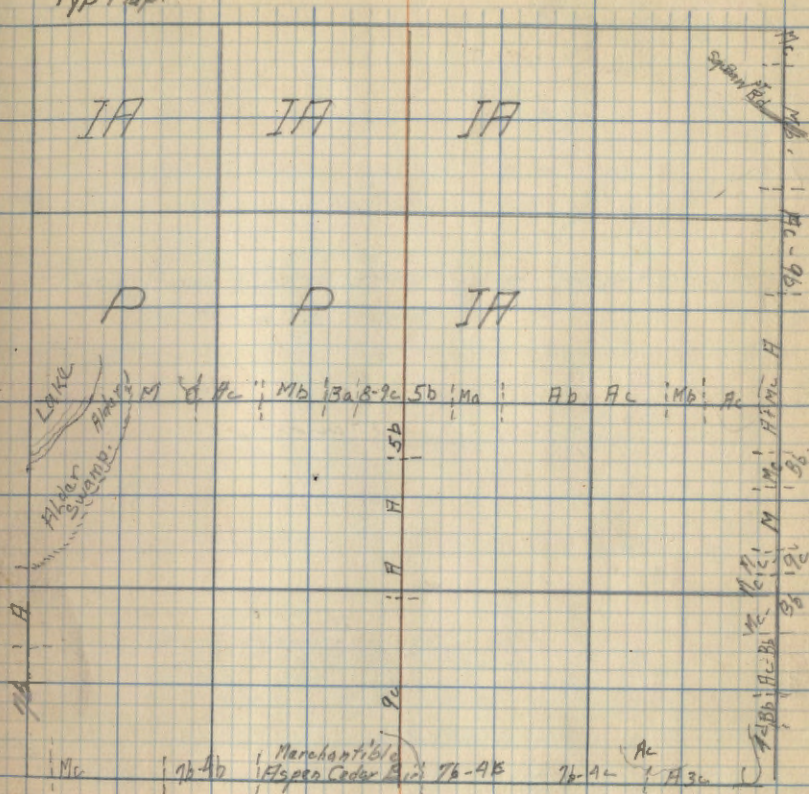


Remarks

On the South section line the greater part of the line up to $\frac{1}{4}$ cor is thru muskeg swamp. hard to give true type without actual estimate as white cedar Tamarack and Black Spruce run about the same quite heavy with Balsam saplings on fringe of swamp. Occasional Balm of Gilead and pole size Birch Tamarack mostly dead and runs sapling size. Through out most of SW $\frac{1}{4}$ good pine reproduction as well as some merchantable Norway. found places where white & black spruce were cut for seeds. trees for the most part were quite large that had been cut.

DB Rose

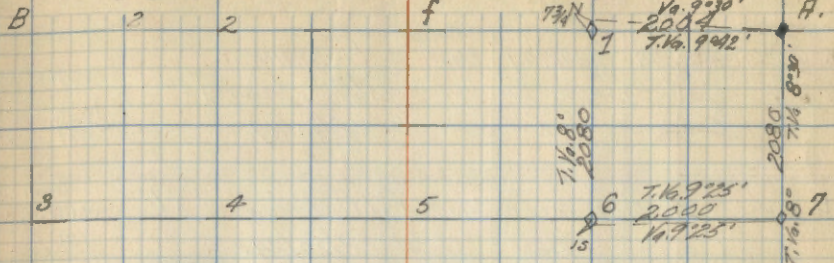
Typ Map.



Compassman.
D.B. Rose

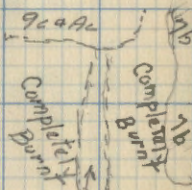
Sect. 2 T143N R31W 17

NE NE Sec. 2,



at Cor. 1 found a temporary $\frac{1}{16}$ Cor. Scribed accordingly
No Bearing Trees.

Typ Map.



Remarks.

Young Aspen coming up all along edge
of high land where burnt. Swamp
grass in the rest of burnt area.
Trees have been cut for seeds.

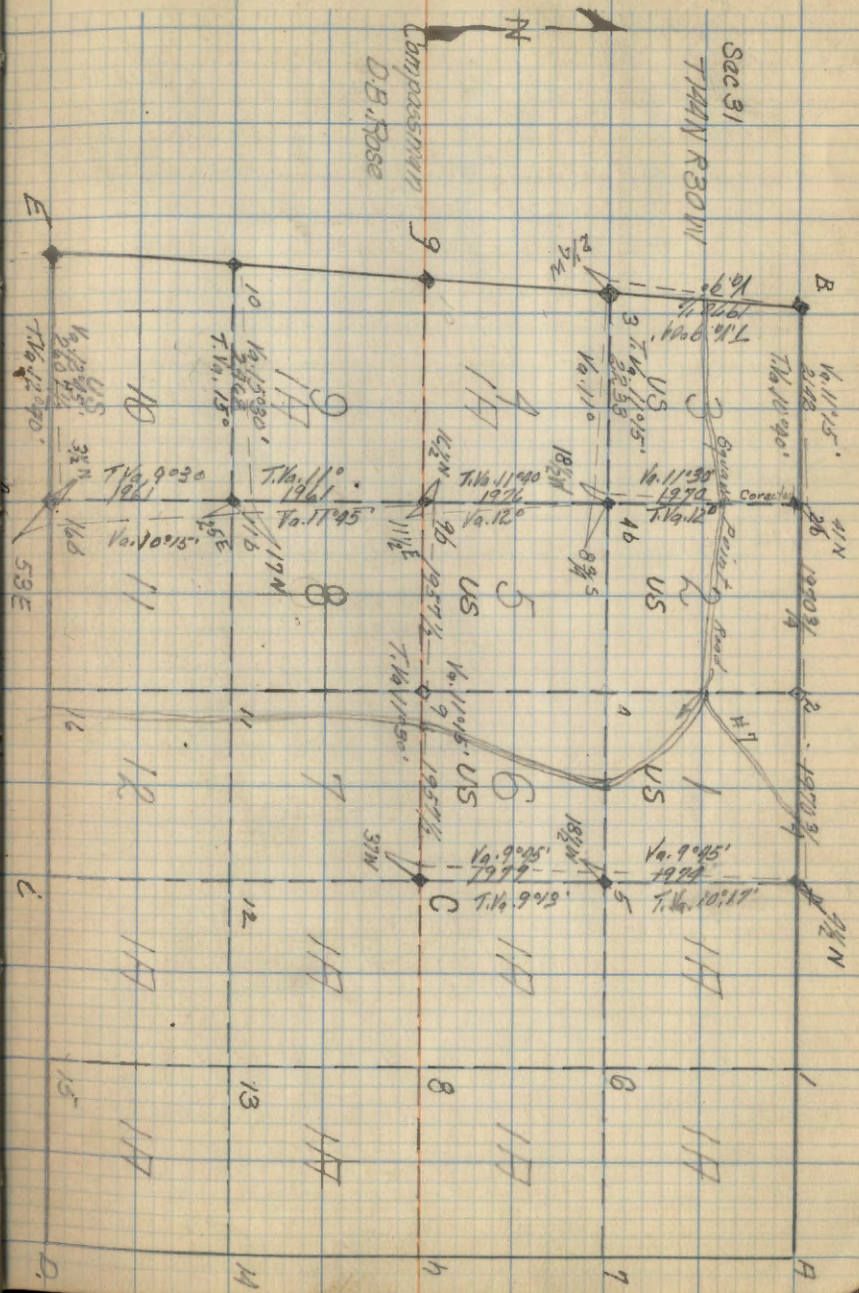
D.B. Rose.

Fire Killed
Aspen & White Pine Poles.

7° Variation Used on all corners.
 Corner Notes.

Sec. 31-T. 144 N. R 30 W. 18

Cor.	Specie	Dia	Bearing	Dist.	Remarks.
96	No Bearing Trees.				G.L.O. Br. Iron 1"X2" 8/20/34.
166	No Bearing Trees.				G.L.O. Br. Iron. 1"X1" 8/20/34.
116	No Bearing Trees.				G.L.O. Br. Iron. 1"X2" 8/20/34.
46	No Bearing Trees.				G.L.O. Br. Iron. 1"X3" 8/22/34.
26	No Bearing Trees.				G.L.O. Br. Iron. 1"X2" 8/20/34.
f	Elm Aspen.	7" 10"	N13°E S39°E	24 1/2 55 1/4	G.L.O. Br. Iron 1"X5" 8/21/34
5	W Birch	6"	N89°W	11 1/2	G.L.O. Br. Iron. 1"X3" 8/22/34
C	W Pine W Birch	14" 14"	S47°45'W N59°30'E	16 1/4 29 3/4	G.L.O. Br. Iron. 1"X5" 8/21/34



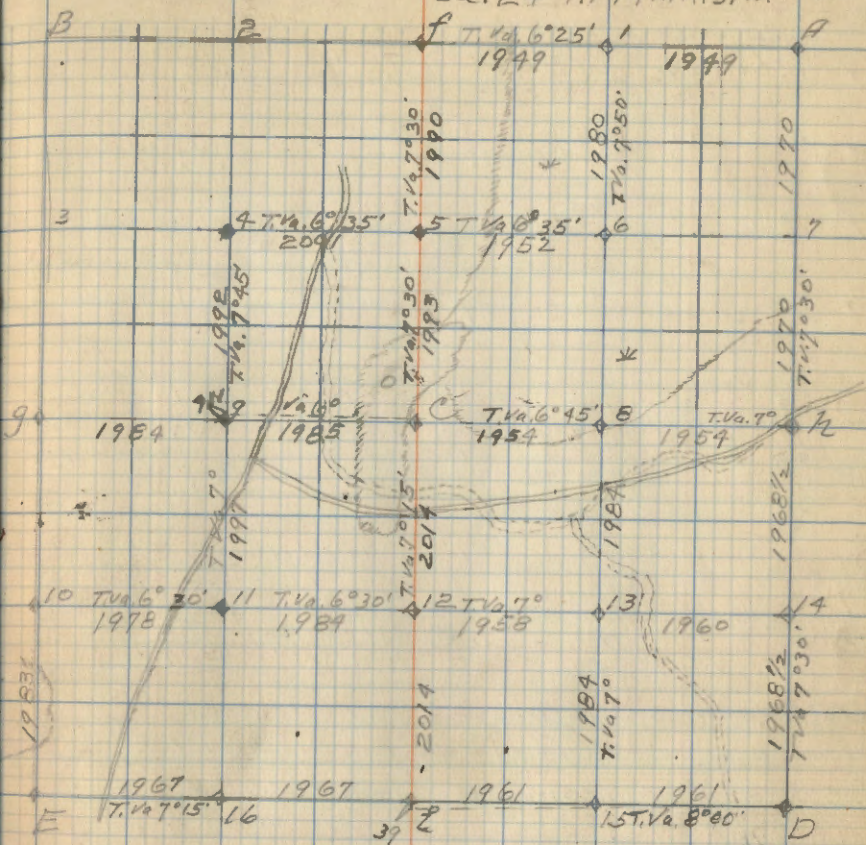
70% used for all Cor. Corner Notes

Cor. At	Spec.	Dia.	Bearing	Dist.	Remarks.
R	N. Pine	12"	S. 38° W.	71	G.L.D. Br. Cap Iron pipe 1" x 12" high.
	" "	12"	S. 19° E.	98 1/2	
D.	R. Oak	9"	N. 54° E.	54	G.L.D.
	" "	10"	S. 24° E.	35 1/2	Cement 6" x 6"
	" "	8"	S. 74 1/2° W.	38 1/4	
	Aspen	14"	N. 5° W.	139	
14	R. Oak	9"	S. 89° E.	11 1/4	Mkd. BT. 8/3/34 JAG.
C	Recorded in Sec. 25				
C	N. Pine	18"	S. 48 1/2° E.	104 1/2	G.L.D. Br. Iron. 1" x 6"
12	W. Pine Dead	14"	S. 5° W.	11 1/4	Mkd. BT. 8/7/34 JAG.
9.	J. Pine	3"	S. 79° E.	39	G.L.D. Br. Cap on Iron pipe 1" x 5" W. 1/60 324 8/6/34
9	N. Pine	14"	N. 11 1/2° W.	27 1/2	G.L.D. Br. Cap Iron 1" x 4" W. 1/60 323 324
	J. " Stump	18"	S. 62° W.	115 1/4	
5	J. Pine	3"	S. 20 1/4° E.	46 1/2	G.L.D. Br. Cap 1" x 10" (Bent) W. 1/60 S. 24 Mendenhall 8/6/34
	" "	4"	S. 39 1/2° W.	93 1/2	
f	N. Pine st.	20"	N. 47° E.	25	G.L.D. Br. Cap Iron 1" x 6" OTI 9. B.T.S. W. S. 13 48 24
	" "	20"	S. 3° W.	38	
A.	No. B.T.s.				G.L.D. Br. Cap Iron 2" x 8" W. S. 13 S. 29 S. 18
7	Set Cedar Post				
1.	Mkd. Tam.	6"	S. 62° E.	13	8/9/34
6.	" "	3"	N. 86° W.	5	JAG.
4	J. Pine	4"	N. 75° E.	26 1/4	G.L.D. Br. Cap Iron P. 1" x 6" W. 1/60 S. 24
11	N. Pine	20"	S. 42° W.	183	G.L.D. 1" x 6" W. 1/60 S. 24
	" "	20"	S. 35 1/2° E.	90 3/4	
10	Birch MKd	3"	N. 75° E.	13 3/4	G.L.D. Br. Cap Iron 1" x 8" No G.L.D. B.T.s. W. 1/60 S. 24
13	N. Pine	10"	S. 5° E.	3 1/2	Mkd. set post 8/13/34 JAG.

J.A.Gjelhaug

Sec. 24-T. 144 N. R. 31 W.

20



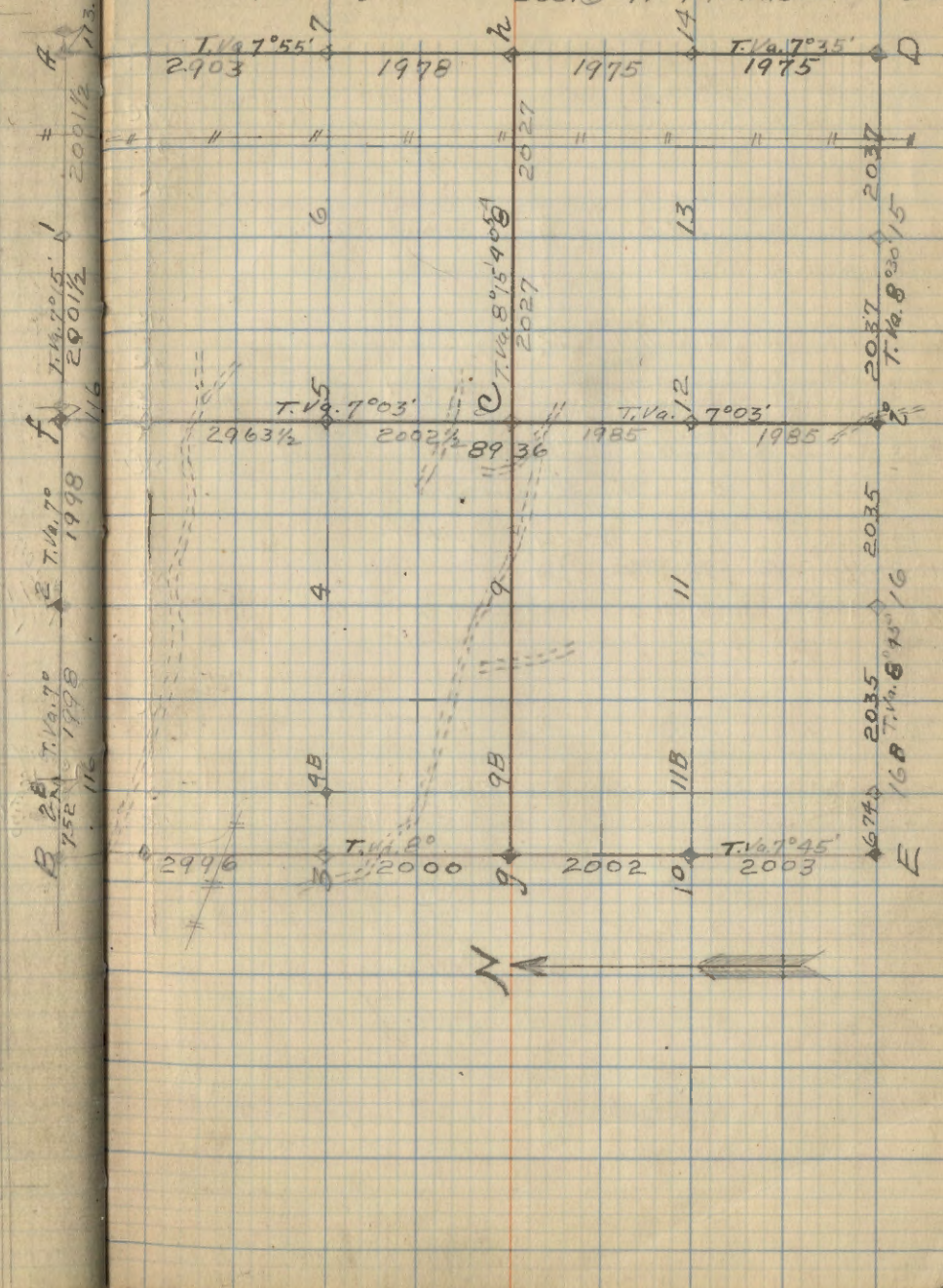
7° Va. used for all corners.

Corner Notes.

Cor. #	Spec.	Dia.	Bearing	Dist.	Remarks.
f	W. Oak	6"	S. 67° E	16 1/2	G.L.O. Brass Cap Iron 1" x 12" (331/436)
A	Aspen W. Oak	6" 7"	S. 69° W. S. 20 1/4° E	23 131	G.L.O. Sec. Cor. Br. Cap. 2" x 10" (532/8685)
1	Balsam	6"	S. 65° W.	19 1/2	Set Oak Post 3" I.A.G. Mkd. B.T. 8/20/34
N	Iron Wood Aspen Iron Wood	5" 6" 6"	S. 40° E. S. 45° W. N. 20° E.	9 1/4 21 6 1/2	G.L.O. Br. Cap Pipe 1" x 8" (56/85) Poster
D	Birch P. Oak W. " Maple	6" 5" 16" 6"	N. 15° W. N. 34 1/2° E. S. 7° E. S. 67 1/2° W.	19 1/2 19 3/4 6 1/2 34 3/4	G.L.O. Brass Caped Iron Pipe 2" x 11" (56/85/87/88)
14	Bass Wood	16"	N. 40° W.	11 1/2	Set Post Mkd. B.T. 8/24
7	Twin Ash	6"	S. 58° W.	12 1/4	Set Post Mkd. B.T. 1/34
2	Ash Birch	6" 9"	N. 4° W. S. 21 1/2° W.	54 1/2 20 1/2	G.L.O. Br. Cap Iron 1" x 8" (36/457)
16	Aspen	5"	N. 3° W.	5 1/2	Set Post Mkd. B.T. 8/24/34
10B	Set oak post Mkd. 6 1/4" E of E. East Boundary of lot.				
15	Balsam	3"	N. 55° W.	10 1/2	Set Post Mkd. B.T. 8/23/34
2	R. Oak	7"	S. 65° W.	14	Set Post Mkd. B.T. 8/24/34
5	Ash	5"	S. 2° W.	2 1/4	Set post Mkd. B.T. 8/27
8	Ash	5"	N. 26° E.	22 1/4	Set Oak Post Mkd. B.T. 8/27
12	Maple	4"	N. 5° E.	1 3/4	" " " " 34
9	Elm	6"	S. 59° E	36	Set Oak Post. Mkd. B.T.
9B	Set Oak Post.				
C	P. Oak	5"	N. 14° E.	19 3/4	Set Oak Post Mkd. B.T.
2B	Set. W. Oak Post. 7.52 chs. East of Sec. Cor. at B. 8/28/34				

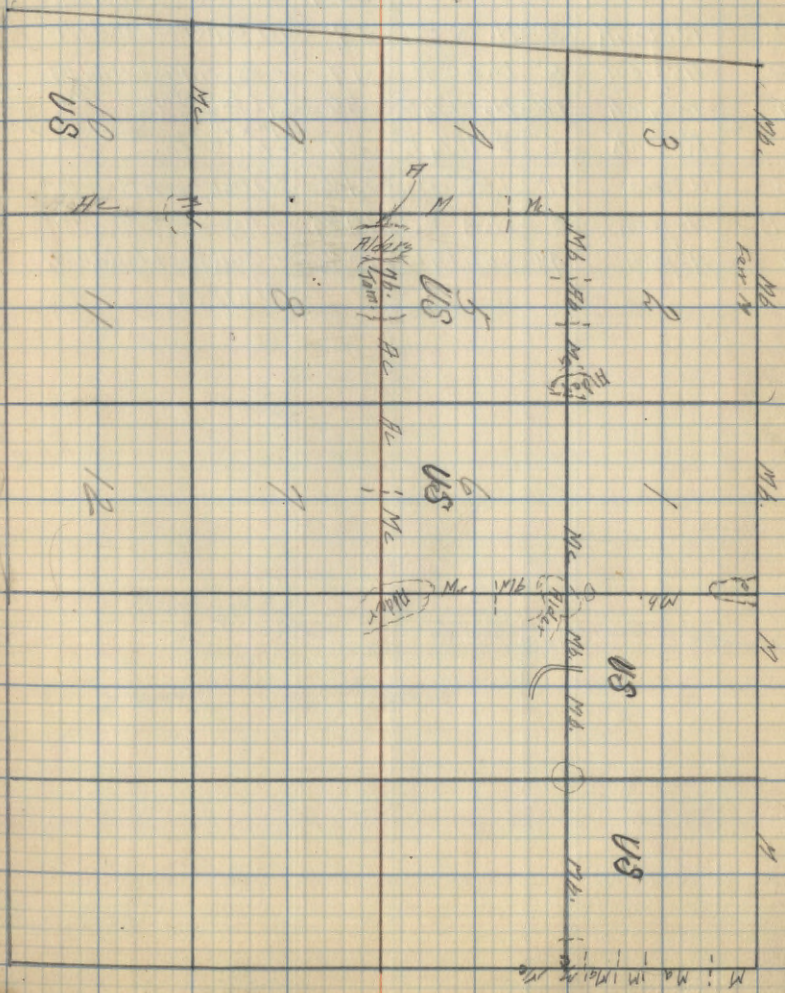
J.A. Gjelhaug

Sec. 6 - T. 144 N. R. 30 W. 22



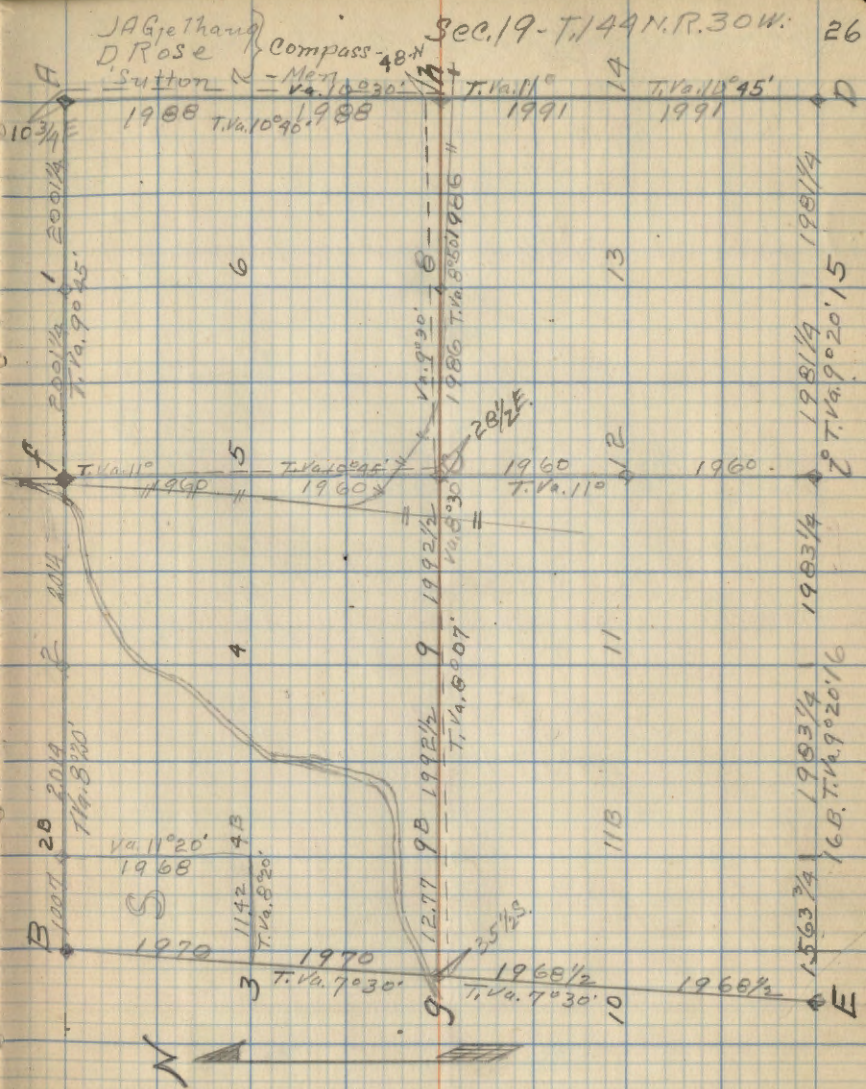
Type Map

Sec. 30.
T144N R30W
Rose
Mendenhall

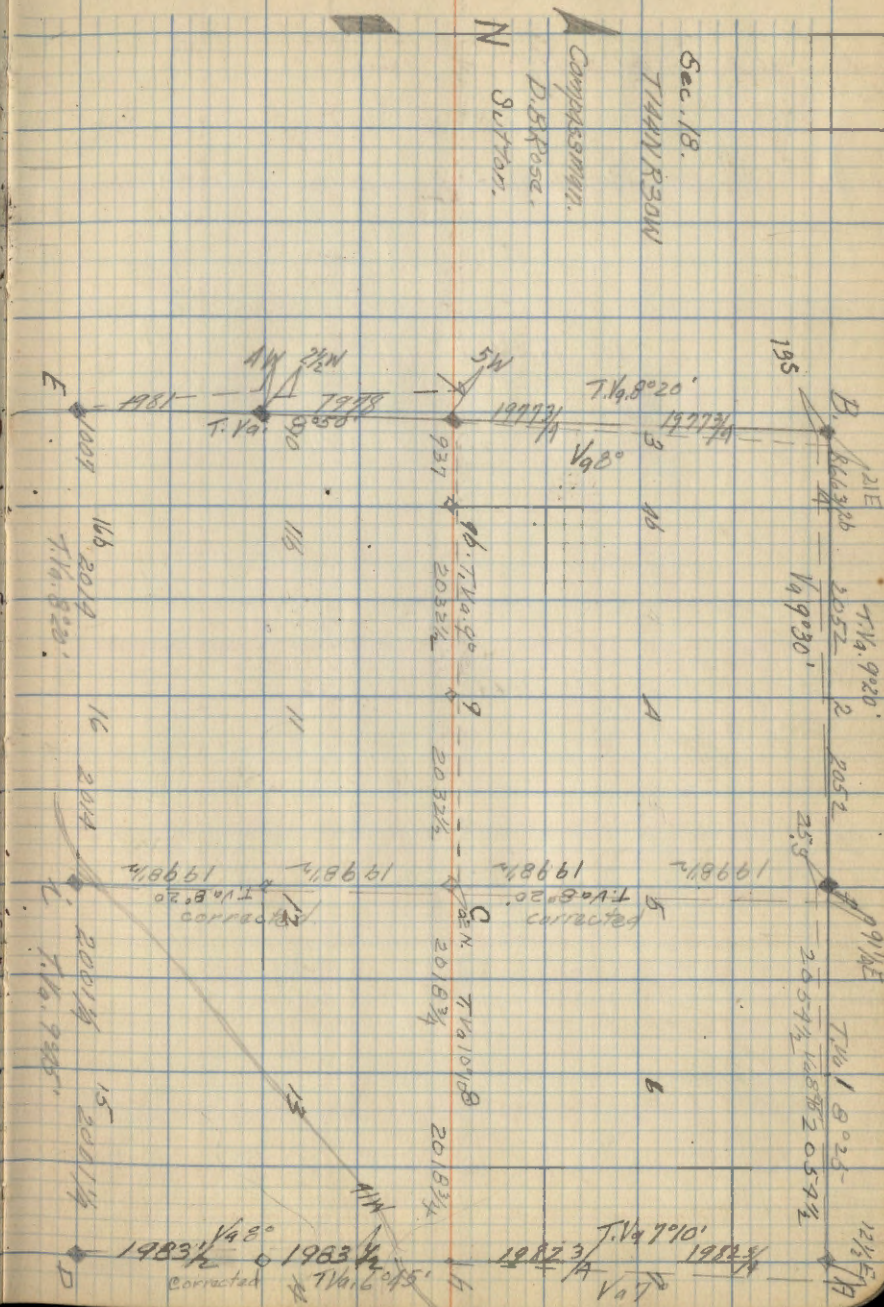


Corner Notes.

Cor. At	Spec.	Dia.	Bearing	Dist.	Remarks.
f	Birch	4"	N. 61 1/2° E.	42 1/2	G.L.O. Br. Cap from 1" x 6" ^{S. 18} _{4. 3. 19}
	W. Oak	24"	S. 72° W.	45 1/2	Old Govt. BT. Poster
A	R. Oak	10"	S. 17 1/2° W.	74	G.L.O. Br. Cap ^{S. 18} _{S. 19}
	" "	9"	S. 61 3/4° E.	55 1/2	from 2" x 9"
	EXM	5"	N. 24 3/4° W.	29 1/2	Poster on BT.
	Aspen	7"	N. 52° E.	73	8/29/34
12	Bass Wood	10"	S. 17° W.	28 1/4	Set Oak Post MKd. BT.
C	W. Oak	5"	N. 3° E.	7	Set Oak Post MKd. BT.
8	Aspen	8"	N. 50° E.	19	" Aspen Post MKd. BT.
11	Birch	16"	N. 17 3/4° E.	56	G.L.O. Br. Cap ^{1/4} _{S. 19}
	R. Oak	6"	S. 72 1/4° E.	29	Poster.
5	Aspen	11"	S. 82° W.	21 1/2	Set Oak Post MKd. BT.
9-B	Aspen	4"	N. 4° E.	14 3/4	" Aspen Post MKd. BT.
9	Aspen	4"	South	13 1/2	" Oak Post MKd. BT.
					8/31/34



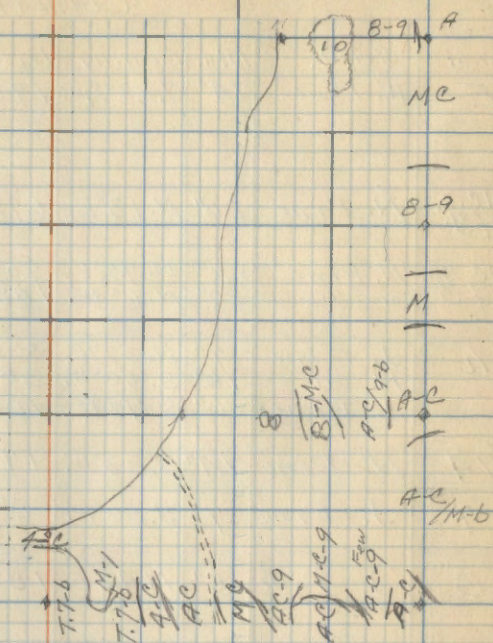
Cor	Species	Di	Bearing	Dist	Remarks.	Description
10.	Aspen. W. Pine	10" 6"	S8°45'W N11°E	113 3/8 38	GLO. Br. Iron. 1" x 6" 8/30/34.	5 1/2 515 518
9	Jackpine Aspen.	6" 6"	S87°15'W N60°15'E	30 5 1/4	GLO. Br. Iron. 1" x 6" Poster 8/30/34	1/2 513 518
B.	Norway W. Pine Aspen.	18" 18" 6"	N123°15'W N21°45'E S43°15'E	57 95 43 1/2	GLO. Br. Cement 6" x 2" 8/31/34	71444 512 57 513 518 A. 314 R. 30W
	Fallen Pine W. Pine T. W. Pine	18" 22"	S9°W S 77°15'W	27 49		
	Poster Aspen.	5"	N 7°W	7 1/4		
f	Ash Aspen.	12" 12"	N 77°15'W S40°15'W	52 38 1/2	GLO. Br. Iron. 1" x 7" 9/4/34	1/4 519 518
h.	WOODK. Poster Aspen	10" 12"	S59°E S53 1/4°W	66 1/2 49 1/2	GLO. Br. Iron 1" x 6" 9/4/34.	1/4 518 517
A.	Ash. Poster W. Oak. H Maple	12" 20" 11"	S26°E N89°W N180°15'E	73 1/2 39 1/2 71 1/2	GLO. Br. Iron 2" x 8"	57 58 58 57 518 517



Type Map
J.B. Gethaus.

Sec. 13 - T. 14 N. R. 31 W.

31



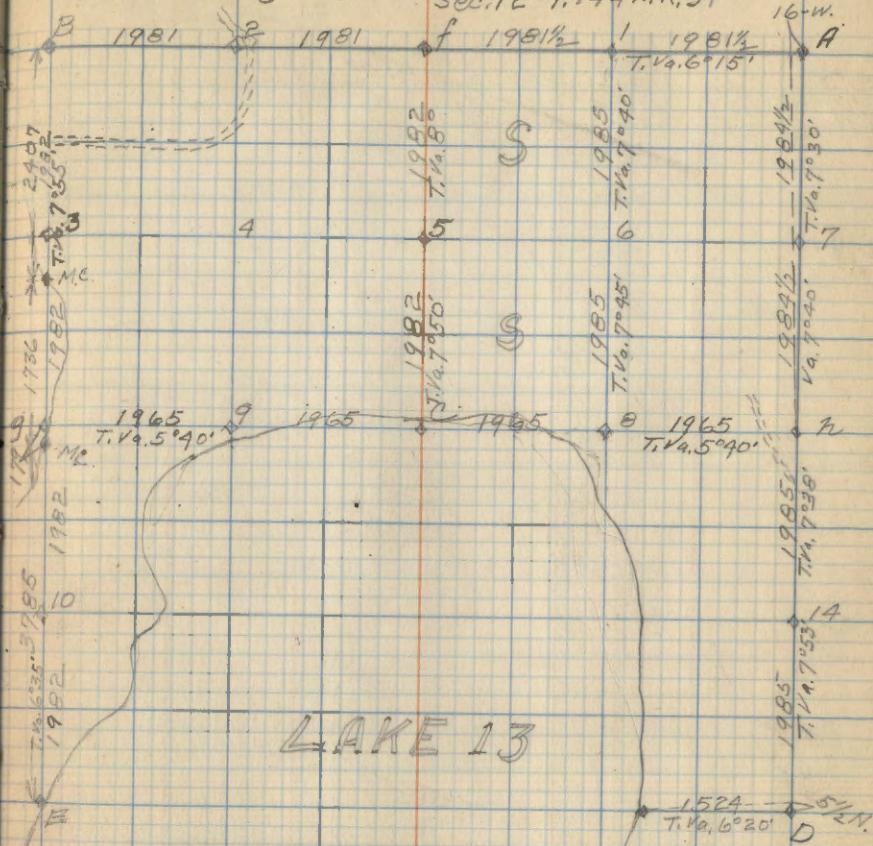
Corner Notes

Cor. #	Spec.	Dia.	Bearing	Dist.	Remarks
E	W. Pine	14"	S. 23° W.	193	G.L.O. Br. Caped Iron Pipe 2" x 6" S11 S12 S19 S13 MC
M.C. S. of 9.	N. Pine	20"	N. 13° E.	69½	G.L.O. 1" x 10" MC S11 S12 9/5 34
M.C. So. of 3	N. Pine	20"	N. 7½° E.	90½	G.L.O. 1" x 10" MC S11 S12 9/34
	N. Pine	20"	N. 6° W.	182	G.L.O. 1" x 10" MC S11 S12 9/34
n	J. Pine	7"	N. 39° E.	30½	G.L.O. Br. Cap 1" x 12" MC S12 S17 9/6 34
	N. "	18"	S. 50° W.	38	Placed Post.
	J. Pine	6"	S. 70° E.	10	
14	N. Pine	14"	S. 23° W.	17	Set Oak Post MKd. BT.
7	J. Pine	7"	S. 56° W.	8¼	Set Aspen Post MKd. BT.
3	J. Pine	5"	N. 42° E.	18½	Set Oak Post MKd. BT. 9/7
9	N. Pine	18"	N. 89° E.	44	Set Oak Post MKd. BT. Nailed Post on B.T. 34
8	W. Oak	4"	N. 3° E.	5¾	Set Oak Post MKd. BT.
6	B. Spruce	4"	N. 5° E.	3.	Set Cedar Post MKd. BT.
C	N. Pine	22"	N. 3° W.	730½	Set Oak Post MKd. BT.
9	Birch	3"	S. 75° E.	21	Set Aspen Post w. BT. 9/10/34
5	Tam.	6"	N. 34° W.	49½	Set Oak Post MKd. BT. 9/11/34

J.A. Gjelhaug

Sec. 12 - T. 144 N. R. 31

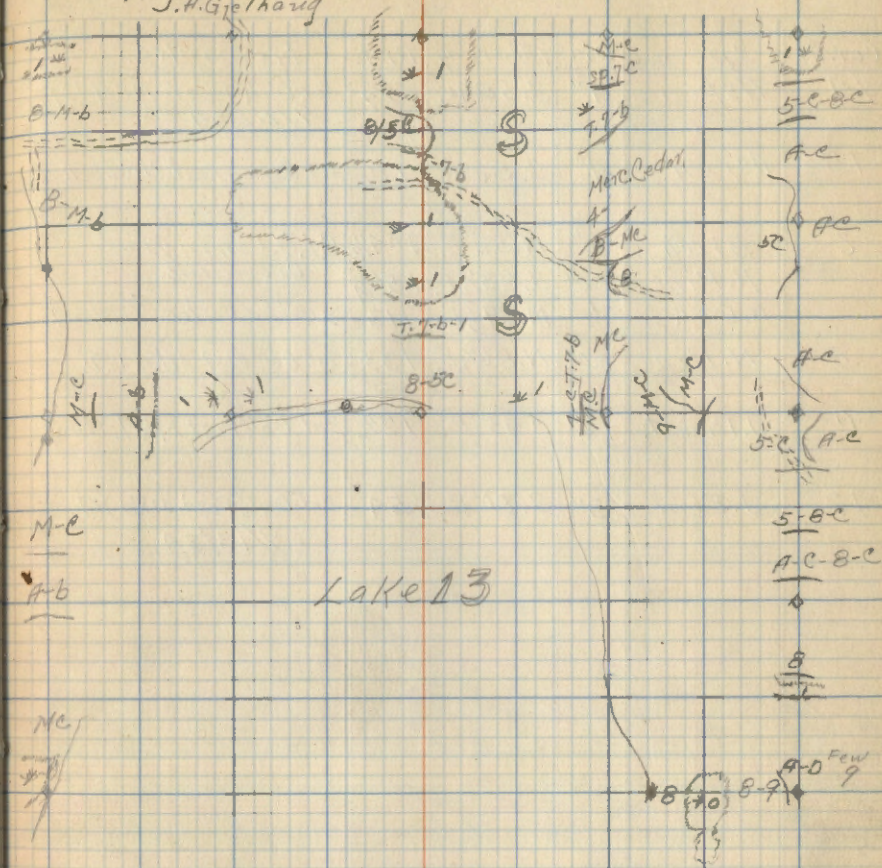
32



Type Map
J.A. Gjelhaug

Sec. 12-T. 144N. R. 31W.

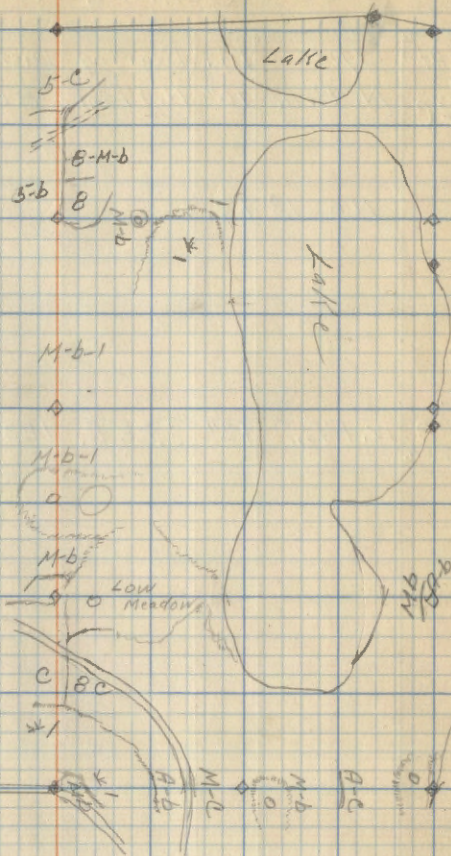
33



Type Map.
J.A. Gjelhaug

Sec. 11 - T. 144 N. R. 31 W.

35

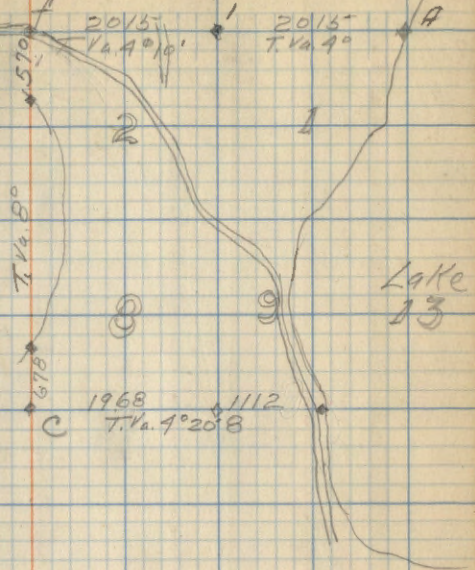


CORNER NOTES.

Cor. At	Spec	Dia	Bearing	Dist.	Remarks.
M.C. N. of C.	N. Pine	10"	N. 47 $\frac{3}{4}$ ° E.	80	G.L.D. Br. Caped Iron Pipe 1" x 2 1/2" high S.M.C. 3/14
C	No. 13. T.S.				G.L.D. Br. Caped. Iron Pipe 1" x 8" S.M.C. C 519 9/13/34
B					Set Aspen Post 9/14/34
M.C. E. of B 11.2 ch.	W. Pine	12"	S. 28° E.	123 $\frac{1}{2}$	G.L.D. 1" x 5" S.M.C. C 514

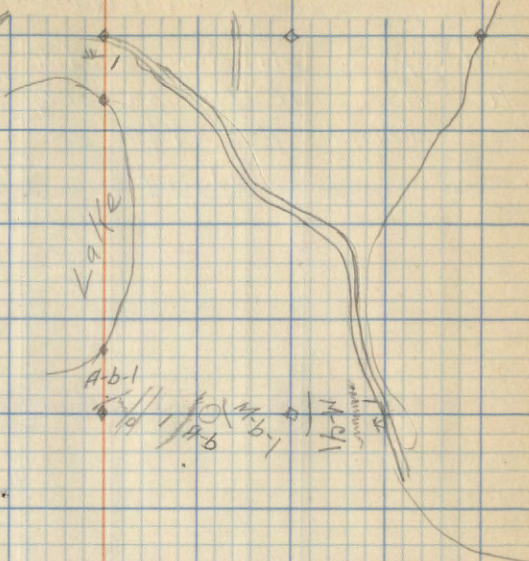
J. A. Gjelhaug.

Sec. 14 - T. 144 N. R. 31 W. - 36



Type Map.
JAG Githang

Sec. 14 - T. 144 N. R. 31 W. 37



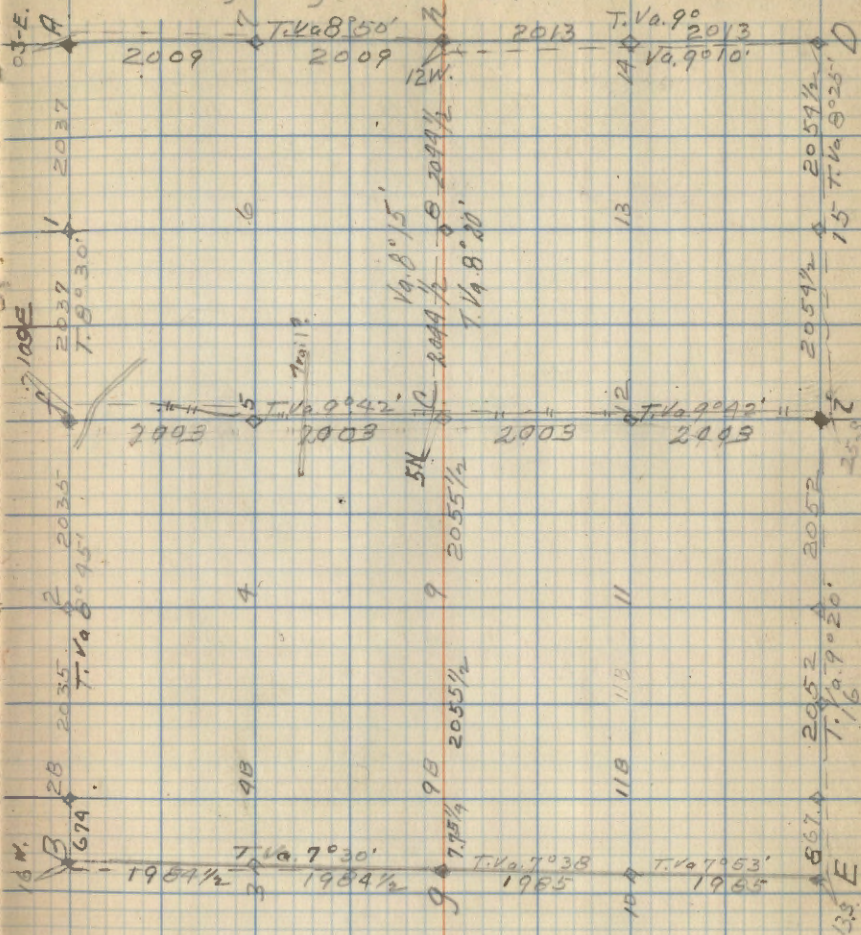
CORNER NOTES.

Cont. At.	Spec.	Dia	Bearing	Dist.	Remarks
N.	Asn	16"	N. 0° 15' N.	30 1/4	910. (19/28)
	H. Maple	7"	S. 54 1/4° E.	28	1" x 6" (27/28)
			D.J. Sutton		Poster on S.E. CT. 9/11/39

J. A. Gjelhaug.

Sec. 7-T. 144N. R. 30W.

38



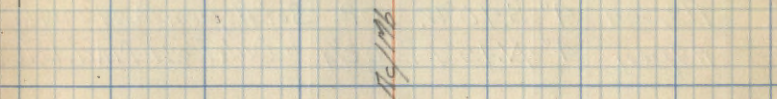
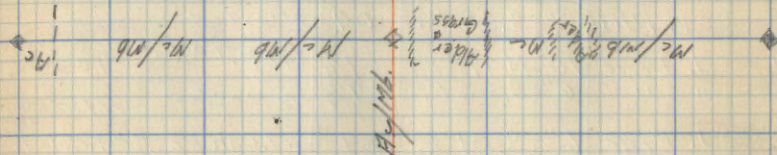
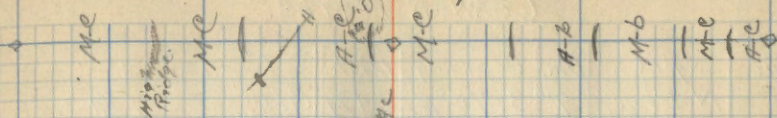
Compassman.

A. B. Rose

D. J. Sutton.

Type Map

Sec. 7-T.144N.R.30W. 39



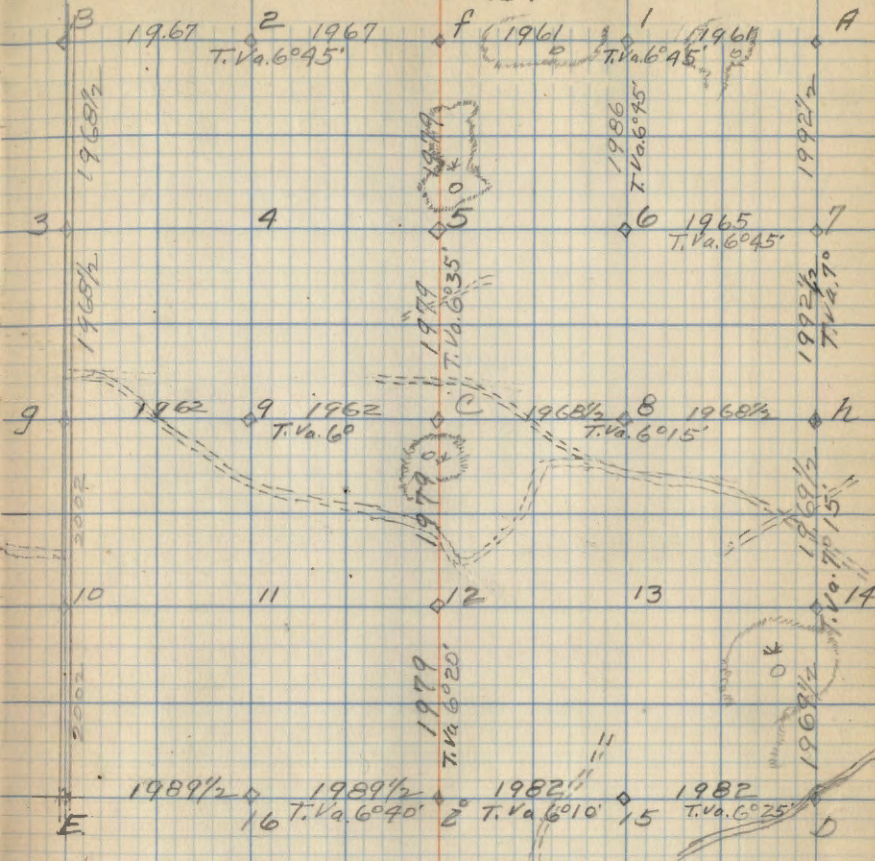
CORNER NOTES.

Cor. No.	Spec.	Dia.	Bearing	Dist.	Remarks
h	N. Pine	9"	S. 70° E.	64 3/4	G.L.D. (3/4) (334/335)
	N. "	14"	S. 51° W.	322 1/2	1" X 5"
	J. Pine	12"	N. 30° E.	14	→ Poster.
14	R. Oak	4"	N. 23° E.	25 1/2	Set Oak Post MKd. B.T. 9/17/34
B	W. Pine	9"	N. 41° W.	59 3/4	G.L.D. Cement
	" "	6"	S. 80° W.	110	6" X 3" (528/527) (533/534)
	J. "	8"	S. 37° E.	214 1/2	
	N. "	16"	N. 67° E.	238	
	Willow	3"	S. 45° W.	04	→ Poster
f	J. Pine	10"	N. 47 1/2° E.	67 1/2	G.L.D. 1" X 10" (327) (453/39)
	" "	6"	S. 62° E.	57 1/4	→ Poster 9/18/34
2	J. Pine	6"	S. 01° E.	64	Set Oak Post MKd. B.T. 9/19/34
5					Set Oak Post No B.T.
12	Aspen	4"	S. 40° W.	02	Set Aspen Post MKd. B.T.
16	Aspen	4"	N. 45° E.	02 1/4	" Oak Post MKd. B.T.
9.					Set Oak Post No B.T.
9					Hub in center of Road. 9/20/34
B					Set Oak Post No B.T.
C	N. Pine	12"	N. 12° W.	48	Set Oak Post MKd. B.T.
A	orig. J. Pine	12"	N. 74 1/2° W.	47 1/2	G.L.D. Cement
	N. "	12"	N. 76 1/2° E.	129 1/4	6" X 3" (527) (526) (534) (535)
	J. "	12"	S. 05 1/2° E.	23	
	J. "	12"	S. 65° W.	27 1/2	
	Jack Pine	7"	S. 25° E.	10 1/2	→ Poster 9/25/34
1	J. Pine	5"	S. 50° E.	6	Set Oak Post MKd. B.T.
6	R. Oak	4"	S. 36° W.	28	" " " " "
7					" Aspen Post 9/26/34

J. A. Gjølhaug.

Sec. 34-T. 146 N. R. 30 W.

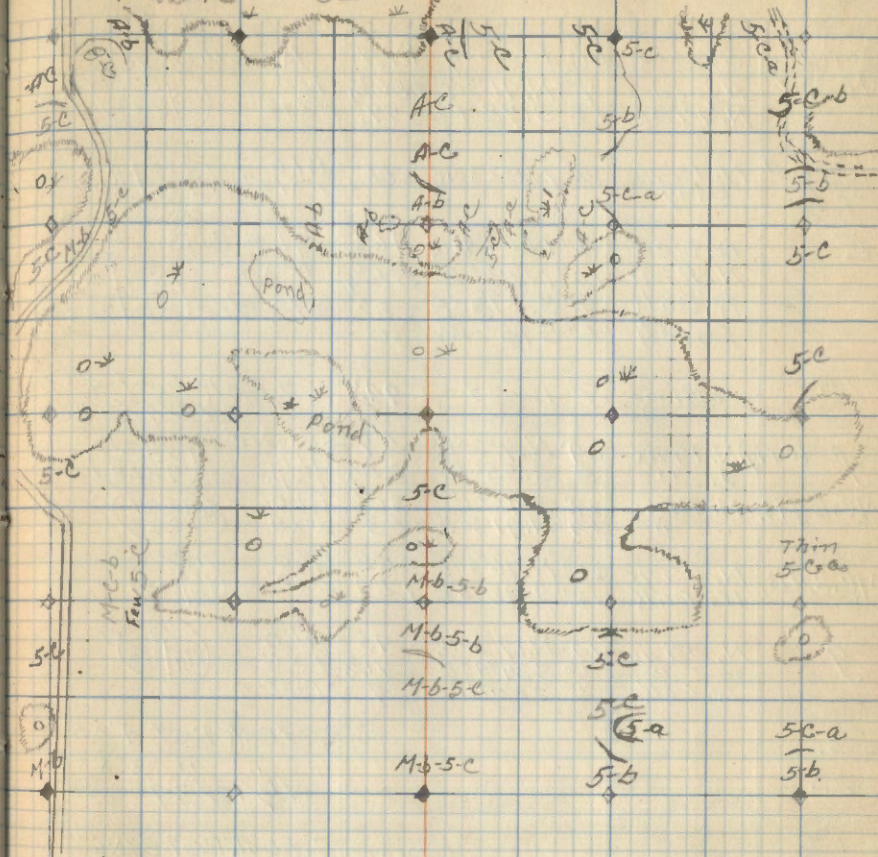
40



J. A. Gjelvang
Type Map

Sec. 27-T146N.R.30W.

43

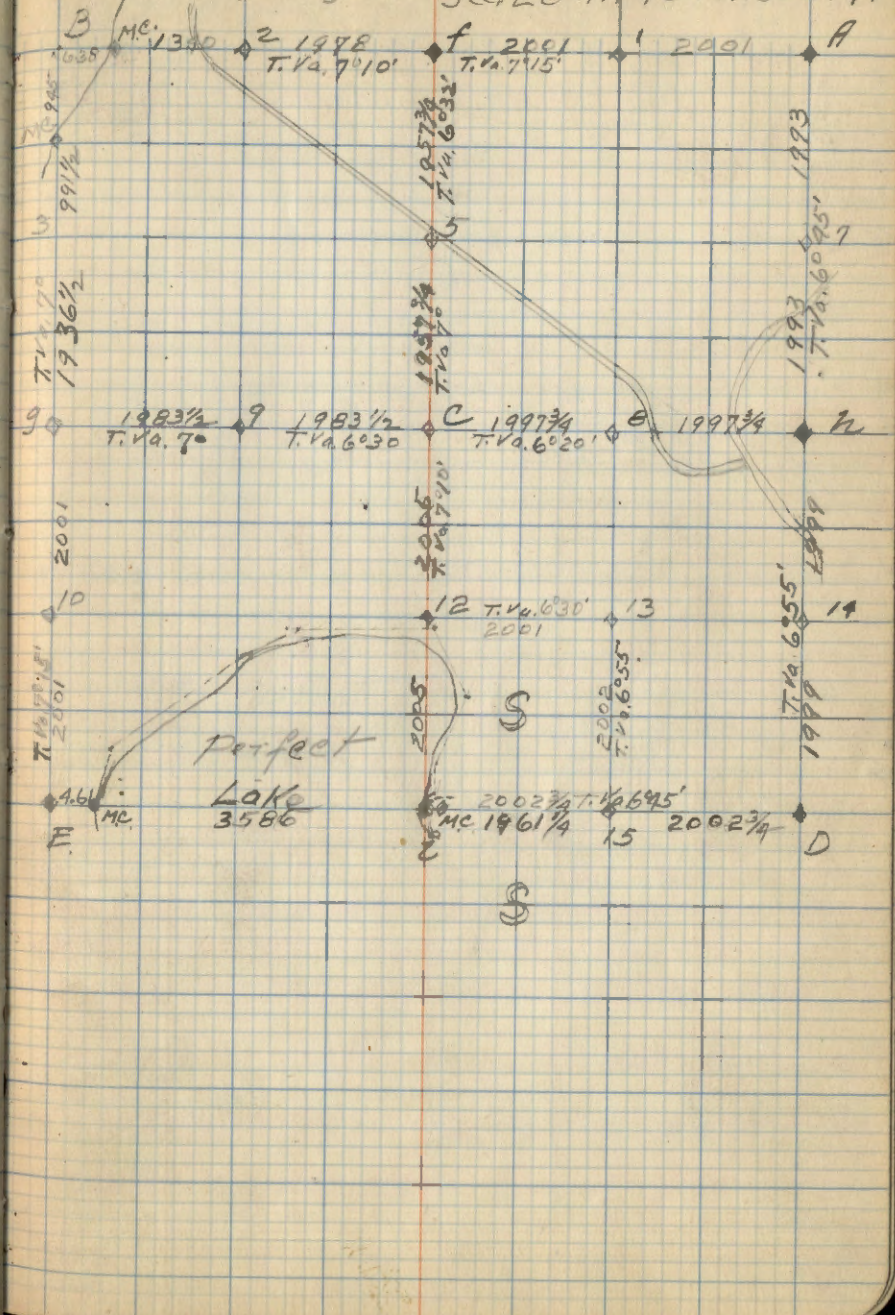


Corner Notes

Cor. At.	Spec.	Dir Bearing	Dist.	Remarks
MC at Z	Aspen N. Pine	7" N. 41° 30' E 18" S. 78° E.	180 3/4 377.	G.L.O. 1" x 12" (S28/S33)
MC. East of E.	N. Pine orig.	24 N. 82° 30' W.	388 1/2	G.L.O. 1" x 12" (S28/MC/S33)
E	W. Oak N. Pine R. Oak Birch	4" N. 69° 45' W. 10" N. 88° E. 9" S. 81° 30' E. 6" S. 15° W.	46 1/2 58 1/4 28 1/2 30	G.L.O. Cement 6" x 4" > Poster. (S29/S28/S32/S33)
15	J. Pine	9" West	94 3/4	Set Oak Post 4" x 5" 10/9/39
f (Opp)	N. Pine J. "	24" N. 9° 30' W. 8" S. 55° E.	57 28 1/2	> Poster G.L.O. (S21/S28)
MC. E. of B.	N. Pine "	22" S. 46° E. 29" N. 41° 30' E.	36 1/2 83	G.L.O. 2" x 8" (MC/S21/S28)
MC. S. of B.	N. Pine W. Oak	28" N. 76° 30' E. 12" S. 48° 15' E.	258 154	G.L.O. 2" x 8" (MC/S29/S28)
9	N. Pine " " R. Oak	14" N. 19° 30' W. 7" S. 29° 45' E. 5" South.	45 7 1/4 4	G.L.O. 1" x 6" > Poster (S29/S28)
3.				Set Oak Post 4" x 5"
2.				" " " " " 3" x 5" 10/10/39
12		open		Set Oak Post 3" x 6" 10/12/39
10	J. Pine	8" N. 02° E.	39 3/4	Set Oak Post MKD BT.
9	Aspen	5" N. 23° W.	13 1/2	" " " " "
C	Aspen	5" S. 53° 15' W	12(?)	" " " " "
5				Set Oak Post
8				Set Cedar Post 5" x 5" 10/15/39
13		open		set Oak Post 3" x 6" 10/16/39
15				Set Oak Post 4" x 5" 10/23/39

J.A. Gjethoung.

Sec. 28-T. 146 N. R. 30 W. 44



Corner Notes.

M.C. at
 11.1906 S.W. of Elm 14" N. 30° E. 48 G.L.O.
 D " 10" S. 89° E 161. 2' x 8'

(S 29
 S 33)

J.A. Gjelhaug.

Sec. 29-T. 146 N. R. 30 W.

46

M.C. 1119
 T. Va. 7°
 D

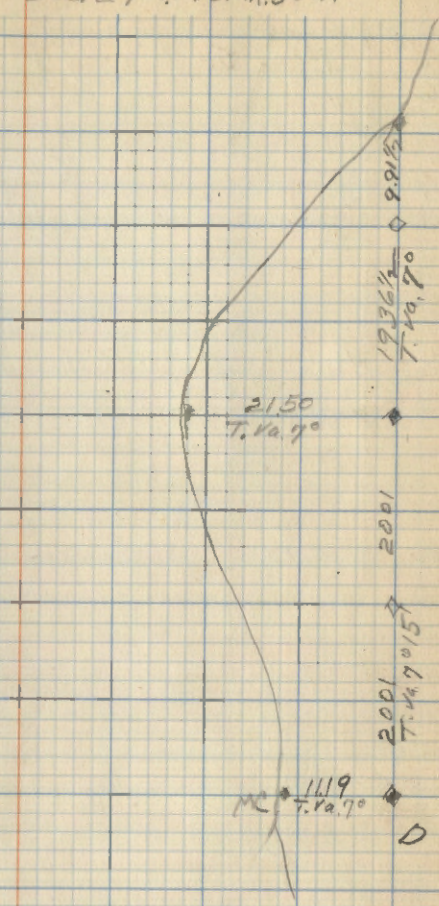
2001
 T. Va. 7° 15'

2001

2150
 T. Va. 7°

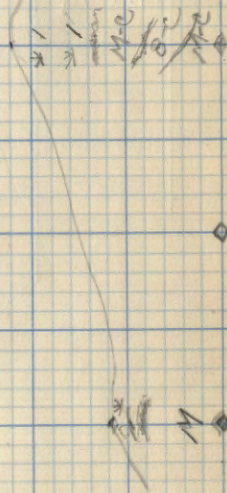
1936 1/2
 T. Va. 7°

828 1/2



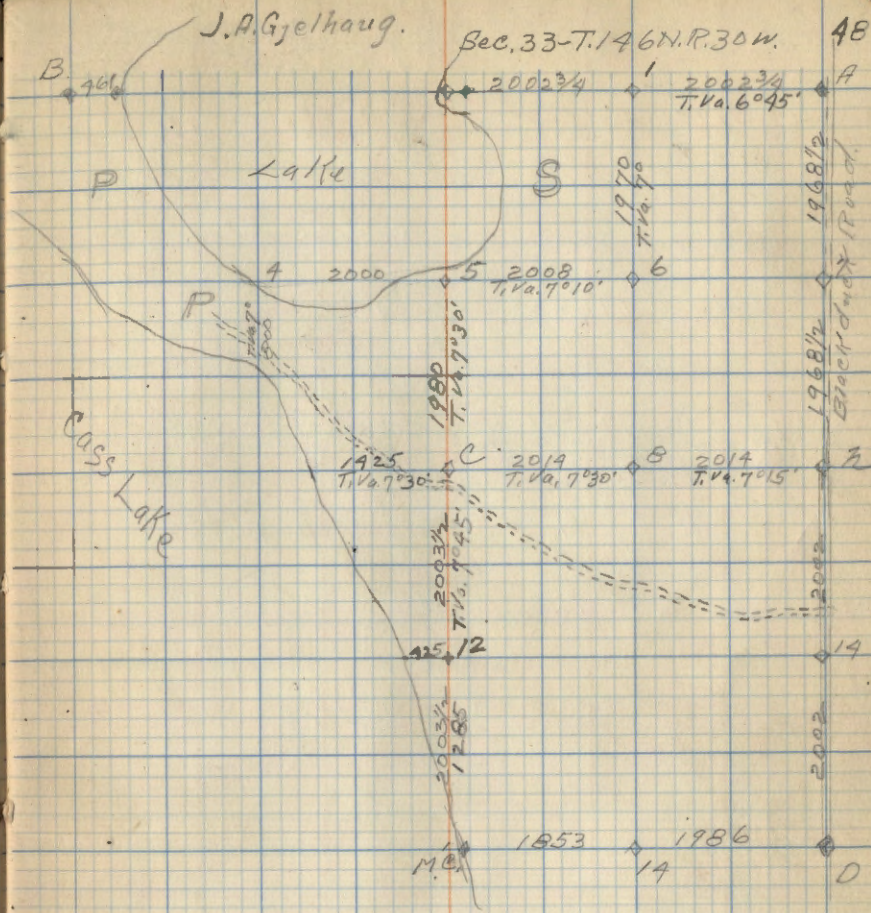
Type Map.
J.A. Gjelhaug.

Sec. 29. T. 146N. R. 30W. 47



Corner Notes.

Cor. #	Spec.	Dia.	Bearing	Dist.	Remarks.
6				open	Set Aspen Post 4" x 6' 10/16/34
5				10/17/34	Set Oak Post 4" x 5'
C	Aspen	5"	N. 84° E	29 3/4	Set Oak Post 4" x 5" MKd. BT.
12				open	Set Oak Post 3" x 6'
B	P. Oak	4"	N. 30° W.	9	Set Oak Post MKd. BT. 10/18/34



Type Map.
J.H. Gjelhaug.

Sec. 33-T.146N.R.30W.

49

Lake

P

S

M-b-5-e

P

M

M-b-5-a

Bc-5c

M-b

M-b-a-5-b

B-b

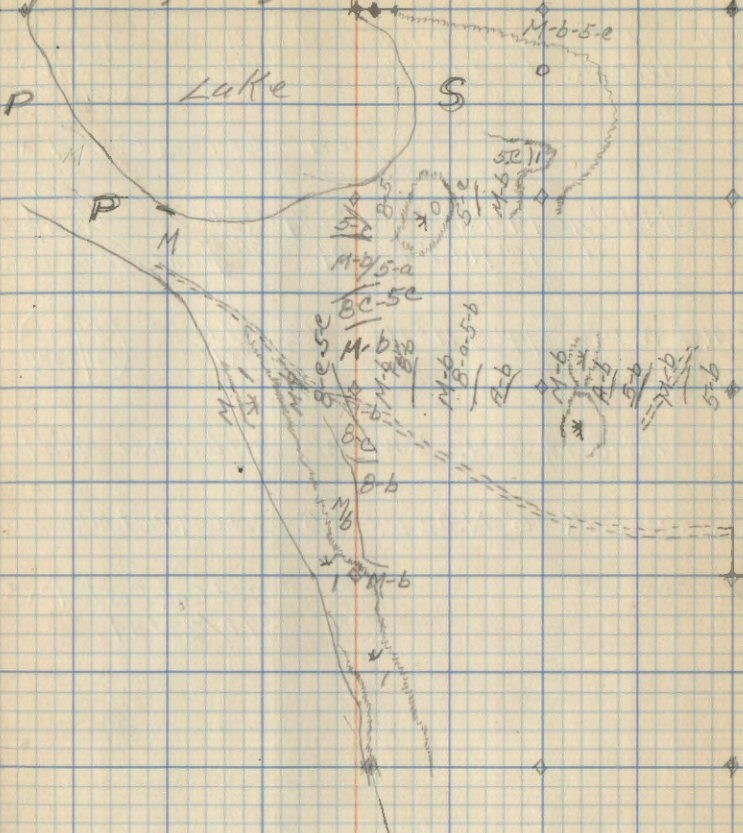
M-b

B-b

B-b

M-b

M-b



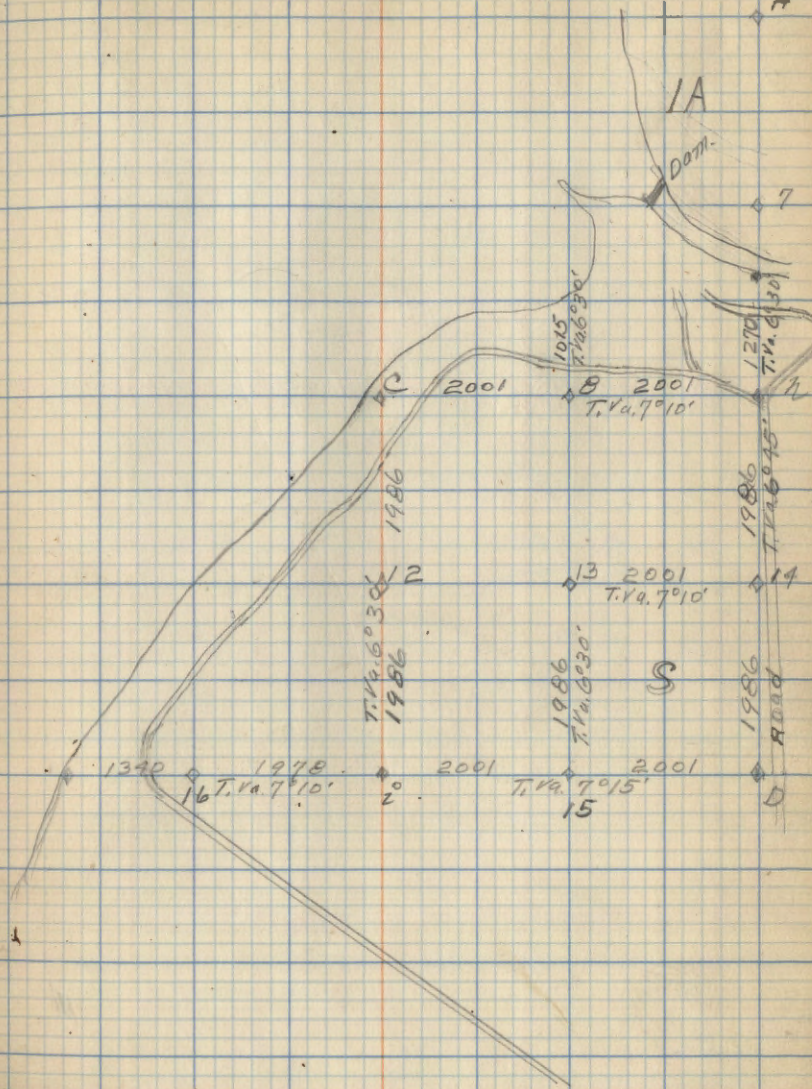
Corner Notes

Cor. at	Spec	Dia	Bearing	Dist	Remarks
14	W. Oak	6"	S. 16° 30' E.	20	G.L.O. 9/16 1" x 6" S. 21/522
13			open		Set Oak Post 4" x 8'
N.	N. Pine	14"	N. 32° 15' W.	82 3/4	G.L.O. 1/4 B.T. cap. S. 21/522 7" diameter grade in Road.
	" "	12"	N. 69° E.	81	
M.C. No. of 7.12708	W. Pine	14"	S. 11° W.	236 1/2	G.L.O. M.C. 1" x 10" S. 21/522
B	Twin Birch	5"	N. 25° W.	3 1/2	Set Oak Post MK'd B.T.
C.	W. Oak	6"	N. 02° E.	15	Set Oak Post MK'd B.T.
12					Set Oak Post 4" x 5' 10/23/39

J. A. Gjelhoug.

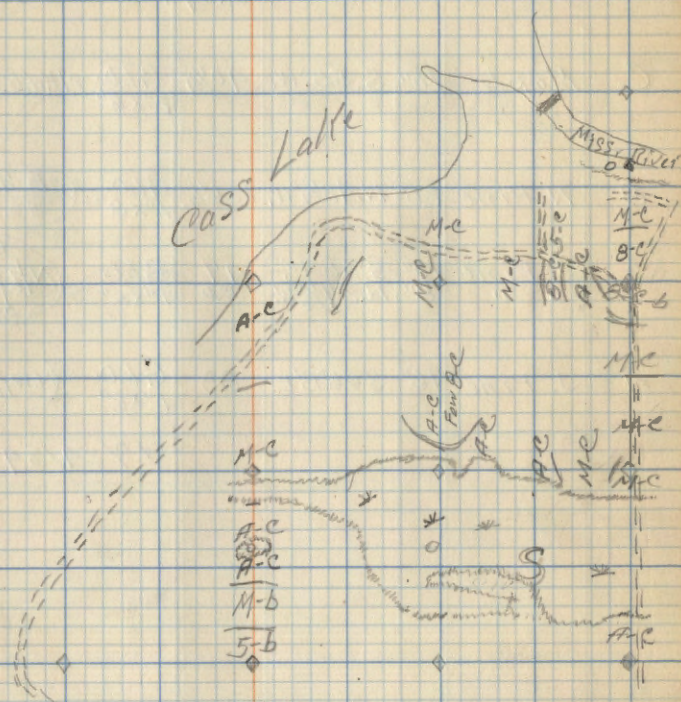
Sec. 21 - T. 146 N. R. 30 W.

50
A



Type Map
JAGjelhaug.

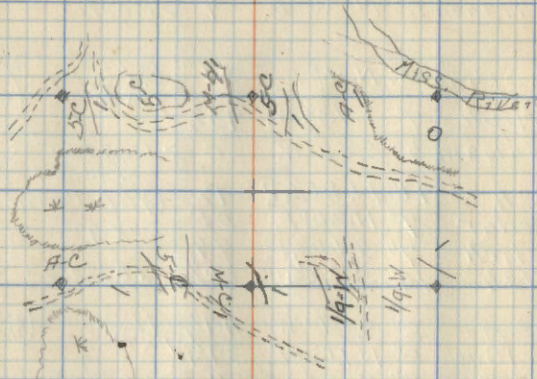
Sec. 21-T. 146N. R. 30W. 51



Type Maps
JAG Mang.

Sec. 22 - T. 146N. R. 30W.

53



CORNER NOTES

Cor. at	Spec.	Dia	Bearing	Dist.	Remarks.
A.	Basswood	14"	S. 07° W.	99 3/4	G.L.O. $\frac{53}{55/54}$
	Balsam	5"	N. 20° E.	7	Poster
H	W. Spruce	13"	N. 10° E.	31	G.L.O. $\frac{1}{4}$
	H. Maple	7"	S. 73 1/2° W.	73 1/2	1" x 8" $\frac{55}{55/54}$
	Balsam	5"	S. 06° W.	5	Poster
D.	Ash	18"	N. 80 1/2° W.	12	Poster
	Cedar	7"	N. 30° E.	58	G.L.O. Cement $\frac{55}{55/54}$
	Birch	7"	S. 60 1/2° E.	79	6" x 4" $\frac{55}{58/59}$
	Ash	14"	S. 62 1/2° W.	20 1/2	10/25/39
E	Elm	8"	S. 66° W.	44 1/2	G.L.O. $\frac{45}{143/8}$
	W. Pine	8"	N. 15 3/4° E.	34 1/4	1" x 6"
	Elm	8"	South	7	Poster

16 set Ironwood Post 4" x 5'
 15 " H. Maple Post 4" x 5'
 14 set Cedar Post 3" x 5'
 7 set Aspen Post 4" x 5'
 10/26/34

9 Balsam 6" S. 10° E. 7 1/2 set Ash Post MKd. B.T.
 C Balsam 6" S. 45° W. 6 3/4 set Maple Post MKd. B.T.
 E Birch 12" N. 40° E. 6 1/2 set " " " "

12 Aspen 5" N. 05° E. 1 1/2 set Ash post MKd. B.T.

f Ash 12" S. 42 1/2° E. 8 Poster $\frac{1}{4}$

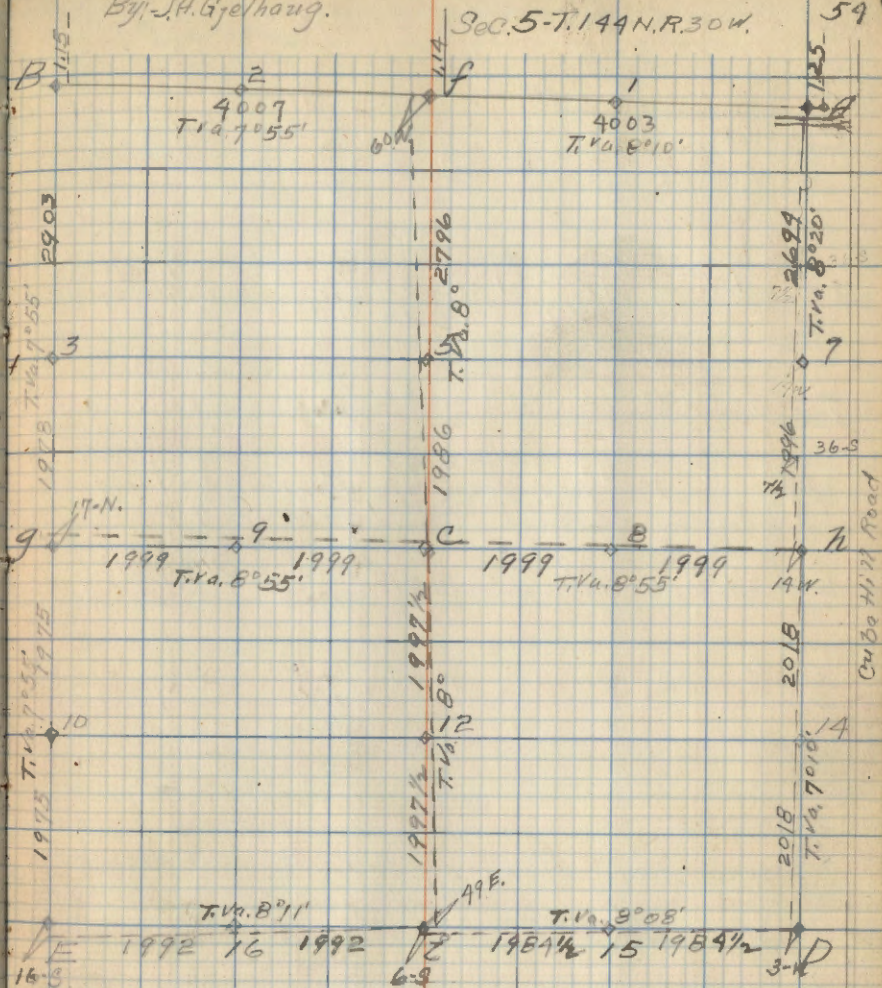
" 10" S. 46° W. 10 3/4 1" x 12" $\frac{1}{4}$ 35

1 set Post 14 1/2 Ks North Maple post
 Line in Road.
 11/2/34

By J. A. Gjelhaug.

Sec. 5-T. 144 N. R. 30 W.

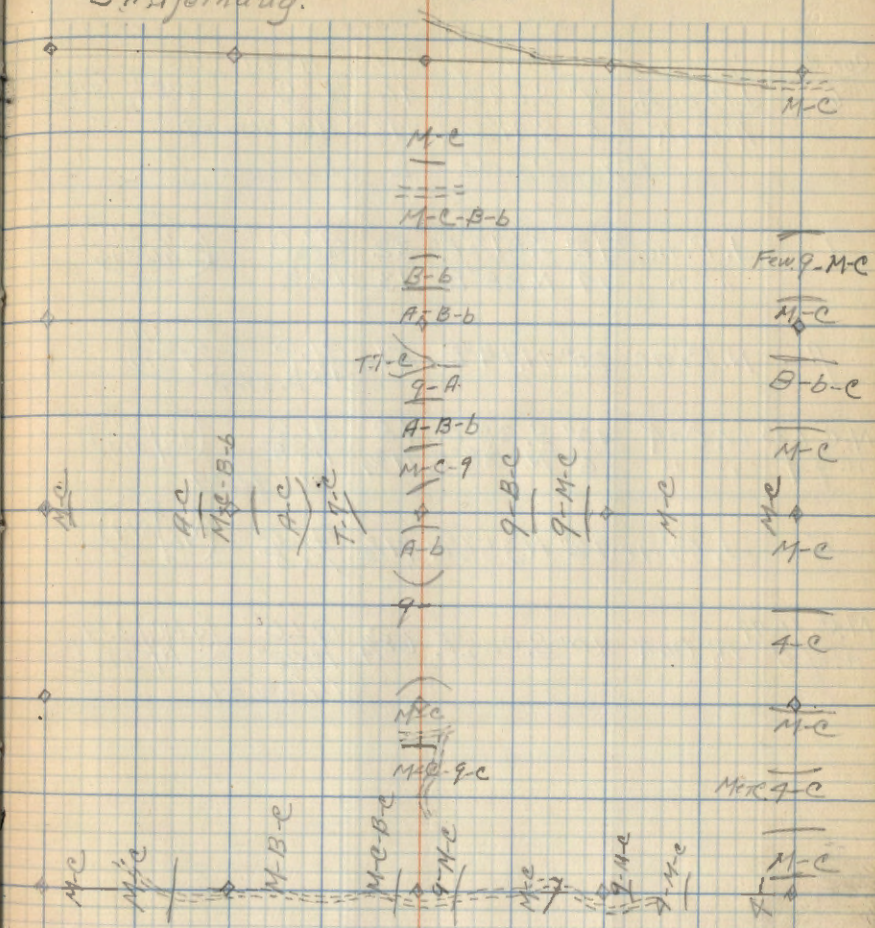
59



TYPE MAP
JABjolhaug.

Sec. 5-T.144N.R.30W.

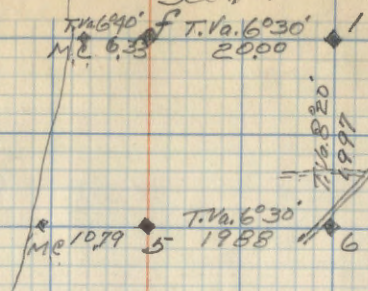
55



Corner Notes.

Cor. At.	Spec.	Dia	Bearing	Dist.	Remarks
6	J. Pine St. R. Oak	7" 5"	S. 29° 30' W. S. 41° 30' W.	46 34 1/2	G.L.O. NE 1/6 S 14 ✓ 1" x 8" Mkd. Now. BT. Fence Post. South. 2 → Poster.
1	J. Pine " "	12" 14"	S. 61 1/2° E. N. 28° E.	32 13	G.L.O. E 1/16 S 11 ✓ 1" x 6"
f	N. Pine	20"	N. 14° E.	51	G.L.O. 1/4 S 11 ✓ 1 1/2" Poster.
M.C. 633 w. of f	W. Oak " "	12" 6"	S. 28° E. N. 23 1/2° E.	18 11 3/4	G.L.O. M.C. S 11 ✓ 1" x 8" 11/14/34
5	J. Pine	12"	N. 35 1/2° W.	9 1/2	G.L.O. N 1/16 S 14 ✓ 1" x 5"
M.C. 10.79 w. of 5	R. Oak	10"	S. 02 1/2° E.	68 3/4	G.L.O. S M.C. S 14 ✓ 1" x 12" N S 14 11/26/34

Sec 14-T143 R. 31 56

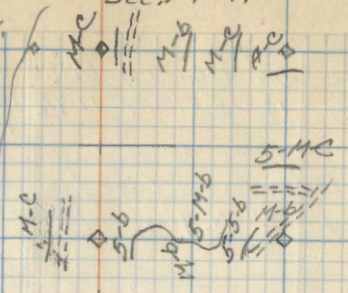


Type Map.
J. A. G. Thang.

Sec. 14-T, 143-R. 31

57

Steamboat
Bay



Corner Notes.

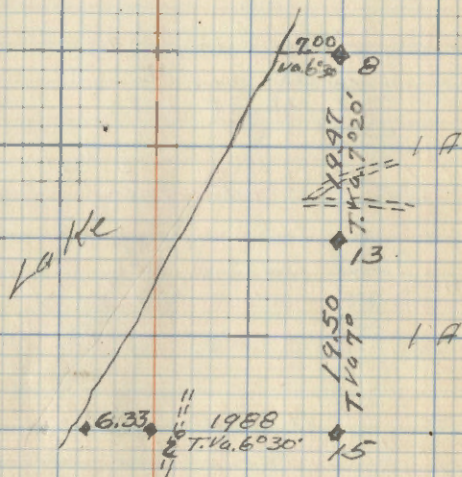
J.A. Gjelhaug

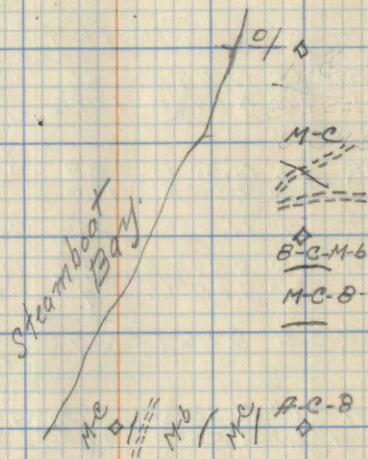
Cor. At	Spec.	Dia.	Bearing	Dist.	Remarks
13	J. Pine	12"	S. 51° 30' E.	10 1/2	G.L.D. 1" x 5" (SE 1/4 S. 16) ✓
• 8	No BTS could be found.				G.L.D. 1" x 2 ft. (E 1/4 C 911) ✓
	Elm	3"	N. 41° W.	15	→ Put Poster

11/26/39

Sec. 11 - T. 143. R. 31

58



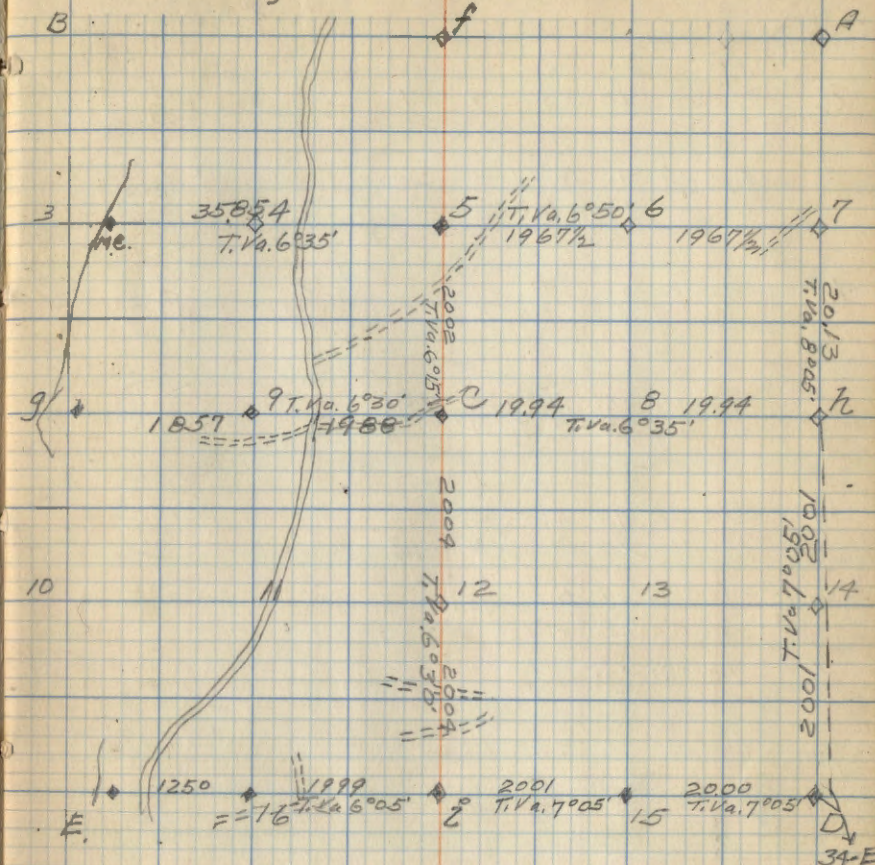


CORNER NOTES

Cor. At.	Spec.	Dia	Bearing	Dist.	Remarks.
M.C. E. of 3	W. Oak	14"	N. 83° 30' E	67	G.L.O. S.M.C. $\frac{S23}{523}$ N. $\frac{S23}{523}$ ✓ 1" x 8"
5	R. Oak	6"	N. 72° W.	8 1/4	G.L.O. $\frac{N}{16}$ 323 ✓ 1" x 7"
	Aspen	6"	S. 63° E.	21	Poster. $\frac{N}{16}$ 323 ✓ 11/27/34
7	Aspen	6"	S. 65° W.	20 1/4	G.L.O. $\frac{N}{16}$ 323 ✓ 1" x 8"
	"	7"	N. 36° E.	51	Poster. $\frac{N}{16}$ 323 ✓
	Aspen	5"	S. 39° W.	4	Poster.
6	Aspen	5"	S. 25° W.	10 1/4	Set Oak Post MK'd BT.
C	N. Pine	18"	N. 74° W.	36	G.L.O. $\frac{C}{14}$ S. 23 ✓ 1" x 7"
	"	16"	N. 87 1/2° E.	109 1/2	Poster. $\frac{C}{14}$ S. 23 ✓
M.C. at 9	W. Oak	12"	N. 30° E.	38	G.L.O. $\frac{S}{12}$ S. 23 ✓ 1" x 12"
	"	12"	S. 50° E.	100	Poster. $\frac{S}{12}$ S. 23 ✓
9	R. Oak	7"	N. 72° W.	23 1/2	Set Oak Post MK'd BT.
h	Aspen	10"	S. 49 1/2° E.	35 3/4	G.L.O. $\frac{h}{14}$ S. 23 ✓ 1" x 6"
	"	9"	S. 68° W.	9	Poster. $\frac{h}{14}$ S. 23 ✓
8	R. Oak	5"	S. 66° E.	27	Set Oak Post MK'd BT. 11/30/34
i	Aspen	6"	N. 38 1/2° W.	39 3/4	G.L.O. $\frac{i}{14}$ S. 23 ✓ 1" x 7"
Old BT.	W. Pine St.	30"	S. 80° E.	16	Poster. $\frac{i}{14}$ S. 23 ✓
	R. Oak	5"	S. 22° E.	2 1/2	Poster.
12	Aspen	7"	N. 25° E.	9	Set Oak Post MK'd BT.
16	Birch	6"	N. 68° E.	25 1/2	G.L.O. $\frac{w}{16}$ S. 23 ✓ 1" x 6"
	Aspen	6"	S. 19 1/2° E.	69	Poster. $\frac{w}{16}$ S. 23 ✓
M.C. 12.50 w. of 16	R. Oak	12"	N. 25 1/2° E.	86	G.L.O. $\frac{MC}{16}$ S. 23 ✓ 1" x 6"
	W. "	12"	S. 75° E.	174	Poster. $\frac{MC}{16}$ S. 23 ✓
15	N. Pine	20"	N. 06° W.	1.40	G.L.O. $\frac{E}{16}$ S. 23 ✓ 1" x 9"
	"	"	"	"	Poster. $\frac{E}{16}$ S. 23 ✓
D	R. Oak	8"	N. 55 1/2° W.	53 1/2	G.L.O. $\frac{D}{16}$ S. 23 ✓ 2" x 6"
	"	7"	S. 41° E.	45 1/2	Poster. $\frac{D}{16}$ S. 23 ✓
14-	Aspen	6"	S. 28 1/2° W.	21 1/2	G.L.O. $\frac{D}{16}$ S. 23 ✓ 1" x 8"

J.A. Gielhang.

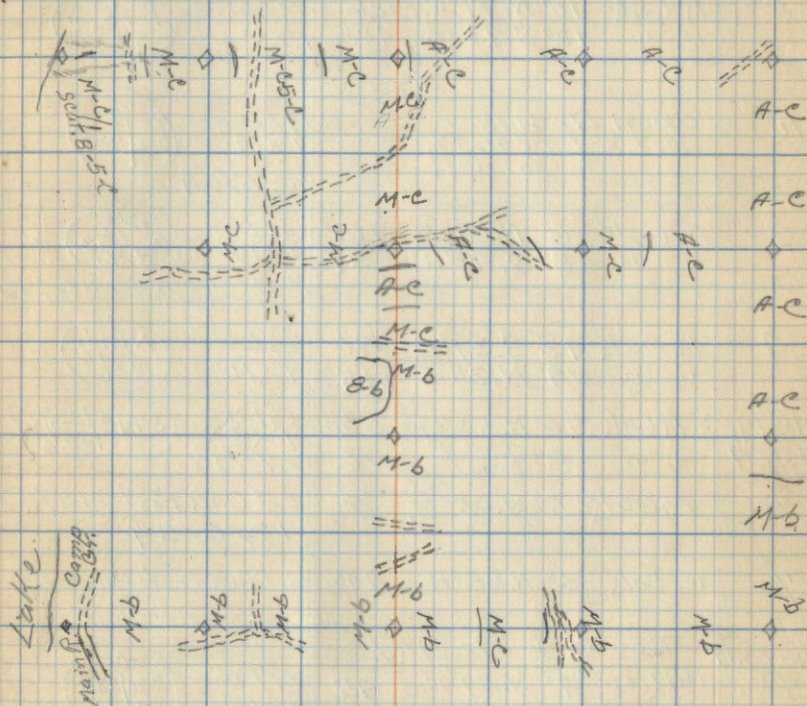
Sec. 23 - T143N.R.31W.



Type Map
J.A. Gielhaney.

Sec. 23-T. 143 R. 31

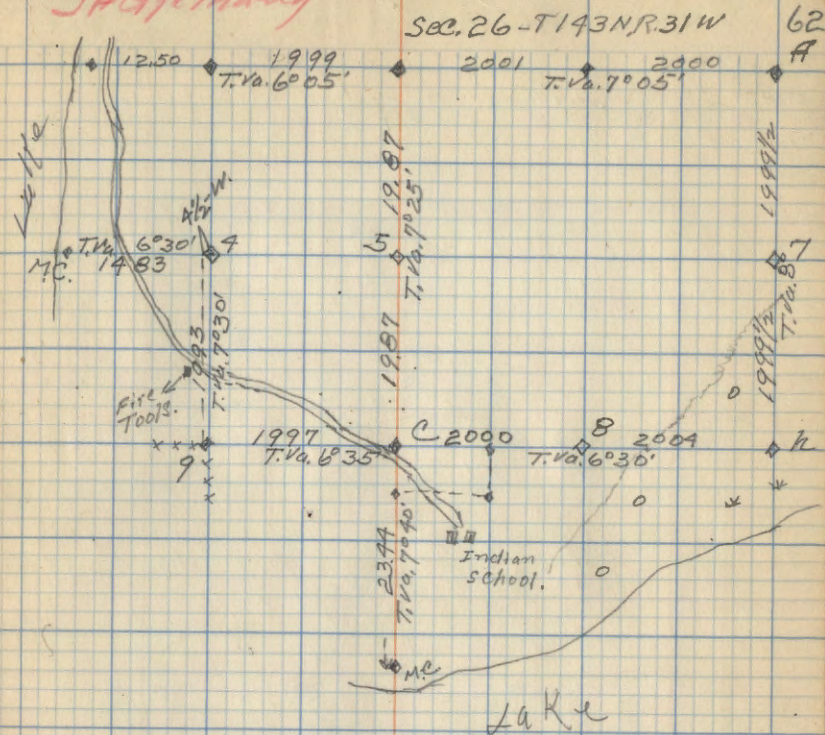
61



Corner Notes

Cor. or	Spec.	Dia	Bearing	Dist.	Remarks
C	H. Pine	18"	S 77° 30' W.	187 1/2	G.L.O. 1" x 8" C 1/4 + S26 ✓
B	R. Oak	10"	N. 77° W.	26	G.L.O. 1" x 6" E 1/6 C S26 ✓
"	"	12"	S. 43° W.	42 1/2	
h	open No BTs Set 3" Oak Post at Corner				G.L.O. 1" x 14" 1/4 S26 S25 ✓ 12/5/34
9	R. Oak	6"	N. 89° E.	101	G.L.O. 1" x 10" W 1/6 C S26 ✓ Post on Pine Post Corner
"	"	8"	S. 42° W.	39	
4	R. Oak	12"	S. 39° E.	46	G.L.O. 1" x 10" NW 1/6 S26 ✓
"	"	14"	N. 25° E.	115 1/2	
MC 1483 W. of 4	R. Oak	10"	N. 50 1/2° E.	53 1/2	G.L.O. 1" x 6" SMC S26 ✓ → Post
"	"	8"	EAST	16	
5	R. Oak	5"	N. 05° E.	9	Set Oak Post MKd BT. 12/6/34
7	W. Oak	6"	N. 68° W.	44 1/2	Set Oak Post MKd BT.
MC 2399 S. of C.	Willow	7"	N. 87° 45' W.	45	G.L.O. 1" x 10" C S26 S26 SMC ✓ 12/7/34

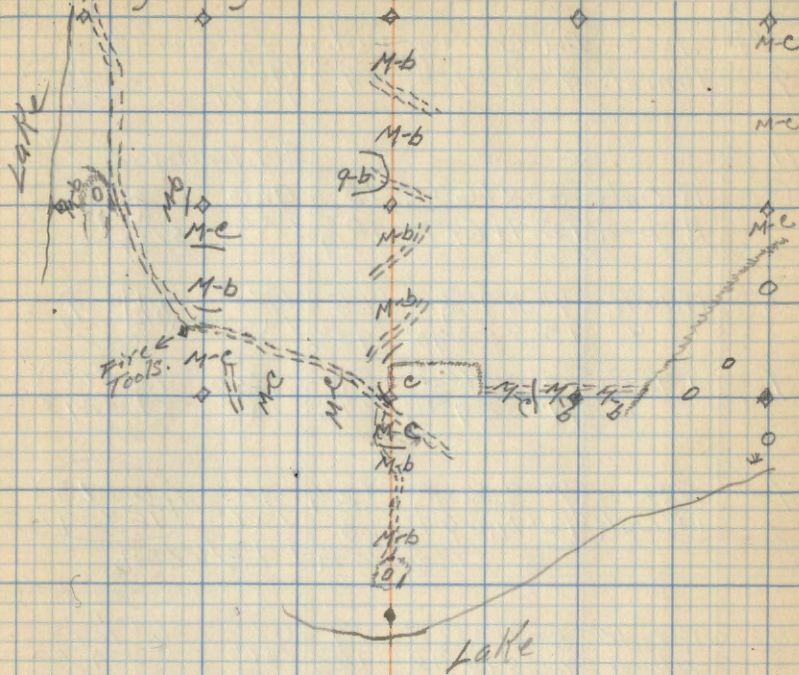
JAG Mang



Type Map,
J. F. Gjelvang.

Sec. 26 - T. 143 N., R. 31 W.

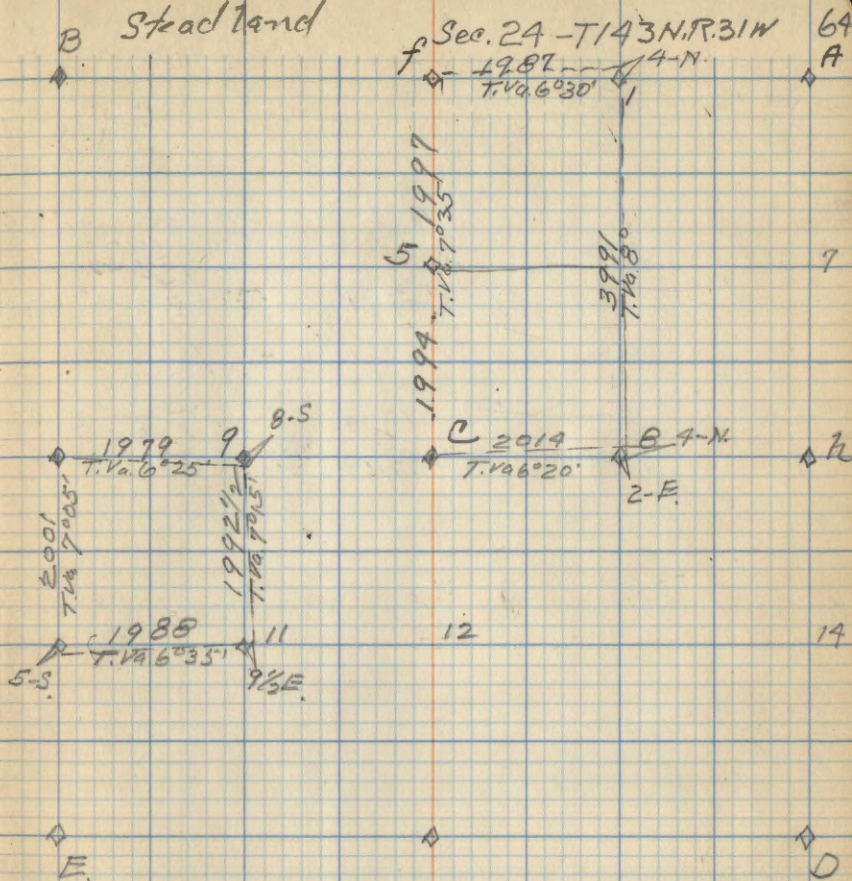
63



Corner Notes.

Cor. At	Spec.	Dia	Bearing	Dist	Remarks
9	Tam St.	9"	S 27° W	19	G.L.O. 1" x 14" W 76° C 324 ✓
11					Set Tam post 3" x 9'
C.	R. Oak	8"	S 16° W	15	G.L.O. 1" x 6" C 1/2 324 ✓
	Aspen	12"	N 69° E	18 3/4	1" x 6" 12/5/34
5	W. Oak	7"	N 45 1/2° W	65	G.L.O. 1" x 6" N 1/2 324 ✓
	" "	13"	S 53 1/4° W	42 1/4	
f	J. Pine	14"	N 76 1/2° E	54	G.L.O. 1" x 6" 313 4 324 ✓
	" "	11"	S 29° W	51 1/2	
1	Aspen	7"	S 20° E	12 1/4	G.L.O. 1" x 6" E 1/2 323 1/2 324 ✓
	W. Oak	12"	N. 09° W	13	1" x 6" Steadland. 12/6/34
8	R. Oak	5"	N 22 1/2° E	19	G.L.O. 1" x 6" E 1/2 324 ✓
	Aspen	6"	S 19° W	18 3/4	1" x 6" Steadland - 12/7/1934

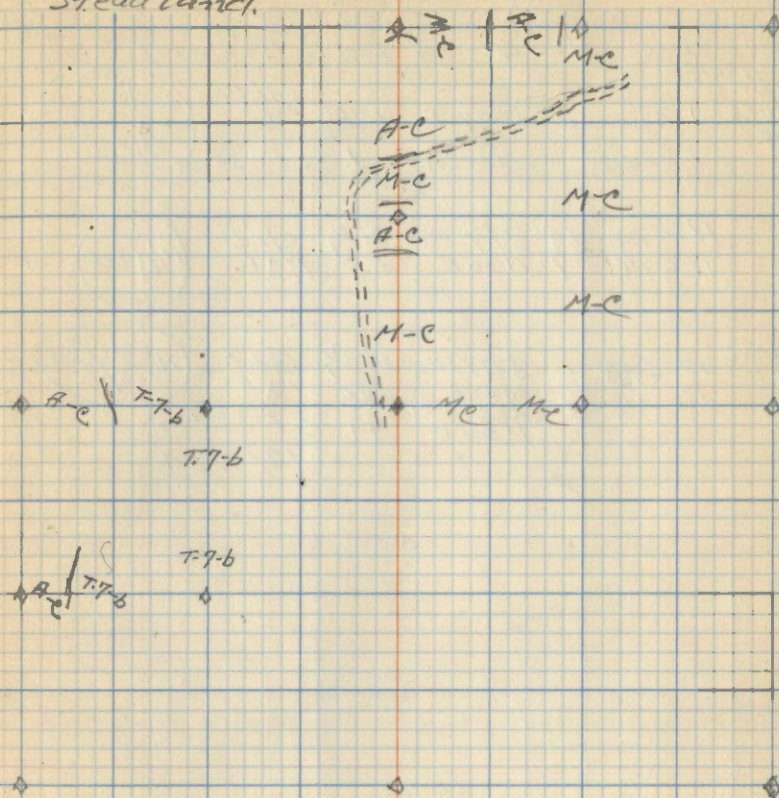
B Steadland



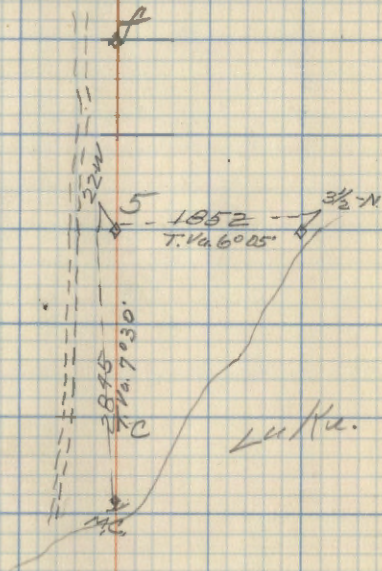
Type Map
Stead Land.

Sec. 24-T143N R. 31W.

65



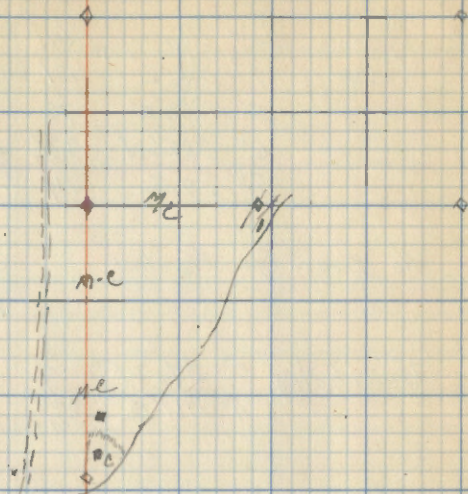
Cor at	Spec.	Dia	Bearing	Dist	Remarks
MC So. 2845 fm #5	J Pine Fence P.	10"	N 47° E	128 1/2	GLD 1" X 6" S25° SNC
5	N. Pine R. Oak	14" 7"	S 17° W N 30° E	21 3/4 55	GLD 1" X 6" N 1/16 S 25° C
MC 1852 E. of 5	W. Oak R. "	6" 7"	S 87° W N 89 3/4° W N 86° W	158 3/4 136 11	GLD 1" X 8" S25°/SNC → Post on 12/7/34



Type Map
Stead Land

sec 25-T143N.R.31W

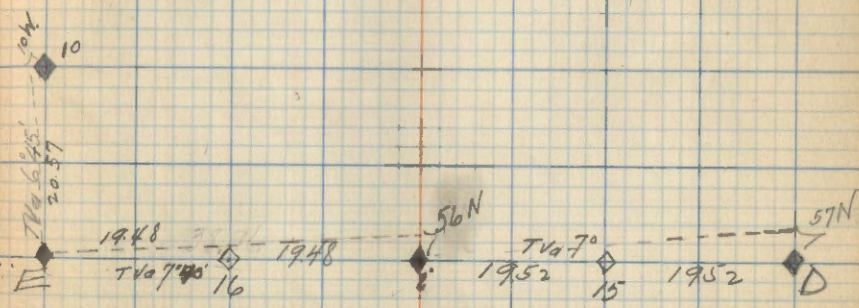
67



Cor. at	Spec.	Dia	Bearing	Dst.	Remarks
E	Cedar	4"	N42°E	31	G.L.O.
"	"	5"	N60°W	18	2" x 12"
"	"	6"	S84½°W	23½	← Poster -
"	"	5"	S2°E	14	
i	No trees - Open Meadow				G.L.O.
					1" x 15"
D	Tamarack Stamp	5"	S46°W	7	G.L.O.
"	"	4"	S61°E	35½	2" x 12"
10	Cedar	6"	S50°E	5½	1" x 10" G.L.O.

Stoodland

Sec. 5 - T. 143 N R. 30 W 68



NOTE: Check Va of South Section Line

TYPE MAP

Headland

Sec. 5 - T. 143N. R. 30W

69

40

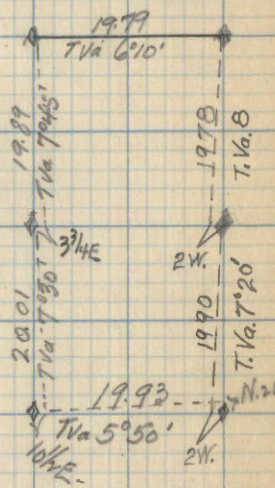
40 / 40 / 2

Gen. at	Spec.	Dia.	Bearing	Dist.	Remarks
#6	R. Oak	6"	N64 1/4° E	50 3/4	G.L.O.
	J. Pine	8"	S39° E	44	1" x 6" -NE 1/16 S13-
#8	W. Oak	14"	S44 1/2° E	39	G.L.O.
	N. Pine	7 1/4"	S21 3/4° W	70 1/2	1" x 6" E 1/16 C S13
#13	Aspen	7"	S12° E	2	G.L.O.
	W. Oak	6"	N85 1/2° W	34	1" x 6" -SE 1/16 S13-
#14	W. Oak	12"	N28 1/2° W	38	G.L.O.
	W. Oak	5"	S75° E	25 3/4	1" x 6" S 5/16 S13/S18
h	J. Pine	18	S30° 15' E	20	G.L.O. K1
	R. Oak	7	N. 22 3/4° W	34	Poster S13/S18
	W. Oak	10	N27 3/4° W	38	G.L.O. S 5/16 S13/S18
#14	W. Oak	4	N76° E	26	Poster
					1-7-35 D.J. Sutton

17/10/1934 C.E. Steadland

Steadland

Sec. 13-Twp. R31



TYPE MAP
Standard

5 13, T143 R31.

71

MC

—
E

—

—
◇

—

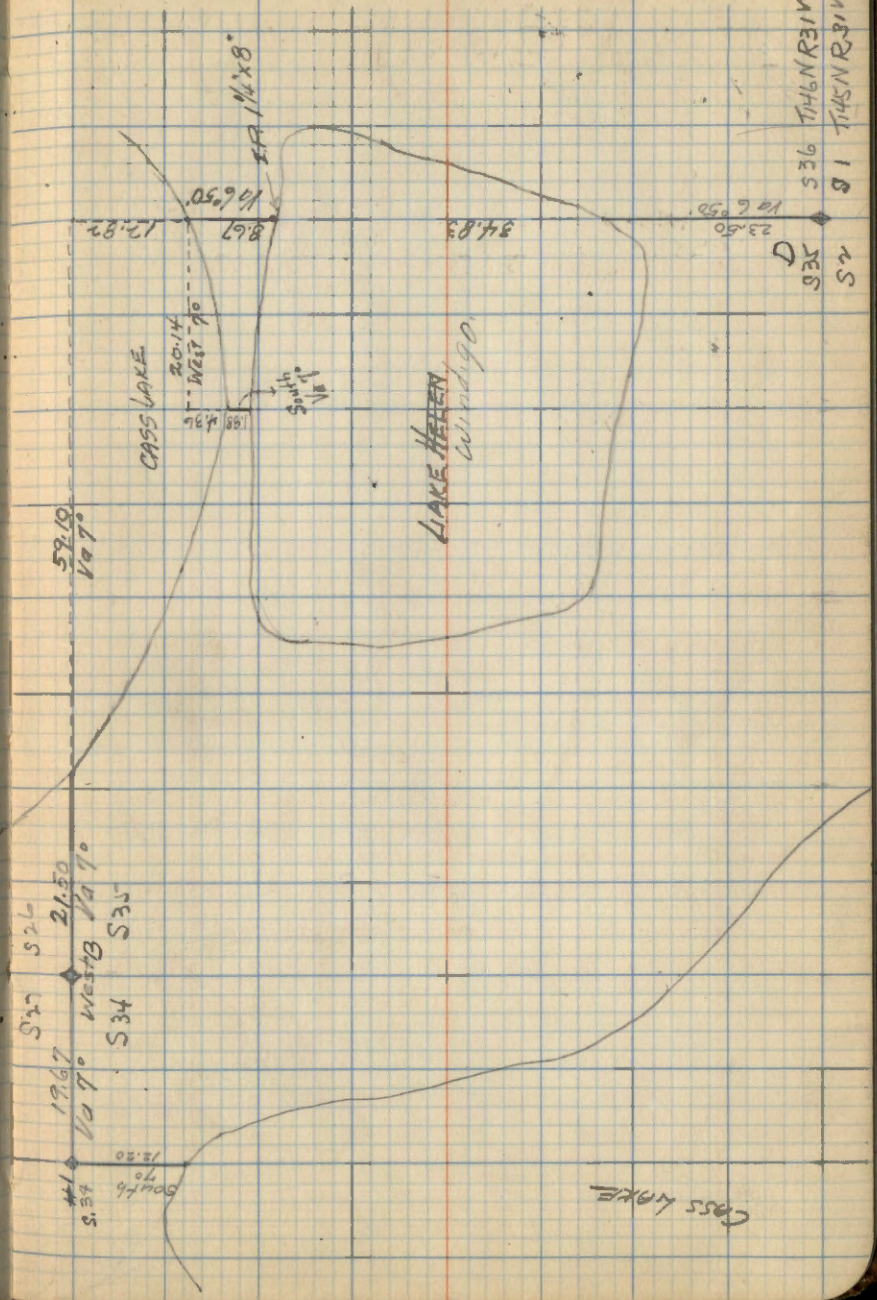
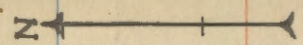
—
E

◇ AC / MC ◇

Steadland

Cor. or	Spec.	Dia.	Bearing	Dist.	Remarks
B. Sec 35	N. Pine	15"	N85 1/2 E	35 1/2	Mkd. T46NR31W S26 BT
	N. Pine	13"	S33 E	40 1/2	" " " S31 BT
	Aspen	8"	S78 W	73	" " " S34 BT
	Maple	4"	N35 W	8 1/2	" " " S27 BT
G.L.O. 2"x4" ^{IP in concrete} Poster on Maple					3/15/1935 ✓
#1	N. Pine	12"	S39 3/4 W	18	Mkd. E 1/6 S34 BT ✓
#334	R. Oak	7"	N77 1/2 W	29	" E 1/6 S27 BT ✓
G.L.O. 1"x8" I.P.					
#10	W. Oak	7"	S82 1/4 E	31	Mkd. S 1/6 S26 BT
S. 26	W. Oak	7"	N44 1/4 W	36 1/2	" S 1/6 S27 BT ✓
Poster on G.L.O. 1"x6" I.P.					
M.C.	Ash	7"	N48 W	4	Mkd. T46NR31W S27 MC BT
S. 26 & S. 27	"	7"	S25 3/4 E	74 1/2	" " " S26 "
Poster on G.L.O. 1"x6" I.P.					✓
D	W. Oak	7"	N37 1/2 E	60	
S. 35	"	9"	S56 E	53	
"	"	6"	S49 1/2 W	41 1/2	
"	"	12"	N69 W	17 1/2	
G.L.O. - 3"x4" in concrete					

3/19/1935 ✓



T46NR31W
S26
S31
S35
S27

CASS LAKE