

0  
-  
4  
-  
3  
-

OFFICE  
141-31

CCC #102

found Feb 1992



16

MOST PAGES IN  
THIS BOOK ARE  
BLANK



PLAIN RISE  
7/8  
18/17

1/6 #8  
5.17

1/4 #8  
7/7

8/17  
M.C.

M.C. #8  
1/17

PLAIN RISE  
8/19  
17/12  
County Cor. 2" I.M. 16" Above ground  
Form 458 on 4" Birch S 49° W 7 Lts.

1/6 #7  
5.17

1/4  
17/16  
County Cor. 2" I.M. 12" Above ground

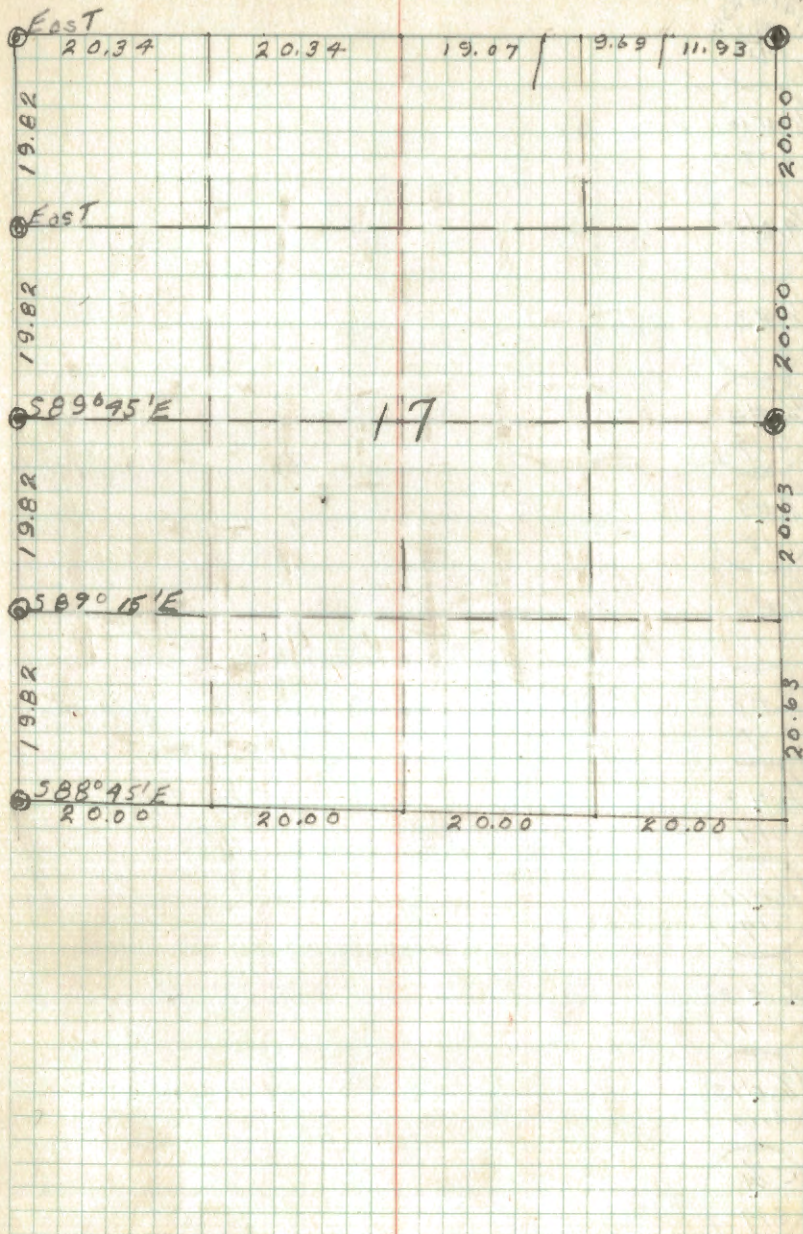
1/6 #14  
5.17

PLAIN RISE  
1/16  
20/21

1/6 #15  
5.17

1/4 #17  
20

1/6 #16  
5.17





RAIN R3/4  
18/17  
19/20

1/16 #10  
5.17

1/9 #17

1/16 #3  
5.17

1/16 #4  
5.17

1/16 #5  
5.17

1/16 #6  
5.17

1/16 #8  
5.17

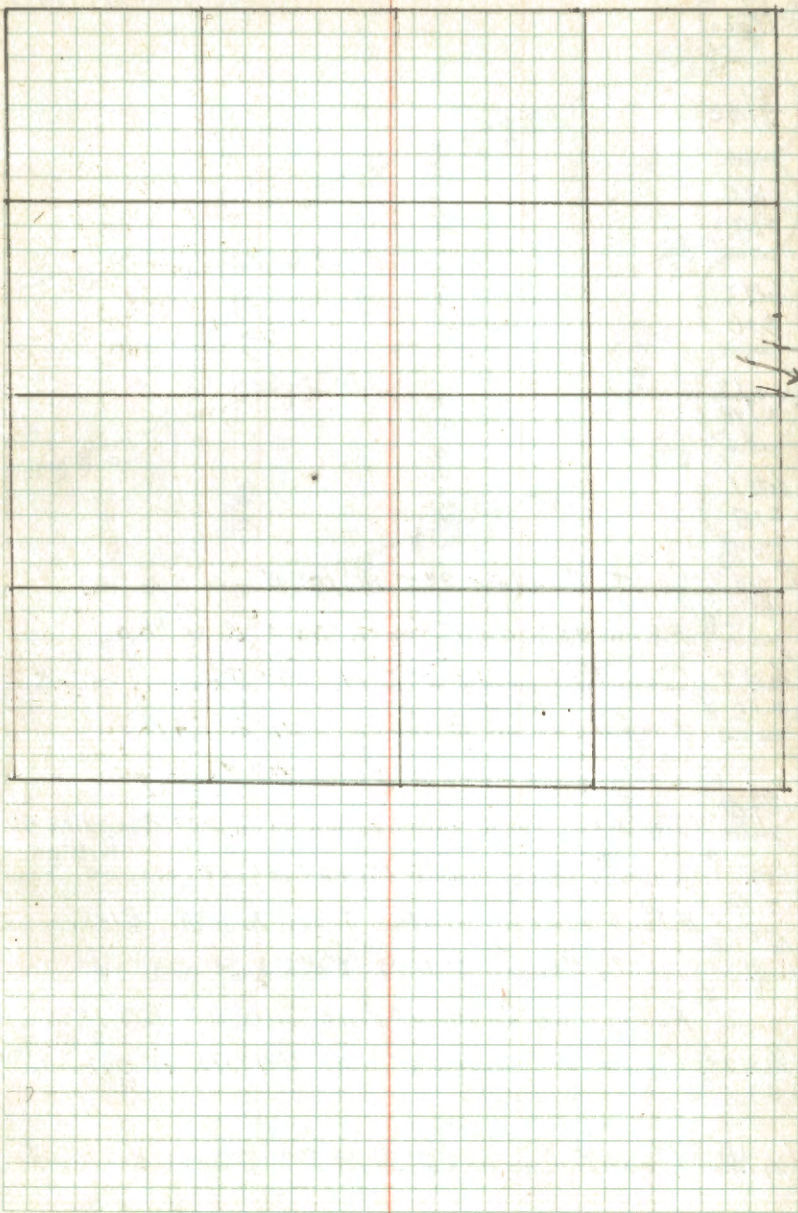
1/16 #9  
5.17

1/16 #11  
5.17

1/16 #12  
5.17

1/16 #13  
5.17

C 1/4  
5.17





17/18

7/18 MC

S.M.C.  
5.18

S.M.C.  
5.18

MC/7  
18

1/16 #1  
5.18

1/16 #7  
5.18

1/4  
10 #17

1/16 #14  
5.18

1/4 #15  
5.18

1/4 #18  
5.18

County Corner 2" I.M. 10" Above ground

✓ Form 458 on 3" Aspen S53°E 61ks

1/16 #7 County Corner 2" I.M. 14" Above ground

✓ Form 458a on 8" Aspen N21°E. 64ks.

1/4 ✓ County Corner 2" I.M. 14" Above ground

B.T. 16" J. Pine S61°W 95ks. Form 458a on 8" J. Pine N21°E 91ks

1/16 #14 County Corner 2" I.M. 12" Above ground

B.T.s. 8" J. Pine S90°W. 71ks. 8" J. Pine. N75°E. 31ks.

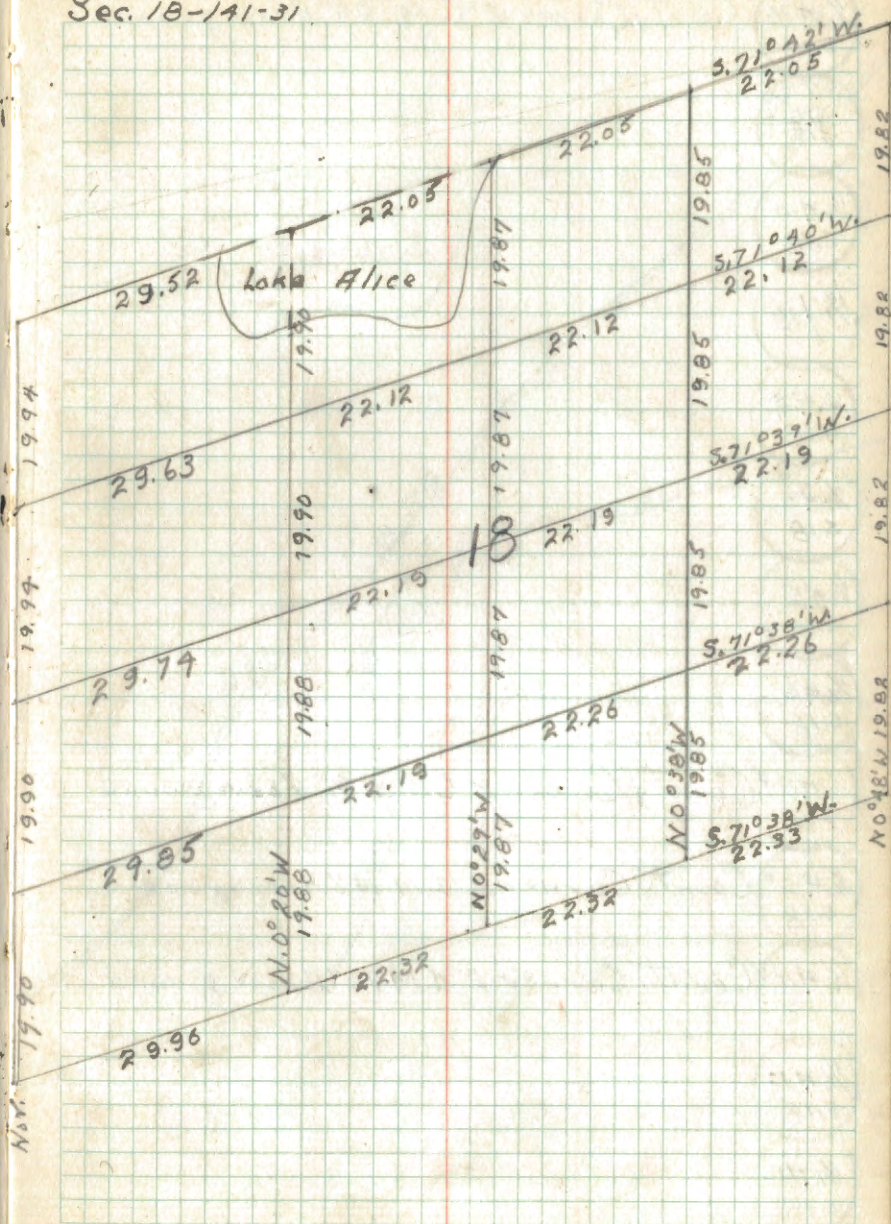
1/4 #15 County Corner 2" I.M. 20" Above ground.

Form 458 on 14" W. Pine S.10°W. 85ks.

1/16 #15 County Corner 2" I.M. 24" Above ground

1/4 #18 County Corner 2" I.M. 24" Above ground

Sec. 18-141-31





1/6 #16 County Corner 2" I.M. 24" Above ground

S.18

1/8 #17  
S.18

1/6 #10  
S.18

1/4 #18

1/6 #3  
S.18

1/6 #4  
S.18

1/6 #5  
S.18

1/8 #6  
S.18

1/6 #8 ✓ County Corner 2" I.M. 24" Above ground

S.18

1/6 #9 ✓ County Corner 2" I.M. 12" Above ground

S.18

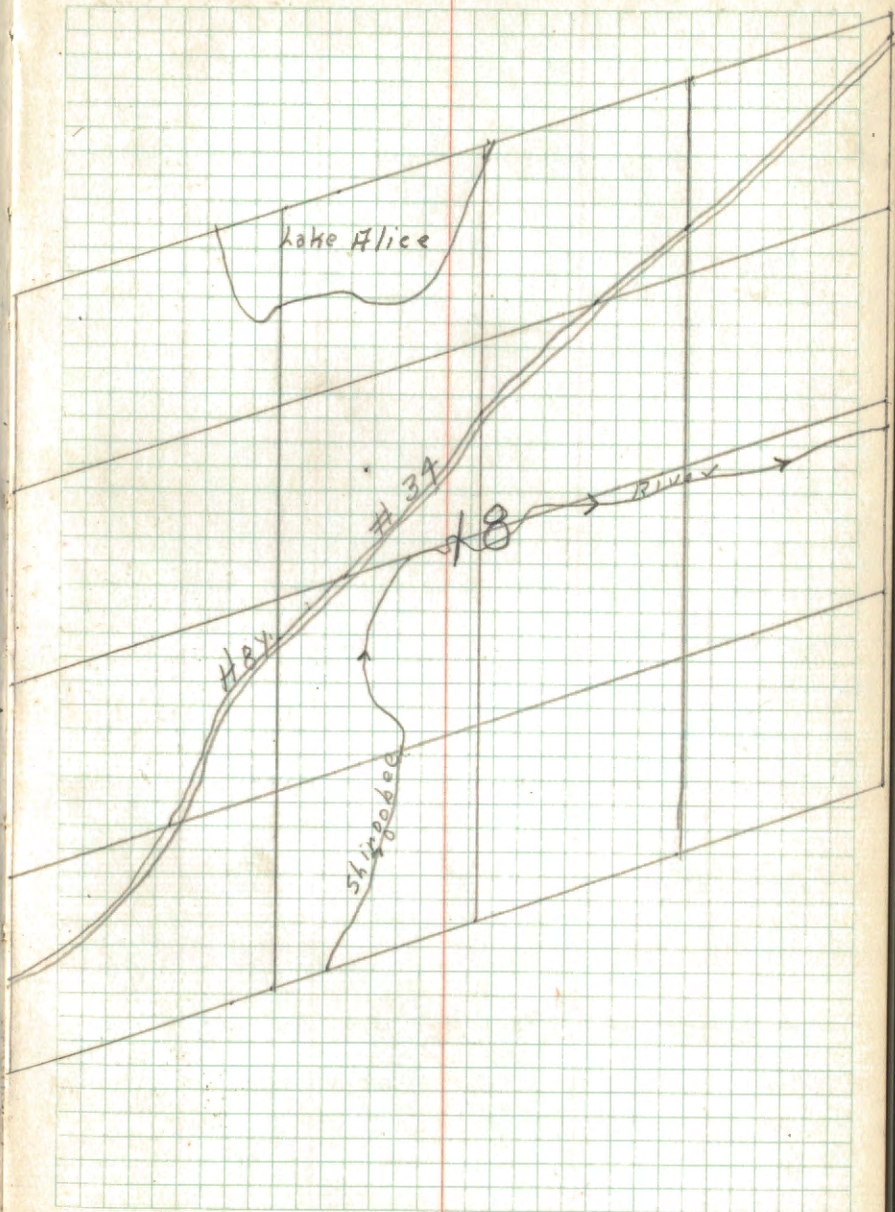
1/6 #11 ✓ County Corner 2" I.M. 16" Above ground

S.18

1/8 #12  
S.18

1/6 #13  
S.18

C 1/4  
S.18





1/4" N 31  
24/25

29  
25 MC

MC/29  
35

1/8 #1  
5.25

1/4" N 31  
24/30  
25/31

1/8 #7  
5.25

1/4  
25/30

1/8 #11  
5.25

1/4" N 31  
25/36

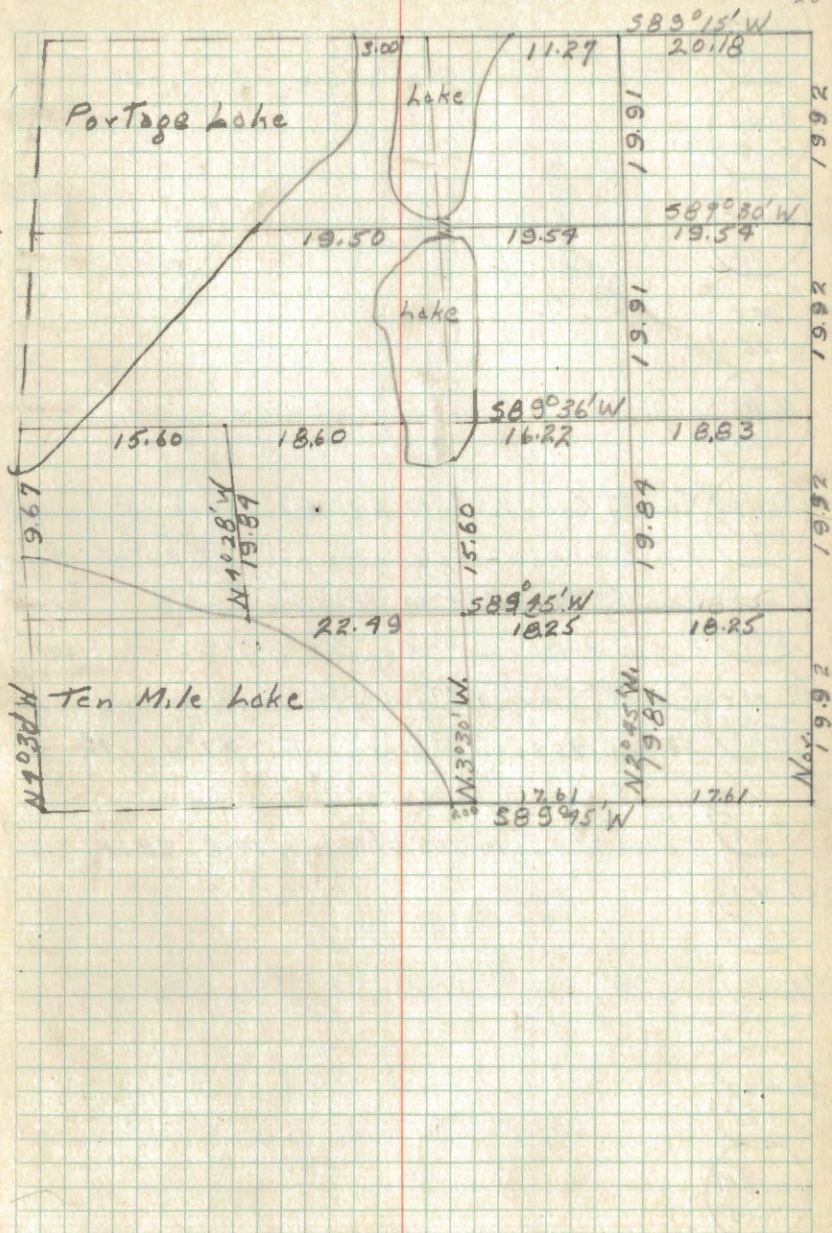
1/8 #15 County Cor 1 1/2" I.M. 24" Above ground  
5.25

1/4 25/36 County Cor 1 1/2" I.M. 12" Above ground

MC/25/36 County Cor 1 1/2" I.M. 30" Above ground

MC/26/25 County Cor 1 1/2" I.M. 24" Above ground

26/25 MC County Cor 1 1/2" I.M. 18" Above ground





1/6 #4  
5.25

1/6 #5  
5.25

S.M.C.  
5.25

S.M.C.  
5.25

1/6 #6  
5.25

1/6 #8 County Cor. 1 1/2" I.M. 27" Above ground  
5.25 Form 9580 on Oak fence post T 533°W 91ks

S.M.C. County Cor. 1 1/2" I.M. 20" Above ground  
5.25 Form 9580 on 4" Aspen S 90°E 501ks

S.M.C. County Cor. 1 1/2" I.M. flush with ground  
5.25 Form 9580 on Alder post T 527°W 11k

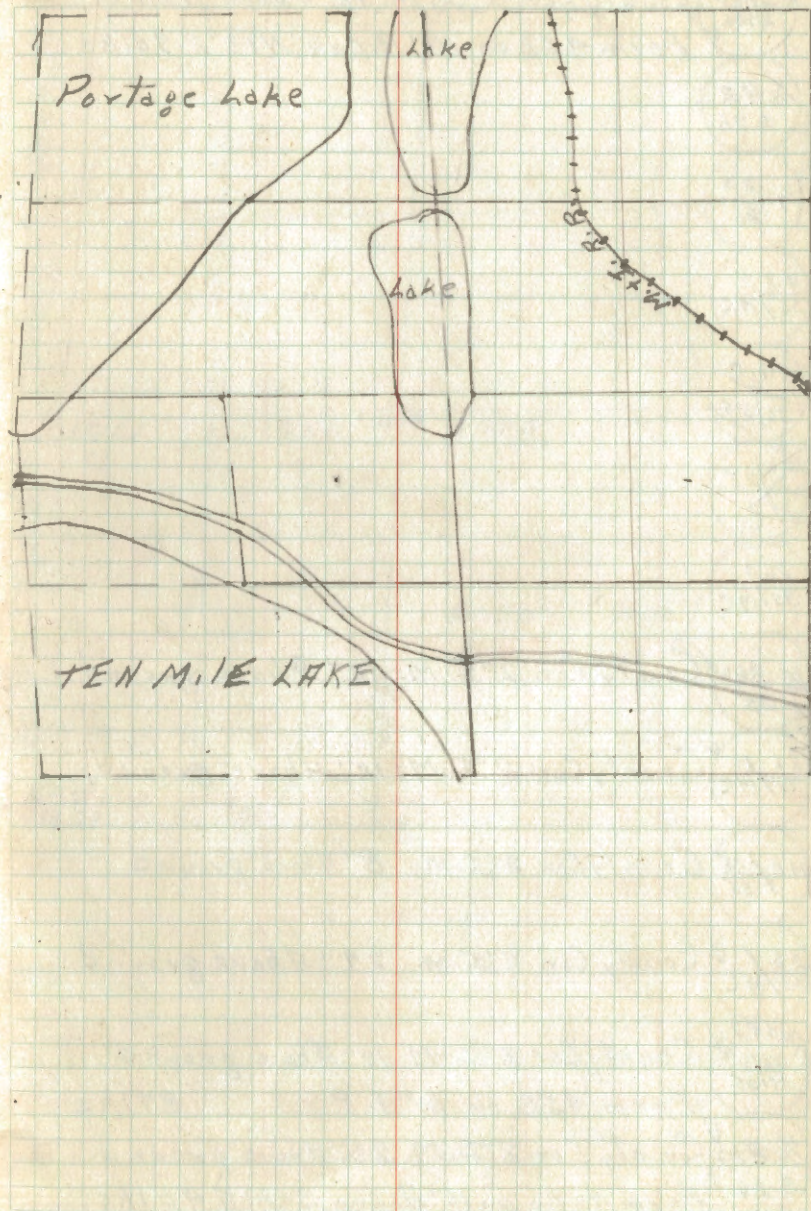
S.M.C. County Cor. 1 1/2" I.M. 20" Above ground  
5.25 Form 9580 on 1 1/2" W oak N 79°E 921ks

1/6 #9  
5.25

1/6 #11  
5.25

1/6 #12  
5.25

1/6 #13  
5.25





RAIN R31  
27126  
27126

County Cor. 2" I.M. 12" Above ground  
Form 458 on 14" R. Oak N13°E 901ks.

1/6 #8  
5.26

1/4 25  
26

25  
26/M.C.

M.C.  
26/25

26/25  
M.C.

26/  
35/M.C.

1/4 36  
35 County Cor. 2" I.M. 12" Above ground

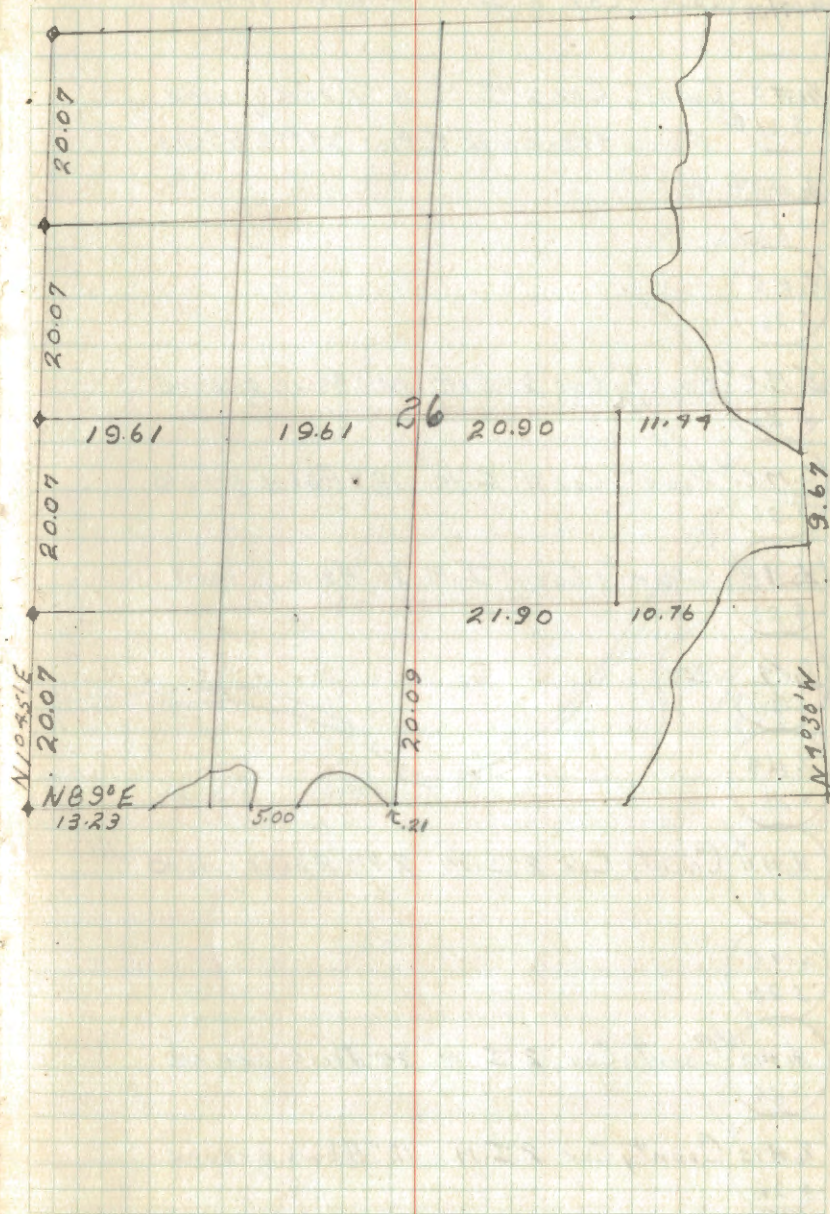
26  
35/M.C. County Cor. 2" I.M. 12" Above ground

M.C. 26  
35 County Cor. 2" I.M. 8" Above ground

26  
35/M.C. County Cor. 2" I.M. 29" Above ground

RAIN R31  
27126  
27135 County Cor. 2" I.M. 12" Above ground  
Form 458 on 12" J.P. 871ks

1/6 #10  
5.26 County Cor. 2" I.M. 20" Above ground  
Form 458a on 16" Aspen S88°E 901ks.





✓  
No #2 County Cor. 2" I.M. 12" Above ground

✓  
No #3 County Cor. 2" I.M. 16" Above ground  
S. 26 ✓ Form 958a on 12" J. Pine S 49° E. 65 1/2

✓  
No #4  
S. 26

✓  
No #5  
S. 26

✓  
B.M.C. County Cor. 2" I.M. 12" Above ground  
S. 26

✓  
S.M.C. County Cor. 2" I.M. 18" Above ground  
S. 26

✓  
No #8 County Cor. 2" I.M. 36" Above ground  
S. 26

✓  
C. 1/9  
S. 26

✓  
No #9  
S. 26

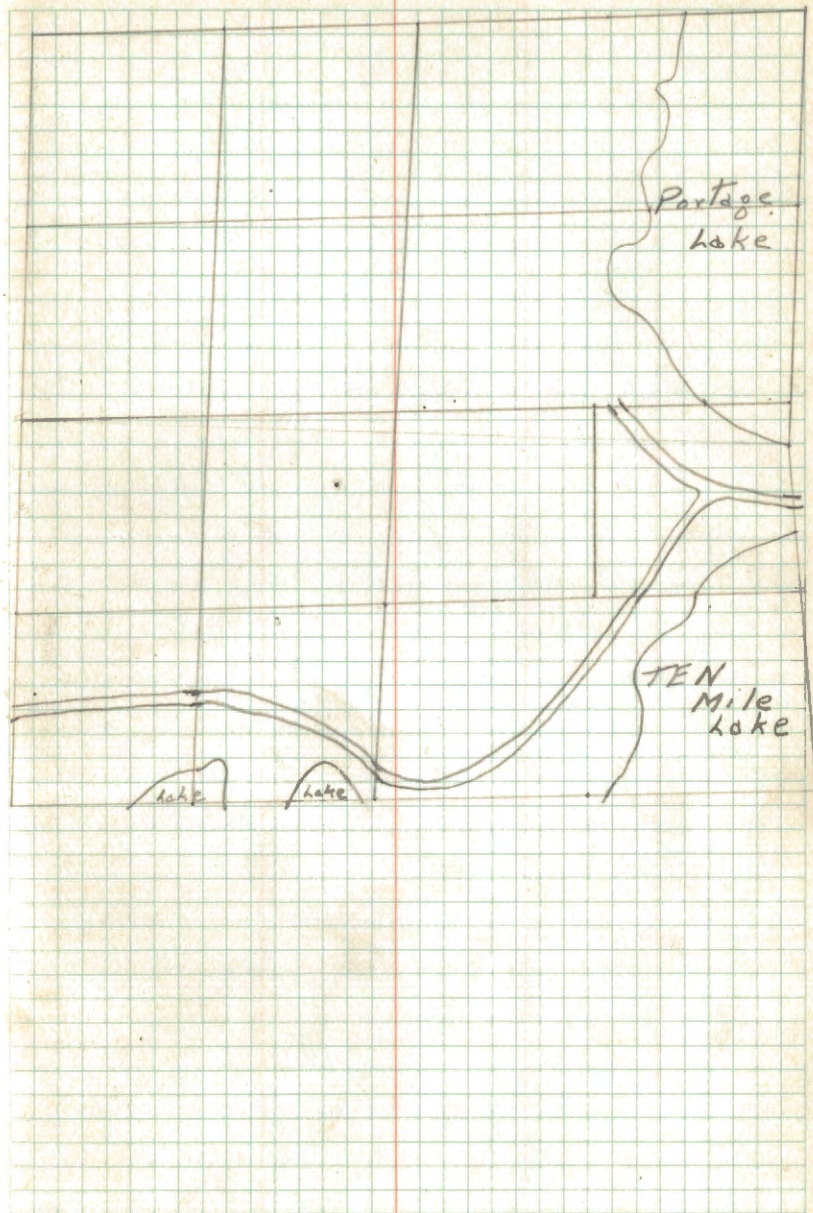
✓  
No #11 County Cor. 2" I.M. 24" Above ground  
S. 26

✓  
S.M.C.  
S. 26

✓  
No #12 County Cor. 2" I.M. 24" Above ground  
S. 26

✓  
No #13 County Cor. 2" I.M. 12" Above ground  
S. 26

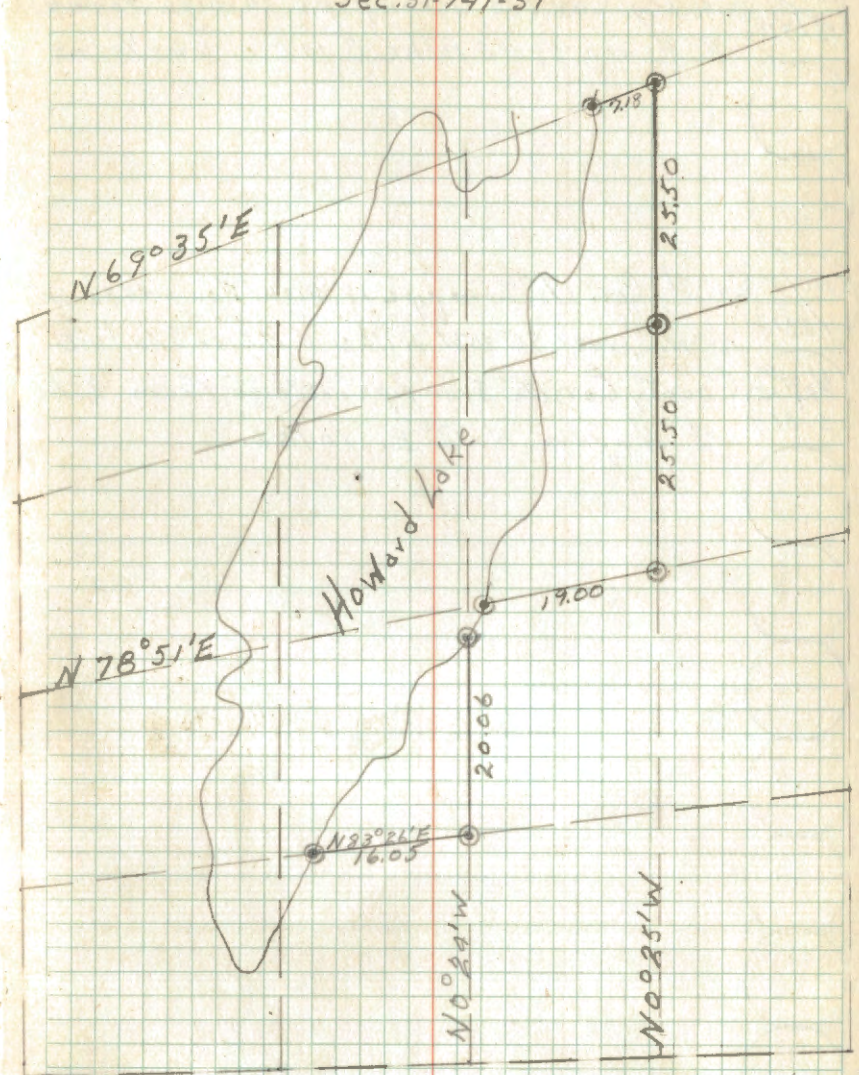
✓  
S.M.C. County Cor. 2" I.M. 18" Above ground  
S. 26





Sec. 31-141-31

31



I.M.C. / E.M.C. on E & W 1/4 line Sec. 31 1 1/2" Iron pipe County Cor.  
 s. 31 18" above ground. Form 458a on 6" W. Spruce  
 S 87° E 161 ks.



I.M.C.  
 5/31 County Cor. 1 1/2" Iron pipe 30" high. Form 958a  
 6" Aspen S80°E 10 lks. S.M.C. on N 4 5/4 line

I.M.C.  
 5.31 County Cor. 1 1/2" Iron pipe 18" high. Form 958a on  
 10" W. Spruce S0°30'W 2 lks. E.M.C. on S 1/4 line

1/2 #12  
 5 31 County Cor. 1 1/2" Iron pipe 18" high Form 958a  
 4" Aspen N22°E. 10 lks.



28/27 ✓  
33/34 County Corner 2" I.M. 18" Above ground  
Form 958 on 1" R. Pine S 38° E 80 k.s.

W 1/6 27  
33

1/4 27 ✓  
34 County Corner 2" I.M. 10" Above ground

E 1/6 27  
34

22/26 ✓  
37/35 County Corner 2" I.M. 12" Above ground

N 1/6  
37/35

M.C.  
37/35

34 M.C.

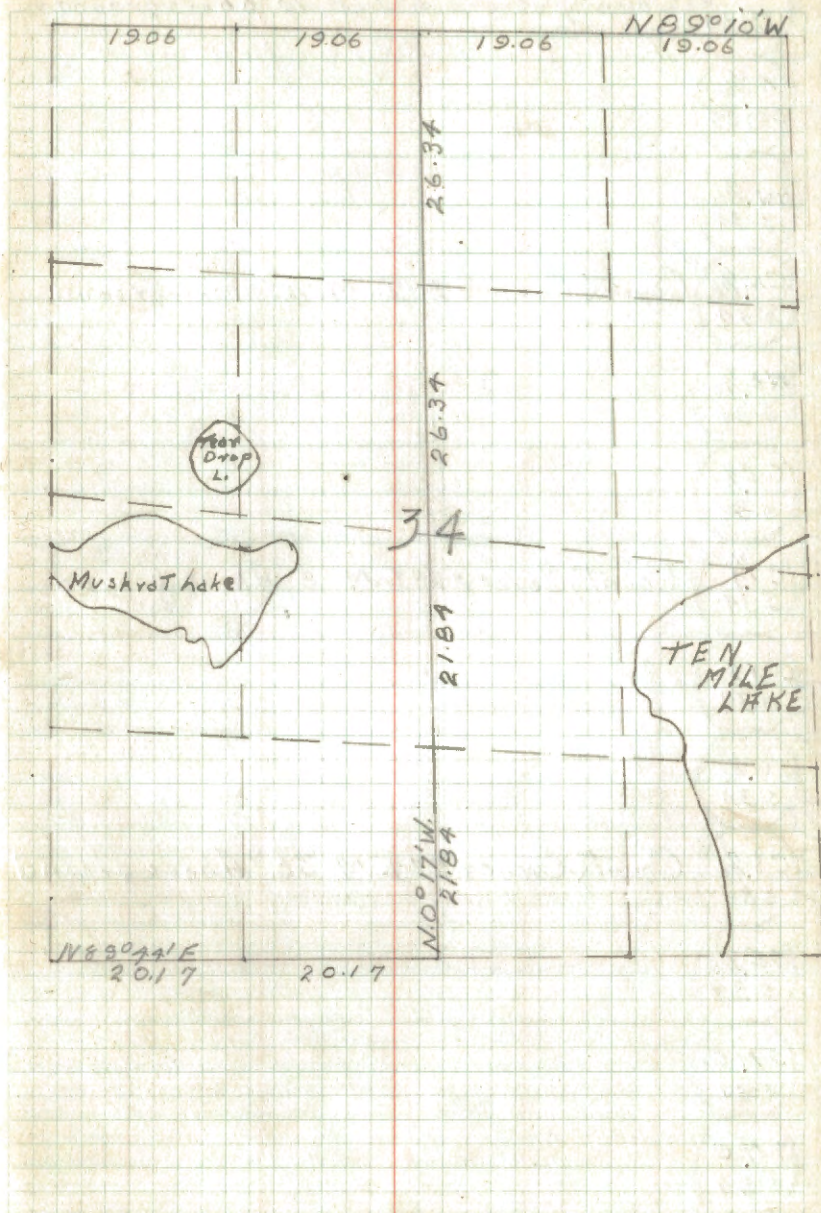
E 1/6 C.C.  
5.34

4 C.C. ✓  
5.34 County Corner 2" I.M. 36" Above ground

W 1/6 C.C. ✓  
5.34 County Corner 2" I.M. 24" Above ground

33/34 ✓  
C.C. County Corner 2" I.M. 24" Above ground

5 1/6  
33/34





1/4 ✓ County Corner 2" I.M. 10" above ground  
53734

N 1/16  
53734

N.W. 1/16  
5.34

✓ C.N. 1/16 County Corner 2" I.M. 18" Above ground  
5.34

B.E. 1/16  
5.34

C.E. 1/16  
5.34

C 1/4 County Corner 2" I.M. 8" Above ground  
5.34

G.W. 1/16  
5.34

SW 1/16  
5.34

C.S. 1/16 County Corner 2" I.M. 36" Above ground  
5.34

SE 1/16  
5.34

S.M.C.  
5.34

S.M.C.  
5.34

