

FIELD
141-31

MINING
TRANSFER BOOK

TIMBERMAN

CCC #101
found Feb. 1992

TABLES FOR EXCAVATIONS AND EMBANKMENTS.

DISTANCES FROM CENTER OF ROADWAY FOR CROSS-SECTIONING-
ROADWAY 18 FEET WIDE. SIDE SLOPES 1 TO 1.
FOR SINGLE TRACK EXCAVATION.

	0	.1	.2	.3	.4	.5	.6	.7	.8	.9	
0	9.0	9.1	9.2	9.3	9.4	9.5	9.6	9.7	9.8	9.9	0
1	10.0	10.1	10.2	10.3	10.4	10.5	10.6	10.7	10.8	10.9	1
2	11.0	11.1	11.2	11.3	11.4	11.5	11.6	11.7	11.8	11.9	2
3	12.0	12.1	12.2	12.3	12.4	12.5	12.6	12.7	12.8	12.9	3
4	13.0	13.1	13.2	13.3	13.4	13.5	13.6	13.7	13.8	13.9	4
5	14.0	14.1	14.2	14.3	14.4	14.5	14.6	14.7	14.8	14.9	5
6	15.0	15.1	15.2	15.3	15.4	15.5	15.6	15.7	15.8	15.9	6
7	16.0	16.1	16.2	16.3	16.4	16.5	16.6	16.7	16.8	16.9	7
8	17.0	17.1	17.2	17.3	17.4	17.5	17.6	17.7	17.8	17.9	8
9	18.0	18.1	18.2	18.3	18.4	18.5	18.6	18.7	18.8	18.9	9
10	19.0	19.1	19.2	19.3	19.4	19.5	19.6	19.7	19.8	19.9	10
11	20.0	20.1	20.2	20.3	20.4	20.5	20.6	20.7	20.8	20.9	11
12	21.0	21.1	21.2	21.3	21.4	21.5	21.6	21.7	21.8	21.9	12
13	22.0	22.1	22.2	22.3	22.4	22.5	22.6	22.7	22.8	22.9	13
14	23.0	23.1	23.2	23.3	23.4	23.5	23.6	23.7	23.8	23.9	14
15	24.0	24.1	24.2	24.3	24.4	24.5	24.6	24.7	24.8	24.9	15
16	25.0	25.1	25.2	25.3	25.4	25.5	25.6	25.7	25.8	25.9	16
17	26.0	26.1	26.2	26.3	26.4	26.5	26.6	26.7	26.8	26.9	17
18	27.0	27.1	27.2	27.3	27.4	27.5	27.6	27.7	27.8	27.9	18
19	28.0	28.1	28.2	28.3	28.4	28.5	28.6	28.7	28.8	28.9	19
20	29.0	29.1	29.2	29.3	29.4	29.5	29.6	29.7	29.8	29.9	20
21	30.0	30.1	30.2	30.3	30.4	30.5	30.6	30.7	30.8	30.9	21
22	31.0	31.1	31.2	31.3	31.4	31.5	31.6	31.7	31.8	31.9	22
23	32.0	32.1	32.2	32.3	32.4	32.5	32.6	32.7	32.8	32.9	23
24	33.0	33.1	33.2	33.3	33.4	33.5	33.6	33.7	33.8	33.9	24
25	34.0	34.1	34.2	34.3	34.4	34.5	34.6	34.7	34.8	34.9	25
26	35.0	35.1	35.2	35.3	35.4	35.5	35.6	35.7	35.8	35.9	26
27	36.0	36.1	36.2	36.3	36.4	36.5	36.6	36.7	36.8	36.9	27
28	37.0	37.1	37.2	37.3	37.4	37.5	37.6	37.7	37.8	37.9	28
29	38.0	38.1	38.2	38.3	38.4	38.5	38.6	38.7	38.8	38.9	29
30	39.0	39.1	39.2	39.3	39.4	39.5	39.6	39.7	39.8	39.9	30
31	40.0	40.1	40.2	40.3	40.4	40.5	40.6	40.7	40.8	40.9	31
32	41.0	41.1	41.2	41.3	41.4	41.5	41.6	41.7	41.8	41.9	32
33	42.0	42.1	42.2	42.3	42.4	42.5	42.6	42.7	42.8	42.9	33
34	43.0	43.1	43.2	43.3	43.4	43.5	43.6	43.7	43.8	43.9	34
35	44.0	44.1	44.2	44.3	44.4	44.5	44.6	44.7	44.8	44.9	35
36	45.0	45.1	45.2	45.3	45.4	45.5	45.6	45.7	45.8	45.9	36

U.S. Forest Ranger

Walker, Minn.

"
G.L.O. Numbering method
in rear of book."
"

MANY BLANK
PAGES WERE
NOT SCANNED

$\frac{15}{22} \frac{19}{23}$ 2" I.M. & Cap County 10" Above ground.

$\frac{E}{6} \frac{15}{22}$

$\frac{1}{4} \frac{15}{22}$

$\frac{W}{6} \frac{15}{22}$

$\frac{16}{21} \frac{15}{22}$

$\frac{S}{6} \frac{16}{15}$

$\frac{1}{4} \frac{16}{15}$

$\frac{N}{6} \frac{16}{15}$

$\frac{9}{16} \frac{10}{15}$

$\frac{1817}{1920}$ County $1\frac{1}{2}$ " Iron pipe 36" Above ground.
Y.M. on 14" White Pine S10°W. 851ks.

$\frac{1}{6}\#16$ F.S.

$\frac{1}{4}\frac{17}{20}$ F.S.

$\frac{1}{6}\#15$ F.S.

$\frac{1716}{2021}$ F.S. 3" Aspen post 3' Above ground

$\frac{1}{6}\#14$ F.S. 3" Aspen post 3 $\frac{1}{2}$ " Above ground

$\frac{1}{4}\frac{1417}{}$ County 2" Iron pipe + cap 10" Above ground.
(In edge of Shingobe River along South bank)

$\frac{1}{6}\#7$ F.S. 4" Aspen post 3 $\frac{1}{2}$ " Above ground

$\frac{819}{1716}$ County 2" I.M. + cap 1' high. Form-758 on
4" Birch S.70°W. 71ks.

F.M.C.
S. 8117 None

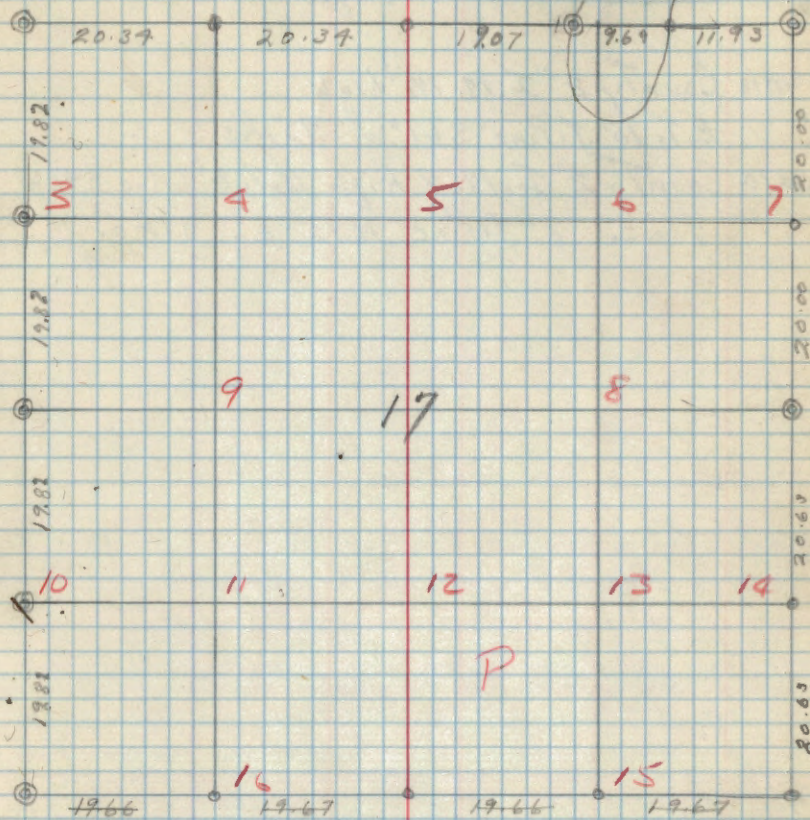
W.M.C.
S. $\frac{7}{17}$ County 2" I.M. + cap 2' high

$\frac{1}{4}\frac{5}{17}$ F.S. 4" Aspen post 3' high

$\frac{1}{6}\#2$ F.S. 3" Aspen post 3' high

$\frac{718}{1617}$ County 2" I.M. + cap 10" high. Form-7582
on 3" Aspen S53°E 61ks.

2 Sec. 17-141-311



No # 3 County 2" I.M. 2' high

No # 18 County 2" I.M. 1 1/2' high

B.T. 10" J. Pine S 61° W 45 ks

No # 10 County 2" I.M. 1' high B.T. 8" J. Pine S 90° W

7 ks. 8" J. Pine N. 75° E. 31 ks.

1/6 #10
S. 18

1/4 #18

1/6 #3
S. 18

1/6 #9
S. 18

1/6 #5
S. 18

1/6 #6
S. 18

1/6 #8 County Cor. 2" I.M. 29" Above ground.
S. 18

C. 1/4
S. 18

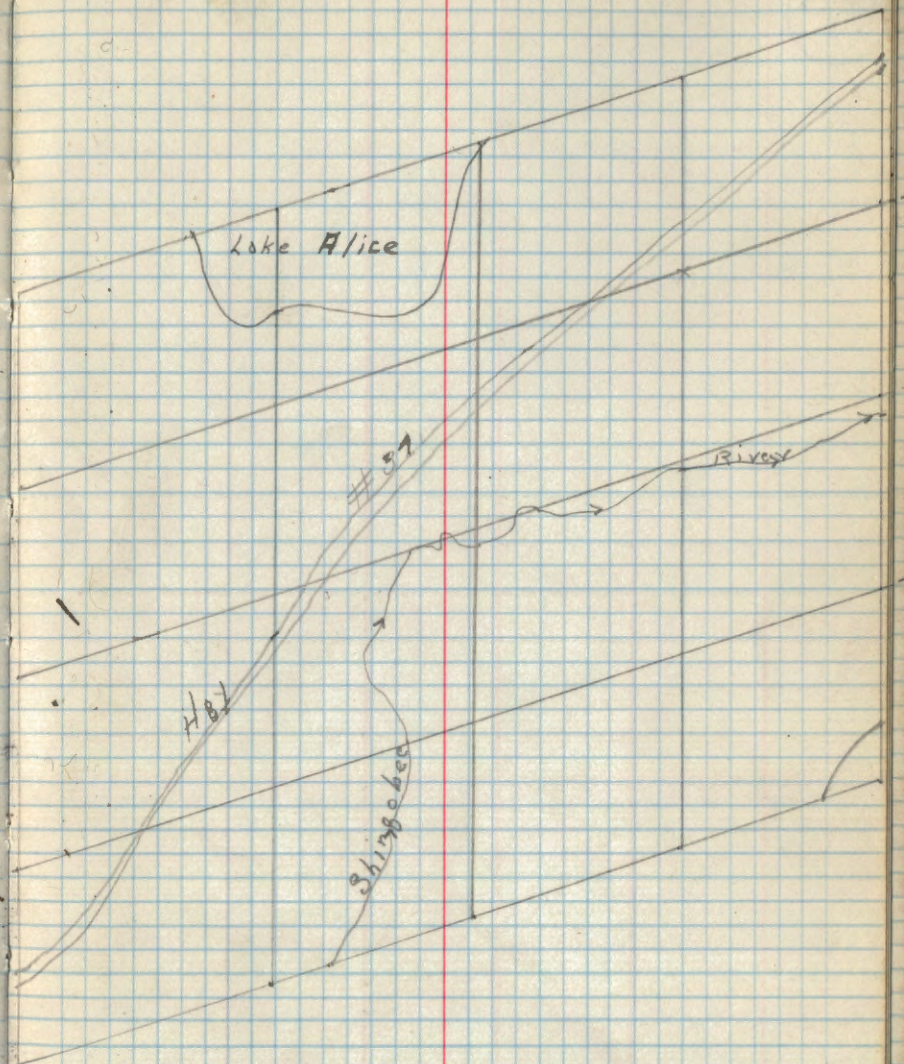
1/6 #9 County Cor. 2" I.M. 12" Above ground
S. 18

1/6 #11 County Cor. 2" I.M. 16" Above ground
S. 18

1/6 #12
S. 18

1/6 #13
S. 18

1/4 10/19 County Cor. 2" I.M. 24" Above ground



1914
MAY 14
1914

19

RAIN 931
M.C. 12
25

24
25/M.C.

M.C. 22
25

1/6 #1
5.25

RAIN 931
25/30
25/31

1/6 #7
5.25

1/4
25/30

1/6 #14
5.25

RAIN 931
25
36

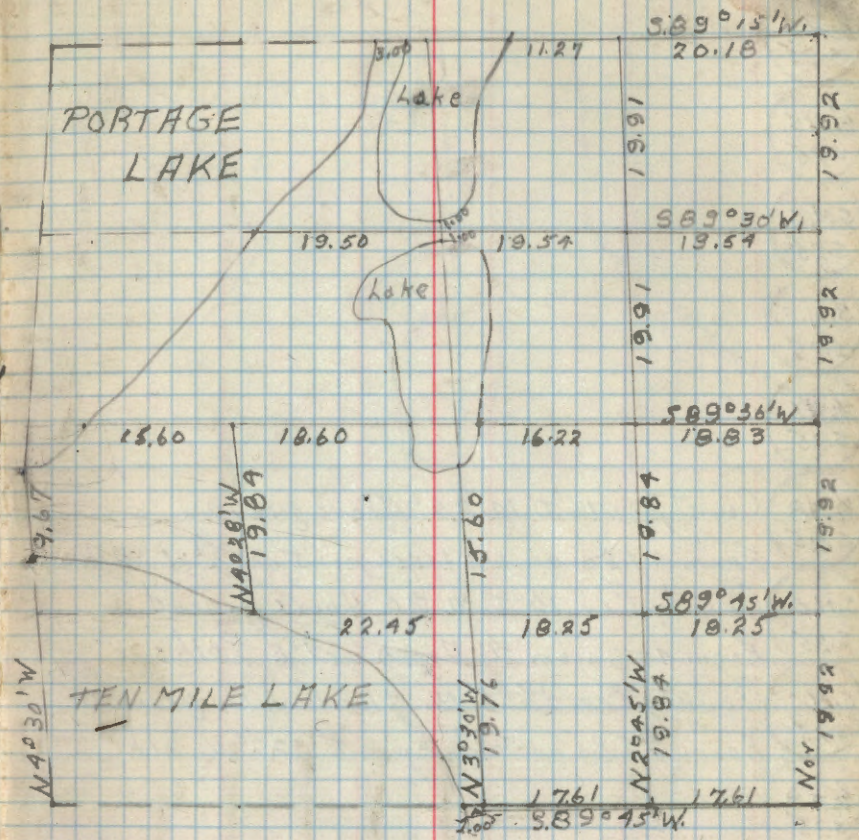
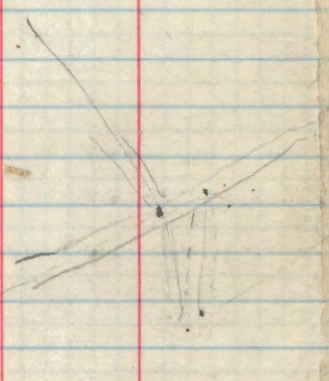
1/6 #15 County Cor. 1 1/2" I.M. 24" Above ground
5.25

1/4 #25 County Cor. 1 1/2" I.M. 12" Above ground
36

M.C. 25 County Cor. 1 1/2" I.M. 30" Above ground
36

M.C. County Cor. 1 1/4" I.M. 24" Above ground
26/25

20/25 County Cor. 1 1/2" I.M. 18" Above ground
M.C.



36

1/6 #4
5.25

1/6 #5
5.25

S.M.C.
5.25

S.M.C.
5.25

1/6 #6
5.25

1/6 #8 County Cor. 1 1/2" E.M. 29" Above ground
5.25 Farm 458a on oak fence post S 33° W 41k.

S.M.C. County Cor. 1 1/2" E.M. 20" Above ground
5.25 Farm 458a on 4" Aspen S 9° E 50k

S.M.C. County Cor. 1 1/2" E.M. flush with ground
5.25 Farm 458a on Alder post S 27° W. 11k.

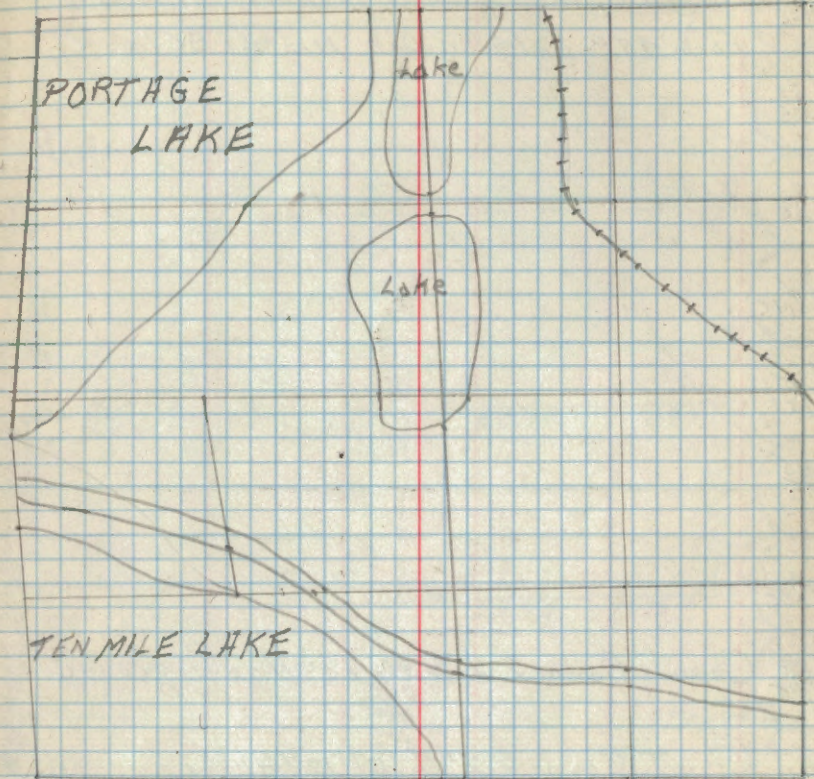
1/6 #9
5.25

1/6 #11
5.25

1/6 #12
5.25

1/6 #13
5.25

S.M.C. County Cor. 1 1/2" E.M. 20" Above ground
5.25 Farm 458a on 1 1/2" Wood N 70° E 921k.



22/23
27/26

County Corner 2" I.M. 12" Above ground
Form 45B on 14" R. Oak N13°E 901K5 ✓

M/6 23
26

1/4 23
26

23
26/M.C.

M.C.
26/25

26/25
M.C.

26/35
M.C.

1/4 26
35

County Corner 2" I.M. 12" Above ground

26/35
M.C.

County Corner 2" I.M. 12" Above ground

M.C. 26
35

County Corner 2" I.M. 8" Above ground

26/35
M.C.

County Corner 2" I.M. 24" Above ground

27/26
34/35

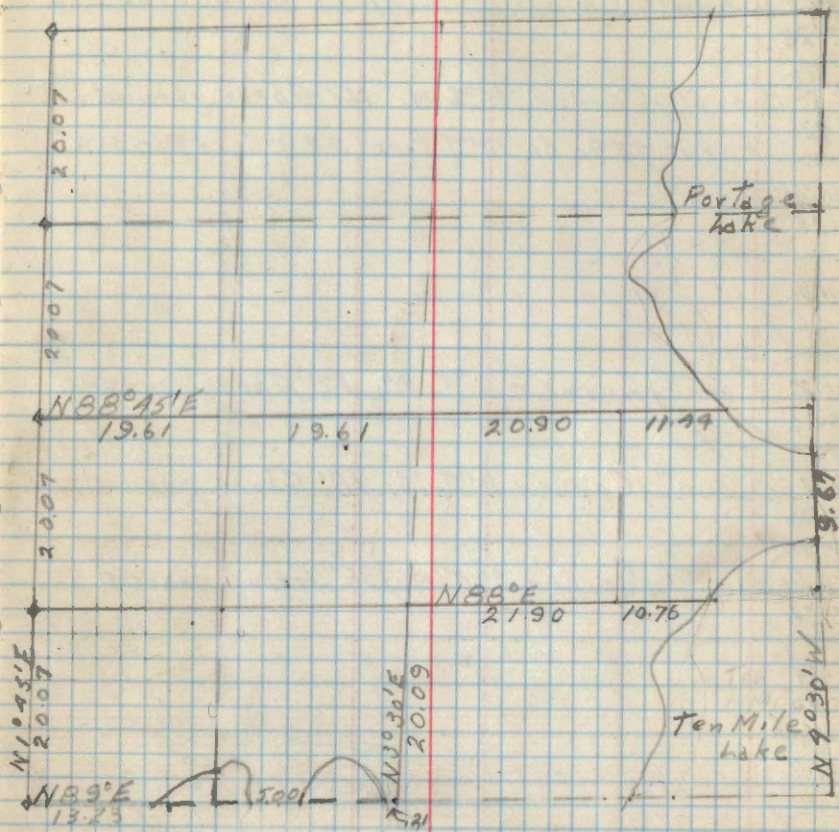
County Corner 2" I.M. 12" Above ground

Form 45B on 12" S. Pine 871K5 ✓

5/16
27/26

County Corner 2" I.M. 20" Above ground

Form 45B on 16" Aspen 588°E 401K5 ✓



K County Corner 2" I.M. 12" Above ground ✓
27/26

N 1/2 County Corner 2" I.M. 16" Above ground
27/26 Form 458a on 12" J. Pine S. 90° E 651 ks. ✓

NW 1/4
S. 26

C. N 1/4
S. 26

S.M.C. County Corner 2" I.M. 12" Above ground
S. 26

S.M.C. County Corner 2" I.M. 18" Above ground
S. 26

C.E. 1/4 County Corner 2" I.M. 36" Above ground
S. 26

C. 1/4
S. 26

C.W. 1/4
S. 26

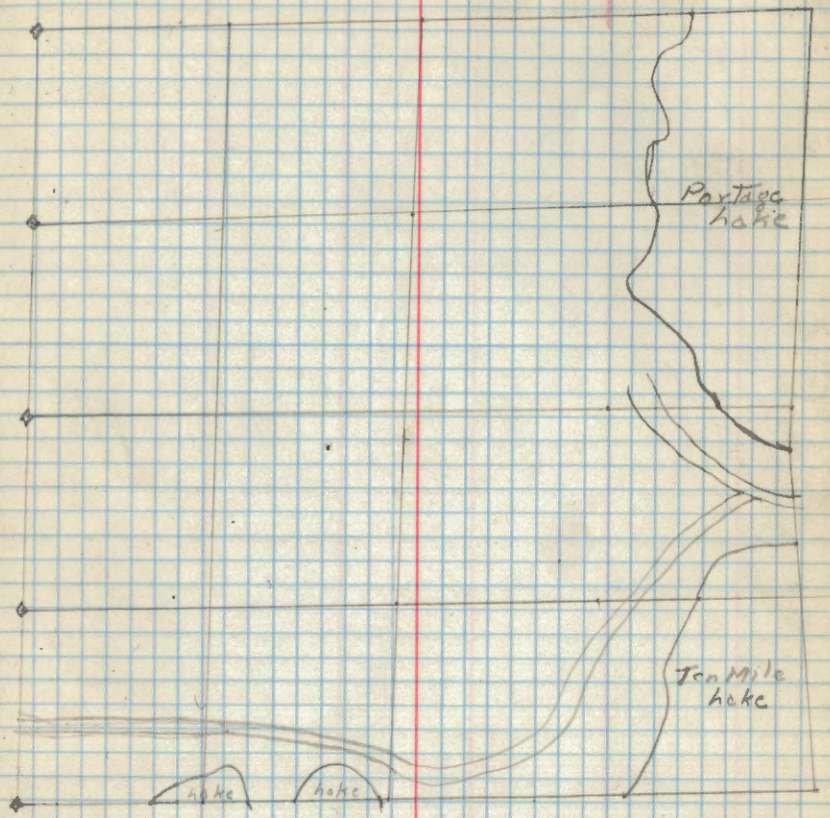
S.W. 1/4 County Corner 2" I.M. 24" Above ground
S. 26

C.S. 1/4 County Corner 2" I.M. 24" Above ground
S. 26

S.E. 1/4 County Corner 2" I.M. 12" Above ground
S. 26

S.M.C. County Corner 2" I.M. 18" Above ground
S. 26

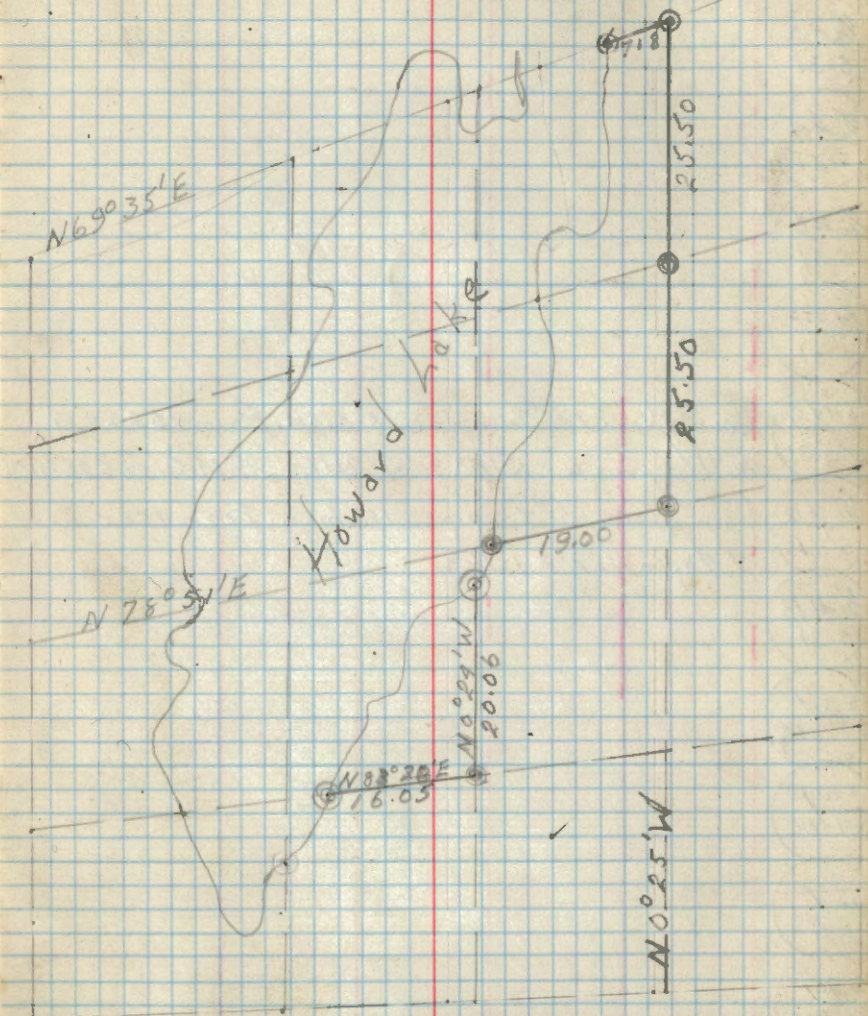
S.M.C.
S. 26



1790
3d

County Cnr. 2" Iron pipe 15" Above ground
B.T. 11" Aspen S. 120 W. 431 ks.

Sec. 31-141-31



1/4 for

1/2
12.31

E. M. C. on E+W. 1/4 line Sec. 31
 1 1/2" Iron Pipe County Cor. 18" above ground
 Form 458a on 6" W. Spruce S87°E 161ks

TRAIN 30
31

1/6 #2
5.31

1/4 30
31

1/6 #1
5.31

30 29
31 32

1/6 #7
5.31

1/4 31+32

1/6 #19
8.31

31 32
1-12-31

1/6 #25
5.31

1/4 31

1/6 #16
5.31

13.31
TRAIN 31

1/6 #10
5.31

I.M.C.
5.31

County Cor. 1 1/2" Iron pipe 30" high Form 9582 on
6" Aspen S80°E 10 lks. S.M.C. on N 46 1/4 line.

1/6 #3
5.31

1/6 #4
5.31

1/6 #5
5.31

1/6 #8
5.31

I.M.C.
5.31

County Cor. 1 1/2" Iron pipe 18" high. Form 9582 on
10" W. Spruce S 60° 30' W 21 lks. E.M.C. on S 1/2 line.

1/6 #12
5.31

County Cor. 1 1/2" Iron pipe 18" high. Form 7582 on
7" Aspen N22°E 10 lks.

1/6 #13
5.31

5.30/
5.31/M.C.

5.30/
5.31/M.C.

5.30/
5.31/M.C.

5.30/
5.31/M.C.

S.M.C.
5.31

S.M.C.
5.31

S.M.C.
5.31

S.M.C.
5.31

1/100
33 County Corner 1 1/2" IM 10" above grd

1/32
CC County corner 1 1/2" IM 10" above ground
458 on 6" JP S38°E 51 links

1/10
1/16 County corner 1 1/2" IM 10" above ground
458 on 6" Aspen S45°W 15 links

1/32
3/32 County corner 1 1/2" IM 10" Above ground
458 on 6" Aspen Due E 7 links

1/3
1/6 Approx corner 4" Aspen 4" Above ground
458 on

30/28
31/33 County corner 2" IM. 8" Above ground
458 on

1/2
1/16 Approx corner 4" Aspen 4" Above ground
458 on 4" Oak N10°W 10 links

1/29
1/32 Approx corner 4" Aspen 4" Above ground
458 on 4" Aspen Due S 8 links

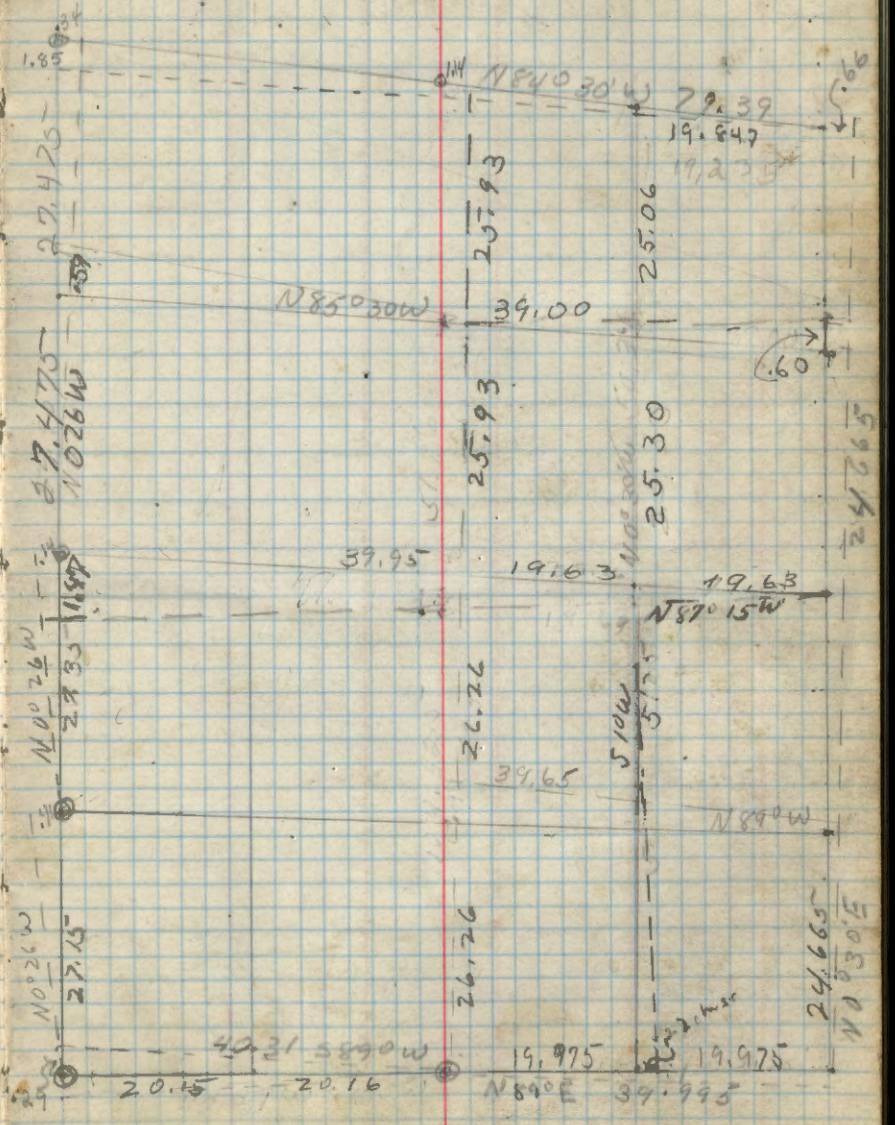
0/4532 F.S. Approx corner 4" Aspen 4" Above ground
458A on 6" Aspen Var. 32°W 22 links

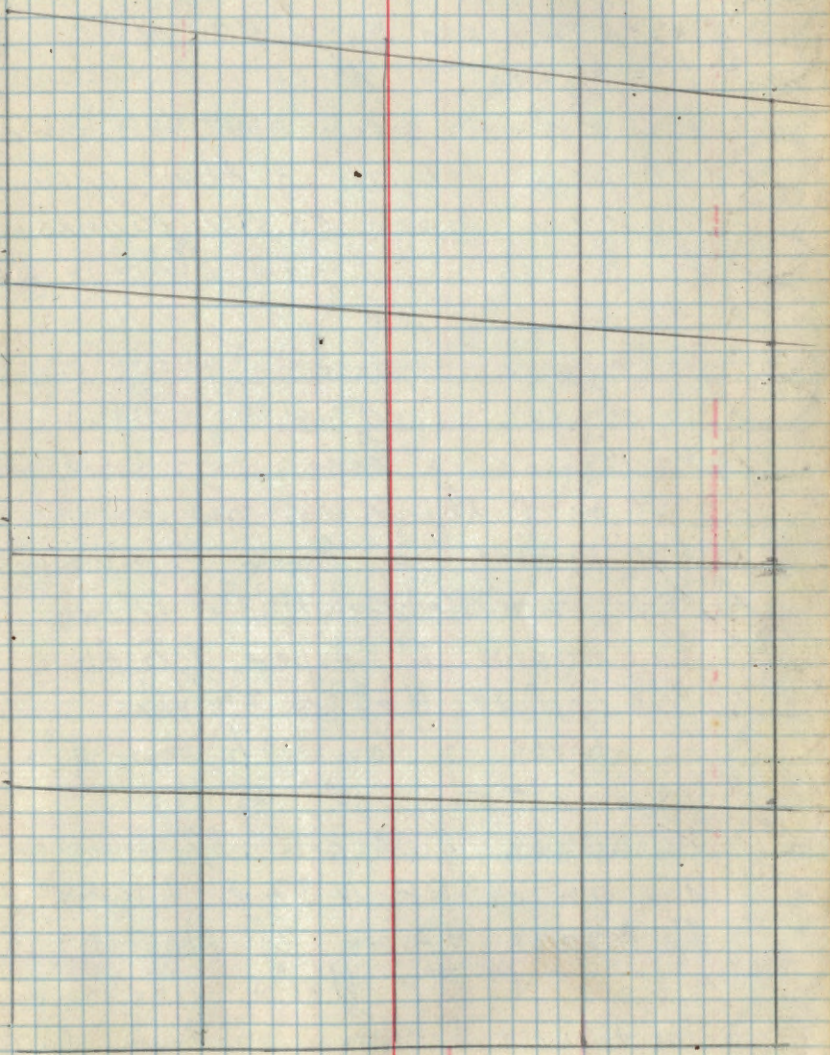
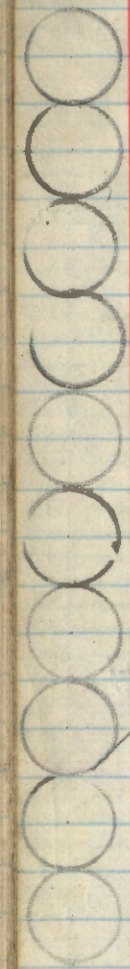
1/5
1/16 F.S. Approx corner 4" Birch 4" Above ground
458A on 5" Aspen S 30°W 8 links

1/8
1/16 F.S. Approx corner 2" Aspen 4" above ground
458A on 4" Aspen N10°W 66 links.

1/16
1/16 F.S. Approx

1/12
1/16 F.S. Approx corner 2" Aspen 4" Above ground
458A on 5" Aspen S 62°E 34 links





#3 FS Approx 4" Aspen 3' Above ground.

1/16 458 on 18" NP S 69°W 58 links

#4 County Corner 2" IM 18" Above ground

3/3 458 on 5" Aspen N 72°W 65 links

#1 FS Approx 4" Aspen 3' Above ground

1/16 458 on 5" Aspen Due So 5 links

28/27
33/34 County Corner 2" I.M. 18" Above ground
Form 458 on 12" R. Pine S. 36° E 80ks.

W 1/2 32
34

1/4 27
34 County Cor. 2" I.M. 10" Above ground

E 1/2 27
34

27/26
37/35 County Cor. 2" I.M. 12" Above ground.
Form 458 on 12" T. Pine S 99° W. 87ks

N 1/2 34
35

N.C.
39/35

~~39~~ M.C.

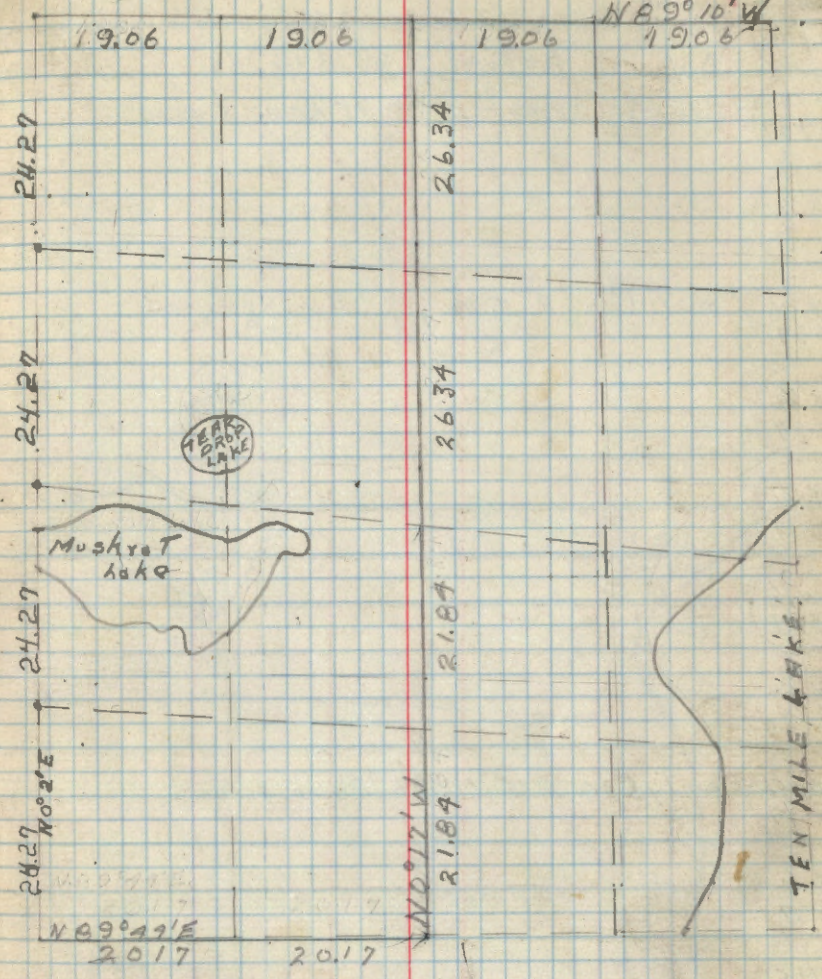
E 1/2 c.c.
5.34

1/4 c.c. County Corner 2" I.M. 36" Above ground
5.34

W 1/2 c.c. County Corner 2" I.M. 24" Above ground
5.34

33/34
c.c. County Cor. 2" I.M. 24" Above ground

S 1/2 35/34
c.c. County Cor 2" I.M. 24" Above ground 2/20/41 - W30.
B.T. 6" Blazed Jack Pine 0.36 chns. S 34° W.



1/4
33+34

County Corner 2" I.M. 10" Above ground
B.P.s 12" Aspen S. 66° W. 40 Ks

N 1/6
33+34

County Corner 2" I.M. 18" Above Ground

NW 1/6
5.34

NE 1/6
5.34

County Cor. 2" I.M. 18" Above ground

SE 1/6
5.34

SW 1/6
5.34

SW 1/6
5.34

SW 1/6
5.34

SW 1/6
5.34

County Cor. 2" I.M. 36" Above ground

SW 1/6
8.34

B.M.C
5.34

S.M.C
5.34

E 1/4
5.34

County Cor. 2" I.M. 8" Above ground

