

FIELD

123

T148N R29W

DIETZGEN
D. J. & G. J.

TRAVEL BOOK

No. 4225

CCC #99
found Feb 1992

1

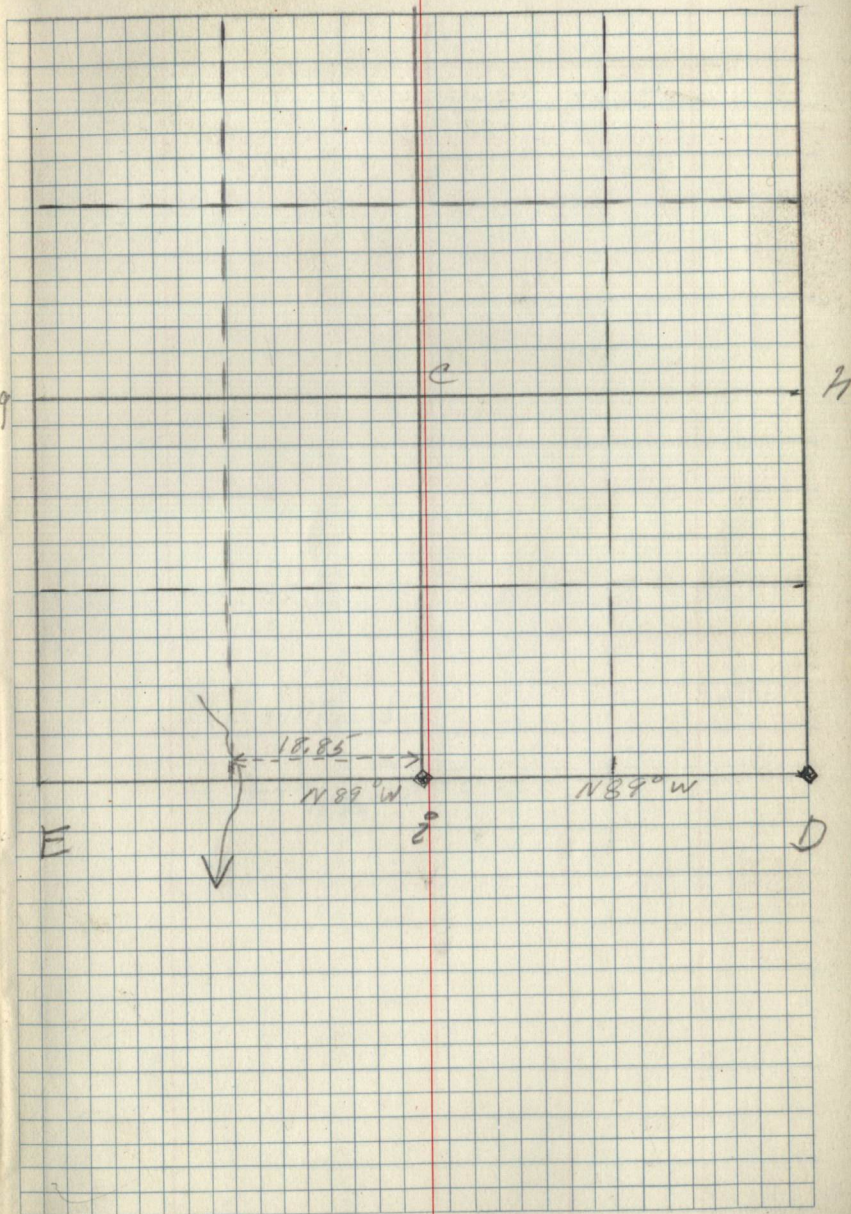
Pages 1
thru 4
Blank

Corat	Spec.	Dia	Bearing	Dist	Remarks
✓ i	Aspen	8"	N35°W	78	County BTs Corner is Section line marker. 11/16/39
	Aspen	6"	S29°W	84	
✓ D	Jack Pine	6"	S40°W	93	County BTs Corner in Center of Road. 11/16/39
	Jack Pine	6"	S51°E	61	

B

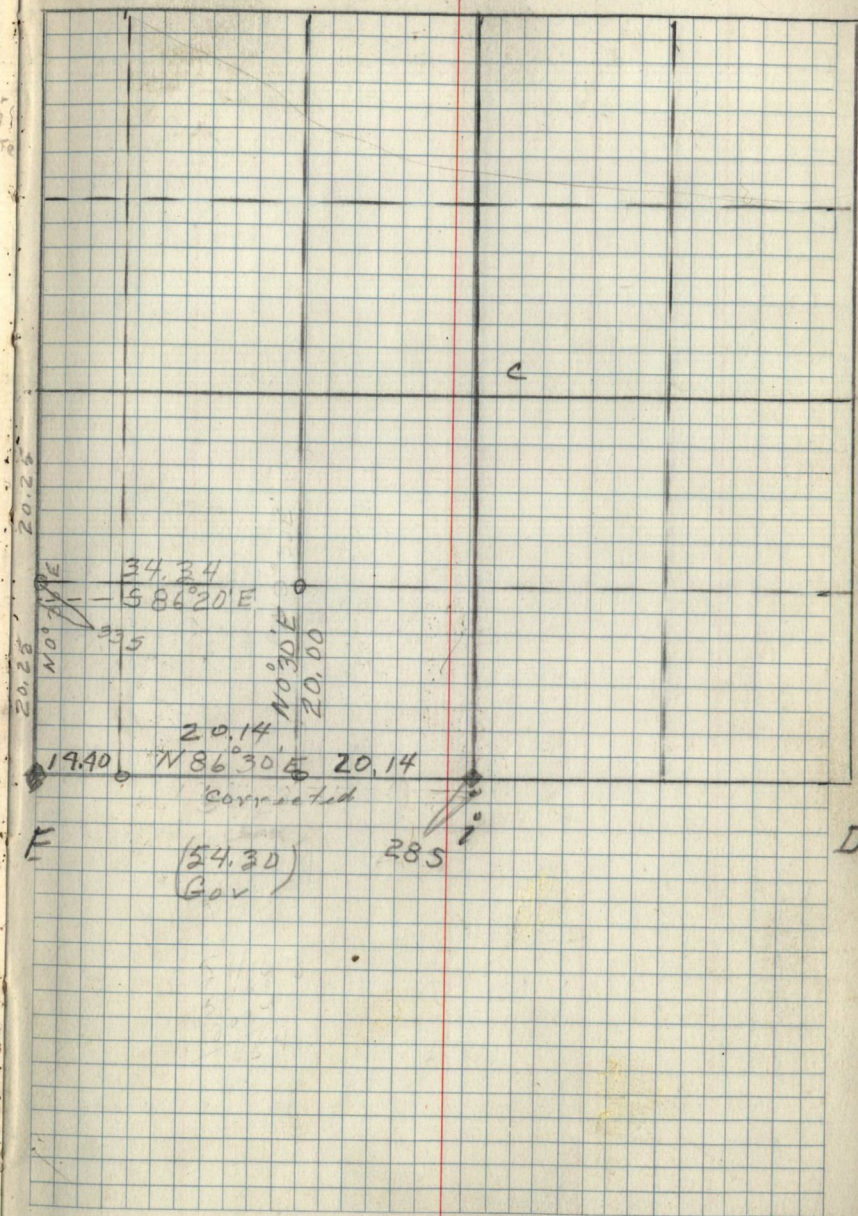
f

5A



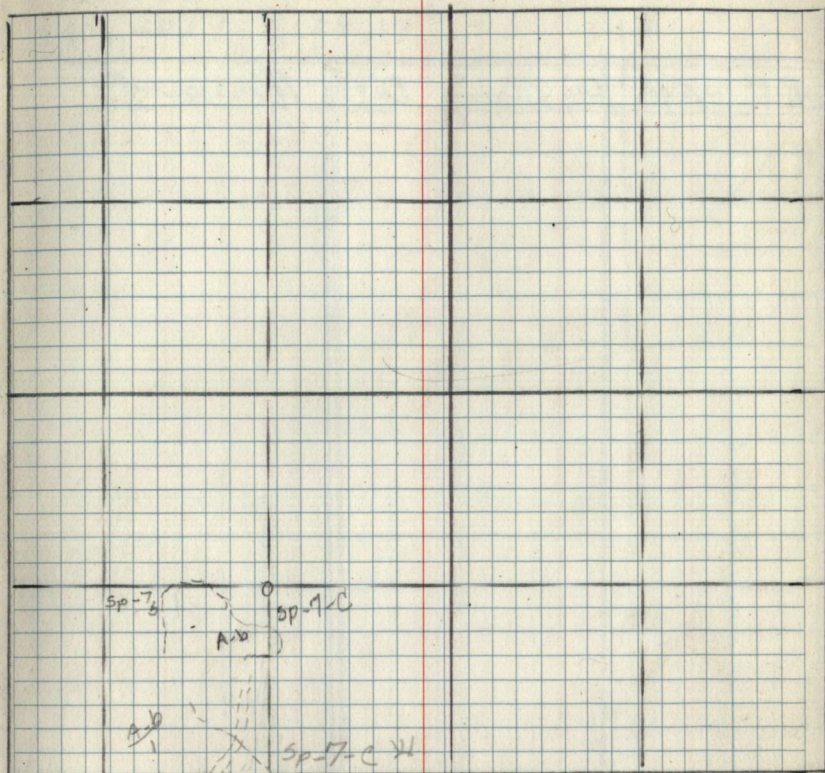


Cor. at	Spec	Diq	Bearing	Dist	Remarks
2	Pine Stub	14"	N2°W	77	County B ^{Found 010} scribed Con. Per Sat 244 X 48
	Pine Stub	15"	N14°W	99	F.S. Foster Balsam store 4/22/40 H. Hoard



B

6A



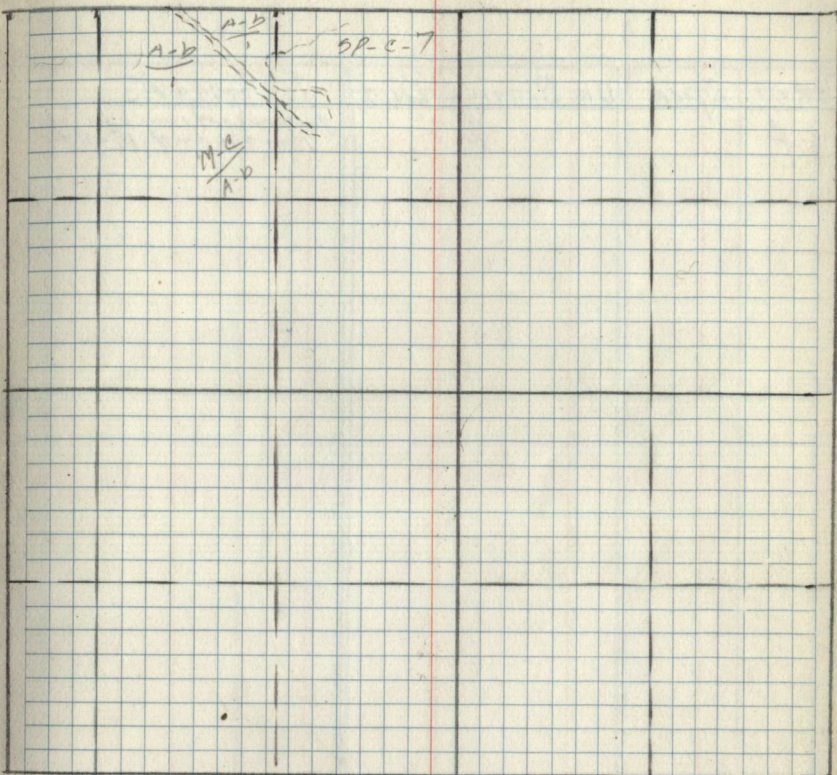
E

D

301

B

7A



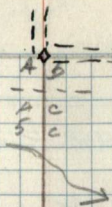
E

D

100

B

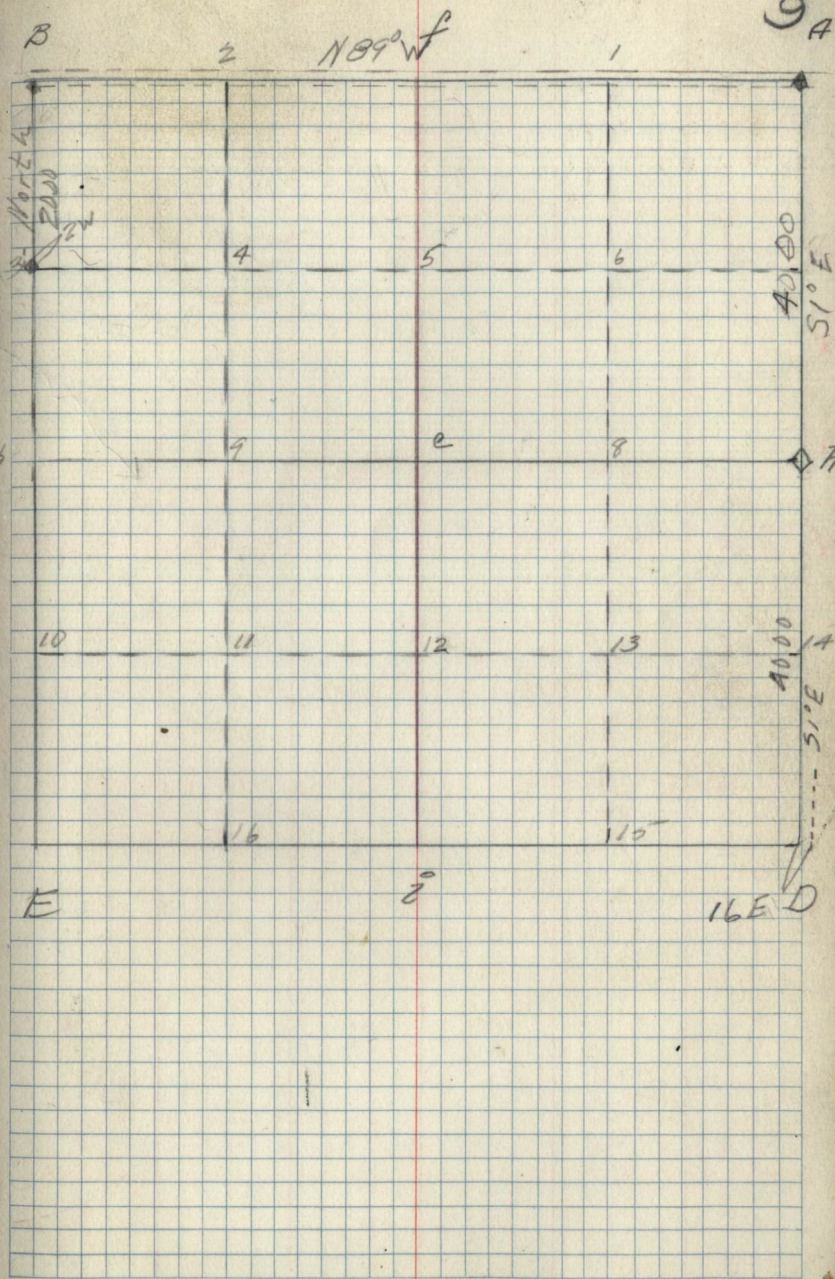
B A



E

D

COR at	Spec.	Diag	Bearing	Dist	Remarks
B					Refer D sec. 5 T148 R29
✓ 3	Aspen	6	N42°E	17	County BTs. Scribed post 3x3x40 11/16/39
	Aspen	5	S79°E	16	
✓ A	Spruce	9	S34°E	59	County BT Cor at intersects
	Spruce	9	S39°E	102	Orig BT of road 11/16/39
✓ h	Elm	10	N73°E	43	County BTs
	Oak	12	S67°W	42	Set Aspen stake 4x4x4 F.S. Poster 11/16/39
✓ D	Jack Pine	22	N60°E	31½	Orig. BTs. Found Post used as corner
	Jack Pine	18	S51°W	31	F.S. Poster 11/17/39



5-6

5-B

4-B

7-D

66.37

7-B

4-A

7-B

7-B

14-C

Field

4-B

7-B

2-B

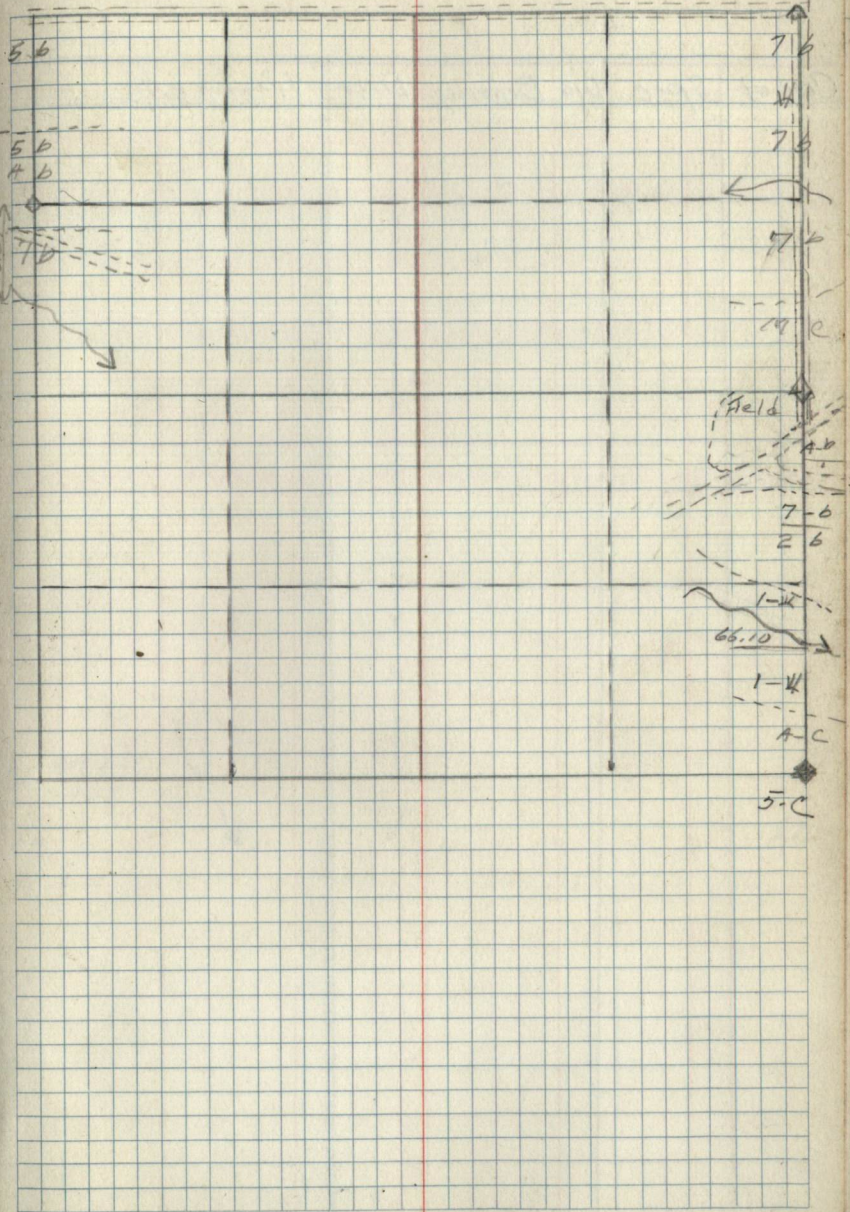
1-K

66.10

1-K

4-C

5-C



500 700 800
← 19.99 →

Pages 11

thru 14

Blank

A Tam. 20" N47°E. 98 Count of ^{BT corner} _{of road} center

15

N89°E
27.44

ok.

31

B

15
A

C

B-b 27.49

B-b

B-C

B-C

B-C

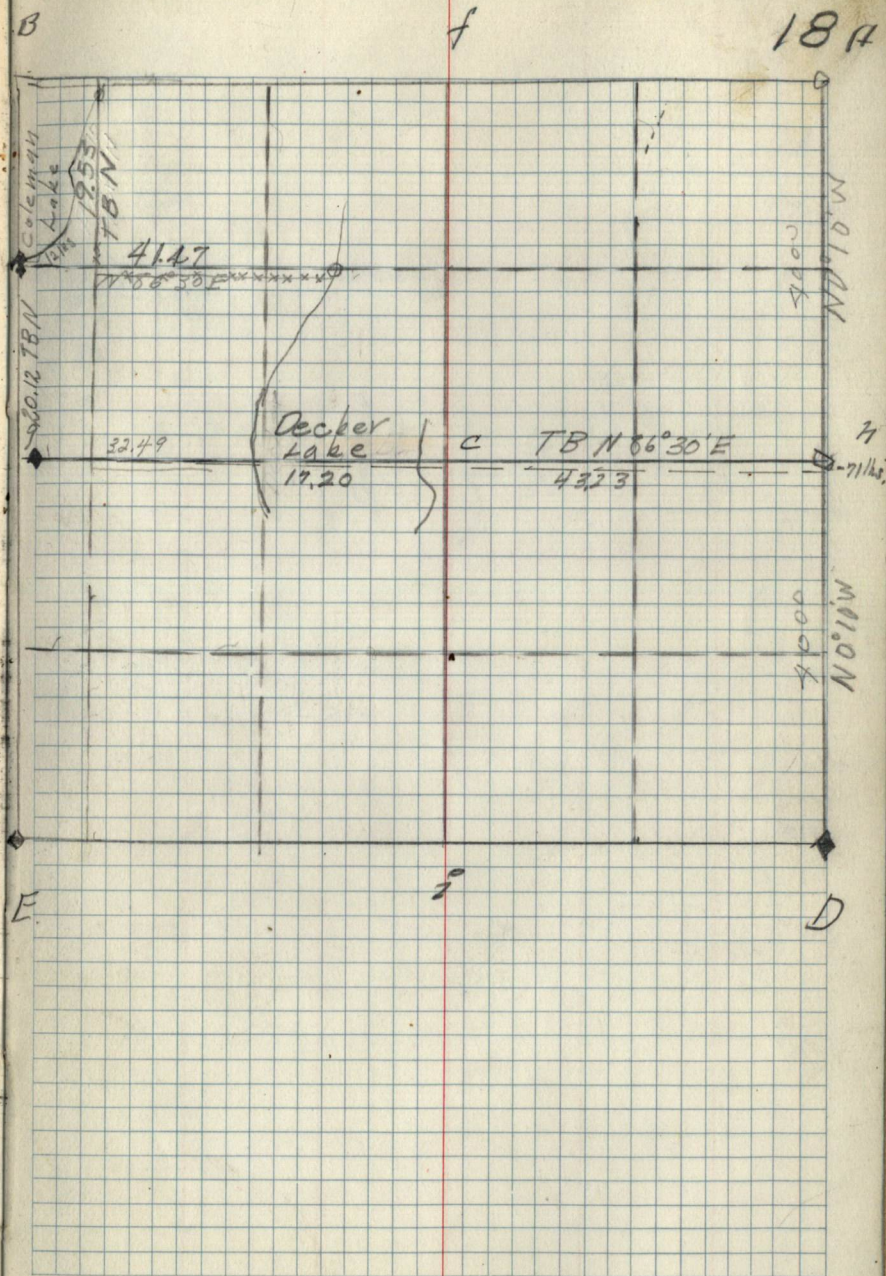
D

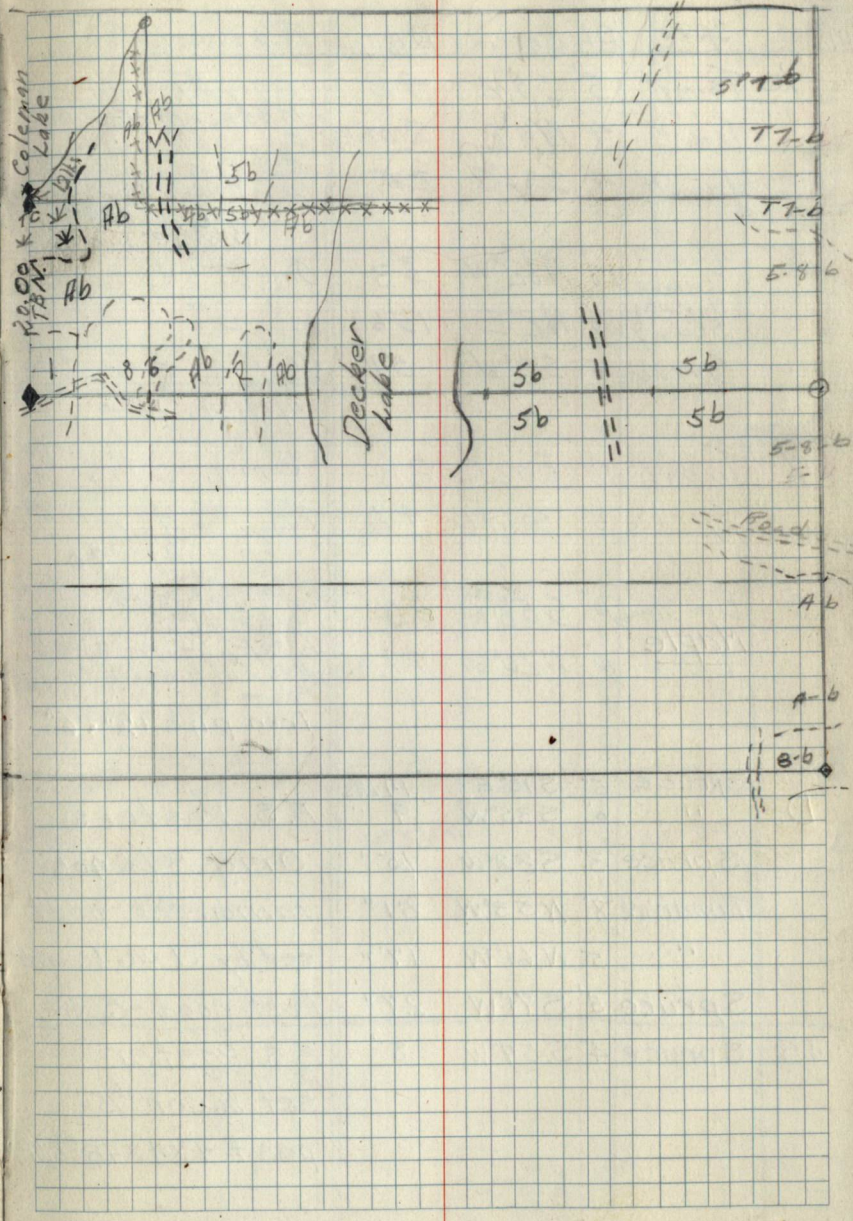
Pages 16

thru 17

Blank

COR	at Spec.	Dist	Bearing	Dist	Remarks.
D					Refer to A. 20, 19
h	J. Pine	7"	N17°W	26 lbs	F.S. poster.
	N. Pine	10"	S. 58°E	19 "	Found axe mark on stump. No scribing. 4" x 4" x 36" W.P. post previously set. EWP
3.					
Ko MC Decker Lake	Aspen	10"	S72°W	5 lbs	F.S. poster set 4" x 4" x 36" aspen post on line 9/1/40 EWP
Ko MC Coleman Lake	Aspen	5"	S46°E	7 lbs	set post 4" x 4" x 36" aspen on line 9/1/40 EWP





5-1-6

7-6

7-6

5-8-6

Decker Lake

5b

5b

5b

5b

5-8-6

Road

A-b

A-b

8-6

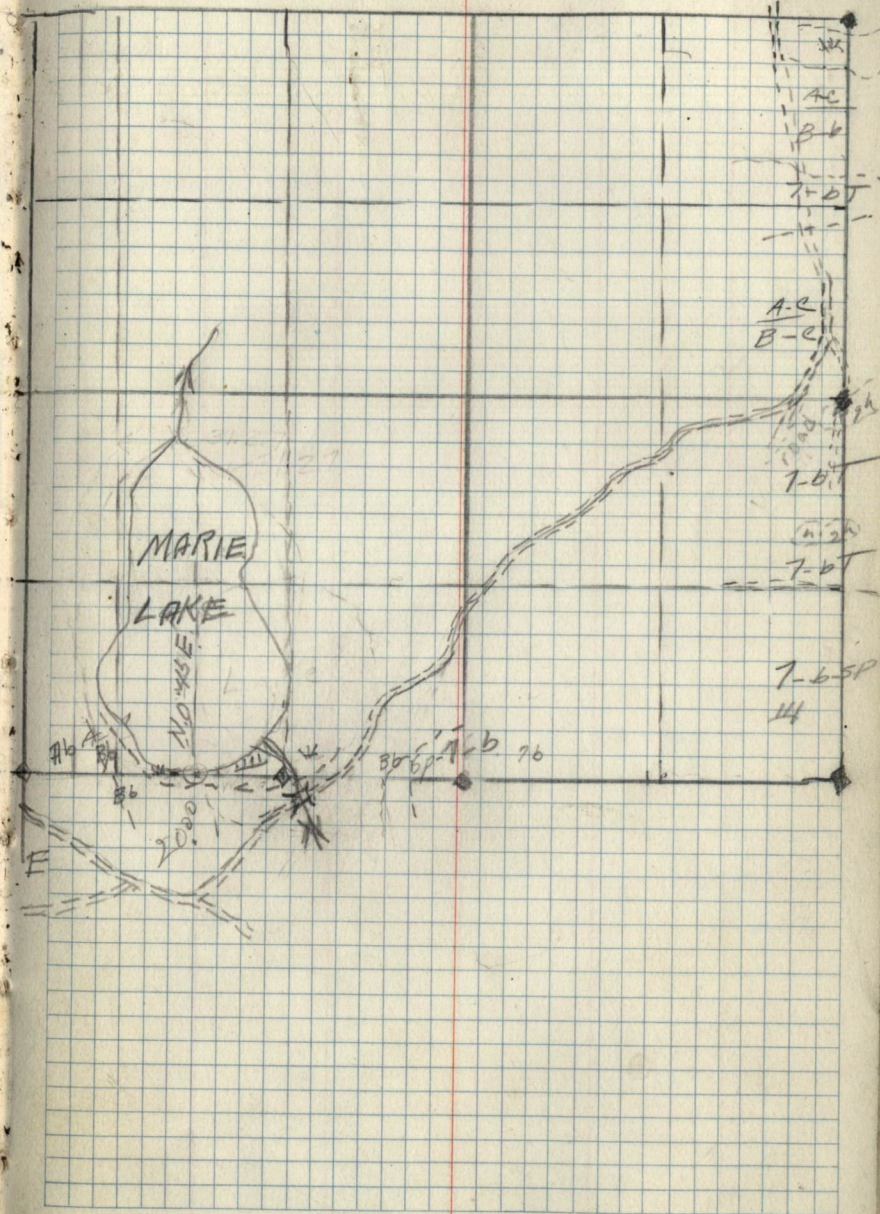
Cor. at Spec. Dia Bearing Dist. Remarks

16

Ash 12" Due S. 176 fts. Forest Service Post

Cedar
Post 4'x4"x.48"

19



Pages 20
thru 21
Blank

Pages 23
thru 24
Blank

part notes
Sp. Spruce 12°S 74°E .9
Willow 3°N 25°W .33

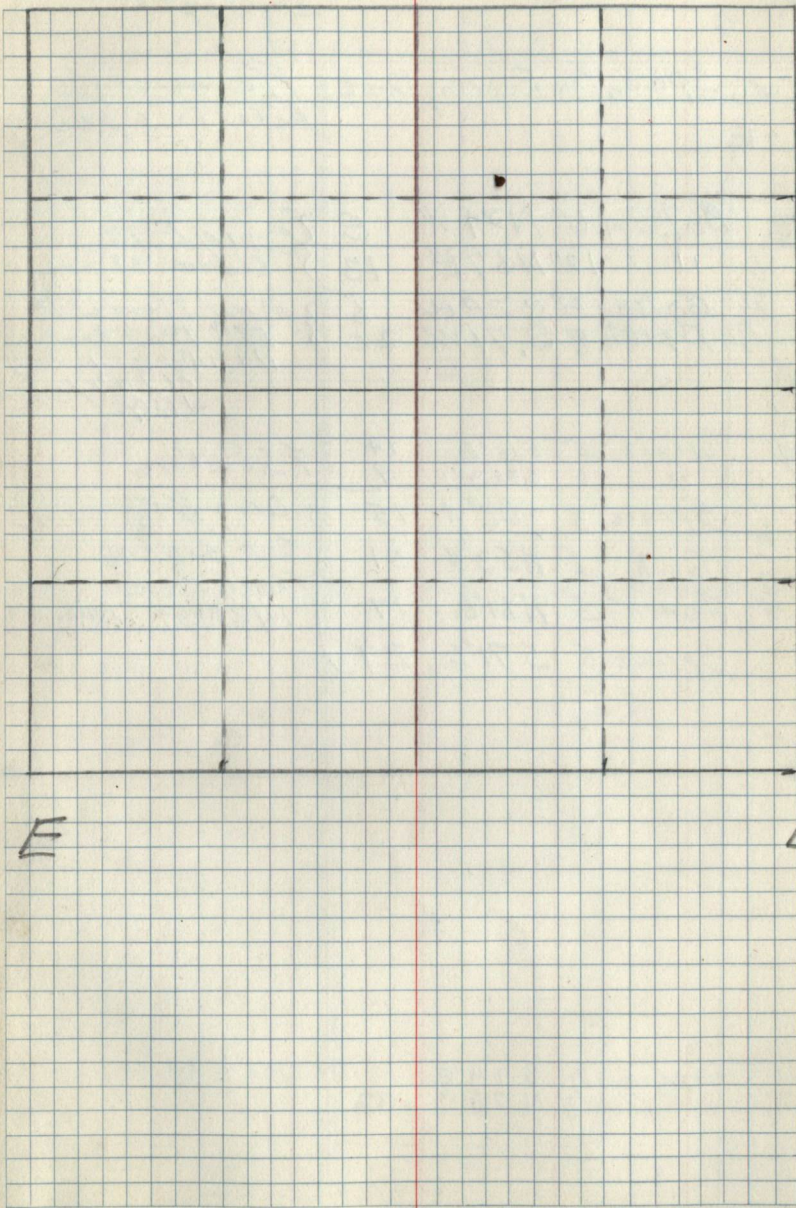
26

A.C. ↓

Pages 27
thru 28
Blank

29 A

B



E

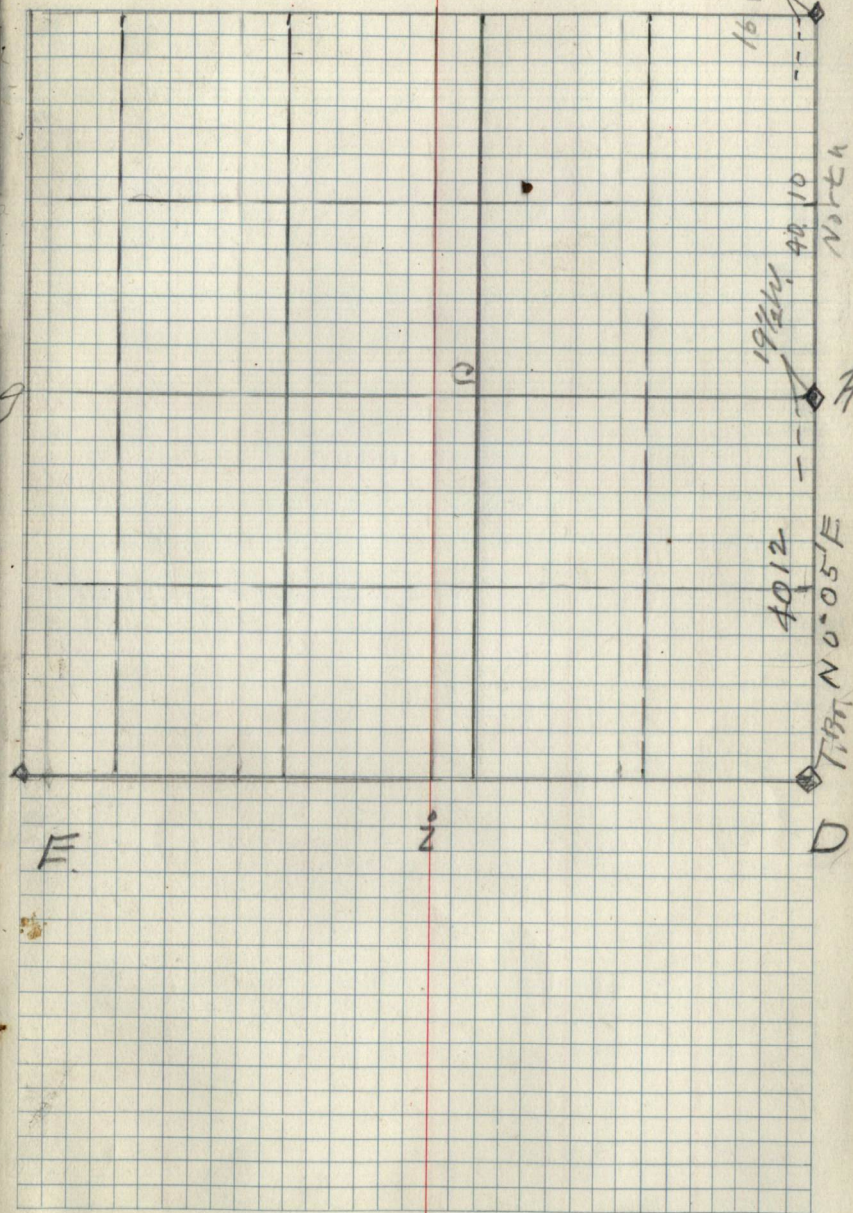
D

H. Hoard - Compass
Notes
A. Engdahl chain
(Paulseth)

Cor.	Spec.	Dia	Bearing	Dist	Remarks
D-E					Refer To A Sec 31
A.	Balsam	6"	N 34 W	8	} Orig. BTs Down 7 Poles
✓	"	12"	N 57 E	13	
	Balsam	8"	S 28 W	8	} MK'd New BTs F.S. Posters ASH Post 11/28/39 J.A.G.
	Birch	8"	S. 71 W	20	
A	Spruce	5"	S 15° E	14	F.S. Posters
	"	6"	S 35° W	9	
✓	Spruce	3"	S 82° W	15	} Orig BTs (good) Set 5x5x48 Tamik Post 11/28/39 J.A.G.
	Tamik	8"	N 53° W	51	
	Tamik	5"	N 61° E	17	
	Spruce	3"	S 71° E	27	

9- spruce 12" S 74 E
W 71 W 3" N 25 W. 33 (orig notes)

B



B

Ab

7b

Ab

Bb

Ab

7b

Ab

Ab

Bb

Ac

Bb

Ab

Ac

7b

Ab

Ab

7b

Ac

Ac

D

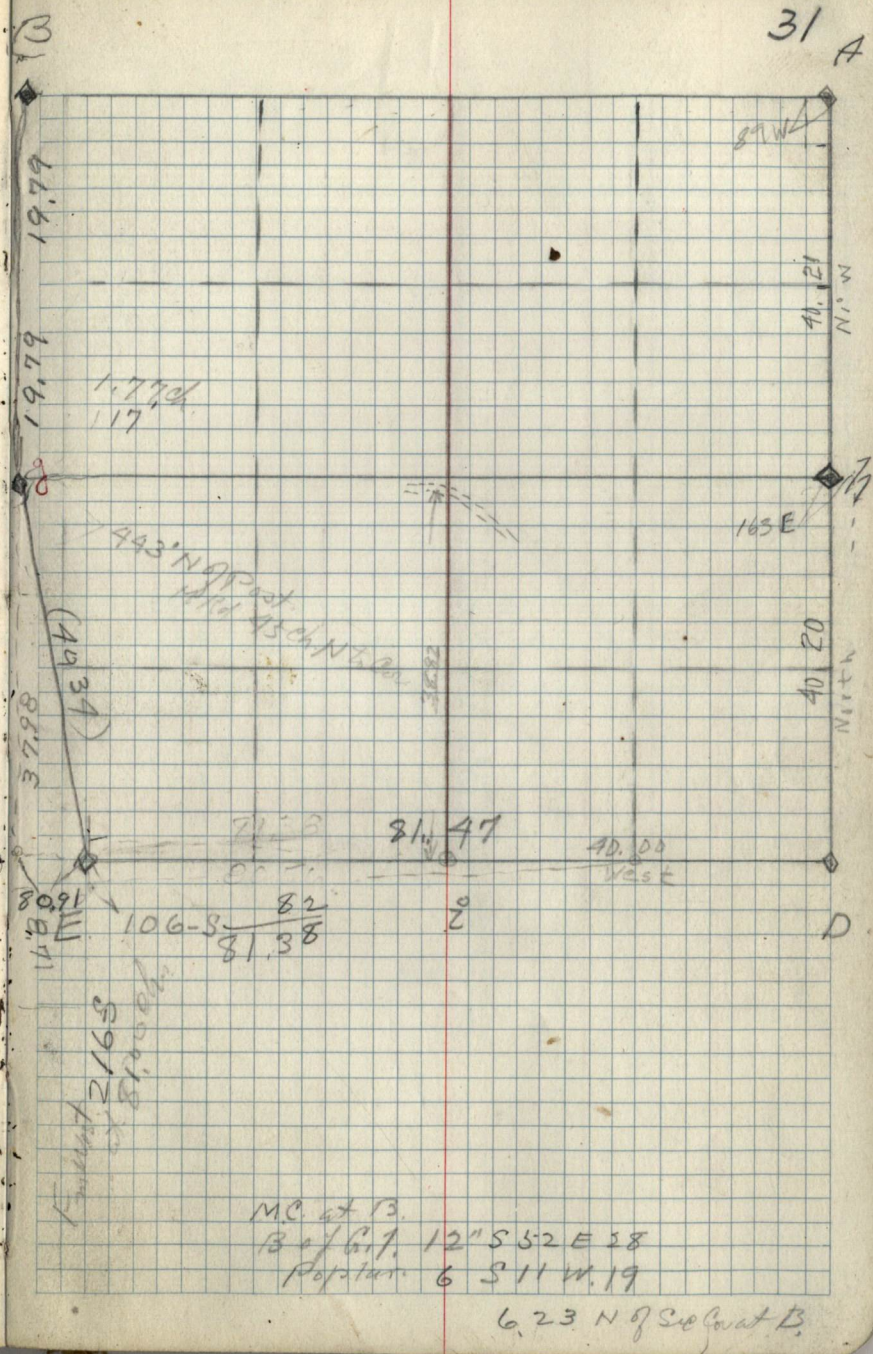
E

22
66
32
132
10.32

32
66
192
192
2.12

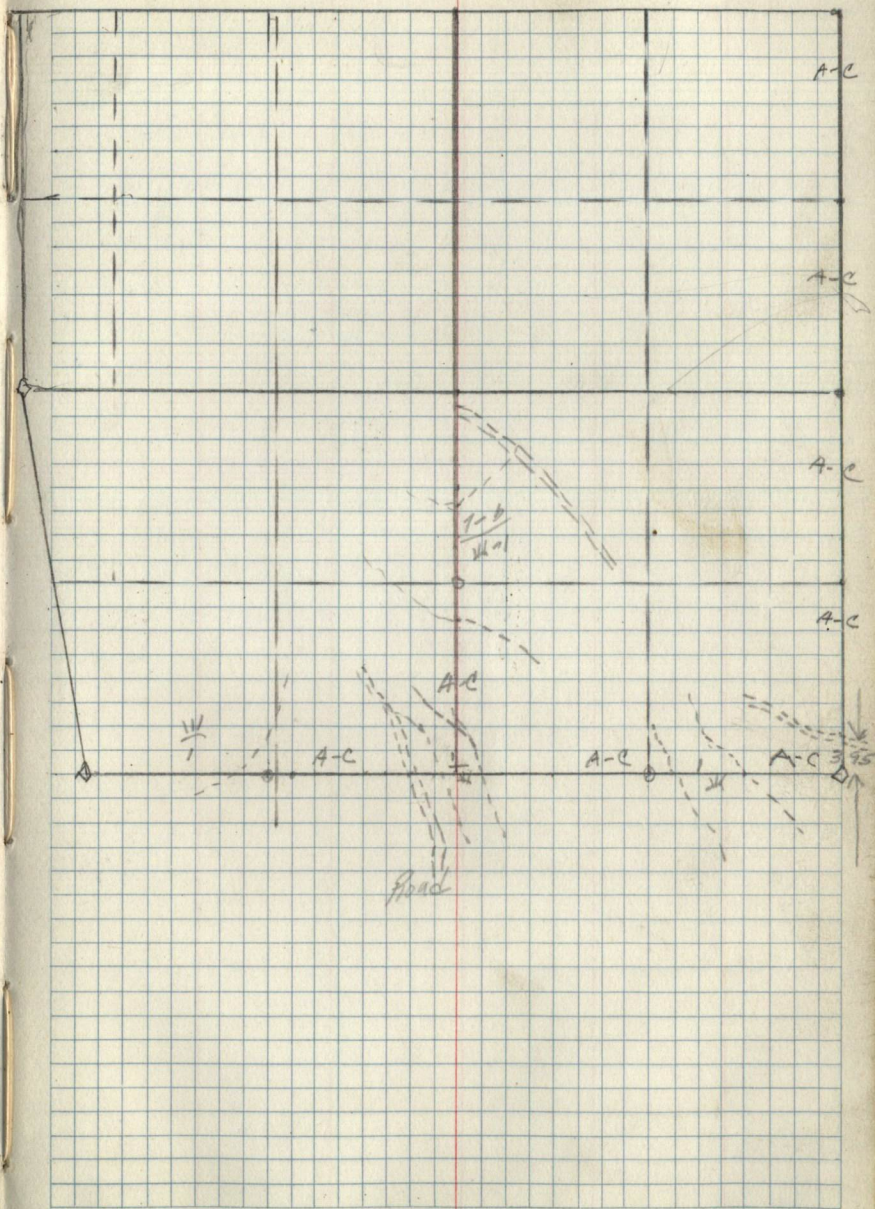
Corat.	Spec.	Dia	Bearing	Dist	Remarks
✓ G.	W. Pine	18"	S 6° E	22	Orig. B.T. FS. Poster.
⊙	" " STA Pittman	18"	N 20° W	32	Burnt + Sp. Pine Set Maple Post 3" x 60" JAG 11/14/39
✓ D	Aspen	9"	S 28° E	44	county B JAG
	Aspen	7"	North	9	FS. Poster 11/14/39
	Aspen	6"	N 77° W	5	FS. Poster 1" iron pipe old oak stake
✓ B.	Elm	12"	N 84° W	41	Orig. B.T.
	Aspen	8"	N 23° E	14	Mkd New B.T.
	" "	8"	N 74° W	14	FS. Poster Found Dry Post Set New Aspen 9" x 60" 11/20/39 JAG/Thay
✓ H	Spruce	8"	S 20° W	16	FS. Posters
	Spruce	5"	N 20° E	39	Found old corner BT gone 11/27/39
✓ A	Aspen	16"	N 38° E	13	Orig. B.T.
	Aspen	5"	S 44° E	19	Found old Post 4x4 x 4x8 good
	Aspen	8"	N 72° E	21	FS. Poster
	Aspen	6"	N 44° W	15	Mkd B.T. + Poster
	Aspen	10"	N 44° E	11	Mkd B.T. 11/27/39
✓ E.	Aspen	6"	S 88° W	230	Mkd B.T. and FS. Poster Aspen Post 30x16x4 Est. Cor. 11/27/39 JAG
9	" "	14"	S 6° E	22	
	" "	10"	N 20° W	32	
	" "	4"	S 18° E	3	
	" "	10"	N 43° E	3	
	" "	5"	N 33° E	37	
	" "	4"	S 8° E	42	

31 A



M.C. at 13.
B of G. 1. 12" S 52 E 28
Poplar. 6 S 11 W. 19

6.23 N of Section B.



Pages 32
thru End
Blank