

FIELD

T. 147N R 30W

DIXON
MINING

MINING
TRANSFER BOOK

No. 422

FIELD T. 147N. R. 30W.

CCC #94
(found 1/17/92)

EUGENE DIETZGEN CO.

DRAWING MATERIALS, MATHEMATICAL and
SURVEYING INSTRUMENTS

Chicago New York San Francisco New Orleans Pittsburg Toronto

Distances from Center of Roadway for Cross-Sectioning
Roadway 16 feet wide. Side Slopes 1 on 1.
For Single Track Embankment.

H	0	.1	.2	.3	.4	.5	.6	.7	.8	.9	H
0	8.0	8.1	8.2	8.3	8.4	8.5	8.6	8.7	8.8	8.9	0
1	9.0	9.1	9.2	9.3	9.4	9.5	9.6	9.7	9.8	9.9	1
2	10.0	10.1	10.2	10.3	10.4	10.5	10.6	10.7	10.8	10.9	2
3	11.0	11.1	11.2	11.3	11.4	11.5	11.6	11.7	11.8	11.9	3
4	12.0	12.1	12.2	12.3	12.4	12.5	12.6	12.7	12.8	12.9	4
5	13.0	13.1	13.2	13.3	13.4	13.5	13.6	13.7	13.8	13.9	5
6	14.0	14.1	14.2	14.3	14.4	14.5	14.6	14.7	14.8	14.9	6
7	15.0	15.1	15.2	15.3	15.4	15.5	15.6	15.7	15.8	15.9	7
8	16.0	16.1	16.2	16.3	16.4	16.5	16.6	16.7	16.8	16.9	8
9	17.0	17.1	17.2	17.3	17.4	17.5	17.6	17.7	17.8	17.9	9
10	18.0	18.1	18.2	18.3	18.4	18.5	18.6	18.7	18.8	18.9	10
11	19.0	19.1	19.2	19.3	19.4	19.5	19.6	19.7	19.8	19.9	11
12	20.0	20.1	20.2	20.3	20.4	20.5	20.6	20.7	20.8	20.9	12
13	21.0	21.1	21.2	21.3	21.4	21.5	21.6	21.7	21.8	21.9	13
14	22.0	22.1	22.2	22.3	22.4	22.5	22.6	22.7	22.8	22.9	14
15	23.0	23.1	23.2	23.3	23.4	23.5	23.6	23.7	23.8	23.9	15
16	24.0	24.1	24.2	24.3	24.4	24.5	24.6	24.7	24.8	24.9	16
17	25.0	25.1	25.2	25.3	25.4	25.5	25.6	25.7	25.8	25.9	17
18	26.0	26.1	26.2	26.3	26.4	26.5	26.6	26.7	26.8	26.9	18
19	27.0	27.1	27.2	27.3	27.4	27.5	27.6	27.7	27.8	27.9	19
20	28.0	28.1	28.2	28.3	28.4	28.5	28.6	28.7	28.8	28.9	20
21	29.0	29.1	29.2	29.3	29.4	29.5	29.6	29.7	29.8	29.9	21
22	30.0	30.1	30.2	30.3	30.4	30.5	30.6	30.7	30.8	30.9	22
23	31.0	31.1	31.2	31.3	31.4	31.5	31.6	31.7	31.8	31.9	23
24	32.0	32.1	32.2	32.3	32.4	32.5	32.6	32.7	32.8	32.9	24
25	33.0	33.1	33.2	33.3	33.4	33.5	33.6	33.7	33.8	33.9	25
26	34.0	34.1	34.2	34.3	34.4	34.5	34.6	34.7	34.8	34.9	26
27	35.0	35.1	35.2	35.3	35.4	35.5	35.6	35.7	35.8	35.9	27
28	36.0	36.1	36.2	36.3	36.4	36.5	36.6	36.7	36.8	36.9	28
29	37.0	37.1	37.2	37.3	37.4	37.5	37.6	37.7	37.8	37.9	29
30	38.0	38.1	38.2	38.3	38.4	38.5	38.6	38.7	38.8	38.9	30
31	39.0	39.1	39.2	39.3	39.4	39.5	39.6	39.7	39.8	39.9	31
32	40.0	40.1	40.2	40.3	40.4	40.5	40.6	40.7	40.8	40.9	32
33	41.0	41.1	41.2	41.3	41.4	41.5	41.6	41.7	41.8	41.9	33
34	42.0	42.1	42.2	42.3	42.4	42.5	42.6	42.7	42.8	42.9	34
35	43.0	43.1	43.2	43.3	43.4	43.5	43.6	43.7	43.8	43.9	35
36	44.0	44.1	44.2	44.3	44.4	44.5	44.6	44.7	44.8	44.9	36
37	45.0	45.1	45.2	45.3	45.4	45.5	45.6	45.7	45.8	45.9	37
38	46.0	46.1	46.2	46.3	46.4	46.5	46.6	46.7	46.8	46.9	38
39	47.0	47.1	47.2	47.3	47.4	47.5	47.6	47.7	47.8	47.9	39
40	48.0	48.1	48.2	48.3	48.4	48.5	48.6	48.7	48.8	48.9	40

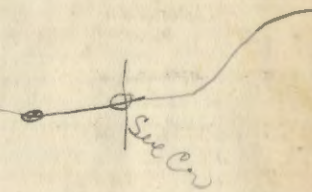
Example—If point is 22.6 ft. above grade, how far should it be from center line to be a slope stake point? Ans. from Table 30.6. For same slopes but other widths of roadbed, correct above figures by one-half difference in width of roadbed; thus in example above, for 20 ft. roadbed distance will be $30.6 + (20 - 16) \div 2$ or 2 ft. added to $30.6 = 32.6$. For slopes of 1 on $1\frac{1}{2}$ see inside of back cover.

Copyright, 1914, by Eugene Dietzgen Co.

FIELD

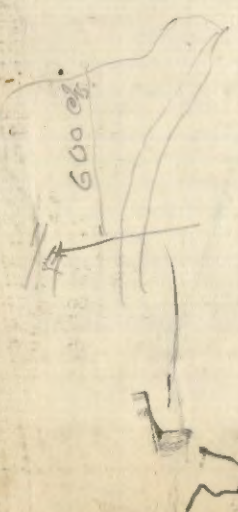
T. 147N. R. 30W.

N 89° E
4712-



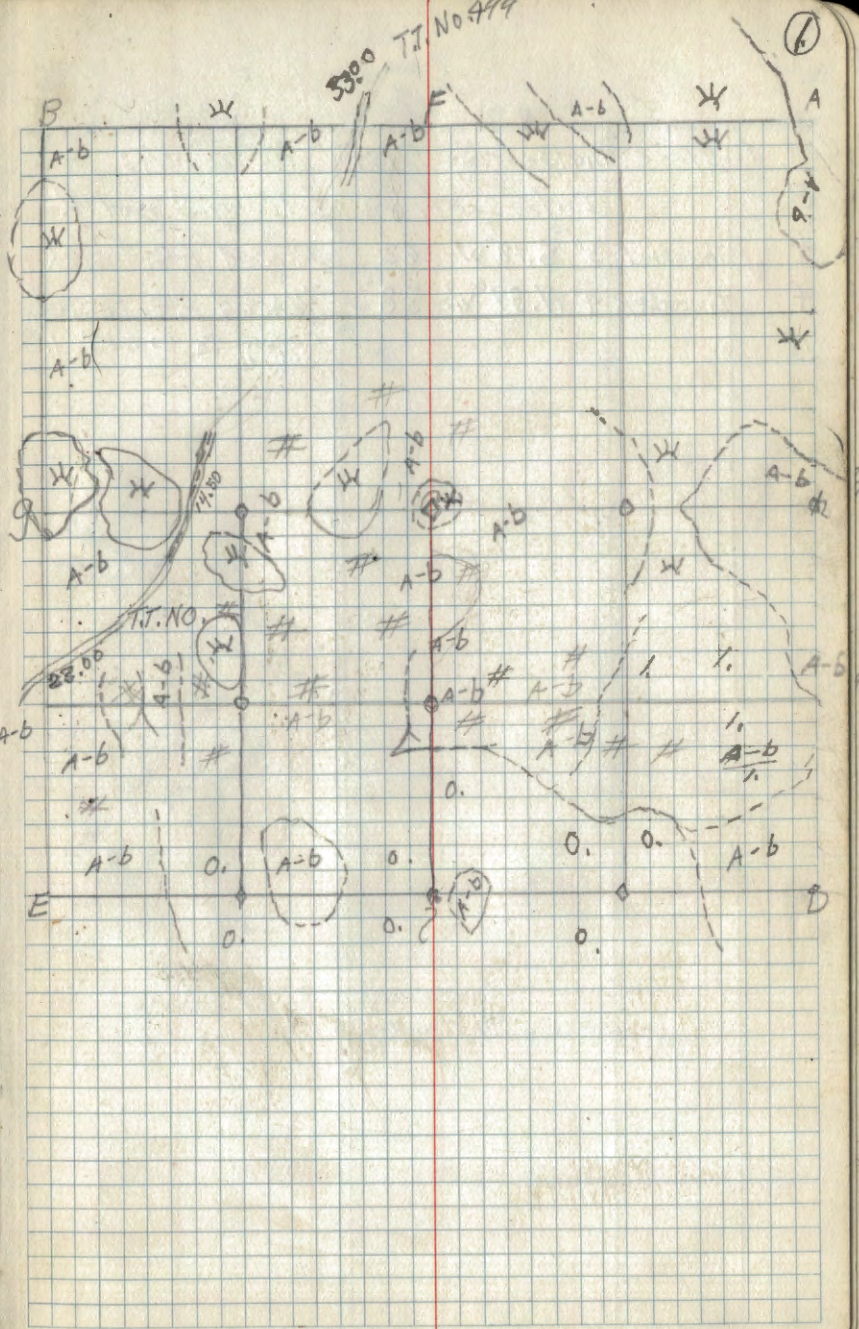
The paper stock of this book is made of a high grade 50% rag paper having a water resisting surface and is sewed with Bing Special Enamel Waterproof Thread.

Made in U. S. A.

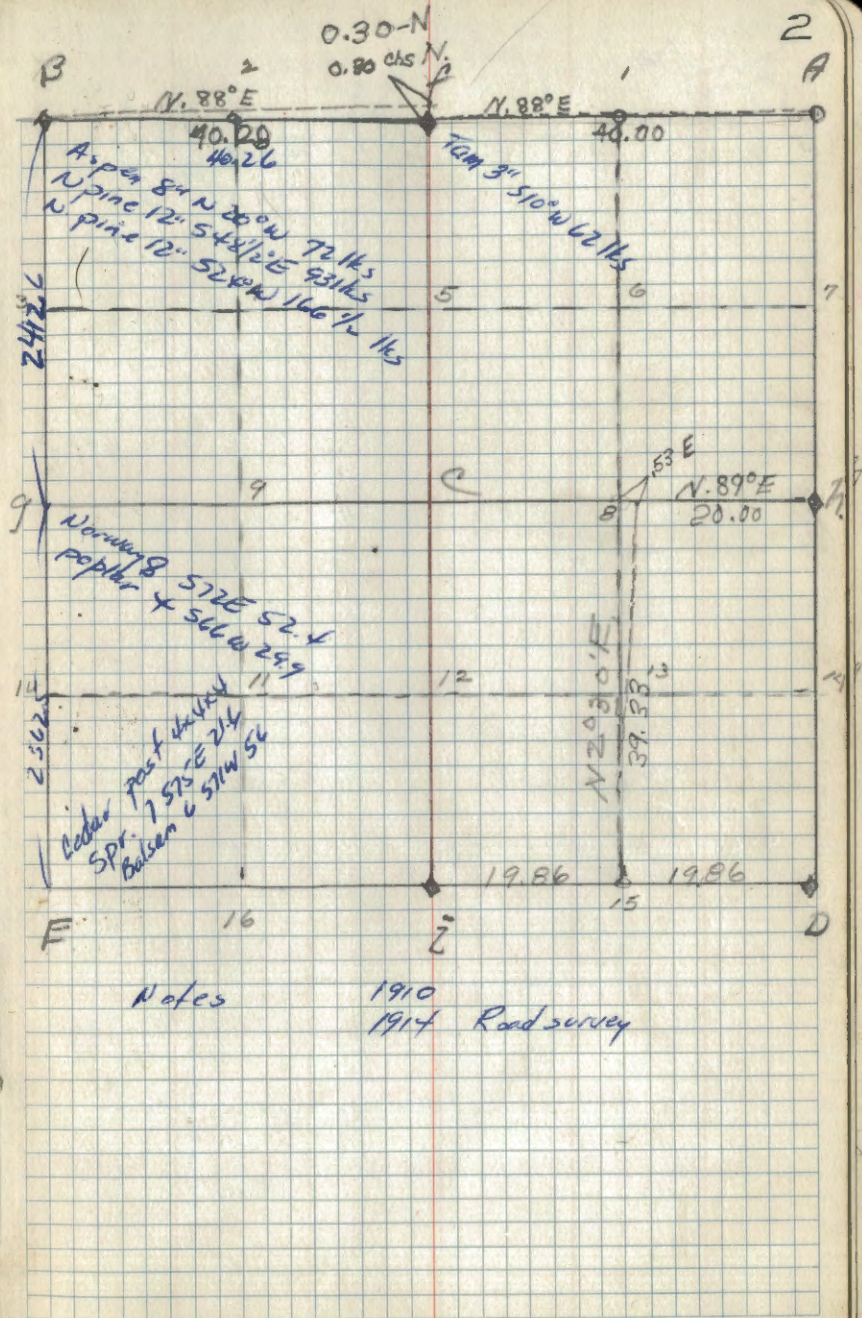


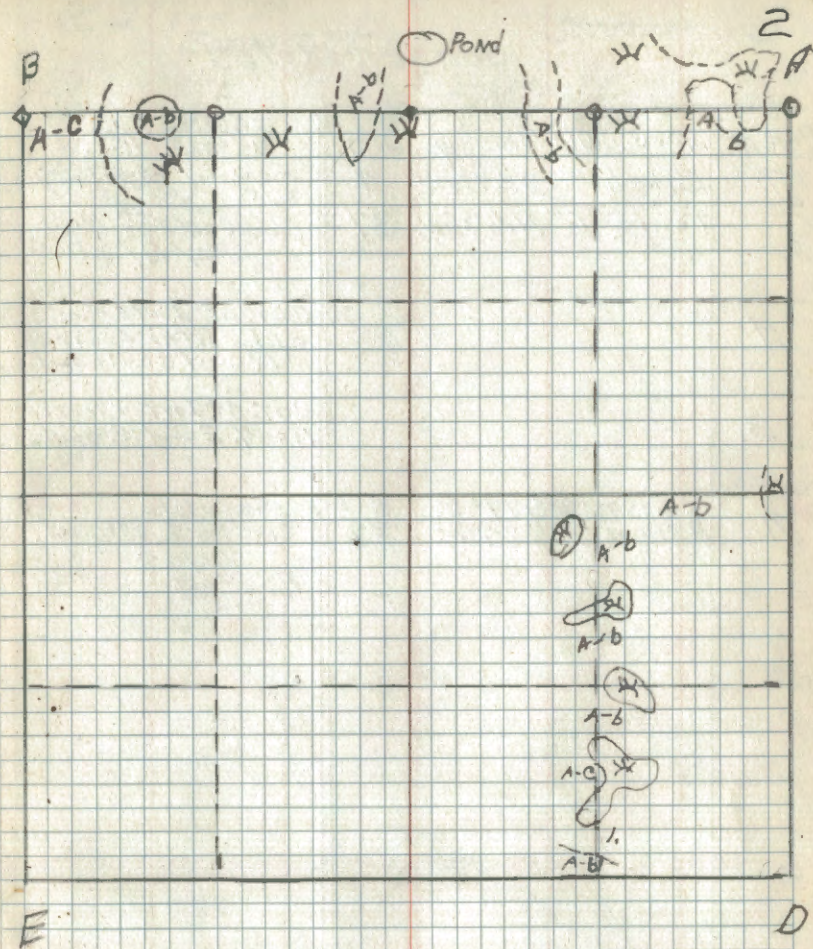
1000000 1/4
1/4
Success
1/5

5300 T.I. No 999



COR. at.	Spec.	Dia.	Bearing	Dist.	Remarks
B.					Intersection of Road S. and W.
f	✓ TAMERACK	3"	S. 18° W	62	PLACED F.S. POSTER ✓
f	TAMERACK	4"	N. 39° W	38	PLACED F.S. POSTER.
15					REFER TO COR. AT 1. Sec. 11





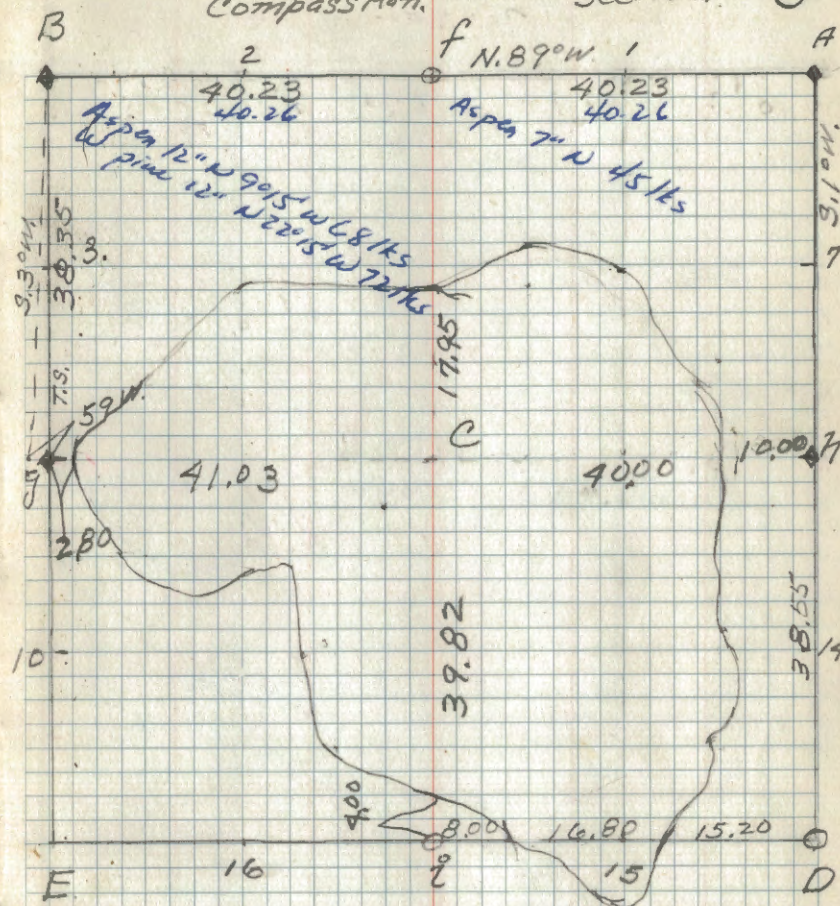
CORNER NOTES.

COR. AT	Spec.	Dia	Bearing	DIST.	REMARKS.
g	Birch	7"	S. 57 1/2° W.	4	Found scribed Post O.K.
	Tamc.	6"	N. 53° W.	37	Placed FS. Posters. 2/8/38
A					Cor. at Intersection of Center Line of Road South and West.
B					Cor. at Intersection Road, E and W. and So.
✓ A	R Pine	12"	S 79° E	80	County B.T.S. Cor. in E of Road. 2/10/38 FS. Posters on 2 B.T.S.
✓ A	ASPEN	7"	S 74° W	39	

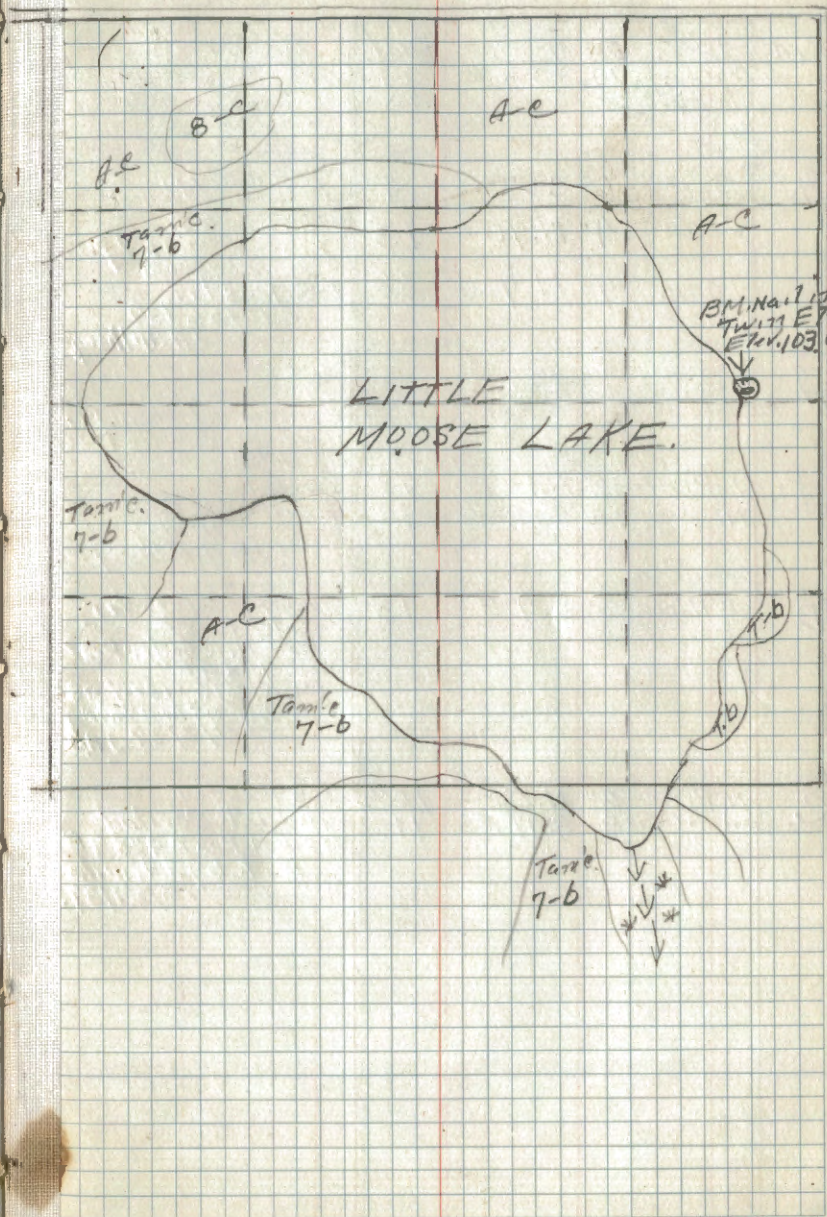
K. STYLER

Compass Men.

Section 3

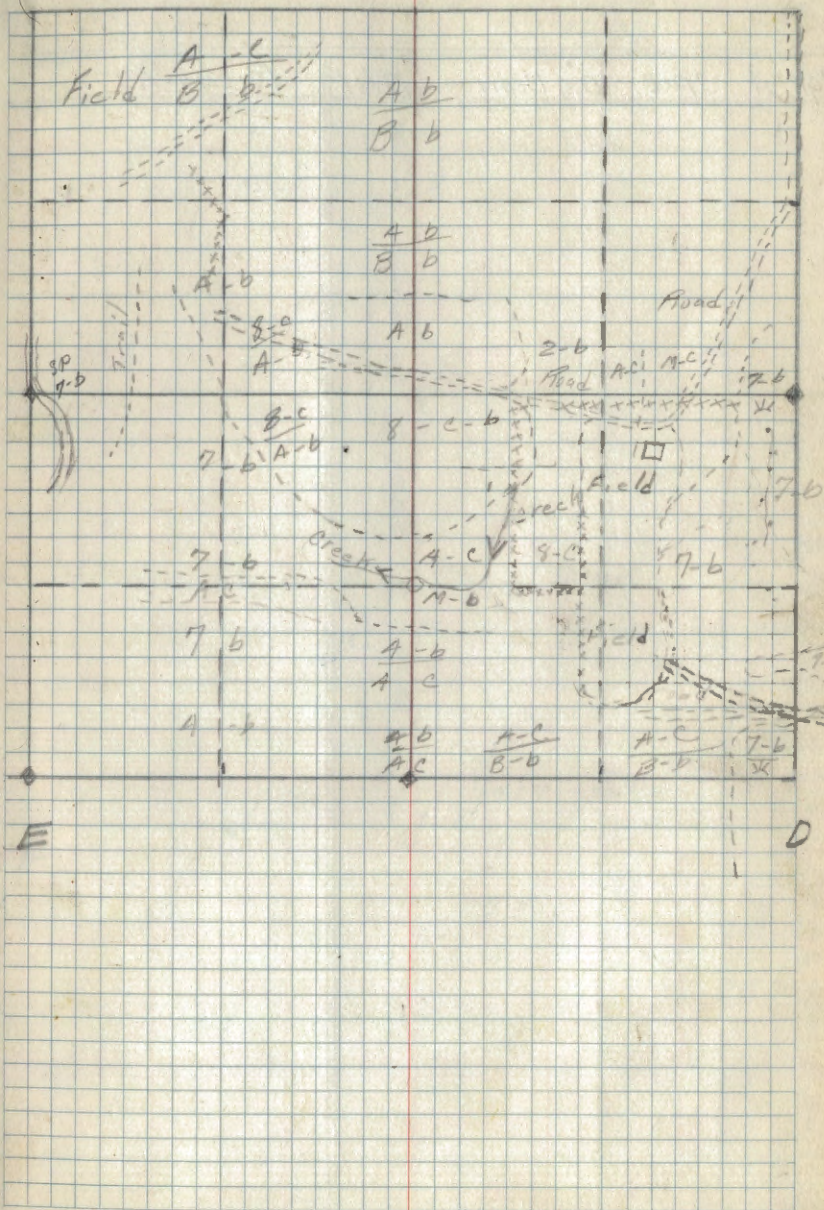


Notes 1910 Co. Sur.



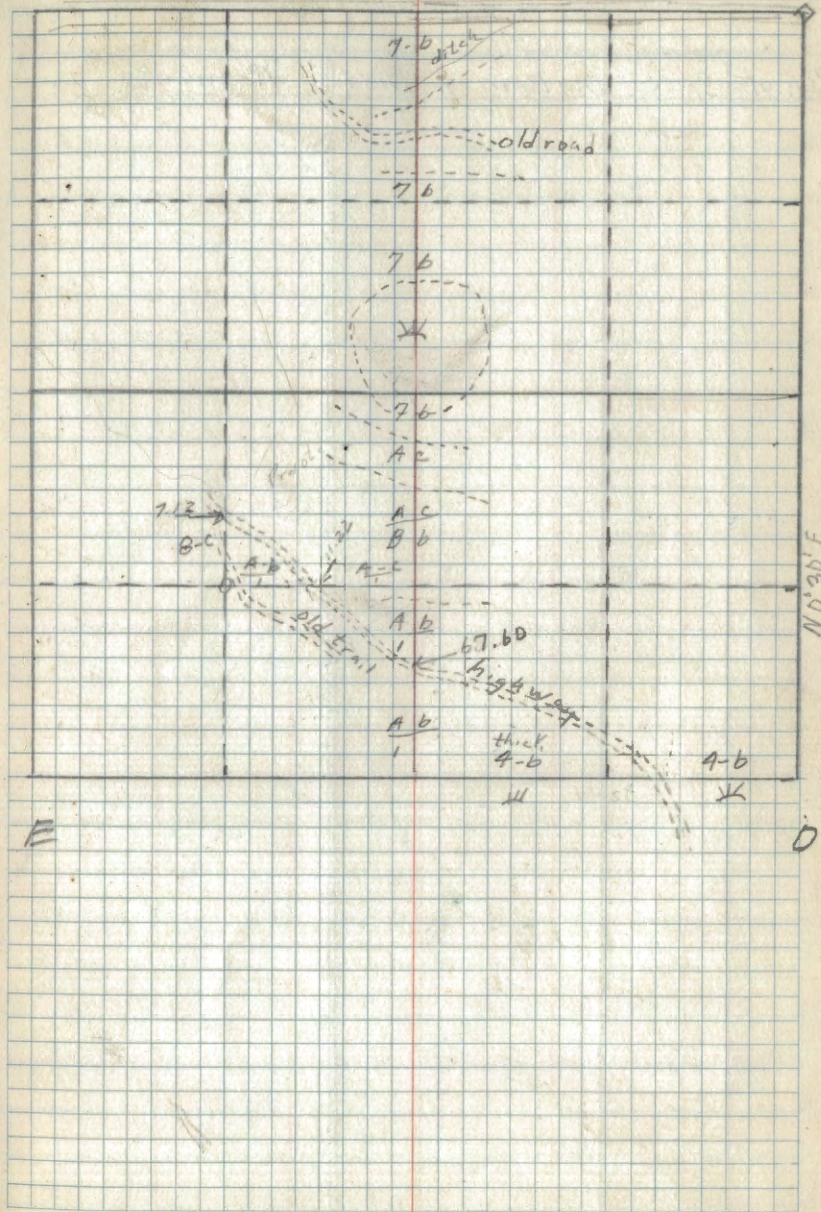
B

4A

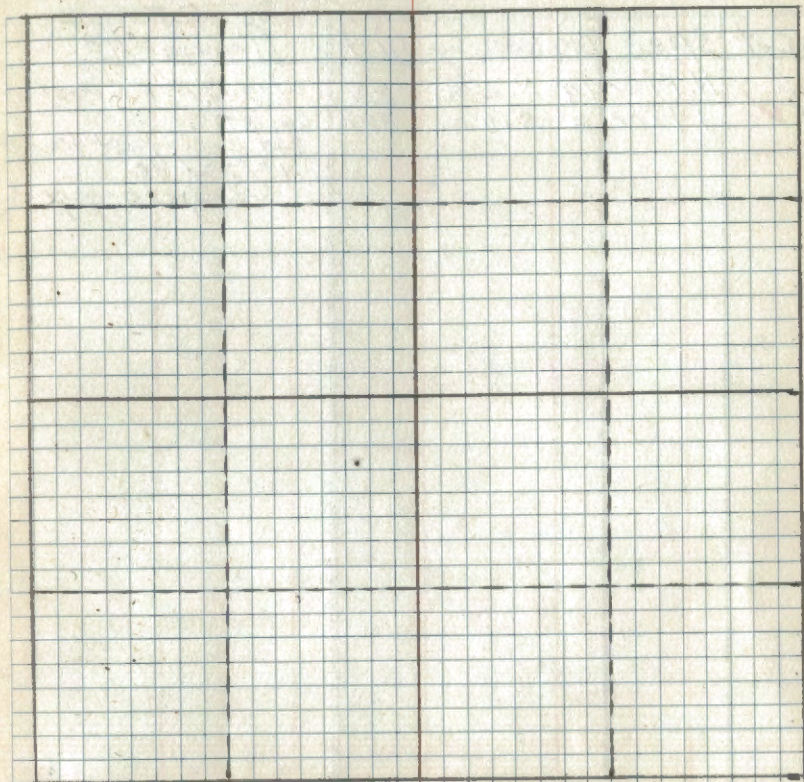


E

D



B



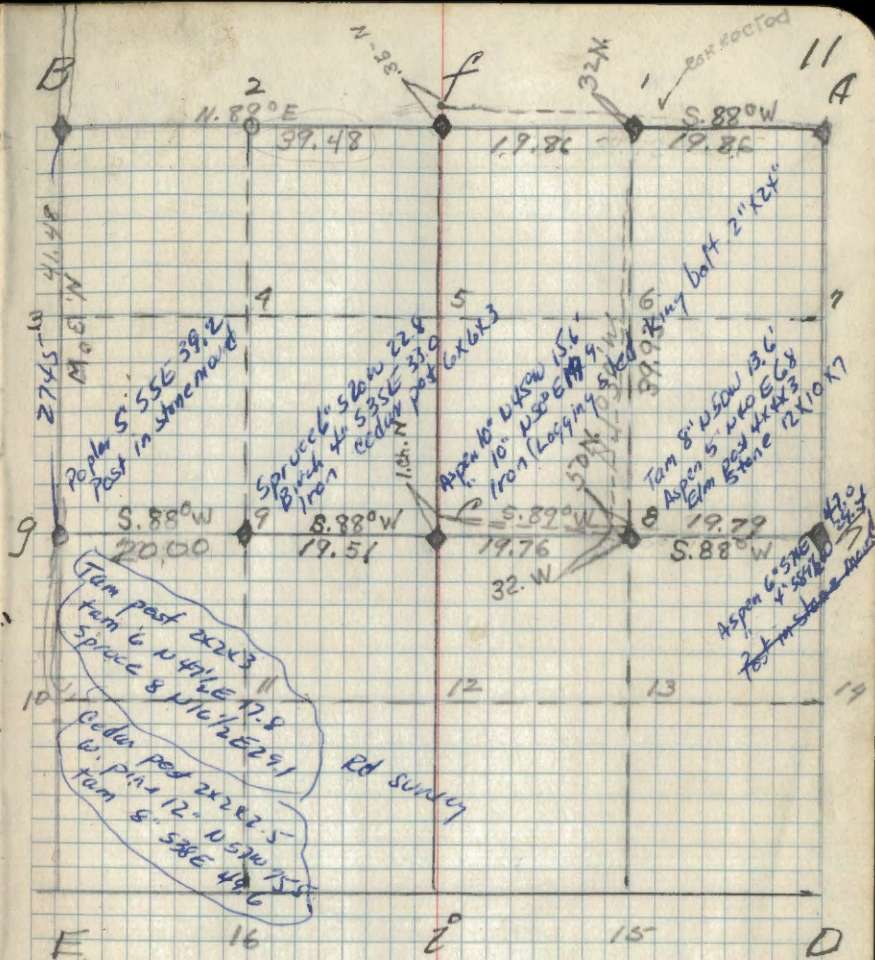
E.

D

PAGES w/ OUT
SPECIFIC INFO
WERE NOT
SCANNED

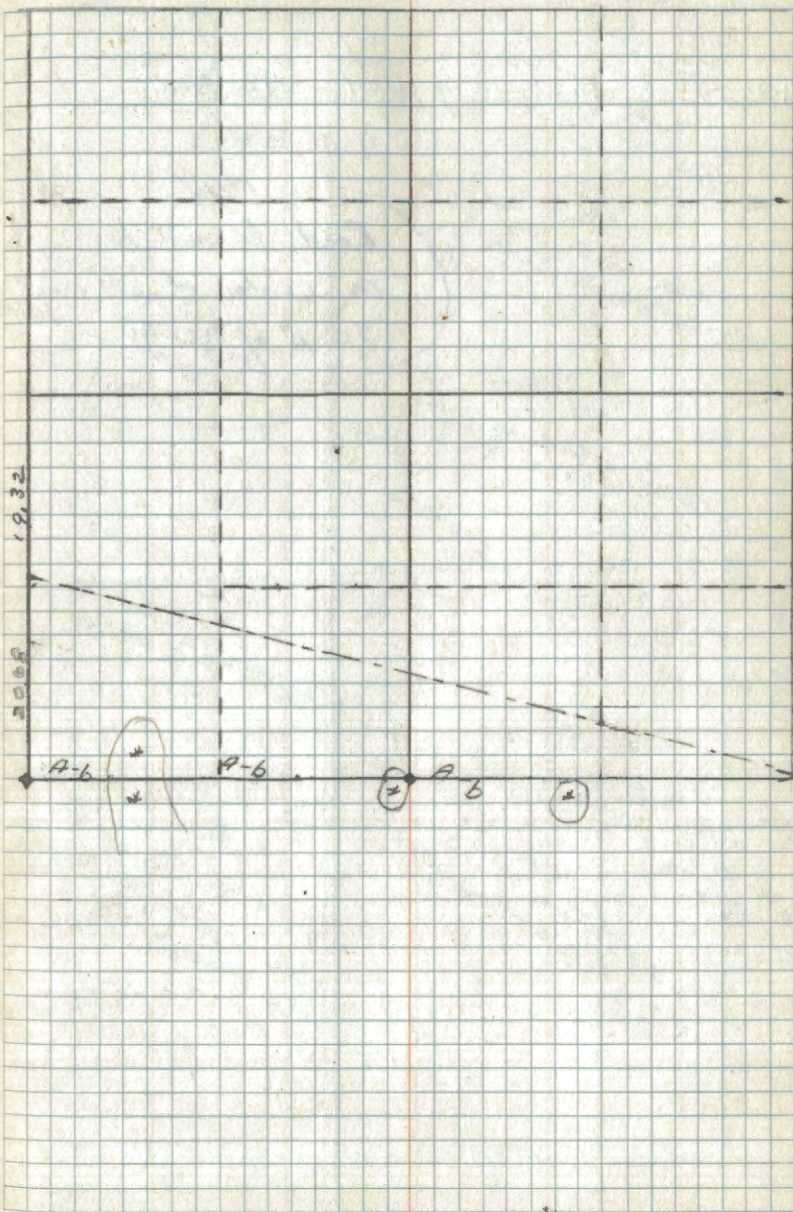
K.V. STYLER
COMPASS AND NOTES

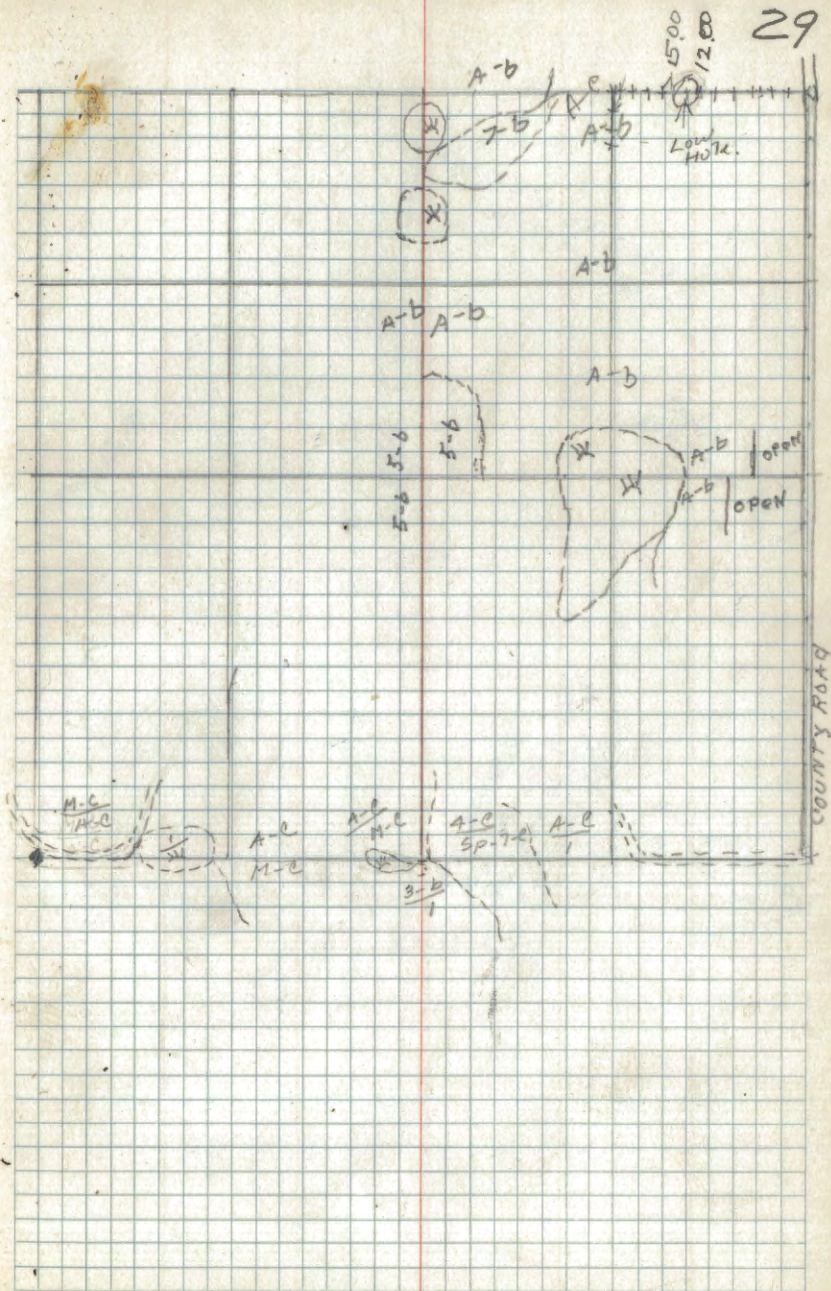
Cor. at	Spec	Dir Bearing	Dist	Remarks
A				REFER TO COR. AT E IN. SEC 1.
B			4/12/38	Post with F.S. POSTER NO B.T.'S ORIG. COR.
✓ n	ASPEN	15° N. 83° E	104	Placed F.S. POSTER.
	ASPEN	12° WEST	68	BT. PLACED F.S. POSTER OLD B.T.'S HAVE FALLEN DOWN. O.K. ORIG. COR.
C	W. PINE	16° N. 10° W	99	NO B.T.'S PLACED F.S. POSTER'S COR. IS SCRIBED WOOD AND AN IRON BAR AT PENCE CORNER. O.K.
	W. PINE	14° S. 51° E	38	
9	ASPEN.	10° S. 38° W	59	NO B.T.'S IRON BAR. AND SCRIBED POST O.K. PLACED POSTER. 4/13/38
1	ASPEN	8° N. 19° W	44	Placed F.S. POSTER
	ASPEN	12° S. 35° E	43	" " "
8	ASPEN	12° N. 45° E	44	Placed F.S. POSTER'S
	R. PINE	14° S. 39° W	45½	FOUND SCRIBED POST O.K.

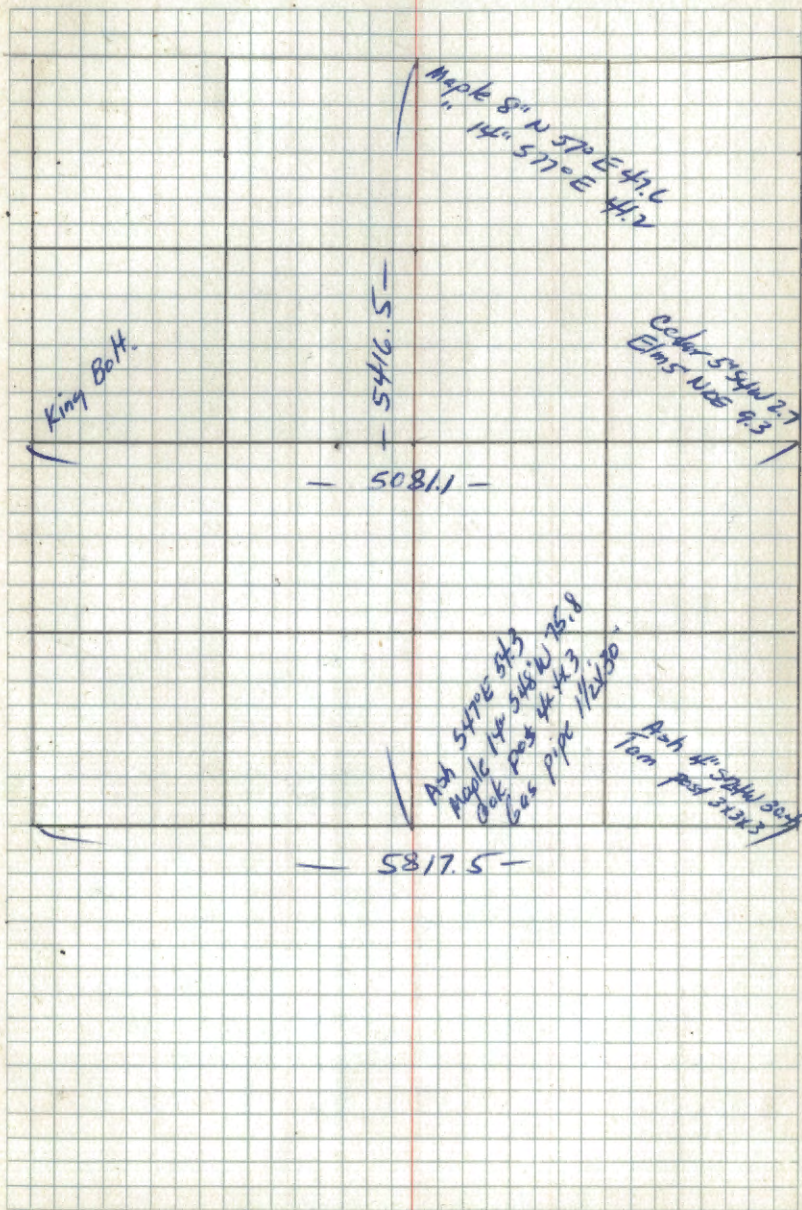


Notes of Blaker Co Sur. 1917

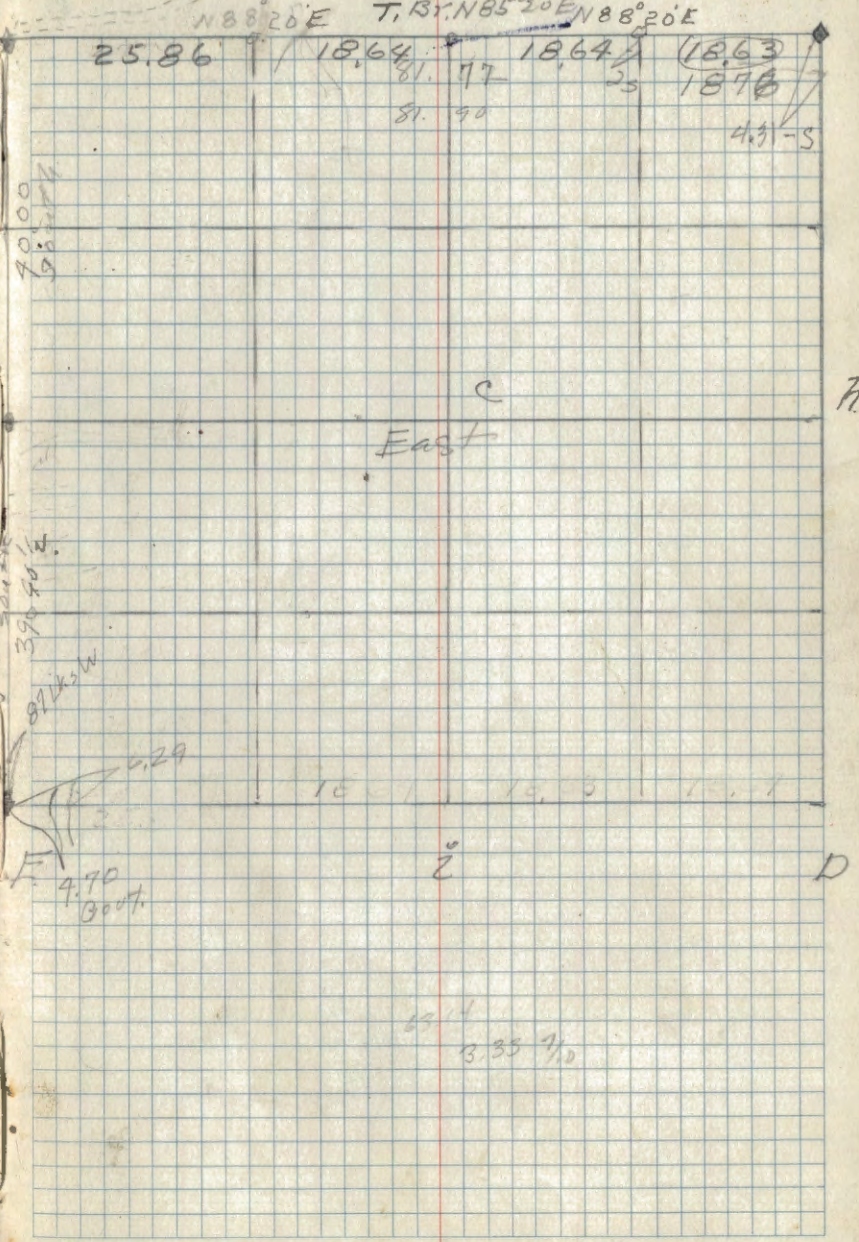
W to E notes	move w 19.4
1/4 1320	
old road 2625	
C/4 2640	move w 41.9
1/4 3960	move w 58.4
1/4 5203.2	



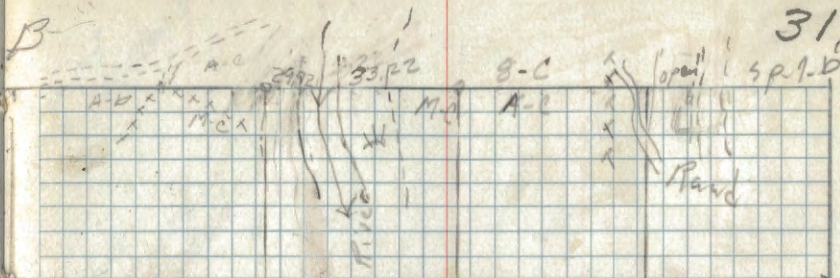




Co	Rat	Spec.	Dia	Bearing	DIST	Remarks
E		Elm	14"	N61°W	2.67	New BTs
✓		Elm	14"	S65°W	4.67	6" cement monument with brass cap
		Aspen	12"	S74°E	.61	2/20/40
		Aspen	10"	N43°E	.85	H.M.H
		Aspen	3"	S48°E	.43	F.S. Poster
✓	B	Refer to Sec. 36 T147N.R31W.				
✓	A	Refer to Sec. 29.				
2		Oak	24"	S32°W	47	Set 4x4x48 oak post F.S. Poster 3/18/40 H. Hoard
F		Maple	9"	S28°W	24½	Set 4x4x48 maple post F.S. Poster 3/18/40 H. Hoard
1		N. Pine	18"	N17°W	54	Set 2x4x48 aspen post F.S. Poster 3/18/40 H. Hoard



31A



E

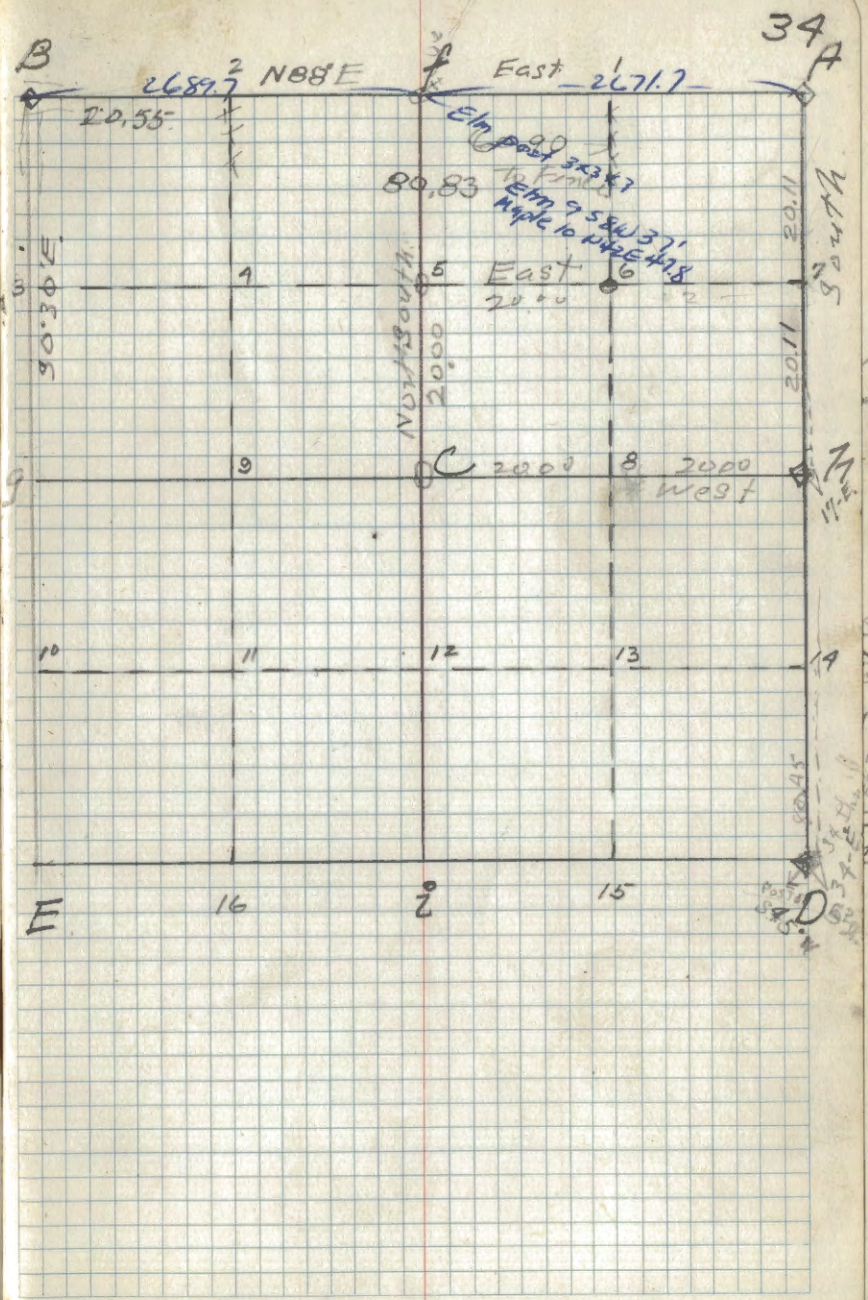
D

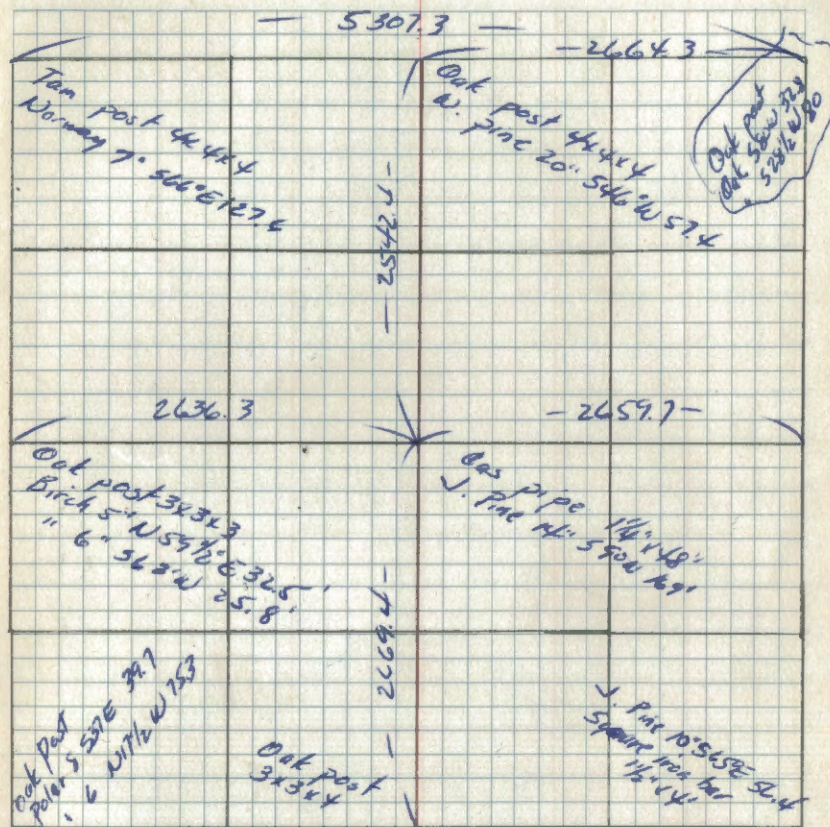
Tan post
Ash 45 S24W 304

1251
Oak stake
Ironwood 4 N70W 5.7
Browns 6 S85W 8.0
oak post 5 65W
Oak 5 527E 200
5 548 E 233

Notes C. C. Spencer 1923
5 from Sec Cor.
635 ruin
860 oak ruin

COR at	Spec.	Dia	Bearing	DIST	Remarks
B					Intersection of Roads
VD	Birch	6"	S 45° W.	52	FS. Post on Old scribble Post. Set. As per 9" x 48" post 7/17/39 H.H.M.





1914 Survey Blaker Co. Surveyor

2658.6

Tain post 31923
Bird to 545° E 35
Narrowing to 586° E 122

1914

Co Sur Bliter