

FIELD

T. 149N. R. 31-30W

DIETZGEN
MINN.

MINING
FIELD BOOK

No. 472

FIELD T. 149N. R. 31-30W

ccc #92
(found 1/12/92)

EUGENE DIETZGEN CO.

DRAWING MATERIALS, MATHEMATICAL and
SURVEYING INSTRUMENTS

Chicago New York San Francisco New Orleans Pittsburg Toronto

Distances from Center of Roadway for Cross-Sectioning
Roadway 16 feet wide. Side Slopes 1 on 1.
For Single Track Embankment.

H	0	.1	.2	.3	.4	.5	.6	.7	.8	.9	H
0	8.0	8.1	8.2	8.3	8.4	8.5	8.6	8.7	8.8	8.9	0
1	9.0	9.1	9.2	9.3	9.4	9.5	9.6	9.7	9.8	9.9	1
2	10.0	10.1	10.2	10.3	10.4	10.5	10.6	10.7	10.8	10.9	2
3	11.0	11.1	11.2	11.3	11.4	11.5	11.6	11.7	11.8	11.9	3
4	12.0	12.1	12.2	12.3	12.4	12.5	12.6	12.7	12.8	12.9	4
5	13.0	13.1	13.2	13.3	13.4	13.5	13.6	13.7	13.8	13.9	5
6	14.0	14.1	14.2	14.3	14.4	14.5	14.6	14.7	14.8	14.9	6
7	15.0	15.1	15.2	15.3	15.4	15.5	15.6	15.7	15.8	15.9	7
8	16.0	16.1	16.2	16.3	16.4	16.5	16.6	16.7	16.8	16.9	8
9	17.0	17.1	17.2	17.3	17.4	17.5	17.6	17.7	17.8	17.9	9
10	18.0	18.1	18.2	18.3	18.4	18.5	18.6	18.7	18.8	18.9	10
11	19.0	19.1	19.2	19.3	19.4	19.5	19.6	19.7	19.8	19.9	11
12	20.0	20.1	20.2	20.3	20.4	20.5	20.6	20.7	20.8	20.9	12
13	21.0	21.1	21.2	21.3	21.4	21.5	21.6	21.7	21.8	21.9	13
14	22.0	22.1	22.2	22.3	22.4	22.5	22.6	22.7	22.8	22.9	14
15	23.0	23.1	23.2	23.3	23.4	23.5	23.6	23.7	23.8	23.9	15
16	24.0	24.1	24.2	24.3	24.4	24.5	24.6	24.7	24.8	24.9	16
17	25.0	25.1	25.2	25.3	25.4	25.5	25.6	25.7	25.8	25.9	17
18	26.0	26.1	26.2	26.3	26.4	26.5	26.6	26.7	26.8	26.9	18
19	27.0	27.1	27.2	27.3	27.4	27.5	27.6	27.7	27.8	27.9	19
20	28.0	28.1	28.2	28.3	28.4	28.5	28.6	28.7	28.8	28.9	20
21	29.0	29.1	29.2	29.3	29.4	29.5	29.6	29.7	29.8	29.9	21
22	30.0	30.1	30.2	30.3	30.4	30.5	30.6	30.7	30.8	30.9	22
23	31.0	31.1	31.2	31.3	31.4	31.5	31.6	31.7	31.8	31.9	23
24	32.0	32.1	32.2	32.3	32.4	32.5	32.6	32.7	32.8	32.9	24
25	33.0	33.1	33.2	33.3	33.4	33.5	33.6	33.7	33.8	33.9	25
26	34.0	34.1	34.2	34.3	34.4	34.5	34.6	34.7	34.8	34.9	26
27	35.0	35.1	35.2	35.3	35.4	35.5	35.6	35.7	35.8	35.9	27
28	36.0	36.1	36.2	36.3	36.4	36.5	36.6	36.7	36.8	36.9	28
29	37.0	37.1	37.2	37.3	37.4	37.5	37.6	37.7	37.8	37.9	29
30	38.0	38.1	38.2	38.3	38.4	38.5	38.6	38.7	38.8	38.9	30
31	39.0	39.1	39.2	39.3	39.4	39.5	39.6	39.7	39.8	39.9	31
32	40.0	40.1	40.2	40.3	40.4	40.5	40.6	40.7	40.8	40.9	32
33	41.0	41.1	41.2	41.3	41.4	41.5	41.6	41.7	41.8	41.9	33
34	42.0	42.1	42.2	42.3	42.4	42.5	42.6	42.7	42.8	42.9	34
35	43.0	43.1	43.2	43.3	43.4	43.5	43.6	43.7	43.8	43.9	35
36	44.0	44.1	44.2	44.3	44.4	44.5	44.6	44.7	44.8	44.9	36
37	45.0	45.1	45.2	45.3	45.4	45.5	45.6	45.7	45.8	45.9	37
38	46.0	46.1	46.2	46.3	46.4	46.5	46.6	46.7	46.8	46.9	38
39	47.0	47.1	47.2	47.3	47.4	47.5	47.6	47.7	47.8	47.9	39
40	48.0	48.1	48.2	48.3	48.4	48.5	48.6	48.7	48.8	48.9	40

Example—If point is 22.6 ft. above grade, how far should it be from center line to be a slope stake point? Ans. from Table 30.6. For same slopes but other widths of roadbed, correct above figures by one-half difference in width of roadbed; thus in example above, for 20 ft. roadbed distance will be $30.6 + (20 - 16) \div 2$ or 2 ft. added to 30.6 = 32.6. For slopes of 1 on $1\frac{1}{2}$ see inside of back cover.

Copyright, 1914, by Eugene Dietzgen Co.

FIELD

T.149N. R.31-30W.

The paper stock of this book is made of a **high grade 50% rag paper** having a **water resisting surface** and is sewed with **Bing Special Enamel Waterproof Thread.**

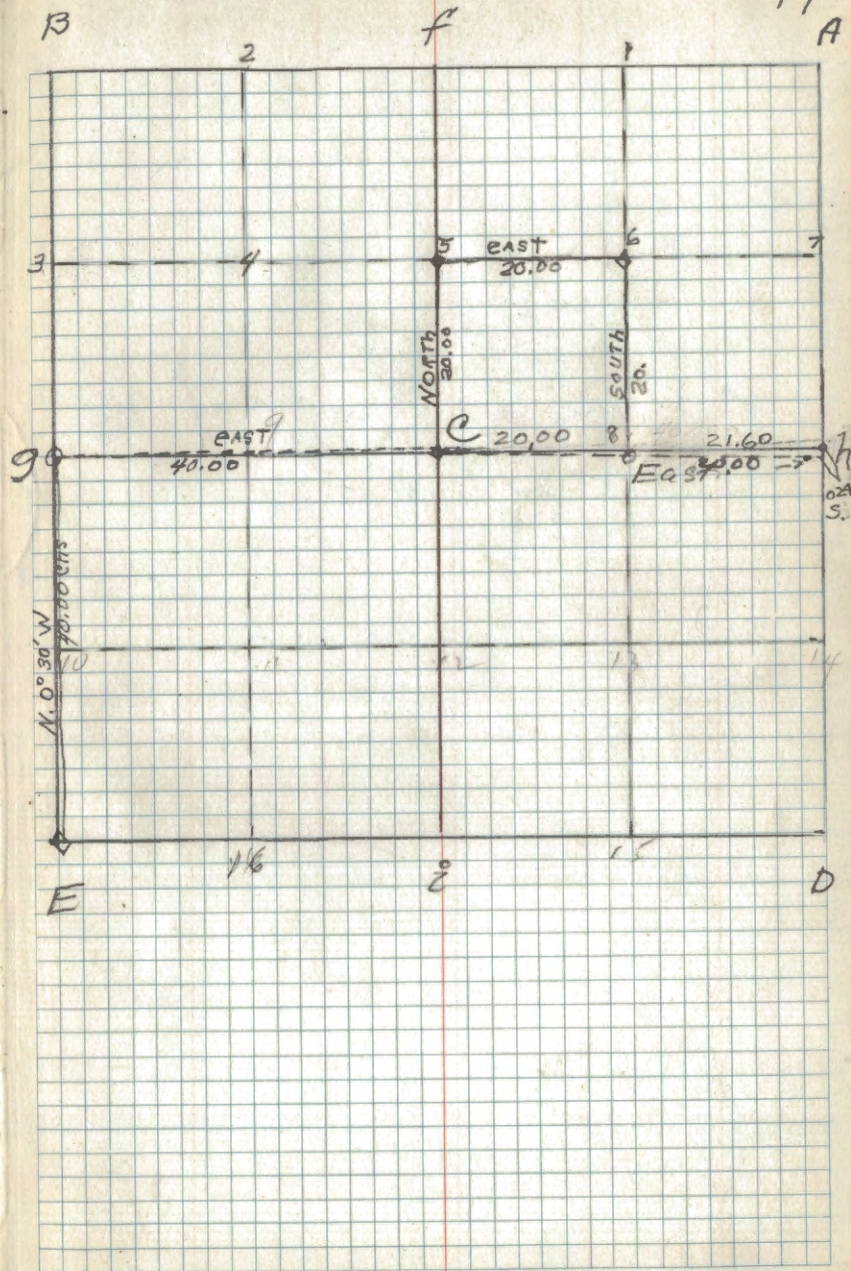
Made in U. S. A.

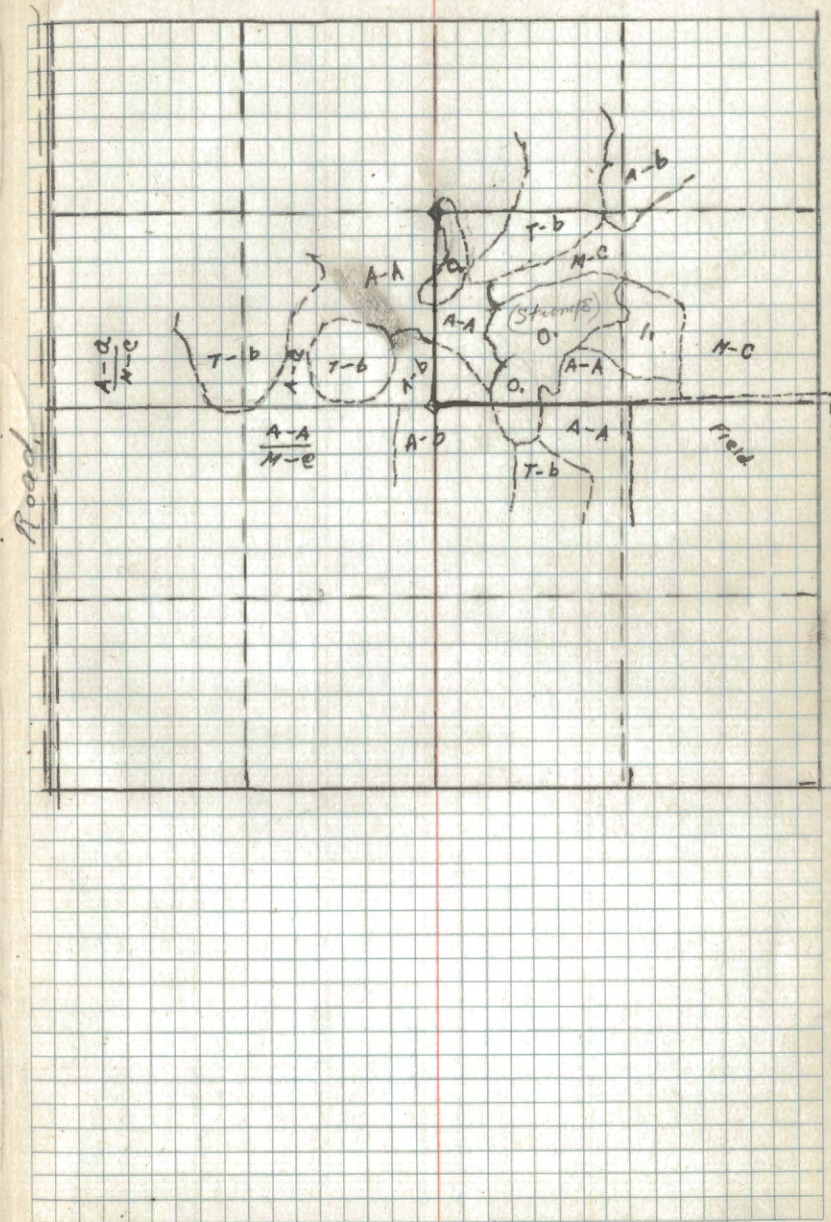
K.V. Styler } Leader }
 J. Sesock } compass } 3/17/38
 M. Wagner } chain }
 " " }

Cor. #	Spec.	Dia.	Bearing	Dist	Remarks
9					TEMP. COR.
C					" "
7.					Temp Cor. Post. 1.60 Ch. E. and 294Ks N. Tree Blazed on 4 sides. 3/16/38
5					TEMP. COR.
6					" "
8					" "
					" " 3/17/38

T. 149 N., R. 31 W.

19
A





SEVERAL BLANK
PAGES NOT
SCANNED

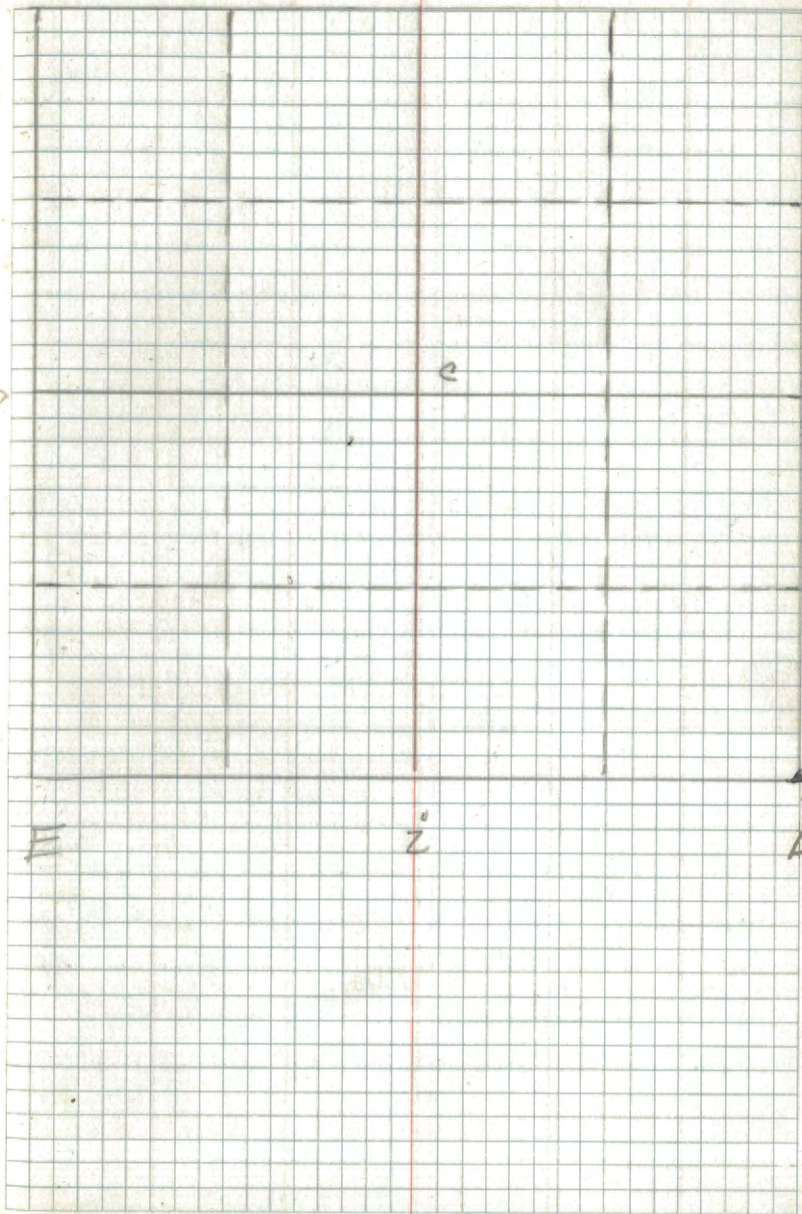
B

T. 149 N. R. 31 W.

f

36A

Co. or Loc.	Spec	Dia	Bearing	Dist	Remarks
✓ D.	N. Pine	12"	N. 30° W.	25'	orig. BT
	N. Pine	6"	N. 78° E.	29'	M.H. New BT
					Col. Cement Mort.
					7/10/39 JAG/jhang



100

B

36A

A page from a notebook with horizontal ruling lines and two vertical red margin lines. The page is otherwise blank.

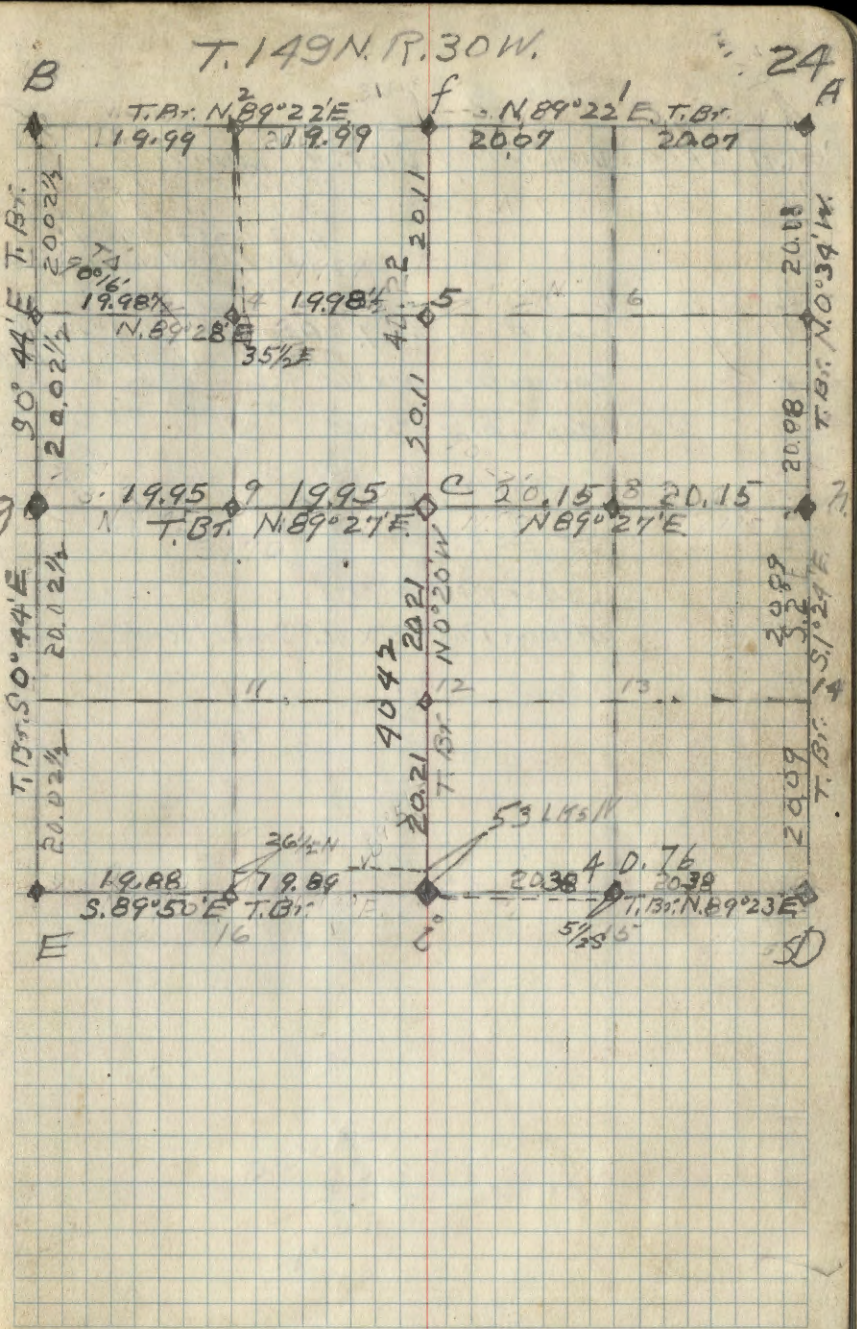
A page from a notebook with a grid pattern. The page is otherwise blank.

E

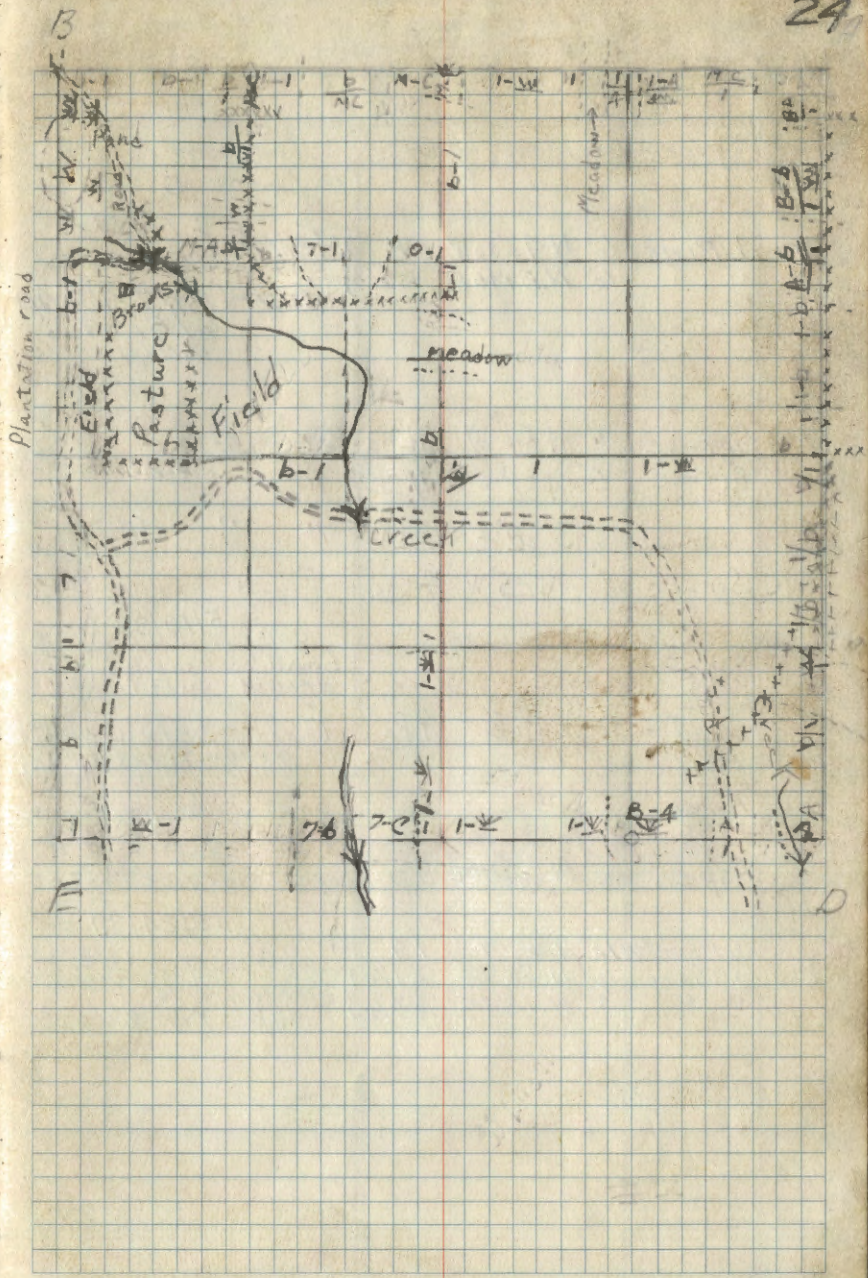
D

J.A. Gilman
Hoard Chain
Jones 5/20/39

Co	Spec	Dir	Bearm	Dist	Remarks
9	Aspen Plant Post	3" S 42° 30' E	45	15	Mkd. New BT. F.S. Poster on Post Set Aspen Post 4" x 48" Piled rocks around base 5/25/39
B	Elm	30° N. 50° W.	50	16	Mkd. New BT. F.S. poster Set Aspen Hub 4" x 48" in orig. place as stated by Brooks old settler. 5/20/39
E	Aspen	6" N. 61° 30' E	53	5	Mkd. New BT. F.S. Poster Aspen Post 4" x 48" Piled small rocks around corner. 5/24/39
f	Dead Birch sapling	8' S 9° E	16 1/2	6	Orig. BT. F.S. Poster orig. line Cedar Post 4" x 48" 5/25/39
h	Downy Spruce	14" N. 60° E	9	9	Orig. BT. 5/25/39
	Elm Stp.	10" N. 21° W.	10	10	F.S. Poster 5" x 24" Post off. J.A. Gilman 5/17/39
A	Elm	9' S 50° E	48	48	County. BT.
A	Ash	9' N 51° 30' E	48	48	County BT. 5/26/39
A	Elm	6" N 76° E	33	33	F.S. Poster Cor. in center of road.
i	Tamarac	8" S 29° W	12	12	} Orig. BTs. Set Cedar Post 4" x 48"
	" "	6" N 3° W	7	7	
i	Balsam	5" North	30 1/2	30 1/2	F.S. Poster 5/31/39 J.A. Gilman
C	Cedar Post	4" x 4" x 48"			Piled rocks around post.
	Elm	10" N 17° 45' E	14 1/2	14 1/2	Mkd. New BT. F.S. Poster 6/1/39
D	Aspen	4" S 61° W	33	33	} Mkd. New BTs. Aspen Post 4" x 48" Piled rocks around post.
	Birch	4" S 11° E	38 1/2	38 1/2	
		4" N 88° W	17	17	F.S. Poster 6/2/39 J.A. Gilman



Co. Rat	Spec.	Dir. Bearing	Dist.	Remarks
1				Cedar post 4"x48"
2				Aspen " 3"x48"
3				Ash post 3"x48" Piled rocks around base.
C				Dry Cedar Post 4"x48"
7		in E-W trail		Aspen post 4"x48" Piled rock around base.
8				Spruce post 3"x36" Piled rocks around corner
4				Aspen post 3"x36"
5				Spruce post 4"x4"x48" Piled small rocks around post.
12				Spruce post 3"x48"
15				Cedar post 3"x48"
9				Aspen Post 3"x36" Small Rock around Base



KV. Stryker
Van Spenk Horn
Meason
Leach.

COR.	at Spec.	DIA	Bearing	DIST	Remarks
h.	Fence Line		RUNNING W.	Road RUNNING E	ALONG LINE. COR IN. ROAD. 8/20/38
A.					COR. in E of Road. E + W and South.
D.					COR. in Centerline of Road E + W and North.
o.					COR. in Center of Road. Old Blazed Line North.
z.					Measured to E of Road in line with fence South. Local farmer claims old Orig COR. is in fence line but about two rods South of Road. 8/20/38 J.A.B. & Meas.
f.					

T. 149N. R. 30W.

29

