

T.143N. R.29W. T.143N. R.30W.

T.143N. R.31W. T.144N. R.31W.

T.145N. R.31W.

#110

DEWZEN
MINING

C.C.

MINING

TRANSFER BOOK

No. 110

SEC 13

1/4

145

31

#

110

0

CCC #91

found 5/22/91

Index

T. 143. R. 29.

Sec	Page
5	1
6	2
7	3
8	4

T. 143. R. 30. W.

1	5
2	6
3	7
4	8
5	9
6	10
7	11
8	12
9	13
11	14
12	15
14	16
15	17
18	18
19	19
22	20
23	21

T. 143 R. 31 W.

1	22
2	29
11	24
12	25
13	26
14	27
23	28
24	23
25	30
26	31

T. 144. R. 31. W.

1	50
2	51
3	52
11	53
12	54
13	55
14	56
24	57
25	58
35	59
36	60

T. 145 R. 31 W.

11	61
12	62
13	63
14	64
15	65
16	66
22	67-68

Over

Index

T.145

R.31

Sec.

Page

25

69

27

70-71

34

72-73

35

74-75

36

76-77

1945

S. C. T. 1951

f

1960
1979

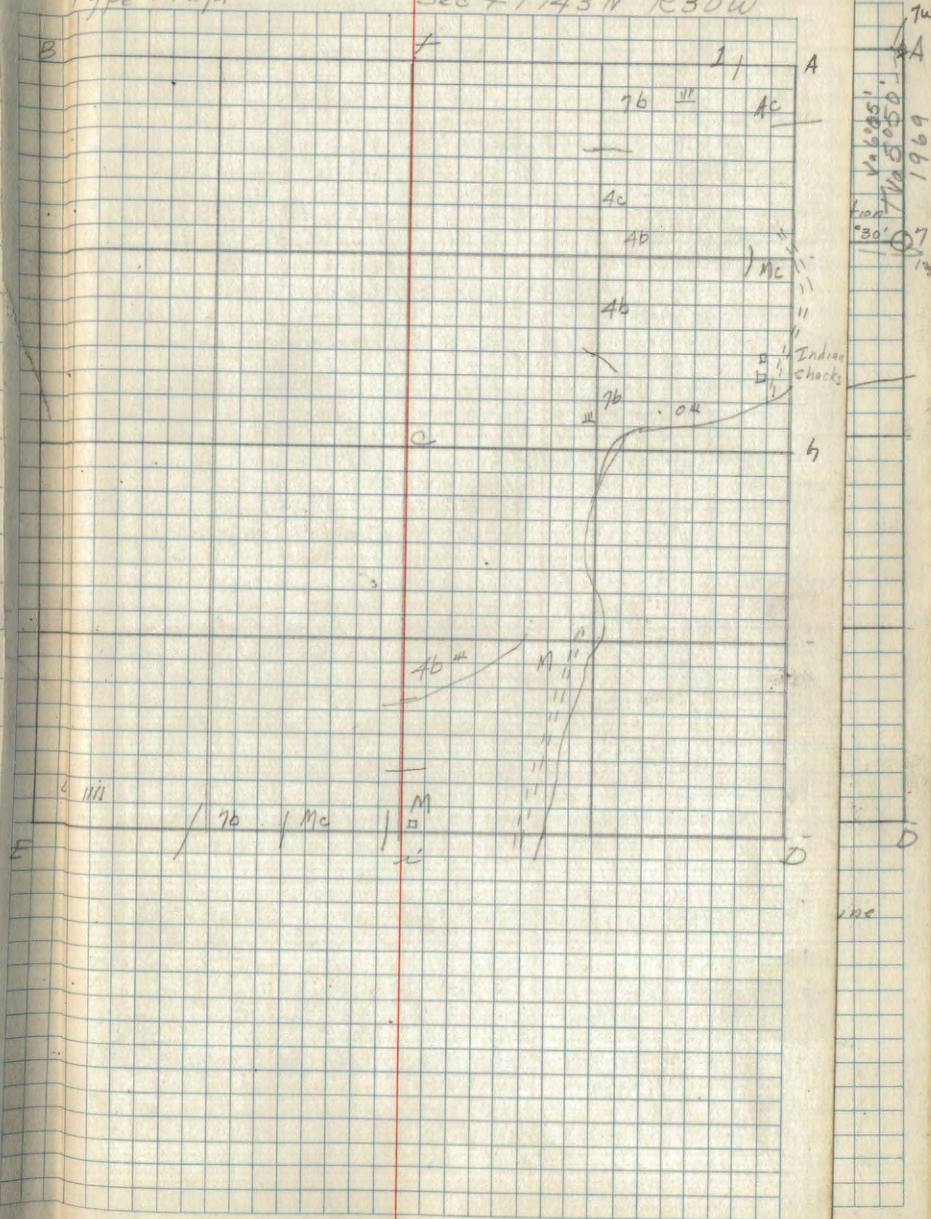
PAGES 1-7
ARE EMPTY

Corner Notes.

Cor	Sp	Dia	Bearing	Dist	Remarks
16	Tam Poster	3"	S 48° 45' E	39"	G.L.O. Br Iron IX in
	H. Maple	26"	N 61° 15' W	14"	G.L.O. Br Iron IX B
	H. Maple	14"	N 67° W	24"	G.L.O. IX A
	H. Maple	12"	S 45° W	39"	Poster
6	B Spruce	5"	N E	6 1/2"	G.L.O. Br Iron IX B
7	Ash covered Poster	14" 11"	S 48° 45' E N 87° 45' W	17" 19"	Poster Set ash stake
G.L.O. Not Located It has probably been torn out as a Trail Passes over its Supposed Location.					
A	Aspen	7	S 50° W	38	Poster
	Birch	4	N 63° E	50	G.L.O. Br Iron
1	Tam only	5"	S 54° W	33 1/2"	G.L.O. Br Iron 1 1/2"
	Tam	2	N 32° W	6	Poster only
8	Tam dead	8	S W	35	G.L.O. Br Iron Poster IX B
MC at B	No Bearing Trees				G.L.O. Br Iron

Type Map.

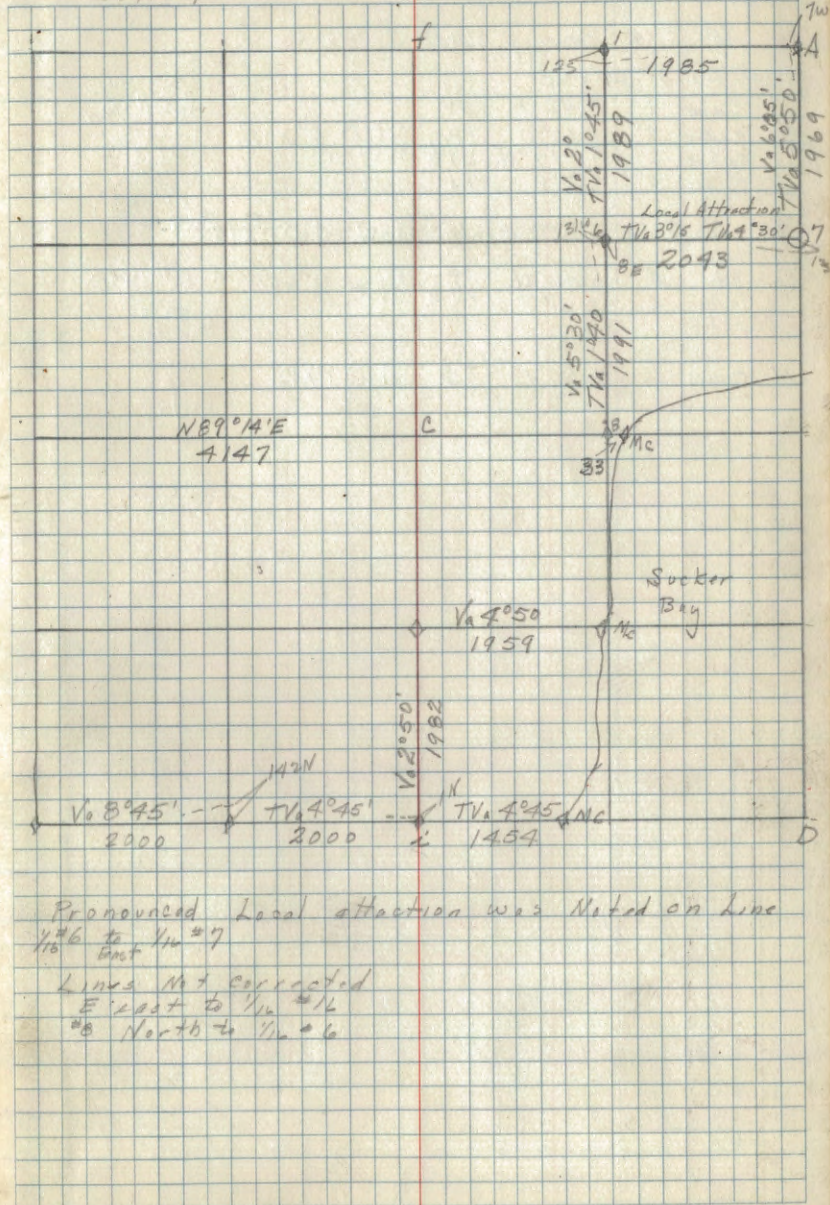
Sec 4 T143N R30W



7w
A
V. 6051
No. 5050
1969
30'

Sutton

Sec 4 T143N R30W



Pronounced Local attraction was noted on line
 1/6 to 1/7
 Lines not corrected
 E. east to 1/6
 8 North to 1/6

Cor
 16
 2
 Ms
 6
 7
 A
 1
 8
 MC
 at 8

Corner Notes

Cor	sp	Dia	Bearing	Dist	Remarks
	11 set cedar	state			
	Cedar	4"	N. 42° E.	31	
E.	Cedar	5"	N. 60° W.	18	GLO. 2" x 12"
	Cedar	6"	S. 84½° W.	23½	Poster
	Cedar	5"	S. 2° E.	14	
	No Trees	open Meadow			GLO 1" x 15"
D.	Tam. st.	5"	S. 46° W.	7½	GLO. 2" x 12"
	Tam. st.	4"	S. 61° E.	35½	
	10 cedar	6"	S. 50° E.	5½	GLO 1" x 10"

T. 143 N. R. 30 W.
S6 S5
S9 S8

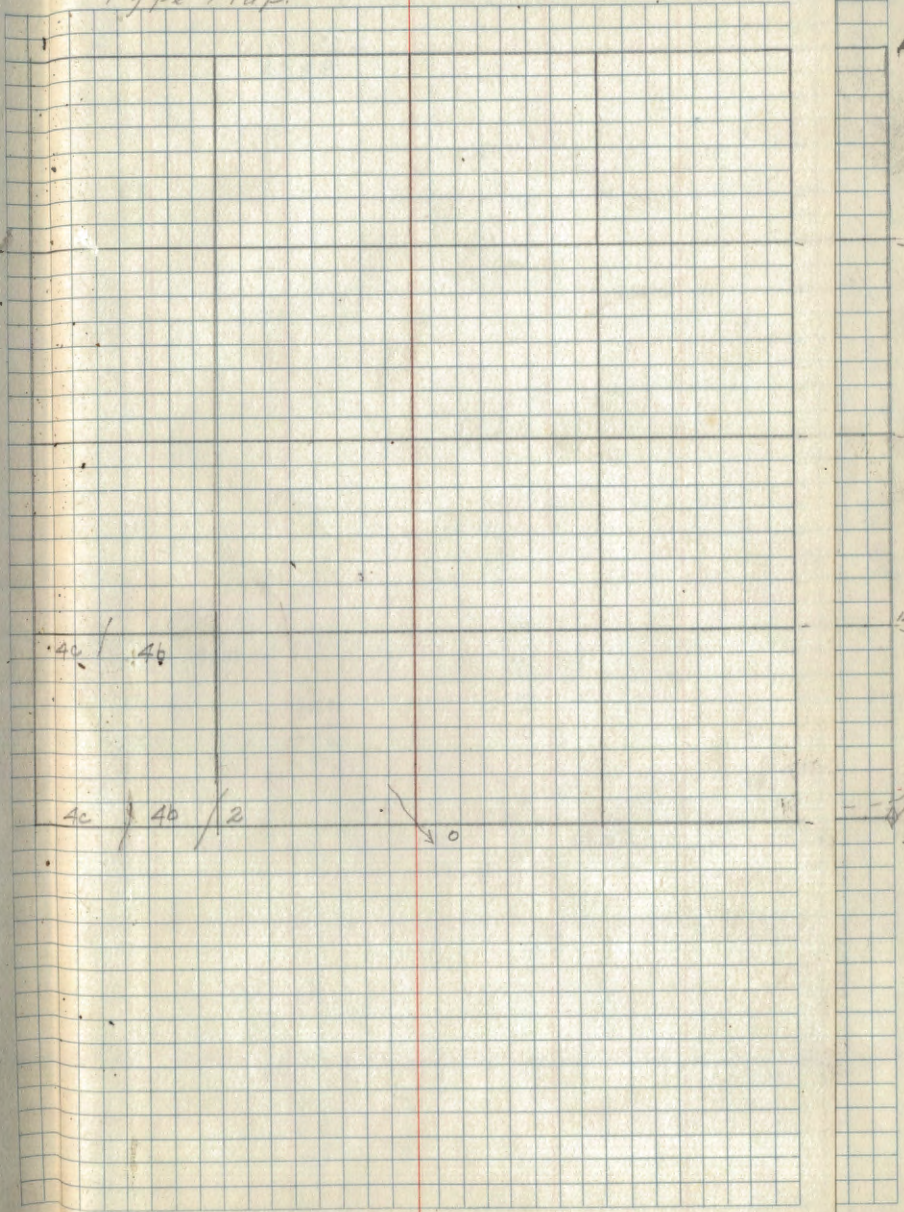
2 S5
4 S8

T. 143 N. R. 30 W.
S5 S4
S8 S9

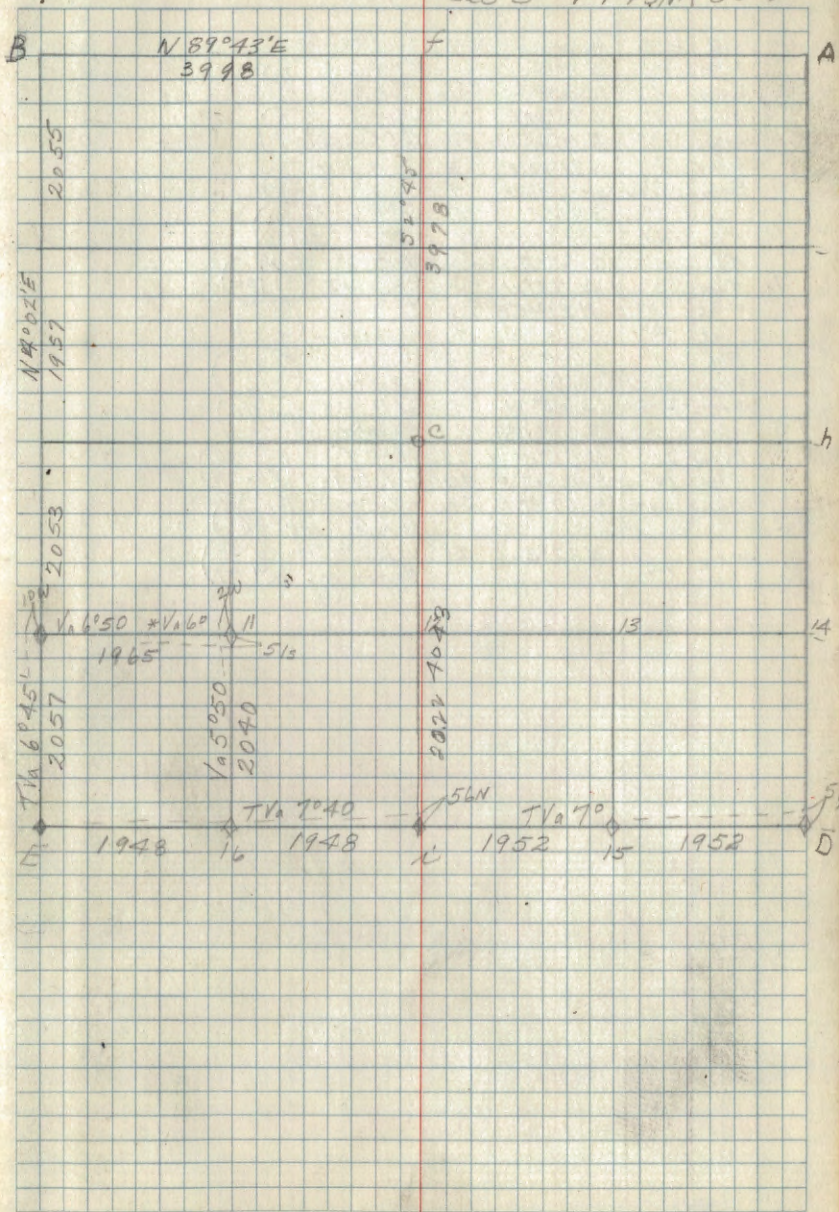
5/6
S6/S5

Type Map

Sec 5 T143N R30W



Sec 5 T143N R30W

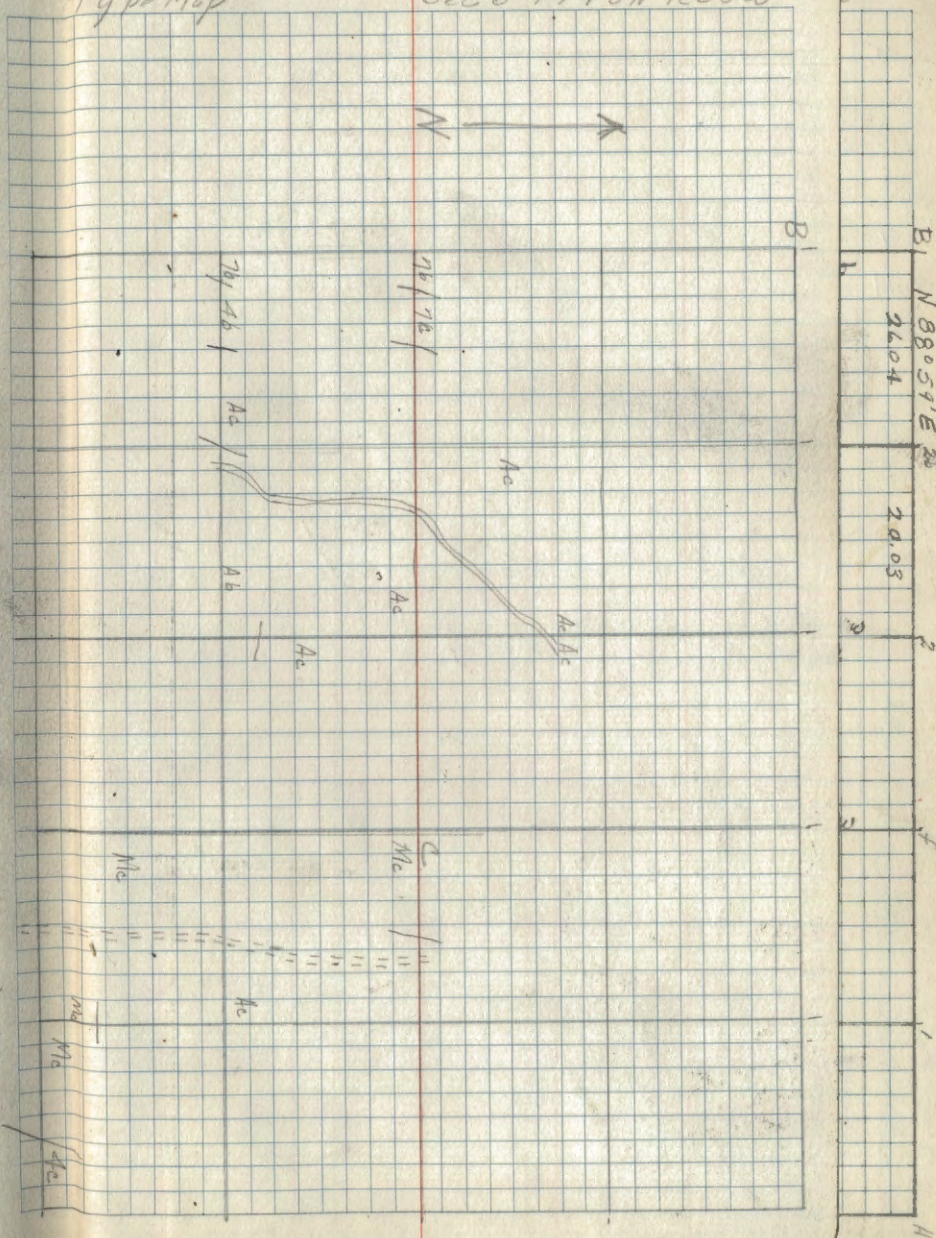


Corner Notes

Cor.	Sp	Dia.	Bearing	Dis	Remarks
4	Aspen	10"	N 79° E	21	← poster 1x5 (NW 1/4 56)
	Aspen	12"	N 26° 45' W	23 1/2	G.L.O. (S 1/4 56)
9	Aspen	7"	S 78° 30' E	35	← poster (SW 1/4 56)
	Aspen	13"	N 35° 45' W	58	G.L.O. 1x4 (SE 1/4 56)
11	Aspen	9"	N 79° 45' E	13	G.L.O. 1x5 (SW 1/4 56)
	Birch	2"	Poster only N 68° E	14	
10	Tam	3"	S 34° E	15	G.L.O. 1x10 (S 1/4 56)
	Tam	4"	N 84° W	45	← poster (S 1/4 56)
9	Tam	4"	S 65° E	36	← poster (S 1/4 56)
	Tam	3"	N 79° W	48	G.L.O. 1x3 (S 1/4 56)
C	wook	10"	N 81° 45' E	29	G.L.O. 1x6 (C/4 56)
	R.Dak	8"	N 64° W	9	← poster (S 1/4 56)
8	Elm	4"	N 45° W	32	G.L.O. 1x3 (SE 1/4 56)
	R.Dak	7"	S 7° E	22	← poster (S 1/4 56)
13	Birch	4"	S 42° W	28	G.L.O. 1x5 (SE 1/4 56)
	W.Pine	8"	S 66° 15' E	12	← poster (S 1/4 56)
15	Aspen	13"	N 52° 15' W	23	← poster (S 1/4 56)
	Elm	16"	S 16° 45' E	48	G.L.O. 1x7 (S 1/4 56)
12	R.Dak	13"	S 67° 30' E	36	← poster (S 1/4 56)
					G.L.O. 1x5 (S 1/4 56)
1	wook	14"	N 32° E	21	G.L.O. Br Iron (S 1/4 56)
					Poster 1x6 (S 1/4 56)

Type Map

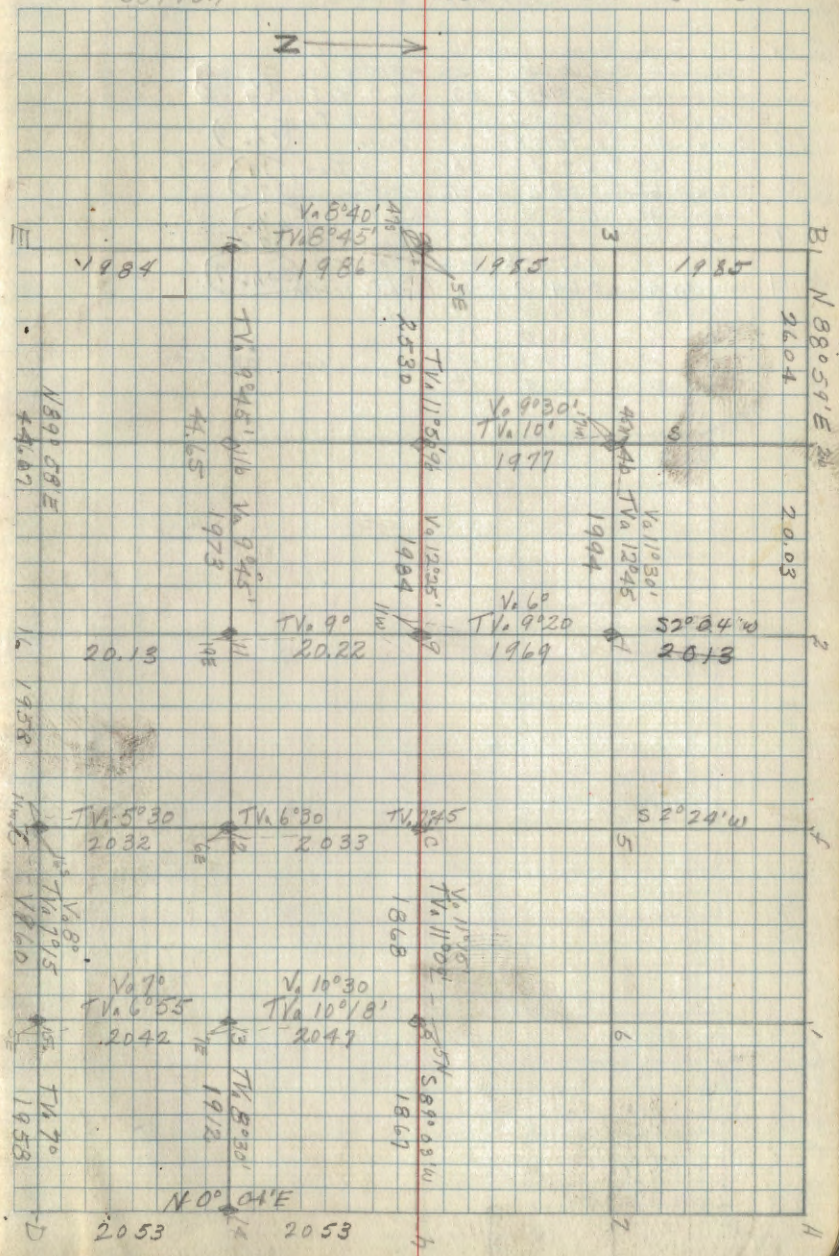
Sec 6 T143N R30W



sutton

Sec 6 T143N R30W

Cor.
4
9
11
10
9
C
8
13
15
12
2

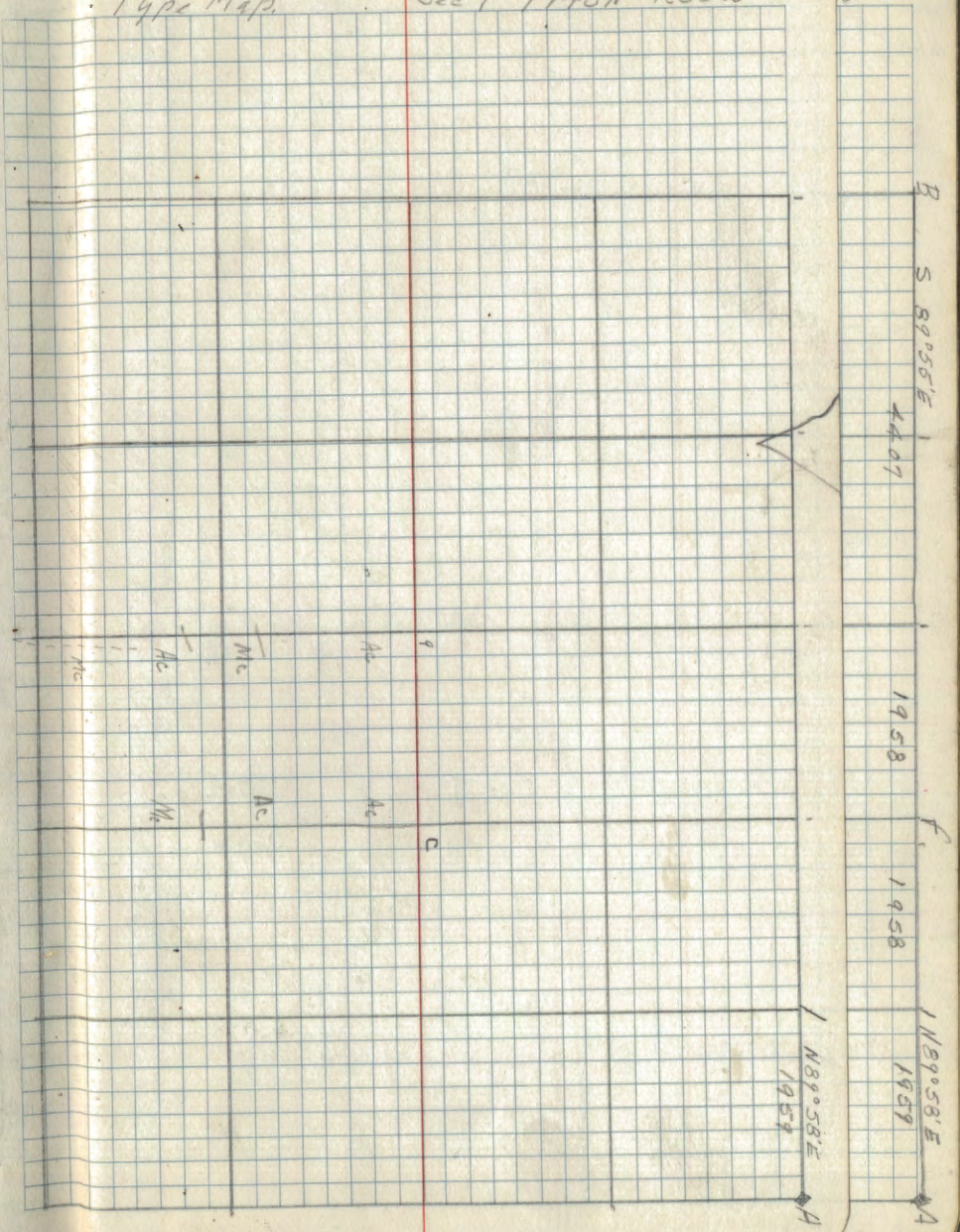


Corner Notes

Cor	SP	Dia	Bearing	Dis	Remarks
i	ROak	16"	N 67° 45' W	42 1/2	← Poster 1x6
	WOak	11"	S 26° 45' E	68	G.L.O. Br Iron (1/4 58)
12.	ROak	16"	N 47° 30' W	35 1/2	G.L.O. Br Iron
	Aspen	8"	N 78° 15' E	6	← poster (5 1/16 57)
C	R Pine	10"	N 7° W	38	G.L.O. Br Iron (1/4)
	ROak	6"	S 29° E	12 1/2	← poster (C 7 C)
9	Aspen	9"	N 73° W	5	G.L.O.
	Aspen	10"	S 35° E	13	← poster (Cw 1/16 57)
11	Birch	8"	N 67° 45' E	38 1/2	← poster
	Birch	4"	S 64° W	41	G.L.O. Br Iron (Sw 1/16 57)
A	Cedar	4"	N 42° E	31	G.L.O.
	Cedar	5"	N 60° W	18	
	Cedar	6"	S 89 1/2° W	28 1/2	Poster S 84 1/2° W 29 1/2 hunk
	Cedar	5"	S 2° E	14	

Type Map.

Sec 7 T143N R30W



Cor

i

12

C

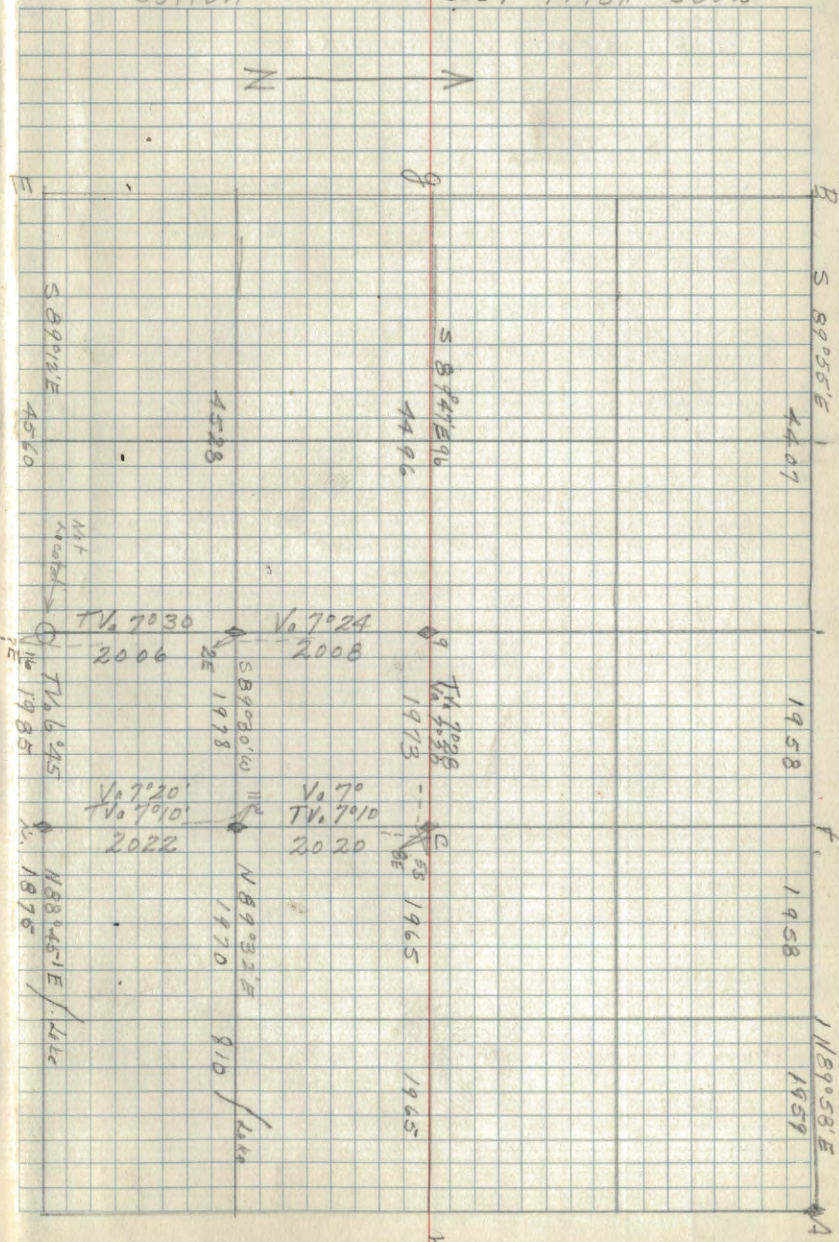
9

11

A

Sutton

Sec 7 T148N R30W

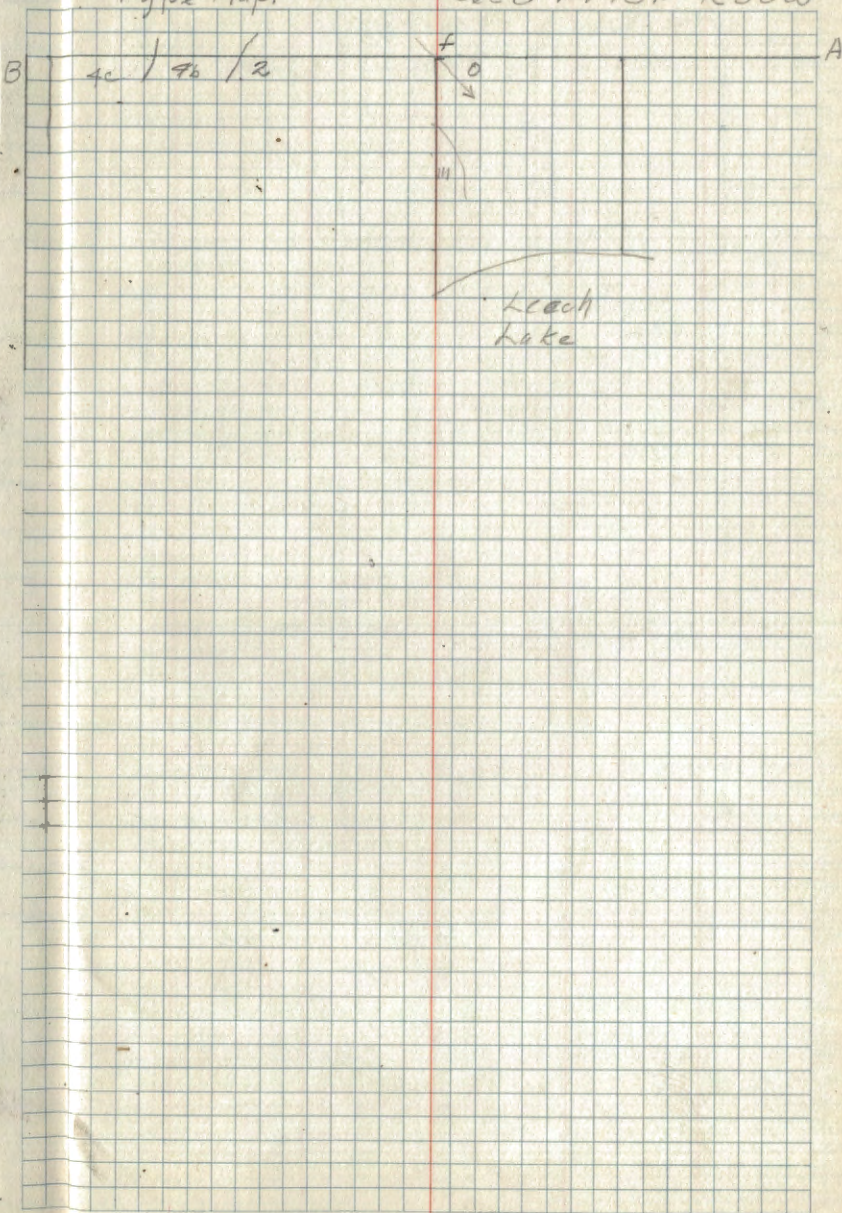


Corner Notes

Cor	SP	Dig	Bearing	Dist	Remarks
-----	----	-----	---------	------	---------

Type Map.

Sec 8 T. 143N R30W



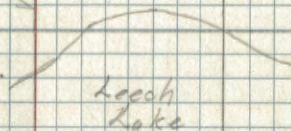
57N
A

Sec 8 T143N R30W

B 1948 TV. 7040 1948 561 TV. 7070 1952 1952 A

105030
 2400

Leech
 Lake



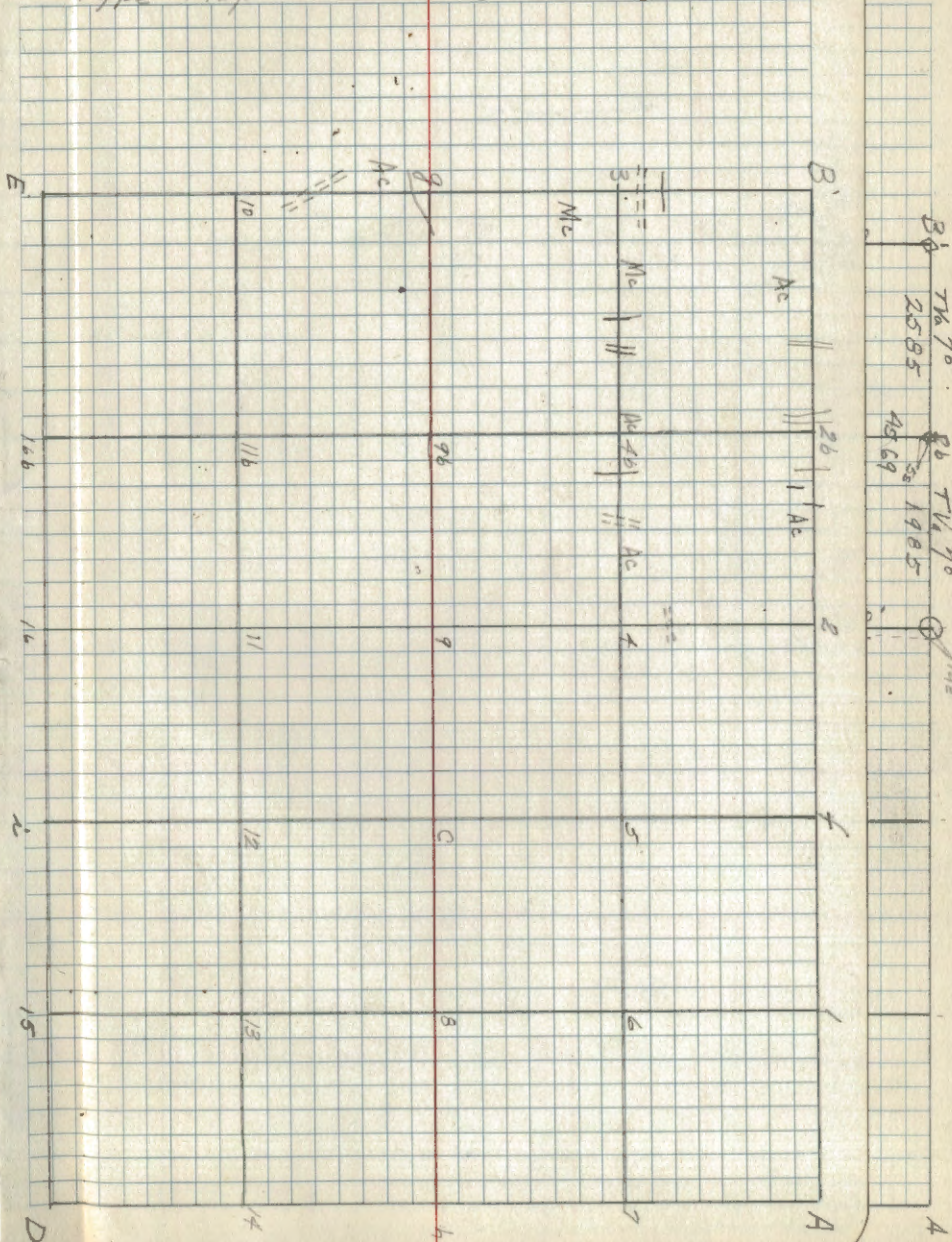
PAGES 13-17
ARE BLANK

Corner Notes

Cor	Sp	Dia	Bearing	Dist	Remarks
B	Rook	5"	S 47° E	26 1/2	← Poster 2 X 5 (S 1/2 S 1/2)
	Aspen	12"	S 29 1/2° W	53	GLD Br Iron (S 1/2 S 1/2)
3	R Pine	14"	S 67° 15' E	40	← Poster 1 X 7 (N 1/4 S 1/2)
	W Oak	14"	N 84° W	100	GLD Br Iron (S 1/2 S 1/2)
4	W Oak	12"	N 10° 15' W	23	← Poster 1 X 11 (NW 1/4 S 1/2)
	W Oak	19"	N 63° 15' E	42	GLD Br Iron (S 1/2 S 1/2)
2b	N Pine	22"	N 12° E	74	← Poster 1 X 8 (SW 1/4 S 1/2)
	Aspen	7"	S 62° E	78	GLD Br Iron (SW 1/4 S 1/2)
2	Aspen	12"	S 63° W	39	GLD Not Located Poster Set out Stake
g.	N Pine	18"	S 30° 15' E	20	GLD Br Iron (1/4 S 1/2)
	R Oak	7"	N 22° 45' W	34	← Poster 1 X 8 (S 1/2 S 1/2)
	W Oak	10"	N 27° 45' W	38	← Poster 1 X 6 (S 1/2 S 1/2)
10	W Oak	4"	N 76° E	26	GLD Br Iron (S 1/2 S 1/2)

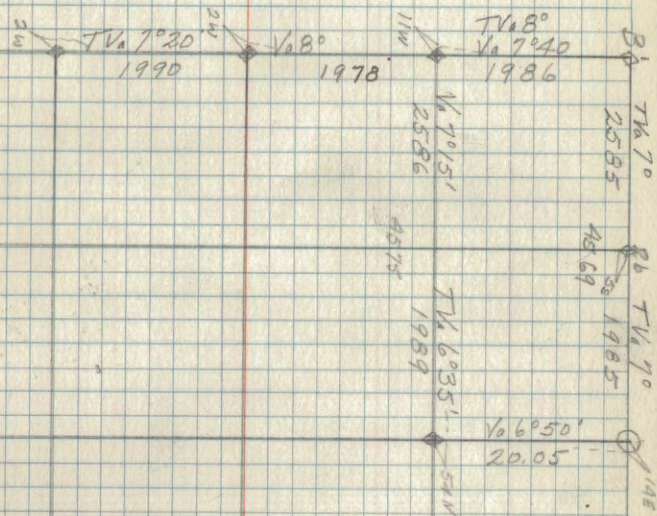
Type Map

Sec 18 T 143 N R 30 W



Sutton

18
Sec 18 T143N R30W



PAGES 19-22
ARE BLANK

Corner Notes

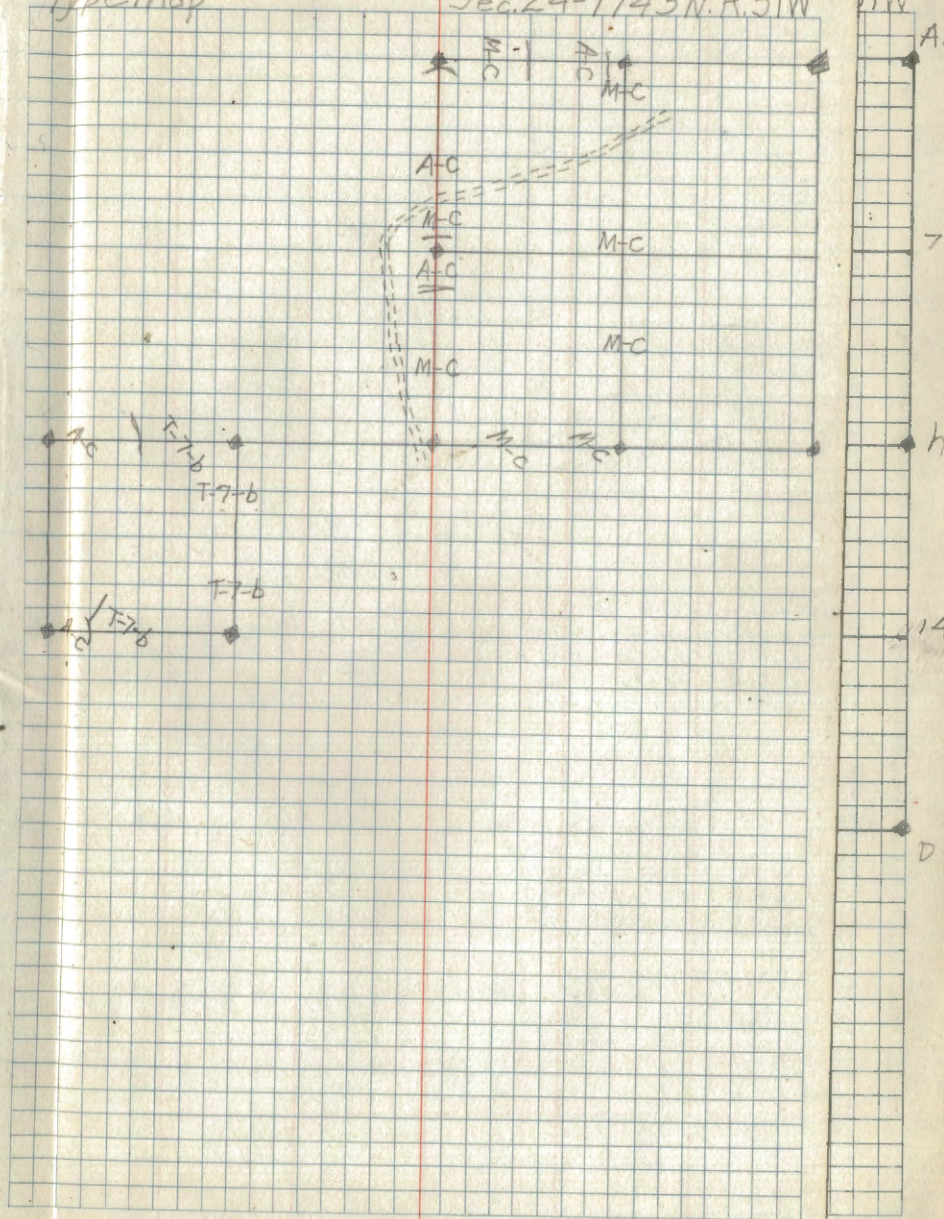
Cor.	Spec	Dia.	Bearing	Dist.	Remarks
9	Tam.st.	4"	S. 27° W	19	GLO. 1" x 14" $\text{C } \frac{1}{16} \text{C}$ $\frac{1}{524}$
11					Set Tam. post 3" x 4"
	R. Oak	8"	S. 16° W	15	
C	Aspen	12"	N. 69° E	18 $\frac{1}{2}$	GLO. 1" x 6" $\text{C } \frac{1}{16} \text{C}$ $\frac{1}{524}$
	W. Oak	7"	N. 45° W	65	
5	W. Oak	13"	S. 55° W	42 $\frac{1}{2}$	GLO. 1" x 6" $\text{C } \frac{1}{16} \text{C}$ $\frac{1}{524}$
	J. Pine	14"	N. 76° E	54 $\frac{1}{2}$	
f	J. Pine	11"	S. 24° W	51 $\frac{1}{2}$	GLO. 1" x 6" $\text{C } \frac{1}{16} \text{C}$ $\frac{1}{524}$
	Aspen	7"	S. 20° E	12 $\frac{1}{2}$	
1	W. Oak	12"	N. 69° W	13	GLO. 1" x 6" $\text{C } \frac{1}{16} \text{C}$ $\frac{1}{524}$
	R. Oak	5"	N. 22° E	14 $\frac{3}{4}$	
8	Aspen	6"	S. 19° W	18 $\frac{1}{4}$	GLO. 1" x 6" $\text{C } \frac{1}{16} \text{C}$ $\frac{1}{524}$

steodland.

Type Map

Sec. 24-T143N.R.31W

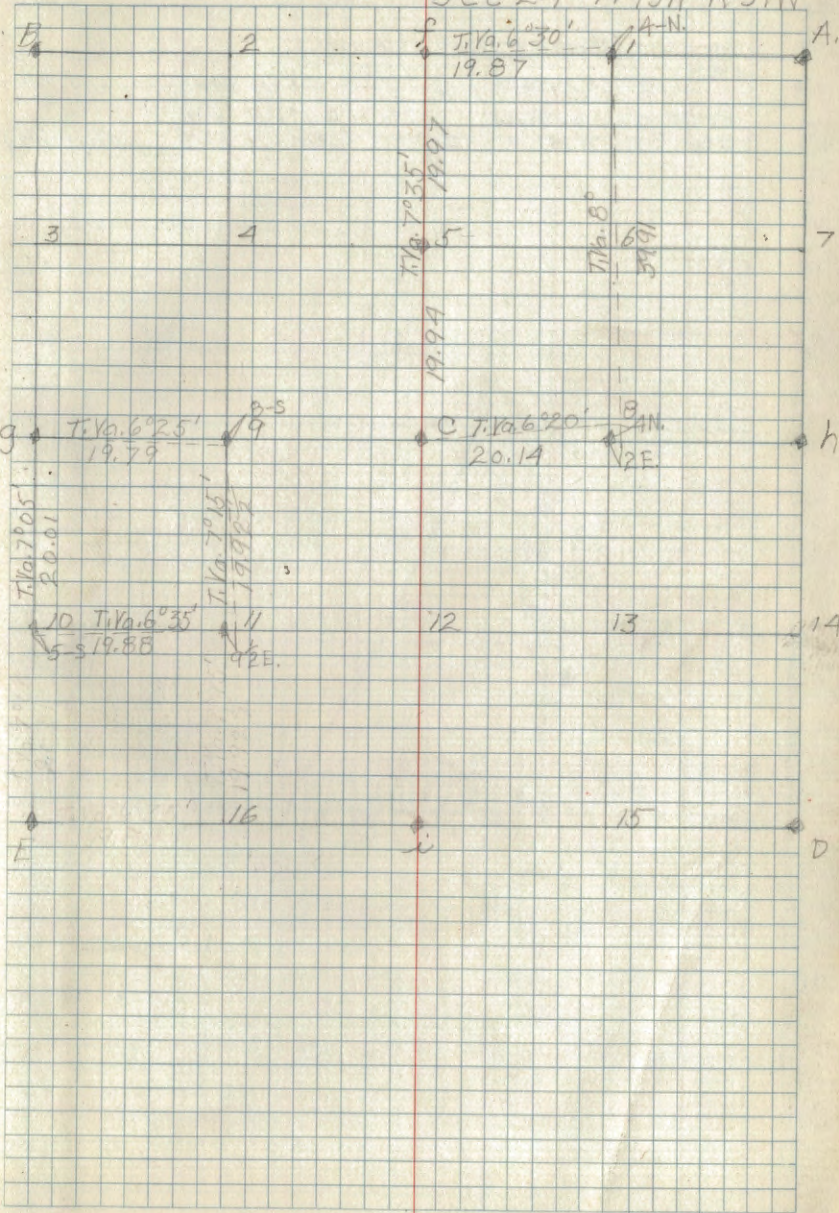
23



Compassman
Steadland

23

Sec 24-T143N R31W



Cor
9
11
C
5
f
1
8

Corner Notes

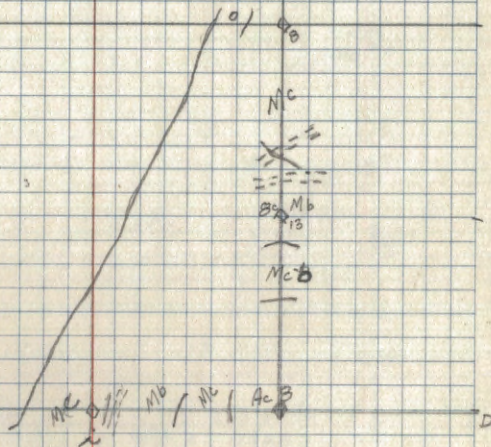
Cor.	Sp	Dia	Bearing	Dist	Remarks
13	d. Pine	12"	S 51° 30' E	107 1/2	G.L.O SE 1/4 S16
8	No B.T. could be found Elm	3"	N 41° W	15	G.L.O 1" x 2ft E 1/4 C → put post on C 3 TT HAGJ

Type Map

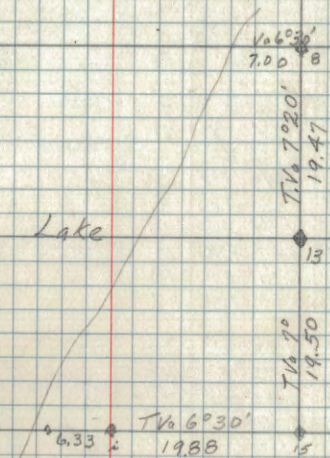
Sec 11 T143N R21W

24

W



Sec 11 T143N R31W



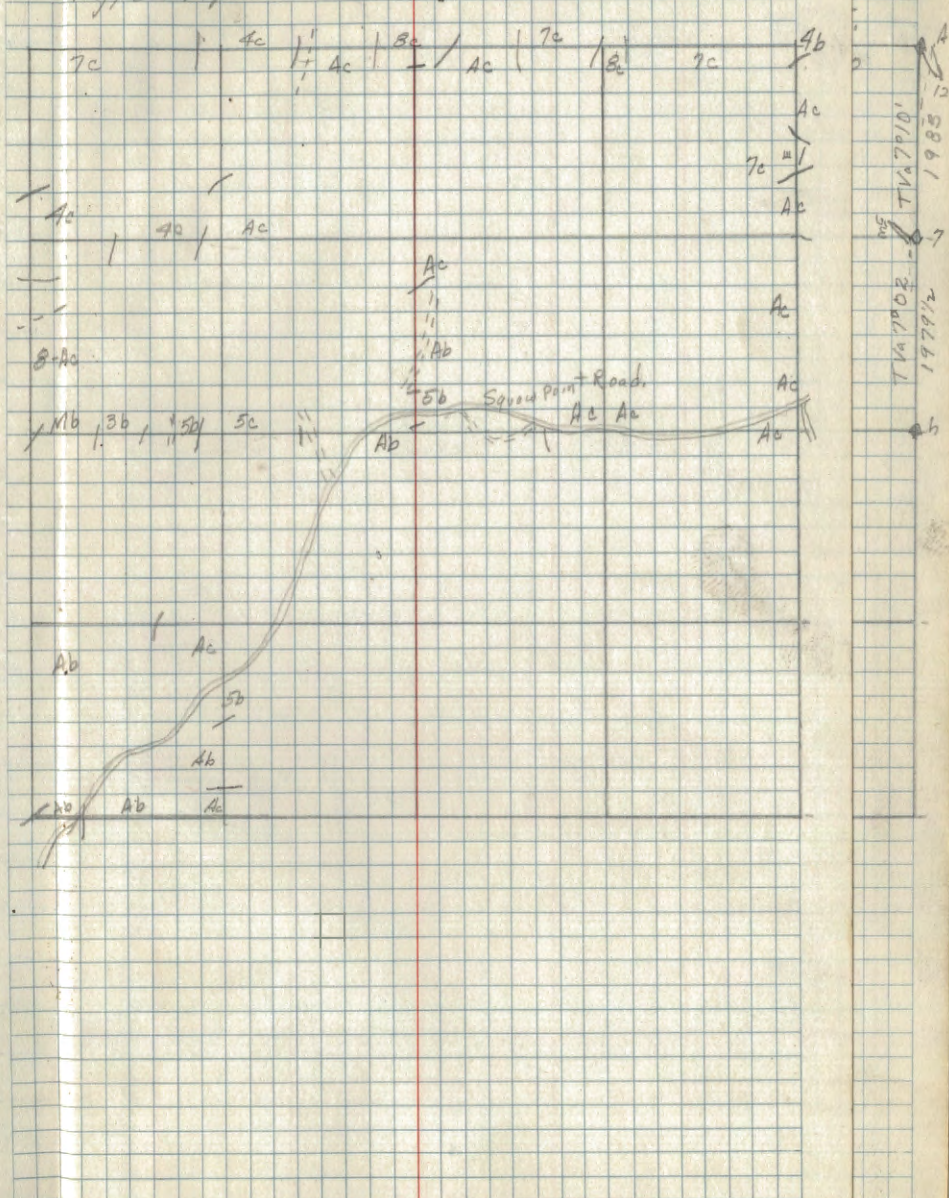
Corner Notes

Cor.	SP	Dia.	Bearing	Dist	Remarks
4	Aspen	9"	S 84° 16' E	37	G.L.D. Br Iron
	Aspen	10"	S 35° 30' W	80	1 X 12
	Aspen	7"	S 24° 45' W	21	← Poster Only
8	Aspen	7"	S 72° 5' E	39	G.L.D. Br Iron 1 X 9
C	J Pine	8"	N 16° E	84	G.L.D. Br Iron
	Aspen	3"	S 7° 30' E	3 1/2	← Poster Only
	N Pine	17"	N 52° 30' W	178	1 X 3
9	J Pine	9"	N 61° 30' W	95	G.L.D. Br Iron
	J Pine	6"	S 18° 30' E	111	1 X 4
g	w Pine	18"	N 82° 30' W	29 1/2	G.L.D. Br Iron
	R Pine	16"	N 46° E	6 1/2	← Poster 1 X 4
7	R Pine	14"	S 65° 45' W	75	G.L.D. Br Iron
A	Aspen	8"	S 59° E	55	G.L.D.
	Cedar	8"	N 39° W	46	← Breakover
	Cedar	9"	S 26° W	7	← Poster
	Cedar	8"	N 66° 45' E	71	
	R Pine	7"	N 55° W	10	← Poster
f	J Pine	12	N 9° 15' E	35	G.L.D. 1 X 8
	J Pine	12	N 9° 15' E	35	G.L.D. 1 X 8
B	Tam (A)	5"	S 60° 30' E	8	G.L.D.
	" (A)	4"	N 49° 30' E	47	2 X 10
	Tam Petroglyph	4"	N 44° 15' E	10	← Poster
	Tam (A)	4"	N 41° 30' W	23	
E	J Pine	15"	N 35° W	30	G.L.D.
	J Pine	18"	N 42° E	66	2 X 5
	J Pine	9"	S 33° 30' E	27 1/2	← Poster
10	J Pine	15"	S 64° 15' W	28	
	J Pine	15"	S 64° 15' W	28	
11	R. Oak	3"	S 52° E	21	← Poster
	R. Oak	6"	S 79° W	28	G.L.D.
16	Aspen	10"	S 71° W	37	G.L.D.
	Aspen	4"	S 2° 30' E	10	← Poster Only

Type Map

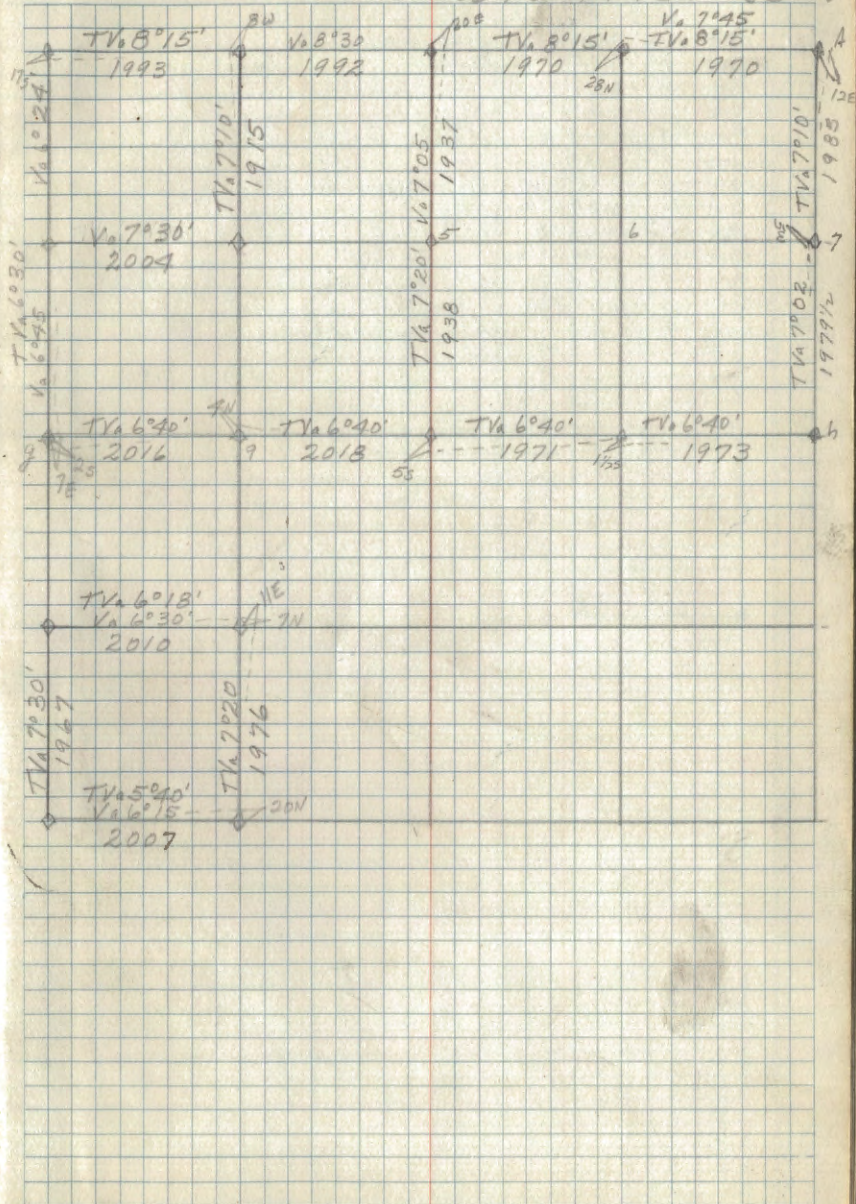
Sec 12 T.143N R31W

P31W



T.143N R.31W
 1985
 1977 1/2

Sec 12 T143N R31W



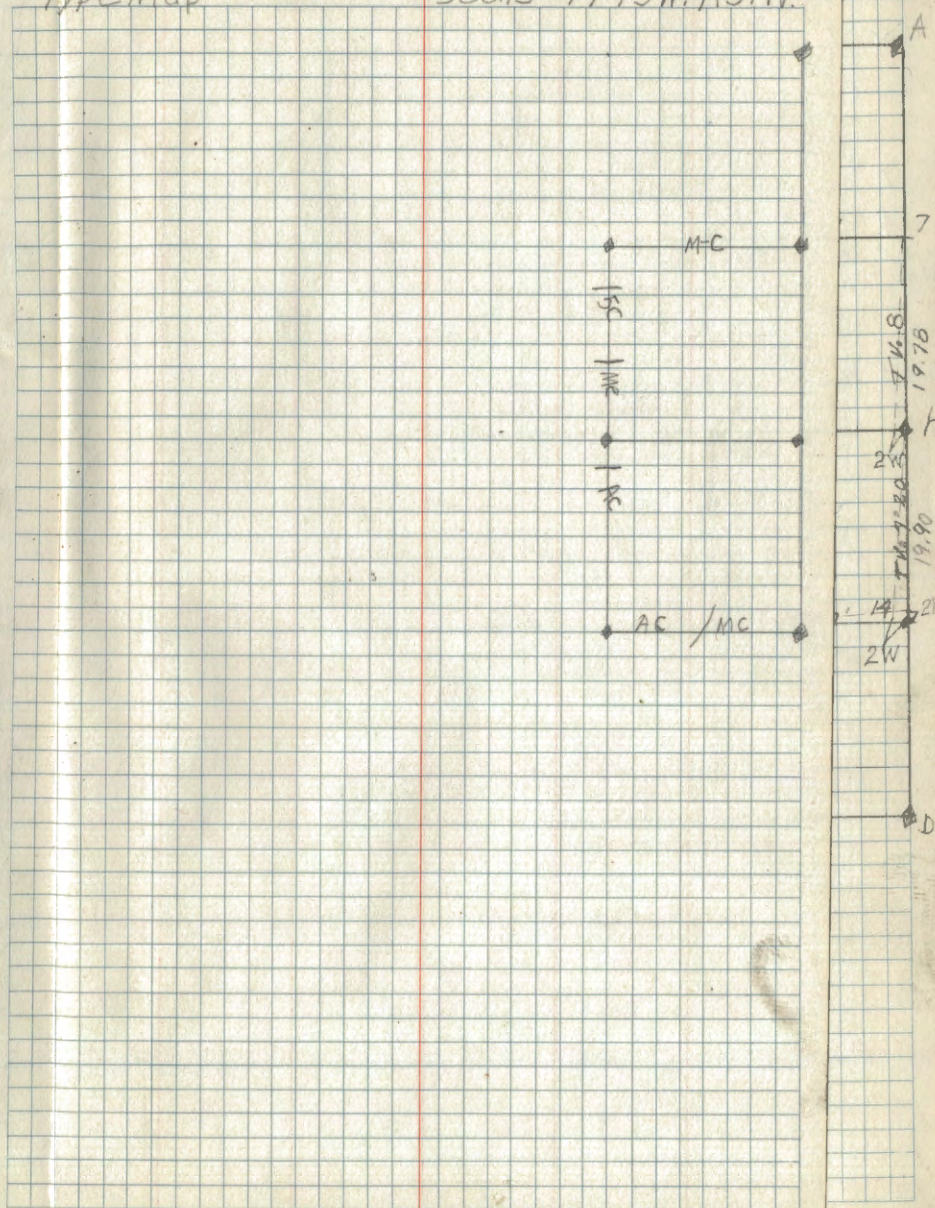
Corner Notes

Cor.	Spec.	Dia.	Bearing	Dist	Remarks
6	R.Oak	6"	N. 64 ¹ / ₂ ° E.	50 ³ / ₄	GLO. 1" x 6" (N.E. 1/6 S13)
	J.Pine	8"	S. 39° E.	44	
8	W.Oak	14"	S. 44 ³ / ₄ ° E.	39 ¹ / ₂	GLO. 1" x 6" (E. 1/6 C S13)
	W.Pine	24"	S. 21 ¹ / ₂ ° W.	70 ¹ / ₂	
	Aspen	7"	S. 12° E.	2	
13	W.Oak	6"	N. 85 ¹ / ₂ ° W.	34	GLO. 1" x 6" (SE 1/6 S13)
	W.Oak	12"	N. 28 ¹ / ₂ ° W.	38 ³ / ₄	
14	W.Oak	5"	S. 75° E.	25 ¹ / ₂	GLO. 1" x 6" (S 1/6 S13)
	J.Pine	18"	S. 30 ¹ / ₂ ° E.	20	Poster (S 1/6 S13)
h	R.Oak	7"	N. 22 ³ / ₄ ° W.	34	GLO. 1" x 8" (S 1/6 S13)
	W.Oak	10"	N. 27 ³ / ₄ ° W.	38	Poster
14	W.Oak	4"	N. 76 ³ / ₄ ° E.	26	GLO. 1" x 6" (S13/S18)

D.J. Sutton

Type Map

Sec. 13-T/43N. R31W.



W
A
7
19.78
19.90
21
2W

Sec 13 T143N R31W

Cor.

6

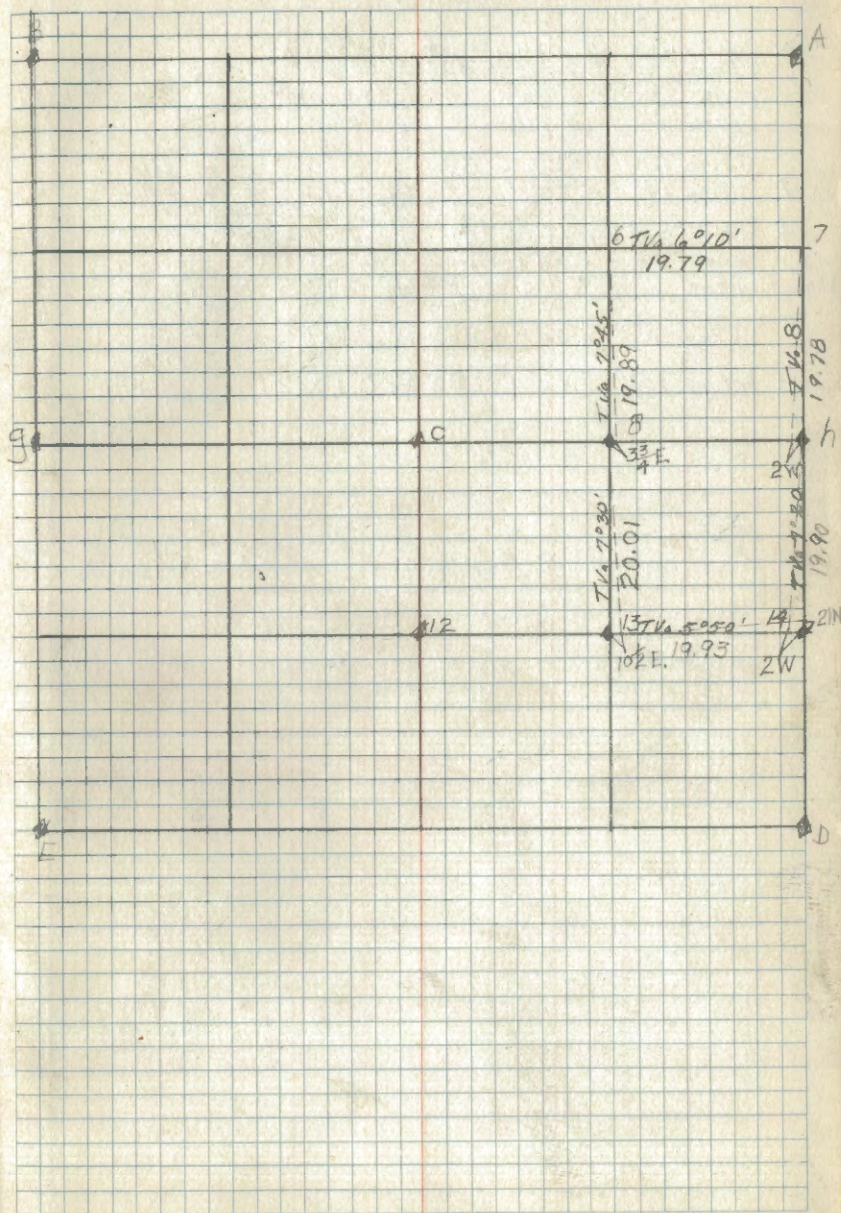
8

13

14

h

14

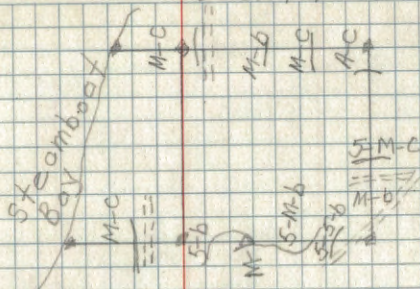


Corner Notes

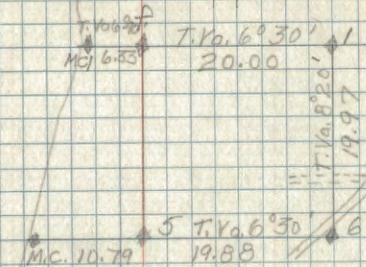
Cor.	Spec.	Dia.	Bearing	Dist	Remarks
6	J. Pine	7"	S. 24° 30' W.	46	GLO. 1" x 8" (N.E. 1/16 / S14)
	R. Oak	5"	S. 41° 30' W.	34 1/2	Mkd. New B.T.
	Fence post		South	2	Poster
1	J. Pine	12"	S. 61 1/2° E.	32	GLO. 1" x 6" (E. 1/16 S11)
	J. Pine	14"	N. 28° E.	13	GLO. 1" x 6" (E. 1/16 S14)
f	R. Pine	20"	N. 14° E.	51	Poster (1/4 S11)
M.C.	W. Oak	12"	S. 28° E.	18	
W. of f.	W. Oak	6"	N. 23 1/2° E.	11 1/2	GLO. 1" x 8" (Mc / S14)
5	J. Pine	12"	N. 35 1/2° W.	91 1/2	GLO. 1" x 5" (1/16 S14)
M.C.					
W. of 5	R. Oak	10"	S. 02° E.	68 3/4	GLO. 1" x 12" (Mc / S14)

Type Map

Sec. 14-T. 143-R-31



Sec. 14-T143N. R. 31.

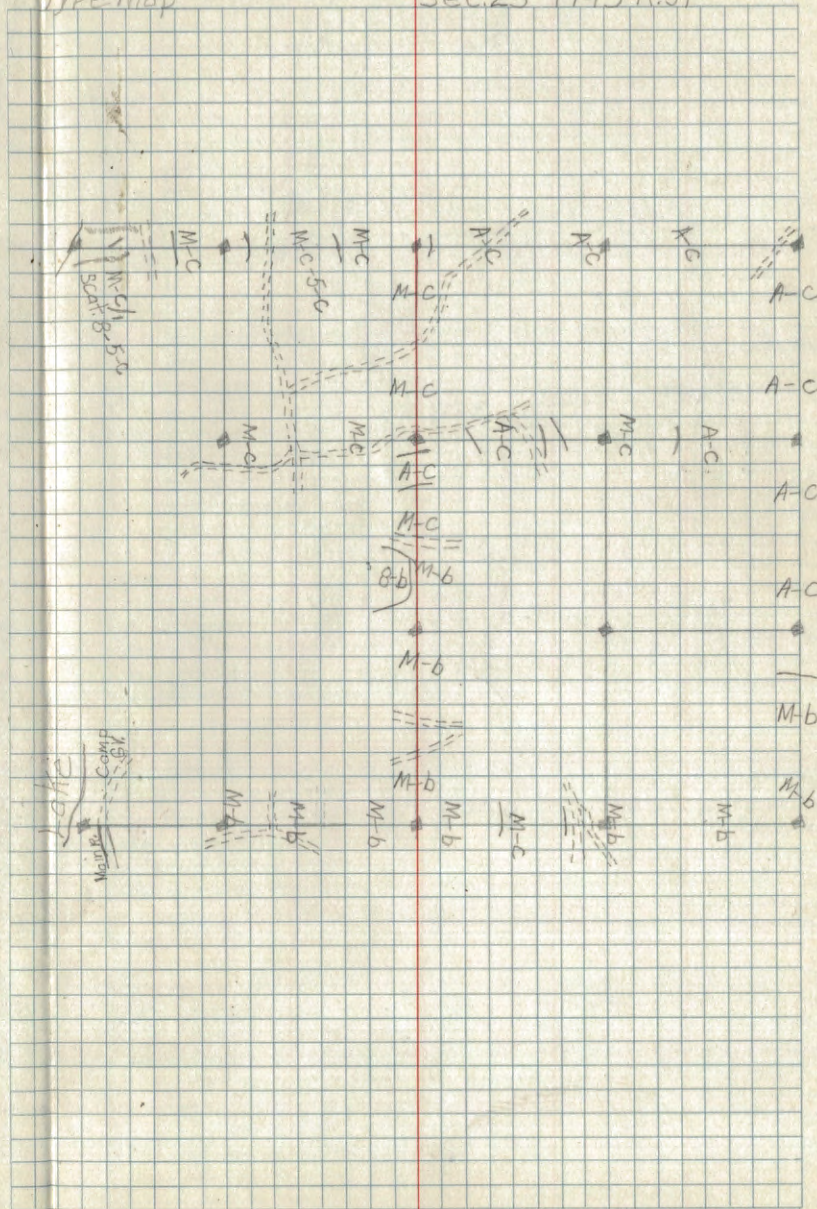


Corner Notes

Cor.	Spec.	Dia.	Bearing	Dist.	Remarks
M.C. Eot. 3	W. Oak	14"	N. 83° 50' E.	67	GLO. 1" x 8" (S.M.C. S23/S23M)
	R. Oak	8"	N. 72° W.	8 1/4	Poster (N.C. 1/16 S23)
5	Aspen	6"	S. 65° E.	21	GLO. 1" x 7" (N. 1/16)
	Aspen	6"	S. 65° W.	20 1/4	(N. 1/16 S23/S24)
7	Aspen	7"	N. 34° E.	51	GLO. 1" x 8"
	Aspen	5"	S. 39° W.	4	Poster
6	Aspen	5"	S. 25° W.	10 1/4	Set oak post MKd. B.T.
	R. Pine	18"	N. 74° W.	36	
C	R. Pine	16"	N. 87 1/2° E.	109 1/2	GLO. 1" x 7" (C 1/4 + S. 23)
M.C. at 9	W. Oak	12"	N. 30° E.	38	
	W. Oak	12"	S. 50° E.	100	GLO. 1" x 12" (S.M.C. S23/S23C)
9	R. Oak	7"	N. 72° W.	23 1/2	Set oak post MKd. B.T.
	Aspen	10"	S. 49 1/2° E.	35 3/4	GLO. 1" x 6"
h	Aspen	9"	S. 68° W.	9	Poster (S23/S24)
8	R. Oak	5"	S. 66° E.	27	Set oak post MKd. B.T.
	Aspen	6"	N. 38 1/2° W.	39 3/4	
J	W. Pine	30"	S. 80° E.	16	GLO. 1" x 7" (1/4 S23/S26)
ohst	R. Oak	5"	S. 22° E.	2 1/2	Poster
12	Aspen	7"	N. 25° E.	9 1/2	Set oak post MKd. B.T.
	Birch	6"	N. 68° E.	25 1/2	
16	Aspen	6"	S. 19 1/2° E.	69	GLO. 1" x 6" (1/16 S23/S26)
M.C.	R. Oak	12"	N. 25 1/2° E.	86	GLO. 1" x 6" (M.C. S23/S26)
W. 16	W. Oak	12"	S. 75° E.	174	Poster
15	R. Pine	20"	N. 06° W.	148	GLO. 1" x 9" (E. 1/16 S23/S26)
	R. Oak	8"	N. 55 1/2° W.	53 1/2	(S23/S26)
D	R. Oak	7"	S. 41° E.	45 1/2	GLO. 2" x 6" (1/16 S26/S29)
4	Aspen	6"	S. 28 1/2° W.	21 1/2	GLO. 1" x 8" (S23/S24)

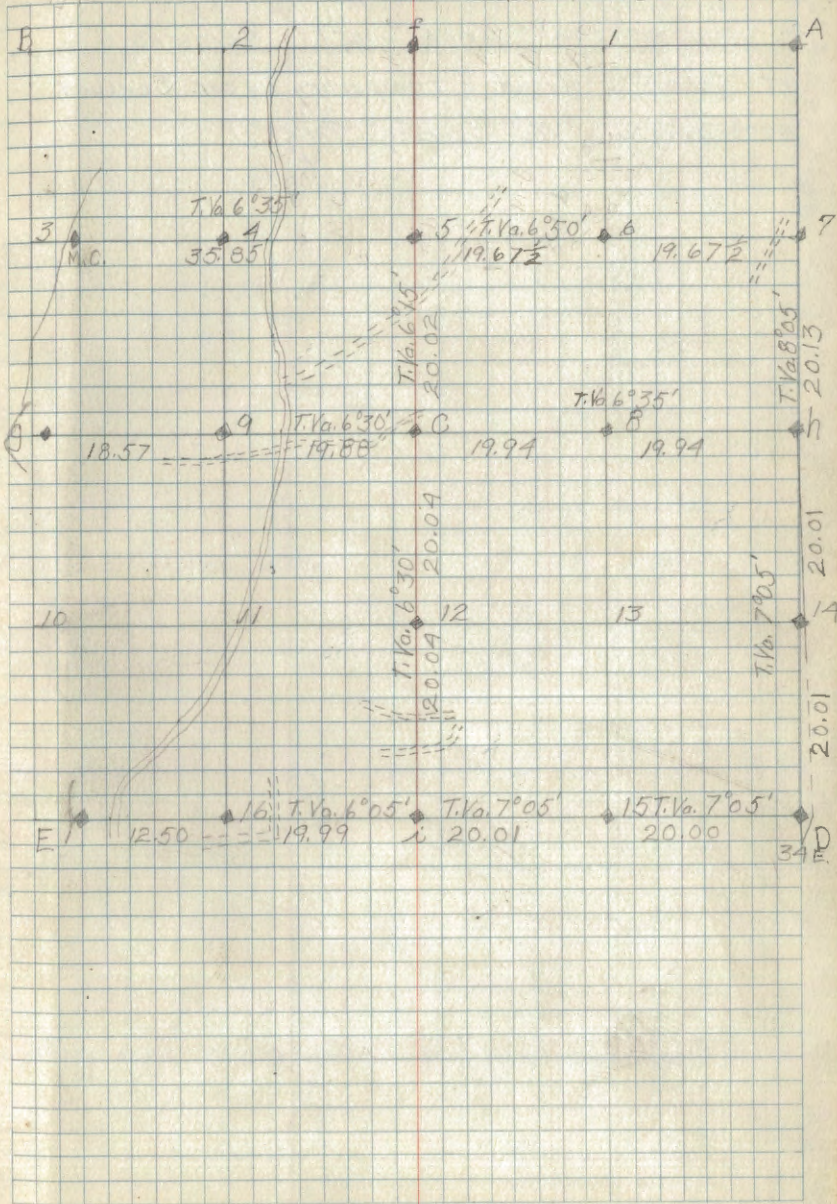
Type Map

Sec. 23-T143 R. 31



T. 143 R. 31
20.13
h
20.01
A
T. 143 R. 31
20.01
A
20.01
D

Sec. 23-T-143N.R.31



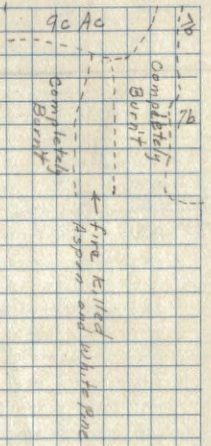
Cor
 M.C.
 Est. 3
 5
 7
 6
 C
 M.C.
 at 9
 9
 h
 8
 i
 at 8
 12
 16
 M.C.
 at 16
 15
 D
 14

Type Map

Sec 2 T143N R31W
NENE Sec 2

29

Cor.	Species	Dia	Bearing	Dist	Remarks
	lat corner I found a temporary 1/6 cor. Scribe accordingly. No Bearing Trees.				



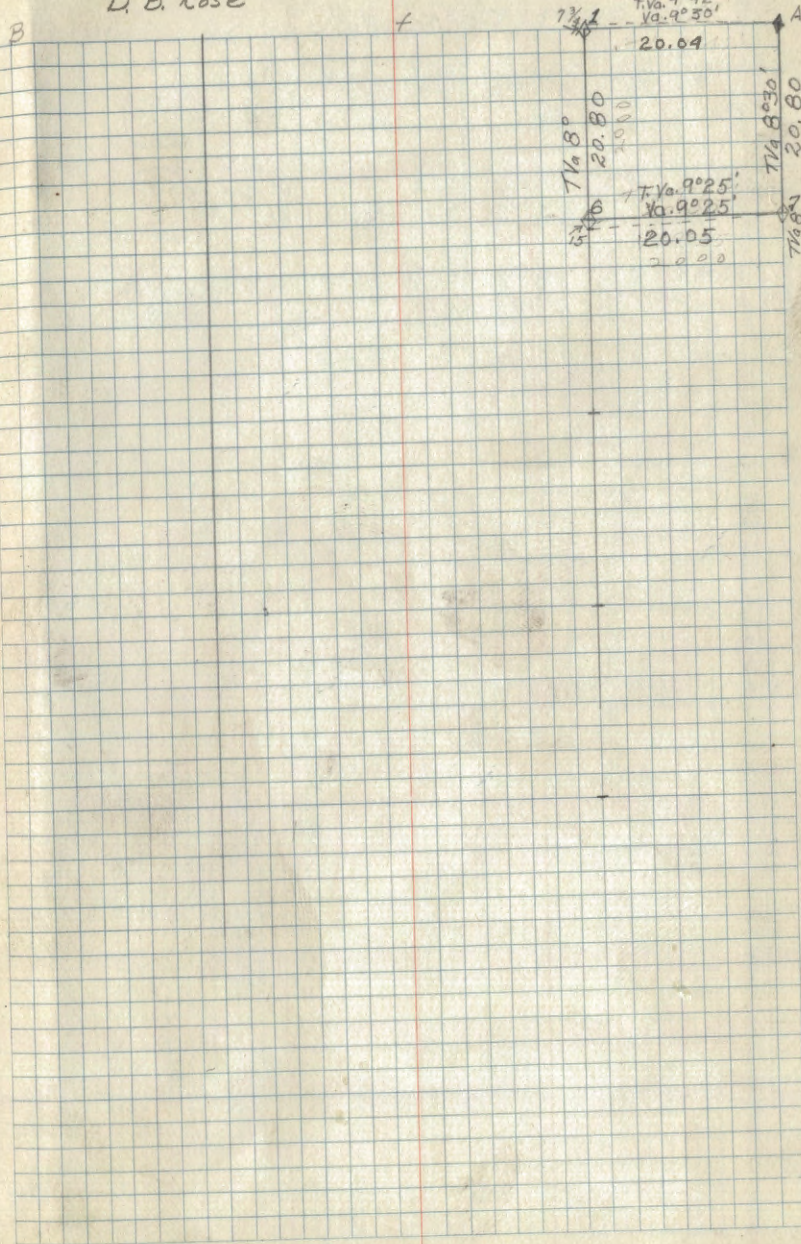
20.80
11 1/2

Remarks:
young Aspen coming up along edge of high land where aren't Swamp grass in rest of Burnt area. Trees have been cut for seed

D. B. Rose

Compassman
D. B. Rose

Sec 2 T143N R31W 29
NENE sec 2

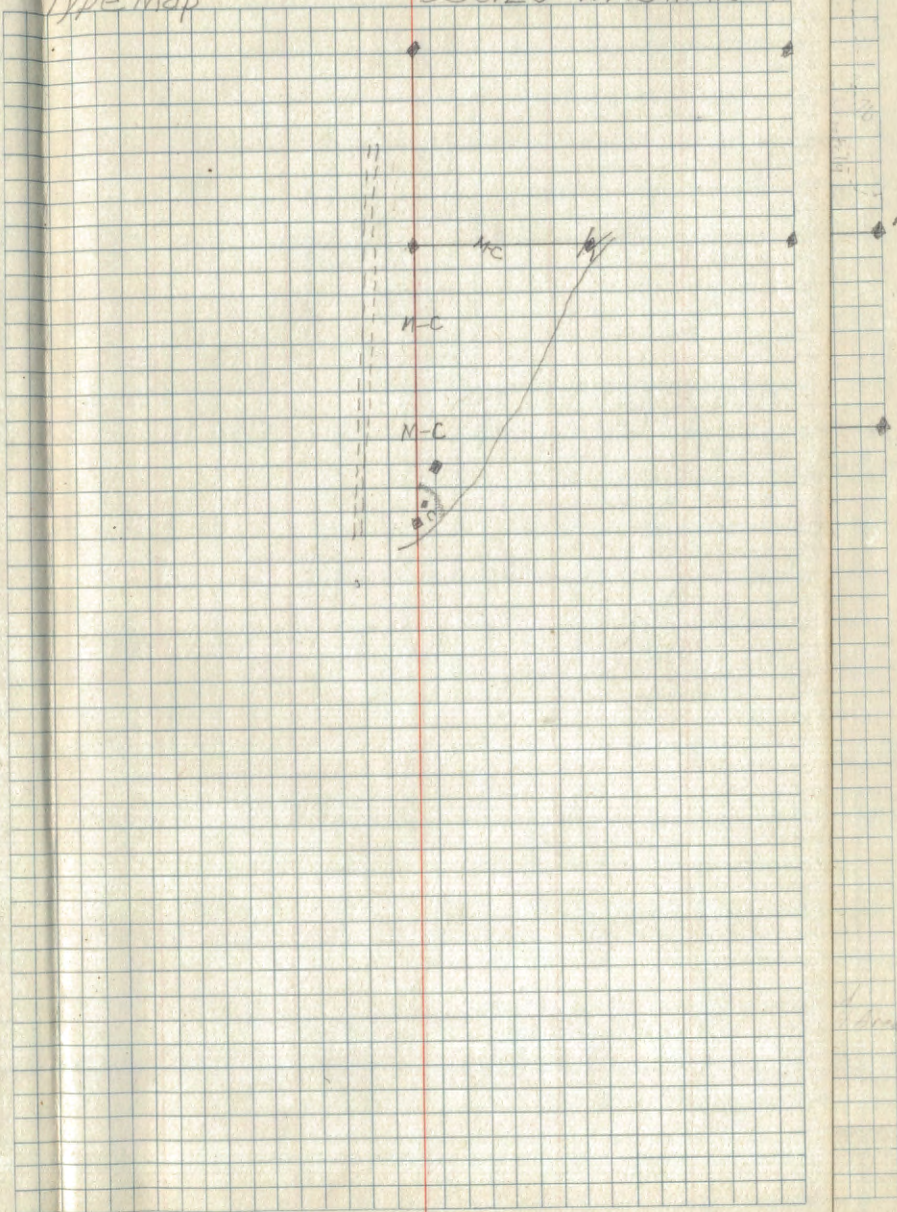


Corner Notes

Cor.	Spec	Dia.	Bearing	Dist.	Remarks
M.C. S of S	J. Pine Fence Post	10"	N. 47° E. North	128 1/2 1	GLO. 1" x 6" poster S 25 1/2 C S MC
5	N. Pine R. Oak	14" 7"	S. 17° W. N. 30° E.	21 3/4 55	GLO. 1" x 6" C N 1/8 S 25 C
M.C. E of S	W. Oak R. Oak	6" 7"	S. 87° W. N. 89 3/4° W.	158 3/4 136	GLO. 1" x 8" N S 25 S 25 N S MC
			N. 86° W.	11	poster

Type Map

Sec. 25-T. 143 N. R. 31 W

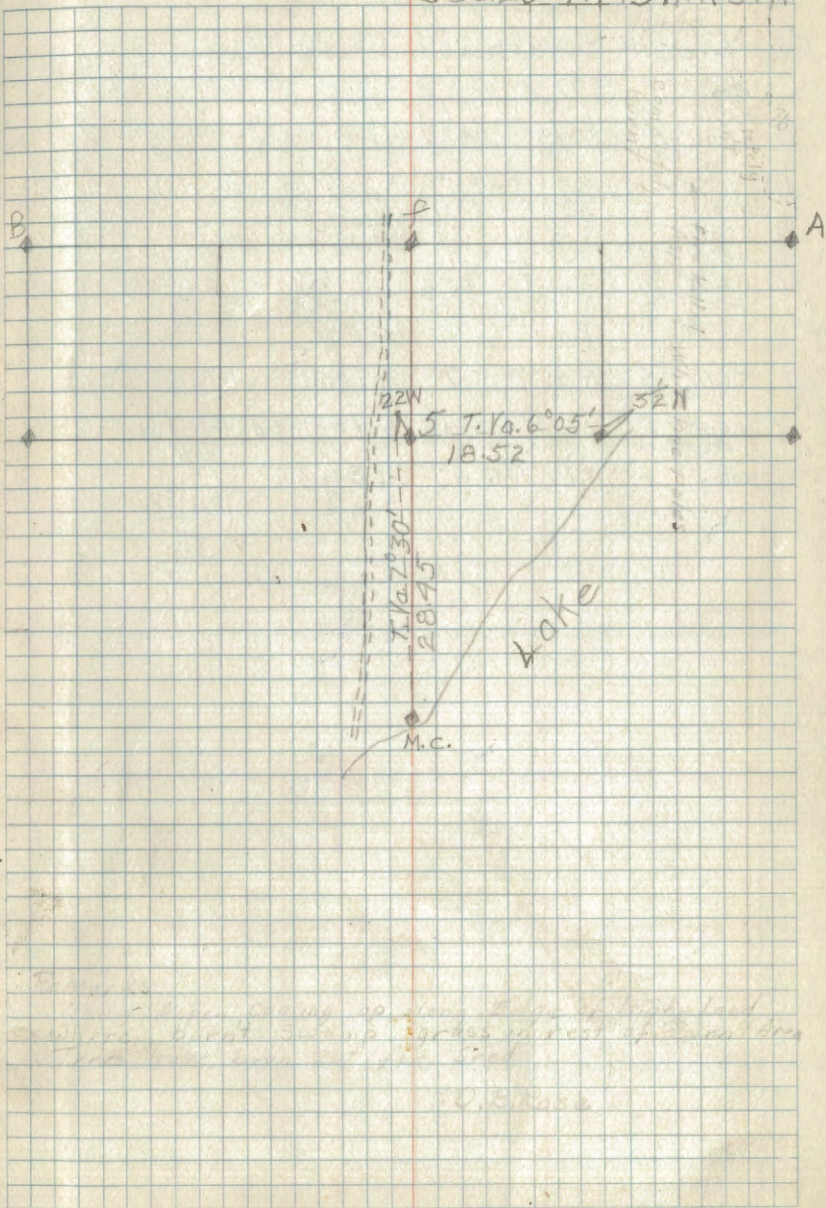


1 W.

Compassman
S-teadland

Sec. 25-T.143N.R.31W.30

Sec. 25-T.143N.R.31W.



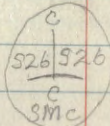
From the corner of the lake up the line of the lake to the
corner of the lake and across the rest of the lake to
the corner of the lake.

J.A. Gjelhoug

31

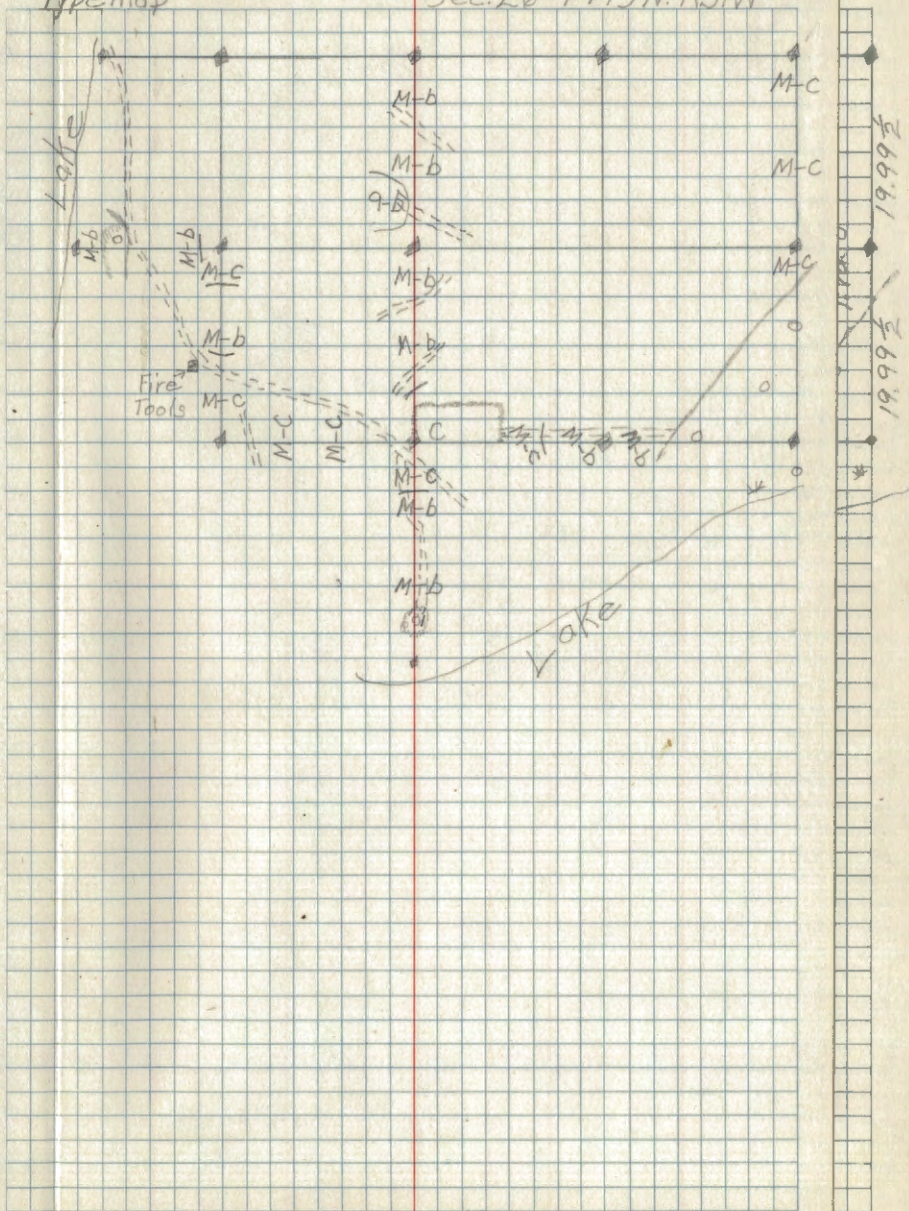
Corner Notes

Cor.	Spec	Dia.	Bearing	Dist	Remarks
C	R. pine	18"	S. 77° 30' W.	187 1/2	GL 0.1" x 8" (C 9 + S 26)
8	R. oak	10"	N. 77° W.	26	GL 0.1" x 6" (C E 76 C S 26)
	R. oak	12"	S. 43° W.	42 1/2	
h	open No. B. T.	Set 3"			oak post at corner GL 0.1" x 4"
9	R. oak	6"	N. 84° E.	101	GL 0.1" x 10"
	R. oak	8"	S. 42° W.	39	Poster on fence post cor. (C W 76 C S 26)
	R. oak	12"	S. 59° E.	46	
4	R. oak	14"	N. 25° E.	115 1/2	GL 0.1" x 10" (N. W. 76 S 26)
	M.C. R. oak	10"	N. 50 1/2° E.	53 1/2	GL 0.1" x 8" (S M C 1 S 26 N 1 S 26)
W. of 4	R. oak	8"	East	16	Poster
5	R. oak	5"	N. 05° E.	9	set oak post MKd. B. T.
7	W. oak	6"	N. 68° W.	44 1/2	set oak post MKd. B. T.
M.C.	Found no B. T.				MKd.
S. of C	Willow	7"	N. 87° 45' W.	45	GL 0.1" x 10" (C S 26 S 26 C S M C)



Type Map

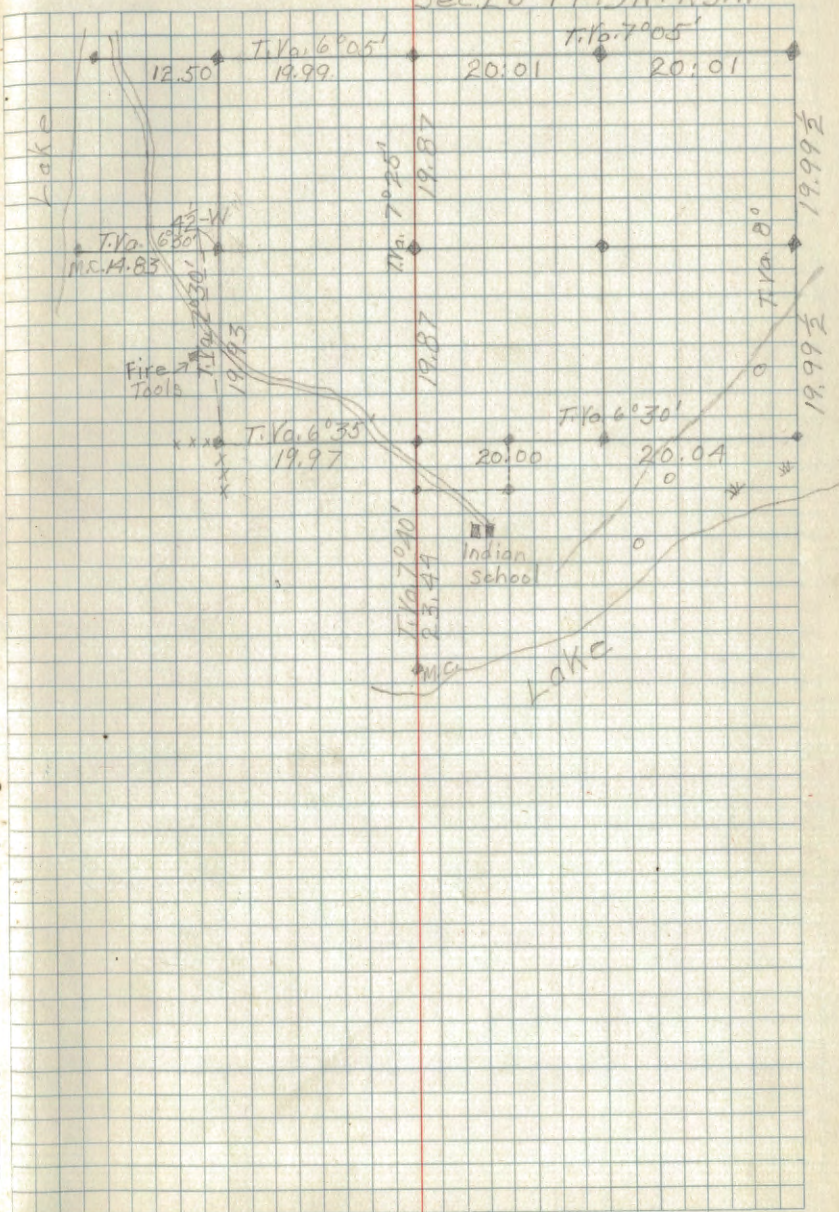
Sec. 26-T143N. R. 31W



Compassman
J.A. Gjelhoug

31

Sec. 26-T143N-R31W.



Cor.

C

8

h

9

4

M.C.

w. of 4

5

7

M.C.

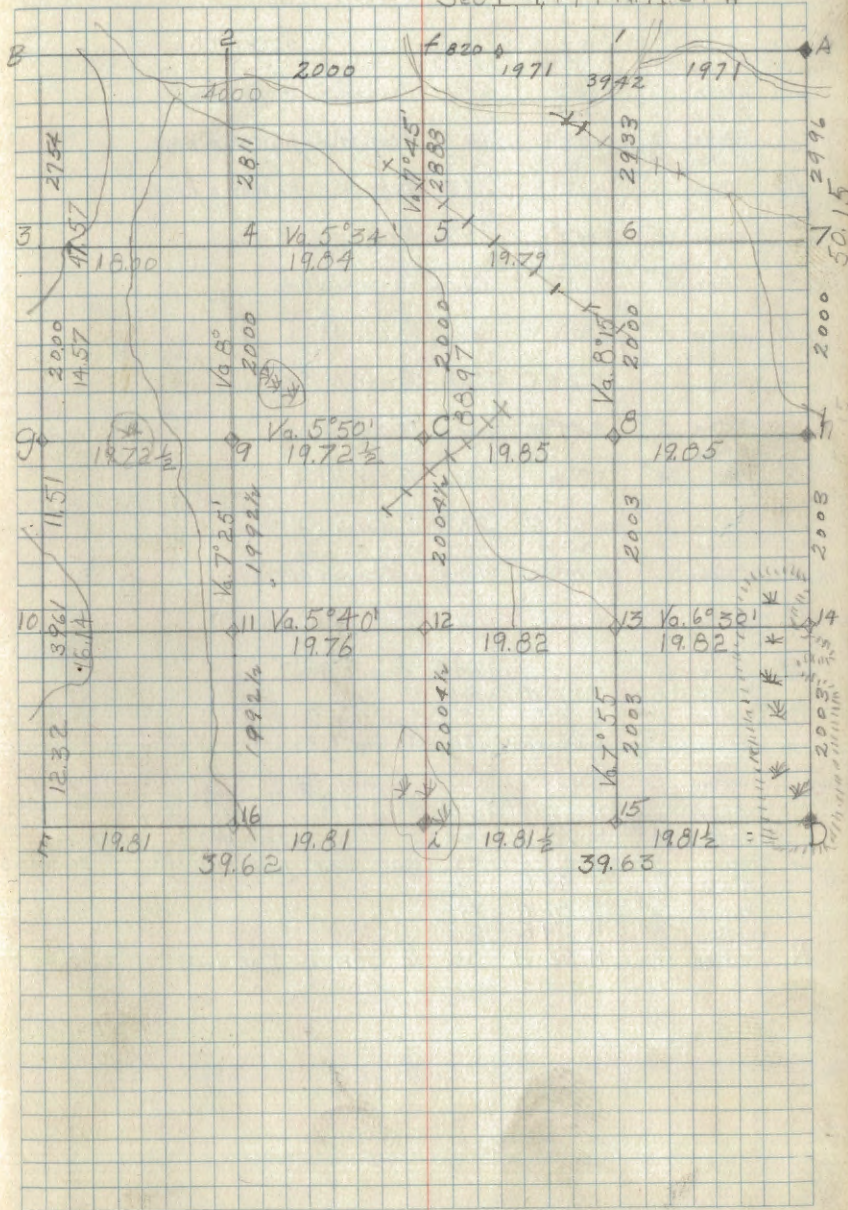
s. of C

PAGES 32-49
ARE BLANK

Corner Notes

Cor	Sp	Diam	Bearing	Dist	Remark
A	Aspen	7"	S 58° W	13 3/4	Sec. Cor. of secs. 1-6 G.L.O. Br
	Elm	5"	S 14° E	30	Cap. pipe 3" dia. 6" high
f	R. Pine	10"	S 66° W	129	iron 1" x 6" high
	Aspen	9"	N 45° W	14 3/4	At 1/4 cor G.L.O. Br. Cap
h	Aspen	10"	S 55° E	1 1/2	Br. Cap. Iron 1" x 6" high
c	J. Pine	6"	N 76° W	11 kcs	at 1/4 Center MKd.
i					At 1/4 cor. G.L.O. Br. iron 1" x 6" high in open swamp. No. E.T.s
9	J. Pine	7"	S 68° E	10 3/4	1/2 Cor MKd.
16	W. Pine	7"	N 16° E	60	1/2 Cor MKd
12	J. Pine	6"	S 38° W	18	1/2 Cor MKd
11	J. Pine	6"	N 59° E	12 1/4	1/2
8	N. Pine	6"	N 58° W	131 kcs	8 1/2 Cor. MKd
D	Birch	8"	S 48° E	107 1/2	G.L.O. Br. Iron 2" Dia. 1" high
75 1/2	W. Pine	10"	N 77 1/2° E	146 1/2	cor MKd
13 1/2	W. Pine	10"	S 23° E	21 1/2	Cor MKd
14 1/2	Aspen	10"	S 20° W	421 kcs	Cor MKd
1 1/2	Aspen	7"	S 42 1/2°	271 kcs	Cor. MKd
6 1/2	J. Pine	5"	S 23° W	20 1/2	Cor. MKd
5 1/2	J. Pine	4"	N 26°	13	Cor. MKd
7 1/2	Aspen	10"	N 52° W	15 3/4	Cor. MKd
4 1/2	J. Pine	9"	N 40° E	61 kcs	Cor. MKd
2 1/2	R. Pine	30"	S 45° W	7 1/4	Cor. MKd

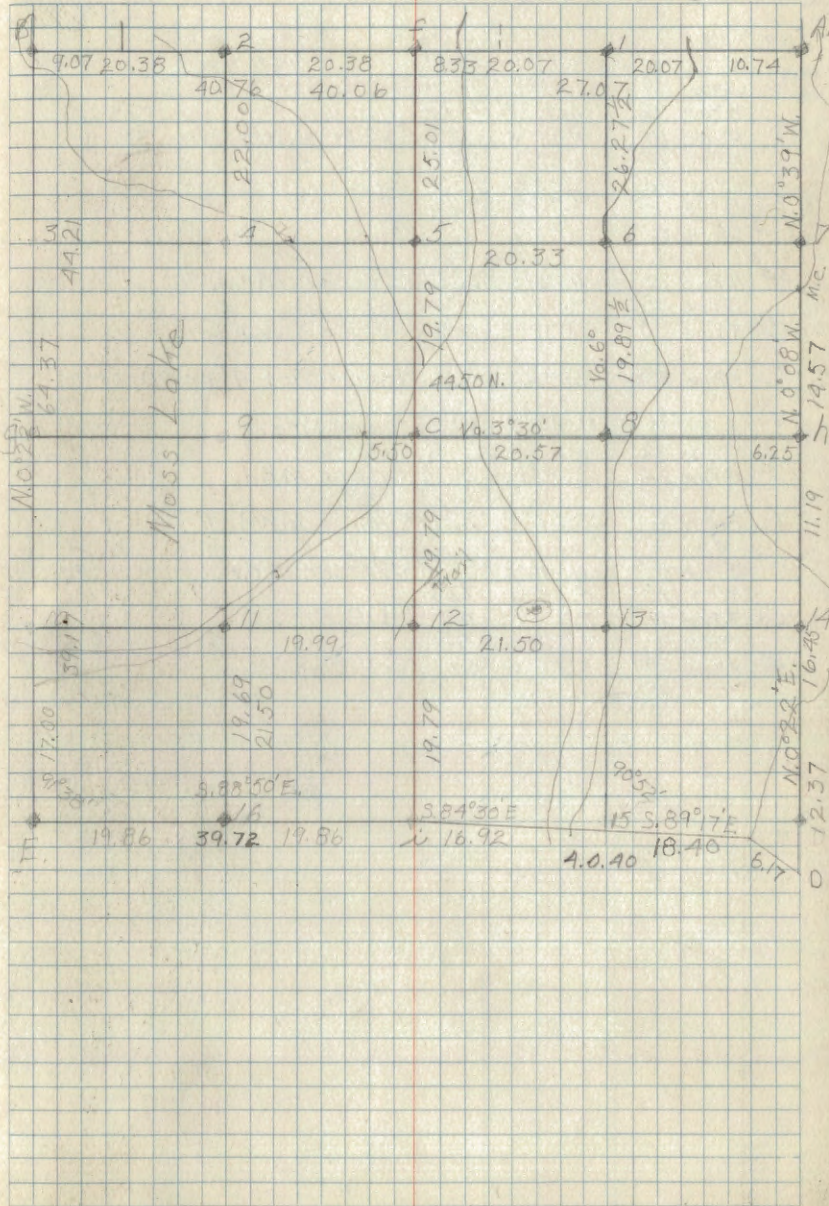
Sec 1-T, 144 N. R 31 W



Corner Notes

Cor	Sp	Diam	Bearing	Dist	Remarks
	R. Pine	14"	N. 40° W.	39 1/2 Lks.	
i	J. Pine	10"	S. 66° E.	20 1/2 "	1/4 cor. G.L.O. iron pipe 8"
	R. Pine	12"	S. 52° W.	19 Lks.	
f	R. Pine	12"	S. 46° E.	60 "	1/4 cor. G.L.O. Br. iron 6" high
	R. Pine	14"	N. 86° W.	270	
h.	R. Pine	16"	N. 84° E.	159	1/4 cor. G.L.O. Br. iron 6" high
C.	R. Pine	18"	N. 44 1/2° E.	13 1/2	1/4 center Sec. 2
8.	J. Pine	8"	S. 18° E.	8 Lks.	1/8 cor. MKd.
l.	J. Pine	5"	S. 85 1/2° W.	32	1/8 cor. MKd.
5.	R. Pine	8"	N. 28° E.	27	1/8 cor. MKd.
6	J. Pine	5"	S. 44° W.	1 1/2	1/8 cor. MKd.
	R. Pine				
2	St.	14"	S. 3° W.	40	1/8 cor. MKd.
12	J. Pine	8"	N. 53° E.	23 1/2	1/8 cor. MKd.
M.C.	J. Pine	8"	S. 74° W.	59 1/2	G.L.O. Br. iron
Eol i	R. Pine	22"	N. 79° W.	98 1/2	old Gov't. B.T.
16	J. Pine	9"	N. 6° W.	32	1/8 cor. MKd.
11	J. Pine	10"	S. 26° W.	24 1/2	1/8 cor. MKd.
	N. Pine	8"	N. 57° W.	106	
D	N. Pine	14"	N. 13° E.	19 1/2	Sec. cor. G.L.O. 3" high
	N. Pine	18"	S. 28° W.	136	old Gov't. B.T.
	Tomst	14"	N. 80° E.	20	
	N. Pine	12"	S 4 E	385	Gov't. B.Ts.
E.	J. pine	5"	N 3 E	1.79	at i 1/8 Cor. betw. 2-11
	Ta. m.	4"	N. 75 W	20	
D	Ta. m.	5"	S. 3.58 E	27	Sec. Cor. 1-2 -11-12
	Ta. m.	9"	N 40 E	51	
	W. pine	12"	S 81 W	74	
	J. Pine	8"	N 59 E	20	
N	J. Pine	12	N 52 W	16	1/4 Cor. betw. 1-2

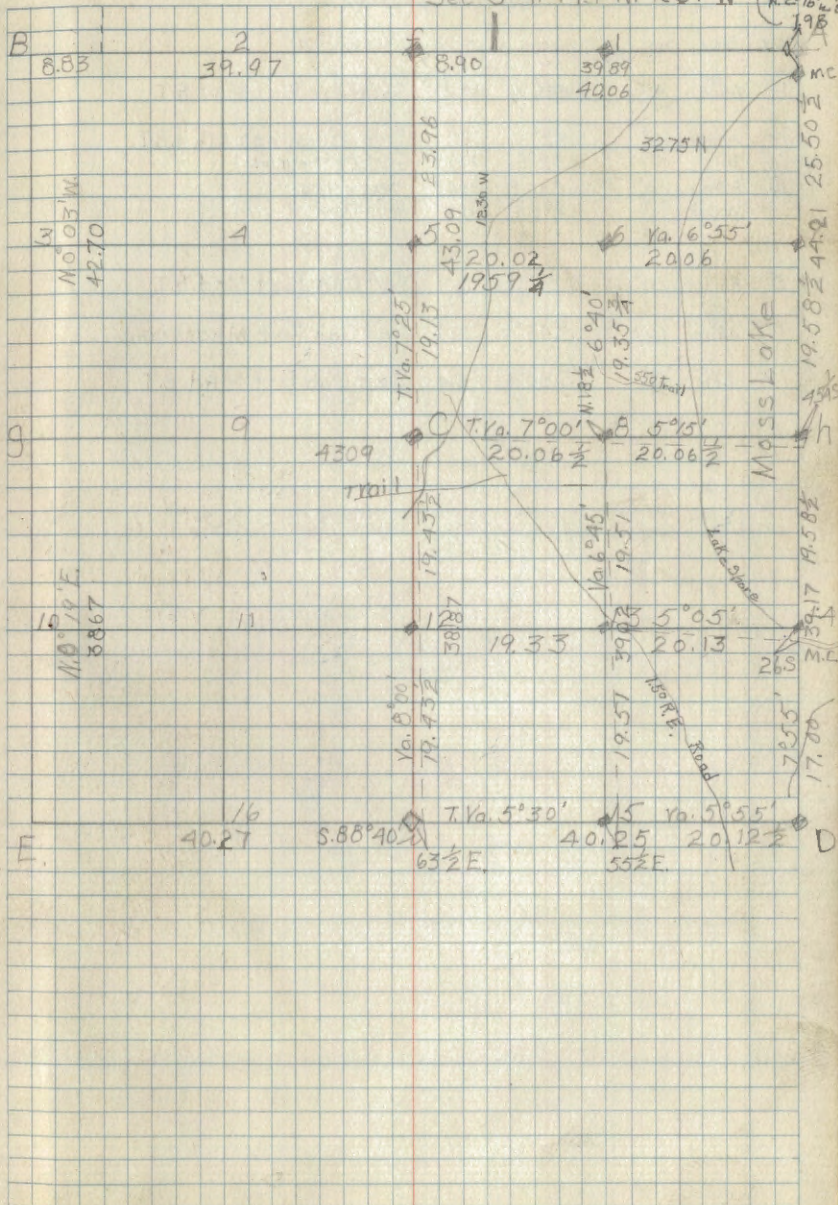
Sec 2 T144N R31W



Corner Notes

Cor.	Sp	Diam	Bearing	Dist	Remarks
.	Birch	6"	N. 15° W.	89 LKS.	
A	Asp	8"	S. 42° E.	23 1/2	1/4 Cor. Gov't. B.T.S
	R. Pine	12"	S. 37° W.	227 1/2	
D	R. Pine	10"	N. 15° W.	172 3/4	GLO. br. cpd. Iron pipe (33' 52" / 310' 511")
	W. Pine	12"	N. 32° E.	340	
	R. Pine	10"	S. 83 1/2° E.	283 1/2	
M.C.	R. Pine	10"	S. 71° E.	95 1/2	
Sof. 14	Birch	6"	S. 72° W.	15	GLO.
15	N. Pine	12"	N. 42° E.	20 1/2 LKS.	1/6 cor. MKd.
	J. Pine	8"	S. 32° W.	33 LKS.	
8	J. Pine	8"	N. 38° E.	12 1/2 LKS.	1/6 cor. MKd.
C	R. Pine	2 1/4"	N. 64 1/2° E.	1/4	On. at sec. 3 Set 4" oak post MKd.
1	R. Pine	8"	N. 45° W.	2 1/2 LKS.	1/6 cor. MKd.
13	R. Pine	2 1/4"	S. 3° E.	26 LKS.	1/6 cor. MKd.
6	Birch	6"	S. 52° E.	22 LKS.	1/6 cor. MKd.
5	J. Pine	10"	N. 46° E.	88 LKS.	1/6 cor. MKd.
M.C. N. end	R. Pine	18"	N. 43° W.	72 3/4	
Moss Lake	R. Pine	6"	N. 65° E.	50	GLO.
	W. Pine	32"	S. 53° E.	70 1/2	
A.	R. Pine	20"	S. 37° W.	52	Sec. Cor.
f	R. Pine	8"	N. 60° E.	34	Resurveyed by GLO. N. 1/6 cor.

Sec 3 T. 144 N. R. 31 W



Compassman
J.A. Gjelhaug

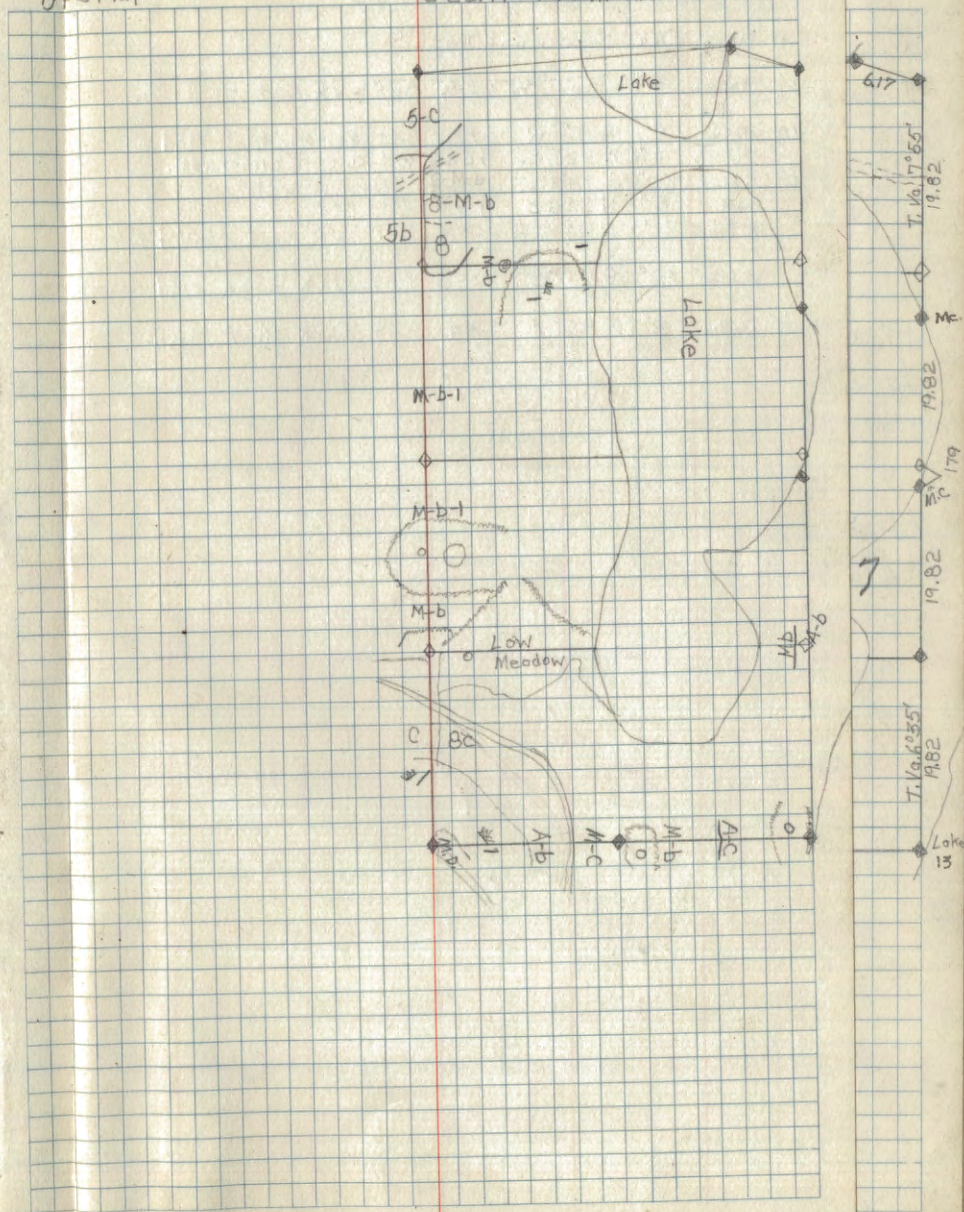
53

Corner Notes

Cor.	Spec.	Dia	Bearing	Dist.	Remarks
14	Aspen	4"	S. 58° W.	5 $\frac{3}{4}$	Set Oak Post Mkd. B.T.
15	Aspen	4"	S. 82° W.	12	Set Aspen Post Mkd. B.T.
	Birch	6"	N. 52° E.	104 $\frac{1}{2}$	G.L.O. Cor. in grade
2	R. Pine	20"	S. 83 $\frac{1}{2}$ ° E.	256 $\frac{3}{4}$	Drove Hub.
	W. Oak	6"	N. 89 $\frac{1}{2}$ ° E.	113	Nailed Poster
5	R. Pine	20"	N. 86 $\frac{1}{2}$ ° E.	133	Set Oak Post Mkd. B.T.
C	J. Pine ^{ST.}	12"	S. 45° E.	12 $\frac{1}{2}$	Set Oak Post Mkd. stump
12	J. Pine	3"	S. 80° E.	54	Set Oak Post Mkd. B.T.

Type Map

Sec. 11 - T. 144 N. R. 31 W



Corner Notes

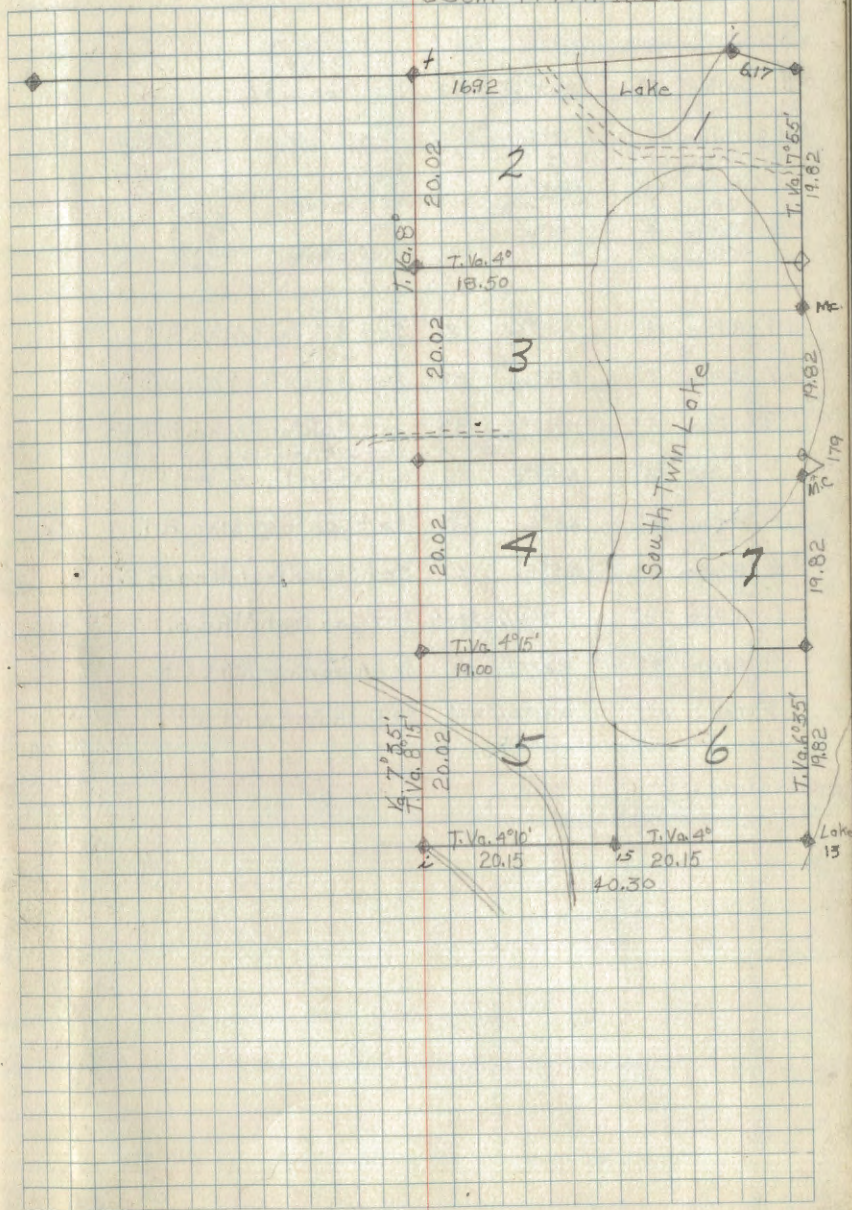
Cor.	At	Spec.	Dia.	Bearing	Dist.	
14	14	Aspen	4"	S 58° W	5 3/4	Set Oak Post MKd. Bt.
15	15	Aspen	4"	S 82° W	12	Set Aspen Post MKd. Bt.
		Birch	6"	N 52° E	104 1/2	Q.L.O. Cor. in Grade.
		R. Pine	20"	S 85 1/2° E	256 3/4	Drove Hub
		oak	6"	N 85 1/2° E	143	Postet
	5	R. Pine	20"	N 86 1/2° E	133	Set Oak Post MKd. Bt.
5	C	J. pine	12"	S 45° E	12 1/2	Set Oak post MKd stamp
C	12	J. pine	3"	S 80° E	54	Set Oak post MKd. Bt.
12						

Compassman

J.A. Gjelhoug

53

Sec. 11 - T. 144 N. R. 31 W



Cor.	Spec.	Dia.	Bearing	Dist.	Remarks
E	W.Pine	1 1/2"	S 23 1/2° W.	193	G.L.O. Br. Caped Iron pipe 2" x 6"
M.C.	R. Pine	20"	N. 13° E.	69 1/2	G.L.O.
Sef 9	R. Pine	20"	N 7 1/2° E.	90 1/2	1" x 10"
MC.	R. Pine	20"	N 6° W.	182	G.L.O.
Sef 3	R. Pine	7"	N. 39° E.	30 1/2	G.L.O. Br. Cap
h	R. Pine	18"	S. 50° W.	38	1" x 12"
	J. Pine	6"	S. 70° E.	10	Placed Poster
14	R. Pine	14"	S. 23° W.	17	Set Oak Post Mkd. B.T.
7	J. Pine	7"	S 56° W.	8 1/4	Set Aspen Post Mkd. B.T.
3	J. Pine	5"	N. 42° E.	18 1/2	Set Oak Post Mkd. B.T.
9	R. Pine	18"	N. 89° E.	44	Set Oak Post Mkd. B.T. Nailed Poster on B.T.
8	W. Oak	4"	N. 3° E.	5 3/4	Set Oak Post Mkd. B.T.
6	B. Spruce	4"	N. 5° E.	3	Set Cedar Post Mkd. B.T.
C	R. Pine	22"	N. 3° W.	130 1/2	Set Oak Post Mkd. B.T.
9	Birch	3"	S. 75° E.	21	Set Aspen Post Mkd. B.T.
5	Torn.	6"	N. 34° W.	49 1/2	Set Oak Post Mkd. B.T.

S11 S12
S14 S13
M.C.

M.C.
S11 S12

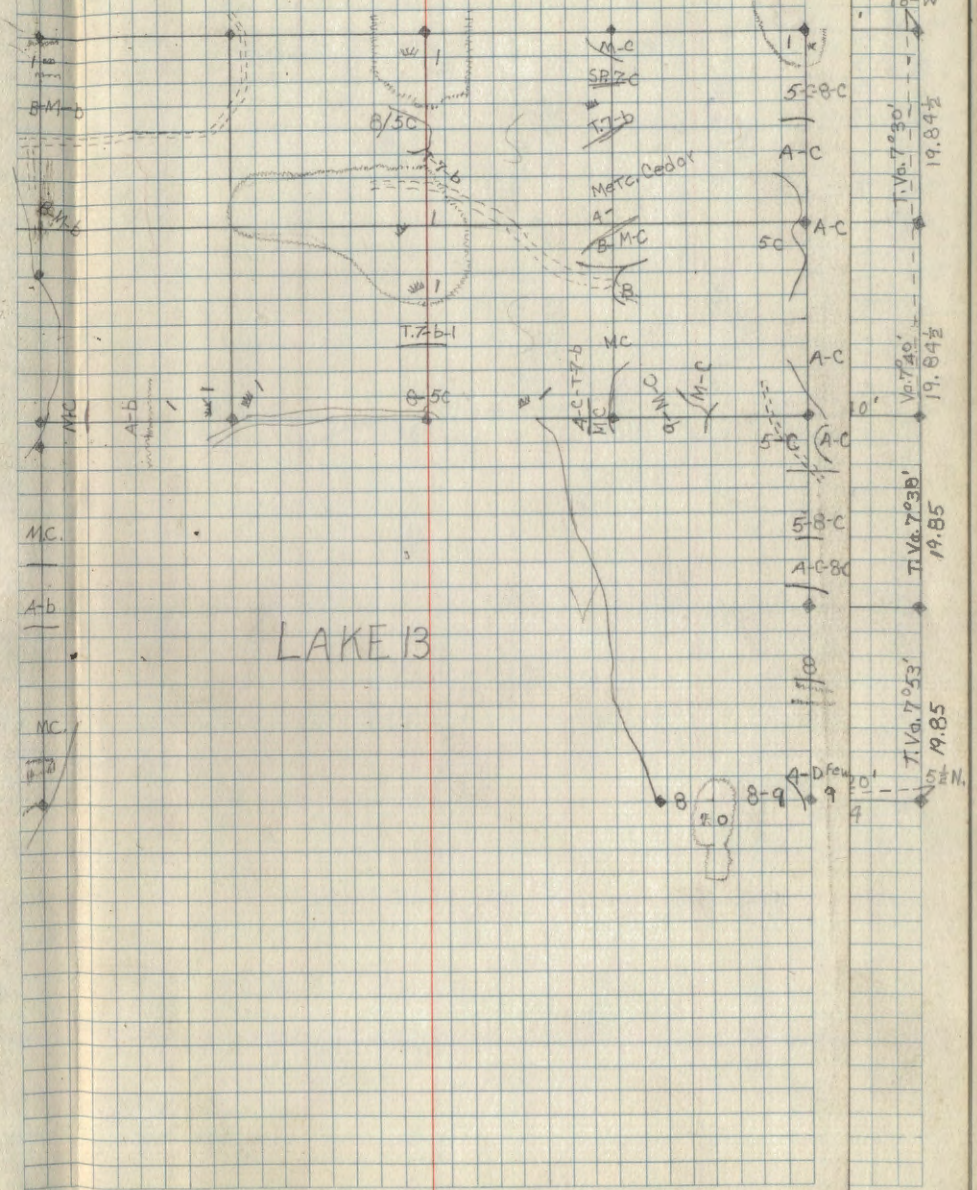
S11 S12
M.C.

1/4
S12 S17

Compassman
J. B. Zielhoug

Type Map

Sec. 12-T14N. R. 31W.

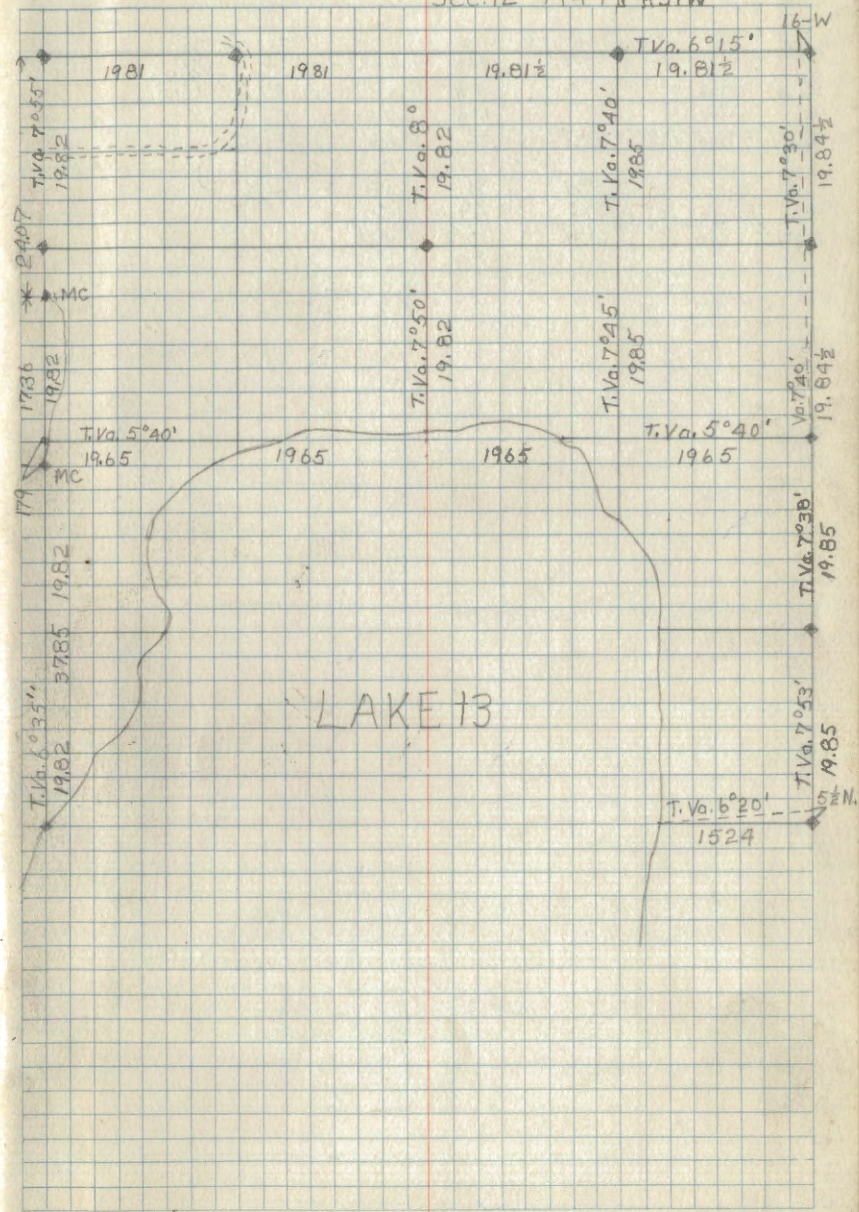


Compassman
J.A. Bjelhoug

54

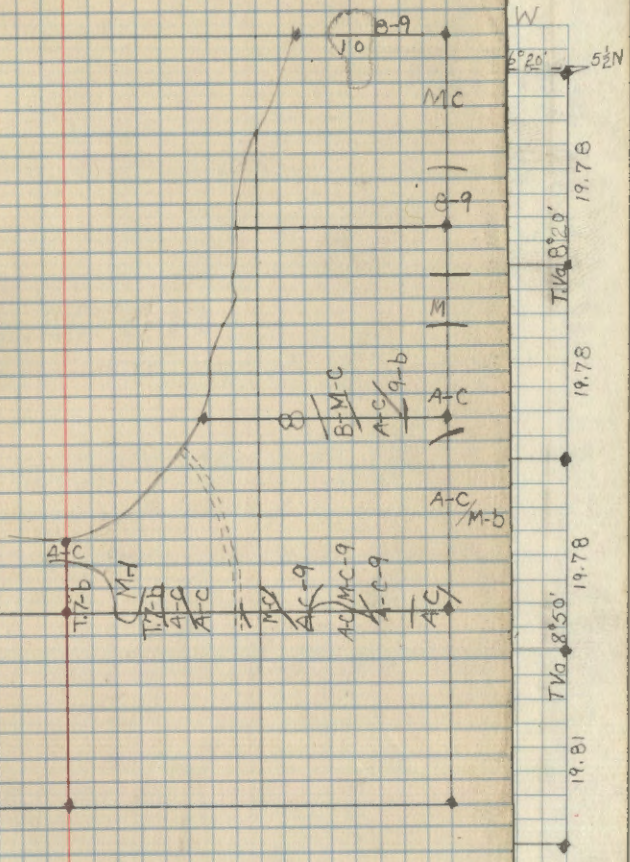
Sec. 12-T144N R31W

Cor.
E
M.C.
Sef 9
M.C.
Sef 3
h
14
7
3
9
8
6
C
9
5

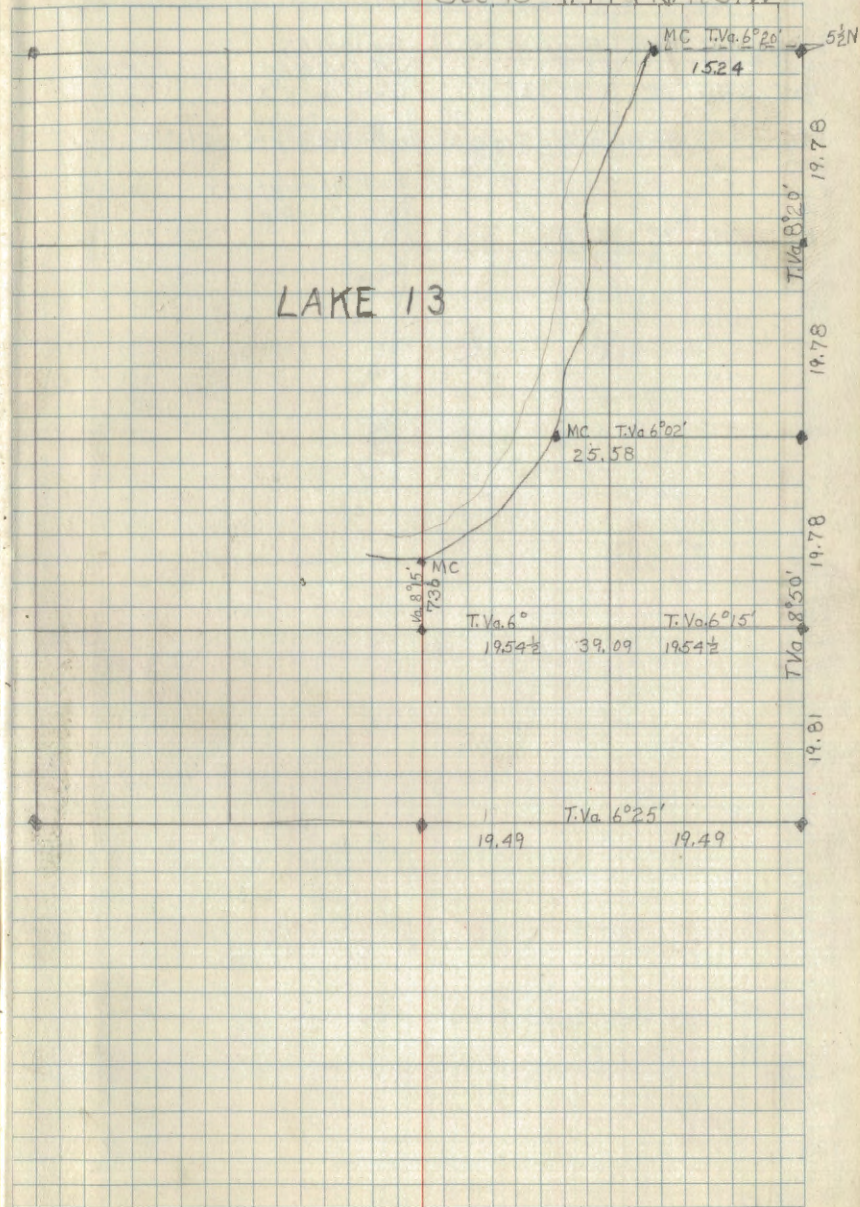


Corner Notes

Cor	Sp	Diam	Bearing	Dist	Remarks
	R. Pine	12"	N. 51° E	44½	GLO Br. Cop.
M. Cat 1	W. Pine	10"	S. 90° E	12¾	1" x 8" Orig. BTS
	R. Pine	9"	S. 67° E	19½	GLO. Br. Cop.
M.C. W. of h.	R. Pine	12"	N 75½° E	32	1" x 6"
12	Totm.	5"	S 21° W	31	GLO. 1" x 6"
M.C.	R. Pine	16"	N. 67½ E.	49	GLO.
N. of 12	Cedar	7"	S. 01° W.	26½	1" x 4"



Sec 13 T. 144 N. R. 31 W



Co

MC

MC
W. of

12

M.C.

N. of

8.87
8.91

Compassman
J.A. Gjelhous

Corner Notes

Cor.	Spec.	Dia.	Bearing	Dist.	Remarks
M.C.					GLO. Br. Coped
Ne of C	R. Pine	10"	N. 47 $\frac{3}{4}$ ° E.	80	Iron Pipe 1" x 2'
C.			No Bearing Trees		GLO. Br. Coped Iron Pipe 1" x 2"
8					Set Aspen Post
M.C.					GLO. Iron Pipe
E of B	W. Pine	12"	S. 28° E.	123 $\frac{1}{2}$	1" x 5"

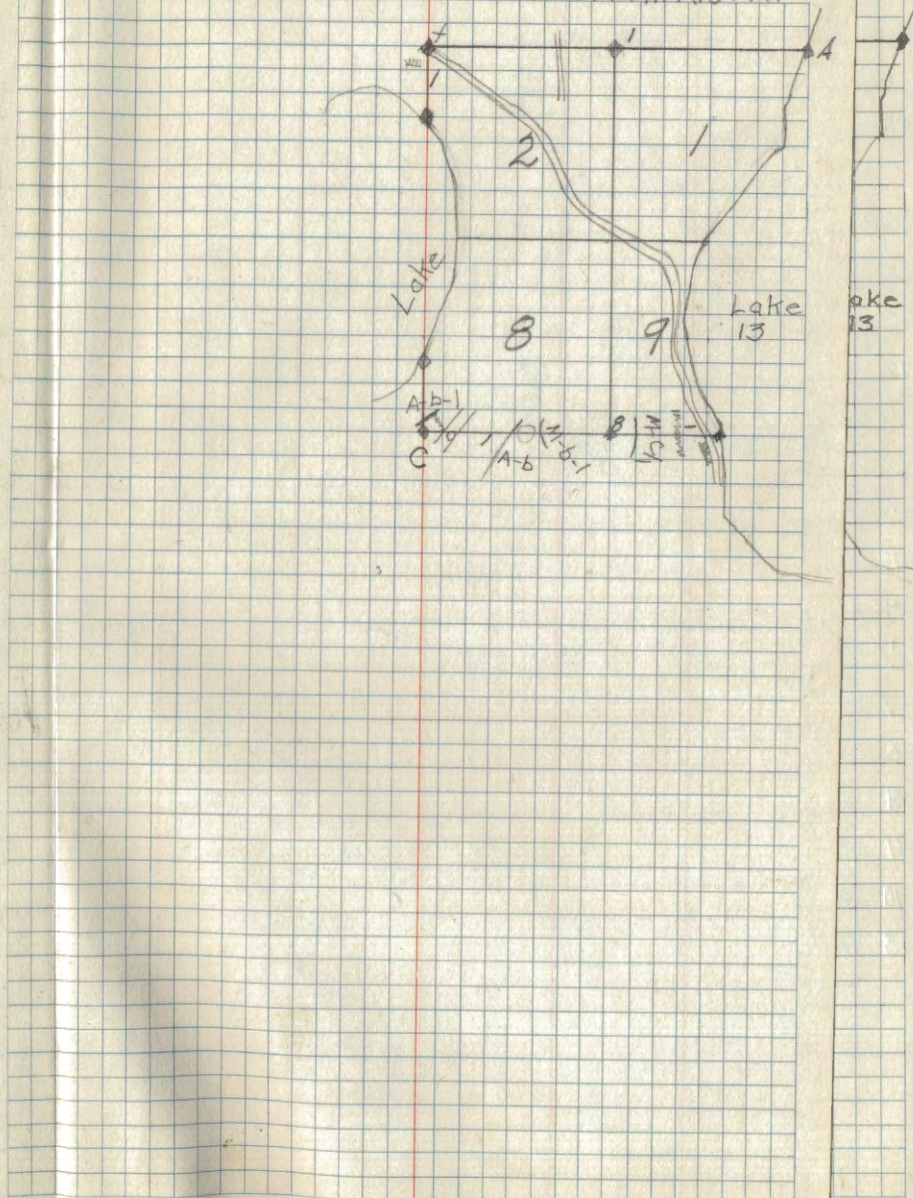
$\frac{5 \text{ m.c.}}{5 \text{ 7 14}}$

$\frac{1}{1} \text{ 5 14}$

$\frac{5 \text{ M.C.}}{5 \text{ 7 14}}$

Type Map

Sec. 14 - T. 144 N. R. 31 W.

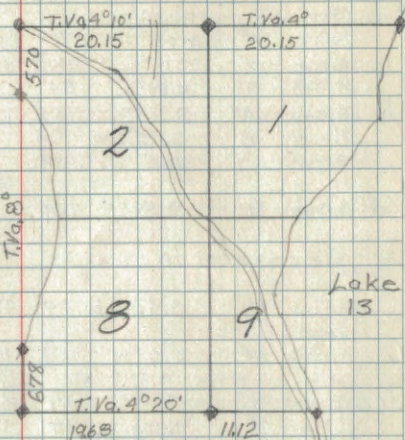


Lake 13

Compassman
J.A. Gjelhoug

56

Sec. 14-T144N. R31W.

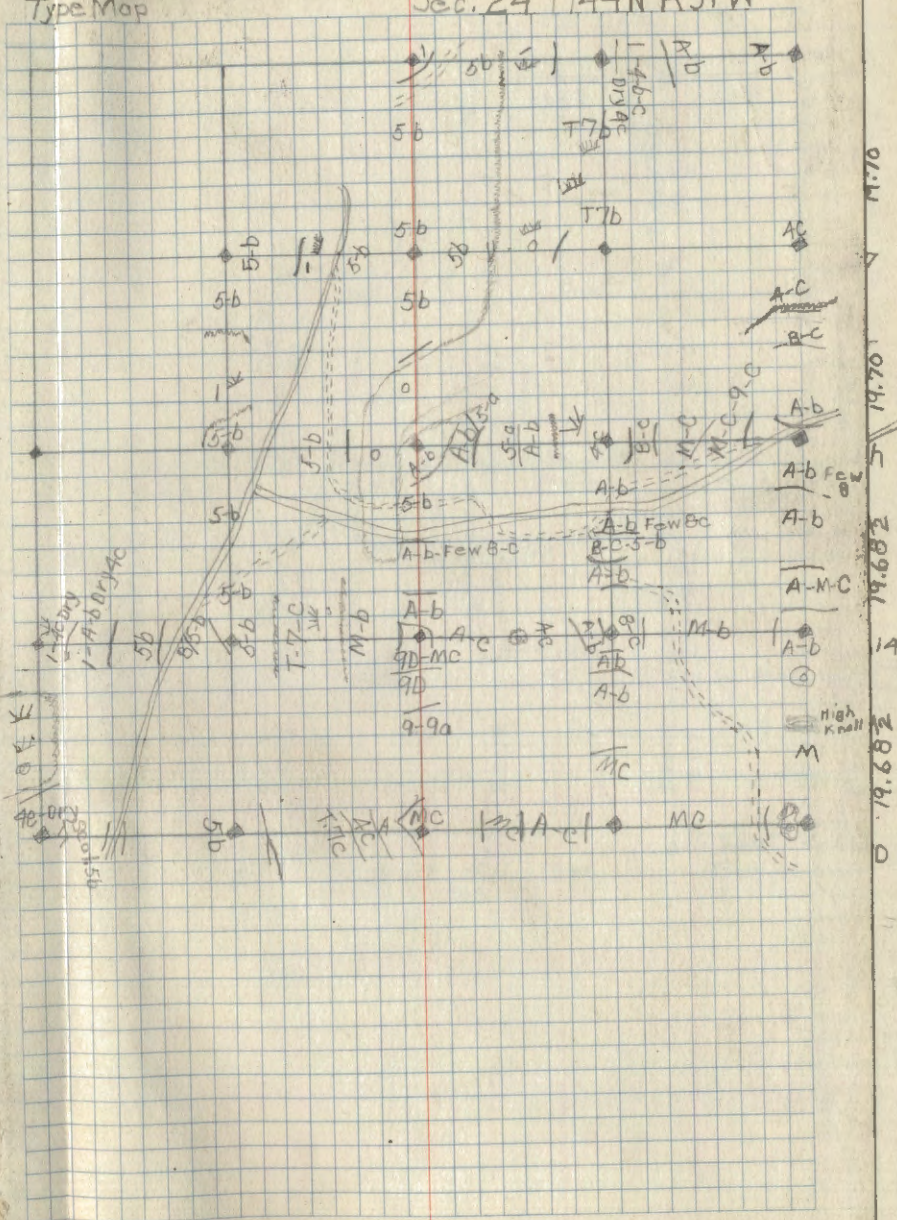


Corner Notes

Cor.	Spec	Dia.	Bearing	Dist.	Remarks
	R. Pine	12"	S. 38° W.	71	GLO.
h.	R. Pine	12"	S. 19° E.	98 1/2	Br. Caped Iron pipe 1"x12" h.
	R. Oak	9"	N. 54° E.	54	GLO.
D.	R. Oak	10"	S. 24° E.	35 1/2	Cement 6"x6"
	R. Oak	8"	S. 74 1/2° W.	38 1/4	
	Aspen	14"	N. 5° W.	139	
14	R. Oak	9"	S. 89° E.	11 1/4	Mkd. B.T. J.A.G.
i Recorded in sec. 25					
C.	R. Pine	18"	S. 48 1/2° E.	109 1/2	GLO. Br. Iron. 1"x6"
	Dead				
12	W. Pine	14"	S. 5° W.	11 1/4	Mkd. B.T. J.A.G.
9	J. Pine	3"	S. 79° E.	39	Br. Capon Iron pipe 1"x5" S24
	R. Pine	14"	N. 11 3/4° W.	271	GLO.
9	J. Stp	18"	S. 62° W.	115 1/4	Br. Cap Iron 1"x4" S23 S24
5	J. Pine	3"	S. 20 1/4° E.	46 1/2	GLO. Br. Cap. 1"x10 (Bent) 1/2 S24
	R. Pine	4"	S. 39 1/2° W.	43 1/2	Mendenhall
f.	R. Pine Stp	20"	N. 47° E.	25	GLO. Br. Cap Iron 1"x6" 1/4 S13
	R. Pine Stp	20"	S. 3° W.	38	Orig. B.T.s 1/4 S24
A.	No. B.T.s				GLO. Br. Caped Iron 2"x8" S13 S17 S24 S18
7.	Set cedar post				
1	Mkd. Tam.	6"	S. 62° E.	13	
6	Mkd. Tam.	3"	N. 86° W.	5	J.A.G.
4.	J. Pine	4"	N. 75° E.	26 1/4	GLO.
	R. Pine	20"	S. 35 1/2° E.	90 1/4	Br. Caped Iron pipe 1"x6" NNW 1/6 S24
11.	R. Pine	20"	S. 42° W.	183	GLO. 1"x6" S.W. 1/6 S24
	Mkd.				GLO. Br. Caped Iron pipe 1"x8" S16
10	Birch	3"	N. 75° E.	13 3/4	No GLO. B.T.s S23 S24
13	R. Pine	10"	S. 6° E.	3 1/2	Mkd. Set Post J.A.G.

Compassman
J.A. Bjelhoug
Type Map

Sec. 24 T144N R31W

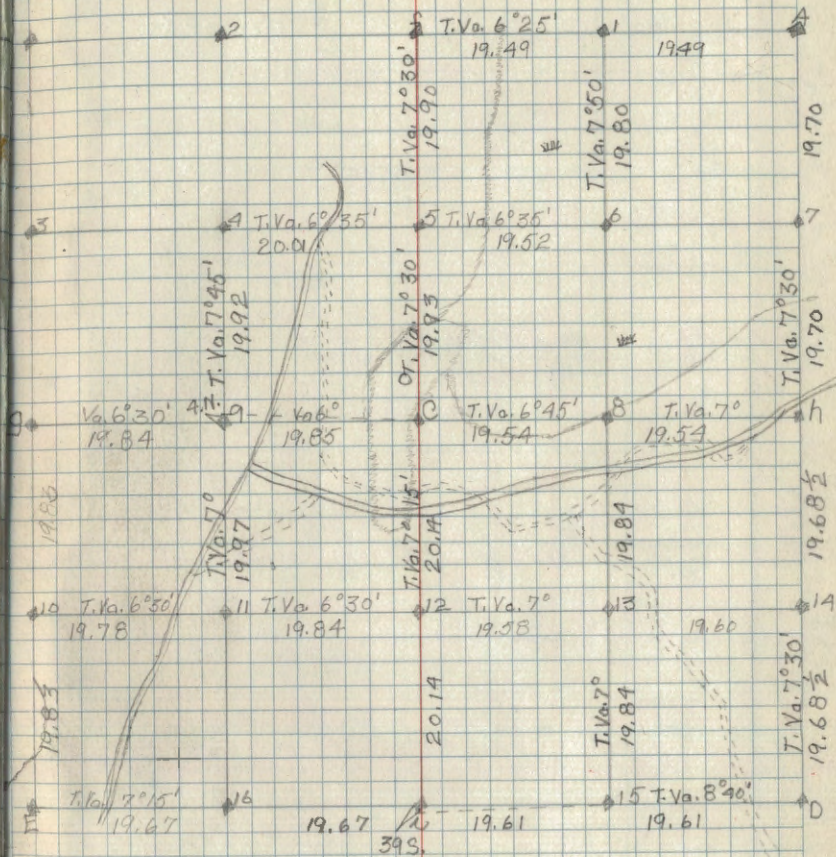


19.70
19.682
14
19.682

Ampassman
T.A. Gjelhaug

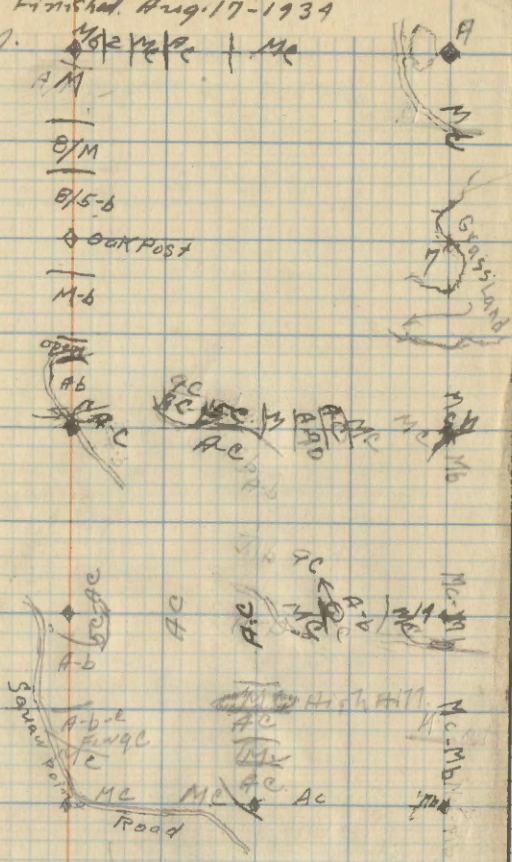
57

Sec. 24 T144NR31W



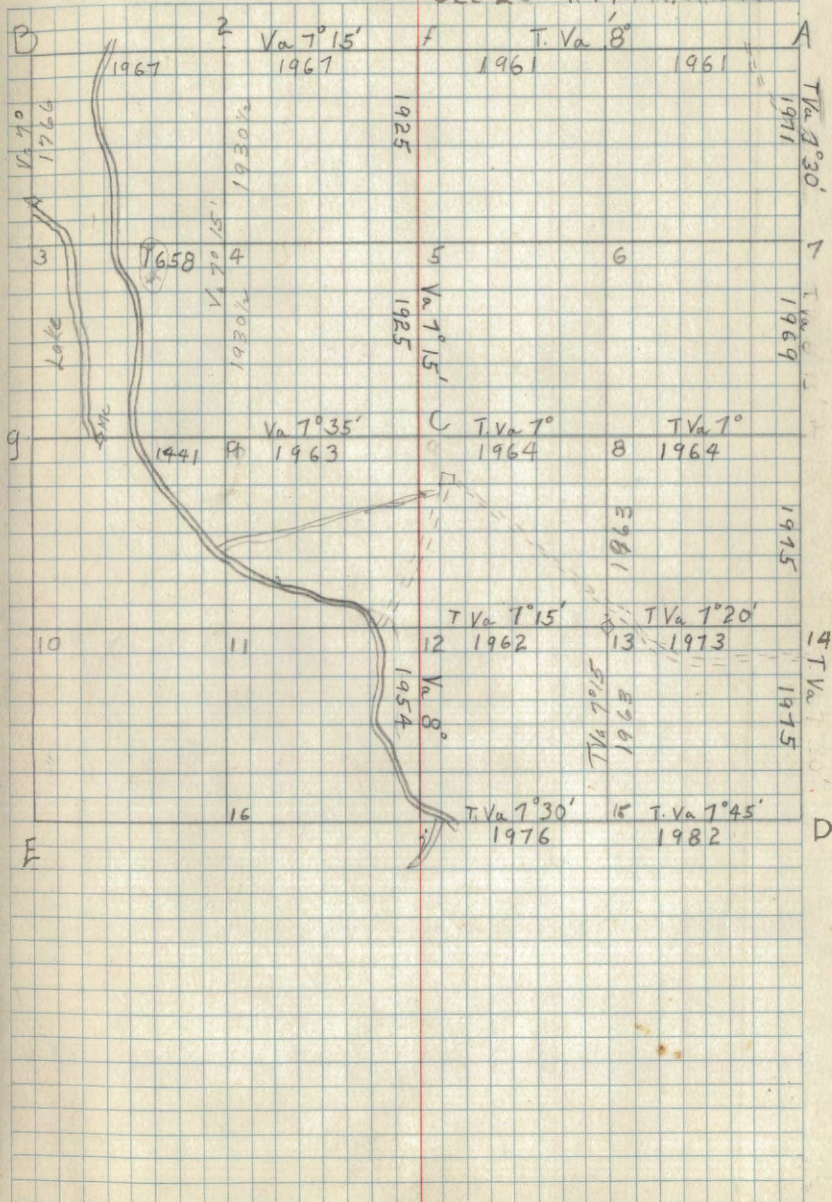
Type Map Sec. 25-T144R.31
JAG, Johnson & Mendenhall.
Finished Aug. 17-1934

		Corner Notes		Remarks
Cor	Sp	Bearing	Dist	



W
A
T 30'
1971
Grassland
1969
1915
1915
14
T
V
1915
45'
D

Sec 25 - T. 144 N. R. 31 W



Corner Notes

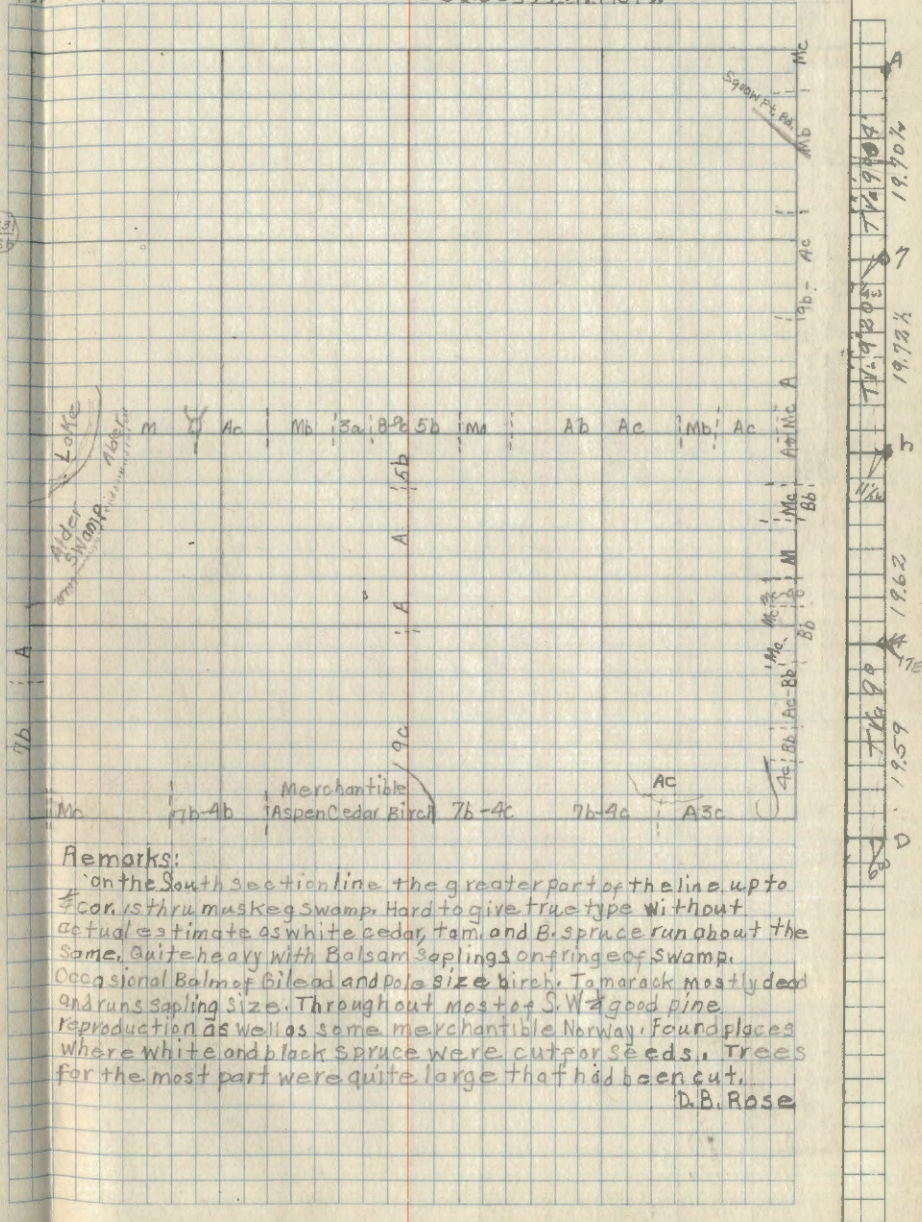
Cor.	Spec.	Dia.	Bearing	Dist.	Remarks
7	Aspen	8"	N 17° W	24 1/2	G.L.O. Br. Iron 1 1/2" x 1/2" (S34/S31)
	W.Pine	6"	N 31 3/4° W	78 3/4	8-12-34
h	Birch	6"	N 75 1/2° E	42 3/4	G.L.O. Br. Iron (S36/S31)
	Elm	6"	N 65 1/2° W	18 3/4	
	W.Oak	5"	N 56 1/2° W	27	8-12-36
	W.Birch	3"	N 41 1/2° E	22 1/2	
14	Aspen	8"	N 87 3/4° E	23 1/2	G.L.O. Br. Iron 1" x 6" (S36/S31)
	W.Cedar	4"	S. 46 1/2° W.	26 1/2	G.L.O. Br. Iron 3" x 1/2" B.T. of Sta. 1414 on Random line 6 1/2 Ks. E. 12° W. Cedar Scribed T. 144 N. R. 31 W. 31-27 R. 31 W. (S36/S31)
D	W.Cedar	4"	S. 33° E.	25 1/2	
8	Woodpecker	15"	S. 52 1/2° E.	33	
	R.Oak	6"	N. 47 1/2° W.	30 1/2	G.L.O. Br. Iron 1" x 5" (S36/S31)
C	R.Pine	12"	N. 57 1/2° E.	42 3/4	
	R.Pine	9"	S. 4 1/2° E.	33 3/4	G.L.O. Br. Iron (S36/S31)
i	B.Bilead	10"	N. 13 1/2° E.	13 1/2	
	Birch	6"	S. 15 1/2° E.	11 1/2	G.L.O. Br. Iron 1" x 8" (S36/S31)
E	Tomstp	8"	N. 40 1/2° E.	25	G.L.O. Br. Iron 2" x 1" (S36/S31)
	Spr. Stp	4"	N. 39 1/2° W.	11	original B.T.s
	Spr. Stp	6"	N. 89° W.	5 1/2	
	Tomstp	8"	S. 51 1/2° W.	34 1/2	
	Cedar	6"	S. 69 1/2° E.	56	Poster T. 144 N.

i.E. & W. Mc Line	Birch	7"	S 77° 15' E.	98 1/2	G.L.O. Br. Iron 1" x 5" (S36/S31)
g.N. & S. Mc Line	Aspen	16"	S. 26° 15' W.	373 1/2	G.L.O. Br. Iron 1" x 4" (S34/S36)

Compassmen

Rose
Sutton
Mendenhall
Type Map

Sec. 36 T. 144 N. R. 31 W



Corner Notes

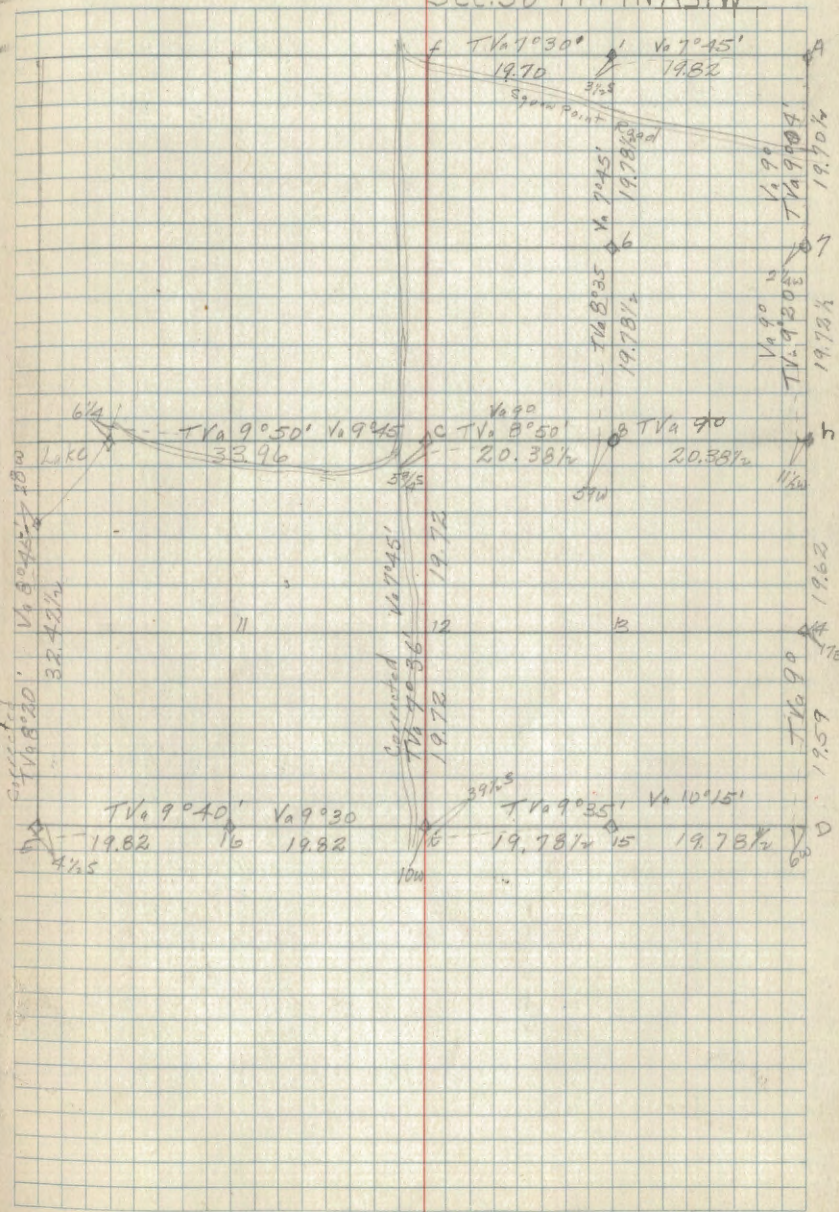
Cor	Sp.	Dia	Bearing	Dist	Remarks
-----	-----	-----	---------	------	---------

7

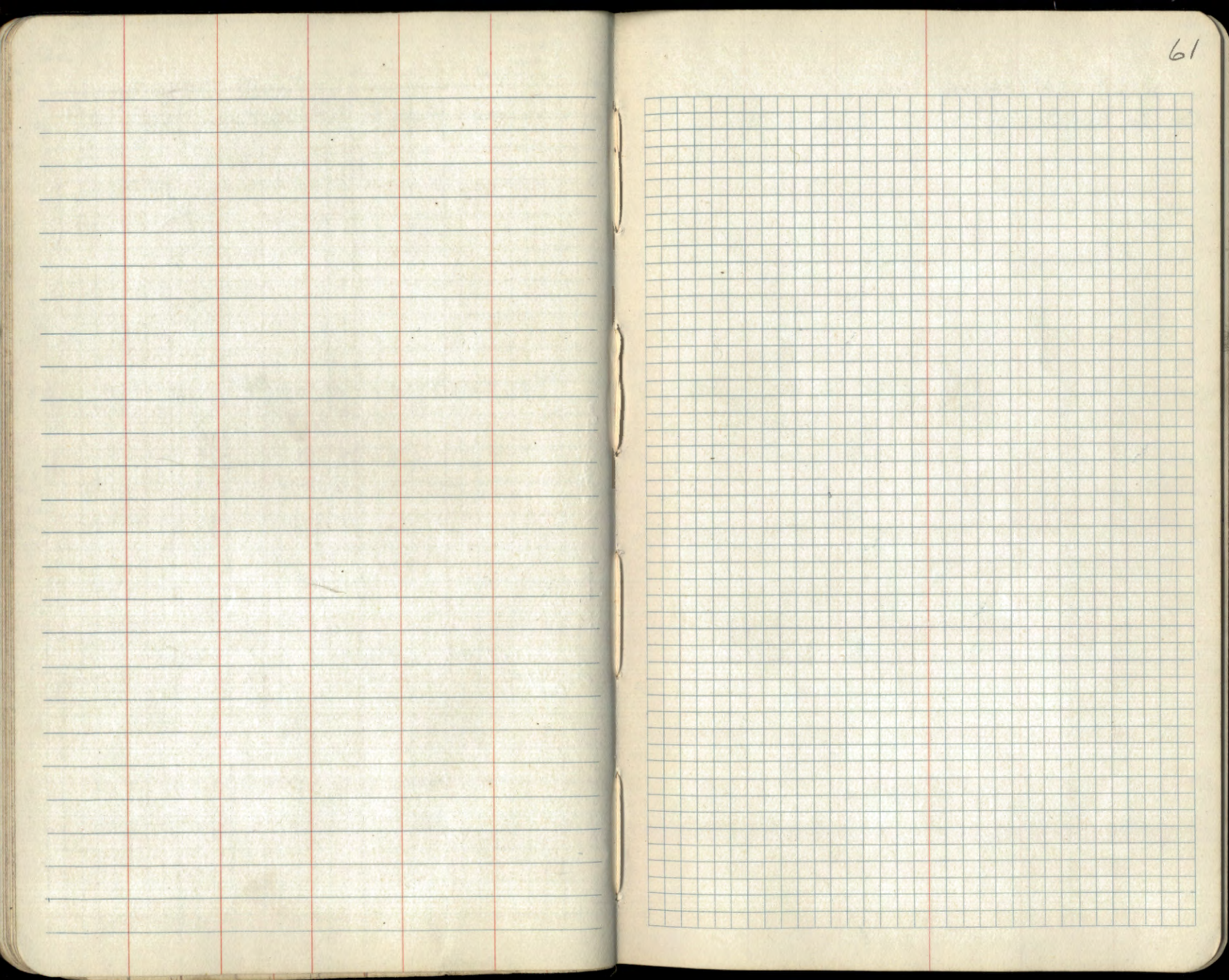
Compassmen
Rose
Sutton
Mendenhall

60

Sec. 36 T144NR31W



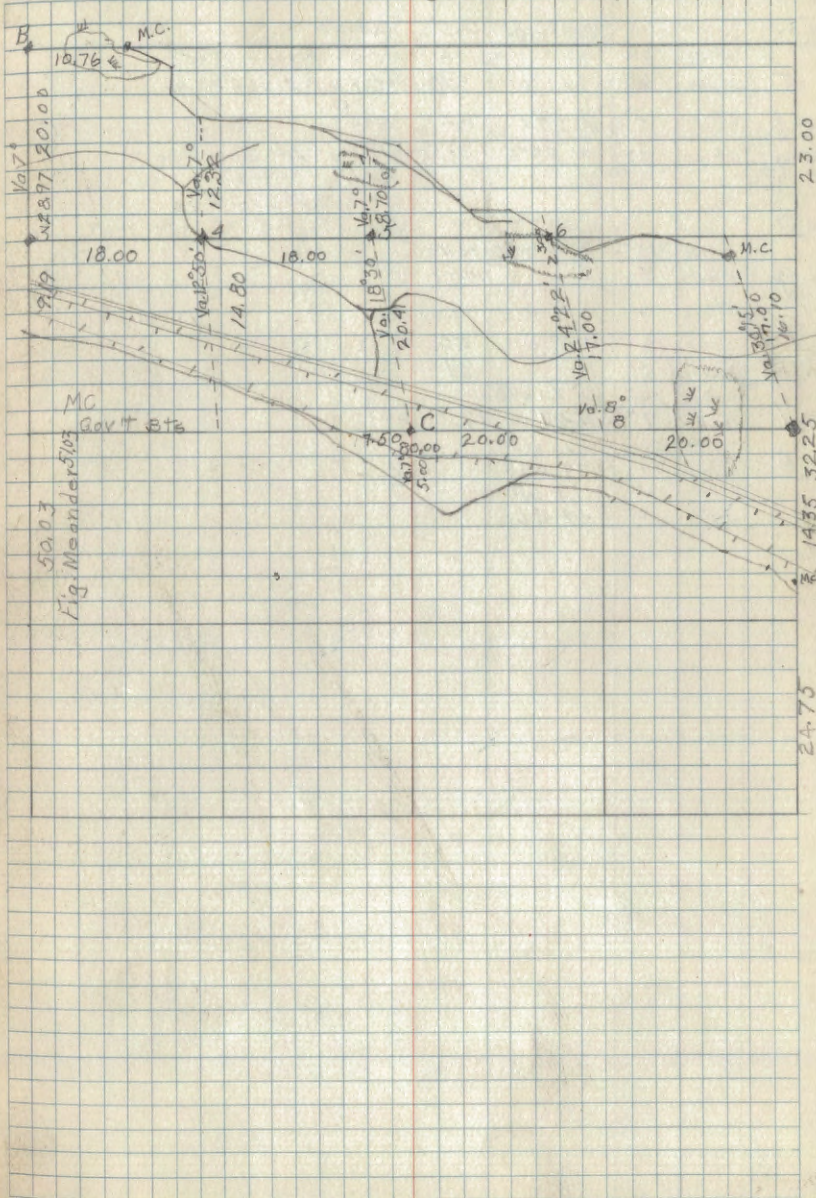
A.E. 4 1/2
Mc L in
g. N. 2
Mc



Corner Notes

Con	Sp	Diam	Bearing	Dist	Remarks
B	Found	old post	rotted off	laying on ground,	but old hole.
	Old B.T.s				
	W. Pine	30"	S 6° E.	67	
	W. Pine	28"	S 28° W.	28	sec. cor. 11-12-13-14
	R. Pine	22"	N 45° E.	62	
	R. Pine	24"	N 43° W.	35	Mkd.
	R. Oak	4"	N 55° W.	7 LKS.	
	R. Oak	4"	N 60° E.	37 LKS.	
	W. Oak	4"	S 88° E.	37 LKS.	
	R. Oak	4"	S 12° W.	29 1/2 LKS.	
3	J. Pine	3"	S 85° E.	2 1/4 LKS.	1/6 cor. MKd.
4	R. Oak	3"	S 26° E.	43 LKS.	1/6 cor. MKd.
5	Aspen	3"	S 2° W.	4 1/2 LKS.	1/6 cor. MKd.
C	R. Pine	12"	S 48° E.	3 1/2 LKS.	1/2 center of Sec.
B	R. Pine	7"	N 72° E.	3 1/4 LKS.	1/6 sec. MKd.
M.C.	Elm	7"	S 26° E.	90	
Left B	oak	7"	N 42° W.	150	
	W. Pine	30"	S 22° N.	30	
B	R. Pine	24"	N 39° W.	28	cor. to 11-12-13-14
	W. Pine	20"	S 7° E.	68	
	R. Pine	12"	N 48° E.	68	
	W. Pine	12"	N 20° E.	78	
M.C.	W. Ash	7"	N 41° W.	77	

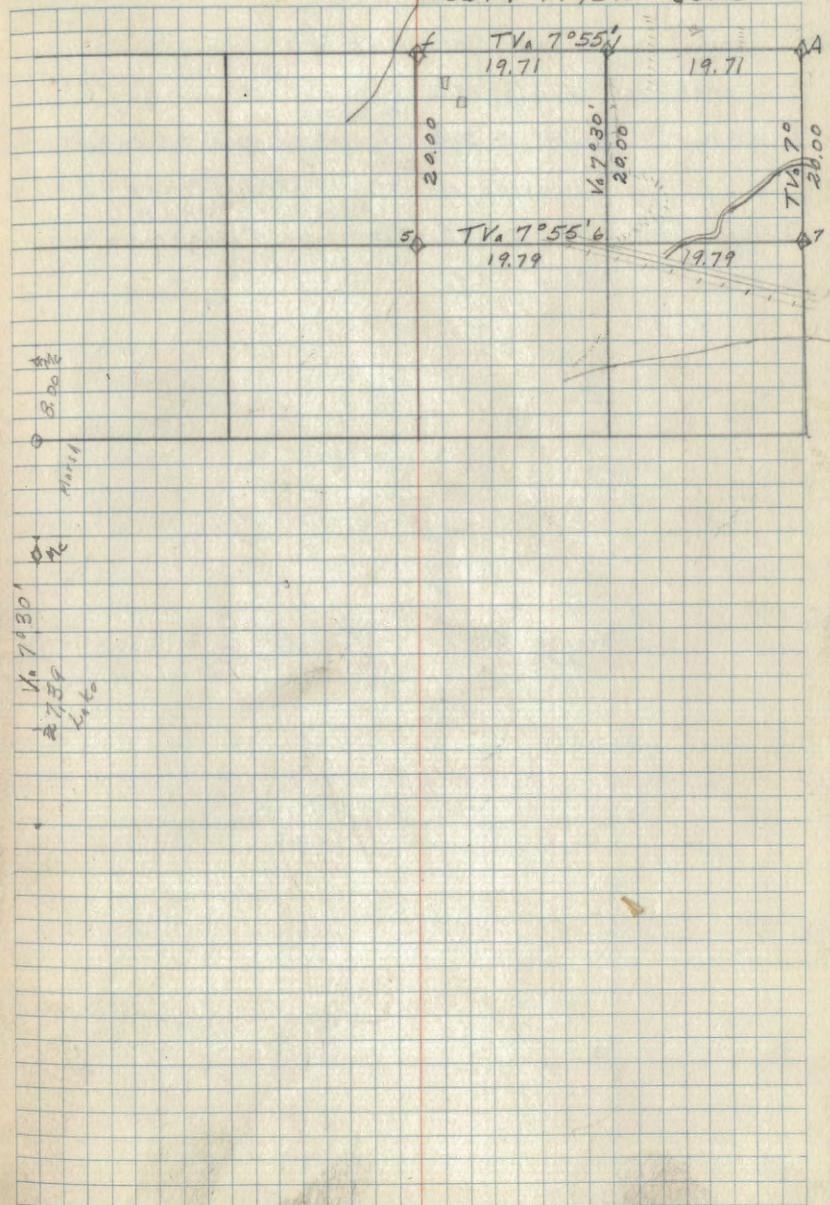
Sec 13-T. 145 N. R. 31 W



Corner Notes.

Cor	SP	Dia	Bearing	Dist	Remarks
f	J Pine	9"	W	18	old. Pt. found old Post
	Aspen	6"	S 17° W	32 1/2	Set New Post and Mkd.
1	RPine	12"	S 36° E	22	Mkd 5/22/34
6	J Pine	5"	N 28° E	31 3/4	Set 1 1/4" x 24" Iron Pipe Mkd. 4-19-37
5					set 3/4" x 20" Iron Pipe Aspen Post 3" x 5" 8-9-37
g	W oak	12"	S 2 W	12.42	Set
	B. Glad	5"	S	12.29	
Mc	W oak	12"	S 5° W	20.83	Set
Nothing	W oak	12"	N 75° W	55	Set
Mc	B. Glad	5"	N	31	Set
set g					
7	W Pine	12"	N 20° E 78	1/2 mi	Set
	Ash	7"	N 41° W 77		
A	W Pine	30	S 22° W 30		
	RPine	24	N 39° W 28		Set
	W Pine	20	S 7° E 68		
	W Pine	14	N 48° E 68		

Sec 14 T145N R31W



Corner Notes

Cor.	spec.	Dia.	Bearing	Dist.	Remarks
	J. Pine	10"	S. 37° E.	89.3	
D	J. Pine	8"	N. 80° 15' E.	72.4	Recorded in Sec. 22
	J. Pine	4"	S. 43° 45' E.	84	Nab 30
E	J. Pine	4"	N. 42° E.	78.7	Placed cor. at inters. of Line S. E. + W. Very close to correct corner.
	N. Pine st.	14"	S. 56° E.	22	old Govt. B.T.s o.k.,
G	J. Pine st.	9"	N. 42° W.	24	but in poor shape
Mkd. New B.T.s	J. Pine	5"	N. 12° E.	85.8	Drove R.R. Spike & oak post 3"x3"
	J. Pine	6"	N. 54 1/2° W.	53.0	For corner.
	J. Pine st.	9"	N. 44° W.	214	old Govt. B.T.s o.k.
B	J. Pine st.	9"	S. 75° W.	236	But in poor shape
	J. Pine	6"	N. 47° 55' W.	240	Mkd. New B.T.s
	J. Pine	7"	S. 85° 08' W.	205.4	Drove Spike for cor.
	Fence post	6"	S. 13° E.	35.2	

3. Drove R.R. Spike for cor. 57.6' N. of C. of R.R.

4. Drove R.R. Spike for cor. at 100' R. of W. Line
Fence going North is 42' W. of Line

A. Center Bolt in Manhole Corner is Sec. cor.

as confirmed by N. LaFontaine - Surveyor

4 cor. Iron in Grade Under Surface

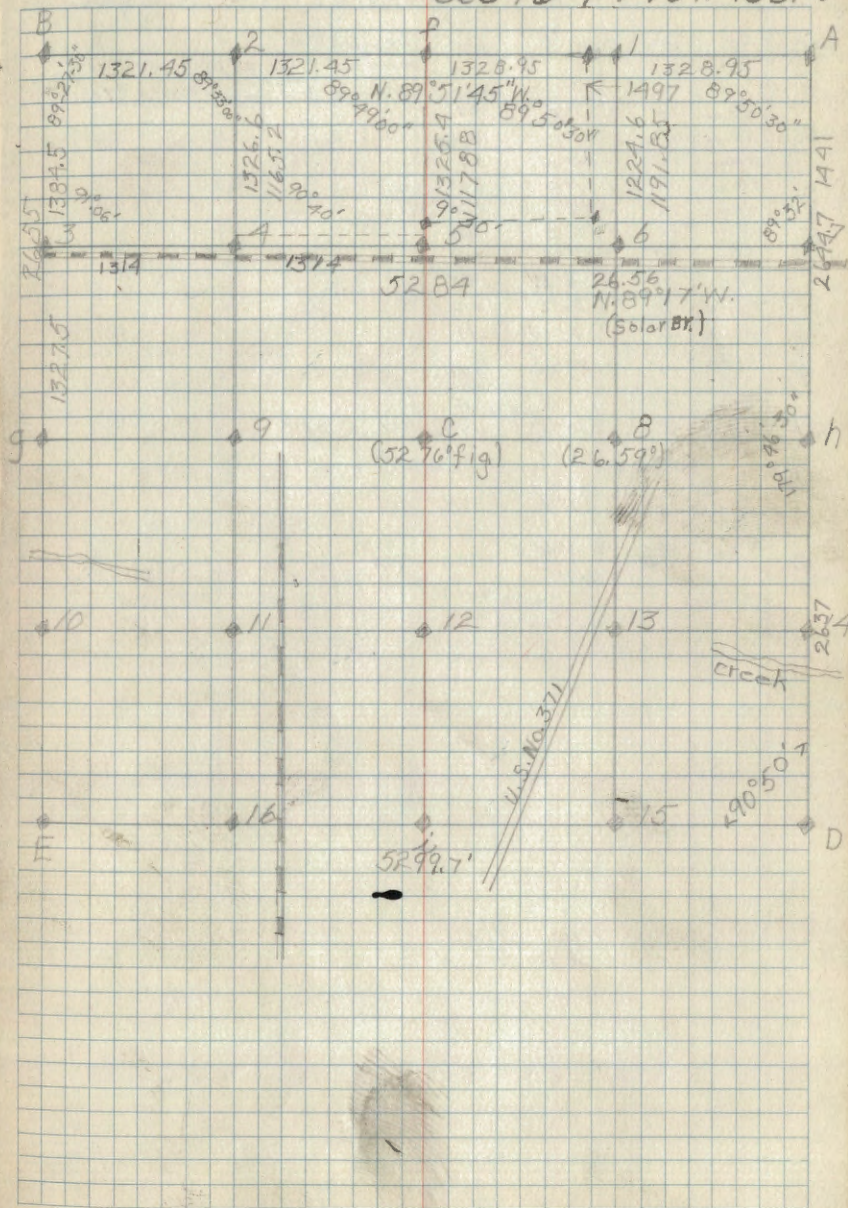
H T. Pole 7" West 30 3/4"

B. set cement Mon. 1/2" Pipe J.A.G.

Compassman
J.A. Gjelhoug

66

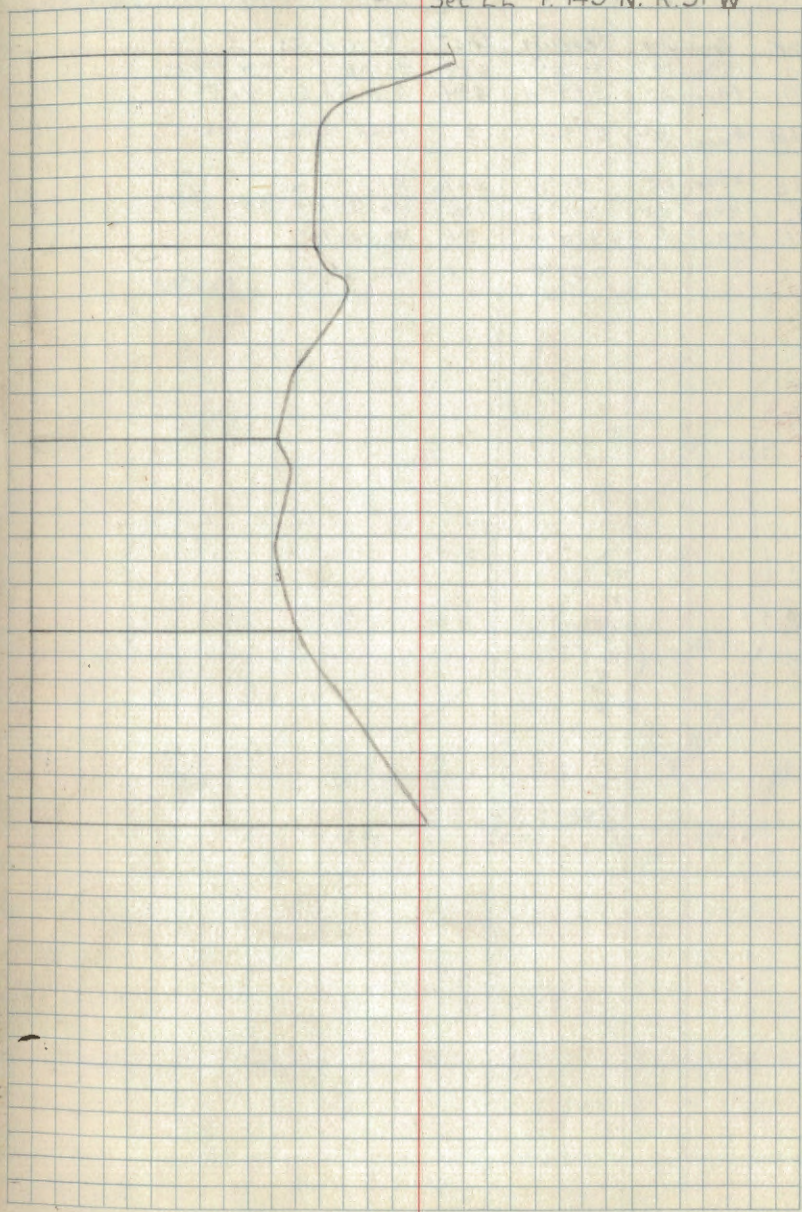
Sec 16 T145N R31W



Sec 22 T. 145 N. R. 31 W

Corner Notes

Cor	Sp	Diam	Bearing	Dist	Remarks
-----	----	------	---------	------	---------

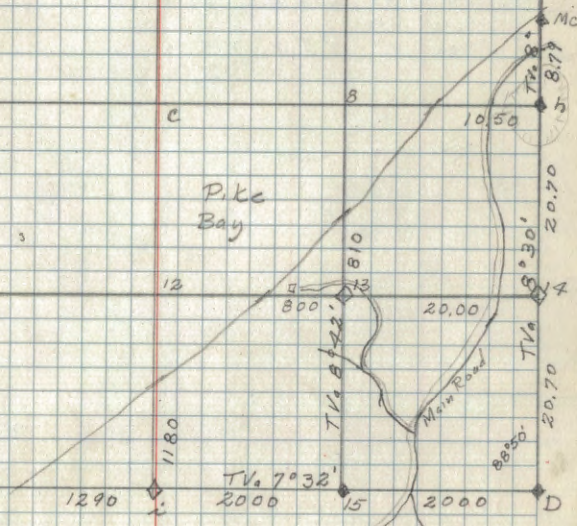


Corner Notes

Cor	Sp.	Di ^a	Bearing	Dist	Remarks
h	RPine	10"	N0°30'W	409	3/8 Cap Iron Pipe 1" high
	RPine	20"	S59°W	434	1/4 Cor G.L.O. Va 7°
14	Aspen	8"	S1°W	8	Mkd 1/16 Cor. Va 7°
13	RPine	22"	S89°W	24 1/2	Mkd 1/16 Cor
Mc Nat of h	RPine	10"	S88°E	105	old GOVIT B.F.
	RPine	5"	S10°W	54	New. Va 10°
	RPine	20"	S89°E	103	New G.L.O. cement Va 6°55'

for South line refer to Sec 36.

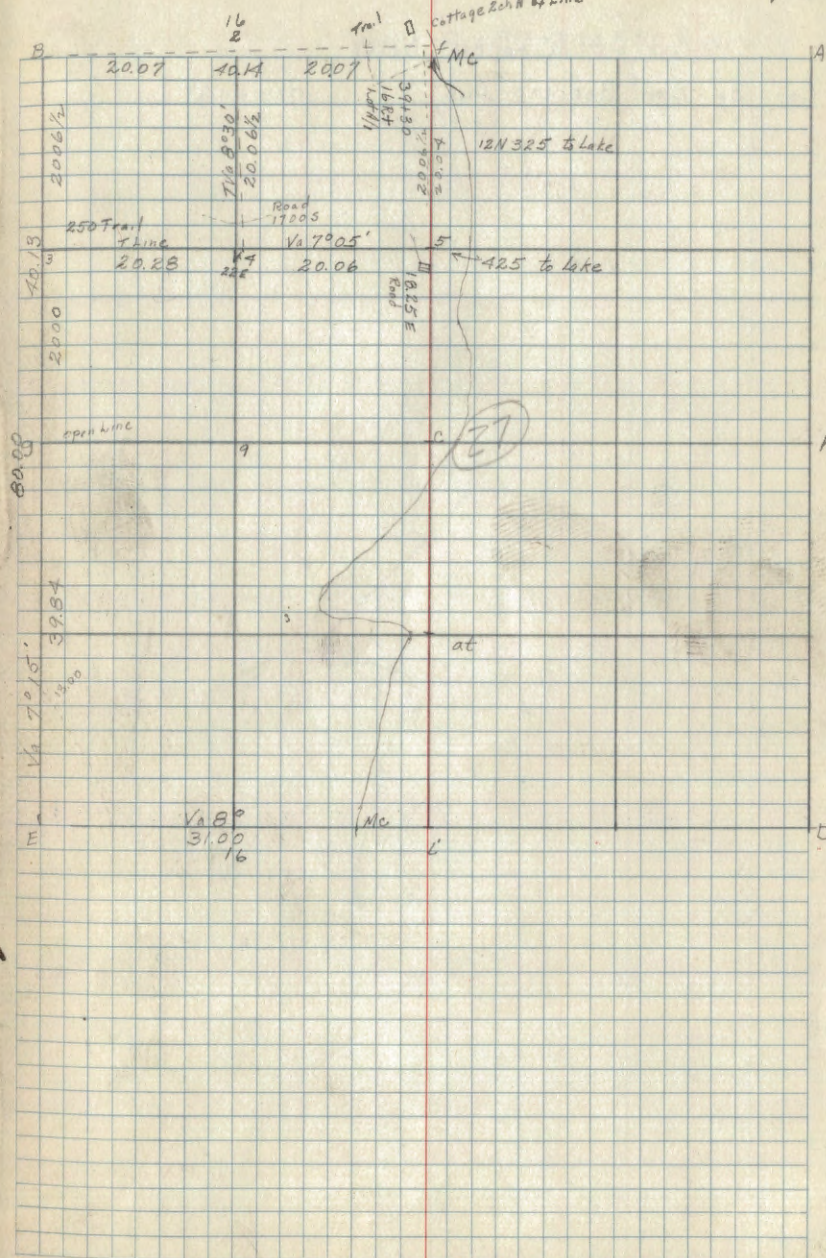
Sec 25 T145N R31W



Sec 27 T145N R31W

Cor.	Specie	Dia	Scaring	Dist.	Remarks
B	J. Pine	6"	S3°30'E	196	at B Mkd
	J. Pine	5"	S4°W	190	dark Pine 8" S85°E 65 1/2 lks
	J. Pine	4"	N52W	78	
	J. Pine	3"	N49°30'E	370	
f	1/4 cor	betw	22-27		
	E. Pine	6"	N19°W	20	ok Set, New post
	R. Pine	16"	S31°W	7	fallen down over post RPine 10" N72°W 40 yds 1/2 cor at f Mkd J. Pine 6" S80°W 54 lks
Mc 5 at 5	Aspen	6"	N6°W	10	
		8"	S31°W	22	
at 2	1/4 cor Mkd R. Pine	20"	S21°E	19 1/2 lks	
at 4	1/4 cor Mkd Tarn	3"	N10°30'E	46 lks	
at 5	1/4 cor Mkd J. Pine	6"	N3°W	14 lks	

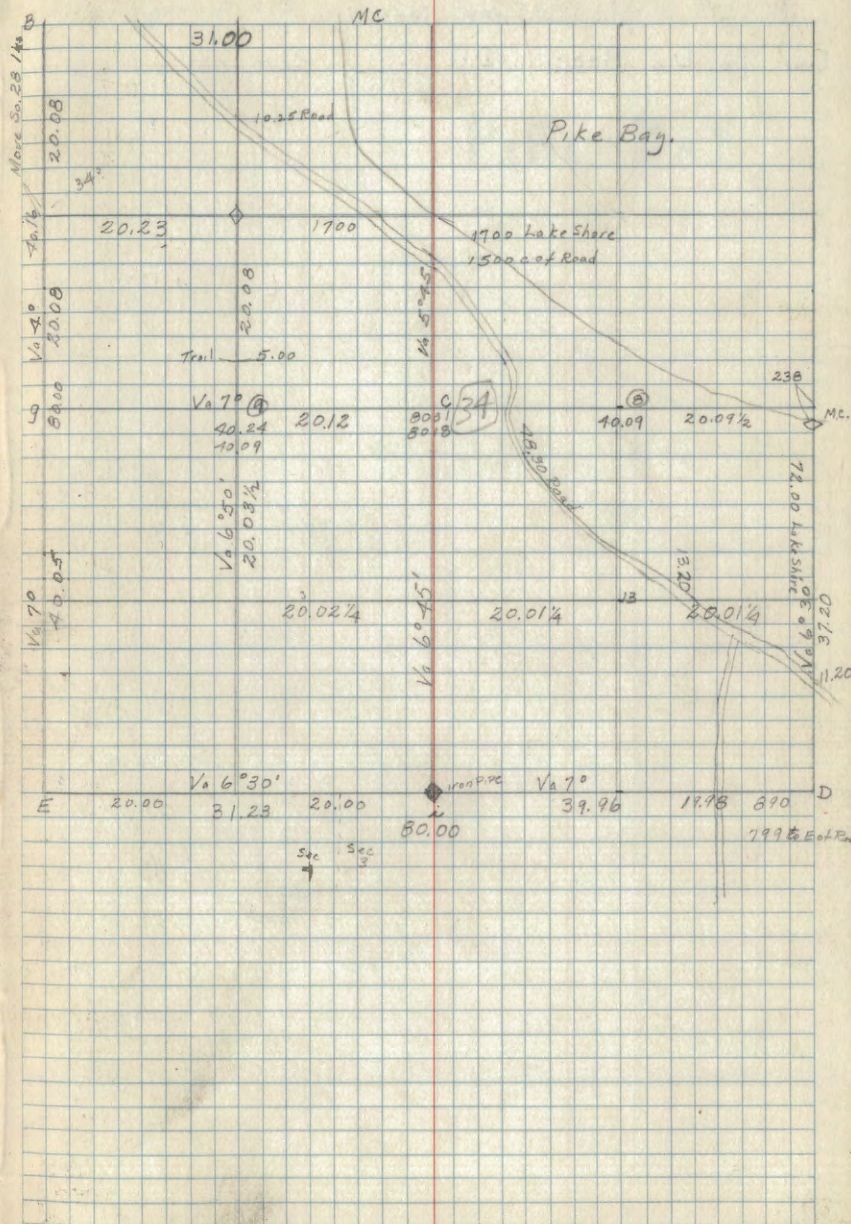
Sec 27 T145N R31W 70



Corner Notes.

Cor.	Sp.	Dia.	Bear.	Dist	Remark
g	Oak	16"	S 77° W	28	old B.T.
	Redk	4"	N 29° W	54 1/2	Mkd.
	RPine	16"	N 69° W	82 1/2	B.T.N.W.
E	Aspen	6"	N 30° W	71	Iron pipe 2 1/2" Cop.
i	RPine	7"	N 59° W	81 1/2	Iron Cop.
D	RPine	7"	N 59° W	81 1/2	Iron Cop.
MC	RPine	7"	S 43° W	41	} Mkd
	JPine	8"	S 16° W	56	
13	Stamp		N 45° E	27 1/2	old B.T.
	RPine	4"	S 79° E	12.5	Mkd
9	ROAK	8"	S 80° E	16	Mkd
g	Birch	3	S 45° E	14	} Mkd.
	Elm	5	N 89° E	66	
C	ROAK	6"	N	18 1/2	Mkd

Sec 34 T145N R31W 72
Dec 9-13, 1933.

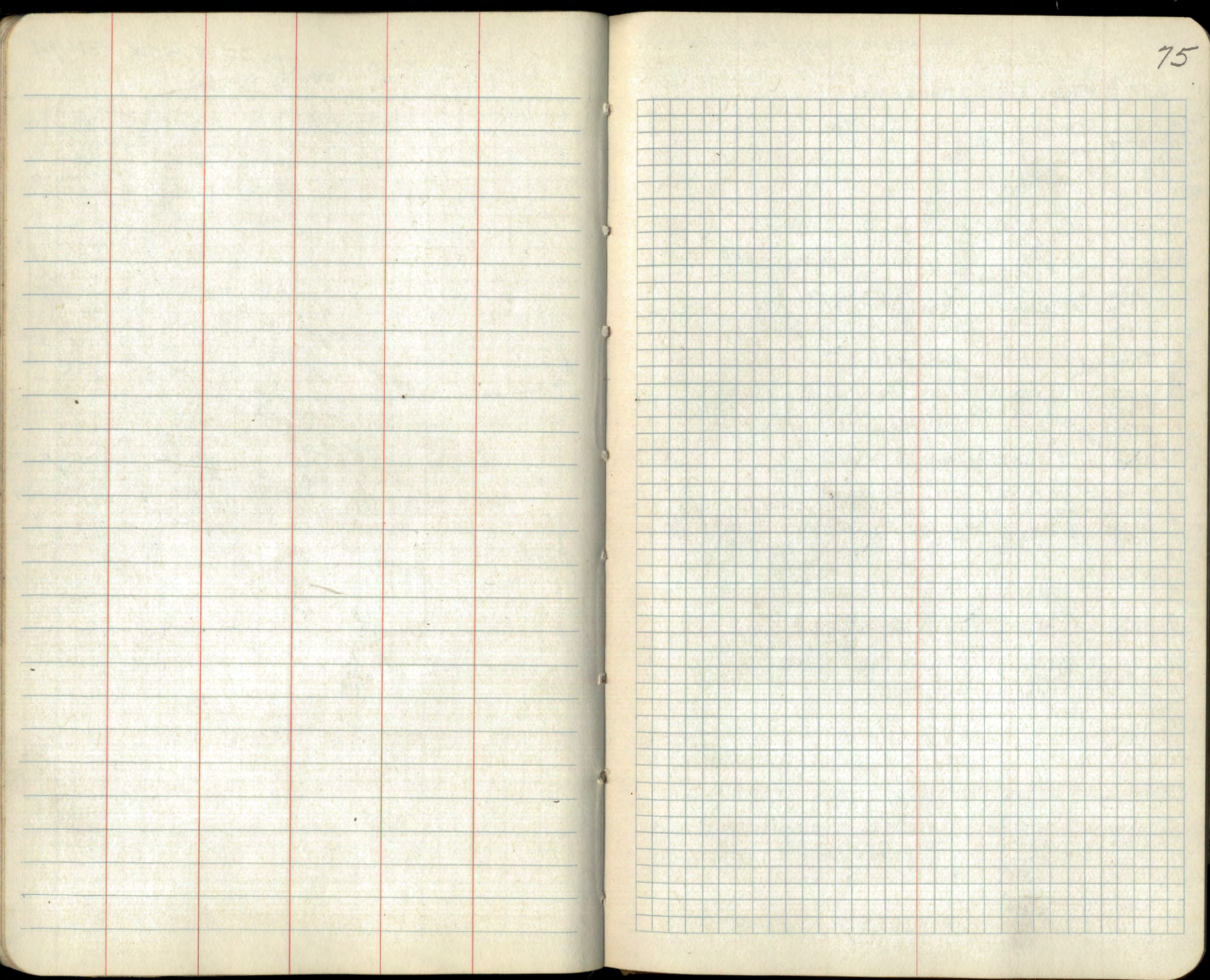


Type Map

Sec 34 T.145N. R.31W

31.00

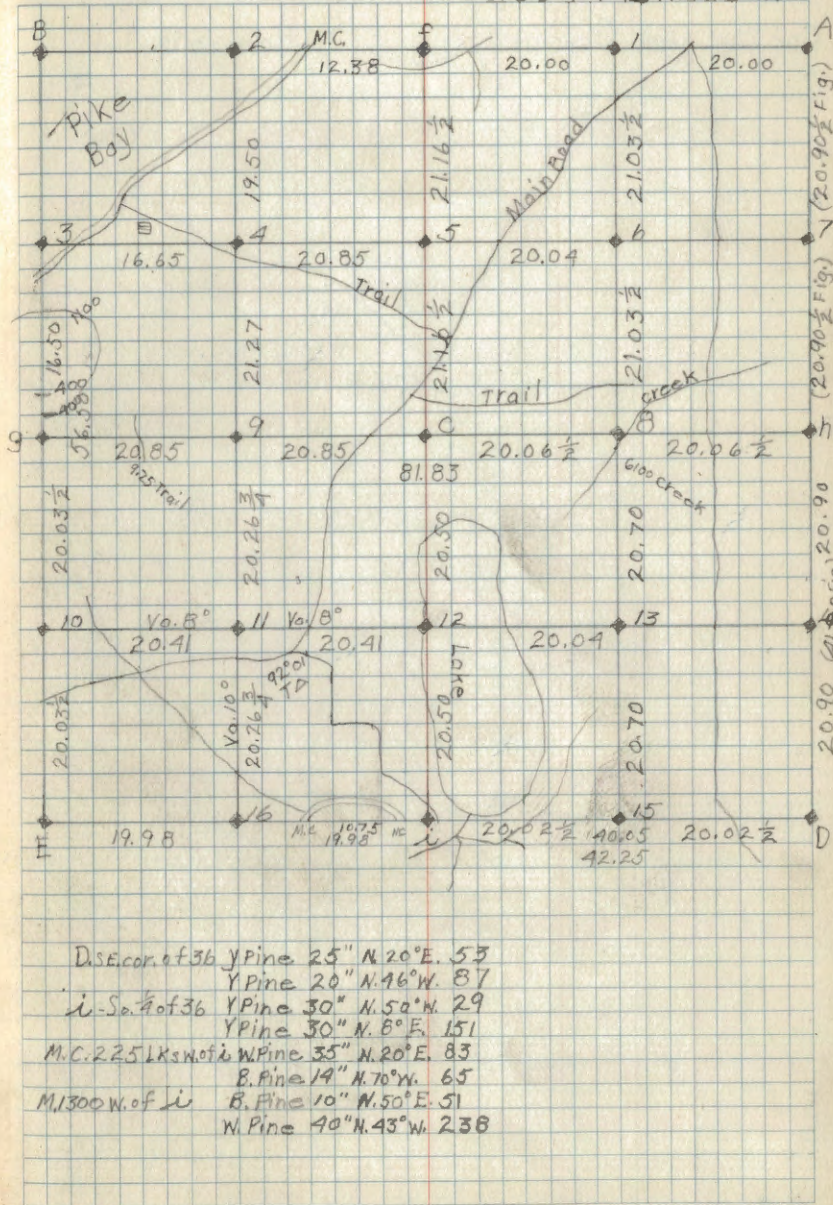
PIKE BAY



Corner Notes

Cor.	Spec.	Diam	Bearing	Dist	Remarks
400 chs. M.	Popular	4"	S. 40° W.	440	
of Sec. A.	W. Pine	6"	S. 11° E.	510	
M.C. N.	R. Pine	20"	S. 88° E.	105	
of A.	R. Pine	20"	S. 8° W.	114	
	W. Oak	10"	S. 67° E.	82 LKS.	
h.	W. Oak	10"	S. 20° W.	198 LKS.	GLO. Cement 5"
	R. Pine	18"	N. 10 1/2° W.	70 LKS.	old orig. B.T.
A.	W. Oak	8"	N. 10 1/2° E.	127"	Sec. cor. 36-31-30-25
	Birch	6"	S. 29 1/2° E.	34"	
	W. Pine	6"	S. 47° W.	47	GLO. cement 5"
i	R. Pine	12"	N. 86 1/2° E.	72 LKS.	2010 Gov't B.T.s. Stumps O.K.
4 cor.	J. Pine	12"	N. 73° W.	153 LKS.	GLO. Br. cap pipe
C	J. Pine	12"	S. 2° E.	13 LKS.	Mkd.
8	W. Oak	7"	S. 55° E.	13 1/2 LKS.	1/2 cor. Mkd.
1	R. Pine	16"	N. 15° W.	15 1/2 LKS.	1/2 cor. Mkd. old B.T.
5	J. Pine	6"	S. 33° E.	18 1/2 LKS.	1/2 cor. Mkd.
6	R. Oak	5"	S. 3° W.	17 LKS.	1/2 cor. Mkd.
f	W. Oak	6"	N. 51 1/2° W.	24 LKS.	1/2 cor. lost no trace of B.T.s. Lined up from A with old line trees all the way past 1/2 cor. Put in about 25 yrs. ago. Set oak post for corner 40.00 chs. W. of A.
4	R. Pine stub	8"	N. 49° E.	5 1/2 LKS.	1/2 cor. Mkd.
9	R. Pine	22"	N. 32° E.	58 1/2 LKS.	1/2 cor. Mkd.
12.					No B.T.s. Set oak post 7" sq. 1/2 cor.
11.	R. Pine	18"	S. 55 1/2° W.	249 1/2 LKS.	1/2 cor. Mkd.
16.	R. Pine	12"	N. 5° W.	55 LKS.	1/2 cor. Mkd.
	J. Pine	8"	N. 32° W.	302 LKS.	Sec. 36-31
D.	R. Pine	18"	N. 12° E.	333 LKS.	GLO. cement 5" x 1" high
13.	R. Pine	22"	S. 78° W.	21 LKS.	1/2 cor. Mkd.
15	R. Pine	16"	N. 54 1/2° W.	115 LKS.	1/2 cor. Mkd.
1/2 cor.	Birch	4"	N. 54° W.	31	
f	Birch	4"	S. 14° W.	81	4" birch for corner
M.C.W.	W. Pine	16"	S. 24° E.	36	
of f	R. Pine	12"	S. 12° W.	37	
	R. Pine	8"	N. 12° W.	70	
A.	Birch	3"	S. 73° E.	55	Sec. Cor. 36-25-30-31
	R. Pine	16"	S. 50° W.	80	

Sec. 36-T. 145N. R. 31W



		Corner		Notes	
Cor	Sp	Diam	Bearing	Dist	Remarks

Sec 36-T145 N R 31 W

