

MISC.

#104

#104

W
LEADING
TRANSIT BOOK

CCC #86

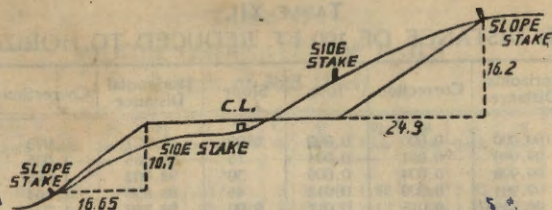
found in 1987

U. S. FOREST SERVICE
WALKER, MINN.

TABLES FOR EXCAVATIONS AND EMBANKMENTS.

DISTANCES FROM CENTER OF ROADWAY FOR CROSS-SECTIONING
ROADWAY 18 FEET WIDE. SIDE SLOPES 1 TO 1.
FOR SINGLE TRACK EXCAVATION.

	0	.1	.2	.3	.4	.5	.6	.7	.8	.9	
0	9.0	9.1	9.2	9.3	9.4	9.5	9.6	9.7	9.8	9.9	0
1	10.0	10.1	10.2	10.3	10.4	10.5	10.6	10.7	10.8	10.9	1
2	11.0	11.1	11.2	11.3	11.4	11.5	11.6	11.7	11.8	11.9	2
3	12.0	12.1	12.2	12.3	12.4	12.5	12.6	12.7	12.8	12.9	3
4	13.0	13.1	13.2	13.3	13.4	13.5	13.6	13.7	13.8	13.9	4
5	14.0	14.1	14.2	14.3	14.4	14.5	14.6	14.7	14.8	14.9	5
6	15.0	15.1	15.2	15.3	15.4	15.5	15.6	15.7	15.8	15.9	6
7	16.0	16.1	16.2	16.3	16.4	16.5	16.6	16.7	16.8	16.9	7
8	17.0	17.1	17.2	17.3	17.4	17.5	17.6	17.7	17.8	17.9	8
9	18.0	18.1	18.2	18.3	18.4	18.5	18.6	18.7	18.8	18.9	9
10	19.0	19.1	19.2	19.3	19.4	19.5	19.6	19.7	19.8	19.9	10
11	20.0	20.1	20.2	20.3	20.4	20.5	20.6	20.7	20.8	20.9	11
12	21.0	21.1	21.2	21.3	21.4	21.5	21.6	21.7	21.8	21.9	12
13	22.0	22.1	22.2	22.3	22.4	22.5	22.6	22.7	22.8	22.9	13
14	23.0	23.1	23.2	23.3	23.4	23.5	23.6	23.7	23.8	23.9	14
15	24.0	24.1	24.2	24.3	24.4	24.5	24.6	24.7	24.8	24.9	15
16	25.0	25.1	25.2	25.3	25.4	25.5	25.6	25.7	25.8	25.9	16
17	26.0	26.1	26.2	26.3	26.4	26.5	26.6	26.7	26.8	26.9	17
18	27.0	27.1	27.2	27.3	27.4	27.5	27.6	27.7	27.8	27.9	18
19	28.0	28.1	28.2	28.3	28.4	28.5	28.6	28.7	28.8	28.9	19
20	29.0	29.1	29.2	29.3	29.4	29.5	29.6	29.7	29.8	29.9	20
21	30.0	30.1	30.2	30.3	30.4	30.5	30.6	30.7	30.8	30.9	21
22	31.0	31.1	31.2	31.3	31.4	31.5	31.6	31.7	31.8	31.9	22
23	32.0	32.1	32.2	32.3	32.4	32.5	32.6	32.7	32.8	32.9	23
24	33.0	33.1	33.2	33.3	33.4	33.5	33.6	33.7	33.8	33.9	24
25	34.0	34.1	34.2	34.3	34.4	34.5	34.6	34.7	34.8	34.9	25
26	35.0	35.1	35.2	35.3	35.4	35.5	35.6	35.7	35.8	35.9	26
27	36.0	36.1	36.2	36.3	36.4	36.5	36.6	36.7	36.8	36.9	27
28	37.0	37.1	37.2	37.3	37.4	37.5	37.6	37.7	37.8	37.9	28
29	38.0	38.1	38.2	38.3	38.4	38.5	38.6	38.7	38.8	38.9	29
30	39.0	39.1	39.2	39.3	39.4	39.5	39.6	39.7	39.8	39.9	30
31	40.0	40.1	40.2	40.3	40.4	40.5	40.6	40.7	40.8	40.9	31
32	41.0	41.1	41.2	41.3	41.4	41.5	41.6	41.7	41.8	41.9	32
33	42.0	42.1	42.2	42.3	42.4	42.5	42.6	42.7	42.8	42.9	33
34	43.0	43.1	43.2	43.3	43.4	43.5	43.6	43.7	43.8	43.9	34
35	44.0	44.1	44.2	44.3	44.4	44.5	44.6	44.7	44.8	44.9	35
36	45.0	45.1	45.2	45.3	45.4	45.5	45.6	45.7	45.8	45.9	36



DISTANCES FROM SIDE STAKES FOR CROSS-SECTIONING.
SLOPE 1½ TO 1. ROADWAY OF ANY WIDTH.

	0	.1	.2	.3	.4	.5	.6	.7	.8	.9	
0	0.00	0.15	0.30	0.45	0.60	0.75	0.90	1.05	1.20	1.35	0
1	1.50	1.65	1.80	1.95	2.10	2.25	2.40	2.55	2.70	2.85	1
2	3.00	3.15	3.30	3.45	3.60	3.75	3.90	4.05	4.20	4.35	2
3	4.50	4.65	4.80	4.95	5.10	5.25	5.40	5.55	5.70	5.85	3
4	6.00	6.15	6.30	6.45	6.60	6.75	6.90	7.05	7.20	7.35	4
5	7.50	7.65	7.80	7.95	8.10	8.25	8.40	8.55	8.70	8.85	5
6	9.00	9.15	9.30	9.45	9.60	9.75	9.90	10.05	10.20	10.35	6
7	10.50	10.65	10.80	10.95	11.10	11.25	11.40	11.55	11.70	11.85	7
8	12.00	12.15	12.30	12.45	12.60	12.75	12.90	13.05	13.20	13.35	8
9	13.50	13.65	13.80	13.95	14.10	14.25	14.40	14.55	14.70	14.85	9
10	15.00	15.15	15.30	15.45	15.60	15.75	15.90	16.05	16.20	16.35	10
11	16.50	16.65	16.80	16.95	17.10	17.25	17.40	17.55	17.70	17.85	11
12	18.00	18.15	18.30	18.45	18.60	18.75	18.90	19.05	19.20	19.35	12
13	19.50	19.65	19.80	19.95	20.10	20.25	20.40	20.55	20.70	20.85	13
14	21.00	21.15	21.30	21.45	21.60	21.75	21.90	22.05	22.20	22.35	14
15	22.50	22.65	22.80	22.95	23.10	23.25	23.40	23.55	23.70	23.85	15
16	24.00	24.15	24.30	24.45	24.60	24.75	24.90	25.05	25.20	25.35	16
17	25.50	25.65	25.80	25.95	26.10	26.25	26.40	26.55	26.70	26.85	17
18	27.00	27.15	27.30	27.45	27.60	27.75	27.90	28.05	28.20	28.35	18
19	28.50	28.65	28.80	28.95	29.10	29.25	29.40	29.55	29.70	29.85	19
20	30.00	30.15	30.30	30.45	30.60	30.75	30.90	31.05	31.20	31.35	20
21	31.50	31.65	31.80	31.95	32.10	32.25	32.40	32.55	32.70	32.85	21
22	33.00	33.15	33.30	33.45	33.60	33.75	33.90	34.05	34.20	34.35	22
23	34.50	34.65	34.80	34.95	35.10	35.25	35.40	35.55	35.70	35.85	23
24	36.00	36.15	36.30	36.45	36.60	36.75	36.90	37.05	37.20	37.35	24
25	37.50	37.65	37.80	37.95	38.10	38.25	38.40	38.55	38.70	38.85	25
26	39.00	39.15	39.30	39.45	39.60	39.75	39.90	40.05	40.20	40.35	26
27	40.50	40.65	40.80	40.95	41.10	41.25	41.40	41.55	41.70	41.85	27
28	42.00	42.15	42.30	42.45	42.60	42.75	42.90	43.05	43.20	43.35	28
29	43.50	43.65	43.80	43.95	44.10	44.25	44.40	44.55	44.70	44.85	29
30	45.00	45.15	45.30	45.45	45.60	45.75	45.90	46.05	46.20	46.35	30
31	46.50	46.65	46.80	46.95	47.10	47.25	47.40	47.55	47.70	47.85	31
32	48.00	48.15	48.30	48.45	48.60	48.75	48.90	49.05	49.20	49.35	32
33	49.50	49.65	49.80	49.95	50.10	50.25	50.40	50.55	50.70	50.85	33
34	51.00	51.15	51.30	51.45	51.60	51.75	51.90	52.05	52.20	52.35	34
35	52.50	52.65	52.80	52.95	53.10	53.25	53.40	53.55	53.70	53.85	35
36	54.00	54.15	54.30	54.45	54.60	54.75	54.90	55.05	55.20	55.35	36
37	55.50	55.65	55.80	55.95	56.10	56.25	56.40	56.55	56.70	56.85	37
38	57.00	57.15	57.30	57.45	57.60	57.75	57.90	58.05	58.20	58.35	38
39	58.50	58.65	58.80	58.95	59.10	59.25	59.40	59.55	59.70	59.85	39
40	60.00	60.15	60.30	60.45	60.60	60.75	60.90	61.05	61.20	61.35	40
41	61.50	61.65	61.80	61.95	62.10	62.25	62.40	62.55	62.70	62.85	41
42	63.00	63.15	63.30	63.45	63.60	63.75	63.90	64.05	64.20	64.35	42
43	64.50	64.65	64.80	64.95	65.10	65.25	65.40	65.55	65.70	65.85	43
44	66.00	66.15	66.30	66.45	66.60	66.75	66.90	67.05	67.20	67.35	44
45	67.50	67.65	67.80	67.95	68.10	68.25	68.40	68.55	68.70	68.85	45
46	69.00	69.15	69.30	69.45	69.60	69.75	69.90	70.05	70.20	70.35	46
47	70.50	70.65	70.80	70.95	71.10	71.25	71.40	71.55	71.70	71.85	47
48	72.00	72.15	72.30	72.45	72.60	72.75	72.90	73.05	73.20	73.35	48
49	73.50	73.65	73.80	73.95	74.10	74.25	74.40	74.55	74.70	74.85	49
50	75.00	75.15	75.30	75.45	75.60	75.75	75.90	76.05	76.20	76.35	50

Page

T 191- R-30

Sec 23

9-10

T 191- R-30

Sec 22

14

T 191- R 31

Sec 25

18

T 191 R 31

Sec 8

20

T 191 R 30

Sec 30

23

T 191 R 30

Sec 29

24 26

T 191 R 29

Sec 26

31

T 191 R 29

Sec 22

32

T 191 R 31

Sec 17 18

5

T 191 R 31

Sec 24 25

16

P.1

P. 2

May 9-1937

located Co. Corner $\frac{30}{31} \frac{29}{32}$ T141N R30W,

✓ which is a 2" I.P. 16" above ground.

Put post on 5" Ash S75E 0.37 chs.

From above corner run East - Vrs checked
along line at $6^{\circ}45'$ to $8^{\circ}15'$ (ave $7^{\circ}30'$)

35.02 Turn angle South (Like at 35.15 on line)

South 2.00

East 1.80

South 0.14

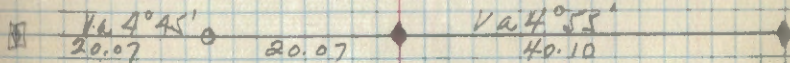
East 3.32 to a 3" sp. tam. post - 30" above
ground - post set approx. 15 yrs. From
the post rotten tam. stump 12" bs. N4W 0.15

Set a post on 5" Ash - N46 E 0.19 chs.

✓ - Set W 1/6 $\frac{29}{37}$ at pt. 1078 + 7 lks East
of ro ch stake. - 3" Elm 36" above ground
(Note: Put up post but did not
interreading - will get later)6/10/37 From 1/4 $\frac{29}{37}$ run East Va $5^{\circ}15'$ 40.10 Fall 0.26 chs N. of cov. $\frac{29}{37} \frac{108}{33}$, which
is an old aspen post, pointed, 4" diam.,
24" above ground set in mound of rock.
From post all burned N. Pine stumps
which are identified as original
A.T.S. me:

T. 141N. R 30W

Stallord -



3 ✓

P.3

N.P. Dump 18: N51 $\frac{1}{2}$ W 0.37 chs.

" " 14 S33W 0.29 chs.

✓ Set post on fence post - N34W - 0.09 chs.

- The above corner is at
position set by original survey

P. 4

6/4/37 From corner $\frac{29}{32} | \frac{28}{33}$ T 141 R 30
 run East Va 5°

40.00 Fall 0.35 chs. S. of $2\frac{1}{2}$ " sq. Apper
 post set in hole 16" in dia. -
 8" deep. Post about 14 yrs old.
 From post a fence corner - N+W -
 bears west 0.36 chs. Could
 not find any P.T.s.

6/4/37 Continue line

80.00 Set temp corner $\frac{28}{33} | \frac{27}{34}$

T Steadland

7/8

6/15/37 Corner 18 1/2 T. 14 R. 31. Find 2"
copper ls. pipe - 10" above ground.
which is County corner.
- Poster on 3" aspen S 3 E 0.06 chs
From above corner run
N-va 5° 45'.

13.75 - 2nd P. Road - E-W.

19.85 - Tree 3 1/2 lks. W. of 2nd P. - 10" above
ground - (Co. corner). which is
5 1/6 sec 7+8.

- Poster on 3" aspen N 42 E 0.11 chs.
- Continue line N. - chaining from
5 1/6 corner

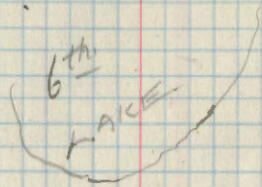
17.19 - Tree 9 lks W. of MC. 7+8.

2nd I.P. - Co. corner - 9" above ground.

Poster on 3" W. oak - S 7 E 0.16 chs

17.30 Leave bush - along dried lake bed.

20.00 Water's edge - 6th Lake.



va 5 9/16
17.19

va 5 9/16
19.85

p. 6

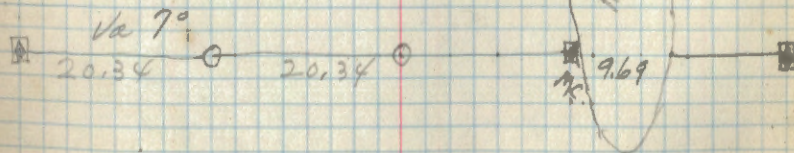
6/16/37 Snow cover $\frac{7}{18}$ | $\frac{8}{17}$ T. 41-R 31

Hum East - Va $7^{\circ}45'$

20.00 Temp. W/16 $\frac{8}{17}$

40.00 Temp $\frac{14}{17}$

59.50 Set stake on edge lake - from stake S $18\frac{1}{2}$ E
0.74 stake to 3' sq. tem. post, 24" set about
15 years.



P.7

6/25/37



Start at approx 1/4 Cor $\frac{9}{10}$ morning

South with Var $6^\circ - 20.00$ set
 approx 5 1/4 cor $\frac{9}{10} - 4"$ Open part 40"
 show ground - Plot on 9" Cor $N 64^\circ E$
 0.12 chs from part - continue to same
 Var from 14 chs fell 153 chs 9V,
 of approx sec corner $\frac{9}{10}$ set
 by Moore 12/24/36 $\frac{16}{15}$

Continue to same Var approx line $\frac{9}{16}$
 at 16 chs - continue to 4 chs
 set approx corner at $\frac{9}{10} - 4"$
 Open part 36" close 16/15 ground -
 section on 3" Poplar $N 16^\circ W$
 23 chs from part to part

P. 8
6/28/37

T. 14^N R. 30^W V

Started at N $\frac{1}{16}$ Sec. 22-23

Run line W Va. 9°

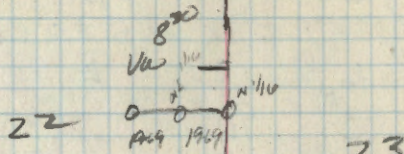
20.00 Chs. Set temp. N $\frac{1}{16}$ Stake.

Set temp. C N $\frac{1}{16}$ Stake. tied

19.38 Chs. in line running N-S

0.35 Ch. N. of F.S. C N $\frac{1}{16}$ Sec 22

Connected NE $\frac{1}{16}$ - True
Va 8° 30'

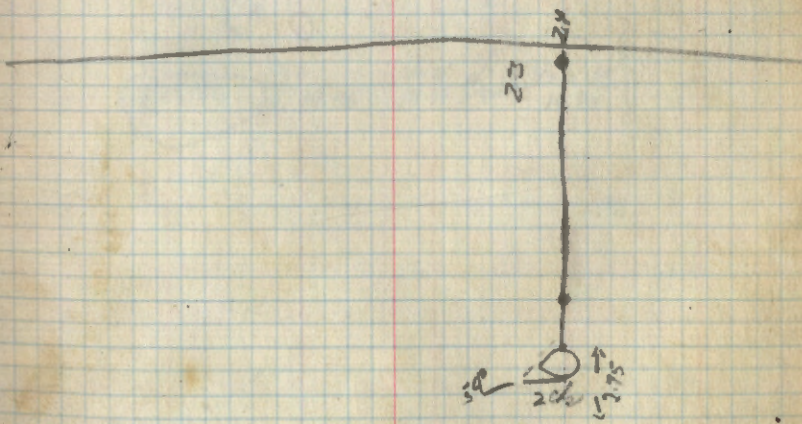
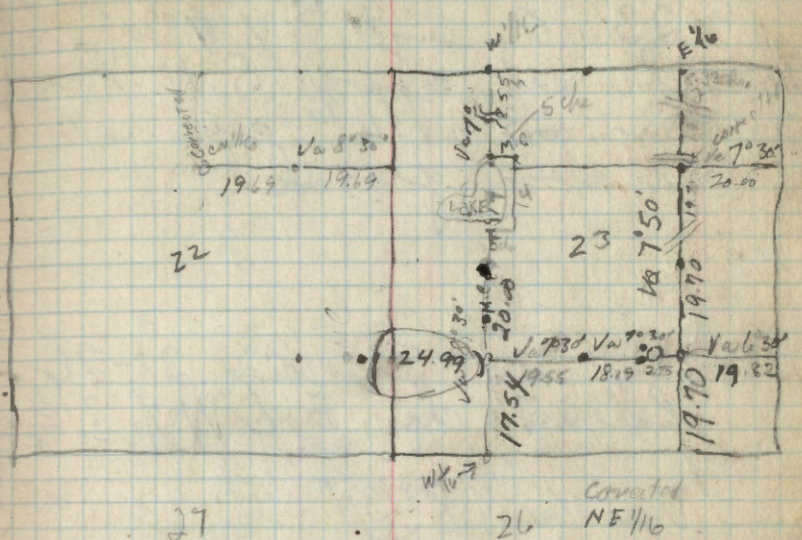


R. 9
6/29/37 T. 141 N. R. 30 W

Started at W to Sec. 23 & 14 run
line S. Va 70° 9 1/2 ch. Hid road E & W
18.00 ch. Run in to small lake
Run meander line E 90° 5 ch
turn S. 90°
32.00 turn W 90° at the end of lake -
Continue S. same Va

37.11 det. CW 1/16 Sec 23
at junction 12" Elm.
N 30° W 1.80 chs from
4" diameter post about 48"
above ground

T. 141 N - R 30 W 14



P. 11

T 141 N. R. 30 W S. 23

7-1-37

see map Page 9

✓

Started at E $\frac{1}{16}$ Cor. Sec. 14-
23 run line South $70^{\circ}30'$

8.33 Chs. to center of trail running
S. 65° E. Continue line
South

19.60 Chs. to center of road running
E. & W.

20.00 Chs. Set approx NE $\frac{1}{16}$ Cor
4" aspen 48" above ground

12.30 Chs. to center of trail
running NE & SW

20.00 Chs. set C.E. $\frac{1}{16}$ ^{approx} Cor. Sec. 23
set oak stake 4" diameter 40"
above ground. Continue line
South $70^{\circ}30'$

20.00 Chs. set approx S.E. $\frac{1}{16}$ cor Sec 23
4" aspen stake 40" above ground.

18.82 Chs. hit Sec. line 23-26
fall. 57 Chs E of E $\frac{1}{16}$ Sec. 23-26
true $70^{\circ}50'$

P. 12

T. 14^N R 30^W

7-2-37

Started at S $\frac{1}{16}$ cor. Sec 23-

✓ 24 Run line W. Va. 7'30"

17.82 Chs to fall 0.33 chs N of S.F.

 $\frac{1}{16}$ Cor. Sec. 23 4" aspen 50" above

ground true Va. 6'30"

Set post on 14 in Norway
pine S. 88° W. 0.75 chs

Continue line W Va. 6'30"

4.00 Chs. temp M.C. small lake
triangulate across lake 2.75 chs

6.75 M.C.

20.94 Chs fall 2.39 chs N. of ✓

CS $\frac{1}{16}$ approx Va 0"

18.07 Chs. Set M.C.

19.55 Chs hit W $\frac{1}{16}$ line fall to SW $\frac{1}{16}$

approx. cor.

21.36 Chs to edge of lake. distance

across lake 24.99

46.35 from wedge of lake.

46.55 Me on W side OF LAKE

7 Chs E to W $\frac{1}{16}$ 22-23

1+22
23

P.13

T14^N R30^W S23

7-6-37.

Started at N¹/₁₆ cor. Sec. 23-24

run line W Va. 6°30' true Va. 9°30'

20.00 chs. fall 1.00 chs. N of N.E. ¹/₁₆Corrected N.E. ¹/₄ Sec. 23

Continue line W. Va. 9°30'

20.44 chs. fall 0.53 chs. N. of C.N. ¹/₁₆

Sec. 23. True Va. 11°

Continue line W. Change Va. to

19.51 chs. to^E edge of lakeContinue line W from N.W. ¹/₁₆

Va. 9°

19.40 chs. hit Sec line 22-23
fall 1.62 chs. N of N ¹/₁₆ 22-23

P. 14

T141 R30 Sec. 21-22

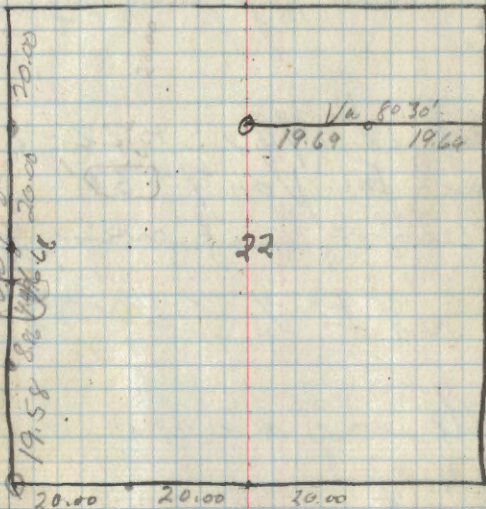
7-9-37.

Started at Sec. Cor. ^{15/14} 9/11/22Run line S. $70^{\circ}30'$ 20.00 ch. N $1/2$ 20.00 ch. $1/4$ 6.66 ch. edge of small lake
run base line 90° W 2. ch S at M.C.
Distance across lake 4.99 ch.

11.19 Set M.C. on S. side of lake

20.00 ch set approx. S $1/16$.19.68 Set Sec. Cor. ^{21/22} 27/28 Set post
on 3" oak. N 17° E 36 ch.
On stake 4" birch 40 in above ground

Sec 22 - T 191 - R 30



P. 15

$\frac{21}{28} \frac{22}{27}$

stand cor. Va

T. 191-R30

20.00

70° 30'

Chs set w $\frac{1}{16}$ Sec. 21-22

Continue E same Va.

40.00

Chs set approx $\frac{1}{4}$ Cor Sec. 22-27.

7/19/37

Stand at $\frac{1}{4}$ S. 22-27
run E Va 70° 30'

11.85 Chs to center of trail running N + S.

20.00 Chs set E $\frac{1}{16}$ 22-27

6.65 Chs to edge of lake.

0.00 Stand at E $\frac{1}{16}$ run N

20.00 set approx SE $\frac{1}{16}$

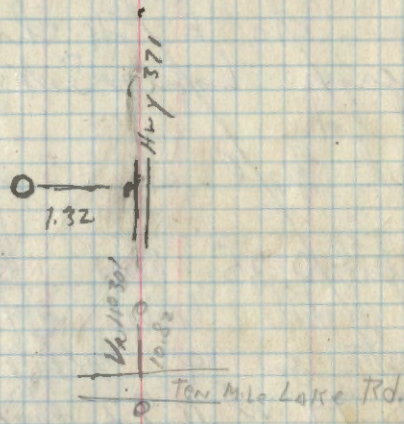
34.00 Chs.

P. 16 24 | 19 start line ^{T 191-R 31} run
25 | 30
W Va 70° 30'

23.97 pts Center line of
R. P. mining N.F.S.
29.78 ch. to full 0.64 ch. S. of ^{supposedly} $\frac{24}{25}$
46.48 full 0.76 ch. S. of M.C. $\frac{24}{25}$
47.87 ch. to E. edge of lake

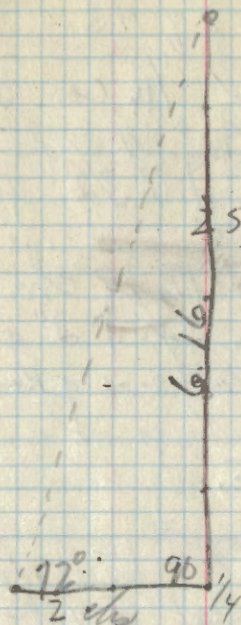
Set Location Poster on Hwy
371 - from Cor. $\frac{24}{19}$ 80° E.
1.32 ch. $\frac{25}{30}$

46.48 full 0.76 ch. S. of M.C. $\frac{24}{25}$
2 in iron pipe 40 in above ground
1 bearing the 12" N.P. as Pix S 30° W 0.05 ch
1 bearing the 12" N.P. N 30° E 0.16 ch
Set poster on N.P. S 30° W 0.05 ch



17

- Start at $\frac{1}{4}$ S 24+25
 Run South Va. 70 30'
 $\frac{1}{4}$ cor edge of lake turn 90° E. 2 chs
 Set M.C. on S edge of lake
 6.16 chs across lake
 22.00 chs set M.C. on N edge of lake
 turn 90° E 4 chs 12.31 chs
 across lake Set M.C. on S edge
 of lake
 24.31 set M.C. at S edge of lake
 38.40 fill 0.35 chs E of
 Johnson County C $\frac{1}{4}$ set
 station on 14" White Oak
 S 79° W 0.92 chs
 Continue line to same Var
 27.75 chs to center of road Camp Jura
 road



24

P. 18.

T 141ⁿ R. 31^w Sec. 25

31.89 full 0.95 chs E of M.C.

V₂.11° Started at 1/4 cor. Sec. 25-36

38.00 chs. turn 90° W. 2 chs. distance across lake 17.32.

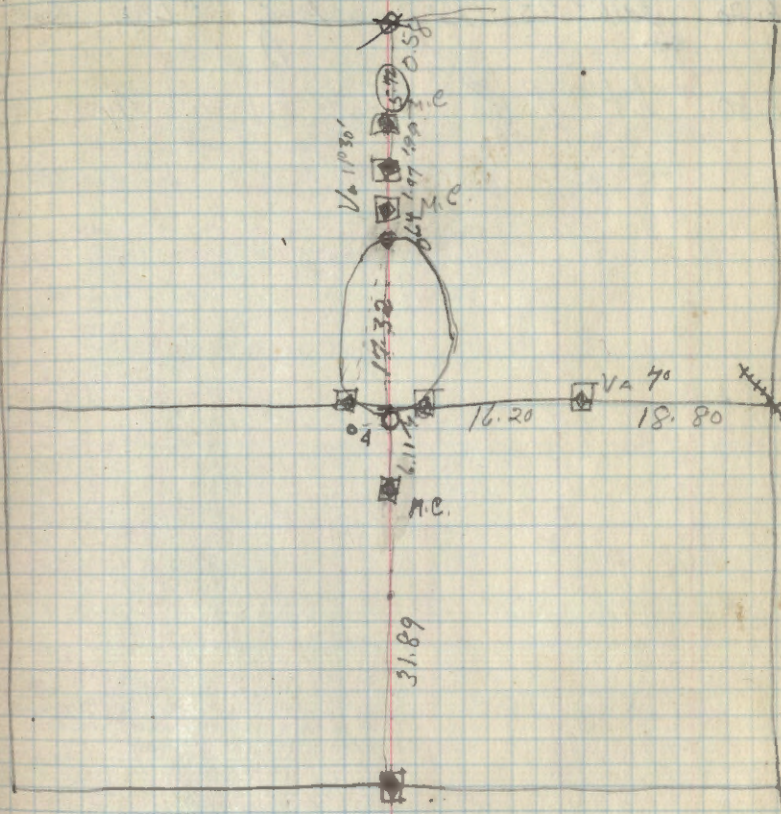
55.96 chs to full 0.28 chs W. of M.C. (probably cor. cor.) 2" gal. capped I.P. about 20" above ground N end of lake. Set post on 5" J.P. N 3° E.

57.43 chs to M.C. between lakes 1 1/2" I.P. 24" above ground

59.42 chs to M.C. S. end of lake set post on 4" aspen N 37° E 130 chs.

72.00 chs. turn E 90° 2 chs. distance across lake 5.72 chs

78.20 chs to 1/4 cor. 24-25 approx

T 141- R. 31^w
Sec 25

19 Start at County M.C. on
E Side of lake Va of 70.

Contour E

16.20 full 003 ch. S. of CE 1/16 Sec 25

18.80 lat R.R. track running N 62° W

11 1/2" sit pebbles 9m.C. Probable County M.C.
1 1/2" I.P. 30" above ground. on 4"
above N 40° W 0.50 ch.

16.20 - CE 1/16 1 1/2" I.P. 24" above ground
sit pebbles on oak fence post 4 ft above
ground N 33° E 0.04 ch. Va 70

7/21/87
20 Start at CE 1/16 Sec 8-141-31
Va 1° 30'

17.93 hit section line between
8-9-141-31 0.26 Ch
N of state road 16
to S 1/16 Sec 8-9

Start at approx 1/4 Sec 8-9
near W Va 12°

17.41 fell 0.41 Ch 90 of
approx E 1/16

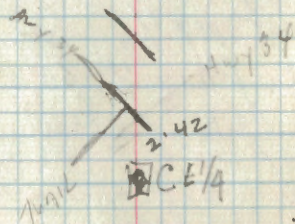
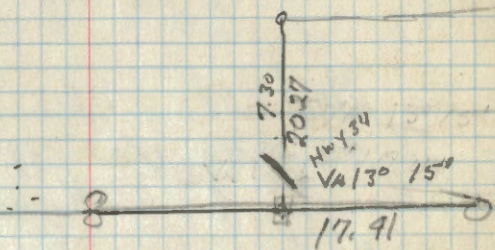
True Va 13° 15'

Start at approx CE 1/16
near W Va 7° 30'

2.42 to E of Hwy 34 running
N 64° E

6.17 to E of road running N 29 W

Sec 8 T 141-R 31



21

Sec 8-191-3

19.68 E of road
 20.27 intersect N $\frac{1}{16}$ line
 set off max NE $\frac{1}{16}$ - 9" S.P.
 post 90" above ground

Start at off max NE $\frac{1}{16}$
 run E Va 11°

1.05 ch to E. v Road survey
 N + S

17.02 ch to fall .73 ch S of
 $\frac{1}{16}$ Sec 8-9

0.00 Start at NE $\frac{1}{16}$ Sec 8 Run
 line N Va 7° 30'

1.79 ch to center of trail

5.06 ch of trail

19.81 ch to fall 1.23 ch E of
 E $\frac{1}{16}$ Sec 8-9- 1 1/2" S.P.
 20" above ground set
 post on 6" Tamarack
 N 1° W 0.26 ch.

22

Sec 8-T-191-R31

0.00 E 1/16 Run S Vw 90°30'

19.57 Ch to Q trail E+W

17.43 - to Q of trail E+W

19.33 To NE 1/16 Sec 8-191-31-
 at post - 9" J.P. 150"
 above ground - 1/2" on
 7" J.P. N 90°W 0.13 ch.

Sec 8-T-191-R-31

0.00 W 1/16 Secs - 8-17 Van Line
N VA 70°30'11.70 to Q Hwy 34 Running
N 70° E.19.82 to Q of trail Running
E+W.

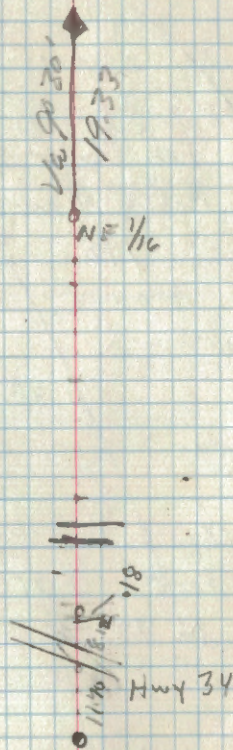
20.00 set APPRA SW 1/16

22.00 FALL 9.05 ch W of SW 1/16

35.55 To Q of trail E+W

70.00

Sec 8-191-31



23

7/26/37

Start at 1/4 Sec 25-30 Run

1/4 line E. VA 6° 30' on RR

Track

15.83 chs to E of Hwy 371

Running N+S

20.77 chs to R running N+S

22.38 ^{Don't pick 0.01 chs} chs to CW 1/16 Set 0.01

Post on 8" Fence Post. At V

corner 1 1/2" I.P. 20"

Above ground Fell 0.39

chs S of corner

T VA 70° 30'

Continue E VA 53°

20.72 2" gal. I.P. ^{post on}

6" Fence Post 0.01 chs E of

C 1/4 E N 72° W

cont'd

20.38 Fall - 70 links N of

C E 1/4 set post

2" gal I.P. ^{post on ground}

T VA 3°

Sec 30 - 191 - 30

~~VA 40°
 22.38
 VA 5°
 20.77
 VA 3°
 20.38~~

24

T 191-R30

0.20 Start at CE 1/16 VA 40
Run E.

7/27/37 Start at 1/4 Cor. Sec 25
VA 70-30

15.53 CHS to \odot of Hwy 371
Running N 30° W - Set
Locator Post on E side of Hwy

15.77 CHS E of 1/4 25-30 72
(6.50 CHS W of CW 1/16 Sec 30
191-30

20.00 CHS to \odot of Trail Running
N 11° W

22.27 To hit CW 1/16

Start at C 1/4 Sec 30

Run Line E VA 30

14.66 To \odot Trail Running
N + S.

20.23 To FALL 0.15 CHS S
of CE 1/16

~~VA 30~~ ~~VA 50~~ VA 30 TVN 50 30
22.27 20.72 20.23 20.21

25

Put Postev on
6" TAMARACK 0.27 CHS
N 15° E. 2" balu
I.P. Laying on ground.

Stab² AT C.E. 1/4 Sec 30-14

30 Run E VA. 9° + AT

Do. 21 Fall 0.53 CHS South of Court 44 ✓

Conrad Secs 29 + 30 Postev

on TAM. SNAG 6" set

by Moore 6/7/37 - N 15° E

0.20 CHS - 2" J.P. 10"

Above ground. in good condition

+ in PLACE

TVA 5° 30'

1938

70 21

26 1/4 County corner
1/4 Secs 29-30 - Run E
VA 60 30'

T141-R30

Sec 29 T141-R30

20.00 CHs set APPROX CW 1/16

40.00 CHs set APPROX C 1/4

60.00 CHs set APPROX C.E 1/16

78.88 Intersect section line
29-28 - set APPROX
1/4 Cor Sec 28-29 Fall 6
1.73 LKs N 6 P
85 96 CH STAKE

20.00 20.00 20.00 18.88
19.72 19.72 19.72 19.72

VA 50 15'

27 start at C14 sec 29
run so. VA 50

13.95 to ϕ Museum Hill
TT Runny E+W

28 $\frac{28}{33} \frac{27}{34}$ start at Sec. line

run E $N 70^{\circ} 30'$

20.00 set approx $N 1/16$ sec 27-34

32.00 turn 90° to N. front
4.50 chs to triangulate across
LAKE - 8.83 Across Lake

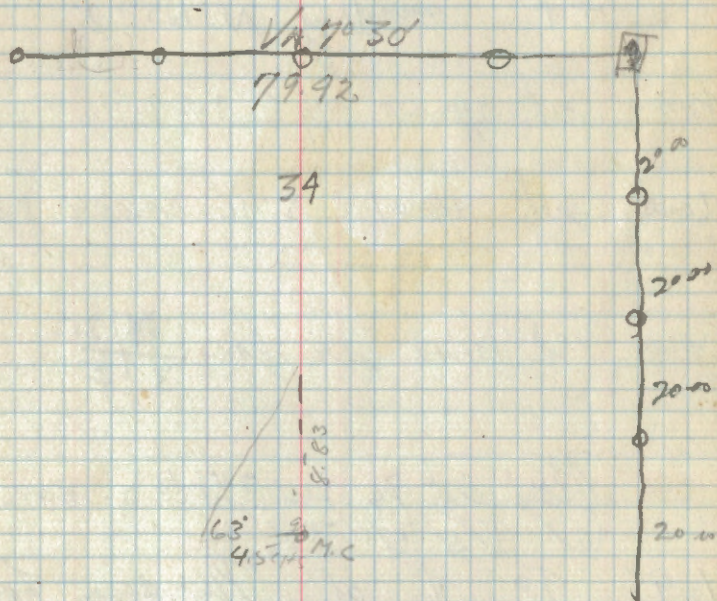
32.25 to Edge of LAKE

41.08 to Edge of LAKE

52.80 chs to center of logging trail
running NE & SW

60.00 chs set approx E $1/16$ Sec. 27-34
containing E.

79.42 chs. to fall 0.22 chs N of Sec.
 $\frac{27}{34} \frac{26}{35}$ 1 1/2" J.P. 20" above ground
set post on 8" Jack pine
N. 18° W. 88 chs.



29

T14ⁿ R 30ⁿ (MAPON 28) $\frac{27}{34} | \frac{26}{35}$ Started at Sec. Cor.
run line S. Va 9° 30'

20.00 set temporary N 1/4

34.31 to. E of Mason's hole
T.T. running N 65° E

40.00 set approx 1/4 S 34-35

60.00 set approx S 1/16 Sec 34-35

80.00 set approx sec cor. $\frac{34}{3} | \frac{35}{2}$ Start at 1/4 Sec 34+35 near
W Va 70° 30'6.95 to. E of Mason's hole
T.T. running N 50° E

8/6/37

Sec 36 - 191 - 30

Stand at corner (approx) $\frac{26}{35} | \frac{25}{36}$
min E. Va 70 301

20.00 ret approx. N 1/4 S 25 - 36

○ 20.00 ○

31 Start at Con

22	23
27	26

 T191-R29
mine

E. VA. 7° 30'

16.69 CHs to \perp of trail running N 74° E

18.20 CHs to \perp of same trail running
S 65° E

20.10 CHs Set APPROX W 1/16.

Sec 23-26 Two B.T.

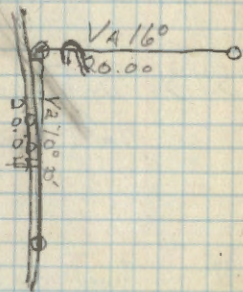
One 10" J.P. S 53° W - 0.55

CHs (scribed W 1/16 Sec 26 - B.T)

One 8" J.P. N 45° E 0.71 CHs
scribed but not legible due to
fine scar

20.07 CHs to \perp of ~~trail~~
~~trail~~ Running - S 3° W

T191-R29- Sec 26



26

32

Start at $\frac{22}{27} \frac{23}{26}$ running
N Va. $7^{\circ} 30'$

20.00 set APPROX $\frac{1}{4}$ C Secs. 22+23

23.43 intersect S $\frac{1}{2}$ line Sec 23
428 chs. E of S $\frac{1}{4}$ C. Sec 22+23

27.00 intersect S $\frac{1}{2}$ line Sec. 23,
1066 chs. N to S $\frac{1}{2}$ corner Va. $19^{\circ} 30'$

Began at W $\frac{1}{4}$ Sec. 23+24
ran line north Va $10^{\circ} 30'$ at
20 chs. 4 lks. line hit S.W. $\frac{1}{4}$ APPROX
Orient Va 17°

Beginning at S $\frac{1}{2}$ Sec 22+23 correct
line south to Sec. C: $\frac{22}{27} \frac{23}{26}$

T 141 R 29 Sec. 23

22

0
11
17
0
0

Station	Time	Distance	Direction
13	2+00	119.30	S 46° E
12	4+00	117.30	S 58° E
11	16+00	113.30	S 77° E
10	10+00	97.30	S 97° E
9	26+95	87.30	N 87° E
8	2+00	60.35	S 89° E
7	6+00	58.35	S 55° E
6	20+00	52.35	S 40° E
5	4+00	32.35	S 63° E
4	23+70	28.95	S 83° E
3	10+00	25.65	S 84° E
2	4+00	15.65	N 83° E
1	6+65	11.65	N 87° E
0	5+50	5.00	N 70° E

Traverse of Longville Grade

Grade from Whip Post to Longville

27	6+00	391.20	N69°E
26	21+00	385.20	N42°E
25	4+00	384.20	N99°E
24	32+00	360.20	S84°E
23	55+25	328.90	N73°E
	FROM sta 22 it is 43 ch. to S.R.		
22	2+00	278.95	N83°E
21	32+00	270.95	S87°W
20	4+00	238.95	N83°E
19	54+00	234.95	N75°E
	FROM sta 18 it is 13 ch. to S.R.		
18	4+00	210.95	N88°E
17	4+00	206.95	S68°E
16	36+80	202.75	S56°E
	6+50 chains S.R.		
15	4+00	165.95	S46°E
	1/2 ch. toward abutment from sta 14		
14	12+00	161.95	S34°E
		119.30	

Traverse of Longville Grade

END OF
BOOK 86

(Sta 499.05 is at Junction)
Grade with Longville cut-off

28 11+40 414.05 N 81° E

31. 5+15 429.65 N 81° E

30 12+00 424.20 N 68° E

(FROM Sta 30 it is ch. to S. R.)

29 5+10 412.20 N 91° E

28 26+00 407.20 N 81° E
391.20